

Transmission of Systemic AA Amyloidosis in Animals

T. Murakami¹, N. Ishiguro¹, and K. Higuchi²

¹Department of Veterinary Medicine, Gifu University, Gifu, 1-1 Yanagido, Gifu, Japan,

²Department of Aging Biology, Institute of Pathogenesis and Disease Prevention,
Shinshu University Graduate School of Medicine, 3-1-1 Asahi, Matsumoto, Japan

Correspondence: Keiichi Higuchi

Department of Aging Biology, Institute of Pathogenesis and Disease Prevention,
Shinshu University Graduate School of Medicine

3-1-1 Asahi, Matsumoto 390-8621, Japan

Tel: +81-263-37-2691, Fax: +81-263-37-3428, e-mail: keiichih@shinshu-u.ac.jp

Abstract

Amyloidoses are a group of protein-misfolding disorders that are characterized by the deposition of amyloid fibrils in organs and/or tissues. In reactive AA amyloidosis, serum amyloid A (SAA) protein forms deposits in mice, domestic and wild animals, and humans that experience chronic inflammation. AA amyloid fibrils are abnormal β -sheet-rich forms of the serum precursor SAA, with conformational changes that promote fibril formation. Extracellular deposition of amyloid fibrils causes disease in affected animals. Recent findings suggest that AA amyloidosis could be transmissible. Similar to the pathogenesis of transmissible prion diseases, amyloid fibrils induce a seeding-nucleation process that may lead to development of AA amyloidosis. We review studies of possible transmission in bovine, avian, mouse, and cheetah AA amyloidosis.

Keywords

AA amyloidosis, amyloid enhancing factor, bird, cheetah, cattle, mouse, prion-like transmission, serum amyloid A

Abbreviations:

AEF: amyloid enhancing factor, ApoA-II: apolipoprotein A-II, HDL: high density lipoproteins, SAA: serum amyloid A

Introduction

Amyloidosis refers to a group of protein-misfolding disorders. Various proteins that are soluble under physiological conditions can undergo conformational changes to the β -sheet-rich structure and subsequently self-assemble into highly insoluble amyloid fibrils. At present, at least 28 different proteins have been shown to be amyloidogenic in humans and animals, and are associated with disorders such as Alzheimer's disease, prion diseases, type II diabetes, familial amyloid polyneuropathy, and reactive AA amyloidosis.⁶¹ Amyloidoses can be divided into two major classes: localized and systemic. In localized amyloidoses, amyloid fibrils are deposited in organs such as the brain and pancreas, in which precursor proteins are synthesized. On the other hand, in systemic amyloidoses, serum precursor proteins, such as immunoglobulin light chain in AL amyloidosis, transthyretin in familial amyloid polyneuropathy, and β_2 -microglobulin in dialysis-related amyloidosis, circulate in the blood and polymerize to form amyloid fibrils that are then deposited throughout the body.⁶¹ AA amyloidosis is a systemic type of amyloidosis and occurs in domestic, laboratory and wild animals that experience chronic inflammation.^{8,26,34} In humans, systemic AA amyloidosis can develop in patients with chronic inflammatory diseases, including rheumatoid arthritis.^{21,50} Several recent studies have shown that susceptibility to AA amyloidosis in mice, cheetahs, chickens, and rabbits can be increased via the peripheral route, as well as orally through ingestion of the amyloid fibrils themselves.^{47,64,82}

The lag phase of disease onset is markedly shortened by the injection of AA amyloid fibrils isolated from amyloid-laden organs, suggesting that prion diseases and AA amyloidosis share a common pathogenic mechanism and may be transmitted by a prion-like infectious process that involves a seeding-nucleation-dependent

mechanism.³⁹ Once nuclei or amyloid fibrils are added to a solution containing the normal form of amyloid protein monomers, the recruitment and attachment of proteins to the ends of existing fibrils become energetically favorable and results in the rapid growth of amyloid fibrils.^{28,48} Here, we discuss important topical studies on the transmission of AA amyloidosis in domestic, laboratory and wild animals.

Transmission of bovine AA amyloidosis

Clinical signs and histological findings. Bovine AA amyloidosis is a relatively rare fatal disease in cattle that is characterized by nephrosis accompanied by diarrhea and edema.²⁶ Bovine AA amyloidosis occurs in adult cattle with chronic inflammatory disorders, such as chronic mastitis or arthritis, but amyloidoses without concurrent disorders are also occasionally observed.^{16,58,59,77}

Massive edema and enlargement of the kidneys are typically observed at autopsy in animals affected by AA amyloidosis.^{58,59} Kidneys with amyloid deposits are grossly irregular and enlarged, waxy-yellow in color, with widened cortices. On the cut surface, amyloid deposits in glomeruli and medulla are stained brown by an iodine reaction test. In extra-renal organs, however, macroscopic changes may be subtle or absent, even if the amyloid deposition in tissues is extensive.⁴⁵

In bovine AA amyloidosis, amyloid deposits in systemic organs, including edible tissues such as skeletal muscles and intestines, can be observed by histological analysis.^{45,77} Severe amyloid deposits are typically found in the kidney, particularly in the renal glomeruli and renal medulla,^{16,58,59} and can cause clinical episodes of renal disease. However, since not all affected cattle exhibit clinical signs,⁴⁵ histopathological analysis by autopsy or biopsy is essential for a definitive diagnosis of bovine AA

amyloidosis.

Bovine serum amyloid A. The precursor protein of AA is serum amyloid A (SAA), which is an acute-phase protein that is synthesized mainly in the liver in response to inflammation.¹¹ Sustained high SAA concentrations in serum can lead to aggregation of AA fibrils by seeding-dependent extension. In cattle affected by AA amyloidosis, serum SAA concentrations are significantly higher than those in unaffected cattle.⁶⁷ Seven SAA isoforms are known in cattle, and those with isoelectric points of 5.2 and 8.6 are thought to have amyloidogenic potential.⁶⁸ However, the amino acid sequence of either isoform has not been fully elucidated, and homology with amino acid sequences of AA proteins deposited in organs has not yet been clarified. On the other hand, antibodies specific for the bovine SAA isoforms are now available, and are expected to be useful in the diagnosis and investigation of bovine AA amyloidosis.⁶⁶

Transmission of bovine AA amyloidosis to other species. In experimental animal systems, AA amyloidosis can be induced by repeated long-term inflammatory stimulation.^{27,41,53,62} In these systems, the period required for inducing AA amyloidosis can be markedly shortened by injecting an amyloid-enhancing factor (AEF) at the same time as delivery of the inflammatory stimulus.^{1,29} The essential mechanism of action of AEFs is thought to involve amyloid fibrils that may work through a seeding-nucleation mechanism. AEFs can sometimes act as cross-seeding factors among different animal species.^{9,10,25,38,44,63,78}

Bovine amyloid fibrils also exhibit AEF activity in experimental animal systems. Cui *et al.* reported the development of AA amyloidosis in mice following the

simultaneous oral administration of semi-purified bovine AA fibrils and exposure to an inflammatory stimulus.^{9,10} In these studies, bovine AA fibrils appeared to behave solely as seeds for amyloid formation, because all of the deposited AA fibrils were derived from murine SAA. Further, the incidence, transmission rate, and severity in the extent of amyloid deposits were dependent on the injected dose of AA fibrils, although the extent of amyloid deposits was lower than when mice were administered mouse AA fibrils. These results indicated that, as in most prion diseases, there is a barrier to cross-species transmission of AA amyloidosis. This species barrier is considered to depend on the primary amino acid structure of the N-terminus of SAA.³⁸ Bovine AA amyloidosis can be transmitted to mice by intravenous, intraperitoneal, and oral routes, with oral transmission being the least virulent of these modes of transmission. The AEF activity of amyloid fibrils is thus considered to be both dose- and route-dependent.

Similar to transmission in the murine system, we previously investigated the development of AA amyloidosis in rabbits after exposure to bovine AA amyloid fibrils.^{25,44} In those previous studies, rabbits were subjected to intravenous administration of bovine amyloid fibrils accompanied by exposure to an inflammatory stimulus. While few rabbits developed AA amyloidosis, those that did had pre-existing ulcerative pododermatitis, a condition known as “sore hocks”. Further investigation revealed that the bacterial infection responsible for sore hocks played an important role in the development of AA amyloidosis, indicating that transmission of bovine AA amyloidosis was also possible in animals other than mice. In the animals used in those studies, the combined effect of bacterial infection and other diseases was considered to enhance cross-species transmission of AA amyloidosis.

Transmission of avian AA amyloidosis

Spontaneous avian amyloidosis. Avian AA amyloidosis occurs in adult birds as a consequence of inflammatory disorders such as tuberculosis.^{8,34} AA amyloidosis is not a rare disease in captive birds, and occurs most frequently in waterfowl, which are known to develop AA amyloidosis secondary to bumblefoot (ulcerative pododermatitis) caused by *Staphylococcus* spp infection.^{4,13,71} Furthermore, Pekin ducks also develop age-associated AA amyloidosis.⁵⁵ Chicken AA amyloidosis is referred to as amyloid arthropathy and is associated with *Enterococcus faecalis* infection, while spontaneous chicken systemic AA amyloidosis is less common.^{33,65,80}

Induced avian amyloidosis. Birds raised for human consumption may be subject to stressful environmental conditions and occasionally develop AA amyloidosis. Commercial foie gras, which is produced by force feeding geese, has been reported to contain AA fibrils at a high incidence.⁶³ Furthermore, we observed that chickens develop AA amyloidosis after inoculation with multiple vaccines (Figure 1).⁴⁶ Using the same principle, avian AA amyloidosis can be induced experimentally. In ducks and chickens, AA amyloidosis can be induced by repeated inflammatory stimulation, such as by inoculation with crude bacterial extracts or vaccination with oil-emulsified bacterins.^{14,36,37} Antigenic stimulation with bacteria is thus considered to promote the development of avian AA amyloidosis.

Transmission of avian AA amyloidosis. Avian AA amyloidoses frequently manifest as epidemic outbreaks in wild and captive fowl populations.^{51,56,60,71} When considering the transmissible properties of AA amyloidosis, the horizontal transfer of amyloidosis by

ingestion of amyloid-contaminated feed or feces is suspected to occur among avian species. Indeed, several recent studies have suggested that avian AA amyloidosis is transmissible.

We investigated whether chicken AA amyloidosis can be transmitted within a species following either intravenous or oral delivery.⁴⁷ Chickens were administered a single intramuscular dose of inactivated *Salmonella enteritidis* vaccine before being inoculated with chicken amyloid extracts either intravenously or orally. Interestingly, while chicken AA amyloidosis was induced in the intravenous inoculation group as well as the oral inoculation group, the patterns of organ involvement differed between both groups. In the intravenous inoculation group, amyloid deposits were distributed homogeneously in all organs, while in the oral inoculation group, severe amyloid deposits were observed only in the spleen. This finding suggested that AA fibrils in the intestine might be taken up by lymphoid tissues, such as Peyer's patches, and then initially transported to the spleen.

The transmission of avian AA amyloidosis is not restricted to the same species, it can also occur between species. Liu et al. showed that swan AA fibrils exhibit AEF activity in mice, and that the induction of murine AA amyloidosis can be enhanced by intravenous administration of swan AA fibrils.³⁸ Furthermore, AA fibrils extracted from duck or goose foie gras exhibit potent AEF activity following oral administration in transgenic mice engineered to produce human interleukin-6.⁶³ These experiments demonstrated that avian AA amyloidosis can be transmitted orally between different species.

Transmission of mouse AA amyloidosis

Spontaneous and experimental AA amyloidosis in mice. Numerous reports have examined spontaneous or senile amyloidosis in mice since the first description of renal glomerular lesions by Gorer in 1940.¹⁹ To date, two amyloid proteins had been found to form spontaneous deposits in mice. The first amyloid fibril protein that was demonstrated biochemically and immunochemically to be an AA protein was found in non-inbred male General Purpose White Swiss (GP) mice¹⁸ and obese hyperglycemic mice.⁷⁴ AA amyloidosis in mice has been associated with chronic inflammation. For example, AA amyloid deposition can be induced experimentally in mice by repeated injection of silver nitrate, casein, or lipopolysaccharide, which greatly increases the concentration of circulating SAA.²⁴ These spontaneous and experimental AA amyloidoses are characterized by the systemic deposition of extracellular fibrils composed of SAA protein or proteolytic fragments, primarily in the spleen, kidney, small intestine, liver, and heart.

The other amyloid protein deposited spontaneously in mice is apolipoprotein A-II (apoA-II), which circulates in the blood associated with serum high-density lipoprotein (HDL), and forms amyloid fibrils (AApoAII) in age-associated systemic amyloidosis.²² Mouse AApoAII amyloidosis is characterized by the systemic and extracellular deposition of amyloid fibrils composed of apoA-II, primarily in the liver, tongue, heart, stomach, small intestine, spleen, kidney, and blood vessel walls in aged mice.⁶⁹

The lag phase of AA amyloidogenesis can be markedly shortened by co-injection of amyloid materials extracted from mouse tissues, such as the spleen and liver, together with an acute or chronic inflammatory stimulus.^{9,39,40} While it typically takes several weeks and repeated administration of inflammatory stimulus to induce the development of amyloid deposits, AA amyloidogenesis is detectable within 48 hours after

co-administration of inflammatory stimulus plus amyloid extracts.³⁰ These findings suggested that experimental mouse AA amyloidosis may be transmitted by a prion-like infectious process.⁷³ Indeed, prion-like transmission was recently demonstrated for mouse AApoAII amyloidosis.^{23,75,76}

Mouse serum amyloid A. Four SAA genes have been identified in the mouse genome. The *Saa1* and *Saa3* genes are located with an interval of ~30 kb on chromosome 7 with *Saa4* located within this interval.¹² The *Saa2* gene is located in a head-to-head orientation with *Saa1* gene with an interval of ~20 kb. SAA1 and SAA2 are acute-phase proteins and are synthesized mainly in the liver in response to cytokines, such as interleukin-1 (IL-1), interleukin-6 (IL-6), and tumor necrosis factor- α (TNF- α). Only SAA1 is deposited as amyloid fibrils in mice.⁷⁹ The plasma concentration of SAA proteins increases rapidly from 1 – 5 μg to ~1000 $\mu\text{g}/\text{ml}$ in less than 24 h during the acute-phase response to tissue injury and inflammation. SAA proteins circulate in the blood as apolipoproteins associated with HDL. Recently, SAA was reported to act as a signal for macrophages to secrete cytokines which would in turn induce hepatic SAA synthesis. Once this cycle is established, higher SAA levels may be maintained during inflammation and amyloid deposition can be accelerated.^{3,5} However, further studies should be undertaken to clarify whether the use of delipidated or aggregated forms of SAA stimulates cytokine secretion by macrophages.^{31,35}

Transmission of cheetah AA amyloidosis

AA Amyloidosis in captive cheetahs. The cheetah (*Acinonyx jubatus*) is in danger of extinction. Consequently, considerable efforts have been made to breed cheetahs in zoos

to increase their numbers and prevent extinction. However, at group breeding facilities with high rearing densities, the prevalence of AA amyloidosis associated with a high incidence of chronic lymphoplasmacytic gastroenteritis is a major hindrance to increasing the population.⁵²

We examined the possibility of horizontal transfer or transmission of AA amyloidosis in a group of captive cheetah with severe AA amyloid deposition in the kidney, liver and spleen, as well as in other organs.⁸² The AA fibril protein isolated from the liver was equivalent to the N-terminal part of the precursor protein SAA (the longest AA peptides consisted of amino acids 1 – 93 of the 111-amino acid, full-length precursor protein). While AA amyloid fibrils were not detected in cheetah urine, cheetah feces unexpectedly contained AA amyloid fibrils that differed from those seen in the liver. Compared to liver amyloid fibrils, fecal amyloid fibrils had a smaller molecular weight due to deletion of both N- and C-terminal sequences, a shorter and finer fibrillar shape on electron microscopy,⁸² and increased sensitivity to denaturation treatments, such as incubation in 6 M guanidine hydrochloride solution. Interestingly, comparison of the transmissibility of fecal and liver AA amyloid fibrils using the mouse experimental AA amyloidosis system showed that the fecal amyloid fibrils from the cheetah exhibited significantly greater transmissibility.⁸² In yeast, transmission of the amyloid fibril form of the Sup35 protein produces a [PSI⁺] phenotype. The metabolic phenotype [PSI⁺] results from conversion of soluble active monomers to an inactive amyloid of the yeast Sup35 translation termination factor.⁵⁷ It has been reported that distinct strains of the yeast prion [PSI⁺] exist, and that strains exhibiting stronger transmission activity form less stable fibrils compared to strains exhibiting weaker transmissibility in general.^{32,70} Amyloid fibrils were also detected in the feces of mice with AApoAII amyloidosis, and

the injection of these fibrils was observed to induce amyloidosis in mice (Figure 2).⁷⁵

Therefore, we propose that feces is a potential transmission vehicle and that it may be ingested by licking, consumption together with food, or by inhalation. Ingested amyloid fibrils with higher transmissibility may accelerate AA amyloidosis in captive cheetah populations. The finding of possible transmission of cheetah AA amyloidosis is important for understanding the propagation and pathogenesis of AA amyloidosis, because it suggests that the transmission of AA amyloidosis, which has only been observed in the laboratory to date, may also occur in wild or captive populations of animals. Why is the incidence and transmission of AA amyloidosis high in cheetahs? Although chronic higher blood concentrations of SAA due to chronic gastritis is a necessary prerequisite for cheetah AA amyloidosis, genetic factors such as the structure of precursor SAA may also play a role.

Cheetah serum amyloid A. Given that the high incidence of AA amyloidosis in cheetahs may be due to unique features of the SAA gene in this species, we cloned and characterized the cheetah *SAA1* gene.^{6,81} Genome walking and PCR cloning analysis revealed that cheetahs have four SAA genes on the same chromosome: *SAA1A*, *SAA1B*, *SAA3A*, and *SAA3B*. Of these, *SAA1A* and *SAA1B* genes show a high degree of nucleotide sequence identity and the SAA1A and SAA1B proteins have the same amino acid sequences. Similarly, the *SAA3A* and *SAA3B* genes are homologous, but the SAA3A and SAA3B proteins have several amino acid substitutions. Notably, only the SAA1A protein associates to form AA amyloid fibrils, and *SAA1B* mRNA is not expressed in the cheetah.⁶

These findings suggested a model for SAA gene evolution in cheetahs. Specifically, the

ancestral *SAA* gene first duplicated and gave rise to the *SAA1* and *SAA3* genes. Subsequently, the *SAA1* and *SAA3* genes were then duplicated one more time giving rise to four *SAA1A*, *SAA1B*, *SAA3A*, and *SAA3B* genes in the cheetah genome.

Screening of 51 cheetahs autopsied in Japan revealed nucleotide polymorphisms only in non-coding regions in the *SAA1A* gene, implying that the cheetah *SAA1A* proteins that formed AA amyloid fibrils were monomorphic among cheetahs. In contrast, SNPs in the 5' flanking region (-13T/C) and in the coding region (2295 C/T and 3010 C/T) of the *SAA1* gene constitute risk factors for development of AA amyloidosis in humans.^{2,42,43} The finding that all cheetahs have the same *SAA1A* protein sequence may be an important factor underlying the very high incidence of AA amyloidosis in the cheetah. Further studies are required to characterize the amyloidogenicity of the cheetah *SAA1* protein.

Discussion

Risk of amyloid in slaughtered cattle and birds. Among food animals, AA amyloidosis is observed mainly in cattle and birds. Although bovine AA amyloidosis is a rare disease in clinical practice, amyloid deposits in slaughtered cattle were observed at a rate of 0.8-5%.^{17,72} In bovine AA amyloidosis, amyloid deposits were observed in edible parts of the animal, including the liver, digestive organs, and skeletal muscle.⁷⁷ Furthermore, some cattle with amyloidosis do not have clinical signs, nephrosis, or amyloid deposits in the glomeruli, despite the presence of severe amyloid deposits in their extrarenal organs.⁴⁵

Broiler chickens are considered to be resistant to amyloidosis, as they are slaughtered at an early age. However, egg-laying hens have longer life spans than

broilers and may therefore develop AA amyloidosis due to repeated vaccinations.^{46,49} After culling of these hens, certain body parts are also consumed as processed meat products. Our surveillance, albeit limited, revealed that amyloid deposits were rarely observed in commercial broiler chicken livers. However, we detected minute amyloid deposits in culled egg-laying chickens that had been administered multiple vaccinations during the rearing period, and these animals developed asymptomatic amyloidosis (unpublished data). In these birds, amyloid deposits were observed mainly in the muscles where the inoculations were delivered (Figure 1). As described previously, amyloid deposits were observed in commercial foie gras and the susceptibility of Pekin duck to AA amyloidosis has been observed to increase with age.^{55,63} Thus, amyloid fibril deposits in animals intended for human consumption appear to be more insidious than initially thought.

Since bovine and avian AA amyloidosis can be transmitted between different species,^{9,10,25,38,44,63,78} the presence of amyloid in edible meat may prove to be a public health hazard. Although there is a barrier to cross-species transmission of AA amyloidosis,^{9,10} and the low levels of amyloid fibrils in muscle may indeed lessen the risk of transmission, the precise details of the transmission mechanism remain unclear. To minimize the risk of food-borne amyloidosis, further investigations of interspecies AA amyloidosis transmission are therefore required.

Horizontal transmission of avian AA amyloidosis. During epidemic outbreaks of AA amyloidosis in wild and captive animals, horizontal transfer of AA amyloidosis among the affected groups has been suspected. In chicken AA amyloidosis, severe amyloid deposits have even been observed in the lamina propria of the gut.⁴⁶ Furthermore, the

high frequency with which hemorrhagic enteritis is observed in amyloidosis-affected chickens, suggests that the associated mucosal damage might enhance shedding of amyloid in the feces. As avian and cheetah AA amyloidosis can be transmitted orally,^{47,82} it is possible that the horizontal transfer of amyloidosis by ingestion of amyloid-contaminated feed or feces also occurs among avian species.

Perspectives. The possibility of inter-individual infectivity or transmissibility of non-prion amyloidosis was revealed experimentally in two systemic AA and AApoAII amyloidoses in mice. More recently, the possibility of prion-like transmission of AA amyloidosis was reported in domestic and wild animals, including cattle, birds, and cheetahs. A diagram of amyloid fibril formation and potential transmission of AA amyloidosis is presented in Figure 3. The following major questions remain: 1) how are pathological agents such as amyloid fibrils ingested, and how do they enter into recipient animals, 2) how do these agents spread throughout the body, 3) how does transmission occur across the species barrier, and 4) how we can obtain epidemiological evidence that confirms whether transmission occurs between animals and humans. While our studies showed that feces appears to be involved in amyloid transmission between animals, further studies confirming these observations are necessary.

The concept of transmission via self-propagating protein structures is considered to be important for understanding the pathogenesis of protein-misfolding diseases, including amyloidoses. Recently, many groups have reported that neurodegenerative diseases, such as Alzheimer's disease,¹⁵ Huntington's disease,⁵⁴ Parkinson's disease²⁰ and tauopathies,⁷ can spread by cell-to-cell transmission of pathological and self-propagating amyloid-like protein structures. The findings reported here suggest that

AA amyloidoses may be similarly transmitted.

Acknowledgments

Our studies were supported by Grants-in-Aid for Scientific Research (B) 23390093, Science Research on Priority Areas 22020015, and Challenging Exploratory Research (23659150) from the Ministry of Education, Culture, Sports, Science, and Technology of Japan, as well as by grants to the Research Committees for Amyloidosis from the Intractable Disease Division of the Ministry of Health, Labor, and Welfare.

References

1. Axelrad MA, Kisilevsky R, Willmer J, et al. Further characterization of amyloid-enhancing factor. *Lab Invest.* 1982; **47**(2): 139-146.
2. Baba S, Masago SA, Takahashi T, et al. A novel allelic variant of serum amyloid A, SAA1 gamma: genomic evidence, evolution, frequency, and implication as a risk factor for reactive systemic AA-amyloidosis. *Hum Mol Genet.* 1995; **4**(6): 1083-1087.
3. Baranova IN, Bocharov AV, Vishnyakova TG, et al. CD36 is a novel serum amyloid A (SAA) receptor mediating SAA binding and SAA-induced signaling in human and rodent cells. *J Biol Chem.* 2010; **285**(11): 8492-8506.
4. Brassard A. Amyloidosis in captive anseriformes. *Can J Comp Med Vet Sci.* 1965; **29**(10): 253-258.
5. Cheng N, He R, Tian J, et al. Cutting edge: TLR2 is a functional receptor for acute-phase serum amyloid A. *J Immunol.* 2008; **181**(1): 22–26.
6. Chen L, Une Y, Higuchi K, et al. Cheetahs have 4 serum amyloid a genes evolved through repeated duplication events. *J Hered.* 2012; **103**(1): 115-129.
7. Clavaguera F, Bolmont T, Crowther RA, et al. Transmission and spreading of tauopathy in transgenic mouse brain. *Nat Cell Biol.* 2009; **11**(7): 909-913.
8. Cowan DF. Avian amyloidosis. I. General incidence in zoo birds. *Pathol Vet.* 1968; **5**(1): 51-58.
9. Cui D, Kawano H, Takahashi M, et al. Acceleration of murine AA amyloidosis by oral administration of amyloid fibrils extracted from different species. *Pathol Int.* 2002; **52**(1): 40-45.
10. Cui D, Kawano H, Hoshii Y, et al. Acceleration of murine AA amyloid deposition

- by bovine amyloid fibrils and tissue homogenates. *Amyloid*. 2008; **15** (2): 77-83.
11. Cray C, Zaias J, Altman NH. Acute phase response in animals: a review. *Comp Med*. 2009; **59**(6): 517-526.
 12. de Beer MC, de Beer FC, Gerardot CJ, et al. Structure of the mouse Saa4 gene and its linkage to the serum amyloid A gene family. *Genomics*. 1996; **34**(1):139–142.
 13. Dias JL, Montau RJ. Staphylococcosis in captive exotic waterfowl. *Avian Pathol*. 1994; **23**(4): 659-669.
 14. Druet RL, Janigan DT. Experimental amyloidosis. Amyloid induction with a soluble protein antigen in intact, bursectomized and thymectomized chickens. *Am J Pathol*. 1966; **49**(6): 1103-1123.
 15. Eisele YS, Obermüller U, Heilbronner G, et al. Peripherally applied A β -containing inoculates induce cerebral beta-amyloidosis. *Science*. 2010; **330**(6006): 980-982.
 16. Elitok OM, Elitok B, Unver O. Renal amyloidosis in cattle with inflammatory diseases. *J Vet Intern Med*. 2008; **22**(2): 450-455.
 17. Fujinaga Y. Incidence of amyloid deposits in various organs in senile cows and their pathological characteristics. *Yamaguchi Med J*. [in Japanese with English abstract] 1990; **39**(6): 293-303.
 18. Glenner GG, Page D, Isersky C, et al. Murine amyloid fibril protein: isolation, purification and characterization. *J Histochem Cytochem*. 1971; **19**(1): 16-28.
 19. Gorer PA. Renal lesions found in pure lines of mice. *J Pathol Bact*. 1940; **50**(1): 25–30.
 20. Hansen C, Angot E, Bergström AL, et al. α -Synuclein propagates from amyloidosis– mouse brain to grafted dopaminergic neurons grafted dopaminergic neurons and seeds aggregation in cultured human cells. *J Clin Invest*. 2011; **121**(2):

715-725.

21. Hazenberg BP, van Rijswijk MH. Where has secondary amyloid gone? *Ann Rheum Dis.* 2000; **59**(8): 577–579.
22. Higuchi K, Yonezu T, Kogishi K, et al. Purification and characterization of a senile amyloid-related antigenic substance (apoSASSAM) from mouse serum. apoSASSAM is an apoA-II apolipoprotein of mouse high density lipoproteins. *J Biol Chem.* 1986; **261**(27): 12834-12840.
23. Higuchi K, Kogishi K, Wang J, et al. Fibrilization in mouse senile amyloidosis is fibril conformation-dependent. *Lab Invest.* 1998, **78**(12): 1535-1542.
24. Hoffman JS, Benditt EP. Changes in high density lipoprotein content following endotoxin administration in the mouse. Formation of serum amyloid protein-rich subfractions. *J Biol Chem.* 1982; **257**(17): 10510-10517.
25. Horiuchi N, Kotani Y, Koga M, et al. Experimental induction of amyloidosis by bovine amyloid fibrils in Sore Hock rabbits. *Amyloid.* 2008; **15**(2): 84-88.
26. Jakob W. Spontaneous amyloidosis of mammals. *Vet Pathol.* 1971; **8**(4) 292-306.
27. Janigan DT, Druet RL. Experimental amyloidosis. Role of antigenicity and rapid induction. *Am J Pathol.* 1966; **48**(6): 1013-1025.
28. Johan K, Westermark G, Engström U, et al. Acceleration of amyloid protein A amyloidosis by amyloid-like synthetic fibrils. *Proc Natl Acad Sci U S A.* 1998; **95**(5): 2558-2563.
29. Kisilevsky R, Gruys E, Shirahama T. Does Amyloid enhancing factor (AEF) exist? Is AEF a single biological entity? *Amyloid.* 1995; **2**(2): 128-133.
30. Kisilevsky R. Preparation and propagation of amyloid-enhancing factor. *Methods Mol. Biol.* 2005; **299**: 237–241.

31. Kisilevsky R, Manley PN. Acute-phase serum amyloid A: perspectives on its physiological and pathological roles. *Amyloid*. 2012; **19**(1): 5-14.
32. Krishnan R, Lindquist SL. Structural insights into a yeast prion illuminate nucleation and strain diversity. *Nature*. 2005; **435**(7043): 765-772
33. Landman WJ, Gruys E, Dwars RM. A syndrome associated with growth depression and amyloid arthropathy in layers: a preliminary report. *Avian Pathol*. 1994; **23**(3): 461-470.
34. Landman WJ, Gruys E, Gielkens AL. Avian amyloidosis. *Avian Pathol*. 1998; **27**(3): 437-449.
35. Lindhorst E, Young D, Bagshaw W, et al. Acute inflammation, acute phase serum amyloid A and cholesterol metabolism in the mouse. *Biochim Biophys Acta*. 1997; **1339**(1): 143–154.
36. Ling YS, Mao HP, Zhong AC, et al. The effects of *Escherichia coli* and its endotoxin on amyloidogenesis in ducks. *Vet Pathol*. 1991; **28**(6): 519-523.
37. Ling Y. Experimental production of amyloidosis in ducks. *Avian Pathol*. 1992; **21**(1): 141-145.
38. Liu Y, Cui D, Hoshii Y, et al. Induction of murine AA amyloidosis by various homogeneous amyloid fibrils and amyloid-like synthetic peptides. *Scand J Immunol*. 2007; **66**(5): 495-500.
39. Lundmark K, Westermark GT, Nystrom S, et al. Transmissibility of systemic amyloidosis by a prion-like mechanism. *Proc Natl Acad Sci U S A*. 2002; **99**(10): 6979-6984. Erratum. *Proc Natl Acad Sci U S A*. 2003; **100**(6): 3543.
40. Lundmark K, Westermark GT, Olsén A, et al. Protein fibrils in nature can enhance amyloid protein A amyloidosis in mice: Cross-seeding as a disease mechanism.

Proc Natl Acad Sci U S A. 2005; **102**(17): 6098-6102.

41. McAdam KP, Sipe JD. Murine model for human secondary amyloidosis: Genetic variability of the acute-phase serum protein SAA response to endotoxins and casein. *J Exp Med.* 1976; **144**(4): 1121-1127.
42. Moriguchi M, Terai C, Koseki Y, et al. Influence of genotypes at SAA1 and SAA2 loci on the development and the length of latent period of secondary AA-amyloidosis in patients with rheumatoid arthritis. *Hum Genet.* 1999; **105**(4): 360-366.
43. Moriguchi M, Kaneko H, Terai C, et al. Relative transcriptional activities of SAA1 promoters polymorphic at position -13(T/C): potential association between increased transcription and amyloidosis. *Amyloid.* 2005; **12**(1): 26-32.
44. Murakami T, Inoshima Y, Watanabe K, et al. Pathogenesis of experimental amyloid protein A amyloidosis in sore hocks-affected rabbits. *Amyloid.* 2011; **18**(3): 112-118.
45. Murakami T, Inoshima Y, Kobayashi Y, et al. Atypical AA amyloid deposits in bovine AA amyloidosis. *Amyloid.* 2012; **19**(1): 15-20.
46. Murakami T, Inoshima Y, Sakamoto E, et al. AA amyloidosis in vaccinated growing chickens. *J Comp Pathol.* 2013; **149**(2-3): 291-297.
47. Murakami T, Muhammad N, Inoshima Y, et al. Experimental induction and oral transmission of avian AA amyloidosis in vaccinated white hens. *Amyloid.* 2013; **20**(2): 80-85.
48. Naiki H, Nagai Y. Molecular pathogenesis of protein misfolding diseases: pathological molecular environments versus quality control systems against misfolded proteins. *J Biochem.* 2009; **146**(6): 751-756.

49. Nakamura K, Waseda K, Yamamoto Y, et al. Pathology of cutaneous fowlpox with amyloidosis in layer hens inoculated with fowlpox vaccine. *Avian Dis.* 2006; **50**(1): 152-156.
50. Nakamura T. Amyloid A amyloidosis secondary to rheumatoid arthritis: uncommon yet important complication. *Curr Rheumatol Rev.* 2007; **3**(3): 231–241.
51. Neimanis A, Gavier-Widén D, Leighton F, et al. An outbreak of type C botulism in herring gulls (*Larus argentatus*) in southeastern Sweden. *J Wildl Dis.* 2007; **43**(3): 327-336.
52. Papendick RE, Munson L, O'Brien TD, et al. Systemic AA amyloidosis in captive cheetahs (*Acinonyx jubatus*). *Vet Pathol.* 1997; **34**(6): 549–556.
53. Ram JS, Glener GG, DeLellis RA. Amyloid. I. Use of Freund's adjuvant in experimental amyloidosis. *Proc Soc Exp Biol Med.* 1968; **127**(3): 854-856.
54. Ren PH, Lauckner JE, Kachirskai I, et al. Cytoplasmic penetration and persistent infection of mammalian cells by polyglutamine aggregates. *Nat Cell Biol.* 2009; **11**(2): 219-225.
55. Rigdon RH. Amyloidosis: spontaneous occurrence in white Pekin ducks. *Am J Pathol.* 1961; **39**(3): 369-378.
56. Sato K, Yasuda J, Katagiri S, et al. Pathology of amyloidosis collectively occurring in a commercial layer chicken flock. *Keibyō Kenkyūkaihō* [in Japanese with English abstract]. 2003; **39**(1): 38-42.
57. Scheibel T. Amyloid formation of a yeast prion determinant. *J Mol Neurosci.* 2004; **23**(1-2): 13–22.
58. Seifi HA, Karimi K, Movassehgi AR. Renal amyloidosis in cattle: a case report in Iran. *Zentralbl Veterinarmed B.* 1997; **44**(10): 631-633.

59. Senturk S, Ozyigit O. Renal AA amyloidosis in a dairy cow in Turkey. *Vet Rec.* 2006; **158**(13): 448-449.
60. Shibatani M, Imoto H, Suzuki T, et al. Amyloidosis in a layer chicken flock. *Nippon Juishikai Zasshi* [in Japanese with English abstract]. 1984; **37**(12): 787-792.
61. Sipe JD, Benson MD, Buxbaum JN, et al. Amyloid fibril protein nomenclature: 2012 recommendations from the Nomenclature Committee of the International Society of Amyloidosis. *Amyloid.* 2012; **19**(4): 167-170.
62. Skinner M, Shirahama T, Benson MD, et al. Murine amyloid protein AA in casein-induced experimental amyloidosis. *Lab Invest.* 1977; **36**(4): 420-427.
63. Solomon A, Richey T, Murphy CL, et al. Amyloidogenic potential of foie gras. *Proc Natl Acad Sci U S A.* 2007; **104**(26): 10998-11001.
64. Sorby R, Espenes A, Landsverk T, et al. Rapid induction of experimental AA amyloidosis in mink by intravenous injection of amyloid enhancing factor. *Amyloid.* 2008; **15**(1): 20–28.
65. Steentjes A, Veldman KT, Mevius DJ, et al. Molecular epidemiology of unilateral amyloid arthropathy in broiler breeders associated with *Enterococcus faecalis*. *Avian Pathol.* 2002; **31**(1): 31-39.
66. Taira Y, Inoshima Y, Ishiguro N, et al. Isolation and characterization of monoclonal antibodies against bovine serum amyloid A1 protein. *Amyloid.* 2009; **16**(4): 215-220.
67. Takahashi E, Uzuka Y, Tanabe S, et al. Serum amyloid A and haptoglobin levels in bovine amyloidosis. *J Vet Med Sci.* 2007; **69**(3): 321-323.
68. Takahashi E, Kuwayama H, Kawamoto K, et al. Detection of serum amyloid A isoforms in cattle. *J Vet Diagn Invest.* 2009; **21**(6): 874-877.

69. Takeshita S, Hosokawa M, Irino M, et al. Spontaneous age-associated amyloidosis in senescence-accelerated mouse (SAM). *Mech Ageing Dev.* 1982; **20**(1): 13-23.
70. Tanaka M, Collins SR, Toyama BH, et al. The physical basis of how prion conformations determine strain phenotypes. *Nature.* 2006; **442**(7102): 585-589.
71. Tanaka S, Dan C, Kawano H, et al. Pathological study on amyloidosis in Cygnus olor (mute swan) and other waterfowl. *Med Mol Morphol.* 2008; **41**(2): 99-108.
72. Tojo K, Tokuda T, Hoshii Y, et al. Unexpectedly high incidence of visceral AA-amyloidosis in slaughtered cattle in Japan. *Amyloid.* 2005; **12**(2): 103-108.
73. Westermark GT, Westermark P. Prion-like aggregates: infectious agents in human disease *Trends Mol Med.* 2010; **16**(11): 501-507.
74. Westermark P, Sletten K, Naeser P, et al. Characterization of amyloid of ageing obese-hyperglycaemic mice and their lean littermates. *Scand J Immunol.* 1979; **9**(2): 193-196.
75. Xing Y, Nakamura A, Chiba T, et al. Transmission of mouse senile amyloidosis. *Lab Invest.* 2001; **81**(4): 493-499.
76. Xing Y, Nakamura A, Korenaga T, et al. Induction of protein conformational change in mouse senile amyloidosis. *J Biol Chem.* 2002; **277**(36): 33164-33169.
77. Yamada M, Kotani Y, Nakamura K, et al. Immunohistochemical distribution of amyloid deposits in 25 cows diagnosed with systemic AA amyloidosis. *J Vet Med Sci.* 2006; **68**(7): 725-729.
78. Yoshida T, Zhang P, Fu X, et al. Slaughtered aged cattle might be one dietary source exhibiting amyloid enhancing factor activity. *Amyloid.* 2009; **16**(1): 25-31.
79. Yu J, Zhu H, Guo JT, et al. Expression of mouse apolipoprotein SAA1.1 in CE/J mice: isoform-specific effects on amyloidogenesis. *Lab Invest.* 2000; **80**(12):

1797-806.

80. Zekarias B, Landman WJ, Tooten PC, et al. Leukocyte responses in two breeds of layer chicken that differ in susceptibility to induced amyloid arthropathy. *Vet Immunol Immunopathol.* 2000; **77**(1-2): 55-69.
81. Zhang B, Une Y, Ge F, et al. Characterization of the cheetah serum amyloid A1 gene: critical role and functional polymorphism of a cis-acting element. *J Hered.* 2008; **99**(4): 355-363.
82. Zhang B, Une Y, Fu X, et al. Fecal transmission of AA amyloidosis in the cheetah contributes to high incidence of disease. *Proc Natl Acad Sci U S A.* 2008; **105**(20): 7263-7268.

Figure legends

Figure 1. Histological images of amyloid deposits in pectoral muscle; AA amyloidosis-affected chicken. Congo red staining. (a) Amyloid deposits in small vessel wall are stained red. (b) Amyloid deposits observed as green birefringence under polarized light.

Figure 2. Analysis of amyloid protein in feces from mice with amyloidosis. The AApoAII amyloid fibrils from the (a) liver and (b) feces were observed by transmission electron microscopy. Open triangles indicate characteristic amyloid fibrils; Arrows show fecal-specific fibrils. Scale bar, 100 nm.

Figure 3. Diagram of amyloid fibril formation and potential transmission of AA amyloidosis. Chronic inflammation induces SAA synthesis in the liver, resulting in a dramatic increase of HDL-associated SAA circulating in the blood. Although spontaneous formation of the nucleus is slow, homologous or heterologous amyloid fibrils act as seeds and facilitate the formation of amyloid fibrils (self- and cross-seeding). Fragmentation of extended amyloid fibrils makes new seeds. Amyloid fibrils are possibly excreted from the body in feces, which may subsequently be ingested by other animals.

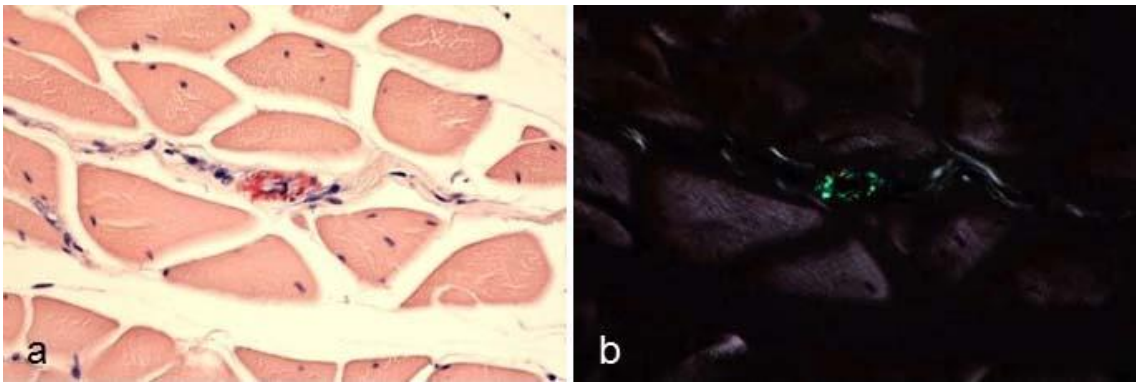


Figure 1.

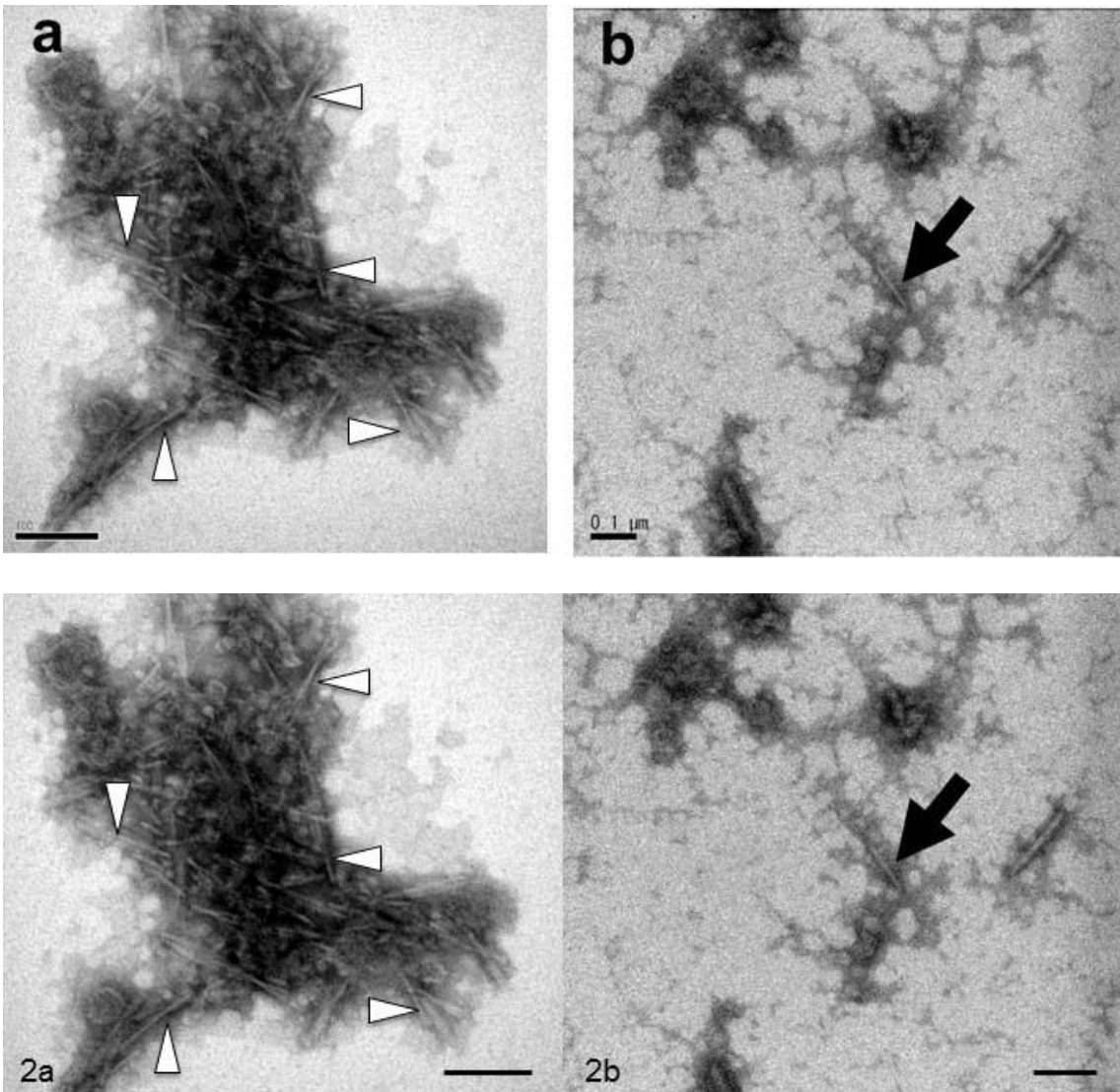


Figure 2.

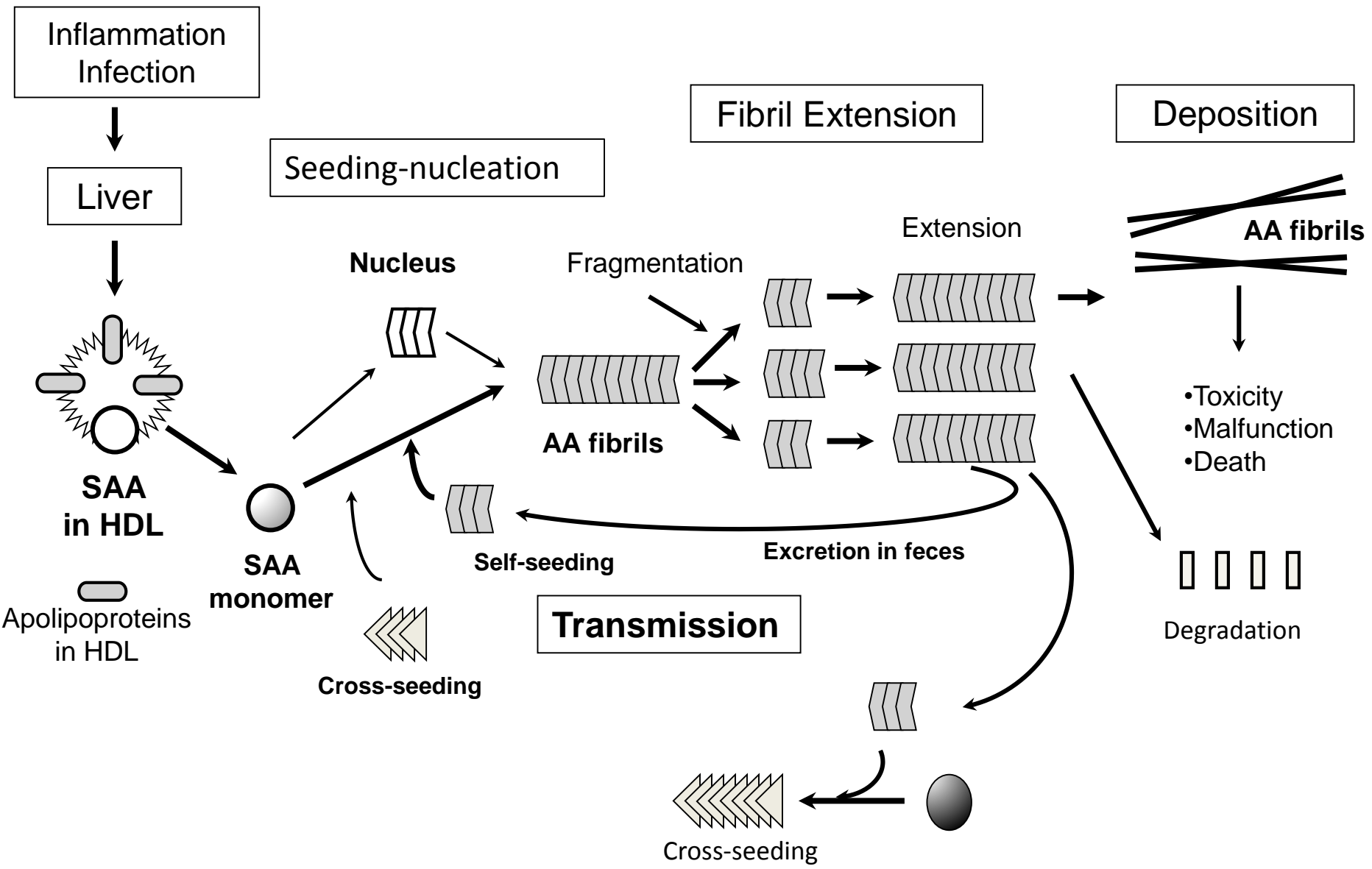


Figure 3.