

1
2
3
4
5
6
7 **Effects of Human Hair and Nail Proteins and Their Films**
8
9 **on Rat Mast Cells**

10
11
12
13
14 *Toshihiro Fujii,^{1,*} Shinya Murai,¹ Kousaku Ohkawa,² and Toshihiro Hirai³*

15
16
17
18 ¹ Department of Kansei Engineering, ² Institute of High Polymer Research, and

19
20
21 ³ Department of Materials Chemistry, Faculty of Textile Science and Technology,

22
23
24
25
26
27
28
29
30
31
32
33
34
35
36
37
38
39
40
41
42
43
44
45
46
47
48
49
50
51
52
53
54
55
56
57
58
59
60
61
62
63
64
65
Shinshu University, Tokida 3-15-1, Ueda 386-8567, Japan

* To whom correspondence should be addressed.

E-mail: fujit1@shinshu-u.ac.jp

Tel: +81-268-215518 Fax: +81-268-215511

1
2
3
4
5 **Summary:** Human hair and nail are valuable materials for producing
6
7 individual corresponding biocompatible materials. A rapid and convenient
8
9 protein extraction method (Shindai method) and novel procedures for preparing
10
11 their protein films from their extracts have been developed using human hair
12
13 and nail. The effects of the human hair and nail proteins and their films on
14
15 histamine release from rat peritoneal mast cells were investigated. Both
16
17 protein solutions and their films, mainly consisting of keratins and matrix
18
19 proteins, did not induce histamine release from the mast cells. Scanning
20
21 electron microscopy (SEM) also showed that the mast cells were only slightly
22
23 affected by adding the human hair and nail proteins or by incubating on their
24
25 protein films. The IgE-dependent histamine release was inhibited by the hair
26
27 and nail proteins and their films. Incubation of the mast cells with the hair and
28
29 nail proteins prior to the addition of the IgE serum resulted in a high inhibition
30
31 (50%) of the histamine release, while the inhibition was approximately 10%
32
33 when the protein solutions were mixed with the mast cells after incubation with
34
35 the IgE serum. These results suggest that the human hair and nail proteins and
36
37 their films will be useful materials for antiallergic actions.
38
39
40
41
42
43
44

45
46 **Keywords:** human hair and nail, protein extraction, protein films, mast cell,
47
48 histamine release, degranulation
49
50
51
52
53
54
55
56
57
58
59
60
61
62

Introduction

Human hair and nail are valuable materials for producing individual corresponding biocompatible materials. Hair proteins mainly consist of microfibrillar α -keratins with molecular masses of 40–65 kDa and matrix proteins with 10–20 kDa based on sodium dodecyl sulfate-polyacrylamide gel electrophoresis (SDS-PAGE). A rapid and convenient protein extraction method (Shindai method) was developed for quantifying the human hair and nail components.^[1] The amount of protein extracted by the Shindai method was 2.5–3.5 times more than those obtained by other conventional methods.^[1,2]

Novel procedures were also developed for preparing human hair protein films (Pre-cast, Post-cast, and soft Post-cast methods).^[2-4] These protein films were water-insoluble and mainly consisted of α -keratin. Reinforcement of the human hair protein films with cotton gauze made it possible to apply them on human skin for several days. A patch test using human skin indicated that the protein films made from individual and multiple human hairs did not cause itching, drying smarting, and pain on the contact areas of arms.^[4] Yamauchi et al. reported that mouse fibroblast cells adhered, spread and grew on wool keratin-coated dishes as well as collagen- and polyvinyl alcohol-coated ones.^[5] Few problems with the cultivation of the fibroblast cells were also confirmed using wool keratin sponge scaffolds.^[6] We examined the antibody-producing activity against mouse body hair proteins, human hair proteins, and human nail proteins using BALB/c mice. The reactivity of sera against the mouse body hair proteins was less than those against the human hair and nail proteins, indicating the presence of an immunological specificity.^[7] The protein films prepared from human hair and wool were biodegraded by proteases.^[8,9]

1
2
3
4
5 Mast cells are widely distributed throughout the epithelia and vascularized
6
7 tissues and responsible for type I allergic disorders such as dermatitis, allergic
8
9 rhinitis and food allergies.^[10,11] Mast cells release histamine and other potent
10
11 inflammatory mediators in response to various stimuli. The interaction
12
13 between the IgE-directed antigen and the IgE receptors on the mast cell surfaces
14
15 causes cross-linking between the IgE receptors and the release granules, the
16
17 latter of which contain the preformed inflammatory mediators and generate
18
19 inflammatory lipids and cytokines.^[11,12] The stimulation of mast cells is also
20
21 induced by proteins and peptides.^[12,13]
22
23
24

25
26 The allergic effects of the hair protein containing α -keratins have not yet
27
28 been studied. As model experiments, we examined the effects of the human
29
30 hair and nail proteins and their films on rat peritoneal mast cells.
31
32
33
34
35
36

37 **Materials and Methods**

38
39
40
41

42 *Preparation of Mast Cells*

43

44 Peritoneal mast cells were obtained from the abdominal cavities of the male rat
45
46 (Wistar; 300–400 g).^[13] Briefly, the rats were anesthetized with ether and
47
48 injected with 20 mL of mast cell medium (MCM) which was comprised of 144
49
50 mM NaCl, 2.7 mM KCl, 4.7 mM Na₂HPO₄, 2 mM KH₂PO₄, 5.6 mM glucose, 10
51
52 U · mL⁻¹ heparine and 1 mg · mL⁻¹ bovine serum albumin (BSA), pH 7, into the
53
54 peritoneal cavity, and then the abdomen was massaged for about 5 min. The
55
56 peritoneal cavity was opened and the fluid was collected using a pipette. The
57
58 peritoneal cavity was opened and the fluid was collected using a pipette. The
59
60 mast cells were purified to at least 95% homogeneity by centrifugation through
61
62

1
2
3
4
5 a 2 mL cushion of 24% metrizamide, and washed twice by centrifugation at 4 °C.

6
7 The cells were re-suspended in MCM buffer at a density of approximately

8
9 $5 \times 10^5 \text{ mL}^{-1}$ and used for each experiment.
10
11

12 13 14 *Preparation of Human Hair and Nail Protein and Their Films*

15
16 Human hair and nail protein solutions were prepared according to the "Shindai
17
18 method", which has been previously described by us.^[1,2] Briefly, the human
19
20 hair and nail were washed with ethanol and incubated with a solution consisting
21
22 of 2.6 M thiourea, 5 M urea, 5% 2-mercaptoethanol, and 25 mM Tris-HCl (pH
23
24 8.5) at 50 °C for 2–4 days. After filtration, the solution was dialyzed against
25
26 MCM buffer without BSA for 3–4 days at 25 °C. The obtained dialysate was
27
28 further centrifuged at 15,000 × g for 20 min at 25 °C, and the supernatant was
29
30 used as the protein solution.
31
32

33
34
35 The human hair and nail protein films were prepared by the Post-cast and soft
36
37 Post-cast methods.^[3,4] The hair and nail proteins dissolved in the Shindai
38
39 solution were cast in solution containing 100 mM acetate buffer (pH 4 and 5)
40
41 (Post-cast method) and 40 mM MgCl₂ (soft Post-cast method). After standing
42
43 for 1 h at room temperature, membrane-like protein films were formed and
44
45 washed by rinsing with water for 36–48 h and then immersed (replaced) into
46
47 MCM for 12–15 h.
48
49

50
51 Sodium dodecyl sulfate-polyacrylamide gel electrophoresis (SDS-PAGE) was
52
53 carried out on a 13.5% polyacrylamide gel according to the method of
54
55 Laemmli.^[14] Proteins in the gel were stained with 0.1% Coomassie brilliant
56
57 blue R-250, 10% acetic acid and 40% ethanol for 1–3 h and destained in 10%
58
59 acetic acid and 40% ethanol. The protein concentrations were determined
60
61
62

1
2
3
4
5 according to Bradford^[15] using BSA as the standard.
6
7

8
9
10 *Assay of IgE-Independent and -Dependent Histamine Release*

11 The suspended mast cells (2×10^4 per tube) were preincubated with the hair and
12 nail proteins or on the dishes coated with protein films for 5 min at 37 °C.
13

14 After the addition of 0.1 mM CaCl₂, the cell suspension was further incubated
15
16 for 10 min at 37 °C. The reactions were terminated by adding 1.8 mL of
17
18 ice-cold MCM buffer containing 1 mM EGTA. The mast cells were stimulated
19
20 by compound 48/80 ($0-0.4 \mu\text{g} \cdot \text{mL}^{-1}$).
21
22

23
24
25 The IgE sensitized mast cells were prepared by incubation for 60 min at 37 °C
26
27 with rat IgE and phosphatidyl serine ($50 \mu\text{g} \cdot \text{mL}^{-1}$) and then washed once by
28
29 centrifugation. The mast cells (0.18 mL) were preincubated with the hair and
30
31 nail proteins or on the dishes coated with the protein films for 5 min at 37 °C
32
33 and ovalbumin as an antigen at $50 \mu\text{g} \cdot \text{mL}^{-1}$ (0.02 mL) was added to the
34
35 sensitized cells for stimulation. Incubation was carried out for 10 min at 37 °C,
36
37 and the reactions were stopped by adding 1.8 mL of ice-cold MCM. After
38
39 centrifugation, the histamine content of the supernatant (1 mL) was determined
40
41 using *o*-phthalaldehyde as described by Shore et al.^[16] The total histamine was
42
43 released by disrupting the cells with boiling. Histamine release from the mast
44
45 cells was calculated using the following equation: [(histamine release) –
46
47 (spontaneous histamine release)] / (total histamine – spontaneous histamine
48
49 release) × 100.
50
51
52
53
54
55
56
57

58 *Scanning Electron Microscopy (SEM) Observation*

59
60 Mast cells were prefixed with 2.5% glutaraldehyde and postfixed with 1% OsO₄.
61
62

1
2
3
4
5 The cells were dehydrated in a graded alcohol series and critical point-dried
6
7 using liquid CO₂. The protein films were sputtered with gold and examined
8
9 using a scanning electron microscope (Hitachi S-2380N).^[17]
10
11
12
13
14

15 16 **Results and Discussion**

17 18 19 20 21 *Effect of Hair and Nail Proteins on Mast Cells*

22
23 The human hair and nail proteins were prepared by the Shindai method, and
24
25 their protein components were analyzed by SDS-PAGE (Figure 1A). The hair
26
27 protein sample was comprised of the type I (acidic) and type II (neutral/basic)
28
29 hard α -keratins and matrix proteins. The nail protein sample contains both the
30
31 hard α -keratins and the soft keratin, the latter of which has a molecular mass of
32
33 56 kDa.^[1,2]
34
35

36
37 When the mast cells were incubated with the hair and nail protein samples
38
39 (0–5 mg · mL⁻¹), no significant release of histamine was observed in the
40
41 presence and absence of Ca²⁺ (Figure 1B), whereas the addition of compound
42
43 48/80, a representative stimulator, triggered the histamine release in a
44
45 concentration-dependent manner (Figure 1C).
46
47
48
49
50

51 *Morphology of Mast Cells Incubated with the Proteins*

52
53 The surface of the mast cells with diameters of 10–20 μ m represents a number
54
55 of granules (diameters, 0.2–0.5 μ m), which contain the pre-formed
56
57 inflammatory mediators, such as histamine, serotonin, and substance P.^[12,13]
58
59
60 Immunological and non-immunological stimuli cause degranulation that releases
61
62
63
64
65

1
2
3
4
5 the mediators from the granules.
6

7 Figure 2 shows SEM pictures of the mast cells. After stimulation, the
8 appearances of the mast cell surfaces were different from those of the
9 non-stimulated cells whose surfaces were covered with lamellar architectures,
10 which correspond to the granule structures containing the inflammatory
11 mediators. In the presence of compound 48/80 ($0.2 \mu\text{g} \cdot \text{mL}$), the granule
12 structures were observed on the surfaces of the mast cells. The addition of the
13 hair or nail proteins did not apparently affect the morphology of the mast cells.
14 These results clearly suggest that the human hair and nail proteins had little or
15 no stimulating effect on the peritoneal mast cells.
16
17
18
19
20
21
22
23
24
25
26
27
28
29

30 *Mast Cells on Hair or Nail Protein Films*

31
32 In a series of our previous studies, we have developed conventional methods to
33 prepare stable films from the human hair and nail proteins.^[3,4] Figure 3 shows
34 the surface of the hair protein films based on SEM observations. As
35 previously reported,^[3,4] the surface of the protein film prepared by the Post-cast
36 method (acetate buffer pH 4) was rough and covered with a filamentous
37 structure which contains smaller particles having diameters of $0.5\text{--}2 \mu\text{m}$ (Figure
38 3A). The surface of the film prepared by the soft Post-cast method was
39 smoother (Figure 3B) than that by the Post-cast method (Figure 3C). When the
40 proteins from the hair and nail protein films were extracted again and they were
41 then analyzed by SDS-PAGE, the enriched protein components were found as
42 the hard keratin for the hair protein films and as the hard plus soft keratins for
43 the nail protein films (data not shown).
44
45
46
47
48
49
50
51
52
53
54
55
56
57
58
59

60 The mast cells were exposed to the dishes coated with the hair and nail
61

1
2
3
4
5 protein films and incubated for 0–90 min at 37 °C, then the release of histamine
6
7 and the morphological changes of the mast cell surfaces were examined (Figure
8
9 4). Time-dependent continuous releases of histamine (approximately 4%) from
10
11 the mast cells were found in the hair and nail protein films as well as the
12
13 control polystyrene dish (Figure 4A). These results indicate the spontaneous
14
15 degranulation occurred during the incubation periods. SEM observations also
16
17 revealed no significant morphological change in the mast cells, which were
18
19 attached on the films after incubation for 60 min (Figure 4B). This result
20
21 strongly suggests that the hair and nail protein films, like their protein solutions
22
23 (Figures 1 and 2), had little stimulating effect on the mast cells.
24
25
26
27
28
29

30 *IgE-Dependent Histamine Release*

31
32 The release of the pre-formed inflammatory mediators is generally triggered by
33
34 a cross-linking between the IgE receptors and the polyvalent allergens on the
35
36 mast cell surfaces. We prepared a serum containing anti-ovalbumin IgE from a
37
38 rat and constructed an experimental system for IgE-dependent exocytosis. The
39
40 mast cells were preincubated with the serum and phosphatidyl serine vesicles
41
42 for 60 min at 37 °C in order to prepare the IgE-sensitized mast cells. When
43
44 ovalbumin as an antigen was added to the IgE-sensitized mast cells, the extent
45
46 of the histamine release increased with the increasing concentration of the
47
48 applied ovalbumin (Figure 5A). The maximum histamine release reached
49
50 approximately 20–25% of the total histamine content.
51
52
53
54
55

56 The effects of the hair and nail proteins on the IgE-dependent histamine
57
58 release were subsequently examined using two procedures. First, when the
59
60 mast cells were preincubated with the hair and nail proteins for 5 min at 37 °C
61
62
63
64
65

1
2
3
4
5 before incubation with the IgE serum and then stimulated by the addition of
6
7 ovalbumin, the histamine release was inhibited up to approximately 50 % in the
8
9 presence of the hair and nail proteins above $0.5 \text{ mg} \cdot \text{mL}^{-1}$ (Figure 5B). Next,
10
11 when the hair and nail proteins were added to the mast cell solutions after
12
13 incubation with the IgE serum and then stimulated by ovalbumin, approximately
14
15 10% of the histamine release was inhibited by over $0.5 \text{ mg} \cdot \text{mL}^{-1}$ of the hair
16
17 and nail proteins (Figure 5C). The extent of the inhibition was higher when
18
19 the mast cells were preincubated with the hair and nail proteins prior to the
20
21 addition of IgE.
22
23

24
25 We examined the effects of the hair and nail protein films on the
26
27 IgE-dependent histamine release from the mast cells (Figure 6). The
28
29 IgE-sensitized mast cells were preincubated for 60 min at $37 \text{ }^\circ\text{C}$ on the dishes
30
31 coated with the hair and nail protein films as shown in Figure 4. After
32
33 incubation, ovalbumin was added to the dishes and further incubated for 10 min
34
35 at $37 \text{ }^\circ\text{C}$. Similar to the previous results, addition of ovalbumin stimulates the
36
37 IgE-sensitized mast cell for the histamine release. The extent of the histamine
38
39 release from the mast cells attached on the protein films was approximately
40
41 60% compared to that from the mast cells on the control dishes. No significant
42
43 difference was found between the hair and nail protein films. These results
44
45 indicated that the hair and nail proteins and their films suppressed the
46
47 IgE-induced histamine release from the mast cells, and the extent of inhibition
48
49 was dependent on the order of addition of the protein, IgE, and mast cells.
50
51

52
53 The anti-allergic effects towards rat mast cells *in vitro* were analyzed as part
54
55 of our continuing research of the human hair proteins and their films having
56
57 biocompatibility. In this study, unlike compound 48/80, the human hair and
58
59
60
61

1
2
3
4
5 nail proteins and their films did not directly stimulate the mast cells. The mast
6
7 cells were stimulated by proteins and peptides including protamine, salmine,
8
9 clupenine, mast cell degranulating peptide, melitin, and mastparan, and
10
11 substance P.^[13,18,19] Most of these proteins and peptides are basic, and three or
12
13 more basic amino acids are repetitively arranged in their primary structures.
14
15 Hard keratins occurring in hairs and nails are classified into two subfamilies,
16
17 which consist of at least 4–9 distinct type I acidic members (40–50 kDa) and
18
19 4–6 type II neutral/basic (55–65 kDa) members.^[20-22] Among the amino acid
20
21 sequences of the keratins, the trilysyl (KKK) sequences were located in the type
22
23 II keratin Hb3 (249–252), while the other repeating sequences found in the
24
25 keratin do not contain the KKK or triarginyl (RRR) sequence.^[22,23] Tertiary
26
27 structures of the intermediate filament proteins are generally constructed from
28
29 three domains, i.e., head, rod, and tail. The KKK sequence of Hb3 was located
30
31 in the rod domain, which is essential for the assembly of proteins into filaments.
32
33 This indicates that the KKK sequence that localizes inside the Hb3 molecule
34
35 cannot directly contact the mast cell surfaces, so that the hair and nail proteins,
36
37 enriched in keratin, do not stimulate the histamine release from the mast cells.
38
39
40
41
42
43
44
45

46 **Conclusion**

47
48 In the present study, we confirmed the inhibitory effects of the human hair and
49
50 nail proteins and their films on the IgE receptor-stimulated histamine release
51
52 from mast cells. These findings indicate that the human hair and nail proteins
53
54 and their films actually interact with IgE, because the inhibition became more
55
56 remarkable when the mast cells were preincubated with the hair and nail
57
58 proteins prior to the addition of IgE than that when the cells were preincubated
59
60
61
62

1
2
3
4 with IgE prior to the addition of the proteins. Human hair and nail are easily
5 collected at an individual level and the extraction by the Shindai method
6
7 recovers the hair and nail proteins in a high yield. The extracted proteins are
8
9 fabricated into films,^[3-5] fibers,^[24] and microspheres^[25] from their aqueous
10
11 solutions. Thus, these products will become some of the self-originating
12
13 materials with promising biocompatibilities. The potential application of the
14
15 present materials encompasses health care, cosmetic, and medical uses, such as
16
17 wound dressing films or drug releasing films.
18
19
20
21
22
23
24

25 *Acknowledgments*

26
27 This study was supported in part by Grants-in-Aid for Science Research (B)
28
29 (16350123) and CLUSTER (the second stage) from *the Ministry of Education,*
30
31 *Culture, Sports, Science and Technology of Japan.* We are also indebted to the
32
33 Division of Gene Research Center, Research Center for Human and
34
35 Environmental Science, Shinshu University, for providing the facilities.
36
37
38
39
40
41

42 **References**

- 43
44 [1] A. Nakamura, M. Arimoto, K. Takeuchi, T. Fujii, *Biol. Pharm. Bull.*
45
46 **2002**, 25, 569.
47
48 [2] T. Fujii, S. Murai, *Kobunshi Ronbunshu* **2005**, 62, 201.
49
50 [3] T. Fujii, D. Ogiwara, M. Arimoto, *Biol. Pharm. Bull.* **2004**, 27, 89.
51
52 [4] T. Fujii, Y. Ide, *Biol. Pharm. Bull.* **2004**, 27, 1433.
53
54 [5] K. Yamauchi, M. Maniwa, T. Mori, *J. Biomater. Sci. Polym. Ed.* **1998**, 9,
55
56 259.
57
58 [6] A. Tachibana, Y. Furuta, H. Takeshima, T. Tanabe, K. Yamauchi, *J.*
59
60
61
62

1
2
3
4
5 *Biotech.* **2002**, 93, 165.
6

7 [7] Y. Ide, T. Fujii, *Sen'I Gakkishi* **2004**, 60, 276.
8

9 [8] K. Yamauchi, A. Yamauchi, T. Kusunoki, A. Khoda, Y. Konishi, *J.*
10 *Biomed. Mater. Res.* **1996**, 31, 439.
11

12 [9] Y. Ide, T. Fujii, *Kobunshi Ronbunshu* **2004**, 61, 153.
13

14 [10] T. Ishizaka, K. Ishizaka, *Prog. Allergy* **1984**, 34, 188.
15

16 [11] S. M. Miescher, M. Vogel, *Mol. Aspects Med.* **2002**, 23, 413.
17

18 [12] L. J. Walsh, *Crit. Rev Oral Biol. Med.* **2003**, 14, 188.
19

20 [13] T. Fujii, H. Yokoyama, G.F. Li, H. Tada, *Biol. Pharm. Bull.* **1997**, 20,
21 79.
22

23 [14] U.K. Laemmli, *Nature* **1970**, 227, 680.
24

25 [15] M. M. Bradford, *Anal. Biochem.* **1976**, 72, 248.
26

27 [16] P. A. Shore, A. Burkhalter, V. H. Cohn Jr, *J. Pharmacol. Exp. Ther.* **1959**,
28 127, 182.
29

30 [17] K. Izushi, K. Tasaka, *Immunopharmacol.* **1989**, 18, 177.
31

32 [18] B. Jansani, G. Kreil, B.F. Mackler, D. R. Stanworth, *Biochem. J.* **1979**,
33 181, 623.
34

35 [19] A. Argiolas, J. J. Pisano, *J. Biol. Chem.* **1990**, 260, 1437.
36

37 [20] H. W. Heid, E. Werner, W. W. Franke. *Differentiation* **1986**, 32, 101.
38

39 [21] L. Langbein, M. A. Rogers, H. Winter, S. Praetzel, U. Beckhaus, H.-R.
40 Rackwitz, J. Schweizer, *J. Biol. Chem.* **1999**, 274, 19874.
41

42 [22] L. Langbein, M. A. Rogers, H. Winter, S. Praetzel, J. Schweizer, *J. Biol.*
43 *Chem.* **2001**, 276, 35123.
44

45 [23] M. A. Rogers, H. Winter, L. Langbein, C. Wolf, J. Schweizer, *J. Invest.*
46 *Dermatol.* **2000**, 114, 464.
47
48
49
50
51
52
53
54
55
56
57
58
59
60
61

1
2
3
4
5
6
7
8
9
10
11
12
13
14
15
16
17
18
19
20
21
22
23
24
25
26
27
28
29
30
31
32
33
34
35
36
37
38
39
40
41
42
43
44
45
46
47
48
49
50
51
52
53
54
55
56
57
58
59
60
61
62
63
64
65

[24] Y. Hirao, K. Ohkawa, H. Yamamoto, T. Fujii, *Macromol. Mater. Eng.* **2005**, *290*, 165.

[25] S. Kobayashi, H. Morikawa, S. Ishii, T. Fujii, *JSME Int. J. Ser. C* **2005**, *48*, 494.

Figures

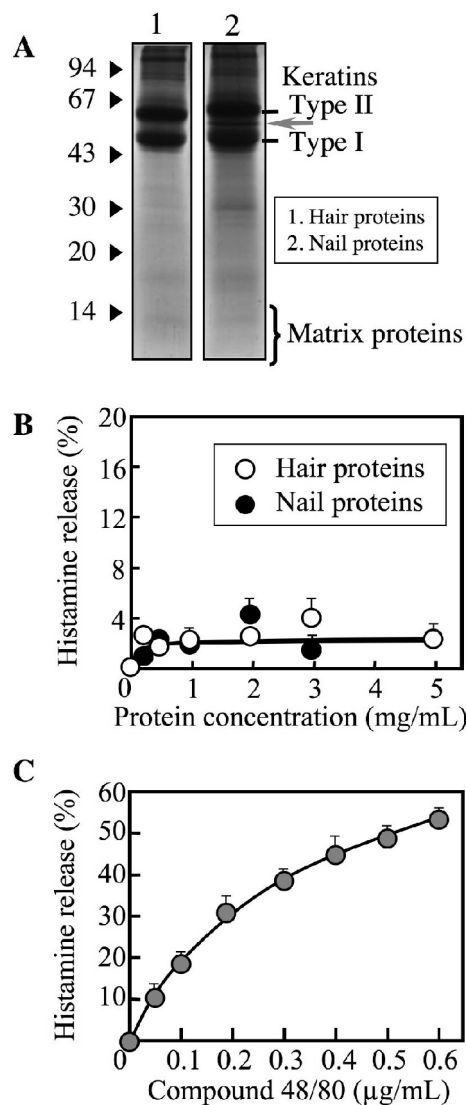


Figure 1. SDS-PAGE of human hair and nail proteins and histamine release from rat mast cells by compound 48/80, hair proteins, and nail proteins. Proteins were prepared from washed human hair and nail by the Shindai method and subjected to 13.5% SDS-PAGE (A). Rat peritoneal mast cells were preincubated for 5 min at 37 °C in the presence of various concentrations of compound 48/80 (B) and the hair (○) and nail proteins (●), as indicated (C). The cells were challenged with 0.9 mM CaCl₂ for 10 min at 37 °C and the amount of released histamine was measured. Values are expressed as means ± S.D. for 3–4 experiments.

1
2
3
4
5
6
7
8
9
10
11
12
13
14
15
16
17
18
19
20
21
22
23
24
25
26
27
28
29
30
31
32
33
34
35
36
37
38
39
40
41
42
43
44
45
46
47
48
49
50
51
52
53
54
55
56
57
58
59
60
61
62
63
64
65

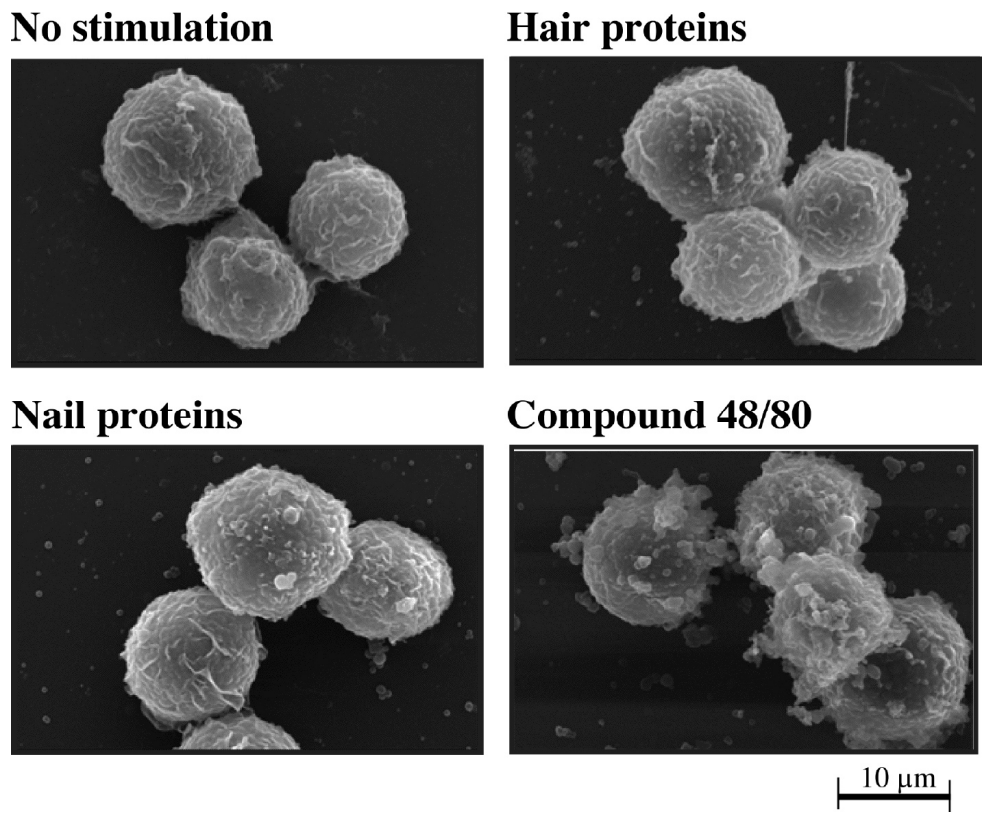


Figure 2. Morphological observations of mast cells incubated with compound 48/80, hair proteins, and nail proteins. The mast cells were exposed to compound 48/80, the hair proteins, and the nail proteins as shown in Figure 1 and observed by SEM. The concentrations of compound 48/80, the hair proteins, and the nail proteins were $0.3 \mu\text{g} \cdot \text{mL}^{-1}$, $3 \text{mg} \cdot \text{mL}^{-1}$, and $3 \text{mg} \cdot \text{mL}^{-1}$, respectively. Bars, 10 μm .

1
2
3
4
5
6
7
8
9
10
11
12
13
14
15
16
17
18
19
20
21
22
23
24
25
26
27
28
29
30
31
32
33
34
35
36
37
38
39
40
41
42
43
44
45
46
47
48
49
50
51
52
53
54
55
56
57
58
59
60
61
62
63
64
65

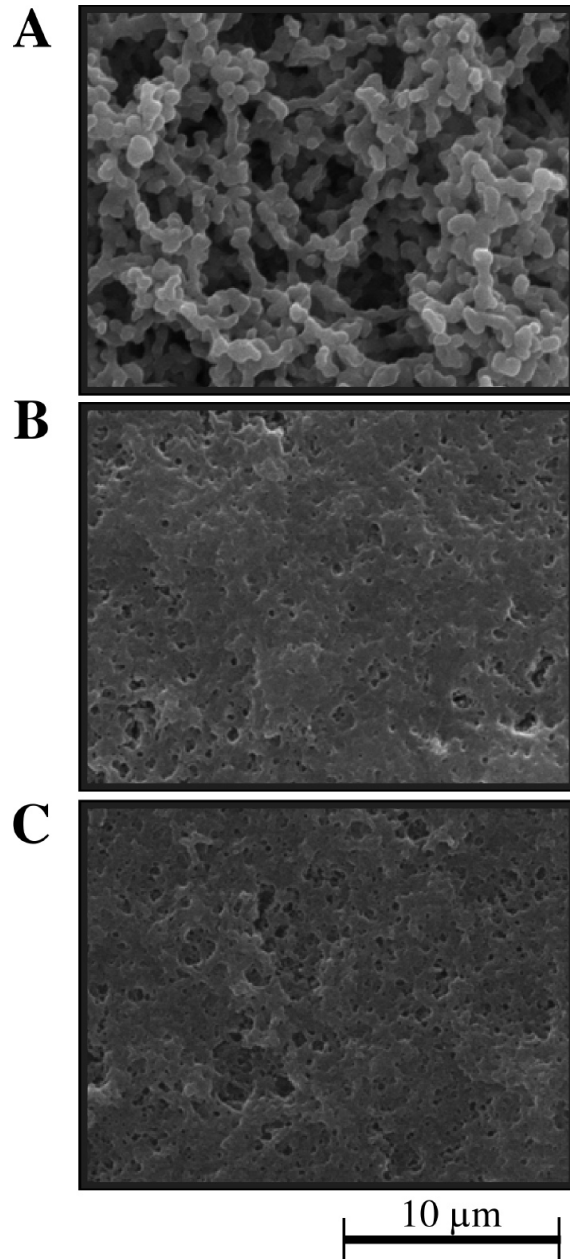


Figure 3. Morphological observation of hair protein films. The hair protein films were prepared by the Post-cast method (A, 100 mM acetate buffer, pH 4 and B, 100 mM acetate buffer, pH 5) and soft Post-cast method (C, 40 mM MgCl₂) and observed by SEM. Bars, 10 μm.

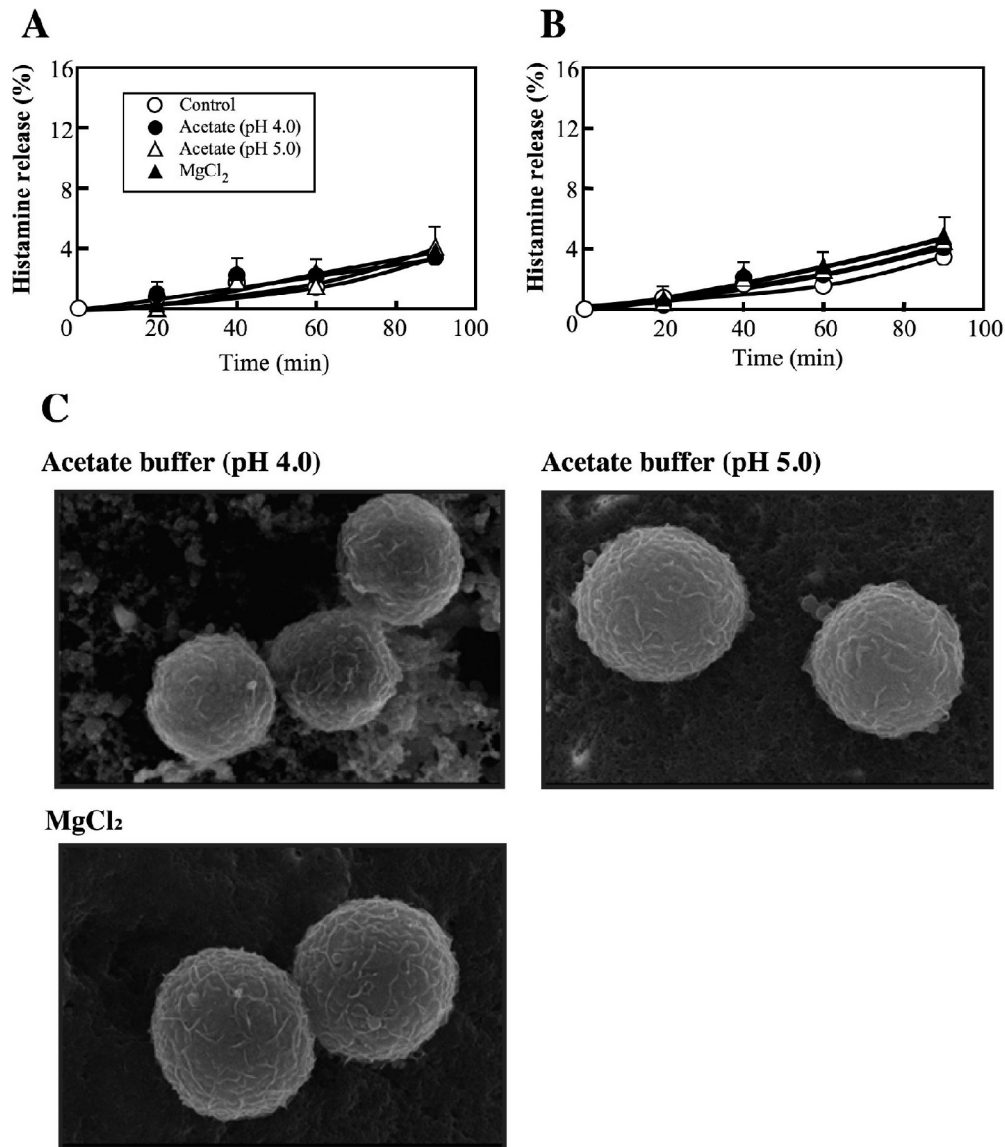


Figure 4. Histamine release from rat mast cells exposed to hair and nail protein films and morphological observations. The mast cells were incubated for 5 min at 37 °C on the hair (A) and nail (B) protein films as shown in Figure 3: ○ , Control (dish); ● , acetate buffer (pH 4); △ , acetate buffer (pH 5), ▲ , 40 mM MgCl₂. The cells were challenged with 0.9 mM CaCl₂ for 10 min at 37 °C, and the amount of released histamine was measured. Values are expressed as means ± S.D. for 3–4 experiments. The mast cells after incubation with the protein films for 60 min were observed by SEM (C).

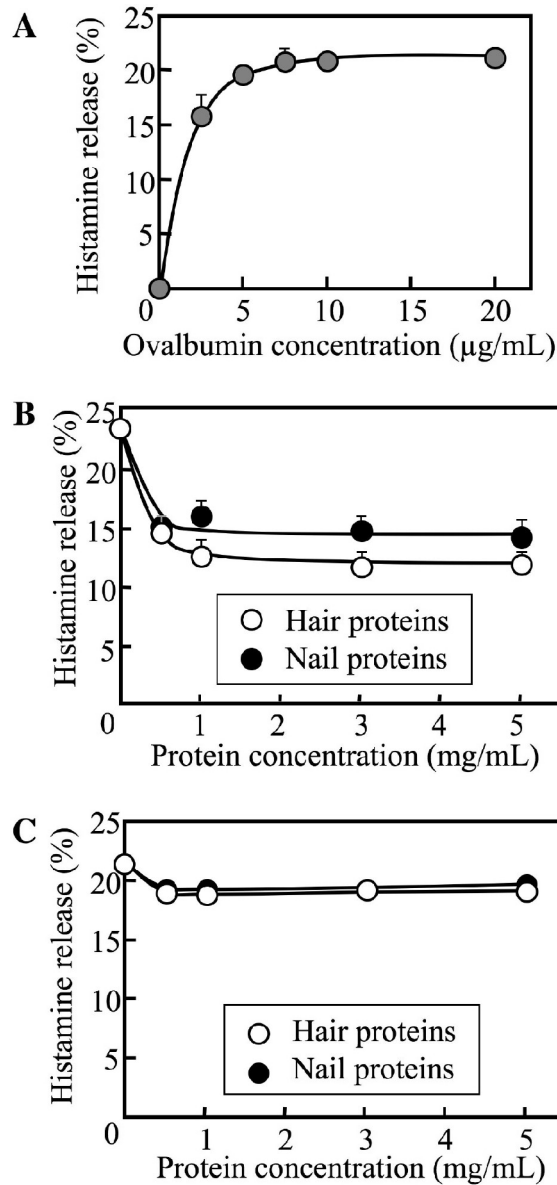


Figure 5. Effects of the hair and nail proteins on the IgE-dependent histamine release from mast cells. The mast cells were incubated with IgE serum for 60 min at 37 °C and then stimulated for 10 min at 37 °C with various concentrations of ovalbumin as indicated (A). The histamine release was measured when the ovalbumin was added after preincubation of the mast cells with hair (\circ) and nail proteins (\bullet) (B) and when the hair and nail proteins were added after preincubation of the mast cells with IgE serum (C). Values are expressed as means \pm S.D. for 3–4 experiments.

1
2
3
4
5
6
7
8
9
10
11
12
13
14
15
16
17
18
19
20
21
22
23
24
25
26
27
28
29
30
31
32
33
34
35
36
37
38
39
40
41
42
43
44
45
46
47
48
49
50
51
52
53
54
55
56
57
58
59
60
61
62
63
64
65

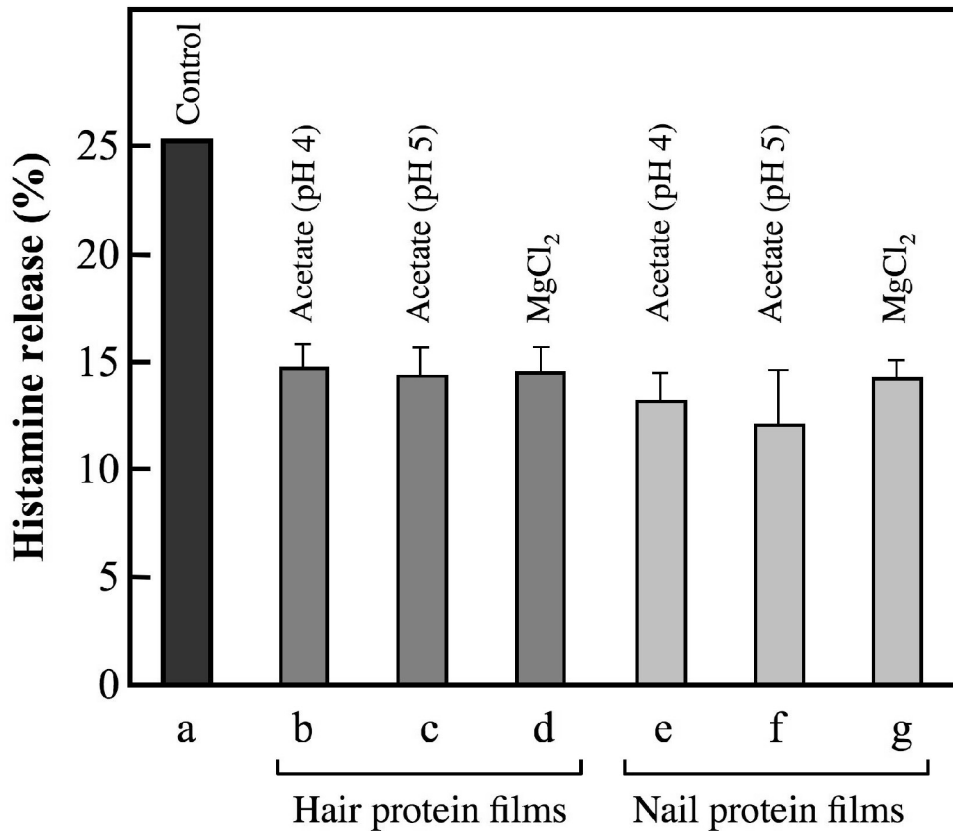


Figure 6. Effects of hair and nail protein films on IgE-dependent histamine release from mast cells. The mast cells on the control dish (a), hair protein films (b-d), and nail protein films (e-g) were incubated with IgE serum for 60 min at 37 °C and stimulated for 10 min at 37 °C with 10 $\mu\text{g} \cdot \text{mL}^{-1}$ ovalbumin. The dishes were coated with protein films; Post-cast method (b and e, 100 mM acetate buffer, pH 4), Post-cast method (c and f, 100 mM acetate buffer, pH 5), and soft Post-cast method (d and g, 40 mM MgCl₂). Values are expressed as means \pm S.D. for 3–4 experiments.