



Dai, L., Massy, Z. A., Stenvinkel, P., Chesnaye, N. C., Caskey, F. J., & Evans, M. (2022). The association between TMAO, CMPF, and clinical outcomes in advanced chronic kidney disease: results from the European QUALity (EQUAL) Study. *American Journal of Clinical Nutrition*, 116(6), 1-10. [nqac278].
<https://doi.org/10.1093/ajcn/nqac278>

Publisher's PDF, also known as Version of record

License (if available):
CC BY

Link to published version (if available):
[10.1093/ajcn/nqac278](https://doi.org/10.1093/ajcn/nqac278)

[Link to publication record in Explore Bristol Research](#)
PDF-document

This is the final published version of the article (version of record). It first appeared online via Oxford University Press at <https://doi.org/10.1093/ajcn/nqac278>. Please refer to any applicable terms of use of the publisher.

University of Bristol - Explore Bristol Research

General rights

This document is made available in accordance with publisher policies. Please cite only the published version using the reference above. Full terms of use are available:
<http://www.bristol.ac.uk/red/research-policy/pure/user-guides/ebr-terms/>

The association between TMAO, CMPF, and clinical outcomes in advanced chronic kidney disease: results from the European QUALity (EQUAL) Study

Lu Dai,^{1,2} Ziad A Massy,^{3,4} Peter Stenvinkel,² Nicholas C Chesnaye,⁵ Islam Amine Larabi,^{6,7} Jean Claude Alvarez,^{6,7} Fergus J Caskey,⁸ Claudia Torino,⁹ Gaetana Porto,¹⁰ Maciej Szymczak,¹¹ Magdalena Krajewska,¹¹ Christiane Drechsler,¹² Christoph Wanner,¹² Kitty J Jager,⁵ Friedo W Dekker,⁵ Pieter Evenepoel,^{13,14} and Marie Evans,² the EQUAL Study Investigators

¹Aging Research Center, Department of Neurobiology, Care Sciences and Society, Karolinska Institutet, Stockholm, Sweden; ²Division of Renal Medicine, Department of Clinical Science, Intervention and Technology, Karolinska Institutet, Stockholm, Sweden; ³Division of Nephrology, Ambroise Paré University Hospital, Boulogne-Billancourt, France; ⁴Centre for Research in Epidemiology and Population Health (CESP), Inserm UMRS 1018, Team 5, University Versailles-Saint Quentin, University Paris-Saclay, Paris, France; ⁵ERA-EDTA Registry, Department of Medical Informatics, Academic Medical Center, University of Amsterdam, Amsterdam Public Health Research Institute, Amsterdam, The Netherlands; ⁶Laboratory of Pharmacology and Toxicology, CHU, Raymond Poincaré, Garches, France; ⁷INSERM U1173, UFR des Sciences de la Santé Simone Veil, Montigny le Bretonneux, Université de Versailles-Saint-Quentin-en-Yvelines, Versailles, France; ⁸Population Health Sciences, Bristol Medical School, University of Bristol, Bristol, United Kingdom; ⁹IFC-CNR, Clinical Epidemiology and Pathophysiology of Renal Diseases and Hypertension, Reggio Calabria, Italy; ¹⁰G.O.M., Bianchi Melacchino Morelli, Reggio Calabria, Italy; ¹¹Clinical Department of Nephrology and Transplantation Medicine, Wrocław Medical University, Wrocław, Poland; ¹²Division of Nephrology, University Hospital of Würzburg, Würzburg, Germany; ¹³Department of Microbiology, Immunology, and Transplantation, Nephrology and Renal Transplantation Research Group, KU Leuven, Leuven, Belgium; and ¹⁴Department of Nephrology and Renal Transplantation, University Hospitals Leuven, Leuven, Belgium

ABSTRACT

Background: Trimethylamine N-oxide (TMAO), a metabolite from red meat and fish consumption, plays a role in promoting cardiovascular events. However, data regarding TMAO and its impact on clinical outcomes are inconclusive, possibly due to its undetermined dietary source.

Objectives: We hypothesized that circulating TMAO derived from fish intake might cause less harm compared with red meat sources by examining the concomitant level of 3-carboxy-4-methyl-5-propyl-2-furanpropionate (CMPF), a known biomarker of fish intake, and investigated the association between TMAO, CMPF, and outcomes.

Methods: Patients were recruited from the European QUALity (EQUAL) Study on treatment in advanced chronic kidney disease among individuals aged ≥ 65 y whose estimated glomerular filtration rate (eGFR) had dropped for the first time to ≤ 20 mL/min per 1.73 m² during the last 6 mo. The association between TMAO, CMPF, and outcomes including all-cause mortality and kidney replacement therapy (KRT) was assessed among 737 patients. Patients were further stratified by median cutoffs of TMAO and CMPF, suggesting high/low red meat and fish intake.

Results: During a median of 39 mo of follow-up, 232 patients died. Higher TMAO was independently associated with an increased risk of all-cause mortality (multivariable HR: 1.46; 95% CI: 1.17, 1.83). Higher CMPF was associated with a reduced risk of both all-cause mortality (HR: 0.79; 95% CI: 0.71, 0.89) and KRT (HR: 0.80; 95% CI: 0.71, 0.90), independently of TMAO and other clinically relevant confounders. In comparison to patients with low TMAO and CMPF,

patients with low TMAO and high CMPF had reduced risk of all-cause mortality (adjusted HR: 0.49; 95% CI: 0.31, 0.73), whereas those with high TMAO and high CMPF showed no association across adjusted models.

Conclusions: High CMPF conferred an independent role in health benefits and might even counteract the unfavorable association between TMAO and outcomes. Whether higher circulating CMPF concentrations are due to fish consumption, and/or if CMPF is

The main funding was received from the European Renal Association (ERA) and contributions from the Swedish Medical Association (SLS), the Stockholm County Council ALF Medicine and Center for Innovative Research (CIMED), the Italian Society of Nephrology (SIN-Reni), the Dutch Kidney Foundation (SB 142), the Young Investigators grant in Germany, and the National Institute for Health Research (NIHR) in the United Kingdom.

Supplemental Figure 1 and Supplemental Tables 1–4 are available from the “Supplementary data” link in the online posting of the article and from the same link in the online table of contents at <https://academic.oup.com/ajcn/>.

Address correspondence to ME (e-mail: marie.evans@ki.se).

Abbreviations used: ACR, albumin creatinine ratio; BP, blood pressure; CKD, chronic kidney disease; CMPF, 3-carboxy-4-methyl-5-propyl-2-furanpropionate; CV, cardiovascular; CVD, cardiovascular disease; eGFR, estimated glomerular filtration rate; EQUAL, European QUALity (study); KRT, kidney replacement therapy; MACE, major adverse cardiac event; SGA, subjective global assessment; TMAO, trimethylamine N-oxide.

Received May 31, 2022. Accepted for publication September 24, 2022.

First published online September 27, 2022; doi: <https://doi.org/10.1093/ajcn/nqac278>.

a protective factor, remains to be verified. *Am J Clin Nutr* 2022;0:1–10.

Keywords: uremic toxins, trimethylamine N-oxide, 3-carboxy-4-methyl-5-propyl-2-furanpropionate, red meat, fish intake, CKD, mortality, kidney replacement therapy

Introduction

Patients with chronic kidney disease (CKD) are characterized with a high prevalence of cardiovascular (CV) comorbidities and increased risk of mortality (1). Traditional risk factors such as old age, diabetes, hypertension, and hyperlipidemia are only partly accountable for the excessive CV burden and adverse clinical outcomes (2, 3), suggesting other residual factors as culprits in the setting of CKD. Recent research has highlighted the role of diet and gut microbiota in mediating the generation and metabolism of some uremic toxins, as well as the consequent impact on host health (4–8).

One of the most representative uremic toxins linking diet, gut microbiome, and host health is trimethylamine N-oxide (TMAO). Although multiple studies have reported the link between TMAO and risk of cardiometabolic diseases (9–11), the clinical evidence linking TMAO to adverse CV outcomes are discordant (12–18). Another uremic toxin is 3-carboxycarboxy-4-methyl-5-propyl-2-furanpropionate (CMPF), a metabolite of furan fatty acids (19, 20). Despite being generally considered as a protein-bound (>95%) uremic toxin highly elevated in advanced CKD (21, 22), the prognostic role of CMPF in CKD is scarcely explored. The richest dietary sources of furan fatty acids and their metabolite CMPF are fish and fish oils. Moreover, several studies have identified plasma CMPF as a biomarker for fish consumption (23). The main dietary source of TMAO, on the contrary, is animal food, including red meat and egg rich in choline and carnitine, but also fish. Although red meat and fish consumption can cause increased plasma or urine concentrations of TMAO (24, 25), this marker, in contrast to CMPF, has not yet been verified as a specific marker of red meat or fish intake.

We hypothesized that TMAO derived from fish consumption might cause less harm compared with TMAO from mainly red meat/egg. Given the elusive and divergent metabolic properties of TMAO and CMPF, we postulated that integrating these 2 uremic toxins, as representative metabolites of dietary intake of red meat and/or fish intake, may provide a better perspective to elucidate their role in health outcomes in the context of CKD. To fill this gap, we investigated the association between TMAO, CMPF, and clinical outcomes including risk of all-cause mortality and kidney replacement therapy (KRT) initiation in carefully phenotyped patients aged ≥ 65 y old with advanced CKD.

Methods

Study design

The European QUALity (EQUAL) Study on treatment in advanced chronic kidney disease is a prospective cohort study in advanced CKD patients in Germany, Italy, Poland, Sweden, the Netherlands, and the United Kingdom (26). Approval was

obtained from the Medical Ethical Committees of the national coordinating centers and corresponding institutional review boards of the participating centers. Written informed consent was obtained from all patients. A full description of the study has been published elsewhere (26). Patients ≥ 65 y of age were included if their estimated glomerular filtration rate (eGFR), as estimated by the Modification of Diet in Renal Disease (MDRD) equation (27), had dropped for the first time to ≤ 20 mL/min per 1.73 m² during the previous 6 mo. Patients were followed until kidney transplantation, death, moving to a center outside the designation of the EQUAL study, refusal of further participation, or loss to follow-up or end of follow-up, whichever came first. For the current analyses, we included patients with baseline measurement of TMAO and CMPF (between March 2012 and February 2019) and examined events of interest within a maximum of 48 mo follow-up (see flowchart in **Supplemental Figure 1**).

Data collection

Patients' clinical data from the baseline visit occurring within 6 mo from the index eGFR were entered in a web-based clinical record form, covering information on the patients' demographics, primary kidney disease, comorbid conditions, medication, physical examination, and routine laboratory results. Data on preexisting cardiovascular disease (CVD), including cerebrovascular disease, peripheral vascular disease, myocardial infarction, angina pectoris, congestive heart failure, left ventricular hypertrophy, and cardiac arrhythmias, were recorded. The 7-point subjective global assessment (SGA) tool was used to assess patients' nutritional status (28), and SGA < 5 was defined as malnutrition.

TMAO and CMPF

Upon enrollment of the patients, serum samples were collected and immediately frozen. The samples were thawed immediately prior to analysis. The investigated 2 uremic toxins (CMPF and TMAO) were assayed in serum samples collected at baseline using a validated ultra-performance LC–tandem MS (UPLC-MS/MS) technique (29). To determine total concentrations, serum samples were first precipitated with methanol. The supernatant was evaporated with nitrogen and then reconstituted in 80 μ L of water. The assay's limit of quantification was between 10 and 50 ng/mL, depending on the compound. The intra- and interassay variabilities (evaluated at 3 different concentrations: 150, 8000, and 40,000 ng/mL) for the 2 compounds were all $< 13\%$.

Outcomes

The primary outcomes were all-cause mortality and KRT initiation during 48 mo of follow-up. In a sensitivity analysis, we explored first major adverse cardiac events (MACEs) as an additional outcome. Information on outcomes was collected as a part of the study protocol at each planned study visit. The cause of death was assigned by the treating doctor and registered in the EQUAL study whenever it was available.

Statistical analysis

Baseline characteristics are presented as means \pm SDs for normally distributed continuous variables, medians with IQRs for skewed continuous variables, and categorical variables as percentages. Statistical significance was set at the level of $P < 0.05$. Comparisons between TMAO and CMPF tertile groups were assessed with the Kruskal-Wallis test for skewed continuous variables, 1-factor ANOVA for normally distributed variables, and the chi-square test for categorical variables. Multivariable regression analysis was used to investigate the association between TMAO, CMPF, and other clinically relevant parameters. Multiple imputation was used to minimize the risk of bias. Missing values at baseline [including Charlson comorbidity index, diastolic blood pressure (BP), systolic BP, height, weight, hemoglobin, albumin, phosphate, and albumin creatinine ratio (ACR)] were imputed using multivariable normal regression (20 repetitions). In regression analyses, continuous variables with nonnormal distributions were converted as natural log (ln)-transformed values. MACE was defined as a hospitalization or comorbidity due to cerebrovascular disease, myocardial infarction, peripheral vascular disease, angina pectoris, arrhythmias, coronary artery disease, or death due to myocardial ischemia and infarction, cardiac arrest, or cerebrovascular accident. First MACE refers to the first occurrence of an MACE after entering the study. We used Cox proportional hazards regression to examine unadjusted and multivariable adjusted associations between TMAO, CMPF, and risk of death and first MACE. We adjusted for demographic characteristics (age, sex, and country) in model 1, with further adjustment for traditional risk factors (diabetes, CVD, Charlson comorbidity index, diastolic BP, systolic BP, SGA) in model 2, and CKD-related biochemical parameters (albumin, phosphate, hemoglobin) in model 3 and eGFR in model 4. Schoenfeld residuals were examined to confirm the proportionality assumption. We applied cause-specific Cox proportional hazards regression models to evaluate the relation between TMAO, CMPF, and risk of KRT with death as a competing risk. The competing risk model was adjusted for conventional risk factors of dialysis (age, sex, eGFR, and ACR) in model 1, further adjusted for other confounders in model 2 (country, diabetes, CVD, Charlson comorbidity index, diastolic BP, systolic BP, SGA) and CKD-related biochemical parameters (albumin, phosphate, hemoglobin) in model 3. To test the assumption of TMAO and CMPF as biomarkers of red meat and fish intake and whether such a pattern is associated with clinical outcomes, we categorized patients into 4 groups according to the median cutoff medians of TMAO and CMPF: low TMAO (–) and low CMPF (–) (suggesting low red meat and low fish intake), low TMAO (–) and high CMPF (+) (suggesting low red meat and high fish intake), high TMAO (+) and low CMPF (–) (suggesting high red meat and low fish intake), and high TMAO (+) and high CMPF (+) (suggesting high red meat and/or fish intake). The association between categorized TMAO and CMPF subgroups and outcomes were tested in Cox regression models as mentioned previously. We repeated analyses both in original and imputed datasets, and for convenience, results derived from imputed datasets are presented. Statistical analyses were performed using Stata 16.1 (StataCorp).

Results

Baseline characteristics and TMAO and CMPF concentrations

The main characteristics of 737 patients with baseline serum TMAO and CMPF measurements are described in **Table 1**. The median age was 76 y, 63.1% were male, and eGFR at baseline was 19.7 (IQR: 16.0, 23.0) mL/min per 1.73 m². Forty-six percent of patients had preexisting CVD, 43% had diabetes, and 32% showed signs of malnutrition (SGA <5). At baseline, 9% were prescribed a low-protein diet (<0.8 g · kg per day). The median serum TMAO was 18.2 (IQR: 11.9, 28.5) μ M, and CMPF was 7.1 (IQR: 2.6, 14.9) μ M. Patient characteristics according to the tertiles of TMAO and CMPF are presented in **Supplemental Tables 1 and 2**.

Association between TMAO, CMPF, and other clinical parameters

In age- and sex-adjusted multivariable regression analysis, while male sex (adjusted for age), diabetes, phosphate, and CMPF were positively associated with TMAO, hemoglobin and eGFR were negatively associated with TMAO (**Table 2**). Age, male sex, hemoglobin, height, and TMAO were positively associated with CMPF, whereas compared with patients recruited in Germany, patients from Sweden were associated with higher CMPF and patients from the United Kingdom were associated with lower CMPF concentrations (**Table 2**).

Association between TMAO, CMPF, and outcomes TMAO, CMPF, and all-cause mortality.

During a median of 39 mo of follow-up, 232 patients died and 258 patients initiated KRT. The unadjusted and adjusted HRs for all-cause mortality in Cox regression models are presented in **Table 3**. In the crude model, ln CMPF and ln TMAO were significant predictors of all-cause mortality [HRs: 0.81 (95% CI: 0.73, 0.90) and 1.63 (95% CI: 1.33, 2.00), respectively]. These associations remained statistically significant after extensive adjustments across models (**Table 3**).

The association between TMAO and CMPF subgroups and all-cause mortality is presented in **Figure 1**. In the crude model, in comparison to patients with TMAO (–) CMPF (–) (as reference group), the subgroup with TMAO (–) CMPF (+) had substantially lower risk of all-cause mortality (HR: 0.49; 95% CI: 0.33, 0.74). The significant lower mortality risk for the TMAO (–) CMPF (+) patient group (51–57% lower risk) was sustained after multivariable adjustments. In contrast, patients with TMAO (+) CMPF (–) showed a higher risk of mortality only in a crude model (HR: 1.41; 95% CI: 1.01, 1.98), whereas patients with TMAO (+) CMPF (+) showed no association with risk of mortality across crude and adjusted models.

TMAO, CMPF, and risk of KRT initiation.

In the unadjusted crude model, ln CMPF and ln TMAO were predictors of risk of KRT [HRs: 0.74 (95% CI: 0.67, 0.82)

TABLE 1 Baseline characteristics of patients with baseline TMAO and CMPF measurements¹

	Values
Age, y	76.0 (70.4, 80.8)
Male sex, <i>n</i> (%)	465 (63.1%)
Country, <i>n</i> (%)	
Germany	115 (15.6%)
Poland	61 (8.3%)
Sweden	213 (28.9%)
United Kingdom	348 (47.2%)
Primary renal diagnosis (<i>n</i> = 729), <i>n</i> (%)	
Glomerular disease	85 (11.5%)
Tubulo-interstitial disease	63 (8.5%)
Systemic disease affecting the kidney	21 (2.8%)
Diabetes	165 (22.4%)
Hypertension	232 (31.5%)
Familial/hereditary nephropathies	33 (4.5%)
Miscellaneous renal disorders	23 (3.1%)
Unknown	107 (14.5%)
Charlson comorbidity index (<i>n</i> = 726)	7 (6–8)
Previous CVD, <i>n</i> (%)	335 (45.5%)
Diabetes, <i>n</i> (%)	319 (43.3%)
eGFR (MDRD), mL/min per 1.73 m ²	19.7 (16.0, 23.0)
Diastolic BP (<i>n</i> = 727), mmHg	74 (67, 81)
Systolic BP (<i>n</i> = 727), mmHg	147 (132, 160)
Height (<i>n</i> = 695), cm	169 (161, 175)
Weight (<i>n</i> = 712), kg	80.0 (69.9, 91.5)
BMI (<i>n</i> = 686), kg/m ²	28.2 (24.9, 32.0)
BMI group (kg/m ²) (<i>n</i> = 686), <i>n</i> (%)	
<22	49 (6.6%)
22–24.9	130 (17.6%)
25–29.9	250 (33.9%)
>30	257 (34.9%)
Waist circumference (<i>n</i> = 700), cm	103 (95, 113)
α-Blocker, <i>n</i> (%)	204 (27.7%)
β-Blocker, <i>n</i> (%)	414 (56.2%)
ACEi/ARB, <i>n</i> (%)	385 (52.2%)
Lipid-lowering, <i>n</i> (%)	466 (63.2%)
SGA overall assessment	6.0 (5.0, 7.0)
SGA <5 (malnourished), <i>n</i> (%)	239 (32.4%)
Low-protein-diet prescription (<i>n</i> = 732), <i>n</i> (%)	68 (9.3%)
Hemoglobin (<i>n</i> = 715), mmol/L	7.1 (6.6, 7.9)
Sodium (<i>n</i> = 721), mmol/L	141.0 (139.0, 142.0)
Potassium (<i>n</i> = 724), mmol/L	4.6 (4.2, 5.0)
Calcium (<i>n</i> = 699), mmol/L	2.3 (2.2, 2.4)
Phosphate (<i>n</i> = 690), mmol/L	1.3 (1.1, 1.4)
Urea (<i>n</i> = 714), mmol/L	17.8 (14.6, 22.2)
Albumin (<i>n</i> = 657), g/L	38.0 (34.2, 41.0)
Total cholesterol (<i>n</i> = 550), mmol/L	4.5 (3.7, 5.5)
PTH (<i>n</i> = 587), pmol/L	15.4 (9.0, 23.5)
ACR (<i>n</i> = 335), mg/mmol	49.3 (8.5, 198.4)
TMAO, μM	18.2 (11.9–28.5)
CMPF, μM	7.1 (2.6, 14.9)

¹ Values are medians (IQR), or *n* (%), as appropriate; *n* = 737. ACEi/ARB, angiotensin-converting enzyme inhibitor/angiotensin receptor blocker; ACR, albumin creatinine ratio; BP, blood pressure; CMPF, 3-carboxy-4-methyl-5-propyl-2-furanpropionate; CVD, cardiovascular disease; eGFR, estimated glomerular filtration rate; MDRD, Modification of Diet in Renal Disease; PTH, parathyroid hormone; SGA, subjective global assessment; TMAO, trimethylamine N-oxide.

and 1.78 (95% CI: 1.46, 2.16), respectively] (Table 4). After adjusting for conventional factors accountable for initiating KRT, higher CMPF remained independently associated with reduced risk of KRT (HR: 0.82; 95% CI: 0.73, 0.91; model 1). The significant association between higher CMPF and lower risk of KRT withstood further extensive adjustment in model 3 (HR:

0.80; 95% CI: 0.71, 0.90). No significant association between TMAO and risk of KRT was observed in adjusted models.

We next looked at the risk of KRT stratified by our predefined subgroups of TMAO and CMPF (Figure 2). In the crude model, compared with the reference group, patients with TMAO (+) CMPF (–) had a significantly increased risk of KRT initiation

TABLE 2 Multivariable linear regression of factors associated with TMAO and CMPF¹

	ln TMAO		ln CMPF	
	Coefficient (SE)	P	Coefficient (SE)	P
ln Age ²	0.14 (0.28)	0.61	1.34 (0.49)	0.007
Male sex ³	0.23 (0.05)	<0.0001	0.18 (0.09)	0.05
Country (Germany as reference group)				
Poland	-0.11 (0.11)	0.29	-0.01 (0.18)	0.96
Sweden	0.03 (0.08)	0.67	0.52 (0.13)	<0.0001
United Kingdom	-0.08 (0.72)	0.26	-0.37 (0.12)	0.002
Diabetes, yes vs. no	0.17 (0.05)	0.001	-0.18 (0.09)	0.04
Previous CVD, yes vs. no	-0.04 (0.05)	0.49	0.17 (0.09)	0.06
SGA <5, malnutrition	0.05 (0.05)	0.39	-0.12 (0.09)	0.20
Charlson comorbidity index	0.17 (0.10)	0.08	-0.29 (0.18)	0.10
ln Hemoglobin	-0.63 (0.19)	0.001	0.96 (0.33)	0.003
ln Albumin	-0.25 (0.12)	0.04	0.31(0.21)	0.14
ln Height	0.49 (0.61)	0.48	2.09 (1.07)	0.05
ln Phosphate	0.71 (0.12)	<0.0001	-0.32 (0.19)	0.11
ln eGFR	-0.73 (0.08)	<0.0001	0.25 (0.14)	0.08
ln CMPF	0.07 (0.02)	0.001	—	—
ln TMAO	—	—	0.23 (0.06)	0.001

¹n = 737. Each model is age- and sex-adjusted. CMPF, 3-carboxy-4-methyl-5-propyl-2-furanpropionate; CVD, cardiovascular disease; eGFR, estimated glomerular filtration rate; SGA, subjective global assessment; TMAO, trimethylamine N-oxide.

²Model adjusted for sex.

³Model adjusted for age.

TABLE 3 Association between TMAO, CMPF, and risk of all-cause mortality¹

	All-cause mortality, HR [95% CI]	
	ln CMPF	ln TMAO
Crude	0.81 [0.73,0.90]	1.63 [1.33,2.00]
Model 1	0.76 [0.68,0.84]	1.63 [1.32,2.00]
Model 2	0.78 [0.70,0.87]	1.55 [1.26,1.91]
Model 3	0.79 [0.70,0.88]	1.51 [1.23,1.87]
Model 4	0.79 [0.71,0.89]	1.46 [1.17,1.83]

¹n = 737. Crude model: ln TMAO + ln CMPF, Model 1: adjusted for age, sex, and country. Model 2: model 1 + diabetes, preexisting cardiovascular disease, Charlson comorbidity index, diastolic blood pressure, systolic blood pressure, and malnutrition (SGA <5). Model 3: model 2 + albumin, phosphate, and hemoglobin. Model 4: model 3 + eGFR. CMPF, 3-carboxy-4-methyl-5-propyl-2-furanpropionate; eGFR, estimated glomerular filtration rate; SGA, subjective global assessment; TMAO, trimethylamine N-oxide.

(HR: 2.29; 95% CI: 1.64, 3.20). Compared with the reference group, no significant associations between TMAO (–) CMPF (+) group nor TMAO (+) CMPF (+) group and risk of KRT initiation were observed in a crude model and models adjusted for other confounders.

TMAO, CMPF, and first MACE.

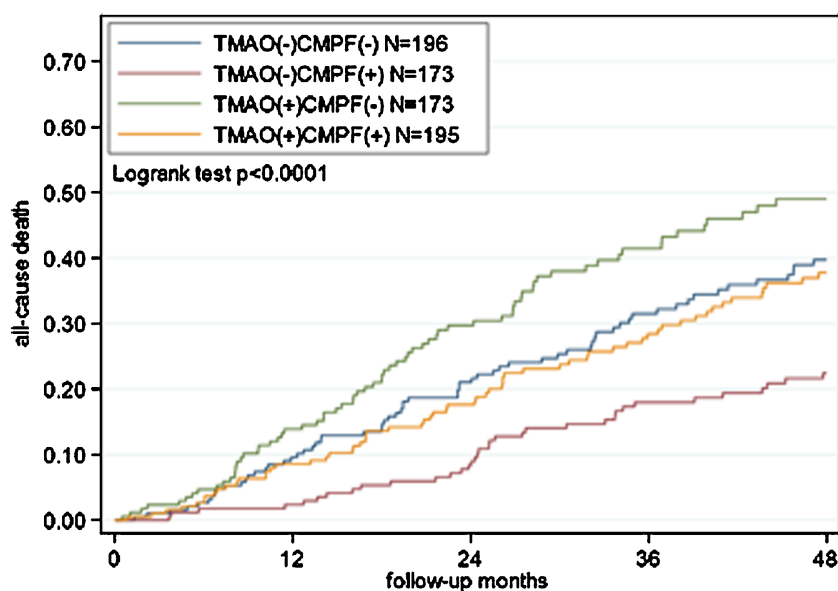
We also explored the association between TMAO, CMPF, and first MACE. High TMAO was associated with increased risk of first MACE in crude models and models adjusted for several confounders (26–34% higher risk) but not in model 4 further adjusted for eGFR. In contrast, CMPF was not associated with the risk of first MACE (**Supplemental Table 3**). Compared with

the reference group [TMAO (–) CMPF (–)], TMAO- and CMPF-stratified groups were not associated with the risk of first MACE (**Supplemental Table 4**).

Discussion

In this large, prospective, multicenter study of older adults (≥65 y) with CKD stage 4–5 across several European countries, there are several key findings. First, whereas higher TMAO is associated with increased risk of all-cause mortality, higher CMPF is independently associated with reduced risk of all-cause mortality and KRT initiation. Second, we found that, compared with a reference group with low concentrations of both TMAO and CMPF, patients with low TMAO and high CMPF concentrations portend a robust survival benefit in reducing all-cause mortality; in addition, patients with high TMAO and high CMPF do not demonstrate an increased risk of all-cause mortality and KRT. Our findings support the hypothesis the high circulating CMPF conferred an independent role in health benefits and might even counteract the unfavorable association of TMAO with outcomes.

The role of TMAO in mediating CV events has been fairly recognized across various populations (14), but the magnitude remains ambiguous. A study in mixed-race healthy US subjects reported that TMAO was not associated with atherosclerosis during a 10-y follow-up (30). Similarly, several observational follow-up studies failed to confirm the association between TMAO and CV outcomes (31, 32). In CKD, elevated circulating TMAO concentrations were well documented, with a large variability among studies (11, 13, 16, 17, 33, 34). Here we report >5-fold higher TMAO concentrations (median: 18.4; IQR: 12.0–29.2 μM) compared with a healthy population (33) (median: 3.3; IQR: 3.1–6.0 μM). We found that high TMAO conferred a 46–63% higher risk of all-cause mortality. However,



	All-cause mortality, HR[95%CI]		
	TMAO (-) CMPF (+)	TMAO (+) CMPF (-)	TMAO (+) CMPF (+)
Crude	0.49[0.33,0.74]	1.41[1.01,1.98]	0.92[0.65,1.31]
Model1	0.43[0.28,0.65]	1.39[0.99,1.95]	0.77[0.54,1.11]
Model2	0.46[0.30,0.71]	1.34[0.95,1.90]	0.78[0.54,1.13]
Model3	0.48[0.31,0.73]	1.31[0.92,1.87]	0.77[0.53,1.12]
Model4	0.49[0.31,0.73]	1.22[0.85,1.75]	0.72[0.49,1.05]

FIGURE 1 Kaplan–Meier estimates for all-cause mortality and cause-specific Cox regression models according to TMAO and CMPF median groups. Model 1 adjusted for age, sex, country. Model 2: adjusted as for model 1 plus diabetes, preexisting cardiovascular disease, Charlson comorbidity index, diastolic blood pressure, systolic blood pressure, malnutrition (SGA <5). Model 3: adjusted as for model 2 plus albumin, phosphate, hemoglobin. Model 4: adjusted as for model 3 plus eGFR. CMPF, 3-carboxy-4-methyl-5-propyl-2-furanpropionate; eGFR, estimated glomerular filtration rate; SGA, subjective global assessment; TMAO, trimethylamine N-oxide.

the association between high TMAO and high risk of mortality was likely to be counteracted with a high dietary fish intake, suggested by concomitant high CMPF concentrations. Although TMAO is commonly recognized as a microbiota-dependent metabolite of mainly red meat/egg consumption (35), it is also an indicative metabolite of fish intake (36). Nevertheless, TMAO alone had a poor ability to estimate fish intake (37), largely due to the undetermined concentration across fish products habitating at different depths (36). In contrast, CMPF is considered a prominent metabolite following the consumption of fish oil and diets rich in fish (20, 23). The correlation between plasma, serum, and urine CMPF and habitual fish/shellfish intake has been verified in several populations (38–40).

Here we found that high CMPF was consistently associated with reduced risk of all-cause mortality and KRT initiation. This observation was counterintuitive to the concept of CMPF as a uremic toxin that can cause damage to proximal tubular cells, at least in vitro (41). To date, there is insufficient evidence of the impact of CMPF on human health. In vivo and in vitro studies from Prentice et al. (42) and Liu et al. (43) showed that CMPF can impair B-cell function, mitochondrial function, and glucose metabolism. In contrast, CMPF was reported to be able to regulate hepatic lipid homeostasis and reverse steatosis (20, 44). Moreover, high CMPF was not associated with all-cause and CV mortality in dialysis patients (45). Taken together, the knowledge of the role of CMPF in human health is still in its infancy and

TABLE 4 Association between TMAO, CMPF, and risk of kidney replacement therapy¹

	KRT initiation, HR [95%CI]	
	ln CMPF	ln TMAO
Crude	0.74 [0.67,0.82]	1.78 [1.46,2.16]
Model 1	0.82 [0.73,0.91]	1.11 [0.88,1.40]
Model 2	0.79 [0.71,0.89]	1.04 [0.83,1.31]
Model 3	0.80 [0.71,0.90]	1.01 [0.81,1.27]

¹*n* = 737. Crude model: ln TMAO + ln CMPF. Model 1: adjusted for age, sex, eGFR, and ACR. Model 2: model 1 + country, diabetes, preexisting cardiovascular disease, Charlson comorbidity index, diastolic blood pressure, systolic blood pressure, and malnutrition (SGA <5). Model 3: model 2 + albumin, phosphate, and hemoglobin. ACR, albumin creatinine ratio; CMPF, 3-carboxy-4-methyl-5-propyl-2-furanpropionate; eGFR, estimated glomerular filtration rate; KRT, kidney replacement therapy; SGA, subjective global assessment; TMAO, trimethylamine N-oxide.

future investigations are warranted to fill the knowledge gap of such conflicting observations.

We hypothesized that overall high fish CMPF (+) and low red meat TMAO (−) consumption can predispose to health benefits in CKD. Our results support this hypothesis in finding that patients with low TMAO and high CMPF had a lower risk of all-cause mortality, whereas high concomitant CMPF and TMAO did not show increased risk of death. Hence, we posit that high CMPF, representing high fish intake, is associated with overall better clinical outcomes regardless of TMAO concentrations. Such postulation of CMPF-related health benefits corroborates with analysis when CMPF was treated as a continuous variable, where high CMPF was significantly associated with a lower risk of all-cause mortality and KRT independently of TMAO. Indeed, the paradox of TMAO as a friend or foe can be partially justified by a background diet pattern as it was recently found that a “healthy diet” rich in fish or in whole-grain cereals, but not meat, processed meat, or dairy products, significantly increased plasma TMAO (46).

We acknowledge the strengths and limitations of this study. A major strength is the well-phenotyped inception cohort of CKD stage 4–5 patients across Europe with long-term follow-up. Our study is, however, limited by its observational study design and, as such, we cannot conclude the causal effect of TMAO and CMPF on clinical outcomes. Also, as TMAO and CMPF are metabolites derived from dietary sources with possible involvement of host gut microbial activities, the lack of information on dietary pattern and gut microbiome profile is a vital limitation. It is worth noting, however, that patients recruited in Sweden had significantly higher CMPF concentrations. Despite the lack of actual diet evaluation, this probably mirrors the food culture of an overall high fish and seafood consumption in the Scandinavian region. In addition, although we have corrected eGFR, this does not account for tubular function, which can be highly variable at any given eGFR (34). Hence, the independent associations between TMAO, CMPF, and outcomes need to be interpreted with caution.

In summary, in our investigation of the association between TMAO and CMPF and their combinations with clinical outcomes in older CKD 4–5 patients, we observed a strong beneficial profile of high circulating CMPF and its association with reduced risk of all-cause mortality and KRT initiation independently of TMAO

concentrations. While the dietary source and the metabolic profile of TMAO remain to be elucidated, our results suggest that high CMPF confers a beneficial role in CKD, possibly due to a healthy eating habit of fish consumption. Moreover, it may possibly counteract the unfavorable association between TMAO and adverse outcomes. As such, whether CMPF is a marker or protective factor, it offers the potential to be a modifiable and important target to improve outcomes in CKD in future studies.

The EQUAL study contributors are as follows: (Germany) Andreas Schneider, Anke Torp, Beate Iwig, Boris Perras, Christian Marx, Christiane Drechsler, Christof Blaser, Christoph Wanner, Claudia Emde, Detlef Krieter, Dunja Fuchs, Ellen Irmeler, Eva Platen, Hans Schmidt-Gürtler, Hendrik Schlee, Holger Naujoks, Ines Schlee, Sabine Cäsar, Joachim Beige, Jochen Röhle, Justyna Mazur, Kai Hahn, Katja Blouin, Katrin Neumeier, Kirsten Anding-Rost, Lothar Schramm, Monika Hopf, Nadja Wuttke, Nikolaus Frischmuth, Pawlos Ichtariis, Petra Kirste, Petra Schulz, Sabine Aign, Sandra Biribauer, Sherin Manan, Silke Röser, Stefan Heidenreich, Stephanie Palm, Susanne Schwedler, Sylke Delrieux, Sylvia Renker, Sylvia Schätzel, Theresa Stephan, Thomas Schmiedeke, Thomas Weinreich, Til Leimbach, Torsten Stövesand, Udo Bahner, Wolfgang Seeger; (Italy) Adamasco Cupisti, Adelia Sagliocca, Alberto Ferraro, Alessandra Mele, Alessandro Naticchia, Alex Cösaro, Andrea Ranghino, Andrea Stucchi, Angelo Pignataro, Antonella De Blasio, Antonello Pani, Aris Tsalouichos, Bellasi Antonio, Biagio Raffaele Di Iorio, Butti Alessandra, Cataldo Abaterusso, Chiara Somma, Claudia D’Alessandro, Claudia Torino, Claudia Zullo, Claudio Pozzi, Daniela Bergamo, Daniele Ciurlino, Daria Motta, Domenico Russo, Enrico Favaro, Federica Vigotti, Ferruccio Ansali, Ferruccio Conte, Francesca Cianciotta, Francesca Giacchino, Francesco Cappellaio, Francesco Pizzarelli, Gaetano Greco, Gaetana Porto, Giada Bigatti, Giancarlo Marinangeli, Gianfranca Cabiddu, Giordano Fumagalli, Giorgia Caloro, Giorgina Piccoli, Giovanbattista Capasso, Giovanni Gambaro, Giuliana Tognarelli, Giuseppe Bonforte, Giuseppe Conte, Giuseppe Toscano, Goffredo Del Rosso, Irene Capizzi, Ivano Baragetti, Lamberto Oldrizzi, Loreto Gesualdo, Luigi Biancone, Manuela Magnano, Marco Ricardi, Maria Di Bari, Maria Laudato, Maria Luisa Sirico, Martina Ferraresi, Michele Provenzano, Moreno Malaguti, Nicola Palmieri, Paola Murrone, Pietro Cirillo, Pietro Dattolo, Pina Acampora, Rita Nigro, Roberto Boero, Roberto Scarpioni, Rosa Sicoli, Rosella Malandra, Silvana Savoldi, Silvio Bertoli, Silvio Borrelli, Stefania Maxia, Stefano Maffei, Stefano Mangano, Teresa Cicchetti, Tiziana Rappa, Valentina Palazzo, Walter De Simone; (The Netherlands) Anita Schrandt, Bastiaan van Dam, Carl Siegert, Carlo Gaillard, Charles Beerenhout, Cornelis Verburgh, Cynthia Janmaat, Ellen Hoogveen, Ewout Hoorn, Friedo Dekker, Johannes Boots, Henk Boom, Jan-Willem Eijgenraam, Jeroen Kooman, Joris Rotmans, Kitty Jager, Liffert Vogt, Maarten Raasveld, Marc Versloet, Marjolijn van Buren, Merel van Diepen, Nicholas Chesnaye, Paul Leurs, Pauline Voskamp, Sadie van Esch, Siska Boorsma, Stefan Berger, Constantijn Konings, Zeynep Aydin; (Poland) Aleksandra Musiała, Anna Szymczak, Ewelina Olczyk, Hanna Augustyniak-Bartosik, Ilona Miśkowiec-Wiśniewska, Jacek Manitus, Joanna Pondel, Kamila Jędrzejak, Katarzyna Nowańska, Łukasz Nowak, Maciej Szymczak, Magdalena Durlik, Szyszkowska Dorota, Teresa Nieszporek, Zbigniew Heleniak; (Sweden) Andreas Jonsson, Björn Rogland, Carin Wallquist, Denes Vargas, Emöke Dimény, Fredrik Sundelin, Fredrik Uhlin, Gunilla Welander, Isabel Bascaran Hernandez, Knut-Christian Gröntoft, Maria Stendahl, Maria Eriksson Svensson, Marie Evans, Olof Heimbürger, Pavlos Kashioulis, Stefan Melander, Tori Almquist; (United Kingdom) Alistair Woodman, Anna McKeever, Asad Ullah, Barbara McLaren, Camille Harron, Carla Barrett, Charlotte O’Toole, Christina Summersgill, Colin Geddes, Deborah Glowski, Deborah McGlynn, Dymphna Sands, Fergus Caskey, Geena Roy, Gillian Hirst, Hayley King, Helen McNally, Houa Masri-Senghor, Hugh Murtagh, Hugh Rayner, Jane Turner, Joanne Wilcox, Jocelyn Berdeprado, Jonathan Wong, Joyce Banda, Kirsteen Jones, Lesley Haydock, Lily Wilkinson, Margaret Carmody, Maria Weetman, Martin Joinson, Mary Dutton, Michael Matthews, Neal Morgan, Nina Bleakley, Paul Cockwell, Paul Roderick, Phil Mason, Philip Kalra, Rincy Sajith, Sally

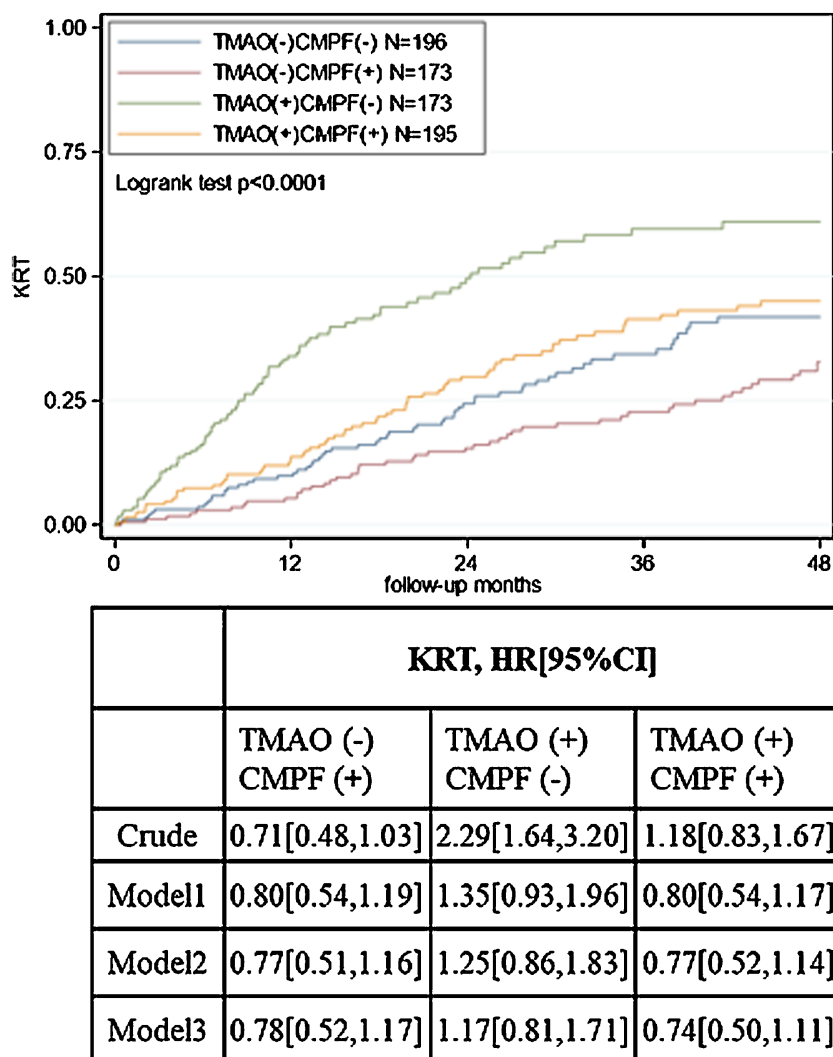


FIGURE 2 Kaplan–Meier estimates for risk of KRT initiation and cause-specific Cox regression models according to TMAO and CMPF median groups. Model 1: adjusted for age, sex, eGFR, ACR. Model 2: adjusted as for model 1 plus country, diabetes, preexisting cardiovascular disease, Charlson comorbidity index, diastolic blood pressure, systolic blood pressure, malnutrition (SGA <math>< 5</math>). Model 3: adjusted as for model 2 plus albumin, phosphate, hemoglobin. ACR, albumin creatinine ratio; CMPF, 3-carboxy-4-methyl-5-propyl-2-furanpropionate; eGFR, estimated glomerular filtration rate; KRT, kidney replacement therapy; SGA, subjective global assessment; TMAO, trimethylamine N-oxide.

Chapman, Santee Navjee, Sarah Crosbie, Sharon Brown, Sheila Tickle, Suresh Mathavakkannan, Ying Kuan.

We thank all the patients and health professionals participating in the EQUAL study.

The authors' responsibilities were as follows—PE and PS: generated the original research question; LD, ZAM, PS, PE, and ME: designed the research; NCC, FJC, CT, GP, MS, MK, CD, CW, KJJ, FWD, IAL, JCA, and ME: conducted the research; IAL and JCA: provided essential reagents or provided essential materials; LD: performed statistical analysis; LD and ME: wrote the manuscript; ZAM, PS, PE, ME, NCC, FJC, CT, GP, MS, MK, CD, and KJJ: revised and edited the manuscript; ME: had primary responsibility for final content; and all authors: read and approved the final manuscript. PS has served on scientific advisory boards of REATA, Baxter, Invizius, Fresenius Medical Care, SGK, and Astra Zeneca. ME has participated in advisory boards in Astellas Pharma, Astra Zeneca, and Vifor Pharma, and reports payment for lectures by Astellas, Astra Zeneca, Vifor Pharma, Fresenius Medical Care, Baxter Healthcare. ZAM reports grants for CKD-REIN and other research projects from Amgen, Baxter, Fresenius Medical Care, GlaxoSmithKline, Merck Sharp and Dohme-Chibret, Sanofi-Genzyme, Lilly, Otsuka, and the

French government, as well as fees and grants to charities from Astra Zeneca. These sources of funding are not necessarily related to the content of the present manuscript. KJJ reports lecture fees from Fresenius Medical Care. The other authors report no conflicts of interest.

Data Availability

Data described in the manuscript, code book, and analytic code will be made available upon reasonable request to the corresponding author. Please e-mail marie.evans@ki.se.

References

- Go AS, Chertow GM, Fan D, McCulloch CE, Hsu C. Chronic kidney disease and the risks of death, cardiovascular events, and hospitalization. *N Engl J Med* 2004;351(13):1296–305.

2. Kalantar-Zadeh K, Block G, Humphreys MH, Kopple JD. Reverse epidemiology of cardiovascular risk factors in maintenance dialysis patients. *Kidney Int* 2003;63(3):793–808.
3. Elliott MK, McCaughan JA, Fogarty DG. Do patients with chronic kidney disease get optimal cardiovascular risk reduction? *Curr Opin Nephrol Hypertens* 2014;23(3):267–74.
4. Nemet I, Saha PP, Gupta N, Zhu W, Romano KA, Skye SM, et al. A cardiovascular disease-linked gut microbial metabolite acts via adrenergic receptors. *Cell* 2020;180(5):862–77, e22.
5. Lobel L, Cao YG, Fenn K, Glickman JN, Garrett WS. Diet posttranslationally modifies the mouse gut microbial proteome to modulate renal function. *Science* (1979) 2020;369:1518–24.
6. Poesen R, Claes K, Evenepoel P, de Loo H, Augustijns P, Kuypers D, et al. Microbiota-Derived phenylacetylglutamine associates with overall mortality and cardiovascular disease in patients with CKD. *J Am Soc Nephrol* 2016;27(11):3479–87.
7. Ravid JD, Kamel MH, Chitalia VC. Uraemic solutes as therapeutic targets in CKD-associated cardiovascular disease. *Nat Rev Nephrol* 2021;17(6):402–16.
8. Massy ZA, Druke TB. Translational science diet–microbiota interaction and kidney disease progression. *Kidney Int* 2021;99:797–800.
9. Cho CE, Caudill MA. Trimethylamine-N-oxide: friend, foe, or simply caught in the cross-fire? *Trends Endocrinol Metab* 2017;28:121–30.
10. Gupta N, Buffa JA, Roberts AB, Sangwan N, Skye SM, Li L, et al. Targeted inhibition of gut microbial trimethylamine N-oxide production reduces renal tubulointerstitial fibrosis and functional impairment in a murine model of chronic kidney disease. *Arterioscler Thromb Vasc Biol* 2020;40(5):1239–55.
11. Tang WHW, Wang Z, Kennedy DJ, Wu Y, Buffa JA, Agatista-Boyle B, et al. Gut microbiota-dependent trimethylamine N-oxide (TMAO) pathway contributes to both development of renal insufficiency and mortality risk in chronic kidney disease. *Circ Res* 2015;116(3):448–55.
12. Shafi T, Powe NR, Meyer TW, Hwang S, Hai X, Melamed ML, et al. Trimethylamine n-oxide and cardiovascular events in hemodialysis patients. *J Am Soc Nephrol* 2017;28(1):321–31.
13. Kim RB, Morse BL, Djurdjev O, Tang M, Muirhead N, Barrett B, et al. Advanced chronic kidney disease populations have elevated trimethylamine N-oxide levels associated with increased cardiovascular events. *Kidney Int* 2016;89(5):1144–52.
14. Heianza Y, Ma W, Manson JE, Rexrode KM, Qi L. Gut microbiota metabolites and risk of major adverse cardiovascular disease events and death: a systematic review and meta-analysis of prospective studies. *J Am Heart Assoc* 2017;6(7):e004947.
15. Li XS, Obeid S, Klingenberg R, Gencer B, Mach F, Räber L, et al. Gutmicrobiota-dependent trimethylamine N-oxide in acute coronary syndromes: a prognostic marker for incident cardiovascular events beyond traditional risk factors. *Eur Heart J* 2017;38:814–24.
16. Stubbs JR, Stedman MR, Liu S, Long J, Franchetti Y, West RE, et al. Trimethylamine N-oxide and cardiovascular outcomes in patients with ESKD receiving maintenance hemodialysis. *Clin J Am Soc Nephrol* 2019;14(2):261–7.
17. Kaysen GA, Johansen KL, Chertow GM, Dalrymple LS, Kornak J, Grimes B, et al. Associations of trimethylamine N-oxide with nutritional and inflammatory biomarkers and cardiovascular outcomes in patients new to dialysis. *J Ren Nutr* 2015;25(4):351–6.
18. Gruppen EG, Garcia E, Connelly MA, Jeyarajah EJ, Otvos JD, Bakker SJL, et al. TMAO is associated with mortality: impact of modestly impaired renal function. *Sci Rep* 2017;7(1):13781.
19. Zhu W, Gregory JC, Org E, Buffa JA, Gupta N, Wang Z, et al. Gut microbial metabolite TMAO enhances platelet hyperreactivity and thrombosis risk. *Cell* 2016;165(1):111–24.
20. Prentice KJ, Wendell SG, Liu Y, Eversley JA, Salvatore SR, Mohan H, et al. CMPF, a metabolite formed upon prescription omega-3-acid ethyl ester supplementation, prevents and reverses steatosis. *EBioMedicine*; 2018;27:200–13.
21. Itoh Y, Ezawa A, Kikuchi K, Tsuruta Y, Niwa T. Protein-bound uremic toxins in hemodialysis patients measured by liquid chromatography/tandem mass spectrometry and their effects on endothelial ROS production. *Anal Bioanal Chem* 2012;403(7):1841–50.
22. Vanholder R, de Smet R, Glorieux G, Argilés A, Baurmeister U, Brunet P, et al. Review on uremic toxins: classification, concentration, and interindividual variability. *Kidney Int* 2003;63(5):1934–43.
23. Sinclair AJ, Xu L, Wang Y. 3-Carboxy-4-methyl-5-propyl-2-furanpropanoic acid (CMPF): a metabolite identified after consumption of fish oil and fish. *Nutr Bull* 2018;43(2):153–7.
24. Mitchell SC, Zhang AQ, Smith RL. Dimethylamine and diet. *Food Chem Toxicol* 2008;46(5):1734–8.
25. Zhang AQ, Mitchell SC, Smith RL. Dietary precursors of trimethylamine in man: a pilot study. *Food Chem Toxicol* 1999;37(5):515–20.
26. Jager KJ, Ocaik G, Drechsler C, Caskey FJ, Evans M, Postorino M, et al. The EQUAL study: a European study in chronic kidney disease stage 4 patients. *Nephrol Dialysis Transplant* 2012;27(Suppl 3):iii27–31.
27. Levey AS. A more accurate method to estimate glomerular filtration rate from serum creatinine: a new prediction equation. *Ann Intern Med* 1999;130(6):461.
28. Windahl K, Faxén Irving G, Almquist T, Lidén MK, van de Luijtgarden M, Chesnaye NC, et al. Prevalence and risk of protein-energy wasting assessed by subjective global assessment in older adults with advanced chronic kidney disease: results from the EQUAL study. *J Ren Nutr* 2018;28(3):165–74.
29. Fabresse N, Uteem I, Lamy E, Massy Z, Larabi IA, Alvarez J-C. Quantification of free and protein bound uremic toxins in human serum by LC-MS/MS: comparison of rapid equilibrium dialysis and ultrafiltration. *Clin Chim Acta* 2020;507:228–35. Available from: <https://linkinghub.elsevier.com/retrieve/pii/S0009898120301911>.
30. Meyer KA, Benton TZ, Bennett BJ, Jacobs DR, Lloyd-Jones DM, Gross MD, et al. Microbiota-dependent metabolite trimethylamine N-oxide and coronary artery calcium in the Coronary Artery Risk Development in Young Adults Study (CARDIA). *J Am Heart Assoc* 2016;5(10):e003970.
31. Mueller DM, Allenspach M, Othman A, Saely CH, Muendlein A, Vonbank A, et al. Plasma levels of trimethylamine-N-oxide are confounded by impaired kidney function and poor metabolic control. *Atherosclerosis* 2015;243(2):638–44.
32. Yin J, Liao S, He Y, Wang S, Xia G, Liu F, et al. Dysbiosis of gut microbiota with reduced trimethylamine-n-oxide level in patients with large-artery atherosclerotic stroke or transient ischemic attack. *J Am Heart Assoc* 2015;4(11):e002699.
33. Stubbs JR, House JA, Ocuque AJ, Zhang S, Johnson C, Kimber C, et al. Serum trimethylamine-n-oxide is elevated in CKD and correlates with coronary atherosclerosis burden. *J Am Soc Nephrol* 2016;27(1):305–13.
34. Gryp T, de Paepe K, Vanholder R, Kerckhof FM, van Biesen W, van de Wiele T, et al. Gut microbiota generation of protein-bound uremic toxins and related metabolites is not altered at different stages of chronic kidney disease. *Kidney Int* 2020;97(6):1230–42.
35. Mafra D, Borges NA, Cardozo LFM de F, Anjos JS, Black AP, Moraes C, et al. Red meat intake in chronic kidney disease patients: two sides of the coin. *Nutrition* 2018;46:26–32.
36. Wang Z, Tang WHW, O'Connell T, Garcia E, Jeyarajah EJ, Li XS, et al. Circulating trimethylamine N-oxide levels following fish or seafood consumption. *Eur J Nutr* 2022;61(5):2357–64.
37. Yin X, Gibbons H, Rundle M, Frost G, McNulty BA, Nugent AP, et al. The relationship between fish intake and urinary trimethylamine-n-oxide. *Mol Nutr Food Res* 2020;64(3):1–9.
38. Playdon MC, Moore SC, Derkach A, Reedy J, Subar AF, Sampson JN, et al. Identifying biomarkers of dietary patterns by using metabolomics. *Am J Clin Nutr* 2017;105(2):450–65.
39. Playdon MC, Sampson JN, Cross AJ, Sinha R, Guertin KA, Moy KA, et al. Comparing metabolite profiles of habitual diet in serum and urine. *Am J Clin Nutr* 2016;104(3):776–89.
40. Lu Y, Zou L, Su J, Tai ES, Whitton C, van Dam RM, et al. Meat and seafood consumption in relation to plasma metabolic profiles in a Chinese population: a combined untargeted and targeted metabolomics study. *Nutrients* 2017;9(7):1–18.
41. Miyamoto Y, Iwao Y, Mera K, Watanabe H, Kadowaki D, Ishima Y, et al. A uremic toxin, 3-carboxy-4-methyl-5-propyl-2-furanpropionate induces cell damage to proximal tubular cells via the generation of a radical intermediate. *Biochem Pharmacol* 2012;84(9):1207–14.
42. Prentice KJ, Luu L, Allister EM, Liu Y, Jun LS, Sloop KW, et al. The furan fatty acid metabolite CMPF is elevated in diabetes and induces β cell dysfunction. *Cell Metab* 2014;19(4):653–66.
43. Liu Y, Prentice KJ, Eversley JA, Hu C, Batchuluun B, Leavey K, et al. Rapid elevation in CMPF may act as a tipping point in diabetes development. *Cell Rep* 2016;14(12):2889–900.

44. Dai J, Yi J, Zhang S, Chen P, Jin H, Yu X, et al. Serum 3-carboxy-4-methyl-5-propyl-2-furanpropanoic acid is associated with lipid profiles and might protect against non-alcoholic fatty liver disease in Chinese individuals. *J Diabetes Investig* 2019;10(3):793–800.
45. Luce M, Bouchara A, Pastural M, Granjon S, Szelag JC, Laville M, et al. Is 3-carboxy-4-methyl-5-propyl-2-furanpropionate (CMPF) a clinically relevant uremic toxin in haemodialysis patients? *Toxins* 2018;10(5):1–16.
46. Costabile G, Vetrani C, Bozzetto L, Giacco R, Bresciani L, del Rio D, et al. Plasma TMAO increase after healthy diets: results from 2 randomized controlled trials with dietary fish, polyphenols, and whole-grain cereals. *Am J Clin Nutr* 2021;114(4):1342–50