

University of Groningen

Timed up and go test and long-term survival in older adults after oncologic surgery

Hendriks, Sharon; Huisman, Monique G.; Ghignone, Frederico; Vigano, Antonio; de Liguori Carino, Nicola; Farinella, Eriberto; Girocchi, Roberto; Audisio, Riccardo A.; van Munster, Barbara; de Bock, Geertruida H.

Published in:
BMC Geriatrics

DOI:
[10.1186/s12877-022-03585-4](https://doi.org/10.1186/s12877-022-03585-4)

IMPORTANT NOTE: You are advised to consult the publisher's version (publisher's PDF) if you wish to cite from it. Please check the document version below.

Document Version
Publisher's PDF, also known as Version of record

Publication date:
2022

[Link to publication in University of Groningen/UMCG research database](#)

Citation for published version (APA):

Hendriks, S., Huisman, M. G., Ghignone, F., Vigano, A., de Liguori Carino, N., Farinella, E., Girocchi, R., Audisio, R. A., van Munster, B., de Bock, G. H., & van Leeuwen, B. L. (2022). Timed up and go test and long-term survival in older adults after oncologic surgery. *BMC Geriatrics*, 22(1), [934].
<https://doi.org/10.1186/s12877-022-03585-4>

Copyright

Other than for strictly personal use, it is not permitted to download or to forward/distribute the text or part of it without the consent of the author(s) and/or copyright holder(s), unless the work is under an open content license (like Creative Commons).

The publication may also be distributed here under the terms of Article 25fa of the Dutch Copyright Act, indicated by the "Taverne" license. More information can be found on the University of Groningen website: <https://www.rug.nl/library/open-access/self-archiving-pure/taverne-amendment>.

Take-down policy

If you believe that this document breaches copyright please contact us providing details, and we will remove access to the work immediately and investigate your claim.

Downloaded from the University of Groningen/UMCG research database (Pure): <http://www.rug.nl/research/portal>. For technical reasons the number of authors shown on this cover page is limited to 10 maximum.

RESEARCH

Open Access



Timed up and go test and long-term survival in older adults after oncologic surgery

Sharon Hendriks^{1*}, Monique G. Huisman¹, Frederico Ghignone², Antonio Vigano³, Nicola de Liguori Carino⁴, Eriberto Farinella⁵, Roberto Girocchi⁵, Riccardo A. Audisio⁶, Barbara van Munster⁷, Geertruida H. de Bock⁸ and Barbara L. van Leeuwen¹

Abstract

Background: Physical performance tests are a reflection of health in older adults. The Timed Up and Go test is an easy-to-administer tool measuring physical performance. In older adults undergoing oncologic surgery, an impaired TUG has been associated with higher rates of postoperative complications and increased short term mortality. The objective of this study is to investigate the association between physical performance and long term outcomes.

Methods: Patients aged ≥ 65 years undergoing surgery for solid tumors in three prospective cohort studies, 'PICNIC', 'PICNIC B-HAPPY' and 'PREOP', were included. The TUG was administered 2 weeks before surgery, a score of ≥ 12 seconds was considered to be impaired. Primary endpoint was 5-year survival, secondary endpoint was 30-day major complications. Survival proportions were estimated using Kaplan-Meier curves. Cox- and logistic regression analysis were used for survival and complications respectively. Hazard ratios (aHRs) and Odds ratios (aOR) were adjusted for literature-based and clinically relevant variables, and 95% confidence intervals (95% CIs) were estimated using multi-variable models.

Results: In total, 528 patients were included into analysis. Mean age was 75 years (SD 5.98), in 123 (23.3%) patients, the TUG was impaired. Five-year survival proportions were 0.56 and 0.49 for patients with normal TUG and impaired TUG respectively. An impaired TUG was an independent predictor of increased 5-year mortality (aHR 1.43, 95% CI 1.02-2.02). The TUG was not a significant predictor of 30-day major complications (aOR 1.46, 95% CI 0.70-3.06).

Conclusions: An impaired TUG is associated with increased 5-year mortality in older adults undergoing surgery for solid tumors. It requires further investigation whether an impaired TUG can be reversed and thus improve long-term outcomes.

Trial registration: The PICNIC studies are registered in the Dutch Clinical Trial database at www.trialregister.nl: NL4219 (2010-07-22) and NL4441 (2014-06-01). The PREOP study was registered with the Dutch trial registry at www.trialregister.nl: NL1497 (2008-11-28) and in the United Kingdom register (Research Ethics Committee reference 10/H1008/59). https://www.hra.nhs.uk/planning-and-improving-research/application-summaries/research-summaries/?page=15&query=preop&date_from=&date_to=&research_type=&rec_opinion=&relevance=true.

Keywords: Older adults, Timed up and go, Physical performance, Long-term survival, Oncologic surgery

Background

The global burden of cancer is rapidly increasing, the number of new cancer cases among older adults is expected to double by 2035 compared to 2012 [1]. Cancer is a disease of ageing, and solid types of cancer

*Correspondence: s.hendriks@umcg.nl

¹ Department of Surgery, University of Groningen, University Medical Center Groningen, 9713 GZ Groningen, The Netherlands
Full list of author information is available at the end of the article



© The Author(s) 2022. **Open Access** This article is licensed under a Creative Commons Attribution 4.0 International License, which permits use, sharing, adaptation, distribution and reproduction in any medium or format, as long as you give appropriate credit to the original author(s) and the source, provide a link to the Creative Commons licence, and indicate if changes were made. The images or other third party material in this article are included in the article's Creative Commons licence, unless indicated otherwise in a credit line to the material. If material is not included in the article's Creative Commons licence and your intended use is not permitted by statutory regulation or exceeds the permitted use, you will need to obtain permission directly from the copyright holder. To view a copy of this licence, visit <http://creativecommons.org/licenses/by/4.0/>. The Creative Commons Public Domain Dedication waiver (<http://creativecommons.org/publicdomain/zero/1.0/>) applies to the data made available in this article, unless otherwise stated in a credit line to the data.

predominantly affect the aged [2, 3]. For many of these solid types of cancer, surgery remains the most efficient treatment [4]. However, the ability to withstand major stressors like surgery varies greatly in the geriatric population undergoing oncologic surgery. Whilst older adults considered fit for surgery might do as well as younger patients, vulnerable or frail patients are at an increased risk of adverse postoperative outcomes [5–7]. Predicting which patient is at risk for postoperative adverse outcomes remains difficult and thus the management of older adults with solid cancer is challenging.

To improve postoperative outcomes in this group of patients, multiple interventions have been developed: prehabilitation is intended to enhance the functional capacity prior to surgery, enabling to withstand stressful events like surgery [8]. Prehabilitation consists mainly of endurance and resistance exercises [9]. Previous studies suggest that preoperative exercise may have beneficial effects on length of hospital stay, functional recovery and postoperative complications [10–12]. However, data on functional capacity in older adults undergoing oncologic surgery are scarce.

Before studying the effects of exercise as part of prehabilitation on long term survival in older adults going for oncologic surgery, it is essential to be informed on baseline physical functioning and long-term survival in these patients. Physical performance and functioning appear to be a proxy for the health status in older adults [13]. Functional tests can integrate known and unrecognized disturbances in multiple organ systems, such as heart, lungs, circulatory and musculoskeletal systems [13, 14]. One of the tests used to objectify physical performance is the Timed Up & Go test. This is a time-saving, inexpensive and easy to administer screening tool for physical performance, integrating information on multiple domains, such as gait speed, balance and strength [15]. In older oncological patients, the TUG seems to be an interesting indicator of the ability to withstand stressors such as chemotherapy or oncologic surgery [13]. All preceding studies have investigated the TUG as a screening tool in older adults undergoing oncological surgery focusing on short-term outcomes, such as length of hospital stay and complication rate [16–19].

Conversely, the primary objective of this study was to investigate the association between the TUG as a measurement of physical performance and 5-year survival after oncologic surgery.

Methods

The PICNIC, PICNIC B-HAPPY and PREOP studies

The data for this study concerns the long-term follow-up of three prospective observational cohort studies, 'PICNIC' (Postoperative Cognitive dysfunction In elderly

Cancer patients), 'PICNIC B-HAPPY' (Biomarkers and Handgrip Strength as Predictors of Postoperative Outcome in PICNIC) and 'PREOP' (Preoperative Risk Estimation for Onco-geriatric Patients). The PICNIC studies were conducted at the University Medical Center Groningen (UMCG, The Netherlands) and approved by the Medical Ethical Committee of the University Medical Centre Groningen. The prospective international multicenter 'PREOP' (Preoperative Risk Estimation for Onco-geriatric Patients) cohort was designed by the surgical task force of the International Society of Geriatric Oncology and conducted between September 2008 and October 2012. The PRE-OP study was originally approved by the National Research Ethics Service Committee North West – Greater Manchester Central and the Medical Ethical Committee from Leiden University Medical center. The PREOP study was coordinated by the University Medical Center Groningen. Centers of the PRE-OP study participating in this study were the Orsola Malpighi Hospital, Bologna, Italy, University Medical Center Groningen, Groningen, The Netherlands, The Highfield Hospital, Manchester, United Kingdom, *S. Maria* Hospital Perugia, Italy and the McGill University Health Centre in Montreal, Canada. All patients gave written informed consent in accord with the ethical standards of the local ethics committees. Data collection was conducted according to the revised version of the Declaration of Helsinki (October 2013, Brazil). Patients from the PICNIC, PICNIC B-HAPPY and PREOP cohorts were described earlier [17, 20–28].

All clinical data such as age, sex, BMI, tumor type, disease stage, comorbidities, and surgical characteristics were prospectively collected from the patient's medical record. During hospital admission complications were recorded prospectively. To complete the 30-days morbidity registration, patients' files were checked on the occurrence of complications. Survival data for patients in 'PICNIC' and 'PICNIC B-HAPPY' was gathered from the patients' medical record in December 2020.

Within 2 weeks prior to the surgical procedure, the TUG was administered as part of a larger test battery in all three studies [17, 20]. The TUG assesses the time a patient needs to get up from a chair, walk 3m, turn around, walk back, and sit down again [15]. This is measured in seconds with a handheld stopwatch by the local researcher who performed the TUG two times for each patient; the mean of these measurements was then calculated. In literature, cut-off scores for an impaired TUG in older patients vary between 10 to 20seconds [13, 17, 19, 29]. Focusing on survival in older adults after cancer treatment for various types of cancer, Hamaker et al. used 12seconds, Soubeyran et al. used 20seconds [18, 30]. Given this wide range in literature findings and the

distribution of the TUG values in this current study, a score of equal of more than 12 seconds on the TUG was considered to be impaired.

Inclusion and exclusion criteria

In this follow-up study, consecutive patients aged 65 and older undergoing elective surgery for solid malignant tumors were included in these analyses. Patients were excluded from analysis if histological examination of the tumor revealed a benign tumor, if the TUG had not been performed preoperatively or if surgery was scheduled in less than 24 hours after inclusion. A preoperative physical assessment was not used as an inclusion criterium in any of the studies, but patients who were physically unable to participate in this study and tests, were not included.

Definitions and data collection

Several variables were taken into account in the here presented analysis. Age was included, sex, BMI in $< 25 \text{ kg/m}^2$ and $\geq 25 \text{ kg/m}^2$, tumor stage by diagnose in a stage, and number of comorbidities in a group < 2 and a group of ≥ 2 comorbidities. Length of anesthesia duration during the operation was collected per 30 minutes. BMI and comorbidities were dichotomized based on clinical cut-offs and previous findings in literature [22, 25, 31].

End points

The primary endpoint of this study was 5-year survival. The secondary endpoint was the incidence of any major 30-day complication, according to the Clavien Dindo (CD) classification (CD grade ≥ 3) conform previous comparable studies [32]. Major complications included those requiring surgical, endoscopic or radiological intervention (CD grade 3), life-threatening problems requiring Intensive Care management (CD grade 4) and death of a patient (CD grade 5). This secondary endpoint was analyzed as a dichotomous variable: major versus no or minor 30-day complications.

Statistical analyses

Descriptive data were reported as absolute numbers and as percentages for categorical data. For continuous data, distributions were analyzed and mean and standard deviation (SD) or median and interquartile range (IQR) were given where appropriate. Overall 5-year survival was analyzed by Cox regression analysis. Median follow-up time was calculated by the Kaplan-Meier estimate of potential follow-up method [33]. A Log-Rank test was used to compare follow-up time for between groups with normal and impaired TUG. Kaplan-Meier curves were used to estimate 1- and 5-year survival proportions. Cox regression was used to estimate hazard ratios (HRs) and 95% confidence intervals (95% CIs). To estimate an adjusted

HR (aHR), a multivariable cox regression analysis was carried out. In this multivariable analysis, we adjusted for sex, age, comorbidities (< 2 vs 2 or more), tumor stage and anesthesia time as measurement for the complexity of surgery. These variables were chosen based on clinical knowledge and preceding studies [20, 22, 34–36]. The aHR was also adjusted for the difference in cohorts (PICNIC and PREOP). To evaluate the incremental value of the TUG to the model without the TUG, we used a chi-square test of overall difference between log likelihoods of models.

Logistic regression analysis was used to estimate odds ratio's (OR) and 95% confidence intervals (95% CI) for major complications. To estimate an adjusted OR (aOR) for the TUG regarding major complications, the OR was adjusted for sex, comorbidities (< 2 vs 2 or more) and anesthesia time as measurement for complexity of surgery [34–36]. The aOR was also adjusted for the cohorts (PICNIC, PICNIC B-HAPPY and PREOP). To evaluate adding the incremental value of the TUG to the model without the TUG, we used a chi-square test of overall difference between log likelihoods of models.

Results

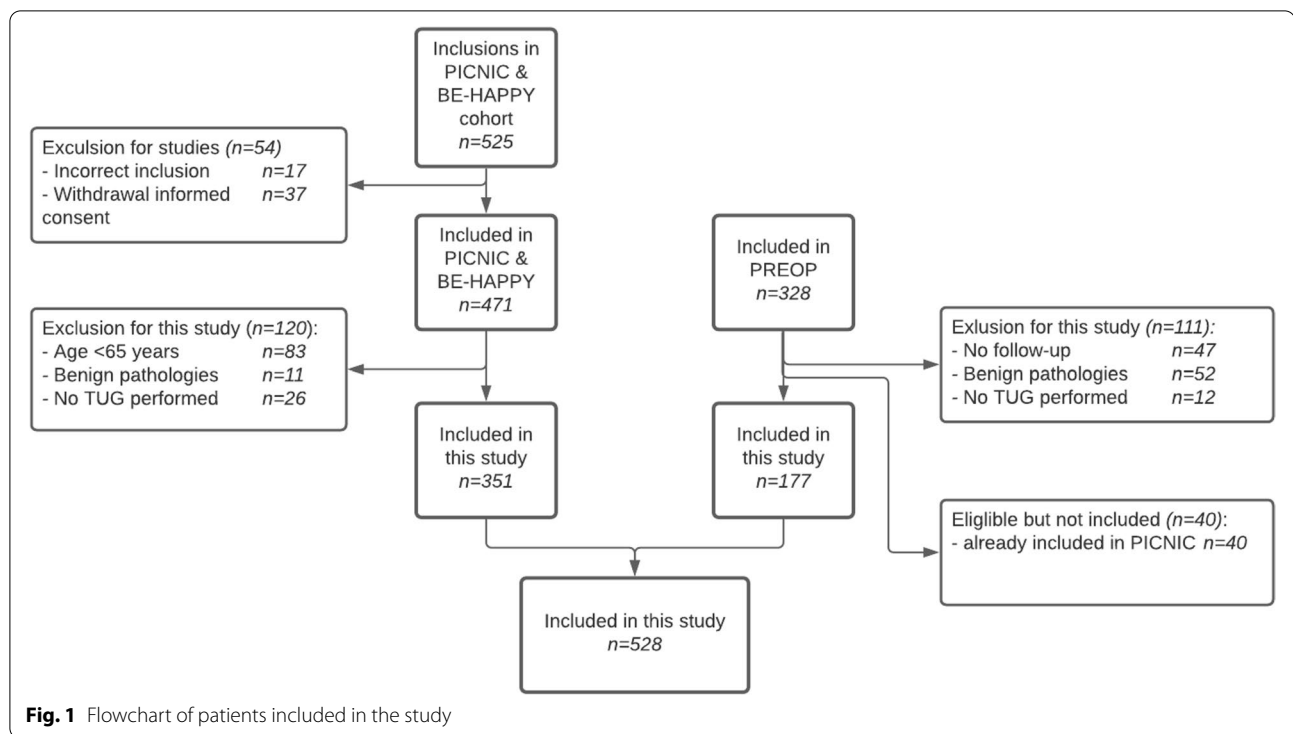
Patient characteristics

Of the 525 patients originally included in the PICNIC & B-HAPPY cohorts and the 328 patients originally included in the PREOP cohort, 528 were over 65 years of age and older and were eligible for this study. In total, 83 patients were excluded based on age < 65 years, 63 patients turned out to have a benign diagnosis and in 38 patients TUG data were missing (Fig. 1). From the PREOP cohort, 177 patients (33.5%) were eligible for this study, from the PICNIC cohorts 351 patients (66.4%), of whom 109 (20.6%) were included in the B-HAPPY cohort.

Mean age was 75 years (SD 5.98) and 282 (53.4%) patients were female. Mean BMI was 26.7 Kg/m^2 (SD 4.29) and median anesthesia time was 195 minutes (IQR 297). Mean TUG was 10.2 seconds (SD 5.57) and in 123 (23.3%) patients the TUG exceeded $\geq 12 \text{ sec}$ (Table 1).

Long-term survival

The median follow-up time was 72 months (95% CI 66.1–77.9) and the overall postoperative survival proportion at 5 years was 0.54. The number of patients at risk at 5 years was 173. Figure 2 presents the Kaplan-Meier survival curve for the group of patients with a normal TUG and the group of patients with an impaired TUG, including numbers at risk per group. Survival proportions per time point in the group of patients with an impaired TUG were lower than survival proportions in the group



of patients with normal TUG. Survival proportion at 5 years for normal TUG was 0.56, for impaired TUG 0.49 (Table 2; Log Rank test: P 0.056).

See supplemental Table 1 for the results of the univariate analysis. In the multivariate model the following variables were included: sex, age, comorbidities, tumor stage, anesthesia time and TUG. An impaired TUG was a statistically significant predictor of mortality after adjustment for sex, comorbidities, tumor stage, anesthesia time (aHR 1.43, 95% CI 1.02-2.02, Fig. 3). When we compared a multivariable model with the TUG to a multivariable model without the TUG, it was seen that the TUG statistically significantly improved the model.

30-day complications

Major complications occurred in 64 patients (12.1%) within 30 days postoperatively. Major complications occurred in 49 patients (12.2%) with a normal TUG, and in 15 patients (12.3%) with an impaired TUG.

The multivariable model included the following variables: sex, comorbidities, anesthesia time and TUG. See supplemental Table 2 for the results of the univariate analysis.

In this model, the TUG was not a significant predictor of major complications within 30 days postoperatively (aOR 1.46, 95% CI 0.70-3.06, Fig. 4). The incremental

value of the TUG to the literature-based model was therefore not calculated.

Discussion

For 5-year mortality in older oncologic patients undergoing surgery, an impaired TUG was a predictor of increased mortality with an aHR of 1.43 (95% CI 1.02-2.02). No association was found between an impaired TUG and the occurrence of major complications 30 days postoperatively, aOR 1.46 (95% CI 0.70-3.06).

Similar to our findings, Ugolini et al. found a relation between impaired TUG and increased long term mortality. In this smaller group of patients with colorectal cancer ($n=46$), an impaired TUG (>20 sec) was a predictor of increased mortality with a HR of 3.51 in univariate analysis [37]. The higher HR in that study could be explained by the fact that the cut-off score for an impaired TUG was 8 seconds higher. Also, only univariate analysis was reported. The results we reported on 5-year mortality are in line with findings on 1-year mortality by Schmidt et al. in a group of 131 older oncologic patients after surgery. Schmidt et al. found a significantly higher 1-year mortality (OR 4.5, 95% CI 1.21-18.25) predicted by the combination of an impaired TUG (≥ 10 sec) with dependency in Activities of Daily Living (ADL, scores <100) [19]. Robinson et al. also studied 1 year mortality in older patients undergoing colorectal and cardiac surgery with comparable findings. In the colorectal

Table 1 Patient, disease and treatment-related characteristics of included patients ($n = 528$)

Variable		
Sex		
Female	282	(53.4)
Male	246	(46.6)
Age (years)	75	(6)
Body Mass Index (Kg/m ²)		
≥ 25	327	(61.9)
Comorbidities present ^a		
Peripheral arterial diseases (including hypertension)	240	(45.5)
Cardiac diseases (incl. Atrial fibrillation)	134	(25.4)
Diabetes	94	(17.8)
Pulmonary diseases (asthma, COPD etc.)	71	(13.5)
Patients with 2 or more comorbidities	172	(32.6)
Tumor site		
Gastro-intestinal	245	(46.5)
Skin, soft tissue and lymph node	82	(15.6)
Breast	67	(12.7)
Gynecological	63	(12.0)
Hepatic, biliary and pancreatic	41	(7.8)
Para- and thyroid	16	(3.0)
Renal and bladder	8	(1.5)
Other	5	(0.9)
Tumor stage at inclusion		
I	192	(36.3)
II	84	(15.9)
III	136	(25.8)
IV	106	(20.1)
Anesthesia time (minutes)	195	[120-315]
Timed Up & Go test (seconds)		
≥ 12	123	(23.3)

^a Comorbidities that occur most frequently are shown here

^b for categories, N (%) is given, for continuous variables, mean (SD) or median [1st-3th quartile] were given where appropriate

surgery group ($n = 98$), they found a 1-year mortality of 3% in the group of patients with a fast TUG (< 10 sec) compared to 31% in the group of patients with an impaired TUG (≥ 15 sec). For patients undergoing cardiac surgery ($n = 174$), 1-year mortality was 2% in the group of patients with a fast TUG compared to 12% for the group of patients with an impaired TUG [38]. The current study adds to these findings by studying a larger cohort with longer follow up times. Overall, TUG is a screening tool indicating an overall health in older patients prior to oncologic surgery, and an impaired TUG is able to predict postoperative mortality.

There are contradicting results in the relation between the TUG and 30-day complications. In this study, the occurrence of 30-day complications was used

as an endpoint to be able to compare our results to the results of similar studies. Longer follow-up time could be more reflective of complications related to surgery. Being able to compare comparable our results to those of similar studies, aids the interpretation of results and implementation of the TUG in clinical practice. In this study, 64 patients (12.1%) experienced major complications, comparable to other studies investigating older oncologic surgical patients [39, 40]. An impaired TUG was not associated with the occurrence of major complications within 30-days postoperatively was found. In contrast to the findings in this study, Robinson et al. found that patients with an impaired TUG (≥ 15 sec) had significantly higher rates of complications postoperatively. In the colorectal group, 13% of the patients with a fast TUG (< 10 sec) had one or more complications, compared to 77% in the group with an impaired TUG (≥ 15 sec). In the cardiac surgery group, 11% of the patients with a fast TUG had one or more complications, compared to 52% in the group of patients with an impaired TUG [38]. Scholtz et al. studied a comparable group of 517 of patients aged ≥ 65 years. In this study, patients with an impaired TUG (≥ 20 sec) had a higher risk of overall complications (OR 2.59, 95% CI 1.05-6.39), but no association was found for major complications [39]. The incidence of major complications was comparable to our findings. In line with our findings, Martin et al. did not find an association between the TUG and complications after colorectal surgery, with a mean TUG of 9.0 sec (SD 2.9 sec) in the group without complications and a TUG of 9.9 sec (SD 2.9 sec) in the group with complications [41]. Where Robinson et al. and Scholtz et al. found an association between complication rate and TUG, we did not for major complications. Both studies used higher cut-off scores for an impaired TUG (≥ 15 sec and ≥ 20 sec respectively). In our study, the median TUG was 10.2 seconds, and 23.3% of the patients had an impaired TUG, where the cut-off was 12 seconds. This could mean that the cut-off of 12 seconds for an impaired TUG in our study was relatively low and a higher cut off is needed finding an association with complications. This could indicate that an impaired TUG can be used to predict total number of complications, but not for the prediction of major complications.

Some limitations and strengths need to be considered when interpreting the findings of this study. The strength of this study is that it is a large study including a large number of patients with various types of solid malignancies during a long follow up period. The patients that were included in this study might have had a better physical status and fewer co-morbidities than participants who refused to participate or for whom a

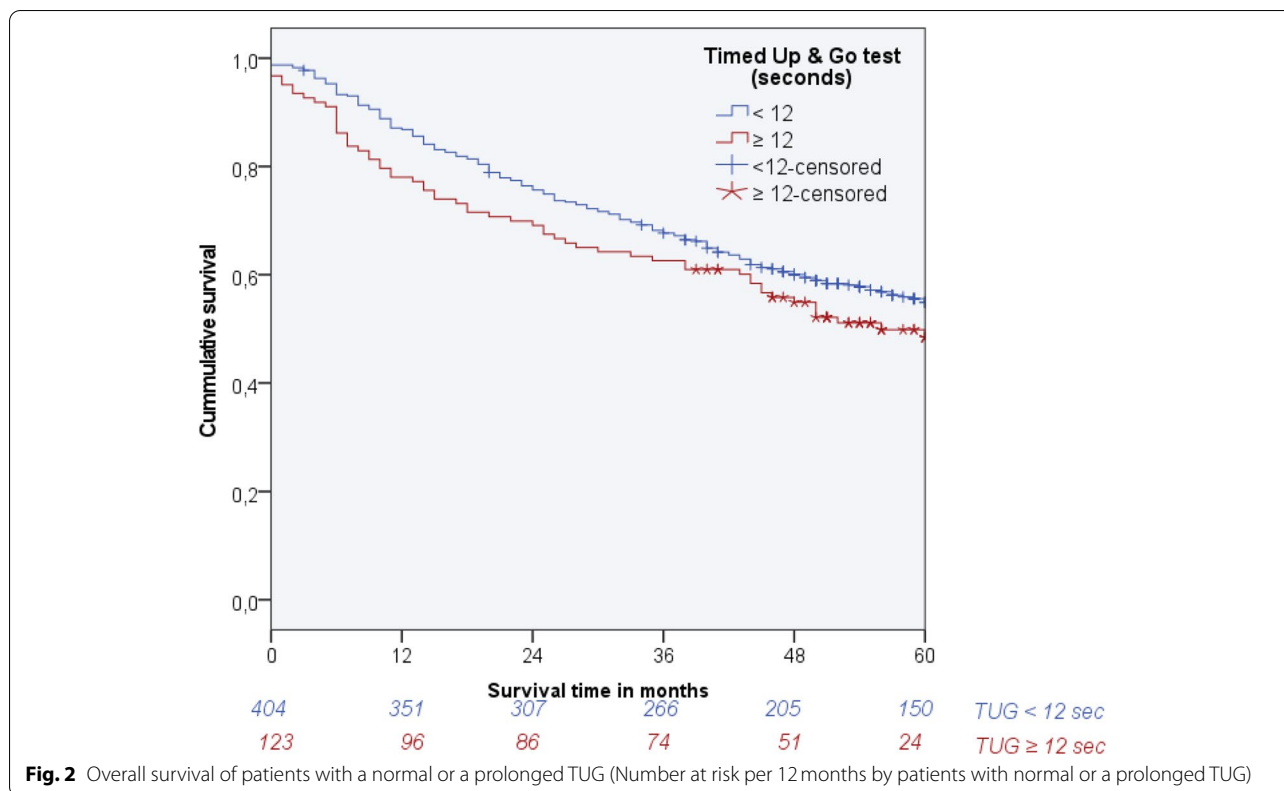


Table 2 Follow-up time and outcomes in the patients (1- and 5-years overall survival and major complications the first 30 days after surgery), overall and stratified for patients with a normal- or a prolonged TUG

	Follow-up time in months	Overall survival		Major 30-day complications
		1 year	5 years	
All (n = 528)	72.0 (66.1-77.9)	0.85	0.54	64 (12.1)
TUG < 12 (n = 405)	80.0 (71.8-88.2)	0.87	0.56	49 (12.2)
TUG ≥ 12 (n = 123)	62.0 (59.2-64.8)	0.79	0.49	15 (12.3)

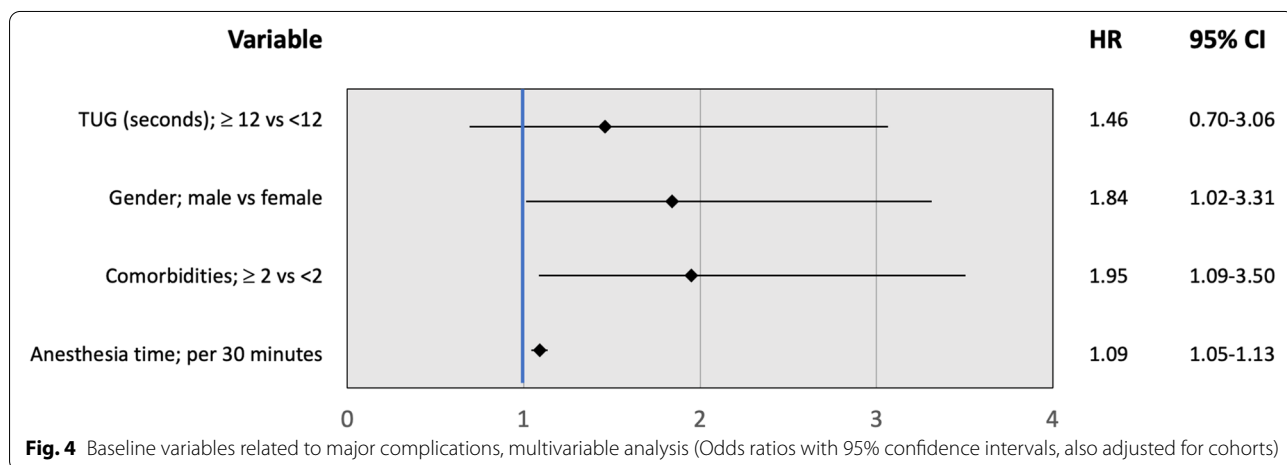
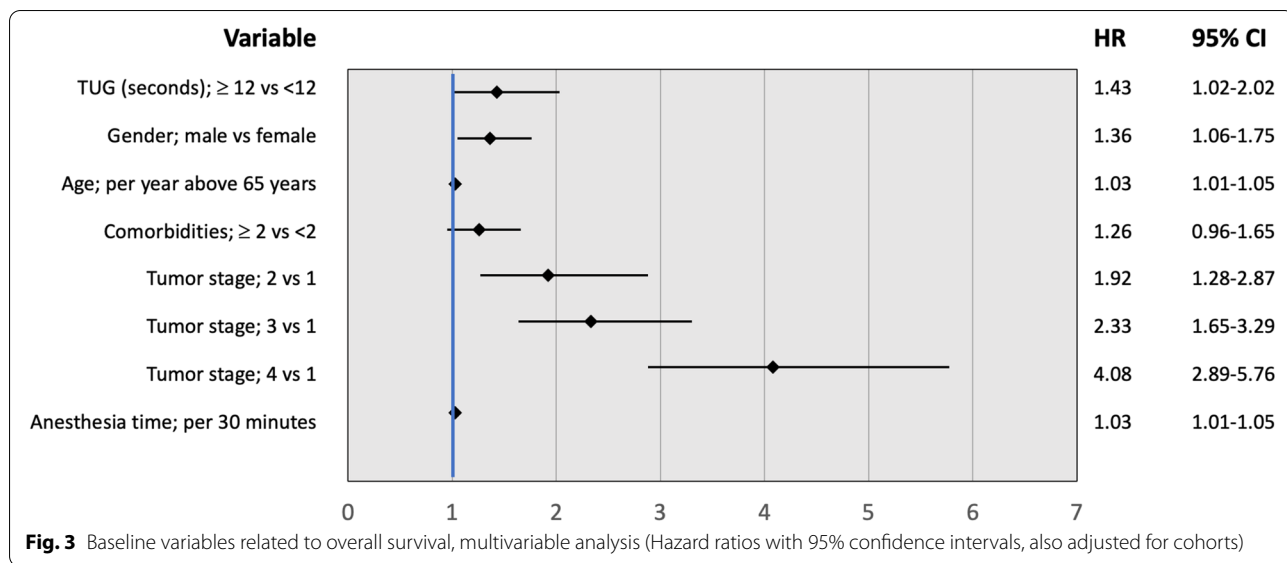
Follow-up time is given as median (IQR), major complications as number (%). Overall survival proportions estimates are based on the Kaplan-Meier tables

surgical treatment did not seem to fit or for whom a surgical treatment did not seem fit [42]. Especially in the ‘PICNIC’ study, where one of the exclusion criteria was the presence of “any physical condition potentially impeding compliance with the study”.

The TUG can be seen as indicator of overall health in older adults and be helpful in the decision-making process. In this group of patients, other domains in addition to the physical one, need to be evaluated prior to surgical treatment [43]. Besides mortality, disability and lack of independence seem to impact patients with cancer more than the cancer prognosis per se [44]. In a survey by the Macmillan cancer support group in the UK for the older retired group of patients, continued

independence was just as important as maintaining health [45]. In addition, Robinson and al found significantly higher rates of institutionalization (67%) in the group of patients with an impaired TUG (≥15 sec) compared to institutionalization rates (40%) of the group with a normal TUG (<10sec) [38]. Therefore, besides the effects of physical performance on outcomes such as complications and mortality, patient related-outcomes such as daily functioning and quality of life should be investigated in future studies too.

In addition to the TUG as a tool to aid the preoperative decision-making process, it might also indicate who can be in need of specialized rehabilitation postoperatively. Patients with an impaired TUG may have more



difficulties restoring preoperative levels of physical functioning, because low fitness and/or low energy reserves make early mobilization more difficult. Also, malnourishment, sarcopenia and/or cachexia make these patients more vulnerable due to a reduced capacity to increased demands for recovery of oncologic surgery [46]. Also, in older patients, early mobilization and enhanced recovery after surgery has been studied extensively and can be applied safely, with benefits such as reducing the occurrence of complications [47, 48]. A multidisciplinary approach, for example together with the experience of the geriatric department, is essential to achieve for example the encouragement to start early mobilizing and good nutrition and therefore recovery of surgery in this group of patients [47].

As an impaired TUG as measurement of physical performance is a predictor of increased mortality after surgery, it would be interesting to know whether an impaired TUG can be reversed and if improvement in survival is possible by interventions such as prehabilitation. Recent studies suggest that enhancing physical performance prior to surgery can accelerate post-operative mobilization and -recovery and reduce mortality. In older adult in major abdominal surgery, Barberan-Garcia et al. reported a significant reduction in overall complications in the intervention arm (20 of 62 versus 38 of 63 in the control arm). Patients in the intervention arm underwent a motivational interview, high-intensity endurance training and promotion of physical activity [49]. Boden et al. reported significantly lower rates of pulmonary complications in the intervention group (27 of 218 versus 58 of

214 in the control group, adjusted HR was 0.48, 95% CI 0.20-0.75) where intervention was physiotherapy education and breathing exercise training [50]. However, meta-analysis by Daniels et al. showed no significant difference in overall complications and pulmonary complications by prehabilitation [51]. The effect of prehabilitation on physical performance was studied by Bruns et al. by a meta-analysis [11]. They found that physical performance (walking distance, respiratory endurance) was improved in the prehabilitation (all trials included cardiopulmonary aerobic exercise) group, but did not find significant reduction of postoperative complications or length of hospital stay in the prehabilitation group [11]. The effects of prehabilitation on the TUG and long-term mortality in older adults going for oncologic surgery have not been extensively studied yet. In future studies, it would be interesting to see what types of prehabilitation can improve the TUG preoperatively and improve long-term survival especially in frail older oncological patients.

Conclusions

An impaired TUG (>12sec) as measurement of physical performance is associated with increased long-term mortality in older adults undergoing oncologic surgery for various solid malignant tumors. No relation was found between an impaired TUG and major 30-day complications. The results of this study can be seen as baseline study on physical performance and long-term mortality. Future studies should focus on reversibility of an impaired TUG by prehabilitation.

Abbreviations

TUG: Timed Up and Go test; PICNIC: Postoperative Cognitive dysfunction in elderly Cancer patients; PICNIC B-HAPPY: Biomarkers and Handgrip Strength as Predictors of Postoperative Outcome in PICNIC; PREOP: Preoperative Risk Estimation for Onco-geriatric Patients; (a)HR: (adjusted) Hazard Ratio; CI: Confidence Interval; (a)OR: (adjusted) Odds Ratio; BMI: Body Mass Index; CD: Clavien Dindo classification; IQR: Inter Quartile Range.

Supplementary Information

The online version contains supplementary material available at <https://doi.org/10.1186/s12877-022-03585-4>.

Additional file 1.

Acknowledgements

The abstract of this article has been accepted for poster presentation at the 40th Congress of the European Society of Surgical Oncology November 2021, Lisboa, Portugal.

Authors' contributions

The authors confirm contribution to the paper as follows: conceptualization: SH, MGH, GHB, BLvL. Data curation: SH, MGH, GHB, BLvL. Formal analysis: SH, GHB, BLvL. Investigation: SH, GHB, BLvL. Methodology: SH, GHB, BLvL. Writing – original draft: SH, GHB, BLvL. Writing – review & editing: SH, MGH, FG, AV,

NdLC, EF, RG, RAA, BvM, GHdB, BLvL. The author(s) read and approved the final manuscript.

Funding

No funding or sponsors were involved in this project.

Availability of data and materials

The data that support the findings of this study are available on request from the corresponding author.

Declarations

Ethics approval and consent to participate

The 'PICNIC' and 'PICNIC B-HAPPY' studies were conducted at the University Medical Center Groningen (UMCG, The Netherlands) and approved by the Medical Ethical Committee of the University Medical Centre Groningen. The PRE-OP study was originally approved by the National Research Ethics Service Committee North West – Greater Manchester Central and the Medical Ethical Committee from Leiden University Medical Center. The PREOP study was coordinated by the University Medical Center Groningen. Centers of the PRE-OP study participating in this study were the Orsola Malpighi Hospital, Bologna, Italy, University Medical Center Groningen, Groningen, The Netherlands, The Highfield Hospital, Manchester, United Kingdom, *S. Maria* Hospital Perugia, Italy and the McGill University Health Centre in Montreal, Canada. Data collection was conducted according to the revised version of the Declaration of Helsinki (October 2013, Brazil). Patients from the PICNIC, PICNIC B-HAPPY and PREOP cohorts were described earlier [17, 20–28]. From all individual participants included in the study, informed consent was obtained in accord with the ethical standard of the local ethics committees in the participating centers.

Consent for publication

The participants have consented regarding publishing their data.

Competing interests

The authors declare that they have no competing interests.

Author details

¹Department of Surgery, University of Groningen, University Medical Center Groningen, 9713 GZ Groningen, The Netherlands. ²Department of Colorectal and General Surgery, Ospedale per gli Infermi, Faenza, Italy. ³McGill Nutrition and Performance Laboratory, McGill University, Montreal, Canada. ⁴Manchester Royal Infirmary, Department of Hepato-Pancreato-Biliary Surgery, Central Manchester University Hospitals, Manchester, UK. ⁵Department of General Surgery and Surgical Oncology, University of Perugia, Hospital of Terni, Terni, Italy. ⁶Department of Surgery, Institute of Clinical Sciences, Sahlgrenska University Hospital, Goteborg, Sweden. ⁷Department of Internal medicine, University Medical Center Groningen, Groningen, The Netherlands. ⁸Department of Epidemiology, University of Groningen, University Medical Center Groningen, Groningen, The Netherlands.

Received: 18 May 2022 Accepted: 3 November 2022

Published online: 05 December 2022

References

- Pilleron S, Sarfati D, Janssen-Heijnen M, Vignat J, Ferlay J, Bray F, et al. Global cancer incidence in older adults, 2012 And 2035: A population-based study. *Int J Cancer*. 2019;144(1):49–58. <https://doi.org/10.1002/IJC.31664>.
- Handforth C, Clegg A, Young C, Simpkins S, Seymour MT, Selby PJ, et al. The prevalence and outcomes of frailty in older cancer patients: A systematic review. *Ann Oncol*. 2015;26(6):1091–101. <https://doi.org/10.1093/annonc/mdu540>.
- Ramesh HSJ, Boase T, Audisio RA. Risk assessment for cancer surgery in elderly patients. *Clin Interv Aging*. 2006;1(3):221–7. <https://doi.org/10.2147/ciaa.2006.1.3.221>.
- Van Leeuwen BL, Huisman MG, Audisio RA. Surgery in older cancer patients-recent results and new techniques: worth the investment?

- Interdiscip Top Gerontol. 2013;38:124–31. <https://doi.org/10.1159/000343582>.
5. Ghignone F, van Leeuwen BL, Montroni I, Huisman MG, Somasundar P, Cheung KL, et al. The assessment and management of older cancer patients: A SIOG surgical task force survey on surgeons' attitudes. *Eur J Surg Oncol*. 2016;42(2):297–302. <https://doi.org/10.1016/j.ejso.2015.12.004>.
 6. Advanced age does not contribute to increased risks or poor outcome after major abdominal operations - PubMed. <https://pubmed.ncbi.nlm.nih.gov/11768814/>. Accessed 7 May 2021.
 7. Huisman MG, Kok M, de Bock GH, van Leeuwen BL. Delivering tailored surgery to older cancer patients: preoperative geriatric assessment domains and screening tools – A systematic review of systematic reviews. *Eur J Surg Oncol*. 2017. <https://doi.org/10.1016/j.ejso.2016.06.003>.
 8. Hulzebos EHJ, van Meeteren NLU. Making the elderly fit for surgery. *Br J Surg*. 2016. <https://doi.org/10.1002/bjs.10033>.
 9. Piraux E, Caty G, Reyckler G. Effects of preoperative combined aerobic and resistance exercise training in cancer patients undergoing tumour resection surgery: A systematic review of randomised trials. *Surg Oncol*. 2018. <https://doi.org/10.1016/j.suronc.2018.07.007>.
 10. Sebio Garcia R, Yáñez Brage MI, Giménez Moolhuyzen E, Granger CL, Denehy L. Functional and postoperative outcomes after preoperative exercise training in patients with lung cancer: a systematic review and meta-analysis. *Interact Cardiovasc Thorac Surg*. 2016. <https://doi.org/10.1093/icvts/iww152>.
 11. Bruns ERJ, van den Heuvel B, Buskens CJ, van Duijvendijk P, Festen S, Wasenaar EB, et al. The effects of physical prehabilitation in elderly patients undergoing colorectal surgery: a systematic review. *Color Dis*. 2016. <https://doi.org/10.1111/CODI.13429>.
 12. Ni HJ, Pudasaini B, Yuan XT, Li HF, Shi L, Yuan P. Exercise training for patients pre- and Postsurgically treated for non-small cell lung Cancer: A systematic review and Meta-analysis. *Integr Cancer Ther*. 2017. <https://doi.org/10.1177/1534735416645180>.
 13. Verweij NM, Schiphorst AHW, Pronk A, van den Bos F, Hamaker ME. Physical performance measures for predicting outcome in cancer patients: a systematic review. *Acta Oncol (Madr)*. 2016. <https://doi.org/10.1080/0284186X.2016.1219047>.
 14. Studenski S, Perera S, Patel K, Rosano C, Faulkner K, Inzitari M, et al. Gait speed and survival in older adults. *JAMA*. 2011. <https://doi.org/10.1001/jama.2010.1923>.
 15. Richardson S. The timed "up & go": A test of basic functional mobility for frail elderly persons. *J Am Geriatr Soc*. 1991. <https://doi.org/10.1111/j.1532-5415.1991.tb01616.x>.
 16. Robinson TN, Wu DS, Pointer L, Dunn CL, Cleveland JC, Moss M. Simple frailty score predicts postoperative complications across surgical specialties. *Am J Surg*. 2013. <https://doi.org/10.1016/j.amjsurg.2013.03.012>.
 17. Huisman MG, van Leeuwen BL, Ugolini G, Montroni I, Spiliotis J, Stabilini C, et al. "Timed up & go": A screening tool for predicting 30-day morbidity in onco-geriatric surgical patients? A multicenter cohort study *PLoS One*. 2014. <https://doi.org/10.1371/journal.pone.0086863>.
 18. Soubeyran P, Fonck M, Blanc-Bisson C, Blanc JF, Ceccaldi J, Mertens C, et al. Predictors of early death risk in older patients treated with first-line chemotherapy for cancer. *J Clin Oncol*. 2012. <https://doi.org/10.1200/JCO.2011.35.7442>.
 19. Schmidt M, Eckardt R, Altmeppen S, Wernecke KD, Spies C. Functional impairment prior to major non-cardiac surgery is associated with mortality within one year in elderly patients with gastrointestinal, gynaecological and urogenital cancer: A prospective observational cohort study. *J Geriatr Oncol*. 2018. <https://doi.org/10.1016/j.jgo.2017.07.011>.
 20. Plas M, de Haan JJ, van der Wal-Huisman H, Rutgers A, Absalom AR, de Bock GH, et al. The systemic impact of a surgical procedure in older oncological patients. *Eur J Surg Oncol*. 2019. <https://doi.org/10.1016/j.ejso.2019.04.024>.
 21. Du J, Plas M, Absalom AR, Leeuwen BL, Bock GH. The association of preoperative anxiety and depression with neurocognitive disorder following oncological surgery. *J Surg Oncol*. 2020. <https://doi.org/10.1002/jso.25836>.
 22. Plas M, Rotteveel E, Izaks GJ, Spikman JM, van der Wal-Huisman H, van Etten B, et al. Cognitive decline after major oncological surgery in the elderly. *Eur J Cancer*. 2017. <https://doi.org/10.1016/j.ejca.2017.09.024>.
 23. Weerink LBM, van Leeuwen BL, Gernaat SAM, Absalom AR, Huisman MG, van der Wal-Huisman H, et al. Vitamin status and the development of postoperative cognitive decline in elderly surgical oncologic patients. *Ann Surg Oncol*. 2018. <https://doi.org/10.1245/s10434-017-6118-6>.
 24. Bras L, Driessen DAJJ, de Vries J, Festen S, van der Laan BFAM, van Leeuwen BL, et al. Patients with head and neck cancer: are they frailer than patients with other solid malignancies? *Eur J Cancer Care (Engl)*. 2020. <https://doi.org/10.1111/ecc.13170>.
 25. Plas M, Rutgers A, van der Wal-Huisman H, de Haan JJ, Absalom AR, de Bock GH, et al. The association between the inflammatory response to surgery and postoperative complications in older patients with cancer; a prospective prognostic factor study. *J Geriatr Oncol*. 2020. <https://doi.org/10.1016/j.jgo.2020.01.013>.
 26. Brattinga B, Rutgers A, de Haan JJ, Absalom AR, van der Wal-Huisman H, de Bock GH, et al. Preoperative inflammatory markers as a predictor of three-year overall survival in older cancer patients undergoing oncologic surgery. *Cancers (Basel)*. 2021. <https://doi.org/10.3390/cancers13081824>.
 27. Huisman MG, Audisio RA, Ugolini G, Montroni I, Viganò A, Spiliotis J, et al. Screening for predictors of adverse outcome in onco-geriatric surgical patients: A multicenter prospective cohort study. *Eur J Surg Oncol*. 2015. <https://doi.org/10.1016/j.ejso.2015.02.018>.
 28. Huisman MG, Ghignone F, Ugolini G, Sidorenkov G, Montroni I, Viganò A. Long-term survival and risk of institutionalization in Onco-geriatric surgical patients: long-term results of the PREOP study. *J Am Geriatr Soc*. 2020. <https://doi.org/10.1111/jgs.16384>.
 29. Bischoff HA, Stähelin HB, Monsch AU, Iversen MD, Weyh A, von Dechend M, et al. Identifying a cut-off point for normal mobility: A comparison of the timed "up and go" test in community-dwelling and institutionalised elderly women. *Age Ageing*. 2003. <https://doi.org/10.1093/ageing/32.3.315>.
 30. Hamaker H, ME, Mitrovic M, Stauder R. The G8 screening tool detects relevant geriatric impairments and predicts survival in elderly patients with a haematological malignancy. *Ann Hematol*. 2014. <https://doi.org/10.1007/S00277-013-2001-0/TABLES/5>.
 31. Michalopoulos E, Matthes KL, Karavasiloglou N, Wanner M, Limam M, Korol D, et al. Impact of comorbidities at diagnosis on the 10-year colorectal cancer net survival: A population-based study. *Cancer Epidemiol*. 2021. <https://doi.org/10.1016/j.canep.2021.101962>.
 32. Clavien PA, Barkun J, de Oliveira ML, Vauthey JN, Dindo D, Schulick RD, et al. The Clavien-Dindo classification of surgical complications: five-year experience. *Ann Surg*. 2009. <https://doi.org/10.1097/SLA.0b013e3181b13ca2>.
 33. Schemper M, Smith TL. A note on quantifying follow-up in studies of failure time. *Control Clin Trials*. 1996. [https://doi.org/10.1016/0197-2456\(96\)00075-X](https://doi.org/10.1016/0197-2456(96)00075-X).
 34. Payá-Llorente C, Martínez-López E, Sebastián-Tomás JC, Santarrufina-Martínez S, DeAngelis N, Martínez-Pérez A. The impact of age and comorbidity on the postoperative outcomes after emergency surgical management of complicated intra-abdominal infections. *Sci Rep*. 2020. <https://doi.org/10.1038/s41598-020-58453-1>.
 35. Goldman N, Gleit DA, Weinstein M. The best predictors of survival: do they vary by age, sex, and race? *Popul Dev Rev*. 2017. <https://doi.org/10.1111/PADR.12079/FULL>.
 36. Procter LD, Davenport DL, Bernard AC, Zwischenberger JB. General surgical operative duration is associated with increased risk-adjusted infectious complication rates and length of hospital stay. *J Am Coll Surg*. 2010. <https://doi.org/10.1016/j.jamcollsurg.2009.09.034>.
 37. Ugolini G, Pasini F, Ghignone F, Zattoni D, Reggiani MLB, Parlanti D, et al. How to select elderly colorectal cancer patients for surgery: a pilot study in an Italian academic medical center. *Cancer Biol Med*. 2015. <https://doi.org/10.7497/j.issn.2095-3941.2015.0084>.
 38. Robinson TN, Wu DS, Sauaia A, Dunn CL, Stevens-Lapsley JE, Moss M, et al. Slower walking speed forecasts increased postoperative morbidity and 1-year mortality across surgical specialties. *Ann Surg*. 2013. <https://doi.org/10.1097/SLA.0b013e3182a4e96c>.
 39. Scholtz K, Spies CD, Mörgeli R, Eckhardt R, von Dossow V, Braun S, et al. Risk factors for 30-day complications after cancer surgery in geriatric patients: a secondary analysis. *Acta Anaesthesiol Scand*. 2018. <https://doi.org/10.1111/AAS.13067>.
 40. Kang SC, Kim HI, Kim MG. Low serum albumin level, male sex, and Total gastrectomy are risk factors of severe postoperative complications in

- elderly gastric Cancer patients. *J Gastric Cancer*. 2016. <https://doi.org/10.5230/JGC.2016.16.1.43>.
41. Martin D, Romain B, Pache B, Vuagniaux A, Guenero V, Hahnloser D, et al. Physical activity and outcomes in colorectal surgery: A pilot prospective cohort study. *Eur Surg Res*. 2020. <https://doi.org/10.1159/000507578>.
 42. Kho ME, Duffett M, Willison DJ, Cook DJ, Brouwers MC. Written informed consent and selection bias in observational studies using medical records: systematic review. *BMJ*. 2009. <https://doi.org/10.1136/BMJ.B866>.
 43. Feng MA, McMillan DT, Crowell K, Muss H, Nielsen ME, Smith AB. Geriatric assessment in surgical oncology: A systematic review. *J Surg Res*. 2015. <https://doi.org/10.1016/J.JSS.2014.07.004>.
 44. Montroni I, Rostoft S, Spinelli A, van Leeuwen BL, Ercolani G, Saur NM, et al. GOSAFE - geriatric oncology surgical assessment and functional rEcovery after surgery: early analysis on 977 patients. *J Geriatr Oncol*. 2020. <https://doi.org/10.1016/J.JGO.2019.06.017>.
 45. Exploring the attitudes and behaviours of older people living with cancer | Ipsos MORI. <https://www.ipsos.com/ipsos-mori/en-uk/exploring-attitudes-and-behaviours-older-people-living-cancer>. Accessed 11 Jan 2022.
 46. Bongers BC, Dejong CHC, den Dulk M. Enhanced recovery after surgery programmes in older patients undergoing hepatopancreatobiliary surgery: what benefits might prehabilitation have? *Eur J Surg Oncol*. 2021. <https://doi.org/10.1016/J.EJSO.2020.03.211>.
 47. Millan M, Renau-Escrig AI. Minimizing the impact of colorectal surgery in the older patient: the role of enhanced recovery programs in older patients. *Eur J Surg Oncol*. 2020. <https://doi.org/10.1016/J.EJSO.2019.12.018>.
 48. Slieker J, Frauche P, Jurt J, Addor V, Blanc C, Demartines N, et al. Enhanced recovery ERAS for elderly: a safe and beneficial pathway in colorectal surgery. *Int J Color Dis*. 2017. <https://doi.org/10.1007/S00384-016-2691-6>.
 49. Barberan-Garcia A, Ubré M, Roca J, Lacy AM, Burgos F, Risco R, et al. Personalised Prehabilitation in high-risk patients undergoing elective major abdominal surgery: A randomized blinded controlled trial. *Ann Surg*. 2018. <https://doi.org/10.1097/SLA.0000000000002293>.
 50. Boden I, Skinner EH, Browning L, Reeve J, Anderson L, Hill C, et al. Pre-operative physiotherapy for the prevention of respiratory complications after upper abdominal surgery: pragmatic, double blinded, multicentre randomised controlled trial. *BMJ*. 2018. <https://doi.org/10.1136/BMJ.J5916>.
 51. Daniels SL, Lee MJ, George J, Kerr K, Moug S, Wilson S, et al. Prehabilitation in elective abdominal cancer surgery in older patients: systematic review and meta-analysis. *BJS Open*. 2020. <https://doi.org/10.1002/bjs5.50347>.

Publisher's Note

Springer Nature remains neutral with regard to jurisdictional claims in published maps and institutional affiliations.

Ready to submit your research? Choose BMC and benefit from:

- fast, convenient online submission
- thorough peer review by experienced researchers in your field
- rapid publication on acceptance
- support for research data, including large and complex data types
- gold Open Access which fosters wider collaboration and increased citations
- maximum visibility for your research: over 100M website views per year

At BMC, research is always in progress.

Learn more biomedcentral.com/submissions

