



Titre: Open-access quantitative MRI data of the spinal cord and
Title: reproducibility across participants, sites and manufacturers

Auteurs: Julien Cohen-Adad, Eva Alonso Ortiz, Mihael Abramovic, Carina Arneitz, Nicole Atcheson, Laura Barlow, Robert L. Barry, Markus Barth, Marco Battiston, Christian Büchel, Matthew Budde, Virginie Callot, Anna J. E. Combes, Benjamin De Leener, Maxime Descoteaux, Paulo Loureiro de Sousa, Marek Dostál, Julien Doyon, Adam Dvorak, Falk Eippert, Karla R. Epperson, Kevin S. Epperson, Patrick Freund, Jürgen Finsterbusch, Alexandru Foias, Michela Fratini, Issei Fukunaga, Claudia A. M. Gandini Wheeler-Kingshott, Giancarlo Germani, Guillaume Gilbert, Federico Giove, Charley Gros, Francesco Grussu, Akifumi Hagiwara, Pierre-Gilles Henry, Tomáš Horák, Masaaki Hori, James Joers, Kouhei Kamiya, Haleh Karbasfroushan, Miloš Keřkovský, Ali Khatibi, Joo-Won Kim, Nawal Kinany, Hagen H. Kitzler, Shannon Kolind, Yazhuo Kong, Petr Kudlička, Paul Kuntke, Nyoman D. Kurniawan, Slawomir Kusmia, René Labounek, Maria Marcella Laganà, Cornelia Laule, Christine S. Law, Christophe Lenglet, Tobias Leutritz, Yaou Liu, Sara Llufrui, Sean Mackey, Eloy Martinez-Heras, Loan Mattera, Igor Nestrasil, Kristin P. O'Grady, Nico Papinutto, Daniel Papp, Deborah Pareto, Todd B. Parrish, Anna Pichiecchio, Ferran Prados, Àlex Rovira, Marc J. Ruitenber, Rebecca S. Samson, Giovanni Savini, Maryam Seif, Alan C. Seifert, Alex K. Smith, Seth A. Smith, Zachary A. Smith, Elisabeth Solana, Y. Suzuki, George Tackley, Alexandra Tinnermann, Jan Valošek, Dimitri Van De Ville, Marios C. Yiannakas, Kenneth A. Weber II, Nikolaus Weiskopf, Richard G. Wise, Patrik O. Wyss, & Junqian Xu

Date: 2021

Type: Article de revue / Article

Référence: Cohen-Adad, J., Alonso Ortiz, E., Abramovic, M., Arneitz, C., Atcheson, N., Barlow, L., Barry, R. L., Barth, M., Battiston, M., Büchel, C., Budde, M., Callot, V., Combes, A. J. E., De Leener, B., Descoteaux, M., de Sousa, P. L., Dostál, M., Doyon, J., Dvorak, A., ... Xu, J. (2021). Open-access quantitative MRI data of the spinal cord and reproducibility across participants, sites and manufacturers. *Scientific Data*, 8, 219 (17 pages). <https://doi.org/10.1038/s41597-021-00941-8>

 **Document en libre accès dans PolyPublie**
Open Access document in PolyPublie


URL de PolyPublie: <https://publications.polymtl.ca/9286/>
PolyPublie URL:

Version: Matériel supplémentaire / Supplementary material
Révisé par les pairs / Refereed

Ce fichier a été téléchargé à partir de PolyPublie, le dépôt institutionnel de Polytechnique Montréal
This file has been downloaded from PolyPublie, the institutional repository of Polytechnique Montréal



Conditions d'utilisation: CC BY
Terms of Use:

 **Document publié chez l'éditeur officiel**
Document issued by the official publisher

Titre de la revue: Scientific Data (vol. 8)
Journal Title:

Maison d'édition: Springer Nature
Publisher:

URL officiel: <https://doi.org/10.1038/s41597-021-00941-8>
Official URL:

Mention légale:
Legal notice:

Supplementary material

Example T1w images	2
Example T2w images	3
Example multiecho GRE images	4
Example GRE T1w images	5
Example DWI data	6

Example T1w images

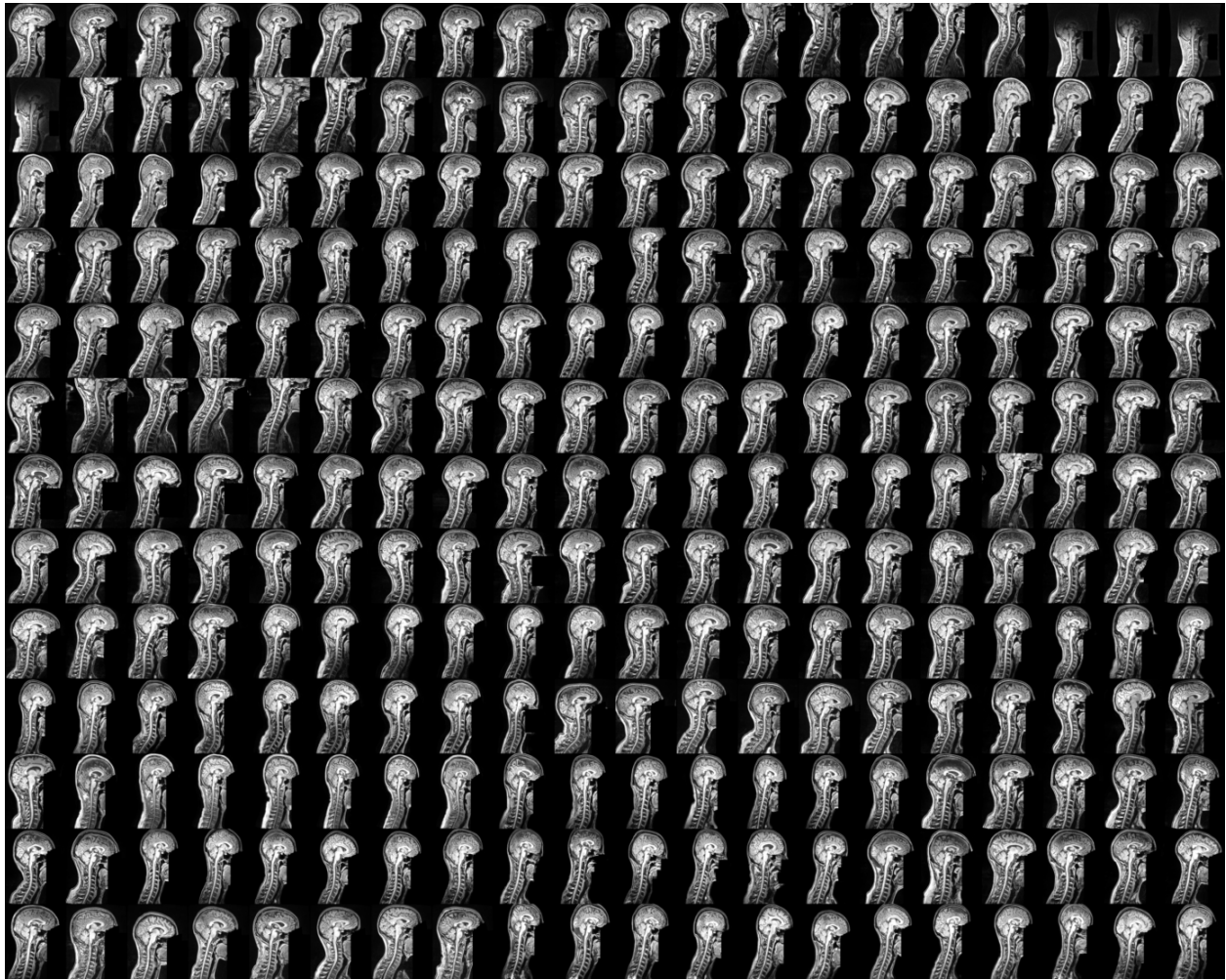


Figure S1. T1w sagittal images of individual participants from the multi-subject database. Images were non-linearly aligned (slicewise translation along the right-left direction) using the spinal cord centerline obtained from the segmentation, in order to have the spinal cord aligned in the medial plane for better visual assessment. Enhance Local Contrast (CLAHE) filter was applied, and the signal range of every image was normalized across all participants to account for different signal quantization across vendors.

Example T2w images

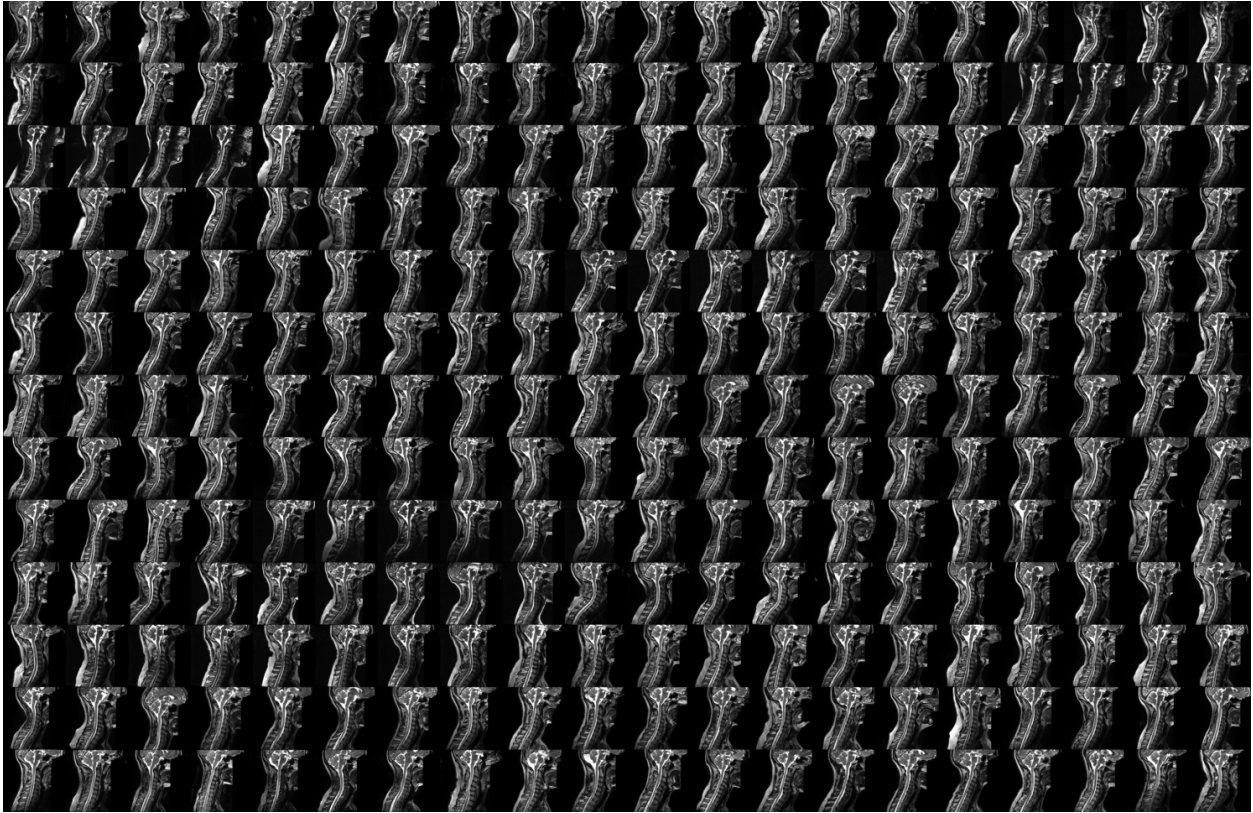


Figure S2. T2w sagittal images of individual participants from the multi-subject database. Images were processed as in Figure S1.

Example multiecho GRE images

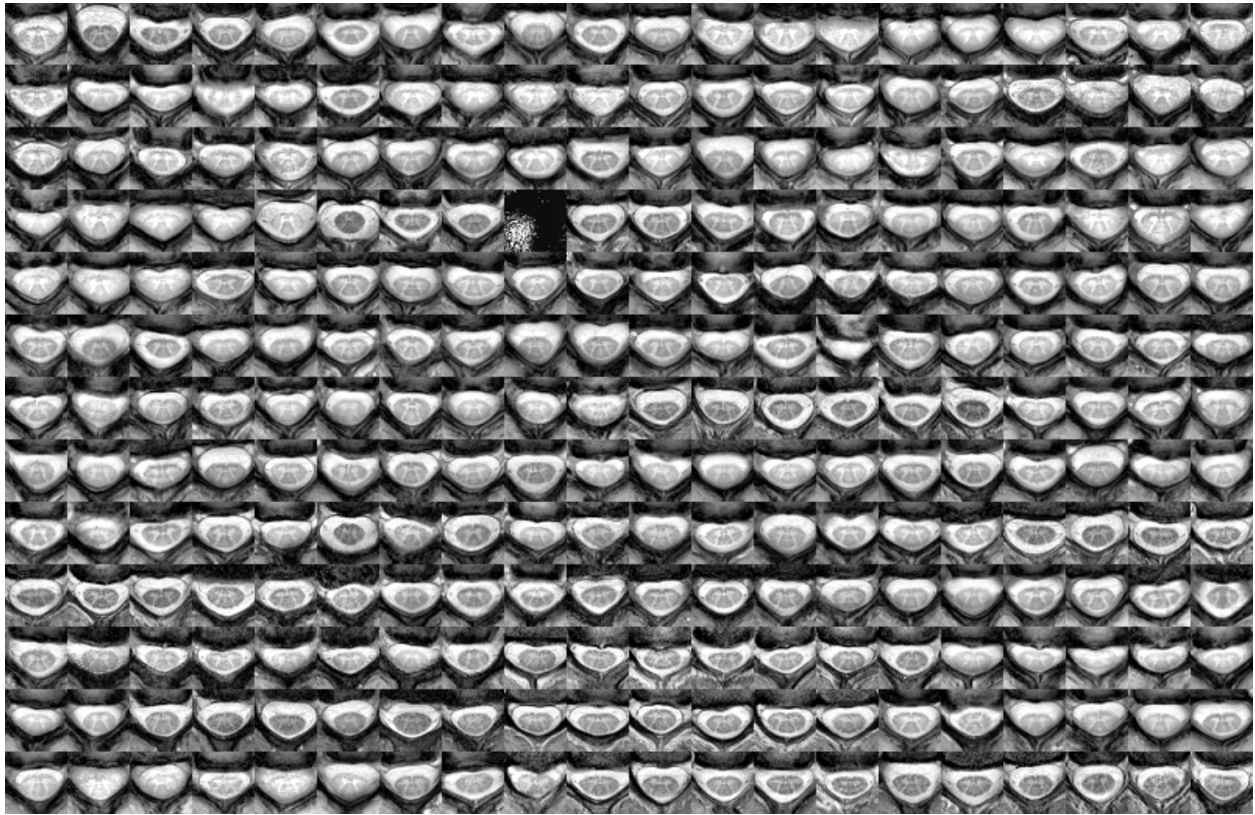


Figure S3. *T2*w* axial images (mid-slice) of individual participants from the multi-subject database. The slice missing (row 4, column 9) is due to a mis-registration caused by the repositioning of a participant.

Example GRE T1w images

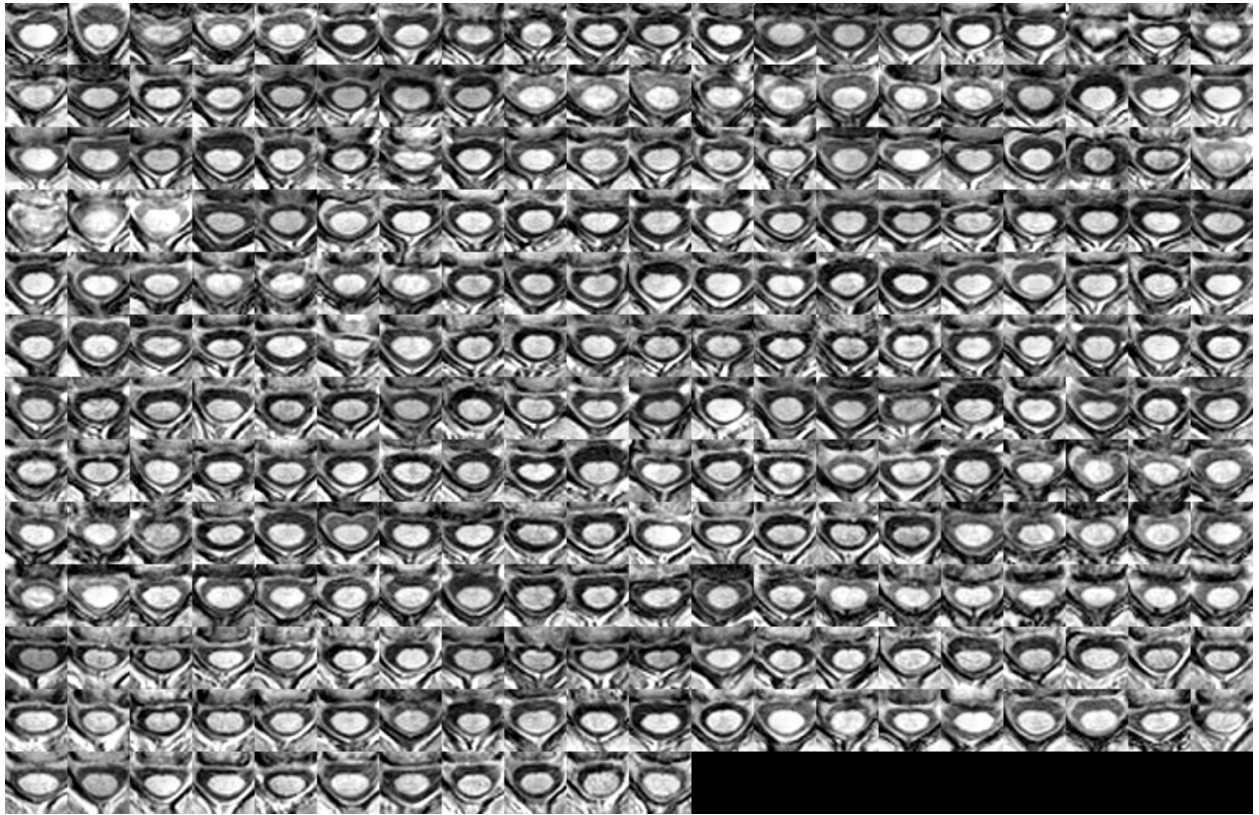


Figure S4. GRE-T1w axial images (mid-slice) of individual participants from the multi-subject database.

Example DWI data

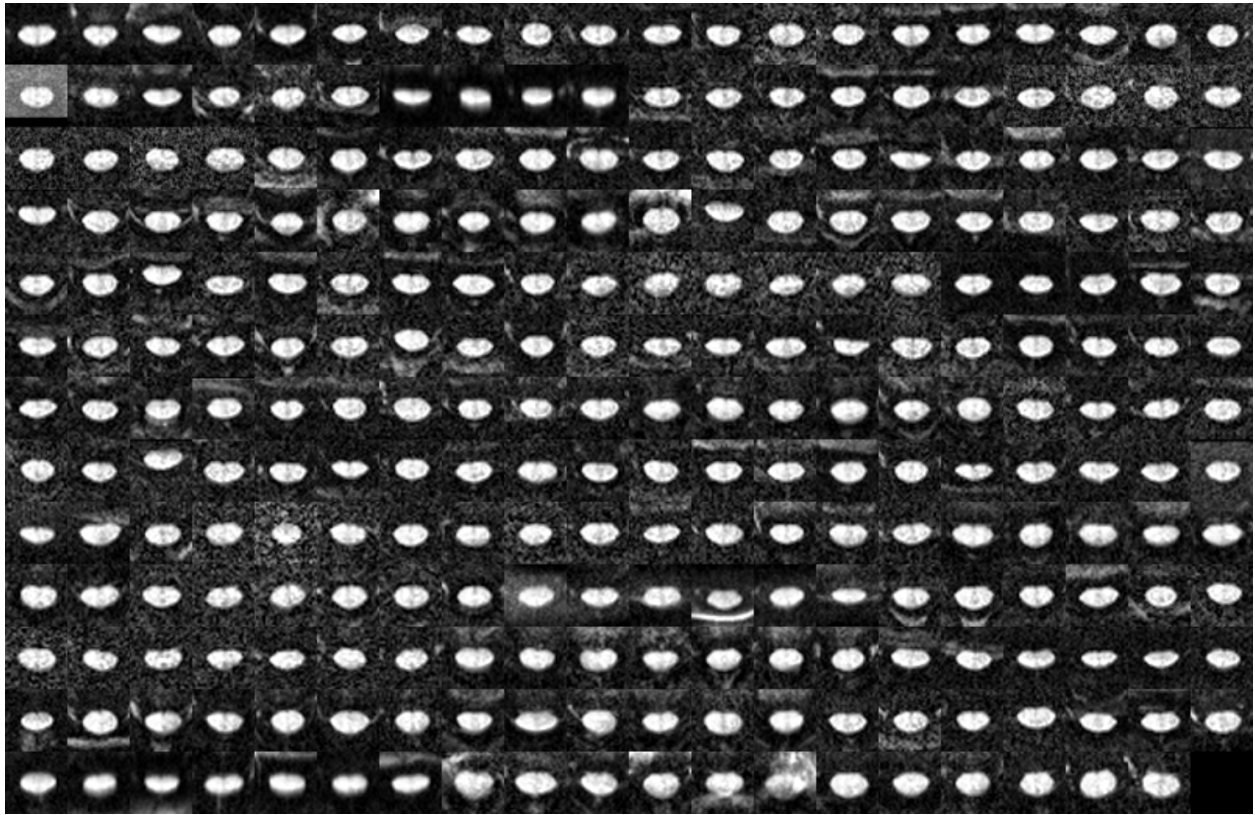


Figure S5. Mean DWI axial images (mid-slice) of individual participants from the multi-subject database.