



Resilient Agri-Food Systems Science Group (RAFS)

Regional Integrated Initiatives (RIIs) and Global Thematic Initiatives (GTIs)

CGIAR week of science and practice of scaling agri-food system innovation

Dr. Martin Kropff

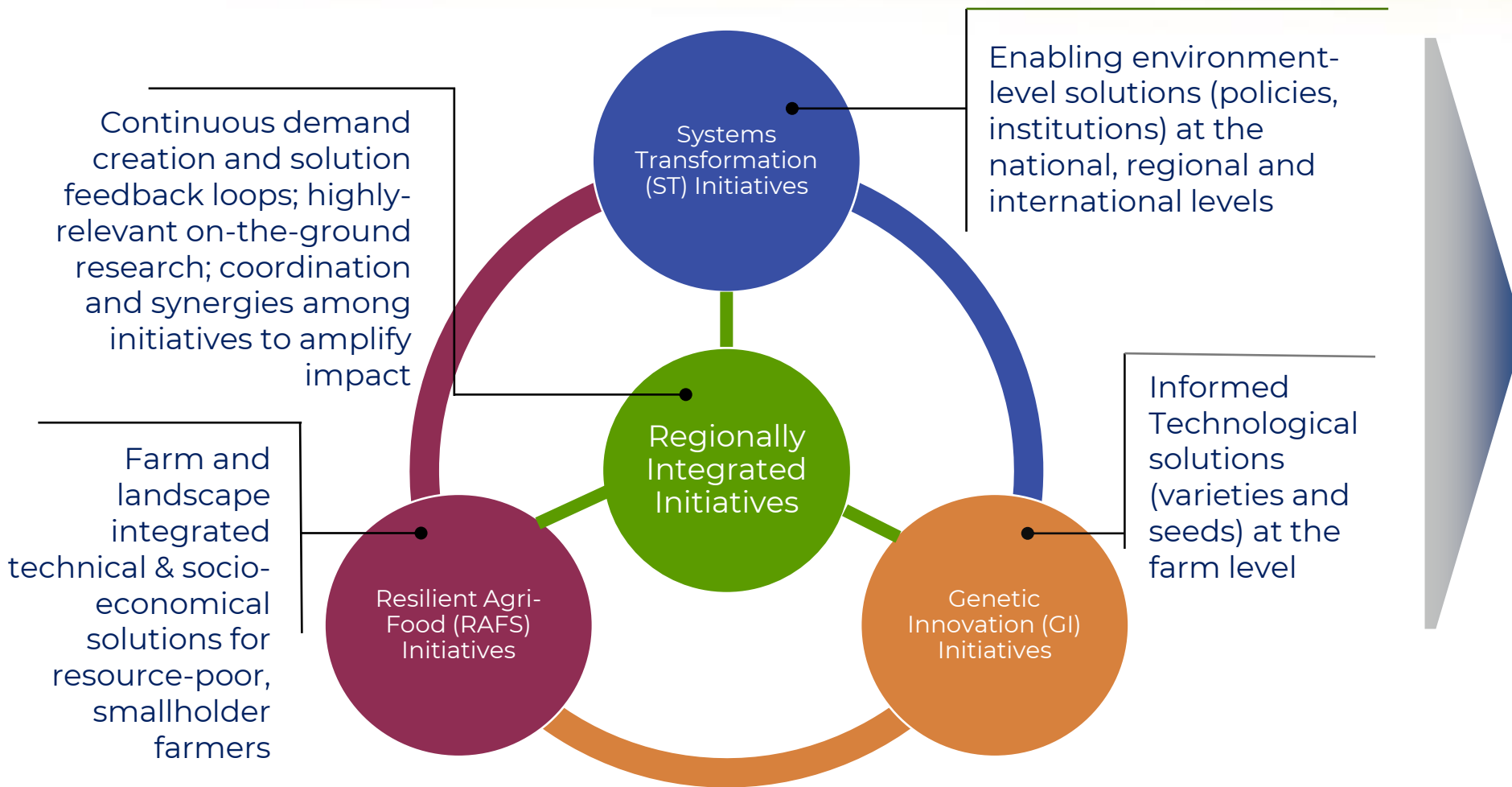
Managing Director, Resilient AgriFood Systems (RAFS)

CGIAR

23 November 2022

Nairobi, Kenya

Science and Regional Groups Deliver Integrated Research and Innovation Solutions



CGIAR's Impact Areas

- Nutrition, Health & Food Security
- Poverty Reduction, Livelihoods & Jobs
- Gender Equality, Youth & Social Inclusion
- Climate Adaptation & Mitigation
- Environmental Health & Biodiversity



Resilient AgriFood Systems (RAFS)

RAFS Overall Mission

Contribute with research to Agri-Food systems transformation for affordable, sufficient and healthy diets produced within planetary boundaries in a climate crisis ... :
Regional resilient production systems

Required innovations



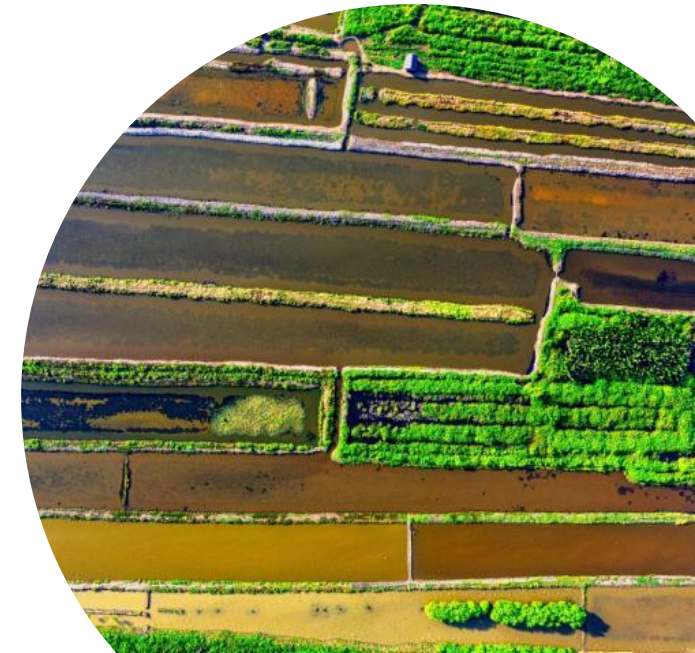
Genetics



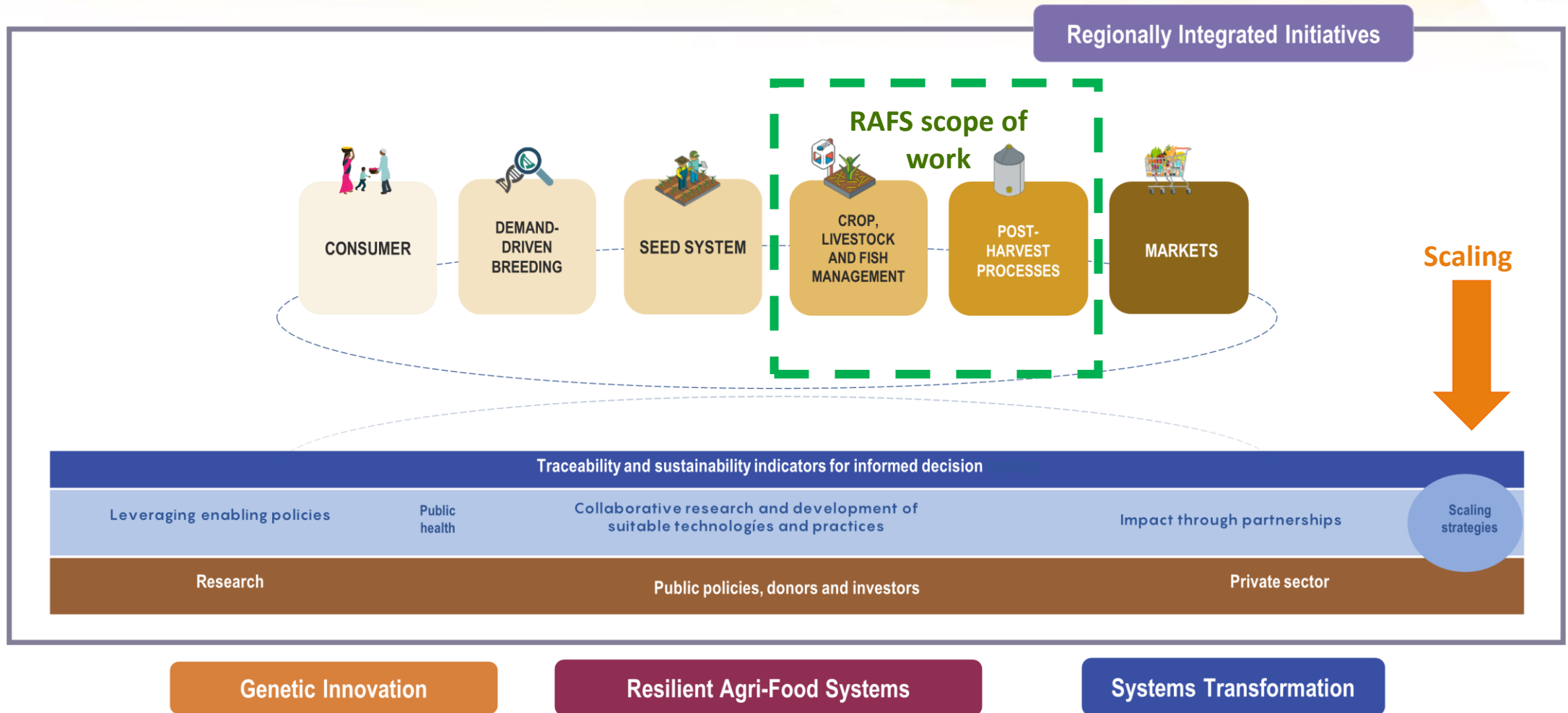
Management



Governance



One CGIAR Integrated Food System Value Network and RAFS scope of work



Global thematic initiatives respond (GTIs) to demand from Regionally Integrated Initiatives (RIIs); at the same time, RIIs adapt, apply, and amplify the outcomes of CGIAR research with regions and countries.

Structure of CGIAR's Initiative Portfolio




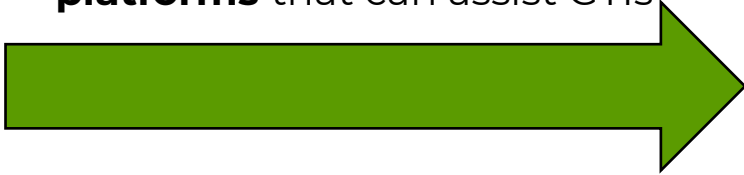
Global Thematic Initiatives (GTIs)


- Largely building on strong existing capacities
- Investigates **thematic issues that by nature are not specific to a single region** or country
- Strong focus on **genetic innovations, management of crops, livestock, fish, foresight and policy**
- Delivering **broad research insights**, knowledge, technologies
- Global relevance: May not always be applicable in the regional context

Regionally Integrated Initiatives (RIIs)


- **Long histories** of bilateral **systems research**
- Responsive to **pressing, regionally unique and relevant agri-food systems crises**
- Highly participatory, **partner demand responsive**
- **Links innovations across CGIAR** to amplify impact at scale
- Conducts **research on unique topics of regional and national importance** beyond the scope of the GTIs

- 
- **Articulates demand** for integrative research from the regions and national partners
 - **Offers 'plug-in' opportunities** for GTIs
 - Forms and sustains **innovation platforms** that can assist GTIs

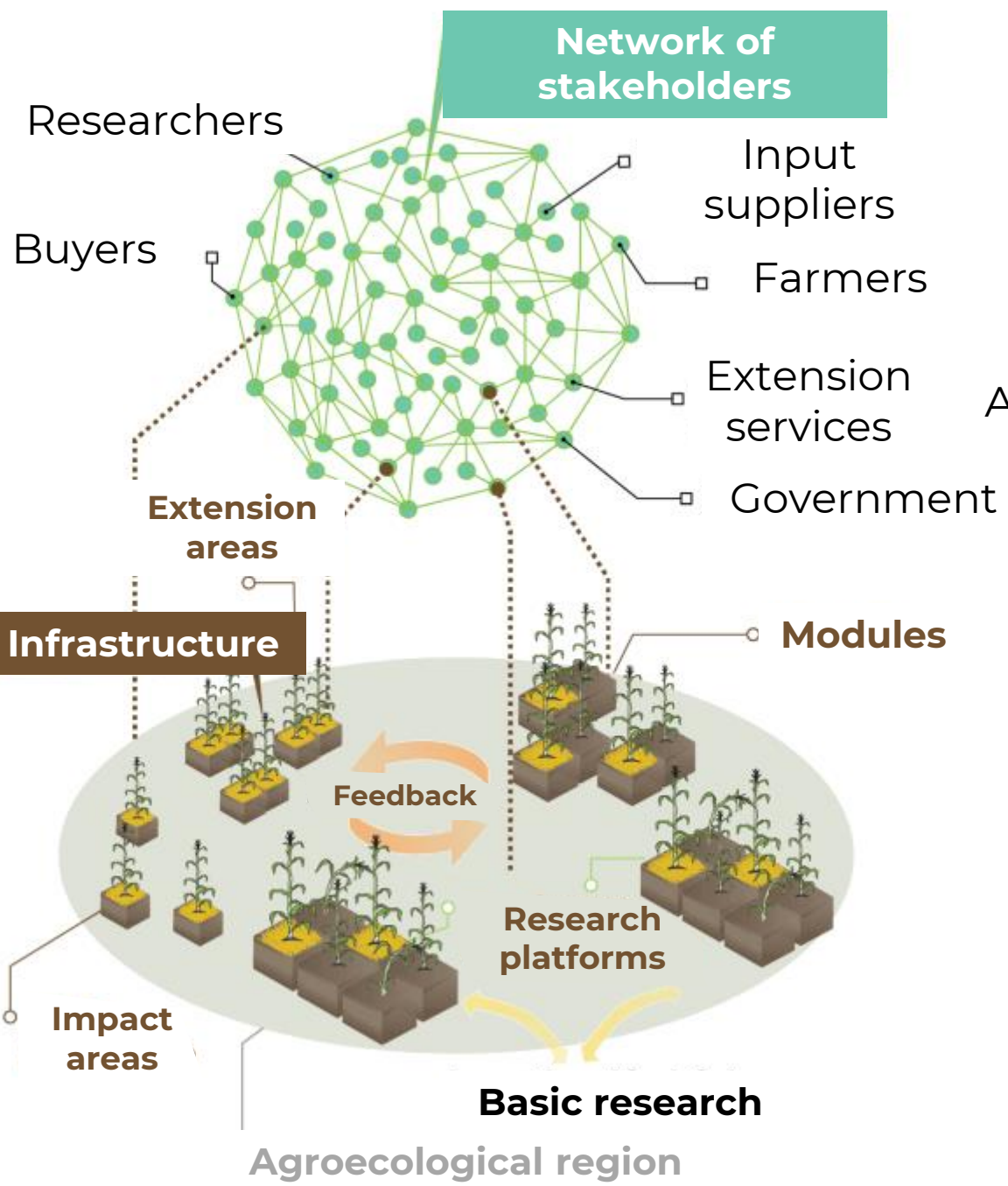
- 
- Tools, technologies, knowledge
 - **Insights from global research** that can be regionally applied
 - **Opportunities for national researchers to engage with global programs**



Research support, research monitoring and evaluation



CGIAR Research Platforms



Innovation Systems

Living Labs

Multi-stakeholder platforms

Action Research | Research in context | Research at scale

PLOS ONE

RESEARCH ARTICLE

One CGIAR and the Integrated Agri-food Systems Initiative: From short-termism to transformation of the world's food systems

Bram Govaerts^{1,2}, Christine Negra³, Tania Carolina Camacho Villa^{1,2}, Xiomara Chavez Suarez^{1,2}, Anabell Diaz Espinosa^{1,2}, Simon Fonteyne^{1,2}, Andrea Gardeazabal^{1,2}, Gabriela Gonzalez^{1,2}, Ravi Gopal Singh^{1,2}, Victor Kommerell^{1,2}, Wietske Kropff^{1,2}, Victor Lopez Saavedra^{1,2}, Georgina Mena Lopez^{1,2}, Sylvanus Odjo^{1,2}, Natalia Palacios Rojas^{1,2}, Julian Ramirez-Villegas^{1,2}, Jelle Van Loon^{1,2}, Daniela Vega^{1,2}, Nele Verhulst^{1,2}, Lennart Woltering^{1,2}, Molly Jahn^{4,5}, Martin Kropff^{1,2}



1 International Maize and Wheat Improvement Center (CIMMYT), Texcoco, Mexico, 2 Cornell University, Ithaca, New York, United States of America, 3 Versant Vision LLC, New York, NY, United States of America, 4 Alliance CIAT-Bioversity, Cali, Colombia, 5 Jahn Research Group, University of Wisconsin-Madison, Madison, Wisconsin, United States of America

KNOWLEDGE MANAGEMENT RESEARCH & PRACTICE
<https://doi.org/10.1080/14778238.2021.1884010>



OPEN ACCESS Check for updates

Knowledge management for innovation in agri-food systems: a conceptual framework

Andrea Gardeazabal³, Tobias Lunt⁶, Molly M. Jahn⁶, Nele Verhulst⁶, Jon Hellin⁶ and Bram Govaerts^{3,6}

Scaling – Key Aspects



GTIs and RIs alignment → Plug-in opportunities for scaling

Demand-driven research embedded in local partnerships → success factors for successful scaling

Innovation Package and Scaling Readiness (IPSR) component is integrated into all CGIAR initiatives

The Ukama-Ustawi scaling experience



Ukama Ustawi:
Diversification for Resilient
Agrifood Systems in East
and Southern Africa



1

Profile all CGIAR innovations

27 Innovations
Profiled

2

Develop innovation packages for
scaling ready innovations

3

Scaling strategies

Incubator for scaling
activated

Innovation Packages
pre-selected

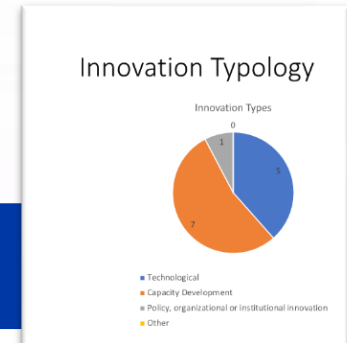
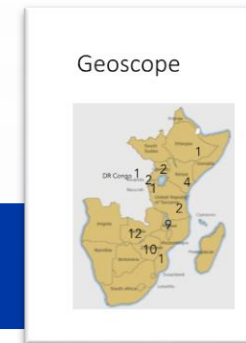
First portfolio overview provided to UU Leadership

4

UU Collaboration with other Initiatives/ AA

- N4ETTSS (1)
- SEEDQUAL (2)
- ABI (1)
- SL-MFS (3)
- EiA (7)
- Rethinking Food Markets (1)

- 10 Innovation Teams collaborate with other Initiatives (3 do not)
- Collaboration with 6 other Initiatives
- RAFS (2), GI (3) and ST (1)
- No RI-RI collaboration



Innovation Portfolio Management

Thank you!