



# Statistical reconstruction of daily temperature and sea level pressure in Europe for the severe winter 1788/89

Duncan Pappert<sup>1,2</sup>, Mariano Barriendos<sup>3</sup>, Yuri Brugnara<sup>1,2</sup>, Noemi Imfeld<sup>1,2</sup>, Sylvie Jourdain<sup>4</sup>,  
Rajmund Przybylak<sup>5,6</sup>, Christian Rohr<sup>2,7</sup>, and Stefan Brönnimann<sup>1,2</sup>

<sup>1</sup>Institute of Geography, University of Bern, Bern, Switzerland

<sup>2</sup>Oeschger Centre for Climate Research, University of Bern, Bern, Switzerland

<sup>3</sup>Department of History and Archaeology, University of Barcelona, Barcelona, Spain

<sup>4</sup>Direction de la Climatologie et des Service Climatiques, Météo-France, Toulouse, France

<sup>5</sup>Faculty of Earth Sciences and Spatial Management, Nicolaus Copernicus University, Torun, Poland

<sup>6</sup>Centre for Climate Change Research, Nicolaus Copernicus University, Torun, Poland

<sup>7</sup>Institute of History, University of Bern, Bern, Switzerland

**Correspondence:** Stefan Brönnimann (stefan.broennimann@giub.unibe.ch)

Received: 31 January 2022 – Discussion started: 2 March 2022

Accepted: 28 October 2022 – Published: 2 December 2022

**Abstract.** The winter 1788/89 was one of the coldest winters Europe had witnessed in the past 300 years. Fortunately, for historical climatologists, this extreme event occurred at a time when many stations across Europe, both private and as part of coordinated networks, were making quantitative observations of the weather. This means that several dozen early instrumental series are available to carry out an in-depth study of this severe cold spell. While there have been attempts to present daily spatial information for this winter, there is more to be done to understand the weather variability and day-to-day processes that characterised this weather extreme. In this study, we seek to reconstruct daily spatial high-resolution temperature and sea level pressure fields of the winter 1788/89 in Europe from November through February. The reconstruction is performed with an analogue resampling method (ARM) that uses both historical instrumental data and a weather type classification. Analogue reconstructions are then post-processed through an ensemble Kalman fitting (EnKF) technique. Validation experiments show good skill for both reconstructed variables, which manage to capture the dynamics of the extreme in relation to the large-scale circulation. These results are promising for more such studies to be undertaken, focusing on different extreme events and other regions in Europe and perhaps even further back in time. The dataset presented in this study may be of sufficient

quality to allow historians to better assess the environmental and social impacts of the harsh weather.

## 1 Introduction

The climate system displays variability on interannual to multidecadal timescales, which in turn affects the frequency and intensity of extreme weather in ways that are not yet fully understood. Such extremes have been observed to occur in the past and will reoccur in the future with a high impact on environmental, social, and economic conditions. Early instrumental meteorological observations hold enormous value in climate research to gain a better understanding of past climate variability and the mechanisms that characterise extreme weather events.

Recent decades have seen a number of different projects put much time and effort into the rescue of some of these data, including making inventories as well as digitising, converting, correcting, and finally adding these instrumental series into global data repositories (Camuffo and Jones, 2002; Vinther et al., 2006; Auer et al., 2007; Cornes, 2010; Csernus-Molnár et al., 2014; Cram et al., 2015; Brönnimann et al., 2019; Pappert et al., 2021). Data rescue projects and activities are facilitated by collaboration with initiatives such as the Atmospheric Circulation Reconstructions over the Earth

(ACRE) project (Allan et al., 2016). These data rescue efforts feed into – or are often triggered by – historical reanalysis projects (Slivinski et al., 2019).

Recovering these data is challenging and there are many old weather records still waiting to be digitised and consolidated. Early instrumental data for Europe are scattered around hundreds of libraries and archives across the continent in the form of countless documents and diaries. Their collection and digitisation require significant time as well as financial and human resources, which goes some way towards explaining why many of such series have yet to be analysed. In some cases, the absence of metadata, for instance specific information regarding the position of instruments and method of observation, might impact the quality of the series; this requires assumptions to be made that may increase the uncertainty of the original observations (Brugnara et al., 2015). This study will show how many of the instrumental series could have promising applications in scientific research despite such problems. These series can be combined with the possibilities offered by today's dynamical and stochastic models, including various data assimilation and statistical downscaling techniques, to offer more complete spatial information on past weather. The daily timescale of such weather reconstructions will help researchers better understand the underlying atmospheric processes associated with extreme events. Moreover, current historical reanalyses go back to the 19th century, but not further. In this paper, we demonstrate another approach for continental-scale weather reconstruction using a late 18th century extreme weather event as a case study.

The extreme event at the centre of this study is the severely cold winter of 1788/89. It ranks amongst the harshest winters in Europe in the past 300 years with perhaps the coldest December for many regions, especially central Europe (Brázdil et al., 2003). Despite the severity of this extreme, the winter 1788/89 has received only modest attention in climate research, though important work has been done towards characterising this event (see Kington, 1980; Gisler, 1985; Barriendos et al., 2000; Brázdil et al., 2003; Pfister et al., 2019). Perhaps the most detailed study of this winter was made by Barriendos et al. (2000), who reflected on the extensive damage it inflicted on human communities and analysed the event at a daily resolution using instrumental data for the Iberian Peninsula. Indeed, the 1780s saw numerous stations in Europe making quantitative observations of the weather. In his book *The Weather of the 1780s over Europe*, Kington (1988) used the available station data from this decade to create hand-drawn daily synoptic weather maps for this period. His experiment showed that prevailing weather situations over Europe at the time could be reconstructed and analysed; though, unfortunately, the maps for the period after 1785 were not published. Since Kington, scarcely any statistical reconstructions of daily weather fields for this period have been attempted, mainly because of the challenges presented by the gathering of these data from numerous differ-

ent sources and their relative higher uncertainty compared to post-industrial measurements. Thus following in Kington's steps, this study seeks to make use of the remarkable volume of instrumental observations that exist for this period to reconstruct daily weather fields over Europe of the winter 1788/89 in an attempt to better understand the dynamics that characterised such an outstanding weather extreme.

For this article, the method used for the reconstruction is as important as the choice of the extreme event itself. Historical station data capture local conditions and are mostly not representative of the regional weather. To overcome this hurdle, we use a statistical approach that has recently been used in weather reconstructions based on historical data: the analogue resampling method (ARM) (Flückiger et al., 2017; Rössler and Brönnimann, 2018) – a variation of the more classical analogue method used in forecasting (Lorenz, 1969; Kruizinga and Murphy, 1983; Zorita and Storch, 1999; Horton et al., 2012). The ARM is based on the assumption that similar patterns of atmospheric states repeat themselves throughout time, producing similar local effects. Two states “which are observed to resemble one another are called analogues” (Lorenz, 1969, p. 636). This statistical relationship between local weather and synoptic patterns allows the analogue approach to use one to predict the other. Thus, the ARM makes predictions for historical weather patterns by searching records from the recent present for weather patterns analogous to those that occurred in the past, thereby resampling known weather fields for which there is detailed spatial information. In this study, temperature analogues are sampled from daily  $0.1^\circ$  resolved fields from the E-OBS dataset (Cornes et al., 2018) and for sea level pressure (SLP) from  $0.25^\circ$  fields from ERA5 (Hersbach et al., 2020). These fields are further improved upon in a post-processing procedure that uses a data assimilation technique known as the ensemble Kalman filter (EnKF).

This study builds on the work of Pfister et al. (2020), who use the ARM to generate daily gridded meteorological fields for Switzerland. In their paper, they demonstrate the good skill of the ARM in reconstructing daily temperature and precipitation fields over Switzerland back to 1864. They conclude with the suggestion to extend the reconstruction further back in time to the pre-industrial period. Additionally, they address the possible suitability of the method for central Europe and beyond. We therefore also perform a validation to assess the ability of the approach to reproduce synoptic conditions over Europe for the winter 1788/89. Results will show the skill of the reconstructions, which will in turn be explored to assess if they are in line with what is already known about the weather in Europe during this season and if they allow us an even more detailed insight into the progression of the cold spell.

A successful reconstruction of the winter 1788/89 would allow for comparisons with other more recent cold temperature extremes. In fact, this study could be seen as a continuation or expansion of the literature on extremely cold win-

ters in Europe. Important work on this topic has been done to study the frequency, timing, intensity, and spatial extent of extremely cold winters (ECWs) and extremely cold winter months (ECMs) for the period 1951–2010 (Twardosz and Kossowska-Cezak, 2016; Twardosz et al., 2016). Our study could open a new chapter for the study of pre-industrial extreme cold winters using high-spatial-resolution and high-temporal-resolution gridded data; these could then be compared to severe winters in the modern era to acquire a better understanding of extreme weather variability.

The next section introduces the datasets and the methodology used for the reconstruction, validation, and analysis. In Sect. 3, we present and discuss the validation of the ARM-reconstructed and post-processed fields of temperature and sea level pressure. The last part of this section examines the current state of knowledge on the winter 1788/89 and explores some of the ways in which the reconstructed maps can improve our understanding of the extreme event. The final section makes concluding remarks about the study.

## 2 Data and methods

### 2.1 Data

To predict a certain aspect of the atmosphere – here, for instance, temperature or SLP fields for a given day of interest in the past (predictand) – the analogue approach searches for the day in the reference period with the most similar predictor values (best analogue) and borrows the spatial atmospheric pattern from this (or multiple) best analogue day (days) as a prediction (Zorita et al., 1995). In the case of the present study, differences between states of the atmosphere are measured in terms of the differences between two sets of series, one historical and the other a reference for which spatial data exist. In line with this explanation, the ARM thus requires three archives: historical station data, reference station data, and gridded datasets from which the spatial information for the analogues is resampled. The following subsections summarise these datasets as used for the reconstruction of the winter 1788/89.

#### 2.1.1 Historical meteorological data

Table 1 lists the stations whose observations were used for the statistical reconstruction. These comprise 52 temperature and 41 SLP series from a total of 53 stations, 8 of which have data for only either 1788 or 1789. Independent measurements from two additional stations were used for validation. Figure 1 shows how these stations are distributed across Europe: most are concentrated in central and western Europe, with only very sparse coverage in the north, south, and east. While these do not represent all stations making measurements in Europe during these years (see Brönnimann et al., 2019), they constitute a large portion of known observation series. Unfortunately, there are virtually no known early instrumen-

tal observations for the south-east during this period. Gathering good-quality instrumental series is an onerous task and requires delving into dozens of regional archives, collecting any relevant metadata (which is often incomplete or absent), and digitising the observations, which then undergo various quality control tests and corrections. Of the series used in this study, some had already been analysed and corrected (Cammuffo and Jones, 2002; Cornes, 2010; Parker et al., 1992; Pfister et al., 2019; Pappert et al., 2021), and some had been investigated for their metadata and digitised (Barriendos et al., 2000; Mazón et al., 2011; Csernus-Molnár et al., 2014; Dawson et al., 2021), while others had yet to be digitised and explored. As such, the series differ in degrees of quality, not only for reasons related to how they were observed in the past, but also for the extent of the attention they have received by researchers today.

Stations whose observations had not undergone any prior processing were converted into modern units and underwent quality control tests provided by the C3S QC software *dataresqc* (see Brugnara et al., 2020; Pappert et al., 2021). Temperature daily means were calculated from subdaily values by taking into account known observation times and adjusted according to the ERA5-Land diurnal cycles for 1981–2010. If observation times were unknown, means were calculated from thrice-daily morning, afternoon, and evening measurements according to the formula  $(t_1 + t_2 + t_3 \times 2)/4$  and from twice-daily morning and afternoon observations according to  $(t_1 + t_2)/2$ . Pressure daily means were calculated as an arithmetic average and subsequently reduced to mean sea level. Available metadata pertaining to each series are written in the “Meta” columns of the Standard Exchange Format (SEF, Brunet et al., 2020) files provided in the Supplement.

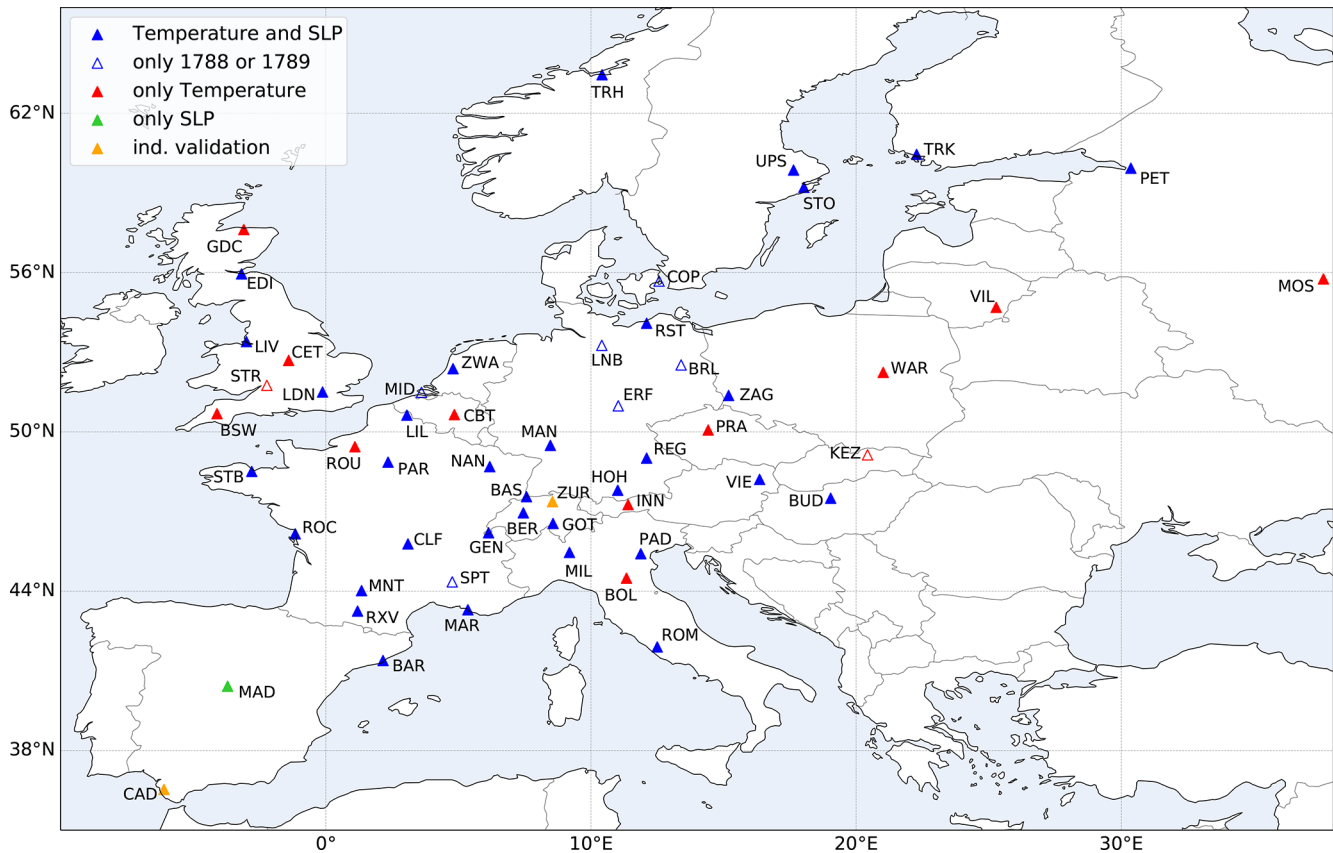
#### 2.1.2 Reference meteorological data

Present-day measurement series covering the period 1950–2020 (predictors) are needed to predict the historical spatial fields. For temperature, data were taken from a number of different sources, mostly from the European Climate Assessment Dataset project (ECA&D), as well as from national weather services such as MeteoSwiss, Météo-France, the German Meteorological Service (DWD), and the Met Office. Given the general difficulty in obtaining high-quality, consistent SLP measurement series for the period 1950–2020, data for this variable were taken from the grid cell corresponding to the station location in the E-OBS observational dataset. If a temperature series was a blend of different locations the Craddock test was applied (Craddock, 1979; Brunetti et al., 2006; Venema et al., 2012; Fessehayé et al., 2019), and it was homogenised using the same method as Pappert et al. (2021). Each blended series (candidate) was tested against the corresponding grid cell from E-OBS (reference) based on their monthly cumulative differences. Constant corrections were applied based on differences between the candidate and

**Table 1.** List of stations used for the reconstruction, described by the modern country they belong to, their station code, approximate height above sea level, latitude, longitude, the name of the observer(s) if known, and the authority (private or network). Stations marked by (\*) represent series that are used in the independent validation. SMP, SRM, and RAMB respectively stand for Societas Meteorologica Palatina, Société Royale de Médecine, and Royal Academy of Medicine of Barcelona. The last column lists any remarks pertaining to a series: ta means that only temperature is used, and slp is for just sea level pressure; 1788 or 1789 means that only data for these years are available; a blank implies that both variables were used in the reconstruction across both years.

Station	Country	Abbr.	m.a.s.l.	Lat	Long	Observer	Authority	Remarks
Barcelona	Spain	BAR	35	41.39	2.16	Salva	RAMB	
Basel	Switzerland	BAS	275	47.56	7.57	d'Annone	Private	
Berlin	Germany	BRL	45	52.52	13.4	Beguelin	SMP	1788
Bern	Switzerland	BER	534	46.95	7.45	Lombach	Private	
Bologna	Italy	BOL	64	44.49	11.34	Cospi	Private	ta
Bridestowe	England	BSW	167	50.685	-4.1	Heberdem	Private	ta
Budapest	Hungary	BUD	168	47.5	19.04	Weiss	SMP	
Cádiz*	Spain	CAD	5	36.54	-6.28	multiple	Private	gaps
Central Belgium T.	Belgium	CBT	-	50.65	4.85	multiple	various	ta
Central England T.	England	CET	-	52.69	-1.4	multiple	various	ta
Clermont-Ferrand	France	CLF	394	45.78	3.1	Delarbre	SRM	
Copenhagen	Denmark	COP	40	55.68	12.57	Bugge	SMP	1788
Edinburgh	Scotland	EDI	40	55.85	-3.175	McFarland	Private	
Erfurt	Germany	ERF	202	50.98	11.03	Planer	SMP	1788
Geneva	Switzerland	GEN	380	46.2	6.14	Senebier	SMP	
Gotthard	Switzerland	GOT	2093	46.55	8.57	Mediolanensi	SMP	
Gordon Castle	Scotland	GDC	40	57.62	-3.09	Hoy	Private	ta
Hohenpeissenberg	Germany	HOH	977	47.8	11.01	Schwaiger	SMP	
Innsbruck	Austria	INN	584	47.26	11.4	Zallinger	Private	ta
Kezmarok	Slovakia	KEZ	626	49.135	20.43	Genersich	Private	1789
La Rochelle	France	ROC	19	46.16	-1.15	Seignette	SMP	
Lille	France	LIL	25	50.63	3.06	Saladin	SRM	
Liverpool	England	LIV	15	53.4	-2.99	Woodworth	Private	
London	England	LDN	24	51.5	-0.12	multiple	Private	
Lüneburg	Germany	LNB	25	53.26	10.41	Ebeling	Private	1788
Madrid	Spain	MAD	680	40.42	-3.7	Salanova	Private	slp
Mannheim	Germany	MAN	112	49.49	8.47	Hemmer	SMP	
Marseille	France	MAR	44	43.3	5.36	de Silvabelle	SMP	
Middelburg	Belgium	MID	15	51.499	3.61	Van de Perre	SMP	1788
Milan	Italy	MIL	132	45.46	9.19	anonymous	Private	
Montauban	France	MNT	112	44.02	1.35	Moulet	SRM	
Moscow	Russia	MOS	130	55.76	37.62	Stritter	SMP	ta
Nancy	France	NAN	215	48.69	6.184	Poma	SRM	
Padua	Italy	PAD	18	45.41	11.88	Toaldo, Chiminello	SMP	
Paris	France	PAR	74	48.86	2.35	anonymous	Private	
Prague	Czechia	PRK	200	50.07	14.42	Strnadt	Private	ta
Regensburg	Germany	REG	346	49.01	12.1	Heinrich	SMP	
Rieux-Volvestre	France	RXV	220	43.25	1.2	Darbas	SRM	
Rome	Italy	ROM	56	41.9	12.5	Calandrelli	SMP	
Rostock	Germany	RST	35	54.09	12.1	Schadeloock	Private	
Rouen	France	ROU	15	49.44	1.1	Le Pecq	SRM	
Saint-Brieuc	France	STB	100	48.51	-2.79	Bagot	SRM	
Saint-Paul-Trois-Ch.	France	SPT	85	44.35	4.77	Caudeiron	SRM	gaps
St Petersburg	Russia	PET	15	59.93	30.36	Euler	SMP	
Stockholm	Sweden	STO	44	59.21	18.03	Nicander	SMP	
Stroud	England	STR	63	51.75	-2.22	Hughes	Private	ta, 1788
Trondheim	Norway	TRH	13	63.45	10.42	Fester	Private	
Turku	Finland	TRK	10	60.45	22.28	Planman	Private	
Uppsala	Sweden	UPS	15	59.86	17.64	multiple	Private	
Vienna	Austria	VIE	208	48.21	16.36	Kletten	Private	
Vilnius	Lithuania	VIL	118	54.69	25.28	Poczobutt-Odlanicki	Private	ta
Warsaw	Poland	WAR	106	52.24	21.02	Bończa-Bystrzycki	Private	ta
Zagan	Poland	ZAG	116	51.37	15.19	Preuss	SMP	
Zurich*	Switzerland	ZUR	418	47.37	8.55	Muralt	Private	
Zwanenburg	the Netherlands	ZWA	10	52.38	4.8	multiple	Private	





**Figure 1.** Map of stations included in the reconstruction. Distinction is made between stations with series with both temperature and SLP (blue) and those with just one of these variables (red and green, respectively); also shown are stations with data for either just November–December 1788 or January–February 1789, as well as stations used for an independent validation (orange).

reference series before and after the breakpoint(s). As in the case of the historical series, the SEF files for the reference series contain details for each day regarding the source, as well as the extent of the correction if homogenised.

### 2.1.3 Gridded meteorological data

The spatial information for the temperature reconstruction is resampled from E-OBS, a daily gridded land-only observational dataset over Europe (Cornes et al., 2018). We use the ensemble mean of the version 23.1e release in March 2021 on a  $0.1^\circ$  regular grid calculated from 100 ensemble members back to 1950. SLP fields, on the other hand, are drawn from the ERA5 dataset, the fifth-generation ECMWF reanalysis for the global climate and weather (Hersbach et al., 2020). We use the recent ERA5 version that includes the preliminary back-extension to 1950, gridded on a  $0.25^\circ$  regular grid. The domain for the gridded reconstruction for both variables extends over Europe from  $-10$  to  $40^\circ$  E and from  $36$  to  $65^\circ$  N.

## 2.2 Pre-processing

Before applying the ARM, station and gridded data are pre-processed in order to make more accurate comparisons between past and present climate variability, thereby facilitating the search for analogues.

In the 160 or so years that separate the historical and reference data, there have been changes in the stations' local environment or site relocations, and instruments and observing practices have also changed. Thus, the first pre-processing step is to homogenise the historical data to better reflect the measurement conditions of the series in the reference period and reduce discrepancies between the two sets of measurements. This was done by extracting mean temperature and SLP from the EKF400v2 reanalysis (Franke et al., 2017; Valler et al., 2021) for each grid cell corresponding to the location of each historical weather station. The historical series are then adjusted with a monthly correction so they deviate from the mean reanalysis curve to the same extent as the reference data, without affecting their daily variability. The assumption is that the EKF400v2 reconstruction manages to capture the monthly variability and the long-term past climatic development of temperature and SLP.

Further, the measurement series contain local influences that are not resolved by the spatial data of the gridded dataset. This was accounted for by subtracting from the station data the monthly bias between the measured values and grid cell values of the corresponding locations from the E-OBS and ERA5 datasets over the period 1950–2020.

Reference station and gridded temperature data are then detrended to remove the climate change signal within the period 1950–2020. For this, a simple linear regression is fitted to ERA5 temperature zonal means over land; this trend is thought to best represent large-scale climate change that is unrelated to changes in the frequency of, e.g. weather types. The fitted values are centred around the mid-period 1985 and subtracted from the reference and gridded data. Additionally, we needed to account for the intercentennial climate change trend: temperature data in our reference period (20th century) are warmer on average relative to the pre-industrial benchmark (18th century). For the daily variability between the two periods to be compared, we therefore needed to deduct this climate change signal from the reference data (both station and gridded), thereby giving them a pre-industrial temperature baseline. This signal was calculated by subtracting the EKF400v2 zonally averaged temperature 1751–1800 over land – assumed to represent the climatology for 1788/89 – from the zonally averaged temperature 1950–2003 over land; again, this trend is thought to represent the change in the large-scale baseline climate that is considered unrelated to synoptic-scale conditions. The resulting difference or “offset” was then subtracted from the reference temperature data for each latitude point. By doing so, physical consistency is not strictly maintained. Nevertheless, we justify this methodological choice from a theoretical standpoint: the subtraction of the offset was performed for the sake of extrapolation. Without performing this step, the analogue pool would be too warm and have insufficient suitable matches for the colder historical data; the gridded fields, also from the period 1950–2020, would also not reflect the climatology of late 18th century Europe. In other words, individual days in 1788/89 will find fewer analogues if the intercentennial climate change signal is not taken into account; this could lead to problems for extreme days. A systematic error is not expected.

The ARM procedure requires expressing the weather data as anomalies relative to a mean climatology, i.e. as “irregular” variation components. For this, the seasonal component is removed from the temperature data. The mean seasonality curve is estimated for each observation series by fitting the first two harmonics of the annual temperature cycle using linear regression according to the following equation:

$$S = c_0 + c_1 \sin\left(\frac{2\pi \text{ doy}}{n_{\text{doy}}}\right) + c_2 \cos\left(\frac{2\pi \text{ doy}}{n_{\text{doy}}}\right) + c_3 \sin\left(\frac{4\pi \text{ doy}}{n_{\text{doy}}}\right) + c_4 \cos\left(\frac{4\pi \text{ doy}}{n_{\text{doy}}}\right), \quad (1)$$

where *doy* is the day of the year,  $n_{\text{doy}}$  the number of days in the year, and  $c_0$ ,  $c_1$ ,  $c_2$ ,  $c_3$ , and  $c_4$  the parameters to be estimated. For the spatial temperature fields, the seasonality is removed by subtracting the multiyear daily mean for 1950–2020. Note that deseasonalising concerns only temperature and not pressure. The subtraction of the annual cycle increases the size of the analogue pool, which might make it easier to reproduce extremes. Finally, because temperature and SLP data have different scales, both variables were standardised to have unit variance. The already deseasonalised temperature data were divided by their standard deviation, whereas the SLP data had their mean subtracted and divided by the standard deviation. The same calculations were applied to the 4-month period in 1788/89 using the parameters of the reference period.

### 2.3 Analogue resampling method

While the perfect past–present analogue couplet may not exist, there are some parameters that can be selected to optimise the analogy. To maintain the physical consistency of the ARM reconstruction we establish the following conditions, largely following Pfister et al. (2020).

1. The identification of suitable analogues depends first and foremost on the definition of the reference period (analogue pool), the library that is searched for the nearest neighbour to the day of interest. Based on data availability, as discussed above, 1950–2020 was used as the reference period for the reconstruction.
2. Analogue days must have the same synoptic-scale weather conditions – i.e. wind fields – as the day that is to be reconstructed. The pool of possible analogues is thus limited to days that share the same weather type (WT) as the target day. Using the daily WT classifications reconstructed by Schwander et al. (2017) the analogue is restricted to the most likely WT plus any additional WTs in order to amount to a combined probability of at least 95 %.
3. Analogue days must belong to the same season as the day of interest and are therefore limited to a temporal window of  $\pm 30$  calendar days around the target day.
4. Finally, the best analogues are chosen based on the smallest “distance” between all observations, which is a measure that is calculated based on station data.

According to these points, the best analogue is decided as the day in the reference period with the same weather type within the same time window that minimises the difference between certain meteorological variables from a specific set of stations with respect to the target day in the past.

With these conditions set and the data pre-processed, the ARM is applied. Following Pfister et al. (2020), the distances

between the historical and reference data are calculated by means of the root mean square error (RMSE):

$$d(\mathbf{x}, \mathbf{y}) = \sqrt{\frac{1}{n} \sum_{i=1}^n (x_i - y_i)^2}, \quad (2)$$

where  $\mathbf{x}$  and  $\mathbf{y}$  are respectively the vector of observed values, and the vector of predictor values and  $i$  denotes the observations within these vectors. Accordingly, the smallest distance  $d(\mathbf{x}, \mathbf{y})$  between the two vectors corresponds to the day that is chosen as the best estimate for the given day in the past. With the underlying assumption that errors are unbiased and follow a Gaussian distribution, the RMSE is more reliable if the sample size is large (Chai and Draxler, 2014). RMSE is a useful distance measure because the squared terms ensure that higher weight is given to high errors, meaning larger deviations are punished more. Once the closest analogue day is found, that day is extracted from the pre-processed E-OBS and ERA5 datasets, and the mean seasonality is added back onto the deviation fields. We refer to these resampled fields as ARM reconstructions.

#### 2.4 Post-processing by means of ensemble Kalman fitting

Considering only the single best analogue usually results in a lower skill than if more analogues were considered (Bontron and Obled, 2005) because one analogue – even if it is the best overall – may not perfectly represent each observation. However, the best analogue is physically consistent, while the average of the best  $n$  analogues is not. Therefore, the temperature and SLP reconstructions from the ARM are further improved. Using a method borrowed from data assimilation techniques known as the Kalman filter (Kalman, 1960) the ARM reconstructions are adjusted to better represent station observations. We use an offline variant of the Kalman filter also termed ensemble Kalman fitting (EnKF, Bhend et al., 2012; Franke et al., 2017). The ARM reconstructions are taken as the background, which is adjusted based on the observations. This approach has been used to obtain climate reconstructions that align with both past observations and the physics used in climate models on a monthly to annual scale. In this study we follow the application of the EnKF adopted in Pfister et al. (2020).

Using the best analogue as the background (or first guess) and best  $n$  analogues as an ensemble, the EnKF will essentially minimise a least-square errors problem. The vector of the true atmospheric state  $\mathbf{x}$  minimises the cost function  $J$  according to

$$J(\mathbf{x}) = (\mathbf{x} - \mathbf{x}^b)^T (\mathbf{P}^b)^{-1} (\mathbf{x} - \mathbf{x}^b) + (\mathbf{y} - H[\mathbf{x}])^T \mathbf{R}^{-1} (\mathbf{y} - H[\mathbf{x}]), \quad (3)$$

where  $\mathbf{x}^b$  is the background,  $\mathbf{P}^b$  is the background error covariance matrix that is calculated from the  $n$  best analogues,

$\mathbf{y}$  is the vector of station observations, and  $H$  is the operator that extracts the corresponding grid cell and variable of the observations from the model space.  $\mathbf{R}$  is the covariance error matrix of  $\mathbf{y} - H[\mathbf{x}]$ , meaning it contains the errors of both the observations and the forward operator; it is assumed to be diagonal. The error of the early instrumental observations used in the reconstruction was estimated following the approach of Wartenburger et al. (2013), which calculates the daily difference in variance for each pair of stations for a given candidate series from a number of neighbouring observations. We assume that this difference depends linearly on the squared Euclidean distance between the stations so a linear regression can be fitted between variance and squared distance. The average standard deviation of all points to the least-squares fit is taken as the observation error: 2.2 K for temperature and 3 hPa for SLP. The relatively high temperature error can be attributed to multiple sources, such as the improper shading of the thermometer, inaccurate human reading of the observations, the measuring of an unrepresentative local climate, or even the imprecise assignment of observation times and daily mean calculation in the data rescue process (WMO, 2008).

A new best estimate of  $\mathbf{x}^a$  for the true atmospheric state  $\mathbf{x}$  is thus calculated from this Kalman-filter-based offline data assimilation:

$$\mathbf{x}^a = \mathbf{x}^b + \mathbf{K}(\mathbf{y} - H\mathbf{x}^b), \quad (4)$$

$$\mathbf{K} = \mathbf{P}^b \mathbf{H}^T (\mathbf{H} \mathbf{P}^b \mathbf{H}^T + \mathbf{R})^{-1}. \quad (5)$$

Here,  $\mathbf{x}^a$  is the updated state vector and  $\mathbf{H}$  is the Jacobian matrix of  $H[\mathbf{x}]$ .  $\mathbf{K}$  is the Kalman gain calculated from the ensemble (shown in Eq. 5), an  $n \times m$  matrix describing the relative weight given to the observations and the current state estimate. Note that mean and anomalies from the mean are updated separately. A more detailed explanation of the implementation the fitting procedure can be found in Bhend et al. (2012) and Pfister et al. (2020).

The ensemble size  $n$  is set to 50. Using a finite ensemble to approximate the background covariance error leads to spurious correlations, which tends to “over-correct” and reduce the variance analysis. In other words, the random correlations arise from very distant and uncorrelated locations correlating by chance in the model space, and therefore small unphysical updates occur in the assimilation that make the reconstruction overconfident. Spatial localisation is a strategy often implemented to reduce these effects (Houtekamer and Mitchell, 2001; Franke et al., 2017) and can be defined with a function that redefines  $\mathbf{P}^b$  such that covariances decay exponentially as a function of distance:

$$P_{i,j}^b = \frac{1}{n-1} \sum_{k=1}^n x_{i,k}^{/b} x_{j,k}^{/b} \exp\left(-\frac{|d_i - d_j|^2}{2L^2}\right), \quad (6)$$

with  $n$  being the different ensemble members.  $|d_i - d_j|$  is the distance in kilometres between the grid box at position  $i$  and

the grid box at  $j$ , with  $L$  being the cut-off distance. Based on the coverage of historical stations and the size of the study area, the decorrelation distance  $L$  was chosen to be 750 km for temperature and 1500 km for SLP.

## 2.5 Evaluation

A leave-one-out validation in time and space is performed on the daily gridded temperature and SLP reconstructions of the winter months NDJF within the reference period 1950–2020. For each day of the reconstructions, the best analogue was calculated with the same requirements as for the winter 1788/89, excluding a  $\pm 5$  d window around the target day, as spatial patterns of neighbouring days might resemble each other too much and lead to misleading analogues being selected (Pfister et al., 2020). The ARM reconstructions for the reference period were likewise post-processed with the ensemble Kalman fitting.

To assess the quality of the winter 1788/89 reconstruction, this period is validated against weather observations that were not used in the reconstruction. Two independent stations were selected, namely Zurich in Switzerland (Pfister et al., 2020) and Cádiz in Spain (Barriendos et al., 2002). For the comparison, the corresponding locations of Zurich and Cádiz are extracted from the gridded reconstructions of the ARM and EnKF.

The reconstructions are assessed for their quality following metrics of skill and reliability commonly used in the validation of field forecasts (Wilks, 2019). All measures were calculated on anomalies from the mean seasonal cycle such as not to confound skill that comes from seasonality. The Pearson correlation is used as a first performance metric. The RMSE is used to assess the error magnitudes. The validation also assesses the systematic bias between the E-OBS (temperature) and ERA5 (SLP) datasets and the respective reconstructions.

Additionally, the mean squared error skill score (MSESS) is used to evaluate the reconstructions' predictive skill according to the following equation:

$$\text{MSESS} = 1 - \frac{\sum_{i=1}^n (x_i^{\text{rec}} - x_i^{\text{ref}})^2}{\sum_{i=1}^n (x_i^{\text{clim}} - x_i^{\text{ref}})^2} = 1 - \frac{\text{MSE}_{\text{rec}}}{\text{MSE}_{\text{clim}}}. \quad (7)$$

The MSESS is a function of the reconstruction  $x^{\text{rec}}$ , the reference data  $x^{\text{ref}}$  from E-OBS and ERA5, and a perfect or “no-knowledge” prediction  $x^{\text{clim}}$ , in this case the mean climatology. For the validation in time  $i$  denotes the time step, and for the validation in space it refers to the grid cell. This dimensionless skill score is positive (negative) when the accuracy of the reconstruction is greater (less) than the accuracy of the climatological prediction (Murphy, 1988). The maximum value the MSESS can have is 1, which equals a perfect predictive skill; negative values imply that the recon-

struction's predictive skill is worse than that of the climatology and can range to minus infinity. An MSESS value of 0 indicates  $\text{MSE}_{\text{rec}} = \text{MSE}_{\text{clim}}$  and implies no skill (Jolliffe and Stephenson, 2012).

## 2.6 Uncertainty and limitations

The uncertainties begin with the observations and their pre-processing. As mentioned in the previous section, historical observations are subject (to differing degrees) to a number of potential inaccuracies and biases. Gridded datasets derived through the interpolation of modern station data may also contain errors. These inaccuracies may be introduced due to the propagation of errors in the underlying station data; in the case of the E-OBS dataset, not all stations used for interpolation have been homogenised, leading to imprecise estimations of absolute values and variance of grid cells (Hofstra et al., 2009).

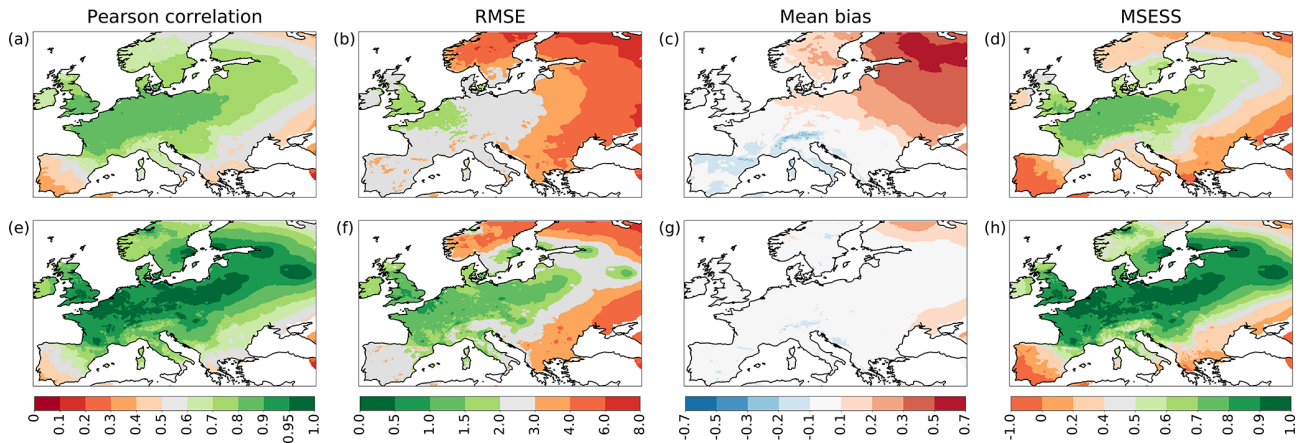
The main limitation of the ARM is the size of the analogue pool (in this study 71 years, 1950–2020). Given the large variety of atmospheric flow, the shorter the reference period, the more unlikely it is to find two matching atmospheric states (Van Den Dool, 1994). If the observational record from which analogues are sampled is too short, the distances between these matches could be too large for them to be strictly called analogues. Indeed, the criterion for what constitutes a truly good analogue is arbitrary and depends heavily on the specific methodological choices employed (see Sect. 2.3). Due to their low probability, the size of the analogue pool is an even more pertinent issue for extreme events as they are by definition rare, meaning they do not occur often enough for there to be “worthy” analogues (Flückiger et al., 2017; Pfister et al., 2020). However, the EnKF approach partly corrects for this.

Another difficulty that affects the ARM is the spatial coverage of the historical station data, which serves as input for the reconstructions. The station coverage in Fig. 1 showed gaps in the Iberian Peninsula, south-eastern and eastern Europe, and Scandinavia, where the lack of station density might negatively impact the skill of the predictions in these regions, especially for temperature, which has a higher spatial variability. That said, inaccuracies in the data cannot be ignored when reconstructing pre-industrial climate and weather. A final source of error specific to our study is the uncertainties due to the subtraction of the intercentennial temperature trend from the reference data discussed in Sect. 2.2.

## 2.7 Analysis

Following the evaluation of the reconstructions, in Sect. 3.2 we turn to look at the reconstructions themselves and study the winter 1788/89 in more detail. First of all, we provide some climatological context to the winter 1788/89 with a literature analysis. We show what is known about this event from the point of view of instrumental records and its impact





**Figure 2.** Validation of temperature over time for winter months NDJF in the period 1950–2020 for the ARM (a–d) and EnKF (e–h) reconstructions. The reconstructions are compared vertically by validation metrics: shown are the Pearson correlation coefficient (a, e), RMSE (°C) (b, f), mean bias (°C) (c, g), and MESS (d, h).

on human activities by exploring the existing literature on the winter 1788/89. The maps from our reconstruction can then be used to complement and enhance the current state of knowledge about the event; we demonstrate this through an example with the SLP maps.

The spatial information from the reconstructed fields of this winter allows comparisons to be made with other extreme cold winters for which we already have spatial information from E-OBS dataset. Such a comparative exercise might help us better situate the winter 1788/89 as an extreme – how it is similar or differs from other comparable extremes. We illustrate this by comparing the reconstructed temperature fields of the winter 1788/89 with three of the coldest winters in the second half of the 20th century: 1955/56 (Dizerens et al., 2017), 1962/63, and 1984/85. The choice is based on the study by Twardosz et al. (2016), which identifies severe winters with the most extreme cold months based on 60 weather stations across Europe in the period 1950–2010. For each winter we then calculated the cold-spell index *eca\_cwfi* (Schulzweida, 2019), i.e. the cold-spell days index for each winter (NDJF) with reference to the 10th percentile of the daily mean temperatures for the period 1950–2020 (NDJF). In other words, for each grid cell the number of days when, in intervals of at least 6 d, the daily winter temperatures are below the 10th percentile of the reference period is counted. In a next step, we identified cold spells below the 1st percentile of the reference period 1950–2020 using the *detect\_event()* function from the *heatwaveR* software (Schlegel and Smit, 2018). The time series used as input are calculated from the daily field mean of a large area around central Europe, ranging from 2–25° E and 44–55° N.

### 3 Results and discussion

As described in Sect. 2.5, we performed a leave-one-out validation for the winter months NDJF in the reference period 1950–2020 to assess the skill of the reconstruction. These reconstructions, both ARM and the post-processed EnKF, are compared to the gridded datasets E-OBS (temperature) and ERA5 (SLP). The validation against independent observations tests the skill of the reconstruction specifically for the winter 1788/89. This section presents the results of the validation and explores its implications. The aim is thus to assess whether the analogue resampling method managed to capture the temporal evolution and spatial patterns over Europe given the set of station observations that were used, as well as to show the extent to which the ensemble Kalman fitting improved the accuracy of the reconstructions. In a final subsection we return to the reconstructed event itself in two parts: firstly, a literature analysis investigates some of the weather patterns that characterised the winter 1788/89 and the social crises that ensued; secondly, a reconstruction analysis looks at some of the reconstructed maps, then compares the winter 1788/89 to three cold winters of the modern period, and finally suggests ideas for further work on the topic.

#### 3.1 Reconstruction

##### 3.1.1 Leave-one-out validation in time

Figure 2 shows the validation over time for temperature reconstructions. The top row of panels reveals validation metrics of the best analogue from the ensemble (ARM), while the bottom row depicts the same for the post-processed reconstruction (EnKF). The best analogue already shows a significant correlation with an average coefficient of 0.68, with higher values between 0.7 and 0.8 concentrated in the region north of the Alps, extending from western France and

England to Poland (Fig. 2a). The post-processing by means of ensemble Kalman fitting improves the correlation to a mean coefficient of 0.82 over the study area, reaching values above 0.9 for a large strip of land stretching from the Pyrenees to north-eastern Europe (Fig. 2e). Looking at the RMSE (Fig. 2b and f), we see that the best analogue has errors up to 3 °C in central and western Europe and from 3 to 8 °C in eastern Europe, the latter of which is improved in the post-processing, mostly in regions with station coverage. The mean bias over the winter months NDJF for the ARM (Fig. 2c) is positive in the north-east of the study area and slightly negative in the south-west, a pattern that is largely corrected in the EnKF (Fig. 2g), save for the introduction of a warm bias in central Germany due to an overestimation in the Erfurt reference series. The reconstruction generally shows good skill in replicating the temporal succession of temperature, with an average MSESS of 0.4 in the ARM (Fig. 2d) and 0.65 with high values above 0.9 for the EnKF (Fig. 2h). Overall, the post-processing by means of ensemble Kalman fitting has improved the accuracy of the reconstruction; however, the extent of the improvement is limited to areas with station data. No temperature observations were used in the Iberian Peninsula, for instance, and hence there is only poor improvement on an already poorly reconstructed region.

The validation over time for SLP shown in Fig. 3 offers a more promising picture. The Pearson correlation coefficients for the ARM are higher than 0.6 over most of the study area (a), which is significantly improved in the EnKF with coefficients higher than 0.9 over most of western, central, and northern Europe (e). Over these regions the EnKF manages to reduce the RMSE by 1 to 3 hPa, but it shows little or no improvement over areas where there are no station observations. Results from the south-east of the domain are not reliable and in the case of Russia should be interpreted with caution. The mean bias (c, g) is reduced by the post-processing, leaving only some areas with a negative bias around  $-0.3$  hPa. The MSESS (d, h) shows a pattern similar to the correlation, indicating excellent skill over most of Europe in the EnKF, which rapidly deteriorates towards the east. Thus, we can confidently say that the post-processed SLP reconstruction can accurately replicate the temporal succession of SLP fields over most of central, western, and northern Europe. The extent of the improvement of the EnKF compared to the ARM is greater for SLP than for temperature due to the overall lower spatial variability of SLP and the consequent selection of a long decorrelation distance  $L$  for the assimilation.

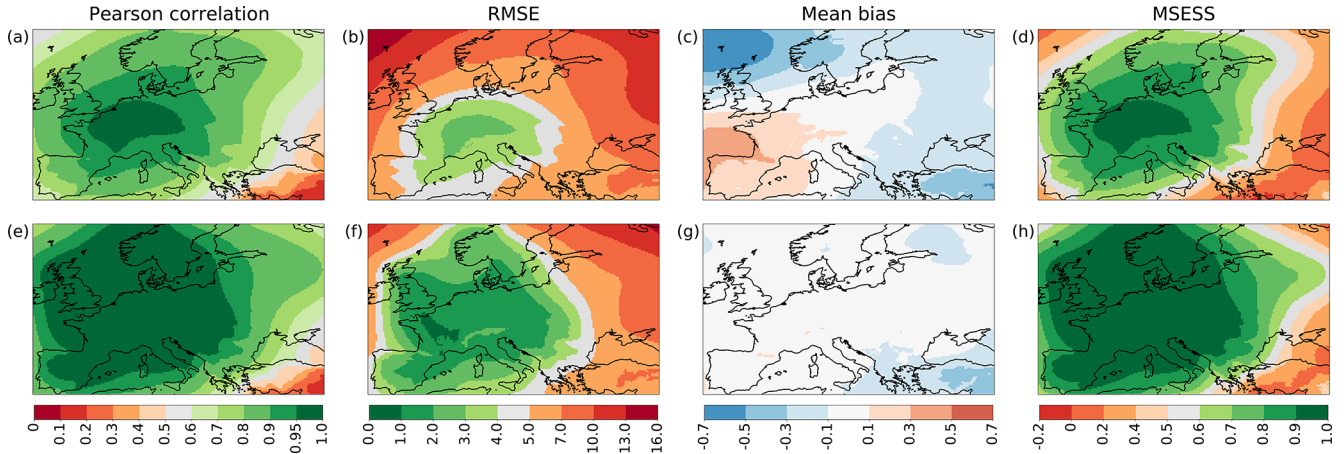
### 3.1.2 Leave-one-out validation in space

The reconstructions are further assessed for their ability to reproduce spatial patterns. To this end, temperature and SLP reconstructions are validated based on quantiles of spatial mean temperature and SLP anomalies respectively calculated from the E-OBS and ERA5 datasets for each winter day in the period 1950–2020 (NDJF). The spatial validation of the

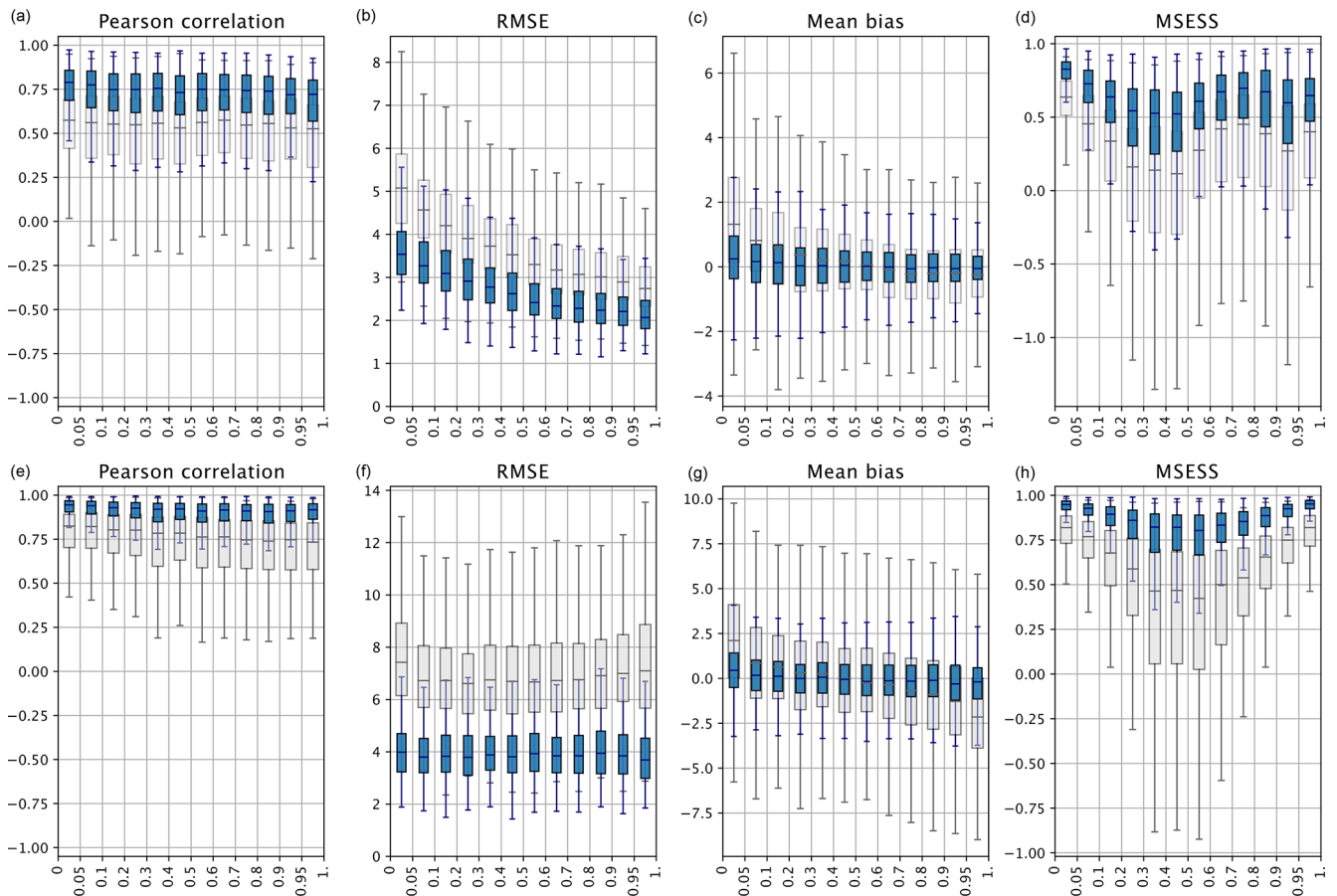
post-processed temperature reconstruction (Fig. 4a–d) shows a considerable improvement relative to the ARM in both the median and spread of values. Spatial correlations do not differ significantly across quantile groups, with median values around 0.75. The RMSE indicates that error magnitudes increase as values approach the lower percentiles, i.e. infrequent temperature extremes. The ARM temperature reconstruction tends to overestimate cold extremes, which have a larger spread of biased values with a median of about 1.3 °C, though this is improved by almost 1 °C in the EnKF; nevertheless, uncertainties remain large, as shown by the whiskers extending beyond 2 °C in both directions. Larger errors and biases with extreme negative values can be explained by the lack of suitable analogues for cold extremes given their lower occurrence. That said, the areas of extreme cold are well-represented in the EnKF, showing a high MSESS below 10% with the entire interquartile range (IQR) above 0.75. On the other hand, the spatial pattern of more common winter temperatures is harder to predict with accuracy, though the MSESS still indicates good predictive skill compared to the climatology.

Meanwhile, the spatial validation of the post-processed SLP reconstruction (Fig. 4e–h) shows an even greater improvement relative to the ARM compared to temperature. This is especially the case for error magnitudes: RMSE medians were improved on average by 3 hPa, yet the long upper whiskers of the box plots indicate that some grid cells have errors between 6 and 8 hPa. These values are likely due to the absence of observations in areas of the domain such as Turkey, the Dead Sea, and Russia. Correlations improve considerably with the Kalman fitting, as does the mean bias, indicating a more balanced spatial pattern. In the ARM, low SLP extremes tend to be overestimated and high SLP extremes are underestimated, again hinting to the fact that there are likely insufficient analogues from which to draw extremes; the EnKF managed to minimise this effect as well as to reduce the spread of biased values. MSESS values from the ARM show better skill for lower and upper quantiles and worsen approaching the median. This pattern is no surprise as days around the median are closer to the average climatology; hence, the denominator in Eq. (7) becomes smaller, leading to a lower MSESS. Once again, the EnKF manages to significantly improve the predictive skill of the reconstruction: the median of all quantile groups has an MSESS above 0.75.

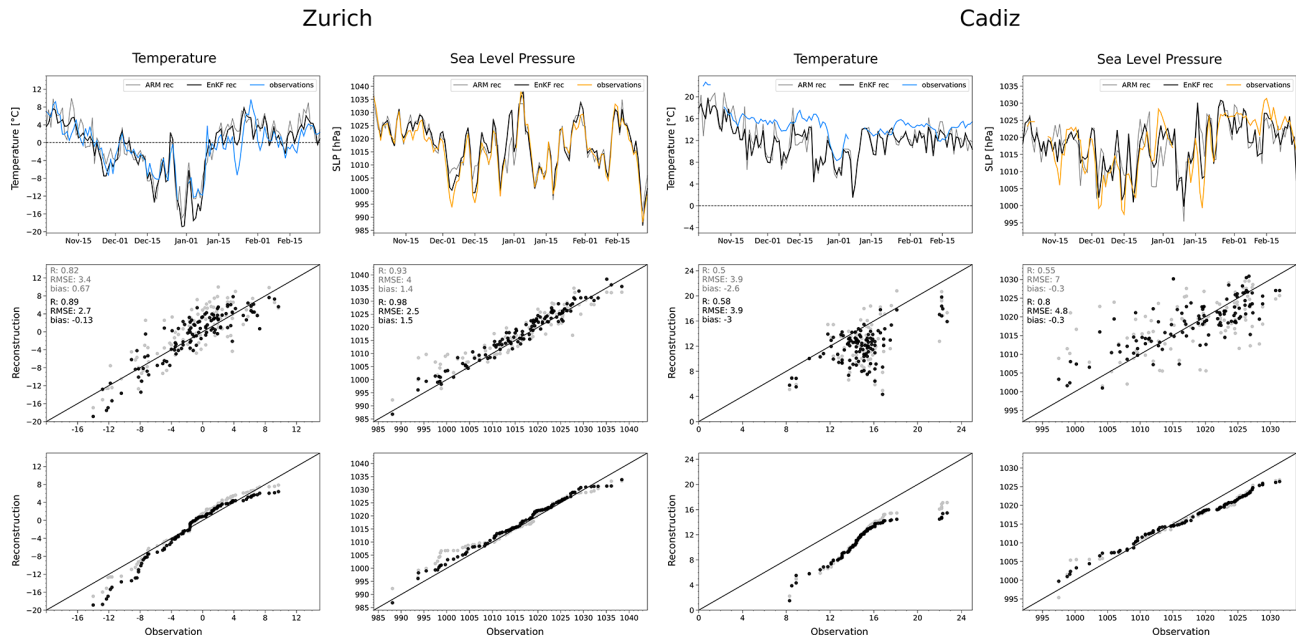
Spatial patterns of temperature and SLP over Europe are physically consistent and generally well-represented in the EnKF reconstructions, which display a substantial decrease in the spread of values across all metrics compared to the best analogue alone. Nevertheless, reconstructions of 18th century weather maps depend on the quality of the early instrumental meteorological observations that are used as input, which are typically more inconsistent and have larger measurement errors relative to modern-day observations. The next section explores this point.



**Figure 3.** Validation of sea level pressure over time for winter months NDJF in the period 1950–2020 for the ARM (a–d) and EnKF (e–h) reconstructions. The reconstructions are compared vertically by validation metrics: shown are the Pearson correlation coefficient (a, e), RMSE (hPa) (b, f), mean bias (hPa) (c, g), and MESS (d, h).



**Figure 4.** Validation over space by mean temperature quantiles (a–d) and SLP quantiles (e–h) for the period 1950–2020 (NDJF). Shown are the results for the ARM (gray) and the EnKF (blue) as well as their respective metrics: Pearson correlation coefficient, RMSE, mean bias, and MESS. The boxes represent the interquartile range (75th–25th percentiles), and the whiskers extend to a distance of  $1.5 \times \text{IQR}$  outside the boxes.



**Figure 5.** Validation of ARM and EnKF reconstructions of the winter 1788/89 against independent observations from Zurich (left) and Cádiz (right). The top panels show time series of temperature and pressure comparing the ARM (gray), the EnKF (black), and observations (coloured). The panels in the centre are plots of the reconstructions (ARM, gray dots; EnKF black dots) against the observations; the top left corner of the middle panels shows validation metrics for the reconstructions: shown are the Pearson correlation coefficient, RMSE, and bias. The bottom panels are Q–Q plots displaying the same.

### 3.1.3 Validation against independent observations

Reconstructed temperature and SLP were compared to two independent measurement series for the winter 1788/89 from the stations Zurich and Cádiz. These locations represent areas with high station coverage and poor to no station coverage, respectively. Unlike the leave-one-out validation, the validation against independent observations was performed on absolute values rather than anomalies. Figure 5 illustrates this comparison in the form of a time series (top), a scatter plot (centre), and a quantile–quantile plot (bottom). Here too, for the most part, we see that the EnKF improves the overall accuracy of the reconstruction compared to the observations. Compared to the Zurich temperature observations, the ARM alone manages to capture the temporal succession of temperature over the 4 winter months and exhibits a correlation of 0.82 with the independent observations; in the EnKF this linear relationship is slightly improved to 0.89. The RMSE also shows an improvement from 3.4 to 2.7 °C, as does the mean bias from 0.67 to −0.13 °C. The spread of values around the 1 : 1 line is reduced; however, the EnKF slightly worsens the underestimation of cold extremes, as can be seen in the first week of January, likely due to the high-altitude neighbouring stations such as Gotthard and Hohenpeissenberg registering colder temperatures on these days. Some of these disparities can be linked to differences between local measurements and the spatially coarser gridded data. The difficulty in accurately estimating cold extremes

also stems from the lack of available analogues in the 71-year analogue pool.

In data-sparse regions such as southern Spain, the EnKF shows no significant improvement on a weak best analogue. Comparisons with the Cádiz temperature series show a large spread of values and poor correlations for the ARM; the assimilation did not significantly improve the reconstruction in this area. The linear relationship is 0.5 for the ARM and 0.58 for the EnKF, which is around the expected value for this region from the validation over time; the RMSE remains unchanged at 3.9 °C, and the mean bias worsens from −2.6 to −3 °C. The reconstructed winter at Cádiz is substantially colder than the observations show. That said, doubts about the quality of the Cádiz temperature series cloud the validation: not only are these daily means based on observations taken only once a day at noon, but there are also several gaps in the series. Moreover, these measurements predate the reorganisation of the facilities and equipment of the observatory that began after 1789 (Barriendos et al., 2002). Thus, it could well be that the instrument itself was poorly exposed and the observations may not capture the full extent of the cooling.

SLP reconstructions show better results in both observation series. The ARM manages to capture the general development of SLP in Zurich during the winter 1788/89, exhibiting a strong correlation with the observations of 0.93. The EnKF improves this to 0.98, while the RMSE is lowered from 4 to 2.5 hPa, though the mean bias is marginally



increased from 1.4 to 1.5 hPa. Notably, the EnKF improves the accuracy of extreme values. This happens for Cádiz as well, though to a lesser degree. Here, the spread of values around the 1 : 1 line is larger, though the mean bias averages out to  $-0.3$  hPa and remains unchanged in the EnKF. The linear relationship between the reconstruction and observations shows significant improvement from an  $R$  of 0.55 to 0.8. The RMSE is reduced from 7 to 4.8 hPa. It is worth keeping in mind that the RMSE punishes larger deviations more heavily. Overall, there is a slight overestimation of low SLP values and an underestimation of high SLP.

The validation against independent observations has shown that the post-processed reconstructions manage to accurately reproduce the day-to-day variability of SLP during the winter 1788/89. The accuracy of the reconstructed temperature fields is good in locations with dense station coverage and poor in regions far away from any assimilated station data. The extent of the cold extremes is hard to validate as station temperatures are highly variable due to local influences and may not be captured by the gridded data.

Overall, the reconstructions show satisfying results: the validation for the EnKF temperature reconstruction shows good correlation and skill score, though only in regions with decent station coverage, whereas the results for SLP look even more promising with even better validation metrics. The results prove that the Pfister et al. (2020) suggestion to extend the method further back in time to a larger study area and possibly to other variables was largely successful. That said, certain aspects of the results stress the need for caution. Compared to their study, our post-processed temperature reconstruction shows significantly higher errors; this can be partly attributed to higher measurement uncertainties in our dataset and the uneven station coverage over a much larger domain with strongly varying topography. Furthermore, our results show that accurately reconstructing extreme values is challenging and relies on a long enough analogue pool from which to select suitable matches. Furthermore, Pfister et al. (2020) found better skill for summer reconstructions than for winter ones: it is very possible that reconstructing the summer 1789 would yield lower errors.

Any shortcomings revealed by the validation are mainly the expected ones described in Sect. 2.6: successfully capturing extremes depends on having a large enough analogue pool that contains rare analogues, and poor station coverage (and quality) leads to omitted information and thus to poor correlations, higher errors, and lower skill scores. In short, the limitations of the ARM are defined by the available data. To this list we may add the choice to reconstruct a relatively large spatial domain. Indeed, Ruostenoja (1988) and Van Den Dool (1994) have argued for the existence of a three-way relationship between the length of the meteorological archive, the size of the spatial domain (or degrees of freedom), and the resulting quality of the analogy: errors increase with a bigger domain yet decrease with a longer reference period archive.

The relative paucity of historical data points in the domain highlights the importance of further data rescue efforts, especially the digitisation and quality control of early instrumental observations. The demanding time resources used for gathering the needed observations for this study point to the pressing need for collaboration across different institutions to rescue, correct, and store daily measurements in common open-access repositories, which would facilitate and accelerate the pace of further studies on the subject.

## 3.2 The winter 1788/89

### 3.2.1 Literature analysis

Europe's winter of 1788/89 took place towards the later stages of the Little Ice Age, towards the end of a century that had seen many climatic anomalies, among which were numerous cold winters. Across the globe, in fact, the decade of the 1780s was marked by increased climate variability containing a number of outstanding temperature and rainfall extremes (Damodaran et al., 2018). These included protracted negative phases of the North Atlantic Oscillation (NAO), the effects of the Laki volcanic eruptions in 1783 (Brázdil et al., 2010), and particularly extreme episodes of El Niño 1782–1784 and La Niña 1785–1790, which had severe effects on the cycle of floods and droughts that can be linked to the famines in India and Japan during these years. As Kington (2010) remarked, the late 18th century climate had “entered a less stable mode, owing to a complex interactions of various factors”. Using instrumental and documentary data, Barriendos and Llasat (2003) identified a period of anomalous hydrometeorological activity in the western Mediterranean known as the Maldá anomaly; particularly during 1780 and 1795, this region saw an increase in the frequency of exceptionally dry and wet extremes, including some catastrophic snowfall. In accordance with this characterisation of the climate, Kington (2010) argues that the decades after 1780 were marked by a southward displacement of the warming waters of the North Atlantic Current and a corresponding shift of the prevailing westerlies to lower latitudes, giving way to more anticyclonic situations over northern Europe.

The years around the winter 1788/89 even show pronounced seasonal variability. After a wet autumn on the Iberian Peninsula and a rather mild winter 1787/8, spring 1788 was one of the driest on record for England and parts of France; summer 1788 was hot and dry, dotted with some heavy thunderstorms, including the devastating hailstorm of 13 July. The cold spell that would turn out to be one of the harshest winters on record started in late November and lasted until mid-January. During this “cruel winter” the Venice Lagoon froze over, as did other lakes and rivers across central Europe (Societas Meteorologica Palatina, 1791; Gisler, 1985; Camuffo, 1987); in London, a frost fair was held on the Thames for the first time since the severe winter of 1739/40 (Kington, 1980). By the end

of January, the worst of the intense cold was over; milder weather in February led to the thawing of frozen rivers and melting of large amounts of snow that had accumulated in several regions. By spring 1789, there had been numerous floods that devastated thousands of hectares of farmland (Barriendos et al., 2000; Fagan, 2001; Brázdil et al., 2003; Kington, 2010).

Observers at the time were aware of the outstanding severity of the winter 1788/89 (Cotte, 1789; Strnadt, 1793). Their weather observations allow us to see the progression of the cold spell from November to February (Fig. 6). By 20 November, most stations in Europe show temperatures plunging below zero and remaining bitterly cold until the second week of January, except for a brief interval of mild stormy weather over Christmas (Pfister et al., 2019). The cold outbreaks coincide with a breakdown of the zonal flow over Europe, interrupting the usual poleward pressure gradient and its associated warm moist air advection. Indeed, the CAP7 weather type classifications by Schwander et al. (2017) show that days during this season were mostly of type 6 (“north”), along with some of type 1 (“north-east, indifferent”) and type 4 (“east, indifferent”), pointing to the flow of cold continental air towards central Europe. Corroborating this picture, pressure series from southern Europe have shown repeated low-pressure situations in the Mediterranean (Barriendos et al., 2000). This is not surprising seeing as cold extremes in Europe are known to be associated with specific winter atmospheric anomalies that are linked to a negative phase of the North Atlantic Oscillation (NAO) (Cattiaux et al., 2010; Sillmann et al., 2011; Pfahl, 2014). An NAO pattern is associated with an enhanced northerly and easterly wind and persistent atmospheric blocking occurrences in northern Europe, which induce strong cold advection of polar air masses into lower latitudes (Takaya and Nakamura, 2005; Buehler et al., 2011). The reconstructions in this study confirm the spatial extent and daily evolution of this pattern.

Lastly, the winter 1788/89 has value not only climatologically but also historically for the social crises it aggravated and those it engendered. The extreme weather fluctuations in this period created instability in the marketplace, with harvests abruptly alternating between plentiful and scarce (Fagan, 2001). The prolonged droughts in 1788 led to crop failures, which soon led to high grain prices and food shortages, resulting in widespread hoarding, thieving, and much human suffering. The ensuing cold winter could not have come at a worse time. Major rivers froze over and heavy snowfall blocked roads, bringing most commerce to a halt and preventing the import of grain. The spring floods exacerbated the subsistence crisis even further. Bread riots broke out in Flanders, France, and elsewhere. In Barcelona, during an upheaval known as the “Rebomboris del Pa”, rioters looted and set fire to the municipal supplies and ovens (Barriendos et al., 2000). France had been dealing with a deteriorating social and political state of affairs for decades, and the adverse weather completely overwhelmed the capacity of the author-

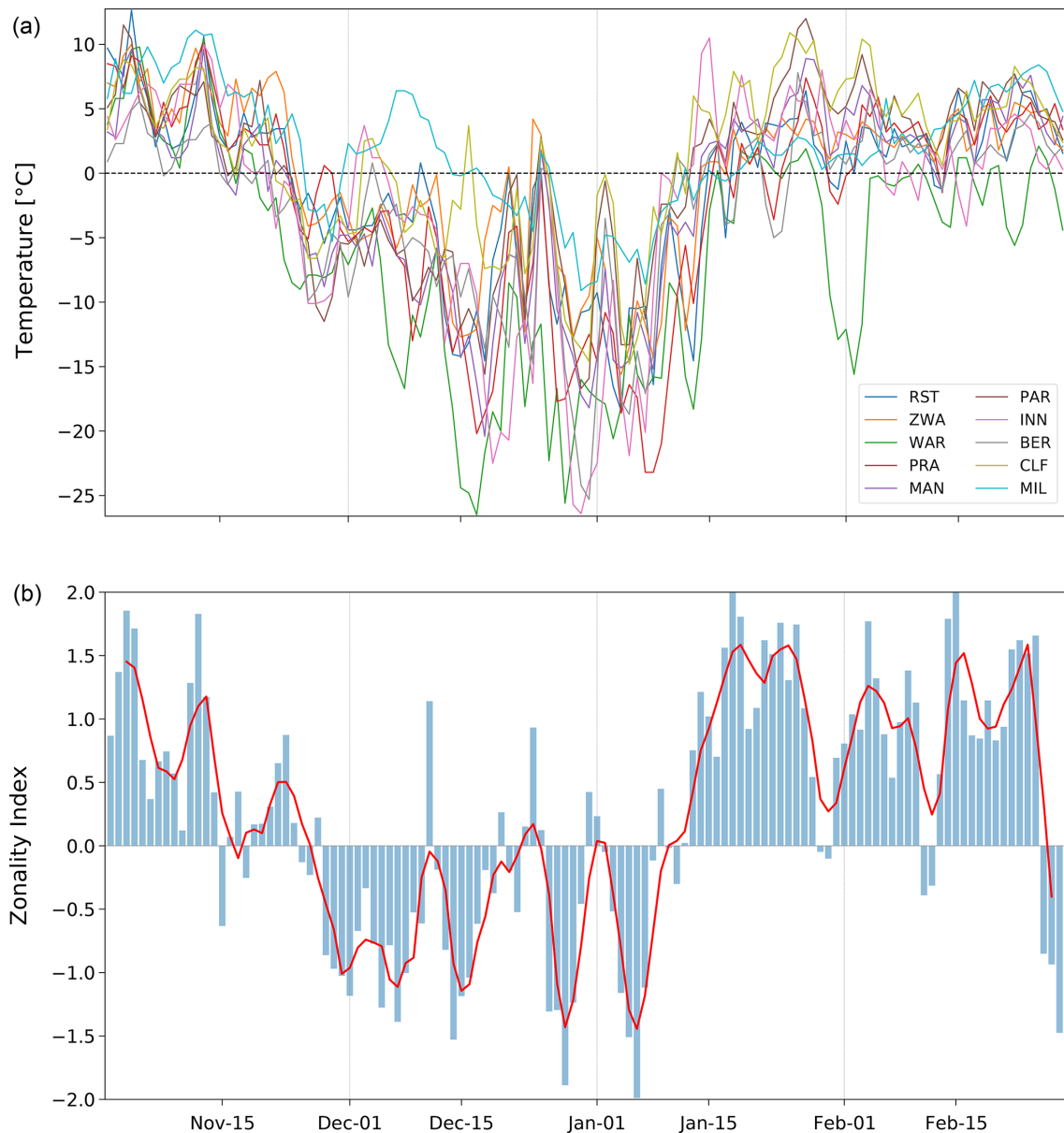
ities to contain the situation. The winter 1788/89 may have hastened the start of an inevitable outcome that culminated in the French Revolution, which broke out the following summer.

### 3.2.2 Reconstruction analysis

The encouraging results from the evaluation of our reconstructions hold promise for research on high-resolution historical climate reconstructions and the interpretation of past extreme weather and climate variability. More specifically, our reconstructions now allow a richer discussion about some aspects of the winter 1788/89 that were previously unexplored. For instance, the maps allow a more detailed spatial assessment of the synoptic patterns over Europe during this period, something which observations alone cannot provide. Figure 7 shows daily reconstructed EnKF maps of SLP from 21 December to 5 January. These correspond to weeks during the winter with marked swings in the zonality index, which brought about brief but pronounced warmings around Christmas and the New Year, each one followed by sudden, sharp coolings (see Fig. 6). The days 24–25 December display a pronounced dipole pattern with a strong low pressure centred over north-eastern Europe; one can easily imagine a storm moving in from the Atlantic blowing milder temperatures towards Europe. Soon after high pressure emerges in the west and by 28 December, it has settled over much of the north, advecting cold continental air from the north-east. By 1–2 January, the high pressure has weakened, giving way to lower SLP values to move across the land, only to be replaced by reinvigorated blocking situations in the following days. By 5 January, an intense high-pressure system bringing freezing air into central Europe extends over the continent, with its centre over the north ranging from England over Scandinavia to southern Finland, with values above 1045 hPa. According to the spatial validation, these SLP spatial patterns are reconstructed fairly accurately.

### 3.2.3 Comparison with more recent cold episodes

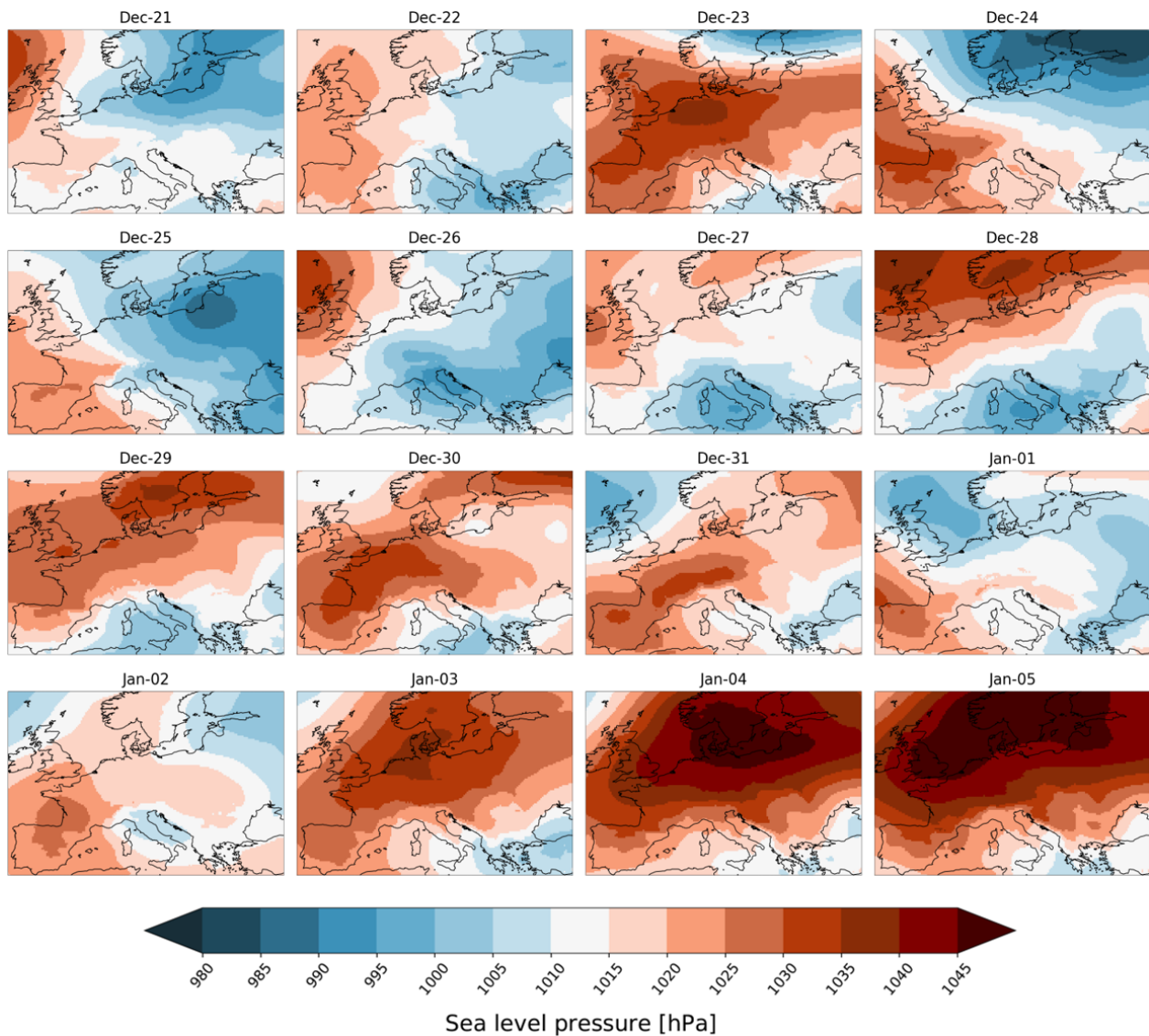
This winter can now be compared to other episodes of extreme cold to identify important differences or similarities in spatial extent, timing, frequency, and intensity. Applying the *eca\_cwfi* index (Schulzweida, 2019) to each winter illustrates how each extreme is quite unique in the number and spatial distribution of cold-spell days (Fig. 8). The winters 1788/89 and 1962/63 have long cold spells reaching into western Europe; 1984/85 was particularly severe in Finland and the east, whereas 1955/56 is more homogeneously distributed across the land. The winter 1962/63 decidedly has the most days under the 10th percentile of the reference period with more than 30 cold-spell days in much of central and western Europe and more than 50 in England and Belgium. However, it is also the winter with the lowest number of anomalous cold days in northern Europe.



**Figure 6.** Daily mean air temperature from November to February 1788/89 at Rostock, Zwanenburg, Warsaw, Prague, Mannheim, Paris, Innsbruck, Bern, Clermont–Ferrand, and Milan (a) as well as a zonality index (b), calculated as the standardised difference between the average SLP at Rome–Barcelona and Trondheim–Edinburgh; also shown is a 4 d moving average (red).

While the *eca\_cwfi* index gives an idea of the regions where the winters were more intense, it is based on a 4-monthly average and does not distinguish between several different spells within the winter, nor does it say much about the intensity of the extremes themselves. Looking at the 1st percentile cold spells averaged over central Europe makes for a more distinct characterisation of these winters. The approach of Hobday et al. (2016) to event detection as implemented in the R command *detect\_event()* identified three events for 1788/89 and 1962/63 and only one for 1955/56 and 1984/85: Table 2 summarises the relevant statis-

tics for each extreme cold spell. One aspect that immediately sets the winter 1788/89 apart from the others is its timing; it is the only winter with a cold spell as early as November. Most of the late 20th century winters, in fact, have cold spells occurring in January and sometimes lasting well into February. Out of the eight listed cold spells, the one from 27 December 1788 to 9 January 1789 has the highest mean and maximum intensity relative to the seasonality, with  $-13.4$  and  $-16.5$  °C, respectively. The days 13 December 1788 and 20 December 1788 have the second highest mean intensity at  $-11.53$  °C. It is not surprising that December 1788 ranks



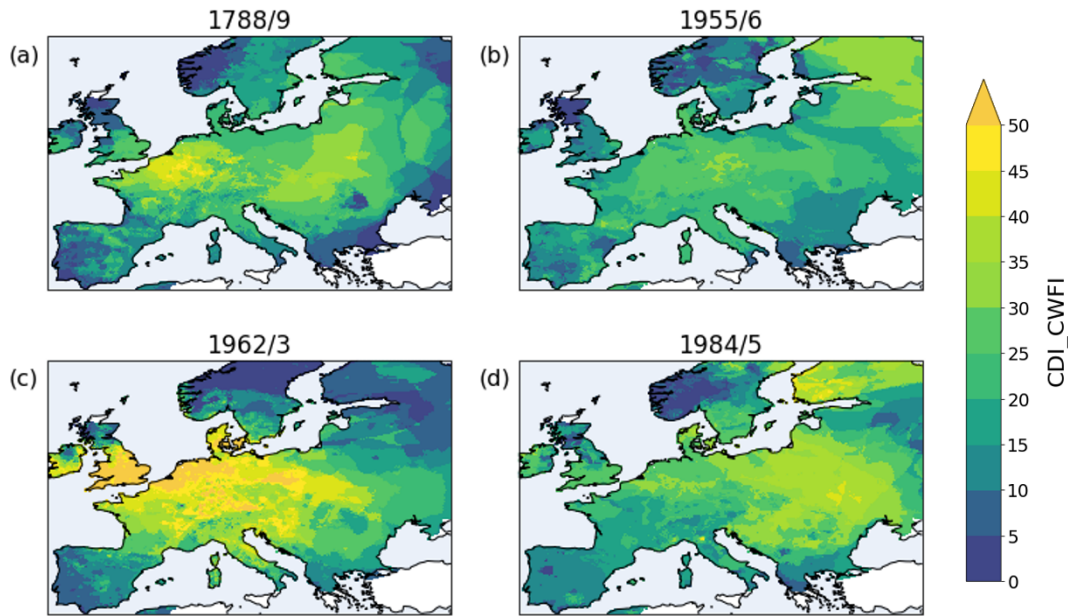
**Figure 7.** Daily mean sea level pressure fields over Europe (hPa) from the EnKF reconstruction covering the days from 21 December 1788 to 5 January 1789.

amongst the coldest in central Europe for the last 300 years. Interestingly, 1984/85 stands out for the longest cold spell with as many as 27 d from 31 January to 26 February, though the rates of onset and decline of the event are lower. The second December cold spell in 1788 has an onset rate as high as  $-2.8^{\circ}\text{C d}^{-1}$ , meaning it was an abrupt cold wave that reached its peak intensity extremely fast, as confirmed by the sudden persistent blocking seen in Fig. 7. From this we can conclude that the winter 1788/89 in central Europe was an early one, marked by three extreme cold spells that increased progressively in duration and intensity, with moderate to high rates of onset and decline.

The reconstructions nicely complement and, more importantly, add layers to the literature covered in Sect. 3.2.1. Even more could be learned comparatively about the win-

ter 1788/89 if these reconstructions were extended to other extreme winters containing severe cold snaps in the pre-industrial period, such as 1708/09, 1775/76, 1783/84, or 1819/20. Other seasons of outstanding (or even non-extreme) weather and climate could also be reconstructed and analysed: as previously hinted, these might in fact yield lower errors. The ARM method has been shown to be suitable for reconstructing SLP and temperature fields over Europe, although for temperature, a vast spatial domain and poor station coverage have been shown to be significant hurdles. For temperature it could be worth focusing on smaller regions, aiming additional efforts at the collection of corrected early instrumental observations, and ensuring extensive station coverage.





**Figure 8.** Cold-spell days index with reference to the 10th percentile of the daily mean temperatures for the period 1950–2020. The  $\text{cdi\_cwfi}$  is calculated over the winter months NDJF for the following extreme winters: 1788/89 (a), 1955/56 (b), 1962/63 (c), and 1984/85 (d). The first of these is from the post-processed temperature reconstruction, while information for the 20th century winters is taken from the E-OBS dataset.

**Table 2.** Detected cold spells for the winters 1788/89, 1955/56, 1962/63, and 1984/85 below the 1st percentile of mean daily temperature in the period 1950–2020, all averaged over central Europe ( $2\text{--}25^\circ\text{E}$ ,  $44\text{--}55^\circ\text{N}$ ). The duration of the cold spell in days as well as its start, peak, and end dates are shown; for each event the mean and maximum intensity ( $^\circ\text{C}$ ) are also shown relative to the seasonal climatology as well as the rate of onset and decline of the event ( $^\circ\text{C d}^{-1}$ ).

Duration	Date			Intensity ( $^\circ\text{C}$ )		Rate ( $^\circ\text{C d}^{-1}$ )	
	Start	Peak	End	Mean	Max	Onset	Decline
5	24 November 1788	26 November 1788	28 November 1788	−8.3	−10.1	−1.68	−1.67
8	13 December 1788	18 December 1788	20 December 1788	−11.53	−13.92	−1.28	−2.13
14	27 December 1788	29 December 1788	9 January 1789	−13.44	−16.51	−2.8	−0.74
27	31 January 1956	10 February 1956	26 February 1956	−10.71	−15.78	−0.61	−0.53
7	22 December 1962	23 December 1962	28 December 1962	−9.21	−11.04	−2.47	−0.78
8	12 January 1963	18 January 1963	19 January 1963	−10.66	−12.76	−0.7	−2.14
7	29 January 1963	30 January 1963	4 February 1963	−10.16	−11.23	−1.86	−0.57
13	5 January 1985	8 January 1985	17 January 1985	−10.96	−14.48	−1.33	−0.69

## 4 Conclusions

We set out to apply the analogue resampling method together with an ensemble Kalman filter technique to reconstruct daily fields of temperature and SLP over Europe for the extreme winter 1788/89. The CAP7 weather types were used as a basis for physical consistency in the analogue search, and the spatial information for the fields was taken from the E-OBS and ERA5 datasets for temperature and SLP, respectively. A vital part of the study involved the collection and quality control of numerous early instrumental series from a total of 53 stations. Our final aim was to be able, on the basis of both the applied method and the new reconstructions, to gain

more complete daily and spatial information about the extreme winter to expand on the existing literature.

For both variables the EnKF reconstructions represented a substantial improvement on the ARM's best analogue, especially with regard to the mean bias. The temperature validation showed robust results, especially considering the relatively high measurement errors. Station-dense regions such as western and central Europe, as well as the north-east, showed good correlations and high skill scores, while station-sparse areas showed poor results and higher errors – a known limitation of the method. The SLP reconstructions were also affected by this pattern but to a much lesser degree; in fact, the validation showed very high predictive skill

over most of the continent. With these results, we proved the suitability of the method used to reconstruct daily temperature and SLP fields. That said, measurement uncertainties, data quality and coverage, and the size of the analogue pool are all important factors that can undermine the analogue approach.

The high spatial and temporal resolution of such gridded datasets presents clear advantages for the study of extreme weather variability; they can provide realistic circulation patterns and help to locate both the regional extent and intensity of anomalies. Indeed, the analogue approach may prove useful for the reconstruction of other pre-industrial extremes, both cold and warm, thereby helping to not only better understand the events themselves but also to put more recent observed extremes in the context of a much longer period. Comparisons with other extreme winters allowed us to contextualise the reconstructed 1788/89 event and identify characteristics that distinguish it. The winter freeze started early and was marked by intense blocking systems that extended over large parts of northern Europe; the cold air outbreaks into central Europe were relatively abrupt and intense, despite being interrupted by brief spells of mild temperature.

To avoid monocausal and determinist explanations, this study has purposely avoided drawing a line between the extreme winter 1788/89 and the events that led to the French Revolution in the summer of 1789 – an undoubtedly significant turning point in European history. Nevertheless, the weather information uncovered in these reconstructions could be useful to historians to study social developments that might have depended on day-to-day weather or indeed on health and agriculture. More specifically, one could trace the daily impact of weather during this period on political and economic affairs, military operations, or any travels and expeditions. Daily historical reconstructions of the kind presented here have much to offer both climatological and historical research.

**Code and data availability.** The data and relevant code related to this article are available as a Supplement to this paper. The instrumental series are stored in SEF, the code as R scripts, and the reconstructed maps in NetCDF.

**Supplement.** The supplement related to this article is available online at: <https://doi.org/10.5194/cp-18-2545-2022-supplement>.

**Author contributions.** DP gathered the data, performed the reconstructions, created the figures, and drafted the paper. YB provided guidance processing of early instrumental observations. MB, SJ, and RP contributed a number of digitised series, and, together with CR, they provided critical feedback to improve the final version of the paper. NI helped develop the scripts for the reconstruction. SB helped shape the research and supervised the project.

**Competing interests.** The contact author has declared that none of the authors has any competing interests.

**Disclaimer.** Publisher's note: Copernicus Publications remains neutral with regard to jurisdictional claims in published maps and institutional affiliations.

**Acknowledgements.** We acknowledge the help of MeteoSwiss, the Met Office National Meteorological Archive, the Universitätsbibliothek Rostock, the Deutscher Wetterdienst, and the Polish Institute of Meteorology and Water Management in providing some of the data. We are grateful to Rob Allan, Ed Hawkins, Jari Holopainen, Heli Huhtamaa, and Andrea Kiss for their help in providing some of the digitised historical observations, scanned sources, and metadata. Assistance provided by Lucas Pfister for his design of the original R scripts is much appreciated. We would also like to acknowledge the ERA5 reanalysis and E-OBS datasets, as well as the data providers in the ECA&D project.

**Financial support.** This research has been supported by the Schweizerischer Nationalfonds zur Förderung der Wissenschaftlichen Forschung (project WeaR, 188701), the H2020 European Research Council (PALAEO-RA (grant no. 787574)), and the Narodowe Centrum Nauki (grant no. DEC-2020/37/B/ST10/00710 to Rajmund Przybylak), as well as the project “Long Meteorological Series” of the Federal Office of Meteorology and Climatology MeteoSwiss in the framework of GCOS Switzerland. The work of Mariano Barriendos was supported by the Catalan Meteorological Office.

**Review statement.** This paper was edited by Mary Gagen and reviewed by Philip Brohan and one anonymous referee.

## References

- Allan, R., Endfield, G., Damodaran, V., Adamson, G., Hannaford, M., Carroll, F., Macdonald, N., Groom, N., Jones, J., Williamson, F., Hendy, E., Holper, P., Arroyo-Mora, J. P., Hughes, L., Bickers, R., and Bliuc, A.-M.: Toward integrated historical climate research: the example of Atmospheric Circulation Reconstructions over the Earth, *WIREs Clim. Change*, 7, 164–174, <https://doi.org/10.1002/wcc.379>, 2016.
- Auer, I., Böhm, R., Jurkovic, A., Lipa, W., Orlik, A., Potzmann, R., Schoner, W., Ungersböck, M., Matulla, C., Briffa, K., Jones, P. D., Efthymiadis, D., Brunetti, M., Nanni, T., Maugeri, M., Mercalli, L., Mestre, O., Moisselin, J.-M., Begert, M., Müller-Westermeier, G., Kveton, V., Bochnicek, O., Statsny, P., Lapin, M., Szalai, S., Szentimrey, T., Cegnar, T., Dolinar, M., Gajic-Capka, M., Zaninovic, K., Majstorovic, Z., and Nieplova, E.: HISTALP — Historical instrumental climatological surface time series of the Greater Alpine Region, *Int. J. Climatol.*, 27, 17–46, <https://doi.org/10.1002/joc.1377>, 2007.
- Barriendos, M. and Llasat, M. C.: The Case of the ‘Maldá’ Anomaly in the Western Mediterranean basin (AD 1760–1800):

- An Example of a Strong Climatic Variability, *Climatic Change*, 61, 191–216, 2003.
- Barriendos, M., Peña, J. C., Martín-Vide, J., Jönsson, P., and Demarée, G.: The Winter of 1788–1789 in the Iberian Peninsula from Meteorological Reading Observations and Proxy-Data Records, in: Giuseppe Toaldo e il Suo Tempo – Nel bicentenario della morte, Atti del Convegno, Padova, 10–13 novembre 1997, edited by: Pigatto, L., Cittadella, Bertinello Artigrafiche, 921–941, 2000.
- Barriendos, M., Martín-Vide, J., Peña, J. C., and Rodríguez, R.: Daily Meteorological Observations in Cádiz – San Fernando. Analysis of the Documentary Sources and the Instrumental Data Content (1786–1996), *Climatic Change*, 53, 151–170, 2002.
- Bhend, J., Franke, J., Folini, D., Wild, M., and Brönnimann, S.: An ensemble-based approach to climate reconstructions, *Clim. Past*, 8, 963–976, <https://doi.org/10.5194/cp-8-963-2012>, 2012.
- Bontron, G. and Obled, C.: L'adaptation probabiliste des prévisions météorologiques pour la prévision hydrologique, *Houille Blanche*, 1, 23–28, <https://doi.org/10.1051/hhb:200501002>, 2005.
- Brázdil, R., Valášek, H., and Macková, J.: Climate in the Czech Lands during the 1780s in Light of the Daily Weather Records of Parson Karel Bernard Hein of Hodonice (Southwestern Moravia): Comparison of Documentary and Instrumental Data, *Climatic Change*, 60, 297327, <https://doi.org/10.1023/A:1026045902062>, 2003.
- Brázdil, R., Demarée, G. R., Deutsch, M., Garnier, E., Kiss, A., Luterbacher, J., Macdonald, N., Rohr, C., Dobrovolný, P., Kolář, P., and Chromá, K.: European floods during the winter 1783/1784: scenarios of an extreme event during the “Little Ice Age”, *Theor. Appl. Climatol.*, 100, 163–189, <https://doi.org/10.1007/s00704-009-0170-5>, 2010.
- Brönnimann, S., Allan, R. Ashcroft, L., Baer, S., Barriendos, M., Brázdil, R., Brugnara, Y., Brunet, M., Brunetti, M., Chimani, B., Cornes, R., Domínguez-Castro, F., Filipiak, J., Founda, D., García Herrera, R., Gergis, J., Grab, S., Hannak, L., Huhtamaa, H., Jacobsen, K. S., Jones, P., Jourdain, S., Kiss, A., Lin, K. E., Lorrey, A., Lundstad, E., Luterbacher, J., Mauelshagen, F., Maugeri, M., Maughan, N., Neukom, R., Moberg, A., Nicholson, S., Noone, S., Nordli, Ø., Ólafsdóttir, K. B., Pearce, P. R., Pfister, L., Pribyl, K., Przybylak, R., Pudmenzky, C., Rasol, D., Reichenbach, D., Řezníčková, L., Rodrigo, F. S., Rohr, C., Skrynyk, O., Slonosky, V., Thorne, P. Valente, M. A., Vaquero, J. M., Westcott, N. E., Williamson, F., and Wyszynski, P.: Unlocking Pre-1850 Instrumental Meteorological Records: A Global Inventory, *B. Am. Meteorol. Soc.*, 100, ES389–ES413, <https://doi.org/10.1175/BAMS-D-19-0040.1>, 2019.
- Brugnara, Y., Auchmann, R., Brönnimann, S., Allan, R. J., Auer, I., Barriendos, M., Bergström, H., Bhend, J., Brázdil, R., Compo, G. P., Cornes, R. C., Dominguez-Castro, F., van Engelen, A. F. V., Filipiak, J., Holopainen, J., Jourdain, S., Kunz, M., Luterbacher, J., Maugeri, M., Mercalli, L., Moberg, A., Mock, C. J., Pichard, G., Řezníčková, L., van der Schrier, G., Slonosky, V., Ustrnul, Z., Valente, M. A., Wypych, A., and Yin, X.: A collection of sub-daily pressure and temperature observations for the early instrumental period with a focus on the “year without a summer” 1816, *Clim. Past*, 11, 1027–1047, <https://doi.org/10.5194/cp-11-1027-2015>, 2015.
- Brugnara, Y., Pfister, L., Villiger, L., Rohr, C., Isotta, F. A., and Brönnimann, S.: Early instrumental meteorological observations in Switzerland: 1708–1873, *Earth Syst. Sci. Data*, 12, 1179–1190, <https://doi.org/10.5194/essd-12-1179-2020>, 2020.
- Brunet, M., Brugnara, Y., Noone, S., Stephens, A., Valente, M. A., Ventura, C., Jones, P., Gilabert, A., Brönnimann, S., Luterbacher, J., Allan, R., Brohan, P., Compo G. P.: Best Practice Guidelines for Climate Data and Metadata Formatting, Quality Control and Submission, Copernicus Climate Change Services, <https://doi.org/10.24381/kctk-8j22>, 2020.
- Brunetti, M., Maugeri, M., Monti, F., and Nanni, T.: Temperature and precipitation variability in Italy in the last two centuries from homogenised instrumental time series, *Int. J. Climatol.*, 26, 345–381, <https://doi.org/10.1002/joc.1251>, 2006.
- Buehler, T., Raible, C. C., and Stocker, T. F.: The relationship of winter season North Atlantic blocking frequencies to extreme cold or dry spells in the ERA-40, *Tellus*, 63, 212–222, <https://doi.org/10.1111/j.1600-0870.2010.00492.x>, 2011.
- Camuffo, D.: Freezing of the Venetian lagoon since the 9th century A. D. in comparison to the climate of Western Europe and England, *Climatic Change*, 10, 43–66, <https://doi.org/10.1007/BF00140556>, 1987.
- Camuffo, D. and Jones, P. (Eds.): Improved Understanding of past Climatic Variability from Early Daily European Instrumental Sources, Springer, Netherlands, <https://doi.org/10.1023/A:1014902904197>, 2002.
- Cattiaux, J., Vautard, R., Cassou, C., Yiou, P., Masson-Delmotte, V., and Codron, F.: Winter 2010 in Europe: A cold extreme in a warming climate, *Geophys. Res. Lett.*, 37, L20704, <https://doi.org/10.1029/2010GL044613>, 2010.
- Chai, T. and Draxler, R. R.: Root mean square error (RMSE) or mean absolute error (MAE)? – Arguments against avoiding RMSE in the literature, *Geosci. Model Dev.*, 7, 1247–1250, <https://doi.org/10.5194/gmd-7-1247-2014>, 2014.
- Cornes, R., van der Schrier, G., van den Besselaar, E. JM., and Jones, P. D.: An Ensemble Version of the E-OBS Temperature and Precipitation Datasets, *J. Geophys. Res.-Atmos.*, 123, 9391–9409, <https://doi.org/10.1029/2017JD028200>, 2018.
- Cornes, R. C.: Early Meteorological Data from London and Paris: Extending the North Atlantic Oscillation Series, PhD thesis, University of East Anglia, Norwich, UK, 233 pp., 2010.
- Cotte, L.: Mémoire sur l'hiver rigoureux de 1788–1789 etc., *J. Phys-Paris*, 24, 337–350, 1789.
- Craddock, J. M.: Methods of comparing annual rainfall records for climatic purposes, *Weather*, 34, 332–346, <https://doi.org/10.1002/j.1477-8696.1979.tb03465.x>, 1979.
- Cram, T. A., Compo, G. P., Yin, X., Allan R. J., McColl, C., Vose, R. S., Whitaker, J. S., Matsui, N., Ashcroft, L., Auchmann, R., Bessemoulin, P., Brandsma, T., Brohan, P., Brunet, M., Comeaux, J., Crouthamel, R., Gleason Jr, B. E., Groisman, P. Y., Hersbach, H., Jones, P. D., Jónsson, T., Jourdain, S., Kelly, G., Knapp, K. R., Kruger, A., Kubota, H., Lentini, G., Lorrey, A., Lott, N., Lubker, S. J., Luterbacher, J., Marshall, G. J., Maugeri, M., Mock, C. J., Mok, H. Y., Nordli, Ø., Rodwell, M. J., Ross, T. F., Schuster, D., Srnec, L., Valente, M. A., Vizi, Z., Wang, X. L., Westcott, N., Woollen, J. S., and Worley, S. J.: The International Surface Pressure Databank version 2, *Geosci. Data J.*, 2, 31–46, <https://doi.org/10.1002/gdj3.25>, 2015.

- Csernus-Molnár, I., Kiss, A., and Pócsik, E.: 18th-Century Daily Measurements and Weather Observations in the Se-Carpathian Basin: A Preliminary Analysis of the Timisoara Series (1780–1803), *J. Env. Geo.*, 7, 1–9, <https://doi.org/10.2478/jengeo-2014-0001>, 2014.
- Damodaran, V., Allan, R., Ogilvie, A. E. J., Demarée, G. R., Gergis, J., Mikami, T., Mikhail, A., Nicholson, S. E., Norrgård, S., and Hamilton, J.: The 1780s: Global Climate Anomalies, Floods, Droughts, and Famines, in: *The Palgrave Handbook of Climate History*, edited by: White, S., Pfister, C., and Mauelshagen, F., Palgrave Macmillan, UK, <https://doi.org/10.1057/978-1-137-43020-5>, 517–550, 2018.
- Dawson, A. G., Kirkbride, M. P., and Cole, H.: Atmospheric effects in Scotland of the AD 1783–84 Laki eruption in Iceland, *Holocene*, 31, 830–843, <https://doi.org/10.1177/0959683620988052>, 2021.
- Dizerens, C., Lenggenhager, S., Schwander, M., Buck, A., and Foffa, S.: The 1956 Cold Wave in Western Europe, in: *Historical Weather Extremes in Reanalyses*, edited by: Brönnimann, S., *Geographica Bernensia*, G92, 101–111, <https://doi.org/10.4480/GB2017.G92.09>, 2017.
- Fagan, B.: *The Little Ice Age – how climate made history 1300–1850*, Basic Books, New York, ISBN-10 0465022723, 2001.
- Fessehaye, M., Brugnara, Y., Savage, M. J., Brönnimann, S.: A note on air temperature and precipitation variability and extremes over Asmara: 1914–2015, *Int. J. Climatol.*, 39, 5215–5227, <https://doi.org/10.1002/joc.6134>, 2019.
- Flückiger, S., Brönnimann, S., Holzkämper, A., Fuhrer, J., Krämer, D., Pfister, C., and Rohr, C.: Simulating crop yield losses in Switzerland for historical and present Tambora climate scenarios, *Environ. Res. Lett.*, 12, L074026, <https://doi.org/10.1088/1748-9326/aa7246>, 2017.
- Franke, J., Brönnimann, S., Bhend, J., and Brugnara, Y.: A monthly global paleo-reanalysis of the atmosphere from 1600 to 2005 for studying past climatic variations, *Scientific Data*, 4, 170076, <https://doi.org/10.1038/sdata.2017.76>, 2017.
- Gisler, O.: Das Wetter zu Ende des 18. Jahrhunderts, *Geogr. Helv.*, 40, 205–222, <https://doi.org/10.5194/gh-40-205-1985>, 1985.
- Hersbach, H., Bell, B., Berrisford, P., Hirahara, S., Horányi, A., Muñoz-Sabater, J., Nicolas, J., Peubey, C., Radu, R., Schepers, D., Simmons, A., Soci, C., Abdalla, S., Abellan, X., Balsamo, G., Bechtold, P., Biavati, G., Bidlot, J., Bonavita, M., De Chiara, G., Dahlgren, P., Dee, D., Diamantakis, M., Dragani, R., Flemming, J., Forbes, R., Fuentes, M., Geer, A., Haimberger, L., Healy, S., Hogan, R. J., Hólm, E., Janisková, M., Keeley, S., Laloyaux, P., Lopez, P., Lupu, C., Radnoti, G., de Rosnay, P., Rozum, I., Vamborg, F., Villaume, S., and Thépaut, J.-N.: The ERA5 global reanalysis, *Q. J. Roy. Meteor. Soc.*, 146, 1999–2049, <https://doi.org/10.1002/qj.3803>, 2020.
- Hobday, A., Alexander, L. V., Perkins, S. E., Smale, D., Straub, S. C., Oliver, E. C. J., Benthuyzen, J., Burrows, M. T., Donat, M. G., Feng, M., Holbrook, N. J., Moore, P., Scannell, H. A., Gupta, A. S., and Wernberg, T.: A hierarchical approach to defining marine heatwaves, *Prog. Oceanogr.*, 141, 227–238, <https://doi.org/10.1016/j.pocean.2015.12.014>, 2016.
- Hofstra, N., Haylock, M., New, M., and Jones, P. D.: Testing E-OBS European high-resolution gridded data set of daily precipitation and surface temperature, *J. Geophys. Res.*, 114, D21101, <https://doi.org/10.1029/2009JD011799>, 2009.
- Horton, P., Jaboyedoff, M., Metzger, R., Obled, C., and Marty, R.: Spatial relationship between the atmospheric circulation and the precipitation measured in the western Swiss Alps by means of the analogue method, *Nat. Hazards Earth Syst. Sci.*, 12, 777–784, <https://doi.org/10.5194/nhess-12-777-2012>, 2012.
- Houtekamer, P. L. and Mitchell, H. L.: A Sequential Ensemble Kalman Filter for Atmospheric Data Assimilation, *Mon. Weather Rev.*, 129, 123–137, [https://doi.org/10.1175/1520-0493\(2001\)129<0123:ASEKFF>2.0.CO;2](https://doi.org/10.1175/1520-0493(2001)129<0123:ASEKFF>2.0.CO;2), 2001.
- Jolliffe, I. T. and Stephenson, D. B. (Eds.): *Forecast verification: A practitioner's guide in atmospheric science*, 2nd edn., Wiley-Blackwell, Chichester, UK, <https://doi.org/10.1002/9781119960003>, 2012.
- Kalman, R. E.: A New Approach to Linear Filtering and Prediction Problems, *J. Basic Eng.-T. ASME*, 82, 35–45, <https://doi.org/10.1115/1.3662552>, 1960.
- Kington, J. A.: Daily weather mapping from 1781: A detailed synoptic examination of weather and climate during the decade leading up to the French revolution, *Climatic Change*, 3, 7–36, <https://doi.org/10.1007/BF02423166>, 1980.
- Kington, J. A.: *The Weather of the 1780s Over Europe*, Cambridge University Press, Cambridge, <https://doi.org/10.1017/CBO9780511735721>, 1988.
- Kington, J. A.: *Climate and Weather*, HarperCollins Publishers, London, UK, ISBN 10 0007185014, 2010.
- Kruizinga, S. and Murphy, A. H.: Use of an Analogue Procedure to Formulate Objective Probabilistic Temperature Forecasts in The Netherlands, *Mon. Weather Rev.*, 111, 2244–2254, [https://doi.org/10.1175/1520-0493\(1983\)111<2244:UOAAPT>2.0.CO;2](https://doi.org/10.1175/1520-0493(1983)111<2244:UOAAPT>2.0.CO;2), 1983.
- Lorenz, E. N.: Atmospheric Predictability as Revealed by Naturally Occurring Analogues, *J. Atmos. Sci.*, 26, 636–646, [https://doi.org/10.1175/1520-0469\(1969\)26<636:APARBN>2.0.CO;2](https://doi.org/10.1175/1520-0469(1969)26<636:APARBN>2.0.CO;2), 1969.
- Mazón, J., Barriendos, M., Prohom, M., Rodríguez, R., Blanch, A., and Ripoll, R.: Reconstruction of long temperature series of Barcelona, 11th Annual Meeting European Meteorological Society, Berlin, Germany, 12–16/09, 2011, EMS Annual Meeting Abstracts, 8, EMS2011-193-2, ISSN 1812-7053, 2011.
- Murphy, A. H.: Skills scores based on the mean square error and their relationships to the correlation coefficient, *Mon. Weather Rev.*, 116, 2417–2424, [https://doi.org/10.1175/1520-0493\(1988\)116<2417:SSBOTM>2.0.CO;2](https://doi.org/10.1175/1520-0493(1988)116<2417:SSBOTM>2.0.CO;2), 1988.
- Pappert, D., Brugnara, Y., Jourdain, S., Pospieszynska, A., Przybylak, R., Rohr, C., and Brönnimann, S.: Unlocking weather observations from the Societas Meteorologica Palatina (1781–1792), *Clim. Past*, 17, 2361–2379, <https://doi.org/10.5194/cp-17-2361-2021>, 2021.
- Parker, D. E., Legg, T. P., and Folland, C. K.: A new daily Central England Temperature Series, 1772–1991, *Int. J. Climatol.*, 12, 317–342, 1992.
- Pfahl, S.: Characterising the relationship between weather extremes in Europe and synoptic circulation features, *Nat. Hazards Earth Syst. Sci.*, 14, 1461–1475, <https://doi.org/10.5194/nhess-14-1461-2014>, 2014.
- Pfister, L., Hupfer, F., Brugnara, Y., Munz, L., Villiger, L., Meyer, L., Schwander, M., Isotta, F. A., Rohr, C., and Brönnimann, S.: Early instrumental meteorological measurements in Switzerland,



- Clim. Past, 15, 1345–1361, <https://doi.org/10.5194/cp-15-1345-2019>, 2019.
- Pfister, L., Brönnimann, S., Schwander, M., Isotta, F. A., Horton, P., and Rohr, C.: Statistical reconstruction of daily precipitation and temperature fields in Switzerland back to 1864, *Clim. Past*, 16, 663–678, <https://doi.org/10.5194/cp-16-663-2020>, 2020.
- Rössler, O. K. and Brönnimann, S.: The effect of the Tambora eruption on Swiss flood generation 1816/1817, *Sci. Total Environ.*, 627, 1218–1227, <https://doi.org/10.1016/j.scitotenv.2018.01.254>, 2018.
- Ruosteenoja, K.: Factors affecting the occurrence and lifetime of 500 mb height analogues: a study based on a large amount of data, *Mon. Weather Rev.*, 116, 368–376, [https://doi.org/10.1175/1520-0493\(1988\)116<0368:FATOAL>2.0.CO;2](https://doi.org/10.1175/1520-0493(1988)116<0368:FATOAL>2.0.CO;2), 1988.
- Schlegel, R. W. and Smit, A. J.: heatwaveR: A central algorithm for the detection of heatwaves and cold-spells, *Journal of Open Source Software*, 3, 821, <https://doi.org/10.21105/joss.00821>, 2018.
- Schulzweida, U.: CDO User Guide, Version 1.9.8, Zenodo, <https://doi.org/10.5281/zenodo.3539275>, 2019.
- Schwander, M., Brönnimann, S., Delaygue, G., Rohrer, M., Auchmann, R., and Brugnara, Y.: Reconstruction of Central European daily weather types back to 1763, *Int. J. Climatol.*, 37, 30–44, <https://doi.org/10.1002/joc.4974>, 2017.
- Sillmann, J., Croci-Maspoli, M., Kallache, M., and Katz, R. W.: Extreme cold winter temperatures in Europe under the influence of North Atlantic atmospheric blocking, *J. Climate*, 24, 5899–5913, <https://doi.org/10.1175/2011JCLI4075.1>, 2011.
- Slivinski, L. C., Compo, G. P., Whitaker, J. S., Sardeshmukh, P. D., Giese, B. S., McColl, C., Allan, R., Yin, X., Vose, R., Titchner, H., Kennedy, J., Spencer, L. J., Ashcroft, L., Brönnimann, S., Brunet, M., Camuffo, D., Cornes, R., Cram, T. A., Crouthamel, R., Domínguez-Castro, F., Freeman, J. E., Gergis, J., Hawkins, E., Jones, P. D., Jourdain, S., Kaplan, A., Kubota, H., Le Blancq, F., Lee, T., Lorrey, A., Luterbacher, J., Maugeri, M., Mock, C. J., Moore, G. K., Przybylak, R., Pudmenzky, C., Reason, C., Slonosky, V. C., Smith, C., Tinz, B., Trewin, B., Valente, M. A., Wang, X. L., Wilkinson, C., Wood, K., and Wyszyński, P.: Towards a more reliable historical reanalysis: Improvements for version 3 of the Twentieth Century Reanalysis system, *Q. J. Roy. Meteor. Soc.*, 145, 2876–2908, <https://doi.org/10.1002/qj.3598>, 2019.
- Societas Meteorologica Palatina: Ephemerides Societatis Meteorologicae Palatinae: Observationes anni 1789, edited by: Hemmer, J. J., Societas Meteorologica Palatina, Mannheim, 1791.
- Strnadt, A.: Beiträge zu der Geschichte des Winters im Christmonate 1788, in: *Sammlung Physikalischer Aufsätze, besonders die böhmische Naturgeschichte betreffend*, edited by: Maner, J., Waltherische Hof-Buchhandlung, Dresden, 39–88, 1793.
- Takaya, K. and Nakamura, H.: Mechanisms of Intraseasonal Amplification of the Cold Siberian High, *J. Atmos. Sci.*, 62, 4423–4440, <https://doi.org/10.1175/JAS3629.1>, 2005.
- Twardosz, R. and Kossowska-Cezak, U.: Exceptionally cold and mild winters in Europe (1951–2020), *Theor. Appl. Climatol.*, 125, 399–411, <https://doi.org/10.1007/s00704-015-1524-9>, 2016.
- Twardosz, R., Kossowska-Cezak, U., and Pelech, S.: Extremely Cold Winter Months in Europe (1951–2010), *Acta Geophys.*, 64, 2609–2629, <https://doi.org/10.1515/acgeo-2016-0083>, 2016.
- Valler, V., Franke, J., Brugnara, B., and Brönnimann, S.: An updated global atmospheric paleo-reanalysis covering the last 400 years, *Geosci. Data J.*, 9, 89–107, <https://doi.org/10.1002/gdj3.121>, 2021.
- Van Den Dool, H.: Searching for analogues, how long must we wait?, *Tellus*, 46, 314–324, <https://doi.org/10.3402/tellusa.v46i3.15481>, 1994.
- Venema, V. K. C., Mestre, O., Aguilar, E., Auer, I., Guijarro, J. A., Domonkos, P., Vertacnik, G., Szentimrey, T., Stepanek, P., Zahradnick, P., Viarre, J., Müller-Westermeier, G., Lakatos, M., Williams, C. N., Menne, M. J., Lindau, R., Rasol, D., Rustemeier, E., Kolokythas, K., Marinova, T., Andresen, L., Acquafatta, F., Fratianni, S., Cheval, S., Klancar, M., Brunetti, M., Gruber, C., Prohom Duran, M., Likso, T., Esteban, P., and Brandsma, T.: Benchmarking homogenization algorithms for monthly data, *Clim. Past*, 8, 89–115, <https://doi.org/10.5194/cp-8-89-2012>, 2012.
- Vinther, B. M., Andersen, K. K., Jones, P. D., Briffa, K. R., and Cappel, J.: Extending Greenland temperature records into the late eighteenth century, *J. Geophys. Res.*, 111, D11105, <https://doi.org/10.1029/2005JD006810>, 2006.
- Wartenburger, R., Brönnimann, S., and Stickler, A.: Observation errors in early historical upper-air observations, *J. Geophys. Res.*, 118, 12012–12028, <https://doi.org/10.1002/2013JD020156>, 2013.
- Wilks, D. S.: *Statistical methods in the atmospheric sciences*, 4th edn., Vol. 91 of International geophysics series, Elsevier, Amsterdam, ISBN: 9780123850225, 2019.
- World Meteorological Organization (WMO): *Guide to Meteorological Instruments and Methods of Observation*, 8, 7 edn., World Meteorological Organization, Geneva, 2008.
- Zorita, E., Hughes, J. P., Lettemaier, D. P., and von Storch, H.: Stochastic Characterization of Regional Circulation Patterns for Climate Model Diagnosis and Estimation of Local Precipitation, *J. Climate*, 8, 1023–1042, [https://doi.org/10.1175/1520-0442\(1995\)008<1023:SCORCP>2.0.CO;2](https://doi.org/10.1175/1520-0442(1995)008<1023:SCORCP>2.0.CO;2), 1995.
- Zorita, E. and von Storch, H.: The Analog Method as a Simple Statistical Downscaling Technique: Comparison with More Complicated Methods, *J. Climate*, 12, 2474–2489, [https://doi.org/10.1175/1520-0442\(1999\)012<2474:TAMAAS>2.0.CO;2](https://doi.org/10.1175/1520-0442(1999)012<2474:TAMAAS>2.0.CO;2), 1999.