

## Why, When and How Should Clinicians Use Physiology in Patients with Acute Coronary Syndromes?

Roberto Scarsini,<sup>1,2</sup> Dimitrios Terentes-Printzios,<sup>1</sup> Giovanni Luigi De Maria,<sup>1</sup> Flavio Ribichini<sup>2</sup> and Adrian Banning<sup>1,3</sup>

1. Oxford Heart Centre, NIHR Biomedical Research Centre, Oxford University Hospitals, Oxford, UK; Division of Cardiology, Department of Medicine, University of Verona, Verona, Italy; 3. Division of Cardiovascular Medicine, BHF Centre of Research Excellence, University of Oxford, Oxford, UK

### Abstract

Current data support the use of coronary physiology in patients with acute coronary syndrome (ACS). In patients with ST-elevation MI, the extent of myocardial damage and microvascular dysfunction create a complex conundrum to assimilate when considering clinical management and risk stratification. In this setting, the index of microcirculatory resistance emerged as an accurate tool to identify patients at risk of suboptimal myocardial reperfusion after primary percutaneous coronary intervention who may benefit from novel adjunctive therapies. In the context of non-ST-elevation ACS, coronary physiology should be carefully interpreted and often integrated with intracoronary imaging, especially in cases of ambiguous culprit lesion. Conversely, the functional assessment of bystander coronary disease is favoured by the available evidence, aiming to achieve complete revascularisation. Based on everyday clinical scenarios, the authors illustrate the available evidence and provide recommendations for the functional assessment of infarct-related artery and non-culprit lesions in patients with ACS.

### Keywords

Acute coronary syndromes, coronary physiology, fractional flow reserve, index of microcirculatory resistance, microvascular resistance, MI, ST-segment elevation

**Disclosure:** RS has served on an advisory board for Abbott. AB has received institutional funding for an interventional fellowship from Boston Scientific. All other authors have no conflicts of interest to declare.

**Received:** 19 November 2019 **Accepted:** 13 January 2020 **Citation:** *Interventional Cardiology Review* 2020;15:e05. **DOI:** <https://doi.org/10.15420/icr.2019.26>

**Correspondence:** Roberto Scarsini, Oxford Heart Centre, Oxford University Hospitals, Headley Way, Oxford OX3 9DU, UK. E: roberto.scarsini@ouh.nhs.uk

**Open Access:** This work is open access under the CC-BY-NC 4.0 License which allows users to copy, redistribute and make derivative works for non-commercial purposes, provided the original work is cited correctly.

Acute coronary syndromes (ACS) encompass a wide spectrum of clinical presentations that range from ST-elevation MI (STEMI) to non-ST-elevation MI and unstable angina. These conditions are life threatening and remain a source of high morbidity and mortality. Unfortunately, despite major accomplishments worldwide in timely reperfusion with percutaneous coronary intervention (PCI), an important residual risk of future cardiovascular events and mortality persists.<sup>1</sup>

Numerous methods have been proposed to provide individualised management in patients with ACS. In the past 20 years, there has been an exponential increase in the application of epicardial functional indices (e.g. fractional flow reserve [FFR]) and microvascular indices (e.g. index of microcirculatory resistance [IMR]). The initial proof-of-concept validation for these indices was performed in patients with chronic coronary syndromes (CCS) and then, based on these initial positive results, further application in patients with ACS has been attempted.

Although evidence supporting the use of coronary physiology guidance in ACS management is increasing, caution should be exercised in the interpretation of coronary physiology indices in this setting, given their potential pitfalls. This article summarises the evidence of the role of the main coronary physiology indices in ACS, focusing on five different

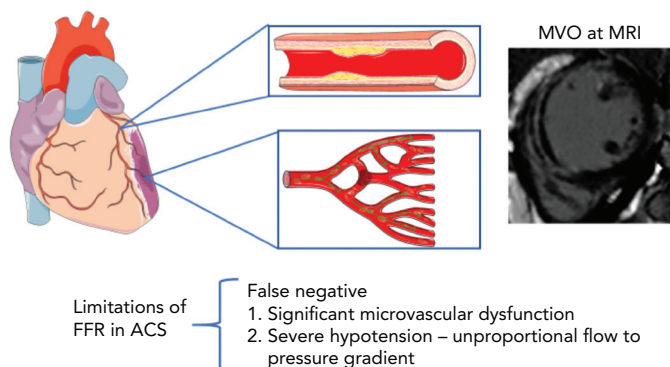
clinical practice scenarios: STEMI with disease only in the infarct-related artery (IRA), STEMI with multivessel disease (MVD), non-ST-elevation ACS (NSTEMI-ACS) with unclear culprit lesion and MVD, NSTEMI-ACS with well-defined culprit lesion and MVD, and MI with non-obstructive coronary artery disease (MINOCA).

### ST-elevation MI: The Infarct-related Artery

Usually, in STEMI undergoing primary PCI (PPCI), the IRA can be easily identified because of its acute angiographic characteristics, compatible with the clinical presentation. In this particular scenario, there is no need for physiological guidance to decide whether revascularisation is necessary. Moreover, the accuracy of epicardial functional indices such as FFR may be hampered by the significant degree of microvascular dysfunction observed in nearly 50% of cases, as discussed in detail below (*Figure 1*).

Nevertheless, coronary physiology can still play an important role in the assessment of the downstream microcirculatory function of the IRA, providing prognostically relevant information and identifying patients at high risk of suboptimal reperfusion who are eligible for additional novel therapies. The IMR, a pressure wire thermodilution-derived index supported by a large body of evidence, is the index of choice to assess the microvascular function in the IRA because of its ability to offer a reasonable compromise between accuracy and feasibility.<sup>2</sup> In patients

**Figure 1: Potential Limitations of Fractional Flow Reserve in Patients with Acute Coronary Syndrome**



ACS = acute coronary syndrome; FFR = fractional flow reserve; MVO = microvascular obstruction.

with STEMI, a cut-off value of IMR  $\geq 40$  has been associated with poor prognosis and more extensive myocardial injury.<sup>3</sup>

## Microvascular Damage in the STEMI Infarct-related Artery

Within less than an hour of ischaemia in the territory of the IRA, oedema develops from structural alterations to cardiomyocytes, resulting in cardiomyocyte death after the first 3 hours. PCI is able to restore coronary blood flow in the IRA but may also have detrimental effects on the microcirculation, causing dislodgement of atherothrombotic debris and distal embolisation.<sup>3</sup> Although endothelial cells are more resilient to ischaemia than cardiomyocytes, prolonged ischaemia eventually also results in endothelial dysfunction. As a consequence, capillary permeability is initially increased with oedema formation. Furthermore, endothelial dysfunction leads to impaired vasomotion, stasis and release of deleterious substances such as vasoconstrictors, inflammatory cytokines and reactive oxygen species. The final consequences of these processes are microvascular obstruction (MVO) and haemorrhage.<sup>4</sup>

It is well established that intramyocardial haemorrhage (IMH) and MVO are closely associated. However, IMH reflects a more irreversible degree of myocardial damage than MVO, which can instead shrink and eventually resolve at follow-up. MVO assessed by cardiovascular MRI (CMR) is an independent predictor of worse outcome regardless of infarct size, and patients with larger MVO are more likely to develop heart failure, leading to an increase in mortality. Thus, MVO represents a potential therapeutic target.

Invasive coronary physiology, and specifically IMR, predict the occurrence of MVO and provides important information regarding a patient's prognosis and management, especially when CMR is unavailable or impractical.<sup>5</sup>

## Temporal Changes in Coronary Physiology in the Infarct-related Artery

Cuculi et al. assessed the changes in coronary physiology over time after STEMI.<sup>6</sup> In that study, 43 STEMI patients underwent physiological assessment of the IRA at the time of the PPCI, at day 1 and at the 6-month follow-up. Notably, the resting coronary flow, estimated via thermodilution, did not change over time after STEMI. Conversely, the hyperaemic coronary flow increased significantly at follow-up (coronary flow reserve [CFR]  $1.8 \pm 0.9$  versus  $3.1 \pm 1.1$ ;  $p < 0.001$ ). Consistently, IMR

decreased progressively after STEMI, being  $37.0 \pm 22.3$  after PPCI,  $30.6 \pm 21.4$  at day 1 and  $24.0 \pm 22.0$  at 6 months ( $p = 0.002$ ).

Interestingly, the epicardial coronary physiology in the IRA also showed significant variations over time. In particular, FFR decreased from  $0.93 \pm 0.06$  after PPCI to  $0.92 \pm 0.06$  at day 1 and  $0.89 \pm 0.06$  at 6 months ( $p < 0.001$ ). In contrast, resting coronary physiology estimated by the baseline ratio of distal coronary pressure (Pd) to aortic pressure (Pa) did not change significantly over time (after PPCI:  $0.96 \pm 0.04$ ; day 1:  $0.95 \pm 0.05$ ; 6 months:  $0.96 \pm 0.04$ ;  $p = 0.22$ ).<sup>6</sup>

Notably, FFR variations over time were significant in patients with evidence of MVO at CMR (mean FFR  $0.94 \pm 0.04$  versus  $0.88 \pm 0.06$ ;  $p = 0.006$ ), but not in patients without MVO ( $0.94 \pm 0.05$  versus  $0.93 \pm 0.04$ ;  $p = 0.21$ ; *Figure 2*).<sup>6</sup>

These interesting findings suggest that the coronary microcirculation generally recovers after STEMI in the IRA and tends to normalise 6 months after STEMI. The hyperaemic response to adenosine is blunted in the IRA, especially in patients with evidence of MVO. Therefore, the reliability of FFR in the acute phase of STEMI is questionable in the territory of the IRA. Whether the new adenosine-free indices can be used in the IRA in the setting of a recent STEMI is not clear, and further studies are needed.

## Prognostic Value of Coronary Physiology After STEMI

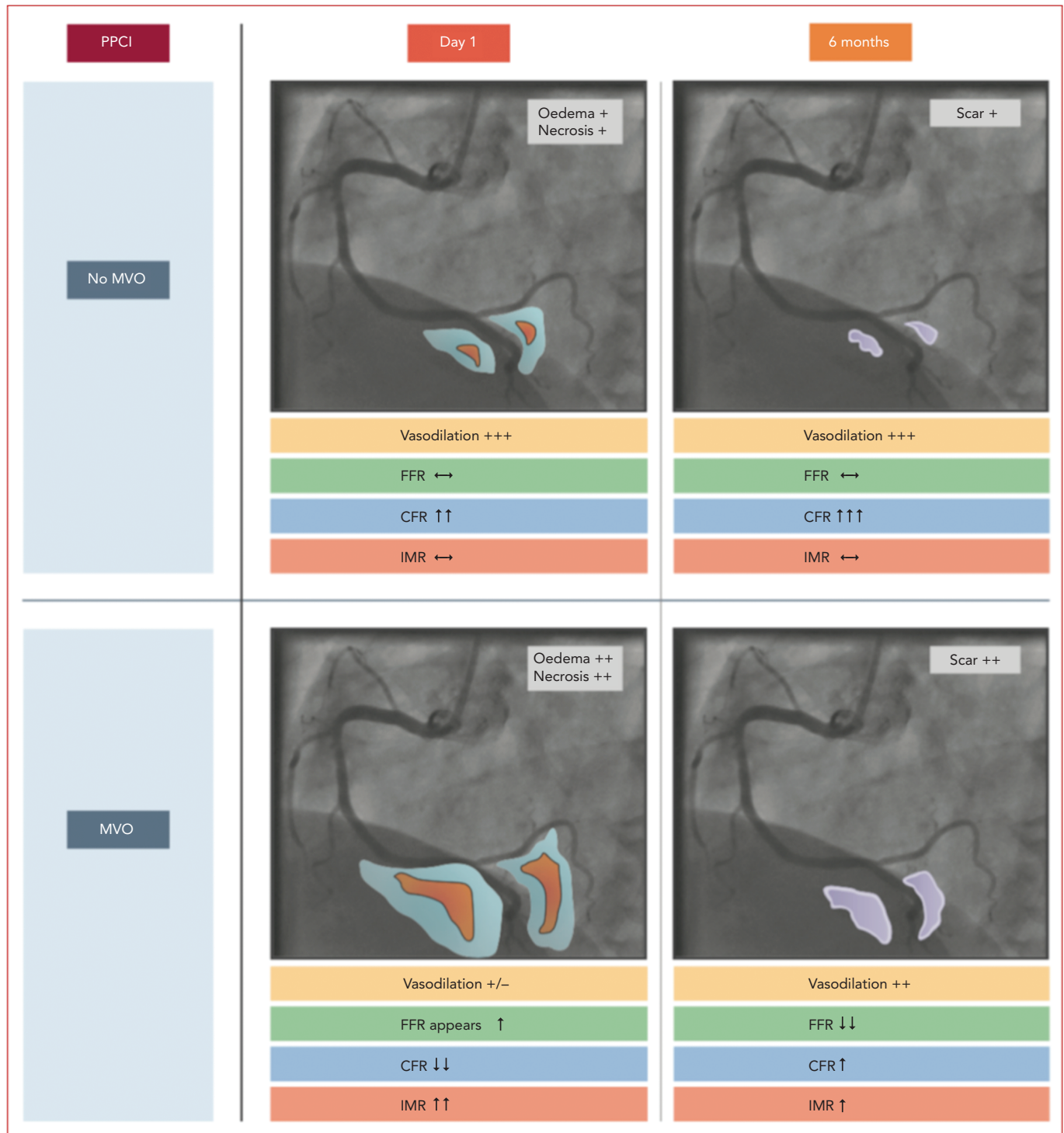
An increasing body of evidence provides insights into the prognostic value of invasive physiology assessed at the time of PPCI with regard to acute and final infarct size, MVO, residual systolic function and clinical outcome after STEMI.

IMR at completion of PPCI has been associated with the extent of MVO ( $\rho = 0.29$ ,  $p = 0.002$ ) and infarct size in the subacute phase after STEMI ( $\rho = 0.21$ ,  $p = 0.03$ ) and at the 6-month follow-up ( $\rho = 0.43$ ,  $p = 0.001$ ).<sup>5</sup> In addition, post-PCI IMR  $\geq 40$  has been associated with higher risk of mortality and readmission for heart failure.<sup>7</sup> Moreover, IMR  $\geq 40$  has shown excellent performance in predicting major in-hospital cardiac complications after PPCI (area under the curve [AUC]  $0.90$ ; 95% CI  $[0.85-0.93]$ ).<sup>8</sup> In addition, when measured before stenting, IMR can detect patients at high risk of suboptimal myocardial reperfusion who are candidates for additional therapies.<sup>9</sup>

A preserved vasodilatory capacity, reflecting an intact and functional coronary microvasculature, is an important predictor of myocardial functional recovery at 6 months after STEMI. The resistive reserve ratio (RRR) has been proposed to assess the vasodilatory capacity of the coronary circulation, and is calculated as the ratio between the baseline microcirculatory resistance (BMR) and the hyperaemic microcirculatory resistance expressed as IMR.<sup>10</sup> Recently, it was demonstrated that RRR had incremental prognostic value in a small cohort of STEMI patients undergoing PPCI. In particular, patients with impaired RRR ( $< 1.98$ ) at completion of PPCI showed larger MVO ( $3.5 [0.0-5.9]$ ;  $p = 0.026$ ), larger infarct size at 6 months ( $22.7 [10.2-35.0]$  versus  $8.8 [6.9-12.3]$ ;  $p = 0.006$ ) and a lower myocardial salvage index ( $34.0 [22.0-59.2]$  versus  $53.2 [37.7-71.0]$ ;  $p = 0.032$ ) than patients with preserved RRR.<sup>11</sup>

Numerous strategies have been developed to prevent or reduce the severity of microcirculatory dysfunction and MVO in patients with STEMI. In particular, the efficacy of intracoronary fibrinolytic therapy

Figure 2: Effect of Microvascular Obstruction on the Microcirculation and Fractional Flow Reserve After ST-segment Elevation MI



After restoring epicardial coronary artery patency by stenting, the presence of MVO detected by cardiac MRI is associated with a blunted capacity for vasodilation. This can be measured as a low CFR or a high IMR and results in an apparently higher FFR. Recovery of myocardial function with improved capacity for vasodilation is reflected by increased CFR; this results in a lower measured FFR at 6 months. In patients without MVO, vasodilatory function is relatively preserved acutely and temporal changes in FFR are less evident. Changes in CFR are represented by arrows: single arrows indicate some response; double arrows indicate a marked response; and triple arrows indicate maximum response. CFR = coronary flow reserve; FFR = fractional flow reserve; IMR = index of microcirculatory resistance; MVO = microvascular obstruction; PPCI = primary percutaneous coronary intervention. Source: Cuculi et al. 2014.<sup>6</sup> Used with permission from Elsevier.

in STEMI patients after PPCI has been investigated, with controversial results.

Sezer et al. studied the effects of adjunctive low-dose intracoronary streptokinase given after PPCI in 41 STEMI patients.<sup>12</sup> Of note, the

treatment was effective in reducing IMR ( $16.29 \pm 5.06$  versus  $32.49 \pm 11.04$ ;  $p < 0.001$ ) and increasing CFR ( $2.01 \pm 0.57$  versus  $1.39 \pm 0.31$ ;  $p = 0.002$ ) compared with controls.<sup>12</sup>

In a larger study, patients who received adjunctive intracoronary

streptokinase after PPCI demonstrated smaller infarct size (22.7% versus 32.9%;  $p=0.003$ ) and better left ventricle ejection fraction (LVEF; 57.2% versus 51.8%,  $p=0.018$ ) compared with controls.<sup>13</sup>

Conversely, McCartney et al. recently reported that patients who were randomised to receive low-dose intracoronary alteplase after PPCI did not differ from controls in terms of MVO at CMR (estimated difference 0.29%; 95% CI [-0.76–1.35%];  $p=0.74$ ) and presented similar clinical outcomes.<sup>14</sup>

Among the procedural techniques available to reduce microvascular and myocardial injury after STEMI, pressure-controlled intermittent coronary sinus occlusion (PiCISO; Miracor Medical) has been reported by us to reduce IMR (24.8 [18.5–35.9] versus 45.0 [32.0–51.3];  $p<0.001$ ) and infarct size at 6 months after STEMI (26% [20.2–30.0] versus 33.0% [28.0–37.0];  $p=0.006$ ) compared with controls.<sup>9</sup> Intermittent occlusion of the coronary sinus allows redistribution of the coronary blood flow in under-perfused areas when the balloon is inflated and washing out of cellular debris and oedema fluid on balloon release, leading to relief of MVO.

Further details regarding available pharmacotherapy and procedural techniques to prevent and treat microcirculatory impairment in STEMI have been reported elsewhere.<sup>15</sup>

### STEMI with Multivessel Disease: The Non-culprit Artery

More than 50% of patients presenting with STEMI have MVD.<sup>16</sup> Recent evidence supports complete revascularisation compared with a culprit-only approach in patients with STEMI and MVD. The Complete vs Culprit-only Revascularization to Treat Multi-vessel Disease After Early PCI for STEMI (COMPLETE) trial demonstrated a significant benefit in terms of cardiovascular death and MI in a large population of STEMI patients who underwent complete revascularisation (HR 0.74; 95% CI [0.60–0.91];  $p=0.004$ ).<sup>17</sup>

The functional assessment of non-culprit lesions has been questioned because of concerns related to the status of the microvasculature in remote myocardial territories, with potential detrimental effects on the reliability of FFR or the instantaneous wave-free ratio (iFR). Numerous studies have addressed this question, and they generally favour the use of physiology to guide revascularisation of the non-culprit.

### Fractional Flow Reserve and Instantaneous Wave-free Ratio Assessment of the Non-culprit Lesion

The Primary PCI in Patients With ST-elevation Myocardial Infarction and Multivessel Disease: Treatment of Culprit Lesion Only or Complete Revascularization (DANAMI-3-PRIMULTI) and Comparison Between FFR Guided Revascularization Versus Conventional Strategy in Acute STEMI Patients With MVD (CompareAcute) trials demonstrated the efficacy of FFR-guided complete revascularisation in patients presenting with STEMI.<sup>18,19</sup> Interestingly, in the CompareAcute trial, functional assessment of the non-culprit lesions was performed during the PPCI procedure, whereas in the DANAMI-3-PRIMULTI trial the assessment was performed before discharge in a staged manner. Notably, both trials demonstrated the superiority of FFR-guided complete revascularisation compared with the culprit-only approach (Table 1).

The feasibility of FFR assessment of non-culprit lesions in patients with acute MI was assessed by Ntalians et al.<sup>20</sup> In that study, the authors found no overall significant difference in FFR values at follow-up

compared with the acute phase. However, the heterogeneity of the study population has to be taken into consideration when interpreting the results, particularly with regard to the mixed clinical presentation (both STEMI and NSTEMI-ACS) and the time of follow-up (ranging from 4 to 128 days). However, the Instantaneous Wave-Free Ratio and Fractional Flow Reserve for the Assessment of Non Culprit Lesions in Patients With ST-segment Elevation Myocardial Infarction (WAVE) study also showed no significant variations in FFR in the non-culprit artery, even though the follow-up period was limited to 5–8 days after STEMI.<sup>21</sup>

Recently, a substudy of the Reducing MicroVascular Dysfunction in Revascularized STEMI Patients by Off-target Properties of Ticagrelor (REDUCE-MVI) trial demonstrated that CFR measured in the non-culprit vessel significantly increases ( $2.9 \pm 1.4$  versus  $4.1 \pm 2.2$ ;  $p<0.001$ ) and the IMR tends to decrease 1 month after the index procedure (18.0 [13.5–27.0] versus 14.5 [11.0–21.0];  $p=0.6$ ).<sup>22</sup> Interestingly, the authors of that study observed a blunted hyperaemic response to adenosine in the acute phase of STEMI measuring Pd variations and RRR ( $3.4 \pm 1.7$  versus  $5.0 \pm 2.7$ ;  $p<0.001$ ). Consistent with these observations, FFR decreased significantly in the non-culprit vessel at the 1-month follow-up ( $0.88 \pm 0.07$  versus  $0.86 \pm 0.09$ ;  $p=0.001$ ), maintaining a classification agreement of 80.8% between the acute phase and follow-up assessment.

Notably, a blunted haemodynamic response detected in the non-culprit artery was associated with larger infarct size and worse LVEF after STEMI.<sup>22</sup> If the reduced hyperaemic flow in the IRA can be explained primarily by the presence of infarct-related microvascular injury, this phenomenon is less well characterised in the non-culprit artery. It is known that the sensitivity of purinergic adenosine receptors is reduced in the remote myocardium in the acute phase of STEMI. Moreover, increased neurohumoral activation and extravascular compression secondary to myocardial oedema may play a role in the acute blunted hyperaemic response to adenosine.<sup>23,24</sup>

Nevertheless, Mejía-Rentería et al. recently observed that the hyperaemic flow was preserved in the subacute phase of MI, supporting the use of FFR in this setting.<sup>25</sup> Notably, IMR (15.6 [10.4–21.8] versus 16.7 [11.6–23.6];  $p=0.56$ ) and RRR ( $3.1 \pm 2.1$  versus  $3.7 \pm 2.2$ ;  $p=0.12$ ) were similar in non-culprit lesions compared with a matched cohort of stable patients, whereas CFR was lower in the non-culprit lesions (1.77 [1.25–2.76] versus 2.44 [1.63–4.00];  $p=0.018$ ). Interestingly, the reduction in CFR was primarily driven by an increase in resting coronary flow (rest mean transit time 0.58 s [0.32–0.83] versus 0.65 s [0.39–1.20];  $p=0.045$ ).<sup>25</sup> This observation may have implications for adenosine-free ischaemic indices in non-culprit vessels.

In particular, a tendency for overestimation of lesion severity was observed in the Nonculprit Stenosis Evaluation Using iFR in Patients with STEMI (iSTEMI) study using iFR. Notably, a similar trend was observed in different clinical settings where baseline coronary flow is markedly increased.<sup>26,27</sup> In the iSTEMI study, the classification agreement between the acute phase and follow-up iFR values was modest (78%) and inferior compared with that for FFR.<sup>28</sup> Conversely, in the study by van der Hoeven et al., iFR presented a similar classification agreement between acute and 30-day assessment to that obtained for FFR (82.2%).<sup>22</sup>

In conclusion, FFR-guided assessment and treatment of non-culprit lesions is supported by pathophysiological and randomised data. Less



Table 1: Non-culprit Lesion Functional Assessment in Patients with Acute MI

Study	Sample size	STEMI or NSTEMI-ACS	Main findings
<b>FFR</b>			
Ntalianis et al. <sup>20</sup>	101 patients, 112 lesions	STEMI and NSTEMI-ACS	Overall, FFR does not change when measured in the acute phase and at follow-up in non-culprit lesions
DANAMI-3-PRIMULTI <sup>18</sup>	627 patients	STEMI	FFR-guided complete revascularisation (assessment before discharge) reduces the composite of cardiac death, MI and ischaemia-driven revascularisation at 27 months (HR 0.56; 95% CI [0.38–0.83]; p=0.004)
Compare-Acute <sup>19</sup>	885 patients	STEMI	FFR-guided complete revascularisation (assessment during PPCI) reduces the composite of cardiac death, MI and ischaemia-driven revascularisation at 12 months (HR 0.35; 95% CI [0.22–0.55]; p<0.001)
WAVE (Musto et al. <sup>21</sup> )	50 patients, 66 lesions	STEMI	No significant variations in FFR values between the acute and subacute phases (5–8 days)
Choi et al. <sup>29</sup>	100 patients	STEMI and NSTEMI-ACS	FFR decrease with worsening of lesion severity is similar in non-culprit artery and stable CAD
Van der Hoeven et al. <sup>22</sup>	73 patients	STEMI	Overall, FFR decreases from the acute phase to the 30-day follow-up (0.88 ± 0.07 versus 0.86 ± 0.09; p=0.001) 80.8% classification agreement between the acute phase and 30-day follow-up
<b>iFR</b>			
WAVE (Musto et al. <sup>21</sup> )	50 patients, 66 lesions	STEMI	No significant variations in FFR values between the acute and subacute phases (5–8 days) iFR has high accuracy in identifying abnormal FFR ≤0.80 in the non-culprit lesion (AUC 0.95)
iSTEMI (Thim et al. <sup>28</sup> )	120 patients, 157 lesions	STEMI	78% classification agreement between acute and follow-up iFR Negative predictive value of negative iFR in the acute phase is 89% The time interval from acute to follow-up iFR affects the classification agreement
Indolfi et al. <sup>45</sup>	52 patients, 78 lesions	STEMI and NSTEMI-ACS	iFR has good accuracy (agreement 79.5%, AUC 0.86) in predicting FFR ≤0.80 iFR in non-culprit ACS has comparable diagnostic accuracy compared with stable CAD
Choi et al. <sup>29</sup>	100 patients	STEMI and NSTEMI-ACS	iFR decrease with worsening of lesion severity is similar in non-culprit artery and stable CAD
Van der Hoeven et al. <sup>22</sup>	73 patients	STEMI	Overall iFR did not change at the 30-day follow-up (0.93 ± 0.07 versus 0.94 ± 0.06; p=0.12) 82.0% classification agreement between the acute phase and 30-day follow-up
<b>QFR</b>			
Spitaleri et al. <sup>30</sup>	1. 31 patients	STEMI	QFR is highly reproducible in the non-culprit lesion (r=0.98)
	2. 45 patients	STEMI	QFR has high accuracy in predicting FFR ≤0.80 (AUC 0.96)
	3. 110 patients	STEMI	Patients with QFR ≤0.80 in non-culprit arteries are at increased risk of MACE (HR 2.3; 95% CI [1.2–4.5]; p=0.01)
iSTEMI (Sejr-Hansen et al. <sup>32</sup> )	103 lesions	STEMI	QFR has 84% classification agreement with FFR in the non-culprit lesion and 74% classification agreement with iFR
Lauri et al. <sup>31</sup>	82 patients, 91 lesions	STEMI	QFR has comparable high accuracy in non-culprit lesion and stable CAD (AUC 0.91) The accuracy of QFR is higher out of the 0.75–0.85 'grey zone'

ACS = acute coronary syndrome; AUC = area under the curve; CAD = coronary artery disease; FFR = fractional flow reserve; iFR = instantaneous wave-free ratio; NSTEMI = non-ST-elevation; PPCI = primary percutaneous coronary intervention; QFR = quantitative flow ratio; STEMI = ST-elevation MI.

extensive experience supports the use of iFR in this clinical scenario, but iFR guidance of non-culprit lesions in a practice similar to the DANAMI-3-PRIMULTI and Compare-Acute trials will require additional research and, ideally, a randomised control trial.<sup>21,22,28,29</sup>

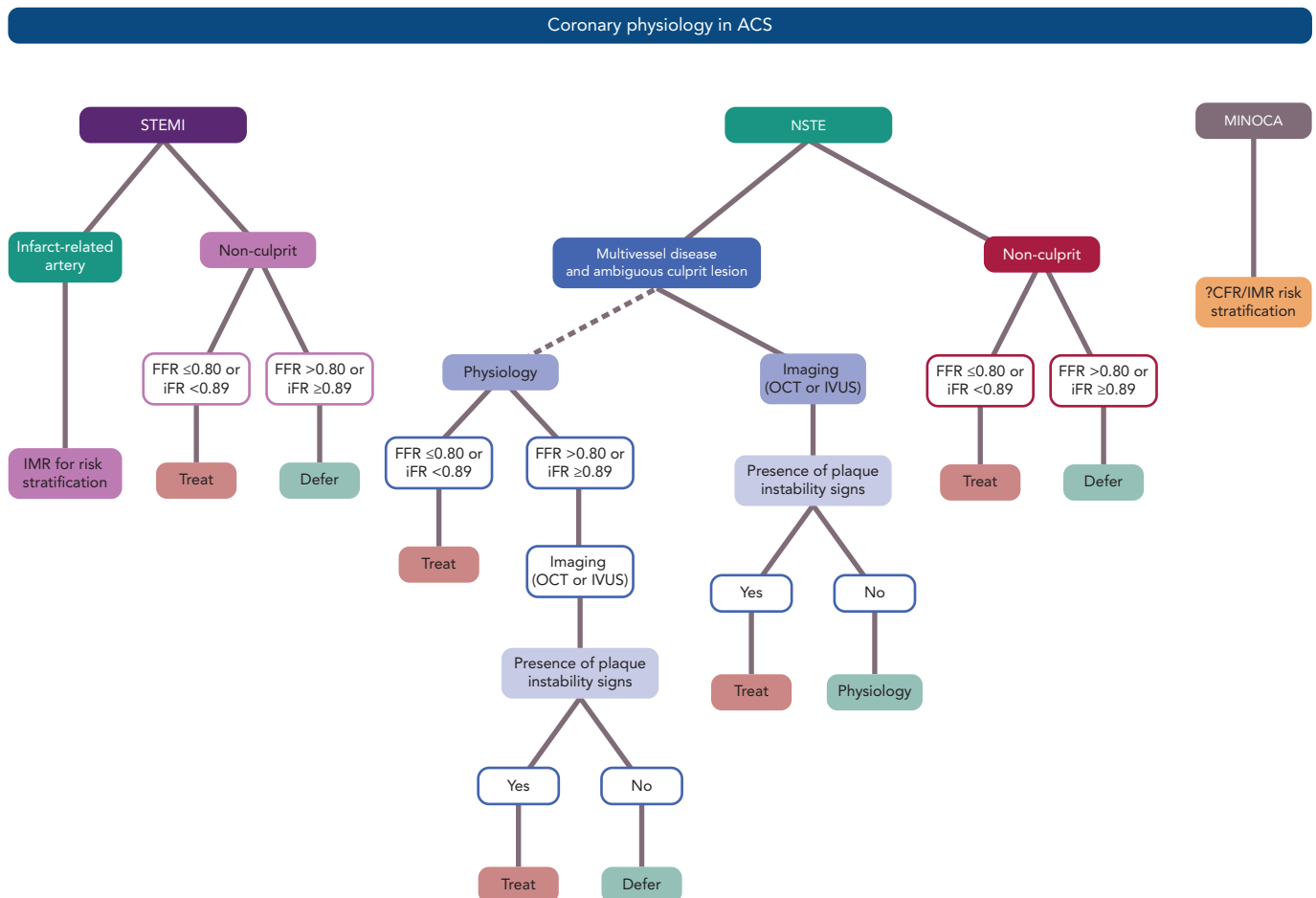
### Angiography-derived Functional Assessment of the Non-culprit Lesion

Recently, the quantitative flow ratio (QFR), a novel angiography-derived index, has been proposed to functionally assess non-culprit lesions in ACS patients. QFR in the non-culprit lesion has demonstrated high reproducibility between the acute and sub-acute phases of STEMI

(r=0.98; 95% CI [0.96–0.99]; mean difference 0.004 [–0.027–0.34]) and high accuracy (AUC 0.96; 95% CI [0.89–0.99]) in predicting an abnormal FFR value (≤0.80).<sup>30</sup>

Similarly, Lauri et al. demonstrated the feasibility of performing QFR analysis retrospectively in patients with STEMI undergoing PPCI.<sup>31</sup> In that study, the authors observed a high accuracy of QFR (AUC 0.91; 95% CI [0.85–0.97]) in predicting an abnormal FFR (≤0.80), especially when QFR is out of a receiver operating characteristic (ROC)-defined grey zone (0.75–0.85). When a hybrid QFR–FFR approach was used, measuring FFR only when QFR is in the grey zone, an overall 96.7%

Figure 3: Use of Coronary Physiology in Different Clinical Scenarios in Patients with Acute Coronary Syndrome



ACS = acute coronary syndrome; CFR = coronary flow reserve; FFR = fractional flow reserve; iFR = instantaneous wave-free ratio; IMR = index of microcirculatory resistance; IVUS = intravascular ultrasound; MINOCA = MI with non-obstructive coronary artery disease; NSTEMI = non-ST segment elevation MI; OCT = optical coherence tomography; STEMI = ST-elevation MI.

classification agreement was obtained, avoiding further invasive diagnostic procedures in the non-culprit vessels in 58.5% of patients.<sup>32</sup> A post hoc analysis of the iSTEMI study revealed good accuracy of QFR in predicting an abnormal FFR (84%; 95% CI [76–90]) in the non-culprit artery and moderate accuracy compared with an abnormal iFR (74%; 95% CI [65–83]).<sup>32</sup> Notably, Spitaleri et al. showed that patients with untreated non-culprit lesions with QFR  $\leq 0.80$  were at higher risk of adverse clinical events (HR 2.3; 95% CI [1.2–4.5];  $p=0.01$ ).<sup>30</sup> Angiography-derived indices, and in particular QFR, may find a role in the simplification of ACS management, and further randomised data are warranted to confirm these preliminary findings.

### NSTEMI-ACS with Clear Culprit Lesion and Multivessel Disease

In presence of a clear infarct-related lesion and bystander MVD, the same information reported for the STEMI non-culprit lesions can be applied to NSTEMI-ACS patients. In particular, FFR and iFR have been used in this setting with favourable outcomes and should be considered in the presence of angiographic intermediate lesions (Figure 3).

### Microvascular Vasodilatory Capacity and Hyperaemic Physiology in NSTEMI-ACS

The question of a reliable achievable maximal hyperaemia in patients with NSTEMI-ACS has been explored by Layland et al. using thermodilution-derived RRR.<sup>10</sup> Notably, the vasodilatory response of the coronary

microcirculation was comparable between patients with NSTEMI-ACS and stable coronary artery disease (RRR 2.5 [1.6–3.9] versus 2.8 [1.7–4.8];  $p=0.61$ ). These findings confirm the preserved capacity of the coronary microcirculation to achieve maximal hyperaemia in NSTEMI-ACS and are reassuring about the reliability of hyperaemic physiology in NSTEMI-ACS.<sup>10</sup>

The Fractional Flow Reserve Versus Angiography in Guiding Management of Optimize Outcomes in Non-ST-Elevation Myocardial Infarction (FAMOUS-NSTEMI) trial demonstrated the safety and feasibility of FFR measurements in NSTEMI-ACS.<sup>33</sup> An interesting FAMOUS-NSTEMI substudy demonstrated that FFR has a 92% diagnostic accuracy (positive predictive value 76%, negative predictive value 97%) in detecting significant perfusion abnormalities in matched territories at stress CMR (AUC 0.93; 95% CI [0.90–0.99]).<sup>34</sup>

IMR has been less extensively studied in the NSTEMI-ACS setting compared with STEMI. In the study of Layland et al., pre-PCI IMR values in NSTEMI-ACS patients did not differ significantly from those in stable angina patients ( $22.73 \pm 11.36$  versus  $18.26 \pm 9.15$ ;  $p=0.1$ ), but were significantly lower than in STEMI IRA ( $22.73 \pm 11.36$  versus  $36.51 \pm 35.7$ ;  $p=0.01$ ).<sup>10</sup> Murai et al. investigated the prognostic value of post-PCI coronary physiology in 83 patients with NSTEMI-ACS. Notably, IMR and CFR  $< 2$ , but not FFR, were significantly associated with major adverse cardiac events (MACE) at 20.7 months of follow-up.<sup>35</sup> Multivariate analysis revealed that high IMR was an independent predictor of MACE in this NSTEMI-ACS cohort (HR 1.03; 95% CI [1.01–1.05];  $p=0.001$ ).<sup>35</sup>

### NSTE-ACS with Ambiguous Culprit Lesion and Multivessel Disease

When coronary intervention is deferred based on coronary physiology, patients presenting with ACS have a higher risk of MACE at follow-up than stable coronary artery disease patients.<sup>36,37</sup> The Fractional flow reserve versus Angiography for Multivessel Evaluation (FAME) trial enrolled 328 patients with NSTE-ACS, of whom 150 were randomised to FFR-guided PCI. Notably, the risk of MACE at 2 years was higher in the ACS group than stable patients (21.3% versus 16.4%).<sup>36</sup>

Recently, a combined analysis of the Functional Lesion Assessment of Intermediate Stenosis to Guide Revascularisation (DEFINE-FLAIR) and Instantaneous Wave-Free Ratio Versus Fractional Flow Reserve in Patients With Stable Angina Pectoris or Acute Coronary Syndrome (iFR SWEDEHEART) trials confirmed that the ACS presentation was associated with a higher incidence of MACE at 1 year in 2,130 patients with coronary lesions deferred based on 'negative' values of iFR or FFR (for stable coronary artery disease presentation, HR 0.61; 95% CI [0.38–0.99];  $p=0.04$ ).<sup>37</sup> It remains unclear whether this higher rate of events registered in patients with ACS is related to an intrinsic higher risk in ACS patients or whether it reflects a 'false negative' physiological assessment.

In the setting of NSTE-ACS, the culprit lesion is often less obvious than in STEMI, especially when there are no specific angiographic features (e.g. intracoronary thrombus, ulceration, dissection), ECG changes or regional wall motion abnormalities. In this clinical scenario, a few aspects can be considered in the assessment of intermediate coronary lesions in patients with NSTE-ACS and ambiguous culprit plaque or artery.

In the IRA, postulating a plaque rupture and a preserved conduit vessel luminal area, FFR and iFR results may be above the ischaemic thresholds, even in case of an intact downstream microvasculature. Conversely, in case of extreme ACS-related microvascular dysfunction, physiological indices may be falsely elevated even in case of flow-limiting intraluminal disease.<sup>38</sup>

In patients with ACS, the optimal FFR cut-off for treatment deferral has been questioned, observing that the rate of MI or target vessel failure was 12.8% per year when FFR was 0.75–0.80, 10.0% per year when FFR was 0.80–0.85 and 6.2% per year for FFR values  $>0.90$ . Notably, such a trend was not observed in patients with stable angina.<sup>39</sup>

Given the theoretical limitations of FFR and iFR in case of an acute plaque event, physiology should be integrated with intracoronary imaging to detect the presence of plaque rupture, erosion or intracoronary thrombus. In particular, optical coherence tomography (OCT) or intravascular ultrasound (IVUS) should be considered as the first choice to guide revascularisation in case of uncertainty regarding the IRA in the setting of NSTE-ACS. If functional assessment by means of FFR or iFR is preferred by the operators, imaging should still be considered in the case of a borderline or negative result (FFR  $>0.80$  or iFR  $\geq 0.89$ ; *Figure 3*).

### MI with Non-obstructive Coronary Artery Disease

MINOCA is the term currently used to describe patients presenting with clinical features of an acute myocardial injury but with no evidence of obstructive coronary artery disease on coronary angiography, so that

the direct cause for the clinical syndrome is not evident.<sup>40</sup> MINOCA is not an uncommon condition and has been reported in 5–15% of patients with suspected MI admission. MINOCA encompasses a wide variety of aetiological mechanisms that could be differentiated into epicardial and microvascular. Regional wall motion abnormalities limited to a single coronary artery territory suggest an epicardial mechanism that is caused primarily by coronary plaque disease, spasm or dissection. Conversely, regional wall motion abnormalities extending to more than one epicardial coronary artery territory suggest a microvascular mechanism that is primarily caused by takotsubo syndrome, myocarditis, coronary microvascular spasm and coronary embolism.

Data on the role of coronary physiology in MINOCA are scarce and stem from small pilot studies and case reports.

During the acute phase of takotsubo syndrome, significant microcirculatory dysfunction with a global distribution pattern has been described, with a tendency towards normalisation during the recovery phase. Possible underlying mechanisms of the temporary disrupted perfusion and myocardial stunning include diffuse vasoconstriction due to catecholamine-induced alpha-adrenoceptor stimulation in resistance arteries, as well as endothelial dysfunction and inflammation.<sup>41–43</sup>

Although there is currently no clinical indication for coronary physiology assessment in MINOCA, it is possible that the assessment of microvascular dysfunction may lead to a better risk stratification and personalised treatment.<sup>44</sup> Understanding coronary physiology in MINOCA and implementation of targeted therapies to improve prognosis represent important challenges for future dedicated research.

### Conclusion

Coronary physiology provides useful information in guiding the management of patients with ACS, as summarised in *Figure 3*. There is usually no need for epicardial functional assessment of the IRA in STEMI. Moreover, a significantly impaired microcirculatory function is detected in more than 50% of STEMI patients, limiting the value of FFR or iFR in the IRA. Conversely, IMR has emerged as an important tool to stratify the clinical risk of adverse events or adverse left ventricle remodelling in STEMI. In addition, increasing data suggest a potential role of IMR in identifying patients who may benefit from additional therapies on top of standard approaches with stenting to prevent suboptimal myocardial reperfusion.

In the setting of NSTE-ACS, physiology should be integrated with intracoronary imaging in the case of an ambiguous IRA (*Figure 3*), and OCT or IVUS should be used to detect signs of plaque instability in case of 'negative' functional assessment. Conversely, an increasing body of evidence supports the use of coronary physiology in the non-culprit lesion of both STEMI and NSTE-ACS, and complete revascularisation is recommended by the latest European Society of Cardiology guidelines.<sup>1</sup>

Finally, coronary physiology assessment in patients with MINOCA represents an interesting field for future dedicated research. ■

- Ibanez B, James S, Agewall S, et al. 2017 ESC guidelines for the management of acute myocardial infarction in patients presenting with ST-segment elevation: the Task Force for the management of acute myocardial infarction in patients presenting with ST-segment elevation of the European Society of Cardiology (ESC). *Eur Heart J* 2018;39:119–77. <https://doi.org/10.1093/eurheartj/ehx393>; PMID: 28886621.
- Fearon WF, Balsam LB, Farouque HM, et al. Novel index for invasively assessing the coronary microcirculation. *Circulation* 2003;107:3129–32. <https://doi.org/10.1161/01.CIR.0000080700.98607.D1>; PMID: 12821539.
- De Maria GL, Cuculi F, Patel N, et al. How does coronary stent implantation impact on the status of the microcirculation during primary percutaneous coronary intervention in patients with ST-elevation myocardial infarction? *Eur Heart J* 2015;36:3165–77. <https://doi.org/10.1093/eurheartj/ehv353>; PMID: 26254178.
- Heusch G, Gersh BJ. The pathophysiology of acute myocardial infarction and strategies of protection beyond reperfusion: a continual challenge. *Eur Heart J* 2017;38:774–84. <https://doi.org/10.1093/eurheartj/ehw224>; PMID: 27354052.
- De Maria GL, Alkhalil M, Wolfrum M, et al. Index of microcirculatory resistance as a tool to characterize microvascular obstruction and to predict infarct size regression in patients with STEMI undergoing primary PCI. *JACC Cardiovasc Imaging* 2019;12:837–48. <https://doi.org/10.1016/j.jcmg.2018.02.018>; PMID: 29680355.
- Cuculi F, De Maria GL, Meier P, et al. Impact of microvascular obstruction on the assessment of coronary flow reserve, index of microcirculatory resistance, and fractional flow reserve after ST-segment elevation myocardial infarction. *J Am Coll Cardiol* 2014;64:1894–904. <https://doi.org/10.1016/j.jacc.2014.07.987>; PMID: 25444143.
- Carrick D, Haig C, Ahmed N, et al. Comparative prognostic utility of indexes of microvascular function alone or in combination in patients with an acute ST-segment-elevation myocardial infarction. *Circulation* 2016;134:1833–47. <https://doi.org/10.1161/CIRCULATIONAHA.116.022603>; PMID: 27803036.
- Fahrni G, Wolfrum M, De Maria GL, et al. Index of microcirculatory resistance at the time of primary percutaneous coronary intervention predicts early cardiac complications: insights from the OxAMI (Oxford Study in Acute Myocardial Infarction) cohort. *J Am Heart Assoc* 2017;6:e005409. <https://doi.org/10.1161/JAHA.116.005409>; PMID: 29113999.
- De Maria GL, Alkhalil M, Borlotti A, et al. Index of microcirculatory resistance-guided therapy with pressure-controlled intermittent coronary sinus occlusion improves coronary microvascular function and reduces infarct size in patients with ST-elevation myocardial infarction: the Oxford Acute Myocardial Infarction – Pressure-controlled Intermittent Coronary Sinus Occlusion study (OxAMI-PICOS study). *EuroIntervention* 2018;14:e352–9. <https://doi.org/10.4244/EIJ-D-18-00378>; PMID: 29792403.
- Layland J, Carrick D, McEntegart M, et al. Vasodilatory capacity of the coronary microcirculation is preserved in selected patients with non-ST-segment-elevation myocardial infarction. *Circ Cardiovasc Interv* 2013;6:231–6. <https://doi.org/10.1161/CIRCINTERVENTIONS.112.000180>; PMID: 23756697.
- Scarsini R, De Maria GL, Borlotti A, et al. Incremental value of coronary microcirculation resistive reserve ratio in predicting the extent of myocardial infarction in patients with STEMI. Insights from the Oxford Acute Myocardial Infarction (OxAMI) study. *Cardiovasc Res* 2019;20:1148–55. <https://doi.org/10.1016/j.carrev.2019.01.022>; PMID: 30779759.
- Sezer M, Oflaz H, Goren T, et al. Intracoronary streptokinase after primary percutaneous coronary intervention. *N Engl J Med* 2007;356:1823–34. <https://doi.org/10.1056/NEJMoa054374>; PMID: 17476008.
- Sezer M, Cimen A, Aslanger E, et al. Effect of intracoronary streptokinase administered immediately after primary percutaneous coronary intervention on long-term left ventricular infarct size, volumes, and function. *J Am Coll Cardiol* 2009;54:1065–71. <https://doi.org/10.1016/j.jacc.2009.04.083>; PMID: 19744615.
- McCartney PJ, Eteiba H, Maznyczka AM, et al. Effect of low-dose intracoronary alteplase during primary percutaneous coronary intervention on microvascular obstruction in patients with acute myocardial infarction: a randomized clinical trial. *JAMA* 2019;321:56–68. <https://doi.org/10.1001/jama.2018.19802>; PMID: 30620371.
- Armstrong R, De Maria GL, Scarsini R, Banning A. Assessing and managing coronary microcirculation dysfunction in acute ST-segment elevation myocardial infarction. *Expert Rev Cardiovasc Ther* 2019;17:111–26. <https://doi.org/10.1080/14779072.2019.1561279>; PMID: 30569773.
- Park DW, Clare RM, Schulte PJ, et al. Extent, location, and clinical significance of non-infarct-related coronary artery disease among patients with ST-elevation myocardial infarction. *JAMA* 2014;312:2019–27. <https://doi.org/10.1001/jama.2014.15095>; PMID: 25399277.
- Mehta SR, Wood DA, Storey RF, et al. Complete revascularization with multivessel PCI for myocardial infarction. *N Engl J Med* 2019;381:1411–21. <https://doi.org/10.1056/NEJMoa1907775>; PMID: 31475795.
- Engström T, Kelbæk H, Helqvist S, et al. Complete revascularization versus treatment of the culprit lesion only in patients with ST-segment elevation myocardial infarction and multivessel disease (DANAMI-3-PRIMULTI): an open-label, randomised controlled trial. *Lancet* 2015;386:665–71. [https://doi.org/10.1016/S0140-6736\(15\)00648-1](https://doi.org/10.1016/S0140-6736(15)00648-1); PMID: 26347918.
- Smits PC, Abdel-Wahab M, Neumann F, et al. Fractional flow reserve-guided multivessel angioplasty in myocardial infarction. *N Engl J Med* 2017;376:1234–44. <https://doi.org/10.1056/NEJMoa1701067>; PMID: 28317428.
- Ntalianis A, Sels JW, Davidavicius G, et al. Fractional flow reserve for the assessment of nonculprit coronary artery stenoses in patients with acute myocardial infarction. *JACC Cardiovasc Interv* 2010;3:1274–81. <https://doi.org/10.1016/j.jcin.2010.08.025>; PMID: 21232721.
- Musto C, De Felice F, Rigattieri S, et al. Instantaneous wave-free ratio and fractional flow reserve for the assessment of nonculprit lesions during the index procedure in patients with ST-segment elevation myocardial infarction: the WAVE study. *Am Heart J* 2017;193:63–9. <https://doi.org/10.1016/j.ahj.2017.07.017>; PMID: 29129256.
- van der Hoeven NW, Janssens GN, de Waard GA, et al. Temporal changes in coronary hyperemic and resting hemodynamic indices in nonculprit vessels of patients with ST-segment elevation myocardial infarction. *JAMA Cardiol* 2019;4:736–44. <https://doi.org/10.1001/jamacardio.2019.2138>; PMID: 31268466.
- Zhou Z, de Wijs-Meijler D, Lankhuizen I, et al. Blunted coronary vasodilator response to uridine adenosine tetraphosphate in post-infarct remodeled myocardium is due to reduced P1 receptor activation. *Pharmacol Res* 2013;77:22–9. <https://doi.org/10.1016/j.phrs.2013.08.007>; PMID: 23994209.
- Van Herck PL, Carlier SG, Claeys MJ, et al. Coronary microvascular dysfunction after myocardial infarction: increased coronary zero flow pressure both in the infarcted and in the remote myocardium is mainly related to left ventricular filling pressure. *Heart* 2007;93:1231–7. <https://doi.org/10.1136/hrt.2006.100818>; PMID: 17395671.
- Mejía-Rentería H, Lee JM, van der Hoeven NW, et al. Coronary microcirculation downstream non-infarct-related arteries in the subacute phase of myocardial infarction: implications for physiology-guided revascularization. *J Am Heart Assoc* 2019;8:e011534. <https://doi.org/10.1161/JAHA.118.011534>; PMID: 31014181.
- Scarsini R, Cantone R, Venturi G, et al. Correlation between intracoronary physiology and myocardial perfusion imaging in patients with severe aortic stenosis. *Int J Cardiol* 2019;292:162–5. <https://doi.org/10.1016/j.ijcard.2019.04.050>; PMID: 31029497.
- Scarsini R, Pesarini G, Zivelonghi C, et al. Coronary physiology in patients with severe aortic stenosis: comparison between fractional flow reserve and instantaneous wave-free ratio. *Int J Cardiol* 2017;243:40–6. <https://doi.org/10.1016/j.ijcard.2017.05.117>; PMID: 28610962.
- Thim T, Götzberg M, Fröbert O, et al. Nonculprit stenosis evaluation using instantaneous wave-free ratio in patients with ST-segment elevation myocardial infarction. *JACC Cardiovasc Interv* 2017;10:2528–35. <https://doi.org/10.1016/j.jcin.2017.07.021>; PMID: 29198461.
- Choi KH, Lee JM, Kim HK, et al. Fractional flow reserve and instantaneous wave-free ratio for nonculprit stenosis in patients with acute myocardial infarction. *JACC Cardiovasc Interv* 2018;11:1848–58. <https://doi.org/10.1016/j.jcin.2018.06.045>; PMID: 30236358.
- Spitaleri G, Tebaldi M, Biscaglia S, et al. Quantitative flow ratio identifies nonculprit coronary lesions requiring revascularization in patients with ST-segment-elevation myocardial infarction and multivessel disease. *Circ Cardiovasc Interv* 2018;11:e006023. <https://doi.org/10.1161/CIRCINTERVENTIONS.117.006023>; PMID: 29449325.
- Lauri F, Macaya F, Mejía-Rentería H, et al. Angiography-derived fractional assessment of non-culprit coronary stenoses during primary percutaneous coronary intervention for ST-elevation myocardial infarction. *EuroIntervention* 2020;15:e1594–601. <https://doi.org/10.4244/EIJ-D-18-01165>; PMID: 31543501.
- Sejrhansen M, Westra J, Thim, et al. Quantitative flow ratio for immediate assessment of nonculprit lesions in patients with ST-segment elevation myocardial infarction – an ISTEMI substudy. *Catheter Cardiovasc Interv* 2019;94:686–92. <https://doi.org/10.1002/ccd.28208>; PMID: 30912257.
- Layland J, Oldroyd KG, Curzen N, et al. Fractional flow reserve vs. angiography in guiding management to optimize outcomes in non-ST-segment elevation myocardial infarction: the British Heart Foundation FAMOUS-NSTEMI randomized trial. *Eur Heart J* 2015;36:100–11. <https://doi.org/10.1093/eurheartj/ehu338>; PMID: 25179764.
- Layland J, Rauhalmami S, Watkins S, et al. Assessment of fractional flow reserve in patients with recent non-ST-segment-elevation myocardial infarction: comparative study with 3-T stress perfusion cardiac magnetic resonance imaging. *Circ Cardiovasc Interv* 2015;8:e002207. <https://doi.org/10.1161/CIRCINTERVENTIONS.114.002207>; PMID: 26253733.
- Murai T, Yonetsu T, Kanaji Y, et al. Prognostic value of the index of microcirculatory resistance after percutaneous coronary intervention in patients with non-ST-segment elevation acute coronary syndrome. *Catheter Cardiovasc Interv* 2018;92:1063–74. <https://doi.org/10.1002/ccd.27529>; PMID: 29446567.
- Sels JW, Tonino PA, Siebert U, et al. Fractional flow reserve in unstable angina and non-ST-segment elevation myocardial infarction experience from the FAME (Fractional flow reserve versus Angiography for Multivessel Evaluation) study. *JACC Cardiovasc Interv* 2011;4:1183–9. <https://doi.org/10.1016/j.jcin.2011.08.008>; PMID: 22115657.
- Escaned J, Ryan N, Mejía-Rentería H, et al. Safety of the deferral of coronary revascularization on the basis of instantaneous wave-free ratio and fractional flow reserve measurements in stable coronary artery disease and acute coronary syndromes. *JACC Cardiovasc Interv* 2018;11:1437–49. <https://doi.org/10.1016/j.jcin.2018.05.029>; PMID: 30093050.
- Hakeem A, Almomani A, Uretsky B. Role of fractional flow reserve in the evaluation and management of patients with acute coronary syndrome. *Curr Opin Cardiol* 2017;32:767–75. <https://doi.org/10.1097/HCO.0000000000000448>; PMID: 28799978.
- Hakeem A, Edupuganti MM, Almomani A, et al. Long-term prognosis of deferred acute coronary syndrome lesions based on nonischemic fractional flow reserve. *J Am Coll Cardiol* 2016;68:1181–91. <https://doi.org/10.1016/j.jacc.2016.06.035>; PMID: 27609680.
- Thygesen K, Alpert JS, Jaffe AS, et al. Fourth universal definition of myocardial infarction (2018). *J Am Coll Cardiol* 2018;72:2231–64. <https://doi.org/10.1016/j.jacc.2018.08.1038>; PMID: 30153967.
- Gowdar S, Chhabra L. Takotsubo cardiomyopathy outcomes should be stratified based on the triggering etiology. *J Am Coll Cardiol* 2016;68:1708–9. <https://doi.org/10.1016/j.jacc.2016.06.069>; PMID: 27712788.
- Jiménez Brites G, Sabaté M, Robles C, et al. Functional and morphological assessment of left anterior descending artery in patients with Tako-tsubo syndrome. *Rev Esp Cardiol (Engl Ed)* 2018;71:986–8. <https://doi.org/10.1016/j.rec.2017.08.013>; PMID: 28928070.
- Rivero F, Cuesta J, García-Guimaraes M, et al. Time-related microcirculatory dysfunction in patients with Takotsubo cardiomyopathy. *JAMA Cardiol* 2017;2:699–700. <https://doi.org/10.1001/jamacardio.2016.5993>; PMID: 28273298.
- Mukherjee D. Myocardial infarction with nonobstructive coronary arteries: a call for individualized treatment. *J Am Heart Assoc* 2019;8:e013361. <https://doi.org/10.1161/JAHA.119.013361>; PMID: 31284819.
- Indolfi C, Mongiardo A, Spaccarotella C, et al. The instantaneous wave-free ratio (IFR) for evaluation of non-culprit lesions in patients with acute coronary syndrome and multivessel disease. *Int J Cardiol* 2015;178:46–54. <https://doi.org/10.1016/j.ijcard.2014.03.210>; PMID: 25464218.