

## T<sub>1</sub> and T<sub>2</sub> Mapping in Uremic Cardiomyopathy: An Update

Luca Arcari <sup>1</sup>, Giovanni Camastra <sup>1</sup>, Federica Ciolina,<sup>2</sup> Massimiliano Danti<sup>2</sup> and Luca Cacciotti <sup>1</sup>

1. Cardiology Unit, Madre Giuseppina Vannini Hospital, Rome, Italy; 2. Radiology Unit, Madre Giuseppina Vannini Hospital, Rome, Italy

### Abstract

Uremic cardiomyopathy (UC) is the cardiac remodelling that occurs in patients with chronic kidney disease (CKD). It is characterised by a left ventricular (LV) hypertrophy phenotype, diastolic dysfunction and generally preserved LV ejection fraction. UC has a major role mediating the increased rate of cardiovascular events, especially heart failure related, observed in patients with CKD. Recently, the use of T<sub>1</sub> and T<sub>2</sub> mapping techniques on cardiac MRI has expanded the ability to characterise cardiac involvement in CKD. Native T<sub>1</sub> mapping effectively tracks the progression of interstitial fibrosis in UC, whereas T<sub>2</sub> mapping analysis suggests the contribution of myocardial oedema, at least in a subgroup of patients. Both T<sub>1</sub> and T<sub>2</sub> increased values were related to worsening clinical status, myocardial injury and B-type natriuretic peptide release. Studies investigating the prognostic relevance and histology validation of mapping techniques in CKD are awaited.

### Keywords

Uremic cardiomyopathy, chronic kidney disease, cardiac MRI, native T<sub>1</sub> mapping, T<sub>2</sub> mapping, fibrosis, oedema

**Disclosure:** The authors have no conflicts of interest to declare.

**Received:** 21 August 2021 **Accepted:** 15 November 2021 **Citation:** *Cardiac Failure Review* 2022;8:e02. **DOI:** <https://doi.org/10.15420/cfr.2021.19>

**Correspondence:** Luca Arcari, Cardiology Unit, Madre Giuseppina Vannini Hospital, Via di Acqua Bullicante 4, 00177, Rome, Italy. E: [luca\\_arcari@outlook.it](mailto:luca_arcari@outlook.it)

**Open Access:** This work is open access under the CC-BY-NC 4.0 License which allows users to copy, redistribute and make derivative works for non-commercial purposes, provided the original work is cited correctly.

Chronic kidney disease (CKD) represents a major cardiovascular (CV) risk factor, with the rate of CV events increasing in proportion with the severity of the underlying renal dysfunction.<sup>1</sup> CV events in CKD are only partly explained by the clustering of traditional risk factors, such as hypertension or diabetes, and are highly influenced by CKD-related systemic abnormalities, including volume and pressure overload, as well as uremic-related factors, such as indoxyl sulfate,  $\beta_2$ -microglobulin and changes in mineral metabolism.<sup>2-4</sup>

Of note, rates of both atherosclerotic and non-atherosclerotic adverse events are increased in CKD patients, but the share attributable to the latter, especially heart failure and sudden cardiac death, becomes larger with the worsening of CKD.<sup>5</sup> Indeed, at higher degrees of renal dysfunction, CV risk is mainly mediated by the hypertrophic cardiac remodelling termed 'uremic cardiomyopathy' (UC).<sup>6</sup> UC is characterised by left ventricular hypertrophy (LVH) and dilation, with often preserved left ventricular (LV) ejection fraction and increased ventricular stiffness and diastolic dysfunction.<sup>7</sup> Histologically, interstitial diffuse myocardial fibrosis is highly prevalent, as observed in postmortem studies performed in patients with end-stage renal disease (ESRD) who have undergone haemodialysis (HD).<sup>8</sup> Interestingly, the extent of interstitial fibrosis is correlated with the decline in renal function, indicating that it can be considered a morphological marker of progressive cardiac involvement.<sup>9</sup>

Cardiac MRI (CMR) has the potential to provide a unique assessment of LVH phenotypes, including UC, being the gold standard for LV mass quantification and providing detailed tissue characterisation of myocardial architecture (both myocytes and extracellular space), with useful diagnostic and prognostic information.<sup>10,11</sup> In recent years, CMR has helped expand our knowledge of UC, identifying pathological myocardial

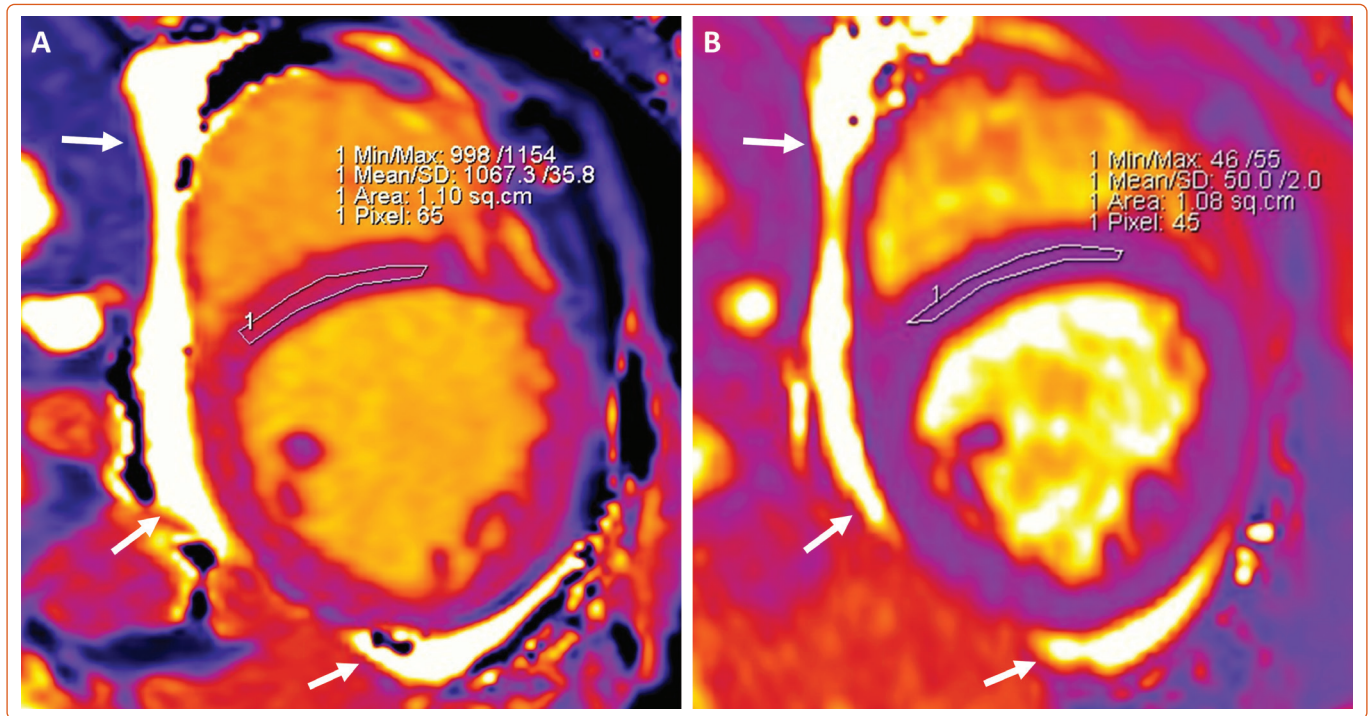
remodelling in CKD even at subclinical stages and potentially providing surrogate endpoints to better understand the effects of treatments or uremic factors on heart muscle.<sup>12</sup> Moreover, native T<sub>1</sub> and T<sub>2</sub> mapping techniques are especially useful because they can be performed without the need for gadolinium, the use of which raised safety concerns in CKD patients. This review provides a focused update on recent advances and future perspectives of CMR tissue mapping in patients with CKD.

### T<sub>1</sub> and T<sub>2</sub> Mapping

T<sub>1</sub> and T<sub>2</sub> mapping can provide accurate and parametric information regarding cardiac tissue composition. T<sub>1</sub> mapping measures the course of longitudinal (or spin–lattice) relaxation, which is determined by how quickly protons re-equilibrate their spins after being excited by a radiofrequency pulse. Conversely, T<sub>2</sub> mapping measures the course of transverse (or spin–spin) relaxation. Mapping sequences consist of the acquisition of multiple images at the same cardiac phase during multiple heart beats in a single breath hold per slice; the reconstruction of colour-coded maps in which every voxel displays a colour intensity according to its T<sub>1</sub> (or T<sub>2</sub>) value allows for parametric estimation of T<sub>1</sub> (or T<sub>2</sub>) values within a specific region of interest (ROI; *Figure 1*).

Native T<sub>1</sub> is an extremely sensitive although non-specific readout that relates to a number of underlying diseases.<sup>13</sup> Most of the pathogenic processes involving the heart muscle, including those causing oedema, fibrosis and amyloid infiltration, lead to an increase in native T<sub>1</sub> values, whereas the deposition of iron or fat leads to a decrease in T<sub>1</sub> value.<sup>13</sup> Conversely, an increase in the water content of myocardial tissues is the main cause for longer T<sub>2</sub> relaxation times; therefore, myocardial oedema is the main pathology responsible for elevations in T<sub>2</sub> values. Normal ranges for T<sub>1</sub> and T<sub>2</sub> mapping vary according to field strength, machines

Figure 1: Cardiac Magnetic Resonance Mapping Images in a Patient with Stage 4 Chronic Kidney Disease



Short-axis, mid-slice, region of interest conservatively drawn in the mid-septum. A: Native  $T_1$  is increased at 1,067 ms. B: The  $T_2$  value is also slightly increased at 50 ms. The left ventricle showed eccentric hypertrophy and dilation; no late gadolinium enhancement was detected. The examination was performed with a 1.5-T scanner (Siemens Aera); in-centre cut-offs for normality are: 995 ms (native  $T_1$ ) and 49 ms ( $T_2$ ). White arrows indicate pericardial effusion.

and the software used for the evaluation.<sup>14,15</sup> Finally, using pre- and post-contrast myocardial and blood pool  $T_1$  values, along with the haematocrit, an estimated extracellular volume (ECV) fraction is calculated.<sup>16</sup> In principle, calculation of ECV and intracellular volume (ICV) may help understand the underlying nature of LVH, where hypertrophy may, in some cases, be primarily driven by cellular hypertrophy rather than an increase in ECV.<sup>17,18</sup> However, given concerns related to the use of gadolinium-based contrast agents (GBCAs) in CKD, scarce data are currently available for ECV assessment in these patients.

### Native $T_1$ Mapping

Several studies have investigated native  $T_1$  mapping findings in patients with CKD, invariably compared to healthy controls or hypertensive subjects. Of note,  $T_1$  values were found to be consistently increased compared with controls.<sup>19–22</sup> Interestingly, a significant increase in native  $T_1$  values has been observed even in patients with only moderate renal disease (mean estimated glomerular filtration rate 50 ml/min); this finding was unrelated to conventional CV risk factors and was detected in patients who had not developed a significant increase in LV mass compared with a reference control group.<sup>23</sup> This suggests a major role of CKD-related factors in driving increases in  $T_1$  values, as well as the very sensitive nature of native  $T_1$  as an imaging biomarker, able to detect pathological changes even in the absence of identifiable LVH.

Observational studies performed in patients with more advanced renal disease are consistent with the ability of native  $T_1$  in tracking the progression of cardiac remodelling. In patients with ESRD, native  $T_1$  values were increased compared with those in control groups.<sup>20,21</sup> In these studies, a correlation was found between increasing  $T_1$  values and UC progression (i.e. increasing LV mass and reduced longitudinal and circumferential strain). Further data from a larger, unselected population of patients referred for a clinically indicated CMR study found native  $T_1$

values progressively increased across renal disease strata, with higher values in patients with more severe CKD and a significant association between native  $T_1$  values and CMR-derived pulse wave velocity as an index of vascular stiffness.<sup>24</sup> Moreover, native  $T_1$  values were independently associated with clinical variables, such as physical function and cardiac biomarkers.<sup>20,25,26</sup>

A recent cross-sectional study demonstrated a graded increase in native  $T_1$  values that, with declining renal function, was an independent predictor of peak oxygen uptake during cardiopulmonary exercise testing.<sup>27</sup> Together, these data suggest that native  $T_1$  values can track the progression of adverse remodelling; increases in native  $T_1$  values are observed early, even when LV mass is unaffected or the small changes in LV mass are undetectable, and are associated with the progression of UC and deterioration of clinical status.

Some factors should be considered when assessing native  $T_1$  values in patients with CKD. The presence of replacement fibrosis, as identified by late gadolinium enhancement (LGE) imaging, is a major confounder when interpreting native  $T_1$  as a measure of diffuse fibrosis. Indeed, in this case higher values reflect scarring rather than diffuse disease; hence, LGE areas should be carefully excluded when drawing the corresponding ROIs.<sup>28</sup> In patients with CKD this cannot be always done, because many would be offered non-contrast examinations due to concerns related to nephrogenic systemic sclerosis.

Some studies performed before regulatory restrictions regarding the use of GBCAs in CKD investigated the presence of replacement fibrosis. In these studies, LGE was described in approximately one-third of cases, often of the non-ischaemic type and unrelated to traditional CV risk factors.<sup>29,30</sup> It should be noted that the use of newer, stable macrocyclic GBCAs, which have a lower risk of nephrogenic systemic sclerosis, may

afford patients with CKD the opportunity to have LGE imaging performed.<sup>31</sup>

A recent study in CKD patients referred with a clinical indication for contrast CMR imaging found that LGE prevalence was similar to that described previously.<sup>26</sup> Although in diffuse diseases the method of a conservative mid-septal ROI is suggested for assessing native  $T_1$ , areas of visually increased signal may be found, suggesting local fibrosis.<sup>32,33</sup> A study sought to investigate the ability of native  $T_1$  to identify replacement fibrosis in aortic stenosis as a model for use in ESRD, but a defined threshold for the identification of scarred areas could not be identified.<sup>34</sup>

Another putative factor possibly influencing native  $T_1$  assessment is volume overload, although contradictory data are currently available in the literature. One study observed higher native  $T_1$  in HD patients compared with controls, with  $T_1$  values being positively correlated with pre-HD volume status as assessed by bioimpedance.<sup>35</sup> Conversely, another study investigated native  $T_1$  in HD patients, also testing inter-study, interobserver and intraobserver variability, finding high reproducibility of the measure and that it was not correlated to detected changes in body weight as a proxy of altered volume status between scans.<sup>36</sup> A limitation of both these studies is their small sample size.

In summary, native  $T_1$  seems to be invariably increased in patients with CKD, even compared with patients with normal renal function and a similar prevalence of traditional CV risk factors.<sup>26</sup> This makes it an effective marker of disease in UC, reflecting the increase in diffuse myocardial fibrosis with worsening renal function. Despite the presence of underlying confounding factors and a lack of histological validation, this hypothesis is largely consistent with results from pathological studies.<sup>8,9</sup>

### **T<sub>2</sub> Mapping**

Fewer studies investigating  $T_2$  mapping are available compared with  $T_1$  mapping studies. Most reports have highlighted increased  $T_2$  values in patients with CKD,<sup>22,37–39</sup> whereas others have not.<sup>40</sup> Studies investigating  $T_2$  mapping values before and after HD sessions revealed a reduction in  $T_2$  values after HD, where the reduction in  $T_2$  values was put in relation to either the reduction in LV mass or to the volume removed during HD sessions.<sup>26,41</sup> Together, these results support the hypothesis that treatment of volume overload can affect myocardial water content, possibly mediating an improvement in cardiac function.<sup>42</sup> In contrast, there are some data in which  $T_2$  values did not change between HD patients and controls, specifically when CMR examinations were systematically performed the day after dialysis at a time of relative euolemia.<sup>40</sup> These findings indicate that achieving strict control of volume status may help reducing the influence of underlying myocardial oedema on native  $T_1$  assessment.

Associations between increased  $T_2$  and both troponin and B-type natriuretic peptide in patients with CKD have been described, hypothetically pointing towards a role for myocardial oedema in ongoing cardiac damage in the context of renal disease.<sup>26,39</sup> These preliminary observational findings on  $T_2$  mapping in CKD need to be confirmed by further studies in order to establish any cause–effect relationship and fully assess whether oedema itself could contribute to myocardial remodelling by inducing structural changes within the interstitium.<sup>43</sup>

### **Longitudinal Changes in $T_1$ and $T_2$ Mapping**

Several studies have explored longitudinal changes in mapping parameters in patients with CKD. Potentially,  $T_1$  and  $T_2$  mapping techniques

can provide useful surrogate endpoints to assess the response to any novel treatment approach, as well as to early identify incipient CKD-related cardiac damage.<sup>33,44</sup> In this context, native  $T_1$  effectively served as surrogate endpoint in a randomised trial exploring the effect of a program of intradialytic cycling, which was associated with reductions in LV mass, native  $T_1$  values and pulse wave velocity.<sup>45</sup>

In patients with moderate CKD, longitudinal examinations revealed stability of native  $T_1$  values, likely explained by the low severity of renal involvement, as well as the relatively short time interval between examinations.<sup>23</sup> In ESRD, native  $T_1$  has been assessed in patients with incident HD (under HD from <1 year) in which 6 months of standard care was associated with a reduction in LV mass and troponin, albeit unchanged  $T_1$  on average; however, the difference in the LV mass index over the duration of the study was greater in those whose  $T_1$  time fell, suggesting ongoing positive cardiac remodelling effectively imaged by CMR.<sup>46</sup> In addition, CMR provided surrogate endpoints in a study testing different HD modalities.<sup>47</sup> Interestingly, nocturnal in-centre HD was associated with positive cardiac remodelling, including reductions in LV mass and native  $T_1$ .<sup>47</sup>

Kidney transplantation (KT) has been described to have benefits on cardiac function and UC.<sup>48,49</sup> There are only a few studies investigating the longitudinal changes in native  $T_1$  in patients undergoing KT, and the data are conflicting. In one study, native  $T_1$  was described as increased 2 months after KT.<sup>37</sup> Others have described reductions in native  $T_1$  at least in a cluster of patients without diabetes and relatively low LV mass.<sup>50</sup> Further analysis from that last cohort revealed that  $T_1$  values did fall after KT and that cardiac deformation improved.<sup>38</sup>

More studies with larger sample sizes and longer follow-up times are needed to assess the long-term cardiac effects of KT. Overall,  $T_1$  and  $T_2$  mapping techniques seem attractive to monitor longitudinal cardiac remodelling in patients with CKD. Combined assessment of native  $T_1$  and  $T_2$ , as well as strict achievement of similar volume status between serial examinations, could be considered to reduce the influence of confounding variables.

### **Knowledge Gaps and Future Perspectives**

Native  $T_1$  as a marker of diffuse myocardial fibrosis has been validated in several diseases, including aortic stenosis and dilated and hypertrophic cardiomyopathy.<sup>51,52</sup> Although a similar association is highly likely present in UC too, no studies to date have attempted to provide such a validation. Of note, a trial is underway in which postmortem evaluation of myocardial fibrosis will be compared with CMR mapping (NCT03586518); this assessment would help to further strengthen the concept that native  $T_1$  can track the progression of diffuse myocardial fibrosis in patients with renal disease. UC is a diffuse disease, in which, according to currently available data, focal LGE areas may be present but not involved in determining prognosis.<sup>29</sup>

Conversely, native  $T_1$  has been shown to be related to increased N-terminal pro B-type natriuretic and reduced physical function in UC, suggesting that it could potentially be a valuable marker of clinical status in CKD.<sup>25,26</sup> Native  $T_1$  has been demonstrated to be a prognostic marker in several clinical conditions.<sup>28,53–55</sup> However, to date, no study is available investigating the prognostic role of native  $T_1$  in UC. Preventing sudden cardiac death in patients with UC is an unmet need.<sup>56</sup> Changes in cardiac morphology are associated with ECG abnormalities, further exaggerated by the occurrence of electrolyte imbalance, especially in people undergoing HD.<sup>57</sup>

The influence of diffuse fibrosis in the genesis of major arrhythmias is an attractive subject of investigation, and a study deriving post-contrast  $T_1$  values from inversion time (TI) scout images of patients undergoing ventricular tachycardia ablation found reduced survival free from recurrence in those patients with lower values, which indicate higher fibrosis burden.<sup>58</sup> In patients with CKD, an association between increased native  $T_1$  and longer QT interval has been described.<sup>20</sup> However, more specific research on this topic is currently lacking.

## Conclusion

CMR  $T_1$  and  $T_2$  mapping techniques expanded our ability to provide early identification and sensible tracking of disease progression in UC. An increase in native  $T_1$  represents the development of diffuse interstitial fibrosis, whereas a contribution of myocardial oedema, identified by increased  $T_2$  mapping values, is likely present at least in a subset of patients. Outcome studies are needed to assess the prognostic relevance of  $T_1$  and  $T_2$  mapping in patients with UC. □

- Go AS, Chertow GM, Fan D, et al. Chronic kidney disease and the risks of death, cardiovascular events, and hospitalization. *N Engl J Med* 2004;351:1296–305. <https://doi.org/10.1056/NEJMoa041031>; PMID: 15385656.
- Tonelli M, Karumanchi SA, Thadhani R. Epidemiology and mechanisms of uremia-related cardiovascular disease. *Circulation* 2016;133:518–36. <https://doi.org/10.1161/CIRCULATIONAHA.115.018713>; PMID: 26831434.
- Paneni F, Gregori M, Ciavarella GM, et al. Impact of dialysis modality on the appropriateness of left ventricular mass in patients with end-stage renal disease. *Int J Cardiol* 2011;149:250–2. <https://doi.org/10.1016/j.ijcard.2011.02.030>; PMID: 21392833.
- Wang X, Shapiro JJ. Evolving concepts in the pathogenesis of uraemic cardiomyopathy. *Nat Rev Nephrol* 2019;15:159–75. <https://doi.org/10.1038/s41581-018-0101-8>; PMID: 30664681.
- Sarnak MJ, Amann K, Bangalore S, et al. Chronic kidney disease and coronary artery disease. *J Am Coll Cardiol* 2019;74:1823–38. <https://doi.org/10.1016/j.jacc.2019.08.1017>; PMID: 31582143.
- de Albuquerque Suassuna PG, Sanders-Pinheiro H, de Paula RB. Uremic cardiomyopathy: a new piece in the chronic kidney disease–mineral and bone disorder puzzle. *Front Med* 2018;5:206. <https://doi.org/10.3389/fmed.2018.00206>; PMID: 30087898.
- Arcari L, Ciavarella GM, Altieri S, et al. Longitudinal changes of left and right cardiac structure and function in patients with end-stage renal disease on replacement therapy. *Eur J Intern Med* 2020;78:95–100. <https://doi.org/10.1016/j.ejim.2020.04.051>; PMID: 32402562.
- Aoki J, Ikari Y, Nakajima H, et al. Clinical and pathologic characteristics of dilated cardiomyopathy in hemodialysis patients. *Kidney Int* 2005;67:333–40. <https://doi.org/10.1111/j.1523-1755.2005.00086.x>; PMID: 15610259.
- Izumaru K, Hata J, Nakano T, et al. Reduced estimated GFR and cardiac remodeling: a population-based autopsy study. *Am J Kidney Dis* 2019;74:373–81. <https://doi.org/10.1053/j.ajkd.2019.02.013>; PMID: 31036390.
- Schulz-Menger J, Bluemke DA, Bremerich J, et al. Standardized image interpretation and post processing in cardiovascular magnetic resonance: Society for Cardiovascular Magnetic Resonance (SCMR) Board of Trustees Task Force on Standardized Post Processing. *J Cardiovasc Magn Reson* 2013;15:35. <https://doi.org/10.1186/1532-429X-15-35>; PMID: 23634753.
- Kolentinis M, Maestrini V, Vidalakis E, et al. CMR in hypertrophic cardiomyopathy conditions – an update. *Curr Cardiovasc Imaging Rep* 2020;13:13. <https://doi.org/10.1007/s12410-020-9533-1>.
- Edwards NC, Moody WE, Chue CD, et al. Defining the natural history of uremic cardiomyopathy in chronic kidney disease. *JACC Cardiovasc Imaging* 2014;7:703–14. <https://doi.org/10.1016/j.jcmg.2013.09.025>; PMID: 25034920.
- Puntmann VO, Peker E, Chandrashekar Y, et al.  $T_1$  mapping in characterizing myocardial disease. *Circ Res* 2016;119:277–99. <https://doi.org/10.1161/CIRCRESAHA.116.307974>; PMID: 27390332.
- Gottbrecht M, Kramer CM, Salerno M. Native  $T_1$  and extracellular volume measurements by cardiac MRI in healthy adults: a meta-analysis. *Radiology* 2019;290:317–26. <https://doi.org/10.1148/radiol.2018180226>; PMID: 30422092.
- von Knobelsdorff-Brenkenhoff F, Prothmann M, Dieringer MA, et al. Myocardial  $T_1$  and  $T_2$  mapping at 3 T: reference values, influencing factors and implications. *J Cardiovasc Magn Reson* 2013;15:53. <https://doi.org/10.1186/1532-429X-15-53>; PMID: 23777327.
- Haaf P, Garg P, Messroghli DR, et al. Cardiac  $T_1$  mapping and extracellular volume (ECV) in clinical practice: a comprehensive review. *J Cardiovasc Magn Reson* 2017;18:89. <https://doi.org/10.1186/s12968-016-0308-4>; PMID: 27899132.
- McDiarmid AK, Swoboda PP, Erhayem B, et al. Athletic cardiac adaptation in males is a consequence of elevated myocyte mass. *Circ Cardiovasc Imaging* 2016;9:e003579. <https://doi.org/10.1161/CIRCIMAGING.115.003579>; PMID: 27033835.
- Castelletti S, Menacho K, Davies RH, et al. Hypertrophic cardiomyopathy: insights from extracellular volume mapping. *Eur J Prev Cardiol* 2021. <https://doi.org/10.1093/eurjpc/zwaa083>; PMID: 33693514; epub ahead of press.
- Edwards NC, Moody WE, Yuan M, et al. Diffuse interstitial fibrosis and myocardial dysfunction in early chronic kidney disease. *Am J Cardiol* 2015;115:1311–7. <https://doi.org/10.1016/j.amjcard.2015.02.015>; PMID: 25769628.
- Rutherford E, Talle MA, Mangion K, et al. Defining myocardial tissue abnormalities in end-stage renal failure with cardiac magnetic resonance imaging using native  $T_1$  mapping. *Kidney Int* 2016;90:845–52. <https://doi.org/10.1016/j.kint.2016.06.014>; PMID: 27503805.
- Graham-Brown MPM, March DS, Churchward DR, et al. Novel cardiac nuclear magnetic resonance method for noninvasive assessment of myocardial fibrosis in hemodialysis patients. *Kidney Int* 2016;90:835–44. <https://doi.org/10.1016/j.kint.2016.07.014>; PMID: 27633869.
- Arcari L, Hinojar R, Engel J, et al. Native  $T_1$  and  $T_2$  provide distinctive signatures in hypertrophic cardiac conditions – comparison of uremic, hypertensive and hypertrophic cardiomyopathy. *Int J Cardiol* 2020;306:102–8. <https://doi.org/10.1016/j.ijcard.2020.03.002>; PMID: 32169347.
- Hayer MK, Price AM, Liu B, et al. Diffuse myocardial interstitial fibrosis and dysfunction in early chronic kidney disease. *Am J Cardiol* 2018;121:656–60. <https://doi.org/10.1016/j.amjcard.2017.11.041>; PMID: 29366457.
- Chen M, Arcari L, Engel J, et al. Aortic stiffness is independently associated with interstitial myocardial fibrosis by native  $T_1$  and accelerated in the presence of chronic kidney disease. *Int J Cardiol Heart Vasc* 2019;24:100389. <https://doi.org/10.1016/j.ijcha.2019.100389>; PMID: 31304234.
- Adenwalla, Billany RE, March DS, et al. The cardiovascular determinants of physical function in patients with end-stage kidney disease on haemodialysis. *Int J Cardiovasc Imaging* 2021;37:1405–14. <https://doi.org/10.1007/s10554-020-02112-z>; PMID: 33258084.
- Arcari L, Engel J, Freiwald T, et al. Cardiac biomarkers in chronic kidney disease are independently associated with myocardial edema and diffuse fibrosis by cardiovascular magnetic resonance. *J Cardiovasc Magn Reson* 2021;23:71. <https://doi.org/10.1186/s12968-021-00762-z>; PMID: 34092229.
- Hayer MK, Radhakrishnan A, Price AM, et al. Defining myocardial abnormalities across the stages of chronic kidney disease: a cardiac magnetic resonance imaging study. *JACC Cardiovasc Imaging* 2020;13:2357–67. <https://doi.org/10.1016/j.jcmg.2020.04.021>; PMID: 32682713.
- Puntmann VO, Carr-White G, Jabbar A, et al. Native  $T_1$  and ECV of noninfarcted myocardium and outcome in patients with coronary artery disease. *J Am Coll Cardiol* 2018;71:766–78. <https://doi.org/10.1016/j.jacc.2017.12.020>; PMID: 29447739.
- Price AM, Hayer MK, Vijapurapu R, et al. Myocardial characterization in pre-dialysis chronic kidney disease: a study of prevalence, patterns and outcomes. *BMC Cardiovasc Disord* 2019;19:295. <https://doi.org/10.1186/s12872-019-1256-3>; PMID: 31842769.
- Mark PB, Johnston N, Groenning BA, et al. Redefinition of uremic cardiomyopathy by contrast-enhanced cardiac magnetic resonance imaging. *Kidney Int* 2006;69:1839–45. <https://doi.org/10.1038/sj.ki.5000249>; PMID: 16508657.
- Canadian Association of Radiologists (CAR). New CAR guidelines for use of gadolinium-based contrast agents in kidney disease. 2017. <https://car.ca/news/new-car-guidelines-use-gadolinium-based-contrast-agents-kidney-disease/> (accessed 6 October 2021).
- Messroghli DR, Moon JC, Ferreira VM, et al. Clinical recommendations for cardiovascular magnetic resonance mapping of  $T_1$ ,  $T_2$ ,  $T_2^*$  and extracellular volume: a consensus statement by the Society for Cardiovascular Magnetic Resonance (SCMR) endorsed by the European Association for Cardiovascular Imaging (EACVI). *J Cardiovasc Magn Reson* 2017;19:75. <https://doi.org/10.1186/s12968-017-0389-8>; PMID: 28992817.
- Puntmann VO, Valbuena S, Hinojar R, et al. Society for Cardiovascular Magnetic Resonance (SCMR) expert consensus for CMR imaging endpoints in clinical research: part 1 – analytical validation and clinical qualification. *J Cardiovasc Magn Reson* 2018;20:67. <https://doi.org/10.1186/s12968-018-0484-5>; PMID: 30231886.
- Graham-Brown MPM, Singh AS, Gulsin GS, et al. Defining myocardial fibrosis in haemodialysis patients with non-contrast cardiac magnetic resonance. *BMC Cardiovasc Disord* 2018;18:145. <https://doi.org/10.1186/s12872-018-0885-2>; PMID: 30005636.
- Antlanger M, Aschauer S, Kammerlander AA, et al. Impact of systemic volume status on cardiac magnetic resonance  $T_1$  mapping. *Sci Rep* 2018;8:5572. <https://doi.org/10.1038/s41598-018-23868-4>; PMID: 29615750.
- Graham-Brown MPM, Rutherford E, Levelt E, et al. Native  $T_1$  mapping: inter-study, inter-observer and inter-center reproducibility in hemodialysis patients. *J Cardiovasc Magn Reson* 2017;19:21. <https://doi.org/10.1186/s12968-017-0337-7>; PMID: 28238284.
- Hayer MK, Radhakrishnan A, Price AM, et al. Early effects of kidney transplantation on the heart – a cardiac magnetic resonance multi-parametric study. *Int J Cardiol* 2019;293:272–7. <https://doi.org/10.1016/j.ijcard.2019.06.007>; PMID: 31272740.
- Barbosa MF, Conitti MM, de Andrade LGM, et al. Feature-tracking cardiac magnetic resonance left ventricular global longitudinal strain improves 6 months after kidney transplantation associated with reverse remodeling, not myocardial tissue characteristics. *Int J Cardiovasc Imaging* 2021;37:3027–37. <https://doi.org/10.1007/s12103-021-11311-w>; PMID: 33997925.
- Han X, He F, Cao, et al. Associations of B-type natriuretic peptide (BNP) and dialysis vintage with CMRI-derived cardiac indices in stable hemodialysis patients with a preserved left ventricular ejection fraction. *Int J Cardiovasc Imaging* 2020;36:2265–78. <https://doi.org/10.1007/s10554-020-01942-1>; PMID: 32686028.
- Graham-Brown MPM, Gulsin GS, Poli F, et al. Differences in native  $T_1$  and native  $T_2$  mapping between patients on hemodialysis and control subjects. *Eur J Radiol* 2021;140:109748. <https://doi.org/10.1016/j.ejrad.2021.109748>; PMID: 33962255.
- Kotecha T, Martinez-Naharro A, Yooannakul S, et al. Acute changes in cardiac structural and tissue characterisation parameters following haemodialysis measured using cardiovascular magnetic resonance. *Sci Rep* 2019;9:1388. <https://doi.org/10.1038/s41598-018-37845-4>; PMID: 30718606.
- Verbrugge FH, Bertrand PB, Willems E, et al. Global myocardial oedema in advanced decompensated heart failure. *Eur Heart J Cardiovasc Imaging* 2017;18:787–94. <https://doi.org/10.1093/ehjci/ewj131>; PMID: 27378769.
- Desai KV, Laine GA, Stewart RH, et al. Mechanics of the left ventricular myocardial interstitium: effects of acute and chronic myocardial edema. *Am J Physiol Heart Circ Physiol* 2008;294:H2428–34. <https://doi.org/10.1152/ajpheart.00860.2007>; PMID: 18375722.
- Price AM, Moody WE, Stoll VM, et al. Cardiovascular effects of unilateral nephrectomy in living kidney donors at 5 years. *Hypertension* 2021;77:1273–84. <https://doi.org/10.1161/HYPERTENSIONAHA.120.15398>; PMID: 33550822.
- Graham-Brown MPM, March DS, Young R, et al. A randomized controlled trial to investigate the effects of intra-dialytic cycling on left ventricular mass. *Kidney Int* 2021;99:1478–86. <https://doi.org/10.1016/j.kint.2021.02.027>; PMID: 34023029.
- Rutherford E, Mangion K, McComb C, et al. Myocardial changes in incident haemodialysis patients over 6-months: an observational cardiac magnetic resonance imaging study. *Sci Rep* 2017;7:13976. <https://doi.org/10.1038/s41598-017-44481-y>; PMID: 29070834.
- Graham-Brown MPM, Churchward DR, Hull KL, et al. Cardiac remodelling in patients undergoing in-centre nocturnal haemodialysis: results from the MIDNIGHT Study, a non-

- randomized controlled trial. *Blood Purif* 2017;44:301–10. <https://doi.org/10.1159/000481248>; PMID: 29084397.
48. Wali RK, Wang GS, Gottlieb SS, et al. Effect of kidney transplantation on left ventricular systolic dysfunction and congestive heart failure in patients with end-stage renal disease. *J Am Coll Cardiol* 2005;45:1051–60. <https://doi.org/10.1016/j.jacc.2004.11.061>; PMID: 15808763.
  49. Obremska M, Kamińska D, Krawczyk M, et al. Impact of different approaches to kidney transplant with and without chronic hemodialysis on cardiac function and morphology: a case-control study. *J Clin Med* 2021;10:3913. <https://doi.org/10.3390/jcm10173913>; PMID: 34501366.
  50. Contti MM, Barbosa MF, del Carmen Villanueva Mauricio A, et al. Kidney transplantation is associated with reduced myocardial fibrosis. A cardiovascular magnetic resonance study with native T<sub>1</sub> mapping. *J Cardiovasc Magn Reson* 2019;21:21. <https://doi.org/10.1186/s12968-019-0531-x>; PMID: 30917836.
  51. Bull S, White SK, Piechnik SK, et al. Human non-contrast T<sub>1</sub> values and correlation with histology in diffuse fibrosis. *Heart* 2013;99:932–7. <https://doi.org/10.1136/heartjnl-2012-303052>; PMID: 23349348.
  52. Diao K, Yang Z, Xu H, et al. Histologic validation of myocardial fibrosis measured by T<sub>1</sub> mapping: a systematic review and meta-analysis. *J Cardiovasc Magn Reson* 2017;18:92. <https://doi.org/10.1186/s12968-016-0313-7>; PMID: 27955698.
  53. Puntmann VO, Carr-White G, Jabbour A, et al. T<sub>1</sub>-mapping and outcome in nonischemic cardiomyopathy all-cause mortality and heart failure. *JACC Cardiovasc Imaging* 2016;9:40–50. <https://doi.org/10.1016/j.jcmg.2015.12.001>; PMID: 26762873.
  54. Lin L, Li X, Feng J, et al. The prognostic value of T<sub>1</sub> mapping and late gadolinium enhancement cardiovascular magnetic resonance imaging in patients with light chain amyloidosis. *J Cardiovasc Magn Reson* 2018;20:2. <https://doi.org/10.1186/s12968-017-0419-6>; PMID: 29298704.
  55. de Leuw P, Arendt CT, Haberl AE, et al. Myocardial fibrosis and inflammation by CMR predict cardiovascular outcome in people living with HIV. *JACC Cardiovasc Imaging* 2021;14:1548–57. <https://doi.org/10.1016/j.jcmg.2021.01.042>; PMID: 33865770.
  56. Shamseddin MK, Parfrey PS. Sudden cardiac death in chronic kidney disease: epidemiology and prevention. *Nat Rev Nephrol* 2011;7:145–54. <https://doi.org/10.1038/nrneph.2010.191>; PMID: 21283136.
  57. Buonacera, Boukhris, Tomasello SD, et al. Impact of left ventricular remodeling and renal function on 24h-ECG recordings and cardiovascular outcome in elderly hypertensive patients. *Eur J Intern Med* 2016;29:71–7. <https://doi.org/10.1016/j.ejim.2016.01.001>; PMID: 26781517.
  58. Muser D, Nucifora G, Castro SA, et al. Myocardial substrate characterization by CMR T<sub>1</sub> mapping in patients with NICM and no LGE undergoing catheter ablation of VT. *JACC Clin Electrophysiol* 2021;7:831–40. <https://doi.org/10.1016/j.jacep.2020.10.002>; PMID: 33516709.