

High-Grade Basal Cell Adenocarcinoma Arising from the Parotid Gland: A Case Report and Review of the Literature

Parotis Bezinden Kaynaklanan Yüksek Dereceli Bazal Hücreli Adenokarsinom: Olgu Sunumu ve Literatürün Gözden Geçirilmesi

Case Report
Olgu Sunumu

Çağatay Han Ülkü¹, Pembe Oltulu², Mustafa Cihat Avunduk²

¹Department of Otorhinolaryngology, Necmettin Erbakan University Meram School of Medicine, Konya, Turkey

²Department of Pathology, Necmettin Erbakan University Meram School of Medicine, Konya, Turkey

Abstract

Basal cell adenocarcinomas are exceptionally rare and were first included in the histopathological classification of salivary gland tumors by the World Health Organization in 1991. These tumors are generally described as a low-grade malignancy with rare regional or distant metastasis. However, 48 basal cell adenocarcinoma cases arising from the major salivary glands have been described as high-grade malignancy in the English literature. Surgical excision and possible postoperative radiotherapy is the treatment of choice. Close follow up is mandatory for early detection of

possible local recurrence. A 66-year-old female with high-grade basal cell adenocarcinoma of the parotid gland was presented in this study. Total parotidectomy with protection of the facial nerve integrity and postoperative radiotherapy were performed. At the most recent follow-up examination, 24 months after the surgery, the patient had no complaints and there was no sign of disease recurrence.

Keywords: Basal cell adenocarcinoma, salivary gland, parotid, treatment

Öz

Bazal hücreli adenokarsinomlar son derece nadir görülür ve ilk kez 1991 yılında Dünya Sağlık Örgütü tarafından tükürük bezi tümörleri histopatolojik sınıflamasına dahil edilmiştir. Bu tümörler genel olarak nadiren bölgesel ya da uzak metastaz ile birlikte olan düşük dereceli maligniteler olarak tanımlanırlar. Bununla birlikte, İngilizce literatürde major tükürük bezi kaynaklı 48 bazal hücreli adenokarsinoma, yüksek dereceli malignite olarak tanımlanmıştır. Cerrahi eksizyon ve olası postoperatif radyoterapi tedavi seçeneği-

dir. Yakın izlem, olası lokal nüksün erken belirlenmesi için gereklidir. Bu çalışmada, altmış altı yaşında parotis bezinde yüksek dereceli bazal hücreli adenokarsinomu olan bir kadın hasta sunuldu. Fasiyal sinir bütünlüğü korunarak total parotidektomi ve postoperatif radyoterapi uygulandı. Cerrahiden 24 ay sonra yapılan son kontrol muayenesinde, hastanın yakınması ve hastalık nüksüne ait herhangi bir bulgu yoktu.

Anahtar kelimeler: Bazal hücreli adenokarsinom, tükürük bezi, parotis, tedavi

Introduction

Basal cell adenocarcinoma (BCAC), which was histopathologically classified by the World Health Organization in 1991, is a rare malignant tumor arising from the salivary glands (1, 2). To the best of our knowledge, fewer than 600 cases of BCAC arising from the major salivary glands have been reported in the literature up to 2015, and only 48 of them have been described as high-grade BCAC (3).

In this case report, the patient with high-grade BCAC arising from the parotid gland is presented and the characteristics of the disease are summarized in light of the literature.

Case Presentation

A 66-year-old female applied to our clinic with a 2-year history of a slow-growing, painless, and semi-mobile mass in the right parotid gland. Physical examination revealed a solid, semi-mobile, 25 mm x 20 mm soft tissue mass in the right parotid gland. Magnetic resonance imaging (MRI) with contrast revealed a well-defined and minimally heterogeneous mass located on the superficial lobe of the parotid gland, measuring 22 mm x 18 mm (Figure 1). The neck was free of the disease. Fine needle aspiration biopsy did not enable us to make a diagnosis of malignancy. Written informed consent was received from the patient, and the tu-



Cite this article as: Ülkü ÇH, Oltulu P, Avunduk MC. High-Grade Basal Cell Adenocarcinoma Arising from the Parotid Gland: A Case Report and Review of the Literature. Turk Arch Otorhinolaryngol 2017; 55: 187-90.

This study was presented at the 38th Turkish National Congress of Otorhinolaryngology Head and Neck Surgery, 26-30 October 2016, Antalya, Turkey.

Bu çalışma, 38. Türk Ulusal Kulak Burun Boğaz ve Baş Boyun Cerrahisi Kongresi'nde sunulmuştur, 26-30 Ekim 2016, Antalya, Türkiye.

Address for Correspondence/Yazışma Adresi:
Çağatay Han Ülkü
E-mail: chanulku@yahoo.com

Received Date/Geliş Tarihi: 17.08.2017

Accepted Date/Kabul Tarihi: 12.10.2017

© Copyright 2017 by Official Journal of the Turkish Society of Otorhinolaryngology and Head and Neck Surgery Available online at www.turkarchotolaryngol.net

© Telif Hakkı 2017 Türk Kulak Burun Boğaz ve Baş Boyun Cerrahisi Derneği Makale metnine www.turkarchotolaryngol.net web sayfasından ulaşılabilir.

DOI: 10.5152/tao.2017.2737

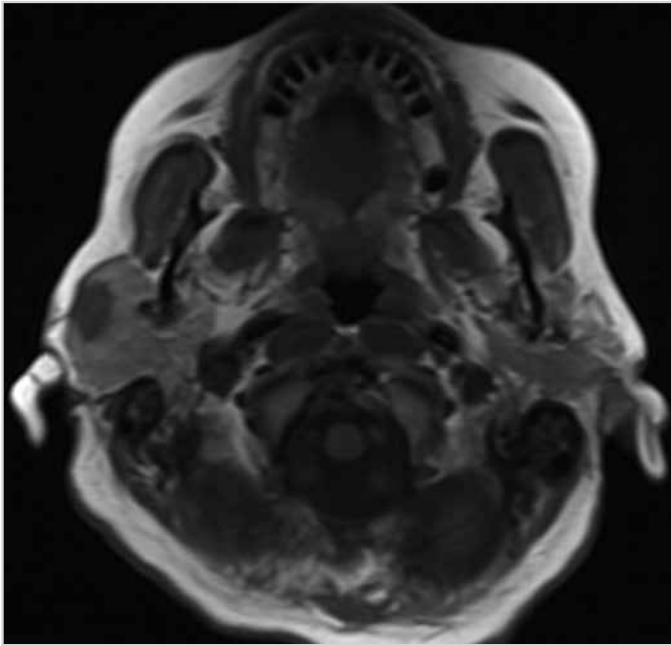


Figure 1. Axial MRI appearance of the mass

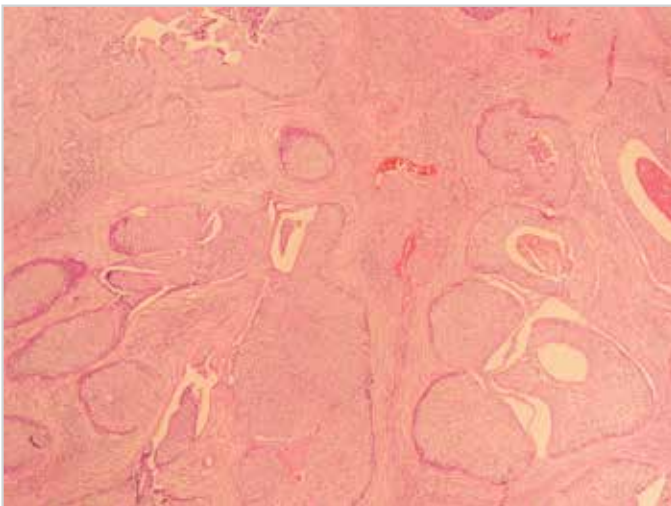


Figure 2. Histopathological appearance with hematoxylin&eosin staining X4

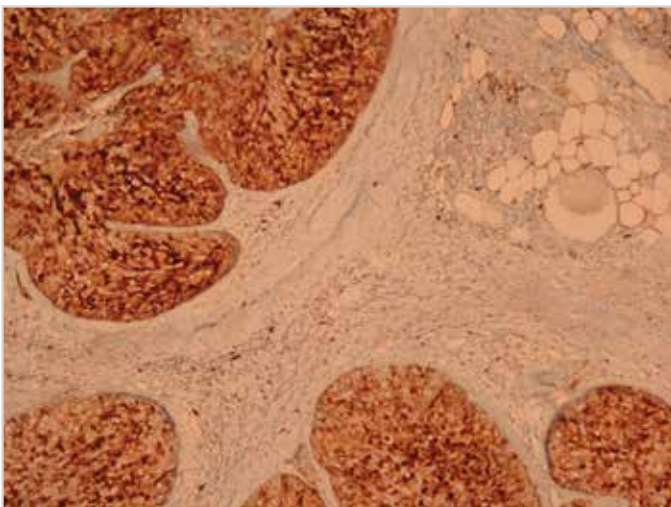


Figure 3. Histopathological appearance with S100 staining X10

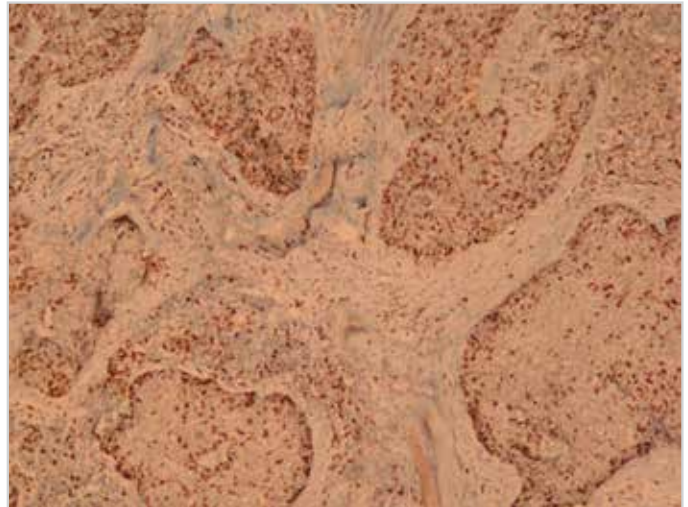


Figure 4. Histopathological appearance with p63 staining X10

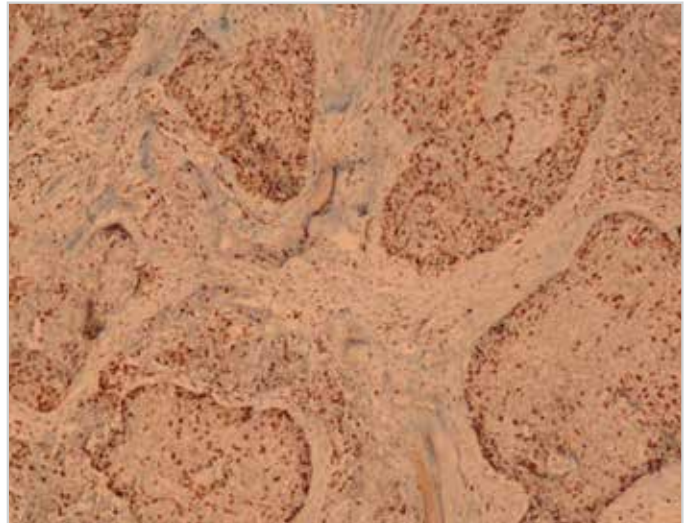


Figure 5. Histopathological appearance with high Ki-67 index (80%) X10

mor was resected by superficial parotidectomy with preservation of the facial nerve.

Microscopically, basaloid cell islands were observed. Dark basophilic cells were often located in the peripheral area, whereas pale basophilic cells were located in the central area (Figure 2). Alpha chymotrypsin, mucin, S 100 (Figure 3), and p63 (Figure 4) staining led us to make a diagnosis of BCAC (solid type). Furthermore, the existence of atypical mitotic figures, pleomorphism, vascular, and perineural invasion, necrosis, solid growth pattern, invasion into the parotid gland, and high Ki-67 index (80%) (Figure 5) were the indicators of a high-grade tumor. Thus the final histopathological diagnosis was high-grade BCAC (solid type). According to the decision of the institution's tumor-board, the patient underwent additional surgery and total parotidectomy with preservation of the facial nerve. Histopathologically, there was no tumor in the deep parotid lobe. Treatment was completed by postoperative radiotherapy. At the most recent follow-up examination, 24 months after the last surgery, there was no sign of disease recurrence.

Discussion

Basal cell adenocarcinoma composes only 1.4% of all major salivary gland malignant tumors, and it primarily arises from the parotid gland (88%) followed by the submandibular (11.2%) and sublingual (0.8%) glands. This tumor is also referred to as carcinoma ex-monomorphic adenoma, basaloid salivary gland carcinoma, and malignant basal cell tumor (3). Minor salivary glands are less common locations for BCAC, which is most frequently seen in the hard palate and buccal mucosa (4, 5). These tumors mostly arise de novo (77%), but they might also arise from preexisting basal cell adenomas (23%) (2).

Clinically, BCAC is a slowly enlarging, non-tender mass (3). The average symptom duration prior to diagnosis has been reported to be 1.8 years by Ellis and Wiskovitch (6). Additional cutaneous adnexal lesions are also observed in about 10% of BCAC cases. According to the retrospective database review of The National Cancer Database in the US between 1998 and 2012 by Zhan et al. (3) 47.3% of the tumors were 2 cm to 4 cm in diameter, and 35.8% of them were less than 2 cm in diameter. The average age at diagnosis is 64 years (range 18 years to 92 years).

Histopathologically, BCAC tumors are classified as solid, membranous, tubular, or trabecular. The majority of them are the solid type, which has much more perineural and intravascular growth potential, and 19 solid, six membranous, three trabecular, and one tubular type BCAC were reported by Ellis and Wiskovitch (6) in their series of 29 cases. Moreover, regional and systemic metastasis rates are also higher for the solid type. Thus, the classification of BCAC might influence the treatment protocol and prognosis (2, 6).

Basal cell adenocarcinoma is generally described as a low-grade malignancy and prognosis is usually good. In 45 cases with BCAC, 8% had cervical lymph node metastases, 4% had distant metastases, and 2% resulted in exitus as reported by Muller et al. (2) for a long follow-up period. In another study, regional and distant (lungs, scalp, manubrium, etc.) metastasis rates were reported as 11.9% and 1.8%, respectively, by Zhan and Lentsch (3). Surgical excision with free margins is the most common treatment of choice (45.1%). This is followed by surgery and postoperative radiotherapy (39.4%) and by only close follow up without any treatment (6.9%) (3).

Zhan et al. (3) described 48 high-grade (solid type, overexpression of p53 and high Ki-67 index) BCAC cases (9.43%) in a database review of the National Cancer Database. Another review of 11 BCAC cases was performed, and solid pattern and overexpression of Ki-67 index and p53 were observed on histopathological examination by Nagao et al. (7). The clinical and histopathological features of these high-grade BCACs are more aggressive. Extraglandular invasion and T3- or T4-stage tumors might be seen more frequently, and surgery and postoperative radiotherapy are more often performed as a treatment for these cases. Even when the surgical margins are free of the tumor, BCAC tends to make a local recurrence (16.7%-50%) between 6 and 24 months after the surgery. Thus, long-term follow up is required (2, 3, 7, 8).

Clinical and histopathological regional metastasis rates were reported as 6.7% and 11.9% for BCAC, respectively, by Zhan et al. (3) Furthermore, the occult nodal metastasis rate was reported as 5.7%. Thus, neck dissection is not required for N0 neck cases.

Solid-type adenoid cystic carcinoma, cutaneous basal cell carcinoma, basal cell adenoma, and small cell carcinoma should all be taken into consideration for differential diagnosis (3, 7, 8).

In this presentation, the patient with high-grade BCAC of the parotid gland was staged as T2N0M0. The patient's treatment was completed by total parotidectomy and postoperative radiotherapy due to the aggressive features of the solid-type high-grade BCAC. Facial nerve integrity and function were protected. At the most recent follow-up examination, 24 months after the last surgery, the patient had no complaints and there were no signs of disease recurrence.

Conclusion

Clinical and histopathological features of high-grade BCACs (solid type) are more aggressive. Treatment generally includes surgery and postoperative radiotherapy. Even when the surgical margins are free of the tumor, BCAC tends to make a local recurrence. Thus, long-term follow up is required.

Informed Consent: Written informed consent was obtained from the patient who participated in this study.

Peer-review: Externally peer-reviewed.

Author Contributions: Concept - Ç.H.Ü., P.O., M.C.A.; Design - Ç.H.Ü., P.O., M.C.A.; Supervision - Ç.H.Ü., P.O., M.C.A.; Resource - Ç.H.Ü., P.O., M.C.A.; Materials - Ç.H.Ü., P.O., M.C.A.; Data Collection and/or Processing - Ç.H.Ü., M.C.A.; Analysis and/or Interpretation - Ç.H.Ü., M.C.A.; Literature Search - Ç.H.Ü.; Writing - Ç.H.Ü.; Critical Reviews - Ç.H.Ü., P.O., M.C.A.

Conflict of Interest: No conflict of interest was declared by the authors.

Financial Disclosure: The authors declared that this study has received no financial support.

Hasta Onamı: Yazılı hasta onamı bu çalışmaya katılan hastadan alınmıştır.

Hakem Değerlendirmesi: Dış bağımsız.

Yazar Katkıları: Fikir - Ç.H.Ü., P.O., M.C.A.; Tasarım - Ç.H.Ü., P.O., M.C.A.; Denetleme - Ç.H.Ü., P.O., M.C.A.; Kaynaklar - Ç.H.Ü., P.O., M.C.A.; Gereçler - Ç.H.Ü., P.O., M.C.A.; Veri Toplanması ve/veya İşlemesi - Ç.H.Ü., M.C.A.; Analiz ve/veya Yorum - Ç.H.Ü., M.C.A.; Literatür Taraması - Ç.H.Ü.; Yazıyı Yazan - Ç.H.Ü.; Eleştirel İnceleme - Ç.H.Ü., P.O., M.C.A.

Çıkar Çatışması: Yazarlar çıkar çatışması bildirmemişlerdir.

Finansal Destek: Yazarlar bu çalışma için finansal destek almadıklarını beyan etmişlerdir.

References

1. Seifert G, Batsakis JG, Brocheriou C, Cardesa A, Dardick I, Ellis GL, et al. World Health Organisation International Histological Classification of Tumours. Histologic Classification of Salivary Gland Tumours. 2nd edition. Berlin: Springer-Verlag, 1991: 9-13, 24-6.
2. Muller S, Barnes L. Basal cell adenocarcinoma of the salivary glands. Report of seven cases and review of the literature. *Cancer* 1996; 78: 2471-7. [\[CrossRef\]](#)
3. Zhan KY, Lentsch EJ. Basal cell adenocarcinoma of the major salivary glands: A population-level study of 509 cases. *Laryngoscope* 2016; 126: 1086-90. [\[CrossRef\]](#)
4. Gross M, Maly B, Goldfarb A, Eliashar R. Basal cell adenocarcinoma in a buccal minor salivary gland. *Acta Otolaryngol* 2004; 124: 213-6. [\[CrossRef\]](#)
5. Ward BK, Seethala RR, Barnes EL, Lai SY. Basal cell adenocarcinoma of a hard palate minor salivary gland: case report and review of the literature. *Head Neck Oncol* 2009; 1: 41. [\[CrossRef\]](#)
6. Ellis GL, Wiscovitch JG. Basal cell adenocarcinomas of the major salivary glands. *Oral Surg Oral Med Oral Pathol* 1990; 69: 461-9. [\[CrossRef\]](#)
7. Nagao T, Sugano I, Ishida Y, Hasegawa M, Matsuzaki O, Konno A, et al. Basal cell adenocarcinoma of the salivary glands: comparison with basal cell adenoma through assessment of cell proliferation, apoptosis, and expression of p53 and bcl-2. *Cancer* 1998; 82: 439-47. [\[CrossRef\]](#)
8. Wilson TC, Robinson RA. Basal cell adenocarcinoma and basal cell adenoma of the salivary glands: a clinicopathological review of seventy tumors with comparison of morphologic features and growth control indices. *Head and Neck Pathol* 2015; 9: 205-13. [\[CrossRef\]](#)