



INSTITUT DE FRANCE  
Académie des sciences

# *Comptes Rendus*

---

## *Géoscience*

### *Sciences de la Planète*

Martin Darius Bengo, Hilaire Elenga, Jean Maley and Pierre Giresse


**Evidence of pollen transport by the Sanaga River on the Cameroon shelf**

Volume 352, issue 1 (2020), p. 59-72.

<https://doi.org/10.5802/crgeos.1>

© Académie des sciences, Paris and the authors, 2020.

*Some rights reserved.*

 This article is licensed under the  
CREATIVE COMMONS ATTRIBUTION 4.0 INTERNATIONAL LICENSE.  
<http://creativecommons.org/licenses/by/4.0/>



*Les Comptes Rendus. Géoscience — Sciences de la Planète sont membres du  
Centre Mersenne pour l'édition scientifique ouverte*

[www.centre-mersenne.org](http://www.centre-mersenne.org)



Hydrology, Environment — Original Article

# Evidence of pollen transport by the Sanaga River on the Cameroon shelf

Martin Darius Bengo<sup>\*</sup>, <sup>a</sup>, Hilaire Elenga<sup>b</sup>, Jean Maley<sup>c</sup> and Pierre Giresse<sup>d</sup>

<sup>a</sup> Ecole Normale Supérieure - Université Marien NGOUABI, Congo

<sup>b</sup> Faculté des Sciences - Université Marien NGOUABI, Congo

<sup>c</sup> Directeur de Recherches IRD, Chercheur associé - Université Montpellier 2, France

<sup>d</sup> Professeur émérite, Université de Perpignan, France.

*E-mails:* dmbengo@yahoo.fr, dmbengo@gmail.com (M. D. Bengo),  
hilaire\_elenga@yahoo.fr (H. Elenga), jean.maley5@gmail.com (J. Maley),  
giresse@univ-perp.fr (P. Giresse).

**Abstract.** Thirty-eight samples were taken from the banks of the Sanaga River and its main tributaries draining different plant ecosystems, but also from rivers in the coastal basins of Cameroon. This study aims to characterize the origins of pollen and the dominant mode of transport of pollen inputs to the continental shelf. The classical method of pollen spectra analysis and multivariate statistical analysis revealed three groups of samples corresponding to the three main ecosystems in which the samples were taken. Pollens typical of the northern savannas are found in the spectra of samples taken further downstream from the Sanaga River in forest areas and not in samples from rivers draining mainly the forested coastal basins. The level of similarity between groups and the spatial evolution of spectra from upstream to downstream are related to the fluvial transport of pollen.

**Keywords.** Palynology, Pollen, Savanna, Forest, River transport, Sediments, Sanaga, Cameroon.

*Manuscript received 28th December 2019, revised 22nd January 2020 and 30th January 2020, accepted 14th February 2020.*

## 1. Introduction

There are many past and recent studies on pollen fluxes in current deposits in Africa. Some have been the subject of attempts to model paleoenvironments and paleoclimates by various authors [Elenga et al., 2000, Jolly et al., 1998a, Lebamba et al., 2009b, Peyron et al., 2006], current [Bengo, 1996, Frédoux and Maley, 1996, Hooghiemstra et al., 1986], and fossils

[Bengo and Maley, 1991, Dupont and Agwu, 1991, Elenga et al., 2004, Giresse et al., 2009, Lebamba et al., 2009a, Lézine et al., 2009, Ngomanda et al., 2008, Reynaud and Maley, 1994]; and others, have shown the importance of wind contributions to the Sahara [Ngunstop et al., 2004], and Sahel winds blowing north and which contributed to the loess deposits in Europe [Haerserts, 1985].

But what about the origin of the terrigenous deposits of the southern part of the Gulf of Guinea which we know that the winds of the Harmattan blowing towards the ocean, pass over the north-

<sup>\*</sup> Corresponding author.

ern limit of the Gulf, and hardly exceeding the Forest/Savannah limit in Cameroon?

Thus, the research questions that this work must answer are:

- Are the pollen flows covering the bottom of the Cameroonian basin brought back by the Harmattan?
- Otherwise, how can we prove that they are part of the procession of fluvial contributions?

The choice of the Sanaga basin is justified by the fact that the Sanaga River, through its main tributaries, successively crosses large plant units (savannah, dense forest and coastal forest). This study thus aims to characterize the origins of pollens and the dominant mode of transport of pollen inputs to the continental shelf. Since the continental winds are weak, the hypothesis of wind inputs can be excluded, or else these inputs are negligible. The importance of fluvial inputs remains to be demonstrated, for example if specific savanna pollens could be found in samples taken downstream in forest areas.

## 2. Material and methods

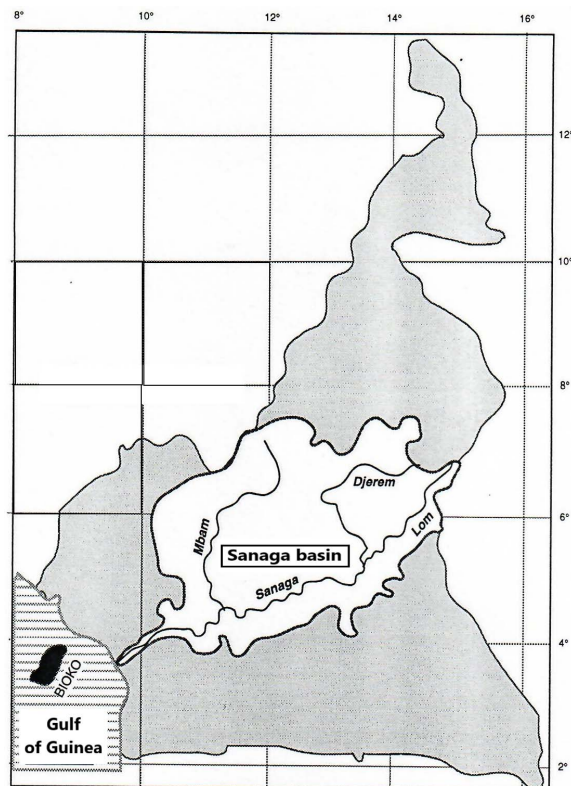
### 2.1. Study site

#### 2.1.1. Location and climate

The study area occupies the central region of Cameroon (Figure 1), including the large Sanaga Basin and the coastal basins facing the Atlantic Ocean. The Sanaga Basin, with an area of 133,000 km<sup>2</sup>, extends between latitudes 3-32' N-7-22' N and longitudes 9-45' E-14-57' E [Laclavère, 1979]. It is bounded to the west by the Cameroonian volcanic Dorsale, and to the north, by the Adamaoua Plateau. The Sanaga Basin is subject to the moist monsoon air masses that flow from the ocean to the mainland, and incidentally in its northern part, to the winds of the Harmattan direction NE that blow from the continent to the ocean [Leroux, 1983, Piton, 1987, Suchel, 1988].

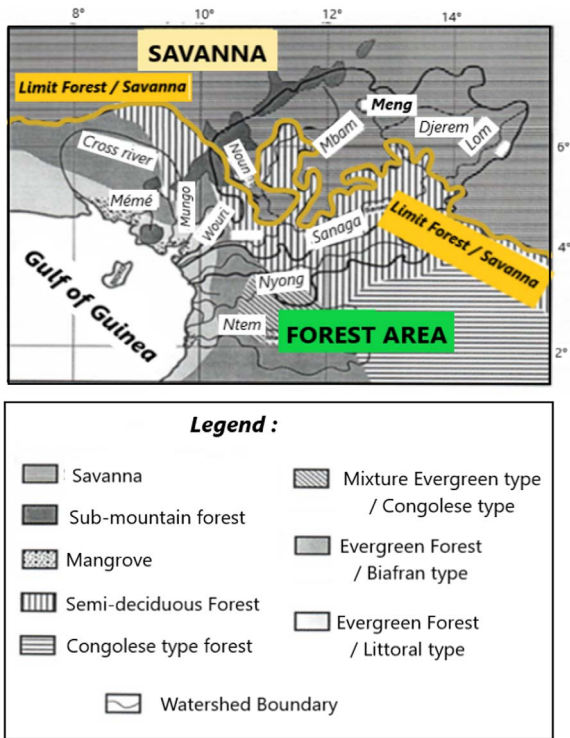
#### 2.1.2. Soils and vegetation

Plant units have a zonality in relation to soils [Martin, 1966, Segalen, 1967] mainly ferralitics related to the quality of substrate [Guillet *et al.*, 1996, Nzila *et al.*, 2018], and the more or less important



**Figure 1.** Location of the Sanaga basin in Cameroon.

annual distribution of precipitation and temperatures (Figure 2). Wet dense forests in the south, savannahs in the centre and north of the country [Aubréville, 1948, Letouzey, 1985, White, 1986]. Dense humid forests are made up of semi-deciduous forest, evergreen biao forest, and evergreen littoral forest, each of which is characterized by specific taxa [Puig, 2001]. Savannahs are of two types on the way to the Adamaoua Plateau in the north: the grassy and shrub-rich peri-forest savannahs (*Bridelia ferruginea*, *Terminalia glaucescens*, ...) and the Sudan-Guinean savannahs that are enriched by new species (*Combretum molle*, *Daniellia oliveri*, *Entada abyssinica*, *Syzygium macrocarpum*, ...). Plant associations linked to specific edaphic or climatic conditions are present, such as: near the coast, mangroves at *Rhizophora mangle*, *Avicenia africana* [Boyé *et al.*, 1975, Letouzey, 1985, Din, 1991]; and at altitude, the mountain formations at *Podocarpus*, *Olea*, *Rapanea* [Maley, 1987]. Moreover, anthro-



**Figure 2.** Main types of vegetation in the Sanaga basin.

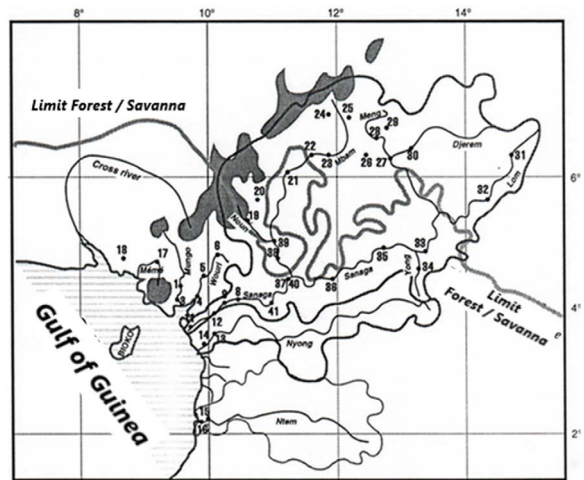
pogenic actions related to logging, industrial and food crops do not prevent the regeneration of the forest, which is currently advancing on the savannah [Letouzey, 1985, Maley, 1990, Youta Happi, 1998].

2.1.3. *Fluvial inputs of the Sanaga River*

Continental erosion depends mainly on soil condition and vegetation cover. On the Edea station, the average turbidity, corresponding to all the suspended solid matter of the Sanaga basin transported to the ocean, was estimated annually at 6,000,000 tons of silt and clay, of which 2,500,000 from the Mbam by the importance of agriculture in The Bamiléké [Nouvelot, 1972, Olivry, 1977].

2.2. *Sampling*

The Sanaga River is fed along its course by several rivers that drain small basins covering various ecological and floristic areas. Mineral and organic particles of different sizes are deposited on the riverbed or on the banks. In order to be likely to find pollen



**Figure 3.** Location of samples on rivers.

grains, sampling was done in fine leashes or deposits of the lutite class, namely silts and clays. These leashes, considered surface deposits, can contain both river-drained inputs and the fallout from atmospheric dust laden with local or even allochthon pollens. Samples were taken throughout the basin, along the Sanaga River and on a dozen of its tributaries. A total of thirty-eight samples (Table 1 and Figure 3) were collected, including twenty-seven from upstream and downstream of the Sanaga Basin, and another 11 samples were taken near the offshore outlets of the main coastal rivers draining only watersheds located in dense forest areas, in order to reassure ourselves of the assumption of a dominant mode of transport.

2.3. *Pollen identification*

After the treatment of samples using conventional methods [Cour, 1974, Faegri and Inversen, 1975], the identification of pollens was made at the level of the Family, Gender and Species by referring to the blades of the Reference Collection of current pollens of the Montpellier Laboratory and monographs of the region [Bonfille and Rioulet, 1980, Caratini *et al.*, 1974, Salard-Chebouldaef, 1980, 1981, 1982, 1983].

2.4. *Statistical analysis of data*

Data placed in a contingency array matrix [Benzecri and Benzécri, 1980, Volle, 1993] is preparing for mul-

**Table 1.** Distribution of the samples taken in the different rivers and under different floristic facies

River	Savanna	Forest	Mangrove	Total
Sanaga	1	9		<b>10</b>
Mbam	6			<b>6</b>
Djerem	5			<b>5</b>
Lom	2			<b>2</b>
Noun	2	1		<b>3</b>
Yong		1		<b>1</b>
Mémé and Lobé		1	1	<b>2</b>
Wouri et Mungo	4	1		<b>5</b>
Nyong		2		<b>2</b>
Ntem		1	1	<b>2</b>
<b>Total</b>	<b>16</b>	<b>19</b>	<b>3</b>	<b>38</b>

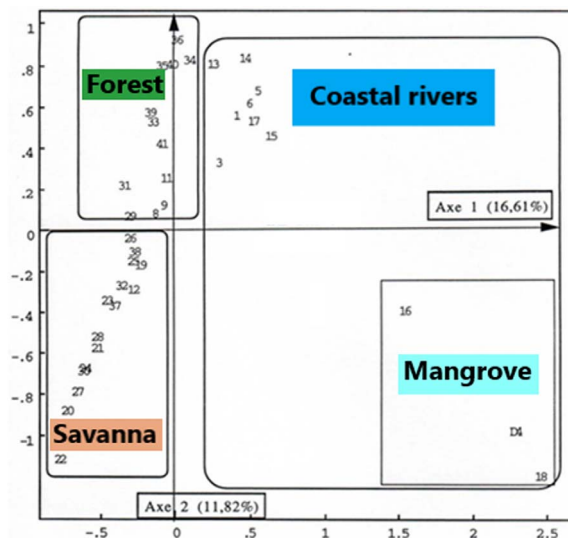
tivariate analyses, such as Factor Correspondence Analysis (FCA) and Principal Component Analysis (PCA). These analyses are supplemented by a Dendrogram hierarchical classification (Clusters analyses and Neighbour joining), so as to define the relationships and nuclei of affinities between the samples [Roux, 1985]. Data processing, graphic representation of results, and dendrogram of hierarchical classification were made with MacMul, GraphMu and MacDendro software [Thioulouse, 1990] and PAST software [Hammer et al., 2001]. In the study region, this type of statistical analysis has recently been adopted on current pollen [Jolly et al., 1996] and fossil [Reynaud-Farrera, 1995].

### 2.5. Pollen spectra

Pollen spectra are analysed using two transects from upstream to downstream (mouth), i.e. from savannah areas to dense forest areas:

- a Mbam transect with 10 samples from the Mbam Basin;
- and a Sanaga transect consisting of 12 samples taken upstream of the Sanaga/Mbam confluence.

From the downstream confluence of the Sanaga and the Mbam to the mouth, five samples complete the two transects mentioned above. These allow tracking the variation in samples along the route,



**Figure 4.** With all samples (38) and taxa (237).

from their area of origin, appearance or abundance in the samples to the mouth, of certain characteristic taxa revealed by the statistical processing of the data.

## 3. Results

### 3.1. Pollen analysis

The pollen analysis of the 38 samples resulted in the identification of 237 taxa, the most represented of which are carried out in Table 2.

### 3.2. Multivariate analyses

#### 3.2.1. Factor Correspondence Analysis (FCA)

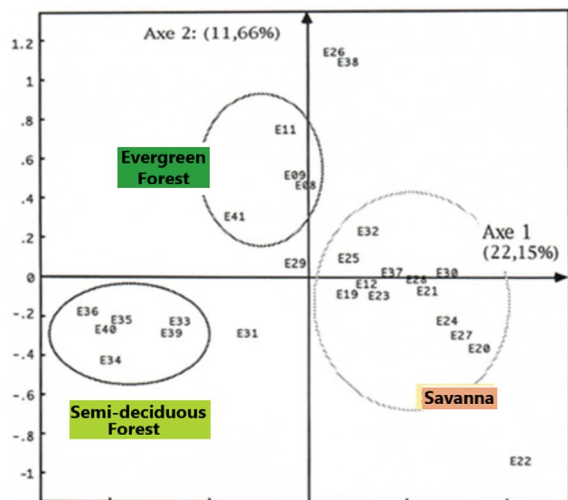
Factor analysis of the matches was applied to two separate matrixes, the initial matrix containing all the analysed samples (Figure 4); the other includes only samples from the Sanaga Basin (Figures 5 and 6).

#### 3.2.2. The Principal Component Analysis (PCA)

The point cloud on the foreground factor (Figure 7) from a main component analysis (PCA) on the Sanaga Basin samples confirms FCA 2. Almost all taxa are grouped in the centre, except those with high contributions ending up towards the periphery of the ellipsoid of correlations (Graminae, Spores, *Alchornea* and *Uapaca guineensis*); as is the case on the

Table 2. Initial matrix of frequent taxa in various plant ecosystems

Table with 61 columns representing different plant ecosystems (Ech 1 to Ech 61) and 61 rows representing various taxonomic groups (Taxons/Familles). Each cell contains a numerical value representing the frequency of that taxon in that ecosystem. The table is a square matrix of 61x61 cells.



**Figure 5.** All samples, without *Rhizophora*.

diagonal (Figure 8) formed by the factor plane of the PCA where axis 1 is placed on the axis of the abscises and on the axis of the ordained.

### 3.3. Pollen spectra

Recurrent taxa, characteristic of different plant ecosystems and highlighted by analysis of statistical data, are shown in Figure 11 showing the evolution in space of pollen spectrum through the Sanaga and Mbam transects.

## 4. Discussion

### 4.1. Conformity of the image of the local plant cover in the samples of river banks

Generally for many palynological studies, the authors base their interpretations based solely on analyses of pollen diagrams. Here, the important results of this work and the analysis of pollen spectra were easily supported by the prior use of a multivariate statistical treatment.

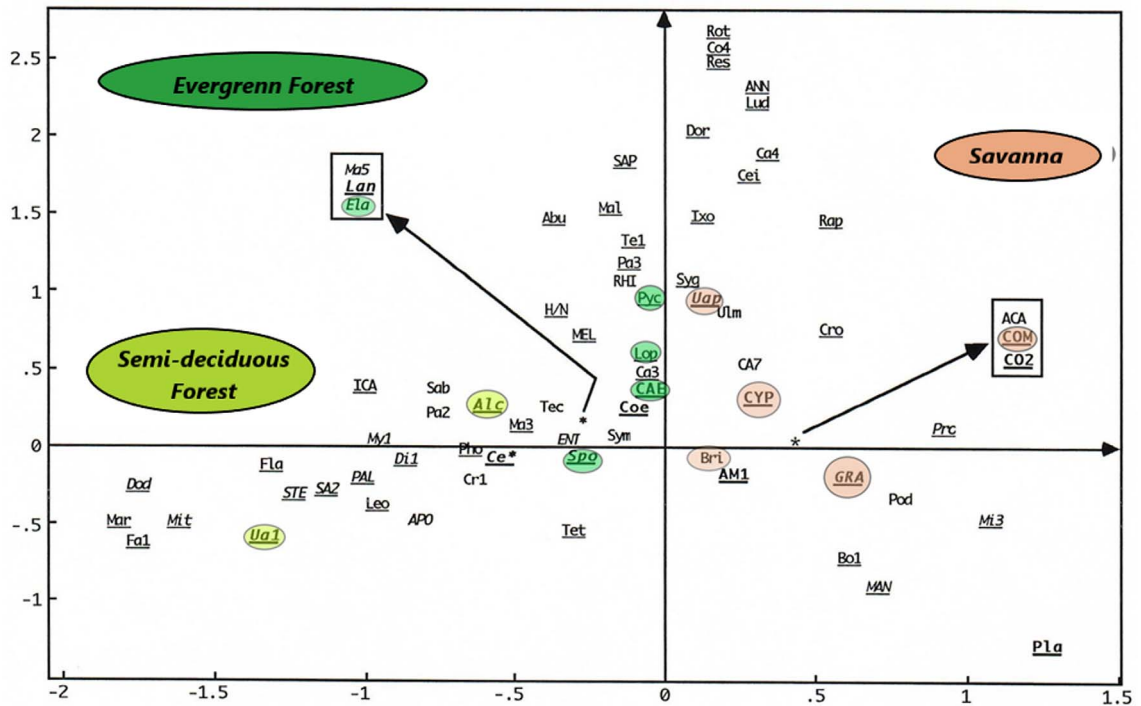
The FCA 1 carried out on all 38 samples allowed to obtain on the factor plane the first two axes bringing together the bulk of inertia, a cloud of points around axis 1 of the abscises that discriminates on either side of the origin the samples Sanaga basin from those in coastal basins, particularly samples (4, 16 and 18).

The eccentricity of these three samples is due to the over-representation of pollens from *Rhizophora*, a major taxon of mangroves. Undeniably, the Sanaga group is characterized by the absence of *Rhizophora* pollens. On the other hand, the identity of the coastal basin sample group, opposed to the Sanaga group, is defined not only by the presence of *Rhizophora*, but also by other taxa characteristic of the coastal evergreen forest.

By examining only the 27 samples of the Sanaga Basin in FCA 2 this time, the effect of The Over-representation of *Rhizophora* is resolved. According to Figure 5 and in relation to axis 1, the samples are arranged on either side of the origin: on the right, the samples of the savannah, and on the left those of the forest. On the other hand, on the forest samples side, axis 2 discriminates above the samples of the evergreen forest, and at the bottom the samples of the semi-deciduous forest. Simultaneous projection or projection on different graphs of point clouds of samples or taxa from the same FCA, in this case FCA 2, shows the taxa that play a great role in the disposal of samples (Figure 6). Such taxa have also been revealed by the PCA (Figure 7), almost all taxa are grouped in the centre, except those with high contributions that are located towards the periphery of the ellipse of correlations (Graminae, spores, *Alchornea* and *Uapaca guineensis*). The arrangement of these taxa on the same side of the positive values of the axis shows a “size effect”, since they are the most abundant. These same taxa are aligned on the diagonal formed by axis 1 (Figure 8) that could be considered an ecological indicator.

The Dendrogram analyses applied to the initial matrix and the reduced matrix to the Sanaga basin samples complements the factor analyses in the same direction. According to Figure 9 from a “Clusters analysis” shows that the aggregation levels and the proximity of the samples are not random, they rather come from the affinities provided by the absence, presence or abundance of the associated taxa. Thus, Figure 10 from a “Neighbour joining” correlates the taxa in the disposition of the samples in a Dendrogram hierarchical classification.

From what is done, the factor analyses and the “Cluster analyses” have revealed different ecosystems, namely the savannah, the semi-deciduous forest, the evergreen forest and the mangroves. In summary, savannah samples contain high propor-



**Figure 6.** AFC 3: Point cloud of taxa, including those with high contributions and inertias are located on either side of the origin, and correlate the distribution of the samples on axis 1: positive values for savannah, and negative values for forests.

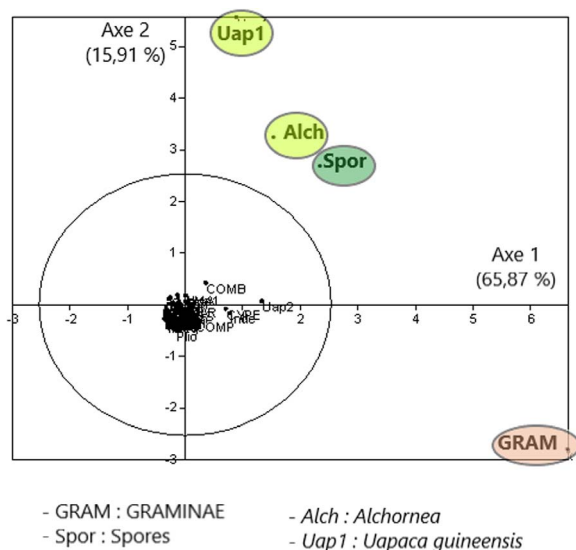
tions of Poaceae (Graminae), the omnipresence of Asteraceae (Compositae), Cyperaceae, *Bridelia*; the semi-deciduous forest is characterized *Uapaca guineensis*, *Elaeis*, *Myrianthus*, the Ulmaceae and the Sapotaceae; the evergreen forest characterized by the taxa of Caesalpiniaceae, *Pycnanthus*, *Lophira* and *Syzygium*; and mangroves by *Rhizophra*, and *Pandanus*. We note the presence of some ubiquitous taxa such as *Alchornea* and Spores. If the high pollen values of *Alchornea* result from the fact that it is a pioneer shrub of forest recruits, while the high proportions of spores are related to the Pteridophytes and Bryophytes that grow abundantly in wetlands [Letouzey, 1968].

These multivariate analyses provide further evidence to the numerous palynological studies that link pollen analyses to botanical harvests in the different ecosystems of the surrounding vegetation cover [Bengo, 1996, Kimpouni *et al.*, 2014, Lebamba *et al.*, 2009a, Vincens *et al.*, 2000, Youta Happei, 1998].

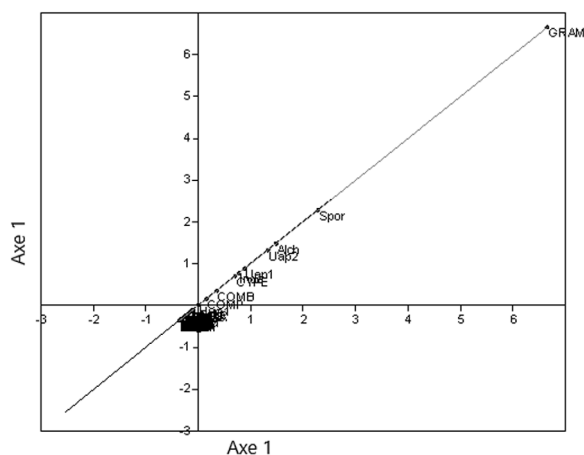
#### 4.2. Characterization of pollen transport from the continent to the ocean (Guttman effect)

The FCA 2 cloud has a parabolic form that generally indicates that the factors of axis 1 and 2, as a matter of linear independent principle, are in fact related to one or more other axes [Benzecri and Benzecri, 1980]. For interpreting this unique factor, a projection of the different dots is made on a straight line joining the two ends of the cloud (Figure 12). Samples (8, 9, 11, and 41) of the evergreen forest downstream of the Sanaga are placed in a middle or intermediate position between the savannah sample group and the semi-deciduous forest group. If factor 1 had instead been defined as an ecological indicator of samples, on the other hand axis 2 would be the single factor that would bring together some savannah and semi-deciduous forest taxa in samples further downstream, and this factor could be transport, a phenomenon also observed with the hierarchical classification where the evergreen forest samples are closer to those of the savannah, then geographically it is rather





**Figure 7.** PCA (Axis 1, Axis 2) on the reduced matrix with relatively frequent and abundant taxa, characteristic of the different plant ecosystems.



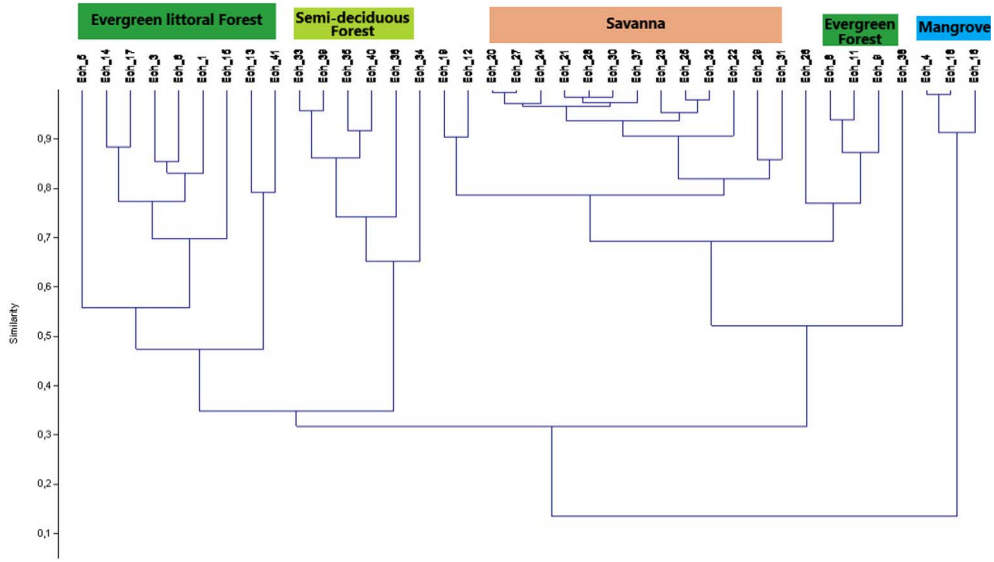
**Figure 8.** PCA (Axis 1, Axis 1): Taxa with high contributions and inertia, characteristic of plant ecosystems are far from the origin.

the semi-deciduous forest (Figure 1). This shows that downstream of the Sanaga, samples located in evergreen forest are influenced by the taxa of the semi-deciduous forest and savannah which develop further upstream and are certainly transported there either by water or by wind.

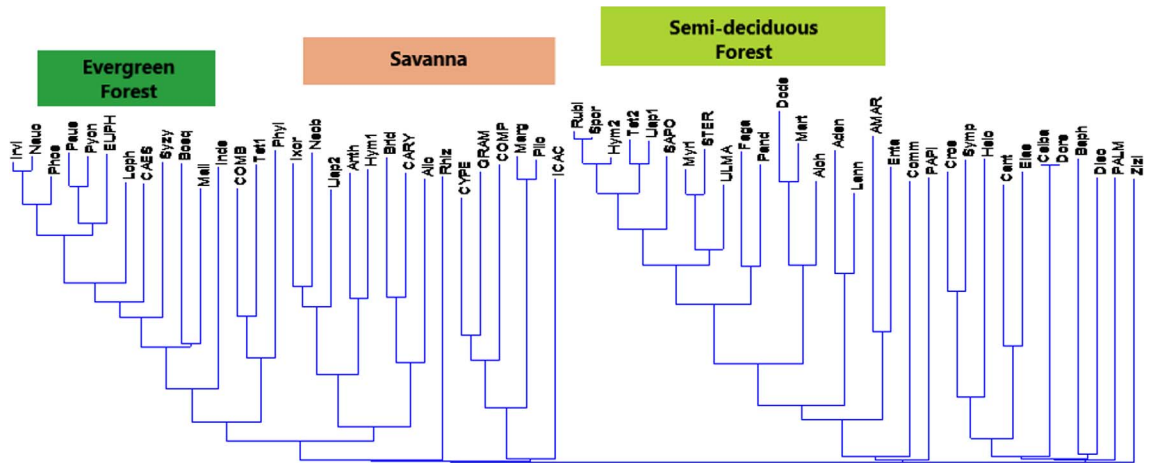
To be able to distinguish the dominant mode of transport of pollens on the Cameroonian coasts consists in knowing well the atmospheric circulation of air masses in this region and the suspended solids in water inputs. The monsoon associated with westerly winds forms a permanent flow to the continent that can counter the action of the Harmattan. However, pollens carried by the Harmattan dust were observed on gauze filters installed on ships cruising far off the Gulf of Guinea [Calleja and Van Campo, 1990] and on the tops of cores of the West African platform [Dupont and Agwu, 1991, Hooghiesmstra *et al.*, 1986]. It seems likely that the Harmattan dusts, which hardly exceed the Forest/Savanna limit and part of the dusts from the dry mist [Suchel, 1988], and that the rainfall falls to the ground, are taken up by runoffs that reach the rivers, the Sanaga River and finally the mouth. So, it can be concluded that wind inputs are not significant in the deposits of the Cameroonian coast, which leads us to focus on fluvial inputs.

#### 4.3. Highlighting river transport

The average Poaceae pollen in the ecological niches of the northern savannas is around 43%, and these values are maintained at a level of about 20% in the samples located further downstream. *Pycnanthus* pollens from the coastal forest and *Celtis*, *Martretia*, *Tetrorchidium* or *Elaeis* pollens from semi-deciduous forest are found in the samples downstream of the Sanaga, but absent in the samples located further down the savanna. This observation is justified by the simple reason that a river cannot flow and carry these inputs upstream, even the permanent flow of westerly winds is not capable of doing so. Moreover, the damaged pollens, which are difficult to identify because of the deterioration of their walls, are present in abundance in the samples located downstream of the Sanaga, certainly they have been destroyed by a long transport by water. In fact, pollens are probably sedimented several times on the river bed or banks and remobilized at the time of floods before reaching the river mouths. There is thus a differential degradation of pollen. When pollen is observed in ultraviolet light, unevenness in fluorescence is observed, which would indicate differences in alteration due to varying degrees of exposure to light and air during river transport (Personal communication, Poumot "in Bengo [1996]").



**Figure 9.** Clusters analyses\_Mode Paired group/Correlation.

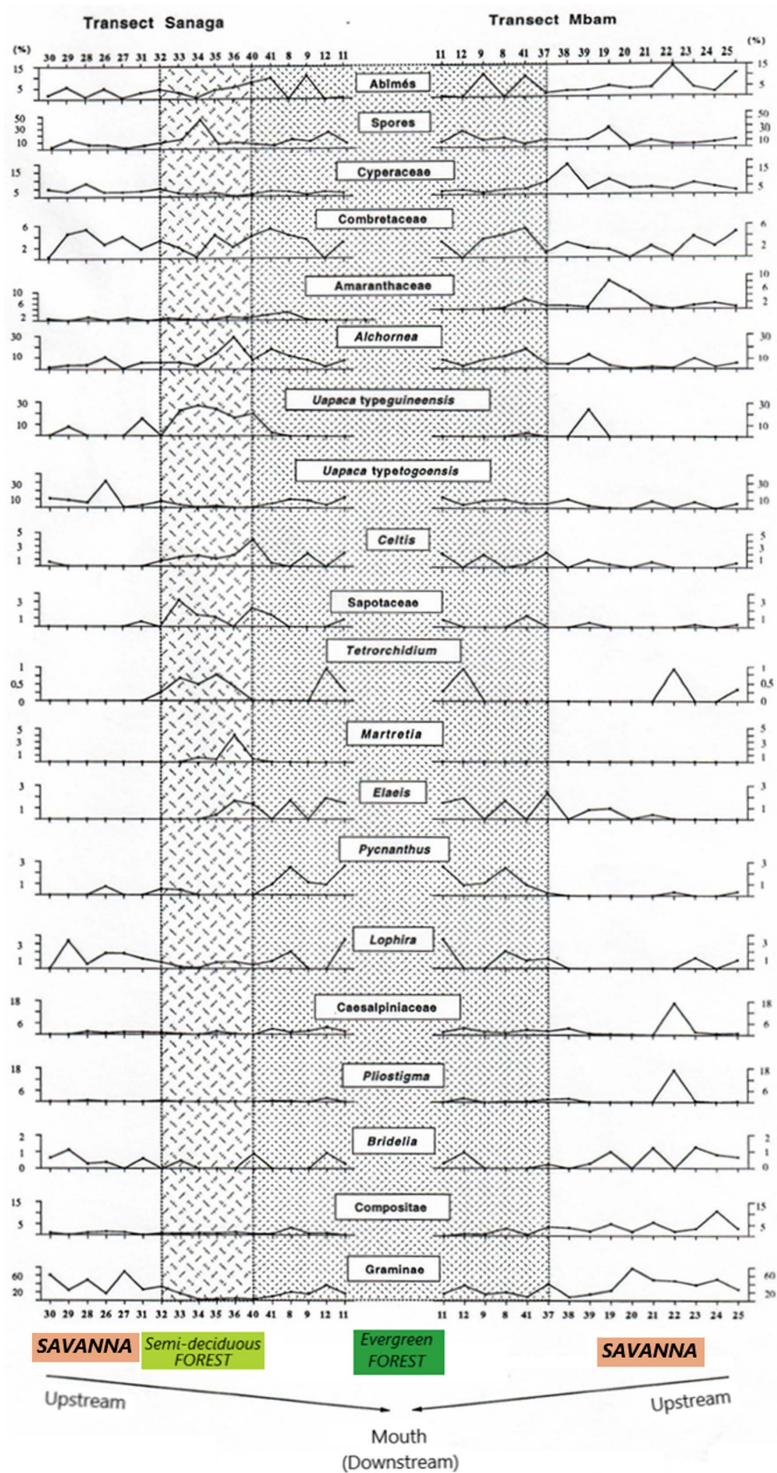


**Figure 10.** Neighbour joining\_Mode Correlation/Final branch on the matrix reduced to 27 samples from the Sanaga basin.

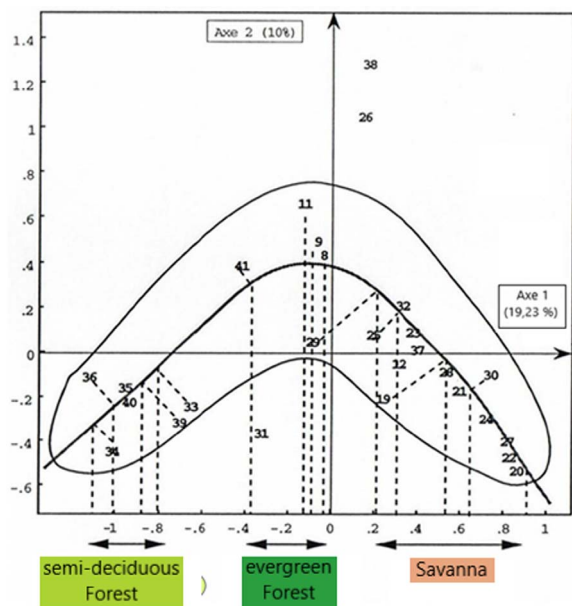
After the deduction of pollen transport by the Guttman effect following the correspondence factor analysis, based on the analysis of pollen spectra of transects, it can therefore be inferred that a good part of the pollen that arrives on the platform of Cameroon is transported by the Sanaga River. This was also observed in dredging samples on the Cameroonian platform where the large proportions of pollen processions were located in the axis of river deposits [Bengo, 1996]. Similarly, studies similar to

ours have also shown the more or less important role in pollen transport towards the mouth of the Senegal River [Lézine and Edoth, 1991], and Trinity River in America [Traverse, 1990].

The isotopic study of carbon 13 on the same samples as ours [Bird *et al.*, 1994] gave average values of  $-19$  to  $-17\text{‰}$  for upstream Sanaga samples and  $-27\text{‰}$  for forest samples. Thus, the values of  $-25$  to  $-24\text{‰}$  near the mouth of the Sanaga could therefore be explained by a mixture of organic matter coming



**Figure 11.** Evolution spectra of taxa characteristic of different ecosystems following the Sanaga and Mbam transects.



**Figure 12.** AFC 2: Guttman effect.

from the savannahs by the Mbam and the Sanaga. Once again, the results of the isotopic study converge completely with those of palynology.

## 5. Conclusions

Pollen trapped in the bank silt quite clearly records the image of the surrounding vegetation cover. The methodology and analyses adopted for this palynological study finally led to highlight the terrigenous origin of sedimentary inputs from the Cameroonian continental shelf and the preponderance of fluvial transport. Multivariate analyses allowed to corroborate the pollen identification, to differentiate and group the samples according to the plant ecosystems where they were taken. The Guttman effect and the Dendrogramm hierarchical classification showed that the matching of the different groups of samples was related to a single factor which is pollen transport. Compared to the regional atmospheric circulation, wind transport was found to be negligible, whether it is the Harmattan winds blowing towards the ocean or the trade winds and westerly monsoon winds that are directed towards the mainland. The absence of typical forest taxa downstream in the savanna samples, and the presence of typical savanna taxa upstream

in the downstream samples, leads to the conclusion that there is fluvial transport of Graminae and others towards the mouth. Thus, it can be noted that, on the West African coasts, pollen transport by wind is important; whereas, on the southern coasts of the Gulf of Guinea, it is essentially fluvial through the drainage of large basins. These results of pollen dynamics could be transposed to a basin other than that of the Sanaga.

## Acknowledgements

For their contributions to the writing of this article, sincere thanks to: Jean de Dieu Nzila, CAMES Lecturer (Marien Ngouabi University); Victor Kimpouni, CAMES Lecturer (Marien Ngouabi University); Noel Watha Douady, Assistant Master CAMES (Marien Ngouabi University); Anthelme Tsoumou, Doctor (Marien Ngouabi University).

## References

- Aubréville, A. (1948). Etude sur les forêts de l'Afrique Equatoriale Française et du Cameroun. *Sect. Techn. Afric. Trop. Bull. Sci.*, 2:132.
- Bengo, M. D. (1996). La sédimentation pollinique dans le Sud-Cameroun et sur la plateforme marine à l'époque actuelle et au Quaternaire récent : études des paléoenvironnements. Thesis, Univ. Montpellier 2, France. 220 p.
- Bengo, M. D. and Maley, J. (1991). Analyses des flux polliniques sur la marge sud du Golfe de Guinée depuis 135.000 ans. *C. R. Acad. Sci. Paris, Ser. II*, 313I:843–849.
- Benzecri, F. and Benzécri, J. P. (1980). *Pratique de l'Analyse des données. Tome 1. Analyse des correspondances : Exposé élémentaire*. Dunod, Paris. 424 p. (ISBN 2040157328). ISBN 10:2040112278/ISBN 13: 9782040112271.
- Bird, M., Giresse, P., and Chivas, A. R. (1994). Effect of forest and savanna vegetation on the carbon-isotope composition of sediments from the Sanaga River, Cameroon. *Limnol. Oceanogr.*, 39(8):1845–1854.
- Bonnefille, R. and Riollet, G. (1980). *Pollens des savanes d'Afrique Orientale*. CNRS, Paris. 256 p. et 113 pl.
- Boyé, M., Baltzer, F., Caratini, C., Hampartzoumian, A., Olivry, J. C., Plaziat, J. C., and Villiers, J. F. (1975).

- Mangrove of the Wouri estuary, Cameroon. In Walsh, G. E., Snedaker, S. C., and Teas, H. J., editors, *Proc. International Symposium on Biology and Management of Mangroves, Gainesville, FL*, volume 2, pages 431–454.
- Calleja, M. and Van Campo, E. (1990). Pluie pollinique le long d'un transect Atlantique Afrique-Bahamas. *C. R. Acad. Sci. Paris, Ser. II*, 310:1321–1326.
- Caratini, C., Guinet, P., et al. (1974). In *Pollens et Spores d'Afrique tropicale*, Trav. & Docu. Géogr. Trop. 16. CEGET/CNRS, Bordeaux. 282 p. et 98 pl.
- Cour, P. (1974). Nouvelles techniques de détection des flux et des retombées polliniques : étude de la sédimentation des pollens et des spores à la surface du sol. *Pollen et Spores*, 16:103–141.
- Din, D. (1991). Contribution à l'étude botanique et écologique des mangroves de l'estuaire du Cameroun. Thesis, Univ.f Yaoundé, Cameroun. 252 p.
- Dupont, L. M. and Agwu, C. O. (1991). Environmental control of pollen grain distribution patterns in the Gulf of Guinea and offshore NW-Africa. *Geol. Rundschau*, 80:567–589.
- Elenga, H., Maley, J., Vincens, A., and Farrera, I. (2004). Palaeoenvironments, palaeoclimates and landscape development in Central Equatorial Africa. A review of major terrestrial keys sites covering the last 25 kyrs. In Battarbee et al., editors, *Past Climate Variability Through Europe and Africa*, pages 181–198. Springer.
- Elenga, H., Peyron, O., Bonnefille, R., Joly, D., Chedadi, R., Guiot, J., Andrieu, V., Bottema, S., Buchet, G., De Beaulieu, J.-L., Hamilton, A., Maley, J., Marchant, R., Perezobilo, R., Reille, M., Riollet, G., Scott, L., Straka, H., Taylor, D., Van Campo, E., Vincens, A., Laarif, F., and Jonson, H. (2000). Pollen-based biome reconstruction for southern Europe and Africa at 18,000 yr BP. *J. Biogeogr.*, 27:621–634.
- Faegri, K. and Inversen, J. (1975). *Text Book of Modern Pollen Analysis*. Blackwell, Oxford, 3rd edition. 295 p.
- Frédoux, A. and Maley, J. (1996). Le contenu pollinique de l'atmosphère dans les forêts sud camerounaises près de Yaoundé. In *Dynamique à long terme des Ecosystèmes forestiers intertropicaux, Symposium ECOFIT, Mars 1996*. Bondy, 63.
- Giresse, P., Mvoutou, M., Maley, J., and Ngomanda, A. (2009). Late-Holocene equatorial environments inferred from deposition processes, carbon isotopes of organic matter, and pollen in three shallow lakes of Gabon, West-Central Africa. *J. Paleolimnol.*, 41(2):369–392.
- Guillet, B., Maman, O., Mariotti, A., Girardin, C., and Schwartz, D. (1996). Preuves pédologiques de l'avancée de la Forêt sur la Savane au Cameroun. Contribution de la géochimie organique et isotopique. In *Symp. Internat. Dynamique à long terme des écosystèmes forestiers intertropicaux, Bondy, 20–22 mars 1996*, pages 149–153.
- Haerserts, P. (1985). Les loess du Pléistocène supérieur en Belgique. Comparaisons avec les séquences d'Europe centrale. *Bulletin de l'Association française pour l'étude du Quaternaire*, 22(2–3):105–115.
- Hammer, Ø., Harper, D. A. T., and Ryan, P. D. (2001). PAST: paleontological statistics software package for education and data analysis. *Palaeontol. Electron.*, 4(1):9.
- Hooghiemstra, H., Agwu, C. O., and Beug, H. J. (1986). Pollen and spore distribution in recent marine sediments: a record of NW-African seasonal wind patterns and vegetation belts. *Meteor. Forschungsergebnisse, C*, 40:87–135.
- Jolly, D., Bonnefille, R., Burcq, S., and Roux, M. (1996). Représentation pollinique de la forêt dense humide du Gabon, tests statistiques. *Comptes-Rendus de l'Académie des Sciences, Paris, série 2a*, 322:63–70.
- Jolly, D., Prentice, I. C., Bonnefille, R., Ballouche, A., Bengo, M., Brenac, P., Buchet, G., Burney, D., Cadet, J.-P., Cheddadi, R., Ector, T., Elenga, H., Elmoutaki, S., Guiot, J., Laarif, F., Lamb, H., Lézine, A.-M., Maley, J., Mbenza, M., Peyron, O., Reille, M., Reynaud-Farrera, I., Riollet, G., Ritchie, J. C., Roche, E., Scott, L., Ssemenda, I., Straka, H., Umer, M., Van Campo, E., Villimumbalo, S., Vincens, A., and Waller, M. (1998a). Biome reconstruction from pollen and plant macrofossil data for Africa and Arabian Peninsula at 0 and 6000 years. *J. Biogeogr.*, 25:1007–1027.
- Kimpouni, V., Loumeto, J., and Mizingou, J. (2014). Woody flora and dynamic of *Aucoumea klaineana* forest in the Congolese littoral. *Int. J. Biol. Chem. Sci.*, 8(4):1393–1410.
- Laclavère, G., editor (1979). *Atlas de la République Unie du Cameroun*. Publication Jeune Afrique, Paris. 72 p.

- Lebamba, J., Ngomanda, A., Vincens, A., Jolly, D., Favier, C., Elenga, H., and Bentaleb, I. (2009b). A reconstruction of Central Atlantic African biomes and forest succession stages derived from modern pollen data and plant functional types. *Clim. Past, Discuss.*, 5:1–50.
- Lebamba, J., Vincens, A., Jolly, D., Ngomanda, A., Schevin, P., Maley, J., Bentaleb, I., and RE-GAB Members (2009a). Modern pollen rain in savanna and forest ecosystems of Gabon and Cameroon, Central Atlantic Africa. *Palaeobot. Palynol.*, 153:34–45.
- Leroux, M. (1983). *Le climat de l'Afrique tropicale*. Champion, Paris. volume 2. 650 p.
- Letouzey, R. (1968). *Etude phytogéographique du Cameroun*. Lechevalier edit, Paris. 508 p.
- Letouzey, R. (1985). *Notice de la carte phytogéographique du Cameroun au 1/500.000*. Inst. Rech. Agro., Yaoundé. et Inst. Carte Intern. Végétation, Toulouse.
- Lézine, A.-M. and Edoth, T. M. (1991). Modern pollen deposition in West African Sudanian environments. *Rev. Palaeobot. Palynol.*, 67:41–58.
- Lézine, A.-M., Watrin, J., Vincens, A., Hely, C., and contributors (2009). Are modern pollen data representative of West African vegetation. *Rev. Palaeobot. Palynol.*
- Maley, J. (1987). Fragmentation de la forêt dense humide ouest-africaine et extension d'une végétation montagnarde à basse altitude au Quaternaire récent: Nouvelles données polliniques et chronologiques. Implications paléo-climatiques et biogéographiques. *Palaeoecol. Afr.*, 18:307–334.
- Maley, J. (1990). L'histoire récente de la forêt dense humide africaine : essai sur le dynamisme de quelques formations forestières. In Lanfranchi, R. and Schwartz, D., editors, *Paysages quaternaires de l'Afrique Centrale Atlantique*, pages 367–382. Didactiques, ORSTOM.
- Martin, D. (1966). *Etudes pédologiques dans le Centre Cameroun (Nanga-Eboko à Bertoua)*. Mem. ORSTOM, No 19, Paris. 92 p.
- Ngomanda, A., Neumann, K., Scheizer, A., and Maley, J. (2008). Seasonality change and the third millennium BP rainforest crisis in southern Cameroon (Central Africa). *Quat. Res.*, 71:307–318.
- Nguestop, V. E, Servant-Vildary, S., and Servant, M. (2004). Late Holocene climatic changes in West Africa, a high resolution diatom record from equatorial Cameroon. *Quat. Sci. Rev.*, 23:591–609.
- Nouvelot, J. F. (1972). *Le régime des transports solides en suspension dans divers cours d'eau du Cameroun de 1969 à 1971*. Cahiers ORSTOM Ser. Hydrol. Vol. IX, no. 1.
- Nzila, J. D., Kimpouni, V., Watha-Ndoudy, N., Nanitelamio, M. M., Salisou, Y. M., and Nguila-Ntsoko, D. P. (2018). Soils typology and floristic diversity of the forest of the “Cité Scientifique” of Brazzaville, Congo. *Open J. Ecol.*, 8:286–304.
- Olivry, J. C. (1977). Transports solides en suspension au Cameroun. *Int. Ass. Hydro. Sci. Publ.*, 122:134–141.
- Peyron, O., Jolly, D., Braconnot, P., Bonnefille, R., Guiot, J., Wirmann, D., and Chalieu, F. (2006). Quantitative reconstructions of annual rainfall in Africa 6000 years ago: model-data comparison. *J. Geophys. Res.*, 111:D24110.
- Piton, B. (1987). Les anomalies océanographiques et climatiques de 1983 et 1984 dans le Golfe de Guinée. *Veille Clim. Satellitaire*, 16:18–31.
- Puig, H. (2001). *La Forêt Tropicale Humide*. Belin, Paris. 448 p.
- Reynaud, I. and Maley, J. (1994). Histoire récente d'une formation forestière du Sud-Ouest Cameroun à partir de l'analyse pollinique. *C. R. Acad. Sci. Paris, Ser. II*, 317:575–580.
- Reynaud-Farrera, I. (1995). Histoire des paléoenvironnements forestiers du Sud Cameroun à partir d'analyses palynologiques et statistiques de dépôts holocènes et actuels. Unpublished PhD thesis, Univ. Montpellier II. 198 p.
- Roux, M. (1985). Algorithmes de classification. In *Méthodes et Programmes*. Masson, Paris. 151 p.
- Salard-Cheboldaeff, M. (1980). Palynologie camerounaise. I. Pollens de la mangrove et des fourrés arbustifs côtiers. In *C. R. 105<sup>e</sup> Congrès Nat. Soc. Savantes, Caen, Sci., fasc. 1*, pages 233–247.
- Salard-Cheboldaeff, M. (1981). Palynologie camerounaise. II. Grains de pollens de la forêt littorale de basse altitude. In *C. R. 106<sup>e</sup> Congrès Nat. Soc. Savantes, Perpignan, Sci., fasc. 1*, pages 125–136.
- Salard-Cheboldaeff, M. (1982). Palynologie camerounaise. II. Grains de pollens de la forêt dense humide de basse et moyenne altitude. In *C.R. 107<sup>e</sup> Congr. Nat. Soc. Savantes, Brest, Sci., fasc 1*, pages 127–141.
- Salard-Cheboldaeff, M. (1983). Palynologie camerounaise. II. Grains de pollens de la forêt dense

- humide de moyenne altitude. In *C.R. 108<sup>e</sup> Congrès Nat. Soc. Savantes, Grenoble, Sci., fasc. 2*, pages 117–129.
- Segalen, P. (1967). Les sols et la Géomorphologie du Cameroun. *Cah. ORSTOM, Sér. Pédol*, 5:137–188.
- Suchel, J. B. (1988). Les climats du Cameroun. Thèse, Univ. Saint-Etienne, France. 1188 p.
- Thioulouse, J. (1990). MacMul and GraphMu: two Macintosh programs for the display and analysis of multivariate data. *Comput. Geosci.*, 16(8):1235–1240.
- Traverse, A. (1990). Studies on pollen and spores in rivers and other bodies of water, I, terms of source-vegetation and sedimentation, with special reference to Trinity river and Bay, Texas. *Rev. Palaeobot. Palynol.*, 64:297–303.
- Vincens, A., Dubois, M. A., Guillet, B., Achoundong, G., Buchet, G., Kamgang Kabeyene Beyala, V., De Namur, C., and Riera, B. (2000). Pollen-rain-vegetation relationships along a forest savanna transect in South-eastern Cameroon. *Rev. Palaeobot. Palynol.*, 110(3–4):191–208.
- Volle, M. (1993). *Analyse des Données (3<sup>e</sup> Edit.)*. Economica, Paris. 323 p.
- White, F. (1986). *La végétation de l'Afrique*. UNESCO/AETFAT/UNSO, Mémoire et Cartes, Paris. 384 p.
- Youta Happi, J. (1998). Arbres contre graminées. La lente invasion de la savane par la forêt au Centre-Cameroun. Unpublished PhD thesis, Univ. Paris IV, France. 240 p.