

ARTICLE

Received 9 Feb 2015 | Accepted 2 Oct 2015 | Published 1 Dec 2015

DOI: 10.1038/ncomms9782

OPEN

A redox signalling globin is essential for reproduction in *Caenorhabditis elegans*

Sasha De Henau¹, Lesley Tilleman², Matthew Vangheel¹, Evi Luyckx², Stanislav Trashin³, Martje Pauwels³, Francesca Germani², Caroline Vlaeminck¹, Jacques R. Vanfleteren¹, Wim Bert¹, Alessandra Pesce⁴, Marco Nardini⁵, Martino Bolognesi^{5,6}, Karolien De Wael³, Luc Moens², Sylvia Dewilde² & Bart P. Braeckman¹

Moderate levels of reactive oxygen species (ROS) are now recognized as redox signalling molecules. However, thus far, only mitochondria and NADPH oxidases have been identified as cellular sources of ROS in signalling. Here we identify a globin (GLB-12) that produces superoxide, a type of ROS, which serves as an essential signal for reproduction in *C. elegans*. We find that GLB-12 has an important role in the regulation of multiple aspects in germline development, including germ cell apoptosis. We further describe how GLB-12 displays specific molecular, biochemical and structural properties that allow this globin to act as a superoxide generator. In addition, both an intra- and extracellular superoxide dismutase act as key partners of GLB-12 to create a transmembrane redox signal. Our results show that a globin can function as a driving factor in redox signalling, and how this signal is regulated at the subcellular level by multiple control layers.

¹Department of Biology, Ghent University, Ghent B-9000, Belgium. ²Department of Biomedical Sciences, University of Antwerp, Antwerp B-2000, Belgium.

³Department of Chemistry, University of Antwerp, Antwerp B-2000, Belgium. ⁴Department of Physics, University of Genova, Genova I-16146, Italy.

⁵Department of Biosciences, University of Milano, Milano I-20133, Italy. ⁶CNR-IBF and CIMAINA, University of Milano, Milano I-20133, Italy.

Correspondence and requests for materials should be addressed to S.D.H. (email: S.deHenau@umcutrecht.nl) or to B.P.B. (email: bart.braeckman@ugent.be).

Reactive oxygen species (ROS)-based redox signalling is involved at all levels of cellular organization, from cell differentiation to cell death^{1,2}. In this type of signalling, low levels of ROS act as biological messengers by inducing reversible oxidative modifications in downstream proteins and thereby influencing signalling pathways^{3,4}. These ROS are enzymatically generated by cells to serve this signalling function. However, in the majority of the reported redox-sensitive signalling pathways, it is often not known which proteins are responsible for generating the redox signal and how cells spatially and temporally link ROS production to specific signalling pathways and so achieve desired cellular outcomes.

Globins are increasingly hypothesized to play a role in redox biology⁵. These proteins are characterized by a common tertiary structure and the presence of a haem group, whereby their function is largely determined by how this haem group is incorporated in the surrounding globin fold. The best-characterized function of globins is in oxygen diffusion and transport, as exemplified by vertebrate haemoglobin and myoglobin. The haem iron in these globins is pentacoordinated, leaving the sixth coordination site of the iron free for reversible binding of diatomic ligands, such as O₂. In a second type of globins, named hexacoordinated globins, all six positions of the haem iron are bound⁶. Since their initial discovery two decades ago, these hexacoordinated globins are now recognized to be broadly present in plants and animals⁷. Because of the hexacoordinated nature of the haem iron, ligand binding/transfer becomes more complex⁸ or even absent⁹. On the other hand, this hexacoordinated state of the iron seems to favour electron transfer^{9–11}, indicating that redox reactions involving the haem iron could be a key element in the physiological function of these globins. Therefore, increasing attention has been placed on the potential roles of hexacoordinated globins and globin-like proteins in signalling and redox chemistry, such as protection against ROS and electron transfer to molecular partners⁷. However, even though a fairly detailed understanding on the structure and biochemistry of hexacoordinated globins is now present, it has thus far been extremely difficult to understand what their possible physiological roles are.

C. elegans has thirty-three globin-like proteins, which display different sizes, are differently located and are likely to be functionally diverse¹². This makes *C. elegans* an attractive model to study the potential roles of globins and globin-like proteins in redox metabolism. A genome-wide RNAi screen in *C. elegans* reported abnormal egg laying and embryonic lethality following RNAi for GLB-12 (ref. 13), providing a clear phenotype for this so far uncharacterized globin. In this study, we analyse the role of GLB-12 in more detail and show that this protein is hexacoordinated, functions as a redox signalling protein and has an essential role in the reproduction of *C. elegans*.

Results

GLB-12 is essential for reproduction. To characterize the role of GLB-12 in reproduction, we analysed the effect of reduced GLB-12 levels on the brood size of *C. elegans*. We observed that *glb-12* RNAi reduced fecundity and increased embryonic lethality in wild-type (WT) worms and caused sterility in the majority of worms in the RNAi-hypersensitive strain *rrf-3* (Fig. 1a). Expression analysis showed that GLB-12 is present in distinct parts of the somatic reproductive system (Fig. 1b,c; Supplementary Fig. 1a)—the distal gonadal sheath, the proximal part of the spermatheca, and the uterus—and in several head and tail neurons and the vulva. GLB-12 does not appear to be directly present in the germline: integration of the GLB-12::GFP reporter, which is necessary to allow expression in the germline, showed no

visible expression in this tissue (Supplementary Fig. 1c). Further, GLB-12 appears to act directly from the somatic gonad to regulate reproduction: *glb-12* RNAi only had an effect on reproduction in a soma-specific, but not in germline- or neuronal-specific RNAi strains (Supplementary Fig. 1b), while *glb-12* RNAi in the GLB-12 reporter strain reduced reporter levels in the somatic gonad only (Supplementary Fig. 1c).

To understand the impact of GLB-12 on gonad morphology, we used a strain visualizing the germline architecture by fluorescent markers (Fig. 1b,d). In the first generation, *glb-12* RNAi caused a range of defects in the adult germline (Fig. 1d): delayed meiotic progression, a considerably smaller rachis, increased apoptosis levels, and irregular shaped compartments and nuclei. In the second generation, *glb-12* RNAi led to abnormal germline development and failure to produce oocytes (Supplementary Fig. 1d). GLB-12 is thus essential for germline development and regulation and appears to be involved in several aspects of reproduction.

GLB-12 is a hexacoordinated globin with redox properties.

To understand how GLB-12 could influence reproduction on a molecular level, we analysed the biochemical and structural properties of the purified globin. Spectroscopic analysis, which allows to discriminate between different globin forms, showed that reduced deoxy (Fe²⁺) GLB-12 displays a hexacoordinated haem iron (Fig. 2a; Supplementary Fig. 2a). Hexacoordinated globins are present in prokaryotes, plants and animals, but their function is largely unclear⁷. They can potentially bind diatomic ligands such as O₂, CN⁻ and CO to their haem iron, thereby replacing the endogenous HisE7 ligand. However, even though GLB-12 was able to bind CN⁻ and CO *in vitro* (Fig. 2a), both reactions proceeded very slowly, requiring several minutes (reaction kinetics not shown). In addition, upon exposure to air, GLB-12 is spontaneously oxidized to the ferric state (Fe³⁺) (Fig. 2a) and is thus incapable of binding O₂ under physiological conditions. These results argue against a role for GLB-12 in reversible ligand binding and/or transport, the best known function for globins. On the other hand, the spontaneous oxidation of air-exposed GLB-12 is in line with the observation that hexacoordination appears to lower the redox potential and promotes electron transfer of the haem iron^{9–11}. By using cyclic voltammetry to study the electrochemical properties of GLB-12 in more detail, we indeed observed a relatively low reduction potential for the GLB-12 redox couple Fe²⁺/Fe³⁺ (−0.244 V versus saturated calomel reference electrode (SCE)), which is largely stable within the physiological pH range (Fig. 2b; Supplementary Fig. 2b). To determine whether GLB-12 could transfer electrons to other molecules, we included cytochrome c peroxidase (CCP) in this experimental setup as an electron acceptor and subsequent catalyst for H₂O₂ reduction. It is important to note that CCP by itself shows no electrocatalytic activity under these conditions¹⁴. When H₂O₂ was added to GLB-12 and CCP, the reduction current increased and the oxidation peak disappeared, indicating very fast GLB-12 oxidation (Fig. 2c). This shows that GLB-12 can donate electrons to CCP in a continuous manner, allowing the latter to reduce H₂O₂. Compared to other tested globins, GLB-12 showed a 10-fold higher electron transfer rate to CCP (Supplementary Fig. 2c). Combined, these results support a role for GLB-12 in electron transfer reactions.

GLB-12 produces O₂⁻ as a signalling molecule. Because GLB-12 can participate in electron transfer and has a reduction potential lower than the O₂/O₂⁻ couple¹⁵, it may directly interact with O₂ to generate O₂⁻. To test this hypothesis, we used an

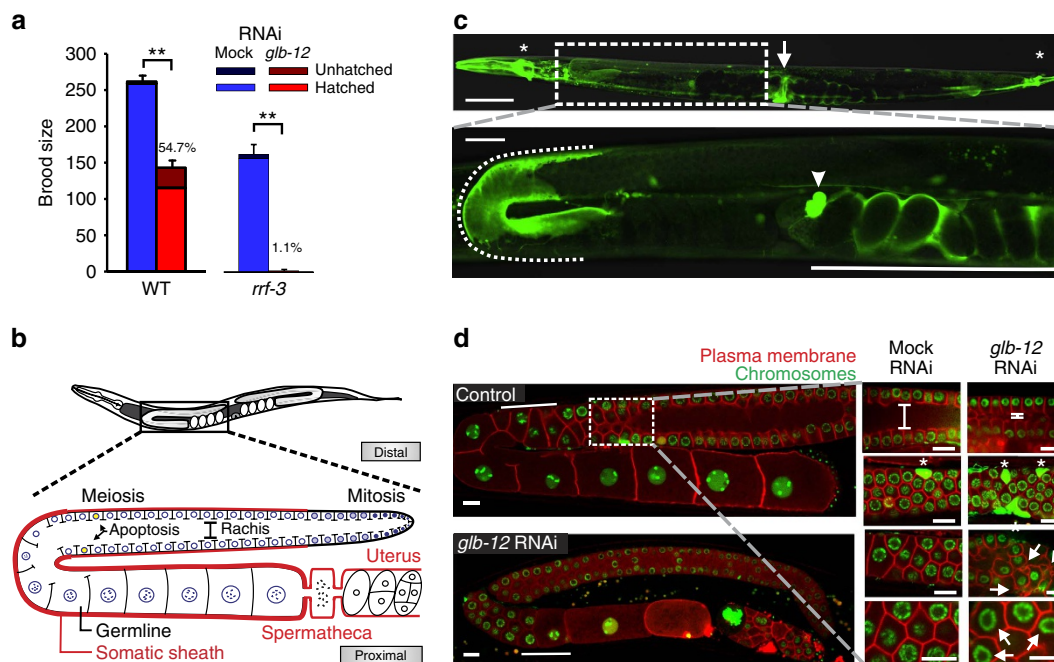


Figure 1 | GLB-12 is essential for reproduction. (a) *glb-12* RNAi in the WT ($n = 16$ biological replicates) and RNAi-hypersensitive strain *rrf-3* ($n = 3$) caused a decreased fecundity. $**P < 0.01$ (two-sided Student *t*-test); data are represented as mean \pm s.e.m. (b) Schematic representation of the *C. elegans*' reproductive system anatomy. (c) GLB-12 is expressed in neurons (asterisk), the vulva (arrow) (upper panel, scale bar: 100 μ m), and very specific regions of the somatic gonad (lower panel, scale bar, 20 μ m), that is, the somatic sheath (dotted line), the proximal part of the spermatheca (arrowhead) and the uterus (full line). (d) *glb-12* RNAi caused multiple defects in the germline. Solid line indicates the meiotic transition region pachytene—diplotene—diakinesis (left panels); bar shows the rachis size; asterisks indicate apoptotic cells and arrows indicate irregular compartment junctions and nuclei (right panels). Scale bar: 10 μ m.

in vitro enzymatic reduction system for haem proteins¹⁶ and included lucigenin, which emits light upon reaction with O_2^- (Supplementary Fig. 2d). Addition of GLB-12 and glucose-6-phosphate, the driving force of this system, led to increased luminescence, showing that GLB-12 can convert O_2 to O_2^- (Fig. 2d; Supplementary Fig. 2d). O_2^- levels are proportional to GLB-12 concentration, indicative of a 1:1 stoichiometry (Supplementary Fig. 2e). We also validated this *in vitro* method using haem proteins with a reduction potential higher and lower than the O_2/O_2^- couple (Fig. 2e). Noteworthy, O_2^- production rate of cytochrome P450 was 40-fold higher than that of GLB-12. We subsequently hypothesized that *in vivo* O_2^- produced by GLB-12 could act as a redox signalling molecule. Decreasing GLB-12 levels by RNAi would thus decrease this O_2^- signal, and exposing worms to O_2^- scavengers could potentially even further reduce the O_2^- signal. Using the antioxidants *N*-acetylcysteine (NAC) or ascorbic acid, scavengers of O_2^- and other ROS, indeed further aggravated the reduction in brood size by *glb-12* RNAi (Fig. 2f), providing a first indication that GLB-12 generates O_2^- as a signalling molecule.

The crystal structure of the GLB-12 globin domain, refined to 1.65 Å resolution (Table 1), further supported our current findings. It confirmed haem hexacoordination, with strong Fe-N bonds with the distal His92 and the proximal His127 residues (Fig. 3a; Supplementary Fig. 3a). Overall, the hexacoordinated GLB-12 globin domain is closely related to the 3D structures of human and murine neuroglobin^{10,17–19}, human cytoglobin²⁰, non-symbiotic rice haemoglobin²¹, *C. elegans* GLB-6 (ref. 9) and *Geobacter sulfurreducens* globin-coupled sensor²², although GLB-12 possesses several unique structural features. The proximal His127 is highly exposed to the solvent, which is the result of a hydrogen bond between the A-propionate of the haem to Ser126 OH. As a result, two water molecules are hosted at the

entrance of the proximal site (hydrogen bonded to Ser126 OG and to Gln130 NE2, respectively), and four additional water molecules and one acetate ion fall next to the propionate (Supplementary Fig. 3a). This exposure to a polar aqueous environment would favour oxidation of the ferrous haem, which is consistent with the low GLB-12 redox potential reported. On the distal site of the haem cavity, the D-propionate stabilizes the location of the E-helix N-terminal region through hydrogen bonding (Supplementary Fig. 3a). In addition, residues Phe89 and Phe96 (surrounding the distal His92) are part of a wide cluster of aromatic/hydrophobic residues (Val54, Phe58, Leu59, Val62, Phe73, Phe152) (not highlighted). These could restrict E-helix movements required to achieve a pentacoordinated haem and would thereby limit ligand binding. This explains the slow CN⁻ and CO binding we observed. Additionally, this aromatic/hydrophobic residue cluster creates a tunnel of about 50 Å³ in the globin domain, nestled among the B-, E-, and G-helices (Fig. 3a). Interestingly, this otherwise apolar tunnel shows a strong negative charge distribution at the solvent exit (resulting from residues Asp48, Asp49, Asp52 and Glu165) (Fig. 3a,b). In the crystal structure the tunnel exit to the solvent appears rather narrow; however, structural fluctuations may vary its diameter, providing a direct connection between the haem distal site and the solvent region. Given this, it is possible that the negative charges located at the tunnel exit would help to remove small and negatively charged species such as O_2^- , produced by redox reactions at the distal site, from the protein core. Further, while the haem pocket in globins usually prevents haem iron oxidation by creating a hydrophobic environment, in GLB-12 three polar amino acids (Lys88, Arg95 and Arg129) are located at the edge of the haem cavity (Fig. 3c), possibly to enhance solvent access to the haem and stimulate haem iron oxidation and O_2^- production. Mutation of these three polar amino acids to the

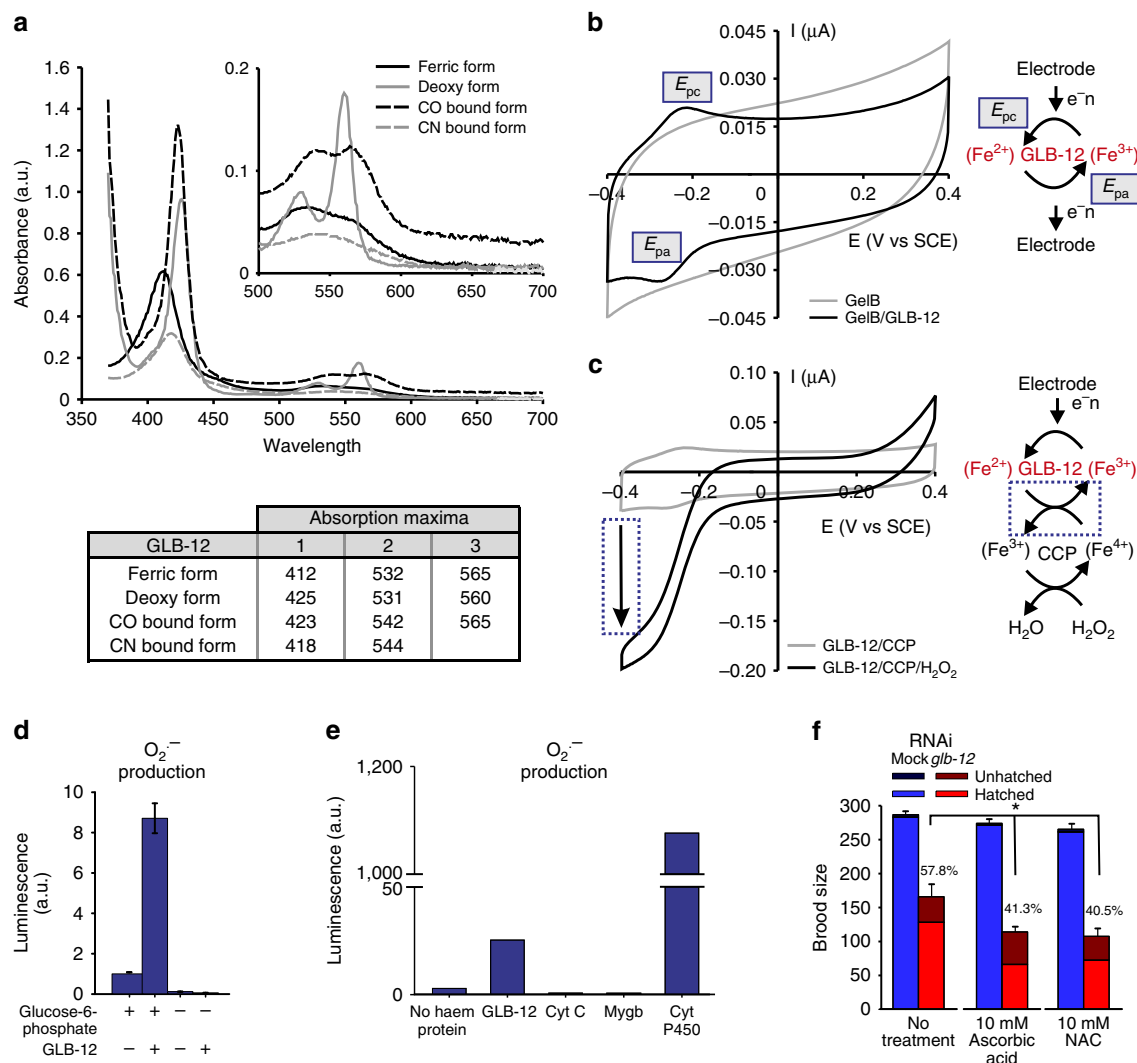


Figure 2 | GLB-12 is a hexacoordinated globin with redox properties and is capable of producing O_2^- . (a) UV-vis spectra of different GLB-12 forms, with their absorption maxima. The absorption spectrum of purified GLB-12 showed that it is spontaneously oxidized to the ferric state (Fe^{3+}) upon exposure to air. Reducing GLB-12 (Fe^{2+}) resulted in an absorption spectrum that is typical for a hexacoordinated haem iron. Absorption spectra of CN- and CO-bound GLB-12 could be obtained after exposure of GLB-12 to an excess of KCN or CO. (b) The current potential behaviour of a gelatin B (GelB) and a GelB/GLB-12 electrode, with the reduction (E_{pc}) and oxidation peak (E_{pa}), showing that GLB-12 is reversibly oxidized and reduced with a reduction potential of -0.244 V (versus SCE). The reversible oxidation/reduction of GLB-12 by cyclic voltammetry is illustrated in the scheme. (c) The current potential behaviour of a gelatin B electrode containing GLB-12 and CCP (cytochrome C peroxidase), with and without H_2O_2 . The arrow points to the increase of the reduction peak when H_2O_2 is added, showing that GLB-12 becomes fully reduced by electron transfer to CCP, making CCP capable of reducing H_2O_2 . This reaction is illustrated in the scheme. (d) GLB-12 is capable of producing O_2^- . (+) indicates the presence, (–) the absence of glucose-6-phosphate and GLB-12. (e) Comparison of *in vitro* superoxide production by GLB-12, cytochrome C, myoglobin and cytochrome P450 (Cyt P450). Myoglobin and cytochrome c, which have a reduction potential higher than the O_2/O_2^- couple^{64,65} and therefore should not be able to produce O_2^- , did not lead to an increase in luminescence. Cytochrome P450, which has a reduction potential lower than the O_2/O_2^- couple and can produce high levels of O_2^- (ref. 66), led to a large increase in luminescence. GLB-12 led to a moderate increase in luminescence, indicating that it produced moderate levels of O_2^- . (f) The antioxidants ascorbic acid and *N*-acetylcysteine (NAC) enhance the *glb-12* RNAi reduction in fecundity ($n = 4$). Percentages show control RNAi compared with *glb-12* RNAi. Data are represented as mean \pm s.e.m.; * $P < 0.05$ (two-sided Student *t*-test).

hydrophobic leucine indeed reduced or prevented O_2^- production (Fig. 3d), while other biochemical characteristics remained largely unaffected (Supplementary Fig. 3b–d). Furthermore, transgene animals bearing these mutations in an RNAi-resistant *glb-12* gene (Supplementary Fig. 3e,f) failed to show rescue of the reduced brood size following *glb-12* RNAi (Fig. 3e). Also the K88L mutant, even though it can still produce some O_2^- , failed to rescue the reduction in brood size. Overall, these results show that GLB-12 possesses specific structural properties associated with a role in redox biology and further support that GLB-12 produces O_2^- as a signalling molecule.

GLB-12 shows a distinct tissue and subcellular expression.

Because O_2^- is a very short-lived signalling molecule, we reasoned that GLB-12 would show a very specific tissue and subcellular localization to achieve an exact juxtaposition with potential downstream targets. Indeed, besides a very distinct expression pattern in the somatic gonad (Fig. 1c), the GLB-12 reporter was also found to be membrane-bound through a short N-terminal extension (Fig. 4a; Supplementary Fig. 4a). This extension harbours predicted sites for both myristoylation²³ and palmitoylation²⁴ (Fig. 4a), post-translational modifications that promote stable membrane attachment²⁵. Deletion of these sites indeed prevented

Table 1 | GLB-12 crystal structure—data collection and refinement statistics.

	GLB-12 native	GLB-12 SAD
<i>Data collection</i>		
Wavelength (Å)	0.95372	1.72200
Space group	<i>P</i> 6 ₅ 22	<i>P</i> 6 ₅ 22
Cell dimensions		
<i>a</i> , <i>b</i> , <i>c</i> (Å)	50.4, 50.4, 245.3	50.4, 50.4, 245.3
α , β , γ (°)	90.0, 90.0, 120.0	90.0, 90.0, 120.0
Resolution (Å)	29.85–1.65 (1.74–1.65)*	49.05–2.70 (2.85–2.70)
No. total reflections	159,514	219,339
No. unique reflections	23,429	5,773
<i>R</i> _{merge} (%)	6.4 (56.1)	6.3 (18.6)
<i>I</i> / σ (<i>I</i>)	13.9 (3.2)	49.7 (24.8)
Completeness (%)	99.8 (100)	100 (100)
Redundancy	6.8 (6.9)	38.0 (38.0)
Anomalous completeness (%)		100 (100)
Anomalous redundancy		23.0 (21.8)
<i>Refinement</i>		
<i>R</i> _{work} / <i>R</i> _{free} (%)	17.8/23.4	
Protein residues	182 (residues 19–166, 182–215)	
Haem	1	
Water	110	
Sulfate ion	1	
Acetate	4	
B-factors (Å ²):		
Protein	25.4	
Haem	25.7	
Water	37.4	
Sulfate ion	47.4	
Acetate	38.1	
r.m.s deviations:		
Bond lengths (Å)	0.017	
Bond angles (°)	1.6	
Ramachandran plot:		
most favoured regions (%)	92.6	
additional allowed regions (%)	7.4	

*Highest resolution shell is shown in parenthesis.

plasma membrane localization (Fig. 4b; Supplementary Fig. 4b). Myristoylation and palmitoylation are specifically associated with protein translocation to membrane rafts, which are dynamic membrane subdomains that compartmentalize cellular processes, including specific redox signalling events²⁶. For GLB-12, we indeed observed a clustered distribution, both in the somatic gonad and in the nervous system (Supplementary Fig. 4c,d). Finally, a cytoplasmic version of the RNAi-resistant *glb-12* gene was not capable of rescuing the decreased fecundity following *glb-12* RNAi (Fig. 4c). Combined, these results support that the localization of GLB-12 serves as a spatial determinant for the O₂[−] signal, both on a tissue and intracellular level.

GLB-12 interacts with an intra- and extracellular SOD. *In vivo*, O₂[−] produced by GLB-12 may be converted into the more stable H₂O₂ by superoxide dismutases (SODs), H₂O₂ being an accepted messenger in redox signalling^{1,27}. To test this hypothesis, we reduced GLB-12 levels in mutants for the five *C. elegans* *sod* genes

(*sod-1* to *sod-5*) and found an aggravated effect on fecundity in the main cytoplasmic *sod-1* mutant and, surprisingly, a reduced effect in the extracellular *sod-4* mutant (Fig. 5a). Also in the second cytoplasmic *sod-5* mutant and, to a lesser extent, in the mitochondrial *sod-3* mutant an aggravated effect was observed (Supplementary Fig. 5a). Further, the effect in a *sod-1*;*sod-4* and a *sod-4* mutant are comparable, indicating that SOD-4 is epistatic to SOD-1 (Fig. 5a). Expression analysis of SOD-1 and both isoforms of SOD-4 showed that they are present in the entire somatic gonad (Fig. 5b, Supplementary Fig. 5b), thus overlapping in expression with GLB-12. When these reporter constructs were expressed in the corresponding *sod* mutant, the *glb-12* RNAi effect on worm fecundity largely reverted to levels observed in the WT (Fig. 5c). Targeting a H₂O₂-specific GFP-probe, roGFP2-ORP1 (ref. 28), to the intracellular location of GLB-12 showed that GLB-12 depletion indeed lowered H₂O₂ levels *in vivo* in the somatic gonad, while overexpressing GLB-12 increased H₂O₂ levels (Fig. 5d, Supplementary Fig. 5c). Although not statistically significant, H₂O₂ levels appeared to be further reduced in a *sod-1* background following GLB-12 depletion, again indicating that the intracellular SOD-1 converts GLB-12-produced O₂[−] to H₂O₂ (Fig. 5d,e). Surprisingly, intracellular H₂O₂ levels in a *sod-4* background appeared to be less reduced compared to the WT following GLB-12 depletion (Fig. 5d), although this difference is again not statistically significant. The type of interaction between GLB-12 and SOD-4 is at this moment not clear; GLB-12-produced O₂[−] could potentially penetrate the membrane through anion channels²⁹ and be converted by the extracellular SOD-4, or O₂[−] could be generated extracellularly by an unknown source. To further test the hypothesis that GLB-12/SOD-1 and SOD-4 work in parallel on both sides of the gonadal sheath cell membrane, we artificially targeted PRDX-2, an H₂O₂ scavenger, to both sides of the membrane (Fig. 5f,g; Supplementary Fig. 5d,e); following *glb-12* RNAi, the presence of PRDX-2 should then mimic the loss of SOD. This was indeed observed, with the strongest effect by the intracellular PRDX-2 (Fig. 5f). Taken together, these results strongly suggest that SOD-1 and SOD-4 modulate the downstream effects of GLB-12 in opposite ways. Endogenous occurring H₂O₂ scavengers like peroxiredoxins and catalases could further influence the GLB-12-based redox signal. However, loss of relevant peroxiredoxins and catalases did not affect the *glb-12* RNAi phenotype, indicating that these H₂O₂ scavengers do not interact with GLB-12 (Supplementary Fig. 5f). Surprisingly however, when both SOD-1 and each of these H₂O₂ scavengers are lost, brood sizes following *glb-12* RNAi are comparable to the WT and not to the SOD-1 single mutant (Supplementary Fig. 5f). This may suggest that lack of H₂O₂ scavenging becomes important when the GLB-12 redox signal is severely diminished, that is, when GLB-12 levels are reduced and SOD-1 is absent, but further analysis is needed to test this hypothesis. Finally, GLB-12 overexpression in the WT as well as in the *sod-1* or *sod-4* background did not result in an obvious effect on fecundity (Supplementary Fig. 5g), even though GLB-12 overexpression led to an increase in peroxide levels (Fig. 5d). Given the complexity of GLB-12-based signalling, negative feedback regulation might potentially be an explanation for this absence of a phenotype.

GLB-12 modulates apoptosis via the p38/JNK MAPK pathways.

To identify potential downstream targets of GLB-12, we focused on its role in germline apoptosis, which is regulated by a well-characterized signalling cascade³⁰. In WT worms, *glb-12* RNAi led to a doubling in germ cell corpses, while germline proliferation was not significantly affected under these conditions

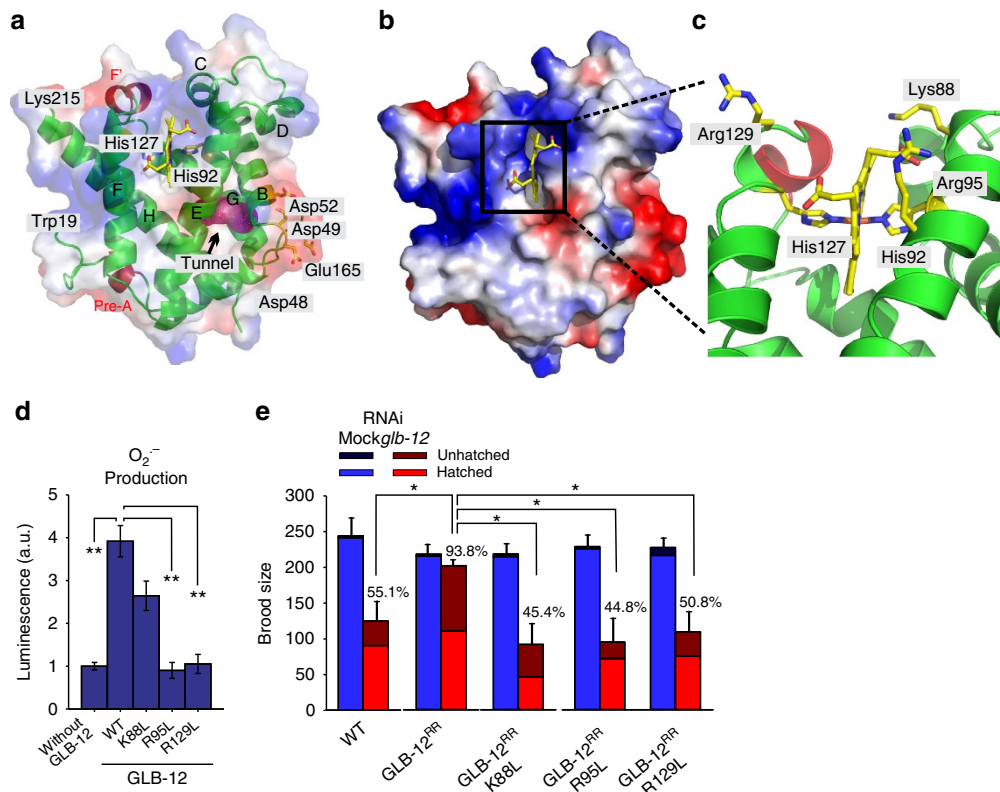


Figure 3 | GLB-12 produces O₂⁻ as a signalling molecule. (a) Ribbon representation of the GLB-12 globin domain, with helices labelled according to the canonical globin fold (green). The GLB-12-specific pre-A helix and F'-helix are highlighted in red. The terminal residues visible in the electron density (19–215) are labelled. The protein electrostatic surface (see also panel (b)) is displayed in semitransparent colours, allowing the view of underlying secondary structure elements and a distal apolar tunnel (magenta mesh) located between the B-, E- and G-helices. Acidic residues, localized where this apolar tunnel reaches the protein surface, are shown in stick representation (yellow) and labelled. (b) Electrostatic surface of the GLB-12 globin domain. The blue and red colours highlight positively and negatively charged surfaces, respectively. The haem moiety, with the propionate groups fully exposed to the solvent region, is shown as stick representation (yellow). (c) Detail of the GLB-12 haem cavity, showing the presence of two histidines and three additional polar amino acids. (d) The GLB-12 K88L mutant is less capable of O₂⁻ production, while R95L and R129L mutants are incapable of O₂⁻ production. (e) These three mutants, when expressed as RNAi-resistant (RR) genes, are not capable of rescuing the *glb-12* RNAi reduction in fecundity ($n = 5$). Percentages show control RNAi compared with *glb-12* RNAi within a strain. * $P < 0.05$; ** $P < 0.01$ (two-sided Student t -test). Data are mean \pm s.e.m.

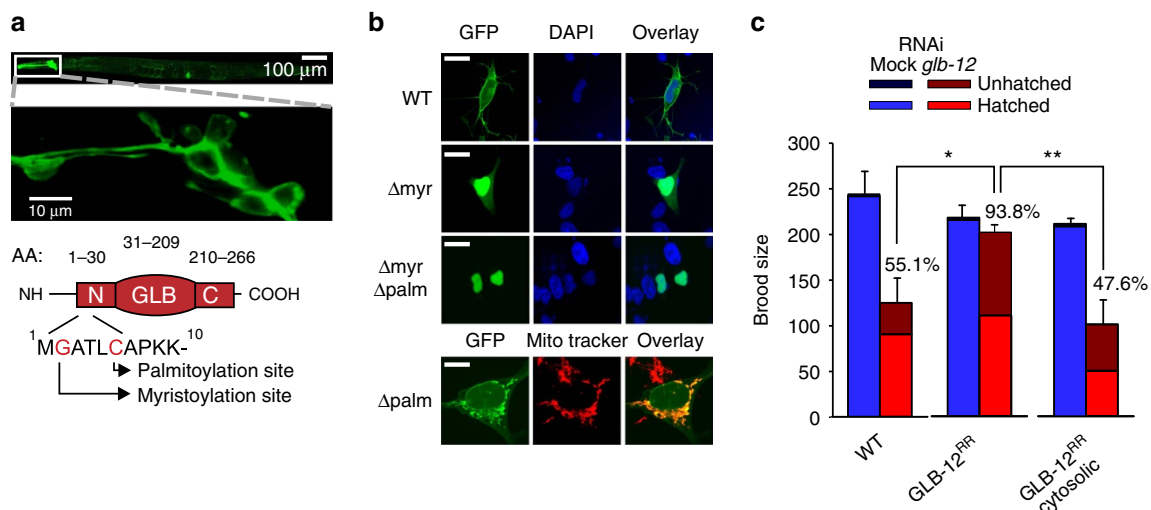


Figure 4 | GLB-12 shows a distinct tissue and subcellular expression pattern. (a) GLB-12 is membrane-bound, as seen in head neurons. Upper scale bar: 100 μ m; lower scale bar, 10 μ m. The graphic shows the presence of a myristoylation and palmitoylation site in the N-terminal region (N: N-terminal, C: C-terminal, AA: amino acid). (b) Deletion of the myristoylation or palmitoylation site disrupts cell membrane localization, as seen in human neuroblastoma SH-SY5Y cells. Scale bar: 10 μ m. (c) A cytosolic RNAi-resistant (RR) GLB-12 is not capable of rescuing the *glb-12* RNAi reduction in fecundity ($n = 5$). Percentages show control RNAi compared to *glb-12* RNAi within a strain. * $P < 0.05$; ** $P < 0.01$. Data are mean \pm s.e.m.

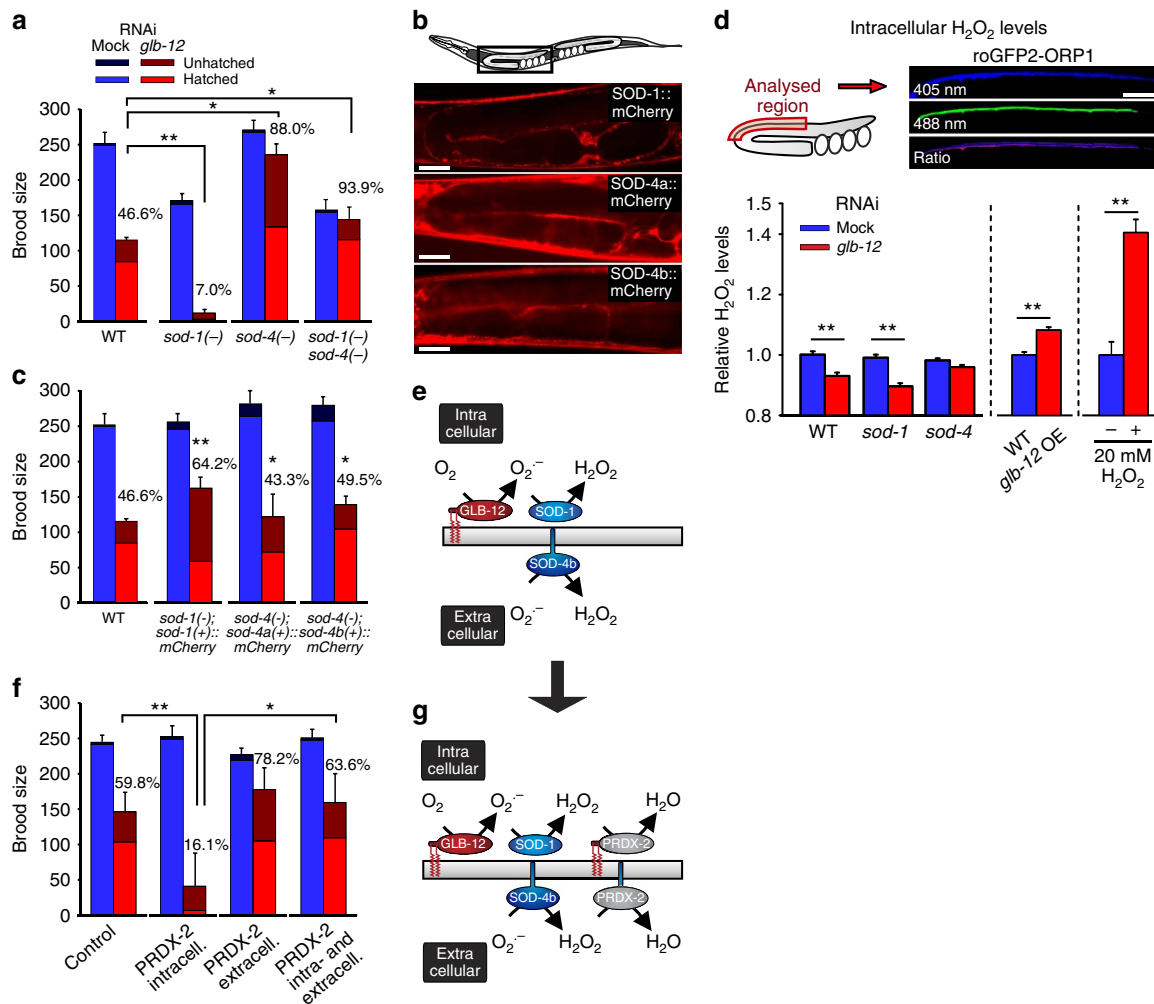


Figure 5 | GLB-12 interacts with both an intra- and extracellular superoxide dismutase. (a) The effects of *glb-12* RNAi were aggravated in a mutant for the main cytoplasmic SOD-1 and reduced in a mutant for the extracellular SOD-4 ($n = 3$). (b,c) SOD-1 and both isoforms of SOD-4 are present in the somatic gonad, and the SOD-1 and SOD-4 reporter constructs, when expressed in the *sod-1* and *sod-4* mutant, respectively, were able to revert the *glb-12* RNAi reduction in fecundity to WT levels ($n = 3$). * in (c) shows significant differences for the strain carrying *sod-1::mCherry* compared with the *sod-1* strain and for the strains carrying *sod-4a/b::mCherry* compared to the *sod-4* strain. Scale bar: 20 μm . (d) Relative H_2O_2 levels in the somatic gonad were determined using the ratiometric probe roGFP2-ORP1. Depletion and overexpression of GLB-12 causes a decrease and increase, respectively, in intracellular H_2O_2 levels ($n = 6$). Exposing worms to 20 mM H_2O_2 was included as a positive control ($n = 3$). Scale bar: 10 μm . (e) Graphic showing the working model for GLB-12 signalling. (f) Introducing an intracellular and extracellular PRDX-2 mimics the effects seen for *glb-12* RNAi in mutants for SOD-1 and SOD-4, respectively ($n = 4$). (g) The anticipated effect of artificially introducing the H_2O_2 scavenger PRDX-2 on GLB-12 signalling. * $P < 0.05$; ** $P < 0.01$ (two-sided Student *t*-test). Data are represented as mean \pm s.e.m.

(Fig. 6a,b; Supplementary Table 1). In a *ced-3* mutant, in which germline apoptosis is absent, no corpses were present following both control and *glb-12* RNAi (Fig. 6b). An increase in germ cell corpses can be caused by an increase in germline apoptosis, or by a decrease in corpse engulfment and removal by the somatic gonad. Because *glb-12* RNAi still caused increased germline apoptosis in engulfment-defective mutants, did not affect the speed of corpse removal by the somatic gonad and had no visible effects on somatic gonad structure (Supplementary Fig. 6a–c), we concluded that GLB-12 is directly involved in germline apoptosis. In loss-of-function mutants for the pro-apoptotic genes *cep-1*, *ced-13* and *egl-1*, GLB-12 depletion still caused an increase in germline apoptosis (Fig. 6b; Supplementary Fig. 6d), indicating that GLB-12 does not signal through these proteins. The p38/JNK MAPK pathways act independently of CEP-1, CED-13 and EGL-1 (Fig. 6b) and are responsible for stress-induced germ cell apoptosis³¹. *glb-12* RNAi in loss-of-function mutants for these

pathways no longer led to an increase in germ cell apoptosis (Fig. 6c; Supplementary Fig. 6e), while in a *vhp-1* mutant, an inhibiting phosphatase for these pathways³², *glb-12* RNAi caused a larger increase in germ cell apoptosis. Further, *glb-12* RNAi in the WT also increased the relative amount of phosphorylated PMK-1 (Supplementary Fig. 6f). Together, these results strongly suggest that GLB-12 has antiapoptotic effects by inhibiting the p38/JNK MAPK pathways. Surprisingly however, in *ced-3* or p38/JNK MAPK pathways mutants, fecundity was even further reduced following *glb-12* RNAi compared with WT and several gonadal defects could still be observed (Fig. 6d; Supplementary Fig. 6g,h). It therefore appears that the p38/JNK MAPK pathways do not mediate all downstream effects of GLB-12 on reproduction, suggesting that GLB-12 influences additional pathways.

Finally, we assessed if GLB-12 influences germline apoptosis by its O_2^- redox signal. We indeed observed that one of the two

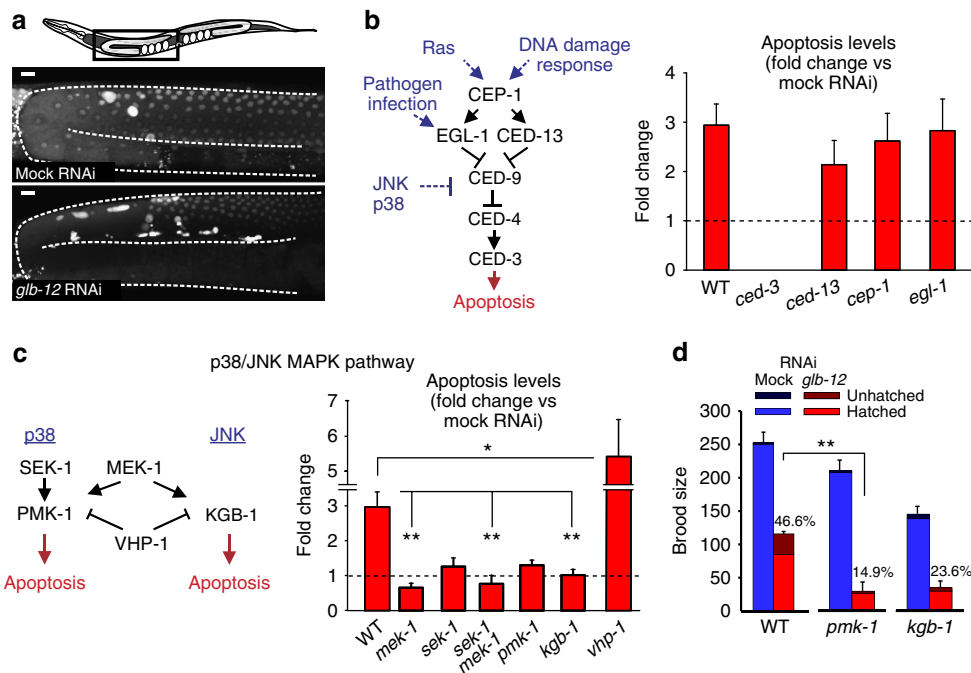


Figure 6 | GLB-12 regulates apoptosis via the p38/JNK MAPK pathways. (a) Acridine orange staining was used to visualize the increase in germline apoptosis following *glb-12* RNAi. Scale bar: 10 μ m. (b,c) *glb-12* RNAi caused an increase in apoptosis in the WT and in mutants for CEP-1, EGL-1 and CED-13, but not in mutants for the p38/JNK MAPK pathways ($n = 5$). Bars show average apoptotic corpses per animal in *glb-12* RNAi treated animals, relative to control RNAi. The scheme shows the pathway associated with apoptosis (black) and upstream signalling pathways (blue), as well as a simplified version of the p38/JNK MAPK pathway. (d) *glb-12* RNAi caused a further decrease in fecundity in mutants for the p38/JNK MAPK pathways ($n = 3$). * $P < 0.05$; ** $P < 0.01$ (two-sided Student t -test). Data are represented as mean \pm s.e.m.

antioxidants used, ascorbic acid, further augmented apoptosis levels following *glb-12* RNAi (Fig. 7a; Supplementary Fig. 7a), while the GLB-12 mutants incapable of producing O_2^- or without native GLB-12 localization were unable to rescue the increase in apoptosis following *glb-12* RNAi (Fig. 7b,c; Supplementary Fig. 7b,c). The antiapoptotic effect of GLB-12 also appears to be modulated by SOD-1 and SOD-4: loss of SOD-1, leading to a reduced conversion of O_2^- to H_2O_2 , enhanced relative germline apoptosis levels following *glb-12* RNAi (Fig. 7d; Supplementary Fig. 7d), SOD-1 reporter expression in the *sod-1* mutant, which restores the conversion of O_2^- to H_2O_2 , significantly suppressed the increase in germline apoptosis compared with *sod-1* worms following *glb-12* RNAi (Fig. 7e; Supplementary Fig. 7e) and artificially targeting the H_2O_2 scavenger PRDX-2 to colocalize with GLB-12, thereby again removing H_2O_2 and thus mimicking loss of SOD-1, further augmented apoptosis levels following *glb-12* RNAi (Fig. 7f; Supplementary Fig. 7f). Following *glb-12* RNAi, loss of the extracellular SOD-4 did not significantly affect apoptosis levels compared with WT worms. However, when both SOD-1 and SOD-4 were lost, apoptosis levels were lower compared to when only SOD-1 was lost and comparable to what is observed in WT animals (Fig. 7d; Supplementary Fig. 7d). This supports that both the intra- and extracellular H_2O_2 levels are important for GLB-12-based signalling. In line with this, scavenging H_2O_2 by targeting PRDX-2 to both the intra- and extracellular side appeared to lead to a lower increase in apoptosis following *glb-12* RNAi compared to when PRDX-2 was only present intracellular (Fig. 7f; Supplementary Fig. 7f). SOD-1 and SOD-4 loss also had opposite effects on the relative amount of phosphorylated PMK-1 following GLB-12 depletion, which further supports their opposite roles in GLB-12-mediated apoptosis (Supplementary Fig. 6f). In general, the role of SOD-1 and especially SOD-4 in

GLB-12-mediated apoptosis appeared less pronounced compared to their role in GLB-12-mediated fecundity. This could indicate that other redundant factors are also involved in GLB-12-mediated apoptosis. Lastly, no added effect following *glb-12* RNAi was observed when natural occurring H_2O_2 scavengers catalase or peroxiredoxin were lost (Supplementary Fig. 7g). Surprisingly again, when each of these scavengers together with SOD-1 is lost, whereby not only less H_2O_2 is produced but also less is removed, the apoptosis increase is less severe than when only SOD-1 is lost (Supplementary Fig. 7h). These results are thus comparable to the effects of these double mutations on the brood size following GLB-12 depletion. As mentioned, the potential role of these H_2O_2 scavengers in GLB-12-based signalling is not clear at this moment.

Discussion

In this study, we identified a novel role within the globin superfamily by showing that GLB-12 of *C. elegans* functions as a redox signalling protein in the reproductive system. Based on our findings, we propose a model whereby GLB-12 acts as a superoxide generator in the somatic gonad, after which this O_2^- signal is modulated directly or indirectly by an intracellular and an extracellular SOD, creating a transmembrane H_2O_2 gradient that acts as a redox signal. This signal then modulates reproduction, including p38/JNK MAPK-dependent germ cell apoptosis (Fig. 8).

The role of GLB-12 in redox chemistry is supported by its biochemical characteristics. We observed that GLB-12 shows a hexacoordinated haem, extremely low ligand affinity, a relatively low redox potential and the ability to transfer electrons to other molecules in a continuous manner. Haem hexacoordination in globins has previously been associated with increased redox kinetics for the haem iron⁹⁻¹¹, and, as a result,

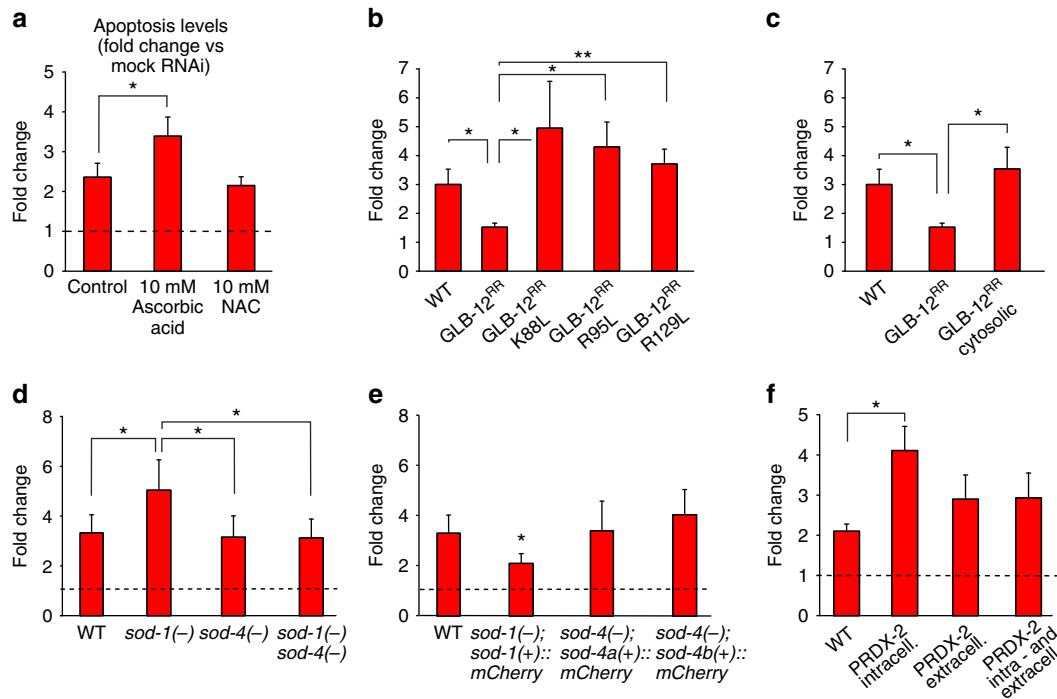


Figure 7 | GLB-12 regulates apoptosis through redox signalling. (a) Ascorbic acid enhanced the *glb-12* RNAi increase in apoptosis ($n=6$). (b,c) The GLB-12 mutants incapable of O_2^- production and the cytosolic GLB-12 cannot rescue the apoptosis increase following *glb-12* RNAi ($n=5$). (d,e) SOD-1 deletion and overexpression enhance and decrease the apoptosis increase following *glb-12* RNAi, respectively ($n=6$). * in (d) indicates significant difference compared to the *sod-1* mutant. (f) Introducing an intracellular PRDX-2 appears to mimic the effects seen for *glb-12* RNAi in the mutant for SOD-1 ($n=5$). * $P < 0.05$; ** $P < 0.01$ (two-sided Student *t*-test). Data are mean \pm s.e.m.

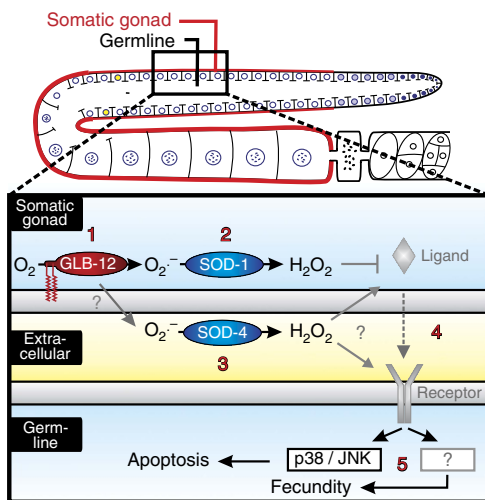


Figure 8 | GLB-12 working model. GLB-12 is expressed in the somatic gonad and is capable of converting O_2 to O_2^- (1) after which this signal is modulated by an intracellular SOD (2) and influenced by an extracellular SOD (3). Combined, GLB-12, SOD-1 and SOD-4 influence germline functioning, including p38 and JNK MAPK-mediated apoptosis (4-5).

hexacoordinated globins have been hypothesized to function in redox biology⁷. For example, hexacoordinated globins have been proposed to function in electron transfer^{33,34}, to work as redox sensors to control behaviour⁹, to regulate lipid oxidation³⁵ or to function as NO scavengers^{36,37}. However, it has thus far been very difficult to link these observations to the biochemical mechanisms used by these globins *in vivo*.

We found that, by using structural, biochemical and mutational approaches, GLB-12 actively converts O_2 to O_2^- , which in turn is used as a redox signalling molecule. As this hexacoordinated globin can actively support redox signalling, it provides a reference model for the function of globins and globin-like proteins in other organisms.

It is already well appreciated that redox signals can originate from endogenous sources, such as membrane-bound NADPH oxidases or mitochondria, but the control mechanisms on ROS as endogenous signalling molecules are still poorly understood. ROS signal specificity can be achieved by strict compartmentalization: by tightly controlled spatio-temporal expression of the ROS generators in proximity to the downstream target, efficient signal transduction can be realized⁴. This specificity in spatial expression is indeed observed for GLB-12: (1) at the tissue level, GLB-12 is only present in a specific part of the somatic gonad, wherefrom it acts to regulate germline reproduction; (2) at the subcellular level, GLB-12 is bound to the plasma membrane by myristoylation and palmitoylation, whereby this localization increases the effectiveness of the GLB-12 signal. In addition, these types of protein acylation localize proteins to dynamic membrane subdomains that have been associated with specific redox signalling events²⁶. Given that GLB-12 produces O_2^- and that O_2^- is diffusible and short lived, we therefore reason that the location of GLB-12 serves as a spatial determinant for downstream signals, both on a tissue and intracellular level. In this context, our observation that GLB-12 shows a 40-fold lower O_2^- production rate compared with cytochrome P450 might indicate that high ROS levels are not required when the redox signal is strictly localized.

On top of localizing the enzymatic source of a redox signal with its potential downstream target, an additional layer of regulation can be achieved by alterations in the local reduction/

oxidation capacity⁴. We observed that GLB-12 acts together with the main cytoplasmic SOD-1, whereby the latter enhances the spontaneous oxidation of O_2^- into O_2 and H_2O_2 , and this interaction indeed increases the effectiveness of the H_2O_2 redox signal. To our surprise, also the extracellular SOD-4 appears to influence the GLB-12 signal and this in an opposite manner compared to SOD-1. These results clearly show that SODs have essential roles in the regulation of redox signalling and are not merely generic antioxidants. We hypothesize that H_2O_2 , produced by GLB-12/SOD-1, influences ligand release from the somatic gonad, while H_2O_2 produced by SOD-4 could either influence ligand release or affect receptor activity on the germline plasma membrane (Fig. 8). These observations are in line with the increasing amount of evidence that the intra- and extracellular redox states work in concert to influence cell signalling^{38,39}. Furthermore, the interaction between GLB-12 and these two SODs adds a surprising third level of regulation in this redox signal, whereby the amount of O_2^- and H_2O_2 on the intra- and extracellular side of the plasma membrane are important determinants of the downstream signal. It is interesting to note that, while plasma membranes form a physical barrier to ROS, ROS transport across membranes could occur via selective membrane channels. This has been observed for both O_2^- and H_2O_2 with certain classes of anion channels²⁹ and aquaporins^{4,40–42}. This ROS transport across membranes has therefore been hypothesized to participate in the regulation of redox signalling and could also be involved in GLB-12-mediated signalling. Overall, our results show that redox signalling by GLB-12 is regulated by multiple control layers. Interesting to note is that NADPH oxidase, a known ROS generator, also displays a very specific subcellular localization that is related to its function, and also appears to interact with SOD enzymes^{26,43}. These shared characteristics between GLB-12 and NADPH oxidases indicate that redox signalling proteins function according to similar principles. Furthermore, the presence of a transmembrane redox gradient in GLB-12-mediated signalling presents a fascinating additional principle in how redox signalling can be further modulated.

We linked the redox signalling function of GLB-12 with *C. elegans* reproduction. Reduction of GLB-12 levels causes decreased fecundity, smaller gonads, increased germline apoptosis levels and several defects during oocyte development. We further showed that GLB-12 has antiapoptotic effects by inhibiting the p38/JNK MAPK pathways. These highly conserved pathways have been shown to be sensitive to environmental stress, including oxidative stress, in several organisms^{44,45}. Also in *C. elegans*, their combined role in modulating germ cell apoptosis in response to stressors such as oxidative and heavy metal toxicity has been demonstrated³¹. The results presented here provide a link between a redox signalling protein and p38/JNK MAPK-mediated germline apoptosis. Importantly, GLB-12-based redox regulation of the p38/JNK MAPK pathways, using low local levels of superoxide, is opposite from the effects of excessive oxidative stress on this pathway. Because GLB-12 acts specifically from the somatic gonad and not from the germline, it likely influences the release of ligands and/or the activation of receptors of the p38/JNK MAPK pathways. In other organisms, it has indeed been observed that ROS can influence receptor activation upstream of the p38/JNK MAPK pathways⁴⁴. Our results presented here indicate that, when p38/JNK MAPK ligands and receptors in the *C. elegans* reproductive system will be identified, they could form an interesting model to study how GLB-12-mediated redox signalling can influence the activity of downstream signalling cascades. Finally, in *C. elegans*, about half of all germ cells die by p53-independent ‘physiological’ apoptosis, and it is thought that this process increases the quality of the surviving germ cells by

the relocation of cytoplasmic components⁴⁶. As fecundity is further reduced by combining *glb-12* RNAi with p38/JNK pathway inhibition, GLB-12 may be required to generate or allocate this cytoplasmic material via modulation of germline apoptosis levels. In the absence of GLB-12, apoptosis is then increased as a compensatory measure to sustain reproduction, albeit at lower levels. This would explain why preventing the increase in cell death during GLB-12 depletion leads to a further decrease in brood size.

In conclusion, we have identified a globin that acts as a source of redox signalling. The specific biochemical characteristics of GLB-12 show how a globin can fulfil this function, while the precise subcellular localization and the interaction with the SOD antioxidant enzymes increase the effectiveness of the redox signal. The opposite effect of the intra- and extracellular SOD on GLB-12 signalling is particularly intriguing; it indicates the importance of transmembrane redox gradients and further deepens the concepts of redox signalling compartmentalization. The notion that highly localized ROS gradients influence important biological processes such as reproduction could open up a new area of redox biology. Finally, given the widespread occurrence of globins, the majority with unknown function, our results add an important member to the group of proteins that drive redox signalling.

Methods

General methods and strains. Maintenance of *C. elegans* was carried out according to standard procedures. *C. elegans* strains were cultured at 20 °C on cholesterol-supplemented nutrient agar (OXOID) plates containing a lawn of freshly grown *Escherichia coli* K12 cells. To obtain synchronized cultures, gravid adults were lysed by hypochlorite treatment and eggs were allowed to hatch overnight in S buffer. Worm strains used in this study were Bristol N2 wild type, NL2099 [*rrf-3(pk1426)* II], TU3311 [uIs60], NL3511 [*ppw-1(pk1425)* I], RB798 [*rrf-1(ok589)* I], OD95 [*unc-119(ed3)* III]; lts37 IV; lts38], GA187 [*sod-1(tm776)* II], GA184 [*sod-2(tgk257)* II], GA186 [*sod-3(tm760)* X], GA416 [*sod-4(gk101)* III], GA502 [*sod-5(tm1146)* II], RB1653 [*ctl-3(ok2042)* II], VC1151 [*prdx-3(gk529)* III], VC289 [*prdx-2(gk169)* II], MT1522 [*ced-3(n717)* IV], FX536 [*ced-13(tm536)* X], TJ1 [*cep-1(gk138)* I], MT8735 [*egl-1(n1084n3082)* V], FK171 [*mek-1(ks54)* X], KU4 [*sek-1(km4)* X], *mek-1(ks54)* *sek-1(km4)*, JT366 [*vhp-1(sa366)* II], KB3 [*kglb-1(um3)* IV], KU25 [*pmk-1(km25)* IV], HT1593 [*unc-119(ed3)* III], EG6699 [ttTi5605 II; *unc-119(ed3)* III; *oxEx1578*], which were provided by the *Caenorhabditis* Genetics Center funded by the National Institutes of Health National Center for Research Resources. Standard crossing was used to generate double mutants.

Molecular biology. Translational reporters and genetic constructs were made using fusion PCR⁴⁷, whereby 20 bp overlapping extensions were used to stitch PCR products together. Individual PCR products were first amplified separately, purified and used as template for the subsequent fusion PCR reaction at ~0.1–1 ng per 50 µl PCR reaction. Final PCR products were also purified and injected into the gonads of young adult hermaphrodites (HT1593 [*unc-119(ed3)* III]) to generate extrachromosomal arrays, whereby a PCR product coding for the *unc-119* gene was used as a co-injection marker. Primer sequences can be found in Supplementary Table 2. Because we observed that the inherent expression variation that is associated with extrachromosomal arrays can be seen over different animals within each injected line and that different lines show the same type of variation, 3–5 hermaphrodites were injected for each construct and the resulting transgenic lines were pooled. Expression analysis was performed on at least 10 animals per construct and representative images are shown. For brood size and germline apoptosis analysis, respectively at least 6 or 10 animals were analysed per transgenic line, per condition and per biological replicate.

The translational reporters contain the target gene and ~3 kb upstream and 0.5 kb downstream of the target gene, to include endogenous promoter and 3'UTR elements. For the different constructs, the exact size of these regions can be found in the Supplementary Figures, in the graphics describing these constructs. The *gfp* or *mCherry* gene was fused at the 3' side of the target gene, and was preceded by the sequence 5'ggagctggtgcaggcctggagccgggtgcc 3' coding for a GA-linker region. Translational reporter constructs were injected at a concentration of 50 ng µl⁻¹, together with the *unc-119* gene at a concentration of 20 ng µl⁻¹. Transformed reporter lines were analysed using a Nikon Eclipse TE2000-5 confocal microscope.

An RNAi-resistant *glb-12* gene (*glb-12^{RR}*) was generated using the guidelines described by Green *et al.*⁴⁸ In short, the nucleotide sequence was recoded by shuffling alternative codons encoding the same amino acid, without changing the original amino acid sequence or the overall codon bias, until there were no long (>9 bp) stretches of homology between the original and recoded *glb-12* gene. The

five *glb-12* introns were replaced by the three synthetic introns that are also found in eGFP. The *glb-12^{RR}* gene was fused at the 3' side to the coding sequence for the self-cleaving peptide T2A⁴⁹, 5'gagggcagaggaagtctgctaactgcggtgacctgcaggagaat cctggccca 3', followed by the *gfp* gene. When the ribosome encounters the T2A sequence, a 'ribosomal-skip' or 'STOP&GO' occurs, releasing the GLB-12 polypeptide while translation of the messenger RNA for GFP continues. This results in the simultaneous expression of GLB-12 and GFP, even though the two proteins are not fused together. The entire construct was fused to the same up- and downstream regions used for the *glb-12* translational reporter. The exact size of these different elements for this construct is shown schematically and can be found in the Supplementary Figures. The *glb-12^{RR}* genes coding for the mutants K88L, R95L and R129L were generated by site-directed mutagenesis. The cytosolic *glb-12^{RR}* gene was generated by removing the region coding for the first 30 AA of GLB-12, which is the N-terminal membrane-targeting region. All *glb-12^{RR}* genes were validated by sequencing.

The constructs coding for the intracellular and extracellular targeted PRDX-2 were generated by combining the *prdx-2* gene with the regulatory and coding regions of the *glb-12* gene and the *sod-4b* gene, respectively. These constructs artificially target PRDX-2 to the intracellular location of GLB-12 or extracellular location of SOD-4B, respectively. These constructs are schematically described in the Supplementary Figures. These schemes also show the exact size of the different elements.

The gene coding for roGFP2-ORP1 was codon optimized with the web tool, C. elegans codon adapter⁵⁰, to a codon adaptation index of 0.6 and with the introduction of three artificial introns. The resulting gene was fused to the upstream and downstream region of the *glb-12* gene, together with the sequence coding for the first 30 AA of GLB-12. This construct targets the roGFP2-ORP1 probe to the intracellular location of GLB-12. Also this construct is schematically represented in the Supplementary Figures.

We observed that the presence of the four different *glb-12* introns, in combination with the *glb-12* upstream and downstream region, were essential for somatic gonad expression. These introns were separately amplified as short PCR fragments with the following oligo's: 5'gtgagtttgagcttgattc 3' and 5'ccgacttgctgaaataat 3' for intron 1, 5'gagttcatggagcaggtag 3' and 5'tctggtctgattttgtcca 3' for intron 2 and 3, and 5'tgagattgtggatcagt 3' and 5'aaatcatatttgggtga 3' for intron 4. The resulting PCR products were co-injected with all constructs that carry the *glb-12* upstream and downstream region but lack these intronic regions: all *glb-12^{RR}* constructs, the intracellular *prdx-2* construct and the roGFP2-*orp1* construct. The *glb-12* introns were co-injected at 2–6 ng μl^{-1} . The *glb-12^{RR}* and *prdx-2* constructs were injected at 25 ng μl^{-1} , together with 20 ng μl^{-1} for the *unc-119* gene. A control strain was generated by only injecting 20 ng μl^{-1} for the *unc-119* gene. The roGFP2-*orp1* construct was injected at 50 ng per μl , together with 20 ng μl^{-1} for the *unc-119* gene. To create the transgenic strain overexpressing *glb-12* together with roGFP2-*orp1*, a PCR product of the *glb-12* gene, including the 2,120 bp upstream and 473 bp downstream region of the *glb-12* gene, was co-injected at 10 ng μl^{-1} . The transgenic strain carrying only the roGFP2-*orp1* construct was further crossed in the strains GA187 [*sod-1(tm776)* II] and GA416 [*sod-4(gk101)* III]. To create the transgenic strain overexpressing *glb-12*, a PCR product of the *glb-12* gene, including the 2,120 bp upstream and 473 bp downstream region of the *glb-12* gene, was injected at 10 ng μl^{-1} , together with 20 ng μl^{-1} for the *unc-119* gene in the *unc-119* mutant. For the control strain, we only injected the *unc-119* rescue gene in the *unc-119* mutant. To overexpress GLB-12 in a *sod-1* and *sod-4* mutant background, we injected the endogenous *glb-12* gene (10 ng μl^{-1}) together with a co-injection marker, *Pmyo-2::mCherry::unc-54UTR* (2.5 ng μl^{-1}), in both these mutants. The control strains were generated by only injecting the *Pmyo-2::mCherry* marker. To assess if GLB-12 is expressed in the germline, the GLB-12 translational reporter described above, including the 2,120 bp upstream and 473 bp downstream region of the *glb-12* gene was cloned in the pCFJ150 vector by Gibson cloning and injected into strain EG6699[tTt5605 II; *unc-119(ed3)* III; *oxEx1578*] to create integrated single-copy transgenes using the MosSCI method⁵¹. This GLB-12 reporter thus carries the endogenous promoter, intronic and 3'UTR regions, which should mimic endogenous expression as closely as possible. Furthermore, the MosSCI integration site tTt5605 in the strain EG6699 is known to allow stable germline expression of integrated constructs carrying regulatory regions that drive germline expression⁵¹. Besides a much weaker expression, the integrated reporter showed a comparable expression pattern compared with the extrachromosomal GLB-12 translational reporter. No expression was seen within the germline. For localization in human neuroblastoma SH-SY5Y cells, cDNAs of wt *glb-12*, *glb-12* Δ myr, *glb-12* Δ palm, and *glb-12* Δ myr Δ palm were cloned into the pEGFP-N1 vector (Clontech) using BglII and HindIII restriction enzymes (Biolabs, Westburg). Ligation of cDNAs in the vectors was performed using T4 DNA ligase (Novagen). The myristoylation site, glycine at position 2, was modified to alanine and is annotated as GLB-12 Δ myr. The palmitoylation site, cysteine at position 6, was mutated to alanine and is annotated as GLB-12 Δ palm. The mutant where both fatty acylation sites are mutated to alanine is annotated as GLB-12 Δ myr Δ palm. These same mutations were also introduced in the GLB-12 translational reporter for *C. elegans*, which has been described above. All mutations were done with the Quickchange site directed mutagenesis kit (Stratagene) and validated by sequencing.

Human neuroblastoma SH-SY5Y cells (ATCC CRL-2266) were cultured as recommended by the manufacturer's protocol. Cells were transfected with 3 μl of lipofectamine 2,000 and 0.5 μg of pEGFP-N1 plasmide. After 4 h, transfection

medium was replaced by growth medium and SH-SY5Y-cells were allowed to express the GFP-tagged proteins for 24 h. For GLB-12 Δ palm, colocalization was performed with the MitoTracker Deep Red probe (Invitrogen) according to the manufacturer's protocol. Localization was examined with an UltraVIEW Vox ERS microscope (Perkin-Elmer), and images were created with the Volocity 6.0.1 software.

Feeding RNAi. RNAi was applied by feeding bacteria expressing dsRNA to the worms. The RNAi clone targeting *glb-12* was derived from the Ahinger RNAi library¹³. An *in silico* analysis of the specificity of *glb-12* RNAi with the online tool E-RNAi⁵² presented no aspecific targets. RNAi induction was performed as described by Timmons *et al.*⁵³: an overnight culture of RNAi bacteria was inoculated in LB medium with 100 $\mu\text{g ml}^{-1}$ ampicilline and 12.5 $\mu\text{g ml}^{-1}$ tetracycline and incubated at 37 °C with shaking. The following day, cultures were diluted 1:100 and grown to OD₅₉₅ = 0.4 at 37 °C with shaking, after which sterile IPTG was added to a final concentration of 0.4 mM. Cultures were again incubated at 37 °C with shaking for 4 h, and finally spiked with another 100 $\mu\text{g ml}^{-1}$ ampicilline and 12.5 $\mu\text{g ml}^{-1}$ tetracycline. IPTG was added to a final concentration of 0.8 mM. NGM plates with 100 $\mu\text{g ml}^{-1}$ ampicilline, 12.5 $\mu\text{g ml}^{-1}$ tetracycline and 0.4 mM IPTG were seeded with the bacterial cultures, air dried and left overnight at room temperature. Finally, synchronized L1 worms were placed on these NGM plates seeded with the freshly induced RNAi bacteria.

Fecundity assay. Two days after synchronized L1 worms were placed on plates containing RNAi bacteria, individual L4 hermaphrodites were transferred to NGM plates with a 25 μl spot of four times concentrated, induced RNAi bacteria and maintained at 20 °C, except for the temperature-sensitive strain *rff-3 (pk1426)*, which was kept at 17 °C. Animals were transferred to fresh plates each day until they stopped laying eggs. Twenty-four hours after adults were transferred, hatched larvae and unhatched eggs on each plate were counted. The fecundity of each worm was calculated as the total number of hatched and unhatched eggs produced. At least 18 worms evenly spread over at least three independent replicas were analysed for each strain and for each condition. Afterwards, fecundity percentages of *glb-12* RNAi compared with control RNAi were calculated for each biological replicate within each genotype, after which statistical analysis was performed on fecundity percentages between genotypes.

Germline apoptosis assay. For all germline apoptosis assays, one-day-old adult animals were used. Animals with clearly underdeveloped or abnormal looking gonads were not included in this analysis. Apoptotic cells observed in the late pachytene region of the germline were scored. For all germline apoptosis assays, at least 10 worms per biological replicate were scored, one gonadal arm per animal was used, and at least three biological replicates were carried out for each condition.

Apoptotic germ cells were visualized by acridin orange (AO) staining, unless otherwise noted. AO (1 mg ml^{-1}) was added to a 9-cm diameter NGM plate carrying first-day adult animals for overnight incubation. The following day, worms were rinsed from the plate, washed, mounted under coverslips in 20 μl of a 12.5-mM sodium azide solution, and immediately analysed. The strain MT1522 [*ced-3(n717)* IV] was used to validate the specific staining of apoptotic cells by AO. Differential interference contrast microscopy instead of acridin orange staining was used to identify apoptotic germ cells in engulfment-defective mutants, as well as in WT animals that were used to analyse the removal speed of apoptotic corpses. Finally, for the latter experiment, animals were anaesthetized for 10 min with 10 mM levamisole instead of sodium azide. After this, animals were mounted on agar pads for analysis and time-lapse contrast microscopy was performed with through-focus z-stack images every 4 min, for a total of 75 min.

Ascorbic acid and N-acetylcysteine treatment. Ascorbic acid and N-acetylcysteine were added into NGM media from a freshly made 100 mM stock solution the day before the plates were used. Worms were placed on plates containing these antioxidants starting from the fourth larval stage on.

In vitro superoxide measurements. To test the capacity of haem proteins to produce superoxide *in vitro*, we applied the method of Hayashi *et al.*¹⁶ to create a reducing environment for haem proteins, and included lucigenin that produces light upon reaction with superoxide, to quantify superoxide production. In brief, the components of the reduction system are an NADPH-generating system, consisting of glucose-6-phosphate, glucose-6-phosphate dehydrogenase and NADP⁺ and an electron-mediating system, consisting of ferredoxin and ferredoxin-NADP reductase. We omitted catalase from the original system, as this might lead to quick removal of the produced superoxide. Concentrations of the different components, including the different haem proteins tested here, were as described in the original paper. haem proteins tested were myoglobin from horse heart (Sigma M1882), cytochrome P450 2B4 from rabbit liver (Sigma C7552) and cytochrome C from horse heart (Sigma C2506). Lucigenin was added to a final concentration of 100 μM . Measurements were performed in a 200- μl working volume in a 96-well microtiter plate. Glucose-6-phosphate was added last to start the reduction. Immediately following this, light emission was recorded in a Victor2 1420 Multilabel Counter (Perkin-Elmer,

Wellesley, MA), whereby for each condition the average of 20 consecutive measurements was taken. Runs were repeated three times to allow statistical analysis.

In vivo hydrogen peroxide measurements. A GFP-based probe specific for hydrogen peroxide, roGFP2-ORP1 (ref. 28), was used to measure relative levels of *in vivo* hydrogen peroxide levels at the subcellular location of GLB-12 and this specifically within the somatic gonad. To this end, a transgenic *C. elegans* line was generated that expressed roGFP2-ORP1 under the control of the *glb-12* regulatory regions, as described above.

To increase roGFP2-ORP1 expression levels, animals were cultivated at 22 °C instead of 20 °C. Hydrogen peroxide levels were measured in first-day adult hermaphrodites. Animals were removed from the plate, anaesthetised in a fresh mixture of 10 mM levamisole dissolved in M9 for 15–30 min before transferring them to an agarose pad under a coverslip for imaging. To measure *in vivo* hydrogen peroxide levels following exposure to 20 mM hydrogen peroxide, a freshly made hydrogen peroxide solution was added to the animals already placed on the agarose pad. Imaging started immediately following this and was completed within 10 min.

Animals were imaged using an inverted Zeiss LSM510 confocal microscope equipped with $\times 40$ magnification objective lens (oil immersion) and Zeiss Zen 2009 software. Laser intensities and microscope settings that were compatible with ratiometric measurements were determined in an initial run and were kept constant for all subsequent experiments. Excitation of roGFP2-ORP1 was performed sequentially by 405 and 488 nm laser lines, emission was detected at 500–550 nm. Only those animals that showed clearly visible expression of roGFP2-ORP1 in the somatic gonad were used for image analysis. One or two single focal plane images were taken for each animal. At least five worms per biological replicate and per condition were scored, one gonadal arm per animal was used, and at least 3 biological replicates were carried out for each condition.

Image processing was based on the method used by Morgan *et al.*⁵⁴ In brief, images were saved as 16-bit tiff files and further processed by ImageJ. Images were first converted to 32-bit tiff files, the background of both 405 nm images and 488 nm images was subtracted using an upper and lower threshold and background values were set to 'not a number' (NaN). Relative H₂O₂ levels in these processed images were quantified by (1) selecting a polygonal region, which showed the probe within the somatic gonad and which showed no interfering background fluorescence from the gut, (2) calculating the average pixel intensities within this region for both the 405 nm and the 488 nm image and (3) calculating the ratio of the 405 nm average pixel intensity over the 488 nm average pixel intensity.

Recombinant expression of GLB-12. To express recombinant GLB-12, young adult worms were collected and total RNA was prepared using the Trizol method (Invitrogen) followed by LiCl precipitation (Ambion). cDNA was prepared using the OneStep RT-PCR kit (Qiagen). Cycling conditions were as followed: 30 min at 50 °C for the RT reaction, followed by 15 min at 95 °C for the activation of the HotStar Taq DNA polymerase, followed by 35 cycles of 60 sec at 94 °C, 60 s at 54 °C and 90 s at 72 °C. cDNA of *glb-12* was cloned into the pET23a-vector (Novagen) using NdeI and XhoI restriction enzymes (Biolabs) and T4 Ligase (Novagen). The expression plasmid was then transformed into *Escherichia coli* strain BL21(DE3)pLysS (Invitrogen). Cells were grown at 25 °C in TB medium containing 200 $\mu\text{g ml}^{-1}$ ampicillin, 30 $\mu\text{g ml}^{-1}$ chloramphenicol and 1 mM δ -amino-levalulinic acid. The culture was induced at A₅₅₀ = 0.8 OD with IPTG (final concentration 0.04 mM). After overnight growth, *E. coli* cells were collected. Recombinant GLB-12 was spectroscopically localized in the cytosolic fraction and was purified to homogeneity using (i) ammonium sulfate precipitation, after which the 90% pellet was dissolved and dialyzed against 5 mM Tris-HCl pH 8.5, (ii) DEAE-Sepharose fast flow chromatography and (iii) Sephacryl S200 gel filtration in 50 mM Tris-HCl pH 8.5, 150 mM NaCl, 0.5 mM EDTA. The fractions containing the pure globin were pooled and concentrated.

UV-vis. UV-vis spectra were measured in a 250–700 nm range on a Cary-5 UV-vis-NIR spectrophotometer (Varian). Ferrous CO-bound and reduced deoxy protein samples were prepared by flushing 1 ml of 100 mM potassium phosphate buffer pH 7.0 for 15 min with CO- and N₂-gas, respectively, in a sealed cuvette. After addition of 10 μl of a saturated solution of sodium dithionite, highly concentrated, recombinant purified protein was added to the flushed sealed cuvette to obtain a final concentration of 50 μM . Ferric CN-ligated GLB-12 was prepared by adding an excess of 40 mM of KCN.

Cyclic voltammetry. Cyclic Voltammetry was performed using electrodes modified with a gelatin layer. The presence of this gelatin layer allows the incorporation of proteins and so the analysis of their electrochemical behaviour. Measurements were performed in a three electrode cell using a SCE containing two compartments (Radiometer Analytical, France) and a platinum counter electrode. The working electrodes were gold electrodes with a diameter of 1.6 mm (BAS, UK) which were pretreated by mechanical and electrochemical polishing according to the following procedure. Before its first use the electrode surface was briefly scoured by a silicon carbide emery paper of 1,200 grit to obtain a fresh surface. To smoothen the resulting relatively rough surface it was further subjected to sequential polishing by

polishing cloth covered with alumina powder of 1, 0.3 and 0.05 mm particle size (Buehler, USA) for, respectively, 5, 10 and 20 min. To remove any adherent Al₂O₃ particles the electrode surface was rinsed thoroughly with doubly deionised water and cleaned in an ultrasonic bath containing deionised water (Branson 3210, USA) for 2 min. Before immobilizing gelatin onto the electrode, the gold surface was modified with a self-assembled monolayer (SAM) of 6-mercaptohexanol (unless otherwise indicated). The latter was done by immersing the electrode in a water solution containing 1 mmol L⁻¹ 6-mercaptohexanol (MH) for 18 h at room temperature. The modified gold electrodes were consequently rinsed with water to remove any physically adsorbed mercaptohexanol.

To immobilize gelatin onto the electrode, gelatin B (gelB) powder (5 m%) was dissolved in 10 mM HEPES buffer solution at 40 °C and further mixed with globin (GLB) and/or cytochrome C peroxidase (CCP) solutions (50 μM). An amount of 7 μl of this gelatin solution was brought onto the surface of the electrode by using a syringe. The electrode was then exposed to air for 2 h at 4 °C (drop drying). The final electrodes are denoted as GLB|CCP|GelB (1.5:1.5:7 ratio), GLB|GelB (3:7 ratio) or CCP|GelB (3:7 ratio). Additional optimization of this analysis showed that highly comparable results can be obtained when proteins are dissolved in a small sample volume instead of a gelatin layer. Cyclic voltammetry for dissolved protein samples was conducted in an electrochemical cell designed by Hagen⁵⁵. A droplet of the protein solutions (10–50 μM) was placed in the cell equipped with a Pt-counter and a SCE electrodes. Gold disk electrodes (diameter 1.6 mm, BASi, USA) modified with 6-mercaptohexanol (Sigma-Aldrich) were used as working electrodes.

A gelatin layer was used to determine the redox potential of GLB-12, the effect of varying pH on this, and the interaction of GLB-12 with CCP. Except for the pH dependence, these measurements were repeated using dissolved protein samples and showed highly comparable results. All other measurements were performed on dissolved protein samples. All measurements were carried out under nitrogen atmosphere at room temperature (22 \pm 2 °C).

Real-time quantitative RT-PCR. Total RNA was isolated from harvested *C. elegans* worms using the RNeasy Midi Kit from Qiagen (Hilden, Germany), according to the manufacturer's instructions. A DNase I (Zymo Research, Orange, California) digestion step was subsequently performed to remove genomic DNA. First strand cDNA was synthesized using an oligo(dT) primer and a Moloney murine leukemia virus reverse transcriptase (Fermentas, Vilnius, Lithuania).

Quantitative RT-PCR was carried out using a Rotor-Gene 2000 centrifugal real-time cycler (Corbett Research, Mortlake, Australia) using the Platinum SYBR Green qPCR SuperMix-UDG (Invitrogen). Each reaction contained: 12.5 μl of the Platinum SYBR Green qPCR SuperMix-UDG, 200 nM of forward and reverse primers and 5 μl cDNA (1:40 RNA dilution), to a final volume of 25 μl . Amplification was performed in 0.1 ml real-time PCR tubes (Corbett Research) placed in the 72-well rotor of the Rotor-Gene instrument. The cycling conditions were as follows: 50 °C for 2 min, initial denaturation at 95 °C for 2 min, followed by 45 cycles of 15 s at 95 °C, 30 s at 60 °C and 30 s at 72 °C (gain set at 8 for SYBR Green). Following the final cycle, melting curve analysis was performed to examine the PCR specificity in each reaction tube (absence of primer dimers and other nonspecific products). All PCR reactions were performed in triplicate. Ct values were transformed to relative quantities and were normalized using the geometric mean of three reference genes⁵⁶. Four biological replicates were carried out for each experiment. Primer sequences can be found in Supplementary Table 2.

Crystallization and structure determination. Atomic coordinates and structure factors determined from the GLB-12 crystal have been deposited in the Protein Data Bank, with entry code 4bja. Crystals of GLB-12 were grown at 4 °C by the hanging-drop vapour diffusion method, by mixing 1 μl protein solution with 1 μl crystallization well solution containing 2 M (NH₄)₂SO₄, 0.2 M Na-acetate, 0.1 M Na-acetate pH 4.6. Crystals usually grew in about two months, and were cryo-protected with the same crystallization well solution supplemented with 30% glycerol, prior to cryo-cooling in liquid nitrogen. The crystals belong to the space group P6₃22, with unit cell parameters $a = 50.4 \text{ \AA}$, $b = 50.4 \text{ \AA}$, $c = 245.3 \text{ \AA}$, $\gamma = 120^\circ$, and one GLB-12 molecule per asymmetric unit. Diffraction data were collected to 1.65 \AA resolution using synchrotron radiation (BM14 beamline, ESRF, Grenoble, France). Raw data were processed with Mosflm⁵⁷ and Scala⁵⁸ (Table 1).

The structure was solved by single-wavelength anomalous dispersion (SAD) method, based on the haem-Fe atom anomalous signal. The haem-Fe atom position and the initial phases were calculated by using the AutoSol pipeline implemented in PHENIX⁵⁹. The GLB-12 model was built with the program COOT⁶⁰ and restrained refined to the maximum resolution using REFMAC⁶¹. At the end of the refinement stages (including anisotropic B-factor refinement), 110 water molecules, 1 sulfate ion, and 4 acetate molecules were located through inspection of difference Fourier maps. The final R factor value was 17.8%, and Rfree 23.4%. No electron density was detected for residues 1–18, 167–181 and 216–266. The programs Procheck⁶² and Surfnet⁶³ were used to assess the stereochemical quality of the protein structures and to explore the protein matrix cavities.

TEM—high-pressure freezing and freeze-substitution. To analyse the sub-cellular localization of GLB-12, the GLB-12 translational reporter in combination

with anti-GFP antibodies was used. N2 WT worms were included as negative control.

Copper membrane carriers (1.5 mm × 0.2 mm) (Leica, Microsystems, Vienna, Austria) treated with 1% lecithin were used and filled with 20% (w/v) Bovine Serum Albumin (BSA). Three to four one-day-old adult nematodes were transferred to the membrane carrier, immersed in the BSA and then immediately frozen in a high-pressure freezer (EM PACT, Leica, Microsystems).

Freeze substitution was carried out using a Leica EM AFS (Leica, Microsystems). Carriers were transferred from EM pact to AFS under liquid nitrogen and placed in an eppendorf filled with dry acetone. Over a period of 5 days, animals were freeze-substituted as follows: −90 °C for 27 h, 2 °C per hour increase for 15 h, −60 °C for 12 h, 2 °C per hour increase for 15 h, −30 °C for 32 h, 2 °C per hour increase for 17 h. At 4 °C carriers were rinsed 3 times with dry acetone for 20 min each time.

TEM—Embedding and sectioning. Samples were infiltrated stepwise in LR-White, hard grade (London, Resin, Basingstoke, UK) and embedded in closed capsules. Polymerization was performed by UV illumination of the AFS for 24 h at 0 °C, 2 °C per hour increase for 10 h followed by 24 h at 20 °C, 2 °C per hour increase for 8 h followed by 72 h at 37 °C. Ultrathin (70 nm) sections were cut using a Leica Ultracut S ultramicrotome (Leica, Vienna, Austria) with a diamond knife (Diatome, Ltd., Biel, Switzerland) and collected on formvar-coated copper single slot grids (Agar Scientific, Stansed, UK).

TEM—immunogold labelling. All steps of the immunolabelling were performed in a humid chamber at room temperature. Grids were floated upside down on 25 µl of aliquots of blocking solution (5% BSA, 1% Fish skin gelatin in Phosphate buffered saline (PBS)) for 30 min followed by a wash step for five times 5 min in incubation buffer (IB: 1% BSA in PBS). Incubation of primary antibodies for 120 min, Goat anti-GFP-biotin antibody, 1:300 (Rockland 600–106–215) followed by washing five times 5 min in IB. The grids were then incubated with unconjugated bridging antibodies, Rabbit anti biotin, 1:10,000 (Rockland 100–4,198) for 30 min. After washing five times 5 min in IB, the grids were incubated in Protein A gold (PAG) (10 nm, Cell Biology, Utrecht University) and washed twice, 5 min each, with IB; three times 5 min with PBS; and five times 2 min with double distilled water. Control experiments consisted of treating sections with bridging antibodies and/or PAG 10 nm alone.

After post-staining in a Leica EM AC20 (Leica, Microsystems) for 30 min in uranyl acetate at 20 °C and for 7 min in lead citrate at 20 °C sections were examined with a JEOL JEM 1010 (Jeol, Ltd, Tokyo, Japan) transmission electron microscope operating at 60 kV. Pictures were digitized using a Dtabis system (Pforzheim, Germany).

Germ cell quantification assay. Animals for germ cell quantification assays were cultivated in an identical manner as for the germline apoptosis assay, only the staining with acridin orange was omitted. Briefly, one-day-old adult animals were used to score number of germ cells, and animals with clearly underdeveloped or abnormal looking gonads were not included in this analysis. Germ cells were scored within a fixed 900 µm² square region in the late pachytene region of the germline, whereby the entire width of the germline fell within this square. Within this square, the number of germ cells in the upper half of the germline, starting from the widest point, were determined by differential interference contrast microscopy. For each genotype and condition, at least five worms per biological replicate were scored, one gonadal arm per animal was used, and at least three biological replicates were carried out.

Western blotting. Western blotting was performed according to standard procedures. Synchronized populations were grown on NGM with induced RNAi, collected as one-day-old adults, and flash frozen in 100 µl volumes. After worm homogenization, protein content was determined using the bicinchoninic acid method. Equal amounts of total protein content were loaded on a 12.5% SDS-PAGE gel. The primary rabbit polyclonal antibodies anti-PMK-1 and anti-phospho-p38 MAPK monoclonal antibody 28B10 (Cell Signalling) were used at a 1:1,000 and 1:500 dilution, respectively, and detected with an HRP-conjugated secondary anti-rabbit antibody (No. A0545; Sigma) (1:5,000). Incubation with Supersignal West Pico chemiluminescent substrate (Pierce) generated light that was recorded on chemiluminescence film. Densitometry was performed using ImageJ software. Full scans of Western blots are presented in Supplementary Fig. 8.

The specificity of anti-PMK-1 and anti-phospho-p38 MAPK was determined by using the PMK-1 mutant *KU25 [pmk-1(km25) IV]*. Three biological replicates were run.

Statistical analysis. Statistical comparisons of fecundity and germline apoptosis levels were performed using a two-sided *t*-test, assuming unequal variance, on three or more independent biological replicates. Statistical comparisons of *in vitro* superoxide production was performed using a two-sided *t*-test, assuming unequal variance, on three or more technical replicates.

References

- Finkel, T. Signal transduction by reactive oxygen species. *J. Cell. Biol.* **194**, 7–15 (2011).
- Ray, P. D., Huang, B. W. & Tsuji, Y. Reactive oxygen species (ROS) homeostasis and redox regulation in cellular signaling. *Cell Signal.* **24**, 981–990 (2012).
- D'Autrèaux, B. & Toledano, M. B. ROS as signalling molecules: mechanisms that generate specificity in ROS homeostasis. *Nat. Rev. Mol. Cell Biol.* **8**, 813–824 (2007).
- Dickinson, B. C. & Chang, C. J. Chemistry and biology of reactive oxygen species in signaling or stress responses. *Nat. Chem. Biol.* **7**, 504–511 (2011).
- Reeder, B. J. The redox activity of hemoglobins: from physiologic functions to pathologic mechanisms. *Antioxid. Redox Signal.* **13**, 1087–1123 (2010).
- Duff, S. M., Wittenberg, J. B. & Hill, R. D. Expression, purification, and properties of recombinant barley (*Hordeum* sp.) hemoglobin. Optical spectra and reactions with gaseous ligands. *J. Biol. Chem.* **272**, 16746–16752 (1997).
- Kakar, S., Hoffman, F. G., Storz, J. F., Fabian, M. & Hargrove, M. S. Structure and reactivity of hexacoordinate hemoglobins. *Biophys. Chem.* **152**, 1–14 (2010).
- de Sanctis, D. *et al.* Structure-function relationships in the growing hexacoordinate hemoglobin sub-family. *IUBMB Life* **56**, 643–651 (2004).
- Yoon, J. *et al.* Structure and properties of a bis-histidyl ligated globin from *Caenorhabditis elegans*. *Biochemistry* **49**, 5662–5670 (2010).
- Dewilde, S. *et al.* Biochemical characterization and ligand binding properties of neuroglobin, a novel member of the globin family. *J Biol Chem* **276**, 38949–38955 (2001).
- Kiger, L. *et al.* Electron transfer function versus oxygen delivery: a comparative study for several hexacoordinated globins across the animal kingdom. *PLoS ONE* **6**, e20478 (2011).
- Hoogewijs, D. *et al.* Wide diversity in structure and expression profiles among members of the *Caenorhabditis elegans* globin protein family. *BMC Genomics* **8**, 356 (2007).
- Kamath, R. S. *et al.* Systematic functional analysis of the *Caenorhabditis elegans* genome using RNAi. *Nature* **421**, 231–237 (2003).
- De Wael, K. *et al.* Electrochemical study of gelatin as a matrix for the immobilization of horse heart cytochrome *c*. *Talanta* **82**, 1980–1985 (2010).
- Petlicki, J. & van de Ven, T. G. M. The equilibrium between the oxidation of hydrogen peroxide by oxygen and the dismutation of peroxy or superoxide radicals in aqueous solutions in contact with oxygen. *J. Chem. Soc. Faraday Trans.* **94**, 2763–2767 (1999).
- Hayashi, A., Suzuki, T. & Shin, M. An enzymic reduction system for metmyoglobin and methemoglobin, and its application to functional studies of oxygen carriers. *Biochim. Biophys. Acta* **310**, 309–316 (1973).
- Couture, M., Burmester, T., Hankeln, T. & Rousseau, D. L. The heme environment of mouse neuroglobin. Evidence for the presence of two conformations of the heme pocket. *J. Biol. Chem.* **276**, 36377–36382 (2001).
- Pesce, A. *et al.* Human brain neuroglobin structure reveals a distinct mode of controlling oxygen affinity. *Structure* **11**, 1087–1095 (2003).
- Vallone, B., Nienhaus, K., Brunori, M. & Nienhaus, G. U. The structure of murine neuroglobin: novel pathways for ligand migration and binding. *Proteins* **56**, 85–92 (2004).
- de Sanctis, D. *et al.* Crystal structure of cytoglobin: the fourth globin type discovered in man displays heme hexa-coordination. *J. Mol. Biol.* **336**, 917–927 (2004).
- Hargrove, M. S. *et al.* Crystal structure of a nonsymbiotic plant hemoglobin. *Structure* **8**, 1005–1014 (2000).
- Pesce, A. *et al.* HisE11 and HisF8 provide bis-histidyl heme hexa-coordination in the globin domain of *Geobacter sulfurreducens* globin-coupled sensor. *J. Mol. Biol.* **386**, 246–260 (2009).
- Bologna, G., Yvon, C., Duvaud, S. & Veuthey, A. L. N-terminal myristoylation predictions by ensembles of neural networks. *Proteomics* **4**, 1626–1632 (2004).
- Ren, J. *et al.* CSS-Palm 2.0: an updated software for palmitoylation sites prediction. *Protein Eng. Des. Sel.* **21**, 639–644 (2008).
- Shahinian, S. & Silviu, J. R. Doubly-lipid-modified protein sequence motifs exhibit long-lived anchorage to lipid bilayer membranes. *Biochemistry* **34**, 3813–3822 (1995).
- Ushio-Fukai, M. Compartmentalization of redox signaling through NADPH oxidase-derived ROS. *Antioxid. Redox Signal.* **11**, 1289–1299 (2009).
- Veal, E. A., Day, A. M. & Morgan, B. A. Hydrogen peroxide sensing and signaling. *Mol. Cell* **26**, 1–14 (2007).
- Gutscher, M. *et al.* Proximity-based protein thiol oxidation by H₂O₂-scavenging peroxidases. *J. Biol. Chem.* **284**, 31532–31540 (2009).
- Madesh, M. *et al.* Selective role for superoxide in InsP3 receptor-mediated mitochondrial dysfunction and endothelial apoptosis. *J. Cell. Biol.* **170**, 1079–1090 (2005).
- Gartner, A., Boag, P. R. & Blackwell, T. K. *Germline Survival and Apoptosis* (WormBook, 2008).

31. Salinas, L. S., Maldonado, E. & Navarro, R. E. Stress-induced germ cell apoptosis by a p53 independent pathway in *Caenorhabditis elegans*. *Cell Death Differ.* **13**, 2129–2139 (2006).
32. Mizuno, T. *et al.* The *Caenorhabditis elegans* MAPK phosphatase VHP-1 mediates a novel JNK-like signaling pathway in stress response. *EMBO J.* **23**, 2226–2234 (2004).
33. Brittain, T., Skommer, J., Raychaudhuri, S. & Birch, N. An antiapoptotic neuroprotective role for neuroglobin. *Int. J. Mol. Sci.* **11**, 2306–2321 (2010).
34. Fago, A., Mathews, A. J., Moens, L., Dewilde, S. & Brittain, T. The reaction of neuroglobin with potential redox protein partners cytochrome b5 and cytochrome c. *FEBS Lett.* **580**, 4884–4888 (2006).
35. Reeder, B. J., Svistunenko, D. A. & Wilson, M. T. Lipid binding to cytoglobin leads to a change in haem co-ordination: a role for cytoglobin in lipid signalling of oxidative stress. *Biochem. J.* **434**, 483–492 (2011).
36. Dordas, C. *et al.* Expression of a stress-induced hemoglobin affects NO levels produced by alfalfa root cultures under hypoxic stress. *Plant J.* **35**, 763–770 (2003).
37. Ohwaki, Y., Kawagishi-Kobayashi, M., Wakasa, K., Fujihara, S. & Yoneyama, T. Induction of class-1 non-symbiotic hemoglobin genes by nitrate, nitrite and nitric oxide in cultured rice cells. *Plant Cell Physiol.* **46**, 324–331 (2005).
38. Chaiswing, L. & Oberley, T. D. Extracellular/microenvironmental redox state. *Antioxid. Redox Signal.* **13**, 449–465 (2010).
39. Fisher, A. B. Redox signaling across cell membranes. *Antioxid. Redox Signal.* **11**, 1349–1356 (2009).
40. Bienert, G. P. *et al.* Specific aquaporins facilitate the diffusion of hydrogen peroxide across membranes. *J. Biol. Chem.* **282**, 1183–1192 (2007).
41. Dynowski, M., Schaaf, G., Loque, D., Moran, O. & Ludewig, U. Plant plasma membrane water channels conduct the signalling molecule H₂O₂. *Biochem. J.* **414**, 53–61 (2008).
42. Hara-Chikuma, M. *et al.* Aquaporin-3-mediated hydrogen peroxide transport is required for NF- κ B signalling in keratinocytes and development of psoriasis. *Nat. Commun.* **6**, 7454 (2015).
43. Fukai, T. & Ushio-Fukai, M. Superoxide dismutases: role in redox signaling, vascular function, and diseases. *Antioxid. Redox Signal.* **15**, 1583–1606 (2011).
44. McCubrey, J. A., Lahair, M. M. & Franklin, R. A. Reactive oxygen species-induced activation of the MAP kinase signaling pathways. *Antioxid. Redox Signal.* **8**, 1775–1789 (2006).
45. Wada, T. & Penninger, J. M. Mitogen-activated protein kinases in apoptosis regulation. *Oncogene* **23**, 2838–2849 (2004).
46. Gumienny, T. L., Lambie, E., Hartwig, E., Horvitz, H. R. & Hengartner, M. O. Genetic control of programmed cell death in the *Caenorhabditis elegans* hermaphrodite germline. *Development* **126**, 1011–1022 (1999).
47. Hobert, O. PCR fusion-based approach to create reporter gene constructs for expression analysis in transgenic *C. elegans*. *Biotechniques* **32**, 728–730 (2002).
48. Green, R. A. *et al.* Expression and imaging of fluorescent proteins in the *C. elegans* gonad and early embryo. *Methods Cell Biol.* **85**, 179–218 (2008).
49. Ahier, A. & Jarriault, S. Simultaneous expression of multiple proteins under a single promoter in *Caenorhabditis elegans* via a versatile 2A-based toolkit. *Genetics* **196**, 605–613 (2014).
50. Redemann, S. *et al.* Codon adaptation-based control of protein expression in *C. elegans*. *Nat. Methods* **8**, 250–252 (2011).
51. Frøkjær-Jensen, C. *et al.* Single-copy insertion of transgenes in *Caenorhabditis elegans*. *Nat. Genet.* **40**, 1375–1383 (2008).
52. Horn, T. & Boutros, M. E-RNAi: a web application for the multi-species design of RNAi reagents—2010 update. *Nucleic Acids Res.* **38**, W332–W339 (2010).
53. Timmons, L., Court, D. L. & Fire, A. Ingestion of bacterially expressed dsRNAs can produce specific and potent genetic interference in *Caenorhabditis elegans*. *Gene* **263**, 103–112 (2001).
54. Morgan, B., Sobotta, M. C. & Dick, T. P. Measuring E(GSH) and H₂O₂ with roGFP2-based redox probes. *Free Radic. Biol. Med.* **51**, 1943–1951 (2011).
55. Hagen, W. R. Direct electron transfer of redox proteins at the bare glassy carbon electrode. *Eur. J. Biochem.* **182**, 523–530 (1989).
56. Vandesompele, J. *et al.* Accurate normalization of real-time quantitative RT-PCR data by geometric averaging of multiple internal control genes. *Genome Biol.* **3**, RESEARCH0034 (2002).
57. Leslie, A. G. M. *MOSFLM User Guide, Mosflm Version 6.2.3* (MRC Laboratory of Molecular Biology, Cambridge, UK, 2003).
58. Evans, P. Scaling and assessment of data quality. *Acta Crystallogr. D Biol. Crystallogr.* **62**, 72–82 (2006).
59. Adams, P. D. *et al.* PHENIX: a comprehensive Python-based system for macromolecular structure solution. *Acta Crystallogr. D Biol. Crystallogr.* **66**, 213–221 (2010).
60. Emsley, P. & Cowtan, K. Coot: model-building tools for molecular graphics. *Acta Crystallogr. D Biol. Crystallogr.* **60**, 2126–2132 (2004).
61. Murshudov, G. N., Vagin, A. A. & Dodson, E. J. Refinement of macromolecular structures by the maximum-likelihood method. *Acta Crystallogr. D Biol. Crystallogr.* **53**, 240–255 (1997).
62. Laskowski, R. A., MacArthur, M. W., Moss, D. S. & Thornton, J. M. PROCHECK: a program to check the stereochemical quality of protein structure. *J. Appl. Crystallography* **26**, 283–291 (1993).
63. Laskowski, R. A. SURFNET: A program for visualizing molecular surfaces, cavities and intermolecular interactions. *J. Mol. Graph.* **13**, 323–330 (1995).
64. Battistuzzi, G. *et al.* Redox reactivity of the heme Fe³⁺/Fe²⁺ couple in native myoglobins and mutants with peroxidase-like activity. *J. Biol. Inorg. Chem.* **12**, 951–958 (2007).
65. Raphael, A. L. & Gray, H. B. Axial ligand replacement in horse heart cytochrome c by semisynthesis. *Proteins* **6**, 338–340 (1989).
66. Shumyantseva, V. V. *et al.* A new format of electrodes for the electrochemical reduction of cytochromes P450. *J. Inorg. Biochem.* **100**, 1353–1357 (2006).

Acknowledgements

We thank Dr K. Matsumoto and Dr T. Mizuno for kindly providing the *mek-1(ks54) sek-1(km4)* double mutant, the antibody anti-PMK-1 and technical advice on antibody use; Dr D. Kim for kindly providing the pDK177 RNAi strain; Dr M. Ubbink and Dr Q. Bashir for providing CCP; Dr K. Oegema and the OD lab for sharing technical expertise; M. Couvreur for assistance in generating transgenic lines; and Dr T. Dansen for the final support. Some strains were provided by the CGC, which is funded by the NIH Office of Research Infrastructure Programs (P40 OD010440). S.D.H. and F.G. are PhD fellows of the Fund for Scientific Research (FWO). Financial support to S.D. and L.M. was provided by the University of Antwerp (BOF UA TOP 2006), to K.D.W., S.D. and S.T. by the University of Antwerp (BOF-GOA) and to S.D., L.M., B.P.B., by FWO project G.0247.09.

Author contributions

All authors contributed extensively to the work presented in this paper. S.D.H., J.R.V. and B.P.B. designed the phenotypical, expression, genetic, molecular and part of the biochemical analysis. S.D.H., M.V. and C.V. carried out the phenotypical, expression, molecular and genetic analysis. W.B. gave technical support for TEM. L.T., E.L., S.D. and L.M. gathered biochemical and expression data. S.T., M.P. and K.D. carried out cyclic voltametry. A.P., F.G., M.N. and M.B. gathered the crystallization data. The manuscript was prepared by S.D.H. and all authors discussed the results and implications and commented on the manuscript at all stages.

Additional information

Accession codes: Crystal structure data have been deposited in the Protein Data Bank under accession code 4bja.

Supplementary Information accompanies this paper at <http://www.nature.com/naturecommunications>

Competing financial interests: The authors declare no competing financial interests.

Reprints and permission information is available online at <http://npg.nature.com/reprintsandpermissions/>

How to cite this article: De Henau, S. *et al.* A redox signalling globin is essential for reproduction in *Caenorhabditis elegans*. *Nat. Commun.* 6:8782 doi: 10.1038/ncomms9782 (2015).



This work is licensed under a Creative Commons Attribution 4.0 International License. The images or other third party material in this article are included in the article's Creative Commons license, unless indicated otherwise in the credit line; if the material is not included under the Creative Commons license, users will need to obtain permission from the license holder to reproduce the material. To view a copy of this license, visit <http://creativecommons.org/licenses/by/4.0/>