


Original Russian text [www.bionet.nsc.ru/vogis/](http://www.bionet.nsc.ru/vogis/)

## An experimental study of the effects of SNPs in the TATA boxes of the *GRIN1*, *ASCL3* and *NOS1* genes on interactions with the TATA-binding protein

E.B. Sharypova, I.A. Drachkova, I.V. Chadaeva, M.P. Ponomarenko, L.K. Savinkova 


Institute of Cytology and Genetics of the Siberian Branch of the Russian Academy of Sciences, Novosibirsk, Russia  
 [savinkl@mail.ru](mailto:savinkl@mail.ru)

**Abstract.** The *GRIN1*, *ASCL3*, and *NOS1* genes are associated with various phenotypes of neuropsychiatric disorders. For instance, these genes contribute to the development of schizophrenia, Alzheimer's and Parkinson's diseases, and epilepsy. These genes are also associated with various cancers. For example, *ASCL3* is overexpressed in breast cancer, and *NOS1*, in ovarian cancer cell lines. Based on our findings and literature data, we had previously obtained results suggesting that the single-nucleotide polymorphisms (SNPs) that disrupt erythropoiesis are highly likely to be associated with cognitive and neuropsychiatric disorders in humans. In the present work, using SNP\_TATA\_Z-tester, we investigated the influence of unannotated SNPs in the TATA boxes of the promoters of the *GRIN1*, *ASCL3*, and *NOS1* genes (which are involved in neuropsychiatric disorders and cancers) on the interaction of the TATA boxes with the TATA-binding protein (TBP). Double-stranded oligodeoxyribonucleotides identical to the TATA-containing promoter regions of the *GRIN1*, *ASCL3*, and *NOS1* genes (reference and minor alleles) and recombinant human TBP were employed to study *in vitro* (by an electrophoretic mobility shift assay) kinetic characteristics of the formation of TBP-TATA complexes and their affinity. It was found, for example, that allele A of rs1402667001 in the *GRIN1* promoter increases TBP-TATA affinity 1.4-fold, whereas allele C in the TATA box of the *ASCL3* promoter decreases the affinity 1.4-fold. The lifetime of the complexes in both cases decreased by ~20 % due to changes in the rates of association and dissociation of the complexes ( $k_a$  and  $k_d$ , respectively). Our experimental results are consistent with the literature showing *GRIN1* underexpression in schizophrenic disorders as well as an increased risk of cervical, bladder, and kidney cancers and lymphoma during *ASCL3* underexpression. The effect of allele A of the -27G>A SNP (rs1195040887) in the *NOS1* promoter is suggestive of an increased risk of ischemic damage to the brain in carriers. A comparison of experimental TBP-TATA affinity values ( $K_D$ ) of wild-type and minor alleles with predicted ones showed that the data correlate well (linear correlation coefficient  $r = 0.94$ ,  $p < 0.01$ ).  
Key words: *GRIN1*; *ASCL3*; *NOS1*; TATA-binding protein; affinity; TBP/TATA interaction.

**For citation:** Sharypova E.B., Drachkova I.A., Chadaeva I.V., Ponomarenko M.P., Savinkova L.K. An experimental study of the effects of SNPs in the TATA boxes of the *GRIN1*, *ASCL3* and *NOS1* genes on interactions with the TATA-binding protein. *Vavilovskii Zhurnal Genetiki i Seleksii* = *Vavilov Journal of Genetics and Breeding*. 2022;26(3):227-233. DOI 10.18699/VJGB-22-29

## Экспериментальное изучение влияния SNP ТАТА-боксов генов *GRIN1*, *ASCL3* и *NOS1* на взаимодействие с ТАТА-связывающим белком

Е.Б. Шарыпова, И.А. Драчкова, И.В. Чадаева, М.П. Пономаренко, Л.К. Савинкова 

Федеральный исследовательский центр Институт цитологии и генетики Сибирского отделения Российской академии наук, Новосибирск, Россия  
 [savinkl@mail.ru](mailto:savinkl@mail.ru)

**Аннотация.** Гены *GRIN1*, *ASCL3* и *NOS1* связаны с различными фенотипами нервно-психических расстройств. Эти гены делают вклад в развитие шизофрении, болезней Альцгеймера и Паркинсона, эпилепсии и др. и ассоциируются также с различными онкологическими заболеваниями. Например, повышенная экспрессия *ASCL3* наблюдается при раке молочной железы, *NOS1* – в клеточных линиях рака яичников. Ранее на основе наших и литературных данных мы получили результаты, свидетельствующие в пользу того, что SNP, нарушающие эритропоэз, с большой вероятностью могут быть связаны с когнитивными и нервно-психическими расстройствами у человека. В настоящей работе исследовано влияние выявленных с помощью SNP\_TATA\_Z-tester не-

аннотированных SNP TATA-боксов промоторов генов *GRIN1*, *ASCL3* и *NOS1*, участвующих в нервно-психических расстройствах и онкологических заболеваниях, на взаимодействие TATA-связывающего белка (TBP). Для изучения *in vitro* кинетических характеристик образования комплексов TBP/TATA и аффинности с помощью метода задержки ДНК в геле использованы двуцепочечные олигодезоксирибонуклеотиды, идентичные TATA-содержащим участкам промоторов генов *GRIN1*, *ASCL3* и *NOS1* (референсным и минорным аллелям), и рекомбинантный TBP человека. Показано, например, что аллель «А» rs1402667001 промотора гена *GRIN1* повышает аффинность TBP/TATA в 1.4 раза, а аллель «С» TATA-боксов промотора гена *ASCL3* снижает аффинность в 1.4 раза; при этом время жизни комплексов в обоих случаях уменьшается примерно на 20 % за счет изменения скоростей образования и диссоциации комплексов ( $k_a$  и  $k_d$  соответственно). Наши экспериментальные результаты согласуются с литературными данными, показывающими низкую экспрессию гена *GRIN1* при шизофренических расстройствах и повышенный риск возникновения рака шейки матки, мочевого пузыря, почек и лимфомы при пониженной экспрессии гена *ASCL3*. Влияние аллеля «А» SNP -27G>A (rs1195040887) промотора гена *NOS1* гипотетически может свидетельствовать о повышенном риске возникновения ишемического повреждения мозга у носителей. Сравнение экспериментальных значений аффинности ( $K_D$ ) TBP/TATA «диких» (WT) и минорных аллелей с прогнозируемыми показало, что данные хорошо коррелируют друг с другом: коэффициент линейной корреляции  $r = 0.94$  ( $p < 0.01$ ).

Ключевые слова: *GRIN1*; *ASCL3*; *NOS1*; TATA-связывающий белок; аффинность; TBP/TATA взаимодействие.

## Introduction

Previously, using Web service SNP\_TATA\_Comparator (Ponomarenko M. et al., 2015) and *in vitro* experiments, we studied effects of SNPs in TATA boxes within core promoters of human genes to predict potential SNP markers, for example, markers of obesity (Arkova et al., 2015), autoimmune diseases (Ponomarenko M. et al., 2016), Alzheimer's disease (Ponomarenko P. et al., 2017), aggressiveness (Chadaeva et al., 2016), circadian rhythm disorders (Ponomarenko P. et al., 2016), anomalies of female reproductive potential (Chadaeva et al., 2018), erythropoiesis disorders (Sharypova et al., 2018), and resistance to anticancer therapy (Turnaev et al., 2016). Then, on the basis of our results and literature data, we made findings suggesting that SNPs that disrupt erythropoiesis are likely to be associated with cognitive and neuropsychiatric disorders in humans (Ponomarenko M. et al., 2020).

The aim of the current work was to search for and to experimentally verify *in vitro* the effects of unannotated SNPs in TATA boxes within promoters of genes *NOS1*, *GRIN1*, and *ASCL3* (which are involved in neuropsychiatric disorders and cancers) on the affinity and kinetic characteristics of TBP–TATA complexes. Identification of causal regulatory mechanisms of diseases is becoming a common practice, but experimental annotation of variants in target genes, especially in regulatory regions, is still a major bottleneck for the use of such genetic data in personalized medicine. Therefore, experimental quantitative methods for annotating SNPs in regulatory regions of specific genes remain important and relevant. This paper presents predictions of effects of unannotated SNPs in TATA boxes of genes *GRIN1*, *ASCL3*, and *NOS1* on the thermodynamic and kinetic characteristics of TBP–TATA complexes as well as the results of their experimental verification *in vitro*.

The *GRIN1* gene, located in chromosomal region 9q34.3, codes for the GluN1 (NR1) subunit of the *N*-methyl-D-aspartate receptor (NMDAR) and plays a key role in synaptic functions (Sin et al., 2002). The protein encoded by *GRIN1* is a critical subunit of *N*-methyl-D-aspartate receptors, which are members of the superfamily of glutamate receptor channels. The latter are heteromeric protein complexes with multiple subunits arranged to form a ligand-gated ion channel. These

subunits play a key part in synaptic plasticity, which is thought to underlie memory and learning.

The first meta-analysis and convergence analysis (Forero, 2020) of available genome-wide expression studies regarding epileptogenesis in humans and model animals made it possible to identify several major candidate genes, including *GRIN1*. Animal models and postmortem studies on patients' brains have shown that transcription and expression levels of the gene of the GluN1 protein in schizophrenia differ from those in controls (conditionally healthy volunteers), although the changes varied among different regions of the brain (Ding et al., 2017).

The achaete-scute complex-like (*ASCL*) gene family consists of five members, namely *ASCL1*, *ASCL2*, *ASCL3*, *ASCL4*, and *ASCL5*. The *ASCL3* gene (*SGN1*) is located on chromosome 11, and its product was originally characterized as a transcription factor specifically localized to cells of salivary gland ducts (Park et al., 2017). Dysregulation of *ASCL* family genes has been reported to play a key role in psychiatric and neurological disorders (Hanahan, Weinberg, 2011). All *ASCL* genes encode the basic helix-loop-helix transcription factors that control nervous system development (Rugel-Stahl et al., 2012); thus, they are called proneural genes. Expression of *ASCL* family genes and the impact of their products on cells are not limited to the nervous system. For example, *ASCL* family members have been shown to be expressed in progenitor cells during muscle and intestinal-cell differentiation (Fox, 1998).

Using bioinformatic analyses, researchers have determined potential involvement of several *ASCL* family members in the initiation and progression of tumors in various types of cancer. *ASCL3* is overexpressed in breast cancer (Hanahan, Weinberg, 2011) but is underexpressed (relative to normal controls) in kidney, cervical, and bladder cancers as well as lymphoma and melanoma. Analysis of different subtypes of kidney tumors has revealed that *ASCL3* is downregulated in renal oncocyoma. As has already been mentioned, in lymphoma and cancers of the cervix, bladder, kidney, and epithelium, a decrease in the expression of *ASCL3* has been documented (Hanahan, Weinberg, 2011), suggesting that this gene is a suitable research object not only in psychiatric and neurological disorders but also in cancers.

The *NOS1* gene codes for the major isoform of nitric oxide synthase and is widely expressed in all tissues, and *NOS1* produces approximately 90 % of nitric oxide in the central nervous system (Akyol et al., 2004). The gene is mapped to chromosomal region 12q24. Several studies indicate that *NOS1* variants are associated with such disorders as Alzheimer's disease (Mishizen-Eberz et al., 2004), schizophrenia (Shinkai et al., 2002; Saadat, 2010), and Parkinson's disease (Hancock et al., 2008; Yu et al., 2018). Using reverse-transcription polymerase chain reaction (RT-PCR), some authors (Freudenberg et al., 2015) demonstrated that protein expression of *NOS1* is constitutively high in ovarian cancer cell lines and that mRNA expression of *NOS1* varies among such cell lines. The results of that study mean that *NOS1* promotes malignant characteristics of ovarian cancer cells, including proliferation, invasion, and chemoresistance, thereby constituting a potential therapeutic target.

## Materials and methods

**DNA sequences.** Unannotated SNPs (from the *GRIN1* gene: rs1402667001, from *ASCL3*: rs1049743008:c, and from *NOS1*: rs1195040887) were retrieved from the dbSNP database (Sherry et al., 2001). Promoter sequences within the [–100; –1] region relative to a transcription start site were retrieved from the Eukaryotic Promotor Database (EPD) (Praz et al., 2002), and the presence of TATA boxes in these regions was determined in the same database.

**Analysis of DNA sequences *in silico*.** DNA sequences of human genes *GRIN1*, *ASCL3*, and *NOS1* between nucleotide positions –100 and –1 upstream of the transcription start site, which were taken from the reference genome, were analyzed using our Web service SNP\_TATA\_Z-tester, which is a modified version of SNP\_TATA\_Comparator (Ponomarenko M. et al., 2015).

**Synthetic double-stranded oligodeoxyribonucleotides (ODNs).** For experimental verification, we used 26 bp ODNs identical to the reference and minor alleles of genes *GRIN1*, *ASCL3*, and *NOS1*; the ODNs were synthesized and then purified by polyacrylamide gel electrophoresis by Biosan (Novosibirsk, Russia).

Sequences of these double-stranded ODNs – identical to the promoter regions of genes *GRIN1*, *ASCL3*, and *NOS1* containing TATA-like elements – were as follows (reference [wild type; WT] alleles and minor alleles):

*GRIN1* (WT) – 5'-tggagggggACAAAGACAgggtggtg-3'  
*GRIN1* (–34g>a) – 5'-tggagggaggACAAAGACAgggtggtg-3'  
*ASCL3* (WT) – 5'-tcgaaaaTAAATAAAAAtaaaacat-3'  
*ASCL3* (–45T>c) – 5'-tcgaaaaTAAAcAAAAtaaaacat-3'  
*NOS1* (WT) – 5'-tgtttctGATAGAAAaaaaaatgg-3'  
*NOS1* (–27G>a) – 5'-tgtttctGATAaAAAaaaaaatgg-3'

**Labeling of the ODNs at 5' ends with <sup>32</sup>P-γATP.** To prepare labeled double-stranded ODNs, both their strands were labeled with <sup>32</sup>P-γATP (Biosan, Novosibirsk, Russia) by means of T4 polynucleotide kinase (SibEnzyme, Novosibirsk, Russia), annealed at 95 °C (at an equimolar ratio), and slowly cooled to room temperature. The annealed duplexes were purified and analyzed by electrophoresis in a non-denaturing 15 % polyacrylamide gel followed by autoradiography on a phosphorimager, Molecular Imager PharoFX Plus (Bio-Rad, Hercules, CA, USA). Unlabeled duplexes were prepared

in the same way and used without further purification by polyacrylamide gel electrophoresis.

**Isolation and purification of recombinant TATA-binding (TBP) protein.** We used recombinant human TBP expressed in *Escherichia coli* BL21(DE3) cells via the pAR3038-hTBP plasmid (a gift from Prof. B. Puhg, Center for Gene Regulation, Department of Biochemistry and Molecular Biology, The Pennsylvania State University, University Park, Pennsylvania, USA). Expression and purification of TBP were performed according to ref. (Pugh, 1995), except for the concentration of isopropyl β-D-1-thiogalactopyranoside (1.0 instead of 0.1 mM) and induction time (3 instead of 1.5 h).

**Determination of kinetic parameters (rates of formation and dissociation of complexes,  $k_a$  and  $k_d$ ) and equilibrium dissociation constants,  $K_D$ , of TBP–ODN complexes.** Association rate constants ( $k_a$ ) and dissociation rate constants ( $k_d$ ), which characterize the rates of formation and disintegration of complexes, were determined by measuring the kinetics of TBP binding to the TATA-containing double-stranded ODNs identical to either a WT TATA box (reference allele) or a TATA box carrying an SNP. The experiments were conducted at several concentrations of the <sup>32</sup>P-labeled ODNs and a fixed concentration of TBP (0.4 nM unless stated otherwise). TBP–ODN binding experiments were performed at 25 °C in a buffer composed of 20 mM HEPES-KOH (pH 7.6), 5 mM MgCl<sub>2</sub>, 70 mM KCl, 1 mM dithiothreitol, 100 μg/ml bovine serum albumin, 0.01 % of NP-40, and 5 % of XYZ, as described in detail before (Drachkova et al., 2014). The electrophoretic mobility shift assay was carried out in a native 5 % polyacrylamide gel in Tris-glycine buffer (pH 8.3) for 40 min at 10 °C. The gels were dried, and Imaging Screen-K (Kodak) for Molecular Imager PharoFX Plus (Bio-Rad) was exposed to the gels. Each screen was scanned on the phosphorimager, and the autoradiographs were quantified in Quantity One v.4.5.0 software (Bio-Rad).

**Statistical analysis.** The comparison of the predicted and experimental values of TBP–TATA complexes' affinity for the “normal” and minor alleles was performed using the Statistica software package (Statsoft™, Tulsa, OK, USA).

## Results and discussion

Transcription, as a rule, is the gene expression stage most sensitive to internal signals and external signals entering the cell and is the main mechanism that controls gene expression. Here, we analyzed its initial stage, i. e., the interaction of TBP with a promoter: the process that triggers the assembly of the transcription complex.

The Table presents the results of *in vitro* verification of our predictions (made by the SNP\_TATA\_Z-tester Web service) regarding the effect of substitutions in the TATA boxes of genes *GRIN1*, *ASCL3*, and *NOS1* on TBP–TATA affinity. These data include experimental affinity ( $K_D$ ) values for WT and minor alleles and association and dissociation constants ( $k_a$  and  $k_d$ , respectively), reflecting the rates of formation and disintegration of TBP–TATA complexes.

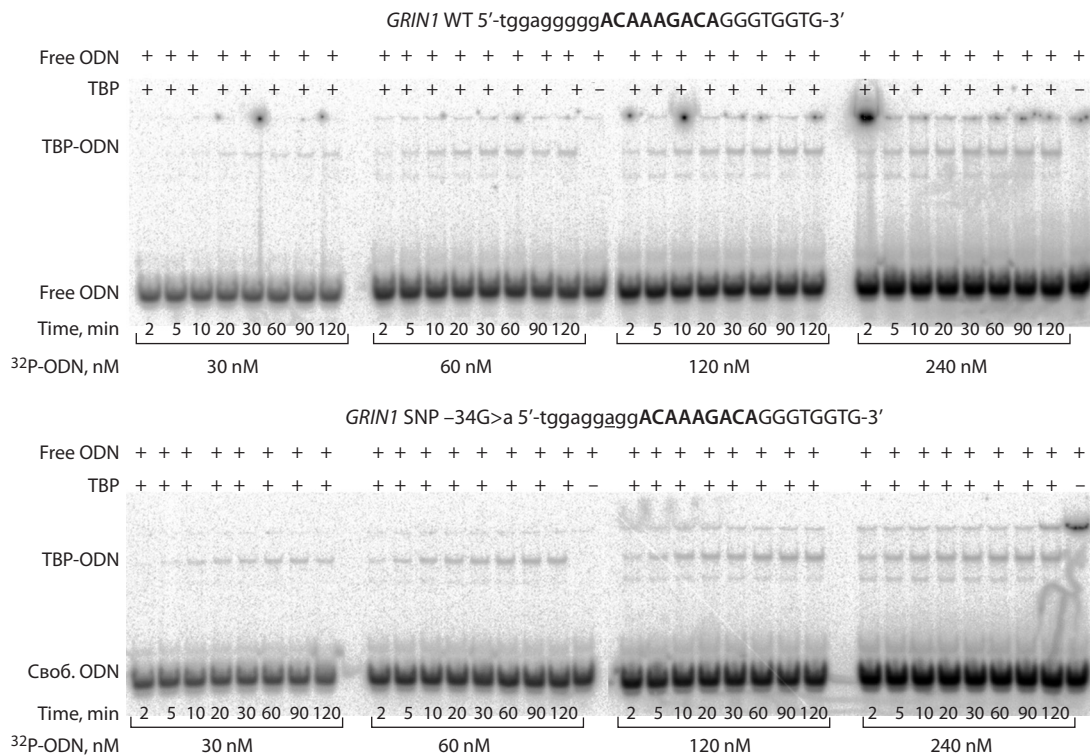
The results given in the Table were obtained by the electrophoretic mobility shift assay. Figure 1 shows electropherograms for the *GRIN1* gene as an example.

As readers can see in the Table, the TBP–TATA affinity for WT *GRIN1* can be described as low-specificity binding

Experimental *in vitro* verification of our predictions of the effect of rs1402667001, rs1049743008, and rs1195040887 (from genes *GRIN1*, *ASCL3*, and *NOS1*, respectively) on affinity and kinetic characteristics of TBP–TATA complexes

Gene	SNP	Prediction		Experiment					
		$-\ln(K_D)$	$\Delta$ , ln units	$-\ln(K_D)$	$K_D$ , nM	$\Delta$ , ln units	$k_{a'}$ , ( $M^{-1} \cdot s^{-1}$ ) $\cdot 10^3$	$k_{d'}$ , $s^{-1} \cdot 10^{-4}$	$t_{1/2}$ , min
<i>GRIN1</i>	WT	17.59±0.08	0.00	14.95±0.05	320±50	0.00	1.4±0.3	4.5±0.4	25.7±3
	-34G>a rs1402667001	17.74±0.08	0.15	15.42±0.08	200±50	2.32	2.8±0.4	5.7±0.8	20.3±5
<i>ASCL3</i>	WT	19.04±0.08	0.00	18.24±0.09	12±5	0.00	7.0±1.0	8.0±3	14.4±6
	-45T>c rs1049743008	18.75±0.08	0.29	17.90±0.08	17±3	0.85	6.2±0.5	10.0±1	11.5±1
<i>NOS1</i>	WT	18.56±0.08	0.00	18.77±0.08	70±20	0.00	2.8±0.3	2.0±0.4	58.0±6
	-27G>a rs1195040887	18.96±0.08	0.34	18.95±0.08	59±9	0.18	4.7±0.4	2.8±0.3	38.0±5

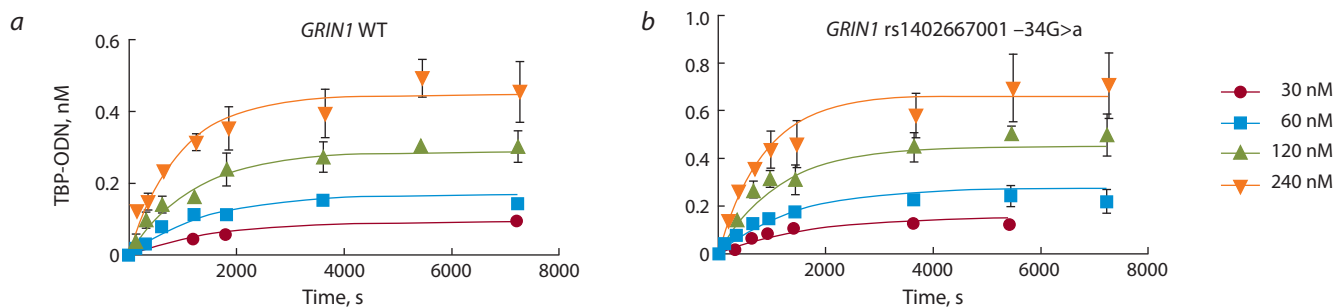
Note. The data are presented as mean ± standard deviation.  $K_D = k_d/k_{a'}$ ;  $\Delta$ , a TBP affinity difference (between ODNs containing and not containing an SNP) expressed in logarithmic units:  $\Delta = -\ln[K_{D,TATA(Mut)}] - (-\ln [K_{D,TATA}])$ ;  $t_{1/2} = \ln 2/k_d$ .



**Fig. 1.** The electropherograms obtained to determine kinetic isotherms of TBP binding to the ODNs identical to the TATA-like element of the *GRIN1* gene promoter: either the WT allele or minor allele “a” (SNP: -34G>a).

( $K_D = 320$  nM). Although the TATA box sequence is AT-rich (ACAAAGACA), the third T, which has the greatest weight in the TATA box, is missing. In addition, conformational flexibility of the three As, which is clearly not enough to generate the conformation suitable for TBP binding, is blocked on both sides by high-melting-point base pairs containing C and G. The substitution (-34G>a) in the sequence flanking the TATA-like element did not significantly increase the flexibility of this DNA region, but the affinity strengthened almost 1.4-fold after introduction of the substitution (minor

allele) as compared to the WT allele ( $K_D = 200$  nM). The rate of formation of the TBP–ODN complex increased twofold: 2.8 versus 1.4  $M^{-1} \cdot s^{-1}$  (Fig. 2). The rate of complex dissociation was also slightly higher, by 20 %, in the case of the minor allele. Overall, these changes somewhat shortened the complex’s half-life (from 25 to 20 min), that is, made it less stable. Judging from the sequence of the ODN in question, which is identical to the region of the *GRIN1* promoter, this promoter does not contain the TATA box consensus sequence but contains a G-rich box, which can bind to transcription



**Fig. 2.** Kinetic isotherms of the TBP binding to the ODNs identical to the TATA box of the *GRIN1* gene promoter, for either the WT allele (panel *a*) or minor allele “a” (panel *b*).

The binding isotherms and  $k_a$  and  $k_d$  values were determined by means of the electropherograms (see Fig. 1) in GraphPad Prism 5 software.

factor SP3, which activates transcription of genes in chicken embryonic cortical neurons and represses it in undifferentiated cells (Chaudhary et al., 2017), as demonstrated in a study on the chicken *GRIN1* gene.

The observed (in our study) weak affinity of TBP for the TATA-like element of the *GRIN1* promoter, which implies gene underexpression (Liu et al., 2019), is in agreement with findings of low *GRIN1* expression in animal models of schizophrenic disorders. On the basis of our data on enhanced TBP–TATA affinity for minor allele “a” (rs1402667001), we can theorize that carriers of this allele are at a reduced risk of schizophrenia as compared to carriers of WT allele G. It should be noted that despite active research, the role of *GRIN1* in the etiology of schizophrenia remains uncertain. For instance, in ref. (Zhao et al., 2006), using Sanger DNA sequencing, researchers conducted a case-control study to investigate the association between *GRIN1* and the risk of schizophrenia in a population of northern China. Distributions of both a genotype and allele of rs117783907 (–1945G/t) significantly differed between the case group and control group ( $p < 0.0083$ ). In that article, genotype frequencies of rs138961287 and rs11146020 are statistically significantly different too ( $p < 0.05$ ), indicating that rs138961287, rs117783907, and rs11146020 are associated with schizophrenia. In another association study conducted in a northern Chinese Han population, allele “c” of rs11146020 was reported to reduce the risk of schizophrenia (Begni et al., 2003), although Saadat (2010) found that this allele is a risk factor of schizophrenia in an Italian population. Furthermore, a meta-analysis (Zwicker et al., 2018) suggests that allele “c” of rs11146020 is associated with an increased risk of schizophrenia, i. e., the results are inconsistent among studies. It is likely that among different ethnic groups, the influence of environmental and genetic factors and their interactions may differ in their impact on the risk of mental disorders (Zwicker et al., 2018). The risk of psychosis increases with the accumulation of multiple variants carrying a genetic risk and with exposure to multiple adverse environmental factors (Gray et al., 2015).

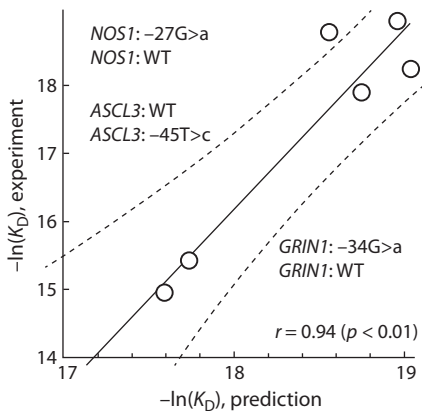
Some authors (Ding et al., 2017) investigated the expression of a large group of genes in the brains of patients with major depressive disorder and controls (postmortem analysis). The results showed elevated expression of most of glutamatergic genes (e. g., *GRIN1*, *GRIN2A–D*, *GRIA2–4*, *GRIK1* and *-2*, and *GRM1*) tested in the dorsolateral prefrontal cortex (mainly in women). Based on these findings, it can be assumed that

rs1402667001 (studied by us), which enhances the affinity of TBP for the TATA-like element, may be a candidate SNP marker of an increased risk of schizophrenia. Despite conflicting results, some researchers (Zou et al., 2020) believe that the association of *GRIN1* with schizophrenia and other psychotic disorders is undeniable and that subunit NR1 encoded by this gene may be a promising therapeutic target in schizophrenia.

As readers can see in the sequence of the *ASCL3* promoter region, which is identical to the region where a TATA box is usually located (positions –20 to –70 relative to the transcription start site), it is enriched in A nucleotides and contains a T. The latter has the greatest weight in the TATA box sequence (for the binding to TBP) and can take the third position in our case. Accordingly, we observed strong affinity of the TBP–TATA complex:  $K_D = 12$  nM. SNP –45T>C (rs1049743008), replacing T with high-melting-point C, led to a 1.4-fold weakening of the affinity ( $K_D = 17$  nM), although the rate of formation of the TBP–TATA complex increased slightly (12 %), while the rate of dissociation increased a little more: by 20 %. As a consequence, the complex’s half-life with the minor allele is also slightly shorter (11.5 versus 14.4 min), i. e., stability decreased. Because changes in the affinity of the TBP–TATA interaction correlate with alterations of gene expression (Mogno et al., 2010), it can be hypothesized that carriers of the C allele (with weakened TBP–TATA affinity and *ASCL3* expression) are at a higher risk of a malignant tumor: lymphoma and cancers of the cervix, bladder, epithelium, and kidneys. This notion is confirmed by the results in ref. (Hanahan, Weinberg, 2011), where a database analysis revealed that out of 21 analyzed tumor types, five correlate with the *ASCL3* expression that is diminished to various degrees.

The *NOS1* promoter contains a TATA-like element with sequence GATAGAAA, to which TBP binds with 70 nM affinity. When high-melting-point G was replaced in our study by A, the affinity strengthened, albeit slightly: by 14 % ( $K_D = 59 \pm 9$  nM). In this context, the rate of TBP–TATA complex formation ( $k_a$ ) increased by a factor of 1.7, while the dissociation rate of the complex ( $k_d$ ) accelerated by a factor of 1.4, and the lifetime of the complex diminished ~1.4-fold.

Based on the results in ref. (Zou et al., 2020) indicating that NOS1 inhibitors can effectively reduce the severity of ischemic brain damage, it can be theorized that the A allele (SNP –27G>A, rs1195040887) – with enhanced TBP–TATA



**Fig. 3.** The significant correlation of the experimentally measured TBP–DNA affinity values with those predicted *in silico* by means of Web service SNP\_TATA\_Z-tester.

The dashed curves: a 95 % confidence interval for the regression line. The estimates were made using the Statistica package (Statsoft™, USA).

affinity and gene expression – may be a candidate marker of an elevated risk of the ischemic brain injury associated with cerebral palsy. The association of *NOS1* with various diseases points to a pleiotropic role of *NOS1* in many physiological processes and potentially to a pathogenesis that is shared among these diseases.

Our comparison of the experimental affinity values ( $K_D$ ) of TBP–TATA complexes of reference (WT) alleles and minor alleles with those predicted by the SNP\_TATA\_Z-tester Web service (Ponomarenko M. et al., 2015) indicates that the data correlate well (linear correlation coefficient  $r = 0.94$ ,  $p < 0.01$ ) (Fig. 3).

Thus, we determined the affinity and kinetic characteristics of the interaction of TBP with TATA boxes containing unannotated SNPs. We found that these SNPs may be functionally significant and correlate with an increased risk of such neuropsychiatric diseases as schizophrenia and ischemic brain damage (associated with cerebral palsy) as well as the risk of malignant tumors: lymphoma and cancers of the cervix, epithelium, bladder, and kidneys.

## Conclusion

The results show effects of the analyzed SNPs (rs1402667001, rs1049743008, and rs1195040887) in the TATA boxes within promoters of genes *GRIN1*, *ASCL3*, and *NOS1* on affinity and the

rates of formation and disintegration of TBP–TATA complexes ( $k_a$  and  $k_d$ , respectively). Our experimental data suggest that the identified candidate SNP markers in neuronal genes can contribute to the development of not only neuropsychiatric but also oncological diseases, in agreement with the results obtained by other authors. Our findings about the influence of SNPs on TBP–TATA affinity and therefore on the expression of the genes in question point to their possible contribution to a higher risk of the diseases associated with these genes. Furthermore, our results have the potential to improve human health and to facilitate the development of new diagnostic markers.

## References

- Akyol O., Zoroglu S.S., Armutcu F., Sahin S., Gurel A. Nitric oxide as a physiopathological factor in neuropsychiatric disorders. *In Vivo*. 2004;18:377-390.
- Arkova O.V., Ponomarenko M.P., Rasskazov D.A., Drachkova I.A., Arshinova T.V., Ponomarenko P.M., Savinkova L.K., Kolchanov N.A. Obesity-related known and candidate SNP markers can significantly change affinity of TATA-binding protein for human gene promoters. *BMC Genom.* 2015;16(Suppl.13):S5. DOI 10.1186/1471-2164-16-S13-S5.
- Begni S., Moraschi S., Bignotti S., Fumagalli F., Rillosi L., Perez J., Gennarelli M. Association between the G1001C polymorphism in the *GRIN1* gene promoter region and schizophrenia. *Biol. Psychiatry*. 2003;53(7):617-619. DOI 10.1016/s0006-3223(02)01783-3.
- Chadaeva I.V., Ponomarenko M.P., Rasskazov D.A., Sharypova E.B., Kashina E.V., Matveeva M.Y., Arshinova T.V., Ponomarenko P.M., Arkova O.V., Bondar N.P., Savinkova L.K., Kolchanov N.A. Candidate SNP markers of aggressiveness-related complications and comorbidities of genetic diseases are predicted by a significant change in the affinity of TATA-binding protein for human gene promoters. *BMC Genom.* 2016;17(Suppl.14):995. DOI 10.1186/s12864-016-3353-3.
- Chadaeva I.V., Ponomarenko P.M., Rasskazov D.A., Sharypova E.B., Kashina E.V., Zhechev D.A., Drachkova I.A., Arkova O.V., Savinkova L.K., Ponomarenko M.P., Kolchanov N.A., Osadchuk L.V., Osadchuk A.V. Candidate SNP markers of reproductive potential are predicted by a significant change in the affinity of TATA-binding protein for human gene promoters. *BMC Genom.* 2018;19(Suppl.3):0. DOI 10.1186/s12864-018-4478-3.
- Chaudhary S., Kaushik M., Kukreti R., Kukreti S. Structural switch from a multistranded G-quadruplex to single strands as a consequence of point mutation in the promoter of the human *GRIN1* gene. *Mol. Biosyst.* 2017;13(9):1805-1816. DOI 10.1039/c7mb00360a.
- Ding J., Zhou H.-H., Ma Q.-R., He Z.-Y., Ma J.-B., Liu Y.-M., Zhang Y.-W., He Y.-Q., Liu J. Expression of NR1 and apoptosis levels in the hippocampal cells of mice treated with MK-801. *Mol. Med. Rep.* 2017;16(6):8359-8364. DOI 10.3892/mmr.2017.7674.
- Drachkova I., Savinkova L., Arshinova T., Ponomarenko M., Peltek S., Kolchanov N. The mechanism by which TATA-box polymorphisms associated with human hereditary diseases influence interactions with the TATA-binding protein. *Hum. Mutat.* 2014;35(5):601-608. DOI 10.1002/humu.22535.
- Forero D.A. Functional genomics of epileptogenesis in animal models and humans. *Cell Mol. Neurobiol.* Publ. online 28 July 2020. Publ. 2021;41:1579-1587. DOI 10.1007/s10571-020-00927-x.
- Fox P.C. Acquired salivary dysfunction. Drugs and radiation. *Ann. N.Y. Acad. Sci.* 1998;842:132-137. DOI 10.1111/j.1749-632.1998.tb09641.x.
- Freudenberg F., Althoa A., Reif A. Neuronal nitric oxide synthase (*NOS1*) and its adaptor, *NOS1AP*, as a genetic risk factors for psychiatric disorders. *Genes Brain Behav.* 2015;14(1):46-63. DOI 10.1111/gbb.12193.
- Gray A.L., Hyde T.M., Deep-Soboslay A., Kleinman J.E., Sodhi M.S. Sex differences in glutamate receptor gene expression in major depression and suicide. *Mol. Psychiatry*. 2015;20(9):1057-1068. DOI 10.1038/mp.2015.91.
- Hanahan D., Weinberg R.A. Hallmarks of cancer: the next generation. *Cell*. 2011;144:646-674. DOI 10.1016/j.cell.2011.02.013.
- Hancock D.B., Martin E.R., Vance J.M., Scott W.K. Nitric oxide synthase genes and their interactions with environmental factors in Parkinson's disease. *Neurogenetics*. 2008;9(4):249-262. DOI 10.1007/s10048-008-0137-1.
- Liu Y.-P., Ding M., Zhang X.-C., Liu Y., Xuan J.-F., Xing J.-K., Xia X., Yao J., Wang B.-J. Association between polymorphisms in the *GRIN1* gene 5' regulatory region and schizophrenia in a northern Han Chinese population and haplotype effect on protein expression *in vitro*. *BMC Med. Genet.* 2019;20(1):26. DOI 10.1186/s12881-019-0757-3.
- Mishizen-Eberz A.J., Rissman R.A., Carter T.L., Ikonovic M.D., Wolfe B.B., Armstrong D.M. Biochemical and molecular studies of NMDA receptor subunits NR1/2A/2B in hippocampal subregions throughout progression of Alzheimer's disease pathology. *Neurobiol. Dis.* 2004;15(1):80-92. DOI 10.1016/j.nbd.2003.09.016.
- Mogno I., Vallania F., Mitra R.D., Cohen B.A. TATA is a modular component of synthetic promoters. *Genome Res.* 2010;20(10):1391-1397. DOI 10.1101/gr.106732.110.

- Park Y.-J., Koh J., Kwon J.T., Park Y.-S., Yang L., Cha S. Uncovering stem cell differentiation factors for salivary gland regeneration by quantitative analysis of differential proteomes. *PLoS One*. 2017; 12(2):e0169677. DOI 10.1371/journal.pone.0169677.
- Ponomarenko M.P., Arkova O., Rasskazov D., Ponomarenko P., Savinkova L., Kolchanov N. Candidate SNP markers of gender-biased autoimmune complications of monogenic diseases are predicted by a significant change in the affinity of TATA-binding protein for human gene promoters. *Front Immunol*. 2016;7:130. DOI 10.3389/fimmu.2016.00130.
- Ponomarenko M., Rasskazov D., Arkova O., Ponomarenko P., Suslov V., Savinkova L., Kolchanov N. How to use SNP\_TATA\_Comparator to find a significant change in gene expression caused by the regulatory SNP of this gene's promoter via a change in affinity of the TATA-binding protein for this promoter. *Biomed. Res. Int*. 2015; 2015:359835. DOI 10.1155/2015/359835.
- Ponomarenko M., Sharypova E., Drachkova I., Chadaeva I., Arkova O., Podkolodnaya O., Ponomarenko P., Kolchanov N., Savinkova L. Unannotated single nucleotide polymorphisms in the TATA box of erythropoiesis genes show in vitro positive involvements in cognitive and mental disorders. *BMC Med. Genet*. 2020;21(Suppl.1):165. DOI 10.1186/s12881-020-01106-x.
- Ponomarenko P., Chadaeva I., Rasskazov D.A., Sharypova E., Kashina E.V., Drachkova I., Zhechev D., Ponomarenko M.P., Savinkova L.K., Kolchanov N. Candidate SNP markers of familial and sporadic Alzheimer's diseases are predicted by a significant change in the affinity of TATA-binding protein for human gene promoters. *Front. Aging Neurosci*. 2017;20(9):231. DOI 10.3389/fnagi.2017.00231.
- Ponomarenko P., Rasskazov D., Suslov V., Sharypova E., Savinkova L., Podkolodnaya O., Podkolodny N.L., Tverdokhlebs N.N., Chadaeva I., Ponomarenko M., Kolchanov N. Candidate SNP markers of chronopathologies are predicted by a significant change in the affinity of TATA-binding protein for human gene promoters. *Biomed. Res. Int*. 2016;2016:8642703. DOI 10.1155/2016/8642703.
- Praz V., Périer R.C., Bonnard C., Bucher P. The Eukaryotic Promoter Database, EPD: new entry types and links to gene expression data. *Nucleic Acids Res*. 2002;30:322-324. DOI 10.1093/nar/30.1.322.
- Pugh B.F. Purification of the human TATA-binding protein, TBP. In: Tymms M.J. (Ed.) *In Vitro Transcription and Translation Protocols*. (Ser. Methods in Molecular Biology, Vol. 37). Totowa, NJ: Humana Press Inc., 1995.
- Rugel-Stahl A., Elliott M.E., Ovitt C.E. Ascl3 marks adult progenitor cells of the mouse salivary gland. *Stem Cell Res*. 2012;8(3):379-387. DOI 10.1016/j.scr.2012.01.002.
- Saadat M. N-methyl-D-aspartate receptor NR1 subunit gene (*GRIN1*) G1001C polymorphism and susceptibility to schizophrenia: a meta-analysis. *EXCLI J*. 2010;9:11-6.
- Sharypova E.B., Drachkova I.A., Kashina E.V., Rasskazov D.A., Ponomarenko P.M., Ponomarenko M.P., Kolchanov N.A., Savinkova L.K. An experimental study of the effect of rare polymorphisms of human *HBB*, *HBD* and *F9* promoter TATA boxes on the kinetics of interaction with the TATA-binding protein. *Vavilovskii Zhurnal Genetiki i Selekcii = Vavilov Journal of Genetics and Breeding*. 2018;22(1):145-152. DOI 10.18699/VJ18.342. (in Russian)
- Sherry S., Ward M., Kholodov M., Baker J., Phan L., Smigielski E., Sirotkin K. dbSNP: the NCBI database of genetic variation. *Nucleic Acids Res*. 2001;29:308-311. DOI 10.1093/nar/29.1.308.
- Shinkai T., Ohmori O., Hori H., Nakamura J. Allelic association of the neuronal nitric oxide synthase (*NOS1*) gene with schizophrenia. *Mol. Psychiatry*. 2002;7(6):560-563. DOI 10.1038/sj.mp.4001041.
- Sin W.C., Haas K., Ruthazer E.S., Cline H.T. Dendrite growth increased by visual activity requires NMDA receptor and Rho GTPases. *Nature*. 2002;419(6906):475-480. DOI 10.1038/nature00987.
- Turnaev I.I., Rasskazov D.A., Arkova O.V., Ponomarenko M.P., Ponomarenko P.M., Savinkova L.K., Kolchanov N.A. Hypothetical SNP markers that significantly affect the affinity of the TATA-binding protein to *VEGFA*, *ERBB2*, *IGF1R*, *FLT1*, *KDR*, and *MET* oncogene promoters as chemotherapy targets. *Molecular Biology*. 2016;50(1):141-152. DOI 10.1134/S0026893316010209.
- Yu T., Xia L., Bi D., Wang Y., Shang Q., Zhu D., Song J., Wang J., Wang X., Zhu C., Xing Q. Association of *NOS1* gene polymorphisms with cerebral palsy in a Han Chinese population: a case-control study. *BMC Med. Genomics*. 2018;11(1):56. DOI 10.1186/s12920-018-0374-6.
- Zhao X., Li H., Shi Y., Tang R., Chen W., Liu J., Feng G., Shi J., Yan L., Liu H., He L. Significant association between the genetic variations in the 5' end of the N-methyl-D-aspartate receptor subunit gene *GRIN1* and schizophrenia. *Biol. Psychiatry*. 2006;59:747-753. DOI 10.1016/j.biopsych.2005.10.023.
- Zou Z., Li X., Sun Y., Li L., Zhang Q., Zhu L., Zhong Z., Wang M., Wang Q., Liu Z., Wang Y., Ping Y., Yao K., Hao B., Liu Q. *NOS1* expression promotes proliferation and invasion and enhances chemoresistance in ovarian cancer. *Oncol. Lett*. 2020;19(4):2989-2995. DOI 10.3892/ol.2020.11355.
- Zwicker A., Denovan-Wright E.M., Uher R. Gene-environment interplay in the etiology of psychosis. *Psychol. Med*. 2018;48(12):1925-1936. DOI 10.1017/S003329171700383X.

#### ORCID ID

E.B. Sharypova orcid.org/0000-0002-1467-9312  
I.A. Drachkova orcid.org/0000-0002-2522-1657

I.V. Chadaeva orcid.org/0000-0002-2724-5441  
M.P. Ponomarenko orcid.org/0000-0003-1663-318X  
L.K. Savinkova orcid.org/0000-0003-4543-4104

**Acknowledgements.** The work was supported by publicly funded project No. FWNR-2022-0016 of the Federal Research Center ICG SB RAS.

**Conflict of interest.** The authors declare no conflict of interest.

Received October 21, 2021. Revised December 27, 2021. Accepted December 30, 2021.