



Universiteit
Leiden
The Netherlands

Defining near-complete response following (chemo)radiotherapy for rectal cancer: systematic review

Custers, P.A.; Geubels, B.M.; Beets, G.L.; Lambregts, D.M.J.; Leerdam, M.E. van; Triest, B. van; Maas, M.

Citation

Custers, P. A., Geubels, B. M., Beets, G. L., Lambregts, D. M. J., Leerdam, M. E. van, Triest, B. van, & Maas, M. (2022). Defining near-complete response following (chemo)radiotherapy for rectal cancer: systematic review. *British Journal Of Surgery*. doi:10.1093/bjs/znac372

Version: Not Applicable (or Unknown)
License: [Leiden University Non-exclusive license](#)
Downloaded from: <https://hdl.handle.net/1887/3492270>

Note: To cite this publication please use the final published version (if applicable).

Defining near-complete response following (chemo) radiotherapy for rectal cancer: systematic review

Petra A. Custers^{1,2}, Barbara M. Geubels^{1,2,3}, Geerard L. Beets^{1,2} , Doenja M. J. Lambregts⁴, Monique E. van Leerdam^{5,6} , Baukelien van Triest⁷ and Monique Maas^{4,*} 

¹Department of Surgery, Netherlands Cancer Institute—Antoni van Leeuwenhoek, Amsterdam, the Netherlands

²GROW School for Oncology and Reproduction, Maastricht University, Maastricht, the Netherlands

³Department of Surgery, Catharina Hospital, Eindhoven, the Netherlands

⁴Department of Radiology, Netherlands Cancer Institute—Antoni van Leeuwenhoek, Amsterdam, the Netherlands

⁵Department of Gastroenterology, Netherlands Cancer Institute—Antoni van Leeuwenhoek, Amsterdam, the Netherlands

⁶Department of Gastroenterology and Hepatology, Leiden University Medical Centre, Leiden, the Netherlands

⁷Department of Radiation Oncology, Netherlands Cancer Institute—Antoni van Leeuwenhoek, Amsterdam, the Netherlands

*Correspondence to: Monique Maas, Department of Radiology, Netherlands Cancer Institute, PO Box 90203, 1006 BE Amsterdam, the Netherlands (e-mail: m.maas@nki.nl)

Abstract

Background: A uniform definition of a clinical near-complete response (near-CR) after neoadjuvant (chemo)radiotherapy for rectal cancer is lacking. A clear definition is necessary for uniformity in clinical practice and trial enrolment for organ-preserving treatments. This review aimed to provide an overview of the terminology, criteria, and features used in the literature to define a near-CR.

Methods: A systematic review was performed based on the PRISMA statement. PubMed and Embase were searched up to May 2021 to identify the terminology, criteria, and features used to define a near-CR after (chemo)radiotherapy for rectal cancer. Studies with no clear cut-off point between a cCR and near-CR, studies using Response Evaluation Criteria In Solid Tumours, and studies including only complete responders were excluded.

Results: A total of 1876 articles were found, of which 23 were included. Patients were managed by watchful waiting and/or additional local treatment in 11 and 17 of 23 studies respectively. Response evaluation included digital rectal examination (DRE) and/or endoscopy with MRI in 18 studies. The majority of studies used the term ‘near-complete response’. In most studies, minor irregularities or a smooth induration with DRE and a small flat ulcer on endoscopy were considered to indicate a near-CR. On MRI, five studies used features (obvious downstaging with or without heterogeneous/irregular fibrosis on T2-weighted MRI or small spot of high signal on diffusion-weighted imaging), five studies used TNM criteria (ycT2), and four used magnetic resonance tumour regression grade (mrTRG) (mrTRG1–2/mrTRG2) to describe a near-CR.

Conclusion: The terminology, criteria, and features used to describe a near-CR vary substantially, which can partly be explained by the different treatment strategies patients are selected for (watchful waiting or additional local treatment). A reproducible definition of near-CR is required.

Introduction

In the management of rectal cancer, organ-preserving treatment strategies, such as watchful waiting and additional local treatment strategies, have emerged as viable and successful treatment options^{1–4}. Organ preservation has several potential benefits compared with total mesorectal excision. Surgical morbidity and mortality can be avoided (including a stoma), and organ preservation leads to better quality of life and functional outcome than surgery². For patients with a clinical complete response (cCR) after neoadjuvant chemoradiotherapy, organ preservation does not compromise oncological results, as local regrowth (occurring in 25 per cent) can usually be curatively treated without a negative impact on long-term outcome^{3,4}.

To select patients for watchful waiting or organ preservation, a combination of digital rectal examination (DRE), endoscopy, and T2-weighted (T2W) MRI combined with diffusion-weighted MRI (DWI) appears to be most accurate⁵. Using these modalities, the criteria used to select patients with a cCR for watchful waiting

are well described^{6,7}. These criteria, as outlined in the initial publications, were quite strict, aiming to avoid undertreatment. A drawback of these strict criteria was an underestimation of response in a substantial part of patients, thereby denying them the chance of organ preservation. The concept of a near-complete response (near-CR) was introduced to address this issue^{8–10}. In patients with a near-CR, significant downsizing of the tumour has typically occurred, although not all criteria of a cCR are met. Previous studies^{8,9} have showed that these patients can progress to a cCR after an additional waiting interval of 6–12 weeks. To increase the possibility of organ preservation, patients with a near-CR may also receive additional local treatment, such as a local excision or a radiotherapy boost^{11–13}.

To ensure safety in clinical practice and consistency in studies, a clear definition is necessary to identify patients with a near-CR. However, in contrast to the widespread consensus on the criteria for a cCR, a variety of features and criteria have been reported to define a near-CR. Also, the terminology used for the good response that enables organ-preservation is variable. A systematic review

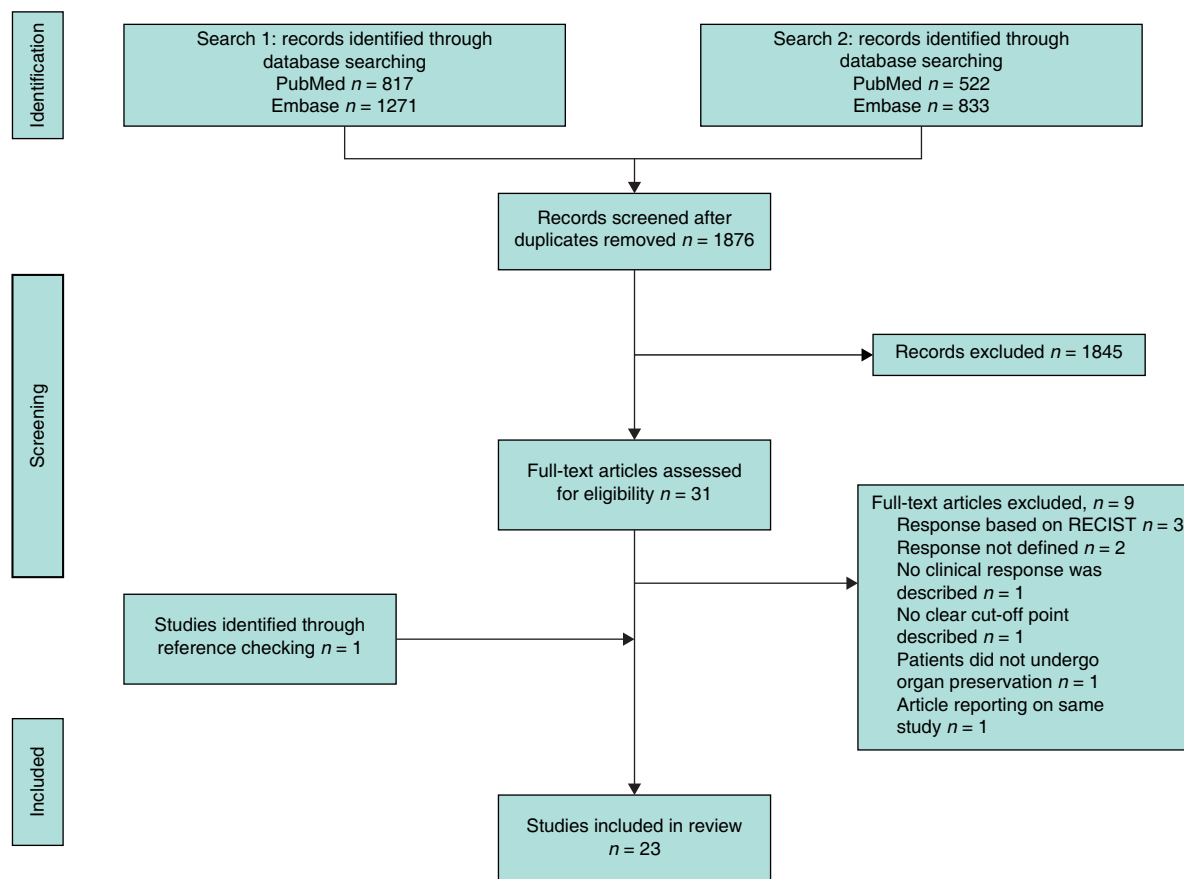


Fig. 1 PRISMA flow chart showing selection of articles for review

RECIST, Response Evaluation Criteria In Solid Tumours.

was undertaken to identify the various features and criteria used in the literature to describe a near-CR.

Methods

Two independent reviewers searched PubMed and Embase databases from inception to May 2021 to identify the criteria and features used to define a near-CR. As the term 'near-complete response' is not used universally, the search aimed to identify the criteria and features of a near-CR or synonyms and similar terms, such as 'good response', which described a response indicating that patients are potentially eligible for organ-preserving treatments. The Medical Subject Heading (MESH) terms and free search terms used in the search are provided in [Tables S1 and S2](#).

Studies were included if they met the following criteria: included patients diagnosed with non-metastasized rectal cancer; patients were treated with neoadjuvant therapy; clinical response evaluation (restaging) was performed following neoadjuvant therapy; either the term 'near-complete response' was used or patients were selected for organ-preserving treatments based on a good response, although not a complete response; and patients were treated with curative intent. Studies were excluded where: only patients with a cCR were included; no clear cut-off point was provided between a cCR and near-CR; and the clinical response was based on Response Evaluation Criteria In Solid Tumours criteria. Additionally, conference abstracts, case reports, reviews, and studies not

reporting in English were excluded. To provide a complete overview of the terminology and definitions used for a near-CR in the literature, both prospective and retrospective studies were included in this review. Studies with potentially overlapping cohorts were also included as the terminology and definitions of a near-CR may vary between these studies. When articles reported on exactly the same patient cohort, the most recently published article was included.

Potentially eligible studies were selected based on title and abstract. Full-text copies of these studies were reviewed to select the studies that met the inclusion criteria. In addition, references of all selected studies were checked for eligibility. Disagreement was resolved by a third reviewer. Data from all selected studies were extracted independently by the two reviewers. The following data were extracted: study design; number of patients included; tumour and patient characteristics; treatment details; details of the timing of, and modalities used, for response evaluation; duration of follow-up; response classification; and criteria and features associated with a near-CR. No automated tools were used in the selection or data extraction process.

The methodological quality of the included studies was assessed to gain insight into the overall methodological quality of studies reporting on a near-complete response or organ-preserving treatments. To assess methodological quality, a checklist was composed, based mainly on the STROBE checklist, complemented by some items from the CONSORT and STARD checklists^{14–16} to fit the present research question. Items concerning details of randomization, blinding, index test, and reference standard were

Table 1 Summary of findings: criteria and features defining a near-complete response by modality used

	Features defining a near-complete response
Digital rectal examination	Normal digital rectal examination Firm rectal wall No palpable mass/no evidence of mucosal malignancy Smooth induration Minor mucosal abnormalities/nodularity Soft superficial irregularity (< 2 cm) Decrease in tumour size > 50%
Endoscopy	No mucosal abnormality No evidence of mucosal malignancy Residual scar ≤3 cm in diameter/whitening of mucosa Mild persisting erythema of scar Small supple/firm nodularity or irregularity Superficial ulcer (< 2 cm or < 3 cm) Residual lesions (< 3 cm) Residual tumour (< 2 cm or < 3 cm) Dysplasia at histopathology
MRI	Total mpMRI score 4–5, based on sum of post-CRT T2W-MRI, DWI, and postcontrast scores
T2W-MRI	Obvious downstaging with or without residual fibrosis, but with heterogeneous or irregular aspect Low or intermediate residual signal Small residual lesion with uncertain tumour viability mrTRG1–2 or mrTRG2 ycT1–2 or ycT2
DWI	Small focal area of high signal Significant regression of signal Minimal or low residual signal
ADC map	Absence of a positive regional lymph node
Lymph nodes	Partial regression of lymph nodes Obvious downstaging of lymph nodes but remaining node(s) ≥ 5 mm
Other modalities	
Endorectal ultrasound	Restricted to bowel wall (no evidence of perirectal fat invasion—ycT1–2) Small residual lesion with uncertain tumour viability
PET-CT	No evidence of nodal metastases (ycN0) No evidence of nodal metastases (ycN0)

mpMRI, multiparametric MRI; CRT, chemoradiotherapy; T2W-MRI, T2-weighted MRI; DWI, diffusion-weighted MRI; mrTRG, magnetic resonance tumour regression grade; ADC, apparent diffusion coefficient.

found not to be applicable. Results are reported according to the PRISMA statement (Table S3)^{17,18}.

Results

Literature search

A total of 3443 records were identified in PubMed and Embase. After removal of duplicates and exclusions, 23 articles^{5,8–11,19–36} with a total of 1845 patients were included. Figure 1 details the process and reasons for exclusion.

The quality assessment of the 23 included articles is summarized in Table S4. Seventeen described therapeutic studies, of which 10 had a prospective study design. All 23 studies were of adequate quality with regard to the inclusion and exclusion criteria for patients, and duration of follow-up. However, most studies were of insufficient quality with regard to the required sample size and the use of a comparator group. Overall, the included studies reporting on a near-CR or organ-preserving treatments were of moderate to good methodological quality. No studies were excluded based on methodological quality. Study characteristics are provided in Table S5.

Treatment

All 23 studies included patients treated with a long course of (chemo)radiotherapy (45–56 Gy). Four studies^{8,9,25,26} also included patients who had a short course of radiotherapy

(25 Gy) followed by a waiting interval, and three^{19,24,25} included patients who received contact X-ray brachytherapy (60–110 Gy).

In almost half of the studies (11 of 23)^{5,8–10,21,22,24–27,35}, patients were selected for a watchful waiting programme based on the response evaluation after neoadjuvant treatment. In 17 studies^{5,8,9,11,19–22,24,25,27,29–34}, the response evaluation was used to select patients for an additional local excision aiming at organ preservation. Duration of follow-up was reported in 19 studies (83 per cent)^{8,9,11,19–26,29–36}, and varied between a median of 15 and 65.5 months. Treatment characteristics are shown in Table S5.

Response evaluation

The interval between (chemo)radiotherapy and response evaluation varied across studies; most had a 4–12 week interval from the end of (chemo)radiotherapy^{5,8–11,20–23,26–36}. Two studies^{19,25} reported an interval of 14 weeks from the start of neoadjuvant treatment. In two studies^{24,34}, data on timing of the response evaluation was missing. No obvious differences in definitions used for a near-CR were found between studies with a short (less than 8 weeks) versus long (over 8 weeks) interval.

Eighteen studies^{5,8–10,19–23,25–27,28–33,35} defined response based on the combination of DRE and/or endoscopy with radiological imaging. In two studies^{24,36} the response was based on clinical examination alone, and in another three^{11,28,34} only radiological imaging was used for the response assessment. All 21 studies^{5,8–11,19–23,25–35} that included radiological imaging used

MRI to assess the response. In addition to MRI, two studies^{30,34} used endorectal ultrasound imaging and one³⁰ used PET-CT.

Terminology

To describe the response after which patients were considered potentially eligible for watchful waiting or organ preservation, 15 studies^{8,9,19,21,23–29,31,33–35} used the term ‘near-complete response’. Three studies^{20,32,36} used the term ‘major response’. Additionally, individual studies used the terms ‘objective clinical response’²², ‘suspected complete response’¹⁰, ‘potential complete response’⁵, ‘subcomplete response’¹¹, and ‘small residual lesion’³⁰.

Features indicative of a clinical near-complete response

In most studies, minor irregularities or a smooth induration found with DRE were considered features of a near-CR, potential complete response, or suspected complete response^{5,8–10,21,23,25}. Three studies^{19,20,35} considered the absence of a palpable tumour mass with DRE as a feature of a near-CR or major response. One study³⁶, which used DRE as a single modality for response evaluation, considered a decrease in tumour size of more than 50 per cent as a major response.

On endoscopy, 11 studies^{5,8,9,19–23,25,26,32} considered a small flat ulcer or superficial ulceration a feature of a near-CR, potential complete response, major response, or objective clinical response. In four studies^{20,22,25,32} the maximum size of the ulcer (2 or 3 cm) was specified. A small nodule, an irregular mucosa, or small mucosal abnormalities were considered features of a near-CR or suspected complete response in six studies^{8–10,19,23,26}. Another six studies^{24,27,29–31,33} used the term near-CR or small residual lesion when a small residual lesion or tumour with a maximum size of 3 cm was observed.

The response on MRI was based on features observed on a combination of T2W-MRI and DWI in five studies^{8,9,21,23,26}. On T2W-MRI, three studies^{8,9,21} considered obvious downstaging with or without heterogeneous or irregular residual fibrosis as a feature of a near-CR. Two studies^{23,26} considered a low or intermediate residual signal (not further specified) as feature of a near-CR. None of these studies reported on the extent of downsizing of the tumour. On DWI, four^{8,9,21,26} of the five studies considered a small focal area of high signal on high b-value as a feature of a near-CR. The fifth study²³ considered a significant regression of the signal on DWI as feature of a near-CR.

In another nine studies^{10,19,25,27,29–31,34,35}, the response on MRI was based on either the TNM classification (5 studies) or magnetic resonance tumour regression grade (mrTRG) (4). In the five studies^{27,29–31,34} that used the TNM classification, ycT2 was considered a near-CR or a small residual lesion. In the four studies^{10,19,25,35} that used the mrTRG, mrTRG1–2 or mrTRG2 were considered as a near-CR or suspected complete response.

In addition to the luminal response on MRI, nine studies^{8,20,23,27,29–32} described the response of the lymph nodes. For the response to be classified as a near-CR or major response, or for patients with a small residual lesion to be treated with local excision, the lymph nodes had to be considered not suspicious for residual tumour in seven^{20,27,29–32} of nine studies. In two other studies^{8,23}, the response could be classified as a near-CR, if partial regression of the lymph nodes, or obvious downstaging with remaining lymph node(s) of 5 mm or more had occurred. Detailed features that were deemed indicative of a clinical near-CR are provided in [Table S6](#). A summary of findings, including the criteria and features used for each modality, is provided in [Table 1](#).

Discussion

This review provides an overview of the terminology, criteria, and features used to describe a near-CR. The terminology used to describe the response category and determine eligibility for watchful waiting or other organ-preserving treatments varied; the most common was ‘near-complete response’, followed by the term ‘major response’. Moreover, criteria and features used to define a near-CR differed between studies. The most common criteria and features for a near-CR were: minor irregularities or a smooth induration found with DRE; small flat ulcer on endoscopy; obvious downstaging of the residual tumour, with or without heterogeneous or irregular residual fibrosis on T2W-MRI; and a small focal area of high signal on DWI. As a consequence of the variation in terminology, criteria, and features, uniformity regarding patient selection for watchful waiting and organ preservation is lacking.

The patients in the included studies were selected for different treatment strategies—either watchful waiting or additional local treatment aiming at organ preservation. The variety in criteria and features defining a near-CR might be explained by the difference in treatment strategies patients are selected for (watchful waiting or additional local treatment). For selection of patients for watchful waiting, very strict criteria were used initially, which may have missed up to 61 per cent of patients with a pathologic complete response (pCR) at response evaluation before resection^{37–39}. In more contemporary practice, less strict criteria are used to select patients for watchful waiting, with the aim of not missing a cCR in the event of (minor) residual abnormalities at response evaluation. These patients still have a high likelihood of achieving a cCR. In contrast, to select patients for additional local treatment aiming at organ preservation, the probability of the response evolving into a cCR is less important, and the criteria used to select patients are more liberal than those used to select patients for watchful waiting. Instead, patients are selected based on the risk of recurrence after additional local treatment, associated with specific high-risk histopathological features and tumour stage^{40–43}.

The findings of this review might indicate that there is a need for a new response categorization system accompanied by new terminology that can differentiate the response in a way that allows clinicians to distinguish patients who are candidates for either watchful waiting or additional local treatment aiming at organ preservation. The term ‘near-complete response’ should perhaps be reserved for patients with a degree of response with high potential for evolving into a cCR. A different term can then be used to describe a major response but with persistent abnormalities that are likely indicative of minor residual tumour requiring additional treatment. An alternative approach could be to convert verbal terminology into numbered response categories, analogous to radiology scoring systems such as Breast Imaging - Reporting and Data System (BI-RADS) and Prostate Imaging - Reporting and Data System (PI-RADS). In such a system, the different response categories should correspond to the likelihood of a sustained complete response or the likelihood of regrowth.

An underlying issue with defining a near-CR is the limited evidence for the predictive value of a cCR or residual tumour for both individual features as well as a combination of features from different modalities. Research groups interested in organ preservation will, therefore, develop their own definition based on clinical experience, which will inherently lead to

heterogeneity and bias. The results of the present review indicated that, on endoscopy, a small flat ulcer was considered a sign indicative of a near-CR in most studies. In a study by van der Sande et al.⁴⁴, the positive predictive value for a true and persistent complete response of a small ulcer was 40–50 per cent. In addition, the predictive value of a flat white scar was 70–80 per cent and that of a large ulcer was 29–30 per cent. It is important to note that, when a large ulcer is observed, the risk of residual disease is substantially higher than the chance of a cCR.

In this review, features commonly used to describe a near-CR on MRI were obvious downstaging with or without heterogeneous or irregular fibrosis on T2W-MRI and small focal spots of high signal on DWI. Lambregts et al.⁴⁵ assessed four response patterns on T2W-MRI and DWI, for which positive predictive values for a cCR were 0, 88, 89, and 100 per cent. The two response patterns with a positive predictive value of 88 and 89 per cent, semicircular fibrosis and regression of polypoid tumours with fibrosis at the stalk (both regardless of any high diffusion signal), might be considered a near-CR. However, using standalone modalities (either endoscopy or MRI) will inherently lead to underestimation or overestimation of the tumour response. Therefore, it is very important to perform a multimodal assessment using DRE, endoscopy, and MRI.

Lymph node status is also important in defining a near-CR. In the present review, less than half of the studies using radiological imaging described the criteria for a lymph node response^{8,19,23,27,29–33}. This is remarkable, because the locoregional lymph nodes remain in situ in organ-preserving treatments, and persisting lymph node metastases will increase the risk of recurrence^{46,47}. Even though it is more accurate than primary staging, lymph node staging after (chemo)radiotherapy remains challenging⁴⁸. Although not adopted universally, the main criterion used for lymph node staging is the short-axis size of the lymph nodes, for which a 5-mm cut-off has been recommended⁴⁹. Although this cut-off provides reasonable results, overstaging and understaging after (chemo)radiotherapy are still encountered. As the lymph nodes are small, their morphology is more difficult to evaluate. This results in a sensitivity of around 40 per cent for the detection of lymph node metastases in patients with a good tumour response after (chemo)radiotherapy^{50,51}. The risk of lymph node metastases after (chemo)radiotherapy should not be underestimated, as a study by Haak et al.⁵² reported that the risk of positive lymph nodes was 7 per cent for ypT0 and 12 per cent for ypT1 tumours. However, as surveillance of suspicious lymph nodes can be done easily with MRI, and salvage treatment is rarely jeopardized by lymph node metastasis, the authors encourage offering an organ-preserving treatment strategy even to patients with lymph nodes of at least 5 mm and a luminal (near-)CR, provided that the lymph nodes are monitored on careful imaging during follow-up. Lymph node status should, therefore, be integrated into the definition of a near-CR.

Owing to the heterogeneity of criteria and features identified, a clear uniform definition of a near-CR cannot be proposed based on the present review. The most important next step is to gather evidence regarding which features at response evaluation are highly likely predictive of successful watchful waiting or successful organ preservation after additional local treatment. However, pending such evidence, a first step could be to establish expert-based consensus. This may take into account two potential response categories: the response with a high likelihood of progression into a cCR, after which watchful waiting can be

considered; and a major response with the possibility of residual tumour, after which additional local treatment aiming at organ preservation can be considered.

There are some limitations to this work. The studies included in this review are heterogeneous with regard to baseline characteristics of the patients, neoadjuvant treatment schedules, and the timing of response evaluation, complicating comparisons. In addition, multiple outcome measures were used in the studies. Therefore, features and criteria used to describe a near-CR could not be compared by clinical outcome. Some included studies are from the same research group, with the potential for reporting on overlapping cohorts. This might have led to over-representation of some features in this review. Consideration was given to excluding studies from the same research group or studies with potentially overlapping cohorts. However, this may have missed important data because the terminology and/or definition used by a research group may have changed over time, owing to changes in management and advances in evidence and knowledge.

Funding

The authors have no funding to declare.

Acknowledgements

This review was not registered and no protocol was prepared.

Disclosure

The authors declare no conflict of interest.

Supplementary material

Supplementary material is available at *BJS* online.

Data availability

No new data were generated or analysed in this manuscript.

References

- Habr-Gama A, Perez RO, Nadalin W, Sabbaga J, Ribeiro U Jr, Silva e Sousa AH Jr et al. Operative versus nonoperative treatment for stage 0 distal rectal cancer following chemoradiation therapy: long-term results. *Ann Surg* 2004; **240**:711–717; discussion 717–718
- Hupkens BJP, Martens MH, Stoot JH, Berbee M, Melenhorst J, Beets-Tan RG et al. Quality of life in rectal cancer patients after chemoradiation: watch-and-wait policy versus standard resection—a matched-controlled study. *Dis Colon Rectum* 2017; **60**:1032–1040
- Smith JJ, Strombom P, Chow OS, Roxburgh CS, Lynn P, Eaton A et al. Assessment of a watch-and-wait strategy for rectal cancer in patients with a complete response after neoadjuvant therapy. *JAMA Oncol* 2019; **5**:e185896
- van der Valk MJM, Hilling DE, Bastiaannet E, Meershoek-Klein Kranenburg E, Beets GL, Figueiredo NL et al. Long-term outcomes of clinical complete responders after neoadjuvant treatment for rectal cancer in the International Watch & Wait Database (IWWDD): an international multicentre registry study. *Lancet* 2018; **391**:2537–2545

5. Maas M, Lambregts DM, Nelemans PJ, Heijnen LA, Martens MH, Leijtens JW *et al.* Assessment of clinical complete response after chemoradiation for rectal cancer with digital rectal examination, endoscopy, and MRI: selection for organ-saving treatment. *Ann Surg Oncol* 2015;**22**:3873–3880
6. Habr-Gama A, Perez RO, Wynn G, Marks J, Kessler H, Gama-Rodrigues J. Complete clinical response after neoadjuvant chemoradiation therapy for distal rectal cancer: characterization of clinical and endoscopic findings for standardization. *Dis Colon Rectum* 2010;**53**:1692–1698
7. Maas M, Beets-Tan RG, Lambregts DM, Lammering G, Nelemans PJ, Engelen SM *et al.* Wait-and-see policy for clinical complete responders after chemoradiation for rectal cancer. *J Clin Oncol* 2011;**29**:4633–4640
8. Martens MH, Maas M, Heijnen LA, Lambregts DM, Leijtens JW, Stassen LP *et al.* Long-term outcome of an organ preservation program after neoadjuvant treatment for rectal cancer. *J Natl Cancer Inst* 2016;**108**:djw171
9. Hupkens BJP, Maas M, Martens MH, van der Sande ME, Lambregts DMJ, Breukink SO *et al.* Organ preservation in rectal cancer after chemoradiation: should we extend the observation period in patients with a clinical near-complete response? *Ann Surg Oncol* 2018;**25**:197–203
10. Habr-Gama A, Sao Juliao GP, Fernandez LM, Vailati BB, Andrade A, Araujo SEA *et al.* Achieving a complete clinical response after neoadjuvant chemoradiation that does not require surgical resection: it may take longer than you think! *Dis Colon Rectum* 2019;**62**:802–808
11. Rullier E, Vendrely V, Asselineau J, Rouanet P, Tuech JJ, Valverde A *et al.* Organ preservation with chemoradiotherapy plus local excision for rectal cancer: 5-year results of the GRECCAR 2 randomised trial. *Lancet Gastroenterol Hepatol* 2020;**5**:465–474
12. Stijns RCH, de Graaf EJR, Punt CJA, Nagtegaal ID, Nuyttens J, van Meerten E *et al.* Long-term oncological and functional outcomes of chemoradiotherapy followed by organ-sparing transanal endoscopic microsurgery for distal rectal cancer: the CARTS study. *JAMA Surg* 2019;**154**:47–54
13. Sun Myint A, Smith FM, Gollins S, Wong H, Rao C, Whitmarsh K *et al.* Dose escalation using contact X-ray brachytherapy after external beam radiotherapy as nonsurgical treatment option for rectal cancer: outcomes from a single-center experience. *Int J Radiat Oncol Biol Phys* 2018;**100**:565–573
14. Schulz KF, Altman DG, Moher D, Group CONSORT. CONSORT 2010 Statement: updated guidelines for reporting parallel group randomised trials. *BMJ* 2010;**340**:c332
15. von Elm E, Altman DG, Egger M, Pocock SJ, Gotsche PC, Vandenbroucke JP *et al.* Strengthening the Reporting of Observational Studies in Epidemiology (STROBE) statement: guidelines for reporting observational studies. *BMJ* 2007;**335**:806–808
16. Bossuyt PM, Reitsma JB, Bruns DE, Gatsonis CA, Glasziou PP, Irwig L *et al.* STARD 2015: an updated list of essential items for reporting diagnostic accuracy studies. *BMJ* 2015;**351**:h5527
17. Page MJ, Moher D, Bossuyt PM, Boutron I, Hoffmann TC, Mulrow CD *et al.* PRISMA 2020 Explanation and elaboration: updated guidance and exemplars for reporting systematic reviews. *BMJ* 2021;**372**:n160
18. Moher D, Liberati A, Tetzlaff J, Altman DG, Group PRISMA. Preferred reporting items for systematic reviews and meta-analyses: the PRISMA statement. *BMJ* 2009;**339**:b2535
19. Benezery K, Montagne L, Evesque L, Schiappa R, Hannoun-Levi JM, Francois E *et al.* Clinical response assessment after contact X-ray brachytherapy and chemoradiotherapy for organ preservation in rectal cancer T2–T3 M0: the time/dose factor influence. *Clin Transl Radiat Oncol* 2020;**24**:92–98
20. Bushati M, Pucciarelli S, Gennaro N, Maretto I, Toppan P, Perin A *et al.* Local excision in rectal cancer patients with major or complete clinical response after neoadjuvant therapy: a case-matched study. *Int J Colorectal Dis* 2019;**34**:2129–2136
21. Chiloiro G, Meldolesi E, Giraffa M, Capocchiano ND, Barbaro B, Coco C *et al.* Could the conservative approach be considered safe in the treatment of locally advanced rectal cancer in case of a clinical near-complete or complete response? A retrospective analysis. *Clin Transl Radiat Oncol* 2021;**28**:1–9
22. Creavin B, Ryan E, Martin ST, Hanly A, O'Connell PR, Sheahan K *et al.* Organ preservation with local excision or active surveillance following chemoradiotherapy for rectal cancer. *Br J Cancer* 2017;**116**:169–174
23. Felder SI, Patil S, Kennedy E, Garcia-Aguilar J. Endoscopic feature and response reproducibility in tumor assessment after neoadjuvant therapy for rectal adenocarcinoma. *Ann Surg Oncol* 2021;**28**:5205–5223
24. Gerard JP, Ortholan C, Benezery K, Ginot A, Hannoun-Levi JM, Chamorey E *et al.* Contact X-ray therapy for rectal cancer: experience in Centre Antoine-Lacassagne, Nice, 2002–2006. *Int J Radiat Oncol Biol Phys* 2008;**72**:665–670
25. Gerard JP, Barbet N, Gal J, Dejean C, Evesque L, Doyen J *et al.* Planned organ preservation for early T2–3 rectal adenocarcinoma: a French, multicentre study. *Eur J Cancer* 2019;**108**:1–16
26. Haak HE, Maas M, Lambregts DMJ, Beets-Tan RGH, Beets GL; Dutch Watch-and-Wait Consortium. Is watch and wait a safe and effective way to treat rectal cancer in older patients? *Eur J Surg Oncol* 2020;**46**:358–362
27. Habr-Gama A, Lynn PB, Jorge JM, São Julião GP, Proscurshim I, Gama-Rodrigues J *et al.* Impact of organ-preserving strategies on anorectal function in patients with distal rectal cancer following neoadjuvant chemoradiation. *Dis Colon Rectum* 2016;**59**:264–269
28. Khwaja SA, Thipphavong S, Kirsch R, Menezes RJ, Kennedy ED, Brierley JD *et al.* Evaluation of a multiparametric MRI scoring system for histopathologic treatment response following preoperative chemoradiotherapy for rectal cancer. *Eur J Radiol* 2021;**138**:109628
29. Perez RO, Habr-Gama A, Lynn PB, Sao Juliao GP, Bianchi R, Proscurshim I *et al.* Transanal endoscopic microsurgery for residual rectal cancer (ypT0–2) following neoadjuvant chemoradiation therapy: another word of caution. *Dis Colon Rectum* 2013;**56**:6–13
30. Perez RO, Habr-Gama A, Sao Juliao GP, Proscurshim I, Coelho AQ, Figueiredo MN *et al.* Transanal local excision for distal rectal cancer and incomplete response to neoadjuvant chemoradiation—does baseline staging matter? *Dis Colon Rectum* 2014;**57**:1253–1259
31. Perez RO, Habr-Gama A, Sao Juliao GP, Proscurshim I, Fernandez LM, de Azevedo RU *et al.* Transanal endoscopic microsurgery (TEM) following neoadjuvant chemoradiation for rectal cancer: outcomes of salvage resection for local recurrence. *Ann Surg Oncol* 2016;**23**:1143–1148
32. Pucciarelli S, De Paoli A, Guerrieri M, La Torre G, Maretto I, De Marchi F *et al.* Local excision after preoperative chemoradiotherapy for rectal cancer: results of a multicenter phase II clinical trial. *Dis Colon Rectum* 2013;**56**:1349–1356
33. Sao Julião GP, Ortega CD, Vailati BB, Habr-Gama A, Fernandez LM, Gama-Rodrigues J *et al.* Magnetic resonance imaging following neoadjuvant chemoradiation and transanal

- endoscopic microsurgery for rectal cancer. *Colorectal Dis* 2017;**19**:O196–O203
34. Shin YS, Yoon YS, Lim SB, Yu CS, Kim TW, Chang HM et al. Preoperative chemoradiotherapy followed by local excision in clinical T2 N0 rectal cancer. *Radiat Oncol J* 2016;**34**:177–185
 35. Simpson G, Hopley P, Wilson J, Day N, Haworth A, Montazeri A et al. Long-term outcomes of real world 'watch and wait' data for rectal cancer after neoadjuvant chemoradiotherapy. *Colorectal Dis* 2020;**22**:1568–1576
 36. Tranchart H, Lefevre JH, Svrcek M, Flejou JF, Tiret E, Parc Y. What is the incidence of metastatic lymph node involvement after significant pathologic response of primary tumor following neoadjuvant treatment for locally advanced rectal cancer? *Ann Surg Oncol* 2013;**20**:1551–1559
 37. Smith FM, Chang KH, Sheahan K, Hyland J, O'Connell PR, Winter DC. The surgical significance of residual mucosal abnormalities in rectal cancer following neoadjuvant chemoradiotherapy. *Br J Surg* 2012;**99**:993–1001
 38. Smith FM, Wiland H, Mace A, Pai RK, Kalady MF. Clinical criteria underestimate complete pathological response in rectal cancer treated with neoadjuvant chemoradiotherapy. *Dis Colon Rectum* 2014;**57**:311–315
 39. Liu S, Zhong GX, Zhou WX, Xue HD, Pan WD, Xu L et al. Can endorectal ultrasound, MRI, and mucosa integrity accurately predict the complete response for mid–low rectal cancer after preoperative chemoradiation? A prospective observational study from a single medical center. *Dis Colon Rectum* 2018;**61**:903–910
 40. Borschitz T, Gockel I, Kiesslich R, Junginger T. Oncological outcome after local excision of rectal carcinomas. *Ann Surg Oncol* 2008;**15**:3101–3108
 41. Bach SP, Hill J, Monson JR, Simson JN, Lane L, Merrie A et al. A predictive model for local recurrence after transanal endoscopic microsurgery for rectal cancer. *Br J Surg* 2009;**96**:280–290
 42. Elmessiry MM, Van Koughnett JA, Maya A, DaSilva G, Wexner SD, Bejarano P et al. Local excision of T1 and T2 rectal cancer: proceed with caution. *Colorectal Dis* 2014;**16**:703–709
 43. Borstlap WAA, van Oostendorp SE, Klaver CEL, Hahnloser D, Cunningham C, Rullier E et al. Organ preservation in rectal cancer: a synopsis of current guidelines. *Colorectal Dis* 2017;**20**:201–210
 44. van der Sande ME, Maas M, Melenhorst J, Breukink SO, van Leerdam ME, Beets GL. Predictive value of endoscopic features for a complete response after chemoradiotherapy for rectal cancer. *Ann Surg* 2019;**274**:e541–e547
 45. Lambregts DMJ, Delli Pizzi A, Lahaye MJ, van Griethuysen JJM, Maas M, Beets GL et al. A pattern-based approach combining tumor morphology on MRI with distinct signal patterns on diffusion-weighted imaging to assess response of rectal tumors after chemoradiotherapy. *Dis Colon Rectum* 2018;**61**:328–337
 46. Park IJ, You YN, Skibber JM, Rodriguez-Bigas MA, Feig B, Nguyen S et al. Comparative analysis of lymph node metastases in patients with ypT0–2 rectal cancers after neoadjuvant chemoradiotherapy. *Dis Colon Rectum* 2013;**56**:135–141
 47. Cho E, Park IJ, Hong SM, Lee JL, Kim CW, Yoon YS et al. Poorer oncologic outcome of good responders to PCRT with remnant lymph nodes defies the oncologic paradox in patients with rectal cancer. *Clin Colorectal Cancer* 2019;**18**:e171–e178
 48. Heijnen LA, Maas M, Beets-Tan RG, Berkhof M, Lambregts DM, Nelemans PJ et al. Nodal staging in rectal cancer: why is restaging after chemoradiation more accurate than primary nodal staging? *Int J Colorectal Dis* 2016;**31**:1157–1162
 49. Beets-Tan RGH, Lambregts DMJ, Maas M, Bipat S, Barbaro B, Curvo-Semedo L et al. Magnetic resonance imaging for clinical management of rectal cancer: updated recommendations from the 2016 European Society of Gastrointestinal and Abdominal Radiology (ESGAR) consensus meeting. *Eur Radiol* 2018;**28**:1465–1475
 50. Loftas P, Sturludottir M, Hallbook O, Almqvist K, Arbman G, Blomqvist L. Assessment of remaining tumour involved lymph nodes with MRI in patients with complete luminal response after neoadjuvant treatment of rectal cancer. *Br J Radiol* 2018;**91**:20170938
 51. Perez RO, Pereira DD, Proscurshim I, Gama-Rodrigues J, Rawet V, Sao Juliao GP et al. Lymph node size in rectal cancer following neoadjuvant chemoradiation—can we rely on radiologic nodal staging after chemoradiation? *Dis Colon Rectum* 2009;**52**:1278–1284
 52. Haak HE, Beets GL, Peeters K, Nelemans PJ, Valentini V, Rodel C et al. Prevalence of nodal involvement in rectal cancer after chemoradiotherapy. *Br J Surg* 2021;**108**:1251–1258