

Revealing the structure of the lensed quasar Q 0957+561

II. Supermassive black hole mass via gravitational redshift

C. Fian¹, E. Mediavilla^{2,3}, J. Jiménez-Vicente^{4,5}, V. Motta⁶, J. A. Muñoz^{7,8}, D. Chelouche⁹, and A. Hanslmeier¹⁰

¹ School of Physics and Astronomy and Wise Observatory, Raymond and Beverly Sackler Faculty of Exact Sciences, Tel-Aviv University, Tel-Aviv, Israel
e-mail: carinafian@mail.tau.ac.il

² Instituto de Astrofísica de Canarias, Vía Láctea s/n, La Laguna 38200, Tenerife, Spain

³ Departamento de Astrofísica, Universidad de la Laguna, La Laguna 38200, Tenerife, Spain

⁴ Departamento de Física Teórica y del Cosmos, Universidad de Granada, Campus de Fuentenueva, 18071 Granada, Spain

⁵ Instituto Carlos I de Física Teórica y Computacional, Universidad de Granada, 18071 Granada, Spain

⁶ Instituto de Física y Astronomía, Universidad de Valparaíso, Avda. Gran Bretaña 1111, Playa Ancha, Valparaíso 2360102, Chile

⁷ Departamento de Astronomía y Astrofísica, Universidad de Valencia, 46100 Burjassot, Valencia, Spain

⁸ Observatorio Astronómico, Universidad de Valencia, 46980 Paterna, Valencia, Spain

⁹ Haifa Research Center for Theoretical Physics and Astrophysics, University of Haifa, Haifa, Israel

¹⁰ Institute of Physics (IGAM), University of Graz, Universitätsplatz 5, 8010 Graz, Austria

Received 1 April 2021 / Accepted 9 July 2021

ABSTRACT

Aims. We intend to use the impact of microlensing on the Fe III $\lambda\lambda 2039$ – 2113 emission line blend along with a measure of its gravitational redshift to estimate the mass of the quasar’s central supermassive black hole (SMBH).

Methods. We fit the Fe III feature in multiple spectroscopic observations between 2008 and 2016 of the gravitationally lensed quasar Q 0957+561 with relatively high signal-to-noise ratios (at the adequate wavelength). Based on the statistics of microlensing magnifications, we used a Bayesian method to derive the size of its emitting region.

Results. The Fe III $\lambda\lambda 2039$ – 2113 spectral feature appears systematically redshifted in all epochs of observation by a value of $\Delta\lambda \sim 17 \text{ \AA}$ on average. We find clear differences in the shape of the Fe III line blend between images A and B. Measuring the strength of those magnitude differences, we conclude that this blend may arise from a region of half-light radius of $R_{1/2} \sim 15$ lt-days, which is in good agreement with the accretion disk dimensions for this system. We obtain a mass for the central SMBH of $M_{\text{BH}} = 1.5^{+0.5}_{-0.5} \times 10^9 M_{\odot}$, consistent within uncertainties with previous mass estimates based on the virial theorem. The relatively small uncertainties in the mass determination (<35%) make this method a compelling alternative to other existing techniques (e.g., the virial plus reverberation mapping based size) for measuring black hole masses. Combining the Fe III $\lambda\lambda 2039$ – 2113 redshift based method with the virial, we estimate a virial factor in the $f \sim 1.2$ – 1.7 range for this system.

Key words. gravitational lensing: micro – quasars: individual: Q 0957+561 – quasars: supermassive black holes

1. Introduction

The experimental determination of the masses of the supermassive black holes (SMBH) that reside at the centers of active galactic nuclei (AGN) can be related, via the virial theorem, to the velocity of the gas moving under the gravitational potential of the SMBH, ΔV . An estimate of the distance of the gas to the SMBH, R , is needed in addition. Finally, the largely unknown geometry and dynamics of the gas distribution should also be taken into account through a coefficient, f , the virial factor, which greatly affects to the mass determination (see, e.g., Peterson & Wandel 1999, 2000; Fromerth & Melia 2000; Krolik 2001; McLure & Dunlop 2001):

$$M_{\text{BH}} = f \frac{(\Delta V)^2 R}{G}. \quad (1)$$

The velocity estimate, ΔV , can be inferred from the Doppler broadening of the emission lines associated to the ionized gas. The specific definition of ΔV is not straightforward, thus, several options that, in turn, affect the value of f are usually

considered (see, e.g., Collin et al. 2006). Furthermore, the complexity of the broad emission lines, which often present several components and substructure, makes difficult the experimental determination of the line widths. The size of the emitting region can be obtained from reverberation mapping (RM, see reviews by Peterson 1993, 2006) or from the size luminosity, R-L, scaling relationship (calibrated using RM; see, e.g., Wu et al. 2004; Dalla Bontà et al. 2020; Fonseca Alvarez et al. 2020; Yu et al. 2020) or from microlensing (Wambsganss 2006). As a consequence of the experimental difficulties and the scarcity of knowledge regarding f , virial masses have a typical uncertainty of about 0.4 dex.

An alternative way to determine SMBH masses is the accretion disk fitting technique. Based on an adequate selection of the model parameters (specifically of the SMBH spin and disk inclination), this method has the capacity to obtain results that are compatible with virial-based ones, with similar uncertainties (Campitiello et al. 2020).

The masses of SMBH can also be measured with a new method based on the redshift of an UV iron feature, namely,

the Fe III $\lambda\lambda 2039\text{--}2113$ blend. This method has been successfully applied (i.e., providing mass estimates that are statistically compatible with virial masses) to a sample of ten lensed quasars (Mediavilla et al. 2018) and to another sample of ten non-lensed quasars (Mediavilla et al. 2019) observed with X-shooter at the Very Large Telescope (Capellupo et al. 2015, 2016). Although the redshift method is basically insensitive to the geometry and the presence of nongravitational forces, it is also tied to a distance estimator:

$$M_{\text{BH}} = \frac{2c^2}{3G} \left(\frac{\Delta\lambda}{\lambda} \right)_{\text{Fe III}} R_{\text{Fe III}}, \quad (2)$$

where $\Delta\lambda/\lambda$ is the redshift of the Fe III $\lambda\lambda 2039\text{--}2113$ emission lines and $R_{\text{Fe III}}$ the size of the region emitting this blend. In a number of cases, Mediavilla et al. (2018, 2019) used an average size for $R_{\text{Fe III}}$ inferred from microlensing (Fian et al. 2018), scaled to each object using the $R \propto \lambda L_\lambda^\alpha$ relationship with $\alpha \sim 0.5$ (Wandel et al. 1999). This approach has led to good results but, certainly, the application of the method to objects with individual measurements of the size is important for validating the technique. This was done in Mediavilla et al. (2018) using UV spectra of NGC 5548 to estimate the RM size of the Fe III $\lambda\lambda 2039\text{--}2113$ blend. Here, we use a collection of spectra from a well-known gravitationally lensed quasar, Q 0957+561, to estimate (based on microlensing variability) the size of the region emitting the Fe III $\lambda\lambda 2039\text{--}2113$ feature in this object.

The paper is organized as follows. In Sects. 2 and 3 we analyze the spectroscopic data, obtaining the redshift for the Fe III $\lambda\lambda 2039\text{--}2113$ blend and the microlensing-based size to determine the SMBH mass. In Sect. 4 we discuss these results and compare them with other measurements. Finally, our main conclusions are presented in Sect. 5.

2. Data analysis and redshift measurements

The spectroscopic data analyzed in this work have different origins (see Table 1). We model the Fe III $\lambda\lambda 2039\text{--}2113$ emission feature in the spectrum of the lensed quasar at five different epochs of observations between 2008 and 2016. First, we fit a straight line ($y = a\lambda + b$) to the continuum, one on either side of the C III] emission line and another one defined in two windows at the blue and red side of the Fe III blend. When convenient, the windows used to fit the continuum have been adapted to the shape of the continuum, which can change from epoch to epoch. Finally, we subtract the continuum from the spectrum and normalize the continuum-subtracted spectra to match the core of the C III] emission line defined by the flux within a narrow interval ($\pm 4 \text{ \AA}$) centered on the peak of the line. This normalization removes the effects of the macro-magnification produced by the lens galaxy and the differential extinction between the images. Thus, the cores of the emission lines are used as a reference that is little affected by microlensing and intrinsic variability (see Guerras et al. 2013; Fian et al. 2018) as they arise from a significantly larger region than the wings. The continuum-subtracted and core matched spectra in the wavelength regions around the C III] emission line and the (microlensed and redshifted) Fe III $\lambda\lambda 2039\text{--}2113$ emission feature can be seen in Fig. 1.

We fit the Fe III $\lambda\lambda 2039\text{--}2113$ blend using a template of 19 single Fe III lines of fixed relative amplitudes as provided by Vestergaard & Wilkes (2001). The (Gaussian) lines are broadened with the same width, σ ($=FWHM/2.35$), globally shifted in wavelength by $\Delta\lambda$, and their relative amplitudes multiplied by a global scale factor, K_{scale} . These are the three free parameters used to fit the blend in both images in different epochs.

Table 1. Spectroscopic data.

Date	Facility	Reference
01/2008	MMT	Motta et al. (2012)
01/2009	NOT	GLENDAMA (*)
03/2010	NOT	GLENDAMA (*)
12/2011	NOT	GLENDAMA (*)
03/2016	WHT	Fian et al. (2021a)

Notes. (*) See Gil-Merino et al. (2018).

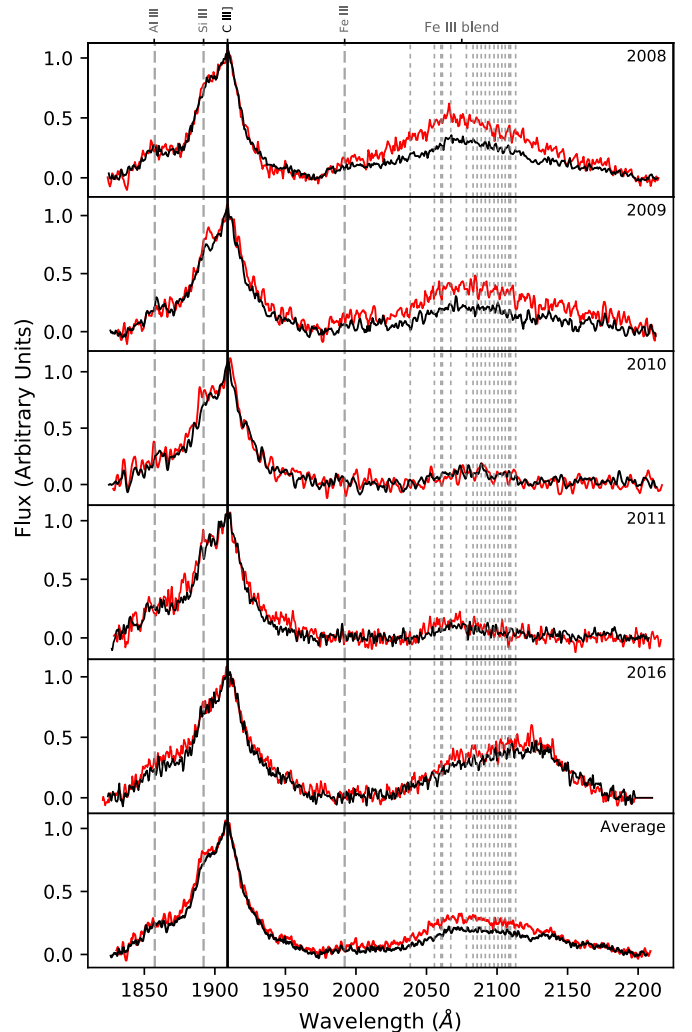


Fig. 1. Superimposed spectra showing the C III] emission line and the Fe III $\lambda\lambda 2039\text{--}2113$ feature for image A (black) and image B (red) in different epochs. We subtracted the continuum and matched the C III] line cores of both images. The ordinate is in arbitrary units of flux.

The Fe III $\lambda\lambda 2039\text{--}2113$ feature is relatively free of contamination from lines of other species and from Fig. 2 we can see that the template of Vestergaard & Wilkes (2001) is able to reproduce well the shape of it when a redshift is applied. The average (\pm standard error in the mean) of this systematic redshift is $\langle \Delta\lambda \rangle = 17.4 \pm 4.0 \text{ \AA}$, in agreement with the findings of Mediavilla et al. (2018, 2019), who also included one epoch of this system in their analysis.

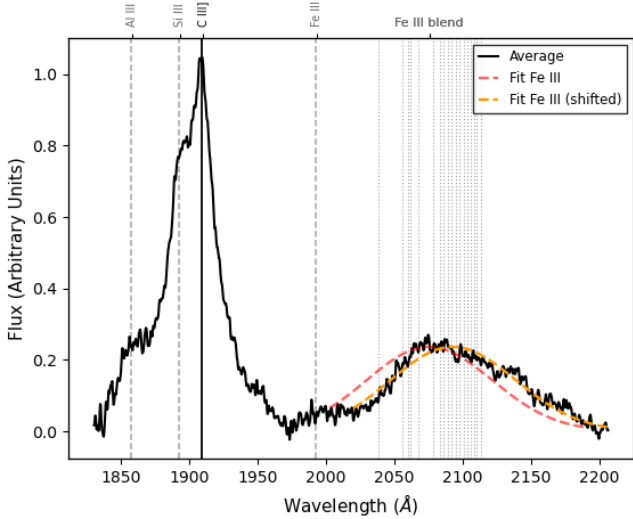


Fig. 2. Average spectrum (black) and fit to the Fe III $\lambda\lambda 2039\text{--}2113$ blend (dashed red curve). Vertical dotted lines are located at the wavelengths corresponding to the Fe III lines of the Vestergaard & Wilkes (2001) template. The fit has been shifted by $\sim 17 \text{ \AA}$ to match the template rest frame (dashed orange curve). The ordinate is in arbitrary units of flux.

3. Estimation of the Bayesian source size and SMBH mass

We analyzed three different wavelength regions to measure the microlensing-induced changes in the UV Fe III emission line blend. In the first case, we estimate the magnitude difference, Δm , in each epoch over a fixed wavelength range of $\lambda\lambda 2039\text{--}2113$. We use the following statistics to calculate the magnitude difference at each wavelength x between the images A and B:

$$\Delta m_x = w_x * (B_x - A_x), \quad (3)$$

with weights $w_x = \sqrt{(B_x + A_x)/(B_x - A_x)}$. These weights are selected to equalize the typical deviations of the differences, that is, to take into account the fact that the calculation of the difference between two emission lines may imply the use of data with very different signal-to-noise ratios (S/Ns) (after removing the continuum, the data close to the peak have high S/Ns as compared with the data in the extreme wings). From the mean value in a given wavelength interval, $\langle \Delta m_x \rangle$, we compute the magnitude difference between the images, $\Delta m = \langle \Delta m_x \rangle$. In the second case, we shift the wavelength window according to the estimated redshift in that epoch, and in the third case, we apply a mean redshift of $\langle \Delta \lambda \rangle = 17.4 \text{ \AA}$ to the wavelength interval of case one. The estimated magnitude differences are similar in all three cases and are given for each epoch in Table 2.

We use these estimates in combination with simulations of the microlensing effect in Q 0957+561 to infer the more likely size of the region emitting the Fe III blend. Our simulations are based in 2000×2000 pixel microlensing magnification maps, generated at the positions of the images using the inverse polygon mapping (IPM) method described in Mediavilla et al. (2006, 2011). The general characteristics of the magnification maps are determined (for each quasar image) by the local convergence, κ , and the local shear, γ . To compute the magnification maps, we used $\kappa_A = 0.20$, $\kappa_B = 1.03$, $\gamma_A = 0.15$, and $\gamma_B = 0.91$, obtained by fitting a singular isothermal sphere with an external shear (SIS+ γ_e), such as might be generated by the tide

Table 2. Magnitude differences Δm for a fixed range ($\lambda\lambda 2039\text{--}2113$), individually shifted range and a globally shifted ($\sim 17 \text{ \AA}$) range ($\lambda\lambda 2056\text{--}2130$).

Epoch	Fixed	Shifted	+17.4 \AA
I	-0.39 ± 0.03	-0.39 ± 0.03	-0.39 ± 0.04
II	-0.53 ± 0.08	-0.54 ± 0.08	-0.53 ± 0.09
III	-0.01 ± 0.23	-0.00 ± 0.25	-0.03 ± 0.27
IV	-0.21 ± 0.28	-0.15 ± 0.31	-0.04 ± 0.29
V	-0.15 ± 0.06	-0.12 ± 0.03	-0.15 ± 0.04

from a neighboring galaxy or cluster, which reproduce the flux ratio and the coordinates of the images (Mediavilla et al. 2009). The local convergence is proportional to the surface mass density and can be divided into $\kappa = \kappa_c + \kappa_*$, where κ_c is the convergence due to continuously distributed matter (i.e., dark matter) and κ_* is due to the stellar-mass point lenses (i.e., stars in the galaxy). The produced maps span $400 \times 400 \text{ lt-days}^2$ on the source plane, with a pixel size of 0.2 lt-days . We assume a mean stellar mass of $M = 0.3 M_\odot$ and for the fraction of mass in stars we use $\alpha = 10\%$. All linear sizes can be rescaled with the square root of the microlens mass $\sqrt{M/M_\odot}$. To simulate the effect of finite sources, we model the luminosity profile of the emitting region as a Gaussian ($I \propto \exp(-R^2/2r_s^2)$) and the magnifications experienced by a source of size r_s are then found by convolving the magnification maps with the Gaussian profiles of sigma r_s . We used a linear grid for the source sizes, spanning an interval between ~ 1 to 40 lt-days . These sizes can be converted to half-light radii by multiplying by 1.18 , $R_{1/2} = 1.18 r_s$.

Given the estimates of the differential microlensing in the Fe III emission blend between images A and B, we can estimate the size of its emission region. We follow the steps described in Guerras et al. (2013), Fian et al. (2018, 2021a) and treat each microlensing measurement as single epoch event. From the microlensing corresponding to all available epochs of observation, we compute the joint microlensing probability, $P(r_s)$, to obtain an average estimate of the source size. The resulting joint likelihood functions for the Fe III emission blend using three different wavelength windows can be seen in Fig. 3. It is clearly visible that a moderate change of the definition of the wavelength interval does not introduce significant changes in the size estimates. From Fig. 3, we can infer a size of $R_{1/2} \sim 15 \text{ lt-days}$ (68% confidence) for the region emitting the Fe III UV blend, indicating that this feature is formed close to or within the accretion disk, which (according to Fian et al. 2021b, hereafter Paper I and Cornachione et al. 2020) has a size of $\sim 17.6 \text{ lt-days}$ at $\lambda_{\text{rest}} = 2558 \text{ \AA}$.

Under the hypothesis that the redshift of the Fe III $\lambda\lambda 2039\text{--}2113$ is of gravitational origin, we can use the previously obtained redshift of the Fe III lines together with the inferred microlensing based size of the Fe III emitting region to derive the mass of the central SMBH. Table 3 lists the SMBH masses obtained after inserting the mean redshift, $\langle \Delta \lambda \rangle$, and the half-light radius of the Fe III blend (using different wavelength windows), $R_{1/2} = R_{\text{Fe III}}$, in Eq. (2). The errors in the Fe III emitting region sizes are estimated by a maximum likelihood method. The uncertainties in the SMBH masses are proportional to the square root of the sum of the squared relative errors of the emitting region sizes and the squared standard error in the mean redshift, $\sigma_{M_{\text{BH}}} = \sqrt{\sigma_{R_{\text{Fe III}}}^2 + \sigma_{\Delta \lambda}^2}$.

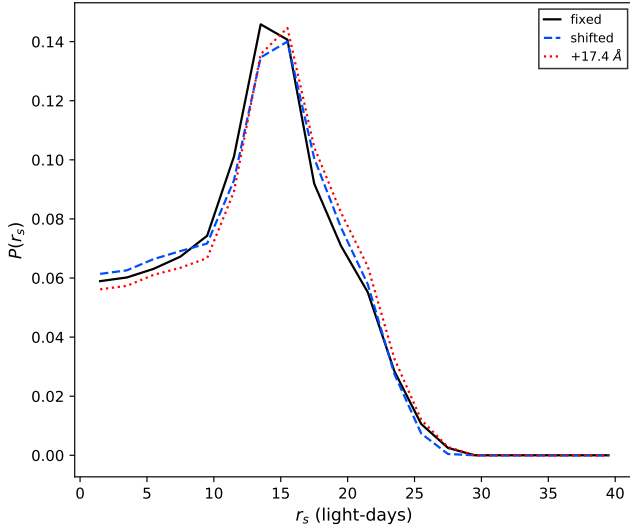


Fig. 3. Probability distribution of the region emitting the Fe III $\lambda\lambda 2039\text{--}2113$ blend using different wavelength windows for estimating the magnitude differences Δm .

Table 3. Half-light radii ($R_{1/2}$) inferred from Fig. 3 and corresponding SMBH mass (M_{BH}).

Interval	$R_{1/2}$ (lt-days)	M_{BH} ($\times 10^9 M_{\odot}$)
Fixed	$15.0^{+4.0}_{-3.5}$	$1.47^{+0.52}_{-0.48}$
Shifted	$15.0^{+4.1}_{-3.9}$	$1.47^{+0.53}_{-0.50}$
+17.4 Å	$15.5^{+4.2}_{-3.6}$	$1.52^{+0.53}_{-0.49}$

Table 4. Half-light radii ($R_{1/2}$) and corresponding SMBH mass (M_{BH}) for stellar mass fractions of $\alpha = 0$ (image A) and $\alpha = 0.3$ (image B).

Interval	$R_{1/2}$ (lt-days)	M_{BH} ($\times 10^9 M_{\odot}$)
Fixed	$20.1^{+5.5}_{-6.0}$	$1.94^{+0.64}_{-0.68}$
Shifted	$20.1^{+5.7}_{-6.5}$	$1.94^{+0.65}_{-0.72}$
+17.4 Å	$20.6^{+2.5}_{-6.5}$	$2.01^{+0.42}_{-0.72}$

3.1. Impact of stellar mass fraction on size estimates

Since the amplitude of microlensing (and as a consequence the source size) is sensitive to the local stellar surface mass density function, we estimate the impact of the stellar mass fraction α on the Fe III emitting region size. We adopted a value $\alpha = 0.3$ for image B and $\alpha = 0$ for image A¹ (for more details see Paper I), and repeated all the calculations. As expected, we obtain a somewhat larger size for the emitting region of Fe III, leading to a ~ 1.3 times bigger SMBH mass of $M_{\text{BH}} \sim 2 \times 10^9 M_{\odot}$ (see Table 4).

3.2. Impact of spectroscopic sample on redshift estimates

To evaluate the impact of single spectra on the average signal (and hence on the average redshift), we used bootstrapping to

¹ The two lensed images of Q 0957+561 are located at very different radii from the center of the lens, resulting in different fractions of convergence in the form of stars.

randomly pick spectra from our sample and build the average spectrum, fit the Fe III $\lambda\lambda 2039\text{--}2113$ blend, and estimate the corresponding redshift. The simulated average spectrum is made of different combinations (with repetition) of ten out of the original ten spectra. We repeated this process 10000 times to obtain frequency distributions for the broadening, σ , and the redshift, $\Delta\lambda$, which are shown in the lower panels of Fig. 4. We find that we are biased towards a slightly bigger redshift ($\sim 1 \text{ \AA}$ on average) and thereby a somewhat bigger (but consistent within uncertainties) SMBH mass ($\Delta M_{\text{BH}} \sim 0.1 \times 10^9 M_{\odot}$, see Table 5).

4. Discussion

Using the individual determination of $R_{\text{Fe III}}$ for Q 0957+561 and the mean redshift $\langle \Delta\lambda \rangle$ obtained by averaging the five epochs times the two images available for the spectra, we inferred a SMBH mass, $M_{\text{BH}} = 1.5^{+0.5}_{-0.5} \times 10^9 M_{\odot}$. This value is in agreement within uncertainties with the virial determinations from Assef et al. (2011), $M_{\text{BH}} = 1.0^{+1.1}_{-0.5} \times 10^9 M_{\odot}$ (CIV) and with our previous measurement, $M_{\text{BH}} = (0.9 \pm 0.5) \times 10^9 M_{\odot}$ (Mediavilla et al. 2018), obtained from a spectrum of relatively poor S/N and based in an average estimate for $R_{\text{Fe III}}$. However, our new determination is affected by relatively small errors $\lesssim 35\%$, which represent a significant improvement in the context of SMBH mass measurements.

The strong variability of the Fe III $\lambda\lambda 2039\text{--}2113$ feature observed in the spectral monitoring (see Fig. 1) is evidence of the small size of the region emitting this blend. We observe a global variability of both images with respect to CIII] with maxima in 2008 and 2016, and an enhancement of component B in 2008 and 2009. Given the large lag (417 ± 2 days; see, e.g., Shalyapin et al. 2008) between both images, in principle, it may be assumed that the difference between A and B at a given epoch could arise from a lag in the intrinsic variability of the quasar. However, the similarity of the spectra during 2008 and 2009 and the subsequent global fading of both components in 2010 and 2011 contradict this hypothesis. Thus, the microlensing hypothesis is favored by the observations to explain the differences between A and B while the quasar intrinsic variability may be the cause of the global changes. Based on the hypothesis of gravitational microlensing, we obtained a size of about 15 lt-days (equivalent to ~ 88 Schwarzschild radii for a $1.5 \times 10^9 M_{\odot}$ black hole), which match the size of the accretion disk inferred from the microlensing of the continuum very well (see Paper I). This agreement gives consistence to our results and support the origin of the Fe III $\lambda\lambda 2039\text{--}2113$ feature in the accretion disk.

Finally, from the broadening of the H β emission line (Assef et al. 2011), we can estimate the virial factor using the equation (Mediavilla et al. 2019):

$$f_{\text{H}\beta} \simeq \frac{2}{3} \frac{R_{\text{Fe III}}}{R_{\text{H}\beta}} \frac{\left(\frac{\Delta\lambda}{\lambda}\right)_{\text{Fe III}}}{\left(FWHM_{\text{H}\beta}/c\right)^2}. \quad (4)$$

To obtain $R_{\text{H}\beta}$ we take the R-L scaling adopted by Mejía-Restrepo et al. (2016),

$$R_{\text{H}\beta} = 538 \left(\frac{\lambda L_{\lambda 5100}}{10^{46} \text{ erg s}^{-1}} \right)^{0.65} \text{ lt-days}. \quad (5)$$

Inserting the corresponding values (and using the continuum luminosity estimate of Assef et al. 2011, $\lambda L_{\lambda 5100 \text{ \AA}} = 10^{45.79} \text{ erg s}^{-1}$) in Eq. (4), we finally obtain $f_{\text{H}\beta} = 1.8$. This value is in good agreement with the empirical calibration recently

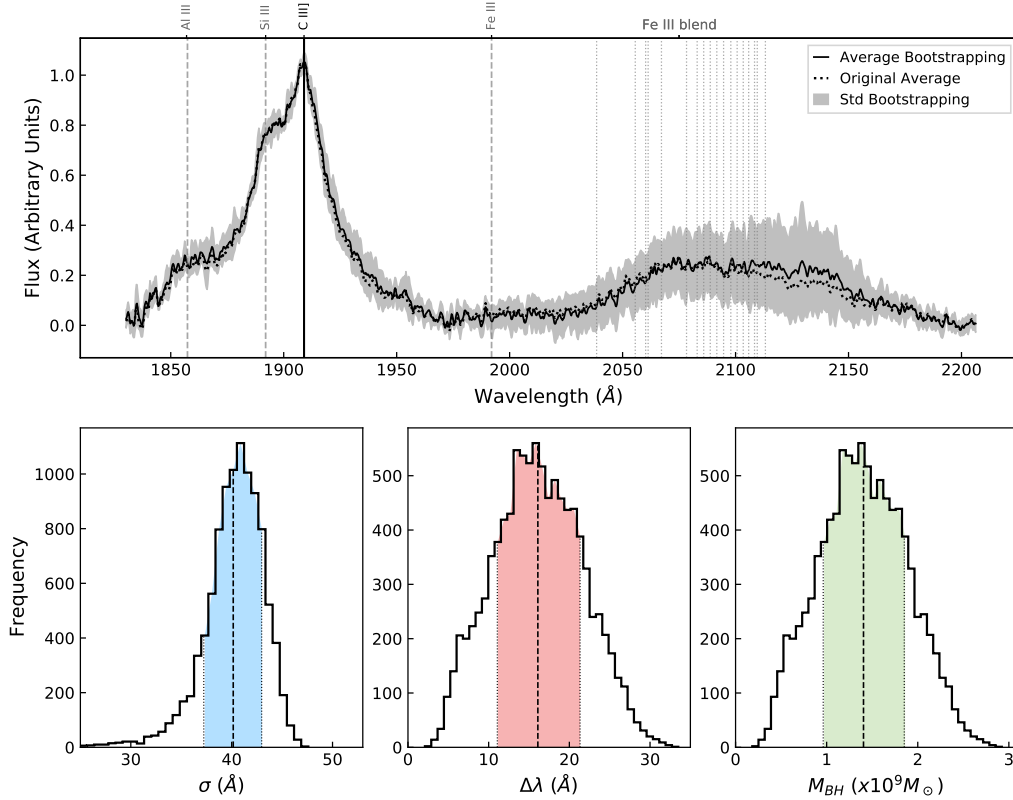


Fig. 4. Bootstrapping results. *Top*: average spectrum (black solid line) and standard deviation (gray error envelope) obtained by using bootstrapping, together with the original average (black dotted line). *Bottom*: frequency distributions of the broadening, σ , redshift, $\Delta\lambda$, and resulting SMBH mass, M_{BH} . The dashed vertical lines give the mean of each distribution and the colored shaded areas show ± 1 standard deviation.

Table 5. Values obtained from the bootstrap-based frequency distributions shown in Fig. 4.

Parameter	Bootstrapping	Difference
σ (Å)	40.2 ± 3.3	1.2
$\Delta\lambda$ (Å)	16.1 ± 5.5	1.3
$M_{\text{BH}} (\times 10^9 M_{\odot})$	1.40 ± 0.48	0.12

proposed by Yu et al. (2019) for the FWHM-based virial factor of $H\beta$ ($f_{H\beta} = 1.7$). For C IV, assuming $R_{\text{CIV}} \sim R_{H\beta}$ and taking different prescriptions to define the line continuum (Assef et al. 2011), we derive $f_{\text{CIV}} = 1.4 - 1.8$. These values are comparable to the prediction, $f = 1.2$, by Collin et al. (2006) (see Eq. (6) of these authors) corresponding to the width estimate by Assef et al. (2011), $\text{FWHM}_{H\beta} = 3300 \text{ km s}^{-1}$. For Fe III, we obtain a slightly bigger virial factor of $f_{\text{FeIII}} = 2.3$ when using the FWHM of the Fe III blend inferred from our average spectrum. According to the simple model proposed by Collin et al. (2006), this range of values corresponds to ratios between isotropic (turbulent) and cylindrical (Keplerian) velocities, $a = V_{\text{iso}}/V_{\text{cyl}} \lesssim 0.4$, and inclinations, $i \lesssim 30^\circ$.

5. Conclusions

We used microlensing measurements of the Fe III $\lambda\lambda 2039-2113$ blend to estimate a size of $R_{\text{FeIII}} \sim 15$ lt-days of the region emitting this feature in Q 0957+561. This result is in good agreement with the accretion disk dimensions inferred from microlensing of

the continuum ($17.6^{+3.4}_{-5.1}$ lt-days according to Paper I). Using this size and the redshift of the Fe III $\lambda\lambda 2039-2113$ emission lines, we obtained a mass estimate, $M_{\text{BH}} = 1.5^{+0.5}_{-0.5} \times 10^9 M_{\odot}$, which is in agreement to within errors with previous determinations. The relatively small uncertainties in the mass determination ($\lesssim 35\%$) make this method (Fe III $\lambda\lambda 2039-2113$ redshift plus microlensing based size) a compelling alternative to other methods for the measurement of SMBH masses such as the virial plus RM-based size. Combining the Fe III $\lambda\lambda 2039-2113$ redshift based method with the virial, for Q 0957+561 we estimate a virial factor in the range of $f \sim 1.2-1.7$, which may correspond to a BLR (broad-line region) with moderate to low isotropy ($a = V_{\text{iso}}/V_{\text{cyl}} \lesssim 0.4$) and low inclination ($i \lesssim 30^\circ$).

Acknowledgements. We thank the anonymous referee for the helpful comments and the constructive remarks on this manuscript. We thank the GLENDAMA project for making publicly available the spectroscopic data of Q 0957+561. C. F. gratefully acknowledges the financial support of the Tel Aviv University and University of Haifa through a DFG grant HA3555-14/1. E. M. and J. A. M. are supported by the Spanish MINECO with the grants AYA2016- 79104-C3-1-P and AYA2016-79104-C3-3-P. J. A. M. is also supported from the Generalitat Valenciana project of excellence Prometeo/2020/085. J. J. V. is supported by the project AYA2014-53506-P financed by the Spanish Ministerio de Economía y Competitividad and by the Fondo Europeo de Desarrollo Regional (FEDER), and by project FQM-108 financed by Junta de Andalucía. V. M. acknowledges partial support from Centro de Astrofísica de Valparaíso (CAV).

References

- Assef, R. J., Denney, K. D., Kochanek, C. S., et al. 2011, *ApJ*, 742, 93
 Campitiello, S., Celotti, A., Ghisellini, G., & Sbratto, T. 2020, *A&A*, 640, A39
 Capellupo, D. M., Netzer, H., Lira, P., Trakhtenbrot, B., & Mejía-Restrepo, J. 2015, *MNRAS*, 446, 3427

- Capellupo, D. M., Netzer, H., Lira, P., Trakhtenbrot, B., & Mejía-Restrepo, J. 2016, *MNRAS*, **460**, 212
- Collin, S., Kawaguchi, T., Peterson, B. M., & Vestergaard, M. 2006, *A&A*, **456**, 75
- Cornachione, M. A., Morgan, C. W., Burger, H. R., et al. 2020, *ApJ*, **905**, 7
- Dalla Bontà, E., Peterson, B. M., Bentz, M. C., et al. 2020, *ApJ*, **903**, 112
- Fian, C., Guerras, E., Mediavilla, E., et al. 2018, *ApJ*, **859**, 50
- Fian, C., Mediavilla, E., Motta, V., et al. 2021a, *A&A*, **653**, A109
- Fian, C., Mediavilla, E., Jiménez-Vicente, J., et al. 2021b, *A&A*, **654**, A70 (Paper I)
- Fonseca Alvarez, G., Trump, J. R., Homayouni, Y., et al. 2020, *ApJ*, **899**, 73
- Fromerth, M. J., & Melia, F. 2000, *ApJ*, **533**, 172
- Gil-Merino, R., Goicoechea, L. J., Shalyapin, V. N., & Oscoz, A. 2018, *A&A*, **616**, A118
- Guerras, E., Mediavilla, E., Jimenez-Vicente, J., et al. 2013, *ApJ*, **764**, 160
- Krolik, J. H. 2001, *ApJ*, **551**, 72
- McLure, R. J., & Dunlop, J. S. 2001, *MNRAS*, **327**, 199
- Mediavilla, E., Muñoz, J. A., Lopez, P., et al. 2006, *ApJ*, **653**, 942
- Mediavilla, E., Muñoz, J. A., Falco, E., et al. 2009, *ApJ*, **706**, 1451
- Mediavilla, E., Mediavilla, T., Muñoz, J. A., et al. 2011, *ApJ*, **741**, 42
- Mediavilla, E., Jiménez-Vicente, J., Fian, C., et al. 2018, *ApJ*, **862**, 104
- Mediavilla, E., Jiménez-vicente, J., Mejía-restrepo, J., et al. 2019, *ApJ*, **880**, 96
- Mejía-Restrepo, J. E., Trakhtenbrot, B., Lira, P., Netzer, H., & Capellupo, D. M. 2016, *MNRAS*, **460**, 187
- Motta, V., Mediavilla, E., Falco, E., & Muñoz, J. A. 2012, *ApJ*, **755**, 82
- Peterson, B. M. 1993, *PASP*, **105**, 247
- Peterson, B. M. 2006, in *The Broad-Line Region in Active Galactic Nuclei*, ed. D. Alloin, 693, 77
- Peterson, B. M., & Wandel, A. 1999, *ApJ*, **521**, L95
- Peterson, B. M., & Wandel, A. 2000, *ApJ*, **540**, L13
- Shalyapin, V. N., Goicoechea, L. J., Koptelova, E., Ullán, A., & Gil-Merino, R. 2008, *A&A*, **492**, 401
- Vestergaard, M., & Wilkes, B. J. 2001, *ApJS*, **134**, 1
- Wambsganss, J. 2006, ArXiv e-prints [arXiv:astro-ph/0604278]
- Wandel, A., Peterson, B. M., & Malkan, M. A. 1999, *ApJ*, **526**, 579
- Wu, X. B., Wang, R., Kong, M. Z., Liu, F. K., & Han, J. L. 2004, *A&A*, **424**, 793
- Yu, L.-M., Bian, W.-H., Wang, C., Zhao, B.-X., & Ge, X. 2019, *MNRAS*, **488**, 1519
- Yu, L.-M., Zhao, B.-X., Bian, W.-H., Wang, C., & Ge, X. 2020, *MNRAS*, **491**, 5881