

EQA – Environmental quality / Qualité de l'Environnement / Qualità ambientale, 15 (2014) 41-64

CRITICAL EVALUATION OF AN INTERCALIBRATION PROJECT FOCUSED ON THE DEFINITION OF NEW MULTI-ELEMENT SOIL REFERENCE MATERIALS (AMS-MO1 AND AMS-ML1)

Livia Vittori Antisari ⁽¹⁾, **Gianluca Bianchini** ⁽²⁾, **Enrico Dinelli** ⁽³⁾,
Gloria Falsone ⁽¹⁾, **Aldo Gardini** ⁽⁴⁾, **Andrea Simoni** ⁽¹⁾,
Renzo Tassinari ⁽²⁾, **Gilmo Vianello** ⁽¹⁾

⁽¹⁾ Department of Agricultural Sciences, University of Bologna, Italy

⁽²⁾ Department of Physics and Earth Sciences, University of Ferrara, Italy

⁽³⁾ Depart. of Biological, Geological Environmental Sciences, University of Bologna, Italy

⁽⁴⁾ Department of Statistical Sciences “Paolo Fortunati”, University of Bologna, Italy

Abstract

Soils are complex matrices and their geochemical investigation necessarily needs reliable Certified Reference Materials (CRMs), i.e. standards, to support analytical precision and accuracy. In particular, the definition of soil multi-element CRMs is particularly complex and involves an inter-laboratory program that employs numerous analytical techniques. In this study, we present the results of the intercalibration experiment focused on the certification of two new soil standards named AMS-ML1 and AMS-MO1. The two soils developed on sandstone and serpentinite parent materials, respectively. The experiment involved numerous laboratories and focused on the evaluation of soil physicochemical parameters and geochemical analyses of major and trace elements by X-ray fluorescence (XRF) and Inductive Coupled Plasma techniques (ICP-OES and ICP-MS). The data was statistically elaborated. Three levels of repeatability and accuracy in function of the different analytical methods and instrumentation equipment was observed. The statistical evaluation of the results obtained by ICP-OES on Aqua Regia extracts (i.e., Lilliefors test for normally, Grubbs test for outliers, Cochran test for outliers in variances and ANOVA) allowed to computed some certified values for the two proposed soil standards. This preliminary study will represent the first step of a more thorough intercalibration ring-test involving a higher number of laboratories, in order to propose the investigated matrices as CRMs.

Keywords: *standard soils, macroelements, microelements, XRF, Aqua Regia, ICP-OES, ICP-MS*

Introduction

The international standards that govern the laboratories procedures for analytical testing (ISO 17025, EN 45001) give great importance to reliability and accuracy of the analytical methods and to results of the measurements (ISO 5725). In Italy the approval of the Official Methods of chemical analysis of soils (Gazzetta Ufficiale della Repubblica Italiana, 1999) had encouraged for workshops on procedures standardization for the soils analyses through calibration of both analytical techniques and procedures, involving several instruments. The ISO 5725 defines

the accuracy as the sum of the deviation from the true value or reference (trueness) and the variance between the results of analysis independently obtained on the same sample under the same operating conditions (precision). The concept of precision is better quantified through the use of two different parameters, the repeatability and the reproducibility of the results of the analysis. The first parameter (i.e., repeatability) describes the minimum variability between the results obtained from the analysis of the same sample, under the same environmental conditions, as well as instrumental setup, calibration and analytical time and technical operator. The second parameter (i.e., reproducibility) concerns the highest variability due to changes of the factors as time, instrument, environment, calibration and operator (ISO 5725/1). The repeatability is a estimate related to each laboratory and the reproducibility refers to interlaboratory comparisons (Giandon et al., 2012).

Two different soil standard materials were thus investigated by Experimental Center for the analysis and the study of the soil (CSSAS) to assess the different steps of standards preparation and statistical validation of results. The two standards, called AMS-ML1 and AMS-MO1, were used as internal reference materials. The concentration of total (X-ray fluorescence analysis: XRF) and pseudo-total elements (Aqua Regia mineralization: AR) has been investigated. The pseudo-total elements concentration in Aqua Regia mineralization solution was determined using Inductive Coupled Plasma (ICP) interfaced with both optical detector spectrometry (-OES) and mass spectrometry (-MS).

The aim of this study was the evaluation of elements concentration of which measurement has a good reproducibility and low variability comparing the three different methods: XRF, AR-ICP-OES, AR-ICP-MS. Finally, a further cross-check was obtained analyzing the samples by ICP-MS after effective dissolution obtained by repeated acid digestion by both fluoridric and nitric acids (HF-HNO₃).

Materials

Soil sampling location

The sites chosen for the collection of the reference materials are located in the Upper Tuscan-Emilian Apennines on the border between the provinces of Bologna and Florence (Fig. 1). The first soil sample hereinafter referred to the abbreviation AMS-ML1, has been collected in Tuscany, in the town of Firenzuola, and is developed on a serpentinitic rock included in an allochthonous Liguride ophiolite unit. The second soil sample, called AMS-MO1, has been collected in Emilia Romagna, in the municipality of Monghidoro, and is developed on a sandstone rock included in the sedimentary flysch of Monghidoro formation. Both sites were characterized from the pedogenic point of view by opening control profiles, by description of the diagnostic horizons and their physical-chemical characterization by means of field and laboratory evaluations.



Figure 1

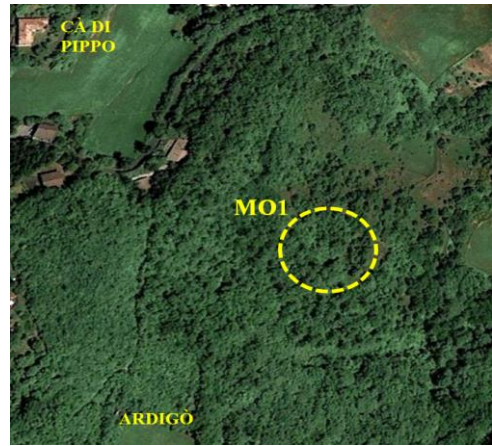
Location of the sampling sites (dashed circles in yellow):

AMS-ML1 site - Sasso Maltesca location (726 m asl) Firenzuola hall, Tuscany Region.

Coord, Geogr. reference point WGS84 UTM 32T 691788.90 mE - 4899113.10 mN

AMS-MO1 site - Ardigò location (818 m asl) Monghidoro hall, Emilia-Romagna Region.

Coord, Geogr. reference point WGS84 UTM 32T 686903.42 mE - 4901041.04 mN



Parent material origin and characteristics

The AMS-ML1 soil parent material consists of serpentinite, an ultramafic rock of mantle provenance included in the Liguride Ophiolite association, i.e. remnants of oceanic lithosphere of Jurassic age obducted during the orogenic processes which originated the Apennines. This lithology is made of femic minerals such as olivine and pyroxenes which were mainly transformed in a serpentine-rich minerals suite.

Elements	AMS-ML1	AMS-MO1
SiO ₂	37.03	69.03
TiO ₂	0.11	0.38
Al ₂ O ₃	2.49	14.44
Fe ₂ O ₃	10.22	2.98
MnO	0.19	0.10
MgO	35.70	1.42
CaO	0.29	0.81
Na ₂ O	0.06	2.02
K ₂ O	0.01	4.01
P ₂ O ₅	0.01	0.03
LOI	13.89	4.78

Table 1.

Average of major elements concentration performed by XRF on the pedogenetic substrates of AMS-ML1 (serpentinized peridotite rock) and AMS-MO1 (quartz-feldspathic sandstone rock) sites, respectively

The AMS-MO1 soil is slightly acidic and develops on sandstone, included in a flysch sedimentary sequence. The parent material was mainly composed by feldspars and quartz, with a carbonate-free matrix. The chemical compositions of both parent materials are reported in Table 1.

Participating laboratories

Preparation, homogenization and storage of soil standard materials

- CSSAS, Experimental Centre for Soil Studies and Analysis, Alma Mater Studiorum, University of Bologna, Italy.

Physical-Chemical Analyses of soil standard materials

- CRAG, Research Centre for Soil-Plant System Studies, Agricultural Research Council, Gorizia, Italy.

- CRAR, Research Centre for Soil-Plant System Studies, Agricultural Research Council, Roma, Italy

- CRAS, Regional Agricultural Research Centre Regione Autonoma della Sardegna, Cagliari, Italy.

- CSA S.p.A., Rimini, Italy

- CSSAS, Experimental Centre for Soil Studies and Analysis, Alma Mater Studiorum, University of Bologna.

- DAES, Department of Agricultural and Environmental Sciences, University of Perugia.

- DIPSА, Department of Agricultural Sciences, Soil Chemistry and Pedology Area, University of Bologna, Italy.

- DISAT Laboratorio di Geopedologia e Pedologia Applicata, Dipartimento di Scienze dell'Ambiente e del Territorio, Università di Milano Bicocca, Italy. IAEC, Institute of Agricultural and Environmental Chemistry, Università Cattolica del Sacro Cuore, Piacenza, Italy.

Major and trace elements determination

X ray fluorescence analyses (XRF)

- BIGEA, Department of Biological, Geological and Environmental Sciences, University of Bologna, Italy

- DEPES, Department of Physics and Earth Sciences, University of Ferrara, Italy.

ICP-OES and ICP-MS determination on Aqua regia solutions (called pseudo-total elements)

- CSSAS, Experimental Centre for Soil Studies and Analysis, Department of Agricultural Sciences, Alma Mater Studiorum, University of Bologna, Italy

- DEPES, Department of Physics and Earth Sciences, University of Ferrara, Italy.

- DIPSА, Department of Agricultural Sciences, Soil Chemistry and Pedology Area, University of Bologna

ICP-MS analyses on totally dissolved samples

- DEPES, Department of Physics and Earth Sciences, University of Ferrara, Italy.

Methods

Preparation, homogenization and storage of the material

Soil standard samples called AMS-MO1 and AMS-ML1 were obtained by homogenization of natural epipedon and endopedon layers collected down to a depth of 10 cm. Each standard sample was obtained by homogenization of about 300 kg of soil; soil samples were air-dried and sieved to 2 mm (fine earth fraction) the sample was subsequently subjected to quartering and division into portions of approximately 250 g.

Determination of physico-chemical characteristics

The main physico-chemical properties of soil reference material were determined according to the current Italian official methods for the physicochemical analysis of soils published on *Gazzetta Ufficiale* (G.U. n 248/99). More in details, the fine earth (<2 mm) samples were analyzed for the following physical and chemical properties. Texture was measured using wet sieving and sedimentation method (Day, 1965). Soil reaction (pH in H₂O and in 1N KCl) was determined by a potenziometer (1:2.5 soil:solution w/v) (pH-meter, Crison). Electrical conductivity (EC) was performed on the 1:2.5 ratio (w/v) using distilled water by a conductimeter (Orion). Total carbonate (CaCO₃) content was quantified by volumetric method (ISO 10693), according to Loeppert and Suarez (1996). Total organic C amount (TOC) was determined by wet oxidation with potassium dichromate at 160 °C for 10min according to Springer and Klee's (1954) methodology. Total nitrogen content (TN) was measured by sulphuric acid digestion according to the Kjeldahl distillation method (Bremner and Mulvaney, 1982). Available phosphorus content (PCit) was extracted with a 1% citric acid solution and the P concentration was determined colorimetrically with the blue ammonium molybdate method with ascorbic acid as reducing agent according to Watanabe and Olsen (1965).

Wavelength dispersive X-ray fluorescence analysis (WDXRF)

X-ray fluorescence (XRF) spectrometry enables the identification and quantification of an element by measurement of its characteristic X-ray emission wavelength of energy (Jenkins, 2006). XRF analysis is a well-established method of quantitative analysis of major (SiO₂, TiO₂, Al₂O₃, Fe₂O₃, MgO, MnO, CaO, Na₂O, K₂O, P₂O₅, expressed in weigh percent) and trace elements (Ba, Ce, Co, Cr, La, Nb, Ni, Pd, Rb, Sr, Th, V, Y, Zn, Cu, Ga, Nd and Sc expressed in parts per million) of any solid matrix. In laboratory, each standard sample was quartered again, dried at 60°C for 24 h in order to eliminate the hygroscopic water and then powdered using an agate mortar. Subsequently, an amount of about 4 g of powder were pressed with addition of boric acid by hydraulic press to obtain powder pellets. Simultaneously, 0.5-0.6 g of powder was heated for about 12 h in a furnace oven at 950°C in order to determine the loss on ignition (LOI). This parameter measures the concentration of volatile species contained in the sample.

XRF analyses were performed both at the University of Ferrara and at the University of Bologna.

- At Ferrara the analyses were carried out by a ARL Advant-XP spectrometer at the Department of Physics and Earth Sciences (DEPES). Calibrations were obtained analyzing certified reference materials, and matrix correction was performed according to the method proposed by Traill and Lachance (1996). Precision and accuracy calculated by repeated analysis of numerous international standards (<http://georem.mpch-mainz.gwdg.de/>) having matrices comparable with those investigated, i.e. femic and ultrafemic rocks such as peridotites (JP-1, PCC-1, NIM-D, DTS-1), serpentinites (UBN), gabbros (JGb1, JGb2), felsic igneous rocks such as granitoids (AC-E, G-2, GA, GH, GS-N, GSR-1, GSP-1) and rhyolites (JR3, RGM1), and various typology of sedimentary rocks (JDO-1, JLK-1, JLS-1, JSD1, JSD2, JSD3). The errors were generally lower than 3% for Si, Ti, Fe, Ca and K, and 7% for Mg, Al, Mn and Na. For trace elements (above 10 ppm), the errors were generally lower than 10%.

- At Bologna the analyses were carried out by Philips PW 1480 spectrometer at the Department of Biological, Geological and Environmental Sciences, (BIGEA), Alma Mater Studiorum University of Bologna, Italy. Major and trace element analyses were performed by X-ray fluorescence spectrometry on powder pellets, following the matrix correction methods of Franzini et al. (1972, 1975) and Leoni and Saitta (1976). The estimated precision and accuracy for trace element determinations are lower than 5% except for those elements concentration ≤ 10 ppm (10-15%). Total loss on ignition (LOI) was gravimetrically estimated after sample overnight heating at 950°C. CO₂ was determined by gasvolumetry following the method of Fabbri et al. (1973).

Aqua regia and HF+HNO₃ soluble elements contents

The fine earth (<2mm) of soil standard samples were finely pulverized to <100 µm with an agate mill. An aliquot of approximately 250 mg of each homogenized and powdered sample was mineralized with Aqua Regia (6 mL 37% HCl Plus and 3mL 65% HNO₃ Suprapur, E. Merck, Germany) in a microwave oven (Milestone 1200) in a Teflon vessel using specific soil digestion program according to Ferronato et al. (2013) and Vittori et al. (2013). After cooling, solutions were made up to 20 mL with milli-Q water and then filtered with Whatman 42 filter.

Contents of 29 elements (Al, As, B, Ba, Be, Ca, Cd, Ce, Co, Cr, Cu, Fe, K, Li, Mg, Mn, Mo, Na, Ni, P, Pb, S, Sb, Sn, Sr, Ti, Tl, V and Zn) were determined for both soil samples by:

- Inductive Coupled Plasma Optical Emission Spectrometry (ICP-OES, Spectro Ametek, Arcos and Spectro Ciros CCD) at the Experimental Centre for Soil Studies Analysis (CSSAS) and Department of Agricultural Sciences (DIPSA), Alma Mater Studiorum, University of Bologna, Italy. For the assessment of the instrumental method accuracy and the analytical results quality, the soil samples were prepared in duplicate and the International Reference Materials (BCR-CRM

141R, 142R, 143R, 320R) provided by the European Commission were used. These analyses will be hereafter referred as AR/ICP-OES.

- X Series Thermo-Scientific spectrometer at the Department of Physics and Earth Sciences of the University of Ferrara (DEPES). External calibration was obtained analyzing differently diluted standard solutions. Specific amounts of Rh, In and Re were added to the solutions as internal standard, in order to correct for instrument drift. Accuracy and precision, based on replicated analyses of samples and standards, are better than 10% for all elements, well above the detection limit. As reference standards, the E.P.A. Reference Standard SS-1 (B type naturally contaminated soil) and the E.P.A. Reference Standard SS-2 (C type naturally contaminated soil) were also analyzed to cross-check and validate results. These analyses will be hereafter defined as AR/ICP-MS. The above described ICP-MS analysis has been performed also on solutions obtained after acid digestion with HF+HNO₃, a procedure that is more efficient than aqua regia in the dissolution of silicate minerals. In this analytical protocol, 0.15 g were attacked for 12 hours with suprapure grade HF and HNO₃ (6 and 3 ml, respectively) on Teflon beakers heated at 170 °C on a hot plate. After evaporation, the samples are re-attacked with 3 ml of HF and 3 ml of HNO₃, and then re-dried on the hot plate. The dried residua is further re-dissolved with 4 ml of HNO₃ and then evaporated. Finally, the residua is solubilized with 2 ml of HNO₃ and ultrapure water reaching a final volume of 100 ml. For these analyses the following reference standards have been used UBN (serpentinite), JGb-1 and JGb-2 (gabbros), JB-1 (basalt), GSR-2 (andesite), soils SS-1 and SS-2 (soils). These analyses will be hereafter defined as HF+HNO₃/ICP-MS.

Statistical approach

Statistical methods for aqua regia and ICP-OES determination. The dataset analysed consisted of a total of $N=17$ observations for each element divided into $K=4$ groups, with the numerosness of the generic i -th group indicated by N_i .

An exploratory analysis of data was performed and for each group of each element the mean was computed as follow:

$$\bar{X}_i = \frac{\sum_{j=1}^{N_i} x_{ij}}{N_i}, \quad i = 1, \dots, K. \quad [1]$$

And the corrected sample standard deviation:

$$s_i = \sqrt{\frac{\sum_{j=1}^{N_i} (x_{ij} - \bar{X}_i)^2}{N_i - 1}}, \quad i = 1, \dots, K. \quad [2]$$

Each set of data was subjected to a procedure of statistical analysis with the aim of identify the acceptable sets of results.

First of all, the null hypothesis that the data come from a normal distribution was tested by using the `lillie.test`, based on the Kolmogorov-Smirnov goodness of fit test. Verifying the normality assumption is essential since all the employed tests and elaborations assume the Normal distribution of the data. This family of tests is founded on the comparison between the empirical distribution and the specified theoretical distribution. In the case of the Lilliefors test, the latter is a Normal distribution function with parameter μ equal to the mean of the observations of each element \bar{X} and σ^2 equal to the corrected sample variance s^2 . The test statistic D is defined as:

$$D = \max_X |F^*(X) - S_N(X)|, \quad [3]$$

where $S_N(X)$ is the empirical distribution function and $F^*(X)$ is the normal distribution function previously described. Then the obtained value is compared with the critical value $D_{0.05}$ based on the Lilliefors distribution and the p-value is computed by Monte Carlo methods (Lilliefors, 1967). If the resultant p-value is lower than the fixed confidence level of 0.05 then the null hypothesis tested is rejected. This procedure is implemented in R by the function `lillie.test`, included in the package `nortest`.

The second step consisted in testing for the homogeneity of the variances of the K data groups (with $K=4$). This is a crucial point since all the observations are analyzed with the same method, therefore homogeneous variances are expected. According to ISO Standard 5725 (1994), Cochran's test for variance outliers was considered to investigate this. It assumes that the data groups come from a normal population and it is based on the C statistic which is defined as:

$$C = \frac{\text{largest of the } s_i^2}{\sum_{i=0}^K s_i^2} \quad [4]$$

Since in this case data had a balanced design and the only the upper limit variance was tested, the C statistic was compared with the critical value C_{UL} with the confidence level $\alpha=0.05$:

$$C_{UL} = \left[1 + \frac{K-1}{F_c(\alpha/K, (K-1), (K-1)(N-1))} \right]^{-1}, \quad [5]$$

where F_c is the critical value of a F distribution with $K-1$ and $(K-1)(N-1)$ degrees of freedom (Snedecor and Cochran, 1980). If C exceeds the threshold C_{UL} , then the null hypothesis that all the variances are homogeneous is rejected. This test was implemented in R by the function `Cochran.test` included in the package `outliers`.

Afterward, the analysis focused on detecting outliers among the group means through the application of the Grubbs' test for outliers. It is able to detect one outlier at a time and it can test the null hypothesis that no outliers are present in a vector assumed normally distributed. The G statistic is defined as:

$$G = \frac{\max_{i \text{ in } 1, \dots, K} |\bar{X}_i - \bar{Y}|}{s_Y}, \quad [6]$$

where \bar{X}_i is the mean of the i -th group, \bar{Y} is the mean of the group means and s_Y the standard deviation of the group means. For the one sided Grubbs' test the null hypothesis is rejected when G is greater than the following critical value (Grubbs, 1950):

$$\frac{K-1}{\sqrt{K}} \sqrt{\frac{t_{\alpha/2, K-2}^2}{K-2+t_{\alpha/2, K-2}^2}}, \quad [7]$$

where $t_{\alpha/2, K-2}^2$ is the square of the value of the Student's t distribution with $K-2$ degrees of freedom that corresponds to the $\alpha/2$ quantile. The test was performed in R by using the function `grubbs.test` of the package `outliers`.

Ultimately, the estimate of the between group (S_b) and the within group (S_w) standard deviations were compared by using the one way ANOVA. The two components of the overall variance are estimated by the following expressions:

$$S_b = \sqrt{\frac{\sum_{i=1}^K N_i (\bar{X}_i - \bar{Y})^2}{K-1}}, \quad [8]$$

$$S_w = \sqrt{\frac{\sum_{i=1}^K \sum_{j=1}^{N_i} (x_{ij} - \bar{X}_i)^2}{K \cdot (N-1)}}. \quad [9]$$

The study of the variance decomposition estimated by the one way ANOVA showed that the between group variation represented the major source of variability, then it was decided to compute the certified value as the mean of the group means, indicated by \bar{Y} .

A 95% confidence interval was computed for every mean group, and its range was computed as:

$$\bar{X}_i \pm t_{\alpha/2, N_i-1} \cdot \frac{s_i}{\sqrt{N_i}} \quad [10]$$

The 95% confidence interval was also computed for the certified value in a similar way:

$$\bar{Y} \pm t_{\alpha/2, N-1} \cdot \frac{s}{\sqrt{N}}, \quad [11]$$

where s is the estimated standard deviation of the group means:

$$s = \sqrt{\frac{\sum_{i=1}^K (\bar{X}_i - \bar{Y})^2}{K-1}}. \quad [12]$$

The uncertainty of the certified value was fixed as the half width of the 95% confidence interval of the mean \bar{Y} .

The tests on certifiable elements should not show any evidence of issues in the assumptions and the mean value has to be included in the confidence interval of every group mean. To verify this point, bar graphs for each element were produced.

Results and discussion

Physicochemical properties of standard soils

The main physicochemical properties obtained by the different laboratories were shown in Tables 2 and 3. The textural class of both standard soils is sandy.

Table 2. Mean amount of textural classes (Sand, Silt and Clay) determined on AMS-ML1 e AMS-MO1 standard materials, measured during 2010-2014 (Measure unit g/kg). * The data is the mean value of 11 analytical replications.

Standard	Laboratory number	Sand		Silt		Clay	
		Ø 2-0.05 mm		Ø 0.05-0.002 mm		Ø < 0.002 mm	
		Average (11)*	SD	Average (11)*	SD	Average (11)*	SD
AMS-ML1-	4	625	49	215	35	164	16
AMS-MO1	7	796	31	134	17	70	23

Table 3. Mean values of physicochemical properties of AMS-ML1 e AMS-MO1 soil standard materials, measured during 2010-2014.

Parameters	Measure unit	Number of laboratory	Number of replications	ML1-AMS		MO1-AMS	
				Average	SD	Average	SD
pH (H ₂ O)		5	12	7.60	0.29	5.80	0.17
pH (KCl)		2	5	6.40	0.19	4.80	0.06
EC	µS/cm	2	4	83.8	2.6	108.5	3.8
TOC	g/kg	6	14	24.9	3.4	17.5	1.4
TN	g/kg	3	6	2.10	0.08	1.30	0.29
CaCO ₃	g/kg	3	6	8.40	0.80	< 0.1	----
Calcium active	g/kg	2	2	< 0.1	----	< 0.1	----
CEC	cmol(+) kg ⁻¹	4	6	17.3	3.4	12.3	2.6
K ex	cmol(+) kg ⁻¹	3	6	0.20	0.08	0.20	0.04
Ca ex	cmol(+) kg ⁻¹	3	6	18.4	6.2	7.90	3.03
Mg ex	cmol(+) kg ⁻¹	3	6	2.80	0.58	1.20	0.32
Na ex	cmol(+) kg ⁻¹	3	6	0.30	0.04	0.30	0.05
BS	%	2	4	87.7	2.1	62.5	1.8
P available	mg/kg	3	6	7.70	3.67	6.60	2.40
P organic	mg/kg	2	4	138.8	8.0	58.5	3.9
Feo	g/kg	2	4	1.50	0.18	0.90	0.07
Alo	g/kg	2	4	0.50	0.09	0.40	0.02

Where: EC is Electric Conductivity; TN is total nitrogen ; TOC is Total Organic Carbon; CaCO₃ is total carbonate, CEC is Cation Exchange Capacity; K ex, Ca ex, Mg ex and Na ex are the exchangeable bases, BS is Base saturation, P available is P content according to Olsen's method, Feo and Alo forms are Al and Fe extracted by ammonium oxalate solution

The two standard materials differ for some parameters as pH value which is neutral for ML1 and acid for MO1, the amount of exchangeable bases and percentage of basic saturation, which were lower in MO1 than in ML1-ASM, as expected due to the different parent material. Other properties are instead similar as high TOC and TN content in both soil standards (TOC: 24.9 and 17.5 g/kg, TN: 2.1 and 1.3 g/kg, respectively for AMS-ML1 and AMS-MO1). The cation exchange capacity (CEC) value is relatively high referred to the high sand content and it is due to high organic matter content. As expected, the prevailing phosphorus form for both standards is organic one, linked to high organic matter content.

Comparison of major and trace elements determination in soil standard materials using different analytical techniques.

The major and trace elements concentrations are detected using different methodologies. The Tables 4a,b and 5a,b showed the elements measured after mineralization using HF-HNO₃ and HCl-HNO₃ (aqua regia, AR) solution and determined by ICP-MS.

As expected, the use of HF during the solubilization of samples makes the elements extraction more efficient than AR methodology. The ICP-MS instrument is a very powerful analytical tool due to a large amount of trace elements detected. Many of these are related to the group of rare-earth elements (REE) and these can be used as tracers of chemical-biochemical processes in soils. The sensibility of ICP-MS for determining the trace elements is very good according to the low standard deviation (SD).

In Figure 2, the logarithmic scatterplot obtained from the comparison of HF-HNO₃ data (Y axis) and Aqua Regia data (X axis) determined using ICP-MS tool of AMS-ML1 (black diamond) and AMS-MO1 (gray square) are shown.

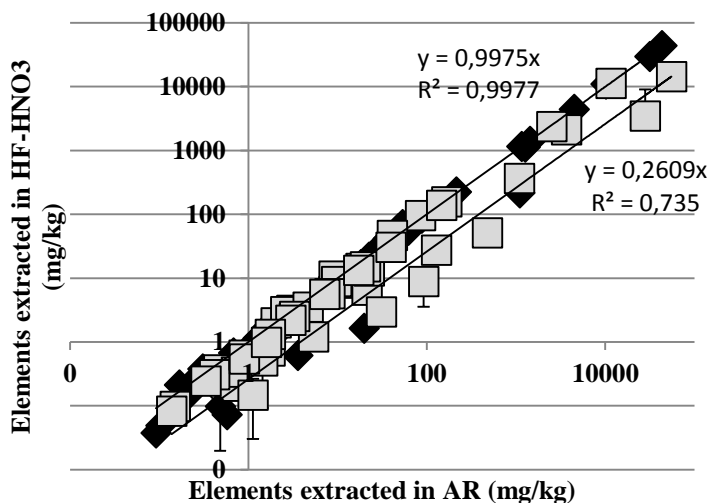


Figure 2. Logarithmic scatterplot of the elements concentration determined in Aqua Regia (AR) vs HF-HNO₃ solution using ICP-MS of MO1-ASM (gray square) and ML1-ASM (black diamond)

It is possible notice that the results for ML1 are very similar for the two investigation ($R^2 = 0.998$), while in AMS-MO1 lower value of determination coefficient was found ($R^2 = 0.735$) and lower amounts of K and Al were detected using AR method than those obtained with HF-HNO₃ mineralization.

Element	ICP-MS analyses on samples totally dissolved by HF+HNO ₃			
	AMS-ML1		AMS-MO1	
	Average	SD	Average	SD
Al	31508	1279	55067	151
B	36.7	4.5	9.1	0.4
Ba	87.8	2.7	476	1
Be	0.68	0.10	1.7	0.2
Ca	10157	1780	3661	33
Cd	0.88	0.2	1.4	0.4
Co	75.6	0.2	3.1	0.1
Cr	1268	28.3	84.4	3.4
Cu	22.4	0.1	9.9	1.4
Fe	43163	4657	11564	215
Ga	9.00	0.8	21.3	7.6
K	4489	1195	28043	5547
Li	47.8	1.9	18.1	1.5
Mg	na	na	2515	245
Mn	1434	101	166	9
Mo	0.31	0.01	2.0	0.1
Na	na	na	14521	213
Ni	1153	44	9.70	0.80
P	214	10	147	2
Pb	8.88	0.10	22.6	2.2
Sb	0.24	0.01	0.50	0.01
Sc	9.08	0.10	2.60	0.40
Sn	1.28	0.30	3.30	0.10
Sr	62.1	0.6	92.0	5.3
Ti	1096	45	1088	11
Tl	0.17	0.01	0.70	0.01
Zn	53.3	0.7	41.1	6.3
Rb	28.0	0.4	128	7
Y	5.58	0.10	8.20	0.80
Zr	19.8	0.4	30.8	0.6

Table 4a

Mean (2 samples) of major and trace elements concentration using HF-HNO₃ mineralization coupled with ICP-MS tool for AMS-ML1 and AMS-MO1 samples characterization. The data are expressed in mg/kg

na not analysed, SD standard deviation.

Element	ICP-MS analyses on samples totally dissolved by HF+HNO ₃			
	AMS-ML1		AMS-MO1	
	Average	SD	Average	SD
Nb	3.58	0.10	5.40	0.20
La	9.05	0.10	20.5	3.0
Ce	18.2	0.30	39.7	5.6
Pr	2.15	0.01	4.60	0.50
Nd	8.19	0.20	17.2	1.7
Sm	1.59	0.01	3.30	0.30
Eu	0.36	0.01	0.70	0.01
Gd	1.52	0.01	3.00	0.30
Tb	0.23	0.01	0.40	0.01
Dy	1.06	0.01	1.80	0.10
Ho	0.22	0.01	0.30	0.01
Er	0.59	0.01	0.90	0.01
Tm	0.10	0.01	0.20	0.01
Yb	0.58	0.01	0.90	0.01
Lu	0.09	0.01	0.10	0.01
Hf	0.58	0.10	1.10	0.11
Ta	0.35	0.20	0.40	0.01
Th	2.27	0.10	7.20	0.01
U	0.48	0.10	1.60	0.20

Table 4b

Mean (2 samples) of rare-earth elements (REE) concentration using HF-HNO₃ mineralization coupled with ICP-MS tool for AMS-ML1 and AMS-MO1 samples characterization. The data are expressed in mg/kg

SD standard deviation

The total dissolution of the soil samples using HF-HNO₃ solution coupled with ICP-MS tool showed similar concentration for many elements to those determined by X-ray fluorescence technique (XRF), as reported in Table 6. The results for major elements in XRF have been standardized using their percentage as oxides and the 100% of composition is given by the compounds loosen by ignition at 950°C (loss on ignition, LOI). The trace elements were expressed as mg/kg. The XRF method also allows to determine some elements of group of rare-earth (REE). The pseudo-total elements concentration is shown in Table 7. These elements are extracted from soil in Aqua Regia, and detected using ICP coupled with optical emission spectrometry (OES). It is well known that several elements could be overestimated or underestimated by ICP-OES due to the interference of some elements which can emit wavelengths of certain orbital levels in the same line. Nevertheless, the versatility of this instrument which determines simultaneously all the elements makes it very common in testing laboratories.

The comparison of the elements concentration in the AR-extracts determined by ICP-MS and ICP-OES (Table 4a and 7, respectively) showed several difference.

Element	ICP-MS analyses on samples dissolved by HCl+HNO ₃			
	AMS-ML1		AMS-MO1	
	Average (6)	SD	Average (6)	SD
Al	29583	1625	14423	613
As	3.60	0.29	4.10	0.48
B	41.7	2.8	10.8	1.0
Ba	87.1	2.5	51.3	2.0
Be	0.70	0.03	0.73	0.04
Ca	11070	476	2105	119
Cd	0.10	0.01	0.51	0.14
Co	77.5	2.8	3.10	0.10
Cr	1138	28	95.8	5.2
Cu	21.3	2.2	8.40	0.93
Fe	44219	2089	11332	1114
Ga	10.5	1.3	6.50	0.47
K	4406	236	3472	463
Li	59.4	2.7	14.2	0.7
Mg	na	na	2380	100
Mn	1391	76	158	5
Mo	0.38	0.08	1.99	0.06
Na	144	13	370	23
Ni	1160	137	8.90	0.96
P	224	5	139	2
Pb	9.30	0.52	13.0	0.4
Sb	0.24	0.05	0.37	0.05
Sc	10.3	0.7	2.98	0.26
Sn	1.15	0.15	2.37	0.16
Sr	56.1	1.9	8.85	0.10
Ti	218	25	364	42
Tl	0.20	0.02	0.20	0.03
Zn	69.2	10.2	46.8	6.5
Rb	28.2	2.8	27.5	2.6
Y	4.22	0.10	5.68	0.03
Zr	1.64	0.04	2.95	0.03

Table 5a

Mean of major and trace elements concentration using aqua regia mineralization coupled with ICP-MS tool for AMS-ML1 and AMS-MO1 samples characterization. The data are expressed in mg/kg

na not analysed,
SD standard deviation.

Element	ICP-MS analyses on samples dissolved by HCl+HNO ₃			
	AMS-ML1		AMS-MO1	
	Average (6)	SD	Average (6)	SD
Nb	0.61	0.01	1.20	0.09
La	8.12	0.05	15.0	0.5
Ce	16.4	0.2	30.4	1.0
Pr	2.00	0.02	3.52	0.11
Nd	8.10	0.11	13.3	0.4
Sm	1.60	0.03	2.52	0.07
Eu	0.36	0.01	0.34	0.01
Gd	1.40	0.03	2.20	0.03
Tb	0.21	0.01	0.31	0.01
Dy	0.88	0.02	1.31	0.01
Ho	0.16	<0,01	0.24	0.01
Er	0.36	<0,01	0.62	0.01
Tm	0.05	<0,01	0.10	<0,01
Yb	0.25	0.01	0.54	0.01
Lu	0.04	<0,01	0.08	<0,01
Hf	0.07	<0,01	0.15	<0,01
Ta	<0,01	<0,01	<0,01	<0,01
Th	1.57	0.01	5.60	0.10
U	0.10	<0,01	0.99	0.01

Table 5b

Mean of rare-earth elements (REE) elements concentration using aqua regia mineralization coupled with ICP-MS tool for ML1-AMS and MO1-ASM samples characterization. The data are expressed in mg/kg

SD standard deviation

Larger differences were investigated for trace elements than major ones; for example an overestimated value was detected by ICP-OES for Sb and Zn due to interference with other emission lines (e.g. aluminum, iron).

The comparison between the data obtained from AR, HF-HNO₃ mineralization, XRF methodology and both ICP-MS and ICP-OES techniques for ASM-MO1 showed that concentration of aluminium was detected in this way: XRF>HF-HNO₃-ICP-MS>>AR for both instrumental techniques. (Fig. 3). Thus the Al content in soil samples in AR were underestimated, confirming the already observed trend for AR-ICP-MS and HF+HNO₃-ICP-MS.

Other elements showed similar trend as K, Fe and Ca. In ASM-ML1 samples the AR-ICP-OES underestimated the Mg content compared to XRF technique. These elements are present in minerals and for this reason discrepancies among samples occurred due to both treatment and instrument techniques.

It is important to note that distinct analytical techniques, sometimes for particular elements, give different results and these differences are mainly related to the treatment of the sample.

Elements	XRF determination of standard materials				
	AMS-ML1		AMS-MO1		
	Average (8)	SD	Average (8)	SD	
Macroelements oxydes (%)	SiO ₂	39.10	2.00	70.33	0.70
	TiO ₂	0.20	0.00	0.30	0.01
	Al ₂ O ₃	7.10	0.70	13.79	0.50
	Fe ₂ O ₃	6.10	0.40	2.02	0.20
	MnO	0.10	0.01	0.05	0.01
	MgO	27.40	2.00	1.09	0.20
	CaO	1.70	0.10	0.73	0.10
	Na ₂ O	0.20	0.10	2.27	0.10
	K ₂ O	0.60	0.01	3.60	0.10
	P ₂ O ₅	0.10	0.01	0.09	0.01
	LOI	17.30	1.40	5.73	0.20
Micro and trace elements (mg/kg)	As	6	3	5	1
	Ba	139	64	466	29
	Ce	19	13	36	4
	Co	95	10	3	2
	Cr	1709	99	145	26
	Cu	31	5	12	2
	Ga	8	1	11	1
	Hf	3	1	8	4
	La	14	2	15	2
	Nb	7	4	8	2
	Nd	9	3	13	2
	Ni	1653	133	12	2
	Pb	13	4	28	3
	Rb	35	4	144	13
	Sc	10	6	7	3.4
	Sr	76	11	100	14
	Th	5	6	6	4
	V	63	8	33	3
	Y	6	2	16	3
	Zn	63	5	29	6
Zr	35	8	116	16	

Table 6

Mean concentration of total elements using XRF determination of standard materials MLI-AMS e MOI-AMS, respectively in BIGEA and DEPES laboratory in the three years 2012-2014. The data are expressed as mg/kg

SD standard deviation.

Elements	AMS-ML1		AMS-MO1	
	Average (17)	SD	Average (17)	SD
Al	25174	1848	13181	962.9
As	1.7	0.3	3.5	0.3
B	35.7	1.2	13.8	4.4
Ba	76.9	8.5	53.5	6.3
Be	0.5	0.0	0.7	0.0
Ca	10673	1000	2008	154
Cd	0.1	0.0	0.2	0.0
Ce	8.6	0.6	26.4	0.7
Co	70.4	3.6	3.4	1.5
Cr	1122	60	94.6	13.9
Cu	27.3	1.0	8.7	1.5
Fe	34640	1994	8796	513
K	4869	742	2653	511
Li	62.6	3.1	13.8	1.2
Mg	13983	8909	2331	109
Mn	1102	101	161	6.1
Mo	0.3	0.0	1.9	0.3
Na	387	80	504	152
Ni	1111	60	10.4	0.6
P	223	17.4	155	8.4
Pb	11.4	3.7	13.4	0.6
S	317	100	150	15
Sb	5.6	1.1	1.2	0.2
Sn	0.9	0.1	2.3	1.1
Sr	52.7	8.9	11.1	1.4
Ti	194	35	411	52
Tl	0.8	0.3	0.7	0.2
V	47.3	2.1	20.6	1.1
Zn	74.3	4.1	34.1	10.1

Table 7
Mean Concentration of elements using *qua regia*-ICP-OES determination of standard materials AMS-ML1 and AMS-MO1, respectively in CSSAS e DIPSA laboratory in the three years 2012-2014. (Data expressed as mg/kg)
SD standard deviation.

The XRF analyses carried out both at the Universities of Bologna and Ferrara are internally consistent. This technique directly analyses the sample powder without preliminary chemical treatments. It gives the “bulk” i.e. total concentration of the investigated matrices. It is therefore plausible that the XRF elements concentrations tend to be higher than those observed by ICP analyses on *Aqua Regia* solutions that, although often referred to as pseudo-total, do not dissolve the more resistant minerals. HF+HNO₃ extractions are obviously more effective and generally dissolve the silicate minerals. However, also in this case the more resistant minerals (e.g. zircon, rutile, chromite, corundum) resist to the acid attack.

Moreover, HF+HNO₃ extractions are sometimes affected by losses of volatile elements having affinity with fluorine during the acid attack. However, specific differences in elements concentration due to the type of parent material of soil materials were evident. AMS-ML1 comes from serpentinite, a rock rich in serpentine minerals which are 1:1 trioctahedral minerals.

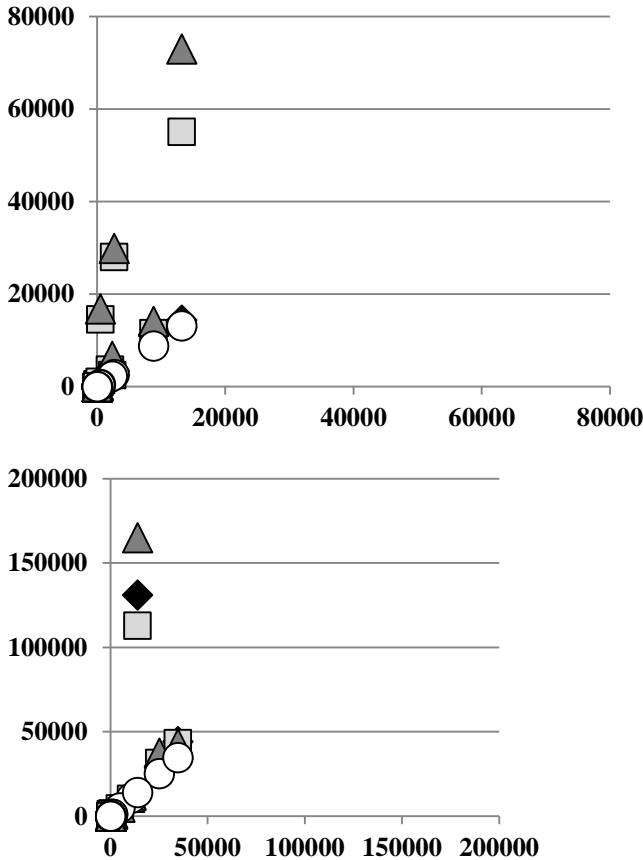


Figure 3
 Scatterplot of different extraction methodologies (Aqua regia, HF-HNO₃) and instrumental techniques (ICP-OES, ICP-MS, XRF) and in particular AR-ICP-OES (white circle), AR-ICP-MS (Black diamond), HF-HNO₃-ICP-MS (gray square) and XRF (gray triangle) for MLI-ASM and MOI-ASM, respectively. The data are expressed as mg/kg

Serpentines are unstable at pH<8 (Evans, 1992). In soils serpentines easily weather and lead to the formation of pedogenic chlorite, which is normally an unstable clay mineral (Schaetzl and Anderson, 2005). Efficient dissolution in acidic condition can occur in serpentine-derived soils, because of the weatherability of serpentine and its transformation products.

For this reason in AMS-ML1 the differences in elements concentration between mineralization procedures (AR and HF+HNO₃) were minimized with respect to those detected in AMS-MO1. This later developed on sandstone rich in feldspars and mica, and elements such as Al, K, Fe and Ca compose resistant minerals to AR digestion. Note that XRF technique is not affected by preliminary treatments which can introduce errors, but is less sensitive than the ICP techniques in revealing concentration at few ppm level.

On the contrary, ICP-techniques, that are more precise and accurate in the analysis of trace elements, sometimes show problems in the investigation of major elements. The above considerations cannot be established a priori and have to be evaluated for each sample having specific composition.

Results of the statistical tests used to explore each set of results								
Elements	Lillefors test for normality		Grubbs test for outliers		Cochran test for outliers in variances		One way ANOVA	
	D statistic	p-value	G statistic	p-value	C statistic	p-value	Sw	Sb
Al	0.152	0.376	0.916	0.444	0.585	0.139	853.018	986.592
Ca	0.182	0.143	1.145	0.776	0.548	0.206	168.747	47.994
Cr	0.158	0.308	1.340	0.426	0.335	1.000	22.127	11.177
Mg	0.154	0.354	1.327	0.755	0.444	0.512	110.318	99.803
Mn	0.158	0.314	1.649	0.129	0.544	0.214	6.193	5.463
Ni	0.117	0.779	1.485	0.410	0.559	0.183	0.633	0.567
P	0.199	0.073	1.449	0.135	0.526	0.255	8.607	7.243
Pb	0.103	0.905	1.621	0.170	0.372	0.862	0.554	0.913
Ti	0.111	0.838	1.382	0.628	0.506	0.307	47.423	71.146
V	0.102	0.909	1.288	0.565	0.472	0.411	1.085	0.920

Summary of the statistical data				
Elements	Mean of means	SD of mean	Certified value	Uncertainty
Al	13180.94	360.25	13180.9	573.2
Ca	2007.76	20.03	2007.8	31.9
Cr	94.59	8.97	94.6	14.3
Mg	2331.12	49.41	2331.1	78.6
Mn	160.73	2.35	160.8	3.8
Ni	10.42	0.24	10.4	0.4
P	155.00	3.13	155	5.0
Pb	13.45	0.40	13.5	0.7
Ti	410.61	30.60	410.6	48.7
V	20.65	0.37	20.6	0.6

Table 8
Some examples of statistical tests on data obtained by aqua regia (AR) mineralization and ICP-OES determination of AMS-MOI soil standard material.

Results of the statistical tests used to explore each set of results								
Elements	Lillefors test for normality		Grubbs test for outliers		Cochran test for outliers in variances		One way ANOVA	
	D statistic	p-value	G statistic	p-value	C statistic	p-value	Sw	Sb
As	0.129	0.642	1.294	0.548	0.604	0.112	0.297	0.179
B	0.162	0.281	1.426	0.197	0.517	0.277	1.267	0.765
Cu	0.127	0.661	1.225	0.733	0.351	0.984	0.984	1.088
Li	0.148	0.414	1.442	0.156	0.562	0.178	2.634	4.660
Mn	0.145	0.445	1.294	0.549	0.653	0.062	79.849	164.923
Sn	0.112	0.823	1.212	0.768	0.467	0.426	0.146	0.130
Ti	0.157	0.319	1.258	0.645	0.478	0.389	33.535	42.261
Tl	0.119	0.755	1.229	0.724	0.619	0.095	0.298	0.061
V	0.116	0.784	1.490	0.027	0.343	1.000	1.740	3.131
Zn	0.099	0.929	1.332	0.447	0.622	0.091	4.257	3.051

Summary of the statistical data				
Elements	Mean of means	SD of mean	Certified value	Uncertainty
As	1.747	0.08	1.7	0.2
B	35.711	0.33	35.7	0.6
Cu	27.350	0.47	27.4	0.8
Li	62.543	2.01	62.5	3.2
Mn	1102.562	71.31	1102.6	113.5
Sn	0.921	0.06	0.92	0.09
Ti	194.121	18.21	194.1	29.0
Tl	2.781	0.03	2.78	0.05
V	47.324	1.34	47.3	2.2
Zn	74.301	1.31	74.3	2.1

Table 9
Some examples of statistical tests on data obtained by aqua regia (AR) mineralization and ICP-OES determination of AMS-ML1 soil standard material

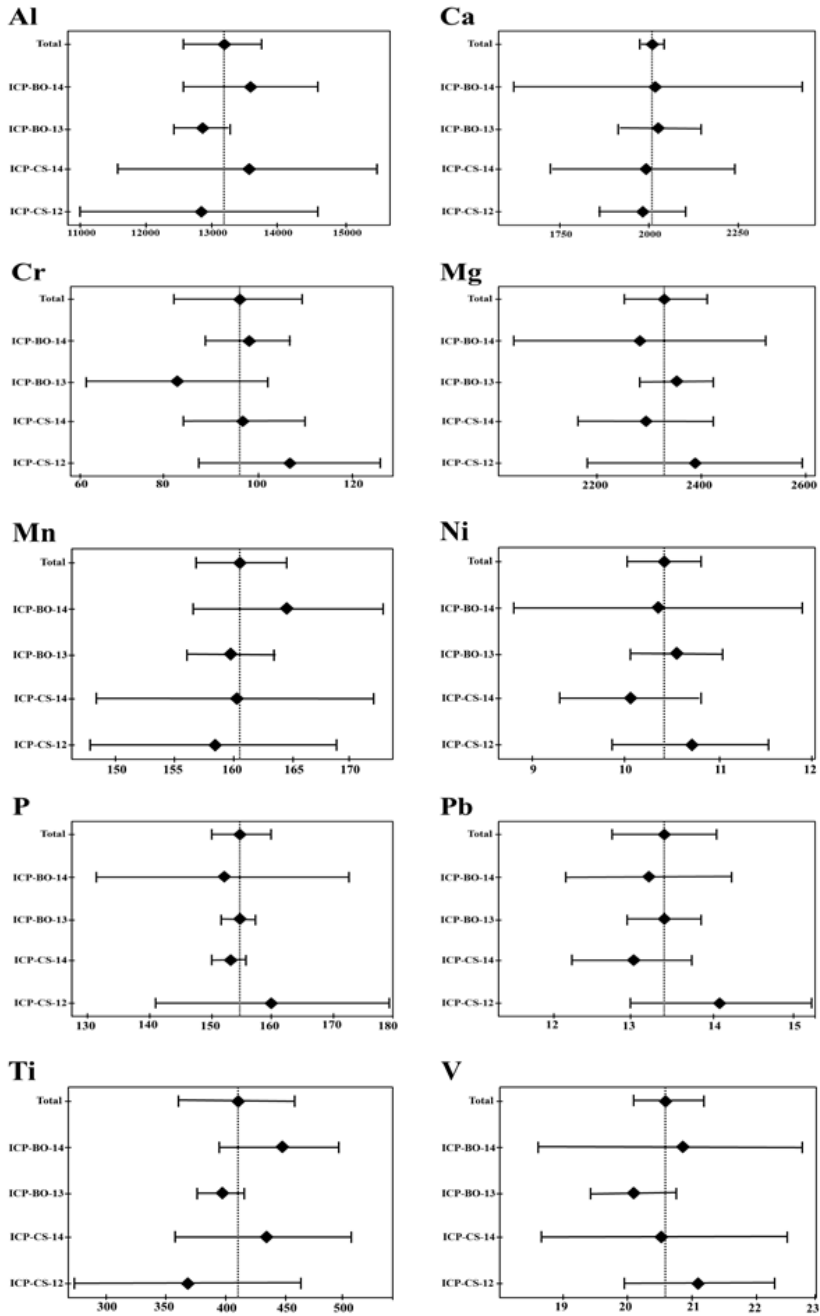


Figure 4. Some examples of statistical representation on data obtained by aqua regia (AR) mineralization and ICP-OES of AMS-MO1 soil standard material (see also table 8). The data are expressed as mg/kg.

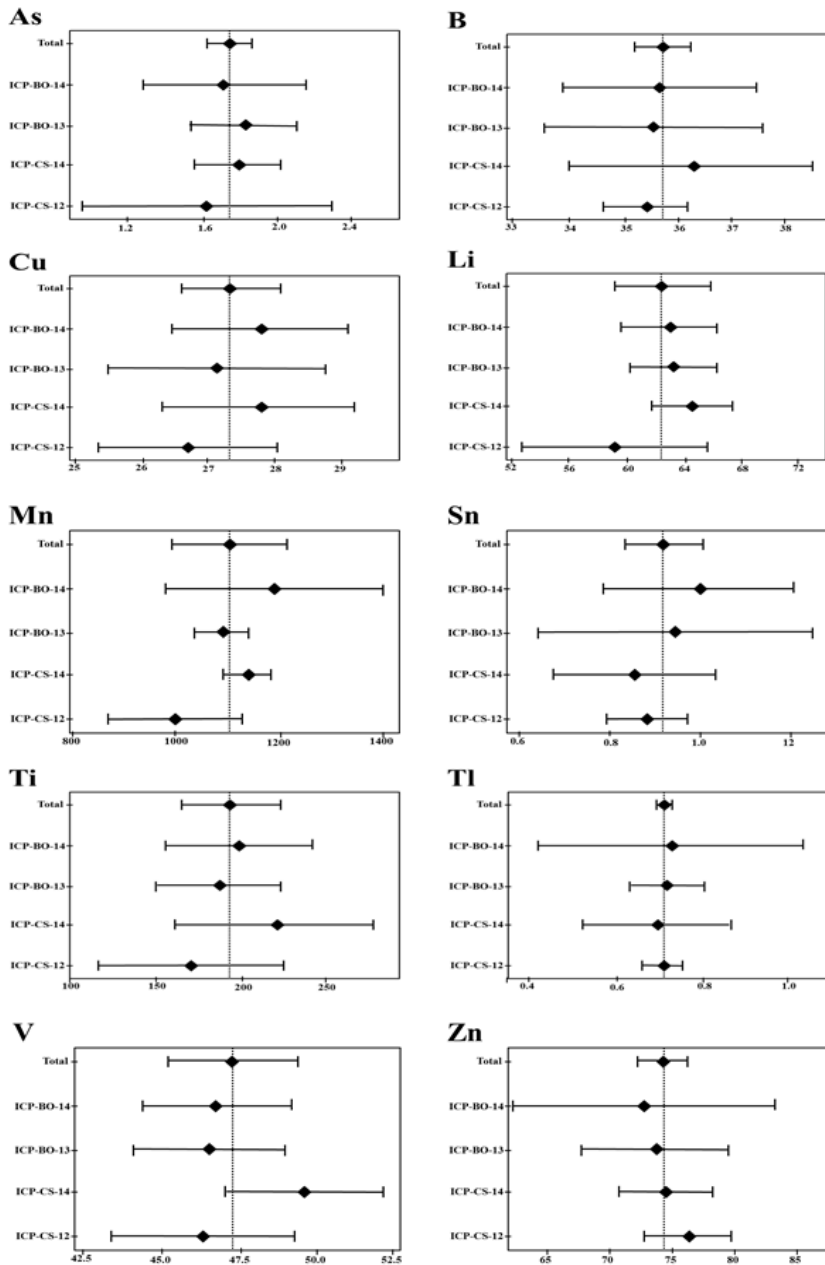


Figure 5. Some examples of statistical representation on data obtained by aqua regia (AR) mineralization and ICP-OES of AMS-ML1 soil standard material (see also table 9). The data are expressed as mg/kg.

In general for most elements we noted that analyses on aqua regia solutions, analysed by both ICP-OES and ICP-MS, have lower concentration than analyses on solutions obtained treating the samples with HF+HNO₃; in turn, the elements concentration obtained on AR and HF+HNO₃ solutions are usually lower than sample powders by XRF.

Technical and statistical discussion

In Tables 8-9 and Figures 4-5 some examples of statistical tests on data obtained from AR-ICP-OES for AMS-MO1 and AMS-ML1 are shown. After statistical test we can certify some values obtained by AR-ICP-OES methodology (Tab. 8 and 9).

Conclusions

The preparation of two reference materials (AMS-ML1 and AMS-MO1) obtained by homogenization of epipedon and endopedon of natural soils has allowed us to achieve a significant level of certification through ring tests carried out by some soil chemistry and geochemical laboratories in Italy. The statistical analysis of the data obtained has also highlighted the different levels of analytical sensitivity as a function of the methods and equipment used.

The comparison between the data obtained from Aqua Regia extracts and HF--HNO₃-HCl mineralization determined by ICP-MS and ICP-OES, and from XRF methodology showed several differences.

The XRF concentrations tend to be higher than those observed with both ICP instruments analysing Aqua Regia solutions that, although often referred to as pseudo-total, do not dissolve the more resistant minerals. HF+HNO₃ extractions are obviously more effective and generally dissolve the silicate minerals.

Acknowledgments

Thanks to the scientific collaboration Anna Benedetti and Maria Teresa Dell'Abate (Research Centre for Soil-Plant System Studies, Agricultural Research Council, Roma, Italy), Liviana Leita (Research Centre for Soil-Plant System Studies, Agricultural Research Council, Gorizia, Italy), Nicoletta Fadda (Regional Agricultural Research Centre Regione Autonoma della Sardegna, Cagliari, Italy), Elena Pari and Pierpaolo Tentoni (CSA S.p.A., Rimini, Italy), Rolando Calandra and Andrea Leccese (Department of Agricultural and Environmental Sciences, University of Perugia), Paola Gioacchini (Department of Agricultural Sciences, Soil Chemistry and Pedology Area, University of Bologna, Italy), Franco Previtalli (Laboratorio di Geopedologia e Pedologia Applicata, Dipartimento di Scienze dell'Ambiente e del Territorio, University of Milano Bicocca, Italy), Claudio Baffi and Sandro Silva (Institute of Agricultural and Environmental Chemistry, Università Cattolica del Sacro Cuore, Piacenza, Italy).

References

BREMNER J.M., MULVANEY C.S. (1982) Nitrogen-Total." In: *Methods of Soil Analysis*. Agron. Madison. pp. 595- 624.

- EVANS L.J. (1992) Alteration products at the earth's surface – the clay minerals. In: *Weathering, soils and paleosols*. Elsevier, Amsterdam, London, New York, Tokyo
- FABBRI B., GAZZI P., ZUFFA G.G. (1973) La determinazione della componente carbonatica nelle rocce. *Mineral. Petrogr. Acta*, 19:137-154.
- FERRONATO C., VITTORI ANTISARI L., MODESTO M.M., VIANELLO G. (2013) Speciation of heavy metals at water-sediment interface. *EQA*, 10:51-64. DOI 10.6092/issn.2281-4485/3932.
- FRANZINI M., LEONI L., SAITTA M. (1972) A simple method to evaluate the matrix effects in X-ray fluorescence analysis. *X-ray Spectrometry*, 1:151-154.
- FRANZINI M., LEONI L., SAITTA M. (1975) Revisione di una metodologia analitica per fluorescenza X basata sulla correzione complete degli effetti di matrice. *Rend. Soc. Ital. Mineral. Petrol.*, 31:365-378. A simple method to evaluate the matrix effects in X-ray fluorescence analysis. *X-ray Spectrometry*, 1:151-154.
- GAZZETTA UFFICIALE DELLA REPUBBLICA ITALIANA (1999). Regolamento recante criteri, procedure e modalità per la messa in sicurezza e il ripristino ambientale dei siti inquinati, ai sensi dell'articolo 17 del decreto legislativo 5/2/1997, no 22, e successive modifiche e integrazioni 471:67.
- GIANDON P., DALLA ROSA A., GARLATO A., RAGAZZI F. (2012) Evaluation of soil diffuse contamination in Venice region (Italy). *EQA*, 9:11-18. DOI 10.6092/issn.2281-4485/3733.
- GRUBBS F.E. (1950) Sample criteria for testing outlying observations. *Ann. Math. St.*, 21(1):27-58.
- LOEPPERT, R.H., SUAREZ, D.L., (1996) Carbonate and gypsum. In: Sparks, D.L. (Ed.), *Method of Soil Analysis. Part 3, Chemical Methods*. SSSA and ASA, Madison, pp. 437–474.
- IMAI N., TERASHIMA S., ITOH S., ANDO A. (1996) Compilation of analytical data on nine GSJ geochemical reference samples. "Sedimentary rock series". *Geostand. Newsl.*, 20:165-216.
- JENKINS R. (2006) *Encyclopedia of Analytical Chemistry*. Wiley. pp.21.
- LEONI L., SAITTA M. (1976) X-ray fluorescence analysis of 29 trace elements in rock and mineral standards. *Rend. Soc. Ital. Mineral. Petrol.*, 323:497-510.
- LILLIEFORS H. (1967) On the Kolmogorov-Smirnov test for normality with mean and variance unknown. *Journal of the American Statistical Association*, 62:399-402.
- SCHAETZL R., ANDERSON S. (2005) Basic concepts: soil mineralogy. In: *Soils genesis and geomorphology*. Cambridge University Press, Cambridge, UK. pp: 54-81
- SNEDECOR G.W., COCHRAN W.G. (1980) *Statistical methods*. 7th ed. Ames: Iowa State University Press.
- SPRINGER U., KLEE J. (1954) Prüfung der Leistungsfähigkeit vom Einigen Wichtigen Verfahren zur Bestimmung des Kohlenstoffes Mittels Chromschwefelsäure Sowie Vorschlag Einer Neuen Schnellmethode." *Z. Pflanzenernähr. Dung. Bodenkunde*. 1954.
- TRAILL R.J., LACHANCE G.R. (1966) Practical solution to the matrix problem in X-ray analysis. *Canadian Journal of Spectroscopy*, 11(2):43-48.
- VITTORI ANTISARI L., CARBONE S., GATTI A., VIANELLO G., NANNIPIERI P. (2013) Toxicity of metal oxide (CeO₂, Fe₃O₄, SnO₂) engineered nanoparticles on soil microbial biomass and their distribution in soil. *Soil Biology and Biochemistry* 60: 87-94.
- WATANABE F.S., OLSEN S.R. (1965) Test of an ascorbic acid method for determining phosphorus in water and NaHCO₃ extracts from soils. *Soil Sci. Soc. Am. Proc.* 29:677-678.

UNE EVALUATION CRITIQUE DE PROIECT DE L'INTER ETALLONAGE AXES SUR DEFINITION DE NOUVEAUX MATERIAUX DE REFERENCE POUR L'ANALYSE CHIMIQUE DES SOLS (AMS-MO1 ET AMS-ML1)

Résumé

Les sols sont des matrices complexes et leur levé géochimique doit matériaux de référence certifiés (CRM) pour évaluer la précision de l'analyse et de précision. En particulier la préparation de matériaux de référence appropriés pour le contrôle des déterminations analytiques effectuées sur le sol nécessite un programme inter laboratoires avec l'utilisation de méthodologies et des instruments différentes. Dans cette étude, nous présentons les résultats de l'inter étalonnage axés sur la certification de deux nouvelles normes de sols appelés AMS-ML1 et AMS-MO1 origine respectivement sur les rochers de grès et de serpentine. L'activité expérimentale a impliqué de nombreux laboratoires et, en plus de l'évaluation des paramètres physiques et chimiques du sol, a mis l'accent sur le perfectionnement des techniques d'analyse par fluorescence X (XRF) et spectrométrie de masse (ICP-OES, ICP-MS). L'analyse statistique a mis en évidence trois niveaux de répétabilité et la précision en fonction des différentes méthodes d'analyse et l'instrumentation utilisées. Dans le cas spécifique de l'extraction dans l'eau régale et de détermination dans les résultats d'ICP-OES, traitée en testant Lilliefors, Grubbs, Cochran et analyse de la variance, contribué à définir le niveau de certification pour certains éléments relatifs aux deux normes proposées. L'étude représente un premier niveau d'inter étalonnage et sera rendue plus épreuve de l'anneau avec l'aide de laboratoires plus spécialisés, de manière à obtenir la certification internationale.

Mots-clés: *standard du sol, macro- micro éléments, XRF, Aqua Regia, ICP-OES, ICP-MS.*

VALUTAZIONE CRITICA DI UN PROGETTO DI INTERCALIBRAZIONE MIRATO ALLA DEFINIZIONE DI NUOVI MATERIALI DI RIFERIMENTO PER ANALISI CHIMICHE DEI SUOLI (AMS-MO1 E AMS-ML1)

Riassunto

I suoli sono matrici complesse e la loro indagine geochimica ha bisogno di materiali certificati di riferimento (CRM) per valutarne la precisione analitica e l'accuratezza. In particolare la preparazione di materiali di riferimento idonei al controllo di determinazioni analitiche effettuate sul suolo richiede un programma interlaboratorio con l'impiego di metodologie e strumentazioni differenti. In questo studio vengono presentati i risultati dell'esperimento di intercalibrazione incentrato sulla certificazione di due nuovi standard di suoli denominati AMS-ML1 e AMS-MO1 originatisi rispettivamente su rocce arenacee e serpentinosi. L'attività sperimentale ha coinvolto numerosi laboratori e, oltre alla valutazione di parametri chimico-fisici del suolo, si è concentrata sull'affinamento delle tecniche analitiche mediante fluorescenza a raggi X (XRF) e spettrometria di massa (ICP-OES, ICP-MS). L'elaborazione statistica ha permesso di evidenziare tre livelli di ripetibilità e precisione in funzione dei differenti metodi di analisi e della strumentazione utilizzata. Nel caso specifico dell'estrazione in Aqua Regia e determinazione in ICP-OES i risultati, elaborati mediante test di Lilliefors, di Grubbs, di Cochran e ANOVA, hanno permesso di definire il livello di certificazione per alcuni elementi riferiti ai due standard proposti. Lo studio rappresenta un primo livello di intercalibrazione e verranno effettuati ulteriori ring test con il contributo di più laboratori specializzati, in modo da conseguire una certificazione internazionale.

Parole chiave: *suoli standard, macro e microelementi, XRF, Aqua Regia, ICP-OES, ICP-MS*