

COHESA

Capacitating One Health in Eastern and Southern Africa

COHESA Work Package 1 – One Health Status

Shauna Richards and Eric Fevre, ILRI

COHESA Project Planning Workshop, 28-29 September 2022



Work Package 1 – One Health Status

Baseline: To perform a baseline & endline assessments with key informants on One Health topics on the following:

- 1. One Health national challenges, gaps, and capacities**
- 2. Understand current One Health Research and Innovation landscape to identify strengths and weaknesses**
- 3. Approaches to identify key One Health issues**
- 4. Assess sectoral performance in One Health, capacity, and bottlenecks**
- 5. Avail baseline and endline data to evaluate performance and impact of COHESA project**

Observatory & Net-Mapping

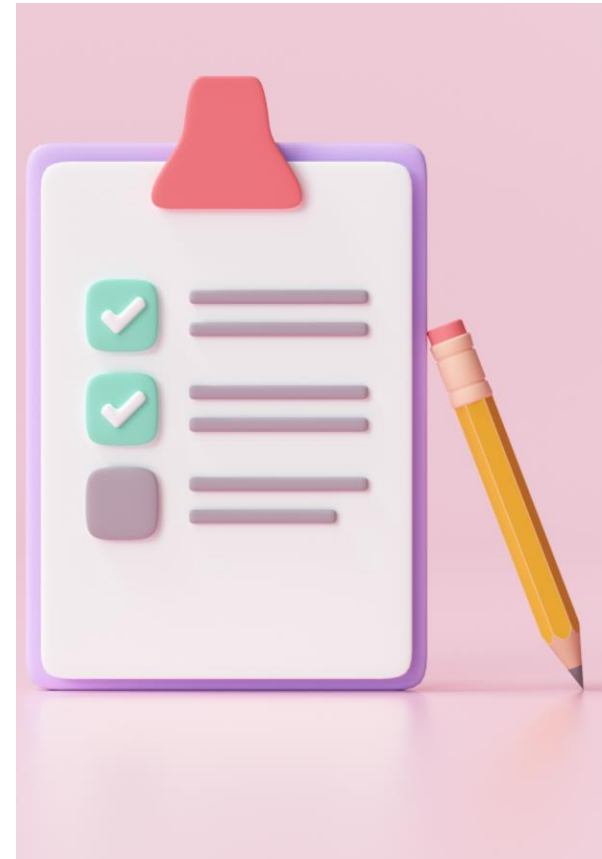


Baseline Assessment - 3 components

1. Key Informant Interviews
2. Focus Group Discussion
3. Desktop Review

Multiplier led activity with consortium support

Supplemented by knowledge from OHRECA/ILRI,
FAO/WOAH/World Bank



Baseline purpose

Discover the gaps

Describe and understand them, eg

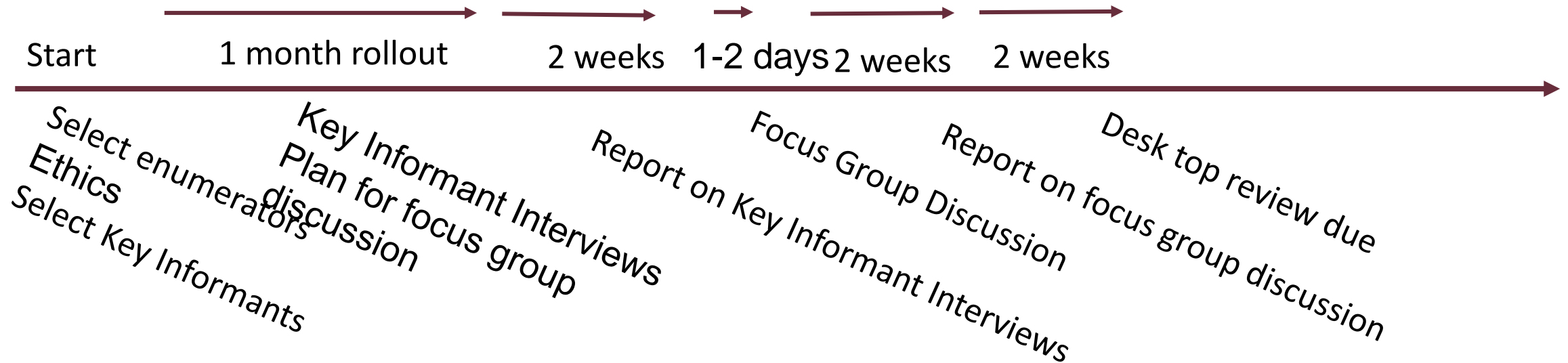
- in education (eg missing parts of syllabus)
- in knowledge (new evidence is needed)
- in capacity (institutional staff need training)
- in networking (too many people are trying to do the same thing)

The next phase uses our resources to strategically plug the gaps/fix the tears in the fabric

bottlenecks
challenges
health
strengths
gaps
capacity
weaknesses
one
issues
performance
impact



Timeline



- From rollout there is an 8-week time period from start to finish

- Collect the data
- Prepare reports
- Highlight the seamless, but focus on the gaps

Baseline to Date

- All countries have been trained in all processes of baseline implementation
- Four countries either in process or completed KII
- Two countries have ethics approved and starting in the next days ahead
- Five countries working on ethics approvals and/or contractual details and yet to start



Acknowledgements



OACPS R&I



Funded by the
European Union

This project is supported by the European Commission OACPS Research and Innovation Programme: ACP-EU initiative, co-funded through ILRI and CIRAD

COHESA




Capacitating One Health in Eastern and Southern Africa

ILRI

INTERNATIONAL
LIVESTOCK RESEARCH
INSTITUTE



The International Livestock Research Institute (ILRI) is a non-profit institution helping people in low- and middle-income countries to improve their lives, livelihoods and lands through the animals that remain the backbone of small-scale agriculture and enterprise across the developing world. ILRI belongs to CGIAR, a global research-for-development partnership working for a food-secure future. ILRI's funders, through the [CGIAR Trust Fund](#), and its many partners make ILRI's work possible and its mission a reality. Australian animal scientist and Nobel Laureate Peter Doherty serves as ILRI's patron. You are free to use and share this material under the Creative Commons Attribution 4.0 International Licence .

*better lives
through
livestock*

ilri.org