



RNA-Seq Highlights Molecular Events Associated With Impaired Pollen-Pistil Interactions Following Short-Term Heat Stress in *Brassica napus*

Neeta Lohani, Mohan B. Singh and Prem L. Bhalla*

Plant Molecular Biology and Biotechnology Laboratory, Faculty of Veterinary and Agricultural Sciences, The University of Melbourne, Parkville, VIC, Australia

OPEN ACCESS

Edited by:

Gad Miller,
Bar-Ilan University, Israel

Reviewed by:

Jeffrey F. Harper,
University of Nevada, Reno,
United States
Stefan Simm,
Universitätsmedizin Greifswald,
Germany

*Correspondence:

Prem L. Bhalla
premlb@unimelb.edu.au

Specialty section:

This article was submitted to
Plant Abiotic Stress,
a section of the journal
Frontiers in Plant Science

Received: 29 October 2020

Accepted: 08 December 2020

Published: 07 January 2021

Citation:

Lohani N, Singh MB and
Bhalla PL (2021) RNA-Seq Highlights
Molecular Events Associated With
Impaired Pollen-Pistil Interactions
Following Short-Term Heat Stress
in *Brassica napus*.
Front. Plant Sci. 11:622748.
doi: 10.3389/fpls.2020.622748

The global climate change is leading to increased frequency of heatwaves with crops getting exposed to extreme temperature events. Such temperature spikes during the reproductive stage of plant development can harm crop fertility and productivity. Here we report the response of short-term heat stress events on the pollen and pistil tissues in a commercially grown cultivar of *Brassica napus*. Our data reveals that short-term temperature spikes not only affect pollen fitness but also impair the ability of the pistil to support pollen germination and pollen tube growth and that the heat stress sensitivity of pistil can have severe consequences for seed set and yield. Comparative transcriptome profiling of non-stressed and heat-stressed (40°C for 30 min) pollen and pistil (stigma + style) highlighted the underlying cellular mechanisms involved in heat stress response in these reproductive tissues. In pollen, cell wall organization and cellular transport-related genes possibly regulate pollen fitness under heat stress while the heat stress-induced repression of transcription factor encoding transcripts is a feature of the pistil response. Overall, high temperature altered the expression of genes involved in protein processing, regulation of transcription, pollen-pistil interactions, and misregulation of cellular organization, transport, and metabolism. Our results show that short episodes of high-temperature exposure in *B. napus* modulate key regulatory pathways disrupted reproductive processes, ultimately translating to yield loss. Further investigations on the genes and networks identified in the present study pave a way toward genetic improvement of the thermotolerance and reproductive performance of *B. napus* varieties.

Keywords: *Brassica napus*, heat stress, heatwaves, pollen-stigma interaction, plant reproduction, pollen, pistil, canola

INTRODUCTION

Brassica napus L. (canola/rapeseed) is the third most important oilseed crop produced globally. Rising demand for canola/rapeseed oil for human consumption, industrial uses and bio-diesel production has led to a continuous expansion of its cultivating areas to comparatively drier regions, thereby increasing the exposure to unfavorable weather events (Jaime et al., 2018). The critical

growth temperatures for canola range from 27 to 30°C (Kirkegaard et al., 2018; Lohani et al., 2020a). Like other crops, *Brassica* requires a specific number of heat units or growing degree days (GDD) for the onset of the flowering phase (Kjellström, 1993). *B. napus*, a temperate crop is especially susceptible to high-temperature events, particularly during reproductive stages (Angadi et al., 2000; Young et al., 2004; Aksouh-Harradj et al., 2006). Accumulation of excessive heat units during the anthesis results in decreased reproductive fitness, thus making it a crucial developmental period for yield determination in *B. napus* (Morrison and Stewart, 2002; Uppal et al., 2019). With frequently occurring heatwaves predicted in the future global climate change scenarios, it is becoming increasingly important to understand the severity of likely damage to reproductive fitness and yield in crop plants.

The intensity, timing, rate of temperature change, and duration of heat stress exposure controls the sensitivity of sexual reproduction to high temperature. High temperature disrupts the stages involved in sexual reproduction by initiating a series of physiological, molecular, cellular, and biochemical changes in crops (Lohani et al., 2020b). A survey of the heat stress regimes utilized for studying the pollen thermotolerance highlight a need for focusing on the impact of short-term heat stress events on *B. napus* and other crops (Mesihovic et al., 2016). Since even short-lived high-temperature spikes can have significant adverse effects on reproductive success, it is crucial to understand the underlying molecular basis short-term heat stress response during pollen-pistil interactions (Frank et al., 2009; Begcy et al., 2019). Exposure of plants to shorter pulses of heat stress during reproductive processes will not only help to understand the heat stress response during various reproductive stages but also the extent of vulnerability of the developing reproductive organs to heat stress regimes.

While high temperature is expected to affect male and female reproductive tissues concurrently, the available data mainly focusses on the effects of heat stress on pollen development and function. Nevertheless, there is a recent focus on the female reproductive organ sensitivity to high temperature in crops like sorghum, rice, maize, wheat, and tomato (Gonzalo et al., 2020; Jagadish, 2020; Lohani et al., 2020b). The outcomes of these studies reveal a considerable variation in heat stress response of pistil (stigma or ovary) across crops. The female reproductive organ or the pistil comprises of the stigma, style, and ovary. The stigma (receptive part) and style (transmitting tract) play crucial roles in triggering, promoting, and guiding the growth of pollen tubes toward female gametes within the ovule. The exposure to high temperatures can disrupt pollen-pistil interactions and fertilization, leading to decline in seed set and crop productivity. However, the molecular basis of heat stress response in the female reproductive tissues remains largely unexplored.

To address gaps in our understanding of effects of short-term heat stress events on reproduction, we investigated the effects of heat stress at 40°C for 4 h on pollen-pistil interactions by performing reciprocal crosses between non-stressed, and heat-stressed pollen and pistil. We further explored the changes in transcriptional patterns of mature pollen and pistil to unravel the molecular signatures in response to heat stress (40°C for 30

min). We have also attempted to integrate physiological effects with the corresponding transcriptome level changes in the gene expression patterns upon short term heat stress exposure. Our findings show that heat stress impairs both the pollen viability and the ability of the pistil to support pollen germination and tube growth. Our RNA-seq analysis highlights differential regulation of specific genes involved in pollen cell wall organization, water channel activity, ROS metabolism, fatty acid metabolism, phenylpropanoid biosynthesis, and genes involved in pollen-pistil interactions.

MATERIALS AND METHODS

Plant Growth Conditions and Temperature Treatments

Brassica napus var. Garnet (AV Garnet) was chosen for this study is mid- to early-maturing variety is grown commercially across Australia. The plants were grown in a Thermoline growth cabinet (model TPG-2400-TH) at the Plant Growth Facility of The University of Melbourne, Australia. Control growth conditions were 23/18°C day/night; a photoperiod of 16/8 h light/dark, 200 $\mu\text{molm}^{-2}\text{s}^{-1}$ light intensity and 60% humidity. The plants bearing secondary inflorescence (50 das) were exposed only once to 40°C for 4 h. The high-temperature treatment started 2 h after the beginning of the day. Each experiment had three biological replicates. Throughout each experiment, plants were spatially randomized weekly and were kept well-watered to minimize any effects associated with drought stress. Soluble nutrient fertilizer was applied directly to the soil once a week for each plant.

Pollen Viability and Germination Assay

Pollen viability was evaluated by double staining with Fluorescein Diacetate (FDA) and Propidium Iodide (Regan and Moffatt, 1990). Anthers isolated from the buds of appropriate size (6–7 mm) were macerated gently to release pollen grains in the staining solution (20 μL : 10% sucrose, 1 μL : 2 mg/mL FDA and 2 μL : 1 mg/mL PI). The samples were kept in the staining solution in the dark at room temperature for 20 min and observed under a fluorescence microscope (Olympus BX60). The viability was presented as percentage (%) calculated by counting a minimum of 200 pollens from each sample.

For pollen germination, pollen grains were collected from flowers with freshly dehisced anthers after each treatment. The pollen grains were allowed to hydrate for 30 min after which they were brushed onto the surface of the freshly prepared solid pollen germination medium (100 g sucrose, 25 mg boric acid, 90 mg calcium chloride, 50 mg potassium nitrate and 100 mg of Tris dissolved in 500 mL of water; 1% agar was used for solidifying it) (Singh et al., 2008). The pollen grains were germinated for 4 h under high humidity (>70%) and light (200 $\mu\text{molm}^{-2}\text{s}^{-1}$). After 4 h, the plates were observed under a microscope for scoring.

Reciprocal Crosses

At least 20 immature flowers (those due to open the next day) were emasculated from two plants per replicate (total three

replicates) for each reciprocal cross. Next day the appropriate numbers of plants were exposed to heat stress at 40°C for 4 h. Manual pollination was performed immediately after heat stress treatment. The following four combinations of reciprocal crosses of non-stressed (NS) and heat-stressed (HS), pistil (♀) and pollen (♂) were carried out: NS♀ × NS♂, NS♀ × HS♂, HS♀ × NS♂ and HS♀ × HS♂. After pollination, the plants were allowed to mature under control conditions until the completion of seed filling to observe seed set.

Pistils from each reciprocal cross were also collected 24 h after pollination and were fixed in Carnoy's solution overnight. Then washed with distilled water, softened with 8 M NaOH solution overnight and stained with aniline blue solution (0.1% aniline blue in 0.1 M K₂HPO₄-KOH buffer, pH 11) for 3 h in complete darkness (Kho and Baer, 1968). The stained pistils were observed with a fluorescence microscope (Olympus BX60).

Statistical Analysis

All experiments were performed in triplicates. Results were expressed as the mean ± SD of n replicates available per treatment. The data were analyzed using GraphPad Prism 8.2.1 (1992–2020 GraphPad Software, Inc.) software. Data analysis was done by performing Welch's *t*-test to compare a time point at a given temperature with the control conditions, and the variance was considered unequal for the comparison. Significant differences among the treatment were considered at *p* < 0.05.

Isolation of Mature Pollen Grains and Pistil (Stigma + Style) for RNA Seq

Mature flower buds (6–7 mm) were collected from non-stressed, and heat-stressed (40°C for 30 min) plants and transferred to a petri dish containing 0.5 × B5 medium and were kept on ice. Anthers carefully dissected out from the buds were lightly macerated in B5 medium. The crushed suspension was then filtered through a 44µm nylon mesh into 1.5 mL tubes. The filtrate was centrifuged at 150 g for 3 min at 4°C. The supernatant was discarded, the pellet was washed using 0.5 × B5 medium and centrifuged at 150 g for 3 min at 4°C. This step was repeated twice. After removing the supernatant, the pellet was immediately frozen in liquid nitrogen and stored at -80°C. An aliquot from each isolation was analyzed by nuclei staining with DAPI to check the purity of the sample for containing tri-nucleate pollen grains. While dissecting the buds for collecting anthers, the pistils were dissected out from the buds. An incision was made at the bottom of style using a scalpel for separating the upper part of the pistil from the ovary. The isolated stigma + style samples were collected in a 1.5 mL tube which was suspended in liquid nitrogen and then stored at -80°C (Figure 1). Twenty-five to thirty buds were collected from three plants as one biological replicate, and three independent biological replicates were prepared for each sample. To avoid confusion, the term “pistil” is used to refer to “stigma + style” samples throughout the article.

For RNA sequencing, heat-stressed pollen and pistil were collected from 50 days old plants immediately after exposure to heat stress at 40°C for 30 min. A 30 min heat stress treatment was selected to capture early heat stress-responsive changes in the

transcriptome. Non-stressed pollen and pistil were collected from plants grown at control growth conditions.

RNA Extraction, Library Preparation, and RNA-Sequencing

Total RNA was isolated from non-stressed and heat-stressed mature pollen as well as non-stressed and heat-stressed pistil samples (three biological replicates) using mirVana microRNA isolation kit (Thermo Fisher Scientific, Waltham, MA, United States) following the manufacturer's instructions. The RNA samples were then shipped on dry ice to the BGI TECH SOLUTIONS (HONGKONG) CO., LIMITED where they underwent additional testing, according to their quality control pipeline for RNA Sequencing. The integrity of the RNA samples was analyzed using an Agilent Bioanalyzer 2100 before being confirmed as suitable to be run on a BGISEQ-500 platform for PE100 strand-specific mRNA sequencing with an expected output of 30 million raw reads per sample. After sequencing, the raw reads were filtered. Data filtering included removing adaptor sequences, contamination, and low-quality reads from raw reads. The read statistics of the RNA-Seq libraries are provided in **Supplementary Table S1a**.

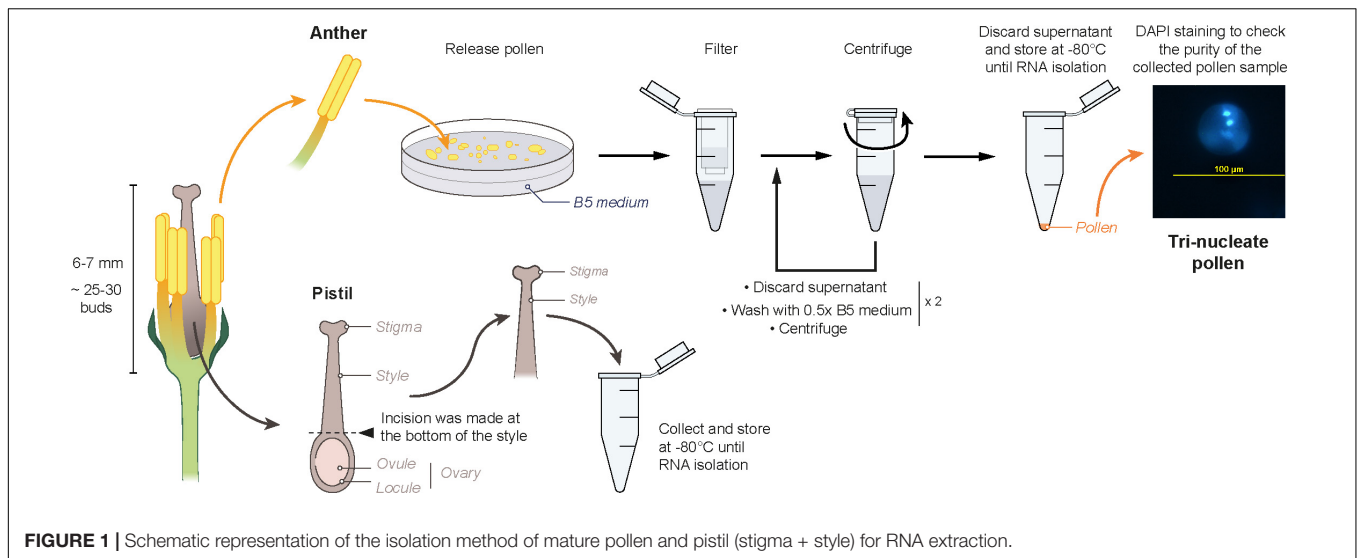
Transcriptome Analysis Pipeline

Quality checks for the raw fastq files were conducted using FastQC v0.11.8 (Andrews, 2010). Reference transcriptome file for *Brassica napus* was downloaded from Genoscope¹. Transcript expression was quantified using Kallisto v0.44.0 (Bray et al., 2016). The transcript expression levels were converted to gene expression levels using tximport (Soneson et al., 2015) v1.6.0 (countsFromAbundance = “no”). The low-count genes were prefiltered by keeping only those genes that have at least 5 counts in total. The DESeq2 R package v1.28.1 was used to perform differential expression analysis. The tximport data was loaded into DESeq2 with DESeqDataSetFromTximport thus creating offset and correcting for changes to the average transcript length across samples (Love et al., 2019). Principal component analysis (PCA) was conducted to determine the relatedness of the biological replicates (**Supplementary Figure S1A**). Pairwise contrasts were performed between control and heat-stressed samples to identify differentially expressed genes (DEGs) in response to heat stress. To generate more accurate log₂ foldchange estimates lfcShrink (type = “apeglm”) function was used. The thresholds for differential expression were set at fold change 1.5 and p-adjusted value cut off 0.01 (lfcThreshold = 0.585, altHypothesis = “greaterAbs,” alpha = 0.01, pAdjustMethod = “BH”) for the alternate hypothesis, BH: Benjamini-Hochberg (Love et al., 2019; Zhu et al., 2019).

Functional Annotation

The DEGs were functionally annotated and enriched for GO terms using online tool PlantRegMap (Tian et al., 2020). This tool employs TopGO and incorporates GO annotations from TAIR 10, UniProt-GOA, InterProScan prediction and RBH-based experimental annotation transfer. The annotated GO terms

¹<http://www.genoscope.cns.fr/brassicaplanus/data/>



were plotted using WEGO Tool, and the redundant enriched GO terms were removed and visualized by REVIGO (Supek et al., 2011; Ye et al., 2018). Subsequently, pathway enrichment analysis of DEGs was carried out using the KOBAS 3.0 database (Xie et al., 2011). A GO term and a KEGG pathway were considered significantly enriched only when the corrected p-value for that pathway was <0.01 after applying Fisher's exact test and false discovery rate (FDR; BH method) correction. Visualization of significantly enriched functional pathways was performed by ggplot2 R package (Wickham, 2016). Differentially expressed gene sets were used as input into SeqEnrich (Becker et al., 2017). SeqEnrich is a program adapted for *B. napus*, and it contains the most current information on *B. napus* TFs, promoter motifs, and gene ontology (GO) available, and uses these data to produce predictive regulatory networks. Networks produced with SeqEnrich were visualized in Cytoscape (Smoot et al., 2011). Based on the gene descriptors, the logos of TF binding motifs were downloaded from JASPAR²⁰²⁰ database² (Fornes et al., 2020). Homologous *B. napus* genes, in comparison to the Arabidopsis proteome, were identified using the BlastP program with an E-value $\leq 1e-05$. R packed Complexheatmap package was used to generate heat maps of gene expression (Gu, 2015).

RESULTS AND DISCUSSION

Short-Term Heat Stress Events Negatively Regulate Reproductive Fitness in *B. napus*

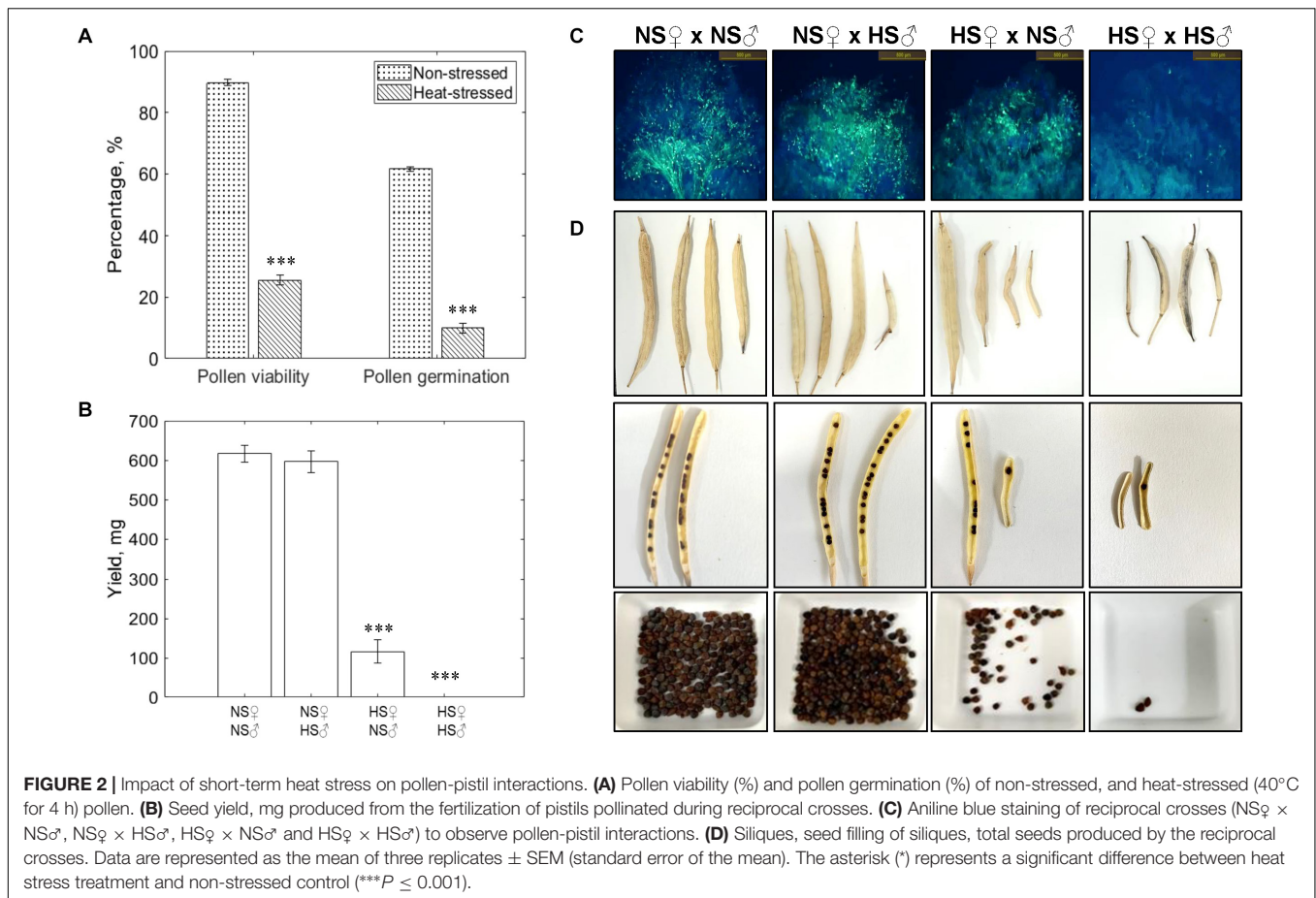
To study the impact of short-term heat stress (4 h) on mature pollen, we exposed the *Brassica napus* plants bearing secondary inflorescences to 40°C for 4 h during the day. The pollen grains of non-stressed plants exhibited ~90% pollen viability and ~62% *in vitro* pollen germination (Figure 2A). Exposure to a short high temperature spike drastically reduced the pollen viability

²<http://jaspar.genereg.net/>

to ~25% and pollen germination to ~10%. Reciprocal crosses between non-stressed (NS), and heat-stressed (HS; 40°C for 4 h) pollen (σ) and pistil (ρ): NS ρ \times NS σ , NS ρ \times HS σ , HS ρ \times NS σ and HS ρ \times HS σ revealed drastic reduction in pollen adhesion and germination on the stigma surface when heat-stressed (HS) pistils were pollinated with heat-stressed (HS) pollen, led to the failure of fertilization and seed set (Figures 2B–D). The highest seed set was recorded in, non-stressed (NS) pistil \times non-stressed (NS) pollen cross. On the other hand, no significant reduction in seed set was noticed in NS pistil \times HS pollen cross. The higher rate of seed set in NS pistil \times HS pollen indicate that even ~25% viable pollen grains (heat-stressed at 40°C for 4 h) were sufficient to fertilize almost all of the ovules. However, the seed set was reduced by ~70% in HS pistil \times NS pollen cross (Figure 2B). Relatively few non-stressed pollen grains, were successful in attaching to the heat-stressed stigma surface and then further germinating (Figure 2C) suggesting that non-stressed pollen is exposed to an unfavorable environment on the heat-stressed stigma surface leading to impaired interaction and reduced fertility. Thus, heat-induced changes in the pistil likely exert considerable influence over pollen performance and thereby the overall seed yield. Since plants produce abundant pollen, only a small percentage of viable pollen is sufficient for successful fertilization (Larden and Triboi-Blondel, 1994). On the other hand, due to relatively small number of ovules, heat stress sensitivity of pistil can have far severe implications for seed set and yield.

Differential Transcriptional Response to Heat Stress in the Upper Part of the Pistil and Mature Pollen

To explore the gene networks underlying heat stress responses in pollen and pistil, we performed heat stress treatments at 40°C for 30 min and employed a high-throughput strand-specific RNA-seq approach. The clean reads were uniquely aligned (Supplementary Figure S1B) to the reference assembly with

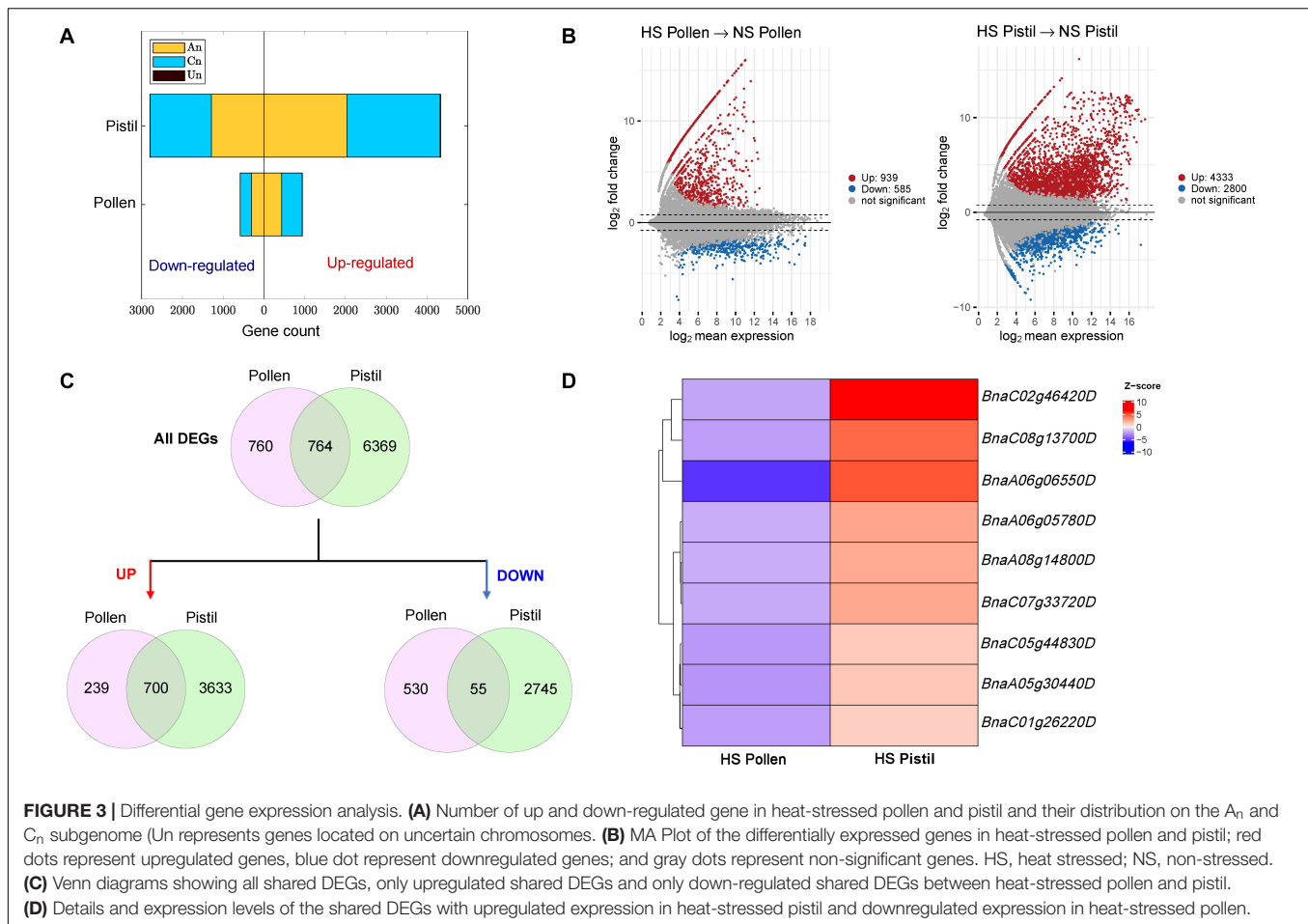


a rate of 72.1% (median). The biological replicates for each sample clustered together and four clusters representing non-stressed pollen, heat-stressed pollen, non-stressed pistil, and heat-stressed pistil were identified in the PCA plot (**Supplementary Figure S1A**). The PCA plot highlighted the similarity of gene expression in the biological replicates for each sample. The relative transcript abundance in terms of TPM (transcripts per million) across all four samples (three biological replicates) are provided in **Supplementary Table S1b** (non-stressed and heat-stressed pollen) and **Supplementary Table S1c** (non-stressed and heat-stressed pistil). The threshold for differential expression was set at fold change 1.5 ($\log_2\text{foldchange} = 0.585$) and the adjusted p-value cut off 0.01 for an alternate hypothesis. Heat stress treatment of pollen led to differential expression of 1,524 genes comprising 939 up- and 585 down-regulated genes (**Supplementary Table S1d**). On the other hand, heat stress treatment of pistil revealed a total of 7,133 differentially expressed genes, including 4,333 up- and 2,800 down-regulated genes as compared with control treatment (**Supplementary Table S1e**). *B. napus* is an allotetraploid formed as a result of spontaneous hybridization between its two diploid progenitors: *B. rapa* (A genome, AA, $2n = 2x = 20$) and *B. oleracea* (C genome, CC, $2n = 2x = 18$). The genome composition of *B. napus* is AACC ($2n = 4x = 38$). Subtle differences in the distribution of DEGs on sub-genome A_n and sub-genome C_n in both heat-stressed

pollen and pistil was observed (**Figure 3A**). Recent reports are suggesting a sub-genome bias in *B. napus* favoring the expression of A_n sub-genome (Khan et al., 2020; Li et al., 2020). However, a further detailed investigation is required to improve the understanding of observed sub-genome expression dominance in *B. napus*.

Interestingly, heat stress-responsive up-regulated transcripts also demonstrated a greater relative change than down-regulated genes (**Figure 3B**). Comparison of the DEGs in response to heat stress in pollen and pistil, highlighted 764 shared DEGs (**Figure 3C**), out of which 755 DEGs showed similar regulation patterns (700 up- and 55 down-regulated in both). In contrast, nine shared DEGs were up-regulated in heat-stressed pistil and down-regulated in heat-stressed pollen (**Figure 3D** and **Supplementary Table S2a**).

Heat stress results in structural changes in proteins, accumulation of misfolded proteins, and various downstream ramifications for cellular homeostasis and development. To counter these effects, heat stress response through chaperone/heat shock protein (HSP)–heat shock factor (HSF) complexes is activated (Bokszczanin et al., 2013; Berz et al., 2019). Transcriptional reprogramming at higher temperatures is regulated by heat stress transcription factors (HSFs) leading to activation of a heat stress response. Based on the reports identifying the members of HSF



gene family in *B. napus* (Zhu et al., 2017; Lohani et al., 2019), we detected the up-regulation of several members of the *B. napus* HSF gene family in heat-stressed pollen and pistil, except for HSFC1 (*BnaC07g07130D*) which was downregulated in pistil upon heat stress exposure. *B. napus* HSA2 (*BnaC03g26940D*, *BnaA03g22890D*), HSA7 (HSF7a: *BnaA03g41550D*, *BnaC07g32600D*, *BnaA03g41540D*, HSF7b: *BnaA09g40360D*) and HSF2a (*BnaC03g52080D*) were the key HSFs upregulated in both pollen and pistil with >100-fold change in expression levels. Further, several differentially regulated HSPs and other chaperone encoding genes (ClpB1, DnaJ-domain chaperone, BAG6, ClpB3, ClpB4) were detected in heat-stressed pollen and pistil (**Supplementary Tables S2b**). In pollen, all the identified HSPs and chaperones were upregulated by heat stress. Similarly, in the heat-stressed pistil, majority of HSPs and chaperones were upregulated except *BnaC06g39440D* (Chaperone DnaJ-domain superfamily protein), *BnaA06g28870D* (Prefoldin chaperone subunit family protein), *BnaA02g11050D*, *BnaA03g12820D* (BAG family molecular chaperone regulator 1) and *BnaC05g29580D* (HSP). Small heat shock proteins (15.7, 17.6, 17.8, 18.5, 21, 22, 23.6, and 26.5 kDa HSPs) along with Hsp70b were among the upregulated HSPs in both heat-stressed pollen and pistil. Thus, the accumulation of HSFs, HSPs (sHSP, HSP70, HSP90,

and HSP100) and chaperones in response to heat stress, illustrate the ability of pollen and pistil to activate “classical” heat stress-responsive mechanisms (Bokszczanin et al., 2013; Fragkostefanakis et al., 2015; Lohani et al., 2020b).

Functional Annotation

Gene ontology (GO) analysis of the DEGs was performed to unravel their role in heat stress response (**Supplementary Figure S2**). Notably, 1,041 (642 up- and 499 down) and 5,192 (3,091 up- and 2,101 down) differentially regulated genes were assigned GO annotations in pollen and pistil, respectively. Analysis of enriched GO terms ($q < 0.01$) revealed that the upregulated genes in heat-stressed pollen and pistil were associated with abiotic stress associated GO terms like “response to stress,” “response to heat,” “response to stimulus,” and “protein folding” (**Figure 4**).

Further, the most significantly enriched downregulated GO terms in pollen were associated with “ion transmembrane transport,” “carbohydrate metabolic process,” “localization,” and “glycosylation” (**Figure 5A**). In heat-stressed pistil, the downregulated GO terms were related to “fatty acid metabolism,” “cell wall organization,” “response to abiotic stimulus,” “cuticle development,” and “lipid transport” (**Figure 5B**). Heat responsive down-regulated genes involved in cellular transport, carbon

GO.ID	Term	Pistil_Genes	Pollen_Genes
GO:0050896	response to stimulus	491	147
GO:0006950	response to stress	296	122
GO:0009628	response to abiotic stimulus	192	77
GO:0042221	response to chemical	243	67
GO:0009266	response to temperature stimulus	103	58
GO:1901700	response to oxygen-containing compound	129	51
GO:0009408	response to heat	74	49
GO:0006457	protein folding	125	47
GO:0010035	response to inorganic substance	93	35
GO:0009642	response to light intensity	30	26

FIGURE 4 | Top significantly enriched common GO terms associated with upregulated genes in heat-stressed pollen and pistil ($q < 0.001$).

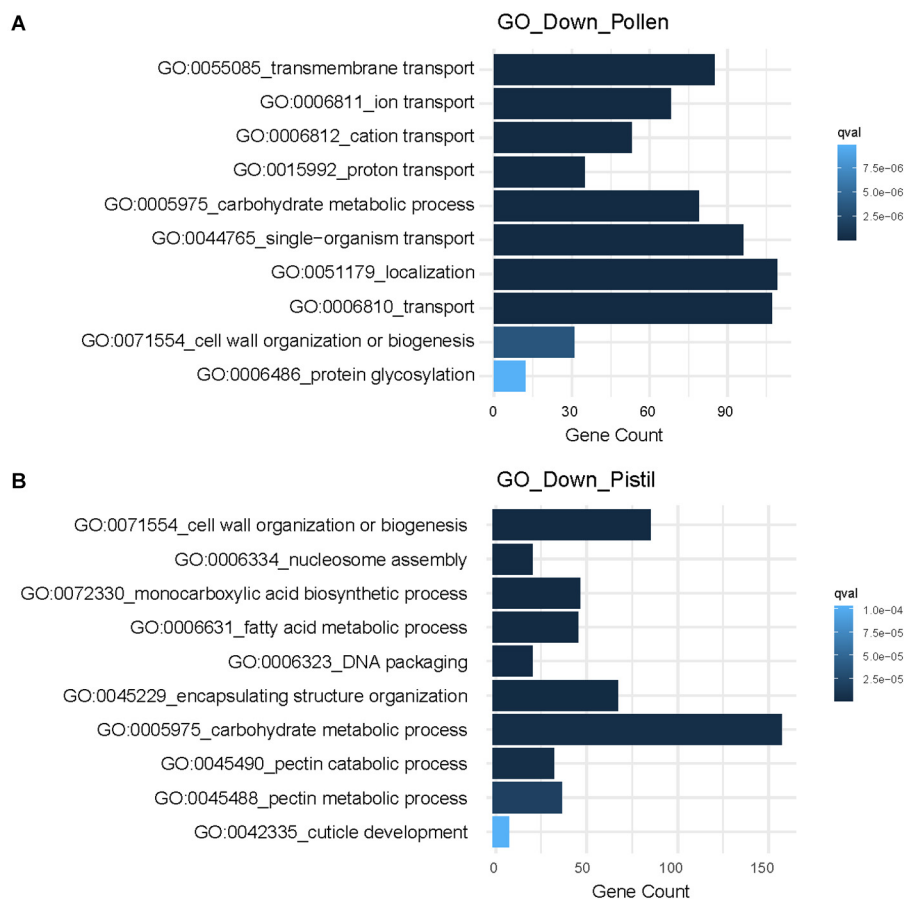
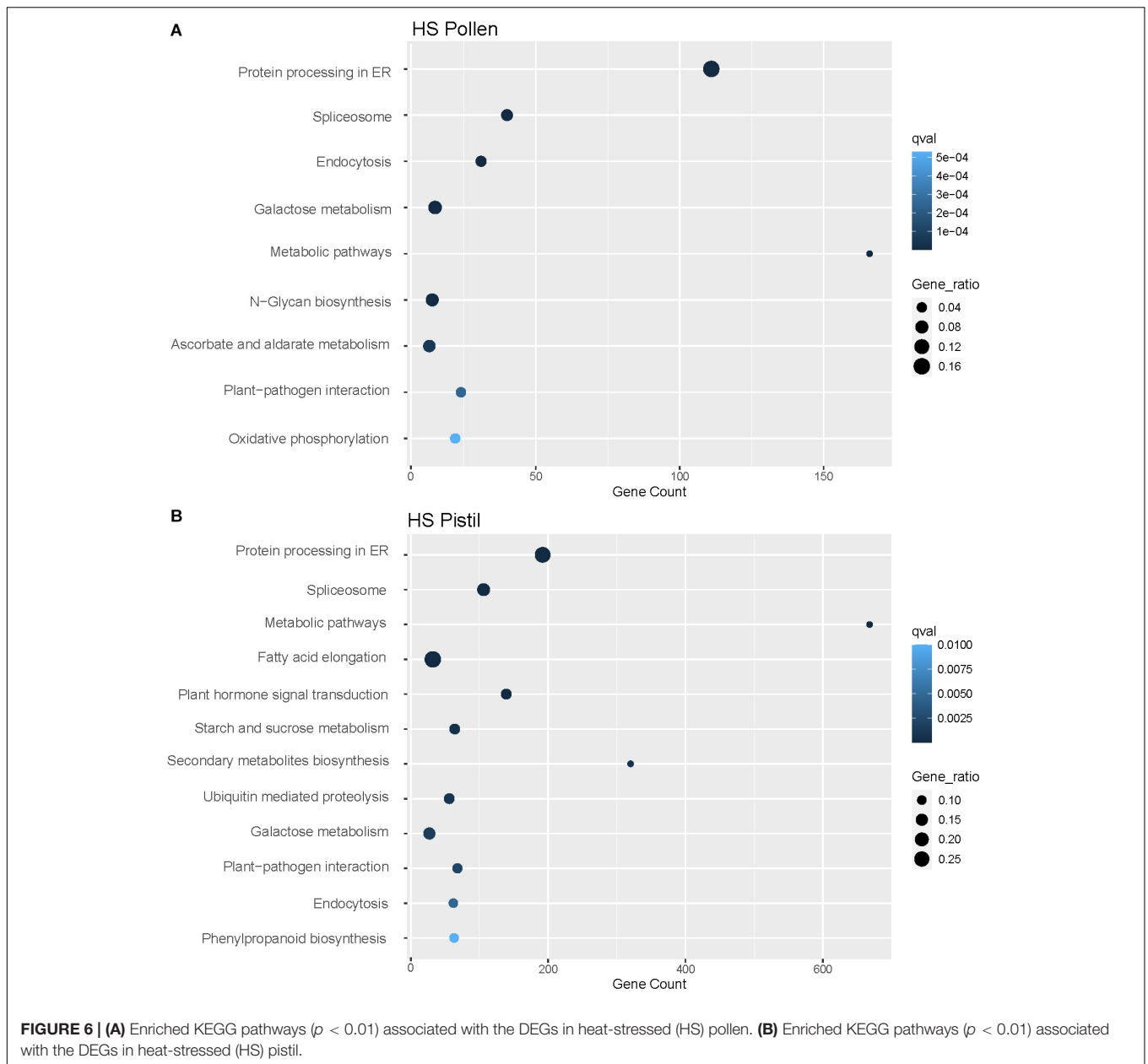


FIGURE 5 | GO enrichment analysis of downregulated DEGs showing top 10 significantly. **(A)** Enriched GO terms associated with downregulated genes in heat-stressed pollen. **(B)** Enriched GO terms associated with downregulated genes in the heat-stressed pistil.

and nitrogen metabolism, cell organization and growth, and metabolic processes determine long-term adverse effects and are reported to differ significantly depending on the developmental stage or tissue exposed to heat stress (Janni et al., 2020).

Further, the analysis of enriched KEGG pathways in both pollen and pistil revealed differential upregulation of diverse pathways including protein processing in the endoplasmic

reticulum (111 genes in pollen, 192 genes in pistil), spliceosome (40 genes in pollen, 106 genes in pistil), metabolic pathways (166 genes in pollen, 668 genes in pistil), and plant-pathogen interaction (24 genes in pollen, 68 genes in pistil) among other pathways (Figure 6). Many of these enriched functional gene categories and pathways have been linked with heat stress response or thermotolerance across different tissues in crops



such as rice, wheat, maize, and tomatoes, which indicates a conserved mechanism of heat stress response in plants (Janni et al., 2020). We further explored the role of the functionally annotated DEGs associated with different metabolic and cellular processes to explore their role in regulating reproductive fitness and pollen-pistil interactions.

Heat Stress Altered Cellular and Metabolic Processes Impair Pollen-Pistil Interactions

The acceptance of compatible pollen by the receptive pistil and the subsequent steps leading to successful fertilization involves interactive processes. The result of reciprocal crosses ($NS_{\text{♀}} \times$

$NS_{\text{♂}}$, $NS_{\text{♀}} \times HS_{\text{♂}}$, $HS_{\text{♀}} \times NS_{\text{♂}}$ and $HS_{\text{♀}} \times HS_{\text{♂}}$) in our study highlighted that heat stress has a negative influence on the pollen-pistil interaction resulting in reduced seed set. In our datasets, the DEGs involved in the GO category “recognition of pollen” and “pollen-pistil interactions” were downregulated in the heat-stressed pistil (Figure 7). These heat-responsive genes might interfere with the attachment of pollen on to the stigma surface. For instance, the S-locus related gene, *SLR1* (*BnaA03g32070D*) belonging to the downregulated category, is reported to play a role in pollen adhesion (Luu et al., 1997, 1999). Further, genes involved in “plant-pathogen interaction (*bna04626*)” and “phenylpropanoid biosynthesis (*bna00940*)” were also differentially regulated in heat-stressed pollen and pistil. The differential regulation of phenylpropanoid biosynthesis pathway

<i>B. napus</i> Gene ID	Arabidopsis homolog	Gene Description	LFC
<i>BnaA03g32070D</i>		SLR1	-3.42
<i>BnaA09g46530D</i>	<i>AT1G11330.2</i>	G-type lectin S-receptor-like serine/threonine-protein kinase	-3.37
<i>BnaA09g46530D</i>		Brassica-specific	-3.37
<i>BnaC06g27660D</i>	<i>AT4G21380.1</i>	SD18, Receptor-like serine/threonine-protein kinase SD1-8	-3.08
<i>BnaA04g23210D</i>	<i>AT4G21380.1</i>	SD18, Receptor-like serine/threonine-protein kinase SD1-8	-2.45
<i>BnaC05g08740D</i>	<i>AT1G11340.1</i>	RKS1, G-type lectin S-receptor-like serine/threonine-protein kinase RKS1	-2.23
<i>BnaC08g42090D</i>	<i>AT1G11330.2</i>	G-type lectin S-receptor-like serine/threonine-protein kinase	-2.06
<i>BnaC08g14850D</i>	<i>AT1G11330.2</i>	G-type lectin S-receptor-like serine/threonine-protein kinase	-2.00
<i>BnaA04g05920D</i>	<i>AT1G65800.1</i>	SD16, Receptor-like serine/threonine-protein kinase SD1-6	-1.96
<i>BnaA04g14930D</i>	<i>AT1G11280.2</i>	S-locus lectin protein kinase family protein	-1.91
<i>BnaC08g14740D</i>	<i>AT1G61360.1</i>	Serine/threonine-protein kinase	-1.55
<i>BnaAnng22710D</i>	<i>AT4G21380.2</i>	SD18, Receptor-like serine/threonine-protein kinase SD1-8	-1.42
<i>BnaC02g44050D</i>	<i>AT4G21380.1</i>	SD18, Receptor-like serine/threonine-protein kinase SD1-8	-1.39
<i>BnaA08g25300D</i>	<i>AT1G11340.1</i>	RKS1, G-type lectin S-receptor-like serine/threonine-protein kinase RKS1	-1.33

FIGURE 7 | Details of the DEGs associated with the GO terms “recognition of pollen” and “pollen-pistil interactions” in the heat-stressed pistil. LFC, log₂foldchange.

leads to accumulation of the intermediates (**Supplementary Figure S3**) which has been suggested to result in incompatible pollen-pistil interactions (Elleman and Dickinson, 1999).

Following pollen adhesion, the success of pollination and pollen tube growth depends on pollen hydration. In pollen very-long-chain fatty acids (VLCFA) are essential components of the pollen coat, facilitating interactions between pollen and stigma (Heizmann et al., 2000) and genes belonging to 3-ketoacyl-CoA synthase family are involved in their biosynthesis (Han et al., 2001). In heat-stressed pollen, five and in the heat-stressed pistil, twenty-nine genes homologous to 3-ketoacyl-CoA synthase genes were downregulated, suggesting downregulation of VLCFA synthesis due to heat stress (**Supplementary Tables S3a, S4a**).

Since lipid biosynthesis is essential for all aspects of pollen development, germination and pollen tube penetration of pistil tissues (Evans et al., 1992; Piffanelli et al., 1997), the observed alteration of genes expression involved in the fatty acid synthesis and lipid transport in heat-stressed pollen and pistil has apparent implications for pollen fitness and pollen-pistil interactions.

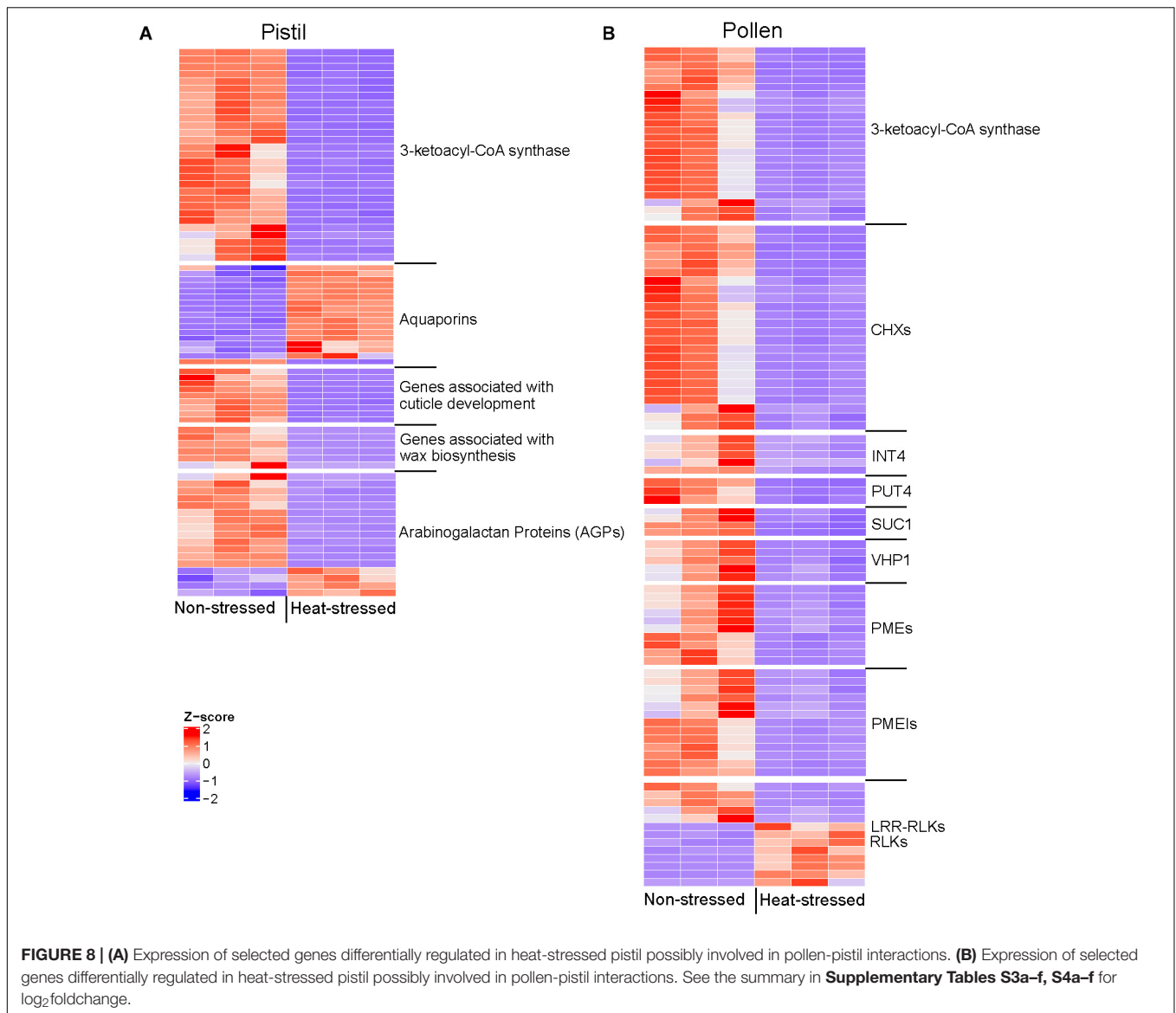
Additionally, in heat-stressed pollen the GO categories “water channel activity” and “water transmembrane transport” were downregulated; especially genes homologous to Aquaporin TIP1-3 (*BnaA09g51590D*, *BnaCnng01570D*), indicating possible interference of the pollen hydration process (**Supplementary Table S3b**). In Arabidopsis TIP1-3 (*At4g01470*) aquaporin, is selectively expressed in pollen (Soto et al., 2008). A possible role of aquaporin-like genes in pollen hydration has also been previously suggested in *Brassica* (Ikeda et al., 1997). Here, we also observed the upregulation of genes homologous to Aquaporin PIP2-7, TIP1-1, and TIP2-1 in the heat-stressed pistil (**Figure 8A** and **Supplementary Table S4b**). PIP aquaporin genes are expressed in the stigma of *Brassica* (Dixit et al., 2001). In tobacco, PIP genes are suggested to be involved in the movement of water between pollen and stigma (Bots et al., 2005). However, the role of TIP1-1 and TIP2-1 in pistil remains elusive (Pérez Di Giorgio et al., 2016).

The stigma in *B. napus* is dry, and the stigmatic papillae are protected from dehydration and environmental conditions by waxy cuticle of the highly modified epidermal cells. Mutations that disrupt the formation of cuticles can have a profound impact on the ability of stigma to support pollen tube growth (Ingram and Nawrath, 2017). In heat-stressed pistil, genes involved in cuticle formation were also downregulated (**Figures 5B, 8A** and **Supplementary Table S4c**). Our data suggest that the downregulation of the genes associated with the biosynthesis of cuticle constituents in response to heat stress in pistil can interfere with pollen hydration and further germination.

Following hydration, pollen germinates on the stigma surface penetrating the stigma cells and then growing within the style's transmitting tract. During growth toward ovary, the pollen tubes interact intimately with the extracellular matrix (ECM) components of the transmitting tract (Cheung et al., 1995). Hydroxyproline-rich glycoproteins (HRGPs), such as arabinogalactan proteins, AGPs (Cheung and Wu, 1999) in the extracellular matrix (ECM) have been suggested to regulate pollen tube growth and pollen tube guidance in the style tissue and regulate other functions, such as maintaining cellular integrity and cell-cell communications (Palanivelu and Preuss, 2000; Losada et al., 2017). Accordingly, we identified several differentially regulated AGPs like AGP4, AGP12, AGP15 and AGP18 in the heat-stressed pistil (**Figure 8A** and **Supplementary Table S4d**). Further research is required to explore the impact of heat stress on the HRGP mediation of pollen-pistil interactions in styler tissues.

Pollen Cell Wall Organization and Cellular Transport-Related Genes Possibly Regulate Pollen Fitness Under Heat Stress

A significant percentage of downregulated genes in heat-stressed pollen was associated with the cell membrane



components in comparison to heat-stressed stigma/style tissues. Key gene families involved in cellular transport such as cation/ H^+ antiporters, cation/ H^+ exchangers (CHXs), inositol transporters (INT4), sucrose transporter, SUC1, Na^+/Ca^{2+} exchanger, proline transporter (PUT4), plasma membrane-associated ATPase, vacuolar H^+ pyrophosphatases (VHP1), metal transporters and K^+ uptake permease were downregulated among other transporters in heat-stressed pollen (**Figure 8B** and **Supplementary Table S3c**). While the possible role of CHX transporters in pollen function is not fully characterized, the Arabidopsis, *cxh17/18/19* mutants display a disordered architecture of the pollen wall, reduced male fertility and seed set (Chanroj et al., 2013). Similarly, *chx21/23* double mutant display male-sterility as the pollen tube is incapable of reaching the ovules (Lu et al., 2011). There is a recent report of the downregulation of these transporters in *in vitro* germinated Arabidopsis pollen exposed to heat stress (Poidevin et al., 2020).

Sucrose transport gene *AtSUC1* shows high expression in pollen. The Arabidopsis, *Atsuc1* mutant pollen is defective *in vivo* with slower rates of pollen germination *in vitro* (Sivitz et al., 2008). Recently, the role of plasma membrane-associated ATPases in maintaining plant fertility was reported as these transporters control the ion balance by controlling downstream pH-dependent mechanisms essential for pollen tube growth (Hoffmann et al., 2020). Thus, based on our analysis and previous reports, we suggest that the downregulation of key genes involved in transmembrane transport is one of the key reasons for the loss of pollen function under heat stress conditions (Frank et al., 2009; Giorno et al., 2010; Fragkostefanakis et al., 2016; Keller et al., 2018; Gonzalo et al., 2020).

We also investigated heat-responsive pollen DEGs associated with cell wall organization to explore their role in pollen fitness. In our analysis, *BnaA02g34360D* encoding gene homologous to cellulose synthase CESA-6 is downregulated in heat-stressed

pollen. In Arabidopsis, subunits of cellulose synthase complex CESA1-, CESA3-, and CESA6-related genes are involved in cellulose synthesis at the plasma membrane. Exclusion of any of these components leads to gametophytic lethality, indicating that primary-wall cellulose synthesis is crucial for pollen development (Persson et al., 2007). Thus, the downregulation of CESA-6 in heat-stressed pollen points toward inhibition of cellulose biosynthesis as one of the heat-induced pollen defects.

B. napus genes encoding probable pectin methyl esterases (PMEs) and PME inhibitors (PMEIs) were differentially regulated in heat-stressed pollen (Figure 8B and Supplementary Table S3d). PME and PMEI are known to regulate the stability of certain pollen tube wall domains during its elongation (Guan et al., 2013). Furthermore, in pollen crucial role of serine-threonine kinases and leucine-rich repeat receptor-like kinases (LRR-RLKs) in regulating pollen germination, pollen tube growth, and/or pollination has been suggested (Kim et al., 2004) and several members of the RLK gene family were also differentially regulated in heat-stressed pollen. Interestingly, we observed downregulation of genes homologous to *Arabidopsis* *transferase RRA3* (*BnaA06g13470D*, *BnaA06g13630D*) in heat-stressed pollen. In Arabidopsis, *RRA3* is involved in glycosylation of cell wall proteins which is suggested to be a crucial step in cell wall assembly for root hairs. This gene is also suggested (Velasquez et al., 2011) to be possibly involved in a similar modification of cell wall proteins involved in pollen tube growth but has not been experimentally validated. We also identified one *expansin* gene (*BnaCnng40260D*) downregulated by heat stress in pollen and pistil, which might play a role in cell wall loosening and assisting in penetration of stigma by the pollen tube (Valdivia et al., 2009). We conclude that downregulation of genes associated with cell wall organization and cellular transport adversely impact the pollen fitness and integrity, leading to reduced reproductive success and seed set.

High Temperature-Induced Oxidative Stress Interferes With Reproductive Functions

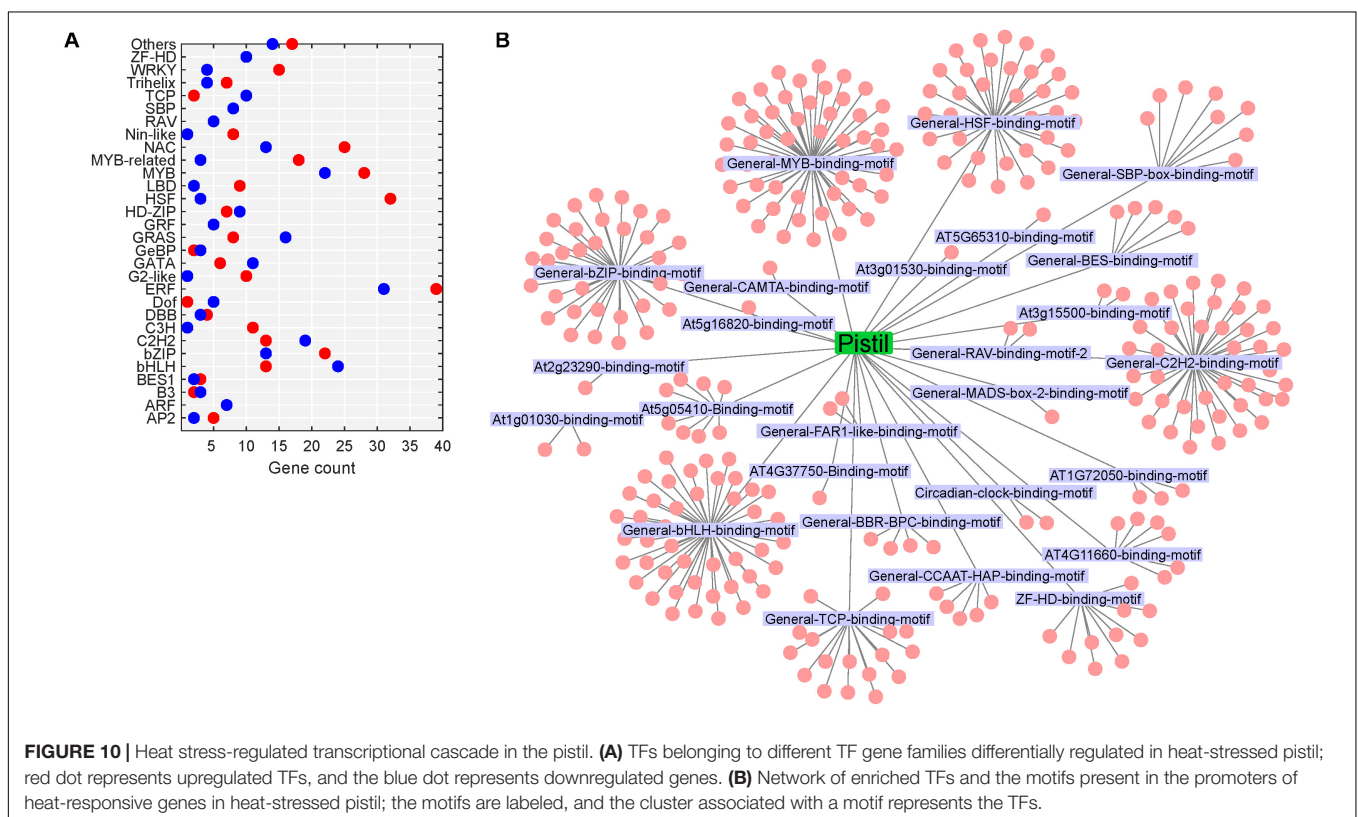
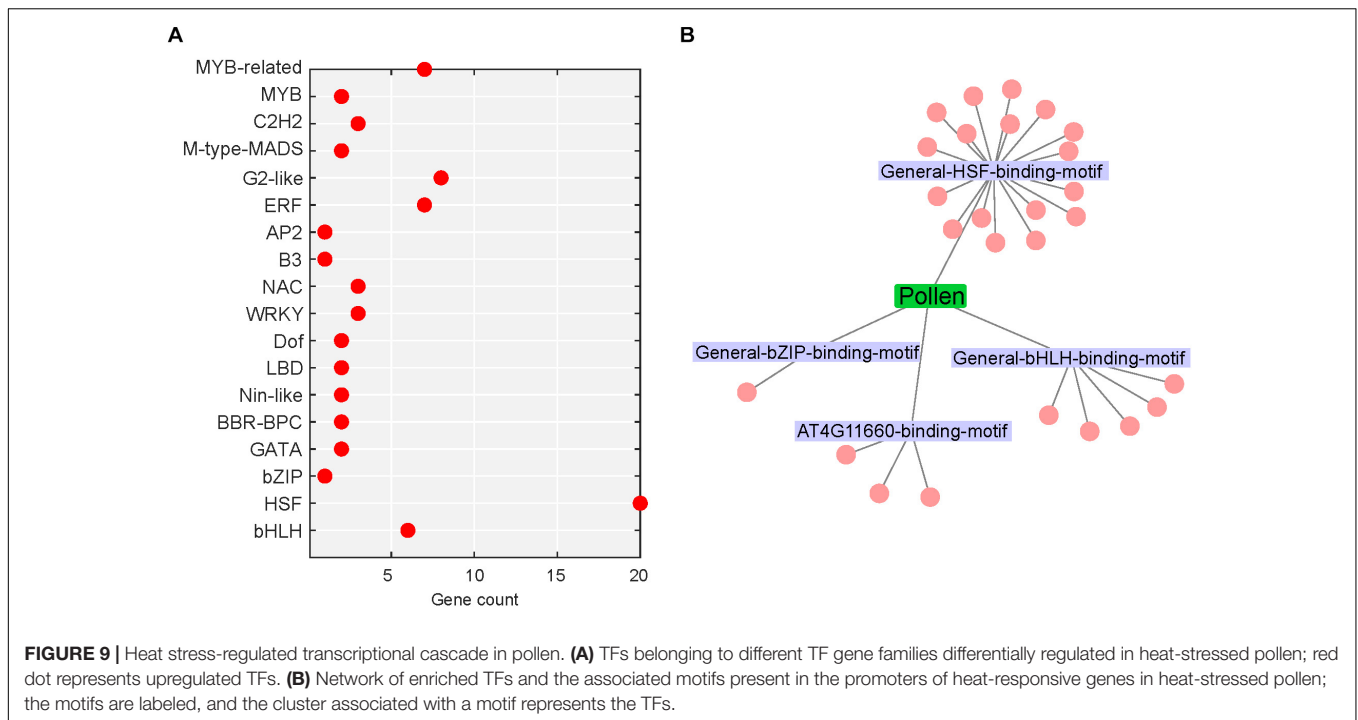
In heat-stressed pollen and pistil, we identified genes associated with GO categories “response to hydrogen peroxide,” “response to reactive oxygen species” (Supplementary Tables S3e, S4e). Majority of the ROS responsive DEGs in pollen were also differentially regulated in pistil except for *BnaC03g73200D*, *BnaA09g36810D*, *BnaAnng06520D*, *BnaA02g06590D*, *BnaA06g18310D*, and *BnaC03g55730D*. Interestingly, homologs of NADPH oxidases (Respiratory burst oxidase homolog H and J), *BnaA02g06590D* (*RbohJ*), *BnaA06g18310D* (*RbohJ*), and *BnaC03g55730D* (*RbohH*) were downregulated only in heat-stressed pollen. In Arabidopsis, defective pollen tube growth which interrupts adequate fertilization was reported in the *rbohHrbohJ* double mutant, suggesting the role of these two genes in pollen germination (Boisson-Dernier et al., 2013). Furthermore, *RbohH* and *RbohJ* are involved in enzymatic production of ROS, which is crucial for pollen germination (Kaya et al., 2014). Thus, the downregulation of these genes negatively impacts the pollen function. Furthermore, the

interaction network of RBOHs, ROS and Ca^{2+} concentrations is also possibly involved in pollen tube growth, and the negative regulation of this interaction by heat stress can cause interference with reproduction. Additionally, Ca^{2+} signaling is reported to play a crucial role in pollen tube growth and development (Konrad et al., 2018). The identified DEGs in heat-stressed pollen and pistil with a possible role in regulating Ca^{2+} gradient and signaling were homologous to Calcium-dependent lipid-binding (CaLB) family proteins, Calmodulin-binding family proteins, CML47, Calmodulin 1, Calcium-binding EF-hand family protein, Calcium-dependent protein kinase (CDPK), sodium/calcium exchangers, Calcium-transporting ATPase, alpha-mannosidase 3, Cyclic nucleotide-gated channel-16 (CNGC16) and others (Supplementary Tables S3f, S4f). We observed downregulation (\log_2 foldchange 1.8) of a probable CNGC16 *B. napus* gene (*BnaCnng14420D*) in heat-stressed pollen. CNGC16 is crucial pollen expressing gene playing a role in heat stress-responsive Ca^{2+} signaling and downstream transcriptional heat stress response (Tunc-Ozdemir et al., 2013). The transcriptome analysis of the Arabidopsis mutant *cngc16* pollen highlighted the defect in triggering or maintaining heat stress-responsive transcriptome, indicating the importance of CNGC16 in pollen heat stress response (Ishka et al., 2018).

In heat-stressed pollen and pistil, aldehyde oxidase genes homologous to *glyoxal oxidase 1* (*Glox1*) were downregulated. In Arabidopsis, *Glox1* possibly play a vital role in the tapetum and pollen development (Krishnamurthy, 2015). It can be suggested that GLOX1 might negatively regulate pollen fitness and also play a damaging role in heat stress exposed pistil as well. Additionally, in heat-stressed pollen and pistil homologs of *galactinol synthase 1* (*GloS1*) and raffinose synthase family proteins were upregulated. These genes are involved in the raffinose family of oligosaccharides (RFOs) synthesis and have a possible role in oxidative stress response (Sengupta et al., 2015). *B. napus* genes homologous to ROS scavenging genes APX1 (Ascorbate Peroxidase 1; *BnaA06g04380D*, *BnaC05g05550D*) and APX2 (Ascorbate Peroxidase 2; *BnaA01g32160D*, *BnaC01g39080D*) were upregulated in pollen and pistil. The role of GLOX1 and raffinose synthase family proteins, APXs in heat stress response in reproductive tissues is not clear.

Transcriptional Cascades Involved in Heat Stress Response in Pollen and Pistil

Transcription factors (TFs) are fundamental to the regulation of gene expression. The transduction of stress signal to stress-responsive gene expression is mediated by TFs, which then interact with cis-acting elements located in the promoters of several target stress-responsive genes (Ohama et al., 2017). Around 4.9% (74/1,524; up: 74) and 7.9% (561/7,133; up: 305, down: 256) DEGs in heat-stressed pollen and pistil, respectively, were identified as encoding TFs (Figures 9A, 10A). Further, the SeqEnrich analysis, DNA sequence motifs or transcription factor binding sites (TFBS) significantly ($p < 0.001$) enriched in promoters of query genes are associated with TFs within the same query gene list capable of binding to that DNA sequence motif. Thus, we further identified the enriched transcriptional module,



including TFs and their binding sites active in heat stress response in pollen and pistil (Figures 9B, 10B).

In heat-stressed pollen and pistil, 13 and 47 significantly enriched TFBS were identified in the 1kb promoter region of

the differentially expressed genes, respectively (Supplementary Tables S5, S6). The HSF binding motifs, bHLH binding motif, bZIP binding motif, GATA/TIFY binding motifs, MYB binding motifs and CAMTA binding motif were among the

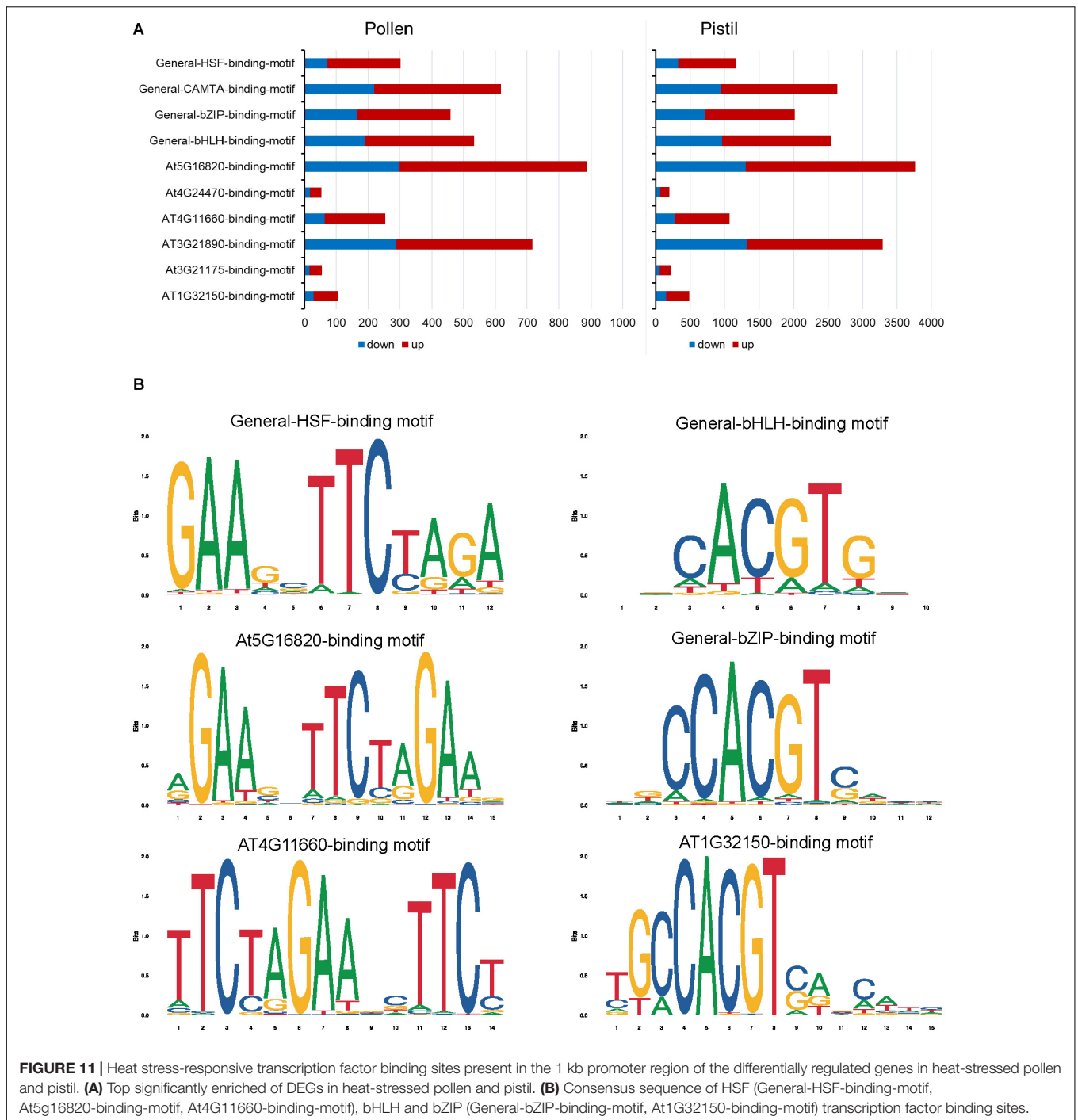
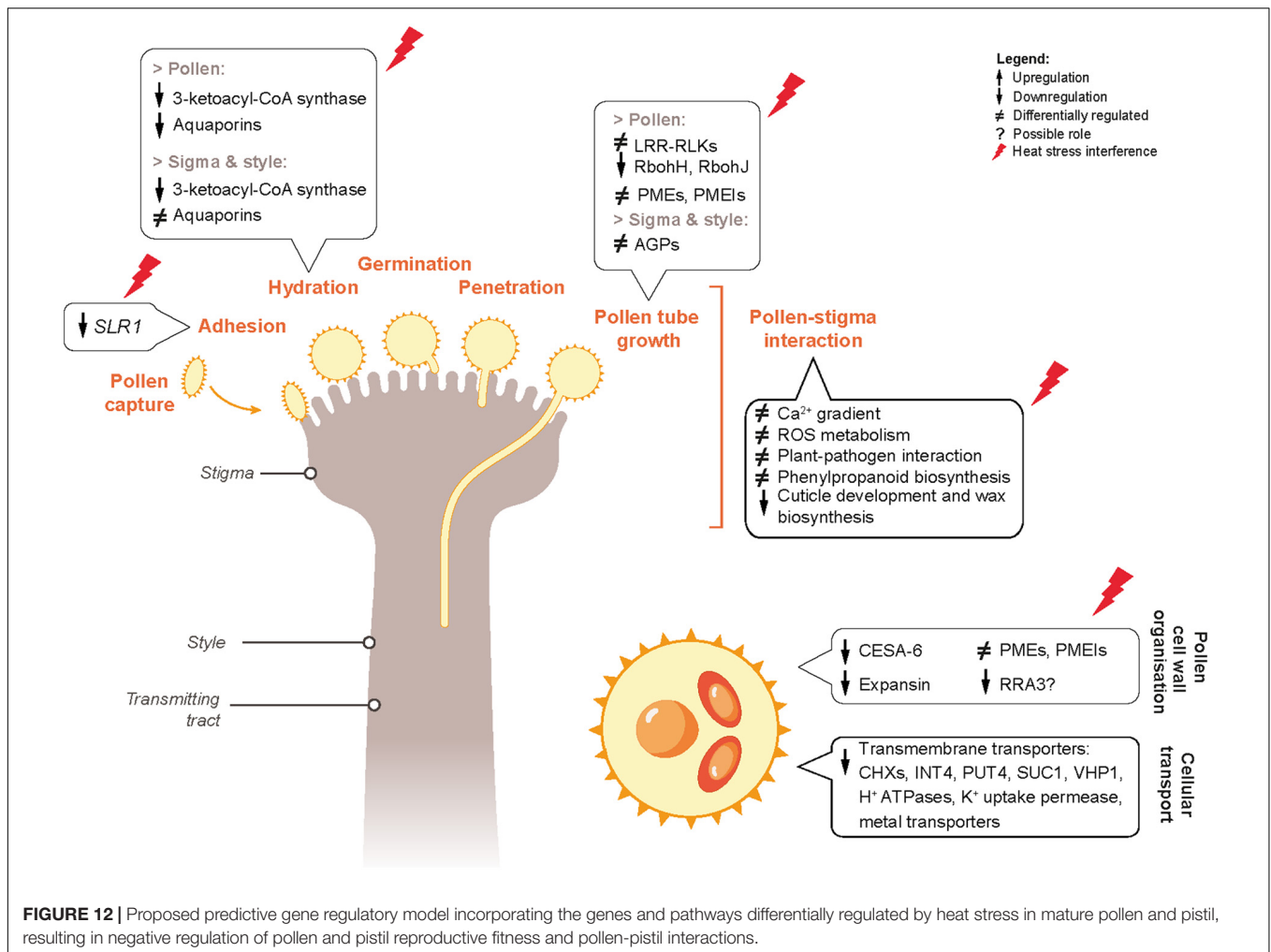


FIGURE 11 | Heat stress-responsive transcription factor binding sites present in the 1 kb promoter region of the differentially regulated genes in heat-stressed pollen and pistil. **(A)** Top significantly enriched of DEGs in heat-stressed pollen and pistil. **(B)** Consensus sequence of HSF (General-HSF-binding-motif, At5g16820-binding-motif, At4G11660-binding-motif), bHLH and bZIP (General-bZIP-binding-motif, At1G32150-binding-motif) transcription factor binding sites.

most significant TFBS predicted to be present in the target DEG's promoters in heat-stressed pollen and pistil (**Figure 11**). The HSF binding sites (General-HSF-binding-motif, At5g16820-binding-motif, At4G11660-binding-motif) were present in 68 and 62% target genes in heat-stressed pollen and pistil, respectively. HSFs are well known to bind to the heat stress elements (HSEs: 5'-nGAAnnTTCnnGAAn-3' or 5'-nTTCnnGAAnnTTCn-3') present in the promoters of their target genes (Guo et al., 2016). In heat-stressed pollen and

pistil, almost 35% of the target DEGs had the bHLH TFBS in their promoters. The bZIP TFBS (General-bZIP-binding-motif, At1G32150-binding-motif) were present in 32 and 31% DEGs in heat-stressed pollen and pistil. The consensus sequences of bZIP and bHLH TFBS had an ACGT core, and the bZIP and bHLH TFs are generally thought to recognize ACGT core containing ABRE sequences such as the G-box motif with flanking regions varying to some degree (Mehrotra et al., 2013; Ezer et al., 2017). The transcription factors bZIPs and bHLHs can act antagonistically,



competing for binding to the same sites. Thus, understanding how bZIP and bHLH regulate their target genes is vital to explore pathways that can be engineered for imparting reproductive thermotolerance (Ezer et al., 2017).

In heat-stressed pollen, four significant TFBS were associated with 26 significantly enriched TFs. Among the enriched TFs, 19 genes belonged to the HSF family; five genes belonged to the bHLH family and one candidate to the bZIP family (Supplementary Table S7). *BnaC03g26940D*, *BnaA09g40360D*, *BnaC07g32600D*, *BnaA03g41550D*, and *BnaC03g52080D* with >11 log₂ fold change in expression were among the top upregulated TFs. One transcription factor *BnaA04g09700D* showing association with the HSF-binding motif had no significant similarity with any Arabidopsis transcription factor. Interestingly no downregulation of any TF in heat-stressed pollen was observed.

In heat-stressed pistil 284 (up 144, down: 140) significantly enriched TFs were identified. The enriched temperature-responsive TFs in heat-stressed pistil belonged to diverse TF families such as bHLH, bZIP, HSF, DREB2A, AP2/ERF, MYB, NAC, WRKY, C2H2-zinc-finger, HD-zip (homeodomain-leucine zipper), FAR1-like (far-red impaired response-like) and

transcription factors involved in brassinosteroids signaling, among others (Supplementary Table S8). Majority of the genes belonged to the MYB, bHLH, bZIP and HSF gene family. MYB (50 TFs) and MYB-related (21 TFs) TF members were significantly overrepresented in the heat-stressed pistil. Genes encoding MYB and MYB-related TFs were reported to be strongly induced by heat stress in maize pollen (Begcy et al., 2019). While the functions of MYBs in heat stress response in reproductive tissues are not clear, it has been reported that overexpression of wheat MYB transcription factor gene *TaMYB80* in Arabidopsis led to enhanced heat and drought stress tolerance (Zhao et al., 2017).

As discussed earlier, our results show that the *B. napus* HSF2 (*BnaC03g26940D*, *BnaA03g22890D*), HSF7 (HSF7a: *BnaA03g41550D*, *BnaC07g32600D*, *BnaA03g41540D*, HSF7b: *BnaA09g40360D*) and HSF2a (*BnaC03g52080D*) were the key HSFs upregulated in both pollen and pistil with >100-fold change in expression levels. HSF2 is reported to regulate thermotolerance during male reproductive development in tomato (Giorno et al., 2010; Fragkostefanakis et al., 2016). The heat stress exposure during tomato pollen development leads to enhanced *HsfA7* expression only in the tetrad stage,

while enhanced expression of *HsfA2* was noticeable in all developmental stages (Keller et al., 2018). Class B HSFs acts as repressors of the expression of other HSFs. HSF2a has been suggested to play a role in female gametophyte development (Wunderlich et al., 2014). In the present study, heat-stressed pollen, and pistil, bHLH TF family member, PIF6 (*BnaA09g39670D*, *BnaC08g32020D*) homologs showed >64-folds upregulation. In heat-stressed pollen, only *BnaC08g32020D* was upregulated, whereas in pistil both copies of PIF6 were upregulated. While PIF6 has been reported to act as a positive regulator of photomorphogenesis in plants and unlike other PIFs and it also plays a role in controlling seed dormancy (Pham et al., 2018), its role in thermo-sensing is not clear and remains an interesting area for future investigations.

In our data, heat-stressed pistil, down-regulated TFs, homologs of MYB75 (*BnaCnng28030D*), NYF subunit A3 (*BnaC04g27090D*), C2H2 type Zn finger protein (*BnaCnng02770D*), bHLH51 (*BnaA04g22490D*), and HSFC1 (*BnaC07g07130D*) were the top candidates with >40-fold decrease (**Supplementary Table S8**). In *Arabidopsis*, downregulation of gene expression of MYB75 (Georgii et al., 2017) and HSFC1 (Swindell et al., 2007) in response to heat stress has been reported. However, the causative relationship between the downregulation of these genes with heat stress response has not been established. Further, down-regulation of TFs in pistil as seen in our analysis, suggests that the heat stress-induced repression of transcription might be an adaptive mechanism that is markedly different between pollen and pistil. The significant transcriptional changes in gene expression in pollen and pistil in response to heat stress are largely due to the differential regulation of TF expression. Our study highlights the need for further investigations to understand the role of the network involving different HSFs along with other significant TFs in regulating the plant's reproductive heat stress response in an organ/stage-specific manner.

CONCLUSION

In this study, the effects of short-term heat stress events during flowering on the success of reproduction in *B. napus* have been described. We have shown that exposure to heat stress impairs the function of both pollen and pistil, leading to loss of fertility and seed set. The genes with possible involvement in negative regulation of pollen fitness and pollen-pistil interactions have also been identified. Based on the heat-responsive DEGs in pollen and pistil associated with heat-sensing, signaling cascades, cellular and metabolic processes; we propose a molecular mechanism through which heat stress possibly alters pollen-pistil interactions in *B. napus* (**Figure 12**). Our data reveal that detailed exploration of the molecular

basis of these pathways is warranted. Dynamic transcriptomic analysis of non-stressed and heat-stressed pollen and pistil provided the basis of highlighting the distinctive mechanisms involved in heat stress response in these reproductive tissues. Further investigations on the DEGs identified in this study could be directed toward improving the performance and thermotolerance of *B. napus* varieties. Overall, data reported in our study provides a framework for further studies to explore key components involved in early heat sensing and response mechanisms during the reproductive phase of the Brassica crop.

DATA AVAILABILITY STATEMENT

All datasets generated for this study are included in the article/**Supplementary Material**. The RNA-Seq data generated for the analysis are deposited at the NCBI Sequence Read Archive (BioProject ID: PRJNA666230, BioSample IDs: SAMN16286967 and SAMN16286968). The output files generated by Kallisto analysis, containing the information of abundance estimates (counts and TPM), and transcript length information length for all samples analyzed in this study are provided in **Supplementary Tables S9a–d**.

AUTHOR CONTRIBUTIONS

NL conducted the experiments, analyzed the sequencing data, and prepared a draft of the manuscript. PB and MS conceived the research, supervised, and extensively edited the article. All authors contributed to the article and approved the submitted version.

FUNDING

The research was supported by the ARC Discovery Grant DP0988972 and the University of Melbourne Research Scholarship.

ACKNOWLEDGMENTS

This research was supported by the Spartan HPC (Lafayette et al., 2016) at the University of Melbourne, Australia.

SUPPLEMENTARY MATERIAL

The Supplementary Material for this article can be found online at: <https://www.frontiersin.org/articles/10.3389/fpls.2020.622748/full#supplementary-material>

REFERENCES

- Aksouh-Harradj, N., Campbell, L., and Mailer, R. (2006). Canola response to high and moderately high temperature stresses during seed maturation. *Can. J. Plant Sci.* 86, 967–980. doi: 10.4141/p05-130
- Andrews, S. (2010). *FastQC: a Quality Control Tool for High Throughput Sequence Data*. Cambridge: Babraham Institute.
- Angadi, S., Cutforth, H., Miller, P., Mcconkey, B., Entz, M., Brandt, S., et al. (2000). Response of three *Brassica* species to high temperature stress during reproductive growth. *Can. J. Plant Sci.* 80, 693–701. doi: 10.4141/p99-152
- Becker, M. G., Walker, P. L., Pulgar-Vidal, N. C., and Belmonte, M. F. (2017). SeqEnrich: a tool to predict transcription factor networks from co-expressed *Arabidopsis* and *Brassica napus* gene sets. *PLoS One* 12:e0178256. doi: 10.1371/journal.pone.0178256
- Begcy, K., Nosenko, T., Zhou, L.-Z., Fragner, L., Weckwerth, W., and Dresselhaus, T. (2019). Male sterility in maize after transient heat stress during the tetrad stage of pollen development. *Plant Physiol.* 181, 683–700. doi: 10.1104/pp.19.00707
- Berz, J., Simm, S., Schuster, S., Scharf, K.-D., Schleiff, E., and Ebersberger, I. (2019). HEATSTER: a database and web server for identification and classification of heat stress transcription factors in plants. *Bioinform. Biol. Insights* 13:1177932218821365.
- Boisson-Dernier, A., Lituiev, D. S., Nestorova, A., Franck, C. M., Thiruganarajah, S., and Grossniklaus, U. (2013). ANXUR receptor-like kinases coordinate cell wall integrity with growth at the pollen tube tip via NADPH oxidases. *PLoS Biol.* 11:e1001719. doi: 10.1371/journal.pbio.1001719
- Bokszczanin, K. L., Fragkostefanakis, S., Bostan, H., Bovy, A., Chaturvedi, P., Chiusano, M. L., et al. (2013). Perspectives on deciphering mechanisms underlying plant heat stress response and thermotolerance. *Front. Plant Sci.* 4:315. doi: 10.3389/fpls.2013.00315
- Bots, M., Vergeldt, F., Wolters-Arts, M., Weterings, K., Van As, H., and Mariani, C. (2005). Aquaporins of the PIP2 class are required for efficient anther dehiscence in tobacco. *Plant Physiol.* 137, 1049–1056. doi: 10.1104/pp.104.05.6408
- Bray, N. L., Pimentel, H., Melsted, P., and Pachter, L. (2016). Near-optimal probabilistic RNA-seq quantification. *Nat. Biotechnol.* 34, 525–527. doi: 10.1038/nbt.3519
- Chanroj, S., Padmanaban, S., Czerny, D. D., Jauh, G.-Y., and Sze, H. (2013). K+ transporter AtCHX17 with its hydrophilic C tail localizes to membranes of the secretory/endocytic system: role in reproduction and seed set. *Mol. Plant* 6, 1226–1246. doi: 10.1093/mp/sst032
- Cheung, A., and Wu, H.-M. (1999). Arabinogalactan proteins in plant sexual reproduction. *Protoplasma* 208, 87–98. doi: 10.1007/bf01279078
- Cheung, A. Y., Wang, H., and Wu, H.-M. (1995). A floral transmitting tissue-specific glycoprotein attracts pollen tubes and stimulates their growth. *Cell* 82, 383–393. doi: 10.1016/0092-8674(95)90427-1
- Dixit, R., Rizzo, C., Nasrallah, M., and Nasrallah, J. (2001). The *Brassica* MIP-MOD gene encodes a functional water channel that is expressed in the stigma epidermis. *Plant Mol. Biol.* 45, 51–62.
- Elleman, C., and Dickinson, H. (1999). Commonalities between pollen/stigma and host/pathogen interactions: calcium accumulation during stigmatic penetration by *Brassica oleracea* pollen tubes. *Sex. Plant Reprod.* 12, 194–202. doi: 10.1007/s004970050192
- Evans, D., Taylor, P., Singh, M., and Knox, R. (1992). The interrelationship between the accumulation of lipids, protein and the level of acyl carrier protein during the development of *Brassica napus* L. pollen. *Planta* 186, 343–354.
- Ezer, D., Shepherd, S. J., Brestovitsky, A., Dickinson, P., Cortijo, S., Charoensawan, V., et al. (2017). The G-box transcriptional regulatory code in *Arabidopsis*. *Plant Physiol.* 175, 628–640. doi: 10.1104/pp.17.01086
- Fornes, O., Castro-Mondragon, J. A., Khan, A., Van Der Lee, R., Zhang, X., Richmond, P. A., et al. (2020). JASPAR 2020: update of the open-access database of transcription factor binding profiles. *Nucleic Acids Res.* 48, D87–D92.
- Fragkostefanakis, S., Meshovic, A., Simm, S., Paupière, M. J., Hu, Y., Paul, P., et al. (2016). HsfA2 controls the activity of developmentally and stress-regulated heat stress protection mechanisms in tomato male reproductive tissues. *Plant Physiol.* 170, 2461–2477. doi: 10.1104/pp.15.01913
- Fragkostefanakis, S., Roeth, S., Schleiff, E., and Scharf, K. D. (2015). Prospects of engineering thermotolerance in crops through modulation of heat stress transcription factor and heat shock protein networks. *Plant Cell Environ.* 38, 1881–1895. doi: 10.1111/pce.12396
- Frank, G., Pressman, E., Ophir, R., Althan, L., Shaked, R., Freedman, M., et al. (2009). Transcriptional profiling of maturing tomato (*Solanum lycopersicum* L.) microspores reveals the involvement of heat shock proteins, ROS scavengers, hormones, and sugars in the heat stress response. *J. Exp. Bot.* 60, 3891–3908. doi: 10.1093/jxb/erp234
- Georgii, E., Jin, M., Zhao, J., Kanawati, B., Schmitt-Kopplin, P., Albert, A., et al. (2017). Relationships between drought, heat and air humidity responses revealed by transcriptome-metabolome co-analysis. *BMC Plant Biol.* 17:120. doi: 10.1186/s12870-017-1062-y
- Giorno, F., Wolters-Arts, M., Grillo, S., Scharf, K.-D., Vriezen, W. H., and Mariani, C. (2010). Developmental and heat stress-regulated expression of HsfA2 and small heat shock proteins in tomato anthers. *J. Exp. Bot.* 61, 453–462. doi: 10.1093/jxb/erp316
- Gonzalo, M. J., Li, Y.-C., Chen, K.-Y., Gil, D., Montoro, T., Nájera, I., et al. (2020). Genetic control of reproductive traits in tomatoes under high temperature. *Front. Plant Sci.* 11:326. doi: 10.3389/fpls.2020.00326
- Gu, Z. (2015). *Complexheatmap: Making Complex Heatmaps. R package version 1*.
- Guan, Y., Guo, J., Li, H., and Yang, Z. (2013). Signaling in pollen tube growth: crosstalk, feedback, and missing links. *Mol. Plant* 6, 1053–1064. doi: 10.1093/mp/sst070
- Guo, M., Liu, J.-H., Ma, X., Luo, D.-X., Gong, Z.-H., and Lu, M.-H. (2016). The plant heat stress transcription factors (HSFs): structure, regulation, and function in response to abiotic stresses. *Front. Plant Sci.* 7:114. doi: 10.3389/fpls.2016.00114
- Han, J., Lühs, W., Sonntag, K., Zähringer, U., Borchardt, D. S., Wolter, F. P., et al. (2001). Functional characterization of β -ketoacyl-CoA synthase genes from *Brassica napus* L. *Plant Mol. Biol.* 46, 229–239.
- Heizmann, P., Luu, D., and Dumas, C. (2000). Pollen-stigma adhesion in the Brassicaceae. *Ann. Bot.* 85, 23–27. doi: 10.1006/anbo.1999.1057
- Hoffmann, R. D., Portes, M. T., Olsen, L. I., Damineli, D. S. C., Hayashi, M., Nunes, C. O., et al. (2020). Plasma membrane H⁺-ATPases sustain pollen tube growth and fertilization. *Nat. Commun.* 11:2395.
- Ikeda, S., Nasrallah, J. B., Dixit, R., Preiss, S., and Nasrallah, M. E. (1997). An aquaporin-like gene required for the *Brassica* self-incompatibility response. *Science* 276, 1564–1566. doi: 10.1126/science.276.5318.1564
- Ingram, G., and Nawrath, C. (2017). The roles of the cuticle in plant development: organ adhesions and beyond. *J. Exp. Bot.* 68, 5307–5321. doi: 10.1093/jxb/erx313
- Ishka, M. R., Brown, E., Weigand, C., Tillett, R. L., Schlauch, K. A., Miller, G., et al. (2018). A comparison of heat-stress transcriptome changes between wild-type *Arabidopsis* pollen and a heat-sensitive mutant harboring a knockout of cyclic nucleotide-gated cation channel 16 (*cngc16*). *BMC Genomics* 19:549. doi: 10.1186/s12864-018-4930-4
- Jagadish, S. K. (2020). Heat stress during flowering in cereals—effects and adaptation strategies. *New Phytol.* 226, 1567–1572. doi: 10.1111/nph.16429
- Jaime, R., Alcántara, J. M., Manzaneda, A. J., and Rey, P. J. (2018). Climate change decreases suitable areas for rapeseed cultivation in Europe but provides new opportunities for white mustard as an alternative oilseed for biofuel production. *PLoS One* 13:e0207124. doi: 10.1371/journal.pone.0207124
- Janni, M., Gulli, M., Maestri, E., Marmiroli, M., Valliyodan, B., Nguyen, H. T., et al. (2020). Molecular and genetic bases of heat stress responses in crop plants and breeding for increased resilience and productivity. *J. Exp. Bot.* 71, 3780–3802. doi: 10.1093/jxb/eraa034
- Kaya, H., Nakajima, R., Iwano, M., Kanaoka, M. M., Kimura, S., Takeda, S., et al. (2014). Ca²⁺-activated reactive oxygen species production by *Arabidopsis* RbohH and RbohJ is essential for proper pollen tube tip growth. *Plant Cell* 26, 1069–1080. doi: 10.1105/tpc.113.120642
- Keller, M., Simm, S., and Consortium, S.-I. (2018). The coupling of transcriptome and proteome adaptation during development and heat stress response of tomato pollen. *BMC Genomics* 19:447. doi: 10.1186/s12864-018-4824-5

- Khan, D., Ziegler, D., Kalichuk, J. L., Hoi, V., Huynh, N., Hajihasani, A., et al. (2020). Gene expression profiling reveals subgenome dominance during *Brassica napus* seed development. *bioRxiv [Preprint]* doi: 10.1101/2020.04.29.068189
- Kho, Y. O., and Baer, J. (1968). Observing pollen tubes by means of fluorescence. *Euphytica* 17, 298–302.
- Kim, S., Dong, J., and Lord, E. M. (2004). 3 Pollen tube guidance: the role of adhesion and chemotropic molecules. *Curr. Top. Dev. Biol.* 61, 61–81. doi: 10.1016/s0070-2153(04)61003-9
- Kirkegaard, J. A., Lilley, J. M., Brill, R. D., Ware, A. H., and Walela, C. K. (2018). The critical period for yield and quality determination in canola (*Brassica napus* L.). *Field Crops Res.* 222, 180–188. doi: 10.1016/j.fcr.2018.03.018
- Kjellström, C. (1993). Comparative growth analysis of *Brassica napus* and *Brassica juncea* under Swedish conditions. *Can. J. Plant Sci.* 73, 795–801. doi: 10.4141/cjps93-102
- Konrad, K. R., Maierhofer, T., and Hedrich, R. (2018). Spatio-temporal aspects of Ca²⁺ signalling: lessons from guard cells and pollen tubes. *J. Exp. Bot.* 69, 4195–4214. doi: 10.1093/jxb/ery154
- Krishnamurthy, K. (2015). “Pre-fertilization: reproductive growth and development,” in *Plant Biology and Biotechnology*, eds B. Bahadur, M. Venkat Rajam, L. Sahijram, and K. Krishnamurthy (New Delhi: Springer), 409–440. doi: 10.1007/978-81-322-2286-6_17
- Lafayette, L., Sauter, G., Vu, L., and Meade, B. (2016). *Spartan Performance and Flexibility: An HPC-Cloud Chimera*. Barcelona: OpenStack Summit.
- Larden, A., and Triboui-Blondel, A. (1994). Freezing injury to ovules, pollen and seeds in winter rape. *J. Exp. Bot.* 45, 1177–1181. doi: 10.1093/jxb/45.8.1177
- Li, M., Wang, R., Wu, X., and Wang, J. (2020). Homoeolog expression bias and expression level dominance (ELD) in four tissues of natural allotetraploid *Brassica napus*. *BMC Genomics* 21:330. doi: 10.1186/s12864-020-6747-1
- Lohani, N., Golicz, A. A., Singh, M. B., and Bhalla, P. L. (2019). Genome-wide analysis of the Hsf gene family in *Brassica oleracea* and a comparative analysis of the Hsf gene family in *B. oleracea*, *B. rapa* and *B. napus*. *Funct. Integr. Genomics* 19, 515–531. doi: 10.1007/s10142-018-0649-1
- Lohani, N., Jain, D., Singh, M. B., and Bhalla, P. L. (2020a). Engineering multiple abiotic stress tolerance in canola, *Brassica napus*. *Front. Plant Sci.* 11:3. doi: 10.3389/fpls.2020.00003
- Lohani, N., Singh, M. B., and Bhalla, P. L. (2020b). High temperature susceptibility of sexual reproduction in crop plants. *J. Exp. Bot.* 71, 555–568. doi: 10.1093/jxb/erz426
- Losada, J. M., Hormaza, J. I., and Lora, J. (2017). Pollen–pistil interaction in pawpaw (*Asimina triloba*), the northernmost species of the mainly tropical family Annonaceae. *Am. J. Bot.* 104, 1891–1903. doi: 10.3732/ajb.1700319
- Love, M. I., Anders, S., and Huber, W. (2019). *Analyzing RNA-seq Data with DESeq2*. Available online at: <http://bioconductor.org/packages/devel/bioc/vignettes/DESeq2/inst/doc/DESeq2.html> (accessed July 12, 2020).
- Lu, Y., Chanroj, S., Zulkifli, L., Johnson, M. A., Uozumi, N., Cheung, A., et al. (2011). Pollen tubes lacking a pair of K⁺ transporters fail to target ovules in *Arabidopsis*. *Plant Cell* 23, 81–93. doi: 10.1105/tpc.110.080499
- Luu, D.-T., Heizmann, P., Dumas, C., Trick, M., and Cappadocia, M. (1997). Involvement of *SLR1* genes in pollen adhesion to the stigmatic surface in Brassicaceae. *Sex. Plant Reprod.* 10, 227–235. doi: 10.1007/s004970050091
- Luu, D.-T., Marty-Mazars, D., Trick, M., Dumas, C., and Heizmann, P. (1999). Pollen–stigma adhesion in *Brassica* spp involves SLG and SLR1 glycoproteins. *Plant Cell* 11, 251–262. doi: 10.2307/3870854
- Mehrotra, R., Sethi, S., Zutshi, I., Bhalothia, P., and Mehrotra, S. (2013). Patterns and evolution of ACGT repeat cis-element landscape across four plant genomes. *BMC Genomics* 14:203. doi: 10.1186/1471-2164-14-203
- Mesihovic, A., Iannacone, R., Firon, N., and Fragkostefanakis, S. (2016). Heat stress regimes for the investigation of pollen thermotolerance in crop plants. *Plant Reprod.* 29, 93–105. doi: 10.1007/s00497-016-0281-y
- Morrison, M. J., and Stewart, D. W. (2002). Heat stress during flowering in summer *Brassica*. *Crop Sci.* 42, 797–803.
- Ohama, N., Sato, H., Shinozaki, K., and Yamaguchi-Shinozaki, K. (2017). Transcriptional regulatory network of plant heat stress response. *Trends Plant Sci.* 22, 53–65.
- Palanivelu, R., and Preuss, D. (2000). Pollen tube targeting and axon guidance: parallels in tip growth mechanisms. *Trends Cell Biol.* 10, 517–524.
- Pérez Di Giorgio, J. A., Soto, G. C., Muschietti, J. P., and Amodeo, G. (2016). Pollen aquaporins: the solute factor. *Front. Plant Sci.* 7:1659. doi: 10.3389/fpls.2016.01659
- Persson, S., Paredez, A., Carroll, A., Palsdottir, H., Doblin, M., Poindexter, P., et al. (2007). Genetic evidence for three unique components in primary cell-wall cellulose synthase complexes in *Arabidopsis*. *Proc. Natl. Acad. Sci. U.S.A.* 104, 15566–15571.
- Pham, V. N., Kathare, P. K., and Huq, E. (2018). Phytochromes and phytochrome interacting factors. *Plant Physiol.* 176, 1025–1038.
- Piffanelli, P., Ross, J. H., and Murphy, D. J. (1997). Intra- and extracellular lipid composition and associated gene expression patterns during pollen development in *Brassica napus*. *Plant J.* 11, 549–562.
- Poidevin, L., Forment, J., Unal, D., and Ferrando, A. (2020). Transcriptome and translational changes in germinated pollen under heat stress uncover roles of transporter genes involved in pollen tube growth. *bioRxiv [Preprint]* doi: 10.1101/2020.05.29.122937
- Regan, S. M., and Moffatt, B. A. (1990). Cytochemical analysis of pollen development in wild-type *Arabidopsis* and a male-sterile mutant. *Plant Cell* 2, 877–889.
- Sengupta, S., Mukherjee, S., Basak, P., and Majumder, A. L. (2015). Significance of galactinol and raffinose family oligosaccharide synthesis in plants. *Front. Plant Sci.* 6:656. doi: 10.3389/fpls.2015.00656
- Singh, S., Kakani, V., Brand, D., Baldwin, B., and Reddy, K. (2008). Assessment of cold and heat tolerance of winter-grown canola (*Brassica napus* L.) cultivars by pollen-based parameters. *J. Agron. Crop Sci.* 194, 225–236.
- Sivitz, A. B., Reinders, A., and Ward, J. M. (2008). *Arabidopsis* sucrose transporter AtSUC1 is important for pollen germination and sucrose-induced anthocyanin accumulation. *Plant Physiol.* 147, 92–100.
- Smoot, M. E., Ono, K., Ruscheinski, J., Wang, P.-L., and Ideker, T. (2011). Cytoscape 2.8: new features for data integration and network visualization. *Bioinformatics* 27, 431–432.
- Soneson, C., Love, M. I., and Robinson, M. D. (2015). Differential analyses for RNA-seq: transcript-level estimates improve gene-level inferences. *F1000Res.* 4:1521.
- Soto, G., Alleva, K., Mazzella, M. A., Amodeo, G., and Muschietti, J. P. (2008). *AtTIP1;3* and *AtTIP5;1*, the only highly expressed *Arabidopsis* pollen-specific aquaporins, transport water and urea. *FEBS Lett.* 582, 4077–4082.
- Supek, F., Bošnjak, M., Škunca, N., and Šmuc, T. (2011). REVIGO summarizes and visualizes long lists of gene ontology terms. *PLoS One* 6:e21800. doi: 10.1371/journal.pone.0021800
- Swindell, W. R., Huebner, M., and Weber, A. P. (2007). Transcriptional profiling of *Arabidopsis* heat shock proteins and transcription factors reveals extensive overlap between heat and non-heat stress response pathways. *BMC Genomics* 8:125. doi: 10.1186/1471-2164-8-125
- Tian, F., Yang, D.-C., Meng, Y.-Q., Jin, J., and Gao, G. (2020). PlantRegMap: charting functional regulatory maps in plants. *Nucleic Acids Res.* 48, D1104–D1113.
- Tunc-Ozdemir, M., Tang, C., Ishka, M. R., Brown, E., Groves, N. R., Myers, C. T., et al. (2013). A cyclic nucleotide-gated channel (CNGC16) in pollen is critical for stress tolerance in pollen reproductive development. *Plant Physiol.* 161, 1010–1020.
- Uppal, R. K., Brill, R., and Bromfield, J. (2019). *Effect of Heat Stress on Canola Grain Yield and Quality*. Barton: Grains Research and Development Corporation.
- Valdivia, E. R., Stephenson, A. G., Durachko, D. M., and Cosgrove, D. (2009). Class B β -expansins are needed for pollen separation and stigma penetration. *Sex. Plant Reprod.* 22, 141–152.
- Velasquez, S. M., Ricardi, M. M., Dorosz, J. G., Fernandez, P. V., Nadra, A. D., Pol-Fachin, L., et al. (2011). O-glycosylated cell wall proteins are essential in root hair growth. *Science* 332, 1401–1403.
- Wickham, H. (2016). *ggplot2: Elegant Graphics for Data Analysis*. Berlin: Springer.
- Wunderlich, M., Groß-Hardt, R., and Schöffl, F. (2014). Heat shock factor HSF2a involved in gametophyte development of *Arabidopsis thaliana* and its expression is controlled by a heat-inducible long non-coding antisense RNA. *Plant Mol. Biol.* 85, 541–550.

- Xie, C., Mao, X., Huang, J., Ding, Y., Wu, J., Dong, S., et al. (2011). KOBAS 2.0: a web server for annotation and identification of enriched pathways and diseases. *Nucleic Acids Res.* 39, W316–W322.
- Ye, J., Zhang, Y., Cui, H., Liu, J., Wu, Y., Cheng, Y., et al. (2018). WEGO 2.0: a web tool for analyzing and plotting GO annotations, 2018 update. *Nucleic Acids Res.* 46, W71–W75.
- Young, L. W., Wilen, R. W., and Bonham-Smith, P. C. (2004). High temperature stress of *Brassica napus* during flowering reduces micro- and megagametophyte fertility, induces fruit abortion, and disrupts seed production. *J. Exp. Bot.* 55, 485–495.
- Zhao, Y., Tian, X., Wang, F., Zhang, L., Xin, M., Hu, Z., et al. (2017). Characterization of wheat MYB genes responsive to high temperatures. *BMC Plant Biol.* 17:208. doi: 10.1186/s12870-017-1158-4
- Zhu, A., Ibrahim, J. G., and Love, M. I. (2019). Heavy-tailed prior distributions for sequence count data: removing the noise and preserving large differences. *Bioinformatics* 35, 2084–2092.
- Zhu, X., Huang, C., Zhang, L., Liu, H., Yu, J., Hu, Z., et al. (2017). Systematic analysis of *Hsf* family genes in the *Brassica napus* genome reveals novel responses to heat, drought and high CO₂ stresses. *Front. Plant Sci.* 8:1174. doi: 10.3389/fpls.2017.01174

Conflict of Interest: The authors declare that the research was conducted in the absence of any commercial or financial relationships that could be construed as a potential conflict of interest.

Copyright © 2021 Lohani, Singh and Bhalla. This is an open-access article distributed under the terms of the Creative Commons Attribution License (CC BY). The use, distribution or reproduction in other forums is permitted, provided the original author(s) and the copyright owner(s) are credited and that the original publication in this journal is cited, in accordance with accepted academic practice. No use, distribution or reproduction is permitted which does not comply with these terms.