



Efficacy of three BCG strains (Connaught, TICE and RIVM) with or without secondary resection (re-TUR) for intermediate/high-risk non-muscle-invasive bladder cancers: results from a retrospective single-institution cohort analysis

Francesco Del Giudice^{1,2} · Gian Maria Busetto¹ · Martin S. Gross³ · Martina Maggi¹ · Alessandro Sciarra¹ · Stefano Salciccia¹ · Matteo Ferro⁴ · Isabella Sperduti⁵ · Simone Flammia¹ · Vittorio Canale¹ · Benjamin I. Chung² · Simon L. Conti² · Michael L. Eisenberg² · Eila C. Skinner² · Ettore De Berardinis¹

Received: 22 January 2021 / Accepted: 15 February 2021
© The Author(s) 2021

Abstract

Purpose (I) To evaluate the clinical efficacy of three different BCG strains in patients with intermediate-/high-risk non-muscle-invasive bladder cancer (NMIBC). (II) To determine the importance of performing routine secondary resection (re-TUR) in the setting of BCG maintenance protocol for the three strains.

Methods NMIBCs who received an adjuvant induction followed by a maintenance schedule of intravesical immunotherapy with BCG Connaught, TICE and RIVM. Only BCG-naïve and those treated with the same strain over the course of follow-up were included. Cox proportional hazards model was developed according to prognostic factors by the Spanish Urological Oncology Group (CUETO) as well as by adjusting for the implementation of re-TUR.

Results $n = 422$ Ta-T1 patients (Connaught, $n = 146$; TICE, $n = 112$ and RIVM, $n = 164$) with a median (IQR) follow-up of 72 (60–85) were reviewed. Re-TUR was associated with improved recurrence and progression outcomes ($HR_{RFS}: 0.63$; 95% CI 0.46–0.86; $HR_{PFS}: 0.55$; 95% CI 0.31–0.86). Adjusting for CUETO risk factors and re-TUR, BCG TICE and RIVM provided longer RFS compared to Connaught ($HR_{TICE}: 0.58$, 95% CI 0.39–0.86; $HR_{RIVM}: 0.61$, 95% CI 0.42–0.87) while no differences were identified between strains for PFS and CSS. Sub-analysis of only re-TUR cases ($n = 190$, 45%) showed TICE the sole to achieve longer RFS compared to both Connaught and RIVM.

Conclusion Re-TUR was confirmed to ensure longer RFS and PFS in intermediate-/high-risk NMIBCs but did not influence the relative single BCG strain efficacy. When routinely performing re-TUR followed by a maintenance BCG schedule, TICE was superior to the other strains for RFS outcomes.

Keywords Bladder cancer · Re-TUR · BCG strain · BCG-Connaught · BCG-TICE · BCG-RIVM · Recurrence-free survival · Progression-free survival · Cancer-specific survival

Eila C. Skinner and Ettore De Berardinis have equally contributed.

✉ Francesco Del Giudice
francesco.delgiudice@uniroma1.it

¹ Department of Maternal-Infant and Urological Sciences, Policlinico Umberto I Hospital, “Sapienza” University of Rome, Viale del Policlinico 155, 00161 Rome, Italy

² Department of Urology, Stanford Medical Center, Stanford, CA, USA

³ Section of Urology, Dartmouth-Hitchcock Medical Center, Lebanon, NH 03766, USA

⁴ Department of Urology, European Institute of Oncology (IEO), IRCCS, Milan, Italy

⁵ Biostatistical Unit, IRCCS, Regina Elena Hospital, Rome, Italy

Introduction

Non-muscle invasive bladder cancers (NMIBCs) represent a heterogeneous category of tumors associated with high recurrence (30–80%) and progression (25–50%) rates, depending on the risk profile, and leading to cancer death after bladder-sparing treatment within 5 years in about 16–23% of cases (Ferlay et al. (2012); CompeÅrat et al. 2015). The highest risk subtype of NMIBC represented by high-grade T1 (HG T1) can reach an almost 40% rate of recurrence and 20% of progression at 5 years, despite adjuvant intravesical therapy with Bacillus Calmette–Gu erin (BCG) (Bosch and Alfred 2011). From the initial introduction more than 35 years ago, BCG remains the gold standard organ-sparing option for patients classified as intermediate/high risk according to European Association of Urology (EAU) Guidelines (Babjuk et al. 2020; Witjes et al. 2020). Several series have demonstrated BCG’s superiority when compared with transurethral resection of bladder tumor (TURBT) alone or in combination with intravesical chemotherapy (Shelley et al. 2004; Han and Pan 2006; Malmstr m et al. 2009).

For optimal efficacy, BCG should be given in a maintenance schedule to prevent recurrence in patients with intermediate-/high-risk tumors, and evidence suggests that the three-year maintenance protocol originally described by Donald Lamm (2000) is more effective than 1-year (Lamm et al. 2000; Oddens et al. 2013). Despite this, many patients appropriate for intravesical immunotherapy will not complete the treatment protocol as planned due to side effects, efficacy, compliance and unfortunately shortage of BCG availability. The current worldwide BCG shortage has made the comparison of different strains, and potentially strain substitution, particularly of interest. To date, few studies have been conducted that compare strain efficacy, optimal dose and toxicity in the clinical setting with many limitations including variable maintenance schedules and BCG doses. Regarding induction protocol, a Dutch randomized clinical trial (RCT) (Vegt et al. 1995) observed RIVM to be superior in terms of recurrence-free survival (RFS) compared to TICE, and a second RCT in the same setting demonstrated Connaught to better prevent recurrence when compared to TICE (Rentsch et al. 2014). The largest European cohort of high-risk NMIBCs, published by Witjes et al. (2016), compared the 2 most widely used BCG strains, Connaught and TICE, and clearly revealed the independent importance of maintenance and how with this schedule TICE resulted in better recurrence-free outcomes.

An important frequently omitted variable among the available trials is information regarding re-staging procedures (re-TUR) and their potential influence on survival

outcomes. In particular, for NMIBCs, residual tumor rates may vary between 33 and 76% for all cases, including 27–72% and 33–78% for Ta and T1 tumors respectively (Cumberbatch et al. 2018). Also, 7–30% of these patients are understaged after initial TURBT, increasing up to 45% when resection does not include detrusor muscle (Shindo et al. 2014). As a result, both intravesical chemotherapy and BCG do not appear to reliably compensate for inadequate resection and are not recommended to replace secondary resection, especially for the highest risk category of HG T1 (Mack et al. 2001; Herr 2005).

To explore this unresolved topic related to potential efficacy differences among BCG strains, we reviewed our historical cohort of NMIBC patients who were assigned to the most used BCG strains (Connaught, TICE and RIVM). The main objective of our analysis was to verify the existence of survival differences among these three stains, with a secondary goal of analyzing the weighted importance of secondary resection procedures in these patients.

Patients and methods

After Institutional Review Board (IRB) approval, we performed a retrospective cohort study on intermediate-/high-risk BCG-na ive NMIBC patients who received induction followed by maintenance with three different BCG strains. Data were also collected on patients who underwent re-TUR within 2–8 weeks following primary resection.

Each participant enrolled in the study had signed an informed consent before undergoing intravesical BCG therapy according to the European Association of Urology (EAU) and Good Clinical Practice (GCP) Guidelines, and the ethical principles of the latest version of the Declaration of Helsinki.

Patients with muscle-invasive disease (\geq T2), upper tract urothelial cancer (UTUC), non-urothelial carcinoma, previous BCG, incomplete/missing data, or who did not initially receive BCG were excluded. The study design is summarized in Supplementary Fig. 1.

Recurrence was defined as tumor relapse in the bladder or prostatic urethra, regardless of tumor stage. Progression was defined as \geq T2 tumor relapse in the bladder or prostatic urethra. The cause of death was determined from death certificates and chart review.

Full BCG consisted of induction and 7 maintenance courses. Six-week induction started 2–3 weeks after staging TURBT or re-TUR. Maintenance therapy was 3 weekly instillations every 3 months for the first two schedules and then every 6 months (Lamm 2000). Patients were only included if they were treated with the same BCG strain throughout follow-up. The three BCG strains were: BCG-Connaught (ImmuCyst , Sanofi Pasteur, France)

BCG-TICE (OncoTICE®, MSD, USA) BCG-RIVM (Medac®, D-20354, Germany). BCG choice was made on the basis of availability, price and supply.

Statistical analysis

Pearson chi-square test or Fisher's exact test measured the association between variables. Kruskal–Wallis test measured association among quantitative variables. Kaplan–Meier method tested univariate effect of BCG strain on survival outcomes. Log-rank test assessed subgroup differences adjusted for multiple comparison (Dunn–Sidak) when appropriate. For the three strains, study end points were recurrence- and progression-free survival (RFS, PFS), defined as months for any stage/grade to relapse (RFS) and months for rise to T2 or higher stage (PFS). An additional end point was cancer-specific survival (CSS).

Times to events were calculated by taking the date of starting BCG as time zero. Patients without an event were censored at the last follow-up. Cox proportional hazards multivariable regression analysis adjusted for the number of CUETO prognostic factors in BCG maintenance patients (Fernandez-Gomez et al. 2009). This model adjusted for age (<60, 60–70 and ≥70 years), gender, prior recurrence, tumor number (<3 vs. ≥3 lesions), T category (Ta vs. Tis/T1), concomitant CIS, and tumor grade (G1/2 vs. G3). Adjustments for re-TUR procedures, and separate analyses in patients who received it or not, compared the benefit in outcomes among the strains. Statistical analysis was performed Stata version 16.1 (Stata Corporation, College Station, TX, USA) with statistical significance set as $p < 0.05$.

Results

422 patients with a median age of 67 (IQR: 64–70) were analyzed, 146 (34.6%) received Connaught, 112 (26.5%) received TICE and 164 (38.7%) received RIVM. Demographics and tumor characteristics are in Table 1. The three groups were equal in follow-up, age, gender, and other CUETO prognostic risk factors. We observed a significant difference in re-TUR within the groups with 30.1%, 48.2% and 56.7% for Connaught, TICE and RIVM respectively ($p < 0.01$). Median follow-up was 6.1 years with maximum of 14 years. Most were high-risk ($n = 392$, 92.9%) with primary HG Ta-T1 the most common ($n = 216$, 69.4%). Smaller proportions were seen of recurrent HG Ta-T1 ($n = 77$, 18.2%), LG T1 ($n = 66$, 15.6%), multiple large recurrent LG Ta ($n = 33$, 7.8%) or those who had previously received intravesical chemotherapy for low-risk tumors ($n = 41$; 9.7%). The median number of BCG instillations was 16 (IQR: 12–19), 19 (IQR: 15.75–21) and 20 (IQR: 16–21) for Connaught, TICE and RIVM, respectively ($p < 0.01$;

Supplementary Fig. 2). Fewer Connaught instillations were due to a lower side effect tolerability and higher drop-off rate (Supplementary Table 1).

70 (47.9%) patients on Connaught, 43 (38.4%) on TICE and 68 on RIVM (41.5%) recurred (Supplementary Table 2a). Recurrence rate, stratified by re-TUR, was 43.8% on Connaught, 22.2% on TICE and 34.4% on RIVM. RFS at 5-year was 54.1% (95% CI 45.9–62.3), 61.3% (95% CI 52.2–70.3) and 60.2% (95% CI 52.6–67.7), respectively (log-rank, $p = 0.012$; Dunn–Sidak: Connaught vs. TICE, $p = 0.052$; Connaught vs. RIVM, $p = 0.029$; TICE vs. RIVM, $p = 0.991$) (Fig. 1a).

After adjustment for CUETO prognostic factors, patients who had undergone re-TUR had a prolonged time to first recurrence (hazard ratio [HR] 0.63; 95% CI 0.46–0.85). The difference was only significant in Connaught patients (HR 0.51; 95% CI 0.32–0.89) and TICE (HR 0.29, 95% CI 0.15–0.58) and not in RIVM (HR 0.81; 95% CI 0.47–1.38).

Patients who received TICE showed a longer time to first recurrence in comparison with Connaught (HR 0.52, 95% CI 0.35–0.77). This was also found comparing RIVM vs. Connaught (HR 0.55, 95% CI 0.39–0.78) but not between TICE and RIVM (HR 0.94, 95% CI 0.65–1.62) (Supplementary Table 3a). Similarly, the difference in time to first recurrence after CUETO risk factors adjustment and adding re-TUR, remained significant only for TICE and RIVM vs. Connaught (HR 0.55; 95% CI 0.37–0.81 and 0.58, 95% CI 0.41–0.82) (Supplementary Table 2a).

In sub-analysis of only re-TUR patients ($n = 191$), TICE was the sole strain to significantly prolong time to first recurrence compared to Connaught and RIVM (HR 0.35, 95% CI 0.17–0.72, and HR 0.49, 95% CI 0.38–0.96, respectively). The same was true only for RIVM compared to Connaught in the sub-analysis of patients who did not have re-TUR ($n = 231$) (HR 0.56, 95% CI 0.34–0.98) (Fig. 2a).

37 (25.3%) patients on Connaught, 21 (18.7%) on TICE and 36 (22%) on RIVM progressed to MIBC (Supplementary Table 2b). Progression rate increased to 31.4% on Connaught, 25.9% on TICE and 28.2% on RIVM for those cases who did not undergo re-TUR. Progression rate was statistically equivalent for all three strains down to 11.4%, 11.1% and 17.2%, respectively, in cases of re-TUR. PFS at 5-yr was 74.7% (95% CI 67.5–81.9) for Connaught, 81% (95% CI 73.6–88.3) for TICE and 78.2% (95% CI 71.8–84.6) for RIVM, respectively (log-rank, $p = 0.202$) (Fig. 1b).

Re-TUR before BCG also prolonged time to progression (HR 0.55; 95% CI 0.35–0.87). This was especially true in the group of patients who received Connaught and TICE (HR 0.27, 95% CI 0.19–0.72 and 0.37, 95% CI 0.14–0.98).

When adjusting for CUETO predictors, as well as for CUETO plus re-TUR, we did not find a statistically significant difference among the three strains in time to progression, but a trend towards significance was observed for

Table 1 Baseline characteristics of the study population according to BCG strain

	Connaught		TICE		RIVM		Total		<i>p</i> value
	<i>n</i> = 146	%	<i>n</i> = 112	%	<i>n</i> = 164	%	<i>n</i> = 422	%	
Median age (IQR)	68 (65–70)		67 (62–69)		67 (63–69)		67 (64–69)		0.168
Age, <i>n</i> (%)									0.052
< 60 year	11	7.5	18	16.1	16	9.8	45	10.7	
60–70 year	89	61	70	62.5	114	69.5	273	64.7	
≥ 70 year	46	31.5	24	21.4	34	20.7	104	24.6	
Gender									0.689
Male	105	71.9	76	67.9	111	67.7	292	69.2	
Female	41	56.1	36	32.1	53	32.3	130	30.8	
Smoking history									0.041
Never	46	31.5	34	30.4	59	36.0	139	32.9	
Previous	68	46.6	53	47.3	84	51.2	205	48.6	
Active	32	21.9	25	22.3	21	12.8	78	18.5	
Recurrence status									0.761
Primary	99	67.8	71	63.4	107	65.2	277	65.6	
Recurrent	47	32.2	41	36.6	57	34.8	145	34.4	
Previous intravesical CHT									0.731
Yes	14	9.6	9	8.0	18	11.0	41	9.7	
No	132	90.4	103	92.0	146	89.0	381	90.3	
re-TUR procedures									<0.01
Yes	44	30.1	54	48.2	93	56.7	191	45.3	
No	102	69.9	58	51.8	71	43.3	231	54.7	
T stage									0.292
Ta	54	37.0	32	28.6	42	25.6	128	30.3	
Tis	9	6.2	8	7.1	13	7.9	30	7.1	
T1	83	56.8	72	64.3	109	66.5	264	62.6	
Tumor grade, WHO 1973									0.111
G3	104	71.2	89	79.5	129	78.7	322	76.3	
G2	17	11.6	5	4.5	7	4.3	29	6.9	
G1	25	17.1	18	16.1	28	17.1	71	16.8	
Tumor focality									0.141
< 3	55	37.7	31	27.7	63	38.4	149	35.3	
≥ 3	91	62.3	81	72.3	101	61.6	273	64.7	
Concomitant CIS									0.477
Yes	23	15.8	15	13.4	18	11.0	56	13.3	
No	123	84.2	97	86.6	146	89.0	366	86.7	
Median follow-up, (IQR)	72 (55.2–91)		73 (69–85)		67 (60–85)		72 (60–85)		0.079
EAU guidelines risk-group									0.846
Intermediate-risk	10	6.9	7	6.2	13	7.9	30	7.1	
High-risk	136	93.1	105	93.8	151	92.1	392	92.9	

TICE and RIVM compared to Connaught (HR 0.62, 95% CI 0.36–1.1 and 0.65, 95% CI 0.40–1.04 respectively; Supplementary Tables 2b–3b).

In the sub-analysis of re-TUR groups, when looking at only those who received it, no differences were demonstrated among all three stains for time to progression. When

Re-TUR was not performed, RIVM was superior to Connaught (HR 0.45, 95% CI 0.26–0.83) (Fig. 2b).

Overall, 17 patients (11.6%) on Connaught, 5 (4.5%) on TICE and 11 (6.7%) on RIVM died due to BCa (Supplementary Table 2c). In total, 14.7%, 6.9% and 8.5% died with Connaught, TICE and RIVM when no re-TUR

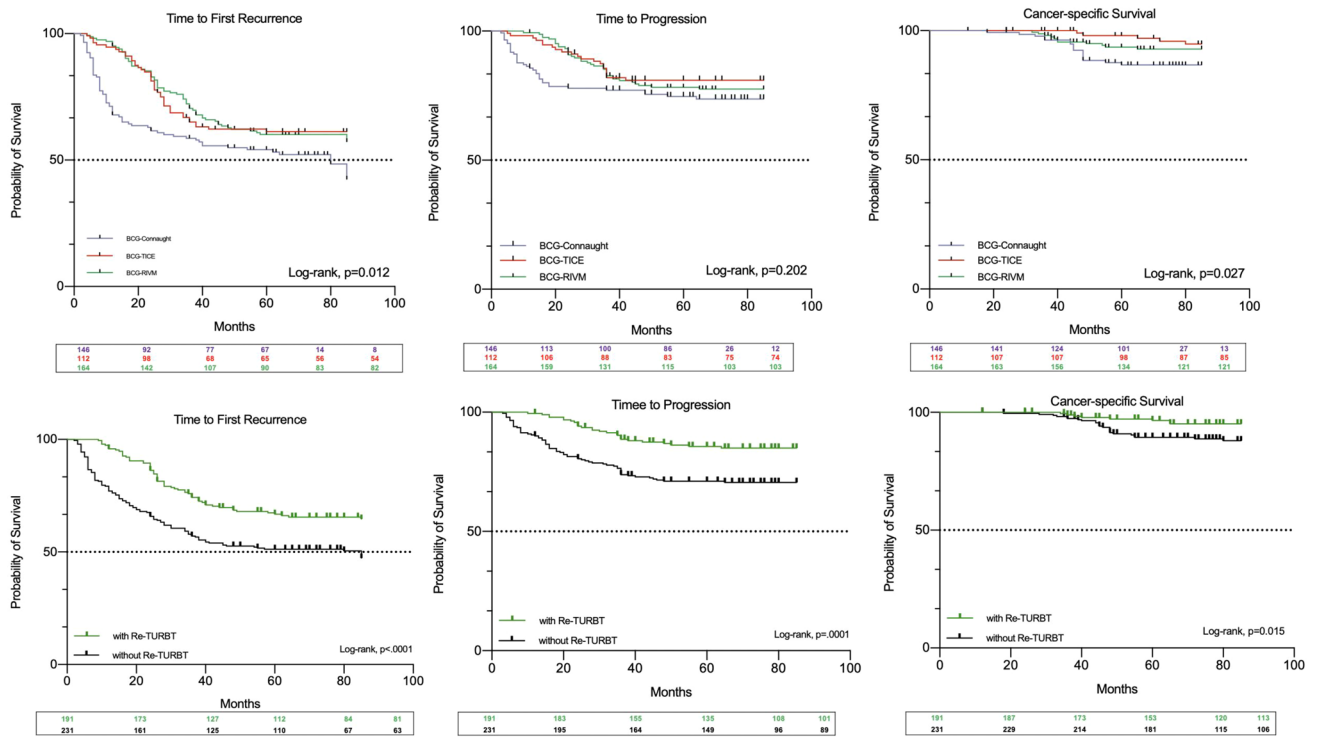


Fig. 1 Kaplan–Meier curves (log-rank) depicting the univariate effect of BCG strains (a) and re-TUR (b) on survival outcomes

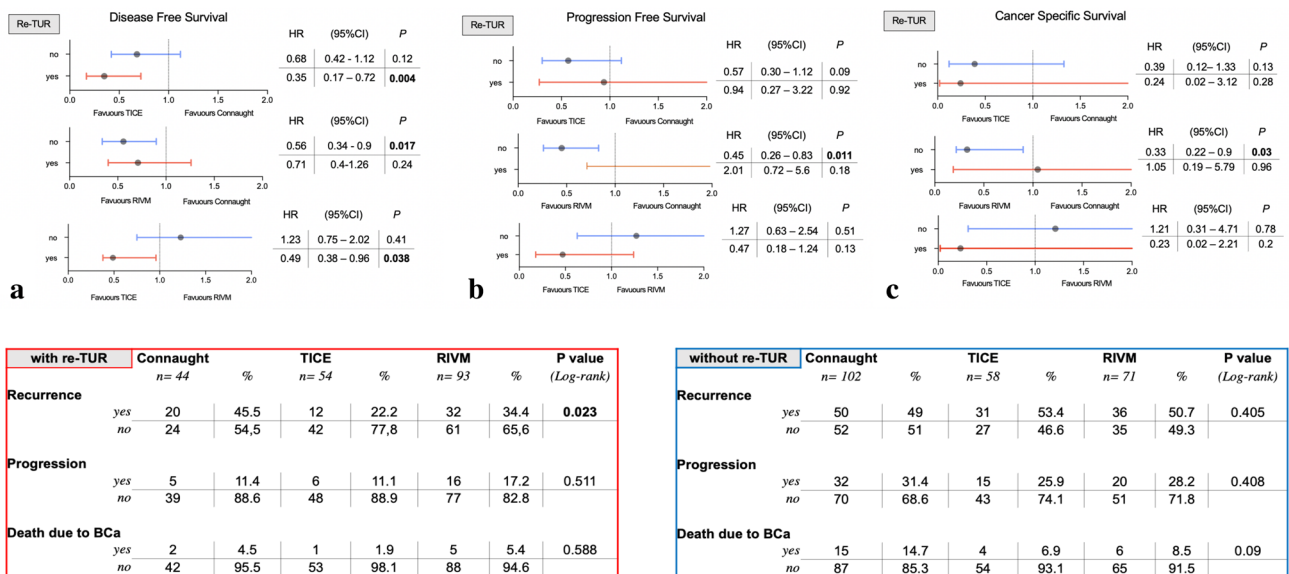


Fig. 2 Sub-group analysis of stratified survival outcomes (a time to first recurrence, b time to progression; c cancer-specific survival) according to the presence or not of repeated trans-urethral resection (re-TUR)

was performed and 4.5%, 1.9% and 5.4% with re-TUR. Five-year CSS was 86.7% (95% CI 80.8–92.6) for Connaught, 98% (95% CI 95.3–100) for Tice and 93.6% (95% CI 89.7–97.4) for RIVM (Log-rank: 0.027; Dunn–Sidak:

Connaught vs. TICE, $p = 0.013$; Connaught vs. RIVM, $p = 0.08$; TICE vs. RIVM, $p = 0.42$) (Fig. 1c).

Although a protective effect was noted, re-TUR was not independently associated with prolonged time to BCa death

(HR 0.64, 95% CI 0.27–1.47). Similarly, for PFS none of the strains was independently associated with improved CSS (Supplementary Tables 2c–3c). RIVM again showed a protective effect in sub-group analysis of non-re-TUR patients (HR 0.33, 95% CI 0.22–0.94; Fig. 2c).

Discussion

The genomic changes over 40–50 years which characterized several sub-strains may have attenuated potential efficacy (Gan et al. 2013). This may have led to imbalances in survival outcomes worldwide, especially in the BCG shortage era. Other trials compare strains (Huang et al. 2017), but study design and implementation of induction therapy alone led to mixed results in determining superiority. Of note, even though RIVM is the third most commonly used BCG strain worldwide (Gsoner et al. 2012), it remains the least studied.

We compared a large sample of patients treated with the three most representative BCG strains. To our knowledge, this is the first series with direct comparison of survival outcomes in these cohorts. Our patients were consistently treated with standardized maintenance. We also determined re-TUR's importance on survival outcomes and the relative effect combined with specific strains.

The literature shows that re-TUR on high-risk and selected intermediate-risk NMIBCs improves outcomes (Krajewski et al. 2020). Eroglu et al. (2020) demonstrated the benefit of re-TUR on RFS and PFS and showed that re-TUR was an independent determinant of overall survival. We also found that re-TUR was independently associated with improvement in both recurrence and progression outcomes.

We found both TICE and RIVM superior to Connaught for prolonging DFS. Witjes et al. showed that maintenance TICE performs better than Connaught in HG T1 patients (Witjes et al. 2016). Connaught has a higher earlier immune response during induction but loses immune response efficacy during maintenance. Rentsch et al. (2014) showed Connaught conferred significantly greater 5-year RFS compared to TICE ($p = 0.0108$) only with a sole induction course. Mice studies suggest that Connaught induced greater initial immune response than TICE. TICE seems to reach its optimum response over time, and therefore with maintenance shows longer DFS.

We found a similar advantage of RIVM over Connaught and a similar percentage of RFS for RIVM to what has previously been seen (Krajewski et al. 2018). Few other studies have reported RIVM's comparative efficacy in NMIBC treatment. RIVM has been studied in comparison with intravesical chemotherapy or alone, not allowing for comparison (Vegt et al. 1995; Krajewski et al. 2018; Sengiku et al. 2013; Kaisary 1987). RIVM has demonstrated excellent RFS and

PFS outcomes and 70% completion rate, suggesting good tolerability (Farah et al. 2014).

PFS was similar to that in the literature (Witjes et al. 2016; Nicolazzo et al. 2017 Oct; Nicolazzo et al. 2019; D'Andrea et al. 2020). No strain in our analysis was independently associated with longer PFS. We did observe a consistent trend towards an advantage of TICE and RIVM for PFS and CSS when compared to Connaught (Supplementary Tables 2b–2c).

BCG efficacies were almost overlapping after CUETO risk factors \pm re-TUR adjustments, thus precluding definitive conclusions on the effect of re-TUR on strain performance in a real-life setting. But we observed two interesting outcomes regarding TICE and RIVM when our analyses were stratified according to the subgroups who had received re-TUR. TICE was the sole strain to improve RFS in re-TUR patients while RIVM provided longer PFS and CSS in the subgroup of patients who had not received re-TUR (Fig. 2a, b).

These findings corroborate that NMIBCs submitted to re-TUR followed by maintenance might achieve RFS with any of these three strains. But when no re-TUR is performed, our results suggest RIVM provides a potential intrinsic protection against MIBC progression and death from BCa which merits further evaluation. To our knowledge, this is the first series reporting a direct comparison among these strains in a maintenance setting. We cannot point to specific survival advantages, but our data suggest future avenues incorporating re-TUR.

A potential explanation for the consistently better performance of TICE and RIVM compared to Connaught may be better tolerability (Miyazaki et al. 2013). This was seen in our higher drop-off rate in the Connaught and was clearly associated with a median of fewer total instillations.

Our study has limitations, including the limitations of retrospective studies. This was not a randomly allocated head-to-head investigation. There may be selection biases between the groups that we could not account for. There was an imbalance between the groups who underwent re-TUR. Nevertheless, our findings are consistent with previous studies and use long-term follow-up to compare three different strains in the same study. Moreover, the strict eligibility criteria, strict BCG protocol homogeneity, and consistent maintenance allowed us to reliably explore the impact of re-TUR.

Conclusions

Our study showed the RFS benefit of both TICE and RIVM compared to Connaught when administered with a maintenance protocol. We also corroborated the importance of performing routine re-TUR in intermediate-/high-risk NMIBCs. We did not find significant differences between TICE and RIVM for the analyzed survival outcomes. Stratifying our

data for re-TUR revealed some benefits of TICE for RFS and RIVM for PFS end points. Future trials are needed on this topic in the BCG shortage era.

Supplementary Information The online version contains supplementary material available at <https://doi.org/10.1007/s00432-021-03571-0>.

Author contributions FDG: protocol/project development, data collection or management, and manuscript writing/editing. GMB: manuscript writing/editing and data collection or management. MM: data collection or management and manuscript writing/editing. AS: manuscript writing/editing and data collection or management. SS: manuscript writing/editing and data collection or management. MF: manuscript writing/editing and data collection or management. IS: data analysis. SF: manuscript writing/editing and data collection or management. VC: manuscript writing/editing and data collection or management. BI: manuscript writing/editing. SLC: manuscript writing/editing. MLE: manuscript writing/editing. ECS: protocol/project development and manuscript writing/editing. EDB: protocol/project development and manuscript writing/editing.

Funding Open access funding provided by Università degli Studi di Roma La Sapienza within the CRUI-CARE Agreement.

Compliance with ethical standards

Conflict of interest Authors have no conflict of interest to disclose.

Relevant disclosures Authors have nothing to disclose.

Additional declarations for articles in life science journals that report the results of studies involving humans and/or animals All procedures performed in studies involving human participants were in accordance with the ethical standards of the institutional and/or national research committee and with the 1964 Helsinki Declaration and its later amendments or comparable ethical standards.

Ethics approval IRB approved the study protocol.

Consent to participate All individuals have signed an informant consent to be enrolled in this study.

Open Access This article is licensed under a Creative Commons Attribution 4.0 International License, which permits use, sharing, adaptation, distribution and reproduction in any medium or format, as long as you give appropriate credit to the original author(s) and the source, provide a link to the Creative Commons licence, and indicate if changes were made. The images or other third party material in this article are included in the article's Creative Commons licence, unless indicated otherwise in a credit line to the material. If material is not included in the article's Creative Commons licence and your intended use is not permitted by statutory regulation or exceeds the permitted use, you will need to obtain permission directly from the copyright holder. To view a copy of this licence, visit <http://creativecommons.org/licenses/by/4.0/>.

References

Babjuk M, Burger M, Comp erat E, Gontero P, Mostafid AH, Palou J et al. Guidelines on non-muscle invasive bladder cancer 2020,

- Update March 2020 Available from: <https://uroweb.org/guideline/non-muscle-invasive-bladder-cancer/>.
- Compe arat E, Larre a S, Roupret M et al (2015) Clinicopathological characteristics of urothelial bladder cancer in patients less than 40 years old. *Virchows Arch* 466:589–594
- Cumberbatch MGK, Foerster B, Catto JWF et al (2018) Repeat transurethral resection in non-muscle-invasive bladder cancer: a systematic review. *Eur Urol* 73(6):925–933
- D'Andrea D, Soria F, Abufaraj M, et al (2020) Comparative effectiveness of intravesical BCG-tice and BCG-moreau in patients with non-muscle-invasive bladder cancer. *Clin Genitourin Cancer* 18(1): 20–25.e2.
- Eroglu A, Ekin RG, Koc G, Divrik RT (2020) The prognostic value of routine second transurethral resection in patients with newly diagnosed stage pT1 non-muscle-invasive bladder cancer: results from randomized 10-year extension trial. *Int J Clin Oncol* 25(4):698–704
- Farah NB, Ghanem R, Amr M (2014) Treatment efficacy and tolerability of intravesical bacillus Calmette–Guerin (BCG)-RIVM strain: induction and maintenance protocol in high grade and recurrent low-grade non-muscle invasive bladder cancer (NMIBC). *BMC Urol* 14:11 (**Published 2014 Jan 27**)
- Ferlay J, Soerjomataram I, Ervik M, et al (2015) GLOBOCAN 2012 v1.0: estimated cancer incidence, mortality and prevalence worldwide in 2012, 2013. IARC Publications, WHO
- Fernandez-Gomez J, Madero R, Solsona E et al (2009) Predicting nonmuscle invasive bladder cancer recurrence and progression in patients treated with bacillus Calmette–Guerin: the CUETO scoring model. *J Urol* 182(5):2195–2203
- Gan C, Mostafid H, Khan MS, Lewis DJ, et al. BCG immunotherapy for bladder cancer--the effects of substrain differences *Nat Rev Urol* 10(10): 580–588.
- Gsponer JR, Bornand D, Bachmann A, Albert ML, Thalman GN, Rentsch CA (2012) Intravesical treatment of non-muscle invasive bladder cancer: global distribution of BCG strains and potential health economic impact of strain differences—Switzerland as an example. *Freitag* 13(00–13):05
- Han RF, Pan JG (2006) Can intravesical bacillus Calmette–Gu erin reduce recurrence in patients with superficial bladder cancer? A meta-analysis of randomized trials. *Urology* 67(6):1216–1223
- Herr HW (2005) Restaging transurethral resection of high risk superficial bladder cancer improves the initial response to bacillus Calmette–Guerin therapy. *J Urol* 174(6):2134–2137
- Huang Z, Liu H, Wang Y, Zhang C, Xu T (2017) Determining optimal maintenance schedules for adjuvant intravesical bacillus Calmette–Guerin immunotherapy in non-muscle-invasive bladder cancer: a systematic review and network meta-analysis. *Curr Med Res Opin* 33(8):1379–1387
- Kaisary AV (1987) Intravesical BCG therapy in the management of multiple superficial bladder carcinoma. Comparison between Glaxo and Pasteur strains. *Br J Urol* 59(6):554–558
- Krajewski W, Matuszewski M, Poletajew S, Grzegorz lka J, Zdrojowy R, Ko odziej A (2018) Are there differences in toxicity and efficacy between various bacillus Calmette–Guerin strains in bladder cancer patients? Analysis of 844 patients. *Urol Int* 101(3):277–284
- Krajewski W, Nowak Ł, Poletajew S, et al. (2020) The impact of restaging transurethral resection of bladder tumor on survival parameters in T1 nonmuscle-invasive bladder cancer: systematic review and meta-analysis [published online ahead of print, 2020 Jun 3]. *J Endourol*. <https://doi.org/10.1089/end.2020.0301>.
- Lamm DL (2000) Efficacy and safety of bacille Calmette–Gu erin immunotherapy in superficial bladder cancer. *Clin Infect Dis* 31(Suppl 3):S86–S90
- Lamm DL, Blumenstein BA, Crissman JD et al (2000) Maintenance bacillus Calmette–Guerin immunotherapy for recurrent TA, T1

- and carcinoma in situ transitional cell carcinoma of the bladder: a randomized Southwest Oncology Group Study. *J Urol* 163(4):1124–1129
- Mack D, Hörtl W, Bassi P et al (2001) The ablative effect of quarter dose bacillus Calmette–Guérin on a papillary marker lesion of the bladder. *J Urol* 165(2):401–403
- Malmström PU, Sylvester RJ, Crawford DE et al (2009) An individual patient data meta-analysis of the long-term outcome of randomised studies comparing intravesical mitomycin C versus bacillus Calmette–Guérin for non-muscle-invasive bladder cancer. *Eur Urol* 56(2):247–256
- Miyazaki J, Hinotsu S, Ishizuka N et al (2013) Adverse reactions related to treatment compliance during BCG maintenance therapy for non-muscle-invasive bladder cancer. *Jpn J Clin Oncol* 43(8):827–834
- Nicolazzo C, Busetto GM, Del Giudice F, Sperduti I, Giannarelli D, Gradilone A, Gazzaniga P, de Berardinis E, Raimondi C (2017) The long-term prognostic value of survivin expressing circulating tumor cells in patients with high-risk non-muscle invasive bladder cancer (NMIBC). *J Cancer Res Clin Oncol* 143(10):1971–1976. <https://doi.org/10.1007/s00432-017-2449-8> (Epub 2017 May 29 PMID: 28555356)
- Nicolazzo C, Busetto GM, Gradilone A, Sperduti I, Del Giudice F, Loreni F, Cortesi E, de Berardinis E, Gazzaniga P, Raimondi C (2019) Circulating tumor cells identify patients with super-high-risk non-muscle-invasive bladder cancer: updated outcome analysis of a prospective single-center trial. *Oncologist* 24(5):612–616. <https://doi.org/10.1634/theoncologist.2018-0784> (Epub 2019 Apr 3. PMID: 30944184; PMCID: PMC6516110)
- Oddens J, Brausi M, Sylvester R et al (2013) Final results of an EORTC–GU cancers group randomized study of maintenance bacillus Calmette–Guérin in intermediate- and high-risk Ta, T1 papillary carcinoma of the urinary bladder: one-third dose versus full dose and 1 year versus 3 years of maintenance. *Eur Urol* 63(3):462–472
- Rentsch CA, Birkhäuser FD, Biot C et al (2014) Bacillus Calmette–Guérin strain differences have an impact on clinical outcome in bladder cancer immunotherapy. *Eur Urol* 66(4):677–688
- Sengiku A, Ito M, Miyazaki Y, Sawazaki H, Takahashi T, Ogura K (2013) A prospective comparative study of intravesical bacillus Calmette–Guérin therapy with the Tokyo or Connaught strain for non-muscle invasive bladder cancer. *J Urol* 190(1):50–54
- Shelley MD, Wilt TJ, Court J, Coles B, Kynaston H, Mason MD (2004) Intravesical bacillus Calmette–Guérin is superior to mitomycin C in reducing tumour recurrence in high-risk superficial bladder cancer: a meta-analysis of randomized trials. *BJU Int* 93(4):485–490
- Shindo T, Masumori N, Kitamura H et al (2014) Clinical significance of definite muscle layer in TUR specimen for evaluating progression rate in T1G3 bladder cancer: multicenter retrospective study by the Sapporo Medical University Urologic Oncology Consortium (SUOC). *World J Urol* 32(5):1281–1285
- van den Bosch S, Alfred WJ (2011) Long-term cancer-specific survival in patients with high-risk, non-muscle-invasive bladder cancer and tumour progression: a systematic review. *Eur Urol* 60(3):493–500
- Vegt PD, Witjes JA, Witjes WP, Doesburg WH, Debruyne FM, van der Meijden AP (1995) A randomized study of intravesical mitomycin C, bacillus Calmette–Guérin Tice and bacillus Calmette–Guérin RIVM treatment in pTa–pT1 papillary carcinoma and carcinoma in situ of the bladder. *J Urol* 153(3 Pt 2):929–933
- Witjes JA, Dalbagni G, Karnes RJ et al (2016) The efficacy of BCG TICE and BCG Connaught in a cohort of 2,099 patients with T1G3 non-muscle-invasive bladder cancer. *Urol Oncol* 34(11):484.e19–484.e25
- Witjes JA, Bruins M, Cathomas R, Compérat E, Cowan NC, Gakis G, et al. EAU guidelines on muscle-invasive and metastatic bladder cancer 2020, Update March 2020, Available from: <https://uroweb.org/guideline/bladder-cancer-muscle-invasive-and-metastatic/>.

Publisher's Note Springer Nature remains neutral with regard to jurisdictional claims in published maps and institutional affiliations.