

Chapman University

Chapman University Digital Commons

Psychology Faculty Articles and Research

Psychology

10-20-2022

Early Life Exposure to Unpredictable Parental Sensory Signals Shapes Cognitive Development Across Three Species

Elyssia Poggi Davis

Kari McCormack

Hina Arora

Desiree Sharpe

Annabel K. Short

See next page for additional authors

Follow this and additional works at: https://digitalcommons.chapman.edu/psychology_articles



Part of the [Animal Experimentation and Research Commons](#), [Behavior and Behavior Mechanisms Commons](#), [Child Psychology Commons](#), [Maternal and Child Health Commons](#), [Other Psychiatry and Psychology Commons](#), [Other Psychology Commons](#), [Personality and Social Contexts Commons](#), and the [Psychological Phenomena and Processes Commons](#)

Early Life Exposure to Unpredictable Parental Sensory Signals Shapes Cognitive Development Across Three Species

Comments

This article was originally published in *Frontiers in Behavioral Neuroscience*, volume 16, in 2022.
<https://doi.org/10.3389/fnbeh.2022>

Creative Commons License



This work is licensed under a [Creative Commons Attribution 4.0 License](https://creativecommons.org/licenses/by/4.0/).

Copyright

The authors

Authors

Elyssia Poggi Davis, Kari McCormack, Hina Arora, Desiree Sharpe, Annabel K. Short, Jocelyne Bachevalier, Laura M. Glynn, Curt A. Sandman, Hal S. Stern, Mar Sanchez, and Tallie Z. Baram



OPEN ACCESS

EDITED BY
Carina Soares-Cunha,
University of Minho, Portugal

REVIEWED BY
Arun Asok,
Alien Therapeutics Inc., United States
Ben Nephew,
Worcester Polytechnic Institute,
United States

*CORRESPONDENCE
Elysia Poggi Davis
Elysia.Davis@du.edu

SPECIALTY SECTION
This article was submitted to
Emotion Regulation and Processing,
a section of the journal
Frontiers in Behavioral Neuroscience

RECEIVED 02 June 2022
ACCEPTED 21 September 2022
PUBLISHED 20 October 2022

CITATION
Davis EP, McCormack K, Arora H,
Sharpe D, Short AK, Bachevalier J,
Glynn LM, Sandman CA, Stern HS,
Sanchez M and Baram TZ (2022) Early
life exposure to unpredictable parental
sensory signals shapes cognitive
development across three species.
Front. Behav. Neurosci. 16:960262.
doi: 10.3389/fnbeh.2022.960262

COPYRIGHT
© 2022 Davis, McCormack, Arora,
Sharpe, Short, Bachevalier, Glynn,
Sandman, Stern, Sanchez and Baram.
This is an open-access article
distributed under the terms of the
[Creative Commons Attribution License
\(CC BY\)](https://creativecommons.org/licenses/by/4.0/). The use, distribution or
reproduction in other forums is
permitted, provided the original
author(s) and the copyright owner(s)
are credited and that the original
publication in this journal is cited, in
accordance with accepted academic
practice. No use, distribution or
reproduction is permitted which does
not comply with these terms.

Early life exposure to unpredictable parental sensory signals shapes cognitive development across three species

Elysia Poggi Davis^{1,2*}, Kai McCormack^{3,4}, Hina Arora⁵,
Desiree Sharpe⁶, Annabel K. Short², Jocelyne Bachevalier⁴,
Laura M. Glynn⁷, Curt A. Sandman⁸, Hal S. Stern⁵,
Mar Sanchez^{4,9} and Tallie Z. Baram^{2,10,11}

¹Department of Psychology, University of Denver, Denver, CO, United States, ²Department of Pediatrics, University of California, Irvine, Irvine, CA, United States, ³Department of Psychology, Spelman College, Atlanta, GA, United States, ⁴Emory National Primate Research Center, Emory University, Atlanta, GA, United States, ⁵Department of Statistics, University of California, Irvine, Irvine, CA, United States, ⁶Mary Frances Early College of Education (MFECE) Torrance Center for Creativity and Talent Development, University of Georgia, Athens, GA, United States, ⁷Department of Psychology, Chapman University, Orange, CA, United States, ⁸Department of Psychiatry and Human Behavior, University of California, Irvine, Irvine, CA, United States, ⁹Department of Psychiatry and Behavioral Sciences, School of Medicine, Emory University, Atlanta, GA, United States, ¹⁰Department of Anatomy and Neurobiology, University of California, Irvine, Irvine, CA, United States, ¹¹Department of Neurology, University of California, Irvine, Irvine, CA, United States

Exposure to early life adversity has long term consequences on cognitive function. Most research has focused on understanding components of early life adversities that contribute to later risk, including poverty, trauma, maltreatment, and neglect. Whereas these factors, in the aggregate, explain a significant proportion of emotional and cognitive problems, there are serious gaps in our ability to identify potential mechanisms by which early life adversities might promote vulnerability or resilience. Here we discuss early life exposure to unpredictable signals from the caretaker as an understudied type of adversity that is amenable to prevention and intervention. We employ a translational approach to discover underlying neurobiological mechanisms by which early life exposure to unpredictable signals sculpts the developing brain. First, we review evidence that exposure to unpredictable signals from the parent during sensitive periods impacts development of neural circuits. Second, we describe a method for characterizing early life patterns of sensory signals across species. Third, we present published and original

data illustrating that patterns of maternal care predict memory function in humans, non-human primates, and rodents. Finally, implications are discussed for identifying individuals at risk so that early preventive-intervention can be provided.

KEYWORDS

unpredictability, stress, early adversity, memory, development, cognition, parental care, monkeys

I Unpredictable parental signals and neural circuit development

Cognitive health and vulnerabilities involve an interplay of genes and environment, especially during sensitive developmental periods. Cognitive functions are a result of the development and maturation of underlying brain circuits. These circuits, built of neurons and neuronal ensembles, are connected *via* synapses, and perform the complex computational tasks underlying specific brain functions. During early life, immature circuits are sculpted as certain synaptic connections are strengthened because of their activation, and others are eliminated. For sensory circuits supporting vision and hearing, it is established that patterns of sensory signals are required for their maturation (Wiesel and Hubel, 1963; Khazipov et al., 2004; Hackett et al., 2011; Espinosa and Stryker, 2012; Singh-Taylor et al., 2018a; Takesian et al., 2018). Light patterns for example, drive normative maturation of circuits within the visual system and disruption of these patterns leads to deficits in visual function (Espinosa and Stryker, 2012). Further, patterns of maternal auditory signals in maternal speech have been shown to affect functional connectivity in neonatal language neurocircuits (Uchida-Ota et al., 2019). These studies establish the importance of patterns of sensory information for neural circuit formation (Davis et al., 2017; Birnie and Baram, 2022). During the sensitive period of infancy, sensory signals come predominantly from the parent and as documented by classic work in non-human primates (Harlow, 1964; Harlow et al., 1965) and rodents (Denenberg and Karas, 1959; Denenberg and Bell, 1960; Levine, 1967; Hofer, 1970, 1973; Hennessy et al., 1980), parental sensory signals are critical for infant development. Across species, the enduring impact of quality of parental care (e.g., sensitivity, responsiveness) is known (Bowlby, 1950; Ainsworth et al., 1978; Feldman, 2007, 2015; Landers and Sullivan, 2012; Beebe et al., 2016; Howell et al., 2017). However, much less is understood regarding the role of sequences and patterns of parental sensory signals during sensitive periods. Based on evidence supporting the importance of patterns of sensory signals for sensory circuit formation and the primacy of parental signals, evaluation of the impact

of patterns of parental sensory signals on higher order circuit development, such as those involved in memory, reward, or stress, is warranted (Baram et al., 2012; Davis et al., 2017; Glynn and Baram, 2019; Noroña-Zhou et al., 2020; Birnie and Baram, 2022).

Infants are exposed to a variety of sensory information (i.e., auditory, tactile, and visual), primarily from their parents. The information may be patterned or sequential (e.g., a parent may regularly follow an auditory signal with simultaneous auditory and visual signals), or it may be inconsistent and without order (e.g., a parent may follow an auditory signal with various unpredictable sensory signals). We have developed an approach to quantify unpredictability across species by computing entropy rates. These define the degree to which one can deduce the next parental behavior from the most recent behavior, providing an index of the predictability of sensory signals from mother to her infant/pup. We have reported that the predictability of sensory signals early in life, characterized by entropy, associates with cognitive and emotional outcomes later in development (Davis et al., 2017; Glynn et al., 2018).

Emerging evidence demonstrates that early exposure to unpredictable patterns of maternal signals (high entropy) correlates with mental development (Davis et al., 2017) and stress regulation, (Noroña-Zhou et al., 2020) as well as the ability to regulate behavior, cognition, and emotion in children from 1 to 9 years of age (Davis et al., 2019). The links between exposure to unpredictable signals and later outcomes were observed in independent cohorts, from California, USA and Turku, Finland with very different backgrounds and cultures, and persisted after accounting for parental mental health, socioeconomic status, and maternal sensitivity, indicating the robustness of the links with unpredictability (Davis et al., 2019). Further, sequences of parental signals are predictive of the maturation of child brain circuits. Unpredictability early in life altered the balanced development of two temporo-frontal projections, the uncinate fasciculus and the cingulum, assessed with diffusion tensor imaging (DTI), and aberrant development of these two regions contributed to performance on a memory task. Specifically, imbalance between the uncinate fasciculus and the cingulum partially mediated the association between

exposure to unpredictable signals during infancy and poor memory performance on a delayed object recognition task during childhood (Granger et al., 2021). Importantly, these effects of unpredictable parental signals on brain and behavior are independent of key previously established predictors of development including sensitivity and responsiveness of parental care, parental mental health, and socioeconomic factors (e.g., income, education, etc.), underscoring the importance of patterns of unpredictability in shaping the immature brain.

Controlled mouse and rat studies bolster human research by illustrating the causal role of unpredictability in shaping subsequent outcomes. In such preclinical studies, unpredictable patterns of dam behaviors during interactions with the pup directly led to aberrant memory and emotional circuit maturation and function in the offspring (Molet et al., 2016a; Bolton et al., 2018, 2020, 2022). For example, in the hypothalamus, a key node of the stress circuit, unpredictable patterns of maternal care behaviors influence synaptic connectivity (Korosi et al., 2010; Gunn et al., 2013; Singh-Taylor et al., 2018b) by attenuating microglial synaptic pruning (Bolton et al., 2022). Further, the same unpredictable maternal behavior sequences led to impoverished apical dendritic trees in hippocampal pyramidal cells and such disrupted hippocampal neuronal structure are associated with memory dysfunction (Molet et al., 2016a). These experimental findings underscore the role of unpredictable patterns of parental signals on shaping neural circuit development.

II Characterizing unpredictable parental signals across species

Growing evidence supports the importance of patterns of parental sensory signals on brain development across species. We have applied the same basic approach of characterizing unpredictability is used across species, with the major differences having to do with the specific sensory signals that are assessed and the appropriate developmental epoch for the assessments. Entropy is a concept associated with randomness that arises throughout science from the study of heat and other forms of energy, where it was initially introduced to the study of the mechanics of interacting particles and the transmission of information. We apply it in this latter sense, using definitions provided by Shannon (Vegetabile et al., 2019) to characterize the predictability of the next word or symbol to be transmitted over a communication channel. The entropy rate of a sequence, of parental behaviors or signals in our case, is a quantitative measure of the randomness or unpredictability of the next observation in the sequence. Below we provide details for computation of entropy rate to characterize unpredictability and we then, using the example of memory, illustrate the way that unpredictability impacts cognitive function in humans, monkeys, and mice.

A. Unpredictable parental signals: Humans

Unpredictability of sensory inputs (visual, tactile, and auditory) are derived from observations of mothers interacting with their children in a semi-structured 10-min play episode (NICHD, 2001). During these play interactions, mothers are given a standard set of age-appropriate toys. Maternal behaviors which provide auditory (A; e.g., any speech or laughter), visual (V; e.g., showing a toy while the child is attending to the toy), or tactile (T; e.g., touching or holding the child) signals to the child are coded continuously in real time by coders who are blinded to all other participant characteristics with 20% of the videos coded independently for interrater reliability. Details of the coding scheme are available in Davis et al. (2017) and at <https://contecenter.uci.edu/>. From the 3 coded types of sensory signals (auditory, tactile and visual) there are 8 categories of sensory input the mother can provide at any point in time; these include only auditory, tactile, or visual stimuli, any combination of two (e.g., auditory and tactile), all three of these signals (auditory, tactile and visual) at the same time, or no input. The timeseries of each mother's signals, example shown in Figure 1, is used to create a matrix of transition probabilities, with each entry in the matrix capturing the proportion of the time that the mother transitions from providing the signal identified by the row (e.g., visual) to providing the signal identified by the column (e.g., auditory and visual at the same time) (Figure 1). An entropy rate is then calculated using the approach described in the appendix with R code available.¹ The entropy rate of the process (as defined, e.g., in Cover and Thomas (2006)) measures the randomness and unpredictability of the distribution of transitions with higher values indicating less predictable maternal signals. Computation and applications of the entropy rate estimates are described in more detail in Vegetabile et al. (2019) and in the **Supplementary material**. The entropy rate is stable within a given mother-child play session (entropy derived from the first and second half of a 10-min play period have correlation 0.5) and across sessions from when the infant is 6–12 months of age (Vegetabile et al., 2019).

B. Unpredictable parental signals: Non-human primates

Unpredictable maternal signals in the monkeys were assessed using a process very similar to our work with humans. Interactions of mother and infant were observed for 4 days in the third month post birth for 30 min per day. Based on developmental age, 3 months in the monkey is most analogous

¹ <https://contecenter.uci.edu/>

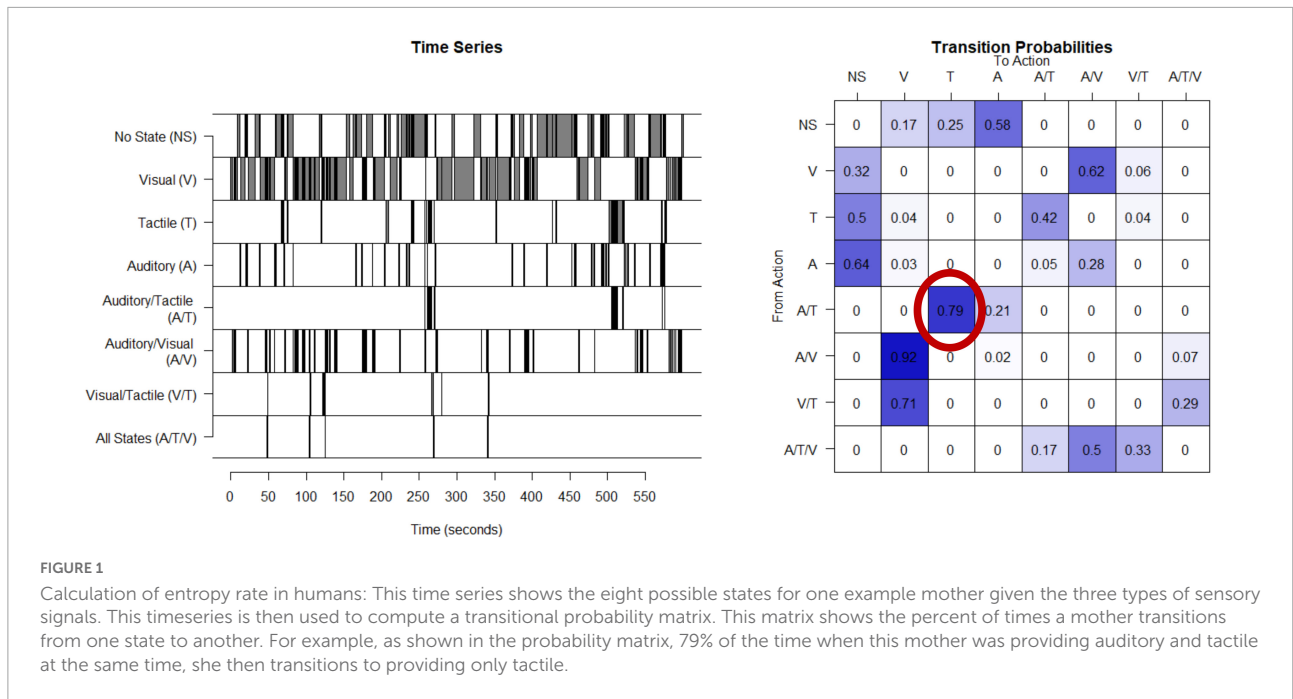


FIGURE 1

Calculation of entropy rate in humans: This time series shows the eight possible states for one example mother given the three types of sensory signals. This timeseries is then used to compute a transitional probability matrix. This matrix shows the percent of times a mother transitions from one state to another. For example, as shown in the probability matrix, 79% of the time when this mother was providing auditory and tactile at the same time, she then transitions to providing only tactile.

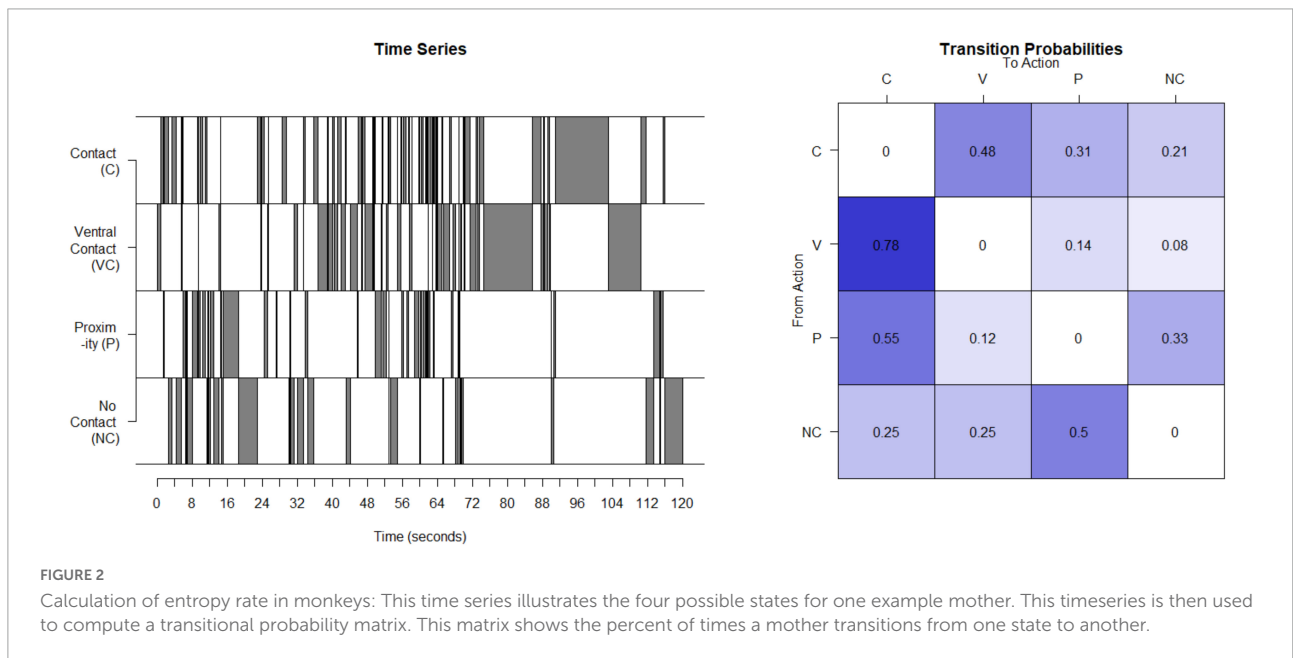


FIGURE 2

Calculation of entropy rate in monkeys: This time series illustrates the four possible states for one example mother. This timeseries is then used to compute a transitional probability matrix. This matrix shows the percent of times a mother transitions from one state to another.

to the data from 12-month-old infants in humans and was the data used here (Mattison and Vaughan, 2017). The maternal behaviors identified and recorded focus on the presence and type of contact between the mother and their infant. Coded maternal behaviors that provide signals to the infant are contact (contact other than ventral) (C), ventral contact (V), proximity to the infant (P), and not in contact at all (NC). Sequences of the 4 possible contact-related behaviors were recorded for each period, concatenated to provide a time series (see Figure 2), the matrix of transition probabilities calculated (see

Figure 2), and the entropy rate computed as described above for humans.

C. Unpredictable parental signals: Rodents

Unpredictability of maternal behavior for rats and mice was assessed using the same basic approach as for the humans and non-human primates. Interactions between the dam and her

pups were observed during postnatal days 2 through 7 for 250-min periods per day. The maternal behaviors that are the source of sensory signals to the pups were nursing (N), licking and grooming (LG), carrying pups (C), eating/drinking (E), off the nest (O), nest-building (NB) and self-grooming (SG) (Molet et al., 2016b). The data from the observation periods were concatenated into a single time series (see Figure 3). The matrix of transition probabilities was calculated (see Figure 3) and the entropy rate was computed as described above for humans.

III Unpredictable parental signals and cognition cross-species

The approach we have described to characterizing unpredictable parental signals using entropy rate provides a novel technique that can be used to test the impact of patterns of moment-to-moment parental signals on the developing brain. Leveraging research with human infants and children highlighting the importance of patterns of moment-to-moment signals and combining this research with translational studies in non-human primates and rodents provides: (1) support for evolutionarily-conserved processes that link patterns of maternal signals to infants and children's development of learning/memory and emotional regulation brain systems, and (2) mechanistic insight into novel processes by which sequences of parental signals shape the organization of the developing brain. This approach provides an opportunity to identify systems that are susceptible to exposure to early life unpredictability. We test here the link between unpredictable patterns of sensory signals from the parent to the infant on memory development, in humans, monkeys, rats and mice.

A. Unpredictable parental signals and memory function: Humans

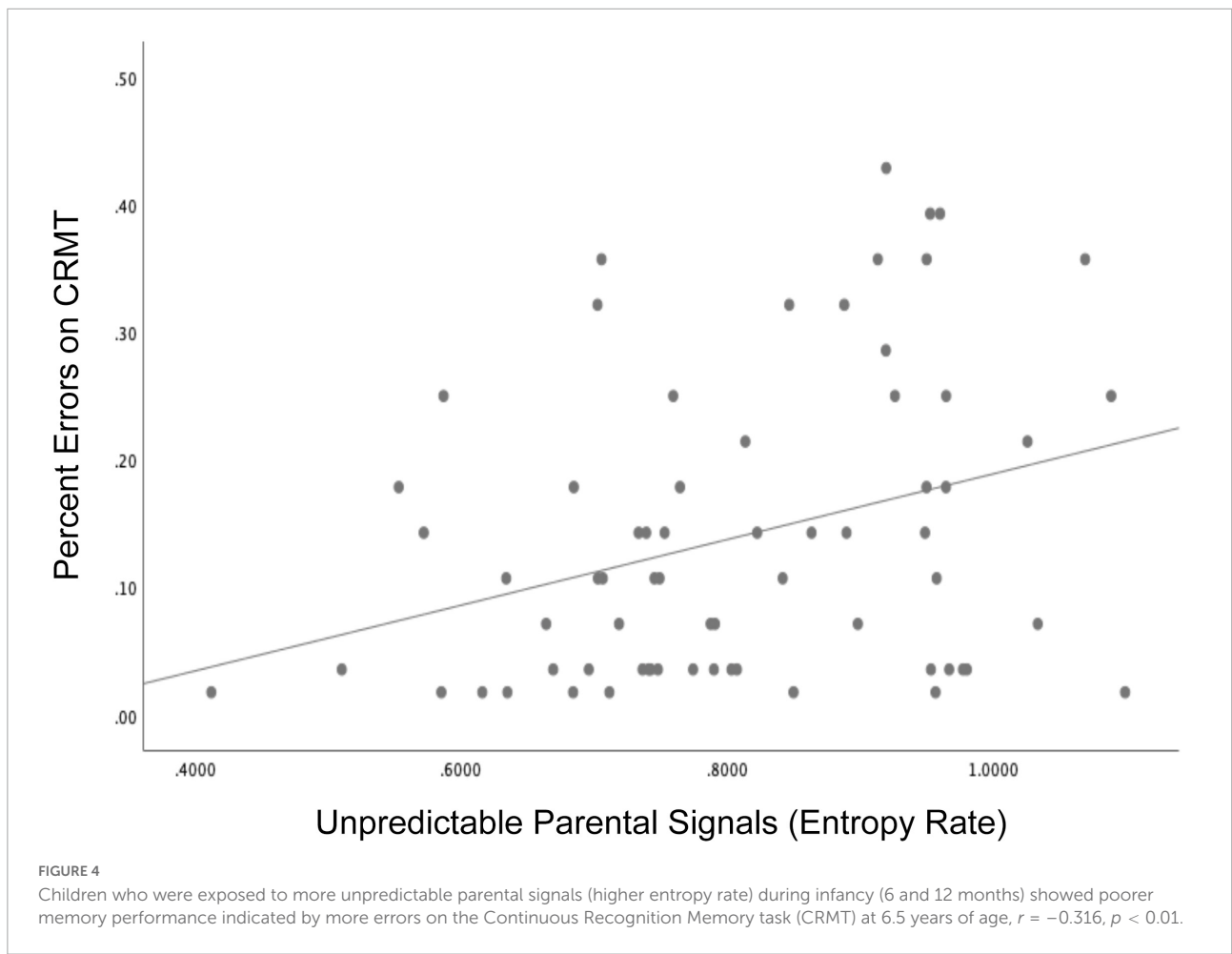
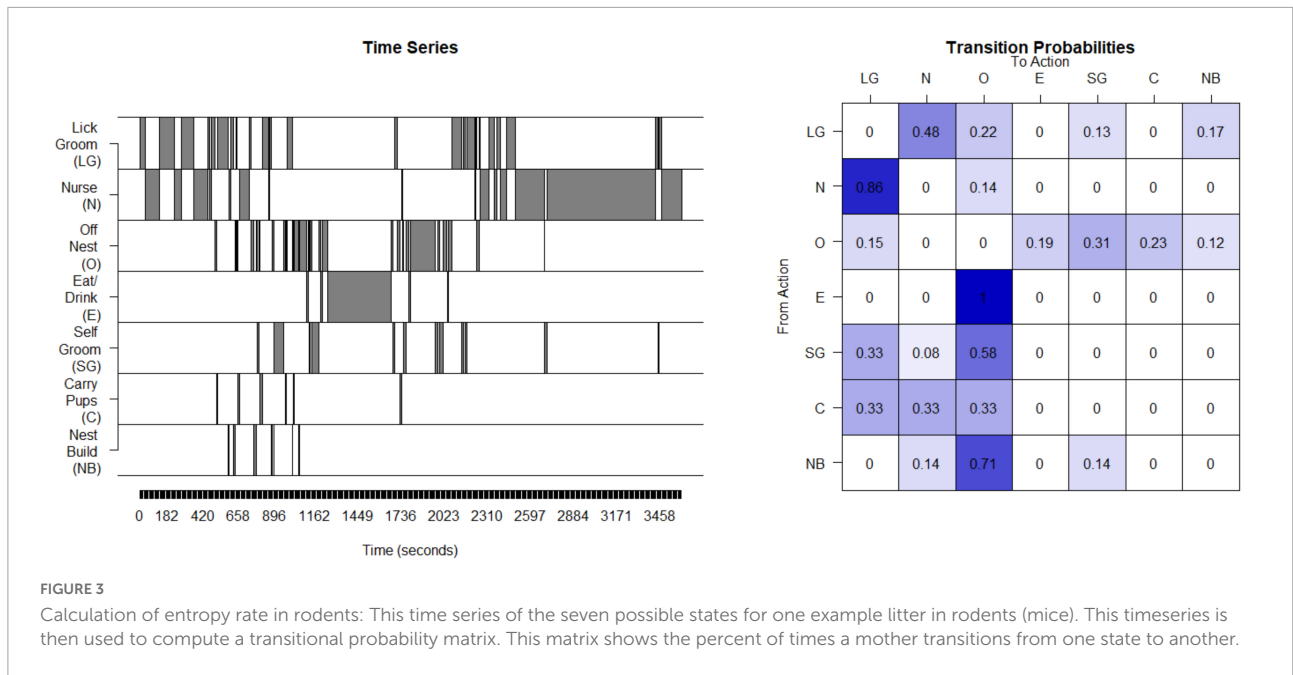
We have previously shown that exposure to unpredictable maternal signals during infancy (high entropy rate at 6 and 12 months) predicted poorer recall memory, (Davis et al., 2017) assessed using a delayed recall memory task (Sheslow and Adams, 2003) that is indicative of hippocampal function (Squire et al., 2007) at 6.5 years of age. Associations with unpredictability persisted after covarying for maternal depression symptoms, maternal sensitivity, and socioeconomic status. Further, unpredictable patterns of parental signals rather than counts of behaviors or counts of transitions predicted child cognitive function, suggesting that patterns of signals rather than simply the number of signals is important in shaping later outcomes (Davis et al., 2017). Notably, this study provided parallel evidence from a preclinical experimental model that early life exposure to unpredictable signals causes poor memory performance on an object recognition task among

adolescent rats, (Davis et al., 2017) supporting the likelihood that unpredictable signals underlie the observed associations in humans.

Consistent with these published findings, we present here new findings linking exposure to unpredictable sensory signals in infancy to child memory performance in 71 mothers and their children (41 girls) participating in a larger longitudinal study of early life experiences and development (Glynn et al., 2018). Initial recruitment criteria included: (1) singleton pregnancy, (2) over the age of 18, (3) English speaking, (4) non-smoking. Participants in the current study additionally participated in infant assessments of maternal child behavior. Children were 34% Hispanic/Latinx, 41% white, 3% Black, and 18% multiracial/ethnic and lived in households with an average income to needs ratio of 3.2. The Institutional Review Board at the University of California, Irvine reviewed, and approved study protocols and mothers gave written and informed consent for themselves and their children. Unpredictability of sensory signals were evaluated when the child was 6 and 12 months and entropy rate was computed as described in section II (Figure 1). The Continuous Recognition Memory task (CRMT), (Sher, 2006) an object recognition memory task that has previously been shown to engage medial temporal regions such as the hippocampus (Eichenbaum et al., 2007) was administered at 6.5 years (see Supplementary Figure 1 for task details). Consistent with published findings, exposure to unpredictable parental sensory signals during infancy (high entropy rate) was associated with poorer memory as indicated by more errors (lower accuracy) on the CRMT at 6.5 years of age (Figure 4, $r = -0.316$, $p < 0.01$). Associations remained after covarying socio-demographic factors and assessments of maternal sensitivity, $\beta = -0.27$, $t = -2.09$, $p = 0.04$. These findings underscore the importance of patterns of unpredictability in shaping the immature brain and consistent with published research suggesting that memory functions may be susceptible to early life unpredictability (Heidinger et al., 2012; Molet et al., 2016a; Davis et al., 2017).

B. Unpredictable parental signals and memory function: Non-human primates

We sought additional evidence to test the idea that the impact of unpredictable signals is an evolutionarily conserved processes by assessing the biological importance of unpredictable patterns of maternal sensory signals and memory development with non-human primates. Specifically, we conducted an evaluation of links between unpredictable patterns of parental signals and memory performance in juvenile rhesus monkeys, assessed at a similar developmental stage as the children in the studies described above. Unpredictability of maternal behaviors was assessed in 21 mother- infant dyads,



rhesus macaques -*Macaca mulatta* who were part of a larger longitudinal developmental study (McCormack et al., 2015; Drury et al., 2016; Howell et al., 2019; Morin et al., 2020). Nine of the infants in this study experienced maltreatment by their mothers (3 females) and 12 were non-maltreated/control infants (6 females). All animals were socially-housed at the Emory National Primate Research Center (ENPRC), with social dominance status (high, medium, low) counterbalanced across groups and ≥ 450 grams birth weight to exclude prematurity. All procedures were approved by the Emory Institutional Animal Care and Use Committee and performed in accordance with the NIH Guide for the Care and Use of Laboratory Animals.

Unpredictability was characterized by coding maternal parenting behaviors when the infant was 3 months of age and entropy rate was computed as described in section II (see Figure 2). Working memory in the juvenile animals was assessed at 18 months of age, roughly equivalent to 5–6 year old children, using the delayed non-matching to sample task, task trial unique (DNMS-TU), a simple recognition memory task, followed by the DNMS-session unique (DNMS-SU), which is a more complex working memory task (Heuer and Bachevalier, 2011) (see Supplementary material and Supplementary Figure 2 for task details). Juvenile monkeys who were exposed to more unpredictable maternal signals during infancy (higher entropy rate) showed impaired working memory performance as indicated by the higher number of trials to reach criterion on the DNMS-SU task. For the control animals, experiencing unpredictable maternal signals during infancy (higher entropy rate) was associated with poorer performance (more trials to criterion) on the DNMS-SU task, $r(12) = 0.37$, $p = 0.12$ (see Figure 5). Associations were weaker among the animals who experienced maltreatment, $r(9) = 0.16$, $p = 0.34$. Although underpowered to reach statistical significance, the magnitude of the effect size is consistent with analogous studies with humans. These preliminary results require replication in future research. Together, human and monkey studies provide suggestive evidence that unpredictable patterns of sensory signals during early infancy are a potent signal shaping brain circuit maturation across species.

C. Unpredictable parental signals and memory function: Rodent models

While the existing human and monkey work provide evidence that links between unpredictability and memory are conserved across species, these observational projects do not allow tests of causality. This limitation is addressed in experimental studies of early life unpredictability and several types of memory in juvenile and adult rats and mice. Earlier rodent studies (Brunson et al., 2005; Ivy et al., 2010) employed the water maze spatial memory test and identified deficits in both short- and long-term spatial memory as a consequence

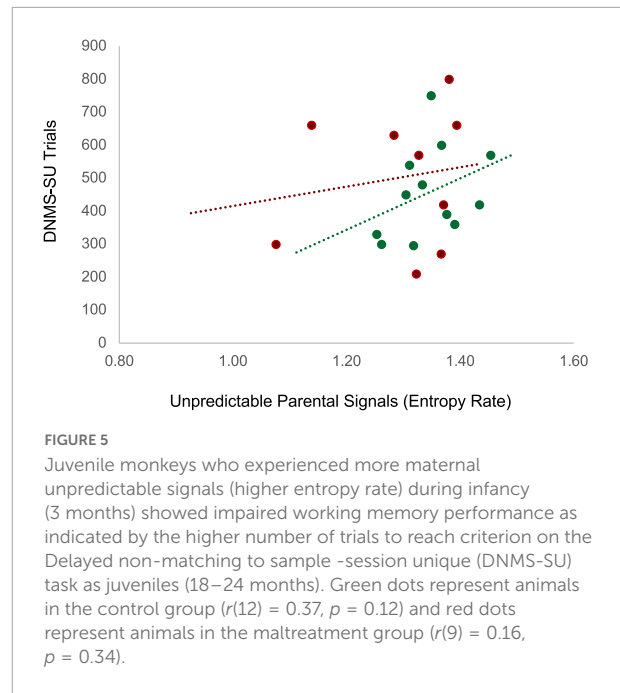


FIGURE 5
Juvenile monkeys who experienced more maternal unpredictable signals (higher entropy rate) during infancy (3 months) showed impaired working memory performance as indicated by the higher number of trials to reach criterion on the Delayed non-matching to sample -session unique (DNMS-SU) task as juveniles (18–24 months). Green dots represent animals in the control group ($r(12) = 0.37$, $p = 0.12$) and red dots represent animals in the maltreatment group ($r(9) = 0.16$, $p = 0.34$).

of exposure to early life unpredictability. The water maze may involve adverse conditions (swimming in water) and the stress of this task may moderate the link between early life unpredictability and memory performance, thus precluding the conclusion that unpredictability relates to memory function under non-stress conditions. Therefore, in more recent work we employed the novel object location and novel object recognition tasks, which do not involve a stressor component. The object location test probes hippocampus-dependent memory whereas the object recognition tasks interrogates multiple components of the limbic system. Performance deficits were observed on both tasks after early life exposure to unpredictability, and deficits were earlier and more severe in the more hippocampus-dependent object location test (Molet et al., 2016a; Davis et al., 2017; Short and Baram, 2019). In addition, rodent studies provide mechanistic insights: in rats, early life exposure to unpredictable sensory signals was associated with attenuated long-term potentiation, the cellular hallmark of memory, and with impoverished dendrites and synapses in dorsal hippocampus (Brunson et al., 2005; Ivy et al., 2010; Short and Baram, 2019), reflected in reduced dorsal hippocampus volumes (Molet et al., 2016a). These observed neuroanatomical consequences of early life exposure to unpredictability associate with observed performance deficits (Molet et al., 2016a).

D. Summary

In summary, these cross-species studies highlight that unpredictable patterns of parental signals during the sensitive period of infancy may contribute to subsequent memory

function and suggest that the developmental importance of unpredictable signals is conserved across species. Evidence suggests that unpredictable patterns of signals early in life may sculpt the developing brain, particularly neural circuits important for cognitive function. As discussed here, our recent research with humans indicates that unpredictable patterns of sensory signals in infancy sculpt corticolimbic circuit maturation in ways that partially mediate memory performance (Granger et al., 2021). Further, experimental and mechanistic research with rodents identify that the predictability of sensory input early in life may be a biological parameter influencing hippocampal circuit maturation (Birnie and Baram, 2022). Future directions in this research will probe the sex-specific consequences of early life exposure to unpredictable parental signals. While emerging research indicates that both males and females are impacted by unpredictability early in life, the functions that are vulnerable likely differ by sex (Glynn et al., 2018; Demaestri et al., 2020; Granger et al., 2021; Levis et al., 2021, 2022).

IV Clinical implications and next steps

Our program of research, across laboratories and species, illustrates that exposure to early life adversity has profound and long-lasting implications for health and wellbeing. We have identified that early life exposure to patterns of parental sensory signals directly impact the developing offspring's learning/memory process. This cross-species evidence supports the biological plausibility that patterns of sensory information from the parent during infancy are critical sources of input for the developing brain and that it is an evolutionarily conserved mechanism by which early life experiences shape neurodevelopment. The ability to test causality and mechanisms in pre-clinical experimental work with rats and mice in parallel with observational longitudinal research in humans and monkeys provides compelling support for the hypothesis that patterns of sensory signals during sensitive periods shape the development of neural circuits underlying cognitive function as well as those involved in sensory processing. Future work will continue to explore links between early life unpredictability and outcomes related to emotional development (Glynn et al., 2018), as well as implications for mental health later in life.

In line with recent calls for the examination of specific components of early life adversity (Boyce and Hertzman, 2018; Luby et al., 2020; Gee, 2021; McLaughlin et al., 2021), our findings suggest that unpredictable parental signals are a potent form of early adversity that shapes neurodevelopment cross species. Based on consequences of exposure to unpredictable signals, there is a need for clinically feasible screening tools to assess early life unpredictability in contexts where intensive coding is not feasible. To this end, we have developed and

validated the Questionnaire of Unpredictability in Childhood (QUIC), (Glynn et al., 2019) which assesses unpredictable early experiences in the parenting and home environment before the age of 18 years. A full (38-item) and brief (5-item) version are available and validated in both English and Spanish (Glynn et al., 2019; Lindert et al., in press). Early screening is particularly important as unpredictability is a form of early adversity that can be addressed with efforts toward prevention and intervention. For example, we recently have shown that maintenance of family routines was protective during the acute responses to the COVID-19 pandemic and related shutdowns involving closure of schools and many other in-person activities. Importantly, maintenance of predictable family routines mitigated the negative impact of the pandemic on mental health outcomes among preschool aged children (Glynn et al., 2021) and was subsequently shown to be similarly protective for older children and adolescents (Rosen et al., 2021). This suggests that unpredictability is an actionable form of early life adversity that may be amenable to prevention efforts aimed at increasing predictability within the early life environment.

Author contributions

EPD, TZB, MS, HSS, and KM conceptualized the review and drafted the sections of the manuscript. EPD, LMG, and CAS designed and conducted the human research. KM, DS, JB, and MS designed and conducted the monkey research. TZB and AKS designed and conducted the rodent research. HA and HSS performed the computations of entropy rate for all species and supported data analysis with EPD, AKS, and KM. All authors provided critical editorial feedback.

Funding

This research was supported by the National Institutes of Health (MH096889 and MH73136 to TZB, MH86062 and MH109662 to EPD, R01 HD51852 and NS041298 to CAS, and MH078105 to MS and P51OD011132 to the Emory National Primate Research Center–ENPRC).

Acknowledgments

We wish to thank Kendra Leak and Megan Faulkner and the research team the Chapman University. Additionally, the authors want to thank Anne Glenn, Dora Guzman, Christine Marsteller, and the staff at the Emory National Primate Research Center (ENPRC) Field Station for the excellent technical support and animal care provided during these studies. The ENPRC is fully accredited by AAALAC, International.

Conflict of interest

The authors declare that the research was conducted in the absence of any commercial or financial relationships that could be construed as a potential conflict of interest.

Publisher's note

All claims expressed in this article are solely those of the authors and do not necessarily represent those of their affiliated

organizations, or those of the publisher, the editors and the reviewers. Any product that may be evaluated in this article, or claim that may be made by its manufacturer, is not guaranteed or endorsed by the publisher.

Supplementary material

The Supplementary Material for this article can be found online at: <https://www.frontiersin.org/articles/10.3389/fnbeh.2022.960262/full#supplementary-material>

References

- Ainsworth, M. D. S., Blehar, M. C., Waters, E., and Wall, S. (1978). *Patterns of attachment. A psychological study of the strange situation*. Hillsdale, NJ: Earlbaum.
- Baram, T. Z., Davis, E. P., Obenaus, A., Sandman, C. A., Small, S. L., Solodkin, A., et al. (2012). Fragmentation and unpredictability of early-life experience in mental disorders. *Am. J. Psychiatry* 169, 907–915.
- Beebe, B., Messinger, D., Bahrnick, L. E., Margolis, A., Buck, K. A., and Chen, H. (2016). A systems view of mother-infant face-to-face communication. *Dev. Psychol.* 52, 556–571.
- Birnie, M. T., and Baram, T. Z. (2022). Principles of emotional brain circuit maturation. *Science* 376, 1055–1056.
- Bolton, J. L., Molet, J., Regev, L., Chen, Y., Rismanchi, N., Haddad, E., et al. (2018). Anhedonia following early-life adversity involves aberrant interaction of reward and anxiety circuits and is reversed by partial silencing of amygdala corticotropin-releasing hormone gene. *Biol. Psychiatry* 83, 137–147. doi: 10.1016/j.biopsych.2017.08.023
- Bolton, J. L., Schulmann, A., Garcia-Curran, M. M., Regev, L., Chen, Y., Kamei, N., et al. (2020). Unexpected transcriptional programs contribute to hippocampal memory deficits and neuronal stunting after early-life adversity. *Cell Rep.* 33:108511. doi: 10.1016/j.celrep.2020.108511
- Bolton, J. L., Short, A. K., Othy, S., Kooiker, C. L., Shao, M., Gunn, B. G., et al. (2022). Early stress-induced impaired microglial pruning of excitatory synapses on immature CRH-expressing neurons provokes aberrant adult stress responses. *Cell Rep.* 38:110600. doi: 10.1016/j.celrep.2022.110600
- Bowlby, J. (1950). Research into the origins of delinquent behaviour. *BMJ.* 1, 570–573.
- Boyce, W. T., and Hertzman, C. (2018). “Early childhood health and the life course: The state of science and proposed research priorities,” in *Handbook of life course health development*, eds N. Halfon, C. B. Forrest, R. M. Lerner, and E. M. Faustman (Berlin: Springer).
- Brunson, K. L., Kramar, E., Lin, B., Chen, Y., Colgin, L. L., and Yanagihara, T. K. (2005). Mechanisms of late-onset cognitive decline after early-life stress. *J. Neurosci.* 25, 9328–9338.
- Cover, T. M., and Thomas, J. A. (2006). *Elements of information theory*. Hoboken, NJ: Wiley-Interscience.
- Davis, E. P., Korja, R., Karlsson, L., Glynn, L. M., Sandman, C. A., Vegetabile, B., et al. (2019). Across continents and demographics, unpredictable maternal signals are associated with children's cognitive function. *EBioMedicine* 46, 256–263. doi: 10.1016/j.ebiom.2019.07.025
- Davis, E. P., Stout, S. A., Molet, J., Vegetabile, B., Glynn, L. M., Sandman, C. A., et al. (2017). Exposure to unpredictable maternal sensory signals influences cognitive development across species. *PNAS.* 114, 10390–10395. doi: 10.1073/pnas.1703444114
- Demaestri, C., Pan, T., Critz, M. O., Ofray, D., Gallo, M., and Bath, K. G. (2020). Type of early life adversity confers differential, sex-dependent effects on early maturational milestones in mice. *Horm. Behav.* 124:104763. doi: 10.1016/j.yhbeh.2020.104763
- Denenberg, V. H., and Bell, R. W. (1960). Critical periods for the effects of infantile experience on adult learning. *Science.* 31, 227–228. doi: 10.1126/science.131.3395.227
- Denenberg, V. H., and Karas, G. G. (1959). Effects of differential infantile handling upon weight gain and mortality in the rat and mouse. *Science* 130, 629–630. doi: 10.1126/science.130.3376.629-a
- Drury, S. S., Sanchez, M. M., and Gonzalez, A. (2016). When mothering goes awry: Challenges and opportunities for utilizing evidence across rodent, nonhuman primate and human studies to better define the biological consequences of negative early caregiving. *Horm. Behav.* 77, 182–192. doi: 10.1016/j.yhbeh.2015.10.007
- Eichenbaum, H., Yonelinas, A. P., and Ranganath, C. (2007). The medial temporal lobe and recognition memory. *Annu. Rev. Neurosci.* 30, 123–152.
- Espinosa, J. S., and Stryker, M. P. (2012). Development and plasticity of the primary visual cortex. *Neuron* 75, 230–249.
- Feldman, R. (2007). Parent-infant synchrony and the construction of shared timing: Physiological precursors, developmental outcomes, and risk conditions. *J. Child Psychol. Psychiatry* 48, 329–354. doi: 10.1111/j.1469-7610.2006.01701.x
- Feldman, R. (2015). Mutual influences between child emotion regulation and parent-child reciprocity support development across the first 10 years of life: Implications for developmental psychopathology. *Dev. Psychopathol.* 27, 1007–1023. doi: 10.1017/S0954579415000656
- Gee, D. G. (2021). Early adversity and development: Parsing heterogeneity and identifying pathways of risk and resilience. *Am. J. Psychiatry* 178, 998–1013. doi: 10.1176/appi.ajp.2021.21090944
- Glynn, L. M., and Baram, T. Z. (2019). The influence of unpredictable, fragmented parental signals on the developing brain. *Front. Neuroendocrinol.* 53:100736. doi: 10.1016/j.yfrne.2019.01.002
- Glynn, L. M., Davis, E. P., Luby, J. L., Baram, T. Z., and Sandman, C. A. (2021). A predictable home environment may protect child mental health during the COVID-19 pandemic. *Neurobiol. Stress* 14:100291. doi: 10.1016/j.ynstr.2020.100291
- Glynn, L. M., Howland, M. A., Sandman, C. A., Davis, E. P., Phelan, M., Baram, T. Z., et al. (2018). Prenatal maternal mood patterns predict child temperament and adolescent mental health. *J. Affect Disord.* 228, 83–90. doi: 10.1016/j.jad.2017.11.065
- Glynn, L. M., Stern, H. S., Howland, M. A., Risbrough, V. B., Baker, D. G., Nievergelt, C. M., et al. (2019). Measuring novel antecedents of mental illness: The questionnaire of unpredictability in childhood. *Neuropsychopharmacology* 44, 876–882. doi: 10.1038/s41386-018-0280-9
- Granger, S. J., Glynn, L. M., Sandman, C. A., Small, S. L., Obenaus, A., Keator, D. B., et al. (2021). Aberrant maturation of the uncinate fasciculus follows exposure to unpredictable patterns of maternal signals. *J. Neurosci.* 41, 1242–1250. doi: 10.1523/JNEUROSCI.0374-20.2020
- Gunn, B. G., Cunningham, L., Cooper, M. A., Corteen, N. L., Seifi, M., Swinny, J. D., et al. (2013). Dysfunctional astrocytic and synaptic regulation of hypothalamic glutamatergic transmission in a mouse model of early-life adversity: Relevance to neurosteroids and programming of the stress response. *J. Neurosci.* 33, 19534–19554. doi: 10.1523/JNEUROSCI.1337-13.2013
- Hackett, T. A., Barkat, T. R., O'Brien, B. M., Hensch, T. K., and Polley, D. B. (2011). Linking topography to tonotopy in the mouse auditory thalamocortical circuit. *J. Neurosci.* 31, 2983–2995. doi: 10.1523/JNEUROSCI.5333-10.2011

- Harlow, H. F. (1964). "Early social deprivation and later behavior in the monkey," in *Unfinished Tasks in the Behavioral Sciences*, eds A. Abrams, H. H. Gurner, and J. E. P. Tomal (Baltimore: Williams & Wilkins), 154–173.
- Harlow, H. F., Dodsworth, R. O., and Harlow, M. K. (1965). Total social isolation in monkeys. *PNAS* 54, 90–97.
- Heidinger, B. J., Blount, J. D., Boner, W., Griffiths, K., Metcalfe, N. B., and Monaghan, P. (2012). Telomere length in early life predicts lifespan. *PNAS* 109:1743.
- Hennessy, M. B., Li, J., and Levine, S. (1980). Infant responsiveness to maternal cues in mice of 2 inbred lines. *Dev. Psychobiol.* 13, 77–84. doi: 10.1002/dev.420130111
- Heuer, E., and Bachevalier, J. (2011). Neonatal hippocampal lesions in rhesus macaques alter the monitoring, but not maintenance, of information in working memory. *Behav. Neurosci.* 125:859. doi: 10.1037/a0025541
- Hofer, M. A. (1970). Physiological responses of infant rats to separation from their mothers. *Science* 1970, 871–873.
- Hofer, M. A. (1973). Maternal separation affects infant rats' behavior. *Behav. Biol.* 9, 629–633.
- Howell, B. R., Ahn, M., Shi, Y., Godfrey, J. R., Hu, X., Zhu, H., et al. (2019). Disentangling the effects of early caregiving experience and heritable factors on brain white matter development in rhesus monkeys. *Neuroimage* 197, 625–642. doi: 10.1016/j.neuroimage.2019.04.013
- Howell, B. R., McMurray, M. S., Guzman, D. B., Nair, G., Shi, Y., McCormack, K. M., et al. (2017). Maternal buffering beyond glucocorticoids: Impact of early life stress on corticolimbic circuits that control infant responses to novelty. *Soc. Neurosci.* 12, 50–64. doi: 10.1080/17470919.2016.1200481
- Ivy, A. S., Rex, C. S., Chen, Y., Dube, C., Maras, P. M., Grigoriadis, D. E., et al. (2010). Hippocampal dysfunction and cognitive impairments provoked by chronic early-life stress involve excessive activation of CRH receptors. *J. Neurosci.* 30, 13005–13015. doi: 10.1523/JNEUROSCI.1784-10.2010
- Khazipov, R., Sirota, A., Leinekugel, X., Holmes, G. L., Ben-Ari, Y., and Buzsáki, G. (2004). Early motor activity drives spindle bursts in the developing somatosensory cortex. *Nature* 432, 758–761.
- Korosi, A., Shanabrough, M., McClelland, S., Liu, Z. W., Borok, E., Gao, X. B., et al. (2010). Early-life experience reduces excitation to stress-responsive hypothalamic neurons and reprograms the expression of corticotropin-releasing hormone. *J. Neurosci.* 30, 703–713. doi: 10.1523/JNEUROSCI.4214-09.2010
- Landers, M. S. S., and Sullivan, R. M. (2012). The development and neurobiology of infant attachment and fear. *Dev. Neurosci.* 34, 101–114.
- Levine, S. (1967). Maternal and environmental influences on the adrenocortical response to stress in weanling rats. *Science* 156, 258–260. doi: 10.1126/science.156.3772.258
- Levis, S. C., Bentzley, B. S., Molet, J., Bolton, J. L., Perrone, C. R., Baram, T. Z., et al. (2021). On the early life origins of vulnerability to opioid addiction. *Mol. Psychiatry* 26, 4409–4416. doi: 10.1038/s41380-019-0628-5
- Levis, S. C., Birnie, M. T., Bolton, J. L., Perrone, C. R., Montesinos, J. S., Baram, T. Z., et al. (2022). Enduring disruption of reward and stress circuit activities by early-life adversity in male rats. *Transl. Psychiatry* 12:251. doi: 10.1038/s41398-022-01988-w
- Lindert, N., Maxwell, M., Liu, S., Stern, H. S., Baram, T. Z., Davis, E. P., et al. (in press). Exposure to unpredictability and mental health: Validation of the brief version of the Questionnaire of Unpredictability in Childhood (QUIC-5) in English and Spanish. *Front. Psychol.*
- Luby, J. L., Baram, T. Z., Rogers, C. E., and Barch, D. M. (2020). Neurodevelopmental optimization after early-life adversity: Cross-species studies to elucidate sensitive periods and brain mechanisms to inform early intervention. *Trends Neurosci.* 43, 744–751. doi: 10.1016/j.tins.2020.08.001
- Mattison, J. A., and Vaughan, K. L. (2017). An overview of nonhuman primates in aging research. *Exp. Gerontol.* 94, 41–45.
- McCormack, K., Howell, B., Guzman, D., Villongco, C., Pears, K., Kim, H., et al. (2015). The development of an instrument to measure global dimensions of maternal care in rhesus macaques (*Macaca mulatta*). *Am. J. Primatol.* 77, 20–33. doi: 10.1002/ajp.22307
- McLaughlin, K. A., Sheridan, M. A., Humphreys, K. L., Belsky, J., and Ellis, B. J. (2021). The value of dimensional models of early experience: Thinking clearly about concepts and categories. *Perspect. Psychol. Sci.* 16, 1463–1472. doi: 10.1177/1745691621992346
- Molet, J., Heins, K., Zhuo, X., Mei, Y. T., Regev, L., Baram, T. Z., et al. (2016a). Fragmentation and high entropy of neonatal experience predict adolescent emotional outcome. *Transl. Psychiatry* 6:e702. doi: 10.1038/tp.2015.200
- Molet, J., Maras, P. M., Kinney-Lang, E., Harris, N. G., Rashid, F., Ivy, A. S., et al. (2016b). MRI uncovers disrupted hippocampal microstructure that underlies memory impairments after early-life adversity. *Hippocampus* 26, 1618–1632. doi: 10.1002/hipo.22661
- Morin, E. L., Howell, B. R., Feczko, E., Earl, E., Pincus, M., Reding, K., et al. (2020). Developmental outcomes of early adverse care on amygdala functional connectivity in nonhuman primates. *Dev. Psychopathol.* 32, 1579–1596. doi: 10.1017/S0954579420001133
- NICHD (2001). Child-care and family predictors of preschool attachment and stability from infancy. *Dev. Psychol.* 37, 847–862.
- Noroña-Zhou, A. N., Morgan, A., Glynn, L. M., Sandman, C. A., Baram, T. Z., Stern, H. S., et al. (2020). Unpredictable maternal behavior is associated with a blunted infant cortisol response. *Dev. Psychobiol.* 62, 882–888. doi: 10.1002/dev.21964
- Rosen, M. L., Rodman, A. M., Kasparek, S. W., Mayes, M., Freeman, M. M., and Lengua, L. J. (2021). Promoting youth mental health during the COVID-19 pandemic: A longitudinal study. *PLoS One* 16:e0255294. doi: 10.1371/journal.pone.0255294
- Sher, L. (2006). Combined dexamethasone suppression-corticotropin-releasing hormone stimulation test in studies of depression, alcoholism, and suicidal behavior. *Sci. World J.* 6, 1398–1404. doi: 10.1100/tsw.2006.251
- Sheslow, D., and Adams, W. (2003). *Wide range assessment of memory and learning administration and technical manual*. Lutz, FL: Psychological Assessment Resources.
- Short, A. K., and Baram, T. (2019). Early-life adversity and neurological disease: Age-old questions and novel answers. *Nat. Rev. Neurol.* 15, 657–669. doi: 10.1038/s41582-019-0246-5
- Singh-Taylor, A., Molet, J., Jiang, S., Korosi, A., Bolton, J. L., Noam, Y., et al. (2018a). NRSF-dependent epigenetic mechanisms contribute to programming of stress-sensitive neurons by neonatal experience, promoting resilience. *Mol. Psychiatry* 3, 648–657. doi: 10.1038/mp.2016.240
- Singh-Taylor, A., Molet, J., Jiang, S., Korosi, A., Bolton, J. L., Noam, Y., et al. (2018b). NRSF-dependent epigenetic mechanisms contribute to programming of stress-sensitive neurons by neonatal experience, promoting resilience. *Mol. Psychiatry* 23:648.
- Squire, L. R., Wixted, J. T., and Clark, R. E. (2007). Recognition memory and the medial temporal lobe: A new perspective. *Nat. Rev. Neurosci.* 8, 872–883.
- Takesian, A. E., Bogart, L. J., Lichtman, J. W., and Hensch, T. K. (2018). Inhibitory circuit gating of auditory critical-period plasticity. *Nat. Neurosci.* 21, 218–227.
- Uchida-Ota, M., Arimitsu, T., Tsuzuki, D., Dan, I., Ikeda, K., Takahashi, T., et al. (2019). Maternal speech shapes the cerebral frontotemporal network in neonates: A hemodynamic functional connectivity study. *Dev. Cogn. Neurosci.* 39:100701. doi: 10.1016/j.dcn.2019.100701
- Vegetabile, B., Stout-Oswald, S. A., Davis, E. P., Baram, T. Z., and Stern, H. (2019). Estimating the entropy rate of finite markov chains with application to behavior studies. *JEBs* 44, 282–308.
- Wiesel, T. N., and Hubel, D. H. (1963). Single-cell responses in striate cortex of kittens deprived of vision in one eye. *J. Neurophysiol.* 26, 1003–1017.