



## OPEN ACCESS

EDITED AND REVIEWED BY  
Mihajlo Jakovljevic,  
Hosei University, Japan

\*CORRESPONDENCE  
Ye Chen  
huaxichenye@163.com  
Xingchen Peng  
pxx2014@163.com

SPECIALTY SECTION  
This article was submitted to  
Health Economics,  
a section of the journal  
Frontiers in Public Health

RECEIVED 10 June 2022  
ACCEPTED 12 July 2022  
PUBLISHED 26 July 2022

CITATION  
Xie Q, Zheng H, Chen Y and Peng X  
(2022) Corrigendum:  
Cost-effectiveness of avelumab  
maintenance therapy plus best  
supportive care vs. best supportive  
care alone for advanced or metastatic  
urothelial carcinoma.  
*Front. Public Health* 10:965798.  
doi: 10.3389/fpubh.2022.965798

COPYRIGHT  
© 2022 Xie, Zheng, Chen and Peng.  
This is an open-access article  
distributed under the terms of the  
[Creative Commons Attribution License  
\(CC BY\)](#). The use, distribution or  
reproduction in other forums is  
permitted, provided the original  
author(s) and the copyright owner(s)  
are credited and that the original  
publication in this journal is cited, in  
accordance with accepted academic  
practice. No use, distribution or  
reproduction is permitted which does  
not comply with these terms.

# Corrigendum: Cost-effectiveness of avelumab maintenance therapy plus best supportive care vs. best supportive care alone for advanced or metastatic urothelial carcinoma

Qian Xie<sup>1</sup>, Hanrui Zheng<sup>2</sup>, Ye Chen<sup>1\*</sup> and Xingchen Peng<sup>1\*</sup>

<sup>1</sup>West China Hospital, Sichuan University, Chengdu, China, <sup>2</sup>West China School of Medicine, West China Hospital, Sichuan University, Chengdu, China

## KEYWORDS

programmed cell death ligand 1, avelumab, cost-effective, advanced or metastatic urothelial cancer, maintenance therapy

## A corrigendum on

### Cost-Effectiveness of Avelumab Maintenance Therapy Plus Best Supportive Care vs. Best Supportive Care Alone for Advanced or Metastatic Urothelial Carcinoma

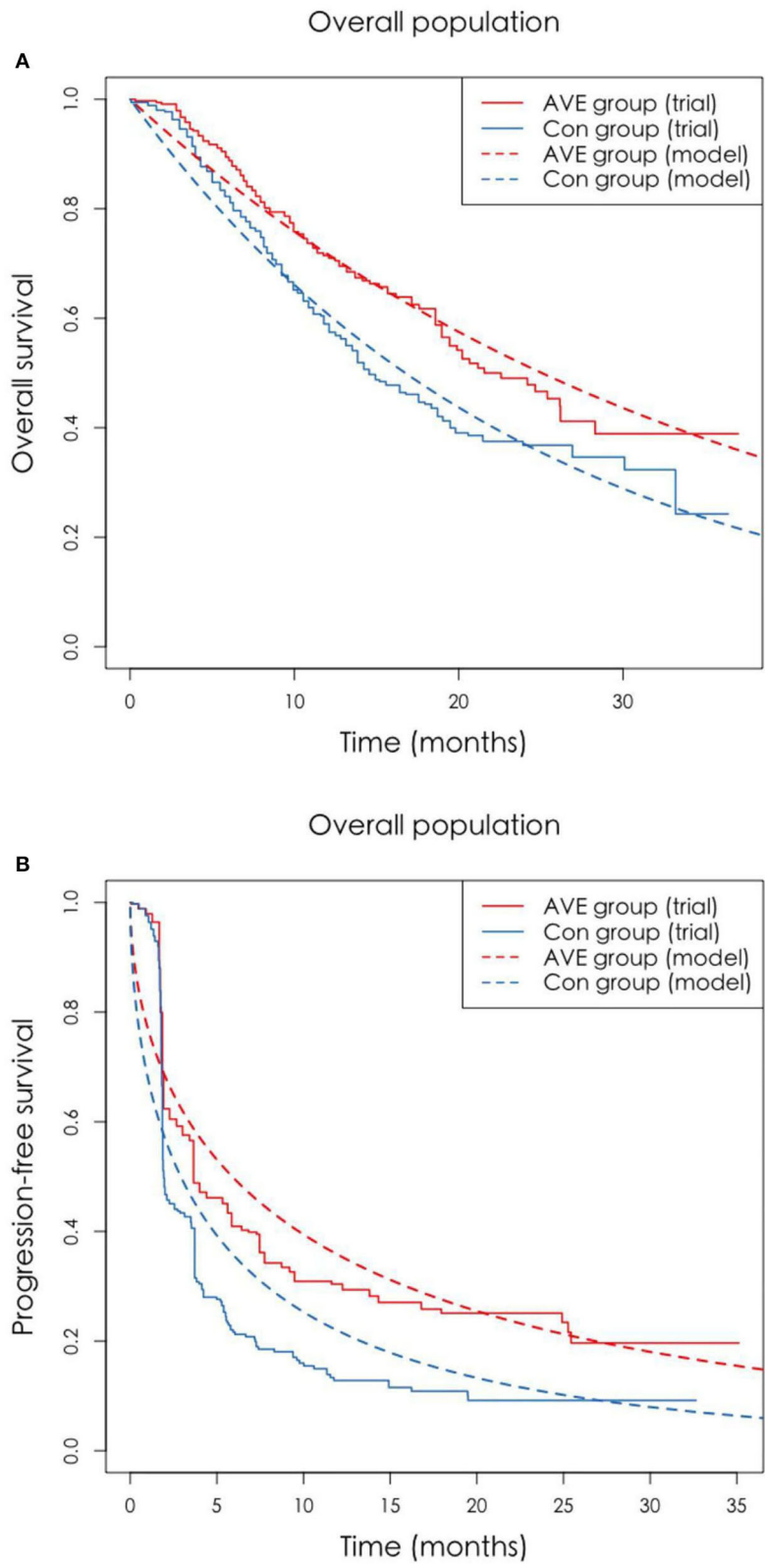
by Xie Q, Zheng H, Chen Y, and Peng X (2022). *Front. Public Health* 10:837854.  
doi: 10.3389/fpubh.2022.837854

In the published article, there was an error in [Figure 2](#) where parts 2A and 2C were duplicated in parts 2B and 2D. The caption should also read as “The original Kaplan-Meier PFS and OS curves from the trial and fitted curves (Weibull distributions). OS, overall survival; PFS, progression-free survival.” The corrected figure appears below.

The authors apologize for this error and state that this does not change the scientific conclusions of the article in any way. The original article has been updated.

## Publisher's note

All claims expressed in this article are solely those of the authors and do not necessarily represent those of their affiliated organizations, or those of the publisher, the editors and the reviewers. Any product that may be evaluated in this article, or claim that may be made by its manufacturer, is not guaranteed or endorsed by the publisher.



**FIGURE 2**  
**(A,B)** The original Kaplan-Meier PFS and OS curves from the trial and fitted curves (Weibull distributions). OS, overall survival; PFS, progression-free survival.