



## OPEN ACCESS

Edited and reviewed by:  
Geert Wiegertjes,  
Wageningen University and Research,  
Netherlands

## \*CORRESPONDENCE

Xiaohui Ai  
aixh@yfi.ac.cn  
Yuhua Chen  
510026437@qq.com

<sup>†</sup>These authors share first authorship

## SPECIALTY SECTION

This article was submitted to  
Comparative Immunology,  
a section of the journal  
Frontiers in Immunology

RECEIVED 30 June 2022

ACCEPTED 07 July 2022

PUBLISHED 27 July 2022

## CITATION

Yang Y, Zhu X, Zhang H, Chen Y,  
Song Y and Ai X (2022) Corrigendum:  
Dual RNA-seq of trunk kidneys  
extracted from channel catfish  
infected with *Yersinia ruckeri*  
reveals novel insights into  
host-pathogen interactions.  
*Front. Immunol.* 13:982091.  
doi: 10.3389/fimmu.2022.982091

## COPYRIGHT

© 2022 Yang, Zhu, Zhang, Chen, Song  
and Ai. This is an open-access article  
distributed under the terms of the  
[Creative Commons Attribution License  
\(CC BY\)](#). The use, distribution or  
reproduction in other forums is  
permitted, provided the original author  
(s) and the copyright owner(s) are  
credited and that the original  
publication in this journal is cited, in  
accordance with accepted academic  
practice. No use, distribution or  
reproduction is permitted which does  
not comply with these terms.

# Corrigendum: Dual RNA-seq of trunk kidneys extracted from channel catfish infected with *Yersinia ruckeri* reveals novel insights into host-pathogen interactions

Yibin Yang<sup>1,2†</sup>, Xia Zhu<sup>1†</sup>, Haixin Zhang<sup>3†</sup>, Yuhua Chen<sup>4,5\*</sup>,  
Yi Song<sup>2</sup> and Xiaohui Ai<sup>1,2\*</sup>

<sup>1</sup>Yangtze River Fisheries Research Institute, Chinese Academy of Fishery Sciences, Wuhan, China,

<sup>2</sup>The Key Laboratory for Quality and Safety Control of Aquatic Products, Ministry of Agriculture, Beijing, China, <sup>3</sup>Fish Disease Laboratory, Jiangxi Fisheries Research Institute, Nanchang, China,

<sup>4</sup>Department of Gastroenterology, Zhongnan Hospital of Wuhan University, Wuhan, China, <sup>5</sup>Hubei Clinical Center & Key Lab of Intestinal & Colorectal Diseases, Zhongnan Hospital of Wuhan University, Wuhan, China

## KEYWORDS

channel catfish, *yersinia ruckeri*, dual RNA-seq, host-pathogen interactions, immunity, virulence

## A Corrigendum on:

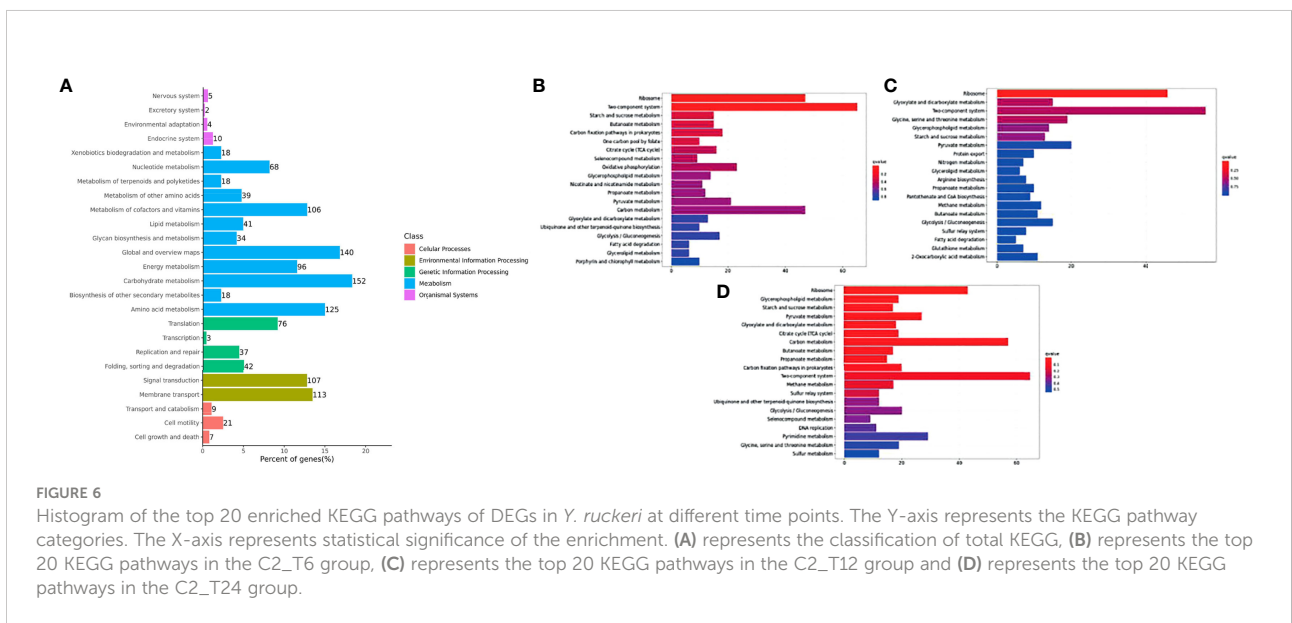
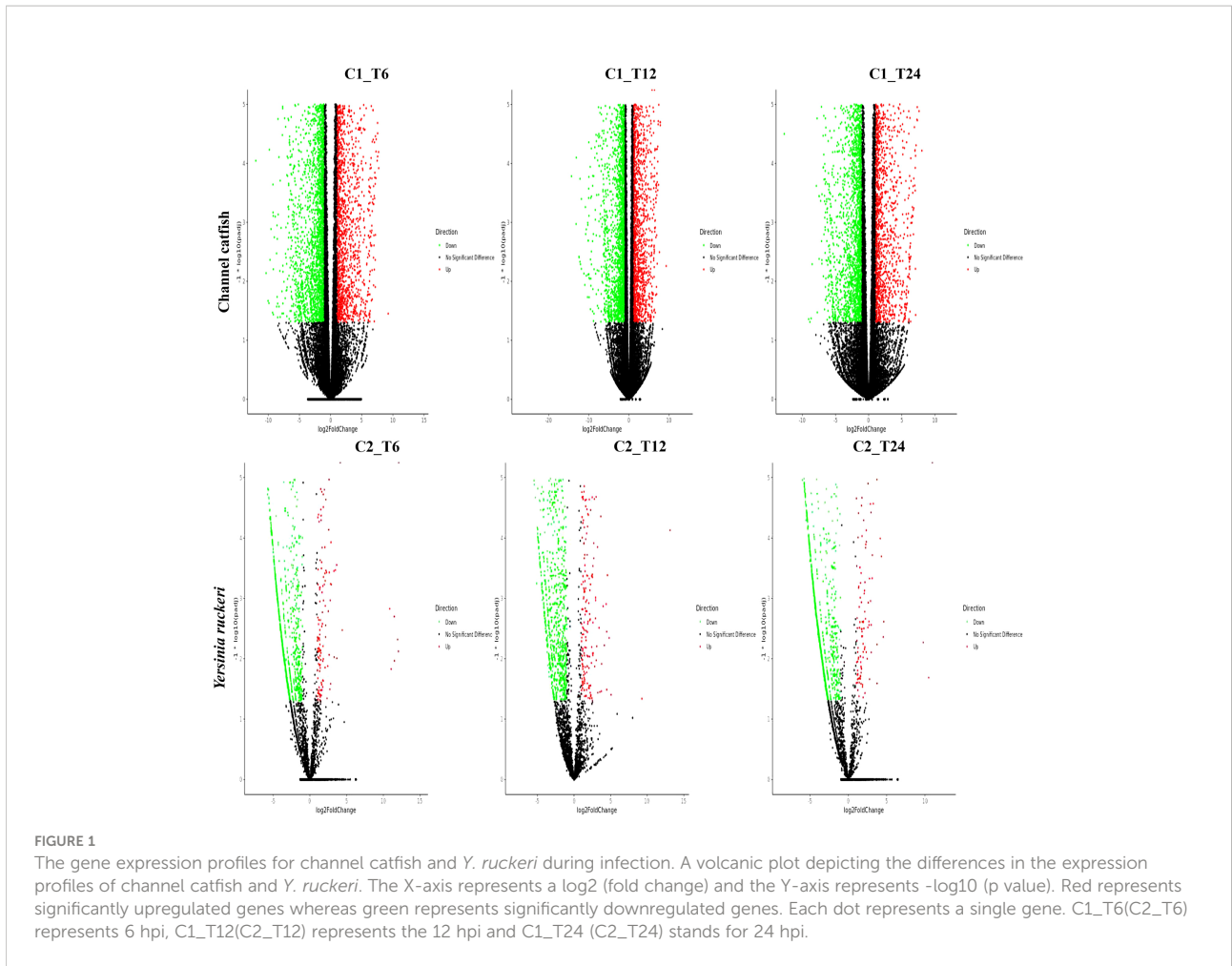
## Dual RNA-Seq of Trunk Kidneys Extracted From Channel Catfish Infected With *Yersinia ruckeri* Reveals Novel Insights Into Host-Pathogen Interactions.

Yang Y, Zhu X, Zhang H, Chen Y, Song Y and Ai X (2021) Dual RNA-Seq of Trunk Kidneys Extracted From Channel Catfish Infected With *Yersinia ruckeri* Reveals Novel Insights Into Host-Pathogen Interactions. *Front. Immunol.* 12:775708. doi: 10.3389/fimmu.2021.775708

In the published article, there was an error in **Figure 6A** as published. **Figure 5A** was used instead of **Figure 6A** in the revision of the article. The corrected **Figure 6A** appears below.

In the published article, there was an error in the legend of **Figure 1** as published. There was one mistake in the species names. The corrected legend appears below.

“**Figure 1.** The gene expression profiles for channel catfish and *Y. ruckeri* during infection. A volcanic plot depicting the differences in the expression profiles of channel catfish and *Y. ruckeri*. The X-axis represents a log<sub>2</sub> (fold change) and the Y-axis represents



$-\log_{10}$  (p value). Red represents significantly upregulated genes whereas green represents significantly downregulated genes. Each dot represents a single gene. C1\_T6(C2\_T6) represents 6 hpi, C1\_T12(C2\_T12) represents the 12 hpi and C1\_T24(C2\_T24) stands for 24 hpi.”

In the published article, there was an error. A correction has been made to **DISCUSSION**, Paragraph 7. This sentence previously stated:

“The pathogen HlyA was severely down-regulated by the host, indicating that the pathogen did not rely on hemolysin to cause harm in the host trunk kidney.”

The corrected sentence appears below:

“The pathogen HlyB was up-regulated in the infection, indicating that the pathogen rely on hemolysin to cause harm in the host trunk kidney.”

The authors apologize for these errors and state that they do not change the scientific conclusions of the article in any way. The original article has been updated.

## Publisher's note

All claims expressed in this article are solely those of the authors and do not necessarily represent those of their affiliated organizations, or those of the publisher, the editors and the reviewers. Any product that may be evaluated in this article, or claim that may be made by its manufacturer, is not guaranteed or endorsed by the publisher.