



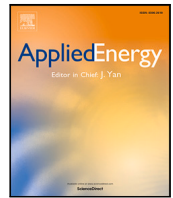
Are biofuel mandates cost-effective? - An analysis of transport fuels and biomass usage to achieve emissions targets in the European energy system

Downloaded from: <https://research.chalmers.se>, 2022-11-19 13:37 UTC

Citation for the original published paper (version of record):

Millinger, M., Reichenberg, L., Hedenus, F. et al (2022). Are biofuel mandates cost-effective? - An analysis of transport fuels and biomass usage to achieve emissions targets in the European energy system. *Applied Energy*, 326. <http://dx.doi.org/10.1016/j.apenergy.2022.120016>

N.B. When citing this work, cite the original published paper.



Are biofuel mandates cost-effective? - An analysis of transport fuels and biomass usage to achieve emissions targets in the European energy system

M. Millinger^{a,*}, L. Reichenberg^a, F. Hedenus^a, G. Berndes^a, E. Zeyen^b, T. Brown^b

^a Department of Space Earth and Environment, Chalmers University of Technology, 412 96, Göteborg, Sweden

^b Department of Digital Transformation in Energy Systems, Technische Universität Berlin, Einsteinufer 25 (TA 8), 10587 Berlin, Germany

ARTICLE INFO

Keywords:

Biofuels
Electrofuels
Negative emissions
Renewable transport
Biofuel mandates

ABSTRACT

Abatement options for the hard-to-electrify parts of the transport sector are needed to achieve ambitious emissions targets. Biofuels based on biomass, electrofuels based on renewable hydrogen and a carbon source, as well as fossil fuels compensated by carbon dioxide removal (CDR) are the main options. Currently, biofuels are the only renewable fuels available at scale and are stimulated by blending mandates. Here, we estimate the system cost of enforcing such mandates in addition to an overall emissions cap for all energy sectors. We model overnight scenarios for 2040 and 2060 with the sector-coupled European energy system model PyPSA-Eur-Sec, with a high temporal resolution. The following cost drivers are identified: (i) high biomass costs due to scarcity, (ii) opportunity costs for competing usages of biomass for industry heat and combined heat and power (CHP) with carbon capture, and (iii) lower scalability and generally higher cost for biofuels compared to electrofuels and fossil fuels combined with CDR. With a -80% emissions reduction target in 2040, variable renewables, partial electrification of heat, industry and transport, and biomass use for CHP and industrial heat are important for achieving the target at minimal cost, while an abatement of remaining liquid fossil fuel use increases system cost. In this case, a 50% biofuel mandate increases total energy system costs by 123–191 billion €, corresponding to 35%–62% of the liquid fuel cost without a mandate. With a negative -105% emissions target in 2060, fuel abatement options are necessary, and electrofuels or the use of CDR to offset fossil fuel emissions are both more competitive than biofuels. In this case, a 50% biofuel mandate increases total costs by 21–33 billion €, or 11%–15% of the liquid fuel cost without a mandate. Biomass is preferred in CHP and industry heat, combined with carbon capture to serve negative emissions or electrofuel production, thereby utilising biogenic carbon several times. Sensitivity analyses reveal significant uncertainties but consistently support that higher biofuel mandates lead to higher costs.

1. Introduction

The transport sector accounted for 30% of total greenhouse gas (GHG) emissions in the EU-27 in 2019, with an increasing trend [1]. Recent developments of electric vehicles and targets for phasing out internal combustion engine vehicles (ICEVs) [2,3] indicate a considerable electrification of land-based transport within the next few decades. However, a phase-out of ICEVs takes time and thus a liquid hydrocarbon fuel demand persists for several decades even at high electrification rates [4,5]. In maritime transport and aviation, a demand for liquid hydrocarbon fuels is likely to remain also in the long run [6–8]. Alternative fuel solutions are thus required to achieve ambitious emissions targets. Biofuels and electrofuels are the two available renewable liquid hydrocarbon fuel options [9]. Another option is the continued use of unabated fossil fuels combined with carbon dioxide removal (CDR) elsewhere in the system [10–12].

Currently, conventional biofuels produced from food crops are the dominating option [13], but they are connected to land use change issues and other sustainability risks [14,15], and are being phased out in the EU [16]. Biomass residues which are suitable for existing conventional biofuel processes (such as used cooking oil) are scarce [17]. Instead, advanced biofuels based on lignocellulosic biomass residues show a relatively large albeit uncertain potential [18]; however, no commercially operational production exists today.

Electrofuels are produced with hydrogen and carbon as feedstocks. Hydrogen can be sourced from electrolyzers, which can use electricity when it is cheap in a system dominated by variable renewable energy (VRE). However, the potential depends on a substantial expansion of VRE (or other carbon emissions free) capacity, and thus can be seen as a large-scale option only in the longer term, especially as there is competition for hydrogen from other usages [19,20].

* Corresponding author.

E-mail address: markus.millinger@chalmers.se (M. Millinger).

<https://doi.org/10.1016/j.apenergy.2022.120016>

Received 6 July 2022; Received in revised form 14 September 2022; Accepted 20 September 2022

Available online 1 October 2022

0306-2619/© 2022 The Author(s). Published by Elsevier Ltd. This is an open access article under the CC BY license (<http://creativecommons.org/licenses/by/4.0/>).

An emissions cap-and-trade or tax is often seen as the first-best policy option for achieving targets, since it in theory leads to the least-cost attainment of emissions targets [21]. However, fuel mandates may be important tools for a country or for the EU in a second-best setting if the ideal first-best policy mix is hard to implement or if there are market barriers hindering abatement solutions [21–23]. Also, mandates may (i) support the development of promising technologies [21], (ii) focus mitigation efforts to the transport sector which is not pressured by international competition [24], and (iii) count towards other goals, such as improved energy security [25].

In the EU, transport fuels are subject to fuel taxes and blending mandates for achieving emissions targets, and there is a proposal to include the transport and additional industry sectors in the EU-ETS [26]. The proposal for the new Renewable Energy Directive (RED III) [27] includes renewable fuel mandates for the aviation (20% in 2035, with at least 5% electrofuels) [28] and road transport sectors (2.3% advanced biofuels for light transport in 2035), while the maritime sector is to reduce its energy intensity by 20% in 2035 compared to 2020 [29]. However, several countries have set targets that significantly surpass those of the EU as a whole. For instance, Sweden targets to decrease fuel emissions by 66% for diesel and 23% for gasoline by 2030, through blending in biofuels [30], and Finland aims for 30% biofuels in the fuel mix by 2030 [31]. In the US, the Renewable Fuel Standard currently mandates a blending of around 10% biofuels into the fuel mix [32].

Biofuels present the main short-term option to fulfil fuel mandates [33], by blending them into the fuels used for aviation, road and maritime transport. The fuel mandates thus incentivise investments in biofuel production (supply chain and biorefineries) on a scale to satisfy a sizeable part of the demand for renewable fuels. Although scaling up of new options such as CDR or renewable fuels based on VRE may prove to be challenging [34,35], the future may also see a large cost reduction for electrolysis [36,37], electrofuels [38] and CDR [39]. In addition, sustainability constraints and competition for biomass may increase biomass prices and thus affect the competitiveness of biofuels as well as of biomass-based CDR options.

An assessment of biomass usage competitions in the energy system requires the inclusion of all energy sectors, which is usually covered in Integrated Assessment Models (IAMs) [6,40–42] and older energy system optimisation models (ESOMs) such as TIMES/MARKAL [43], with biofuels often emerging as a key solution if CDR or carbon storage potentials are restricted. However, these models generally are limited to a yearly temporal resolution and many of them also to a continental spatial resolution [44], while a higher resolution is needed for an explicit representation of VRE [45–48] and variable production such as electrolyzers (and thus electrofuels, which have mostly been lacking as a technology option in such studies). Modern ESOMs employ a higher temporal resolution and have recently been enhanced to encompass all energy sectors and a detailed representation of both supply and flexible demand [49–51], which enables a cross-sectoral analysis of biomass usage including relevant competing options, as well as of abatement alternatives for the transport sectors. None of the papers based on these sector-coupled models have specifically targeted biomass use or biofuels, and – to our knowledge – neither have biofuel mandates been investigated in energy system modelling or IAM studies. In order to do this, we expand the sector-coupled European ESOM PyPSA-Eur-Sec [52] with details on biomass and bioenergy options.

In this work, we investigate the competition for fuel supply under CO₂ emission reduction targets, and the effects of biofuel mandates on energy system costs. We do this by quantifying the increase in total energy system costs as well as liquid fuel costs that biofuel mandates would lead to in the medium (~2040) and long-term (~2060) perspectives.

2. Materials and methods

We use PyPSA-Eur-Sec [52], which minimises total system costs (including the liquid fuel costs), and analyse system effects and costs when increasing the required minimum share of biofuels that is blended into the liquid hydrocarbon fuel demand. We thus investigate the additional cost of moving away from the optimal use of biomass [53] to scenarios which are constrained in terms of dedicated use of biomass for liquid fuel production. These latter scenarios may be viewed as proxies for policies which promote biofuels, i.e. biofuel mandates. We investigate this question for the medium (~2040) and long term (~2060). The two time horizons are different in terms of CO₂ cap as well as other parameters, such as degree of electrification and technology maturity and costs. We assess the effect of carbon sequestration availability, and investigate two different scenarios for domestic biomass potential: one conservative and one more optimistic. In addition, we allow import of biomass to Europe, but at a relatively high cost, as outlined below.

2.1. Model: PyPSA-Eur-Sec

PyPSA-Eur-Sec [49,52] is a sector-coupled full European energy system model including the power sector, transport, space and water heating, industry and industrial feedstocks. The model co-optimises capacity expansion of energy generation and conversion, as well as their production.

In this work, we expand the model by a rich biomass resource and bioenergy technology portfolio. The further developed version of the model used in this work is available for free use under an open-source license [54].

We use a 37-node spatial resolution and an uninterrupted 1-hourly temporal resolution for a full year in overnight brown-field scenarios. The transmission grid is adapted to be a HVDC lossy transport model, and transmission is constrained to increase by max. 50% in terms of total line volume compared to today.

Final energy demands for the different sectors are calculated based on the JRC IDEES database [55] with additions for non-EU countries [see 49,56, for further elaboration], and need to be met (i.e. demand is perfectly inelastic). However, energy carrier production including electricity, hydrogen, methane and liquid fuels is determined endogenously. Fossil fuels (coal, fossil methane and liquid fossil fuels) as well as uranium are not limited by volume and thus the price equals the cost. Solid biomass imports are also not limited by volume but the price is determined with a supply-curve as outlined in Section 2.2.1. For the other energy carriers (VRE and domestic biomass), scarcity does affect prices. Technology data is elaborated on in the supplementary information.

The model runs were performed on the Chalmers Centre for Computational Science and Engineering (C3SE) computing cluster, using 64 threads and 768 GB RAM (or 96 GB RAM for the lower resolution sensitivity runs). The model set-up used here requires up to ~400 GB RAM (which can be lowered by using fewer threads).

2.2. Biomass and bioenergy

A variety of biomass categories and conversion technologies are introduced in the model. Different biomass residue types are clustered into the categories solid biomass and biogas from digestible biomass (Table 1). Solid biomass can be used for a variety of applications in heat, power and fuel production, and can be combined with carbon capture (Fig. 1). Digestible biomass can be used for biogas production, which is upgraded to biomethane and can likewise be combined with carbon capture.

In the main scenarios, the domestic biomass availability is varied as stated in Table 1. Depending on the biomass scenario, solid biomass and biogas from digestible biomass can together provide corresponding to either about 5 or 23% of the resulting total primary energy demand

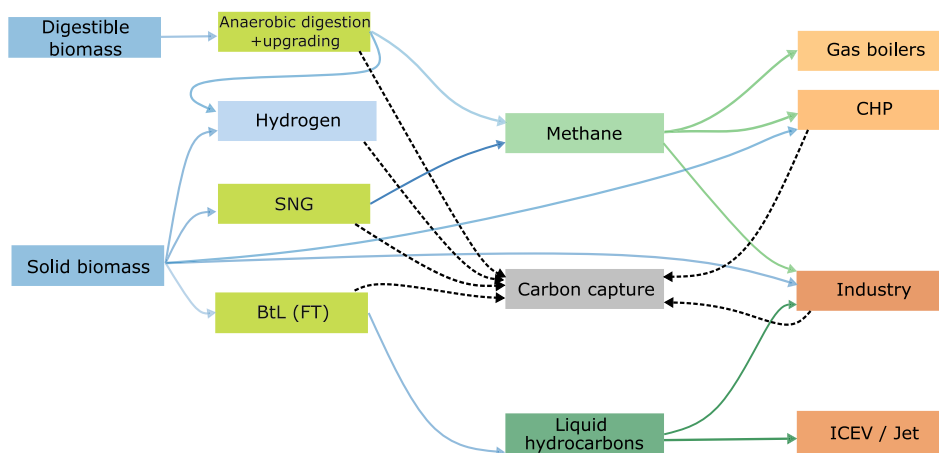


Fig. 1. Simplified depiction of the biomass usage options in the model. Energy flows are shown, except for the dashed lines going to carbon capture (which is optional for each of the shown processes), which show mass flows of carbon. The captured carbon can be utilised for hydrocarbon production, or sequestered. Hydrogen can also be produced through electrolysis and steam methane reforming (SMR), and can be used for numerous applications, including FCEVs, electrofuel production and as industry feedstock (not shown).

Table 1

Domestic biomass scenarios (TWh). The digestible biomass is given in the biogas potential. Values stem from the medium (here denoted *low*) and high biomass potential scenarios from the JRC ENSPRESO data base [18]. A weighted average of country-level biomass costs used from the *high* biomass scenario for 2050 is held constant across scenarios in this study.

	Low TWh	High TWh	Cost €/MWh
Forest residues	267	1654	12
Industry wood residues	76	381	6
Landscape care	42	214	8
Σ Solid biomass	385	2249	
Manure & slurry	173	522	20
Municipal biowaste	122	222	0.14
Sewage sludge	8	15	17
Straw	186	601	10
Σ Biogas (dig. biomass)	489	1359	
Σ Biomass	874	3608	

of around 16 PWh. A weighted average of country-level biomass costs from the *high* biomass scenario for 2050 from the JRC ENSPRESO data base [18] is used and is held constant across scenarios in this study.

Only biomass residues and wastes are included in the analysis, i.e. crops are excluded. The current political and policy context hints towards a limited role for dedicated cultivation in EU, due to concerns about competition with food and risks for environmental impacts from cropland expansion. Thereby, the only option considered for producing liquid biofuels is based on solid biomass (i.e. biomass to liquid, BtL), and biofuel imports are excluded. The use of residues and waste as bioenergy feedstock is assumed not to influence the net flow of CO₂ between the atmosphere and the biosphere, which is driven by photosynthesis, respiration, decay, and combustion of organic matter. See Section 4.2.1 for further elaboration on this carbon neutrality assumption.

2.2.1. Biomass imports

Biomass supply and demand in IAMs depend on many different factors, which makes it difficult to construct a global biomass supply curve based on their results. Still, global trade of biomass needs to somehow be represented in a regional ESOM to be more realistic. We use the model comparison by Bauer et al. [41] which focuses on biomass use in carbon mitigation scenarios, and select five models which represent the competition between biomass supply and food, pasture, and nature, and provide global biomass prices (two of the models also include competition for land for afforestation). For 2050,

the global supply varies between 130 and 250 EJ in the different model results, and the biomass price spans between 10 and 21 USD/GJ. Using the average of these models we assume that 175 EJ of biomass can be supplied globally and annually at a price of 15 USD/GJ. We use regional data on biomass use per capita and population estimates [57] to find that 20 EJ biomass may be imported to Europe at a price of 15 €/GJ. For each additional EJ to be imported the price is assumed to increase by 0.25 €/GJ, based on the slope of the low-cost scenarios.

In 2021 wood chip prices were at around 8 €/GJ (30 €/MWh), i.e. the above prices assume a substantial price increase compared to today, which reflects an increased demand for biomass in scenarios complying with stringent GHG emission targets. We test the effect of this assumption on results in a sensitivity analysis. Only solid biomass can be imported, and the import prices are held constant across all scenarios. Direct biofuel imports from outside Europe are excluded.

2.3. Sector-specific assumptions

For aviation, increases in travelled passenger kilometres of 50% by 2040 and 100% by 2060 in Europe are assumed, compared to 2019 levels, and efficiency improvements of 3% and 20% in 2040 and 2060, respectively, are assumed [58, extrapolated for 2060]. Based on this, we assume a fuel demand increase compared to 2019 of 50% and 70% in 2040 and 2060, respectively. Electric or hydrogen-fuelled aviation is not considered, as a conservative assumption based on expected long lead times delaying a significant market penetration.

Although shipping demand is projected to increase by 50% to 2050, efficiency measures may counteract this to result in 0%–30% end energy demand increase, depending on the scenario [59]. We assume that efficiency measures are stronger towards 2060, resulting in a 20% fuel demand increase compared to the base level, for both 2040 and 2060. IRENA [59] assumes an about 25% share of hydrogen-based fuels (ammonia and hydrogen) for 2040, and about 55% in 2050 in an ambitious scenario, with the rest being liquid or gaseous hydrocarbons (except very minor electrification). We thereby assume 25% and 70% hydrogen in 2040 and 2060, respectively, with the rest being liquid hydrocarbons. Electrification of shipping is not considered.

The total fuel demand in EU road transport consists of 64% passenger road transport and 36% freight road transport [55]. Passenger and freight road transport services (i.e. passenger-km and ton-km) are projected to increase by 15% and 24% in 2040 as well as 20% and 33% in 2050 compared to 2018 [60]. We assume increases of 25% and 40% for 2060. The freight share increases to 44% and is assumed to have 40% EVs and 60% FCEVs by 2060. This results in 34% and 68% EVs in 2040 and 2060, respectively, and 5% and 32% FCEVs in 2040 and

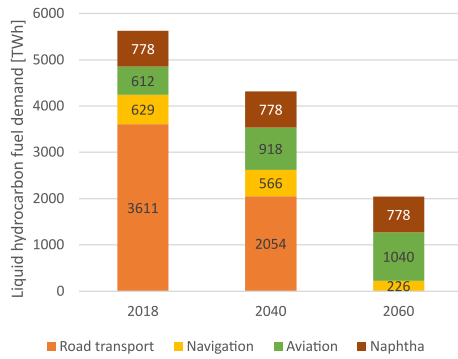


Fig. 2. Assumed liquid hydrocarbon fuel demand in the years 2018 [60], 2040 and 2060.

2060, respectively. These assumptions are in line with a ban on new ICEVs by 2035 [3,4].

Total initial transport fuel demand (2018) amounts to 4851 TWh and includes road transport (incl. non-electric trains), domestic and international aviation and navigation (Fig. 2). The liquid fuel demand for industry feedstock (naphtha) is added on top of this and amounts to 778 TWh (held constant across years). The resulting total liquid fuel demand for transport amounts to 3444 TWh in 2040 (4223 TWh incl. naphtha, corresponding to ~30% of total primary energy demand) and 1233 TWh in 2060 (2011 TWh incl. naphtha, or ~15% of total primary energy demand). The inclusion of naphtha is justified as it is a part of the product mix from the Fischer–Tropsch process.

Steel production is assumed to be increasingly performed with hydrogen as a reduction agent (Direct Reduced Iron, DRI) and Electric Arc Furnaces (EAF), with 40% in 2040 and 100% in 2060. The share of scrap steel increases from 40% today to 60% 2040 and 70% 2060.

The space heating demand is assumed to decrease by 16% by 2040 and 29% by 2060, through efficiency improvements in buildings. The district heating share is assumed at current levels for each country [56].

Industrial heat is divided into three segments: low, medium and high temperature. In the low and medium temperature segments, biomass is an option, whereas methane is an option in all three. Direct electrification is an option in the low temperature (process steam) segment, while heat pumps are excluded in the base case. Thus, solid biomass competes for producing industrial process steam with electric boilers and methane boilers, and for producing medium temperature process heat with methane.

2.4. Scenarios

The scenarios are varied in four dimensions: target year, biomass availability and carbon sequestration capacity, which have been identified as having a large influence on outcomes [43], as well as liquid biofuel quota.

Two target years are analysed, namely 2040 and 2060. These target years are connected to different CO₂ emission targets, with an 80% reduction in 2040 compared to 1990 and a 105% reduction in 2060 (i.e. a net-negative target to represent the long-term need to remove carbon dioxide from the atmosphere; Sweden already has a net-negative target for after 2045 [61].) Other than that, technology costs and efficiencies differ between the years, as presented in the supplementary information. For both years, it is assumed that conventional and renewable capacities existing in 2020 still exist in 2040 and 2060, unless they have reached the end of their life time. The two years are not interlinked, i.e. capacities built in scenarios for 2040 are not considered in scenarios for 2060.

The biomass availability is varied as presented in Section 2.2. The carbon sequestration capacity is assumed at either 0 or 1500

Table 2

Biomass and carbon sequestration (CS) potentials assumed in the scenarios, for 2040 and 2060, resulting in eight base scenarios. In 2040, no carbon sequestration is assumed in the low CS scenarios, while in 2060 400 MtCO₂ is assumed because it is close to the minimum necessary in order to be able to achieve a net-negative target. For each of the base scenarios, different biofuel mandates of equal to 0%, above 20%, 50% and 100%, as well as no mandate (i.e. free optimisation) are assessed.

	Biomass TWh	CS MtCO ₂ /a
High bio, low CS	3608	0 400
High bio, high CS	3608	1500
Low bio, low CS	874	0 400
Low bio, high CS	874	1500

MtCO₂/year for 2040, and 400 or 1500 MtCO₂/year for 2060, as summarised in Table 2. The lower end represents (close to) the least amount necessary to reach the set target, while the upper end is high enough to never be reached in the scenarios, i.e. it does not set an active constraint.

Production of liquid biofuels π_{fu} is forced as a function of the share $\alpha \in [0, 1]$ of the total set demand $\delta_{fu,s}$ for each sector s : (i) liquid fuels in the transport trp (including land-based transport, marine and aviation) and (ii) industry ind .

$$\pi_{fu} \geq \alpha \sum \delta_{fu,s} \quad \forall s \in \{ind, trp\} \quad (1)$$

The total energy system cost as well as the estimated liquid fuel cost Appendix B serve as metrics for the analysis.

2.5. Sensitivity analysis

The sensitivity analysis is performed through runs of all the combinations of optimistic and pessimistic parameter value combinations outlined in Table 3. All parameter values for a group are set to either pessimistic or optimistic, i.e. for example all Fischer–Tropsch-related parameters including for Biomass to Liquid and Electrofuels. This results in $2^6 = 64$ combinations. These are run for each of the four main scenarios for 2060, with the model temporal resolution reduced to 237 representative time-steps per year (instead of 8760 with an hourly resolution) due to computational restrictions. A lower temporal resolution tends to slightly overestimate the biofuel share among liquid fuels.

3. Results

In this section, we present the resulting fuel supply and solid biomass usage in the main scenarios without fuel mandates, and then we assess the effect of enforcing biofuel mandates on the system and show why such mandates risk increasing energy system costs substantially.

3.1. Fuel and electricity supply in the base scenarios without biofuel mandates

In all 2040 base scenarios (i.e. without a biofuel mandate), liquid fuel demand is dominated by fossil fuels (Fig. 4). The reason is that there are more cost-effective abatement options to achieve an overall ~80% CO₂ emission reduction in the energy system. For example, the resulting electricity supply is almost fully supplied by non-fossil energy sources (mainly renewables, for which the resulting capacities are shown in Table 4). Also, electrification of transport, heat and industry contributes to decreasing emissions, and carbon capture is to some extent used in industry. With no carbon sequestration available, 20% of the liquid fuel demand is covered by renewable fuels (4% biofuels and 16% electrofuels) in the optimal case if there is ample domestic biomass available, and 21% electrofuels emerge if domestic biomass is scarce (see Fig. 3).

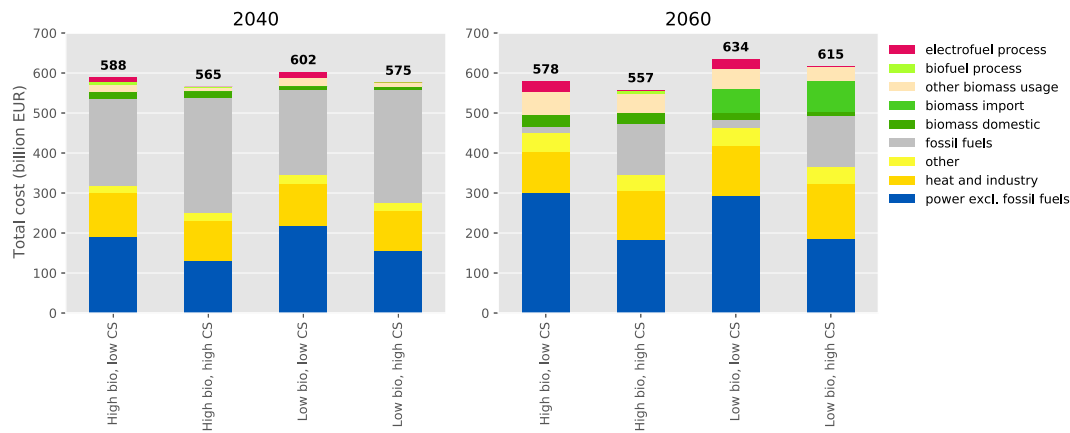


Fig. 3. Total system cost [billion €] in the 2040 and 2060 scenarios at different biomass and carbon sequestration availability, without biofuel mandates.

Table 3

Assumed sensitivity ranges of key parameters directly relevant to liquid fuel supply in 2060. Ranges from DEA for 2050 [62], except for BtL, carbon sequestration, oil, gas and biomass imports, which are varied $\pm 25\%$, except for the BtL efficiency (range based on literature) and carbon sequestration cost (assumed to have a higher cost variability). BtL includes the gasification unit as well as the FT-process.

				Optimistic	Base	Pessimistic
Fischer–Tropsch	Biomass to Liquid	Investment cost	€/kW	1500	2000	2500
		Efficiency		0.5	0.45	0.35
	Electrofuels	Investment cost	€/kW	675	900	1125
		Efficiency		0.9	0.75	0.6
Electrolyser		Investment cost	€/kW	150	250	400
		Efficiency		0.8	0.75	0.7
Carbon capture	CHP	Cost	€/ktCO ₂ /h	1600	2000	2800
		Cost	€/ktCO ₂ /h	1400	1800	2400
	Industry	Cost	€/ktCO ₂ /h	3000	4000	7000
Carbon sequestration		Cost	€/tCO ₂	10	20	50
Fossils	Oil	Price	€/MWh	37.5	50	62.5
	Gas	Price	€/MWh	15	20	25
Biomass		Import price (base)	€/MWh	36	54	72

Table 4

Resulting VRE capacities in the base scenarios for 2040 and 2060, compared to values for Europe in 2020 [59]. The upper end of the resulting capacities is in scenarios with low carbon sequestration and low biomass.

[GW _p]	2020	2040	2060
Solar PV	161	866–1380	1513–2900
Onshore wind	183	719–1170	875–1314
Offshore wind	25	152–433	270–773

In the 2060 base scenarios, the liquid fuel supply differs substantially between being dominated by electrofuels if carbon sequestration is scarce and by fossil fuels if there is ample carbon sequestration capacity available (Fig. 5). With little carbon sequestration, the total electricity supply doubles compared to in the 2040 scenarios, while with ample carbon sequestration it increases by 30%. In both cases, the additional electricity is covered mainly by solar PV and offshore wind power and is mainly used for applications which today rely on non-electric primary sources, i.e. supplying industry, heat and transport either directly with electricity or via producing hydrogen or methane which are used in those sectors.

Solid biomass is most cost-effectively used for CHP and industrial heat to varying degrees depending on the scenario, and with ample domestic biomass in 2060 also for producing some BioSNG. Biofuels make up a minor part of the biomass usage in all of the optimal cases (Figs. 4 and 5).

Now, optimal results may be rather sensitive to small perturbations in the system [53,63] and therefore such results need to be handled

with care. The question is: to which extent does a diversion from the optimal biomass usage and fuel supply affect system costs?

3.2. How is the system affected when biofuel mandates are introduced?

The cost increase due to biofuel mandates in the different scenarios is shown in Fig. 6, both for the medium term (2040) and long term (2060). The figure also shows violin plots of the span and distribution of results from the parameter sensitivity analysis (Section 3.4).

A clear and general trend of increasing costs with increasing mandates can be observed, which is also robust to parameter variations. The cost increase due to biofuel mandates is higher in 2040 than in 2060, due to a higher liquid fuel demand and a lower emissions target in 2040.

The remaining demand for liquid hydrocarbon fuels is among the most costly parts of the system to directly replace with renewables. Thus, at a -80% -target in 2040, biofuel mandates substitute oil for much more costly biofuels. The more ambitious emissions target of -105% in 2060 requires measures to be taken also for the liquid fuel supply, and thus the least-cost abatement option is more expensive (either electrofuels or fossil fuels combined with CCS), while the value of the competing usage of biomass for CHP and industry heat combined with carbon capture also increases.

Fig. 6 also reveals that both the domestic biomass supply as well as the carbon sequestration capacity have a clear impact on the cost of biofuel mandates. The domestic biomass residues display low costs, and thus a lower supply of these leads to more costly imported biomass being needed when pursuing higher biofuel mandates or more ambitious

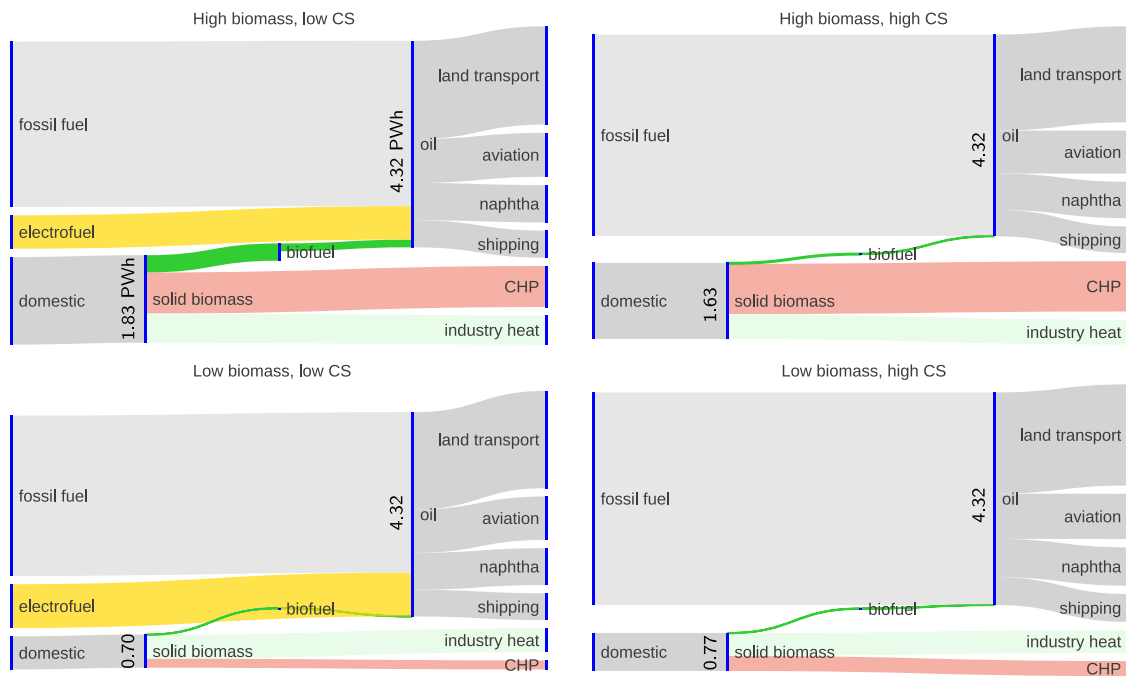


Fig. 4. Sankey diagram of fuel supply and solid biomass usage in the base scenarios for 2040. Naphtha is used as a feedstock in industry.

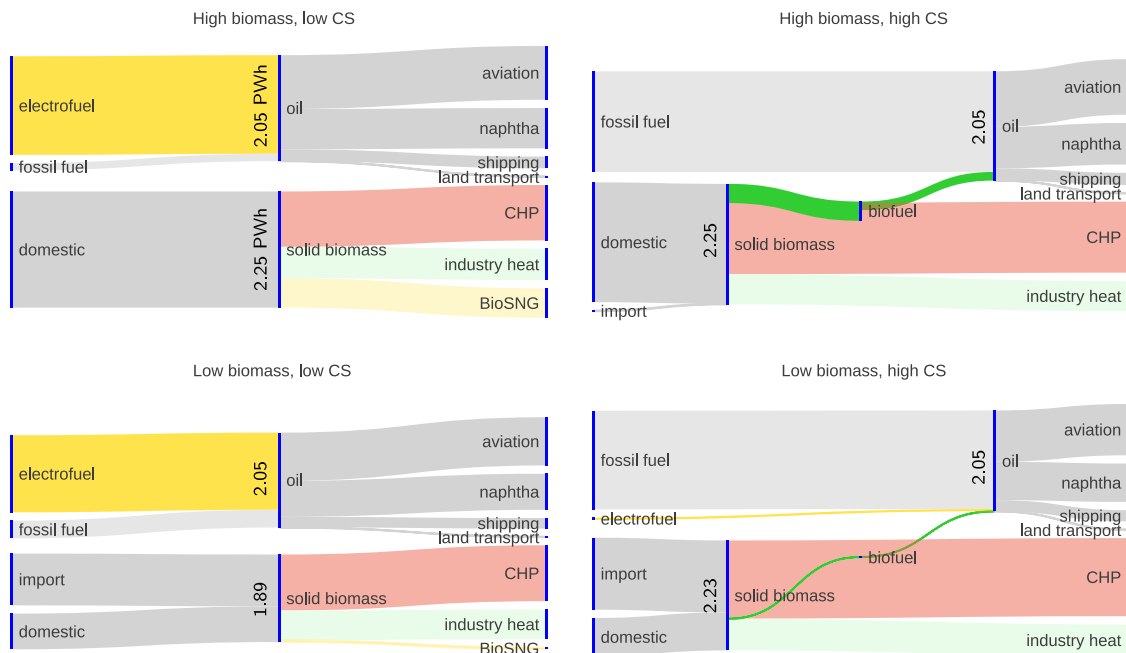


Fig. 5. Sankey diagram of fuel supply and solid biomass usage in the base scenarios for 2060. Naphtha is used as a feedstock in industry.

emission targets. The availability of carbon sequestration enables more fossil fuels to be used, which are substantially lower cost than biofuels. Therefore, biofuel mandates increase costs more in scenarios with a low biomass supply and with high carbon sequestration capacities.

Figs. 7 and 8 show the estimated costs broken down by fuel type, costs from fossil liquid fuel emissions caused elsewhere in the system, and cost increases in other parts of the system due to redirecting biomass usage to biofuel production. See Appendix B for the method used to calculate these values. For the analysis in Sections 3.2.1 and 3.2.2, the fossil fuel emission cost is added to the fossil liquid fuel cost.

3.2.1. Are biofuels a cost-effective transitional solution?

Biofuels are sometimes put forward as a transitional solution to reduce the emissions of the transport sector until electrification achieves high shares [5,64]. Despite the fact that a substantial electrification of transport was assumed, the fuel demand in 2040 is estimated at 71% of that in 2020 and corresponds to ~30% of the resulting primary energy demand.

The estimated cost of fuel supply (Fig. 7) in the optimal cases amounts to 268–366 billion € if fossil fuel emission costs are included. A biofuel mandate of 20% in 2040 results in a total cost increase

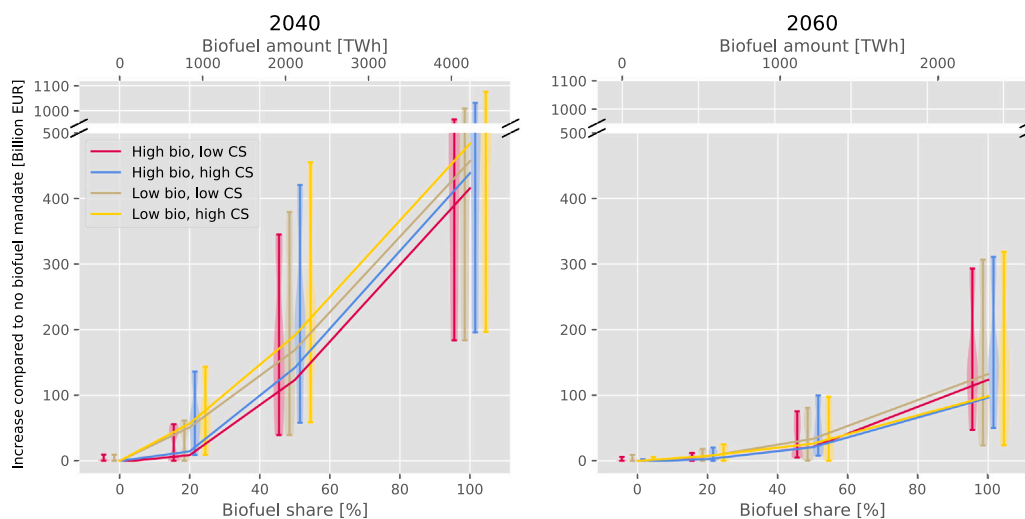


Fig. 6. Total energy system cost increase compared to without a biofuel mandate. The vertical lines show the distribution from the sensitivity analysis for each biofuel share.

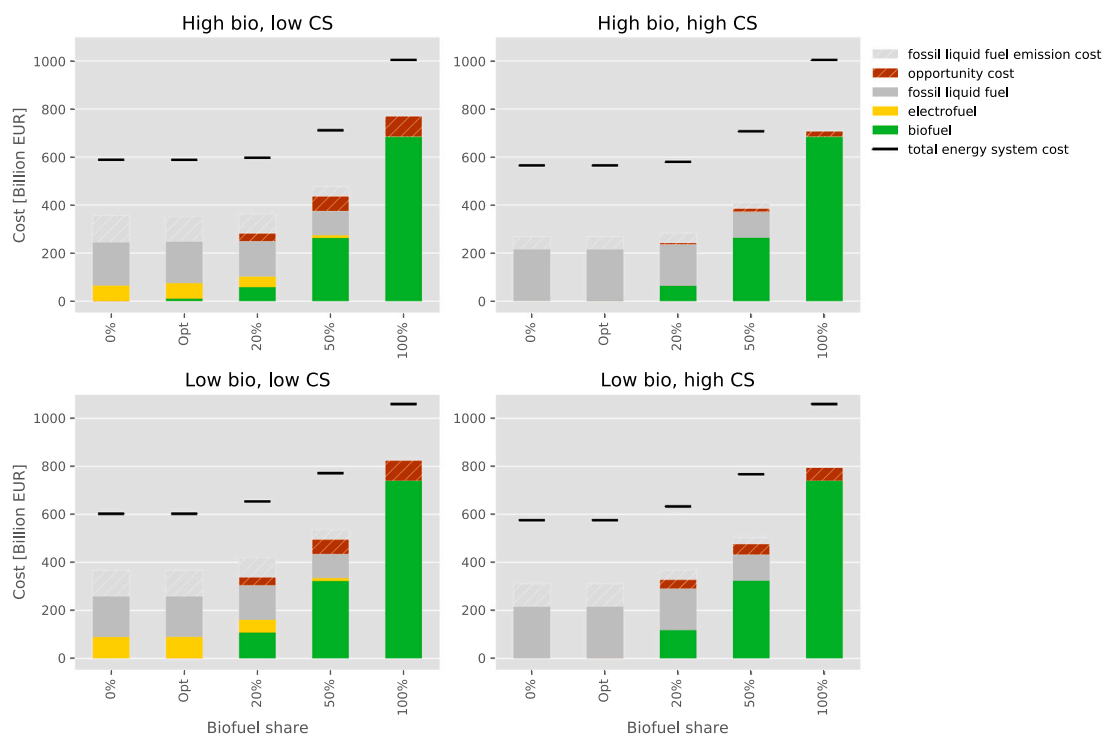


Fig. 7. Liquid hydrocarbon fuel cost [billion €/year] in the 2040 scenarios when pushing biofuels into the liquid fuel mix, at different biomass and carbon sequestration availability. The opportunity cost denotes the additional cost induced elsewhere in the energy system when redirecting biomass to biofuel production, and the estimated fossil liquid fuel emission cost likewise occurs in other parts of the energy system (both of which are striped).

of 9–57 billion € (Fig. 6), where the lower value represents the case with high domestic supply of biomass. This corresponds to 2%–18% of the fuel cost without a mandate. Mandates of 50% lead to cost increases of 123–191 billion €, which corresponds to 34%–61% of the fuel cost without a mandate. A mandate of 100% results in a very large cost increase of 416–483 billion €. For comparison, the total cost of transport fuels in the EU in 2018 is estimated to 282 billion € Appendix C, so the cost increases are substantial.

3.2.2. Are biofuels a cost-effective long-term solution?

In the 2060 scenarios, the assumptions on electrification and switch to hydrogen in this work entail that the liquid fuel demand decreases to 36% of that in 2018 and amounts to ~15% of the resulting primary

energy demand. Thus, enforcing a biofuel mandate as a share of the demand has a smaller effect on the total system cost than in 2040.

The cost of fuel supply in the optimal cases amounts to 166–218 billion € if fossil fuel emission costs are included (Fig. 8). A 20% biofuel mandate in 2060 results in a small cost increase of 2–8 billion € (Fig. 6), which corresponds to 1%–4% of the fuel cost without a mandate. A 50% mandate induces a cost increase of 21–33 billion €, where the lower range is at an ample supply of domestic biomass. This corresponds to 11%–15% of the fuel cost without a mandate.

3.2.3. What drives the cost increase when biofuel mandates are introduced?

Redirecting biomass usage to biofuel production incurs several system effects. Generally, fuel costs increase due to biofuels being more expensive compared to both electrofuels and fossil fuels compensated

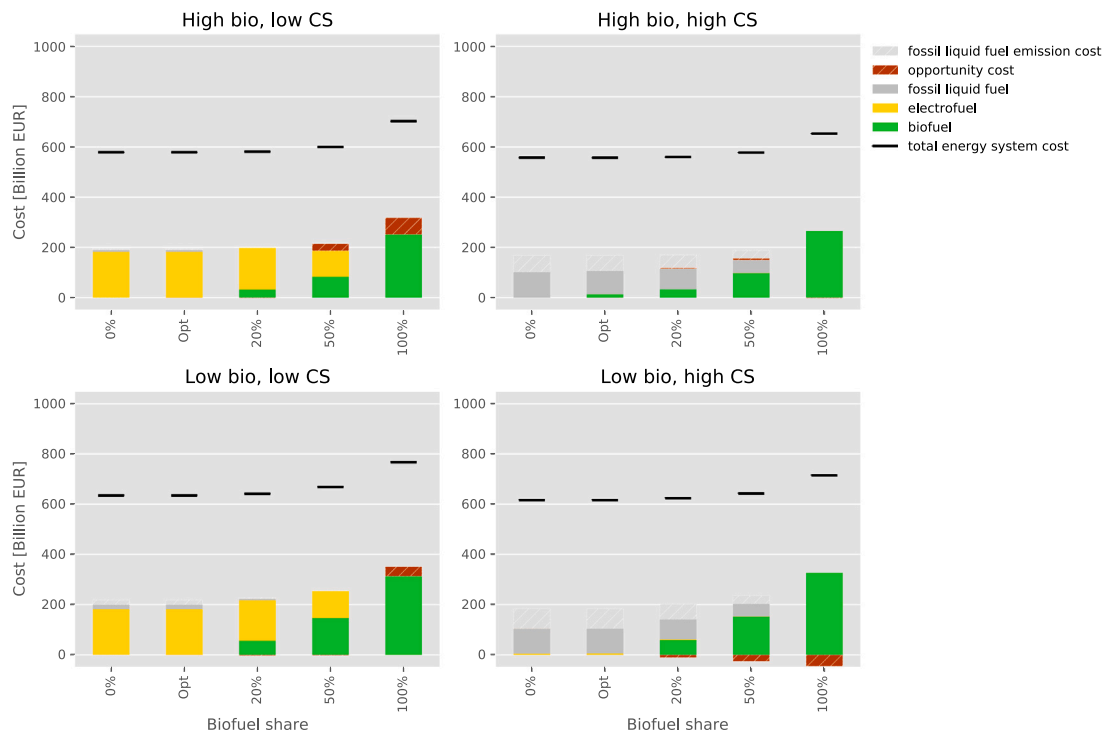


Fig. 8. Liquid hydrocarbon fuel cost [billion €/year] in the 2060 scenarios when pushing biofuels into the liquid fuel mix, at different biomass and carbon sequestration availability. The opportunity cost denotes the additional cost induced elsewhere in the energy system when redirecting biomass to biofuel production, and the estimated fossil liquid fuel emission cost likewise occurs in other part of the energy system (both of which are striped).

with CCS (Figs. 7 and 8). The BtL process has a rather low conversion efficiency and a high investment cost, even though rather optimistic base values were chosen. Also, as there is a cost–supply curve for biomass, the more biomass is demanded, the higher the cost is, especially when expensive imports are needed.

Also, as the available biomass is used for fuel production it cannot be used for industrial heat and CHP, which instead are covered by other, more expensive options (direct electrification and methane). Thus, there is an opportunity cost of using solid biomass for liquid fuel production rather than for industrial heat and CHP (and at ample domestic biomass also for BioSNG), as other options there are more costly.

Furthermore, the potential for BECCUS is reduced, as a higher share of the biomass carbon can be captured in stationary combustion processes (assumed at 95%) compared to when producing fuels, where only the carbon not ending up in the fuel can be captured (~66% at a conversion efficiency $\eta = 45\%$). This has two effects: there is less biogenic carbon available for producing other hydrocarbons, and other, comparatively more expensive measures are needed to reduce emissions. Thus, more of e.g. biogas and power-to-methane are needed to decrease emissions in the system, at a higher cost.

The actual fuel cost in fact even decreases somewhat in some cases when biofuels from domestic biomass replace a share of the most expensive electrofuels, but there is always a total cost increase due to opportunity costs elsewhere in the system (Fig. 8). This reflects the cost of alternatives for supplying industry heat and CHP as well as carbon capture, and highlights the importance of covering the whole energy system when assessing biomass usage. Conversely, high biofuel mandates can also lead to slightly decreased costs for the rest of the system due to less CCS being needed to compensate for fossil fuels, but the overall system cost increases due to a substantially higher cost of fuel supply.

3.3. Why are electrofuels preferred to biofuels when carbon sequestration capacity is scarce?

The carbon used for producing the electrofuels stems from bioenergy with carbon capture, i.e. the carbon atoms are used twice in the system before being emitted to the atmosphere. This becomes important in the cases with little available carbon sequestration: fossil fuels cannot be compensated by CCS and DAC is more expensive, so renewable carbon atoms need to be utilised efficiently.

Also, solar and wind power are substantially more scalable resources than is biomass, and these serve as the main resources for producing hydrogen for electrofuels. Electrolysers can be utilised flexibly and thus run when electricity is cheaper. Thereby, they can also help solve integration issues at high variable renewable shares [65–67], and thus more variable renewables can be utilised cost-effectively.

3.4. Sensitivity analysis

The sensitivity of results to the 64 different parameter combinations of pessimistic and optimistic technology assumptions as outlined in Section 2.5 is assessed.

The sensitivity on the total cost increase due to a biofuel mandate resulting from the varied parameters is substantial in all scenarios, but they consistently show an increasing trend with higher biofuel mandates leading to higher costs (Fig. 6). In 2040 the uncertainty is especially substantial, with up to almost a doubling of the total energy system cost at a 50% biofuel mandate, and up to almost a trebling at a 100% mandate.

The effect of the uncertainty of different parameters on the total energy system cost is shown in Fig. 9. The ranges show the uncertainty between pessimistic and optimistic parameter variations for each combination of the other parameters. For example, assuming high prices for fossil fuels in the optimal scenarios for 2040 compared to assuming low prices yield a minimum of 17% total system cost difference, but it

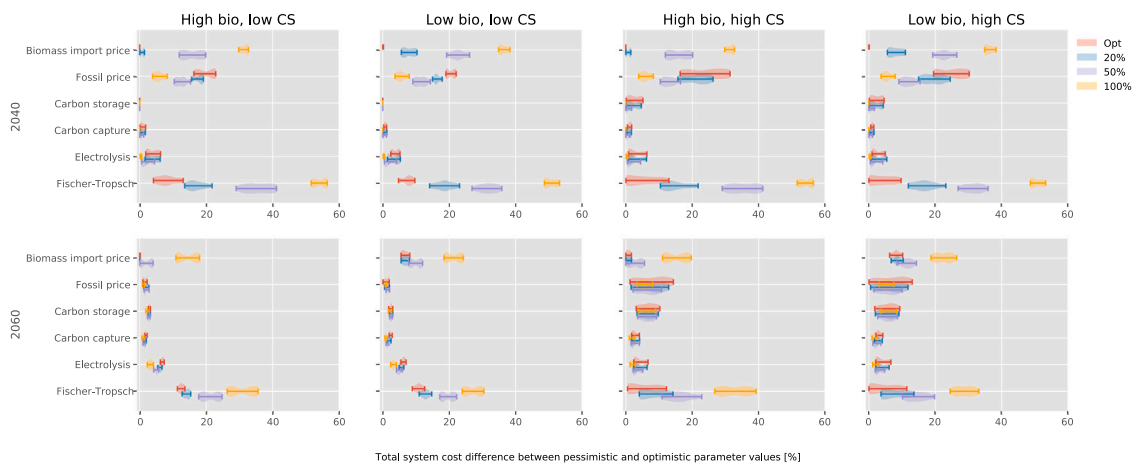


Fig. 9. Violin plot of the parameter sensitivity of the system cost difference between pessimistic and optimistic parameter values for each extreme parameter value combination, at different biofuel shares in 2040 and 2060. This is shown in cases of low and high domestic biomass and low and high carbon storage potentials. The shaded areas show the distribution density of the outcome for a specific parameter when all other parameters are varied.

can yield a 33% total system cost difference, depending on the values of the other parameters. Thus, a violin that is placed further to the right of the diagram means that the parameter in question is more important for the cost.

The parameter with the largest effect on the system cost is the investment cost and efficiency of Fischer–Tropsch, which affects both BtL and electrofuels. The effect increases with increasing mandates. The difference between pessimistic and optimistic values amounts to up to around 60% of the total energy system cost at a 100% biofuel mandate in 2040, or up to around 40% in 2060.

The biomass import price has an effect especially at higher biofuel mandates, and more so in 2040 than in 2060, due to a higher fuel demand. In the optimal cases, the import price has barely any effect. This highlights that biomass imports do not play a role in any of those cases, despite the lower biomass import price being set to near current solid biomass prices. At increasing biofuel mandates however, biomass imports are needed.

The effect of the fossil fuel price uncertainty on the total energy system cost amounts to up to around 30% in the optimal cases in 2040, and decreases with higher biofuel mandates. Fossil fuel prices and carbon storage costs have an effect in 2060 only if there is ample carbon sequestration capacity, since very limited fossil usage and carbon sequestration is allowed when carbon sequestration capacity is scarce.

In 2040, both carbon capture and carbon storage play a minor role and thus show little effect on total costs. The cost of carbon capture shows a minor effect also in 2060, while carbon storage cost uncertainty amounts to up to 13% of the total cost if carbon sequestration capacity is large. The cost and efficiency of electrolysis shows an effect of up to 10% on the total cost in both 2040 and 2060. The uncertainties of carbon storage, capture and electrolysis exhibit similar patterns across all cases and are thus independent of biofuel mandates as well as of the target year.

4. Discussion

In this section, we first compare the results to other studies, then discuss different factors affecting biofuel mandates.

4.1. Comparison to other studies

Most previous studies on the subject of optimal use of biomass in the energy system have been performed using models lacking the spatio-temporal resolution needed to represent VRE and electrolysis [44,45], and therefore their interplay cannot be well represented in such studies.

Using the TIMES model with a low temporal resolution, Blanco et al. [43] assessed hydrogen usage options including electrofuels to find that carbon sequestration capacity (and thus the possibility to continue using fossil fuels), biomass availability (which limits the green CO₂ available for electrofuel production) as well as technology costs determine the competitiveness and potential of electrofuels. These findings align with the results presented here. Solid biomass is primarily used for hydrogen production (which was allowed but did not show up in our results) and electricity generation unless carbon sequestration is not allowed, in which case biofuel production ends up as the main solid biomass usage option, in contrast to our results.

Similarly to our results, Lehtveer et al. [12] find that a scarcity of carbon sequestration capacity is decisive for the competitiveness of electrofuels. They, however, find electrofuels to be less cost-competitive than biofuels in most cases. The contrast to the results in this work can at least partly be explained by substantially higher assumed costs for VRE and electrolyzers (with many cost assumptions for VRE for 2050 being above current actual costs), while biomass and biofuel conversion costs are very similar.

Millinger et al. [19] assessed renewable fuel competition in Germany and found that electrofuels were cost-competitive to biofuels in the long term (2050), and necessary for achieving high renewable shares in transport, in line with the results presented here. The availability of excess renewable electricity and dwindling carbon sources were found to limit the electrofuel production potential, similar to in this study.

Other energy system studies which include electrofuels were not found [40–42,68], which makes comparisons to this study difficult. Many IAM studies arrive at the result that high carbon sequestration capacities enable a continued high use of fossil fuels in transport, in which case biofuel usage is low [12,41,42]. The usage of biomass for fuel production rather than for bioelectricity is sometimes determined by whether it can be combined with CCS or not [40,41]. IAM studies sometimes arrive at a high penetration of biofuels and sometimes low [41,42,68], depending on e.g. if CCS is possible to combine with bioliquid production, but also other model-specific assumptions [41]. However, as electrofuels were not included, the results cannot be directly compared with this study. In contrast, Bogdanov et al. [50] performed an energy system study with a high spatio-temporal resolution which included electrofuels, but biofuels as well as BECCS were excluded and thus results cannot be compared to this study.

4.2. Other factors affecting biofuel mandates

Biomass residues are a limited resource, and the domestic biomass residues assumed to be available in this study could only cover a part

of the liquid fuel demand, even if it were all used for biofuels and despite assuming an ambitious electrification of transport. Within these bounds however, some factors are discussed below, which may affect the competitiveness of using the limited biomass for producing biofuels, or are relevant to biofuel mandates.

4.2.1. Biofuel production and biomass resource base

In the sensitivity analysis, the most sensitive parameter was found to be the cost and efficiency of Fischer–Tropsch processes. In the base case, these parameters were set to figures in the optimistic part of the range established based on literature [69–71]. Even if a further 25% cost reduction is assumed, a 50% biofuel mandate still always resulted in a higher system cost than in the case without a mandate.

In this study, biomass supply costs are used for the domestic biomass. However, especially for goods such as solid biomass that are tradable on the global market, there is an opportunity cost of not selling the biomass to the market price, which is affected by, e.g., biomass scarcity and the versatile biomass usage potential to achieve emissions targets [72]. This means that the biomass supply cost here is underestimated, and using market prices for biomass would thus increase the cost of biofuels.

Excessive residue extraction may influence soil carbon stocks negatively, but some uses of residues and waste for energy can facilitate recirculation of carbon to soils and can also reduce methane emissions [73]. In the modelling, the use of biomass residues is assumed to be carbon neutral.

Additional biomass resources could increase the potential for cost-competitive biofuels. The main biomass sources excluded in this study are oil-rich food wastes and crops for which the potential is relatively low compared to the demand for liquid fuels [17,33]. The reliance on food crops for bioenergy is being decreased in the EU due to sustainability concerns [14–16], but biomass from forests and from dedicated cultivation of lignocellulosic crops in agriculture represent potentially significant domestic resources that can complement residues and waste [74–77]. Appropriate integration of new biomass production systems into forestry and agriculture landscapes can help reduce environmental impacts of current land use while providing biomass for energy and enhancing carbon storage in vegetation and soils [77–80]. However, we included only residues and waste since EU policies emphasise such resources.

4.2.2. Limitations for electrofuel production and CCS

Electrofuels rely on a low-carbon source of electricity for hydrogen electrolysis, and a renewable source of carbon, which are both limited today and may be so also in the foreseeable future [19,20].

Achieving the high electricity generation and carbon capture and storage capacities in Europe required for negative emission scenarios is an unprecedented challenge [35]. If domestic electricity generation capacities are limited, electrofuels may instead be imported from regions with high solar and/or wind potentials and less land constraints, possibly produced at a lower cost than domestically [81,82].

The difference in total cost between the scenarios with low and high carbon sequestration capacity in this study is small, despite the large difference in fuel mix (Fig. 8) as well as in the resulting VRE capacities (Table 4), and deserves further attention in future work. A continued reliance on fossil fuels which are compensated by CCS or other CDR measures involves risks and is subject to controversy [83–86].

In this study, only carbon capture of process emissions was included. Several other CDR options exist but were out of the scope of this study, notably land-based options such as afforestation and reforestation (A/R), biochar, soil carbon sequestration, and BECCS relying on other biomass sources than the ones included in this study [87–89]. A/R can provide CDR via carbon sequestration in vegetation and soils while at the same time providing biomass for various purposes including bioenergy and BECCS [88,89]. But A/R may also take forms that compete for land with bioenergy options, e.g. revegetation to establish

natural ecosystems not intended for biomass harvest [88,89]. A/R may also result in a higher GHG abatement than energy crops used to replace fossil fuels [90], but short-rotation forests may become cost-effective at higher carbon prices [91]. An analysis of such competitions is out of the scope of this study.

4.2.3. Electrification of transport and hydrocarbon demand

The high costs and conversion losses involved when producing hydrocarbon fuels, regardless of pathway, render hydrocarbon fuels one of the most costly parts of the energy system. In the scenarios, substantial additional VRE capacities and biomass are needed to cover for this, despite high electrification shares of road transport. Hydrocarbon demand reduction could therefore decrease energy system costs substantially.

An endogenous optimisation of the vehicle park in the transport sector was not included in this study, for several reasons: in the land transport sector, the choice of vehicle is not subject to a simple cost-minimisation, but is a function of e.g. agents' desire for flexibility for occasional longer journeys, status and availability of charging infrastructure, as well as being subject to combustion engine bans [3], and vehicle fleet inertia [4]. The high cost and resource need of renewable liquid fuels found in this study, as well as decreasing costs and supreme efficiency of EVs compared to ICEVs (ICEVs run on electrofuels require ~5–7 times the amount of electricity per kilometre [92]) render EVs a highly competitive option. Future studies with PyPSA-Eur-Sec are underway to assess this topic.

In navigation, substantial energy efficiency improvements were assumed. H₂ was assumed to cover 70% of the energy demand by 2060 [59]. This is of course highly uncertain, as are aviation demand projections [93]. In aviation, no H₂ or electrification was assumed. Higher shares of EVs or H₂ or an overall lower demand in these sectors would decrease the liquid hydrocarbon fuel demand, and thus decrease the cost of biofuel mandates. However, demand for aviation and navigation may also increase more than assumed here, thereby increasing the cost of biofuel mandates.

4.2.4. Cost-competitiveness of biomass usage in industry and CHP

The cost-competitiveness of biomass usage for process heat in industry would be affected by a cheaper than expected electrification of industrial process heat. Industrial heat pumps for steam generation could be a competitive option [94,95], but it is uncertain to which extent they are a viable option for process steam [96]. In medium and high temperature applications, electrification is possible, but the uncertainty increases with the required temperature and options are currently in experimental or pilot stages of technological readiness [96]. Many processes such as steel production were assumed to be electrified to a high extent in this study, but we were conservative with electric options for process heat due to the above uncertainties. A sensitivity run where heat pumps for process steam were included resulted in biomass still being preferred for process steam. This, however, depends on the assumed COP, which depends on temperature differences to the heat sink; this is process specific and outside of the scope to assess in more detail here.

Biomass or other flexibility options are needed for CHP especially during cold dark doldrums, when both heating and electricity are needed but solar PV and wind generate little, and heat-pumps are less efficient [c.f. 56]. Biomass for CHP appears without carbon capture in the 2040 scenarios. In a sensitivity analysis where BECCS was turned off for all technologies, CHP still appeared in 2060, to a similar extent as with BECCS turned on. Thus, this flexibility option provides an important system service and is not only due to the higher potential for BECCS compared to when producing biofuels. Other flexibility options for generation, such as batteries as well as heat and hydrogen storage are included in this study. A back-up system relying on renewables and not fossils is necessary at more ambitious emission targets, and biomass turns out to be a potentially cost-effective candidate for this. Note that CHP requires a district heating grid, which was restricted to current shares on a country level.

4.2.5. Policy and co-benefits?

Even though renewable fuel shares turned out low at an 80% emission reduction, as other measures to achieve the targets were less costly, there are still arguments for supporting such options earlier. Since the development of renewable fuels requires several parts in the supply chain to function, it may take time to set up the necessary infrastructure and logistics.

This goes for the here assessed biofuels based on gasification of solid biomass residues, which require the mobilisation of currently unused biomass residues [18] as well as the investment in costly biofuel production facilities [69]. It goes just as well for electrofuels, which require large amounts of clean electricity and a carbon source, as well as costly production facilities [19].

Pursuing a renewable fuel mandate which exceeds the future fuel demand in a shrinking market and with a changing fuel mix may present a risk of stranded assets for investors unless other markets arise. Uncertainties along the value chain and regarding sustainability issues and future prices add further risk to investments. This hinders the development of renewable fuels, and thus directed policy (such as fuel blending mandates) may be warranted as a complement, even if a first-best cap-and-trade or tax policy is implemented for the whole energy system [21,23,97].

A general view is that technologies should be supported to address two market failures: the external costs of GHG emissions as well as of learning effects, which lead to an underestimation of future benefits or that they are not appropriated by the investor [21,23]. Does this apply to biofuels?

Although the conversion technology may need time to develop, the biofuel price depends on both the investment and the resource, in contrast to e.g. for VRE. Biomass scarcity and the competitiveness of other biomass usage options may lead to biomass price increases which surpass investment cost reductions achieved through learning effects [98]. Thus, even though production costs might be reduced [99], it is uncertain whether supporting advanced biofuels paves the way for a promising technology in terms of cost reduction potentials (see [68] for a similar argument).

However, there may be co-benefits and spillover effects between BtL and electrofuels, since they are both based on the FT-process. Thus, also the electrofuel process may improve in terms of cost and efficiency if BtL improves. It is also possible to combine biofuel and electrofuel production (for instance as electrobiofuels where biofuels are produced with a hydrogen addition, thereby using the biomass carbon more efficiently [19,100]), or to reuse biofuel facilities for electrofuel production. It may also stimulate a transition to producing renewable chemicals in biorefineries. Therefore, supporting biofuels to some extent may still be a sensible investment in terms of research and development, as well as for setting up value chains and stimulating the mobilisation of currently unused biomass residues.

Nevertheless, care needs to be taken to ensure that production is indeed able to switch over time as outlined above as well as to accommodate for a changing fuel mix, in order to avoid infrastructural lock-in effects. Institutional lock-ins related to actors with vested interests [101] may also present a challenge in this regard, if biomass streams are first stimulated and then directed away from renewable fuel production [102].

4.3. Critical appraisal

This study assesses the role of biofuels in the full energy system with an explicit representation of VRE and electrofuels, which enables a systems analysis of the trade-offs of focusing biomass usage for producing biofuels. Some model related aspects and limitations deserve mentioning.

A country-level spatial resolution was chosen for computational reasons and deemed appropriate for the assessed research question.

A transport model for electricity transmission was used which is suitable at this resolution [103]. Initial assessments show that the main results are insensitive to moderate variations in the choice of temporal resolution.

A limitation compared to IAM studies is the lack of an explicit representation of agriculture and forestry, and the lack of a global trade model. An expansion of the system boundaries to encompass the land use system would more accurately capture emission flows related to biomass, as well as capture the competition between BECCUS and land-based CDR measures such as A/R.

A spatially explicit representation of carbon storage locations and of infrastructure for CO₂ transport was not considered and should be pursued in further work.

The modelling was performed for Europe but can easily be scaled to e.g. the country level. The model can also be transferred to other regions given the availability of data.

5. Conclusions

This work focuses on the competition for liquid fuel supply under CO₂ emission reduction targets, and the effects of biofuel mandates on the cost of the future European energy system.

Results indicate that in the medium term (~2040) VRE and a partial electrification of transport, heat and industry would suffice to achieve a ~80% emission reduction target cost-effectively. This would allow for a continued use of fossil fuels for the remaining liquid fuel demand, which is among the most costly parts of the system to directly cover with renewables. Introducing a biofuel mandate of 20% resulted in a cost increase corresponding to 2%–18% of the fuel cost without a mandate. A 50% mandate resulted in a cost increase of 123–191 billion € depending on the scenario, or 35%–62% of the fuel cost without a mandate, with an uncertainty range due to parameter variations of 39–455 billion €.

In the long term (~2060), liquid fuel demand is expected to be substantially lower due to electrification, and at a negative emissions target (–105%) liquid fuels must be either renewable or compensated by CDR. However, biomass use for industry and CHP allows for more carbon capture than when producing biofuels, and this enables carbon atoms to be used several times in the system. Also, CHP emerged as an important flexibility option for heat and electricity supply. Electrofuels based on captured biogenic carbon emerged as the main fuel if carbon sequestration availability was low, while fossil fuels compensated by BECCS emerged if carbon sequestration availability was high. Notably, the difference in total cost was merely 3%–4% between these two systems, but VRE capacities differed substantially, with e.g. solar PV capacities ranging between 1.5 and 2.9 TW_p and offshore wind between 0.3 and 0.8 TW_p. In this case, a 50% biofuel mandate increased the total energy system cost by 21–34 billion € depending on the scenario, corresponding to 11%–15% of the fuel cost without a mandate, with an uncertainty range due to parameter variations of 0–100 billion €.

We conclude that even low biofuel mandates risk increasing total energy system costs substantially, and that this cost increase is higher if biofuel mandates are employed in the short- to medium term. Biofuel mandates were found to increase system costs across a range of parameter variations and scenarios. The cost drivers are: (i) high biomass costs due to scarcity, (ii) opportunity costs for competing usages of biomass for industry heat and combined heat and power with carbon capture, and (iii) lower scalability and generally higher cost for biofuels compared to other abatement options (electrofuels and fossil fuels combined with CDR).

CRediT authorship contribution statement

M. Millinger: Conceptualization, Methodology, Software, Visualization, Formal analysis, Writing – original draft. **L. Reichenberg:** Conceptualization, Writing – original draft. **F. Hedenus:** Funding acquisition, Project administration, Conceptualization, Writing – review & editing. **G. Berndes:** Writing – review & editing. **E. Zeyen:** Software, Data curation, Writing – review & editing. **T. Brown:** Software, Data curation, Writing – review & editing.

Declaration of competing interest

The authors declare that they have no known competing financial interests or personal relationships that could have appeared to influence the work reported in this paper.

Data availability

Supplementary data attached

Acknowledgements

This publication is the result of a project carried out within the collaborative research program Renewable transportation fuels and systems (Förnybara drivmedel och system), Project no. 50460-1. The project has been financed by the Swedish Energy Agency and f3 – Swedish Knowledge Centre for Renewable Transportation Fuels.

The computations and data handling were enabled by resources provided by the Swedish National Infrastructure for Computing (SNIC) at C3SE, partially funded by the Swedish Research Council through grant agreement no. 2018-05973. We thank the project reference group for fruitful discussions: Åsa Håkansson (Preem), Raziye Khodayari (EnergiFöretagen), Eric Zinn (Göteborg Energi), Sven Hermansson (Södra) and Svante Axelsson (Fossilfritt Sverige).

Viktor Rehnberg, Fredrik Rönnvall, Per Fahlberg and Thomas Svedberg at C3SE are acknowledged for assistance concerning technical and implementational aspects in making the code run on the C3SE resources.

We also thank Daniel Johansson, Johannes Morfeldt and Olivia Cintas Sánchez for helpful discussions.

Appendix A. Carbon balances of fuels

Solid biomass carbon dioxide uptake from atmosphere, with $\%C_{sb} = 50\%$, $e_{sb} = 18$ GJ/t, $m_{CO_2}/m_C = 44/12$ (Eq. (A.1)):

$$\varepsilon_{at}^{sb} = -\%C_{sb} \cdot \frac{3.6}{e_{sb}} \cdot \frac{m_{CO_2}}{m_C} \quad (A.1)$$

Liquid fuel carbon dioxide emission [tCO₂/MWh] at full combustion for diesel and methane based on -CH₂- simplification and $e_{CH_2} = 44$ GJ/t LHV for diesel, and $e_{CH_4} = 50$ GJ/t LHV for methane (Eq. (A.2)):

$$\varepsilon_{fu} = \frac{3.6}{e_{CH_x}} \cdot \frac{m_{CO_2}}{m_{CH_x}} \quad (A.2)$$

The carbon share ending up in the fuel $C_{fu} : C_{in}$ can be estimated by Eq. (A.3).

$$C_{fu} : C_{in} = \eta \cdot \frac{\varepsilon_{fu}}{\varepsilon_{sb}} \quad (A.3)$$

The rest is assumed to end up as CO₂, of which a part ε_s is separated, captured and stored with an efficiency η_ε , with the remainder ε_v being vented as CO₂ to the atmosphere in the exhaust gas.

The biogas produced from digestible biomass is assumed to contain 60 vol-% CH₄ ($e = 50$ GJ t⁻¹, $\rho = 0.657$ kg/m³) and 40 vol-% CO₂ ($\rho = 1.98$ kg/m³), which calculates to 0.0868 tCO₂/MWh_{CH₄}. The feedstock input potentials and costs for biogas are given for MWh_{CH₄}, and thus

MWh_{in} = MWh_{out} for the carbon balance calculations. Thereby the C-content in the slush can be omitted, thus avoiding system boundary issues with the agricultural sector (see Table A.5).

The carbon balance equals zero (Eq. (A.4)):

$$\Delta\varepsilon = \varepsilon_{at} + \varepsilon_s + \varepsilon_v + \varepsilon_{fu} \cdot \eta = 0 \quad (A.4)$$

For the Fischer–Tropsch and methanation processes based on H₂ and CO₂ inputs, the CO₂ is assumed to be cycled within the process, and thus the input–output-ratio of carbon is unity, bar CO₂ leakage.

Appendix B. Estimating fuel supply cost

It is challenging to isolate the liquid fuel (or any other) part of the system cost, since electrofuels are interlinked with the electricity system and both electrofuels and biofuels are connected via carbon capture. Electrolysers are flexible and thus use electricity when it is cheaper.

We provide an estimate for the electricity cost carried by electrolysers as follows. The total electricity cost is the sum of $C_{j,i}^{el}$ for all technologies $j \in (g, tn)$ (electricity generators g and transmission infrastructure tn). The total load-weighted electricity price paid by electrolysers (electrolyser k electricity demand $\delta_{i,k,t}^{el}$ multiplied by electricity price $p_{i,t}^{el}$) is divided by the total load-weighted electricity price paid (electricity production from each generator j , multiplied by price $p_{i,t}^{el}$) for each time step t and node i . This provides a weight with which the cost of electricity carried by electrolysers is derived.

The share of H₂ used for electrofuel production is calculated by dividing the electrofuel H₂ demand $\delta_{i,j,t}^{H_2}$ for all electrofuel technologies $j \in F_e$, by the total H₂ production $\pi_{i,t}^{H_2}$. The cost of H₂ (including electricity, electrolyser capital costs and H₂ pipeline costs $C_{j \in H_2}$) is assigned to electrofuels by the share of H₂ used for electrofuel production.

The CO₂ shadow price p^{CO_2} is used as the cost of CO₂ input for electrofuels $\delta_j^{CO_2}$ with $j \in F_e$. The total cost calculation is shown in Eq. (B.1).

$$C_{tot}^{F_e} = \sum_i C_i^{F_e} + \frac{\sum_{i,j \in F_e,t} \delta_{i,j,t}^{H_2}}{\sum_{i,t} \pi_{i,t}^{H_2}} \left(\sum_{j,t} C_{j,i}^{el} \frac{\sum_{i,t} \delta_{i,k,t}^{el} p_{i,t}^{el}}{\sum_{i,t} \pi_{i,j,t}^{el} p_{i,t}^{el}} + \sum_j C_{j \in H_2} \right) + \sum_{j \in F_e} \delta_j^{CO_2} p^{CO_2} \quad (B.1)$$

The cost of solid biomass b_s used to produce biofuels is assigned to the biofuels by the amount of solid biomass used for biofuels $\delta_{j \in F_b,i,t}^{b_s}$ with $j \in F_b$, divided by the total amount of solid biomass used $\pi_{i,t}^{b_s}$. This is added to the capital cost of biomass to liquid $C_i^{F_b}$ (Eq. (B.2)).

$$C_{tot}^{F_b} = \sum_i C_i^{F_b} + \frac{\sum_{i,j \in F_b,t} \delta_{i,j,t}^{b_s}}{\sum_{i,t} \pi_{i,t}^{b_s}} \sum_{i,t} C_{i,t}^{b_s} \quad (B.2)$$

The CO₂ shadow price p^{CO_2} is used as the cost of CO₂ emissions for fossil fuels $\varepsilon_{i,j,t}^{CO_2}$ with $j \in F_f$ (fossil fuels), see Eq. (B.3), but is shown separately and not directly assigned to the cost of fossil fuels.

$$C_\varepsilon^{F_f} = \sum_{j \in F_f,i,t} \varepsilon_{i,j,t}^{CO_2} p^{CO_2} \quad (B.3)$$

All of the reassigned costs are subtracted at the appropriate place elsewhere in the system. An opportunity cost is calculated as the total energy system cost increase compared to the base cases, minus the fuel cost difference compared to the base cases. This can sometimes lead to negative opportunity costs, i.e. the rest of the energy system is less costly compared to in the base case.

Table A.5
Carbon balances of bioenergy options. Dig. = digestible.

Type	e GJ/t	η	ϵ_{at} tCO ₂ /MWh _{in}	$C_{fu} : C_{in}$ %	ϵ_s tCO ₂ /MWh _{in}	ϵ_v tCO ₂ /MWh _{in}	e_{fu} GJ/t	ϵ_{fu} tCO ₂ /MWh	
BioSNG	solid	18	0.7	-0.3667	37.8	0.2235	0.0046	50	0.198
BtL	solid	18	0.4	-0.3667	28	0.2585	0.0053	44	0.2571
Biogas	dig.	-	1	-0.198-0.0868	69.5	0.085064	0.001736	50	0.198

Table C.6
Costs and demands of different transport fuels in 2018.

	Cost €/l	Energy density MJ/l	Demand 2018 TWh	Total cost billion €
Gasoline	0.56	33	1083	61
Diesel	0.61	36	2528	168
Fuel oil	0.44	39	629	26
Jet fuel	0.44	35	612	28
				Σ 282

Appendix C. Liquid fuel cost today

The Eurozone weighted average consumer price of Euro-super 95 (gasoline) in 2019 was 0.56 €/l excluding taxes and levies, 0.61 €/l for diesel and 0.44 €/l for low-sulphur fuel oil [104]. The average price of jet fuel was 0.44 €/l [105], and the share of diesel in road transport was around 70% in 2018 [106]. The total cost of *transport fuels* in 2018 is estimated at 282 billion €, based on the data summarised in Table C.6.

Appendix D. Supplementary data

Supplementary material related to this article can be found online at <https://doi.org/10.1016/j.apenergy.2022.120016>.

References

- [1] European Environment Agency. EEA greenhouse gases - data viewer — European Environment Agency. 2022, URL <https://www.eea.europa.eu/publications/data-and-maps/data/data-viewers/greenhouse-gases-viewer>.
- [2] Wappelhorst S. The end of the road? an overview of combustion-engine car phase-out announcements across Europe. Tech. rep., 2020, URL <https://theicct.org/publication/the-end-of-the-road-an-overview-of-combustion-engine-car-phase-out-announcements-across-europe/>.
- [3] European Parliament. Procedure 2021/0197(COD): COM (2021) 556: Proposal for a Regulation of the European Parliament and of the Council amending Regulation (EU) 2019/631 as regards strengthening the CO2 emission performance standards for new passenger cars and new light commercial vehicles in line with the union's increased climate ambition. 2021.
- [4] Morfeldt J, Davidsson Kurland S, Johansson DJ. Carbon footprint impacts of banning cars with internal combustion engines. Transp Res D 2021;95:102807. <http://dx.doi.org/10.1016/j.trd.2021.102807>.
- [5] Millinger M, Meisel K, Thrän D. Greenhouse gas abatement optimal deployment of biofuels from crops in Germany. Transp Res D 2019;69:265–75. <http://dx.doi.org/10.1016/j.trd.2019.02.005>.
- [6] Masson-Delmotte V, Zhai P, Pörtner H-O, Roberts D, Skea J, Shukla P, Pirani A, Moufouma-Okia W, Péan C, Pidcock R, Connors S, Matthews J, Chen Y, Zhou X, Gomis M, Lonnoy E, Maycock T, Tignor M, Waterfield T. Global Warming of 1.5C. an IPCC special report on the impacts of global warming of 1.5C above pre-industrial levels and related global greenhouse gas emission pathways, in the context of strengthening the global response to the threat of climate change. Intergovernmental Panel on Climate Change; 2018, URL <https://www.ipcc.ch/sr15/>.
- [7] Gray N, McDonagh S, O'Shea R, Smyth B, Murphy JD. Decarbonising ships, planes and trucks: An analysis of suitable low-carbon fuels for the maritime, aviation and haulage sectors. Adv Appl Energy 2021;1(FEBRUARY):100008. <http://dx.doi.org/10.1016/j.adapen.2021.100008>.
- [8] Mock P, Diaz S. European vehicle market statistics - Pocketbook 2020/21. Tech. rep., International Council on Clean Transportation Europe; 2020, URL <https://theicct.org/publication/european-vehicle-market-statistics-2020-21/>.
- [9] Hannula I, Reiner DM. Near-term potential of biofuels, electrofuels, and battery electric vehicles in decarbonizing road transport. Joule 2019;3(10):2390–402. <http://dx.doi.org/10.1016/j.joule.2019.08.013>.
- [10] Fuss S, Canadell JG, Peters GP, Tavoni M, Andrew RM, Ciais P, Jackson RB, Jones CD, Kraxner F, Nakicenovic N, Le Quéré C, Raupach MR, Sharifi A, Smith P, Yamagata Y. COMMENTARY: Betting on negative emissions. Nature Clim Change 2014;4(10):850–3. <http://dx.doi.org/10.1038/nclimate2392>.
- [11] Azar C, Johansson DJ, Mattsson N. Meeting global temperature targets - The role of bioenergy with carbon capture and storage. Environ Res Lett 2013;8(3). <http://dx.doi.org/10.1088/1748-9326/8/3/034004>.
- [12] Lehtveer M, Brynolf S, Grahn M. What future for electrofuels in transport? Analysis of cost competitiveness in global climate mitigation. Environ Sci Technol 2019;53(3):1690–7. <http://dx.doi.org/10.1021/acs.est.8b05243>.
- [13] European Commission. EU agricultural outlook for markets, income and environment 2020-2030. 2020. <http://dx.doi.org/10.2762/252413>.
- [14] Creutzig F, Ravindranath NH, Berndes G, Bolwig S, Bright R, Cherubini F, Chum H, Corbera E, Delucchi M, Faaij A, Fargione J, Haberl H, Heath G, Lucon O, Plevin R, Popp A, Robledo-Abad C, Rose S, Smith P, Stromman A, Suh S, Masera O. Bioenergy and climate change mitigation: An assessment. GCB Bioenergy 2015;7(5):916–44. <http://dx.doi.org/10.1111/gcbb.12205>.
- [15] Creutzig F. Economic and ecological views on climate change mitigation with bioenergy and negative emissions. GCB Bioenergy 2016;8(1):4–10. <http://dx.doi.org/10.1111/gcbb.12235>.
- [16] European Parliament. Directive (EU) 2018/2001 of the European Parliament and of the Council on the promotion of the use of energy from renewable sources. Off J Eur Union 2018;2018(L 328):82–209.
- [17] van Grinsven A, van den Toorn E, van der Veen R, Kampman B. Used cooking oil (UCO) as biofuel feedstock in the EU. Tech. rep., Delft: CE Delft; 2020, URL <https://cedelft.eu/publications/used-cooking-oil-uco-as-biofuel-feedstock-in-the-eu/>.
- [18] Ruiz P, Nijts W, Tarvydas D, Sgobbi A, Zucker A, Pilli R, Jonsson R, Camia A, Thiel C, Hoyer-Klick C, Dalla Longa F, Kober T, Badger J, Volker P, Elbersen BS, Brosowski A, Thrän D. ENSPRESO - an open, EU-28 wide, transparent and coherent database of wind, solar and biomass energy potentials. Energy Strategy Rev 2019;26(2019):100379. <http://dx.doi.org/10.1016/j.esr.2019.100379>.
- [19] Millinger M, Tafarte P, Jordan M, Hahn A, Meisel K, Thrän D. Electrofuels from excess renewable electricity at high variable renewable shares: cost, greenhouse gas abatement, carbon use and competition. Sustain Energy Fuels 2021;5(3). <http://dx.doi.org/10.1039/d0se01067g>.
- [20] Ueckerdt F, Bauer C, Dirnaichner A, Everall J, Sacchi R, Luderer G. Potential and risks of hydrogen-based e-fuels in climate change mitigation E-fuels promise to replace fossil fuels with renewable electricity without the demand-side transformations required for a direct electrification. Nature Clim Change 2021. <http://dx.doi.org/10.1038/s41558-021-01032-7>.
- [21] Jaffe AB, Newell RG, Stavins RN. A tale of two market failures: Technology and environmental policy. Ecol Econom 2005;54(2-3):164–74. <http://dx.doi.org/10.1016/j.ecolecon.2004.12.027>.
- [22] Lapan H, Moschini GC. Second-best biofuel policies and the welfare effects of quantity mandates and subsidies. J Environ Econ Manag 2012;63(2):224–41. <http://dx.doi.org/10.1016/j.jeem.2011.10.001>.
- [23] Lehmann P. Supplementing an emissions tax by a feed-in tariff for renewable electricity to address learning spillovers. Energy Policy 2013;61:635–41. <http://dx.doi.org/10.1016/j.enpol.2013.06.072>.
- [24] Hoel M. Should a carbon tax be differentiated across sectors? J Public Econ 1996;59(1):17–32. [http://dx.doi.org/10.1016/0047-2727\(94\)01490-6](http://dx.doi.org/10.1016/0047-2727(94)01490-6).
- [25] Berndes G, Hansson J. Bioenergy expansion in the EU: Cost-effective climate change mitigation, employment creation and reduced dependency on imported fuels. Energy Policy 2007;35(12):5965–79. <http://dx.doi.org/10.1016/j.enpol.2007.08.003>.
- [26] European Commission. EU emissions trading system (EU-ETS) - Revision for phase 4 (2021-2030). 2021, URL https://climate.ec.europa.eu/eu-action/eu-emissions-trading-system-eu-ets/revision-phase-4-2021-2030_en.
- [27] European Commission. Proposal for a directive of the European parliament and of the council amending directive (EU) 2018/2001 of the European Parliament and of the Council, Regulation (EU) 2018/1999 of the European Parliament and of the Council and directive 98/70/EC of the E. Off J Eur Union 2021.
- [28] European Commission. Proposal for a regulation of the EUROPEAN parliament and of the council on ensuring a level playing field for sustainable air transport. COM/2021/561 final. Off J Eur Union 2021.
- [29] European Commission. Proposal for a regulation of the EUROPEAN parliament and of the council on the use of renewable and low-carbon fuels in maritime transport and amending directive 2009/16/EC. COM/2021/562 final. Off J Eur Union 2021.

- [30] Regeringskansliet. Krav på ökad inblandning av biodrivmedel i bensin och diesel. 2021, URL <https://www.regeringen.se/pressmeddelanden/2021/03/krav-pa-okad-inblandning-av-biodrivmedel-i-bensin-och-diesel/>.
- [31] Business Finland. Finland sets new law to increase biofuel use in road traffic - Business Finland. 2019, URL <https://www.businessfinland.fi/en/whats-new/news/2019/finland-sets-new-law-to-increase-biofuel-use-in-road-traffic>.
- [32] US Energy Information Administration. Use of gasoline - U.S. Energy Information Administration. EIA, 2021, URL <https://www.eia.gov/energyexplained/gasoline/use-of-gasoline.php>.
- [33] Meisel K, Millinger M, Naumann K, Müller-Langer F, Majer S, Thrän D. Future renewable fuel mixes in transport in Germany under RED II and climate protection targets. *Energies* 2020;13(7):1712. <http://dx.doi.org/10.3390/en13071712>.
- [34] Bento N, Wilson C. Measuring the duration of formative phases for energy technologies. *Environ Innov Soc Transit* 2016;21:95–112. <http://dx.doi.org/10.1016/j.eist.2016.04.004>.
- [35] Cherp A, Vinichenko V, Tosun J, Gordon JA, Jewell J. National growth dynamics of wind and solar power compared to the growth required for global climate targets. *Nat Energy* 2021;6(7):742–54. <http://dx.doi.org/10.1038/s41560-021-00863-0>.
- [36] IRENA. Green hydrogen cost reduction: Scaling up electrolyzers to meet the 1.5°C climate goal. 2020, URL <https://www.irena.org/publications/2020/Dec/Green-hydrogen-cost-reduction>.
- [37] International Energy Agency. The future of hydrogen: Seizing today's opportunities. IEA Publications; 2019, URL <https://www.iea.org/reports/the-future-of-hydrogen>.
- [38] Brynolf S, Taljegard M, Grahn M, Hansson J. Electrofuels for the transport sector: A review of production costs. 2018, <http://dx.doi.org/10.1016/j.rser.2017.05.288>.
- [39] Keith DW, Holmes G, St. Angelo D, Heidel K. A process for capturing CO₂ from the atmosphere. *Joule* 2018;2(8):1573–94. <http://dx.doi.org/10.1016/j.joule.2018.05.006>.
- [40] Leblanc F, Bibas R, Mima S, Muratori M, Sakamoto S, Sano F, Bauer N, Daioglou V, Fujimori S, Gidden MJ, Kato E, Rose SK, Tsutsui J, van Vuuren DP, Weyant J, Wise M. The contribution of bioenergy to the decarbonization of transport: a multi-model assessment. *Clim Change* 2022;170(3–4). <http://dx.doi.org/10.1007/s10584-021-03245-3>.
- [41] Bauer N, Rose SK, Fujimori S, van Vuuren DP, Weyant J, Wise M, Cui Y, Daioglou V, Gidden MJ, Kato E, Kitous A, Leblanc F, Sands R, Sano F, Strefler J, Tsutsui J, Bibas R, Fricko O, Hasegawa T, Klein D, Kurosawa A, Mima S, Muratori M. Global energy sector emission reductions and bioenergy use: overview of the bioenergy demand phase of the EMF-33 model comparison. *Clim Change* 2020;163(3):1553–68. <http://dx.doi.org/10.1007/s10584-018-2226-y>.
- [42] Ahlgren EO, Börjesson Hagberg M, Grahn M. Transport biofuels in global energy–economy modelling – a review of comprehensive energy systems assessment approaches. *GCB Bioenergy* 2017;9(7):1168–80. <http://dx.doi.org/10.1111/gcbb.12431>.
- [43] Blanco H, Nijs W, Ruf J, Faaij A. Potential for hydrogen and Power-to-Liquid in a low-carbon EU energy system using cost optimization. *Appl Energy* 2018;232(October):617–39. <http://dx.doi.org/10.1016/j.apenergy.2018.09.216>.
- [44] Iwanaga T, Wang HH, Hamilton SH, Grimm V, Koralewski TE, Salado A, Elsayah S, Razavi S, Yang J, Glynn P, Badham J, Voinov A, Chen M, Grant WE, Peterson TR, Frank K, Shenk G, Barton CM, Jakeman AJ, Little JC. Socio-technical scales in socio-environmental modeling: Managing a system-of-systems modeling approach. *Environ Model Softw* 2021;135(2020):104885. <http://dx.doi.org/10.1016/j.envsoft.2020.104885>.
- [45] Collins S, Deane JP, Poncelat K, Panos E, Pietzcker RC, Delarue E, Galachóir BPÓ. Integrating short term variations of the power system into integrated energy system models: A methodological review. *Renew Sustain Energy Rev* 2017;76(March):839–56. <http://dx.doi.org/10.1016/j.rser.2017.03.090>.
- [46] Reichenberg L, Siddiqui AS, Wogrin S. Policy implications of downscaling the time dimension in power system planning models to represent variability in renewable output. *Energy* 2018;159:870–7. <http://dx.doi.org/10.1016/j.energy.2018.06.160>.
- [47] Hörsch J, Brown T. The role of spatial scale in joint optimisations of generation and transmission for European highly renewable scenarios. In: International conference on the European energy market, EEM. 2017, p. 1–7. <http://dx.doi.org/10.1109/EEM.2017.7982024>, arXiv:1705.07617.
- [48] Nahmmacher P, Schmid E, Hirth L, Knopf B. Carpe diem: A novel approach to select representative days for long-term power system modeling. *Energy* 2016;112:430–42. <http://dx.doi.org/10.1016/j.energy.2016.06.081>.
- [49] Victoria M, Zeyen E, Brown T. Speed of technological transformations required in Europe to achieve different climate goals. *Joule* 2022;6(5):1066–86. <http://dx.doi.org/10.1016/j.joule.2022.04.016>.
- [50] Bogdanov D, Ram M, Aghahosseini A, Gulagi A, Oyewo AS, Child M, Caldera U, Sadvoskaia K, Farfan J, De Souza Noel Simas Barbosa L, Fasihi M, Khalili S, Traber T, Breyer C. Low-cost renewable electricity as the key driver of the global energy transition towards sustainability. *Energy* 2021;227:120467. <http://dx.doi.org/10.1016/j.energy.2021.120467>.
- [51] Pickering B, Lombardi F, Pfenninger S. Diversity of options to eliminate fossil fuels and reach carbon neutrality across the entire European energy system. *Joule* 2022;6(6):1253–76. <http://dx.doi.org/10.1016/j.joule.2022.05.009>.
- [52] PyPSA-Eur-Sec. PyPSA-Eur-Sec — A sector-coupled open optimisation model of the European energy system — PyPSA-Eur-Sec 0.6.0 documentation. 2021, URL <https://pypsa-eur-sec.readthedocs.io/en/latest/>.
- [53] Neumann F, Brown T. The near-optimal feasible space of a renewable power system model. *Electr Power Syst Res* 2021;190(2019):106690. <http://dx.doi.org/10.1016/j.epr.2020.106690>, arXiv:1910.01891.
- [54] GitHub - millingermarkus/pypsa-eur-sec: PyPSA-Eur-Sec: A sector-coupled open optimisation model of the European energy system. 2021, URL <https://github.com/millingermarkus/pypsa-eur-sec/>.
- [55] Mantzos L, Wiesenthal T, Matei N-A, Tchung-Ming S, Rozsai M, Russ HP, Soria Ramirez A. JRC-IDEES: Integrated database of the European energy sector: Methodological note. 2017, <http://dx.doi.org/10.2760/182725>.
- [56] Zeyen E, Hagenmeyer V, Brown T. Mitigating heat demand peaks in buildings in a highly renewable European energy system. *Energy* 2021;231:120784. <http://dx.doi.org/10.1016/j.energy.2021.120784>.
- [57] KC S, Lutz W. The human core of the shared socioeconomic pathways: Population scenarios by age, sex and level of education for all countries to 2100. *Global Environ Change* 2017;42:181–92. <http://dx.doi.org/10.1016/j.gloenvcha.2014.06.004>.
- [58] ATAG. Waypoint 2050 project report. 2020, URL <https://aviationbenefits.org/environmental-efficiency/climate-action/waypoint-2050/>.
- [59] IRENA. Renewable capacity statistics 2021. International Renewable Energy Agency; 2021, URL <https://www.irena.org/publications/2021/March/Renewable-Capacity-Statistics-2021>.
- [60] Alonso Raposo M, Ciuffo B, Alves Dies P, Ardenne F, Aurambout J-P, Baldini G, Baranzelli C, Blagojeva D, Bobba S, Braun R, Cassio L, Chawdhry P, Christodoulou A, Corrado S, Duboz A, Duch Brown N, Felici S, Fernández Macías E, Ferragut J, Fulli G, Galassi M-C, Georgakaki A, Gkoumas K, Grosso M, Gómez Vilchez J, Hajdu M, Iglesias M, Julea A, Krause J, Kriston A, Lavalle C, Lonza L, Lucas A, Makridis M, Marinopoulos A, Marmier A, Marques dos Santos F, Martens B, Mattas K, Mathieux F, Menzel G, Minarini F, Mondello S, Moretto P, Mortara B, Navajas Cawood E, Paffumi E, Pasimeni F, Pavel C, Pekár F, Pisoni E, Raileanu I-C, Sala S, Saveyn B, Scholz H, Serra N, Tamba M, Thiel C, Trentadue G, Tecchio P, Tsakalidis A, Uihlein A, van Balen M, van de Castele I. The future of road transport - Implications of automated, connected, low-carbon and shared mobility. Tech. rep., Luxembourg: Joint Research Centre; 2019, <http://dx.doi.org/10.2760/668964>.
- [61] Ministry of the Environment and Energy. The Swedish climate policy framework. Government Offices of Sweden; 2018, p. 1–5, URL <https://www.government.se/495f60/contentassets/883ae8e123bc4e42aa8d59296ebe0478/the-swedish-climate-policy-framework.pdf>.
- [62] Danish Energy Agency. Technology data for generation of electricity and district heating | Energistyrelsen. 2021, URL <https://ens.dk/en/our-services/projections-and-models/technology-data/technology-data-generation-electricity-and>.
- [63] DeCarolis JF, Babae S, Li B, Kanungo S. Modelling to generate alternatives with an energy system optimization model. *Environ Model Softw* 2016;79:300–10. <http://dx.doi.org/10.1016/j.envsoft.2015.11.019>.
- [64] Riksdagen. Fossilfria drivmedel för att minska transportsektorns klimatpåverkan. 2018, URL <https://data.riksdagen.se/fil/EE20BCB5-1593-4298-A58A-5F6FA643E4BF>.
- [65] Ruhnau O. How flexible electricity demand stabilizes wind and solar market values: The case of hydrogen electrolyzers. *Appl Energy* 2021;(November):118194. <http://dx.doi.org/10.1016/j.apenergy.2021.118194>.
- [66] Ruggles TH, Dowling JA, Lewis NS, Caldeira K. Opportunities for flexible electricity loads such as hydrogen production from curtailed generation. *Adv Appl Energy* 2021;3(June):100051. <http://dx.doi.org/10.1016/j.adapen.2021.100051>.
- [67] Bogdanov D, Gulagi A, Fasihi M, Breyer C. Full energy sector transition towards 100% renewable energy supply: Integrating power, heat, transport and industry sectors including desalination. *Appl Energy* 2021;283:116273. <http://dx.doi.org/10.1016/j.apenergy.2020.116273>.
- [68] Azar C, Lindgren K, Andersson BA. Global energy scenarios meeting stringent CO₂ constraints—cost-effective fuel choices in the transportation sector. *Energy Policy* 2003;31(10):961–76. [http://dx.doi.org/10.1016/S0301-4215\(02\)00139-8](http://dx.doi.org/10.1016/S0301-4215(02)00139-8).
- [69] Millinger M, Ponitka J, Arendt O, Thrän D. Competitiveness of advanced and conventional biofuels: Results from least-cost modelling of biofuel competition in Germany. *Energy Policy* 2017;107. <http://dx.doi.org/10.1016/j.enpol.2017.05.013>.
- [70] Dimitriou I, Goldingay H, Bridgwater AV. Techno-economic and uncertainty analysis of Biomass to Liquid (BTL) systems for transport fuel production. *Renew Sustain Energy Rev* 2018;88(2016):160–75. <http://dx.doi.org/10.1016/j.rser.2018.02.023>.
- [71] Larson E, Li Z, Williams RH. Fossil energy. In: *Global energy assessment-Toward a sustainable future*. Cambridge, UK and New York, NY, USA: Cambridge University Press; 2012, p. 901–92.

- [72] Material Economics. EU biomass use in a net-zero economy. 2021, p. 102, URL <https://materialeconomics.com/latest-updates/eu-biomass-use>.
- [73] Oehmichen K, Majer S, Thrän D. Biomethane from manure, agricultural residues and biowaste—ghg mitigation potential from residue-based biomethane in the european transport sector. Sustainability (Switzerland) 2021;13(24). <http://dx.doi.org/10.3390/su132414007>.
- [74] Cintas O, Berndes G, Englund O, Johnsson F. Geospatial supply–demand modeling of lignocellulosic biomass for electricity and biofuels in the European Union. Biomass Bioenergy 2021;144(2020). <http://dx.doi.org/10.1016/j.biombioe.2020.105870>.
- [75] Mandley SJ, Daioglou V, Junginger HM, van Vuuren DP, Wicke B. EU bioenergy development to 2050. Renew Sustain Energy Rev 2020;127(April):109858. <http://dx.doi.org/10.1016/j.rser.2020.109858>.
- [76] Panoutsou C, Maniatis K. Sustainable biomass availability in the EU, to 2050. Ref: RED II Annex IX A/B. Tech. rep., Imperial College London consultants; 2021, <http://dx.doi.org/10.32964/tj20.8>, URL <https://www.concawe.eu/publication/sustainable-biomass-availability-in-the-eu-to-2050/>.
- [77] Forster EJ, Healey JR, Dymond C, Styles D. Commercial afforestation can deliver effective climate change mitigation under multiple decarbonisation pathways. Nature Commun 2021;12(1):1–12. <http://dx.doi.org/10.1038/s41467-021-24084-x>.
- [78] Englund O, Dimitriou I, Dale VH, Kline KL, Mola-Yudego B, Murphy F, English B, McGrath J, Busch G, Negri MC, Brown M, Goss K, Jackson S, Parish ES, Cacho J, Zumpf C, Quinn J, Mishra SK. Multifunctional perennial production systems for bioenergy: performance and progress. Wiley Interdiscip Rev: Energy Environ 2020;9(5):1–24. <http://dx.doi.org/10.1002/wene.375>.
- [79] Yang Y, Tilman D, Lehman C, Trost JJ. Sustainable intensification of high-diversity biomass production for optimal biofuel benefits. Nat Sustain 2018;1(11):686–92. <http://dx.doi.org/10.1038/s41893-018-0166-1>.
- [80] Robertson GP, Hamilton SK, Barham BL, Dale BE, Izaurralde RC, Jackson RD, Landis DA, Swinton SM, Thelen KD, Tiedje JM. Cellulosic biofuel contributions to a sustainable energy future: Choices and outcomes. Science 2017;356(6345). <http://dx.doi.org/10.1126/science.aal2324>.
- [81] Hampf J, Düren M, Brown T. Import options for chemical energy carriers from renewable sources to Germany. 2021, arXiv:2107.01092.
- [82] Kan X, Reichenberg L, Hedenus F, Daniels D. Global renewable LCOE – including socio-economic factors in assessments of resource potential. 2016, (feb 2022). arXiv:2202.02257.
- [83] Middleton RS, Yaw S. The cost of getting CCS wrong: Uncertainty, infrastructure design, and stranded CO₂. Int J Greenh Gas Control 2018;70(2017):1–11. <http://dx.doi.org/10.1016/j.jggc.2017.12.011>.
- [84] Strefler J, Kriegler E, Bauer N, Luderer G, Pietzcker RC, Giannousakis A, Edenhofer O. Alternative carbon price trajectories can avoid excessive carbon removal. Nature Commun 2021;12(1):1–8. <http://dx.doi.org/10.1038/s41467-021-22211-2>.
- [85] Anderson K, Peters G. The trouble with negative emissions. Science 2016;354(6309):182–3. <http://dx.doi.org/10.1126/science.aah4567>.
- [86] Bistline JE, Blanford GJ. Impact of carbon dioxide removal technologies on deep decarbonization of the electric power sector. Nature Commun 2021;12(1):1–12. <http://dx.doi.org/10.1038/s41467-021-23554-6>.
- [87] Babiker M, Berndes G, Blok K, Cohen B, Cowie A, Geden O, Ginzburg V, Leip A, Smith P, Sugiyama M, Yamba F. Cross-sectoral perspectives. In: Shukla P, Skea J, Slade R, Al Khourdajie A, van Diemen R, McCollum D, Pathak M, Some S, Vyas P, Fradera R, Belkacemi M, Hasija A, Lisboa G, Luz S, Malley J, editors. IPCC, 2022: Climate change 2022: Mitigation of climate change. contribution of working group III to the sixth assessment report of the intergovernmental panel on climate change. Cambridge, UK and New York, NY, USA: Cambridge University Press; 2022, <http://dx.doi.org/10.1017/9781009157926.005>.
- [88] Minx JC, Lamb WF, Callaghan MW, Fuss S, Hilaire J, Creutzig F, Amann T, Beringer T, De Oliveira Garcia W, Hartmann J, Khanna T, Lenzi D, Luderer G, Nemet GF, Rogelj J, Smith P, Vicente JL, Wilcox J, Del Mar Zamora Dominguez M. Negative emissions - Part 1: Research landscape and synthesis. Environ Res Lett 2018;13(6). <http://dx.doi.org/10.1088/1748-9326/aabf9b>.
- [89] Fuss S, Lamb WF, Callaghan MW, Hilaire J, Creutzig F, Amann T, Beringer T, De Oliveira Garcia W, Hartmann J, Khanna T, Luderer G, Nemet GF, Rogelj J, Smith P, Vicente JV, Wilcox J, Del Mar Zamora Dominguez M, Minx JC. Negative emissions - Part 2: Costs, potentials and side effects. Environ Res Lett 2018;13(6). <http://dx.doi.org/10.1088/1748-9326/aabf9f>.
- [90] Chan K, Millinger M, Schneider UA, Thrän D. How diet portfolio shifts combined with land-based climate change mitigation strategies could reduce climate burdens in Germany. 2022, <http://dx.doi.org/10.1016/j.jclepro.2022.134200>, in press.
- [91] Hedenus F, Azar C. Bioenergy plantations or long-term carbon sinks? - A model based analysis. Biomass Bioenergy 2009;33(12):1693–702. <http://dx.doi.org/10.1016/j.biombioe.2009.09.003>.
- [92] Gustafsson T, Johansson A. Comparison between battery electric vehicles and internal combustion engine vehicles fueled by electrofuels (Master's thesis), Chalmers University of Technology; 2015, URL <https://publications.lib.chalmers.se/records/fulltext/218621/218621.pdf>.
- [93] Franz S, Rottoli M, Bertram C. The wide range of possible aviation demand futures after the COVID-19 pandemic. Environ Res Lett 2022;17(6). <http://dx.doi.org/10.1088/1748-9326/ac65a4>.
- [94] Jordan M, Lenz V, Millinger M, Oehmichen K, Thrän D. Future competitive bioenergy technologies in the German heat sector: Findings from an economic optimization approach. Energy 2019;189. <http://dx.doi.org/10.1016/j.energy.2019.116194>.
- [95] Jordan M, Millinger M, Thrän D. Robust bioenergy technologies for the German heat transition: A novel approach combining optimization modeling with Sobol' sensitivity analysis. Appl Energy 2020;262. <http://dx.doi.org/10.1016/j.apenergy.2020.114534>.
- [96] Madeddu S, Ueckerdt F, Pehl M, Peterseim J, Lord M, Kumar KA, Krüger C, Luderer G. The CO₂ reduction potential for the European industry via direct electrification of heat supply (power-to-heat). Environ Res Lett 2020;15(12). <http://dx.doi.org/10.1088/1748-9326/abbd02>.
- [97] Benneer LS, Stavins RN. Second-best theory and the use of multiple policy instruments. Environ Resour Econ 2007;37(1):111–29. <http://dx.doi.org/10.1007/s10640-007-9110-y>.
- [98] Millinger M, Thrän D. Biomass price developments inhibit biofuel investments and research in Germany: The crucial future role of high yields. J Cleaner Prod 2018;172:1654–63. <http://dx.doi.org/10.1016/j.jclepro.2016.11.175>.
- [99] Chen X, Khanna M, Yeh S. Stimulating learning-by-doing in advanced biofuels: Effectiveness of alternative policies. Environ Res Lett 2012;7(4). <http://dx.doi.org/10.1088/1748-9326/7/4/045907>.
- [100] Celebi AD, Sharma S, Ensinas AV, Maréchal F. Next generation cogeneration system for industry – Combined heat and fuel plant using biomass resources. Chem Eng Sci 2019;204:59–75. <http://dx.doi.org/10.1016/j.ces.2019.04.018>.
- [101] Seto KC, Davis SJ, Mitchell RB, Stokes EC, Unruh G, Ürge-Vorsatz D. Carbon lock-in: Types, causes, and policy implications. Annu Rev Environ Resour 2016;41:425–52. <http://dx.doi.org/10.1146/annurev-environ-110615-085934>.
- [102] Reid WV, Ali MK, Field CB. The future of bioenergy. Global Change Biol 2020;26(1):274–86. <http://dx.doi.org/10.1111/gcb.14883>.
- [103] Neumann F, Hagenmeyer V, Brown T. Assessments of linear power flow and transmission loss approximations in coordinated capacity expansion problems. Appl Energy 2022;314(2021):118859. <http://dx.doi.org/10.1016/j.apenergy.2022.118859>.
- [104] EU. Weekly oil bulletin | Energy. 2021, URL <https://ec.europa.eu/energy/data-analysis/weekly-oil-bulletin>.
- [105] IndexMundi. Jet fuel - monthly price (euro per gallon) - commodity prices - price charts, data, and news - IndexMundi. 2022, URL <https://www.indexmundi.com/commodities/?commodity=jet-fuel&months=60¤cy=eur>.
- [106] Fuels Europe. Statistical report 2018. Tech. rep., Fuel Europe; 2018, URL <https://www.fuelseurope.eu/wp-content/uploads/FuelsEurope-Statistical-Report-2018.pdf>.