



# Compensatory-reserve-weighted intracranial pressure versus intracranial pressure for outcome association in adult traumatic brain injury: a CENTER-TBI validation study

Frederick A. Zeiler<sup>1,2,3</sup> · Ari Ercole<sup>1</sup> · Manuel Cabeleira<sup>3</sup> · Erta Beqiri<sup>3,4</sup> · Tommaso Zoerle<sup>5</sup> · Marco Carbonara<sup>5</sup> · Nino Stocchetti<sup>4,5</sup> · David K. Menon<sup>1</sup> · Peter Smielewski<sup>3</sup> · Marek Czosnyka<sup>3,6</sup> · CENTER-TBI High Resolution ICU Sub-Study Participants and Investigators

Received: 27 February 2019 / Accepted: 13 April 2019 / Published online: 3 May 2019  
© The Author(s) 2019

## Abstract

**Background** Compensatory-reserve-weighted intracranial pressure (wICP) has recently been suggested as a supplementary measure of intracranial pressure (ICP) in adult traumatic brain injury (TBI), with a single-center study suggesting an association with mortality at 6 months. No multi-center studies exist to validate this relationship. The goal was to compare wICP to ICP for association with outcome in a multi-center TBI cohort.

**Methods** Using the Collaborative European Neuro Trauma Effectiveness Research in TBI (CENTER-TBI) high-resolution intensive care unit (ICU) cohort, we derived ICP and wICP (calculated as  $wICP = (1 - RAP) \times ICP$ ; where RAP is the compensatory reserve index derived from the moving correlation between pulse amplitude of ICP and ICP). Various univariate logistic regression models were created comparing ICP and wICP to dichotomized outcome at 6 to 12 months, based on Glasgow Outcome Score—Extended (GOSE) (alive/dead—GOSE  $\geq 2$ /GOSE = 1; favorable/unfavorable—GOSE 5 to 8/GOSE 1 to 4, respectively). Models were compared using area under the receiver operating curves (AUC) and  $p$  values.

**Results** wICP displayed higher AUC compared to ICP on univariate regression for alive/dead outcome compared to mean ICP (AUC 0.712, 95% CI 0.615–0.810,  $p = 0.0002$ , and AUC 0.642, 95% CI 0.538–0.746,  $p < 0.0001$ , respectively; no significant difference on Delong's test), and for favorable/unfavorable outcome (AUC 0.627, 95% CI 0.548–0.705,  $p = 0.015$ , and AUC 0.495, 95% CI 0.413–0.577,  $p = 0.059$ ; significantly different using Delong's test  $p = 0.002$ ), with lower wICP values associated with improved outcomes ( $p < 0.05$  for both). These relationships on univariate analysis held true even when comparing the wICP models with those containing both ICP and RAP integrated area under the curve over time ( $p < 0.05$  for all via Delong's test).

---

P Smielewski and M Czosnyka are joint senior authors.

---

This article is part of the Topical Collection on *Brain trauma*

---

**Electronic supplementary material** The online version of this article (<https://doi.org/10.1007/s00701-019-03915-3>) contains supplementary material, which is available to authorized users.

---

✉ Frederick A. Zeiler  
umzeiler@myumanitoba.ca

Ari Ercole  
ae105@cam.ac.uk

Manuel Cabeleira  
mc916@cam.ac.uk

Erta Beqiri  
erta.beqiri@gmail.com

Tommaso Zoerle  
tommaso.zoerle@policlinico.mi.it

Marco Carbonara  
marco.carbonara@gmail.com

Nino Stocchetti  
nino.stocchetti@policlinico.mi.it

David K. Menon  
dkm13@cam.ac.uk

Peter Smielewski  
ps10011@cam.ac.uk

Marek Czosnyka  
mc141@medschl.cam.ac.uk

Extended author information available on the last page of the article

**Conclusions** Compensatory-reserve-weighted ICP displays superior outcome association for both alive/dead and favorable/unfavorable dichotomized outcomes in adult TBI, through univariate analysis. Lower wICP is associated with better global outcomes. The results of this study provide multi-center validation of those seen in a previous single-center study.

**Keywords** Compensatory reserve · Intracranial pressure · Outcome · Weighted ICP

## Introduction

Intracranial pressure (ICP) is well known to be associated with outcome in adult traumatic brain injury (TBI), with higher sustained levels of ICP linked to worse global outcome, and particularly higher mortality [1, 3, 5, 9, 11]. Various studies to date have documented such associations, with defined treatment thresholds providing one of the main therapeutic targets in the critical care management of the moderate/severe TBI patient [3, 9].

Recent single-center retrospective work has suggested a newer variant of ICP in adult TBI, termed compensatory-reserve-weighted ICP [2, 6]. Using information from the continuously updating cerebral compensatory reserve index (RAP) [2, 4, 12], derived from the moving correlation coefficient between pulse amplitude of ICP (AMP) and ICP, one can derive a “weighted” ICP (wICP) as  $wICP = (1 - RAP) \times ICP$  [2, 6]. Such characteristics of wICP have been described in detail within this previous work [2], with a strong association between wICP and mortality being seen on descriptive analysis.

However, despite the promise of wICP as a combined measure of ICP and compensatory reserve in adult TBI, these conclusions have been based on data from a single-center series [2, 6]. This limitation stems from the complexity of the data required for analysis. With the completion of the Collaborative European Neuro Trauma Effectiveness Research in TBI (CENTER-TBI) study [8], the high-resolution intensive care unit (ICU) cohort has provided a multi-center data set with high-frequency digital physiologic signals. The goal of this study is to compare the association between ICP and wICP with global patient outcome in adult TBI, using the CENTER-TBI high-resolution ICU cohort.

## Methods

### Patient population

All patients from the multi-center CENTER-TBI high-resolution ICU cohort were included for this study. These patients were prospectively recruited during the periods of January 2015 to December 2017. A total of 21 centers in the European Union (EU) recruited patients for this cohort. All patients were admitted to ICU for their TBI during the course

of the study, with high-frequency digital signals recorded from their ICU monitors during the course of their ICU stay. All patients suffered predominantly from moderate to severe TBI (moderate = Glasgow Coma Score (GCS) 9 to 12, and severe = GCS of 8 or less). A minority of patients suffered from non-severe TBI, with subsequent early deterioration leading to ICU admission for care and monitoring. All patients in this cohort had invasive ICP monitoring conducted in accordance with the BTF guidelines [3].

### Data collection

As part of recruitment to the multi-center high-resolution ICU cohort of CENTER-TBI [8], all patients had demographics prospectively recorded. Similarly, all patients had high-frequency digital signals from ICU monitoring recorded throughout their ICU stay, with the goal of initiating recording within 24 h of injury. All digital ICU signals were further processed (see the “Signal acquisition”/“Signal processing” section). For the purpose of this study, the following admission demographic variables were collected: age, sex, admission Glasgow Coma Scale (GCS; total and motor), and admission pupillary response (bilaterally reactive, unilateral reactive, bilateral unreactive). Only non-imputed raw data was used for the purpose of this study, given the CENTER-TBI study-wide imputation for missing data is still ongoing and will be the focus of various other publications and studies. Data was accessed on Sept 16, 2018, via Opal database software [7].

### Signal acquisition

Arterial blood pressure (ABP) was obtained through either radial or femoral arterial lines connected to pressure transducers (Baxter Healthcare Corp. CardioVascular Group, Irvine, CA). ICP was acquired via an intra-parenchymal strain gauge probe (Codman ICP MicroSensor; Codman & Shurtleff Inc., Raynham, MA), parenchymal fiber optic pressure sensor (Camino ICP Monitor, Integra Life Sciences, Plainsboro, NJ, USA; <https://www.integralife.com/>) or external ventricular drain. All signals were recorded using digital data transfer or digitized via an A/D converter (DT9801; Data Translation, Marlboro, MA), where appropriate, sampled at frequency of 100 Hz or higher, using the ICM+ software (Cambridge Enterprise Ltd., Cambridge, UK, [!\[\]\(f1c5da15572e3e09d343161be98f508d\_img.jpg\) Springer](http://icmplus.neurosurg.</a></p></div><div data-bbox=)

[cam.ac.uk](http://cam.ac.uk)) or Moberg CNS Monitor (Moberg Research Inc., Ambler, PA, USA) or a combination of both. Signal artifacts were removed using both manual and automated methods prior to further processing or analysis.

## Signal processing

Post-acquisition processing of the above signals was conducted using ICM+. CPP was determined as  $CPP = MAP - ICP$ . AMP was determined by calculating the fundamental Fourier amplitude of the ICP pulse waveforms over a 10-s window, updated every 10 s. Ten-second moving averages (updated every 10 s to avoid data overlap) were calculated for all recorded signals: ICP, ABP (which produced MAP), AMP, and CPP.

RAP, the continuous index of cerebral compensatory reserve was derived as the moving correlation coefficient between 30 consecutive 10-s mean windows of the parent signals (AMP and ICP), updated every minute. Finally, compensatory-reserve-weighted ICP (wICP) was created for each minute-by-minute observation via the following previously described method:  $wICP = (1 - RAP) \times ICP$ .

Data were provided in minute-by-minute comma separated variable sheets for the entire duration of recording for each patient.

The basis for interpretation of wICP has been previously published [2], and a brief summary is provided here: RAP shows values around 0 when ICP is low and compensatory reserve is good (linear part of pressure-volume curve). RAP increases to +1 at higher ICP indicating poor compensatory reserve (exponential part of pressure-volume curve). Such a state is usually seen almost all the time after severe TBI. When ICP increases to very high values, it provokes gradual collapse of cerebral arterial bed and rapid decrease of cerebral blood flow. RAP decreases towards zero or negative (deflection of pressure-volume curve). This “very high value of ICP” leading to vascular collapse is individual and cannot be substituted by any cohort-based average, like 20 or 25 mmHg. Multiplying ICP by  $(1 - RAP)$  would magnify these values of ICP when it interferes with integrity of cerebral blood flow, by taking into account the cerebral compensatory reserve during the calculation.

## Data processing

Grand (i.e., the entire recording period) mean values of all physiologic variables were calculated per patient. In addition, post-ICM+ processing of RAP physiologic data occurred in R (R Core Team (2016). R: A language and environment for statistical computing. R Foundation for Statistical Computing, Vienna, Austria. URL <https://www.R-project.org/>), in keeping with our recent single-center retrospective study on RAP in adult TBI, using the *flux* package. Area under

the curve for RAP (RAP AUC) was determined for each patient by integrating the RAP signal over time via a sequential linear interpolation method within R using minute-by-minute data. RAP AUC over time was calculated for RAP thresholds of 0 and +0.4. This is in keeping with previous work on the association between RAP and admission brain imaging characteristics [12]. The threshold for RAP was employed for the purpose of summarizing RAP as a measure over the entire recording period. Given RAP has a negative parabolic relationship with ICP, RAP values near 0 can mean both good and poor compensatory reserve, depending on the situation. As such, taking grand mean values of RAP over the entire recording period can be done, but their interpretation is extremely difficult, even during logistic regression analysis. This is why we have focused on the area under the RAP vs. time relationship, which provides a more objective and meaningful grand summary measure when talking about a summary metric over an entire recording period. This is not the case for wICP, as each minute the wICP value is calculated from the ICP and RAP value at that time, and is reflective of the physiologic situation.

## Statistics

All statistical analysis was conducted using R (R Core Team (2016). R: A language and environment for statistical computing. R Foundation for Statistical Computing, Vienna, Austria. URL <https://www.R-project.org/>) and XLSTAT (Addinsoft, New York, NY; <https://www.xlstat.com/en/>) add-on package to Microsoft Excel (Microsoft Office 15, Version 16.0.7369.1323). Normality of continuous variables was assessed via the Shapiro-Wilks test. For all testing described within, the alpha was set at 0.05 for significance.

Despite GOSE being collected at both 6 and 12 months post-injury in this cohort of patients, there was missing data present in both categories of outcome. Thus, we combined GOSE scores from both 6 and 12 months in order to provide a “6- to 12-month” GOSE. For patients where GOSE was reported for both 6 and 12 months, the superior GOSE score was selected for analysis. Both ICP and wICP were assessed across each ordinal category of GOSE using the Jonckheere-Terpstra test with 1000 permutations, assessing for statistically significant decreases in each ICP variable with increasing GOSE grade.

GOSE was then dichotomized into the following categories: (A) alive (GOSE 2 to 8) vs. dead (GOSE 1) and (B) favorable (GOSE 5 to 8) vs. unfavorable (GOSE 4 or less). Demographics and physiologic variables were compared between each dichotomized group via *t* test, Mann-Whitney *U*, and chi-square testing where appropriate. Box plots were created for variables of interest comparing between dichotomized groups.

Univariate logistic regression (ULR) was conducted, comparing variables to both dichotomized outcomes, assessing superiority using AUC and Delong's test. Next, various multi-variable models were created, which included ICP, AMP, wICP, mean RAP, RAP AUC above 0 and RAP AUC above + 0.4. This study represented the first validation of the concept of wICP, and we therefore limited the complexity of the analyses undertaken. We only used univariate logistic regression, as we were primarily interested in validating previous single-center results in a multicenter dataset, to demonstrate the feasibility of such an approach. No adjustment for baseline characteristics was conducted, as study-wide imputation is currently being conducted to account for missing values.

## Results

### Patient demographics

There were 196 patients from the CENTER-TBI high-resolution ICU cohort, with high-frequency physiologic signals and

complete demographic variables, which were included in this study. The mean age was  $46.6 \pm 19.7$  years, with 150 being male. Median admission GCS was 8 (IQR 5 to 13), and mean duration of physiologic monitoring was  $159.3 \pm 115.1$  h. All continuous variables were found to be non-parametrically distributed. Table 1 summarizes all of the patient demographics and base physiologic information.

### Physiology and outcome

Appendix A summarizes the comparison of various patient demographics and physiology between the dichotomized 6- to 12-month outcome groups, using Mann-Whitney *U* and chi-square test where appropriate. Both mean age and mean wICP were noted to be significantly different between both alive/dead and favorable/unfavorable outcome groups with high mean age ( $p < 0.0001$  for alive/dead, and  $p = 0.001$  for favorable/unfavorable) and wICP ( $p < 0.0001$  for alive/dead, and  $p = 0.002$  for favorable/unfavorable) associated with worse outcomes. Mean ICP was not significantly different between either dichotomized group ( $p = 0.134$  for alive/dead, and  $p = 0.614$  for favorable/

**Table 1** Patient demographics, physiology and outcome—entire population

	Mean/median ( $\pm$ sd or IQR)
Number of Patients	196
Age (years)	46.6 (19.7)
Sex	
Male	150
Female	46
Admission GCS (total)	8 (5 to 13)
Admission GCS (motor)	4 (2 to 6)
Admission pupil response	
Bilaterally reactive	128
Unilateral unreactive	17
Bilaterally unreactive	51
Duration of high-frequency physiologic recording (hours)	159.3 (115.1)
ICP (mmHg)	14.3 (10.4)
AMP (mmHg)	2.6 (2.8)
CPP (mmHg)	69.6 (12.4)
wICP (mmHg)	5.8 (7.9)
RAP (a.u.)	0.614 (0.206)
RAP AUC—threshold of 0	5544.8 (4188.9)
RAP AUC—threshold of + 0.4	2625.8 (2158.6)
6- to 12-month GOSE	4 (2 to 6)
Number alive—6 to 12 months	149
Number dead—6 to 12 months	47
Number favorable outcome—6 to 12 months (GOSE 5 to 8)	94
Number unfavorable outcome—6 to 12 months (GOSE 1 to 4)	102

AMP pulse amplitude of ICP, *a.u.* arbitrary units, *AUC* integrated area under the RAP curve over time, *CPP* cerebral perfusion pressure, *GCS* Glasgow Coma Scale, *GOSE* Glasgow Outcome Score—Extended, *ICP* intracranial pressure, *IQR* inter-quartile range, *RAP* compensatory reserve index (moving correlation between AMP and ICP), *sd* standard deviation, *wICP* compensatory-reserve-weighted ICP ( $wICP = (1 - RAP) \times ICP$ )

unfavorable). Figure 1 displays a box plot of ICP and wICP across each category of GOSE at 6 to 12 months, with wICP demonstrating a statistically significant decrease in mean value with increasing GOSE category via Jonckheere-Terpstra testing ( $p=0.001$ ). Mean ICP did not display a significant decrease with increasing GOSE score ( $p=0.086$ ). Figure 2 displays box plots of ICP and wICP across both dichotomized outcome groups, highlighting statistically significant lower mean wICP for both the alive and favorable outcome groups.

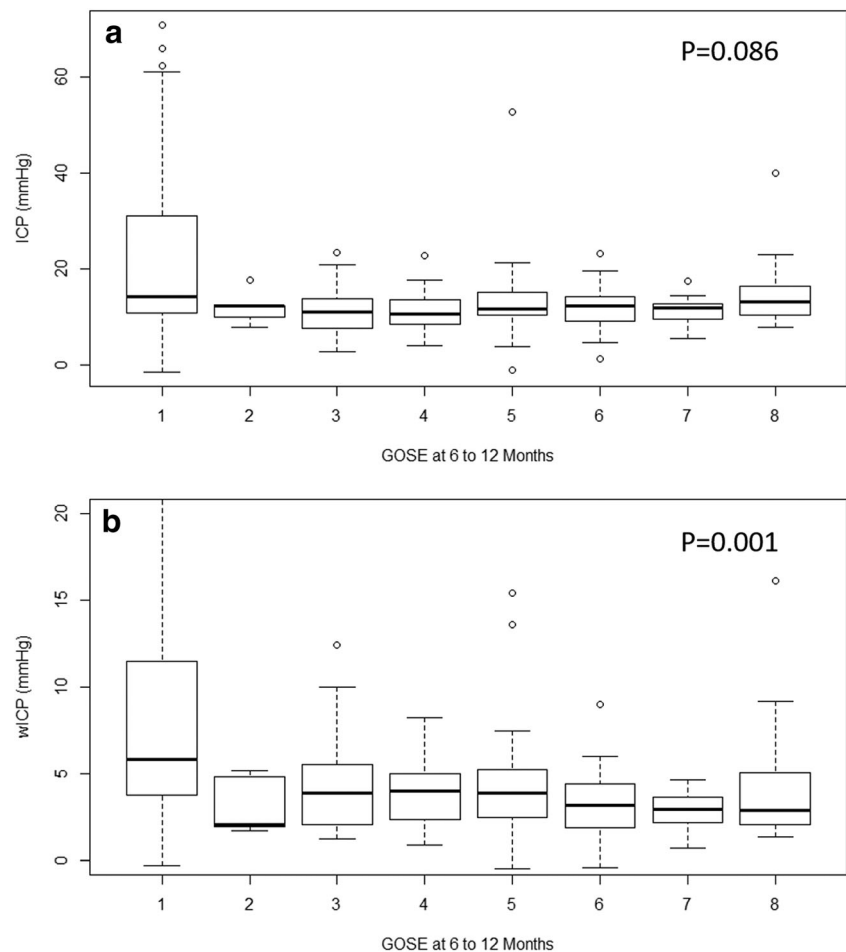
### Univariate logistic regression (ULR) analysis

Univariate logistic regression was performed for each demographic and physiologic variable with both 6- to 12-month dichotomized outcomes. Table 2 displays the results of the ULR analysis with AUCs and  $p$  values tabulated for each variable. From this analysis, it was found that age was statistically associated with both alive/dead (AUC = 0.737; 95% CI 0.652–0.737;  $p < 0.0001$ ) and favorable/unfavorable (AUC = 0.680; 95% CI 0.605–0.754;  $p < 0.0001$ ) outcomes, in keeping with prior literature [3, 10]. Mean ICP was only significantly associated

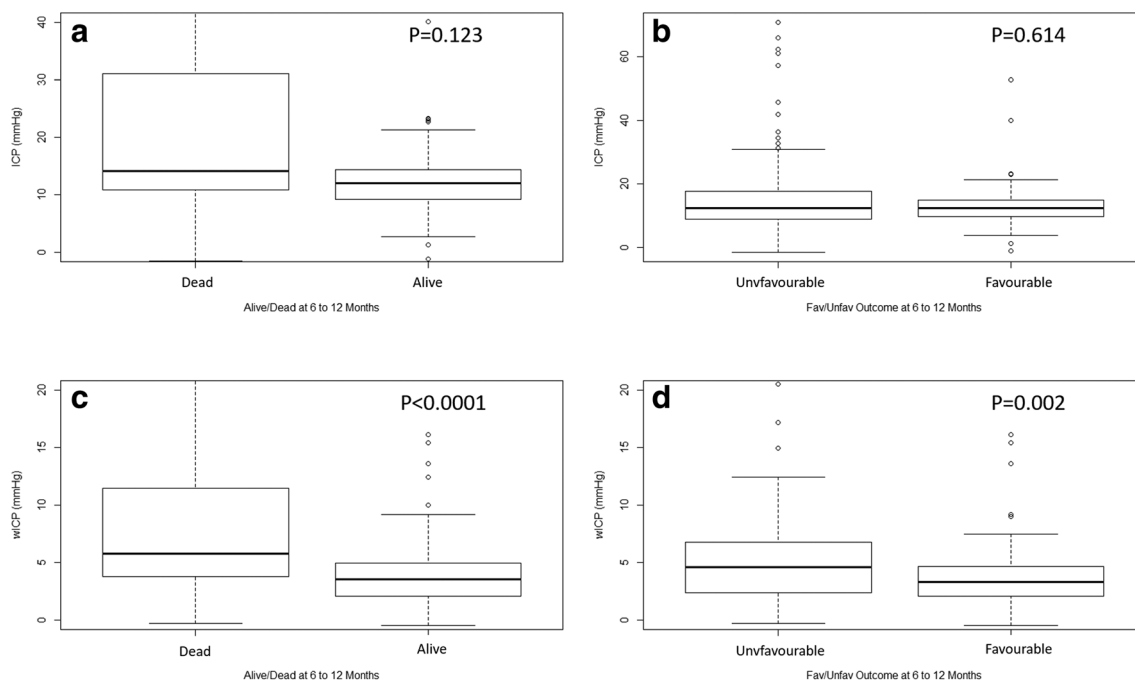
with alive/dead (AUC = 0.642; 95% CI 0.538–0.746;  $p < 0.0001$ ), not favorable/unfavorable outcome (AUC = 0.495; 95% CI 0.413–0.577;  $p = 0.059$ ). wICP displayed a stronger association (i.e., larger AUC) with both alive/dead and favorable/unfavorable outcomes (AUC = 0.712; 95% CI 0.615–0.810;  $p = 0.0002$ , and AUC = 0.626; 95% CI 0.548–0.705;  $p = 0.015$ ; respectively), compared to ICP. This stronger relationship between wICP and outcome held true even when comparing to models with ICP and RAP AUC.

Comparing AUCs via Delong's test indicated that there was no difference between the AUCs for alive/dead outcome association between ICP and wICP. However, wICP demonstrated a statistically significant higher AUC compared to ICP for favorable/unfavorable outcome ( $p = 0.002$ ). Comparing the bivariate models with ICP and RAP AUC to the univariate model with wICP, for both alive/dead and favorable/unfavorable outcomes, the univariate models with wICP alone displayed statistically significant higher AUCs compared to the bivariate models with ICP and RAP AUC ( $p < 0.05$  for all; Delong's test). Figure 3 displays the receiver operating curves for ICP, ICP + RAP AUC above 0.4, and wICP.

**Fig. 1** a, b ICP and wICP across GOSE categories. GOSE = Glasgow Outcome Score—Extended, ICP = intracranial pressure, mmHg = millimeters of Mercury, wICP = compensatory-reserve-weighted ICP ( $wICP = (1 - RAP) \times ICP$ ). \* $p$  values reported are for the Jonckheere-Terpstra test, which was set to assess for statistically significant decreases in mean values of ICP and wICP, with increase GOSE category







**Fig. 2** ICP and wICP across dichotomized 6 to 12 month outcomes. GOSE = Glasgow Outcome Score—Extended, ICP = intracranial pressure, mmHg = millimeters of mercury, wICP = compensatory-reserve-weighted ICP ( $wICP = (1 - RAP) \times ICP$ ). **a** Mean ICP for alive and dead outcomes. **b** Mean ICP for favorable and unfavorable outcomes. **c** Mean wICP for alive and dead outcomes. **d** Mean wICP for favorable

and unfavorable outcomes. Alive/dead dichotomization (alive = GOSE  $\geq 2$ , dead = GOSE 1). Favorable/unfavorable dichotomization (favorable = GOSE 5 to 8, unfavorable = GOSE 1 to 4). \**p* values reported are for Mann-Whitney *U* test, comparing mean values between dichotomized groupings

Finally, comparing the univariate models with wICP to those containing (A) ICP + AMP and (B) ICP + AMP + mean RAP, the univariate models with wICP displayed statistically higher AUCs compared to both the ICP + AMP and the ICP + AMP + mean RAP models for favorable/unfavorable dichotomized outcomes ( $p < 0.05$  for both; DeLong's test). However, there was no significant difference between models for the alive/dead dichotomization, despite a trend to higher AUC values for the univariate wICP model compared to both the ICP + AMP and ICP + AMP + RAP models. Table 2 summarizes all AUC, 95% confidence intervals, and *p* values for the multi-variable models.

## Discussion

Using data from a multicenter study, this manuscript confirms the conceptual basis for wICP measurement and demonstrates its ability to better discriminate mortality and functional outcome when compared to conventional ICP measurement in adult moderate/severe TBI. Two important aspects of our results deserve highlighting.

First, we have been able to confirm the association between wICP and mortality displayed in the previous publication on the topic using a multi-center data set. This provides

validating evidence that wICP may provide important information, potentially beyond what ICP can provide, with lower wICP values associated with reduced mortality. This was exemplified in the stronger association between wICP and both dichotomized 6- to 12-month outcomes. While these data provide important insights into cerebrovascular physiology, the data do not, as yet, allow us to recommend adoption of wICP as a clinically used measure at this time.

Second, we have been able to display the strong association between wICP and favorable/unfavorable outcome, as demonstrated using ULR and during the multi-variable models tested. This is an important finding, as regardless of how wICP was compared to ICP, the statistical association between wICP and favorable/unfavorable outcome was in favor of wICP, with lower wICP values associated with favorable 6- to 12-month outcome. However, as with the association between wICP and mortality, these results should be considered preliminary and the use of wICP as a clinically monitored variable cannot be justified at this time.

## Limitations

Despite the promising results displayed, there are some important limitations to highlight. First, despite the data from the CENTER-TBI high-resolution cohort being collected in a prospective manner, the treatments and therapies received by the

**Table 2** Univariate/bivariate logistic regression analysis for IMPACT core and physiologic variables

Variable	A/D AUC (95% CI)	<i>p</i> value	F/U AUC (95% CI)	<i>p</i> value
Age	0.737 (0.652–0.737)	< 0.0001	0.680 (0.605–0.754)	< 0.0001
Admission GCS Motor	0.559 (0.409–0.612)	0.160	0.576 (0.497–0.655)	0.022
Admission Pupil Reactivity	0.440 (0.336–0.524)	0.196	0.440 (0.372–0.507)	0.228
Mean ICP	0.642 (0.538–0.746)	< 0.0001	0.495 (0.413–0.577)	0.059
Mean AMP	0.671 (0.567–0.775)	< 0.0001	0.527 (0.445–0.609)	0.045
Mean RAP*	0.669 (0.575–0.762)	0.002	0.659 (0.582–0.735)	0.0007
Mean RAP AUC Above 0	0.619 (0.526–0.712)	0.015	0.495 (0.413–0.576)	0.359
Mean RAP AUC above + 0.4	0.635 (0.544–0.727)	0.007	0.539 (0.458–0.620)	0.137
wICP	0.712 (0.615–0.810)	0.0002	0.627 (0.548–0.705)	0.015
<u>Multi-variable models</u>				
ICP + RAP AUC Above 0	0.618 (0.525–0.711)	< 0.0001	0.495 (0.414–0.577)	0.126
ICP + RAP AUC above + 0.4	0.633 (0.541–0.724)	< 0.0001	0.538 (0.457–0.619)	0.069
ICP + AMP	0.657 (0.553–0.760)	0.007	0.508 (0.426–0.590)	0.222
ICP + AMP + mean RAP	0.653 (0.548–0.758)	0.0001	0.503 (0.421–0.586)	0.001

Italicized *p* values are those reaching significance (i.e.,  $p < 0.05$ ). \*Despite these mean values of RAP demonstrate significant associations with the dichotomized outcomes, they are difficult to interpret given the nature of RAP. RAP values near 0 can mean both good and poor compensatory reserve, as such, during the averaging process to produce mean values over a recording period, it becomes difficult to interpret the meaning of such measures

AMP pulse amplitude of ICP, A/D alive/dead, AUC area under the receiver operating curve, CI confidence interval, F/U favorable/unfavorable outcome (i.e., favorable = Glasgow Outcome Scale of 5 to 8; unfavorable = Glasgow Outcome Scale of 1 to 4), ICP intra-cranial pressure, IMPACT International Mission for Prognosis and Analysis of Clinical Trials, RAP compensatory reserve index (moving correlation between AMP and ICP), RAP AUC integrated area under the RAP curve over time, wICP compensatory-reserve-weighted ICP ( $wICP = (1 - RAP) \times ICP$ )

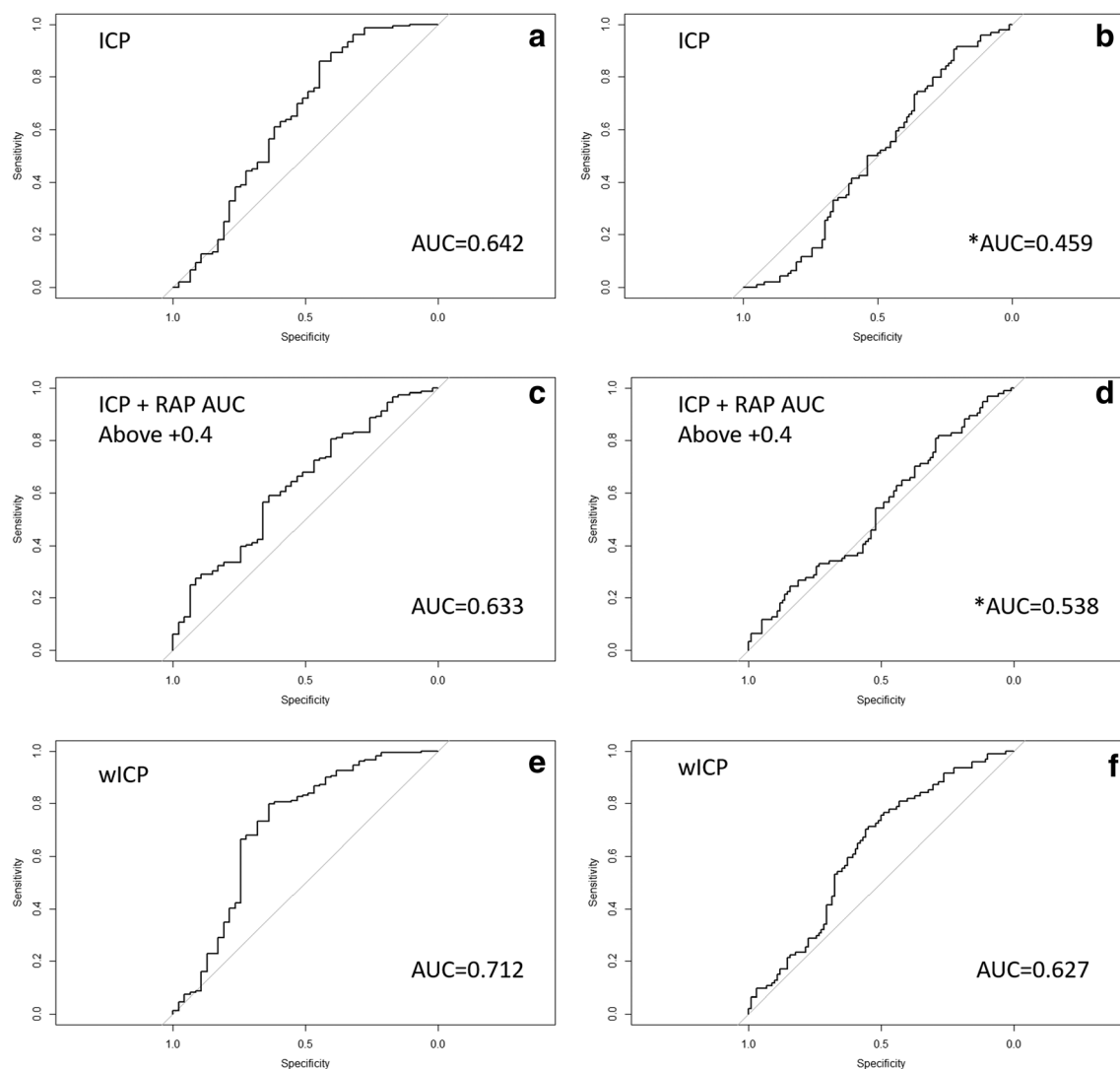
patients for their TBI remains heterogeneous, with both center-to-center and patient-by-patient variation. Such variation in treatment, complication profile, and hospital course could potentially impact the physiologic signals recorded. The potential impact of various ICU therapies on signal response should be emphasized, as this data does not represent the natural history of untreated cerebral physiology in moderate/severe TBI. Thus, ICP-directed treatments, amongst other therapies, may have impacted the physiology recorded. Despite that, the results portrayed in this study parallel those seen in the previous retrospective work on compensatory-reserve-weighted ICP. Furthermore, there exists the potential for within-patient variability of the physiologic signals over time, either in response to individual therapeutic measures, or based on individual physiologic differences between patients. This within-patient variability may have impacted the results seen within the preliminary results presented in this manuscript. As such, they require much further investigation and validation. Future analysis of wICP and RAP will need to account for this and may benefit from more complex time-series techniques, mixed effects, and latent class modelling.

Second, the overall patient numbers with outcome and basic demographics were low at 196. This high-resolution cohort was a small specialty sub-cohort within the larger

CENTER-TBI data collection scheme. While extrapolation to other (or wider) populations of TBI patients remains unproven, we believe that the strength of statistically significant results displayed in this study is important, and warrant further exploration in larger multi-center TBI studies, where such high-frequency physiologic data is collected.

Third, we specifically did not adjust for baseline admission characteristics through multi-variable logistic regression analysis, given the CENTER-TBI study-wide imputation and validation processes for missing data is still ongoing and will be the focus of various other publications and studies, once completed. As such, we can only comment on univariate association with outcome at this time, as the focus was to provide a multi-center validation study for the previous retrospective single-center results from Cambridge. It is possible that through adjusting for baseline admission characteristics, the results may not be as significant. Such multi-variable models will be the focus of future studies from both CENTER-TBI and other high-resolution data sets.

Fourth, despite strong associations with global outcome at 6 to 12 months, and results indicating the wICP may be superior to ICP in outcome association, there are currently no



**Fig. 3** Univariate logistic regression—ICP, ICP + RAP AUC above + 0.4, and wICP receiver operating curves. GOSE = Glasgow Outcome Scale Extended, ICP = intracranial pressure, ULR = univariate logistic regression, wICP = compensatory-reserve-weighted ICP ( $wICP = (1 - RAP) \times ICP$ ). **a** ICP ULR for alive/dead outcome. **b** ICP ULR for favorable/unfavorable outcome. **c** ICP + RAP AUC above + 0.4 ULR

for alive/dead outcome. **d** ICP + RAP AUC above + 0.4 for favorable/unfavorable outcome. **e** wICP ULR for alive/dead outcome. **f** wICP ULR for favorable/unfavorable outcome. Alive/dead dichotomization (alive = GOSE  $\geq 2$ , dead = GOSE 1). Favorable/unfavorable dichotomization (favorable = GOSE 5 to 8, unfavorable = GOSE 1 to 4). \*Indicates AUC reported failed to reach statistical significance in the ULR model

treatment thresholds for wICP in TBI. This lack of treatment thresholds for wICP is in contrast to existing BTF suggested treatment thresholds for ICP. Such analysis of wICP thresholds will need to occur with larger, perhaps combined, prospective and retrospective high-frequency physiologic data sets in TBI patients.

Finally, wICP should still be considered an experimental variable despite the significant results in this study. To date, with this current study, only three works have evaluated compensatory-reserve-weighted ICP, all providing complementary results [2, 6]. Currently, wICP should not replace ICP in monitoring and care of moderate and severe TBI patients. Much further multi-center work is

required to validate this measure as a clinically valuable physiologic parameter in TBI.

## Conclusions

Compensatory-reserve-weighted ICP displays superior outcome association over ICP for both alive/dead and favorable/unfavorable dichotomized outcomes at 6 to 12 months in adult TBI, through univariate analysis. Lower wICP is associated with better global outcomes. The results of this study provide multi-center validation of those seen in



previous single-center studies. Further work is required to identify treatment thresholds for wICP in adult TBI.

**Acknowledgements** CENTER-TBI High Resolution Sub-Study Participants and Investigators:

Audny Anke<sup>1</sup>, Ronny Beer<sup>2</sup>, Bo-Michael Bellander<sup>3</sup>, Andras Buki<sup>4</sup>, Giorgio Chevallard<sup>5</sup>, Arturo Chierogato<sup>5</sup>, Giuseppe Citerio<sup>6, 7</sup>, Endre Czeiter<sup>8</sup>, Bart Depreitere<sup>9</sup>, George Eapen†, Shirin Frisvold<sup>10</sup>, Raimund Helbok<sup>2</sup>, Stefan Jankowski<sup>11</sup>, Daniel Kondziella<sup>12</sup>, Lars-Owe Koskinen<sup>13</sup>, Geert Meyfroidt<sup>14</sup>, Kirsten Moeller<sup>15</sup>, David Nelson<sup>3</sup>, Anna Piippo-Karjalainen<sup>16</sup>, Andreea Radoi<sup>17</sup>, Arminas Ragauskas<sup>18</sup>, Rahul Raj<sup>16</sup>, Jonathan Rhodes<sup>19</sup>, Saulius Rocka<sup>18</sup>, Rolf Rossaint<sup>20</sup>, Juan Sahuquillo<sup>17</sup>, Oliver Sakowitz<sup>21, 22</sup>, Ana Stevanovic<sup>20</sup>, Nina Sundström<sup>23</sup>, Riikka Takala<sup>24</sup>, Tomas Tamosiutis<sup>25</sup>, Olli Tenovuo<sup>26</sup>, Peter Vajkoczy<sup>27</sup>, Alessia Vargiolu<sup>6</sup>, Rimantas Vilcinis<sup>28</sup>, Stefan Wolf<sup>29</sup>, Alexander Younsi<sup>22</sup>.

<sup>1</sup> Department of Physical Medicine and Rehabilitation, University hospital Northern Norway.

<sup>2</sup> Department of Neurology, Neurological Intensive Care Unit, Medical University of Innsbruck, Innsbruck, Austria.

<sup>3</sup> Department of Neurosurgery & Anesthesia & intensive care medicine, Karolinska University Hospital, Stockholm, Sweden.

<sup>4</sup> Department of Neurosurgery, University of Pecs and MTA-PTE Clinical Neuroscience MR Research Group and Janos Szentagothai Research Centre, University of Pecs, Hungarian Brain Research Program, Pecs, Hungary.

<sup>5</sup> NeuroIntensive Care, Niguarda Hospital, Milan, Italy.

<sup>6</sup> NeuroIntensive Care Unit, Department of Anesthesia & Intensive Care, ASST di Monza, Monza, Italy.

<sup>7</sup> School of Medicine and Surgery, Università Milano Bicocca, Milano, Italy.

<sup>8</sup> Department of Neurosurgery, University of Pecs and MTA-PTE Clinical Neuroscience MR Research Group and Janos Szentagothai Research Centre, University of Pecs, Hungarian Brain Research Program (Grant No. KTIA 13 NAP-A-II/8), Pecs, Hungary.

<sup>9</sup> Department of Neurosurgery, University Hospitals Leuven, Leuven, Belgium.

<sup>10</sup> Department of Anesthesiology and Intensive care, University Hospital Northern Norway, Tromsø, Norway.

<sup>11</sup> Neurointensive Care, Sheffield Teaching Hospitals NHS Foundation Trust, Sheffield, UK.

<sup>12</sup> Departments of Neurology, Clinical Neurophysiology and Neuroanesthesiology, Region Hovedstaden Rigshospitalet, Copenhagen, Denmark.

<sup>13</sup> Department of Clinical Neuroscience, Neurosurgery, Umea University Hospital, Umea, Sweden.

<sup>14</sup> Intensive Care Medicine, University Hospitals Leuven, Leuven, Belgium.

<sup>15</sup> Department Neuroanesthesiology, Region Hovedstaden Rigshospitalet, Copenhagen, Denmark.

<sup>16</sup> Helsinki University Central Hospital, Helsinki, Finland.

<sup>17</sup> Department of Neurosurgery, Vall d'Hebron University Hospital, Barcelona, Spain.

<sup>18</sup> Department of Neurosurgery, Kaunas University of technology and Vilnius University, Vilnius, Lithuania.

<sup>19</sup> Department of Anaesthesia, Critical Care & Pain Medicine NHS Lothian & University of Edinburgh, Edinburgh, UK.

<sup>20</sup> Department of Anaesthesiology, University Hospital of Aachen, Aachen, Germany.

<sup>21</sup> Klinik für Neurochirurgie, Klinikum Ludwigsburg, Ludwigsburg, Germany.

<sup>22</sup> Department of Neurosurgery, University Hospital Heidelberg, Heidelberg, Germany.

<sup>23</sup> Department of Radiation Sciences, Biomedical Engineering, Umea University Hospital, Umea, Sweden.

<sup>24</sup> Perioperative Services, Intensive Care Medicine, and Pain Management, Turku University Central Hospital and University of Turku, Turku, Finland.

<sup>25</sup> Neuro-intensive Care Unit, Kaunas University of Health Sciences, Kaunas, Lithuania.

<sup>26</sup> Rehabilitation and Brain Trauma, Turku University Central Hospital and University of Turku, Turku, Finland.

<sup>27</sup> Neurologie, Neurochirurgie und Psychiatrie, Charité – Universitätsmedizin Berlin, Berlin, Germany.

<sup>28</sup> Department of Neurosurgery, Kaunas University of Health Sciences, Kaunas, Lithuania.

<sup>29</sup> Interdisciplinary Neuro Intensive Care Unit, Charité – Universitätsmedizin Berlin, Berlin, Germany

**Funding** Data used in preparation of this manuscript were obtained in the context of CENTER-TBI, a large collaborative project with the support of the European Union 7th Framework program (EC grant 602150). Additional funding was obtained from the Hannelore Kohl Stiftung (Germany), from OneMind (USA) and from Integra LifeSciences Corporation (USA).

DKM was also supported by funding from the National Institute for Health Research (NIHR, UK) through a Senior Investigator award and the Cambridge Biomedical Research Centre at the Cambridge University Hospitals NHS Foundation Trust. The study also received additional support from the NIHR Clinical Research network. The views expressed are those of the authors and not necessarily those of the NHS, the NIHR or the Department of Health and Social Care, UK.

FAZ has received salary support for dedicated research time, during which part of this project was completed. Such salary support came from the Cambridge Commonwealth Trust Scholarship, the University of Manitoba Clinician Investigator Program, and the Royal College of Surgeons of Canada – Harry S. Morton Travelling Fellowship in Surgery. FAZ receives research support from the University of Manitoba Thorlakson Chair in Surgical Research Establishment Fund, the University of Manitoba Research Investment Fund (RIF), and the University of Manitoba Rudy Falk Clinician-Scientist Professorship Award.

PS and MC receive part of licensing fees for the software ICM+ (Cambridge Enterprise Ltd., UK) used for data collection and analysis in this study.

## Compliance with ethical standards

**Conflict of interest** Funding was obtained from the Hannelore Kohl Stiftung (Germany), from OneMind (USA) and from Integra LifeSciences Corporation (USA). PS and MC receive part of licensing fees for the software ICM+ (Cambridge Enterprise Ltd., UK) used for data collection and analysis in this study. All other authors certify that they have no affiliations with or involvement in any organization or entity with any financial interest (such as honoraria; educational grants; participation in speakers' bureaus; membership, employment, consultancies, stock ownership, or other equity interest; and expert testimony or patent-licensing arrangements), or non-financial interest (such as personal or professional relationships, affiliations, knowledge or beliefs) in the subject matter or materials discussed in this manuscript.

**Ethical approval** All procedures performed in studies involving human participants were in accordance with the ethical standards of the institutional and/or national research committee for each participating center and with the 1964 Helsinki declaration and its later amendments or comparable ethical standards.

**Informed consent** Informed consent was obtained from all individual participants included in the study.

Data used in these analyses were collected as part of the CENTER-TBI study which had individual national or local regulatory approval; the UK Ethics approval is provided as an exemplar: (IRAS No: 150943; REC 14/SC/1370). The CENTER-TBI study (EC grant 602,150) has been conducted in accordance with all relevant laws of the EU if directly applicable or of direct effect and all relevant laws of the country where the recruiting sites were located, including but not limited to, the relevant privacy and data protection laws and regulations (the “Privacy Law”), the relevant laws and regulations on the use of human materials, and all relevant guidance relating to clinical studies from time to time in force including, but not limited to, the ICH Harmonised Tripartite Guideline for Good Clinical Practice (CPMP/ICH/135/95) (“ICH GCP”) and the World Medical Association Declaration of Helsinki entitled “Ethical Principles for Medical Research Involving Human Subjects”. Informed consent by the patients and/or the legal representative/next of kin was obtained, accordingly to the local legislations, for all patients recruited in the Core Dataset of CENTER-TBI and documented in the e-CRF.


**Open Access** This article is distributed under the terms of the Creative Commons Attribution 4.0 International License (<http://creativecommons.org/licenses/by/4.0/>), which permits unrestricted use, distribution, and reproduction in any medium, provided you give appropriate credit to the original author(s) and the source, provide a link to the Creative Commons license, and indicate if changes were made.

## References

- Adams H, Donnelly J, Czosnyka M, Koliass AG, Helmy A, Menon DK, Smielewski P, Hutchinson PJ (2017) Temporal profile of intracranial pressure and cerebrovascular reactivity in severe traumatic brain injury and association with fatal outcome: an observational study. *PLoS Med* 14(7):e1002353
- Calviello L, Donnelly J, Cardim D, Robba C, Zeiler FA, Smielewski P, Czosnyka M (2018) Compensatory-reserve-weighted intracranial pressure and its association with outcome after traumatic brain injury. *Neurocrit Care* 28(2):212–220. <https://doi.org/10.1007/s12028-017-0475-7>
- Carney N, Totten AM, O’Reilly C et al (2017) Guidelines for the management of severe traumatic brain injury, Fourth Edition. *Neurosurgery* 80(1):6–15
- Czosnyka M, Guazzo E, Whitehouse M, Smielewski P, Czosnyka Z, Kirkpatrick P, Piechnik S, Pickard JD (1996) Significance of intracranial pressure waveform analysis after head injury. *Acta Neurochir* 138(5):531–541 discussion 541–542
- Czosnyka M, Smielewski P, Timofeev I, Lavinio A, Guazzo E, Hutchinson P, Pickard JD (2007) Intracranial pressure: more than a number. *Neurosurg Focus* 22(5):E10
- Czosnyka M, Steiner L, Balestreri M, Schmidt E, Smielewski P, Hutchinson PJ, Pickard JD (2005) Concept of “true ICP” in monitoring and prognostication in head trauma. *Acta Neurochir Suppl* 95:341–344
- Doiron D, Marcon Y, Fortier I, Burton P, Ferretti V (2017) Software Application Profile: Opal and Mica: open-source software solutions for epidemiological data management, harmonization and dissemination. *Int J Epidemiol* 46(5):1372–1378
- AIR M, Menon DK, Steyerberg EW, Citerio G, Lecky F, Manley GT, Hill S, Legrand V, Sorgner A, CENTER-TBI Participants and Investigators (2015) Collaborative European NeuroTrauma Effectiveness Research in Traumatic Brain Injury (CENTER-TBI): a prospective longitudinal observational study. *Neurosurgery* 76(1):67–80
- Sorrentino E, Diedler J, Kasprowicz M et al (2012) Critical thresholds for cerebrovascular reactivity after traumatic brain injury. *Neurocrit Care* 16(2):258–266
- Steyerberg EW, Mushkudiani N, Perel P et al (2008) Predicting outcome after traumatic brain injury: development and international validation of prognostic scores based on admission characteristics. *PLoS Med* 5(8):e165 discussion e165
- Yuan Q, Wu X, Sun Y, Yu J, Li Z, Du Z, Mao Y, Zhou L, Hu J (2015) Impact of intracranial pressure monitoring on mortality in patients with traumatic brain injury: a systematic review and meta-analysis. *J Neurosurg* 122(3):574–587
- Zeiler FA, Kim D-J, Cabeleira M, Calviello L, Smielewski P, Czosnyka M (2018) Impaired cerebral compensatory reserve is associated with admission imaging characteristics of diffuse insult in traumatic brain injury. *Acta Neurochir (Wien)* 160(12):2277–2287. <https://doi.org/10.1007/s00701-018-3681-y>

**Publisher’s note** Springer Nature remains neutral with regard to jurisdictional claims in published maps and institutional affiliations.

## Affiliations

Frederick A. Zeiler<sup>1,2,3</sup>  · Ari Ercole<sup>1</sup> · Manuel Cabeleira<sup>3</sup> · Erta Beqiri<sup>3,4</sup> · Tommaso Zoerle<sup>5</sup> · Marco Carbonara<sup>5</sup> · Nino Stocchetti<sup>4,5</sup> · David K. Menon<sup>1</sup> · Peter Smielewski<sup>3</sup> · Marek Czosnyka<sup>3,6</sup>

<sup>1</sup> Division of Anaesthesia, Addenbrooke’s Hospital, University of Cambridge, Cambridge, UK

<sup>2</sup> Department of Surgery, Rady Faculty of Health Sciences, University of Manitoba, Winnipeg, MB R3A 1R9, Canada

<sup>3</sup> Brain Physics Laboratory, Division of Neurosurgery, Addenbrooke’s Hospital, University of Cambridge, Cambridge, UK

<sup>4</sup> Department of Physiopathology and Transplantation, Milan University, Milan, Italy

<sup>5</sup> Neuro ICU Fondazione IRCCS Cà Granda Ospedale Maggiore Policlinico Milan, Milan, Italy

<sup>6</sup> Institute of Electronic Systems, Warsaw University of Technology, Warsaw, Poland