

RESEARCH ARTICLE

# Microseminoprotein-Beta Expression in Different Stages of Prostate Cancer

Liisa Sjöblom<sup>1,2</sup>, Outi Saramäki<sup>1,2</sup>, Matti Annala<sup>1</sup>, Katri Leinonen<sup>1,2</sup>, Janika Nättinen<sup>1</sup>, Teemu Tolonen<sup>3</sup>, Tiina Wahlfors<sup>1</sup>, Matti Nykter<sup>1</sup>, G. Steven Bova<sup>1</sup>, Johanna Schleutker<sup>1</sup>, Teuvo L. J. Tammela<sup>4,5</sup>, Hans Lilja<sup>1,6,7,8\*</sup>, Tapio Visakorpi<sup>1,2</sup>

**1** Prostate Cancer Research Center, Institute of Biosciences and Medical Technology (BioMediTech), University of Tampere, Tampere, Finland, **2** Fimlab Laboratories, Tampere University Hospital, Tampere, Finland, **3** Department of Pathology, Fimlab Laboratories, Tampere University Hospital, Tampere, Finland, **4** Prostate Cancer Research Center, School of Medicine, University of Tampere, Tampere, Finland, **5** Department of Urology, Tampere University Hospital, Tampere, Finland, **6** Departments of Laboratory Medicine, Surgery, and Medicine, Memorial Sloan Kettering Cancer Center, New York, United States of America, **7** Nuffield Department of Surgical Sciences, University of Oxford, Oxford, United Kingdom, **8** Department of Translational Medicine, Lund University, Malmö, Sweden

\* [liljah@mskcc.org](mailto:liljah@mskcc.org)



OPEN ACCESS

**Citation:** Sjöblom L, Saramäki O, Annala M, Leinonen K, Nättinen J, Tolonen T, et al. (2016) Microseminoprotein-Beta Expression in Different Stages of Prostate Cancer. PLoS ONE 11(3): e0150241. doi:10.1371/journal.pone.0150241

**Editor:** Irina U Agoulnik, Florida International University, UNITED STATES

**Received:** October 30, 2015

**Accepted:** February 2, 2016

**Published:** March 3, 2016

**Copyright:** © 2016 Sjöblom et al. This is an open access article distributed under the terms of the [Creative Commons Attribution License](https://creativecommons.org/licenses/by/4.0/), which permits unrestricted use, distribution, and reproduction in any medium, provided the original author and source are credited.

**Data Availability Statement:** All relevant data are within the paper and its Supporting Information files.

**Funding:** The work was supported by grants from the Finnish Funding Agency for Technology and Innovation Finland Distinguished Professor program, the Academy of Finland, the Cancer Society of Finland, the Sigrid Juselius Foundation, the Medical Research Fund of Tampere University Hospital, the National Cancer Institute at the National Institutes of Health (R01 CA160816, R01 CA175491); the Sidney Kimmel Center for Prostate and Urologic Cancers; David H. Koch through the Prostate Cancer Foundation; the National Institute for Health Research

## Abstract

Microseminoprotein-beta (MSMB, *MSMB*) is an abundant secretory protein contributed by the prostate, and is implicated as a prostate cancer (PC) biomarker based on observations of its lower expression in cancerous cells compared with benign prostate epithelium. However, as the current literature on MSMB is inconsistent, we assessed the expression of MSMB at the protein and mRNA levels in a comprehensive set of different clinical stages of PC. Immunohistochemistry using monoclonal and polyclonal antibodies against MSMB was used to study protein expression in tissue specimens representing prostatectomies ( $n = 261$ ) and in diagnostic needle biopsies from patients treated with androgen deprivation therapy (ADT) ( $n = 100$ ), and in locally recurrent castration-resistant PC (CRPC) ( $n = 105$ ) and CRPC metastases ( $n = 113$ ). The transcript levels of *MSMB*, nuclear receptor co-activator 4 (*NCOA4*) and *MSMB-NCOA4* fusion were examined by qRT-PCR in prostatectomy samples and by RNA-sequencing in benign prostatic hyperplasia, PC, and CRPC samples. We also measured serum MSMB levels and genotyped the single nucleotide polymorphism rs10993994 using DNA from the blood of 369 PC patients and 903 controls. MSMB expression in PC (29% of prostatectomies and 21% of needle biopsies) was more frequent than in CRPC (9% of locally recurrent CRPCs and 9% of CRPC metastases) ( $p < 0.0001$ ). Detection of MSMB protein was inversely correlated with the Gleason score in prostatectomy specimens ( $p = 0.024$ ). The read-through *MSMB-NCOA4* transcript was detected at very low levels in PC. MSMB levels in serum were similar in cases of PC and controls but were significantly associated with PC risk when adjusted for age at diagnosis and levels of free or total PSA ( $p < 0.001$ ). Serum levels of MSMB in both PC patients and controls were significantly associated with the rs10993994 genotype ( $p < 0.0001$ ). In conclusion, decreased expression of MSMB parallels the clinical progression of PC and adjusted serum MSMB levels are associated with PC risk.

(NIHR) Oxford Biomedical Research Centre Program; the Cancer Research UK Oxford Centre; the Swedish Cancer Society (project no. 14-0722); and Fundacion Federico SA as well as by University of Tampere.

**Competing Interests:** Hans Lilja holds patents for free PSA (US 5,501,983), hK2 (U.S. Patent No. US 5,614,372), and intact PSA (U.S. Patent No. US 7,872,104 B2) assays, and is named on a patent application for a statistical method to detect prostate cancer. The assay patents and the patent application for the statistical model have been licensed and commercialized by OPKO and Dr. Lilja receives royalties from sales of these tests. Dr. Lilja owns stock in OPKO. Others do not disclose any COIs.

## Introduction

Prostate cancer (PC) is the second most common cancer among men worldwide [1]. Measurements of prostate specific antigen (PSA) in blood are widely used to detect men at PC-risk and monitor men with PC. Due to low test-specificity at moderately elevated levels, indiscriminate use of PSA-testing results in large number of unnecessary biopsies and over-diagnosis with a consequent risk of overtreatment [2,3]. Hence, there is an urgent need for additional biomarkers that can provide enhanced specificity for the early detection of aggressive, lethal forms of the disease.

Microseminoprotein-beta (*MSMB*, MSMB aka MSP, PSP94) is one of the three most abundant proteins secreted by the prostate, along with PSA and prostatic acid phosphatase (PAP) [4]. Several studies have shown higher MSMB expression in normal and benign prostate tissue than in cancerous tissue [4–7]. Observations of higher MSMB expression in benign prostate tissue prompted some investigators to suggest that MSMB has a tumor suppressive role in PC [8]. Functional studies *in vivo* and *in vitro* also suggest a tumor suppressive role for MSMB [9]. Levels of MSMB in serum and urine have also been shown to be lower in PC patients than in controls [10]. Positive MSMB expression has been reported to associate with favorable prognosis in needle biopsies [11] and loss of MSMB staining has been shown to be associated with shorter time to biochemical recurrence in clinically localized PC [7]. By contrast, increased MSMB expression in prostatectomy specimens has been suggested to be associated with unfavorable disease outcomes [12]. Thus, the prognostic significance of MSMB expression in prostate tissue remains controversial.

It has been shown that the serum level of MSMB is associated with a single nucleotide polymorphism (SNP) in rs10993994 in the promoter region of *MSMB*, the gene encoding for MSMB [13,14]. The T allele of the SNP rs10993994 has also been associated with PC risk [15,16], which has been replicated in multiple studies [17–19]. Still, there is evidence of an association between low levels of MSMB in serum and increased risk of PC regardless of the rs10993994 genotype [20].

Published data on the regulation of *MSMB* expression by androgens are inconsistent. Some studies have shown that MSMB expression is independent of androgens [21,22]. However, Dahlman and co-authors [23] found that the *MSMB* transcript and MSMB protein were both significantly reduced after short-term androgen deprivation therapy (ADT). Enhancer of zeste homologue-2 (*EZH2*), a known epigenetic silencer of gene expression, has been suggested to silence *MSMB* expression in advanced PC [24]. *EZH2* has also been shown to be overexpressed in late-stage PC [25].

The *MSMB* gene is located on chromosome 10q11.2 [26]. A read-through fusion transcript combining *MSMB* with adjacent gene nuclear receptor co-activator 4 (*NCOA4*) has recently been demonstrated by Nacu et al. [27] and confirmed in PC tissue and normal prostate tissue by Lou et al. [28]. They also reported that the *MSMB-NCOA4* fusion gene includes androgen response elements (ARE) suggesting that the fusion gene could be regulated by androgens. *NCOA4* (aka *ARA70*) encodes an AR-associated protein that increases the transcriptional activity of AR in prostate cells [29]. It has been suggested that *MSMB-NCOA4* fusion could have a role in PC due to the important roles of *MSMB* in prostate tissue and of *NCOA4* as an enhancer of AR activity [27].

Due to the inconsistent data on the tissue expression of MSMB/*MSMB* in the prostate we wanted to evaluate protein expression by immunohistochemistry (IHC) in comprehensive cohorts of PC representing hormone-naïve localized and advanced disease, as well as locally recurrent castration resistant PC (CRPC) and CRPC metastases. Additionally, transcript levels of *MSMB*, *NCOA4* and *MSMB-NCOA4* were studied to evaluate the significance of the read-

through fusion transcript. Finally, serum levels of MSMB as well as rs10993994 genotype were analyzed in a cohort of PC patients and controls.

## Materials and Methods

### Clinical tumor samples

Prostatectomy, needle biopsy and locally recurrent CRPC tissue specimens as well as serum samples were obtained from Tampere University Hospital (TAUH). The samples were de-identified and analyzed anonymously. The use of the prospectively collected samples was approved by the Ethical committee of the Tampere University Hospital and the written informed consent was obtained from the patients. The approval for use of retrospective collection of tissue samples without informed consent was obtained from the National Authority for Medicolegal Affairs according to the Finnish law. The use of CRPC metastases was approved by the Johns Hopkins Medicine Institutional Review Board, and written informed consent was obtained from the subjects. All samples used for IHC were formalin-fixed, paraffin-embedded (FFPE) samples. Tissue microarray (TMA) slides were created from the prostatectomy and CRPC samples.

**Prostatectomy samples.** MSMB expression was evaluated with IHC in 261 prostatectomy specimens. The characteristics of the cohort are shown in [S1 Table](#). The same prostatectomy specimens have previously been analyzed for Ki-67 and EZH2 [25]. Disease progression was defined according to the blood PSA level, with biochemical recurrence (BCR) defined as a PSA level  $\geq 0.5$  ng/ml in two consecutive blood draws.

**Needle biopsy specimens.** The needle biopsy cohort consisted of 99 diagnostic needle biopsies from patients who subsequently received primary ADT. The Gleason score and treatment information are presented in [S2 Table](#). The same specimens have previously been analyzed for Ki-67- and EZH2-immunohistochemistry [30]. Disease progression was defined by PSA measurements in two consecutive blood draws being 25% above nadir with an absolute increase of  $\geq 2$  ng/ml above nadir or development of new metastases [30,31].

**Locally recurrent CRPC samples.** Transurethral resection of the prostate (TURP) specimens of 105 men with evidence of disease progression during ADT. Treatment information is shown in [S2 Table](#).

**CRPC metastases.** One hundred and thirteen CRPC metastases were collected from 32 patients who died of CRPC and underwent rapid autopsy. All patients had been treated with ADT. The same metastases have also been analyzed for Ki-67 and EZH2 [25].

**Prostatectomy cohort for qRT-PCR analyses.** Seventy-six freshly frozen prostatectomy specimens containing a minimum of 70% cancerous cells were used for qRT-PCR analysis. The characteristics of the cohort are presented in [S1 Table](#). TRI-reagent (Molecular Research Center Inc., Cincinnati, OH, USA) was used to isolate total RNA from the freshly frozen clinical samples and cell lines according to the manufacturer's instructions.

**RNA-sequencing cohorts.** Data from freshly frozen tumor material from 12 benign prostatic hyperplasia (BPH) samples, 28 hormone-naïve prostatectomy specimens and 13 CRPCs [32] as well as 301 samples, including 251 cancerous samples and 45 adjacent normal tissue samples from the Cancer Genome Atlas (TCGA)- cohort, were used for evaluating the expression levels of *MSMB*, *NCOA4* and *MSMB-NCOA4*.

### Immunohistochemistry

All FFPE-samples were stained with a monoclonal MSMB antibody (ab19070; Abcam, Cambridge, UK), and the prostatectomy- and CRPC-specimens were also stained with a polyclonal MSMB antibody (4). For the staining, Power Vision<sup>+</sup> Poly-HRP IHC kit (ImmunoLogic, AD,

Duiven, Netherlands) was used according to the manufacturer's instructions. Briefly, samples were first deparaffinized and heat treated in pH 6 TriSodium citrate-buffer, containing 0.05% Tween. Sections were incubated overnight with the diluted primary antibody. For the mouse-derived commercial MSMB antibody, samples were blocked in post-blocking solution and were then incubated with poly-HRP-solution. UltraVision Detection System (Thermo Fischer Scientific Inc., Waltham, MA, USA) was used for the visualization of the bound primary antibody. Negative control without the primary antibody was included in all stainings. Slides were scanned with Aperio ScanScope XT scanner (Aperio Technologies, Inc., Vista, CA, USA). Scoring was performed in a blinded fashion using a virtual microscope (<http://jvsmicroscope.uta.fi>). Intensity and percentage of the stained tumor area was evaluated. Expression of MSMB was considered high when 20% or more of the tumor tissue was stained with an intensity of at least 1 on an intensity scale of 0–3. Mean values of Ki-67 defined low and high expression of Ki-67. EZH2 expression was defined as high when >50% of the tumor cells were stained.

### qRT-PCR for *MSMB*, *NCOA4* and *MSMB-NCOA4* and sequencing of *MSMB-NCOA4*

The SYBR Green assay (Thermo Fischer Scientific Inc., Waltham, MA, USA) was used according to the manufacturer's protocol to detect the mRNA expression levels of *MSMB*, *NCOA4* and the *MSMB-NCOA4* fusion. The sequences for the primers were obtained from Lou et al. [28]. Thermal cycles were as follows: 95°C for 5 min., 95°C for 10 sec., annealing temperature 59°C (for *MSMB*), 62°C (for *NCOA4*) and 59.5°C (for *MSMB-NCOA4*) for 30 sec. and 72°C for 20 sec. The gene encoding the TATA-box binding protein (*TBP*) was used for normalization. Finally, PCR-products were separated on 1% agarose gels to confirm the specificity of the reaction. The *MSMB-NCOA4* fusion product was sequenced to confirm the presence of fusion. For the sequencing, PCR-products were extracted from the gel and purified with a QIAquick kit (QIAGEN Inc., Valencia, CA, USA) according to manufacturer's protocol. Purified PCR-product was cloned using a TOPO-TA cloning kit (Life Technologies, Carlsbad, CA, USA). A Big-Dye terminator sequencing kit (Applied Biosystems, Foster City, CA, USA) was used for the sequencing reactions. In data analyses, median values were used as a limit between high and low expression of the mRNA levels of *MSMB*, *NCOA4* and *MSMB-NCOA4*.

### Genotyping the SNP rs10993994 in germ-line DNA and measurement of serum MSMB levels

Measurement of the serum MSMB levels and genotyping of rs10993994 were performed from 369 PC patients and 903 adult male age-matched ( $\pm$  two years) control subjects referred to the Department of Urology without evidence of PC. The characteristics of the cases are presented in S3 Table. The SNP rs10993994 was genotyped from the DNA samples using the Sequenom MassARRAY (Sequenom Inc., San Diego, CA, USA) system at the Institute for Molecular Medicine Finland (FIMM). Immunoassay measurements of MSMB were conducted on the Auto-Delfia 1235 automatic immunoassay system (PerkinElmer, Waltham, MA, USA) at Dr. Lilja's laboratory at Wallenberg Research Laboratories, Department of Translational Medicine, Lund University, Skåne University Hospital, Malmö, Sweden as previously described [20,33,34]. Free and total PSA were measured using the dual-label DELFIA Prostatus total/free PSA-Assay (PerkinElmer, Turku, Finland) [35] calibrated against the WHO 96/670 (PSA-WHO) and WHO 68/668 (free PSA-WHO) standards. All assay measurements were conducted with samples blinded to outcome.

## Statistical analyses

Fisher's exact test, the Chi-squared test, the Mann-Whitney U-test and unpaired t-tests were used to analyze the association between MSMB, *MSMB*, *NCOA4* and *MSMB-NCOA4* expression and different clinico-pathological and expression variables. Paired t-tests were used to analyze differences between the expression levels of *MSMB*, *NCOA4* and *MSMB-NCOA4*. Kaplan-Meier analysis of progression free survival was used to analyze the prognostic significance of MSMB expression in different cohorts with the Mantel-Cox test. Fisher's exact test and the Kappa-test were applied when comparing results obtained using the commercial MSMB antibody and those obtained with our polyclonal MSMB antibody. The Mann-Whitney U-test was used to compare the serum levels of MSMB and PSA between PC patients and controls. The data were analyzed with analysis of covariance (ANCOVA) to examine the association of PC and serum MSMB levels, adjusted for age at diagnosis and free PSA or total PSA. Both MSMB and PSA variables were log transformed. Logistic regression analysis was performed, also with SPSS, to study the association between the serum MSMB level and PC risk indicated by the Gleason score and the stage of PC. Spearman correlation was used to study correlation between free, total and free to total PSA levels and the MSMB level in blood of patients and controls. The Kruskal-Wallis test was used to analyze associations between serum MSMB level and the genotype of the SNP rs10993994. Spearman correlation was used to analyze correlation between the serum MSMB level and age at diagnosis.

## Results

### Comparison of the monoclonal and polyclonal MSMB antibodies

Prostatectomy and locally recurrent CRPC samples were stained with both a rabbit polyclonal MSMB antibody as described by Abrahamsson et al. [4] and a commercial monoclonal MSMB antibody (ab19070, Abcam, Cambridge, UK). Both staining intensity and area of cancerous tissue were assessed in scoring with MSMB expression defined as positive when 20% or more of the tumor area had staining intensity from 1 to 3. Staining results with the monoclonal and polyclonal antibodies were similar. Eighty percent of the prostatectomy samples manifesting low level MSMB expression stained with the polyclonal MSMB antibody also showed low level MSMB expression when stained with the monoclonal antibody ( $\kappa = 0.559$ ,  $p < 0.0001$ ; Table 1). In CRPC samples, the staining results were even more consistent between polyclonal and monoclonal MSMB antibodies ( $\kappa = 0.77$ ,  $p < 0.0001$ ; Table 1). Due to the consistent nature of the staining, all other samples were stained only with the monoclonal antibody.

### Prostatectomy specimens

MSMB was heterogeneously expressed in the cytoplasm of the malignant prostate epithelium with distinct intensity differences observed in separate carcinomatous glands of the same specimen. Benign glands were commonly stained with high intensity, whereas cancerous glands only rarely showed high staining intensity and MSMB expression was commonly low (Fig 1). MSMB was expressed at a high level in 29% (75/261) of the cancerous tissue in prostatectomy specimens. Cancerous lesions had staining intensity of 0 in 89% (166/186) of the prostatectomy specimens, which was defined as low level expression of MSMB. MSMB expression tended to be inversely associated with the Gleason score but not with the Gleason grade ( $p = 0.0544$  and  $0.1669$ , respectively, Table 2). High MSMB expression was observed in 52/178 cases (29%) of the pT2 samples and 21/82 cases (26%) in pT3 samples (Table 2). There was no association between MSMB expression and diagnostic PSA levels or between MSMB expression and age ( $p = 0.8248$ ;  $0.2563$ , respectively; Table 2).

**Table 1. Comparison of a monoclonal MSMB antibody and polyclonal MSMB antibody.** Prostatectomy and locally recurrent CRPC samples were stained with a rabbit polyclonal MSMB antibody (33) and a commercial monoclonal MSMB antibody (ab19070, Abcam, Cambridge, UK).

Variable	Polyclonal MSMB antibody		p	κ
	Low, n (%)	High, n (%)		
<b>Prostatectomy specimens<sup>1, 2</sup></b>				
Commercial monoclonal MSMB antibody: Low	122(80)	31(20)		
Commercial monoclonal MSMB antibody: High	12(18)	53(82)	<0.0001	0.559
<b>CRPC specimens<sup>1, 2</sup></b>				
Commercial monoclonal MSMB antibody: Low	82(99)	1(1)		
Commercial monoclonal MSMB antibody: High	3(27)	8(73)	<0.0001	0.77

<sup>1</sup>Fisher's exact test

<sup>2</sup>Kappa-test.

doi:10.1371/journal.pone.0150241.t001

Although there was no significant association between MSMB expression and EZH2 expression, EZH2 expression tended to be higher in samples expressing low levels of MSMB ( $p = 0.1040$ ; [Table 2](#)). There was no association between expression of MSMB and expression of the proliferation marker Ki-67 ( $p = 0.2208$ ; [Table 2](#)) or with time to biochemical recurrence ( $p = 0.8997$ ; [S1 Fig](#)).

### Needle biopsy specimens

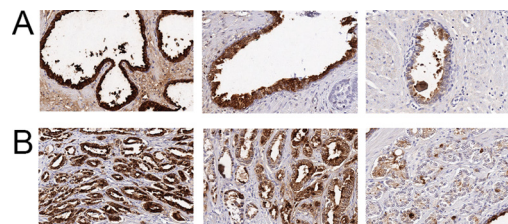
Tissue sections of diagnostic needle biopsy specimens represented a cohort of older patients and/or more advanced disease at diagnosis than the prostatectomy cohort, and which received primary ADT. Twenty-one out of 99 (21%) of the biopsy samples expressed MSMB at a high level ([Table 2](#)), with no association between MSMB expression and Gleason score or T-stage ( $p = 0.7869$ ;  $0.8097$ , respectively; [Table 2](#)). Similarly, there was no association between MSMB expression and the expression of EZH2 or Ki-67 ( $p = 0.4849$  and  $0.4055$ , respectively; [Table 2](#)). Further, cases with high compared to low MSMB expression showed no difference in time to biochemical progression by Kaplan-Meier analysis ( $p = 0.5621$ ; [S1 Fig](#)).

### Locally recurrent CRPC specimens

MSMB expression was high in only 9% (9/105) of locally recurrent CRPC samples ([Table 2](#)), with no association between the expression of MSMB and EZH2 or Ki-67 expression ( $p = 0.1024$ ;  $0.1545$ , respectively; [Table 2](#)).

### CRPC metastases

High MSMB expression was observed in 9% of the cases (3/32) ([Table 2](#)). One out of these three patients had high MSMB expression in 1 out of 2 of his metastases. Another patient had



**Fig 1. MSMB staining using a monoclonal MSMB antibody (ab19070, Abcam, Cambridge, UK).** (A) High, medium and low MSMB staining in normal prostate tissue. (B) High, medium and low MSMB staining in prostate cancer tissue.

doi:10.1371/journal.pone.0150241.g001

**Table 2. Association of MSMB expression with clinicopathological variables and expression of EZH2 and Ki-67.** These results are based on IHC-analysis of different cohorts.

Variable	MSMB expression		p
	Low	High	
Prostatectomy specimens n (%)	186 (71)	75 (29)	
Needle biopsy specimens n (%)	79 (79)	21 (21)	
Locally recurrent CRPCs n (%)	96 (91)	9 (9)	
CRPC metastases (patients) n (%) <sup>1</sup>	29 (91)	3 (9)	<0.0001
CRPC metastases (samples) n (%)	106 (94)	7 (6)	
<b>Prostatectomy specimens:</b>			
Gleason score, n (%) <sup>1</sup>			
≤6	60 (63)	36 (37)	
3+4 (7)	62 (73)	23 (27)	
4+3 (7)	33 (77)	10 (23)	
≥8	29 (83)	5 (15)	0.0544
Gleason grade, n (%) <sup>1</sup>			
2–3	126 (68)	60 (32)	
4	48 (77)	14 (23)	
5	8 (89)	1 (11)	0.1669
pT- stage, n (%) <sup>2</sup>			
pT2	126 (71)	52 (29)	
pT3	61 (74)	21 (26)	0.6562
PSA ng/ml (mean ± SD) <sup>3</sup>	14.1 ± 11.4	17.45 ± 30.6	0.8248
Age (mean ± SD) <sup>4</sup>	63.2 ± 0.4	62.4 ± 0.7	0.2563
EZH2 (mean ± SD) <sup>3</sup>	37.9 ± 24.0	32.4 ± 23.2	0.1040
Ki-67 (mean ± SD) <sup>3</sup>	11.1 ± 14.2	9.0 ± 11.6	0.2208
<b>Needle biopsy specimens:</b>			
Gleason score, n (%) <sup>1</sup>			
≤6	20 (83)	4 (17)	
7	33 (79)	9 (21)	
≥8	25 (76)	8 (24)	0.7869
T stage n (%) <sup>2</sup>			
T2	40 (80)	10 (20)	
T3	38 (78)	11 (22)	0.8097
PSA ng/ml (mean ± SD) <sup>3</sup>	5.4 ± 17.1	2.1 ± 2.4	0.3078
Age (mean ± SD) <sup>4</sup>	73.2 ± 0.79	71.4 ± 1.6	0.3169
Tumor area% (mean ± SD) <sup>5</sup>	30.5 ± 3.0	27.7 ± 5.6	0.6617
EZH2 (mean ± SD) <sup>3</sup>	24.3 ± 19.7	20.7 ± 18.6	0.4849
Ki-67 (mean ± SD) <sup>3</sup>	8.9 ± 0.7	7.6 ± 1.3	0.4055
<b>Locally recurrent CRPCs:</b>			
EZH2 (mean ± SD) <sup>3</sup>	56.8 ± 27.3	42.6 ± 26.3	0.1024
Ki-67 (mean ± SD) <sup>3</sup>	18.4 ± 14.7	11.1 ± 6.6	0.1545
<b>CRPC metastases:</b>			
EZH2 (mean ± SD) <sup>3</sup>	29.6 ± 24.9	36.5 ± 20	0.3295
Ki-67 (mean ± SD) <sup>3</sup>	11.5 ± 13.4	12.9 ± 7.5	0.2412

<sup>1</sup>χ<sup>2</sup> test

<sup>2</sup>Fisher's exact test

<sup>3</sup>Mann Whitney test

<sup>4</sup>Unpaired t test

<sup>5</sup>Unpaired t test with Welch correction. Low MSMB expression: <20% of the cancer tissue was positively stained (with intensity 1–3). High MSMB expression: ≥20% of the cancer tissue was positively stained (with intensity 1–3). EZH2 and Ki-67 were scored according to the stained area of the tumor tissue.

**Table 3. Association of MSMB, NCOA4 and MSMB-NCOA4 expression and the Gleason score, pT- stage and age.** These results are based on Q-RT-PCR-analysis. Means of the normalized values were used as a cut-off value between high and low expression of MSMB, NCOA4 and MSMB-NCOA4. Age refers to age at diagnosis.

Variable	MSMB expression		p	NCOA4 expression		p	MSMB-NCOA4 expression		p
	Low	High		Low	High		Low	High	
Prostatectomy specimens (%) <sup>1</sup>	57 (75)	19 (25)		45 (59)	31 (41)		50 (68)	23 (32)	0.0003
Gleason score, n (%) <sup>2</sup>									
≤6	24 (86)	4 (14)		16 (57)	12 (43)		22 (73)	8 (27)	
7	18 (62)	11 (38)		20 (69)	9 (31)		15 (56)	12 (44)	
≥8	10 (83)	2 (17)	0.0913	10 (83)	2 (17)	0.2577	9 (82)	2 (18)	0.1963
pT- stage, n (%) <sup>3</sup>									
pT2	30 (68)	14 (32)		24 (55)	20 (45)		30 (70)	13 (30)	
pT3	22 (81)	5 (19)	0.2760	19 (63)	11 (37)	0.4819	19 (68)	9 (32)	1.000
Age (mean ± SD) <sup>4</sup>	62.0 ± 0.7	61.5 ± 1.6	0.7511	61.7 ± 0.9	61.8 ± 0.8	0.9071	61.9 ± 0.8	61.8 ± 1.3	0.9089

<sup>1</sup> One-way analysis of variance

<sup>2</sup>  $\chi^2$  test

<sup>3</sup> Fisher's exact test

<sup>4</sup> Unpaired t test.

doi:10.1371/journal.pone.0150241.t003

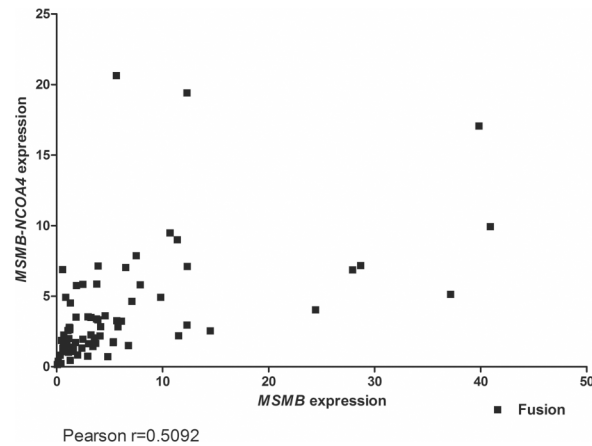
high MSMB expression in 3 of 5 of the metastases, and the third patient in 3 of 4 of the metastases. MSMB was expressed at a high level in 6% (7/112) of all the metastases (Table 2). MSMB expression was not associated with the expression of Ki67 or with EZH2 ( $p = 0.2412$  and  $0.3295$ , respectively; Table 2).

### MSMB, NCOA4 and MSMB-NCOA4 fusion

First, transcripts of MSMB, NCOA4 and the fusion of MSMB-NCOA4 were measured by qRT-PCR in RNA isolated from cancerous tissue in a cohort of patients with clinically localized PC treated with prostatectomy ( $n = 76$ ). The data had a non-Gaussian distribution, with most samples showing below- average MSMB expression and only 25% (19/76) of samples manifesting MSMB-expression above average. NCOA4 was expressed at a high level in 41% (31/76) of the samples and high levels of MSMB-NCOA4 fusion was found in 32% (23/73) of the samples (Table 3). The expression of MSMB-NCOA4 fusion transcripts was correlated with the expression of MSMB (Pearson  $r = 0.5092$ ,  $p < 0.0001$ ; Fig 2). MSMB expression tended to be lower at higher tumor grade, but the expression levels of MSMB, NCOA4, and the MSMB-NCOA4 fusion transcript were not significantly associated with the Gleason score ( $p = 0.0913$ ;  $0.2577$ ; and  $0.1963$ , respectively), pT-stage ( $p = 0.2760$ ;  $0.4819$ ; and  $1.000$ , respectively; Table 3), or time to biochemical recurrence ( $p = 0.3862$ ;  $0.4126$ ; and  $0.5940$ , respectively; S2 Fig).

Second, the detection of MSMB, NCOA4 and MSMB-NCOA4 fusion transcripts was assessed using RNA-seq in two cohorts; one containing 12 BPH, 28 hormone-naïve PC, and 13 CRPC samples [32], as well as a second TCGA-cohort consisting of 301 prostate adenocarcinoma tumors. Overall, the expression of MSMB-NCOA4 was low and expression was observed more frequently in PC than in BPH tissue, although low levels of expression were detected in 2 of the 12 BPH samples (Fig 3). In the sample that expressed MSMB-NCOA4 at the highest level, only 2.2% of the transcripts starting from the MSMB promoter formed a transcript with NCOA4 (Fig 3B). NCOA4 was expressed at a significantly lower level than MSMB in both cohorts (Fig 3 and S3 Fig).



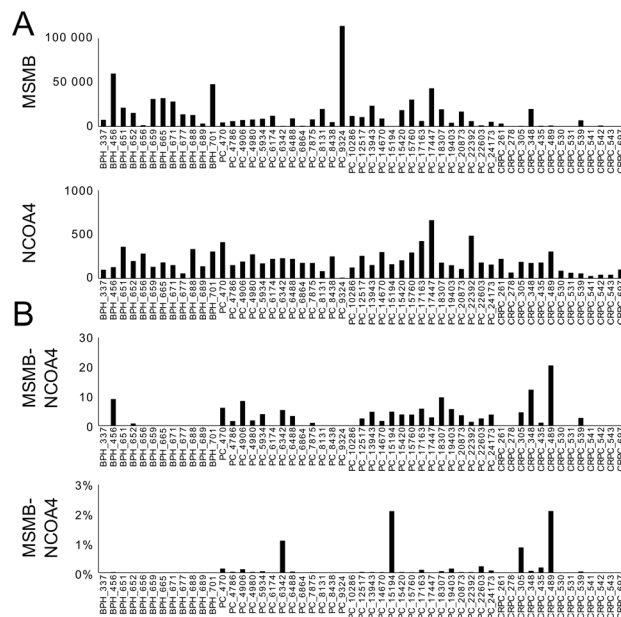


**Fig 2. Correlation of MSMB and MSMB-NCOA4 expression according to qRT-PCR.** MSMB expression was positively correlated with expression of MSMB-NCOA4.

doi:10.1371/journal.pone.0150241.g002

### Serum MSMB levels and SNP rs10993994

There was no significant correlation between MSMB levels in serum and age at diagnosis of PC patients (Spearman  $r = 0.1550$ ) or age at blood draw among controls (Spearman  $r = 0.1876$ ; [S4 Fig](#)). In PC cases, the median level of MSMB in serum (23.0 ng/ml; interquartile range (IQR) 15.9) was not different ( $p = 0.2422$ ) from that in controls (21.8 ng/ml; IQR 15.3; [Table 4](#)). However, when adjusted by age and free or total PSA at diagnosis, there was a significant association between PC risk and the serum levels of MSMB in the covariance analysis ( $p < 0.001$ ; [Table 5](#)). MSMB levels were higher in controls (the mean MSMB level was 29.7 ng/ml when adjusted by



**Fig 3. RNA-sequencing data of expression of MSMB, NCOA4 and MSMB-NCOA4 in BPH, PC and CRPC samples.** (A) MSMB was expressed at higher level than NCOA4. (B) Lower panel shows the percentage of the MSMB-NCOA4 reads from the total reads of MSMB and MSMB-NCOA4. NCOA4 was expressed at lower level than MSMB. The fusion gene expression portion was 2.2% at highest, out of the sum of MSMB and MSMB-NCOA4 reads. Y-axis represents normalized read count.

doi:10.1371/journal.pone.0150241.g003

**Table 4. Characteristics of PC patients and controls of blood sample cohort.**

Biomarker	Mean ( $\pm$ SD) case subjects / control subjects	Median (IQR) case subjects / control subjects	<i>p</i>
MSMB (ng/ml) <sup>1</sup>	27.8 ( $\pm$ 24.4) / 26.5 ( $\pm$ 24.7)	22.9 (15.9) / 21.8 (15.3)	0.2422
Free/ Total PSA (ng/ml) <sup>1</sup>	17.4 ( $\pm$ 11.4) / 28.4 ( $\pm$ 12.8)	14.7 (9.15) / 26.4 (15.7)	<0.0001
Age <sup>1, 2</sup>	68.1 ( $\pm$ 8.3) / 64.6 ( $\pm$ 9.3)	68 (10.7) / 64 (11)	<0.0001

<sup>1</sup>Mann Whitney test

<sup>2</sup>Age of the cancer cases refers to age at diagnosis and age of the controls refers to age at the time when the blood sample was taken.

doi:10.1371/journal.pone.0150241.t004

age and total PSA at diagnosis and 29.2 ng/ml when adjusted by age and free PSA at diagnosis) compared to PC patients (the mean MSMB level was 21.1 ng/ml when adjusted by age and total PSA at diagnosis and 22.4 ng/ml when it was adjusted by age and free PSA at diagnosis) (Table 5). Further, the serum MSMB level was associated with risk indicated by the Gleason score and with clinical stage at diagnosis (S4 Table), with the association remaining significant in non-metastatic or metastatic cases alone. Additionally, PC patients had a significantly lower free/total PSA ratio compared with controls ( $p < 0.0001$ ; Table 4). There was a statistically significant albeit weak positive correlation between levels of MSMB and free PSA as well as between MSMB and total PSA in serum from cancer cases (Spearman  $r = 0.3990$  and  $0.3200$ , respectively) and in controls (Spearman  $r = 0.3421$  and  $0.2710$ , respectively),  $p < 0.0001$  in all (S5 Fig), and significant association between the free-to-total PSA ratio and the serum levels of MSMB in cases and controls (Spearman  $r = 0.2142$ ;  $r = 0.1351$ , respectively),  $p < 0.0001$  in all (S5 Fig).

Among the PC patients, the MSMB levels in serum were not associated with Gleason score in prostatectomy or biopsy specimens ( $p = 0.6621$ ;  $0.819$ , respectively; Table 6), but serum MSMB levels and pT-stage ( $p = 0.0288$ ) and age at diagnosis ( $p = 0.0452$ ) tended to be weakly associated in prostatectomy cases (Table 6). Kaplan-Meier analysis showed no association between the serum MSMB level and time to biochemical recurrence in patients treated with prostatectomy or radiation therapy ( $p = 0.1396$ ;  $0.1925$ , respectively; S6 Fig) or hormone-treated patients ( $p = 0.2070$ ; S6 Fig).

In contrast, there was a very strong association between low MSMB levels in serum and TT risk genotype of the SNP rs10993994 of both cancer cases and controls ( $p < 0.0001$ ;  $0.0001$ , respectively; Fig 4). However, the SNP rs10993994 was not associated with Gleason score at

**Table 5. Characteristics of PC patients and controls of blood sample cohort adjusted by covariance analysis.**

Characteristic	Cases		Controls		<i>p</i> ***
	Mean	SD	Mean	SD	
Age at diagnosis	68.1	0.5	64.6	0.3	<0.001
MSMB *	21.1	1.5	29.7	0.9	<0.001
MSMB #	22.4	1.4	29.2	0.9	<0.001
Total PSA **	22.5	3.1	4.6	1.9	<0.001
Free PSA **	3.6	0.4	1.2	0.3	<0.001
Free to total PSA **	0.2	0.01	0.3	0.004	<0.001

\* means adjusted by covariance analysis for age at diagnosis, total PSA (log2-transformed)

# means adjusted by covariance analysis for age at diagnosis, free PSA (log2-transformed)

\*\* means adjusted by covariance analysis for age at diagnosis, MSMB (log2-transformed)

\*\*\* F test of case-control differences from covariance analysis.

doi:10.1371/journal.pone.0150241.t005

**Table 6. Association of serum MSMB with the Gleason score, pT-stage and age at diagnosis.**

Variable	Level of serum MSMB		p
	Low, n (%)	High, n (%)	
<b>Gleason score (biopsy), n (%)<sup>1</sup></b>			
≤6	82(50)	82(50)	0.8194
7	55(48)	59(52)	
≥8	33(53)	29(47)	
<b>Prostatectomy-treated patients</b>			
<b>Gleason score, n (%)<sup>1</sup></b>			
≤6	15(44)	19(56)	0.6621
7	37(54)	32(48)	
≥8	8(50)	8(50)	
<b>pT- stage, n (%)<sup>2</sup></b>			
pT2	37(44)	47(56)	0.0288
pT3	24(67)	12(33)	
Age (mean ± SD) <sup>3</sup>	67 ± 7.5	69 ± 8.9	0.0452

<sup>1</sup>Chi-square test

<sup>2</sup>Fisher's exact test

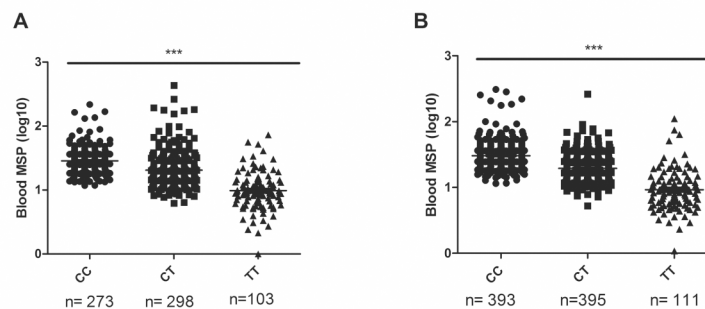
<sup>3</sup>Unpaired t test, Median (Gleason score: biopsy 23.5 ng/ml; prostatectomy: 21 ng/ml, pT-stage: 20.9 ng/ml) was used as a limit between low and high expression of MSMB.

doi:10.1371/journal.pone.0150241.t006

biopsy or prostatectomy specimens or with pT-stage at prostatectomy ( $p = 0.7959; 0.4683; 0.3584$ , respectively; [Table 7](#)). Although the frequency of TT genotype tended to be slightly higher in cancer cases (15%) compared with controls (12%), there was no association of the rs10993994 genotype and cancer risk in this cohort ( $p = 0.5114$ ; [Table 7](#)).

## Discussion

In this paper, we studied the potential role of MSMB/*MSMB*/*MSMB-NCOA4* as PC biomarkers in cohorts corresponding to different stages of PC from early to advanced disease. We showed that MSMB expression is reduced in more advanced PC, being lowest in the CRPC. The low MSMB protein levels in CRPC were consistent with our RNA-seq data indicating low *MSMB* transcript levels in the CRPC compared to PC samples. The finding of decreased expression of



**Fig 4.** Genotype of SNP rs10993994 and MSMB level in blood of (A) PC patients and (B) controls. Lower MSMB level was associated with T-allele of the SNP rs10993994. Kruskal-Wallis test was used to compare the different groups. Lines represents the mean MSMB level of the different genotypes. \*\*\* denotes  $p < 0.0001$ .

doi:10.1371/journal.pone.0150241.g004

MSMB/*MSMB* in PC compared with non-malignant prostate, as well as association of the loss of expression with more advanced and higher-Gleason-score disease, is consistent with several previous publications [5–7]. However, CRPC cases have not been thoroughly studied before. Dahlman et al., [23] studied MSMB expression in 3 CRPC metastases and found low *MSMB* transcript levels. Here, we showed that both transcript and MSMB protein levels are low in CRPC with only 9% of the CRPC cases expressing MSMB.

In our study, MSMB protein or mRNA levels were not associated with prognosis in prostatectomy or ADT-treated patients. Some previous publications have shown an association between low MSMB and poor prognosis in PC [7,11], whereas others demonstrated high MSMB or *MSMB* transcript levels and poor prognosis [12,36]. There may be several reasons for the discordant findings. Patient cohorts vary. Here, we used three cohorts: (a) a prostatectomy cohort of 261 cases with a mean follow-up of 7.3 years, (b) a prostatectomy cohort of 76 cases with a mean follow-up of 5.2 years and (c) a cohort of primarily ADT-treated patients with a mean follow-up of 3.6 years. Cohorts a and c were used for immunohistochemical detection of MSMB protein and cohort b for qRT-PCR measurement of *MSMB* transcript. Consistently, none of the cohorts showed prognostic value for MSMB/*MSMB*. One putative variable is the antibody used for immunostaining. We tested two commonly used antibodies, a monoclonal antibody and a polyclonal one. They gave highly concordant staining patterns. Thus, the antibodies are likely not the cause of the discrepant data.

A read-through fusion transcript of *NCOA4* and *MSMB* has recently been demonstrated in some prostate cancers [27,28]. Thus, we aimed to measure the expression of the fusion transcript in clinical specimens. We found that *MSMB-NCOA4* expression was correlated with *MSMB* expression and not associated with the prognosis of prostatectomy-treated patients. Based on RNA-seq data, the expression level of the *MSMB-NCOA4* fusion was also very low, even in the sample expressing the fusion transcript at the highest level. Thus, the clinical relevance of the fusion gene remains unknown. Read-through transcripts are relatively common in cancer, but often their functional significance remains unknown [37].

**Table 7. Association of the SNP rs10993994 with the Gleason score of the biopsy and prostatectomy specimens and pT-stage.**

Variable	rs10993994 genotype			p
	CC	TC	TT	
Cancer cases, n (%) <sup>2</sup>	154 (42)	160 (43)	54 (15)	
Controls, n (%)	394 (44)	396 (44)	111 (12)	0.5114
Gleason score (biopsy), n (%) <sup>1</sup>				
≤6	64 (41)	73 (46)	21 (13)	
7	49 (43)	49 (43)	16 (14)	
≥8	25 (40)	25 (40)	12 (20)	0.7959
Prostatectomy-treated patients				
Gleason score, n (%) <sup>1</sup>				
≤6	11 (32)	17 (50)	6 (18)	
7	31 (45)	31 (45)	7 (10)	
≥8	9 (56)	6 (38)	1 (6)	0.4683
pT- stage, n (%) <sup>2</sup>				
pT2	5 (42)	7 (58)	0 (0)	
pT3	42 (41)	46 (45)	14 (14)	0.3584

<sup>1</sup>Chi-square test

<sup>2</sup>Fisher's exact test.

doi:10.1371/journal.pone.0150241.t007

Beke et al. [24] have suggested that *MSMB* is a target for EZH2. They showed that *MSMB* transcription is diminished by EZH2 via tri-methylation of H3K27. We studied the association between the expression of *MSMB* and EZH2 in prostatectomy, needle biopsy and CRPC samples and saw a slight trend of higher EZH2 expression in samples where *MSMB* expression was low (Table 2). However, no significant association was observed. Thus, it is likely that other mechanisms lead to decreased expression of *MSMB* in CRPC.

We did not find a significant difference in serum *MSMB* levels between the cancer cases and the controls when the comparison was performed without adjustment with age and free or total PSA. In fact, an average *MSMB* level was slightly higher in sera of cases compared to controls. However, when adjusted for age at diagnosis and free or total PSA, the serum *MSMB* level was higher in the blood of controls than in PC patients. This result is consistent with those obtained in the study by Haiman et al. [20].

CT and TT genotypes of the SNP rs10993994 were associated with lower *MSMB* level in serum both in PC cases and controls, consistent with previous studies [13,14,20,38]. In the study by Xu et al. [14], the T allele of rs10993994 was also associated with PC risk. In our study we did not see the association. More studies are warranted to investigate the potential role of serum *MSMB* and rs10993994 genotype in detection of PC.

In conclusion, the study confirms that *MSMB* expression is reduced in PC and is lowest in CRPC. The low serum level of *MSMB* was also associated with the risk of PC when adjusted for age and PSA. In the future, it will be important to study whether *MSMB* could be used together with other biomarkers to detect clinically significant PC. In addition, new reagents to detect different forms of *MSMB*, such as the CRISP3-bound form [39], are urgently needed.

## Supporting Information

**S1 Fig.** Progression-free survival of prostatectomy (A) and ADT-treated (B) patients according to the *MSMB* immunostaining. Low *MSMB* expression: <20% of the cancer tissue was positively stained (with intensity 1–3). High *MSMB* expression:  $\geq$ 20% of the cancer tissue was positively stained (with intensity 1–3). Mantel-Cox test was used to discover the *p*-values. (TIF)

**S2 Fig.** Progression-free survival of prostatectomy-treated patients according to (A) *MSMB*, (B) *NCOA4* and (C) *MSMB-NCOA4* expression. Expressions were measured with qRT-PCR. The median value was used as a cut-off point between high and low expression. The *p*-values were discovered by Mantel-Cox test. (TIF)

**S3 Fig. RNA-sequencing data of expression of *MSMB*, *NCOA4* and *MSMB-NCOA4* in TCGA-cohort.** TCGA-cohort included 301 prostate adenocarcinoma tumors. *NCOA4* was expressed at lower level than *MSMB*. *MSMB-NCOA4* expression was low compared to expression of *MSMB*. Y-axis represents normalized read count. (TIFF)

**S4 Fig.** Correlation of serum *MSMB* level with age of (A) PC cases and (B) controls. In figure A, age indicates age at diagnosis. In figure B, age indicates the time when blood sample was taken. (TIF)

**S5 Fig. Correlation of serum *MSMB* level with PSA-levels.** Correlation of serum *MSMB* level with free and total PSA levels of (A and B) cancer cases and (C and D) controls. (E) and (F) illustrates correlation between free to total PSA level and *MSMB* level in blood of (E) patients

and (F) controls.  
(TIF)

**S6 Fig.** Progression-free survival of (A) prostatectomy-, (B) radiation- and (C) ADT-treated patients according to serum MSMB. The median level was used as a cut-off value for low and high level. Mantel-Cox test was used to discover the *p*-values.

(TIF)

**S1 Table.** Characteristics of prostatectomy specimens used in IHC (n = 261) and qRT-PCR (n = 76).

(DOCX)

**S2 Table.** Characteristics of 99 needle biopsy specimens and 105 locally recurrent CRPCs used in IHC.

(DOCX)

**S3 Table.** Characteristics of the 369 PC cases of the cohort of serum and germ-line DNA.

(DOCX)

**S4 Table.** Association of serum MSMB levels and PC risk by the Gleason score and disease stage.

(DOCX)

## Acknowledgments

We thank Mrs Paivi Martikainen, Riina Kylätie, and Marika Vähä-Jaakkola for their technical assistance. We also thank Mona Hassan Al-Battat, and AnnaPeri Erlandsson for expert assistance with immunoassay measurements of blood samples at the Wallenberg Research Laboratories at Lund University in Malmö, Sweden.

## Author Contributions

Conceived and designed the experiments: LS HL TV. Performed the experiments: LS OS MA KL TT. Analyzed the data: LS OS MA JN MN HL TV. Contributed reagents/materials/analysis tools: TW GSB JS TLJT TV. Wrote the paper: LS OS MA KL JN TT TW MN GSB JS TLJT HL TV.

## References

1. Ferlay J, Soerjomataram I, Dikshit R, Eser S, Mathers C, Rebelo M, et al. Cancer incidence and mortality worldwide: sources, methods and major patterns in GLOBOCAN 2012. *Int J Cancer* 2015 Mar 1; 136(5):E359–86. doi: [10.1002/ijc.29210](https://doi.org/10.1002/ijc.29210) PMID: [25220842](https://pubmed.ncbi.nlm.nih.gov/25220842/)
2. Schroder FH, Hugosson J, Roobol MJ, Tammela TL, Zappa M, Nelen V, et al. Screening and prostate cancer mortality: results of the European Randomised Study of Screening for Prostate Cancer (ERSPC) at 13 years of follow-up. *Lancet* 2014 Dec 6; 384(9959):2027–2035. doi: [10.1016/S0140-6736\(14\)60525-0](https://doi.org/10.1016/S0140-6736(14)60525-0) PMID: [25108889](https://pubmed.ncbi.nlm.nih.gov/25108889/)
3. Vickers AJ, Sjoberg DD, Ulmert D, Vertosick E, Roobol MJ, Thompson I, et al. Empirical estimates of prostate cancer overdiagnosis by age and prostate-specific antigen. *BMC Med* 2014 Feb 11; 12:26-7015-12-26.
4. Abrahamsson PA, Lilja H, Falkmer S, Wadstrom LB. Immunohistochemical distribution of the three predominant secretory proteins in the parenchyma of hyperplastic and neoplastic prostate glands. *Prostate* 1988; 12(1):39–46. PMID: [2450341](https://pubmed.ncbi.nlm.nih.gov/2450341/)
5. Chan PS, Chan LW, Xuan JW, Chin JL, Choi HL, Chan FL. In situ hybridization study of PSP94 (prostatic secretory protein of 94 amino acids) expression in human prostates. *Prostate* 1999 Oct 1; 41(2):99–109. PMID: [10477906](https://pubmed.ncbi.nlm.nih.gov/10477906/)

6. Imasato Y, Xuan JW, Sakai H, Izawa JI, Saito Y, Chin JL, et al. PSP94 expression after androgen deprivation therapy: a comparative study with prostate specific antigen in benign prostate and prostate cancer. *J Urol* 2000 Nov; 164(5):1819–1824. PMID: [11025776](#)
7. Bjartell AS, Al-Ahmadie H, Serio AM, Eastham JA, Eggener SE, Fine SW, et al. Association of cysteine-rich secretory protein 3 and beta-microseminoprotein with outcome after radical prostatectomy. *Clin Cancer Res* 2007 Jul 15; 13(14):4130–4138. PMID: [17634540](#)
8. Garde SV, Basrur VS, Li L, Finkelman MA, Krishan A, Wellham L, et al. Prostate secretory protein (PSP94) suppresses the growth of androgen-independent prostate cancer cell line (PC3) and xenografts by inducing apoptosis. *Prostate* 1999 Feb 1; 38(2):118–125. PMID: [9973097](#)
9. Liu AY, Bradner RC, Vessella RL. Decreased expression of prostatic secretory protein PSP94 in prostate cancer. *Cancer Lett* 1993 Oct 15; 74(1–2):91–99. PMID: [7506990](#)
10. Nam RK, Reeves JR, Toi A, Dulude H, Trachtenberg J, Emami M, et al. A novel serum marker, total prostate secretory protein of 94 amino acids, improves prostate cancer detection and helps identify high grade cancers at diagnosis. *J Urol* 2006 Apr; 175(4):1291–1297. PMID: [16515983](#)
11. Hyakutake H, Sakai H, Yogi Y, Tsuda R, Minami Y, Yushita Y, et al. Beta-microseminoprotein immunoreactivity as a new prognostic indicator of prostatic carcinoma. *Prostate* 1993; 22(4):347–355. PMID: [8497429](#)
12. Girvan AR, Chang P, van Huizen I, Moussa M, Xuan JW, Stitt L, et al. Increased intratumoral expression of prostate secretory protein of 94 amino acids predicts for worse disease recurrence and progression after radical prostatectomy in patients with prostate cancer. *Urology* 2005 Apr; 65(4):719–723. PMID: [15833515](#)
13. Waters KM, Stram DO, Le Marchand L, Klein RJ, Valtonen-Andre C, Peltola MT, et al. A common prostate cancer risk variant 5' of microseminoprotein-beta (MSMB) is a strong predictor of circulating beta-microseminoprotein (MSMB) levels in multiple populations. *Cancer Epidemiol Biomarkers Prev* 2010 Oct; 19(10):2639–2646. doi: [10.1158/1055-9965.EPI-10-0427](#) PMID: [20736317](#)
14. Xu B, Wang J, Tong N, Mi Y, Min Z, Tao J, et al. A functional polymorphism in MSMB gene promoter is associated with prostate cancer risk and serum MSMB expression. *Prostate* 2010 Jul 1; 70(10):1146–1152. doi: [10.1002/pros.21149](#) PMID: [20333697](#)
15. Eeles RA, Kote-Jarai Z, Giles GG, Olama AA, Guy M, Jugurnauth SK, et al. Multiple newly identified loci associated with prostate cancer susceptibility. *Nat Genet* 2008 Mar; 40(3):316–321. doi: [10.1038/ng.90](#) PMID: [18264097](#)
16. Thomas G, Jacobs KB, Yeager M, Kraft P, Wacholder S, Orr N, et al. Multiple loci identified in a genome-wide association study of prostate cancer. *Nat Genet* 2008 Mar; 40(3):310–315. doi: [10.1038/ng.91](#) PMID: [18264096](#)
17. Klein RJ, Hallden C, Gupta A, Savage CJ, Dahlin A, Bjartell A, et al. Evaluation of multiple risk-associated single nucleotide polymorphisms versus prostate-specific antigen at baseline to predict prostate cancer in unscreened men. *Eur Urol* 2012 Mar; 61(3):471–477. doi: [10.1016/j.eururo.2011.10.047](#) PMID: [22101116](#)
18. Camp NJ, Farnham JM, Wong J, Christensen GB, Thomas A, Cannon-Albright LA. Replication of the 10q11 and Xp11 prostate cancer risk variants: results from a Utah pedigree-based study. *Cancer Epidemiol Biomarkers Prev* 2009 Apr; 18(4):1290–1294. doi: [10.1158/1055-9965.EPI-08-0327](#) PMID: [19336566](#)
19. Lou H, Yeager M, Li H, Bosquet JG, Hayes RB, Orr N, et al. Fine mapping and functional analysis of a common variant in MSMB on chromosome 10q11.2 associated with prostate cancer susceptibility. *Proc Natl Acad Sci U S A* 2009 May 12; 106(19):7933–7938. doi: [10.1073/pnas.0902104106](#) PMID: [19383797](#)
20. Haiman CA, Stram DO, Vickers AJ, Wilkens LR, Braun K, Valtonen-Andre C, et al. Levels of beta-microseminoprotein in blood and risk of prostate cancer in multiple populations. *J Natl Cancer Inst* 2013 Feb 6; 105(3):237–243. doi: [10.1093/jnci/djs486](#) PMID: [23213189](#)
21. Hurkadli KS, Lokeshwar B, Sheth AR, Block NL. Detection of prostatic-inhibin-like peptide in the cytoplasm of LNCaP cells, a human prostatic adenocarcinoma cell line. *Prostate* 1994 Jun; 24(6):285–290. PMID: [8208622](#)
22. Garde SV, Sheth AR, Porter AT, Pienta KJ. A comparative study on expression of prostatic inhibin peptide, prostate acid phosphatase and prostate specific antigen in androgen independent human and rat prostate carcinoma cell lines. *Cancer Lett* 1993 Jul 16; 70(3):159–166. PMID: [7689036](#)
23. Dahlman A, Edsjo A, Hallden C, Persson JL, Fine SW, Lilja H, et al. Effect of androgen deprivation therapy on the expression of prostate cancer biomarkers MSMB and MSMB-binding protein CRISP3. *Prostate Cancer Prostatic Dis* 2010 Dec; 13(4):369–375. doi: [10.1038/pcan.2010.25](#) PMID: [20680031](#)

24. Beke L, Nuytten M, Van Eynde A, Beullens M, Bollen M. The gene encoding the prostatic tumor suppressor PSP94 is a target for repression by the Polycomb group protein EZH2. *Oncogene* 2007 Jul 5; 26(31):4590–4595. PMID: [17237810](#)
25. Leinonen KA, Saramaki OR, Furusato B, Kimura T, Takahashi H, Egawa S, et al. Loss of PTEN is associated with aggressive behavior in ERG-positive prostate cancer. *Cancer Epidemiol Biomarkers Prev* 2013 Dec; 22(12):2333–2344. doi: [10.1158/1055-9965.EPI-13-0333-T](#) PMID: [24083995](#)
26. Sasaki T, Matsumoto N, Jinno Y, Niikawa N, Sakai H, Kanetake H, et al. Assignment of the human beta-microseminoprotein gene (MSMB) to chromosome 10q11.2. *Cytogenet Cell Genet* 1996; 72(2–3):177–178. PMID: [8978767](#)
27. Nacu S, Yuan W, Kan Z, Bhatt D, Rivers CS, Stinson J, et al. Deep RNA sequencing analysis of read-through gene fusions in human prostate adenocarcinoma and reference samples. *BMC Med Genomics* 2011 Jan 24; 4:11-8794-4-11.
28. Lou H, Li H, Yeager M, Im K, Gold B, Schneider TD, et al. Promoter variants in the MSMB gene associated with prostate cancer regulate MSMB/NCOA4 fusion transcripts. *Hum Genet* 2012 Sep; 131(9):1453–1466. doi: [10.1007/s00439-012-1182-2](#) PMID: [22661295](#)
29. Yeh S, Chang C. Cloning and characterization of a specific coactivator, ARA70, for the androgen receptor in human prostate cells. *Proc Natl Acad Sci U S A* 1996 May 28; 93(11):5517–5521. PMID: [8643607](#)
30. Leinonen KA, Tolonen TT, Bracken H, Stenman UH, Tammela TL, Saramaki OR, et al. Association of SPINK1 expression and TMPRSS2:ERG fusion with prognosis in endocrine-treated prostate cancer. *Clin Cancer Res* 2010 May 15; 16(10):2845–2851. doi: [10.1158/1078-0432.CCR-09-2505](#) PMID: [20442300](#)
31. Scher HI, Halabi S, Tannock I, Morris M, Sternberg CN, Carducci MA, et al. Design and end points of clinical trials for patients with progressive prostate cancer and castrate levels of testosterone: recommendations of the Prostate Cancer Clinical Trials Working Group. *J Clin Oncol* 2008 Mar 1; 26(7):1148–1159. doi: [10.1200/JCO.2007.12.4487](#) PMID: [18309951](#)
32. Annala M, Kivinummi K, Tuominen J, Karakurt S, Granberg K, Latonen L, et al. Recurrent SKIL-activating rearrangements in ETS-negative prostate cancer. *Oncotarget* 2015 Mar 20; 6(8):6235–6250. PMID: [25749039](#)
33. Abrahamsson PA, Andersson C, Bjork T, Fernlund P, Lilja H, Murne A, et al. Radioimmunoassay of beta-microseminoprotein, a prostatic-secreted protein present in sera of both men and women. *Clin Chem* 1989 Jul; 35(7):1497–1503. PMID: [2758596](#)
34. Valtonen-Andre C, Savblom C, Fernlund P, Lilja H, Giwercman A, Lundwall A. Beta-microseminoprotein in serum correlates with the levels in seminal plasma of young, healthy males. *J Androl* 2008 May-Jun; 29(3):330–337. doi: [10.2164/jandrol.107.003616](#) PMID: [18222915](#)
35. Mitrunen K, Pettersson K, Piironen T, Bjork T, Lilja H, Lovgren T. Dual-label one-step immunoassay for simultaneous measurement of free and total prostate-specific antigen concentrations and ratios in serum. *Clin Chem* 1995 Aug; 41(8 Pt 1):1115–1120. PMID: [7543033](#)
36. Sakai H, Tsurusaki T, Kanda S, Koji T, Xuan JW, Saito Y. Prognostic significance of beta-microseminoprotein mRNA expression in prostate cancer. *Prostate* 1999 Mar 1; 38(4):278–284. PMID: [10075007](#)
37. Maher CA, Palanisamy N, Brenner JC, Cao X, Kalyana-Sundaram S, Luo S, et al. Chimeric transcript discovery by paired-end transcriptome sequencing. *Proc Natl Acad Sci U S A* 2009 Jul 28; 106(30):12353–12358. doi: [10.1073/pnas.0904720106](#) PMID: [19592507](#)
38. Xu X, Valtonen-Andre C, Savblom C, Hallden C, Lilja H, Klein RJ. Polymorphisms at the Microseminoprotein-beta locus associated with physiologic variation in beta-microseminoprotein and prostate-specific antigen levels. *Cancer Epidemiol Biomarkers Prev* 2010 Aug; 19(8):2035–2042. doi: [10.1158/1055-9965.EPI-10-0431](#) PMID: [20696662](#)
39. Udby L, Lundwall A, Johnsen AH, Fernlund P, Valtonen-Andre C, Blom AM, et al. beta-Microseminoprotein binds CRISP-3 in human seminal plasma. *Biochem Biophys Res Commun* 2005 Jul 29; 333(2):555–561. PMID: [15950934](#)