

Law
HD6892
.R3
1985

HD6892.R3 1985.

1296606



A.N.U. LIBRARY

**AUSTRALIAN
UNIONS
1984**



AUSTRALIAN UNIONS 1984

D. W. Rawson
and
Sue Wrightson



Croom Helm Australia
Sydney

© 1985 D. W. Rawson and S. Wrightson

Croom Helm Australia Pty Ltd, 1st Floor, 139 King Street, Sydney
NSW 2000

Croom Helm Ltd, Provident House, Burrell Row, Beckenham BR3
1AT, UK

National Library of Australia Cataloguing-in-Publication Data

Rawson, D. W. (Donald William) 1930-.

Australian unions 1984.

ISBN 0 949614 13 0.

1. Trade-unions — Australia — Directories.

I. Wrightson, Suzanne, 1945-. II. Title

331.88'025'94

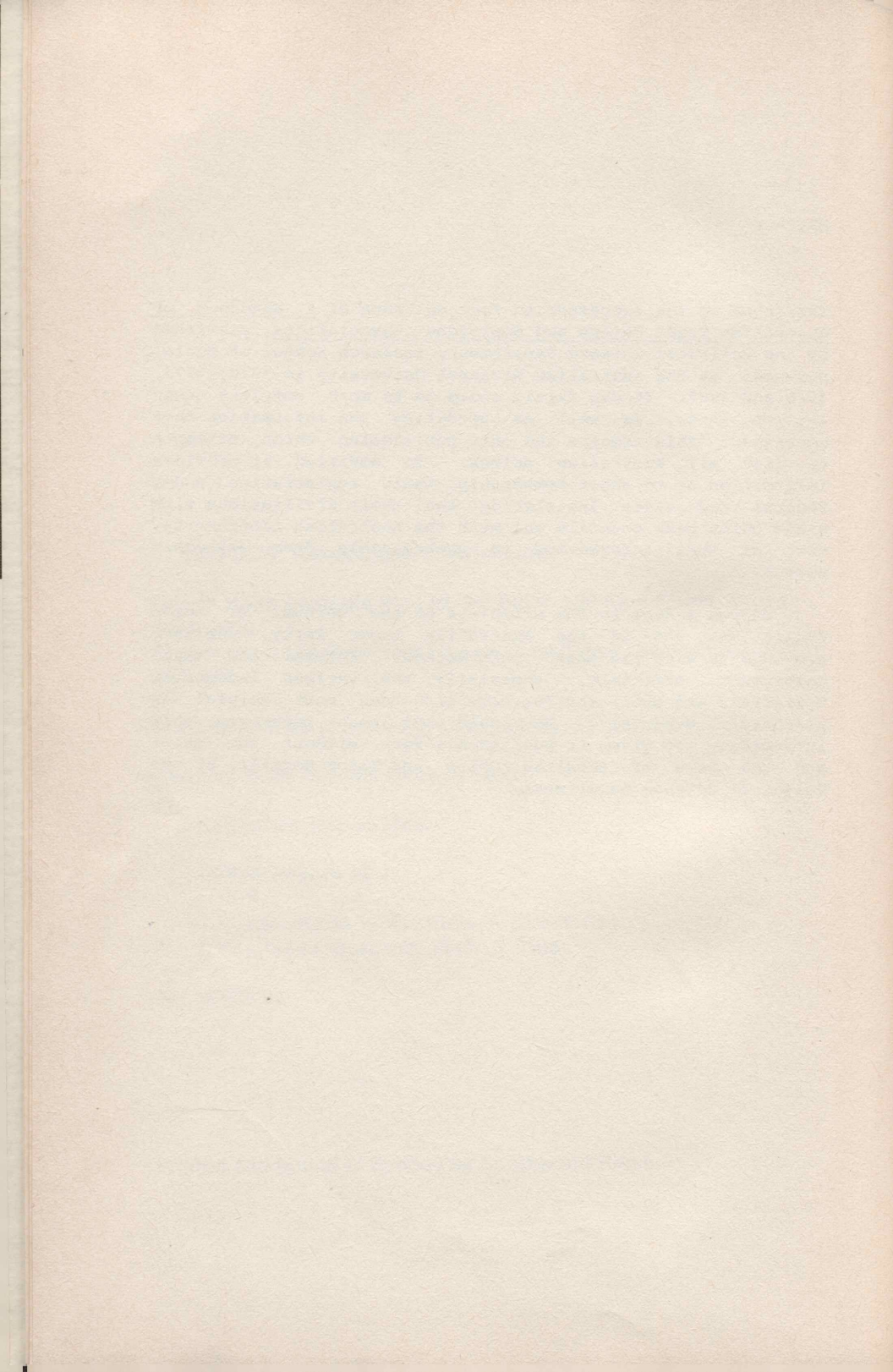
Printed and bound in Sydney by Southwood Press

PREFACE

This book is the successor to four editions of A Handbook of Australian Trade Unions and Employees' Associations, published by the Political Science Department, Research School of Social Sciences at The Australian National University in 1970, 1973, 1976 and 1980. It can fairly claim to be more complete than any of these, as well as up-dating the information they contained. This remains the only publication which attempts to list all Australian unions. In addition, it provides information as to their membership, their registration under federal and state legislation and their affiliations with trade union peak councils and with the Australian Labor Party. Most of this information is unobtainable from any other source.

We owe a debt to the officials of the unions, of union federations and of the Australian Labor Party, who have provided us with the basic information. Federal and state government officials, especially the various Industrial Registrars and their staffs, have also been most helpful in providing material. We could not have processed this information and given it publishable form without the skill and the care of Brigitte Coles and Vance Merrill, of the Political Science Department.

D.W.R.
S.W.



INTRODUCTION

Trade unions have often been subjects of controversy, but no-one doubts that they are important bodies and that we need all the information we can get about them. This was true when we produced the first Handbook of Australian Trade Unions and Employees Associations in 1970 and it is, if anything, even more true now. Moreover, we (and this includes the members and leaders of unions) need to know not only about 'the trade unions' in general but about particular trade unions. Unions are very heterogeneous bodies. They differ greatly not only in size but in composition, in terms of occupation, income, geographic distribution and sex. What is more, their composition has changed rapidly since the first Handbook appeared. There have been only moderate changes in the proportion of employees who belong to trade unions; but 'trade unionism' in 1983 was made up of very different people from the trade unionists of 1969.

The knowledge that unions were very diverse in membership, and the belief that their composition was continually changing, has been part of the reason for the appearance of the Handbooks. The Australian Bureau of Statistics (ABS) has since 1913 published annual figures on the number of unions and their total membership, subdivided by categories of size, state and sex. These figures appear in the Bureau's annual bulletin Trade Union Statistics: Australia, Catalogue No.6323.0. This series is, of course, of great value and authority: but it has severe limitations. The Bureau obtains its figures from unions under the authority of the Census and Statistics Act. This requires each union to provide the information sought but also guarantees the confidentiality of the information provided. This has meant that there was no way in which the Bureau could release information about the size of any individual union. It could not even reveal which were the unions from which it had obtained its information. Changes to the Act in 1981 suggest that it may be possible in the future for the Bureau to seek the consent of unions for the release of information about them. However, this step has not been taken so far.

Although, for example, the issue of the Trade Union Statistics bulletin for December 1983 tells us that there were, as the Bureau carefully puts it, 319 'reporting trade unions' at that time, it does not provide the names of these unions, nor any information about any individual union.

Various other sources provide at least the names and addresses of particular unions, but no such list seeks to be complete. There are, for example, lists of those unions which

are registered under federal and state industrial legislation; and of those which belong to the Australian Council of Trade Unions (ACTU) and to its state and territory branches, in most cases called Trades and Labor Councils. By their nature, these are selective lists, which do not set out to cover all unions; and there are many unions which do not appear on any of them.

A basic purpose of this book, therefore, is simply to provide the only published listing of all the trade unions in Australia. We may not have been completely successful in this. Minor unions are constantly appearing and disappearing and many are, to say the least, inconspicuous. However, we have done our best and are open to correction.

Apart from names and addresses, our tables show the membership of each union, divided by state and territory and by sex; whether the union is registered under federal or state legislation; whether it is affiliated with the ACTU or with a Trades and Labor Council; and whether it is affiliated with the Australian Labor Party (ALP). Later sections of this introduction will deal with each of these subjects.

WHAT IS A TRADE UNION?

This initial question is not answered as easily as may appear, but the definition adopted by the ABS is a good one. The Bureau says:

For the purposes of these statistics a trade union is defined as an organisation, consisting predominantly of employees, the principal activities of which include the negotiation of rates of pay and conditions of employment for its members. (ABS, Trade Union Statistics 1983, p.1)

We have followed this definition. This means that we include bodies which have minorities of members who are not employees but are self-employed people working under contracts for services, such as owner-drivers of trucks who may belong to the Transport Workers' Union of Australia or sub-contractors in the building industry who may belong to the Building Workers' Industrial Union or other building unions. We do not, however, include bodies like the Australian Medical Association which, although it includes a minority of salaried medical practitioners and sometimes represents them in negotiating conditions of employment, is principally composed of self-employed people.

Similarly, we include all bodies which regard the negotiation of conditions of employment as among their principal activities. Unions undertake a variety of other activities. Some are active and important forces in politics; some have important educational activities or are involved in the maintenance of professional standards; some conduct social and welfare activities for the benefit of their members. We have not regarded any such further activity as either disqualifying a body from being a trade union or as being essential for a trade union.

The one instance in which we have treated an association as a trade union in one state but not a trade union in others illustrates our practice. The Australian Physiotherapy Association is a national body with professional and educational functions. In most states it is not involved in negotiating conditions of employment. Those of its members who are employees may be represented by various trade unions for these purposes; for example, by the Public Service Association of New South Wales. In Queensland, however, the situation is different. Here the Australian Physiotherapy Association has the same functions as in other states but in addition it represents its employee members in matters involving their pay and other conditions of employment. For this reason it is registered as an industrial union under the state Industrial Conciliation and Arbitration Act. We therefore count the Queensland branch, but only the Queensland branch, of the Australian Physiotherapy Association as a trade union.

A somewhat similar situation exists among teachers in Colleges of Technical and Further Education. A body called the Technical and Further Education Teachers' Association of Australia has a total membership of 11,500. It is not a trade union. Its objectives and functions are educational and political; the latter in the broad sense of seeking to influence the policies of governments in this area. It is not directly concerned with the conditions of employment of its members. For these purposes, they are represented by a number of state and territory unions; in most cases, by the principal union of government school teachers in that state or territory. In Victoria they belong to the Technical Teachers' Association of Victoria, and in Tasmania to the Tasmanian Technical Colleges Staff Society. In Queensland, they belong to the Queensland Professional Officers' Association. In the other states and in the territories, TAFE teachers are included as members of the major unions of teachers.

Some trade unions regard themselves as being very different from those unions which are best known and for this reason some of their members or leaders may consider that they

do not belong to a 'trade union' at all. The title of previous editions of the Handbook referred to 'Trade Unions and Employees' Associations'. This was not because we saw any clear distinction between the two but rather to make it plain that we covered a wide range of employees' organizations. Nevertheless, all have always come within our definition of a trade union. The great variety of trade unions, and the fact that a trade union need not have the economic, social, or political attributes once commonly associated with the term, have now come to be better understood. We have therefore ceased to refer to 'employees' associations', since this might wrongly suggest that we saw this as a category separate from trade unions. The range of organizations which we seek to cover remains unaltered by this change of title.

Because trade unions vary so much it is very necessary to distinguish between unions of different types. One of our main purposes is to make some such distinctions possible. For example, if we are speaking of the role of 'the trade unions' within the ALP, we need to recall that a large and growing minority of unionists belong to unions which are not affiliated with the party and to know which unions are and are not affiliated. Fewer difficulties are involved in speaking of the ACTU as representing 'the trade unions', since a much larger majority of unionists belong to ACTU-affiliated unions. We should nevertheless recall that some important unions are not affiliated, and know which unions these are. Although it is broadly true to say that 'the trade unions' comprised an increasing proportion of the workforce during the early 1970s and this proportion then stabilized, we need to remember that such generalizations need not apply to individual unions. Some important unions grew or declined in ways which were very different from the pattern for unionism as a whole, and again we need to know which unions behaved in these different ways.

Some of these matters will be discussed further in later sections of this introduction. The more general point, however, is that trade unions make up such a mixed bag of organizations that we need to know about them individually. This book, like the earlier Handbooks, is intended as a first step in this process.

HOW MANY UNIONS AND UNIONISTS ARE THERE?

Our tables cover 306 unions. In the great majority of cases, their membership has been provided by the union itself and is for either June or December 1983. In 14 cases we have had to use the membership of the union as reported in the Executive Report of the ACTU in September 1983. In another 14 cases we have not been able to obtain any membership figure for the

union. All of the latter group, and most of those for which we have had to use ACTU figures, are small unions. However we have had to use ACTU figures for two unions of considerable size; the Australasian Society of Engineers and the Federated Engine Drivers and Firemen's Association of Australia.

The total membership of the 306 unions we have included, as shown in our tables, is 2,901,084. As we have seen, the Australian Bureau of Statistics reported that there were 319 'reporting unions' in December 1983. It gave the total membership of these unions as 2,985,200, or 3 per cent higher than our own figure. It is not possible to analyse the relatively small discrepancies between the Bureau's figures and our own. It may safely be said that we have not omitted any major union. The unions for which we have not been able to obtain membership figures would account for some of the difference between the two totals. Some unions report a lower membership to the ACTU than they would otherwise claim, in order to minimize the payment of affiliation fees. In some circumstances, determining the precise number of trade unions may be a matter of definition. The membership of some unions may have changed somewhat during the course of 1983. Whatever the explanations, the similarity between our own totals and those of the ABS seems close enough to justify our data and the general conclusions which can be drawn from them.

Determining the number of unions is not as simple as it may sound. There is the very major problem of the status of federally-registered and state-registered unions. Since the decision of the Federal Court in Australia in the case of Moore v Doyle in 1969 (15 Federal Law Reports 59) the law has held that a union registered under a state arbitration Act is a legal entity distinct from the branch of a federally-registered union which exists in that state, although the two may have the same name and may (but need not necessarily) have the same membership and the same leaders. Thus there may in the strict sense be two bodies called, for example, the Transport Workers' Union of Australia, New South Wales Branch. One is the 'real' branch of the federal organization, the Transport Workers Union of Australia, within the state of New South Wales. The other is an 'industrial union' registered under the New South Wales Industrial Arbitration Act.

The many difficulties which this situation has involved, and the attempts by both state and federal governments to resolve or at least to reduce them, cannot concern us here. If every state industrial union were to be treated as a separate union, even though it is so closely associated with a federal union as to form part of it for most practical purposes, the number of unions in Australia would be at least

500. It can be seen that this is not the view taken by the ABS, nor will it be by us. We have regarded a federally-registered union as subsuming the state-registered unions which, in ordinary terms although not in the strict legal sense, form part of it. In some cases this may have resulted in some under-estimation of the size of unions. The membership of a federally-registered union consists not merely of those who work under awards of the Australian Conciliation and Arbitration Commission but of those who would be eligible to do so, often a much larger number. Nevertheless, there will sometimes be members of the associated state-registered union who not only do not work under a federal award but would not even be eligible to work under a hypothetical federal award. The number of such people has been diminished by recent legislation and judgments but some unionists may go unnoticed because we (like the ABS) have used the figures provided by the federal secretaries of unions for their membership in each state.

In deciding whether a state-registered union should be treated as though it was a branch of a federal organization, titles can be deceptive. For example, the Amalgamated Society of Carpenters and Joiners of Australia is registered under the federal Conciliation and Arbitration Act. It has 13,000 members in several states, but none in Queensland. In Queensland there is a state-registered union called the Amalgamated Society of Carpenters and Joiners and Bricklayers of Australasia, Queensland Branch. This is not connected with the federal ASC&J, despite the similarity of names; but it is, in effect, a branch of the federally-registered Building Workers' Industrial Union.

There are other cases in which a name may be misleading. The West Australian Locomotive Engine Drivers' Firemen's and Cleaners' Union is not, as its name might suggest, a completely autonomous union; it is associated with the federal organization, the Australian Federated Union of Locomotive Enginemen. On the other hand, the Food Preservers' Union of Western Australia is a completely autonomous union and not related to the federally-registered Food Preservers' Union of Australia.

In some cases the degree of integration or separation between a federal and a state union may change over time. On previous occasions we have treated the Australasian Society of Engineers, Moulders and Foundry Workers Union, Western Australian Branch as though it was part of the federal Australasian Society of Engineers. However it has emphasized its independence to the point of considering - though ultimately rejecting - a proposed amalgamation with quite a different union, the Amalgamated Metals, Foundry and

Shipwrights' Union. We have therefore listed it separately this time.

Other difficulties arise in deciding whether individual unions linked in some form of federation should be treated as one union or as many. We have been guided by the level at which the principal negotiation of wages and salaries takes place. Thus, although the unions of government school teachers (except in Tasmania) all belong to the Australian Teachers' Federation, we have treated them as separate unions since they negotiate independently at the state level. On the other hand we have treated the federations of unions of academic staff in tertiary education as single unions, since the federations themselves conduct the principal negotiations over salaries before the federal Academic Salaries Tribunal. These unions are the Federation of Australian University Staff Associations (for Universities) and the Federation of College Academics (for Colleges of Advanced Education).

If the members of the ATF succeed in an application for federal registration, and this leads to the negotiation of teachers' salaries taking place before the federal Conciliation and Arbitration Commission, we shall thereafter treat such an organization as a single union. The possibility of such an application succeeding results from the recent decision of the High Court in R v Coldham; ex parte Australian Social Welfare Union ((1983) 47 Australian Law Reports 225) which has facilitated the registration of unions which had previously been excluded on the ground of not being engaged in an 'industry'. The same decision is likely to lead to the registration of a single federal union covering firefighters, and so to the simplification of unionism in that area.

Applying our principle of being guided by the level at which most wage and salary negotiations take place, we have not included the State Public Services Federation and the Professional Officers (State Public Services and Instrumentalities) Association, both of which are federally-registered. This is because virtually all their members will also be included under the various unions of state public servants, which in most states use the title Public Service Association and which conduct the great bulk of negotiation on behalf of their members.

Though such distinctions as these are important for the leaders and members of the unions involved, they will not concern most users of this book. We include these explanations to show that we are not unaware of the legal and other difficulties involved even in the task of making a list

of trade unions and that we have tried to deal with these difficulties.

Other problems concern the number of unionists. There are some people who belong to more than one union, though the number is probably too small to make much difference to overall figures. There is no uniform practice among unions as to who are regarded as their current members. Some include only financial members. Others also include some whose fees are in arrears for varying periods or who have retired from work.

The distribution of union membership by state and sex is subject to further uncertainties. Unions frequently keep no separate record of their members in one or both of the territories (the Australian Capital Territory and the Northern Territory) and include these members with those in an adjoining state. In some cases a union with only a few members in a particular state will also include these in the figures for a nearby state. Where possible, the footnotes to our tables for the individual unions indicate where this is done.

CHANGES IN UNION MEMBERSHIP

Since 1969, when we collected data for the first Handbook, the total number of unionists in Australia has increased by about 33 per cent. This increase has been distributed very unevenly, both over time and over different unions. Most of the increase occurred between 1969 and 1976, which was the date of our third edition. During this time there was a steady increase in the total number of employees; that is, of potential unionists. There was also a marked increase in the proportion of employees who actually belonged to unions - what British writers have labelled 'union density'. Between 1969 and 1976, according to ABS figures, this proportion increased from 49 per cent to 56 per cent.

During the years since 1976, the total number of employees has continued to increase, but much more slowly and unsteadily. At the same time, the increase in union density came to an end. The figure remained at either 55 per cent or 56 per cent until 1982. It then rose to 57 per cent but fell again to 55 per cent in 1983. Whereas the number of unionists rose by 25 per cent between 1969 and 1976, it rose by only 7 per cent between 1976 and 1983. Table 1 shows the membership of the larger unions in 1983, and the change in the membership of each since 1976 and since 1969.

Table 1

MEMBERSHIP OF UNIONS WITH MORE THAN 10000 MEMBERS 1983

(Showing per cent change since 1976 and since 1969)

Union	Membership (000)	Per cent change	
		since	since
		1976	1969
Amal. Metals, Foundry & Shipwrights	165.4	-1	+11
Shop, Distributive & Allied Employees	154.4	+14	+287
Aust. Workers	121.4	-13	-24
Fed. Misc. Workers	118.6	+29	+63
Fed. Liquor	94.8	-21	+137
Fed. Clerks	92.0	-11	+42
Transport Workers	90.1	+47	+22
Aust. Bank Employees	83.9	+29	+121
NSW Teachers	82.1	+126	+143
Electrical Trades	77.5	+6	+25
Fed. Ironworkers	71.8	+8	+8
Fed. Storemen & Packers	70.7	+16	+171
Fed. Municipal & Shire Council Employees	51.1	+18	+7
Printing & Kindred Industries	50.1	-12	-6
Admin. & Clerical Officers	48.2	-1	+79
Aust. Postal & Telecommunications	47.8	+3	+20
Aust. Railways	47.5	+8	-1
Public Service Assn of NSW	47.5	+19	+82
Building Workers [BWIU]	47.3	-8	+8
Royal Aust. Nursing Fed.	41.1	+15	+384
Municipal Officers	39.6	+47	+93
Health & Research Employees	38.7	+15	+82
A'asian Meat Industry Employees	38.2	-16	-14
Hospital Employees Fed.	36.0	-20	-40
Aust. Building Construction Employees	35.2	na	+177
C'wealth Bank Officers	33.9	+28	+70
NSW Nurses	33.1	+11	+121
Vehicle Builders	31.5	-19	-10
A'asian Society of Engineers	30.0*	-46	-60
Aust. Public Service Assn (4th Div.)	29.1	-21	+143

Clothing & Allied Trades	28.7	-23	-18
Aust. Telecommunications Employees	26.7	+5	+52
Fed. Engine Drivers	26.1*	-10	+4
Aust. Textile Workers	25.6	-22	-39
Vic. Public Service Assn	23.5	+34	+110
Vic. Teachers	23.3	+15	+6
Q. Teachers	22.9	+29	+108
Public Service Assn of SA	22.7	+6	+123
Aust. Insurance Employees	22.6	+14	+65
Q. State Service	20.8	+14	+93
SA Institute of Teachers	20.6	+38	+50
Assn of Draughting Supervisory & Technical Employees	20.5	-12	+41
Actors Equity	19.6	na	+326
Plumbers & Gasfitters	19.5	+18	+8
Op. Painters & Decorators	19.1	-12	-21
Civil Service Association of Western Australia	18.3	+30	+113
Aust. Transport Officers	18.1	+1	+57
Aust. Timber Workers	17.2	+4	+1
Fed. Rubber & Allied Workers	16.8	+19	+20
Assn of Professional Engineers	16.4	+4	+48
Musicians	14.9	-8	+32
Q. Nurses	14.5	na	na
Amal. Soc. of Carpenters & Joiners	13.2	-25	+207
A'asian Coal & Shale Employees [Miners]	12.7	+12	+14
State School Teachers Union of WA	12.6	+17	+80
Q. Professional Officers	11.9	+38	+129
Vic. Secondary Teachers Assn	11.9	+61	+65
Aust. Tramway & Motor Omnibus Employees	11.7	-5	-8
Aust. Fed. Union of Locomotive Enginemen	11.4	-1	-3
Aust. Journalists	11.2	+27	+67

* This membership figure is taken from the Executive Report of the ACTU, 1983.

na Not available

It can be seen that, although the years since 1976 have been a period of stability in overall union membership, which more or less kept pace with a slow increase in the number of employees, the fortunes of particular unions varied very greatly. Table 2 lists these unions in order of the increase in their membership since 1976. The Queensland Nurses' Union, which was not established until 1981, has been omitted from Table 2. Its members would previously have been included in the Royal Australian Nursing Federation. To provide some information which will be considered later in this introduction, under the heading 'Affiliation With the ALP', we have underlined in Table 2 those unions which are not affiliated with the party in any state in which they operate.

Table 2

UNIONS WITH MORE THAN 10000 MEMBERS IN ORDER OF
RATE OF GROWTH 1976-1983

<u>Union</u>	<u>Per cent increase</u> <u>1976-1983</u>
NSW Teachers**	126
<u>Vic Secondary Teachers Assn**</u>	61
Transport Workers	47
<u>Municipal Officers</u>	47
<u>SA Institute of Teachers**</u>	38
<u>Q. Professional Officers</u>	38
<u>Vic. Public Service Assn*</u>	34
<u>Civil Service Assn of WA*</u>	30
Fed. Misc. Workers	29
<u>Aust. Bank Employees</u>	29
<u>Q. Teachers**</u>	29
<u>C'wealth Bank Officers</u>	28
<u>Aust. Journalists*</u>	27
<u>Public Service Assn of NSW</u>	19
Fed. Rubber & Allied Workers	19
Fed. Municipal & Shire Council Employees	18
Plumbers & Gasfitters	18
<u>State School Teachers Union of WA**</u>	17
Fed. Storemen & Packers	16
<u>Royal Aust. Nursing Fed.</u>	15
Health & Research Employees	15
<u>Vic. Teachers**</u>	15
Shop Distributive & Allied Employees	14
<u>Aust. Insurance Employees</u>	14

<u>Q. State Service*</u>	14
A'asian Coal & Shale Employees [Miners]	12
<u>NSW Nurses</u>	11
Fed. Ironworkers	8
Aust. Railways	8
[ALL UNIONS	7]
Electrical Trades	6
<u>Public Service Assn of SA*</u>	6
Aust. Telecommunications Employees	5
Aust. Timber Workers	4
<u>Assn of Professional Engineers*</u>	4
Aust. Postal & Telecommunications	3
Aust. Transport Officers	1
Amal. Metals, Foundry & Shipwrights	-1
<u>Admin. & Clerical Officers</u>	-1
Aust. Fed. Union of Locomotive Enginemmen	-1
Aust. Tramway & Motor Omnibus Employees	-5
Building Workers [BWIU]	-8
Musicians	-8
Fed. Engine Drivers	-10
Fed. Clerks	-11
Printing & Kindred Industries	-12
<u>Assn of Draughting, Supervisory & Technical Employees</u>	-12
Op. Painters & Decorators	-12
Aust. Workers	-13
A'asian Meat Industry Employees	-16
Vehicle Builders	-19
Hospital Employees Fed.	-20
Fed. Liquor	-21
<u>Aust. Public Service Assn (4th Div.)</u>	-21
Aust. Textile Workers	-22
Clothing & Allied Trades	-23
Amal. Soc. of Carpenters & Joiners	-25
A'asian Society of Engineers	-46

Underlined unions not affiliated with the ALP in any state.

*Union not affiliated with the ACTU in 1983.

** This union is affiliated with the Australian Teachers Federation which is, in turn, affiliated with the ACTU.

There is inevitably a certain arbitrariness in comparisons between years when we are concerned with the membership of particular unions, which may be subject to short-term fluctuations. It may be that consideration of a slightly different period would have produced somewhat different results. Nevertheless, these figures clearly show the continuing trend for unions of non-manual workers to grow quite rapidly, even during a period of modest overall union growth. Between 1976 and 1983, very many unions of manual workers declined in size, while few exceeded the overall growth figure of 8 per cent. Of those that did, it is fair to point out that the Federated Miscellaneous Workers' Union grew principally because of its absorption of a number of small unions, especially in Western Australia. The growth of the Australasian Coal and Shale Employees' Federation (often known as the Miners' Federation), on the other hand, was the result of growing employment in the coal industry up to 1983.

The changing occupational character of unionism is related to another consistent change which has continued into the most recent period - the increased proportion of unionists who are women. Ironically, this has become more difficult to measure accurately at a time when there is most interest in the subject. An increasing number of unions, including some of the largest, do not record the sex of their members. Some of these unions can be assumed to have majorities of women members (for example, the Health and Research Employees' Association of Australia); or perhaps very large majorities (for example, the Royal Australian Nursing Federation). Thus any conclusions on this subject inevitably involve some guesswork on somebody's part. However the general tendencies are not in doubt. According to the ABS, in December 1983 the proportion of unionists who were women was 33 per cent. This compares with 24 per cent in 1969 and 30 per cent in 1976. Women employees are still significantly less likely to belong to unions than male employees but this gap has closed considerably. In December 1983, 61 per cent of employed males and 46 per cent of employed females were union members. It should be noted, however, that according to the ABS the proportion of women employees who belonged to unions fell quite sharply in 1983, from 49 per cent to 46 per cent. This was the first year since 1976 in which this proportion has fallen. This appears to have been due to some extent to a decline in the number of women unionists; but to a greater extent to an increase in the number of women who were employed but who did not belong to unions. Since the number of male unionists also declined, the long-term tendency towards the greater 'feminization' of union membership was halted but not reversed.

Table 3

FEMALE PERCENTAGE OF MEMBERSHIP IN UNIONS
WITH MORE THAN 10,000 MEMBERS

(Unions which record the sex of their members)

<u>Union</u>	<u>Female Percentage</u>
NSW Nurses	92.1
Clothing & Allied Trades	85.0
Shop, Distributive & Allied Employees	70.0
Victorian Teachers	70.0
Fed. Clerks	69.1
Aust. Public Service Assn (4th Division)	65.7
Queensland Teachers	63.9
Aust. Textile Workers	63.8
Aust. Insurance Employees	60.3
Fed. Liquor & Allied Industries Employees	60.0
Hospital Employees Fed.	60.0
NSW Teachers	60.0
SA Institute of Teachers	59.4
Aust. Bank Employees	52.8
Public Service Assn of SA	52.8
Victorian Secondary Teachers Assn	52.2
State School Teachers Union of WA	52.1
Fed. Miscellaneous Workers	51.3
C'wealth Bank Officers	48.4
Actors Equity of Australia	47.9
Public Service Assn of NSW	45.7
Queensland State Service	42.8
Victorian Public Service Assn	36.5
Civil Service Assn of WA	35.7
Fed. Storemen & Packers	34.0
Fed. Rubber & Allied Workers	32.8
Aust. Journalists Assn	26.2
Admin. & Clerical Officers	25.5
Municipal Officers	25.4
Queensland Professional Officers	25.0
A'asian Meat Industry Employees	24.9
Printing & Kindred Industries	20.0
Aust. Transport Officers	14.9
Fed. Municipal & Shire Council Employees	11.7
Aust. Postal & Telecommunications	11.3
Musicians	9.8
Aust. Railways	8.1

Aust. Tramway & Motor Omnibus	
Employees	7.8
Transport Workers	6.7
Fed. Ironworkers	5.4
Vehicle Builders	5.4
Aust. Timber Workers	5.0
Electrical Trades	5.0
Assn of Draughting Supervisory & Technical	
Employees	4.5
Amal. Metals Foundry & Shipwrights	4.2
Aust. Telecommunications Employees	3.3
Australian Workers	1.2
Assn of Professional Engineers	0.4
Aust. Fed. Union of Locomotive Enginemen	0.1
Op. Painters & Decorators	0.1
A'sian Coal & Shale Employees	0
Aust. Building Construction Employees	0
Plumbers & Gasfitters	0

REGISTRATION UNDER STATE AND FEDERAL LEGISLATION

A very large majority of unionists - probably over 90 per cent - belong to unions which are recognized under state or federal legislation. The earliest, though in most places the least important, examples of such legislation are the Trade Union Acts which were passed in each of the Australian colonies (or, later, states) between 1876 and 1902. In addition there is legislation more definitely related to the settlement of industrial disputes, especially the Acts providing for conciliation and arbitration at the Commonwealth level and in the States of New South Wales, Queensland, South Australia and Western Australia. Somewhat different systems apply in Victoria and Tasmania.

Trade Union Acts

All states have had, and four states still have, Acts which were modelled on the British Trade Union Acts of 1871 and 1876 and which were intended to provide a legal framework which would enable unions to operate effectively. All of these Acts have provided for the registration of employer as well as employee associations as 'trade unions', but we shall be concerned only with their relevance to unions of employees.

The Australian Trade Union Acts have been of little practical importance, except in New South Wales. They have been repealed in Queensland and South Australia, though some of their provisions have been continued within the arbitration legislation of those states. Elsewhere they have attracted

little attention, from trade unions or anyone else. The number of unions registered under the Trade Union Acts of Victoria and Tasmania has been so small for so long that we have not shown these registrations. Registrations under the Western Australian Trade Unions Act 1902 are more numerous but not much more significant. The most recent published list (Western Australian Industrial Gazette v.62, pt 2, October-December 1982) shows 16 registered unions of employees with a total membership of 32,340, or about 14 per cent of all the unionists in that state. Why these few unions are registered under the Act, while the great majority are not, appears to be a matter of historical chance.

The New South Wales Trade Union Act 1884 is much more important, though only because of its connection with other legislation. Registration under this Act has been a prerequisite for registration under the Industrial Arbitration Act 1940 and its predecessors for many years. Unlike the arbitration Acts of the Commonwealth and of Queensland, South Australia and Western Australia, the New South Wales arbitration Act makes no provision for the incorporation of unions which register under it. As an alternative means of securing a common legal status for such unions, they are required to register under the Trade Union Act. The courts have held that such registration has given these unions 'at least a quasi-corporate status'; (Egan v Barrier Branch of The Amalgamated Miners' Association, (1917) 17 State Reports, NSW 243, 247). The New South Wales Act is thus of considerable importance whereas the corresponding Acts in other states have been or have become largely superfluous.

In January 1984 there were 123 unions of employees registered under the New South Wales Act. Three sections of the Australasian Coal and Shale Employees' Federation and two each of the Australasian Meat Industry Employees' Union, the Federated Ship Painters and Dockers' Union and the Federated Engine Drivers and Firemen's Association were separately registered, so slightly inflating this total. A large majority of these unions, numbering 112, were also registered under the Industrial Arbitration Act, while some of the remainder had applied for registration under that Act.

Arbitration Acts

The most important of these Acts is the Commonwealth Conciliation and Arbitration Act 1904. At the time of writing there are 150 'organizations' of employees registered under the Act. According to the ABS, these federally-registered unions comprised 82 per cent of all unionists in December 1983. The proportion of employees, and probably of unionists,

who work under awards of the Conciliation and Arbitration Commission is much less than this, since an 'organization' may include those who would be eligible to work under a federal award as well as those who do so in fact.

The number of unions registered under the four state arbitration Acts is as follows:

NSW	<u>Industrial Arbitration Act 1940</u>	112
QLD	<u>Industrial Conciliation and Arbitration Act 1969-1983</u>	69
SA	<u>Industrial Conciliation and Arbitration Act 1972-1978</u>	69
WA	<u>Industrial Arbitration Act 1979</u>	64

Registered bodies are described as 'organizations' under the federal Act; 'industrial unions' under the Acts of New South Wales, Queensland and Western Australia; and 'associations of employees' in South Australia. The Queensland Act requires industrial unions to include the words 'Union of Employees' in their official titles, while it was once required, and is still common, for those in Western Australia to include the words 'Industrial Union of Workers'. Though these terms are often found in official listings of unions they are usually dropped in ordinary usage, and we have not included them in the titles used in this book.

In some cases intra-state branches of a union are registered separately under the state arbitration Acts and, as we have said, some of the titles under which state unions are registered may be misleading. Our Appendix lists the names of state-registered unions which have titles other than those under which we have included their members and indicates the union with which they have been included.

The Victorian Industrial Relations Act

The Industrial Relations Act 1979, which was not proclaimed until 1982, provides for the 'recognition' of associations of employers and of employees. 'Recognition' must be granted if the Industrial Relations Commission established under the Act is satisfied that the association is a bona fide representative of those involved in one or more trades. The 'recognized' bodies are then entitled to nominate members to Conciliation and Arbitration Boards for the relevant trades

and to enter into industrial agreements which may be recognized under the Act.

This process of 'recognition' is in many ways simpler and more flexible than the 'registration' provided under the arbitration Acts of other states. In particular, it does not purport to incorporate or to provide any other defined legal status for those bodies which are 'recognized'. Thus it does not give rise to the 'Moore v Doyle problem', in which there are legally distinct bodies, each with its own legal status, operating at the state and at the federal level within what is for most purposes the same trade union.

There were 76 employee associations 'recognized' under the Act in November 1983. Our tables indicate whether each union is registered under one or more arbitration Acts and/or 'recognized' under the Victorian Act.

The Tasmanian Industrial Relations Act 1975 differs from the Victorian Act of the same name in providing no formal recognition of individual trade unions. Section 12 provides that an employee representative on the Industrial Boards established under the Act may be an employee engaged in the industry concerned; or an officer of an organization covering those employed in the industry; or an officer of the Tasmanian Trades and Labor Council. Since only the Trades and Labor Council is specifically recognized, the Act does not provide information which can be noted in our tables.

TRADE UNION FEDERATIONS

The ACTU

The Australian Council of Trade Unions is the only 'peak' organization which, in principle, seeks to include all trade unions. Before its establishment, in 1927, there had been no permanent organization which sought to speak for Australian trade unionism at large. In most states, trade union federations had been set up late in the nineteenth century and they now exist in all the states and in the two territories. These bodies now constitute branches of the ACTU. In most places they are called Trades and Labor Councils. Unions confined to one state may affiliate with the ACTU as well as with the appropriate Trades and Labor Council, but the bulk of the ACTU affiliates operate in at least two states.

The ACTU has been gaining in importance over a long period. The simplest aspect of this gain has been the increased proportion of unionists who belong to it. Its increased size has resulted principally from its absorption of

two federations of non-manual unions; the Australian Council of Salaried and Professional Associations (ACSPA) in 1979 and the Council of Australian Government Employee Organizations (CAGEO) in 1981. Although some affiliates of each body had already been affiliated with the ACTU, the ACTU made a net gain of about 180,000 members from the amalgamation with ACSPA and about 130,000 from the amalgamation with CAGEO.

According to its own figures in its Executive Report for 1983, the ACTU then had 156 affiliates, with a total membership of 2,444,600. This does not include the Union of Christmas Island Workers, which we have not treated as an Australian union. There are also more substantial variations between these figures and our own. We have treated several unions listed separately by the ACTU as branches of other unions. On the other hand, we have listed separately 9 teachers' unions which are jointly affiliated with the ACTU as affiliates of the Australian Teachers' Federation. Our total figure for the membership of ACTU-affiliated unions is 2,583,000, or nearly 6 per cent higher than the ACTU's own figure. This is attributable to the fact that some unions give a lower figure to the ACTU than they would claim for other purposes.

According to our figures, 89 per cent of Australian unionists belong to ACTU-affiliated unions. The variation in this figure between states and territories is set out in Table 4. This table also shows the proportions of unionists affiliated with state and territory Trades and Labor Councils and with the Australian Labor Party. These aspects of the table will be discussed later in this introduction.

Table 4

UNIONISTS IN ACTU, T&LC AND ALP-AFFILIATED UNIONS

(per cent)

	<u>ACTU</u>	<u>T&LC</u>	<u>ALP</u>
NSW	96	96	67
VIC	93	91	65
QLD	86	58	57
SA	87	71	60
WA	81	74	50
TAS	79	61	51
NT	94	80	34
ACT	96	83	12
AUSTRALIA	89	82	60

The membership of the ACTU is now so extensive that it is easier to set out those major unions which do not belong, rather than to speak of those which do. The major group of unions which are not affiliated is made up of state public service unions which are loosely linked by the Australian Public Service Federation. Even here an exception must be made of the largest such union, the Public Service Association of New South Wales, which has belonged to the ACTU for many years. Discussions are under way which are likely to lead to the other unions in this Federation also joining the ACTU. Other non-ACTU unions of considerable size are the Australian Journalists' Association; the Association of Professional Engineers, Australia; the Australian Federation of Air Pilots and the Australian International Pilots' Association; the Civil Air Operations Officers' Association of Australia; the unions of police officers (although the Police Association of New South Wales is affiliated with the Labor Council of New South Wales, the state branch of the ACTU); and the unions of non-government school teachers which make up the Independent Teachers' Federation of Australia. Although, as will be seen from our tables, there are many other unions not affiliated with the ACTU, the remainder are small and, in most cases, very small.

Trades and Labor Councils

There are a variety of union federations at state, territory and provincial levels. These are known collectively as Trades and Labor Councils and in most cases, though not in all, include those words in their titles. They are of very different levels of size and importance.

Each of the state Trades and Labor Councils has the status of a branch of the ACTU. These are very important bodies in their own right and are often involved in the negotiation of disputes and other industrial matters, especially those which come within the respective state conciliation and arbitration systems. Generally speaking, they are made up of the state branches of ACTU-affiliated federal unions together with many intra-state unions. The latter may be, but usually are not, also directly affiliated with the ACTU.

Our tables show whether each union is affiliated with one or more of these state Trades and Labor Councils. According to rule 3(i) of the ACTU:

No union shall be allowed to affiliate with the ACTU unless affiliated with the State Branch of the ACTU.

This would appear to mean that an ACTU-affiliated union should also be affiliated with the Trades and Labor Council in each state in which the union operates. However, this is not rigidly enforced and, as can be seen from Table 4, affiliation with the TLCs varies considerably from state to state. The lower figures in two states are due to political antagonisms. A number of left-wing unions have been outside the Tasmanian Trades and Labor Council, though it appears that they are about to rejoin it. In Queensland, the branches of three ACTU-affiliated unions (of shop assistants, clerks and the furnishing trades) have for many years declined to join the Queensland Trades and Labor Council. Together with seven other unions, all intra-state in membership, they belong to a rival federation called the Combined Industrial Unions Committee.

There are some other instances, in various states, in which branches of ACTU unions do not belong to the state Trades and Labor Council. These are relatively recent affiliates to the ACTU and their present absence from some Trades and Labor Councils may be due to inertia rather than to any more significant factor.

Territory Trades and Labor Councils exist in the Australian Capital Territory and the Northern Territory. Their membership is somewhat untidy in that, especially in the ACT, some unions do not have distinct territory branches and their members are regarded as part of the union's membership in an adjoining state. Our tables show whether each union is affiliated with one or both of these councils.

Provincial Trades and Labor Councils are usually affiliated with one of the state Councils. They vary considerably in size, importance and, in the case of the smaller councils, in longevity, according to the industries with which they are associated. The Barrier Industrial Council, which unlike others is a wholly autonomous body, is made up of mining and other unions in the isolated city of Broken Hill, in the far west of New South Wales. Within that limited area, it could be said to be the most pervasive and influential trade union federation in Australia. Other important provincial Trades and Labor Councils include those of Newcastle and of the South Coast, also in New South Wales; and Gippsland in Victoria. There are at present 14 provincial councils in New South Wales; 7 in Victoria; 14 in Queensland; 6 in South Australia; 1 in Western Australia; and 3 in Tasmania.

All of these councils use the title Trades and Labor Council except, as it happens, for the two most important: the Labor Council of New South Wales; and the Victorian Trades Hall Council.

The Council of Professional Associations

The absorption of the Australian Council of Salaried and Professional Associations and the Council of Australian Government Employee Organizations by the ACTU has left the Council of Professional Associations (CPA) as the only other trade union federation recognised as a 'Peak Council' by the Australian Conciliation and Arbitration Commission. Since the CPA has only eight affiliates, it is convenient to list them here, together with the membership of each as of July 1983.

Table 5

UNIONS AFFILIATED WITH THE COUNCIL OF
PROFESSIONAL ASSOCIATIONS

<u>Union</u>	<u>Membership</u>
Association of Professional Engineers, Australia	16500
Association of Professional Scientists of Australia	1240
Australian Government Lawyers' Association	450
Commonwealth Medical Officers' Association	250
Commonwealth Professional Surveyors' Association	109
CSIRO Officers' Association	2554
Railway Professional Officers' Association	1600
Repatriation Department Medical Officers' Association	234

Source: Information provided by CPA.

Of these, the CSIRO Officers' Association and the Australian Government Lawyers' Association are also affiliated with the ACTU.

AFFILIATION WITH THE ALP

Unions cannot affiliate with the ALP at the national level; they can affiliate only in one or more states and territories. Unions may be affiliated in some, but not all, of the states in which they operate. Thus there may not be a simple answer to whether a union is affiliated with the ALP. Few unions are so far affiliated with the relatively new Australian Capital Territory and Northern Territory branches of the party. In nearly all cases these are unions which consistently affiliate with the party in the states.

Although national affiliation of unions with the ALP is not possible, the party in 1982 made it possible for unions which were widely affiliated at the state level to have some direct influence on the party at the national level. Trade unions which are affiliated in a majority of the states in which they operate (for these purposes, the term states also includes the territories) may submit items to be considered by the party's National Executive and by Platform Committees for possible consideration by the National Conference. (ALP 1982 Platform Constitution and Rules, pp.184-5)

Over the years, a number of unions have moved in and out of the ALP because of their attitudes to those controlling the party in the state concerned. Once outside, those in control may try to prevent them from returning. In September 1984, the party's National Executive directed that five unions in three states be re-affiliated. The most disputed cases, all in Victoria, involved the state branches of the Amalgamated Society of Carpenters and Joiners, the Federated Ironworkers' Association and the Shop, Distributive and Allied Employees' Association. These were unions which had been out of the party since 1955, when the ALP split and they supported what became the rival Democratic Labor Party. The National Executive is to consider later the similar case of the Federated Clerks' Union. At the same time, the National Executive ordered the affiliation of the Australian Building Construction and Builders Labourers' Federation in New South Wales and the Australasian Meat Industry Employees' Union in Tasmania. The Victorian re-affiliations had a dramatic effect on total ALP affiliations in that state, increasing the proportion of unionists who belong to ALP-affiliated unions from 57 per cent to 65 per cent. Unionists in New South Wales and Victoria are now more likely to belong to ALP-affiliated unions than those in other states. The proportions for each state and territory are shown in Table 4, on p. 19.

Had it not been for these re-affiliations, the proportion of ALP-affiliated unionists would have fallen by about 3 per cent since 1978. This is because of a long-term tendency for this proportion to decline because, generally speaking, the rapidly-growing unions of non-manual workers have not affiliated with the ALP.

The party itself has long been aware of this unfavourable tendency. A discussion paper prepared for a National Commission of Inquiry into the party in 1978 reported:

In so far as the ALP's relationship with the trade union movement is concerned, it is noteworthy that the unions affiliated are basically the same unions as were affiliated with the Party in the early years

of this century, and the dramatic changes in the composition of the workforce and the structure of trade unions have not been reflected in new union affiliations with the ALP... In organizational terms, it is arguable that one of the greatest failures of the ALP has been its inability to attract affiliation in the growth areas of trade unionism, such as the technical, professional and white collar areas. (ALP National Committee of Inquiry Discussion Papers, APSA Monograph No.23, 1979, p.86)

It remains to be seen whether this 'failure' will be checked or reversed.

* * *

UNION NAMES

Unions are listed alphabetically, by their official titles. However, to facilitate the identification of unions, we have omitted the word 'the' when it is the first word in a title. For the sake of clarity of appearance we have also omitted all apostrophes in union titles in the tables themselves, in this list of names and in the Appendix.

The first word in the title of many unions does nothing to indicate the nature of their membership and may be a barrier to easy identification. Such cases are listed below, so that those who know a union only by the name of the industry or the occupations which it covers can more readily locate it and discover where it appears in the tables.

Amalgamated

Carpenters and Joiners of Australia, Society of
Metals Foundry and Shipwrights Union

Association of

Colliery Management, Western Australia
Draughting Supervisory and Technical Employees
Foremen and Supervisors

Health Professionals (Commonwealth Public Service)

Hospital Pharmacists of Victoria

Industrial Blind

Principals of Independent Schools in New South Wales

Professional Engineers, Australia

Professional Scientists of Australia

Railway Professional Officers of Australia

Retail Pharmacy Employees, New South Wales

Teachers in Independent Schools, South Australia

Teachers in Victorian Catholic Secondary Schools

Australasian

Coal and Shale Employees Federation [Miners Federation]

Engineers Moulders and Foundry Workers Union, Western
Australian Branch, Society of

Engineers, Society of

Meat Industry Employees Union

Australian

Air Pilots, Federation of

Airline Flight Engineers Association

Bank Employees Union

Boot Trade Employees Federation

Broadcasting Commission Senior Officers Association

Broadcasting Commission Staff Association

Brushmakers Union

Building Construction Employees and Builders Labourers
Federation

Capital Territory Medical Officers Association
Capital Territory Teachers Federation
Collieries Staff Association
Commercial and Industrial Artists Association
Federal Police Association
Flight Attendants Association
Foremen Stevedores Association
Glass Workers Union
Government Lawyers Association
Hairdressers Wigmakers and Hairworkers Employees
Federation
Insurance Employees Union
International Pilots Association
Journalists Association
Licensed Aircraft Engineers Association
Locomotive Enginemen, Federated Union of
Marine and Power Engineers, Institute of
National University Administrative and Allied Officers
Association
Physiotherapy Association (Queensland Branch)
Postal and Telecommunications Commissions Heads of
Department Divisions and Branches Association
Postal and Telecommunications Union
Postmasters Association
Public Service Artisans Association
Public Service Association (Fourth Division Officers)
Railways Union

Rope and Cordage Workers Union
Shipping Officers Association
Social Welfare Union
Stevedoring Supervisors Association
Telecommunications Employes Association
Telephone and Phonogram Officers Association
Textile Workers Union
Theatrical and Amusement Employees Association
Timber Workers Union
Tramway and Motor Omnibus Employees Association
Transport Officers Federation
Workers Union

Commonwealth

Bank Officers Association
Foremens Association of Australia (Australian Public
Service)
Medical Officers Association
Professional Surveyors Association
Works Supervisors Association

Federated

Brick Tile and Pottery Industrial Union of Australia
Clerks Union of Australia
Cold Storage and Meat Preserving Union of Australasia
Confectioners Association of Australia
Engine Drivers and Firemens Association of Australasia

Felt Hatting and Allied Trades Employees Union of
Australia

Furnishing Trade Society of Australasia

Gas Employees Industrial Union

Ironworkers Association of Australia

Jewellers Watchmakers and Allied Trades Union of
Australia

Liquor and Allied Industries Employees Union of Australia

Marine Stewards and Pantrymens Association of Australasia

Millers and Mill Employees Association of Australasia

Mining Mechanics Association of Australasia

Miscellaneous Workers Union of Australia

Municipal and Shire Council Employees Union of Australia

Photo Engravers Photo-lithographers and Photogravure
Employees Association of Australia

Rubber and Allied Workers Union of Australia

Ship Painters and Dockers Union of Australia

Storemen and Packers Union of Australia

Tobacco Workers Union of Australia

Federation of

College Academics

University Staff Associations, Australian

New South Wales

Colliery Officials Association, Illawarra District

Fire Brigade Employees Union

Independent Teachers Association

Nurses Association

Public Medical Officers Association

Public Service Professional Officers Association

Teachers Association, Independent

Northern Territory

Police Association

Police Commissioned Officers Association

Senior Education Officers, Institute of

Teachers Federation

Operative

Painters and Decorators Union of Australia

Plasterers and Plaster Workers Federation of Australia

Stonemasons Society of Australia

Queensland

Blind Workers Union

Country Fire Brigade Officers Union

Kindergarten Teachers Association

Nurses Union

Police Officers Union

Police Union

Professional Officers Association

Railway Employees Union

Railway Maintenance Union

Senior Education Officers, Institute of

State Service Union

Teachers in Independent (Non-Governmental) Schools,
Association of

Teachers Union

Royal

Nursing Federation, Australian

South Australian

Herd Recorders Association

Salaried Medical Officers Association

Teachers, Institute of

Tasmanian

Dental Mechanics and Dental Employees Association

Public Service Association

Registered Teachers Association

Teachers Federation

Technical Colleges Staff Society

Union of

Postal Clerks and Telegraphists

Victorian

Allied Health Professionals Association

Ambulance Administrative Officers Association

Bricklayers Society, Operative

Catholic Primary Teachers Association

Child Care Executives, Association of

Colleges Staff Association

Mothercraft Nurses and Allied Employees Association

Plaster Industry Workers Union

Plasterers Society

Printers Operatives Union

Public Service Association

Secondary Teachers Association

Teachers in Independent Schools, Association of

Teachers Union

West Australian

Bakers Pastrycooks and Confectioners Union

Fire Brigade Employees Union

Hairdressers and Wigmakers Employees Union

Psychiatric Nurses Association

Railway Officers Union

Timber Industry Union, South West Land Division

Western Australian

Dental Technicians and Employees Union

Gold and Nickel Mines Supervisors Association

Grain Handling Salaried Officers Association

Police Union

Prison Officers Union

Salaried Pharmacists Association

ACADEMIC STAFF ASSOCIATION OF THE SOUTH AUSTRALIAN INSTITUTE
OF TECHNOLOGY

PO Box 1 INGLE FARM SA 5098

Membership at 31 July 1984

<u>State</u>	<u>Males</u>	<u>Females</u>	<u>Total</u>	ARB ACT: SA
SA	*	*	250	

ACTORS EQUITY OF AUSTRALIA

32 Orwell Street POTTS POINT NSW 2011

Membership at 31 December 1983

<u>State</u>	<u>Males</u>	<u>Females</u>	<u>Total</u>	TU ACT: NSW ARB ACT: FED NSW QLD SA WA INDUSTRIAL RELATIONS ACT ACTU T&L COUNCILS: NSW VIC QLD SA WA ALP AFFIL: NSW QLD SA WA
NSW	4478	4254	8732	
VIC	2860	2766	5626	
QLD	1532	1334	2866	
SA	831	614	1445	
WA	381	294	675	
TAS	75	54	129	
NT	8	6	14	
ACT	46	51	97	
TOTAL	10211	9373	19584	

ADMINISTRATIVE AND CLERICAL OFFICERS ASSOCIATION, AUSTRALIAN
GOVERNMENT EMPLOYMENT

245 Castlereagh Street SYDNEY NSW 2000

Membership at 31 December 1983

<u>State</u>	<u>Males</u>	<u>Females</u>	<u>Total</u>	ARB ACT: FED ACTU T&L COUNCILS: NSW QLD SA WA ACT NT
NSW	6685	3068	9753	
VIC	8349	2775	11124	
QLD	3682	1396	5078	
SA	3230	928	4158	
WA	2459	918	3377	
TAS	1127	289	1416	
NT	1263	915	2178	
ACT	9111	2004	11115	
TOTAL	35906	12293	48199	

AFFILIATED TEACHERS UNION

Trades Hall 54 Victoria Street CARLTON SOUTH VIC 3053

<u>State</u>	<u>Males</u>	<u>Females</u>	<u>Total</u>	ACTU
VIC	*	*	150	T&L COUNCIL: VIC

The membership figure is taken from the Executive Report of the ACTU, 1983.

AMALGAMATED METALS FOUNDRY AND SHIPWRIGHTS UNION

136-140 Chalmers Street SURRY HILLS NSW 2010

<u>State</u>	<u>Males</u>	<u>Females</u>	<u>Total</u>	TU ACT: NSW
NSW	55964	2614	58578	ARB ACT: FED NSW QLD SA
VIC	43336	3090	46426	WA
QLD	25021	505	25526	INDUSTRIAL RELATIONS ACT
SA	12158	561	12719	ACTU
WA	16773	66	16839	T&L COUNCILS: NSW VIC QLD
TAS	4344	56	4400	SA WA ACT NT
ACT	932	6	938	ALP AFFIL: NSW VIC QLD SA
				WA TAS NT
TOTAL	158528	6898	165426	

AMALGAMATED SOCIETY OF CARPENTERS AND JOINERS OF AUSTRALIA

Trades Hall 54 Victoria Street CARLTON SOUTH VIC 3053

<u>State</u>	<u>Males</u>	<u>Females</u>	<u>Total</u>	ARB ACT: FED SA
NSW	2500	0	2500	INDUSTRIAL RELATIONS ACT
VIC	6170	0	6170	ACTU
SA	3880	0	3880	T&L COUNCILS: NSW VIC SA
TAS	500	0	500	TAS ACT
ACT	140	0	140	ALP AFFIL: NSW VIC SA
TOTAL	13190	0	13190	

AMBULANCE EMPLOYEES ASSOCIATION OF SOUTH AUSTRALIA
150 South Road TORRENSVILLE SA 5031

<u>State</u>	<u>Males</u>	<u>Females</u>	<u>Total</u>	ARB ACT: SA T&L COUNCIL: SA
SA	133	1	134	

AMBULANCE EMPLOYEES ASSOCIATION OF TASMANIA
265 Macquarie Street HOBART TAS 7000

<u>State</u>	<u>Males</u>	<u>Females</u>	<u>Total</u>	T&L COUNCIL: TAS
TAS	143	3	146	

AMBULANCE EMPLOYEES ASSOCIATION OF VICTORIA
PO Box 60 CARLTON SOUTH VIC 3053

<u>State</u>	<u>Males</u>	<u>Females</u>	<u>Total</u>	ARB ACT: FED INDUSTRIAL RELATIONS ACT T&L COUNCIL: VIC
VIC	1362	125	1487	

AMBULANCE SUPERINTENDENTS ASSOCIATION OF QUEENSLAND
PO Box 63 NAMBOUR QLD 4560

<u>State</u>	<u>Males</u>	<u>Females</u>	<u>Total</u>	ARB ACT: QLD
QLD	98	0	98	

ARBITRATION INSPECTORS ASSOCIATION
PO Box 101 AVONDALE HEIGHTS VIC 3034

<u>State</u>	<u>Males</u>	<u>Females</u>	<u>Total</u>	ARB ACT: FED
TOTAL	*	*	*	

We have no other information concerning this union.

ASSOCIATION OF COLLIERY MANAGEMENT, WESTERN AUSTRALIA
PO Box 218 COLLIE WA 6225

<u>State</u>	<u>Males</u>	<u>Females</u>	<u>Total</u>	TU ACT: WA
WA	24	0	24	

ASSOCIATION OF DRAUGHTING SUPERVISORY AND TECHNICAL EMPLOYEES
ACTU House 393-397 Swanston Street MELBOURNE VIC 3000

Membership at 31 December 1983

<u>State</u>	<u>Males</u>	<u>Females</u>	<u>Total</u>	TU ACT: NSW ARB ACT: FED NSW QLD SA WA INDUSTRIAL RELATIONS ACT ACTU T&L COUNCILS: NSW VIC QLD SA WA TAS ACT NT
NSW	5334	250	5584	
VIC	6814	257	7071	
QLD	1031	63	1094	
SA	2562	76	2638	
WA	689	10	699	
TAS	625	27	652	
NT	692	58	750	
ACT	1860	174	2034	
TOTAL	19607	915	20522	

ASSOCIATION OF FOREMEN AND SUPERVISORS
17 Bellinger Place SYLVANIA NSW 2224

<u>State</u>	<u>Males</u>	<u>Females</u>	<u>Total</u>	TU ACT: NSW ARB ACT: NSW ACTU T&L COUNCIL: NSW
NSW	402	0	402	

ASSOCIATION OF HEALTH PROFESSIONALS (COMMONWEALTH PUBLIC
SERVICE)

78 High Street BORONIA PARK NSW 2111

<u>State</u>	<u>Males</u>	<u>Females</u>	<u>Total</u>	ARB ACT: FED ACTU T&L COUNCIL: NSW
NSW	33	57	90	
VIC	14	2	16	
QLD	15	5	20	
SA	0	1	1	
TAS	8	4	12	
TOTAL	70	69	139	

ASSOCIATION OF HOSPITAL PHARMACISTS OF VICTORIA
Warrnambool & District Hospital WARRNAMBOOL VIC 3280

<u>State</u>	<u>Males</u>	<u>Females</u>	<u>Total</u>	INDUSTRIAL RELATIONS ACT
VIC	121	156	277	

ASSOCIATION OF INDUSTRIAL BLIND
PO Box 14 MARYLANDS WA 6051

<u>State</u>	<u>Males</u>	<u>Females</u>	<u>Total</u>
WA	16	3	19

ASSOCIATION OF PRINCIPALS OF INDEPENDENT SCHOOLS IN NEW SOUTH
WALES
Knox Grammar School WAHROONGA NSW 2076

<u>State</u>	<u>Males</u>	<u>Females</u>	<u>Total</u>	TU ACT: NSW ARB ACT: NSW
NSW	45	30	75	

ASSOCIATION OF PROFESSIONAL ENGINEERS, AUSTRALIA
PO Box 1272L MELBOURNE VIC 3001

Membership at 31 December 1983

<u>State</u>	<u>Males</u>	<u>Females</u>	<u>Total</u>	ARB ACT: FED QLD SA
NSW	4708	15	4723	
VIC	5729	25	5754	
QLD	1970	10	1980	
SA	1288	5	1293	
WA	1305	1	1306	
TAS	536	2	538	
NT	171	0	171	
ACT	665	0	665	
TOTAL	16372	58	16430	

This union is affiliated with the Council of Professional Associations.

ASSOCIATION OF PROFESSIONAL SCIENTISTS OF AUSTRALIA
PO Box 321 NORTH MELBOURNE VIC 3051

<u>State</u>	<u>Males</u>	<u>Females</u>	<u>Total</u>	ARB ACT: FED INDUSTRIAL RELATIONS ACT
NSW	252	33	285	
VIC	733	49	782	
QLD	26	1	27	
SA	56	1	57	
WA	32	1	33	
TAS	50	1	51	
NT	4	0	4	
ACT	1	0	1	
TOTAL	1154	86	1240	

This union is affiliated with the Council of Professional Associations.

ASSOCIATION OF RAILWAY PROFESSIONAL OFFICERS OF AUSTRALIA
Trades Hall 4 Goulburn Street SYDNEY NSW 2000

<u>State</u>	<u>Males</u>	<u>Females</u>	<u>Total</u>	TU ACT: NSW ARB ACT: FED SA T&L COUNCIL: NSW
NSW	*	*	900	
VIC	*	*	300	
SA	*	*	144	
WA	*	*	216	
TAS	*	*	24	
TOTAL	*	*	1584	

This union is affiliated with the Council of Professional Associations.

ASSOCIATION OF RETAIL PHARMACY EMPLOYEES, NEW SOUTH WALES
21 Mary Street LONGUEVILLE NSW 2066

<u>State</u>	<u>Males</u>	<u>Females</u>	<u>Total</u>	TU ACT: NSW ARB ACT: NSW T&L COUNCIL: NSW
NSW	60	70	130	

ASSOCIATION OF TEACHERS IN INDEPENDENT SCHOOLS, SOUTH AUSTRALIA

C/- The South Australian Institute of Teachers
163A Greenhill Road PARKSIDE SA 5063

<u>State</u>	<u>Males</u>	<u>Females</u>	<u>Total</u>
SA	*	*	320

This union is affiliated with the Independent Teachers Federation of Australia.

ASSOCIATION OF TEACHERS IN VICTORIAN CATHOLIC SECONDARY SCHOOLS

27 Alexandra Parade FITZROY VIC 3065

<u>State</u>	<u>Males</u>	<u>Females</u>	<u>Total</u>	INDUSTRIAL RELATIONS ACT
VIC	850	850	1700	

This union is affiliated with the Independent Teachers Federation of Australia.

AUSTRALASIAN COAL AND SHALE EMPLOYEES FEDERATION

Labor Council Building 377-383 Sussex Street SYDNEY NSW 2000

Membership at 31 December 1983

<u>State</u>	<u>Males</u>	<u>Females</u>	<u>Total</u>	TU ACT: NSW
NSW	9487	0	9487	ARB ACT: FED NSW QLD
QLD	3100	0	3100	ACTU
TAS	90	0	90	T&L COUNCILS: NSW QLD
				ALP AFFIL: NSW QLD
TOTAL	12677	0	12677	

The Northern District, Southern District and Western District branches are separately registered under the New South Wales Trade Union and Industrial Arbitration Acts.

AUSTRALASIAN MEAT INDUSTRY EMPLOYEES UNION
 Labor Council Building 377-383 Sussex Street SYDNEY NSW 2000

Membership at 31 December 1983

<u>State</u>	<u>Males</u>	<u>Females</u>	<u>Total</u>	
NSW	7478	3852	11330	TU ACT: NSW WA
VIC	5806	2258	8064	ARB ACT: FED NSW QLD WA
QLD	7507	1742	9249	INDUSTRIAL RELATIONS ACT
SA	4303	574	4877	ACTU
WA	2264	837	3101	T&L COUNCILS: NSW VIC QLD
TAS	849	174	1023	SA WA TAS ACT NT
NT	373	41	414	ALP AFFIL: NSW VIC QLD SA
ACT	87	13	100	WA TAS NT
TOTAL	28667	9491	38158	

Newcastle and Northern, and New South Wales branches are separately registered under the New South Wales Trade Union and Industrial Arbitration Acts and separately affiliated with the ALP in New South Wales.

AUSTRALASIAN SOCIETY OF ENGINEERS
 PO Box Q195 Queen Victoria Building SYDNEY NSW 2001

<u>State</u>	<u>Males</u>	<u>Females</u>	<u>Total</u>	
TOTAL	*	*	29950	TU ACT: NSW
				ARB ACT: FED NSW SA
				INDUSTRIAL RELATIONS ACT
				ACTU
				T&L COUNCILS: NSW VIC SA
				TAS ACT
				ALP AFFIL: NSW VIC SA TAS

The membership figure is taken from the Executive Report of the ACTU, 1983.

AUSTRALASIAN SOCIETY OF ENGINEERS, MOULDERS AND FOUNDRY
 WORKERS UNION, WESTERN AUSTRALIAN BRANCH
 318 Lord Street EAST PERTH WA 6000

Membership at 31 December 1983

<u>State</u>	<u>Males</u>	<u>Females</u>	<u>Total</u>	
WA	5437	100	5537	ARB ACT: WA
				T&L COUNCIL: WA
				ALP AFFIL: WA

AUSTRALIAN AIRLINE FLIGHT ENGINEERS ASSOCIATION
182 Anzac Parade KENSINGTON NSW 2033

<u>State</u>	<u>Males</u>	<u>Females</u>	<u>Total</u>	ARB ACT: FED ACTU
NSW	167	0	167	T&L COUNCIL: NSW
VIC	223	0	223	
QLD	46	0	46	
TOTAL	436	0	436	

AUSTRALIAN BANK EMPLOYEES UNION
PO Box 108 CARLTON SOUTH VIC 3053

Membership at 16 May 1984

<u>State</u>	<u>Males</u>	<u>Females</u>	<u>Total</u>	TU ACT: NSW ARB ACT: FED NSW QLD ACTU
NSW/ACT	13139	16434	29573	T&L COUNCILS: NSW VIC QLD TAS ACT
VIC	13306	12953	26259	
QLD	5163	5766	10929	
SA/NT	3922	3913	7835	
WA	3155	4156	7311	
TAS	952	1021	1973	
TOTAL	39637	44243	83880	

Only the State Bank of New South Wales Division is registered under the New South Wales Trade Union and Industrial Arbitration Acts.

AUSTRALIAN BOOT TRADE EMPLOYEES FEDERATION
132-138 Leicester Street CARLTON VIC 3053

<u>State</u>	<u>Males</u>	<u>Females</u>	<u>Total</u>	TU ACT: NSW WA ARB ACT: FED NSW QLD WA INDUSTRIAL RELATIONS ACT ACTU
NSW	400	680	1080	T&L COUNCILS: NSW VIC SA WA TAS
VIC	1564	3488	5052	ALP AFFIL: NSW VIC SA WA
QLD	103	160	263	
SA	339	334	673	
WA	45	50	95	
TAS	27	50	77	
TOTAL	2478	4762	7240	

AUSTRALIAN BROADCASTING COMMISSION SENIOR OFFICERS ASSOCIATION
GPO Box 487 SYDNEY NSW 2001

Membership at 6 September 1983

<u>State</u>	<u>Males</u>	<u>Females</u>	<u>Total</u>	ARB ACT: FED
NSW	66	2	68	
VIC	10	0	10	
QLD	4	0	4	
SA	5	0	5	
WA	6	0	6	
TAS	6	0	6	
NT	1	0	1	
ACT	1	0	1	
O'SEAS	2	0	2	
TOTAL	101	2	103	

AUSTRALIAN BROADCASTING COMMISSION STAFF ASSOCIATION
68 Chandos Road ST LEONARDS NSW 2065

<u>State</u>	<u>Males</u>	<u>Females</u>	<u>Total</u>	ARB ACT: FED ACTU T&L COUNCILS: NSW WA TAS
NSW/NT	*	*	1807	
VIC	*	*	978	
QLD	*	*	315	
SA	*	*	367	
WA	*	*	354	
TAS	*	*	320	
ACT	*	*	51	
TOTAL	*	*	4192	

The union has indicated that approximately one third of its members are females.

AUSTRALIAN BRUSHMAKERS UNION
6 Glen Osmond Road PARKSIDE SA 5063

<u>State</u>	<u>Males</u>	<u>Females</u>	<u>Total</u>	ARB ACT: FED SA ACTU T&L COUNCIL: SA ALP AFFIL: SA
SA	*	*	355	

The membership figure is taken from the Executive Report of the ACTU, 1983.

AUSTRALIAN BUILDING CONSTRUCTION EMPLOYEES AND BUILDERS
LABOURERS FEDERATION

Trades Hall 54 Victoria Street CARLTON SOUTH VIC 3053

Membership at 31 August 1983

<u>State</u>	<u>Males</u>	<u>Females</u>	<u>Total</u>	
NSW	10356	0	10356	TU ACT: NSW
VIC	10342	0	10342	ARB ACT: FED NSW QLD SA WA
QLD	5277	0	5277	INDUSTRIAL RELATIONS ACT ACTU
SA	2212	0	2212	T&L COUNCILS: QLD SA WA
WA	3260	0	3260	TAS ACT
TAS	2148	0	2148	ALP AFFIL: NSW VIC QLD
ACT	1594	0	1594	SA WA TAS
TOTAL	35189	0	35189	

AUSTRALIAN CAPITAL TERRITORY MEDICAL OFFICERS ASSOCIATION
PO Box 20 GLEBE NSW 2037

<u>State</u>	<u>Males</u>	<u>Females</u>	<u>Total</u>	ARB ACT: FED
ACT	*	*	*	

We have no other information concerning this union.

ACT TEACHERS FEDERATION
PO Box 1 WESTON CREEK ACT 2611

<u>State</u>	<u>Males</u>	<u>Females</u>	<u>Total</u>	ARB ACT: FED T&L COUNCIL: ACT
ACT	1769	1176	2945	

This union is affiliated with the Australian Teachers Federation which, in turn, is affiliated with the ACTU.

AUSTRALIAN COLLIERIES STAFF ASSOCIATION
 PO Box 5178B NEWCASTLE WEST NSW 2302

<u>State</u>	<u>Males</u>	<u>Females</u>	<u>Total</u>	TU ACT: NSW ARB ACT: FED NSW WA
NSW	2705	290	2995	
QLD	1447	181	1628	
WA	119	18	137	
TAS	14	1	15	
TOTAL	4285	490	4775	

AUSTRALIAN COMMERCIAL AND INDUSTRIAL ARTISTS ASSOCIATION
 PO Box 878 CROWS NEST NSW 2065

<u>State</u>	<u>Males</u>	<u>Females</u>	<u>Total</u>	ARB ACT: FED
NSW	*	*	500	
VIC	*	*	400	
QLD	*	*	100	
SA	*	*	100	
WA	*	*	150	
TOTAL	*	*	1250	

AUSTRALIAN FEDERAL POLICE ASSOCIATION
 8-12 Fisher Place NARWEE NSW 2209

<u>State</u>	<u>Males</u>	<u>Females</u>	<u>Total</u>	ARB ACT: FED ACTU T&L COUNCIL: NSW
NSW	401	66	467	
VIC	299	64	363	
QLD	127	9	136	
SA	174	5	179	
WA	88	5	93	
TAS	18	3	21	
NT	49	6	55	
ACT	1150	101	1251	
TOTAL	2306	259	2565	

AUSTRALIAN FEDERATED UNION OF LOCOMOTIVE ENGINEERS
 PO Box 250 NORTH MELBOURNE VIC 3051

Membership at 31 December 1983

<u>State</u>	<u>Males</u>	<u>Females</u>	<u>Total</u>	
NSW	4425	2	4427	TU ACT: WA
VIC	2198	2	2200	ARB ACT: FED QLD WA
QLD	2698	2	2700	ACTU
SA	1080	0	1080	T&L COUNCILS: NSW VIC QLD
WA	800	0	800	SA WA
TAS	220	0	220	ALP AFFIL: NSW VIC QLD SA
				WA
TOTAL	11421	6	11427	

The South Australian figure includes members of the Commonwealth Division at Port Augusta.

The South Australian branch and the Commonwealth Division at Port Augusta are separately affiliated with the ALP in South Australia.

AUSTRALIAN FEDERATION OF AIR PILOTS
 132 Albert Road SOUTH MELBOURNE VIC 3205

<u>State</u>	<u>Males</u>	<u>Females</u>	<u>Total</u>
NSW	426	8	434
VIC	1053	5	1058
QLD	652	4	656
SA	98	1	99
WA	267	1	268
NT	62	1	63
O'SEAS	1	1	2
TOTAL	2559	21	2580

AUSTRALIAN FLIGHT ATTENDANTS ASSOCIATION
132-6 Albert Road SOUTH MELBOURNE VIC 3205

<u>State</u>	<u>Males</u>	<u>Females</u>	<u>Total</u>	ARB ACT: FED ACTU T&L COUNCILS: NSW VIC
NSW	13	683	696	
VIC	24	824	848	
QLD	1	395	396	
SA	0	37	37	
WA	0	104	104	
O'SEAS	0	425	425	
TOTAL	38	2468	2506	

AUSTRALIAN FOREMEN STEVEDORES ASSOCIATION
29 Devereaux Street OAK PARK VIC 3046

<u>State</u>	<u>Males</u>	<u>Females</u>	<u>Total</u>	TU ACT: NSW ARB ACT: FED NSW QLD SA ACTU T&L COUNCILS: NSW VIC SA WA TAS ALP AFFIL: VIC QLD SA WA
NSW	398	0	398	
VIC	339	0	339	
QLD	115	0	115	
SA	95	0	95	
WA	150	0	150	
TAS	42	0	42	
NT	10	0	10	
TOTAL	1149	0	1149	

The Queensland branch and the Northern Section are separately affiliated with the ALP in Queensland.

AUSTRALIAN GLASS WORKERS UNION
Trades Hall 4 Goulburn Street SYDNEY NSW 2000

<u>State</u>	<u>Males</u>	<u>Females</u>	<u>Total</u>	TU ACT: NSW ARB ACT: FED NSW INDUSTRIAL RELATIONS ACT ACTU T&L COUNCILS: NSW VIC QLD SA WA TAS ALP AFFIL: NSW VIC SA WA
NSW	1287	224	1511	
VIC	1285	36	1321	
QLD	381	9	390	
SA	261	28	289	
WA	147	0	147	
TAS	83	0	83	
TOTAL	3444	297	3741	

AUSTRALIAN GOVERNMENT LAWYERS ASSOCIATION
GPO Box E307 CANBERRA ACT 2601

Membership at 27 July 1983

<u>State</u>	<u>Males</u>	<u>Females</u>	<u>Total</u>	ARB ACT: FED ACTU
NSW	*	*	119	T&L COUNCIL: NSW
VIC	*	*	37	
QLD	*	*	19	
SA	*	*	11	
WA	*	*	10	
TAS	*	*	20	
NT	*	*	26	
ACT	*	*	214	
TOTAL	*	*	456	

This union is affiliated with the Council of Professional Associations.

AUSTRALIAN HAIRDRESSERS WIGMAKERS AND HAIRWORKERS EMPLOYEES
FEDERATION
53 Queen Street MELBOURNE VIC 3000

<u>State</u>	<u>Males</u>	<u>Females</u>	<u>Total</u>	ARB ACT: FED SA INDUSTRIAL RELATIONS ACT ACTU
VIC	75	215	290	T&L COUNCILS: VIC SA TAS
SA	*	*	*	
TAS	*	*	50	
TOTAL	*	*	340	

AUSTRALIAN INSTITUTE OF MARINE AND POWER ENGINEERS
14 Quay Street SYDNEY NSW 2000

<u>State</u>	<u>Males</u>	<u>Females</u>	<u>Total</u>	TU ACT: NSW ARB ACT: FED NSW QLD SA WA INDUSTRIAL RELATIONS ACT ACTU
NSW/ACT	1583	0	1583	T&L COUNCILS: NSW VIC NT
VIC/TAS	1018	0	1018	
QLD	676	0	676	
SA/NT	217	0	217	
WA	526	0	526	
TOTAL	4020	0	4020	

AUSTRALIAN INSURANCE EMPLOYEES UNION
310 Queen Street MELBOURNE VIC 3000

Membership at 31 December 1983

<u>State</u>	<u>Males</u>	<u>Females</u>	<u>Total</u>	
NSW	3407	6104	9511	ARB ACT: FED
VIC	3036	3985	7021	ACTU
QLD	957	1263	2220	T&L COUNCILS: NSW VIC QLD
SA	744	1097	1841	SA WA TAS
WA	542	851	1393	
TAS	265	272	537	
NT	40	70	110	
TOTAL	8991	13642	22633	

AUSTRALIAN INTERNATIONAL PILOTS ASSOCIATION
68 Moncur Street WOOLLAHRA NSW 2025

<u>State</u>	<u>Males</u>	<u>Females</u>	<u>Total</u>	
NSW	490	0	490	TU ACT: NSW ARB ACT: NSW

AUSTRALIAN JOURNALISTS ASSOCIATION
291 George Street SYDNEY NSW 2000

Membership at 31 December 1983

<u>State</u>	<u>Males</u>	<u>Females</u>	<u>Total</u>	
NSW	2944	1324	4268	TU ACT: NSW
VIC	2102	620	2722	ARB ACT: FED NSW QLD SA WA
QLD	1117	359	1476	INDUSTRIAL RELATIONS ACT
SA/NT	680	209	889	T&L COUNCILS: NSW ACT
WA	660	190	850	
TAS	254	64	318	
ACT	472	157	629	
TOTAL	8229	2923	11152	

AUSTRALIAN LICENCED AIRCRAFT ENGINEERS ASSOCIATION
24 Station Street KOGARAH NSW 2217

<u>State</u>	<u>Males</u>	<u>Females</u>	<u>Total</u>	ARB ACT: FED ACTU T&L COUNCIL: NSW SA
NSW	690	1	691	
VIC	510	0	510	
QLD	264	0	264	
SA	99	1	100	
WA	144	0	144	
TAS	19	0	19	
NT	27	0	27	
ACT	6	0	6	
TOTAL	1759	2	1761	

AMP SOCIETY STAFF ASSOCIATION
Royal Exchange PO Box R151 SYDNEY NSW 2001

<u>State</u>	<u>Males</u>	<u>Females</u>	<u>Total</u>	ARB ACT: FED
NSW	862	644	1506	
VIC	711	390	1101	
QLD	295	182	477	
SA	244	141	385	
WA	134	92	226	
TAS	54	46	100	
NT	7	2	9	
ACT	24	8	32	
TOTAL	2331	1505	3836	

AUSTRALIAN NATIONAL UNIVERSITY ADMINISTRATIVE AND ALLIED
OFFICERS ASSOCIATION
GPO Box 4 CANBERRA ACT 2601

<u>State</u>	<u>Males</u>	<u>Females</u>	<u>Total</u>	ARB ACT: FED
ACT	122	18	140	

AUSTRALIAN PHYSIOTHERAPY ASSOCIATION (QUEENSLAND BRANCH)
88 L'Estrange Terrace KELVIN GROVE QLD 4059

<u>State</u>	<u>Males</u>	<u>Females</u>	<u>Total</u>	ARB ACT: QLD
QLD	7	146	153	

The Association has branches in all states but operates as a trade union only in Queensland. See Introduction p.3

AUSTRALIAN POSTAL AND TELECOMMUNICATION COMMISSIONS HEADS OF DEPARTMENTS, DIVISIONS AND BRANCHES ASSOCIATION
GPO Box 3423 SYDNEY NSW 2001

<u>State</u>	<u>Males</u>	<u>Females</u>	<u>Total</u>	ARB ACT: FED ACTU T&L COUNCIL: NSW
TOTAL	*	*	250	

The membership figure is taken from the Executive Report of the ACTU, 1983.

AUSTRALIAN POSTAL AND TELECOMMUNICATIONS UNION
48 La Trobe Street MELBOURNE VIC 3000

Membership at 31 December 1983

<u>State</u>	<u>Males</u>	<u>Females</u>	<u>Total</u>	ARB ACT: FED ACTU T&L COUNCILS: NSW VIC QLD SA WA NT ALP AFFIL: NSW VIC QLD SA WA TAS
NSW	15949	2351	18300	
VIC	10905	1732	12637	
QLD	7457	595	8052	
SA	3577	359	3936	
WA	3079	226	3305	
TAS	1017	86	1103	
NT	392	48	440	
TOTAL	42376	5397	47773	

AUSTRALIAN POSTMASTERS ASSOCIATION
PO Box 870 NORTH SYDNEY NSW 2061

<u>State</u>	<u>Males</u>	<u>Females</u>	<u>Total</u>	ARB ACT: FED ACTU T&L COUNCILS: NSW VIC
NSW	440	0	440	
VIC	311	1	312	
QLD	194	0	194	
SA	140	0	140	
WA	157	0	157	
TAS	40	0	40	
NT	6	0	6	
ACT	12	0	12	
TOTAL	1300	1	1301	

AUSTRALIAN PUBLIC SERVICE ARTISANS ASSOCIATION
340-350 Victoria Street NORTH MELBOURNE VIC 3051

<u>State</u>	<u>Males</u>	<u>Females</u>	<u>Total</u>	ARB ACT: FED ACTU T&L COUNCIL: NSW SA
TOTAL	*	*	2200	

The membership figure is taken from the Executive Report of the ACTU, 1983.

AUSTRALIAN PUBLIC SERVICE ASSOCIATION (FOURTH DIVISION
OFFICERS)
PO Box 147 CARLTON VIC 3053

Membership at 31 December 1983

<u>State</u>	<u>Males</u>	<u>Females</u>	<u>Total</u>	ARB ACT: FED ACTU T&L COUNCILS: NSW VIC QLD WA ACT NT
NSW	1989	4679	6668	
VIC	2933	5023	7956	
QLD	1183	2007	3190	
SA	850	1581	2431	
WA	661	1154	1815	
TAS	300	447	747	
NT	702	1140	1842	
ACT	1362	3062	4424	
TOTAL	9980	19093	29073	

AUSTRALIAN RAILWAYS UNION

Labor Council Building 377-383 Sussex Street SYDNEY NSW 2000

Membership at 31 December 1983

<u>State</u>	<u>Males</u>	<u>Females</u>	<u>Total</u>	
NSW	15710	2001	17711	TU ACT: NSW WA
VIC	11090	872	11962	ARB ACT: FED NSW QLD SA WA
QLD	9797	712	10509	ACTU
SA	2859	152	3011	T&L COUNCILS: NSW VIC QLD SA WA TAS
WA	3607	99	3706	ALP AFFIL: NSW VIC QLD SA WA TAS
TAS	566	5	571	
TOTAL	43629	3841	47470	

This union is registered under the title New South Wales Branch, Australian Railways Union under the New South Wales Industrial Arbitration Act.

AUSTRALIAN ROPE AND CORDAGE WORKERS UNION

Trades Hall 54 Victoria Street CARLTON SOUTH VIC 3053

<u>State</u>	<u>Males</u>	<u>Females</u>	<u>Total</u>	
VIC	*	*	516	ARB ACT: FED ACTU T&L COUNCIL: VIC

AUSTRALIAN SHIPPING OFFICERS ASSOCIATION

327 Sussex Street SYDNEY NSW 2000

<u>State</u>	<u>Males</u>	<u>Females</u>	<u>Total</u>	
NSW	1053	577	1630	ARB ACT: FED ACTU
VIC	841	397	1238	T&L COUNCILS: NSW VIC QLD TAS
QLD	479	218	697	
SA	273	102	375	
WA	291	108	399	
TAS	102	48	150	
NT	20	9	29	
TOTAL	3059	1459	4518	

AUSTRALIAN SOCIAL WELFARE UNION
PO Box 1118 NORTH RICHMOND VIC 3121

<u>State</u>	<u>Males</u>	<u>Females</u>	<u>Total</u>	
NSW	203	606	809	TU ACT: NSW
VIC	261	780	1041	ARB ACT: FED NSW QLD SA
QLD	36	120	156	INDUSTRIAL RELATIONS ACT
SA	34	83	117	ACTU
WA	17	30	47	T&L COUNCILS: NSW VIC QLD
TAS	17	41	58	SA WA TAS ACT NT
ACT	40	90	130	ALP AFFIL: NSW ACT
TOTAL	608	1750	2358	

AUSTRALIAN STEVEDORING SUPERVISORS ASSOCIATION
Labor Council Building 377-383 Sussex Street SYDNEY NSW 2000

<u>State</u>	<u>Males</u>	<u>Females</u>	<u>Total</u>	
NSW	108	0	108	TU ACT: NSW
VIC	121	0	121	ARB ACT: FED NSW QLD SA
QLD	48	0	48	WA
SA	28	0	28	ACTU
WA	50	0	50	T&L COUNCILS: NSW VIC SA
TAS	16	0	16	WA
NT	4	0	4	
TOTAL	375	0	375	

AUSTRALIAN TELECOMMUNICATIONS EMPLOYEES ASSOCIATION
270 Flinders Street MELBOURNE VIC 3000

Membership at 31 December 1983

<u>State</u>	<u>Males</u>	<u>Females</u>	<u>Total</u>	
NSW/ACT	8716	295	9011	ARB ACT: FED
VIC	7115	319	7434	ACTU
QLD	4310	150	4460	T&L COUNCILS: NSW VIC QLD
SA/NT	2756	52	2808	SA ACT
WA	2144	42	2186	ALP AFFIL: NSW VIC QLD SA
TAS	813	30	843	WA TAS
TOTAL	25854	888	26742	

AUSTRALIAN TELEPHONE AND PHONOGRAM OFFICERS ASSOCIATION
270 Flinders Street MELBOURNE VIC 3000

Membership at 31 December 1982

<u>State</u>	<u>Males</u>	<u>Females</u>	<u>Total</u>	
NSW	370	2984	3354	ARB ACT: FED ACTU
VIC	108	1606	1714	T&L COUNCILS: QLD SA WA
QLD	63	1653	1716	
SA	31	818	849	
WA	39	694	733	
TAS	8	163	171	
NT	2	104	106	
ACT	16	243	259	
TOTAL	637	8265	8902	

AUSTRALIAN TEXTILE WORKERS UNION
132-138 Leicester Street CARLTON VIC 3053

Membership at 31 December 1983

<u>State</u>	<u>Males</u>	<u>Females</u>	<u>Total</u>	
NSW	2116	4720	6836	TU ACT: NSW
VIC	5835	10176	16011	ARB ACT: FED NSW INDUSTRIAL RELATIONS ACT ACTU
SA	745	787	1532	T&L COUNCILS: NSW VIC SA WA TAS
WA	61	123	184	ALP AFFIL: NSW VIC SA WA TAS
TAS	485	512	997	
TOTAL	9242	16318	25560	

AUSTRALIAN THEATRICAL AND AMUSEMENT EMPLOYEES ASSOCIATION
15 Glebe Point Road GLEBE NSW 2037

<u>State</u>	<u>Males</u>	<u>Females</u>	<u>Total</u>	
TOTAL	*	*	4134	TU ACT: NSW ARB ACT: FED NSW QLD SA WA ACTU T&L COUNCILS: NSW VIC QLD SA WA TAS ACT ALP AFFIL: VIC QLD

The membership figure is taken from the Executive Report of the ACTU, 1983.

AUSTRALIAN TIMBER WORKERS UNION
13 Nile Street PORT ADELAIDE SA 5015

Membership at 31 December 1983

<u>State</u>	<u>Males</u>	<u>Females</u>	<u>Total</u>	
NSW	7850	50	7900	TU ACT: NSW
VIC	4800	540	5340	ARB ACT: FED NSW SA
SA	2250	250	2500	INDUSTRIAL RELATIONS ACT
TAS	1473	22	1495	ACTU
				T&L COUNCILS: NSW VIC SA
				TAS ACT
				ALP AFFIL: NSW VIC SA TAS
TOTAL	16373	862	17235	

AUSTRALIAN TRAMWAY AND MOTOR OMNIBUS EMPLOYEES ASSOCIATION
Labor Council Building 377-383 Sussex Street SYDNEY NSW 2000

Membership at 31 December 1983

<u>State</u>	<u>Males</u>	<u>Females</u>	<u>Total</u>	
NSW	3990	231	4221	ARB ACT: FED QLD
VIC	2587	559	3146	ACTU
QLD	792	54	846	T&L COUNCILS: NSW VIC QLD
SA	1566	38	1604	SA WA
WA	1470	26	1496	ALP AFFIL: NSW VIC QLD SA
TAS	367	0	367	WA TAS
TOTAL	10772	908	11680	

AUSTRALIAN TRANSPORT OFFICERS FEDERATION
327-331 Sussex Street SYDNEY NSW 2000

Membership at 31 March 1984

<u>State</u>	<u>Males</u>	<u>Females</u>	<u>Total</u>	
NSW	7979	1733	9712	TU ACT: NSW
VIC	2794	575	3369	ARB ACT: FED NSW
QLD	924	0	924	ACTU
SA	1200	112	1312	T&L COUNCILS: NSW VIC SA
WA	69	0	69	ALP AFFIL: NSW VIC
TAS	332	85	417	
Airlines	2132	204	2336	
TOTAL	15430	2709	18139	

AUSTRALIAN WORKERS UNION
PO Box A252 SYDNEY SOUTH NSW 2001

<u>State</u>	<u>Males</u>	<u>Females</u>	<u>Total</u>	
NSW	15461	5	15466	TU ACT: NSW
VIC	18439	176	18615	ARB ACT: FED NSW QLD SA WA
QLD	51600	1153	52753	INDUSTRIAL RELATIONS ACT
SA	12465	102	12567	ACTU
WA	16837	57	16894	T&L COUNCILS: NSW VIC SA WA TAS
TAS	5141	1	5142	ALP AFFIL: NSW VIC QLD SA WA TAS ACT
TOTAL	119943	1494	121437	

BACON FACTORIES UNION, QUEENSLAND
131 Elizabeth Street BRISBANE QLD 4000

<u>State</u>	<u>Males</u>	<u>Females</u>	<u>Total</u>	ARB ACT: QLD
QLD	1125	505	1630	

This union is affiliated with the Combined Industrial Unions Committee.

BAKERY EMPLOYEES AND SALESMENS FEDERATION OF AUSTRALIA
Trades Hall 11-16 South Terrace ADELAIDE SA 5000

<u>State</u>	<u>Males</u>	<u>Females</u>	<u>Total</u>	
NSW	3657	504	4161	TU ACT: NSW
VIC	985	35	1020	ARB ACT: FED NSW SA
SA	558	2	560	INDUSTRIAL RELATIONS ACT
TAS	240	10	250	ACTU
ACT	50	0	50	T&L COUNCILS: NSW VIC TAS
TOTAL	5490	551	6041	

BAKING TRADE EMPLOYEES UNION OF SOUTH AUSTRALIA
Trades Hall 11-16 South Terrace ADELAIDE SA 5000

Membership at 30 June 1984

<u>State</u>	<u>Males</u>	<u>Females</u>	<u>Total</u>	
SA	*	*	1400	ARB ACT: SA
				T&L COUNCIL: SA
				ALP AFFIL: SA

BLIND WORKERS UNION
557 St Kilda Road ST KILDA VIC 3004

<u>State</u>	<u>Males</u>	<u>Females</u>	<u>Total</u>	ACTU
VIC	62	21	83	T&L COUNCIL: VIC ALP AFFIL: VIC

BLIND WORKERS UNION OF SOUTH AUSTRALIA
PO Box 30 GREENACRES SA 5086

<u>State</u>	<u>Males</u>	<u>Females</u>	<u>Total</u>	ALP AFFIL: SA
SA	37	14	51	

BREWERIES AND BOTTLE-YARDS EMPLOYEES UNION OF WESTERN
AUSTRALIA
169 Oxford Street LEEDERVILLE WA 6007

<u>State</u>	<u>Males</u>	<u>Females</u>	<u>Total</u>	TU ACT: WA ARB ACT: WA ACTU T&L COUNCIL: WA ALP AFFIL: WA
WA	350	0	350	

BUILDING SURVEYORS AND BUILDING INSPECTORS OF AUSTRALIA
PO Box Q59 115 York Street SYDNEY NSW 2000

<u>State</u>	<u>Males</u>	<u>Females</u>	<u>Total</u>	TU ACT: NSW
NSW	94	0	94	
VIC	1	0	1	
QLD	3	0	3	
SA	3	0	3	
NT	15	0	15	
TOTAL	116	0	116	

BUILDING WORKERS INDUSTRIAL UNION OF AUSTRALIA
PO Box A288 SYDNEY SOUTH NSW 2000

Membership at 31 December 1983

<u>State</u>	<u>Males</u>	<u>Females</u>	<u>Total</u>	
NSW	*	*	25042	TU ACT: NSW
VIC	*	*	7312	ARB ACT: FED NSW QLD SA
QLD	*	*	6987	WA
SA	*	*	1425	ACTU
WA	*	*	3706	T&L COUNCILS: NSW VIC QLD
TAS	*	*	1628	SA WA TAS ACT
ACT	*	*	1205	ALP AFFIL: NSW VIC QLD SA
				WA TAS
TOTAL	*	*	47305	

CIVIL AIR OPERATIONS OFFICERS ASSOCIATION OF AUSTRALIA
29 Cobden Street NORTH MELBOURNE VIC 3051

<u>State</u>	<u>Males</u>	<u>Females</u>	<u>Total</u>	ARB ACT: FED
NSW	283	19	302	
VIC	313	18	331	
QLD	260	11	271	
SA	119	2	121	
WA	112	0	112	
TAS	29	1	30	
NT	54	0	54	
ACT	74	0	74	
TOTAL	1244	51	1295	

CIVIL SERVICE ASSOCIATION OF WESTERN AUSTRALIA
445 Hay Street PERTH WA 6000

<u>State</u>	<u>Males</u>	<u>Females</u>	<u>Total</u>	ARB ACT: WA
NSW	8	2	10	
VIC	8	5	13	
QLD	3	0	3	
SA	4	0	4	
WA	11746	6501	18247	
TOTAL	11769	6508	18277	

CLERK OF WORKS INSTITUTE OF AUSTRALIA
PO Box A740 SYDNEY SOUTH NSW 2000

Membership at 31 December 1981

<u>State</u>	<u>Males</u>	<u>Females</u>	<u>Total</u>	ARB ACT: FED
NSW	33	0	33	
VIC	76	0	76	
QLD/NT	36	0	36	
SA	40	0	40	
WA	22	0	22	
ACT	23	0	23	
TOTAL	230	0	230	

This union declined to provide membership figures for 1983.

CLOTHING AND ALLIED TRADES UNION OF AUSTRALIA
Labor Council Building 377-383 Sussex Street SYDNEY NSW 2000

Membership at 31 December 1983

<u>State</u>	<u>Males</u>	<u>Females</u>	<u>Total</u>	TU ACT: NSW ARB ACT: FED NSW QLD SA WA INDUSTRIAL RELATIONS ACT ACTU T&L COUNCILS: NSW VIC SA WA ALP AFFIL: NSW VIC SA WA TAS
NSW	1379	7811	9190	
VIC	2090	11846	13936	
QLD	336	1903	2239	
SA	380	2153	2533	
WA	85	480	565	
TAS	30	160	190	
ACT	10	40	50	
TOTAL	4310	24393	28703	

COLLIE COAL MINERS UNION OF WESTERN AUSTRALIA
c/- Mineworkers Institute COLLIE WA 6225

<u>State</u>	<u>Males</u>	<u>Females</u>	<u>Total</u>	ARB ACT: WA ACTU T&L COUNCIL: WA ALP AFFIL: WA
WA	748	0	748	

COLLIE DISTRICT DEPUTIES UNION
57 Clifton Street COLLIE WA 6225

<u>State</u>	<u>Males</u>	<u>Females</u>	<u>Total</u>	ARB ACT: WA
WA	*	*	32	T&L COUNCIL: WA ALP AFFIL: WA

The membership figure is taken from the Western Australian Industrial Gazette, v.63, pt 2, 1983.

COLLIERY MANAGERS ASSOCIATION, NEW SOUTH WALES
40 Woodward Street MEREWETHER NSW 2291

<u>State</u>	<u>Males</u>	<u>Females</u>	<u>Total</u>	TU ACT: NSW
NSW	271	0	271	

CSR LIMITED OFFICERS ASSOCIATION
1-7 Bent Street SYDNEY NSW 2000

<u>State</u>	<u>Males</u>	<u>Females</u>	<u>Total</u>	ARB ACT: FED
TOTAL	1572	444	2016	

The union was unable to provide further details of its membership.

COMMISSION AGENTS UNION OF WESTERN AUSTRALIA
19 May Street EAST FREMANTLE WA 6158

<u>State</u>	<u>Males</u>	<u>Females</u>	<u>Total</u>	ARB ACT: WA
TOTAL	*	*	112	

The membership figure is taken from the Western Australian Industrial Gazette, v.63, pt 2, 1983.

COMMONWEALTH BANK OFFICERS ASSOCIATION
208 Clarence Street SYDNEY NSW 2000

Membership at 29 March 1984

<u>State</u>	<u>Males</u>	<u>Females</u>	<u>Total</u>	ARB ACT: FED ACTU T&L COUNCIL: NSW
NSW/ACT	7773	7255	15028	
VIC	2944	2766	5710	
QLD	2692	2705	5397	
SA/NT	1220	1109	2329	
WA	1075	1193	2268	
TAS	331	244	575	
R.Bank	1476	1134	2610	
TOTAL	17511	16406	33917	

COMMONWEALTH FOREMENS ASSOCIATION OF AUSTRALIA (AUSTRALIAN
PUBLIC SERVICE)
PO Box 373 MIRANDA NSW 2228

<u>State</u>	<u>Males</u>	<u>Females</u>	<u>Total</u>	ARB ACT: FED ACTU
NSW	470	3	473	
VIC/TAS	467	10	477	
QLD	49	0	49	
SA/WA	49	0	49	
NT	38	0	38	
ACT	36	0	36	
TOTAL	1109	13	1122	

COMMONWEALTH MEDICAL OFFICERS ASSOCIATION
PO Box 20 GLEBE NSW 2037

<u>State</u>	<u>Males</u>	<u>Females</u>	<u>Total</u>	ARB ACT: FED
NSW	55	6	61	
VIC	36	3	39	
QLD	12	1	13	
SA	13	0	13	
WA	7	2	9	
TAS	8	1	9	
NT	50	4	54	
ACT	31	6	37	
O'SEAS	4	0	4	
TOTAL	216	23	239	

This union is affiliated with the Council of Professional Associations.

COMMONWEALTH PROFESSIONAL SURVEYORS ASSOCIATION
GPO Box 4520 SYDNEY NSW 2001

<u>State</u>	<u>Males</u>	<u>Females</u>	<u>Total</u>	ARB ACT: FED
NSW	14	0	14	
VIC	13	0	13	
QLD	15	0	15	
SA	6	0	6	
WA	11	0	11	
NT	6	0	6	
ACT	52	0	52	
TOTAL	117	0	117	

This union is affiliated with the Council of Professional Associations.

CSIRO LABORATORY CRAFTSMEN ASSOCIATION
5 Yaldeeme Close TUGGERAH NSW 2259

<u>State</u>	<u>Males</u>	<u>Females</u>	<u>Total</u>	ARB ACT: FED
TOTAL	*	*	310	ACTU T&L COUNCIL: NSW

The membership figure is taken from the Executive Report of the ACTU, 1983.

CSIRO OFFICERS ASSOCIATION
9 Queens Road MELBOURNE VIC 3004

<u>State</u>	<u>Males</u>	<u>Females</u>	<u>Total</u>	ARB ACT: FED ACTU T&L COUNCIL: SA
NSW	667	79	746	
VIC	745	56	801	
QLD	188	11	199	
SA	144	16	160	
WA	103	4	107	
TAS	27	5	32	
NT	6	1	7	
ACT	436	48	484	
TOTAL	2316	220	2536	

This union is affiliated with the Council of Professional Associations.

COMMONWEALTH SCIENTIFIC AND INDUSTRIAL RESEARCH ORGANIZATION
TECHNICAL ASSOCIATION
GPO Box 1523N MELBOURNE VIC 3001

<u>State</u>	<u>Males</u>	<u>Females</u>	<u>Total</u>	ARB ACT: FED ACTU T&L COUNCIL: NSW
NSW	281	83	364	
VIC	298	94	392	
QLD	175	35	210	
SA	49	33	82	
WA	61	10	71	
TAS	16	3	19	
NT	15	0	15	
ACT	181	77	258	
TOTAL	1076	335	1411	

COMMONWEALTH WORKS SUPERVISORS ASSOCIATION
PO Box 373 MIRANDA NSW 2228

<u>State</u>	<u>Males</u>	<u>Females</u>	<u>Total</u>	ARB ACT: FED ACTU T&L COUNCIL: NSW
NSW	153	0	153	
VIC/TAS	91	0	91	
QLD	62	0	62	
SA	38	0	38	
WA	31	0	31	
NT	47	0	47	
ACT	90	0	90	
TOTAL	512	0	512	

COUNTRY FIRE AUTHORITY OFFICERS ASSOCIATION
c/- PO DARLING VIC 3145

<u>State</u>	<u>Males</u>	<u>Females</u>	<u>Total</u>	INDUSTRIAL RELATIONS ACT
VIC	285	8	293	

CUSTOMS OFFICERS ASSOCIATION OF AUSTRALIA, FOURTH DIVISION
GPO Box 4787 SYDNEY NSW 2001

<u>State</u>	<u>Males</u>	<u>Females</u>	<u>Total</u>	ARB ACT: FED T&L COUNCIL: NSW
TOTAL	*	*	*	

We have no other information concerning this union.

DEAKIN UNIVERSITY GENERAL STAFF ASSOCIATION
Pigdons Road WAURN PONDS VIC 3221

<u>State</u>	<u>Males</u>	<u>Females</u>	<u>Total</u>	INDUSTRIAL RELATIONS ACT
VIC	53	74	127	

DENTAL TECHNICIANS ASSOCIATION OF NEW SOUTH WALES
PO Box A261 SYDNEY SOUTH NSW 2001

<u>State</u>	<u>Males</u>	<u>Females</u>	<u>Total</u>	
NSW	120	20	140	TU ACT: NSW ARB ACT: NSW ACTU T&L COUNCIL: NSW

ELECTRICAL TRADES UNION OF AUSTRALIA
302-306 Elizabeth Street SYDNEY NSW 2010

Membership at 31 December 1983

<u>State</u>	<u>Males</u>	<u>Females</u>	<u>Total</u>	
NSW	31055	2162	33217	TU ACT: NSW WA ARB ACT: FED NSW QLD SA WA
VIC	16127	1413	17540	INDUSTRIAL RELATIONS ACT
QLD	11124	41	11165	ACTU
SA	7055	227	7282	T&L COUNCILS: NSW VIC QLD
WA	4434	0	4434	SA WA TAS ACT NT
TAS	2561	0	2561	ALP AFFIL: NSW VIC SA WA
NT	390	0	390	TAS NT
ACT	924	0	924	
TOTAL	73670	3843	77513	

Perth and Kalgoorlie branches are separately registered under the Western Australian Industrial Arbitration Act. In South Australia the Port Pirie branch is separately affiliated with the ALP.

ELECTRICITY SUPPLY PROFESSIONAL OFFICERS ASSOCIATION
280 Pitt Street SYDNEY NSW 2000

<u>State</u>	<u>Males</u>	<u>Females</u>	<u>Total</u>	
NSW	551	5	556	TU ACT: NSW ARB ACT: NSW

EXTERNAL PLANT OFFICERS ASSOCIATION
133 Binalong Road OLD TOONGABBIE NSW 2146

<u>State</u>	<u>Males</u>	<u>Females</u>	<u>Total</u>	ARB ACT: FED ACTU T&L COUNCIL: NSW
NSW	269	0	269	
VIC	191	0	191	
QLD	85	0	85	
SA	55	0	55	
WA	54	0	54	
TAS	24	0	24	
TOTAL	678	0	678	

FEDERAL FIREFIGHTERS UNION
PO Box 193 FITZROY VIC 3065

<u>State</u>	<u>Males</u>	<u>Females</u>	<u>Total</u>	ARB ACT: FED ACTU T&L COUNCILS: NSW VIC SA WA TAS ACT NT ALP AFFIL: ACT
NSW	78	0	78	
VIC	109	0	109	
QLD	136	0	136	
SA	45	0	45	
WA	83	0	83	
TAS	71	0	71	
NT	61	0	61	
ACT	233	0	233	
TOTAL	816	0	816	

FEDERATED BRICK TILE AND POTTERY INDUSTRIAL UNION OF AUSTRALIA
PO Box 80 EAST BRUNSWICK VIC 3056

<u>State</u>	<u>Males</u>	<u>Females</u>	<u>Total</u>	TU ACT: NSW ARB ACT: FED NSW WA INDUSTRIAL RELATIONS ACT ACTU T&L COUNCILS: NSW VIC WA ACT ALP AFFIL: VIC
NSW	2500	250	2750	
VIC	1800	300	2100	
WA	600	100	700	
ACT	16	0	16	
TOTAL	4916	650	5566	

FEDERATED CLERKS UNION OF AUSTRALIA
53 Queen Street MELBOURNE VIC 3000

Membership at 31 December 1983

<u>State</u>	<u>Males</u>	<u>Females</u>	<u>Total</u>	
NSW	8516	20567	29083	TU ACT: NSW
VIC	7103	14308	21411	ARB ACT: FED NSW QLD SA WA
QLD	6668	16853	23521	INDUSTRIAL RELATIONS ACT ACTU
SA	2317	3238	5555	T&L COUNCILS: NSW VIC SA
WA	1950	6069	8019	WA TAS ACT
TAS	1311	1795	3106	ALP AFFIL: NSW
NT	137	93	230	
ACT	462	607	1069	
TOTAL	28464	63530	91994	

The North Queensland and Central and Southern Queensland branches of this union are affiliated with the Combined Industrial Unions Committee.

FEDERATED COLD STORAGE AND MEAT PRESERVING EMPLOYEES UNION OF AUSTRALASIA

Trades Hall 54 Victoria Street CARLTON SOUTH VIC 3053

<u>State</u>	<u>Males</u>	<u>Females</u>	<u>Total</u>	
VIC	4500	2000	6500	ARB ACT: FED SA INDUSTRIAL RELATIONS ACT ACTU
SA	490	550	1040	T&L COUNCILS: VIC SA ALP AFFIL: VIC SA
TOTAL	4990	2550	7540	

FEDERATED CONFECTIONERS ASSOCIATION OF AUSTRALIA

Trades Hall 54 Victoria Street CARLTON SOUTH VIC 3053

<u>State</u>	<u>Males</u>	<u>Females</u>	<u>Total</u>	
NSW	400	582	982	TU ACT: NSW ARB ACT: FED NSW SA ACTU
VIC	506	2000	2506	T&L COUNCILS: NSW VIC SA
SA	150	255	405	TAS
TAS	165	280	445	ALP AFFIL: NSW VIC SA TAS
TOTAL	1221	3117	4338	

FEDERATED ENGINE DRIVERS AND FIREMENS ASSOCIATION OF AUSTRALASIA

136 Chalmers Street SURRY HILLS NSW 2010

<u>State</u>	<u>Males</u>	<u>Females</u>	<u>Total</u>	
TOTAL	*	*	26058	TU ACT: NSW WA ARB ACT: FED NSW QLD WA INDUSTRIAL RELATIONS ACT ACTU T&L COUNCILS: NSW VIC QLD SA WA ACT NT ALP AFFIL: NSW VIC QLD SA WA TAS

The membership figure is taken from the Executive Report of the ACTU, 1983.

FEDERATED FELT HATTING AND ALLIED TRADES EMPLOYEES UNION OF AUSTRALIA

Trades Hall 4 Goulburn Street SYDNEY NSW 2000

<u>State</u>	<u>Males</u>	<u>Females</u>	<u>Total</u>	
NSW	55	28	83	ARB ACT: FED ACTU
VIC	4	10	14	T&L COUNCILS: NSW VIC
TOTAL	59	38	97	

FEDERATED FURNISHING TRADE SOCIETY OF AUSTRALASIA
61-65 Drummond Street CARLTON VIC 3053

Membership at 31 December 1983

<u>State</u>	<u>Males</u>	<u>Females</u>	<u>Total</u>	
NSW	*	*	3400	TU ACT: NSW ARB ACT: FED NSW QLD SA INDUSTRIAL RELATIONS ACT ACTU
VIC	*	*	3882	
QLD	*	*	800	T&L COUNCILS: NSW VIC SA TAS ACT
SA	*	*	1100	
TAS	*	*	216	ALP AFFIL: NSW VIC SA
ACT	*	*	180	
TOTAL	*	*	9578	

The Queensland branch of this union is affiliated with the Combined Industrial Unions Committee.

FEDERATED GAS EMPLOYEES INDUSTRIAL UNION
 Trades Hall 11-16 South Terrace ADELAIDE SA 5000

<u>State</u>	<u>Males</u>	<u>Females</u>	<u>Total</u>	TU ACT: NSW ARB ACT: FED NSW ACTU T&L COUNCILS: NSW VIC SA ALP AFFIL: VIC SA TAS
NSW	1463	43	1506	
VIC	1607	72	1679	
QLD	7	0	7	
SA	632	0	632	
TAS	27	0	27	
TOTAL	3736	115	3851	

FEDERATED IRONWORKERS ASSOCIATION OF AUSTRALIA
 188 George Street SYDNEY NSW 2000

Membership at 31 December 1983

<u>State</u>	<u>Males</u>	<u>Females</u>	<u>Total</u>	TU ACT: NSW ARB ACT: FED NSW QLD SA INDUSTRIAL RELATIONS ACT ACTU T&L COUNCILS: NSW VIC QLD SA TAS ALP AFFIL: NSW VIC SA TAS
NSW	37818	2175	39993	
VIC	16401	1085	17486	
QLD	6326	237	6563	
SA	4631	308	4939	
WA	148	0	148	
TAS	2290	70	2360	
NT	295	13	308	
TOTAL	67909	3888	71797	

The Port Pirie/Whyalla branch is separately affiliated with the ALP in South Australia.

FEDERATED JEWELLERS WATCHMAKERS AND ALLIED TRADES UNION OF AUSTRALIA
 Trades Hall BRISBANE QLD 4000

<u>State</u>	<u>Males</u>	<u>Females</u>	<u>Total</u>	ARB ACT: QLD T&L COUNCIL: QLD ALP AFFIL: QLD
QLD	*	*	138	

The membership figure is taken from the Twenty-second Annual Report of the President of the Industrial Court of Queensland.

FEDERATED LIQUOR AND ALLIED INDUSTRIES EMPLOYEES UNION OF AUSTRALIA

27 Drummond Street CARLTON SOUTH VIC 3053

Membership at 31 December 1983

<u>State</u>	<u>Males</u>	<u>Females</u>	<u>Total</u>	
NSW	16490	24900	41390	TU ACT: NSW
VIC	7760	11640	19400	ARB ACT: FED NSW QLD SA WA
QLD	4200	6360	10560	INDUSTRIAL RELATIONS ACT ACTU
SA	4120	6180	10300	T&L COUNCILS: NSW VIC QLD SA TAS
WA	3020	4480	7500	ALP AFFIL: NSW VIC QLD SA WA TAS
TAS	1290	1900	3190	
NT	20	20	40	
ACT	1000	1400	2400	
TOTAL	37900	56880	94780	

FEDERATED MARINE STEWARDS AND PANTRYMENS ASSOCIATION OF AUSTRALASIA

Trades Hall 4 Goulburn Street SYDNEY NSW 2000

<u>State</u>	<u>Males</u>	<u>Females</u>	<u>Total</u>	
NSW	490	0	490	ARB ACT: FED ACTU
VIC	289	8	297	T&L COUNCILS: NSW VIC QLD ALP AFFIL: NSW VIC
QLD	138	0	138	
SA	38	0	38	
WA	81	0	81	
TOTAL	1036	8	1044	

FEDERATED MILLERS AND MILL EMPLOYEES ASSOCIATION OF AUSTRALASIA

265 Macquarie Street HOBART TAS 7000

<u>State</u>	<u>Males</u>	<u>Females</u>	<u>Total</u>	
TOTAL	*	*	1998	TU ACT: NSW WA ARB ACT: FED NSW WA ACTU T&L COUNCILS: NSW VIC SA TAS ALP AFFIL: SA WA

The membership figure is taken from the Executive Report of the ACTU, 1983.

FEDERATED MINING MECHANICS ASSOCIATION OF AUSTRALASIA
7 Beaumont Street HAMILTON NSW 2303

<u>State</u>	<u>Males</u>	<u>Females</u>	<u>Total</u>	TU ACT: NSW
NSW	2128	0	2128	ARB ACT: FED NSW ACTU T&L COUNCIL: NSW ALP AFFIL: NSW

FEDERATED MISCELLANEOUS WORKERS UNION OF AUSTRALIA
365-375 Sussex Street SYDNEY NSW 2000

<u>State</u>	<u>Males</u>	<u>Females</u>	<u>Total</u>	TU ACT: NSW
NSW	16066	16463	32529	ARB ACT: FED NSW QLD SA WA
VIC	14151	8822	22973	INDUSTRIAL RELATIONS ACT
QLD	7323	11216	18539	ACTU
SA	8107	9152	17259	T&L COUNCILS: NSW VIC QLD
WA	7249	12235	19484	SA WA TAS ACT NT
TAS	980	1142	2122	ALP AFFIL: NSW VIC QLD SA
NT	2922	968	3890	WA TAS ACT NT
ACT	1025	820	1845	
TOTAL	57823	60818	118641	

FEDERATED MUNICIPAL AND SHIRE COUNCIL EMPLOYEES UNION OF
AUSTRALIA

GPO Box 3511 SYDNEY NSW 2001

Membership a 31 December 1983

<u>State</u>	<u>Males</u>	<u>Females</u>	<u>Total</u>	TU ACT: NSW
NSW	*	*	35175	ARB ACT: FED NSW WA
VIC	*	*	11263	ACTU
SA	*	*	115	T&L COUNCILS: NSW VIC TAS
WA	*	*	3120	ALP AFFIL: NSW VIC
TAS	*	*	1457	
TOTAL	*	*	51130	

FEDERATED PHOTO ENGRAVERS PHOTO-LITHOGRAPHERS AND PHOTOGRAVURE
EMPLOYEES ASSOCIATION OF AUSTRALIA
Trades Hall 54 Victoria Street CARLTON SOUTH VIC 3053

<u>State</u>	<u>Males</u>	<u>Females</u>	<u>Total</u>	
VIC	527	1	528	ARB ACT: FED SA INDUSTRIAL RELATIONS ACT ACTU
SA	97	2	99	T&L COUNCILS: VIC SA ALP AFFIL: SA
TOTAL	624	3	627	

FEDERATED RUBBER AND ALLIED WORKERS UNION OF AUSTRALIA
PO Box 209 PORT MELBOURNE VIC 3207

Membership at 31 December 1983

<u>State</u>	<u>Males</u>	<u>Females</u>	<u>Total</u>	
NSW	3810	1690	5500	TU ACT: NSW ARB ACT: FED NSW INDUSTRIAL RELATIONS ACT ACTU
VIC	6512	3320	9832	T&L COUNCILS: NSW VIC SA WA ACT
SA	540	400	940	ALP AFFIL: NSW VIC SA WA TAS
WA	200	66	266	
TAS	220	36	256	
ACT	14	0	14	
TOTAL	11296	5512	16808	

FEDERATED SHIP PAINTERS AND DOCKERS UNION OF AUSTRALIA
36 Mort Street BALMAIN NSW 2041

<u>State</u>	<u>Males</u>	<u>Females</u>	<u>Total</u>	
NSW	760	0	760	TU ACT: NSW ARB ACT: FED NSW ACTU
VIC	350	0	350	T&L COUNCILS: NSW VIC QLD SA
QLD	220	0	220	
SA	42	0	42	
WA	111	0	111	
TOTAL	1483	0	1483	

FEDERATED STOREMEN AND PACKERS UNION OF AUSTRALIA
17-25 Lygon Street CARLTON VIC 3053

<u>State</u>	<u>Males</u>	<u>Females</u>	<u>Total</u>	
NSW	14200	8000	22200	TU ACT: NSW
VIC	15500	10000	25500	ARB ACT: FED NSW QLD SA
QLD	9000	3000	12000	INDUSTRIAL RELATIONS ACT
SA	4500	2000	6500	ACTU
WA	1300	300	1600	T&L COUNCILS: NSW VIC QLD
TAS	1400	600	2000	SA WA TAS ACT
NT	250	20	270	ALP AFFIL: NSW VIC QLD SA
ACT	500	100	600	WA TAS
TOTAL	46650	24020	70670	

FEDERATED TOBACCO WORKERS UNION OF AUSTRALIA
16 Balfour Road KENSINGTON NSW 2033

<u>State</u>	<u>Males</u>	<u>Females</u>	<u>Total</u>	
NSW	*	*	1726	TU ACT: NSW
VIC	*	*	1286	ARB ACT: FED NSW
TOTAL	*	*	3012	INDUSTRIAL RELATIONS ACT
				ACTU
				T&L COUNCILS: NSW VIC

The New South Wales and Victorian branches are separately affiliated with the ACTU.

FEDERATION OF AUSTRALIAN UNIVERSITY STAFF ASSOCIATIONS
33 Bank Street MELBOURNE VIC 3205

<u>State</u>	<u>Males</u>	<u>Females</u>	<u>Total</u>	
NSW	*	*	2771	TU ACT: NSW
VIC	1555	357	1912	ARB ACT: FED NSW QLD SA
QLD	961	164	1125	ACTU
SA	812	156	968	T&L COUNCIL: NSW
WA	*	*	600	
TAS	272	30	302	
ACT	*	*	587	
TOTAL	*	*	8265	

The Australian National University Staff Association is registered under the Conciliation and Arbitration Act.

The University Academic Staff Association of New South Wales is registered under the NSW Trade Union Act.

FEDERATION OF COLLEGE ACADEMICS
GPO Box 372 CANBERRA ACT 2601

<u>State</u>	<u>Males</u>	<u>Females</u>	<u>Total</u>	
NSW	*	*	792	TU ACT: NSW WA
VIC	*	*	2430	ARB ACT: NSW QLD SA
QLD	*	*	803	ACTU
SA	*	*	568	T&L COUNCILS: NSW VIC SA
WA	*	*	773	WA
TAS	*	*	149	
NT	*	*	54	
ACT	*	*	220	
TOTAL	*	*	5789	

FIRE BRIGADE EXECUTIVE OFFICERS UNION, QUEENSLAND
71 Longueval Street MOOROOKA QLD 4105

<u>State</u>	<u>Males</u>	<u>Females</u>	<u>Total</u>	ARB ACT: QLD
QLD	42	0	42	

FIRE BRIGADE OFFICERS ASSOCIATION OF SOUTH AUSTRALIA
20 Chancery Lane ADELAIDE SA 5000

<u>State</u>	<u>Males</u>	<u>Females</u>	<u>Total</u>	ARB ACT: SA
SA	185	0	185	T&L COUNCIL: SA

FIRE FIGHTERS ASSOCIATION OF SOUTH AUSTRALIA
150 South Road TORRENSVILLE SA 5031

<u>State</u>	<u>Males</u>	<u>Females</u>	<u>Total</u>	ARB ACT: SA
SA	520	0	520	ACTU
				T&L COUNCIL: SA
				ALP AFFIL: SA

FIREMEN AND DECKHANDS UNION OF NEW SOUTH WALES
289 Sussex Street SYDNEY NSW 2000

<u>State</u>	<u>Males</u>	<u>Females</u>	<u>Total</u>	TU ACT: NSW
NSW	550	27	577	ARB ACT: NSW ACTU T&L COUNCIL: NSW

FLIGHT STEWARDS ASSOCIATION OF AUSTRALIA
Labor Council Building 377-383 Sussex Street SYDNEY NSW 2000

<u>State</u>	<u>Males</u>	<u>Females</u>	<u>Total</u>	TU ACT: NSW
NSW	1643	0	1643	ARB ACT: FED NSW ACTU T&L COUNCIL: NSW

FOOD PRESERVERS UNION OF AUSTRALIA
PO Box 4929 MELBOURNE VIC 3001

<u>State</u>	<u>Males</u>	<u>Females</u>	<u>Total</u>	TU ACT: NSW
NSW	800	1250	2050	ARB ACT: FED NSW SA
VIC	1905	1247	3152	INDUSTRIAL RELATIONS ACT
SA	235	290	525	ACTU
TAS	420	487	907	T&L COUNCILS: NSW VIC SA TAS
TOTAL	3360	3274	6634	ALP AFFIL: NSW VIC SA TAS

FOOD PRESERVERS UNION OF WESTERN AUSTRALIA
929 Wellington Street WEST PERTH WA 6005

<u>State</u>	<u>Males</u>	<u>Females</u>	<u>Total</u>	ARB ACT: WA
WA	*	*	1400	ACTU T&L COUNCIL: WA

The membership figure is taken from the Western Australian Industrial Gazette, v.63, pt 2, 1983.

FOREMEN (GOVERNMENT) UNION, WESTERN AUSTRALIA
158 Adelaide Terrace PERTH WA 6000

<u>State</u>	<u>Males</u>	<u>Females</u>	<u>Total</u>	ARB ACT: WA
WA	160	0	160	

FUNERAL AND ALLIED INDUSTRIES UNION OF NEW SOUTH WALES
730 George Street SYDNEY NSW 2000

<u>State</u>	<u>Males</u>	<u>Females</u>	<u>Total</u>	TU ACT: NSW ARB ACT: NSW ACTU T&L COUNCIL: NSW
NSW	660	5	665	

The membership figure is taken from the Report of the Industrial Registrar, 1982.

GAS INDUSTRY SALARIED OFFICERS FEDERATION
PO Box K450 HAYMARKET NSW 2000

<u>State</u>	<u>Males</u>	<u>Females</u>	<u>Total</u>	TU ACT: NSW ARB ACT: FED NSW SA ACTU T&L COUNCILS: NSW VIC QLD SA
NSW	783	421	1204	
VIC	1428	803	2231	
QLD	76	37	113	
SA	375	85	460	
TOTAL	2662	1346	4008	

GRAMOPHONE RECORD INDUSTRY UNION OF NEW SOUTH WALES
24 Newcastle Street FIVE DOCK NSW 2046

<u>State</u>	<u>Males</u>	<u>Females</u>	<u>Total</u>	TU ACT: NSW ARB ACT: NSW T&L COUNCIL: NSW
NSW	205	230	435	

HEALTH AND RESEARCH EMPLOYEES ASSOCIATION OF AUSTRALIA
507-509 Elizabeth Street SURRY HILLS NSW 2010

Membership at 31 December 1983

<u>State</u>	<u>Males</u>	<u>Females</u>	<u>Total</u>	
NSW	*	*	37650	TU ACT: NSW ARB ACT: FED NSW ACTU
TAS	*	*	298	T&L COUNCILS: NSW TAS ACT
ACT	*	*	737	ALP AFFIL: NSW
TOTAL	*	*	38685	

HEALTH SURVEYORS ASSOCIATION OF NEW SOUTH WALES
69 Australia Street CAMPERDOWN NSW 2050

<u>State</u>	<u>Males</u>	<u>Females</u>	<u>Total</u>	
NSW	936	11	947	TU ACT: NSW ARB ACT: NSW

HOSPITAL ADMINISTRATIVE OFFICERS ASSOCIATION OF VICTORIA
66 Derby Street KEW VIC 3101

<u>State</u>	<u>Males</u>	<u>Females</u>	<u>Total</u>	INDUSTRIAL RELATIONS ACT
VIC	*	*	812	

HOSPITAL DENTISTS ASSOCIATION OF VICTORIA
711 Elizabeth Street MELBOURNE VIC 3000

<u>State</u>	<u>Males</u>	<u>Females</u>	<u>Total</u>	INDUSTRIAL RELATIONS ACT
VIC	*	*	*	

We have no other information concerning this union.

HOSPITAL EMPLOYEES FEDERATION OF AUSTRALIA
PO Box 58 CARLTON SOUTH VIC 3053

<u>State</u>	<u>Males</u>	<u>Females</u>	<u>Total</u>	
NSW	346	519	865	ARB ACT: FED QLD
VIC	10440	15660	26100	INDUSTRIAL RELATIONS ACT
QLD	1040	1559	2599	ACTU
SA	140	210	350	T&L COUNCILS: NSW VIC QLD
WA	168	251	419	SA WA TAS ACT
TAS	1860	2790	4650	ALP AFFIL: VIC QLD TAS
NT	4	2	6	ACT
ACT	414	640	1054	
TOTAL	14412	21631	36043	

HOSPITAL OFFICERS ASSOCIATION OF NEW SOUTH WALES
Hornsby Kuring-gai Hospital HORNSBY NSW 2077

<u>State</u>	<u>Males</u>	<u>Females</u>	<u>Total</u>	
NSW	628	89	717	TU ACT: NSW
				ARB ACT: NSW
				T&L COUNCIL: NSW

HOSPITAL SALARIED OFFICERS ASSOCIATION OF WESTERN AUSTRALIA
8 Coolgardie Terrace EAST PERTH WA 6000

<u>State</u>	<u>Males</u>	<u>Females</u>	<u>Total</u>	
WA	1162	2289	3451	ARB ACT: WA
				T&L COUNCIL: WA

HUNTER DISTRICT WATER BOARD EMPLOYEES ASSOCIATION
Trades Hall NEWCASTLE NSW 2300

Membership at 31 December 1982

<u>State</u>	<u>Males</u>	<u>Females</u>	<u>Total</u>	
NSW	1076	152	1228	TU ACT: NSW
				ARB ACT: NSW
				ACTU
				T&L COUNCIL: NSW

The Salaried Division (534 members) is affiliated with the ACTU.

INDEPENDENT SCHOOLS SALARIED OFFICERS ASSOCIATION OF WESTERN
AUSTRALIA

5 Greenham Street COTTESLOE WA 6011

<u>State</u>	<u>Males</u>	<u>Females</u>	<u>Total</u>	ARB ACT: WA T&L COUNCIL: WA
WA	300	457	757	

This union is affiliated with the Independent Teachers
Federation of Australia.

INDEPENDENT SCHOOLS STAFF ASSOCIATION, AUSTRALIAN CAPITAL
TERRITORY

PO Box E89 Queen Victoria Terrace BARTON ACT 2600

<u>State</u>	<u>Males</u>	<u>Females</u>	<u>Total</u>	ARB ACT: FED
ACT	117	403	520	

This union is affiliated with the Independent Teachers
Federation of Australia.

INDUSTRIAL ARBITRATION REGISTRARS ASSOCIATION

Nicholls Rivulet Road OYSTER COVE TAS 7100

<u>State</u>	<u>Males</u>	<u>Females</u>	<u>Total</u>	ARB ACT: FED
NSW	2	0	2	
VIC	2	0	2	
SA	1	0	1	
WA	1	0	1	
TAS	1	0	1	
NT	1	0	1	
ACT	1	0	1	
TOTAL	9	0	9	

INDUSTRIAL STAFF UNION

160 Clarence Street SYDNEY NSW 2000

<u>State</u>	<u>Males</u>	<u>Females</u>	<u>Total</u>	TU ACT: NSW ARB ACT: NSW ALP AFFIL: NSW
NSW	31	9	40	

INSTITUTE OF INSPECTORS OF SCHOOLS AND SENIOR EDUCATIONAL
ADMINISTRATORS OF NEW SOUTH WALES
GPO Box 33 SYDNEY NSW 2001

<u>State</u>	<u>Males</u>	<u>Females</u>	<u>Total</u>	TU ACT: NSW ARB ACT: NSW
NSW	192	29	221	

KINDERGARTEN TEACHERS ASSOCIATION OF VICTORIA
335 Camberwell Road CAMBERWELL VIC 3124

Membership at 1 June 1983

<u>State</u>	<u>Males</u>	<u>Females</u>	<u>Total</u>	INDUSTRIAL RELATIONS ACT
VIC	11	879	890	

LA TROBE GENERAL STAFF ASSOCIATION
La Trobe University BUNDOORA VIC 3083

<u>State</u>	<u>Males</u>	<u>Females</u>	<u>TOTAL</u>	INDUSTRIAL RELATIONS ACT
VIC	*	*	255	

LIBRARY AND INFORMATION STAFF UNION
7 Forsyth Street WEST RYDE NSW

<u>State</u>	<u>Males</u>	<u>Females</u>	<u>Total</u>	TU ACT: NSW
NSW	*	*	*	

We have no other information concerning this union.

LOCAL GOVERNMENT CLERKS ASSOCIATION OF NEW SOUTH WALES
217 Clarence Street SYDNEY NSW 2000

<u>State</u>	<u>Males</u>	<u>Females</u>	<u>Total</u>	TU ACT: NSW ARB ACT: NSW
NSW	385	0	385	

LOCAL GOVERNMENT ENGINEERS ASSOCIATION OF NEW SOUTH WALES
215-217 Clarence Street SYDNEY NSW 2000

<u>State</u>	<u>Males</u>	<u>Females</u>	<u>Total</u>	TU ACT: NSW ARB ACT: NSW
NSW	798	5	803	

MAITLAND DISTRICT DEPUTIES ASSOCIATION
Ellalong Road PELTON via CESSNOCK NSW 2325

<u>State</u>	<u>Males</u>	<u>Females</u>	<u>Total</u>	TU ACT: NSW ARB ACT: NSW
NSW	180	0	180	

MANNEQUINS AND MODELS GUILD OF AUSTRALIA
220 Collins Street MELBOURNE VIC 3000

<u>State</u>	<u>Males</u>	<u>Females</u>	<u>Total</u>	ARB ACT: FED SA INDUSTRIAL RELATIONS ACT ACTU T&L COUNCIL: VIC SA
VIC	5	105	110	
QLD	4	40	44	
SA	5	50	55	
WA	6	120	126	
TAS	8	50	58	
NT	7	56	63	
ACT	2	60	62	
TOTAL	37	481	518	

MANUFACTURING GROCERS EMPLOYEES FEDERATION OF AUSTRALIA
Trades Hall 54 Victoria Street CARLTON SOUTH VIC 3053

<u>State</u>	<u>Males</u>	<u>Females</u>	<u>Total</u>	ARB ACT: FED SA INDUSTRIAL RELATIONS ACT ACTU T&L COUNCILS: VIC SA ALP AFFIL: VIC SA
VIC	750	980	1730	
SA	300	300	600	
TOTAL	1050	1280	2330	

MARINE AND HARBOUR TRUST EMPLOYEES ASSOCIATION
GPO Box 896J HOBART TAS 7001

<u>State</u>	<u>Males</u>	<u>Females</u>	<u>Total</u>	T&L COUNCIL: TAS
TAS	52	0	52	

MARINE PORTERS ASSOCIATION
6 Brownlea Place MT PRITCHARD NSW 2170

<u>State</u>	<u>Males</u>	<u>Females</u>	<u>Total</u>	TU ACT: NSW
NSW	18	0	18	

MSB OFFICERS ASSOCIATION
752 George Street SYDNEY NSW 2000

<u>State</u>	<u>Males</u>	<u>Females</u>	<u>Total</u>	TU ACT: NSW ARB ACT: NSW ACTU T&L COUNCIL: NSW
NSW	610	170	780	

MARITIME WORKERS UNION OF WESTERN AUSTRALIA
18 Pakenham Street FREMANTLE WA 6160

<u>State</u>	<u>Males</u>	<u>Females</u>	<u>Total</u>	TU ACT: WA ARB ACT: WA ACTU T&L COUNCIL: WA ALP AFFIL: WA
WA	278	0	278	

MEAT INSPECTORS ASSOCIATION, AUSTRALIAN PUBLIC SERVICE
PO Box 80 ALTONA VIC 3018

<u>State</u>	<u>Males</u>	<u>Females</u>	<u>Total</u>	ARB ACT: FED ACTU T&L COUNCILS: VIC QLD
NSW	676	0	676	
VIC	460	1	461	
QLD	428	1	429	
SA	230	0	230	
WA	177	0	177	
TAS	76	0	76	
NT	14	0	14	
ACT	12	0	12	
TOTAL	2073	2	2075	

MEDICAL SCIENTISTS ASSOCIATION OF VICTORIA
358 New Street BRIGHTON VIC 3186

<u>State</u>	<u>Males</u>	<u>Females</u>	<u>Total</u>	INDUSTRIAL RELATIONS ACT
VIC	*	*	*	

We have no other information concerning this union.

MERCHANT SERVICE GUILD OF AUSTRALIA
Labor Council Building 377-383 Sussex Street SYDNEY NSW 2000

<u>State</u>	<u>Males</u>	<u>Females</u>	<u>Total</u>	TU ACT: NSW ARB ACT: FED NSW QLD SA WA ACTU T&L COUNCILS: NSW VIC QLD SA WA TAS NT
NSW	988	1	989	
VIC	560	0	560	
QLD	785	1	786	
SA	191	0	191	
WA	507	0	507	
TAS	138	0	138	
NT	30	0	30	
ACT	6	0	6	
TOTAL	3205	2	3207	

METROPOLITAN FIRE BRIGADE OFFICERS ASSOCIATION, BRISBANE
18 Symphony Avenue STRATHPINE QLD 4500

<u>State</u>	<u>Males</u>	<u>Females</u>	<u>Total</u>	ARB ACT: QLD T&L COUNCIL: QLD ALP AFFIL: QLD
QLD	174	0	174	

METROPOLITAN LAUNDRY EMPLOYEES UNION
61 Thomas Street SUBIACO WA 6008

<u>State</u>	<u>Males</u>	<u>Females</u>	<u>Total</u>	ARB ACT: WA T&L COUNCIL: WA ALP AFFIL: WA
WA	48	319	367	

METROPOLITAN (PERTH) PASSENGER TRANSPORT TRUST OFFICERS UNION
Labor Centre 82 Beaufort Street PERTH WA 6000

<u>State</u>	<u>Males</u>	<u>Females</u>	<u>Total</u>	ARB ACT: WA ACTU T&L COUNCIL: WA ALP AFFIL: WA
WA	287	35	322	

MONASH UNIVERSITY GENERAL STAFF ASSOCIATION
Monash University CLAYTON VIC 3168

<u>State</u>	<u>Males</u>	<u>Females</u>	<u>Total</u>	INDUSTRIAL RELATIONS ACT
VIC	211	206	417	

MOTOR TRANSPORT AND CHAUFFEURS ASSOCIATION
Trades Hall 54 Victoria Street CARLTON SOUTH VIC 3053

<u>State</u>	<u>Males</u>	<u>Females</u>	<u>Total</u>	ARB ACT: FED INDUSTRIAL RELATIONS ACT ACTU T&L COUNCIL: VIC
VIC	3100	100	3200	

MUNICIPAL OFFICERS ASSOCIATION OF AUSTRALIA
1-3 O'Connell Street NORTH MELBOURNE VIC 3051

Membership at 31 December 1983

<u>State</u>	<u>Males</u>	<u>Females</u>	<u>Total</u>	
NSW	584	10	594	TU ACT: NSW
VIC	17078	5324	22402	ARB ACT: FED QLD
QLD	5408	2012	7420	ACTU
SA/NT	2613	1472	4085	T&L COUNCILS: NSW VIC QLD
WA	2965	1008	3973	SA WA NT
TAS	864	237	1101	
TOTAL	29512	10063	39575	

MUSICIANS UNION OF AUSTRALIA
65 Wellington Street WINDSOR VIC 3181

Membership at 31 December 1983

<u>State</u>	<u>Males</u>	<u>Females</u>	<u>Total</u>	
NSW/ACT	6895	747	7642	TU ACT: NSW
VIC	3199	351	3550	ARB ACT: FED NSW QLD SA
QLD	1118	78	1196	WA
SA	871	163	1034	INDUSTRIAL RELATIONS ACT
WA	778	94	872	ACTU
TAS	580	31	611	T&L COUNCILS: NSW VIC QLD
				SA WA TAS ACT
				ALP AFFIL: NSW VIC WA
TOTAL	13441	1464	14905	

NATIONAL UNION OF RAIL WORKERS OF AUSTRALIA
399 Illawarra Road MARRICKVILLE NSW 2204

<u>State</u>	<u>Males</u>	<u>Females</u>	<u>Total</u>	
NSW	1511	142	1653	TU ACT: NSW
TAS	*	*	222	ARB ACT: FED NSW
TOTAL	*	*	1875	

NEW SOUTH WALES COLLIERY OFFICIALS ASSOCIATION, ILLAWARRA
DISTRICT

3/61 Market Street WOLLONGONG NSW 2500

<u>State</u>	<u>Males</u>	<u>Females</u>	<u>Total</u>	TU ACT: NSW
NSW	570	0	570	ARB ACT: NSW

NEW SOUTH WALES FIRE BRIGADE EMPLOYEES UNION

267 Sussex Street SYDNEY NSW 2000

<u>State</u>	<u>Males</u>	<u>Females</u>	<u>Total</u>	TU ACT: NSW
NSW	*	*	3293	ARB ACT: NSW
				ACTU
				T&L COUNCIL: NSW
				ALP AFFIL: NSW

NEW SOUTH WALES INDEPENDENT TEACHERS ASSOCIATION

32 York Street SYDNEY NSW 2000

<u>State</u>	<u>Males</u>	<u>Females</u>	<u>Total</u>	TU ACT: NSW
NSW	*	*	8377	ARB ACT: NSW
				T&L COUNCIL: NSW

This union is affiliated with the Independent Teachers
Federation of Australia.

NEW SOUTH WALES NURSES ASSOCIATION

188-192 Goulburn Street DARLINGHURST NSW 2010

Membership at 31 March 1984

<u>State</u>	<u>Males</u>	<u>Females</u>	<u>Total</u>	TU ACT: NSW
NSW	2603	30490	33093	ARB ACT: NSW
				ACTU
				T&L COUNCIL: NSW

NEW SOUTH WALES PUBLIC MEDICAL OFFICERS ASSOCIATION
99 York Street SYDNEY NSW 2000

<u>State</u>	<u>Males</u>	<u>Females</u>	<u>Total</u>	TU ACT: NSW ARB ACT: NSW T&L COUNCIL: NSW
NSW	616	118	734	

NEW SOUTH WALES PUBLIC SERVICE PROFESSIONAL OFFICERS
ASSOCIATION
Labour Council Building 377-383 Sussex Street SYDNEY NSW 2000

<u>State</u>	<u>Males</u>	<u>Females</u>	<u>Total</u>	TU ACT: NSW ARB ACT: NSW ACTU T&L COUNCIL: NSW
NSW	3376	636	4012	

NEW SOUTH WALES TEACHERS FEDERATION
300-304 Sussex Street SYDNEY NSW 2000

Membership at 31 December 1983

<u>State</u>	<u>Males</u>	<u>Females</u>	<u>Total</u>	TU ACT: NSW ARB ACT: NSW T&L COUNCILS: NSW ACT
NSW	*	*	82104	

The union has advised us that approximately 60% of the membership is female.

This union is affiliated with the Australian Teachers Federation which, in turn, is affiliated with the ACTU.

NEWCASTLE DISTRICT DEPUTIES AND SHOTFIRERS PROTECTIVE
ASSOCIATION
169 Pacific Highway CHARLESTOWN NSW 2290

<u>State</u>	<u>Males</u>	<u>Females</u>	<u>Total</u>	TU ACT: NSW ARB ACT: NSW
NSW	483	0	483	

NEWSPAPER STAFF OFFICERS ASSOCIATION
10 Porter Road ENGADINE NSW 2233

<u>State</u>	<u>Males</u>	<u>Females</u>	<u>Total</u>	TU ACT: NSW
NSW	155	0	155	ARB ACT: NSW

The membership figure is taken from the Report of the Industrial Registrar, 1982.

NON-OFFICIAL POSTMASTERS ASSOCIATION OF AUSTRALIA
PO Box 155 KANGAROO FLAT VIC 3555

<u>State</u>	<u>Males</u>	<u>Females</u>	<u>Total</u>	ARB ACT: FED
TOTAL	*	*	*	T&L COUNCILS: QLD SA ACT

We have no other information concerning this union.

NORTHERN TERRITORY INSTITUTE OF SENIOR EDUCATION OFFICERS
PO Box 4821 DARWIN NT 5790

<u>State</u>	<u>Males</u>	<u>Females</u>	<u>Total</u>
NT	*	*	*

We have no other information concerning this union.

NORTHERN TERRITORY POLICE ASSOCIATION
18 Mitchell Street DARWIN NT 5790

<u>State</u>	<u>Males</u>	<u>Females</u>	<u>Total</u>
NT	536	25	561

NORTHERN TERRITORY POLICE COMMISSIONED OFFICERS ASSOCIATION
PO Box 39764 WINNELLIE NT 5789

<u>State</u>	<u>Males</u>	<u>Females</u>	<u>Total</u>
NT	33	0	33

NORTHERN TERRITORY TEACHERS FEDERATION
PO Box 4494 DARWIN NT 5794

Membership at 12 September 1983

<u>State</u>	<u>Males</u>	<u>Females</u>	<u>Total</u>	ARB ACT: FED	T&L COUNCIL: NT
NT	764	1094	1858		

This union is affiliated with the Australian Teachers Federation which, in turn, is affiliated with the ACTU.

OFFICIAL COURT INTERPRETERS AND TRANSLATORS PROFESSIONAL
ASSOCIATION OF NEW SOUTH WALES
107 Pitt Street SYDNEY NSW 2000

<u>State</u>	<u>Males</u>	<u>Females</u>	<u>Total</u>	TU ACT: NSW	ARB ACT: NSW	T&L COUNCIL: NSW
NSW	14	10	24			

The membership figure is taken from the Report of the Industrial Registrar, 1982.

OPERATIVE PAINTERS AND DECORATORS UNION OF AUSTRALIA
 Trades Hall 54 Victoria Street CARLTON SOUTH VIC 3053

Membership at 31 December 1983

<u>State</u>	<u>Males</u>	<u>Females</u>	<u>Total</u>	
NSW	7780	15	7795	TU ACT: NSW
VIC	4170	5	4175	ARB ACT: FED NSW QLD WA
QLD	3338	1	3339	INDUSTRIAL RELATIONS ACT
SA	1182	2	1184	ACTU
WA	1563	0	1563	T&L COUNCILS: NSW VIC QLD
TAS	689	1	690	SA WA ACT
ACT	347	3	350	ALP AFFIL: NSW VIC QLD SA
				WA TAS
TOTAL	19069	27	19096	

OPERATIVE PLASTERERS AND PLASTER WORKERS FEDERATION OF AUSTRALIA

490 Kent Street SYDNEY NSW 2000

<u>State</u>	<u>Males</u>	<u>Females</u>	<u>Total</u>	
NSW/ACT	6843	0	6843	TU ACT: NSW
QLD	350	0	350	ARB ACT: FED NSW SA WA
SA	450	0	450	ACTU
WA	*	*	600	T&L COUNCILS: NSW SA WA
TAS	80	0	80	ACT
				ALP AFFIL: NSW SA WA
TOTAL	*	*	8323	

OPERATIVE STONEMASONS SOCIETY OF AUSTRALIA

535 George Street SYDNEY NSW 2000

<u>State</u>	<u>Males</u>	<u>Females</u>	<u>Total</u>	
TOTAL	*	*	1020	TU ACT: NSW
				ARB ACT: FED NSW
				ACTU
				T&L COUNCILS: NSW ACT

The membership figure is taken from the Executive Report of the ACTU, 1983.

PASTRYCOOKS, BAKERS, BISCUITMAKERS AND ALLIED TRADES UNION
 Trades Hall 54 Victoria Street CARLTON SOUTH VIC 3053

<u>State</u>	<u>Males</u>	<u>Females</u>	<u>Total</u>	
NSW	1323	978	2301	TU ACT: NSW ARB ACT: FED NSW
VIC	1133	1227	2360	INDUSTRIAL RELATIONS ACT ACTU
TOTAL	2456	2205	4661	T&L COUNCILS: NSW VIC ALP AFFIL: NSW VIC

The Victorian figures include 581 members of the Operative Bakers Union of Victoria.

PLATE, SHEET AND ORNAMENTAL GLASS WORKERS UNION OF NEW SOUTH WALES
 Labor Council Building 377-383 Sussex Street SYDNEY NSW 2000

<u>State</u>	<u>Males</u>	<u>Females</u>	<u>Total</u>	
NSW	986	70	1056	TU ACT: NSW ARB ACT: NSW ACTU T&L COUNCIL: NSW ALP AFFIL: NSW

PLUMBERS AND GASFITTERS EMPLOYEES UNION OF AUSTRALIA
 48 Victoria Street CARLTON SOUTH VIC 3053

Membership at 31 December 1983

<u>State</u>	<u>Males</u>	<u>Females</u>	<u>Total</u>	
NSW	5520	0	5520	TU ACT: NSW ARB ACT: FED NSW QLD SA WA
VIC	7536	4	7540	INDUSTRIAL RELATIONS ACT ACTU
QLD	3033	0	3033	T&L COUNCILS: NSW VIC QLD SA WA ACT
SA	1221	0	1221	ALP AFFIL: NSW VIC QLD SA WA TAS
WA	1158	0	1158	
TAS	482	0	482	
NT	19	0	19	
ACT	562	0	562	
TOTAL	19531	4	19535	

POLICE ASSOCIATION
43 Mackenzie Street MELBOURNE VIC 3000

Membership at 5 September 1983

<u>State</u>	<u>Males</u>	<u>Females</u>	<u>Total</u>
VIC	7749	782	8531

POLICE ASSOCIATION OF NEW SOUTH WALES
452 Kent Street SYDNEY NSW 2000

<u>State</u>	<u>Males</u>	<u>Females</u>	<u>Total</u>	TU ACT: NSW
NSW	8968	518	9486	ARB ACT: NSW ACTU T&L COUNCIL: NSW

POLICE ASSOCIATION OF SOUTH AUSTRALIA
27 Carrington Street ADELAIDE SA 5000

<u>State</u>	<u>Males</u>	<u>Females</u>	<u>Total</u>	ARB ACT: SA
SA	3150	250	3400	T&L COUNCIL: SA

POLICE ASSOCIATION OF TASMANIA
25 Argyle Street HOBART TAS 7000

<u>State</u>	<u>Males</u>	<u>Females</u>	<u>Total</u>
TAS	956	48	1004

POLICE ASSOCIATION SALARIED OFFICERS UNION
18/10 Batemans Road GLADESVILLE NSW 2111

<u>State</u>	<u>Males</u>	<u>Females</u>	<u>Total</u>	TU ACT: NSW
NSW	*	*	11	

POSTAL SUPERVISORY OFFICERS ASSOCIATION
26 Harrabrook Avenue FIVE DOCK NSW 2046

<u>State</u>	<u>Males</u>	<u>Females</u>	<u>Total</u>	ARB ACT: FED ACTU T&L COUNCILS: NSW VIC SA
NSW	134	1	135	
VIC	122	0	122	
QLD	62	0	62	
SA	55	0	55	
WA	43	0	43	
TAS	4	0	4	
NT	1	0	1	
ACT	7	0	7	
TOTAL	428	1	429	

PRINTING AND KINDRED INDUSTRIES UNION
Labor Council Building 377-383 Sussex Street SYDNEY NSW 2000

Membership at 31 December 1983

<u>State</u>	<u>Males</u>	<u>Females</u>	<u>Total</u>	TU ACT: NSW ARB ACT: FED NSW QLD SA WA INDUSTRIAL RELATIONS ACT ACTU T&L COUNCILS: NSW VIC QLD SA WA ACT ALP AFFIL: NSW VIC QLD SA WA TAS
NSW	15446	3529	18975	
VIC	11787	4072	15859	
QLD	4518	730	5248	
SA/NT	3243	874	4117	
WA	2661	382	3043	
TAS	1571	232	1803	
ACT	842	216	1058	
TOTAL	40068	10035	50103	

PROFESSIONAL DIVERS ASSOCIATION OF AUSTRALASIA
90 Queen Street MELBOURNE VIC 3000

<u>State</u>	<u>Males</u>	<u>Females</u>	<u>Total</u>	ARB ACT: FED ACTU T&L COUNCILS: NSW VIC QLD WA ALP AFFIL: VIC
NSW	178	1	179	
VIC	179	0	179	
QLD	75	2	77	
SA	13	0	13	
WA	181	1	182	
TAS	10	0	10	
NT	13	0	13	
ACT	1	0	1	
TOTAL	650	4	654	

PROFESSIONAL OFFICERS ASSOCIATION, AUSTRALIAN PUBLIC SERVICE
136 Albert Road SOUTH MELBOURNE VIC 3205

<u>State</u>	<u>Males</u>	<u>Females</u>	<u>Total</u>	ARB ACT: FED ACTU
NSW	*	*	1016	T&L COUNCIL: ACT
VIC	*	*	2374	
QLD	*	*	618	
SA	*	*	532	
WA	*	*	346	
TAS	*	*	109	
NT	*	*	295	
ACT	*	*	1183	
TOTAL	*	*	6473	

PROFESSIONAL OFFICERS ASSOCIATION OF NEW SOUTH WALES
PO Box A646 SYDNEY SOUTH NSW 2000

<u>State</u>	<u>Males</u>	<u>Females</u>	<u>Total</u>	TU ACT: NSW ARB ACT: NSW T&L COUNCIL: NSW
NSW	840	24	864	

PROFESSIONAL RADIO AND ELECTRONICS INSTITUTE OF AUSTRALASIA
GPO Box 7028 SYDNEY NSW 2001

<u>State</u>	<u>Males</u>	<u>Females</u>	<u>Total</u>	ARB ACT: FED ACTU T&L COUNCIL: NSW
TOTAL	*	*	3800	

The membership figure is taken from the Executive Report of the ACTU, 1983.

PROPERTY SALESMENS ASSOCIATION OF QUEENSLAND
GPO Box 2447 BRISBANE QLD 4001

<u>State</u>	<u>Males</u>	<u>Females</u>	<u>Total</u>	ARB ACT: QLD
QLD	*	*	101	

The membership figure is taken from the Twenty-second Annual Report of the President of the Industrial Court of Queensland.

PUBLIC SERVICE ASSOCIATION OF NEW SOUTH WALES
160 Clarence Street SYDNEY NSW 2000

Membership at 30 April 1984

<u>State</u>	<u>Males</u>	<u>Females</u>	<u>Total</u>	TU ACT: NSW
NSW	25799	21674	47473	ARB ACT: NSW ACTU T&L COUNCIL: NSW

PUBLIC SERVICE ASSOCIATION OF SOUTH AUSTRALIA
82 Gilbert Street ADELAIDE SA 5000

Membership at 31 December 1983

<u>State</u>	<u>Males</u>	<u>Females</u>	<u>Total</u>	ARB ACT: SA
SA	10720	11990	22710	

PULP AND PAPER WORKERS FEDERATION OF AUSTRALIA
PO Box 312 NORTH MELBOURNE VIC 3051

<u>State</u>	<u>Males</u>	<u>Females</u>	<u>Total</u>	ARB ACT: FED ACTU
NSW	431	30	461	T&L COUNCILS: NSW VIC TAS
VIC	2329	95	2424	ALP AFFIL: VIC SA TAS
SA	470	44	514	
TAS	216	30	246	
TOTAL	3446	199	3645	

QUEENSLAND ASSOCIATION OF TEACHERS IN INDEPENDENT
(NON-GOVERNMENTAL) SCHOOLS
PO Box 418 FORTITUDE VALLEY QLD 4006

<u>State</u>	<u>Males</u>	<u>Females</u>	<u>Total</u>	ARB ACT: QLD
QLD	1120	2080	3200	

This union is affiliated with the Independent Teachers
Federation of Australia.

QUEENSLAND BLIND WORKERS UNION
 PO Box 25 HOLLAND PARK QLD 4121

<u>State</u>	<u>Males</u>	<u>Females</u>	<u>Total</u>	ARB ACT: QLD
QLD	19	1	20	T&L COUNCIL: QLD

QUEENSLAND COUNTRY FIRE BRIGADE OFFICERS UNION
 PO Box 528 HERMIT PARK QLD 4812

<u>State</u>	<u>Males</u>	<u>Females</u>	<u>Total</u>	ARB ACT: QLD
QLD	310	0	310	

QUEENSLAND INSTITUTE OF SENIOR EDUCATION OFFICERS
 PO Box 275 CHERMSIDE QLD 4032

<u>State</u>	<u>Males</u>	<u>Females</u>	<u>Total</u>	ARB ACT: QLD
QLD	99	8	107	

QUEENSLAND NURSES UNION
 GPO. Box 1289 BRISBANE QLD 4001

Membership at 31 December 1983

<u>State</u>	<u>Males</u>	<u>Females</u>	<u>Total</u>	ARB ACT: QLD
QLD	*	*	14479	

The union has indicated that approximately 8% of its members are males. The union is affiliated with the Combined Industrial Unions Committee.

QUEENSLAND POLICE OFFICERS UNION

Police Headquarters Makerston Street BRISBANE QLD 4000

<u>State</u>	<u>Males</u>	<u>Females</u>	<u>Total</u>	ARB ACT: QLD
QLD	137	0	137	

QUEENSLAND POLICE UNION

PO Box 2 Roma Street BRISBANE QLD 4000

<u>State</u>	<u>Males</u>	<u>Females</u>	<u>Total</u>	ARB ACT: QLD
QLD	4414	300	4714	

This union is affiliated with the Combined Industrial Unions Committee.

QUEENSLAND PROFESSIONAL OFFICERS ASSOCIATION

349 Queen Street BRISBANE QLD 4000

Membership at 30 April 1984

<u>State</u>	<u>Males</u>	<u>Females</u>	<u>Total</u>	ARB ACT: QLD ACTU
QLD	8894	2964	11858	T&L COUNCIL: QLD

This union is affiliated with the Combined Industrial Unions Committee.

QUEENSLAND RAILWAY EMPLOYEES UNION

276 Edward Street BRISBANE QLD 4000

Membership at 30 April 1984

<u>State</u>	<u>Males</u>	<u>Females</u>	<u>Total</u>	ARB ACT: QLD T&L COUNCIL: QLD
QLD	1794	121	1915	ALP AFFIL: QLD

This union is affiliated with the Combined Industrial Unions Committee.

QUEENSLAND RAILWAY MAINTENANCE UNION
236 Elizabeth Street BRISBANE QLD 4000

<u>State</u>	<u>Males</u>	<u>Females</u>	<u>Total</u>	ARB ACT: QLD ALP AFFIL: QLD
QLD	2684	0	2684	

QUEENSLAND STATE SERVICE UNION
67 Elizabeth Street BRISBANE QLD 4000

Membership at 31 December 1983

<u>State</u>	<u>Males</u>	<u>Females</u>	<u>Total</u>	ARB ACT: QLD
QLD	11915	8918	20833	

This union is affiliated with the Combined Industrial Unions Committee.

QUEENSLAND TEACHERS UNION
PO Box 310 SPRING HILL QLD 4000

Membership at 31 December 1983

<u>State</u>	<u>Males</u>	<u>Females</u>	<u>Total</u>	ARB ACT: QLD T&L COUNCIL: QLD
QLD	8261	14627	22888	

This union is affiliated with the Australian Teachers Federation which, in turn, is affiliated with the ACTU.

RACECOURSE TOTALIZATORS EMPLOYEES ASSOCIATION OF NEW SOUTH WALES
Trades Hall 4 Goulburn Street SYDNEY NSW 2000

<u>State</u>	<u>Males</u>	<u>Females</u>	<u>Total</u>	TU ACT: NSW ARB ACT: NSW T&L COUNCIL: NSW
NSW	127	668	795	

RAILWAY SALARIED OFFICERS UNION, QUEENSLAND
276 Edward Street BRISBANE QLD 4000

<u>State</u>	<u>Males</u>	<u>Females</u>	<u>Total</u>	ARB ACT: QLD
QLD	1537	366	1903	ALP AFFIL: QLD

This union is affiliated with the Combined Industrial Unions Committee.

REAL ESTATE [SALESMENS] ASSOCIATION OF NEW SOUTH WALES
102/60 Willoughby Road CROWS NEST NSW 2065

<u>State</u>	<u>Males</u>	<u>Females</u>	<u>Total</u>	TU ACT: NSW
NSW	229	55	284	ARB ACT: NSW ACTU T&L COUNCIL: NSW

The membership figure is taken from the Report of the Industrial Registrar, 1982.

REAL ESTATE SALESMENS ASSOCIATION OF SOUTH AUSTRALIA
GPO Box 494 ADELAIDE SA 5001

<u>State</u>	<u>Males</u>	<u>Females</u>	<u>Total</u>	ARB ACT: SA
SA	*	*	*	

We have no other information concerning this union.

REAL ESTATE SALESMENS ASSOCIATION OF VICTORIA
37 Swanston Street MELBOURNE VIC 3000

<u>State</u>	<u>Males</u>	<u>Females</u>	<u>Total</u>	INDUSTRIAL RELATIONS ACT
VIC	141	23	164	

REPATRIATION DEPARTMENT MEDICAL OFFICERS ASSOCIATION
PO Box 20 GLEBE NSW 2037

<u>State</u>	<u>Males</u>	<u>Females</u>	<u>Total</u>	ARB ACT: FED
NSW	65	30	95	
VIC	29	4	33	
QLD	15	10	25	
SA	19	2	21	
WA	17	1	18	
TAS	9	0	9	
TOTAL	154	47	201	

This union is affiliated with the Council of Professional Associations.

RESIDENTIAL YOUTH AND CHILD CARE ASSOCIATION
PO Box 489 CHELTENHAM VIC 3192

<u>State</u>	<u>Males</u>	<u>Females</u>	<u>Total</u>	INDUSTRIAL RELATIONS ACT T&L COUNCIL: VIC
VIC	*	*	*	

We have no other information concerning this union.

ROYAL AUSTRALIAN NURSING FEDERATION
132-136 Albert Road SOUTH MELBOURNE VIC 3205

Membership at 31 December 1983

<u>State</u>	<u>Males</u>	<u>Females</u>	<u>Total</u>	ARB ACT: FED SA WA INDUSTRIAL RELATIONS ACT ACTU T&L COUNCILS: VIC TAS ACT NT
NSW	*	*	2468	
VIC	*	*	17828	
QLD	*	*	1988	
SA	*	*	6304	
WA	*	*	6975	
TAS	*	*	3684	
NT	*	*	721	
ACT	*	*	1126	
TOTAL	*	*	41094	

RAA PATROLMENS ASSOCIATION OF SOUTH AUSTRALIA
PO Box 128 NORTH ADELAIDE SA 5006

<u>State</u>	<u>Males</u>	<u>Females</u>	<u>Total</u>	ARB ACT: SA
SA	117	0	117	

RAC PATROLMENS ASSOCIATION OF WESTERN AUSTRALIA
228 Adelaide Terrace PERTH WA 6000

<u>State</u>	<u>Males</u>	<u>Females</u>	<u>Total</u>	ARB ACT: WA
WA	96	0	96	

SALARIED PHARMACISTS ASSOCIATION
PO Box 127 PARKVILLE VIC 3052

<u>State</u>	<u>Males</u>	<u>Females</u>	<u>Total</u>	ARB ACT: FED INDUSTRIAL RELATIONS ACT T&L COUNCIL: VIC
VIC	*	*	*	

We have no other information concerning this union.

SEAMENS UNION OF AUSTRALIA
289A Sussex Street SYDNEY NSW 2000

<u>State</u>	<u>Males</u>	<u>Females</u>	<u>Total</u>	TU ACT: NSW ARB ACT: FED NSW QLD INDUSTRIAL RELATIONS ACT ACTU T&L COUNCILS: NSW VIC QLD SA WA NT ALP AFFIL: NSW VIC QLD SA WA NT
NSW	2575	1	2576	
VIC	1044	0	1044	
QLD	870	0	870	
SA	313	0	313	
WA	848	0	848	
TAS	141	0	141	
NT	32	0	32	
TOTAL	5823	1	5824	

SECRETARIES AND MANAGERS ASSOCIATION OF AUSTRALIA
 Labor Council Building 377-383 Sussex Street SYDNEY NSW 2000

<u>State</u>	<u>Males</u>	<u>Females</u>	<u>Total</u>	TU ACT: NSW
NSW	2020	211	2231	ARB ACT: FED NSW ACTU T&L COUNCIL: NSW

The membership figure is taken from the Report of the Industrial Registrar, 1982. The ACTU affiliation is for 1100 members.

SHOP, DISTRIBUTIVE AND ALLIED EMPLOYEES ASSOCIATION
 53 Queen Street MELBOURNE VIC 3000

<u>State</u>	<u>Males</u>	<u>Females</u>	<u>Total</u>	TU ACT: NSW WA
NSW	15750	36750	52500	ARB ACT: FED NSW QLD SA WA
VIC	12900	30100	43000	INDUSTRIAL RELATIONS ACT
QLD	7200	16800	24000	ACTU
SA	4050	9450	13500	T&L COUNCILS: NSW VIC SA
WA	4200	9800	14000	WA TAS ACT
TAS	1320	3080	4400	ALP AFFIL: NSW VIC QLD
NT	150	350	500	SA WA ACT
ACT	750	1750	2500	
TOTAL	46320	108080	154400	

The Queensland branch of this union is affiliated with the Combined Industrial Unions Committee.

SILVERTON TRAMWAY EMPLOYEES ASSOCIATION
 31 Morgan Street BROKEN HILL NSW 2880

<u>State</u>	<u>Males</u>	<u>Females</u>	<u>Total</u>	TU ACT: NSW
NSW	15	0	15	ARB ACT: NSW

SLATERS TILERS AND ROOFING INDUSTRY UNION OF VICTORIA
 Trades Hall 54 Victoria Street CARLTON SOUTH VIC 3053

<u>State</u>	<u>Males</u>	<u>Females</u>	<u>Total</u>	ARB ACT: FED
VIC	*	*	1020	INDUSTRIAL RELATIONS ACT ACTU T&L COUNCIL: VIC ALP AFFIL: VIC

The membership figure is taken from the Executive Report of the ACTU, 1983.

SOUTH AUSTRALIAN HERD RECORDERS ASSOCIATION
 Address not known

<u>State</u>	<u>Males</u>	<u>Females</u>	<u>Total</u>	ARB ACT: SA
SA	*	*	*	

We have no other information concerning this union.

SOUTH AUSTRALIAN INSTITUTE OF TEACHERS
 163a Greenhill Road PARKSIDE SA 5063

Membership at 31 December 1983

<u>State</u>	<u>Males</u>	<u>Females</u>	<u>Total</u>	ARB ACT: SA
SA	8359	12250	20609	

This union is affiliated with the Australian Teachers Federation which, in turn, is affiliated with the ACTU.

SOUTH AUSTRALIAN SALARIED MEDICAL OFFICERS ASSOCIATION
 80 Brougham Place NORTH ADELAIDE SA 5006

<u>State</u>	<u>Males</u>	<u>Females</u>	<u>Total</u>	ARB ACT: SA
SA	691	165	856	

SOUTH MAITLAND RAILWAY OFFICERS ASSOCIATION
77 Parallel Street MAITLAND NSW 2320

<u>State</u>	<u>Males</u>	<u>Females</u>	<u>Total</u>	TU ACT: NSW ARB ACT: NSW
NSW	9	2	11	

STATE SCHOOL TEACHERS UNION OF WESTERN AUSTRALIA
150-152 Adelaide Terrace PERTH WA 6000

Membership at 30 April 1984

<u>State</u>	<u>Males</u>	<u>Females</u>	<u>Total</u>	T&L COUNCIL: WA
WA	6041	6563	12604	

This union is affiliated with the Australian Teachers Federation which, in turn, is affiliated with the ACTU.

STATE TRANSPORT AUTHORITY TRAFFIC OFFICERS ASSOCIATION
Railway Building North Terrace ADELAIDE SA 5000

<u>State</u>	<u>Males</u>	<u>Females</u>	<u>Total</u>	ARB ACT: SA
SA	69	0	69	

STIPENDIARY MAGISTRATES ASSOCIATION, QUEENSLAND
PO Box 15 NORTH QUAY QLD 4000

<u>State</u>	<u>Males</u>	<u>Females</u>	<u>Total</u>	ARB ACT: QLD
QLD	66	0	66	

SYDNEY COAL LUMPERS UNION
Mechanics Institute MILLERS POINT NSW 2000

<u>State</u>	<u>Males</u>	<u>Females</u>	<u>Total</u>	TU ACT: NSW ARB ACT: NSW
NSW	57	0	57	

TASMANIAN DENTAL MECHANICS & DENTAL EMPLOYEES ASSOCIATION
141 Tranmere Road HOWRAH TAS 7018

<u>State</u>	<u>Males</u>	<u>Females</u>	<u>Total</u>	T&L COUNCIL: TAS
TAS	52	0	52	

TASMANIAN PUBLIC SERVICE ASSOCIATION
49 Molle Street HOBART TAS 7000

<u>State</u>	<u>Males</u>	<u>Females</u>	<u>Total</u>
TAS	5957	3439	9396

TASMANIAN REGISTERED TEACHERS ASSOCIATION
213 Derwent Avenue LINDISFARNE TAS 7015

<u>State</u>	<u>Males</u>	<u>Females</u>	<u>Total</u>
TAS	*	*	*

This union is affiliated with the Independent Teachers Federation of Australia.

TASMANIAN TEACHERS FEDERATION
32 Patrick Street HOBART TAS 7000

<u>State</u>	<u>Males</u>	<u>Females</u>	<u>Total</u>
TAS	2022	3584	5606

TASMANIAN TECHNICAL COLLEGES STAFF SOCIETY
28 Bathurst Street HOBART TAS 7000

Membership at 30 June 1984

<u>States</u>	<u>Males</u>	<u>Females</u>	<u>Total</u>
TAS	*	*	583

TEACHERS ASSOCIATION OF AUSTRALIA
PO Box 200 GLEN WAVERLY VIC 3150

Membership at 28 February 1984

<u>State</u>	<u>Males</u>	<u>Females</u>	<u>Total</u>
NSW	*	*	*
VIC	*	*	*
QLD	*	*	*
SA	*	*	*
ACT	*	*	*
TOTAL	*	*	800

TECHNICAL SERVICE GUILD OF AUSTRALIA
Trades Hall 54 Victoria Street CARLTON SOUTH VIC 3053

<u>State</u>	<u>Males</u>	<u>Females</u>	<u>Total</u>	
NSW	657	2	659	ARB ACT: FED
VIC	747	10	757	INDUSTRIAL RELATIONS ACT
QLD	164	6	170	ACTU
SA	158	0	158	T&L COUNCILS: NSW VIC SA
WA	133	4	137	
TAS	40	0	40	
NT	10	0	10	
ACT	27	0	27	
TOTAL	1936	22	1958	

TECHNICAL TEACHERS UNION OF VICTORIA
57 Keele Street COLLINGWOOD VIC 3066

<u>State</u>	<u>Males</u>	<u>Females</u>	<u>Total</u>	T&L COUNCIL: VIC
VIC	*	*	9964	

This union is affiliated with the Australian Teachers Federation, which, in turn, is affiliated with the ACTU.

TELECOMMUNICATIONS TECHNICAL OFFICERS ASSOCIATION
388 Bourke Street MELBOURNE VIC 3000

<u>State</u>	<u>Males</u>	<u>Females</u>	<u>Total</u>	ARB ACT: FED ACTU T&L COUNCIL: NSW
NSW	430	0	430	
VIC/TAS	201	0	201	
QLD	338	0	338	
SA	24	0	24	
WA	48	0	48	
TOTAL	1041	0	1041	

TELECOMMUNICATIONS TRAFFIC AND SUPERVISORY OFFICERS
ASSOCIATION
GPO Box 1799 SYDNEY NSW 2001

<u>State</u>	<u>Males</u>	<u>Females</u>	<u>Total</u>	ARB ACT: FED ACTU T&L COUNCIL: NSW
NSW	50	0	50	
VIC	50	1	51	
QLD	39	0	39	
SA	21	0	21	
WA	16	0	16	
TAS	7	0	7	
NT	2	0	2	
ACT	6	0	6	
TOTAL	191	1	192	

THEATRE MANAGERS ASSOCIATION
153 Kenthurst Road KENTHURST NSW 2154

<u>State</u>	<u>Males</u>	<u>Females</u>	<u>Total</u>	ARB ACT: FED QLD T&L COUNCIL: NSW
TOTAL	*	*	*	

We have no other information concerning this union.

TOTALISATOR EMPLOYEES ASSOCIATION OF VICTORIA
PO Box 33 MELBOURNE VIC 3001

<u>State</u>	<u>Males</u>	<u>Females</u>	<u>Total</u>	ARB ACT: FED
VIC	130	302	432	

TRANSPORT WORKERS UNION OF AUSTRALIA
17-25 Lygon Street CARLTON VIC 3053

Membership at 7 May 1984

<u>State</u>	<u>Males</u>	<u>Females</u>	<u>Total</u>	
NSW	30159	1900	32059	TU ACT: NSW
VIC	24784	1800	26584	ARB ACT: FED NSW QLD SA WA
QLD	12239	1400	13639	INDUSTRIAL RELATIONS ACT ACTU
SA	6493	130	6623	T&L COUNCILS: NSW VIC QLD
WA	5064	600	5664	SA WA TAS ACT NT
TAS	2821	80	2901	ALP AFFIL: NSW VIC QLD SA
NT	777	30	807	WA TAS NT
ACT	1775	60	1835	
TOTAL	84112	6000	90112	

TRUSTEE COMPANIES OFFICERS ASSOCIATION
12 Regent Street ADELAIDE SA 5000

Membership at 31 December 1982

<u>State</u>	<u>Males</u>	<u>Females</u>	<u>Total</u>	
NSW	181	66	247	ARB ACT: FED ACTU
VIC	163	82	245	T&L COUNCILS: NSW SA
QLD	68	83	151	
SA	161	119	280	
WA	50	61	111	
TAS	1	0	1	
ACT	5	0	5	
TOTAL	629	411	1040	

UNDERTAKERS ASSISTANTS AND CEMETERY EMPLOYEES UNION OF
AUSTRALIA

74 Victoria Street CARLTON SOUTH VIC 3053

<u>State</u>	<u>Males</u>	<u>Females</u>	<u>Total</u>	
VIC	498	2	500	ARB ACT: FED ACTU
				T&L COUNCIL: VIC
				ALP AFFIL: VIC

UNION OF POSTAL CLERKS AND TELEGRAPHISTS
 PO Box K342 HAYMARKET NSW 2000

<u>State</u>	<u>Males</u>	<u>Females</u>	<u>Total</u>	ARB ACT: FED ACTU
NSW/ACT	*	*	1753	T&L COUNCILS: NSW VIC QLD
VIC	*	*	1088	SA WA TAS NT
QLD	*	*	736	ALP AFFIL: NSW SA TAS
SA/NT	*	*	440	
WA	*	*	403	
TAS	*	*	115	
TOTAL	*	*	4535	

UNITED FIREFIGHTERS UNION
 PO Box 193 FITZROY VIC 3065

<u>State</u>	<u>Males</u>	<u>Females</u>	<u>Total</u>	ARB ACT: QLD INDUSTRIAL RELATIONS ACT ACTU
VIC	2089	16	2105	T&L COUNCILS: VIC QLD TAS
QLD	1000	7	1007	ALP AFFIL: VIC QLD TAS
TOTAL	3089	23	3112	

The Queensland and Victorian branches are separately affiliated with the ACTU.

UNITED FURNITURE TRADES UNION, WESTERN AUSTRALIA
 220 Whatley Crescent MAYLANDS WA 6051

<u>State</u>	<u>Males</u>	<u>Females</u>	<u>Total</u>	TU ACT: WA ARB ACT: WA T&L COUNCIL: WA ALP AFFIL: WA
WA	966	258	1224	

UNITED SALES REPRESENTATIVES AND COMMERCIAL TRAVELLERS GUILD
OF AUSTRALIA
PO Box 471 PARRAMATTA NSW 2150

<u>State</u>	<u>Males</u>	<u>Females</u>	<u>Total</u>	
NSW	1000	0	1000	TU ACT: NSW
VIC	280	0	280	ARB ACT: FED NSW QLD SA WA
QLD	250	0	250	INDUSTRIAL RELATIONS ACT
SA	196	0	196	T&L COUNCILS: NSW VIC QLD SA TAS
WA	207	0	207	ALP AFFIL: VIC
TAS	97	0	97	
ACT	30	0	30	
TOTAL	2060	0	2060	

The New South Wales Sales Representatives and Commercial Travellers Guild is affiliated with the ACTU.

UNITED TIMBER YARDS SAWMILLS AND WOODWORKERS EMPLOYEES UNION
OF WESTERN AUSTRALIA
108 Beaufort Street PERTH WA 6000

<u>State</u>	<u>Males</u>	<u>Females</u>	<u>Total</u>	
WA	547	19	566	TU ACT: WA ARB ACT: WA T&L COUNCIL: WA ALP AFFIL: WA

UNIVERSITY LIBRARY OFFICERS ASSOCIATION
Fisher Library University of Sydney SYDNEY NSW 2006

<u>State</u>	<u>Males</u>	<u>Females</u>	<u>Total</u>	
NSW	69	160	229	TU ACT: NSW ARB ACT: FED NSW T&L COUNCIL: NSW

UNIVERSITY OF ADELAIDE GENERAL STAFF ASSOCIATION
The University of Adelaide North Terrace ADELAIDE SA 5000

<u>State</u>	<u>Males</u>	<u>Females</u>	<u>Total</u>	
SA	414	473	887	ARB ACT: SA

UNIVERSITY OF MELBOURNE GENERAL STAFF ASSOCIATION
University of Melbourne PARKVILLE VIC 3052

<u>State</u>	<u>Males</u>	<u>Females</u>	<u>Total</u>	INDUSTRIAL RELATIONS ACT
VIC	392	399	791	

UNIVERSITY SALARIED OFFICERS ASSOCIATION OF WESTERN AUSTRALIA
40 Myers Street NEDLANDS WA 6009

<u>State</u>	<u>Males</u>	<u>Females</u>	<u>Total</u>	ARB ACT: WA
WA	563	461	1024	

VEHICLE BUILDERS EMPLOYEES FEDERATION OF AUSTRALIA
57 Drummond Street CARLTON SOUTH VIC 3053

Membership at 31 December 1983

<u>State</u>	<u>Males</u>	<u>Females</u>	<u>Total</u>	TU ACT: NSW ARB ACT: FED NSW QLD SA INDUSTRIAL RELATIONS ACT ACTU T&L COUNCILS: NSW VIC QLD SA TAS ALP AFFIL: NSW VIC QLD SA TAS
NSW	5789	600	6389	
VIC	14469	520	14989	
QLD	3035	160	3195	
SA	6472	420	6892	
TOTAL	29765	1700	31465	

VICTORIAN ALLIED HEALTH PROFESSIONALS ASSOCIATION
Cnr Smith Street and Victoria Parade FITZROY VIC 3065

<u>State</u>	<u>Males</u>	<u>Females</u>	<u>Total</u>	INDUSTRIAL RELATIONS ACT ACTU T&L COUNCIL: VIC
VIC	310	730	1040	

VICTORIAN AMBULANCE ADMINISTRATIVE OFFICERS ASSOCIATION
23 Welsford Street SHEPPARTON VIC 3630

<u>State</u>	<u>Males</u>	<u>Females</u>	<u>Total</u>	INDUSTRIAL RELATIONS ACT
VIC	46	1	47	

VICTORIAN ASSOCIATION OF CHILD CARE EXECUTIVES
PO Box 19 HIGHETT VIC 3190

<u>State</u>	<u>Males</u>	<u>Females</u>	<u>Total</u>	INDUSTRIAL RELATIONS ACT T&L COUNCIL: VIC
VIC	40	21	61	

VICTORIAN ASSOCIATION OF TEACHERS IN INDEPENDENT SCHOOLS
332 Albert Street EAST MELBOURNE VIC 3002

<u>State</u>	<u>Males</u>	<u>Females</u>	<u>TOTAL</u>	INDUSTRIAL RELATIONS ACT
VIC	824	1082	1906	

VICTORIAN CATHOLIC PRIMARY TEACHERS ASSOCIATION
27 Alexandra Parade NORTH FITZROY VIC 3068

<u>State</u>	<u>Males</u>	<u>Females</u>	<u>Total</u>	INDUSTRIAL RELATIONS ACT
VIC	*	*	*	

We have no other information concerning this union.

VICTORIAN COLLEGES STAFF ASSOCIATION
PO Box 93 KEW VIC 3101

Membership at 31 December 1983

<u>State</u>	<u>Males</u>	<u>Females</u>	<u>Total</u>	T&L COUNCIL: VIC
VIC	880	1339	2219	

VICTORIAN MOTHERCRAFT NURSES AND ALLIED EMPLOYEES ASSOCIATION
250 Domain Street SOUTH YARRA VIC 3141

<u>State</u>	<u>Males</u>	<u>Females</u>	<u>Total</u>	INDUSTRIAL RELATIONS ACT ACTU
VIC	*	*	583	T&L COUNCIL: VIC

The membership figure is taken from the Executive Report of the ACTU, 1983.

VICTORIAN OPERATIVE BRICKLAYERS SOCIETY
121 Drummond Street CARLTON VIC 3053

<u>State</u>	<u>Males</u>	<u>Females</u>	<u>Total</u>	ARB ACT: FED INDUSTRIAL RELATIONS ACT ACTU
VIC	5250	0	5250	T&L COUNCIL: VIC

VICTORIAN PLASTER INDUSTRY WORKERS UNION
Trades Hall 54 Victoria Street CARLTON SOUTH VIC 3053

<u>State</u>	<u>Males</u>	<u>Females</u>	<u>Total</u>	ARB ACT: FED INDUSTRIAL RELATIONS ACT ACTU
VIC	998	6	1004	T&L COUNCIL: VIC ALP AFFIL: VIC

VICTORIAN PLASTERERS SOCIETY
Trades Hall 54 Victoria Street CARLTON SOUTH VIC 3053

<u>State</u>	<u>Males</u>	<u>Females</u>	<u>Total</u>	ARB ACT: FED INDUSTRIAL RELATIONS ACT ACTU
VIC	*	*	1015	T&L COUNCIL: VIC

VICTORIAN PRINTERS OPERATIVES ASSOCIATION
 Trades Hall 54 Victoria Street CARLTON SOUTH VIC 3053

<u>States</u>	<u>Males</u>	<u>Females</u>	<u>Total</u>	ACTU
VIC	1805	618	2423	T&L COUNCIL: VIC ALP AFFIL: VIC

VICTORIAN PUBLIC SERVICE ASSOCIATION
 41 Mackenzie Street MELBOURNE VIC 3000

Membership at 31 December 1983

<u>State</u>	<u>Males</u>	<u>Females</u>	<u>Total</u>	T&L COUNCIL: VIC
VIC	14911	8562	23473	

VICTORIAN SECONDARY TEACHERS ASSOCIATION
 PO Box 1124 NORTH RICHMOND VIC 3121

Membership at 31 December 1983

<u>State</u>	<u>Males</u>	<u>Females</u>	<u>Total</u>	T&L COUNCIL: VIC
VIC	5688	6200	11888	

This union is affiliated with the Australian Teachers Federation which, in turn, is affiliated with the ACTU.

VICTORIAN TEACHERS UNION
 335-341 Camberwell Road CAMBERWELL VIC 3124

Membership at 12 April 1984

<u>State</u>	<u>Males</u>	<u>Females</u>	<u>Total</u>	INDUSTRIAL RELATIONS ACT T&L COUNCIL: VIC
VIC	*	*	23326	

This union is affiliated with the Australian Teachers Federation which, in turn, is affiliated with the ACTU.

The union has advised us that approximately 70% of the membership is female.

WATER AND SEWERAGE EMPLOYEES UNION (WAGES DIVISION)
752 George Street SYDNEY NSW 2000

<u>State</u>	<u>Males</u>	<u>Females</u>	<u>Total</u>	TU ACT: NSW
NSW	*	*	6879	ARB ACT: NSW ACTU T&L COUNCIL: NSW ALP AFFIL: NSW

WATER INDUSTRY SALARIED OFFICERS UNION
756 George Street SYDNEY NSW 2000

<u>State</u>	<u>Males</u>	<u>Females</u>	<u>Total</u>	TU ACT: NSW
NSW	3630	500	4130	

WATERSIDE WORKERS FEDERATION OF AUSTRALIA
PO Box 344 HAYMARKET NSW 2000

<u>State</u>	<u>Males</u>	<u>Females</u>	<u>Total</u>	ARB ACT: FED ACTU
NSW	3289	0	3289	T&L COUNCILS: NSW VIC QLD
VIC	2612	0	2612	SA WA TAS NT
QLD	832	0	832	ALP AFFIL: NSW VIC QLD SA
SA	617	0	617	WA TAS NT
WA	1073	0	1073	
TAS	359	0	359	
NT	95	0	95	
TOTAL	8877	0	8877	

The Port Adelaide, Port Lincoln, Port Pirie, Wallaroo and Whyalla branches are separately affiliated with the ALP in South Australia.

The Hobart and Burnie branches are separately affiliated with the ALP in Tasmania.

The Albany, Bunbury, Esperance, Fremantle, Geraldton and Port Hedland branches are separately affiliated with the ALP in Western Australia.

WEST AUSTRALIAN BAKERS PASTRYCOOKS AND CONFECTIONERS UNION
214 St George's Terrace PERTH WA 6000

<u>State</u>	<u>Males</u>	<u>Females</u>	<u>Total</u>	ARB ACT: WA T&L COUNCIL: WA ALP AFFIL: WA
WA	250	190	440	

WEST AUSTRALIAN FIRE BRIGADE EMPLOYEES UNION
61 Railway Parade MT LAWLEY WA 6050

<u>State</u>	<u>Males</u>	<u>Females</u>	<u>Total</u>	TU ACT: WA ARB ACT: WA ACTU T&L COUNCIL: WA ALP AFFIL: WA
WA	750	0	750	

WEST AUSTRALIAN HAIRDRESSERS AND WIGMAKERS EMPLOYEES UNION
25 Carlyle Crescent DUNCRAIG WA 6023

<u>State</u>	<u>Males</u>	<u>Females</u>	<u>Total</u>	ARB ACT: WA
WA	225	805	1030	

WEST AUSTRALIAN PSYCHIATRIC NURSES ASSOCIATION
61 Railway Parade MOUNT LAWLEY WA 6050

<u>State</u>	<u>Males</u>	<u>Females</u>	<u>Total</u>	ARB ACT: WA T&L COUNCIL: WA ALP AFFIL: WA
WA	*	*	730	

WEST AUSTRALIAN RAILWAYS OFFICERS UNION
2 Zebina Street EAST PERTH WA 6000

<u>State</u>	<u>Males</u>	<u>Females</u>	<u>Total</u>	TU ACT: WA T&L COUNCIL: WA ALP AFFIL: WA
WA	1392	204	1596	

WEST AUSTRALIAN TIMBER INDUSTRY UNION, SOUTH WEST LAND
DIVISION
187 Claisebrook Road EAST PERTH WA 6000

<u>State</u>	<u>Males</u>	<u>Females</u>	<u>Total</u>	ARB ACT: WA
WA	1000	65	1065	T&L COUNCIL: WA ALP AFFIL: WA

WESTERN AUSTRALIAN DENTAL TECHNICIANS AND EMPLOYEES UNION
929 Wellington Street WEST PERTH WA 6005

<u>State</u>	<u>Males</u>	<u>Females</u>	<u>Total</u>	ARB ACT: WA
WA	*	*	150	ACTU T&L COUNCIL: WA

WESTERN AUSTRALIAN GOLD AND NICKEL MINES SUPERVISORS
ASSOCIATION
18 Sturt Pea Crescent KAMBALDA WEST WA 6444

<u>State</u>	<u>Males</u>	<u>Females</u>	<u>Total</u>	ARB ACT: WA
WA	*	*	26	

WESTERN AUSTRALIAN GRAIN HANDLING SALARIED OFFICERS
ASSOCIATION
22 Delhi Street WEST PERTH WA 6005

<u>State</u>	<u>Males</u>	<u>Females</u>	<u>Total</u>	ARB ACT: WA
WA	177	1	178	

WESTERN AUSTRALIAN POLICE UNION
246 Adelaide Terrace PERTH WA 6000

<u>State</u>	<u>Males</u>	<u>Females</u>	<u>Total</u>	ARB ACT: WA
WA	2788	64	2852	

WESTERN AUSTRALIAN PRISON OFFICERS UNION
18 Belham Way BALCATTA WA 6021

<u>State</u>	<u>Males</u>	<u>Females</u>	<u>Total</u>	ARB ACT: WA ACTU T&L COUNCIL: WA ALP AFFIL: WA
WA	928	52	980	

WESTERN AUSTRALIAN SALARIED PHARMACISTS ASSOCIATION
929 Wellington Street WEST PERTH WA 6005

<u>State</u>	<u>Males</u>	<u>Females</u>	<u>Total</u>	ARB ACT: WA ACTU T&L COUNCIL: WA
WA	*	*	100	

WESTERN DISTRICT DEPUTIES ASSOCIATION
51 Wrights Road LITHGOW NSW 2790

<u>State</u>	<u>Males</u>	<u>Females</u>	<u>Total</u>	TU ACT: NSW ARB ACT: NSW
NSW	145	0	145	

WOOL BROKERS STAFFS ASSOCIATION
12 Regent Street ADELAIDE SA 5000

<u>State</u>	<u>Males</u>	<u>Females</u>	<u>Total</u>	ARB ACT: FED ACTU T&L COUNCIL: SA
SA	*	*	1500	

The membership figure is taken from the Executive Report of the ACTU, 1983.

WOOL VALUERS ASSOCIATION
PO Box R400 Royal Exchange SYDNEY NSW 2000

<u>State</u>	<u>Males</u>	<u>Females</u>	<u>Total</u>	TU ACT: NSW
NSW	53	0	53	

The membership figure is taken from the Report of the Industrial Registrar, 1982.

WOOLCLASSERS ASSOCIATION OF AUSTRALIA
PO Box 153 ASCOT VALE VIC 3032

Membership at 6 September 1983

<u>State</u>	<u>Males</u>	<u>Females</u>	<u>Total</u>	
NSW	314	10	324	TU ACT: NSW
VIC	400	15	415	ARB ACT: FED NSW
QLD	54	1	55	ACTU
SA	232	3	235	T&L COUNCIL: SA
WA	166	11	177	
TAS	8	1	9	
TOTAL	1174	41	1215	

Appendix

NAMES OF STATE UNIONS NOT INCLUDED IN MAIN LIST

As explained in the Introduction, we have listed unions under the titles of their federal organizations. In many cases, state branches of these organizations operate under another title, and may be registered under this title. Below are set out the names of unions which are registered or commonly known by some title other than that under which their members have been included in our tables, together with the title under which they have been included.

- Actors Artists and Announcers Equity of Western Australia see
Actors Equity of Australia
- Actors Entertainers and Announcers Equity Association,
Queensland see Actors Equity of Australia
- Adelaide College of Advanced Education Academic Staff
Association see Federation of College Academics
- Adelaide College of the Arts and Education Academic Staff
Association see Federation of College Academics
- Airline Hostesses Association see Australian Flight Attendants
Association
- Amalgamated Metal Workers and Shipwrights Union see
Amalgamated Metals Foundry and Shipwrights Union
- Amalgamated Society of Carpenters Joiners Bricklayers and
Plasterers of Australasia, Queensland see Building
Workers Industrial Union of Australia
- Architects Engineers Surveyors Draughtsmen Technical and
Supervisory Officers Association of Tasmania see
Association of Draughting Supervisory and Technical
Employees
- Association of Architects Engineers Surveyors and Draughtsmen
see Association of Draughting Supervisory and Technical
Employees
- Australian Building and Construction Workers Federation see
Australian Building Construction Employees and Builders
Labourers Federation

- Australian National University Staff Association see
Federation of Australian University Staff Associations
- Australian Teachers Federation see individual state unions
- Baking Trade Employees Union of New South Wales see Bakery
Employees and Salesmens Federation of Australia
- Boot Trade of Western Australia Union, Perth see Australian
Boot Trade Employees Federation.
- Bread Carters Industrial Federation of Australia (South
Australian Branch) see Bakery Employees and Salesmens
Federation
- Club Managers Association see Secretaries and Managers
Association of Australia
- Federation of College Academics (New South Wales) see
Federation of College Academics
- Federated Moulders (Metal) Union of Australia see Amalgamated
Metals Foundry and Shipwrights Union
- Flinders University of South Australia Staff Association see
Federation of Australian University Staff Associations
- Furnishing Trade Society of New South Wales see Federated
Furnishing Trade Society of Australasia
- GIO Agents Association see Public Service Association of New
South Wales
- Griffith University Faculty Staff Association see Federation
of Australian University Staff Associations
- Hartley College of Advanced Education Academic Staff
Association see Federation of College Academics
- Independent Teachers Federation of Australia see individual
state unions
- James Cook University Staff Association see Federation of
Australian University Staff Associations
- Marine Cooks Bakers and Butchers Association of Australasia
see Seamens Union of Australia
- Medical Radiographers Association of Victoria see Victorian
Allied Health Professionals Association

- Murdoch University Academic Staff Association see Federation of Australian University Staff Associations
- New South Wales Sales Representatives and Commercial Travellers Guild see United Sales Representatives and Commercial Travellers Guild of Australia
- New South Wales Shop Assistants and Warehouse Employees Federation of Australia, Newcastle and Northern see Shop Distributive and Allied Employees Association
- New South Wales Social Welfare Workers Union see Australian Social Welfare Union
- Northern Territory Fire Fighters Federation see Federal Firefighters Union
- Operative Bakers Union of Victoria see Pastrycooks Bakers Biscuit Makers and Allied Trades Union
- Pastrycooks Employees Biscuit Makers Employees and Flour and Sugar Goods Workers Union of New South Wales see Pastrycooks Bakers Biscuitmakers and Allied Trades Union
- Professional Officers (State Public Services and Instrumentalities) Association not included see p.7
- Professional Para-Medical Officers Association (Commonwealth Public Service) see Association of Health Professionals
- Queensland Association of Academic Staff in Colleges of Advanced Education see Federation of College Academics
- Queensland Colliery Employees Union see Australasian Coal and Shale Employees Federation
- Queensland Sales Representatives and Commercial Travellers Guild see United Sales Representatives and Commercial Travellers Guild of Australia
- Queensland Shop Assistants Union see Shop Distributive and Allied Employees Association
- Rangers and Rabbit Inspectors Association of New South Wales see Public Service Association of New South Wales
- Roseworthy Agricultural College Academic Staff Association see Federation of College Academics

- Sales Representatives and Commercial Travellers Guild of Western Australia see United Sales Representatives and Commercial Travellers Guild of Australia
- Salisbury College of Advanced Education Academic Staff Association see Federation of College Academics
- Society of Stevedoring Supervisors of Western Australia see Australian Stevedoring Supervisors Association
- South Australian Association of Architects Engineers Surveyor and Draughtmen see Association of Draughting Supervisory and Technical Employees
- South Australian College Academic Staff Association see Federation of College Academics
- State Bank of New South Wales Division, Australian Bank Employees Union see Australian Bank Employees Union
- State Public Service Federation not included see p.7
- Sturt College of Advanced Education Academic Staff Association see Federation of College Academics
- Tertiary Education Academic Staffs Association, Western Australian Division see Federation of College Academics
- Torrens College of Advanced Education Academic Staff Association see Federation of College Academics
- United Commercial Travellers Guild of Australia (South Australian Branch) see United Sales Representatives and Commercial Travellers Guild of Australia
- University Academic Staff Association of New South Wales see Federation of Australian University Staff Associations
- University of Adelaide Staff Association see Federation of Australian University Staff Associations
- University of Queensland Academic Staff Association see Federation of Australian University Staff Associations
- University of Western Australia Academic Staff Association see Federation of Australian University Staff Associations
- West Australian Locomotive Engine Drivers Firemens and Cleaners Union see Australian Federated Union of Locomotive Enginemen

West Australian Shop Assistants and Warehouse Employees Union
Perth see Shop Distributive and Allied Employees
Association

West Australian Theatrical and Amusement Employees Association
see Australian Theatrical and Amusement Employees
Association

Western Australian Carpenters and Joiners Bricklayers and
Stoneworkers Union see Building Workers Industrial Union
of Australia

Wharf Superintendents and Supervisors Association of New South
Wales see Australian Stevedoring Supervisors Association


Wharf Superintendents and the Supervisors Association of South
Australia see Australian Stevedoring Supervisors
Association

Wharf Superintendents Association of Victoria and Tasmania see
Australian Stevedoring Supervisors Association

Law
347.83
RAW
1985

BRN
244P52

1296606



A.N.U. LIBRARY

THE AUSTRALIAN NATIONAL UNIVERSITY
The Library

CANCELLED
15 OCT 2002

This book is due on:

CANCELLED
2-2-95

CANCELLED
11 OCT 1996

CANCELLED