

Key Points:

- Autocorrelation functions (ACFs) of SEIS ambient vibrations and seismic events are computed and validated by intercomparison
- The stability of autocorrelations at 2.4 Hz resonance favor an excitation by a diffuse seismic wavefield
- Various arrivals are observed in ACFs and interpreted as seismic reflections on internal discontinuities

Correspondence to:




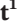












N. Compaire,
nicolas.compaire@isae-superaero.fr

Citation:

Compaire, N., Margerin, L., Garcia, R. F., Pinot, B., Calvet, M., Orhand-Mainsant, G., et al. (2021). Autocorrelation of the ground vibrations recorded by the SEIS-InSight seismometer on Mars. *Journal of Geophysical Research: Planets*, 126, e2020JE006498. <https://doi.org/10.1029/2020JE006498>

Received 30 APR 2020
Accepted 2 MAR 2021

Autocorrelation of the Ground Vibrations Recorded by the SEIS-InSight Seismometer on Mars

N. Compaire¹ , L. Margerin² , R. F. Garcia^{1,2} , B. Pinot¹ , M. Calvet² , G. Orhand-Mainsant¹ , D. Kim⁸ , V. Lekic⁸ , B. Tausin^{10,11} , M. Schimmel⁹ , E. Stutzmann³ , B. Knapmeyer-Endrun⁴ , P. Lognonné³ , W. T. Pike⁵ , N. Schmerr⁸ , L. Gizon⁷, and W. B. Banerdt⁶ 

¹Institut Supérieur de l'Aéronautique et de l'Espace SUPAERO, Toulouse, France, ²Institut de Recherche en Astrophysique et Planétologie, Université Toulouse III Paul Sabatier, CNRS, CNES, Toulouse, France, ³Institut de Physique du Globe de Paris, Université de Paris, CNRS, Paris, France, ⁴Bensberg Observatory, University of Cologne, Bergisch Gladbach, Germany, ⁵Department of Electrical and Electronic Engineering, Imperial College London, South Kensington Campus, London, UK, ⁶Jet Propulsion Laboratory, California Institute of Technology, Pasadena, CA, USA, ⁷Max Planck Institute for Solar System Research, Göttingen, Germany, ⁸Department of Geology, University of Maryland, College Park, MD, USA, ⁹Institute of Earth Sciences Jaume Almera – CSIC, Barcelona, Spain, ¹⁰Université de Lyon, Université Claude Bernard Lyon 1, ENS, CNRS, Laboratoire de Géologie de Lyon: Terre, Planètes, Environnement, Villeurbanne, France, ¹¹Research School of Earth Sciences, The Australian National University, Canberra, ACT, Australia

Abstract Since early February 2019, the SEIS (Seismic Experiment for Interior Structure) seismometer deployed at the surface of Mars in the framework of the InSight mission has been continuously recording the ground motion at Elysium Planitia. In this study, we take advantage of this exceptional data set to put constraints on the crustal properties of Mars using seismic interferometry (SI). To carry out this task, we first examine the continuous records from the very broadband seismometer. Several deterministic sources of environmental noise are identified and specific preprocessing strategies are presented to mitigate their influence. Applying the principles of SI to the single-station configuration of InSight, we compute, for each Sol and each hour of the martian day, the diagonal elements of the time-domain correlation tensor of random ambient vibrations recorded by SEIS. A similar computation is performed on the diffuse waveforms generated by more than a hundred Marsquakes. A careful signal-to-noise ratio analysis and an inter-comparison between the two datasets suggest that the results from SI are most reliable in a narrow frequency band around 2.4 Hz, where an amplification of both ambient vibrations and seismic events is observed. The average autocorrelation functions (ACFs) contain well identifiable seismic arrivals, that are very consistent between the two datasets. Interpreting the vertical and horizontal ACFs as, respectively, the P- and S- seismic reflectivity below InSight, we propose a simple stratified velocity model of the crust, which is mostly compatible with previous results from receiver function analysis. Our results are discussed and compared to recent works from the literature.

Plain Language Summary The correlation of seismic records is the basis of seismic interferometry methods. These methods use seismic waves, either from ambient vibrations of the planet or from quakes, that are scattered in the medium in order to recover information about the structure between two seismic sensors. The method is implemented to compute the auto-correlation functions of the three components of the ground motion recorded by the SEIS seismometer. The comparison of the results obtained from earthquake data to the ones obtained from ambient vibrations demonstrates that the ambient seismic vibration is clearly above the self-noise of SEIS during early night hours around a specific frequency (2.4 Hz). The seismic vibrations appear to be amplified at this frequency by an unknown mechanism. Some seismic energy arrivals appear consistently in the auto-correlation functions, at specific propagation times, independent of the data sets and processing parameters tested. These arrivals are interpreted as vertically propagating seismic waves which are reflected on top of crustal layers. Their propagation times can be used to constrain a model of Mars crustal structure.

1. Introduction

NASA's InSight (Interior Exploration using Seismic Investigations, Geodesy and Heat Transport) mission landed on November 26, 2018 near the Martian equator in Elysium Planitia (Banerdt et al., 2020). The seismological records provided by the main instrument SEIS (Seismic Experiment for Interior Structure)—constitute a data set of unprecedented quality for planetary seismology. The seismometer sensitivity and the extremely low amplitude of the ambient ground vibrations make the Martian seismic signals very different from those collected on Earth (Lognonné et al., 2019, 2020). Not all the features of the ground velocity records can be interpreted as seismic signals, and all the details of the InSight mission system have to be taken into account to correctly interpret the data. Among these, we mention the lander-related noise, the electrical noise, the atmospheric noise and all the mechanical resonances that are temperature dependent (Garcia et al., 2020; Lognonné et al., 2020; Murdoch, Kenda, et al., 2017; Murdoch, Mimoun, et al., 2017). Henceforth, we refer to these as “environmental noise.”

Planetary bodies like the Moon or Mars have a much lower seismicity-rate compared to Earth due to the absence of plate tectonics. As a consequence, the scarcity and low amplitude of seismic sources can be an issue for seismological applications. Fortunately, the last 20 years have seen the rapid development of new processing methods which allow seismologists to extract meaningful seismological signals from passive records of random vibrations generated by natural processes such as winds, earthquakes, etc. (Nakata et al., 2019). These methods are often referred to collectively as “seismic interferometry.” They are based on the close relation between the mean correlation function C_{AB} of diffuse seismic wavefields recorded at any two stations A and B and the Green's function G_{AB} between A and B (Campillo & Paul, 2003; Lobkis & Weaver, 2001). We recall that the Green's function is the seismic response recorded at A due to an impulsive source operating at B . Because seismic wavefields are rarely perfectly diffuse, the signal reconstructed by cross-correlating random seismic signals is referred to as “Empirical” Green's function as it will in general deviate from the exact Green's function of the medium (Weaver & Lobkis, 2005). We will also adopt this terminology.

Seismic interferometry has been applied with success to Lunar seismic data (Larose et al., 2005). These authors demonstrated the possibility to virtually reconstruct propagating Rayleigh waves by cross-correlating ambient vibrations recorded on an array of geophones deployed in the framework of the Apollo Lunar Seismic Profiling Experiment. Using the dispersion properties of surface waves, they were able to put constraints on the shear wave speed profile in the Lunar regolith, thereby gleaning new insights from an already prolific data set (Garcia et al., 2019; Nunn et al., 2020). The experimental conditions of InSight are more specific in the sense that only a single (6-axis) sensor is at our disposal. In this situation, the most direct observables are autocorrelation functions (ACFs). This is by no means a severe limitation. Indeed, it is known since the works of Claerbout (1968), that the reflection response of a stack of layers located beneath a single seismometer can be retrieved from its transmission response. In other words, if the medium is illuminated from below, computing the ACF of the transmitted wavefield is essentially equivalent to virtually activating a source at the location of the seismometer and recording the seismic response. The results of Claerbout (1968), valid for a 1D-horizontally layered medium, have been extended to 3D-inhomogeneous media by Wapenaar (2003), based again on a perfect illumination of the structure. Following the pioneering works of Claerbout (1968) and Wapenaar (2003), a number of studies reported the successful passive reconstruction of the crustal reflection response from the AC of field data acquired on Earth (Gorbatov et al., 2013; Ito & Shiomi, 2012; Kennett et al., 2015; Oren & Nowack, 2017; Phạm & Tkalčić, 2017; Romero & Schimmel, 2018; Saygin et al., 2017; Tibuleac & von Seggern, 2012) and on the Moon (Nishitsuji et al., 2016).

Suemoto et al. (2020) were the first to extract propagating signals from AC of ambient vibrations recorded by SEIS. They considered high frequencies and short propagation times. They observed stable phases on the ACF of the Vertical, East, and North components of the seismic wavefield. From this observation, they deduced the presence of a very shallow interface underneath InSight. More recent works by Deng and Levander (2020) focused on the deep seismic structure of Mars. Their results will be discussed and compared to ours in Section 4. In the present work, we apply the seismic interferometry method to two types of diffuse wavefields -ambient vibrations and the diffuse part of seismic events- and investigate the possibility to retrieve the deep vertical reflection response of the Martian crust beneath InSight. In Section 2, we describe the particular features of the continuous records of very broadband seismometer (SEIS-VBB) and the various types of seismic events. In Section 3, we present a preprocessing strategy to mitigate environmental

Table 1
Summary of Acronyms Used in the Text

Nomenclature	
VBB	Very broad band
SP	Short period
SA	Sensor assembly
WTS	Wind and thermal shield
LVL	Leveling system
LSA	Load shunt assembly

noise and compute empirical Green's function (EGF) by correlating records of both ambient vibrations and diffuse seismic events. We show excellent agreement between the two datasets in a specific frequency band. Based on these results, some simple layering models below InSight are proposed in Section 4, and compared to previous results from the literature. Section 5 summarizes our main findings and proposes directions for future works.

2. Data

2.1. Overview of the SEIS Instrument

SEIS is the main instruments of the InSight mission (Banerdt et al., 2020). It is a six axes seismometer composed of three very broad band (VBB) sensors sensitive to frequencies between 0.01 and 10 Hz and three short period (SP) sensors sensitive to frequencies between 0.1 and 50 Hz (Lognonné et al., 2019, 2020). The three VBB sensors are installed in a vacuum sphere as a first thermal protection. The sphere and the three SP sensors rest on a three-legged leveling system (LVL) that couples with the Martian ground. The whole constitutes the sensor assembly (SA). The SA is connected to the lander via the tether. A relaxation loop (LSA) has been installed at the junction between the SA and the tether. Thus, when the tether contracts or expands under the effect of temperature the movement is not transmitted to the SA. SEIS was deployed on the Martian surface with the robotic arm of the InSight lander on December 19, 2018. It is covered by the wind and thermal shield (WTS) since February 2, 2019 (Lognonné et al., 2020). SEIS is continuously recording ground motion at the InSight's landing site. We summarize the acronyms relevant to this study in Table 1. The orientations of the six sensors of SEIS in the Martian geographical system are extracted from SEIS dataless information and provided in Table 2. More information on the location and orientation of the various instruments is provided by Golombek et al. (2020). In this study, we focus our analysis on the frequency band below 10 Hz and chose to use VBB data at 20 sample-per-second (sps) (InSight Mars SEIS Data Service, 2019).

2.2. Raw Continuous Signal

The continuous records of SEIS present several features that have been described in Lognonné et al. (2020) and Ceylan et al. (2021). We briefly summarize the main characteristics here. We show in Figure 1a a spectrogram of raw records of the VBB-V axis at 20 samples-per-second (sps) between Sol 183 and Sol 190. The time windows with the highest energy correspond to sunlight periods. The clear difference between daytime- and nighttime-records is due to atmospheric processes. As described in Lognonné et al. (2020), atmospheric noise entails elastic deformations induced by pressure effects on the ground, tilt of the lander under wind, and lander vibrations under wind. The changes in the speed and turbulent

flow of the wind are the main drivers of the SEIS background signal. Next, we remark that certain narrow frequency bands are noticeably more energetic than others. Careful examination reveals the excitation of resonances whose central frequency exhibits a daily modulation. Some of these resonances are clustered in the frequency domain between 3.2 and 4.5 Hz (as delimited by the red rectangle in Figure 1a). This particular frequency band contains a series of modes of resonance of the InSight lander which are continuously excited by the wind. The complexity of the modal distribution stems from the fact that the lander is assembled from different mechanical parts. The various components resonate in different frequency bands, that depend in particular on their elastic properties (Murdoch, Mimoun, et al., 2017). Hence, the periodic modulation of the resonance spectrum is a direct consequence of the thermo-elastic response of the lander induced by daily temperature variations. Finally, we note that the vast majority of lander modes are found in the 1–50 Hz frequency range and that most of them produce

Table 2
Azimuth (Az) and Dip (Angular Deviation From Horizontal) Defining the Spatial Orientation of the six Sensors Composing the SEIS Instrument

SEIS sensors	
VBB channel	Sensor orientation (degrees)
U	135.1 Az, −29.4 Dip
V	15.0 Az, −29.2 Dip
W	255.0 Az, −29.7 Dip
SP Channel	Sensor orientation (degrees)
1	285.0 Az, −89.9 Dip
2	105.2 Az, 0 Dip
3	345.3 Az, 0 Dip

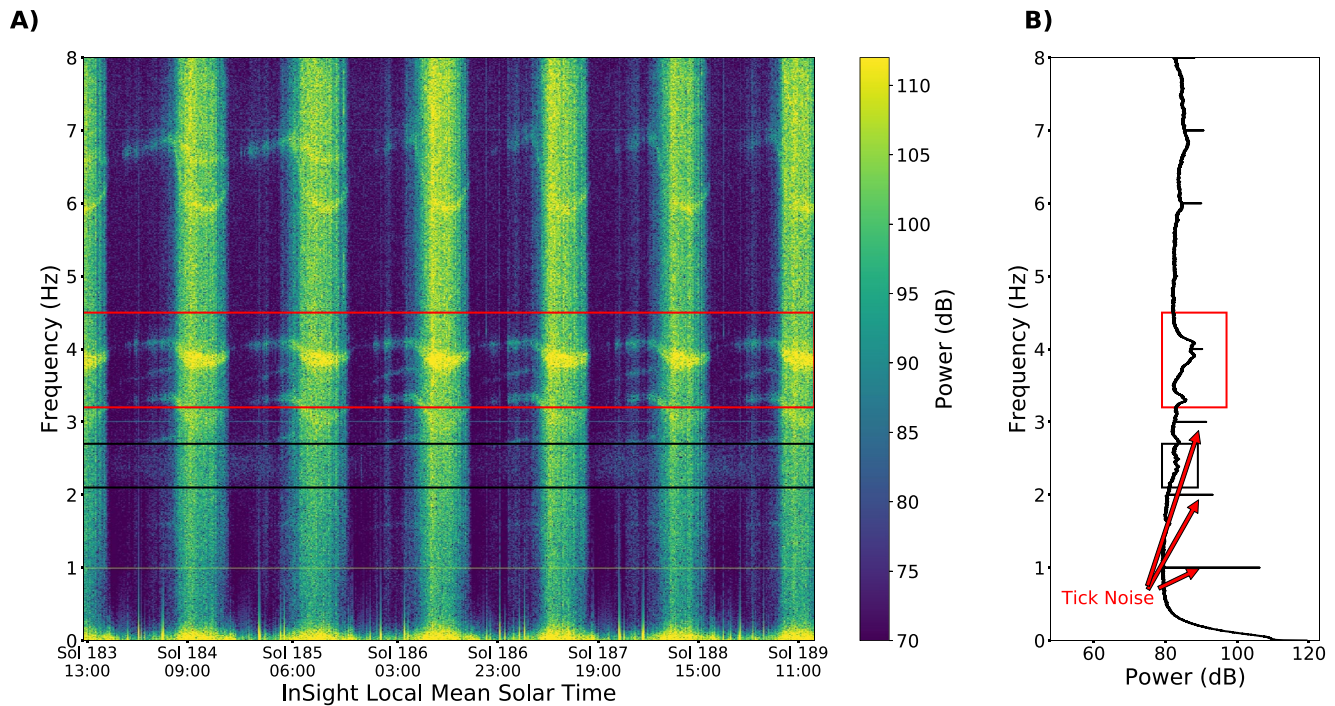


Figure 1. (a) Spectrogram of a 6 Sols-long record of raw 20 sps VBB data (V component in count). The spectrogram is computed using a moving time window of 15 min without overlap. The vertical bands of high amplitude correspond to daytime windows, that is between 5:00 and 16:00 LMST (Local Mean Solar Time). (b) Mean power spectrum of the same data (in dB). The red rectangles delimit specific frequency ranges where lander modes are clustered. The black rectangles indicate the broad resonance around 2.4 Hz.

strongly polarized signals that are detected by SEIS-VBB. As a consequence, the lander modes rarely contaminate simultaneously all components of the signal.

The spectrogram of Figure 1a also shows a sharp peak of energy at exactly 1 Hz frequency. This feature is more clearly visible on the mean power spectrum shown in Figure 1b. In addition to the main peak at 1 Hz, we observe various harmonics at 2, 3 Hz, etc. These harmonics are not all visible on the spectrogram due to the low image resolution. The signal at the origin of the peaks at 1, 2 Hz, seen on the spectrogram is called “tick noise” and corresponds to a periodic cross-talk induced by the temperature acquisition at 1 sps. Because the temperature sensors and the seismometer axes share the same clock, the cross-talk signal (tick noise) is perfectly synchronized with the acquisition of the SEIS records.

Figure 1 (black rectangles) also reveals a permanent excitation of a continuum of frequencies between 2 and 3 Hz, that are not modulated in time in sharp contrast with the Lander modes. This feature is called the “2.4 Hz resonance” and is interpreted by Giardini et al. (2020) as a local ground resonance. Nevertheless, the exact way this resonance is generated and excited remains unknown.

There also exist two families of transient perturbations, presented in Figure 2, that deserve attention. One of these transients dominates the low frequency band and is referred to as “glitch” (panels a and b). The other dominates the high frequency band and is referred to as “donk” (panels c and d). The most likely origin of these signals is the activation of presumably pre-existing cracks in the various mechanical parts of the InSight station including the lander, the SA of SEIS and the tether between SEIS and the lander (Ceylan et al., 2021). Indeed, the temperature variations between day and night at the InSight landing site can reach 100 K. All the mechanical parts are thus subject to high thermal stresses and the elastic energy accumulated is partly released in the form of low- and high-frequency acoustic emission. For a detailed analysis of glitch signals we refer the reader to Scholz et al. (2020). Because glitches, tick noise and donks can adversely affect the results of seismic interferometry, Section 3.1 describes several data procedures to mitigate their effect.

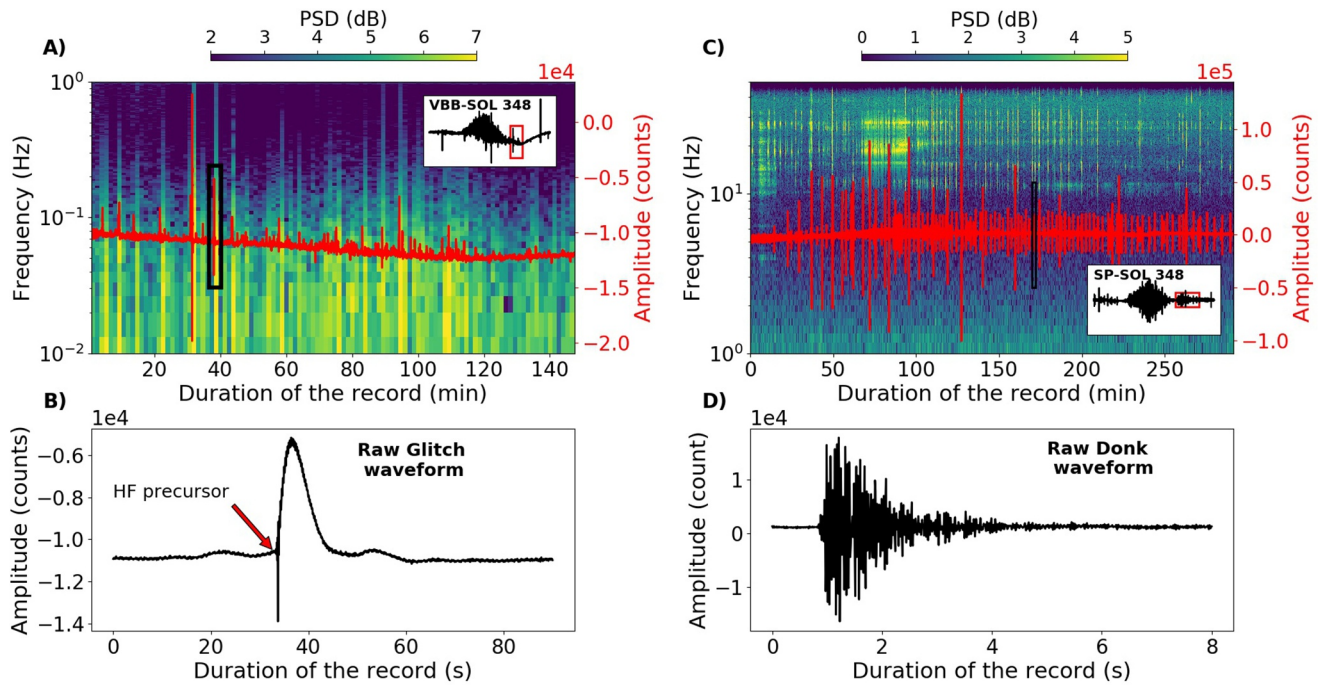


Figure 2. (a) Spectrogram of the raw VBB-V component at 20 sps at the beginning of the evening of Sol 348. The spectrogram is computed using a moving time window of 100 s with 20% overlap. Each high energy peak in the low frequency band (<0.1 Hz) is the signature of a glitch. Glitches are also clearly visible in the time-series (red line) superposed on the spectrogram. The black rectangle delimits the time window of the glitch presented in (b). In inset, the whole VBB-V record is shown for Sol 348. The red rectangle delimits the time window used for the spectrogram computation. (b) Typical raw glitch waveform. (c) Spectrogram of the raw SP2 (horizontal) component at 100 sps during the evening of Sol 348. The spectrogram is computed using a moving time window of 5 s with 20% overlap. Each high-energy peak in the high frequency band is the signature of a donk. Donks are also clearly visible in the time-series (red line) superposed onto the spectrogram. The black rectangle delimits the time window of the donk presented in (d). The inset in (c) shows the complete SP2 record for Sol 348. The red rectangle delimits the time window used for the spectrogram computation. (d) Typical raw donk waveform.

2.3. Seismic Events

Since the beginning of the operation phase SEIS has recorded more than a 100 seismic events (Giardini et al., 2020). The event nomenclature used in this study refers to the catalog provided by the MarsQuake Service (MQS) (InSight Marsquake Service, 2020) described in Giardini et al. (2020). The events are classified into five types and have an assigned quality score from A (best) to D (worst). The description of the five event types is presented in Table 3. Up-to-date information on SEIS events and the Mars quake catalog are provided by Clinton et al. (2021).

In this study, we focus our analysis on the high frequency events (HF), very high frequency events (VF) and 2.4 Hz events. As described by Lognonné et al. (2020) and Giardini et al. (2020), the high-frequency seismic events (HF, VF and 2.4 Hz events) waveforms have a diffusive character. The abundance and long duration of high-frequency seismic events offer a unique opportunity to apply seismic interferometry to the retrieval

Table 3
Characteristics of the Different Types of Events as Defined by the MQS (InSight Marsquake Service, 2020)

Event type	Description
Low frequency (LF)	Energy exclusively below the 2.4 Hz resonance
Broadband (BB)	Excite the 2.4 Hz resonance but with the major part of their energy at lower frequencies
2.4 Hz event	Excite only the 2.4 Hz resonance
High frequency (HF)	Excite the 2.4 Hz resonance but also the higher frequencies
Very high frequency (VF)	Same as HF events but with larger energy on the horizontal components than on the vertical component

of the local seismic response below InSight. All in all, we have used 41 HF, 14 VF, and 69 2.4 Hz events. Only seismic events with quality better than or equal to C were selected. The complete list of events used is given in Appendix A1. For all these events we were able to exploit the entire waveform as previous polarization and multiple-scattering analyses strongly suggest that the diffusive regime sets in almost immediately after signal onset (Lognonné et al., 2020).

3. Processing and Results

3.1. Pre-processing

3.1.1. Tick Noise Removal

The tick noise is an electrical disturbance (cross-talk) resulting from the acquisition of the temperature inside SEIS. The frequency content of this deterministic noise depends mostly on the sampling rate of the temperature sensor. It is important to note that the tick noise waveform differs on the three components U, V, and W of the VBB. As the acquisitions of the temperature and seismic channels are synchronized, the tick noise repeats periodically every N samples, where N is the sampling rate of the SEIS channel. This implies in particular that it is not sensitive to the temporal drift of the SEIS clock. As observed in Figure 1, the tick noise peaks in the frequency domain at 1 Hz but also exhibits a nonnegligible amplitude at each harmonics (2 Hz, 3 Hz, ...). In order to remove this noise from the raw data at 20 sps, we stack nonoverlapping contiguous 20-samples windows. Under the assumption that the background noise is random, the stack should converge toward a good estimate of the tick noise waveform. To obtain the estimates presented in Figure 3a, we stacked 2 months 20 sps VBB records acquired between 18:00 and 22:00 Local Mean Solar Time (LMST). We only employ evening data because they sample the quietest period of the day on Mars. Finally, to remove the tick noise from the data, we first determine its lag-time with respect to the raw time-series using a simple cross-correlation algorithm. We then appropriately shift the tick noise to align it with the raw time-series and remove the former from the latter in contiguous windows of 20 samples by subtraction. Figure 3b shows the spectrograms before and after the tick noise removal around a frequency of 1 Hz for each component. Figures 3c and 3d show the time-series and the spectral contents of VBB-V during the evening of Sol 183 before and after the tick noise removal. We see that our procedure successfully removes the tick noise at the target frequency, while preserving the rest of the spectral content.

3.1.2. Glitch Suppression

As described in Lognonné et al. (2020), the term “glitch” refers to a particular type of signal in the seismic channels of SEIS whose waveform is similar to the response of the instrument to a step in acceleration. Glitches are broadband signals but most of their energy is localized in the low-frequency domain (<1 Hz). Rarely, glitches can be preceded by a high-frequency precursor. Glitch amplitude extends over six orders of magnitude. They may happen anytime during a Sol but those with highest amplitudes appear to occur when the temperature exceeds certain specific values (Scholz et al., 2020). Polarity analysis suggests that glitches have preferential polarization in the directions of the feet of the WTS, the feet of SEIS Leveling System (LVL) and the LSA/tether (Lognonné et al., 2020; Scholz et al., 2020). The fact that a large number of glitches are thermally activated can be an issue for passive seismic applications. Notwithstanding the fact that some glitches have very high amplitude, if their temporal distribution shows some regularity and reproduces at fixed temperature conditions during each Sol, these transients may eventually deteriorate the ACFs and mask interesting signals. To mitigate the risk of contamination by glitches, we apply a glitch-correction algorithm (Scholz et al., 2020) to the raw data, that detects and removes the low-frequency waveform of the most energetic glitches. Due to the variability in their waveforms, some glitches may leave a small imprint in our data, even after correction. For this reason, their impact on our results will be further discussed in Section 3.4.2.

In the next sections, we present two methods to retrieve empirically the seismic response below InSight from the preprocessed continuous data. The first method is based on the well-established identity between the temporal correlation function of a diffuse wavefield and the Green's function of an elastic medium (Campillo & Paul, 2003; Lobkis & Weaver, 2001). The second method proceeds in the frequency domain and exploits the Wiener-Khinchine relation between the power spectral density of random signals and their autocorrelation function (Yaglom, 2004).

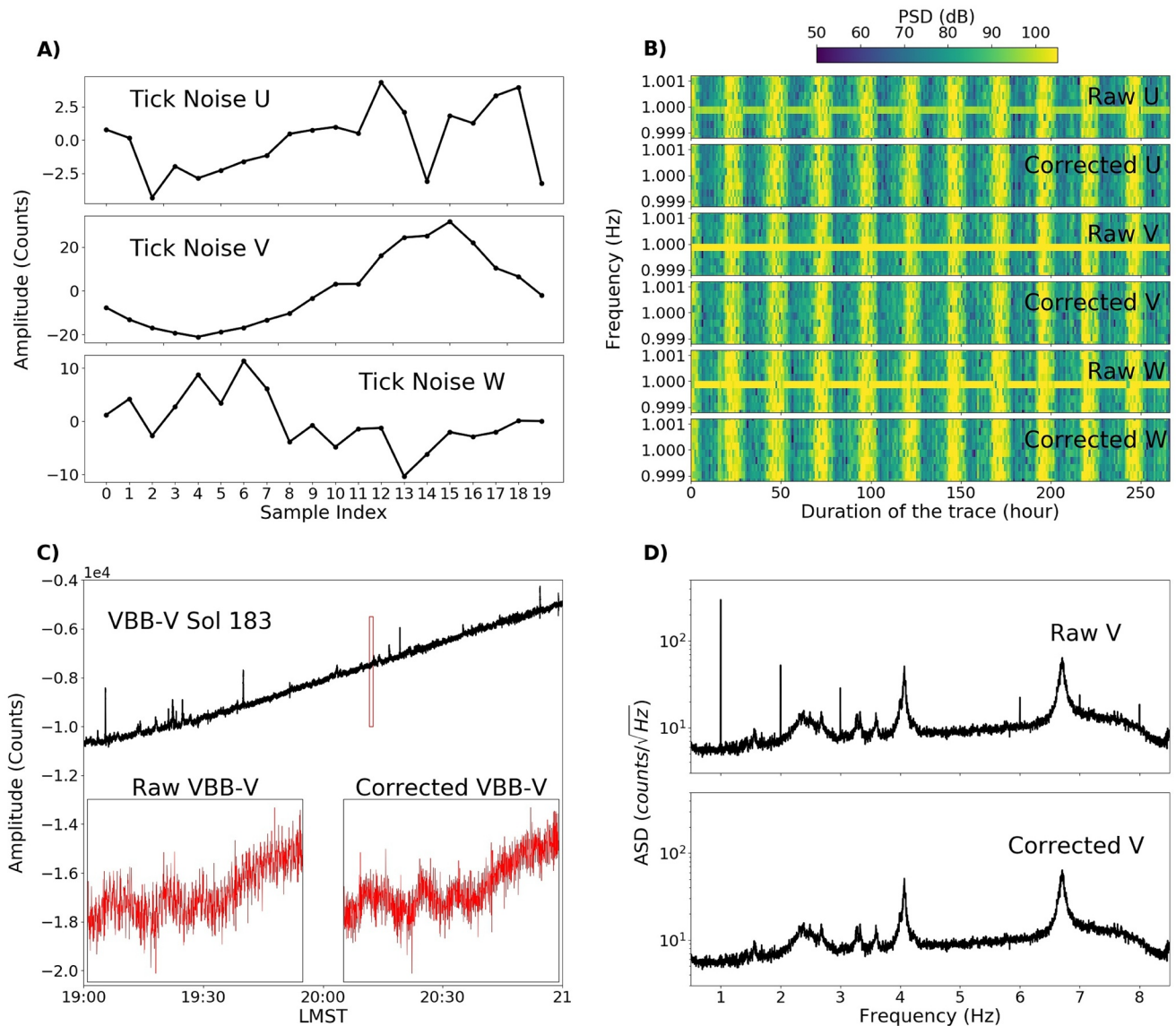


Figure 3. (a) Estimated waveforms of the tick noise on the U, V, and W channels of SEIS-VBB at 20sps. (b) Spectrograms of the U, V and W components of SEIS-VBB before (raw) and after (corrected) tick-noise removal. The spectrograms have a temporal resolution of 1 h and are represented in the 0.999–1.001 Hz frequency band. (c) Raw VBB-V record between 19:00 and 21:00 LMST (black line) on Sol 183. Zooms into the time-window delimited by the red rectangle are provided in insets to highlight the effect of the correction. (d) Amplitude Spectral Density (ASD) of the Raw VBB-V record shown in (c) before and after tick-noise removal.

3.2. Computation of ACFs and Signal-To-Noise Ratio (SNR) Analysis

To compute the velocity ACF of Martian ambient vibrations, we follow the workflow described by Bensen et al. (2007) with minor modifications. After tick noise and glitch removal, the instrument response is removed and the traces are rotated onto the local geographical coordinate system Z, N, E , with Z the upward vertical, N the horizontal North component and E the horizontal East component. The signal is subsequently cut into segments of one Sol duration which are processed independently. Due to the highly nonstationary character of both the ambient Martian vibrations and the perturbations caused by the environment, we further process independently each hour (in LMST) of the continuous record. This hourly processing allows us to check the stability of the ACFs and to remove segments that are potentially contaminated by spurious phases related to environmental noise, whose excitation depends strongly on the daily variation of wind and temperature (Scholz et al., 2020).

A band-pass filter is applied to each 1-hour trace. We subsequently subdivide each trace into windows of 60 s duration with 70% overlap. To mitigate the impact of energetic transients, a 1-bit normalization is applied to enforce stationarity of the signal amplitude, thereby improving the SNR (Bensen et al., 2007; Ito & Shiomi, 2012). Following De Plaen et al. (2016), we do not apply any spectral whitening. Depending on the bandwidth and the component involved, we also apply several notch filters to remove the lander modes resonances. The low-frequency band 0.4–1 Hz does not appear to contain lander modes. The 1–2 Hz and 1–3 Hz bands contain a lander mode around 1.6 Hz but this one is mainly polarized on the horizontal components. As a consequence, a notch filter centered at 1.6 Hz, which corresponds to the frequency of the lander mode averaged over one Sol, is applied to the East and North components. The 3–6 Hz band contains two lander modes at 3.3 and 4 Hz visible on the three components. Two notch filters are consequently applied to the Z , N , and E traces during the preprocessing. We used a second-order infinite impulse response notch filter with a quality factor $Q = 30$. The width of the rejected band at -3 dB is approximately one-thirtieth of the center frequency. Finally, we compute the full normalized autocorrelations (ZZ, NN, and EE) for each of these 60 second-long traces, and we stack them to obtain the ACF for the given LMST and the given Sol. For the computation of ACFs from seismic events waveforms, the processing is almost identical. Different seismic events are simply considered as different Sols and the first subdivision into LMST is not applied. Note nevertheless that a large number of seismic events are recorded during the evening.

In order to check the stability of the various phases observed in the ACFs, we use the definition of the SNR given by Clarke et al. (2011) based on a method of Larose et al. (2007). This SNR is a function of N , the number of realizations, and t , the correlation time-lag. In our case N represent either the number of Sols or the number of seismic events. The SNR is given by:

$$SNR(N, t) = \frac{s(N, t)}{\sigma(N, t)} \quad (1)$$

With $s(N, t) = \left\| \langle ACF(t) \rangle + i\mathbf{H}(\langle ACF(t) \rangle) \right\|$ and $\sigma(N, t) = \sqrt{\frac{\langle ACF(t)^2 \rangle - \langle ACF(t) \rangle^2}{N - 1}}$. Here, $\langle ACF(t) \rangle = \frac{1}{N} \sum_{i=1}^N ACF_i(t)$ with i the index labeling the Sol (or the event). We denote $s(N, t)$ the envelope of the stacked autocorrelation function $\langle ACF(t) \rangle$, \mathbf{H} the Hilbert transform and $\sigma(N, t)$ the amplitude of the residual fluctuations normalized by the number of realizations minus one to avoid biasing. We smooth the time-dependent SNR using a moving time window with the following frequency-dependent duration: 2.5 s in the 0.4–1 Hz band, 0.5 s in the 1–2, and 1–3 Hz bands and 0.25 s in the 3–6 and 4.5–7 Hz bands.

We show in Figure 4a the SNR estimated from 149 ambient vibration ACFs derived from data recorded from Sol 222 to Sol 399. We remark that the phases that are visible on individual correlograms as well as on the stacked waveform between 5 and 8 s, 10 and 13 s, and around 21 s also correspond to peaks of the SNR. In Figure 4b, we show the SNR for each hour of the day expressed in LMST. We see that the most energetic arrivals (5–8 s, 10–13, and 21 s) are visible and stable during nighttime (i.e., from 17:00 LMST to 06:00 LMST) and are particularly clear during the evening (from 17:00 LMST to 23:00 LMST). This period of the day corresponds to the lowest atmospheric activity on Mars. By contrast, when atmospheric noise is particularly strong during daytime (from 06:00 LMST to 17:00 LMST), we cannot discern any clear seismic phase in the ACF. This observation suggests that the signals recorded by SEIS during daytime are not seismic waves but rather ground deformation induced by atmospheric forcing.

3.3. Reflectivity via Power Spectral Density (PSD) Estimate

By the Wiener-Khinchine theorem, it is known that the PSD of a stationary random signal contains the same information as its ACF, the two being related by a Fourier transform. This property suggests an alternative method to process our data set. First, we compute the average power spectral density of each 1-hour long data segment using the Welch method (Welch, 1967) with sub-windows of 60 s duration and 70% overlap. Note that no 1-bit normalization is applied to the original data set, in sharp contrast with the method described in the previous section. The application of Welch's approach to nonnormalized data has been recommended in the framework of ambient seismic vibration processing by Seats et al. (2012). All the

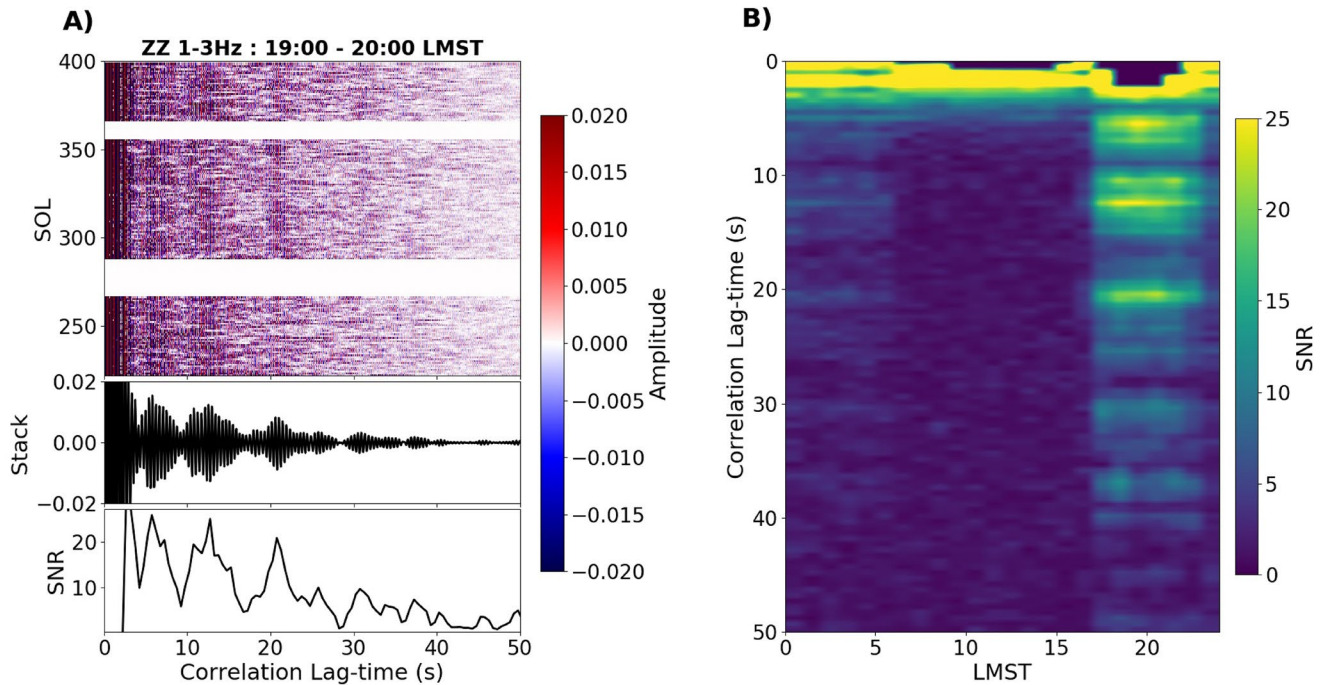


Figure 4. (a) From top to bottom: ZZ-Correlograms computed from Sol 222 to Sol 399 between 19:00 and 20:00 LMST in the 1–3 Hz frequency band; Resulting stacked ACF; SNR as a function of the correlation lag-time, following the method of Clarke et al. (2011). (b) SNR (see colorbar) as a function of LMST (local mean solar time) and correlation lag-time for the ZZ component filtered between 1 and 3 Hz.

PSD estimated between 18:00 and 23:00 LMST on the Z-component are shown in the 0.5–4 Hz frequency band in Figure 5a. At the top of Figure 5a, we show the PSD averaged over all Sols. In Figure 5a, we observe the broad 2.4 Hz resonance first reported by Giardini et al. (2020). Superposed on the broad resonance, we observe characteristic oscillations of the PSD on smaller frequency scales. In order to improve the SNR ratio around the 2.4 Hz resonance, we have normalized the PSDs by their maximum in the 1–3 Hz frequency band prior to the stack. This procedure downweights data from Sols with anomalously high energies (as around Sol 320 in Figure 5a) and therefore improves the ensemble averaging. Furthermore, although it may not be apparent on the individual PSDs, there may remain a small imprint of the tick-noise, even after application of the denoising algorithm. To mitigate this issue, we simply replace the value of the PSD at 1 Hz (and higher harmonics) by the mean value of the PSD at the two nearest samples. The averaged, normalized PSD is shown in Figure 5b.

Using both numerical simulations and real data examples, Oren and Nowack (2017) have suggested that the rapid oscillations of the PSD may contain information on the reflection of propagating waves from deep interfaces. Therefore, to extract the reflectivity structure under InSight, it is natural to deconvolve the PSD from the smooth 2.4 Hz resonance. In the example shown in Figure 5c, this operation is performed by dividing the original PSD by its smoothed version using a 0.5 Hz window. In order to remove contamination from unwanted spectral oscillations caused by Lander modes, we also normalize the PSD to one outside the frequency band of interest (Figure 5d). The final step of the process consists in taking the inverse Fourier transform of the deconvolved PSD to reveal the arrival times of the possible seismic phases at the origin of the spectral oscillations (Figure 5e). In the following, we refer to this method as the “Welch Method.”

The deconvolution stage is often used in seismic interferometry to mitigate the effect of the source time function of ambient vibrations, which creates strong side lobes near 0 lag-time (Casas et al., 2020; Ruigrok et al., 2010). In this operation, the bandwidth of the smoothing window used to estimate the PSD of the source function is a key parameter. In particular, we remark that both the amplitude and the arrival time of the wave packets in the first 4s depend on the smoothing parameter. As a consequence, we will refrain from interpreting any arrival reconstructed by the Welch method at lag time smaller than 4s.

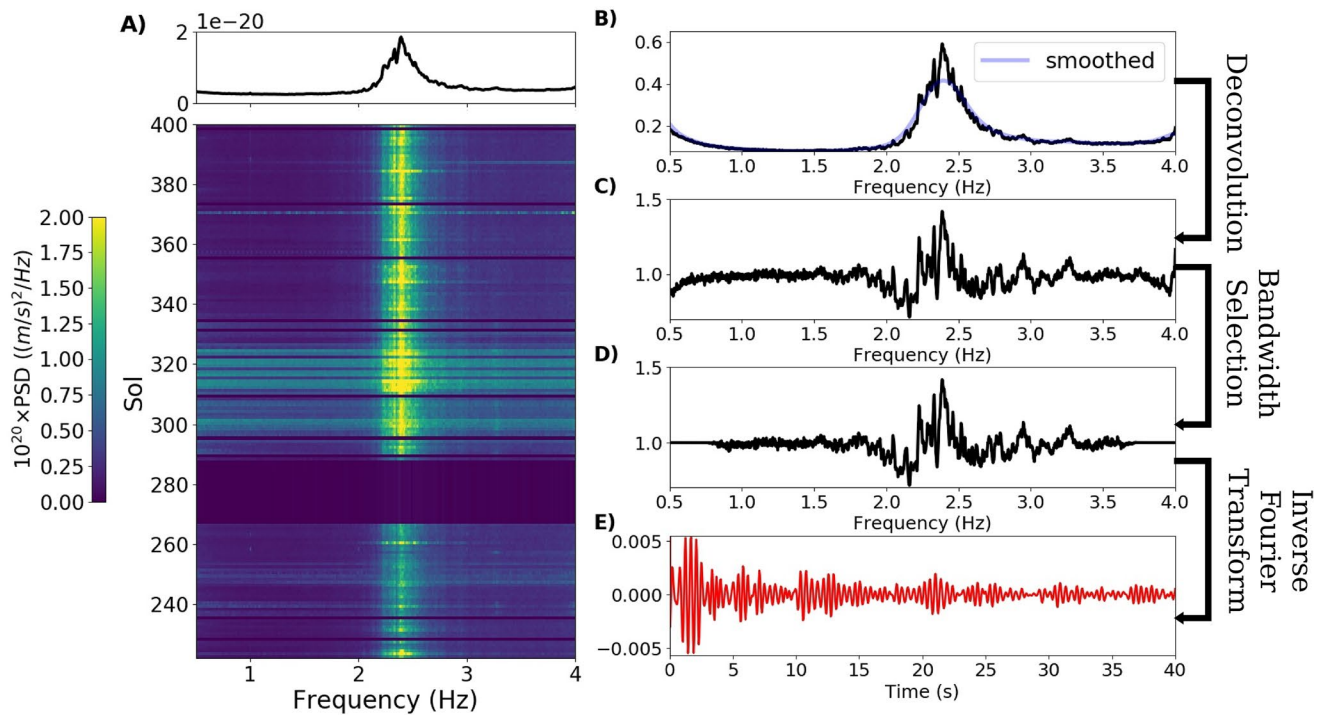


Figure 5. (a) Spectrogram showing the power spectral density (PSD) in the 0.5–4 Hz frequency band during the evening period (18:00–23:00 LMST) from Sol 222 to Sol 399. The spectrogram is computed using a moving time window of 1 min with 70% overlap. The averaged PSD is shown at the top of the spectrograms. (b) Averaged and normalized PSD estimated between 18:00 and 23:00 LMST and its smoothed version. (c) Deconvolved PSD. (d) Deconvolved PSD after frequency band selection. (e) Inverse Fourier Transform of the PSD shown in (d).

3.4. Results

3.4.1. ACFs and SNR Analysis

The ACFs of the ambient vibrations have been computed in four different frequency bands: 0.4–1, 1–2, 1–3, and 3–6 Hz. The SNR and power spectra of the resulting ACFs are shown in Figure 6 for the ZZ component. The high values of SNR (in red) near 0 lag-time are caused by the noise source time function since no source deconvolution has been applied during the processing. We see in Figure 6 that outside of the time window near 0 lag-time, the SNR is close to zero everywhere except in the 1–3 Hz bandwidth between 17:00 LMST and 23:00 LMST (Figure 6e). We recall that the evening is known to be the period of the Sol where the atmospheric disturbances are the lowest. Hence, it is only during this time of the Martian day that seismic ambient vibrations may be expected to predominate. The second peculiarity of the 1–3 Hz frequency band is the presence of the 2.4 Hz resonance. We see on the power spectra of Figure 6f that this resonance dominates the frequency content of the ACF. Our interpretation is that the 2.4 Hz resonance amplifies the ambient vibration at the InSight’s landing site, thereby allowing a better reconstruction of the zero-offset reflection response. In the following, we therefore focus our analysis on the results obtained in the 1–3 Hz frequency band.

Our main results are shown in Figure 7 where we represent all the ACF waveforms computed from ambient vibrations from Sol 222 to Sol 399 for the Z, E, and N components (upper panels), as well as the Z, E, and N ACFs waveforms obtained from 124 seismic events (HF, VF, and 2.4 Hz events, lower panels). In addition, Figures 8–10 show the average waveforms for the three approaches outlined above: seismic events, Welch method, and ambient vibration for the ZZ, EE, and NN components respectively. The ACFs referring to “Seismic Events” have been obtained by stacking linearly the individual ACFs of all HF events, VF events and 2.4 Hz events (124 diffuse seismic events in total) shown in Figures 7d–7f. The ACFs referring to “ambient vibrations” have been obtained by stacking linearly the hourly ACFs during the evening period (17:00 to 23:00 LMST) of each Sol and by subsequently averaging the results from Sol 222 to Sol 399 shown in Figures 7a–7c. Note that because source deconvolution has been applied in the Welch method, the waveform

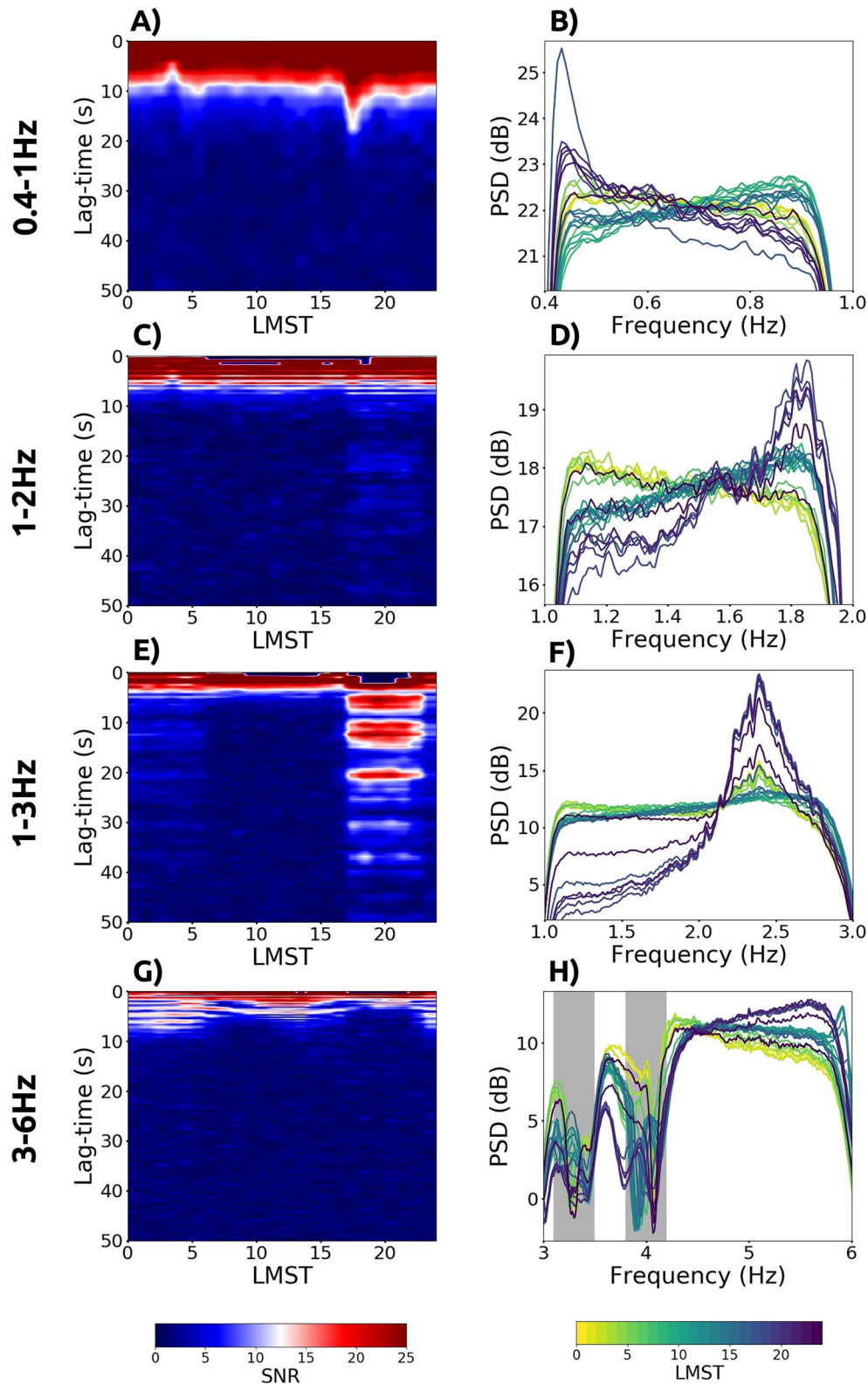


Figure 6. Left: Signal-to-noise ratio (SNR, see color scale) of the hourly ZZ autocorrelation functions (ACFs) as a function of Local Mean Solar Time (LMST) and lag-time in the following frequency bands: 0.4–1 Hz (a), 1–2 Hz (c), 1–3 Hz (e), and 3–6 Hz (g). On the right, Power Spectral Density (PSD, see color scale) of the hourly ZZ autocorrelation functions as a function of LMST in the following frequency bands: 0.4–1 Hz (b), 1–2 Hz (d), 1–3 Hz (f), and 3–6 Hz (h). The frequency band of the notch filters applied to remove the lander modes from the data are delimited by gray rectangles around 3.3 and 4 Hz in (h).

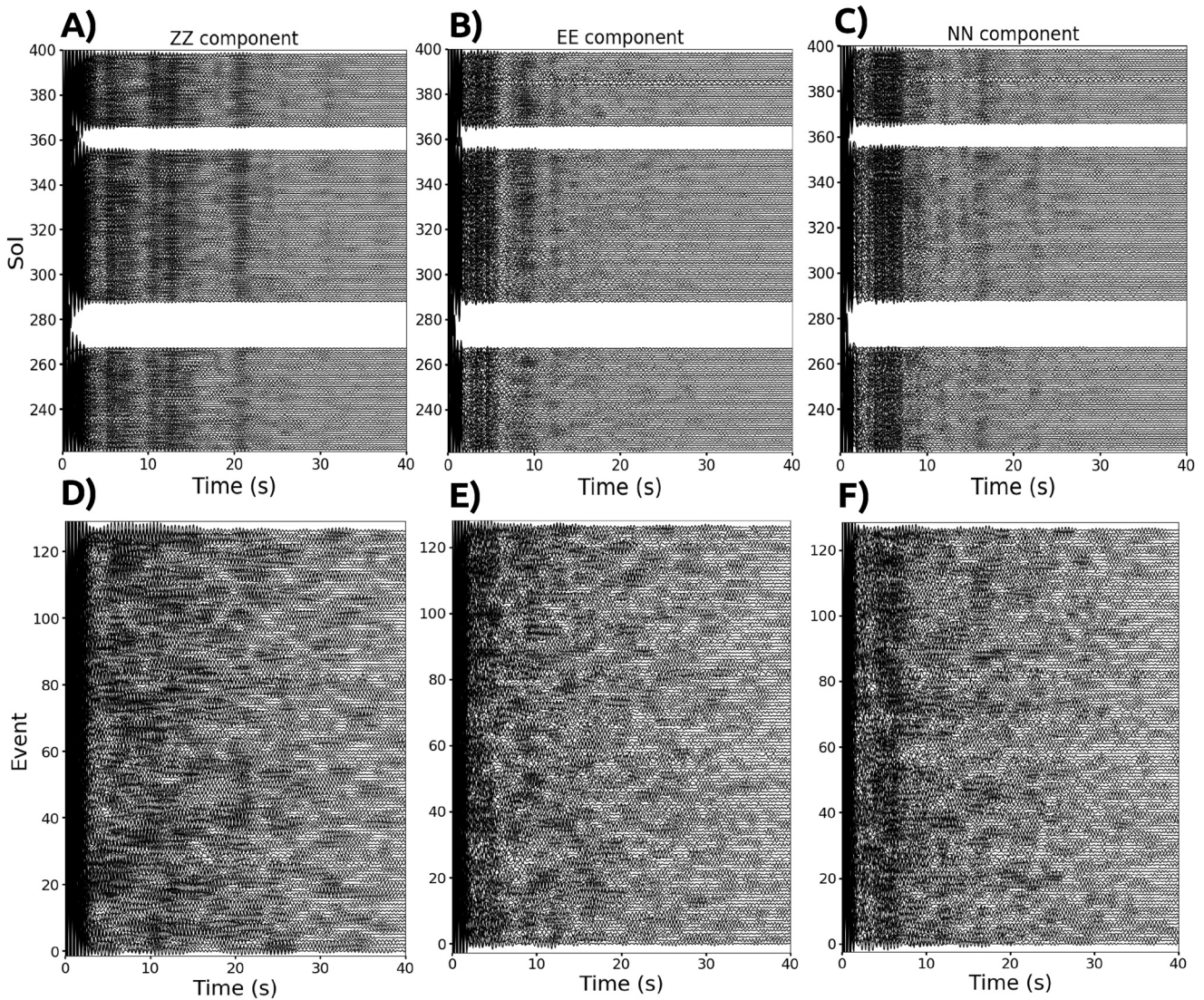


Figure 7. (a) ZZ, (b) EE, and (c) NN autocorrelation functions of ambient vibrations computed between 17:00 and 23:00 LMST from Sol 222 to Sol 399 in the 1–3 Hz frequency band. (d) ZZ, (e) EE, and (f) NN autocorrelation functions of HF, VF and 2.4 Hz events in the 1–3 Hz frequency band, ordered by event number.

amplitudes shown in panel b are not directly comparable with the one displayed in panels a and c. In Figures 8–10, we highlight in gray the wave packets that are simultaneously visible on the three different types of ACFs. When the envelope of the wave packet presents a clear maximum, common to the three methods, we mark its arrival time with a vertical dark gray line.

The excellent agreement between the three correlograms is worth noting. The close similarity between the waveforms derived from ACFs of seismic events and ambient vibrations is particularly compelling. Furthermore, the agreement between these two ACFs and the results from the Welch method, which proceeds in the frequency domain, confirms that the arrival time of the different wavepackets is indeed encoded in the periodical oscillations of the PSD around the 2.4 Hz resonance. Again, this should come as no surprise by the Wiener-Khinchine theorem. Examining Figures 7a–7c, we also notice that the individual ambient vibration ACFs computed over a single Sol already contain all the arrivals that show up in the complete stack. By contrast, the individual ACFs computed from seismic events waveforms (Figures 7d–7f) exhibit much more variability. Quite remarkably, the average ACF nevertheless converges toward the same waveform as obtained from the ambient seismic vibration. Interestingly, Hillers and Campillo (2016) observed the same

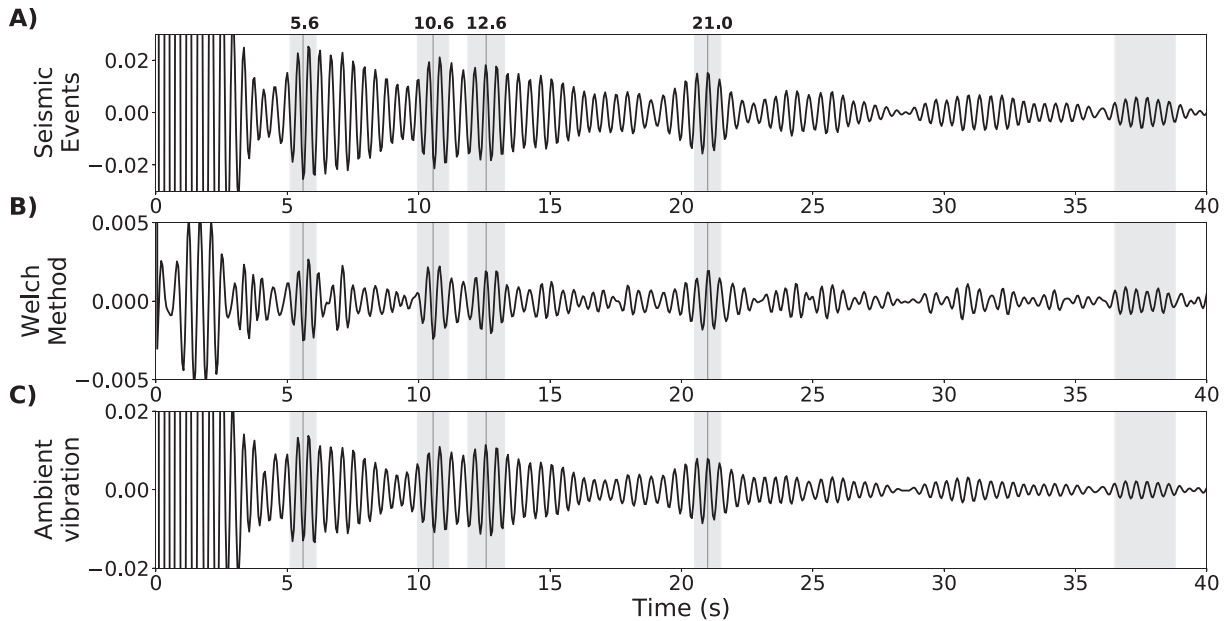


Figure 8. ZZ ACFs in the 1–3 Hz frequency band derived from (a) seismic events waveforms (linear stack of all HF, VF, and 2.4 Hz events); (b) Welch’s Method applied to ambient vibrations (see Section 3.3) and (c) time domain processing of ambient vibrations (linear stack from Sol 222 to Sol 399) between 17:00 and 23:00 LMST (see Section 3.2). Note that in the Welch method, an additional source deconvolution is applied. Arrivals that are simultaneously visible on the three waveforms are highlighted in gray. The arrival time of the maximum of each wave packet (marked by a vertical line) is indicated at the top of the figure.

variability of cross-correlation waveforms derived from earthquake coda waves on Earth. This comforts us in our interpretation of the arrivals visible in the ACFs as true propagating seismic signals.

3.4.2. Potential Contamination by Glitches and Donks

We have seen in Section 3.1.2 that only the low frequency part of a given glitch is removed by the detection-correction algorithm. This implies that the temporal distribution of glitches can still have an impact on the correlation analysis. In the same way, the distribution of donks is susceptible to contaminate the ACFs.

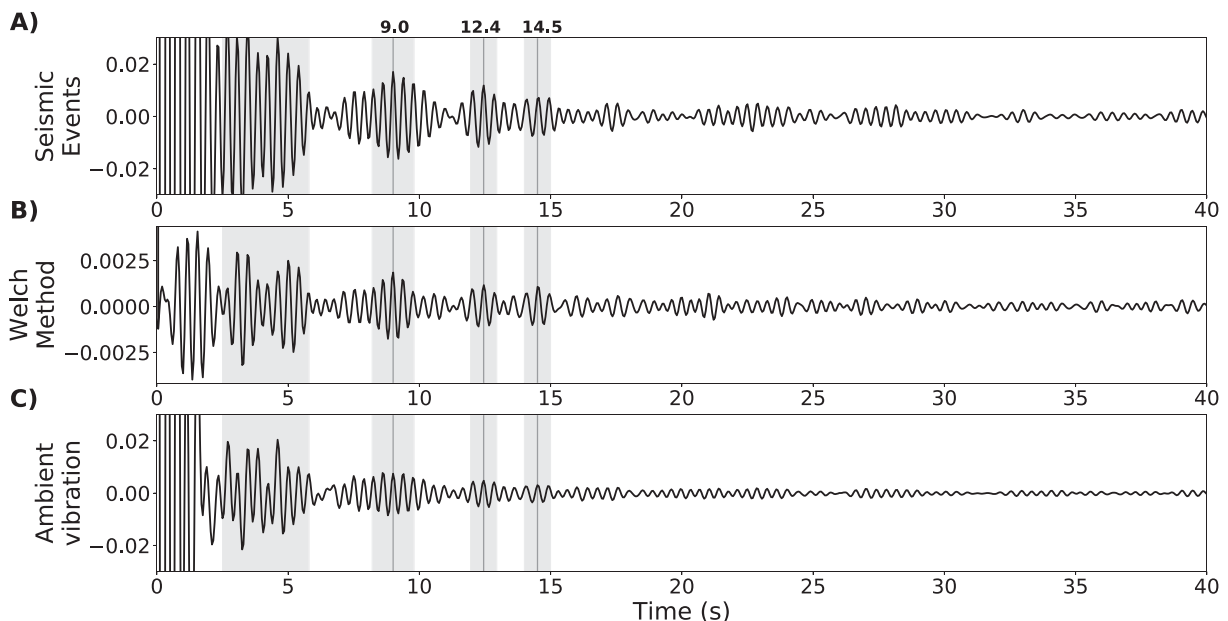


Figure 9. Same as Figure 8 for EE ACFs in the 1–3 Hz frequency band. Note that in the Welch method, an additional source deconvolution is applied.

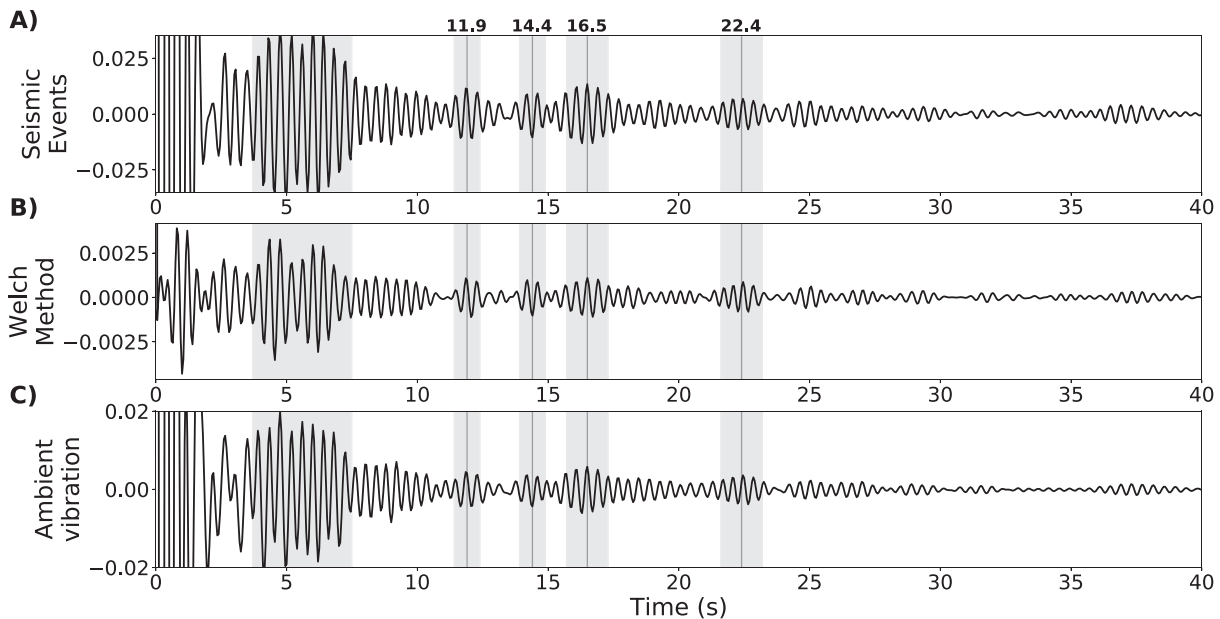


Figure 10. Same as Figure 8 for NN ACFs in the 1–3 Hz frequency band. Note that in the Welch method, an additional source deconvolution is applied.

These possible issues are now critically examined. In Figure 11a, we show the statistics of the lapse-time between pairs of glitches detected in the 20 sps VBB data. A clear pattern can be distinguished on the plots, where each glitch is represented as a point in the (LMST, Sol number) plane. In particular, a high density of glitches can be observed along certain curves suggesting that glitches are driven by environmental forcing. Indeed, Scholz et al. (2020) have shown that the curves correspond to particular values of the temperature, which varies seasonally. The regularity and repeatability observed in the glitch distribution leads us to take into consideration the time delay between two consecutive glitches. This parameter is key to unravel a potential contamination of ACFs. In Figure 11a, we show the histogram of the time delays between two consecutive glitches on the V component at different LMST. We focus our analysis on the evening part of each Sol because it is the period during which we obtain the best results. We see on the histogram that the smallest delay is ~ 30 s and that the mean delay between two consecutive glitches is around 200 s. These values are too large to explain the arrivals visible on the ACFs. Moreover, we see that the distribution of the delays depends on the LMST. This observation is not compatible with the stability of the arrivals over the nighttime windows.

We show in Figure 11d, the temporal distribution of the donks detected between 17:00 and 23:00 LMST from Sol 180 to Sol 261. This period is delimited by the red rectangle in Figure 11b. As the 100 sps SP data are not always available, we perform the detection of donks on a composite SP channel called ESTASP (Energy Short Term Average—SP) which is available in the continuous data stream. The output of this channel is defined as the root mean square of the raw vertical SP components (SP1), filtered in the 12–14 Hz bandwidth and averaged over 1 s (Lognonné et al., 2019). The peaks visible on the ESTASP channel time series shown in Figure 11e are markers of donks. Application of a simple STA/LTA (1 s/25 s) criterion thus permits the automatic detection of the vast majority of donks from ESTASP records. In Figure 11d, we may observe three time windows with a particularly high density of donks at the beginning of the evening. Each time window opens at a particular Sol and extends gradually Sol after Sol. We hypothesize that the appearance of a high number of donks is related to the seasonal re-activation of lander cracks. We see on the histogram of Figure 11c that the typical delay between two donks is much smaller than the delay between glitches. A broad maximum in the distribution of delays is visible around 10 s between 17:00 and 18:00 LMST. Such a peak could cast doubts on the physical origin of the arrival seen around 10.5 s in the ZZ ACFs. Nevertheless, there are a number of arguments that favor the interpretation of this arrival in terms of wave propagation. (1) The phases seen in the ACF's are stable during the whole evening, while donks activity strongly decreases after 18:00 LMST. (2) Donks leak very little energy into the 2–3 Hz bandwidth. (3) All the arrivals seen on

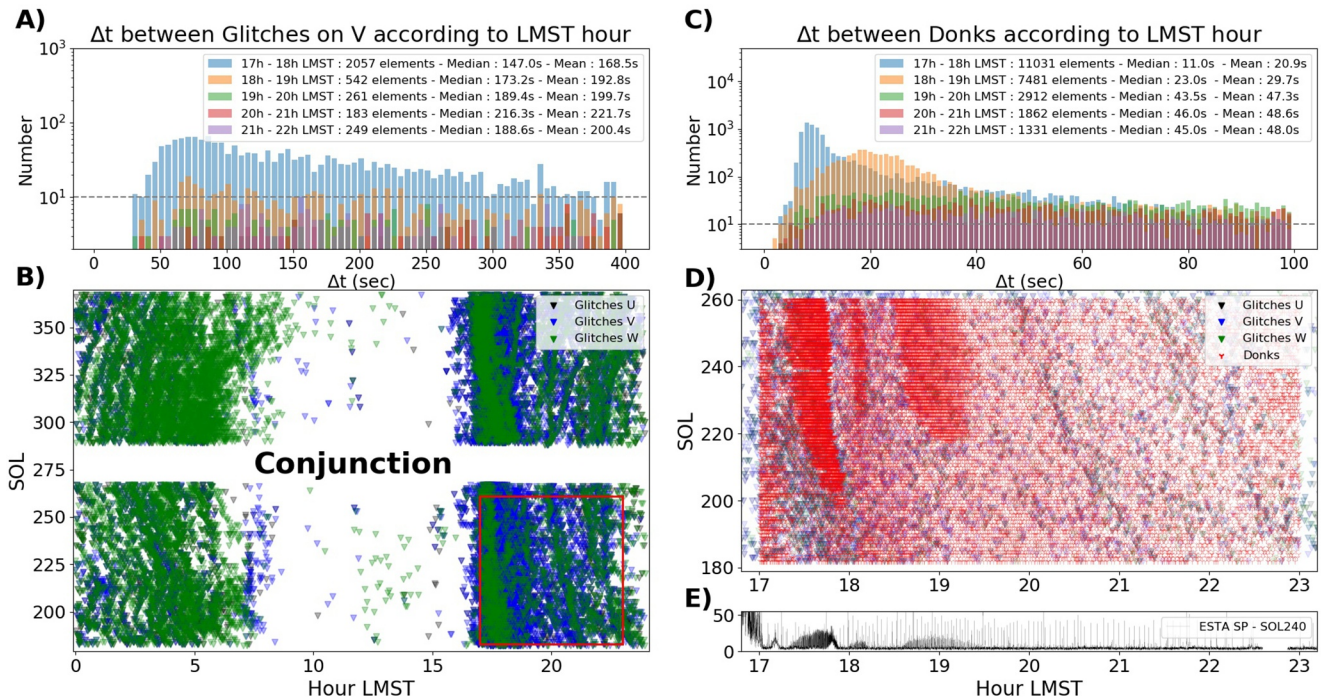


Figure 11. Temporal distribution of glitches and donks. (a) Histogram of the distribution of delays between two consecutive glitches of the V component in different LMST windows. (b) Time of occurrence of glitches detected on the U (black triangles), V (blue triangles) and W (green triangles) components of the VBB sensor from Sol 180 to Sol 361. Note that the high noise level during daytime (7:00 LMST to 17:00 LMST) hampers detection of glitches by our algorithm. (c) Histogram of the distribution of delays between two consecutive donks in different LMST windows. (d) Zoom in the red inset shown in (b). The time of occurrence of the donks detected from Sol 180 to Sol 260 is shown with red markers. (e) Typical time-series of the ESTASP channel (see text for the definition).

ambient vibration ACFs are also present in the events ACFs. The latter are tens to thousands of times more energetic than the ambient vibration, making donk contamination rather unlikely.

4. Interpretation of ACFs

Having detected clear arrivals in the ACFs, that are furthermore consistent between two different datasets, we now explore the possibility that these phases correspond to the reflection of body waves on deep interfaces under InSight. Other interpretations based on scattered surface waves are of course possible but are left for future works.

4.1. Possible Reflectivity Structure Below InSight

We begin our analysis with the vertical ACFs which show high S/N ratio (>4) up to lapse time of 30s. Following the basic principles of seismic interferometry, we interpret the identified phases in terms of P-wave reflectivity. The most energetic arrival (besides the sidelobe at time $t = 0$) seen on both ambient vibration and event ACFs arrives at a two-way traveltime of 5.6 s. This arrival is most directly interpreted as a reflection from an upper-crustal interface that was also detected by Receiver Function analysis. As reported by Lognonné et al. (2020), the plausible depth of this interface is 9.6 km (± 1.8 km), corresponding to an arrival time in the range 3.5–8.2 s. A series of later arrivals is detected at lapse-time 10.6, 12.6, and 21 s, whose amplitudes decay gradually. As an illustration, the amplitude ratio between the 5.6 and 21 s phases is typically in the range 1.5–2. This makes it rather unlikely that any of the late arrivals corresponds to a multiple reflection. Assuming the same range of P-wavespeeds in the lower crust as Lognonné et al. (2020) (reported in Table 4), our observations suggest the presence of several deep interfaces at approximate depths of 21.6 ± 4.8 km, 26.4 ± 6 km, and 46.5 ± 11.1 km, corresponding respectively to arrivals at 10.6, 12.6, and 21.0 s, respectively. The uncertainty on the depth of the interfaces is directly inherited from our assumption

Table 4
Extension of the Crustal Model by Lognonné et al. (2020) Derived From the Main Arrivals Observed in the ZZ ACF

	PP reflection in the Z-ACF (s)	Expected PP arrival (s)	V_p range (km/s)	Thickness (km)	Depth (km)
Layer 1	5.6	[3.5; 8.1]	[2.8; 4.4]	9.6 ± 1.8	9.6 ± 1.8
Layer 2	10.6		[3.6; 6.0]	12.0 ± 3.0	21.6 ± 4.8
Layer 3	12.6		[3.6; 6.0]	4.8 ± 1.2	26.4 ± 6.0
Layer 4	21.0		[3.6; 6.0]	20.1 ± 5.1	46.5 ± 11.1

on the plausible range of P-wave velocities in the crust. This analysis of the ZZ ACFs is summarized in Table 4.

We now examine the horizontal ACFs and interpret them in terms of shear wave reflectivity. In doing so, we try to identify arrivals that possibly correspond to reflections from the interfaces deduced from the vertical ACF interpretation. This task is complicated by the fact that the arrival times of phases seen on the EE and NN ACFs do not necessarily match. Comparing Figures 9 and 10, we observe that the NN component presents more similarity up to 40 s lag-time between the three methods than the EE component. Since the agreement between ambient vibration and event ACFs is by far better on the NN component than on the EE component, we focus our interpretation on the former. We observe a broad high-amplitude arrival between 4 and 8 s lapse-time. This arrival corre-

sponds to lapse-time that are too short to be unambiguously interpreted on the ZZ ACFs. The dispersed nature of the signal may be the signature of scattering from the surface regolith which hampers the identification of an interface. A series of later and lower amplitude arrivals can be discerned simultaneously on the event and ambient vibration NN ACFs at lapse-times of 11.9, 14.4, 16.5, and 22.4 s. The simplest interpretation of these arrivals, compatible with the P-wave reflectivity is the following one. The 11.9 s phase could correspond to the reflection of S waves from the upper crustal interface detected on the ZZ ACF. This allows us to determine the P-to-S wavespeed ratio $V_p/V_s = 2.1$ which in turn puts the first interface at a depth of 11.6 ± 0.9 km. The reduction in uncertainty with respect to the ZZ analysis comes from a far better constraint of the S-wave velocities by Lognonné et al. (2020) (reported in Table 5) than the P-wave velocities. The next phase that we identify arrives at 22.4 s and corresponds to the 10.6 s reflection seen on the ZZ ACF. Taking into account the range of shear wave velocities deduced from RF by Lognonné et al. (2020) and shown in Table 5, this implies that the second interface could be located at $25.2 \text{ km} \pm 2.5$ km depth. We summarize this analysis in Table 5. This interpretation is not entirely satisfactory, as we observe two arrivals at respectively 14.4 and 16.5 s that are difficult to reconcile with the P-reflectivity profile. The two uninterpreted arrivals on the NN ACF correspond to phases arriving between 5.6 and 10.5 s lapse-time for P-waves. In this time window, the ZZ ACF shows a broad wave packet where individual arrivals are difficult to discern. Interestingly, the 14.4 s arrival is visible on both the EE and NN ACF, which indeed suggests the presence of an interface between 11.6 and 25.2 km depth.

4.2. Discussion

We now critically examine our interpretation as well as those proposed in the recent literature. The work by Deng and Levander (2020) is particularly relevant to ours. These authors used vertical ACFs at long and short period to propose a stratified view of Mars interior. We will focus the discussion on the short period band that is common to both studies. Deng and Levander (2020) reported the observations of two arrivals at 11.5 and 21 s. The most notable difference with our findings is that instead of a single arrival at 11.5 s, we observe two arrivals at 10.6 and 12.6 s. We therefore see the interest in considering both ambient vibrations and coda waves in the processing.

The plausibility that the reconstructed phases correspond to deep reflections depends crucially on the crustal attenuation below InSight. As reported in Lognonné et al. (2020), the scattering attenuation as quantified by the seismic diffusivity $D = 90 \text{ km}^2/\text{s}$ is rather moderate. This diffusivity corresponds to a scattering attenuation length of about 90 kms (Lognonné et al., 2020) so that ballistic waves propagating two-way through the crust would see their amplitude reduced by a factor of three due to scattering attenuation. The absorption quality factor Q has also been estimated to be in the range 1,250–1,325 for S waves at 2.5 Hz and is probably much higher for P waves. Thus, absorption likely affects negligibly the ballistic wave amplitudes. All these estimates are of course subject to large uncertainties but they do not rule out our interpretation of ACFs as body waves reflections.

Although scattering is moderate in the Martian crust, we have observational evidence that the wavefield of high-frequency Martian events is diffuse (Lognonné et al., 2020). Since the minimal hypocentral distance of the events used in our study is larger than 500 km (Giardini et al., 2020), the diffuse character

Table 5
Extension of the Crustal Model by Lognonné et al. (2020) Based on a Combined Interpretation of ZZ and NN ACFs

	PP reflection in the Z-ACF (s)	SS reflection in the N-ACF (s)	V_p/V_s ratio	V_s range (km/s)	Depth (km)
Layer 1	5.6	11.9	2.1	[1.8; 2.1]	11.6 ± 0.9
Layer 2	10.6	22.4	2.1	[2.3; 2.9]	25.2 ± 2.5

is acquired by long range propagation through an inhomogeneous crust rather than by strong local scattering (Lognonné et al., 2020). Coda records are more likely to possess the diffusive character required for the application of seismic interferometry. Therefore, by contrast with Deng and Levander (2020) we would rather interpret the phase detected at 21 s as a PmP rather than as an SmS. We also note that the horizontal ACFs, which are supposed to be more faithful to the S reflectivity profile, lack a clear reflection associated to the 21 s phase seen on the ZZ ACF. Therefore, we believe that the depth of the Moho under InSight is still to be confirmed by additional studies. To carry out this task, a joint interpretation of the vertical and horizontal ACFs would be necessary. This will

require more advanced modeling approaches such as full-waveform inversion. Even more importantly, additional constraints could come from the analysis of converted phases as in RF analysis, which in addition provide constraints on the absolute velocities in the crust.

5. Conclusion

The ground velocity records of the SEIS instrument have been analyzed with seismic interferometry methods. The stability analysis of the ACFs of SEIS components demonstrates that the ambient seismic vibration is most reliably observed in a specific frequency band (2.4 Hz resonance) and only when the environmental noise is lowest (17:00 to 23:00 LMST from Sol 222 to Sol 399). Based on the Power Spectral Density (PSD) of ambient vibrations, we show that the 2.4 Hz resonance has an oscillating structure which is perfectly stable with time and which is directly related to the EGFs reconstructed in the 1–3 Hz band by autocorrelation analysis. The good agreement between the ACFs computed on ambient seismic vibration in the 1–3 Hz range and the ACFs computed on the Marsquake waveforms is consistent with the interpretation of the 2.4 Hz resonance as a local ground amplification due to the shallow structure beneath the InSight's landing site. The ACFs present seismic energy arrivals in the 4–30 s lag-time range that are validated by Signal to Noise Ratio (SNR) analysis and intercomparisons between results obtained from ambient vibration and seismic event records. We report the possible detection of vertically propagating P-waves reflected on internal discontinuities with two-way travel times of 5.6, 10.6, 12.6, and 21 s. A clear identification of the corresponding S-waves reflections is more speculative due to the poor agreement between the EE and NN components. Nevertheless, based on the more reliable component (NN), we suggest that the 11.9 and 22.4 s arrivals could be the S-waves reflections corresponding to the P-waves reflections at 5.6 and 10.6 s. Two internal structure models deduced from these travel times are presented, but they must be further constrained by other seismic analysis such as receiver functions, in order to obtain a reliable internal structure model.

Appendix A: Seismic Events

Table A1
List of Seismic Events Used in This Study Referring to the Catalog V3 by the MQS (InSight Marsquake Service, 2020)

HF events		VF events		2.4 Hz events		2.4 Hz events	
Name	Quality	Name	Quality	Name	Quality	Name	Quality
S0423c	B	S0424c	B	S0405d	C	S0346d	C
S0405f	B	S0421a	B	S0405b	C	S0344a	C
S0392a	B	S0387a	B	S0401b	C	S0342a	B
S0385a	C	S0376a	C	S0398b	C	S0340b	C
S0384d	C	S0358c	C	S0397d	C	S0339c	C
S0384c	C	S0343a	C	S0397b	C	S0338b	B
S0384b	B	S0334b	C	S0397a	C	S0338a	C
S0375a	C	S0334a	B	S0394a	B	S0327a	B

Table A1
Continued

HF events		VF events		2.4 Hz events		2.4 Hz events	
Name	Quality	Name	Quality	Name	Quality	Name	Quality
S0371b	B	S0306c	C	S0390c	C	S0325c	B
S0363d	C	S0264e	B	S0386b	C	S0323c	B
S0361c	B	S0241a	C	S0385b	C	S0321a	B
S0352a	B	S0226a	C	S0384a	C	S0314a	B
S0351b	C	S0202b	C	S0383a	C	S0311b	B
S0349a	B	S0128a	B	S0378b	B	S0265e	B
S0347a	C	—	—	S0378a	C	S0264b	B
S0343b	B	—	—	S0373b	C	S0263c	B
S0340a	B	—	—	S0372a	B	S0257b	B
S0331a	B	—	—	S0370a	C	S0255b	B
S0327c	B	—	—	S0369b	C	S0248b	B
S0325b	B	—	—	S0368a	C	S0248a	B
S0323a	B	—	—	S0367d	C	S0247b	B
S0319b	B	—	—	S0367c	B	S0247a	B
S0319a	B	—	—	S0366e	C	S0229a	B
S0315b	B	—	—	S0366d	C	S0227d	B
S0314b	B	—	—	S0366c	B	S0222a	B
S0311a	C	—	—	S0365a	C	S0219c	B
S0308a	B	—	—	S0363c	C	S0216b	B
S0306a	C	—	—	S0363b	C	S0194c	B
S0304b	B	—	—	S0363a	C	—	—
S0303a	C	—	—	S0361b	C	—	—
S0292a	C	—	—	S0359a	C	—	—
S0291c	B	—	—	S0358b	C	—	—
S0262b	C	—	—	S0355a	C	—	—
S0260a	B	—	—	S0353d	C	—	—
S0246a	B	—	—	S0353c	C	—	—
S0239a	B	—	—	S0353b	C	—	—
S0231b	B	—	—	S0349b	C	—	—
S0228c	B	—	—	S0348d	C	—	—
S0213a	C	—	—	S0348c	C	—	—
S0202c	C	—	—	S0348b	C	—	—
S0185b	B	—	—	S0348a	C	—	—

Data Availability Statement

SEIS data are referenced at http://dx.doi.org/10.18715/SEIS.INSIGHT.XB_2016. The Mars Quake service (MQS) catalog of events used in this contribution is the Mars Seismic Catalog, InSight Mission, V3 acknowledging ETHZ, IPGP, JPL, ICL, ISAE-Supaero, MPS, and the University of Bristol. It is available at <http://doi.org/10.12686/a8>. V. Lekic and D. Kim acknowledge support from the Packard Foundation to V. Lekic. The authors would like to thank D. Mikesell and an anonymous referee for their careful reviews and numerous suggestions to improve the manuscript.

Acknowledgments

This study is InSight contribution number 164. The authors acknowledge both “Université Fédérale de Toulouse Midi Pyrénées” and the “Région Occitanie” for funding the PhD grant of Nicolas Compaire. The French authors acknowledge the French Space Agency CNES and ANR (ANR-14-CE36-0012-02 and ANR-19-CE31-0008-08) for funding the InSight Science analysis. We acknowledge NASA, CNES, their partner agencies and Institutions (UKSA, SSO, DLR, JPL, IPGP-CNRS, ETHZ, IC, MPS-MPG) and the flight operations team at JPL, SISMOG, MSDS, IRIS-DMC and PDS for providing SEED SEIS data.

References

Banerdt, W. B., Smrekar, S. E., Banfield, D., Giardini, D., Golombek, M., Johnson, C. L., et al. (2020). Initial results from the insight mission on Mars. *Nature Geoscience*, *13*(3), 183–189. <https://doi.org/10.1038/s41561-020-0544-y>

Bensen, G. D., Ritzwoller, M. H., Barmin, M. P., Levshin, A. L., Lin, F., Moschetti, M. P., et al. (2007). Processing seismic ambient noise data to obtain reliable broad-band surface wave dispersion measurements. *Geophysical Journal International*, *169*(3), 1239–1260. <https://doi.org/10.1111/j.1365-246X.2007.03374.x>

Campillo, M., & Paul, A. (2003). Long-range correlations in the diffuse seismic coda. *Science*, *299*(5606), 547–549. <https://doi.org/10.1126/science.1078551>

Casas, J. A., Badi, G. A., Franco, L., & Draganov, D. (2020). Seismic interferometry applied to regional and teleseismic events recorded at Planchón-Peteroa Volcanic Complex, Argentina-Chile. *Journal of Volcanology and Geothermal Research*, *393*, 106805. <https://doi.org/10.1016/j.jvolgeores.2020.106805>

Ceylan, S., Clinton, J. F., Giardini, D., Böse, M., Charalambous, C., van Driel, M., et al. (2021). Companion guide to the marsquake catalog from insight, Sols 0-478: Data content and non-seismic events. *Physics of the Earth and Planetary Interiors*, *310*, 106597. <https://doi.org/10.1016/j.pepi.2020.106597>

Claerbout, J. F. (1968). Synthesis of a layered medium from its acoustic transmission response. *Geophysics*, *33*(2), 264–269. <https://doi.org/10.1190/1.1439927>

Clarke, D., Zaccarelli, L., Shapiro, N. M., & Brenguier, F. (2011). Assessment of resolution and accuracy of the moving window cross spectral technique for monitoring crustal temporal variations using ambient seismic noise. *Geophysical Journal International*, *186*(2), 867–882. <https://doi.org/10.1111/j.1365-246X.2011.05074.x>

Clinton, J. F., Ceylan, S., van Driel, M., Giardini, D., Stähler, S. C., Böse, M., et al. (2021). The Marsquake catalogue from insight, Sols 0-478. *Physics of the Earth and Planetary Interiors*, *310*, 106595. <https://doi.org/10.1016/j.pepi.2020.106595>

Deng, S., & Levander, A. (2020). Autocorrelation reflectivity of mars. *Geophysical Research Letters*, *47*, e2020GL089630. <https://doi.org/10.1029/2020gl089630>

De Plaen, R. S. M., Lecocq, T., Caudron, C., Ferrazzini, V., & Francis, O. (2016). Single-station monitoring of volcanoes using seismic ambient noise. *Geophysical Research Letters*, *43*, 8511–8518. <https://doi.org/10.1002/2016GL070078>

Garcia, R. F., Kenda, B., Kawamura, T., Spiga, A., Murdoch, N., Lognonné, P. H., et al. (2020). Pressure effects on the Seis-InSight instrument, improvement of seismic records, and characterization of long period atmospheric waves from ground displacements. *Journal of Geophysical Research: Planets*, *125*, e2019JE006278. <https://doi.org/10.1029/2019je006278>

Garcia, R. F., Khan, A., Drilleau, M., Margerin, L., Kawamura, T., Sun, D., et al. (2019). Lunar seismology: An update on interior structure models. *Space Science Reviews*, *215*(8), 1–47. <https://doi.org/10.1007/s11214-019-0613-y>

Giardini, D., Lognonné, P., Banerdt, W. B., Pike, W. T., Christensen, U., Ceylan, S., et al. (2020). The seismicity of Mars. *Nature Geoscience*, *13*(3), 205–212. <https://doi.org/10.1038/s41561-020-0539-8>

Golombek, M., Williams, N., Warner, N. H., Parker, T., Williams, M. G., Daubar, I., et al. (2020). Location and setting of the mars InSight lander, instruments, and landing site. *Earth and Space Science*, *7*, e2020EA001248. <https://doi.org/10.1029/2020ea001248>

Gorbatov, A., Saygin, E., & Kennett, B. L. N. (2013). Crustal properties from seismic station autocorrelograms. *Geophysical Journal International*, *192*(2), 861–870. <https://doi.org/10.1093/gji/ggs064>

Hillers, G., & Campillo, M. (2016). Fault zone reverberations from cross-correlations of earthquake waveforms and seismic noise. *Geophysical Journal International*, *204*(3), 1503–1517. <https://doi.org/10.1093/gji/ggv515>

InSight Mars SEIS Data Service. (2019). *Seis raw data, insight mission*. IPGP, JPL, CNES, ETHZ, ICL, MPS, ISAE-Supaero, LPG, MFSC. https://doi.org/10.18715/SEIS.INSIGHT.XB_2016

InSight Marsquake Service. (2020). *Mars seismic catalogue, InSight mission; v3 2020-07-01 version 3.0 [data set]*. Bristol: ETHZ, IPGP, JPL, ICL, ISAE-Supaero, MPS, University. <https://doi.org/10.12686/a8>

Ito, Y., & Shiomi, K. (2012). Seismic scatterers within subducting slab revealed from ambient noise autocorrelation. *Geophysical Research Letters*, *39*, L19303. <https://doi.org/10.1029/2012GL053321>

Kennett, B. L. N., Saygin, E., & Salmon, M. (2015). Stacking autocorrelograms to map Moho depth with high spatial resolution in south-eastern Australia. *Geophysical Research Letters*, *42*, 7490–7497. <https://doi.org/10.1002/2015GL065345>

Larose, E., Campillo, M., Khan, A., & Nakamura, Y. (2005). Lunar subsurface investigated from correlation of seismic noise. *Geophysical Research Letters*, *32*. <https://doi.org/10.1029/2005GL023518>

Larose, E., Roux, P., & Campillo, M. (2007). Reconstruction of Rayleigh-Lamb dispersion spectrum based on noise obtained from an air-jet forcing. *Journal of the Acoustical Society of America*, *122*(6), 3437–3444. <https://doi.org/10.1121/1.2799913>

Lobkis, O. I., & Weaver, R. L. (2001). On the emergence of the Green’s function in the correlations of a diffuse field. *Journal of the Acoustical Society of America*, *110*(6), 3011–3017. <https://doi.org/10.1121/1.1417528>

Lognonné, P., Banerdt, W. B., Giardini, D., Pike, W. T., Christensen, U., Laudet, P., et al. (2019). SEIS: Insight’s seismic experiment for internal structure of Mars. *Space Science Reviews*, *215*(1), 170. <https://doi.org/10.1007/s11214-018-0574-6>

Lognonné, P., Banerdt, W. B., Pike, W. T., Giardini, D., Christensen, U., Garcia, R. F., et al. (2020). Constraints on the shallow elastic and anelastic structure of Mars from InSight seismic data. *Nature Geoscience*, *13*(3), 213–220. <https://doi.org/10.1038/s41561-020-0536-y>

Murdoch, N., Kenda, B., Kawamura, T., Spiga, A., Lognonné, P., Mimoun, D., & Banerdt, W. B. (2017). Estimations of the seismic pressure noise on Mars determined from large eddy simulations and demonstration of pressure decorrelation techniques for the Insight mission. *Space Science Reviews*, *211*(1–4), 457–483. <https://doi.org/10.1007/s11214-017-0343-y>

Murdoch, N., Mimoun, D., Garcia, R. F., Rapin, W., Kawamura, T., Lognonné, P., et al. (2017). Evaluating the wind-induced mechanical noise on the InSight seismometers. *Space Science Reviews*, *211*(1–4), 429–455. <https://doi.org/10.1007/s11214-016-0311-y>

Nakata, N., Gualtieri, L., & Fichtner, A. (2019). *Seismic ambient noise*. Cambridge University.

Nishitsuji, Y., Rowe, C. A., Wapenaar, K., & Draganov, D. (2016). Reflection709 imaging of the Moon’s interior using deep-moonquake seismic interferometry: 710 Deep-Moonquake seismic interferometry. *Journal of Geophysical Research: Planets*, *121*, 695–713. <https://doi.org/10.1002/2015JE004975>

Nunn, C., Garcia, R. F., Nakamura, Y., Marusiak, A. G., Kawamura, T., Sun, D., et al. (2020). Lunar seismology: A data and instrumentation review. *Space Science Reviews*, *216*(5), 1–39. <https://doi.org/10.1007/s11214-020-00709-3>

Oren, C., & Nowack, R. L. (2017). Seismic body-wave interferometry using noise autocorrelations for crustal structure. *Geophysical Journal International*, *208*(1), 321–332. <https://doi.org/10.1093/gji/ggw394>

Phạm, T.-S., & Tkalčić, H. (2017). On the feasibility and use of teleseismic P wave coda autocorrelation for mapping shallow seismic discontinuities. *Journal of Geophysical Research: Solid Earth*, *122*(5), 3776–3791. <https://doi.org/10.1002/2017JB013975>

- Romero, P., & Schimmel, M. (2018). Mapping the basement of the Ebro basin in Spain with seismic ambient noise autocorrelations. *Journal of Geophysical Research: Solid Earth*, *123*(6), 5052–5067. <https://doi.org/10.1029/2018JB015498>
- Ruigrok, E., Campman, X., Draganov, D., & Wapenaar, K. (2010). High-resolution lithospheric imaging with seismic interferometry. *Geophysical Journal International*, *183*(1), 339–357. <https://doi.org/10.1111/j.1365-246X.2010.04724.x>
- Saygin, E., Cummins, P. R., & Lumley, D. (2017). Retrieval of the P wave reflectivity response from autocorrelation of seismic noise: Jakarta basin, Indonesia. *Geophysical Research Letters*, *44*, 792–799. <https://doi.org/10.1002/2016GL071363>
- Scholz, J.-R., Widmer-Schmidrig, R., Davis, P., Lognonné, P., Pinot, B., Garcia, R. F., et al. (2020). Detection, analysis, and removal of glitches from InSight's seismic data from Mars. *Earth and Space Science*, *7*, e2020EA001317. <https://doi.org/10.1029/2020ea001317>
- Seatz, K. J., Lawrence, J. F., & Prieto, G. A. (2012). Improved ambient noise correlation functions using Welch's method. *Geophysical Journal International*, *188*(2), 513–523. <https://doi.org/10.1111/j.1365-246X.2011.05263.x>
- Suemoto, Y., Ikeda, T., & Tsuji, T. (2020). Temporal variation and frequency dependence of seismic ambient noise on Mars from polarization analysis. *Geophysical Research Letters*, *47*, e2020GL087123. <https://doi.org/10.1029/2020gl087123>
- Tibuleac, I. M., & von Seggern, D. (2012). Crust-mantle boundary reflectors in Nevada from ambient seismic noise autocorrelations. *Geophysical Journal International*, *189*(1), 493–500. <https://doi.org/10.1111/j.1365-246X.2011.05336.x>
- Wapenaar, K. (2003). Synthesis of an inhomogeneous medium from its acoustic transmission response. *Geophysics*, *68*(5), 1756–1759. <https://doi.org/10.1190/1.1620649>
- Weaver, R. L., & Lobkis, O. I. (2005). Fluctuations in diffuse field-field correlations and the emergence of the Green's function in open systems. *Journal of the Acoustical Society of America*, *117*(6), 3432–3439. <https://doi.org/10.1121/1.1898683>
- Welch, P. (1967). The use of fast Fourier transform for the estimation of power spectra: A method based on time averaging over short, modified periodograms. *IEEE Transactions on Audio and Electroacoustics*, *15*(2), 70–73. <https://doi.org/10.1109/tau.1967.1161901>
- Yaglom, A. M. (2004). *An introduction to the theory of stationary random functions*. Courier Corporation.