

Greenhouse Gas Balance of *Sphagnum* Farming on Highly Decomposed Peat at Former Peat Extraction Sites

Jan Oestmann,^{1*} Bärbel Tiemeyer,¹ Dominik Düvel,¹ Amanda Grobe,² and Ullrich Dettmann^{1,3}

¹Thünen Institute of Climate-Smart Agriculture, Bundesallee 65, 38116 Braunschweig, Germany; ²Institute of Environmental Planning, Leibniz University Hannover, Herrenhäuser Str. 2, 30419 Hannover, Germany; ³Institute of Soil Science, Leibniz University Hannover, Herrenhäuser Str. 2, 30419 Hannover, Germany

ABSTRACT

For two years, we quantified the exchange of carbon dioxide (CO₂), methane (CH₄) and nitrous oxide (N₂O) at two different large-scale *Sphagnum* farming sites. At both, peat extraction left a shallow layer of highly decomposed peat and low hydraulic conductivities. One site was characterized by preceding multi-annual inundation and irrigated by ditches, while the other one was inoculated directly after peat extraction and irrigated by ditches and drip irrigation. Further, GHG emissions from an irrigation polder and the effect of harvesting *Sphagnum* donor material at a near-natural reference site were determined. GHG mitigation potentials lag behind the results of less decomposed sites, although our results were also affected by the extraordinary hot and dry summer 2018. CO₂ exchanges ranged between -0.6 and 2.2 t CO₂-C ha⁻¹

y⁻¹ and were mainly influenced by low water table depths. CH₄ emissions were low with the exception of plots with higher *Eriophorum* covers, while fluctuating water tables and poorly developing plant covers led to considerable N₂O emissions at the ditch irrigation site. The removal of the upper vegetation at the near-natural site resulted in increased CH₄ emissions and, on average, lowered CO₂ emissions. Overall, best plant growth and lowest GHG emissions were measured at the previously inundated site. At the other site, drip irrigation provided more favourable conditions than ditch irrigation. The size of the area needed for water management (ditches, polders) strongly affected the areal GHG balances. We conclude that *Sphagnum* farming on highly decomposed peat is possible but requires elaborate water management.

Received 16 July 2020; accepted 16 May 2021;
published online 21 July 2021

Supplementary Information: The online version contains supplementary material available at <https://doi.org/10.1007/s10021-021-00659-z>.

Author Contributions BT, JO and UD designed the study; JO, DD and AG performed the research; UD, BT, DD and JO wrote code; all authors contributed to data analysis; JO wrote the first draft, and all authors contributed to the final manuscript.

*Corresponding author; e-mail: jan_oestmann@yahoo.de

HIGHLIGHTS

- *Sphagnum* farming is possible on highly decomposed peat.
- GHG exchange was mainly affected by water table depth and vegetation development.
- CH₄ and N₂O may influence GHG balances of inadequately managed sites.

INTRODUCTION

Drained and intensively used peatlands emit large amounts of greenhouse gases (GHG) into the atmosphere (Waddington and Price 2000; Tiemeyer and others 2020). Re-wetting these areas as soon as possible is the most effective measure to mitigate climate warming in the long term (Günther and others 2020; Wilson and others 2016b). However, raising water table depths (WTD) hinders conventional land use. Ecological and economic goals could be combined by implementing the concept of paludiculture, that is, the production of biomass under wet and peat preserving conditions using suitable wetland crops (Wichtmann and others 2016). Under nutrient-poor and acidic conditions, that is, on bog peat, the cultivation of peat mosses (*Sphagnum* farming) is the most promising land-use option (Gaudig and others 2018). Harvested moss fragments can be spread in degraded peatlands in order to accelerate vegetation restoration (Quinty and Rochefort 2003) or *Sphagnum* fibres can be used as a sustainable resource in horticultural substrates (Emmel 2008), substituting fossil weakly decomposed ('white') peat and this way relieving the pressure of ongoing peat extraction on pristine peatlands.

Besides providing habitat for endangered flora (Gaudig and Krebs 2016) and fauna (Muster and others 2015; Zoch and Reich 2020), re-wetting, for example, for *Sphagnum* farming has major impact on the GHG exchange of the cultivation sites. If water tables can be kept close to ground surface, carbon dioxide (CO₂) emissions can be reduced, stopped or even reversed (Wilson and others 2016a). Previous studies in northwest Germany hint towards a rapid recovery of *Sphagnum* farming sites as sinks of atmospheric carbon (Beyer and Höper 2015; Günther and others 2017). On the other hand, quasi-natural hydrological conditions favour the production of methane (CH₄). On average, CH₄ emissions of classically re-wetted sites are comparable to those of natural sites (Wilson and others 2016a). CH₄ emissions from *Sphagnum* cultivation sites have so far been found to be very low (Beyer and Höper 2015; Günther and others 2017) due to the strictly controlled water tables and the low abundance of aerenchymous species. Drained peatlands can release relevant amounts of nitrous oxide (N₂O) (Regina and others 1996; Tiemeyer and others 2020), whereas the N₂O emissions of *Sphagnum* farming field sites are close to zero (Beyer and Höper 2015; Günther and others 2017).

In this study, the cultivation sites were established following the moss layer transfer technique (Quinty and Rochefort 2003). Data on the effect of harvesting donor material are scarce, but need to be considered when assessing the GHG balance of *Sphagnum* cultivation. It is suggested that harvested sites recover quickly (Silvan and others 2017; Krebs and others 2018; Guene-Nanchen and others 2019) and might return to their pre-disturbance carbon balance naturally within a few years (Murray and others 2017), but further research is of special importance in areas such as Germany where near-natural sites are extremely rare.

Peat mosses possess no roots and rely on precipitation and capillary water supply. As moisture controls *Sphagnum* photosynthesis and productivity (McNeil and Waddington 2003), the adjustment of a high and stable water table is the key factor of a successful cultivation of peat mosses (Pouliot and others 2015). Previous *Sphagnum* farming trials have been relatively small in scale (0.10 to 1.1 ha, Brown and others 2017; Beyer and Höper 2015; Günther and others 2017), where WTDs are relatively easy to control. Thus, there is still a gap in knowledge on which irrigation technique is most suitable in large-scale peat moss cultivation regarding optimum growth of mosses and maximum GHG mitigation. The most common techniques are subsurface irrigation (Brown and others 2017, Gaudig and others 2017) and irrigation ditches (Beyer and Höper 2015; Brown and others 2017; Günther and others 2017), while drip irrigation has not yet been tested.

In contrast to previous studies, this study is the first to explore the feasibility and the GHG exchange of large-scale *Sphagnum* farming on shallow, highly decomposed peat remaining after industrial peat extraction. The high degree of decomposition of the peat imposes new challenges to large-scale *Sphagnum* farming as the concomitant low porosity and hydraulic conductivity (Liu and Lennartz 2019) cause strong fluctuations of WTDs and poor water supply from ditches. This raises the question whether highly decomposed peat can support *Sphagnum* farming.

A further challenge is the irrigation water: surface and groundwater might be unsuitable due to high nutrient, electric conductivity (EC) and pH levels, while rainwater storage requires space. 'Classical' bog re-wetting after peat extraction is frequently done by creating water-filled polders separated by dams, which are to undergo succession towards peatland vegetation (Blankenburg 2004). Such polders could also be used to store and deliver water to *Sphagnum* cultivation sites, but

need to be included into an areal GHG balance of a *Sphagnum* cultivation system. Such data are important as high emissions have been reported for inundated fens (Franz and others 2016; Hahn and others 2015).

Vascular plants emerge even in strongly controlled *Sphagnum* farming systems. They could, on the one hand, compete with *Sphagnum* for resources and are unwanted in the produced substrate. On the other hand, vascular ‘shelter’ plants have been shown to be beneficial for *Sphagnum* development by creating microhabitats with higher soil moisture and protection from excess solar radiation and wind (McNeil and Waddington 2003; McCarter and Price 2015). Further, species composition will influence the GHG exchange, for example, by increasing CH₄ emissions via aerenchymous tissues (Gray and others 2013).

Consequently, the objective of this study is to determine areal GHG balances of large-scale *Sphagnum* farming on a highly decomposed peat soil including emissions from the irrigation system, dams (using literature data) and projected harvest in comparison with a near-natural bog. Special emphasis is put on the influence of different irrigation techniques (ditch irrigation, drip irrigation and a combination of ditch irrigation and preceding multi-annual inundation) and on the effect of harvesting *Sphagnum* donor material at the near-natural site.

MATERIALS AND METHODS

Study Sites and Implementation of the *Sphagnum* Cultivation Areas

We measured GHGs at two *Sphagnum* cultivation areas (‘Provinzialmoor’, 52°40′ N, 07°06′ E and ‘Drenth’, 52°41′ N, 07°05′ E) and a near-natural peat bog (‘Meerkolk’, 52°38′ N, 07°08′ E) from March 2017 to March 2019 (Fig. 1). All sites are situated approximately 20 km northwest of Lingen, Lower Saxony, Germany. The climate is oceanic with an average annual precipitation of 791 mm and an average annual temperature of 9.8 °C (1971–2000, Lingen, German Weather Service).

Meerkolk, a last remainder of a once vast peatland complex, is a former bog pool characterized by partially floating peat moss and cotton grass mats with a peat thickness of about 350 cm. The upper 53 cm are weakly decomposed, and the lower part is highly decomposed with a high water content (Table 1). The site can be classified as an Ombric Fibric Histosol (IUSS Working Group WRB 2015). The dominating plant species are *Sphagnum papil-*

losum, *Sphagnum pulchrum*, *Sphagnum cuspidatum*, *Rhynchospora alba*, *Molinia caerulea*, *Vaccinium oxycoccus*, *Erica tetralix*, *Drosera rotundifolia* and *Eriophorum angustifolium*. Close to the measurement plots, the upper 5 cm of *Sphagnum* vegetation was harvested and used for the inoculation of parts of Provinzialmoor (P-MIX). As the area is—as nearly all potential donor sites in Germany—strictly protected, mosses were selectively manually harvested. Meerkolk is hereafter referred to as near-natural reference site. GHGs were measured at a control site (M-NAT) and at a harvest site where the upper 5 cm of vegetation were removed in April 2017 (M-HAR).

Both Provinzialmoor and Drenth are former sites of industrial peat extraction with remaining peat thicknesses of about 90 cm and 45 cm, respectively. Both sites are Ombric Hemic Histosols. The lower part of the profile is moderately decomposed fen peat overlying a relictic gley and the upper part moderately to highly decomposed bog peat. The major difference between the two areas is that Provinzialmoor has been re-wetted in 2008 after the termination of peat extraction as a system of large (~ 1.6 to 4.2 ha) shallow polders, while Drenth is a narrow strip of seven polders installed in 2015 directly after terminating peat extraction without any previous re-wetting. Thus, Drenth is not surrounded by water bodies and re-wetted peatlands but by ongoing peat extraction. The inoculation of *Sphagnum* mosses was performed following the moss layer transfer technique (Quinty and Rochefort 2003). In brief, small fragments of peat mosses were spread evenly and covered with straw mulch (details in Graf and others 2017) and developed into new moss plants. Along with the *Sphagnum* mosses, vascular plants were also transferred. In order to prevent negative feedback of dominant vascular plants on peat moss development and substrate quality, the cultivation sites were mowed 1–2 times a year.

In Drenth, water is pumped from two ponds, which were additionally replenished with deeper ground water in dry periods. Excess irrigation water is channelled back to the ponds. The sites were inoculated with *Sphagnum papillosum* in October 2015. Due to the poor growth of mosses, parts were re-inoculated with *Sphagnum palustre* in April 2017. GHGs were measured at two of these polders (0.4 ha each): one irrigated by ditches (D-DITCH) and the other one by drip irrigation (D-DRIP). Drip irrigation was installed in April 2017 and the site was irrigated via subsurface drain pipes until then.

In Provinzialmoor, one of the polders (2.3 ha) was prepared for *Sphagnum* cultivation in 2015 by

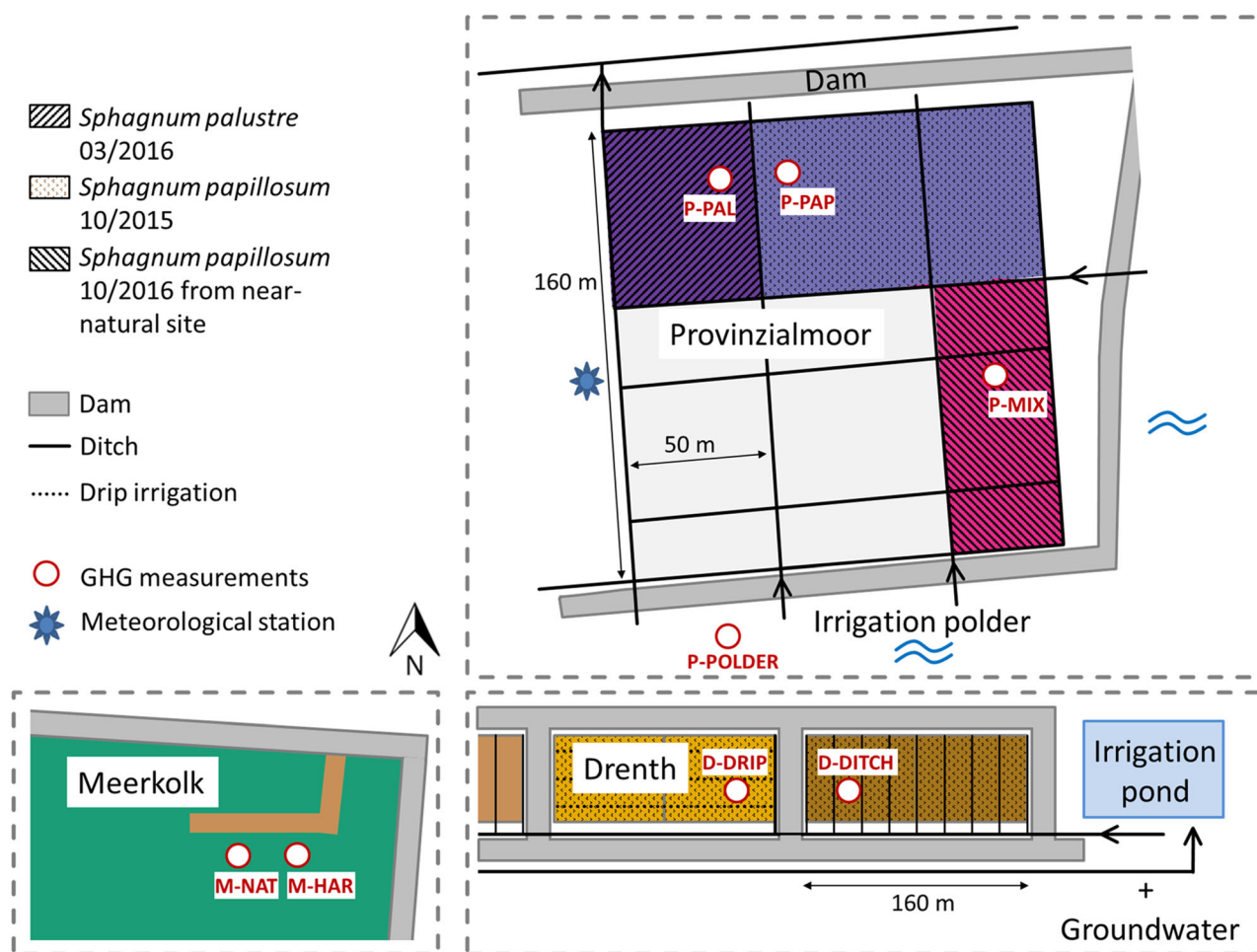


Figure 1. Scheme (not true-to-scale) of study sites (near-natural area Meerkolk and two cultivation areas Provinczialmoor and Drenth) after Graf and others (2020, modified). The background colours of the respective sites are maintained in all figures.

lowering the water table to the peat surface and profiling the ground. Different parts were inoculated with different peat moss species, that is, with *Sphagnum papillosum* in October 2015 (P-PAP), with *Sphagnum palustre* in March 2016 (P-PAL) and with a mix of *Sphagnum* hummock species from Meerkolk in October 2016 (P-MIX), although *Sphagnum papillosum* was the dominant species (Fig. 1). Water is supplied by the surrounding polders and is distributed via shallow ditches. To avoid inundation, surplus water is discharged to a drainage ditch. Unfortunately, drainage pipes (30 m drain spacing) have been discovered and destroyed only after termination of measurements. GHGs were also measured at the southern irrigation polder (P-POLDER) which was subjected to seasonal fluctuations of the water table (– 0.21 to 0.56 m). The measurement plots are located approximately 6 m away from the shore, with a sparse cover of submerged peat moss (*Sphagnum cuspidatum*).

Environmental Parameters

Hydrological and Meteorological Characteristics

A meteorological station in Provinczialmoor (Fig. 1) measured soil temperature (2 cm), air temperature and relative humidity (2 m), wind speed, photosynthetic active radiation and global radiation. All hydro-meteorological data were recorded in 30-min intervals. Each GHG measurements site consisted of three replicate plots, and at all plots, soil temperatures (2 cm) were measured from June 2017 onwards. At the meteorological station, 15% of the temperature and 2% of radiation data were missing and filled with data of the German Weather Service (station Lingen, 20 km away). In Meerkolk (M-NAT), 14% of soil temperature values were missing and replaced by meteorological station data. In Drenth (D-DRIP) and Provinczialmoor (P-MIX), it was 29% and 23%, respectively.

Table 1. Soil Properties of Sites

Area	Sites	Peat depth (cm)	Horizon depth (cm)	Von Post (-)	Peat type	SOC (%)	N _t (%)	CN-ratio (-)	pH	BD (g cm ⁻³)	ε (cm ³ cm ⁻³)	Field capacity (cm ³ cm ⁻³)	K _s (m d ⁻¹)	
Meerkolk	M-NAT, M-HAR	350	0-18	H1	<i>Sphagnum</i> peat	45.9	0.72	64.1	3.3	n.d.	n.d.	n.d.	n.d.	
			18-30	H2	<i>Sphagnum</i> peat	52.9	1.10	48.0	4.1	n.d.	n.d.	n.d.	n.d.	
		30-53	H3	<i>Sphagnum</i> peat	50.7	1.54	32.8	n.d.	n.d.	n.d.	n.d.	n.d.	n.d.	
		53-65	H6	<i>Sphagnum</i> peat	53.3	1.35	39.4	3.2	n.d.	n.d.	n.d.	n.d.	n.d.	
		43	0-15 15-27	H8 H5	<i>Sphagnum</i> peat <i>Eriophorum-Sphagnum</i> peat	51.4 53.8	1.20 1.15	42.6 46.7	3.3 3.4	0.19 ± 0.01 0.17 ± 0.01	0.85 ± 0.01 0.88 ± 0.02	0.44 ± 0.06 0.48 ± 0.02	0.18 ± 0.21 0.18 ± 0.21	
Drenth	D-DRIP	40	27-43 0-16 16-30	H7 H8 H7	Sedge-wood peat <i>Sphagnum</i> peat <i>Sphagnum</i> peat with <i>Eriophorum</i>	59.9 50.2 54.6	1.68 1.19 1.13	35.7 42.1 48.2	3.0 3.4 2.9	0.11 ± 0.00 0.21 ± 0.01 0.18 ± 0.01	0.91 ± 0.03 0.88 ± 0.02 0.93 ± 0.04	0.51 ± 0.07 0.55 ± 0.08 0.56 ± 0.03	n.d.	
			30-40	H5	Sedge-wood peat	57.8	1.52	38.1	3.3	0.13 ± 0.00	0.95 ± 0.01	0.65 ± 0.04		
	Provinzialmoor	P-MIX	80	0-25 25-65	H5 H6	<i>Sphagnum</i> peat <i>Eriophorum-Sphagnum</i> peat	52.0 56.4	1.09 0.86	47.7 65.5	3.5 3.0	0.16 ± 0.01 0.10 ± 0.01	0.96 ± 0.01 0.94 ± 0.03	0.59 ± 0.01 0.67 ± 0.03	0.05 ± 0.05
				65-80	H8	Sedge peat with <i>Eriophorum</i>	56.6	1.77	31.9	3.0	0.15 ± 0.01	0.95 ± 0.02	0.71 ± 0.03	
Provinzialmoor	P-PAP, P-PAL	95	0-33	H5	<i>Sphagnum</i> peat	51.9	0.98	52.8	3.1	0.12 ± 0.00	0.94 ± 0.03	0.51 ± 0.01	0.09 ± 0.15	
			33-80	H7	<i>Sphagnum-Eriophorum</i> peat	56.2	0.82	68.2	3.1	0.10 ± 0.00	0.97 ± 0.01	0.67 ± 0.05		
		80-95	H8	Sedge-wood peat	58.2	1.50	38.8	3.4	0.13 ± 0.01	0.96 ± 0.01	0.72 ± 0.07			

M-NAT Meerkolk reference site, M-HAR, Meerkolk harvested site, D-DITCH, Drenth ditch irrigation, D-DRIP, Drenth drip irrigation, P-MIX, Provinzialmoor *Sphagnum* plants from Meerkolk, P-PAP, Provinzialmoor *Sphagnum papillosum*, P-PAL, Provinzialmoor *Sphagnum palustre*, SOC, soil organic carbon, N_t, total Nitrogen, BD bulk density, ε porosity, K_s saturated hydraulic conductivity measured with bail tests at water table depths of 0.05 to 0.30 m (Grobe and others 2021), n.d. = not determined, BD, ε, field capacity and K_s are given as mean ± standard deviation of repeated measurements.

At sites M-NAT, D-DRIP and P-MIX, near-surface soil moistures were recorded using GS3 capacitance sensors (Decagon Devices Inc., Pullman, WA, USA). Volumetric water contents θ ($\text{cm}^3 \text{cm}^{-3}$) were calculated from dielectric permittivities using the standard calibration of the device for potting and peat soils. To exclude the impact of freezing on the dielectric permittivity, values at soil temperature below 2 °C were discarded. Measurements of θ were transformed to water-filled pore space (WFPS) by dividing θ with the maximum θ of the time series. Additionally, relative humidity was measured near the soil surface (IST AG, Ebnat-Kappel, Switzerland).

Monitoring wells (slotted PVC tubes) were installed in the peat at all plots. To avoid measurements of deeper groundwater, they were installed in the peat layer only and thus fell periodically dry. Water table depth (WTD) was measured using Mini-Divers in combination with Baro-Divers for atmospheric pressure correction (Eijkelkamp, Giesbeek, the Netherlands). In the following, WTD below ground is noted with a negative sign and vice versa.

Soil Properties

At all study sites, soil profiles were dug. If sites were very close to each other, a profile was shared to minimize disturbance of the area (Table 1). From each horizon, samples for the determination of physical (six steel rings with a volume of 244.29 cm^3 each) and chemical properties (grab samples) were taken. The degree of humification was determined according to von Post, and carbon (C) and nitrogen (N) contents were measured using an elemental analyser (LECO Corporation, St. Joseph, Michigan, USA).

Bulk density (BD) and porosity (ϵ) were determined as part of evaporation experiments with standard mass calculations based on the sample weight at the beginning and end of the experiment. Field capacity (θ at pF 1.8– θ at pF 4.2; pressure heads h (cm) are expressed as $\text{pF} = \log_{10}(h)$) was determined with soil hydraulic properties using the bimodal hydraulic function of van Genuchten (1980) (Durner 1994) derived by evaporation experiments using the ‘inverse method’ described in Dettmann and others (2019).

Water Quality

Biweekly, soil water samples were taken at each site and from the irrigation pond in Drenth and polders in Provinzialmoor. EC and pH values were measured in situ (WTW, Weilheim, Germany).

Samples were filtered to 0.45 μm (PES, Merck Millipore, Tullagreen, Ireland), and concentrations of nitrate (NO_3^-), ammonium (NH_4^+), phosphate (PO_4^{3-}), sulphate (SO_4^{2-}) and calcium (Ca^{2+}) were determined by ion chromatography (850 Professional Ion Chromatograph, Metrohm, Filderstadt, Germany). Concentrations of dissolved organic carbon (DOC) were calculated as the difference between total carbon and total inorganic carbon (DimaTOC 2000, Dimatec, Essen, Germany).

Vegetation Characteristics

Every spring and autumn, vegetation cover (mosses and vascular plants) and species composition were classified according to the Londo scale (Londo 1976) at each measurement plot. In addition, heights of *Sphagnum* lawns were recorded. The harvested biomass at the donor site (M-HAR) and the mowed vascular plants at the cultivation sites were dried to determine biomass. Subsequently, C and N contents were determined by elemental analysis (LECO Corporation, St. Joseph, Michigan, USA).

Determination of Greenhouse Gas Balances

GHGs were measured using manual static chambers (Livingston and Hutchinson 1995) at 8 sites (Fig. 1, Table 1). A ‘site’ represents a management/vegetation type in one of the three study areas ‘Meerkolk’, ‘Provinzialmoor’ and ‘Drenth’ and consists of three ‘plots’ as measurement replicates. GHG measurements were taken for two years. The period from 16 March 2017 to 15 March 2018 will hereafter be referred to as 2017 and the period from 16 March 2018 to 15 March 2019 as 2018. We follow the atmospheric sign convention and emissions of GHG are specified as positive values.

All plots were accessible by boardwalks in order to minimize soil disturbances. During measurements, chambers were placed on permanently installed PVC frames and were fixed gas-tightly via a rubber seal and clamps. Fans mixed the air inside the chambers in order to avoid concentration differences. An opening in the chamber wall, which was closed with a rubber plug after placement, prohibited possible pressure differences during the placement of the chambers. Additionally, a vent tube prevented differences in pressure between inside and surrounding air. When necessary, transparent chambers were cooled with icepacks. At the irrigation polder (P-POLDER), buoyant frames with a water-filled u-shape were deployed. The frames were able to follow the WTD of the

polder and held in position by thin steel poles. Before measurements, they were fixed to the poles.

Carbon Dioxide

Measurement and Flux Calculation

Fluxes of CO₂ were measured monthly in diurnal campaigns using transparent and opaque chambers (78 × 78 × 50 cm, transparent polycarbonate and PVC) to determine the net ecosystem exchange (NEE) and ecosystem respiration (R_{eco}), respectively.

Campaigns started with one set of R_{eco} measurements before sunrise, followed by one set of NEE measurements at sunrise and then continued in alternation until the maximum light intensity was reached at noon and the maximum soil temperature was reached in the afternoon. If possible, measurements were taken on sunny days to cover the whole range of environmental parameters. A minimum of four transparent and four opaque fluxes was measured per plot and campaign day. The CO₂ concentration of the chamber air was measured with an infrared gas analyser (LI-820, LICOR, Lincoln, Nebraska, USA) during chamber closure times of 120 (NEE) and 180 (R_{eco}) seconds. Additionally, air temperature and humidity (Rotronic GmbH, Ettlingen, Germany) were recorded and the CO₂ concentrations were corrected for water vapour concentrations (Webb and others 1980).

Fluxes were calculated using the linear regression of a moving window with the highest coefficient of determination (R^2). The length of the moving window was adjusted according to the solar declination between 40 s at the longest day and 50 s at the shortest day. This was necessary as chamber air temperatures rapidly increased during summer and low fluxes required longer moving windows during winter. Fluxes with $R^2 < 0.75$ were excluded from further calculations unless the increase or decrease of the CO₂ concentration was smaller than 3% of the mean concentration. If the change of photosynthetic active radiation (PAR) exceeded a threshold of 10% of the initial value and/or the change of air temperature inside the chamber was higher than 1.5 °C, no flux was calculated.

Calculation of Annual Balances

To account for the seasonal development in vegetation response to environmental conditions, we used a campaign-based approach for annual bal-

ances (for example, Leiber-Sauheitl and others 2014).

First, response functions relating R_{eco} to soil temperature were parameterized for each campaign day using the temperature dependent Arrhenius-type model of Lloyd and Taylor (1994):

$$R_{\text{eco}}(T) = R_{\text{ref}} \times \exp \left[E_0 \times \left(\frac{1}{T_{\text{ref}} - T_0} - \frac{1}{T - T_0} \right) \right] \quad (1)$$

where T is the measured soil temperature, T_{ref} the reference temperature of 283.15 K and T_0 the temperature constant for the start of biological processes (227.13 K) and R_{ref} (respiration at the reference temperature (mg CO₂-C m⁻² h⁻¹)) and E_0 (an activation-like parameter (K)) are the estimated parameters. If the difference between minimum and maximum temperatures was smaller than 1.5 °C during the campaign day, the median of all R_{eco} fluxes was used as R_{ref} in Eq. 1.

Secondly, using these parameters and half-hourly data of soil temperature, annual time series of R_{eco} were interpolated for each site (Leiber-Sauheitl and others 2014). For every time point, R_{eco} was calculated as the distance weighted mean of the two values derived by using the parameters of the previous and subsequent campaign.

Thirdly, gross primary production (GPP) was calculated as the difference between measured NEE and the nearest modelled R_{eco} flux. For each campaign, the rectangular hyperbolic light response equation based on the Michaelis–Menten (Johnson and Goody 2011) kinetics was parameterized (Falge and others 2001):

$$\text{GPP}(\text{PAR}) = \frac{\text{GPP2000} \times \alpha \times \text{PAR}}{\text{GPP2000} + \alpha \times \text{PAR} - \frac{\text{GPP2000}}{2000 \mu\text{mol m}^{-2} \text{s}^{-1}} \times \text{PAR}} \quad (2)$$

where PAR is the photon flux density of the photosynthetic active radiation (μmol m⁻² s⁻¹) and GPP2000 (the rate of carbon fixation at a PAR value of 2000 (mg CO₂-C m⁻² h⁻¹)) and α (the light use efficiency (mg CO₂-C m⁻² h⁻¹/μmol m⁻² s⁻¹), that is, the initial slope of the fitted curve) are the estimated parameters. The PAR data of the measurement campaigns were corrected by a factor of 0.95 as the transparent chambers slightly reduce light transmission (PS-Plastic, Eching, Germany). If GPP parameters could not be fitted, the respective campaign was combined with the nearest campaign which best resembled the campaign's environmental conditions, that is, ranges of PAR and GPP. This was especially the case at the polder site (P-POLDER), where fluxes were low and variable and

all campaigns were pooled. Annual time series of GPP were interpolated in analogy to R_{eco} using the campaign parameters and half-hourly PAR data. The effect of cutting vegetation on the GPP interpolation of the near-natural donor site (M-HAR) was accounted for by setting the GPP parameters to zero at this day. NEE values were obtained by summing up GPP and R_{eco} .

Finally, annual balances and uncertainties of NEE were estimated by bootstrapping. The response functions for R_{eco} and GPP were fitted again using random resamples of the campaign fluxes with replacement (number of bootstraps = 1000). From the bootstrapped fits, standard errors were calculated.

Methane and Nitrous Oxide

Measurement and Flux Calculation

Fluxes of CH_4 and N_2O were determined fortnightly using opaque chambers. Over a total closure time of 80 min, five consecutive chamber air gas samples were collected using semi-automatic sampling devices directly after placing the chamber and every 20 min from then on. Concentrations of CO_2 , CH_4 and N_2O were measured in the laboratory using a gas chromatograph (Shimadzu, Kyoto, Japan) equipped with an electron capture detector (ECD) for analysing CO_2 and N_2O and a flame ionization detector (FID) for analysing CH_4 .

Fluxes were determined using robust linear or nonlinear Hutchinson–Mosier (HMR, Pedersen and others 2010) regressions (R Core Team 2019; Fuß and others 2020). Linear or nonlinear fits were selected according to the kappa.max criterion introduced by Hüppi and others (2018). In brief, the robust linear regression was set as a default. HMR was selected, if the kappa value, that is, the nonlinear shape parameter, did not exceed kappa.max (h^{-1}), that is, the quotient of the linear flux estimate and the minimal detectable flux multiplied by the closure time. This was the case for 28% of CH_4 fluxes and 2% of N_2O fluxes.

Decreases in CO_2 concentration of more than 10 ppm compared to the previous measurement were interpreted as a hint towards a leak of the system or other shortcomings, and the respective data points were discarded. If there were less than four data points per measurement, no flux was calculated. Fluxes indicating an uptake of CH_4 higher than $0.5 \text{ mg m}^{-2} \text{ h}^{-1}$ ($n = 6$) were regarded as implausible and discarded (Günther and others 2015; Hütsch 2001). Finally, fluxes of both CH_4 and N_2O were excluded ($n = 54$), if the respective CO_2

flux was smaller than 30% of the maximum CO_2 flux of the other two replicates.

Calculation of Annual Balances

Annual balances of CH_4 and N_2O and uncertainties were estimated using a combination of bootstrap and jackknife procedures (Günther and others 2015). In brief, one of the three replicate flux estimates was randomly selected for each campaign day. This way, 2000 random time series were generated. Out of these data, balances were calculated via linear interpolation, each time omitting one campaign day. The reported annual estimates and uncertainties represent the means of all jackknife balances and standard errors.

Site-specific and Areal Greenhouse Gas Balances

Methane and N_2O entered the greenhouse gas balance of sites given their global warming potentials of 28 and 265 $\text{t CO}_2\text{-eq. ha}^{-1} \text{ y}^{-1}$ over a timeframe of 100 years (Myhre and others 2013).

$$\begin{aligned} \text{GHG-balance} (\text{t CO}_2\text{-eq. ha}^{-1}\text{y}^{-1}) \\ = \text{NEE} + C_{\text{Export}} + 28 \text{CH}_4 + 265 \text{N}_2\text{O} \quad (3) \end{aligned}$$

Sphagnum donor material was harvested at M-HAR, and the cultivation sites were mowed. The respective C exports ($\text{t CO}_2 \text{ ha}^{-1} \text{ y}^{-1}$) are part of the GHG balance. The C import by *Sphagnum* fragments and straw was not accounted for as the inoculation took place before starting the measurements, and no straw was present during the measurement period anymore.

In order to derive total areal balances of the three *Sphagnum* farming sites differing in their irrigation system, emissions of the irrigation system, of dams and of projected biomass harvest have to be included. To do so, we used the following assumptions:

Size of the irrigation polders: The contribution of GHG emitted from the irrigation systems (polders and ditches) was determined by sizing the respective areas using scans of an aerial drone and assuming that the emission of irrigation ditches equals the measured emission of the P-POLDER site. The exact amount of irrigation water could not be determined in Provinzialmoor. Therefore, a theoretical size of 3.8 ha of an irrigation polder needed to balance water deficits of the cultivation area was estimated based on the maximum irrigation amount determined in Drenth (500 mm in 2018, Köbbing, personal communication) and a theoretical extractable water column of 0.30 m.

Peat dams: Peat dams surrounding the cultivation sites were constructed out of the upper layer of onsite peat and will largely decompose to CO₂. For D-DITCH, D-DRIP and Provinzialmoor, areas of the surrounding peat dams of 0.17 ha, 0.17 ha and 0.31 ha were determined using scans of an aerial drone. We assumed that emissions from peat dams correspond to peat extraction sites in North-Western Germany (5.2 t CO₂ ha⁻¹ y⁻¹, Tiemeyer and others 2020).

Re-distribution of Sphagnum fragments: We assumed that all materials harvested at the donor site were spread on the cultivation sites. Therefore, the harvested biomass enters the site-specific GHG balance of M-HAR, but not the areal GHG balances.

Biomass harvest: Over the course of this study, no harvest of *Sphagnum* biomass was conducted. However, we determined biomass and height of mosses at the cultivation sites (Grobe and others 2021). The linear regression ($R^2 = 0.43$) between biomass and height of these data was used to derive biomasses for each measurement site from the height of mosses in our plots. It was further assumed that 70% of this biomass could be harvested and this estimated extractable biomass was divided by the number of years since the establishment of respective sites and included in the areal GHG balances (t CO₂-eq. ha⁻¹ y⁻¹, Table 4). Areal GHG balances of the different irrigation systems were finally standardized per unit of estimated extractable *Sphagnum* biomass (t DM ha⁻¹ y⁻¹, Table 4).

RESULTS

Hydro-meteorological Conditions

The early summer of 2017 was unusually dry but extensive rainfalls in the second half of the year resulted in an annual precipitation of 50 mm above the long-term average value of 791 mm in Lingen (German Weather Service). However, in 2018, only 561 mm was measured, which was the lowest value since 1960. With 10.9 °C and 11.7 °C, both years were warmer than the long-term average of 9.8 °C. 2018 was the second warmest year since recording began in 1951.

WTD at the near-natural reference site (M-NAT) was close to the peat surface throughout both measurement years, with annual means of -0.05 ± 0.03 m (mean of daily averages \pm standard deviation) in 2017 and -0.07 ± 0.06 m in 2018 (Fig. 2A). Even in summer 2018, WTD did not fall below -0.16 m. At the ditch irrigation site (D-DITCH), -0.12 ± 0.13 m and -0.14 ± 0.13 m

were measured in 2017 and 2018. As this monitoring well temporarily fell dry in June and July 2018, the true mean of site D-DITCH might be slightly lower. At the drip irrigation site (D-DRIP), annual mean WTDs were -0.09 ± 0.12 m and -0.12 ± 0.12 m, in Provinzialmoor (mean of sites P-PAL, P-PAP and P-MIX), -0.11 ± 0.11 m and -0.25 ± 0.22 m. WTDs at all cultivation sites fluctuated strongly and fell below -0.30 m for 51 and 81 days in 2017 and 2018 at D-DITCH, for 39 and 42 days at D-DRIP and for 31 and 135 days in Provinzialmoor. During summer 2018, WTDs in Provinzialmoor even fell below -0.60 m, while water management in Drenth could be largely maintained.

While the incomplete data of 2017 already suggested a lower WFPS in Provinzialmoor, WFPS was considerably higher in D-DRIP ($83 \pm 12\%$) than in P-MIX ($66 \pm 19\%$), but still lower than in M-NAT ($93 \pm 4\%$) in 2018 (Fig. 2B). In 2018, WFPS tended to be higher at same WTDs in D-DRIP compared to P-MIX. Humidity near the soil surface was measured in 2018 only and was $79 \pm 23\%$ at M-NAT (mean \pm standard deviation), $80 \pm 21\%$ at D-DRIP and $78 \pm 22\%$ at P-MIX.

Water Quality

Values of pH and EC as well as solute concentrations were low at the near-natural and at the cultivation sites (Table 2). The irrigation water in Drenth showed high pH values and concentrations of Ca²⁺, especially when ground water was added in dry summer months. However, concentrations of soil pore water at the plots were hardly affected. Maximum pH was 8.7 in the pond water and 5.7 at the measurement plots, and the maximum concentrations of Ca²⁺ were 33.9 mg l⁻¹ and 15.9 mg l⁻¹, respectively. At D-DITCH, a peak of NO₃⁻ concentrations (up to 42.6 mg l⁻¹ in comparison with the overall mean of 4.1 mg l⁻¹) was measured in the first summer.

Vegetation Development

The harvested plots in the near-natural area recovered quickly (Fig. 3). In two of the replicate plots, plant cover and species composition resembled the reference plots already one year after harvesting. However, at one replicate plot (M-HAR.2), remaining mosses were drowned and died off in the subsequent winter. At the cultivation sites, the *Sphagnum* cover increased during the course of this study and spots of bare peat largely closed. However, vegetation developed unequally at the different irrigation treatments (Fig. 3). The mean *Sphagnum* cover at the cultivation sites de-

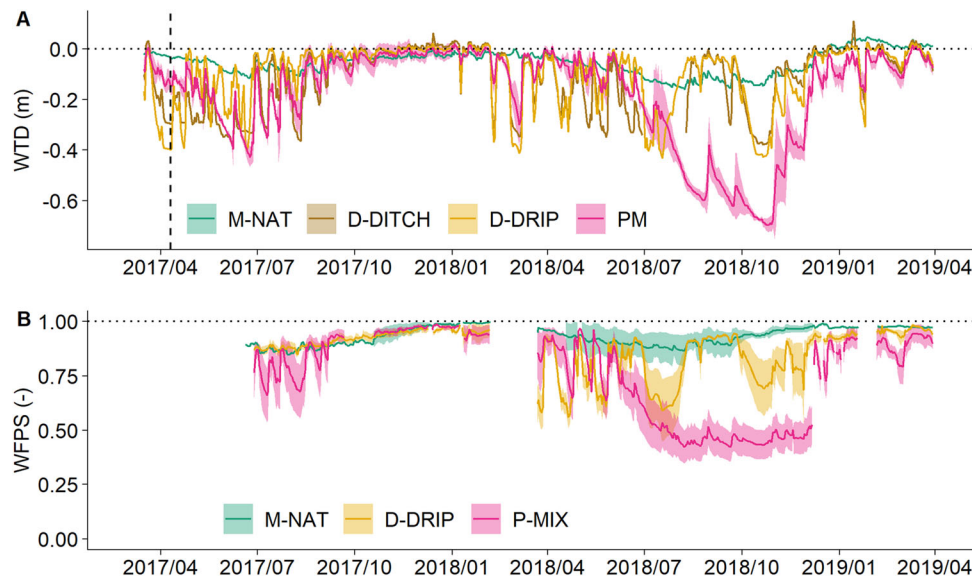


Figure 2. **A** Water table depths (WTD) of the near-natural site (M-NAT) and the different irrigation systems ditch irrigation (D-DITCH), drip irrigation (D-DRIP) and a combination of ditch irrigation and previous re-wetting (PM, mean and standard deviation of sites P-PAL, P-PAP and P-MIX); and **B** water-filled pore spaces (WFPS) of the upper centimetres of M-NAT, D-DRIP and P-MIX. The vertical dashed line denotes the change from subsurface drain pipes to aboveground drip irrigation at D-DRIP. In June and July 2018, WTD of site D-DITCH fell below detection limit and is therefore not plotted.

creased during the dry summer 2018, but mosses slightly recovered until spring 2019. At site D-DITCH, mean *Sphagnum* cover decreased throughout the study period. The cover of vascular plants was higher at P-PAL, P-PAP and P-MIX compared to D-DITCH and D-DRIP. Plant species known to play an important role in peatland CH₄ exchange also increased in abundance, especially the cover of *Eriophorum* species increased from 2017 to 2018 at the cultivation sites. *Rhynchospora alba* cover increased in 2018 at the near-natural site and also slightly at the cultivation sites. *Molinia caerulea* was mainly observed at the near-natural sites and at P-MIX and covers decreased in 2018. At P-PAP and P-PAL, higher covers of *Erica tetralix* and *Calluna vulgaris* were recorded which increased in 2018.

Carbon Dioxide

NEE of the near-natural sites was negative (net uptake) in 2017 and positive in 2018 (Table 3). Of the cultivation sites, highest CO₂ emissions were determined at D-DITCH, followed by D-DRIP and the sites in Provinzialmoor. P-PAP showed the highest GPP, in its size almost comparable to the near-natural sites, and acted as a CO₂ sink in 2017. Lowest GPPs were measured at D-DITCH. Fluxes of both R_{eco} and GPP were higher at the Provinzialmoor sites compared to the Drenth sites. At the cultivation sites, the extraordinary hot and dry

summer 2018 resulted in an earlier GPP peak compared to 2017 (Fig. 4). At D-DITCH, GPP even shrank to half during July and August before it increased again in September. This decrease in GPP was considerably less pronounced at the near-natural sites and at D-DRIP. CO₂ emissions increased with decreasing WTDs at all sites with the exception of D-DRIP (Fig. 5A), as R_{eco} increased in 2018 to a greater extent than the respective GPP values. However, mean WTD only explained changes in NEE between years as in 2018, NEEs of P-MIX and D-DITCH were similar despite different annual mean WTDs and in 2017, similar mean WTDs resulted in different NEEs at the cultivation sites.

Methane

Highest CH₄ emissions were measured at the near-natural sites and decreased in 2018 (Fig. 5B, Table 3). Harvested plots (M-HAR) emitted more CH₄, about 20% in 2017 and 10% in 2018. From the irrigation polder in Provinzialmoor (P-POLDER), roughly a third of the amount of M-NAT, that is, 6.9 and 8.9 g CH₄-C m⁻² y⁻¹, was released (Table 3). At our and other *Sphagnum* farming sites (Beyer and Höper 2015; Günther and others 2017), low CH₄ emissions were found. However, CH₄ emissions of the cultivation sites increased in 2018 despite lower WTDs. This increase coincided with an increase of *Eriophorum* cover (*E. angustifolium*

and *E. vaginatum*, Fig. 6A). Campaign CH₄ fluxes also correlated with daily mean soil temperatures (Fig. 6B and C).

Nitrous Oxide

With the notable exception of D-DITCH, N₂O emissions were low at all sites (Table 3). In general, high annual N₂O emissions coincided with low vegetation covers (Fig. 7A). The high emissions of D-DITCH could mainly be attributed to a short-term peak in summer 2017 and coincided with a rising WTD after a dry period and high concentrations of NO₃⁻ in the soil water (Fig. 7B and C). The NO₃⁻ did not seem to originate from the irrigation water, as no elevated concentrations were measured in the irrigation ponds.

Site-specific and Areal Greenhouse Gas Balances

The GHG balances of the near-natural sites (M-NAT, M-HAR) were characterized by high CH₄ emissions, but M-NAT was still accumulating C in 2017 (Table 3). At M-HAR, the amount of harvested biomass equals an export of 9.1 t CO₂-eq. ha⁻¹ y⁻¹. In contrast, NEE dominated the GHG balances of the cultivation sites. The only net GHG uptake was calculated for site P-PAP in 2017. High CO₂ and N₂O emissions contributed to the balance of D-DITCH. The GHG balance of the irrigation polder in Provinzialmoor (P-POLDER) was composed of CH₄ and CO₂ emissions, the mean of both years was 6.5 t CO₂-eq. ha⁻¹ y⁻¹. The C-export generated by mowing of vascular plants at the cultivation sites added up to only 0.13 and 0.05 t CO₂-eq. ha⁻¹ y⁻¹ for Provinzialmoor and Drenth,

respectively, and is therefore not visible in Fig. 8 but included in Table 4.

In accordance with the different vegetation development, the three irrigation systems produced distinct GHG balances. Mean site-specific GHG balances were highest in D-DITCH, followed by D-DRIP and Provinzialmoor (mean of sites P-PAL, P-PAP and P-MIX, Table 4). Including emissions of irrigation systems and dams, drip irrigation (D-DRIP) generated the smallest areal GHG balance, whereas irrigation by ditches combined with previous re-wetting (Provinzialmoor) produced the lowest GHG emissions per ton of *Sphagnum* biomass.

DISCUSSION

Sphagnum Farming on Highly Decomposed Peat

In this study, we provide evidence for the general feasibility of large-scale *Sphagnum* farming on highly decomposed peat remaining after peat extraction. Further, results are not only relevant for post-extraction sites, as agriculturally used bog peats may have also already lost the upper horizons due to mineralization and share similar physical soil characteristics. In Germany, this applies to more than half of the total bog area.

However, the highly decomposed peat challenges a successful cultivation of peat mosses. Measured K_s values were small compared to the 1.13 m d⁻¹ reported for a nearby *Sphagnum* farming project on less decomposed peat (Brust and others 2018), and BD was slightly higher compared to the range of 0.07–0.12 g cm³ reported for another nearby site (Gaudig and others 2017). Over prolonged periods, WTDs at the cultivation sites fell far below the

Table 2. Values of pH and Electric Conductivity (EC) as well as Solute (DOC = dissolved organic carbon, NO₃⁻ = nitrate, NH₄⁺ = ammonium, PO₄³⁻ = phosphate, SO₄²⁻ = sulphate, Ca²⁺ = calcium) Concentrations (mg l⁻¹) of Irrigation Water and of Soil Water at the Measurement Sites (means of biweekly sampling campaigns ± standard deviation)

	Meerkolk Mean of sites	Drenth Irrigation ponds	Drenth D-DITCH	Drenth D-DRIP	Provinzialmoor Irrigation polder	Provinzialmoor Mean of sites
pH	4.6 ± 0.4	5.5 ± 1.3	4.4 ± 0.4	4.3 ± 0.3	4.2 ± 0.3	4.4 ± 0.3
EC	54 ± 16	152 ± 59	159 ± 53	121 ± 23	93 ± 30	117 ± 30
DOC	31 ± 13	51 ± 20	68 ± 20	70 ± 22	43 ± 19	59 ± 26
NO ₃ ⁻	0.1 ± 0.1	4.0 ± 4.3	4.1 ± 8.4	0.4 ± 0.4	0.3 ± 0.2	0.3 ± 1.0
NH ₄ ⁺	0.5 ± 0.3	0.8 ± 0.7	5.2 ± 2.0	1.4 ± 1.2	0.8 ± 0.7	1.9 ± 1.3
PO ₄ ³⁻	0.02 ± 0.05	0.07 ± 0.12	0.01 ± 0.02	0.06 ± 0.09	0.02 ± 0.06	0.07 ± 0.19
SO ₄ ²⁻	0.6 ± 0.3	11.4 ± 0.4	7.4 ± 3.9	4.9 ± 3.0	1.3 ± 0.7	3.8 ± 3.0
Ca ²⁺	0.5 ± 0.6	9.7 ± 8.9	2.3 ± 3.4	2.6 ± 3.0	0.6 ± 1.7	1.3 ± 2.1



Figure 3. Covers of peat mosses and vascular plants (mean and standard deviations of replicate plots) at the near-natural sites (M-NAT and M-HAR) and at the cultivation sites. One harvested plot (M-HAR.2) did not recover and covers of total vegetation and *Sphagnum* could not be determined in March 2019. *Eriophorum* cover is the sum of *E. angustifolium* and *E. vaginatum* covers, though *E. angustifolium* covers were dominant. The dashed vertical line denotes the date of harvest at M-HAR.

targeted range close to the surface. Price and Whitehead (2001) observed *Sphagnum* recolonization of an abandoned block-cut bog at mean WTD of -0.25 ± 0.14 m and volumetric water contents higher than 50%. WTDs measured at our cultivation sites were higher, but WFPS temporarily dropped below 50% (corresponding to volumetric water contents lower than 50%) in 2018, especially at P-MIX. During these periods of hydrological stress, mosses lost their green colour and became visibly inactive.

Although mosses recovered and covers increased again in early 2019, the 2018 drought affected biomass production. The estimated *Sphagnum* biomass in March 2019 was 1.2 t dry mass per hectare at D-DITCH (41 months since inoculation), 2.1 t at D-DRIP (41 months), 3.3 t at P-PAP (41 months) and 2.5 t at P-PAL (36 months) and P-MIX (29 months). A detailed analysis of *Sphagnum* establishment at our sites is available in Grobe and others (2021), while our data are restricted to the GHG plots only. Biomass production in Drenth was low, but values of the sites in Provinzialmoor are

comparable to a neighbouring *Sphagnum* farming project ($1.0 \text{ t ha}^{-1} \text{ y}^{-1}$ in the first 3 years, Gaudig and others 2017). In a greenhouse experiment, Gaudig and others (2020) found that peat moss productivities can reach up to $7 \text{ t ha}^{-1} \text{ y}^{-1}$ for *S. papillosum* at a constant WTD 0.02 m below capitulum.

Vascular plants also colonized the cultivation sites and higher *Sphagnum* covers coincided with higher covers of vascular plants (Grobe and others 2021). This supports the findings of McNeil and Waddington (2003), who observed that vascular plants promote *Sphagnum* growth by providing shadow and suitable moistures, a mechanism especially useful during hydrological stress (Buttler and others 1998) and after cutting of mosses (Krebs and others 2018). Vascular plants generally profited from the dry conditions in 2018 and shaded peat mosses remained active longer at the beginning of dry periods compared to spots without shading.

Table 3. GHG Balances of Sites

Site	Year	WTD (m)	NEE (t C ha ⁻¹ y ⁻¹)	GPP (t C ha ⁻¹ y ⁻¹)	R _{eeco} (t C ha ⁻¹ y ⁻¹)	CH ₄ -C (g C m ⁻² y ⁻¹)	N ₂ O-N (g N m ⁻² y ⁻¹)	C-Export (t ha ⁻¹ y ⁻¹)	C balance (t ha ⁻¹ y ⁻¹)	GHG balance (t CO ₂ -eq ha ⁻¹ y ⁻¹)
M-NAT	2017	- 0.04 ± 0.03	- 0.7 ± 0.2	- 6.7 ± 0.2	5.9 ± 0.3	36.1 ± 10.8	0.00 ± 0.01		- 0.3 ± 0.3	10.9 ± 4.1
M-NAT	2018	- 0.06 ± 0.06	1.4 ± 0.3	- 7.2 ± 0.2	8.6 ± 0.4	25.1 ± 5.2	0.00 ± 0.01		1.6 ± 0.3	14.5 ± 2.2
M-HAR	2017	0.00 ± 0.03	- 0.4 ± 0.2	- 4.9 ± 0.1	4.5 ± 0.1	43.8 ± 14.6	0.00 ± 0.01	2.48 ± 0.28	2.5 ± 0.4	23.9 ± 5.6
M-HAR	2018	- 0.03 ± 0.07	0.2 ± 0.6	- 6.3 ± 0.3	6.5 ± 0.5	27.8 ± 5.0	0.00 ± 0.01		0.5 ± 0.6	11.1 ± 2.8
D-DITCH	2017	- 0.12 ± 0.13	1.7 ± 0.2	- 3.0 ± 0.1	4.7 ± 0.2	0.0 ± 0.0	1.20 ± 0.83		1.7 ± 0.2	11.1 ± 3.5
D-DITCH	2018	- 0.14 ± 0.13	2.2 ± 0.4	- 3.5 ± 0.2	5.7 ± 0.4	0.4 ± 0.2	0.38 ± 0.17		2.2 ± 0.4	9.7 ± 1.7
D-DRIP	2017	- 0.09 ± 0.12	0.9 ± 0.1	- 3.2 ± 0.1	4.1 ± 0.1	0.0 ± 0.1	0.15 ± 0.05		0.9 ± 0.1	3.8 ± 0.6
D-DRIP	2018	- 0.12 ± 0.12	0.7 ± 0.1	- 4.2 ± 0.1	4.9 ± 0.1	0.1 ± 0.1	0.19 ± 0.06		0.7 ± 0.1	3.5 ± 0.5
P-PAL	2017	- 0.10 ± 0.11	- 0.0 ± 0.1	- 4.1 ± 0.1	4.1 ± 0.1	1.9 ± 0.3	0.05 ± 0.02	0.02 ± 0.01	0.0 ± 0.1	0.8 ± 0.4
P-PAL	2018	- 0.25 ± 0.24	0.9 ± 0.2	- 5.7 ± 0.2	6.6 ± 0.1	5.3 ± 0.5	0.01 ± 0.01	0.06 ± 0.02	1.0 ± 0.2	5.4 ± 0.7
P-PAP	2017	- 0.09 ± 0.12	- 0.6 ± 0.2	- 5.8 ± 0.1	5.2 ± 0.1	0.7 ± 0.1	0.02 ± 0.02	0.03 ± 0.01	- 0.6 ± 0.2	- 1.8 ± 0.6
P-PAP	2018	- 0.26 ± 0.23	0.1 ± 0.1	- 7.2 ± 0.1	7.2 ± 0.1	3.0 ± 0.3	0.00 ± 0.01	0.03 ± 0.02	0.2 ± 0.1	1.7 ± 0.4
P-MIX	2017	- 0.13 ± 0.10	0.1 ± 0.2	- 4.7 ± 0.2	4.8 ± 0.1	0.3 ± 0.1	0.13 ± 0.07	0.04 ± 0.02	0.2 ± 0.2	1.1 ± 0.8
P-MIX	2018	- 0.25 ± 0.21	2.2 ± 0.2	- 5.6 ± 0.2	7.7 ± 0.1	1.5 ± 0.2	0.03 ± 0.02	0.04 ± 0.01	2.2 ± 0.2	8.6 ± 0.6
P-POLDER	2017	0.25 ± 0.16	0.9 ± 0.1	- 1.6 ± 0.1	2.5 ± 0.1	6.9 ± 5.2	0.01 ± 0.01		1.0 ± 0.1	6.0 ± 2.0
P-POLDER	2018	0.13 ± 0.25	1.0 ± 0.1	- 1.6 ± 0.1	2.6 ± 0.1	8.9 ± 4.0	0.00 ± 0.01		1.1 ± 0.1	7.0 ± 1.5

Water table depths (WTD) are means and standard deviation of daily means. Net ecosystem exchange (NEE), gross primary production (GPP) and ecosystem respiration (R_{eeco}) are means and standard errors of bootstrap fits, methane (CH₄-C) and nitrous oxide (N₂O-N) are means and standard errors of bootstrap and jackknife balances. C-Export is the Sphagnum donor material at M-HAR and the mowed vascular plants at the cultivation sites. In Drenth, C-Export could not be split into D-DITCH and D-DRIP, the combined export was 0.01 t C ha⁻¹ y⁻¹.

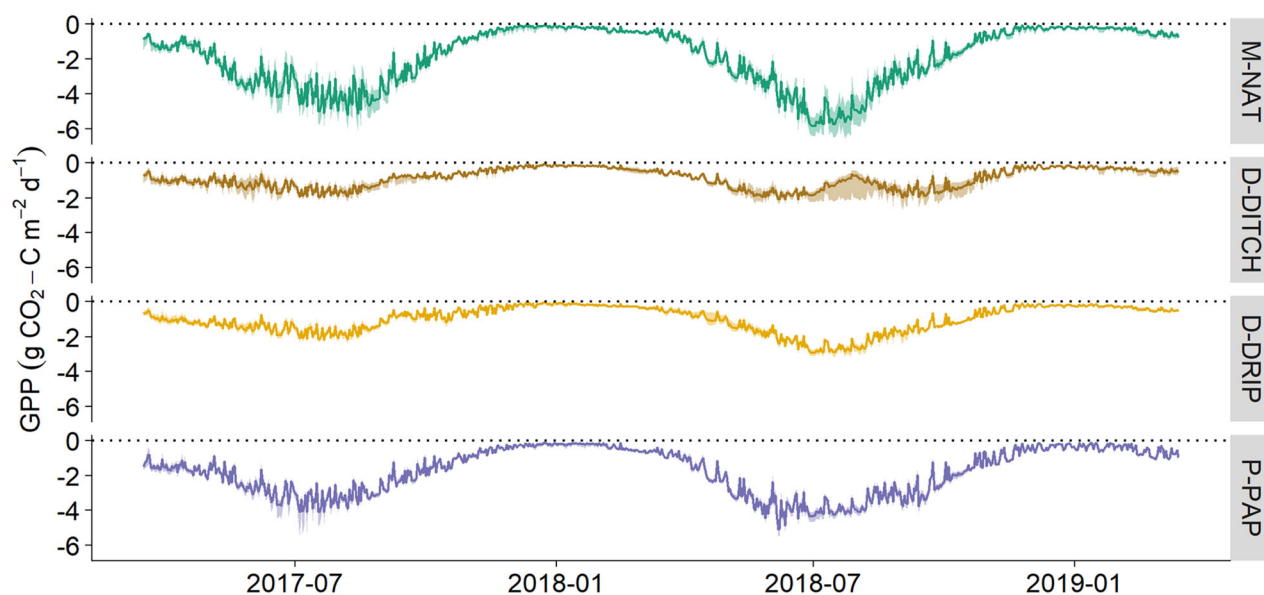


Figure 4. Daily values of gross primary production (GPP) in 2017 and 2018 at the near-natural site (M-NAT) and at the cultivation sites (D-DITCH = ditch irrigation, D-DRIP = drip irrigation, P-PAP (exemplary for Provinzialmoor) = ditch irrigation combined with previous re-wetting).

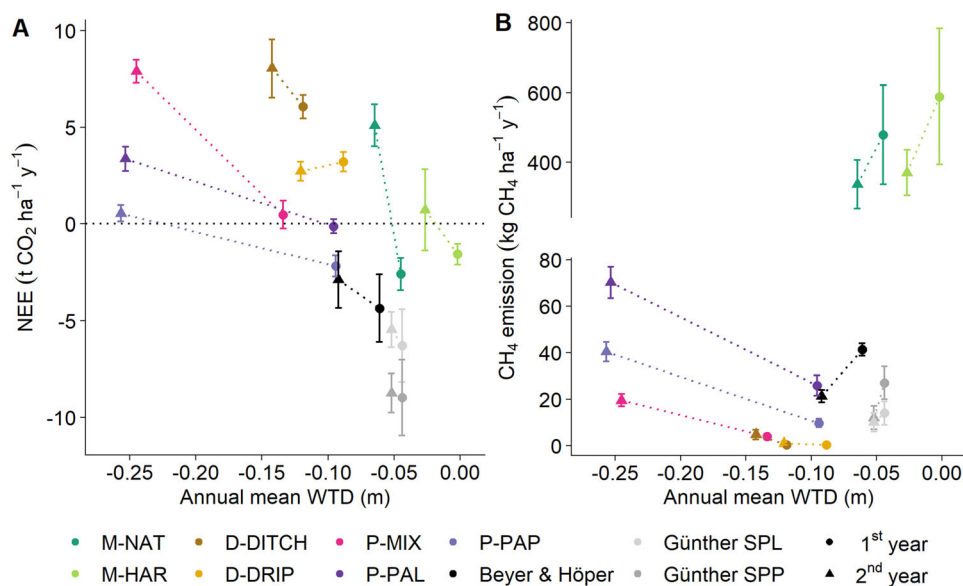


Figure 5. **A** Net ecosystem exchange (NEE) and annual mean water table depths (WTD); and **B** methane (CH_4) emission and WTD. First and second years are 2017 and 2018 at our sites, 2010 and 2011 (that is, 6 and 7 years after establishment) in Beyer and Höper (2015) and 2012 and 2013 (that is, first and second years after establishment) in Günther and others (2017; SPL = *Sphagnum palustre*, SPP = *Sphagnum papillosum*). Dotted lines combine both measurement years of each site.

Drivers of GHG Exchange

Carbon Dioxide (CO_2)

WTD affected the CO_2 exchange of all sites. At the near-natural site, differences in WTD of only a few centimetres shifted M-NAT from a sink of CO_2

comparable to other near-natural bogs ($-2.4 \pm 1.2 \text{ t CO}_2 \text{ ha}^{-1} \text{ y}^{-1}$, Helfter and others 2015) to a considerable source in 2018. The effect of the dry year 2018 on mean WTDs and the accompanying increased CO_2 emissions were particularly pronounced in Provinzialmoor. Fluctuations of WTDs

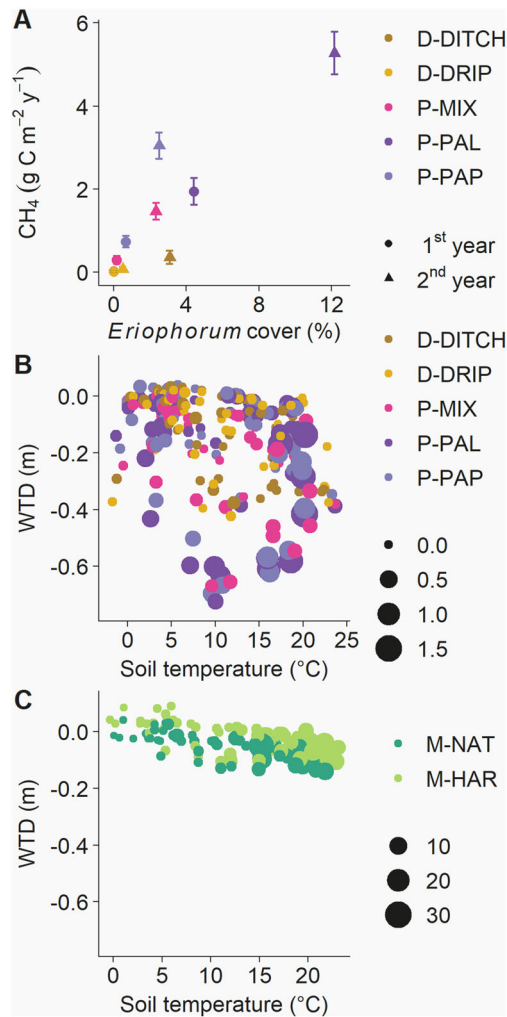


Figure 6. **A** Methane (CH_4) emissions and covers of *Eriophorum* (*E. angustifolium* and *E. vaginatum*) at the end of measurement years; **B** campaign CH_4 fluxes ($\text{mg CH}_4\text{-C m}^{-2} \text{h}^{-1}$) and the respective daily mean soil temperatures and water table depths (WTD) at the cultivation sites and **C** at the near-natural sites.

will affect NEEs of *Sphagnum* farming sites, especially when mosses are exposed to periodical desiccation. In a laboratory experiment, McNeil and Waddington (2003) found that respiration of peat columns grown with *Sphagnum* increased shortly after drying and subsequent re-wetting, while GPP recovered only after three weeks of water saturation, highlighting the importance of stable WTDs. Brown and others (2017) also found that water table fluctuation best predicted NEE and that a stable WTD lead to greater uptake of CO_2 .

In addition to the hydrology of the sites, the development of the vegetation cover influenced NEE. Lower GPP values at D-DRIP and D-DITCH

were consistent with the poor vegetation development, while the decrease of NEE at D-DRIP in 2018 could be explained by an increase in vegetation cover. At sites P-PAP and P-PAL, the restoration of the sites as sinks of atmospheric CO_2 in 2017 can be attributed to the almost completely closed *Sphagnum* lawn. Site P-PAP also showed the highest vascular plant cover of all cultivation sites. In general, higher vascular plant covers went along with increased GPP and R_{eco} fluxes.

In line with peatlands restored with the moss layer transfer technique (Nugent and others 2018), the time needed for a *Sphagnum* farming site to become a sink of atmospheric CO_2 cannot easily be predicted. Comparing our results to previous neighbouring *Sphagnum* farming experiments (Beyer and Höper 2015; Günther and others 2017) showed no clear correlation of NEE and GPP with the age of sites, and differences in CO_2 exchange are probably rather explained by the high and stable WTD in those two studies (Fig. 5A). In addition, dry years can also turn older restored sites into sources of CO_2 (Strack and others 2009; Wilson and others 2016b). Both GPP and R_{eco} values increased from 2017 to 2018. GPP was influenced by growing vegetation covers, while lower WTDs and higher temperatures affected R_{eco} . A higher biomass probably also contributed to the higher R_{eco} , but still the increase in R_{eco} was more than offsetting GPP increases. Possibly, the growing vegetation would have turned the cultivation areas in sinks of atmospheric CO_2 in 2018 under the condition of sufficient water supply. The development of daily GPP values indicates that GPP was strongly affected by the 2018 drought, above all at D-DITCH (Fig. 4).

Methane (CH_4)

The CH_4 emissions of the near-natural site were high compared to the emission factors for re-wetted and near-natural bogs (Wilson and others 2016a) or temperate wetlands (Turetsky and others 2014). In addition to the shallow WTD, reasons could be relatively high temperatures compared to both long-term average and other studies summarized by those reviews, the cover of vascular plants or the high N deposition level (about $25 \text{ kg N ha}^{-1} \text{ y}^{-1}$, Hurkuck and others 2016). Meerkolk is surrounded by intensively used agricultural area, which might influence GHG exchange. In a fertilization experiment, Juutinen and others (2018) could associate increasing CH_4 fluxes with higher N input in a temperate bog. Compared to semi-natural sites in a similar climatic setting, our values are not

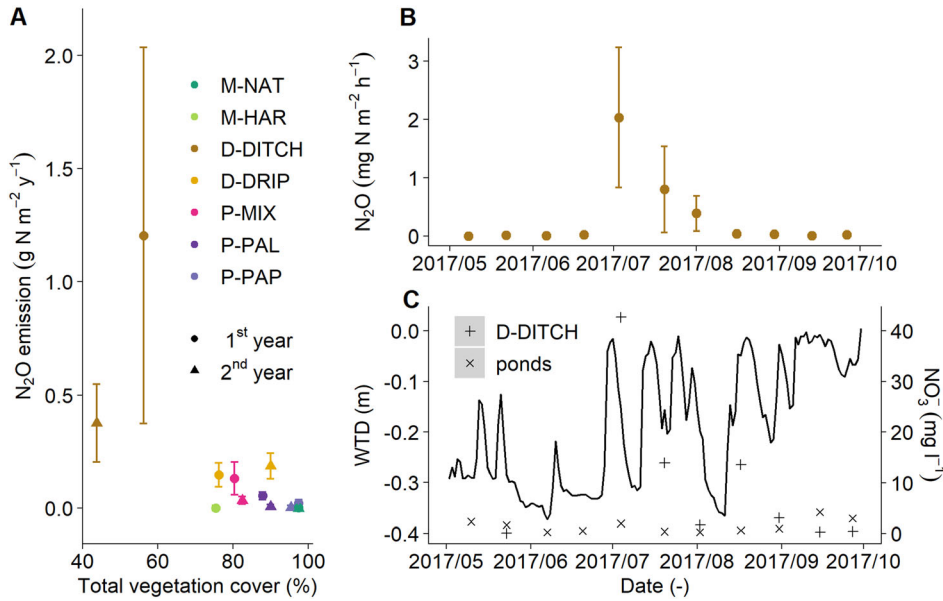


Figure 7. **A** Annual nitrous oxide (N₂O) emissions (mean of jackknife balances ± standard error) and total vegetation covers; **B** campaigns with peak N₂O fluxes at site D-DITCH (mean of replicates ± standard deviation); and **C** the respective water table depths (WTD) and nitrate (NO₃⁻) concentrations of the irrigation ponds (ponds) and of the soil water at the measurement plots (D-DITCH)

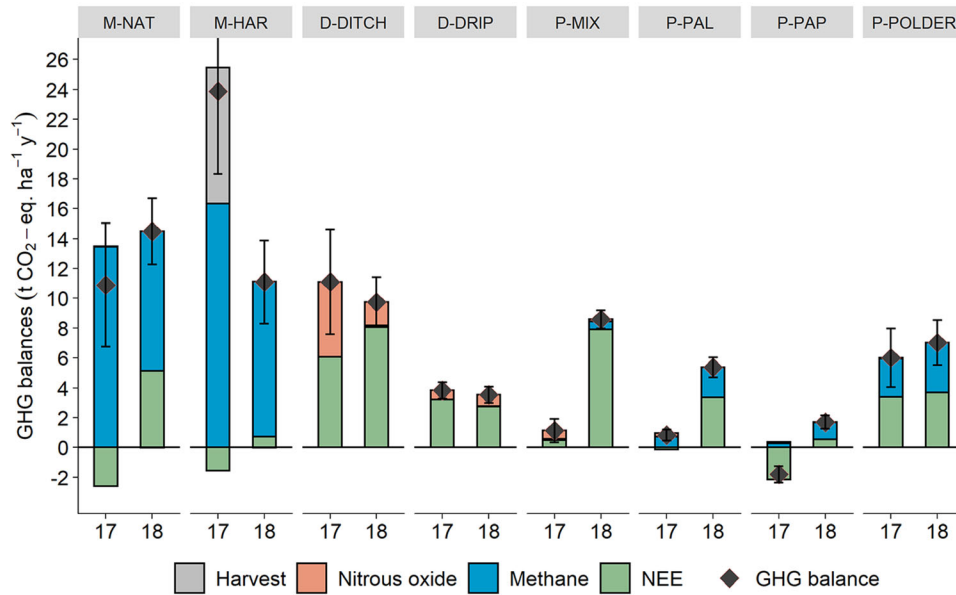


Figure 8. Annual exchange of nitrous oxide, methane and carbon dioxide (NEE) and site-specific GHG balances of the near-natural sites (M-NAT = reference, M-HAR = harvest of *Sphagnum* donor material), of the cultivation sites (D-DITCH = ditch irrigation, D-DRIP = drip irrigation, P-MIX, P-PAL and P-PAP = ditch irrigation combined with previous re-wetting) and of the irrigation polder in Provinzialmoor (P-POLDER).

implausible: Drösler (2005) measured 38 g CH₄-C m² y⁻¹ in a semi-natural peatland in Bavaria dominated by *Sphagnum cuspidatum*, *Scheuchzeria palustris* and *Rhynchospora alba*, whereas 5–14 g CH₄-C m² y⁻¹ were reported for a near-natural bog

dominated by *Sphagnum fallax* in North-Western Germany (Tiemeyer and others 2020).

In general, campaign CH₄ fluxes increased with increasing daily mean soil temperatures and highest fluxes were measured at WTDs close to the peat

Table 4. Areal GHG Balances of Irrigation Systems (D-DITCH = ditch irrigation, D-DRIP = drip irrigation, Provinzialmoor = ditch irrigation combined with previous re-wetting, that is, mean of sites P-PAL, P-PAP and P-MIX) and Product-related GHG Balances per Ton of Extractable *Sphagnum* Biomass

Drenth D-DITCH	Drenth D-DRIP	Provinzialmoor	
10.4	3.7	2.6	Mean site-specific GHG balance of cultivation sites (t CO ₂ -eq. ha ⁻¹ y ⁻¹)
6.5	6.5	6.5	GHG balance of polders and ditches (t CO ₂ -eq. ha ⁻¹ y ⁻¹) (site P-POLDER)
5.2	5.2	5.2	GHG balance of dams (t CO ₂ -eq. ha ⁻¹ y ⁻¹) (Tiemeyer and others 2020)
5:1	10:1	0.6:1	Ratio cultivation area/irrigation area
2.2:1	2.4:1	7.4:1	Ratio cultivation area/dams
0.05	0.05	0.13	Extracted biomass (mowing) (t CO ₂ -eq. ha ⁻¹ y ⁻¹)
0.5	0.9	1.4	Estimated extractable biomass (vascular plants + <i>Sphagnum</i>) (t CO ₂ -eq. ha ⁻¹ y ⁻¹)
8.9	5.3	6.6	Areal GHG balance of irrigation system (t CO ₂ -eq. ha ⁻¹ y ⁻¹)
0.3	0.4	0.7	Estimated extractable <i>Sphagnum</i> biomass (t DM ha ⁻¹ y ⁻¹)
29.5	13.2	9.4	GHG balance per extractable ton of <i>Sphagnum</i> biomass (t CO ₂ -eq. t DM ⁻¹)

surface. However, high emissions were observed at the cultivation sites during drought in 2018, which could be attributed to the vegetation composition of the plots. Specialized wetland plants possessing aerenchymous tissues enable a plant-mediated transport of gases between soil and atmosphere (Gray and others 2013). At the cultivation sites, increasing covers of *Eriophorum angustifolium* and *Eriophorum vaginatum* from 2017 to 2018 resulted in higher CH₄ emissions (Fig. 6A) despite drier conditions, a pattern already described in previous studies (Greenup and others 2000; Tuittilla and others 2000; Waddington and Day 2007). *Molinia caerulea* (Leroy and others 2019; Vanselow-Algan and others 2015; Rigney and others 2018) and *Juncus effusus* (Henneberg and others 2015) have also been associated with higher CH₄ emissions, but their influence seemed to be less important at our sites.

The CH₄ emissions of P-POLDER were higher than emissions of the cultivation sites but significantly smaller compared to the near-natural sites (Table 3). They were comparable to emissions of irrigation ditches at a nearby *Sphagnum* cultivation site (4–11 g CH₄-C m² y⁻¹, Günther and others 2017). In contrast, Franz and others (2016) reported 40 g CH₄-C m² y⁻¹ for a re-wetted rich fen. As in other chamber studies (for example, Günther and others 2017), we could not determine episodic ebullition fluxes, which might have played a role especially at P-POLDER. Therefore, CH₄ fluxes estimated here probably represent a lower limit of the ‘real fluxes’.

Nitrous oxide (N₂O)

N₂O emissions were mainly relevant for the GHG balances of the ditch irrigation site (Fig. 7A). Annual balances at this site were comparable to those of arable land (Tiemeyer and others 2020), and even the N₂O emissions of D-DRIP are comparable to low-intensity grassland on bog peat (Leiber-Sauheitl and others 2014). Emission peaks at D-DITCH (Fig. 7B) coincided with a re-rise of WTD after a dry period and high concentrations of nitrate in the soil pore water (Fig. 7C). The respective NO₃⁻ concentrations of the irrigation ponds were not elevated, hinting towards an origin of N in peat mineralization during the preceding dry period. With a rising WTD, NO₃⁻ was probably converted to N₂O by incomplete denitrification. Unfortunately, it is possible that this peak emission was missed in 2018: A similar re-rise of WTD combined with higher concentrations of NO₃⁻ in the soil pore water was observed in August 2018, but the respective CH₄/N₂O campaign could not be conducted. A lack of vegetation which could take up N from the soil water also seems to contribute to the observed pattern. High N₂O emissions from bare peat were also reported by other studies (Marushchak and others 2011), emphasizing the risk of high N₂O emission under suboptimum plant growth conditions even at unfertilized sites.

Greenhouse Gas Balances

Altogether, the GHG emissions were higher than those of *Sphagnum* farming on less degraded peat soils (Beyer and Höper 2015; Günther and others 2017) mainly because of more unfavourable CO₂

exchange in our case and the different degrees of decomposition of the cultivation sites. It also has to be taken into account that 2018 was an extraordinarily hot and dry year and that drought substantially affected GHG exchange. Interestingly, the near-natural sites proved to be resilient regarding the WTD due to its ability to oscillate, but to be very sensitive regarding the GHG exchange. Here, the highest annual balances were quantified. This result must not be misinterpreted in a way that near-natural sites should be used as *Sphagnum* farming sites as our cultivation sites have a land-use legacy of carbon emissions equivalent to several metres of peat and as near-natural sites are irreplaceable in terms of biodiversity. Further, the temporal dynamic of the radiative forcing impact of natural sites, which is dominated by CO₂ in the long term (Frolking and others 2006), has to be considered. Despite the high CH₄ emissions, M-NAT was still accumulating C in 2017.

Impact of Sphagnum Harvest at the Near-natural Site

Harvesting the upper 5-cm vegetation at M-HAR resulted in higher CH₄ emissions and—on average—lower CO₂ emissions. Effectively, it removed the active green *Sphagnum* horizon and moved the peat surface towards the water table, which resulted in a decreased CO₂ uptake in the first year, but lower CO₂ emissions than M-NAT in the dry second year. Reduced oxidation in the shallower *Sphagnum* horizon might be the reason for the increased CH₄ emission. This pattern of higher CH₄ emissions and a reduced CO₂ uptake followed by a rapid plant recovery was also reported by Murray and others (2017) for a Canadian donor site. However, wetter conditions and flattening of the surface of harvested sites could change plant compositions in the long-term (Guene-Nanchen and others 2019). M-HAR showed slightly lower *Sphagnum* covers and slightly higher covers of vascular plants (especially *Rhynchospora alba* and *Molinia caerulea*). GPP recovered in 2018, but GPP and R_{eco} were higher at M-NAT in both years. It has to be considered that the ‘drowned’ replicate (Fig. 3) is included in the average GHG values. Silvan and others (2017) harvested down to a depth of 30 cm and also described a rapid recovery of *Sphagnum* cover and CO₂ sequestration. Under optimum conditions, re-growth of *Sphagnum* could even facilitate yearly harvests (Krebs and others 2018). However, the depth of cutting needs to be carefully adjusted when harvesting *Sphagnum* farming sites.

Impact of Different Irrigation Systems and Initial Effects

Three different irrigation systems were investigated in this study. In Drenth, drip irrigation (D-DRIP) provided slightly higher WTDs compared to ditch irrigation (D-DITCH), while Provinzialmoor became very dry in 2018 due to a lack of sufficient irrigation water and accidentally continuing drainage. However, despite the apparently hydrological favourable conditions in Drenth, vegetation developed better and CO₂ emissions were lower in Provinzialmoor. In this context, it is important to emphasize that the vegetation development at the GHG plots was in line with the overall vegetation development at the cultivation sites (Grobe and others 2021). A number of factors might have contributed to these surprising results: differences in soil properties, differences in meteorological conditions, the presence of vascular plants, quality of the irrigation water and initial effects.

Soil properties were slightly more favourable at Provinzialmoor (Table 1), which might be the result of the preceding multi-annual inundation (especially the lower BD and higher ϵ). While this did not prevent dry conditions in the uppermost soil layer, which is relevant for the peat mosses, the vascular plants might have profited from the higher field capacity and in turn positively influenced peat moss development.

The shape of the cultivation areas and the surrounding environment would suggest higher evapotranspiration and lower humidity at Drenth (narrow strip surrounded by ongoing peat extraction) than at Provinzialmoor (square surrounded by re-wetted peatlands). However, D-DRIP even showed slightly higher humidity compared to P-MIX in 2018, although this might have been caused by the drip irrigation itself. Furthermore, mean peat thickness was only 45 cm in Drenth compared to 90 cm in Provinzialmoor, which could have affected the ability of mosses to cope with prolonged periods of increased evaporation (Dixon and others 2017).

The irrigation water used in Drenth during dry summer periods had a lower quality regarding pH and nutrient concentrations than the polders in Provinzialmoor. In particular, higher amounts of calcium were measured. At single dates, concentrations exceeded 20 mg l⁻¹, an amount possibly negatively affecting peat moss health (Vicheroová and others 2015). Higher concentrations were observed only in the irrigation ponds and not in the soil pore water at measurement plots. However, temporal inundation at D-DITCH and aboveground

drip irrigation at D-DRIP could have delivered detrimental amounts.

Especially in the initial phase of *Sphagnum* growth, a sufficient water supply is essential (Pouliot and others 2015). Before the installation of drip irrigation, site D-DRIP was irrigated via sub-surface drain pipes, which did not provide sufficient water in the first months after spreading of moss fragments. It is likely that the well-working drip irrigation could not compensate for damages in the phase of *Sphagnum* establishment. Furthermore, storms and freezing damaged parts of the Drenth area in early 2017, whereas the Provinzialmoor area was hardly affected and also profited from a relatively wet year 2016.

Areal GHG Balances

Altogether, drip irrigation (D-DRIP) generated the lowest areal GHG balance because the low site-specific emissions in Provinzialmoor were compromised by the large areal contribution of the irrigation polder. However, emissions per ton of extractable *Sphagnum* biomass were lowest in Provinzialmoor due to the better vegetation development.

We need to stress that differences between the investigated irrigation systems (Table 4) have to be interpreted with caution. They might be the result of the previous re-wetting of Provinzialmoor as well as the result of disturbances in the initial phase in Drenth. In contrast to Provinzialmoor, it was possible to add groundwater in dry periods in Drenth, considerably reducing the areal contribution of the irrigation system.

Furthermore, the assumptions made to derive areal balances induced uncertainties. The water deficit in Drenth (500 mm) and the resulting theoretical polder size for Provinzialmoor were slightly higher than deficits calculated for a neighbouring *Sphagnum* farming site. Brust and others (2018) specified a mean deficit of 160 mm and a deficit of 320 mm in dry years. However, they also recorded a deficit of 636 mm in an extremely dry year, supporting our theoretical polder size. Although emissions from site P-POLDER resemble those from irrigation ditches of this neighbouring site (Günther and others 2017), literature values for emissions from peat dams vary considerably. For example, Vybornova and others (2019) report 31.5 t CO₂-eq. ha⁻¹ y⁻¹ for bare peat dams, two thirds of this emission being CO₂ and about one third being N₂O. This value would be seven times larger than the value used in this study.

To optimize both GHG balances and productivity per area, future designs for *Sphagnum* farming should keep areas of dams and open water as small as possible while avoiding all unnecessary water losses and ensuring a sufficient water supply in dry summer periods. As long as the sites have not yet developed an active acrotelm, irrigation and thus space for water storage will be needed. In Drenth, peat mosses grew better in closer distance to ditches (Grobe and others 2021) and ditches could be cut in closer distance (5 m, Gaudig and others 2017). However, this will considerably influence both the maintenance costs and the GHG balance, as emissions of ditches are expected to be higher than the emissions of cultivation areas. Due to the challenging hydrological conditions, the irrigation via ditches seems to be only recommendable for highly decomposed sites if they were inundated before. Drip irrigation might better maintain favourable moisture conditions, but requires water of a better quality than ditch irrigation.

Finally, even though optimum conditions could not be provided, *Sphagnum* farming on former peat extraction sites still offers a considerable GHG mitigation compared to average emissions from cropland (33.7 t CO₂-eq. ha⁻¹ y⁻¹) and grassland (30.4 t CO₂-eq. ha⁻¹ y⁻¹) in Germany (Tiemeyer and others 2020). In the presented balances, global warming potentials over 100 years were used. When considering longer time frames, the most important goal of peatland restoration and paludiculture projects is to quickly stop the sites from emitting CO₂ to the atmosphere (Günther and others 2020).

ACKNOWLEDGEMENTS

This research was funded by the Lower Saxony Ministry for Nutrition, Agriculture and Consumer Protection (ML, AZ 105.1-3234/1-13-3) and the German Federal Environmental Foundation (DBU, AZ 33305/01-33/0). The permissions granted by the Weser-Ems Office for Regional State Development (State Bog Administration) and the County Emsland have facilitated the project. We thank our project partners at Klasmann-Deilmann GmbH for the productive cooperation. We gratefully thank two anonymous reviewers for their knowledgeable and constructive comments. We also want to express our thanks to Kerstin Gilke and Andrea Oehns-Rittgerodt for gas chromatograph analyses; Sabine Wathsack, Ute Tambor, Thomas Viohl and Claudia Wiese for water, soil and biomass analysis, Frank Hegewald and Dirk Lempio for technical assistance in the field, and Arndt Piayda for data on

hydraulic conductivity and soil sampling together with Mareille Wittnebel. Finally, we would also like to thank the students who helped in the field and in the laboratory.

FUNDING

Open Access funding enabled and organized by Projekt DEAL.

Open Access This article is licensed under a Creative Commons Attribution 4.0 International License, which permits use, sharing, adaptation, distribution and reproduction in any medium or format, as long as you give appropriate credit to the original author(s) and the source, provide a link to the Creative Commons licence, and indicate if changes were made. The images or other third party material in this article are included in the article's Creative Commons licence, unless indicated otherwise in a credit line to the material. If material is not included in the article's Creative Commons licence and your intended use is not permitted by statutory regulation or exceeds the permitted use, you will need to obtain permission directly from the copyright holder. To view a copy of this licence, visit <http://creativecommons.org/licenses/by/4.0/>.

REFERENCES

- Beyer C, Höper H. 2015. Greenhouse gas exchange of rewetted bog peat extraction sites and a *Sphagnum* cultivation site in northwest Germany. *Biogeosciences* 12(7):2101–2117.
- Blankenburg J. 2004. Praktische Hinweise zur optimalen Wiedervernässung von Torfabbauf Flächen (in German). *Geofakten* 14, Niedersächsisches Landesamt für Bodenforschung, Bremen. 1–11.
- Brown C, Strack M, Price JS. 2017. The effects of water management on the CO₂ uptake of *Sphagnum* moss in a reclaimed peatland. *Mires and Peat* 20(5):1–15.
- Brust K, Krebs M, Wahren A, Gaudig G, Joosten H. 2018. The water balance of a *Sphagnum* farming site in north-west Germany. *Mires and Peat* 20(10):1–12.
- Buttler A, Grosvernier P, Matthey Y. 1998. Development of *Sphagnum fallax* diaspores on bare peat with implications for the restoration of cut-over bogs. *Journal of Applied Ecology* 35:800–810.
- Dettmann U, Bechtold M, Viohl T, Piayda A, Sokolowsky L, Tiemeyer B. 2019. Evaporation experiments for the determination of hydraulic properties of peat and other organic soils: An evaluation of methods based on a large dataset. *Journal of Hydrology* 575:933–944.
- Dixon SJ, Kettridge N, Moore PA, Devito KJ, Tilak AS, Petrone RM, Mendoza CA, Waddington JM. 2017. Peat depth as a control on moss water availability under evaporative stress. *Hydrological Processes* 31:4107–4121.
- Drösler M. 2005. Trace gas exchange and climatic relevance of bog ecosystems, Southern Germany. Doctoral Dissertation at the Technical University of Munich. 102–130.
- Durner W. 1994. Hydraulic conductivity estimation for soils with heterogeneous pore structure. *Water Resources Research* 30:211–223.
- Emmel M. 2008. Growing ornamental plants in *Sphagnum* biomass. *Acta Horticulturae* 779:173–178.
- Falge E, Baldocchi D, Olson R, Anthoni P, Aubinet M, Bernhofer C, Burba G, Ceulemans R, Clement R, Dolman H, Granier A, Gross P, Grünwald T, Hollinger D, Jensen NO, Katul G, Keronen P, Kowalski A, Lai CT, Law BE, Meyers T, Moncrieff J, Moors E, Munger JW, Pilegaard K, Rannik Ü, Rebmann C, Suyker A, Tenhunen J, Tu K, Verma S, Vesala T, Wilson K, Wofsy S. 2001. Gap filling strategies for defensible annual sums of net ecosystem exchange. *Agricultural and Forest Meteorology* 107:43–69.
- Franz D, Koebsch F, Larmanou E, Augustin J, Sachs T. 2016. High net CO₂ and CH₄ release at a eutrophic shallow lake on a formerly drained fen. *Biogeosciences* 13:3051–3070.
- Frolking S, Roulet NT, Fuglestedt J. 2006. How northern peatlands influence the Earth's radiative budget: Sustained methane emission versus sustained carbon sequestration. *Journal of Geophysical Research* 111:1–10.
- Fuß R. 2020. gasfluxes: Greenhouse Gas Flux Calculation from Chamber Measurements. R package version 0.4–4.
- Gaudig G, Krebs M. 2016. Torfmooskulturen als Ersatzlebensraum – Nachhaltige Moornutzung trägt zum Artenschutz bei (in German). *Biologie in Unserer Zeit* 46(4):251–257.
- Gaudig G, Krebs M, Joosten H. 2017. *Sphagnum* farming on cut-over bog in NW Germany: Long-term studies on *Sphagnum* growth. *Mires and Peat* 20(4):1–19.
- Gaudig G, Krebs M, Prager A, Wichmann S, Barney M, Caporn SJM, Emmel M, Fritz C, Graf M, Grobe A, Pacheco SG. 2018. *Sphagnum* farming from species selection to the production of growing media: a review. *Mires and Peat* 20(13):1–30.
- Gaudig G, Krebs M, Joosten H. 2020. *Sphagnum* growth under N saturation: interactive effects of water level and P or K fertilization. *Plant Biology* 22:394–403.
- Graf M, Bredemeier B, Grobe A, Köbbing JF, Oestmann J, Rammes D, Reich M, Tiemeyer B, Zoch L. 2017. Torfmooskultivierung auf Schwarztorf: ein neues Forschungsprojekt in Niedersachsen (in German). *Telma* 47:1109–1128.
- Gray A, Levy PE, Cooper MDA, Jones T, Gaiawyn J, Leeson SR, Ward SE, Dinsmore KJ, Drewer J, Sheppard LJ, Ostle NJ, Evans CD, Burden A, Zieliński P. 2013. Methane indicator values for peatlands: A comparison of species and functional groups. *Global Change Biology* 19:1141–1150.
- Greenup AL, Bradford MA, Mcnamara NP, Ineson P, Lee JA. 2000. The role of *Eriophorum vaginatum* in CH₄ flux from an ombrotrophic peatland. *Plant and Soil* 227:265–272.
- Grobe A, Tiemeyer B, Graf M. 2021. Recommendations for successful establishment of *Sphagnum* farming on shallow highly decomposed peat. *Mires and Peat* (accepted)
- Guéné-Nanchen M, Hugron S, Rochefort L. 2019. Harvesting surface vegetation does not impede self-recovery of *Sphagnum* peatlands. *Restoration Ecology* 27:178–188.
- Günther A, Huth V, Jurasinski G, Glatzel S. 2015. The effect of biomass harvesting on greenhouse gas emissions from a rewetted temperate fen. *Global Change Biology Bioenergy* 7:1092–1106.

- Günther A, Jurasinski G, Albrecht K, Gaudig G, Krebs M, Glatzel S. 2017. Greenhouse gas balance of an establishing *Sphagnum* culture on a former bog grassland in Germany. *Mires and Peat* 20(2):1–16.
- Günther A, Barthelmes A, Huth V, Joosten H, Jurasinski G, Koebisch F, Couwenberg J. 2020. Prompt rewetting of drained peatlands reduces climate warming despite methane emissions. *Nature Communications* 11:1–14.
- Hahn J, Köhler S, Glatzel S, Jurasinski G. 2015. Methane exchange in a coastal fen in the first year after flooding – A systems shift. *PLoS One* 10(10):1–25.
- Helfter C, Campbell C, Dinsmore KJ, Drewer J, Coyle M, Anderson M, Skiba U, Nemitz E, Billett MF, Sutton MA. 2015. Drivers of long-term variability in CO₂ net ecosystem exchange in a temperate peatland. *Biogeosciences* 12:1799–1811.
- Henneberg A, Elsgaard L, Sorrell BK, Brix H, Petersen SO. 2015. Does *Juncus effusus* enhance methane emissions from grazed pastures on peat? *Biogeosciences* 12:5667–5676.
- Hüppi R, Felber R, Krauss M, Six J, Leifeld J, Fuß R. 2018. Restricting the nonlinearity parameter in soil greenhouse gas flux calculation for more reliable flux estimates. *PLoS One* 13(7):1–17.
- Hurkuck M, Brümmer C, Kutsch WL. 2016. Near-neutral carbon dioxide balance at a seminatural, temperate bog ecosystem. *Journal of Geophysical Research: Biogeosciences* 121:370–384.
- Hütsch BW. 2001. Methane oxidation in non-flooded soils as affected by crop production—invited paper. *European Journal of Agronomy* 14:237–260.
- IUSS Working Group WRB. 2015. World Reference Base for Soil Resources 2014, update 2015. International soil classification system for naming soils and creating legends for soil maps. Food and Agriculture Organization, Rome (World Soil Resources Reports, 106).
- Johnson KA, Goody RS. 2011. The original Michaelis constant: translation of the 1913 Michaelis-Menten paper. *Biochemistry* 50(39):8264–8269.
- Juutinen S, Moore TR, Bubier JL, Arnkil S, Humphreys E, Marincak B, Roy C, Larmola T. 2018. Long-term nutrient addition increased CH₄ emission from a bog through direct and indirect effects. *Scientific Reports* 8(1):1–11.
- Krebs M, Gaudig G, Matchutadze I, Joosten H. 2018. *Sphagnum* regrowth after cutting. *Mires and Peat* 20(12):1–20.
- Leiber-Sauheitl K, Fuß R, Voigt C, Freibauer A. 2014. High CO₂ fluxes from grassland on histic gleysol along soil carbon and drainage gradients. *Biogeosciences* 11:749–761.
- Leroy F, Gogo S, Guimbaud C, Bernard-Jannin L, Yin X, Belot G, Shuguang W, Laggoun-Défarge F. 2019. CO₂ and CH₄ budgets and global warming potential modifications in *Sphagnum*-dominated peat mesocosms invaded by *Molinia caerulea*. *Biogeosciences* 16:4085–4095.
- Liu H, Lennartz B. 2019. Hydraulic properties of peat soils along a bulk density gradient – A meta study. *Hydrological Processes* 33:101–114.
- Livingston GP, Hutchinson GL. 1995. Enclosure-based measurement of trace gas exchange: applications and sources of error. Matson PA, Harris RC, editors. *Biogenic trace gases: measuring emissions from soil and water*. Oxford: Blackwell Science. 14–51.
- Lloyd J, Taylor JA. 1994. On the Temperature Dependence of Soil Respiration. *Functional Ecology* 8:315–323.
- Londo G. 1976. The decimal scale for relevés of permanent quadrats. *Vegetatio* 33:61–64.
- Marushchak ME, Pitkämäki A, Koponen H, Biasi C, Seppälä M, Martikainen PJ. 2011. Hot spots for nitrous oxide emissions found in different types of permafrost peatlands. *Global Change Biology* 17:2601–2614.
- McCarter CPR, Price JS. 2015. The hydrology of the Bois-des-Bel peatland restoration: Hydrophysical properties limiting connectivity between regenerated *Sphagnum* and remnant vacuum harvested peat deposit. *Ecohydrology* 8:173–187.
- McNeil P, Waddington JM. 2003. Moisture controls on *Sphagnum* growth and CO₂ exchange on a cutover bog. *Journal of Applied Ecology* 40:354–367.
- Murray KR, Borkenhagen AK, Cooper DJ, Strack M. 2017. Growing season carbon gas exchange from peatlands used as a source of vegetation donor material for restoration. *Wetlands Ecology and Management* 25:501–515.
- Muster C, Gaudig G, Krebs M, Joosten H. 2015. *Sphagnum* farming: the promised land for peat bog species? *Biodiversity and Conservation* 24:1989–2009.
- Myhre G, Shindell D, Bréon FM, Collins W, Fuglestedt J, Huang J, Koch D, Lamarque JF, Lee D, Mendoza B, Nalajima T, Robock A, Stephens G, Takemura T, Zhang H. 2013. *Climate Change 2013: The Physical Science Basis*. Working Group I contribution to the IPCC Fifth Assessment Report. Intergovernmental Panel on Climate Change. Cambridge: Cambridge University Press.
- Nugent KA, Strachan IB, Strack M, Roulet NT, Rochefort L. 2018. Multi-year net ecosystem carbon balance of a restored peatland reveals a return to carbon sink. *Global Change Biology* 24:5751–5768.
- Pedersen AR, Petersen SO, Schelde K. 2010. A comprehensive approach to soil-atmosphere trace-gas flux estimation with static chambers. *European Journal of Soil Science* 61:888–902.
- Pouliot R, Hugron S, Rochefort L. 2015. *Sphagnum* farming: A long-term study on producing peat moss biomass sustainably. *Ecological Engineering* 74:135–147.
- Price JS, Whitehead GS. 2001. Developing hydrologic thresholds for *Sphagnum* recolonization on an abandoned cutover bog. *Wetlands* 21:32–40.
- Quinty F, Rochefort L. 2003. *Peatland Restoration Guide*, Second Edition. Canadian Sphagnum Peat Moss Association (St. Albert, AB) and New Brunswick Department of Natural Resources and Energy (Fredericton, NB).
- R Core Team. 2019. *R: A language and environment for statistical computing*. R Foundation for Statistical Computing, Vienna, Austria.
- Regina K, Nykänen H, Silvola J, Martikainen PJ. 1996. Fluxes of nitrous oxide from boreal peatlands as affected by peatland type, water table level and nitrification capacity. *Biogeochemistry* 35:401–418.
- Rigney C, Wilson D, Renou-Wilson F, Müller C, Moser G, Byrne KA. 2018. Greenhouse gas emissions from two rewetted peatlands previously managed for forestry. *Mires and Peat* 21(24):1–23.
- Silvan N, Jokinen K, Näkkilä J, Tahvonen R. 2017. Swift recovery of *Sphagnum* carpet and carbon sequestration after shallow *Sphagnum* biomass harvesting. *Mires and Peat* 20(1):1–11.

- Strack M, Waddington JM, Lucchese MC, Cagampan JP. 2009. *Sphagnum*-dominated peatland: results from an extreme drought field experiment. *Ecohydrology* 2:454–461.
- Tiemeyer B, Freibauer A, Borraz EA, Augustin J, Bechtold M, Beetz S, Beyer C, Ebli M, Eickenscheidt T, Fiedler S, Förster C, Gensior A, Giebels M, Glatzel S, Heinichen J, Hoffmann M, Höper H, Jurasinski G, Laggner A, Leiber-Sauheitl K, Peichl-Brak M, Drösler M. 2020. A new methodology for organic soils in national greenhouse gas inventories: Data synthesis, derivation and application. *Ecological Indicators* 109: 105838.
- Tuittila ES, Komulainen VM, Vasander H, Nykanen H, Martikainen PJ, Laine J. 2000. Methane dynamics of a restored cut-away peatland. *Global Change Biology* 6:569–581.
- Turetsky MR, Kotowska A, Bubier J, Dise NB, Crill P, Hornibrook ERC, Minkkinen K, Moore TR, Myers-Smith IH, Nykänen H, Olefeldt D, Rinne J, Saarnio S, Shurpali N, Tuittila ES, Waddington JM, White JR, Wickland KP, Wilmking M. 2014. A synthesis of methane emissions from 71 northern, temperate, and subtropical wetlands. *Global Change Biology* 20:2183–2197.
- van Genuchten MT. 1980. A closed-form equation for predicting the hydraulic conductivity of unsaturated soils. *Soil Science Society of America* 44:892–898.
- Vanselow-Algan M, Schmidt SR, Greven M, Fiencke C, Kutzbach L, Pfeiffer EM. 2015. High methane emissions dominated annual greenhouse gas balances 30 years after bog rewetting. *Biogeosciences* 12:4361–4371.
- Vicheroová E, Hájek M, Hájek T. 2015. Calcium intolerance of fen mosses: Physiological evidence, effects of nutrient availability and successional drivers. *Perspectives in Plant Ecology, Evolution and Systematics* 17:347–359.
- Vybornova O, van Asperen H, Pfeiffer E, Kutzbach L. 2019. High N₂O and CO₂ emissions from bare peat dams reduce the climate mitigation potential of bog rewetting practices. *Mires and Peat* 24(4):1–22.
- Waddington JM, Day SM. 2007. Methane emissions from a peatland following restoration. *Journal of Geophysical Research: Biogeosciences* 112(3):1–11.
- Waddington JM, Price JS. 2000. Effect of peatland drainage, harvesting, and restoration on atmospheric water and carbon exchange. *Physical Geography* 21:433–451.
- Webb EK, Pearman GI, Leuning R. 1980. Correction of flux measurements for density effects due to heat and water vapour transfer. *Quarterly Journal of the Royal Meteorological Society* 106:85–100.
- Wichtmann W, Schröder C, Joosten H, Eds. 2016. *Paludiculture – Productive Use of Wet Peatlands. Climate Protection, Biodiversity, Regional Economic Benefits*. Stuttgart: Schweizerbart Science Publishers.
- Wilson D, Blain D, Cowenberg J, Evans CD, Murdiyarto D, Page SE, Renou-Wilson F, Rieley JO, Sirin AS, M. Tuittila E-S. . 2016a. Greenhouse gas emission factors associated with rewetting of organic soils. *Mires and Peat* 17(4):1–28.
- Wilson D, Farrell CA, Fallon D, Moser G, Müller C, Renou-Wilson F. 2016b. Multiyear greenhouse gas balances at a rewetted temperate peatland. *Global Change Biology* 22:4080–4095.
- Zoch L, Reich M. 2020. Torfmooskultivierungsflächen als neuer Lebensraum für Moorlibellen (in German). *Libellula* 39(1/2):27–48