

# Improving the worst way to induce affect except for all the others



Andero Uusberg  
andero.uusberg@ut.ee

Stanford University, USA  
University of Tartu, Estonia

Emotionally evocative photographs balance ecological validity with experimental control, but need to be selected carefully to avoid confounding neuroscientific outcome measures

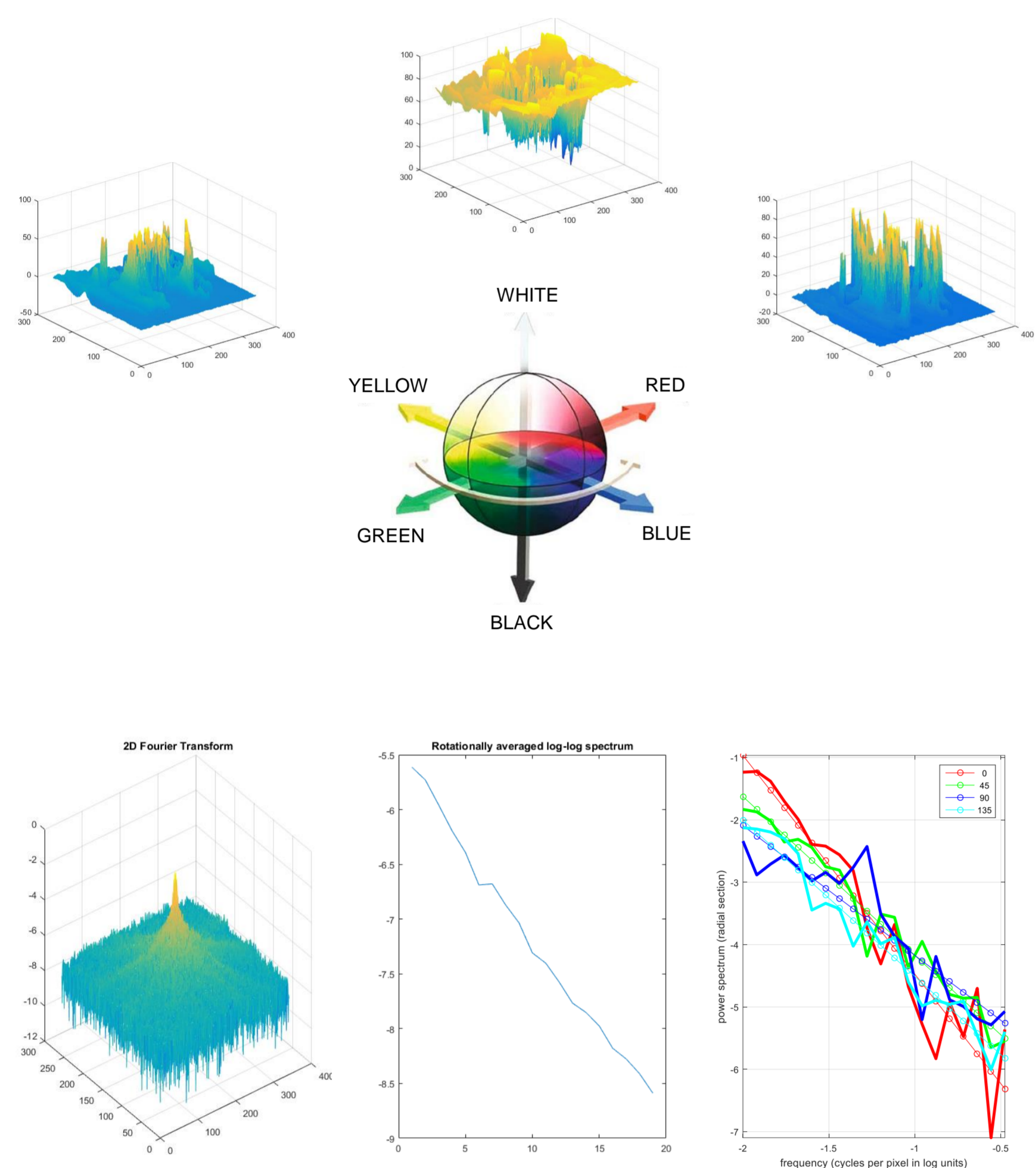
I'm working on simplifying this task by extracting perceptual image features and using them to generate balanced stimulus sets

ECOLOGICAL VALIDITY

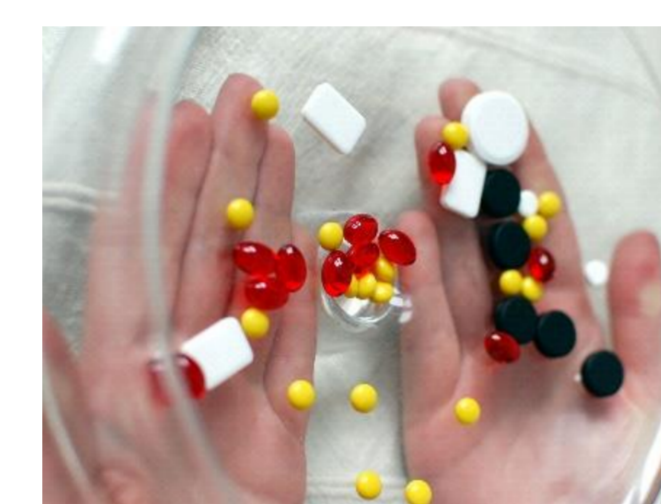
EXPERIMENTAL CONTROL



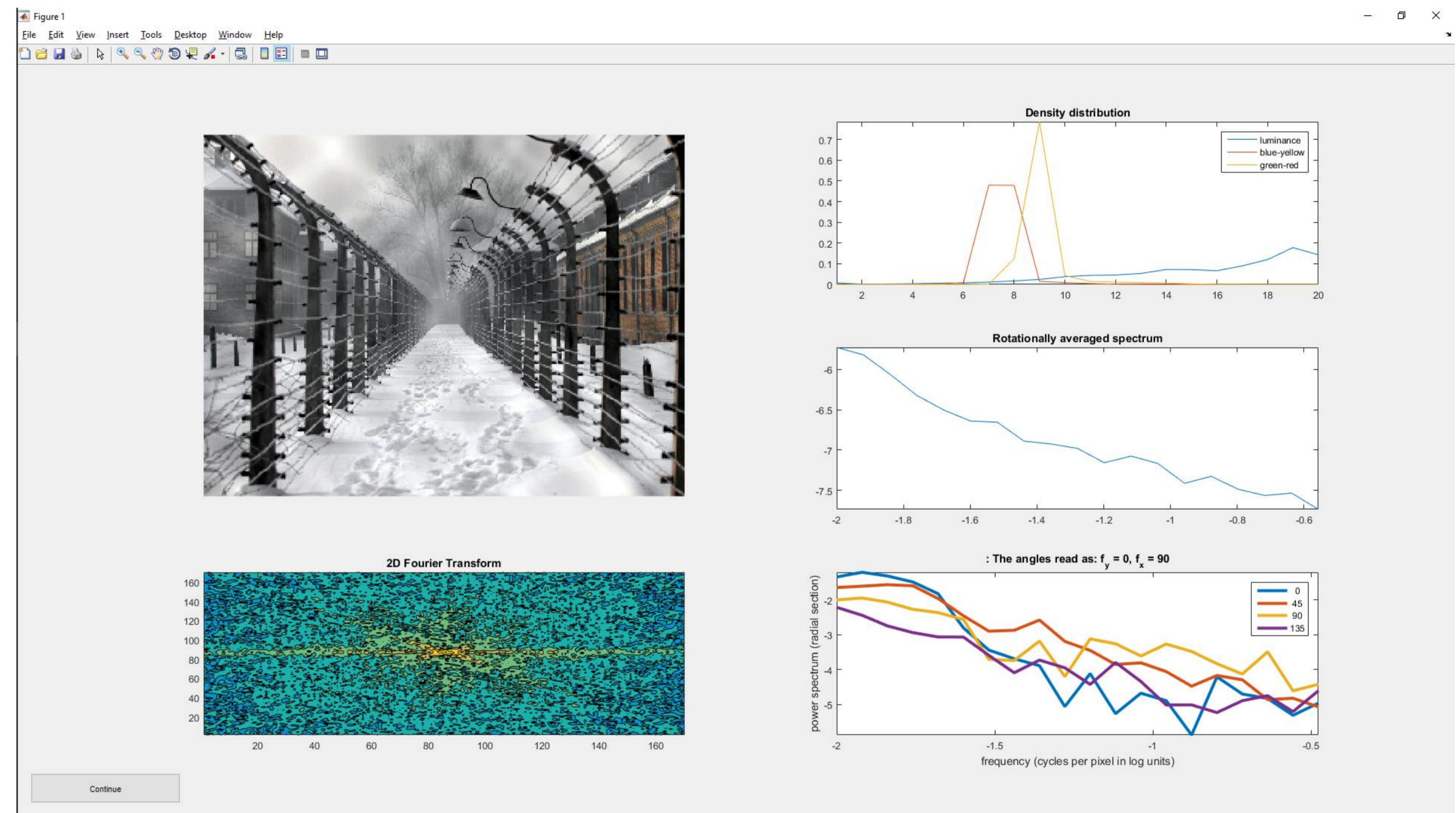
## Perceptual feature extraction



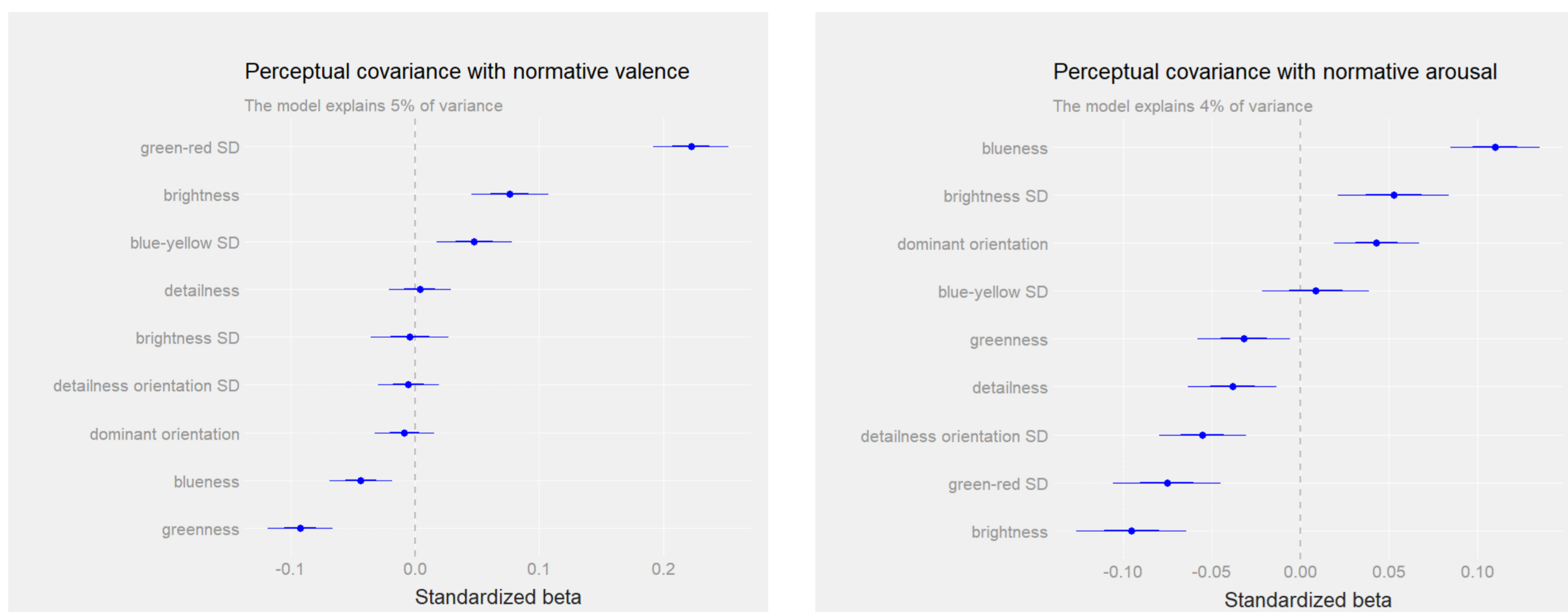
Luminance and color distribution represented by summary statistics of pixel values in the CIE Lab color space.



Spatial distribution of luminance represented by summary statistics of the 2D spatial frequency transform.



## What's the problem?



## Towards an algorithmic solution

