



MOREHealth Research Group: more than clinical data!



Authors: Marina Borges and Luisa Lopes-Conceição
Portuguese Oncology Institute of Porto, Portugal

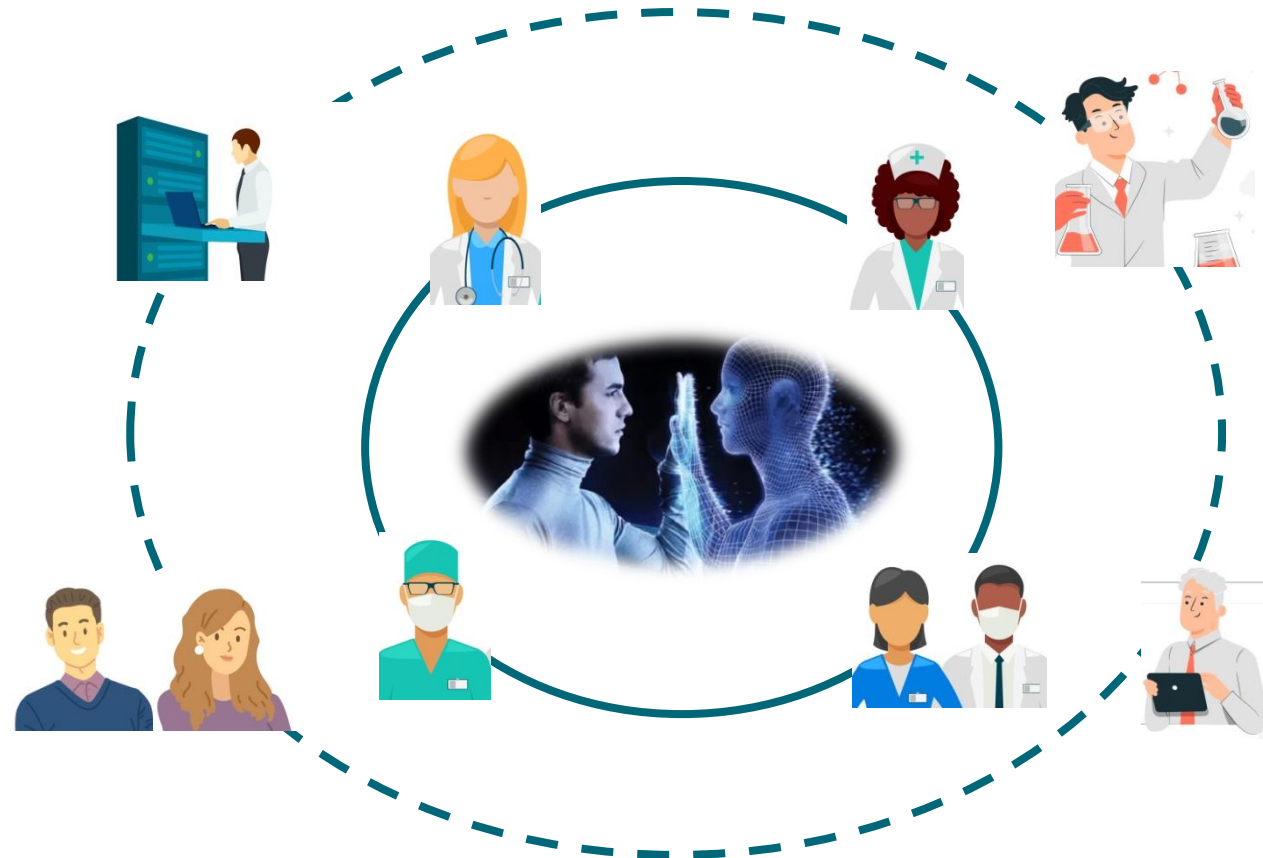
MOREHealth Research Group



To impact healthcare local and globally by producing knowledge in the following areas:
healthcare Management, Outcomes Research, and health Economics.



PROMs + PREMs



To enlarge the scope of comprehensiveness in cancer care!

Impact on Healthcare

RG based on a CCC => Strong integration with IPU's

- Small projects to solve the needs identified by healthcare professional (e.g., Early integration of palliative care in patients with advanced or metastatic lung cancer)

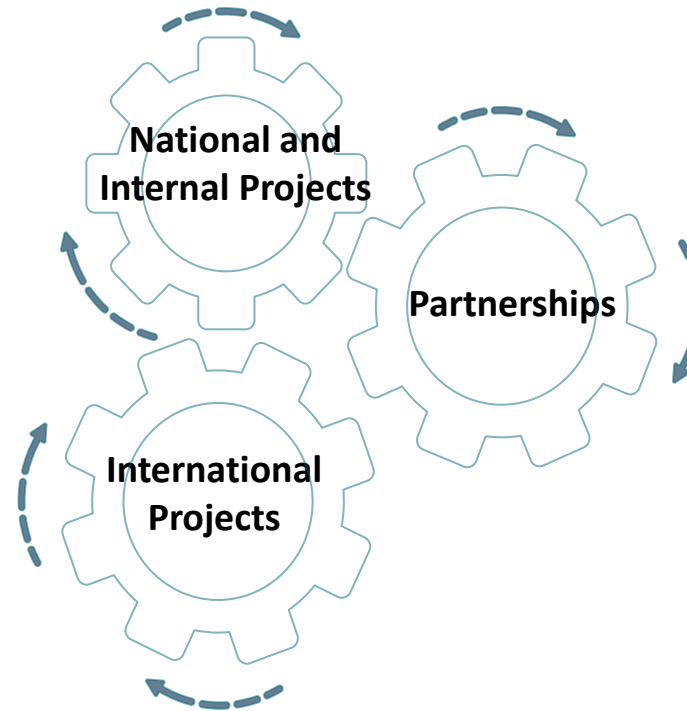


To influence stakeholders' decision-making

- Use of RWE across the medicine's lifecycle (e.g.: natural history studies, external control arms and health technology assessments);
- Participation on international project, funded by EU program, for unlock the full potential of RWD of cancer hospitals to support decision-making in oncology drugs.



Scientific Outputs



Scientific Outputs

Source: *BMC Pulmonary Medicine* (2020) 20:240
<https://doi.org/10.1186/s12890-020-01270-z>

RESEARCH ARTICLE Open Access

Real-world treatment patterns and survival outcomes for advanced non-small cell lung cancer in the pre-immunotherapy era in Portugal: a retrospective analysis from the I-O Optimise initiative

Marta Soares¹, Luís Antunes², Patrícia Redondo³, Marina Borges⁴, Ruben Hermans¹, Domy Patel⁵, Fiona Grison⁶, Robin Munro⁷, Carlos Chab⁸, Laure Laccin⁹, Melinda Daumone¹, John R. Penrod¹, John C. O'Donnell¹, Maria José Bento¹⁰ and Francisco Rocha Gonçalves¹⁰

The Breast 37 (2021) 1-4

Contents lists available at ScienceDirect
The Breast
 journal homepage: www.elsevier.com/locate/bsbre

Short communication

Comparing the cost of non-metastatic breast cancer care in a low-income vs a high-income country: A plea for an optimal allocation of health resources in Sub-Saharan Africa

Mariana Brandão^{1,2,3}, Samantha Morais^{4,5}, Assouena Guissewe^{6,7}, Genevieve Bata⁸, Marina Borges^{9,10}, Sathish Subudis^{11,12}, Susana Pereira¹³, Carla Carrilho¹⁴, Nuno Lunet^{15,16}

Open access Original research

ESMO Open Cancer Horizons

Healthcare use and costs in early breast cancer: a patient-level data analysis according to stage and breast cancer subtype

Mariana Brandão^{1,2,3}, Samantha Morais^{4,5}, Luisa Lopes-Conceição^{6,7}, Filipa Fontes⁸, Natália Araújo⁹, Teresa Dias¹⁰, Deolinda Pereira¹¹, Marina Borges^{12,13}, Susana Pereira¹⁴, Nuno Lunet^{15,16}

Borges et al. *Health Economics Review* (2021) 11:33
<https://doi.org/10.1186/s13561-021-00332-0>

Health Economics Review

RESEARCH Open Access

The addition of neoadjuvant pertuzumab for the treatment of HER2+ breast cancer: a cost estimate with real-world data

Andreia Borges^{1,2}, Filipa Pereira³, Patrícia Redondo^{1,2}, Luís Antunes^{4,5}, Cláudia Vieira^{1,6,7}, Pedro Antunes⁸, Maria José Bento^{8,9}, Susana Sousa¹, José Machado Lopes¹, Francisco Rocha-Gonçalves¹⁰, Joaquim Abreu de Sousa⁹, Deolinda Sousa Pereira³ and Marina Borges^{1,2}

blood Regular Article

GENE THERAPY

Comparative effectiveness of ZUMA-5 (axi-cel) vs SCHOLAR-5 external control in relapsed/refractory follicular lymphoma

Paola Ghione^{1,2,4}, M. Lia Palomba^{2,4}, Anik R. Patel⁵, Sabela Bobillo⁶, Kevin Deighton⁵, Caron A. Jacobson⁶, Myrna Nahas⁷, Anthony J. Hawari⁷, A. Scott Jung⁸, Steve Karim⁹, Julia Thornton Snider⁹, Sathya S. Neelapu⁹, Maria Teresa Ribeiro⁹, M. Alan Brookhart^{10,11}, Hema Chesiquem¹², John Radford¹³ and John G. Gribben¹⁴



Future Directions

- Improve the quality of RWD/RWE (e.g.: OMOP CDM,...);
- Increase the number of international collaborations, including the participation in projects with EU funding;
- Enhance the impact of research activities in decision-making and/or in clinical practice;
- Move towards Patient-Centered Outcomes Research.



Thank you!

marina.borges@ipoporto.min-saude.pt
marinaaborges@sapo.pt