



## UvA-DARE (Digital Academic Repository)

### Unequal policy responsiveness in the Netherlands

Schakel, W.

**DOI**

[10.1093/ser/mwz018](https://doi.org/10.1093/ser/mwz018)

**Publication date**

2021

**Document Version**

Final published version

**Published in**

Socio-Economic Review

**License**

CC BY-NC

[Link to publication](#)

**Citation for published version (APA):**

Schakel, W. (2021). Unequal policy responsiveness in the Netherlands. *Socio-Economic Review*, 19(1), 37–57. <https://doi.org/10.1093/ser/mwz018>

**General rights**

It is not permitted to download or to forward/distribute the text or part of it without the consent of the author(s) and/or copyright holder(s), other than for strictly personal, individual use, unless the work is under an open content license (like Creative Commons).

**Disclaimer/Complaints regulations**

If you believe that digital publication of certain material infringes any of your rights or (privacy) interests, please let the Library know, stating your reasons. In case of a legitimate complaint, the Library will make the material inaccessible and/or remove it from the website. Please Ask the Library: <https://uba.uva.nl/en/contact>, or a letter to: Library of the University of Amsterdam, Secretariat, Singel 425, 1012 WP Amsterdam, The Netherlands. You will be contacted as soon as possible.

Article

# Unequal policy responsiveness in the Netherlands

Wouter Schakel  \*

Department of Political Science, University of Amsterdam, Amsterdam, the Netherlands

\*Correspondence: w.schakel@uva.nl

## Abstract

Scholars have long recognized that equality in policy responsiveness is potentially undermined by the existence of economic inequality. However, there is still a lack of empirical research testing whether and how this actually occurs, especially outside of the USA. This study takes up the question whether unequal representation also exists in a country that is in some ways a least-likely case, namely the Netherlands. It does so by linking public opinion to policy on 291 potential policy changes between 1979 and 2012. This reveals, first, that policy responsiveness is much stronger for high incomes than for low or median incomes. Second, an exploration of the underlying causal mechanisms finds support for the role of political participation of wealthier versus poorer citizens, while the socioeconomic background of parliamentarians relative to the broader public does not seem to matter. Corporate lobbying may also contribute to unequal responsiveness.

**Key words:** income distribution, inequality, power

**JEL classification:** D31 (personal income, wealth and their distributions)

## 1. Introduction

Equality is a core tenet of, and justification for, democracy (Dahl, 1989). However, political equality is potentially undermined by the existence of economic inequality. As the gap between rich and poor increases across the range of advanced democracies, commentators increasingly wonder whether this results in—or is itself already the result of—unequal political representation (Hager, 2018).

The USA stands out as the country where economic inequality has grown fastest in recent decades, and so it is no surprise that most research on unequal representation has been conducted there. The central finding that emerges from this literature is that political outcomes are systematically biased toward the preferences of the rich (Gilens, 2012; Gilens and Page, 2014; Bartels, 2016). An obvious question is whether this finding can be generalized to other

contexts. This is not at all self-evident, given that the USA is arguably a most-likely case. Its extreme levels of economic inequality are a major reason for this, but so is the huge flow of money in American politics (Lessig, 2011) and, related to that, the fact that most members of Congress are millionaires (Center for Responsive Politics, 2018).

This article takes up the question whether unequal representation also exists in a country that is in some ways a least-likely case, namely the Netherlands. The level of income equality in the Netherlands is among the lowest in the world and has barely increased in the past few decades (Hager, 2018). Furthermore, financial donations play a very limited role in Dutch elections and its highly proportional electoral system should amplify the political voice of the poor (Iversen and Soskice, 2006).

Beyond studying a least-likely case, the current study offers two substantive contributions to the nascent literature on unequal representation in Europe. First, I analyze policy changes instead of public spending (Peters and Ensink, 2015), party positions (Giger *et al.*, 2012) or elite surveys (Lupu and Warner, 2017). Although the latter are all important, they are nevertheless only indirect indicators of political inequality. As Caughey and Warshaw (2018, p. 250) put it, ‘government policies (...) are arguably the ultimate metric of representation’. Second, I attempt to shed some light on relevant causal mechanisms that may bring about unequal policy responsiveness. I focus on three of the most commonly suggested mechanisms for disproportionate political representation of wealthy citizens: political participation (Flavin, 2012), descriptive representation (Carnes, 2013; Hakhverdian and Schakel, 2017) and interest-group lobbying (Gilens, 2012). This second contribution is more exploratory than the first, owing to more stringent data limitations. But available empirical information provides some leverage to clarify and provide preliminary evidence on patterns that future research can further explore.

To develop these lines of inquiry into representation, I largely follow the research design used by Martin Gilens in his recent work on responsiveness in the USA (Gilens, 2012). Focusing on the Netherlands, I selected 291 questions from pre-existing surveys conducted in the Netherlands between 1979 and 2012, each question asking respondents for their opinions on particular policy changes. For each of these, coders tracked down whether the policy change in question was enacted in the subsequent 4 years following the survey.

The main finding of such analysis is that, amidst general policy responsiveness to public opinion, responsiveness is strongly skewed toward wealthier citizens. And when preferences between income groups diverge, only the higher incomes have an effect on policy change. When it comes to possible causal mechanisms, political participation—measured as voting during national elections—of wealthy versus poorer citizens seems to matter, though it cannot fully account for the gap in responsiveness. The expectation following from the literature on descriptive representation is not clearly supported. Finally, there are good reasons to think that lobbying activity by corporations contributes to unequal responsiveness, with civil society groups playing a subordinate role.

All in all, what emerges is a very sobering picture of democracy in the Netherlands. Moreover, the key elements in this picture—the presence of economic inequality, the association of income with political preferences, and inequalities in political participation, descriptive representation and interest-group lobbying—are not just found in the Netherlands but also in many other Western European countries. Hence, there are good reasons to expect political inequality to arise in those countries as well.

## 2. Framework

Over the past decades, a strong body of evidence has mounted in support of a causal effect of public opinion on policy, most notably in the USA but also in other advanced democracies (for overviews of the US literature, see [Shapiro, 2011](#); [Canes-Wrone, 2015](#); for other countries, see [Brooks and Manza, 2007](#); [Hobolt and Klemmensen, 2008](#); [Soroka and Wlezien, 2009](#); [Hakhverdian, 2010](#)). This literature shows that there is general responsiveness to public preferences, at least in the aggregate over an extended period of time and over many policy issues. A question that subsequently presents itself is whether there are biases in responsiveness, that is, whether policy makers systematically favor the preferences of some groups in society over others. This is, very broadly, the question that motivates the current study.

To answer it, we can start with the view that there are three basic conditions that have to be met before unequal responsiveness can arise ([Winters and Page, 2009](#)). First, a resource should be unequally distributed in society. Second, this resource should be correlated with certain political preferences. Third, it should be possible for this resource to be translated into political influence in some way.

Income stands out as a resource for which these criteria are potentially met in many countries, including the Netherlands. First, income is unequally distributed in the Netherlands, as everywhere else ([Alvaredo et al., 2018](#)). At the same time, income inequality is low in the Dutch context compared to most other countries. This is particularly true when looking at top incomes, which is presumably the most relevant measure when looking at the overrepresentation of the rich. In 2010, the top 1% of the income distribution earned 6.4% of total income in the Netherlands, joining Denmark as reserving the smallest share for the top 1% of any country in the world. That same year, the top 10% earned 30.6% of all income, which is slightly more than they earned in Denmark (26.9%) but comparable to other Scandinavian countries (e.g. Sweden at 31.0%) and still among the lowest in the world. In comparison, the top 1% took home 20% of all earnings in the USA in 2010, whereas the top 10% took almost half (47.1%).<sup>1</sup> A lower level of inequality suggests that biases in responsiveness will be smaller. The logic is simple: even if the rich have different political preferences than the poor and more ways to influence the policy process in the Netherlands, their advantage over the poor is smaller because they have less money than wealthy Americans to use as political currency.

Second, income can only bring about unequal responsiveness if it is correlated with political preferences. Even if some citizens have more money than others and they can use this money to influence the policy process, policy will fit the preferences of the poor equally well as the preferences of the rich if both want the same thing on an issue ([Soroka and Wlezien, 2008](#)).<sup>2</sup> In support of this second condition, a large literature has shown that income predicts various political preferences ([Van de Werfhorst and De Graaf, 2004](#); [Gilens, 2009](#); [Schakel and Hakhverdian, 2018](#)). Regardless of the exact source or mechanism behind this

1 All figures were obtained from the World Inequality Database ([wid.world](#), accessed on 1 September 2018). 2010 was chosen because this was the most recent year for which data were available for some countries.

2 From a normative standpoint, 'democracy by coincidence' is less desirable than genuine equality in responsiveness ([Gilens, 2015](#)), but the point is that these cannot be distinguished in terms of policy outcomes.

association (cf. [Van de Werfhorst and De Graaf, 2004](#); [Rehm, 2009](#)), the association itself is uncontroversial. What is not yet clear is how this differs between countries, and whether the Netherlands is also a least-likely case with regard to this condition.

The third condition is where much is still unknown. That is, it is unclear to what extent income can be used to gain influence in the political sphere. In the USA, a growing literature attempts to answer this question, with the work of Martin Gilens as the most extensive analysis so far ([Gilens, 2012](#); [Gilens and Page, 2014](#)). Gilens shows that, when preferences diverge between income groups, ‘government policy appears to be fairly responsive to the well-off and virtually unrelated to the desires of low- and middle-income citizens’ ([Gilens, 2012](#), p. 81).<sup>3</sup> Other research has found evidence for unequal responsiveness in parties’ campaign appeals ([Rigby and Wright, 2013](#)), state-level policies ([Flavin, 2014](#)) and roll-call votes in Congress ([Ellis, 2012](#); [Bartels, 2016](#)). Although there is no consensus (cf. [Ura and Ellis, 2008](#); [Brunner et al., 2013](#)), the evidence for unequal responsiveness to income groups in American politics seems quite strong overall.

But why would we expect this finding to apply to a country like the Netherlands? I am not the first to test this research question in a European context, and previous studies have found evidence for unequal responsiveness in Europe ([Giger et al., 2012](#); [Peters and Ensink, 2015](#); [Elsässer et al., 2017](#)). These studies are not without their limitations, key among which is that most of them are not based on analyses of government policy, leaving open the possibility that policy outcomes are more equally responsive than, for instance, party positions. But even putting this aside, previous findings cannot just be assumed to hold for the Netherlands because it is arguably a least-likely case to find unequal responsiveness.

What makes the Netherlands a least-likely case? One reason is the much lower level of income inequality in the Netherlands, as discussed earlier. Another important difference between the Netherlands and the USA is found in the role of money in politics. The vast and growing campaign contributions in American elections are the most common and perhaps the most plausible explanation of unequal responsiveness there ([Dawood, 2015](#); [Ferguson et al., 2016](#); [Page and Gilens, 2017](#), pp. 90–130). In contrast, political donations play a much smaller role in Dutch politics. Even compared to other European countries, elections in the Netherlands are inexpensive ([Nassmacher, 2009](#), pp. 109–120).<sup>4</sup> Since the amount of campaign contributions is strongly related to income ([Schlozman et al., 2012](#); [Bonica et al., 2013](#)), this is expected to dampen unequal responsiveness along income lines. A third difference lies in the electoral system. Proportional representation has been shown to be closely associated with left-wing governments and increased redistribution ([Iversen and Soskice, 2006](#)), and the Netherlands has one of the most proportional systems in the world. Finally, the socioeconomic background of representatives seems less skewed in the Netherlands compared to the USA, where more than half of all members of Congress are millionaires ([Center](#)

3 This conclusion has come under fire from some ([Enns, 2015](#); cf. [Gilens, 2015](#); [Branham et al., 2017](#)).

4 The majority of Dutch Party financing comes from membership dues and public subsidies ([Veling et al., 2018](#)). The money that flows in from private donations amounted to €24 million between 2015 and 2017 (in current euros). However, the vast majority of this came from politicians themselves, and in particular from representatives of the Socialist Party, for whom it is mandatory to donate their income to the party in return for a smaller fee. Excluding this, private donations totaled less than €1 million between 2015 and 2017 ([De Vries and Boogaard, 2017](#)).

for *Responsive Politics*, 2018).<sup>5</sup> Following the growing literature that explores the effects of politicians' personal backgrounds on their views and behavior (Burden, 2007; Carnes, 2013), this can also be expected to lead to more equal responsiveness.<sup>6</sup>

All of this makes the Netherlands a least-likely case, but even in this least-likely case I expect income inequality to affect responsiveness, such that the opinion-policy link will be stronger for citizens with high incomes than for citizens with lower incomes. In other words, many prominent causal mechanisms from the American context do not apply in the Netherlands, but there are some mechanisms that I *do* expect to apply. Three, in particular, have often been suggested in both the American and European literature: political participation (Flavin, 2012), descriptive representation (Carnes, 2013; Hakhverdian and Schakel, 2017) and interest-group lobbying (Gilens, 2012). To be clear, I do not claim that this list is exhaustive, only that all three are plausible mechanisms and, therefore, worth exploring. I discuss each of them below.

The first and perhaps most obvious mechanism linking income to political influence is electoral participation in other forms than political donations. There is quite clear evidence that people with high incomes participate more in politics than those low incomes, through such activities as voting and working for a party (Gallego, 2007). Moreover, American research indicates that voters are better represented in Congressional roll-call votes than non-voters, for straightforward reasons: voters have more influence over who ends up in office, they communicate their preferences to politicians more clearly and they provide more incentives for politicians to act upon these preferences (Griffin and Newman, 2005). Together, these arguments suggest that political participation is a plausible causal mechanism connecting income to responsiveness.<sup>7</sup>

Second, it is worth singling out the most intensive form of political participation of all: holding public office. While the Dutch parliament is not the 'millionaire's club' that the US Congress is, it is by no means representative of the Dutch population. This statement should be qualified by noting that there are no attempts, to my knowledge, to estimate the (previous) income or wealth of parliamentarians in the Netherlands. Yet, we do know that the Dutch parliament is highly skewed in terms of education, a related variable, prompting claims that the Netherlands is a 'diploma democracy' (Bovens and Wille, 2017). Moreover, although the presence of government ministers from middle-class backgrounds has increased in recent decades, around 40% are still from the upper class while only 10% come from working class families (Bovens and Wille, 2011, p. 71). Hence, even without exact information on the net worth of Dutch politicians, it is likely that they are mostly in the upper deciles of the population. If this informs their political views and priorities, this may also be a plausible explanation of biased responsiveness.

The third possible mechanism is that the views represented by interest groups may align more closely with the views of the rich than the poor. Here, it makes sense to distinguish

5 In a recent paper, Eggers and Klačnja (2018) estimate the proportion of millionaires in the US Congress to be about three quarters.

6 All of these considerations are summed up in the Varieties of Democracy database. On the question whether 'political power [is] distributed according to socioeconomic position', experts rank the Netherlands as the 6th most equal country in the world since 1980, while the USA ranks 62nd.

7 The US literature has not found clear support for the mediating role of participation (Flavin, 2012; Bartels, 2016), but I see no reason to rule out its relevance for the Dutch context at this stage.

between two broad types of interest groups, namely civil society groups and corporations. Civil society groups, such as consumer and environmental organizations, can contribute to unequal responsiveness if (a) membership of these groups is positively correlated with income, (b) people join these groups (in part) to influence policy and not just to get membership benefits, (c) civil society groups take their members' views into account when trying to change policy and (d) civil society groups are successful in changing policy. Although all of these conditions seem plausible, it remains to be seen whether they are met strongly enough to increase inequality in responsiveness.

When it comes to corporations and their associated lobby groups, we may assume that their political stances are more similar to the preferences of the rich than the poor, certainly on economic issues. The opposite should apply to trade unions. The plausibility of this mechanism therefore hinges on the extent to which corporations are more influential in the policy process than unions. Research in the USA has indicated that this is the case, exploring mainly the instrumental sources of this influence (Ferguson, 1995; Hacker and Pierson, 2010; Gilens and Page, 2014). The strong corporatist tradition in the Netherlands would suggest that this does not apply to the Netherlands, but I know of no direct test of this hypothesis (cf. Van Waarden, 1992). Furthermore, Dutch corporations may still have a structural advantage over labor as drivers of economic growth and employment (Lindblom, 1982). All in all, many questions are unanswered about both types of interest groups, but in both cases there is at least the possibility that they contribute to an economic bias in responsiveness.

To sum up, the overarching hypothesis of this article is that policy responsiveness is stronger for citizens with high incomes than for citizens with middle or low incomes. In addition, more tentative hypotheses state that this unequal responsiveness can be explained by biases in electoral participation, the socioeconomic background of representatives and interest-group lobbying.

### 3. Data

To analyze the policy implications of citizen attitudes in the Netherlands, I follow the research design used by Martin Gilens (2012). The basic idea is to gather a large number of questions from pre-existing surveys that ask respondents for their opinions on specific policy changes. These questions can cover all kinds of topics, the only common denominators between them being that they should fall under the authority of the national government and they can be linked to subsequent policy changes. For each question, coders could then track down whether the policy change was passed in the years following the survey.

A major reason for adopting this research design is its focus on policy outcomes (Hacker and Pierson, 2014). For studies in related areas, such as descriptive and symbolic representation, the question always remains to what extent a specific conclusion matters for policy. Policy is what affects the lives of citizens in many important ways, arguably more so than other dimensions of representation. The current method bypasses all intervening steps to go straight from public opinion to policy outcomes. Another advantage of this approach is that it eschews the use of overarching ideological scales, such as the left–right or liberal–conservative scale. Although there are various (practical) upsides to these scales, they have clear downsides as well. Ideological scales may confuse consistency with extremity (Broockman, 2016), they can mean different things to different groups in society (Bauer *et al.*, 2017) or



change in meaning over time (De Vries *et al.*, 2013), and they can lead to overly rosy conclusions about the quality of representation (Schakel and Hakhverdian, 2018).

Survey questions that were asked within less than 2 years of another question on the same specific issue were discarded. Furthermore, I only used questions about policy changes that were not yet enacted at the time of the survey to decrease the possibility of reverse causation. This results in a collection of 291 survey questions.<sup>8</sup> These questions were asked between 1979 and 2012 and are spread fairly evenly across time, with the exception of a peak in the period 2010–2012. The sources of the survey questions are listed in Online Appendix A, while the complete list of all questions can be found in Online Appendix B.

It is important to add that the survey questions differ from those used by Gilens in the sense that he only used questions that were specifically asked in response to current events, often by media organizations. Due to more limited availability of survey data in the Netherlands, only half of the questions in the sample come from such organizations, while the other half come from repeated surveys such as the Dutch Parliamentary Election Study. Some of the questions in those surveys explicitly reference current events, but this still leaves a minority of cases where questions about policy preferences were potentially included for other reasons than to tie in with a current debate. If these include questions that are not very salient to either the public or political actors, but respondents still express an opinion because they are asked to, this may result in attenuation bias in the opinion–policy link.

### 3.1 Independent variable: citizen attitudes

After gathering the survey questions, I calculate for each question how much support the policy change has among respondents. In each case, the possible answers are recoded to two categories, change (1) or no change (0), and the independent variable is the percentage of respondents that favors change.<sup>9</sup> Hence, gradations in support or opposition, such as the difference between somewhat and strongly supporting a policy, are not taken into account. Moreover, respondents that answer ‘don’t know’, ‘no opinion’ or ‘neither for nor against’ are not considered when calculating this percentage.

For the measures of possible differences in support for policy changes across income groups, I calculate scores at various percentiles by regressing the recoded questions on household income and its squared term (using probability weights whenever available) and taking the resulting predicted scores at various points in the income distribution. This approach follows Gilens and was used because different surveys often have a different number of income categories, which means one cannot directly compare the lowest and highest categories.<sup>10</sup> The precise positioning of low- and high-income groups is somewhat arbitrary, especially when expressed in percentiles. The baseline models focus on the 10th versus 90th

8 A slightly larger number of questions were selected for the coding procedure (305), but in 14 cases the policy outcome could not be coded or the outcome was coded as partial change. These are excluded from the analysis.

9 There are a number of questions that can be answered in two directions, asking respondents, for example, whether they want to increase or decrease unemployment benefits. In those cases, I look which of the two directions contains more respondents overall and the independent variable is the percentage of respondents that positions themselves on this side.

10 See Gilens (2012, pp. 61–62) for a more detailed explanation of this procedure.



percentiles, but this will be varied as a robustness check. Middle income is measured, naturally, as the 50th percentile.

For the imputation procedure to yield reasonably reliable estimates, the original variables should have a minimum number of categories. That is to say, it is hard to estimate the preferences at the 90th income percentile when there are only two or three income groups. Here, I only used surveys that had at least five income groups, although this number is based more on practical experience than any mathematical deduction. The average number of income categories is around 14 for the surveys used in the analysis.

### 3.2 Dependent variable: policy change

For each survey question, coders tracked down whether the policy change was enacted or not in the first 4 years following the survey. The dependent variable is therefore a dichotomous measure; either the measure passed (1) or it did not (0). If the change was not enacted during this period, this is coded as not having passed. If a change took place in the opposite direction of the question, for instance, if unemployment benefits were decreased when respondents were asked if they wanted to increase them, then this was coded as 0 as well.

Coding the policy outcomes is a laborious process that involves going through official announcements, legislative changes and news articles. This task was performed by two people, who each coded about half of the survey questions. An intercoder reliability test, calculated for a random sample of 40 questions, resulted in a Krippendorff's alpha of 0.74.<sup>11</sup>

## 4. Findings

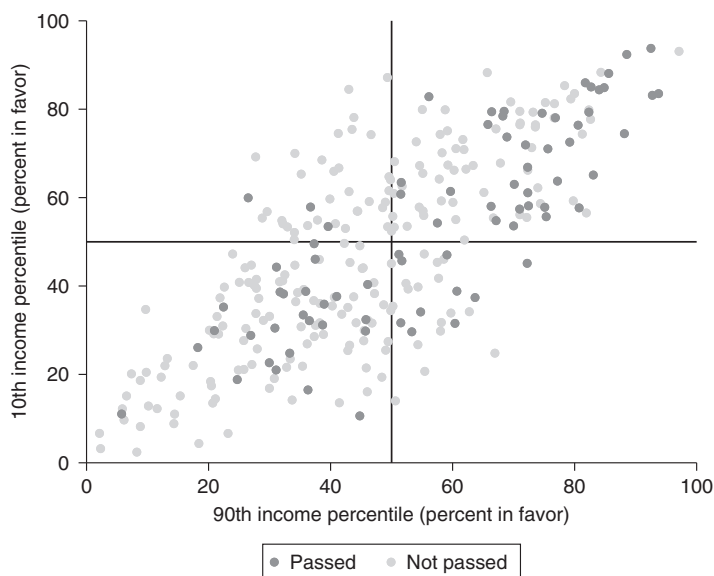
The findings will be presented in the order of the theoretical framework. The first and longest part will address whether income has a positive effect on policy responsiveness, starting with some descriptive information. The second part will discuss the mechanisms of political participation, descriptive representation and interest-group lobbying, in turn.

### 4.1 Unequal policy responsiveness

As a first impression of the findings with regard to both public opinion and policy changes, [Figure 1](#) shows the preferences of citizens with low incomes (10th percentile) and high incomes (90th percentile) on all 291 issues. The dark-grey dots indicate policy changes that were passed, whereas the lighter dots are policy changes that were not passed. Horizontal and vertical lines at 50% divide the observations into four quadrants. Several things stand out.

First, the preferences of the two groups are highly correlated. For the 10th and 90th income percentile, the correlation is 0.76; the 50th and 90th income percentiles have a correlation of 0.87. This strong association mirrors patterns found in the USA ([Soroka and Wlezien, 2008](#); [Branham \*et al.\*, 2017](#)). In part, this might reflect the fact that different groups are exposed to similar stimuli from their environment, such that many policies are popular or unpopular among all of them, even if they differ in their level of support or opposition. In line with this, in only 22% of all cases, there is a majority of low-income citizens in support of a policy change while a majority of high-income citizens is opposed, or vice versa (the

<sup>11</sup> Full documentation of the coding procedure, including the intercoder reliability test, is available upon request.



**Figure 1.** Low- and high-income preferences.

upper-left and lower-right quadrants of [Figure 1](#)). However, this strong relation might also partly reflect measurement error that affected all respondents of a specific survey.

Second, although the preferences are strongly correlated, [Figure 1](#) shows that there are also clear differences between income groups. The average absolute difference between the preferences of the 10th and 90th income percentiles is 12 percentage points. This makes it clear that income provides clear ‘room’ for unequal responsiveness, in line with the second condition discussed in the theoretical framework. For now, it is clear that income provides clear ‘room’ for unequal responsiveness, in line with the second condition discussed in the theoretical framework.<sup>12</sup> Third, [Figure 1](#) indicates that most potential policy changes are not adopted. In fact, this only happens in 27% of all cases.<sup>13</sup> Fourth, policy change is unlikely when the poor are in favor while the rich are mostly opposed (the upper-left quadrant). When the opposite occurs, change is more likely (the lower-right quadrant). Fifth, policies are especially likely to be adopted when a clear majority of the rich are in favor of them, indicated by the dark-grey dots on the right side of the figure.

To learn more about the effect of opinion on policy, [Table 1](#) presents the results of logistic regression models where the dependent variable is policy change and the independent variables are the preferences of the different income groups. In general, public preferences have a significant positive effect on the dependent variable. At the 50th income percentile,

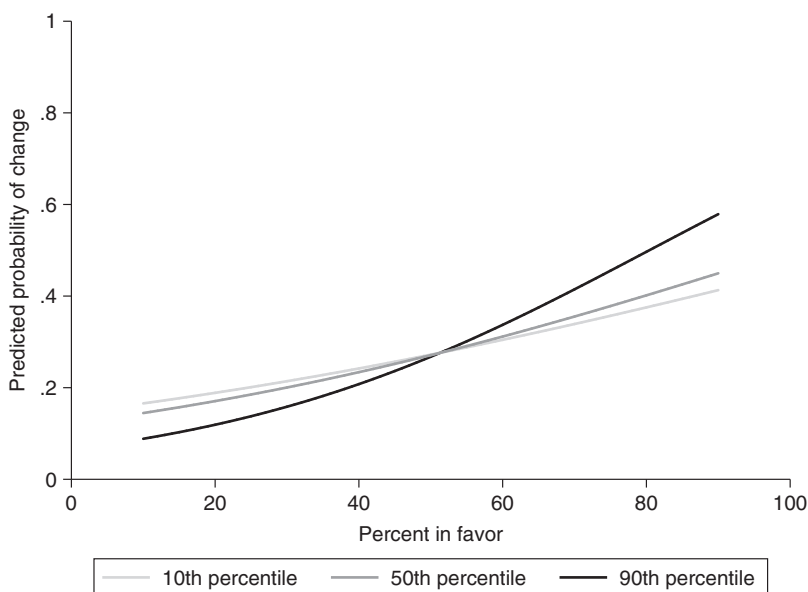
12 As a comparison, the average absolute difference between women and men is six percentage points.

13 This is very similar to what [Gilens \(2012\)](#) finds in the USA, but given the difference in the nature of the survey questions mentioned above, it may not be wise to conclude that both countries have similar status quo biases.

**Table 1.** Logistic regression models of income groups

	Model 1 (P10)	Model 2 (P50)	Model 3 (P90)
Odds ratio	1.016** (0.006)	1.020*** (0.006)	1.034*** (0.007)
Constant	0.170*** (0.058)	0.139*** (0.049)	0.070*** (0.028)
Pseudo R <sup>2</sup>	0.020	0.030	0.072
N	291	291	291

\* $P < 0.10$ ; \*\* $P < 0.05$ ; \*\*\* $P < 0.01$  (two tailed).

**Figure 2.** Predicted probability of policy change by income.

for example, an increase in support of 1% multiplies the odds of a policy change being enacted by about 1.02. At the same time, this effect clearly increases with income.<sup>14</sup>

To illustrate these findings, Figure 2 contains the predicted probabilities of a policy being passed at different levels of support among low, middle and high incomes, corresponding to models 1–3 presented earlier.<sup>15</sup> The steeper line for the 90th income percentile indicates stronger responsiveness to their views. That is, policy change is very unlikely (around 10%) if they are largely opposed to it, while it is quite likely (around 60%) if they are largely in favor.

14 The difference between the coefficients of the 10th and 90th income percentiles is on the edge of statistical significance ( $P = 0.064$ ).

15 To prevent clutter, confidence intervals are not included in the figure.

**Table 2.** Logistic regression models of income groups when preferences diverge

	10th versus 90th percentiles		50th versus 90th percentiles	
	Model 4 (P10)	Model 5 (P90)	Model 6 (P50)	Model 7 (P90)
Odds ratio	1.010 (0.010)	1.057*** (0.014)	0.995 (0.013)	1.038** (0.017)
Constant	0.207*** (0.109)	0.020*** (0.015)	0.527 (0.363)	0.061*** (0.055)
Pseudo $R^2$	0.007	0.123	0.001	0.048
N	145	145	93	93

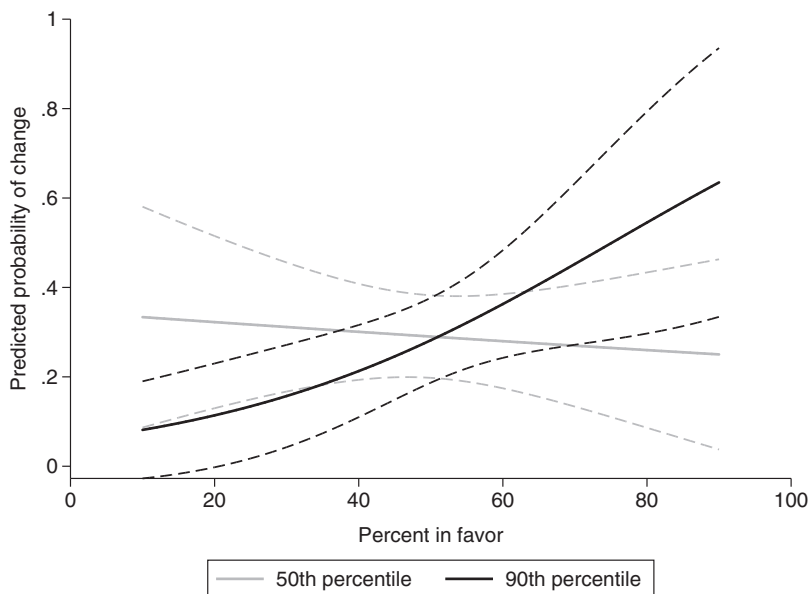
\* $P < 0.10$ ; \*\* $P < 0.05$ ; \*\*\* $P < 0.01$  (two tailed).

Although these results suggest some inequality in responsiveness, they also suggest that policy is responsive to all income groups. However, given the strong correlations between the views of these groups, it may not be the case that they all independently influence policy. The obvious next step is therefore to see what happens when the preferences of income groups diverge, which we can do by limiting the analysis to issues where preferences between two selected groups differ by, for instance, 10 percentage points, as Gilens (2012) does. This is done in Table 2.

Strikingly, the preferences of the 90th income percentile continue to have a strong effect when they diverge from the 10th and 50th percentiles, while the effect of the latter's preferences is indistinguishable from zero. This suggests that median citizens in terms of income are only represented to the extent that they happen to agree with the rich. Another way to test this idea is to interact the preferences of, for instance, the 90th income percentile with the difference in opinion with the 10th percentile. This produces the same result: the 90th percentile continues to have a large effect regardless of the difference in opinion (with the interaction term being small and insignificant), while the 10th and 50th percentiles only have an effect when the difference in opinion is small (Online Appendix C).

Figure 3 illustrates these findings by plotting the predicted probabilities of policy change at different levels of support among the 50th and 90th income percentiles when the difference in opinion between them is at least 10 percentage points. This corresponds to models 6 and 7 presented earlier. The figure shows that when median and high incomes disagree on a policy the former no longer have a discernible effect on policy change, while the latter are still influential.

These findings are strikingly similar to those of Gilens (2012) for the USA. Needless to say, it is important to check whether they are robust to alternative approaches and specifications. One such alternative approach is to use a different measure of unequal responsiveness, the so-called win rate (Branham *et al.*, 2017). Here, we only look at cases where a majority of one group is opposed to a policy change, whereas the majority of another group is in favor of it, or vice versa. Table 3 contains an example of this, comparing the win rates of low- and high-income citizens. When a majority of those with low incomes is in favor of change while high incomes are mostly opposed, the policy is enacted in 3 cases and not enacted in 35 cases. When the positions are reversed, the policy is enacted in 10 cases and not enacted in 16 cases. We can calculate each group's win rate by dividing their number of 'wins' by the



**Figure 3.** Predicted probability of policy change by income when preferences diverge (dotted lines indicate 95% confidence intervals).

**Table 3.** Win rates of low- and high-income citizens

	Low favor and high oppose	High favor and low oppose	Total wins	Win rate (%)
Low win	3	16	19	30
High win	35	10	45	70

total number of observations. This is 30% for low incomes and 70% for high incomes. Similar rates are obtained when we compare median and high incomes (respectively, 33 and 67%). With the understanding that this measure underestimates unequal responsiveness because it disregards what happens at other places in the preference distribution other than the middle, and because any status quo bias provides a lower bound of ‘wins’ to both groups, this is in line with the findings presented earlier.

A second important robustness check is to control for individual-level variables that are correlated with income. The most essential of these is education because this plausibly meets the same three criteria for unequal representation as income. In line with this, some commentators have argued that Dutch politics is dominated by the higher educated, hypothesizing—but not testing—that this skews policy in their favor (Bovens and Wille, 2017; Hakhverdian and Schakel, 2017).

To control for education, I first calculate preferences at different education percentiles in the exact same way as was done with income. The most straightforward approach would

**Table 4.** Effects of education and income on policy change

	Education (P10)	Education (P50)	Education (P90)
Income (P10)	1.0077	1.0179***	1.0274***
Income (P50)	1.0128**	1.0242***	1.0353***
Income (P90)	1.0166***	1.0274***	1.0361***

\* $P < 0.10$ ; \*\* $P < 0.05$ ; \*\*\* $P < 0.01$  (two tailed). Coefficients are odds ratios.

then be to estimate a model of policy change with the preferences of, say, the 90th income and the 90th education percentiles, but this would be quite unstable given the high correlation between the two variables and the limited number of observations. What we can do, however, is interact the variables in the imputation procedure to obtain estimates of, for instance, highly educated and low-earning respondents. Using the same three groups as before (at the 10th, 50th and 90th percentiles), we get nine combinations of income and education, which can be entered in nine separate logistic regression models as predictors of policy change. The results of this are presented in Table 4, which contains the regression coefficients of each model. This shows that the effect of education is in fact larger than the effect of income. That is, increasing education within income groups leads to a larger increase in the odds ratio than increasing income within education groups. At the same time, policy responsiveness still increases with income when holding education constant, though as expected the effect is smaller than in previous models.<sup>16</sup>

The main result holds up to a wide range of other specifications. For the sake of brevity, these will be discussed more briefly than the previous two robustness tests, with the full results being relegated to Online Appendix D.

First, perhaps citizens with high levels of income are more attentive to changing macro-economic circumstances and adapt their preferences accordingly. If the same goes for policy makers, this could explain the positive association of income with responsiveness. However, controlling for economic growth, unemployment and the size of government debt, either at the time of the survey or the average of the 4-year period following the survey, leave the effects as they are. The same goes when controlling for the left–right position of the government, again either at the time of the survey or over the years following it (Online Appendix D, Tables D1–D2 in the [Supplementary Material](#)). Controlling for the year of the survey does not change the effects either (Tables D3–D4 in the [Supplementary Material](#)).

Another possibility is that the effects are driven by one of the survey organizations that gathered the original data, perhaps because of the kinds of questions they ask. This does not appear to be the case, since either including dummies for the large survey organizations or excluding them one by one does not affect the results (Tables D5–D6 in the [Supplementary](#)

16 The difference between the coefficients of the 10th and 90th income percentiles, within each of the education percentiles, falls short of conventional levels of statistical significance. However, the fact that preferences between the two groups often overlap, coupled with the limited number of observations, limits the practical significance of this finding. When the preference gap between the two groups exceeds 10 percentage points, as in Table 2, the difference between the two coefficients is significant at  $\alpha = 0.10$ .

**Material**). Excluding survey questions about government spending, since spending is somewhat noisy as a measure of policy change, also has little effect on the regression coefficients (Tables D7–D8 in the **Supplementary Material**).

The results could also be driven by outliers, particularly given the modest number of observations. However, if the analyses in **Table 2** limited to issues where preferences diverge by more than 10 percentage points but less than 25 percentage points, the findings do not change (Table D9 in the **Supplementary Material**). Furthermore, measuring low income as the 5th or 20th percentile, and high income as the 95th or 80th percentile, produces results that are in line with those presented earlier (Tables D10 and D11 in the **Supplementary Material**). Finally, using alternative estimators (ordinary least squares and probit) and using either robust or clustered standard errors (by year) does not lead to different conclusions either (Tables D12–D17 in the **Supplementary Material**).

## 4.2 Causal mechanisms

The previous analyses have unearthed strong evidence of unequal policy responsiveness. I now turn to three potential explanations of this finding, namely political participation, descriptive representation and interest-group lobbying. To test whether the positive effect of income on policy responsiveness is mediated by political participation, I look at voting behavior. Of course, voting is only one form of political participation, a form that differs from others by being more widespread and less strongly associated with socioeconomic characteristics (Bovens and Wille, 2017). Moreover, measuring voting behavior in surveys can suffer from over-reporting (Bernstein *et al.*, 2001). Both may lead to an underestimation of the mediating role of participation. At the same time, voting is an act with obvious significance in the process of representation and may also act as a proxy for more intensive forms of participation with which it is strongly correlated.

Of the 291 observations, 235 (or 81%) are taken from surveys that ask respondents either they voted in the previous national election or they intend to vote in the next national election. Hence, it is possible to calculate the preferences of self-identified voters and non-voters, interacted with income, for these 235 observations. Doing so reveals, first, that responsiveness is stronger for voters than non-voters at each income percentile. For voters at the 50th income percentile, for example, an increase in support of 1% multiplies the odds of a policy change being enacted by about 1.026 ( $P = 0.001$ ). For non-voters at the 50th percentile, this is only 1.014 ( $P = 0.032$ ). However, when estimating a model with the preferences of low-income voters and high-income non-voters as independent variables, the effect for high-income non-voters stays intact (OR = 1.018,  $P = 0.038$ ), whereas the effect for low-income voters disappears (OR = 1.003,  $P = 0.759$ ).<sup>17</sup> This suggests that controlling for voting at national elections does not eliminate the income bias in responsiveness. In fact, it is more important to have a high income than to vote when one wants their views to be implemented.

The second potential mechanism assumes that politicians' personal backgrounds align more closely with the top of the income distribution than the bottom, and that this informs their views and actions. Testing this mechanism is hampered by the fact that, as mentioned earlier, I know of no effort to collect information on politicians' (previous) income or wealth in the Netherlands. However, we do have information on the previous occupation of all those

17 These two variables share a correlation of 0.68, which is sufficiently low to avoid problems of collinearity.



who entered the Second Chamber of parliament between 1994 and 2012 (Mügge *et al.*, 2019). I use this to derive estimates of socioeconomic status with the index of Ganzeboom *et al.* (1992). This measure is based on the occupation's income, education level and prestige. On the one hand, this is only an approximation of the purely economic backgrounds of representatives. On the other hand, the other parts of this index may by themselves also affect one's political views (Carnes, 2013), potentially making this an easier test of this mechanism.

Between 1994 and 2012, 549 different people served in the Second Chamber of the Dutch parliament. 364 of these, or two-thirds, had professions that are classified as managers by the 2008 International Standard Classification of Occupations. Many in this group were already active in politics, for instance, on the municipal level. Another 157 (29%) were professionals, often in the field of policy administration. This leaves only 28 (5%) for the remaining categories. In comparison, only 7% of the Dutch labor force were managers and 17% were professionals between 2003 and 2012 (Statistics Netherlands, 2018).

The next question is whether this skew in socioeconomic class affects substantive representation. If so, it seems likely that it does so by affecting parliamentarians' policy views. On the mass level, the association between socioeconomic status and policy views is quite clear. In the European Social Survey for the Netherlands, going from the lowest status to the highest status decreases support of reducing income inequality by 0.6 points (on a scale from 1 to 5). It also increases support for European unification by 1.5 points (on a scale from 0 to 10) and increases support for immigration by 1.6 points (on a scale from 0 to 10).<sup>18</sup>

To find out whether the same association holds on the elite level, I match parliamentarians' previous occupation to elite surveys conducted by Rudy Andeweg in 1990, 2001 and 2017. In this data, however, socioeconomic status is not as clearly related to parliamentarians' responses to survey questions about reducing income inequality, European unification and immigrant integration (Table 5).<sup>19</sup> The only possible (and intrinsically important) exception is the first, where going from the near-lowest status to the highest status in the sample decreases support for reducing inequality by 0.5 points (on a scale from 1 to 7), though this effect falls short of statistical significance.<sup>20</sup> Of course, the limited variation in

- 18 These estimates are based on a combined dataset of all European Social Survey rounds between 2002 and 2012, with dummies for each wave and using post-stratification weights. The full text of the survey questions is as follows: 'Using this card, please say to what extent you agree or disagree with each of the following statements. The government should take measures to reduce differences in income levels'; 'Now thinking about the European Union, some say European unification should go further. Others say it has already gone too far. Using this card, what number on the scale best describes your position?'; 'And, using this card, would you say that the Netherlands' cultural life is generally undermined or enriched by people coming to live here from other countries?'
- 19 All three variables are measured on a scale from 1 to 7. The text of the survey questions is as follows: 'How would you place yourself on a line from 1 to 7, where 1 means differences in income should be increased and 7 means that differences in income should be decreased?'; 'Where would you place yourself on a line from 1 to 7, where 1 means that the European unification should go even further and 7 that the unification has already gone too far?'; 'Where would you place yourself on a line from 1 to 7; 1 meaning preservation of own culture for foreigners and 7 meaning that they should fully adapt [to Dutch culture]?'
- 20 This estimate is not based on the very lowest status because there are a handful of negative outliers. Instead, the 'near-lowest' value is a socio-economic status of 43 on a scale from 0 to 100, which is the 2nd percentile.

**Table 5.** Linear regression models of elite policy views by socioeconomic status

	Model 8 (redistribution)	Model 9 (EU unification)	Model 10 (integration)
Socioeconomic status	−0.012 (0.010)	0.004 (0.010)	−0.006 (0.009)
Year dummies	Yes	Yes	Yes
Constant	5.758*** (0.688)	3.070*** (0.706)	4.758*** (0.607)
R <sup>2</sup>	0.013	0.063	0.004
N	302	303	302

\* $P < 0.10$ ; \*\* $P < 0.05$ ; \*\*\* $P < 0.01$  (two tailed).

socioeconomic status on the elite level makes it harder to find a significant effect. Still, the mechanism of politicians' personal background is not clearly supported in this analysis.

The role of interest groups, finally, is hardest to assess, largely because most of the surveys used in the main analysis do not contain questions on interest-group membership. Nevertheless, previous research provides some indications as to the importance of interest group in bringing about unequal responsiveness. Starting with civil society groups, research by Hanegraaff *et al.* (2018) shows that citizens who are higher educated, older and male are overrepresented among members of interest groups in the Netherlands. Given the positive association of all these factors with income, the same membership bias is likely to exist between rich and poor citizens. The bias is not amplified in the next step of the policy process, in the sense that interest groups with more privileged membership profiles are not consulted more often by policy makers, but it is not decreased either (Hanegraaff *et al.*, 2018). Furthermore, in organizations with members from different economic strata, the rich may be more influential in setting the interest groups' agenda than the poor (Strolovitch, 2006).

It would appear very plausible that civil society groups contribute to unequal responsiveness, if it was not for one factor: mass-based interest groups may not actually influence policy (Lowery, 2013). To the extent that these groups have any influence, this is mostly confined to non-salient policy changes, where the total number of actors fighting over the direction of policy is small. However, the policies I analyze here do not fall into this category, as they were all prominent enough to be included in national surveys and were usually actively debated in the media and the political sphere. Since the general public can hardly be expected to know and care about what are often minor policy changes, the role of civil society groups in fostering unequal responsiveness—or any kind of responsiveness—is very much in doubt.

In contrast, corporate lobbying provides a more plausible explanation of biased responsiveness, for several reasons. First, corporations are overrepresented among interest groups in the Netherlands. In this sense, the Netherlands is similar to other European countries, as well as the European Union (Berkhout *et al.*, 2017). Second, and in line with this, the corporatist tradition that aimed to balance the demands of labor and capital is showing clear signs of decline in the Netherlands. One of these signs is that corporations have become the dominant actors in parliamentary hearings since the 1990s, dwarfing the presence of unions (Aizenberg and Hanegraaff, 2018). Another suggestive piece of evidence is that the policies

announced in Dutch coalition agreements have, in the past three decades, led to a lower tax burden on corporations than what was planned in the programs of the coalition parties. The opposite applies to the tax burden on labor. In other words, corporations apparently have a way to shift policy proposals in their favor during the formation of a coalition government (Bolhuis, 2018). All of this is still a long way from proving that policy change is decisively affected by corporate lobbying, but the existing findings are at least consistent with it.

## 5. Conclusion

This article has explored unequal responsiveness in the Netherlands. Based on an analysis of 291 potential policy changes between 1979 and 2012, it finds, first, that there are vast inequalities in the substantive representation of rich and poor. Even in separate, bivariate models, the effect of preferences on policy changes increases with income. Furthermore, when preferences diverge, citizens with low or median levels of income have no discernible effect on policy, while the effects remain strong for the 90th percentiles of income. This finding, which mirrors Martin Gilens' (2012) conclusions for the USA, may come as a surprise. But even in a relatively egalitarian and inclusive context such as the Netherlands, there are clear biases in government responsiveness. The article's main hypothesis, hence, finds substantial support in the best and substantial body of available data.

The second and more exploratory part of the analysis considered three potential causal mechanisms behind this income bias in responsiveness: political participation, descriptive representation and interest-group lobbying. Such exploration yields mixed but important results about the roots of the manifestly unequal representation. Political participation, measured in this article as voting during national elections, does seem to matter, but it cannot fully account for the gap in responsiveness. The expectation from the literature on descriptive representation, i.e. that the socioeconomic status of parliamentarians can predict their policy views, was not supported, though this test was necessarily weak given the limited variation in the independent variable. Finally, there are strong reasons to think that a third major mechanism, lobbying activity by corporations, substantially contributes to unequal responsiveness, with civil society groups playing a subordinate role.

Both the study's main and supplementary claims are offered, and should be read, in light of some important caveats. First, it is possible that political power does not reside with the 90th income percentile so much as with the 99th or 99.9th percentile, as has often been suggested in the USA (Winters and Page, 2009; Page *et al.*, 2013). Second, income may be a smaller source of political influence than wealth, given that wealth is more unequally distributed than income and more stable over time (Winters, 2011). Both possibilities should be tested in future research, even though they will be difficult to operationalize with available data. For now, it is important to recognize that both would imply that the current analysis *underestimates* the extent of unequal responsiveness.

Third, the analyses are limited to one country and it remains uncertain to what extent the findings can be generalized to other countries in Western Europe. I have argued that the Netherlands is a least-likely case, which suggests that the same inequality can also be found in other countries (Elsässer *et al.*, 2017; Persson and Gilljam, 2017). At the same time, this topic is so important that there is still a great need for comparative studies, ideally using high-quality survey data and detailed policy coding. This would allow us to make stronger inferences about the nature and causes of unequal responsiveness across countries.

Despite these and other caveats, the findings presented here have major implications. One of these concerns the study of populism. A common argument among populist leaders, voters and those studying the topic is that the rise of populism is closely associated with feelings of being underrepresented among broad parts of the public. In this discussion, many people have contributed to a sea of rhetoric about the existence or non-existence of unequal representation without any empirical analysis. The finding that the poor *are* underrepresented when it comes to policy outcomes suggests that any grievances they may have about this are justified. The most important implication of all, however, is more basic. The major biases in responsiveness that have been found here should be troubling to all those who care about democracy. Regardless of one's vision of representation, and regardless of the causal mechanisms at play, these findings indicate that democracy is not functioning as it should (Sabl, 2015).

## Supplementary material

[Supplementary material](#) is available at *Socio-Economic Review* online.

## Acknowledgements

For useful comments and suggestions, I thank Joost Berkhout, Thijs Bol, Brian Burgoon, Marius Busemeyer, Andrea Forster, Bert Fraussen, Martin Gilens, Armen Hakhverdian, Theresa Kuhn and Sander Steijn, as well as the editor and two anonymous reviewers. I am particularly grateful to Tessa van Houtrijve for her excellent research assistance and to Daphne van der Pas for her guidance.

## Funding

This work was supported by the Netherlands Organisation for Scientific Research, grant number 406-15-089.

## References

- Aizenberg, E. and Hanegraaff, M. (2018) *Is Politics under Increasing Corporate Sway? Evidence from The Netherlands, 1970-2017*, unpublished manuscript, University of Amsterdam.
- Alvaredo, F., Chancel, L., Piketty, T., Saez, E. and Zucman, G. (2018) *World Inequality Report 2018*, Cambridge, Belknap Press.
- Bartels, L. M. (2016) *Unequal Democracy: The Political Economy of the New Gilded Age*, Princeton, Princeton University Press.
- Bauer, P. C., Barberá, P., Ackermann, K. and Venetz, A. (2017) 'Is the Left-Right Scale a Valid Measure of Ideology? Individual-Level Variation in Associations with "Left" and "Right" and Left-Right Self-Placement', *Political Behavior*, **39**, 553–583.
- Berkhout, J., Hanegraaff, M. and Braun, C. (2017) 'Is the EU Different? Comparing the Diversity of National and EU-Level Systems of Interest Organisations', *West European Politics*, **40**, 1109–1131.
- Bernstein, R., Chadha, A. and Montjoy, R. (2001) 'Overreporting Voting: Why It Happens and Why It Matters', *Public Opinion Quarterly*, **65**, 22–44.

- Bolhuis, W. (2018) *Van Woord Tot Akkoord: Een Analyse van de Partijkeuzes in CPB-Doorrekeningen van Verkiezingsprogramma's en Regeerakkoorden, 1986-2017*, PhD Thesis, Leiden University.
- Bonica, A., McCarty, N., Poole, K. T. and Rosenthal, H. (2013) 'Why Hasn't Democracy Slowed Rising Inequality?', *Journal of Economic Perspectives*, 27, 103–124.
- Bovens, M. and Wille, A. (2011) *Diplomademocratie: Over de Spanning Tussen Meritocratie En Democratie*, Amsterdam, Bert Bakker.
- Bovens, M. and Wille, A. (2017) *Diploma Democracy: The Rise of Political Meritocracy*, Oxford, Oxford University Press.
- Branham, J. A., Soroka, S. N. and Wlezien, C. (2017) 'When Do the Rich Win?', *Political Science Quarterly*, 132, 43–62.
- Broockman, D. E. (2016) 'Approaches to Studying Policy Representation', *Legislative Studies Quarterly*, 41, 181–215.
- Brooks, C. and Manza, J. (2007) *Why Welfare States Persist: The Importance of Public Opinion in Democracies*, Chicago, University of Chicago Press.
- Brunner, E., Ross, S. L. and Washington, E. (2013) 'Does Less Income Mean Less Representation?', *American Economic Journal: Economic Policy*, 5, 53–76.
- Burden, B. C. (2007) *Personal Roots of Representation*, Princeton, Princeton University Press.
- Canes-Wrone, B. (2015) 'From Mass Preferences to Policy', *Annual Review of Political Science*, 18, 147–165.
- Carnes, N. (2013) *White-Collar Government: The Hidden Role of Class in Economic Policy Making*, Chicago, University of Chicago Press.
- Caughey, D. and Warshaw, C. (2018) 'Policy Preferences and Policy Change: Dynamic Responsiveness in the American States, 1936–2014', *American Political Science Review*, 112, 249–266.
- Center for Responsive Politics (2018) 'Personal Finances: Net Worth', accessed at <https://www.opensecrets.org/personal-finances/top-net-worth> on April 18, 2018.
- Dahl, R. A. (1989) *Democracy and Its Critics*, New Haven, Yale University Press.
- Dawood, Y. (2015) 'Campaign Finance and American Democracy', *Annual Review of Political Science*, 18, 329–348.
- Eggers, A. C. and Klačnja, M. (2018) 'Wealth, Fundraising, and Voting in the U.S. Congress', paper presented at the 8th Annual Conference of the European Political Science Association, Vienna, 21–23 June.
- Ellis, C. (2012) 'Understanding Economic Biases in Representation: Income, Resources, and Policy Representation in the 110th House', *Political Research Quarterly*, 65, 938–951.
- Elsässer, L., Hense, S. and Schäfer, A. (2017) "'Dem Deutschen Volke"? Die Ungleiche Responsivität Des Bundestags', *Zeitschrift für Politikwissenschaft*, 27, 161–180.
- Enns, P. K. (2015) 'Relative Policy Support and Coincidental Representation', *Perspectives on Politics*, 13, 1053–1064.
- Ferguson, T. (1995) *Golden Rule: The Investment Theory of Party Competition and the Logic of Money-Driven Political Systems*, Chicago, University of Chicago Press.
- Ferguson, T., Jorgensen, P. and Chen, J. (2016) *How Money Drives US Congressional Elections*, Working Paper No. 48, New York, Institute for New Economic Thinking.
- Flavin, P. (2012) 'Does Higher Voter Turnout among the Poor Lead to More Equal Policy Representation?', *Social Science Journal*, 49, 405–412.
- Flavin, P. (2014) 'State Campaign Finance Laws and the Equality of Political Representation', *Election Law Journal*, 13, 362–374.
- Gallego, A. (2007) 'Unequal Political Participation in Europe', *International Journal of Sociology*, 37, 10–25.

- Ganzeboom, H. B. G., De Graaf, P. M. and Treiman, D. J. (1992) 'A Standard International Socio-Economic Index of Occupational Status', *Social Science Research*, **21**, 1–56.
- Giger, N., Rosset, J. and Bernauer, J. (2012) 'The Poor Political Representation of the Poor in a Comparative Perspective', *Representation*, **48**, 47–61.
- Gilens, M. (2009) 'Preference Gaps and Inequality in Representation', *PS: Political Science & Politics*, **42**, 335–341.
- Gilens, M. (2012) *Affluence and Influence: Economic Inequality and Political Power in America*, Princeton, Princeton University Press.
- Gilens, M. (2015) 'The Insufficiency of "Democracy by Coincidence": A Response to Peter K', *Perspectives on Politics*, **13**, 1065–1071.
- Gilens, M. and Page, B. I. (2014) 'Testing Theories of American Politics: Elites, Interest Groups, and Average Citizens', *Perspectives on Politics*, **12**, 565–581.
- Griffin, J. D. and Newman, B. (2005) 'Are Voters Better Represented?', *Journal of Politics*, **67**, 1206–1227.
- Hacker, J. S. and Pierson, P. (2010) *Winner-Take-All Politics: How Washington Made the Rich Richer—and Turned Its Back on the Middle Class*, New York, Simon and Schuster.
- Hacker, J. S. and Pierson, P. (2014) 'After the "Master Theory": Downs, Schattschneider, and the Rebirth of Policy-Focused Analysis', *Perspectives on Politics*, **12**, 643–662.
- Hager, S. B. (2018) 'Varieties of Top Incomes?', *Socio-Economic Review*, doi: 10.1093/ser/mwy036.
- Hakhverdian, A. (2010) 'Political Representation and Its Mechanisms: A Dynamic Left-Right Approach for the United Kingdom, 1976', *British Journal of Political Science*, **40**, 835–856.
- Hakhverdian, A. and Schakel, W. (2017) *Nepparlement? Een Pleidooi Voor Politiek Hokjesdenken*, Amsterdam, Amsterdam University Press.
- Hanegraaff, M., Berkhout, J. and Van der Ploeg, J. (2018) *How Interest Groups Reflect and Reproduce Political Inequality: Tracing Representational Bias from Interest Groups to Political Institutions*, unpublished manuscript, University of Amsterdam.
- Hobolt, S. B. and Klemmensen, R. (2008) 'Government Responsiveness and Political Competition in Comparative Perspective', *Comparative Political Studies*, **41**, 309–337.
- Iversen, T. and Soskice, D. (2006) 'Electoral Institutions and the Politics of Coalitions: Why Some Democracies Redistribute More than Others', *American Political Science Review*, **100**, 165–181.
- Lessig, L. (2011) *Republic Lost: How Money Corrupts Congress - and a Plan to Stop It*, New York, Hachette Book Group.
- Lindblom, C. E. (1982) 'The Market as Prison', *Journal of Politics*, **44**, 324–336.
- Lowery, D. (2013) 'Lobbying Influence: Meaning, Measurement and Missing', *Interest Groups & Advocacy*, **2**, 1–26.
- Lupu, N. and Warner, Z. (2017) 'Affluence and Congruence: Unequal Representation Around the World', accessed at <http://www.noamlupu.com/A&C.pdf> on April 18, 2018.
- Mügge, L., Van der Pas, D. J., Van der Wardt, M. and Van Gulpen, A. (2019) 'Diversity in Dutch Provincial and National Parliaments, 1994-2015'. In *The Representation of Citizens of Immigrant Origin in Europe*, Oxford, Oxford University Press.
- Nassmacher, K.-H. (2009) *The Funding of Party Competition: Political Finance in 25 Democracies*, Baden-Baden, Nomos Verlagsgesellschaft.
- Page, B. I., Bartels, L. M. and Seawright, J. (2013) 'Democracy and the Policy Preferences of Wealthy Americans', *Perspectives on Politics*, **11**, 51–73.
- Page, B. I. and Gilens, M. (2017) *Democracy in America? What Has Gone Wrong and What We Can Do about It*, Chicago, University of Chicago Press.
- Persson, M. and Gilljam, M. (2017) *Who Got What They Wanted? The Opinion-Policy Link in Sweden 1956-2014*. unpublished manuscript, University of Gothenburg

- Peters, Y. and Ensink, S. J. (2015) 'Differential Responsiveness in Europe: The Effects of Preference Difference and Electoral Participation', *West European Politics*, 38, 577–600.
- Rehm, P. (2009) 'Risks and Redistribution: An Individual Analysis', *Comparative Political Studies*, 42, 855–881.
- Rigby, E. and Wright, G. C. (2013) 'Political Parties and Representation of the Poor in the American States', *American Journal of Political Science*, 57, 552–565.
- Sabl, A. (2015) 'The Two Cultures of Democratic Theory: Responsiveness, Democratic Quality, and the Empirical-Normative Divide', *Perspectives on Politics*, 13, 345–365.
- Schakel, W. and Hakhverdian, A. (2018) 'Ideological Congruence and Socio-Economic Inequality', *European Political Science Review*, 10, 441–465.
- Schlozman, K. L., Verba, S. and Brady, H. E. (2012) *The Unevenly Chorus: Unequal Political Voice and the Broken Promise of American Democracy*, Princeton, Princeton University Press.
- Shapiro, R. Y. (2011) 'Public Opinion and American Democracy', *Public Opinion Quarterly*, 75, 982–1017.
- Soroka, S. N. and Wleziën, C. (2008) 'On the Limits to Inequality in Representation', *PS: Political Science & Politics*, 41, 319–327.
- Soroka, S. N. and Wleziën, C. (2009) *Degrees of Democracy: Politics, Public Opinion, and Policy*, New York, Cambridge University Press.
- Statistics Netherlands (2018) 'Werkzame Beroepsbevolking; Beroep', accessed at <https://opendata.cbs.nl/statline/#/CBS/nl/dataset/82808NED/table?ts=1538138109576> on September 28, 2018.
- Strolovitch, D. Z. (2006) 'Do Interest Groups Represent the Disadvantaged? Advocacy at the Intersections of Race, Class, and Gender', *Journal of Politics*, 68, 894–910.
- Ura, J. D. and Ellis, C. R. (2008) 'Income, Preferences, and the Dynamics of Policy Responsiveness', *PS: Political Science & Politics*, 41, 785–794.
- Veling, K., De Jong, A. H. M., De Lange, S. L. and Voerman, G. (2018) *Het Publieke Belang van Politieke Partijen: Eindrapport van de Evaluatie- En Adviescommissie Wet Financiering Politieke Partijen*, Den Haag, Ministerie van Binnenlandse Zaken en Koninkrijksrelaties.
- De Vries, B. and Boogaard, L. (2017) 'Welke Partij Kreeg de Meeste Giften? En Wie Geeft Het Meest Uit?', accessed at <https://nos.nl/artikel/2162007-welke-partij-kreeg-de-meeste-giften-en-wie-geeft-het-meest-uit.html> on September 19, 2018.
- De Vries, C. E., Hakhverdian, A. and Lancee, B. (2013) 'The Dynamics of Voters' Left/Right Identification: The Role of Economic and Cultural Attitudes', *Political Science Research and Methods*, 1, 223–238.
- Van Waarden, F. (1992) 'Emergence and Development of Business Interest Associations: An Example from The Netherlands', *Organization Studies*, 13, 521–561.
- Van de Werfhorst, H. G. and De Graaf, N. D. (2004) 'The Sources of Political Orientations in Post-Industrial Society: Social Class and Education Revisited', *The British Journal of Sociology*, 55, 211–235.
- Winters, J. A. (2011) *Oligarchy*, Cambridge, Cambridge University Press.
- Winters, J. A. and Page, B. I. (2009) 'Oligarchy in the United States?', *Perspectives on Politics*, 7, 731–751.