



TITLE:

# The tectum/superior colliculus as the vertebrate solution for spatial sensory integration and action

AUTHOR(S):

Isa, Tadashi; Marquez-Legorreta, Emmanuel;  
Grillner, Sten; Scott, Ethan K.

---

CITATION:

Isa, Tadashi ...[et al]. The tectum/superior colliculus as the vertebrate solution for spatial sensory integration and action. *Current Biology* 2021, 31(11): R741-R762

ISSUE DATE:

2021-06

URL:

<http://hdl.handle.net/2433/276957>

RIGHT:

© 2021 The Author(s). Published by Elsevier Inc.; This is an open access article under the CC BY-NC-ND license.

## Review

# The tectum/superior colliculus as the vertebrate solution for spatial sensory integration and action

Tadashi Isa<sup>1,2</sup>, Emmanuel Marquez-Legorreta<sup>3</sup>, Sten Grillner<sup>4</sup>, and Ethan K. Scott<sup>3,\*</sup><sup>1</sup>Department of Neuroscience, Graduate School of Medicine, Kyoto University, Kyoto, 606-8501, Japan<sup>2</sup>Institute for the Advanced Study of Human Biology, Kyoto University, Kyoto, 606-8501, Japan<sup>3</sup>The Queensland Brain Institute, The University of Queensland, St Lucia, QLD 4072, Australia<sup>4</sup>Department of Neuroscience, Karolinska Institutet, Stockholm SE-17177, Sweden\*Correspondence: [ethan.scott@uq.edu.au](mailto:ethan.scott@uq.edu.au)<https://doi.org/10.1016/j.cub.2021.04.001>**SUMMARY**

The superior colliculus, or tectum in the case of non-mammalian vertebrates, is a part of the brain that registers events in the surrounding space, often through vision and hearing, but also through electrosensation, infrared detection, and other sensory modalities in diverse vertebrate lineages. This information is used to form maps of the surrounding space and the positions of different salient stimuli in relation to the individual. The sensory maps are arranged in layers with visual input in the uppermost layer, other senses in deeper positions, and a spatially aligned motor map in the deepest layer. Here, we will review the organization and intrinsic function of the tectum/superior colliculus and the information that is processed within tectal circuits. We will also discuss tectal/superior colliculus outputs that are conveyed directly to downstream motor circuits or via the thalamus to cortical areas to control various aspects of behavior. The tectum/superior colliculus is evolutionarily conserved among all vertebrates, but tailored to the sensory specialties of each lineage, and its roles have shifted with the emergence of the cerebral cortex in mammals. We will illustrate both the conserved and divergent properties of the tectum/superior colliculus through vertebrate evolution by comparing tectal processing in lampreys belonging to the oldest group of extant vertebrates, larval zebrafish, rodents, and other vertebrates including primates.

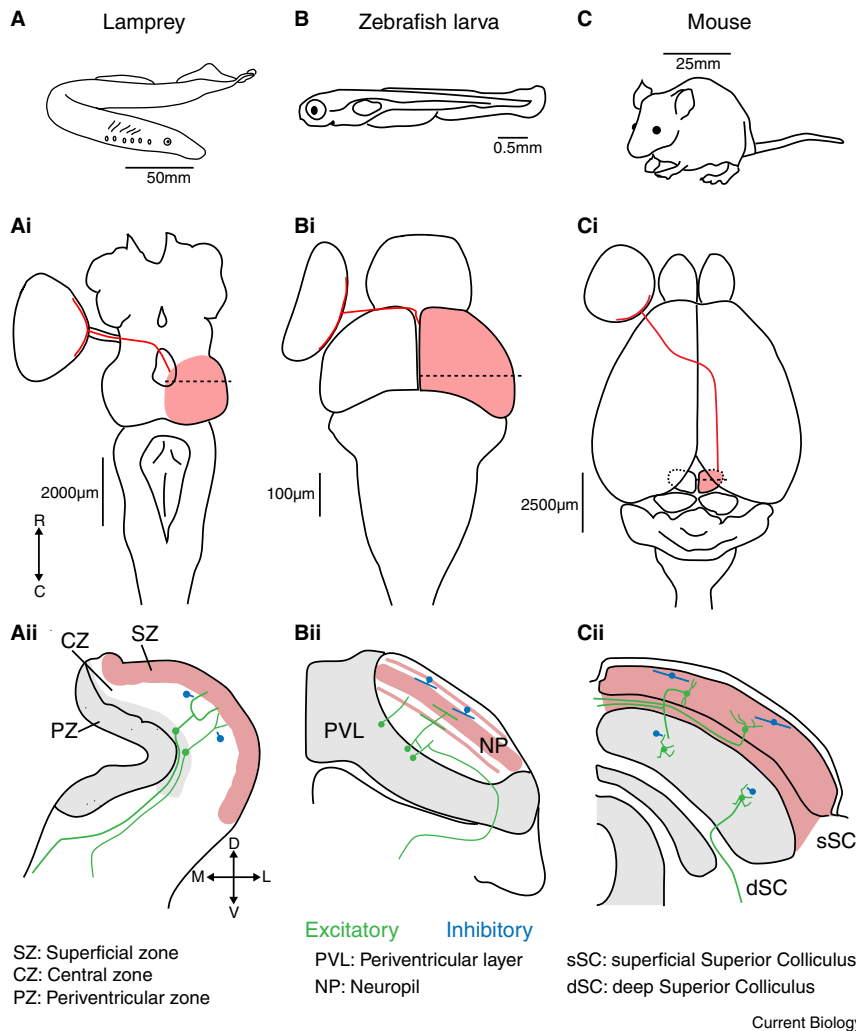
**Introduction**

The survival and evolutionary success of all animals depend on their ability to sense their surroundings and to mount appropriate behavioral responses to external stimuli. Depending on the stimulus and context, an animal may choose to approach, avoid, or simply ignore something that is occurring around it. In everyday life, as we walk along the street we need to avoid bumping into other pedestrians, but also stop to look at interesting items. The superior colliculus (SC), also called the tectum, is critical for eliciting such orienting or evasive movements<sup>1–6</sup>, and through interactions with the basal ganglia and cortex, it contributes importantly to this decision-making<sup>7–11</sup>. The tectum/SC contains a retinotopic map of the surrounding space to which other senses may add<sup>12–15</sup>. Salient stimuli originating from visual input, but also from sounds and other senses, can activate the tectum/SC with a minimal delay. The sensory input carries information about the stimulus' position in the surrounding space, allowing the tectum/SC to rapidly guide movements of various body parts towards the object and determine whether to elicit an orienting or an evasive response. It appears that the tectum/SC is mostly concerned with co-registration of stimulus location, regardless of sensory sources, but tectal/SC circuitry also shows selectivity for specific stimulus features in some contexts. The tectum/SC responds to a wide range of inputs important to the animal's ethological context, not only vision but also the lateral line in fish, electroreception in lampreys, heat signatures in some snakes, and auditory inputs in most animals.

The intrinsic neural circuitry of tectum/SC, including its visual and other sensory inputs and its output connectivity, is conserved throughout vertebrate phylogeny, but the details of the sensory processing have shifted through evolution and with the varying demands of its diverse owners<sup>12–15</sup>. In the oldest group of extant vertebrates, the lampreys, the tectum is a much larger structure than the entire forebrain, although the latter still contains a visual and a motor representation<sup>7,16</sup>. However, the relative size of the forebrain increases gradually to become many times larger in mammals and particularly primates (Figure 1). With a gross oversimplification, one can say that the tectum/SC contributes with a rapid response to salient stimuli from different locations in the surrounding space, while the forebrain is involved in the nuanced appraisal of these stimuli and in the cognitive control of action<sup>17</sup>.

In this review, we will compare the roles of the tectum/SC across the vertebrate lineage, including the different specializations that have occurred in various vertebrate groups. We will focus in greater depth on models in which particular progress has been made in understanding the tectum/SC's functional contributions and circuitry: the lamprey, larval zebrafish, mouse, and primates. In the first section below, “The tectum/SC's position in brain-wide networks”, we will start with a description of the tectum's gross structure and connectivity, including the contributions that it makes to different ascending sensory pathways in various vertebrates. We will then turn, in “The tectum/SC's intrinsic networks, and the computations that they perform”, to the sensory and sensorimotor integration





**Figure 1. Positions, sizes, and retinal inputs to the tectum/SC in lampreys, zebrafish larvae, and mice.**

(A) The lamprey (*Lampetra fluviatilis*). (Ai) Dorsal view of a lamprey brain. Retinal ganglion cell projections (red line) from the left eye cross the optic chiasm to enter the right tectum (red shading). The dashed line represents the position of the coronal section displayed in (Aii). Major divisions are based on Butler and Hodos<sup>19</sup>. The red shaded region represents the layers that receive retinal input. The gray shaded area represents regions with a high density of neuronal somata. Local inhibitory interneurons are represented in blue. Ipsilateral and contralateral glutamatergic projecting neurons are represented in green. The same features are shown for larval zebrafish (B–Bii) and mouse (C–Cii). R, rostral; C, caudal; D, dorsal; V, ventral; M, medial; L, lateral.

### The tectum/SC's position in brain-wide networks

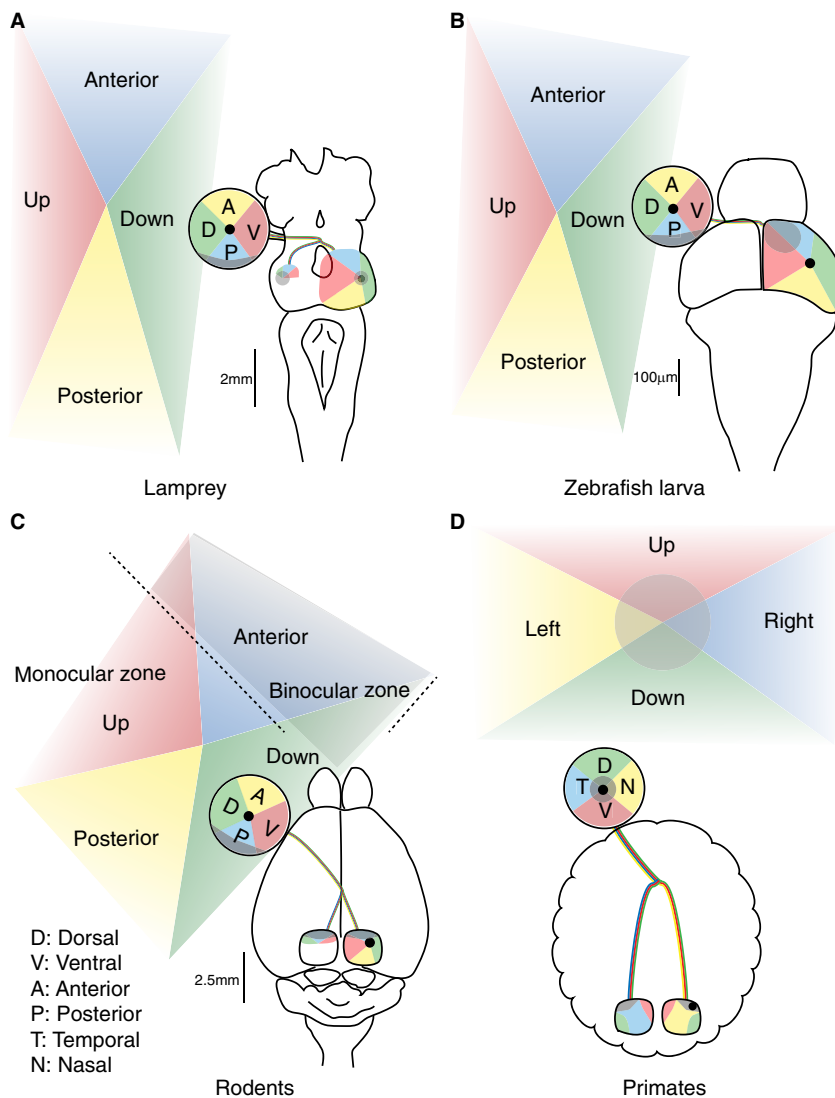
#### The retinotectal pathway

Retinal ganglion cells, the output neurons of the retina, provide a major input to the tectum/SC in most vertebrates<sup>19</sup> (Figure 1). Importantly, they terminate in the tectum/SC in a retinotopic manner, forming a retinotectal map in which spatial positions in the retina (and therefore the visual world) are preserved in the tectum/SC. Specifically, retinal ganglion cells in the temporal retina (reporting on the anterior visual field) terminate in the rostral tectum, while nasal retinal ganglion cells (posterior visual field) terminate in the caudal tectum. Similarly, retinal ganglion cells in the dorsal and ventral retina target the lateral and medial tectum/SC, respectively.

that take place in tectum/SC, and will discuss recent developments in describing the functional microcircuits that carry out these calculations. Next, we will discuss the diversity of the sensory modalities processed in the tectum/SC in “Multisensory integration of spatial information in tectum/SC”. While different lineages process different combinations of sensory modalities in the tectum/SC, its conserved role is nonetheless to integrate these sensory inputs and register them in space to permit directed behavior. The ultimate goal of the tectum/SC (and the brain as a whole) is to deliver adaptive behavior, so in “Sensorimotor transformation, premotor outputs, and behavior selection”, we will cover the tectum/SC's contributions to sensorimotor gating and to the directed selection of appropriate behaviors. Finally, we will conclude with perspectives on the key outstanding questions about tectal/SC function, and possible avenues for addressing them. We aim to provide a broad evolutionary perspective on the tectum/SC, its intrinsic circuitry, its interactions with other brain regions, and its contributions to the processing of diverse sensory stimuli, and we refer readers to a very recent and complementary review by Basso *et al.*<sup>18</sup>, which is more focused on the SC's role in vision, especially in mammals including primates.

As we will discuss in our descriptions of tectal circuits and computations, this has important implications for the overall encoding of sensory space in the tectum/SC.

These retinal ganglion cells are not a uniform population, however, and recent studies have made enormous progress in defining and mapping the various subtypes of retinal ganglion cell and their associated neural networks using genetics, viral circuit tracing, and behavioral psychophysics, especially in mice. Based on the soma size, dendritic stratification pattern, and visual response patterns, 20–30 morphologically and physiologically distinct retinal ganglion cell types are estimated to exist in the mouse and primates<sup>23–25</sup>. Retinal ganglion cells can also be categorized based on molecular markers, and while some categories of retinal ganglion cells have characteristic sets of markers, there is as yet no clear understanding of whether these markers identify specific structural and functional subtypes of retinal ganglion cells<sup>26–29</sup> (but see Kölsch *et al.*<sup>30</sup>). In rodents, more than 90% of retinal ganglion cells project to the SC<sup>31,32</sup>, and different retinal



**Figure 2. Eye position and retinotectal space across lineages.**

Visual topography of the retinotectal projections in the lamprey (A), zebrafish larva (B), rodents (C) and primates (D). Projections from various aspects of the visual field (Up, Down, Anterior and Posterior in (A–C), and Right and Left in (D)) to the retina and tectum/SC are shown in corresponding colors. The center of the retina is represented with black dots. The binocular zone for rodents (C) and the foveal region for primates (D) are shaded in gray.

looming speed or the response time course<sup>35–38</sup>, as contributions from retinal ganglion cell inputs have also been identified. This arrangement contrasts with that in the cats and hamsters, in which certain visual response features of the SC neurons have been reported to depend on the cortical inputs<sup>39</sup>. In zebrafish, by contrast, response properties of some tectal neurons have been shown to arise from the processing in the local tectal circuits<sup>33,40–42</sup>. In primates, inactivation of magnocellular laminae of the lateral geniculate nucleus (LGN) disrupts the visual responses of most dSC, but not sSC, cells. Meanwhile, the inactivation of the parvocellular lamina of the LGN has no effect on visual responses in SC neurons<sup>43</sup>. Generalizing across vertebrates, therefore, tectal outputs are shaped by a combination of retinal ganglion cell inputs, inputs from other brain regions, and integral tectal circuitry.

#### **The retino-thalamic and retino-colliculo-thalamic visual pathways**

In the lamprey, a prototypical vertebrate, the shortest visuomotor circuit is trisynaptic. Retinal ganglion cells make direct

ganglion cell subtypes target distinct laminar depths in the superficial SC (sSC)<sup>33</sup>. Thus, the sSC is subdivided into multiple distinct sublaminar maps, each with input from a set of retinal ganglion cell subtypes. It is also worth noting that different subtypes of retinal ganglion cell are not uniformly distributed across the retina, suggesting that their functional contributions vary across spatial positions in the tectum/SC<sup>15</sup>.

A great deal of work has addressed how individual retinal ganglion cell types are connected to different types of sSC neuron, how their inputs contribute to the sSC neurons' visual response properties, and how this eventually shapes behavioral responses, but many details of these links remain unclear. The visual response properties of sSC neurons may depend on selective retinal ganglion cell or cortical inputs, or on processing in local SC circuits, and this balance appears to vary across different animal species<sup>34</sup>. In the mouse, ablation or silencing the cortico-tectal pathway modulates the receptive field and tuning properties of SC neurons, but these inputs do not solely determine SC neurons' selectivity for features such as the

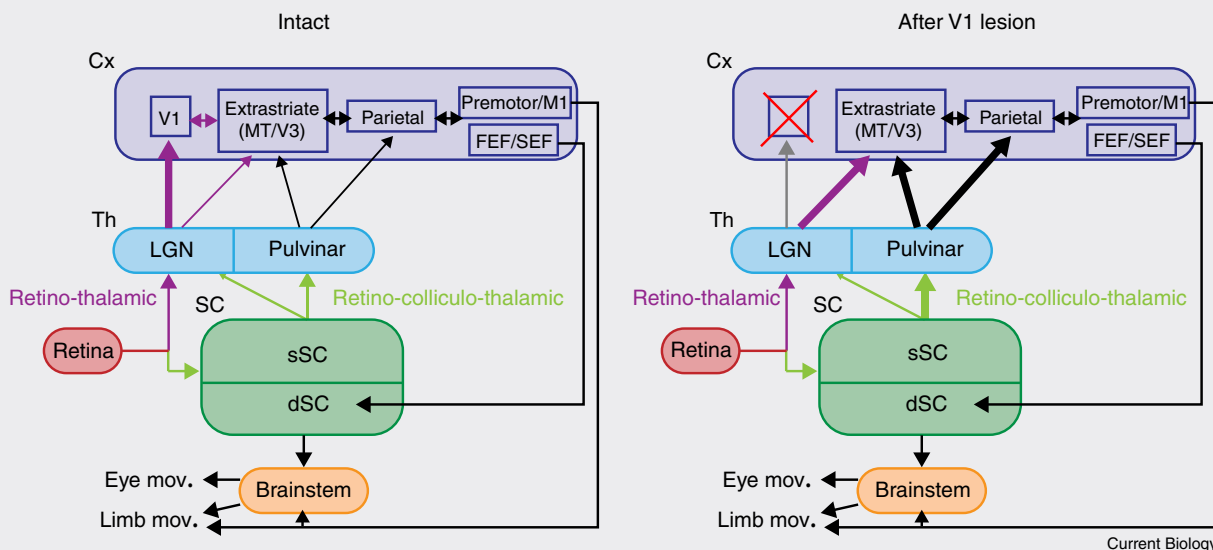
connections to the output neurons of the tectum, which in turn project to the lower brainstem. Here, they synapse onto reticulo-spinal neurons that are directly connected to spinal motoneurons, allowing for rapid approach or escape responses to visual stimuli<sup>1,2</sup>. As the tectum/SC has elaborated during the course of evolution, intra-tectal processing has further evolved in this eye-tectum-motor pathway. In mammals, anatomically distinct superficial and deep areas have developed (the sSC and dSC), with information flowing from the eye through the sSC, to the dSC, and on to downstream premotor areas. Although the details of this circuit vary across lineages, this conserved pathway represents the tectum/SC's simplest role as a relay for fast visuomotor transmission.

The tectum/SC is, however, much more than a simple visuomotor relay. In addition to such direct transformation of sensory signals to behavioral responses, the sSC implements intrinsic processing of visual signals to extract their critical features and sends outputs to the posterior thalamus and then to the telencephalon (pallium or extrastriate cortex). This is the

Current Biology

**Box 1. Blindsight.**

Blindsight is an interesting phenomenon that occurs in some patients with damage to the primary visual cortex. These patients lose visual awareness of objects in the blind visual field but retain a certain level of visuo-motor behavior towards these objects when they are forced to do so<sup>46,47</sup>. The neural mechanisms of blindsight have been intensively studied in the macaque monkey model. It has been shown that visual awareness is impaired in monkeys with V1 lesions, as judged by their behavior in a Yes–No choice task in which the animals are required to register their awareness of the visual cue<sup>215,216</sup>. There is a consensus that the SC is critical for the relay of visual inputs because lesion/inactivation of SC has been shown to impair the visually guided behaviors or visual responses in the extrastriate cortex<sup>48–50</sup>. The role of the thalamic relay has been less clear, with some researchers suggesting a major role for the SC-pulvinar and extrastriate cortical pathway<sup>217,218</sup>, and others favoring the SC-dLGN (koniocellular layer)-extrastriate cortex pathway<sup>219–222</sup>. A very recent study<sup>223</sup> has addressed this uncertainty by inactivating the dLGN and pulvinar in the same animal on the ipsilesional and contralesional sides of macaque monkeys with unilateral V1 lesions. It was found that inactivation of dLGN (but not of the pulvinar) on the contralesional (intact) side impaired visually guided saccade performance, while both impaired the visually guided saccades on the ipsilesional (affected) side. These results suggest the SC-pulvinar pathway partially compensates for the dLGN-striate cortical pathway after the V1 lesion.



**Schematic of visual pathways before and after V1 damage.**

Visuo-motor pathway for the control of eye or limb movements with the intact V1 (left) and following damage to the V1 (right). The thickness of the arrows indicates the strength of connectivity.

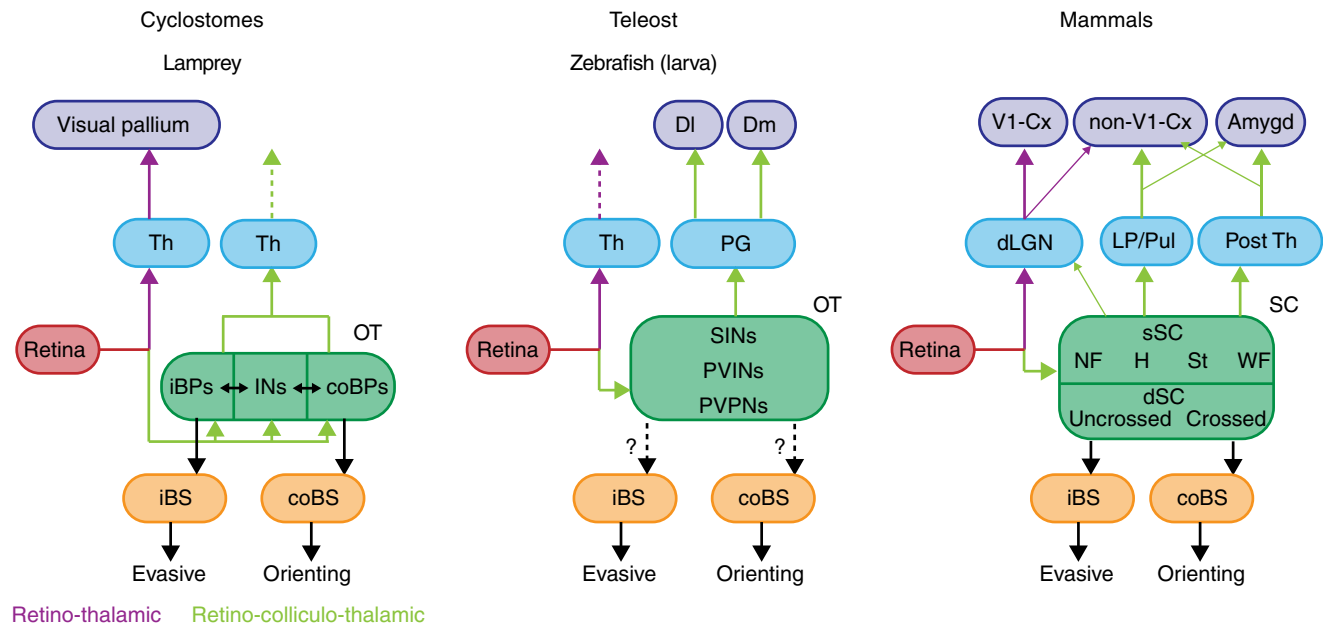
retino-colliculo-thalamic pathway. This pathway appears to be involved in the integrated processing of visual information about the location and motion of targets<sup>44</sup>. In parallel, visual inputs from the retina also project to the dorsal thalamus (dLGN) and further to the telencephalon. This is the retino-thalamic pathway, which has been implicated in the detection and recognition of objects<sup>45</sup>.

These different anatomical paths reflect the distinct visual processing that occurs in the retino-thalamic and retino-colliculo-thalamic/retinotectal pathways, and these differences shed light on the tectum/SC's contributions to sensory processing as a whole. The curious phenomenon known as 'blindsight' (see Box 1) illustrates the functions of retino-thalamic and retinocollicular visual pathways, and the ways in which some of these functions are plastically changeable. Blindsight refers to human patients with damage to their visual cortex who lack conscious vision but are nonetheless capable of visually-guided eye movements, obstacle avoidance, and other coarse visuo-motor

tasks<sup>46,47</sup>. Long ago, these residual visual behaviors in apparently blind people provided an indication that there are multiple distinct visual pathways, and subsequent studies soon suggested a role for the retino-colliculo-thalamic pathway in blindsight<sup>48–50</sup>. Thus, the retino-thalamic pathway is generally regarded as necessary for conscious and high acuity vision, while the retino-colliculo-thalamic pathway has been shown to regulate non-conscious and reflexive visuo-motor processing (see Box 1 for further comments on the thalamic relay for blindsight).

Illustrating this, inactivation of the SC in nonhuman primates prolongs reaction times for visually-guided eye saccades and eliminates ultra-short latency 'express saccades'<sup>51</sup>. However, recent studies have shown that the SC not only mediates the quick processing of simple visual signals, but also is involved in more complex visual processing in its local circuits. For example, inactivation of the SC impairs 'saccadic suppression' (the shutting down of visual processing during saccades to





Current Biology

**Figure 3. Phylogenetic conservation of brain-wide visual pathways.**

Retino-thalamic (violet lines) and retino-colliculo-thalamic (green) lines in the lamprey, zebrafish larva and mammals. Abbreviations: Amygd, amygdala; iBPs, ipsilateral brainstem projecting neurons; coBPs, contralateral brainstem projecting neurons; Cx, cortex; DI, dorsolateral subdivision of pallium; Dm, dorsomedial subdivision of pallium; iBS, ipsilateral brainstem; coBS, contralateral brainstem; INs, inhibitory interneurons; Th, thalamus; SInS, GABAergic superficial inhibitory neurons; PVPNs, periventricular interneurons; PVPNs, periventricular projection neurons; NF, narrow field vertical cells; H, horizontal cells; St, stellate cells; WF, wide-field vertical cells; OT, optic tract; PG, periglomerular nucleus.

reduce the image blur) in extrastriate cortical neurons<sup>52</sup>, target selection from a visual field with multiple distractors<sup>53</sup>, detection of subtle changes in the properties of visual cues in the periphery<sup>54</sup>, and perceptual decision making<sup>11</sup>. On the sensory side, single unit recordings suggest that sSC neurons are involved in the detection of salient visual stimuli in the visual scene<sup>55</sup>, as well as the processing of spatial frequency, contrast, orientation, and temporal frequency<sup>56,57</sup>. In combination with the retinotopic map, these and many other observations show the retino-colliculo-thalamic pathway, and the tectum/SC specifically, to be involved in the coding of visual space, the detection of salient stimuli, the control of rapid or reflexive visual behavior, and the making of decisions related to action.

In addition to the retino-thalamic pathway and the canonical retino-colliculo-thalamic pathway, recent studies have revealed non-canonical ascending pathways from the tectum/SC that are involved in a range of cognitive processes across a variety of animal species. The pathways from the sSC to the amygdala via the lateral posterior nucleus of the thalamus or the nucleus paraventricularis play a role in encoding or processing stimuli that induce fear in mice<sup>58,59</sup>. This possibility is reinforced by recent human literature describing a relationship between the SC and fear<sup>60</sup>. On the other hand, a direct connection of the tectal output fibers with midbrain dopamine neurons has been found in lampreys<sup>61</sup>, rodents<sup>62</sup>, cats<sup>63</sup>, and monkeys<sup>64</sup> and is considered to be involved in visually triggered reinforcement learning. In terms of the functions of the tectum/SC in cognition, more recent studies have shown that monkeys exhibiting blindsight, which rely on the SC in visual processing<sup>50</sup>, can perform a variety of cognitive tasks such as short-term

memory<sup>65</sup> and associative learning<sup>66</sup>. Moreover, humans with blindsight show fear responses to visual cues presented in the V1 lesion-affected visual field<sup>67</sup>. These results suggest that the tectum/SC and retino-colliculo-thalamic pathway are not just involved in control of rapid reflexive visual behavior and low-level filtering, but can also process more complex images<sup>68</sup> and may contribute to higher cognitive functions such as top-down attention and decision making, as well as emotional processing.

#### Evolutionary conservation of the tectum/SC's position in visual pathways

So when in natural history did these separate visual pathways emerge? Lampreys, among our most distant existing vertebrate relatives, have thalamic nuclei that receive retinal and tectal inputs, and that project to the pallium. Some of the thalamic projection neurons produce a retinotopic (and also a somatosensory) arborization field in the pallium<sup>16</sup>, while others project to the striatum<sup>69,70</sup>. A subset of the tectal projection neurons targeting the thalamus also send descending axonal branches to the brainstem to drive behavior<sup>71</sup>. Among primitive fish, the longnose gar (*Lepisosteus osseus*) has a retinal projection to the nucleus anterior (possibly corresponding to the dLGN and retino-thalamic pathway), as well as retinotectal and tecto-thalamic projections terminating in the dorsal posterior nuclei (corresponding to the pulvinar and canonical retino-colliculo-thalamic pathway)<sup>72</sup>. The telencephalic (pallial) targets of the thalamic projection neurons have not been clearly identified. Combined, these observations provide clear evidence for the retino-thalamic and retino-colliculo-thalamic pathways in distant vertebrate lineages (Figure 3).

Evidence for these pathways has been inconsistent in the more recently evolved cyprinid fish. Adult goldfish and carp have retino-thalamic projections, but the retinorecipient thalamic nuclei do not contain neurons projecting to the pallium. Furthermore, tecto-thalamic projections have rarely been identified, the one exception being a study by Yamamoto and Ito<sup>73</sup> showing that the ventromedial nucleus (preglomerular nucleus) receives retinal and tectal projections, and sends axons to the dorsomedial (Dm) subdivision of pallium. While studies of adult cyprinids have been equivocal, detailed descriptions of individual neurons in larval zebrafish have recently found stronger correlates of the retino-thalamic and retino-tectal pathways. These include retinorecipient thalamic neurons that project to the pallium<sup>74</sup>.

A new brain-wide atlas of cellular morphologies across the larval zebrafish brain<sup>75</sup> has revealed neurons in both the ventral and dorsal thalamus projecting to the pallium, and previous work has shown that tectal neurons send projections to both these thalamic areas<sup>76</sup>. The differences between the descriptions in adults and larvae could be a function of the species studied, the life stage, or the different methods used. For instance, adult cyprinids almost exclusively use the preglomerular nucleus as a visual relay station, but this nucleus is undifferentiated in larvae. It is also possible that the larval connections are lost during development. Perhaps most likely, the ease with which intact neurons can be observed in small, transparent larvae has allowed a more comprehensive accounting of the connections that exist among the eye, tectum, thalamus, and pallium.

The above results suggest that the fundamentals of the retino-thalamic and retino-colliculo-thalamic pathways are shared across 450 million years of the vertebrate history, spanning from cyclostomes to mammals among modern species. From basic teleosts like the gar, vertebrate evolution has proceeded over many stages to amphibians and higher vertebrates, while the cyprinids and other teleosts were subjected to an additional genome duplication that may have facilitated evolutionary change by allowing for the addition of novel neural circuits<sup>77,78</sup>. Of course, different vertebrate lineages have different ethological landscapes and sensory demands, and the changing structures and roles of the tectum/SC through vertebrate history reflect this. One manifestation of this can be found in the position of the eyes in the head and the corresponding changes in the structure of retinotectal space (Figure 2). Another is in the relative weighting placed on rapid reactions versus cognitive processes. In older lineages and in most modern fish, there is a reliance on the quick reactions provided by the retino-tecto-motor circuit and spatial awareness that comes from the retino-colliculo-thalamic pathway, and a relative de-emphasis of the cognitive sensory functions associated with the retino-thalamic pathway. The extraordinary expansion of the telencephalon in mammals, and primates in particular, may have provided a greater emphasis on cognition in this lineage, and a corresponding weighting toward the retino-thalamic pathway.

### The tectum/SC's intrinsic networks and their computations

#### The tectum/SC's conserved laminar structure

The tectum/SC receives information regarding the visual world in a spatially arranged retinotopic map. In all vertebrates, there is a similar organization, with a superficial visual layer and an

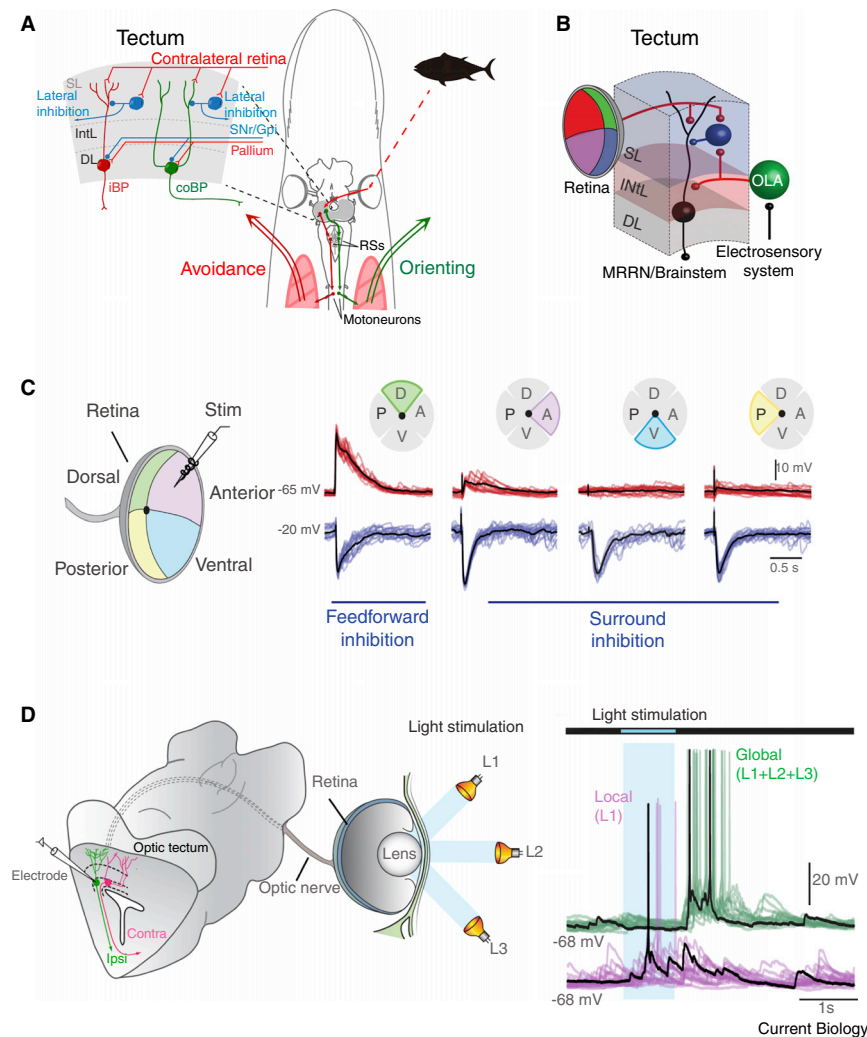
intermediate layer containing spatially aligned input from other senses (covered in detail in the next section). A deeper layer contains output neurons that forward motor commands for eye, orienting, or evasive movements<sup>19,79</sup>. This general organization is present in all vertebrates, although the different layers carry different names and have been variably subdivided in different model systems. In addition to the inputs from the different senses, there is input from cortex/pallium both from the frontal eye fields and the visual areas<sup>80</sup>, and prominent inhibitory control from the basal ganglia affecting the tectal output layer<sup>70,81–83</sup>. There are also inputs from other midbrain areas and from dopamine, serotonin, and cholinergic afferents<sup>61,84–87</sup>. These diverse inputs, each with a different role, allow the tectum to receive, process, and integrate sensory information; register it spatially; and direct appropriate behaviors based on the animal's context. In the next section, we will focus on the early steps in the cascade: the processing of visual inputs in the tectum/SC.

#### The lamprey tectum's sensory and motor maps and circuit mechanisms

In the lamprey, the retinal ganglion cells projecting into the tectum (Figure 2A) are of four morphologically distinct subtypes that presumably carry different types of information<sup>15</sup>. The density of neurons varies across different areas in the tectum, with the highest density in the area representing the anterior visual field. In this area, both orienting and evasive responses can be elicited, while in the posterior visual field mostly evasive movements are produced. Importantly, a motor map aligned with the visual map is present at a deeper level among the output neurons. Stimulation of the tectum at the lowest stimulation strength elicits eye movements, in which the two eyes are coordinated. Small amplitude movements are elicited in the rostral part of the tectum, while larger amplitudes are produced more caudally<sup>88</sup>. At a somewhat higher strength of stimulation, orienting or evasive movements are elicited, and locomotor movements can be elicited from the caudal region. As discussed in “Sensorimotor transformation, premotor outputs, and behavior selection” below, this regional organization of the tectum is critical for generating the appropriate movements in response to various visual stimuli.

The output neurons in the deep layer are glutamatergic neurons of two kinds. One type, neurons with one stem dendrite extending all the way to the visual layer, with an axon projecting to the ipsilateral brainstem's reticulospinal neurons (iBP in Figure 4A), is involved in evasive movements. The second type instead has two stem dendrites extending to the visual layer and an axon instead projecting to the contralateral brainstem (coBP in Figure 4A), and these are involved in orienting movement as illustrated in Figure 4A<sup>2</sup>. Slowly expanding stimuli are sufficient to activate the latter type of neurons (coBP), and an orienting movement will result. On the other hand, rapidly expanding visual stimuli (thus more intense per unit time) will instead elicit an avoidance reaction<sup>3</sup>. Thus, the same type of stimulus applied slowly elicits an orienting response, but when applied faster an avoidance response instead.

One mechanism that can account for this finding is the different membrane properties of these two types of neurons. coBPs have a lower threshold for activation and will start spiking with a stimulus that only gives a subthreshold activation of the iBP neurons<sup>2</sup>. Only with a more intense stimulus are the iBPs



**Figure 4. Structure and circuitry of the lamprey tectum.**

(A) Drawing of the lamprey head and brain with the circuitry leading to orienting and avoidance responses. In the upper left the tectal circuitry is represented, with the ipsilateral projecting neurons (iBP) underlying avoidance reaction and the contra-laterally projecting neurons (coBP) orienting responses. These neurons have monosynaptic input from retinal afferents and GABAergic interneurons. The output layer has input from both the pallium (cortex) and the substantia nigra pars reticulata (SNr). (B) Diagram illustrating convergence between the retinal input and the electro-sensory input activated from the same point in space. At the distal dendrites the retinal afferents form synapses, while the electro-sensory afferents target the same dendrite but closer to the cell soma. The tectal output neuron targets middle rhombencephalic reticular nucleus (MRRN), located in the brainstem. Abbreviations: SL, superficial layer; IntL, intermediate layer; DL, deep layer; OLA, octavolateral area. (C) Stimulation of retina in one quadrant leads to excitation in tectal neurons in the specific retinotopic projection area in the tectum, while stimulation in all other parts of the retina instead leads to a strong inhibition mediated by the tectal GABAergic interneurons. The red traces are recorded with a holding potential of  $-65$  mV, and the blue traces at  $-20$  mV, when the inhibition can be seen clearly. There is thus a powerful lateral inhibition. (D) Shows recordings from a lamprey eye-brain preparation in which the tectal output neurons can be patched, while the eye is illuminated with local brief light pulses (blue area) or globally with light on in all parts of the retina. The neuron illustrated is excited by the local light (L1), while there is no response when the entire retina is illuminated (global). This illustrates the strong surround inhibition also shown in (B). There is, however, a post-inhibitory rebound.

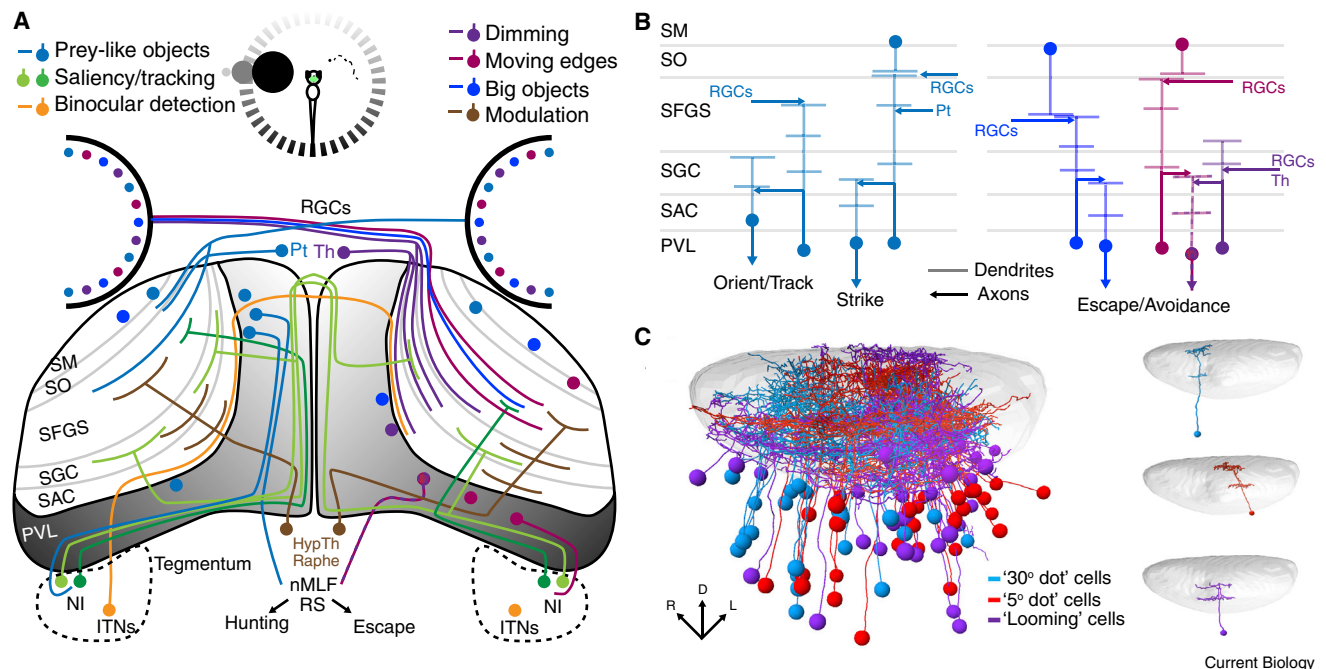
recruited and fire action potentials that then elicit an avoidance movement. Orienting movements are activated only from the anterior visual field and coBPs are only present in this location, whereas the iBPs that elicit avoidance are present throughout the tectal visual layer, which appears purposeful because threats can originate from any direction. Orienting and evasive movements depend on the tectum and are blocked if processing in the tectum is incapacitated by local pharmacological intervention<sup>3</sup>, but can of course be gated by signals from the basal ganglia, pallium/cortex and other sources (Figure 4A).

What is the upstream process leading to the activation of the output neurons? A local brief stimulation of the retina with electrodes provides a local discrete activation of the tectum according to the retinotopic map (Figure 4C) and provides monosynaptic activation by the local retinal afferents through synapses onto the dendrites of iBP and coBP<sup>2</sup>. The stimulus-evoked excitatory postsynaptic potentials (EPSPs) from the retina are followed by a disynaptic local inhibition elicited by local GABAergic interneurons (Figure 4A,C). Moreover, stimulation of any part of the retina outside the area in tectum receiving monosynaptic retinal input causes only a potent GABAergic inhibition. This shows that there is a marked lateral or surround

inhibition in the tectal network. In the visual layer, there is a rich supply of GABAergic interneurons with short and longer axons (Figure 4A) that are responsible for this lateral inhibition. In addition, there are glutamatergic interneurons that presumably contribute to the coordination of the eyes.

What if the retina is activated by light stimuli? If a brief local (1 second) light stimulus is applied to the eye while recording from output neurons in the local retinotopic area of the tectum (Figure 4D), there will be a net excitation of the cells in that location, although there is some concurrent inhibition<sup>2</sup>. But if global illumination of the eye occurs instead, the inhibition from surrounding areas will dominate and no excitatory activity is actually produced. After the global illumination has ended, there is, however, a postinhibitory rebound activation. This also means that, if two salient stimuli occur simultaneously in different locations on the retina, there will be a rivalry between the two, and the most prominent will win and then induce a gaze shift towards the direction controlled by the particular output neurons that become activated. This is thus a mechanism for selection of motor action at the level of the tectum. Another interesting role for this circuit is the combined processing of multisensory input (Figure 4B), which we will cover in more detail in the next section.





**Figure 5. Integral circuitry of the larval zebrafish tectum.**

A schematic representation of the larval zebrafish's tectal inputs and outputs (A) illustrates its role in receiving and integrating information from diverse sources. The inputs are strongly spatial — shading of circle at the top of (A) and of the PVL in the tectum — and differ depending on whether a small stimulus (prey item seen by the right eye) or a large looming stimulus (left eye) is presented. The processing of prey-like stimuli (left tectum, since all retinal ganglion cell axons cross the midline) results in hunting behavior, while looming stimuli (right tectum) trigger escape responses. Inputs from various cell types and brain regions are color coded to indicate the stimulus properties that they encode (legend at the top). Different types of information are delivered selectively to different laminae of the tectal neuropil (B), and this dictates the response properties of PVL neurons with dendrites in a specific lamina or laminae. The spatial registration (C, left) of many individual PVL neurons' morphologies (C, right), taking into account their visual response profiles (colors), reveals the spatial and functional architecture of visual processing in the tectum. Panel (C) adapted from Förster *et al.*<sup>42</sup> (CC BY 4.0). Abbreviations: HypTh, hypothalamus; ITNs, intertectal neurons; NI, nucleus isthmi; nMLF, nucleus of the medial longitudinal fasciculus; Pt, pretectum; PVL, periventricular cell layer; RGCs, retinal ganglion cells; RS, reticulospinal neurons; SAC, stratum album centrale; SFGS, stratum fibrosum et griseum superficiale; SGC, stratum griseum centrale; SM, stratum marginale; SO, stratum opticum; Th, thalamus.

### Tectal processing in zebrafish

In larval zebrafish, retinal ganglion cells dominate the inputs to the superficial layers, with at least 20 discrete categories of retinal ganglion cells delivering information on visual stimuli's motion, orientation, and (through the retinotectal map) position<sup>75,89</sup>. These retinal ganglion cells have distinct molecular profiles and morphologies, and they target specific laminae and are sensitive to particular visual features<sup>30</sup>. Deeper retinorecipient layers in the central regions of the neuropil receive luminance information from retinal ganglion cells. Deep laminae of the neuropil receive a smaller number of afferents from diverse sources, including the hypothalamus, thalamus, cerebellum, torus semicircularis (homologous to the inferior colliculus in mammals), serotonergic raphe, the nucleus isthmi, and the contralateral tectum<sup>75,76,90–95</sup>. These inputs likely carry information from other modalities (auditory and potentially water flow and vestibular), information on satiety levels and other motivational states, and proprioceptive feedback.

With a single continuous neuropil region, the fish tectum has no clear structural separation between its superficial and deep areas, as is seen in mammals. There are, however, numerous superficial-to-deep laminae and sublaminae through which specific types of information flow. The tectal neurons contributing to this presumed information flow include superficial

interneurons with broad sharply laminated dendritic structures, interneurons with dendrites spanning multiple superficial laminae and with axons in the deep neuropil, and tectal projection neurons with dendrites restricted to deep layers of the neuropil<sup>96,97</sup> (Figure 5).

The tectum/SC's inputs, laminar structure, and cellular composition provide a framework by which visual information can be interpreted and contextualized to drive appropriate behaviors. This general layout provides an appealing system in which to characterize the functional microcircuits that perform visual computations in this structure. While these computations have been studied in a range of model systems, the larval zebrafish, with its relatively simple tectum and suitability for microanatomical studies, calcium imaging, and optogenetics, has been an especially effective platform for characterizing the details of information flow through the tectum<sup>42,76,98,99</sup>.

In the simple world of the larval zebrafish, survival largely depends on attacking suitable prey items while escaping from predators, and as we have seen for lampreys, the tectum is central to both of these behaviors. Appropriate approach/escape decisions rely on specific information about visual stimuli, such as their size, position, movement, and luminance, and tectal circuits therefore must perform behavioral calculations based on this basic information. Given the visual properties of small prey

# Current Biology

## Review



items, predation involves high-acuity vision and motion detection, and requires the larva to perform extended visual tracking. In contrast to prey items, predators are large and ‘loom’ toward the larva as an expanding object, typically producing a drop in luminance in the relevant portion of the visual field, and require a rapid and dramatic escape response that, while loosely directional, does not have to be tightly spatially targeted.

Both of these behaviors depend on detecting a visual stimulus’ position, motion, and direction. Because retinal ganglion cells’ axons navigate to particular tectal positions to form a retinotectal map, locations on the retina (and therefore in visual space) are preserved across the rostrocaudal and mediolateral axes of the tectal neuropil<sup>100,101</sup>. As we will describe in subsequent sections, this is an important property of the tectum/SC, as it provides a basis for registering visual space against the spatial properties of other sensory modalities in the deeper layers of the tectum and the dSC. The foundations of motion and direction sensitivity come from the retinal ganglion cells, which deliver information about movement in particular directions to specific laminae in the superficial tectal neuropil<sup>102</sup>. These inputs’ laminar specificity allows periventricular layer (PVL) neurons with dendrites in a specific lamina or laminae to respond to motion in particular directions<sup>103,104</sup>. Although the circuit-level details have not been elucidated, these PVL neurons increase direction selectivity from three cardinal axes delivered by retinal ganglion cells to four axes, roughly corresponding to forward, backward, up, and down, represented among the tectal PVL neurons<sup>40</sup>. Combined with the positional information that springs from the retinotectal map, this motion and direction sensitivity provides a basis for identifying where an object is and how it is moving<sup>105</sup>.

Predatory behavior begins with the identification of a prey item, the gauging of its position and speed, and the decision to pursue it. In larval zebrafish, this perception of prey starts with retinal ganglion cells that respond selectively to objects of a particular size (in visual space on the retina) and speed (in movement across retinal space). Retinal ganglion cells with particular size and speed tuning innervate a subpopulation of pretectal neurons and specific layers of the tectal neuropil, effectively allowing small and large stimuli to activate different tectal layers<sup>106,107</sup>. The size and speed to which these retinal ganglion cells are tuned matches the apparent size and speed of natural prey, and artificial stimuli with these properties are effective at producing hunting routines<sup>108,109</sup>. Presumably by restricting their dendrites to specific laminae, a subset of tectal PVL neurons use this organized input to respond selectively to particular features or combinations of features<sup>41</sup>, facilitating the selective response to small or large objects<sup>106,110</sup>.

GABAergic superficial inhibitory neurons (SINs), located in the stratum opticum (SO) of the tectal neuropil, have tightly laminated dendritic arbors in specific sublaminae of the neuropil, and are therefore in a position to filter information flow on the basis of object size. Indeed, Preuss *et al.*<sup>106</sup> have shown that SINs are active in response to visual objects of various sizes, but that a given SIN is size-selective, and that this selectivity is tightly coupled to the size selectivity of the retinal ganglion cell axons present in the tectal sublamina containing that SIN’s dendrites. Consistent with this, ablating large-object SINs leads to increased responses to large objects in the deeper

non-retinorecipient layers of the tectal neuropil, with a resulting drop in the efficacy of predation<sup>111</sup>.

Selective inputs from small and large objects, received and processed by PVL neurons and gated by lamina-specific SINs, therefore provide a computational framework for the size-selective responses of non-retinorecipient PVL neurons<sup>106</sup>, and specifically for the increased emphasis placed on prey-sized objects in the neuropil’s deepest, non-retinorecipient, layers<sup>111</sup>. The clear representation of these objects is a prerequisite for coordinating the eye movements required for tracking prey items and the orchestration of pursuit and strike maneuvers. Recent findings suggest that the tectum of larval zebrafish can sample small parts of the visual field and even suppress activity surrounding a preferred portion of it<sup>112</sup>.

In a recent study, Förster *et al.*<sup>42</sup> combined multiple approaches to elucidate the processing of prey-like stimuli in zebrafish larvae. The authors first characterized the profile of responses to multiple visual stimuli in both tectal cells and retinal ganglion cell axons. They found that most tectal cells respond to multiple types of visual stimuli and that they are highly sensitive to object motion. These tectal responses seemed to be produced mainly by multiple types of retinal ganglion cells’ activity profiles (two on average). However, up to 36% of tectal responses could be explained by a single retinal ganglion cell input. Furthermore, there were tectal responses that were poorly explained by the retinal information. These results suggest that tectal cells both combine information already present in the retinal ganglion cells and also perform their own computations.

By combining functional imaging and single cell labeling of tectal cells, Förster *et al.*<sup>42</sup> then showed that cells tuned to prey-like objects have distinct positions depending on the size of the object, and that their dendrites sample from layers targeted by correspondingly tuned retinal ganglion cells. Finally, they described a group of PVL neurons tuned to large objects (presumably close prey), located in the anterior tectum, which represents the frontal striking-zone of the visual field. Their contributions to predatory behavior were corroborated by ablation experiments, in which the loss of these neurons affected hunting performance.

Once the target prey is located and a hunting sequence is initiated, an interaction between the tectum and the nucleus isthmi facilitates the maintenance of the tracking, probably by selecting the target stimulus based on its saliency relative to other stimuli<sup>94,95</sup>. Finally, another group of GABAergic tegmental neurons that projects to deep layers of the tectal neuropil combine binocular information with commissural connections and are important to identify when the prey is in the striking zone<sup>113</sup>. As the tectum grows and becomes more efficient at decoding and transmitting spatial information, a gradual developmental improvement in hunting performance occurs<sup>114</sup>. The processing of all of these visual features in the tectum, the interaction between the pretectum and the anterior-ventral tectum, and the tectum’s further connections to premotor areas, therefore, combine to coordinate the hunting behavior<sup>115–117</sup>. These premotor and motor elements will be discussed below in “Sensorimotor transformation, premotor outputs, and behavior selection”.

Across a wide range of species, dark looming objects elicit visual escape behavior<sup>118–121</sup>. The stimulus’ key properties

include its size and motion, involving circuits described above, but also a drop in luminance across the visual field<sup>122</sup>. The tectum/SC thus needs to calculate the combined presence of motion and luminance in order to identify a loom. In the case of larval zebrafish, some of this information is already encoded in retinal ganglion cells as they arrive in the tectal neuropil, including motion- and size-specific retinal ganglion cells that terminate in the superficial and intermediate layers of the neuropil<sup>118,120</sup>, and retinal ganglion cells encoding a drop in luminance (dim-specific retinal ganglion cells) in deeper layers<sup>42,120</sup>. These ‘OFF’ retinal ganglion cells present different sensitivity profiles and segregate this information in the neuropil, which in turn is received by OFF-sensitive tectal cells<sup>123</sup>. Additionally, dim-sensitive thalamic neurons project into the deep neuropil layers<sup>93</sup>. As none of these inputs, individually, encodes the presence of a loom, computations must be taking place in the tectum to produce loom-specific responses in PVL neurons (Dunn *et al.*<sup>118</sup> and our unpublished observations).

Again, the SINs appear to play an important role in these computations, responding to visual objects growing at particular speeds, and sculpting the activity among PVL neurons to facilitate transmission of loom-relevant information<sup>118</sup>. Such information about edges and movement could then be incorporated with luminance information in the deeper layers of the neuropil. Dim-specific projections from the thalamus terminate in the deep neuropil layers and have been shown to contribute to the probability of startle behavior and to be necessary for directional escape<sup>93</sup>. This suggests that filtered information on stimulus size and motion from retinorecipient PVLs, combined with dimming information from thalamic projection neurons and retinal ganglion cells, is synthesized in the deeper layers of the neuropil, leading to loom-specific responses in subsequent PVL neurons and providing a basis for downstream behavioral decisions.

### The superior colliculus in mammals — neurons, networks, and behavior

As we have seen, the tectum of lampreys and zebrafish larvae differ in their specific inputs and in the fine details of the circuits that carry out visual computations. They nonetheless fill the same role in processing visual information and pivoting this information toward appropriate behavioral responses. As we move to the mammalian superior colliculus, we will see another step up in complexity, reflecting greater communication with the expanded mammalian telencephalon and differences in the sensory landscape. Despite these differences, we will nonetheless find important conservation of the tectum/SC’s structure, sensory processing, and behavioral contributions.

A prerequisite for navigating the visual world is the ability to track objects as they move or to stabilize vision as strong visual flow takes place, and the tectum/SC plays an important role in producing the eye saccades and head movements that allow this tracking and stabilization. The selective delivery of specific types of information to each lamina of the sSC involves visual information from several locations, including the retina, thalamus, and visual cortex. As in the zebrafish tectum, inputs from different visual origins overlap in their laminar distributions within the sSC of mammals, but each shows a unique profile of the laminae innervated, suggesting an as-yet poorly understood logic for the processing of visual information as a whole. These

inputs are received by sSC neurons with one of a few basic morphologies, including narrow field vertical (NF), horizontal (H), stellate (St), and wide field vertical (WF) cells (Figure 6). The computations performed by these circuits culminate in the delivery of processed visual information, carried by sSC projection neurons, principally to the dSC and in parallel to the visual thalamus including the lateral posterior nucleus (LP) or pulvinar, and LGN.

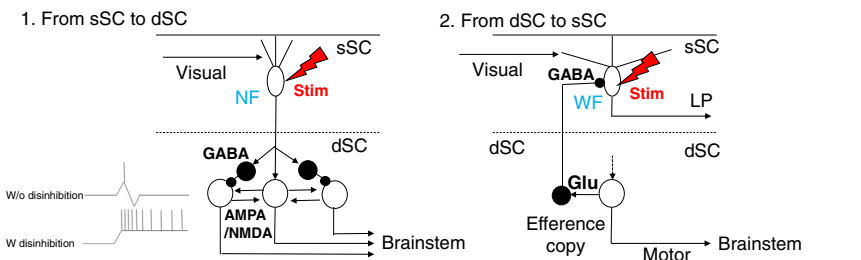
In earlier studies<sup>124</sup>, despite the similar representation of the spatial locations, the direct projection from the sSC to the dSC had been called into question, and neuronal recording studies in monkeys showed that visual bursts in the sSC do not always induce saccade related activity in the dSC. From the late 1980s to 1990s, however, direct projections from the sSC to dSC were demonstrated first anatomically<sup>125–127</sup> and then physiologically in acute slice preparations from rodents (Figure 6A1)<sup>128–130</sup>. Explaining earlier observations, this sSC-dSC pathway is under suppression of GABAergic inhibition, and removal of the inhibition is necessary for the prominent activation of dSC neurons to the sSC stimulation<sup>129</sup> (Figure 6A1). The dSC neurons relay the visual inputs from the sSC to the saccade generator circuits in the pontomedullary reticular formation (PMRF) to control saccades.

Thus, the flow of the signals from the sSC to the dSC is gated depending on the level of GABAergic inhibition. The opening or closing of this gate might be reflected in the reaction time of visuomotor responses, and such effects are observed in the distribution of reaction times of visually guided saccades. In the ordinary saccade task in which the target is presented simultaneously with the fixation point offset, the saccadic reaction times are distributed at 150–250 ms in macaques, which are called ‘regular saccades’. In contrast, when a short time gap (for example 200 ms) is inserted between the fixation offset and target onset (gap saccade task), the reaction times are markedly shortened and form a distinct peak around 80–120 ms<sup>131</sup>. These ultra-short latency saccades are called “express saccades” and are thought to be caused by disengagement of attention toward the fixation point and the predictability of the target location<sup>132</sup>. The sSC to dSC pathway is proposed to be involved in the induction of express saccades<sup>133</sup>.

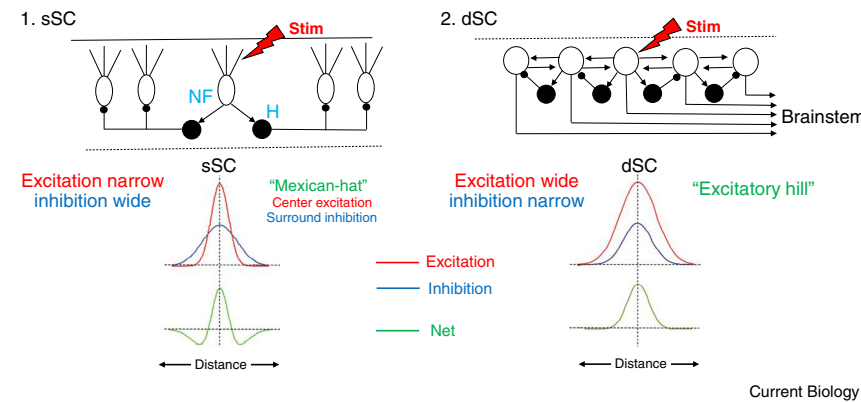
On the other hand, dSC neurons, in parallel to sending the output commands to the brainstem and spinal cord to induce saccades or orienting head/body movements, send collateral projections to the GABAergic inhibitory neurons in the same layer. Some of these neurons are known to project to the superficial layer and inhibit the neurons projecting to the visual thalamus (Figure 6A2). This pathway is thought to suppress the visual inputs during saccades, which prevents the blurring of the visual image that saccades would otherwise cause<sup>134</sup>. In addition to this inhibitory dSC to sSC pathway, excitatory projections have been reported, which are proposed to play a role in seeing the visual images seamlessly during saccades<sup>135</sup>.

The dSC also receives projections from the non-V1 cortex, the SNr, the mesencephalic reticular formation, and the cerebellum, as well as sensory information including proprioceptive feedback and cutaneous and vestibular inputs<sup>4</sup>. In order for the dSC neurons to produce their characteristic strong bursting responses to drive saccades or orienting head/body movements, they have to be released from inhibition by GABAergic local interneurons and the outputs of the basal ganglia<sup>81,136</sup>. Relieved from

**A Inter-laminar connection**



**B Intra-laminar connection**



**Figure 6. Canonical SC circuits in mammals.**

(A) Interlaminar connection. (A1) From the sSC to the dSC. When an electrical stimulus is delivered to narrow field vertical (NF) cells in the sSC (red lightning bolt), excitation is transmitted to brainstem-projecting neurons in the dSC (open circles) through excitatory synapses with AMPA and NMDA receptors. In parallel, GABAergic feedforward inhibition (black circle cells) curtails the excitation as shown in the inset (see the upper inset trace showing intracellular electrophysiological recordings, ‘w/o disinhibition’) and prevents successive spiking responses upon stimulation of the NF cells. However, if the feedforward GABAergic inhibition is removed, long lasting excitatory responses are induced in the dSC neurons<sup>129</sup> (lower inset trace, ‘w disinhibition’) through bidirectional reverberating excitatory circuits existing in the dSC (see (B2))<sup>136</sup>. (A2) Interlaminar connection from the dSC to sSC. The brainstem projection neurons in the dSC (open circle) send collaterals to the GABAergic dSC neurons (black circle), which send axons to the sSC and inhibit WF cells that project to the LP. (B) Intralaminar connections of the sSC and dSC. (B1) In the sSC, when an electrical stimulus is delivered to the NF cells (red lightning bolt), they excite nearby horizontal cells (H, black circles) which are GABAergic and send horizontal neurites to inhibit remote NF cells. Here, the extent of horizontal excitatory connections (red trace in the upper inset) is narrower than the inhibitory connections (blue trace in the upper inset) and the net effect (green trace in the lower inset) becomes ‘Mexican-hat’-like center excitation and surround inhibition

in NF cells. Here, ‘distance’ in the inset indicates the medial-lateral distance of the NF cells relative to the stimulated cell. (B2) In the dSC, when an electrical stimulus is delivered to the brainstem-projecting neurons (open circle) the lateral excitation (red trace in the upper inset) is wider than the lateral inhibition in other brainstem-projecting neurons (blue trace in the upper inset) mediated by local GABAergic neurons (black circles), and the net effect (green trace in the lower inset) is an “excitatory hill”. (Adapted from Phongphanphaneet *et al.*<sup>142</sup> (CC BY 3.0).)

this inhibition, they produce a horizontal excitation which overcomes lateral inhibition to recruit surrounding cells and generate an ‘excitatory hill’ on the saccade vector map in the dSC<sup>137</sup> (Figure 6B2). This may underlie the population coding of saccade vectors by dSC neurons, in which the saccade vector is determined by center of gravity of a large population of dSC neurons that exhibit high frequency presaccadic activity<sup>138</sup>.

Several studies during the last decade have revealed the ways in which computations for the detection of salient stimuli are carried out in the mammalian sSC. The wide field (WF) vertical neurons, which possess widely projected dendritic trees are projected dorsally from the cell body, are tuned to small slow-moving objects<sup>139</sup>. This selectivity is modulated by horizontal GABAergic neurons that are sensitive to broader visual fields and that inhibit local parts of the dendritic trees of WF neurons<sup>140</sup>. These circuits involving the WF neurons appear to be essential for detecting prey<sup>141</sup>. The lateral interaction within the sSC was studied in horizontal slice preparations of the sSC, which were obtained by cutting the SC along a horizontal plane containing all the intact visual topology<sup>142</sup>. These horizontal slices were placed on multielectrode arrays and electrical stimuli were applied while intracellular potentials were measured by whole cell recordings. In this preparation, narrow-field (NF) neurons, a major sSC projection neuron population with narrow dendritic fields, were excited by stimulation of nearby locations, while strongly inhibited by the surrounding locations, thus forming a ‘Mexican hat’-like center

excitation-surround inhibition structure that may enhance visual responses in a specific part of the visual field<sup>142</sup>.

The analysis of population activity using calcium imaging also showed the Mexican-hat like organization in the sSC<sup>143</sup>. This modulation is likely due to long range inhibition probably produced by the horizontal cells (‘H’ in Figure 6B1). In order to orient vision to the prey and then follow and maintain the target while it moves within the visual field, the NF vertical cells and their bidirectional interaction with the parabrachial nucleus (PBG) are key in enhancing the contrast through facilitation of lateral inhibition in the sSC<sup>141</sup>. These cells have small receptive fields and are particularly tuned to small objects and their directional information<sup>139,141</sup>. Furthermore, they project to the PBG nucleus and intermediate layers of the SC, where premotor neurons driving saccades are located<sup>128,129,133,139</sup>.

In mammals, parvalbumin-positive (PV<sup>+</sup>) cells in the sSC are sensitive to looming stimuli and appear to be involved in visual escape<sup>59,141</sup>. Interestingly, these PV<sup>+</sup> neurons are glutamatergic and send projections to the PBG and the lateral posterior nucleus (LP) in the thalamus, but they belong to two distinct populations with different distributions in the sSC layers<sup>144</sup>. These distributions indicate that these two categories of PV<sup>+</sup> neuron contribute to two parallel pathways, a possibility that is reinforced by their facilitating two opposing types of anti-predator responses. When the PBG pathway is stimulated, the likelihood of an escape response is increased while when the LP pathway is activated, a freezing response is more likely. Both pathways send projections



to the amygdala, making it likely that this fear-encoding structure plays a role in both types of behavioral response<sup>58,59</sup>. We need to know more about the circuits that involve these PV<sup>+</sup> cells to understand better how they process the loom visual information coming from the retina, and also the possible role of the projecting horizontal GABAergic neurons of the sSC, as they also seem to be sensitive to large fast objects and project to the thalamus and PBg<sup>139</sup>.

In addition to this canonical pathway, the sSC receives neuromodulatory inputs, especially cholinergic inputs from the PBg in rodents<sup>145</sup> and nucleus isthmi in other vertebrate species. Traditionally, the function of the nucleus isthmi has been studied in frogs<sup>146</sup> and birds<sup>147</sup>. Lesion in the nucleus isthmi in birds results in impairment of orientation discrimination. In rodents, it has been reported that the sSC and PBg are reciprocally connected in a topographical manner. Cholinergic PBg inputs to the sSC output neurons (NF cells) induce direct excitation in the target neurons, accompanying strong inhibition presumably mediated by nearby GABAergic neurons in the sSC<sup>148–150</sup>. These results suggest that the inputs from the nucleus isthmi or PBg enhance the center-excitation and surround-inhibition in the SC circuits for detection of salient stimuli.

As described in this section, the tectum/SC has the necessary microcircuitry to identify both prey items and predators, and elements of these circuits are necessary for the relevant downstream behaviors. At the same time, the products of these computations contain little novel information not already encoded in the retina's outputs (which include visual objects' positions, sizes, and movement). So, what value does the tectum add? The answer lies in the tectum/SC's position in the brain's broader sensorimotor network. The retinal ganglion cells carry visual information without context, and it is only within the tectum/SC that vision can be registered against the position of the body and eyes, spatial inputs from other sensory modalities, and ethologically important information on the animal's brain state, motivational state, and recent experience. In the next section, we will discuss how visual information is merged with a diverse array of other inputs in the tectum/SC to produce an integrated and coherent spatial representation of the sensory world.

### Multisensory integration of spatial information in tectum/SC

The tectum/SC is at the center of one of the brain's two major visual pathways, and sensory input to the superficial parts of the tectum/SC is dominated by vision. As a result, this structure is so firmly associated with vision that the unduly specific term 'optic tectum' is sometimes still used to describe it. This term, however, belies one of the tectum/SC's most fundamental contributions: the registration of multiple sensory modalities into a coherent representation of space and movement. In addition to the retinotopic map, other senses provide their own spatial maps, and these maps overlap in the tectum/SC to provide rich information about objects in sensory space. Furthermore, this spatial map is aligned with a motor map that can trigger saccadic eye movements to different points in space or orienting or evasive movements. This integrative role for the tectum/SC is shared among all vertebrates, but it is flexible, and has been adapted to different sensory landscapes and specializations. Below, we will provide examples from diverse vertebrate

lineages, each illustrating the integration of a different sensory modality with vision in the tectum/SC.

### Spatial integration of vision and electrosensation in cyclostomes

The lamprey, representing the oldest group of extant vertebrates, has a classic layered tectum, with vision represented in the most superficial layer together with predominantly GABAergic, but also glutamatergic, interneurons. These visual inputs are represented retinotopically<sup>15,88</sup>. In the next layer, there is input from the octavolateral nerve that conveys electrosensory input from different parts of the animal's surrounding space<sup>1,2</sup> (Figure 4B). In a deeper layer are the output neurons, which have dendrites extending to the superficial visual layer. As we have described above, there are two types of output neuron: those that extend their axons on the ipsilateral side and convey evasive responses and those with contralateral axons that convey orienting responses.

The visual input from a given point in space projects to a given location in the retinotopic map in the tectum and activates the tectal output neurons with a monosynaptic linkage, while at the same time activating GABAergic interneurons that inhibit surrounding neurons. Interestingly, the same output neurons that become activated by visual stimuli from a given part in the surrounding space are also activated by the electrosensory input from the same part of surrounding space. The visual and electrosensory stimuli converge to the same neurons and provide mutual facilitation. Conversely, visual and electrosensory stimuli originating from different parts of the surrounding space will instead inhibit each other. Individual output neurons are thus concerned with a stimulus' position in space, rather than whether the stimulus originates from vision or electrosensation. As described above for visual inputs in lamprey, the circuitry for deciding whether an orienting or evasive response will result depends on the nature of the stimulus, with rapidly expanding looming stimuli driving evasive movements through ipsilateral projection neurons and slowly expanding stimuli preferentially activating contralaterally projecting neurons to elicit orienting movements<sup>3</sup>.

### Tectal integration of vision and thermosensation in the rattlesnake

Rattlesnakes survive by catching warm-blooded creatures, and they have evolved a heat-sensing pit organ to assist them with this. Their thermosensation provides spatial information about prey, which is integrated with a retinotopic representation in the tectum to provide a coherent representation of the snake's surroundings<sup>151,152</sup>. The pit organ is innervated by heat-sensitive terminals from the trigeminal nerve, which relays thermal information to the nucleus calorix, which further projects to the contralateral tectum, terminating in a layer ventral to the superficial visual layer<sup>153</sup>.

Recordings from tectal neurons showed that many that were activated by visual stimuli were also activated by heat signatures in the same part of the sensory space, and that copresentation of these stimuli led to facilitation in the tectal neurons. Even in the cases of tectal neurons that only responded to vision or thermosensation, copresentation of the off-target stimulus facilitated responses to the detected stimulus. The tectum's responses to thermal stimuli were spatially selective, being most effective in the anterior visual field where the snake would



# Current Biology

## Review



position them prior to striking. Because the maps for both modalities are registered in the tectum, this arrangement permits the snake to combine visual and thermal information to identify prey items in a complex sensory landscape and under dim light conditions.

### **Auditory spatial maps allow the barn owl to hunt when it is dark**

The barn owl has the astounding ability to hunt down field mice even when it is pitch dark, homing in on its prey purely with auditory information. Classic work by Mark Konishi and Eric Knudsen showed that, in the tectum of the barn owl, there is a very accurate three-dimensional auditory map of the surrounding space, built on the separate inputs from the two ears. This bi-aural input can create a three-dimensional map, as the ears are placed in asymmetric positions: this allows the tectum to calculate the origin of a sound based on the small time difference between when the sound hits the two ears<sup>154–157</sup>. Separate neurons in the barn owl tectum respond to different points in three-dimensional space and form a spatial auditory map. As for electro-sensation in lamprey and thermosensation in rattlesnakes, the visual and auditory maps of the surrounding space are aligned in the barn owls, allowing for both modalities to contribute to hunting when light is present<sup>155</sup>.

### **Integration between visual and auditory processing in the mammalian superior colliculus**

The integration between vision and auditory stimuli has been studied in considerable detail in the cat<sup>158</sup> and in primates including humans<sup>159,160</sup>. As in other vertebrates, visual and auditory stimuli originating from the same point in space facilitate each other, and conversely, if they originate from different areas in space, they will instead inhibit each other<sup>161</sup>. An added complication is that the retinotopic map's relationship with space is affected by eye movements. As a result, the position of the eye within the orbit has to be taken into account when aligning the auditory spatial map to the retinotectal map<sup>162,163</sup>. This can be handled by utilizing information about the efferent commands to the eye muscles, often referred to as an efference copy or corollary discharge. It is debated to what extent afferents from the eye muscles may take part, which may differ between species.

In the previous two sections, we have discussed how visual information is processed within the tectum/SC, and how different sensory modalities are registered to one another spatially to create a single, combined map of the sensory world. The goal of this sensory processing and integration is to provide the necessary sensory information for making behavioral decisions. In the next section, we will discuss how tectal calculations, based on the integrated inputs from multiple sensory modalities, are converted into adaptive behavioral responses.

### **Sensorimotor transformation, premotor outputs, and behavior selection**

As described in previous sections, a variety of bottom-up sensory inputs converge in the tectum/SC, especially in its deeper layers (dSC and deep tectal neuropil). Further top-down attentional or motor commands project to the SC directly from the frontal and parietal cortex, or indirectly through the basal ganglia via the substantia nigra pars reticulata (SNr). In addition, neuromodulator systems such as dopaminergic, cholinergic, noradrenergic, and serotonergic fibers innervate the

dSC in mammals. Although they are less well characterized, similar inputs and forms of modulation converge on the deep layers of the tectal neuropil in fish. Thus, the tectum/SC plays a central role in the sensorimotor transformation, whereby the nature and position of the stimuli elicit appropriate and spatially targeted responses. Furthermore, the deep tectum and dSC are well positioned to integrate bottom-up, top-down, and neuromodulatory signals to inform behavioral decisions based on the animal's brain state, risk tolerance, or recent experiences.

### **Motor control of orienting, approach, and predation**

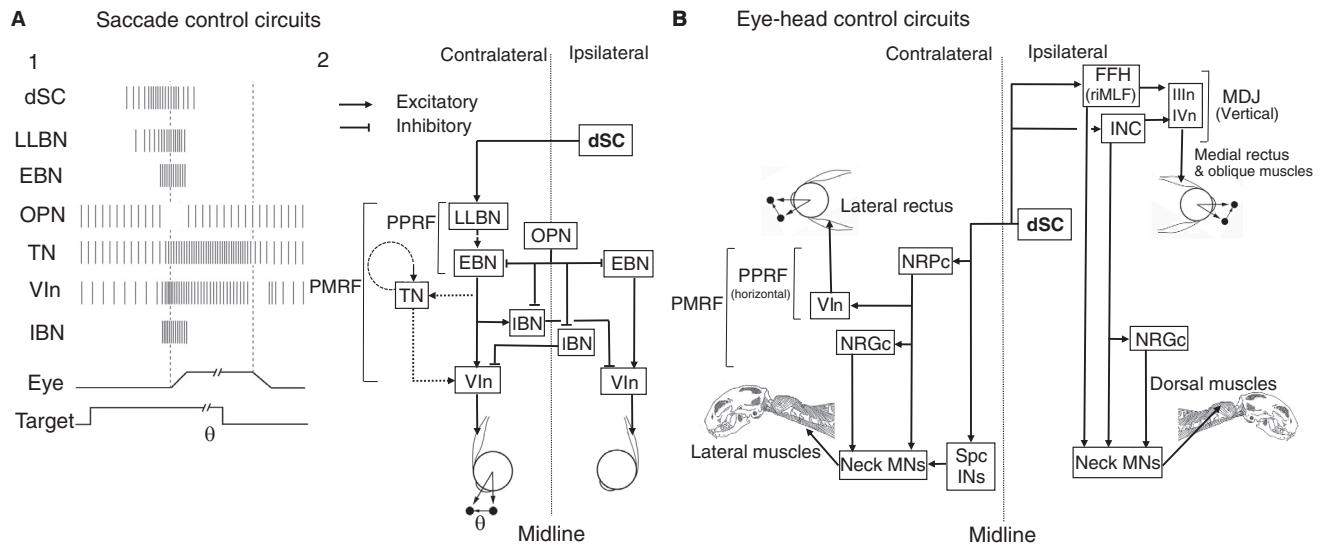
In pioneering studies by Hess and colleagues in the 1940s and 1950s<sup>164</sup>, a variety of brain regions in the diencephalon and mesencephalon of the cat were electrically stimulated and behavioral effects were observed. They found that “electrical stimulation of the tectum opticum (superior colliculus) produces a typical and highly specific motor effect consisting of turning of head and eyes to the contralateral side”. The topographical organization of the tectum/SC was first found by Apter<sup>165</sup> by local chemical disinhibition of various locations in the SC combined with global light flashes.

The current views on SC function, linking sensory space to movement-related activity, emerged out of a series of studies published in 1972 on behaving monkeys by Robinson, Schiller and Stryker, and by Wurtz and Goldberg. They found that electrical stimulation of a point in the deeper layer of SC drove saccades with a particular vector above a certain stimulus threshold<sup>166,167</sup>. Mapping various locations in SC revealed topographic organization of the saccade vector map in the SC, in which the rostral and caudal SC represent foveal and peripheral visual field, respectively, and medial and lateral SC represent upper and lower visual field, respectively. Furthermore, neurons in the deeper layer were found to exhibit high frequency activity preceding the onset of saccades (presaccadic bursts)<sup>167,168</sup>.

Later, it was found that individual SC neurons exhibit presaccadic bursts towards targets in a wide range of directions and eccentricities, which in turn indicates that a saccade of a particular amplitude and direction is generated by the activity of a large number of neurons across the SC map. These observations suggest the population coding of the saccade vector by SC neurons<sup>147</sup>. The most rostral part of the SC, representing the foveal region, was proposed to control either fixation of gaze<sup>169,170</sup> or microsaccades<sup>171</sup>.

Downstream of the SC, sets of saccade-related neurons such as excitatory and inhibitory burst neurons (EBN, IBN), omnipause (OPN), tonic neurons (TN), and neural integrator circuits compose the saccade generator circuits<sup>172,173</sup> (Figure 7A, reviewed by Sparks<sup>174</sup> and Takahashi and Shinoda<sup>175</sup>). One set in the pontomedullary reticular formation (PMRF) drives the horizontal component of a saccade, and the other in the meso-diencephalic junction (MDJ) — rostral interstitial nucleus of MLF (riMLF) in primates or Forel's field H (FFH) in cats — and the interstitial nucleus of Cajal (INC) controls the vertical component<sup>176,177</sup> (Figure 7B). It has been shown that the individual SC output neurons have one axon that branches caudally to the PMRF and another that targets the MDJ<sup>178</sup>, which may coordinate the horizontal and vertical components of eye movements.

On the other hand, a place-coded command signal in the SC is transformed to temporally coded signals carried by the



Current Biology

**Figure 7. Output pathways from the dSC.**

(A) SC output circuits controlling horizontal saccades. (A1) Firing patterns of individual neuron types belonging to the circuits involved in the onset of saccades. The presence of the visual target and movements of the eye are indicated (bottom). (A2) dSC neurons are connected to long-lead burst neurons (LLBNs) and medium-lead excitatory burst neurons (EBNs) in the paramedian pontine reticular formation (PPRF), which transmit the velocity-related high frequency firing activity to abducens motoneuron (VIn). EBN signals are integrated by the tonic neurons (TNs), which relay eye position-related tonic activity to VIn. EBNs are connected to inhibitory burst neurons (IBNs) which further inhibit the VIn on the contralateral side. (A2) Adapted from Sparks<sup>174</sup> and Takahashi and Shinoda<sup>175</sup>. (B) dSC output circuits controlling eye and head movements. dSC neurons send bifurcating axons to the ipsilateral mesodiencephalic junction (MDJ) and contralateral pontomedullary reticular formation (PMRF). The former includes Forel's field H (FFH, or rostral interstitial nucleus of MLF (riMLF)) and interstitial nucleus of Cajal (INC). Both of these structures are connected to the oculomotor (IIn) and trochlear motor (IVn) nuclei to control eye movements and dorsal neck motoneurons (MNs) either directly or indirectly via the nucleus reticularis gigantocellularis (NRGc) to control movements of the head. The latter descending axons are connected to the nucleus reticularis pontis caudalis (NRPc), which is connected to VIn and lateral neck MNs either directly or indirectly via NRGc (horizontal system). Some dSC neurons descend to the spinal cord and connect to MNs via spinal cord interneurons (Spc INs). (B) Adapted from Isa and Sasaki<sup>182</sup>.

downstream premotor and motoneurons; signals from the rostral SC are transformed to saccade signals with short duration and small amplitude, while those from the caudal SC generate saccades with long duration and large amplitude. This is called the spatio-temporal transformation problem. Whether the spatio-temporal transformation problem is implemented in an intracollicular circuit or in one of the regions downstream of the SC is still unknown. Moschovakis *et al.*<sup>179</sup> have shown that the number of terminal buttons in the PMRF is larger for the caudal SC neurons, coding larger saccades, than the rostral SC neurons, coding smaller saccades, which supports the latter possibility.

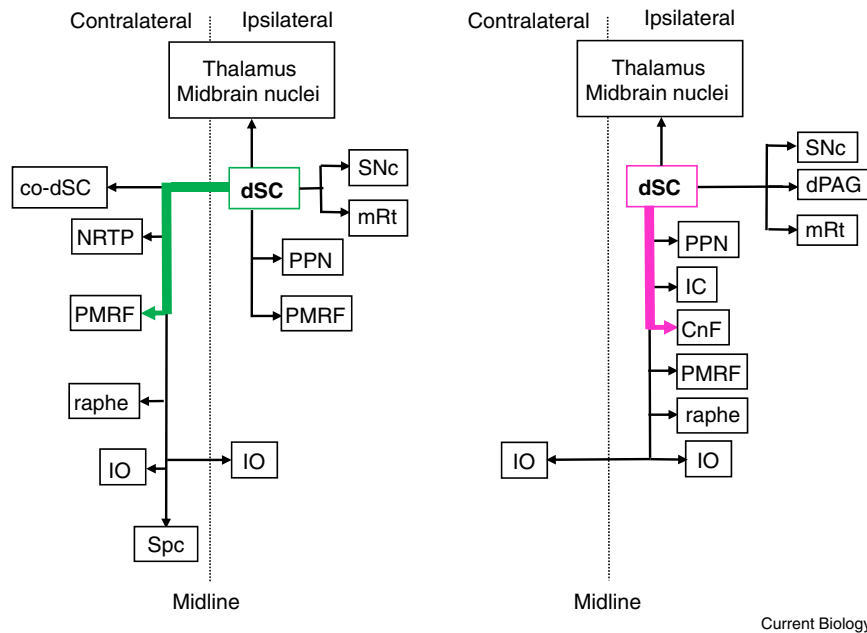
In addition to eye movements, the SC controls head movements during orienting behavior<sup>180</sup>. These movements are supposed to be mainly controlled by the reticulospinal neurons in the nucleus reticularis pontis caudalis (NRPc), for the horizontal component, and FFH, for the vertical component<sup>181,182</sup>, either directly or via the reticulospinal neurons in the nucleus reticularis gigantocellularis (NRGc) (Figure 7B). The SC also affects limb movements through reticulospinal or propriospinal neurons, which may underlie the posture during the orienting eye-head turn<sup>183,184</sup> or the quick adaptation of forearm reaching trajectories<sup>185</sup>. Therefore, while the SC's roles in driving saccades and other eye movements are the best understood mechanistically, the SC appears also to make contributions to the broader orchestration of orienting movements<sup>180,186</sup>.

In zebrafish larvae, the detection of a peripheral prey item can trigger a hunting routine that begins with the convergence of the

eyes, which creates a binocular visual field in front of the larva<sup>41,108</sup>. Several lines of evidence suggest that the tectum is involved in these movements. First, optical stimulation of the tectum can produce eye orienting responses<sup>117</sup>. Second, there are patterns of activity across assemblies of tectal neurons that do not reflect visual stimuli, but that specifically occur prior to and during convergent saccades, regardless of whether those saccades are visually evoked or spontaneous<sup>41</sup>. Finally, there is a group of tectal neurons tuned to prey-like objects in the frontal visual field, and ablation of these neurons reduces the occurrence of predatory pursuit and tracking<sup>42</sup>. The circuits responsible for the eye movements themselves have been described<sup>187</sup>, but the ways in which tectal information is relayed to the nuclei involved in ocular movements have yet to be fully elucidated.

Beyond the eye convergence that begins the hunting sequence, larval zebrafish display a set of characteristic maneuvers to orient toward, pursue, and eventually strike their prey. These movements follow a sequence that has been described both manually and more recently using unsupervised computational methods<sup>188–192</sup>. These maneuvers are coordinated by midbrain and hindbrain premotor neurons that project to the spinal cord<sup>193–195</sup>. Among these, the MeLr and the MeLc neurons in the nucleus of the medial longitudinal fasciculus (nMLF) have dendrites in the deep layers of the tectum, and have been specifically implicated in the generation of the orienting tail movements during hunting, likely providing a mechanistic link between tectal processing and eventual behaviors<sup>115</sup>.

**A** Crossed pathway: orienting movements **B** Uncrossed pathway: evasive movements



**Figure 8. Circuits controlling innate visual responses in the mouse.**

(A) Projections of the crossed pathway, principally from the dSC to the contralateral PMRF (green), drive orienting movements. In addition to the PMRF, descending collaterals are projected to the contralateral dSC (co-dSC), the precerbellar nuclei such as the nucleus reticularis tegmenti pontis (NRTP) and inferior olive (IO), the raphe, and further down to the spinal cord (Spc). In addition, collaterals are also projected ipsilaterally to the pedunculopontine tegmental nucleus (PPN) and partly to the PMRF in the pons, mesencephalic reticular formation (mRt) and substantia nigra pars compacta (SNc) in the midbrain. Furthermore, ascending axons are projected to several thalamic and midbrain nuclei on the ipsilateral side, some of which might function an efference copy signal. (B) Projections forming the uncrossed pathway (magenta), from the dSC to the ipsilateral cuneiform nucleus (CnF), control evasive movements. Here, collaterals of the descending branch are projected to the PPN, inferior colliculus (IC), PMRF, raphe and IO. In the midbrain, collaterals are projected to the dorsal periaqueductal gray matter (dPAG), SNc and mRt, some of which might be related to the emotional and reward-related aspects of the behavior. Furthermore, ascending axons are projected to several thalamic and midbrain nuclei on the ipsilateral side. Adapted from Dean *et al.*<sup>5</sup> and Isa *et al.*<sup>199</sup> (CC BY 4.0).

**Distinct motor pathways for approach and avoidance**

How can animals quickly decide between approach and escape behavior? In some cases, like the lamprey approach/escape circuits described above, the tectum's integral circuits, and the physiology of the neurons composing them, are sufficient to guide this decision. In this instance, they permit rapidly expanding visual stimuli to trigger ipsilateral projections to produce escape responses and respond to slowly expanding stimuli with contralateral projections that guide approach.

The arrangement is somewhat more complicated in larval zebrafish, where processing occurs across multiple synapses within the tectum, but behavioral decisions are nonetheless dictated by the downstream structures selectively activated by tectal projection neurons in response to different stimuli. In zebrafish larvae, these projection neurons target the nMLF and reticulospinal neurons<sup>76,115,196,197</sup>, which are involved in predatory and escape behavior. These premotor relay neurons then project to the spinal cord, where their outputs are involved in the control of visually triggered motor behaviors<sup>115,194,198</sup>.

A recent study<sup>76</sup> mapping tectal projections to these premotor areas showed different patterns of projecting neurons, including some that project to contralateral reticulospinal neurons and the nMLF, while others innervate ipsilateral reticulospinal neurons. This study also found that, in the ipsilateral pathway, there is a segregation of the visual information in which looming/threatening visual information seems to be preferentially sent through medial tectobulbar axons. The axons of tectal projection neurons that are sensitive to prey-like stimuli terminate laterally while maintaining the retinotopy, with information from stimuli presented in the posterior visual field traveling more laterally and information from stimuli presented in the anterior visual field going through more medially located axons<sup>76</sup>.

Despite the added anatomical complexity found in mammals, the essential ipsilateral/contralateral contributions to escape and approach behavior are maintained. In the 1980s, Redgrave and colleagues<sup>5,6</sup> studied these motor pathways by combining electrical stimulation of the SC with ablations in downstream structures. They showed that the output pathway from the SC to the contralateral PMRF, the crossed pathway, controls orienting head/body turn, while that to the ipsilateral cuneiform nucleus (CnF), the uncrossed pathway, controls defense-like responses such as escape and freezing.

More recently, channelrhodopsin-2 (ChR2) was selectively expressed in SC neurons contributing to the uncrossed and crossed pathways in mice using the targeted delivery of viral vectors to one pathway or the other<sup>199</sup>. Photostimulation of the SC elicited defensive responses in the case of ChR2 expression in the uncrossed pathway, and contraversive orienting head/body turns in the case of the expression in the crossed pathway. As summarized in Figure 8, these two pathways are directed to different target regions in the brainstem and orchestrate the various aspects of orienting and evasive movements, respectively.

Across diverse vertebrate lineages, animals' environments and ethological contexts are reflected in the structures of their tectum/SC and its connections with downstream structures. In primates, for example, the representation of upper visual field in the SC is magnified, and saccades are faster and more accurate to this part of visual space<sup>200,201</sup>. This reflects the primate's need to scan the remote environment, which is generally in the upper visual field. In rodents, the orienting (contralateral) pathway mainly originates from the lateral SC encoding the lower visual field, while the escape (ipsilateral) pathway originates from the medial SC, encoding the upper visual field. This is consistent with the ethology of rodents, where predators are expected to come from above, as a looming stimulus, while food or pups

are on the ground<sup>202</sup>. Ethologically driven relationships between sensory space and behavioral selection have also been shown to exist in lamprey, for which orienting stimuli mainly originate from the frontal visual field, while threatening stimuli can be elicited from any part of the visual field<sup>2</sup>. In larval zebrafish, the approach/escape decision also hinges on several qualities of stimuli, including their size (small visual objects are approached and large objects avoided), their dynamics (threatening looming stimuli drive escape behavior), and their position in space (with a preference, like the lamprey, for approaching objects in the frontal visual field and often escaping from objects coming from behind)<sup>42,76,112,117,118</sup>.

In summary, approach/escape decisions hinge on the selective delivery of sensory information to particular layers of the tectum/SC, the intrinsic circuits that process this information within the tectum/SC, the specialization of different tectal/SC regions (corresponding to different sensory spaces), and the selective activation of projection neurons innervating premotor areas responsible for one behavior or the other. Next, we will explore how this sensorimotor network's computations can be tuned to provide appropriate behavioral outcomes in different situations.

### Context-dependent control and modulation of the tectum/SC

Outputs from the tectum/SC must be tightly temporally controlled, and different behaviors are called for in different contexts. For this reason, inputs from additional brain regions, carrying diverse information about sensory and motor context, impinge on tectal/SC processing and on the tectum/SC's outputs. One of the major inputs that regulates inhibition in the dSC of mice is the GABAergic projection from the substantia nigra pars reticulata (SNr). In the classical studies by Hikosaka and Wurtz<sup>81</sup>, SNr inputs to the dSC were found to tonically inhibit the excitatory output neurons from the dSC, and inhibition of the SNr neurons preceding the onset of saccades served to disinhibit the dSC circuits, allowing the generation of presaccadic bursts in the dSC. A more recent study by Kaneda *et al.*<sup>203</sup> showed that the SNr also inhibits GABAergic interneurons in the dSC, suggesting that the SNr inputs to the dSC may also exert control over SC interneurons. SNr inputs to the dSC may therefore regulate the excitation/inhibition balance in the dSC network.

In addition to the control by the basal ganglia, several neuromodulator systems innervate the dSC and control its intrinsic processing and generation of motor command signals. First, cholinergic inputs from the pedunculopontine tegmental nucleus, and laterodorsal tegmental nucleus project to the intermediate layer and form cholinergic patches. Their primary action on the dSC projection neurons is through excitatory receptors<sup>204,205</sup>, a conclusion supported by the observation that injection of nicotine into the monkey SC shortened the saccadic latency and increased the frequency of express saccades<sup>206</sup>. In rodents as well as lamprey, there is a dopaminergic innervation from the SNc to the tectum/SC of the same neurons that innervate the striatum<sup>61,84</sup>. Activation of this dopaminergic projection produces a net enhancement of visual reflexes to oculomotor nuclei and to downstream brainstem structures innervated by the tectum/SC. The locus coeruleus also provides noradrenergic projections to the SC, which enhance looming defensive reactions<sup>85</sup>. In contrast, serotonergic projections from the dorsal raphe nucleus to the SC decrease responses to looming stimuli<sup>86</sup>.

Neuromodulator systems, like the serotonergic raphe, can trigger changes in brain states that influence exploratory or hunting behaviours<sup>207</sup>. Apart from global modulations, these latter inputs may provide mechanisms whereby the animal's context influences approach/escape decisions, and a recent study by Filosa *et al.*<sup>90</sup> provides a particularly satisfying example of this in larval zebrafish. They found that periods of increased approach/predation and reduced escape behavior correlated with low cortisol levels and relatively little activity in the hypothalamic-pituitary-interrenal (HPI) axis. They then found that starvation led to increased activity in raphe serotonergic neurons that project to the tectum, and that artificially driving activity in these neurons increased approach behavior regardless of hunger levels. Zebrafish larvae generally approach small (prey-like) visual objects and avoid large (predator-like) ones. Filosa *et al.*<sup>90</sup> showed that activity in the HPI axis and in the serotonergic raphe neurons tune the responses of tectal neurons, thereby adjusting the threshold on which this approach/escape decision rests. These artificial modulations match the natural changes in tectal tuning that take place when larvae are starved or satiated, suggesting that it is through this mechanism that hunger state intersects with visual processing. This study, therefore, illustrates how modulation of the core tectal circuit can permit a larva to be appropriately daring when in danger of starvation, but risk-averse when satiated.

These circuits alone, however, may not be sufficient to make appropriate decisions. The top-down signals from the cerebral cortex/pallidum may convey the context-dependent information about the environment, and the neuromodulator systems or inputs from the hypothalamus may transmit the intrinsic signals related to emotion or physical status such as hunger, satiety, or fatigue. While many of the important modulatory inputs have been described and partially characterized, much work remains in exploring how animals' internal states and recent experience mesh with integral tectal/SC circuitry to produce flexible and adaptive behavior.

### Conclusions and future directions

In this review, we have summarized results from varied experimental approaches and diverse lineages of vertebrates. In total, these studies converge to reveal a conserved role for the tectum/SC in receiving information from multiple senses, in filtering this information to identify salient features, in registering this multi-sensory information to produce a coherent spatial map of the sensory world, and in driving appropriate downstream premotor circuitry responsible for adaptive behavioral responses. We have highlighted examples of studies that have revealed some of the tectal/SC neurons, connections, and physiology that underlie these calculations, but a great many of the tectum/SC's circuit-level processes remain enigmatic. For instance, the role of the retino-colliculo-thalamic pathway in the control of visuomotor behavior is critical, and the information conveyed by thalamic neurons to motor structures in the cortex and basal ganglia should be investigated.

Recent years have seen a clear trend suggesting roles for the tectum/SC beyond the simple detection and localization of sensory stimuli and the induction of downstream orienting and evasive responses. Recent studies have shown that cells with similar orientation preferences form large patches that span the vertical thickness of the sSC. Thus, orientation column-like structures have been



# Current Biology

## Review



identified in the SC of rodents<sup>36,37</sup>, although these have not been evident in all studies<sup>208</sup>. Furthermore, face-selective SC neurons have been found in primates<sup>209,210</sup>, and the SC has been implicated in processing aversive image and face recognition in primates, including humans<sup>210–213</sup>. It has also been reported that some blindsight patients can detect facial expressions, a phenomenon called ‘affective blindsight’<sup>67</sup>, further suggesting that roles traditionally viewed as cortical can also be performed in the tectum/SC. On the behavioral side, both tectal/SC neuronal activity and downstream behavioral responses have been shown to vary dramatically depending on the cognitive state of the subject<sup>132</sup>, the environmental context<sup>199</sup>, or the subject’s recent experience<sup>90</sup>.

Recent rodent studies have shown the induction of fear responses through the SC’s ascending pathways to the amygdala via relay nuclei in the thalamus and midbrain<sup>58,59,141,144</sup>. Studies in primates have shown that the SC is involved in complex cognitive processes such as target selection<sup>53</sup>, decision making<sup>11</sup>, and attentional control<sup>214</sup>, presumably involving its ascending projection to the thalamus and cortex. These observations have been corroborated by studies on blindsight monkeys, where the monkeys can conduct a variety of cognitive tasks as long as the stimuli are large and bright<sup>65,66</sup>.

Collectively, these new studies challenge the notion of a strict and exclusive dichotomy between the retino-thalamic and retino-colliculo-thalamic pathways, where the former is responsible for cognitive control and the latter for the control of motion. It rather appears that the retino-colliculo-thalamic pathway, and the tectum/SC specifically, are capable of a diverse range of calculations, both overlapping with and distinct from those performed in the cortex/telencephalon.

These two pathways are present in our most distant extant vertebrate relatives, the lampreys, and thus represent a conserved design feature of the vertebrate brain<sup>16</sup>. This combination of evolutionary conservation and diversity across the vertebrate lineage presents an opportunity to better understand both the conserved fundamentals of tectal/SC structure and function, and the ways in which its structure and function have changed with diverse sensory landscapes and the emergence of the cortex as an important sensory processing structure in the mammalian lineage. Cross-species comparative studies of the cell types, neural circuit structures, behavioral roles, and cognitive functions of the tectum/SC will help to map out this landscape, and to clarify how the retino-tectal and retino-colliculo-thalamic pathways have interacted and overlapped functionally through evolution.

A rapidly accelerating array of methodologies, including single cell RNAseq, CRISPR-mediated targeted transgenesis, a variety of neuroimaging techniques, population-scale calcium imaging, and opto- or chemogenetic manipulations should make such studies increasingly accessible in the coming years. The combination of these emerging methods with electrophysiology and anatomical analysis stands to reveal the microanatomical, microcircuit, and network properties of the tectum/SC, and the ways in which this structure and its function have evolved through time.

### ACKNOWLEDGEMENTS

The helpful comments of Ziad Hafed, Abdel El Manira and Andreas Kardamakis are gratefully acknowledged. We also thank Masatoshi Yoshida, the staff, and the students of Isa lab for helping in the literature search. This study was supported by Brain/MINDS grant from AMED/Japan (Nos.

18dm0207020h0005 and 19dm0207093h0001) to T.I. and Grant-in-Aid for Scientific Research by MEXT/Japan (Nos. 22220006, 26112001) to T.I. The support of the Swedish Medical Research Council (VR-M-K2013-62X-03026, VR-M-2015-02816, VR-M-2018-02453 and VR-M-2019-01854), EU/FP7 Moving Beyond grant ITN-No-316639, European Union Seventh Framework Programme (FP7/2007-2013) under grant agreement no.604102 (HBP), EU/Horizon 2020 no.720270 (HBP SGA1), no. 785907 (HBP SGA2) and no. 945539 (HBP SGA3), and the Karolinska Institutet is gratefully acknowledged. E.K.S. is supported by an NHMRC Project Grant (APP1066887), a Simons Foundation Research Award (625793), and two ARC Discovery Project Grants (DP140102036 & DP110103612). The research reported in this publication was supported by the National Institute of Neurological Disorders and Stroke of the National Institutes of Health under Award Number R01NS118406 to E.K.S. The content is solely the responsibility of the authors and does not necessarily represent the official views of the National Institutes of Health. E.M.-L. gratefully acknowledges funding for postgraduate studies provided by the Mexican National Council for Science and Technology (CONACYT) and The University of Queensland.

### DECLARATION OF INTERESTS

The authors declare no competing interests.

### REFERENCES

1. Kardamakis, A.A., Pérez-Fernández, J., and Grillner, S. (2016). Spatio-temporal interplay between multisensory excitation and recruited inhibition in the lamprey optic tectum. *eLife* 5, e16472.
2. Kardamakis, A.A., Saitoh, K., and Grillner, S. (2015). Tectal microcircuit generating visual selection commands on gaze-controlling neurons. *Proc. Natl. Acad. Sci. USA* 112, E1956–E1965.
3. Suzuki, D.G., Perez-Fernandez, J., Wibble, T., Kardamakis, A.A., and Grillner, S. (2019). The role of the optic tectum for visually evoked orienting and evasive movements. *Proc. Natl. Acad. Sci. USA* 116, 15272–15281.
4. Sparks, D.L. (1986). Translation of sensory signals into commands for control of saccadic eye movements: role of primate superior colliculus. *Physiol. Rev.* 66, 118–171.
5. Dean, P., Redgrave, P., and Westby, G.W. (1989). Event or emergency? Two response systems in the mammalian superior colliculus. *Trends Neurosci.* 12, 137–147.
6. Sahibzada, N., Dean, P., and Redgrave, P. (1986). Movements resembling orientation or avoidance elicited by electrical stimulation of the superior colliculus in rats. *J. Neurosci.* 6, 723–733.
7. Grillner, S., and Robertson, B. (2016). The basal ganglia over 500 million years. *Curr. Biol.* 26, R1088–R1100.
8. Hikosaka, O., Takikawa, Y., and Kawagoe, R. (2000). Role of the basal ganglia in the control of purposive saccadic eye movements. *Physiol. Rev.* 80, 953–978.
9. Hu, F., Kamigaki, T., Zhang, Z., Zhang, S., Dan, U., and Dan, Y. (2019). Prefrontal corticotectal neurons enhance visual processing through the superior colliculus and pulvinar thalamus. *Neuron* 104, 1141–1152.
10. Distler, C., and Hoffmann, K.P. (2015). Direct projections from the dorsal premotor cortex to the superior colliculus in the macaque (macaca mulatta). *J. Comp. Neurol.* 523, 2390–2408.
11. Crapse, T.B., Lau, H., and Basso, M.A. (2018). A role for the superior colliculus in decision criteria. *Neuron* 97, 181–194.
12. Drager, U.C., and Hubel, D.H. (1976). Topography of visual and somatosensory projections to mouse superior colliculus. *J. Neurophysiol.* 39, 91–101.
13. Frost, B.J., Wise, L.Z., Morgan, B., and Bird, D. (1990). Retinotopic representation of the bifoveate eye of the kestrel (*Falco sparverius*) on the optic tectum. *Vis. Neurosci.* 5, 231–239.
14. Cynader, M., and Berman, N. (1972). Receptive-field organization of monkey superior colliculus. *J. Neurophysiol.* 35, 187–201.



15. Jones, M.R., Grillner, S., and Robertson, B. (2009). Selective projection patterns from subtypes of retinal ganglion cells to tectum and pretectum: Distribution and relation to behavior. *J. Comp. Neurol.* *517*, 257–275.
16. Suryanarayana, S.M., Perez-Fernandez, J., Robertson, B., and Grillner, S. (2020). The evolutionary origin of visual and somatosensory representation in the vertebrate pallium. *Nat. Ecol. Evol.* *4*, 639–651.
17. Schroder, S., and Carandini, M. (2014). A cortical rein on the tectum's gain. *Neuron* *84*, 6–8.
18. Basso, M.A., Bickford, M.E., and Cang, J. (2021). Unraveling circuits of visual perception and cognition through the superior colliculus. *Neuron* *109*, 917–937.
19. Butler, A.B., and Hodos, W. (2005). Optic tectum. In *Comparative Vertebrate Neuroanatomy: Evolution and Adaptation*, 2<sup>nd</sup> Edition, A.B. Butler, and W. Hodos, eds. (New Jersey: Wiley), pp. 311–340.
20. Gaze, R.M. (1958). Binocular vision in frogs. *J. Physiol.* *143*, 20.
21. Jacobson, M., and Gaze, R.M. (1964). Types of visual response from single units in optic tectum + optic nerve of goldfish. *Q. J. Exp. Physiol. Cogn. Med. Sci.* *49*, 199–209.
22. Diao, Y.C., Wang, Y.K., and Xiao, Y.M. (1983). Representation of the binocular visual field in the superior colliculus of the albino rat. *Exp. Brain Res.* *52*, 67–72.
23. Coombs, J., van der List, D., Wang, G.Y., and Chalupa, L.M. (2006). Morphological properties of mouse retinal ganglion cells. *Neuroscience* *140*, 123–136.
24. Völgyi, B., Chheda, S., and Bloomfield, S.A. (2009). Tracer coupling patterns of the ganglion cell subtypes in the mouse retina. *J. Comp. Neurol.* *512*, 664–687.
25. Baden, T., Berens, P., Franke, K., Roman Roson, M., Bethge, M., and Euler, T. (2016). The functional diversity of retinal ganglion cells in the mouse. *Nature* *529*, 345–350.
26. Badea, T.C., Cahill, H., Ecker, J., Hattar, S., and Nathans, J. (2009). Distinct roles of transcription factors *brn3a* and *brn3b* in controlling the development, morphology, and function of retinal ganglion cells. *Neuron* *61*, 852–864.
27. Mao, C.A., Li, H., Zhang, Z., Kiyama, T., Panda, S., Hattar, S., Ribelayga, C.P., Mills, S.L., and Wang, S.W. (2014). T-box transcription regulator *Tbr2* is essential for the formation and maintenance of *Opn4*/melanopsin-expressing intrinsically photosensitive retinal ganglion cells. *J. Neurosci.* *34*, 13083–13095.
28. Sweeney, N.T., Tierney, H., and Feldheim, D.A. (2014). *Tbr2* is required to generate a neural circuit mediating the pupillary light reflex. *J. Neurosci.* *34*, 5447–5453.
29. Martersteck, E.M., Hirokawa, K.E., Evarts, M., Bernard, A., Duan, X., Li, Y., Ng, L., Oh, S.W., Ouellette, B., Royall, J.J., et al. (2017). Diverse central projection patterns of retinal ganglion cells. *Cell Rep.* *18*, 2058–2072.
30. Kölsch, Y., Hahn, J., Sappington, A., Stemmer, M., Fernandes, A.M., Helmbrecht, T.O., Lele, S., Butrus, S., Laurell, E., Arnold-Ammer, I., et al. (2021). Molecular classification of zebrafish retinal ganglion cells links genes to cell types to behavior. *Neuron* *109*, 645–662.
31. Linden, R., and Perry, V.H. (1983). Massive retinotectal projection in rats. *Brain Res.* *272*, 145–149.
32. Hofbauer, A., and Dräger, U.C. (1985). Depth segregation of retinal ganglion cells projecting to mouse superior colliculus. *J. Comp. Neurol.* *234*, 465–474.
33. Dhande, O.S., and Huberman, A.D. (2014). Retinal ganglion cell maps in the brain: implications for visual processing. *Curr. Opin. Neurobiol.* *24*, 133–142.
34. Schiller, P.H., Stryker, M., Cynader, M., and Berman, N. (1974). Response characteristics of single cells in the monkey superior colliculus following ablation or cooling of visual cortex. *J. Neurophysiol.* *37*, 181–194.
35. Wang, L., Sarnaik, R., Rangarajan, K., Liu, X., and Cang, J. (2010). Visual receptive field properties of neurons in the superficial superior colliculus of the mouse. *J. Neurosci.* *30*, 16573–16584.
36. Feinberg, E.H., and Meister, M. (2015). Orientation columns in the mouse superior colliculus. *Nature* *519*, 229–232.
37. Ahmadlou, M., and Heimel, J.A. (2015). Preference for concentric orientations in the mouse superior colliculus. *Nat. Commun.* *6*, 6773.
38. Zhao, X., Liu, M., and Cang, J. (2014). Visual cortex modulates the magnitude but not the selectivity of looming-evoked responses in the superior colliculus of awake mice. *Neuron* *84*, 202–213.
39. Chalupa, L.M., and Rhoades, R.W. (1977). Responses of visual, somatosensory, and auditory neurones in the golden hamster's superior colliculus. *J. Physiol.* *270*, 595–626.
40. Hunter, P.R., Lowe, A.S., Thompson, I.D., and Meyer, M.P. (2013). Emergent properties of the optic tectum revealed by population analysis of direction and orientation selectivity. *J. Neurosci.* *33*, 13940–13945.
41. Bianco, I.H., and Engert, F. (2015). Visuomotor transformations underlying hunting behavior in zebrafish. *Curr. Biol.* *25*, 831–846.
42. Forster, D., Helmbrecht, T.O., Mearns, D.S., Jordan, L., Mokayes, N., and Baier, H. (2020). Retinotectal circuitry of larval zebrafish is adapted to detection and pursuit of prey. *eLife* *9*, e58596.
43. Schiller, P.H., Malpeli, J.G., and Schein, S.J. (1979). Composition of geniculostriate input of superior colliculus of the rhesus monkey. *J. Neurophysiol.* *42*, 1124–1133.
44. Beltramo, R., and Scanziani, M. (2019). A collicular visual cortex: Neocortical space for an ancient midbrain visual structure. *Science* *363*, 64–69.
45. Hubel, D.H., and Wiesel, T.N. (1959). Receptive fields of single neurones in the cat's striate cortex. *J. Physiol.* *148*, 574–591.
46. Pöppel, E., Held, R., and Frost, D. (1973). Leter: Residual visual function after brain wounds involving the central visual pathways in man. *Nature* *243*, 295–296.
47. Weiskrantz, L., Warrington, E.K., Sanders, M.D., and Marshall, J. (1974). Visual capacity in the hemianopic field following a restricted occipital ablation. *Brain* *97*, 709–728.
48. Mohler, C.W., and Wurtz, R.H. (1977). Role of striate cortex and superior colliculus in visual guidance of saccadic eye movements in monkeys. *J. Neurophysiol.* *40*, 74–94.
49. Rodman, H.R., Gross, C.G., and Albright, T.D. (1990). Afferent basis of visual response properties in area MT of the macaque. II. Effects of superior colliculus removal. *J. Neurosci.* *10*, 1154–1164.
50. Kato, R., Takaura, K., Ikeda, T., Yoshida, M., and Isa, T. (2011). Contribution of the retino-tectal pathway to visually guided saccades after lesion of the primary visual cortex in monkeys. *Eur. J. Neurosci.* *33*, 1952–1960.
51. Schiller, P.H., Sandell, J.H., and Maunsell, J.H. (1987). The effect of frontal eye field and superior colliculus lesions on saccadic latencies in the rhesus monkey. *J. Neurophysiol.* *57*, 1033–1049.
52. Berman, R.A., Cavanaugh, J., McAlonan, K., and Wurtz, R.H. (2017). A circuit for saccadic suppression in the primate brain. *J. Neurophysiol.* *117*, 1720–1735.
53. McPeck, R.M., and Keller, E.L. (2004). Deficits in saccade target selection after inactivation of superior colliculus. *Nat. Neurosci.* *7*, 757–763.
54. Lovejoy, L.P., and Krauzlis, R.J. (2010). Inactivation of primate superior colliculus impairs covert selection of signals for perceptual judgments. *Nat. Neurosci.* *13*, 261–266.
55. White, B.J., Berg, D.J., Kan, J.Y., Marino, R.A., Itti, L., and Munoz, D.P. (2017). Superior colliculus neurons encode a visual saliency map during free viewing of natural dynamic video. *Nat. Commun.* *8*, 14263.
56. Chen, C.Y., and Hafed, Z.M. (2018). Orientation and contrast tuning properties and temporal flicker fusion characteristics of primate superior colliculus neurons. *Front. Neural Circuits* *12*, 58.

# Current Biology

## Review

 CellPress  
OPEN ACCESS

57. Chen, C.Y., Sonnenberg, L., Weller, S., Witschel, T., and Hagedorn, Z.M. (2018). Spatial frequency sensitivity in macaque midbrain. *Nat. Commun.* **9**, 2852.
58. Wei, P., Liu, N., Zhang, Z., Liu, X., Tang, Y., He, X., Wu, B., Zhou, Z., Liu, Y., Li, J., et al. (2015). Processing of visually evoked innate fear by a non-canonical thalamic pathway. *Nat. Commun.* **6**, 6756.
59. Shang, C., Liu, Z., Chen, Z., Shi, Y., Wang, Q., Liu, S., Li, D., and Cao, P. (2015). Brain circuits. A parvalbumin-positive excitatory visual pathway to trigger fear responses in mice. *Science* **348**, 1472–1477.
60. Almeida, I., Soares, S.C., and Castelo-Branco, M. (2015). The distinct role of the amygdala, superior colliculus and pulvinar in processing of central and peripheral snakes. *PLoS One* **10**, e0129949.
61. Perez-Fernandez, J., Kardamakis, A.A., Suzuki, D.G., Robertson, B., and Grillner, S. (2017). Direct dopaminergic projections from the SNc modulate visuomotor transformation in the lamprey tectum. *Neuron* **96**, 910–924.
62. Comoli, E., Coizet, V., Boyes, J., Bolam, J.P., Canteras, N.S., Quirk, R.H., Overton, P.G., and Redgrave, P. (2003). A direct projection from superior colliculus to substantia nigra for detecting salient visual events. *Nat. Neurosci.* **6**, 974–980.
63. McHaffie, J.G., Jiang, H., May, P.J., Coizet, V., Overton, P.G., Stein, B.E., and Redgrave, P. (2006). A direct projection from superior colliculus to substantia nigra pars compacta in the cat. *Neuroscience* **138**, 221–234.
64. May, P.J., McHaffie, J.G., Stanford, T.R., Jiang, H., Costello, M.G., Coizet, V., Hayes, L.M., Haber, S.N., and Redgrave, P. (2009). Tectonigral projections in the primate: a pathway for pre-attentive sensory input to midbrain dopaminergic neurons. *Eur. J. Neurosci.* **29**, 575–587.
65. Takaura, K., Yoshida, M., and Isa, T. (2011). Neural substrate of spatial memory in the superior colliculus after damage to the primary visual cortex. *J. Neurosci.* **31**, 4233–4241.
66. Takakuwa, N., Kato, R., Redgrave, P., and Isa, T. (2017). Emergence of visually-evoked reward expectation signals in dopamine neurons via the superior colliculus in V1 lesioned monkeys. *eLife* **6**, e24459.
67. Morris, J.S., DeGelder, B., Weiskrantz, L., and Dolan, R.J. (2001). Differential extrageniculostriate and amygdala responses to presentation of emotional faces in a cortically blind field. *Brain* **124**, 1241–1252.
68. Georgy, L., Celegghin, A., Marzi, C.A., Tamietto, M., and Ptito, A. (2016). The superior colliculus is sensitive to gestalt-like stimulus configuration in hemispherectomy patients. *Cortex* **81**, 151–161.
69. Stephenson-Jones, M., Samuelsson, E., Ericsson, J., Robertson, B., and Grillner, S. (2011). Evolutionary conservation of the basal ganglia as a common vertebrate mechanism for action selection. *Curr. Biol.* **21**, 1081–1091.
70. Stephenson-Jones, M., Ericsson, J., Robertson, B., and Grillner, S. (2012). Evolution of the basal ganglia: Dual-output pathways conserved throughout vertebrate phylogeny. *J. Comp. Neurol.* **520**, 2957–2973.
71. Capantini, L., von Twickel, A., Robertson, B., and Grillner, S. (2017). The pretectal connectome in lamprey. *J. Comp. Neurol.* **525**, 753–772.
72. Northcutt, R.G., and Butler, A.B. (1980). Projections of the optic tectum in the longnose gar, *Lepisosteus osseus*. *Brain Res.* **190**, 333–346.
73. Yamamoto, N., and Ito, H. (2008). Visual, lateral line, and auditory ascending pathways to the dorsal telencephalic area through the rostro-lateral region of the lateral preglomerular nucleus in cyprinids. *J. Comp. Neurol.* **508**, 615–647.
74. Ma, M., Ramirez, A.D., Wang, T., Roberts, R.L., Harmon, K.E., Schoppik, D., Sharma, A., Kuang, C., Goei, S.L., Gagnon, J.A., et al. (2020). Zebrafish *dscaml1* deficiency impairs retinal patterning and oculomotor function. *J. Neurosci.* **40**, 143–158.
75. Kunst, M., Laurell, E., Mokayes, N., Kramer, A., Kubo, F., Fernandes, A.M., Forster, D., Dal Maschio, M., and Baier, H. (2019). A cellular-resolution atlas of the larval zebrafish brain. *Neuron* **103**, 21–38.
76. Helmbrecht, T.O., dal Maschio, M., Donovan, J.C., Koutsouli, S., and Baier, H. (2018). Topography of a visuomotor transformation. *Neuron* **100**, 1429–1445.
77. Ito, H., Ishikawa, Y., Yoshimoto, M., and Yamamoto, N. (2007). Diversity of brain morphology in teleosts: brain and ecological niche. *Brain Behav. Evol.* **69**, 76–86.
78. Glasauer, S.M., and Neuhauss, S.C. (2014). Whole-genome duplication in teleost fishes and its evolutionary consequences. *Mol. Genet. Genomics* **289**, 1045–1060.
79. Ingle, D. (1975). Sensorimotor function of the midbrain tectum. II. Classes of visually guided behavior. *Neurosci. Res. Program Bull.* **13**, 180–185.
80. Robinson, D.L., and Jarvis, C.D. (1974). Superior colliculus neurons studied during head and eye movements of the behaving monkey. *J. Neurophysiol.* **37**, 533–540.
81. Hikosaka, O., and Wurtz, R.H. (1983). Visual and oculomotor functions of monkey substantia nigra pars reticulata. IV. Relation of substantia nigra to superior colliculus. *J. Neurophysiol.* **49**, 1285–1301.
82. Ocana, F.M., Suryanarayana, S.M., Saitoh, K., Kardamakis, A.A., Capantini, L., Robertson, B., and Grillner, S. (2015). The lamprey pallium provides a blueprint of the mammalian motor projections from cortex. *Curr. Biol.* **25**, 413–423.
83. Karabelas, A.B., and Moschovakis, A.K. (1985). Nigral inhibitory termination on efferent neurons of the superior colliculus: an intracellular horseradish peroxidase study in the cat. *J. Comp. Neurol.* **239**, 309–329.
84. Campbell, K.J., and Takada, M. (1989). Bilateral tectal projection of single nigrostriatal dopamine cells in the rat. *Neuroscience* **33**, 311–321.
85. Li, L., Feng, X., Zhou, Z., Zhang, H., Shi, Q., Lei, Z., Shen, P., Yang, Q., Zhao, B., Chen, S., et al. (2018). Stress accelerates defensive responses to looming in mice and involves a locus coeruleus-superior colliculus projection. *Curr. Biol.* **28**, 859–871.
86. Huang, L., Yuan, T., Tan, M., Xi, Y., Hu, Y., Tao, Q., Zhao, Z., Zheng, J., Han, Y., Xu, F., et al. (2017). A retinorecipient projection regulates serotonergic activity and looming-evoked defensive behaviour. *Nat. Commun.* **8**, 14908.
87. Hall, W.C., Fitzpatrick, D., Klatt, L.L., and Raczkowski, D. (1989). Cholinergic innervation of the superior colliculus in the cat. *J. Comp. Neurol.* **287**, 495–514.
88. Saitoh, K., Menard, A., and Grillner, S. (2007). Tectal control of locomotion, steering, and eye movements in lamprey. *J. Neurophysiol.* **97**, 3093–3108.
89. Robles, E., Laurell, E., and Baier, H. (2014). The retinal projectome reveals brain-area-specific visual representations generated by ganglion cell diversity. *Curr. Biol.* **24**, 2085–2096.
90. Filosa, A., Barker, A.J., Dal Maschio, M., and Baier, H. (2016). Feeding state modulates behavioral choice and processing of prey stimuli in the zebrafish tectum. *Neuron* **90**, 596–608.
91. Heap, L.A., Goh, C.C., Kassahn, K.S., and Scott, E.K. (2013). Cerebellar output in zebrafish: an analysis of spatial patterns and topography in eurydendroid cell projections. *Front. Neural Circuits* **7**, 53.
92. Heap, L.A., Vanwalleghem, G.C., Thompson, A.W., Favre-Bulle, I., Rubinsztein-Dunlop, H., and Scott, E.K. (2018). Hypothalamic projections to the optic tectum in larval zebrafish. *Front. Neuroanat.* **11**, 135.
93. Heap, L.A., Vanwalleghem, G., Thompson, A.W., Favre-Bulle, I.A., and Scott, E.K. (2018). Luminance changes drive directional startle through a thalamic pathway. *Neuron* **99**, 293–301.
94. Henriques, P.M., Rahman, N., Jackson, S.E., and Bianco, I.H. (2019). Nucleus isthmi is required to sustain target pursuit during visually guided prey-catching. *Curr. Biol.* **29**, 1771–1786.
95. Fernandes, A.M., Mearns, D.S., Donovan, J.C., Larsch, J., Helmbrecht, T.O., Kolsch, Y., Laurell, E., Kawakami, K., Dal Maschio, M., and Baier, H. (2021). Neural circuitry for stimulus selection in the zebrafish visual system. *Neuron* **109**, 805–822.
96. Scott, E.K., and Baier, H. (2009). The cellular architecture of the larval zebrafish tectum, as revealed by Gal4 enhancer trap lines. *Front. Neural Circuits* **3**, 13.

97. Robles, E., Smith, S.J., and Baier, H. (2011). Characterization of genetically targeted neuron types in the zebrafish optic tectum. *Front. Neural Circuits* 5, 1.
98. Simmich, J., Staykov, E., and Scott, E. (2012). Zebrafish as an appealing model for optogenetic studies. *Prog. Brain Res.* 196, 145–162.
99. Vanwallegheem, G.C., Ahrens, M.B., and Scott, E.K. (2018). Integrative whole-brain neuroscience in larval zebrafish. *Curr. Opin. Neurobiol.* 50, 136–145.
100. Kita, E.M., Scott, E.K., and Goodhill, G.J. (2015). Topographic wiring of the retinotectal connection in zebrafish. *Dev. Neurobiol.* 75, 542–556.
101. Romano, S.A., Pietri, T., Perez-Schuster, V., Jouary, A., Haudrechy, M., and Sumbre, G. (2015). Spontaneous neuronal network dynamics reveal circuit's functional adaptations for behavior. *Neuron* 85, 1070–1085.
102. Nikolaou, N., Lowe, A.S., Walker, A.S., Abbas, F., Hunter, P.R., Thompson, I.D., and Meyer, M.P. (2012). Parametric functional maps of visual inputs to the tectum. *Neuron* 76, 317–324.
103. Gabriel, J.P., Trivedi, C.A., Maurer, C.M., Ryu, S., and Bollmann, J.H. (2012). Layer-specific targeting of direction-selective neurons in the zebrafish optic tectum. *Neuron* 76, 1147–1160.
104. Wang, K., Hinz, J., Haikala, V., Reiff, D.F., and Arrenberg, A.B. (2019). Selective processing of all rotational and translational optic flow directions in the zebrafish pretectum and tectum. *BMC Biol.* 17, 29.
105. Niell, C.M., and Smith, S.J. (2005). Functional imaging reveals rapid development of visual response properties in the zebrafish tectum. *Neuron* 45, 941–951.
106. Preuss, S.J., Trivedi, C.A., von Berg-Maurer, C.M., Ryu, S., and Bollmann, J.H. (2014). Classification of object size in retinotectal microcircuits. *Curr. Biol.* 24, 2376–2385.
107. Semmelhack, J.L., Donovan, J.C., Thiele, T.R., Kuehn, E., Laurell, E., and Baier, H. (2014). A dedicated visual pathway for prey detection in larval zebrafish. *eLife* 3, e04878.
108. Bianco, I.H., Kampff, A.R., and Engert, F. (2011). Prey capture behavior evoked by simple visual stimuli in larval zebrafish. *Front. Syst. Neurosci.* 5, 101.
109. Muto, A., Lal, P., Ailani, D., Abe, G., Itoh, M., and Kawakami, K. (2017). Activation of the hypothalamic feeding centre upon visual prey detection. *Nat. Commun.* 8, 15029.
110. Barker, A.J., and Baier, H. (2015). Sensorimotor decision making in the zebrafish tectum. *Curr. Biol.* 25, 2804–2814.
111. Del Bene, F., Wyart, C., Robles, E., Tran, A., Looger, L., Scott, E.K., Isacoff, E.Y., and Baier, H. (2010). Filtering of visual information in the tectum by an identified neural circuit. *Science* 330, 669–673.
112. Wang, K., Hinz, J., Zhang, Y., Thiele, T.R., and Arrenberg, A.B. (2020). Parallel channels for motion feature extraction in the pretectum and tectum of larval zebrafish. *Cell Rep.* 30, 442–453.
113. Gebhardt, C., Auer, T.O., Henriques, P.M., Rajan, G., Duroure, K., Bianco, I.H., and Del Bene, F. (2019). An interhemispheric neural circuit allowing binocular integration in the optic tectum. *Nat. Commun.* 10, 5471.
114. Avitan, L., Pujic, Z., Molter, J., McCullough, M., Zhu, S., Sun, B., Myhre, A.E., and Goodhill, G.J. (2020). Behavioral signatures of a developing neural code. *Curr. Biol.* 30, 3352–3363.
115. Gahtan, E., Tanger, P., and Baier, H. (2005). Visual prey capture in larval zebrafish is controlled by identified reticulospinal neurons downstream of the tectum. *J. Neurosci.* 25, 9294–9303.
116. Antinucci, P., Folgueira, M., and Bianco, I.H. (2019). Pretectal neurons control hunting behaviour. *eLife* 8, e48114.
117. Fajardo, O., Zhu, P., and Friedrich, R.W. (2013). Control of a specific motor program by a small brain area in zebrafish. *Front. Neural Circuits* 7, 67.
118. Dunn, T.W., Gebhardt, C., Naumann, E.A., Riegler, C., Ahrens, M.B., Engert, F., and Del Bene, F. (2016). Neural circuits underlying visually evoked escapes in larval zebrafish. *Neuron* 89, 613–628.
119. Preuss, T., Osei-Bonsu, P.E., Weiss, S.A., Wang, C., and Faber, D.S. (2006). Neural representation of object approach in a decision-making motor circuit. *J. Neurosci.* 26, 3454–3464.
120. Temizer, I., Donovan, J.C., Baier, H., and Semmelhack, J.L. (2015). A visual pathway for looming-evoked escape in larval zebrafish. *Curr. Biol.* 25, 1823–1834.
121. Yilmaz, M., and Meister, M. (2013). Rapid innate defensive responses of mice to looming visual stimuli. *Curr. Biol.* 23, 2011–2015.
122. Marquez-Legorreta, E., Piber, M., and Scott, E.K. (2019). Visual escape in larval zebrafish: stimuli, circuits, and behavior. In *The Behaviour Genetics of Zebrafish (Danio rerio)*, R.T. Gerlai, ed. (Academic Press), pp. 49–71.
123. Robles, E., Fields, N.P., and Baier, H. (2021). The zebrafish visual system transmits dimming information via multiple segregated pathways. *J. Comp. Neurol.* 529, 539–552.
124. Edwards, S.B. (1980). The deep cell layers of the superior colliculus: their reticular characteristics and structural organization. In *The Reticular Formation Revisited*, J.A. Hobson and M.D. Brazier, eds. (New York: Raven Press), pp. 193–209.
125. Behan, M., and Appell, P.P. (1992). Intrinsic circuitry in the cat superior colliculus: projections from the superficial layers. *J. Comp. Neurol.* 315, 230–243.
126. Lee, P., and Hall, W.C. (1995). Interlaminar connections of the superior colliculus in the tree shrew. II: Projections from the superficial gray to the optic layer. *Vis. Neurosci.* 12, 573–588.
127. Mooney, R.D., Nikolettseas, M.M., Hess, P.R., Allen, Z., Lewin, A.C., and Rhoades, R.W. (1988). The projection from the superficial to the deep layers of the superior colliculus: an intracellular horseradish peroxidase injection study in the hamster. *J. Neurosci.* 8, 1384–1399.
128. Lee, P.H., Helms, M.C., Augustine, G.J., and Hall, W.C. (1997). Role of intrinsic synaptic circuitry in collicular sensorimotor integration. *Proc. Natl. Acad. Sci. USA* 94, 13299–13304.
129. Isa, T., Endo, T., and Saito, Y. (1998). The visuo-motor pathway in the local circuit of the rat superior colliculus. *J. Neurosci.* 18, 8496–8504.
130. Helms, M.C., Ozen, G., and Hall, W.C. (2004). Organization of the intermediate gray layer of the superior colliculus. I. Intrinsic vertical connections. *J. Neurophysiol.* 91, 1706–1715.
131. Fischer, B., and Boch, R. (1983). Saccadic eye movements after extremely short reaction times in the monkey. *Brain Res.* 260, 21–26.
132. Dorris, M.C., Paré, M., and Munoz, D.P. (1997). Neuronal activity in monkey superior colliculus related to the initiation of saccadic eye movements. *J. Neurosci.* 17, 8566–8579.
133. Isa, T., and Hall, W.C. (2009). Exploring the superior colliculus in vitro. *J. Neurophysiol.* 102, 2581–2593.
134. Phongphanphane, P., Mizuno, F., Lee, P.H., Yanagawa, Y., Isa, T., and Hall, W.C. (2011). A circuit model for saccadic suppression in the superior colliculus. *J. Neurosci.* 31, 1949–1954.
135. Ghitani, N., Bayguinov, P.O., Vokoun, C.R., McMahon, S., Jackson, M.B., and Basso, M.A. (2014). Excitatory synaptic feedback from the motor layer to the sensory layers of the superior colliculus. *J. Neurosci.* 34, 6822–6833.
136. Saito, Y., and Isa, T. (2003). Local excitatory network and NMDA receptor activation generate a synchronous and bursting command from the superior colliculus. *J. Neurosci.* 23, 5854–5864.
137. Saito, Y., and Isa, T. (2004). Laminar specific distribution of lateral excitatory connections in the rat superior colliculus. *J. Neurophysiol.* 92, 3500–3510.
138. Lee, C., Rohrer, W.H., and Sparks, D.L. (1988). Population coding of saccadic eye movements by neurons in the superior colliculus. *Nature* 332, 357–360.

# Current Biology

## Review



139. Gale, S.D., and Murphy, G.J. (2014). Distinct representation and distribution of visual information by specific cell types in mouse superficial superior colliculus. *J. Neurosci.* *34*, 13458–13471.
140. Gale, S.D., and Murphy, G.J. (2016). Active dendritic properties and local inhibitory input enable selectivity for object motion in mouse superior colliculus neurons. *J. Neurosci.* *36*, 9111–9123.
141. Hoy, J.L., Bishop, H.I., and Niell, C.M. (2019). Defined cell types in superior colliculus make distinct contributions to prey capture behavior in the mouse. *Curr. Biol.* *29*, 4130–4138.
142. Phongphanphane, P., Marino, R.A., Kaneda, K., Yanagawa, Y., Munoz, D.P., and Isa, T. (2014). Distinct local circuit properties of the superficial and intermediate layers of the rodent superior colliculus. *Eur. J. Neurosci.* *40*, 2329–2343.
143. Kasai, M., and Isa, T. (2016). Imaging population dynamics of surround suppression in the superior colliculus. *Eur. J. Neurosci.* *44*, 2543–2556.
144. Shang, C., Chen, Z., Liu, A., Li, Y., Zhang, J., Qu, B., Yan, F., Zhang, Y., Liu, W., Liu, Z., *et al.* (2018). Divergent midbrain circuits orchestrate escape and freezing responses to looming stimuli in mice. *Nat. Commun.* *9*, 1232.
145. Graybiel, A.M. (1978). A satellite system of the superior colliculus: the parabrachial nucleus and its projections to the superficial collicular layers. *Brain Res.* *145*, 365–374.
146. Caine, H.S., and Gruber, E.R. (1985). Ablation of nucleus isthmi leads to loss of specific visually elicited behaviors in the frog *Rana pipiens*. *Neurosci. Lett.* *54*, 307–312.
147. Knudsen, E.I. (2018). Neural circuits that mediate selective attention: a comparative perspective. *Trends Neurosci.* *41*, 789–805.
148. Lee, P.H., Schmidt, M., and Hall, W.C. (2001). Excitatory and inhibitory circuitry in the superficial gray layer of the superior colliculus. *J. Neurosci.* *21*, 8145–8153.
149. Endo, T., Yanagawa, Y., Obata, K., and Isa, T. (2005). Nicotinic acetylcholine receptor subtypes involved in facilitation of GABAergic inhibition in mouse superficial superior colliculus. *J. Neurophysiol.* *94*, 3893–3902.
150. Tokuoka, K., Kasai, M., Kobayashi, K., and Isa, T. (2020). Anatomical and electrophysiological analysis of cholinergic inputs from the parabrachial nucleus to the superficial superior colliculus. *J. Neurophysiol.* *124*, 1968–1985.
151. Hartline, P.H., Kass, L., and Loop, M.S. (1978). Merging of modalities in optic tectum — infrared and visual integration in rattlesnakes. *Science* *199*, 1225–1229.
152. Newman, E.A., and Hartline, P.H. (1981). Integration of visual and infrared information in bimodal neurons of the rattlesnake optic tectum. *Science* *213*, 789–791.
153. Stanford, L.R., and Hartline, P.H. (1984). Spatial and temporal integration in primary trigeminal nucleus of rattlesnake infrared system. *J. Neurophysiol.* *51*, 1077–1090.
154. Knudsen, E.I., and Konishi, M. (1978). Neural map of auditory space in owl. *Science* *200*, 795–797.
155. Knudsen, E.I. (1982). Auditory and visual maps of space in the optic tectum of the owl. *J. Neurosci.* *2*, 1177–1194.
156. Konishi, M. (1993). Listening with 2 ears. *Sci. Am.* *268*, 66–73.
157. Carr, C.E., and Konishi, M. (1990). A circuit for detection of interaural time differences in the brain-stem of the barn owl. *J. Neurosci.* *10*, 3227–3246.
158. Stein, B.E., and Stanford, T.R. (2008). Multisensory integration: current issues from the perspective of the single neuron. *Nat. Rev. Neurosci.* *9*, 255–266.
159. Wang, Z.Y., Yu, L.P., Xu, J.H., Stein, B.E., and Rowland, B.A. (2020). Experience creates the multisensory transform in the superior colliculus. *Front. Integr. Neurosci.* *14*, 18.
160. White, B.J., and Munoz, D.P. (2011). Separate visual signals for saccade initiation during target selection in the primate superior colliculus. *J. Neurosci.* *31*, 1570–1578.
161. Meredith, M.A., and Stein, B.E. (1986). Visual, auditory, and somatosensory convergence on cells in superior colliculus results in multisensory integration. *J. Neurophysiol.* *56*, 640–662.
162. Jay, M.F., and Sparks, D.L. (1984). Auditory receptive-fields in primate superior colliculus shift with changes in eye position. *Nature* *309*, 345–347.
163. Peck, C.K., Baro, J.A., and Warder, S.M. (1995). Effects of eye position on saccadic eye-movements and on the neuronal responses to auditory and visual-stimuli in cat superior colliculus. *Exp. Brain Res.* *103*, 227–242.
164. Hess, W.R. (1954). *Diencephalon: Autonomic and Extrapyramidal Functions* (New York: Grune & Stratton).
165. Apter, J.T. (1946). Eye movements following strychninization of the superior colliculus of cats. *J. Neurophysiol.* *9*, 73–86.
166. Robinson, D.A. (1972). Eye movements evoked by collicular stimulation in the alert monkey. *Vision Res.* *12*, 1795–1808.
167. Schiller, P.H., and Stryker, M. (1972). Single-unit recording and stimulation in superior colliculus of the alert rhesus monkey. *J. Neurophysiol.* *35*, 915–924.
168. Wurtz, R.H., and Goldberg, M.E. (1972). Activity of superior colliculus in behaving monkey. 3. Cells discharging before eye movements. *J. Neurophysiol.* *35*, 575–586.
169. Munoz, D.P., and Wurtz, R.H. (1993). Fixation cells in monkey superior colliculus. II. Reversible activation and deactivation. *J. Neurophysiol.* *70*, 576–589.
170. Munoz, D.P., and Wurtz, R.H. (1993). Fixation cells in monkey superior colliculus. I. Characteristics of cell discharge. *J. Neurophysiol.* *70*, 559–575.
171. Hafed, Z.M., Goffart, L., and Krauzlis, R.J. (2009). A neural mechanism for microsaccade generation in the primate superior colliculus. *Science* *323*, 940–943.
172. Luschei, E.S., and Fuchs, A.F. (1972). Activity of brain stem neurons during eye movements of alert monkeys. *J. Neurophysiol.* *35*, 445–461.
173. Raybourn, M.S., and Keller, E.L. (1977). Colliculoreticular organization in primate oculomotor system. *J. Neurophysiol.* *40*, 861–878.
174. Sparks, D.L. (2002). The brainstem control of saccadic eye movements. *Nat. Rev. Neurosci.* *3*, 952–964.
175. Takahashi, M., and Shinoda, Y. (2018). Brain stem neural circuits of horizontal and vertical saccade systems and their frame of reference. *Neuroscience* *392*, 281–328.
176. Büttner, U., Büttner-Ennever, J.A., and Henn, V. (1977). Vertical eye movement related unit activity in the rostral mesencephalic reticular formation of the alert monkey. *Brain Res.* *130*, 239–252.
177. Moschovakis, A.K., Scudder, C.A., and Highstein, S.M. (1991). Structure of the primate oculomotor burst generator. I. Medium-lead burst neurons with upward on-directions. *J. Neurophysiol.* *65*, 203–217.
178. Grantyn, A., and Grantyn, R. (1982). Axonal patterns and sites of termination of cat superior colliculus neurons projecting in the tecto-bulbo-spinal tract. *Exp. Brain Res.* *46*, 243–256.
179. Moschovakis, A.K., Kitama, T., Dalezios, Y., Petit, J., Brandt, A.M., and Grantyn, A.A. (1998). An anatomical substrate for the spatiotemporal transformation. *J. Neurosci.* *18*, 10219–10229.
180. Masullo, L., Mariotti, L., Alexandre, N., Freire-Pritchett, P., Boulanger, J., and Tripodi, M. (2019). Genetically defined functional modules for spatial orienting in the mouse superior colliculus. *Curr. Biol.* *29*, 2892–2904.
181. Grantyn, A., Ong-Meang Jacques, V., and Berthoz, A. (1987). Reticulospinal neurons participating in the control of synergic eye and head movements during orienting in the cat. II. Morphological properties as revealed by intra-axonal injections of horseradish peroxidase. *Exp. Brain Res.* *66*, 355–377.
182. Isa, T., and Sasaki, S. (2002). Brainstem control of head movements during orienting; organization of the premotor circuits. *Prog. Neurobiol.* *66*, 205–241.



183. Alstermark, B., Lundberg, A., Pinter, M., and Sasaki, S. (1987). Long C3-C5 propriospinal neurones in the cat. *Brain Res.* *404*, 382–388.
184. Iwamoto, Y. (1990). Disynaptic tectal and pyramidal excitation of hindlimb motoneurons mediated by pontine reticulospinal neurons in the cat. *Exp. Brain Res.* *79*, 175–186.
185. Courjon, J.H., Olivier, E., and Pélissier, D. (2004). Direct evidence for the contribution of the superior colliculus in the control of visually guided reaching movements in the cat. *J. Physiol.* *556*, 675–681.
186. Wilson, J.J., Alexandre, N., Trentin, C., and Tripodi, M. (2018). Three-dimensional representation of motor space in the mouse superior colliculus. *Curr. Biol.* *28*, 1744–1755.
187. Brysch, C., Leyden, C., and Arrenberg, A.B. (2019). Functional architecture underlying binocular coordination of eye position and velocity in the larval zebrafish hindbrain. *BMC Biol.* *17*, 110.
188. Budick, S.A., and O'Malley, D.M. (2000). Locomotor repertoire of the larval zebrafish: Swimming, turning and prey capture. *J. Exp. Biol.* *203*, 2565–2579.
189. McClenahan, P., Troup, M., and Scott, E.K. (2012). Fin-tail coordination during escape and predatory behavior in larval zebrafish. *PLoS One* *7*, e32295.
190. Marques, J.C., Lackner, S., Felix, R., and Orger, M.B. (2018). Structure of the zebrafish locomotor repertoire revealed with unsupervised behavioral clustering. *Curr. Biol.* *28*, 181–195.
191. Johnson, R.E., Linderman, S., Panier, T., Wee, C.L., Song, E., Herrera, K.J., Miller, A., and Engert, F. (2020). Probabilistic models of larval zebrafish behavior reveal structure on many scales. *Curr. Biol.* *30*, 70–82.
192. Mearns, D.S., Donovan, J.C., Fernandes, A.M., Semmelhack, J.L., and Baier, H. (2020). Deconstructing hunting behavior reveals a tightly coupled stimulus-response loop. *Curr. Biol.* *30*, 54–69.
193. Kimmel, C.B., Powell, S.L., and Metcalfe, W.K. (1982). Brain neurons which project to the spinal-cord in young larvae of the zebrafish. *J. Comp. Neurol.* *205*, 112–127.
194. Orger, M.B., Kampff, A.R., Severi, K.E., Bollmann, J.H., and Engert, F. (2008). Control of visually guided behavior by distinct populations of spinal projection neurons. *Nat. Neurosci.* *11*, 327–333.
195. Thiele, T.R., Donovan, J.C., and Baier, H. (2014). Descending control of swim posture by a midbrain nucleus in zebrafish. *Neuron* *83*, 679–691.
196. Sato, T., Hamaoka, T., Aizawa, H., Hosoya, T., and Okamoto, H. (2007). Genetic single-cell mosaic analysis implicates ephrinB2 reverse signaling in projections from the posterior tectum to the hindbrain in zebrafish. *J. Neurosci.* *27*, 5271–5279.
197. Yao, Y., Li, X., Zhang, B., Yin, C., Liu, Y., Chen, W., Zeng, S., and Du, J. (2016). Visual cue-discriminative dopaminergic control of visuomotor transformation and behavior selection. *Neuron* *89*, 598–612.
198. Severi, K.E., Portugues, R., Marques, J.C., O'Malley, D.M., Orger, M.B., and Engert, F. (2014). Neural control and modulation of swimming speed in the larval zebrafish. *Neuron* *83*, 692–707.
199. Isa, K., Sooksawate, T., Kobayashi, K., Kobayashi, K., Redgrave, P., and Isa, T. (2020). Dissecting the tectal output channels for orienting and defense responses. *eNeuro* *7*, NEURO.0271-20.2020.
200. Hafd, Z.M., and Chen, C.Y. (2016). Sharper, stronger, faster upper visual field representation in primate superior colliculus. *Curr. Biol.* *26*, 1647–1658.
201. Hafd, Z.M., and Goffart, L. (2020). Gaze direction as equilibrium: more evidence from spatial and temporal aspects of small-saccade triggering in the rhesus macaque monkey. *J. Neurophysiol.* *123*, 308–322.
202. Comoli, E., Das Neves Favaro, P., Vautrelle, N., Leriche, M., Overton, P.G., and Redgrave, P. (2012). Segregated anatomical input to sub-regions of the rodent superior colliculus associated with approach and defense. *Front. Neuroanat.* *6*, 9.
203. Kaneda, K., Isa, K., Yanagawa, Y., and Isa, T. (2008). Nigral inhibition of GABAergic neurons in mouse superior colliculus. *J. Neurosci.* *28*, 11071–11078.
204. Sooksawate, T., and Isa, T. (2006). Properties of cholinergic responses in neurons in the intermediate grey layer of rat superior colliculus. *Eur. J. Neurosci.* *24*, 3096–3108.
205. Stubblefield, E.A., Thompson, J.A., and Felsen, G. (2015). Optogenetic cholinergic modulation of the mouse superior colliculus in vivo. *J. Neurophysiol.* *114*, 978–988.
206. Aizawa, H., Kobayashi, Y., Yamamoto, M., and Isa, T. (1999). Injection of nicotine into the superior colliculus facilitates occurrence of express saccades in monkeys. *J. Neurophysiol.* *82*, 1642–1646.
207. Marques, J.C., Li, M., Schaak, D., Robson, D.N., and Li, J.M. (2020). Internal state dynamics shape brainwide activity and foraging behaviour. *Nature* *577*, 239–243.
208. Chen, H., Savier, E.L., DePiero, V.J., and Cang, J. (2021). Lack of evidence for stereotypical direction columns in the mouse superior colliculus. *J. Neurosci.* *41*, 461–473.
209. Nguyen, M.N., Nishimaru, H., Matsumoto, J., Van Le, Q., Hori, E., Maior, R.S., Tomaz, C., Ono, T., and Nishijo, H. (2016). Population coding of facial information in the monkey superior colliculus and pulvinar. *Front. Neurosci.* *10*, 583.
210. Le, Q.V., Le, Q.V., Nishimaru, H., Matsumoto, J., Takamura, Y., Hori, E., Maior, R.S., Tomaz, C., Ono, T., and Nishijo, H. (2020). A prototypical template for rapid face detection is embedded in the monkey superior colliculus. *Front. Syst. Neurosci.* *14*, 5.
211. McFadyen, J., Mattingley, J.B., and Garrido, M.I. (2019). An afferent white matter pathway from the pulvinar to the amygdala facilitates fear recognition. *eLife* *8*, e40766.
212. McFadyen, J., Dolan, R.J., and Garrido, M.I. (2020). The influence of subcortical shortcuts on disordered sensory and cognitive processing. *Nat. Rev. Neurosci.* *21*, 264–276.
213. Wang, Y.C., Bianciardi, M., Chanes, L., and Satpute, A.B. (2020). Ultra high field fMRI of human superior colliculi activity during affective visual processing. *Sci. Rep.* *10*, 1331.
214. Zénon, A., and Krauzlis, R.J. (2012). Attention deficits without cortical neuronal deficits. *Nature* *489*, 434–437.
215. Cowey, A., and Stoerig, P. (1995). Blindsight in monkeys. *Nature* *373*, 247–249.
216. Yoshida, M., and Isa, T. (2015). Signal detection analysis of blindsight in monkeys. *Sci. Rep.* *5*, 10755.
217. Diamond, I.T., and Hall, W.C. (1969). Evolution of neocortex. *Science* *164*, 251–262.
218. Kinoshita, M., Kato, R., Isa, K., Kobayashi, K., Kobayashi, K., Onoe, H., and Isa, T. (2019). Dissecting the circuit for blindsight to reveal the critical role of pulvinar and superior colliculus. *Nat. Commun.* *10*, 135.
219. Schmid, M.C., Mrowka, S.W., Turchi, J., Saunders, R.C., Wilke, M., Peters, A.J., Ye, F.Q., and Leopold, D.A. (2010). Blindsight depends on the lateral geniculate nucleus. *Nature* *466*, 373–377.
220. Ajina, S., and Bridge, H. (2018). Blindsight relies on a functional connection between hMT+ and the lateral geniculate nucleus, not the pulvinar. *PLoS Biol.* *16*, e2005769.
221. Ajina, S., Pestilli, F., Rokem, A., Kennard, C., and Bridge, H. (2015). Human blindsight is mediated by an intact geniculo-extrastriate pathway. *eLife* *4*, e08935.
222. Yu, H.H., Atapour, N., Chaplin, T.A., Worthy, K.H., and Rosa, M.G.P. (2018). Robust visual responses and normal retinotopy in primate lateral geniculate nucleus following long-term lesions of striate cortex. *J. Neurosci.* *38*, 3955–3970.
223. Takakuwa, N., Isa, K., Onoe, H., Takahashi, J., and Isa, T. (2021). Contribution of the pulvinar and lateral geniculate nucleus to the control of visually guided saccades in blindsight monkeys. *J. Neurosci.* *41*, 1755–1768.