

# The Lincoln Repository

## What is the Repository?

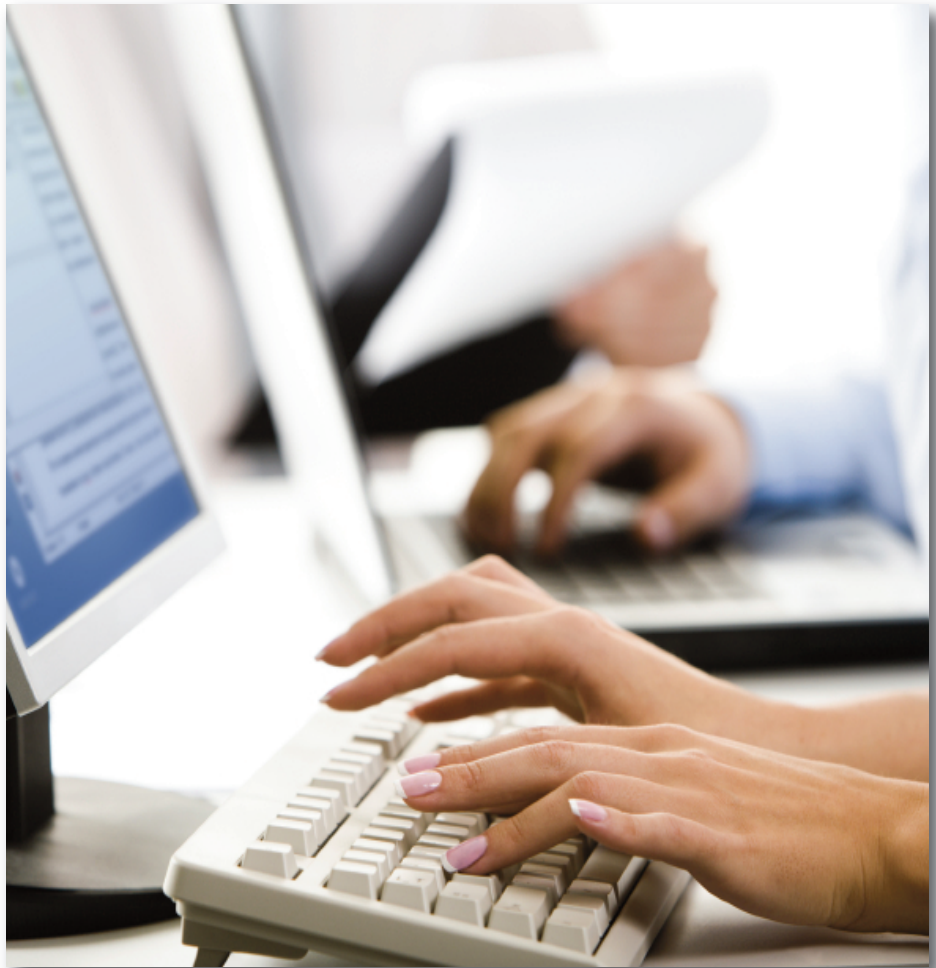
**The University of Lincoln Repository is an online archive hosting full texts of published research carried out by academic staff at the University and teaching and learning materials.**

Material stored in the repository can be made freely available to anyone with access to the Internet.

The University of Lincoln Repository is an online archive hosting teaching and learning materials created by staff, and the full text of published research carried out by academic staff at the University.

Open Access repositories are being developed by Universities across the world, because the current model of publishing can make it difficult for other researchers to access your work – this blunts the impact of your work, because if other researchers can't see your work they can't cite it.

But the repository is about more than just research work. We are also interested in storing and sharing the high quality teaching materials that are being created and used in the University. Storing teaching and learning materials in a repository, makes them searchable and shareable, and promotes the personal, departmental and institutional work of the University.



## How can the repository help?

Research papers are written for the widest possible impact, not for profit. Repositories are the most effective way of disseminating your work to the wider world.

The more your papers are disseminated the more they will be cited and greater citation rates help you to develop your career and to attract further research funding.

Teaching materials are often hidden in departmental web sites, or on Virtual Learning Environments such as Blackboard.

If a course doesn't run for a year, or you move to a new post, you can lose these materials. If they're in the repository you'll always be able to access them.

## Why should I use the repository?

Your research is made available to a world wide community of scholars, in a way that traditional publishing cannot achieve. Materials in the repository are indexed by specialised repository search engines and materials in repositories are given higher rankings by public search engines such as Google and Yahoo!

All your work is stored in the same place, whereas research papers tend to be distributed around publishers' web sites. You will be able to provide a link from your personal web site to the repository, making all your work available, rather than just the citation. In fact, you can set your personal web page to display your last 10 deposits in the repository.



Log into the Lincoln Repository at <http://eprints.lincoln.ac.uk>

# Supporting you throughout your Research at the University

## Your research will be preserved

The repository preserves research papers indefinitely, which again contrasts with the provisions offered by publishers, who can also choose to remove your work whenever it suits their purposes.

You'll have access to similar repositories worldwide. Through OALster indexing at [www.oalster.umdl.umich.edu](http://www.oalster.umdl.umich.edu) you will be able to search hundreds of repositories simultaneously – you can easily restrict your searches to research papers, or teaching materials, or material in a particular format.

The repository will make it much easier for students to access your research work, and teaching material. Students can sometimes have difficulty in accessing publishers' websites remotely because of licensing restrictions. Material in the repository is open to all.

Depositing your paper takes minutes and it is available online shortly thereafter following checks on the copyright. In most cases, and always subject to copyright, and other agreements with the publisher, either a pre-print – that is, the draft you submit to the journal, or a post print (the finalised text after refereeing) can be deposited. In some cases the publisher might ask that the document be embargoed – not released for a period of time after publication. The release date can be set when the item is deposited.

You retain all the copyright and intellectual property in your own work. The Lincoln Repository only asks that you give us permission to keep your work in one format, that is the format in which you deposit it and to freely distribute electronic copies of it. We do recommend that you license other users to use your work using one of the creative commons licenses at [www.creativecommons.org](http://www.creativecommons.org).

## Copyright

When a journal publisher accepts a paper, it's usual to have to sign over the copyright. Isn't depositing the paper in the Lincoln Repository infringing the copyright?

Actually, it depends on the publisher. Copyright checks are part of the Lincoln Repository's upload process and all papers submitted are checked. But most publishers allow the upload of pre-prints, that is papers that have been refereed, but have not yet been formatted for final publication. You also have the option of granting the publisher a license to publish your work, which means that you retain the copyright.

## Copyright in Teaching Materials

If you or anyone in the University has created the teaching materials yourself, or have permission to deposit them in the repository, copyright isn't an issue.

However, if you incorporate material published elsewhere into your materials, (for example you use a published photograph) then it will be necessary to clear the copyright status

of every element. If this is not possible, a link to the original source may be provided prior publication.

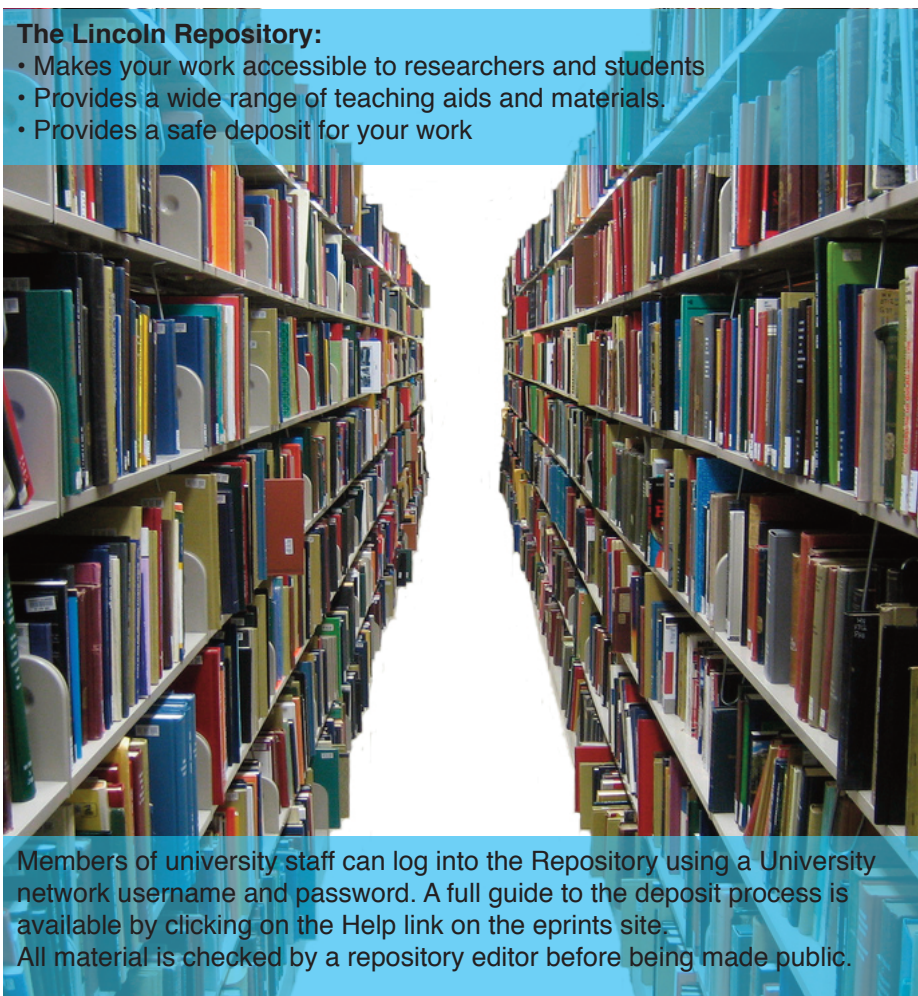
Surely, if I deposit a pre-print, the journal might turn around and say it has already been published and refuse to accept it? - This depends on the journal, although most would not. Ask the Repository team to check for you, or check with the publisher themselves.

## That's all very well, but what about...

**Plagiarism.** Surely, if my research is available through open access anyone can plagiarise it? Well, yes. But that's true of any published work and open access doesn't make it any easier to plagiarise. In fact, because work is freely available in electronic form it makes it much easier to catch plagiarists, because it is searchable by services such as Turnitin.

### The Lincoln Repository:

- Makes your work accessible to researchers and students
- Provides a wide range of teaching aids and materials.
- Provides a safe deposit for your work



Members of university staff can log into the Repository using a University network username and password. A full guide to the deposit process is available by clicking on the Help link on the eprints site. All material is checked by a repository editor before being made public.

Log into the Lincoln Repository at <http://eprints.lincoln.ac.uk>