

# Abell 611

## I. Weak lensing analysis with LBC

A. Romano<sup>1,2</sup>, L. Fu<sup>3,12</sup>, F. Giordano<sup>4,2</sup>, R. Maoli<sup>1</sup>, P. Martini<sup>5</sup>, M. Radovich<sup>3,14</sup>, R. Scaramella<sup>2</sup>, V. Antonuccio-Delogu<sup>6,13</sup>, A. Donnarumma<sup>7,8,9</sup>, S. Ettori<sup>8,9</sup>, K. Kuijken<sup>10,3</sup>, M. Meneghetti<sup>8,9</sup>, L. Moscardini<sup>7,9</sup>, S. Paulin-Henriksson<sup>11,6</sup>, E. Giallongo<sup>2</sup>, R. Ragazzoni<sup>14</sup>, A. Baruffolo<sup>14</sup>, A. DiPaola<sup>2</sup>, E. Diolaiti<sup>8</sup>, J. Farinato<sup>14</sup>, A. Fontana<sup>2</sup>, S. Gallozzi<sup>2</sup>, A. Grazian<sup>2</sup>, J. Hill<sup>16</sup>, F. Pedichini<sup>2</sup>, R. Speziali<sup>2</sup>, R. Smareglia<sup>15</sup>, and V. Testa<sup>2</sup>

<sup>1</sup> Dipartimento di Fisica, Università La Sapienza, piazzale A. Moro 2, 00185 Roma, Italy  
e-mail: Anna.Romano@roma1.infn.it

<sup>2</sup> INAF – Osservatorio Astronomico di Roma, via Frascati 33, 00044 Monte Porzio Catone (Roma), Italy

<sup>3</sup> INAF – Osservatorio Astronomico di Napoli, via Moiariello 16, 80131 Napoli, Italy

<sup>4</sup> Dipartimento di Fisica, Università Tor Vergata, via della Ricerca Scientifica 1, 00133 Roma, Italy

<sup>5</sup> Department of Astronomy and Center for Cosmology and Astroparticle Physics, The Ohio State University, Columbus, OH 43210, USA

<sup>6</sup> INAF – Osservatorio Astrofisico di Catania, via Santa Sofia 78, 95123 Catania, Italy

<sup>7</sup> Dipartimento di Astronomia, Università di Bologna, via Ranzani 1, 40127 Bologna, Italy

<sup>8</sup> INAF - Osservatorio Astronomico di Bologna, via Ranzani 1, 40127 Bologna, Italy

<sup>9</sup> INFN, Sezione di Bologna, viale Berti Pichat 6/2, 40127 Bologna, Italy

<sup>10</sup> Leiden Observatory, Leiden University, PO Box 9513, 2300 RA Leiden, The Netherlands

<sup>11</sup> Service d'Astrophysique, CEA Saclay, Batiment 709, 91191 Gif-sur-Yvette Cedex, France

<sup>12</sup> Key Lab for Astrophysics, Shanghai Normal University, 100 Guilin Road, 200234 Shanghai, PR China

<sup>13</sup> Astrophysics, Department of Physics, University of Oxford, Oxford, UK

<sup>14</sup> INAF – Osservatorio Astronomico di Padova, vicolo dell'Osservatorio 5, 35122 Padova, Italy

<sup>15</sup> INAF – Osservatorio Astronomico di Trieste, via G. B. Tiepolo 11, 34131 Trieste, Italy

<sup>16</sup> Large Binocular Telescope Observatory, University of Arizona, 933 N Cherry Avenue, 85721-0065 Tucson, Arizona, USA

Received 8 June 2009 / Accepted 3 February 2010

### ABSTRACT

**Aims.** The Large Binocular Cameras (LBC) are two twin wide field cameras (FOV  $\sim 23' \times 25'$ ) mounted at the prime foci of the 8.4 m Large Binocular Telescope (LBT). We performed a weak lensing analysis of the  $z = 0.288$  cluster Abell 611 on  $g$ -band data obtained by the blue-optimized LBC in order to estimate the cluster mass.

**Methods.** Owing to the complexity of the PSF of LBC, we decided to use two different approaches, KSB and shapelets, to measure the shape of background galaxies and to derive the shear signal produced by the cluster. Then we estimated the cluster mass with both aperture densitometry and parametric model fits.

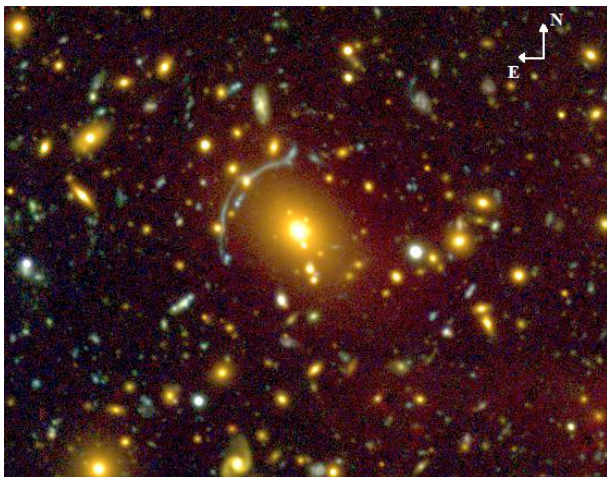
**Results.** The combination of the large aperture of the telescope and the wide field of view allowed us to map a region well beyond the expected virial radius of the cluster and to get a high surface density for background galaxies (23 galaxies/arcmin<sup>2</sup>). This made it possible to estimate an accurate mass for Abell 611. We find that the mass within 1.5 Mpc is  $(8 \pm 3) \times 10^{14} M_{\odot}$  from the aperture mass technique and  $(5 \pm 1) \times 10^{14} M_{\odot}$  using the model fitting by an NFW mass density profile for both shapelet and KSB methods. This analysis demonstrates that LBC is a powerful instrument for weak gravitational lensing studies.

**Key words.** galaxies: clusters: individual: Abell 611 – gravitational lensing: weak

## 1. Introduction

According to the hierarchical model of structure formation, clusters of galaxies are the most massive objects in the universe, and the cluster mass function is a powerful probe of cosmological parameters (e.g. Evrard 1989; Eke et al. 1998; Henry 2000; Allen et al. 2004; Vikhlinin et al. 2009). In addition, the ratio between the cluster gas mass, as estimated with X-ray observations, and the total mass in a galaxy cluster provides stringent constraints on the total matter density. Specifically, the apparent evolution of the gas fraction with redshift can be used to estimate the contribution of the dark energy component to the cosmic density (e.g. Allen et al. 2008; Ettori et al. 2009). Using clusters as a cosmological probe therefore requires reliable mass estimates.

Several techniques are commonly used to estimate masses for galaxy clusters: the X-ray luminosity or temperature of the hot intracluster gas, the Sunyaev-Zel'dovich effect, the number of bright galaxies in a cluster, and the velocity dispersion of the cluster galaxies. The disadvantage of all these methods is that they are indirect and require significant assumptions about the dynamical state of the cluster. Gravitational lensing, in contrast, is only sensitive to the amount of mass along the line of sight and allows reconstruction of the projected cluster mass regardless of its composition or dynamical behavior (e.g. Kaiser & Squires 1993). The only direct method of estimating cluster masses is therefore via measuring the distortion (*shear*) of the shapes of background galaxies that are weakly lensed by the gravitational potential of the cluster.



**Fig. 1.** A three-color image ( $2' \times 1.6'$ ) of Abell 611 obtained with LBC observations in the  $u$ -,  $g$ -, and  $r$ -bands. A giant arc is clearly visible close the brightest cluster galaxy ( $\alpha = 08^{\text{h}}00^{\text{m}}57^{\text{s}}, \delta = +36^{\circ}03'23''$ ).

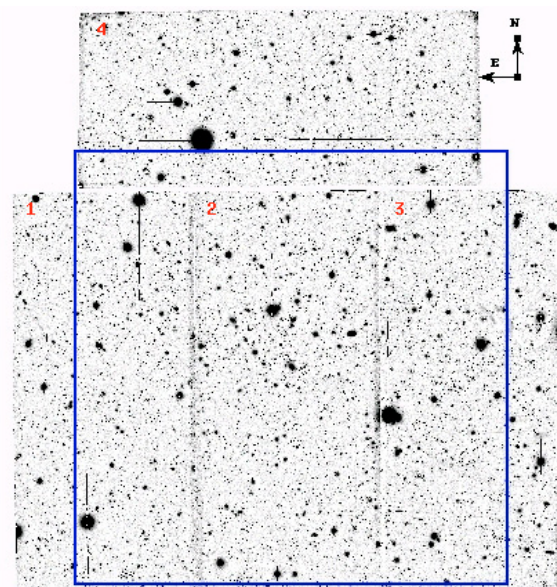
This distortion is very small and lensed galaxies are usually at high redshift. Observational studies to measure weak gravitational lensing by clusters require deep images in order to detect these faint sources and to obtain a high number density of background galaxies. Moreover, this kind of analysis requires very high-quality images to measure the shape of the lensed sources with high precision: good seeing ( $<1''$ ) conditions and a high signal-to-noise ratio (SNR typically  $>10$ ) are needed. Wide-field images are also required to obtain a statistical measure of the tangential shear as a function of distance from the cluster center so that the projected mass measured by weak lensing essentially includes all of the mass of the cluster (Clowe & Schneider 2001, 2002).

In the past decade substantial progress has been made with weak lensing studies thanks to the advent of wide-field data with linear detectors, the development of sophisticated algorithms for shape measurements (e.g. Kaiser et al. 1995; Bernstein & Jarvis 2002; Refregier 2003; Kuijken 2006), and the availability of multi-band photometry, which provides information about the redshift distribution of the lensed sources (Ilbert et al. 2006).

Here we describe the results of a weak lensing analysis of the Abell 611 cluster. This analysis is based on images obtained with the Large Binocular Camera (LBC), which are a pair of prime focus cameras mounted on the two 8.4 m diameter mirrors of the Large Binocular Telescope (LBT). Each LBC has a  $23' \times 25'$  field of view (FOV) and, combined with the collecting area of LBT, is a very powerful instrument for weak lensing studies.

Abell 611 is a rich cluster at redshift  $z = 0.288$  (Struble & Rood 1999) that appears relaxed in X-ray data, has a regular morphology, and the brightest cluster galaxy (BCG) is coincident with the center of X-ray emission (Donnarumma et al. 2010). A giant arc caused by strong lensing is also clearly visible close to the BCG (Fig. 1).

In this work we describe a weak lensing analysis to estimate the mass of Abell 611 from a deep  $g$ -band LBC image whose field of view extends well beyond the expected virial radius of the cluster. We compare the mass estimated from gravitational lensing with previous lensing results and with other mass estimates available in the literature that were derived by secondary techniques. In particular, we compare our weak lensing results with new mass measurements obtained by X-ray analysis of Chandra data provided to us by Donnarumma et al. (2010).



**Fig. 2.**  $g$ -band image of the full field of LBC, centered on Abell 611. The box marks the region of 5000 pixels we used for the analysis.

Mass measurements by weak lensing do not need any assumption about the geometry of the cluster; however, assumptions are required to compare projected lensing masses with other mass estimates. Thus projection effects have to be taken into account during this kind of analysis; in particular, the true triaxiality of the halo (De Filippis et al. 2005; Gavazzi 2005) and the presence of unrelated structures along the line of sight (Metzler et al. 2001; Hoekstra 2007) can be sources of noise or bias on the projected mass measurements.

The paper is organized as follows. In the first sections we describe the data (Sect. 2) used for a weak lensing analysis of Abell 611, the catalog extraction of the background sources (Sect. 3), and the selection of candidate cluster galaxies (Sect. 4). The two different pipelines used to extract the shear signal from the images are described in Sect. 5, and their results are compared in Sect. 5.3. Finally, both shear maps are used to estimate the mass of the cluster with different techniques (Sect. 6). The results are summarized and discussed in Sect. 7.

Throughout this paper we adopt  $H_0 = 70 \text{ km s}^{-1} \text{ Mpc}^{-1}$ ,  $\Omega_m = 0.3$ , and  $\Omega_\Lambda = 0.7$ . At the distance of Abell 611, 1 arcmin corresponds to a projected physical distance of nearly 0.26 Mpc.

## 2. Observations and data reduction

Abell 611 was observed in March 2007, during the science demonstration time (SDT) for the blue-optimized large binocular camera (LBC), which is one of the two LBCs built for the prime foci of the LBT. The LBC focal plane consists of four CCDs ( $2048 \times 4608$  pixels, pixel scale  $13.5 \mu\text{m}$ , gain  $\sim 2 e^-/\text{ADU}$ , readout-noise  $\sim 11 e^-$ ). The CCDs are arranged so that three of the chips are butted along their long edges and the fourth chip is rotated counterclockwise by 90 degrees and centered on the top of the other CCDs (see Fig. 2). The field of view is equivalent to  $23' \times 25'$  and provides images with a sampling of  $0.225''/\text{pixel}$ . Because each LBC is mounted on a swing arm over the primary mirror, the support structure lacks the symmetry of most prime focus instruments. Moreover LBC PSFs are dominated by optical aberrations from misalignments, which can prevent PSFs

**Table 1.** Exposure times, limiting magnitudes for point-like sources and zero points (AB) for the observations in each band.

Filter	$N_{\text{exp}}$	Exptime (s)	Mag ( $5\sigma$ )	Mag ( $20\sigma$ )	Zero point
$g$	12	3600	28.0	26.0	28.4
$r$	3	900	26.0	24.2	27.7
$u$	4	1200	27.2	25.0	27.1

from having bilateral symmetry. This is a potential complication for the weak lensing analysis, a point we discuss below. More details about the characteristics of LBC are given in [Giallongo et al. \(2008\)](#).

The observations, collected in optimal seeing conditions ( $FWHM \sim 0.6''$ ), consisted of several sets of exposures of 5 min each in a wide  $u$ -band and in SDSS  $g$ - and  $r$ -band filters. The total exposure time was 1 h in  $g$ , 15 min in  $r$ , and 20 min in  $u$ . For the present work we used the deep,  $g$ -band data for the weak-lensing analysis and the  $u$ - and  $r$ -band data to select cluster galaxies. Each image was dithered by 5 arcsec to remove bad pixels, rows, columns, and satellite tracks. This offset is not large enough to fill the gaps between the CCDs, but the analysis plan was to treat CCDs separately owing to expected PSF discontinuities at the chip boundaries. The offsets were therefore kept small to maximize depth and uniformity.

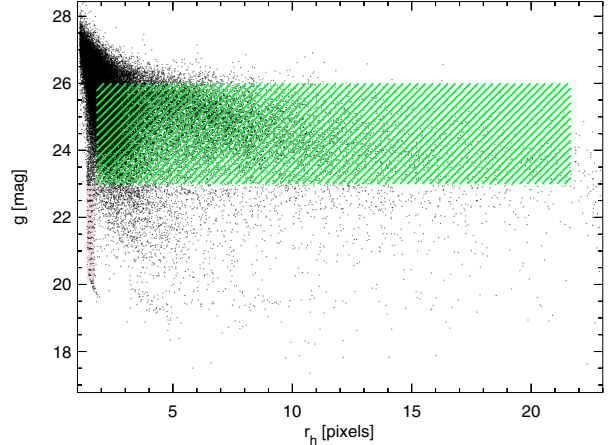
The images were reduced by the LBT pipeline<sup>1</sup> implemented at INAF-OAR. The flat-field correction was done using both a twilight flat-field and a superflat obtained during the night. Moreover, a geometric distortion correction was performed to normalize the pixel size, which showed differences across the CCDs caused by field distortions in the optics. The astrometric solution was computed using the ASTROMC package ([Radovich et al. 2008](#)). This solution was then used to resample and coadd the images using the SWARP<sup>2</sup> software.

Standard fields for photometric calibration were not observed during the SDT, so we used the values of zero points for each band (Table 1) given by [Giallongo et al. \(2008\)](#). Table 1 also shows the limiting magnitudes estimated from the faintest point-like objects detected at the  $5\sigma$  and  $20\sigma$  level.

### 3. Catalog extraction

The detection of sources was performed using the SExtractor package ([Bertin & Arnouts 1996](#)). Regions of the image presenting potential problems, such as spikes and halos around bright stars, were masked by visual inspection, and sources inside such regions were discarded from the final catalog. In addition, we removed sources located at the borders of each CCD, where the SNR was lower due to the small dither offset. Finally, a very bright star dominates one of the CCDs. We therefore decided to limit our analysis to a box (displayed in Fig. 2) with a size of 5000 pixels (corresponding to  $\sim 18.7'$ ) centered on Abell 611. Starting from this box of 350 arcmin<sup>2</sup>, the effective area used for the analysis was  $\sim 290$  arcmin<sup>2</sup> after removing all the masked regions (30% due to bright stars, 70% due to regions between adjacent CCDs with no data or low SNR).

The separation between stars and galaxies was performed in the  $\text{mag}-r_h$  plane, where magnitudes (mag) and half-light radii ( $r_h$ ) were obtained from the MAG\_AUTO and FLUX\_RADIUS parameters computed by SExtractor. Unsaturated stars were



**Fig. 3.** Magnitude ( $g$ ) vs. half-light radius ( $r_h$ ) plane. Green zone shows the background galaxies selected for the lensing analysis ( $23 < g < 26$ ,  $r_h > 1.8$  pixels) and pink zone the unsaturated stars selected for correction of PSF anisotropy ( $20 < g < 23$ ,  $1.4 < r_h < 1.8$  pixels). See Sect. 3 for more details.

selected on the vertical branch (see Fig. 3) in the range  $20 < g < 23$  mag and  $1.4 < r_h < 1.8$  pixels. In this way we obtained 302 stars for the PSF correction, with an  $SNR > 200$  for the faintest ones.

For the lensing analysis, only background galaxies located at redshifts higher than  $z = 0.288$ , the redshift of the cluster, should be used. Unfortunately, in our case the number of available bands does not allow us to estimate accurate photometric redshifts of these faint galaxies. The selection of the background galaxies was therefore done by choosing an adequate cut in apparent magnitude.

The choice of the upper magnitude limit was based on the galaxy redshift distribution obtained by [Ilbert et al. \(2006\)](#) from the Canada-France-Hawaii Telescope Legacy Survey (CFHTLS), which also used the SDSS photometric system. Taking the accuracy of the photometric redshifts (3%) of [Ilbert et al. \(2006\)](#) into account, the approximations due to the different bands they used compared to ours, and the assumption that we have the same galaxy distribution in our field, we chose 0.4 as the redshift reference value to perform the magnitude cut. Galaxies with  $z \leq 0.4$  were assumed to belong to the cluster or be foreground galaxies. This reference value was chosen to be greater than cluster redshift, in order to reduce the contamination of foreground galaxies as much as possible, taking the approximations discussed above into account.

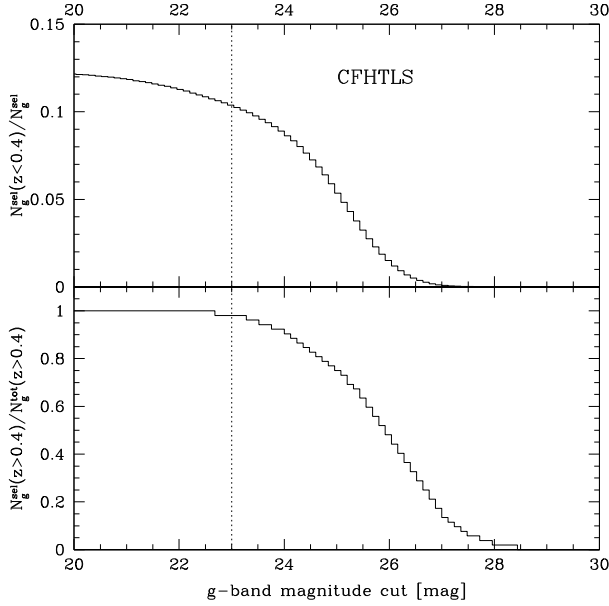
Figure 4 shows the fraction of the total CFHTLS sources at  $z \leq 0.4$  (upper panel) and the fraction of background galaxies at  $z > 0.4$  (bottom panel) as a function of the apparent magnitude cut. From this figure we conclude that a magnitude cut at  $g > 23$  is a good compromise to minimize the contamination from likely foreground and cluster galaxies ( $\sim 10\%$ ) and to maximize the number density of background galaxies ( $\sim 98\%$ ). The faint magnitude cut was chosen at  $g < 26$ , which is the magnitude limit where we have an  $SNR > 10$  for the sources, where SNR is defined as  $FLUX/FLUX\_ERR$  as measured by SExtractor. The final catalog contained 8134 background galaxies.

### 4. Candidate cluster members

The candidate cluster members were selected from the simultaneous usage of  $u$ -,  $g$ -, and  $r$ -band photometry. To this end

<sup>1</sup> <http://lbc.oa-roma.inaf.it>

<sup>2</sup> Developed by Bertin, <http://terapix.iap.fr>



**Fig. 4.** The fraction of likely foreground and cluster galaxies (*top-panel*) and background galaxies (*bottom-panel*) from the CFHTLS versus magnitude cut in  $g$ -band. The dotted vertical line is the lower limit of the magnitude cut adopted to select background galaxies. See Sect. 3 for details.

catalogs were extracted from these images, running SExtractor in dual-mode with the  $g$ -band image as detection image. Only sources detected in all three bands were used.

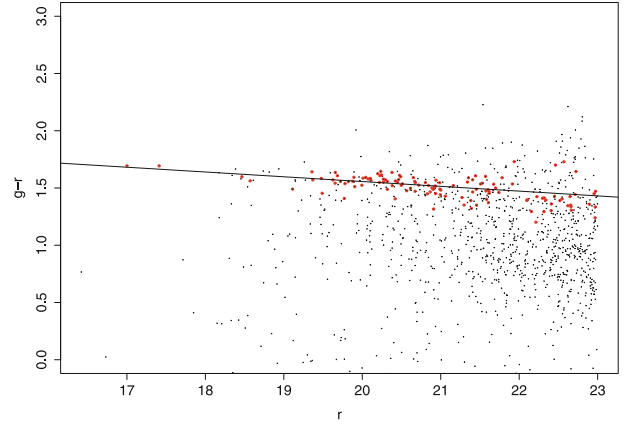
We then applied an algorithm (Fu et al., in prep.) similar to the C4 clustering algorithm (Miller et al. 2005). This algorithm is based on the assumption that galaxies in a cluster should have similar colors and be located together in space. It evaluates the probability of each galaxy being field-like, meaning that candidate cluster galaxies are those for which this probability is below a given threshold, as outlined below.

1. Each galaxy was set in a four-dimensional space of  $\alpha$ ,  $\delta$ ,  $u - g$ , and  $g - r$ . For each galaxy (named “target galaxy”), we counted the number of neighbors within the four-dimensional box,  $N_{\text{target}}$ . The angular size of the box was set to  $1 \text{ h}^{-1} \text{ Mpc}$  ( $\sim 5.5'$  at the redshift of Abell 611). The sizes of the boxes in two-color dimensions were determined as

$$\delta_{mn} = \sqrt{\sigma_{mn}^2(\text{stat}) + \sigma_{mn}^2(\text{sys})}, \quad (1)$$

where  $\sigma_{mn}(\text{stat})$  is the observed error for two magnitudes ( $m, n$ ), and  $\sigma_{mn}(\text{sys})$  is the intrinsic scatter of the color  $m - n$ . For LBC A611 data,  $\delta_{ug}$ ,  $\delta_{gr}$  are 0.49 and 0.31, respectively.

2. This four-dimensional box was placed on 100 randomly chosen galaxy positions and at each position we counted the number of neighbors. These randomized number counts constructed a distribution of counts for the target four-dimensional box. This distribution is represented by the median value  $N_{\text{median}}$  of the randomization counts.
3. The probability  $p$  that the target galaxy is field-like was derived by comparing the target galaxy count  $N_{\text{target}}$  to the distribution of randomization values  $N_{\text{median}}$ .
4. The distribution of  $p$  values was derived by repeating the above steps for all galaxies. We ranked the  $p$  values from lowest to highest and derived the value after which  $p$  starts to rise significantly. In this way we identified  $\sim 150$  galaxies at  $r < 23 \text{ mag}$  as the candidate cluster members. We



**Fig. 5.** Color-magnitude plot of the galaxies in the Abell 611 field. Red points are the candidate cluster galaxies selected by the C4 method. Also displayed (solid line) is the results of the biweight regression fit.

then removed outliers in the  $g - r$  vs.  $u - g$  diagram, leaving 125 candidate members.

Starting from these galaxies, we fitted the  $g - r$  vs.  $r$  red sequence ( $g - r = a + b \cdot r$ ) using a biweight regression method (Fig. 5) and obtained:  $a = 2.39^{+0.61}_{-0.45}$ ,  $b = -0.04^{+0.02}_{-0.03}$ .

## 5. Weak lensing analysis

Weak lensing is based on the measurement of the coherent distortion of the shapes of background galaxies produced by a distribution of matter. This distortion is very small and cannot be measured for any single background galaxy because the galaxy intrinsic ellipticity is not known. The dispersion of intrinsic ellipticity is a source of noise, which is  $\propto \sigma_\epsilon / \sqrt{N}$ . A statistical approach is therefore required, where the distortion can be measured for several sources in order to bring down that noise. This requires a careful treatment of systematic effects, as the shapes of galaxies may also be affected by contributions to the point spread function (PSF) by both the telescope and the atmosphere. In the past decade several methods have been developed for this kind of analysis. The most popular is the KSB approach, originally proposed by Kaiser et al. (1995) and improved by Luppino & Kaiser (1997) and Hoekstra et al. (1998). Several different implementations of this method exist in the literature and have been used in many KSB analysis pipelines. More recently, Refregier (2003) and Massey & Refregier (2005) have proposed a new method based on shapelets. Several available pipelines have also used this approach to measure the shear signal in various ways (e.g. Massey & Refregier 2005, Kuijken 2006).

One of the key differences between these two approaches is the treatment of the PSF. The KSB method assumes that the PSF can be written as a convolution of a very compact anisotropic kernel with a more extended, circular function. These two terms are expressed in terms of the quadrupole moments of the surface brightness. As summarized below, the isotropic component is subtracted from the measured ellipticity and the anisotropic component is subtracted from a responsivity term. In contrast, in the shapelet approach there is no assumption about the PSF shape. Individual galaxy images are decomposed into a complete orthonormal basis set consisting of Hermite (or Laguerre) polynomials, and the PSF correction is performed through deconvolution.

Since the PSF of LBC presents a significant deviation from symmetry, the analysis of Abell 611 presents a very good

opportunity to compare the results produced by these two methods. For this comparison, we started with the same initial catalogs of stars and galaxies for both pipelines. Specifically, we only considered sources with a SEXTRACTOR FLAG < 4, which removes sources that are possibly blended. As the subsequent steps performed by each algorithm are different, the same galaxy may be rejected by one algorithm but not by the other. The result is that different output catalogs are produced by the KSB and shapelet pipelines. To have a homogeneous comparison, we therefore finally selected only the sources common to both output catalogs. Sources with an unphysical ellipticity  $|e| > 1$  were also removed from the final catalogs.

### 5.1. KSB method

We used the weak lensing pipeline described in Radovich et al. (2008) to compute the quantities relevant to the lensing analysis. This pipeline implements the KSB approach using a modified version of the IMCAT<sup>3</sup> tools that was provided to us by Erben (Erben et al. 2001; Hettterscheidt et al. 2007).

In the KSB approach, stars and galaxies are parametrized according to the weighted quadrupole moments of the intensity distribution using a Gaussian weight function whose scale length is the size of the source (the formalism is described in Kaiser et al. 1995). The main assumption of this approach is that the PSF can be described as the sum of a large isotropic component (seeing) and small anisotropic part. In this way the observed ellipticity  $e_{\text{obs}}$  can be related to the intrinsic source ellipticity  $e_s$  and shear  $\gamma$  by the relation:

$$e_{\text{obs}} = e_s + P^\gamma \gamma + P^{\text{sm}} p, \quad (2)$$

where  $P^{\text{sm}}$  is the smear polarizability tensor and  $P^\gamma$  the pre-seeing polarizability tensor, which is related to the shear polarizability tensor  $P^{\text{sh}}$  and  $P^{\text{sm}}$  by Eq. (5) (see also Hoekstra et al. 1998). The quantity  $p$  characterizes the anisotropy of the PSF and is estimated from stars, which have zero intrinsic ellipticity:

$$p^* = \frac{e_{\text{obs}}^*}{P^{\text{sm}*}}. \quad (3)$$

If we average over a large number of sources, assuming a random orientation of the unlensed galaxies, we expect  $\langle e_s \rangle = 0$  and so

$$\gamma = \left\langle \frac{e_{\text{iso}}}{P^\gamma} \right\rangle, \quad (4)$$

where  $e_{\text{iso}} = e_{\text{obs}} - P^{\text{sm}} p^*$  is the ellipticity corrected for anisotropic distortions.

We computed the contribution by the PSF anisotropy (Eq. (3)) from the selected stars. This quantity changes with position in the image, so we needed to fit it on each CCD in order to extrapolate its value at the position of the galaxy we want to correct. In our case we performed this fitting on each CCD and a second-order polynomial fit was sufficient. Figure 6 displays the spatial pattern of the ellipticities for the stars in all CCDs, before and after the PSF correction.

After that we computed  $P^\gamma$  for each source:

$$P^\gamma = P^{\text{sh}} - P^{\text{sm}} \frac{P^{\text{sh}*}}{P^{\text{sm}*}}. \quad (5)$$

As the PSF correction was done separately on each CCD, we decided not to fit  $\frac{P^{\text{sh}*}}{P^{\text{sm}*}}$  as a function of the coordinates and instead took an average value.

Stellar ellipticities should be computed using the same weight function as for galaxies (see Hoekstra et al. 1998), so we considered a sequence of bins in  $r_h$ , and for each galaxy we selected the PSF correction terms computed in the closest  $r_h$  bin. Figure 7 shows the  $\frac{P^{\text{sh}*}}{P^{\text{sm}*}}$  values computed in different bins of  $r_h$ , for each CCD.

We weighted the shear contribution from each galaxy according to:

$$w = \frac{P^\gamma{}^2}{P^\gamma{}^2 \sigma_{e0}^2 + \langle \Delta e^2 \rangle}, \quad (6)$$

as in Hoekstra et al. (2000), where  $\sigma_{e0} \sim 0.3$  is the intrinsic rms of galaxy ellipticities,  $\langle \Delta e^2 \rangle^{1/2}$  is the uncertainty in the measured ellipticity, where the average is computed on both components of ellipticity for each galaxy (see Eqs. (A8), (A9) in Hoekstra et al. 2000).

A crucial point in this kind of study is the selection of the galaxies to use for the shear analysis, as the contamination of foreground galaxies can dilute the lensing signal and lead to underestimating the mass. Since the PSF degrades somewhat at the borders of the image, we limited our analysis to an  $18.7' \times 18.7'$  box centered on the BCG, as discussed in Sect. 3. After that we filtered the source catalog using the following criteria:  $P^\gamma > 0.25$ ,  $SNR > 10$ ,  $r_h > 1.8$  pixels,  $23 < g < 26$ , ellipticities below one, obtaining a surface density of  $\sim 25$  galaxies/arcmin<sup>2</sup>.

The cut  $P^\gamma > 0.25$  allowed us to discard sources that appeared too circular (e.g. stars incorrectly classified as galaxies). We considered only galaxies with  $SNR > 10$  to avoid noisy objects, which can be a source of error in computing the shear signal. Finally, we used the magnitude cut  $23 < g < 26$  to select background galaxies, as previously explained in Sect. 3.

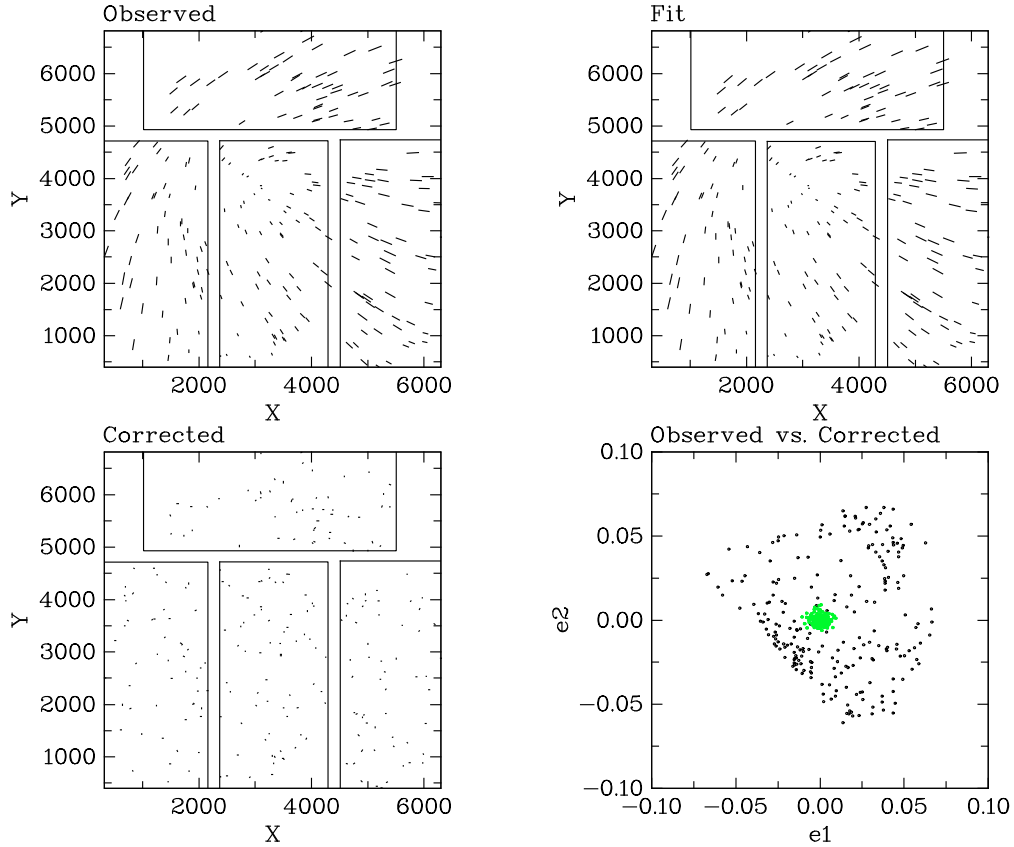
### 5.2. Shapelets

Another approach for weak lensing analysis is to use shapelets, which are basis functions constructed from two-dimensional Hermite polynomials weighted by a Gaussian. The translation, magnification, rotation, and shear of astronomical images can be expressed as matrices acting on shapelet coefficients. The advantage of shapelets is that a galaxy image can be described in reverse order: pixelation, convolution with the PSF, and finally distortion by shear. Shapelets have a free scale radius  $\beta$ , which is the size of the Gaussian core of the functions. Its truncated expansion describes deviations from a Gaussian over a particular range of spatial scales, which widens with order  $N$ .

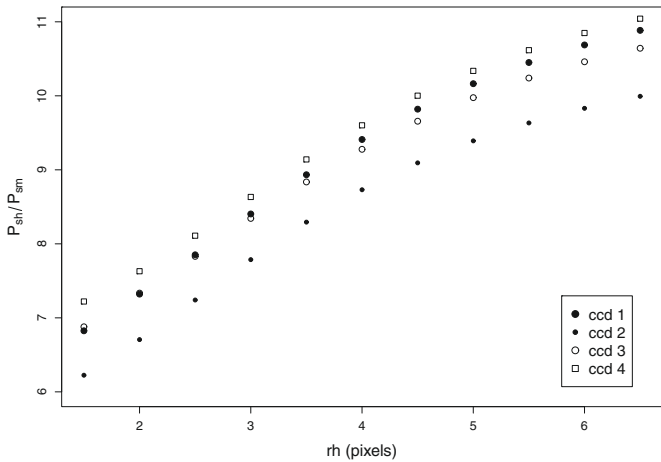
For the analysis of the LBC data of Abell 611 we used the shapelet pipeline developed by Kuijken (2006), starting with the same stars and galaxies as used in the KSB method. Each star was first fit with a circular Gaussian, and the median radius was computed. This radius was then multiplied by a factor of 1.3 for the shapelet fits, which was found by Kuijken (2006) to work well for a range of model PSFs up to shapelet order  $N = 8$ . Then we obtained a shapelet description of the PSF for each star. To estimate the PSF model at the position of each galaxy, the shapelet coefficients were interpolated by a fourth-order polynomial on the whole image frame (Fig. 8). The residual of the PSF model fitting is shown in Fig. 9.

The ellipticity of each source is then determined by least-squares-fitting a model, which is expressed as the shear applied to a circular source to fit the object optimally. The extension order of shapelets for galaxies is taken to be the same as for stars. Performing the least-squares fit, the minimum of  $\chi^2$  can be found in a few Levenberg-Marquardt iterations (Press et al. 1986). The

<sup>3</sup> <http://www.ifa.hawaii.edu/~kaiser/imcat>



**Fig. 6.** Removal of PSF anisotropy in the KSB approach. The observed (*top-left*), fitted (*top-right*), and residual (*bottom-left*) ellipticities of stars for all CCDs. The observed (black points) versus corrected (green points) ellipticities are also shown (*bottom-right*).



**Fig. 7.**  $P_{sh}^*/P_{sm}^*$  values computed in different bins of  $r_h$ , for each CCD. These values are lower for the central CCD (#2) where the quality of PSF is better.

errors of shapelet coefficients for each source are derived from the photon noise, and these can be propagated through the  $\chi^2$  function. Thus the error of shear measurement  $\sigma_\gamma$  is calculated from the covariance matrix which is given by the second partial derivatives of  $\chi^2$  at the best fit.

The shear contribution from each galaxy is weighted according to

$$w = \frac{\sigma_{e0}^2}{\sigma_{e0}^2 + \sigma_\gamma^2}, \quad (7)$$

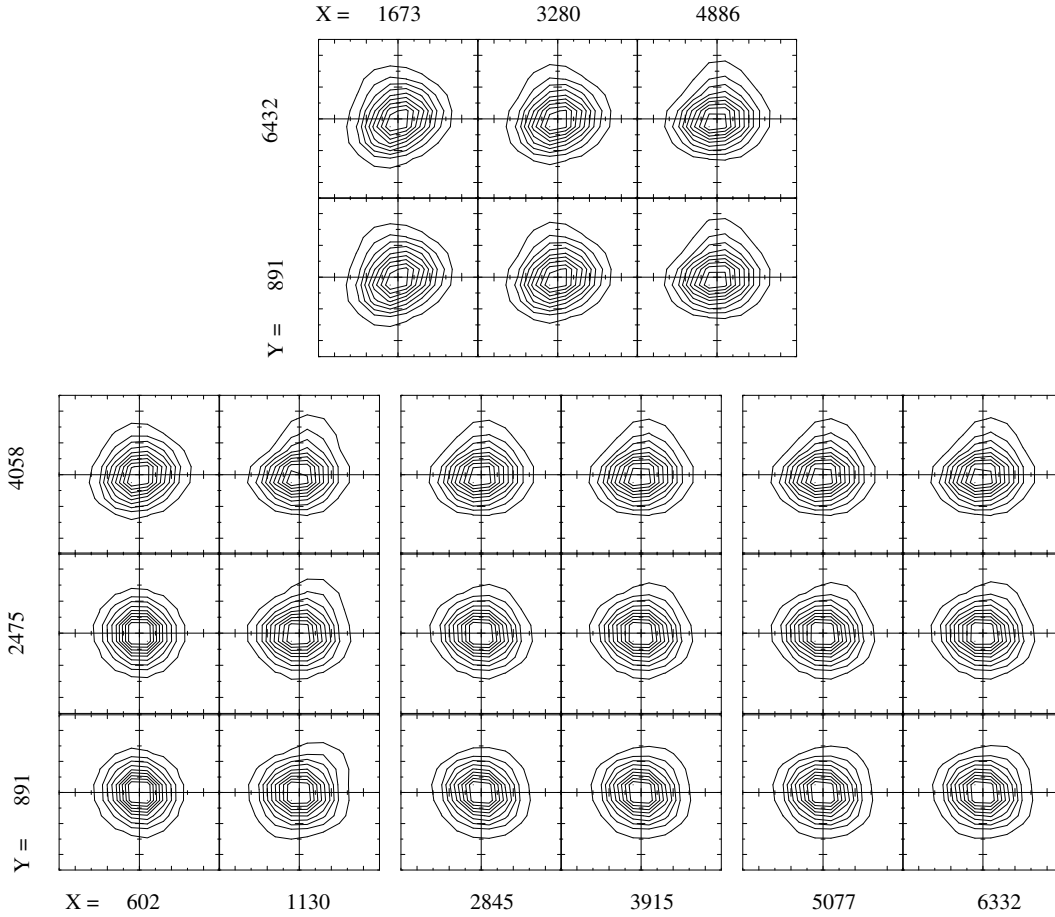
which combines the error in the shear measurements  $\sigma_\gamma$  and the intrinsic scatter  $\sigma_{e0}$ . The last quantity was computed from the distribution of ellipticity components of galaxies.

Finally, we removed galaxies with  $SNR < 10$ , and which failed the shapelet expansion and radial profile cuts defined by Kuijken (2006). This eliminated galaxies that were not detected well or measured, providing a number density of  $\sim 26$  galaxies/arcmin<sup>2</sup>. Further details about the selection criteria are available in Kuijken (2006).

### 5.3. Comparison between KSB and shapelet ellipticities

After matching the two output catalogs, our final background galaxy sample has a surface density of  $\sim 23$  galaxies/arcmin<sup>2</sup>. In weak lensing studies, the background number density of ground-based telescope usually is around 15 to 20 galaxies/arcmin<sup>2</sup> (e.g. Paulin-Henriksson et al. 2007). It depends not only on the size of telescope, the exposure time, the color filter, seeing condition, but also on galaxy selection criteria.

The maps of the PSF correction computed by both methods show a good-quality PSF in the central regions that then degrades farther from the center of the field. Nevertheless, the final correction is good with fluctuations in the PSF anisotropy less than 1%.



**Fig. 8.** Shapelet PSF models interpolated at different positions on each CCD. The distribution of these models corresponds to their actual placement on the CCD mosaic, CCD1 to CCD3 from left to right in the bottom panel and CCD4 in the top. Contours are the representations of PSF shape decomposed by shapelets. The X and Y values correspond to the pixel position.

Figure 10 compares the first component of the shear  $\gamma_1$  measured by the KSB and shapelet methods. It shows good agreement in the range of  $-0.5 < \gamma_1 < 0.5$ . Some scatter is present for very elongated galaxies, but the fraction of these galaxies is less than 5% in the final, common catalog. As shown in Fig. 11, these strongly elongated galaxies are downweighted nearly by a factor of 2 compared to small ellipticity galaxies, so that they do not affect the final mass measurements of the cluster (as described below). A similar behavior is seen for the second component  $\gamma_2$ . These matched catalogs were used to compute estimates of the cluster mass as described in the next sections.

## 6. Mass measurements

The relationship between the shear  $\gamma$  and the surface mass density is

$$\gamma(\theta) = \frac{1}{\pi} \int_{R^2} d^2\theta' D(\theta - \theta') \kappa(\theta'), \quad (8)$$

where  $D = \frac{-1}{(\theta_1 - i\theta_2)^2}$ ,  $\kappa \equiv \Sigma/\Sigma_{\text{cr}}$  is the convergence,  $\Sigma_{\text{cr}} = \frac{c^2}{4\pi G} \frac{D_s}{D_1 D_s} = \frac{c^2}{4\pi G} \frac{1}{D_1 \beta}$  is the critical density of the cluster, and  $D_s$ ,  $D_1$ , and  $D_s$  are source-observer, lens-observer, and lens-source distances, respectively. While weak lensing actually measures the reduced shear  $g = \frac{\gamma}{1-\kappa}$ , for  $\kappa \ll 1$ ,  $g \sim \gamma$ .

An optimal approach for computing the mass requires knowledge of the redshift of each background galaxy. As we do not have this information, we assumed that the background

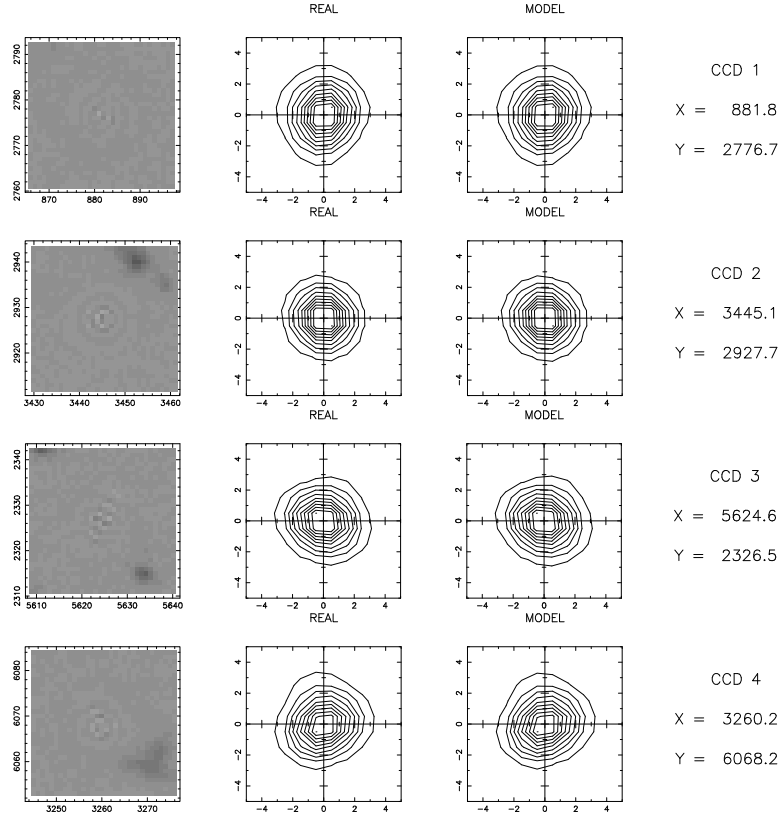
sources all lie at the same redshift according to the *single sheet approximation* (King & Schneider 2001). An estimate of the redshift value to use for the weak lensing analysis was computed using the first release of photometric redshifts available for the D1 deep field of the CFHTLS, adopting the magnitude cut in the  $g$ -band chosen here for the background galaxies selection ( $23 < g < 26$  mag; see Sect. 3) and assuming a gamma probability distribution (Gavazzi et al. 2004). This yielded a median redshift  $z = 1.05$ , and for our analysis, we assumed all of the background galaxies lie at  $z \sim 1$ , corresponding to  $\langle \beta \rangle = \langle D_{\text{ls}}/D_s \rangle \sim 0.65$ .

As discussed by Hoekstra (2007), the single-sheet approximation overestimates the shear by a factor

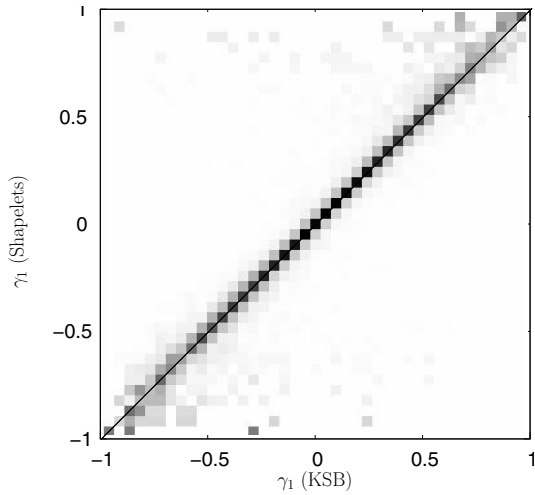
$$1 + \left[ \frac{\langle \beta^2 \rangle}{\langle \beta \rangle^2} - 1 \right] \kappa. \quad (9)$$

We computed this factor using the CFHTLS catalog of photometric redshifts and obtained  $\langle \beta^2 \rangle / \langle \beta \rangle^2 = 1.167$ .

The convergence  $\kappa$  gives an estimate of the surface mass density apart from an unknown additive constant, the so-called *mass-sheet degeneracy*. We tried to solve this degeneracy using two different approaches: assuming either that  $\kappa$  vanishes at the borders of the image or a particular mass profile whose expected shear profile is known.



**Fig. 9.** The star at the position near the center of each CCD is taken as an example to show the residual of PSF model fitting (*left column*). The real PSF shape and fitted PSF model are shown in the *middle and right columns*.



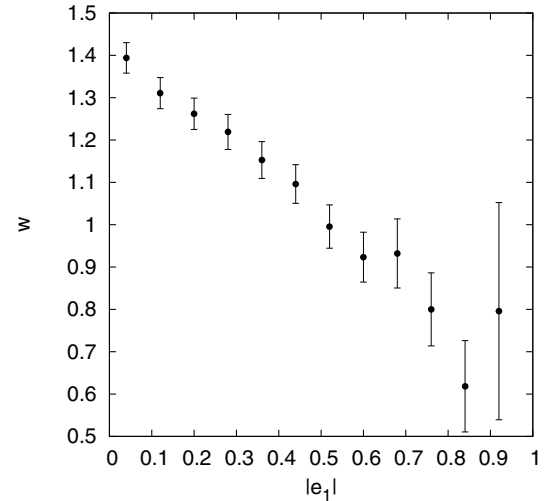
**Fig. 10.** Comparison between the first component of the shear from the shapelet and KSB methods (results with the second components are very similar).

### 6.1. S-Maps

In Fig. 12 we plot the so-called *S-maps* (Schirmer et al. 2004) for these data. *S-maps* are computed as the ratio  $S = M_{\text{ap}}/\sigma_{\text{Map}}$  where

$$M_{\text{ap}} = \frac{\sum_i e_{t,i} w_i Q(|\theta_i - \theta_0|)}{\sum_i w_i} \quad (10)$$

$$\sigma_{M_{\text{ap}}}^2 = \frac{\sum_i e_{t,i}^2 w_i^2 Q^2(|\theta_i - \theta_0|)}{2(\sum_i w_i)^2}. \quad (11)$$

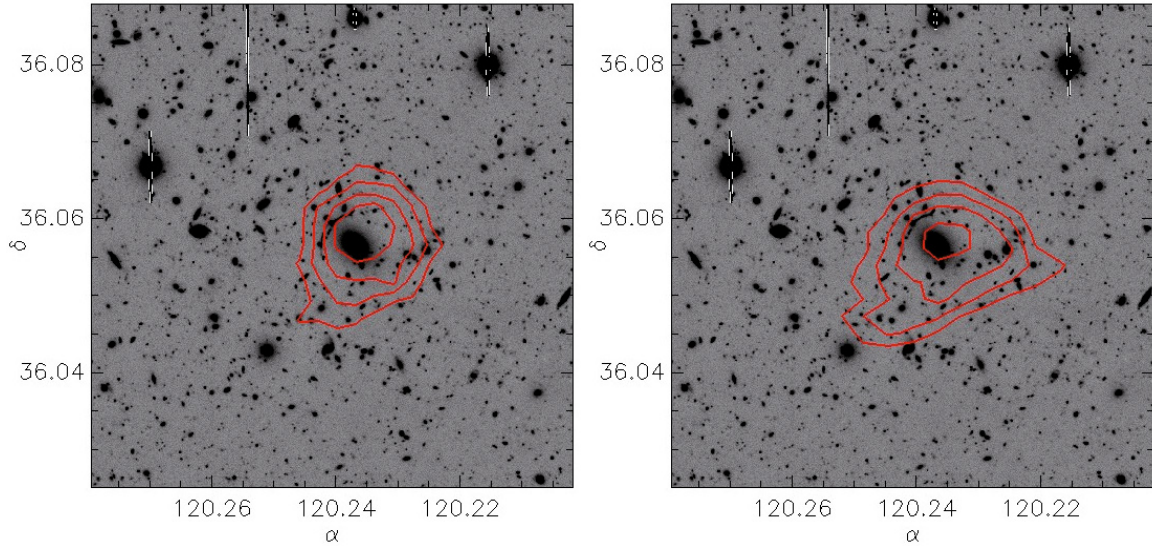


**Fig. 11.** The plot of the normalized galaxy weight as function of the absolute first component of ellipticity for KSB measurement. The applied normalization was  $\sum w_i \times \delta e_1 = 1$ , where  $\delta e_1$  is the constant bin width of  $e_1$ . The shapelet measurement shows similar downweight for elongated ellipticity galaxies.

For this calculation the image is considered as a grid of points,  $e_{t,i}$  are the tangential components of the ellipticities of the lensed galaxies, which are computed by considering the center of each point on the grid,  $w_i$  is the weight as defined in Eq. (6), and  $Q$  is a window function, chosen to be a Gaussian function defined by

$$Q(|\theta - \theta_0|) = \frac{1}{\pi\theta_c^2} \exp\left(-\frac{(\theta - \theta_0)^2}{\theta_c^2}\right) \quad (12)$$





**Fig. 12.** S-maps obtained from the KSB (*left panel*) and the Shapelets (*right panel*) analysis. The levels are plotted between  $\sigma_{\min} = 3.5$  and  $\sigma_{\max} = 5$ . They are overlotted on a  $g$ -band grayscale image ( $\sim 4$  arcmin) of the center of the field of Abell 611.

where  $\theta_0$  and  $\theta_c$  are the center and the size of the aperture. The ratio  $S = M_{\text{ap}}/\sigma_{M_{\text{ap}}}$  provides an estimate of the SNR ratio of the dark matter halo detection. *S-maps* are discussed further by Schirmer et al. (2004).

We computed these maps using shear catalogs obtained from both the KSB and shapelet pipelines. In both cases (see Fig. 12), the maps show that the lensing signal is peaked around the BCG, confirming that this is indeed the center of the mass distribution. The mass distribution also appears quite regular, which agrees with what is indicated by the X-ray maps. In Fig. 13, S-map contours are overlaid on the  $r$ -band luminosity-weighted density distribution of the red sequence galaxies of Abell 611, selected in Sect. 4, showing that the mass distribution follows that of the red cluster galaxies.

## 6.2. Aperture densitometry

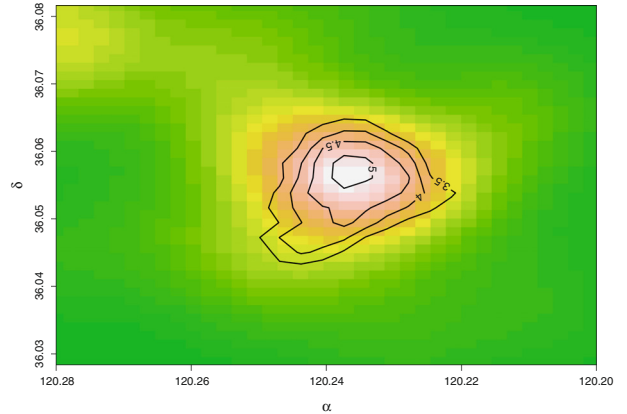
To trace the mass profile of the cluster, we computed the  $\zeta$ -statistic described in Clowe et al. (1998) and Fahlman et al. (1994):

$$\zeta(\theta_1) = \bar{\kappa}(\theta \leq \theta_1) - \bar{\kappa}(\theta_2 < \theta \leq \theta_{\max}) = 2 \int_{\theta_1}^{\theta_2} \langle \gamma_T \rangle d \ln \theta \quad (13)$$

$$+ \frac{2}{1 - (\theta_2/\theta_{\max})^2} \int_{\theta_2}^{\theta_{\max}} \langle \gamma_T \rangle d \ln \theta.$$

Mass measurements are computed within different apertures of increasing radius using a control annulus far from the center of the distribution (the BCG). Here,  $M_{\text{ap}} = \pi \theta_1^2 \zeta(\theta_1) \Sigma_{cr}$  is the mass within the last aperture and provides a lower limit on the mass, unless the value in the control annulus is equal to zero. This method allows us to choose the size of the annulus that satisfies the desired condition; moreover, it has the advantage that this mass computation does not depend on the mass profile of the cluster (Clowe et al. 1998).

We chose  $30'' \leq \theta \leq 500''$  and  $\theta_{\max} = 600''$ , which yielded projected masses within  $\sim 1500$  kpc of  $7.7 \pm 3.3 \times 10^{14} M_{\odot}$  and  $8.4 \pm 3.8 \times 10^{14} M_{\odot}$  using the KSB and shapelet shear catalogs, respectively.



**Fig. 13.**  $r$ -band luminosity-weighted density distribution of red sequence galaxies of Abell 611. The overlaid contour (black lines) is the S-map (computed and discussed in Sect. 6.1) showing the SNR of the shear signal around the cluster obtained from the shapelet analysis. The levels are plotted between  $\sigma_{\min} = 3.5$  and  $\sigma_{\max} = 5$ .

Unfortunately we could not extend our analysis farther from the center of the cluster because of the presence of a very bright star in the field making the outer regions unusable.

Since weak lensing is sensitive to the total mass along the line of sight, the observed aperture mass is the sum of the mass of the cluster and any contribution from other, uncorrelated structures along the line of sight. This contribution is assumed to be negligible in the central regions of the cluster, which are much denser, and become more relevant in its outer regions. As discussed by Hoekstra (2001), the effect of this contribution does not introduce any bias, but it does add a source of noise to the lensing mass. Aperture densitometry is more affected by this uncertainty than parametric methods because it is sensitive to the lensing signal at large radii. Nevertheless, for observations of rich clusters at intermediate redshifts, this uncertainty is fairly small because the bulk of the background sources are at much higher redshifts than the cluster.

**Table 2.** Mass values computed for  $M_{200}$  by model fitting using an SIS profile, an NFW profile, and a constrained NFW (MNFW), according to Bullock et al. (2001).

Parameter	KSB		SIS	Shapelets		
	MNFW	NFW		MNFW	NFW	SIS
$M_{200}(10^{14})$	$5.3^{+1.4}_{-1.2}$	$5.6^{+4.7}_{-2.7}$		$5.3^{+0.8}_{-0.8}$	$5.9^{+2.2}_{-1.7}$	
$r_{200}$ (kpc)	$1513^{+119}_{-123}$	$1545^{+345}_{-306}$		$1516^{+77}_{-78}$	$1570^{+177}_{-170}$	
$c_{\text{vir}}$	4.51	$3.9^{+5.6}_{-2.1}$		4.50	$3.7^{+2.2}_{-1.3}$	
$\sigma_{cl}$ (km s $^{-1}$ )			$778^{+26}_{-27}$			$781^{+26}_{-27}$
$red.\chi^2$	1.46	2.02	1.94	1.62	2.12	2.31
$Q$	0.21	0.11	0.10	0.17	0.10	0.06

**Notes.** Best fit parameters and reduced  $\chi^2$  are listed for each fit performed using both KSB and shapelet shear catalogs, together with the goodness-of-fit probability  $Q$ .

### 6.3. Model fitting

The model-fitting approach for estimating the mass of a cluster consists of assuming a particular analytic mass density profile for which to calculate the expected shear and then fitting the observed shear with the model one by minimizing the log-likelihood function (Schneider et al. 2000):

$$l_{\gamma} = \sum_{i=1}^{N_{\gamma}} \left[ \frac{|\epsilon_i - g(\theta_i)|^2}{\sigma^2[g(\theta_i)]} + 2 \ln \sigma[g(\theta_i)] \right], \quad (14)$$

with  $\sigma[g(\theta_i)] = (1 - g(\theta_i)^2)\sigma_e$ .

In this analysis we assumed both a singular isothermal sphere (SIS) and a Navarro-Frenk-White (Navarro et al. 1997) model. In the SIS model the density profile depends on one parameter, the velocity dispersion  $\sigma$ :

$$\rho_{\text{SIS}}(r) = \frac{\sigma^2}{2\pi G} \frac{1}{r^2}. \quad (15)$$

In this profile the shear is found to be related to  $\sigma$  by

$$\gamma_T(\theta) = \frac{2\pi \sigma^2 D_{\text{ls}}}{\theta c^2 D_s} = \frac{\theta_E}{2\theta}. \quad (16)$$

(e.g. Bartelmann & Schneider 2001).

The mass density profile predicted by the Navarro-Frenk-White model (hereafter NFW) is

$$\rho_{\text{NFW}}(r) = \frac{\delta_c \rho_c}{(r/r_s)(1 + r/r_s)^2} \quad (17)$$

where  $\rho_c = 3H^2(z)/(8\pi G)$  is the critical density of the universe at the cluster redshift,  $r_s$  a scale radius related to the virial radius by means of the concentration parameter  $c_{\text{vir}} = r_{\text{vir}}/r_s$ , and  $\delta_c$  a characteristic overdensity of the halo:

$$\delta_c = \frac{\Delta_{\text{vir}}}{3} \frac{c^3}{\ln(1+c) - c/(1+c)}. \quad (18)$$

where  $\Delta_{\text{vir}}$  is the virial overdensity, approximated by  $\Delta_{\text{vir}} \sim (18\pi^2 + 82(\Omega_M(z)-1) - 39(\Omega_M(z)-1)^2)/\Omega_M(z)$  using the spherical collapse model (Bryan & Norman 1998) for flat cosmologies.

The mass of the halo is

$$M_{\text{vir}} = \frac{4}{3}\pi\Delta_{\text{vir}}\rho_m r_{\text{vir}}^3, \quad (19)$$

where  $\rho_m = \rho_c \cdot \Omega_M(z)$  is the mean density at the cluster redshift. We solved it for the mass of the cluster with the expression

for the shear  $\gamma_T(r)$  derived by Bartelmann (1996) and Wright & Brainerd (2000) and minimized Eq. (14) with the MINUIT package.

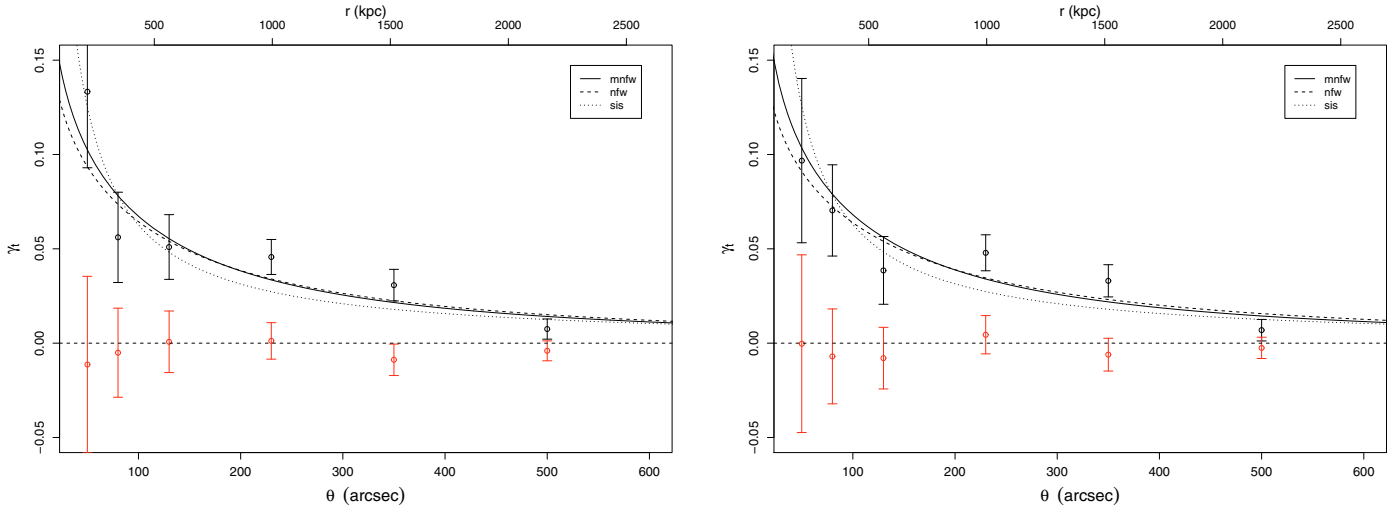
Table 2 shows the best-fit parameters and the mass values derived by model fitting. The NFW profile was used by keeping both the concentration and mass as free parameters (marked as NFW) and by using the relation between  $c_{\text{vir}}$  and  $M_{\text{vir}}$  proposed by Bullock et al. (2001) (hereafter MNFW):  $c_{\text{vir}} = \frac{K}{1+z} \left(\frac{M_{\text{vir}}}{M_*}\right)^{\alpha}$ , where  $M_* = 1.5 \times 10^{13}/h M_{\odot}$ ,  $K = 9$  and  $\alpha = -0.13$ .

These values were computed assuming spherical symmetry for the cluster halo. The effect of departures from spherical symmetry (e.g. triaxial halos) on the determination of the total cluster mass have been studied by several authors (e.g. Gavazzi 2005, De Filippis et al. 2005). De Filippis et al. (2005) show that these effects are negligible when the mass is computed at large distances from the cluster center, although they are important at small radii. The same authors tried to recover a three-dimensional reconstruction of Abell 611 through a combined analysis of X-ray and Sunyaev-Zel'dovich observations and conclude that the cluster is approximately spherical, supporting our symmetry assumption.

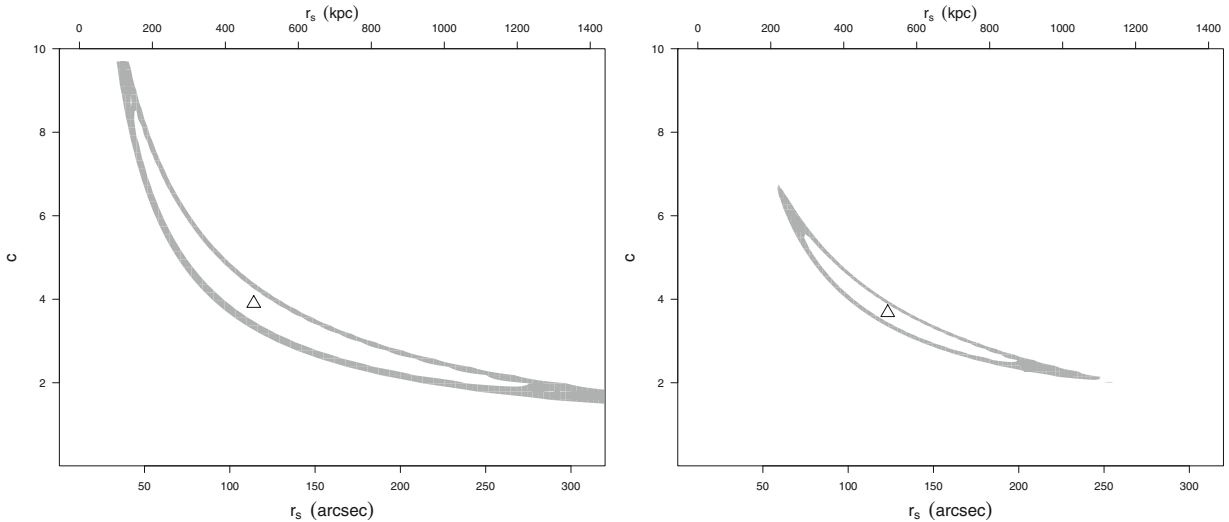
In Fig. 14 the results of fitting by an NFW model, a constrained (M)NFW model (Bullock et al. 2001) and an SIS profile are displayed, for the KSB (*left panels*) and shapelet (*right panels*) pipeline, respectively. The best fit to the unbinned data as function of distance from the center of the cluster is displayed. Average values of tangential and radial components of the shear, computed in logarithmic scale bins, are also plotted. The latter components are expected to be zero in the absence of systematic errors. In Fig. 15 the confidence contours for the NFW profile are plotted in a plane  $r_s$  vs.  $c$ : the levels show confidence at 68% and 90%, starting with the innermost one. The goodness of each fit ( $\chi^2$ ) and its probability ( $Q$ ) are also listed in Table 2.

## 7. Discussion

We conducted a weak lensing analysis of Abell 611 with deep  $g$ -band images from the LBC. Owing to the complexity of the LBC PSF, we decided to use both the KSB and shapelet methods to measure galaxy shapes and extract the shear signal. KSB parametrizes the sources using their weighted quadrupole moments and is based on a simplified hypothesis of a nearly circular PSF. In contrast, shapelets use a decomposition of the images into Gaussian-weighted Hermite polynomials and does not make any assumption about the best PSF model. Thanks to the large collecting area of LBT and the wide field of the LBC, we were



**Fig. 14.** Results of fitting by an NFW model (*dashed lines*), a constrained (M)NFW (*solid lines*) model (Bullock et al. 2001), and an SIS profile (*dotted lines*), with the KSB (*left panel*) and shapelet (*right panel*) pipeline. Average values of tangential (*black*) and radial (*red*) components of the shear, computed in logarithmic scale bins, are also plotted. Cluster masses were computed at  $r_{200}$ , estimated to be  $\sim 350$  arcsec.



**Fig. 15.** The confidence contours for NFW profile are plotted in the  $(r_s, c)$  plane, for KSB (*left panel*) and shapelets (*right panel*), respectively. The confidence levels are at 68% and 90%, starting with the innermost one. The triangle shows the best-fit position.

able to extract a high number density of  $\sim 25$  background galaxies per arcmin<sup>2</sup> over a wide field of  $19 \times 19$  arcmin<sup>2</sup> and this allowed us to perform an accurate weak lensing analysis.

The two shear catalogs, which were derived by the KSB and shapelet pipelines, were matched and common sources (with a number density of  $\sim 23$  galaxies/arcmin<sup>2</sup>) were used to estimate mass measurements for Abell 611 by two different weak lensing techniques: aperture densitometry and a parametric model fitting. In both approaches we assumed that the BCG was the center of the mass distribution, which is supported by S-Maps (see Fig. 12, Sect. 6.1).

The projected mass values obtained by aperture densitometry within a radius of  $\sim 1500$  kpc are:  $7.7 \pm 3.3 \times 10^{14} M_\odot$  and  $8.4 \pm 3.8 \times 10^{14} M_\odot$ , using KSB and shapelets, respectively. These estimations are model-independent (Clowe et al. 1998), but they are affected by large uncertainties. As discussed in Sect. 14, the contribution of uncorrelated structures along the line of sight can be source of noise for aperture measurements, although they can be decreased by averaging the results for several clusters

(Hoekstra 2001) or corrected by using photometric redshifts of the sources, if available.

Table 2 shows the results of fitting the observed shear with a parametric model. We assumed both an SIS and an NFW mass density profile. We first fitted an NFW model by leaving both  $c$  and  $r_s$  as free parameters: as displayed in Fig. 15, the uncertainty on these two parameters provided by the fit is high and does not allow a strong constraint on the concentration. Nevertheless, the best-fit value ( $c \sim 4$ ) is in good agreement with the one obtained when the Bullock et al. (2001) relation is adopted ( $c = 4.5$ ). For the NFW fits, the quoted masses are  $M_{200}$ , within the radius  $r_{200}$  where the density is 200 times the critical density. The estimated value of  $r_{200}$  for Abell 611 is  $\sim 1.5$  Mpc ( $5.8'$ ).

The weak lensing mass measurements obtained from both the KSB and shapelet shear catalogs agree, within uncertainties: by using an (M)NFW profile we obtain  $M_{200} \sim 5.3^{+1.4}_{-1.2} \times 10^{14} M_\odot$  and  $5.3^{+0.8}_{-0.8} \times 10^{14} M_\odot$ , respectively. The smaller uncertainties of shapelet results show that this method provides higher accuracy than KSB. Moreover, the goodness of the fits ( $\chi^2$ ) in Table 2

shows that both shapelets and KSB provide a best fit with higher probability ( $Q$ ) by using an NFW mass density profile rather than an SIS profile.

Abell 611 was previously targeted for a weak lensing study by Dahle (2006), who used  $V$  and  $I$  observations from several facilities to target many clusters (see Dahle et al. 2002 for more details). They used the KSB (Kaiser et al. 1995) shear estimator as described in Kaiser (2000) to derive the shear signal from the images. The mass of the cluster was then derived by fitting the observed shear with an NFW mass density profile (Navarro et al. 1997). They assumed a concentration parameter as predicted by Bullock et al. (2001) and obtained a mass value of  $M_{180} = (5.21 \pm 3.47) \times 10^{14} h^{-1} M_{\odot}$  within  $r_{180}$ , the radius within which the density is 180 times the critical density. A more recent mass estimate of Abell 611 is presented in Pedersen & Dahle (2007), who use the data collected in Dahle (2006) to obtain a value of  $M_{500} = 3.83 \pm 2.89 \times 10^{14} h^{-1} M_{\odot}$  within  $r_{500}$ , the radius within which the density is 500 times the critical density. In these papers, the authors extrapolate the NFW profile out to  $r_{500}$  because the data were insufficient to extend this far in projection from the cluster center. For their work on Abell 611,  $r_{\text{fit}}/r_{500} = 0.59$  (note  $r_{500} = 0.66 \times r_{200}$ ).

Our weak lensing estimates for the mass of Abell 611 agree with the previous results of Dahle (2006) and Pedersen & Dahle (2007), but the depth and the larger area covered by LBC data allowed us to perform a more accurate analysis.

A recent weak lensing analysis of Abell 611 has recently been done by Okabe et al. (2009) using Subaru/Suprime-Cam observations in two filters ( $i'$  and  $V$ ). The authors use the color ( $V - i'$ ) information to select the background galaxies for their cluster lensing analysis, getting a galaxy number density of  $\sim 21$  galaxies/arcmin<sup>2</sup>, with an  $SNR \sim 10$ . By fitting the mass density profile of the cluster using an NFW model, they find a mass value  $M_{200} = 5.13^{+1.16}_{-1.00} \times 10^{14} M_{\odot}$  and a  $c_{\text{vir}} = 4.14^{+1.73}_{-1.21}$  (private communication), which are in good agreement with our results.

A new mass estimation of Abell 611 was performed by Newman et al. (2009) over a wide range in cluster-centric distance (from  $\sim 3$  kpc to 3.25 Mpc) by combining weak, strong, and kinematic analysis of the cluster, based on Subaru, HST, and Keck data, respectively. They found a mass value  $M_{200} = 6.2^{+0.7}_{-0.5} \times 10^{14} M_{\odot}$  with  $c = 6.95 \pm 0.41$  by using an NFW model fitting, in agreement with our results. We note that such a high value of  $c$  cannot be rejected by our NFW fits, due to the large uncertainties on NFW parameters (see Table 2 and Fig. 15).

Finally, we also compared the mass values obtained by our weak lensing analysis to X-ray estimates of  $M_{200}$  available in the literature. Schmidt & Allen (2007) analyzed Chandra data of several clusters and modeled their total mass profile (dark plus luminous matter) using an NFW profile. They found for Abell 611 a scale radius  $r_s = 0.32^{+0.10}_{-0.20}$  Mpc and a concentration parameter  $c = 5.39^{+1.60}_{-1.51}$ , which provide a mass value  $M_{200} \sim 8 \times 10^{14} M_{\odot}$  at  $r_{200} \sim 1.7$  Mpc, in agreement, within the uncertainties, with our results. A more recent X-ray analysis of Chandra observations of Abell 611 has been performed by Donnarumma et al. (2010). They obtained a value of  $M_{200} = 1.11 \pm 0.21 \times 10^{15} M_{\odot}$  at  $r_{200} \sim 1900$  kpc, with  $r_s = 407^{+120}_{-86}$  kpc and  $c = 4.76^{+0.87}_{-0.78}$ . Their projected mass at  $r_{200}$  is  $1.28 \pm 0.24 \times 10^{15} M_{\odot}$ . This value agrees, within the statistical uncertainties, with the mass measured by aperture densitometry, but it is higher than the value estimated by the parametric model. Additional information on the mass will be derived from the strong lensing analysis of Abell 611 (Donnarumma et al. 2010).

This work shows that LBT is a powerful instrument for weak lensing studies, but we want to stress that the data analyzed here did not allow us to use the full capabilities of the telescope. The presence of bright saturated stars hampered the use of the whole field of the camera to analyse Abell 611. In addition, the analysis of weak lensing is expected to be improved by using the Red Channel in LBC, which was not yet available during these observations. The present results are nevertheless important to demonstrate the capabilities of LBC for weak lensing, so we plan to extend this analysis to other clusters, this time using the Red Channel.

*Acknowledgements.* Observations were obtained with the Large Binocular Telescope at Mt. Graham, Arizona, under the Commissioning and Science Demonstration phase of the Blue Channel of the Large Binocular Camera. The LBT is an international collaboration among institutions in the United States, Italy, and Germany. LBT Corporation partners are: The University of Arizona on behalf of the Arizona university system; Istituto Nazionale di Astrofisica, Italy; LBT Beteiligungsgesellschaft, Germany, representing the Max-Planck Society, the Astrophysical Institute Potsdam, and Heidelberg University; The Ohio State University, and The Research Corporation, on behalf of The University of Notre Dame, University of Minnesota, and University of Virginia.

This paper makes use of photometric redshifts produced jointly by Terapix and the VVDS team.

Part of the data analysis in this paper was done with the R software (<http://www.R-project.org>).

We thank the anonymous referee for useful comments and suggestions that improved the presentation of this work. A.R. acknowledges the financial support from contract ASI-COFIS I/016/07/0. L.F., K.K., and M.R. acknowledge the support of the European Commission Programme 6-th framework, Marie Curie Training and Research Network "DUEL", contract number MRTN-CT-2006-036133. L.F. is partly supported by the Chinese National Science Foundation Nos. 10878003 & 10778725, 973 Program No. 2007CB 815402, Shanghai Science Foundations and Leading Academic Discipline Project of Shanghai Normal University (DZL805). A.D., S.E., L.M., M.M. acknowledge the financial contribution from contracts ASI-INAF I/023/05/0 and I/088/06/0. SPH is supported by the P2I program, contract number 102759.

## References

- Allen, S. W., Schmidt, R. W., Ebeling, H., Fabian, A. C., & van Speybroeck, L. 2004, *MNRAS*, 353, 457
- Allen, S. W., Rapetti, D. A., Schmidt, R. W., et al. 2008, *MNRAS*, 383, 879
- Bartelmann, M. 1996, *A&A*, 313, 697
- Bartelmann, M., & Schneider, P. 2001, *Phys. Rep.*, 340, 291
- Bernstein, G. M., & Jarvis, M. 2002, *AJ*, 123, 583
- Bertin, E., & Arnouts, S. 1996, *A&AS*, 117, 393
- Bryan, G. L., & Norman, M. L. 1998, *ApJ*, 495, 80
- Bullock, J. S., Kolatt, T. S., Sigad, Y., et al. 2001, *MNRAS*, 321, 559
- Clowe, D., & Schneider, P. 2001, *A&A*, 379, 384
- Clowe, D., & Schneider, P. 2002, *A&A*, 395, 385
- Clowe, D., Luppino, G. A., Kaiser, N., Henry, J. P., & Gioia, I. M. 1998, *ApJ*, 497, L61
- Dahle, H. 2006, *ApJ*, 653, 954
- Dahle, H., Kaiser, N., Irgens, R. J., Lilje, P. B., & Maddox, S. J. 2002, *ApJS*, 139, 313
- De Filippis, E., Sereno, M., Bautz, M. W., et al. 2005, *ApJ*, 625, 108
- Donnarumma, A., Ettori, S., Meneghetti, M., et al. 2010, *A&A*, submitted, [arXiv:1002.1625]
- Eke, V. R., Cole, S., Frenk, C. S., et al. 1998, *MNRAS*, 298, 1145
- Erben, T., Van Waerbeke, L., Bertin, E., Mellier, Y., & Schneider, P. 2001, *A&A*, 366, 717
- Ettori, S., Morandi, A., Tozzi, P., et al. 2009, *A&A*, 501, 61
- Evrard, A. E. 1989, *ApJ*, 341, L71
- Fahlman, G., Kaiser, N., Squires, G., et al. 1994, *ApJ*, 437, 56
- Gavazzi, R., Mellier, Y., Fort, B., et al. 2004, *A&A*, 422, 407
- Gavazzi, R. 2005, *A&A*, 443, 793
- Giallongo, E., Ragazzoni, R., Grazian, A., et al. 2008, *A&A*, 482, 349
- Henry, J. P. 2000, *ApJ*, 534, 565
- Hetterscheidt, M., Simon, P., Schirmer, M., et al. 2007, *A&A*, 468, 859
- Hoekstra, H. 2001, *A&A*, 370, 743
- Hoekstra, H. 2007, *MNRAS*, 379, 317
- Hoekstra, H., Franx, M., Kuijken, K., et al. 1998, *New Astron. Rev.*, 42, 137
- Hoekstra, H., Franx, M., & Kuijken, K. 2000, *ApJ*, 532, 88
- Ilbert, O., Arnouts, S., McCracken, H. J., et al. 2006, *A&A*, 457, 841
- Kaiser, N. 2000, *ApJ*, 537, 555

- Kaiser, N., & Squires, G. 1993, *ApJ*, 404, 441  
Kaiser, N., Squires, G., & Broadhurst, T. 1995, *ApJ*, 449, 460  
King, L. J., & Schneider, P. 2001, *A&A*, 369, 1  
Kuijken, K. 2006, *A&A*, 456, 827  
Luppino, G. A., & Kaiser, N. 1997, *ApJ*, 475, 20  
Massey, R., & Refregier, A. 2005, *MNRAS*, 363, 197  
Metzler, C. A., White, M., & Loken, C. 2001, *ApJ*, 547, 560  
Miller, C. J., Nichol, R. C., Reichart, D., et al. 2005, *AJ*, 130, 968  
Navarro, J. F., Frenk, C. S., & White, S. D. M. 1997, *ApJ*, 490, 493  
Newman, A. B., Treu, T., Ellis, R. S., et al. 2009, *ApJ*, 706, 1078  
Okabe, N., Takada, M., Umetsu, K., Futamase, T., & Smith, G. P. 2009, *PASJ*, [arXiv:0903.1103]  
Paulin-Henriksson, S., Antonuccio-Delogu, V., Haines, C. P., et al. 2007, *A&A*, 467, 427  
Pedersen, K., & Dahle, H. 2007, *ApJ*, 667, 26  
Press, W. H., Flannery, B. P., & Teukolsky, S. A. 1986, *Numerical recipes. The art of scientific computing*, ed. W. H. Press, B. P. Flannery, & S. A. Teukolsky  
Radovich, M., Puddu, E., Romano, A., Grado, A., & Getman, F. 2008, *A&A*, 487, 55  
Refregier, A. 2003, *MNRAS*, 338, 35  
Schirmer, M., Erben, T., Schneider, P., Wolf, C., & Meisenheimer, K. 2004, *A&A*, 420, 75  
Schmidt, R. W., & Allen, S. W. 2007, *MNRAS*, 379, 209  
Schneider, P., King, L., & Erben, T. 2000, *A&A*, 353, 41  
Struble, M. F., & Rood, H. J. 1999, *ApJS*, 125, 35  
Vikhlinin, A., Kravtsov, A. V., Burenin, R. A., et al. 2009, *ApJ*, 692, 1060  
Wright, C. O., & Brainerd, T. G. 2000, *ApJ*, 534, 34