

Antibacterial activity, cytocompatibility, and thermomechanical stability of Ti40Zr10Cu36Pd14 bulk metallic glass

*Original*

Antibacterial activity, cytocompatibility, and thermomechanical stability of Ti40Zr10Cu36Pd14 bulk metallic glass / Rezvan, Amir; Sharifikolouei, Elham; Lassnig, Alice; Soprunyuk, Viktor; Gammer, Christoph; Spieckermann, Florian; Schranz, Wilfried; Najmi, Ziba; Cochis, Andrea; Calogero Scalia, Alessandro; Rimondini, Lia; Manfredi, Marcello; Eckert, Jürgen; Sarac, Baran. - In: MATERIALS TODAY BIO. - ISSN 2590-0064. - ELETTRONICO. - 16:(2022), p. 100378. [10.1016/j.mtbio.2022.100378]

*Availability:*

This version is available at: 11583/2972754 since: 2022-11-02T16:52:09Z

*Publisher:*

ELSEVIER

*Published*

DOI:10.1016/j.mtbio.2022.100378

*Terms of use:*

openAccess

This article is made available under terms and conditions as specified in the corresponding bibliographic description in the repository

*Publisher copyright*

(Article begins on next page)



## Antibacterial activity, cytocompatibility, and thermomechanical stability of $Ti_{40}Zr_{10}Cu_{36}Pd_{14}$ bulk metallic glass



Amir Rezvan<sup>a,b</sup>, Elham Sharifikolouei<sup>c</sup>, Alice Lassnig<sup>a</sup>, Viktor Soprunyuk<sup>d</sup>, Christoph Gammer<sup>a</sup>, Florian Spieckermann<sup>b</sup>, Wilfried Schranz<sup>d</sup>, Ziba Najmi<sup>e</sup>, Andrea Cochis<sup>e</sup>, Alessandro Calogero Scalia<sup>e</sup>, Lia Rimondini<sup>e</sup>, Marcello Manfredi<sup>f</sup>, Jürgen Eckert<sup>a,b</sup>, Baran Sarac<sup>a,\*</sup>

<sup>a</sup> Erich Schmid Institute of Materials Science, Austrian Academy of Sciences, A-8700, Leoben, Austria

<sup>b</sup> Department of Materials Science, Chair of Materials Physics, Montanuniversität Leoben, A-8700, Leoben, Austria

<sup>c</sup> Department of Applied Science and Technology, Politecnico di Torino, Corso Duca Degli Abruzzi 24, 10129, Turin (TO), Italy

<sup>d</sup> University of Vienna, Faculty of Physics, Physics of Functional Materials, A-1090, Vienna, Austria

<sup>e</sup> Department of Health Sciences, Center for Translational Research on Autoimmune and Allergic Diseases – CAAD, Università Del Piemonte Orientale UPO, Corso Trieste 15/A, 28100, Novara (NO), Italy

<sup>f</sup> Department of Translational Medicine, Center for Translational Research on Autoimmune and Allergic Disease – CAAD, Università Del Piemonte Orientale UPO, Corso Trieste 15/A, 28100, Novara (NO), Italy

### ARTICLE INFO

#### Keywords:

Bulk metallic glass  
Oral implant  
Antibacterial  
Cytocompatible  
Oral plaque

### ABSTRACT

This paper envisions  $Ti_{40}Zr_{10}Cu_{36}Pd_{14}$  bulk metallic glass as an oral implant material and evaluates its antibacterial performance in the inhabitation of oral biofilm formation in comparison with the gold standard Ti–6Al–4V implant material. Metallic glasses are superior in terms of biocorrosion and have a reduced stress shielding effect compared with their crystalline counterparts. Dynamic mechanical and thermal expansion analyses on  $Ti_{40}Zr_{10}Cu_{36}Pd_{14}$  show that these materials can be thermomechanically shaped into implants. Static water contact angle measurement on samples' surface shows an increased surface wettability on the Ti–6Al–4V surface after 48 h incubation in the water while the contact angle remains constant for  $Ti_{40}Zr_{10}Cu_{36}Pd_{14}$ . Further, high-resolution transmission and scanning transmission electron microscopy analysis have revealed that  $Ti_{40}Zr_{10}Cu_{36}Pd_{14}$  interior is fully amorphous, while a 15 nm surface oxide is formed on its surface and assigned as copper oxide. Unlike titanium oxide formed on Ti–6Al–4V, copper oxide is hydrophobic, and its formation reduces surface wettability. Further surface analysis by X-ray photoelectron spectroscopy confirmed the presence of copper oxide on the surface. Metallic glasses cytocompatibility was first demonstrated towards human gingival fibroblasts, and then the antibacterial properties were verified towards the oral pathogen *Aggregatibacter actinomycetemcomitans* responsible for oral biofilm formation. After 24 h of direct infection, metallic glasses reported a >70% reduction of bacteria viability and the number of viable colonies was reduced by ~8 times, as shown by the colony-forming unit count. Field emission scanning electron microscopy and fluorescent images confirmed the lower surface colonization of metallic glasses in comparison with controls. Finally, oral biofilm obtained from healthy volunteers was cultivated onto specimens' surface, and proteomics was applied to study the surface property impact on species composition within the oral plaque.

### 1. Introduction

Bacterial biofilm formation on oral implant surfaces is a leading cause of the development of peri-implant inflammatory disease, which affects the surrounding tissue of the implant, predominately the bone. The adhesion of pathogenic biofilm on the implant and peri-implant tissues

results in bone loss and destruction of connective soft tissue. Currently, the gold standard oral implant is based on Ti–6Al–4V alloy. The combination of good biocompatibility and high strength makes Ti–6Al–4V alloy a desirable choice for oral implants. However, several disadvantages, including its elastic modulus mismatch with bone leading to a stress-shielding effect [1], weak wear resistance contributing to

\* Corresponding author.

E-mail address: [baran.sarac@oeaw.ac.at](mailto:baran.sarac@oeaw.ac.at) (B. Sarac).

<https://doi.org/10.1016/j.mtbio.2022.100378>

Received 6 June 2022; Received in revised form 18 July 2022; Accepted 20 July 2022

Available online 3 August 2022

2590-0064/© 2022 The Authors. Published by Elsevier Ltd. This is an open access article under the CC BY license (<http://creativecommons.org/licenses/by/4.0/>).

inflammation and fatigue corrosion, as well as the low hardness, have led to the search for alternative implant materials.

Sometimes above 500 bacterial species are involved in forming a biofilm on oral implant surfaces [2] that briefly starts with pellicle formation on the surface, followed by reversible bacterial adhesion with feeble interactions between bacterial pellicle and implant surface or tissues around it that can conduct strong interactions. Finally, due to bacterial co-adhesion and the production of extra cellular polysaccharide matrix, a sophisticated 3D bacterial community is created into biofilm structures [3,4]. A great body of research has been conducted on the development of implant surfaces to interfere with each of the above-mentioned steps and, as a result, minimize the bacterial biofilm formation on oral implants. The development of antibacterial surfaces yet cytocompatible oral implants is not an easy task. There are several approaches to prevent or counteract bacterial colonization, such as the generation of superhydrophobic antifouling surfaces preventing the early adhesion. Sharifikolouei et al. have shown that zirconium-based metallic glasses with superhydrophobic surfaces can prohibit bacterial adhesion formation up to 95% while keeping their cytocompatibility up to 97% [5]. However, since oral implants are required to be well integrated within the pre-implant and bone tissue, superhydrophobicity of the surface might be a disadvantage. In fact, it has been shown that porous and hydrophilic surfaces might show superior bone growth and molecular surface functionalization [6,7]. Ferraris et al. have shown that the creation of a thin layer of nanotextured titanium oxide on Ti-implants can promote superior osseointegration, and the nanotextured pattern can help with the antifouling properties against Gram-positive and Gram-negative bacteria [8]. In another attempt, Li et al. have shown that Ti-implants coated with graphene enhance the biological activity of the implant surface and may further promote *in vivo* osteogenesis and osseointegration [9]. However, the long-term mechanical stability of graphene nanocoating is not studied, and it requires further evaluation. Surface functionalization of Ti implants is another popular approach to create cytocompatible and antibacterial surfaces. As an example, natural biomolecules such as gallic acid and polyphenols extracted from natural byproducts are shown to be successful for this purpose [10]. Another example is the loading of mesoporous dopamine (MPDA) nanoparticles with nitric oxide (NO) donor, S-nitrosoglutathione (GSNO), which were immobilized on the surface of titanium (Ti) to reduce bacterial infection and improve osseointegration [11].

Bulk metallic glasses (BMGs) are relative newcomers in materials science, showing unique behavior due to the absence of crystallinity and the associated lack of microstructural features such as grain and phase boundaries [1,12–14]. Among advanced glassy multicomponent systems, Ti-based BMGs are exploited as biomedical materials mainly owing to low Young's modulus, high processability, good biocompatibility, and bioactivity of the Ti element [15–19]. Besides, they have a higher oxidation resistance, corrosion passivity, and lower corrosion current density than conventionally used Ti–6Al–4V alloys, indicating a better corrosion resistance [20]. It has been proven that the mechanical, corrosion, biocompatible and antibacterial properties of Cu-bearing Ti-based BMG were enhanced by controlling the porosity [21–23]. Moreover, Ti-MGs and composites have 1.5 to 2 times better wear resistance than Ti-based crystalline alloys [24,25]. The grain-free microstructure also yields twice to three times higher fracture strength and hardness as compared to other conventionally used crystalline Ti-based alloys [26,27]. In the literature, some metallic glass types are reported as potential biomaterials considering the bioactivity of the constituent elements and their intermetallic compounds [28,29]. Ti<sub>40</sub>Zr<sub>10</sub>Cu<sub>36</sub>Pd<sub>14</sub> BMG is robust in dental applications with high resistance to sterilization and corrosion when submerged in 0.9 wt% NaCl solution [30]. It possesses, in comparison to Ti–6Al–4V, higher strength and lower Young's modulus, which is beneficial in reducing the stress-shielding effect [31–34]. Moreover, metallic glasses show

extensive plastic-like processability when heated to elevated temperatures [35,36]. These properties motivated us to study Ti<sub>40</sub>Zr<sub>10</sub>Cu<sub>36</sub>Pd<sub>14</sub> BMG further.

To develop any concept in the framework of biomedical alloy systems, the biological safety investigation of compositions is of utmost importance in order to avoid adverse reactions to the human body. As an example, to broaden the concept, implantation guidelines for oral implants [37] suggest the application of antibiotics as a precaution to avoid post-operative infections. This necessity is, however, problematic in a twofold manner. The increased presence of drug-resistant bacteria [38] reduces the options in the case of post-operative infections, and on the other hand, the development of antibiotic resistance is increased by the increasing prophylactic application of antibiotics. Moreover, surgical site infections (SSI) may be underestimated due to dormant bacteria that adhered to the initially sterile implant during the surgical intervention. Such dormant infections may break some weeks or months later. It is thus crucial to reduce the adhesion of microbial biofilms to the implant surface or control the bactericidal load over time to counteract the rising infection. Furthermore, the biocompatibility and the tissue- and osseointegration should be preserved. Specific groups of metallic glasses are believed to answer some of these issues.

In this work, first the microstructure and the mechanical properties of Ti<sub>40</sub>Zr<sub>10</sub>Cu<sub>36</sub>Pd<sub>14</sub>-BMG metallic glass are investigated. Then the evaluation of its performance as an oral implant is specifically investigated towards the oral strain *Aggregatibacter actinomycetemcomitans* that is considered one of the main pathogen responsible for oral periodontal and peri-implant diseases. Moreover, to mimic the real conditions, oral plaque is collected from healthy volunteers and cultured on the implant devices; the changes in the bacterial consortium in response to the material is investigated by proteomics analysis.

## 2. Materials and methods

### 2.1. Casting

A Ti<sub>40</sub>Zr<sub>10</sub>Cu<sub>36</sub>Pd<sub>14</sub> master alloy was synthesized using an Edmund Buehler AM0.5 arc melting system operating under a Ti-gettered argon atmosphere. The industrial-grade alloy constituents of 99.9% purity were weighed with an accuracy of  $\pm 0.001$  g. Rotary and diffusion pumps were utilized to evacuate the system to  $10^{-7}$  mbar. Upon melting, the melting current was raised to 160 A. To homogenize the ingot thoroughly, the melting was repeated four times. The alloy was cast afterwards into a copper mold with a rod geometry of 3 mm in diameter and 60 mm in length. The pressure gradient required for suction between the designed mold cavity and the working chamber was attained by purging argon. From the cast rod pieces were cut for characterizations.

### 2.2. XRD, DSC, and TEM analyses

Structural analysis was conducted by X-ray diffraction (XRD) employing a Bruker D2 Phaser diffractometer with Co K $\alpha$  radiation ( $\lambda = 1.7902$  Å) with a step size of  $0.02^\circ$ . Differential scanning calorimetry (DSC) tests were performed with a Mettler Toledo DSC 3+ under an argon atmosphere at a constant heating rate of 10 K/min. The weight of the specimens was  $10 \pm 0.5$  g. They were heated twice in the DSC, and normalization was done by subtracting the baseline from the original heating curve. The cooling rate between cooling intervals was 50 K/min to minimize the effect of the time spent for cooling on the overall DSC data. All the DSC measurements were repeated 4 times, and an error of  $\pm 2$  K was determined for the glass transition and crystallization temperatures. Detailed structural analysis was carried out using transmission electron microscopy (TEM). An electron transparent lamella of the surface region was created via focused ion beam (FIB) lift-out technique within a Zeiss Auriga workstation equipped with an omniprobe

micromanipulator. To protect the sample surface during FIB cutting a protective carbon layer and an amorphous W layer was deposited on top of the surface using the gas injection system (GIS) of the work station. Coarse trench cuts up to fine polishing of the lamella was performed at acceleration voltage of 30 kV and current ranging from 2 nA down to 50 pA. The TEM analyses were conducted in a JEOL 2200FSat 200 kV, where HR-TEM was performed in the region close to the sample surface and the sample interior selected area diffraction (SAD) patterns and high-resolution TEM (HR-TEM) images were recorded to verify the amorphous structure including TEM-EDX analysis to study the elemental composition of the surface region and interior of the glass.

### 2.3. DMA and TE

Dynamic mechanical analysis (DMA) was conducted using a Diamond DMA (Perkin Elmer, Inc.) in compression mode within a temperature range from 300 K to 850 K while purging with N<sub>2</sub> gas continuously upon heating, a constant heating rate of 10 K/min was employed at frequencies of 0.1 to 1 to 10 Hz. The specimens are solid rectangular shapes 6 mm in height and 3 mm in diameter. The experiments were performed by imposing 10 N axial force in a displacement-controlled mode with a displacement oscillation amplitude of 10 μm. Thermal expansion/contraction (TE) was measured using a thermomechanical analyzer TMA 4000 (Perkin Elmer, Inc.) under a constant load of 50 mN. The specimens were heated from 300 K to 850 K at a 10 K/min heating/cooling rate.

### 2.4. Wear resistance analysis

Specimens (3 mm diameter) were submerged with 7 ml/specimen of artificial saliva solution and were placed inside a shaker (120 rpm, T = 37 °C) for 1, 3, and 7 consequent days. At each time point, the supernatants were collected and used to investigate the ion release (Ti, Zr, Cu, Pd for Ti<sub>40</sub>Zr<sub>10</sub>Cu<sub>36</sub>Pd<sub>14</sub>) from the surface using inductively coupled plasma mass spectrometry (ICP-MS, iCAP Q, ThermoFischer).

### 2.5. Antibacterial evaluation

#### 2.5.1. Strain growth condition

Bacteria were purchased from the American Type Culture Collection (ATCC, Manassas, USA). Specimens' antibacterial properties were assayed towards *Aggregatibacter actinomycetemcomitans* (ATCC 33384), a Gram-negative bacteria commonly responsible for oral environmental infections leading to periodontal and peri-implant diseases). The bacteria were cultivated in trypticase soy agar plates (TSA, Sigma-Aldrich) and incubated at 37 °C until round single colonies were formed; then, a few colonies were collected and spotted into 15 ml of Luria Bertani broth (LB, Sigma-Aldrich) and incubated overnight at 37 °C under agitation (120 rpm). The day after, a fresh broth culture was prepared prior to the experiment by diluting bacteria into a fresh medium till a final concentration of 1 × 10<sup>5</sup> bacteria/ml corresponding to a spectrophotometric optical density of 0.001 at 600 nm wavelength [39]. (Spark, from Tecan, Switzerland).

#### 2.5.2. Antibacterial activity evaluation

Antibacterial properties were assayed after 90 min (early time point) and 24 h (late time point) of direct infection. The specimens (3 mm diameter) were submerged with 200 μl of LB containing 1 × 10<sup>5</sup> bacterial cells in a 96-multiwell plate. Then in order to improve contact between bacteria and specimens, the multiwell plate was agitated by using an orbital mini shaker inside the incubator. At each time point, the LB (from Sigma-Aldrich) were gently collected from each specimen to evaluate the number of viable floating bacteria, whereas adhered bacteria were detached from specimens' surface by sonication and vortex (5 min each, 3 times). The number of viable bacteria was determined by the colony-forming unit count (CFU) as previously detailed [8], whereas the viability of adhered bacteria was evaluated by means of their metabolic

activity using the resazurin colorimetric metabolic assay (alamarBlue™, ready-to-use solution from Life Technologies) by directly adding the dye solution (0.0015% in phosphate buffer saline (PBS)) onto the infected specimens. After 4 h of incubation in the dark, the fluorescent signals (expressed as relative fluorescent units – RFU) were detected at 590 nm by spectrophotometer (Spark, from Tecan, Switzerland). Moreover, the fluorescent Live/Dead assay (BaLight™, Bacterial Viability Kit for microscopy, Invitrogen) was applied to visually detect viable colonies adhered to the sample; images were collected with an EVOS FLoid microscope (from Life Technologies). Finally, field emission scanning electron microscopy (FESEM, SUPRATM 40, Zeiss) imaging was used to detect biofilm-like colonies aggregates; briefly, specimens were dehydrated by the alcohol scale (70-80-90-100% ethanol, 1 h each), swelled with hexamethyldisilazane, mounted onto stubs with conductive carbon tape and covered with a chromium layer. Images were collected at different magnifications using secondary electrons.

### 2.6. In vitro cytocompatibility evaluation

#### 2.6.1. Cells cultivation

Human gingival fibroblast cells (HGF) were purchased from Promo-Cell (C 12,974) and cultivated in low-glucose Dulbecco's modified Eagle medium (DMEM, Sigma-Aldrich) supplemented with 10% fetal bovine serum (FBS, Sigma-Aldrich) and 1% antibiotics at 37 °C, 5% CO<sub>2</sub> atmosphere. Cells were cultivated until 80%–90% confluence, detached by a trypsin EDTA solution (0.25% in PBS), harvested and used for experiments.

#### 2.6.2. Cytocompatibility evaluation

Cells were directly seeded onto specimens' surface (3 mm diameter) at a defined density (2000 cells/sample), and after 4 h of allowing adhesion, 450 μl of culture media was added to each sample. Subsequently, they were cultivated for 24 and 48 h; at each time point, the viability of the cells were evaluated using metabolic activity using the resazurin metabolic assay as prior described; moreover, the fluorescent Live/Dead assay was applied to visually check for viable cells (Live/Dead, Viability/Cytotoxicity Kit for mammalian cells, Invitrogen) with a digital EVOS FLoid microscope (from Life Technologies). Finally, the morphology of cells was visually investigated by FESEM imaging.

### 2.7. Oral plaque prevention

#### 2.7.1. Preparation of oral plaque

Samples of oral plaque were collected from 3 healthy volunteers by non-invasive procedures and after obtaining their informed consensus in accordance with the Declaration of Helsinki. None of them used antibiotics nor had undergone periodontal treatment during 3 months prior to sampling. Oral plaque samples were taken from supragingival parts of premolars or molars with individual sterile Gracey curettes by gently scraping. After their removal, samples were pooled and maintained in sterile cooked meat culture broth (Sigma-Aldrich). Microorganisms were dispersed by vortex and subsequently transferred in 30 ml of fresh media. After 24 h, the bacterial community of oral plaque was frozen and stored at –80 °C to preserve the starting population.

#### 2.7.2. Bacterial consortium assessment

In order to investigate whether Ti<sub>40</sub>Zr<sub>10</sub>Cu<sub>36</sub>Pd<sub>14</sub>-BMG has any effect on influencing the bacterial community involved in oral plaque, the samples were submerged into 300 μl of cooked meat broth, including about 1 × 10<sup>3</sup> bacterial cells. After incubation in anaerobic conditions (by means of anaerobic Bug Box, 500 rpm and 37 °C) for 24 h, the floating planktonic bacteria were collected and pelleted by centrifuging at 5000 rpm for 20 min. In order to investigate bacterial biofilm, the samples of Ti<sub>40</sub>Zr<sub>10</sub>Cu<sub>36</sub>Pd<sub>14</sub>-BMG and Ti-6Al-4V were washed once with PBS solution to remove unattached bacterial cells. Then, the samples were sonicated three times (5 min followed by 20 s vortex) to detach

bacterial biofilm that was pelleted as detailed for the planktonic counterpart. Moreover, bacteria-contaminated material surfaces and biofilm feature and development were visually checked by FESEM as previously described.

### 2.7.3. Protein extraction and digestion

Protein extraction of planktonic and biofilm was performed by adding 200  $\mu\text{l}$  of lysis buffer, mainly composed of 8 M urea buffer (pH 8.5) and Tris-HCl, to both planktonic and biofilm form samples obtained in the previous section. For the release of all bacterial cells' proteins, the samples were sonicated 6 times (each time 10 s). After protein quantification assayed by using Bradford reagent (Sigma-Aldrich), a certain volume of protein samples that equals 80  $\mu\text{g}$  (threshold concentration for proteomics assay) was added to 25  $\mu\text{l}$  of 100 mM ammonium bicarbonate ( $\text{NH}_4\text{HCO}_3$ ). For protein reduction, two following solutions: 15  $\mu\text{l}$  trifluoroethanol (TFE, 99%) and 2.5  $\mu\text{l}$  of dithiothreitol (200 mM DTT stock solution) (Sigma-Aldrich), were added and kept at 60  $^\circ\text{C}$  for 30 min. Furthermore, proteins were alkylated with 10  $\mu\text{l}$  of cysteine blocking reagent (Iodoacetamide, IAM, 200 mM; Sigma-Aldrich) for 30 min at room temperature in the dark and digested with trypsin (Promega, Sequence Grade) overnight at 37  $^\circ\text{C}$ . Trypsin activity was stopped by adding 2  $\mu\text{l}$  of neat formic acid and the digests were dried by speed vacuum [40].

### 2.7.4. Proteomics analysis

In order to investigate the impact of Ti-BMG on bacterial consortia of oral biofilm, proteomics analysis was performed on the protein samples prepared in the previous section.

The digested peptides were analyzed with a UHPLC Vanquish system (Thermo Scientific, Rodano, Italy) coupled with an Orbitrap Q-Exactive Plus (Thermo Scientific, Rodano, Italy). Peptides were separated by a reverse phase column (Accucore<sup>TM</sup> RP-MS 100  $\times$  2.1 mm, particle size 2.6  $\mu\text{m}$ ). The column was maintained at a constant temperature of 40  $^\circ\text{C}$  at a flow rate of 0.2 mL/min. Mobile phases A and B were water and acetonitrile, respectively, both acidified with 0.1% formic acid. The analysis was performed using the following gradient: 0–5 min from 2% to 5% B; 5–55 min from 5% to 30% B; 55–61 min from 30% to 90% B and held for 1 min, at 62.1 min the percentage of B was set to the initial condition of the run at 2% and hold for about 8 min in order to re-equilibrate the column, for a total run time of 70 min. The mass spectrometry (MS) analysis was performed in positive ion mode. The electrospray ionization source was used with a voltage of 2.8 kV. The capillary temperature, sheath gas flow, auxiliary gas, and spare gas flow were set at 325  $^\circ\text{C}$ , 45, 10, and 2 arb, respectively. S-lens were set at 70 rf. For the acquisition of spectra, a data-dependent (ddMS2) top 10 scan mode was used. Survey full-scan MS spectra (mass range  $m/z$  381 to 1581) were acquired with resolution  $R = 70,000$  and AGC target  $3 \times 10^6$ . MS/MS fragmentation was performed using high-energy c-trap dissociation (HCD) with resolution  $R = 35,000$  and automatic gain control target of  $1 \times 10^6$ . The normalized collision energy (NCE) was set to 30. The injection volume was 3  $\mu\text{l}$ .

The mass spectra analysis was carried out using Mascot v.2.4 (Matrix Science Inc., Boston, USA): the digestion enzyme selected was trypsin, with 2 missed cleavages, and a search tolerance of 10 ppm was specified for the peptide mass tolerance, and 0.1 Da for the MS/MS tolerance. The charges of the peptides to search for were set to 2+, 3+, and 4+, and the search was set on monoisotopic mass. The following modifications were specified for the search: carbamidomethyl cysteines as fixed modification and oxidized methionine as variable modification. The Human Oral Microbiome Database V3 was used, and a target-decoy database search was performed. False discovery rate was fixed at 1% [41]. Peptides were mapped to their respective taxa of origin using Unipept [42].

### 2.8. Statistical analysis of data

Experiments were performed in triplicate. Results were statistically

analyzed using the SPSS software (v.20.0, IBM, USA). First, data normal distribution and homogeneity of variance were confirmed by the Shapiro-Wilk's and the Levene's test, respectively; then, groups were compared by the one-way ANOVA using the Tukey's test as post-hoc analysis. Significant differences were established at  $p < 0.05$ .

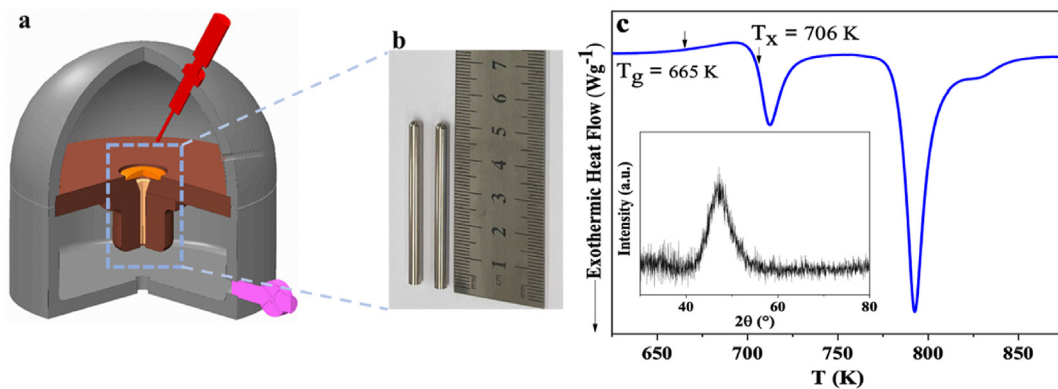
## 3. Results and discussion

### 3.1. Materials properties evaluation

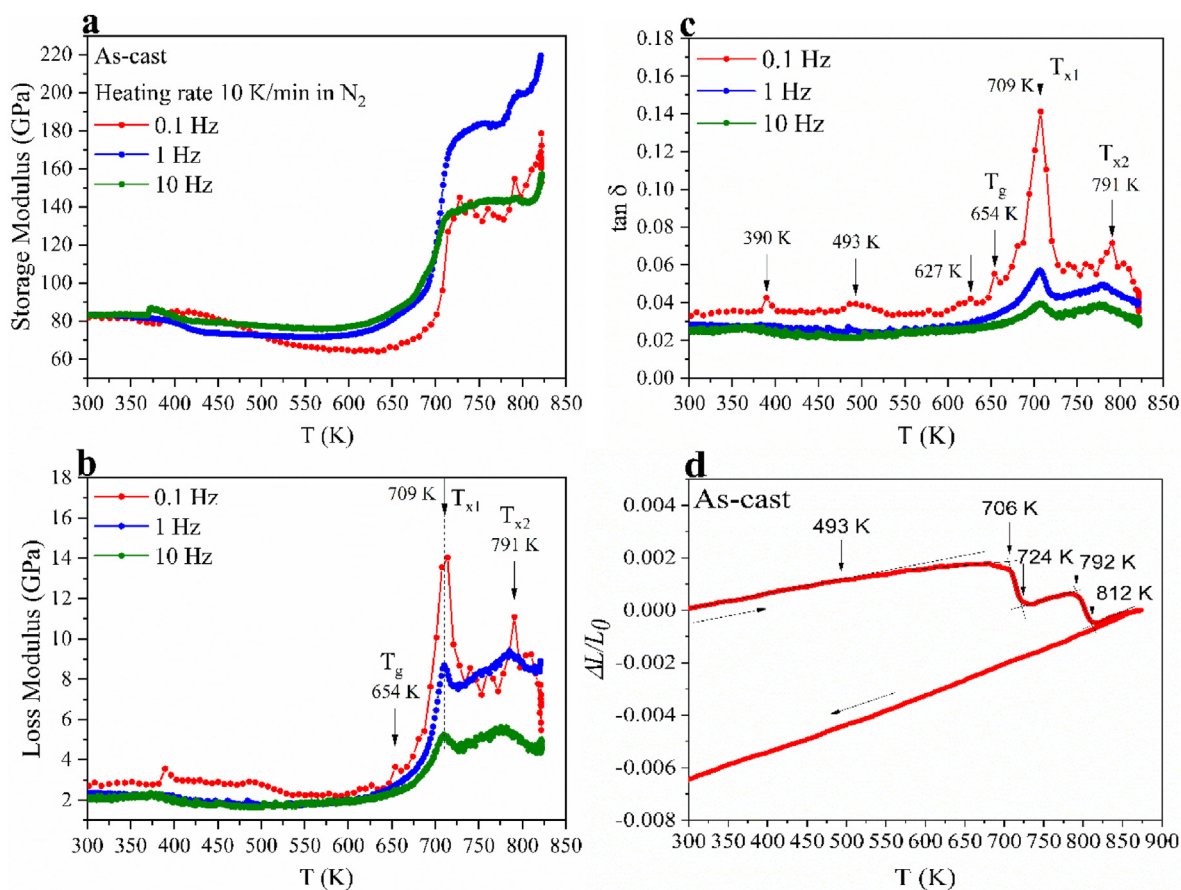
Fig. 1 shows images of (a) the casting set-up and (b) the outer surface appearance of the cast rods of 3 mm in diameter. Fig. 1c displays the differential scanning calorimetry (DSC) data obtained from the cast alloy. The curve exhibits an endothermic event, characteristic of glass transition to supercooled liquid, followed by exothermic reactions corresponding to crystallization of the supercooled liquid. The glass exhibits two exothermic peaks associated with a two-stage crystallization. X-ray diffraction (XRD) of  $\text{Ti}_{40}\text{Zr}_{10}\text{Cu}_{36}\text{Pd}_{14}$  shown in the inset signifies a glassy nature, which is confirmed by transmission electron microscopy (TEM) studies (Fig. 4). Neither crystals nor any features (i.e., defects, shear bands, or nanocrystals) are observed throughout the sample, which corroborates the amorphous state of the as-cast BMG.

BMG in many biomedical applications requires a net-shape manufacturing process. The large resistance of BMG to crystallization results in an accessible supercooled liquid region (SCLR) on a convenient time scale for processing. This allows for a net-shape process, where the BMG behaves like a plastic [43–46]. It means, the sluggish crystallization kinetics in the SCLR confers a promising net-shape processing route, by which the material can be deformed within a much longer time window [35,36,47]. In this regard, the structural relaxation and crystallization behavior of glasses exposed to thermomechanical driving forces merit in-depth exploration. Fig. 2 illustrates the dynamic mechanical analysis (DMA) and thermal expansion (TE) results of the as-cast  $\text{Ti}_{40}\text{Zr}_{10}\text{Cu}_{36}\text{Pd}_{14}$  glass investigated under compression. The storage modulus ( $G'$ ), the loss modulus ( $G''$ ), and thereby the loss factor ( $\tan \delta$ ) of Ti-based BMG are, in general, sensitive to the applied frequency. To assess the influence of frequency on the thermo-mechanical response, specimens were tested in compression mode employing a fixed heating rate of 10 K/min at various frequencies. Fig. 2 (a), (b), and (c) present respectively the evolution of  $G'$ ,  $G''$ , and  $\tan \delta$  in  $\text{Ti}_{40}\text{Zr}_{10}\text{Cu}_{36}\text{Pd}_{14}$  at three different testing frequencies (0.1–1–10 Hz). Although the frequency does not seem to affect the characteristic temperatures, the glass transition and crystallization events are mitigated as the frequency varies from 0.1 to 10 Hz. This suggests that 0.1 Hz can involve larger groups of atoms to respond in a more intense oscillation way, whereas with higher frequencies, a larger thermo-mechanical driving force is required to visualize the effects, which can be considered a disadvantage. The glass transition temperature ( $T_g$ ) and crystallization temperature ( $T_x$ ) are registered from  $G''$  and  $\tan \delta$ . The peak maximum of the hump exhibited in the  $\alpha$  region of the  $G''$  can be addressed to the  $T_g$  ( $654 \pm 1$  K).  $G''$  increases as the temperature approaches the onset of crystallization ( $T_{x1} = 709 \pm 1$  K). After 709 K, the first crystallization sets in, and thus it drops drastically to a minimum at  $734 \pm 1$  K, followed by variations in the evolution of  $G''$  and a second rise afterwards as the temperature reaches  $791 \pm 1$  K, there the second crystallization takes place and  $G''$  drops again.  $G'$  of 0.1 develops an evident shoulder as the temperature ranges from  $382 \pm 1$  K – 416 K, indicating a clear relaxation.  $G'$  decreases afterwards from  $92 \pm 1$  GPa gradually to  $70 \pm 1$  GPa at  $578 \pm 1$  K, followed by a plateau till  $T_g$ .  $G'$  rises and heads up with  $90^\circ$  at the onset of crystallization temperature to  $137 \pm 1$  GPa and afterwards with variations in values further to  $193 \pm 1$  GPa at  $822 \pm 1$  K. Fig. 2 (d) shows the corresponding dilatometer trace. The dilatation curve is linear at lower temperatures until the onset of structural relaxation at  $493 \pm 1$  K, where the thermal expansion starts to counteract the contraction, which saturates around  $550 \pm 1$  K. The ordinate signal remains more or less constant during the transition into the supercooled liquid state, and thereafter until the first crystallization is





**Fig. 1.** (a) 3D demonstration of an arc melter suction casting (b) The produced  $\text{Ti}_{40}\text{Zr}_{10}\text{Cu}_{36}\text{Pd}_{14}$  BMG (c) DSC analysis together with the XRD data of the as-cst sample in c-inset.



**Fig. 2.** DMA and TE data of the as-cast samples; (a) Storage modulus ( $G'$ ), (b) loss modulus ( $G''$ ), (c) loss factor ( $\tan \delta$ ), and (d) thermal expansion of  $\text{Ti}_{40}\text{Zr}_{10}\text{Cu}_{36}\text{Pd}_{14}$  BMG as a function of temperature. The heating rate was 10 K/min, and the DMA measurement frequencies were 0.1–1–10 Hz.

reached, which is indicated by a step-like drop in the signal within  $709 \pm 1 - 724 \pm 1$  K. Afterwards, the glass continues to expand obeying nearly the same thermal expansion coefficient as below 493 K. A further penetration step occurs at  $791 \pm 1$  K as the glass crystallizes in the second stage till  $812 \pm 1$  K. These observations elucidate the processing range, in which the considered Ti-based glass can be thermomechanically shaped to implants [48–50].

Static water contact angle measurements were conducted via the sessile drop method on the etched surface of as-cast  $\text{Ti}_{40}\text{Zr}_{10}\text{Cu}_{36}\text{Pd}_{14}$  BMG and Ti-6Al-4V, and the same test was repeated on their surface after incubation in a water medium for 48 h at  $37^\circ\text{C}$ , and  $\text{rpm} = 120$ . The results are shown in Fig. 3. According to this figure, the water contact

angle for both etched samples is in the same range of values. The purpose of etching was to remove any unwanted oxide layer caused during casting. However, after 48 h incubation in water, the hydrophilicity of Ti-6Al-4V increases significantly while the water contact angle for  $\text{Ti}_{40}\text{Zr}_{10}\text{Cu}_{36}\text{Pd}_{14}$  BMG remains the same. Previous studies show that the formation of the  $\text{TiO}_2$  layer on Ti-6Al-4V can significantly increase its surface wettability [51]. There are two possibilities to explain this phenomenon.  $\text{Ti}_{40}\text{Zr}_{10}\text{Cu}_{36}\text{Pd}_{14}$  BMG is much more resistant to oxidation compared with Ti-6Al-4V. Therefore, the extent of oxidation for Ti-6Al-4V after 48 h is expected to be much more significant than  $\text{Ti}_{40}\text{Zr}_{10}\text{Cu}_{36}\text{Pd}_{14}$  BMG. Furthermore, depending on the type of the oxide layer, the wetting behavior is expected to be different. The oxidation

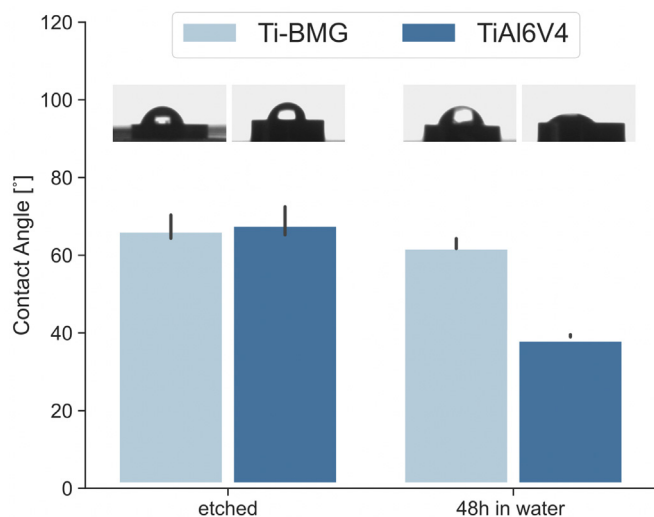


Fig. 3. Water contact angle measurements on  $\text{Ti}_{40}\text{Zr}_{10}\text{Cu}_{36}\text{Pd}_{14}$ -BMG (referred to as Ti-BMG for short) and Ti-6Al-4V after etching and after 48 h incubation in water at 37 °C, rpm = 120.

behavior of Ti-6Al-4V is very well-studied, and it is a fact that the formation of  $\text{TiO}_2$  on Ti-6Al-4V improves the surface wettability significantly [52]. On the other hand, the oxide layer forming on  $\text{Ti}_{40}\text{Zr}_{10}\text{Cu}_{36}\text{Pd}_{14}$  BMG could be  $\text{TiO}_2$ ,  $\text{Cu}_2\text{O}$ , or  $\text{ZrO}_2$ . In the case of  $\text{Cu}_2\text{O}$  formation, the oxide layer is studied to have a hydrophobic to the superhydrophobic surface, and therefore, if it is partially formed on  $\text{Ti}_{40}\text{Zr}_{10}\text{Cu}_{36}\text{Pd}_{14}$  BMG, it would not improve the surface wettability [53]. A similar outcome is expected from  $\text{ZrO}_2$ . Therefore, further investigation is required to identify the type of oxide layer formed on  $\text{Ti}_{40}\text{Zr}_{10}\text{Cu}_{36}\text{Pd}_{14}$  BMG.

The surface of  $\text{Ti}_{40}\text{Zr}_{10}\text{Cu}_{36}\text{Pd}_{14}$  was further analyzed by HRTEM, and its results are presented in Fig. 4. Since the surface is an important contributor to the antifouling properties of the alloy, specific attention is paid to distinguishing between the surface of the alloy in comparison with its interior. Fig. 4a shows the TEM picture of the sample's cross-section and the surface, and the interior part of BMG is marked. While the sample interior is fully amorphous, as shown in Fig. 4b and inset, a 15 nm thin surface region was identified, showing a mixed amorphous and nanocrystalline structure in Fig. 4c, as confirmed by the selected area diffraction (SAD) patterns in Fig. 4c, respectively. The lattice distance in crystalline surface area was measured to be 0.22 nm.

The elemental distribution of both regions was determined using STEM-EDX, as shown in Fig. 5. From the elemental maps in Fig. 5a significant change in elemental compositions between the interior of the

glass and its surface can be seen. Fig. 5b shows an EDX line scan to quantify the change of composition, showing an increase of oxygen and copper in the 15 nm thin surface region and a decrease of Ti, Zr, and Pd, corroborating the possible copper oxide formation. Since O is also detected in this analysis, and Pd is a noble metal, the oxide surface layer can be deduced to be copper oxide predominantly.

Further surface analysis on as-cast  $\text{Ti}_{40}\text{Zr}_{10}\text{Cu}_{36}\text{Pd}_{14}$  was conducted by XPS and is shown in Fig. 6a. According to this graph, there must be at least a very thin oxide layer must be present on the samples surface, evidenced by the O1s and OKLL peaks [54]. The binding energy peak position of the O1s are: As-cast –  $529 \pm 1$  eV, as-cast after ion etch –  $529 \pm 1$  eV, after incubation in water for 48 h –  $531 \pm 1$  eV, after incubation in artificial saliva for 48 h –  $532 \pm 1$  eV. Sample surface was ion-etched, and the XPS analysis was repeated (see Fig. 6b), showing similar results. In both spectra, the principal peaks of titanium (Ti2s, Ti2p), oxygen (O1s), zirconium (Zr3d), copper (Cu2p), and palladium are revealed. Cu 2p peaks correspond to the CuO, supporting the TEM findings [51].

The carbon is mainly due to surface contamination, and after etching, it almost disappeared. The as-cast samples were also incubated in water for 48 h at 37 °C, rpm = 120, and their XPS analysis is shown in Fig. 6c. In this figure, the main carbon and oxygen peaks dominate the whole spectra. New sodium peak at around ~500 eV is due to the adsorbed ions on the surface of the metallic glass. Ultimately, since  $\text{Ti}_{40}\text{Zr}_{10}\text{Cu}_{36}\text{Pd}_{14}$  will be utilized as oral implants, the same incubation procedure was repeated on them, this time in artificial saliva (Fig. 6d). The full composition of artificial saliva is presented in supplementary material. According to this figure, the main peaks are carbon and oxygen, suppressing all other peaks from the metallic glass compositions. The composition of artificial saliva is based on organic compounds, and therefore, it is expected to have the adhered layer showing mainly carbon and oxygen as main peaks.

### 3.2. Antibacterial activity evaluation

In this study, the oral pathogen *Aggregatibacter actinomycetemcomitans* was selected due to its widespread pathogenic potency in intraoral infection with particular involvement in the oral biofilm development [55,56]. The aim of this study was to investigate whether the  $\text{Ti}_{40}\text{Zr}_{10}\text{Cu}_{36}\text{Pd}_{14}$ -BMG holds antifouling properties by reducing the number of adhered bacteria at the 90 min early-stage or antibacterial properties, thus being able to reduce the number of proliferating bacteria and the amount of biofilm-like 3D structures at the late 24 h time point [57]. Both metabolic (alamarBlue, CFU count) and visual approaches (Live/Dead, FESEM) have been exploited to evaluate the specimens' performances. Results are summarized in Fig. 7. Prior to the tests, the FESEM investigation shows that the surface of  $\text{Ti}_{40}\text{Zr}_{10}\text{Cu}_{36}\text{Pd}_{14}$ -BMG and the Ti-6Al-4V control were relatively the same, which were polished with the same protocol (Fig. S1 in the Supplementary data file).

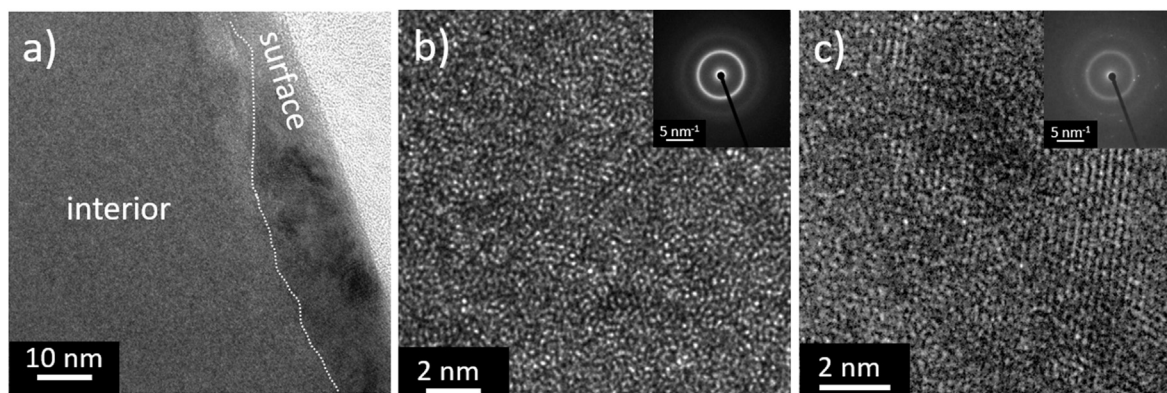


Fig. 4. HR-TEM images comparing the structure of the interior and the surface of the as-cast  $\text{Ti}_{40}\text{Zr}_{10}\text{Cu}_{36}\text{Pd}_{14}$  glass; (a) overview, (b) close-up of the fully amorphous interior, and (c) close-up of the surface region showing nanocrystals embedded in an amorphous matrix.



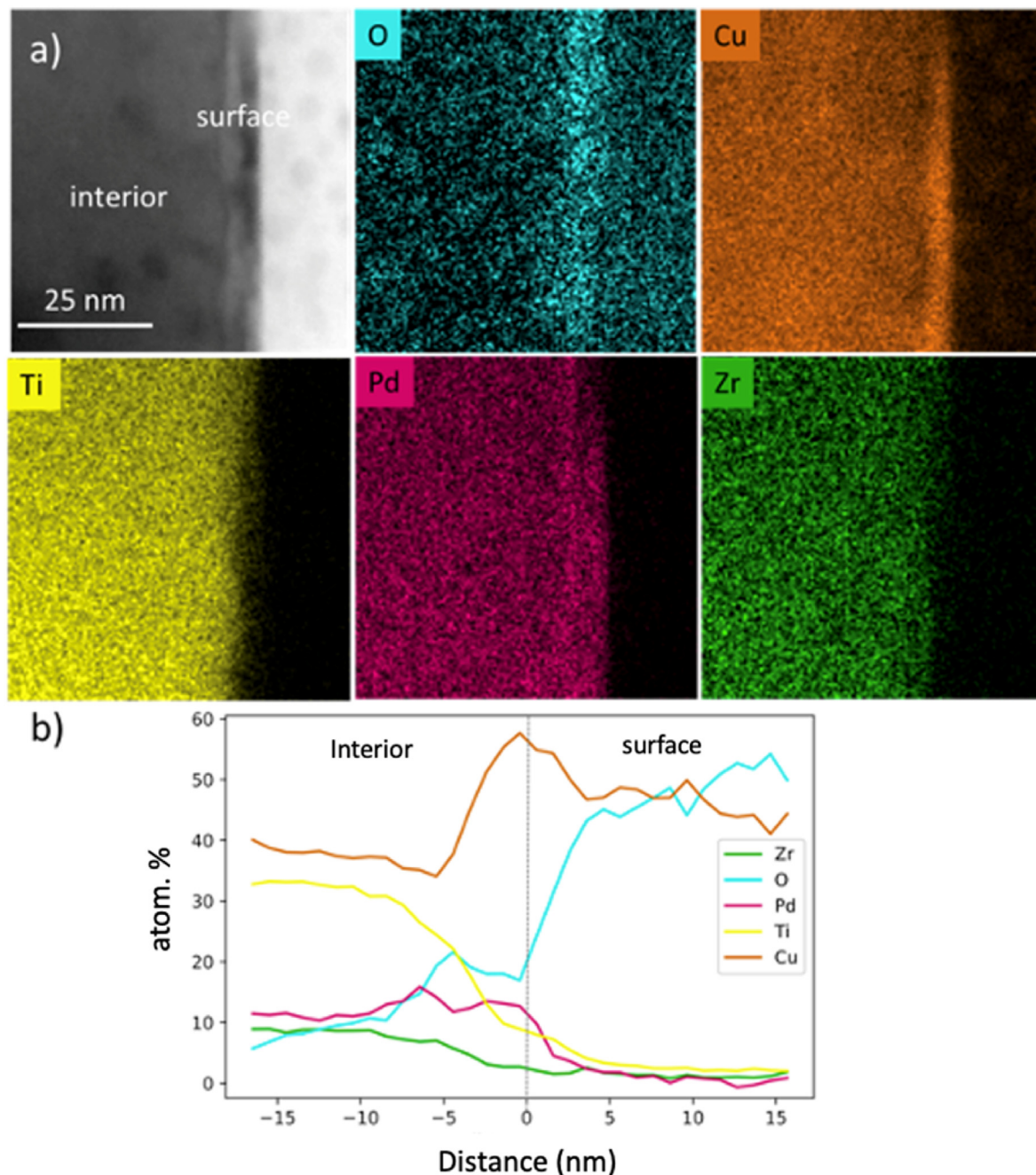


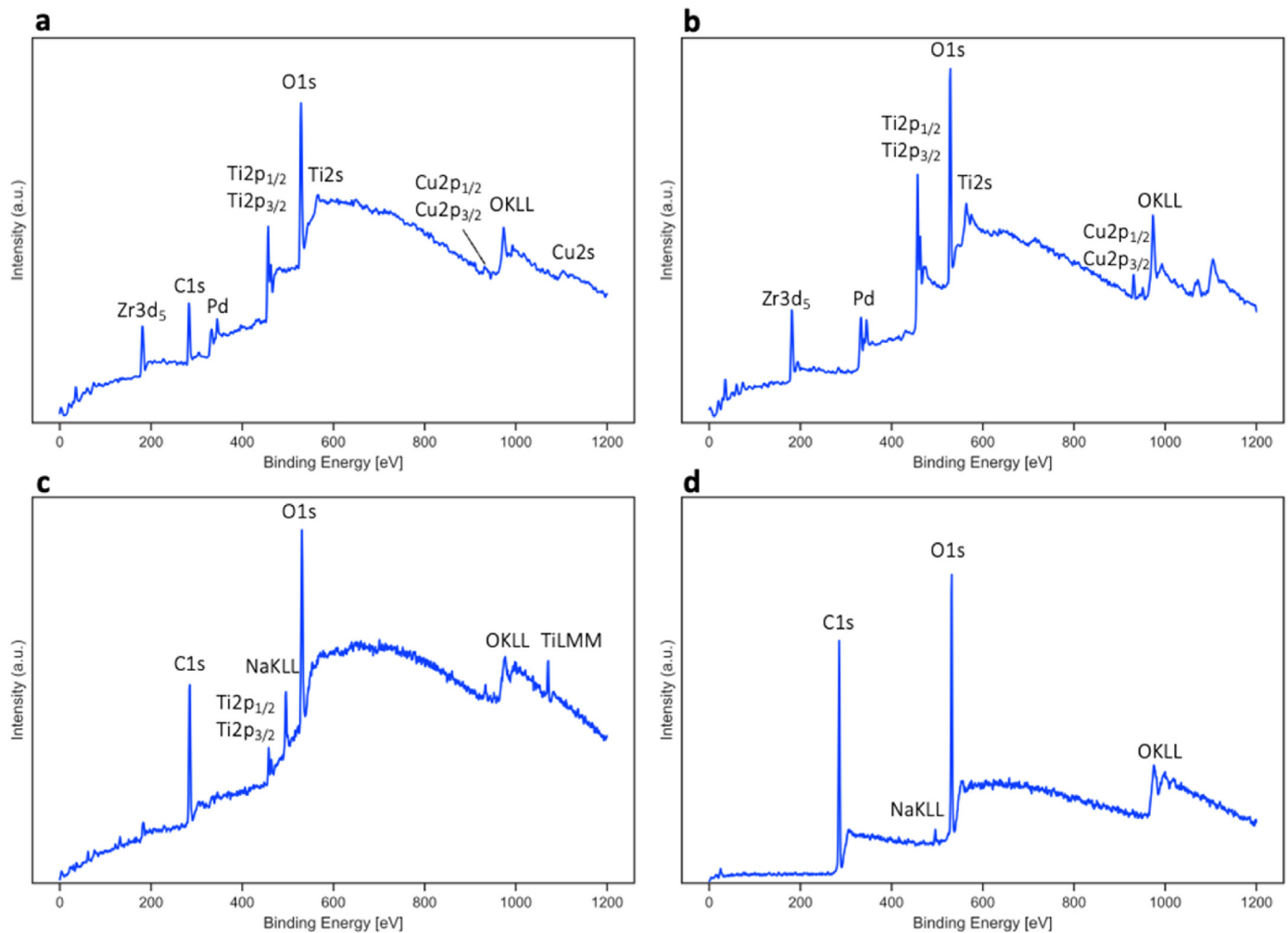
Fig. 5. TEM-EDX analysis showing a change of the elemental composition between interior and surface of the as-cast  $\text{Ti}_{40}\text{Zr}_{10}\text{Cu}_{36}\text{Pd}_{14}$  glass (a) elemental maps of O, Cu, Ti, Pd, and Zr and (b) line-scan across the transition between the interior and surface region.

In Fig. 7a, the density of the viable colonies adhered to the specimens' surface are given after early (90 min) and late (24 h) time points by the fluorescent Live/Dead assay (viable bacteria stained in green). After 90 min (upper panel), the density and the distribution of the viable bacteria onto specimens' surface was comparable between BMG and controls; therefore, an apparent antifouling activity of the BMG preventing bacteria adhesion was not observed. Therefore, the physical-chemical properties of the test materials are not suitable for preventing bacterial adhesion, as well as the lack of ions release (mainly Cu) deprived specimens of a possible defense mechanism. However, moving to the 24 h results (lower panel), the density and the distribution of viable bacterial results are highly reduced on the  $\text{Ti}_{40}\text{Zr}_{10}\text{Cu}_{36}\text{Pd}_{14}$ -BMG surfaces in comparison to the Ti-6Al-4V controls, thus suggesting a killing activity

exploited in the function of time. Moreover, some 3D biofilm-like aggregates were observed in the Ti-6Al-4V specimens, whereas only single random colonies were detectable for the  $\text{Ti}_{40}\text{Zr}_{10}\text{Cu}_{36}\text{Pd}_{14}$ -BMG ones. The same visual confirmations were achieved by FESEM images (Fig. 7-b); random single colonies were observed after 90 min for both specimens, but after 24 h, numerous biofilm-like aggregates were detected on control surfaces while mainly single ones were still present on the  $\text{Ti}_{40}\text{Zr}_{10}\text{Cu}_{36}\text{Pd}_{14}$ -BMG test specimens.

Fluorescent and FESEM images were confirmed by the count of the viable colonies (CFU, Fig. 7-c) detached from the specimens' surface; after 90 min,  $7.5 \times 10^1$  and  $5 \times 10^1$  colonies were counted for Ti-6Al-4V and  $\text{Ti}_{40}\text{Zr}_{10}\text{Cu}_{36}\text{Pd}_{14}$ -BMG, respectively. However, after 24 h, the number of living bacterial colonies on the surface of Ti-6Al-4V showed a





**Fig. 6.** XPS analysis of  $\text{Ti}_{40}\text{Zr}_{10}\text{Cu}_{36}\text{Pd}_{14}$  BMG surface for the (a) as-cast sample (b) ion-etched as-cast sample (c) after incubation in water for 48 h at 37 °C, rpm = 120, (d) after incubation in artificial saliva for 48 h at 37 °C, rpm = 120.

significant increase ( $p < 0.05$ ), approximately  $\sim 8$  times more than the ones attached to  $\text{Ti}_{40}\text{Zr}_{10}\text{Cu}_{36}\text{Pd}_{14}$ -BMG ( $28.5 \times 10^3$  vs.  $3 \times 10^3$ , respectively) as summarized in Table 1.

As a logical consequence of the reduction of the number of viable colonies showed by the CFU count, when the metabolic activity of the bacteria colonizing specimens' surface was measured by the Alamar blue assay (Fig. 7d), a significant reduction ( $p < 0.001$ , representing  $\approx 70\%$ ) was obtained for the  $\text{Ti}_{40}\text{Zr}_{10}\text{Cu}_{36}\text{Pd}_{14}$ -BMG specimens in comparison with the control ones.

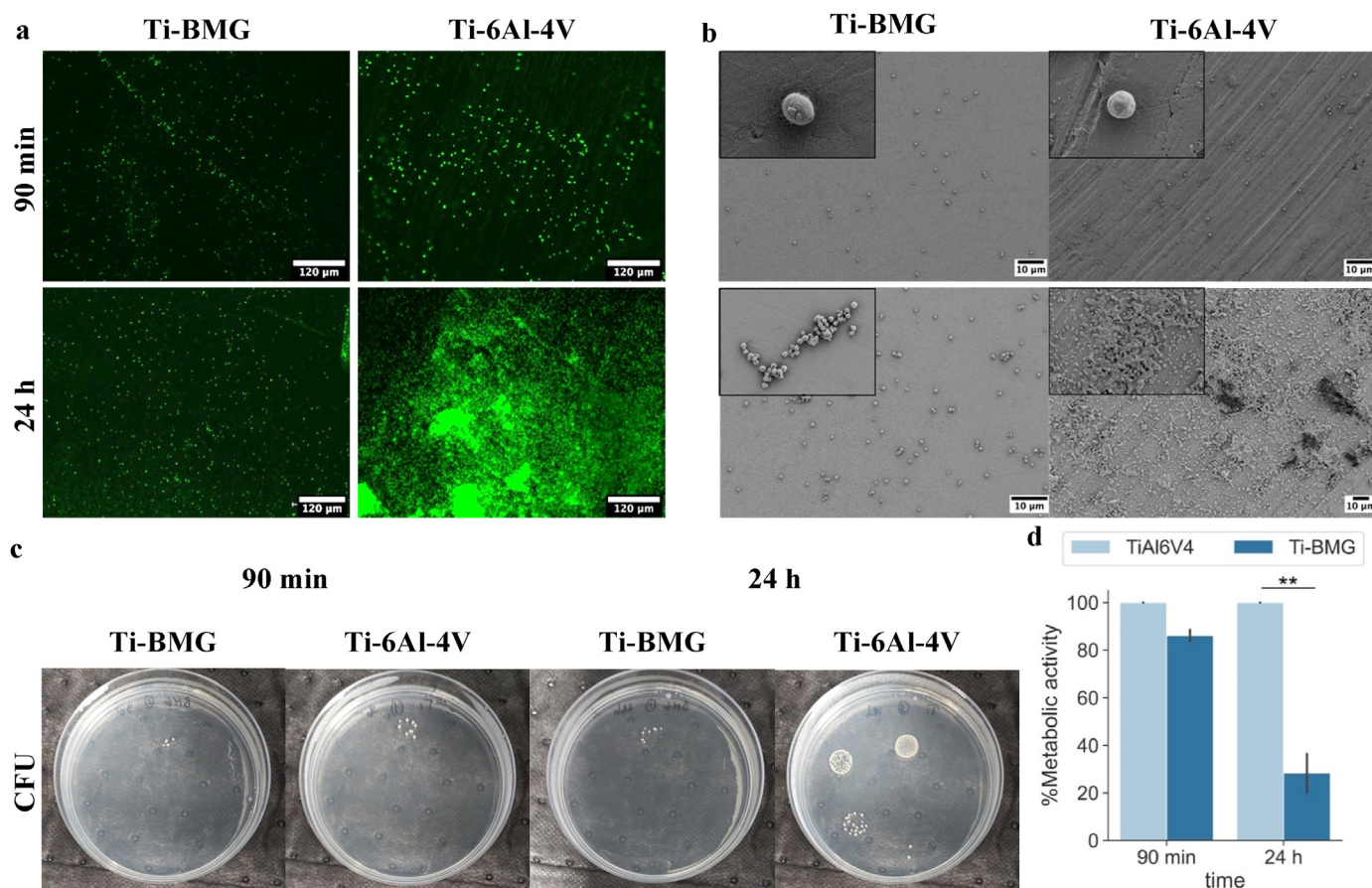
Such a significant difference in terms of antibacterial activity on the surface of two inert Ti-based alloys ( $\text{Ti}_{40}\text{Zr}_{10}\text{Cu}_{36}\text{Pd}_{14}$ -BMG and Ti-6Al-4V) can find the first explanation according to their oxidation range. As previously seen in Fig. 3, the incubation of Ti-6Al-4V in water (or, in this case, a water-based medium) could decrease the water contact angle significantly on Ti-6Al-4V. Wang et al. [58] have previously shown that the oxidation of Ti-6Al-4V significantly increases its wettability. In fact, when the aim is to enhance the proteins and cells' attachment to the Ti-6Al-4V surface, oxidation of the surface can be exploited as a complementary strategy [52]. On the other hand, HRTEM analysis conducted on  $\text{Ti}_{40}\text{Zr}_{10}\text{Cu}_{36}\text{Pd}_{14}$ -BMG reported in Fig. 4 shows the formation of a nanometers-thick layer of copper oxide representing a hydrophobic-to-superhydrophobic surface. Therefore, the surface wettability is not improved even after partial surface oxidation. Many research analyses on the interaction of bacteria with materials surfaces have indicated that bacteria attachment on the surface increases when the surface is more hydrophilic and this is the reason why many efforts

have been conducted on the development of superhydrophobic surfaces to prohibit the early bacterial attachment [5].

Another possible explanation of the  $\text{Ti}_{40}\text{Zr}_{10}\text{Cu}_{36}\text{Pd}_{14}$ -BMG killing activity can be ascribed to the Cu layer formed in the superficial zone as reported in Figs. 4 and 5. In fact, copper represents a well-known ion holding antibacterial properties: it is of pivotal importance for bacterial metabolisms by regulating the activity of many enzymes such as tyrosine and dopamine that require copper as donor/receptor [59]. Therefore, the coordination of copper can be exploited through a Fenton chemistry route to introduce highly reactive radicals such as hydroxyl groups (ROS), causing oxidation of proteins and lipids [60]. In this scenario, as previously discussed by the Authors [61] once bacteria try to adhere to the specimens' surface, they expose the [4Fe-4S] clusters of proteins in order to coordinate iron exchange that is crucial for the metabolic activity. The presence of copper results in a direct impairment of the [4Fe-4S] clusters leading to the release of Fenton-active Fe in the cytoplasm, where toxic ROS accumulate, and this brings bacteria to death.

### 3.3. Cytocompatibility evaluation

The cytocompatibility of  $\text{Ti}_{40}\text{Zr}_{10}\text{Cu}_{36}\text{Pd}_{14}$ -BMG specimens was investigated preliminarily *in vitro* on Human gingival fibroblast (HGF) cells. HGF cells were selected as a representative of the soft tissue responsible for the device sealing in the peri-implant region; here, the positive cells' repopulation of the device regulates the pro-inflammatory cascade activation [39] as well as represents a physical hurdle for



**Fig. 7.** Antibacterial test to assess antiadhesive and antibacterial properties of  $\text{Ti}_{40}\text{Zr}_{10}\text{Cu}_{36}\text{Pd}_{14}$ -BMG (referred to as Ti-BMG for short) and Ti-6Al-4V on aerobic bacterial strain, *A. actinomycetemcomitans*: (a) Live/Dead assay on the surface of samples after 90 min and 24 h incubation time; (b) SEM images after 90 min and 24 h of direct contact. (c) Colony-forming unit (CFU) after 90 min and 24 h incubation time. (d) % Metabolic activity on samples' surface after 90 min and 24 h incubation time. The values are normalized with respect to Ti-6Al-4V as a control for each time point (\*\* indicates p-value < 0.01).

**Table 1**

Number of viable colonies (CFU) of *A. actinomycetemcomitans* attached to the sample surface after 90 min and 24 h of infection. Results represent means  $\pm$  deviation standard.

Samples	Adhered CFU count	
	After 90 min ( $\times 10^1$ )	After 24 h ( $\times 10^3$ )
Ti-6Al-4V	7.5 ( $\pm 2.5$ )	28.5 ( $\pm 0.5$ )
Ti-BMG	5 ( $\pm 0.0$ )	3 ( $\pm 0.0$ ) <sup>a</sup>

<sup>a</sup> =  $p < 0.05$  vs Ti-6Al-4V.

bacteria invasion. Accordingly, HGF cells were directly seeded on the samples' surfaces, and after 24 and 48 h, the viability and the morphology of adhered and spread cells were determined by Live/Dead and SEM imaging as reported in Fig. 8a and b, respectively, a representative for 24 h cultivation. Results from SEM demonstrated that the cells were able to successfully adhere and spread onto both the control Ti-6Al-4V and test  $\text{Ti}_{40}\text{Zr}_{10}\text{Cu}_{36}\text{Pd}_{14}$ -BMG surfaces, while the Live/Dead assay confirmed that such cells were viable and that their confluence was comparable to the control. So, the test BMG surfaces were confirmed to be cytocompatible towards HGF. Later, the viability of the cells was further evaluated employing the metabolic activity using the resazurin (Alamar blue) assay; results are reported in Fig. 8c. As a confirmation of the images from fluorescence and SEM, the metabolism of cells resulted as comparable between control ad test BMG at both 24/48 h time-points; a slight increase was observed for the BMG after 48 h, but the values resulted as not significant in comparison to the control ( $p > 0.05$ ); this is a promising finding based on the pivotal role played by fibroblasts in the early sealing

step and the previous results showing a strong antibacterial effect (Fig. 7), meaning that the amount of Cu exposed at the materials' interface is sufficient to prevent bacterial colonization, but it is not toxic for human cells colonizing the device. Indeed, to confirm that the Cu is not released from the surface into the solution, the ion-release test was conducted by submerging samples into artificial saliva solutions for 1, 3 and 7 consequent days. Fig. 8d shows that the amount of the released Cu into the solution is at its peak after 3 days of submersion, but its maximum concentration is below 12 ppb. It has been previously shown that a minimum concentration of 250 ppm Cu in the solution is required to induce any effect on cells or bacteria [62].

In general, these results are in line with previous literature. Kaushik et al. reported about cytocompatibility of metallic glass thin films (TiCuNi) applied onto Si substrate upon exposure to muscle cells, allowing for successful adhesion, spread, and proliferation [63]. Similarly, Liens et al. showed similar biological performances between  $\text{Ti}_{40}\text{Zr}_{10}\text{Cu}_{36}\text{Pd}_{14}$ -BMG and Ti-6Al-4V when human osteoblasts (MG63 osteosarcoma cells) or dermal fibroblast (primary cells from human derma) were cultivated in direct contact onto those surfaces [64].

### 3.4. Oral biofilm investigation

After validating  $\text{Ti}_{40}\text{Zr}_{10}\text{Cu}_{36}\text{Pd}_{14}$ -BMG specimens cytocompatibility and antibacterial activity towards the single strain *A. actinomycetemcomitans*, the ability of such innovative materials to prevent infections in the oral environment was tested by using a fresh sample of oral biofilm collected from healthy donors. Oral biofilm is a complex multispecies community composed of microorganisms from

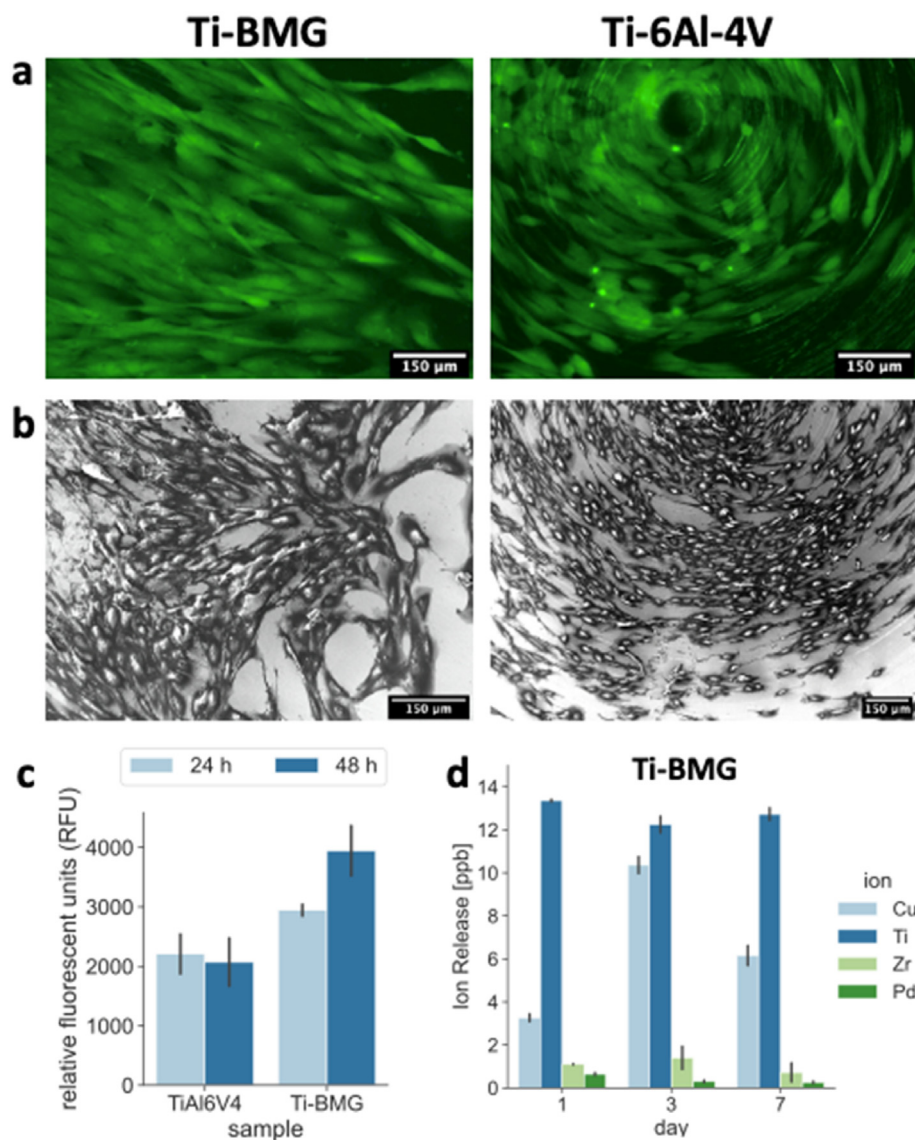


Fig. 8. Cytocompatibility evaluation of  $\text{Ti}_{40}\text{Zr}_{10}\text{Cu}_{36}\text{Pd}_{14}$ -BMG and Ti-6Al-4V. HGF cells were cultivated directly on samples surface for 24 and 48 h, and the cytocompatibility was evaluated by: (a) Live/Dead images after 24 h, (b) SEM images of attached cells on the samples' surfaces, (c) Metabolic activity after 24 and 48 h. Ti-6Al-4V is used as control sample; differences between  $\text{Ti}_{40}\text{Zr}_{10}\text{Cu}_{36}\text{Pd}_{14}$ -BMG and Ti-6Al-4V were not significant ( $p$ -value  $>0.05$ ), and (d) Ion-release measured by ICP-MS from  $\text{Ti}_{40}\text{Zr}_{10}\text{Cu}_{36}\text{Pd}_{14}$ -BMG after submersion into artificial saliva solution for 1, 3, and 7 days ( $T = 37^\circ\text{C}$ ,  $\text{rpm} = 120$ ).

multiple pathogenic and non-pathogenic bacteria as well as fungi. So, it can be expected that different implant materials perform differently in contact with oral biofilm, and each promotes selective adherence during early biofilm formation [65]. Based on these premises, in this work, as a next step, the samples' behavior was tested on the oral biofilm, including a number of bacterial communities with complicated interactions between them.

Fig. 9 shows the FESEM pictures taken from 24 h of incubation of samples inside a harvested oral biofilm. Fig. 9a shows the surface of  $\text{Ti}_{40}\text{Zr}_{10}\text{Cu}_{36}\text{Pd}_{14}$ -BMG where parts of the surface are covered by the oral biofilm. The biofilm, however, does not appear to be continuous to cover the whole surface. Higher magnification FESEM pictures show very sparse and slim biofilm growing on the surface so that single colonies of different bacterial species are properly distinguishable. Moving to Fig. 9b, the massive biofilm on the Ti-6Al-4V is clearly reported. A higher resolution picture of the biofilm shows that an extremely thick and dense layer of biofilm formed and fully covered the implant's surface; hence, in most parts of the surface, protrusions of bacterial biofilm are apparent. Unlike  $\text{Ti}_{40}\text{Zr}_{10}\text{Cu}_{36}\text{Pd}_{14}$ -BMG, the distinction between single colonies is difficult. As the obtained results of antibacterial activity showed on the surface of  $\text{Ti}_{40}\text{Zr}_{10}\text{Cu}_{36}\text{Pd}_{14}$ -BMG, a Cu-rich oxide layer with 15 nm thick was formed, and as a result, surface properties turned

into a hydrophobic-to-superhydrophobic one; so, a sparse layer of biofilm on the samples' surfaces can be justified. In contrast, the surface of the Ti-6Al-4V turned into a hydrophilic due to the formation of a single layer of Ti oxides.

Further experiments to assess any change or shift of bacterial communities in the oral biofilm during incubation on the  $\text{Ti}_{40}\text{Zr}_{10}\text{Cu}_{36}\text{Pd}_{14}$ -BMG surface in comparison to Ti-6Al-4V were carried out by proteomics. The extraction of proteins was done in both planktonic and biofilm forms (detailed in section 2.7), and their concentration was first determined with the quantitative Bradford assay. Because of the very small size of the samples (3 mm diameter), the concentration of extracted proteins in the biofilm form was much less than the limit concentration of proteomics ( $<80 \mu\text{g}$ ). So, the proteomics assay was doable only for the planktonic form. Fig. 10 shows the prevalence of different oral bacterial phyla in the planktonic form (referred to as PF, detailed information on the prevalence of bacterial species in oral biofilm showed in Fig. S2 in the Supplementary data file). According to this result, the most prevalent bacterial phylum is Firmicutes, 85% and 87% for Ti-6Al-4V and  $\text{Ti}_{40}\text{Zr}_{10}\text{Cu}_{36}\text{Pd}_{14}$ -BMG, respectively. They are Gram-positive bacterial strain mainly found as normal flora in the human intestine [66]. As reported in research, the oral microbiome found in healthy people as the human microbiome containing the phyla Firmicutes, Proteobacteria,



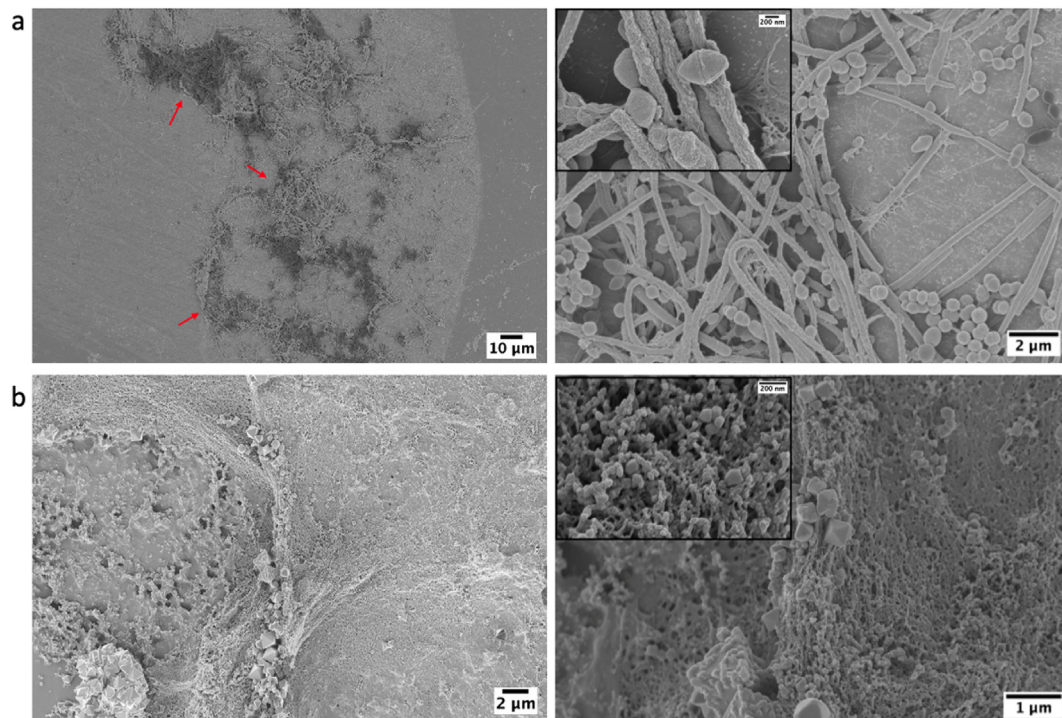


Fig. 9. FESEM pictures on (a) oral biofilm on  $\text{Ti}_{40}\text{Zr}_{10}\text{Cu}_{36}\text{Pd}_{14}$ -BMG after 24 h incubation and (b) oral biofilm on Ti-6Al-4V.

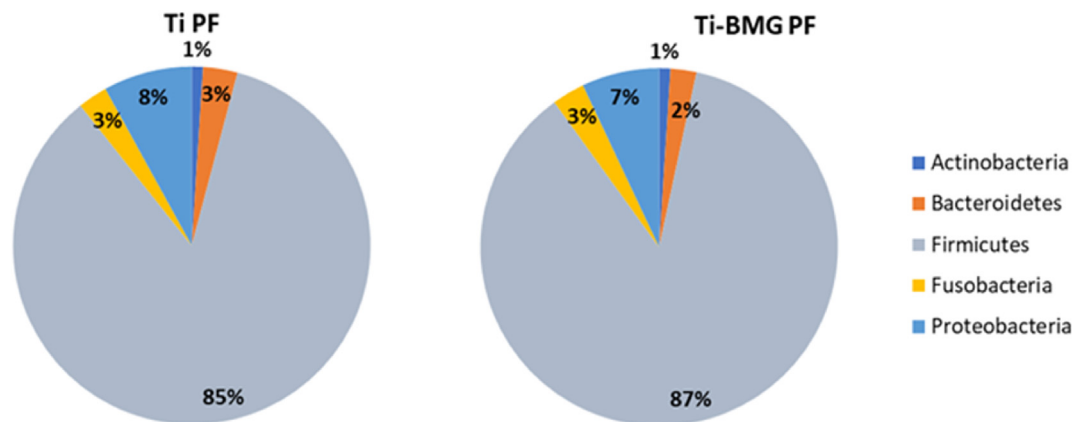


Fig. 10. Distribution of bacterial phyla in a planktonic form in oral biofilm done by proteomics analysis (Detailed information of bacterial species prevalence shown in Fig. S2 in supplementary data). PF indicates planktonic form.

Actinobacteria, Bacteroidetes and Fusobacteria [67]. Although the Actinobacteria phylum represents a small percentage of oral and gut microbiota, they are considered interesting phyla due to their role in some gastrointestinal and systemic diseases [68].

Despite an evident difference in terms of biofilm accumulation on the surface obtained by the SEM quantitative analysis, qualitative results from proteomic did not reveal significant shifts of populations within the oral biofilm community, with minimum differences between biofilm in contact with Ti-6Al-4V controls and  $\text{Ti}_{40}\text{Zr}_{10}\text{Cu}_{36}\text{Pd}_{14}$ -BMG test ones ( $\approx 1\%$  for Bacteroidetes and Proteobacteria). Taking into account that oral biofilm sampling was performed from healthy donors presenting an oral physiological condition (intended as free from any pathological condition), these results can be interpreted as the ability of the samples to prevent biofilm colonization without causing impairments on its physiological composition.

However, to better understand the role of the  $\text{Ti}_{40}\text{Zr}_{10}\text{Cu}_{36}\text{Pd}_{14}$ -BMG in preventing oral biofilm formation as the future perspective we plan to

*i)* improve the specimens' manufacture to obtain a sufficient area to screen the adhered biofilm by proteomics and *ii)* extend the analysis to oral biofilm obtained from pathological patients (such as periodontitis and gingivitis cases).

#### 4. Conclusions

This work decodes the intrinsic nature of  $\text{Ti}_{40}\text{Zr}_{10}\text{Cu}_{36}\text{Pd}_{14}$ -BMG targeted for biomedical oral implants. Casting 3 mm diameter rods of the given composition can generate a fully amorphous glass, as confirmed by an HRTEM study. The viscoelastic behavior of  $\text{Ti}_{40}\text{Zr}_{10}\text{Cu}_{36}\text{Pd}_{14}$ -BMG bulk metallic glass is manifested via dynamic mechanical analysis upon compression. At temperatures below the glass transition, the considered glasses deform primarily elastic, and the material responds independently of the testing frequency. A driving frequency of 1 Hz is conducive to visualizing the supercooled liquid region. Instead of the  $\text{TiO}_2$  surface oxide in Ti-6Al-4V, the formation of CuO on the Ti-BMG, according to

the TEM and XPS analyses, reduces the bacterial metabolic activity of the oral pathogen *A. actinomycetemcomitans* while increasing the cyto-compatibility of the fibroblasts responsible for the device sealing on soft tissues. Finally, the formation of harmful oral biofilm is reduced, whereas its composition in bacterial communities was not changed for samples obtained from healthy volunteers.

### Credit author statement

AR contributed to methodology, writing original draft, ES contributed to conceptualization, methodology and writing original draft, AL contributed to experimental investigation and discussion, VS contributed to experimental investigation and discussion, CG contributed to experimental investigation, FS contributed to discussion, WS provided resources and contributed to discussion, ZN contributed to biological analysis and writing original draft, AC contributed to the editing, review, discussion, and validation of biological analysis, AS contributed to biological analysis, LR contributed to discussion and validation, MM contributed to proteomics analysis, JE supervised the study, provided resources, reviewed and edited the draft, and acquired the funding source. BS contributed to methodology, provided resources, contributed to writing original draft, supervised the study, and acquired the funding source.

### Data availability statement

The raw/processed data required to reproduce these findings cannot be shared at this time as the data also forms part of an ongoing study.

### Declaration of competing interest

The authors declare that they have no known competing financial interests or personal relationships that could have appeared to influence the work reported in this paper.

### Acknowledgments

BS acknowledges the Austrian Science Fund (FWF) under project grant I3937–N36, ERC Proof of Concept Grant TriboMetGlass (grant ERC-2019-PoC-862485). AL acknowledges financial support by the Austrian Science Fund (FWF) under the project grant T891-N36. ES would like to thank European Commission for providing funding for this project under the Horizon 2020 research and innovation program for Marie Skłodowska-Curie Individual Fellowship, with the acronym “MAGIC” and grant agreement N. 892050.

### Appendix A. Supplementary data

Supplementary data to this article can be found online at <https://doi.org/10.1016/j.mtbio.2022.100378>.

### References

- [1] M. Geetha, A.K. Singh, R. Asokamani, A.K. Gogia, Ti based biomaterials, the ultimate choice for orthopaedic implants – a review, *Prog. Mater. Sci.* 54 (2009) 397–425.
- [2] R. Saini, P.P. Marawar, S. Shete, S. Saini, Periodontitis, a true infection, *J. Global Infect. Dis.* 1 (2009) 149–150.
- [3] P.D. Marsh, Dental plaque as a biofilm and a microbial community – implications for health and disease, *BMC Oral Health* 6 (2006) S14.
- [4] O.Y. Yu, I.S. Zhao, M.L. Mei, E.C.-M. Lo, C.-H. Chu, Dental biofilm and laboratory microbial culture models for cariology research, *Dent. J.* 5 (2017) 21.
- [5] E. Sharifikolouei, Z. Najmi, A. Cochis, A.C. Scalia, M. Aliabadi, S. Perero, L. Rimondini, Generation of cyto-compatible superhydrophobic Zr–Cu–Ag metallic glass coatings with antifouling properties for medical textiles, *Mater. Today Bio* 12 (2021), 100148.
- [6] E. Velasco-Ortega, I. Ortiz-García, A. Jiménez-Guerra, L. Monsalve-Guil, F. Muñoz-Guzón, R.A. Perez, F.J. Gil, Comparison between sandblasted acid-etched and oxidized titanium dental implants: in vivo study, *Int. J. Mol. Sci.* 20 (2019) 3267.
- [7] S.W. Tan, T.N. Sut, W.Y. Jeon, B.K. Yoon, J.A. Jackman, On/off switching of lipid bicelle adsorption on titanium oxide controlled by sub-monolayer molecular surface functionalization, *Appl. Mater. Today* 27 (2022), 101444.
- [8] S. Ferraris, A. Cochis, M. Cazzola, M. Tortello, A. Scalia, S. Spriano, L. Rimondini, Cyto-compatible and anti-bacterial adhesion nanotextured titanium oxide layer on titanium surfaces for dental and orthopedic implants, *Front. Bioeng. Biotechnol.* 7 (2019) 103.
- [9] K. Li, C. Wang, J. Yan, Q. Zhang, B. Dang, Z. Wang, Y. Yao, K. Lin, Z. Guo, L. Bi, Y. Han, Evaluation of the osteogenesis and osseointegration of titanium alloys coated with graphene: an in vivo study, *Sci. Rep.* 8 (2018) 1843.
- [10] D.S. Morais, R.M. Guedes, M.A. Lopes, Antimicrobial approaches for textiles: from research to market, *Materials* 9 (2016) 498.
- [11] K. Xu, Z. Yuan, Y. Ding, Y. He, K. Li, C.C. Lin, B.L. Tao, Y.L. Yang, X. Li, P. Liu, K.Y. Cai, Near-infrared light triggered multi-mode synergetic therapy for improving antibacterial and osteogenic activity of titanium implants, *Appl. Mater. Today* 24 (2021), 101155.
- [12] A.L. Greer, Metallic glasses...on the threshold, *Mater. Today* 12 (2009) 14–22.
- [13] W.H. Wang, C. Dong, C.H. Shek, Bulk metallic glasses, *Mater. Sci. Eng. R* 44 (2004) 45–89.
- [14] L.C. Liu, M. Hasan, G. Kumar, Metallic glass nanostructures: fabrication, properties, and applications, *Nanoscale* 6 (2014) 2027–2036.
- [15] B. Sarac, S. Bera, S. Balakin, M. Stoica, M. Calin, J. Eckert, Hierarchical surface patterning of Ni- and Be-free Ti- and Zr-based bulk metallic glasses by thermoplastic net-shaping, *Mater. Sci. Eng., C* 73 (2017) 398–405.
- [16] S. Bera, P. Ramasamy, D. Şopu, B. Sarac, J. Zalesak, C. Gammer, M. Stoica, M. Calin, J. Eckert, Tuning the glass forming ability and mechanical properties of Ti-based bulk metallic glasses by Ga additions, *J. Alloys Compd.* 793 (2019) 552–563.
- [17] S. Bera, B. Sarac, S. Balakin, P. Ramasamy, M. Stoica, M. Calin, J. Eckert, Micro-patterning by thermoplastic forming of Ni-free Ti-based bulk metallic glasses, *Mater. Des.* 120 (2017) 204–211.
- [18] B. Sarac, S. Bera, F. Spieckermann, S. Balakin, M. Stoica, M. Calin, J. Eckert, Micropatterning kinetics of different glass-forming systems investigated by thermoplastic net-shaping, *Scripta Mater.* 137 (2017) 127–131.
- [19] M. Calin, A. Gebert, A.C. Ghinea, P.F. Gostin, S. Abdi, C. Mickel, J. Eckert, Designing biocompatible Ti-based metallic glasses for implant applications, *Mater. Sci. Eng., C* 33 (2013) 875–883.
- [20] J.J. Oak, D.V. Louzguine-Luzgin, A. Inoue, Fabrication of Ni-free Ti-based bulk-metallic glassy alloy having potential for application as biomaterial, and investigation of its mechanical properties, corrosion, and crystallization behavior, *J. Mater. Res.* 22 (2007) 1346–1353.
- [21] P. Du, T. Xiang, X. Yang, G. Xie, Enhanced mechanical and antibacterial properties of Cu-bearing Ti-based bulk metallic glass by controlling porous structure, *J. Alloys Compd.* 904 (2022), 164005.
- [22] P. Du, T. Xiang, Z. Cai, G. Xie, The influence of porous structure on the corrosion behavior and biocompatibility of bulk Ti-based metallic glass, *J. Alloys Compd.* 906 (2022), 164326.
- [23] P. Du, Z. Wu, K. Li, T. Xiang, G. Xie, Porous Ti-based bulk metallic glass orthopedic biomaterial with high strength and low Young's modulus produced by one step SPS, *J. Mater. Res. Technol.* 13 (2021) 251–259.
- [24] B. Lin, R. Mu, L.F. Yang, X.F. Bian, Antibacterial effect of metallic glasses, *Chin. Sci. Bull.* 57 (2012) 1069–1072.
- [25] Y.S. Lin, C.F. Hsu, J.Y. Chen, Y.M. Cheng, P.Y. Lee, Wear behavior of mechanically alloyed Ti-based bulk metallic glass composites containing carbon nanotubes, *Metals* 6 (2016) 289.
- [26] D.C. Hofmann, L.M. Andersen, J. Kolodziejka, S.N. Roberts, J.P. Borgonia, W.L. Johnson, K.S. Vecchio, A. Kennett, Optimizing bulk metallic glasses for robust, highly wear-resistant gears, *Adv. Eng. Mater.* 19 (2016), 1600541.
- [27] S.F. Lin, S.F. Ge, Z.W. Zhu, W. Li, Z.K. Li, H. Li, H.M. Fu, A.M. Wang, Y.X. Zhuang, H.F. Zhang, Double toughening Ti-based bulk metallic glass composite with high toughness, strength and tensile ductility via phase engineering, *Appl. Mater. Today* 22 (2021), 100944.
- [28] J. Schroers, G. Kumar, T.M. Hodges, S. Chan, T.R. Kyriakides, Bulk metallic glasses for biomedical applications, *JOM* 61 (2009) 21–29.
- [29] H.F. Li, Y.F. Zheng, Recent advances in bulk metallic glasses for biomedical applications, *Acta Biomater.* 36 (2016) 1–20.
- [30] A. Liens, A. Etienne, P. Rivory, S. Balvay, J.M. Pelletier, S. Cardinal, D. Fabregue, H. Kato, P. Steyer, T. Munhoz, J. Adrien, N. Courtois, D.J. Hartmann, J. Chevalier, On the potential of bulk metallic glasses for dental implantology: case study on Ti<sub>40</sub>Zr<sub>10</sub>Cu<sub>36</sub>Pd<sub>14</sub>, *Materials* 11 (2018).
- [31] S.L. Zhu, X.M. Wang, F.X. Qin, M. Yoshimura, A. Inoue, New TiZrCuPd quaternary bulk glassy alloys with potential of biomedical applications, *Mater. Trans.* 48 (2007) 2445–2448.
- [32] F.X. Qin, M. Yoshimura, X.M. Wang, S.L. Zhu, A. Kawashima, K. Asami, A. Inoue, Corrosion Behavior of a Ti-based bulk metallic glass and its crystalline alloys, *Mater. Trans.* 48 (2007) 1855–1858.
- [33] G. Lütjering, Property optimization through microstructural control in titanium and aluminum alloys, *Mater. Sci. Eng., A* 263 (1999) 117–126.
- [34] P. Gong, L. Deng, J. Jin, S. Wang, X. Wang, K. Yao, Review on the research and development of Ti-based bulk metallic glasses, *Metals* 6 (2016) 264.
- [35] B. Sarac, J. Eckert, Thermoplasticity of metallic glasses: processing and applications, *Prog. Mater. Sci.* 127 (2022), 100941.
- [36] J. Schroers, The superplastic forming of bulk metallic glasses, *JOM* 57 (2005) 35–39.
- [37] F. Schwarz, J. Becker, Die Behandlung periimplantärer Infektionen an Zahnimplantaten, *Deutsche Gesellschaft für Implantologie, Deutsche Gesellschaft für Zahn-, Mund- und Kieferheilkunde*, 05/2016.

- [38] T.E. Rams, J.E. Degener, A.J. van Winkelhoff, Antibiotic resistance in human peri-implantitis microbiota, *Clin. Oral Implants Res.* 25 (2014) 82–90.
- [39] A. Cochis, S. Ferraris, R. Sorrentino, B. Azzimonti, C. Novara, F. Geobaldo, F. Truffa Giachet, C. Vineis, A. Varesano, A. Sayed Abdelgelil, S. Spriano, L. Rimondini, Silver-doped keratin nanofibers preserve a titanium surface from biofilm contamination and favor soft-tissue healing, *J. Mater. Chem. B* 5 (2017) 8366–8377.
- [40] E. Dalla Pozza, M. Manfredi, J. Brandi, A. Buzzi, E. Conte, R. Pacchiana, D. Cecconi, E. Marengo, M. Donadelli, Trichostatin A alters cytoskeleton and energy metabolism of pancreatic adenocarcinoma cells: an in depth proteomic study, *J. Cell. Biochem.* 119 (2018) 2696–2707.
- [41] J. Brandi, S. Cheri, M. Manfredi, C. Di Carlo, V. Vita Vanella, F. Federici, E. Bombiero, A. Bazaj, E. Rizzi, L. Manna, G. Cornaglia, U. Marini, M.T. Valenti, E. Marengo, D. Cecconi, Exploring the wound healing, anti-inflammatory, anti-pathogenic and proteomic effects of lactic acid bacteria on keratinocytes, *Sci. Rep.* 10 (2020), 11572.
- [42] R. Gurdeep Singh, A. Tanca, A. Palomba, F. Van der Jeugt, P. Verschaffelt, S. Uzzau, L. Martens, P. Dawyndt, B. Mesuere, Unipept 4.0: functional analysis of metaproteome data, *J. Proteome Res.* 18 (2019) 606–615.
- [43] B. Sarac, G. Kumar, T. Hodges, S.Y. Ding, A. Desai, J. Schroers, Three-dimensional shell fabrication using blow molding of bulk metallic glass, *J. Microelectromech. Syst.* 20 (2011) 28–36.
- [44] J. Schroers, Processing of bulk metallic glass, *Adv. Mater.* 22 (2010) 1566–1597.
- [45] B. Sarac, J. Schroers, Designing tensile ductility in metallic glasses, *Nat. Commun.* 4 (2013) 2158.
- [46] B. Sarac, J. Ketkaew, D.O. Popnoe, J. Schroers, Honeycomb structures of bulk metallic glasses, *Adv. Funct. Mater.* 22 (2012) 3161–3169.
- [47] B. Sarac, Microstructure-Property Optimization in Metallic Glasses, Springer International Publishing, 2015, p. 89.
- [48] S. Maeda, T. Yamasaki, Y. Yokoyama, D. Okai, T. Fukami, H.M. Kimura, A. Inoue, Viscosity measurements of  $Zr_{55}Cu_{30}Al_{10}Ni_5$  and  $Zr_{50}Cu_{40-x}Al_{10}Pd_x$  ( $x=0, 3$  and  $7$  at.%) supercooled liquid alloys by using a penetration viscometer, *Mater. Sci. Eng., A* 449 (2007) 203–206.
- [49] A. Rezvan, B. Sarac, V. Soprunyuk, J.T. Kim, K.K. Song, C.J. Li, W. Schranz, J. Eckert, Influence of combinatorial annealing and plastic deformation treatments on the intrinsic properties of  $Cu_{46}Zr_{46}Al_8$  bulk metallic glass, *Intermetallics* 127 (2020), 106986.
- [50] A. Inoue, Stabilization of metallic supercooled liquid and bulk amorphous alloys, *Acta Mater.* 48 (2000) 279–306.
- [51] N.S. McIntyre, S. Sunder, D.W. Shoesmith, F.W. Stanchell, Chemical information from XPS—applications to the analysis of electrode surfaces, *J. Vac. Sci. Technol.* 18 (1981) 714–721.
- [52] G. Wang, J. Li, K. Lv, W. Zhang, X. Ding, G. Yang, X. Liu, X. Jiang, Surface thermal oxidation on titanium implants to enhance osteogenic activity and in vivo osseointegration, *Sci. Rep.* 6 (2016), 31769.
- [53] Y. He, Z.S. Fishman, K.R. Yang, B. Ortiz, C. Liu, J. Goldsamt, V.S. Batista, L.D. Pfefferle, Hydrophobic CuO nanosheets functionalized with organic adsorbates, *J. Am. Chem. Soc.* 140 (2018) 1824–1833.
- [54] S. Ward, M.A. Isaacs, G. Gupta, M. Mamlouk, S.S. Pramana, Boosting the oxygen evolution activity in non-stoichiometric praseodymium ferrite-based perovskites by A site substitution for alkaline electrolyser anodes, *Sustain. Energy Fuels* 5 (2021) 154–165.
- [55] L. Jia, N. Han, J. Du, L. Guo, Z. Luo, Y. Liu, Pathogenesis of important virulence factors of porphyromonas gingivalis via toll-like receptors, *Front. Cell. Infect. Microbiol.* 9 (2019).
- [56] P. Gholizadeh, A. Pormohammad, H. Eslami, B. Shokouhi, V. Fakhrzadeh, H.S. Kafil, Oral pathogenesis of *Aggregatibacter actinomycetemcomitans*, *Microb. Pathog.* 113 (2017) 303–311.
- [57] A. Cochis, B. Azzimonti, C. Della Valle, E. De Giglio, N. Bloise, L. Visai, S. Cometa, L. Rimondini, R. Chiesa, The effect of silver or gallium doped titanium against the multidrug resistant *Acinetobacter baumannii*, *Biomaterials* 80 (2016) 80–95.
- [58] S. Wang, Y. Liu, C. Zhang, Z. Liao, W. Liu, The improvement of wettability, biotribological behavior and corrosion resistance of titanium alloy pretreated by thermal oxidation, *Tribol. Int.* 79 (2014) 174–182.
- [59] L.R. Rivera, A. Cochis, S. Biser, E. Canciani, S. Ferraris, L. Rimondini, A.R. Boccaccini, Antibacterial, pro-angiogenic and pro-osteointegrative zein-bioactive glass/copper based coatings for implantable stainless steel aimed at bone healing, *Bioact. Mater.* 6 (2021) 1479–1490.
- [60] Y. Yoshida, S. Furuta, E. Niki, Effects of metal chelating agents on the oxidation of lipids induced by copper and iron, *Biochim. Biophys. Acta* 1210 (1993) 81–88.
- [61] A. Cochis, B. Azzimonti, R. Chiesa, L. Rimondini, M. Gasik, Metallurgical gallium additions to titanium alloys demonstrate a strong time-increasing antibacterial activity without any cellular toxicity, *ACS Biomater. Sci. Eng.* 5 (2019) 2815–2820.
- [62] A. Reyes-Jara, N. Cordero, J. Aguirre, M. Troncoso, G. Figueroa, Antibacterial effect of copper on microorganisms isolated from bovine mastitis, *Front. Microbiol.* 7 (2016) 626.
- [63] N. Kaushik, P. Sharma, S. Ahadian, A. Khademhosseini, M. Takahashi, A. Makino, S. Tanaka, M. Esashi, Metallic glass thin films for potential biomedical applications, *J. Biomed. Mater. Res. B* 102 (2014) 1544–1552.
- [64] A. Liens, A. Etienne, P. Rivory, S. Balvay, J.M. Pelletier, S. Cardinal, D. Fabrègue, H. Kato, P. Steyer, T. Munhoz, J. Adrien, N. Courtois, D.J. Hartmann, J. Chevalier, On the potential of bulk metallic glasses for dental implantology: case study on  $Ti_{40}Zr_{10}Cu_{36}Pd_{14}$ , *Materials* 11 (2018) 249.
- [65] B. Grössner-Schreiber, M. Griepentrog, I. Hausteiner, W.D. Müller, K.P. Lange, H. Briedigkeit, U.B. Göbel, Plaque formation on surface modified dental implants. An in vitro study, *Clin. Oral Implants Res.* 12 (2001) 543–551.
- [66] L. Dong, J. Yin, J. Zhao, S.-R. Ma, H.-R. Wang, M. Wang, W. Chen, W.-Q. Wei, Microbial similarity and preference for specific sites in healthy oral cavity and esophagus, *Front. Microbiol.* 9 (2018) 1603.
- [67] A.M. Valm, The structure of dental plaque microbial communities in the transition from health to dental caries and periodontal disease, *J. Mol. Biol.* 431 (2019) 2957–2969.
- [68] C. Binda, L.R. Lopetuso, G. Rizzatti, G. Gibiino, V. Cennamo, A. Gasbarrini, Actinobacteria: a relevant minority for the maintenance of gut homeostasis, *Dig. Liver Dis.* 50 (2018) 421–428.