



This is a repository copy of *The LUX-ZEPLIN (LZ) radioactivity and cleanliness control programs*.

White Rose Research Online URL for this paper:

<https://eprints.whiterose.ac.uk/192497/>

Version: Submitted Version

Preprint:

Akerib, DS, Akerlof, CW, Akimov, DY et al. (387 more authors) (Submitted: 2020) The LUX-ZEPLIN (LZ) radioactivity and cleanliness control programs. [Preprint - arXiv]

<https://doi.org/10.48550/arxiv.2006.02506>

© 2020 The Author(s). For reuse permissions, please contact the Author(s).

Reuse

Items deposited in White Rose Research Online are protected by copyright, with all rights reserved unless indicated otherwise. They may be downloaded and/or printed for private study, or other acts as permitted by national copyright laws. The publisher or other rights holders may allow further reproduction and re-use of the full text version. This is indicated by the licence information on the White Rose Research Online record for the item.

Takedown

If you consider content in White Rose Research Online to be in breach of UK law, please notify us by emailing eprints@whiterose.ac.uk including the URL of the record and the reason for the withdrawal request.



eprints@whiterose.ac.uk
<https://eprints.whiterose.ac.uk/>

The LUX-ZEPLIN (LZ) radioactivity and cleanliness control programs

D.S. Akerib^{a,b}, C.W. Akerlof^c, D. Yu. Akimov^d, A. Alquahtani^e, S.K. Alsum^f, T.J. Anderson^{a,b}, N. Angelides^g, H.M. Araújo^h, A. Arbuckle^f, J.E. Armstrongⁱ, M. Arthurs^c, H. Auyeung^a, S. Aviles^j, X. Bai^j, A.J. Bailey^h, J. Balajthy^k, S. Balashov^l, J. Bang^e, M.J. Barry^m, D. Bauer^h, P. Bauerⁿ, A. Baxter^o, J. Belle^p, P. Beltrame^q, J. Bensing^r, T. Benson^f, E.P. Bernard^{s,m}, A. Bernstein^t, A. Bhattiⁱ, A. Biekert^{s,m}, T.P. Biesiadzinski^{a,b}, H.J. Birch^o, B. Birrittella^f, K.E. Boast^u, A.I. Bolozdynya^d, E.M. Boulton^{v,s}, B. Boxer^o, R. Bramante^{a,b}, S. Branson^f, P. Brás^w, M. Breidenbach^a, C.A.J. Brew^l, J.H. Buckley^x, V.V. Bugaev^x, R. Bunker^j, S. Burdin^o, J.K. Busenitz^y, R. Cabrita^w, J.S. Campbell^f, C. Carels^u, D.L. Carlsmith^f, B. Carlsonⁿ, M.C. Carmona-Benitez^z, M. Cascella^g, C. Chan^e, J.J. Cherwinka^f, A.A. Chiller^{aa}, C. Chiller^{aa}, N.I. Chott^j, A. Cole^m, J. Coleman^m, D. Colling^h, R.A. Conley^a, A. Cottle^u, R. Coughlen^j, G. Cox^z, W.W. Craddock^a, D. Curranⁿ, A. Currie^h, J.E. Cutter^k, J.P. da Cunha^w, C.E. Dahl^{ab,p}, S. Dardin^m, S. Dasu^f, J. Davisⁿ, T.J.R. Davison^q, L. de Viveiros^z, N. Decheine^f, A. Dobi^m, J.E.Y. Dobson^g, E. Druszkiewicz^{ac}, A. Dushkin^r, T.K. Edbergⁱ, W.R. Edwards^m, B.N. Edwards^v, J. Edwards^f, M.M. Elnimr^y, W.T. Emmet^v, S.R. Eriksen^{ad}, C.H. Faham^m, A. Fan^{a,b}, S. Fayer^h, S. Fiorucci^m, H. Flaecher^{ad}, I.M. Fogarty Florangⁱ, P. Ford^l, V.B. Francis^l, E.D. Fraser^o, F. Froberg^h, T. Fruth^u, R.J. Gaitskell^e, N.J. Gantos^m, D. Garcia^e, V.M. Gehman^m, R. Gelfand^{ac}, J. Genovesi^j, R.M. Gerhard^k, C. Ghag^g, E. Gibson^u, M.G.D. Gilchriese^m, S. Gokhale^{ae}, B. Gomber^f, T.G. Gonda^a, A. Greenall^o, S. Greenwood^h, G. Gregerson^f, M.G.D. van der Grinten^l, C.B. Gwilliam^o, C.R. Hallⁱ, D. Hamilton^f, S. Hans^{ae}, K. Hanzel^m, T. Harrington^f, A. Harrison^j, J. Harrison^j, C. Hasselkus^f, S.J. Haselschwardt^{af}, D. Hemer^k, S.A. Hertel^{ag}, J. Heise^f, S. Hillbrand^k, O. Hitchcock^f, C. Hjermfelt^j, M.D. Hoff^m, B. Holbrook^k, E. Holtom^l, J.Y-K. Hor^v, M. Hornⁿ, D.Q. Huang^e, T.W. Hurteau^v, C.M. Ignarra^{a,b}, M.N. Irving^k, R.G. Jacobsen^{s,m}, O. Jahangir^g, S.N. Jeffery^l, W. Ji^{a,b}, M. Johnsonⁿ, J. Johnson^k, P. Johnson^f, W.G. Jones^h, A.C. Kaboth^{ai,l}, A. Kamaha^{ah,*}, K. Kamdin^{m,s}, V. Kasey^h, K. Kazkaz^t, J. Keefnerⁿ, D. Khaitan^{ac}, M. Khaleeq^h, A. Khazov^l, A.V. Khromov^d, I. Khurana^g, Y.D. Kim^{aj}, W.T. Kim^{aj}, C.D. Kocher^e, D. Kodroff^z, A.M. Konovalov^d, L. Korley^r, E.V. Korolkova^{ak}, M. Koyuncu^{ac}, J. Kras^f, H. Kraus^u,

*akamaha@albany.edu

**umit.utku.12@ucl.ac.uk

S.W. Kravitz^m, H.J. Krebs^a, L. Kreczko^{ad}, B. Krikler^{ad}, V.A. Kudryavtsev^{ak},
 A.V. Kumpan^d, S. Kyre^{af}, A.R. Lambert^m, B. Landerud^f, N.A. Larsen^v,
 A. Laundrie^f, E.A. Leason^q, H.S. Lee^{aj}, J. Lee^{aj}, C. Lee^{a,b}, B.G. Lenardo^k,
 D.S. Leonard^{aj}, R. Leonard^j, K.T. Lesko^m, C. Levy^{ah}, J. Li^{aj}, Y. Liu^f, J. Liao^e,
 F.-T. Liao^u, J. Lin^{s,m}, A. Lindote^w, R. Linehan^{a,b}, W.H. Lippincott^p, R. Liu^e,
 X. Liu^q, C. Loniewski^{ac}, M.I. Lopes^w, E. Lopez-Asamar^w, B. López Paredes^h,
 W. Lorenzon^c, D. Luceroⁿ, S. Luitz^a, J.M. Lyle^e, C. Lynch^e, P.A. Majewski^l,
 J. Makkinje^e, D.C. Malling^e, A. Manalaysay^k, L. Manenti^g, R.L. Mannino^f,
 N. Marangou^h, D.J. Markley^p, P. MarrLaundrie^f, T.J. Martin^p, M.F. Marzioni^q,
 C. Maupinⁿ, C.T. McConnell^m, D.N. McKinsey^{s,m}, J. McLaughlin^{ab}, D.-M. Mei^{aa},
 Y. Meng^y, E.H. Miller^{a,b}, Z.J. Minaker^k, E. Mizrahiⁱ, J. Mock^{ah,m}, D. Molash^j,
 A. Monte^p, M.E. Monzani^{a,b}, J.A. Morad^k, E. Morrison^j, B.J. Mount^{al},
 A.St.J. Murphy^q, D. Naim^k, A. Naylor^{ak}, C. Nedlik^{ag}, C. Nehr Korn^{af}, H.N. Nelson^{af},
 J. Nesbit^f, F. Neves^w, J.A. Nikkel^l, J.A. Nikoleyczik^f, A. Nilima^q, J. O'Dell^l,
 H. Oh^{ac}, F.G. O'Neill^a, K. O'Sullivan^{m,s}, I. Olcina^h, M.A. Olevitch^x,
 K.C. Oliver-Mallory^{m,s}, L. Oxborough^f, A. Pagac^f, D. Pagenkopf^{af}, S. Pal^w,
 K.J. Palladino^f, V.M. Palmaccioⁱ, J. Palmer^{ai}, M. Pangilinan^e, N. Parveen^{ah},
 S.J. Patton^m, E.K. Pease^m, B.P. Penning^r, G. Pereira^w, C. Pereira^w, I.B. Peterson^m,
 A. Piepkke^y, S. Pierson^a, S. Powell^o, R.M. Preece^l, K. Pushkin^c, Y. Qie^{ac},
 M. Racine^a, B.N. Ratcliff^a, J. Reichenbacher^j, L. Reichhart^g, C.A. Rhyne^e,
 A. Richards^h, Q. Riffard^{s,m}, G.R.C. Rischbieter^{ah}, J.P. Rodrigues^w, H.J. Rose^o,
 R. Rosero^{ae}, P. Rossiter^{ak}, R. Rucinski^p, G. Rutherford^e, J.S. Saba^m, L. Sabarots^f,
 D. Santone^{ai}, M. Sarychev^p, A.B.M.R. Sazzad^y, R.W. Schnee^j, M. Schubnell^c,
 P.R. Scovell^l, M. Severson^f, D. Seymour^e, S. Shaw^{af}, G.W. Shutt^a, T.A. Shutt^{a,b},
 J.J. Silkⁱ, C. Silva^w, K. Skarpaas^a, W. Skulski^{ac}, A.R. Smith^m, R.J. Smith^{s,m},
 R.E. Smith^f, J. So^j, M. Solmaz^{af}, V.N. Solovov^w, P. Sorensen^m, V.V. Sosnovtsev^d,
 I. Stancu^y, M.R. Stark^j, S. Stephenson^k, N. Stern^e, A. Stevens^u, T.M. Stiegler^{am},
 K. Stifter^{a,b}, R. Studley^r, T.J. Sumner^h, K. Sundarnath^j, P. Sutcliffe^o, N. Swanson^e,
 M. Szydagis^{ah}, M. Tan^u, W.C. Taylor^e, R. Taylor^h, D.J. Taylorⁿ, D. Temples^{ab},
 B.P. Tennyson^v, P.A. Terman^{am}, K.J. Thomas^m, J.A. Thomson^k, D.R. Tiedtⁱ,
 M. Timalcina^j, W.H. To^{a,b}, A. Tomás^h, T.E. Tope^p, M. Tripathi^k, D.R. Tronstad^j,
 C.E. Tull^m, W. Turner^o, L. Tvrznikova^{v,s}, M. Utes^p, U. Utku^{g,**}, S. Uvarov^k,
 J. Va'vra^a, A. Vacheret^h, A. Vaitkus^e, J.R. Verbus^e, T. Vietanen^f, E. Voirin^p,
 C.O. Vuosalo^f, S. Walcott^f, W.L. Waldron^m, K. Walker^f, J.J. Wang^r, R. Wang^p,
 L. Wang^{aa}, W. Wang^f, Y. Wang^{ac}, J.R. Watson^{s,m}, J. Migneault^e, S. Weatherlyⁱ,
 R.C. Webb^{am}, W.-Z. Wei^{aa}, M. While^{aa}, R.G. White^{a,b}, J.T. White^{am},
 D.T. White^{af}, T.J. Whitis^{a,an}, W.J. Wisniewski^a, K. Wilson^m, M.S. Witherell^{m,s},
 F.L.H. Wolfs^{ac}, J.D. Wolfs^{ac}, D. Woodward^z, S.D. Worm^l, X. Xiang^e, Q. Xiao^f,

J. Xu^t, M. Yeh^{ae}, J. Yin^{ac}, I. Young^p, C. Zhang^{aa}, P. Zarzhitsky^y

^aSLAC National Accelerator Laboratory, Menlo Park, CA 94025-7015, USA

^bKavli Institute for Particle Astrophysics and Cosmology, Stanford University, Stanford, CA 94305-4085 USA

^cUniversity of Michigan, Randall Laboratory of Physics, Ann Arbor, MI 48109-1040, USA

^dNational Research Nuclear University MEPhI (NRNU MEPhI), Moscow, 115409, RUS

^eBrown University, Department of Physics, Providence, RI 02912-9037, USA

^fUniversity of Wisconsin-Madison, Department of Physics, Madison, WI 53706-1390, USA

^gUniversity College London (UCL), Department of Physics and Astronomy, London WC1E 6BT, UK

^hImperial College London, Physics Department, Blackett Laboratory, London SW7 2AZ, UK

ⁱUniversity of Maryland, Department of Physics, College Park, MD 20742-4111, USA

^jSouth Dakota School of Mines and Technology, Rapid City, SD 57701-3901, USA

^kUniversity of California, Davis, Department of Physics, Davis, CA 95616-5270, USA

^lSTFC Rutherford Appleton Laboratory (RAL), Didcot, OX11 0QX, UK

^mLawrence Berkeley National Laboratory (LBNL), Berkeley, CA 94720-8099, USA

ⁿSouth Dakota Science and Technology Authority (SDSTA), Sanford Underground Research Facility, Lead, SD 57754-1700, USA

^oUniversity of Liverpool, Department of Physics, Liverpool L69 7ZE, UK

^pFermi National Accelerator Laboratory (FNAL), Batavia, IL 60510-5011, USA

^qUniversity of Edinburgh, SUPA, School of Physics and Astronomy, Edinburgh EH9 3FD, UK

^rBrandeis University, Department of Physics, Waltham, MA 02453, USA

^sUniversity of California, Berkeley, Department of Physics, Berkeley, CA 94720-7300, USA

^tLawrence Livermore National Laboratory (LLNL), Livermore, CA 94550-9698, USA

^uUniversity of Oxford, Department of Physics, Oxford OX1 3RH, UK

^vYale University, Department of Physics, New Haven, CT 06511-8499, USA

^wLaboratório de Instrumentação e Física Experimental de Partículas (LIP), University of Coimbra, P-3004 516 Coimbra, Portugal

^xWashington University in St. Louis, Department of Physics, St. Louis, MO 63130-4862, USA

^yUniversity of Alabama, Department of Physics & Astronomy, Tuscaloosa, AL 3587-0324, USA

^zPennsylvania State University, Department of Physics, University Park, PA 16802-6300, USA

^{aa}University of South Dakota, Department of Physics & Earth Sciences, Vermillion, SD 57069-2307, UK

^{ab}Northwestern University, Department of Physics & Astronomy, Evanston, IL 60208-3112, USA

^{ac}University of Rochester, Department of Physics and Astronomy, Rochester, NY 14627-0171, USA

^{ad}University of Bristol, H.H. Wills Physics Laboratory, Bristol, BS8 1TL, UK

^{ae}Brookhaven National Laboratory (BNL), Upton, NY 11973-5000, USA

^{af}University of California, Santa Barbara, Department of Physics, Santa Barbara, CA 93106-9530, USA

^{ag}University of Massachusetts, Department of Physics, Amherst, MA 01003-9337, USA

^{ah}University at Albany (SUNY), Department of Physics, Albany, NY 12222-1000, USA

^{ai}Royal Holloway, University of London, Department of Physics, Egham, TW20 0EX, UK

^{aj}IBS Center for Underground Physics (CUP), Yuseong-gu, Daejeon, KOR

^{ak}University of Sheffield, Department of Physics and Astronomy, Sheffield S3 7RH, UK

^{al}Black Hills State University, School of Natural Sciences, Spearfish, SD 57799-0002, USA

*^{am}Texas A&M University, Department of Physics and Astronomy, College Station, TX
77843-4242, USA*

^{an}Case Western Reserve University, Department of Physics, Cleveland, OH 44106, USA

Abstract

LUX-ZEPLIN (LZ) is a second generation direct dark matter experiment with spin-independent WIMP-nucleon scattering sensitivity above $1.4 \times 10^{-48} \text{ cm}^2$ for a WIMP mass of $40 \text{ GeV}/c^2$ and a 1000 d exposure. LZ achieves this sensitivity through a combination of a large 5.6 t fiducial volume, active inner and outer veto systems, and radio-pure construction using materials with inherently low radioactivity content. The LZ collaboration performed an extensive radioassay campaign over a period of six years to inform material selection for construction and provide an input to the experimental background model against which any possible signal excess may be evaluated. The campaign and its results are described in this paper.

We present assays of dust and radon daughters depositing on the surface of components as well as cleanliness controls necessary to maintain background expectations through detector construction and assembly.

Finally, examples from the campaign to highlight fixed contaminant radioassays for the LZ photomultiplier tubes, quality control and quality assurance procedures through fabrication, radon emanation measurements of major sub-systems, and bespoke detector systems to assay scintillator are presented.

Keywords: Radio-purity, Gamma-ray spectroscopy, Mass spectrometry, Neutron Activation, Alpha counting, Low background, Dark matter, LZ, Surface assay, Radon emanation

1. Introduction

The LUX-ZEPLIN (LZ) experiment operates a 7 t purified liquid-xenon target in a time projection chamber (TPC) and has a design sensitivity capable of excluding at 90% confidence level spin-independent WIMP-nucleon cross sections above $1.4 \times 10^{-48} \text{ cm}^2$ for a $40 \text{ GeV}/c^2$ mass WIMP, providing excellent discovery potential for WIMPs through nucleon elastic scattering and subsequent detection of light and charge from the collisions [1]. The detector is currently being installed in the Davis Cavern of the Sanford Underground Research Facility (SURF) at a depth of approximately 4850 ft which is equivalent to approximately 4300 meters of water (henceforth

referred to as meters of water equivalent - m w.e.). The detector is described in detail in [2] and [3]. The sensitivity of the experiment is achieved through a combination of very low backgrounds, a large fiducial mass of 5.6 t, and a 1000 d WIMP search exposure. The detector backgrounds are predominantly of two kinds: electron recoils (ER) which occur through interaction with the atomic electrons of the target xenon material; and nuclear recoils (NR) which occur through interaction with the nucleus of the xenon. The background levels in LZ are suppressed and characterized by employing two veto detectors: an instrumented layer of liquid-xenon known as the xenon skin veto, and an outer detector (OD) that uses a Gd-loaded liquid scintillator (GdLS) detection medium. The inner 5.6 t fiducial volume further benefits from attenuation of background radioactivity penetrating the TPC.

The construction of LZ requires materials very low in radio-contamination to limit the background in the target, thus maximizing sensitivity. Furthermore, an accurate knowledge of expected low levels of background from remaining radioactivity and irreducible sources is necessary to ascribe confidence to any possible observation of signal excess. This article presents the results from the radioassay and screening campaign used to inform selection of LZ construction materials and to develop the experiment's comprehensive background model.

Section 2 describes the gamma-ray spectroscopy and mass spectrometry techniques and the facilities used to determine levels of radioactivity fixed within materials, including efforts to cross-calibrate the various detectors deployed. Section 3 presents the radon emanation facilities available to LZ which were used to inform selection of materials making contact with liquid xenon and to characterize components used in LZ construction. Section 4 describes our techniques to limit surface depositions of environmental dust and atmospheric radon decay-daughters, with particular emphasis on the period of detector assembly at SURF. Section 5 presents a selection of highlights from the assay program that illustrates our fixed-contaminant radioassays for the LZ PMTs; demonstrates the importance of our quality control (QC) and quality assurance (QA) procedures for construction of the cryostat; revisits a dedicated detector constructed to survey the scintillator for the OD first discussed in [4]; and presents radon emanation measurements from key components, including *in-situ* assays of the cryostat with the complete detector within.

Upon completion of any assay, results are uploaded to a dedicated database. This database links assay results to individual components of the LZ detector, greatly simplifying the process of building the expected background model which, in turn, helps to define the expected sensitivity of the detector. The results from the assays performed are tabulated in the Appendix to this article.

2. Fixed Contamination

2.1. Origin of Fixed Contamination

Fixed contaminants are embedded in materials and typically consist of naturally occurring radioactive materials (NORM), the most prevalent being ^{238}U , ^{235}U , ^{232}Th , and their progeny which emit various radioactive species through their decay eventually to stable isotopes of lead; and gamma-ray emitting isotopes, ^{40}K , ^{60}Co and ^{137}Cs . Neutrons are produced through (α, n) reactions and through spontaneous fission in the uranium and thorium decay chains. The ^{238}U and ^{232}Th chains are divided into ‘early’ and ‘late’; for ^{238}U , the early part of the chain ($^{238}\text{U}_e$) contains the isotopes above ^{226}Ra since chemical processes may induce a break of secular equilibrium at this point, and it will take thousands of years ($\tau_{1/2}$ 1600 years) to be restored. The late part of the chain ($^{238}\text{U}_l$) is counted from ^{226}Ra and below. Typical p-type high-purity germanium (HPGe) detectors are not sensitive to the low-energy gamma-ray lines from ^{210}Pb at the bottom of the chain but broad energy germanium (BEGe), n-type and well-type detectors available to LZ are.

Secular equilibrium breaking is observed by differences in long-lived isotope concentrations in early and late chain values. However, it should be noted that the ^{232}Th chain, as defined, includes ^{228}Ra which has a relatively long half-life of 5.7 y. If ^{232}Th and ^{228}Th are depleted in production of a material, it is possible for ^{228}Th to grow back in from ^{228}Ra on a time scale of several years, such that assays may underestimate the ultimate activity. It is difficult to measure ^{228}Ra with sufficient sensitivity, but the risk is generally mitigated by using materials where batches of different ages have been measured over the course of a long material selection campaign [5].

The collaboration also performs assays with in-house inductively-coupled plasma mass spectrometry (ICP-MS) (Section 2.4) and some limited use of glow discharge mass spectrometry (GDMS).

2.2. High-Purity Germanium Screening

Gamma-ray spectroscopy was used to identify the bulk of the radio-isotopes contributing to neutron and gamma-ray emission. In order to achieve sensitivity to the required low levels, these measurements were typically of 1 to 2 week duration. Assays were made using 12 HPGe detectors, or variants of HPGe detectors, available to the LZ collaboration across four sites, described in the following subsections and with key parameters summarized in Table 1 and performance characteristics summarized in Table 2. In the early stages of the LZ screening program a campaign of blind cross-calibration across all detectors was undertaken to verify the consistency

of analysis and interpretation across the different sites. The cross-calibration campaign is described in Section 2.3. HPGe assay sensitivity to both early and late chain activities was critical to the comprehensive modeling of backgrounds.

2.2.1. BHUC

The Black Hills Underground Campus (BHUC) [6] is a facility located at the 4850 ft level of SURF which hosts a class 2000 cleanroom containing six low- and ultra-low background HPGe detectors: MAEVE, MORGAN, MORDRED, SOLO, and the TWINS. MAEVE, an Ortec 85% relative efficiency p-type detector (where the efficiency is defined as relative to that of a 3-inch \times 3-inch NaI detector exposed to 1332 keV ^{60}Co gamma-rays with a source-detector distance of 25 cm) has previously been situated in the Davis campus at SURF and, before that, at LBNL's Oroville site for 15 years. MORGAN, an Ortec 85% relative efficiency p-type detector, is effectively identical to MAEVE in performance. MORDRED, an Ortec 60% relative efficiency n-type detector, was retrofitted with ultra-low background electronics to improve its performance for low-background assay. MORDRED has good sensitivity to low-energy gamma rays and is therefore particularly well-suited for early chain U assays. SOLO, a 30% relative efficiency p-type detector, was previously sited in the Soudan Underground Laboratory and played an important role in the LUX experiment's low background counting [7, 8, 9]. While the crystal is small, it has exceptionally low backgrounds. The newest detectors in the BHUC are referred to as the TWINS, a pair of Ortec 90% relative efficiency p-type detectors in a common shield. The TWINS can operate in coincidence or anti-coincidence and in combined singles data acquisition mode where spectra from each detector are combined without any regard for events which are detected in coincidence.

In the BHUC, MAEVE, MORGAN, MORDRED, and SOLO are situated in separate graded shields. The TWINS are installed in a common shield. Each shield provides at least 20 cm of low-activity lead shielding with 2.5 cm of oxygen-free, low conductivity copper within the lead. The shield surrounding MAEVE has an inner layer of 2.5 cm of ultra-low activity lead and the shield surrounding SOLO has an inner layer of 5 cm of ancient lead. The study of low-background lead for detector shielding is discussed in detail in [10]. All HPGe detectors are constructed using low-background designs and include remote preamplifiers. All detectors are filled with liquid nitrogen from a fully automated filling system. To provide the nitrogen gas flows necessary for purging the six detectors inside the BHUC cleanroom, a dedicated gas generator was installed, producing low activity nitrogen gas from a liquid nitrogen dewar. The gas purge flushes the detector counting cavities as well as the lead and copper shields. An additional detector, Ge-IV, operated by the University of Alabama, is installed

outside the cleanroom, although this has not been used for assays discussed in this paper.

2.2.2. BUGS

The Boulby Underground Germanium Suite (BUGS) hosts seven gamma spectroscopy detectors 1.1 km underground at the Boulby Underground Laboratory in a class 1000 cleanroom. Since 2013, the majority of screening efforts for the LZ experiment were performed using the Chaloner, Lunehead, and Lumpsey detectors. These detectors are, respectively, a Mirion (formerly Canberra) BE5030 broad-energy ultra-low background (ULB) HPGe detector¹, a Mirion ULB SAGe well-detector, and a refurbished 100% relative efficiency Ortec p-type detector used previously for the ZEPLIN-II and ZEPLIN-III experiment’s low background counting [11, 12, 13]. The BUGS detectors are housed in custom shields designed and built by Lead Shield Engineering Ltd. The shields comprise 9 cm thickness of lead and an inner layer of 9 cm thickness of copper with interlocking retractable roofs to simplify sample loading. The lead used in these shields has mostly been recycled from lead used to shield previous low-background experiments hosted at the Boulby Underground Laboratory. The characterizations and sensitivities of these detectors are discussed in [5].

In addition to these detectors, BUGS has installed additional Mirion “specialty ultra-low background” (S-ULB) detectors which have been used to screen later LZ samples since 2017. These comprise two p-type detectors, Belmont and Merrybent, with relative efficiencies of 160% and 110%, respectively, and Roseberry, a BE6530 BEGe type detector. For uniformity, these detectors are housed in similar shields to those used for the ULB standard Mirion detectors with the exception of the shield used for the Belmont detector which includes an inner liner of very low-background copper. These three detectors display substantially lower backgrounds than those of the ULB standard to significantly enhance the throughput rate of assays for LZ. The Belmont detector in particular, was used to further lower the $^{238}\text{U}_1$ upper limits for titanium reported in [14].

The shields used for all detectors are purged using nitrogen from a Wirac NG6 gas generator. The Boulby Underground Laboratory benefits from a low baseline radon level (averaging $\sim 2.5 \text{ Bq/m}^3$). To remove residual radon in the nitrogen purge gas, charcoal traps containing approximately 6 kg of Carboact activated charcoal are

¹It is inappropriate to classify BEGe and SAGe well detectors by their relative efficiency as they are designed to maximize efficiency to low-energy gamma-rays rather than to maximize efficiency to a 1332 keV ^{60}Co gamma-ray. For the BEGe type detector, the model number signifies the area of the front face and the thickness of the crystal. In the case of the BE5030 detector, it has a 50 cm^2 front face and a thickness of 30 mm.

deployed in a Labcold ULTF416 -80 °C chest freezer. This radon reduction system is based on the design of a radon emanation detector developed at the Centre de Physique des Particules de Marseille (CPPM) [15].

2.2.3. LBNL

Lawrence Berkeley National Laboratory (LBNL) has two HPGe detectors devoted to assay [16]. These are housed in a near-surface room shielded with over 1.5 m of low radioactivity concrete. The MERLIN detector is an Ortec 115% n-type detector. MERLIN is shielded by 20 cm of lead with an inner layer of 2.5 cm of copper and is equipped with a plastic scintillator cosmic-ray veto. The BIG-8 detector is an 85% p-type detector shielded with 10 cm of lead and 1.2 cm of copper. It is equipped with a NaI veto that encloses the Ge crystal. Both detectors are flushed with nitrogen boil-off gas. The cosmic-ray vetos and local shielding result in detector performance equivalent to being sited at a depth of approximately 500 m.w.e.

2.2.4. Alabama

The University of Alabama operates two above-ground Canberra p-type low-background HPGe detectors [17]. These are Ge-II and Ge-III which have relative efficiencies of 60% and 105%, respectively. Each of these detectors is housed in shielding comprising 20 cm of lead with an inner layer of 5 cm of copper, instrumented with 5 cm thick plastic scintillator cosmic-ray veto detectors. The sample chambers are continuously flushed with nitrogen boil-off gas to displace radon. Despite their above-ground location, the background rates achieved this way are comparable to some of the underground devices, as reported in Table 2. Ge-II and Ge-III have been used for items assayed using Neutron Activation Analysis (NAA), described in Section 2.5. Ge-III was further utilized extensively for studies of ^{210}Pb surface activities, their deposition through radon exposure, and their removal.

2.3. HPGe Cross-Calibration

Early in the LZ assay efforts, it was recognized that samples would be distributed amongst a large variety of detectors with different backgrounds, shielding arrangements, and histories. To cross-calibrate and evaluate the systematic uncertainties in assays performed with the detectors listed in Table 2, a sample of latite with well-characterized uranium, thorium and potassium content was prepared. This material has been used by LBNL for more than 30 years to characterize its detectors. The uniformity of the radioactivity has been studied and is confirmed to be flat across a variety of sample sizes from ~ 1 mm up to several cm. An S5 Marinelli beaker of this mineral was prepared and sealed. The content and activity was not known by the rest of the collaboration and the same beaker was subsequently analyzed by all

Table 1: Key characteristics of the 12 detectors used in the LZ HPGe screening campaign. Crystal mass and volume is included to give an idea of the relative sizes of the crystal. In addition the relative efficiency is given for the p-type detectors and the area of the front face is given for the BEGe detectors.

Location	Detector	Type	V [cm ³]	M [kg]	Relative Efficiency (%)	Face Area [cm ²]
BUGS	Belmont	p-type	600	3.2	1.92	-
	Merrybent	p-type	375	2.0	1.87	-
	Lunehead	p-type	375	2.0	1.86	-
	Roseberry	BEGe	170	0.9	-	181.1
	Chaloner	BEGe	150	0.8	-	1053.0
	Lumpsey	SAGe well	263	1.4	-	-
LBNL	MERLIN	n-type	430	2.2	3.59	-
BHUC	MAEVE	p-type	375	2.0	3.19	-
	MORGAN	p-type	375	2.0	2.68	-
	MORDRED	n-type	253	1.3	2.44	-
	SOLO	p-type	113	0.6	5.52	-
Alabama	Ge-II	p-type	260	1.4	3.6	-
	Ge-III	p-type	406	2.2	2.71	-

Table 2: Performance characteristics for each detector used in the LZ fixed contaminant screening campaign. For each detector, as is standard, the full-width at half maximum (FWHM) of the 1332 keV ^{60}Co gamma-ray is shown. It can be seen that BEGe and SAGe-well type detectors (Roseberry, Chaloner & Lumpsey) typically achieve the best resolution. A comparison of the integral counts between 60-2700 keV is given scaled to the mass of the detector crystal. Finally, a comparison between count rates for several peaks of interest are given corresponding to standard NORM (or in the case of ^{60}Co , anthropogenic) isotopes.

Detector	FWHM 1332 keV [keV]	Integral (60 - 2700) keV [$\text{kg}^{-1}\cdot\text{day}^{-1}$]	Tl-208 2614.5 keV [$\text{kg}^{-1}\cdot\text{day}^{-1}$]	Bi-214 609.3 keV [$\text{kg}^{-1}\cdot\text{day}^{-1}$]	Co-60 1332.5 keV [$\text{kg}^{-1}\cdot\text{day}^{-1}$]	K-40 1460.8 keV [$\text{kg}^{-1}\cdot\text{day}^{-1}$]	Pb-210 46.5 keV [$\text{kg}^{-1}\cdot\text{day}^{-1}$]
Belmont	1.92	135.0	0.3	1.4	1.6	1.0	-
Merrybent	1.87	167.4	0.4	1.8	0.6	1.9	-
Lunehead	1.86	582.4	2.0	4.7	1.5	9.2	-
Roseberry	1.58	181.1	<0.4	<0.4	0.6	0.7	0.3
Chaloner	1.56	1053.0	1.7	9.5	1.2	8.3	1.7
Lumpsey	1.66	4256.8	12.2	60.3	1.6	7.0	13.7
MERLIN	3.59	68868.3	9.7	7.5	-	20.0	80.2
MAEVE	3.19	956.1	1.8	1.4	0.5	3.5	49.6
MORGAN	2.68	1338.8	3.2	8.8	3.8	4.8	4.6
MORDRED	2.44	2103.2	2.1	3.9	1.6	7.4	29.0
SOLO	5.52	786.9	-	3.3	-	-	-
Ge-II	3.6	9600	<1.4	3.6	10.3	2.3	-
Ge-III	2.71	8600	<0.5	9.6	1.7	2.5	1.6

groups on all their detectors. The analyses were sent to a central site, amassed and compared by one individual who had knowledge of the true contamination of the calibration source material.

This comparison uncovered some issues with several analyses, mostly due to problems with the Monte Carlo simulations of the detectors. After discrepancies were highlighted by the individual who amassed the results, these issues were identified and corrected. The results were again compared across all the detectors. Table 3 lists reference values for each isotope; compares results from each detector; and gives their combined average and standard deviation. A visual comparison between detectors used in the calibration program for potassium is shown in Figure 1. It is important to note at this point that when a concentration is reported, in parts per value *e.g.* ppm, ppb, ppt (g of U/Th per g of material), it is no longer pertinent to refer to late chain or early chain values as the concentration defines the concentration of the progenitor isotope (^{238}U , ^{235}U , ^{232}Th) assuming secular equilibrium [18]. The vast majority of the assays performed as part of the LZ campaign were performed on the detectors shown in this figure. The cross-calibration effort confirmed that the modeling of detector geometries and efficiencies were correctly handled and provides a reasonable estimate on the systematic variation among the assays of $\sim 10\%$ thus giving the collaboration confidence that each individual facility is able to produce consistent and accurate assay results. This being the case, newer detectors that were used later in the campaign (such as the S-ULB detectors added to BUGS) were not required to be characterized using the latite sample. Each facility was able to implement their own calibration and characterization methods and the subsequent assay results were accepted to be accurate within statistical errors and within the systematic errors of the detector used.

For some materials, such as the titanium, additional steps were taken to increase our confidence in the assay precision. This cross-calibration also verified that all counters had effective Rn-reducing purge systems. Periodically, the LZ assay campaign screening of selected samples was repeated on different detectors to monitor for stability of assays. These ongoing comparisons spanned a variety of source materials and a wide range of contamination levels, while also probing for Th in-growth in particular LZ components. For many materials we complemented the HPGe assays with Inductively-Coupled Plasma Mass Spectrometry (ICP-MS) and, after their installation at Boulby, with the new S-ULB detectors to further verify our measured concentrations of $^{238}\text{U}_e$ and $^{232}\text{Th}_e$.

Results from the assays deploying gamma spectroscopy are presented in Table A1.

Table 3: Results from the HPGe cross-calibration performed using a sample of Rhyolite. For the $^{238}\text{U}_e$ and $^{238}\text{U}_l$ columns, the contamination reported is that of the progenitor isotope ^{238}U assuming secular equilibrium and for the $^{232}\text{Th}_e$ and $^{232}\text{Th}_l$ columns, the contamination reported is that of ^{232}Th assuming secular equilibrium.

Detector	$^{238}\text{U}_e$ (ppm)	$^{238}\text{U}_l$ (ppm)	$^{232}\text{Th}_e$ (ppm)	$^{232}\text{Th}_l$ (ppm)	K (%)
Reference	8.87(4)	8.5(1)	12.1(1)	12.1(1)	2.82(1)
MERLIN	8.92(9)	-	12.4(1)	12.4(1)	2.81(3)
MAEVE	8.6(1)	8.6(1)	11.9(1)	11.9(1)	2.74(3)
MORDRED	7.92(5)	10.2(1)	11.3(2)	11.3(1)	2.66(6)
SOLO	6.16(1)	-	12.5(7)	9.94(1)	2.91(1)
Chaloner	8.73(5)	7.9(2)	11.1(1)	11.1(1)	2.81(1)
Lunehead	8.5(1)	-	11.8(1)	11.8(1)	2.85(1)
Ge-II	9.6(13)	11.4(15)	12(16)	12.2(17)	3.4(4)
Ge-III	9.2(9)	10.3(10)	12.1(12)	12.8(13)	3.3(3)
Average	7.61(3)	9.2(2)	11.9(1)	10.54(0.5)	2.84(2)
Std. Dev.	0.98	1.26	0.46	0.84	0.25

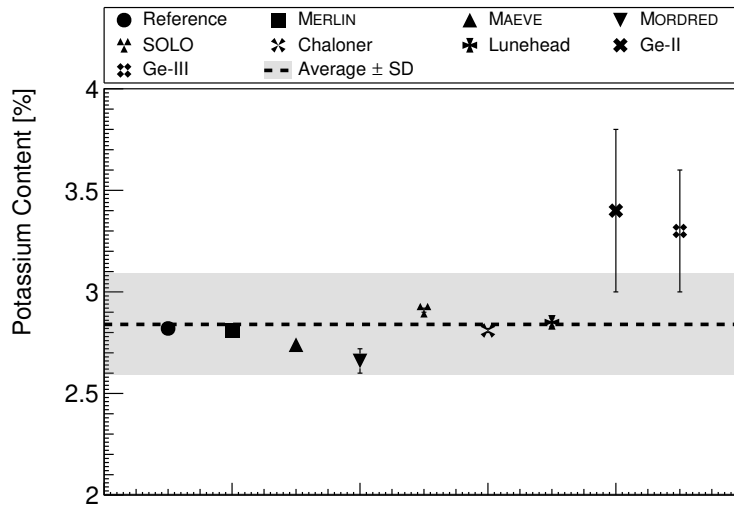


Figure 1: Cross-calibration results for potassium concentration for the detectors used in the LZ HPGe radioassay campaign. The reference value for potassium concentration in this sample is $(2.82 \pm 0.01)\%$. Excluding this, an error-weighted mean of $(2.84 \pm 0.02)\%$ was derived from the measurements of ^{40}K . In this figure, the gray band represents the standard deviation of the measurements with a value of 0.25%.

2.4. Mass Spectrometry

Inductively-Coupled Plasma Mass Spectrometry (ICP-MS) allows very precise direct measurement of the elemental abundances of uranium and thorium in small samples. The assays can be very quick, taking hours to days depending on requisite sensitivity down to sub-ppt levels and depending on related sample preparation protocols. ICP-MS has been used extensively in LZ to quickly measure ^{238}U and ^{232}Th in small samples to either reject or clear materials for use, or to pre-screen materials prior to assay with gamma spectroscopy which can determine the complete activity through the ^{238}U and ^{232}Th decay chains. The speed of ICP-MS allowed rapid analysis of test pieces provided by manufacturers at specified points in the production processes to detect potential issues and to ensure radioactivity and cleanliness compliance. The manufacture of the Ti cryostat is one such example, highlighted in Section 5.2.

The majority of ICP-MS assays for LZ were performed using a dedicated mass spectrometry laboratory at UCL, housed in a class 1000 cleanroom facility and operating an Agilent 7900 spectrometer installed in 2015 exclusively for LZ [19]. Sample preparation and analysis procedures have been developed for materials with U/Th concentrations in the ppt to 1 ppb range: Samples are microwave-digested in pre-cleaned modified-PTFE vessels using ultra-high purity acids. They are then diluted, without further chemical treatment, into disposable 50 mL polypropylene (PP) vessels ready for ICP-MS analysis. Fractional recoveries of ^{230}Th and ^{233}U spikes added prior to digestion are used to correct for ^{232}Th and ^{238}U signal loss from a range of sources. In particular, this enables accurate analysis of samples with high total dissolved solids (TDS) where the instrument response degrades throughout the run. A full assay including digestion, ICP-MS measurement and analysis can be completed in a single day. The UCL facility was upgraded in 2019 with an Agilent 8900 ICP-MS.

In addition to the system at UCL, some material samples were assayed using facilities at the University of Alabama, the Centre for Underground Physics in Korea, and the Black Hills State University. At the University of Alabama, the LZ group set up a sample preparation laboratory in a Class 500 cleanroom equipped with a cryogenic mill, microwave digestion system, and digestion bomb. Further processing of samples, including spiking and resin-based extraction of U/Th isotopes was carried out in a separate cleanroom. The samples were then given to the Department of Geological Sciences which processed the samples using a Perkin-Elmer SCIEX-ELAN 6000 system. In Korea and at Black Hills State University, samples were measured using Agilent 7900 spectrometer, as was used at UCL. Results from ICP-MS assays for LZ are presented in Table A2.

Finally, in the early days of the LZ assay program, a small number of items were assayed using Glow Discharge Mass Spectrometry (GDMS). These assays were performed using a Thermo-Fisher VG 9000 GDMS instrument operated by the National Research Council of Canada (NRC). GDMS can achieve sensitivities of around 10 ppt for conductive materials. For this reason, GDMS was used for some assays of titanium. Results from the GDMS assays for LZ are presented in Table A3.

2.5. Neutron activation Analysis (NAA)

As with ICP-MS, NAA allows sensitive analysis of small concentrations of Th and U in small samples. It only constrains the early decay series. It can be utilized for materials where the matrix does not form long-lived radioactivity after neutron capture. As such it is well-suited for plastics.

For NAA assay in LZ, the University of Alabama group utilizes the 6 MW_{th} tank-type MITR-II (MITR-II, located at the Massachusetts Institute of Technology) to activate samples. This technique is typically used for small size samples of a few mm in diameter and several cm in length. LZ samples were prepared at the University of Alabama in a cleanroom prior to their shipping to the reactor for activation. Surfaces were leached extensively in ultra-clean acids to distinguish bulk from surface activities. The polyethylene vials used for irradiation are cleaned, welded shut, and leak tested. Samples are typically irradiated for 10 h in the high-flux sample insertion facility of MITR-II before being returned for counting analysis. Storage within sealed polyethylene vials serves to protect the samples from cross-contamination during transport and activation. There is a typical delay of around 24 h between activation being completed and samples being assayed using Ge-II or Ge-III, but this is acceptable when compared to the half-lives of the activation products used for NAA (*e.g.* ^{42}K - $\tau_{1/2} = 22.3$ h, ^{233}Pa - $\tau_{1/2} = 26.97$ days, and ^{239}Np - $\tau_{1/2} = 2.36$ days). Assays typically lasted 2 to 4 weeks and a double-differential time-energy analysis is used to determine elemental concentrations of samples. Neutron capture cross sections, averaged over the energy distributions of the three reactor neutron flux components, taken from the JENDL4.0 database are utilized in the data analysis. For each of the LZ activation campaigns the neutron fluxes were determined by activating the NIST reference material, fly ash, immediately following the sample. This allows to reference the elements of interest directly to a standard. This method is discussed in depth in [20].

The techniques employed by the University of Alabama group routinely achieve a sensitivity of 10^{-12} g U/Th per g of material and, indeed, sensitivities as good as 10^{-14} g of U/Th per g of material have been reported by the same group for assays related to the EXO-200 experiment [20, 21]. Such sensitivity has been key for assays

and selection of raw materials not readily amenable to direct HPGe due to sample mass or minimal detectable activity requirements, or to ICP-MS due to difficulties in sample digestion and preparation. Selection of PTFE to manufacture the LZ TPC reflectors are one such example where NAA has been deployed, with results presented in Table A4.

3. Radon Emanation

3.1. Origin of Radon Emanation

Radon is produced in the alpha decay of radium, part of the uranium and thorium decay series. Due to the long lifetime of their progenitor isotopes, there is a near-constant supply of ^{222}Rn ($\tau_{1/2} = 3.82$ d) and ^{220}Rn ($\tau_{1/2} = 55.6$ s) that may emanate out of materials over the lifetime of an experiment. The emanation rate of a material can be broken down into two parts: emanation due to recoiling radon atoms and emanation due to diffusion. Emanation due to diffusion can vary drastically depending on chemical and lattice structures of a material, density, surface roughness, and temperature. The diffusion length, $L(m)$, of radon for a given material can be represented as $L(m) = \sqrt{D/\lambda}$, where D is the diffusion coefficient and λ the decay constant.

The background from radon emanation in LZ is dominated by the ground-state to ground-state or “naked” β -emission from the ^{214}Pb progeny of the ^{222}Rn sub-chain as it decays to ^{214}Bi . The relatively long half-life of ^{222}Rn leads to a homogeneous mixing within the target volume, resulting in a uniform ER background with the ^{214}Pb β spectrum up to 1019 keV. The background from ^{220}Rn is expected to be significantly suppressed due a much smaller diffusion length as a result of its shorter half-life, hence most of it is expected to decay within the material volume in comparison to ^{222}Rn before diffusing out, or before maximally mixing with the active xenon volume.

Radon emanation accounts for $\approx 66\%$ of the projected ER background in the WIMP search region of interest in LZ [1], predominantly from a projected ^{222}Rn specific activity of $2\ \mu\text{Bq}/\text{kg}$ that corresponds to approximately 20 mBq in the 10 tonnes of xenon, from which 11 mBq is in the fiducial volume. As demonstrated by previous LXe-based rare-event search experiments, including LUX and ZEPLIN-III, the amount of radon in the target can be deduced through analysis of the ^{214}Pb β -spectrum and from coincidence tagging of decaying radon daughter ^{214}Bi and ^{214}Po [7, 12]. While such *in-situ* techniques are powerful in constraining the observed radon emanation background once the detector is closed and operational, a screening campaign akin to that for fixed contaminants is required to inform material selection for detector and sub-system construction, and for the experiment background prediction.

3.2. Radon Emanation Screening

3.2.1. Screening Techniques

The techniques involved in screening for radon generally involve reconstructing the radon emanation rate by measuring the radon sub-chain daughter isotopes. An indirect way of achieving this uses gamma spectroscopy to measure the ^{214}Bi ($\tau_{1/2} = 19.9$ min) and ^{214}Pb ($\tau_{1/2} = 26.8$ min) decay rates, from which the radon decay rate can be inferred. Although some useful constraints can be derived, it is extremely difficult to distinguish between radon daughters decaying in the bulk of the material and those that decay outside of the material, so emanation rates cannot be deduced without a material-specific diffusion model.

The method utilized by LZ in four different facilities is to directly measure the radon emanation rates from detector material, leading to a more accurate result in constructing the radon-induced background rate. The sample material is initially enclosed in an air-tight chamber that is filled with a low-radon carrier gas, typically helium or nitrogen. This carrier gas prevents recoiling radon atoms from embedding themselves in the walls of the chamber. After an emanation period that allows the radon concentration in the chamber to approach equilibrium (≈ 1 week), the emanated radon atoms are transferred into a detector that can either measure the rates of ^{218}Po ($\tau_{1/2} = 3.1$ m) and ^{214}Po ($\tau_{1/2} = 164$ μs), with a mean decay time of ~ 71 min after the initial ^{222}Rn decay. A second method of reconstructing the emanation rate is by identify the delayed ^{214}Bi - ^{214}Po coincidence (with measurement times also ≈ 1 week). In both cases, the radon emanation rate is reconstructed by correcting for the detection and transfer efficiencies, measured during dedicated runs with radon sources of known activity.

The first of these reconstruction techniques determines the radon emanation rate by detecting the alpha particles emitted from the ^{218}Po and ^{214}Po isotopes. These systems use electrostatic silicon PIN-diodes to attract and capture the predominantly positively charged ions ($87.3 \pm 1.6\%$) of radon daughter nuclei by using an electric field that is generated from the negative voltage applied on the PIN-diode [22]. The alpha particles emitted from the ^{218}Po and ^{214}Po ions are detected by a PIN-diode as they undergo alpha decay and are distinguished by the energies they deposit; 6.1 MeV and 7.9 MeV, respectively. Of the four radon-emanation screening facilities used by LZ, three use electrostatic PIN-diode detectors for radon emanation. The fourth facility collects the harvested radon by dissolving it in organic liquid scintillator by means of a carrier gas. The delayed ^{214}Bi - ^{214}Po coincidences are then counted to infer the corresponding ^{222}Rn decay rate. All operate at room temperature such that the expected suppression of diffusion-dominated radon emanation at low temperature is not probed.

Table 4: Comparison of the key highlights of the four radon emanation facilities used by LZ. The chambers detailed are those used in containing the sample material, where radon is collected. Some facilities operate two chambers as detailed below. Chamber blank rates detail the emanation rate from the chambers alone and are background subtracted for sample measurements. Detector efficiency represents the fraction of activity measured from the total radon inside the detecting volume; independent of chamber usage and transfer efficiency. The cross-calibration figures represent the reconstructed emanation rate of a standard rubber sample previously used by other collaborations. When not stated, overall uncertainties are estimated to be 10-20%.

Detector	Type	Chamber Volumes [L]	Chamber Blank Rates [mBq]	Transfer Efficiency [%]	Detector Efficiency [%]	Cross-Calibration [Measured/EXO-activity]
SDSM&T	PIN-diode	13	0.2	94	25	0.89±0.15
		300	0.2	80		1.11±0.28
Maryland	PIN-diode	4.7	0.2	96	24	1.13 ± 0.19
UCL	PIN-diode	2.6	0.2	97	30	1.49±0.15
		2.6	0.4	97		
Alabama	Liquid Scint.	2.6	<0.4	34	36	0.83±0.17
		2.6				

The LZ collaboration performed cross-calibrations for the four radon facilities deployed as part of our assay program. A rubber sample previously screened by the EXO collaboration [23, 24] was assayed at each of the radon emanation facilities. Prior to the emanation period, the sample was prepared under the same conditions to reduce the chances of environmental contamination. The surface of the sample was scrubbed with isopropyl alcohol-soaked lint-free wipes and inspected with UV-light to ensure no presence of surface contamination. The activity of the sample was $\mathcal{O}(10\text{ mBq})$ and was thus well above the minimal detectable activities of the radon systems. Table 4 presents the results of the cross-calibration and a summary of key details of the LZ radon screening facilities.

LZ makes use of two portable radon collection systems for equipment that is too large or delicate to move to the radon emanation facilities or for assays of systems under construction in the SURF Surface Assembly Laboratory (SAL). Emanated radon is transferred to a cold trap consisting of copper beads or wool that is double-sealed and then transported by car or overnight shipping to the radon facility at South Dakota School of Mines and Technology (SDSM&T) or University of Maryland. The collected radon would then be transferred over into the respective radon detector with transfer efficiencies taken into account from portable-system specific calibrations. The activity is then reconstructed by correcting for the transportation time and detector efficiency. These portable systems were critical for measurements of radon emanation from the assembled LZ detector and from large instrumentation used in the circulation path. Results from the radon emanation assay campaign are presented in Table A5. For majority of the measurements, smaller samples are sent to the

facilities detailed below and radon is often collected in emanation chambers and measured with their respective detectors.

3.2.2. *SDSM&T*

The SDSM&T system uses two electropolished stainless steel chambers as the radon collection media: a 13 L vessel for smaller components and a 300 L vessel for larger components. Emanation samples are placed in the chambers with care taken not to introduce dust into the chambers or onto the samples. The chambers are then filled with nitrogen gas that has been scrubbed of radon by an activated charcoal trap cooled to 196 K by a mixture of dry ice and isopropyl alcohol.

After the sample has emanated, the radon is concentrated and transferred to the 1.7 L detection chamber in a multi-stage process. In the first stage, the radon is transferred from the emanation chamber to a large brass wool trap cooled to 77 K by liquid nitrogen (LN_2). A high transfer efficiency is achieved even for the 300 L vessel by repeatedly pumping the chamber out through the trap and refilling. The radon is then transferred to a small brass wool trap by warming the large trap and cooling the small trap and flowing clean nitrogen through first the large trap and then the small trap. Due to the volume of gas allowed to flow, the transfer efficiency from the large trap to the small trap is $\approx 100\%$. Then with the small trap and detection chamber at low pressure, the small trap is warmed and nitrogen is allowed to flow through the small trap into the detection chamber to raise the pressure in the detection chamber to 100 Torr. This process transfers $\sim 95\%$ of the radon to the detection chamber, for overall transfer efficiencies of 80% (94%) for the 300 L (13 L) chamber. The detector is an electrostatic silicon PIN-diode detector as described above. The detector efficiency was determined to be $23 \pm 2\%$ for ^{218}Po and $25 \pm 2\%$ for ^{214}Po under standard operating conditions. A system for performing emanations at LN temperatures is under construction.

3.2.3. *University of Maryland*

The Maryland system's primary focus was to measure emanation rates from volumes that act as their own emanation chambers, such as the LZ compressor system. The Maryland system also contains a 4.6 L stainless steel vessel, used to calibrate the system and to perform measurements on smaller samples. The system uses an activated charcoal trap operated at LN_2 temperature to initially scrub the radon from the helium carrier gas. The radon from the emanation volume is captured by a copper pellet trap also cooled to LN_2 temperature. The copper trap is a 0.5" electropolished stainless steel tube bent into a U-shape and containing 180 g of copper pellets (Atlantic Equipment Engineers CU-131). The pellets range in size from 1/16" to 3/32". The radon is released from the copper at room temperature and

transferred to a 1.7 L chamber containing an electrostatic PIN diode detector. The efficiency of the copper pellet trap was determined to be near 100% by repeated trapping and counting of a radon sample. The absolute efficiency of the detector was determined to be 24% by measuring a calibrated natural rock source purchased from DurrIDGE. Ion drift simulations were carried out to study the performance of the detector. The predicted efficiency agrees with the measurements within the systematic uncertainty for both the Maryland and the SDSM&T detection chambers, which have a near-identical design.

A second electrostatic PIN diode radon counting system is operated at Maryland in flow-through mode to measure the elution curves of charcoal samples in helium carrier gas. A piece of uranium ore acts as an uncalibrated radon source for these measurements. Once the elution curve is determined, an appropriate radon harvesting time can be chosen for each charcoal sample during its subsequent radon emanation measurement.

3.2.4. UCL

The UCL system’s custom-made electrostatic detector was originally developed for high sensitivity radon measurements for the ELEGANT V and Super-Kamiokande experiments [25]. The detector consists of a 70 L electropolished steel chamber with a silicon PIN-diode located at the top, operating under the same principles as described above. By the use of a calibration source of known activity (a 1.32 kBq “flow-through” ^{226}Ra source by Pylon Electronics, RN-1025), the detection efficiencies for ^{214}Po and ^{218}Po are determined to be $(31.6 \pm 1.6)\%$ and $(27.1 \pm 1.4)\%$, respectively, with helium as the transfer gas. The system operates two 2.7 L stainless steel chambers as the emanation media. The larger detector volume and the small emanation volumes allow a single step transfer process, where helium gas is flushed through the emanation chambers, directly into the detector. To eliminate the contamination of background radon from the carrier gas, the gas is initially allowed to flow through an activated carbon trap stored in an ultra-low temperature freezer (193 K) and the entire system is purged to remove accumulated radon emanating out of the transfer lines.

A second mode of operation for the system uses 57 g of activated carbon (a synthetic charcoal sourced from Carbo-Act International [26]) as a radon collection trap. In larger emanation volumes, the radon is initially absorbed into the cooled trap while the carrier gas passes through. The trap is then heated to release the radon and the carrier gas is then used to transfer the concentrated radon into the detector volume. The trapping efficiency for this setup has been measured to be $\approx 93\%$ at 248 K. The cold trap was not generally necessary for the results reported

in Table A5.

A second facility with sensitivity to low-temperature emanation is under construction and will be operated at the Rutherford Appleton Laboratory.

3.2.5. *University of Alabama*

The radon emanation facility at Alabama operates in a similar principle to those of the other three detectors, with the exception of their detection technique. Two 2.6 L electropolished emanation chambers, of the same design as those utilized by the UCL group, are used to accumulate the radon outgassed from samples of interest. Boil-off nitrogen, selected for its low intrinsic radon content, serves as a carrier to transfer the radon into about 150 mL of organic liquid scintillator. The carrier gas is flowed for 48 min at a rate of 20 mL/min. Experiments with a calibrated Pylon RN-1025 radon source showed that longer purge times and higher flow rates result in more effective radon removal from the collection vessel but, on the other hand, lead to radon loss in the liquid scintillator due to the dissolved radon being washed out. The chosen parameters constitute the optimal compromise between these two mechanisms. Measurements with cascaded scintillator collectors showed that under these conditions about 70% of the radon arriving at the scintillator-gas interface dissolves in the scintillator. Use of the calibrated radon source yields an overall radon transfer efficiency of 34.3%. The radon-loaded scintillator is transferred into a small acrylic counting cell, equipped with one low-activity 3-inch Hamamatsu R-1307 PMT. The measurement of delayed ^{214}Bi - ^{214}Po coincidences allows the determination of the decay rate with low background. The analysis of the delayed-coincidence data sets uses cuts on the β - and α -like energy deposits. The distribution of time differences between β - and α -like events is fit to an exponential plus a constant, with the correlation time frozen to the known ^{214}Po mean lifetime. The exponential component of the fit determines the decay rate; the constant term unfolds the random background. The efficiency of these cuts has been determined, by means of loading radon derived from the calibrated source, to be 35.9%. However, because of the need to transfer both the carrier gas and the scintillator, the limiting factor is not the detector background but the blank (radon introduced during transfer and handling). Repeated measures of the handling blank allowed for estimation of the blank subtraction uncertainty. A further source of background is steady state leakage of radon into the sealed counting cells. Counting continued after allowing the radon to decay, thus, quantifying this background directly. This leakage varied between counting cells.

4. Surface Contamination

4.1. Origins of Surface Contamination

Radio-pure detector materials and components selected through the LZ screening campaign may be contaminated during the assembly process. Indeed, exposure to airborne radon at any stage of the assembly process results in the contamination of detector materials by radon daughters (mainly the long-lived ^{210}Pb , $\tau_{1/2} = 22.3\text{ y}$) that plate-out onto surfaces [27]. Environmental dust also deposits on detector material surfaces, and later, radon emanates from these surfaces and could yield daughter decays in the LXe volume during the LZ data-taking period.

Of particular concern is ^{214}Pb , which will emit naked betas leading to a continuous ER background down to the WIMP energy window as described in Section 3.1. Also, ^{210}Pb will subsequently decay, with its granddaughter ^{210}Po releasing 5.3 MeV alphas. This induces neutrons via (α, n) reactions on low-Z nuclei in various detector materials, leading to NR backgrounds. Stable ^{206}Pb from the decay of ^{210}Po on material surfaces may recoil into the LXe volume producing a complicated wall background (0 to 103 keV in energy), which, despite fiducialization, could yield leakage nuclear recoil events in the region of interest due to poor position reconstruction because of their high radius (near wall) and low s_2 size (since low energy) [28]. Surface contamination by radon daughters and dust thus contributes to LZ internal ER and NR backgrounds (at the expected level of about 3% and 38%, respectively) and should therefore be carefully controlled to meet the low level background requirements of the LZ experiment [1]. To this effect, a stringent cleanliness campaign was developed to monitor and mitigate this contamination during sub-systems assemblies, mainly the TPC detector assembly in the SAL.

This section discusses the estimation of the TPC surface contamination from both Rn and dust accumulated during the different phases of the TPC construction, along with the cleanliness measures and procedures undertaken to ensure the contamination levels remain below LZ requirements, and to minimize the internal backgrounds.

4.2. Dust Deposition

The ambient dust in the SAL cleanroom comes from two main sources: dust from outdoor air flowing through the air filtration system, and dust carried in and generated by personnel and material. The air filtration system consists of a series of six high-efficiency particulate air (HEPA) filters with fiber glass membranes that remove dust particulates from outdoor air fed into the cleanroom with an efficiency $\geq 99.97\%$ for particulates $\geq 0.3\ \mu\text{m}$ [29]. Recorded dust level (from two Met One GT-526S particle counters installed at different locations) within the cleanroom with and

without personnel demonstrates that outdoor dust passing through the air filtration system has a negligible contribution to the dust level within the cleanroom.

The main contribution to dust therefore comes from personnel who bring in dust from their bodies, cleanroom garbs, or equipment they bring into the cleanroom, as well as the dust they generate while working in the cleanroom. While continuous air recirculation within the cleanroom takes part of this dust back out, a portion of it does deposit onto open surfaces within the room, including those of the TPC, and should therefore be carefully quantified and controlled. Two technical probes were developed to estimate dust deposition on the TPC detector components surfaces, and a dust fallout model was developed for the same purpose.

4.2.1. Technical Probes: Witness Coupons

Witness coupons are small samples ideally made of the same materials as the detector component that is being assembled. Since dust deposits are expected to accumulate at the same rate on the detector material, the coupons are then used to infer the dust deposition on the component. For the LZ detector, the coupons are mostly PTFE and glass, since these make up a vast majority of the most background-sensitive surfaces of the TPC.

Although coupon surfaces should preferably be flat, PMT cable coupons with curved surfaces were also deployed in an effort to thoroughly probe dust deposition. All coupons are carefully cleaned with isopropyl alcohol (IPA) soaked non-shedding wipes and then deployed in pairs, as close as possible to the detector, to collect dust under similar conditions as the detector surfaces. They are typically harvested after a couple of weeks, which, based on the cleanroom level and the sensitivity of the assay technique, is enough time to collect the required amount of dust to make an assay possible. The coupons are then assayed via optical or fluorescence microscopy depending on material type in order to enable a contrast between the dust particulates and the rest of the coupon surface. For the PTFE coupons, since PTFE does not fluoresce but many dust particulates do, ultraviolet light is shone on the exposed side of the samples. Glass coupons, on the other hand, may be imaged under visible light. Both fluorescent or optical images are then processed via software written in for ImageJ [30] for further contrast to reveal smaller dust particulates down to $0.5\ \mu\text{m}$, and accurately determine the size distribution of these particulates and their contribution to the dust density accumulated on the coupons' surfaces. Some dust from the optics, which shows up in the same place on each image (of a clean or dirty coupon as seen on Figure 2), needs to be removed from the analysis and provides some minor calibration which ensures a consistent imageJ threshold is set for all images.

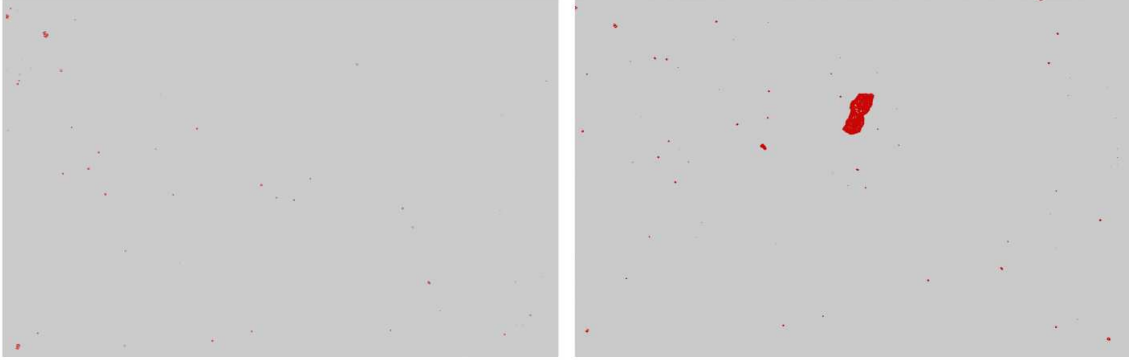


Figure 2: Optical images of clean (Left) and dirty (Right) witness coupons, post optical processing. The feature common to them are dust from the optics, and serves as a calibration check.

The number of particulates on the coupons decreases with increasing particulate size [31], such that large particles ($\geq 50 \mu\text{m}$) are relatively uncommon but they may dominate the total mass, as seen in Figure 3. Once the dust particulates size distribution is determined, the dust density accumulated on the coupon surface (in ng/cm^2) is calculated by dividing the accumulated mass (assuming particulates are spherical in shape with density of $1\text{g}/\text{cm}^3$) by the surface area of the coupons.

To obtain the dust fallout rate, witness coupons are assayed both before and after their exposure. The pre-exposure dust concentration is subtracted from the post-exposure dust concentration before dividing by the coupon exposure time to determine the dust fallout rate. Occasionally, mishandling of coupons led to their results being discarded.

4.2.2. Technical Probes: Tape lifts

Since rough, fluorescing materials cannot be imaged accurately, and because witness coupons never have exactly the history of the material itself, another, more direct, probe of dust deposition was conducted. These so-called tape lifts are simple pieces of acetate or carbon tapes that are stuck to an assembly piece, and are lifted to remove dust for assay. The choice of tape material depends on the surface texture/roughness of the component: acetate tape works better on smooth surfaces, like PTFE, while, for rougher surfaces like titanium, carbon tapes were found to perform better. The tape lifts are assayed using the same fluorescence microscopy technique utilized for the witness coupons. Unlike the coupons that collect dust throughout the assembly process, the tape lift assessment is conducted at the end of a main assembly. In addition to providing a more direct probe, tape lifts also mitigate against improper use or mishandling of coupons. For example, while the witness coupons are

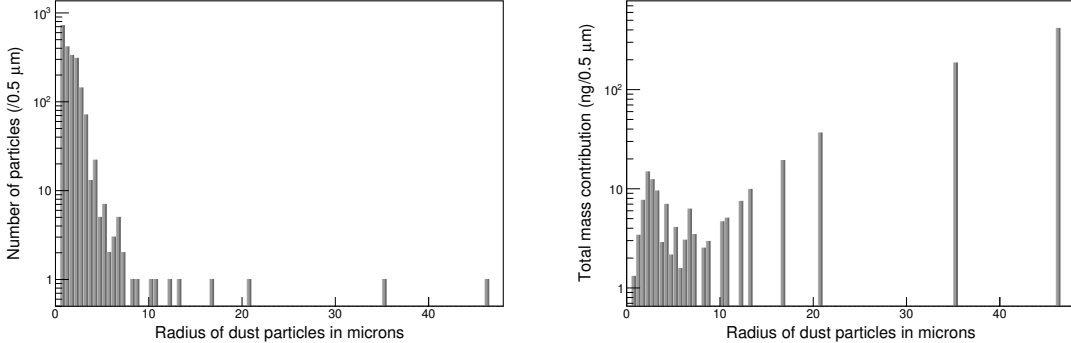


Figure 3: Left: Dust particulate size distribution from fluorescent image analysis of a witness plate. Particulates of size $>50\mu\text{m}$ are rarely recorded. Right: Dust particulate mass distribution of the same witness coupon showing contribution of particulate size to mass. Although most particulates are small, most of the mass on the coupon is from a small number of larger particulates.

supposed to be wiped each time an assembly, sub-assembly or parts are being wiped, this step can be overlooked, in which case the coupons will collect more dust than the actual assembly. The tape lifts meanwhile give confirmation of the dust level on a final assembly. However, tape lifts cannot be taken on particularly sensitive parts of the TPC, and therefore, they do not negate the need for coupons, but rather complement them. Both tape lifts and coupons are necessary for a full history of the dust deposition on every component during the assembly process. In addition, having two probes for dust deposition provided additional opportunities for the calibration and validation of the dust deposition models used by the LZ collaboration.

4.2.3. Dust Deposition Modeling

As discussed above, the dust density inside the assembly cleanroom depends on the influx and outflux of dust particulates in the room. Its value per unit particulate size D could be described by Eq.(1) originally developed by the SNO collaboration [32, 33]:

$$n(D) = R_{in}(D) \left[R_{AE} + v(D) \frac{S}{V} \right]^{-1} \quad (1)$$

where R_{AE} is the cleanroom air exchange rate defined as the volumetric air circulation rate in the cleanroom divided by the volume V of the cleanroom, $v(D)$ is the Stokes settling velocity which is dependent on the particulate size [34], $R_{in}(D)$ is the volume-normalized dust-particulate carry-in rate mostly from personnel, and S is the area of the projection of the cleanroom volume onto the horizontal plane.

The fallout rate per particulate size in mass per unit area and time could then be deduced using the continuity equation as shown in Eq.(2)

$$m(D) = \frac{\pi}{6}n(D)\rho D^3v(D) \quad (2)$$

where $\frac{\pi}{6}D^3$ is the particulate volume assuming they are spherical in shape and ρ is their mass density ($\equiv 1\text{g/cm}^3$). The total fallout rate is then obtained by integrating over all particulate sizes ($m = \int m(D) dD$); which for LZ ranges between $0.5\mu\text{m}$ to $100\mu\text{m}$ as determined by the witness coupons assay results.

However, the carry-in rate per particulate size $R_{in}(D)$ was not measured by LZ. Only the air class within the cleanroom was measured using particulate counters. Consequently, a model of air particulate-size distribution from dust carry-in was assumed based on ISO-14644-1 and the measured air class (which generally averages less than 10 particles $\geq 0.5\mu\text{m}$ per cubic foot due to our developed cleanliness protocols) was used to constrain the model. Also, a scaling factor η was added to the fallout rate in Eq.(2) and was then calibrated using results of fallout rate measurements from witness coupon assays. Its average value was estimated to be $\eta = 26.86 \pm 5.09$. This modified fallout rate, written in Eq.(3) will be referred to as the modified SNO model.

$$m = \int \frac{\pi}{6}n(D)\rho D^3v(D)\eta dD \quad (3)$$

The new modified SNO model was then compared with independent tape lift measurements to ensure agreement within uncertainty between the model and the measurements. Table 5 shows the agreement, hence validating the modified model. The η factor may be influenced by several factors but the clearest observed correlation for an increase in particle fallout rate was with a decrease in the relative humidity in the cleanroom. It was observed that at the lowest relative humidity level of 25%, the fallout rate was the highest ($1.18_{-0.19}^{+0.25}$ ng/cm²/hour) while in normal relative humidity levels (35-45 %), the fallout rate was as low as $0.03_{-0.01}^{+0.02}$ ng/cm²/hour. This is expected as, when the cleanroom air is drier, surfaces accumulate more static charges and attract more dust particulates.

Table 5: Comparison of calibrated modified SNO model with tape lift assay results

Tape lift date	Exposure time T (days)	Air class (cts/ft ³ $\geq 0.5\mu\text{m}$)	Dust deposition rate $m * T$ from model (ng/cm ²)	Dust deposition rate from tape lifts (ng/cm ²)
09/27/2018	1	172±17	285 ± 53	220 ⁺⁵⁰ ₋₂₀
11/29/2018	64	8±1	829 ± 154	885 ± 197

It is important to note that the high dust density recorded on some detector components in Table 5 was reduced to about 20% of this value after cleaning was performed, and is not the final level of dust density on the TPC surface. Indeed, tape lift results taken before and after cleaning have demonstrated that cleaning protocols developed by LZ (*e.g.* wiping surfaces under UV light with IPA soaked non-shedding wipes) reduce dust accumulation on surfaces by 80% and serve as stringent mitigation procedures against surface dust contamination. This is discussed in more detail in Section 4.4.

4.2.4. Dust Fallout Calculation for the TPC

The dust deposition rate in mass per unit area per unit time on the various TPC components was estimated using the modified SNO model. Once individual estimates are obtained for different components for each daily work shift, the overall deposited dust density for the i^{th} surface (M_i) is obtained by taking into account the exposure time T of that given surface and the mass of dust deposited per unit area and time (m), and is then given by Eq.(4):

$$M_i = Tm \quad (4)$$

Since different areas of the detector are exposed for different times during the assembly process, one must also take into account the exposed area versus total detector area. Therefore, the overall dust density (M_O) in ng/cm² for the entire TPC is:

$$M_o = \frac{\sum A_{exposed}^i M_i}{\sum A_{total}^i} \quad (5)$$

The surface areas, $A_{exposed}^i$ and A_{total}^i are obtained from a sophisticated information repository developed by LZ to smoothly manage and track detector parts, their surface areas, and their exposure to ambient cleanroom air during TPC construction. In addition, every instance of detector surface cleaning is recorded and taken into account, as described above, which allows for an accurate estimation of the dust contamination on TPC surfaces. The final estimation amounts to a total of (0.64 ± 0.05) g of dust accumulated on the entire TPC for a dust density of (214 ± 22) ng/cm², below LZ requirement of 500 ng/cm².

4.3. Rn Progeny Plate-out

In addition to dust, another source of background in the experiment comes from the environmental radon-laden air itself, with radon daughters plating out onto the surfaces of materials [35] during assembly. To limit plate-out, most assemblies are

done in a radon-reduced cleanroom (RCR) at the SAL. The radon-reduced system used in the RCR was built by ATEKO, and is a continuous filtration system constantly circulating air through a cold carbon column to filter out the radon at an overall reduction factor of 2200 leading to an ambient radon level averaging $<0.5 \text{ Bq/m}^3$ as measured by LZ. The RCR high recirculation rate of 8500 cubic feet per minute is enough to mostly sweep out radon daughters (particularly ^{218}Po) before they plate-out onto detector surfaces. Absolute plate-out prevention is however not possible, and the remaining ^{218}Po that plates out is problematic due to its long-lived ^{210}Pb daughter which will decay over time in the detector. Therefore, the plate-out rates on assemblies must be calculated.

Plate-out rates onto materials are often estimated using the Jacobi model [36, 27], which, similar to the original SNO model, describes particle deposition from a balance of influx and outflux of particles in the room assuming that the room contents are well-mixed. This Jacobi model can also be modified to reflect a cleanroom setting, as is the case here [37]. In its original version, the Jacobi model assumes that all surfaces within a given enclosure or a room are equivalent, with radon daughters ending up on all of them in equal concentrations. Under that assumption, the area-normalized plate-out rate (surface activity) depends on the conditions of the enclosure (air circulation rate, Rn concentration, volume, and surface area) within which the material surfaces are exposed. The ^{210}Pb plate-out rate expressed as the decay rate per unit area (Bq/m^2) and unit time, R_p , is thus described by Eq.(6):

$$R_p = C_{Rn} \lambda_{Pb210} \frac{\Lambda_d}{\Lambda_d + \Lambda_v} \frac{V}{A} \quad (6)$$

where C_{Rn} is the Rn concentration in the cleanroom (obtained from DurrIDGE Rad7 radon monitors with the monitors' blank rates subtracted off), λ_{Pb210} is the ^{210}Pb decay rate, V is the volume of the cleanroom, A is the surface area within the cleanroom, $\Lambda_d = v \frac{A}{V}$ is the deposition rate that depends on the diffusion velocity v of radon daughters measured to be between 5-15 m/h [36], $\Lambda_v = \frac{R}{V}$ is the air ventilation rate obtained by dividing the recirculation rate R of the cleanroom HEPA filters by its volume. The ratio $\frac{\Lambda_d}{\Lambda_d + \Lambda_v}$ corresponds to the probability that a Rn daughter will plate-out before being carried out by the ventilation; which, for the RCR, was around 0.17.

It is worth noting that the Jacobi model in Eq.(6) is a direct analog of the SNO dust deposition model, as seen by expanding $n(D)$ from Eq.(1) into Eq.(2) and making a number of associations of variables. While the SNO model describes deposition of dust onto horizontal surfaces, the Jacobi model describes deposition of Rn daughters on all surfaces, both controlled by a characteristic velocity in a similar

filtration environment. In particular we can identify the particle deposition rate per unit area per unit time in Eq.(6) as $R_p/\lambda_{Pb_{210}}$, whereas in Eq.(2) it is expressed as $6m/\pi\rho D^3$. The volume-normalized influx R_{in} of dust particulates in Eq.(1) is analogous to the volume-normalized rate of production of Rn daughters in Eq.(6), that is, the Rn activity per unit volume, C_{Rn} . The volume-normalized filtration rate R_{AE} from Eq.(1) is directly associated with λ_v from Eq.(6). The fallout area S from Eq.(1) is associated with the available Rn daughter plate-out area A from Eq.(6). Finally, the stokes velocity $v(D)$ from Eq.(1) is physically similar and mathematically analogous to the Rn daughter diffusion velocity v in Eq.(6).

However, the assumption in the Jacobi model that plate-out does not depend on material type has been shown to be incorrect, particularly for materials at the bottom of the triboelectric series, such as PTFE [38], which could have a plate-out rate M times higher than for neutral metallic materials. An experiment conducted by the SDSM&T measured the M factor to be between 50 and 100 [37]. So for LZ, plate-out rate estimations using the Jacobi model are thus corrected with a multiplicative factor M which has a value of $M = 1$ for plate-out onto metals, and its highest value $M = 100$ for plate-out rate on PTFE material surfaces which are naturally charged.

Much of the inner TPC is made from PTFE such that it is essential to mitigate against this high Rn plate-out. This is achieved by neutralizing the PTFE by using air deionizing fan units. These units are ISO 10 cleanroom compatible Simco 4008630 - 3 Fan Cleanroom Overhead Air Ionizer units which produce continuous ionized air through corona discharge, thus neutralizing the otherwise negatively charged PTFE material. Usage of the fans was taken into account in the plate-out estimations by reducing the correction factor M to the value of 1 for PTFE surfaces, after the fans' deployment. Indeed, electrostatic field measurements taken at regular time intervals between metallic surfaces and PTFE surfaces placed under air deionizing fan units showed a consistent reading of 0 kV/inch within the uncertainty of the measurement device, while similar measurement for PTFE material not placed under these fans read ~ 1.5 kV/inch, thus demonstrating the successful neutralization of PTFE under these deionizer units.

The weighted plate-out rate R_w on a given TPC assembly for a single work shift time period (exposure time T) is thus given by Eq.(7) where M is the plate-out rate multiplicative factor described above, A is the surface area of the individual parts making up the assembly, and R_p is the Jacobi plate-out rate per unit area and time obtained from Eq.(6):

$$R_w = \frac{\sum A_{exposed}^i (MR_p) T}{\sum A_{total}^i} \quad (7)$$

The overall plate-out accumulated for all the work shift time periods for that assembly is obtained by combining all the weighted rates as was done previously for the dust estimation.

Plate-out rate estimations are drastically different during and outside working hours (overnight and during weekends). As expected, the plate-out rates outside working hours were found to be negligible, of the order of less than 1%. Overall, the average plate-out for the inner TPC PTFE surfaces in contact with the LXe is $R_{avg} = (158 \pm 13) \mu\text{Bq}/\text{m}^2$, which is below the LZ requirement of $500 \mu\text{Bq}/\text{m}^2$.

4.4. Cleanliness Protocols to Mitigate against Dust and Rn-progeny Contamination

Following manufacture, most detector components were sent to be cleaned at AstroPak Inc, a certified professional precision cleaning company. After cleaning, detector components were sealed in multiple Rn barrier bags under N_2 purge. The redundancy in the bags also provided layers to shed, thereby helping to reduce carry-in dust when components were brought into the cleanroom after transportation.

Both aluminized mylar and nylon bags have been shown to be very efficient against Rn penetration, with reduction factors of 2500 ± 1042 and 130 ± 3 respectively [39]. Once properly bagged, the detector components were shipped to the SAL facility where they were assembled in the RCR to mitigate, as previously mentioned, against surface contamination during assembly. The cleanliness protocols implemented within the cleanroom allowed its air class to always be measured at a significantly lower level (on average less than 10 particles with a size $\geq 0.5 \mu\text{m}$ per cubic foot) than its ISO 6 classification.

Upon arrival at the SAL, the outer layer of the shipping bags was removed before sealed components were brought inside the RCR. Inside the cleanroom, each component was un-bagged under deionizing fans to remove static charges on polymer-like materials such as PTFE. They were then inspected under UV light to check for dust particulates, which were cleaned off using Abgenics Essence Gold non-shedding mono-filament wipes saturated with 99% pure IPA as a basic cleaning method. Other cleaning methods involved IPA spray or bath followed by blow drying with filtered N_2 , ultra-sonic or high-pressure cleaning using deionized water or IPA, and CO_2 blasting depending on the material type and the amount and type of particulates to be removed. In general, small hardware like screws and bolts were ultrasonically cleaned in deionized water and IPA bath. Smooth surface components, like PTFE parts, were wiped down using IPA saturated non-shedding wipes, but this cleaning method could not be used on rough surfaces, like titanium, because of shedding residues. Those were instead cleaned with high pressure deionized water. CO_2 blasting was also used to clean the titanium surfaces to remove chemical residues from Astropak

Inc cleaning. As for the PMT cables, wiping them with IPA saturated wipes was inefficient at removing dust. Instead, they were first sprayed with IPA within the droplets of which the dust accumulated. The cable was then gently blow-dried with N_2 thus removing the IPA droplets and the dust contained within.

All these methods have been visually investigated for efficiency before usage, but only the IPA cleaning was quantified, since it was the most used. Figure 4 shows images before and after cleaning of PTFE pieces under UV light, and visually and qualitatively demonstrates the effectiveness of the cleaning. The quantitative estimates of the IPA cleaning protocol were done using tape lifts, as described in Section 4.2.2. The tape lifts were taken on sample coupons before and after cleaning for the various cleaning methods. The average dust removal efficiency was found to be about 80%. For instance, tape lift on sample PTFE before cleaning was of 700^{+700}_{-100} ng/cm^2 and after cleaning was 100^{+20}_{-9} ng/cm^2 yielding $\sim 90\%$ efficiency.



Figure 4: Pictures of some PTFE components (used on the PMT arrays) under UV light before (left and center) and after (right) cleaning with IPA saturated non-shedding mono-filament wipes. Fluorescent specks are dust particulates which are removed after cleaning the pieces in an IPA bath as seen in the right picture.

During assembly, several deionizing fans were used to surround the assembly area, and ensured complete neutralization of materials, thereby reducing plate-out as discussed in Section 4.3. Usage of these deionizing fans during assembly was particularly important as the assembly process involved extensive manipulation and rubbing which would have otherwise cause charging, increasing the dust and radon-daughter plate-out, particularly on PTFE surfaces.

In addition to the deionizing fans, UV light inspections were conducted at regular

time intervals to evaluate dust accumulation on assembly surfaces, and their cleaning was done every day at the beginning of the work shift. When judged necessary, or at the end of a sub-assembly, remedial cleaning of the surfaces was conducted (IPA wiping, IPA bath, vacuuming) with the appropriate cleaning methods, thus removing most of the accumulated dust. Note that, as mentioned previously, remedial cleanings did not remove all the dust, which is why the witness coupons and tape lifts mentioned in Section 4.2.1 were still invaluable in assessing the actual amount of dust collected on the assemblies.

Finally, cleanroom garbs worn by personnel working on the assembly were changed after every work shift to reduce carry-in dust, and wiped off with a lint roller multiple times during work to remove particulates that could deposit onto detector surfaces.

At the end of all daily shifts, smaller detector components were sealed in double nylon bags which prevented plate-out since the components were then no longer in contact with the cleanroom air. Larger components like the PMT arrays, on the other hand, had bespoke airtight enclosures, allowing them to be kept under filtered and ventilated air from an extra HEPA filter unit or under N₂ purge, allowing further mitigation against Rn plate-out.

All of the described procedures have ensured that exposure to Rn and dust during the assembly process was minimal, surpassing LZ requirements, as stated, for both dust and plate-out of radon progeny.

5. Selected Highlights from the Assay Program

The LZ design sensitivity imposes limits to radioactivity from particular components, principally items such as PMTs which are close to or in contact with the fiducial volume, thus demanding dedicated fixed contamination screening campaigns to meet requirements. The assay program also included dedicated QC and QA elements to ensure radioactivity and cleanliness compliance throughout all manufacturing processes, such as through the construction of the Ti cryostat. Dedicated radon emanation measurement campaigns were performed on complete purification and recirculation sub-systems that may contribute to radon, as well as *in-situ* measurements of the inner cryostat with the TPC sealed within. The assay program also included construction and deployment of a dedicated detector system to determine radioactivity in the GdLS for the LZ OD system. In the following sub-sections, we present these dedicated campaigns in order to illustrate through specific examples the deployment of fixed contaminant assays, QA, radon assays, and detector construction and deployment.

5.1. Hamamatsu R11410 PMT HPGe Assay Program

LZ employs three different models of PMT. The main active volume will be viewed by 494 3-inch Hamamatsu R11410 PMTs. Other regions containing xenon are instrumented using a combination of 1-inch Hamamatsu R8520 and 2-inch Hamamatsu R8778 PMTs with the latter having been repurposed having been used in the LUX dark matter experiment [40]. Additionally, the LZ OD system is instrumented using 8-inch Hamamatsu R5912 PMTs.

The radioactive background of 3-inch PMTs is of particular importance as these sit adjacent to the main active volume of LZ. In order to ensure that these met the intrinsic radioactivity requirements of 3.0/3.0/30/2.5 mBq/PMT for $^{238}\text{U}/^{232}\text{Th}/^{40}\text{K}/^{60}\text{Co}$, respectively, a comprehensive screening program was conducted. Initially, a subset of the raw material used for the construction of the tubes was screened across detectors both at SURF and at Boulby, and from these measurements, a bottom-up prediction of the intrinsic radioactivity of the final tubes was calculated. This calculation is discussed in detail in [3].

Following the raw material screening program, the collaboration was satisfied that PMTs of the required radiopurity could be produced. However, even with knowledge of the radiopurity of the raw materials, it was important to repeat the screening process for the final tubes. This required substantial gamma-ray spectroscopy detector time both at SURF and at Boulby. The program began with an initial batch of tubes being screened at Boulby between August 2016 and February 2017. Over 32 weeks, 102 PMTs were screened and a substantial amount of background data was acquired. Figure 5 shows comparisons between a combination of all PMT runs on the detectors used in this campaign. For protection and cleanliness purposes, the 3-inch PMTs assayed at Boulby were screened with PTFE tape wrapped around their body and with protective foam on the pins at the base of the PMT. Subsequently, the tape and foam were screened and their contribution (along with the contribution from the holder and detector setup backgrounds) subtracted to give final contamination levels for the tubes presented here. Screening of tubes at SURF was performed following performance testing at Brown University for which the foam and PTFE tape needed to be removed. No additional correction was required for this data. The full PMT screening program assayed 229 of the 494 3-inch tubes used in the LZ detector.

The tests of individual components showed that the radioactive contaminants were not uniformly distributed. Not only is this the case, but the relative levels of ^{238}U , ^{232}Th and ^{40}K were different in each component. Ordinarily, when calculating a geometric efficiency for an assayed material or component (using GEANT4 [41] in this case), gamma-rays are fired uniformly from the component being studied. In order to allow for non-uniform distribution of radioactivity when determining specific

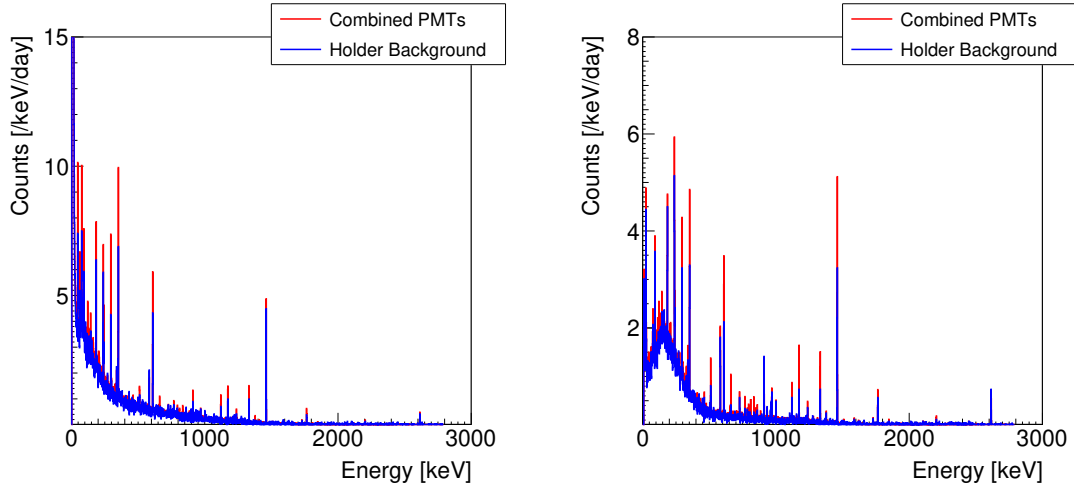


Figure 5: Combined spectra for all R11410 PMT runs using Chaloner (left) and Lunehead (right) at the Boulby Underground Germanium Suite. In both cases, the background spectrum includes the holders used to secure PMTs in place in the detector castles.

activities for the assayed PMTs, geometric efficiency curves had to be calculated for individual isotopes. The distribution of simulated gamma-rays was determined using the expected contamination distribution. This is detailed in Table 6 where the three largest components (both by mass and, in the case of the ceramic stem, by radioactive content) are used to represent the whole PMT. In the case of all other isotopes (detailed in Tables 7 and 8), the contamination was assumed to be distributed uniformly.

The expected distributions of contamination detailed in Table 6 do not take into account one important unknown factor: the distribution of ^{40}K as the process of forming a PMT photocathode requires the evaporation of potassium onto the inside of the quartz window face of the PMT. This adds a substantial systematic uncertainty to the final measured values of ^{40}K in this study. As an approximation, the distribution of ^{40}K in the PMTs was modified in order to give a reasonable systematic error on each setup. The systematic error is set assuming a distribution of 0.1, 0.45 and 0.45 for the ceramic, the Kovar and the quartz face, respectively. In the case of the Chaloner detector, where PMTs are placed so that the pins are the closest part to the front face of the detector and the quartz window the furthest, a systematic error of 125% is calculated. In the case of SOLO, where PMTs uniformly surround the detector, there is no substantial systematic error as the geometric efficiency has

a very weak dependence on the distribution of ^{40}K in the PMTs. The systematic errors for ^{40}K are captured in Table 6. In all other isotopes, it was assumed that the distribution of radiocontaminants follows expectation so only statistical errors are presented.

Table 6: Fractional contamination levels for ^{238}U , ^{232}Th and ^{40}K from individual R11410 component assay. The PMT is split into major components and the expected distribution of activity is calculated using individual component measurements. This distribution acts as weighting factor when determining the contribution of each individual component to the overall efficiency. In the ^{238}U and ^{232}Th , secular equilibrium is assumed.

Isotope	Ceramic Stem	Kovar Bulb	Quartz Face
^{238}U	0.79	0.17	0.04
^{232}Th	0.45	0.45	0.10
^{40}K	0.71	0.23	0.06

Overall average values are calculated for assayed tubes and these are presented in Table 7. Even allowing for the systematic error in the measurement, it is clear that there is substantial variation in the levels of ^{40}K found in the tubes. This is likely due to variability in the manufacturing process as uniformity in ^{40}K values is seen across batches of PMTs produced at similar times. Additionally, some significant variation in ^{60}Co can be seen in the various batches of tubes. The combined values were calculated using two methods. The first ignores data where only upper limits are obtained and relies solely on measured values whereas the second incorporates measured 90% CL upper limits as measured values. For ^{232}Th and ^{235}U , the incorporation of upper limits substantially reduces the combined value.

In addition to values for U (^{238}U , ^{235}U , ^{210}Pb), ^{232}Th , ^{40}K and ^{60}Co , small levels of contamination from other isotopes are observed. This includes isotopes of cobalt (other than ^{60}Co), ^{137}Cs and the meta-stable $^{110\text{m}}\text{Ag}$ isotope as reported in [42]. Results from measurements of these isotopes made with the Chaloner and Lunehead detectors at Boulby are shown in Table 8.

As an example, the distribution of measured values of ^{40}K in the assayed PMTs along with their distribution in the upper and lower PMT arrays of LZ are shown in Figure 6. For those PMTs not assayed, the average value of $12.2_{-0.9}^{+1.1}$ mBq/PMT, as given in Table 7 is used. Also shown in Figure 6 is the distribution of measured ^{40}K values. This figure incorporates both measured values and upper limits.

Table 7: Combined activities for all runs in the LZ PMT screening program. In total, 233 PMTs were screened across six detectors in batches of varying sizes. For each detector, all acquired spectra are summed and the resultant peaks fitted for use in the calculation. For the combined values, detection errors are combined in quadrature. Two combined values are presented. One (*MO*) uses measured values only, ignoring upper limits and the other (*UL*) incorporates upper limits as measured values. The component average comes from [3]. We include for comparison the results from the equivalent assay campaign of an earlier model of Hamamatsu R11410 PMT by XENON1T, taken from [42].

Detector	# PMTs Assayed	Total Live Time	$^{238}\text{U}_e$	$^{238}\text{U}_l$	$^{232}\text{Th}_e$	$^{232}\text{Th}_l$	^{40}K	^{60}Co	^{235}U	^{210}Pb
			all values in mBq/PMT							
Chaloner	48	160	4.8 ± 1.3	1.5 ± 0.3	< 0.3	< 0.1	$5.4^{+9.9}_{-3.1}$	0.6 ± 0.3	0.7 ± 0.4	7.1 ± 2.9
Lunehead	54	144	< 4.1	0.9 ± 0.3	< 0.2	< 0.2	$14.0^{+3.4}_{-2.0}$	0.7 ± 0.1	0.6 ± 0.6	-
SOLO	90	121	< 7.1	0.9 ± 0.1	< 0.1	0.5 ± 0.2	13.0 ± 0.2	1.0 ± 0.1	< 0.1	-
MORDRED	27	45	5.6 ± 4.9	< 0.2	0.9 ± 0.4	0.9 ± 0.2	$6.4^{+3.0}_{-2.8}$	3.0 ± 0.2	1.4 ± 0.9	< 28
MAEVE	10	28.7	< 10	0.4 ± 0.3	1.9 ± 1.5	0.9 ± 0.3	$11.0^{+3.0}_{-4.2}$	6.2 ± 0.3	< 0.3	-
MORGAN	4	17.4	< 15	< 0.8	3.0 ± 1.9	< 0.8	$6.3^{+6.6}_{-7.1}$	6.0 ± 0.7	< 0.4	-
		Combined (MO)	5.0 ± 2.1	0.9 ± 0.2	1.4 ± 0.8	0.8 ± 0.2	$12.2^{+1.1}_{-0.9}$	1.9 ± 0.2	0.8 ± 0.6	7.1 ± 2.9
		Combined (UL)	4.3 ± 2.9	0.6 ± 0.2	0.20 ± 0.15	0.3 ± 0.1			0.2 ± 0.2	8.3 ± 4.8
		Component Average	< 13.3	< 0.6	< 0.6	< 0.6	< 2.9	< 0.5	-	< 0.1
		LZ Requirement	-	< 3.0	< 3.0	< 3.0	< 30	< 2.5	-	-
		XENON1T	< 12.9	0.5 ± 0.1	0.5 ± 0.1	0.4 ± 0.1	12 ± 2	0.7 ± 0.1	0.4 ± 0.1	-

Table 8: Combined contaminations from the Chaloner (BEGe) and Lunehead (p-type) detectors at Boulby for the less common isotopes detected when combining all PMT runs together. As we have no prior knowledge of the distribution of contamination for these isotopes we include a systematic uncertainty due to potential variations in geometric efficiency.

Detector	^{137}Cs	$^{110\text{m}}\text{Ag}$	^{57}Co	^{58}Co
	all values in mBq/PMT			
Chaloner	$0.21^{+0.48}_{-0.12}$	$0.07^{+0.19}_{-0.05}$	$0.25^{+0.64}_{-0.11}$	$0.20^{+0.48}_{-0.10}$
Lunehead	0.51 ± 0.03	0.13 ± 0.02	0.25 ± 0.03	0.37 ± 0.03

5.2. ICP-MS Titanium QC and QA assays

In the early stages of the LZ experiment, an extensive R&D campaign was conducted to source and produce enough titanium for the cryostat vessels of the detector. The inner and the outer cryostat vessels (ICV and OCV, respectively), containing the TPC and the 10 tonnes of LXe, make up a significant bulk of the LZ detector. Due to their scale and proximity to the TPC, it was necessary to ensure ultra-low levels of radiopurity for the ^{238}U and ^{232}Th isotopes as well as ^{40}K and ^{60}Co . A detailed analysis using ICP-MS and gamma-ray spectroscopy of 22 different titanium samples was conducted, and the sample of the HN3469 product manufactured by

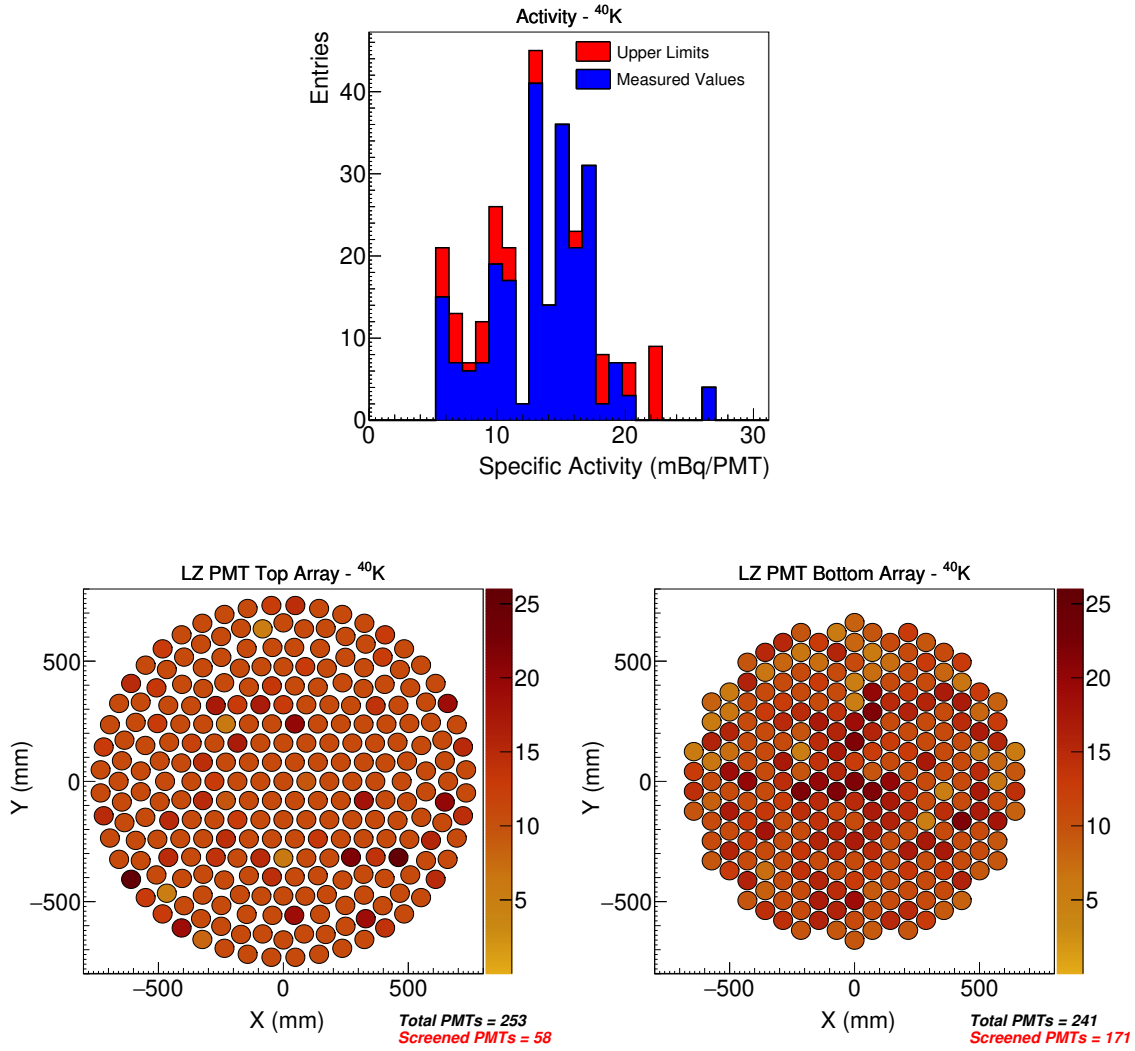


Figure 6: Top: Distribution of measured value for ^{40}K in the LZ PMT assay program. Measured values are plotted in blue and upper limits are plotted in red. Bottom, left and right: Distribution of ^{40}K contamination for the top and bottom arrays, respectively. For tubes which were not measured, the calculated average value of $12.2^{+1.1}_{-0.9}$ mBq/PMT, as given in Table 7 is used.

TIMET was found to have the lowest background. The measured activities for ^{238}U , ^{232}Th , ^{60}Co and ^{40}K from the sample are significantly lower than requirements and were the lowest reported to date [14].

The titanium R&D campaign was followed by a radiopurity screening program to

monitor and mitigate the risk of radioactive contamination during the construction process of the vessels. Although the bulk titanium was found to be ultra-pure, the manufacturing stage of the vessels possessed a large risk for contamination. In assessing the radiopurity of the welding process a welding sample issued to the project as one of the many regular samples for assessment in the LZ QC and QA program, was measured to have 6 ppb of thorium—equating to roughly 100 times higher than the concentration initially measured in the TIMET HN3469. Material used for the test sample was from the LZ titanium stock and the welding was performed with an automatic tungsten inert gas (TIG) machine purportedly using the lanthanated tungsten electrodes commonly used by the manufacturer (Loterios).

The high levels of thorium found in the sample prompted a suspension of the cryostat production and the start of a screening campaign to identify the source of the contamination. Over a period of two months, the campaign performed 24 radioassays with HPGe detectors and 67 ICP-MS measurements, screening representative samples from the titanium stock, welding wires and electrodes used by Loterios. Assays of two welding electrodes used by Loterios and removed from the TIG and plasma machines located in the cryostat production area showed a very high level of thorium. The $^{232}\text{Th}_e$ levels, as measured by the ICP-MS system, resulted in (3.20 ± 0.16) ppb of Th, in comparison to (0.069 ± 0.007) ppb measured for the TIMET HN3469 stock. This indicated that the unexpected excess in Th activity was due to an isolated and erroneous use of a small number of thoriated electrodes, as opposed to the pre-agreed lanthanated tungsten electrodes throughout.

Additionally, it was found that the standard lanthanated tungsten electrodes used do contain a small amount of thorium which, in the welding process, gets into the weld at the level of 0.7 ppb. Although this is not ideal, it would not have explained the observed increase of thorium in the welded sample which prompted this contamination study.

The rapid turnaround for uranium and thorium assays at sub-ppb levels made possible by the ICP-MS system allowed LZ to arrest production, thoroughly investigate and precisely identify the contaminant introduced by the manufacturing process. Upon these findings, appropriate control measures were implemented in the cryostat manufacturing process to avoid additional inadvertent use of thoriated welding electrodes. This is a key example of how the LZ QA program identified a potentially serious manufacturing error which otherwise would have had the potential to substantially increase the overall thorium background in LZ.

5.3. Radon Emanation Studies

Sensitivity projections for LZ presented in [1] include the effect of the online charcoal-based radon-removal system, operating continuously to scrub gaseous Xe [3, 26]. Projections also assume the expected suppression of radon diffusion in certain materials at low temperatures. In this article, Table A5 presents the as-measured results from room temperature assays of individual materials and components. Room temperature measurements from fully assembled LZ systems and contributions from individually screened components within those systems are highlighted in Figure 7. Measurements for three of these assemblies are discussed in the following sub-sections, with radon emanation results.

5.3.1. Inner Cryostat Vessel

Radon emanation from the ICV was measured several times during various integration stages of the construction of the skin veto region and the TPC installation. The final assay was made following after the ICV was fully complete and sealed. The cryostat at this stage housed both the top and the bottom PMT arrays for the TPC and the skin veto regions, and their corresponding PMT bases and cables. Furthermore, the entire field cage, PTFE coating, various sensors, and conduit volumes of the cables were a part of these measurement.

A portable radon trapping system was deployed underground at SURF with minimal plumbing due to space constraints. After leak-checking and purging, the trapping system was opened to the ICV and the emanated gas was harvested over a 6.3 hour period—equivalent to 18.25% of the gas within the ICV. After the harvest, the trap was carefully disconnected and transported to SDSM&T radon facility for screening. The radon trap also captures outgassing molecular species that would serve as neutralisers of positively charged radon-daughters, leading to a drop in detection efficiency. An in-house procedure was followed to separate out these species by transferring the sample from a cold trap held at -109°C to one at -196°C with sufficient flow to effectively transfer all of the radon atoms while leaving most of the contaminants behind. This process was repeated until measurements with a residual gas analyzer indicated no further reduction in contaminant concentration, after which the sample was transferred to the detection chamber via a secondary small cold trap.

Results indicate a room-temperature emanation rate of $46.1_{-3.8}^{+4.0}$ mBq under the assumption of an even sampling of the radon within the ICV.

5.3.2. Xenon Circulation System

The xenon gas circulation system brings together multiple components and surfaces that are potential radon emitters. The system consists of two gas compressors,

a heated zirconium getter, and a main valve and instrumentation panel. The compressors (model A2-5/15 from Fluitron) have two heads, each enclosing a flexible all-metal diaphragm sealed with copper plating. Check valves, accumulation bottles, and associated plumbing and instrumentation are also included in the compressor assemblies. The compressors operate in parallel to achieve a gas flow rate of 500 standard liters per minute. Much of the system was fabricated at the University of Wisconsin's Physical Sciences Laboratory. Whilst there, a portable radon trapping system was used to harvest emanation samples that were then shipped to the U. Maryland radon facility for counting. Initial radon emanation measurements of compressor 2 found that the heads emanated <1 mBq each; however, the integrated compressor skid assembly presented ~ 17 mBq. After replacing most of the welded stainless steel plumbing and etching the accumulation bottles in citric acid, the rate was reduced to 1.48 ± 0.31 mBq. A similar treatment was applied to compressor 1 but this compressor was not radon emanated and hence is assumed to have the same rate as compressor 2. The main circulation panel contains most of the valves and instrumentation exposed to the xenon in gas phase, and it was found to contribute 0.74 mBq of radon. The fully loaded getter (model PS5-MGT50-R-535 from SAES) was emanated at its operational temperature of 400°C using helium carrier gas and its emanation rate was determined to be 2.26 mBq. The entire circulation system amounted to a total emanation rate of 5.22 ± 0.75 mBq.

5.3.3. Xenon Tower

The xenon tower is a cryogenic system that thermally couples the gaseous and LXe portions of the purification circuit for efficient heat transfer, serving to vaporize and re-condense the liquid for continuous purification. It consists of a two-phase heat exchanger (supplied from Standard Xchange), three cryogenic valves (manufactured by WAKE), a sub-cooler/phase-separator vessel to hold LXe returning to the detector, a reservoir vessel to hold liquid exiting the detector, two liquid xenon purity monitors, and several custom liquid xenon heat exchangers. The tower can be viewed as having two sides: the heat exchanger assembly on one side and the weir reservoir, sub-cooler and purity monitor on the other. Radon emanation from sub-components was measured prior to full integration of the xenon tower and was found to contribute a total of <1 mBq.

A preliminary measurement of the tower after integration found a very high radon activity in the reservoir side, possibly due to a leak into the system from laboratory air. As a precautionary measure, the reservoir vessel was flushed with a concentrated solution designed for removing radioactive contamination (RadiacwashTM) and rinsed with deionized water. The portable radon trap was then deployed underground to

measure the two sides of the complete xenon tower prior to the installation of the purity monitor and found a total emanation rate of $3.14^{+0.86}_{-0.81}$ mBq.

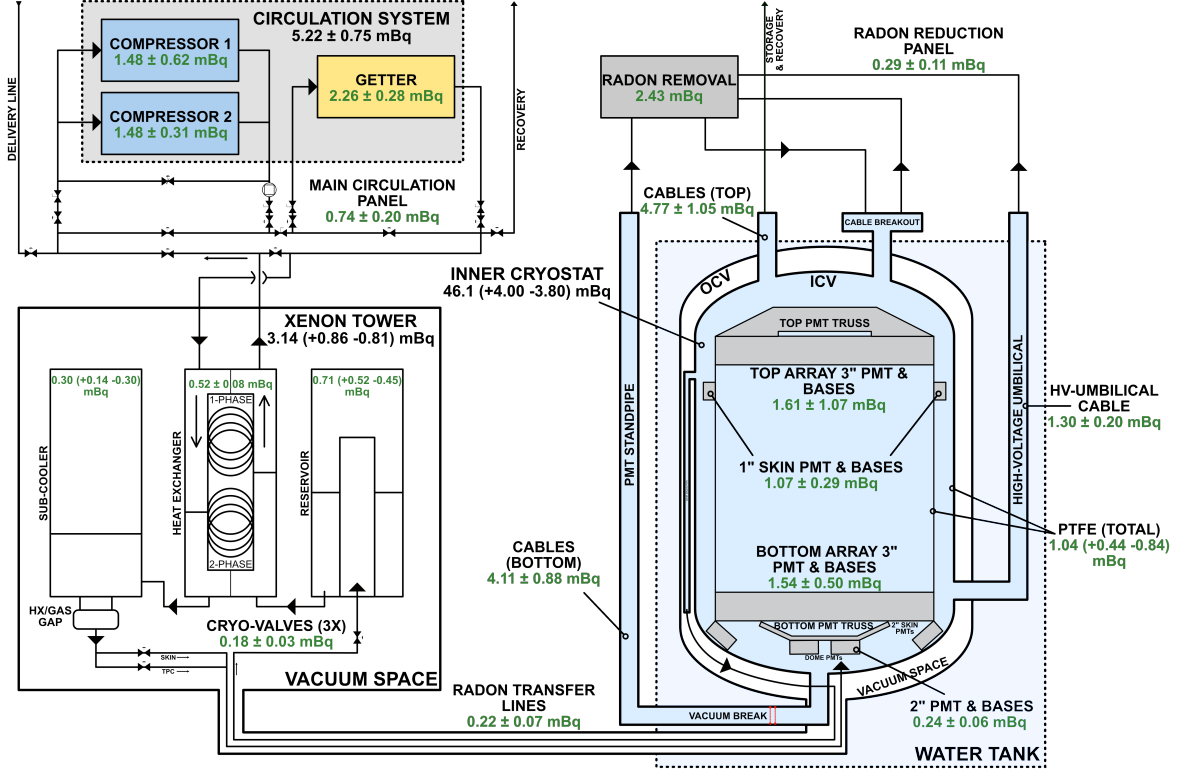


Figure 7: Approximate schematic of LZ highlighting key sub-systems and xenon circulation paths in and out of the ICV. The diagram condenses some of the key radon emanation measurements that will contribute to the overall radon budget of LZ. The results presented in green text are directly from measurements and those in black show summed results for that particular component. All of the results shown are measurements made at room temperature and does not include the cold suppression expected under full operation.

5.4. GdLS screener for the Outer Detector (OD)

Achieving a low level of radioimpurities in the 17.3t of GdLS used in the LZ OD is crucial for its performance as both an effective monitor of the experiment's backgrounds and as an efficient veto for coincident events in the TPC. The admissible radioactive impurity levels in the GdLS are derived from the LZ requirement for a false veto rate of $<5\%$ assuming an energy threshold of 200 keV and a maximum coincidence window of 500 μ s between an interaction in the TPC and the OD. This

restricts the event rate in the full 17.3t of GdLS to be <100 Hz. Approximately 39 Hz is expected from a combination of radioactivity in LZ construction materials and the flux of gamma-rays in the experimental hall which penetrate the water shield to reach the OD [43]. This allows for at most 61 Hz of rate to arise from impurities dissolved in the GdLS.

GdLS generally features a combination of common radioimpurities and more exotic isotopes which enter during the Gd-loading process. Common radioisotopes include ^{14}C , ^{85}Kr , ^{40}K , and those in the ^{238}U and ^{232}Th chains, while the more unusual isotopes include ^{138}La , ^{176}Lu , ^{147}Sm , ^{152}Gd , and those in the ^{235}U decay chain. Chemical processing and purification of the components of GdLS alters the relative abundance of these isotopes, often resulting in out-of-equilibrium activities within decay chains [44].

Before it is added to LS, the raw gadolinium product (in the form of GdCl_3) is purified via pH-controlled partial hydrolysis. During this process, certain actinides including uranium and thorium are precipitated out of solution, but others such as actinium itself tend to remain in solution [44]. The purified Gd is then combined with the chelating ligand TMHA, or 3,5,5-trimethylhexanoic acid. The resulting $\text{Gd}(\text{TMHA})_3$ compound is dissolved in the non-polar LS solvent, linear alkylbenzene, to achieve a final concentration of 0.1% Gd by mass.

Measurements of the radioactive impurity concentrations in both Gd-loaded and unloaded scintillator samples were made using a dedicated liquid scintillation counter known as the “LS Screener”. The LS Screener was comprised of an acrylic vessel containing approximately 23 kg of scintillator and three R11410 PMTs. For each sample measurement, the detector was lowered into the ultra-low background environment at the center of the filled LZ water tank. A detailed description of that detector and the results from those measurement campaigns are published in [4]. Two results from that work yielded results particularly significant for the OD’s performance. First, a fit using the ^{14}C β shape ($Q = 156$ keV) to the low-energy spectrum collected with the unloaded scintillator sample measured the $^{14}\text{C}/^{12}\text{C}$ atom fraction in the LS to be $(2.83 \pm 0.06(\text{stat.}) \pm 0.01(\text{sys.})) \times 10^{-17}$. This concentration of ^{14}C validates that hydrocarbons used for the GdLS chemicals are suitably derived from underground sources (as opposed to biogenic sources). As a result, the expected rates of single and pile-up pulses from ^{14}C near the OD threshold are negligible. Second, pulse shape discrimination and delayed coincidence counting were used to measure the concentrations of α and β -emitting radioisotopes with relatively small uncertainties. In particular, a significant amount of activity from the ^{235}U series was measured by identifying the unique pulse pair from ^{219}Rn - ^{215}Po in the GdLS sample. No such activity was observed in the unloaded LS sample, confirming that this activity is

introduced with the Gd.

To further characterize the impact of loading with Gd, a 0.307 kg sample of the same purified $\text{Gd}(\text{TMHA})_3$ compound used in the LS Screener was counted by HPGe at the BHUC. A large activity from ^{176}Lu was easily detected above background confirming the presence of rare earth impurities. Additionally, the strong γ -line from ^{235}U was not detected, suggesting that equilibrium is broken during purification causing either ^{231}Pa or ^{227}Ac to serve as the head of the decay chain.

These findings motivated a modification to the Gd purification procedure in which a higher pH was used to more aggressively precipitate out impurities at the cost of a slightly lower Gd yield. To confirm the effectiveness of this procedure, a larger, 1.44 kg sample of the newly purified $\text{Gd}(\text{TMHA})_3$ was counted using HPGe at the BHUC. Table 9 reports the results before and after the new purification as well as the reduction factor in each isotope's central value or quoted upper limit. Concentrations are given per kg of $\text{Gd}(\text{TMHA})_3$ and per kg of LZ GdLS, doped to 0.1% Gd by mass. The observed reduction in the detected ^{176}Lu concentration demonstrates the effectiveness of the purification on rare earth metals. No significant signatures from ^{227}Ac and its daughters in the newer sample were observed. By applying the reduction factors in Table 9 to the results in [4], the total OD rate from GdLS radioimpurities above 200 keV is predicted to be <10 Hz, well below the requirement.

Table 9: Results from HPGe counting of two purified $\text{Gd}(\text{TMHA})_3$ powder samples given in mBq/kg of $\text{Gd}(\text{TMHA})_3$. For GdLS, loaded to 0.1% Gd by mass, the values listed can be reduced by a factor of 250. The reduction factors of the limits/central values for the improved purification results are also given. Limits are given at 1σ confidence level. The late ^{235}U chain is defined as starting at ^{231}Pa as discussed in [4].

Isotope or Subchain	0.307 kg, Initial Purification mBq/(kg $\text{Gd}(\text{TMHA})_3$)	1.44 kg, Improved Purification mBq/(kg $\text{Gd}(\text{TMHA})_3$)	Reduction
$^{238}\text{U}_e$	< 259	< 4.36	59.4
$^{238}\text{U}_l$	23(5)	2.6(9)	8.8
$^{235}\text{U}_e$	< 2.8	< 4.5	0.6
$^{235}\text{U}_l$	26(10)	< 3.0	8.7
$^{232}\text{Th}_e$	< 6.7	< 0.89	7.5
$^{232}\text{Th}_l$	< 5.1	< 0.76	6.7
^{40}K	< 56	< 2.29	24.5
^{138}La	< 1.4	< 0.42	3.3
^{176}Lu	75(18)	2.03(46)	36.9

6. Conclusion

The LZ collaboration has concluded one of the most wide ranging and sensitive assay programs performed to-date for a rare event search experiment. This program began in October 2013 and has continued for more than six years, building a database of over 1200 entries. The results obtained in the screening program have been used to select the materials used in the final construction of the LZ detector, to ensure radioactivity compliance through to detector assembly, and to inform the background model used to determine the predicted sensitivity of LZ.

In parallel to these assay efforts, a comprehensive set of cleanliness quality assurance protocols were developed and implemented. These sought to ensure that additional radiocontaminants were not introduced into the detector in the construction period, particularly during the time when the TPC was being constructed, up until the point where it was sealed within the inner cryostat vessel for transportation to the underground laboratory at SURF.

Comprehensive tables of results for the LZ assay program are presented in Appendix A, documenting the results from the LZ assays performed since 2013.

7. Acknowledgements

The LZ collaboration lost one of its dedicated researchers this year and the father of low background assay at Berkeley Lab, Al Smith. For more than sixty years, he pursued low background assays and identification of materials in support of rare search experiments including CDMS, SNO, KamLAND, Daya Bay, KATRIN, Majorana Demonstrator, LUX, and LZ. We also wish to acknowledge the contributions from Emma Meehan at the Boulby Underground Laboratory for her help. The research supporting this work took place in whole or in part at the Sanford Underground Research Facility (SURF) in Lead, South Dakota. Funding for this work is supported by the U.S. Department of Energy, Office of Science, Office of High Energy Physics under Contract Numbers DE-AC02-05CH11231, DE-SC0020216, DE-SC0012704, DE-SC0010010, DE-AC02-07CH11359, DE-SC0012161, DE-SC0014223, DE-FG02-13ER42020, DE-SC0009999, DE-NA0003180, DE-SC0011702, DE-SC0010072, DE-SC0015708, DE-SC0006605, DE-FG02-10ER46709, UW PRJ82AJ, DE-SC0013542, DE-AC02-76SF00515, DE-SC0019066, DE-AC52-07NA27344, & DE-SC0012447. This research was also supported by U.S. National Science Foundation (NSF); the U.K. Science & Technology Facilities Council under award numbers, ST/M003655/1, ST/M003981/1, ST/M003744/1, ST/M003639/1, ST/M003604/1, and ST/M003469/1; Portuguese Foundation for Science and Technology (FCT) under award numbers PTDC/FIS-PAR/28567/2017; the Institute for

Basic Science, Korea (budget numbers IBS-R016-D1); University College London and Lawrence Berkeley National Laboratory thank the U.K. Royal Society for travel funds under the International Exchange Scheme (IE141517). We acknowledge additional support from the STFC Boulby Underground Laboratory in the U.K., the GridPP Collaboration [45, 46], in particular at Imperial College London and additional support by the University College London (UCL) Cosmoparticle Initiative. This research used resources of the National Energy Research Scientific Computing Center, a DOE Office of Science User Facility supported by the Office of Science of the U.S. Department of Energy under Contract No. DE-AC02-05CH11231. The University of Edinburgh is a charitable body, registered in Scotland, with the registration number SC005336. The assistance of SURF and its personnel in providing physical access and general logistical and technical support is acknowledged.

References

- [1] D. S. Akerib, et al., Projected WIMP sensitivity of the LUX-ZEPLIN (LZ) dark matter experiment, *Phys. Rev. D* 101 (5) (2018) 052002. [arXiv:{1802.06039}](#), [doi:{10.1103/PhysRevD.101.052002}](#).
- [2] D. S. Akerib, et al., The LUX-ZEPLIN (LZ) experiment, *Nucl. Instrum. Meth. A* 953 (2020) 163047. [arXiv:{1910.09124}](#), [doi:{10.1016/j.nima.2019.163047}](#).
- [3] B. J. Mount, et al., LUX-ZEPLIN (LZ) technical design report (2017). [arXiv:{1703.09144}](#).
- [4] S. J. Haselschwardt, et al., A liquid scintillation detector for radioassay of gadolinium-loaded liquid scintillator for the LZ outer detector, *Nucl. Instrum. Meth. A* 937 (2019) 148–163. [arXiv:{1808.05595}](#), [doi:{10.1016/j.nima.2019.05.055}](#).
- [5] P. R. Scovell, et al., Low background gamma spectroscopy at the Boulby Underground Laboratory, *Astropart. Phys.* 97 (2018) 160–173. [arXiv:{1708.06086}](#), [doi:{10.1016/j.astropartphys.2017.11.006}](#).
- [6] B. J. Mount, et al., Black Hills State University Underground Campus, *Appl. Radiat. Isot.* 126 (2017) 130–133. [doi:{10.1016/j.apradiso.2017.02.025}](#).
- [7] D. S. Akerib, et al., Radiogenic and muon-Induced backgrounds in the LUX dark matter detector, *Astropart. Phys.* 62 (2015) 33–46. [arXiv:{1403.1299}](#), [doi:{10.1016/j.astropartphys.2014.07.009}](#).

- [8] D. S. Akerib, et al., First results from the LUX dark matter experiment at the Sanford Underground Research Facility, *Phys. Rev. Lett.* 112 (2014) 091303. [arXiv:{1310.8214}](#), [doi:{10.1103/PhysRevLett.112.091303}](#).
- [9] D. S. Akerib, et al., Results from a search for dark matter in the complete LUX exposure, *Phys. Rev. Lett.* 118 (2) (2017) 021303. [arXiv:{1608.07648}](#), [doi:{10.1103/PhysRevLett.118.021303}](#).
- [10] A. Alessandrello, et al., Measurements on radioactivity of ancient roman lead to be used as shield in searches for rare events, *Nuclear Instruments and Methods in Physics Research Section B: Beam Interactions with Materials and Atoms* 61 (1) (1991) 106 – 117. [doi:{https://doi.org/10.1016/0168-583X\(91\)95569-Y}](#).
- [11] G. J. Alner, et al., First limits on WIMP nuclear recoil signals in ZEPLIN-II: A two phase xenon detector for dark matter detection, *Astropart. Phys.* 28 (2007) 287–302. [arXiv:{astro-ph/0701858}](#), [doi:{10.1016/j.astropartphys.2007.06.002}](#).
- [12] H. M. Araújo, et al., Radioactivity backgrounds in ZEPLIN-III, *Astropart. Phys.* 35 (2012) 495–502. [arXiv:{1104.3538}](#), [doi:{10.1016/j.astropartphys.2011.11.001}](#).
- [13] D. Yu. Akimov, et al., WIMP-nucleon cross-section results from the second science run of ZEPLIN-III, *Phys. Lett. B* 709 (2012) 14–20. [arXiv:{1110.4769}](#), [doi:{10.1016/j.physletb.2012.01.064}](#).
- [14] D. S. Akerib, et al., Identification of radiopure titanium for the LZ dark matter experiment and future rare event searches, *Astropart. Phys.* 96 (2017) 1–10. [arXiv:{1702.02646}](#), [doi:{10.1016/j.astropartphys.2017.09.002}](#).
- [15] R. Noel, et al., Measuring and understanding radon adsorption in microporous materials, *AIP Conf. Proc.* 1672 (1) (2015) 070001. [doi:{10.1063/1.4927992}](#).
- [16] A. R. Smith, et al., Low background counting at LBNL, *Phys. Procedia* 61 (2015) 787–795. [doi:{10.1016/j.phpro.2014.12.101}](#).
- [17] R. H. M. Tsang, et al., GEANT4 models of HPGe detectors for radioassay, *Nucl. Instrum. Meth. A* 935 (2019) 75–82. [arXiv:{1902.06847}](#), [doi:{10.1016/j.nima.2019.04.085}](#).
- [18] D. C. Malling, et al., Dark matter search backgrounds from primordial radionuclide chain disequilibrium (2013). [arXiv:{1305.5183}](#).

- [19] J. Dobson, et al., Ultra-low background mass spectrometry for rare-event searches, Nucl. Instrum. Meth. AarXiv:{1708.08860}, doi:{https://doi.org/10.1016/j.nima.2017.10.014}.
- [20] D. S. Leonard, et al., Trace radioactive impurities in final construction materials for EXO-200, Nucl. Instrum. Meth. A871 (2017) 169–179. arXiv:{1703.10799}, doi:{10.1016/j.nima.2017.04.049}.
- [21] D. S. Leonard, et al., Systematic study of trace radioactive impurities in candidate construction materials for EXO-200, Nucl. Instrum. Meth. A591 (2008) 490–509. arXiv:{0709.4524}, doi:{10.1016/j.nima.2008.03.001}.
- [22] P. Pagelkopf, et al., Neutralisation rate and the fraction of the positive ^{218}Po -clusters in air, Atmospheric Environment 37 (8) (2003) 1057 – 1064. doi:{https://doi.org/10.1016/S1352-2310(02)00997-4}.
- [23] J. B. Albert, et al., Investigation of radioactivity-induced backgrounds in EXO-200, Phys. Rev. C92 (1) (2015) 015503. arXiv:{1503.06241}, doi:{10.1103/PhysRevC.92.015503}.
- [24] E. H. Miller, et al., Constraining radon backgrounds in LZ, AIP Conf. Proc. 1921 (1) (2018) 050003. arXiv:{1708.08533}, doi:{10.1063/1.5018996}.
- [25] C. Mitsuda, et al., Development of super-high sensitivity radon detector for the Super-Kamiokande detector, Nucl. Instrum. Meth. A497 (2003) 414–428. doi:{10.1016/S0168-9002(02)01923-X}.
- [26] K. Pushkin, et al., Study of radon reduction in gases for rare event search experiments, Nucl. Instrum. Meth. A903 (2018) 267–276. arXiv:{1805.11306}, doi:{10.1016/j.nima.2018.06.076}.
- [27] W. Jacobi, Activity and potential alpha-energy of ^{222}Rn and ^{220}Rn -daughters in different air atmospheres, Health Physics 22 (5) (1972) 441–450.
- [28] D. Akerib, S. Alsum, H. Araújo, X. Bai, A. Bailey, J. Balajthy, P. Beltrame, E. Bernard, A. Bernstein, T. Biesiadzinski, et al., Position reconstruction in lux, Journal of Instrumentation 13 (02) (2018) P02001.
- [29] US Department of Energy (DOE), Specification for HEPA filters used by DOE contractors (1997).

- [30] C. T. Rueden, et al., ImageJ2: ImageJ for the next generation of scientific image data, CoRR abs/1701.05940. [arXiv:{1701.05940}](#).
- [31] E. Borson, IEST-STD-CC1246D: product cleanliness levels and contamination control program, Institute of Environmental Sciences and Technology.
- [32] J. Boger, et al., The Sudbury Neutrino Observatory, Nucl. Instrum. Meth. A449 (2000) 172–207. [arXiv:{nucl-ex/9910016}](#), [doi:{10.1016/S0168-9002\(99\)01469-2}](#).
- [33] E. D. Hallman, R. G. Stokstad, Establishing a cleanliness program and specifications for the Sudbury Neutrino Observatory, Tech. Rep. SNO-STR-91-009, Sudbury Neutrino Observatory, Department of Physics, Stirling Hall, Queen’s University at Kingston, Kingston, Ontario, Canada K7L 3N6 (1991).
- [34] T. A. Barber, Control of particulate matter contamination in healthcare manufacturing, CRC Press, 1999.
- [35] M. Leung, Surface contamination from radon progeny, AIP Conf. Proc. 785 (1) (2005) 184. [doi:{10.1063/1.2060470}](#).
- [36] E. O. Knutson, Modeling indoor concentrations of radon decay products, Radon and its decay products in indoor air (1988) 161–202.
- [37] E. S. Morrison, et al., Radon daughter plate-out onto Teflon, AIP Conf. Proc. 1921 (1) (2018) 090002. [arXiv:{1708.08534}](#), [doi:{10.1063/1.5019012}](#).
- [38] H. Zou, et al., Quantifying the triboelectric series, Nature Communications 10 (1) (2019) 1427. [doi:{10.1038/s41467-019-09461-x}](#).
- [39] Y. Meng, et al., A new method for evaluating the effectiveness of plastic packaging against radon penetration (2019). [arXiv:{1903.02643}](#).
- [40] D. S. Akerib, et al., The Large Underground Xenon (LUX) experiment, Nucl. Instrum. Meth. A704 (2013) 111–126. [arXiv:{1211.3788}](#), [doi:{10.1016/j.nima.2012.11.135}](#).
- [41] S. Agostinelli, et al., GEANT4: a simulation toolkit, Nucl. Instrum. Meth. A506 (2003) 250–303. [doi:{10.1016/S0168-9002\(03\)01368-8}](#).
- [42] E. Aprile, et al., Lowering the radioactivity of the photomultiplier tubes for the XENON1T dark matter experiment, Eur. Phys. J. C75 (11) (2015) 546. [arXiv:{1503.07698}](#), [doi:{10.1140/epjc/s10052-015-3657-5}](#).

- [43] D. S. Akerib, et al., Measurement of the gamma ray background in the Davis cavern at the Sanford Underground Research Facility, *Astropart. Phys.* 116 (2020) 102391. [arXiv:{1904.02112}](#), [doi:{10.1016/j.astropartphys.2019.102391}](#).
- [44] M. Yeh, et al., Purification of lanthanides for large neutrino detectors: thorium removal from gadolinium chloride, *Nucl. Instrum. Meth.* A618 (2010) 124–130. [doi:{10.1016/j.nima.2010.02.124}](#).
- [45] P. J. W. Faulkner, et al., GridPP: development of the UK computing grid for particle physics, *J. Phys.* G32 (2006) N1–N20. [doi:{10.1088/0954-3899/32/1/N01}](#).
- [46] D. Britton, et al., GridPP: the UK grid for particle physics, *Phil. Trans. Roy. Soc. Lond.* A367 (1897) (2009) 2447–2457. [doi:{10.1098/rsta.2009.0036}](#).

Appendix A. Assay Results Tables

In this section, the results from the assay campaign of the LZ experiment are captured. The tables are split into the various techniques which were used. Table A1 details all assays completed using the HPGe detectors available to the collaboration. For this table, there are a number of repeat measurements. Where this is the case, items are grouped with a single entry having multiple results. Each named item in the table is unique even if it shares the same name as another. Tables A4, A2 and A3 detail results from NAA, ICP-MS and GD-MS, respectively. Finally, Table A5 details results from the radon emanation assay campaign.

For ease of interpretation, the tables are further subdivided to detail locations within the LZ experiment where specific items were either used or where there intended use would be. Those items which are constructed “in-house” by the LZ collaboration are highlighted as such. Not all isotopes are detailed for all items as the ability to do this may depend on the ability of the detector or method employed or if the isotope is of particular interest (*e.g.* for ^{60}Co in stainless steel components). The upper limits reported are generally at 90% confidence level but upper limits from the LBNL and BHUC detectors (MERLIN, MAEVE, MORGAN, MORDRED, and SOLO) are quoted at 1σ .

Table A1: HPGe Screening Results.

Sample	Supplier	Detector	Mass [kg]	Units	²³⁸ U _n	²³⁸ U _i	²³² Th _n	²³² Th _i	⁴⁰ K	²¹⁰ Pb	⁶⁰ Co
Calibration											
Tungsten Pig	Midwest Tungsten	MERLIN	0.89	mBq/kg	-	<1200	<690	<610	<150	-	-
Tungsten Alloy	Midwest Tungsten	MERLIN	0.98	mBq/kg	-	1.7(10)	0.15(100)	0.14(100)	77(5)	-	-
Conduits											
PVC Tubing	Commercial Supplier	MERLIN	6.0	mBq/kg	0.27(7)	0.16(1)	0.04(1)	0.04(1)	0.40(60)	-	-
Closed-Cell Polyethylene Foam 1/4-inch	FoamOrder	MERLIN	0.05	mBq/kg	<309	<138	<177	<107	<490	-	-
		MORGAN		mBq/kg	<290	<42	<60	<36	<236	-	-
Cryostat											
0.375-in Ti Sheet Stock Grade CP-1	Supra Alloy	MAEVE	5.8	mBq/kg	31(5)	4.1(6)	-	2.8(4)	<1.8	-	-
0.3125-in Ti Sheet Stock Grade CP-1	PTG	MAEVE	5.4	mBq/kg	46(7)	2.8(6)	-	2.8(4)	<1.8	-	-
0.375-in Ti Sheet Stock Grade CP-2	Supra Alloy	MAEVE	7.6	mBq/kg	110(24)	<2.4	-	170(4)	2.4(3)	-	-
0.3125-in Ti Sheet Stock Grade CP-2	PTG	MAEVE	6.7	mBq/kg	<9.6	3.6(12)	-	2.4(8)	<2.1	-	8.4(3)
Ti alloy bolts 0.5-in x 3.5-in	METTEC	MERLIN	0.99	mBq/kg	1300(100)	<6.0	-	160(20)	<60	-	-
0.5-in Ti alloy nuts and washers	METTEC	MERLIN	0.29	mBq/kg	500(100)	<8.4	-	80(20)	<60	-	-
Ti Sheet Stock	Timet	MAEVE	6.4	mBq/kg	4.9(25)	3.3(5)	2.8(8)	0.81(41)	<1.5	-	-
Ti Sheet Stock	Timet	MERLIN	4.3	mBq/kg	<1.2	<25	-	<4.1	<6.0	-	-
Ti Sheet Stock	Timet	MAEVE	4.3	mBq/kg	11(4)	<0.60	-	<0.60	<2.4	-	-
Gerda D6 Stainless Steel Plate	Ilsenburg	Ge-II	6.0	mBq/kg	<1.5	<1.5	-	<1.1	<13	-	6.2(6)
		MAEVE		mBq/kg	5.7(33)	<0.16	0.37(4)	<0.30	<0.80	-	3.7(2)
Polyurethane Foam Sealant	Handi Foam	MERLIN	0.44	mBq/kg	<49	-	-	<41	<310	-	-
LUX Titanium 3/16	Titanium Metal Supply Inc.	MERLIN	3.6	mBq/kg	<11	<2.5	-	<1.6	<0.01	-	-
LUX Titanium 3/16	Titanium Metal Supply Inc.	MERLIN	2.9	mBq/kg	<6.2	<1.2	-	<1.2	<0.01	-	-
Titanium Sponge	VSMPO	MAEVE	1.00	mBq/kg	17(9)	12(1)	<4.1	<4.1	<6.2	-	-
Titanium Wafers	VSMPO	MAEVE	0.53	mBq/kg	62(25)	<6.2	<4.1	<4.1	<31	-	-
Titanium Plate	Timet	MAEVE	7.1	mBq/kg	8.0(19)	<0.12	-	<0.12	<0.62	-	-
Polyethylene Foam	Foam Factory	Ge-III	0.79	mBq/kg	57(13)	57(13)	-	<9.0	<80	-	<6.0
Titanium Sheet	Timet	MAEVE	6.9	mBq/kg	<8.5	<0.37	-	<0.61	<0.53	-	-
Stainless Steel Sheet	Nironit	Ge-II	10	mBq/kg	22(22)	4.9(10)	-	5.4(9)	1.7(36)	-	14(2)
		MERLIN		mBq/kg	-	1.1(3)	-	4.1(5)	<3.0	-	8.2(5)
Stainless Steel Sheet	Nironit	Ge-III	10	mBq/kg	7.9(105)	2.5(5)	-	0.37(31)	0.69(183)	-	14(2)
		MERLIN		mBq/kg	-	<0.60	-	<0.80	<3.0	-	7.4(4)
Stainless Steel Sheet	Nironit	Ge-II	10	mBq/kg	33(22)	2.2(8)	-	0.67(64)	-3.35(369)	-	9.7(13)
		MERLIN	8.5	mBq/kg	-	<0.60	-	<0.90	<3.0	-	6.5(5)

continued

Sample	Supplier	Detector	Mass [kg]	Units	²³⁸ U _e	²³⁸ U _l	²³² Th _e	²³² Th _l	⁴⁰ K	²¹⁰ Pb	⁶⁰ Co
Stainless Steel Sheet	Nironit	MAEVE	10	mBq/kg	7.3(25)	0.35(5)	1.1(2)	4.0(3)	<0.80	-	14(0)
		MERLIN		mBq/kg	-	<0.70	-	6.3(10)	<3.0	-	16(1)
Stainless Steel Sheet	Nironit	MAEVE	10	mBq/kg	<1.0	0.54(10)	0.49(8)	1.1(2)	<0.59	-	1.7(1)
		MERLIN		mBq/kg	-	<0.60	-	<1.3	<3.0	-	1.7(3)
Stainless Steel Sheet	Nironit	MERLIN	11	mBq/kg	-	<0.60	-	0.90(20)	<4.0	-	2.2(3)
		MAEVE		mBq/kg	1.2(5)	0.27(5)	0.33(4)	0.49(4)	<0.40	-	1.6(1)
Stainless Steel Sheet	Nironit	MAEVE	9.4	mBq/kg	1.9(11)	0.38(5)	0.81(8)	0.73(8)	<0.46	-	5.6(2)
		MERLIN		mBq/kg	-	<0.70	-	<0.03	<3.0	-	5.9(4)
Stainless Steel Sheet	Nironit	MERLIN	9.4	mBq/kg	-	<0.50	-	2.0(1)	<5.0	-	1.6(3)
		MAEVE		mBq/kg	0.50(20)	1.9(1)	1.7(2)	1.5(1)	<0.50	-	4.5(2)
Stainless Steel Sheet	Nironit	MAEVE	9.5	mBq/kg	1.4(6)	0.50(10)	0.50(6)	0.32(4)	<0.50	-	2.6(1)
		MERLIN		mBq/kg	-	<0.60	-	2.1(3)	<3.0	-	2.2(4)
Stainless Steel Sheet	Nironit	MERLIN	9.6	mBq/kg	-	4.0(6)	-	2.2(3)	<4.0	-	26(1)
Stainless Steel Sheet	Nironit	MERLIN	11	mBq/kg	-	<0.60	-	4.8(6)	<2.0	-	32(1)
Stainless Steel Sheet	Nironit	MERLIN	9.6	mBq/kg	-	<0.80	-	2.1(4)	5.0(7)	-	32(1)
Stainless Steel Sheet	Nironit	MERLIN	9.6	mBq/kg	-	<1.4	-	<1.5	<4.0	-	335(3)
Viton O-ring	FKM	Chaloner	0.30	mBq/kg	2630(280)	2490(70)	220(20)	220(20)	2510(290)	3140(170)	10(10)
Titanium Sheet	Timet	MAEVE	10	mBq/kg	<1.6	<0.09	0.28(3)	0.23(2)	<0.54	-	-
Helicoflex Nimonic Spring	Helicoflex	Chaloner	0.37	mBq/kg	850(78)	16(5)	27(6)	2.0(17)	84(58)	226(82)	32(3)
Helicoflex Aluminium/Inconel	Helicoflex	Lumehead	0.42	mBq/kg	443(131)	<4.6	18(4)	139(4)	32(33)	-	<0.84
Polyamide Foam	eFoam UK	Lumehead	0.01	mBq/kg	-	1693(230)	<211	<192	3756(2135)	-	-
Armaflex Foam	eFoam UK	Lumehead	0.10	mBq/kg	701(212)	704(36)	<78	<25	732(263)	-	-
Plastazone Foam	eFoam UK	Lumehead	0.03	mBq/kg	2049(607)	333(67)	<64	<58	<469	-	<18
Silicone Gasket	Barnwell	Lumehead	0.04	mBq/kg	-	294(37)	<43	<31	836(350)	-	<12
Stainless Steel Fasteners	Oxford Bearings Ltd	Lumehead	0.69	mBq/kg	59(30)	26(2)	<1.3	<1.3	<6.0	-	10(1)
Multi-Layer Insulation	RUAG	Lumehead	0.05	mBq/kg	-	3346(457)	<272	<98	21(11)	-	<9.0
Plastazone Foam	eFoam UK	Lumehead	0.10	mBq/kg	1289(362)	446(44)	146(93)	133(81)	<438	-	<23
Viton O-Rings	Dichtomatik	Lumehead	0.27	mBq/kg	<118	40(11)	<37	<33	1522(169)	-	<8.0
Viton O-Rings	O-Rings Ltd	Lumpsey	0.40	mBq/kg	159(24)	<56	<49	58(11)	1503(90)	6914(246)	<4.0
Stainless Steel Cryostat Flange	Italy #422511	MORGAN	9.2	mBq/kg	8.6(12)	0.32(6)	6.5(4)	6.5(4)	<0.40	-	3.0(1)

continued

Sample	Supplier	Detector	Mass [kg]	Units	²³⁸ U _e	²³⁸ U _l	²³² Th _e	²³² Th _l	⁴⁰ K	²¹⁰ Pb	⁶⁰ Co
Stainless Steel Cryostat Flange	Italy #422511	MERLIN	1.0	mBq/kg	2.5(12)	1.9(4)	4.9(8)	4.9(8)	<31	-	3.1(3)
Stainless Steel Round Stock	Italian	MORGAN	3.4	mBq/kg	<0.99	<0.86	3.3(4)	4.9(4)	<1.0	-	6.7(4)
		MERLIN		mBq/kg	37(12)	12(1)	3.7(12)	3.7(12)	<31	-	9.0(40)
Stainless Steel Plate	Coulter	MERLIN	13	mBq/kg	<6.2	<2.5	<2.0	<2.0	<31	-	12(0)
3.2 mm Titanium Welding Wire	Timet	MERLIN	0.95	mBq/kg	<123	<12	<8.1	<8.1	<31	-	-
7 mm Titanium Coupons	Timet	MERLIN	5.0	mBq/kg	<25	<12	<4.1	<4.1	<31	-	-
5 mm Stainless Steel Plate	Nironit	SOLO	7.1	mBq/kg	<3.4	0.83(54)	2.1(19)	2.3(11)	<2.3	-	-
5 mm Stainless Steel Plate	Nironit	MERLIN	7.1	mBq/kg	<6.2	<1.2	-	2.4(4)	<6.2	-	-
Aluminium Plate	Technetics	MERLIN	0.32	mBq/kg	1235(247)	<12	122(41)	102(8)	2694(93)	-	-
Stainless Steel Wire	Technetics	MERLIN	0.20	mBq/kg	1111(247)	<123	<41	<41	<7121	-	1.5(3)
Inconel 600 Plate For Helicoflex Seal	Technetics	MAEVE	0.34	mBq/kg	115(65)	<2.5	<8.9	<5.3	<13	-	-
		MERLIN		mBq/kg	494(123)	<12	-	<41	<155	-	-
Multi-Layer Insulation	RUAG	MERLIN	0.12	mBq/kg	0.99(37)	<62	<8.1	<8.1	372(248)	-	-
		SOLO		mBq/kg	<123	<10	<15	<77	-	-	
12 mm Titanium Plate	Loterios	MERLIN	8.2	mBq/kg	<7.4	<1.2	<4.1	<4.1	<3.1	-	-
9 mm Titanium Plate	Loterios	MERLIN	5.0	mBq/kg	<25	<1.2	<4.1	<4.1	<31	-	-
7.5 mm Stainless Steel Plate	Nironit	MERLIN	12	mBq/kg	<6.2	<1.2	<4.1	<4.1	<3.1	-	-
12 mm Stainless Steel Plate	Nironit	MERLIN	8.6	mBq/kg	<3.7	<1.2	<4.1	<4.1	<3.1	-	-
20 mm Stainless Steel Plate	Nironit	MERLIN	9.9	mBq/kg	<12	<1.2	2.0(12)	2.0(12)	<3.1	-	-
25 mm Stainless Steel Plate	Nironit	MERLIN	9.1	mBq/kg	<12	<1.2	<2.0	<2.0	<15	-	0.40(10)
Forged and Machined Weir Ports	Timet	MERLIN	1.6	mBq/kg	<37	<12	<4.1	<4.1	<31	-	-
1.6 mm Titanium Welding Wire	Loterios	MERLIN	1.1	mBq/kg	136(37)	64(5)	<4.1	<4.1	<31	-	-
1.6 mm Titanium Welding Wire	Loterios	MERLIN	1.1	mBq/kg	<123	37(12)	8.1(41)	8.1(41)	<31	-	-
1-inch Stainless Steel Rods	Nironit	MAEVE	2.1	mBq/kg	10(5)	3.2(6)	10(1)	9.0(10)	<1.3	-	2.5(10)
3.2 mm Titanium Welding Wire	Loterios	MORDRED	1.00	mBq/kg	<6.2	85(16)	<6.9	<4.1	<9.3	-	-
50 mm Stainless Steel Plates	Nironit	MERLIN	9.1	mBq/kg	<12	<1.2	<2.0	<2.0	<15	-	0.40(10)
Cable For LZ Sensors	Axon	MAEVE	1.7	mBq/kg	37(7)	5.0(10)	<1.4	<2.7	39(8)	-	-
Aluminium Sheets	Technetics	Lumpsey	0.17	mBq/kg	640(110)	60(20)	64(34)	580(30)	<240	12000(400)	<11
Stainless Steel Tubes	Tube Supply Intl.	Lumpsey	0.77	mBq/kg	90(50)	31(13)	<30	<20	-	-	-
Stainless Steel Threaded Rod	Stainless UK Ltd	Lumpsey	1.0	mBq/kg	70(30)	<17	<20	<9.0	43(35)	-	-

continued

Sample	Supplier	Detector	Mass [kg]	Units	²³⁸ U _e	²³⁸ U _i	²³² Th _e	²³² Th _i	⁴⁰ K	²¹⁰ Pb	⁶⁰ Co
1.6 mm Titanium Welding Wire	Loterios	MORGAN	1.1	mBq/kg	<6.0	<0.80	<0.90	<2.7	<4.3	-	-
PEEK Rods 3/8 & 1/2	McMaster Carr	MERLIN	0.60	mBq/kg	<38	21(5)	<3.2	<2.9	<19	-	-
PEEK Rods 1/4	McMaster Carr	MERLIN	0.23	mBq/kg	<18	<15	<9.0	<6.0	<51	-	-
PEEK 1/4 Threaded Rod	McMaster Carr	MERLIN	0.12	mBq/kg	<25	<12	<16	<11	<94	-	-
UMHW Polyethylene Blocks	Direct Plastics	Chaloner	1.5	mBq/kg	<24	<1.0	<1.0	<0.50	<24	-	-
High Density Polyethylene Blocks	Direct Plastics	Lumpsey	1.3	mBq/kg	<40	<4.0	<7.0	<4.0	<24	-	-
Viton O-Rings	Dichtomatik	Lunehead	0.29	mBq/kg	<80	250(20)	710(55)	680(30)	3900(220)	-	-
Helicoflex Seal Aluminium	Technetics	Lunehead	0.07	mBq/kg	1050(300)	125(30)	<90	1200(50)	<320	-	-
Styrofoam	Panel Systems	Lunehead	0.35	mBq/kg	<199	130(16)	85(24)	59(14)	<150	-	-
MMCX Connectors	TE Connectivity	Chaloner	0.03	mBq/kg	525(85)	48(23)	<95	12(11)	<332	35542(1427)	-
Stainless Steel Tubes	Whitney Steelstock	Lumpsey	0.77	mBq/kg	1000(550)	50(20)	<40	<50	<100	-	-
Stainless Steel Nuts	Oxford Bearings Ltd	Lumpsey	0.44	mBq/kg	<850	60(40)	<73	<61	<190	-	-
Stainless Steel Threaded Rod	Stainless UK Ltd	Lumpsey	1.0	mBq/kg	<180	<25	<23	<20	41(33)	-	-
Large Stainless Steel Cylinder	Stainless UK Ltd	Lumpsey	3.9	mBq/kg	<40	8.0(40)	<6.0	<5.0	<16	-	-
Small Stainless Steel Cylinders x4	Stainless UK Ltd	Lunehead	4.7	mBq/kg	<50	8.0(10)	4.0(10)	4.0(10)	<8.0	-	-
Deionised Water	Astropak	MERLIN	1.0	mBq/kg	<185	<8.5	<4.1	<4.5	112(27)	<12	-
IPA 99%	A. G. Layne Inc.	MERLIN	1.0	mBq/kg	<25	<9.0	<4.0	<4.0	<25	<12	-
Welding Tips	Weld Craft	MERLIN	0.15	mBq/kg	<227	35(31)	504(66)	323(35)	<100	<128	-
PEEK Cable Ties	Solid Spot	MERLIN	0.39	mBq/kg	<75	70(18)	80(96)	40(12)	<80	-	-
PEEK Cable Ties	Solid Spot	MAEVE	0.39	mBq/kg	<81	45(3)	28(5)	32(4)	71(18)	-	-
Metal Treatment Spray	Avesta	MERLIN	0.60	mBq/kg	<12	<10	<4.0	<4.0	2200(90)	<19	-
Black 3D Printed Material	GoPrint3D	Roseberry	0.04	mBq/kg	15(10)	17(9)	35(20)	5.0(30)	1360(150)	1060(80)	-
White 3D Printed Material	GoPrint3D	Roseberry	0.04	mBq/kg	15(11)	<8.0	30(15)	20(3)	<60	75(25)	-
Stainless Steel Pipe	Stainless UK Ltd	Roseberry	0.57	mBq/kg	14(7)	4.0(20)	5.0(20)	7.0(10)	12(7)	550(80)	2.0(10)
Thermal Flexible Links	Techapps (CuTS brand)	MERLIN	1.1	mBq/kg	<12	<6.0	<8.0	<6.0	44(6)	<62	-
Stainless Steel Threaded Rod	Stainless UK Ltd	Chaloner	2.5	mBq/kg	<47	<1.0	<2.0	1.7(40)	<13	-	8.0(10)
Stainless Steel Nuts	Oxford Bearings Ltd	Lunehead	0.73	mBq/kg	<71	4.0(20)	4.0(30)	3.0(20)	<19	-	11(1)
PTFE Screws	Product Components Corporation	MORGAN	0.08	mBq/kg	<85	<12	<15	<17	<89	-	-

continued

Sample	Supplier	Detector	Mass [kg]	Units	²³⁸ U _e	²³⁸ U _i	²³² Th _e	²³² Th _i	⁴⁰ K	²¹⁰ Pb	⁶⁰ Co
PTFE Screws	Product Components Corporation	MERLIN	0.08	mBq/kg	<145	<44	<52	<31	<188	-	-
Bellows	Palatine Precision Ltd	Roseberry	0.54	mBq/kg	14(7)	8.0(20)	12(4)	15(1)	<8.0	140(51)	10(2)
Viton O-Rings	Dichtomatik	Lumehead	0.37	mBq/kg	171(26)	62(8)	19(7)	15(3)	3267(105)	-	<3.0
Elastomer Cord	Dichtomatik	Chaloner	0.35	mBq/kg	<19	572(20)	1776(45)	1747(15)	7895(172)	-	<2.0
PEEK Monofilament	Accu-Glass Products Inc	MERLIN	0.02	mBq/kg	<1060	<320	<710	<760	<2030	-	-
		Chaloner		mBq/kg	1500(500)	1200(500)	<400	300(100)	<4400	<900	<170
Krytox	Chemours	Roseberry	0.07	mBq/kg	<43	46(12)	14(10)	11(3)	137(54)	<500	<6.0
Aluminium Sheet	Hydro Aluminium Rolled Products	Chaloner	0.37	mBq/kg	293(100)	64(16)	<20	<13	<121	<120	<5.0
PTFE Screws	Product Components Corporation	MERLIN	0.07	mBq/kg	<154	<74	<141	<138	<287	-	-
Styrodur Foam	eFoam UK	Chaloner	0.22	mBq/kg	<33	45(20)	<28	29(5)	<268	<119	<11
Polyisocyanurate Foam	eFoam UK	Lumehead	0.20	mBq/kg	<150	<28	<44	<15	57200(800)	-	<8.0
20mm Stainless Steel Sheet	Nironit	SOLO	9.9	mBq/kg	<7.4	0.87(43)	0.99(75)	1.5(6)	<1.7	-	-
Multi-Layer Insulation	RUAG	Roseberry	0.66	mBq/kg	18(8)	10(3)	<3.0	<1.0	50(20)	150(30)	<2.0
Titanium Lathe Swarf	Loterios	Lumehead	0.16	mBq/kg	<109	<19	<21	<11	<121	-	<6.0
Titanium Drill Swarf	Loterios	Chaloner	0.46	mBq/kg	7.0(40)	8.0(50)	<5.0	5.0(10)	<43	29(12)	<2.0
Sodium Bicarbonate	Genesis Alkali	MERLIN	0.39	mBq/kg	<27	123(25)	<12	<11	<39	-	-
Stainless Steel Plates	Nironit	MERLIN	9.7	mBq/kg	<2.5	<0.70	<1.1	<0.76	<3.1	<14	-
AeroGel Thermal Wrap 8 mm	BuyAerogel	MORGAN	0.10	mBq/kg	<181	<25	<30	<20	1588(221)	-	-
Cream 3D Printed Material	GoPrint3D	Lumehead	0.03	mBq/kg	<1000	100(42)	186(49)	161(16)	<280	-	<12
Stainless Steel Fasteners	Oxford Bearings Ltd	Lumehead	1.5	mBq/kg	<75	<4.0	8.0(30)	8.0(20)	<14	-	13(1)
Aluminium Tape	RUAG	Merrybent	0.29	mBq/kg	<7.0	40(6)	20(5)	25(2)	130(23)	-	<2.0
Titanium Coupons	Timet	MORGAN	2.0	mBq/kg	<9.7	<1.1	<2.9	<1.6	<6.8	-	-
HDPE Plates	Direct Plastics	Chaloner	0.55	mBq/kg	14(5)	<6.9	<7.9	1.8(10)	<36	-	-
Blue 3D Printed Material	GoPrint3D	Chaloner	0.04	mBq/kg	<25	<23	<14	<12	<160	<25	<5.0
Yellow 3D Printed Material	GoPrint3D	Merrybent	0.03	mBq/kg	<12	150(25)	<8.0	<4.0	<74	-	-
PTFE Screws & Washers	McMaster Carr	MERLIN	0.05	mBq/kg	<142	<80	<70	<55	<209	-	-
Welding Wire	Loterios	Belmont	0.03	mBq/kg	<21	<37	35(16)	22(4)	<81	-	350(17)
Cable Ties	Mouser Electronics	SOLO	0.00	mBq/kg	<182	<13	<20	<16	<84	-	-
Kapton Tiles	Fralock (McMaster Carr)	MORGAN	0.18	mBq/kg	<25	<4.6	<6.2	<5.2	<32	-	-

continued

Sample	Supplier	Detector	Mass [kg]	Units	²³⁸ U _e	²³⁸ U ₁	²³² Th _e	²³² Th ₁	⁴⁰ K	²¹⁰ Pb	⁶⁰ Co
Copper Block	Silicon valley MFG	MERLIN	0.35	mBq/kg	<24	<8.6	<9.3	<8.5	<28	-	-
Terminal Ring Connectors	Digikey/TE Connectivity	MERLIN	0.04	mBq/kg	<343	<120	<110	<121	<359	-	-
Vacuum RTD Screws	Made in house	Roseberry	0.08	mBq/kg	58(14)	29(6)	6.0(40)	14(3)	30(18)	-	18(4)
Stainless Steel Tubes	Tube Supply Intl.	Lunehead	0.92	mBq/kg	<25	<4.0	<4.0	<3.0	<18	-	172(3)
Stainless Steel Tubes	Tube Supply Intl.	Lunehead	1.5	mBq/kg	40(20)	<3.0	<4.0	<5.0	<17	-	15(1)
M8 Bolts & Washers	McMaster Carr	MORGAN	0.59	mBq/kg	<27	<3.5	<5.0	<4.1	<19	-	6.5(34)
ISO 200-800-OF Flanges & Stainless 304L	NorCal & Penn Stainless	SOLO	2.3	mBq/kg	<14	4.6(10)	<6.1	5.4(18)	<14	-	15(2)
High Voltage											
Polyethylene Bead Stock	Bay Cable	MERLIN	3.4	mBq/kg	1.3(31)	3.4(5)	<0.30	<0.49	5.3(31)	-	-
Polyethylene Bead Stock	Bay Cable	MERLIN	3.8	mBq/kg	6.6(27)	<0.40	0.55(23)	<0.55	3.0(28)	-	-
Polyethylene Bead Stock	Bay Cable	MERLIN	4.2	mBq/kg	6.0(30)	<0.37	0.63(24)	<0.62	3.4(28)	-	-
Canted Coil Springs	BAL-SEAL from BSE-3 SS stock	MAEVE	0.10	mBq/kg	<120	54(15)	43(22)	<16	<130	-	-
		MERLIN		mBq/kg	<308	182(56)	171(73)	<18	<163	-	-
Wave Springs	Smalley	MERLIN	0.18	mBq/kg	1482(942)	107(20)	<14	<11	<74	<95	-
Xenon Displacer	McMaster Carr	MERLIN	0.30	mBq/kg	<35	<3.3	<6.6	<3.8	<36	-	-
PEEK Rods 3/8	McMaster Carr	MERLIN	0.21	mBq/kg	<56	<7.0	<10	<6.0	<65	-	-
CHV Insulating Boomerangs	Protolabs from PolyOne stock	MERLIN	0.20	mBq/kg	<116	20(14)	<11	<10	<56	<62	-
Stainless Steel Bars 1-7/16	McMaster Carr	MERLIN	2.6	mBq/kg	<10	<4.3	6.0(50)	9.3(20)	<16	-	7.2(11)
Tellurium Copper Bars 1/2	McMaster Carr	MERLIN	1.6	mBq/kg	<7.4	<3.7	<5.7	<4.9	<22	-	-
Tellurium Copper Bars 1	McMaster Carr	MERLIN	1.6	mBq/kg	<7.4	<3.7	<5.7	<4.9	<22	-	-
3/4 Stainless Steel Adapters	McMaster Carr	MERLIN	0.27	mBq/kg	<49	<18	<26	<19	<67	-	-
Conflat Flanges	Kurt J. Lesker	MERLIN	0.34	mBq/kg	<49	<13	<15	<18	<56	-	-
Stainless Steel Swarf	McMaster Carr	MERLIN	0.94	mBq/kg	<15	<6.0	<11	<9.0	<28	-	-
1-1/3 Conflat Blanks	Kurt J. Lesker	MERLIN	-	mBq/Unit	<1.6	<0.40	<0.60	0.70(60)	<1.7	-	0.30(20)
2-1/8 Conflat Half Nipples	Kurt J. Lesker	MERLIN	-	mBq/Unit	<7.2	<1.8	<2.8	3.3(30)	<7.5	-	1.5(9)
Stainless Steel Bars	Grainger	MERLIN	2.7	mBq/kg	<12	<4.9	<4.1	<4.9	<16	-	5.0(20)
Solder Paste	Chip Quik	MERLIN	0.23	mBq/kg	<55	<18	<18	<16	<70	-	-
Copper Plates	LBNL Fabrication	MERLIN	1.0	mBq/kg	<12	<5.0	<5.0	<4.0	<19	<43	-
Stainless Steel Spring	Lee Spring	MERLIN	-	mBq/Unit	<3.1	<1.2	<1.9	<1.7	<4.9	-	-
Tungsten Welding Electrodes	Blue Demon	MERLIN	0.19	mBq/kg	<124	<22	<39	56(36)	<108	-	-
Stainless Steel Welding Wire	Harris Products via McMaster	MERLIN	0.93	mBq/kg	<29	<7.0	<7.0	15(14)	<31	-	-

continued

Sample	Supplier	Detector	Mass [kg]	Units	²³⁸ U _o	²³⁸ U ₁	²³² Th _o	²³² Th ₁	⁴⁰ K	²¹⁰ Pb	⁶⁰ Co
Stainless Stell Mount	McMaster Carr	MORGAN	0.32	mBq/kg	<19	<3.6	<6.0	<4.1	<20	-	24(7)
Pure and Ceriated Tungsten Welding Electrodes	McMaster Carr	MERLIN	0.30	mBq/kg	<52	156(35)	506(107)	303(34)	<102	-	-
Stainless Steel Welding Wire	McMaster Carr	MERLIN	0.49	mBq/kg	<28	<12	<13	34(15)	<36	-	-
PEEK Cylinder 2-1/2 Diameter	McMaster Carr	MERLIN	0.63	mBq/kg	<34	<17	<17	<13	<45	-	-
FEP Compression To Conflat Adaptor	McMaster Carr	MERLIN	-	mBq/Unit	<64	<3.0	89(9)	101(6)	<10	-	-
Cold Grading Structure Mount	McMaster Carr	MERLIN	1.4	mBq/kg	<148	<4.9	<8.9	<7.3	<22	-	6.5(15)
Black TIVAR Discs	Quadrant From Boedecker Stock	SOLO	1.6	mBq/kg	<18	<6.2	<3.0	<2.4	<22	-	-
Copper Desoldering Braid	McMaster Carr	MERLIN	0.07	mBq/kg	<93	<32	<55	<44	<142	<432	-
CHV Cables	Quadrant From Boedecker Stock	MERLIN	0.46	mBq/kg	<34	56(15)	<21	16(17)	<34	-	-
3D Printed Brass Connectors	Shapeways.com	MERLIN	0.04	mBq/kg	<247	<89	<89	<97	<368	-	-
Grading Resistors	Ohmite	MERLIN	-	mBq/Unit	2.2(6)	0.50(10)	0.20(20)	0.30(10)	<0.30	-	-
Bellows	Kurt J. Lesker	MERLIN	-	mBq/Unit	<16	<3.1	<5.6	<5.1	<17	-	-
Bellows Clamp Collar	Vendor Supplied SS 304	MERLIN	0.26	mBq/kg	<106	<33	<37	<26	<100	-	-
Clamp Collar Split Ring	Vendor Supplied SS 304	MERLIN	-	mBq/Unit	<11	<3.4	<5.4	<4.2	<17	-	-
Stainless Steel Set Screws	McMaster Carr	MERLIN	0.06	mBq/kg	<154	<33	<35	<40	392(538)	-	-
Misc											
Deionised Water	Amazon UK	Chaloner	0.29	mBq/kg	<5.6	<9.0	<7.8	<3.4	<67	<16	-
Environmental Dust From 4850L SURF Cleanroom	N/A	Ge-II	0.06	mBq/kg	11(2)	10(1)	4.4(4)	4.4(4)	156(23)	-	-
Environmental Dust From 4850L SURF Cleanroom (vented)	N/A	MERLIN	0.39	mBq/kg	18(0)	15(0)	9.6(0)	9.6(0)	251(3)	-	-
Environmental Dust From 4850L SURF Cleanroom (un-vented)	N/A	MERLIN	0.39	mBq/kg	13(0)	12(0)	7.7(0)	7.7(0)	197(1)	-	-
Alconox Detegent-8	Alconox	MERLIN	1.8	mBq/kg	247(37)	<12	<4.1	<4.1	1115(62)	-	-
Alconox Powdered Detergent	Alconox	MERLIN	0.88	mBq/kg	543(247)	222(25)	61(24)	138(20)	21672(310)	-	-
Rope	McMaster Carr	MERLIN	0.38	mBq/kg	309(123)	62(12)	<20	<20	<310	-	-
High Voltage Cables	McMaster Carr	MERLIN	0.27	mBq/kg	49(25)	235(49)	-	285(41)	402(155)	-	-
HEPA Dust (unvented)	N/A	Lunehed Ge-III	0.86	mBq/kg	16(11) <30	11(2) <4.8	8.0(30) 7.3(23)	3.0(10) 11(2)	177(14) 187(30)	1119(175) -	<1.0 -
HEPA Dust (vented)	N/A	Lunehed	0.86	mBq/kg	21(11)	9.0(20)	6.0(30)	5.0(10)	172(13)	974(152)	<1.0
Isopropyl Alcohol	Imperial College London Fabrication	Chaloner	0.90	mBq/kg	<7.0	<3.0	<4.0	<2.0	<35	<22	-
Acetone	Imperial College London Fabrication	Chaloner	1.0	mBq/kg	<7.0	<3.0	<5.0	<2.0	<37	35(31)	-
Carboact Activated Charcoal	Carboact	Lumpsey	0.01	mBq/kg	<280	<130	<240	<130	<460	<480	-
Thermofoil Heaters	MINCO	MAEVE	0.04	mBq/kg	<227	457(49)	<27	<17	<68	-	-

continued

Sample	Supplier	Detector	Mass [kg]	Units	²³⁸ U _e	²³⁸ U ₁	²³² Th _e	²³² Th ₁	⁴⁰ K	²¹⁰ Pb	⁶⁰ Co
OFHC Copper	City Special Metals	MERLIN	2.3	mBq/kg	<15	<11	<10	<8.0	<28	<11	-
Deionised Water From SURF Faucet	N/A	Roseberry	1.2	mBq/kg	2.0(10)	3.0(10)	2.0(10)	1.1(20)	9.0(60)	19(6)	-
Superwash 2000	Imperial College London Fabrication	Chaloner	1.1	mBq/kg	<7.0	<2.0	<3.0	2.0(10)	1280(40)	<18	-
Citranox	Alconox	Chaloner	1.1	mBq/kg	<6.0	3.0(20)	<4.0	<2.0	147(25)	<18	-
Deionised Water	Imperial College London Fabrication	Chaloner	1.1	mBq/kg	<6.0	3.0(20)	<3.0	<2.0	<25	<16	-
Deionised Water	Imperial College London Fabrication	Chaloner	1.2	mBq/kg	<5.0	<3.0	<3.0	<2.0	<27	<31	-
A4 Coarse Dust	Powder Technology	Ge-II	0.12	mBq/kg	29(0)	-	-	-	-	-	-
A1 Ultrafine Dust	Powder Technology	Ge-II	0.10	mBq/kg	47(1)	-	-	-	-	-	-
AFRL-02 Dust	Powder Technology	Ge-II	0.30	mBq/kg	4.9(1)	-	-	-	-	-	-
AFRL-03 Dust	Powder Technology	Ge-II	0.32	mBq/kg	6.6(1)	-	-	-	-	-	-
Isopropyl Alcohol	AstroPak	MERLIN	0.52	mBq/kg	<28	<26	<14	<11	<47	<198	-
MMC Black Rubber	Lincoln Plastics	MERLIN	0.41	mBq/kg	<993	1616(105)	<49	152(86)	1607(526)	-	-
DAWN Ultra Washing Up Liquid	P&G	MERLIN	0.63	mBq/kg	37(26)	<12	<8.1	<8.1	2080(91)	<25	-
Mixed Stainless Steel Hardware	Malin	MERLIN	0.20	mBq/kg	<98	137(80)	<36	<41	<134	-	-
Mixed Stainless Steel Hardware	MMC	MERLIN	0.92	mBq/kg	<17	<9.2	<7.5	<8.0	<25	-	2.7(19)
Stainless Steel Offcuts	PENN STAINLESS	SOLO	0.40	mBq/kg	<62	<10	<17	<11	<65	-	-
Stainless Steel Bellows Material	American Boa	MORDRED	0.21	mBq/kg	<74	<12	<20	<15	<59	-	-
Outer Detector											
Adhesive Epoxy	Reynolds Polymer Technology	Ge-III	0.08	mBq/kg	-71(431)	123(41)	-8.0(260)	-8.0(260)	99(158)	-	9.0(100)
Stainless Steel Unistrut	Ventura Steel	MERLIN	1.0	mBq/kg	<1.0	<1.0	<1.0	<1.0	300(200)	-	-
Rope	Endure Braid	MERLIN	0.42	mBq/kg	86(12)	86(12)	<20	<20	712(31)	-	-
Stainless Steel 1/4-20 Nuts	McMaster Carr	MERLIN	0.52	mBq/kg	<12	<12	<8.1	<8.1	<93	-	-
Polishing Compound (Finesse-It)	3M	Ge-II	0.59	mBq/kg	-	-	<29	<1.9	-	-	-
Sandpaper 5-inch	Reynolds	Ge-II	0.04	mBq/kg	15(2)	13(1)	19(2)	17(1)	11(2)	-	-
Sandpaper 7-inch	Reynolds	Ge-II	0.13	mBq/kg	4.5(7)	4.3(5)	8.7(8)	7.1(7)	9.9(12)	-	-
Gemac Film	Reynolds	Ge-II	1.1	mBq/kg	405(99)	187(22)	303(34)	289(28)	936(156)	-	-
Lumirror Reflector	TORAY(Japan)	LBNL	0.69	mBq/kg	<133	1708(32)	<55	58(17)	329(106)	-	-
Microgrit Aluminum Oxide	Microgrit	Ge-II	0.68	mBq/kg	10(2)	5.0(5)	7.6(7)	7.0(6)	5.6(9)	-	-
GdLS Exposed To Mine Air	Sigma-Aldrich	MORGAN	0.69	mBq/kg	<12	58(1)	2.4(8)	<1.6	<9.3	-	-
GdCl (Gadolinium Chloride)	Sigma-Aldrich	MORDRED	0.31	mBq/kg	<7.4	21(2)	<3.3	<1.2	<28	-	-
		MERLIN		mBq/kg	<12	25(13)	<4.0	<4.0	<31	-	-

continued

Sample	Supplier	Detector	Mass [kg]	Units	²³⁸ U _e	²³⁸ U ₁	²³² Th _e	²³² Th ₁	⁴⁰ K	²¹⁰ Pb	⁶⁰ Co
Fiberoptic Cable	Super ESKA	Lumpsey	0.94	mBq/kg	<74	22(6)	14(12)	13(6)	411(28)	<210	<1.5
Alconox Deteget-8	Alconox	Chaloner	0.32	mBq/kg	<15	<5.0	<7.0	<2.0	86000(1300)	<46	<2.0
Deionized Water	UCSB Fabrication	Chaloner	0.88	mBq/kg	8.0(110)	2.0(40)	<2.0	6.0(20)	21(31)	<11	<0.50
Bonding Syrup	Reynolds	Chaloner	0.41	mBq/kg	12(21)	11(8)	13(11)	6.0(30)	510(70)	<18	4.0(30)
Machining Water	UCSB Fabrication	Chaloner	0.82	mBq/kg	7.0(90)	3.0(40)	5.0(50)	3.0(20)	100(30)	<9.0	<0.70
Aquavantage 1990 GD / BRULIN 1900 GD	Brulin	MERLIN	1.0	mBq/kg	57(53)	7.0(60)	39(28)	7.0(140)	106378(403)	<11	-
Fiberoptic Cable Mounts	University of Liverpool Fabrication	Lumpsey	-	mBq/Unit	<75	12(3)	<9.0	<5.0	<20	-	<1.0
Fibreoptic Cable	Super ESKA	Lumehead	0.82	mBq/kg	140(50)	9.0(30)	8.0(50)	5.0(30)	293(34)	-	<2.0
Fibreoptic Cable	Super ESKA	Lumehead	0.82	mBq/kg	84(30)	7.0(30)	10(6)	<3.0	303(35)	-	<1.0
Fibreoptic Cable	Super ESKA	Lumehead	0.82	mBq/kg	84(27)	7.0(30)	9.0(50)	<5.0	230(30)	-	<1.0
Fibreoptic Cable	Super ESKA	Lumehead	0.82	mBq/kg	58(30)	9.0(30)	15(6)	5.0(30)	384(33)	-	<3.0
PTFE Tubing	iPolymer	MERLIN	0.70	mBq/kg	<18	<7.0	<10	<6.0	<31	-	-
PTFE Tubing	Pure Blue USA	MERLIN	0.64	mBq/kg	<335	<10	<14	21(19)	<48	-	-
PTFE Cylinder	iPolymer	MERLIN	1.1	mBq/kg	<26	<6.0	<11	<9.0	<26	-	-
FEP Tube 5/8 ID & 3/4 OD	McMaster Carr	MERLIN	0.772	mBq/kg	<31	<9.0	<11	<10	167(50)	-	-
Cross-Linked Polyethylene Sheet	Foam factory	MERLIN	0.09	mBq/kg	<177	<72	<107	<77	<302	-	-
Cross-Linked Polyethylene Sheet	Foam factory	MORGAN	0.09	mBq/kg	<132	<23	<33	<19	<147	-	-
SS303 Inserts	LZ Fabrication	Belmont	0.01	mBq/kg	1400(300)	1700(210)	<120	70(20)	660(520)	-	<110
OCS Fibre Supports	University of Liverpool Fabrication	Lumehead	1.9	mBq/kg	31(16)	<2.7	6.1(21)	<2.6	330(20)	-	<0.50
OD Acrylic Powder	Reynolds	Lumehead	1.4	mBq/kg	<186	8.1(190)	<3.1	<2.6	38(11)	-	<0.60

PMTs, PMT bases and their components

Capacitors KEMET 10 nF - 0603	Farnell	Lumehead	0.02	mBq/kg	5030(1190)	12130(140)	4180(80)	4180(80)	400(340)	-	<10
		Chaloner		mBq/kg	4050(350)	11300(150)	3890(80)	3890(80)	300(300)	11590(940)	<10
Resistors BOURNS 4.99M - 0805	Farnell	Chaloner	0.02	mBq/kg	2070(260)	1340(40)	860(30)	860(30)	1360(270)	22940(400)	<10
Hamamatsu 10-inch PMT Glass	Hamamatsu	MERLIN	1.0	mBq/kg	1506(49)	1506(49)	262(6)	1065(24)	3901(124)	-	-
Cirlex Sheets	Cirlex	Chaloner	0.99	mBq/kg	24(4)	19(2)	3.2(15)	3.2(15)	<15	25(7)	<0.63
SnCu 0.7 flux 3064 2.2%	ELSOLD	Lumehead	0.26	mBq/kg	<58	<12	<11	<11	<32	-	<2.2
Capacitors AVX 10 nF - 0805	Farnell	Lumehead	0.03	mBq/kg	<320	39650(360)	1780(70)	1780(70)	1000(370)	-	<40
Capacitors Yageo 10 nF - 0805	Farnell	Chaloner	0.02	mBq/kg	<370	86180(710)	1770(100)	1770(100)	<290	<1170	<10
Resistors VISHAY 4.99M - 0805	Farnell	Chaloner	0.02	mBq/kg	1166(86)	369(39)	227(28)	227(28)	4358(545)	39787(763)	<9.3
Resistors Welwyn 10M - 0805	Farnell	Chaloner	0.01	mBq/kg	2420(157)	414(49)	226(36)	226(36)	987(456)	21613(544)	<12

continued

Sample	Supplier	Detector	Mass [kg]	Units	$^{238}\text{U}_e$	$^{238}\text{U}_1$	$^{232}\text{Th}_e$	$^{232}\text{Th}_1$	^{40}K	^{210}Pb	^{60}Co
Resistors VISHAY 7M5 - 0805	Farnell	Chaloner	0.01	mBq/kg	1097(102)	389(47)	106(22)	106(22)	3082(608)	41600(830)	<16
PMT Pin Receptacles	TE Connectivity	Lumehead	0.21	mBq/kg	1706(770)	<15	<21	<21	159(240)	-	<5.1
Receptacles For PMT HV	Mill-Max	Chaloner	0.02	mBq/kg	1252(220)	<24	<17	<17	<107	34971(1283)	18(8)
R11410-20 Insulator Plate (2013)	Hamamatsu	SOLO	0.21	mBq/kg	<306	<10	<16	<16	<104	-	-
R11410-20 Metal Bulb (2013)	Hamamatsu	SOLO	0.20	mBq/kg	<389	<7.7	<10	<10	<72	-	<2.1
R11410-20 Sapphire (2013)	Hamamatsu	SOLO	0.09	mBq/kg	-	34(3)	-	14(3)	<24	-	-
R11410-20 Quartz Faceplate (2013)	Hamamatsu	SOLO	0.21	mBq/kg	<107	<1.3	<4.0	<4.0	<9.3	-	-
R11410-20 Aluminum Ring 99.85% (2013)	Hamamatsu	SOLO	0.24	mBq/kg	<150	25(2)	<8.3	200(8)	<55	-	-
R11410-20 Aluminum Ring (2013)	Hamamatsu	SOLO	0.24	mBq/kg	<150	<1.5	<8.3	<8.3	13(2)	-	-
R11410-20 Faceplate Flange (2013)	Hamamatsu	SOLO	0.20	mBq/kg	<111	<1.6	<2.4	<2.4	<16	-	8.3(11)
R11410-20 Shield Plate (2013)	Hamamatsu	SOLO	0.20	mBq/kg	<70	<12	<2.8	<2.8	<1.8	-	<0.75
R11410-20 Electrode Disk (2013)	Hamamatsu	SOLO	0.20	mBq/kg	<109	<2.4	4.9(18)	4.9(18)	15(2)	-	4.9(12)
R11410-20 Dynodes (2013)	Hamamatsu	SOLO	0.21	mBq/kg	<89	<1.4	<2.8	<2.8	<11	-	<1.1
R11410-20 Ceramic Stem (2013)	Hamamatsu	SOLO	0.25	mBq/kg	<350	16(3)	11(4)	11(4)	89(13)	-	-
Gold Plated Pins	Mill-Max	Lumehead	0.01	mBq/kg	<1015	98(42)	<39	<39	353(401)	-	<10
Receptacles	Harwin	Chaloner	0.04	mBq/kg	589(112)	<18	16(14)	3.3(37)	172(124)	21664(715)	<6.9
Capacitors 3uF	KEMET	Lumehead	0.01	mBq/kg	7008(2810)	11638(606)	4126(593)	1587(218)	<1923	-	<104
Resistors 5M1	Multicomp	Chaloner	0.01	mBq/kg	4142(1379)	2747(204)	2216(247)	1035(84)	1027(1358)	39943(1639)	<139
Resistors 0805 4M99	VISHAY	Chaloner	0.01	mBq/kg	965(76)	284(41)	240(41)	172(31)	3249(477)	35475(597)	<18
CuBeNi ₂ Foil	Harwin	Chaloner	0.05	mBq/kg	4578(309)	38(12)	50(14)	75(11)	131(126)	1364(467)	<6.6
Receptacles 0.8 mm	Harwin	Chaloner	0.38	mBq/kg	833(73)	7.0(20)	13(3)	15(2)	77(25)	21171(524)	<2.0
Receptacles 0.8 mm	Harwin	Chaloner	0.07	mBq/kg	1178(177)	<6.9	22(11)	15(4)	110(87)	22393(741)	-
Receptacles 1.0 mm	Harwin	Chaloner	0.14	mBq/kg	389(86)	24(5)	12(4)	9.1(27)	63(48)	23677(661)	-
Receptacles 1.0 mm	Harwin	Chaloner	0.12	mBq/kg	568(75)	21(4)	17(6)	8.0(30)	<19	29112(603)	4.0(20)
R11410-20 Ceramic Stem (2015)	Hamamatsu	Chaloner	0.76	mBq/kg	105(8)	20(2)	7.8(18)	7.5(11)	123(20)	5.6(81)	<1.0
R11410-20 Metal Bulb (2015)	Hamamatsu	SOLO	0.51	mBq/kg	<190	<2.9	<5.5	13(5)	<15	-	-
R11410-20 Metal Bulb (2015)	Hamamatsu	MAEVE	0.51	mBq/kg	<18	<0.90	<1.7	<1.3	<6.4	-	-
R11410-20 Dynode (2015)	Hamamatsu	SOLO	0.53	mBq/kg	<216	<2.0	<4.1	<3.4	<4.6	-	4.0(10)
R11410-20 Shield Plate (2015)	Hamamatsu	SOLO	0.52	mBq/kg	<77	<5.1	<5.0	<3.2	<6.0	-	4.6(15)

continued

Sample	Supplier	Detector	Mass [kg]	Units	²³⁸ U _e	²³⁸ U ₁	²³² Th _e	²³² Th ₁	⁴⁰ K	²¹⁰ Pb	⁶⁰ Co
R11410-20 Faceplate (2015)	Hamamatsu	MAEVE	1.2	mBq/kg	<11	<0.67	<1.0	<0.80	<4.0	-	-
R11410-20 Insulator Plate (2015)	Hamamatsu	MAEVE	0.84	mBq/kg	<21	<1.0	<1.6	<1.2	<6.3	-	-
R11410-20 Electrode Disk (2015)	Hamamatsu	SOLO	0.52	mBq/kg	<203	9.5(36)	<4.3	14(4)	<9.6	-	8.5(21)
R11410-20 Faceplate Flange (2015)	Hamamatsu	SOLO	0.53	mBq/kg	<162	<2.8	<3.8	<4.2	<14	-	12(3)
R11410-20 Ceramic Stem (2015)	Hamamatsu	SOLO	0.76	mBq/kg	247(175)	20(4)	18(5)	11(4)	96(21)	-	-
R11410-20 Stem Flange (2015)	Hamamatsu	SOLO	1.6	mBq/kg	<198	<0.63	<2.3	<0.84	<3.3	-	12(2)
Resistors 0805 100k	VISHAY	Chaloner	0.00	mBq/kg	3460(317)	1036(107)	510(209)	144(70)	6118(1724)	97516(2157)	<169
Resistors 0805 2M49	VISHAY	Chaloner	0.00	mBq/kg	1787(282)	571(73)	645(168)	150(53)	7069(1344)	52702(1292)	<65
Resistors 0805 49.9R	VISHAY	Chaloner	0.00	mBq/kg	3430(475)	670(98)	314(184)	264(77)	5425(1672)	61140(1914)	<29
R11410-20 Aluminum Ring (2015)	Hamamatsu	SOLO	0.51	mBq/kg	-	<1.2	<2.3	<0.94	<8.5	-	<0.34
R11410-20 Getter (2015)	Hamamatsu	SOLO	0.01	mBq/kg	<2508	<39	<133	<102	<173	-	<9.4
Hamamatsu 3-inch PMT	Hamamatsu	MAEVE	-	mBq/Unit	<24	<2.0	<2.1	2.5(4)	<9.1	-	1.0(6)
Hamamatsu 3-inch PMT	Hamamatsu	MAEVE	-	mBq/Unit	<18	<1.5	<2.3	<1.5	24(5)	-	1.6(4)
Flux For PMT bases	Circuit Works	Lumpsey	0.03	mBq/kg	<140	<240	<240	<150	<375	-	-
General Routing Material	Various suppliers	Lumehead	0.10	mBq/kg	2008(535)	99(10)	23(16)	20(9)	<153	-	-
Router Back Material	Various Suppliers	Lumehead	0.19	mBq/kg	<225	93(5)	75(7)	97(5)	19810(222)	-	<2.6
Gore PMT Cable	Gore	Lumehead	0.28	mBq/kg	<262	22(5)	<11	<18	<77	-	9.5(26)
Hamamatsu Washing Powder	Hamamatsu	MERLIN	0.51	mBq/kg	173(74)	173(12)	110(16)	110(16)	370(123)	-	-
Hamamatsu Water	Hamamatsu	MERLIN	2.0	mBq/kg	<12	<12	<2.0	<2.0	<74	-	-
3-inch PMT Bases	LZ Fabrication	Lumehead	-	mBq/Unit	1.9(7)	0.39(5)	0.20(5)	0.17(2)	0.26(20)	-	<14
Co-Free Kovar	Hamamatsu	MERLIN	0.51	mBq/kg	74(25)	<12	<4.1	<4.1	<31	-	<1.0
		MAEVE		mBq/kg	<24	<2.5	<6.9	<2.8	<22	-	<0.01
3-Inch PMT Bases	Imperial College London Fabrication	MORGAN	-	mBq/Unit	1.6(5)	0.45(6)	0.19(3)	0.18(2)	<0.20	-	-
Stainless Steel Rods	McMaster Carr	MERLIN	1.0	mBq/kg	<37	25(5)	<8.1	12(4)	<124	-	-
Stainless Steel Rods	McMaster Carr	MORGAN	1.1	mBq/kg	<25	<22	6.0(20)	4.0(10)	<5.0	-	-
1-inch PMT Bases	Imperial College London Fabrication	Lumehead	-	mBq/Unit	1.9(70)	0.39(500)	0.20(500)	0.17(200)	<2.5	-	-
First Contact Polymer	Photonic Cleaning	Chaloner	0.13	mBq/kg	<140	<40	<70	<20	<540	<350	-
Stainless Steel Sheet	Abbott Ball	MERLIN	0.27	mBq/kg	<62	27(18)	<17	<12	<70	-	-
PEEK Plates	McMaster Carr	MERLIN	2.0	mBq/kg	<19	4.0(20)	<2.0	3.0(80)	<15	-	-

continued

Sample	Supplier	Detector	Mass [kg]	Units	²³⁸ U _e	²³⁸ U _l	²³² Th _e	²³² Th _l	⁴⁰ K	²¹⁰ Pb	⁶⁰ Co
PEEK Fasteners	McMaster Carr	MERLIN	0.48	mBq/kg	<19	17(8)	<10	<6.0	<45	-	-
Set Screws	RediVac	MERLIN	0.07	mBq/kg	<388	<19	<24	<10	<186	-	-
Teflon Screws	Craftech	MORGAN	0.94	mBq/kg	<18	3.9(13)	2.9(16)	9.8(33)	839(24)	-	-
Kovar KV-2	Hamamatsu	MAEVE	0.58	mBq/kg	<36	7.0(20)	<7.4	<3.1	<15	-	-
Co-Free Kovar YFE42	Hamamatsu	MORGAN	0.51	mBq/kg	<48	<2.2	<4.2	<2.2	64(18)	-	-
Perimeter Trifoil Bolts HHCS #10-32 .75	McMaster Carr	MERLIN	-	mBq/Unit	<0.08	<0.03	<0.03	<0.03	<0.19	-	-
Trifoil Washers	McMaster Carr	MERLIN	-	mBq/Unit	<0.00	<0.00	<0.00	<0.00	<0.00	-	-
PFTE Nuts, Bolts & Washers	McMaster Carr	MERLIN	0.094	mBq/kg	<99	<31	<37	<33	<236	-	-
PFTE Nuts, Bolts & Washers	McMaster Carr	MAEVE	0.094	mBq/kg	<46	<21	<23	<8.0	<52	-	-
Perimeter Trifoil Washers For #10 Screw	McMaster Carr	MERLIN	-	mBq/Unit	<0.04	<0.01	<0.01	<0.01	<0.10	-	-
Perimeter Trifoil Nuts #10-32	McMaster Carr	MERLIN	-	mBq/Unit	<0.04	<0.01	<0.01	<0.01	<0.08	-	-
PEEK Key Handle Nuts #10-32 Narrow Nuts	McMaster Carr	MERLIN	0.00	mBq/kg	16223(8277)	6354(1553)	16612(7832)	14210(1805)	<9460	-	-
PEEK Key Handle Bolt #10-32 .75 Pan Handle (Philips-Head)	McMaster Carr	MERLIN	0.33	mBq/kg	<49	<16	<20	<16	<71	-	-
PEEK Key Handle Bolt #10-32 .75 Pan Handle (Philips-Head)	McMaster Carr	MERLIN	-	mBq/Unit	<0.16	<0.05	<0.07	<0.05	<0.23	-	-
PEEK Key Handle Nuts #10-32 Narrow Nuts	McMaster Carr	MERLIN	0.05	mBq/kg	<185	<62	<85	<87	<277	-	-
PEEK Key Handle Nuts #10-32 Narrow Nuts	McMaster Carr	MERLIN	0.16	mBq/kg	<125	<25	<33	<31	<106	-	-
PEEK Key Handle Nuts #10-32 Narrow Nuts	McMaster Carr	MERLIN	-	mBq/Unit	<0.10	<0.02	<0.03	<0.03	<0.08	-	-
PEEK Key Handle Nuts #10-32 Narrow Nuts	McMaster Carr	MERLIN	-	mBq/Unit	<0.14	<0.04	<0.06	<0.06	<0.20	-	-
PEEK Cable Ties	Solid Spot	MERLIN	0.41	mBq/kg	<37	25(21)	<23	27(10)	107(68)	-	-
		MAEVE		mBq/kg	<32	34(6)	24(6)	33(5)	73(31)	-	-
LZ Calibration LEDs	Everlight	MORGAN	0.01	mBq/kg	<260	<123	<348	<335	<376	-	-
Stainless Steel 10/32 NF X 5/16 Nuts	McMaster Carr	MERLIN	0.16	mBq/kg	<125	<25	<33	<31	<106	-	-
ELSOLD SnCu 0.7 flux 3064 2.2%	ELSOLD	Chaloner	0.26	mBq/kg	-	-	-	-	-	<350	-
R11410-20 - Ceramic Stem Body (2018)	Hamamatsu	MORGAN	1.6	mBq/kg	77(30)	14(1)	12(1)	5.0(13)	55(8)	-	-
R11410-20 Kovar Sheet Stem Flange (2018)	Hamamatsu	SOLO	3.4	mBq/kg	<37	2.5(12)	<3.1	<3.0	<5.0	-	57(4)
R11410-20 - Silver Brazing Plate (2018)	Hamamatsu	MORDRED	0.30	mBq/kg	<126	<11	<18	<17	<155	-	-
R11410-20 - Silver Brazing Wire (2018)	Hamamatsu	MORGAN	0.34	mBq/kg	<105	<5.6	<5.0	<4.2	<22	-	-
Stainless Steel Fasteners	McMaster Carr	MERLIN	2.7	mBq/kg	<4.2	<2.5	<2.5	<3.0	<6.3	-	5.3(7)
Lead Free Solder	Institute for Basic Science Fabrication	MERLIN	0.25	mBq/kg	<81	<23	<28	<24	<83	10208(912)	-
Loop Antennae	University Of Oxford Fabrication	MORGAN	-	mBq/Unit	<6.2	<0.30	0.80(30)	0.60(30)	<2.3	-	-

continued

Sample	Supplier	Detector	Mass [kg]	Units	²³⁸ U _e	²³⁸ U _l	²³² Th _e	²³² Th _l	⁴⁰ K	²¹⁰ Pb	⁶⁰ Co
PTFE Screws	MMC	MERLIN	0.06	mBq/kg	<194	<83	<100	134(117)	<306	-	-
PEEK Nuts and Washers	Solid Spot	MERLIN	0.53	mBq/kg	<45	<10	<12	37(17)	<49	-	-
PEEK Hex Nuts	McMaster Carr	MERLIN	0.01	mBq/kg	12000(5000)	9000(700)	6200(1000)	8200(700)	13000(5000)	-	-
1-inch PMT Batch 1	Hamamatsu	Roseberry	-	mBq/Unit	0.34(11)	<0.12	<0.06	0.08(2)	6.4(5)	<0.60	0.30(3)
1-inch PMT Batch 2	Hamamatsu	Roseberry	-	mBq/Unit	0.16(6)	<0.08	<0.05	0.05(1)	6.5(4)	0.90(20)	0.33(2)
1-inch PMT Batch 3	Hamamatsu	Roseberry	-	mBq/Unit	0.33(9)	<0.12	<0.07	0.06(1)	7.2(5)	1.7(3)	0.32(3)
1-inch PMT Batch 4	Hamamatsu	Roseberry	-	mBq/Unit	0.44(13)	<0.14	0.06(4)	0.08(2)	6.6(5)	1.7(4)	0.30(3)
1-inch PMT Batch 5	Hamamatsu	Roseberry	-	mBq/Unit	0.50(13)	<0.18	<0.09	0.11(2)	6.0(5)	1.0(3)	0.29(3)
1-inch PMT batch 6	Hamamatsu	Roseberry	-	mBq/Unit	0.33(12)	<0.16	<0.15	0.08(2)	7.2(6)	1.9(4)	0.33(3)
PMT Top Array Cable Strain Relief Screws	McMaster Carr	MORDRED	0.29	mBq/kg	<39	<4.9	<10	<8.9	<78	-	-
High Density Polyethylene Blocks	All-States	MORGAN	-	mBq/Unit	<5.5	<0.90	<1.0	<1.0	<5.2	-	-
Cable Ties For Top PMT Array Cable Strain Relief	All-States	SOLO	0.16	mBq/kg	<68	<11	<11	<13	68(48)	-	-
High Density Polyethylene Blanks	All-States	MORGAN	-	mBq/Unit	<5.5	<0.90	<1.0	<1.0	<5.2	-	-
PTFE Connectors	iPolymer	MERLIN	0.33	mBq/kg	<40	<9.0	<13	<13	1094(84)	-	-
PMT Cabling											
Semi-Rigid Cabling	University Of Oxford Fabrication	Chaloner	-	mBq/Unit	<6.0	<8.1	<16	<4.8	58(104)	161(42)	<4.8
PMT Cable (2015)	Gore	SOLO	0.26	mBq/kg	<516	<13	<16	<18	<52	-	23(5)
FEP Pellets	Axon	MORGAN	0.81	mBq/kg	<2.7	<0.90	<0.80	<0.90	<24	-	-
Central Copper Conductor Wire	Axon	MAEVE	0.97	mBq/kg	<1.0	1.1(5)	1.5(9)	0.31(48)	10(6)	-	-
Ground Braid Copper Wire	Axon	MAEVE	1.1	mBq/kg	<10	9.0(10)	<1.8	<0.70	<4.5	-	-
Lead Free Solder	MG Chemicals	MAEVE	0.69	mBq/kg	66(30)	29(2)	2.8(19)	3.4(27)	<11	<4100	-
OFHC Copper Cable Clips	Brown University Fabrication	MORGAN	0.07	mBq/kg	<207	<14	41(26)	21(22)	84(87)	-	-
PMT Signal Cable	Axon	MAEVE	1.1	mBq/kg	<2.0	3.9(13)	<1.4	<0.60	<9.0	-	-
Cable Pins - Ground Pins	Harwin	MERLIN	0.10	mBq/kg	<473	<16	<33	<42	<210	-	-
		MAEVE		mBq/kg	<86	185(12)	<10	12(10)	<62	-	-
Signal/HV Pins	Harwin	MERLIN	0.08	mBq/kg	<123	153(29)	<82	<48	<125	-	-
		MORGAN		mBq/kg	<72	<15	25(17)	<5.0	113(75)	-	-
RG196 A/U Cable	koax24	MORGAN	1.7	mBq/kg	28(23)	<1.2	2.7(10)	<0.80	17(10)	-	-
		MERLIN		mBq/kg	<112	<4.6	<1.6	<2.0	<7.3	<10	-
Cirlex PCBs	Fralock	MAEVE	0.42	mBq/kg	<35	18(4)	<4.9	16(8)	<16	-	-

continued

Sample	Supplier	Detector	Mass [kg]	Units	$^{238}\text{U}_e$	$^{238}\text{U}_i$	$^{232}\text{Th}_e$	$^{232}\text{Th}_i$	^{40}K	^{210}Pb	^{60}Co
LZ PMT Cable Offcuts (1)	Axon	Chaloner	-	mBq/Unit	<0.15	<0.15	<0.10	<0.03	<1.2	<0.25	<0.06
LZ PMT Cable Offcuts (2)	Axon	Chaloner	-	mBq/Unit	<0.21	<0.20	<0.15	<0.04	<0.98	<0.58	<0.06
LZ PMT Cable Offcuts (3)	Axon	Chaloner	-	mBq/Unit	<0.22	<0.20	<0.12	<0.04	<0.91	<0.45	<0.04
LZ PMT Cable Offcuts (4)	Axon	Chaloner	-	mBq/Unit	<0.12	<0.10	<0.10	<0.05	<0.59	<0.36	0.03(100)
FEP Pellets	Axon	Roseberry	0.67	mBq/kg	<0.50	6.6(90)	<0.80	0.40(10)	6.6(3)	<2.6	<0.30
LZ PMT Cable Offcuts (all)	Axon	Belmont	0.34	mBq/kg	<1.0	13(3)	<2.6	<0.50	<27	-	<2.5
AWG-6 Heat Shrink	McMaster Carr	MORGAN	0.21	mBq/kg	<67	<7.8	<10	<9.9	147(66)	-	-
TPC											
TPC High Voltage Cable	Gore	MERLIN	1.3	mBq/kg	<2.4	<2.4	-	<2.0	<15	-	-
Titanium Field Shaping Ring	Timet (LZ Stock)	MERLIN	2.4	mBq/kg	<2.5	<2.5	-	<1.6	<12	-	-
		MAEVE		mBq/kg	<6.1	22(1)	-	<1.2	<9.5	-	-
TPC Digital Camera	Apogee Imaging Systems	Ge-III	1.4	mBq/kg	11247(1566)	1392(141)	1672(169)	1672(169)	2533(281)	-	-
Resistor - MC104825007JE	Ohmite	MERLIN	0.18	mBq/kg	6667(247)	1605(123)	1098(81)	1098(81)	1393(248)	-	-
Resistor - MC102822007FE	Ohmite	MERLIN	0.10	mBq/kg	1605(370)	494(123)	160(20)	650(81)	1022(31)	-	-
Resistor - MOX93021007GTE	Ohmite	MERLIN	0.08	mBq/kg	8642(1235)	2099(1235)	970(40)	3943(163)	396(0)	-	-
Resistor - V3902AOS	Harris	MERLIN	0.19	mBq/kg	617(247)	247(37)	30(10)	122(41)	<186	-	-
Compact Telecentric Lens (40 mm)	Edmund Optics	Ge-III	0.03	mBq/kg	27276(5066)	1570(174)	1272(140)	1272(140)	1372(354)	-	-
PT100	Omega	Lunehead	0.00	mBq/kg	4038(1094)	3433(307)	1439(387)	1042(240)	156416(5925)	-	<196
PEEK	Victrex	Lunehead	1.3	mBq/kg	17(17)	17(2)	16(3)	8.5(22)	48(21)	-	<0.52
Copper	City Special Metals	Lunehead	0.85	mBq/kg	<14	<1.7	<1.3	<1.2	<7.0	-	<0.40
R11410-20 - Cr2O3 (2015)	Hamamatsu	Chaloner	0.10	mBq/kg	<22	178(12)	<9.0	<7.5	<61	539(178)	-
Acoustic Sensors	MAES	Chaloner	0.02	mBq/kg	1710(787)	595(68)	2179(122)	1951(91)	1389(585)	1962(251)	-
PT100	Heraeus	Chaloner	0.02	mBq/kg	1581(674)	4107(387)	1500(372)	1949(297)	83168(6335)	8439(1265)	15(8)
PT100	IST	Chaloner	0.00	mBq/kg	-	5325(426)	5006(459)	5065(339)	15449(3633)	707129(7862)	-
Ceramic Acoustic Sensors	RS Components	Chaloner	0.03	mBq/kg	<20	602(39)	864(54)	488(34)	142(236)	48189(647)	<13
Resistors SLIM-MOX10803	Ohmite	MERLIN	0.33	mBq/kg	1852(25)	556(37)	374(24)	374(24)	867(93)	-	-
MMCX Connectors	Molex	Chaloner	0.06	mBq/kg	2034(389)	<30	<26	<25	<222	255340(8412)	-
PVDF Sensor	Measurement Specialties	Chaloner	-	mBq/unit	<700	<81	<52	<50	<340	-	25(10)
PTFE Powder	DuPont	Lunehead	1.4	mBq/kg	<37	4.0(10)	<3.0	<3.0	<13	-	<0.60

continued

Sample	Supplier	Detector	Mass [kg]	Units	²³⁸ U _e	²³⁸ U _l	²³² Th _e	²³² Th _l	⁴⁰ K	²¹⁰ Pb	⁶⁰ Co
PEEK Stock Material	Boedeker Plastics Inc	MERLIN	1.0	mBq/kg	<12	<12	<4.1	<4.1	<31	-	-
PEEK For TPC	TECAPEEK	MERLIN	0.15	mBq/kg	741(247)	198(37)	<41	<41	402(124)	-	-
PEEK Flat Stock Material	Boedeker Plastics Inc	SOLO	2.4	mBq/kg	<14	4.6(7)	5.0(10)	3.0(3)	19(5)	-	<0.20
Silicon Dioxide Powder	American Elements	MERLIN	0.33	mBq/kg	617(123)	49(12)	<4.1	28(16)	<31	-	-
Synthetic Alumina Powder	Taimei	MORGAN	0.33	mBq/kg	<63	<35	4.8(41)	<2.5	61(26)	-	-
Pin Connectors	Mill-Max	MERLIN	0.01	mBq/kg	9.9(12)	<12	0.41(41)	0.41(41)	<31	-	-
Tivar 1000 ESD	Quadrant From Boedeker Stock	MERLIN	1.6	mBq/kg	247(62)	<12	<4.1	<4.1	<31	-	-
		MORGAN		mBq/kg	<18	<6.2	<3.0	<2.4	<22	-	-
HV Resistors	Ohmite	MERLIN	0.07	mBq/kg	5926(617)	988(123)	650(41)	650(41)	4025(62)	-	-
2-Part Epoxy	Loctite	MAEVE	0.10	mBq/kg	<93	<15	<9.0	<6.0	<46	-	-
Stainless Steel Grid Wire	California Fine Wire	MORGAN	0.11	mBq/kg	<57	23(6)	22(15)	26(9)	34(48)	-	-
Stainless Steel 316 Screws	McMaster Carr	MERLIN	0.06	mBq/kg	<31	73(23)	<19	<21	<120	-	-
Stainless Steel Fasteners	McMaster Carr	MERLIN	2.7	mBq/kg	-	14(4)	-	4.1(20)	-	-	6.0(6)
		MORGAN		mBq/kg	<7.0	<1.0	4.2(7)	3.6(5)	35(4)	-	-
Stainless Steel Fasteners	Bowlin	MERLIN	2.8	mBq/kg	-	7.4(37)	-	5.7(33)	-	-	8.9(7)
Stainless Steel Fasteners	J&M	MERLIN	3.3	mBq/kg	-	21(5)	12(4)	11(0)	-	-	20(1)
Copper Tubes	City Special Metals	Lumhead	1.1	mBq/kg	<21	<3.0	<4.0	<3.0	<28	-	<1.0
PTFE Tubing	UC Santa Barbara Fabrication	MERLIN	0.94	mBq/kg	<37	19(4)	<12	14(10)	<18	-	-
TPC Grid Cable	Axon	MAEVE	1.2	mBq/kg	<18	11(2)	<1.5	<1.5	58(11)	-	-
TPC Grid Cable	Axon	MORGAN	0.91	mBq/kg	<130	5.0(20)	<1.5	<2.2	80(20)	-	-
Grading Resistor Lugs	Newark/TE Connectivity	MERLIN	0.13	mBq/kg	<168	<12	<12	<11	<77	-	-
		MORDRED		mBq/kg	123(86)	<8.8	<7.2	<5.3	<69	-	-
Small Titanium Pieces	RAL Space Fabrication	Lumpsey	0.04	mBq/kg	960(210)	52(30)	180(60)	220(30)	170(180)	<1000	-
Copper For Acoustic Sensors	City Special Metals	Chaloner	0.08	mBq/kg	<13	44(7)	<10	<4.0	<81	<113	<3.0
PEEK Fasteners	Essentra	Lumpsey	0.01	mBq/kg	<188	190(80)	<196	<85	<378	<475	-
Ceramic Resistors	Ohmite	MERLIN	0.06	mBq/kg	2600(600)	1100(100)	1400(200)	1700(100)	<250	-	-
Grading Resistor Nuts	McMaster Carr	MORDRED	0.06	mBq/kg	<114	<25	<44	<16	<138	-	-
		MERLIN		mBq/kg	<63	<18	<18	<13	<113	-	-
Hexapod Copper	City Special Metals	Lumpsey	0.06	mBq/kg	<115	20(12)	29(16)	<8.0	<38	-	<2.0
Grading Resistors	Riedon	MERLIN	0.02	mBq/kg	6135(1050)	2500(160)	3626(350)	3626(170)	2786(1115)	-	-

continued

Sample	Supplier	Detector	Mass [kg]	Units	²³⁸ U _e	²³⁸ U _l	²³² Th _e	²³² Th _l	⁴⁰ K	²¹⁰ Pb	⁶⁰ Co
Grading Resistors	Riedon	MERLIN	0.09	mBq/kg	4100(400)	3700(200)	5300(200)	5900(200)	4500(700)	-	-
PTFE Washers	Craftech	MERLIN	0.42	mBq/kg	<50	<19	<22	<12	820(115)	-	-
PEEK Virgin Natural Sheet 1.000	Boedeker Plastics Inc	MERLIN	2.4	mBq/kg	<10	16(2)	18(6)	13(3)	39(6)	274(37)	-
PEEK Virgin Natural Sheet 1.500	Boedeker Plastics Inc	MERLIN	2.1	mBq/kg	<10	<5.0	<6.0	<6.0	<31	-	-
PTFE Powder	Dupont	Roseberry	0.07	mBq/kg	8.0(50)	13(5)	4.0(50)	5.0(20)	45(25)	<22	<3.0
PTFE Screws	Craftech	MERLIN	0.59	mBq/kg	<40	<12	<20	14(8)	787(100)	-	-
PTFE Screws	Craftech	MERLIN	0.42	mBq/kg	<62	28(19)	<20	16(10)	830(100)	-	-
PTFE Screws	Craftech	MERLIN	0.94	mBq/kg	<24	<6.2	<6.5	11(5)	785(120)	-	-
Resistors	Ohmite	MERLIN	0.09	mBq/kg	2704(405)	1678(85)	2511(191)	2557(98)	<332	-	-
Resistors	Ohmite	MERLIN	0.10	mBq/kg	2700(300)	2100(100)	2600(100)	3000(100)	1300(400)	-	-
Forward Field Region Tuning Resistors	Ohmite	MERLIN	0.04	mBq/kg	931(649)	1282(175)	2053(316)	2428(195)	<1137	-	-
PTFE Resin 8764	Techmetics	MAEVE	8.3	mBq/kg	<5.9	<0.18	<0.16	<0.17	<0.51	-	-
		Roseberry		mBq/kg	<0.10	0.40(20)	<0.20	<0.04	2.9(13)	<1.6	<0.10
Isopropyl Alcohol	EMD Millipore	MERLIN	0.78	mBq/kg	<15	<6.5	<10	<9.8	<27	<93	-
High Purity Lead	Korea	Roseberry	0.08	mBq/kg	<106	<6.0	<6.0	<4.0	<25	54000(3600)	<4.0
M5 PEEK Fasteners	Solid Spot	MERLIN	0.29	mBq/kg	<62	62(25)	133(53)	25(13)	156(91)	-	-
Forward Field Region Tuning Resistors	Ohmite	MERLIN	0.06	mBq/kg	757(265)	457(94)	<130	229(63)	<401	-	-
Pb-Free Tip Tinner	Weller	Belmont	0.01	mBq/kg	7300(700)	350(120)	100(70)	<20	2100(500)	-	<24
Stainless Steel Screws	McMaster Carr	MERLIN	0.86	mBq/kg	<20	<6.0	<10	<8.0	<31	-	6.0(40)
Stainless Steel Fasteners	Various	MERLIN	1.5	mBq/kg	<12	<5.0	<4.0	13(6)	<19	-	43(5)
Current Monitoring Resistors	Ohmite	MERLIN	0.04	mBq/kg	2300(1300)	1200(300)	1800(600)	2200(300)	1800(2300)	-	-
PTFE Screws	McMaster Carr	MERLIN	0.10	mBq/kg	<135	<34	<41	<65	<195	-	-
Silver Plated Stainless Steel Pan Head Screw #4-40 x .25	UC Components	MERLIN	-	mBq/Unit	<0.29	1.4(2)	<0.16	0.33(15)	<0.49	-	-
Isopropyl Alcohol	VWR International	MERLIN	1.4	mBq/kg	<11	<5.0	<7.0	<7.0	<19	<81	-
PTFE Screws	McMaster Carr	MERLIN	0.07	mBq/kg	<216	<35	<65	<52	<210	-	-
Pan-Head PTFE Screws #6-32x0.25	McMaster Carr	MERLIN	0.01	mBq/kg	<639	<240	<373	<387	<1264	-	-
Silver Plated Stainless Steel Pan Head Screw #4-40 x .3125	UC components	MERLIN	0.10	mBq/kg	<123	<35	<57	<31	<135	-	-
Stainless Steel Screws	RediVac	MERLIN	0.24	mBq/kg	<47	<16	<23	<14	<77	-	-
		MORGAN		mBq/kg	<25	<5.8	<10	<2.9	<35	-	-
RTD Copper Enclosures	City Special Metals	Lumhead	0.26	mBq/kg	<178	<9.0	<9.0	<11	<68	-	<3.0

continued

Sample	Supplier	Detector	Mass [kg]	Units	²³⁸ U _e	²³⁸ U _l	²³² Th _e	²³² Th _l	⁴⁰ K	²¹⁰ Pb	⁶⁰ Co
Harwin Pins	Digikey	Lunehead	0.01	mBq/kg	450(220)	200(90)	<100	80(25)	<630	-	<40
		Merrybent		mBq/kg	420(260)	730(210)	<40	90(30)	<580	-	<17
Stainless Steel Fasteners	McMaster Carr	MERLIN	2.5	mBq/kg	26(19)	<2.5	2.4(50)	4.0(30)	<9.3	<36	6.5(5)
PEEK Fasteners	Solid Spot	MERLIN	0.53	mBq/kg	<45	<10	<12	37(17)	<49	-	-
PEEK Resistor Tap	LBNL Fabrication	MERLIN	-	mBq/Unit	<2.3	<0.60	<1.3	<0.90	<4.1	-	-
Stainless Steel HV Connector	LBNL Fabrication	MERLIN	0.13	mBq/kg	<108	<51	<36	<32	<134	-	-
Extraction Region Stainless Steel Plates	LBNL Fabrication	MERLIN	0.63	mBq/kg	<18	204(15)	<16	38(12)	<28	-	12(4)
Extraction Region T-Washer	LBNL Fabrication	MERLIN	0.12	mBq/kg	<110	679(29)	<33	145(25)	<169	-	-
Extraction Region Misc Stainless Steel Components	McMaster Carr	MERLIN	0.72	mBq/kg	<18	36(6)	<8.5	<9.5	<31	-	-
Field Cage PTFE Washers	McMaster Carr	MERLIN	0.08	mBq/kg	<180	<49	<94	<61	<327	-	-
Cable Ties	All States	SOLO	-	mBq/Unit	<93	<27	<25	<16	<117	-	-
Long Level Sensor 300mm	University Of Oxford Fabrication	Merrybent	-	mBq/Unit	<20	<1.5	<0.70	<0.40	<4.1	-	<0.30
Position Sensor	University Of Oxford Fabrication	Lunehead	-	mBq/Unit	<24	<1.2	1.4(10)	<1.0	<6.5	-	<0.30
Cu Coupon	University Of Oxford Fabrication	Chaloner	1.9	mBq/kg	<23	<1.8	<2.3	<1.9	<16	480(180)	<0.60
PEEK Coupon	University Of Oxford Fabrication	Lunehead	0.31	mBq/kg	<270	<17	13(10)	<10	<90	-	<4.0
Washers	Associated Springs	MERLIN	-	μBq/Unit	3.3(24)	<0.03	0.42(62)	0.51(38)	<1.2	-	0.82(6)
Combined PTFE Skin System	LZ Chosen PTFE	MAEVE	0.19	mBq/kg	<109	32(5)	36(12)	51(6)	<70	-	-
Stainless Steel Skin System Repair Kit	McMaster Carr	MERLIN	1.9	mBq/kg	<9.9	<4.9	<3.7	<2.6	<16	<45	5.1(12)
PTFE Washers & Screws	McMaster	MAEVE	0.11	mBq/kg	<96	29(8)	<17	63(12)	<98	-	-
Cable Ties	Mouser Electronics	MAEVE	0.18	mBq/kg	<123	26(7)	<8.9	<7.4	<34	-	-
Heat Shrink For LZ Gate/Anode	TE connectivity	MERLIN	0.18	mBq/kg	<76	<23	<37	<30	<98	-	-
		MORGAN		mBq/kg	<86	<8.6	<12	<11	<56	-	-
Copper Cable Connection Lugs	Newark/3M	MERLIN	0.04	mBq/kg	<430	<108	<170	<195	<465	-	-
PTFE Screw Pan Head Slotted #10-32 x 1	McMaster Carr	MERLIN	0.07	mBq/kg	<142	<56	<76	88(74)	<533	-	-
Heater Block Plate	Silicon valley MFG	MERLIN	-	mBq/Unit	<1.9	<0.70	<0.80	<0.70	<2.6	-	-
Stainless Steel Grid Wire	California Fine Wire	MERLIN	0.47	mBq/kg	<17	<5.6	<8.1	<8.5	<34	-	-
Hexapod Springs	RS Components	Roseberry	0.05	mBq/kg	<7.0	23(8)	33(12)	22(4)	<51	<96	302(19)
Hexapod Copper	City Special Metals	SOLO	1.7	mBq/kg	<27	<3.7	2.0(14)	<4.5	<25	-	-
Hexapod Titanium Parts	Timet (LZ Stock)	MORDRED	2.4	mBq/kg	<8.9	<1.1	<2.4	<1.7	<5.0	-	-
Position Sensors	University Of Oxford Fabrication	MAEVE	-	mBq/Unit	<3.1	5.3(3)	<1.0	<0.64	<1.9	-	-

continued

Sample	Supplier	Detector	Mass [kg]	Units	²³⁸ U _e	²³⁸ U _l	²³² Th _e	²³² Th _l	⁴⁰ K	²¹⁰ Pb	⁶⁰ Co
Position Sensors	University Of Oxford Fabrication	MAEVE	-	mBq/Unit	<3.1	5.3(3)	<1.0	<0.64	<1.9	-	-
Weir Precision Sensors (WPS)	University Of Oxford Fabrication	MAEVE	-	mBq/Unit	<1.9	3.7(5)	2.3(4)	2.9(3)	19(2)	-	-
PEEK Grid Spacer Replacement Parts	Boedeker	MERLIN	-	mBq/Unit	<0.80	<0.30	<0.50	<0.50	<1.4	-	-
Acoustic Sensors	Measurement Specialties	MAEVE	0.18	mBq/kg	<433	<58	<78	71(67)	<216	-	-
Hardware For Vent Tube Assembly	McMaster Carr	MORGAN	0.48	mBq/kg	<39	<4.9	<6.5	<4.4	<28	-	27(8)
PEEK Cable Ties	Panduit	MAEVE	0.17	mBq/kg	<120	<15	<14	4.0(32)	<41	-	-
M3 PEEK Screws	Chemis	MAEVE	0.06	mBq/kg	<1096	<142	<327	<203	<739	-	-
Xenon Circulation System											
ST707 Getter Material (Used)	SAES	MERLIN	0.45	mBq/kg	2600(600)	<10	130(20)	70(20)	<80	-	-
ST707 Getter Material (Fresh)	SAES	MERLIN	0.10	mBq/kg	11000(2000)	<50	20(10)	30(10)	220(30)	-	-
Getter Raw Material 'Standard Zr'	SAES	MERLIN	0.10	mBq/kg	481(111)	<37	<53	<24	155(22)	-	-
Getter Raw Material 'Non-Standard Clean Zr'	SAES	MERLIN	0.11	mBq/kg	<247	<37	73(24)	<20	898(62)	-	-
Getter Raw Material Fe-V Alloy	SAES	MERLIN	0.11	mBq/kg	<173	<37	<41	<20	164(22)	-	-
Citric Acid Powder	Sigma Aldrich	MERLIN	1.0	mBq/kg	<1.0	<1.0	<1.0	<1.0	<1000	-	-
Calcium-Carbide Getter	Sigma Aldrich	MERLIN	0.10	mBq/kg	10819(5208)	17785(220)	4821(285)	6462(194)	<288	-	-
Carboact Charcoal	Carboact	Chaloner	1.0	mBq/kg	20(9)	36(8)	<4.0	16(2)	780(55)	25(18)	3.0(20)
Extruded PFTE Tubing	ZEUS	MERLIN	0.42	mBq/kg	<62	<13	<12	<16	<61	-	-
PTFE Barbed Fittings	ZEUS	MERLIN	0.07	mBq/kg	<154	<44	<100	<93	<231	-	-
Cable Ties	All States	MERLIN	0.05	mBq/kg	<330	<67	<137	<165	<465	-	-
Stainless Steel Transfer Lines & Weir Drains	Tecnifab	MAEVE	0.81	mBq/kg	<45	8.6(37)	<6.1	11(2)	<9.3	-	14(4)
Stainless Steel Transfer Lines & Weir Drains	Tecnifab	MAEVE	0.72	mBq/kg	<43	24(2)	<5.3	12(5)	<16	-	58(5)
PEEK Screws #4-40 x 0.25 Pan Head	McMaster Carr	MERLIN	-	mBq/Unit	<1450	2530(620)	3520(970)	4350(560)	<1860	-	-
5/16 OD PTFE Tube	ZEUS	MERLIN	0.41	mBq/kg	<41	<12	<12	<12	<55	-	-
Xe Fluid Nozzle Sleeve	Technifab	MERLIN	-	mBq/Unit	<8.3	<1.7	<3.6	<4.2	<12	-	-
Valves For Xe Supply & Return	Technifab	MORGAN'	3.2	mBq/kg	<8.6	<1.1	2.2(13)	2.2(13)	<13	-	3.5(6)
Xe Thermosiphon Hardware	Technifab	MORGAN	1.4	mBq/kg	<9.5	<1.5	<2.0	<1.9	<10	-	6.0(5)
Stainless Steel VCR adaptors M/F	Swagelok	MAEVE	1.5	mBq/kg	<4.8	2.1(8)	2.1(12)	1.0(5)	<3.1	-	7.9(7)

Table A2: ICP-MS Screening Results.

Sample	Supplier	Detector	Units	²³⁸ U	²³² Th
Cryostat					
Titanium Welding Wire 1.6 mm	Timet (LZ Stock)	UCL	mBq/kg	2.6(4)	0.63(6)
Titanium Welding Wire 1.6 mm	Timet (LZ Stock)	UCL	mBq/kg	66(1)	13(1)
Titanium Welding Wire 3.2 mm	Timet (LZ Stock)	UCL	mBq/kg	2.9(4)	0.27(10)
Ti Cryostat Weld Chips; Support Leg; Etched	Timet (LZ Stock)	UCL	mBq/kg	2.7(3)	2.3(2)
Ti Cryostat Weld Chips; Support Leg; Cleaned	Timet (LZ Stock)	UCL	mBq/kg	2.7(2)	2.7(1)
Ti Cryostat Weld Chips; Support Leg; Uncleaned	Timet (LZ Stock)	UCL	mBq/kg	3.2(1)	3.8(3)
Ti Cryostat Weld Chips; Welded Coupon Location 3; Cleaned	Timet (LZ Stock)	UCL	mBq/kg	2.0(3)	42(39)
Ti Cryostat Weld Chips; Welded Coupon Location 3; Cleaned	Timet (LZ Stock)	UCL	mBq/kg	1.8(3)	28(1)
Ti Cryostat Weld Chips; Welded Coupon Location 3; Uncleaned	Timet (LZ Stock)	UCL	mBq/kg	2.7(3)	96(2)
Ti Cryostat Weld Chips; Welded Coupon Location 2; Etched	Timet (LZ Stock)	UCL	mBq/kg	1.9(2)	13(3)
Ti Cryostat Weld Chips; Welded Coupon Location 2; Cleaned	Timet (LZ Stock)	UCL	mBq/kg	1.9(4)	12(1)
Ti Cryostat Weld Chips; Welded Coupon Location 2; Uncleaned	Timet (LZ Stock)	UCL	mBq/kg	2.0(3)	16(1)
Ti Cryostat Weld Chips; Welded Coupon Location 1; Etched	Timet (LZ Stock)	UCL	mBq/kg	2.1(2)	0.12(3)
Ti Cryostat Weld Chips; Welded Coupon Location 1; Cleaned	Timet (LZ Stock)	UCL	mBq/kg	2.2(5)	0.13(17)
Ti Cryostat Weld Chips; Welded Coupon Location 1; Uncleaned	Timet (LZ Stock)	UCL	mBq/kg	2.4(6)	0.48(16)
Ti Cryostat Weld Chips; Plasma Welds; Etched	Timet (LZ Stock)	UCL	mBq/kg	2.5(1)	2.5(10)
Ti Cryostat Weld Chips; Plasma Welds; Cleaned	Timet (LZ Stock)	UCL	mBq/kg	2.4(2)	3.4(10)
Ti Cryostat Weld Chips; Plasma Welds; Uncleaned	Timet (LZ Stock)	UCL	mBq/kg	2.4(8)	3.6(3)
Ti Cryostat Weld Chips; TIG Welds; Etched	Timet (LZ Stock)	UCL	mBq/kg	3.3(4)	1.2(1)
Ti Cryostat Weld Chips; TIG Welds; Cleaned	Timet (LZ Stock)	UCL	mBq/kg	3.8(4)	1.7(4)

continued

Sample	Supplier	Detector	Units	²³⁸ U	²³² Th
Ti Cryostat Weld Chips; TIG Welds; Uncleaned	Timet (LZ Stock)	UCL	mBq/kg	4.1(3)	1.5(2)
Welding Electrode; 4.0 mm W-La From Wolfram; Etched	Timet (LZ Stock)	UCL	mBq/kg	2.1(2)	4.7(7)
Welding Electrode; 4.0 mm W-La From Wolfram; Cleaned	Timet (LZ Stock)	UCL	mBq/kg	2.1(2)	5.9(3)
Welding Electrode; 4.0 mm W-La From Wolfram; Uncleaned	Timet (LZ Stock)	UCL	mBq/kg	2.1(2)	6.2(2)
Welding Electrode; Pure W From Plansee; Etched	Timet (LZ Stock)	UCL	mBq/kg	2.1(1)	36(2)
Welding Electrode; Pure W From Plansee; Cleaned	Timet (LZ Stock)	UCL	mBq/kg	2.1(3)	41(1)
Welding Electrode; Pure W From Plansee; Uncleaned	Timet (LZ Stock)	UCL	mBq/kg	2.4(2)	47(1)
Ti cryostat OCV Weld Chips; Cleaned	Timet (LZ Stock)	UCL	mBq/kg	2.6(3)	3.6(12)
Ti cryostat OCV Weld Chips; Cleaned	Timet (LZ Stock)	UCL	mBq/kg	2.8(2)	2.4(4)
Ti cryostat OCV Weld Chips; Uncleaned	Timet (LZ Stock)	UCL	mBq/kg	2.9(3)	3.9(7)
Welding Electrode; 3.2 mm OD W-La From Wolfram; Cleaned	Timet (LZ Stock)	UCL	mBq/kg	2.2(2)	0.42(8)
Welding Electrode; 3.2 mm OD W-La From Wolfram; Uncleaned	Timet (LZ Stock)	UCL	mBq/kg	2.4(1)	1.5(2)
Welding Electrode; 4.0 mm OD W-La From Wolfram; Cleaned	Timet (LZ Stock)	UCL	mBq/kg	2.3(1)	6.2(2)
Welding Electrode; 4.0 mm OD W-La From Wolfram; Uncleaned	Timet (LZ Stock)	UCL	mBq/kg	2.6(2)	8.2(3)
Welding Electrode; 4.0 mm OD W-La From Plansee; Cleaned	Timet (LZ Stock)	UCL	mBq/kg	3.0(3)	25(2)
Welding Electrode; 4.0 mm OD W-La From Plansee; Uncleaned	Timet (LZ Stock)	UCL	mBq/kg	3.5(2)	33(1)
Helicoflex Seal Aluminium	Technetics	UCL	mBq/kg	998(82)	280(23)
Helicoflex Seal Nimonic90	Technetics	UCL	mBq/kg	275(7)	5.6(4)
Helicoflex Seal Inconel	Technetics	UCL	mBq/kg	337(37)	4.0(4)
Polystyrene Foam	Styro dure	UCL	mBq/kg	4.2(8)	1.2(2)

continued

Sample	Supplier	Detector	Units	²³⁸U	²³²Th
Polystyrene Foam	Styrodure	UCL	mBq/kg	3.3(10)	0.57(21)
Forward Field Region Titanium Weld Sample	Timet	UCL	mBq/kg	2.1(2)	0.14(4)
Forward Field Region Titanium Weld Sample	Timet	UCL	mBq/kg	2.4(3)	4.3(2)
Ti weld sample from CHAMP; Material Adjacent To Weld	Timet	UCL	mBq/kg	2.3(4)	0.59(13)
Ti weld sample from CHAMP; Weld Material	Timet	UCL	mBq/kg	2.9(3)	15(1)
Multi-Layer Insulation	RUAG (Vienna)	University of Alabama	mBq/kg	14(2)	31(6)
Polyethylene Foam	Foam Factory	University of Alabama	mBq/kg	20(3)	2.6(4)
Titanium Plate 4 x 6 0.125	Timet	PNNL	mBq/kg	9.8(2)	0.09(1)
Misc					
SNO Acrylic	RPT	University of Alabama	mBq/kg	0.30(12)	0.36(7)
JUNO Acrylic	Juno Experiment	University of Alabama	mBq/kg	0.27(5)	0.03(1)
JUNO Acrylic	Juno Experiment	University of Alabama	mBq/kg	0.66(11)	0.15(2)
Outer Detector					
Outer Detecor Tank Acrylic	Reynolds (from Thailand)	UCL	mBq/kg	0.04(4)	0.02(3)
Outer Detecor Tank Acrylic	Reynolds	UCL	mBq/kg	0.11(11)	0.03(3)
Acrylic Sheet	Reynolds	University of Alabama	mBq/kg	0.13(3)	0.26(8)
Cast Acrylic Slab	Reynolds	University of Alabama	mBq/kg	0.31(5)	0.20(7)
Adhesive	Reynolds	University of Alabama	mBq/kg	-0.03(8)	0.06(4)
PMT Cabling					
Tinned-Cu Cable Sample	AXON	UCL	mBq/kg	0.22(4)	0.11(2)
Cable - Cu Sheath Material	AXON	UCL	mBq/kg	0.87(11)	0.16(4)
Cable - Cu Conductor	AXON	UCL	mBq/kg	0.23(7)	0.07(1)
TPC					
Loop Antennae Sensor Cu Wire	Scientific Wire Company	UCL	mBq/kg	0.19(8)	0.05(4)

Table A3: GDMS Screening Results.

Sample	Supplier	Detector	Mass [g]	Units	$^{238}\text{U}_e$	$^{232}\text{Th}_e$	^{40}K
Cryostat							
Ti Plate HN3469	Timet	NRC	0.35	mBq/kg	<2.5	<0.81	<0.31
Ti Plate HN3469	Timet	NRC	0.35	mBq/kg	<2.5	<0.81	<0.34
Ti Plate 4 x 6 0.125	Timet	NRC	1.0	mBq/kg	<1.2	<0.41	<0.15
Ti Plate 4 x 6 0.125	Timet	NRC	1.0	mBq/kg	<1.2	<0.41	<0.22
Ti Plate 0.125 HN2470	Timet	NRC	1.0	mBq/kg	<4.0	<1.2	<0.60
NEXT100 50 mm SS Flange Material	Nironit	NRC	1.0	mBq/kg	<12	<0.20	<0.60
NEXT100 SS 15 mm Cryostat Cover Material	Nironit	NRC	1.0	mBq/kg	<12	<0.20	<0.60
NEXT100 SS 10 mm For Shell	Nironit	NRC	1.0	mBq/kg	<7.4	<0.20	<0.60
Titanium - Timet Japanese Mill	Timet	NRC	1.0	mBq/kg	7.4(37)	<0.80	<0.10
Stainless Steel Plate - Gerda G2	Ilsenburg	NRC	1.0	mBq/kg	<5.0	<0.40	<0.00
Stainless Steel Plate - Gerda G1	Ilsenburg	NRC	1.0	mBq/kg	<5.0	<0.40	<0.00
Stainless Steel Plate - Gerda D6	Ilsenburg	NRC	1.0	mBq/kg	<5.0	<0.40	<0.00
LUX Ti sample	Supra Alloy	NRC	0.30	mBq/kg	11(5)	<0.40	<0.10
Ti Sheet Stock	Timet	NRC	0.40	mBq/kg	11(5)	<0.80	<0.15
0.3125 Ti Sheet Stock Grade CP-2	PTG	NRC	0.40	mBq/kg	12(6)	4.0(20)	<7.0
0.375 Ti Sheet Stock Grade CP-1	Supra Alloy	NRC	0.40	mBq/kg	36(18)	3.2(16)	<7.0

Table A4: NAA Screening Results.

Sample	Supplier	Detector	Mass [g]	Units	$^{238}\text{U}_e$	$^{232}\text{Th}_e$	^{40}K
PMT Cabling							
Raw FEP Pellets	Axon	University of Alabama	3.1	mBq/kg	<0.017	0.036(4)	0.17(2)
Raw FEP Pellets	Axon	University of Alabama	3.1	mBq/kg	<0.052	0.037(5)	0.18(2)
FEP Inner Cable Jacket	Axon	University of Alabama	2.5	mBq/kg	<0.060	0.083(12)	5.1(5)
FEP Outer Cable Jacket	Axon	University of Alabama	2.6	mBq/kg	<0.024	0.096(12)	11(1)
TPC							
PTFE 8764 For Skin Region	Boedeker Plastics	University of Alabama	8.3	mBq/kg	0.018(5)	0.029(3)	0.018(4)
PTFE FLON008	Flontech	University of Alabama	2.8	mBq/kg	<0.027	0.051(6)	0.33(2)
Teflon NXT85	DuPont	University of Alabama	2.9	mBq/kg	<0.021	0.028(4)	0.122(1)
Teflon 807NX	DuPont	University of Alabama	2.8	mBq/kg	0.038(10)	0.029(4)	0.096(5)
PTFE 8764	Boedeker Plastics	University of Alabama	2.8	mBq/kg	<0.043	0.013(3)	0.066(4)

Table A5: Radon Emanation Results.

Sample	Supplier	Detector	Quantity Screened	Units	^{222}Rn
Calibration					
Welding Rods	HTP from USAWeld	SDSM&T	1 unit	$\mu\text{Bq}/\text{unit}$	185^{+104}_{-81}
Conduits					
PMT Signal Feedthrough	Accuglass	University of Alabama	5 unit	$\mu\text{Bq}/\text{unit}$	<110
PMT HV Feedthrough (Before Potting)	CeraTec	University of Maryland	21 unit	$\mu\text{Bq}/\text{unit}$	17.0 ± 4.1
PMT Signal Feedthrough	Accuglass	University of Maryland	16 unit	$\mu\text{Bq}/\text{unit}$	$5.1^{+4.7}_{-3.5}$
PMT Signal Feedthrough	Accuglass	University of Alabama	9 unit	$\mu\text{Bq}/\text{unit}$	104 ± 36
Anode/Gate Feedthrough	CeraTec	SDSM&T	4 unit	$\mu\text{Bq}/\text{unit}$	12^{+23}_{-12}
Cryostat					
LZ Inner Cryostat Vessel (fully constructed)	Loterios	SDSM&T	1 unit	$\mu\text{Bq}/\text{unit}$	46100^{+4000}_{-3800}
PEEK Flat Stock	Boedeker	SDSM&T	2993.54 cm ²	$\mu\text{Bq}/\text{cm}^2$	$0.056^{+0.041}_{-0.053}$
PEEK Samples	Boedeker	SDSM&T	20858 cm ²	$\mu\text{Bq}/\text{cm}^2$	$0.0053^{+0.0078}_{-0.0053}$
LZ Sensors	University of Oxford Fabrication	SDSM&T	1 unit	$\mu\text{Bq}/\text{batch}$	324^{+116}_{-185}
Teflon (PTFE)	Technetics	SDSM&T	17 m	$\mu\text{Bq}/\text{m}^2$	$12^{+4.6}_{-10}$
Sensor Cable	Axon	SDSM&T	454 m	$\mu\text{Bq}/\text{m}$	$1.7^{+1.3}_{-1.2}$
Cryostat Seals	Technetics	University of Alabama	1 unit	$\mu\text{Bq}/\text{unit}$	<741
Titanium Sheets	Timet	UCL	2350 cm ²	$\mu\text{Bq}/\text{cm}^2$	0.17 ± 0.04
High Voltage					
HV Umbilical Epoxy	Stycast	University of Alabama	0.11 m ²	$\mu\text{Bq}/\text{m}^2$	7110 ± 3010
Umbilical Cable (Rejected)	Dielectric Sciences	SDSM&T	12 unit	$\mu\text{Bq}/\text{unit}$	995 ± 694

continued

Sample	Supplier	Detector	Quantity Screened	Units	²²² Rn
Delrin (Polyoxymethylene)	DuPont	UCL	0.54 m ²	µBq/m ²	440 ± 116
Viton O-Rings	Dichtomatik	UCL	90 unit	µBq/unit	17 ± 2.3
HV Cathode System Components	Various	UCL	1 unit	µBq/batch	369 ± 85
Umbilical Cables	Dielectric Sciences	SDSM&T	25 m	µBq/m	52 ^{+8.1} ₋₁₂
HV Umbilical Epoxy	Stycast	University of Alabama	0.11 m ²	µBq/m ²	5010 ± 2630
PMT HV Feedthrough	Accuglass	University of Alabama	5 unit	µBq/unit	104 ± 46
PMT HV Feedthrough	Accuglass	University of Alabama	5 unit	µBq/unit	5.2 ± 2.4
Epoxy Potted HV Flanges	Ceramtech	University of Maryland	4 unit	µBq/unit	37 ⁺¹³ ₋₁₀
Misc					
Calibration Source (2016)	University of Alabama	SDSM&T	1 unit	µBq/unit	787 ± 174
Dust From SURF 4850L - Warm And Vented	N/A	University of Alabama	163.4 g	µBq/g	1550 ± 200
Helicoflex Aluminum Sheet	Technetics	SDSM&T	5000 cm ²	µBq/cm ²	60 ⁺²⁸ ₋₃₈
Mobile Xenon Sampling System	Various	University of Maryland	1 unit	µBq/unit	450 ⁺¹²⁵ ₋₁₀₆
Test Cryostat	NorCal	SDSM&T	1 unit	µBq/unit	405 ⁺²²⁰ ₋₁₇₄
A1 Ultrafine Dust	Powder Technology	University of Alabama	103.1 g	µBq/g	6750 ± 410
A4 Coarse Dust	Powder Technology	University of Alabama	124.1 g	µBq/g	3300 ± 310

continued

Sample	Supplier	Detector	Quantity Screened	Units	²²² Rn
AFRL-02 Dust	Powder Technology	University of Alabama	295.7 g	μBq/g	330 ± 110
AFRL-03 Dust	Powder Technology	University of Alabama	323.6 g	μBq/g	190 ± 110
Dust From SURF 4850L	N/A	University of Alabama	0.2172 kg	μBq/g	739 ± 125
Dust From SURF 4850L	N/A	University of Alabama	0.2172 kg	μBq/g	900 ± 153
TIG Welded Titanium Block	Loterios	UCL	325 cm ²	μBq/cm ²	1.7 ± 0.3
TIG Welded Titanium Block	Loterios	UCL	325 cm ²	μBq/cm ²	1.2 ± 0.28
PT100 RTDs	Omega	UCL	150 unit	μBq/batch	231 ± 35
Compressor Maintenance Cart	U. Maryland Fabrication	University of Maryland	1 unit	μBq/unit	260 ± 60
Surface Assembly Lab Sprinkler Head	Western States Fire Protection	SDSM&T	1 unit	μBq/unit	2600 ± 104
PMTs, PMT bases and their components					
PMT Capacitors	KEMET	University of Alabama	0.5 kg	μBq/kg	729 ± 486
PMT Capacitors	KEMET	University of Alabama	0.5 kg	μBq/kg	1080 ± 544
PMT Resistors	VISHAY	UCL	25000 unit	μBq/batch	1550 ± 116
PMT Resistors	VISHAY	UCL	3650 unit	μBq/batch	324 ± 81
PMTs (2-inch)	Hamamatsu	SDSM&T	42 PMTs 14 bases unit	μBq/unit	100 ⁺¹⁹⁰ ₋₁₀₀
PMT Bases (1-inch)	Imperial College London Fabrication	UCL	100 unit	μBq/unit	4.4 ± 0.9

continued

Sample	Supplier	Detector	Quantity Screened	Units	^{222}Rn
PMT Bases (3-inch)	Imperial College London Fabrication	UCL	124 unit	$\mu\text{Bq/unit}$	5 ± 0.87
PCB/Cirlex	Cirlex	UCL	421 g	$\mu\text{Bq/g}$	1.4 ± 0.35
PMT Capacitors	KEMET	University of Alabama	0.5 kg	$\mu\text{Bq/kg}$	3510 ± 961
PMT HV Feedthrough (After Potting)	Ceramaseal	University of Maryland	21 unit	$\mu\text{Bq/unit}$	5.2 ± 2.4
PMTs (3-inch)	Hamamatsu	SDSM&T	93 unit	$\mu\text{Bq/unit}$	$1.9^{+1.7}_{-1.9}$
PMTs (1-inch)	Hamamatsu	SDSM&T	95 unit	$\mu\text{Bq/unit}$	$7.1^{+2.5}_{-3}$
PMT Cabling					
Gore PMT Cables	Gore	UCL	0.957 kg	$\mu\text{Bq/kg}$	< 130
Axon Cables	Axon	SDSM&T	3000 m	μBq	613 ± 127
Connector Boards	Imperial College London Fabrication	University of Alabama	1200 unit	$\mu\text{Bq/unit}$	< 0.35
PMT Signal Flanges	Accuglass	University of Maryland	4 unit	$\mu\text{Bq/g}$	23^{+13}_{-10}
PMT Signal Flanges	CeramTec	University of Maryland	4 unit	$\mu\text{Bq/unit}$	17 ± 8.1
TPC					
Loop Antenna & Screws	University Of Oxford Fabrication	SDSM&T	10 unit	$\mu\text{Bq/unit}$	1^{+8}_{-1}
Tivar 1000 ESD	Quadrant From Boedeker Stock	SDSM&T	12536 cm^2	$\mu\text{Bq/m}^2$	35^{+69}_{-35}

continued

Sample	Supplier	Detector	Quantity Screened	Units	²²² Rn
Kapton	Fralock (McMaster Carr)	SDSM&T	25000 cm ²	µBq/cm ²	56 ⁺¹⁰⁴ ₋₅₆
Xenon Circulation System					
Heat Exchanger	FNAL Fabrication	SDSM&T	1 unit	µBq/unit	197 ⁺¹⁸⁵ ₋₁₉₇
Compressor Head	Fluitron	University of Maryland	1 unit	µBq/unit	1570 ± 266
Getter Cabinet	SAES	SDSM&T	1 unit	µBq/unit	2260 ⁺²⁷⁸ ₋₂₆₆
PCB 4 x 8 Charcoal	Calgon	University of Maryland	0.03 kg	µBq/kg	850000 ± 57900
OVC 4 x 8 Charcoal	Calgon	University of Maryland	0.432 kg	µBq/kg	35900 ± 2780
Conditioning Heat Exchangers	Standard Xchange	University of Maryland	4 unit	µBq/unit	35 ⁺²⁵ ₋₂₄
Cryogenic Valve	WEKA	University of Maryland	3 unit	µBq/unit	178 ⁺²⁸ ₋₂₇
Heat Exchanger	Xylem US	University of Maryland	1 unit	µBq/unit	524 ⁺⁸¹ ₋₇₄
Adsorbant	Saratech	University of Maryland	1 kg	µBq/kg	890 ± 410
Adsorbant (Pre-Etching)	Saratech	University of Maryland	1 kg	µBq/kg	1780 ± 210
OVC 4 x 8 Charcoal	Calgon	University of Maryland	0.472 kg	µBq/kg	64800 ± 3820
Synthetic Charcoal	Carbo-Act	University of Maryland	0.363 kg	µBq/kg	336 ⁺⁴¹⁷ ₋₁₉₇
Synthetic Charcoal	MAST	University of Maryland	0.19 kg	µBq/kg	2790 ± 787
Synthetic Adsorbant	Saratech/Blouecher	University of Maryland	0.585 kg	µBq/kg	1790 ± 324

continued

Sample	Supplier	Detector	Quantity Screened	Units	²²² Rn
Shirasagi Charcoal	Osaka Gas Chemicals	University of Maryland	0.512 kg	μBq/kg	101000 ± 8100
Cryogenic Valve	WEKA	University of Maryland	1 unit	μBq/unit	247 ± 56
Circulation Compressor #1 heads	Fhuitron	University of Maryland	2 unit	μBq/unit	375 ± 50
Circulation Compressor #2 heads	Fhuitron	University of Maryland	2 unit	μBq/unit	391 ± 56
Full Circulation Compressor #2	Fhuitron	University of Maryland	1 unit	μBq/unit	17000 ± 500
Xe Transfer Lines	U. Maryland Fabrication	University of Maryland	1 unit	μBq/unit	223 ± 72
Vespel Gas Valve Seats	DuPont	University of Alabama	36 unit	μBq/unit	15 ± 9.3
Radon Reduction System Panel	U. Michigan Fabrication	University of Maryland	1 unit	μBq/unit	286 ⁺¹¹⁰ ₋₉₁
Radon Reduction System Plumbing	U. Michigan Fabrication	University of Maryland	1 unit	μBq/unit	160 ± 57
TIG Welds On 0.5" SS Tubing	U. Maryland Fabrication	University of Maryland	1 m	μBq/m	34 ± 21
Main Circulation Panel	U. Maryland Fabrication	University of Maryland	1 unit	μBq/unit	744 ± 198