



10-22-1960

October 22, 1960 Football Program, UOP vs. Washington State University

Washington State University

Follow this and additional works at: <https://scholarlycommons.pacific.edu/ua-football>

Recommended Citation

Washington State University, "October 22, 1960 Football Program, UOP vs. Washington State University" (1960). *Football*. 284.

<https://scholarlycommons.pacific.edu/ua-football/284>

This Book is brought to you for free and open access by the Athletics at Scholarly Commons. It has been accepted for inclusion in Football by an authorized administrator of Scholarly Commons. For more information, please contact mgibney@pacific.edu.



COP vs. WASHINGTON STATE

Rogers Field, Pullman

(Dad's Day and Band Day)

SATURDAY

OCTOBER 22, 1960

2:00 P.M.

50¢

R. Vossler



YARDAGE ON THE WAY! Traveling anywhere in the Northwest, directly to your door, the Pratt Carpet Mobile brings selection of hundreds of samples of carpet to your home. On Easy Terms buy carpet with the Northwest's Lowest Interest Rates.



Washington State University

versus

College of the Pacific

ROGERS FIELD, PULLMAN

October 22, 1960

2:00 P. M.

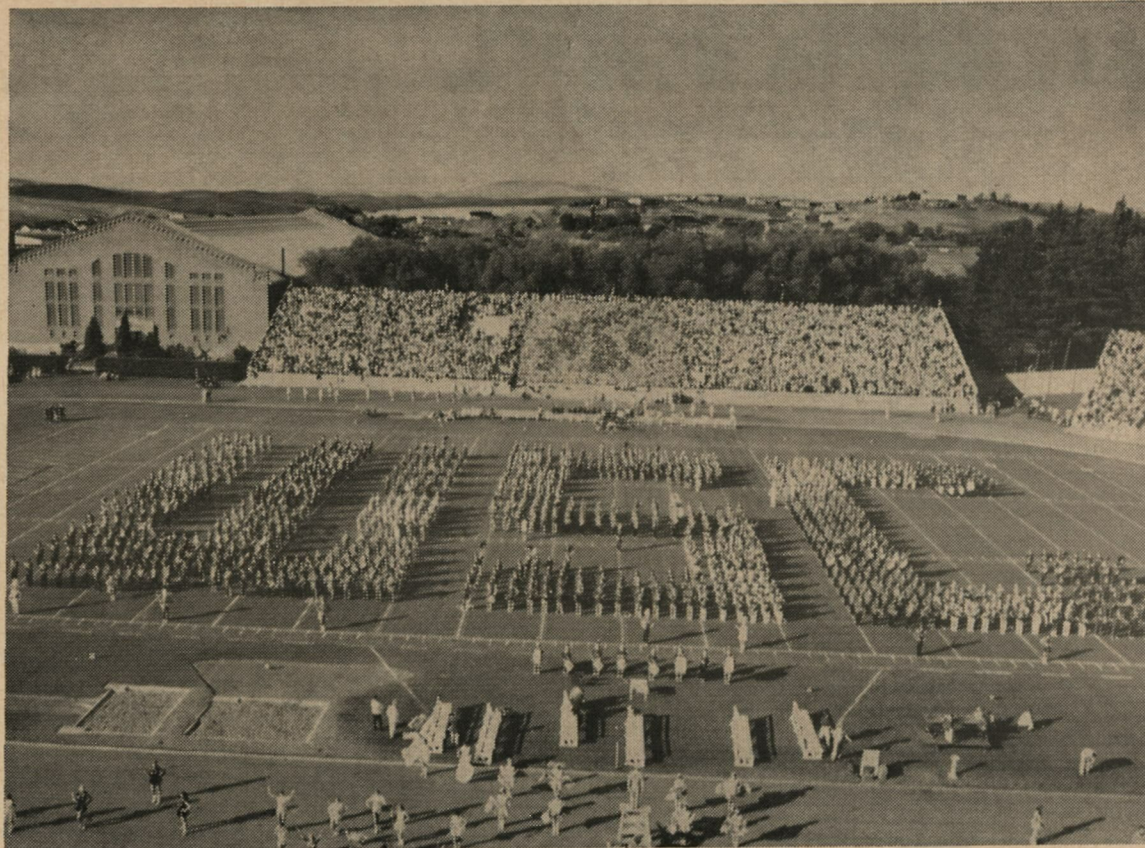
WSU'S REMAINING HOME SCHEDULE

Nov. 5—Oregon State CollegeRogers Field, Pullman
(Homecoming)
Nov. 19—University of Wash.Memorial Stadium, Spokane

THE COUGAR HUDDLE is the Official Football Publication of the Associated Students of Washington State University at Pullman, Washington. Dick Fry, Director of Athletic Publicity. National Advertising representative: Spencer Advertising Co., Inc., 271 Madison Ave., New York, N. Y. Printed by The Pullman Herald.

The Official Watch for Timing Today's Game is LONGINES — "The World's Most Honored Watch."

Today Is Band Day!



Colorful guests of Washington State University this afternoon are members of 34 visiting high school bands from Eastern, and Central Washington and several cities in Idaho. The half-time spectacle, arranged by Prof. Randall Spicer of the WSU faculty, will include more than 2200 bandmen and 180 twirlers. Among their selections will be a new one written especially for WSU by Paul Yoder, one of the nation's leading composers of band music.

We would like to take this opportunity to thank the following school bands and their directors for making this program possible:

City	Director	City	Director
CHENEY	Hal Harvey	OTHELLO	Wendell Holstrom
CHELAN	Duane Loomis	PALOUSE	Kenneth Holway
CLARKSTON	Jack F. Corporon	PASCO	Bill Bode
COLFAX	Sig Norman	PROSSER	William Gresham
CHEWELAH	Wayne Summers	PULLMAN	Dana L. Cleveland
COLVILLE	Jack Field	COLUMBIA HIGH (Richland)	David E. Harry
DAVENPORT	Ed Grier	RITZVILLE	Ron Wildey
EPHRATA	F. Truman Youngberg	SANDPOINT (Idaho)	Adair Hilligoss
GENESEEE (Idaho)	Craig Wellington	SELAH	Robert O'Dell
GRANDVIEW	John Schactler	LEWIS & CLARK (Spokane)	C. Oliver Fuller
KENNEWICK	H. R. Wines	SHADLE PARK (Spokane)	John Harris
KETTLE FALLS	James R. Thom	CENTRAL VALLEY (Spokane)	Dick Thomas
LIND	Rodney Roberts	WEST VALLEY (Spokane)	Dean Rowbothom
MEAD	Kenneth Coon	WALLA WALLA	Russell Larsen
MOSCOW (Idaho)	W. H. Snodgrass	WENATCHEE	Duane Mikow
NACHES	David Arend	EISENHOWER (Yakima)	H. J. Thomas
OKANOGAN	D. L. Callahan	A. C. DAVIS (Yakima)	Robert Green

Today's Game . . .

Seventh WSU-COP Meeting

The Cougar and the Bengal Tiger go at it tooth and claw here today, and if past performances are a guide this one should be a crowd-pleaser all the way.

Washington State and College of the Pacific are in their seventh renewal of a series that began in 1953 down in Stockton, Calif., with a 26-20 Cougar victory. Wayne Berry, the fine Cougar halfback from LaGrande, Ore., was the difference for WSU in that one, running a fourth quarter punt back all the way and a six-point Washington State victory over a favored COP eleven.

Since that time, the Cougars have won three more and dropped a pair and lead in the series four games to two. However, neither school ever has won more than two in a row in this series, and the cougars currently are seeking to extend their string to three. WSU won 34-0 in 1958 and came back with a 20-12 win last Fall. Prior to that, COP hung up a pair of wins, 30-0 in 1955 and 33-12 in Jim Sutherland's first season of 1956. Washington State also picked up a win, 18-0, at Spokane in 1954.

Northwest football fans will be looking at one of the really great linemen in collegiate ball here today in Carl Kammerer. The Tiger guard, already drafted by the professionals as a red-shirt, is considered the finest front man in the history of the Stockton school—and that covers a lot of ground. The Tigers have placed a whole host of linemen in the professional game in recent seasons; perhaps more than any single school in the nation. But Kammerer is rated the all-time best. He's big, at about 240, and has all the moves of a halfback. The Cougars saw this fellow in action first in 1958, and thought him the best guard they faced all season. Carl sat out last year with a broken hip, but he's back now, better than ever.

Coach Jack "Moose" Myers, the former UCLA great, brings the Tigers into Pullman for the first time this year. COP has played in the Northwest, at Spokane, Moscow and Seattle, but never on WSU's Roger's field.

COP started slowly this season with opening losses to Washington and Marquette, but the Bengals bounced back in a hurry, winning from Hawaii and Villanova in their next two starts. They boast a trio of fine throwers in quarter-

backs Bob Vander Wall, Bob Gatiss and sophomore Jack Sparrow. The latter, a 6-4, 190-pound bomber, led the Bengal Frosh to a fine 5-1 season last Fall.

Myers likes his teams to throw the football, so fans who have followed the Cougars' thrilling aerial game know that a real zipper is on tap today. Last Fall, at Stockton, the Bengals sprang an old-fashioned spread formation on the Cougars and quarterback Gatiss almost pulled the game out for COP with a dazzling aerial display.

Surprisingly, both these squads like it rough and tough, even though known primarily as passing outfits. All six of the previous WSU-COP meetings have provided fans with great action spectacles. This one appears ready to follow that pattern.

America's Cleanest Solid Fuel

in handy log form for
fireplace, furnace or stove
or
golden nugget size
for stoker

PRES-TO-LOGS

Spokane Pres-to-Log Co.

E. 140 RIVERSIDE

MA 4-2233

What about a

NEW CONFERENCE?

By DICK FRY
Athletic News Service
Washington State University

What's with this new league? Are the Cougars going to join a new athletic association involving schools from the Northwest, the Skyline and Border Conferences? What are the chances of the old PCC getting back together?

If you're a football fan, then you've asked, or been asked, these questions many times in recent months. Well then, what do Washington State officials have to say about the reports that are flying thicker than footballs these days?

Director of Athletics Stan Bates and WSU Faculty Representative Dr. Wallis Beasley attended the recent meeting of officials from WSU, Oregon, Oregon State, Utah, Brigham Young, Arizona, Arizona State and New Mexico in Salt Lake City to talk over the proposed new league involving these schools. Athletic Directors and Faculty Representatives attending agreed that a new conference including these eight schools would be desirable. Further action now rests with the Presidents of the respective institutions.

Bates says the meetings have not changed Washington State's long-held view that the Cougars would prefer a conference to their present independent status.

"We always have been interested in talking over the possibility of a conference alignment, whether it be a new one or a re-grouping of former associations. We definitely feel that Washington State athletics would benefit under a conference arrangement," Bates says.

"We have not joined any new group, and it is still our opinion that any regrouping should be done with Oregon, Oregon State and ourselves staying together," Bates declared.

"Dr. Beasley and I feel that this suggested alignment could be a forward step for Washington State. We have had several meetings with representatives of the other schools, and we have exchanged information on our respective institutions. Through all of this, we have found that the schools involved have much in common and that the possibilities for a strong alignment with a good future are not in any way far-fetched.

"I think it is important to look upon this proposed conference as a step in the right direction. Whether the organization is set up as now outlined is not particularly important at this time. We feel that Washington State would benefit from conference affiliation. The first thing, then, is to work toward this end, and that is what we have done.

"Much has been said—pro and con—about this proposal. Generally, however, both sides have had little

information from which to draw on the merits or demerits of such a league. It has been pretty much an emotional discussion up to this point, and very few good decisions are forthcoming under these circumstances."

We are well acquainted with our Northwest neighbors at Oregon and Oregon State. What are some of the basic facts about the other schools we have mentioned? Perhaps these brief outlines will help answer some of the questions:

UTAH—Located in Salt Lake City, with an enrollment of 11,000 and a projected student body of 16,000 in 10 years. Population of the area about 300,000 now and 500,000 in 1970. Football stadium seats 30,000 and a basketball pavilion for 12-15,000 planned for construction before 1965.

BRIGHAM YOUNG—Located in Provo, about 30 miles from Salt Lake. 9,500 students now and 16,000 expected in 1970. Population now is 60,000, with 100,000 in 10 years plus being in the greater Salt Lake area. Present football stadium seats 16,000 with plans for a new 35,000 seat stadium. The basketball pavilion holds 10,800.

NEW MEXICO—Located in Albuquerque (population 250,000 now with over 300,000 expected in 10 years). Present student body is 7,400 with 12,000 expected before 1970. New football stadium seats 30,000 and basketball pavilion holds 7,000.

ARIZONA—Located in Tucson, population 254,000 with 350,000 expected by 1970. Student body currently 11,000 with 18,000 expected before another decade passes. Present football stadium seats 25,000 with plans for additional 15,000 seats. Basketball pavilion seats 3,500 (10,000 planned).

ARIZONA STATE—Located in Tempe, a dozen miles from Phoenix where the current population is about 400,000 and expected to grow another 300,000 in the next 10 years. Present student body exceeds 9,000 with the 1970 growth expected to double the current figure. The present football stadium holds 30,000 with a 50% addition expected and the basketball pavilion seats 5,000.

Interestingly enough, the former PCC members are among the smaller schools of the proposed conference, both in size of student body and community population.

This is the story as it stands now, and perhaps before long a definite decision will have been made on the future associations of these schools.

Dad's Day 1960

This is Dad's Day in Rogers Field, and scattered throughout the stands today are several hundred members of the State University Dads' Association.

Members of the Association have been on campus since Friday, enjoying a series of plays, musical programs, smokers and other entertainment prepared by WSU students in honor of Dad.

The Association held its annual meeting this morning, at which time it elected new officers for the coming year; named a Dad of the Year, who will be honored at halftime today; and allocated several hundred dollars to student activities and organizations.



Throughout the world, no other name on a watch means so much as

LONGINES

The World's Most Honored Watch
OFFICIAL WATCH

1960 OLYMPIC WINTER GAMES • 1959 PAN AMERICAN GAMES • 1960 U. S. OLYMPIC TRIALS • MAJOR NATIONAL AND WORLD CHAMPIONSHIPS IN ALL FIELDS BOTH HERE AND ABROAD

At Authorized

Longines-Wittnauer
JEWELERS

THE OFFICIAL WATCH
FOR THIS GAME



The World's Most Honored Watch

- * Winner of 10 World's Fair Grand Prizes
- * 28 World's Fair Gold Medals
- * Highest Observatory Honors for Accuracy

Premier Product of

Longines-Wittnauer
WATCH COMPANY

For Almost 100 Years, Maker of Watches
of the Highest Character

1960 OFFICERS

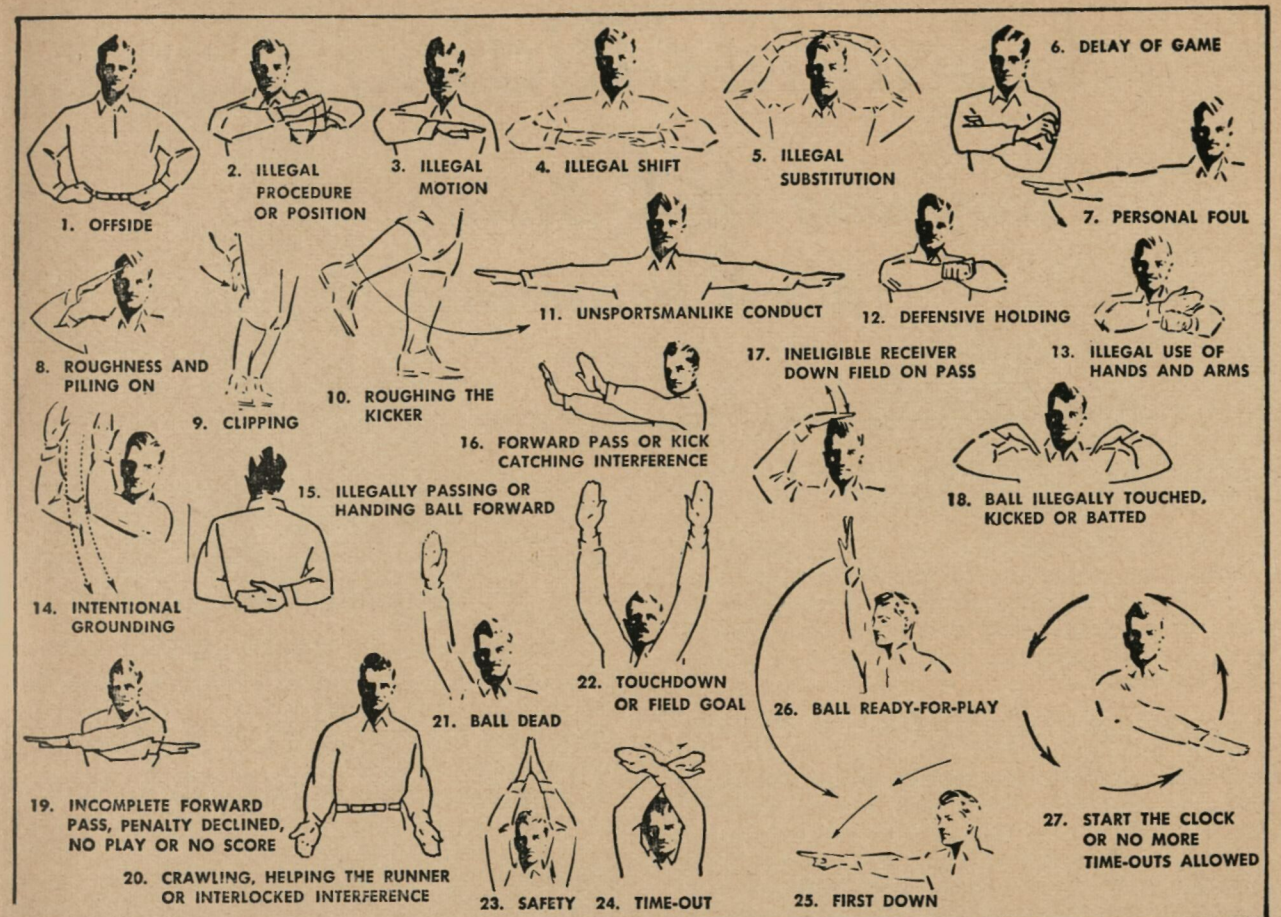
Officers who served the WSU Dads' Association for the past year included the following:

- Dr. Paul L. Beckett, Pullman, president.
Emmet Schroeder, Kelso, first vice president.
Carl Ellingsen, Spokane, second vice president.
Dale Smith, Edgemont, secretary-treasurer.

The Association, during the past year, provided financial backing to the following programs and organizations: forensics, \$100; Women's Recreation Association, \$175; YMCA, \$100; Men's Intramural, \$275; and Dad's Day Committee, \$200. Other money in the Association fund was divided equally between the WSU Scholarship and Development Fund and the CUB Browsing Library.



THEY LEAD THE COUGARS—Coach Jim Sutherland, center standing, is pictured here with his coaching staff at Washington State. They are, left to right, Bob Gambold, Roy Carlson, Laurie Niemi, Tom Parry and Ray Blier.



SPOKANE DRY GOODS Co.

Contract Division of THE CRESCENT

offers a Complete Planning
and Furnishing Service for

BANKS CHURCHES HOSPITALS LOUNGES

DORMITORIES MOTELS HOTELS SCHOOLS

MILITARY INSTALLATIONS

a phone call to Riverside 7-2131 will
bring a representative to discuss your needs

S. 152 LINCOLN ST.

SPOKANE, WASHINGTON

Time to Think of Basketball!

An early Winter? Blame it on Harshman! Washington State's football season passes the mid-point today, and most sports fans are hoping that Fall still has a long way to run in the Palouse country. No so Marv Harshman; he's pushing Winter on us already.

When Monday rolls around, Harshman will issue his first call for the Cougar basketball squad, and for him, that means Winter is here.

Now starting his third season at Washington State, Marv is looking for still more improvement from his Cougar cagers. He's bettered recent WSU records in each of his first two campaigns, but the gentleman from Lake Stevens and late of Pacific Lutheran is far from satisfied. This fellow wants to go all the way . . . and quick.

Washington State has two of the Northwest's finest returning in guard Terry Ball, a record-setter here as a sophomore in 1959-60, and Charlie Sells, a loose-limbed forward with worlds of ability. Backing up this pair from last year's club are Dwight Damon, of Spokane; Nick August, Spokane; Neil Dirom, Duncan, B.C.; Ernie Woods, Manhattan Beach, Calif.;

Bill McKenzie, Portland, Ore., and George Dunham, Coulee Dam. Likely lookers of the Cougar Frosh include Jim Lemery, Portland; Larry Carlson, Tacoma, and Denny Colacino, Anacortes.

1960-1961 SCHEDULE

DEC. 3—GONZAGA	At Pullman, 8 p.m.
DEC. 9—U. OF IDAHO	At Moscow, 8 p.m.
DEC. 10—U. OF IDAHO	At Pullman, 8 p.m.
DEC. 15—U. OF WICHITA	At Wichita, Kan., 8 p.m.
DEC. 17—PURDUE U.	At Lafayette, Ind., 8 p.m.
DEC. 19—U. OF ILLINOIS	At Champagne, Ill., 8 p.m.
DEC. 21—STANFORD U.	At Palo Alto, Cal., 8 p.m.
DEC. 28-29-30—FAR WEST CLINIC	Portland, 8 p.m.
JAN. 5—GONZAGA	Spokane Coliseum, 8 p.m.
JAN. 13—OREGON STATE	At Pullman, 8 p.m.
JAN. 14—OREGON STATE	At Pullman, 8 p.m.
JAN. 20—U. OF OREGON	At Eugene, 8 p.m.
JAN. 21—OREGON STATE	At Corvallis, 8 p.m.
JAN. 28—U. OF IDAHO	At Moscow, 8 p.m.
FEB. 4—STANFORD U.	At Pullman, 8 p.m.
FEB. 6—SEATTLE U.	At Pullman, 8 p.m.
FEB. 10—OREGON STATE	At Corvallis, 8 p.m.
FEB. 11—U. OF OREGON	At Eugene, 8 p.m.
FEB. 17—SEATTLE U.	At Seattle, 8 p.m.
FEB. 21—U. OF IDAHO	At Pullman, 8 p.m.
FEB. 25—U. OF WASHINGTON	At Pullman, 8 p.m.
MARCH 3—U. OF OREGON	At Pullman, 8 p.m.
MARCH 4—U. OF OREGON	At Pullman, 8 p.m.
MARCH 11—U. OF WASHINGTON	At Seattle, 8 p.m.

Black Bandits Riding Again!

Surprising OSC Beavers WSU Homecoming Opponent

The Black Bandits of Benton County, more commonly known to grid fans of the Northwest as the Oregon State Beavers, are back at their old tricks winning football games with a daring and explosive brand of football that made them the scourge of the Coast in 1956 and 1957.

That's the word out of the Willamette Valley as Coach Tommy Prothro's charges continue on a single-wing rampage that moved them into the nation's top 20 football teams early this season.

Surprising is hardly the word for Prothro's Beavers this Fall. Not too many folks gave the Orange and Black a look-in before the campaign got underway, but the football experts had overlooked a couple of kids named Kasso and Baker. Don Kasso and Terry Baker have given the Beavers one of the best tailback duos in the country, and that was all Prothro needed to get his Tennessee single-wing attack rolling again.

They pretty much counted Tommy out down in the Valley last Fall when for the second year in a row the Washington State Cougars shut him out and scored a solid 14-0 victory. "You can't win with the wing unless you have a tailback," the folks said. So Tommy went out and got himself two boys to do the job.

Kasso, a product of Berkeley, Calif., high school, was around last year and gave a good account of himself as a first-year performer, but he didn't quite have the poise that Prothro needed to make his attack hum. Now, as a junior, Kasso, is going great guns, but he's having his hands full keeping his number one job ahead of the amazing Baker, a sophomore out of Portland's Jefferson High School. Baker already is a living legend in the Oregon country. He's an all-state prepster in football, basketball and baseball who throws a football left-handed and pitches a baseball with his right. No joke! Baker is completely ambidextrous, although he prefers the port wing when he's dealing out touchdown passes from Prothro's single wing.

So that's the exciting outlook for Washington State's big Homecoming game in Pullman on November 5. Two great tailbacks operating right and left in Prothro's patented wing attack.

How's Jim Sutherland going to handle this chore?

You'll just have to come out to Roger's field and find out for yourself. Sutherland isn't disclosing any trade secrets. But he has managed to zero the Beavers the past two seasons, and Jim is confident the Cougars just could do it again.

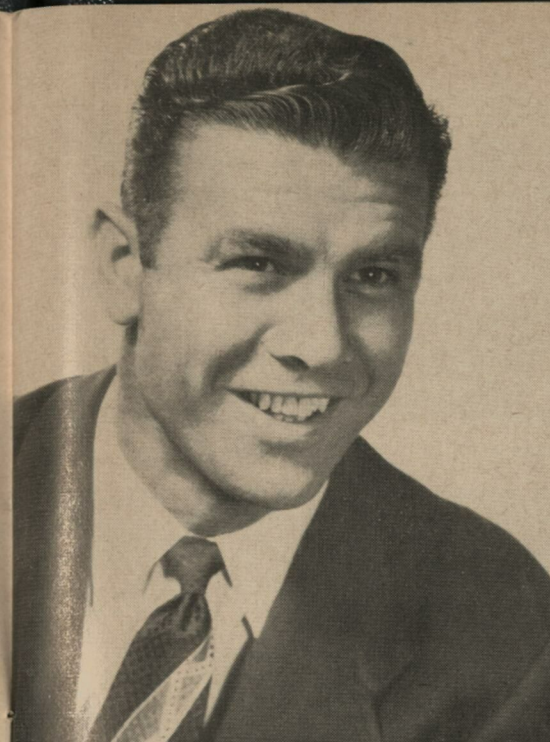
"We didn't beat a single-wing team the first two seasons I was at Washington State, but we haven't lost to one since," Sutherland declares. "I just don't figure we're going to start another losing streak."

Washington State might not be the best defensive club the Beavers have faced this year, but they darn sure are one of the finest outfits anywhere at moving the football on offense. Quarterback Mel Melin, left half Keith Lincoln and left end Hugh Campbell all have been nationally ranked recently in offensive statistics. Melin, having a great throwing year, passed his 1959 total yardage mark in the first four ball games this season and with a bit of good fortune easily could top the total offense mark of 1,444 yards that Bobby Newman hung up here in 1957. He's also off to a good start in pursuit of the passing yardage record of 1,391 Newman hung up that same season.

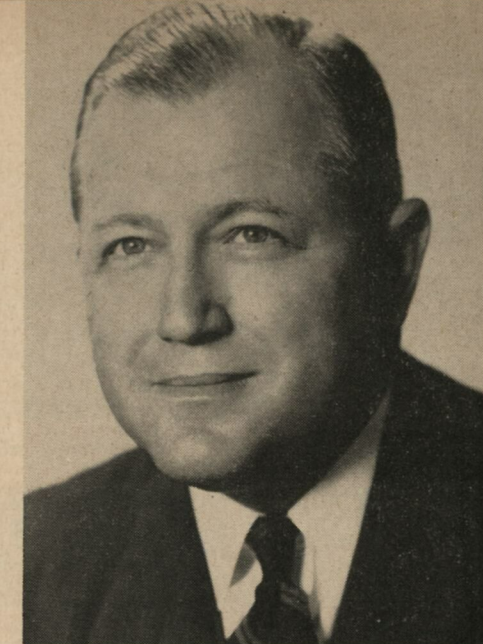
Lincoln, who had one of his greatest days down in Corvallis last year as the Cougars beat the Beavers, already claims the all-time WSU career rushing record and is adding to it each week. He passed the record of 1,274 yards set by Charles Morrell here in 1958 in the fourth game of the current campaign. He also is threatening the all-time WSU career punting mark of 39.5 set by Billy Sewell back in 1941. Lincoln currently is over the 41-yard mark.

Campbell, dubbed "The Phantom" for his sneaky artistry in the pass-catching department, bids fair to become WSU's greatest receiver—and that covers a lot of ground. The splendid sophomore from Saratoga, Calif., twice has equalled the all-time Cougar single game receiving record of ten set back in 1951 by Sunnyside's Ed Barker.

That's the story: Beaver power against Cougar finesse. The last chapter will be written here on Roger's field come November 5.



Jack "Moose" Myers
Athletic Director and Head Coach



Robert E. Burns
President, College of the Pacific

C
O
P

COACHES and STAFF



COP Coaching Staff

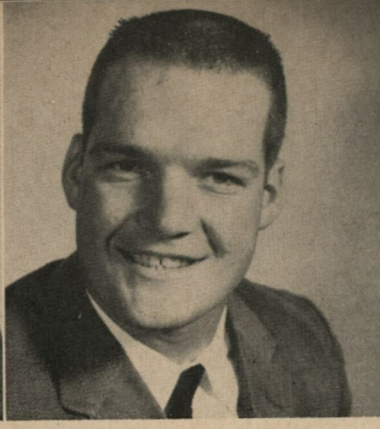
From left: Line Coach Don Campora, End Coach John Rohde, Head Coach Jack Myers, and Backfield Coach George Dickson.



Mike Porter, FB



Chuck Adams, RH



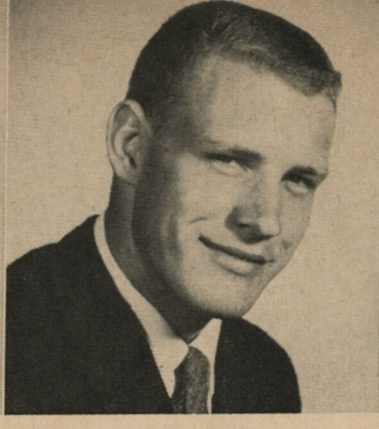
Roy Williams, C



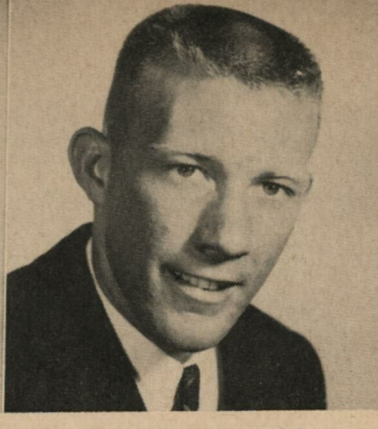
Jay Olson, FB



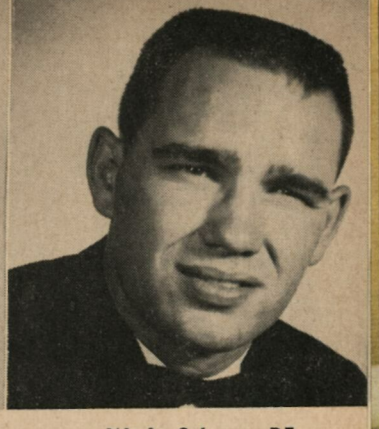
Duck Del Nero, RE



Dick Henander, RH



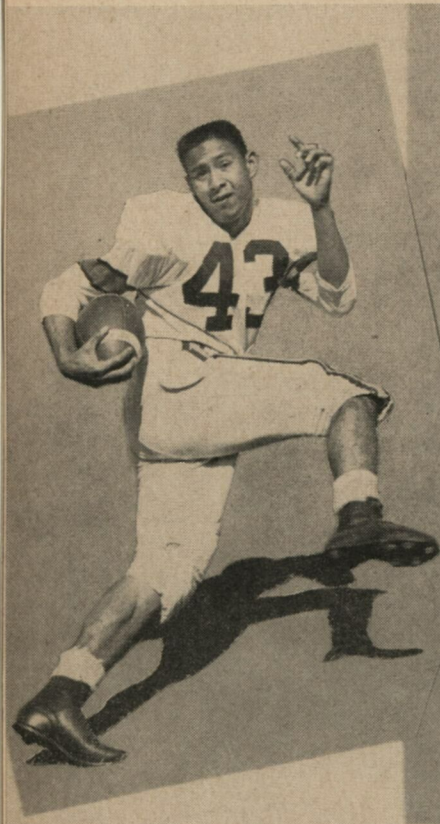
Terry Marshburn, LE



Wade Selman, RE

C O P T I G E R S

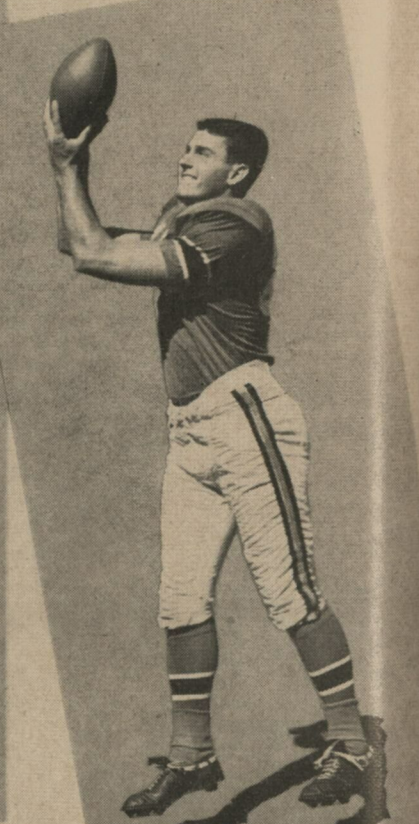
C O P T I G E R S



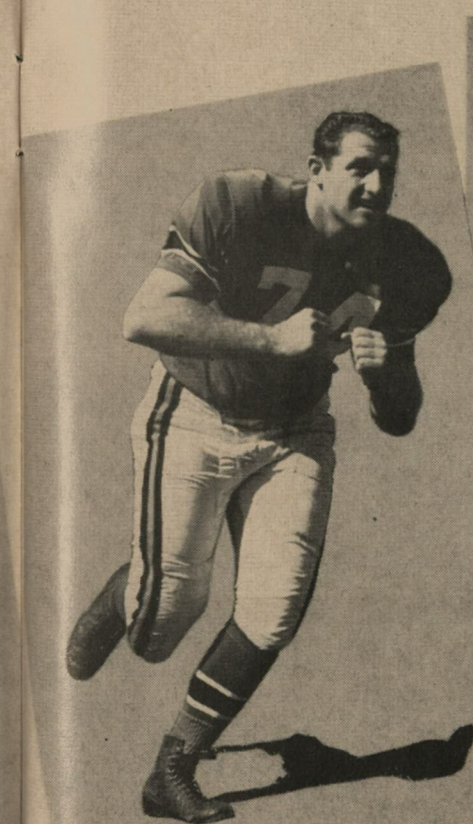
Chuck Verduzco, RH



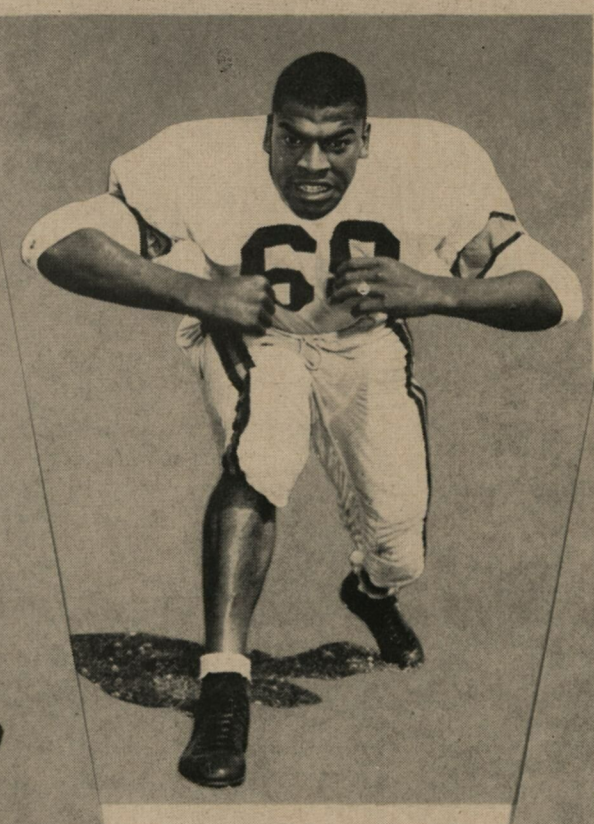
Jim Bush, C



Mike Hart, RE



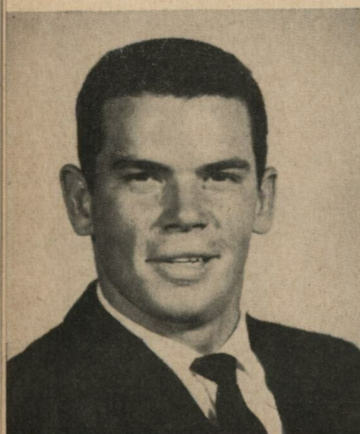
Larry Jones, LT



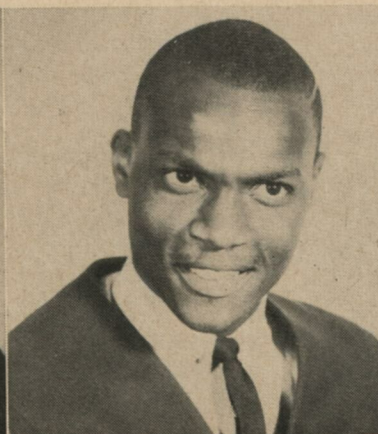
Willie Hector, RG



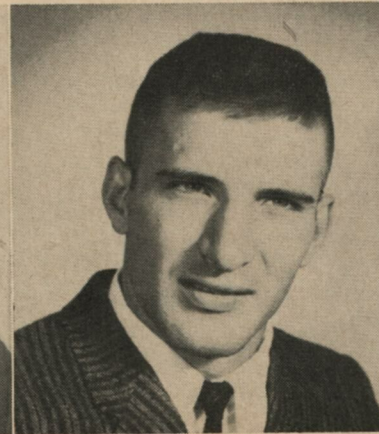
Bob Gatiss, QB



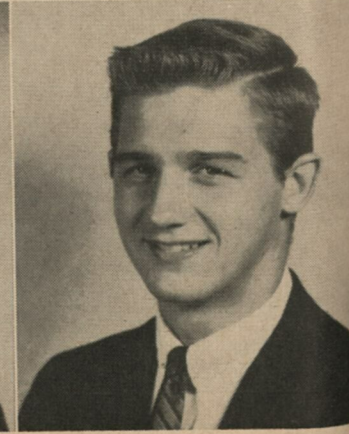
Bill Kutzer, FB



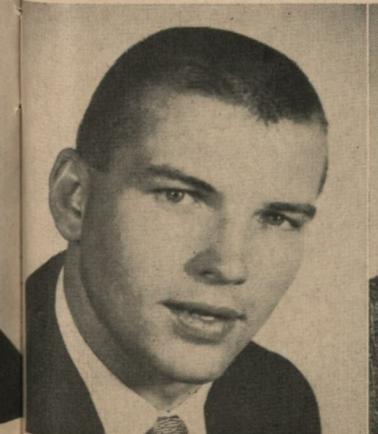
Robert Reed, FB



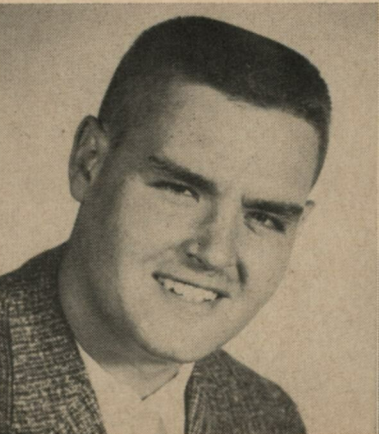
Larry Guilford, RE



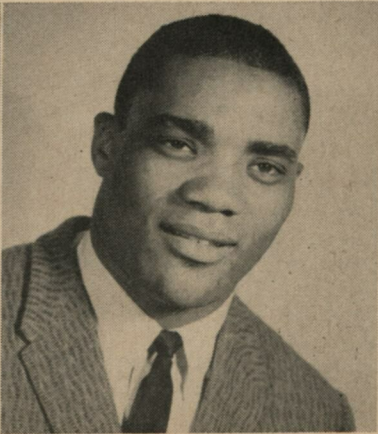
Eddie Kotal, RH



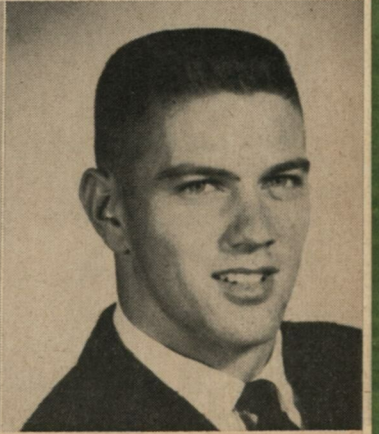
Ron Warren, RT



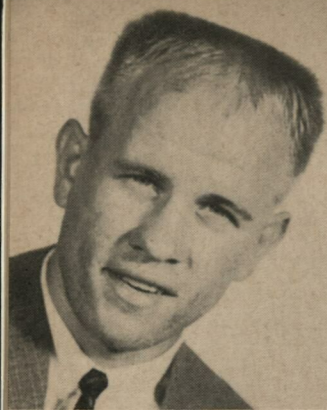
Paul Wicker, RT



John Gamble, RG



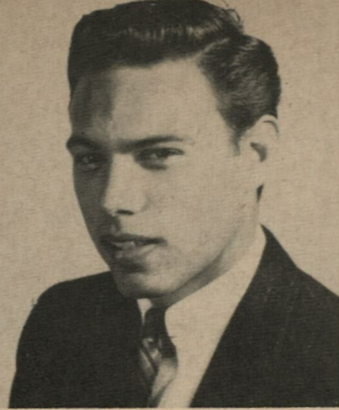
Jack Sparrow, QB



Bill Reed, RT



Dolph Trotter, LT



Bob Cabanyog, LH



Waymond Hall, LH

C O P T I G E R S



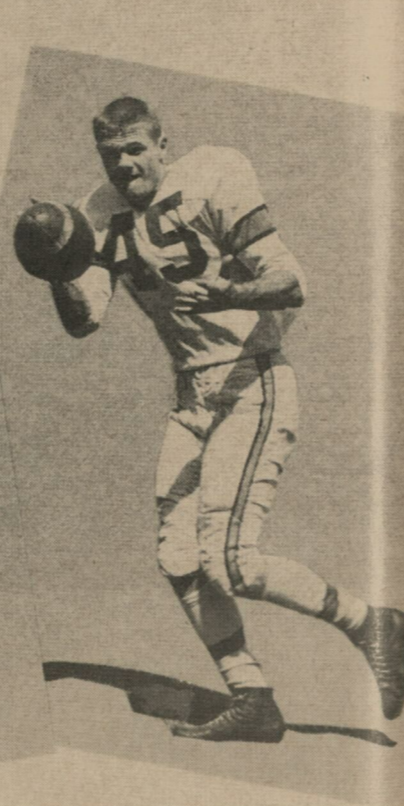
Herman Urenda, RE



Carl Kammerer, LG



Dick Scott, FB



Gene Stafford, LE



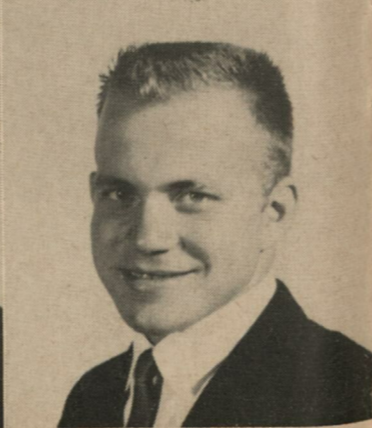
Mike Pence, LE



Dan Silva, LG



Bob Vander Wall, QB



Ray Heinrich, RH

COP 1960 VARSITY FOOTBALL ROSTER

(Alphabetical)

Name	Pos.	Age	Ht.	Wt.	Class	Exp.	Home Town
ADAMS, CHUCK	RH	21	5-10	170	Jr.	San Diego JC	San Diego
BUSH, JIM	C	21	6-2	205	Sr.	COP-1	San Mateo
CABANYOG, BOB	LH	22	6-0	190	Jr.	COP-1	Salinas
CLEM, WAYNE	C	20	6-1	238	Sr.	COP-2	Modesto
DEL NERO, BUCK	RE	21	6-3	200	Jr.	Stockton Coll.	Stockton
GAMBLE, JOHN	RG	22	6-4	234	So.	Modesto JC	Greenville, S. C.
GATISS, BOB	QB	21	6-1	194	Sr.	COP-1	Sacramento
GUILFORD, LARRY	RH	20	6-5	200	Jr.	Monterey JC	Santa Clara
HALL, WAYMOND	LH	22	5-10	165	Jr.	Stockton Coll.	Stockton
HART, MIKE	RE	22	6-3	210	Sr.	COP-1	Martinez
HECTOR, WILLIE	RG	20	6-2	207	Sr.	COP-2	San Francisco
HEINRICH, RAY	RH	20	5-9	200	So.	Stockton Coll.	Galt
HENANDER, DICK	RH	19	5-10	175	So.	Frosh	San Mateo
HIGDON, ROGER	C	19	6-1	202	So.	Frosh	Stockton
JOHNSON, GARY	RT	20	6-2	192	Jr.	COP-1	S. Maria
JONES, LARRY	LT	23	6-2	207	Sr.	COP-1	Stockton
KAMMERER, CARL	LG	23	6-3	242	Sr.	COP-2	Lodi
KOTAL, EDDIE	RH	19	5-10	160	Jr.	COP-1	N. Hollywood
KUTZER, BILL	FB	19	5-10	175	So.	Frosh	Belmont
LEITCH, LARRY	LH	21	5-11	175	Jr.	San Mateo JC	San Francisco
MARSHBURN, TERRY	LE	19	6-3	203	So.	Porterville JC	SLO
NEMETZ, DICK	C	23	6-1	191	Jr.	COP-1	Burbank
NORSETH, DAVE	RG	21	6-0	209	Jr.	COP-1	Burbank
OLDS, STEVE	LT	19	6-2	197	So.	Frosh	Burlingame
OLSON, JAY	FB	19	5-11	185	So.	Frosh	Patterson
PENCE, MIKE	LE	21	5-11	171	Jr.	COP-1	Willows
PORTER, MIKE	FB	21	6-2	210	Jr.	Hartnell JC	Salinas
REED, BILL	LT	22	6-2	210	Jr.	Caffey JC	Yermo
SCOTT, DICK	FB	21	5-10	187	Jr.	COP-1	Pasadena
SELMAN, WADE	LG	21	6-2	200	Jr.	Monterey JC	Jackson
SMITH, MIKE	RE	22	6-3	205	Jr.	San Mateo JC	San Mateo
SPARROW, JACK	QB	19	6-4	187	So.	Frosh	Novato
STAFFORD, GENE	LE	22	6-3	210	Sr.	COP-2	Reedley
STIKES, GREG	LH	20	5-10	165	So.	COP-1	Burlingame
TROTTER, DOLPH	LT	19	6-0	207	Jr.	COP-1	Fresno
URENDA, HERMAN	RH	22	5-11	176	Sr.	COP-2	Brentwood
VANDER WALL, BOB	QB	23	6-0	195	Jr.	COP-1	Redlands
VERDUZCO, CHUCK	LH	20	5-11	167	Sr.	COP-2	Pittsburg
WICKER, PAUL	RT	20	6-4	241	So.	Bakersfield JC	Merced
WILLIAMS, ROY	C	23	6-7	240	So.	Frosh	Pasco, Wash.
WORDEN, RON	RT	21	6-1	230	Jr.	Antelope Val. JC	Lancaster

The Official Watch for Timing Today's Game is LONGINES — "The World's Most Honored Watch"

Discover
PERFORMABILITY

IN THE **'61 LARK**
BY STUDEBAKER



You have to
drive the Lark
to believe it!

Lark Performability is graced with new low-line styling, elegant, convenient interiors. Seats six in comfort. Choose from 8 smart styles.

Lark Performability features the new Skybolt Six or famous 259-V8, new automatic transmission, new steering system, new bonded brakes.

COLLEGE OF THE PACIFIC

PROBABLE STARTING LINEUP

No.	Name & Weight	Pos.
88	STAFFORD (210)	LE
79	JONES (207)	LT
77	KAMMERER (242)	LG
54	BUSH (205)	C
60	HECTOR (207)	RG
75	WICKER (241)	RT
42	KOTAL (160)	RE
14	GATIS (194)	QB
20	CABANYOG (190)	LH
10	VRENDA (176)	RH
33	SCOTT (187)	FB

THE C.O.P. SQUAD

10 Urenda, RH	44 Guilford, RH	73 Trotter, LT
12 Vander Wall, QB	45 Leitch, LH	74 Reed, LT
14 Gatiss, QB	47 Stikes, LH	75 Wicker, RT
15 Sparrow, QB	50 Higdon, C	77 Kammerer, LG
20 Cabanyog, LH	52 Nemetz, C	78 Worden, RT
21 Adams, RH	54 Bush, C	79 Jones, LT
23 Hall, LH	55 Clem, C	82 Hart, RE
24 Verduzco, LH	56 Williams, C	83 Pence, LE
32 Kutzer, FB	60 Hector, RG	84 Marshburn, LE
33 Scott, FB	63 Porter, FB	85 Del Nero, RE
35 Heinrich, RH	66 Gamble, RG	86 Selman, LE
39 Olson, FB	70 Johnson, RT	87 Smith, RE
41 Henander, RH	71 Olds, LT	88 Stafford, LE
42 Kotal, RH	72 Norseth, RG	

WASHINGTON STATE

PROBABLE STARTING LINEUP

No.	Name & Weight	Pos.
42	H. CAMPBELL (183)	LE
74	EKSTRAN (210)	LT
62	COPPLE (202)	LG
50	ERLANDSON (205)	C
71	GREEN (240)	RG
75	COLLERAN (225)	RT
85	SCHROEDER (195)	RE
24	MELIN (190)	QB
22	LINCOLN (205)	LH
10	BOYLAN (170)	RH
45	BLAKELY (185)	FB

THE COUGAR SQUAD

10 Boylan, HB	50 Erlandson, C	74 Ekstran, T
20 Abbott, QB	51 D. Martin, C	75 Colleran, T
22 Lincoln, HB	52 Crook, C	76 Gehrmann, T
23 Knight, QB	53 Foster, C	77 Friauf, T
24 Melin, QB	60 Giachino, G	78 Hoiien, T
26 Mathieson, QB	62 Copple, G	80 Devine, E
27 Ellingsen, QB	63 Johnson, G	81 Shaw, E
30 Connors, FB	64 Ribary, G	82 Schwarz, E
31 Stanton, HB	65 Christean, G	84 Langhans, E
32 Schenck, HB	66 Duprel, G	85 Schroeder, E
33 James, HB	67 Greig, G	86 Rushfeldt, E
35 J. Campbell, HB	68 Berry, G	87 M. Martin, E
37 Kerrone, HB	69 Babbitt, G	88 Lawrence, E
39 Haddock, FB	70 Jensen, T	89 West, E
40 Harper, HB	71 Green, T	Arlt, E
42 H. Campbell, HB	72 Wyffels, T	Murphy, HB
44 Cano, FB	73 Miller, T	
45 Blakely, FB		

Take a look at America's classic sports coupe, the 1961 HAWK,

with new optional synchromesh 4-speed gear box

WSU 1960 VARSITY FOOTBALL ROSTER

(Alphabetical)

Name	Pos.	Ht.	Wt.	Age	Class	Exp.	Hometown
ABBOTT, MIKE	QB	6-0	167	19	So.	Fr.	Seattle
ARLT, WALTER	E	6-1	190	22	Sr.	Fr.	Ritzville
BABBITT, LEROY	G	5-9	215	20	Jr.	Sq.	Pullman
BERRY, BILL	G	5-7	169	21	Sr.	2V	Pullman
BLAKELY, LOUIS	FB	5-10	185	20	Jr.	2JC	Sacramento, Calif.
BOYLAN, JIM	E	6-1	170	21	Jr.	2JC	Van Nuys, Calif.
CAMPBELL, HUGH	E	6-1	183	18	So.	Fr.	Saratoga, Calif.
CAMPBELL, JERRY	HB	5-8	175	20	Jr.	Sq.	Castro Valley, Calif.
CANO, TED	FB	6-0	195	23	Sr.	2V	San Francisco, Calif.
CHRISTEAN, LORIN	G	6-3	207	21	So.	Fr.	Jacksonville, Ore.
COLLERAN, BOB	T	6-0	235	22	Jr.	Sq.	Prosser
CONNORS, TIM	FB	5-10	175	19	So.	1JC	Spokane
COPPLE, DICK	G	6-2	202	21	Sr.	1V	Medford, Ore.
CROOK, PAT	C	5-9	190	20	Jr.	1V	Richland
DEVINE, MIKE	C	6-1	206	20	So.	Fr.	San Carlos, Calif.
DUPREL, ROGER	G	5-10	220	22	Sr.	2V	Auburn
EKSTRAN, GARNER	T	5-11	210	21	Sr.	2V	Bow
ELLINGSEN, BRUCE	QB	6-1	180	20	Jr.	1V	Spokane
ERLANDSON, TOM	C	6-2	205	20	Jr.	Sq.	Bellingham
FOSTER, GEORGE	C	6-2	198	18	So.	Fr.	Seattle
FRIAUF, BILL	T	6-1	228	20	So.	1JC	Vancouver
GEHRMANN, GERY	T	6-2	207	21	So.	Sq.	Tacoma
GIACHINO, BOB	G	5-8	192	19	So.	Fr.	Renton
GREEN, RON	T	5-11	240	22	Sr.	2V	Monrovia, Calif.
GREIG, JIM	G	5-11	225	22	Sr.	2V	Yakima
HADDOCK, HAROLD	HB	5-11	195	19	So.	Fr.	Walla Walla
HARPER, PERRY	HB	5-10	160	24	Jr.	1V	McKeesport, Pa.
HOIEN, BOB	T	6-3	247	20	Jr.	1V	Seattle
JAMES, BOB	HB	6-0	180	18	So.	Fr.	Coeur d'Alene, Idaho
JENSEN, JIM	T	6-4	196	21	Jr.	Sq.	Tacoma
JOHNSON, GREG	G	5-10	192	19	So.	Fr.	Wallowa, Ore.
KERRONE, DAVE	HB	5-10	185	21	Jr.	Sq.	Tacoma
KNIGHT, DON	QB	6-1	188	19	So.	Fr.	Portland
LANGHANS, RON	E	5-11	201	19	So.	Fr.	Aberdeen
LAWRENCE, DICK	E	5-11	182	20	Jr.	2JC	Seattle
LINCOLN, KEITH	HB	6-2	208	21	Sr.	2V	Monrovia, Calif.
MARTIN, DENNY	C	5-11	185	21	Sr.	1V	Van Nuys, Calif.
MARTIN, MIKE	E	6-3	225	21	Jr.	1V	Kennewick
MATHIESON, DAVE	QB	6-1	190	19	So.	Fr.	Reseda, Calif.
MELIN, MEL	QB	6-0	190	20	Jr.	1V	Olympia
MILLER, CHUCK	T	5-9	210	21	Jr.	1V	Rathdrum, Idaho
MURPHY, BILL	HB	5-11	150	20	So.	0	Spokane
RIBARY, JOHN	G	6-0	182	19	So.	Fr.	Auburn
RUSHFELDT, PAUL	E	6-0	185	18	So.	Fr.	Tacoma
SCHENCK, PETE	E	6-2	187	21	Jr.	1V	Los Angeles
SCHROEDER, LEE	E	5-11	195	21	Sr.	2V	Kelso
SCHWARZ, BOB	HB	5-11	200	19	So.	Fr.	Chehalis
SHAW, ED	E	6-0	190	21	Sr.	2V	Spokane
STANTON, MEL	HB	5-10	179	19	So.	Fr.	Spokane
WEST, HARVEY	E	6-0	210	20	Jr.	1V	Olympia
WYFFELS, JOHN	T	6-0	234	18	So.	Fr.	Martinez, Calif.



DR. C. CLEMENT FRENCH
President, Washington State U



STAN BATES
Director of Athletics



JIM SUTHERLAND
Head Football Coach
Washington State U



BOB GAMBOLD
Assistant Coach



LAURIE NIEMI
Assistant Coach



TOM PARRY
Assistant Coach

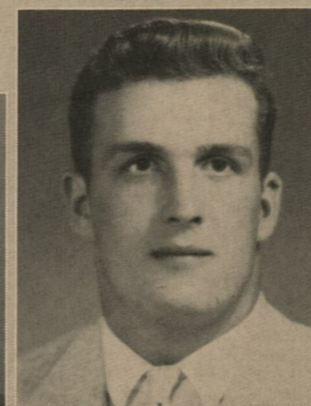
Coaches and Staff



ROY CARLSON
Assistant Coach



DR. R. E. MORTON
Team Physician

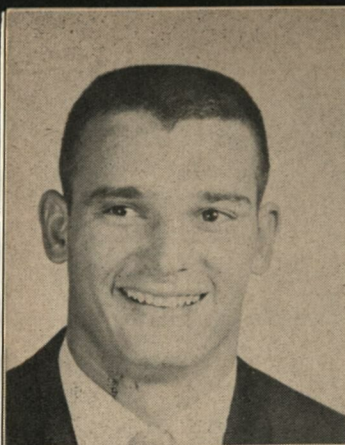


RAY BLIER
Assistant Coach



DICK VANDERVOORT
Trainer

The Official Watch for Timing Today's Game is LONGINES — "The World's Most Honored Watch"



MIKE MARTIN



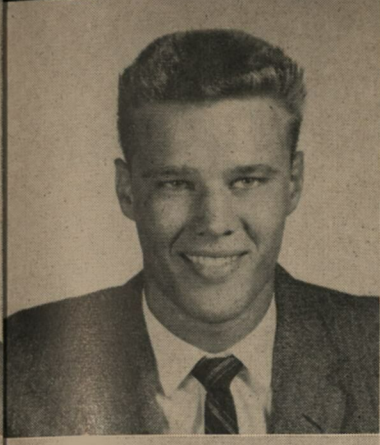
PETE SCHENCK



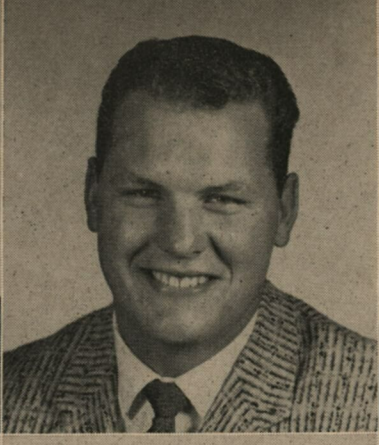
DICK COPPLE



HARVEY WEST



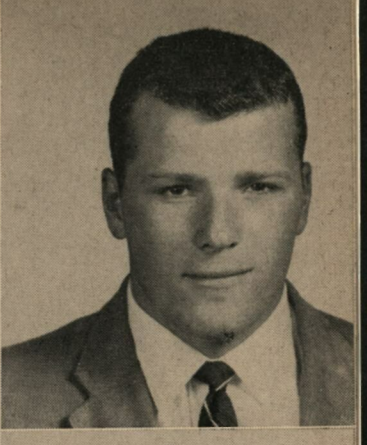
JIM JENSEN



GERY GEHRMANN

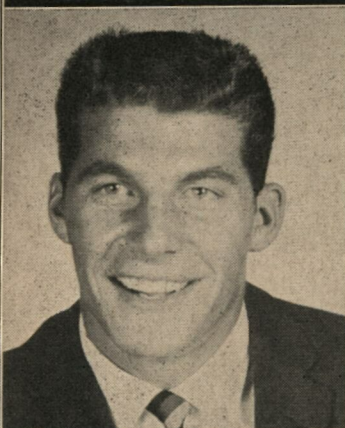


GEORGE FOSTER

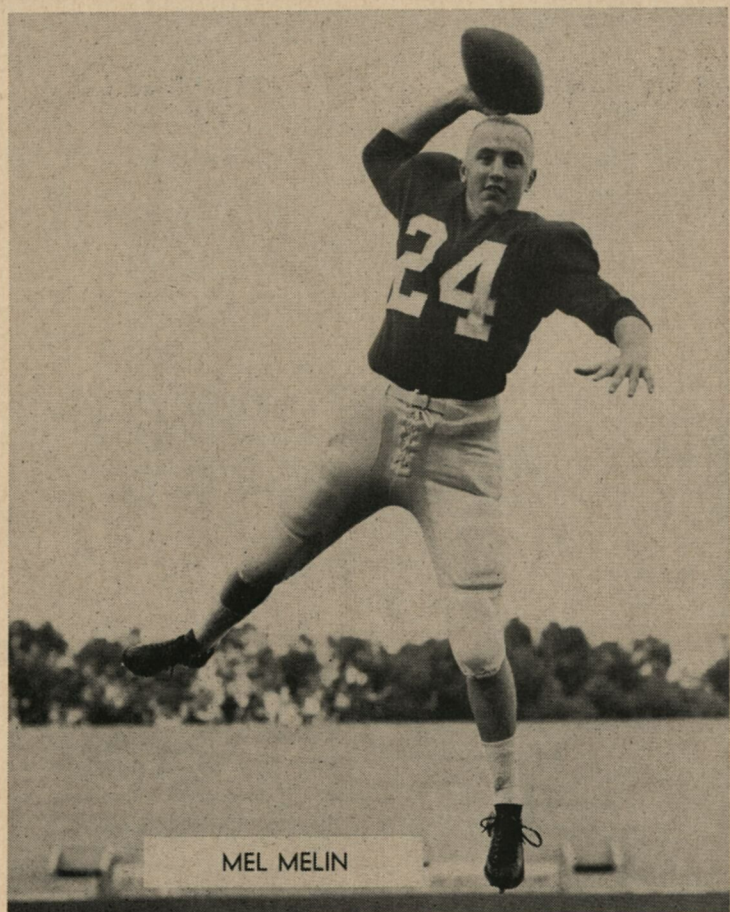


MIKE DEVINE

WASHINGTON STATE U



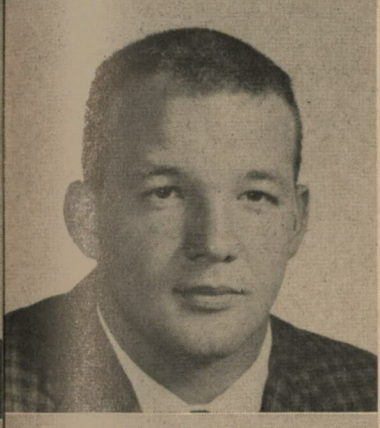
KEITH LINCOLN



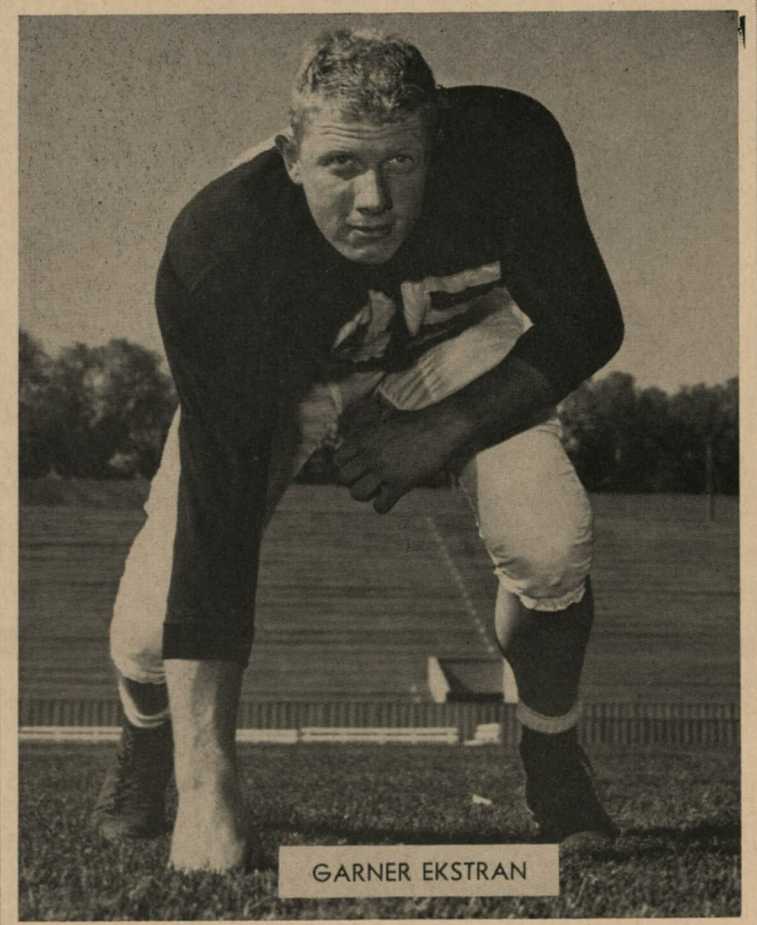
MEL MELIN



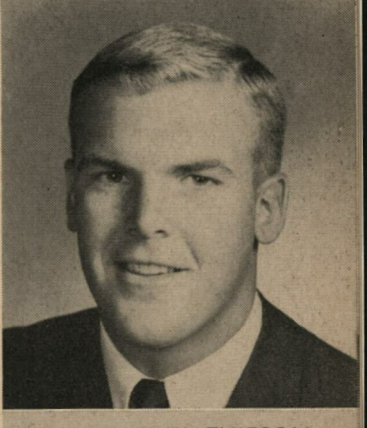
MEL MELIN



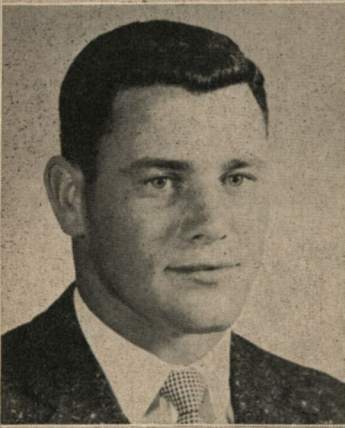
HAROLD HADDOCK



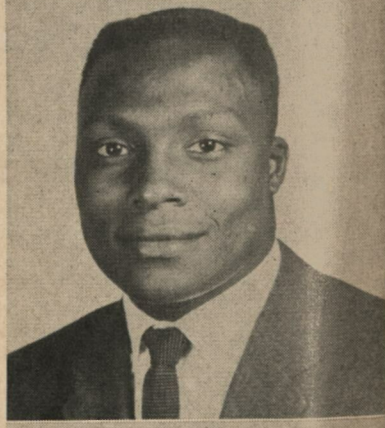
GARNER EKSTRAN



DAVE MATHIESON



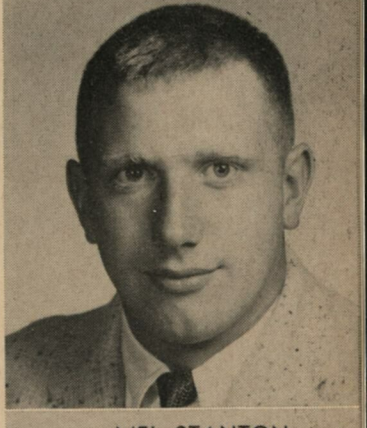
BILL BERRY



GEORGE REED



BOB JAMES



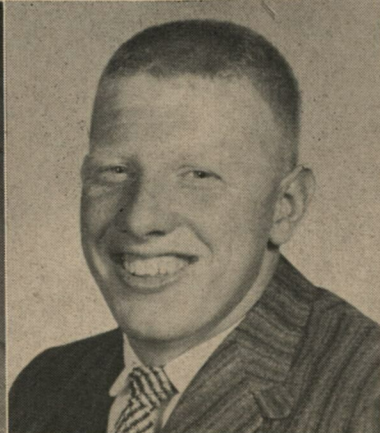
MEL STANTON



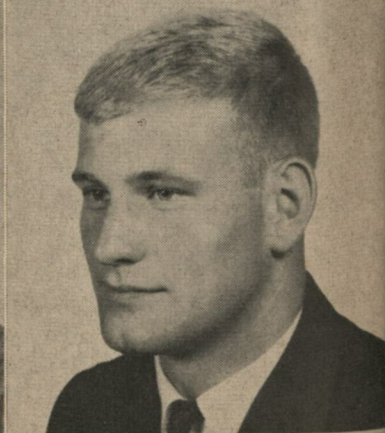
ED SHAW



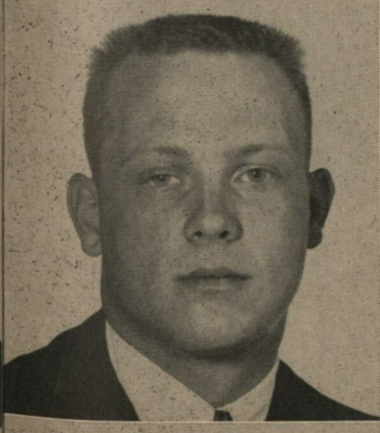
ROGER DUPREL



GARNER EKSTRAN



JIM GREIG



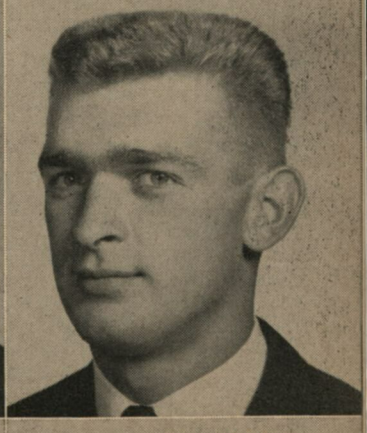
RON LANGHANS



JIM BOYLAN



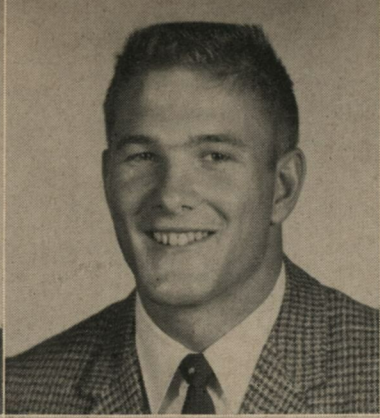
CHUCK MILLER



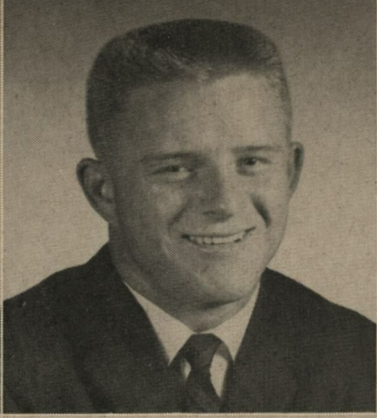
MIKE ABBOTT



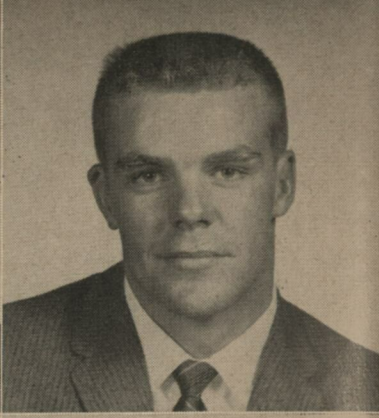
DAVE KERRONE



JERRY CAMPBELL



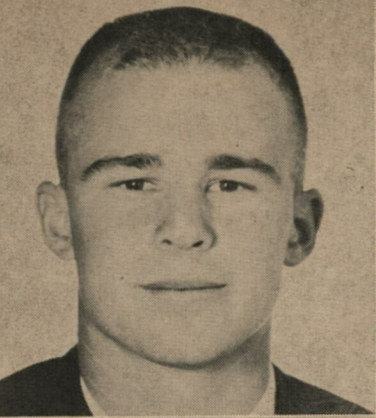
PAT CROOK



LeROY BABBITT



PAUL RUSHFELDT



HUGH CAMPBELL

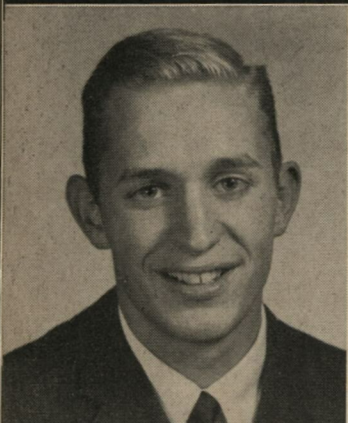


DON KNIGHT

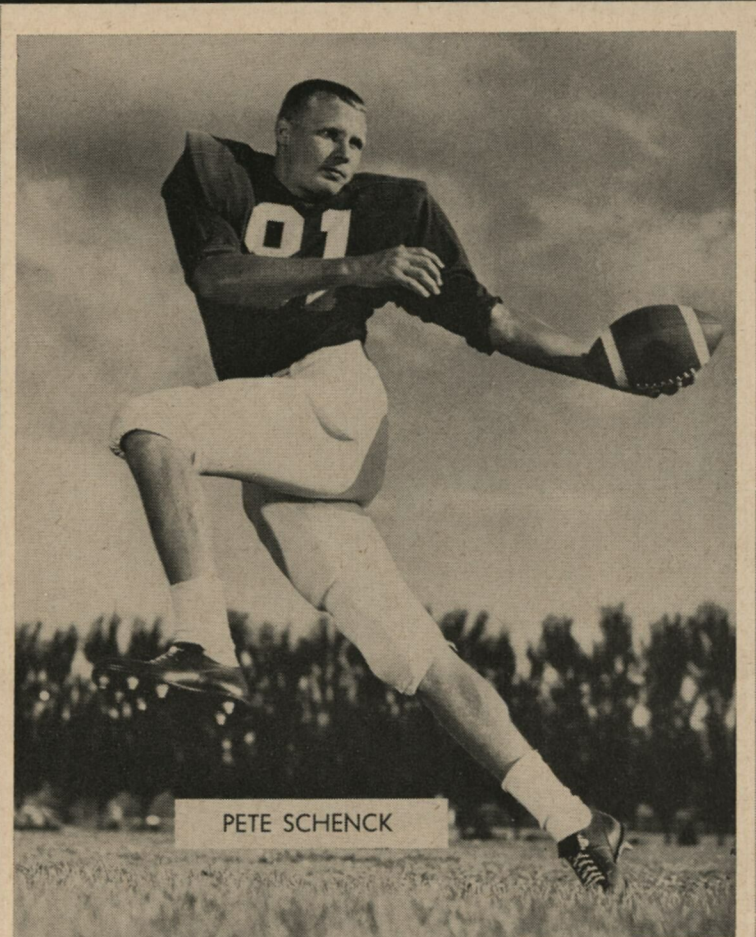


GREG JOHNSON

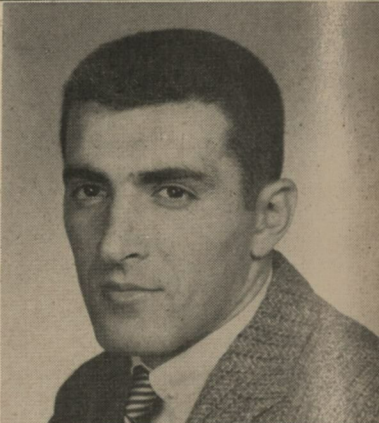
WASHING TON STATE U



BRUCE ELLINGSEN



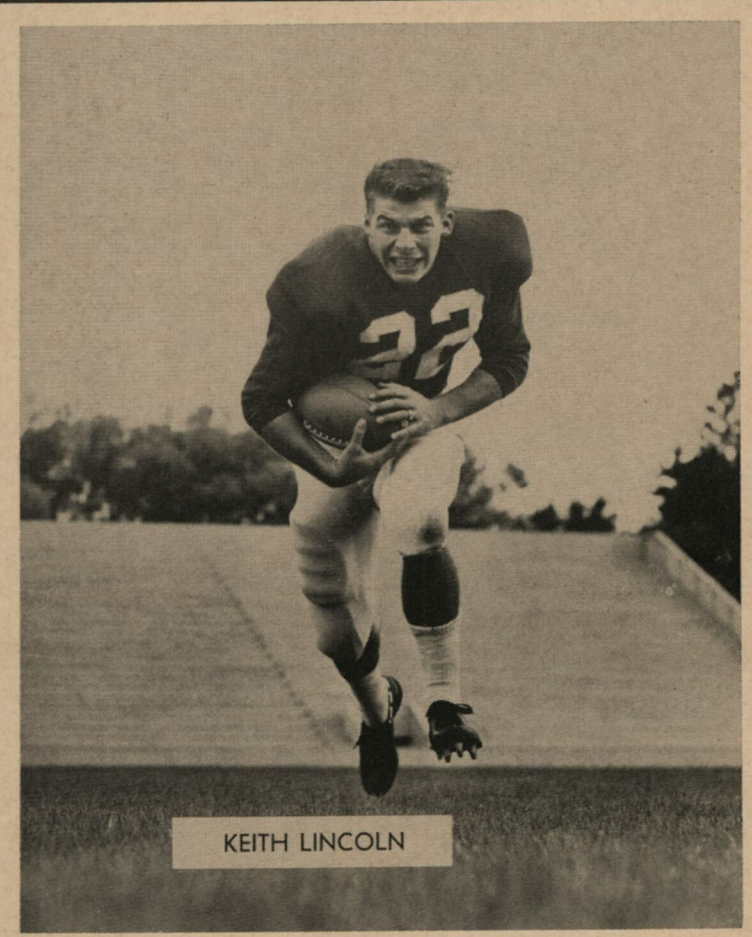
PETE SCHENCK



TED CANO



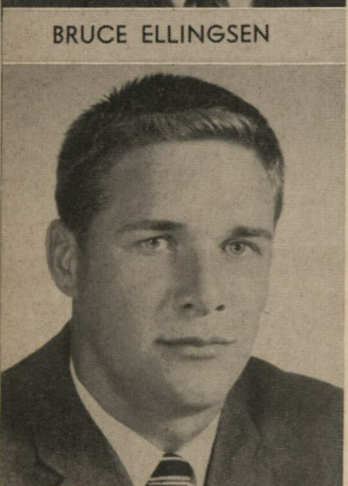
TIM CONNORS



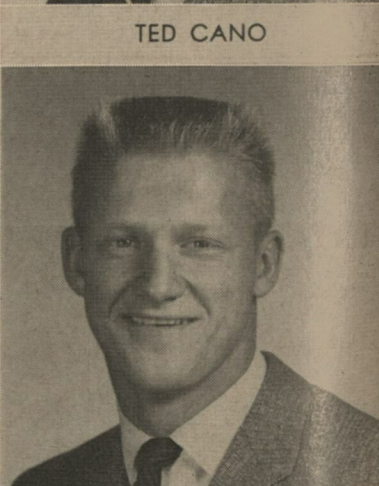
KEITH LINCOLN



BILL FRIAUF



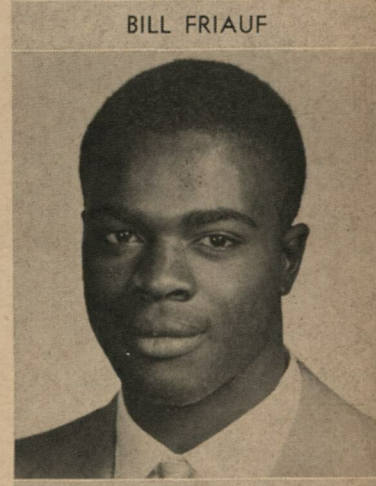
LEE SCHROEDER



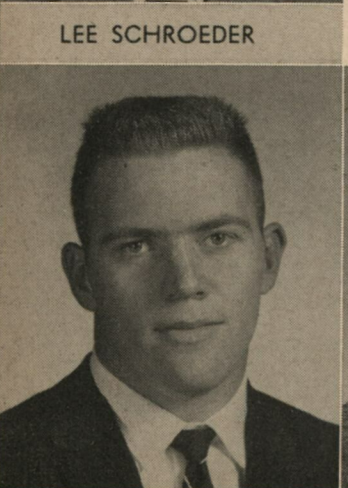
TOM ERLANDSON



LORIN CHRISTEAN



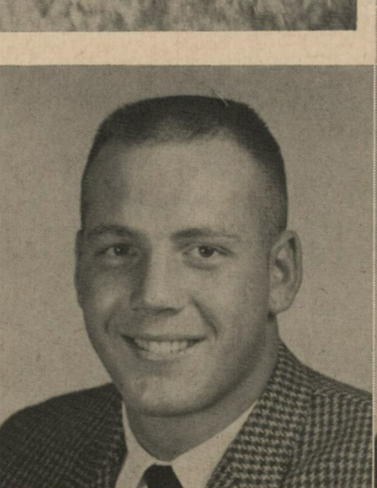
LOUIS BLAKELY



BOB COLLERAN



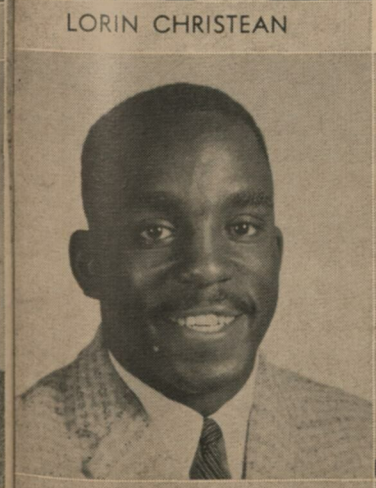
DENNY MARTIN



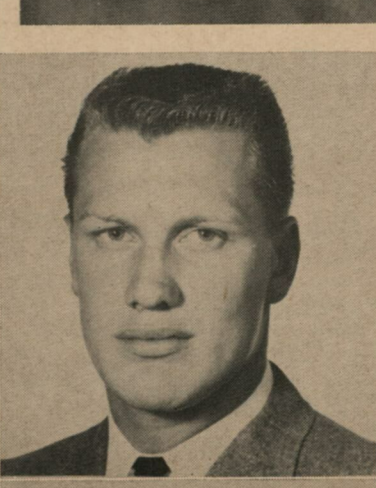
BOB HOIEN



RON GREEN



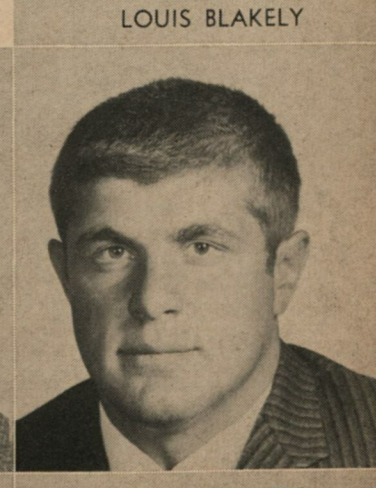
PERRY HARPER



BOB SCHWARZ



BOB GIACHINO



JOHN WYFFELS

WSU Football Records

*Individual Single Game Records

(From 1945—Compiled by NCAB)

RUSHING

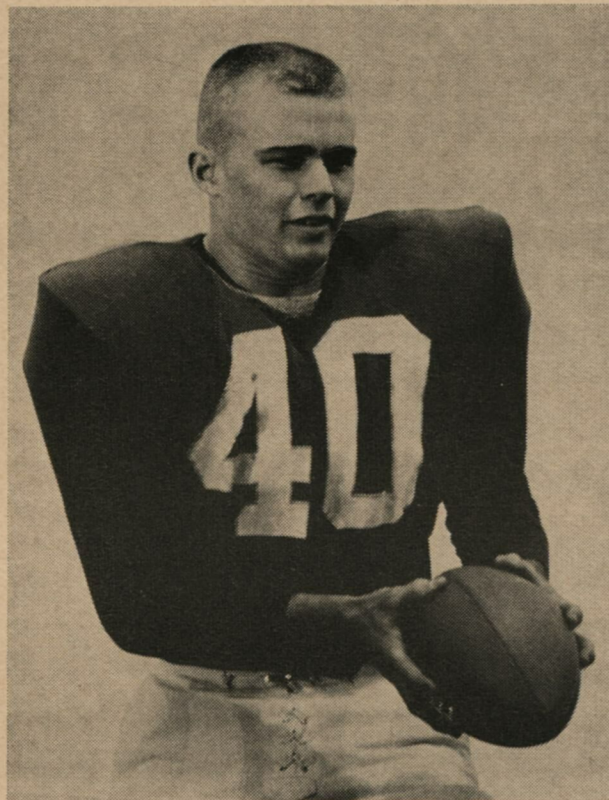
Most attempts—31, Dick Bower (OSC, 1950) and Bud Roffler (Washington, 1951).
Most net yards gained—182, Wayne Berry (Oregon, 1951).
Highest avg. per rush (min. 8 rushes)—14.0 (10 rushes for 140 yards), Don Paul (Oregon, 1948).

FORWARD PASSING

Most attempts—38, Bob Burkhart (Stanford, 1951).
Most completions—20, Bob Burkhart (Stanford, 1951).
Most had intercepted—4, Bob Gambold (Oregon, 1949) and Bob Iverson (USC, 1955).
Highest percent comp. (min 10 atts.)—818 (9 of 11), Wayne Berry (Iowa, 1953). Note: Bob Newman completed 11 of 12 attempts for the West team in the 1958 East-West Shrine Game.
Most TD passes thrown—3, Bob Gambold (Utah State, 1949); Bob Burkhart (Washington and Montana, 1951); Bob Burkhart (Idaho and Oregon, 1952) and Bob Newman (Washington, 1956; Nebraska, Oregon State, Washington, 1957).

TOTAL OFFENSE

Most rushing and passing plays—41, Bob Burkhart (Stanford, 1951).
Most yards gained, rushing and passing—301, Bob Burkhart (Idaho, 1952).
Highest avg. per play min. 10 plays—15.9 (19 plays for 301 yards), Bob Burkhart (Idaho, 1952).



HUGH CAMPBELL, in both the Denver and Arizona State games this year, caught ten passes to tie the record set by Ed Barker.

PASS RECEIVING

Most passes caught—10, Ed Baker (Stanford 1951 and Washington, 1952).

Most yards gained—252, Gail Cogdill (Northwestern, 1958).

Most TD passes caught—3, Jack Fanning (Nebraska, 1957).

PUNTING

Most punts—10, Dean Eggers (USC, 1946) and Don Paul (Oregon, 1947).

Highest avg. per punt (min. 5 punts)—44.8 (6 for 269 yards), Don Paul (Montana, 1949).

INTERCEPTIONS

Most passes intercepted—3, Bill Lippincott (OSC, 1945) and LaVern Torgeson (Penn State, 1948).

Most yards returned—96, Frank Miyaki (Idaho, 1945).

PUNT RETURNS

Most punts returned—8, Jerry Williams (Oregon, 1946).

Most yards returned—97, Jerry Williams (Oregon 1947).

KICKOFF RETURNS

Most kickoffs returned—5, Jerry Williams (Mich. State, 1948); Dwight Pool (USC, 1951) and Bill Steiger COP, 1955).

Most yards returned—105, Dwight Pool (USC, 1951).

SCORING

Most touchdowns scored—3, Don Paul (Stanford, 1946); Jerry Williams (Idaho, 1946); Jerry Williams (OSC 1948); Dan Fackrell (Utah State, 1950); Wayne Berry (Oregon, 1951); Jim Hagerty (Washington, 1954) and Jack Fanning (Nebraska, 1957).

Most points after attempted—7, Bill Lippincott (Montana, 1948) and Bud Roffler (Montana, 1951).

Most points after made—6, Bill Lippincott (Montana, 1948).

Most field goals scored—1, Bill Lippincott (Washington, 1948); Ed Barker (Oklahoma A & M and Idaho, 1952); Bob Burkhart (Idaho, 1953); Frank Sarno (Stanford and Col. Pacific, 1954) and Frank Sarno (Idaho, 1955).

Most total points scored—18, Don Paul (Stanford, 1946); Jerry Williams (Idaho, 1946); Jerry Williams (OSC, 1948); Dan Fackrell (Utah State, 1950); Wayne Berry (Oregon, 1951); Jim Hagerty (Washington, 1954) and Jack Fanning (Nebraska, 1957).

Individual — Single Season Records

(From 1937—Compiled by NCAB)

RUSHING

Most attempts—226, Bob Kennedy (1942).
Most net yards—813, Bob Kennedy (1942).
Highest avg. (min. 70 rushes)—5.9 (616 yards on 105 rushes), Talmadge Washington (1954).

* The keeping of complete individual and team statistics in football is relatively new when compared with the long history of the game. In this compilation, the National Collegiate Athletic Bureau has made an attempt to set out all-time WSU marks as they are in the period since serious record-keeping began. In several instances, however, footnotes will show outstanding marks that were recorded in years antedating the official statistics. Whenever possible, these records are noted. There undoubtedly are others of which we have no knowledge. If a record has been overlooked, in most cases it is the oversight of WSU sports record keepers rather than the NCAB statistician who compiled this data.

FORWARD PASSING

Most attempts—188, Bob Newman (1957).
Most completions—104, Bob Newman (1957).
Most had intercepted—18, Bill Sewell (1941).
Highest percent comp. (min. 50 atts.)—683 (43 of 63) Dave Wilson (1958).
Most yards gained—1391, Bob Newman (1957).
Most touchdown passes thrown—15, Bob Burkhart (1951).

TOTAL OFFENSE

Most rushing and passing plays—297, Bill Sewell (1940).
Most rushing and passing yards—1444, Bob Newman (1957).
Highest avg. per play (min. 100 plays)—7.1 (1098 yards on 155 plays), Bob Burkhart (1951).

PASS RECEIVING

Most passes caught—46, Ed Barker (1951).
Most yards gained—864, Ed Barker (1951)*.

PUNTING

Most punts—68, Bill Sewell (1941).
Highest avg. per punt (min. 25 punts)—43.4 (41 punts for 1779 yards), Keith Lincoln (1959).

INTERCEPTIONS

Most passes intercepted—7, Bill Lippincott (1945).
Most yards returned—143, Frank Miyaki (1945).

PUNT RETURNS

Most punts returned—41, Bill Sewell (1940).
Most yards returned—335, Jerry Williams (1947).

KICKOFF RETURNS

Most kickoffs returned—16, Jerry Williams (1948).
Most yards returned—478, Jerry Williams (1948).

SCORING

Most touchdowns scored—11, Bob Kennedy (1942).
Most points after attempted—35, Bud Roffler (1951).
Most points after made—26, Bud Roffler (1951).
Most field goals kicked—2, Ed Barker (1952) and Frank Sarno (1954).
Most total points scored—74, Bud Roffler (1951).

Career Record Leaders

(From 1937 — Compiled by NCAB)

RUSHING

Most attempts—343, Bob Kennedy; 307, Bill Sewell.
Most net yards—1274, Chuck Morell (1956-58).
Highest avg. per rush (min. 200 rushes)—4.8 (211 for 1019), Talmadge Washington; 4.6 (261 for 1188) Jerry Williams.

FORWARD PASSING

Most attempts—437, Bob Newman (1956-58).
Most completions—246, Bob Newman; 149, Bill Sewell.
Most had intercepted—41, Bill Sewell; 28, Bob Gambold.
Highest percent comp. (min. 150 atts.)—563 (246 of 437), Bob Newman.

Most yards gained—3,172, Bob Newman; 2078, Bob Burkhart.

*Most touchdown passes thrown—27, Bob Newman.

TOTAL OFFENSE

Most rushing and passing plays—630, Bill Sewell.
Most yards gained rushing and passing—3084, Bob Newman; 2522, Bill Sewell; 1919, Bob Burkhart.
Highest avg. per play (min. 250 plays)—6.1, Bob Burkhart (313 for 1919); 5.4, Bob Gambold (334 for 1803); 5.4, Bob Newman (569 for 3084).

PASS RECEIVING

Most passes caught—108, Ed Barker; 86, Don Ellingsen.
Most yards gained—1699, Ed Barker; 1256, Gail Cogdill.
Most TD passes caught—16, Ed Barker; 13, Cogdill.

PUNTING

Most punts—171, Bill Sewell; 128, Don Paul.

Highest avg. per punt (min. 90 punts)—39.5 (171 for 6764 yards), Bill Sewell; 35.9 (128 for 4593 yards), Don Paul.

INTERCEPTIONS

Most passes intercepted—13, Bill Lippincott; 11, Don Paul.
Most yards returned—216, Don Paul; 197, Bill Lippincott.

PUNT RETURNS

Most punts returned—78, Bill Sewell; 56, Jerry Williams.
Most yards returned—706, Bill Sewell; 700, Jerry Williams.

KICKOFF RETURNS

Most kickoffs returned—36, Jerry Williams; 28, Wayne Berry.
Most yards returned—822, Jerry Williams; 576, Wayne Berry.

SCORING

Most touchdowns scored—19, Don Paul; 17, Bob Kennedy.
Most field goals kicked—3, Frank Sarno; 2, Ed Barker.
Most total points scored—116, Ed Barker; 114, Don Paul.

* National record.

† In 1929 Elmer Schwartz scored 14 touchdowns and 84 points.

Team Offense — Single Game Records

(From 1945—Compiled by NCAB)

RUSHING

Most attempts—78, Oregon (1951).
Most net yards—525, Oregon (1951).
Highest avg. per rush—7.1 (62 for 437 yards, Utah State (1950)).

FORWARD PASSING

Most attempts—39, Stanford (1951).
Most completions—21, Stanford (1956).
Most had intercepted—5, Oregon (1945) and USC (1955).
Highest percent comp. (min. 10 atts.)—750 (12 of 16), California (1956) and (9 of 12) Idaho (1948).
Most yards gained—311, Idaho (1956).
Most TDs by passing—4 Montana (1951); Washington (1956) and Nebraska (1957).

TOTAL OFFENSE

Most rushing and passing plays—100, Oregon (1951).
Most yards gained, rushing and passing—649, Oregon (1951).
Highest avg. per play—7.4 (45 for 335 yards), OSC (1945).

PUNTING

Most punts—15, Oregon (1946).
Highest avg. per punt (min. 5 punts)—49.5 (6 for 297 yards), Oregon (Nov. 14, 1959).

INTERCEPTIONS

Most passes intercepted—6, Idaho and Washington (1945).
Most yards returned—116, Montana (1948).

PUNT RETURNS

Most punts returned—11, Oregon (1946).
Most yards returned—125, Oregon (1946).

* From 1946.

† National record for 3 seasons.

‡ Ed Goddard, during 1934-35-36, scored 20 touchdowns for 120 points.

KICKOFF RETURNS

Most kickoffs returned—9, Mich. State (1954) and USC (1955).
Most yards returned—221, California (1948).

MISCELLANEOUS

Most first downs by rushing—24, Oregon (1951).
(More on next page)

WSU FOOTBALL RECORDS (Continued)

Most first downs by passing—15, Stanford (1956).
 Most total first downs—31, Oregon (1951).
 Most times penalized—16, California (1955).
 Most yards penalized—145, Idaho (1958).
 Most fumbles—8, Montana (1947).
 Most fumbles lost—6, Montana (1947).

Team Offense — Single Season

From 1937—Compiled by NCAB)

RUSHING

Most attempts—568 (1951).
 Most net yards—2341 (1951).
 Highest avg. per rush—4.1 (1951).
 Most yards per game—234.1 (1951).

FORWARD PASSING

Most attempts—281 (1956).
 Most completions—150 (1956).
 Most had intercepted—24 (1938 and 1941).
 Fewest had intercepted—10 (1950).
 Highest percent completed—.612 (1958).
 Most yards gained passing—2068 (1956).
 Most yards per game—206.8 (1956).
 Most TDs by passing—19 (1958).

TOTAL OFFENSE

Most rushing and passing plays—781 (1951).
 Most yards gained, rushing and passing—3781 (1951).
 Highest avg. per play—4.96 (1957).
 Most yards per game—378.1 (1951).

PUNTING

Most punts—114 (1938).
 Fewest punts—37 (1958).
 Highest avg. per punt—41.8 (1939).

INTERCEPTIONS

Most passes intercepted—23 (1941).
 Most yards returned—393 (1941).

PUNTS RETURNED

Most punts returned—45 (1940).
 Most yards returned—506 (1947).
 Highest avg. yards per return—14.4 (25 for 360) (1950).

KICKOFF RETURNS

Most kickoffs returned—48 (1954).
 Most yards returned—885 (1954).
 Highest avg. yards per return—27.0 (13 for 351 in 1941).

SCORING

Most touchdowns—41 (1951).
 Most points after made—32 (1951).
 Most field goals kicked—3 (1940).
 Most total points*280 (in 10 games) (1951).

MISCELLANEOUS

Most first downs by rushing—132 (1951).
 Most first downs by passing—96 (1956).
 Most total first downs—187 (1951).
 Most penalties against—72 (1952).
 Most yards penalized—584 (1952).
 Most fumbles—42 (1954).
 Most fumbles lost—24 (1955).

* All-time record is 297 points in 12 games (1929).

Team Defense — Single Game Records

(From 1945—Compiled by NCAB)

RUSHING

Fewest attempts allowed—16, OSC (1954).
 Fewest net yards allowed—Minus 12, Oklahoma A & M (1951).
 Lowest avg. per rush allowed—Minus 0.5 (22 rushes for minus 12 yards), Oklahoma A & M (1951).

FORWARD PASSING

Fewest attempts allowed—2, OSC (1955).
 Fewest completions—0, Portland (1947); OSC (1958).
 Most passes intercepted—6, Idaho and Washington (1945).
 Lowest percent comp. against (min. 10 atts.)—.077 (1 of 13), Oregon (1946).
 Fewest yards gained—Minus 2 (1 of 5 comp.), Idaho (1950).

TOTAL DEFENSE

Fewest rushing and passing plays allowed—35, OSC (1954).

Fewest rushing and passing yards allowed—59, Portland (1947).
 Lowest avg. per play—1.4 (42 plays for 59 yards), Portland (1947).

PUNTING

Most times opp. forced to punt—15, Oregon (1946).
 Lowest avg. per punt—22.8 (12 for 274 yards), Portland (1947).

MISCELLANEOUS

Fewest total first downs allowed—5, Oregon (1946); Portland (1947) and OSC (1954).
 Most times opp. penalized—13, California (1955).
 Most yards penalized—110, USC (1954).
 Most fumbles by opp.—10, Oregon (1952).
 Most fumbles lost by opp.—8, Idaho (1949).

Team Defense — Single Season

(From 1937—Compiled by NCAB)

RUSHING

Fewest attempts allowed—326 (1942).
 Fewest net yards allowed—844 (1942).
 Lowest avg. per rush—2.6 (1942).
 Fewest yards per game—93.8 (1942).

FORWARD PASSING

Fewest attempts against—110 (1946).
 Fewest completions—31 (1946).
 Lowest percent completed against—.282 (1946).
 Fewest yards gained—456 (1942).
 Fewest yards per game—50.7 (1942).
 *Fewest TDs by passing—2 (1958).

TOTAL DEFENSE

Fewest rushing and passing plays allowed—454 (1942).
 Fewest rushing and passing yards allowed—1300 (1942).
 Lowest avg. per play—2.9 (1942).
 Fewest yards per game—144.4 (1942).

PUNTING

Most punts by opp.—107 (1938).
 Lowest avg. per punt—34.2 (1939).
 Most punts opp. had blocked—2 (1938 and 1947).

INTERCEPTIONS

Fewest yards interceptions returned—95 (1950).

PUNT RETURNS

Lowest avg. yards per punt return allowed—5.6 (1951).

KICKOFF RETURNS

Lowest avg. yards per kickoff return allowed—15.3 (1946).

MISCELLANEOUS

Fewest total first downs allowed—86 (1940 and 1946).
 Most penalties against opp.—74 (1952).
 Most yards opp. penalized—684 (1955).
 Most fumbles by opp.—43 (1952).
 Most fumbles lost—26 (1952).

* From 1946.



**THE PLACE
 TO GO
 FOR THE
 BRANDS
 YOU KNOW**

MAIN AND WALL, SPOKANE, WASHINGTON

HARMS-CAMP CHEVROLET, Inc.

Complete Chevrolet Service

New Chevrolet Cars

New Chevrolet Trucks

"Corvair"

Used Cars

Used Trucks

Parts — Service — Body Shop

1324 West
 Second

SPOKANE
 TE 8-2931

The Pullman Cougar Club



Pictured above are the four officers of the 1960 Pullman Cougar Club: Don Downen, President; Henry Daubert, 3rd Vice-President; Ed Dumas, 2nd Vice-President, and Bob Doten, 1st Vice-President. For the second consecutive year the Pullman group topped \$10,000 from their membership drive to apply to the Cougar Club Scholarship Fund which is used exclusively for the tuition payments of the young men in the Athletic Program.

CENTURY COUGARS

ALLEN HARDWARE
Guy Allen
C. F. "ANDY" ANDERSON
ARDEN FARMS
Dick Smith
Bob Coonradt
DR. W. S. BARDWELL
BILL'S WELDING
Hartman Gearhiser
BRISTOL PACKING COMPANY
Harry Daubert
Bill Bacharach
BROWN & HOLTER CHEVROLET
Martin Brown
A. C. "SPUD" CARPENTER
TED CHANDLER
CLARK'S MARKET
Cark Simpson
ASA V. CLARK & SONS
COMMERCIAL BUILDERS
Bob Sutherland
CY'S CAMPUS SPORT SHOP
Cy Jacobs
DISSMORE'S FOOD MART
Guy Dissmore
Chet Dissmore
Fred Buckingham

DOTEN'S TRANSIT-MIX
Bob Doten
DOWNEN INSURANCE AGENCY
Dan C. Downen
Donald C. Downen
MARTIN DRUFFEL
ED DUMAS
EMPIRE DEPARTMENT STORE
Bob Emerson
EMPIRE MEN'S SHOP
Jim Kimzey
FIRST NATIONAL BANK
M. R. Ebner
William Mitchell
Will Seitz
FRED FORREST
GRAHAM INSURANCE
Jack A. Graham
HELD'S AUTO ELECTRIC
Sherry Held
HOWARD HUGHES
IRWIN & FRIEL, ATTORNEYS
Claude Irwin
Wallis Friel
JOE MADER
PAUL MADER

DR. R. E. MORTON
JAMES MCGINNIS
NEILL FURNITURE
Bob Neill
NEILL MOTORS
Tom Neill
NEILL & AITKEN, ATTORNEYS
Marshall Neill
Hugh Aitken
ORIENTAL CAFE
Tommy Eng
THE PARISIAN (MOSCOW)
Mrs. Henry Daubert
PULLMAN APPLIANCE
Clint Westberg
PULLMAN BRANCH SEATTLE-FIRST NATIONAL BANK
J. R. "Dick" Wyard
A. G. "Mike" Neilsen
Chuck Endahl
PULLMAN DRIVE-IN CLEANERS
Del Rowland
PULLMAN GRAIN GROWERS
Howard Hughes
Kester Grimes
PULLMAN HERALD
Paul Stoffel

PULLMAN LAUNDRY
Del Rowland
PULLMAN SAVINGS & LOAN
Frank Fulkerth
PULLMAN TRAVEL SERVICE
Keith Tatham
RAYMER FORD RANCH
J. Ed Raymer
REGGIE'S CHEVRON SERVICE
Reggie McKarcher
SAFEWAY STORES
Jim McKay

SAYLES INSURANCE & REAL ESTATE
Ivan Sayles
Stan Clinton
SERVISOFT SOFT WATER SERVICE
James L. Kimzey
SMELTZ & SCHOEFF, ACCOUNTANTS
Raymon Smeltz
Howard Schoeff
L. C. STALEY
JOHN STALEY
STANDARD LUMBER COMPANY
Joe Campero

STANDARD OIL DISTRIBUTORS
H. W. "Hank" Daubert
F. L. "TUT" TITUS
WASHINGTON WATER POWER
Virg Thompson
John Murray
DR. CLAUDE WEITZ
WHITE DRUG STORE
R. A. "Mickey" McBride
Leigh Marlatt

REGULAR MEMBERS

Hugh Abegglen
Gene Arnold
Lloyd Arnold
Jerry Arnold
Carl Arness
Bernard Barton
Paul Berger
Charlie Blank
Jerry Bolick
Carl Boyd
Lloyd Bury
Cletus Busch
Norbert Busch
Scotty Cameron
Bob Campbell
Harold Chadsey
Lester Clinton
Trent Congdon
Dr. John Cramer

Maurice Davis
Bill Dean
Dr. R. F. DeVleming
Dr. A. J. Devlin
Ray Dillon
Al Dunning
Roscoe Duthie
George Ferguson
Howard Finch
Charles Frederickson
Howard Gass
Paul Gass
Mrs. Glenn Glover
Grange Supply
Carl Gray
Arnold Greenwell
R. C. Hamilton
Earl Harris
Chuck Hatley

Howard Hayes
Art Helbling
Del Henry
John Hinrichs
Edwin Johnson
Dr. Fred Johnston
Jack Koppel
Herb Kottler
Howard Kronemeyer
Jack McDonald
Don McMannis
Henry Meiners
Virgil Michaelson
Dr. Harold Mooney
Greg Neill
Earl Nelson
Walter Nelson
Howard Nygreen
Jim Passmore

Hugh Paul
Dan Peterson
Omer Pogue
Dwight Poole
George Pratt
Ralph Pratt
Jim Reavis
Dr. Don Riedel
John Rehberg
A. A. Reynolds
Virg Reynolds
Frank Rima
Merril Roush
John Scott
Jim Seeley
Bill Sicheloff
Harold Sims
Paul Slusser
Don Sodorff

Roy Sodorff
Walt Sodorff
Joe Street
G. O. Swales
Tony Talarico
Don Taylor
Frank Treaster
Bob Turnley
Cliff Wexler
Bill Weisel
Fred White
Roy Wiggins
Bill Wippel
Leo Wolfe
Jules Lycan

CSU STAFF COUGAR CLUB MEMBERS

Haakon Bang
Charles Barker
Frank Barnard
Charlie Belfre
B. R. Bertramson
Les Bishop
Howard Brewer
Guy Brislawn
Mark Buchanan

Jerry Cavanaugh
Jack Clevenger
S. J. Crandell
Ralph Devlin
E. V. Ellington
Elvin Ericson
C. Clement French
Les Gabe
Bill Gnaedinger

Leo Jensen
E. J. Kreizinger
L. C. Luce
Tom Maloney
Sherm Markley
James McGinnis
Edna Messenger
Allen Miller
Emmett Moore

Dennis Morrison
Howard Moyer
Carl Muir
Eugene Pare'
Maybell Petterson
E. G. Patterson
Fred Rounds
Bruce Rutherford
Merl Simmons

Claude Simpson
Helen Smith
Henry W. Smith
Randall Spicer
S. T. Stephenson
Selma Streit
Marvin Vogt
Dick White
Wallis Beasley
Howard Barlow

Cougar Advertisers

Allen Hardware
Arden Farms
Barton Insurance
Berger Auto Repair
Bill's Welding
Bristol Packing Co.
Brown & Holter Chevrolet
Busch Insurance Co.
A. C. Carpenter
City Club
City Ice Co.
Clark's Market
Commercial Builders
Corner Drug Store
Cougar Barber Shop
The Country Club
Cy's Sport Shop
Dillon Electric Co.
Dissmore's Food Mart
Don's Pharmacy
Doten's Transit-Mix

Downen Insurance Agency
Duthie Fuel Store
Empire Department Store
Empire Men's Shop
Finch's Grocery
First National Bank
Gass's Auto Repair
General Telephone Co.
Graham Insurance
Grange Supply
Harris Electric
Helbling Farm Equip.
Held's Auto Electric
Hinrich's Insurance
Holsum Baking Co.
Klemgard Pea Processing
Mason-Ehrman Company
Neill's Flower Shop
Neill Furniture
Neill Motors
Oriental Cafe

Passmore Insurance
J. C. Penney Co.
Pullman Appliance
Seattle-First National Bank
Manor Lodge Motel
Pullman Grain Growers
Pullman Herald
Pullman Laundry
Pullman Savings & Loan
Pullman Tractor Co.
Pullman Travel Service
Raymer Ford Company
Reggie's Chevron Service
Rehberg Furnace
Reynolds Grocery
Rima Lumber Company
Safeway Grocery Store
Sayles Ins. & Real Estate
Scotty's Service Senter
Servisoft Inc.
Sim's Glass Co.

Smeltz & Schoeff
Smoke House
Spot Shop Cleaners
Standard Oil Distributors
Standard Lumber Co.
Top Notch Cafe
Trent's Grocery
Washington Water Power
White Drug Store
Union Oil Distr.
Richfield Oil Distr.
Pratt Electric
Roush Jewelry
Midway Photo
KOFÉ Radio
Jerry's Richfield
Chuck's Hardware
Washington Hotel
Bolick's Shoes
Village Cafe
Burgerville



HERB HEMINGWAY

Whitman County Cougar Club

President - - - - Herb Hemingway, Garfield
 First Vice-President - - - Jack Miller, Colfax
 Second Vice-President - Jeff Riggs, Oakesdale
 Third Vice-President - Howard Wigen, Lacrosse

The 1960 president of the Whitman County Cougar Club is Herb Hemingway of Garfield, class of 1939 at Washington State. Through Herb's leadership the Whitman County group has increased its 1959 total in both membership funds and members. This group is quite unique in that less than half of the membership are former students at Washington State.



COLFAX
 Donald Billings
 Robert Brown
 Ralph Cocking
 Adrian DeVries
 John Doggett
 Philip Paris
 Gene Foley
 Elliott Gay
 Roy Glaser
 Joe Henderson
 Dr. Bob Henry
 R. T. Jones
 Tick Klock
 John LaFollette
 Ted Logsdon
 Larry Lothspeich
 Wallace Luther
 Wayne Major
 John McNerny
 Chas. McSweeney
 Jack Miller
 Frank Miller
 Bill Munson
 Warren Neil
 John Ottmar
 Ken Pierce
 Earl Pierson
 John Pool
 Harold Powell
 Larry Sarver
 Don Schmick
 Dr. Ole Slind
 L. W. Smawley
 Bill Steiger
 Dr. W. A. Tempel
 Norman Willson
 Horse Division of
 Whitman County Fair

ENDICOTT
 Harry Benner
 James Cottrell
 Walter Geier
 Dr. John Hardy
 Con Hergert
 Mel Kleweno
 Darwin Nealey
 Donovan Smick
 Kenneth Smick
 Philip Swent
 Alvin Swift

FARMINGTON
 Don Aschinger
 Burton Lehn
 Richard Lehn

GARFIELD
 Bob Curtis
 Herb Hemingway
 Chuck Hubner
 Don Johnson
 E. W. Johnson
 Howard Miller
 Gerald Miller
 Archie Neal
 Tom Pennell
 Dr. J. T. Person
 Stewart Pfaff
 Wayne Smith
 E. N. Victor

LACROSSE
 Bob Allert
 Hjalmer Aune
 Urgel Bell

Donald Camp
 Walter Camp
 Keith Carter
 Ira Daniel
 John Dorman
 Donald Ferris
 J. Frank Gordon
 Robert Gordon
 Lacrosse Grain Gr.
 Russell Looney
 Con Ochs
 Lloyd Ochs
 Larry Plowman
 David Repp
 Chester Schoeff
 Ray Smith
 Joris Walli
 Howard Wigen

LAMONT
 Earl Colyar
 Donald Morton
 Vester Nelson
 Henry Shields
 Briggs Sorrels
 Leslie Swannack
 Art Tuggle

OAKESDALE
 Ashton Brown
 Virgil Crider
 Harold Ellis
 Dick Engle
 Mac Crow
 Dan Fisher
 Guy Griffen
 Don Hansen
 George Miller

Bill Pendry
 Jeff Riggs
 Fred Zimmerman

PALOUSE
 C. B. Billings
 Allan Flansberg
 Henry Hulett
 Kenneth Johnson
 Joe Mader
 Stan Willcox

ROSALIA
 Cecil Calhoun
 Harry Goldsworthy
 Ed Goldsworthy
 Bob Goldsworthy
 Keith Manring
 Harv Heidenreich

ST. JOHN
 Jim Davis
 Harry Davis
 Joe Freeman
 Max Harper
 Bob Heglar
 Jim Howell
 Woodrow Mills
 Ivar Nelson
 Ralph Seward

THORNTON
 Eugene Eastep
 Ralph Henning
 Elmer Huntley
 Virgil Klaveano

TEKOA
 John Denoo
 Tom Dorsey
 W. A. McReynolds
 Carl Sieveke

UNIONTOWN
 Kerry Burg

WINONA
 C. V. Kuehl

COLTON
 John Kramer
 Norman Kramer
 Howard Nygreen
 Joe Reisenauer
 Alan Stewart

LEWISTON
 Joe McArthur
 James McMonigle
 Vernon Robinson
 Jack Sorey
 Merel Stonebraker
 W. R. "Bill" Tonkin

CLARKSTON
 Rev. A. K. Bethmann
 George Blakkolb
 Bill Kramer
 Pete Meyer
 Robert Miller
 George Weber

The DAVENPORT
 500 Delightfully Decorated
 Rooms at Sensible Rates
 New Agate Terrace
 Swimming Pool
 Famous Marador
 Dining at its Finest
 24-hour Coffee Shop

The DESERT
 Popular Oasis Meals
 Glamorous Mirage Rooms
 Parking Next Door
 Free TV in every Room

The RITZ
 Drive in Lobby
 Fine in the Sky
 Air-Conditioned
 Throughout
 Television in all Rooms

The SPOKANE
 Famous Silver Grill
 Parking from Our
 Front Door
 Family Rates
 First at Stevens

The COEUR D'ALENE
 Newly Decorated Cardally
 Low Overnight Parking Rate
 Donkey Room and
 Coffee Shop
 Rainbow Room —
 Dancing Nightly

When in
 Spokane
 enjoy the
 superlative
HOTEL
 facilities...
 come soon
 and often...

Salem refreshes your taste
—“air-softens” every puff



- menthol fresh
- rich tobacco taste
- modern filter, too

Salem makes it "Springtime" every time you smoke. Just as a perfect day in May gives you both bright sunshine and cool shade, so a Salem gives you both rich tobacco to taste and cool softness to refresh you. Salem's special High Porosity paper "air-softens" every puff. Try Salem. It's the rich-tasting smoke with springtime softness. Salem refreshes your taste.

Created by R. J. Reynolds Tobacco Company