



10-8-1955

## October 8, 1955 Football Program, UOP vs. University of Idaho

University of Idaho

Follow this and additional works at: <https://scholarlycommons.pacific.edu/ua-football>

---

### Recommended Citation

University of Idaho, "October 8, 1955 Football Program, UOP vs. University of Idaho" (1955). *Football*. 153.  
<https://scholarlycommons.pacific.edu/ua-football/153>

This Book is brought to you for free and open access by the Athletics at Scholarly Commons. It has been accepted for inclusion in Football by an authorized administrator of Scholarly Commons. For more information, please contact [mgibney@pacific.edu](mailto:mgibney@pacific.edu).

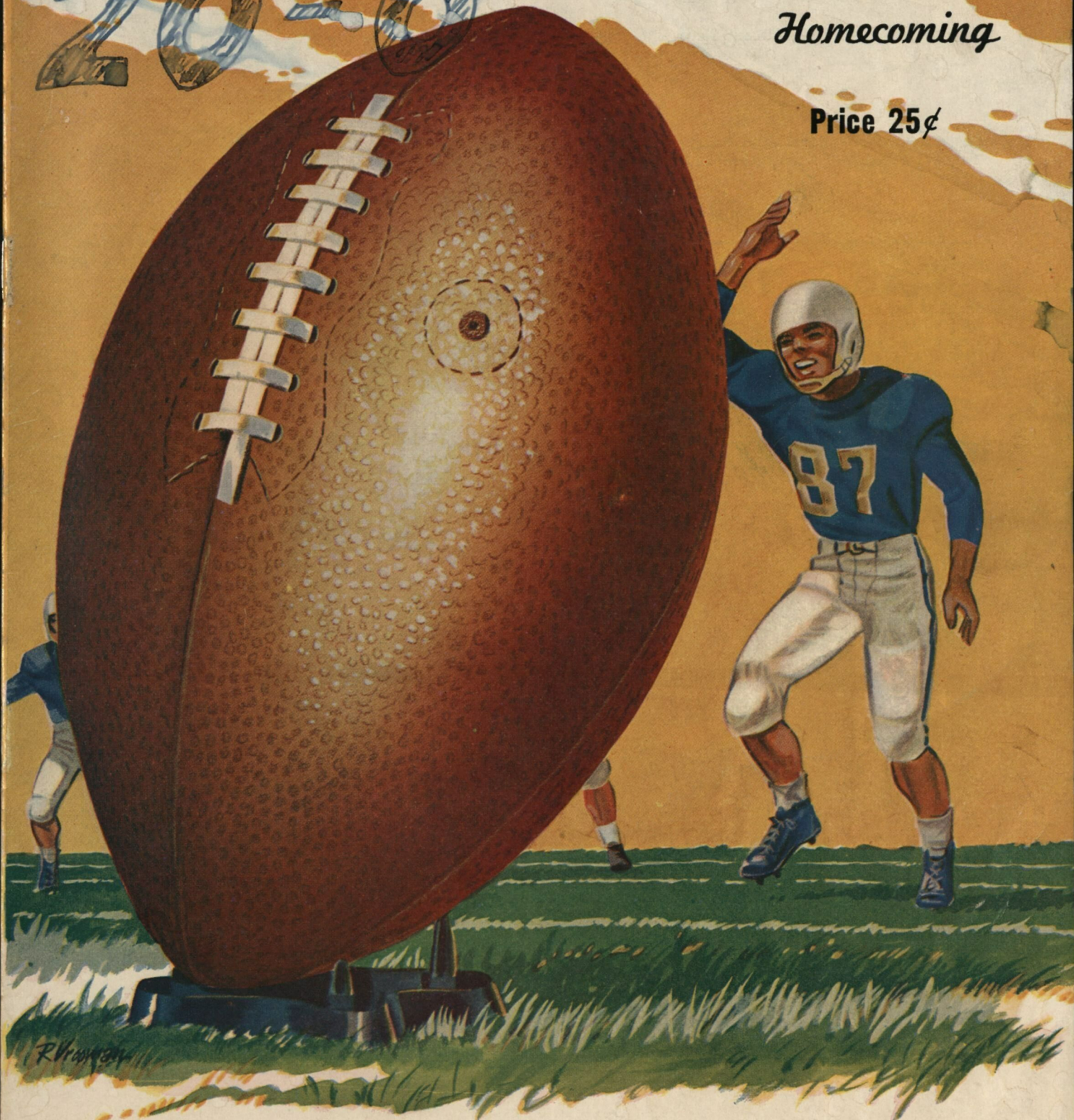
# COLLEGE OF PACIFIC vs. IDAHO

NEALE STADIUM ★ OCTOBER 8, 1955

20-0

*Homecoming*

Price 25¢



R. V. ...

## VANDAL GRID REVIEW

### Idaho vs. College of Pacific

VOL. XVII, NO. 2

OCTOBER 8, 1955

Published by the Athletic Department of  
The University of Idaho

KEN HUNTER, Athletic News Editor

Represented for National Advertising by Don Spencer,  
Inc., 271 Madison Avenue, New York 16, New York.

## 1955 Football Schedule

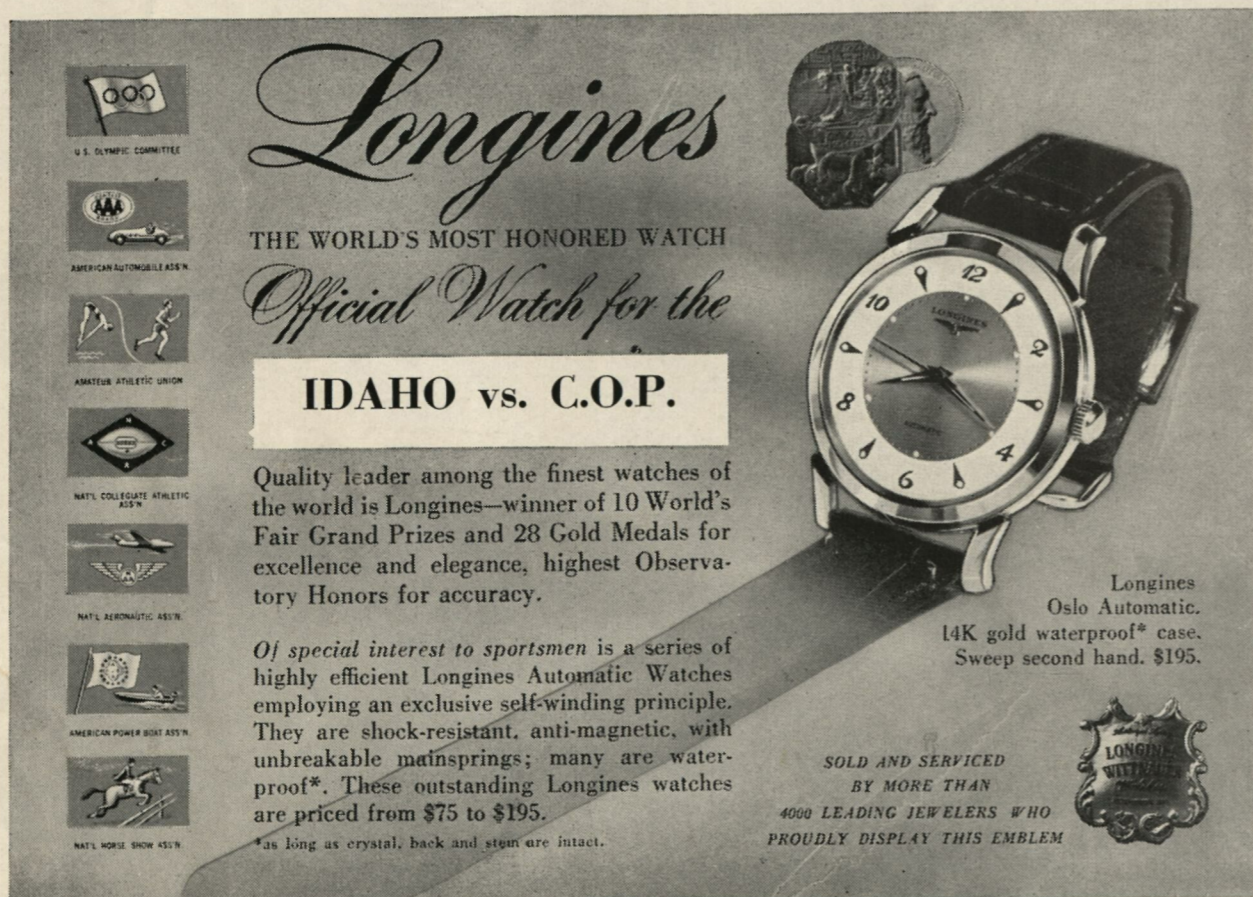
Sept. 17—Washington 14, Idaho 7  
Sept. 24—Utah 20, Idaho 13  
Oct. 1—Arizona 47, Idaho 14  
Oct. 8—College of Pacific at Moscow (Homecoming)  
Oct. 15—Washington State at Moscow  
Oct. 29—Oregon at Eugene  
Nov. 5—Oregon State College at Corvallis  
Nov. 11—Brigham Young at Provo  
Nov. 19—Montana at Moscow (Dad's Day)

For ticket applications or requests address

Director of Athletics  
Memorial Gym, Phone 2411  
Moscow, Idaho, Room 101

## The Annual Battle Of The Palouse

Next Saturday in this stadium will be staged the BIG GAME for the IDAHO VANDALS — the football game with Washington State at 2 p.m. You will not want to miss this classic in which all previous games of past seasons and of this season means nothing. You will recall last year's contest at Pullman. Nuff Sed. Reserve seat tickets may still be obtained in Room 101, Memorial gymnasium, or by writing to Ticket Manager at the above Address. But Don't Delay.



**Longines**

THE WORLD'S MOST HONORED WATCH

*Official Watch for the*

**IDAHO vs. C.O.P.**


Quality leader among the finest watches of the world is Longines—winner of 10 World's Fair Grand Prizes and 28 Gold Medals for excellence and elegance, highest Observatory Honors for accuracy.

Of special interest to sportsmen is a series of highly efficient Longines Automatic Watches employing an exclusive self-winding principle. They are shock-resistant, anti-magnetic, with unbreakable mainsprings; many are waterproof\*. These outstanding Longines watches are priced from \$75 to \$195.

\*as long as crystal, back and stem are intact.

Longines  
Oslo Automatic.  
14K gold waterproof\* case.  
Sweep second hand. \$195.

SOLD AND SERVICED  
BY MORE THAN  
4000 LEADING JEWELERS WHO  
PROUDLY DISPLAY THIS EMBLEM



# COACHES

## College of Pacific



### Head Football Coach Jack "Moose" Myers

Coach Myers is the second youngest head coach in major collegiate football and today celebrates his 31st birthday. He has been in charge of College of Pacific football for two years. Assisting him are two coaches well known to this area. John Nikceovich was an assistant at Idaho before joining Myers at COP. John handles the line coaching spot. Gen. "Skip" Rowland, assistant coach, played professional baseball with Spokane for several seasons in the Western International league. John Rohde, backfield coach, rounds out the COP mentoring staff.



JIM COLLINS, LT



FLOYD WEAVER, LT



BOB MARON, RT



TOM GREEN, FB



KEN CORNELL, RE



DEL WHITTIER, QB



BUZZ WILLIAMS, RG



GERRY FAIRLEY, LT



# COLLEGE OF THE PACIFIC



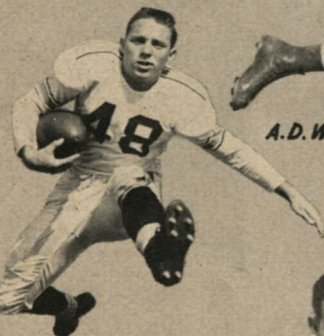
DEWEY TOMPKINS, RH



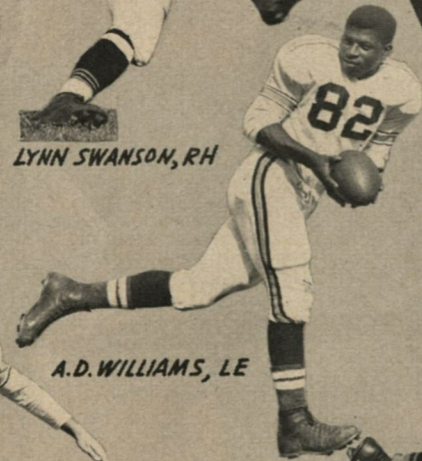
LYNN SWANSON, RH



DARRELL HAYNES, LE



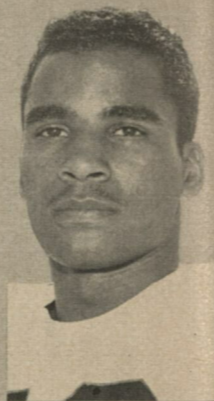
A.D. WILLIAMS, LE



KEN SWEARINGEN, RH



ROGER LINN, RE



ERNIE LINDO, FB



BEN CAHILL, C



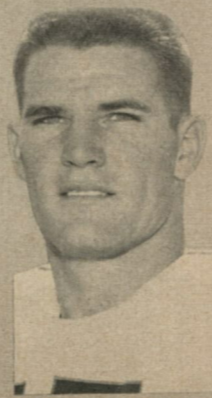
GENE CRONIN, LT



DICK ZOLEZZI, RT



FRANK MONTABANA  
RT



TOM PERRY, RH



GALEN LAACK, RG

# COLLEGE OF THE PACIFIC



GENE CAMPBELL, LH



FARRELL FUNSTON, FB



DON BOSSERT, FB



JIM MASTELOTTO, RE



STAN DANIEL, LE



JACK O'ROURKE, C



GARRY STRONG, LE



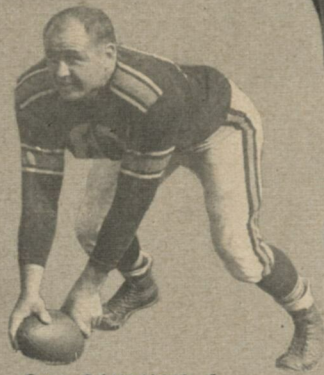
MICH YAMAMOTO, C



BEN PARKS, LG



BILL STRIEGEL, LT



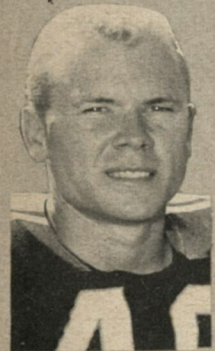
ROY BANDUCCI, C



JOHN THOMAS, RE



BOB LEE, LG



JERRY SCHWEITZER  
LH



J.B. GIRARD, LH



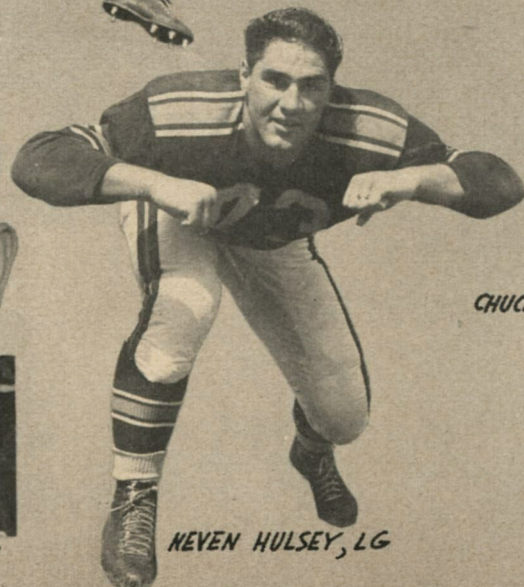
JOHN NISBY, RT



ROTUS HARVEY, RG



JUNIOR REYNOSA, QB



NEVEN HULSEY, LG



CHUCK CHATFIELD, QB



TONY ORTEGA, LG

COLLEGE OF THE  
PACIFIC

DRINK  
**Coca-Cola**  
IN BOTTLES

Delicious and  
Refreshing



COPYRIGHT 1955, THE COCA-COLA COMPANY

## PENALTIES

### LOSS OF FIVE YARDS

1. Taking more than five times out during either half (except for replacement of injured player).
2. Illegal delay of game.
3. Failure to complete substitution before play starts.
4. Violation of kickoff formation.
5. Player out of bounds when scrimmage begins.
6. Putting ball in play before Referee signals "Ready-for-play".
7. Failure to maintain proper alignment of offensive team when ball is snapped. Also, backfield man illegally in motion.
8. Offside by either team or encroachment on neutral zone.
9. Attempt to draw opponents offside.
10. Crawling by runner.
11. Illegal forward pass (includes intentional grounding of forward pass). Also loss of down.
12. Taking more than two steps after Fair Catch is made.
13. Player on line receiving snap.
14. Any violation of the scrimmage formation.

### LOSS OF FIFTEEN YARDS

15. Team not ready to play at scheduled time.
16. Violation of rules during intermission.
17. Illegal return of suspended player.
18. Interference by member of offensive team with defensive player making pass interception. (Also loss of down.)
19. Interference with opportunity of player of receiving team to catch a kick.
20. Illegal use of hands or arms by offensive player.
21. Tackling or blocking defensive player who has made fair catch.
22. Roughing the kicker.
23. Piling up, hurdling, clipping.
24. Tackling player out of bounds, or running into player obviously out of play.
25. Coaching from sidelines.
26. Failure to stop one full second following shift.
27. Defensive holding.
28. Invalid Signal for Fair Catch.

### OTHER PENALTIES

29. Striking an opponent with fist, forearm, elbow or locked hands, kicking or kneeling — Mandatory disqualification of offending player plus loss of fifteen yards.
30. Foul within the one yard line—half the distance to the goal.
31. Interference by defensive team on forward pass—passing team's ball at spot of foul.
32. Forward pass being touched by ineligible receiver beyond the line of scrimmage—loss of fifteen yards from spot of preceding down and loss of a down.
33. Illegal touching of kicked ball within opponent's ten yard line — touchback.
34. Flagrantly rough play or unsportsmanlike conduct — Mandatory disqualification plus loss of fifteen yards.
35. Eligible pass receiver who goes out of bounds and later touches a forward pass — loss of down.

### OFFICIALS

James M. Cain .....	Referee
Anthony J. Amato .....	Umpire
Ted Rohwer .....	Head Linesman
George Derr .....	Field Judge
Mickey Davis .....	Back Judge
Lavern Glasgow .....	Alternate

## COLLEGE OF PACIFIC

### Probable Starting Lineup

No.	Name	Position
82	A. D. Williams	LE
70	Gene Cronin	LT
73	Neven Hulsey	LG
85	Roy Banducci	C
71	Galen Laack	RG
78	John Nisby	RT
80	John Thomas	RE
42	Junior Reynosa	QB
49	Jerry Schweitzer	LH
44	Ken Swearingen	RH
59	Farrell Funston	FB

### COLLEGE OF PACIFIC SQUAD

41 Tompkins, RH	64 O'Rourke, C
42 Reynosa, QB	65 Maron, RT
43 Girard, LH	66 Lindo, FB
44 Swearingen, RH	67 Cahill, C
45 Whittier, QB	68 Ortega, LG
46 Chatfield, QB	69 Parks, RG
47 Daniel, LE	70 Cronin, LT
48 Cornell, LH	71 Laack, RG
49 Schweitzer, LH	72 Lee, LG
50 Swanson, RH	73 Hulsey, LG
51 Campbell, LH	74 Striegel, LT
52 Allerdice, RH	75 Haynes, LE
53 Bossert, FB	77 Montabana, RT
54 Tom Green, FB	78 Nisby, RT
55 Jacobs, QB	79 Strong, LE
56 Yamamoto, C	80 Thomas, RE
57 Tom Perry, RH	81 Collins, LT
58 Cornell, RE	82 Williams, LE
59 Funston, FB	83 Fairley, RT
60 Conner, RT	84 Weaver, LT
61 Linn, RT	85 Banducci, C
62 Dattola, FB	86 Zolezzi, RT
63 Williams, RG	

## UNIVERSITY OF IDAHO

### Probable Starting Lineup

No.	Name	Position
88	Pete Gerpheide	LE
70	Marsh Jones	LT
64	John Payne	LG
53	Wayne Walker	C
63	Ed Resa	RG
77	Dick Foster	RT
83	Ed Hilder	RE
14	Howard Willis	QB
43	Ron Braden	RH
23	Ray Bittner	LH
37	Wilbur Gary	FB

### THE IDAHO SQUAD

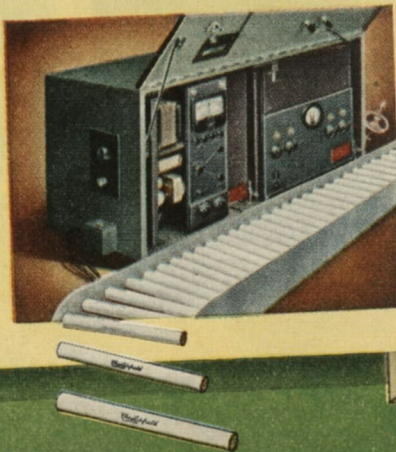
12 Johnson, QB	62 Bergthold, G
14 Willis, QB	63 Resa, G
17 Uglesich, QB	64 Payne, G
18 Kenworthy, QB	66 Hepler, G
20 Schmidt, HB	67 Eldred, G
22 Hilgenberg, HB	68 Haller, G
23 Bittner, HB	69 Kline, G
25 Norby, HB	70 Jones, T
32 Hawley, FB	71 Cox, T
33 Fenton, FB	72 Anderson, T
34 Pettit, FB	73 Baroni, E
35 Gorrell, FB	74 Kramer, T
37 Gary, FB	77 Foster, T
43 Braden, HB	79 Buhler, T
41 Davis, HB	80 Patterson, E
47 Faraca, HB	81 Sullivan, E
49 Baxter, HB	82 Aldrich, E
53 Walker, C	83 Hilder, E
54 Faulkner, C	84 Newby, E
55 Brown, C	85 Randolph, E
60 Smythe, G	86 Denny, E
61 Fries, G	88 Gerpheide, E



*America's Best*

**Only Chesterfield is Made the Modern Way—with *AccuRay***

Today—discover for yourself what modern science can do to increase your cigarette enjoyment! Try Chesterfield—the cigarette made the modern way... measurably smoother... cooler... best for you!



**THIS IS IT!** L&M has the purest and best filter your lips ever touched... the pure, white Miracle Tip. What's more, L&M gives you a rich, good tasting, and fully satisfying smoke. No wonder smokers everywhere say, "L&M's got everything!"

**L&M**—America's Best Filter Cigarette!

PURE WHITE





There's nothing like a Coke

- 1 Offside
- 2 Illegal procedure or position
- 3 Illegal motion
- 4 Illegal shift
- 5 Illegal substitution
- 6 Delay of game
- 7 Personal foul
- 8 Clipping
- 9 Roughing the kicker
- 10 Unsportsmanlike conduct
- 11 Illegal use of hands and arms
- 12 Intentional grounding
- 13 Illegally passing or handing ball forward
- 14 Forward pass or kick catching interference
- 15 Ineligible receiver downfield on pass
- 16 Ball illegally touched, kicked or batted
- 17 Incomplete forward pass, penalty declined, no play or no score
- 18 Crawling, helping runner or interlocked interference
- 19 Ball dead
- 20 Touchdown or field goal
- 21 Safety
- 22 Time-out
- 23 First down
- 24 Ball ready for play
- 25 Start the clock

DRINK  
**Coca-Cola**  
 IN BOTTLES

"COKE" IS A REGISTERED TRADE MARK



J. Neil "Skip" Stahley  
 Head Coach

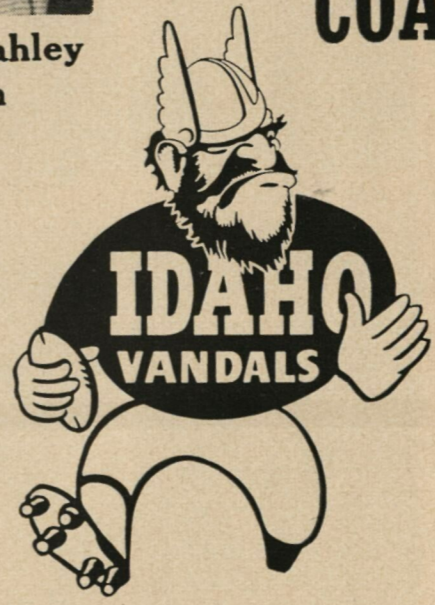
Gene Stauber  
 Assistant Coach



Earl Klapstein  
 Assistant Coach

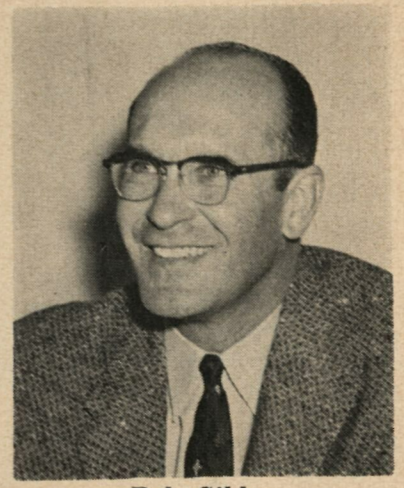


F. J. "Packey" Boyle  
 Trainer



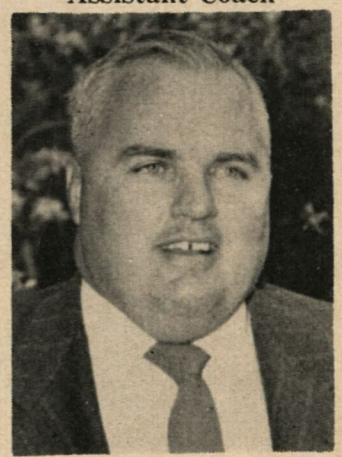
# COACHES

1955

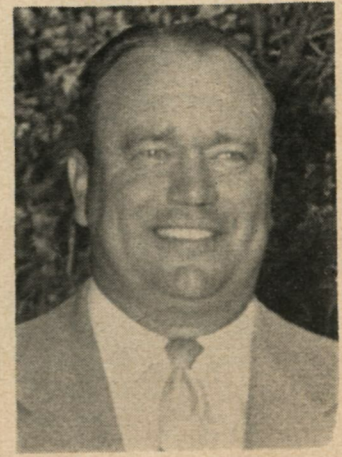


Bob Gibb  
 Athletic Director

Jay Pattee  
 Assistant Coach



Clem Parberry  
 Assistant Coach





N. Uglesich, Q



E. Pettit, FB



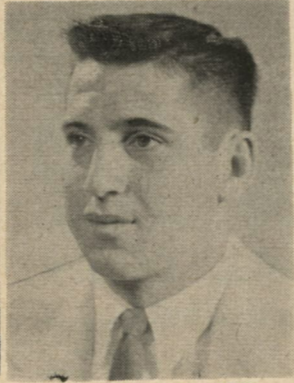
W. Hawley, FB



E. Hilder, E



E. Resa, G

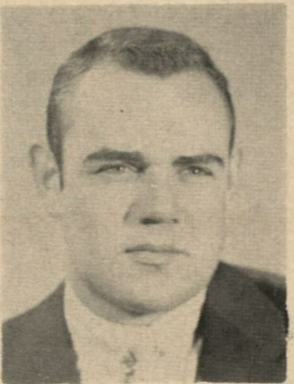


M. Schmidt, HB

1955



L. Kline, G



J. Buhler, T



B. Shaffer, Mgr.



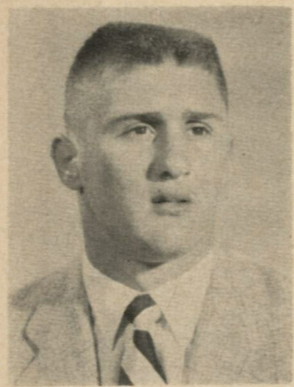
G. Johnson, Q



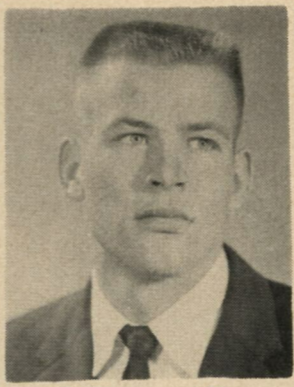
W. Denny, E



R. Bittner, HB



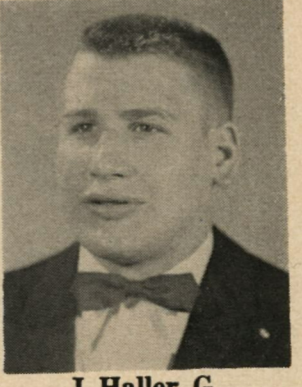
L. Aldrich, E



J. Kramer, T



L. Norby, HB



J. Haller, G



W. Walker, C



C. Hilgenberg, HB

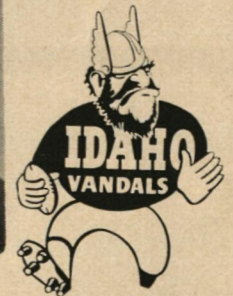
1955



D. Baroni, C



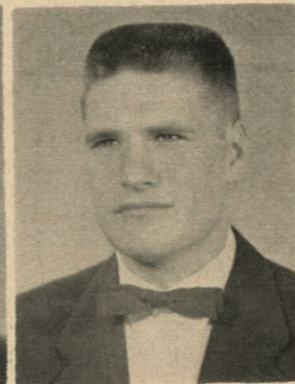
J. Payne, G



M. Jones, T



R. Randolph, E

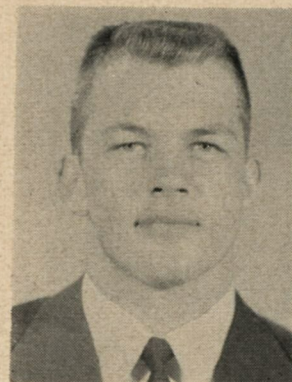


J. Newby, E

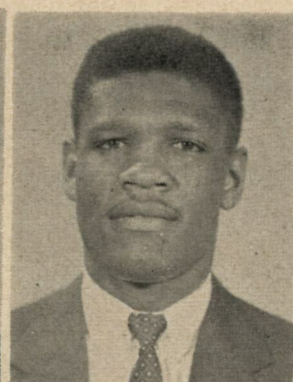


C. Fries, G





D. Davis, HB



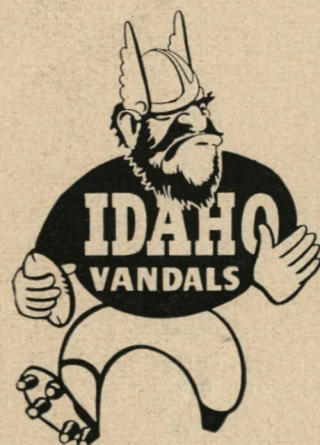
W. Gary, FB



H. Willis, QB



R. Braden, HB

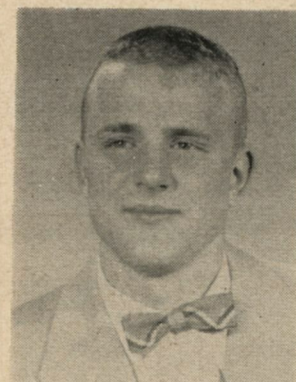


M. Hepler, G

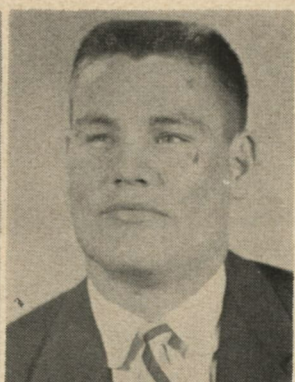


D. Foster, T

1955



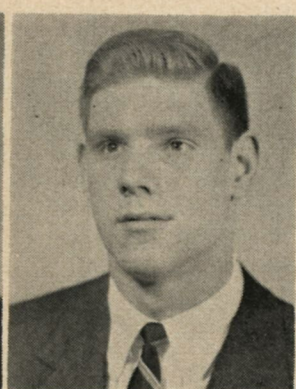
B. Baxter, HB



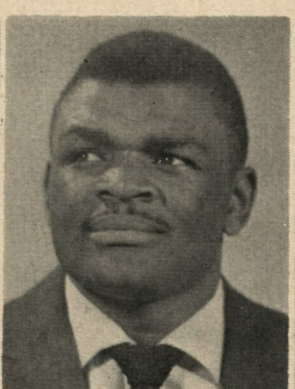
J. Smythe, G



M. Cox, T



P. Gerpheide, E



J. Sullivan, E



J. Faulkner, C

The official watch for timing today's game is Longines, "The World's Most Honored Watch"

Luxury Television...and it costs less than ever before!



21-inch Allison Deluxe. Model 21D645. Mahogany grained finish, \$339.95. Lined oak grained finish, \$349.95

### New 21-inch RCA VICTOR Television Deluxe

BRINGS YOU NEW "4-PLUS" PICTURE AND "HIGH-SIDE" TUNING

Now RCA Victor brings you the superlative cabinetry and unmatched performance of the new 21-inch Allison Deluxe at surprisingly low cost. For the finest performance in all television, you get great

new advances like "4-Plus" picture quality and two-speaker Balanced Fidelity Sound.

See us today—see for yourself the luxury and beauty of the new RCA Victor 21-inch Allison Deluxe.

RCA Victor 21-inch Rittenhouse Deluxe. Swivels! Three finishes: natural walnut and blond tropical hardwood; blond tropical hardwood and natural walnut; two-tone birch. Model 21D648. \$349.95.

For UHF—New High Speed UHF tuning covers 70 UHF channels in 2½ seconds! Optional, at RCA Victor's lowest price ever—\$25 extra.

See the Big Change in television by RCA Victor today!

Manufacturer's nationally advertised VHF list prices shown, subject to change.



### MOSCOW RADIO AND TV

Al Johnson, Owner

PHONE 6271

EXPERT RADIO AND TV SERVICE



*Light up a Lucky—  
it's light-up time!*

# LUCKIES TASTE BETTER

**Cleaner, Fresher, Smoother!**



**"IT'S  
TOASTED"  
to taste  
better!**