



OPEN ACCESS

Original research

# SARS-CoV-2 mRNA vaccinations fail to elicit humoral and cellular immune responses in patients with multiple sclerosis receiving fingolimod

Lil Meyer-Arndt <sup>1,2,3</sup>, Julian Braun,<sup>1,4</sup> Florent Fauchere,<sup>1,4</sup> Kanika Vanshylla,<sup>5</sup> Lucie Loyal,<sup>1,4</sup> Larissa Henze,<sup>1,4</sup> Beate Kruse,<sup>1,4</sup> Manuela Dingeldey,<sup>1,4</sup> Karsten Jürchott,<sup>1,4</sup> Maike Mangold,<sup>1</sup> Ardit Maraj,<sup>1</sup> Andre Braginets,<sup>1</sup> Chotima Böttcher,<sup>6,7,8,9</sup> Andreas Nitsche,<sup>10</sup> Kathrin de la Rosa,<sup>11</sup> Christoph Ratswohl,<sup>11</sup> Birgit Sawitzki,<sup>12,13</sup> Pavlo Holenya,<sup>14</sup> Ulf Reimer <sup>14</sup>, Leif E Sander,<sup>15</sup> Florian Klein,<sup>5,16,17</sup> Friedemann Paul,<sup>2,7,8,9</sup> Judith Bellmann-Strobl,<sup>2,7,8,9</sup> Andreas Thiel,<sup>1,4</sup> Claudia Giesecke-Thiel <sup>18</sup>

► Additional supplemental material is published online only. To view, please visit the journal online (<http://dx.doi.org/10.1136/jnnp-2022-329395>).

For numbered affiliations see end of article.

## Correspondence to

Dr Claudia Giesecke-Thiel, Max Planck Institute for Molecular Genetics, Berlin, Germany; [giesecke@molgen.mpg.de](mailto:giesecke@molgen.mpg.de)

JB, FF and KV contributed equally.

FP, JB-S, AT and CG-T contributed equally.

Received 7 April 2022

Accepted 27 June 2022

Published Online First 14 July 2022

## ABSTRACT

**Background** SARS-CoV-2 mRNA vaccination of healthy individuals is highly immunogenic and protective against severe COVID-19. However, there are limited data on how disease-modifying therapies (DMTs) alter SARS-CoV-2 mRNA vaccine immunogenicity in patients with autoimmune diseases.

**Methods** As part of a prospective cohort study, we investigated the induction, stability and boosting of vaccine-specific antibodies, B cells and T cells in patients with multiple sclerosis (MS) on different DMTs after homologous primary, secondary and booster SARS-CoV-2 mRNA vaccinations. Of 126 patients with MS analysed, 105 received either anti-CD20-based B cell depletion (aCD20-BCD), fingolimod, interferon- $\beta$ , dimethyl fumarate, glatiramer acetate, teriflunomide or natalizumab, and 21 were untreated MS patients for comparison.

**Results** In contrast to all other MS patients, and even after booster, most aCD20-BCD- and fingolimod-treated patients showed no to markedly reduced anti-S1 IgG, serum neutralising activity and a lack of receptor binding domain-specific and S2-specific B cells. Patients receiving fingolimod additionally lacked spike-reactive CD4<sup>+</sup> T cell responses. The duration of fingolimod treatment, rather than peripheral blood B and T cell counts prior to vaccination, determined whether a humoral immune response was elicited.

**Conclusions** The lack of immunogenicity under long-term fingolimod treatment demonstrates that functional immune responses require not only immune cells themselves, but also access of these cells to the site of inoculation and their unimpeded movement. The absence of humoral and T cell responses suggests that fingolimod-treated patients with MS are at risk for severe SARS-CoV-2 infections despite booster vaccinations, which is highly relevant for clinical decision-making and adapted protective measures, particularly considering additional recently approved sphingosine-1-phosphate receptor antagonists for MS treatment.

## INTRODUCTION

COVID-19 is caused by SARS-CoV-2 and presents with a wide variety of symptoms ranging from asymptomatic to severe and even fatal disease courses. In addition to age and lifestyle-related diseases, other major risk factors for severe COVID-19 disease courses include immunosuppression due to chronic diseases or immunosuppressive therapies.<sup>1 2</sup> For patients with the autoimmune disease multiple sclerosis (MS), studies have produced mixed results regarding patient susceptibility and severity of COVID-19 mainly due to differences between the treatment.<sup>3–6</sup> In particular, aCD20-BCD therapies with rituximab and ocrelizumab and the sphingosine-1-phosphate (S1P) receptor functional antagonist fingolimod increased the risk of infection, hospitalisation and fatality.<sup>6–9</sup> Fortunately, vaccines against SARS-CoV-2 became available within a year after the new virus strain emerged and two mRNA vaccines, BNT162b2 (Pfizer-BioNTech) and mRNA-1273 (Moderna), demonstrated strong immunogenicity, efficacy and safety in their corresponding clinical trials receiving approval at the end of 2020.<sup>10 11</sup> Due to their increased risk for severe COVID-19, patients with MS were prioritised for vaccination,<sup>12</sup> however, it was expected that their highly immunomodulatory MS treatments compromise the immunogenicity of the vaccine and alter protection.<sup>13 14</sup> Initial results demonstrated that patients with MS treated with aCD20-BCD showed lower to absent SARS-CoV-2 spike glycoprotein-specific antibody and B cell responses. Functional T cell responses were maintained but with partial selective defects in antigen-specific follicular helper T cells.<sup>15–17</sup> Impaired humoral responses were also noted for patients on fingolimod treatment and besides, their T cell responses were decreased.<sup>18 19</sup> Despite these selected reports of reduced immunogenicity, detailed reports examining the entire spectrum of humoral and cellular immune responses from before primary vaccination until after the booster vaccinations are still lacking.



© Author(s) (or their employer(s)) 2022. Re-use permitted under CC BY-NC. No commercial re-use. See rights and permissions. Published by BMJ.

**To cite:** Meyer-Arndt L, Braun J, Fauchere F, et al. *J Neurol Neurosurg Psychiatry* 2022;**93**:960–971.

**WHAT IS ALREADY KNOWN ON THIS TOPIC**

⇒ Most studies have focused on humoral and cellular responses to COVID-19 vaccination in aCD20-BCD (Apostolidis et al, 2021; Habek et al, 2022; Madelon et al, 2022; Bajwa et al, 2022; Brill et al, 2022) while those investigating a broader range of disease-modifying treatments have relied on small sample sizes (Tortorella et al, 2021; Sabatino et al, 2022) without baseline data, humoral outcomes only (Tallantyre et al, 2021; Dreyer-Alster et al, 2022; Levit et al, 2022; Guerrieri et al, 2022; Satyanarayan et al, 2022; König et al, 2022; Mariottini et al, 2022) or short-term follow-ups (Yuzefpolskiy et al, 2022; Iannetta et al, 2022; Zabalza et al, 2022; Kister et al, 2022). Particularly for sphingosine-1-phosphate receptor antagonist treatment, we found no studies reporting in-depth analyses of vaccine-induced B and T cells and neutralising capacity including booster vaccinations and providing insight into factors that may influence immunogenicity in these patients and thus providing clinical guidance.

**WHAT THIS STUDY ADDS**

⇒ To our knowledge, this is the only study investigating multifaceted humoral and cellular immune responses to COVID-19 vaccination schedules in patients with multiple sclerosis (MS) with a broad spectrum of different disease-modifying therapies (DMTs), starting prior to primary vaccination (baseline data) until after the booster vaccinations allowing us to identify factors possibly correlated with unsuccessful humoral and cellular vaccination outcomes. Not only did we focus on receptor binding domain (RBD)-specific humoral and T cell responses, but the methodology used allowed us to determine, in the absence of a de novo response, whether reactivation of a pre-existing protective memory had occurred by dissecting RBD/S1-specific and S2-specific humoral and T cell responses.

**HOW THIS STUDY MIGHT AFFECT RESEARCH, PRACTICE AND/OR POLICY**

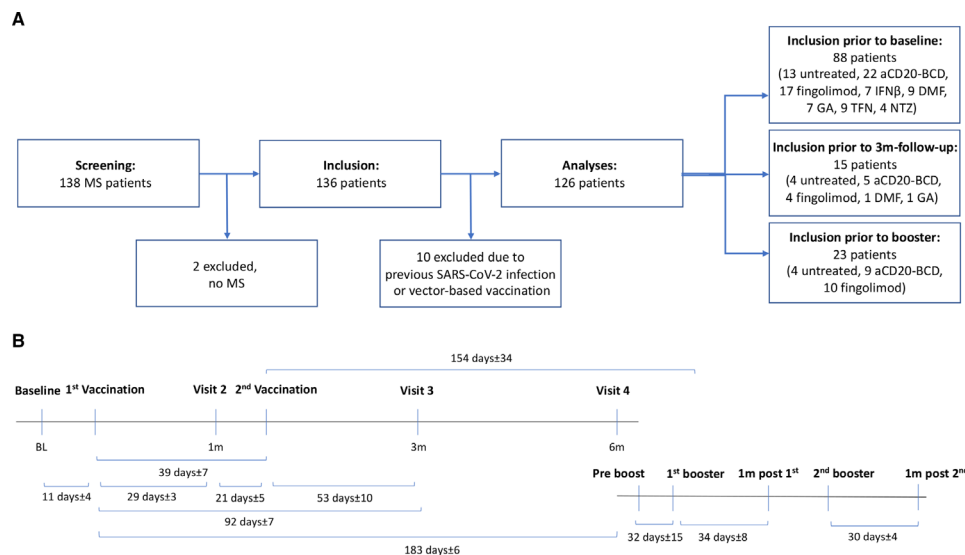
⇒ We found a significant reduction of the humoral immune response for aCD20-BCD and fingolimod therapy but only for fingolimod a significant reduction or even absence of vaccine-specific T cell reactivity that persists after booster vaccinations. Unlike all other DMTs, including aCD20-BCD, patients treated with fingolimod cannot rely on T cell protection in the absence of a humoral response, and this depends on the treatment duration. These results suggest that MS patients treated with fingolimod require extended health screenings and adapted protective measures beyond currently available vaccinations as SARS-CoV-2 and the potentially serious consequences of infection will persist and may affect a vulnerable patient population.

In this study, we aimed to assess humoral and cellular immune responses to primary, secondary and booster SARS-CoV-2 vaccinations in patients with MS treated with aCD20-BCD, fingolimod, interferon- $\beta$  (IFN $\beta$ ), glatiramer acetate (GA), dimethyl fumarate (DMF), teriflunomide (TFN) or the  $\alpha$ 4-integrin monoclonal antibody natalizumab (NTZ) compared with those without any immunomodulatory treatment. Due to the high prevalence of MS and the tendency to start immunomodulatory treatment early, investigation on vaccine immunogenicity and

longevity of induced immunity in this patient group becomes increasingly relevant for clinical practice and vaccine development. Currently available SARS-CoV-2 mRNA vaccines rely on the highly immunogenic SARS-CoV-2 surface spike glycoprotein, which elicits robust T cell and neutralising antibody responses.<sup>20 21</sup> The spike glycoprotein consists of two subunits, S1 and S2, of which the less conserved S1 subunit mediates virus-receptor contact via the receptor binding domain (RBD) and is the target of the de novo immune response, which is also the correlate for eliciting a protective immune response. The S2 subunit mediates membrane fusion and is more conserved with respect to endemic coronaviruses.<sup>22–24</sup> Here, we dissected the immune responses to both subunits individually as cross-reactive reactivation of pre-existing immune memory against the S2 subunit could occur even in the absence of a de novo response, which may be impaired in patients on disease-modifying therapies (DMTs).

**METHODS****Participants**

Participants were recruited at the MS outpatient clinic of the Charité - Universitätsmedizin Berlin between January and October 2021. Inclusion criteria were: (1) MS diagnosis according to the McDonald criteria of 2017, (2) stable disease for at least 3 months (no acute relapse therapy, no clinical progression or new symptoms suggestive of relapse, no disease activity on brain MRI), (3) continuous immunomodulatory treatment or no treatment for at least 3 months, (4) immunomodulatory monotherapy (if treated) and (5) no medical contraindications against SARS-CoV-2 vaccination. Patients of the aCD20-BCD cohort received either rituximab or ocrelizumab (dosage per administration: 1000 mg rituximab or 600 mg ocrelizumab) in 6 month intervals (except for two patients whose next treatment intervals were delayed due to low lymphocyte counts). Out of 136 patients included, 3 with signs of previous SARS-CoV-2 infection (previous SARS-CoV-2 infection verified by PCR or positive anti-S1 IgG levels at baseline) and seven vaccinated with a vector-based SARS-CoV-2 vaccine were excluded from analyses resulting in a total of 126 participants (figure 1A). Blood samples, nasopharyngeal swabs and a medical history were provided at up to seven time points: before primary vaccination (BL) and 1 month (before secondary vaccination), 3 months and 6 months after primary vaccination as well as before first booster vaccination (pre boost) and 1 month after each booster (1 month post first boost; 1 month post second boost, figure 1B). Fifteen patients were included prior to follow-ups and 23 patients prior to booster vaccinations. Only untreated patients and aCD20-BCD- or fingolimod-treated patients were investigated pre and post booster vaccinations. All participants received a homologous prime-boost mRNA COVID-19 vaccination schedule and booster vaccinations with the same mRNA vaccine (BNT162b2 (BioNTech/Pfizer) or mRNA-1273 (Moderna)). No overt result differences between mRNA vaccines were observed (only three patients received the mRNA-1273 vaccine). The following patients were excluded from further analyses due to drop-out, SARS-CoV-2 infection, no booster or booster with a heterologous vaccine: untreated (n=4, before booster), aCD20-BCD (n=1, before 6 months; n=4, before booster), fingolimod (n=2, before booster), IFN $\beta$  (n=2, before 6 months), NTZ (n=2, before 6 months). Information on missing data is shown in the respective figures.



**Figure 1** Study design and participant flow chart. (A) Timeline depicting study visits including clinical assessments and sample collection in relation to vaccinations. Time intervals reported as mean $\pm$ range across all treatment groups as no significant differences between groups were detected. (B) Participant chart showing available data for screening, data collection and analyses steps. aCD20-BCD, anti-CD20 B cell depletion; BL, baseline; DMF, dimethyl fumarate; GA, glatiramer acetate; IFN $\beta$ , interferon- $\beta$ ; m, month/s; MS, multiple sclerosis; TFN, teriflunomide; NTZ, natalizumab.

### SARS-CoV-2 RT-qPCR

RT-qPCR analysis of nasopharyngeal swabs was performed as previously described.<sup>25</sup>

### Blood sampling, serum preparation and peripheral blood mononuclear cell isolation

Whole blood was collected in lithium heparin tubes for peripheral blood mononuclear cell (PBMC) isolation and in SSTII advance (all Vacutainer, BD) tubes for serology. SSTII advance tubes were centrifuged at 1000xg for 10 min and serum supernatant aliquots were frozen at  $-80^{\circ}\text{C}$  until further use. PBMCs were isolated by gradient density centrifugation using Bicoll (Bio&SELL) and Leucosep tubes (Greiner) according to the manufacturer's instructions and immediately used for T cell stimulations and flow cytometry assays.

### Anti-SARS-CoV-2 S1 ELISA

Anti-SARS-CoV-2 S1 IgG testing was performed using a commercially available ELISA kit (Euroimmun).

### SARS-CoV-2 pseudovirus neutralisation assay

Serum neutralisation was measured using a lentivirus-based pseudovirus neutralisation assay as described before<sup>26</sup> and in online supplemental methods.

### SARS-CoV-2 spike epitope-specific peptide microarray

Serum IgG reactivity profiling was performed by JPT Peptide Technologies with a peptide microarray (JPT Peptide Technologies) containing 562 peptides derived from a peptide scan (15mers with 11 aa overlap) through spike glycoprotein (Swiss-Prot ID: PODTC2) of the Wuhan type SARS-CoV-2. For a detailed method description see online supplemental methods.

### Ex vivo T cell stimulations

Freshly isolated PBMC were cultivated at  $5 \times 10^6$  PBMC in RPMI 1640 medium (Gibco) supplemented with 10% heat inactivated AB serum (Pan Biotech), 100 U/mL penicillin (Biochrom), 0.1 mg/mL streptomycin (Biochrom). Stimulations with peptide

pools covering the SARS-CoV-2 spike S1 subunit (S-I) and the spike S2 subunit (S-II) were conducted as described before<sup>20 22</sup> and in online supplemental methods.

### Protein labeling for RBD- and S2-specific B cells

Recombinant SARS-CoV-2 spike-S2 (Miltenyi) was covalently labelled with Pacific Blue (Antibody Labelling Kit, Invitrogen) and AlexaFluor488 (Antibody Labelling Kit, Invitrogen), respectively, and recombinant SARS-CoV-2 spike-RBD (Miltenyi) was labelled with AlexaFluor647 (Antibody Labelling Kit, Invitrogen) following the manufacturer's instructions. For labelling of SARS-CoV-2 spike-RBD with PE-Vio615, biotinylated SARS-CoV-2 spike-RBD (Miltenyi) was incubated for 15 min at room temperature with Streptavidin-PE-Vio615 (Miltenyi) at 4:1 molar ratio each time before staining.

### B cell and T cell flow cytometry

For RBD- and S2-specific B cell analysis: Surface staining was performed for 20 min in the presence of 1 mg/mL beriglobin (CSL Behring) with the following fluorochrome-conjugated antibodies titrated to their optimal concentrations: CD20-VioGreen (LT20, Miltenyi), CD14 BV570 (M5E2, Biolegend), CD38 BV605 (HB7, Biolegend), CD27 PE (O323, Biolegend), IgD PerCP-Cy5.5 (IA6-2, Biolegend), CD19 PE-Cy7 (SJ25C1, Biolegend) and CD3 APC-Cy7 (UCHT1, Biolegend) and the labelled proteins (S2 PacBlue (0.25  $\mu\text{g}$ ), S2 AlexaFluor488 (0.25  $\mu\text{g}$ ), RBD Biotin/Streptavidin PE-Vio615 (0.15  $\mu\text{g}$ ) and RBD AlexaFluor647 (0.15  $\mu\text{g}$ )).<sup>20 22</sup> Zombie Yellow fixable viability staining (Biolegend) was added during the last 5 min of incubation. After staining, the cells were washed once in PBS/BSA, centrifuged and resuspend in PBS/BSA/2 mM EDTA. For analyses of S-I- and S-II-specific T cells and peripheral blood B and T cell subsets, antibody staining was performed as described before<sup>20 22</sup> and in online supplemental methods. All samples were measured on a MACSQuant Analyzer 16 (Miltenyi). Instrument performance was monitored using Rainbow Calibration Particles (BD).

### Data collection and statistical analysis

Study data were collected and managed using REDCap electronic data capture tools hosted at the Charité. Flow cytometry data were analysed using FlowJo V.10 (BD). Prism V.9 (GraphPad) was used for the following data plotting and statistical analyses: Fisher's exact test for seroconversion rate comparison; Kruskal-Wallis test followed by Dunn's multiple comparisons test for group comparisons; Spearman correlation for correlation testing. Correlation analyses were performed in R (R Core Team (2021). R: A language and environment for statistical computing. R Foundation for Statistical Computing, Vienna, Austria. URL <https://www.R-project.org/>). Spearman correlations between potential predictive variables and several outcomes were determined and the matrix of correlation coefficients were plotted using the *corrplot* package (Taiyun Wei and Viliam Simko (2021). R package 'corrplot': Visualisation of a Correlation Matrix (V.0.92), available from <https://github.com/taiyun/corrplot>). Correlation coefficients were reported as *r*. Only correlations with at least five measured value pairs were shown in the plots. No adjustment of *p* values for multiple testing was done to avoid an inflation of type II errors. Selected single correlations were plotted using the default plot-function in R, including results for Pearson and Spearman correlations. CD4<sup>+</sup> T cell activation was plotted as stimulation index (StimIndex), that is, ratio of % of CD40L<sup>+</sup>4-1BB<sup>+</sup> CD4<sup>+</sup> T cells in stimulated samples and % of CD40L<sup>+</sup>4-1BB<sup>+</sup> CD4<sup>+</sup> T cells in unstimulated controls. Stimulation indices of 1.5 were assumed to be positive with uncertainty, and stimulation indices of 3.0 and above were assumed to be a definitely positive indicator of an antigen-specific T cell response.

### RESULTS

To determine the individual effects of DMTs commonly used to treat patients with MS on humoral and cellular immune responses to mRNA SARS-CoV-2 vaccinations, we analysed 105 DMT-treated patients with MS and compared them to 21 untreated patients with MS (see [table 1](#) for details of DMTs and clinical characteristics). Clinical histories and samples were taken prior to and 1 month, 3 months and 6 months post primary vaccination as well as before the first booster vaccination (pre boost) and 1 month after each booster (1 month post first boost; 1 month post second boost; see the Methods section for further details). The significance levels reported result from comparisons between the respective treatment group and the untreated patient cohort.

### Impaired seroconversion after mRNA vaccination in aCD20-BCD-treated and fingolimod-treated patients

Compared with untreated patients with MS, patients with MS receiving aCD20-BCD therapies or fingolimod showed significantly lower or no anti-S1 IgG levels at 1 month and 3 months post primary vaccination ([figure 2A](#)). Ten of 11 (91%) untreated patients with MS seroconverted after primary vaccination, the 11th patient after secondary vaccination. In patients receiving DMTs, except for aCD20-BCD and fingolimod, seroconversion was not significantly different to untreated patients with conversion rates ranging from 67% to 100% after the primary vaccination, depending on the treatment group, and a 100% seroconversion rate after the secondary vaccination. In contrast to untreated patients with MS, patients with MS on aCD20-BCD therapies and fingolimod demonstrated significantly reduced seroconversion rates. In detail, 2 of 22 (9%) aCD20-BCD-treated patients seroconverted at 1 month ( $p=7\times 10^{-6}$ ) and 5 of 24 (21%) at 3 months ( $p=7\times 10^{-5}$ ); 0 of 17 (0%) fingolimod-treated patients seroconverted at 1 month ( $p=8\times 10^{-7}$ ) and 7 of 21 (33%) at 3 months ( $p=4\times 10^{-4}$ ) post primary vaccination. Of note, anti-S1 IgG levels of seroconverted fingolimod-treated patients remained on a lower level compared with all other patients. Next, we used SARS-CoV-2 whole spike peptide arrays to determine whether antibodies to spike epitopes other than those in the spike glycoprotein S1 subunit were induced in patients with MS treated with aCD20-BCD or fingolimod. Compared with untreated patients with MS, these patients showed binding to a significantly lower number of different S2 subunit peptides ( $p=0.002$ ; [figure 2B](#)). Specifically, this number was significantly decreased in S1-non-seroconverted aCD20-BCD-treated patients compared with seroconverted patients of this treatment group. No such difference was observed in fingolimod-treated patients. Both aCD20-BCD and fingolimod-treated patients who did not have positive anti-S1 IgG levels (with the exception of one fingolimod patient) did not show increased antibody binding to S2 spike peptide fragments either ([figure 2C](#)).

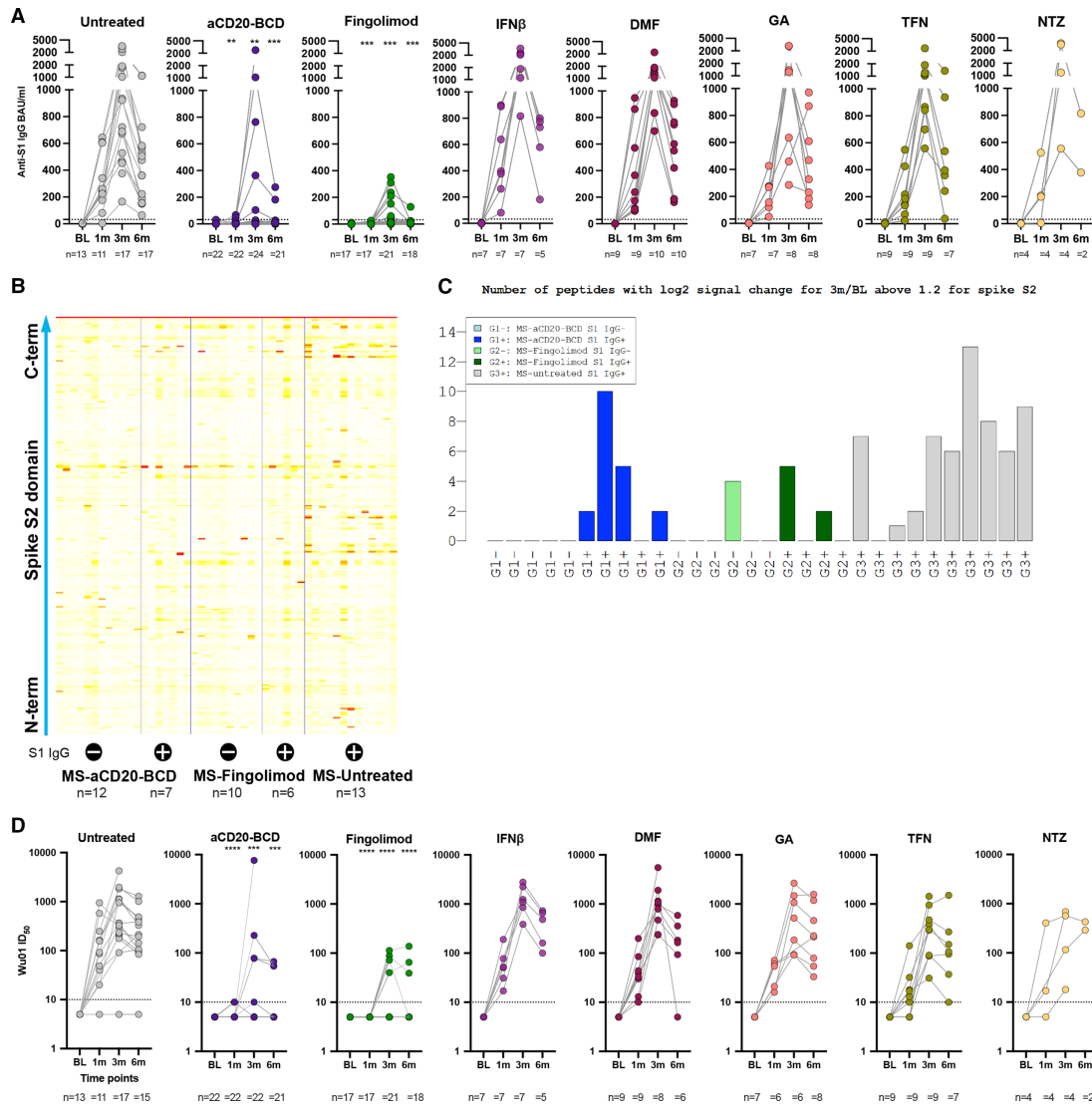
To further investigate humoral features of the mRNA vaccine-induced immune response, we examined serum spike neutralisation capacities using a pseudovirus neutralisation assay of the Wu01 spike protein, which is the vaccine strain ([figure 2D](#)). Overall, anti-S1 IgG levels correlated positively with the serum ability to neutralise Wu01 spike at 3 months ([figure 2A,D](#); online supplemental figure 1). The untreated MS cohort showed the highest serum spike neutralising capacity with a geometric mean serum ID<sub>50</sub> titre of 382 at 3 months post primary vaccination. IFN $\beta$ , DMF, GA, TFN and NTZ treatment did not affect development of serum neutralising activity at 3 months. Treatment with

**Table 1** Clinical cohort characteristics

	n	Female sex n (%)	Mean age in years (range)	Mean disease duration since manifestation in years $\pm$ SD (range)	Mean treatment duration in months $\pm$ SD (range)
Untreated	21	12 (57)	51 (28–68)	20 $\pm$ 8 (3–36)	NA
aCD20-BCD	36	23 (64)	42 (28–58)	15 $\pm$ 9 (1–33)	26 $\pm$ 12 (2–51)
Fingolimod	31	24 (77)	45 (21–68)	16 $\pm$ 6 (7–33)	87 $\pm$ 50 (9–167)
IFN $\beta$	7	7 (100)	42 (34–58)	11 $\pm$ 6 (3–20)	102 $\pm$ 44 (20–180)
DMF	10	8 (80)	45 (33–55)	15 $\pm$ 9 (1–29)	90 $\pm$ 28 (12–155)
GA	8	6 (75)	47 (34–61)	13 $\pm$ 8 (1–26)	99 $\pm$ 32 (15–144)
TFN	9	7 (78)	46 (31–55)	11 $\pm$ 7 (1–20)	81 $\pm$ 50 (14–188)
NTZ	4	2 (50)	45 (31–56)	13 $\pm$ 12 (2–26)	55 $\pm$ 21 (13–70)

DMF, dimethyl fumarate; GA, glatiramer acetate; IFN $\beta$ , Interferon- $\beta$ ; n, number; NA, not applicable; NTZ, natalizumab; TFN, teriflunomide.



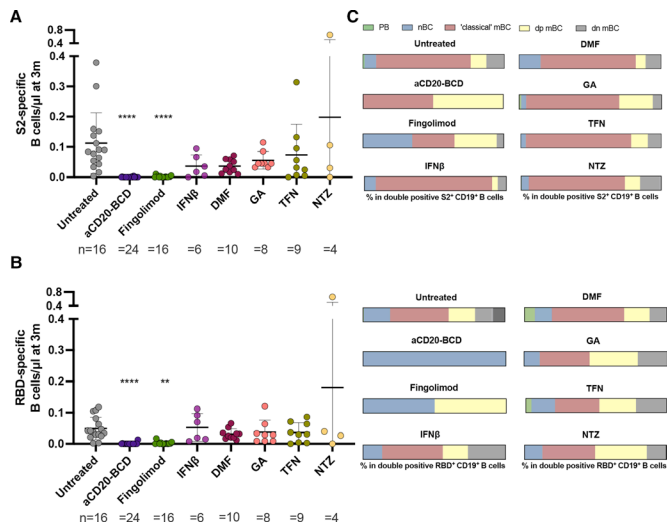


**Figure 2** Decreased humoral responses after SARS-CoV-2 mRNA vaccination in aCD20-BCD-treated and fingolimod-treated patients. (A, D) Anti-S1 IgG response (A) and Wu01 spike neutralising capacity (D) at BL and 1 month, 3 months and 6 months post primary vaccination per treatment group. Positivity thresholds: >31 binding antibody units (BAU)/mL for anti-S1 IgG. >10 ID<sub>50</sub> for Wu01 spike neutralisation. Serum ID<sub>50</sub> values less than the lowest serum dilution tested (1:10) were assigned a value of 5 for plotting the graph and for statistical analysis. Each dot represents the determined value for a patient. The number of patients per time point for each respective group is provided below each plot. Kruskal-Wallis test followed by Dunn's multiple comparisons test were performed to test treatment groups in comparison to untreated patients at the respective time points. Significance levels indicate differences between treatment groups and the untreated cohort and are reported as: \*\*p≤0.01, \*\*\*p≤0.001, \*\*\*\*p≤0.0001. Non-significant results were not reported. (B) Peptide array results from SARS-CoV-2 S2 subunit peptides from sera from subcohorts of the indicated MS treatment groups, respectively, with (+) or without (–) anti-S1 IgG antibodies. (C) Number of peptides with log<sub>2</sub>-fold signal change for 3 m/BL >1.2 for all S2 peptides depicted according to subcohorts of the indicated treatment group with (+) or without (–) anti-S1 IgG antibodies. BL, baseline; DMF, dimethyl fumarate; GA, glatiramer acetate; IFNβ, interferon-β; m, month/s; MS, multiple sclerosis; TFN, teriflunomide; NTZ, natalizumab.

aCD20-BCD therapies and fingolimod reduced the geometric mean serum neutralising titres at 3 months by 35-fold and 48-fold, respectively, compared with untreated patients with MS. In stark contrast to all other groups and consistent with anti-S1 IgG production, none of the aCD20-BCD-treated or fingolimod-treated patients showed neutralising serum capacity already after the first vaccination (figure 2D). Notably, while 7 of 21 (33%) fingolimod-treated patients mounted positive anti-S1 IgG levels after secondary vaccination (at 3 m), only 4 of 22 (18%) showed any detectable neutralising activity with an ID<sub>50</sub> >10 at this 3 months time point. No such discrepancy was found for aCD20-BCD.

### Impaired B cell responses after SARS-CoV-2 mRNA vaccination in aCD20-BCD-treated and fingolimod-treated patients with MS

To define the magnitude of the RBD-specific and S2-specific B cell response in our MS patient cohorts post vaccination, we used direct staining of B cells with fluorescently labelled antigens and flow cytometry. Consistent with the serological response, only a fraction of patients on aCD20-BCD therapies and fingolimod exhibited circulating RBD- (aCD20-BCD 7%, fingolimod 50%) and S2-specific (aCD20-BCD 14%, fingolimod 50%) B cells after the secondary vaccination (at 3 months) and only in low numbers (figure 3A,B). For the other treatment groups,



**Figure 3** Decreased and naïve B cell-shifted RBD-specific and S2-specific B cell responses in aCD20-BCD-treated and fingolimod-treated patients with MS. (A, B) Absolute numbers of RBD-specific (A) and S2-specific (B) CD19<sup>+</sup> B cells at 3 months post primary vaccination for each treatment group. Mean and SD are indicated. Each dot represents the determined value for a patient. The number of patients for each respective group is provided below each plot. Kruskal-Wallis test followed by Dunn's multiple comparisons test were performed to test treatment groups in comparison to untreated patients. Significance levels indicate differences between treatment groups and the untreated cohort and are reported as: \*\* $p \leq 0.01$ , \*\*\* $p \leq 0.0001$ . Non-significant results were not reported. (C) Frequencies of CD19<sup>+</sup>CD20<sup>low</sup>/CD27<sup>++</sup>CD38<sup>++</sup> plasma blasts (PB), CD19<sup>+</sup>CD20<sup>+</sup>CD27<sup>-</sup>IgD<sup>+</sup> naïve B cells (nBC), CD19<sup>+</sup>CD20<sup>+</sup>CD27<sup>+</sup>IgD<sup>-</sup> memory B cells (mBC), CD19<sup>+</sup>CD20<sup>+</sup>CD27<sup>+</sup>IgD<sup>+</sup> MBC (dp MBC) and CD19<sup>+</sup>CD20<sup>+</sup>CD27<sup>-</sup>IgD<sup>-</sup> B cells (dn MBC) in RBD-specific and S2-specific CD19<sup>+</sup> B cells per treatment group. B cell gating is shown in online supplemental figure 4. RBD, receptor binding domain; DMF, dimethyl fumarate; GA, glatiramer acetate; IFNβ, interferon-β; m, month/s; MS, multiple sclerosis; TFN, teriflunomide; NTZ, natalizumab.

no significant difference in RBD-specific and S2-specific B cell responses was observed compared with untreated patients with MS, all of whom had detectable circulating spike-specific B cells. B cell compartmentalisation was similar in untreated patients and patients on DMTs except, again, for aCD20-BCD therapies and fingolimod. Most antigen-specific B cells were memory B cells regardless of S2- or RBD-specificity but the memory compartment was larger for S2-specific B cells (figure 3C).<sup>27–30</sup> For aCD20-BCD-treated patients with MS, none of the few RBD-specific B cells (detectable in only two patients) were memory B cells. For fingolimod-treated patients, we observed a shift towards a naïve B cell phenotype of both RBD-specific and S2-specific B cells (detectable in only eight patients) compared with the other patients with MS.

### Lack of vaccine-induced spike-reactive CD4<sup>+</sup> T cell responses in fingolimod-treated patients with MS

Robust T cell responses are associated with improved survival in COVID-19 patients with haematological malignancies including patients receiving BCD therapies.<sup>31 32</sup> Given the poor humoral responses in patients with MS treated with aCD20-BCD or fingolimod, we next examined CD4<sup>+</sup> T cell S-I and S-II peptide pool reactivity following primary and secondary SARS-CoV-2 mRNA vaccination (figure 4A,B). All patients with MS without treatment and on DMTs except fingolimod demonstrated a strong increase

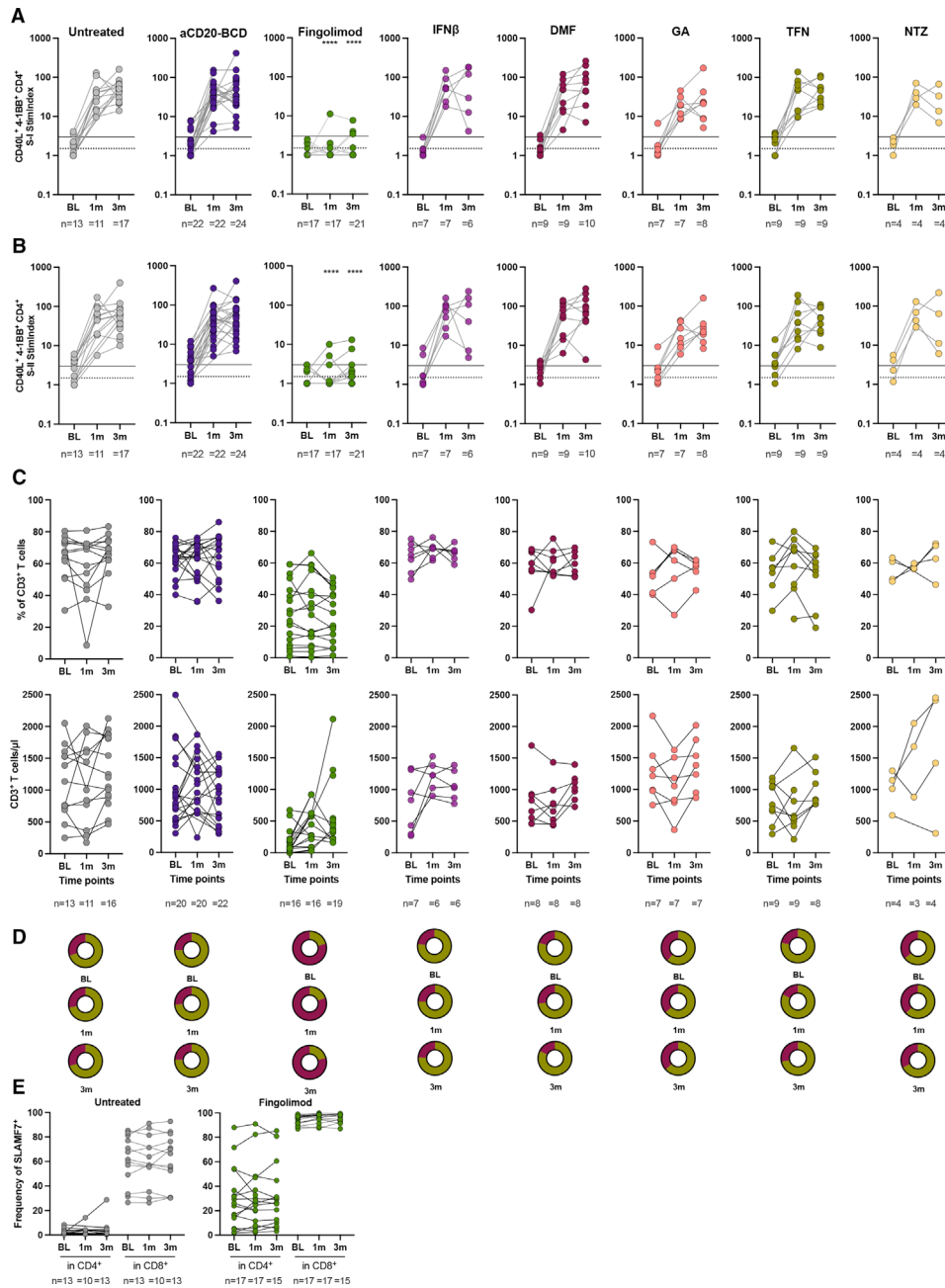
in S-I- and S-II-reactive CD4<sup>+</sup> T cells after primary vaccination. In contrast, fingolimod-treated patients showed significantly reduced or no S-I- and S-II-reactive T cell responses. Only 1 of 17 (6%) fingolimod-treated patients had a weak CD4<sup>+</sup> T cell response to the S-I peptide pool after the primary vaccination and 3 of 17 (18%) to S-II. The secondary vaccination triggered low responses in 3 of 21 (14%) fingolimod-treated patients to S-I and S-II. As fingolimod treatment affects the composition of circulating T cell subsets,<sup>33 34</sup> we assumed an impact on the detected vaccination responses. Therefore, we next examined the effect of fingolimod on the T cell populations of our cohorts. As expected, fingolimod-treated patients showed significantly fewer circulating CD3<sup>+</sup> T cells and a CD4/CD8 subset shift in favour of CD8<sup>+</sup> T cells (figure 4C,D). In addition, we observed significantly more signalling lymphocyte activation molecule family member seven (SLAMF7) positive cytotoxic CD4<sup>+</sup> and CD8<sup>+</sup> T cells<sup>35</sup> in these patients (figure 4E) and very few circulating CD4<sup>+</sup> helper T cells. The distribution of circulating T cell subsets before vaccination remained largely unchanged post vaccination in all groups although the absolute number of CD3<sup>+</sup> T cells varied (figure 4C,D). Overall, spike-reactive T cell responses were severely impaired in patients with MS treated with fingolimod, which is in stark contrast to untreated patients and patients on other DMTs including aCD20-BCD.

### Humoral and cellular immune response coordination in fingolimod-treated patients with MS

Next, we performed correlation analyses to gain insight into which factors influencing the individual immunological health status may be associated with the partial or complete absence of vaccine-induced immune responses in aCD20-BCD- and fingolimod-treated patients with MS. These analyses revealed negative correlation trends between antibody induction and disease duration, and positive correlation trends between antibody induction and the amounts of B cells and T cells before vaccination (figure 5A–C). As shown previously, we found that anti-S1 IgG levels post vaccination in patients receiving aCD20-BCD therapies showed a significant positive correlation with the frequency and absolute number of B cells before vaccination (figure 5B, online supplemental figure 2, online supplemental table 1). In fingolimod-treated patients, B and T cell counts at baseline showed a significant positive correlation with the presence of S2-specific B cells at 1 month post primary vaccination but, importantly, not with anti-S1 IgG induction or neutralising capacity. Instead, we found a strong negative correlation between treatment duration and (neutralising) antibody induction in these patients (figure 5C,D) with a cut-off for IgG antibody induction at 29 months.

### Humoral and cellular immune responses in risk treatment groups after booster vaccinations

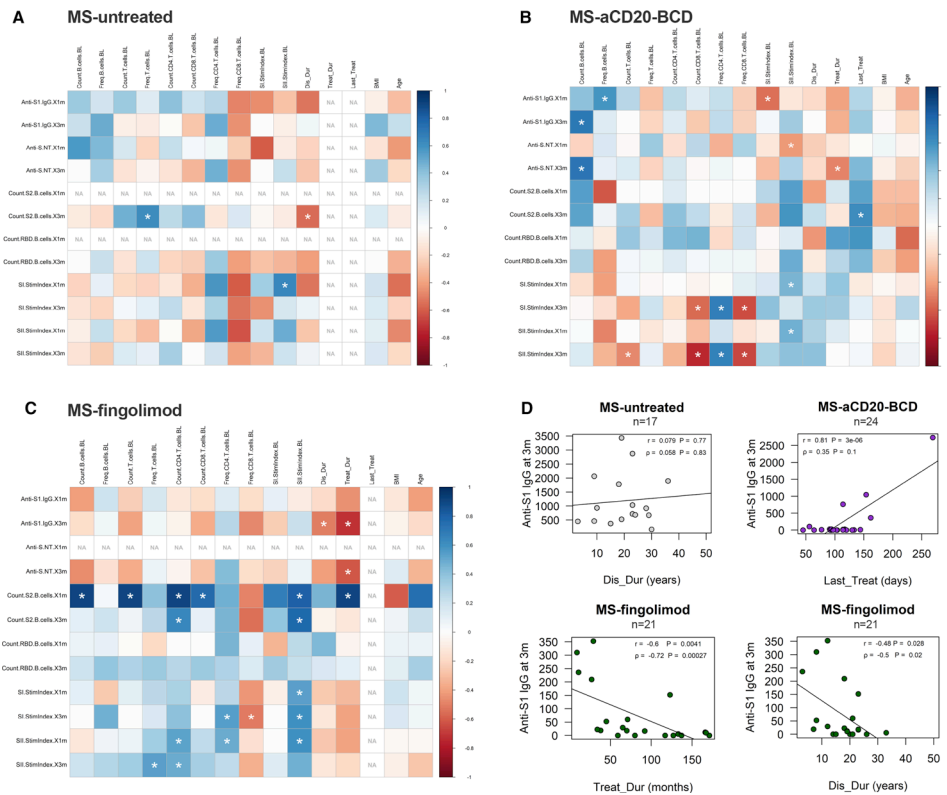
Considering the significantly reduced humoral response in aCD20-BCD-treated patients and the lack of both humoral and cellular responses in fingolimod-treated individuals, we further investigated the effect of SARS-CoV-2 mRNA booster vaccinations in these two treatment groups and again compared with the untreated cohort. Expectedly, untreated patients with MS showed an increase in anti-S1 IgG, neutralising capacity, RBD- and S2-specific B cells and spike-specific T cells after the first booster (figure 6A–D). However, in aCD20-BCD- and fingolimod-treated patients, the humoral response remained significantly reduced (figure 6A,B). The seroconversion rate (of those not previously seroconverted) was 19% (5/26) for aCD20-BCD and



**Figure 4** Impaired S-I- and S-II-reactive CD4<sup>+</sup> T cell responses in fingolimod-treated patients with MS. (A, B) S-I-specific (A) and S-II-specific (B) CD4<sup>+</sup> T cell reactivity at BL, 1 month and 3 months post first vaccination per treatment group. Lines indicate stimulation indices (StimIndex) of 1.5 (positive with uncertainty; dotted line) and 3.0 (definitely positive; solid line). T cell gating is shown in online supplemental figure 5. Each dot represents the determined value for a patient. The numbers of patients per time point for each respective group is provided below each plot. Kruskal-Wallis test followed by Dunn's multiple comparisons test performed to test treatment groups in comparison to untreated patients at the respective time points. Significance levels indicate differences between treatment groups and the untreated cohort and are reported as: \*\*\*p≤0.0001. Non-significant results were not reported. (C) Frequencies and absolute CD3<sup>+</sup> T cell number at BL, 1 month and 3 months after primary vaccination per treatment group. (D) Frequencies of CD4<sup>+</sup> (violet) and CD8<sup>+</sup> (green) cells in CD3<sup>+</sup> T cells at BL, 1 month and 3 months post first vaccination per treatment group. (E) Frequencies of SLAMF7<sup>+</sup> cells in CD4<sup>+</sup> or CD8<sup>+</sup> T cells, respectively, at BL, 1 month and 3 months for patients treated with fingolimod compared with untreated patients. SLAMF7<sup>+</sup>, signalling lymphocyte activation molecule family member 7 positive. BL, baseline; DMF, dimethyl fumarate; GA, glatiramer acetate; IFNβ, interferon-β; m, month/s; MS, multiple sclerosis; TFN, teriflunomide; NTZ, natalizumab.

36% (9/25) for fingolimod patients. Overall, only 35% (11/31) of aCD20-BCD- and 45% (13/29) of fingolimod-treated patients showed positive anti-S1 IgG levels after the third mRNA vaccination (figure 6A). In patients who had not previously been found to have neutralising serum capacity, booster vaccination induced neutralising capacity in only 29% (8/28) of patients in

the aCD20-BCD cohort and in 32% (8/25) of the fingolimod group (overall 35% (11/31) aCD20-BCD; 41% (12/29) fingolimod; figure 6B). Similar to the first two vaccinations, a discrepancy between anti-S1 IgG and neutralising activity was evident in fingolimod patients. Consistently, circulating RBD-specific and S2-specific B cells were not detectable in the majority of patients



**Figure 5** SARS-CoV-2 mRNA vaccination outcome to immune constitution correlation. (A–C) Multiple correlation analyses for untreated patients with MS (A), MS-aCD20-BCD patients (B), and MS-fingolimod (C). The y-axis represents vaccination outcome variables, the x-axis potential correlation variables. The colour of the result depicts the magnitude and direction of the respective correlation as indicated in the key on the right side. Spearman correlations with a p value below 0.05 were considered significant and indicated by white asterisks. Correlations with less than five measured value pairs were excluded due to low robustness and indicated by 'NA'. (D) Simple linear correlation for anti-S1-IgG at 3 months and disease duration (Dis\_Dur; MS-untreated), days since last treatment administration (Last\_Treat; MS-aCD20-BCD), disease duration and overall treatment duration (Treat\_Dur; MS-fingolimod; from upper left clockwise). MS, multiple sclerosis.

of these two treatment groups or remained on a very low level (detectable in 3/27 (RBD, S2) in aCD20-BCD and 13/28 (RBD, S2) in fingolimod; [figure 6C](#)). All untreated and aCD20-BCD-treated patients showed a persistent T cell response to S-I- and S-II after first booster vaccination. By contrast, fingolimod-treated patients exhibited a significantly lower spike-specific T cell response: only 26% (7/27) of fingolimod-treated patients had detectable S-I-reactive CD4<sup>+</sup> T cells after the third vaccination (pre boost 1/26) and 9/27 had detectable S-II-reactive CD4<sup>+</sup> T cell responses (pre boost 3/26; [figure 6D](#)). Importantly, two aCD20-BCD and eight fingolimod patients received a fourth COVID-19 vaccination with none of the aCD20-BCD group and two fingolimod patients previously positive for anti-S1 IgG. This second booster vaccination did not induce seroconversion in any of the previously negative patients in these two treatment groups. Interestingly, there was no longer a correlation between B cell counts pre boost and anti-S1 IgG post boost for the aCD20-BCD-treated cohort (online supplemental figure 3a; online supplemental table 1). This is in contrast to the primary SARS-CoV-2 mRNA vaccination regimen, in which we and others found a correlation between induced antibody titers and cell counts.<sup>15 36</sup> In fingolimod patients, treatment duration continued to correlate with the lack of a humoral response to booster vaccination (online supplemental figure 3b).

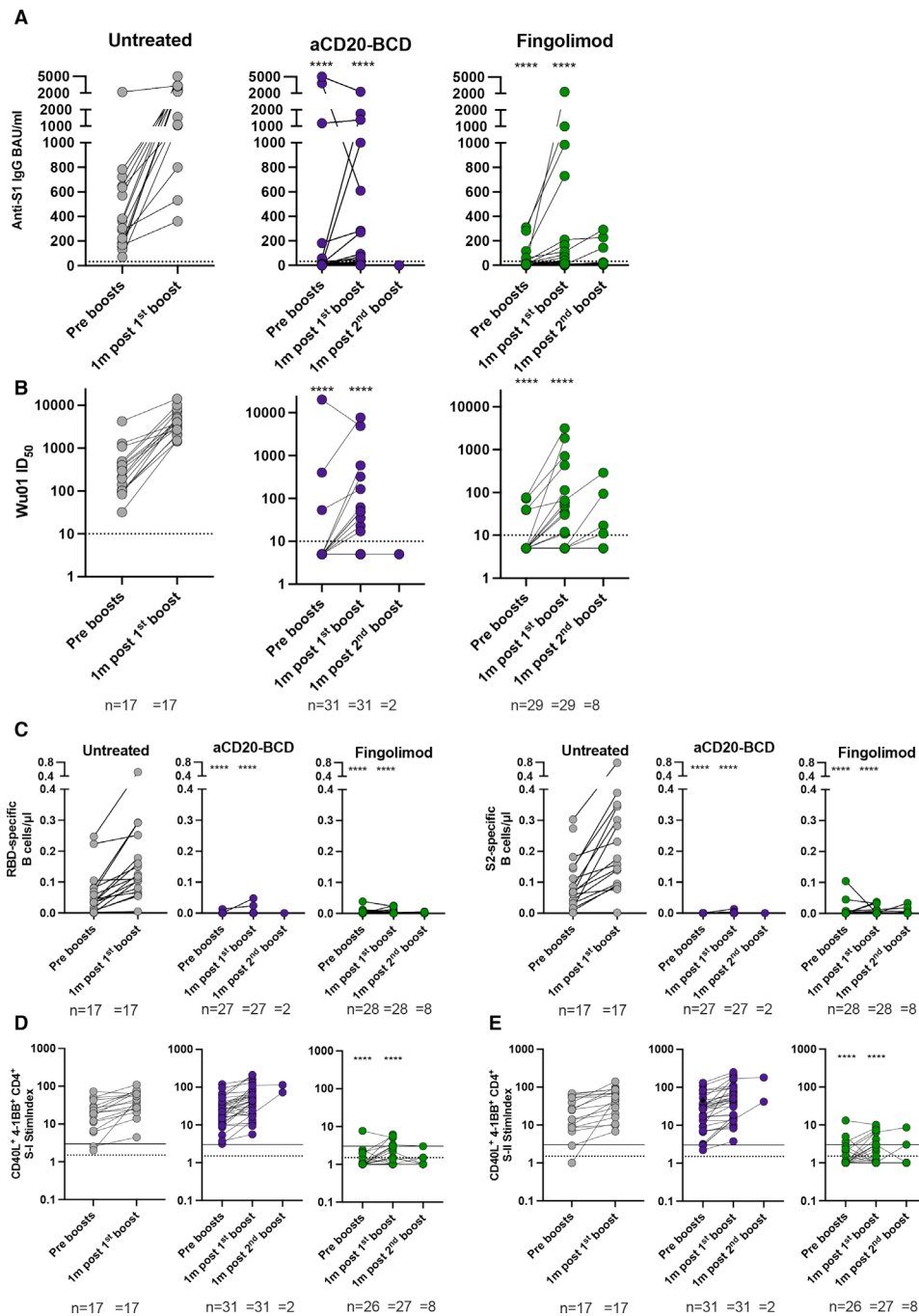
## DISCUSSION

We here provide a detailed analysis of primary, secondary and booster immune responses to SARS-CoV-2 mRNA vaccination

in patients with MS treated with the S1P receptor functional antagonist fingolimod or aCD20-BCD therapies compared with other standard immunomodulatory treatment regimens and untreated patients with MS. SARS-CoV-2 vaccines mitigate the risk of infection and symptom severity of COVID-19 by inducing specific T cell and B cell memory<sup>37 38</sup> but how B and T cells individually act to do so is so far unclear. The higher incidence of severe COVID-19 disease as well as the increased risk of infection despite vaccination in aCD20-BCD-treated patients with MS suggests that a lack of specific antibodies and B cells can severely impair COVID-19 immunity.<sup>6 9 39 40</sup> Interestingly, antibody responses to SARS-CoV-2 appear to be relatively short-lived even in healthy individuals without known immunodeficiency, thus shifting the focus to B and T cellular immune memory to provide long-term protection from severe disease. T cell responses to SARS-CoV-2 vaccination have been shown to be stable and to play a central role in protection, enhancement of the antibody response and viral clearance.<sup>20 41</sup> Consistently, reduced T cell responses against SARS-CoV-2 have also been associated with severe disease.<sup>42</sup> In patients undergoing aCD20-BCD therapy, who consequently lack B cells and are unable to mount specific humoral immune responses, T cell responses are promising indicators of protective immune responses by providing B cell-independent protection from severe COVID-19.

Our findings, in synopsis with existing literature on vaccination against other diseases, demonstrate that untreated patients with MS and patients on DMT, except for aCD20-BCD therapies and fingolimod, mounted humoral immune responses to





**Figure 6** Humoral and cellular responses to booster vaccinations in risk treatment groups. (A, B) Anti-S1 IgG response (A) and Wu01 spike neutralising capacity (B). (C) Absolute numbers of RBD-specific and S2-specific CD19<sup>+</sup> B cells. (D) S-I-specific and S-II-specific CD4<sup>+</sup> T cell reactivity. Lines indicate stimulation indices (StimIndex) of 1.5 (positive with uncertainty; dotted line) and 3.0 (definitely positive; solid line). For T cell gating see online supplemental figure 5. All data are shown for pre booster and 1 month after each booster (1 month post first boost; 1 month post second boost) for untreated, aCD20-BCD-treated and fingolimod-treated patients. Each dot represents the determined value for a patient. The number of patients per time point for each respective group is provided below each plot. Kruskal-Wallis test followed by Dunn's multiple comparisons test were performed to test treatment groups in comparison to untreated patients at the respective time points. Significance levels indicate differences between the respective treatment group and the untreated cohort and are reported as: \*\*\*\* $p \leq 0.0001$ . Non-significant results were not reported.

primary and secondary SARS-CoV-2 vaccination on a comparable level to that of normal healthy donors.<sup>15 20 43–48</sup> Moreover, our results from patients on aCD20-BCD therapy receiving infusions of 600 mg ocrelizumab or 1000 mg rituximab in 6-month intervals corroborate previous reports showing that anti-S1 IgG levels after primary vaccination correlate with the absolute peripheral B cell counts and also, but to a lesser

extent, with the duration since the last aCD20-BCD infusion before vaccination, and finally that aCD20-BCD has no effect on the principal ability to elicit SARS-CoV-2 spike-specific T-cell responses.<sup>15 49 50</sup> In addition, we demonstrate that more than half of aCD20-BCD-treated patients remained without humoral response after booster vaccination, this time without significant correlation to peripheral B cell counts prior to booster, which

is in line with findings from König *et al.*<sup>51</sup> However, aCD20-BCD-treated patients investigated here showed very low B cell counts (2.1 B cells/ $\mu$ L on average excluding one outlier of 378 cells/ $\mu$ L who mounted a regular humoral response), which could bias correlation calculations due to some uncertainty in these small numbers. Another possible explanation for the lack of the association of B cell numbers and humoral response to booster vaccination could be aCD20-BCD reinfusions administered too soon after vaccination.

In contrast to all other treatment groups, the majority of fingolimod-treated patients with MS developed neither humoral nor CD4<sup>+</sup> T cellular immune responses to SARS-CoV-2 vaccinations. Only some of the fingolimod-treated patients with a humoral response also showed neutralising serum capacity, possibly due to a lack of antibody maturation as a consequence of the absence of a spike-specific CD4<sup>+</sup> T cell response and/or lack of B:T cell interaction within the secondary lymphoid organs (SLO). In line with low or no humoral responses, fingolimod-treated patients demonstrated absent or drastically reduced numbers of circulating RBD-specific and S2-specific B cells and if present biased in their composition with a higher proportion of naïve B cells. Despite an increase of anti-S1 IgG positive individuals in the fingolimod cohort by factor 1.36 after the first booster vaccination, most of these patients still lacked both humoral and cellular responses. Notably, more individuals showed a humoral response to booster vaccination than a measurable response at the cellular level. In regard to the clinical impact of vaccinations in this treatment group, this is consistent with a large study that reports an increased risk of SARS-CoV-2 infection despite vaccination in patients treated with S1P antagonists.<sup>40</sup> However, data on COVID-19 severity in this medication group (before vaccination) are ambiguous.<sup>7,52</sup> Fingolimod is a compound molecule which sequesters lymphocytes in SLO and inflammatory tissues and thus hinders lymphocyte recirculation into the periphery. It also facilitates an increased T cell responsiveness to ligands of the CCR7 receptor.<sup>53</sup> T cells utilise CCR7 to home and migrate within the T cell zone and B cells express that receptor to position at the T:B border. To successfully mount a functional immune response, T and B cells must migrate from niche to niche and zone to zone in a rapid and highly regulated manner,<sup>54</sup> a process that is abolished by fingolimod. Earlier studies also demonstrate effects of fingolimod on the mobility of dendritic cells,<sup>55</sup> which taken all together may explain the lack of immune response in these patients and underscores the importance of immune cell migration in the coordinated nature of functional immune responses. Interestingly, observations in mice showed that fingolimod leads to sequestration of T cells in SLO but not that fingolimod completely abrogates specific immune responses.<sup>56</sup> However, in these experiments mice were treated with fingolimod only over a short period of time, which may explain this discrepancy to our findings in humans.

While in aCD20-BCD-treated patients, efficacy of the primary vaccination regimen correlated with the time elapsed since last treatment administration and thus with the absolute number of B cells at the time of vaccination, in fingolimod-treated patients, vaccine-induced humoral responses were negatively correlated with overall treatment duration, which was also true for the third vaccination. A possible explanation for this could be that the antagonistic effect of fingolimod on lymphocytic S1P receptors is cumulative over time requiring a certain number of months to affect all peripheral lymphocytes. There may be a critical lower limit of (tissue-resident) peripheral lymphocytes to mount adaptive immune responses and this limit may have been approached at approximately 29 months. Fingolimod treatment suspension is

often not feasible as reduced immunomodulation increases the risk of severe MS rebounds. Thus, there are currently very few options to improve the preconditions for successful vaccination outcomes in these patients, which may pose a high health risk to them.

Limitations to this study are the small sample sizes for some of the treatment groups and lacking data on lymphocyte subpopulations and homing receptors for further mechanistic insights into decreased or absent immune responses in aCD20-BCD-treated or fingolimod-treated patients. Future studies should further focus on the clinical impact (ie, risk of infection and disease severity) of lacking vaccination responses.

In summary, in striking contrast to all other DMTs, the majority of patients treated with fingolimod appear to be unable to mount specific B and T cell responses to SARS-CoV-2 vaccinations. Booster vaccinations particularly increase the proportion of fingolimod-treated patients showing a humoral immune response. It, however, remains unclear why some fingolimod-treated patients mounted (low) humoral and cellular immune responses after the second and/or third vaccination while most others did not. Accordingly, fingolimod-treated patients may require frequent immune monitoring and further protective measures such as patient education, which is becoming increasingly important in clinical practice as three new S1P receptor antagonists (siponimod, ozanimod, ponesimod) have recently been approved for use in different types of MS and thus in a growing number of patients.

#### Author affiliations

<sup>1</sup>Regenerative Immunology and Aging, BIH Immunomics, Charité - Universitätsmedizin Berlin, corporate member of Freie Universität Berlin, Humboldt-Universität zu Berlin, and Berlin Institute of Health, Berlin, Germany

<sup>2</sup>NeuroCure Clinical Research Center, Charité - Universitätsmedizin Berlin, corporate member of Freie Universität Berlin, Humboldt-Universität zu Berlin, and Berlin Institute of Health, Berlin, Germany

<sup>3</sup>Department of Neurology with Experimental Neurology, Charité - Universitätsmedizin Berlin, corporate member of Freie Universität Berlin, Humboldt-Universität zu Berlin, and Berlin Institute of Health, Berlin, Germany

<sup>4</sup>Si-M / "Der Simulierte Mensch" a science framework of Technische Universität Berlin and Charité - Universitätsmedizin Berlin, Berlin, Germany

<sup>5</sup>Laboratory of Experimental Immunology, Institute of Virology, Faculty of Medicine and University Hospital Cologne, University of Cologne, Cologne, Germany

<sup>6</sup>Department of Neuropsychiatry, corporate member of Freie Universität Berlin, Humboldt-Universität zu Berlin, and Berlin Institute of Health, Berlin, Germany

<sup>7</sup>Experimental and Clinical Research Center, a cooperation between the Max Delbrück Center for Molecular Medicine in the Helmholtz Association and Charité - Universitätsmedizin Berlin, Berlin, Germany

<sup>8</sup>Experimental and Clinical Research Center, Charité - Universitätsmedizin Berlin, corporate member of Freie Universität Berlin and Humboldt-Universität zu Berlin, Berlin, Germany

<sup>9</sup>Max Delbrück Center for Molecular Medicine in the Helmholtz Association (MDC), Berlin, Germany

<sup>10</sup>Robert Koch Institute, Berlin, Germany

<sup>11</sup>Department of Cancer and Immunology, Max Delbrück Center for Molecular Medicine in the Helmholtz Association, Berlin, Germany

<sup>12</sup>Berlin Institute of Health (BIH), Charité - Universitätsmedizin Berlin, corporate member of Freie Universität Berlin and Humboldt-Universität zu Berlin, Berlin, Germany

<sup>13</sup>Institute for Medical Immunology, Charité - Universitätsmedizin Berlin, corporate member of Freie Universität Berlin, Humboldt-Universität zu Berlin, and Berlin Institute of Health, Berlin, Germany

<sup>14</sup>JPT Peptide Technologies, Berlin, Germany

<sup>15</sup>Department of Infectious Diseases and Respiratory Medicine, Charité - Universitätsmedizin Berlin, corporate member of Freie Universität Berlin, Humboldt-Universität zu Berlin, and Berlin Institute of Health, Berlin, Germany

<sup>16</sup>German Center for Infection Research (DZIF), Partner site Bonn-Cologne, Cologne, Germany

<sup>17</sup>Center for Molecular Medicine Cologne (CMMC), University of Cologne, Cologne, Germany

<sup>18</sup>Max Planck Institute for Molecular Genetics, Berlin, Germany

**Acknowledgements** We thank the CCC Study Group E. Baysal, T. Panne, F. Legler, M. Girod, B. Bohnen, T. Nguyen, J. Schmitz, R. Klemencic, L. Hintze, N. Avinc, P. Resch, A. Maraj, A. Farghaly, P. Schulz, N. Matuschewski, K. Gutwenger, I. Katsianas

and C. Dedieu for their contributions to donor recruitment, sample processing and measurement. Furthermore, we thank A. Hetey for support with maintaining the REDCap database and N. Brindle for critical reading of the manuscript.

**Contributors** Conceptualisation: LM-A, FP, JB-S, AT and CG-T. Data Analysis: LM-A, JB, FF, KV, KJ, MM, AM, AB, PH, UR and CG-T. Funding acquisition: AT. Resources: LM-A, LL, LH, MD, BK, CB, AN, KdlR, CR, BS, LES and FK. Writing: LM-A, FP, JB-S, AT, CG-T. LM-A and CG-T have verified the manuscript's data. CG-T acts a guarantor.

**Funding** This work was supported by the Federal Ministry of Health through a resolution of the German Bundestag (CCC 2.0 (V-2020.12/1503\_68403 / 2021-2022) and CCP (ZM11-2521KDG103)). Parts of the work were funded by the Deutsche Forschungsgemeinschaft (DFG, German Research Foundation) as part of the clinical research unit (CRU339): Food allergy and tolerance (FOOD@) – 428091001 (JB); 428094573 (FF).

**Competing interests** PH and UR are employed by JPT Peptide Technologies.

**Patient consent for publication** Consent obtained directly from patient(s)

**Ethics approval** This study involves human participants and was approved by the ethics committee of the Charité - Universitätsmedizin Berlin (reference number: EA/152/20). Participants gave informed consent to participate in the study before taking part.

**Provenance and peer review** Not commissioned; externally peer reviewed.

**Data availability statement** Data are available on reasonable request. The data that support the findings of this study are available from the corresponding author on reasonable request.

**Supplemental material** This content has been supplied by the author(s). It has not been vetted by BMJ Publishing Group Limited (BMJ) and may not have been peer-reviewed. Any opinions or recommendations discussed are solely those of the author(s) and are not endorsed by BMJ. BMJ disclaims all liability and responsibility arising from any reliance placed on the content. Where the content includes any translated material, BMJ does not warrant the accuracy and reliability of the translations (including but not limited to local regulations, clinical guidelines, terminology, drug names and drug dosages), and is not responsible for any error and/or omissions arising from translation and adaptation or otherwise.

**Open access** This is an open access article distributed in accordance with the Creative Commons Attribution Non Commercial (CC BY-NC 4.0) license, which permits others to distribute, remix, adapt, build upon this work non-commercially, and license their derivative works on different terms, provided the original work is properly cited, appropriate credit is given, any changes made indicated, and the use is non-commercial. See: <http://creativecommons.org/licenses/by-nc/4.0/>.

## ORCID iDs

Lil Meyer-Arndt <http://orcid.org/0000-0002-7909-020X>

Ulf Reimer <http://orcid.org/0000-0002-3375-6889>

Claudia Giesecke-Thiel <http://orcid.org/0000-0002-5927-7018>

## REFERENCES

- Goldman JD, Robinson PC, Uldrich TS, et al. COVID-19 in immunocompromised populations: implications for prognosis and repurposing of immunotherapies. *J Immunother Cancer* 2021;9:e002630.
- Neurath MF. COVID-19: biologic and immunosuppressive therapy in gastroenterology and hepatology. *Nat Rev Gastroenterol Hepatol* 2021;18:705–15.
- Zabalza A, Cárdenas-Robledo S, Tagliani P, et al. COVID-19 in multiple sclerosis patients: susceptibility, severity risk factors and serological response. *Eur J Neurol* 2021;28:3384–95.
- Barzegar M, Mimosayyeb O, Gajarzadeh M, et al. COVID-19 among patients with multiple sclerosis: a systematic review. *Neurol Neuroimmunol Neuroinflamm* 2021;8:e1001.
- Louapre C, Collongues N, Stankoff B, et al. Clinical characteristics and outcomes in patients with coronavirus disease 2019 and multiple sclerosis. *JAMA Neurol* 2020;77:1079–88.
- Sormani MP, De Rossi N, Schiavetti I, et al. Disease-Modifying therapies and coronavirus disease 2019 severity in multiple sclerosis. *Ann Neurol* 2021;89:780–9.
- Foerch C, Friedauer L, Bauer B, et al. Severe COVID-19 infection in a patient with multiple sclerosis treated with fingolimod. *Mult Scler Relat Disord* 2020;42:102180.
- Iyer RB, S R, M JN, et al. COVID-19 outcomes in persons with multiple sclerosis treated with rituximab. *Mult Scler Relat Disord* 2022;57:103371.
- Simpson-Yap S, De Brouwer E, Kalinck T, et al. Associations of disease-modifying therapies with COVID-19 severity in multiple sclerosis. *Neurology* 2021;97:e1870–85.
- Frenc RW, Klein NP, Kitchin N, et al. Safety, immunogenicity, and efficacy of the BNT162b2 Covid-19 vaccine in adolescents. *N Engl J Med* 2021;385:239–50.
- Baden LR, El Sahly HM, Essink B, et al. Efficacy and safety of the mRNA-1273 SARS-CoV-2 vaccine. *N Engl J Med* 2021;384:403–16.
- Fujinami RS, von Herrath MG, Christen U, et al. Molecular mimicry, bystander activation, or viral persistence: infections and autoimmune disease. *Clin Microbiol Rev* 2006;19:80–94.
- Subesinghe S, Bechman K, Rutherford AI, et al. A systematic review and Metaanalysis of antirheumatic drugs and vaccine immunogenicity in rheumatoid arthritis. *J Rheumatol* 2018;45:733–44.
- Shirai S, Hara M, Sakata Y, et al. Immunogenicity of quadrivalent influenza vaccine for patients with inflammatory bowel disease undergoing immunosuppressive therapy. *Inflamm Bowel Dis* 2018;24:1082–91.
- Apostolidis SA, Kakara M, Painter MM, et al. Cellular and humoral immune responses following SARS-CoV-2 mRNA vaccination in patients with multiple sclerosis on anti-CD20 therapy. *Nat Med* 2021;27:1990–2001.
- Habek M, Željko C, Savić Mlakar A, et al. Humoral and cellular immunity in convalescent and vaccinated COVID-19 people with multiple sclerosis: effects of disease modifying therapies. *Mult Scler Relat Disord* 2022;59:103682.
- Bajwa HM, Novak F, Nilsson AC, et al. Persistently reduced humoral and sustained cellular immune response from first to third SARS-CoV-2 mRNA vaccination in anti-CD20-treated multiple sclerosis patients. *Mult Scler Relat Disord* 2022;60:103729.
- Kister I, Patskovsky Y, Curtin R, et al. Cellular and humoral immunity to SARS-CoV-2 infection in multiple sclerosis patients on Ocrelizumab and other disease-modifying therapies: a multi-ethnic observational study. *Ann Neurol* 2022;91:782–95.
- Zabalza A, Arrambide G, Otero-Romero S, et al. Is humoral and cellular response to SARS-CoV-2 vaccine modified by Dmt in patients with multiple sclerosis and other autoimmune diseases? *Mult Scler* 2022;28:1138–45.
- Loyal L, Braun J, Henze L, et al. Cross-reactive CD4<sup>+</sup> T cells enhance SARS-CoV-2 immune responses upon infection and vaccination. *Science* 2021;374:eabh1823.
- Wajnberg A, Amanat F, Firpo A, et al. Robust neutralizing antibodies to SARS-CoV-2 infection persist for months. *Science* 2020;370:1227–30.
- Braun J, Loyal L, Frensch M, et al. SARS-CoV-2-reactive T cells in healthy donors and patients with COVID-19. *Nature* 2020;587:270–4.
- Huo J, Le Bas A, Ruza RR, et al. Neutralizing nanobodies bind SARS-CoV-2 spike RBD and block interaction with ACE2. *Nat Struct Mol Biol* 2020;27:846–54.
- Lan J, Ge J, Yu J, et al. Structure of the SARS-CoV-2 spike receptor-binding domain bound to the ACE2 receptor. *Nature* 2020;581:215–20.
- Michel J, Neumann M, Krause E, et al. Resource-efficient internally controlled in-house real-time PCR detection of SARS-CoV-2. *Viral J* 2021;18:1–11.
- Vanshilla K, Di Cristanziano V, Kleipass F, et al. Kinetics and correlates of the neutralizing antibody response to SARS-CoV-2 infection in humans. *Cell Host Microbe* 2021;29:917–29.
- Song G, He W-ting, Callaghan S, et al. Cross-Reactive serum and memory B-cell responses to spike protein in SARS-CoV-2 and endemic coronavirus infection. *Nat Commun* 2021;12:1–10.
- Shrock E, Fujimura E, Kula T, et al. Viral epitope profiling of COVID-19 patients reveals cross-reactivity and correlates of severity. *Science* 2020;370:eabd4250.
- Brewer RC, Ramadoss NS, Lahey LJ, et al. BNT162b2 vaccine induces divergent B cell responses to SARS-CoV-2 S1 and S2. *Nat Immunol* 2022;23:33–9.
- Ng KW, Faulkner N, Cornish GH, et al. Preexisting and de novo humoral immunity to SARS-CoV-2 in humans. *Science* 2020;370:1339–43.
- Bange EM, Han NA, Wileyto P, et al. CD8<sup>+</sup> T cells contribute to survival in patients with COVID-19 and hematologic cancer. *Nat Med* 2021;27:1280–9.
- Wen X-song, Jiang D, Gao L, et al. Clinical characteristics and predictive value of lower CD4<sup>+</sup>T cell level in patients with moderate and severe COVID-19: a multicenter retrospective study. *BMC Infect Dis* 2021;21:1–10.
- Serpero LD, Filaci G, Parodi A, et al. Fingolimod modulates peripheral effector and regulatory T cells in MS patients. *J Neuroimmune Pharmacol* 2013;8:1106.
- Dominguez-Villar M, Raddassi K, Danielsen AC, et al. Fingolimod modulates T cell phenotype and regulatory T cell plasticity in vivo. *J Autoimmun* 2019;96:40.
- Loyal L, Warth S, Jürchott K, et al. SLAMF7 and IL-6R define distinct cytotoxic versus helper memory CD8<sup>+</sup> T cells. *Nat Commun* 2020;11:6357.
- Stefanski A-L, Rincon-Arevalo H, Schrezenmeier E, et al. B cell numbers predict humoral and cellular response upon SARS-CoV-2 vaccination among patients treated with rituximab. *Arthritis Rheumatol* 2022;74:934–47.
- Zollner A, Watschinger C, Rössler A, et al. B and T cell response to SARS-CoV-2 vaccination in health care professionals with and without previous COVID-19. *EBioMedicine* 2021;70:103539.
- Guerrera G, Picozza M, D'Orso S, et al. BNT162b2 vaccination induces durable SARS-CoV-2-specific T cells with a stem cell memory phenotype. *Sci Immunol* 2021;6:eabl5344.
- Bsteh G, Dürauer S, Assar H, et al. Humoral immune response after COVID-19 in multiple sclerosis: a nation-wide Austrian study. *Mult Scler* 2021;27:2209–18.
- Garjani A, Patel S, Bharkhada D, et al. Impact of mass vaccination on SARS-CoV-2 infections among multiple sclerosis patients taking immunomodulatory disease-modifying therapies in England. *Mult Scler Relat Disord* 2022;57:103458.
- Bertoletti A, Tan AT, Le Bert N. The T-cell response to SARS-CoV-2: kinetic and quantitative aspects and the case for their protective role. *Oxf Open Immunol* 2021;2:iqab006.
- Sattler A, Angermair S, Stockmann H, et al. SARS-CoV-2-specific T cell responses and correlations with COVID-19 patient predisposition. *J Clin Invest* 2020;130:6477–89.

- 43 Mateus J, Dan JM, Zhang Z, *et al.* Low-Dose mRNA-1273 COVID-19 vaccine generates durable memory enhanced by cross-reactive T cells. *Science* 2021;374:eabj9853.
- 44 Mehling M, Fritz S, Hafner P, *et al.* Preserved antigen-specific immune response in patients with multiple sclerosis responding to IFN $\beta$ -therapy. *PLoS One* 2013;8:e78532.
- 45 von Hehn C, Howard J, Liu S, *et al.* Immune response to vaccines is maintained in patients treated with dimethyl fumarate. *Neurol Neuroimmunol Neuroinflamm* 2018;5:e409.
- 46 Vågberg M, Kumlin U, Svenningsson A. Humoral immune response to influenza vaccine in natalizumab-treated MS patients. *Neurol Res* 2012;34:730–3.
- 47 Olberg HK, Eide GE, Cox RJ, *et al.* Antibody response to seasonal influenza vaccination in patients with multiple sclerosis receiving immunomodulatory therapy. *Eur J Neurol* 2018;25:527–34.
- 48 Bar-Or A, Freedman MS, Kremenchutzky M, *et al.* Teriflunomide effect on immune response to influenza vaccine in patients with multiple sclerosis. *Neurology* 2013;81:552–8.
- 49 Achiron A, Mandel M, Dreyer-Alster S, *et al.* Humoral immune response to COVID-19 mRNA vaccine in patients with multiple sclerosis treated with high-efficacy disease-modifying therapies. *Ther Adv Neurol Disord* 2021;14:17562864211012835.
- 50 Gallo A, Capuano R, Donnarumma G, *et al.* Preliminary evidence of blunted humoral response to SARS-CoV-2 mRNA vaccine in multiple sclerosis patients treated with ocrelizumab. *Neurol Sci* 2021;42:3523–6.
- 51 König M, Torgauten HM, Tran TT, *et al.* Immunogenicity and safety of a third SARS-CoV-2 vaccine dose in patients with multiple sclerosis and weak immune response after COVID-19 vaccination. *JAMA Neurol* 2022;79:307–9.
- 52 Sullivan R, Kilaru A, Hemmer B, *et al.* COVID-19 infection in Fingolimod- or Siponimod-Treated patients. *Neurol Neuroimmunol Neuroinflamm* 2022;9:e1092.
- 53 Brinkmann V, Chen S, Feng L, *et al.* FTY720 alters lymphocyte homing and protects allografts without inducing General immunosuppression. *Transplant Proc* 2001;33:530–1.
- 54 Pereira JP, Kelly LM, Cyster JG. Finding the right niche: B-cell migration in the early phases of T-dependent antibody responses. *Int Immunol* 2010;22:413–9.
- 55 Zeng X, Wang T, Zhu C, *et al.* Topographical and biological evidence revealed FTY720-mediated anergy-polarization of mouse bone marrow-derived dendritic cells in vitro. *PLoS One* 2012;7:e34830.
- 56 Pinschewer DD, Ochsenbein AF, Odermatt B, *et al.* Fty720 immunosuppression impairs effector T cell peripheral homing without affecting induction, expansion, and memory. *J Immunol* 2000;164:5761–70.



1  
2  
3  
4  
5  
6  
7  
8  
9  
10  
11  
12  
13  
14  
15  
16  
17  
18  
19  
20  
21  
22  
23  
24  
25  
26  
27  
28  
29  
30  
31  
32  
33  
34  
35  
36  
37  
38  
39  
40  
41  
42  
43  
44  
45  
46  
47  
48  
49  
50  
51  
52  
53  
54  
55  
56

## Supplemental Material

# SARS-CoV-2 mRNA vaccinations fail to elicit humoral and cellular immune responses in multiple sclerosis patients receiving fingolimod

Lil Meyer-Arndt<sup>1, 2, 3</sup>, Julian Braun<sup>1, 4, \*</sup>, Florent Fauchere<sup>1, 4, \*</sup>, Kanika Vanshylla<sup>5, \*</sup>, Lucie Loyal<sup>1, 4</sup>, Larissa Henze<sup>1, 4</sup>, Beate Kruse<sup>1, 4</sup>, Manuela Dingeldey<sup>1, 4</sup>, Karsten Jürchott<sup>1, 4</sup>, Maïke Mangold<sup>1</sup>, Ardit Maraj<sup>1</sup>, Andre Braginets<sup>1</sup>, Chotima Böttcher<sup>6</sup>, Andreas Nitsche<sup>7</sup>, Kathrin de la Rosa<sup>8</sup>, Christoph Ratswohl<sup>8</sup>, Birgit Sawitzki<sup>9</sup>, Pavlo Holenya<sup>10</sup>, Ulf Reimer<sup>10</sup>, Leif E. Sander<sup>11</sup>, Florian Klein<sup>5, 12, 13</sup>, Friedemann Paul<sup>2, 14, \*</sup>, Judith Bellmann-Strobl<sup>2, 14, \*</sup>, Andreas Thiel<sup>1, 4, \*§</sup>, Claudia Giesecke-Thiel<sup>16, \*, §</sup>

<sup>1</sup> Charité - Universitätsmedizin Berlin, corporate member of Freie Universität Berlin, Humboldt-Universität zu Berlin, and Berlin Institute of Health, Regenerative Immunology and Aging, BIH Center for Regenerative Therapies, 13353 Berlin, Germany

<sup>2</sup> Charité – Universitätsmedizin Berlin, corporate member of Freie Universität Berlin, Humboldt-Universität zu Berlin, and Berlin Institute of Health, NeuroCure Clinical Research Center, 10117 Berlin, Germany

<sup>3</sup> Charité – Universitätsmedizin Berlin, corporate member of Freie Universität Berlin, Humboldt-Universität zu Berlin, and Berlin Institute of Health, Department of Neurology with Experimental Neurology, 10117 Berlin, Germany

<sup>4</sup> Si-M / “Der Simulierte Mensch” a science framework of Technische Universität Berlin and Charité - Universitätsmedizin Berlin, 10117 Berlin, Germany

<sup>5</sup> Institute of Virology, Faculty of Medicine and University Hospital Cologne, University of Cologne, 50931 Cologne, Germany

<sup>6</sup> Charité – Universitätsmedizin Berlin, corporate member of Freie Universität Berlin, Humboldt-Universität zu Berlin, and Berlin Institute of Health, Department of Neuropsychiatry and Laboratory of Molecular Psychiatry, 10117 Berlin, Germany

<sup>7</sup> Robert Koch Institute, 13353 Berlin, Germany

<sup>8</sup> Department of Cancer and Immunology, Max-Delbrück-Center for Molecular Medicine in the Helmholtz Association (MDC), 13125 Berlin, Germany

<sup>9</sup> Charité - Universitätsmedizin Berlin, corporate member of Freie Universität Berlin, Humboldt-Universität zu Berlin, and Berlin Institute of Health, Institute for Medical Immunology, 13353 Berlin, Germany

<sup>10</sup> JPT Peptide Technologies, 12489 Berlin, Germany

<sup>11</sup> Charité – Universitätsmedizin Berlin, corporate member of Freie Universität Berlin, Humboldt-Universität zu Berlin, and Berlin Institute of Health, Department of Infectious Diseases and Respiratory Medicine, 13353 Berlin, Germany

<sup>12</sup> German Center for Infection Research, Partner Site Bonn-Cologne, 50931 Cologne, Germany

<sup>13</sup> Center for Molecular Medicine Cologne (CMMC), University of Cologne, 50931 Cologne, Germany

<sup>14</sup> Charité – Universitätsmedizin Berlin, corporate member of Freie Universität Berlin, Humboldt-Universität zu Berlin, and Berlin Institute of Health, Experimental and Clinical Research Center, 13125 Berlin, Germany

<sup>15</sup> Max-Delbrück-Center for Molecular Medicine in the Helmholtz Association (MDC), 13125 Berlin, Germany

<sup>16</sup> Max Planck Institute for Molecular Genetics, 14195 Berlin, Germany

\* equal contribution

§Co-Corresponding authors:

Claudia Giesecke-Thiel. Address: Max Planck Institute for Molecular Genetics, Ihnestraße 63, 14195 Berlin, Germany. Phone: 030-8413-1544. Email address: [giesecke@molgen.mpg.de](mailto:giesecke@molgen.mpg.de).

Andreas Thiel. Address: Charité - Universitätsmedizin Berlin, BIH Center for Regenerative Therapies, 13353 Berlin, Germany. Phone: 030-450-539555. Email address: [andreas.thiel@charite.de](mailto:andreas.thiel@charite.de).

57  
58  
59

## Supplemental Methods

### 60 SARS-CoV-2 pseudovirus neutralization assay

61 SARS-CoV-2 pseudoviruses were generated by co-transfection of plasmids encoding HIV Tat, HIV Gag/Pol, HIV  
62 Rev, luciferase followed by an IRES and ZsGreen, and the SARS-CoV-2 spike protein (Wu01 spike, EPI\_ISL\_406716)  
63 into HEK 293T cells using FuGENE 6 Transfection Reagent (Promega). Virus culture supernatant was harvested at  
64 48 h and 72 h post transfection and stored at -80°C till use. Harvested virus was titrated by infecting 293T  
65 expressing ACE2<sup>42</sup> and after a 48-hour incubation at 37°C and 5% CO<sub>2</sub>, luciferase activity was determined after  
66 addition of luciferin/lysis buffer (10 mM MgCl<sub>2</sub>, 0.3 mM ATP, 0.5 mM Coenzyme A, 17 mM IGEFAL (all Sigma-  
67 Aldrich), and 1 mM D-Luciferin (GoldBio) in Tris-HCL) using the Tristar microplate reader (Berthold).  
68 Neutralization assays were performed as described before. Briefly, 3-fold serial dilutions of serum (1:10 starting  
69 dilution) were co-incubated with pseudovirus supernatants for 1 h at 37°C, following which 293T-ACE-2 cells  
70 were added. After 48 h at 37°C and 5% CO<sub>2</sub>, luciferase activity was determined using the luciferin/lysis buffer.  
71 Background relative light units (RLUs) of non-infected cells was subtracted and 50% inhibitory dilution (ID<sub>50</sub>) were  
72 calculated as the serum dilution resulting in a 50% reduction in RLU compared to the untreated virus control  
73 wells. ID<sub>50</sub> values were calculated by plotting a non-linear fit dose response curve in GraphPad Prism 7.0.

74

### 75 SARS-CoV-2 spike epitope-specific peptide microarray

76 Peptides were synthesized and immobilized on peptide microarray slides as described previously. In brief, the  
77 peptides were synthesized using SPOT synthesis, cleaved from the solid support and chemoselectively  
78 immobilized on functionalized glass slides. Each peptide was deposited on the microarray in triplicates. The  
79 peptide microarrays were incubated with human sera (applied dilution 1:200) in a 96-well microarray incubation  
80 chamber for one hour at 30°C, followed by incubation with 0.1 µg/mL fluorescently labelled anti human IgG  
81 detection antibody (Jackson ImmunoResearch). Washing steps were performed after each incubation step with  
82 0.1 % Tween-20 in 1x TBS. After the final incubation step the microarrays were washed and dried. Each  
83 microarray slide was scanned using a GenePix Scanner 4300 SL50 (Molecular Devices). Signal intensities were  
84 evaluated using GenePix Pro 7.0 analysis software (Molecular Devices). For each peptide, the MMC2 value of the  
85 three triplicates was calculated. The MMC2 value was equal to the mean value of all three instances on the  
86 microarray except when the coefficient of variation (CV) – standard-deviation divided by the mean value – was  
87 larger than 0.5. In this case the mean of the two values closest to each other (MC2) was assigned to MMC2.  
88 Further data analysis and generation of the heatmaps was performed using the statistical computing and  
89 graphics software R (Version 4.1.1, [www.r-project.org](http://www.r-project.org)).

90

### 91 Ex vivo T cell stimulations

92 In short, PBMC were stimulated with PepMix™ SARS-CoV-2 spike glycoprotein pool 1 (JPT) covering the N-  
93 terminal aa residues 1-643 (abbreviated to "S-I") and with PepMix™ SARS-CoV-2 spike glycoprotein pool 2  
94 covering the C-terminal part (aa residues 633-1273, abbreviated to "S-II") at a final concentration of 1 µg/ml per  
95 peptide, respectively. Stimulation controls were performed with equal concentrations of DMSO in PBS  
96 (unstimulated control) and 1 µg/ml per peptide of CEFX Ultra SuperStim pool (JPT) as positive control. All  
97 approaches contained 1 µg/ml purified anti-CD28 (clone CD28.2; BD Biosciences). Incubation was performed at  
98 37°C, 5% CO<sub>2</sub> for 16 h in the presence of 10 µg/ml brefeldin A (Sigma-Aldrich) during the last 14h. T cell  
99 stimulations were stopped by incubation in 20mM EDTA for 5 min.

100

### 101 B cell and T cell flow cytometry

102

103

104

105

106

For S-I- and S-II-specific T cell analysis, antibodies were used as described before: CD3-FITC (REA613, Miltenyi),  
CD4-VioGreen (REA623, Miltenyi), CD8-VioBlue (REA734, Miltenyi), CD38-APC (REA671, Miltenyi), HLA-DR-  
PerCpVio700 (REA805, Miltenyi). For B cell status analysis: CD8 Vioblue (REA734, Miltenyi), IgD BV510 (IA6-2,  
Biolegend), CD14 BV570 (M5E2, Biolegend), CD21 BV605 (1048, BD), CD3 FITC (REA613, Miltenyi), SLAMF7 PE  
(162.1, Biolegend), CD27 PE-Dazzle594 (O323, Biolegend), HLADR Percp-Vio770 (REA780, Miltenyi), CD20 PE-

107 Vio770 (REA780, Miltenyi), CD38 APC (REA572, Miltenyi), CD4 AlexaFluor700 (RPA-T4, Biolegend) and CD19 APC-  
108 Vio770 (REA675, Miltenyi). For intracellular staining of stimulated T cells, fixation and permeabilization were  
109 performed with eBioscience™ FoxP3 fixation and PermBuffer (Invitrogen) according to the manufacturer's  
110 protocol. Intracellular staining was carried out for 30 min in the dark at room temperature with 4-1BB-PE  
111 (REA765, Miltenyi) and CD40L-PeVio770 (REA238, Miltenyi).

112 Peripheral blood B and T cell subsets were quantified using the following staining: 50µl of blood were stained for  
113 20 minutes at room temperature in the presence of 1mg/ml Beriglobin (CSL Behring) and the following antibodies  
114 at their determined optimum titration: CD4-VioBlue (REA623, Miltenyi), CD3-VioGreen (REA641, Miltenyi), HLA-  
115 A2-FITC (REA517, Miltenyi), CCR7-PE (REA108, Miltenyi), CD8-PerCP (REA734, Miltenyi), CD31-PE-Vio770  
116 (REA730, Miltenyi), CD19-APC (REA675, Miltenyi), CD16-AF700 (REA423, Miltenyi), CD45RA-APC-Vio770  
117 (REA1047, Miltenyi). 500µl of cold Erythrocyte lysis buffer (Buffer EL, Quiagen) were added and incubated 30  
118 minutes on ice. 400µl of cold PBS, BSA, 2mM EDTA were then added.

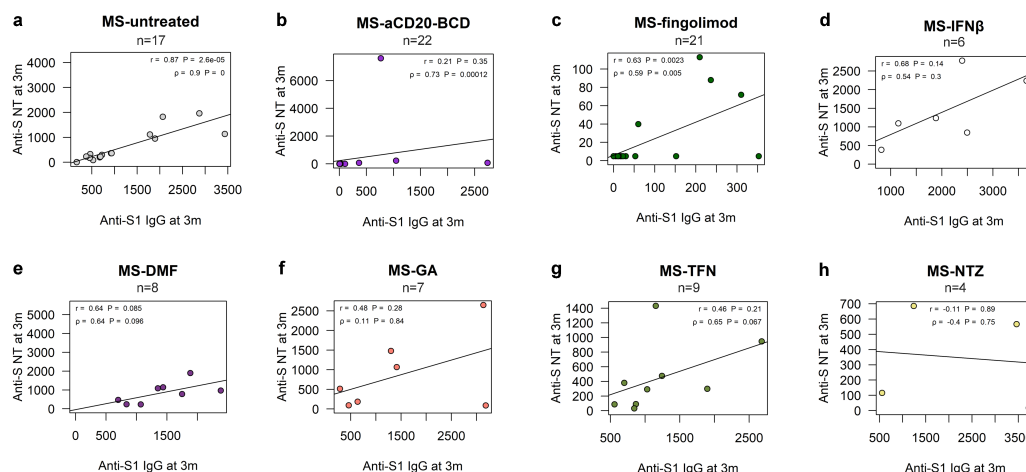
119  
120  
121  
122  
123  
124  
125  
126  
127  
128  
129  
130  
131  
132  
133  
134  
135  
136  
137  
138  
139  
140  
141  
142  
143  
144  
145  
146  
147  
148  
149  
150  
151  
152  
153  
154  
155  
156

157  
158  
159

Supplemental Results

Supplemental Fig. 1

Supplemental Fig. 1

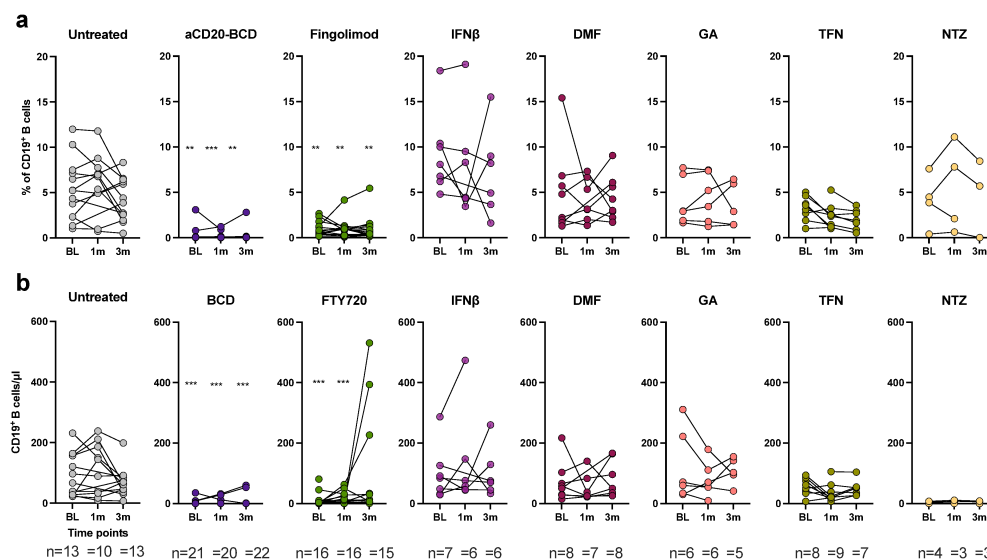


160  
161  
162  
163  
164  
165  
166  
167  
168  
169

**Supplemental Fig. 1. Association of anti-S1 IgG levels and neutralizing capacity.** Correlation of anti-S1 IgG and neutralizing capacity in serum at 3m for untreated MS patients (MS-untreated) (a), MS-aCD20-BCD (b), and MS-FTY720 (c), MS-IFNβ (d), MS-DMF (e), MS-GA (f), MS-TFN (g), and MS-NTZ (h). Simple linear regression tests performed per treatment; correlation coefficients depicted as lines and reported as r (for Pearson correlation) and rho (for Spearman rank correlation), respectively, with corresponding p-values: Spearman r value of 0.87 for untreated MS patients, 0.68 for IFNβ, 0.64 for DMF, 0.48 for GA, 0.46 for TFN, -0.11 for NTZ, 0.2 for aCD20-BCD, and 0.64 for fingolimod.

Supplemental Fig. 2

Supplemental Fig. 2



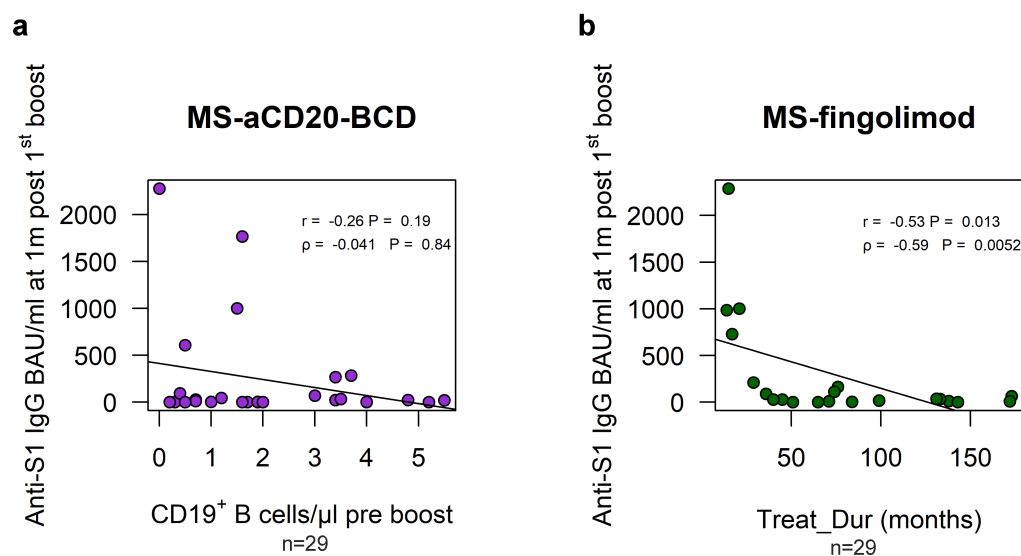
170  
171  
172  
173  
174  
175

**Supplemental Fig. 2. Total number and relative frequencies of peripheral blood CD19+ B cells.** a) Frequencies of CD19+ B cells in total lymphocytes and b) total number of CD19+ B cells per μl per treatment group. Kruskal-Wallis test followed by Dunn's multiple comparisons test performed to test between treatment groups at the respective time point were reported for comparison to untreated patients as: \*p ≤ 0.05, \*\*p ≤ 0.01, \*\*\*p ≤ 0.001, \*\*\*\*p ≤ 0.0001.



176

Supplemental Fig. 3



177

178

179

180

181

182

183

184

185

186

187

188

189

190

191

192

193

194

195

196

197

198

199

200

201

202

203

204

205

206

207

208

209

210

211

212

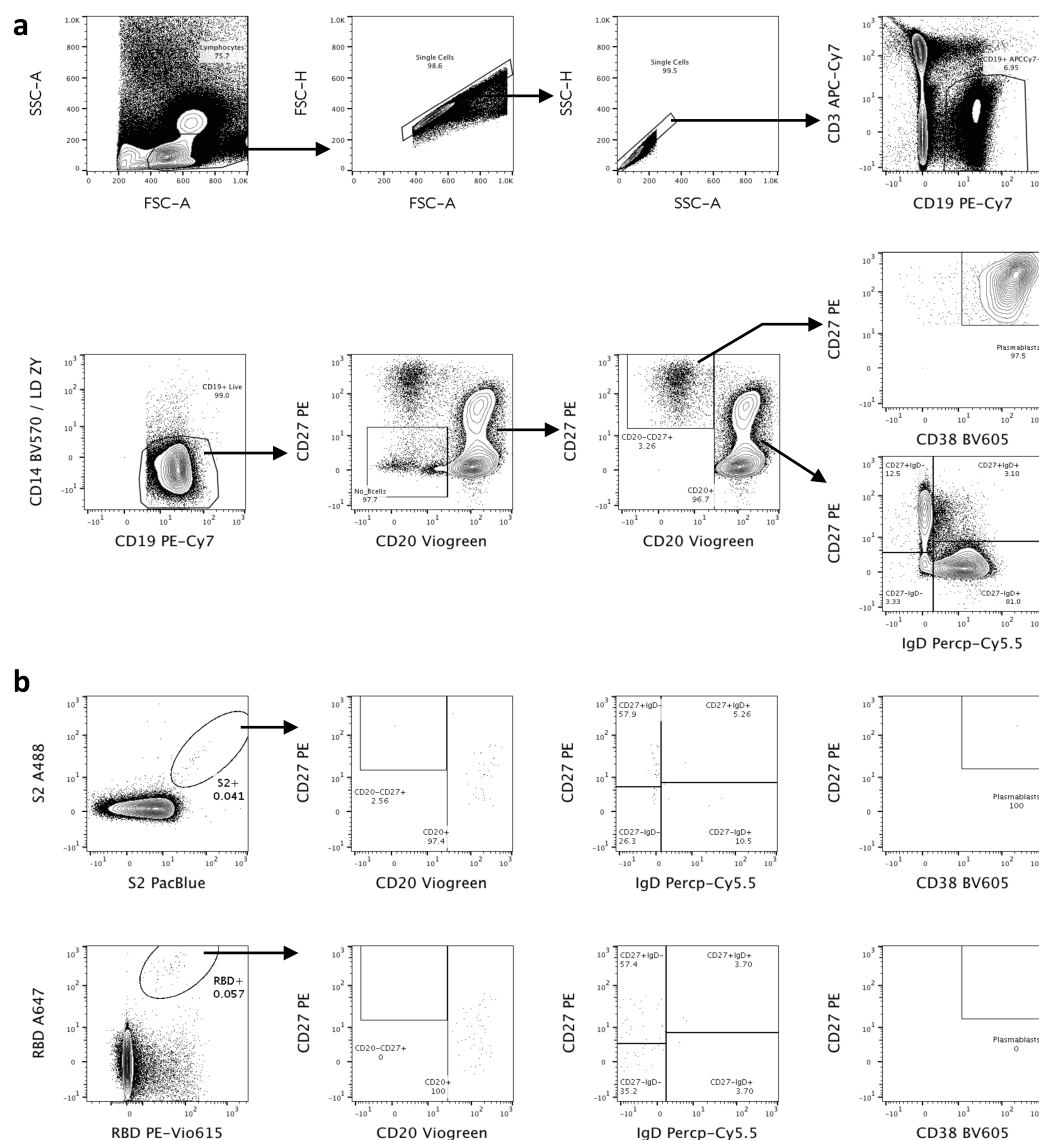
213

214

**Supplemental Fig. 3. Associations of anti-S1 IgG levels 1m post 1<sup>st</sup> boost for aCD20-BCD and fingolimod.** Correlation of anti-S1 IgG at 1m post 1<sup>st</sup> boost with CD19<sup>+</sup> B cells/μl pre boost (aCD20-BCD; **a**) and fingolimod treatment duration in months (**b**) respectively. Simple linear regression tests performed per treatment; correlation coefficients depicted as lines and reported as  $r$  (for Pearson correlation) and  $\rho$  (for Spearman rank correlation), respectively, with corresponding  $p$ -values.

215

## Supplemental Fig. 4

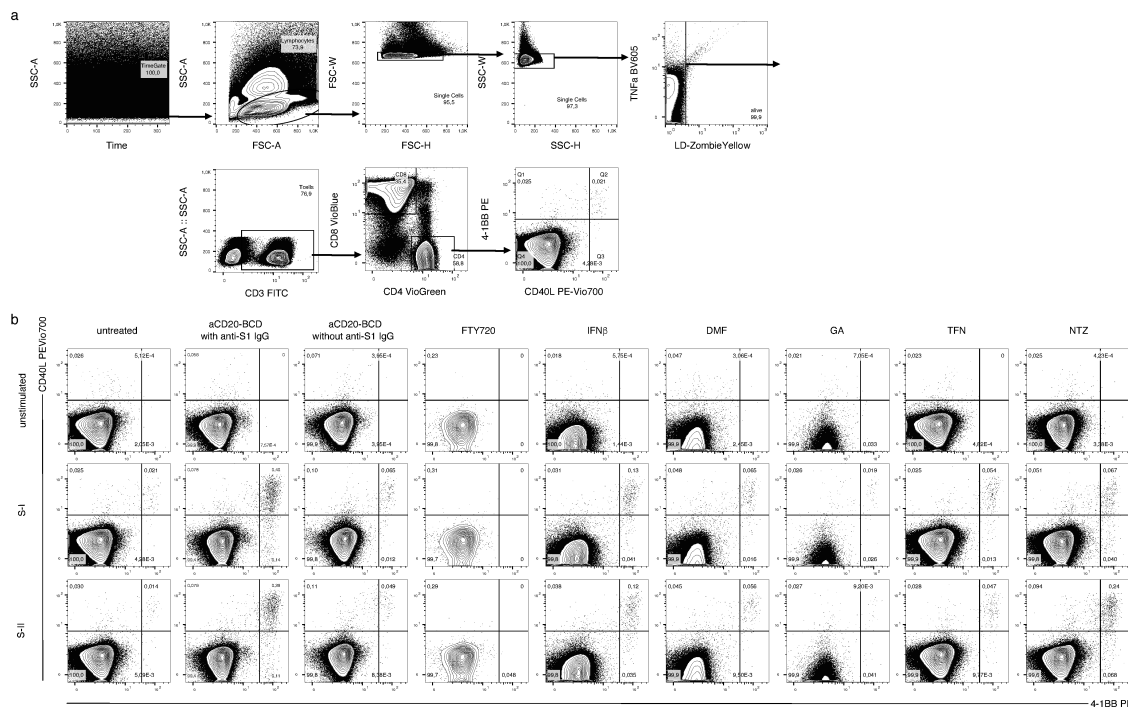


216  
217  
218  
219  
220  
221  
222  
223  
224  
225  
226  
227  
228  
229  
230  
231  
232

**Supplemental Fig. 4. Gating strategy of RBD- and S2-specific B cells.** **a**, B cells are gated from peripheral blood mononuclear cells (PBMCs; FSC-A vs SSC-A), by first excluding doublets (FSC-A vs FSC-H and SSC-A vs SSC-H), gating on CD19<sup>+</sup>CD3<sup>-</sup> B cells, excluding both dead cells (LiveDead Zombie Yellow) and CD14<sup>+</sup> cells, and finally by excluding CD20<sup>-</sup>CD27<sup>-</sup> cells. Among CD19<sup>+</sup>CD3<sup>-</sup> B cells, plasmablasts were identified as CD20<sup>-</sup>/lowCD27<sup>++</sup>CD38<sup>++</sup> cells. CD20<sup>+</sup> B cells were further classified into subpopulations based on their CD27 and IgD expression. CD20<sup>+</sup>CD27<sup>+</sup>IgD<sup>-</sup> were classified as classical memory B cells (mBC), CD20<sup>+</sup>CD27<sup>+</sup>IgD<sup>+</sup> were classified as double positive mBC (dp mBC), CD20<sup>+</sup>CD27<sup>-</sup>IgD<sup>-</sup> were classified as double negative mBC (dn mBC), and CD20<sup>+</sup>CD27<sup>-</sup>IgD<sup>+</sup> were classified as naïve B cells (nB). **b**, exemplary contour plots showing gating of S2-specific B cells and RBD-specific B cells, and again their subsequent subpopulation classification based on their CD27 and IgD expression.

Supplemental Fig. 5

233  
234  
235  
236  
237  
238  
239  
240  
241  
242  
243  
244  
245  
246  
247  
248  
249  
250  
251  
252  
253  
254  
255  
256  
257  
258  
259  
260  
261  
262  
263  
264  
265  
266  
267  
268  
269  
270



**Supplemental Fig. 5. Gating strategy of antigen-reactive CD4<sup>+</sup> T cells and differences between DMT treatment groups.** **a**, antigen-reactive CD40L<sup>+</sup>4-1BB<sup>+</sup>CD4<sup>+</sup> T cells were gated by controlling for measurement-dependent artefacts (Time vs SSC-a) from antigen-stimulated PBMC (FSC-A vs SSC-A), by first excluding doublets (FSC-H vs FSC-W and SSC-H vs SSC-W), dead cells (LiveDead Zombie Yellow), then gating on CD3<sup>+</sup> T cells and CD4<sup>+</sup> double positive cells. **b**, exemplary contour plots showing CD40L and 4-1BB expression in unstimulated control, S-I-, and S-II-stimulated CD4<sup>+</sup> T cells, displayed for the seven different DMT treatment groups at around two months after secondary SARS-CoV-2 mRNA vaccination.

Supplemental Table 1

aCD20-BCD treatment	Days since last treatment before 1 <sup>st</sup> vaccination	CD19 <sup>+</sup> B cells per $\mu$ l before 1 <sup>st</sup> vaccination	Days since last treatment before booster	CD19 <sup>+</sup> B cells per $\mu$ l before booster
Ocrelizumab	68	0	65	0.5
Ocrelizumab	133	0	87	0.3
Ocrelizumab	91	0.1	125	1.9
Ocrelizumab	93	0.3	143	5.5
Ocrelizumab	64	0	105	1.7
Ocrelizumab	154	35		
Ocrelizumab	162	9.2	96	3.7
Ocrelizumab	56	0.1	100	1.2
Ocrelizumab	269	8.2		
Ocrelizumab	114	0.1	360	3.4
Ocrelizumab	114	0	102	1
Ocrelizumab	144	0	116	4.8
Ocrelizumab	45	0.2	58	1.9
Ocrelizumab	114	2.5		
Ocrelizumab	94	0	84	5.2

Ocrelizumab	92	0.1		
Ocrelizumab	130	0	82	4
Ocrelizumab	97	0.7	120	0.7
Rituximab	103	0.1		
Rituximab	120	0.1	103	3.5
Rituximab	101	2.3	111	1.5
Ocrelizumab	112		179	1.6
Ocrelizumab	104			
Ocrelizumab	117		149	3.4
Ocrelizumab	92		105	0.2
Ocrelizumab	77		99	0.7
Ocrelizumab	94		314	378.1
Ocrelizumab			83	4
Ocrelizumab			99	0.2
Ocrelizumab			129	0
Ocrelizumab			45	1.5
Ocrelizumab			68	2
Ocrelizumab			92	0.5
Ocrelizumab			93	3
Ocrelizumab				
Ocrelizumab			94	1.6

271  
272  
273  
274  
275  
276  
277  
278  
279  
280  
281  
282

**Supplemental Table 1. Days since last aCD20-BCD treatment administration and absolute B cell numbers before primary and booster vaccinations.** 22 patients treated with aCD20-BCD therapies were enrolled prior to primary vaccination, another 5 after secondary vaccination (before 3m) and another 9 before booster vaccinations who received either rituximab or ocrelizumab (dosage per administration: 1000 mg rituximab or 600 mg ocrelizumab) in 6-month intervals (except for one patient whose next treatment interval was delayed due to low lymphocyte counts).