



Cortical response variability is driven by local excitability changes with somatotopic organization



T. Stephani^{a,b,*}, B. Nierula^c, A. Villringer^{a,d,e}, F. Eippert^c, V.V. Nikulin^{a,f,g,*}

^a Department of Neurology, Max Planck Institute for Human Cognitive and Brain Sciences, Leipzig, Germany

^b International Max Planck Research School NeuroCom, Leipzig, Germany

^c Max Planck Research Group Pain Perception, Max Planck Institute for Human Cognitive and Brain Sciences, Leipzig, Germany

^d Berlin School of Mind and Brain, Humboldt-Universität zu Berlin, Berlin, Germany

^e Clinic for Cognitive Neurology, University Hospital Leipzig, Leipzig, Germany

^f Neurophysics Group, Department of Neurology, Charité-Universitätsmedizin Berlin, Berlin, Germany

^g Bernstein Center for Computational Neuroscience, Berlin, Germany

ARTICLE INFO

Keywords:

EEG
Somatosensory
Oscillations
Pre-stimulus
Somatotopy

ABSTRACT

Identical sensory stimuli can lead to different neural responses depending on the instantaneous brain state. Specifically, neural excitability in sensory areas may shape the brain's response already from earliest cortical processing onwards. However, whether these dynamics affect a given sensory domain as a whole or occur on a spatially local level is largely unknown. We studied this in the somatosensory domain of 38 human participants with EEG, presenting stimuli to the median and tibial nerves alternatingly, and testing the co-variation of initial cortical responses in hand and foot areas, as well as their relation to pre-stimulus oscillatory states. We found that amplitude fluctuations of initial cortical responses to hand and foot stimulation – the N20 and P40 components of the somatosensory evoked potential (SEP), respectively – were not related, indicating local excitability changes in primary sensory regions. In addition, effects of pre-stimulus alpha (8–13 Hz) and beta (18–23 Hz) band amplitude on hand-related responses showed a robust somatotopic organization, thus further strengthening the notion of local excitability fluctuations. However, for foot-related responses, the spatial specificity of pre-stimulus effects was less consistent across frequency bands, with beta appearing to be more foot-specific than alpha. Connectivity analyses in source space suggested this to be due to a somatosensory alpha rhythm that is primarily driven by activity in hand regions while beta frequencies may operate in a more hand-region-independent manner. Altogether, our findings suggest spatially distinct excitability dynamics within the primary somatosensory cortex, yet with the caveat that frequency-specific processes in one sub-region may not readily generalize to other sub-regions.

1. Introduction

Moment-to-moment fluctuations of neural responses to sensory stimuli play a critical role in how we perceive the external world. Commonly, it is assumed that instantaneous neural states influence the stimulus-related brain responses, which in turn shape the perceptual outcome (e.g., Arieli et al., 1996; McCormick et al., 2020; Sadaghiani et al., 2010; Stephani et al., 2021). Specifically, this may be achieved through the modulation of cortical excitability, which is assumed to shift the sensory threshold of stimulus perception (Samaha et al., 2020). Using electroencephalography (EEG) or magnetoencephalography (MEG), this phenomenon can be observed in various sensory modalities in humans, such as the visual (Busch et al., 2009; Iemi et al., 2017), auditory (Henry et al., 2016; Müller et al., 2013), and somatosensory domain (Baumgarten et al., 2016; Craddock et al., 2017; Forschack et al., 2020;

Stephani et al., 2021), where instantaneous neural states have typically been quantified by pre-stimulus oscillatory activity in the alpha frequency range (8–13 Hz), a common marker of the excitability state of a given cortical brain region (Jensen and Mazaheri, 2010; Klimesch et al., 2007; Romei et al., 2008). Noteworthy, in the somatosensory domain, also activity in the beta frequency range (15–30 Hz) may have a similar modulatory effect on sensory processing (Anderson and Ding, 2011; Jones et al., 2010; van Ede et al., 2011).

Certainly, such fluctuations of cortical excitability – as for example reflected in the dynamics of alpha oscillatory activity – should not be understood as a single, homogenous brain rhythm, but rather as complex network activity involving many distinct neural sources and processes (Buzsáki and Draguhn, 2004; Nikulin et al., 2011; Nunez et al., 2001; van der Meij et al., 2016; Varela et al., 2001). On the one hand, effects of the alpha rhythm on perception have been shown to be brain

* Corresponding authors

E-mail addresses: stephani@cbs.mpg.de (T. Stephani), nikulin@cbs.mpg.de (V.V. Nikulin).

<https://doi.org/10.1016/j.neuroimage.2022.119687>.

Received 26 April 2022; Received in revised form 23 September 2022; Accepted 14 October 2022

Available online 15 October 2022.

1053-8119/© 2022 The Authors. Published by Elsevier Inc. This is an open access article under the CC BY-NC-ND license (<http://creativecommons.org/licenses/by-nc-nd/4.0/>)

region-specific (Romei et al., 2008), and spatially fine-tuned by attention even within a sensory modality, reflected for example in retinotopic (Popov et al., 2019) and hand-specific modulations of alpha (and beta) activity (Anderson and Ding, 2011; Jones et al., 2010; van Ede et al., 2011). On the other hand, there are reports of changes in neural states that exert rather unspecific, global effects on perception, for example, associated with a general arousal level (Gee et al., 2020; Schröder et al., 2020), which is also known to be related to alpha oscillations in humans (Barry et al., 2007). Although arousal fluctuations are just one possible explanation for excitability changes, it could thus be that sensory domains are affected by these dynamics as a whole (i.e., domain-wide effects) or that such distributed effects even coexist with local, content-specific modulations (Podvalny et al., 2019) that shape perceptual content through spontaneous changes of pre-stimulus activity (Hesselmann et al., 2008). The notion of wide-spread dynamics of cortical excitability is further supported by findings in the motor domain, where moment-to-moment variability of TMS-elicited motor-evoked potentials extended even to the contralateral hemisphere (Ellaway et al., 1998). Given that both sensory and motor processing reflect activity of broad neural circuitries, understanding neural response variability requires a proper specification of where and when these changes in excitability states take place. In this context, it has been found for the somatosensory domain that fluctuations of cortical excitability emerge already at earliest cortical processing in primary sensory regions (Stephani et al., 2020), with behaviorally relevant effects on stimulus intensity perception (Stephani et al., 2021). However, the spatial organization of these neural dynamics is not understood well yet, leaving open the question of whether instantaneous changes of excitability at earliest cortical processing follow local fluctuations or reflect a domain-wide state of the primary somatosensory cortex.

Following up on a previously developed technique to probe instantaneous changes of cortical excitability by short-latency somatosensory-evoked potentials (SEP) in the human EEG (Stephani et al., 2021; Stephani et al., 2020), we here examined the trial-to-trial dependencies between neural responses to somatosensory stimulation of hand and foot regions (Fig. 1), as well as their relation to ongoing oscillatory states. Specifically, the N20 component of the SEP, a negative deflection after 20 ms at centro-parietal electrode sites in response to median nerve (i.e., “hand”) stimulation (Allison et al., 1991), is thought to be exclusively generated by excitatory post-synaptic potentials (EPSPs) of the first thalamo-cortical volley (Bruyns-Haylett et al., 2017; Nicholson Peterson et al., 1995; Wikström et al., 1996), and therefore represents a direct measure of instantaneous cortical excitability. Assuming a homologous neural circuitry for the somatosensory foot region, we related this measure to the first cortical component of the SEP in response to tibial nerve (i.e., “foot”) stimulation, the P40 component (Allison et al., 1996; Kany and Treede, 1997). This way, we sought to dissociate local from domain-wide fluctuations of neural excitability across spatially distinct sites within the somatosensory cortex. In addition, we compared these dynamics between a long and a short inter-stimulus interval (ISI), as well as in alternating vs. single nerve stimulation to control for influences of the experimental stimulation paradigm. Overall evidence was in favor of a somatotopic organization of excitability effects during early cortical processing, consistent with the idea of local rather than domain-wide neural dynamics at the beginning of the neuronal response cascade in the human somatosensory cortex.

2. Methods

2.1. Participants

In total, 42 participants took part in this study, from whom 40 complete datasets could be obtained. Two more participants had to be excluded since no clear SEPs could be extracted on a single-trial level, resulting in a final sample of 38 participants in the alternating stimulation conditions (52.6% female; mean age = 25.7 years, $SD = 3.7$);

in the single-nerve control conditions, one additional participant had to be excluded due to similar reasons, leading to a sample of 37 participants. All participants were right-handed as assessed with the Edinburgh Handedness Inventory (Oldfield, 1971; lateralization score, $M = +79.0$, $SD = 18.2$) and did not report any neurological or psychiatric disease. The participants were recruited from the database of the Max Planck Institute for Human Cognitive and Brain Sciences, gave informed consent, and were reimbursed monetarily. The study was approved by the local ethics committee at the Medical Faculty of Leipzig University.

2.2. Stimuli

Somatosensory stimuli were administered by means of electrical stimulation of the median and of the tibial nerves. Non-invasive bipolar stimulation electrodes were positioned on the volar side of the left wrist and on the median side of the left ankle (cathode always proximal), for median and tibial nerve stimulation, respectively. The electrical stimuli consisted of 0.2 ms square-wave pulses and were presented by a DS-7 constant-current stimulator (Digitimer, Hertfordshire, United Kingdom). The intensity of the stimuli was set just above the motor threshold, so that a muscle twitch of the thumb or big toe was clearly visible for every stimulus, with average intensities of 6.77 mA ($SD = 2.07$) for median nerve stimulation and 12.30 mA ($SD = 3.55$) for tibial nerve stimulation. The stimulation was perceived by all participants as a distinct but not painful sensation.

2.3. Procedure

The present study was part of a more extensive project with simultaneous electroencephalo-, electrospino-, electroneuro-, electrocardiographic, and respiratory recordings (Nierula et al., in prep.). After preparation of the electrodes, participants lay down on their backs on a massage bed in a semi-darkened and noise-shielded EEG cabin. First, a 5-min resting-state EEG was recorded, followed by 4 blocks of median and 4 blocks of tibial nerve stimulation alone. These single-nerve stimulation conditions served as control conditions for the subsequent alternating stimulation condition. The single-nerve stimulation blocks were presented in an alternating order, counter-balanced across participants, with breaks in between blocks. Each block contained 500 stimuli and the inter-stimulus interval (ISI) was set to 766 ms with a uniformly distributed jitter between +50 and -50 ms. This ISI distribution served to prevent any phase alignment of stimulus onsets with 50 Hz power line artifacts or other periodic noise sources and also ensured the close comparability with a previous study of ours (Stephani et al., 2020). After these blocks, median and tibial nerve stimuli were presented alternately within the same blocks (referred to as the alternating stimulation condition). Here we used two different ISIs of $ISI_{\text{short}} = 385 \pm 50$ ms and $ISI_{\text{long}} = 766 \pm 50$ ms (between subsequent stimuli at alternating sites; both including a uniformly distributed jitter), presented in different sub-samples of participants ($N_{\text{short}} = 23$; $N_{\text{long}} = 15$). The long ISI was chosen in accordance with the single-nerve stimulation condition and the short ISI was set at around half the duration, ensuring that the ISI was still long enough not to lead to any repetition-related attenuation of the initial cortical SEP components (Wikström et al., 1996). In the short-ISI condition, 1000 stimuli each were presented to the median and tibial nerves, while 500 stimuli each were presented in the long-ISI condition. In both cases, the stimuli were split into two blocks, separated by a short break. During the experimental blocks, participants were instructed to look at a fixation cross attached to the ceiling of the cabin. The duration of all experimental blocks was approximately 90 minutes.

Since we were interested in investigating concurrent changes of excitability at different cortical locations, we also considered a simultaneous application of median and tibial stimuli. However, given the spatial overlap between both types of SEPs in the EEG we decided not to perform such stimulation. We rather carefully selected interleaved patterns

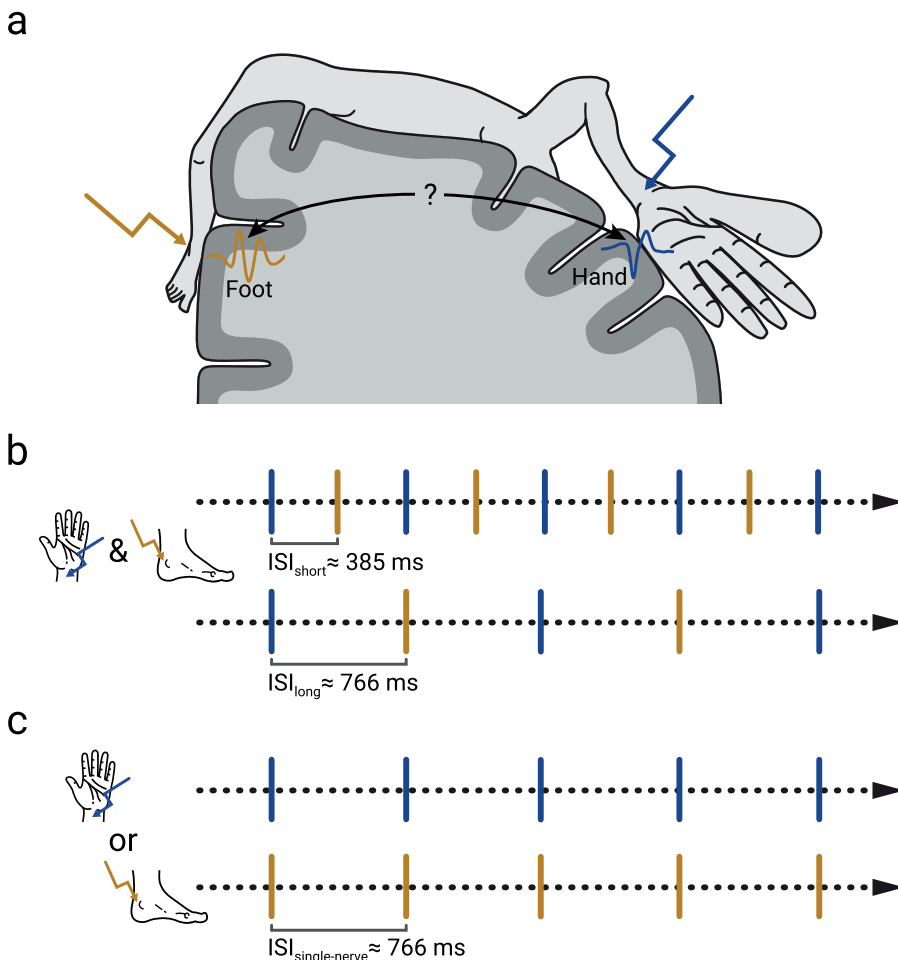


Fig. 1. Experimental paradigm. **a)** Schematic of the representation of different body parts in the primary somatosensory cortex. Responses to hand and foot stimuli emerge at spatially distinct sites. **b)** Electrical stimulation of the median (hand) and tibial (foot) nerves was applied in an alternating sequence. In two sub-samples ($N = 23$ & $N = 15$), different inter-stimulus intervals (ISI) were presented: $ISI_{\text{short}} = 385 \pm 50$ ms and $ISI_{\text{long}} = 766 \pm 50$ ms. **c)** Control conditions of median and tibial stimulation alone (both performed in all participants).

of alternating stimulation, which on the one hand allowed us to investigate the activation of each cortical area separately and reliably, and on the other hand enabled us to have stimuli sufficiently close in time in order to assess the near-simultaneous processing of both stimuli.

2.4. Data Acquisition

EEG data were recorded from 64 Ag/AgCl electrodes at a sampling rate of 10000 Hz with an 80-channel EEG system (NeuroOne Tesla, Bitium, Oulu, Finland), employing a built-in band-pass filter in the frequency range from 0.16 to 2500 Hz. Electrodes were positioned in an elastic cap (EasyCap, Herrsching, Germany) at the international 10-10 system locations Fp1, Fpz, Fp2, AF7, AF3, AFz, AF4, AF8, F9, F7, F5, F3, F1, Fz, F2, F4, F6, F8, F10, FT9, FT7, FT8, FT10, FC5, FC3, FC1, FCz, FC2, FC4, FC6, C5, C3, C1, Cz, C2, C4, C6, CP5, CP3, CP1, CPz, CP2, CP4, CP6, T7, T8, TP7, TP8, P7, P5, P3, P1, Pz, P2, P4, P6, P8, PO7, PO3, PO4, PO8, O1, and O2, with the reference placed on the right mastoid process, POz used as the ground, and an additional electrode located on the left mastoid process for offline re-referencing.

In addition, we measured the compound nerve action potentials (CNAP) of the median and tibial nerves to control for peripheral nerve variability. For the median nerve CNAP, two bipolar electrodes were placed on the inner side of the left upper arm along the path of the median nerve, at a distance of about 3 cm. The tibial nerve CNAP was acquired from a patch of 5 electrodes, placed on the backside of the left knee, with the middle electrode on the center of the popliteal fossa, the other 4 electrodes symmetrically arranged around it at a distance of about 1 cm, and referenced to an additional electrode located about

3 cm proximal to the popliteal fossa. The impedances of all electrodes were kept below 10 k Ω .

2.5. EEG pre-processing

The EEG pre-processing pipeline was adapted from two preceding studies with complimentary research foci (Stephani et al., 2021, 2020). First, stimulation artifacts were cut out and interpolated using Piecewise Cubic Hermite Interpolating Polynomials (MATLAB function *pchip*). The time windows of interpolation were determined on an individual basis depending on the duration of artifact contamination, starting at -1.5 ms and ending between 3 ms and 6 ms relative to stimulus onset. Next, the data were down-sampled to 5000 Hz (including the default anti-aliasing filter of EEGLAB function *pop_resample*). For examining short-latency SEPs, the EEG data were then band-pass filtered between 30 and 200 Hz, sliding a 4th order Butterworth filter forwards and backwards over the data to prevent phase shift (MATLAB function *filtfilt*). On the one hand, this filter served to specifically focus on the N20 and P40 potentials of the SEP, which emerge from frequencies above around 35 Hz, and to omit contributions of later (slower) SEP potentials of no interest. On the other hand, this filter removed slow trends in the data, reaching an attenuation of 30 dB at 14 Hz, thus making sure that variability of the SEP did not arise from fluctuations within slower frequencies (e.g., alpha or theta band activity). At the same time, this high-pass filter obviated the need for an additional baseline correction. Additionally, the data were visually inspected for segments showing muscle or non-biological artifacts, which were excluded from further analyses. After re-referencing to an average reference, eye, heart, and prominent muscle artifacts were removed using independent component analysis

(Infomax ICA) whose weights were calculated on the data band-pass filtered between 1 and 45 Hz (4th order Butterworth filter applied forwards and backwards) before. For the SEP analysis, the data were segmented into epochs from -100 to 600 ms relative to stimulus onset, resulting in (average across participants) 1951, 961, 1973, and 1972 trials for the short-ISI, long-ISI, median-only, and tibial-only condition, respectively. EEG pre-processing was performed using EEGLAB (version 14.1.2; Delorme and Makeig, 2004), and custom written scripts in MATLAB (version 2021a; The MathWorks Inc., Natick, Massachusetts).

2.6. Single-trial extraction using CCA

Single-trial SEPs were extracted using Canonical Correlation Analysis (CCA), as proposed by Waterstraat et al. (2015), and applied in the same way as described in Stephani et al. (2020; 2021) for similar datasets. For multi-channel signals X and Y , CCA finds the spatial filters w_x and w_y that maximize the correlation between the two signals:

$$\max_{w_x, w_y} \text{corr}(w_x^T X, w_y^T Y)$$

where X is constructed from concatenating all the epochs of a subject's recording, i.e. $X = [x_1, x_2, \dots, x_N]$ with $x_i \in \mathbb{R}^{\text{channel} \times \text{time}}$ being the multi-channel signal of a single trial and N the total number of trials. In contrast, Y contains the average of all trials, duplicated according to the number of single trials, $Y = [\bar{x}, \dots, \bar{x}]$ with $\bar{x} = \frac{1}{N} \sum_{i=1}^N x_i$. Thus,

this CCA procedure can be viewed as a template matching between the single trial signals and a template time signature of the SEP of interest. Solving the optimization problem of CCA (using eigenvalue decomposition) results in a set of weights (i.e., eigenvectors), referred to as the spatial filters w_x , which serve to mix the channels of each single trial (i.e. $x_{i, CCA} = w_x^T x_i$) in order to obtain the underlying SEP in CCA space. To focus on the early portion of the SEP only, the two signal matrices X and Y were constructed using segments from 5 to 80 ms post-stimulus. The extracted CCA spatial filters were, however, applied to the whole-length epochs from -100 to 600 ms. The signal resulting from mixing the single trial's channels using the CCA spatial filter w_x , i.e. $x_{i, CCA} = w_x^T x_i$, is called a CCA component of that trial i .

To obtain the spatial activation pattern of each CCA component we multiplied the spatial filters w_x by the covariance matrix of X , as $\text{cov}(X)w_x$, thus taking the noise structure of the data into account (Haufe et al., 2014). The resulting spatial activation pattern hence reflects the contribution of each EEG sensor to a given CCA component.

CCA was separately applied to median and tibial stimulation trials individually for every participant. For median stimulation, CCA components whose spatial activity patterns showed the orientation of a tangential dipole over the central sulcus (typical for the N20 potential) were selected for further analyses and referred to as *median CCA components*. In contrast, for tibial stimulation, CCA components were chosen that were characterized by a central radial dipole over the medial part of the primary somatosensory cortex (typical for the P40 potential; referred to as *tibial CCA components*). Such median and tibial CCA components were present for all participants among the first two CCA components with the maximum canonical correlation coefficients, respectively (i.e., one median and one tibial CCA component were selected per participant). Since CCA solutions are insensitive to the polarity of the signal, we standardized the resulting CCA components by multiplying the spatial filter by a sign factor, in the way that the N20 potential in median nerve stimulation always appeared as a negative peak, and the P40 potential in tibial nerve stimulation as a positive peak.

2.7. SEP peak amplitudes and pre-stimulus oscillatory activity

N20 peak amplitudes were defined as the minimum value in single-trial SEPs of the median CCA components ± 2 ms around the latency of

the N20 in the within-subject average SEP. Similarly, P40 peak amplitudes were defined as the maximum value in single-trial SEPs of the tibial CCA components ± 3 ms around the latency of the P40 in the within-subject average SEP.

To infer cortical excitability from oscillatory brain activity, we quantified the amplitudes of pre-stimulus oscillatory activity in the alpha and beta frequency bands. While alpha band activity is a well-established indicator of cortical excitability (Jensen and Mazaheri, 2010; Klimesch et al., 2007; Romei et al., 2008), we also included beta band activity in our analyses since it may serve a similar function particularly in the somatosensory domain (Anderson and Ding, 2011; Jones et al., 2010; van Ede et al., 2011). For the extraction of pre-stimulus alpha and beta band amplitudes, the data were segmented from -200 to -10 ms relative to stimulus onset, mirrored to both sides (symmetric padding; in order to avoid filter-related edge artifacts), and band-pass filtered in the alpha band (8 to 13 Hz), as well as in the beta band (18 to 23 Hz), using a 4th order Butterworth filter (applied forwards and backwards). Subsequently, the amplitude envelope in the given frequency band was computed by taking the absolute value of the analytic signal, using Hilbert transform of the real-valued signal. To derive one pre-stimulus metric per trial, amplitudes were averaged across the pre-stimulus time window and log-transformed for subsequent statistical analyses in order to approximate a normal distribution. This analysis was performed both on the signals obtained from the same spatial CCA filters as for the SEP analysis (corresponding to the median and tibial CCA components) as well as in source space (for details of the reconstruction see section *EEG source reconstruction*). With the CCA filter approach, we sought to focus on similar sources in the pre-stimulus data as are involved in the N20 and P40 generation. Complementarily, the source-space-based approach can be viewed as an SEP-uninformed whole-cortex analysis.

In order to avoid block-related sources of variability in the median- and tibial-only control conditions (such as caused by re-adjustments of stimulation intensities between blocks), we here only included the first block for each condition (i.e., approximately the first 500 trials), whereas in the alternating stimulation condition all available trials were used.

2.8. EEG source reconstruction

Source activity of the EEG was reconstructed using a lead field matrix corresponding to a three-shell boundary element model (BEM) computed with OpenMEEG (Gramfort et al., 2010; Kybic et al., 2005) on the basis of a template brain anatomy (ICBM152; Fonov et al., 2009) with standardized electrode locations. We constrained the lead field matrix to sources perpendicular to the cortex surface (5001 sources), inverted it using the eLORETA method (Pascual-Marqui, 2007), and reconstructed the sources for the spatial patterns of the median and tibial CCA components of every subject, as well as for pre-stimulus alpha and beta activity (on a single-trial level). Brainstorm (Tadel et al., 2011) was used for building the head model and visualizing the data in source space. The MATLAB implementation of the eLORETA algorithm was obtained from the MEG/EEG Toolbox of Hamburg (METH; <https://www.uke.de/english/departments-institutes/institutes/neurophysiology-and-pathophysiology/research/research-groups/index.html>).

2.9. Processing of peripheral electrophysiological data (median and tibial nerve CNAP)

Analogously to the EEG data, stimulation artifacts in the peripheral electrophysiological data were cut out and interpolated using Piecewise Cubic Hermite Interpolating Polynomials. We chose interpolation windows of -2 to 4 ms and -6 to 6 ms relative to stimulus-onset, for the median and tibial CNAPs, respectively (due to the higher stimulation intensity of the tibial stimuli, larger stimulation artifacts occurred in the

tibial CNAP). Furthermore, among the five tibial CNAP channels, the channel with the largest average response was selected individually per participant to be used in further analyses. To achieve a sufficient signal-to-noise ratio (SNR) of the short-latency CNAP peak of only a few milliseconds duration on single-trial level, the data were high-pass filtered at 70 Hz (4th order Butterworth filter applied forwards and backwards). Single-trial peak amplitudes were extracted as the minimum amplitude ± 1 ms around the participant-specific latency of the CNAP peak that were found between 5 and 9 ms, as well as between 7 and 12 ms in the within-participant averages, for median and tibial stimuli, respectively. In the analysis of these peripheral nerve activity measures, a sub-sample of 25 participants was included who showed clear responses for both the median and tibial CNAPs (exclusions were mostly due to unclear tibial CNAPs).

2.10. Phase slope index (PSI)

In order to examine interactions within the alpha and beta frequency bands in hand and foot regions, we used the phase slope index (PSI), a connectivity metric that indicates the direction of information flow and that is insensitive to spurious connections due to volume conduction (Nolte et al., 2008), defined as follows:

$$\tilde{\Psi}_{ij} = \Im \left(\sum_{f \in F} C_{ij}^*(f) C_{ij}(f + \delta f) \right)$$

where $C_{ij}(f) = S_{ij}(f) / \sqrt{S_{ii}(f) S_{jj}(f)}$ is the complex coherency between two signals i and j , S the cross-spectral matrix, δf the frequency resolution, F the set of frequencies over which the slope is summed, $*$ indicates the complex conjugate, and $\Im(\cdot)$ denotes taking the imaginary part.

For the extraction of the PSI metrics, we first defined regions of interest (ROI) in the hand and foot areas of the right primary somatosensory cortex. The included vertices of the head model were manually selected via the Brainstorm GUI, based on the Destrieux atlas (Destrieux et al., 2010), resulting in 20 and 24 vertices for the hand and foot regions, respectively. After projecting the EEG data into source space (as described above), principal component analysis (PCA) was used to reduce the dimensionality of the ROI activities to one signal trace each (with the largest eigenvalue). These signals were segmented into epochs from -400 to 400 ms around stimulus onset and the PSI was calculated for frequency bands from 7.5 to 13.75 Hz and from 18.75 to 25.0 Hz for alpha and beta activity, respectively. Slightly wider frequency ranges and a longer time window were chosen here, as compared to the above-mentioned analyses on the pre-stimulus effects, in order to include more frequency bins and to improve the frequency resolution, thus leading to better slope estimates of the phase lags for the PSI calculation. Additionally, pre- and post-stimulus time windows were analyzed separately; please see Supplement D. Finally, PSI values were normalized by their standard deviation as suggested by Nolte et al. (2008):

$$\Psi = \tilde{\Psi} / \text{std}(\tilde{\Psi}).$$

We used the PSI implementation of the MEG/EEG Toolbox of Hamburg (METH; <https://www.uke.de/english/departments-institutes/institutes/neurophysiology-and-pathophysiology/research/research-groups/index.html>).

2.11. Statistical analyses

The spatial specificity of fluctuations of N20 and P40 potentials was examined using a model-based approach that compared both their within- and across-stimulation-site dependencies over time. For this, we employed cross-lagged two-level structural equation modeling (elsewhere also referred to as *Dynamic Structural Equation Models*; Asparouhov et al., 2018; McNeish and Hamaker, 2020), based on the general latent variable framework of *Mplus* (Muthén and Muthén, 1998-2017). Autoregressive lag-1 relationships were modelled both for N20 and P40 amplitudes on a single-trial level within participants, as well

as their cross-lagged dependencies (i.e., the effect of the preceding P40 on the subsequent N20, as well as the N20's effect on the subsequent P40). Furthermore, in a second approach, the moderating effect of the inter-stimulus interval (ISI) on the inter-relationships between N20 and P40 amplitudes was tested as a level-2 covariate. Finally, median and tibial CNAP peak amplitudes were added to the initial model, and both the autoregressive lag-1 effects within these peripheral measures, as well as their relationship with N20 and P40 amplitudes were estimated (this model was calculated in a sub-sample of 25 participants due to the limited availability of clear peripheral CNAPs). In all tested models, path coefficients of the within-participant effects were derived as random slopes using Bayesian model estimation based on Markov-Chain-Monte-Carlo (MCMC) iterations. We used *Mplus*' default prior distributions (i.e., uninformative priors for path coefficients). The p -values provided by *Mplus* correspond to the proportion of coefficients having the opposite sign according to the posterior distribution (reported in order to facilitate a comparison with potentially alternative frequentist statistics). In addition, we indicate the 95%-credible intervals (CI) of path coefficients. Model fit was assessed using the deviance information criterion (DIC; Spiegelhalter et al., 2002), calculated as follows:

$$D(\theta) = -2 \log(p(Y|\theta)),$$

$$p_D = \bar{D} - D(\bar{\theta}),$$

$$DIC = p_D + \bar{D},$$

where θ represents all model parameters, Y all observed variables, p_D the effective number of parameters (i.e., indicating the model's complexity; Spiegelhalter et al., 2002), \bar{D} the average deviance, $\bar{\theta}$ the average model parameters across MCMC iterations (Asparouhov et al., 2018). Please note that traditional fit indices known from maximum-likelihood-based SEMs (such as RMSEA, SRMR or CFI) are not available for MCMC model estimation. The DIC can be interpreted in a similar way as the Akaike information criterion (AIC) or the Bayesian information criterion (BIC), that is, lower values indicate a better model fit (Asparouhov et al., 2018; McNeish and Hamaker, 2020). Employing DIC comparisons, the initial cross-lagged SEM was compared to alternative models, stepwise excluding specific effect paths involved in either the cross-lag relationships or the auto-correlations (Table 1). To account for potential instabilities of the DIC values over different MCMC runs (Asparouhov et al., 2018), we repeated the model estimations 100 times each and averaged the resulting p_D and DIC values. Subsequently, we tested the differences between models regarding their DIC distributions using pairwise t-tests (p values were corrected for multiple comparisons using the Holm-Bonferroni method; Holm, 1979). All physiological measures (i.e., SEPs and CNAPs) included in these models were z-transformed and linear trends were removed before being submitted to the SEM analysis.

Effects of pre-stimulus alpha and beta band amplitudes on SEP amplitudes (i.e., N20 and P40) were analyzed using random-intercept linear-mixed-effects models of the following form:

$$SEP \text{ peak amplitude} \sim 1 + pre - stimulus \text{ amplitude} + (1 | subject),$$

calculated for pre-stimulus amplitudes both in CCA space as well as in source space (mass-univariate approach; i.e., separate models for every source). Please note that we opted for random-intercept linear-mixed-effects models since random-slope linear-mixed-effects models did not converge in all cases for the examined effects of pre-stimulus alpha amplitude on SEP amplitudes in source space (i.e., mass-univariate models calculated for all vertices across the whole cortex). This procedure corresponds to a simplification of the random effects structure to avoid model convergence problems as described by Barr et al. (2013). Furthermore, the moderating effect of the ISI condition was tested by adding an interaction term:

$$SEP \text{ peak amplitude} \sim 1 + ISI * pre - stimulus \text{ amplitude} + (1 | subject).$$

All EEG amplitude measures were z-transformed prior to the analysis and pre-stimulus alpha and beta amplitudes were additionally log-transformed in order to approximate a normal distribution. In the mass-univariate approach in source space, we used FDR-correction ($p < .001$) to account for multiple comparisons (Benjamini and Hochberg, 1995). Differences in directed connectivity between hand and foot regions for alpha and beta frequencies were assessed with repeated-measurement ANOVAs with the factors *stimulation site*, *frequency band*, and *stimulation condition* (either single-nerve vs. alternating stimulation or short ISI vs. long ISI). For all analyses (apart from the FDR-correction for multiple comparisons), the statistical significance level was set to $p = .05$.

The linear-mixed-effects models were calculated in R (version 4.1.1, R Core Team, 2018) with the *lmer* function of the *lme4* package (version 1.1-27.1, Bates et al., 2015), estimating the fixed-effect coefficients based on the restricted maximum likelihood (REML). To derive a p value for the fixed-effect coefficients, the denominator degrees of freedom were adjusted using Satterthwaite's method (Satterthwaite, 1946) as implemented in the R package *lmerTest* (version 3.1-3 Kuznetsova et al., 2017). Structural equation modelling was performed in *Mplus* (version 8.6, Base Program and Combination Add-On; Muthén and Muthén, 1998-2017) using the *MplusAutomation* package in R for scripting (version 1.0.0; Hallquist and Wiley, 2018). For the repeated-measurement ANOVAs, we used the R package *ez* (version 4.4-0; Lawrence, 2016).

3. Results

3.1. Short-latency somatosensory evoked potentials on a single-trial level

Single-trial somatosensory evoked potentials (SEPs) were extracted for both the median and tibial nerve stimulation conditions, decomposing the sensor-space EEG by Canonical Correlation Analysis (CCA). As can be seen from Fig. 2, short-latency responses to median nerve stimulation presented with a tangential-dipole pattern with corresponding sources around the hand region of the primary somatosensory cortex, whereas short-latency responses to tibial nerve stimulation were characterized by a radial pattern whose orientation suggested sources in the medial part of the primary somatosensory cortex where the foot region is located. The initial cortical responses of interest, the N20 in median nerve stimulation and the P40 in tibial nerve stimulation, were visible on a single-trial level as negative peak at around 20 ms, and as positive peak at around 40 ms, respectively. To assess the neural response variability associated with our repeated supra-threshold stimulation (as well as to allow a comparison with previous studies), we quantified the trial-to-trial variability of early SEP amplitudes. Across stimulation conditions, similar variances were observed both for N20 and P40 peak amplitudes, with $SD_{N20, \text{alternating long ISI}} = 0.70$ a.u., $SD_{N20, \text{alternating short ISI}} = 0.78$ a.u., $SD_{N20, \text{single-nerve}} = 0.77$ a.u., $SD_{P40, \text{alternating long ISI}} = 0.58$ a.u., $SD_{P40, \text{alternating short ISI}} = 0.63$ a.u., and $SD_{P40, \text{single-nerve}} = 0.65$ a.u. (standard deviations of within-subject trial-to-trial fluctuations, pooled on group level; the units are "arbitrary units", a.u., due to the normalization of CCA components to have unit variance across the whole training window).

Table 1

Comparison of alternative SEMs. pD and DIC values were averaged across 100 MCMC runs with different random seeds. Lower DIC values indicate a better model fit. Additionally seeking model parsimony, as reflected in a smaller number of free parameters and lower pD values, SEM 4 presents as the preferred model (marked in bold font).

	Model fit indices		
	Number of free parameters	Model complexity (effective number of parameters, pD)	Deviance information criterion (DIC)
(1) Cross-lagged SEM (incl. auto-regression)	14	1916.3	153934.4
(2) Cross-lagged SEM excl. P40 _t ~ N20 _t	12	1899.3	153932.3
(3) Cross-lagged SEM excl. N20 _{t-1} ~ P40 _{t-1}	12	1899.3	153936.8
(4) Auto-regressive SEM excl. cross-lag	10	1881.2	153932.5
(5) Cross-lagged SEM excl. auto-regression	10	1880.8	153986.8

3.2. Short-latency SEP dependencies emerge within but not between stimulation sites

In order to examine whether dynamics in initial cortical somatosensory responses follow local or domain-wide dynamics, we tested the inter-dependencies of N20 and P40 peak amplitudes in a cross-lagged two-level structural equation model (SEM). We modelled the lag-1 auto-correlation of subsequent SEPs within hand and foot regions, as well as their cross-lag relationships on a single-trial level. As can be seen from the results of the fitted SEM in Fig. 3, only the within-site relationships (i.e., lag-1 auto-regressions) showed significant effects whereas no dependencies emerged between stimulation sites (i.e., cross-lag regressions), $\beta_{N20 \rightarrow N20} = .039$, $p_{N20 \rightarrow N20} < .001$, $CI_{N20 \rightarrow N20} = [.024, .055]$; $\beta_{P40 \rightarrow P40} = .021$, $p_{P40 \rightarrow P40} = .007$, $CI_{P40 \rightarrow P40} = [.004, .038]$; $\beta_{P40 \rightarrow N20} = -.009$, $p_{P40 \rightarrow N20} = .146$, $CI_{P40 \rightarrow N20} = [-.026, .008]$; $\beta_{N20 \rightarrow P40} = -.006$, $p_{N20 \rightarrow P40} = .228$, $CI_{N20 \rightarrow P40} = [-.021, .008]$, respectively (CIs correspond to the 95%-credible intervals based on the posterior distributions of the Bayesian model estimation).

These findings were further corroborated by comparisons of alternative models, in which we tested the stepwise exclusion of specific effect paths, that is either paths involved in the cross-lag relationship or in the auto-correlation (Table 1). The models were evaluated using the deviance information criterion (DIC) where lower values indicate better model fit (i.e., in close correspondence to the Akaike information criterion (AIC) in non-Bayesian model estimation). To account for potential instabilities of the DIC values over different MCMC runs (i.e., different model estimation runs) – an issue that has been noted for Bayesian model comparisons before (Asparouhov et al., 2018) – we repeated the model estimations 100 times each and averaged the resulting pD and DIC values. As can be seen from Table 1, SEM 2 and SEM 4 showed the lowest DIC values on average. To confirm this statistically, we examined the differences of DIC values between models using pairwise t -tests across the 100 model estimation runs. While SEM2 and SEM4 did not differ, $p = .839$, they both showed significantly lower DIC values than SEM1, SEM3 and SEM5, $p = .034$, $p < .001$, $p < .001$, and $p = .040$, $p < .001$, $p < .001$, for SEM2 and SEM4, respectively (all p values Holm-Bonferroni-corrected). Given the equal model fit of SEM2 and SEM4 regarding their DIC values but considering the lower number of model parameters of SEM4 (i.e., seeking model parsimony), we conclude that SEM 4, that is the model without cross-lag relationships, presents as the preferred model to describe the empirical data. Taken together, both the analysis of path coefficients as well as subsequent model comparisons suggest temporal dependencies of cortical excitability within stimulated regions but not dependencies between the two regions.

In a next step, we added *ISI condition* as an additional between-subjects variable to the original cross-lagged two-level SEM and tested whether the ISI had a moderating effect on either the auto-correlation within cortical regions or on inter-dependencies between the two regions. No moderator effects were observed here, neither for the within-region auto-correlations, $\beta_{ISI, N20 \rightarrow N20} = -.004$, $p_{ISI, N20 \rightarrow N20} = .421$, $CI_{ISI, N20 \rightarrow N20} = [-.041, .034]$, and $\beta_{ISI, P40 \rightarrow P40} = -.003$, $p_{ISI, P40 \rightarrow P40} = .451$, $CI_{ISI, P40 \rightarrow P40} = [-.040, .035]$ (Fig. 4), nor for

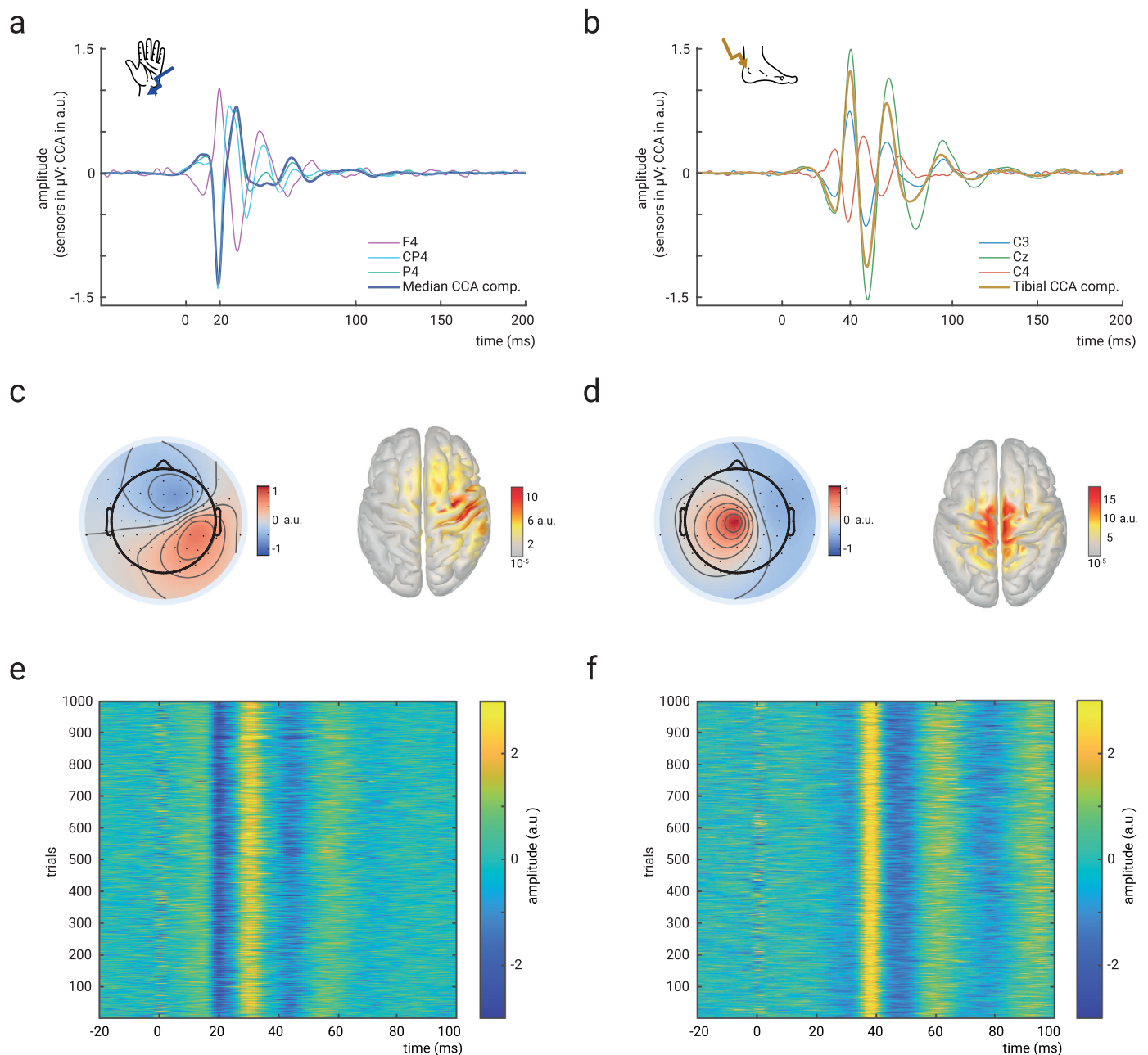


Fig. 2. Short-latency somatosensory evoked potentials (SEPs) to median and tibial nerve stimulation. **a)** Grand average of the SEP ($N = 38$) in response to median nerve stimulation, shown for selected electrodes in sensor space, as well as for the representative component of the single-trial extraction using Canonical Correlation Analysis (CCA). **b)** Same as **a)** but for tibial nerve stimulation. **c)** Spatial activation pattern (left) and source reconstruction (right) of the representative CCA component in median nerve stimulation. The spatial activation pattern indicates the contribution of each EEG sensor to the CCA component activity which was subsequently reconstructed in source space. Averaged across participants ($N = 38$). **d)** Same as **c)** but for tibial nerve stimulation. **e)** Single-trial responses to median nerve stimulation derived from the representative CCA component of an exemplary participant. **f)** Same as **e)** but for tibial nerve stimulation. All panels show data from the alternating stimulation condition, pooled across the long- and short-ISI conditions for the group-level averages in panels **a-d**.

the cross-lagged relationships between P40 and subsequent N20, as well as N20 and subsequent P40, $\beta_{ISI, P40 \rightarrow N20} = .003$, $p_{ISI, P40 \rightarrow N20} = .446$, $CI_{ISI, P40 \rightarrow N20} = [-.034, .039]$, and $\beta_{ISI, N20 \rightarrow P40} = -.021$, $p_{ISI, N20 \rightarrow P40} = .119$, $CI_{ISI, N20 \rightarrow P40} = [-.053, .014]$, respectively. Thus, different ISIs did not affect the temporal dependencies of short-latency SEP amplitudes, which at the same time endorses our initial approach to pool SEPs from both the long and short ISI (Fig. 2 & Fig. 3).

Finally, we tested whether the temporal dependencies of SEP amplitudes were driven by changes of peripheral nerve activity, as measured by compound nerve action potentials (CNAPs) at the upper arm and at the back of the knee. In addition to genuine peripheral neu-

ral variability, also small displacements of the stimulation electrodes or changes in limb posture could potentially have affected the extent of stimulus-induced nerve excitation and might thus render cortical-excitability explanations for temporal SEP dependencies moot. We employed the initial cross-lagged two-level SEM, but now included the median- and tibial-nerve CNAP measures as additional predictors of N20 and P40 amplitude, respectively. The model results did not indicate any relationship between peripheral nerve activity and SEP amplitudes, $\beta_{CNAPmedian \rightarrow N20} = .012$, $p_{CNAPmedian \rightarrow N20} = .309$, $CI_{CNAPmedian \rightarrow N20} = [-.036, .056]$, and $\beta_{CNAPtibial \rightarrow P40} = -.016$, $p_{CNAPtibial \rightarrow P40} = .196$, $CI_{CNAPtibial \rightarrow P40} = [-.060, .024]$, nor did we observe any auto-correlation

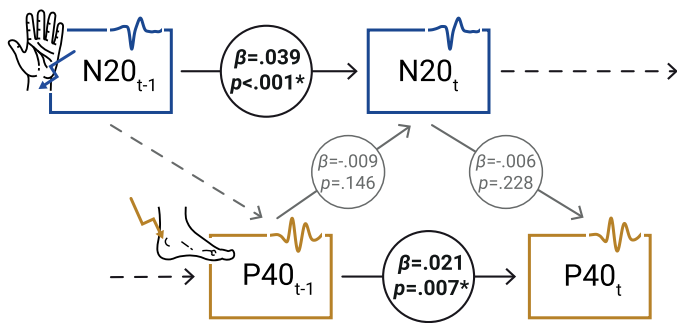


Fig. 3. Cross-lagged two-level SEM. Path coefficients reflect mean random slopes on group level, derived from a Bayesian model estimation with one-tailed p -values corresponding to the proportion of coefficients having the opposite sign according to the posterior distribution.

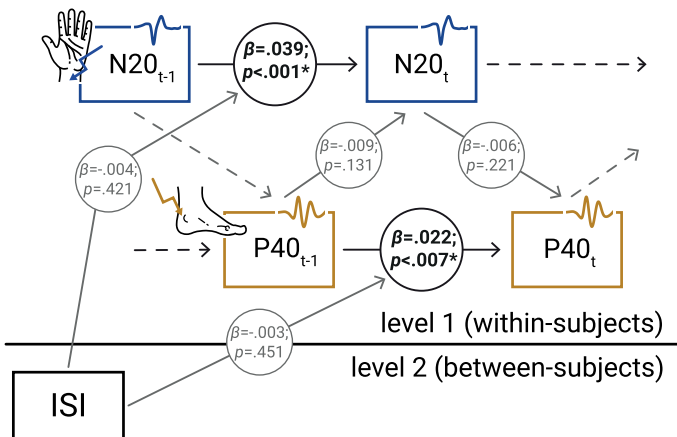


Fig. 4. Cross-lagged two-level SEM including ISI as cross-level moderator. Path coefficients reflect mean random slopes on group level, derived from a Bayesian model estimation with one-tailed p -values corresponding to the proportion of coefficients having the opposite sign according to the posterior distribution.

within the time-series of CNAP amplitudes, $\beta_{CNAPmedian} = .033$, $PCNAPmedian = .058$, $CI_{CNAPmedian} = [-.010, .077]$, and $\beta_{CNAPtibial} = -.010$, $PCNAPtibial = .338$, $CI_{CNAPtibial} = [-.062, .039]$ – while relations among SEP amplitudes remained comparable (i.e., dependencies within but not between cortical regions; Fig. 5). We therefore conclude that the observed SEP dynamics cannot be explained by peripheral changes of nerve activity.

3.3. Spatially confined effects of pre-stimulus alpha oscillatory state on initial SEP amplitudes

Next, we examined the relationship between short-latency SEP amplitudes and pre-stimulus oscillatory state in the alpha band (8–13 Hz). In congruence with previous studies (Stephani et al., 2021; Stephani et al., 2020), we found a negative relationship between the amplitude of the N20 potential (in response to median nerve stimulation) and pre-stimulus alpha amplitude, as extracted with the same spatial CCA filter as the median SEP, $\beta_{prestim} = -.040$, $t(29611.3) = -6.626$, $p < .001$ (calculated with a random-intercept linear-mixed-effects model with N20 amplitude as dependent variable and pre-stimulus alpha amplitude as predictor, pooled across both ISI conditions). Similarly, the P40 potential (in response to tibial nerve stimulation) was related to the pre-stimulus alpha amplitude extracted with the spatial CCA filter of the tibial SEP when pooling both ISI conditions, $\beta_{prestim} = -.017$, $t(29600.6) = -2.913$, $p = .004$. As can be seen from Supplement A, a complementary analysis sorting N20 and P40 amplitudes by quintiles of pre-stimulus alpha amplitudes further supported the linearity of the

respective relationships (as opposed to an inverted u-shaped relationship).

In order to test the spatial specificity of the pre-stimulus alpha effects, we repeated the above analyses in source space. For this, we first reconstructed the sources of the pre-stimulus alpha activity and then computed separate linear-mixed-effects models across all sources in the cortex. As shown in Fig. 6, the effects of pre-stimulus alpha amplitude on the N20 potential were most prominent in proximity to the hand area in the primary somatosensory cortex, whereas the effects on the P40 potential were located more medially, just above the primary somatosensory foot area. This observation was further supported by the lack of significant pre-stimulus effects for alpha band activity in the primary visual cortex (Supplement C). Thus, in these analyses including both ISI conditions, the effects of pre-stimulus alpha activity appeared to be specific for those spatial regions where the modulated SEP components are generated.

3.4. Pre-stimulus alpha effects are consistent across stimulation conditions for N20 but not P40

Although we did not observe any moderating effect of the ISI on the inter-dependencies of short-latency SEP amplitudes (see structural equation models above), the ISI might still play a role for the effect of pre-stimulus alpha activity on SEP amplitudes. To test this, we ran additional control analyses, now including the interaction term $ISI \times pre-stimulus\ alpha\ amplitude$ in the linear-mixed-effects models of the effects of pre-stimulus alpha on N20 and P40 amplitudes, respectively (pre-stimulus alpha activity was extracted with the same spatial CCA filters as the single-trial SEPs). For the N20 potential, no interaction effect emerged $\beta_{ISI \times prestim} = .006$, $t(29524.0) = .461$, $p = .645$, and the main effect of pre-stimulus alpha amplitude remained significant $\beta_{prestim} = -.045$, $t(29451.6) = -3.697$, $p < .001$. Thus, effects of pre-stimulus alpha amplitude on N20 amplitude were comparable for both the long and the short ISI. However, we found a significant interaction effect $ISI \times pre-stimulus\ alpha\ amplitude$ on P40 amplitude, $\beta_{ISI \times prestim} = .033$, $t(29566.9) = 2.460$, $p = .014$, and here, the main effect of pre-stimulus alpha on P40 disappeared when including the interaction term, $\beta_{prestim} = -.008$, $t(29540.1) = -.690$, $p = .490$. Further examining this interaction effect with separate linear-mixed-effects models for both ISI conditions revealed that there was an effect of pre-stimulus alpha amplitude on P40 amplitude in the short-ISI condition, $\beta_{prestim} = .025$, $t(22398.0) = 3.697$, $p < .001$, whereas no pre-stimulus effect emerged in the long-ISI condition, $\beta_{prestim} = -.008$, $t(7193.1) = -.765$, $p = .445$. These findings were further supported when examining the pre-stimulus effects in source space but now separately for each ISI condition: While the spatial specificity was consistent for pre-stimulus alpha effects on the N20, the P40 analyses revealed somatotopic effects in the short-ISI condition only (Fig. 7a).

In order to better understand the lack of pre-stimulus alpha effects on P40 amplitudes in the long-ISI condition (e.g., whether these were specific to the considerably smaller sub-sample of participants we tested here), we re-examined the pre-stimulus alpha effects in additional control conditions in which either median or tibial nerve stimuli were presented alone ($ISI \approx 766$ ms). While the relationship between pre-stimulus alpha and N20 amplitudes remained qualitatively comparable with the other median nerve stimulation conditions (Fig. 7a, bottom row left), an unexpected pattern emerged for tibial-nerve-only stimulation: Pre-stimulus alpha effects on P40 amplitude were most pronounced over bilateral somatosensory hand regions rather than over foot regions (Fig. 7a, bottom row right).

3.5. Spatial specificity of pre-stimulus effects in the beta frequency range (18–23 Hz)

Following up on the heterogenous spatial specificity of pre-stimulus alpha effects in tibial nerve stimulation, we explored whether differ-

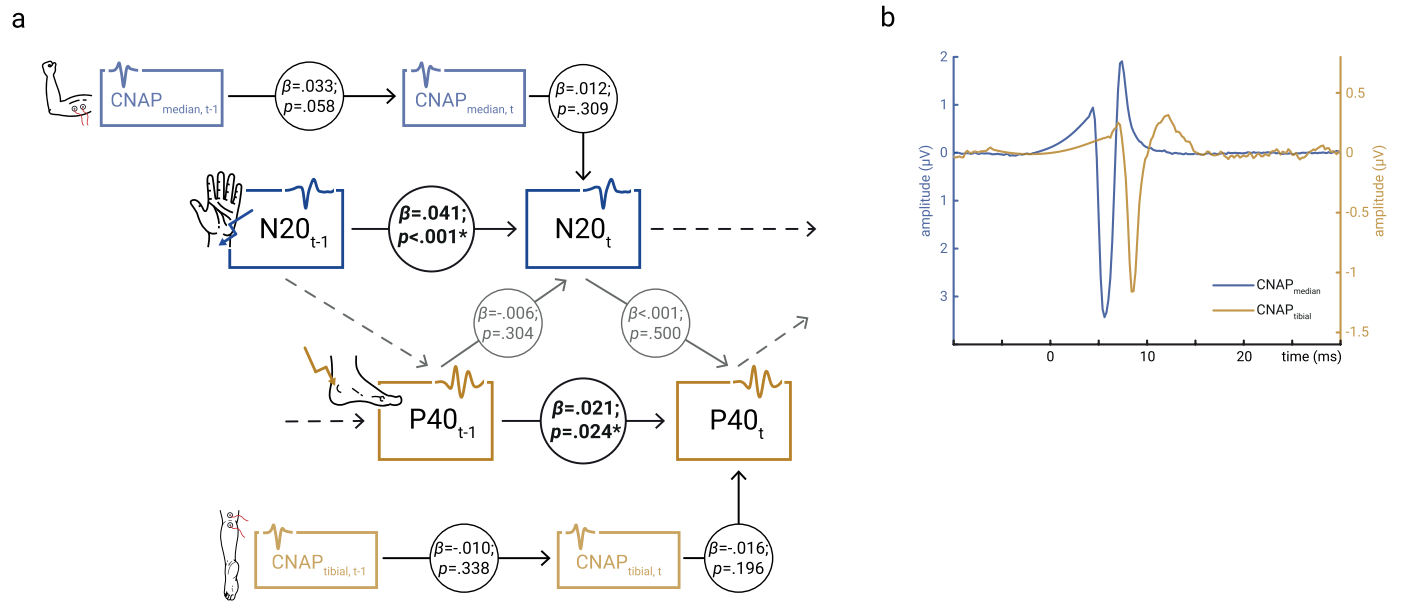


Fig. 5. Controls for peripheral nerve variability. **a)** Cross-lagged two-level SEM including peripheral nerve activity measures ($CNAP_{median}$ and $CNAP_{tibial}$) as covariates (sub-sample of dataset, $N = 25$). Path coefficients reflect mean random slopes on group level, derived from a Bayesian model estimation with one-tailed p -values corresponding to the proportion of coefficients having the opposite sign according to the posterior distribution. **b)** Grand averages ($N = 25$) of the peripheral nerve activity measures $CNAP_{median}$ and $CNAP_{tibial}$ in the alternating stimulation condition.

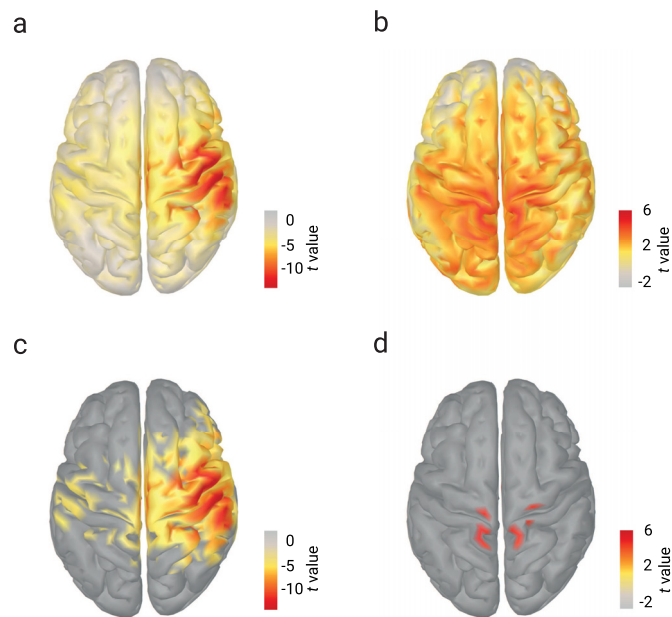


Fig. 6. Relationship between pre-stimulus alpha activity and SEPs in source space (pooled ISI conditions). **a)** Effects of pre-stimulus alpha amplitude, reconstructed in source space and averaged between -200 and -10 ms relative to stimulus onset, on N20 amplitude (evoked by median nerve stimulation). Shown are t -values corresponding to the β coefficients of mass-bivariate linear-mixed-effects models in source space (5001 sources; $N = 38$). **b)** Same as a) but for the effect of pre-stimulus alpha amplitude on P40 amplitude (evoked by tibial nerve stimulation). **c)** Same as a) but FDR-corrected to control for multiple comparisons, $p<.001$. **d)** Same as b) but FDR-corrected to control for multiple comparisons, $p<.001$.

ential patterns would be observed for the second prominent frequency component of the sensorimotor mu rhythm, the beta frequency band (here measured between 18 and 23 Hz). As pointed out by previous studies that a somatosensory alpha rhythm may be more difficult to

detect in foot regions (Pfurtscheller et al., 1997) and given that time-frequency analyses suggested additional pre-stimulus effects in the beta frequency range both in a recent, similar study (Stephani et al., 2021) as well as in the present data (Supplement B), the beta band may thus provide complimentary insights into the frequency-specific spatial organization of excitability effects. As displayed in Fig. 7b, the linear-mixed-effects models in source space indeed showed somatotopic effects of pre-stimulus beta amplitude on N20 amplitude in all stimulation conditions, as well as somatotopic effects of pre-stimulus beta amplitude on P40 amplitude at least in the short-ISI and single-nerve conditions. Thus, an asymmetric pattern was observed for pre-stimulus effects on P40 amplitudes particularly in the single-nerve stimulation condition: While pre-stimulus effects were rather located over (bilateral) hand regions in the alpha frequency range (Fig. 7a, bottom row right), pre-stimulus beta effects emerged primarily over foot regions (Fig. 7b, bottom row right). In contrast, the spatial organization of pre-stimulus effects on the N20 was similar both in the alpha and beta frequency range (please refer to Table 2 for a systematic overview).

3.6. Alpha and beta bands express different directional connectivity between hand and foot areas

Motivated by some discrepancies of pre-stimulus alpha and beta effects across stimulation conditions (Table 2), we tried to further disentangle the general regional specificity of these frequency bands by examining their directed connectivity between hand and foot regions. For this, we employed the phase slope index (PSI; Nolte et al., 2008), a measure whose sign indicates the direction of information flow between two cortical areas. We calculated the PSI between a hand and a foot ROI in the right somatosensory cortex and compared the resulting connectivity metrics across stimulation conditions and the two frequency bands, with positive values reflecting that activity in the hand region led activity in the foot region and vice versa for negative values. Since we were interested in overall, that is, prevailing connectivity differences of the frequency bands, we here examined the whole time range from -400 to 400 ms relative to stimulus onset (please refer to Supplement D for separate analyses of the pre- and post-stimulus time windows). As can be seen in Fig. 8, alpha band activity was associated with positive

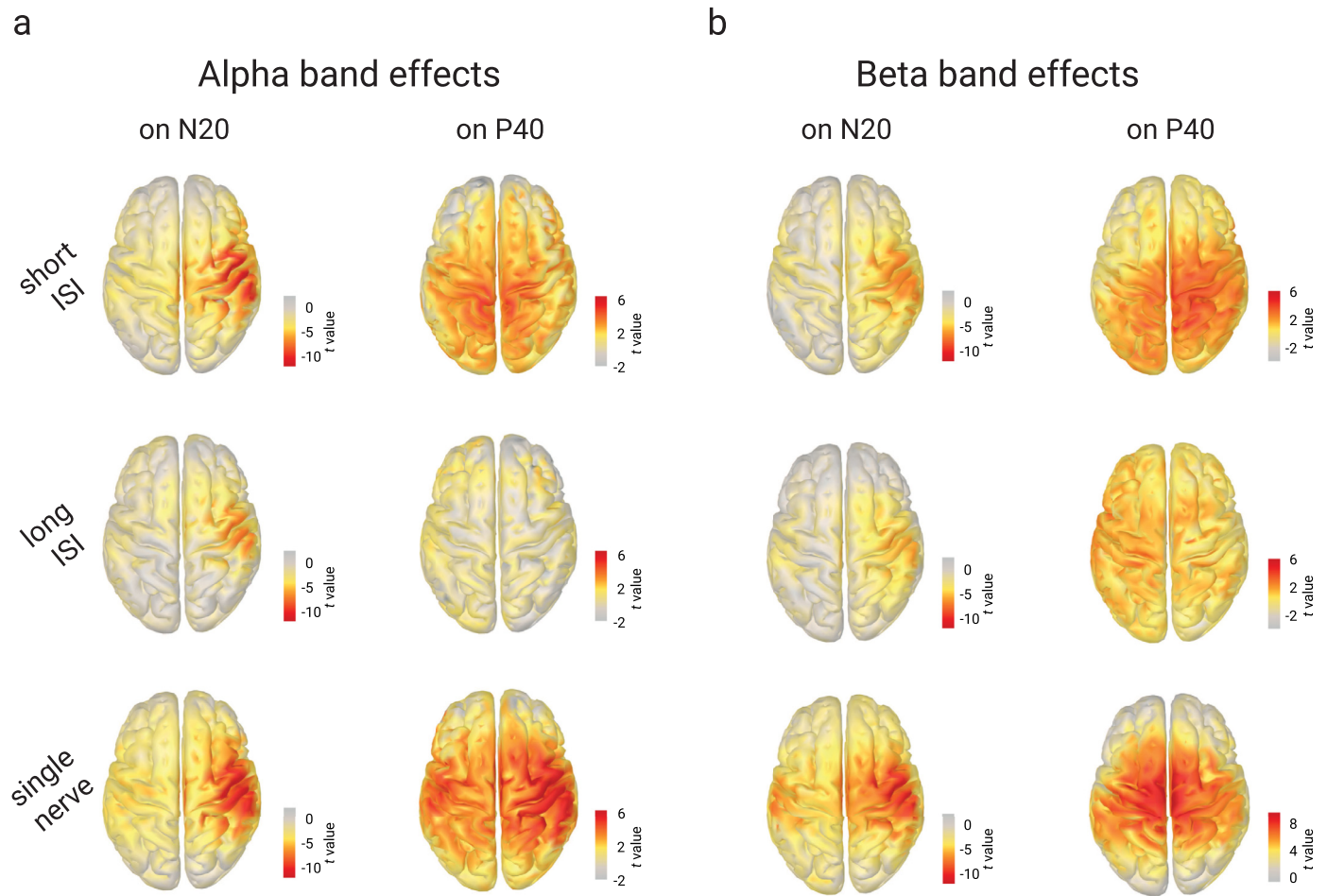


Fig. 7. Effects of pre-stimulus alpha (8-13 Hz) and beta (18-23 Hz) band amplitudes on initial SEP amplitudes in source space, displayed across all stimulation conditions. **a)** Alpha band effects on N20 (left column) and P40 (right column), for short ISI (first row; $N = 23$), long ISI (second row; $N = 15$), and single nerve stimulation (third row; $N = 37$). **b)** Beta band effects on N20 (left column) and P40 (right column), for short ISI (first row; $N = 23$), long ISI (second row; $N = 15$), and single nerve stimulation (third row; $N = 37$). All panels display t -values corresponding to the β coefficients of the effect between pre-stimulus alpha amplitude and N20 or P40 amplitude as calculated by mass bivariate linear-mixed-effects models in source space (5001 sources). Please note the different scaling of the color bar for the beta band effect on P40 in the single nerve condition.

Table 2

Overview of the spatial specificity of pre-stimulus effects of pre-stimulus alpha and beta activity on N20 and P40 amplitudes. Green color indicates findings in line with a local and somatotopic organization of excitability dynamics (whereas null findings are marked in grey and contradictory findings in red).

		Pre-stimulus effects			
		Alpha band		Beta band	
		on N20	on P40	on N20	on P40
Alternating stimulation	Short ISI	hand area	foot area	hand area	foot area
	Long ISI	hand area	no clear effects	hand area	no clear effects
Single-nerve stimulation (control condition)		hand area	hand areas (bilaterally)	hand area	foot area

PSI values across all stimulation conditions whereas beta band activity showed PSI values around zero and in a slightly negative regime. This suggests that the alpha rhythm in the hand region led alpha activity in the foot region while this tendency was not present (or even slightly reversed) for the beta rhythms. This observation was statistically confirmed using a repeated-measurement ANOVA with the factors *stimulation site*, *frequency band*, and *single-nerve vs. alternating stimula-*

tion (corresponding to Fig. 8a), which showed a main effect of *frequency band*, $F(1,37) = 22.528, p < .001, \eta^2 = .127$ and an interaction effect of *frequency band* by *stimulation site*, $F(1,37) = 4.517, p = .040, \eta^2 = .010$. Also, a second ANOVA confirmed the main effect of *frequency band* when splitting up the alternating stimulation condition into short- and long-ISI conditions (corresponding to Fig. 8b), $F(1,36) = 26.347, p < .001, \eta^2 = .224$ (here, *ISI condition* was treated as between-subject factor while

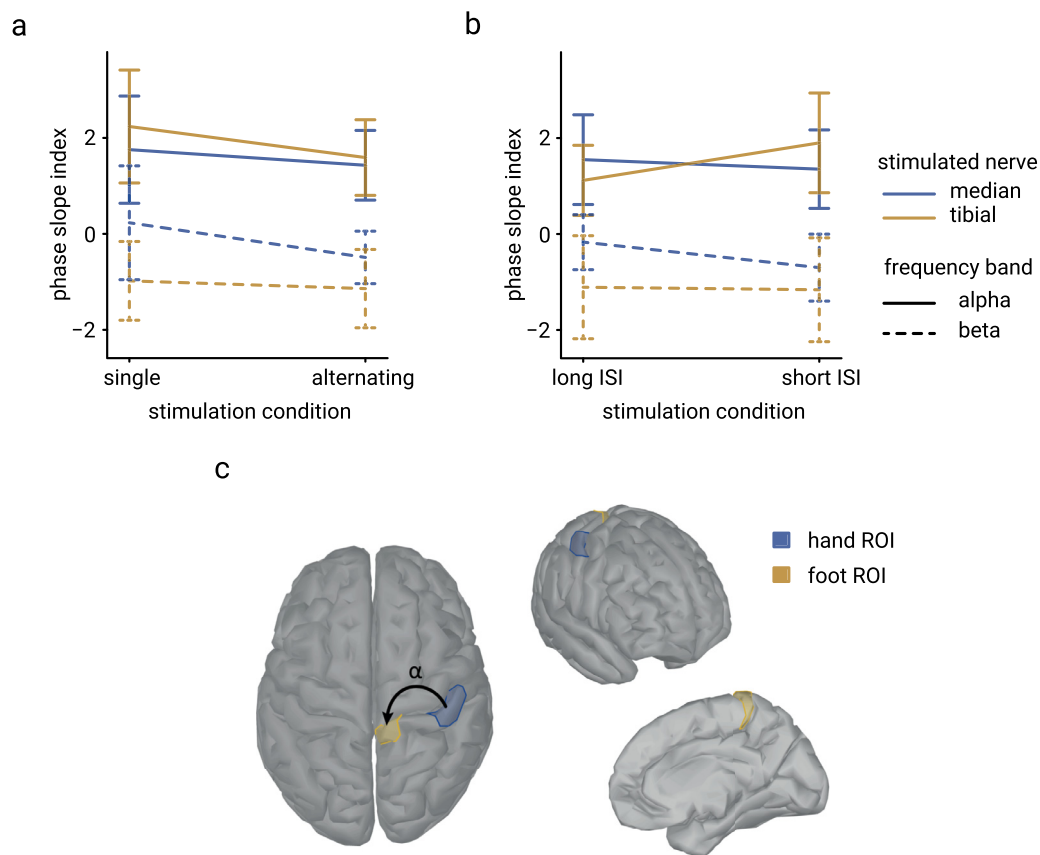


Fig. 8. Directed connectivity between hand and foot areas in alpha and beta frequency bands. **a)** PSI values for single nerve vs. alternating nerve stimulation conditions ($N = 38$). **b)** PSI values for long- vs. short-ISI conditions ($N = 15$ and $N = 23$, respectively). **c)** Display of the hand and foot ROIs between which the connectivity metrics were computed, shown from different angles. The arrow in the top view (left cortex surface) illustrates the direction of information flow within the alpha band. PSI values were extracted between -400 and 400 ms relative to stimulus onset. Positive PSI values indicate that activity in the hand region led activity in the foot region and vice versa for negative values. Error bars correspond to the 95%-confidence intervals.

the factor *single-nerve vs. alternating stimulation* in the former analysis was implemented as within-subject factor). Similar relationships between the frequency band and the PSI values were also obtained when considering the pre- or post-stimulus time windows separately (Supplement D). Notably, these connectivity effects cannot be explained by volume conduction since the chosen connectivity metric, the phase slope index, eliminates these spurious relations (Nolte et al., 2008). Next, one might wonder whether the frequency-specific positive and negative PSI values significantly differed from zero, respectively, which would indicate a certain direction of information flow (and not just a difference between conditions). Examining the 95%-confidence intervals (as shown in Fig. 8), it becomes evident that PSI values in the alpha frequency band were all higher than zero while the PSI values in the beta frequency band were significantly negative in tibial nerve stimulation only.

Altogether, these findings thus indicate that alpha band activity reflects a rhythm that is generally orchestrated by activity in the hand region while beta activity does not show this dependency in median nerve stimulation and even tends to be more foot-region-driven in tibial nerve stimulation. At least partially, this asymmetric connectivity pattern may thus explain the divergence of pre-stimulus alpha and beta effects on SEP amplitudes in tibial-nerve-only stimulation.

4. Discussion

Combining short-latency somatosensory evoked potentials and pre-stimulus oscillatory state measures, we examined whether instantaneous changes of neural excitability follow spatially local or domain-wide dy-

namics within the primary somatosensory cortex. We found that initial cortical EEG responses in hand and foot areas showed temporal dependencies regarding their amplitudes, yet only within and not across cortical regions, suggesting local fluctuations of cortical excitability at the earliest processing stages. Furthermore, the relationship between pre-stimulus alpha state and short-latency SEPs was characterized by a somatotopic organization across all hand stimulation conditions. However, this pattern was not equally consistent for foot stimulation where instead beta band activity was found to be region-specific. Offering an explanation for these slightly different effects across regions and frequency bands, post-hoc analyses of directed connectivity suggested that the somatosensory alpha rhythm may be dominated by activity from hand areas while this pattern was not present for beta frequencies.

4.1. Evidence for local excitability fluctuations within primary somatosensory areas

Employing cross-lagged structural equation modeling, we examined the inter-dependencies between short-latency SEPs in the primary somatosensory hand area (N20, evoked by median nerve stimulation) and in the primary somatosensory foot area (P40, evoked by tibial nerve stimulation). According to findings of previous work that the initial component of the cortical somatosensory evoked potential reflects excitatory post-synaptic potentials only (Bruyins-Haylett et al., 2017; Nicholson Peterson et al., 1995; Wikström et al., 1996), N20 and P40 amplitudes represent probes of the instantaneous excitability in the respective somatosensory region at a given time. Our analyses indicated temporal

dependencies of instantaneous excitability within but not between primary somatosensory hand and foot regions. These effects occurred irrespective of the ISI conditions – speaking for their robustness – and could furthermore not be explained by variability of peripheral nerve activity. Hence, local fluctuations of neural excitability seem to determine the brain's response variability. These findings are also well in line with previous work studying the temporal structure of short-latency somatosensory evoked potentials in median nerve stimulation only, where we found that long-range temporal dependencies emerged for even longer time lags within the primary somatosensory hand area (Stephani et al., 2020). Notably, our probing approach using somatosensory stimuli only allows for the observation of excitability fluctuations that occurred on the same (or larger) time scale as the stimulation events (i.e., in the range of seconds), raising the possibility that fluctuations on a smaller time scale might have been missed. We deem this to be unlikely however, since brain responses to stimulations of the *same* body parts were temporally further apart than those of *different* body parts and we did not observe relations between hand and foot region excitability. In addition, fluctuations of cortical excitability in sensorimotor areas, manifested in amplitude modulations of alpha oscillations, are typically characterized by a robust $1/f$ spectral profile (Linkenkaer-Hansen et al., 2001; Nikulin et al., 2012), which in turn indicates that very slow fluctuations dominate excitability dynamics in the frequency domain (< 0.2 Hz). Therefore, we believe that the ISI(s) used in the present study can be regarded adequate for probing corresponding temporal dynamics.

In a second approach to test the spatial specificity of excitability fluctuations, we related initial cortical stimulus-evoked responses to the pre-stimulus oscillatory state, examined in source space across the cortical surface. In line with the hypothesis that alpha band activity (8-13 Hz) reflects the excitability state of sensory regions (Jensen and Mazaheri, 2010; Klimesch et al., 2007; Romei et al., 2008; Samaha et al., 2020) and replicating the results of a recent study using median nerve stimulation only (Stephani et al., 2021), we observed effects of pre-stimulus alpha amplitudes and initial SEP amplitudes on a single-trial level and now extended these findings also to the foot domain. Although the positive effect direction (i.e., larger alpha amplitudes corresponded to larger SEP amplitudes) may seem counterintuitive at first, it may be explained by the sensitivity of EEG to post-synaptic currents rather than post-synaptic potentials (please refer to Stephani et al. (2021) for a detailed discussion). Furthermore, these effects on short-latency SEPs descriptively match with trends observed in earlier work on somatosensory evoked fields in MEG data (Nikouline et al., 2000) and also conform with biophysically realistic models of the relation between oscillatory activity and evoked responses in the somatosensory cortex (Jones et al., 2009). Crucially, pre-stimulus alpha effects on evoked potential amplitudes were most pronounced over the primary somatosensory hand area for the N20 and over the primary somatosensory foot area for the P40, thus presenting evidence for a local, somatotopic organization of excitability dynamics. This notion agrees well with recent studies in the visual domain where attention allocation was found to modulate alpha activity with a retinotopic pattern (Popov et al., 2019), associated with changes of the local excitability state (van Kempen et al., 2020), and may reflect the modulation of local neuronal firing rates in the hand area of the primary somatosensory cortex (Haegens et al., 2011).

4.2. Differences in oscillatory state response dynamics between hand and foot regions

Interestingly though, while the spatial specificity of pre-stimulus alpha effects was consistent across all median nerve stimulation conditions (i.e., most pronounced effects over the stimulated hand region), heterogenous effect patterns emerged across tibial nerve stimulation conditions during control analyses: In the short-ISI condition, pre-stimulus alpha effects were found over the foot region, yet such effects were absent for long ISIs, and in tibial nerve stimulation alone, the most pronounced effects of pre-stimulus alpha amplitude on P40

potentials were instead observed over (bilateral) hand areas (Table 2). This observation appears at odds with the hypothesis of exclusively local, somatotopic dynamics of cortical excitability. On the one hand, the lack of effects in the long-ISI condition may be partially attributable to the smaller number of participants and trials in this condition. On the other hand, the foot area in the primary somatosensory cortex is located much deeper in the brain (in the interhemispheric fissure) and with it the generators of the foot-related P40 as well as of foot-related oscillatory activity are more distant from the EEG sensors as compared to the rather superficial hand area. Thus, it may be more difficult to obtain and correctly localize neural activity from such deeper sources as was reported for foot areas already earlier (Jones et al., 2010). Additionally, the orientation of dipoles in the hand and foot regions should differ due to the cortical folding specific for these regions (which is why the N20 is visible as a negative and the P40 as a positive peak at somatosensory electrodes in the EEG, corresponding to tangential and radial CCA activation patterns, respectively). Although the foot SEPs could be measured very clearly in the current study due to the high stimulus intensity, the dipole orientation difference may still have added to the challenge to observe pre-stimulus narrow-band activity and thus its effects on tibial SEPs. Nevertheless, pre-stimulus alpha effects over the hand regions in the tibial-nerve-only condition in fact rather speak for non-local interactions in the alpha frequency range between foot and hand regions. These differential pre-stimulus dependencies may have at least two reasons. First, it is well known that the somatosensory alpha rhythm is most prominent in hand areas and less consistently found in foot areas (Pfurtscheller et al., 1997). This may be related to the recent finding that different body parts are represented by distinct resting-state functional networks (Thomas et al., 2021), hence possibly also affecting oscillatory rhythms that are thought to arise from activity of neural feedback loops (Bollimunta et al., 2011; Halgren et al., 2019; van Kerkoerle et al., 2014). Second, the segregation of hand and foot areas in the primary somatosensory cortex may be less strict than commonly assumed on the basis of the somatosensory homunculus, with sometimes overlapping representations of distant body parts (Catani, 2017; Muret et al., 2022). In congruence with this account, event-related synchronization of beta band activity after toe stimulation has also been reported in hand regions in humans (in addition to foot regions; Gaetz and Cheyne, 2006) and chemogenetic silencing of hand regions in monkeys may be associated with a disinhibition of foot areas (as measured by BOLD responses using fMRI; Hirabayashi et al., 2021). Thus, more complex inter-areal interactions may occur already at a basic processing level between hand- and foot-related activity, possibly obscuring somatotopic effects of pre-stimulus oscillations.

In another approach, attempting to account for possible differences of hand and foot oscillatory networks, we extended our analyses of pre-stimulus alpha activity (8 to 13 Hz) to the beta frequency band (18 to 23 Hz), the second major frequency component of the somatosensory mu rhythm, which has been associated with a similar (yet not identical) modulatory role as alpha activity in somatosensory perception (Anderson and Ding, 2011; Jones et al., 2010; Law et al., 2021; van Ede et al., 2010). Here, we indeed found somatotopic effects of pre-stimulus amplitude on P40 amplitude also in the tibial-only condition over more medial regions, presumably corresponding to foot regions, thus contrasting the spatial effect patterns over hand regions in the alpha frequency band. On the one hand, this finding may be related to the assumption that faster oscillatory rhythms (in this case beta) typically originate from neuronal ensembles of smaller sizes (Pfurtscheller and Lopes da Silva, 1999) and might therefore correspond to more local activity than slower rhythms (e.g., alpha). On the other hand, however, this notion cannot entirely explain the asymmetry of effects in alpha and beta bands between the hand and foot stimulation conditions (especially the absence of both alpha and beta effects on P40 amplitudes in the long-ISI condition). Taken together, it appears that somatosensory alpha and beta rhythms in hand and foot regions do not show identical functional properties and that relationships between pre-stimulus

states and responses are not readily transferrable across different body regions.

4.3. Hand-dominance of the somatosensory alpha rhythm

Are oscillatory rhythms in hand and foot regions – hypothesized to be indicative of the current neuronal state – independent from each other or do they interact? Addressing this complementary perspective regarding the local versus domain-wide organization of excitability within the somatosensory cortex, we analyzed the directed connectivity between the two areas in the alpha and beta frequency bands. Strikingly, our analyses identified hand activity to lead foot activity within the alpha but not in the beta band. This suggests that the somatosensory alpha rhythm – also in foot areas – is generally dominated by activity from the hand areas, which may further explain the frequency-specific pre-stimulus effect patterns discussed in the previous section: Since the alpha rhythm in the hand area appears to be a driver for alpha activity in the foot area, both areas are likely to follow similar dynamics within the alpha band. Consequently, since the alpha rhythm is generally most dominant in the hand area, stronger pre-stimulus alpha effects on foot-related SEP amplitudes are observed over hand rather than foot areas. This adds the important notion that, at least for alpha frequencies, oscillatory rhythms of the somatosensory system may also exhibit components that reflect domain-wide coordination, possibly adjusted preferably to the requirements of the hand regions. This is in line with earlier work on the Rolandic mu rhythm over hand regions arguing for both local *and* domain-wide alpha activity components (Andrew and Pfurtscheller, 1997) as well as the absence of a fine-grained somatotopy of post-stimulus alpha event-related desynchronization (ERD) on the level of individual fingers (Nierula et al., 2013). Although these asymmetries in somatosensory rhythms between hand and foot areas may seem unexpected, they can be understood from the perspective that hand- and foot-related neural networks serve completely different functions in daily life: While hand coordination often reflects more complex, consciously performed motor sequences (for example in tool use), foot movements are comprised of more monotonous elements and may be executed rather automatically (e.g., when walking). Consequently, these different motoric requirements may also lead to a differential organization of associated sensory functions.

4.4. Conclusions and perspectives

Summing up all findings from the present study, we conclude that overall evidence speaks for modulations of cortical excitability on a rather local than domain-wide level – especially when focusing on feed-forward sensory processing, such as reflected in N20 and P40 SEP amplitudes. Also, when examining pre-stimulus oscillatory states as markers of excitability, the majority of our findings pointed towards a somatotopic organization of excitability, yet with the limitation that alpha and beta frequency bands may not entirely behave in the same way in hand and foot regions. These inhomogeneities may be due to an asymmetric connectivity pattern of somatosensory oscillatory networks, with the hand region having a prominent role in the alpha frequency range. Despite these presumably local excitability dynamics at early sensory processing, it is conceivable that more domain-wide influences come into play at later stages of perception (which we have not focused on here), for example, exerted by top-down processes. Furthermore, one may wonder whether the neural response variability of supra-threshold stimuli observed in the current study would have had any implications for the variability of the perceptual outcome. Typically, such perceptual variability is studied in the context of near-threshold stimuli (Al et al., 2020; Auksztulewicz et al., 2012; Forschack et al., 2020; Linkenkaer-Hansen et al., 2004; Palva et al., 2005), where the slightest changes of neuronal responses are likely to decide about perceiving or not perceiving the stimulus. In our case, however, the stimulation was supra-threshold (i.e., all stimuli can be expected to have always been detected)

and the fluctuation of neural response amplitudes could at most be associated with differences of the perceived stimulus intensity as we indeed observed in a recent study using a somatosensory discrimination paradigm (Stephani et al., 2021). In that previous study, the subjectively reported stimulus intensity varied from trial to trial, in dependency of both pre-stimulus alpha amplitude and N20 amplitude. Importantly, in the current study, median nerve stimuli were presented with comparable supra-threshold intensities and the variability of N20 amplitudes was in general similar (or even slightly higher) as compared to the variability in our previous study (SD_{N20} Stephani et al. 2021 = 0.70 a.u.). Presumably, the extent of observed fluctuations of evoked responses in the current study may thus indeed have been in a range that is of behavioral relevance regarding the perceived stimulus intensity – at least for the median nerve stimuli (for the tibial nerve stimuli, associated with a slightly lower trial-to-trial neural response variability, it may be a topic for future studies to also test the relation between P40 amplitudes and the subjective stimulus experience). Future work may additionally extend the experimental setting to stimuli presented to both sides of the body. This way, it could be studied whether homologous regions in the left and right primary somatosensory cortex (e.g., left- and right-hand areas) share more variance of neural activity than heterologous regions within one hemisphere (e.g., left-hand and left-foot areas), taking into account the existence of interhemispheric connections particularly between homologous S1 regions (Hlushchuk and Hari, 2006; Ragert et al., 2011). Moreover, to further scrutinize the potential role of preceding stimulation events on subsequent pre-stimulus states and evoked responses, a wider range of ISIs should be examined in follow-up studies, possibly also employing less regular (and thus less predictable) stimuli. In this context, it would be interesting to study the specific role of expectation for local excitability dynamics in S1 subregions, given the previous reports of reduced neural gain in case of unpredictable auditory stimuli (Auksztulewicz et al., 2019) and long-term prior effects on the perception of ambiguous visual stimuli (Hardstone et al., 2021). A further question may be whether the spatial specificity of excitability modulations is stable over time or whether the system can adjust it according to the specific task conditions, for example requiring differential involvement of hand and foot neural networks. Last but not least, a promising next step could be to examine the relationship between the here observed local fluctuations of somatosensory excitability in the context of brain-wide, general arousal levels. To this end, future studies could thus combine dedicated arousal measures, such as pupil diameter or skin conductance, with the local excitability metrics employed in the current study, and ideally also include a behavioral control or manipulation of current arousal and/or excitability states.

Code availability

The custom-written code that was used for data processing and statistical analyses is publicly available at: <https://osf.io/fn7jc/>.

Competing Interests statement

The authors declare no competing financial interests.

Credit authorship contribution statement

T. Stephani: Conceptualization, Formal analysis, Investigation, Methodology, Visualization, Writing – original draft, Writing – review & editing. **B. Nierula:** Conceptualization, Formal analysis, Investigation, Project administration, Data curation, Writing – review & editing. **A. Villringer:** Conceptualization, Funding acquisition, Supervision, Writing – review & editing. **F. Eippert:** Conceptualization, Funding acquisition, Project administration, Supervision, Writing – review & editing. **V.V. Nikulin:** Conceptualization, Methodology, Supervision, Writing – review & editing.

Data availability

The data of the alternating stimulation conditions used in this study are openly available at: <https://osf.io/fn7jc/>. The data of the single-nerve stimulation conditions can be obtained upon request from the corresponding author (T.S.) and will be published along with an upcoming data article comprising simultaneous electroencephalo-, electrospino-, electroneuro-, electrocardiographic, and respiratory recordings (Nierula et al., in prep.).

Acknowledgements

We are grateful to Janek Haschke, Pia-Lena Baisch, Paula Kosel, Max Braune, Samuel Simeon, Marleen Löffler, and Merve Kaptan for their invaluable help in data collection and their contributions to data preprocessing. Furthermore, we thank Heike Schmidt-Duderstedt for her support in creating Fig. 1. This work was funded by the Max Planck Society.

Supplementary materials

Supplementary material associated with this article can be found, in the online version, at [doi:10.1016/j.neuroimage.2022.119687](https://doi.org/10.1016/j.neuroimage.2022.119687).

References

- Al, E., Iliopoulos, F., Forschack, N., Nierhaus, T., Grund, M., Motyka, P., Gaebler, M., Nikulin, V.V., Villringer, A., 2020. Heart-brain interactions shape somatosensory perception and evoked potentials. *Proc. Natl. Acad. Sci.* 117, 10575–10584. doi:10.1073/pnas.1915629117.
- Allison, T., McCarthy, G., Luby, M., Puce, A., Spencer, D.D., 1996. Localization of functional regions of human mesial cortex by somatosensory evoked potential recording and by cortical stimulation. *Electroencephalogr. Clin. Neurophysiol.* 100, 126–140. doi:10.1016/0013-4694(95)00226-X.
- Allison, T., McCarthy, G., Wood, C.C., Jones, S.J., 1991. Potentials evoked in human and monkey cerebral cortex by stimulation of the median nerve. *Brain* 114, 2465–2503. doi:10.1093/brain/114.6.2465.
- Anderson, K.L., Ding, M., 2011. Attentional modulation of the somatosensory mu rhythm. *Neuroscience* 180, 165–180. doi:10.1016/j.neuroscience.2011.02.004.
- Andrew, C., Pfurtscheller, G., 1997. On the existence of different alpha band rhythms in the hand area of man. *Neurosci. Lett.* 222, 103–106. doi:10.1016/S0304-3940(97)13358-4.
- Arieli, A., Sterkin, A., Grinvald, A., Aertsen, A., 1996. Dynamics of ongoing activity: explanation of the large variability in evoked cortical responses. *Science* 273, 1868–1871.
- Asparouhov, T., Hamaker, E.L., Muthén, B., 2018. Dynamic structural equation models. *Struct. Equ. Model.* 25, 359–388. doi:10.1080/10705511.2017.1406803.
- Auksztulewicz, R., Myers, N.E., Schnupp, J.W., Nobre, A.C., 2019. Rhythmic temporal expectation boosts neural activity by increasing neural gain. *J. Neurosci.* 0925, 1–19. doi:10.1523/JNEUROSCI.0925-19.2019.
- Auksztulewicz, R., Spitzer, B., Blankenburg, F., 2012. Recurrent neural processing and somatosensory awareness. *J. Neurosci.* 32, 799–805. doi:10.1523/JNEUROSCI.3974-11.2012.
- Barr, D.J., Levy, R., Scheepers, C., Tily, H.J., 2013. Random effects structure for confirmatory hypothesis testing: keep it maximal. *J. Mem. Lang.* 68, 2765–2773. doi:10.1016/j.jml.2012.11.001.
- Barry, R.J., Clarke, A.R., Johnstone, S.J., Magee, C.A., Rushby, J.A., 2007. EEG differences between eyes-closed and eyes-open resting conditions. *Clin. Neurophysiol.* 118, 2765–2773. doi:10.1016/j.clinph.2007.07.028.
- Bates, D., Mächler, M., Bolker, B., Walker, S., 2015. Fitting Linear Mixed-Effects Models Using lme4. *J. Stat. Soft.* 67, 1–48. doi:10.18637/jss.v067.i01.
- Baumgarten, T.J., Schnitzler, A., Lange, J., 2016. Prestimulus Alpha Power Influences Tactile Temporal Perceptual Discrimination and Confidence in Decisions. *Cereb. Cortex* 26, 891–903. doi:10.1093/cercor/bhu247.
- Benjamini, Y., Hochberg, Y., 1995. Controlling the false discovery rate: a practical and powerful approach to multiple testing. *J. R. Stat. Soc.* 57, 289–300. doi:10.1111/j.2517-6161.1995.tb02031.x.
- Bollimunta, A., Mo, J., Schroeder, C.E., Ding, M., 2011. Neuronal mechanisms and attentional modulation of corticothalamic α oscillations. *J. Neurosci.* 31, 4935–4943. doi:10.1523/JNEUROSCI.5580-10.2011.
- Bruyns-Haylett, M., Luo, J., Kennerley, A.J., Harris, S., Boorman, L., Milne, E., Vautrelle, N., Hayashi, Y., Whalley, B.J., Jones, M., Berwick, J., Riera, J., Zheng, Y., 2017. The neurogenesis of P1 and N1: a concurrent EEG/LFP study. *NeuroImage* 146, 575–588. doi:10.1016/j.neuroimage.2016.09.034.
- Busch, N.A., Dubois, J., VanRullen, R., 2009. The phase of ongoing EEG oscillations predicts visual perception. *J. Neurosci.* 29, 7869–7876. doi:10.1523/JNEUROSCI.0113-09.2009.
- Buzsáki, G., Draguhn, A., 2004. Neuronal oscillations in cortical networks. *Science* 304, 1926–1929. doi:10.1126/science.1099745.
- Catani, M., 2017. A little man of some importance. *Brain* 140, 3055–3061. doi:10.1093/brain/awx270.
- Craddock, M., Poliakoff, E., El-Deredy, W., Klepousniotou, E., Lloyd, D.M., 2017. Pre-stimulus alpha oscillations over somatosensory cortex predict tactile misperceptions. *Neuropsychologia* 96, 9–18. doi:10.1016/j.neuropsychologia.2016.12.030.
- Delorme, A., Makeig, S., 2004. EEGLAB: An open source toolbox for analysis of single-trial EEG dynamics including independent component analysis. *J. Neurosci. Methods* 134, 9–21. doi:10.1016/j.jneumeth.2003.10.009.
- Destrieux, C., Fischl, B., Dale, A., Halgren, E., 2010. Automatic parcellation of human cortical gyri and sulci using standard anatomical nomenclature. *NeuroImage* 53, 1–15. doi:10.1016/j.neuroimage.2010.06.010.
- Ellaway, P., Davey, N., Maskill, D., Rawlinson, S., Lewis, H., Anissimova, N., 1998. Variability in the amplitude of skeletal muscle responses to magnetic stimulation of the motor cortex in man. *Electroencephalogr. Clin. Neurophysiol.* 109, 104–113. doi:10.1016/S0924-980X(98)00007-1.
- Fonov, V.S., Evans, A.C., McKinstry, R.C., Almlri, C.R., Collins, D.L., 2009. Unbiased non-linear average age-appropriate brain templates from birth to adulthood. *NeuroImage* 47, S102. doi:10.1016/S1053-8119(09)70884-5.
- Forschack, N., Nierhaus, T., Müller, M.M., Villringer, A., 2020. Dissociable neural correlates of stimulation intensity and detection in somatosensation. *NeuroImage* 217, 116908. doi:10.1016/j.neuroimage.2020.116908.
- Gaetz, W., Cheyney, D., 2006. Localization of sensorimotor cortical rhythms induced by tactile stimulation using spatially filtered MEG. *NeuroImage* 30, 899–908. doi:10.1016/j.neuroimage.2005.10.009.
- Gee, J.W., Tsetsos, K., Schwabe, L., Urai, A.E., McCormick, D., McGinley, M.J., Donner, T.H., 2020. Pupil-linked phasic arousal predicts a reduction of choice bias across species and decision domains. *Elife* 9. doi:10.7554/eLife.54014.
- Gramfort, A., Papadopoulos, T., Olivi, E., Clerc, M., 2010. OpenMEEG: open-source software for quasistatic bioelectromagnetics. *Biomed. Eng. Online* 9, 45. doi:10.1186/1475-925X-9-45.
- Haegens, S., Nacher, V., Luna, R., Romo, R., Jensen, O., 2011. α -Oscillations in the monkey sensorimotor network influence discrimination performance by rhythmic inhibition of neuronal spiking. *Proc. Natl. Acad. Sci.* 108, 19377–19382. doi:10.1073/pnas.1117190108.
- Halgren, M., Ulbert, I., Bastuji, H., Fabó, D., Eröss, L., Rey, M., Devinsky, O., Doyle, W.K., Mak-McCully, R., Halgren, E., Wittner, L., Chauvel, P., Heit, G., Eskandar, E., Mandell, A., Cash, S.S., 2019. The generation and propagation of the human alpha rhythm. *Proc. Natl. Acad. Sci.* 116, 23772–23782. doi:10.1073/pnas.1913092116.
- Hallquist, M.N., Wiley, J.F., 2018. MplusAutomation: an R package for facilitating large-scale latent variable analyses in Mplus. *Struct. Equ. Model.* 25, 621–638. doi:10.1080/10705511.2017.1402334.
- Hardstone, R., Zhu, M., Flinker, A., Melloni, L., Devore, S., Friedman, D., Dugan, P., Doyle, W.K., Devinsky, O., He, B.J., 2021. Long-term priors influence visual perception through recruitment of long-range feedback. *Nat. Commun.* 12. doi:10.1038/s41467-021-26544-w.
- Haufe, S., Meinecke, F., Górgen, K., Dähne, S., Haynes, J.-D., Blankertz, B., Bießmann, F., 2014. On the interpretation of weight vectors of linear models in multivariate neuroimaging. *NeuroImage* 87, 96–110. doi:10.1016/j.neuroimage.2013.10.067.
- Henry, M.J., Herrmann, B., Obleser, J., 2016. Neural Microstates Govern Perception of Auditory Input without Rhythmic Structure. *J. Neurosci.* 36, 860–871. doi:10.1523/JNEUROSCI.2191-15.2016.
- Hesselmann, G., Kell, C.A., Eger, E., Kleinschmidt, A., 2008. Spontaneous local variations in ongoing neural activity bias perceptual decisions. *Proc. Natl. Acad. Sci.* 105, 10984–10989. doi:10.1073/pnas.0712043105.
- Hirabayashi, T., Nagai, Y., Hori, Y., Inoue, K.-I., Aoki, I., Takada, M., Suhara, T., Higuchi, M., Minamimoto, T., 2021. Chemogenetic sensory fMRI reveals behaviorally relevant bidirectional changes in primate somatosensory network. *Neuron* 109, 3312–3322. doi:10.1016/j.neuron.2021.08.032, e5.
- Hlushchuk, Y., Hari, R., 2006. Transient suppression of ipsilateral primary somatosensory cortex during tactile finger stimulation. *J. Neurosci.* 26, 5819–5824. doi:10.1523/JNEUROSCI.5536-05.2006.
- Holm, S., 1979. A simple sequentially rejective multiple test procedure. *Scand. J. Stat.* 6, 65–70.
- Iemi, L., Chaumon, M., Crouzet, S.M., Busch, N.A., 2017. Spontaneous neural oscillations bias perception by modulating baseline excitability. *J. Neurosci.* 37, 807–819. doi:10.1523/JNEUROSCI.1432-16.2017.
- Jensen, O., Mazaheri, A., 2010. Shaping functional architecture by oscillatory alpha activity: gating by inhibition. *Front. Hum. Neurosci.* 4, 186. doi:10.3389/fnhum.2010.00186.
- Jones, S.R., Kerr, C.E., Wan, Q., Pritchett, D.L., Hämäläinen, M., Moore, C.I., 2010. Cued spatial attention drives functionally relevant modulation of the mu rhythm in primary somatosensory cortex. *J. Neurosci.* 30, 13760–13765. doi:10.1523/JNEUROSCI.2969-10.2010.
- Jones, S.R., Pritchett, D.L., Sikora, M.A., Stufflebeam, S.M., Hämäläinen, M., Moore, C.I., 2009. Quantitative analysis and biophysically realistic neural modeling of the MEG mu rhythm: rhythmogenesis and modulation of sensory-evoked responses. *J. Neurophysiol.* 102, 3554–3572. doi:10.1152/jn.00535.2009.
- Kany, C., Treede, R.-D., 1997. Median and tibial nerve somatosensory evoked potentials: middle-latency components from the vicinity of the secondary somatosensory cortex in humans. *Electroencephalogr. Clin. Neurophysiol.* 104, 402–410. doi:10.1016/S0168-5597(97)00045-2.
- Klimesch, W., Sauseng, P., Hanslmayr, S., 2007. EEG alpha oscillations: The inhibition-timing hypothesis. *Brain Res. Rev.* 53, 63–88. doi:10.1016/j.brainresrev.2006.06.003.
- Kuznetsova, A., Brockhoff, P.B., Christensen, R.H.B., 2017. lmerTest package: tests in linear mixed effects models. *J. Stat. Soft.* 82, 1–26. doi:10.18637/jss.v082.i13.

- Kybic, J., Clerc, M., Abboud, T., Faugeras, O., Keriven, R., Papadopoulos, T., 2005. A common formalism for the Integral formulations of the forward EEG problem. *IEEE Trans. Med. Imaging* 24, 12–28. doi:10.1109/TMI.2004.837363.
- Law, R.G., Pugliese, S., Shin, H., Shiva, D.D., Lee, S., Neymotin, S., Moore, C., Jones, S.R., 2021. Thalamocortical mechanisms regulating the relationship between transient beta events and human tactile perception. *Cereb. Cortex* doi:10.1093/cercor/bhab221.
- Lawrence, Michael A., 2016. ez: Easy Analysis and Visualization of Factorial Experiments. R package version 4.4-0. <https://CRAN.R-project.org/package=ez>.
- Linkenkaer-Hansen, K., Nikouline, V.V., Palva, J.M., Ilmoniemi, R.J., 2001. Long-range temporal correlations and scaling behavior in human brain oscillations. *J. Neurosci.* 21, 1370–1377. doi:10.1523/JNEUROSCI.21-04-01370.2001.
- Linkenkaer-Hansen, K., Nikulin, V.V., Palva, S., Ilmoniemi, R.J., Palva, J.M., 2004. Prestimulus oscillations enhance psychophysical performance in humans. *J. Neurosci.* 24, 10186–10190. doi:10.1523/JNEUROSCI.2584-04.2004.
- McCormick, D.A., Nestvogel, D.B., He, B.J., 2020. Neuromodulation of brain state and behavior. *Annu. Rev. Neurosci.* 43, 391–415. doi:10.1146/annurev-neuro-100219-105424.
- McNeish, D., Hamaker, E.L., 2020. A primer on two-level dynamic structural equation models for intensive longitudinal data in Mplus. *Psychol. Methods* 25, 610–635. doi:10.1037/met0000250.
- Müller, N., Keil, J., Obleser, J., Schulz, H., Grunwald, T., Bernays, R.-L., Huppertz, H.-J., Weisz, N., 2013. You can't stop the music: reduced auditory alpha power and coupling between auditory and memory regions facilitate the illusory perception of music during noise. *Neuroimage* 79, 383–393. doi:10.1016/j.neuroimage.2013.05.001.
- Muret, D., Root, V., Kieliba, P., Clode, D., Makin, T.R., 2022. Beyond body maps: Information content of specific body parts is distributed across the somatosensory homunculus. *Cell Rep.* 38, 110523. doi:10.1016/j.celrep.2022.110523.
- Muthén, L.K., Muthén, B.O., 1998–2017. *Mplus User's Guide, Eighth Edition Muthén & Muthén, Los Angeles, CA.*
- Nicholson Peterson, N., Schroeder, C.E., Arezzo, J.C., 1995. Neural generators of early cortical somatosensory evoked potentials in the awake monkey. *Electroencephalogr. Clin. Neurophysiol.* 96, 248–260. doi:10.1016/0168-5597(95)00006-E.
- Nierula, B., Hohlefeld, F.U., Curio, G., Nikulin, V.V., 2013. No somatotopy of sensorimotor alpha-oscillation responses to differential finger stimulation. *Neuroimage* 76, 294–303. doi:10.1016/j.neuroimage.2013.03.025.
- Nierula, B., Stephani, T., Zhao, H., Kaptan, M., Al, E., Haschke, J., Baisch, P.-L., Kosel, P., Braune, M., Simeon, S., Löffler, M., Mouraux, A., Maess, B., Hartwigsen, G., Nazarova, M., Villringer, A., Curio, G., Nikulin, V.V., Eippert, F., in prep. Electrophysiological data of cortex, spinal cord and periphery during somatosensory and motor stimulation.
- Nikouline, Vadim V., Wikström, Heidi, Linkenkaer-Hansen, Klaus, Kesäniemi, Martti, Ilmoniemi, Risto J., Huttunen, Juha, 2000. Somatosensory evoked magnetic fields: Relation to pre-stimulus mu rhythm. *Clinical Neurophysiology* 111 (7), 1227–1233. doi:10.1016/S1388-2457(00)00291-1.
- Nikulin, V.V., Jönsson, E.G., Brismar, T., 2012. Attenuation of long-range temporal correlations in the amplitude dynamics of alpha and beta neuronal oscillations in patients with schizophrenia. *Neuroimage* 61, 162–169. doi:10.1016/j.neuroimage.2012.03.008.
- Nikulin, V.V., Nolte, G., Curio, G., 2011. A novel method for reliable and fast extraction of neuronal EEG/MEG oscillations on the basis of spatio-spectral decomposition. *Neuroimage* 55, 1528–1535. doi:10.1016/j.neuroimage.2011.01.057.
- Nolte, G., Ziehe, A., Nikulin, V., Schlögl, A., Krämer, N., Brismar, T., Müller, K.-R., 2008. Robustly estimating the flow direction of information in complex physical systems. *Phys. Rev. Lett.* 100, 234101.
- Nunez, P.L., Wingeier, B.M., Silberstein, R.B., 2001. Spatial-temporal structures of human alpha rhythms: theory, microcurrent sources, multiscale measurements, and global binding of local networks. *Hum. Brain Mapp* 13, 125–164. doi:10.1002/hbm.1030.
- Oldfield, R.C., 1971. The assessment and analysis of handedness: The Edinburgh inventory. *Neuropsychologia* 9, 97–113. doi:10.1016/0028-3932(71)90067-4.
- Palva, S., Linkenkaer-Hansen, K., Näätänen, R., Palva, J.M., 2005. Early neural correlates of conscious somatosensory perception. *J. Neurosci.* 25, 5248–5258. doi:10.1523/JNEUROSCI.0141-05.2005.
- Pascual-Marqui, R.D., 2007. Discrete, 3D distributed linear imaging methods of electric neuronal activity. Part 1: exact, zero error localization. *ArXiv*.
- Pfurtscheller, G., Lopes da Silva, F.H., 1999. Event-related EEG/MEG synchronization and desynchronization: Basic principles. *Clin. Neurophysiol.* 110, 1842–1857. doi:10.1016/S1388-2457(99)00141-8.
- Pfurtscheller, G., Neuper, C., Andrew, C., Edlinger, G., 1997. Foot and hand area mu rhythms. *Int. J. Psychophysiol.* 26, 121–135. doi:10.1016/S0167-8760(97)00760-5.
- Podvalny, E., Flounders, M.W., King, L.E., Holroyd, T., He, B.J., 2019. A dual role of prestimulus spontaneous neural activity in visual object recognition. *Nat. Commun.* 10, 3910. doi:10.1038/s41467-019-11877-4.
- Popov, T., Gips, B., Kastner, S., Jensen, O., 2019. Spatial specificity of alpha oscillations in the human visual system. *Hum. Brain Mapp.* 40, 4432–4440. doi:10.1002/hbm.24712.
- R Core Team, 2018. *R: A language and environment for statistical computing. R Foundation for Statistical Computing, Vienna, Austria.*
- Ragert, P., Nierhaus, T., Cohen, L.G., Villringer, A., 2011. Interhemispheric interactions between the human primary somatosensory cortices. *PLoS One* 6, e16150. doi:10.1371/journal.pone.0016150.
- Romei, V., Brodbeck, V., Michel, C., Amedi, A., Pascual-Leone, A., Thut, G., 2008. Spontaneous fluctuations in posterior alpha-band EEG activity reflect variability in excitability of human visual areas. *Cereb. Cortex* 18, 2010–2018. doi:10.1093/cercor/bhm229.
- Sadaghiani, S., Hesselmann, G., Friston, K.J., Kleinschmidt, A., 2010. The relation of ongoing brain activity, evoked neural responses, and cognition. *Front. Syst. Neurosci.* 4, 20. doi:10.3389/fnsys.2010.00020.
- Samaha, J., Iemi, L., Haegens, S., Busch, N.A., 2020. Spontaneous brain oscillations and perceptual decision-making. *Trends Cogn. Sci.* 24, 639–653. doi:10.1016/j.tics.2020.05.004.
- Satterthwaite, F.E., 1946. An Approximate Distribution of Estimates of Variance Components. *Biometrics* 2, 110. doi:10.2307/3002019.
- Schröder, S., Steinmetz, N.A., Krumin, M., Pachitariu, M., Rizzi, M., Lagnado, L., Harris, K.D., Carandini, M., 2020. Arousal Modulates Retinal Output. *Neuron* 107, 487–495. doi:10.1016/j.neuron.2020.04.026, e9.
- Spiegelhalter, D.J., Best, N.G., Carlin, B.P., van der Linde, A., 2002. Bayesian measures of model complexity and fit. *J. R. Stat. Soc. B* 64, 583–639. doi:10.1111/1467-9868.00353.
- Stephani, T., Hodapp, A., Jamshidi Idaji, M., Villringer, A., Nikulin, V.V., 2021. Neural excitability and sensory input determine intensity perception with opposing directions in initial cortical responses. *Elife* 10, e67838. doi:10.7554/eLife.67838, e67838.
- Stephani, T., Waterstraat, G., Haufe, S., Curio, G., Villringer, A., Nikulin, V.V., 2020. Temporal signatures of criticality in human cortical excitability as probed by early somatosensory responses. *J. Neurosci.* 40, 6572–6583. doi:10.1523/JNEUROSCI.0241-20.2020.
- Tadel, F., Baillet, S., Mosher, J.C., Pantazis, D., Leahy, R.M., 2011. Brainstorm: a user-friendly application for MEG/EEG analysis. *Comput. Intell. Neurosci.* 879716, 2011. doi:10.1155/2011/879716.
- Thomas, J., Sharma, D., Mohanta, S., Jain, N., 2021. Resting-state functional networks of different topographic representations in the somatosensory cortex of macaque monkeys and humans. *Neuroimage* 228, 117694. doi:10.1016/j.neuroimage.2020.117694.
- van der Meij, R., van Ede, F., Maris, E., 2016. Rhythmic components in extracranial brain signals reveal multifaceted task modulation of overlapping neuronal activity. *PLoS One* 11, e0154881. doi:10.1371/journal.pone.0154881.
- van Ede, F., Jensen, O., Maris, E., 2010. Tactile expectation modulates pre-stimulus beta-band oscillations in human sensorimotor cortex. *Neuroimage* 51, 867–876. doi:10.1016/j.neuroimage.2010.02.053.
- van Ede, F., Lange, F.de, Jensen, O., Maris, E., 2011. Orienting attention to an upcoming tactile event involves a spatially and temporally specific modulation of sensorimotor alpha- and beta-band oscillations. *J. Neurosci.* 31, 2016–2024. doi:10.1523/JNEUROSCI.5630-10.2011.
- van Kempen, J., Gieselmann, M.A., Boyd, M., Steinmetz, N.A., Moore, T., Engel, T.A., Thiele, A., 2020. Top-down coordination of local cortical state during selective attention. *Neuron* 109, 894–904. doi:10.1016/j.neuron.2020.12.013.
- van Kerkoerle, T., Self, M.W., Dagnino, B., Gariel-Mathis, M.-A., Poort, J., van der Togt, C., Roelfsema, P.R., 2014. Alpha and gamma oscillations characterize feedback and feedforward processing in monkey visual cortex. *Proc. Natl Acad. Sci.* 111, 14332–14341. doi:10.1073/pnas.1402773111.
- Varela, F., Lachaux, J.P., Rodriguez, E., Martinerie, J., 2001. The brainweb: phase synchronization and large-scale integration. *Nat. Rev. Neurosci.* 2, 229–239. doi:10.1038/35067550.
- Waterstraat, G., Fedele, T., Burghoff, M., Scheer, H.-J., Curio, G., 2015. Recording human cortical population spikes non-invasively - An EEG tutorial. *J. Neurosci. Methods* 250, 74–84. doi:10.1016/j.jneumeth.2014.08.013.
- Wikström, H., Huttunen, J., Korvenoja, A., Virtanen, J., Salonen, O., Aronen, H., Ilmoniemi, R.J., 1996. Effects of interstimulus interval on somatosensory evoked magnetic fields (SEFs): a hypothesis concerning SEF generation at the primary sensorimotor cortex. *Electroencephalogr. Clin. Neurophysiol.* 100, 479–487. doi:10.1016/S0168-5597(96)95688-9.