

Washington University School of Medicine

Digital Commons@Becker

---

2020-Current year OA Pubs

Open Access Publications

---

5-1-2021

**A blood-based diagnostic test incorporating plasma A $\beta$ 42/40 ratio, ApoE proteotype, and age accurately identifies brain amyloid status: Findings from a multi cohort validity analysis**

Tim West

Kristopher M Kirmess

Matthew R Meyer

Mary S Holubasch

Stephanie S Knapik

*See next page for additional authors*

Follow this and additional works at: [https://digitalcommons.wustl.edu/oa\\_4](https://digitalcommons.wustl.edu/oa_4)

---

---

**Authors**


Tim West, Kristopher M Kirmess, Matthew R Meyer, Mary S Holubasch, Stephanie S Knapik, Yan Hu, John H Contois, Erin N Jackson, Scott E Harpstrite, Randall J Bateman, David M Holtzman, Philip B Verghese, Ilana Fogelman, Joel B Braunstein, and Kevin E Yarasheski

RESEARCH ARTICLE

Open Access



# A blood-based diagnostic test incorporating plasma A $\beta$ 42/40 ratio, ApoE proteotype, and age accurately identifies brain amyloid status: findings from a multi cohort validity analysis

Tim West<sup>1\*</sup> , Kristopher M. Kirmess<sup>1</sup>, Matthew R. Meyer<sup>1</sup>, Mary S. Holubasch<sup>1</sup>, Stephanie S. Knapik<sup>1</sup>, Yan Hu<sup>1</sup>, John H. Contois<sup>1</sup>, Erin N. Jackson<sup>1</sup>, Scott E. Harpstrite<sup>1</sup>, Randall J. Bateman<sup>2</sup>, David M. Holtzman<sup>2</sup>, Philip B. Verghese<sup>1</sup>, Ilana Fogelman<sup>1</sup>, Joel B. Braunstein<sup>1</sup> and Kevin E. Yarasheski<sup>1</sup>

## Abstract

**Background:** The development of blood-based biomarker tests that are accurate and robust for Alzheimer's disease (AD) pathology have the potential to aid clinical diagnosis and facilitate enrollment in AD drug trials. We developed a high-resolution mass spectrometry (MS)-based test that quantifies plasma A $\beta$ 42 and A $\beta$ 40 concentrations and identifies the ApoE proteotype. We evaluated robustness, clinical performance, and commercial viability of this MS biomarker assay for distinguishing brain amyloid status.

**Methods:** We used the novel MS assay to analyze 414 plasma samples that were collected, processed, and stored using site-specific protocols, from six independent US cohorts. We used receiver operating characteristic curve (ROC) analyses to assess assay performance and accuracy for predicting amyloid status (positive, negative, and standard uptake value ratio; SUVR). After plasma analysis, sites shared brain amyloid status, defined using diverse, site-specific methods and cutoff values; amyloid PET imaging using various tracers or CSF A $\beta$ 42/40 ratio.

**Results:** Plasma A $\beta$ 42/40 ratio was significantly ( $p < 0.001$ ) lower in the amyloid positive vs. negative participants in each cohort. The area under the ROC curve (AUC-ROC) was 0.81 (95% CI = 0.77–0.85) and the percent agreement between plasma A $\beta$ 42/40 and amyloid positivity was 75% at the optimal (Youden index) cutoff value. The AUC-ROC (0.86; 95% CI = 0.82–0.90) and accuracy (81%) for the plasma A $\beta$ 42/40 ratio improved after controlling for cohort heterogeneity. The AUC-ROC (0.90; 95% CI = 0.87–0.93) and accuracy (86%) improved further when A $\beta$ 42/40, ApoE4 copy number and participant age were included in the model.

(Continued on next page)

\* Correspondence: [twest@c2n.com](mailto:twest@c2n.com)

<sup>1</sup>C2N Diagnostics, 20 S Sarah Street, St. Louis, MO 63108, USA

Full list of author information is available at the end of the article



© The Author(s). 2021 **Open Access** This article is licensed under a Creative Commons Attribution 4.0 International License, which permits use, sharing, adaptation, distribution and reproduction in any medium or format, as long as you give appropriate credit to the original author(s) and the source, provide a link to the Creative Commons licence, and indicate if changes were made. The images or other third party material in this article are included in the article's Creative Commons licence, unless indicated otherwise in a credit line to the material. If material is not included in the article's Creative Commons licence and your intended use is not permitted by statutory regulation or exceeds the permitted use, you will need to obtain permission directly from the copyright holder. To view a copy of this licence, visit <http://creativecommons.org/licenses/by/4.0/>. The Creative Commons Public Domain Dedication waiver (<http://creativecommons.org/publicdomain/zero/1.0/>) applies to the data made available in this article, unless otherwise stated in a credit line to the data.

(Continued from previous page)

**Conclusions:** This mass spectrometry-based plasma biomarker test: has strong diagnostic performance; can accurately distinguish brain amyloid positive from amyloid negative individuals; may aid in the diagnostic evaluation process for Alzheimer's disease; and may enhance the efficiency of enrolling participants into Alzheimer's disease drug trials.

**Keywords:** Alzheimer's disease, Plasma biomarkers, Neurodegeneration, mass spectrometry

## Background

Alzheimer's disease (AD) is the most common form of dementia [1]. Globally, nearly 50 million people have AD or a related dementia, yet only 25% of people living with AD have been diagnosed [2, 3]. Currently, AD affects 5.8 million Americans 65 years and older, and by 2050, AD prevalence in the US is expected to increase to 13.8 million [1]. AD is a progressive, irreversible degenerative condition that affects a person's memory, cognitive abilities, and personality. AD dementia is associated with increased disease susceptibility in organs outside the brain in ways that can ultimately lead to death. In the US, AD is the sixth-leading cause of death.

With several promising AD-modifying therapies in development, early detection of brain amyloidosis will be imperative for selecting and treating patients. Current AD diagnostic guidelines include tests that detect the presence of brain amyloid- $\beta$  (A $\beta$ ) plaques using either amyloid PET imaging or low cerebrospinal fluid (CSF) A $\beta$ 42 levels or A $\beta$ 42/40 ratio; biomarkers for dysregulated A $\beta$  metabolism and plaque formation [4–10]. Although amyloid PET imaging and CSF biomarkers have significantly improved the detection of brain amyloidosis, there is still a critical need for safe, lower cost, less resource-intensive, broadly available, blood-based biomarkers that identify the presence or absence of brain amyloid plaques. Herein, we describe the first generation of a Mass Spectrometry (MS)-based blood test that addresses this critical need.

Substantial effort and resources have been devoted to quantifying blood biomarkers (e.g., A $\beta$ 42, A $\beta$ 40) as potential proxies for brain amyloid plaques [11–24]. Using traditional enzyme-linked immunoassay (ELISA) technology, most prior studies found poor concordance between blood A $\beta$  concentrations and either brain amyloid status or AD [25]. Recently, mass spectrometry-based technologies have gained traction as highly sensitive and specific methods for quantifying A $\beta$  isoforms in CSF and blood samples [17, 20, 21, 26–31]. These studies found that low plasma A $\beta$ 42/40 concentration ratios (or high plasma A $\beta$ 40/42 concentration ratios [21]) are associated with the presence of brain amyloid plaques. Interestingly, a low plasma A $\beta$ 42/40 ratio identified the presence of brain amyloid plaques prior to the onset of a positive amyloid PET scan [17]. During the research and

development process, we designed a streamlined, high throughput, liquid chromatography-tandem mass spectrometry (LC-MS/MS) analytical platform that quantifies plasma A $\beta$ 40 and A $\beta$ 42 levels and identifies plasma Apolipoprotein E (ApoE) isoform-specific peptides.

To establish proof-of-principle, we tested the robustness, clinical accuracy, and commercial viability of this novel LC-MS/MS assay by evaluating concordance between LC-MS/MS-based measures of plasma A $\beta$ 42/40 concentration ratio, ApoE phenotype, and the presence or absence of brain amyloidosis determined using CSF and amyloid PET imaging biomarkers among participants enrolled by multiple memory clinics and academic research centers across the US.

## Methods

### Participants and samples

We obtained random, banked plasma samples collected from six independent cohorts that were collected from participants enrolled in site-specific clinical studies, where brain amyloid status (positive, negative, SUVR) was determined using either amyloid PET imaging or CSF biomarker analysis (Table 1). Plasma samples were collected, and brain amyloid status was determined using site-specific, but diverse methods and protocols. In this retrospective sample analysis, control of pre-analytical conditions during blood sample collection and processing was not possible. For example, five of the six sites provided plasma from blood collected in K<sub>2</sub> EDTA tubes, and one site (cohort 2) used lithium heparin tubes. Other than the collection tube, blood sample processing procedures were similar among the different sites. Briefly, blood samples were centrifuged at room temperature or 4 °C within 30–60 min of phlebotomy. Plasma was aliquoted (0.5–1.0 mL) into polypropylene tubes and frozen at –70 to –80 °C within 2 h of phlebotomy. All samples were deidentified, shipped on dry ice to C<sub>2</sub>N, and analyzed in a blinded manner. Some sites obtained brain amyloid PET status using Pittsburgh compound B (PiB) while other sites used FDA-approved amyloid tracers (Amyvid, NeuraCeq); and some sites used CSF A $\beta$ 42/40 concentration ratios, different quantification methods (ELISA, MS), and different cutoff values to assign amyloid positivity or negativity. Most but not all sites provided the same demographic and

**Table 1** Cohort demographics and plasma biomarker values

	Cohort 1 (N = 37)	Cohort 2 (N = 94)	Cohort 3 (N = 121)	Cohort 4 (N = 26)	Cohort 5 (N = 96)	Cohort 6 (N = 40)	All Cohorts (N = 414)
<b>Age</b>							
Mean (SD)	73.1 (7.8)	71.1 (8.0)	66.1 (7.8)	75.1 (6.8)	71.4 (7.6)	69.7 (9.1)	70.0 (8.3)
Min	59.2	56.7	47.0	66.1	45.0	46.1	45.0
Max	87.5	93.1	85.0	88.9	89.0	86.0	93.1
<b>Sex</b>							
Male (%)	54.1%	58.5%	23.1%	57.7%	40.6%	35%	41.3%
<b>Amyloid Positive (%)</b>							
	49%	46%	17%	42%	49%	52%	39%
<b>CDR</b>							
Percent CDR = 0 [N]	- [0]	50% [94]	- [0]	56% [25]	- [0]	75% [40]	57.2% [159]
<b>MMSE</b>							
Percent MMSE = 27–30 [N]	45.9% [37]	- [0]	100% [121]	64% [25]	- [0]	85% [40]	84.3% [223]
<b>Biomarker Used to Determine Brain Amyloid Status (% participants)</b>							
PiB	-	-	68%	54%	-	52%	28%
Amyvid	-	-	32%	-	22%	48%	19%
Neuraceq	-	-	-	-	78%	-	18%
CSF ELISA	-	100%	-	-	-	-	23%
CSF IPMS	100%	-	-	46%	-	-	12%
<b>ApoE Proteotype</b>							
E2/E3 (%)	5.4%	8.5%	5.0%	23.1%	7.3%	7.5%	7.7%
E2/E4 (%)	2.7%	6.4%	-	-	2.1%	5.0%	2.7%
E3/E3 (%)	51.4%	46.8%	47.9%	46.2%	52.1%	45.0%	48.6%
E3/E4 (%)	29.7%	28.7%	29.8%	19.2%	34.4%	35.0%	30.4%
E4/E4 (%)	10.8%	9.6%	17.4%	11.5%	4.2%	7.5%	10.6%
<b>C<sub>2</sub>N Plasma Aβ42/40</b>							
Mean (SD)	0.089 (0.012)	0.102 (0.010)	0.101 (0.009)	0.096 (0.009)	0.087 (0.009)	0.100 (0.009)	0.097 (0.011)
Min	0.065	0.084	0.080	0.082	0.059	0.080	0.059
Max	0.113	0.148	0.126	0.114	0.113	0.117	0.148

No patients had the E2/E2 genotype. Cohort 2 used Heparin tubes whereas all other cohorts used EDTA tubes for blood collection. [N] is the number of participants where data was available/provided

CSF cerebrospinal fluid, ELISA enzyme-linked immunoassay, IPMS immunoprecipitation-mass spectrometry, CDR Clinical Dementia Rating, MMSE Mini-Mental State examination

phenotype data for their cohorts (Table 1). Sites are referred to as cohort 1–6. A total of 414 participants' plasma samples were received, prepared and analyzed using the following sample preparation and liquid chromatography-mass spectrometry methods.

#### Plasma Aβ calibrators and internal standard preparation

Amino acid analysis (AAA) was performed on full length <sup>14</sup>N- and uniformly labeled <sup>15</sup>N-Aβ40 and <sup>15</sup>N-Aβ42 proteins (rPeptide, Watkinsville, GA) to confirm their chemical purity and the amount of each to be used when preparing calibrator stock solutions. Calibrators were prepared by spiking known incremental amounts of recombinant <sup>14</sup>N-Aβ40 and <sup>14</sup>N-Aβ42 into 2% (w/v) recombinant human serum albumin (HSA) in phosphate

buffered saline (PBS) that contained a known amount of <sup>15</sup>N-Aβ40 and <sup>15</sup>N-Aβ42 proteins. Seven calibrator concentrations were prepared based on the expected physiological range for plasma Aβ proteins: Aβ40 = 24.3–1558 pg/mL; Aβ42 = 3.6–235 pg/mL. A matrix blank prepared from 2% HSA was also included in every analysis.

All participant plasma samples, calibrators, and quality control samples were treated identically throughout sample processing and analysis. To each 450 μL plasma sample, 9 μL of 2.5% (w/v) Tween-20, 23 μL of PBS, 45 μL of 5 M guanidine, and 10 μL of protease inhibitors were added. Final concentrations of full-length <sup>15</sup>N internal standard proteins were 200 pg/mL and 30 pg/mL for Aβ40 and Aβ42, respectively. After the addition of immunoprecipitation buffers, 40 μL of a slurry

containing monoclonal anti-A $\beta$ 13–28 antibody (HJ5.1) conjugated to magnetic beads (Dynabeads M-270 Epoxy, Thermo-Fisher) was added to each sample and incubated at room temperature for 90 min. After incubation, the magnetic beads were washed with PBS and triethylammonium bicarbonate (TEABC) to remove non-specific binding contaminants prior to sample digestion. Bound amyloid proteins were digested at 37 °C in 100  $\mu$ L of TEABC containing 0.94 ng/ $\mu$ L lysN metalloprotease (MS Grade, Pierce Biotechnology, Rockford, IL). After 120 min, the reaction was quenched by the addition of 2% formic acid. The acidified digests were further cleared using reverse-phase solid phase extraction (SPE) and washed with 20% MeOH/1% formic acid. The A $\beta$  species were eluted from the SPE plate by the addition of 55% ACN/1% formic acid, dried under vacuum, and stored (– 80 °C) until analysis.

#### Plasma A $\beta$ quantification using LC-MS/MS

The dried A $\beta$  peptide digests were reconstituted in 16  $\mu$ L of 10% ACN/10% formic acid. Three  $\mu$ L of the sample were injected onto a monolithic divinylbenzene column (Thermo Fisher Scientific) and separated using a Waters Acquity M-class UPLC (Waters Corporation, Milford, MA). The A $\beta$  peptides were resolved using a linear gradient of 99.9% water/0.1% formic acid and 99.9% acetonitrile/0.1% formic acid over 6 min. The A $\beta$  peptides were detected using a Thermo Scientific Fusion Lumos Tribrid MS (Thermo Fisher Scientific, Waltham, MA). For the targeted analytes, precursor and product ions were detected using parallel reaction monitoring (PRM). Precursor ions were filtered by quadrupole isolation of 1.6 m/z and detected within the orbitrap at a mass resolution of 30,000. Automatic gain control (AGC) targets for A $\beta$ 40 and A $\beta$ 42 were set at 1.0e<sup>5</sup> and 5.0e<sup>5</sup>, respectively. Maximum injection times for all A $\beta$  species was set at 75 msec.

#### A $\beta$ isoform quantification

Calibration curves for both A $\beta$ 40 and A $\beta$ 42 were created by dividing the integrated peak area for each targeted <sup>14</sup>N-peptide over the integrated peak area for the corresponding <sup>15</sup>N-peptide, and the measured <sup>14</sup>N/<sup>15</sup>N ratio for each ( $n = 7$ ) calibrator's known A $\beta$ 40 and A $\beta$ 42 peptide concentration were plotted. Linear regression analysis (1/x weighting) was used to determine the correlation coefficient ( $r^2 > 0.995$ ), slope and intercept for each calibration curve. Acceptance criteria were established for calibration curve metrics, chromatographic peak retention time, symmetry, intensity, and peptide ion ratios (details provided in [Supplementary Information](#)); these were assessed in each sample batch using TraceFinder 4.1 General Quan software (Thermo Fisher Scientific, Waltham, MA). Plasma A $\beta$ 40 and A $\beta$ 42

concentrations in participant samples and quality control samples were calculated by comparing each sample's <sup>14</sup>N/<sup>15</sup>N ratio for A $\beta$ 40 and A $\beta$ 42 peptides to their respective calibration curves. Ion ratios for the participant samples and quality control samples were within  $\pm 20\%$  of the average ion ratios for the seven calibrators. Quality control plasma samples with known A $\beta$ 42 and A $\beta$ 40 concentrations and A $\beta$ 42/40 ratios were analyzed in each batch and were required to pass multi-rule acceptance criteria for their assigned values. For the quality control samples, a 1–3 s rule was implemented where a batch would fail if A $\beta$ 40, A $\beta$ 42, or A $\beta$ 42/40 exceeded the nominal concentration by  $\pm 3SD$ .

#### Plasma ApoE qualitative assay internal standard peptides

Stable isotope labeled ApoE internal standard (ISTD) peptides corresponding to the four tryptic ApoE peptide sequences (CLAVYQAGAR, LAVYQAGAR, LGADME DVCGR, and LGADMEDVR) that distinguish among the six ApoE genotypes were synthesized with uniformly labeled <sup>13</sup>C,<sup>15</sup>N-arginine at the C-terminus (Vivitide, Gardner, MA).

#### Plasma ApoE sample preparation

Plasma samples were prepared using a method modified from van den Broek et al. [32]. Briefly, plasma (5  $\mu$ L) was diluted into 95  $\mu$ L 100 mM Tris pH 8.1, 9.6 mM sodium deoxycholate (SDC), 2.3 mM tris(2-carboxyethyl) phosphine (TCEP)). Eight  $\mu$ L of diluted sample were added to 40  $\mu$ L of 100 mM Tris pH 8.1, 9.6 mM SDC, 2.3 mM TCEP, 10 fmol ISTD peptides/ $\mu$ L. Samples were denatured by incubation at 50 °C with shaking. Proteins were alkylated by the addition of 20  $\mu$ L of 4.8 mM iodoacetamide and incubated at room temperature, in the dark, with shaking. Proteins were digested by the addition of 24  $\mu$ L of 0.06  $\mu$ g/ $\mu$ L mM trypsin (Gold, MS Grade; Promega Corporation, Madison, WI) and incubated at 50 °C with shaking. After digestion, samples were acidified with the addition of 7  $\mu$ L of 35.7% formic acid/71.4 mM heptafluorobutyric acid (HFBA) to precipitate the SDC. Samples were centrifuged at room temperature to pellet the SDC, and further cleaned using SPE. The samples were dried under vacuum and stored (– 80 °C) until LC-MS/MS analysis.

#### ApoE peptide analysis and identification using LC-MS/MS

The dried ApoE peptide digests were reconstituted, 3  $\mu$ L of the sample was injected onto a CSH C18 column and were separated using a Waters Acquity M-class UPLC. The ApoE peptides were resolved using a linear gradient of 99.9% water/0.1% formic acid and 99.9% acetonitrile/0.1% formic acid over 4 min. The A $\beta$  peptides were detected using a Thermo Scientific Fusion Lumos Tribrid MS (Thermo Fisher Scientific, Waltham, MA). For the

targeted analytes, precursor and product ions were detected using parallel reaction monitoring (PRM). Precursor ions were filtered using a quadrupole isolation window of 1.6 m/z. Product ions were detected within the orbitrap at a mass resolution of 30,000 and the AGC target was set to  $5.0 \times 10^5$ .

### ApoE Proteotyping

ApoE proteotyping for each of the six ApoE genotypes ( $\epsilon 2/2$ ,  $\epsilon 2/3$ ,  $\epsilon 2/4$ ,  $\epsilon 3/3$ ,  $\epsilon 3/4$ ,  $\epsilon 4/4$ ) used a combination of the presence or absence of the four targeted ApoE isoform-specific tryptic peptides. The presence or absence of an ApoE isoform-specific peptide was determined by inspecting ratio dot product (rdotp) scores provided by Skyline between the measured transitions for the endogenous and corresponding ISTD peptides [33]. A high rdotp value was used to confirm the ApoE peptide identity in the sample rather than solely relying on limits of detection for the measurands as the threshold for determining presence or absence in a sample. Rdotp values range from 0 to 1, with a score of 0 representing the least amount of endogenous ApoE isoform-specific peptide agreement with the corresponding internal standard peptide and 1 being identical agreement. ApoE peptides with rdotp values greater than or equal to 0.99 were considered present and those with rdotp values less than 0.99 were considered absent. ApoE proteotype was determined using the presence/absence of ApoE isoform-specific peptides as outlined in the [Supplementary Information](#). An in-house R script was utilized to generate the ApoE proteotypes based upon the input peak areas (or their absence) for each isoform-specific peptide.

### Statistical analysis

All data were analyzed using R version 4.0.0 (The R Foundation for Statistical Computing, <https://www.r-project.org/>). Receiver operating characteristic (ROC), sensitivity, and specificity were calculated using the pROC package for R and optimal cut off values for plasma A $\beta$ 42/40 ratio and model parameters were determined by Youden index (maximized sensitivity and specificity of the predictive test) [34]. ROC curve 95% confidence intervals (CI) and comparisons between ROCs were calculated using the DeLong method [35].

Comparisons between groups with only two outcomes were performed using an unpaired two-sided t-test. Comparisons between groups with more than two outcomes were performed using a one-way ANOVA followed by Tukey multiple pairwise-comparisons between the group means. Fisher's Exact test was used to compare demographic variables (e.g., % women vs. men) between amyloid positive vs. negative groups.

Binary logistic regression models were used to account for cohort heterogeneity across the different banked sample sets, as well as ApoE proteotype, and age as variables for predicting amyloid positivity. Logistic regression models used amyloid positivity as the dependent variable and the cohort, plasma A $\beta$ 42/40 ratio, ApoE proteotype, and age as independent variables. ApoE proteotype was included as a dummy variable indicating the number of ApoE4 alleles as either zero, one or two, to allow for non-linear influence of two copies vs. one copy of ApoE4.

## Results

### Cohort demographics

As expected, each cohort included a different number of participants ( $n = 26$ –121) with differing distributions by sex (23–58% male), age (45–93 years), prevalence of brain amyloid positivity (17–52%), ApoE4 status (19–35% E4 heterozygotes; 4–17% homozygotes), and plasma A $\beta$ 42/40 ratios (0.059–0.148; Table 1). Clinical diagnosis was only available for cohort 2, and in this cohort clinical diagnosis aligned with the CDR scores, with around 54% classified as normal, and the remaining receiving a diagnosis of either dementia-AD or MCI-AD. For all but one cohort either MMSE or CDR scores were available (Table 1). Cohorts 1, 2, and 4 were evenly balanced, with around 50% having either CDR or MMSE scores in the normal range, whereas cohorts 3 and 6 had a majority of clinically normal participants.

Brain amyloid status was defined using site-specific methods and cutoff values for determining CSF A $\beta$ 42/40 ratio or amyloid PET positive or negative, further breakdown of the demographics for the 6 cohorts by amyloid status can be found in [Supplementary Information](#). These methods varied between and within cohorts and included differences in imaging agent and methods for evaluating images. Using these site-dependent criteria, 161 (39%) of the 414 participants were classified as brain amyloid positive.

Likewise, site-specific procedures were used to collect and process blood, aliquot and store plasma samples, and these varied among the cohorts. Pre-analytical sample handling conditions affect plasma A $\beta$ 42 and A $\beta$ 40 concentrations [36], but these conditions could not be controlled in this retrospective sample analysis. These heterogeneous conditions allowed us to test the robustness and analytical viability of the sample preparation methods and the LC-MS/MS assay developed, and the practical applicability of the findings among diverse sites, participants, and samples collected under real-world, non-optimal conditions.

After analysis, all plasma A $\beta$ 42, A $\beta$ 40, A $\beta$ 42/40 ratio and ApoE proteotype data were secured, sites shared the corresponding demographic and phenotypic data for

statistical analysis with the plasma biomarker data. Initially, the plasma biomarker values were compared between the brain amyloid positive and negative participants as defined by the site-specific method (Table 2). Overall, the amyloid positive group was older (74 vs. 68 yr;  $p < 0.0001$ ), had fewer women (51% vs.

60%;  $p = 0.01$ ), fewer participants with CDR = 0 (32% vs 80%;  $p < 0.0001$ ), fewer participants with normal MMSE of 27–30 (61% vs. 95%;  $p < 0.0001$ ), and more ApoE4 heterozygotes (51% vs. 22%) and homozygotes (17% vs. 7%) than the amyloid negative group. Hispanic/Latino representation (24% vs. 22%;  $p = 0.57$ ) and years of education (16 vs. 16 yr;  $p = 0.41$ ) were not significantly different between the groups. A previous study reported lower CSF biomarker levels among African American ApoE4 carriers than non-Hispanic White ApoE4 carriers [37]. Information about race was available from 4 out of the 6 cohorts (missing from cohort 4 and 5). From this it is clear that the overall racial diversity in the cohorts was low, with an overall preponderance of white research participants.

**Table 2** Participant characteristics separated by brain amyloid status

	Amyloid Negative (N = 253)	Amyloid Positive (N = 161)
<b>Age (<math>P &lt; 0.0001</math>)</b>		
Mean (SD) [N]	67.7 (8.1) [253]	73.6 (7.4) [161]
<b>Sex (<math>P = 0.0139</math>)</b>		
Female [N]	63.6% [253]	50.9% [161]
<b>Ethnicity (<math>P = 0.5734</math>)</b>		
Hispanic [N]	21.7% [198]	24.5% [110]
<b>Race</b>		
White	176	97
Black or African American	8	5
Asian	2	0
American Indian or Alaska Native	1	1
<b>Education (<math>P = 0.4080</math>)</b>		
Mean years (SD) [N]	16.3 (2.4) [170]	16.1 (2.5) [85]
<b>ApoE4 distribution within subgroup</b>		
No E4 [N]	71.5% [181]	32.3% [52]
One E4 [N]	21.7% [55]	50.9% [82]
Two E4 [N]	6.7% [17]	16.8% [27]
<b>CDR (<math>P &lt; 0.0001</math>)</b>		
Percent CDR = 0 [N]	79.8% [84]	32% [75]
<b>MMSE (<math>P &lt; 0.0001</math>)</b>		
Percent MMSE = 27–30 [N]	95.4% [152]	60.6% [71]
mean (sd)	29.4 (1.6)	26.2 (4.5)
<b>Abeta42/40 (<math>P &lt; 0.0001</math>)</b>		
mean (sd)	0.101 (0.010)	0.090 (0.010)
min	0.072	0.059
max	0.126	0.148
<b>Abeta42 (pg/mL) (<math>P &lt; 0.0001</math>)</b>		
mean (sd)	44.477 (8.637)	40.421 (9.698)
min	10.984	23.985
max	82.494	103.882
<b>Abeta40 (pg/mL) (<math>P = 0.22</math>)</b>		
mean (sd)	440.435 (81.870)	452.325 (103.933)
min	134.985	270.455
max	893.672	1219.238

N Number of total observations - not all demographic data were available from each cohort, so [N] is the number of participants where data was available/provided

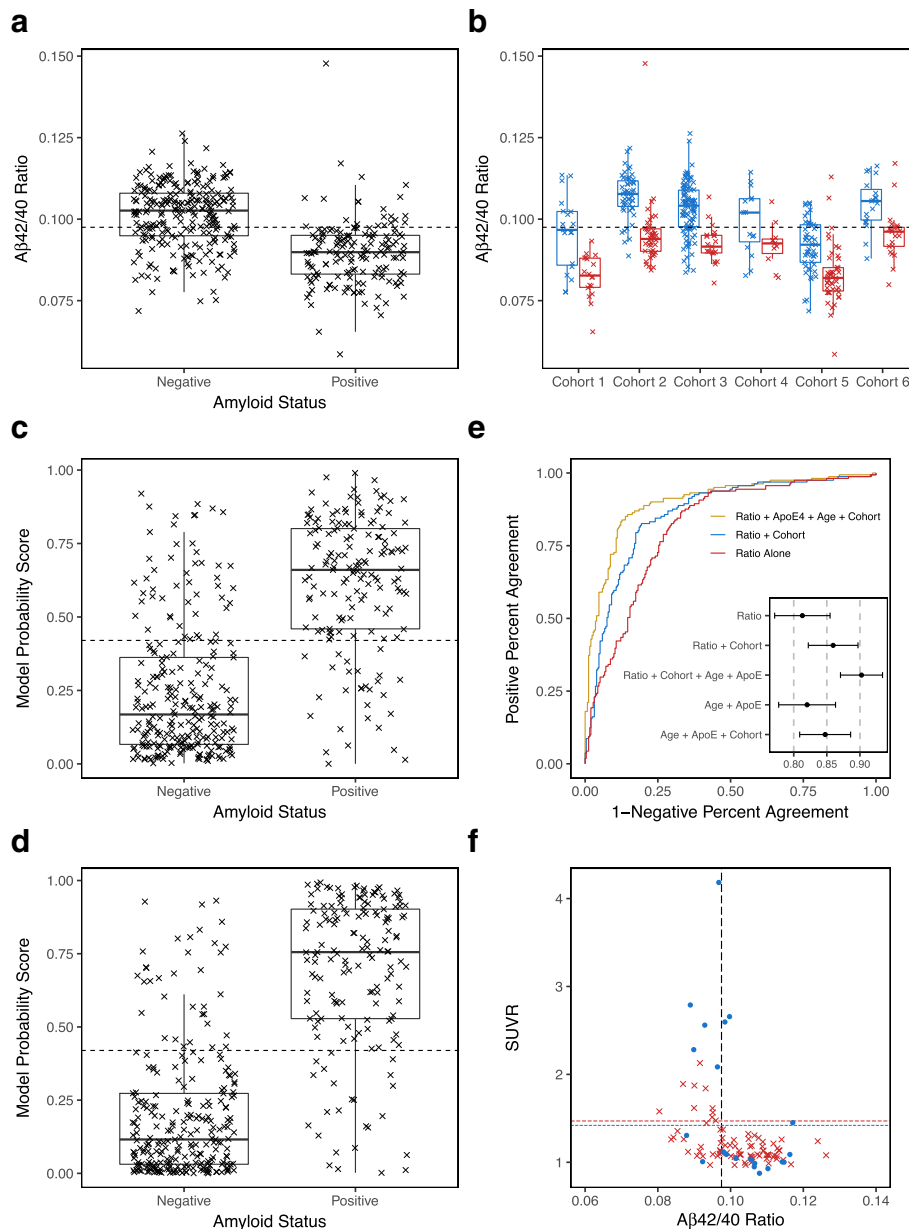
### Plasma amyloid isoform concentrations

The sample preparation methods and LC-MS/MS analytical platform developed were sensitive and specific for quantifying plasma A $\beta$ 40 and A $\beta$ 42 concentrations. The limit of detection (LOD) was 11 pg/mL for A $\beta$ 40 and 3 pg/mL for A $\beta$ 42. The specificity derives from the ability of tandem mass spectrometry to detect the amino acid sequence for each targeted peptide and fragment ions based on their mass-to-charge ratios. The LC-MS/MS assay has undergone extensive analytical validation to ensure consistent performance over a wide range of A $\beta$  peptide concentrations and all ApoE genotypes (manuscript under review).

The plasma A $\beta$ 42 and A $\beta$ 40 concentrations were expressed as a concentration ratio (A $\beta$ 42/40). As is the case for CSF, this ratio is a better predictor of the presence of brain amyloid than just the plasma A $\beta$ 42 concentration, and a lower plasma A $\beta$ 42/40 ratio has been associated with amyloidosis [17, 21]. Overall, plasma A $\beta$ 42/40 was 11.4% lower in the amyloid positive than in the amyloid negative group ( $p = 2.6 \times 10^{-26}$ ) (Fig. 1a). By performing ROC analysis, the plasma A $\beta$ 42/40 cutoff value that maximized sensitivity and specificity (Youden index) was found to be 0.0975 (dashed line in Fig. 1a). The area under the ROC curve (AUC-ROC) was 0.81 (95% CI = 0.77–0.85, Fig. 1e, red line) and the overall percent accuracy between the plasma A $\beta$ 42/40 ratio and amyloid positivity was 75% at this cutoff value.

Plotting the plasma A $\beta$ 42/40 ratios by cohort shows how cohort-specific differences for defining amyloid positivity, and differences in blood collection and storage protocols affected the measured plasma A $\beta$ 42/40 ratios (Fig. 1b). Across all cohorts, the plasma A $\beta$ 42/40 ratio was consistently lower in the amyloid positive than the amyloid negative participants, but the optimal plasma A $\beta$ 42/40 cutoff value appeared to differ slightly among cohorts. A logistic regression model was constructed using plasma A $\beta$ 42/40 ratio and cohort as variables to





**Fig. 1** Diagnostic Performance Plots, Metrics, and Prediction Parameters for Plasma Biomarkers Measured Using LC-MS/MS. **a** Plasma A $\beta$ 42/40 concentration ratios were lower in amyloid positive than negative participants ( $n = 414$ ). Scatter-Box-Whisker plot of plasma A $\beta$ 42/40 for participants classified as brain amyloid negative or positive. Optimal plasma A $\beta$ 42/40 cutoff value (0.0975) = dashed horizontal line; Median = dark horizontal lines; 25th to 75th quartiles = Box; 95% Confidence Interval = Whisker. **b** In each cohort, plasma A $\beta$ 42/40 ratios were consistently lower in amyloid positive than negative participants. Plasma A $\beta$ 42/40 ratios separated by brain amyloid status (Blue = Negative; Red = Positive) for each cohort. Dashed horizontal line is the optimal plasma A $\beta$ 42/40 cutoff value (0.0975) based on ratio alone (same as dashed line in **a**). **c** Amyloid probability scores were higher in amyloid positive than negative participants. A logistic regression model using plasma A $\beta$ 42/40 and cohort to generate a model probability score that predicted brain amyloid status. Scatter-Box-Whisker plots of individual probability scores (0.0–1.0) separated by amyloid status. Optimal model-derived probability score that differentiated amyloid positive from negative (0.42) = dashed horizontal line. **d** Amyloid probability scores derived from a logistic regression model that used plasma A $\beta$ 42/40, number of ApoE4 alleles, age and cohort to predict brain amyloid status. Scatter-Box-Whisker plots of individual amyloid probability scores (0.0–1.0) separated by amyloid status. **e** Receiver Operating Characteristic curves (ROC) plotted using: participants’ plasma A $\beta$ 42/40 ratio, ApoE4, age, and cohort (gold plot; AUC-ROC = 0.90 and 95% CI shown in insert); plasma A $\beta$ 42/40 and cohort (blue plot; AUC-ROC = 0.86); and only plasma A $\beta$ 42/40 (red plot; AUC-ROC = 0.81). For comparison, the insert also shows AUC-ROC and 95% CI for ApoE4 and age (0.82), and ApoE4, age and cohort (0.84). **f** Four-quadrant plot illustrating the relationship between quantitative PiB SUVR values and plasma A $\beta$ 42/40 ratios and cutoff value (dashed vertical line = 0.0975) for two cohorts ( $n = 103$ ). Cohort 3 used PiB SUVR cutoff = 1.47 (Red (x) and dashed horizontal line), cohort 6 used 1.42 (Blue filled dots (•) and dashed horizontal line). Three false negative plasma A $\beta$ 42/40 results in the upper right quadrant. Twenty false positive plasma A $\beta$ 42/40 results in the lower left quadrant that may represent participants with elevated risk for converting to amyloid PET positive in the future

adjust for the cohort differences and their performance for predicting amyloid status independent of any global cohort-specific differences in plasma A $\beta$ 42/40 ratios. This logistic regression model provided an overall improvement in AUC-ROC to 0.86 (95% CI = 0.82–0.90, Fig. 1e, blue line) and accuracy to 81%. The logistic regression model generated a probability score (0.0–1.0) for predicting brain amyloid status for each participant; low probability scores predicted a negative amyloid status while high probability scores predicted a positive amyloid status (Fig. 1c). The ROC curve analysis used to calculate model performance generated an optimal (Youden) probability score cutoff of 0.42 (dashed line in Fig. 1c), and the mean probability score was higher among amyloid positive than negative participants ( $p = 1.8 \times 10^{-43}$ ). The model that accounted for cohort differences in plasma sample collection and processing procedures, along with plasma A $\beta$ 42/40 concentration ratios, provided an improvement in overall predictive value for the presence or absence of brain amyloidosis. The AUC-ROC analysis for the model that used plasma A $\beta$ 42/40 alone (0.81) was significantly lower ( $p = 0.00031$ ) than the AUC-ROC analysis that used plasma A $\beta$ 42/40 ratio and cohort (0.86).

#### Inclusion of ApoE and age improves diagnostic performance

ApoE genotype and participant age are established risk factors for Alzheimer's disease and brain amyloidosis [1]. Along with plasma A $\beta$ 40 and A $\beta$ 42 quantitation, we developed sample preparation procedures and LC-MS/MS detection methods that identified plasma ApoE isoform-specific peptides expressed by ApoE genes. We refer to this as plasma ApoE proteotyping or phenotyping. The method requires 5  $\mu$ L plasma and no genetic material. ApoE proteotyping successfully confirmed all participants' ApoE genotypes as provided in the demographic data from the various cohorts (Table 1).

We examined whether adding participant age and ApoE proteotype offered further improvements to the performance of the logistic regression model's probability score for predicting brain amyloid status. Age was added to the logistic regression model as a continuous variable, and the number of ApoE4 alleles was added as a non-linear variable. Adding these factors to the logistic regression model improved the separation in probability scores between brain amyloid positive and negative ( $p = 3.2 \times 10^{-55}$ ; Fig. 1d) without dramatically altering the optimal cutoff value (0.44), significantly increased ( $p = 0.0010$ ) the AUC-ROC to 0.90 (95% CI = 0.87–0.93; Fig. 1e, gold line) and the overall accuracy to 86%. There was no significant difference in performance of this model between the 6 different cohorts ( $p = 0.47$  for Fisher test on accuracy data). For

comparison, the AUC-ROC for just age and ApoE4 copy number was only 0.82, and AUC-ROC for age, cohort, and ApoE4 copy number (excluding plasma A $\beta$ 42/40 ratio) was 0.84 (Insert in Fig. 1e).

#### Plasma A $\beta$ 42/40 concentration compared to SUVR

Of the 414 participants, 251 had quantitative amyloid PET SUVR measures. The SUVR data were collected using 3 different tracers: PiB (Pittsburgh Compound B), Amyvid (Florbetapir), or NeuraCeq (Florbetaben) at multiple clinical sites using different scanners, modalities, and non-standardized acquisition parameters (Table 1). While the SUVR values cannot be directly compared among the tracers and sites, when the SUVR values were plotted against their corresponding plasma A $\beta$ 42/40 ratios, there was a grouping of SUVR values below the SUVR cutoffs for participants who were amyloid negative by the blood test, while for participants who were positive by the blood test, the SUVR values were either above or below the SUVR cutoff value. This is illustrated in Fig. 1f for PiB ( $n = 103$ ), but similar patterns were observed for the other PET tracers. Quantitative PiB SUVR values were available from cohorts 3 and 6. But, each cohort used slightly different SUVR cutoff values to define amyloid positive and amyloid negative participants (1.47 for cohort 3 and 1.42 for cohort 6), so the data points from the two cohorts are shown as red and blue with color matching horizontal lines denoting the cutoff value for each cohort (Fig. 1f). This plot shows that there are three participants with SUVR values above background uptake who had plasma A $\beta$ 42/40 ratios above the cutoff value (false negative by the plasma A $\beta$ 42/40 ratio measures). However, 20 participants with SUVR values in the normal range were predicted to be amyloid positive by the plasma A $\beta$ 42/40 ratio measures (false positives). This is consistent with what has been observed with CSF A $\beta$ 42/40 assays and could suggest that the A $\beta$ 42/40 ratio can detect biochemical changes prior to brain amyloid accumulating to the level required for detection by PET imaging.

#### Discussion

The findings indicate that the plasma sample preparation and LC-MS/MS analytical methods developed for our blood biomarker assay are robust, analytically viable, practically applicable, and resilient to the potential variability introduced when plasma samples are collected using non-standardized procedures from participants under real-world conditions. The findings provide proof-of-principle; this LC-MS/MS method has strong diagnostic performance and accurately (AUC-ROC 0.81–0.90) distinguished brain amyloid positive from amyloid negative individuals, even when various imaging and

CSF fluid biomarker platforms were used as reference standards to determine brain amyloid status.

The diagnostic performance metrics are excellent, considering: i) several different sites provided plasma samples and phenotypic data; ii) the diverse and heterogeneous participant demographics; iii) the difference in methodologies used to identify brain amyloid status; iv) the different methods, definitions, and cutoff values sites used to distinguish brain amyloid positive from negative; and v) the non-standardized site-specific procedures used to collect blood, isolate, aliquot, freeze and store the plasma samples prior to A $\beta$ - and ApoE-isoform specific peptide analysis. Despite these uncontrolled factors, the sample preparation procedure and LC-MS/MS method performed remarkably well. This warrants further investigation to qualify, verify, and validate the analytical and clinical performance parameters in larger cohorts using controlled, consistent protocols and procedures. Such analytical and clinical validation studies are in progress by our group, and planned for regulatory review and clearance (e.g., US FDA, College of American Pathologists).

The findings also indicate that plasma A $\beta$ 42/40 concentration ratio determined using the LC-MS/MS assay developed can accurately identify brain amyloid status, and that including additional risk factors for amyloid pathology in the model (age, ApoE4 copy number) improved the AUC-ROC and model accuracy. This is consistent with what has been observed by other groups and is based on established relationships among advanced age, number of ApoE4 alleles and amyloid pathology [17, 23, 38]. It is important to note that the plasma A $\beta$ 42/40 ratio combined with ApoE and age improved the accuracy for identifying amyloid positivity as compared to just ApoE and age alone. The AUC-ROC for plasma A $\beta$ 42/40 ratio and cohort was 0.86 while the AUC-ROC for ApoE, age, and cohort was 0.84, but when plasma A $\beta$ 42/40 ratio, ApoE, age, and cohort were combined into a single model, the AUC-ROC improved to 0.90. This suggests that the risk/susceptibility information provided by the ApoE genotype and age is additive to the biochemical information provided by the plasma A $\beta$ 42/40 ratio. At an AUC-ROC of 0.90, the accuracy of the plasma test approaches the upper limit of accuracy for the diverse methods used to determine amyloid status in these cohorts. It is also notable that this LC-MS/MS analytical platform adds efficiency and value to the prediction algorithm by identifying the plasma ApoE proteotype in the same plasma sample. This eliminates the need for a separate blood collection for traditional ApoE genotyping procedures.

Similar to other studies that tested concordance between CSF or plasma A $\beta$ 42/40 ratio against amyloid PET status, the current plasma biomarker analyses

yielded a greater number of false positive than false negative findings (Fig. 1f), i.e., there were more individuals with a positive plasma biomarker result who had a negative amyloid PET scan than the reverse situation [17, 20, 23]. This is consistent with preliminary findings from a longitudinal study where amyloid PET negative individuals with a low plasma A $\beta$ 42/40 ratio had a 15-fold greater risk of converting to amyloid PET positive within 4 years when compared to individuals with a high plasma A $\beta$ 42/40 ratio [17]. As suggested, a low plasma A $\beta$ 42/40 ratio may identify individuals who will convert from amyloid PET negative to positive in the near future [17], but additional longitudinal evidence is required.

These observations suggest that the plasma A $\beta$ 42/40 ratio declines before brain amyloid accumulates to a level that can be detected by currently available PET tracers, and that fluid biomarkers and amyloid PET SUVR reflect different aspects/stages of amyloid pathology. Fluid biomarkers might provide an earlier indication of changes in A $\beta$ 42 (and other soluble neuroproteins) production and clearance rates, while amyloid PET SUVR reflects the consequence of these kinetic changes in the form of accumulation of neuritic amyloid plaques that take many years to evolve. Large longitudinal studies are needed to better elucidate the relationships among changes in CSF and plasma A $\beta$ 42/20 ratio, and amyloid PET SUVR values.

The use of banked samples from multiple diverse cohorts provides proof-of-principle for the analytical robustness of the LC-MS/MS assay. However, the lack of consistent enrollment criteria, sample collection methods, and amyloid status definitions are limitations as these factors may have introduced a sample selection bias, and they do not allow cohort-independent cutoff values to be established for plasma A $\beta$ 42/40 ratio or amyloid probability score. The Plasma test for Amyloid Risk Screening (PARIS) study, a C<sub>2</sub>N sponsored prospective and controlled study, enrolled patients with amyloid PET imaging obtained as part of the IDEAS (Imaging Dementia Evidence for Amyloid Scanning) study [39], was recently completed and tested concordance between plasma A $\beta$ 42/40, ApoE, age and amyloid PET status (central read) in patients who met the IDEAS inclusion criteria (NCT02420756). The first phase of the PARIS study established cutoff values (manuscript in preparation) for the now available PrecivityAD™ CLIA test (C<sub>2</sub>N Diagnostics, St. Louis, MO).

The lack of consistent enrollment criteria among the six cohorts may also have contributed to the unusually good performance of the model that included only ApoE4 copy number and age to predict amyloid status. This model had an AUC-ROC of 0.84 when cohort was included, whereas such models normally have AUC-ROCs in the 0.75–0.80 range [23, 24]. However, when

plasma A $\beta$ 42/40 ratio was included in this model, the model performance (AUC-ROC) increased (Fig. 1e), supporting the notion that the plasma A $\beta$ 42/40 ratio captures unique biological information that is additive to the ApoE and age information.

Analytical validation metrics for this LC-MS/MS assay that conformed to the standards of Clinical Laboratory Improvement Amendments (CLIA) were presented at the virtual 2020 CTAD meeting [40]. This, combined with the clinical performance metrics presented (Fig. 1) prompted C<sub>2</sub>N to complete the first phase of the PARIS study, clinically validate (CLIA) the PrecivityAD™ test, and release it for use in the clinic to aid clinicians evaluating individuals experiencing early cognitive impairment. Full analytical and clinical validation, according to FDA's in vitro diagnostic (IVD) regulations, are underway.

## Conclusions

The LC-MS/MS analytical platform and algorithm presented here constitute a test that can accurately identify brain amyloid status based on a single blood sample. Despite differences in how each cohort site collected and stored plasma samples, and defined presence or absence of brain amyloid, the findings indicate that this blood test and logistic regression model that incorporates plasma A $\beta$ 42/40, ApoE4 status, and patient age had excellent performance; AUC-ROC = 0.90 when compared to CSF or amyloid PET biomarkers. Brain PET imaging or CSF biomarker analysis currently represent the primary approaches used to identify AD pathological changes in living individuals. However, amyloid PET is resource-intensive, costly, and exposes individuals to unnecessary radiation. The CSF biomarkers require invasive sampling that deters many individuals from undergoing such testing. There is an urgent need for non-invasive and easily available diagnostic tools that identify AD pathology. This blood-based test may be a useful aid in the diagnosis of AD, therefore allowing for improved medical decision making and management, streamlined AD clinical trial enrollment, and better identification of who may benefit from an AD specific therapy.

## Abbreviations

AD: Alzheimer's disease; ADRC: Alzheimer's Disease Research Center; A $\beta$ : Amyloid-beta; CSF: Cerebrospinal fluid; MS: Mass Spectrometry; LC: Liquid chromatography; ApoE: Apolipoprotein E; CDR: Clinical Dementia Rating; MMSE: Mini-Mental State Examination; SUVR: Standard uptake value ratio; PET: Positron emission tomography; PiB: Pittsburgh compound B; AAA: Amino acid analysis; ISTD: Internal standard; PRM: Parallel reaction monitoring; LOD: Limit of Detection; ROC: Receiver operating characteristic; AUC-ROC: Area under the ROC curve; CI: Confidence interval; FDA: US Food and Drug Administration; IVD: In vitro diagnostic; CLIA: Clinical Laboratory Improvement Amendments; SD: Standard deviation

## Supplementary Information

The online version contains supplementary material available at <https://doi.org/10.1186/s13024-021-00451-6>.

**Additional file 1: Table S1.** Acceptance criteria of A $\beta$  40 and A $\beta$  42 assays. **Table S2.** ApoE proteotype determination based on present/absent of call of isoform-specific peptides. **Table S3.** Participant characteristics separated by brain amyloid status, for each cohort.

## Acknowledgments

The following Centers provided samples and data: Wisconsin ADRC Clinical, Neuropathology, and Biomarker Cores, and biostatistical support provided by the Data Management and Biostatistics Core (P50 AG033514); Banner Alzheimer's Institute (R01 AG031581), Arizona Alzheimer's Disease Core Center (P30 AG19610), and Arizona Department of Health Services (Contract 211002); University of Florida – Mt. Sinai Medical Center Alzheimer's Disease Research Center (P50 AG047266); Washington University Knight Alzheimer's Disease Research Center (P50 AG005681, P01 AG003991, P01 AG026276).

## Authors' contributions

All authors made substantial contributions. JBB, IF, KEY, TW, YH, PBV, RJB, and DMH conceptualized and designed the study, requested/received samples and data from Centers, and supervised all aspects of the project. TW, KEY, PBV, YH, KK, MM selected the appropriate technologies and resources, used iterative processes to design, test, problem-solve, troubleshoot, establish acceptance/rejection criteria, and approved the sample preparation and analysis procedures. KK, MM, MH, SK, ES, SH, JC provided the technical expertise required to prepare and analyze samples for LC-MS/MS, acquire, process, and secure analytical data and results, conduct quality control and assurance activities, and transfer the results to sites that provided samples. TW conducted all statistical analyses. All authors drafted, reviewed, revised, and approved the final version of the manuscript.

## Funding

This work was supported by NIH R44 AG059489, BrightFocus CA2016636, The Gerald and Henrietta Rauenhorst (GHR) Foundation, and the Alzheimer's Drug Discovery Foundation (ADDF).

## Availability of data and materials

The datasets used and/or analyzed during the current study are available from the corresponding author on reasonable request.

## Declarations

### Ethics approval and consent to participate

All study procedures were approved by Human Research Protection Boards/Committees at the respective institutions, namely Banner Alzheimer's Institute, University of Florida, University of Wisconsin, and Washington University. Written informed consent was obtained from all participants.

### Consent for publication

Not applicable.

### Competing interests

All authors are full time employees or advisors to C<sub>2</sub>N Diagnostics, receive equity or equity options, and contributed to the development of the plasma A $\beta$ 42, A $\beta$ 40, ApoE analytical platforms and the amyloid probability prediction models. DMH is as an inventor on a patent licensed by Washington University to C<sub>2</sub>N Diagnostics on the therapeutic use of anti-tau antibodies. C<sub>2</sub>N Diagnostics has licensed certain anti-tau antibodies to AbbVie for therapeutic development. DMH and RJB co-founded and are on the scientific advisory board of C<sub>2</sub>N Diagnostics. DMH is on the scientific advisory board of Denali and consults for Genentech, Merck, and Cajal Neuroscience. RJB receives personal fees from Amgen, AC Immune, Eisai, Hoffman-LaRoche, and Janssen Pharmaceuticals outside the submitted work. RJB receives income based on a blood plasma assay licensed by Washington University to C<sub>2</sub>N Diagnostics and has a patent ("Plasma Based Methods for Determining A-Beta Amyloidosis") pending with Washington University.

**Author details**

<sup>1</sup>C2N Diagnostics, 20 S Sarah Street, St. Louis, MO 63108, USA. <sup>2</sup>Department of Neurology, Hope Center for Neurological Disorders, Knight Alzheimer's Disease Research Center, Washington University School of Medicine, St. Louis, MO 63110, USA.

Received: 19 January 2021 Accepted: 15 April 2021

Published online: 01 May 2021

**References**

- Alzheimer's Association. 2020 Alzheimer's disease facts and figures. *Alzheimers Dement.* 2020;16:391–460.
- Feigin VL, Nichols E, Alam T, Bannick MS, Beghi E, Blake N, et al. Global, regional, and national burden of neurological disorders, 1990–2016: a systematic analysis for the Global Burden of Disease Study 2016. *Lancet Neurol.* 2019;18(5):459–80. [https://doi.org/10.1016/S1474-4422\(18\)30499-X](https://doi.org/10.1016/S1474-4422(18)30499-X).
- Prince M, Comas-Herrera A, Knapp M, Guerchet M, Karagiannidou M. World Alzheimer report 2018: the state of the art of dementia research- new frontiers. London: Alzheimer's Disease International; 2018. <https://www.alz.co.uk/research/WorldAlzheimerReport2018.pdf>
- Dubois B, Feldman HH, Jacova C, Hampel H, Molinuevo JL, Blennow K, et al. Advancing research diagnostic criteria for Alzheimer's disease: the IWG-2 criteria. *Lancet Neurol.* 2014;13(6):614–29. [https://doi.org/10.1016/S1474-4422\(14\)70090-0](https://doi.org/10.1016/S1474-4422(14)70090-0).
- Wolk D, Salloway S, Dickerson B. Putting the new Alzheimer disease amyloid, tau, neurodegeneration (AT[N]) diagnostic system to the test. *JAMA.* 2019;321(23):2289–91. <https://doi.org/10.1001/jama.2019.7534>.
- Biscetti L, Salvadori N, Farotti L, Cataldi S, Eusebi P, Paciotti S, et al. The added value of A $\beta$ 42/A $\beta$ 40 in the CSF signature for routine diagnostics of Alzheimer's disease. *Clin Chim Acta.* 2019;494:71–3. <https://doi.org/10.1016/j.cca.2019.03.001>.
- Herukka S-K, Simonsen AH, Andreassen N, Baldeiras I, Bjerke M, Blennow K, et al. Recommendations for cerebrospinal fluid Alzheimer's disease biomarkers in the diagnostic evaluation of mild cognitive impairment. *Alzheimers Dement.* 2017;13(3):285–95. <https://doi.org/10.1016/j.jalz.2016.09.009>.
- Chételat G, Arbizu J, Barthel H, Garibotto V, Law I, Morbelli S, et al. Amyloid-PET and 18F-FDG-PET in the diagnostic investigation of Alzheimer's disease and other dementias. *Lancet Neurol.* 2020;19(11):951–62. [https://doi.org/10.1016/S1474-4422\(20\)30314-8](https://doi.org/10.1016/S1474-4422(20)30314-8).
- Morris E, Chalkidou A, Hammers A, Peacock J, Summers J, Keevil S. Diagnostic accuracy of 18F amyloid PET tracers for the diagnosis of Alzheimer's disease: a systematic review and meta-analysis. *Eur J Nucl Med Mol Imaging.* 2016;43(2):374–85. <https://doi.org/10.1007/s00259-015-3228-x>.
- Suppiah S, Didier M-A, Vinjamuri S. The who, when, why, and how of PET amyloid imaging in management of Alzheimer's disease—review of literature and interesting images. *Diagnostics.* 2019;9(2):65. <https://doi.org/10.3390/diagnostics9020065>.
- Toledo JB, Shaw LM, Trojanowski JQ. Plasma amyloid beta measurements - a desired but elusive Alzheimer's disease biomarker. *Alzheimers Res Ther.* 2013;5(2):8. <https://doi.org/10.1186/alzrt162>.
- Ashton NJ, Nevado-Holgado AJ, Barber IS, Lynham S, Gupta V, Chatterjee P, et al. A plasma protein classifier for predicting amyloid burden for preclinical Alzheimer's disease. *Sci Adv.* 2019;5:eaau7220.
- Rembach A, Faux NG, Watt AD, Pertile KK, Rumble RL, Trounson BO, et al. Changes in plasma amyloid beta in a longitudinal study of aging and Alzheimer's disease. *Alzheimers Dement.* 2014;10(1):53–61. <https://doi.org/10.1016/j.jalz.2012.12.006>.
- Kim HJ, Park KW, Kim TE, Im JY, Shin HS, Kim S, et al. Elevation of the plasma A $\beta$ 40/A $\beta$ 42 ratio as a diagnostic marker of sporadic early-onset Alzheimer's disease. *J Alzheimers Dis.* 2015;48(4):1043–50. <https://doi.org/10.3233/JAD-143018>.
- Wang MJ, Yi S, Han J, Park SY, Jang J-W, Chun IK, et al. Oligomeric forms of amyloid- $\beta$  protein in plasma as a potential blood-based biomarker for Alzheimer's disease. *Alzheimer's Res Ther.* 2017;9(1):98. <https://doi.org/10.1186/s13195-017-0324-0>.
- Chatterjee P, Elmi M, Goozee K, Shah T, Sohrabi HR, Dias CB, et al. Ultrasensitive detection of plasma amyloid- $\beta$  as a biomarker for cognitively normal elderly individuals at risk of Alzheimer's disease. *J Alzheimers Dis.* 2019;71(3):775–83. <https://doi.org/10.3233/JAD-190533>.
- Schindler SE, Bollinger JG, Ovod V, Mawuenyega KG, Li Y, Gordon BA, et al. High-precision plasma  $\beta$ -amyloid 42/40 predicts current and future brain amyloidosis. *Neurology.* 2019;93(17):e1647–59. <https://doi.org/10.1212/WNL.0000000000008081>.
- Shahpasand-Kroner H, Klafki H-W, Bauer C, Schuchhardt J, Hüttenrauch M, Stazi M, et al. A two-step immunoassay for the simultaneous assessment of A $\beta$ 38, A $\beta$ 40 and A $\beta$ 42 in human blood plasma supports the A $\beta$ 42/A $\beta$ 40 ratio as a promising biomarker candidate of Alzheimer's disease. *Alzheimers Res Ther.* 2018;10(1):121. <https://doi.org/10.1186/s13195-018-0448-x>.
- Song L, Lachno DR, Hanlon D, Shepro A, Jeromin A, Gemani D, et al. A digital enzyme-linked immunosorbent assay for ultrasensitive measurement of amyloid- $\beta$  1–42 peptide in human plasma with utility for studies of Alzheimer's disease therapeutics. *Alzheimers Res Ther.* 2016;8(1):58. <https://doi.org/10.1186/s13195-016-0225-7>.
- Ovod V, Ramsey KN, Mawuenyega KG, Bollinger JG, Hicks T, Schneider T, et al. Amyloid  $\beta$  concentrations and stable isotope labeling kinetics of human plasma specific to central nervous system amyloidosis. *Alzheimers Dement.* 2017;13(8):841–9. <https://doi.org/10.1016/j.jalz.2017.06.2266>.
- Nakamura A, Kaneko N, Villemagne VL, Kato T, Doecke J, Doré V, et al. High performance plasma amyloid- $\beta$  biomarkers for Alzheimer's disease. *Nature.* 2018;554(7691):249–54. <https://doi.org/10.1038/nature25456>.
- Verberk IMW, Thijssen E, Koelewijn J, Mauro K, Vanbrabant J, de Wilde A, et al. Combination of plasma amyloid beta(1-42/1-40) and glial fibrillary acidic protein strongly associates with cerebral amyloid pathology. *Alzheimers Res Ther.* 2020;12(1):118. <https://doi.org/10.1186/s13195-020-00682-7>.
- Verberk IMW, Slot RE, Verfaillie SCJ, Heijst H, Prins Niels D, van Berckel BNM, et al. Plasma amyloid as prescreeener for the earliest Alzheimer pathological changes. *Ann Neurol.* 2018;84(5):648–58. <https://doi.org/10.1002/ana.25334>.
- Palmqvist S, Insel PS, Zetterberg H, Blennow K, Brix B, Stomrud E, et al. Accurate risk estimation of  $\beta$ -amyloid positivity to identify prodromal Alzheimer's disease: cross-validation study of practical algorithms. *Alzheimers Dement.* 2019;15(2):194–204. <https://doi.org/10.1016/j.jalz.2018.08.014>.
- Olsson B, Lautner R, Andreasson U, Öhrfelt A, Portelius E, Bjerke M, et al. CSF and blood biomarkers for the diagnosis of Alzheimer's disease: a systematic review and meta-analysis. *Lancet Neurol.* 2016;15(7):673–84. [https://doi.org/10.1016/S1474-4422\(16\)00070-3](https://doi.org/10.1016/S1474-4422(16)00070-3).
- Kim JS, Ahn H-S, Cho SM, Lee JE, Kim Y, Lee C. Detection and quantification of plasma amyloid- $\beta$  by selected reaction monitoring mass spectrometry. *Anal Chim Acta.* 2014;840:1–9. <https://doi.org/10.1016/j.jaca.2014.06.024>.
- Weber DM, Tran D, Goldman SM, Taylor SW, Ginns EL, Lagier RJ, et al. High-throughput mass spectrometry assay for quantifying  $\beta$ -amyloid 40 and 42 in cerebrospinal fluid. *Clin Chem.* 2019;65(12):1572–80. <https://doi.org/10.1373/clinchem.2018.300947>.
- Leinenbach A, Pannee J, Dülffer T, Huber A, Bittner T, Andreasson U, et al. Mass spectrometry-based candidate reference measurement procedure for quantification of amyloid- $\beta$  in cerebrospinal fluid. *Clin Chem.* 2014;60(7):987–94. <https://doi.org/10.1373/clinchem.2013.220392>.
- Pannee J, Gobom J, Shaw LM, Korecka M, Chambers EE, Lame M, et al. Round robin test on quantification of amyloid- $\beta$  1–42 in cerebrospinal fluid by mass spectrometry. *Alzheimers Dement.* 2016;12(1):55–9. <https://doi.org/10.1016/j.jalz.2015.06.1890>.
- Schauer SP, Mylott WR, Yuan M, Jenkins RG, Rodney Mathews W, Honigberg LA, et al. Preanalytical approaches to improve recovery of amyloid- $\beta$  peptides from CSF as measured by immunological or mass spectrometry-based assays. *Alzheimers Res Ther.* 2018;10(1):118. <https://doi.org/10.1186/s13195-018-0445-0>.
- Lame ME, Chambers EE, Blatnik M. Quantitation of amyloid beta peptides A $\beta$ 1–38, A $\beta$ 1–40, and A $\beta$ 1–42 in human cerebrospinal fluid by ultra-performance liquid chromatography–tandem mass spectrometry. *Anal Biochem.* 2011;419(2):133–9. <https://doi.org/10.1016/j.jab.2011.08.010>.
- van den Broek I, Romijn FPHTM, Nouta J, van der Laarse A, Drijfhout JW, Smit NPM, et al. Automated multiplex LC-MS/MS assay for quantifying serum apolipoproteins A-I, B, C-I, C-II, C-III, and E with qualitative apolipoprotein E phenotyping. *Clin Chem.* 2016;62(1):188–97. <https://doi.org/10.1373/clinchem.2015.246702>.
- Sherwood CA, Eastham A, Lee LW, Risler J, Vitek O, Martin DB. Correlation between y-type ions observed in ion trap and triple quadrupole mass spectrometers. *J Proteome Res.* 2009;8(9):4243–51. <https://doi.org/10.1021/pr900298b>.

34. Robin X, Turck N, Hainard A, Tiberti N, Lisacek F, Sanchez J-C, et al. pROC: an open-source package for R and S+ to analyze and compare ROC curves. *BMC Bioinform.* 2011;12(1):77. <https://doi.org/10.1186/1471-2105-12-77>.
35. DeLong ER, DeLong DM, Clarke-Pearson DL. Comparing the areas under two or more correlated receiver operating characteristic curves: a nonparametric approach. *Biometrics.* 1988;44(3):837. <https://doi.org/10.2307/2531595>.
36. Rózga M, Bittner T, Batrla R, Karl J. Preanalytical sample handling recommendations for Alzheimer's disease plasma biomarkers. *Alzheimers Dement.* 2019;11:291–300.
37. Morris JC, Schindler SE, McCue LM, Moulder KL, Benzinger TLS, Cruchaga C, et al. Assessment of racial disparities in biomarkers for Alzheimer disease. *JAMA Neurol.* 2019;76(3):264–73. <https://doi.org/10.1001/jamaneurol.2018.4249>.
38. Palmqvist S, Insel PS, Stomrud E, Janelidze S, Zetterberg H, Brix B, et al. Cerebrospinal fluid and plasma biomarker trajectories with increasing amyloid deposition in Alzheimer's disease. *EMBO Mol Med.* 2019;11(12): e111170. <https://doi.org/10.15252/emmm.2019111170>.
39. Rabinovici GD, Gatsonis C, Apgar C, Chaudhary K, Gareen I, Hanna L, et al. Association of amyloid positron emission tomography with subsequent change in clinical management among Medicare beneficiaries with mild cognitive impairment or dementia. *JAMA.* 2019;321(13):1286–94. <https://doi.org/10.1001/jama.2019.2000>.
40. Kirmess K, Holubasch M, Knapik S, Meyer M, Contois J, Hu Y, et al. P009-analytical validation of PrecivityAβ™ test: an accurate, reproducible, and precise LC-MS/MS assay for quantifying plasma amyloid beta 40 and 42. *J Prev Alzheimers Dis.* 2020;7:S59.

## Publisher's Note

Springer Nature remains neutral with regard to jurisdictional claims in published maps and institutional affiliations.

**Ready to submit your research? Choose BMC and benefit from:**

- fast, convenient online submission
- thorough peer review by experienced researchers in your field
- rapid publication on acceptance
- support for research data, including large and complex data types
- gold Open Access which fosters wider collaboration and increased citations
- maximum visibility for your research: over 100M website views per year

**At BMC, research is always in progress.**

Learn more [biomedcentral.com/submissions](https://biomedcentral.com/submissions)

