

Earth's Future

RESEARCH ARTICLE

10.1029/2020EF001931

Key Points:

- We establish a mathematical model that captures unwillingness or inability to migrate, return migrations, and cascading effects
- For the case study of Bangladesh, the model predicts population changes of each of the 64 districts, impacting 1.3 million people by 2050
- Migration from inundated central regions will trigger country-wide, non-trivial patterns, such as the reduction in the population of Dhaka

Supporting Information:

Supporting Information may be found in the online version of this article.

Correspondence to:

M. Porfiri,
mporfiri@nyu.edu

Citation:

De Lellis, P., Ruiz Marín, M., & Porfiri, M. (2021). Modeling human migration under environmental change: A case study of the effect of sea level rise in Bangladesh. *Earth's Future*, 9, e2020EF001931. <https://doi.org/10.1029/2020EF001931>

Received 13 JUL 2020

Accepted 19 MAR 2021

© 2021. The Authors. Earth's Future published by Wiley Periodicals LLC on behalf of American Geophysical Union. This is an open access article under the terms of the [Creative Commons Attribution License](https://creativecommons.org/licenses/by/4.0/), which permits use, distribution and reproduction in any medium, provided the original work is properly cited.

Modeling Human Migration Under Environmental Change: A Case Study of the Effect of Sea Level Rise in Bangladesh

Pietro De Lellis¹ , Manuel Ruiz Marín² , and Maurizio Porfiri^{2,3} 

¹Department of Information Technology and Electrical Engineering, University of Naples Federico II, Naples, Italy, ²Department of Quantitative Methods, Law and Modern Languages, Technical University of Cartagena, Cartagena, Spain, ³Center for Urban Science and Progress, Department of Mechanical and Aerospace Engineering, and Department of Biomedical Engineering, New York University Tandon School of Engineering, Brooklyn, NY, USA

Abstract Sea level rise (SLR) could have catastrophic consequences worldwide. More than 600 million people currently living in coastal areas may see their livelihood at risk and choose to migrate in the near future. Predicting when, how, and where people could migrate under environmental change is critical to devise effective policy initiatives and improve our preparedness. Here, we propose a modeling framework to predict the effect of SLR on migration patterns from easily accessible geographic and demographic data. The framework adapts the radiation model to capture unwillingness or inability to migrate of affected residents, as well as return migration and cascading effects in migration patterns. We apply the mathematical model to study internal migration in Bangladesh, where we predict a complex and counterintuitive landscape of migration patterns between districts. Our predictions indicate that the impact of SLR on 816,000 people by 2050 will trigger cascading effects in migration patterns throughout the entire country. The population of each of the 64 districts will change, leading to a total variation of 1.3 million people. Migration from inundated regions in the center will trigger non-trivial patterns, including a reduction in the population of the district of the capital Dhaka.

Plain Language Summary Droughts, desertification, floods, earthquakes, and wildfire threaten livelihood worldwide, triggering more and more often human unrest. From wealthy to developing economies, every country is vulnerable to environmental change. Mathematical models can assist in providing reliable predictions of environmental migration, which are critical for devising effective policy initiatives and improving our preparedness for future migration patterns. Here, we establish a modeling framework to predict environmental migration from knowledge of the number of individuals who will be placed on the move due to environmental change. We specialize the model to the study of the catastrophic consequences of sea level rise (SLR) in Bangladesh. Our results indicate that the geography and demographics of Bangladesh could magnify the threat posed by SLR on internal migration. Although SLR will affect only a fraction of the districts, these districts have a critical role in migration patterns and local inundations therein will ultimately trigger human unrest in the entire country.

1. Introduction

Sea level rise (SLR) is expected to be one of the “most expensive and irreversible future consequences of global climate change, costing up to 4.5% of global gross domestic product,” as recently summarized by Hauer et al. (2019). A population of more than 600 million who is currently living close to the coast could be displaced by SLR. Over 40 years ago, Mercer (1978) identified the disintegration of the West Antarctic Ice Sheet as a potential driver of human migration in coastal regions. Since then, the technical literature has made strides in elucidating the complex range of drivers of human migration that are related to SLR (Hauer et al., 2019). While the most evident consequence of SLR is the ultimate inundation of low-elevation areas, a number of related hazards might cause human unrest before these regions become uninhabitable. From flooding by tropical cyclones (Woodruff et al., 2013) to saltwater intrusions in coastal aquifers (Ketabchi et al., 2016), SLR-induced hazards may damage coastal biodiversity and human health (Mahmuduzzaman et al., 2014), reduce property values (Keenan et al., 2018), and destroy infrastructure (Fussell et al., 2017). More and more households will become vulnerable to SLR-induced hazards and be forced to migrate.

Although there is large variability in future sea level projections, due, for instance, to the uncertainty in anthropogenic emissions, there is consensus on the potentially catastrophic worldwide impact of SLR (Kopp et al., 2019). Coastal regions in the United States might experience migrations “of a magnitude similar to the 20th century Great Migration of southern African-Americans” (Hauer et al., 2016). Similarly, developing countries, like Bangladesh, may see the majority of their population experience SLR-related impact by the middle of the century, potentially triggering massive migrations (Neumann et al., 2015). Not only is formulating reliable predictions of environmental migration critical for devising effective policy initiatives around the implications of SLR, but also it plays a fundamental role in improving our preparedness for future migration patterns.

Several mathematical models have been proposed to predict the impact of SLR on migration patterns (Hauer et al., 2019). For example, Hassani-Mahmooei and Parris (2012) established an agent-based model to examine environmental migration in Bangladesh. Their results suggest a migration in 2050 toward east and northeast districts, along with a continuous absorption of migrants in current urban areas. Through a linear probability model, Chen and Mueller (2018), determined that gradual increases in soil salinity due to coastal flooding could be a stronger factor for environmental migration in Bangladesh than inundation alone. Agent-based modeling was also utilized by Karanci et al. (2017) to predict housing decisions in the coastal town of Nags Head in North Carolina, USA. While having considerable technical merit, these modeling approaches are relatively complex to implement, with several parameters to be empirically calibrated toward accurate predictions.

The study by Davis et al. (2018) makes an important contribution to the literature, by proposing a universal model of human migration under environmental change. The model constitutes a valuable trade-off between complexity and accuracy to predict the influence of SLR on migration fluxes. The approach adapts the radiation model by Simini et al. (2012), which has been shown to accurately describe mobility patterns as a function of population distribution. Specifically, the radiation model predicts that the flux between two regions is controlled by their populations and those of all the neighboring regions. The adaptation by Davis et al. (2018) reduces the value of the populations in the expression of the fluxes to account for human migration triggered by SLR. The model is parameter-free, whereby it only takes as input the population distribution and the population in inundated regions for the prediction of migration fluxes. The approach was illustrated through the study of future environmental migration driven by SLR in Bangladesh.

Albeit offering the first parameter-free approach for elucidating environmental migration, the original approach presented by Davis et al. (2018) has a number of limitations that are, in fact, discussed by the authors in their manuscript. In its present incarnation, the model does not allow for considering unwillingness and inability to migrate, which is widely documented in the technical literature (Hauer et al., 2019). For example, previous studies on Bangladesh have indicated that residents of affected regions display a complex coping response to hazard, which may not trigger migration (Barman et al., 2012; Hutton & Haque, 2003). Should one be willing to migrate, the route to migration is still hampered by socioeconomic factors, where the poorest and least mobile will be “trapped populations” (Black, Bennett, et al., 2011).

In addition, the model neither accounts for cascading effects in environmental migration nor for return migration (Hauer et al., 2019). As large populations are displaced due to environmental change to a new region, they may conflict with existing residents who may see their economic resource base threatened (Reuveny, 2007). Such a conflict may, in turn, trigger consequent migrations in a cascading effect. Displaced people may also express a desire to return to their homes, as seen for example, among New Orleans' residents who returned to New Orleans after Hurricane Katrina for a sense of place (Chamlee-Wright & Storr, 2009). Both cascading effects and return migration will ultimately contribute to a richer landscape of migration patterns, in which local effects of environmental change in any region will have global consequences.

Here, we propose a mathematical model to study migration patterns due to environmental change that seeks to overcome these limitations. Each region is treated as a node in a weighted network (Estrada, 2012), whose directed links represent migrations between regions. We encapsulate demographic and geographic data in each node through the population and position of the corresponding region. The population of a region may increase or decrease due to incoming or outgoing links, respectively. The migration rate along each link is controlled by the population of the endpoints, as well as the population of any other regions that is

geographically closer to the origin than the destination, following the radiation model (Simini et al., 2012). The migration flux is then computed by multiplying the corresponding rate by the population of the origin that is willing and able to migrate under the effect of environmental change.

Different from the approach of Davis et al. (2018), the model contains one parameter that captures baseline migration between regions, in terms of the fraction of lifetime migrants who are born in a region and live their lives in another region. The presence of environmental change is modeled through a localized shock onto this baseline parameter. The more severe is the shock, the larger is the fraction of people that could be displaced in a region, thereby changing the global landscape of migration patterns. Adapting techniques from the study of vulnerability and leadership in network dynamical systems (Fitch & Leonard, 2015; Pagnier & Jacquod, 2019; Porfiri & Frasca, 2018), we propose a sensitivity analysis to examine the specific effect of a local shock on global migration patterns. In this context, we apply a perturbation at a given node (that is, an increase in the number of individuals who are willing and able to migrate) and study its cascading effects in any other node. We introduce a resilience index to measure the extent to which a localized perturbation induces migration everywhere in the network.

By linking the results of the resilience analysis with predictions about the spatial distribution of environmental change, we quantify the extent of the potential threat on migration patterns and offer long-term predictions. For example, the same average SLR for a given country may trigger widely different migration patterns, depending on how the population is distributed between coastal and inland regions and between rural and densely populated urban areas. We focus the analysis on the effect of SLR on internal migrations in Bangladesh, demonstrating complex inter-dependencies between SLR distribution and migration patterns between different regions.

2. Data and Methods

2.1. Formulation of the Migration Model

Our modeling approach begins by partitioning the overall geographical area where environmental change and the resulting migration take place into N regions, corresponding to the network nodes. At each node, we measure the population at discrete time instants separated by a unitary time step; the population in the i -th region at time k is denoted as $n_i(k)$. By assuming that birth and death rate balance each other and that there is not an influx from or outflux toward other areas, we can write the following continuity equation to predict the time-evolution of the population in the network:

$$n_i(k+1) - n_i(k) = \sum_{j=1}^N J(j \rightarrow i, k) - \sum_{j=1}^N J(i \rightarrow j, k), \quad (1)$$

where $J(i \rightarrow j, k)$ is the migration flux from origin i to destination j in the time interval $[k, k+1)$.

To complete the system of equations and afford predictions of environmental migrations, we must relate the migration fluxes to the populations and some salient parameter of environmental change through constitutive equations. We propose the following constitutive equation of the generic flux:

$$J(i \rightarrow j, k) = n_i^m(k) r_{ij}(n(k)). \quad (2)$$

Here, $n_i^m(k) \leq n_i(k)$ is the number of people living in region i at time k that could migrate in the time interval $[k, k+1)$ (superscript “m” stands for “mobile”); $n(k)$ is a vector that aggregates all the populations at time k ; and $r_{ij}(n(k)) \in [0, 1]$ is the fraction of the mobile population of origin i which chooses j as the destination, which we name the migration rate.

We measure the mobile population in each of the N regions with respect to the initial population at time 0, that is, we introduce N parameters $\alpha_1, \dots, \alpha_N \in (0, 1)$, such that

$$n_i^m(k) = n_i(k) - \alpha_i n_i(0). \quad (3)$$

The parameters $\alpha_1, \dots, \alpha_N \in (0, 1)$ are used to capture the effect of environmental change, whereby affected regions will register an increase in the fraction of inhabitants that will try to move, that is, a reduction in the corresponding parameter values. In our modeling approach, environmental change causes an increase in the number of people who are willing and able to move: whether or not the migration will take place depends on demographic and geographic data that involved the entire network. To minimize the number of fitting parameters, we hypothesize that in the absence of environmental change $\alpha_1 = \dots = \alpha_N = : \alpha_0$, where α_0 is the baseline value.

Demographic and geographic data contribute to the value of all the $r_{ij}(n(k))$ -s for $i, j = 1, \dots, N$. We take $r_{ij}(n(k))$ to be equal to the probability of migration obtained from the radiation model (Simini et al., 2012), which relates migration tendency from an origin to a destination to the populations of both these regions as well as the population of any neighboring region. Specifically, we impose

$$r_{ij}(n(k)) = \begin{cases} \frac{n_i(k)n_j(k)}{\left(n_i(k) + n_j(k) + \sum_{l \in \mathcal{N}_{ij}} n_l(k)\right)\left(n_i(k) + \sum_{l \in \mathcal{N}_{ij}} n_l(k)\right)}, & \text{if } i \neq j, \\ \frac{n_i(k)}{\sum_{l=1}^N n_l(k)}, & \text{otherwise,} \end{cases} \quad (4)$$

where $\mathcal{N}_{ij} = \{l \neq i : d_{il} < d_{ij}\}$ is the set of all the regions which are closer to the origin than the destination, with d_{ij} being the distance between the centroids of districts i and j . In the original radiation model, Equation 4 is derived under the premises that an individual will select its migration destination on the basis of better life opportunities, while seeking to remain close to the origin. In this vein, the summation in the denominator of Equation 4 over the neighbors accounts for intervening opportunities that should be weighted during the decision process.

The structure of the model equations leads to the following three properties, which are easy to verify:

1. The total population is constant, that is,

$$\sum_{i=1}^N n_i(k) = \sum_{i=1}^N n_i(0), \quad \text{for all } k. \quad (5)$$

This property follows directly from the continuity equation in Equation 1 by summing over i .

2. For all $i = 1, \dots, N$, and for all times k

$$n_i(k) \geq \alpha_i n_i(0). \quad (6)$$

This property follows from the fact that the outflux at time k can never exceed $n_i^m(k)$.

3. The probability of not migrating at time k can be computed from the radiation model as $r_{ii}(n(k)) = n_i(k) / \left(\sum_{l=1}^N n_l(k)\right)$, thereby yielding

$$\sum_{\substack{j=1 \\ j \neq i}}^N r_{ij}(n(k)) = \frac{\sum_{l=1}^N n_l(k) - n_i(k)}{\sum_{l=1}^N n_l(k)}, \quad \text{for all } i, k. \quad (7)$$

We utilize the migration model to predict the populations in a network at the steady-state, starting from given initial conditions for the populations $n_1(0), \dots, n_N(0)$, a chosen distribution of $\alpha_1, \dots, \alpha_N$ (encompassing changes with respect to the baseline value α_0), and prescribed geographical distances between each pair of nodes d_{ij} with $i, j = 1, \dots, N$. This step is simply executed by running the recursion Equation 1 with constitutive Equation 2, specified through Equations 3 and 4. By comparing the steady-state populations with the original populations, we assess the extent of net migration within the network.

We note that $r_{ij}(n(k))$ depends on demographic and geographic data, without explicitly accounting for the size of the time step, whether it is 1 year or 5 years, for example. The derivation by Simini et al. (2012) does not explicitly include time, such that probability of migration is intended with respect to the time scale of the migration process itself. Should the decision process by an individual unfold on the time scale of 5 years, this number should be intended as the probability of migrating within 5 years and a simulation conducted with a resolution of 1 year should artificially reduce the probability of migration by a factor of five. In our simulations, this aspect has a secondary role, whereby we largely focus on the equilibrium where influxes and outfluxes are completely balanced, that is, $k \rightarrow +\infty$. The same predictions would be obtained by directly solving Equation 1 with $n(k+1) = n(k) =: \bar{n}$ and considering Equation 5, that is, by setting the left-hand-side to zero.

2.2. Analysis of the Migration Model

To facilitate the study of the proposed mathematical model of migration, we introduce the matrix function $Q(\cdot)$ with zero-column sum, whose ij -th element is

$$Q_{ij}(a) = \begin{cases} r_{ji}(a), & \text{if } i \neq j, \\ a_i - \sum_{l=1}^N a_l, & \text{otherwise,} \\ \sum_{l=1}^N a_l, & \end{cases} \quad (8)$$

where a is an arbitrary vector, with components a_1, \dots, a_N . By accounting for Equation 7, we write the model equations as

$$n(k+1) = (I_N + Q(n(k)))n(k) - Q(n(k))\text{diag}(\alpha)n(0), \quad (9)$$

where I_N is the identity matrix, $\text{diag}(\cdot)$ is the diagonal form of a vector, and α collates all the values $\alpha_1, \dots, \alpha_N$.

As a first step in the analysis of migration patterns, we perform a sensitivity analysis by increasing the number of mobile individuals in the generic region i by one with respect to the baseline value α_0 , such that $n^m(k) = n(k) - \alpha_0 n(0) + \epsilon_i$, where ϵ_i is the vector of all zeros except of a one at position i . The perturbation will modify the equilibrium \bar{n}_0 corresponding to $\alpha_1 = \dots = \alpha_N =: \alpha_0$ into $\bar{n}_0 + v^{(i)}$, where $v^{(i)}$ collates the (zero-sum) changes in the population at the equilibrium for all the nodes in the network due to the perturbation at node i .

By linearizing Equation 9, we establish

$$v^{(i)}(k+1) = \left(I_N + Q(\bar{n}_0) + \tilde{Q}(\bar{n}_0, \bar{n}_0 - \alpha_0 n(0)) \right) v^{(i)}(k) + Q(\bar{n}_0) \epsilon_i, \quad (10)$$

where $\tilde{Q}(\cdot, \cdot)$ is a matrix function with zero-column sum, whose generic element is computed as

$$\tilde{Q}_{ij}(a, b) = \sum_{l=1}^N \frac{\partial Q_{il}(n)}{\partial n_j} \Big|_a b_l, \quad (11)$$

for any pairs of vectors a and b . The expression of Equation 11 can be explicitly obtained by carrying out the derivatives.

We can compute the steady-state value $\bar{v}^{(i)}$ of Equation 10, either as the limit $k \rightarrow +\infty$ or simply solving for $v(k+1) = v(k)$ with a zero-sum perturbation. By studying $\bar{v}^{(i)}$, we establish how a small increase in the mobile population of a region may trigger complex migration patterns throughout the network. As a result, one of the regions will see an increase in the number of incoming migrants and another may register a decrease in the population. We quantify the extent of these effects throughout the network by summing the absolute values of all the variations in the population to obtain $\|\bar{v}^{(i)}\|_1$.

By comparing the values of $\|\bar{v}^{(i)}\|_1$ for different indices i , we can evaluate resilience to a localized shock anywhere in the network. The higher this number is, the stronger will be the global effect caused by a localized shock on migration patterns. To present results in a normalized manner, we calculate the “resilience” to environmental change at region i as

$$\rho_i = \frac{\max\left\{\|\bar{v}^{(i)}\|_1\right\}_{i=1}^N - \|\bar{v}^{(i)}\|_1}{\max\left\{\|\bar{v}^{(i)}\|_1\right\}_{i=1}^N - \min\left\{\|\bar{v}^{(i)}\|_1\right\}_{i=1}^N}. \quad (12)$$

Such a sensitivity analysis offers insight into the relative role of each network node on migration patterns, under the premise that only a small fraction of the population will be affected by a shock. To overcome this approximation, we should simulate the complete nonlinear model (Equation 9) with a large perturbation. Due to the nonlinearity of the problem, the superposition principle does not apply and we should consider at once all the perturbations that are applied throughout the network. Hence, the nonlinear analysis requires to increase the number of mobile individuals as $n^m(k) = n(k) - \alpha_0 n(0) + n^{m-ec}$, where the vector n^{m-ec} collates the estimated number of people that could become environmental migrants at each node (superscript “m-ec” identifies “mobile” population due to the “environmental change”). Finally, by subtracting \bar{n}_0 from the resulting steady-state solution \bar{n} , we can estimate the (zero-sum) variations in the population due to environmental migration.

2.3. Demographic and Inundation Data in Bangladesh

The administration of Bangladesh is organized in two main levels: divisions and districts. Based on the 2011 Census (Bangladesh Bureau of Statistics 2015, 2011 Population and Housing Census, 2011), Bangladesh had seven divisions (Bengali: *bibhag*), each of them further divided into districts (Bengali: *zila*), for a total of 64. In the following analysis, the censused population in 2011 for each division and district is used as the initial population $n(0)$ in our model. The 2011 Census also contains data on lifetime migration at division level. Specifically, for each ordered pair of divisions, we extracted the number of individuals born in a division of origin that became residents in a division of destination.

The impact of SLR on Bangladesh is potentially disruptive, since 41% of the total population lives in areas where the elevation is lower than 10 m (Neumann et al., 2015). To quantify the population in each district that could be affected by SLR in 2050, we use the estimations made by Davis et al. (2018). These estimations were obtained by first retrieving an inundation map which combined elevation data taken from the Shuttle Radar Topography Mission for Bangladesh (NASA Shuttle Radar Topography Mission (SRTM) Version 3.0 Global 1 arc second Data Released over Asia and Australia, 2008) with SLR projections (Intergovernmental Panel on Climate Change, 2013). Then, the inundation map was overlaid on the 2010 Gridded Population of the World (GPWv4) data set (Center for International Earth Science Information Network – CIESIN – Columbia University, 2016), adjusted according to the projected population of Bangladesh in 2050 (United Nations, Department of Economic and Social Affairs, Population Division, 2015), to finally gather the population that is expected to be inundated in each district. We collate these values in the vector n^{m-ec} with $N = 64$ entries, of which 21 are different from zero in correspondence to potential environmental migration from inundated districts. From a modeling perspective, this vector consolidates the entire effect of environmental change, thereby serving as the sole input to predict migration patterns.

2.4. Calibration of the Migration Model on 2011 Division-Level Migration Data

As a baseline for studying the effect of environmental change, we calibrate the model with respect to division-level migration data from (Bangladesh Bureau of Statistics 2015, 2011 Population and Housing Census, 2011) ($N = 7$). We hypothesize a common value for $\alpha_1, \dots, \alpha_N$ equal to α_0 , which we identify from the data. We set the initial population in each of the seven divisions from the 2011 Census data and use geographic distances between the centroids of divisions computed from Davis et al. (2018), to implement the

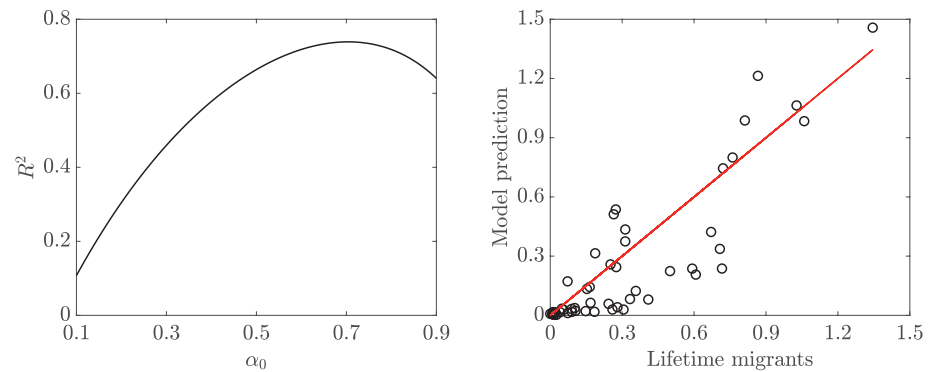


Figure 1. Tuning of the parameter α_0 of the model summarized through Equations 1 – 4, using division-level lifetime migration data: plot of the R^2 value between the pairs predictions/data and the bisectrix (left panel). Comparison between migration fluxes predicted by our model with $\alpha_0 = 0.704$, corresponding to the maximum value of R^2 , and division-level lifetime migration data (right panel). Each point corresponds to the pairwise log-transformed flux between divisions; given a flux x , we plot $\log_{10}(x + 1)$.

model as a function of α_0 . Model output is the vector \bar{n} of length equal to 7, from which we calculate the 49 values of migration fluxes $(\bar{n}_i - \alpha_0 n_i(0))r_{ij}(\bar{n})$, with $r_{ij}(\bar{n})$ given by Equation 4.

For each pair of origin and destination, data are log-transformed and compared with the actual flows between divisions taken from (Bangladesh Bureau of Statistics 2015, 2011 Population and Housing Census 2011). By varying α_0 from 0 to 1, in steps of 0.001, we determine the value that maximizes the R^2 value between the pairs predictions/data and the bisectrix ($R^2 = 0.739$, $p < 0.001$), see Figure 1. While it might be preferable to calibrate at a finer spatial resolution and over a time window, data availability challenged pursuing a different approach. A similar analysis has been, in fact, reported by Davis et al. (2018), although with the different goal of validating the fluxes in the radiation model against lifetime migrants, before examining the effect of environmental change.

3. Results and Discussion

We articulate the assessment of the severity of the potential threat of SLR on Bangladesh in three sequential steps.

First, we apply the sensitivity analysis to district-level data from 2011 Census ($N = 64$), thereby computing the resilience in Equation 12. To delve into the mechanisms underlying a differential resilience of the country to environmental change, we perform a correlation analysis linking the resilience to a localized shock in a district with the population in its neighboring districts. Neighbors are defined to be those districts whose centroids are within a distance that is less than the average distance between any two districts (207 km). A positive correlation would indicate that highly populated regions could shield migration from a neighboring district, whereas a negative correlation would reveal cascade effects in migration patterns.

Second, we correlate the values of the resilience indices with the corresponding affected populations n^{m-ec} in the inundated districts ($N = 21$) by 2050 (estimated by Davis et al., 2018). Through this analysis, we seek to evaluate the overall resilience of Bangladesh to SLR. A positive correlation would indicate the more favorable scenario in which inundated regions have a more peripheral role on migration patterns, such that people who will be placed on the move will not trigger cascading migrations throughout the country. On the other hand, a negative correlation would point at a more dramatic scenario, in which SLR will impact critical districts with respect to global migration patterns.

Third, we perform a full nonlinear analysis of migration patterns that accounts for the simultaneous SLR of the 21 inundated districts. Toward this aim, we estimate the steady-state population in all the 64 districts, using the 2050 projected populations as the initial condition. These values are compared with the

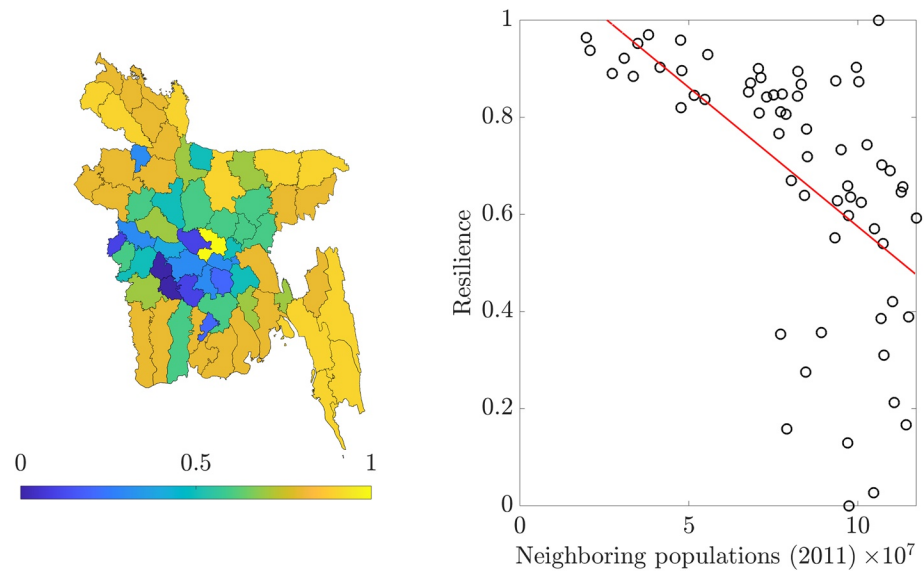


Figure 2. Colormap of the resilience to a localized shock in each district in Bangladesh (left panel), and correlation between the resilience in each district and the population living in neighboring districts (right panel).

population \bar{n}_0 that are predicted from the same initial conditions, but in the absence of the potential environmental migrants n^{m-ec} .

3.1. The Location of Environmental Change Will Have a Differential Effect on Migration Patterns in Bangladesh

We begin by examining the resilience of Bangladesh to localized shocks in each of the 64 districts. The map in Figure 2 suggests that shocks in districts in the north, east, and south will have a lesser impact on migration patterns than central and western districts. However, we should acknowledge a rich spatial dependence, with some of the most critical districts that neighbor less influential regions. The highest value of resilience is registered in the capital district of Dhaka in the center of the country, while the lowest is in the central-western district of Narail. Notably, these rankings are robust with respect to a simplistic inclusion of external migration, in the form of an additional, virtual district that is equally accessible from all the 64 districts (see Supporting Information S1 and Figure S1).

The correlation analysis in Figure 2 indicates that resilience to environmental change in a district is inversely related to the population of neighboring district ($R^2 = 0.340$, $p < 0.001$). The more a district is surrounded by highly populated districts, the stronger are the resulting migration patterns within the country. This suggests the possibility to mathematically anticipate cascading effects, in which people affected by the environmental change will first migrate to neighboring districts, thereby triggering further migration to the rest of the country. These cascading effects have been documented in the literature (Hauer et al., 2019) and attributed to potential conflict between migrants and existing residents, who may experience lower quality of life due to the incoming migration.

The correlation analysis in Figure 2 utilizes a common value α_0 , but equivalent predictions would be obtained by accounting for small heterogeneity in the values of $\alpha_1, \dots, \alpha_N$ with respect to α_0 , as discussed in Supporting Information S2 and Figure S2. In particular, variations of up to 10% in $\alpha_1, \dots, \alpha_N$ never confound the significance of the correlation and the resulting changes in the slope of the fit are within 5% of the nominal value for a common α_0 .

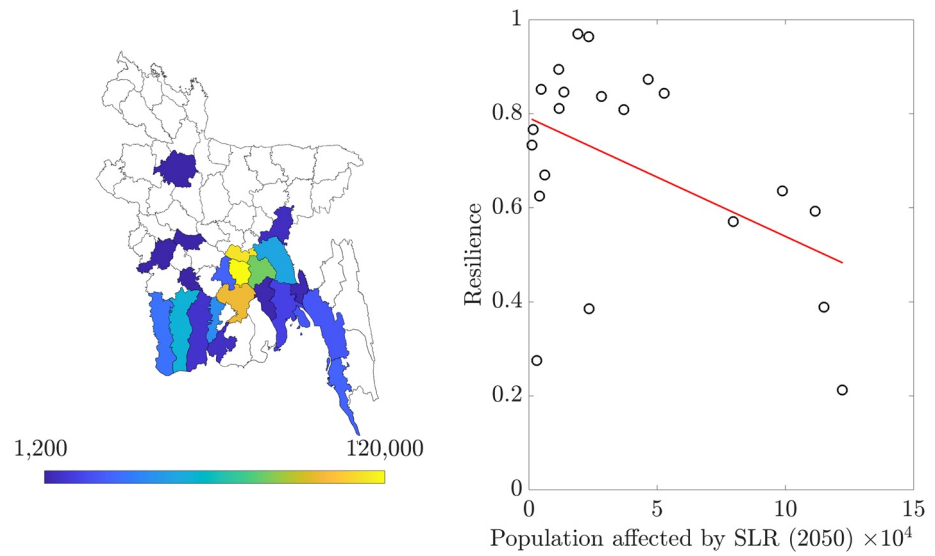


Figure 3. Number of people n^{m-ec} affected by sea level rise (SLR) in 2050, using data from Davis et al. (2018) (left panel), and correlation between the resilience to a localized shock in each district and n^{m-ec} (right panel).

3.2. The Geography and Demographics of Bangladesh Could Magnify the Threat Posed by SLR on Internal Migration

The map in Figure 3 illustrates the number of people who will be impacted by SLR in 2050. Districts in the south will be mostly impacted by SLR, with the largest fraction in the central-southern districts of Shariatpur, Munshiganj, and Narayanganj, where over 335,000 people will be affected.

Although the districts that are expected to be impacted by SLR are not those that yield the lowest resilience from Figure 2, their role is expected to be dramatic. From the correlation analysis in Figure 3, we evidence a negative correlation between resilience to localized shocks and the affected population ($R^2 = 0.223$, $p = 0.031$). SLR is predicted to affect large segments of the population living in critical districts, which will trigger global migration patterns throughout the country.

The extent of the effect of SLR can be visualized in Figure 4. Therein, we demonstrate that a unitary increase in the mobile population of Shariatpur (the most affected district by SLR in 2050) will trigger mobility in three northern districts toward western districts. The capital of Dhaka should register an outflux of people

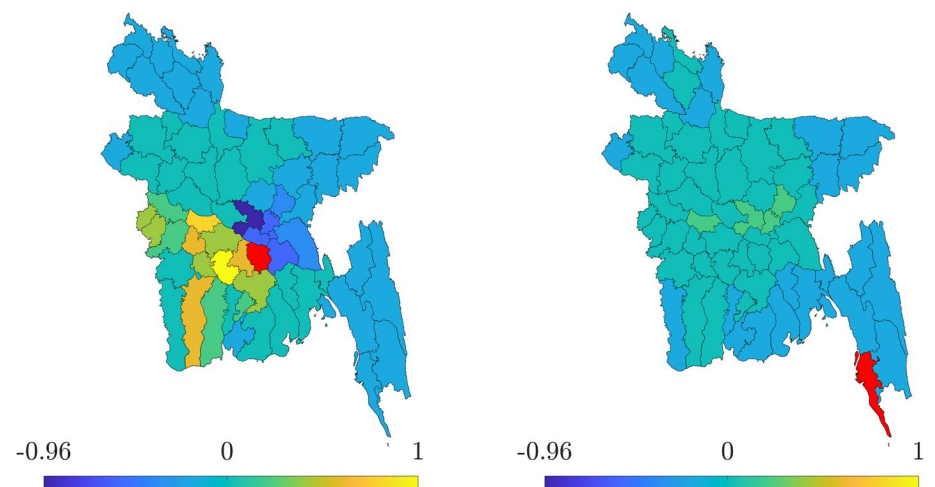


Figure 4. Normalized net migration flux in each district caused by a unitary increase in the mobile population in Shariatpur (left panel) and Cox's Bazar (right panel) from the sensitivity analysis.

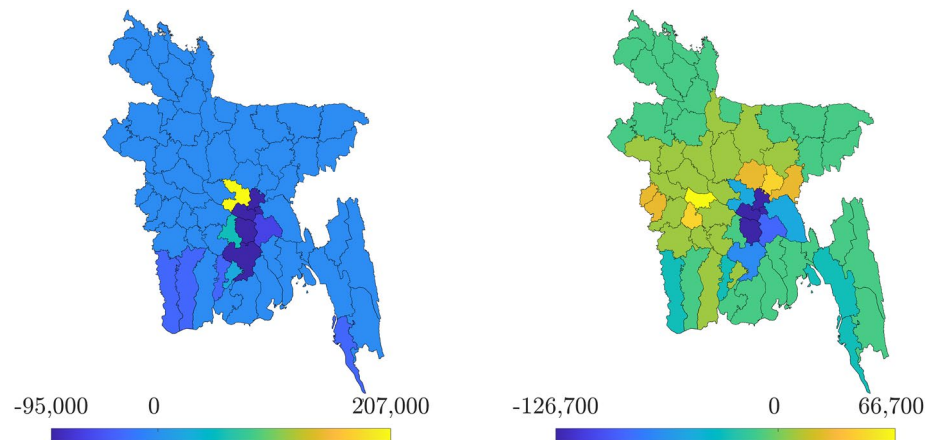


Figure 5. Variation in the population of each district in Bangladesh due to sea level rise (SLR) in 2050 predicted by Davis et al. (2018) (left panel) and our proposed modeling framework (right panel). The sum of the variations (in absolute value) for the left panel is 992,000 and for the right is 1,354,000.

due to the increased mobility of the population in Shariatpur. This possibility might appear counterintuitive, based on predictions of previous models (Chen & Mueller, 2018; Davis et al., 2018; Hassani-Mahmoeei & Parris, 2012) and empirical evidence by Kartiki (2011), suggesting that migrants prefer to migrate to urban areas.

The basis of this surprising result is related to the gradual effects of SLR, which drive the system to a new equilibrium. Specifically, our analysis focuses on steady-state migration patterns that will emerge in response to the increased tendency of people to move from inundated areas. While in a single time-step, highly populated districts will tend to attract more migrants, as time evolves this incoming population might tend to diffuse to neighboring regions, until reaching the new equilibrium. For example, a one time-step prediction in Equation 1 about the effect of the shock in Shariatpur (corresponding to a unitary increase in the mobile population) will consist of a normalized increase of 0.048 on Dhaka's population, in contrast with the steady-state decrease of 0.224 shown in Figure 4.

The same phenomenon is not observed in response to environmental change in the peripheral region of Cox's Bazar shown in Figure 4, where more than 23,000 people are estimated to be impacted by SLR. In this case, the neighboring districts are not expected to see their population change, while the central districts of Dhaka, Rajbari, and Narsingdi will register an increase in their population. This long-range phenomenon should be explained as a cascading effect, in which people from Cox's Bazar will begin moving to other south-eastern districts, prompting migration of local residents toward neighboring districts and ultimately gravitate toward Dhaka, Rajbari, and Narsingdi.

3.3. SLR Will Trigger Migration Patterns Involving the Whole Country

In Figure 5, we compare the results of the model by Davis et al. (2018), with our predictions, starting from the same initial populations in 2050 and accounting for the same values for the affected populations in the inundated districts (a total of 816,000 people over 21 districts). The two models anticipate a comparable net change in the population of all the districts (992,000 vs. 1,354,000) and are in agreement in the identification of the districts which will see their population reduce the most (Narayanganj, Shariatpur, and Munshiganj).

However, the predictions of the destination of the migrations are radically different. The model by Davis et al. (2018), predicts that SLR will cause a massive flux toward Dhaka, which will increase its population of more than 207,000 people, and northern and south-eastern districts will be unaffected by the internal migration. In contrast, our mathematical model predicts that migration will involve the whole country, including the northern districts, and that no district will register an increase in population above 67,000 people. Our model also suggests that Dhaka will see its population reduce by about 34,000 people. Differences between the two model predictions are further clarified in Table 1.

Table 1
Net Variations in the Population Due to Sea Level Rise in 2050 in Selected Districts

District	Net flux (Davis et al., 2018)	Net flux (proposed model)	Rank (Davis et al., 2018)	Rank (proposed model)
Dhaka*	207,373	−34,060	1	11
Narayanganj	−95,003	−126,694	2	1
Shariatpur	−80,916	−124,444	3	3
Barisal	−80,669	−64,252	4	6
Munshiganj	−77,916	−124,598	5	2
Madaripur	61,791	−937	6	60
Chandpur	−37,711	−70,998	7	4
Jhalakati	35,546	9,198	8	36
Satkhira	−32,287	−19,603	9	23
Khulna	−28,148	−9,982	10	33
Cox's Bazar	−25,680	−16,366	11	24
Bagherat	24,860	12,263	12	28

Notes. Comparison between predictions by Davis et al. (2018) and our proposed modeling framework; the rank is based on the absolute value of the variation. An asterisk identifies a non-inundated district.

With respect to the model by Davis et al. (2018), the proposed approach presents the following differences. First, the model by Davis et al. (2018) assumes that environmental change will cause the migration of every individual in an affected region, without considering unwillingness and inability to move by many people. In our model, we take as input the fraction of people that could migrate in an affected region and predict the ultimate migration. Second, the model by Davis et al. (2018) distributes migrants to neighboring regions, without accounting for either return migration or cascading effects, which are key factors in driving our model to its new equilibrium. Third, the model by Davis et al. (2018) is not formulated in terms of a continuity equation in which migration fluxes are combined to calculate the variations in the population throughout the network. As a result, it is tenable that the population distribution associated with the approach by Davis et al. (2018) does not constitute an equilibrium, from which there will be additional influx or outflux of people due to the immediate or long-term consequences of environmental migration.

The latter difference between our work and the approach by Davis et al. (2018) could be further developed by examining the transient dynamics of our model. In Figure 6, we show the population in the four districts of Dhaka, Narayanganj, Shariatpur, and Munshiganj as a function of time; these districts are selected based on Table 1, which defines them as the most critical districts for our model and the one by Davis et al. (2018). In all of these simulations, we use as initial conditions the predicted population at the equilibrium in the absence of inundations and, at the first time-step

of the simulation, we modify the vector α to capture the simultaneous SLR of the 21 inundated districts. Results presented in Figure 6 confirm the intuition that the district of Dhaka might undergo an initial increase in its population, which would then reduce as time progresses. The same response is not visible for the other three districts, which are directly impacted by inundations and steadily register a decrease in their population.

These predictions depend on the modality that we used to force the system to a new equilibrium, whereby changing the spatio-temporal patterning of SLR-driven inundations would lead to different transient dynamics. To explore this aspect, we examined two alternative inundation patterns. Within the first pattern, one district was inundated at each time-step, taking 21 time-steps to inundate the whole set of districts (a total of 100 simulations was conducted to account for the randomness of the selection). Within the second pattern, the 21 districts were gradually inundated over 21 time-steps, by linearly increasing the inundation from 0 to the desired final value corresponding to the original analysis. In general, both of these two modifications delay and mitigate the migration process with respect to the original analysis. For example, in the district of Dhaka, we observe that a gradual inundation would delay the peak in the population of 20 time-steps and reduce its magnitude by 32.14%. Randomizing the inundated districts has an equivalent effect, although the extent to which the peak is delayed and reduced depends on the specific temporal ordering of the inundated districts. A slightly different scenario is recorded for the three other districts of Narayanganj, Shariatpur, and Munshiganj, where any of the two modifications is responsible for a diffusion of the migration over a wider time-window.

4. Summary and Concluding Remarks

Borrowing the words in Jasso (2003), “Every year and at every age humans move.” They move to pursue a better quality of life, as the Romans put it, “ubi bene, ibi Patria” (“where one is well-off, there is one's country”), sometimes just to survive. Environmental change from droughts, desertification, floods, earthquakes, and wildfire is being increasingly recognized as a key driver for mass migration (Kaczan & Orgill-Meyer, 2019). SLR, in particular, is expected to affect the lives of more than 600 million people living close to the coast, who could see their livelihood at risk and decide to migrate (Hauer et al., 2019).

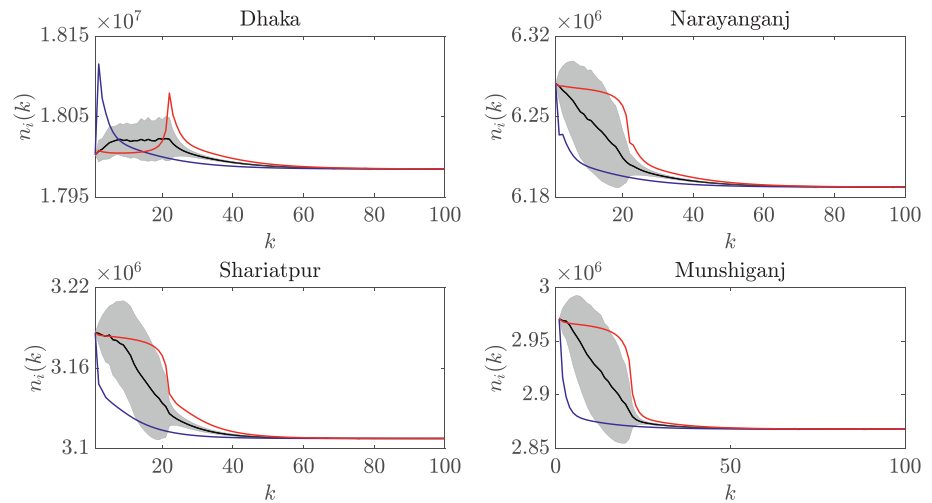


Figure 6. Transient population dynamics in four select districts due to sea level rise (SLR). The blue lines correspond to the instantaneous inundation of all the 21 districts, whereas the red lines correspond to their gradual inundation over 21 time-steps, with a linear increase from 0 to the desired final value. The black line corresponds to the case in which one district was inundated at each time-step, averaged over 100 permutations, with the extrema of the shaded region corresponding to one standard deviation.

Here, we make a further step toward a universal model of human migration under environmental change. Our migration model extends the promising approach of Davis et al. (2018) along several directions to anticipate salient phenomena that have been extensively documented in the literature: unwillingness or inability to migrate, cascading effects on migration patterns, and return migration (Hauer et al., 2019). These extensions do not come at the expense of increased complexity, whereby the model contains a single additional parameter that is used to capture the baseline tendency of people to migrate, in the absence of environmental change. This is the only parameter that should be calibrated, before embarking on the predictions of migration patterns.

In principle, the modeling framework is applicable to a wide class of environmental migration problems. Similar to Davis et al. (2018), we demonstrate the framework on SLR in Bangladesh, using easily available geographic and demographic data to draw predictions on internal migrations. Our findings point at a more complex interplay between geography and demographics in shaping migratory fluxes due to environmental change than Davis et al. (2018). Highly populated districts should not always experience increases in population in response to environmental change occurring in lesser populated regions, but may also see their population reduce. Similarly, lesser populated regions could register further reduction or increase in their population, depending on where the location of environmental change. We propose that the predictions of our model should be preferred to those by Davis et al. (2018) in the study of SLR, whose impact will gradually affect the Bangladesh population, rather than drive immediately the system out of equilibrium.

The present model is not free of limitations, which should be explored in further studies.

1. During each time-step, we always assume that the hypotheses of the radiation model by Simini et al. (2012) hold true. In particular, we hypothesize that only economic factors drive the selection of the migration destination, thereby neglecting social ties which could play a critical role in shaping migration patterns as evidenced by Kartiki (2011), for rural Bangladesh. This limitation might be addressed by informing the construction of the weighted network of the radiation model based on social ties within communities. This modeling route could also assist in a more detailed quantification of the opportunities that are offered by large cities, against rural areas. Whether these improvements will result in substantially different predictions is presently unclear, whereby preliminary analysis of the heterogeneity in the baseline migration propensity seems to point at robustness of our model predictions against these unmodeled effects
2. In its present form, the model does not distinguish between recent and past migrants in each district, which may be crucial in determining the real opportunities available to migrants in each district. This

limitation might be addressed by extending the model beyond a first-order difference equation to capture sedimentation in the migration process. In this vein, one should explore the possibility of including memory in the migration rates

3. Introducing a memory in the migration rates may also help resolve the ambiguity underlying the notion of return migration. In its present form, the model accounts for return migration but does not offer a means to tease out their net effect. Specifically, from the flux between two districts, it is impossible to identify individuals who migrate for the first time versus individuals who are returning to their district of origin
4. The model does not distinguish between capability and vulnerability as two different causes for the decision to migrate (Kaczan & Orgill-Meyer, 2019). The complex interplay between these drivers might challenge the premises of the radiation model, which does not distinguish between individuals in their decision process. This limitation might be resolved through a further degree of refinement that partitions the affected population in classes
5. The model does not account for within-region migration, which could play an important role in migration patterns. For example, in Bangladesh, it has been proposed that a relevant fraction of displaced people could attempt short-range migration (Fussell et al., 2014). This limitation might be addressed by teasing out the portion of individuals who decide not to migrate from those who choose to migrate within the same district through an additional parameter to be identified from experiments
6. The model does not allow for a detailed treatment of external migration, in the form of crossing the borders of the country through ground transportation or airplane. Preliminary analyses on external migration to a virtual destination that is equally accessible from any district point at a secondary effect of the resilience of the country to localized shocks. Future research should explore whether this claim generalizes to more accurate representations of external migration

Whether the simplicity of the modeling framework should be regarded as a limitation or a strength depends on the envisioned application of a mathematical model of environmental migration. The proposed approach requires the calibration of a single parameter to capture baseline migrations, which avoids overfitting the data, but comes at the cost of a limited temporal and spatial resolution of baseline migration throughout a country. Similarly, the prediction of environmental migration patterns is based on the number of individuals in any region who could become mobile due to environmental change. In principle, this number could account for economic, political, social, and demographic factors that could identify the most impacted individuals (Black, Adger, et al., 2011). However, working with the Bangladesh case study, we chose to estimate this number based on the extent to which each district will be inundated. This simplistic choice allows for a first assessment of the effect of environmental change, upon which one can determine the effect of specific, intervening factors.

Acknowledgments

This study is part of the collaborative activities carried out under the program of the region of Murcia (Spain): "Groups of Excellence of the region of Murcia, the Fundación Séneca, Science and Technology Agency" project 19884/GERM/15 and "Call for Fellowships for Guest Researcher Stays at Universities and OPIS" project 21144/IV/19, and of the program "STAR 2018" of the University of Naples Federico II and Compagnia di San Paolo, Istituto Banco di Napoli – Fondazione, project ACROSS. M. Porfiri would like to express his gratitude to the Technical University of Cartagena for hosting him during a Sabbatical leave and to acknowledge support from the National Science Foundation under Grant number CMMI 1561134. M. Ruiz Marin would like to acknowledge support from Ministerio de Ciencia e Innovación of Spain under Grant number PID2019-107800GB-I00 / AEI / 10.13039/501100011033. The authors would also like to thank Paolo D'Odorico for useful discussion and for sharing codes and data.

Data Availability Statement

Data are available from the supplementary data published by Davis et al. (2018).

References

- Bangladesh Bureau of Statistics 2015, 2011 Population and Housing Census. (2011). *2011 population and housing census*. Bangladesh Bureau of Statistics.
- Barman, D., Majumder, C., Rahaman, M. Z., & Sarker, S. (2012). Foundations of migration from the disaster consequences coastal area of Bangladesh. *Developing Country Studies*, 2(4).
- Black, R., Adger, W. N., Arnell, N. W., Dercon, S., Geddes, A., & Thomas, D. (2011). The effect of environmental change on human migration. *Global Environmental Change*, 21, S3–S11. <https://doi.org/10.1016/j.gloenvcha.2011.10.001>
- Black, R., Bennett, S. R. G., Thomas, S. M., & Beddington, J. R. (2011). Migration as adaptation. *Nature*, 478(7370), 447–449. <https://doi.org/10.1038/478477a>
- Center for International Earth Science Information Network – CIESIN – Columbia University (2016). *Gridded population of the world, version 4 (GPWv4): Population count*. NASA Socioeconomic Data and Applications Center.
- Chamlee-Wright, E., & Storr, V. H. (2009). "There's No Place like New Orleans": Sense of place and community recovery in the ninth ward after Hurricane Katrina. *Journal of Urban Affairs*, 31(5), 615–634. <https://doi.org/10.1111/j.1467-9906.2009.00479.x>
- Chen, J., & Mueller, V. (2018). Coastal climate change, soil salinity and human migration in Bangladesh. *Nature Climate Change*, 8(11), 981–985. <https://doi.org/10.1038/s41558-018-0313-8>
- Davis, K. F., Bhattachan, A., D'Odorico, P., & Suweis, S. (2018). A universal model for predicting human migration under climate change: Examining future sea level rise in Bangladesh. *Environmental Research Letters*, 13(6), 064030. <https://doi.org/10.1088/1748-9326/aac4d4>
- Estrada, E. (2012). *The structure of complex networks: Theory and applications*. Oxford University Press.

- Fitch, K., & Leonard, N. E. (2015). Joint centrality distinguishes optimal leaders in noisy networks. *IEEE Transactions on Control of Network Systems*, 3(4), 366–378.
- Fussell, E., Curran, S. R., Dunbar, M. D., Babb, M. A., Thompson, L., & Meijer-Irons, J. (2017). Weather-related hazards and population change. *The Annals of the American Academy of Political and Social Science*, 669(1), 146–167. <https://doi.org/10.1177/0002716216682942>
- Fussell, E., Hunter, L. M., & Gray, C. L. (2014). Measuring the environmental dimensions of human migration: The demographer's toolkit. *Global Environmental Change*, 28, 182–191. <https://doi.org/10.1016/j.gloenvcha.2014.07.001>
- Hassani-Mahmooui, B., & Parris, B. W. (2012). Climate change and internal migration patterns in Bangladesh: An agent-based model. *Environment and Development Economics*, 17(6), 763–780. <https://doi.org/10.1017/s1355770x12000290>
- Hauer, M. E., Evans, J. M., & Mishra, D. R. (2016). Millions projected to be at risk from sea-level rise in the continental United States. *Nature Climate Change*, 6(7), 691–695. <https://doi.org/10.1038/nclimate2961>
- Hauer, M. E., Fussell, E., Mueller, V., Burkett, M., Call, M., Abel, K., et al. (2019). Sea-level rise and human migration. *Nature Reviews Earth & Environment*, 1(1), 1–12.
- Hutton, D., & Haque, C. E. (2003). Patterns of coping and adaptation among erosion-induced displacees in Bangladesh: Implications for hazard analysis and mitigation. *Natural Hazards*, 29(3), 405–421. <https://doi.org/10.1023/a:1024723228041>
- Intergovernmental Panel on Climate Change. (2013). *Climate Change 2013: The Physical Science Basis*. In T. F. Stocker, et al. (Eds.) Contribution of Working Group I to the Fifth Assessment Report of the Intergovernmental Panel on climate change. Cambridge: Cambridge University Press.
- Jasso, G. (2003). Migration, human development, and the life course. In *Handbook of the life course* (pp. 331–364). Springer.
- Kaczan, D. J., & Orgill-Meyer, J. (2019). The impact of climate change on migration: A synthesis of recent empirical insights. *Climatic Change*, 158(3), 1–20.
- Karanci, A., Berglund, E., & Overton, M. (2017). An agent-based model to evaluate housing dynamics of coastal communities facing storms and sea level rise. *Coastal Engineering Proceedings*, 1(35), 23. <https://doi.org/10.9753/icce.v35.management.23>
- Kartiki, K. (2011). Climate change and migration: A case study from rural Bangladesh. *Gender and Development*, 19(1), 23–38. <https://doi.org/10.1080/13552074.2011.554017>
- Keenan, J. M., Hill, T., & Gumber, A. (2018). Climate gentrification: From theory to empiricism in Miami-Dade County, Florida. *Environmental Research Letters*, 13(5), 054001. <https://doi.org/10.1088/1748-9326/aabb32>
- Ketabchi, H., Mahmoodzadeh, D., Ataie-Ashtiani, B., & Simmons, C. T. (2016). Sea-level rise impacts on seawater intrusion in coastal aquifers: Review and integration. *Journal of Hydrology*, 535, 235–255. <https://doi.org/10.1016/j.jhydrol.2016.01.083>
- Kopp, R. E., Gilmore, E. A., Little, C. M., Lorenzo-Trueba, J., Ramenzoni, V. C., & Sweet, W. V. (2019). Usable science for managing the risks of sea-level rise. *Earth's Future*, 7(12), 1235–1269. <https://doi.org/10.1029/2018ef001145>
- Mahmuduzzaman, M., Ahmed, Z. U., Nuruzzaman, A., Ahmed, F. R. S. (2014). Causes of salinity intrusion in coastal belt of Bangladesh. *International Journal of Plant Research*, 4(4A), 8–13.
- Mercer, J. H. (1978). West Antarctic ice sheet and CO₂ greenhouse effect: A threat of disaster. *Nature*, 271(5643), 321–325. <https://doi.org/10.1038/271321a0>
- NASA Shuttle Radar Topography Mission (SRTM) Version 3.0 Global 1 arc second Data Released over Asia and Australia. (2008). Retrieved from <https://earthdata.nasa.gov/nasa-shuttle-radar-topography-mission-srtm-version-3-0-global-1-arc-second-data-released-over-asia-and-australia>
- Neumann, B., Vafeidis, A. T., Zimmermann, J., & Nicholls, R. J. (2015). Future coastal population growth and exposure to sea-level rise and coastal flooding—a global assessment. *PLOS One*, 10(3). e0118571. <https://doi.org/10.1371/journal.pone.0118571>
- Pagnier, L., & Jacquod, P. (2019). Optimal placement of inertia and primary control: A matrix perturbation theory approach. *IEEE Access*, 7, 145889–145900. <https://doi.org/10.1109/access.2019.2945475>
- Porfiri, M., & Frasca, M. (2018). Robustness of synchronization to additive noise: How vulnerability depends on dynamics. *IEEE Transactions on Control of Network Systems*, 6(1), 375–387.
- Reuveny, R. (2007). Climate change-induced migration and violent conflict. *Political Geography*, 26(6), 656–673. <https://doi.org/10.1016/j.polgeo.2007.05.001>
- Simini, F., González, M. C., Maritan, A., & Barabási, A.-L. (2012). A universal model for mobility and migration patterns. *Nature*, 484(7392), 96–100. <https://doi.org/10.1038/nature10856>
- United Nations, Department of Economic and Social Affairs, Population Division. (2015). *World population prospects: The 2015 revision*. Wiley.
- Woodruff, J. D., Irish, J. L., & Camargo, S. J. (2013). Coastal flooding by tropical cyclones and sea-level rise. *Nature*, 504(7478), 44–52. <https://doi.org/10.1038/nature12855>