

University of Groningen

Godwit Survival Project – Mission report Iberia 2011

Hooijmeijer, Jos

IMPORTANT NOTE: You are advised to consult the publisher's version (publisher's PDF) if you wish to cite from it. Please check the document version below.

Publication date:
2011

[Link to publication in University of Groningen/UMCG research database](#)

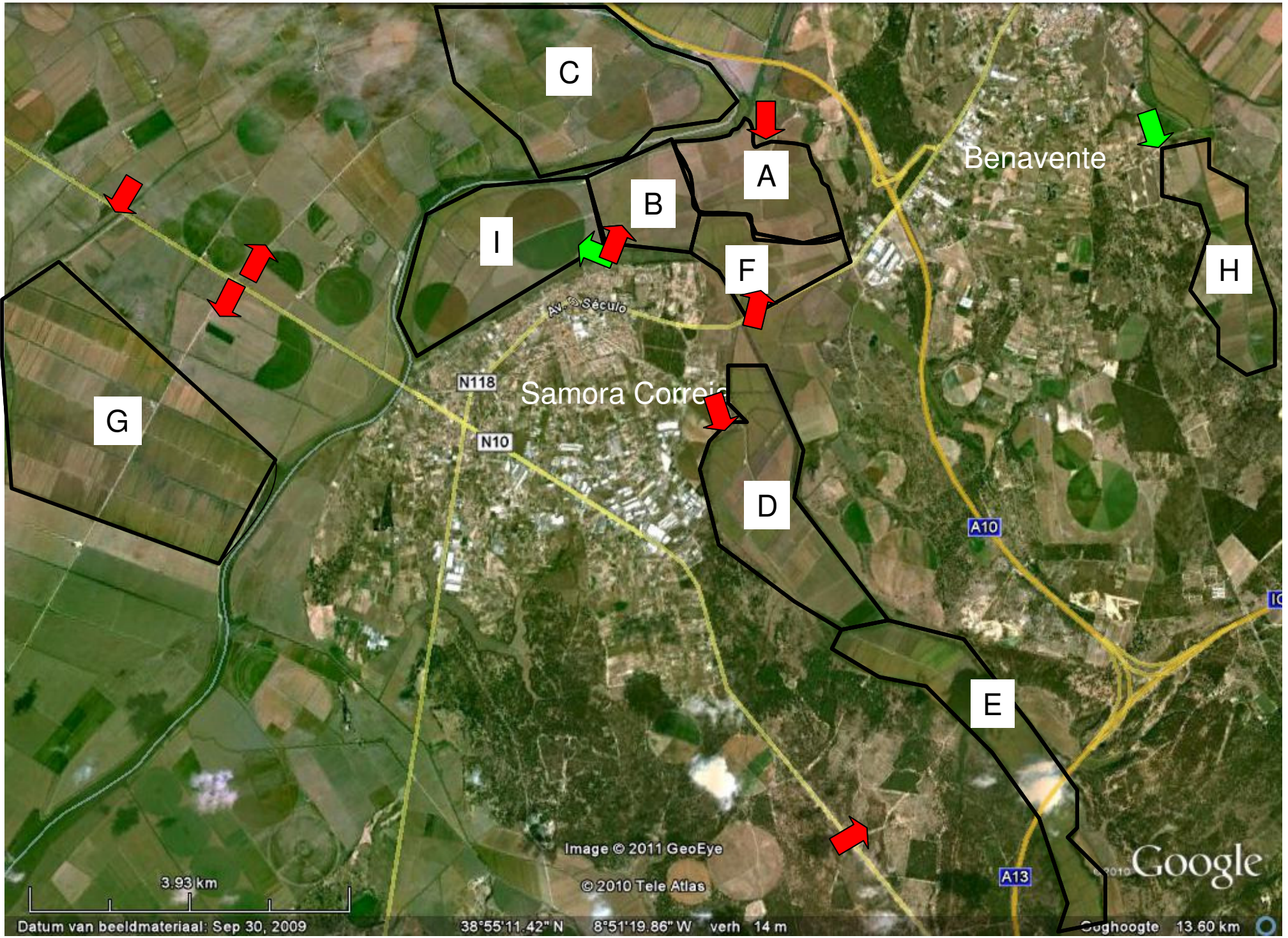
Citation for published version (APA):
Hooijmeijer, J. (2011). *Godwit Survival Project – Mission report Iberia 2011*. University of Groningen.

Copyright
Other than for strictly personal use, it is not permitted to download or to forward/distribute the text or part of it without the consent of the author(s) and/or copyright holder(s), unless the work is under an open content license (like Creative Commons).

The publication may also be distributed here under the terms of Article 25fa of the Dutch Copyright Act, indicated by the "Taverne" license. More information can be found on the University of Groningen website: <https://www.rug.nl/library/open-access/self-archiving-pure/taverne-amendment>.

Take-down policy
If you believe that this document breaches copyright please contact us providing details, and we will remove access to the work immediately and investigate your claim.

Downloaded from the University of Groningen/UMCG research database (Pure): <http://www.rug.nl/research/portal>. For technical reasons the number of authors shown on this cover page is limited to 10 maximum.



C

A

B

I

F

H

G

D

E

Samora Correia

Benavente

Image © 2011 GeoEye

© 2010 Tele Atlas

Google

3.93 km

Datum van beeldmateriaal: Sep 30, 2009

38°55'11.42" N 8°51'19.86" W verh 14 m

Coghoogte 13.60 km

Fieldstation Hortas



Alcochete

Valborn

N118

Entroncamento

CM10 São Francisco

N119

Barroca de Alva

Av. Dom João II

Circular Externa

IC32

Pinhal do Concelho

J

Image © 2011 GeoEye
Image © 2011 DigitalGlobe
© 2010 Tele Atlas

© 2010 Google

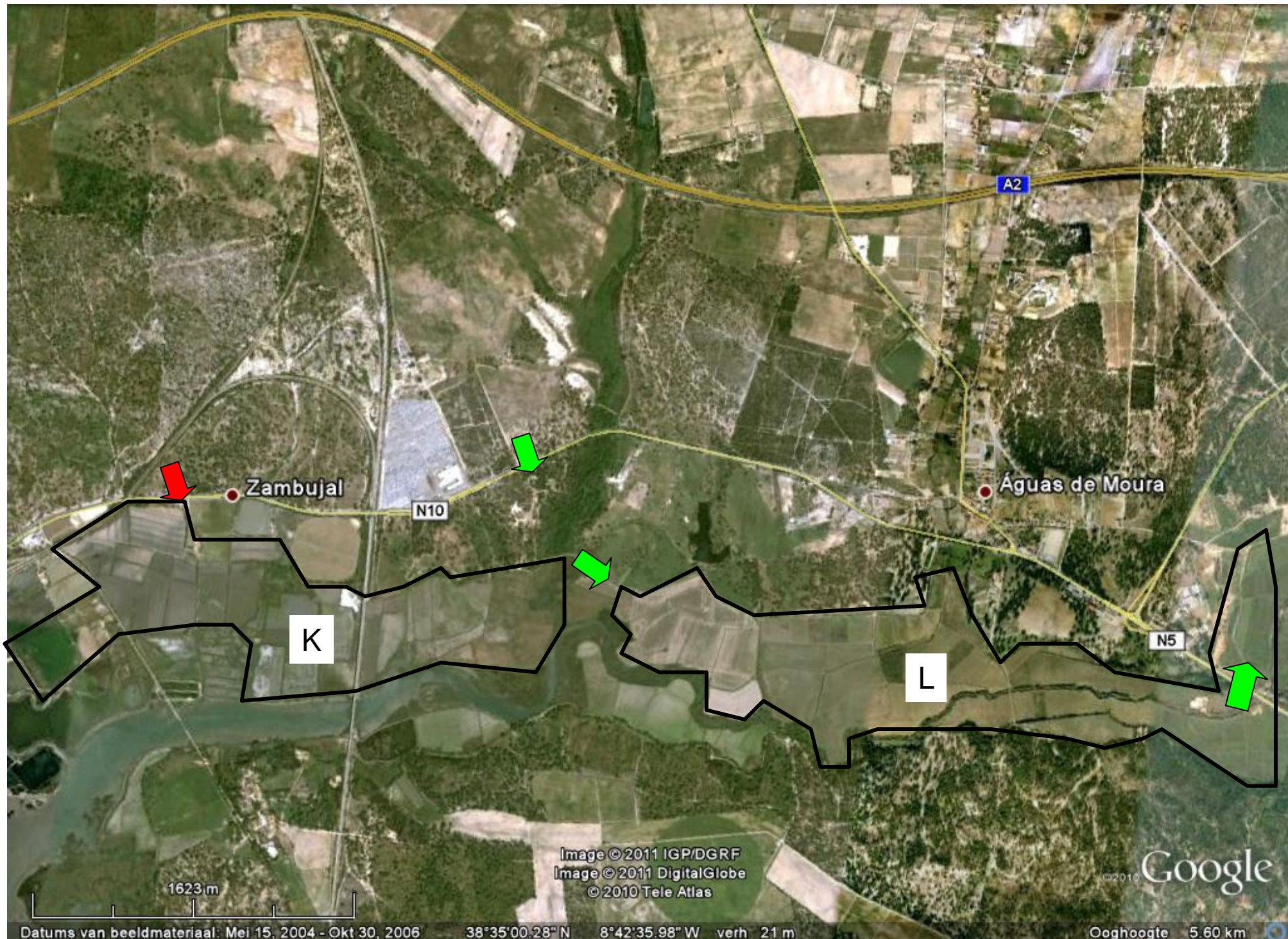
2314 m

Datum van beeldmateriaal: Okt 2, 2004 - Aug 6, 2009

38°44'29.38" N 8°55'54.23" W verh 23 m

Ooghoogte 7.99 km





1623 m

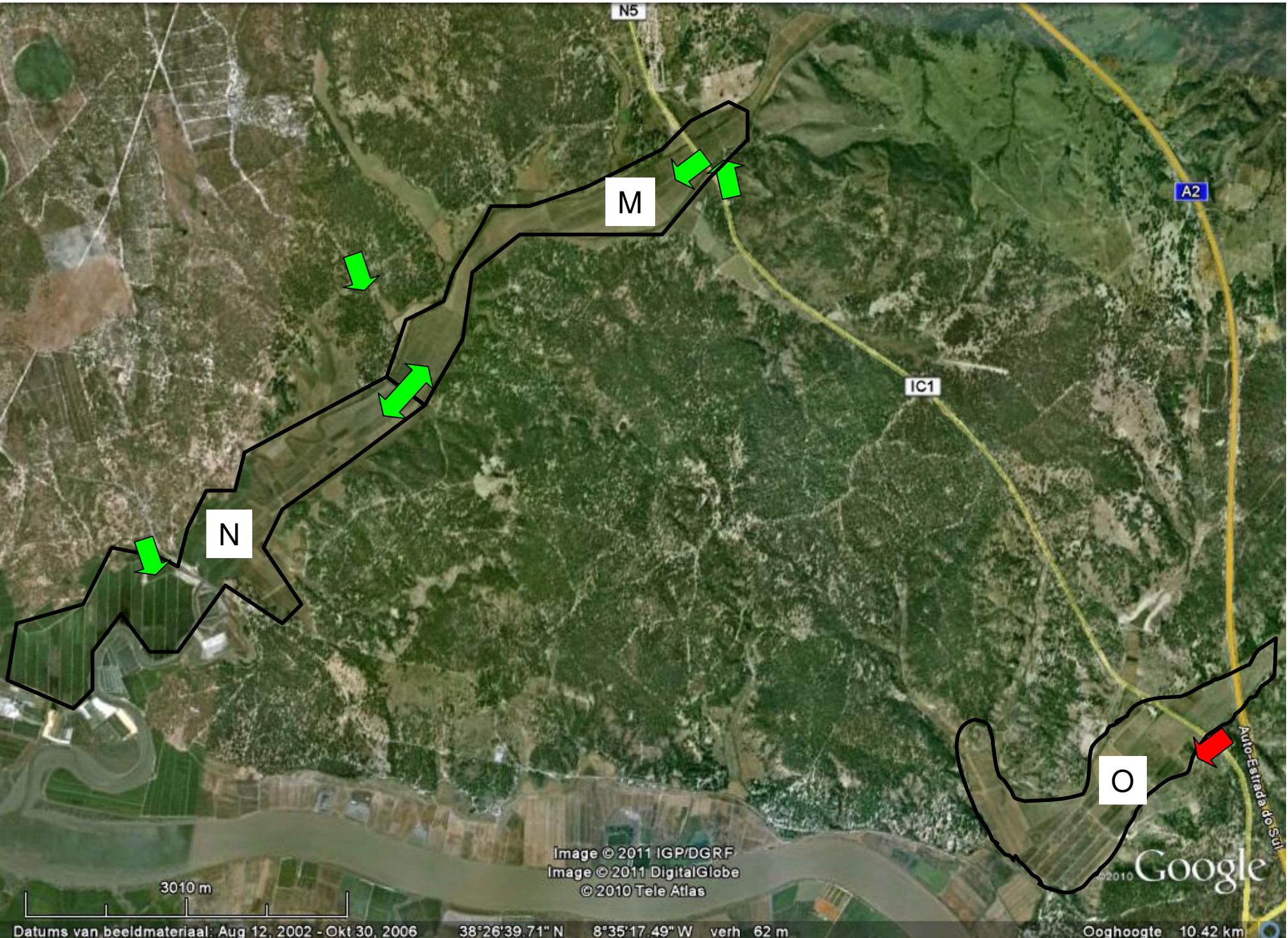
Image © 2011 IGP/DGRF
Image © 2011 DigitalGlobe
© 2010 Tele Atlas

© 2011 Google

Datums van beeldmateriaal: Mei 15, 2004 - Okt 30, 2006

38°35'00.28" N 8°42'35.98" W verh 21 m

Ooghoogte 5.60 km



N5

M

N

O

IC1

A2

Auto-Estrada do Sul

Image © 2011 IGP/DGRF
Image © 2011 DigitalGlobe
© 2010 Tele Atlas

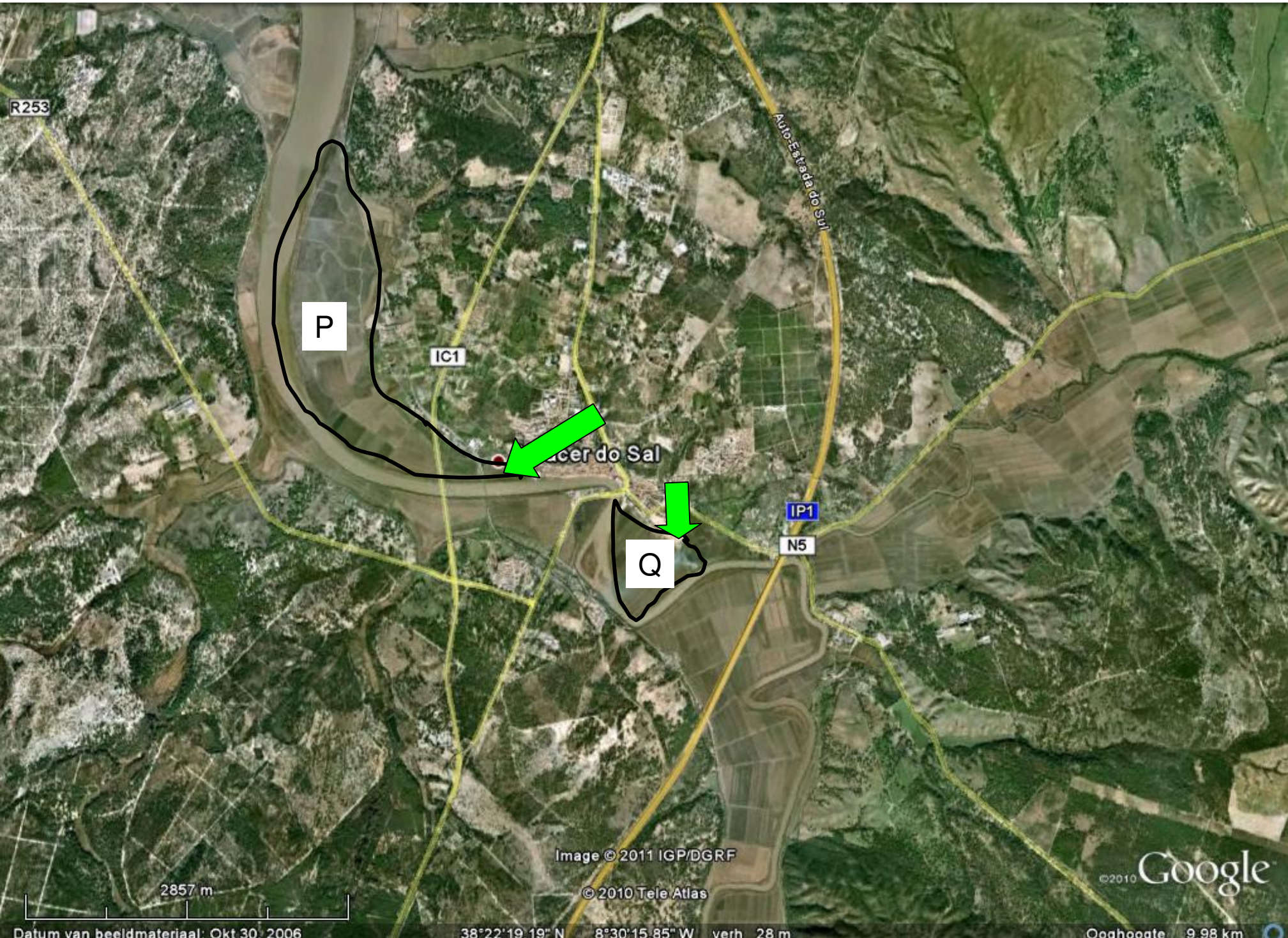
©2010 Google

3010 m

Datums van beeldmateriaal: Aug 12, 2002 - Okt 30, 2006

38°26'39.71" N 8°35'17.49" W verh 62 m

Ooghoogte 10.42 km



R253

P

IC1

Lacerdo Sal

Q

IP1

N5

Auro-Estado do Sul

Image © 2011 IGP/DGRF

© 2010 Tele Atlas

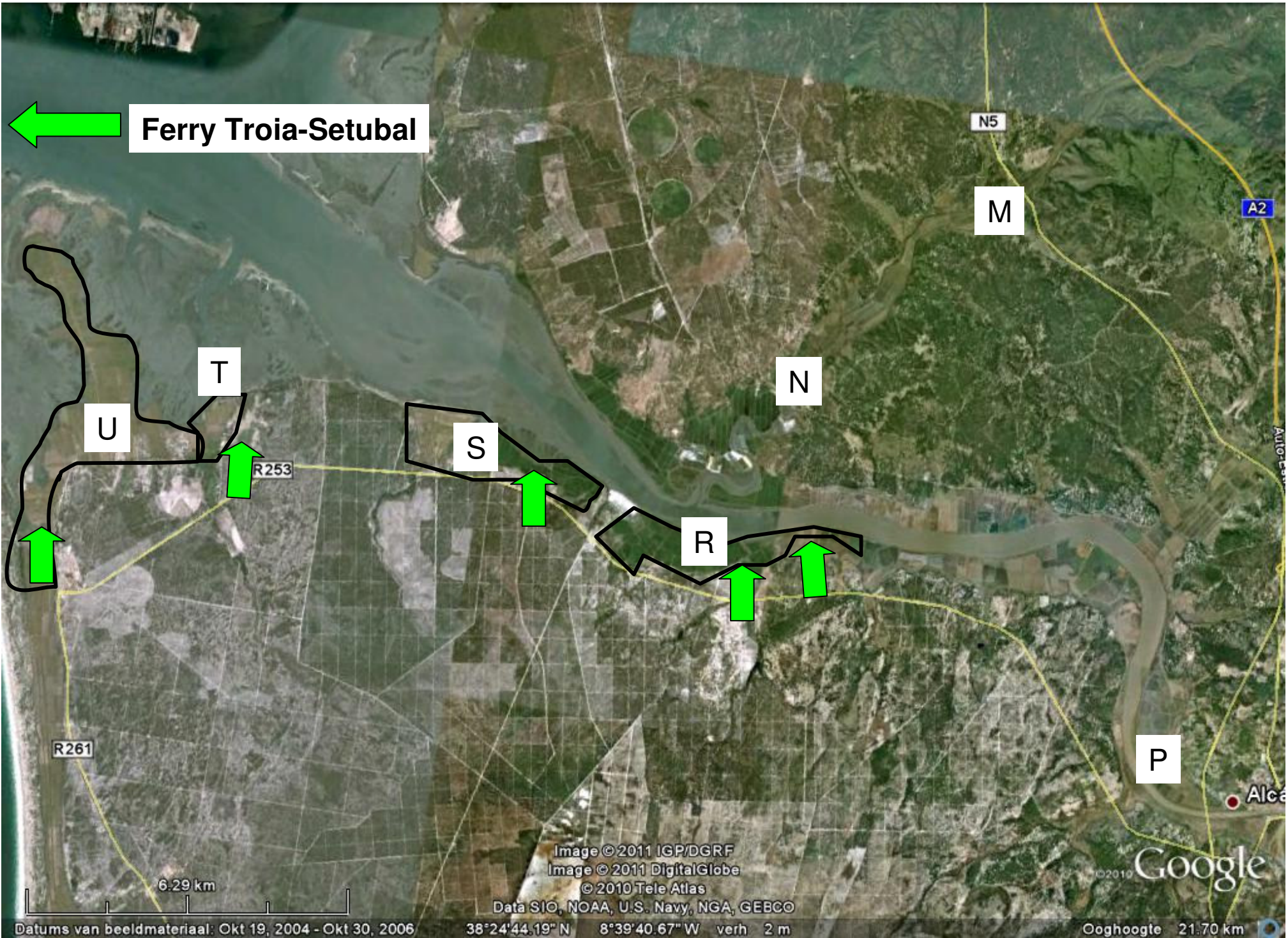
2857 m

Datum van beeldmateriaal: Okt 30, 2006

38°22'19.19" N 8°30'15.85" W verh 28 m

©2010 Google

Ooghoogte 9.98 km



Ferry Troia-Setubal

N5

M

A2

T

N

U

S

R253

R

P

R261

Alca

Image © 2011 IGP/DGRF
Image © 2011 DigitalGlobe
© 2010 Tele Atlas

©2010 Google

Data SIO, NOAA, U.S. Navy, NGA, GEBCO

Datums van beeldmateriaal: Okt 19, 2004 - Okt 30, 2006

38°24'44.19" N 8°39'40.67" W verh 2 m

Ooghoogte 21.70 km

6.29 km



Hernán Cortés

N-430

V

W

2088 m

© 2010 Tele Atlas
© 2011 Cnes/Spot Image
Image © 2011 DigitalGlobe

©2010 Google

Datum van beeldmateriaal: Aug 25, 2005

39°00'04.09"N 105°57'29.95"W verh 257 m

Ooghoogte 7.45 km



Valdehornillos

X

W

V

EX-206
Santa Ana

Hernán Cortés

N-430

©2010 Google

Datum van beeldmateriaal: Aug 25, 2005

39°02'16.80" N 5°58'07.00" W verh 254 m

Ooghoogte 8.10 km



Valdehornillos

Vivares

EX-106

X

X

X

Y

Y

Y

Y

2868 m

© 2010 Tele Atlas
© 2011 Cnes/Spot Image
Image © 2011 DigitalGlobe

© 2011 Google

Datum van beeldmateriaal: Dec. 5, 2002

39°04'42.87" N 5°55'39.67" W verh 266 m

Ooghoogte 10.18 km



Santa Amalia

N-430

Z

Z

Z

Yelbes

Z

EX-206

2176 m

© 2010 Tele Atlas

Image © 2011 DigitalGlobe

© 2010 Google

Datum van beeldmateriaal: Aug 25, 2005

38°59'04.65" N 6°01'43.33" W verh 240 m

Ooghoogte 7.76 km



EX-354

AA

Palazuelo

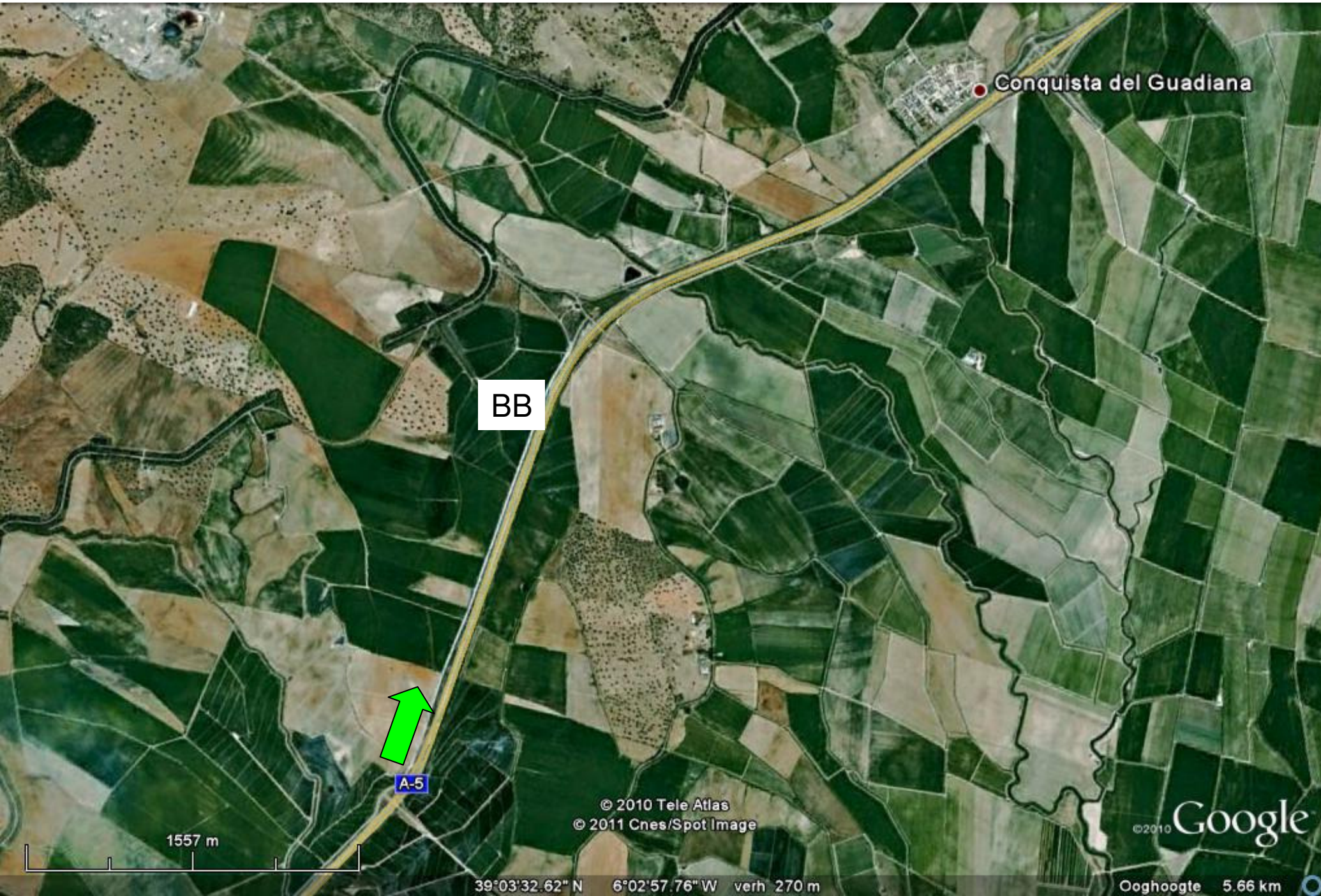
© 2010 Tele Atlas
© 2011 Google/Spot Image

Google

2349 m

39°07'40.56" N 5°44'12.18" W verh 274 m

Ooghoogte 8.38 km



Conquista del Guadiana

BB



A-5

1557 m

© 2010 Tele Atlas
© 2011 Cnes/Spot Image

©2010 Google

39°03'32.62" N 6°02'57.76" W verh 270 m

Ooghoogte 5.66 km