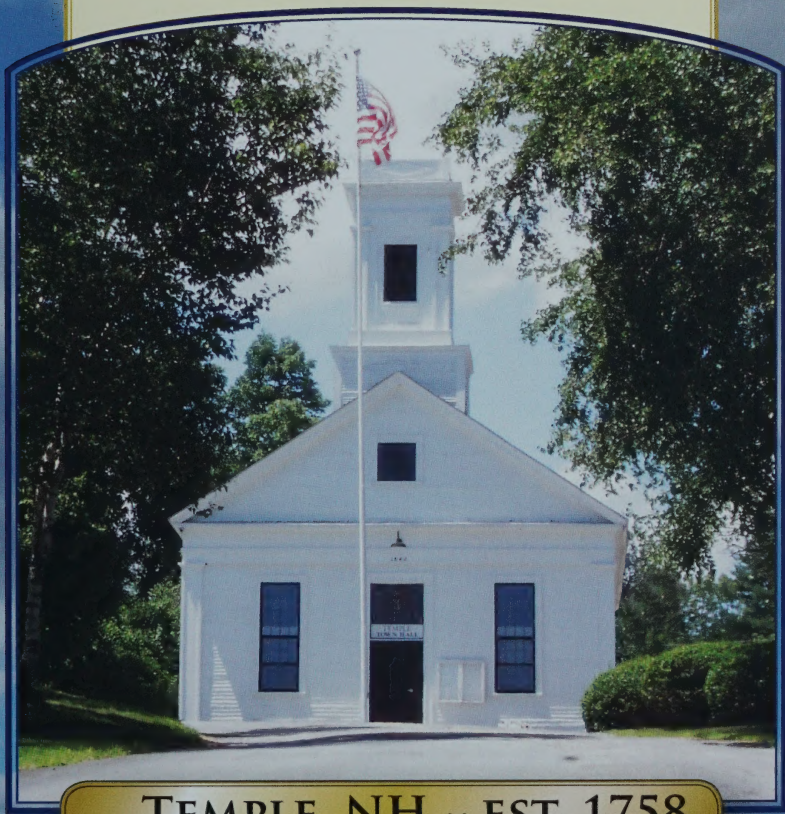


352.0742b
T24
2011
c.2

Annual
Reports
of the
Town of
TEMPLE
New Hampshire
2011



TEMPLE, NH ~ EST. 1758

Temple Phone Listings

EMERGENCIES - Ambulance, Fire or Police: call 911

Be sure to give your address and name and a callback number as well as clearly stating the nature of the emergency. **DO NOT HANG UP** until you are sure your message has been understood.

Have questions? Here's who to call:

Administration (Town Government)	Selectmen's Office	878-2536
Animal Control	Dispatch	878-3474
Assessment of Property	Selectmen's Office	878-2536
Building/Electrical/Plumbing Permits	Selectmen's Office	878-2536
Burn Permits	Fire Warden	878-1479
Cemeteries	Road Agent	878-2744
Demolition Permits	Selectmen's Office	878-2536
Dog Licenses	Town Clerk	878-3873
Elections/Voter Registration	Town Clerk	878-3873
Health & Sanitation	Health Officer	878-1672
Highway Department	Town Garage	878-2744
Library	Mansfield Library	878-3100
Motor Vehicle Registration	Town Clerk	878-3873
Plowing Roads	Town Garage	878-2744
Police Routine Business	Dispatch	878-3474
Post Office	Post Office	878-1800
Recreation	Recreation Chairman	878-1479
Recycling Center	Recycling Office	654-6150
Taxes	Tax Collector	878-3873
Welfare Assistance	Selectmen's Office	878-2536

Hours of Operation:

Department	Mon	Tues	Weds	Thu	Fri	Sat	Sun
Admin. Assistant to the Selectmen	9:30a - 12:30 1p-5p	9:30a - 12:30 1p-5p	9:30a - 12:30 1p-5p	9:30a - 12:30 1p-5p			
Mansfield Library	10a - 4p	3p - 8p		3p - 8p	10a - 4p	10:30a-1:30p	
Town Clerk		12p - 5p	9a - 2p	9a - 2p			
Tax Collector		12p - 5p	9a - 2p	9a - 2p			
Wilton Recycling Center		7:30a-5p		9a - 5p		9a - 4:45p	8a - 11:45a

Town Website: www.templeh.org

352.07486
T 24
2011
C. 2

TEMPLE New Hampshire

J. H. STATE LIBRARY 2011

JUN 05 2012

CONCORD, NH

Annual Report

For the Year Ending December 31, 2011



Report Compiled by Debra Harling and Rose Lowry

Photo credits: Cover Town Hall photo: Connie Kieley

Title page photo: Mary Ann & Ken Sullivan

Back cover inset photos: *Parade* - Diane Kraemer, *Little Clowns* - Touchstone Farm,
Arch - Paul Clifton-Waite, *Color Hill & Ladies Slipper* - Mary Ann & Ken Sullivan,
Mountain Lane Farm Foal - Lauren Garofalo Riccio, *Hilltop Circus* - Jackie Davis

Other photos in the book contributed as noted

Table of Contents

Phone Listing	Inside front cover
Town Officials	2
Warrant Articles	8
Select Board Report	12
Budget Advisory Committee Report	14
Cap Improvements Report	15
Cap Improvements Worksheet	16
Temple Budget	18
Town Property	20
Salaries	21
Payments	22
Financial Report	24
Town Clerk Report	25
Treasurer's Report	26
Sources of Revenue	28
Receipts	30
Tax Collector Report	32
Summary of Tax Liens	33
Uncollected Taxes, Unredeemed Tax Liens	34
Trust Funds	36
Current Use, Conservation Restriction Assessment	40
Conservation Commission Report	42
Conservation Commission Public Deposit Investment Pool	43
Highway Department Report	44
Highway Department Budget	46
Cemetery Report and Budget	47
Police Report	48
Police Budget	49
Police Statistics	50
Ambulance Report	52
Fire Dept Report	54
Fire Dept Call Summary	55

Fire Dept & Auxiliary Rosters 56
 Fire Dept Budget 57
 Temple Town Forester Report. 58
 Temple Forest Fire Warden Report. 59
 State Forest Ranger Report. 60
 State Fire Statistics 61

 Planning Board Report 62
 Planning Board Approval Chart. 63
 Zoning Board of Adjustment 63
 Library Report. 64
 Temple Town Hall Advisory Committee Report 66
 Recreation Commission Report 68
 Memorial Day/Patriotic Purposes 69
 TEEC Report. 70
 Elections & Registrations Report 72
 Animal Control Report. 72
 250th Anniversary Report 73
 Monadnock Family Services Report. 74
 Home Healthcare, Hospice & Community Svcs 75

 Marriages/Deaths/Births 76

 Last Year's Town Meeting Minutes 78

 Taxes Assessed. 82
 Schedule of Valuation 83
 Valuation Listings (27) 84
 Auditor's Report 2010. 111
 Notice on involuntarily merged lots. 112

 Index 114
 Temple Facts Inside back cover

Temple Town Officials 2011

Moderator – Elected Position

Steve Cullinan Term Expires 2012

Town Clerk – Elected Position

Wendy Drouin Term Expires 2013

Deputy Town Clerk – Appointed Position

Jeanne Whitcomb Term Expires 2013

Town Treasurer – Elected Position

Shannon Kelley Term Expires 2013

Deputy Treasurer – Appointed Position

Jennifer Connolly Term Expires 2013

Tax Collector – Elected Position

Jeanne Whitcomb Term Expires 2013

Deputy Tax Collector – Appointed Position

Wendy Drouin Term Expires 2013

Selectmen – Elected Position

John Kieley – *Chairman* Term Expires 2012

Tedd Petro Term Expires 2013

Michael Darnell Term Expires 2014

Road Agent – Elected Position

Timothy P. Fiske Term Expires 2013

Trustees of Trust Funds – Elected Position

George Ruppel, Jr. Term Expires 2012

Ben Tirey Term Expires 2013

Iphigenia Hatt Term Expires 2014

Supervisors of the Checklist – Elected Position

Lynda Connolly Term Expires 2012

Sandra Wildes Term Expires 2014

Robin Downes Term Expires 2016

Cemetery Trustees – Elected Position

- Barbara Harling Term Expires 2012
- Matthew Fedorka Term Expires 2013
- David Yetman. Term Expires 2014
- Timothy P. Fiske, *Cemetery Supervisor*

Zoning Board of Adjustment – Appointed Position

- Honey Hastings Term Expires 2012
- John Pierce – *Chairman* Term Expires 2012
- Jenny Howland. Term Expires 2013
- David Martz Term Expires 2013
- Donald Kraemer – *Alternate*. Term Expires 2013
- Randy Burnham Term Expires 2014
- Mary Beth Ayvazian – *Alternate*. Term Expires 2014

ConVal Selectmen’s Advisory Committee –

Appointed from Board of Selectmen Member

- John Kieley

Local Emergency Planning Coordinator/Emergency Manager –

Appointed Position

- Steven Harling. Term Continues until new appointment

Animal Control Officer – Appointed Position

- Peter Clegg (*Deceased*) Term Expires 2014
- Jennifer Rheume. Term Expires 2014

Timber Tax Duties

- Selectmen

Health and Sanitation Officer – Appointed by State of NH

- Peter W. Caswell Term Expires 2013

Deputy Health Officer – Appointed by State of NH

- Timothy Fiske. Term Expires 2013

ConVal School Board Member – Elected Position

- Gail Cromwell Term Expires 2012

Temple Town Officials 2011

Library Trustees – Elected Position

Vince Mamone	Term Expires 2012
Julie McAdoo	Term Expires 2012
William Ellis	Term Expires 2012
Constance Rinaldo	Term Expires 2013
Casey Jones	Term Expires 2013
Vicki Moylan	Term Expires 2014
Christine Robidoux	Term Expires 2014

Librarian – Katherine Fedorka

Assistant Librarian – Priscilla Weston

Fire Engineers – Elected Position

Mark Salisbury	Term Expires 2012
William S. Wildes	Term Expires 2013
Donald Kraemer	Term Expires 2014

Fire Chief – Michael Connolly

Fire Warden – Appointed by State of NH

Joseph Cournoyer

Police Department

- James H. McTague, *Chief*
- Michael Needham, *Full Time*
- CJ Rousseau, *Full Time*
- Richard D’Auria, *Part Time*
- Kay Lamarre, *Part Time*
- Kevin Maxwell, *Part Time*
- Richard Sprankle, *Part Time*
- Donald Volante, *Part Time*
- Elizabeth Maxcy-Humphrey, *Office Administrator*

Planning Board – Elected Position

Mary Beth Ayvazian	Term Expires 2012
Bruce Kullgren, Sr.	Term Expires 2012
Rose Lowry	Term Expires 2013
Randall Martin	Term Expires 2013
Allan Pickman – <i>Chairman</i>	Term Expires 2014
Richard Whitcomb (<i>Deceased</i>)	Term Expires 2014
John Kieley	<i>Ex-Officio</i>

Conservation Commission – Appointed Position

Honey Hastings	Term Expires 2012
David Repak – <i>Vice-Chairman</i>	Term Expires 2012
Vacant – <i>Alternate</i>	Term Expires 2012
Lincoln Geiger – <i>Chairman</i>	Term Expires 2013
Eric Foley	Term Expires 2013
Vacant – <i>Alternate</i>	Term Expires 2013
Bruce Kantner – <i>Secretary</i>	Term Expires 2014
John Kieley	Term Expires 2014
Sean Radcliffe	Term Expires 2014
Albert Gove	<i>Member Emeritus</i>

Recreation Commission – Appointed Position

Jean Darnell	Term Expires 2012
Vacant	Term Expires 2012
Ken Carpenter	Term Expires 2013
Kathy Fedorka	Term Expires 2013
Vacant	Term Expires 2014
Vacant	Term Expires 2014
Joseph Cournoyer	<i>Member Emeritus</i>

Members of the Historic District Commission – Appointed Position

Vacant	Term Expires 2012
Vacant	Term Expires 2012
Randy Burnham	Term Expires 2013
Sergeant Collier	Term Expires 2013
Vacant	Term Expires 2014
Vacant	Term Expires 2014
Tedd Petro	<i>Ex-Officio</i>

Welfare Officer – Appointed Position

Iphigenia Hatt	Term Expires 2014
--------------------------	-------------------

Temple Town Officials 2011

Deputy Welfare Officer – Appointed Position

Debra Harling Term Expires 2014

Town Forester – Appointed Position

Allan Oxman Term Expires 2014

Wilton Recycling Center Representative

Beverly (Nadesha) Edwards Term Expires 2014

Budget Advisory Committee – Elected Position

Steven Andersen – *Chair* Term Expires 2012

Luke Peterson Term Expires 2012

Ben Tirey Term Expires 2013

Brian Kullgren Term Expires 2013

Michael Davidson Term Expires 2014

Gary Scholl Term Expires 2014

Capital Improvements Committee – Appointed Position

Paul Martin Term Expires 2012

David Martz – *Chairman* Term Expires 2012

Mary Beth Ayvazian Term Expires 2013

Barry West Term Expires 2013

Charlene Eddy Term Expires 2014

Connie Kieley Term Expires 2014

Tedd Petro *Ex officio*

Temple Economical Energy Committee – Appointed Position

Mary Beth Ayvazian Term Expires 2012

Robert Wills Term Expires 2012

Catherine Joly Term Expires 2012

Beverly Edwards – *Chair* Term Expires 2013

Honey Hastings Term Expires 2013

Mary Pendleton Term Expires 2013

Deb Deieso Term Expires 2014

Gayle Richards Term Expires 2014

Temple Town Hall Advisory Committee – Appointed Position

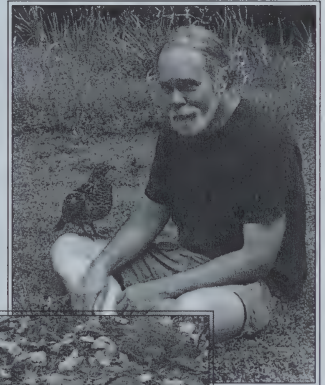
Honey Hastings	Term Expires 2012
Ronald Pulos	Term Expires 2012
Richard Benotti	Term Expires 2013
Richard Keuper	Term Expires 2013
Connie Kieley – <i>Chair</i>	Term Expires 2014
Sydney Thomas	Term Expires 2014
Tedd Petro	<i>Ex officio</i>



Linda Bollinger



Deb Harling



Tom Baker

Warrant Articles

To the inhabitants of the Town of Temple, NH in the County of Hillsborough in said State, qualified to vote in town affairs:

You are hereby notified to meet at the Town Hall in said Temple, on Tuesday, the Thirteenth Day of March next, at ten o'clock in the morning, to act on the following subjects.

Article 1: To cast your ballots for the election of all officers required to be elected to serve the Town of Temple for the ensuing year.

Article 2: To see if the Town of Temple, NH shall vote to adopt the provisions of RSA 40:13 (known as SB 2) to allow official ballot voting on all issues before the Town of Temple, NH on the second Tuesday of March. (*3/5 majority vote needed*) (*By petition*)

Article 3: To cast your ballots on the proposed amendments to the Temple Zoning Ordinance.

THE POLLS SHALL OPEN AT TEN O'CLOCK IN THE MORNING, AND SHALL CLOSE NOT EARLIER THAN SEVEN O'CLOCK IN THE EVENING.

You are further notified to meet at the Temple Elementary School in said Temple, on Saturday, the Seventeenth Day of March next, at ten o'clock in the morning, to act on the following:

Article 4: To see if the Town will vote to raise and appropriate the sum of Five Thousand dollars (\$5,000.00) to be placed in the Highway Vehicle and Equipment Maintenance and Repair Expendable Trust, previously established by Article #5, March 13, 2010 Town Meeting under the provisions of RSA 31:19-a. (*Selectmen Recommend*)

Article 5: To see if the Town will vote to raise and appropriate the sum of Two Thousand dollars (\$2,000.00) to be placed in the Town Building Maintenance and Repair Expendable Trust Fund, previously established by Article #7, March 13, 2010 Town Meeting under the provisions of RSA 31:19-a. (*Selectmen recommend*)

Article 6: To see if the Town will vote to raise and appropriate the sum of \$1,209,194.00 for town charges as the operating budget and other necessary maintenance and operating expenditures.

Article 7: To see if the Town will vote to close, subject to gates and bars, that portion of Putnam Road represented by the Putnam Road Bridges and to request the State of NH-DOT to re-allocate the money previously allocated to the Putnam Road Bridges under the State of NH Bridge Aid program to the first bridge on Converse Road (Converse Road Bridge #1)

Article 8: To see if the Town will vote to raise and appropriate the sum of \$26,400.00, to be placed in the Bridge Capital Reserve Fund previously established under the provisions of RSA 35:1, said sum to come from the State of NH Bridge Aid program for engineering costs for the Putnam Road Bridge. This article is contingent upon receipt of Bridge Aid. (*Selectmen Recommend*)

Article 9: To see if the Town will vote to raise and appropriate the sum of \$86,000.00 for the purpose of engineering costs and bid phase services for the first bridge on Converse Road (Converse Road Bridge #1), with \$57,000.00 to come from taxation and \$29,000.00 to come from the Bridge Capital Reserve Fund. This will be a non-lapsing appropriation per RSA 32:7, VI and will not lapse until the Converse Road Bridge #1 has been completed or December 31, 2014, whichever is sooner. (This appropriation is subject to 80% reimbursement from the State of NH Bridge Aid program). (*Selectmen Recommend*)

Article 10: To see if the Town will vote to raise and appropriate the sum of \$12,500.00 for the purpose of performing maintenance on the second bridge on Converse Road (Converse Road Bridge #2). (*Selectmen Recommend*)

Article 11: To see if the Town will vote to discontinue the following described roads or portions thereof in accordance with NH RSA 231:43:

1. Tainter Lane, north of West Road;
2. Stone Lane, north of West Road;
3. Holt Lane, north of West Road;
4. Derbyshire Lane, north of Converse Road
5. Jessen Lane, north of Converse Road;
6. Leighton Lane, northeast of Route 45; and
7. Tobey Lane, west of East Road

(*By petition*).

Warrant Articles

Article 12: To see if the Town will vote to raise and appropriate the sum of \$146,600.00 to purchase radios, pagers, SCBA and jaws-of-life with \$139,270.00 to come from the Firefighters Grant and \$7,330.00 to come from taxation. This article is contingent upon receipt of said grant, if said grant is not received this article, if passed, will be disallowed. If the Firefighters Grant is received, then article 13 will be disallowed if passed. (*Selectmen Recommend*)

Article 13: To see if the Town will vote to raise and appropriate the sum of \$10,500.00 for the purchase of pagers and radios. This article, if passed, will be disallowed if the grant in article 12 is received. (*Selectmen Recommend*)

Article 14: To see if the Town will vote to raise and appropriate the sum of \$38,000.00 to make an additional payment in 2012 on the Citizens Bank loan for the road grader purchased in 2009 (Recommended by the CIP Committee to “smooth” out expenses) (Contingent upon final approval by the Board of Selectmen). (*Selectmen Recommend*)

Article 15: To see if the Town will vote to reduce the number of Library Trustees from seven (7) to five (5), pursuant to RSA 669:16 and RSA 669:75; each Trustee shall serve staggered 3-year terms, or until their successors are elected and qualified, pursuant to RSA 202-A:6; and to ratify the previous elections of the existing Library Trustees to complete 3-year terms respectively. (*Submitted by the Library Trustees*)

Article 16: to see if the Town will vote to authorize the Board of Selectmen to investigate the re-institution of driveway plowing within the Town of Temple, contingent upon the passage of Senate Bill 378 by the State of NH Legislature.

Given under our hands and seal this 13th day of February in
the year of our Lord, Two Thousand and Twelve,

John Kieley, *Chairman*

Tedd Petro, *Selectman*

Michael Darnell, *Selectman*

A True Copy of This Warrant - Attest:

John Kieley, *Chairman*

Tedd Petro, *Selectman*

Michael Darnell, *Selectman*



Mary Ann & Ken Sullivan

Select Board Report

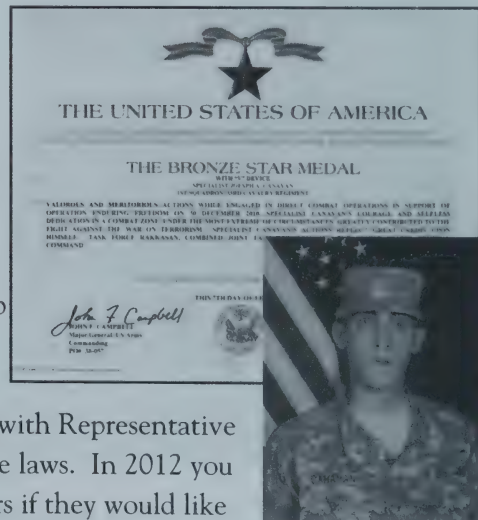
2011 was an active year with many positive events, but it ended on a somber note, with 2012 starting on the same somber note. The Town lost some long time active citizens and we would like to remember Peter Clegg, Animal Control Officer; Richard Whitcomb, Planning Board member; Bruce Kullgren, Sr., Planning Board member and Kathy Nolte, former Town Clerk.

In January the installation of the generators for the Municipal Building, Town Hall and Highway Garage/Library was completed. The generators were put to the test and worked well, allowing town operations to continue during power outages.

In March the voters approved a capital reserve fund for a small dump truck for the Highway Department and named the Selectmen as agents to expend these funds. This turned out to be a wise vote by the town as it was determined that the 2002 Ford F550 had more problems than originally known and we had the opportunity to purchase a 2011 Ford F550 for an amount slightly less than the capital reserve fund.

May had quite a lot of activity. The office was renovated and the new area is a very efficient work space as well as satisfying the requests from the Department of Labor. The work done under the RGGI grant was completed with the installation of air conditioners in the Municipal Building. The Fire Departments brush truck arrived and has responded to various calls throughout the year.

May was also the month that the Select Board received notification from the NH Department of Revenue that the additional money voted for driveway plowing had been disallowed. Over the course of the summer and fall the Board held forums to determine the best course of action. The decision was made to stop the plowing of driveways by the town. A driveway plowing co-operative was formed and the Board has been working with Representative Daler and Senator Bragdon to change the laws. In 2012 you will see a warrant article asking the voters if they would like



the Board to investigate re-instituting driveway plowing if the law is changed.

In July we honored Army SPC Joseph Canavan for his receipt of the bronze medal with valor device and a purple heart for his actions in Afghanistan. Joseph grew up in Temple and entered the Army on September 11, 2008.

We have been working with the Road Agent to prioritize the replacement/repair of bridges. This work will continue in 2012 with warrant articles asking the voters to approve work on two bridges on Converse Road. Most of the expense will be reimbursed under the State of NH Bridge Aid program.

As we enter 2012 the Board of Selectmen will continue to review the budget and special projects to ensure that the best interests of the Town are served.

Respectfully submitted;

John Kieley, *Chairman*, Tedd Petro, and Mike Darnell



Courtesy Willard
Photo Collection



Budget Advisory Committee

For the year 2011, the town worked through challenges with under budgeting for snowplowing and diesel fuel. Our budget provided sufficient flexibility to adjust other expenditures to compensate for those items. This year, thanks to the leadership shown by the various department heads, the BAC is able to submit a budget for 2012 with a 2.4% year on year decrease from the budget proposed for 2011.

The Budget Advisory Committee recommends the following for 2012:

- A total budget (not including any warrant articles) of \$1,195,920 subtracting “Other Financial Uses” of \$90,671. The BAC recommends a total core budget of \$1,105,249
- Include repairing a fire department pump in the budget.
- Increasing the diesel fuel line to protect against volatile changes through the year.
- Purchasing a refurbished lawnmower for cemeteries.
- Adding \$2000 to the expendable trust for government buildings.
- Enabling a cost of living raise for the core employees.

The Budget Advisory Committee does not recommend any increases for Wilton or Greenville expenses.

Respectfully submitted,

Steve Andersen, *Chairman, BAC*

BAC Members:

Ben Tirey, *Minute Taker*; Brian Kullgren; Mike Davidson; Gary Scholl; Luke Peterson; Selectman Michael Darnell, *Ex-Officio*

Capital Improvements Program

The New Hampshire legislature established RSA 674:5-8 to encourage towns to develop Capital Improvement Plans in order to anticipate and plan financially for major expenses. Temple's first Capital Improvement Plan (CIP) was developed in 2004 with assistance from all of the town's departments. The resulting plan was intended to be a living document that would be updated each year to reflect the town's changing needs. The CIP Committee has updated that plan in each subsequent year. We, again, incorporated the input from the town departments to provide recommendations to the Select Board for consideration at town meeting.

The CIP Committee met again in 2011 with the heads of each town department to discuss each item in the plan and to ascertain any new requirements on the horizon. The CIP Committee discussed several scenarios to develop relatively flat year-on-year expense projections across the 10-year period in order to avoid a significant impact on the tax rate in any one year while emphasizing the protection of the current infrastructure and town services.

The committee recommends the following projects be considered for 2012:

Digital Pagers and Digital Radios (\$10,500): The Fire department requests 20 new pagers and 5 digital radios to be appropriated in 2012. The purchase is required to be in compliance with the new FCC mandates. The Fire Department has applied for a grant to cover 95% of the cost. The recommended amount constitutes the totals cost of the items.

Bridges and Culverts (TBD): The Road Agent and the Select Board have determined that the highest priority is the first structure on Converse Road. The State has agreed to fund 80% of the cost of rebuilding that bridge in 2013. The CIP Committee is unable to make a recommendation at this time because the engineering costs are unknown.

Skladany Land (\$47,900): The Town of Temple voted to purchase this land in March of 2005. The recommended amount constitutes the annual amount due.

Road Grader (\$42,000): The Town's grader was purchased in 2009. The recommended amount constitutes the annual amount due.

Road Grader (\$38,000): The CIP also recommends the 2014 payment (principle only) for the road grader be made in 2012. This is to eliminate the payment in 2014 due to a number of items that are due in 2014.

Respectfully submitted, Capital Improvement Committee:

Dave Martz *Chairman*, Mary Beth Ayvazian, Charlene Eddy, Connie Kieley, Paul Martin, Barry West, and Select Board liaison Tedd Petro

Capital Improvements Worksheet

Dept.	Item Description	Year Purch. or Refurbished	Year Needed	Estimated Cost (2011\$)	Est Cost Adjusted for Inflation
EMS	Ambulance (20%) *		2014	33,000	36,600
Fire	Airpacks and Comp		2014	65,200	72,300
Fire	Jaws of Life		2015	20,000	23,000
Fire	Digital Radios & Pagers		2012	10,500	10,900
Fire	Thermal Imager	2004	2020	7,000	9,500
Fire	Skid Unit	2003	2033	10,700	22,800
Fire	Turnout Gear	2009	2020	10,700	14,600
Fire	Grumman Rescue Truck	2006	2026	140,000	234,500
Fire	F550 Brush Truck / First Response Vehicle		2021	59,300	83,600
Fire	International Fire Pumper (Engine)	1993	2023	300,000	453,300
Fire	Freighliner Tanker	2003	2033	300,000	639,500
Highway	Ford F550 6 Wheel Dumptruck	2011	2021	63,200	89,100
Highway	International Dump Truck (6 wheel)	1996	2013	145,000	155,300
Highway	International Dump Truck (6 wheel)	2006	2020	145,000	197,600
Highway	CAT Road Grader	2009	2039	216,400	257,000
Highway	CAT Loader	1995	2015	135,000	154,900
Highway	Garage & Sand Storage Facility			1,150,000	-
Highway	Brush Chipper	2007	2016	20,000	23,800
Highway	Massey-Ferguson Tractor		2037	37,700	92,200
Highway	Bridges		2012	450,000	465,800
Highway	Cemetery Expansion			100,000	-
Library	Replace North and West section of Library Roof				-
Library	Replace South and East section of Library Roof				-
Library	Addition				-
Police	Police Cruiser (38%)		2013	18,360	19,700
Police	Police Cruiser (38%)		2015	18,650	21,400
Police	Police Cruiser (38%)		2018	18,360	23,400
Police	Police ATV (38%)			5,922	-
Police	Crown Victoria				
Recreation	Resurface Tennis & B-Ball Courts		2011	15,000	15,000
Recreation	Resurface Tennis & B-Ball Courts		2017	10,000	12,300
Recreation	Little League Field: Storage Shed & Dugouts			15,000	-
Town Gov	Skladany Land	2005		407,000	407,000
Town Gov	Future Municipal Building		2027	400,000	693,600
Town Gov	Photocopier		2013	8,200	8,800
Town Gov	Paint Town Hall		2015	13,000	14,900
TOTAL					

* The ambulances will be owned by the Town of Wilton under proposed agreement, the cost shown reflects the amount Temple will be assessed for it's 20% share of the new ambulances needed

2012	2013	2014	2015	2016	2017	2018	2019	2020	2021	2022	2023
-	-	36,600	-	-	-	-	-	-	-	-	-
-	-	-	19,883	19,431	18,979	18,527	-	-	-	-	-
-	-	-	23,000	-	-	-	-	-	-	-	-
10,500	-	-	-	-	-	-	-	-	-	-	-
-	-	-	-	-	-	-	-	9,500	-	-	-
-	-	-	-	-	-	-	-	14,600	-	-	-
-	-	-	-	-	-	-	-	-	-	-	-
-	-	-	-	-	-	-	-	-	83,600	-	-
-	-	-	-	-	-	-	-	-	-	-	-
-	-	-	-	-	-	-	-	-	89,100	-	-
-	-	42,708	41,737	40,766	39,796	-	-	-	-	-	-
-	-	-	-	-	-	-	-	-	44,460	43,472	42,484
80,000	40,000	-	-	-	-	-	-	-	-	-	-
-	-	-	-	42,598	41,629	40,661	39,693	-	-	-	-
-	-	-	-	23,800	-	-	-	-	-	-	-
-	-	-	-	-	-	-	-	-	-	-	-
-	-	-	-	-	-	-	-	-	-	-	-
-	-	-	-	-	-	-	-	-	-	-	-
-	-	-	-	-	-	-	-	-	-	-	-
-	-	-	-	-	-	-	-	-	-	-	-
-	-	-	-	-	-	-	-	-	-	-	-
-	19,700	-	-	-	-	-	-	-	-	-	-
-	-	-	21,400	-	-	-	-	-	-	-	-
-	-	-	-	-	-	23,400	-	-	-	-	-
-	-	-	-	-	-	-	-	-	-	-	-
-	-	-	-	-	-	-	-	-	-	-	-
-	-	-	-	-	12,300	-	-	-	-	-	-
-	-	-	-	-	-	-	-	-	-	-	-
47,961	46,146	44,330	42,515	-	-	-	-	-	-	-	-
-	-	-	-	-	-	-	-	-	-	-	-
-	8,800	-	-	-	-	-	-	-	-	-	-
-	-	-	14,900	-	-	-	-	-	-	-	-
138,461	114,646	123,638	148,535	126,594	112,704	82,588	39,693	24,100	217,160	43,472	42,484
101,860 - 10 YEAR AVERAGE											
126,585 - 6 YEAR AVERAGE											
Assumed rate of inflation - 3.50%; Assumed Muni Bond Rate - 2.50%; State & Fed Bridge Aid - 80.00%											

Town of Temple Budget

General Government	Budgeted 2011	Expenditures 2011	Proposed 2012
Board of Selectmen	\$7,794.00	\$5,121.05	\$7,692.00
Town Administration	64,475.00	62,465.60	67,112.00
Town Meeting	5,510.00	4,003.63	4,950.00
Town Clerk	22,008.00	21,395.23	22,249.00
Voter Registration	1,650.00	1,125.36	2,334.00
Election Administration	3,500.00	1,631.50	4,600.00
Vital Statistics	500.00	383.00	500.00
Accounting & Auditing	10,500.00	10,500.00	10,500.00
Assessing	15,000.00	15,000.00	15,000.00
Tax Collecting	21,351.00	19,013.19	21,842.00
Treasury	5,357.00	5,330.48	5,405.00
Information Systems	8,800.00	9,265.85	10,500.00
Budget Committee	100.00	0.00	100.00
Legal Operations	10,100.00	5,640.25	5,100.00
Benefits Not Otherwise Allocated	80,356.00	72,308.96	74,799.00
Planning Board	4,286.00	1,334.93	6,319.00
Zoning Board	1,089.00	497.15	1,050.00
Building Maintenance/Repairs	23,707.00	15,903.73	25,232.00
Cemeteries	6,032.00	6,436.60	10,145.00
Insurance Not Otherwise Allocated	29,000.00	28,289.01	20,400.00
Advertising & Regional Assoc.	2,771.00	2,757.68	2,534.00
Other General Government	2,193.00	1,900.42	2,043.00
Police Department	175,260.00	175,259.43	185,437.00
Wilton Ambulance	43,390.00	40,658.18	36,539.00
Fire Department	27,800.00	27,066.72	41,300.00
Building Inspection	531.00	188.39	219.00
Emergency Management	2,000.00	953.28	2,000.00
Other Public Safety	34,500.00	41,323.01	44,500.00

General Government	Budgeted '11	Expend '11	Proposed '12
Highway Department	\$385,141.00	\$366,249.52	\$346,950.00
Bridge Repair & Maintenance	0.00	1,650.00	0.00
Solid Waste Recycle/ Disposal	58,048.00	57,863.84	53,395.00
Welfare Administration	1,485.00	1,484.48	1,485.00
Animal Control	6,289.00	2,098.65	7,155.00
Health Office Expenses	2,800.00	765.00	1.00
Health and Welfare	6,800.00	6,238.00	4,589.00
Welfare	20,000.00	12,708.76	20,000.00
Recreation	3,000.00	2,741.85	3,000.00
Library	47,798.00	44,436.44	49,543.00
Patriotic Purposes	801.00	472.12	3,401.00
Conservation Commission	703.00	490.00	603.00
Subtotal	\$1,142,425.00	\$1,072,951.29	\$1,120,523.00
Debt Service	91,501.00	91,967.19	88,671.00
W.A. #6 Municipal Office	20,000.00	19,942.00	0.00
W.A. #9 Sm Hwy Dump Truck	0.00	58,905.30	0.00
W.A. #10 Tennis Court	15,000.00	6,998.00	0.00
W.A.#19 Sm Hwy Dump Truck	60,000.00	60,000.00	0.00
W.A. Hwy Vhcl M/R Exp Trst	0.00	0.00	5,000.00
W.A. Fire Vhcl M/R Exp Trst	4,000.00	4,000.00	0.00
W.A. GB Bldg M/R Exp Trst	2,000.00	2,000.00	2,000.00
Other Financial Uses	192,501.00	243,812.49	95,671.00
Total Appropriations	\$1,334,926.00	\$1,316,763.78	\$1,216,194.00
Converse Road Bridge #2			\$12,500.00
FD pagers and radios			10,500.00
Extra Grader Loan Payment			38,000.00
Converse Road Bridge #1			86,000.00
Bridge CRF - 80% State Reimbursement			26,400.00
FD Grant			146,600.00

Schedule of Town Property

Description	Value
Town Land & Buildings:	
Town Hall, Highway Sheds, Library	\$843,900.00
Library Furniture & Equipment	10,000.00
Highway Equipment.	464,421.00
Highway Material & Supplies	4,350.00
Municipal Building/Fire Station	504,600.00
Furniture & Equipment	53,557.00
Fire Department Equipment including Trucks	418,085.00
Ball Park, Tennis Court, Cemeteries.	251,300.00
Town Dump.	8,000.00
Land Acquired Through Tax Deed	
Richards Land (Town Forest)	224,600.00
Luongo & Ianninni Land (on Route 45)	549,900.00
Davis Land (on Route 101).	6,900.00
All Other Property & Equipment	
Kendall Ledges	15,200.00
Town Common	124,600.00
Village Cemetery.	162,800.00
Route 45 Property (by Elementary School)	99,200.00
Unknown Lot on Hadley Highway.	67,200.00
General Miller Highway Land	335,800.00

Town Officers Salaries

Moderator	Thomas Baker	\$146.63
	Steve Cullinan	102.00
Town Clerk	Wendy Drouin	15,912.60
Deputy Town Clerk	Jeanne Whitcomb	1,200.00
Tax Collector	Jeanne Whitcomb	12,141.68
Deputy Tax Collector	Wendy Drouin	200.00
Selectmen	John Kieley	2,280.00
	Tedd Petro	2,180.00
	Michael Darnell	0.00
Road Agent	Timothy P. Fiske	56,749.59
Treasurer	Shannon Kelley	3,970.00
Deputy Treasurer	Jennifer Connolly	271.34
Welfare Officer	Iphigenia Hatt	1,379.00
Forester	Allan Oxman	1,339.00
Supervisors of the Checklist	Lynda Connolly	282.63
	Sandra Wildes	318.75
	Robin Downes	146.63
Animal Control	Peter Clegg	600.00
Building Inspection	William S. Wildes	225.00

Total \$99,444.85

Payments

General Government:		
Executive	\$71,277.51	
Election, Registrations & Vital Statistics	24,388.60	
Financial Administration	61,343.42	
Legal Expense	5,255.25	
Personnel Administration	71,922.70	
Planning and Zoning	1,832.08	
General Government Buildings	15,954.18	
Cemeteries	7,215.99	
Insurance	28,289.01	
Advertising and Regional Associations	2,757.68	
Other General Government	1,292.87	
TOTAL General Government		\$291,529.29
Public Safety:		
Police	\$175,639.43	
Wilton-Lyndeborough-Temple Ambulance	40,658.18	
Fire	26,718.03	
Building Inspection	188.39	
Emergency Management	884.06	
Other Public Safety	40,020.50	
TOTAL Public Safety		\$284,108.59
Highways and Streets:		
Highway Department	\$299,630.66	
Driveway Plowing	80,810.50	
Bridges	1,650.00	
TOTAL Highways and Streets		\$382,091.16
Sanitation:		
Wilton Recycling Center	\$57,247.84	
Birchwood Inn Dumpster Rental	784.00	
TOTAL Sanitation		\$58,031.84
Health:		
Health Officer Expenses	\$1,880.63	
Animal Control	2,098.65	
Health Agencies and Hospitals	6,738.00	
TOTAL Health		\$10,717.28
Welfare:		
Welfare Administration	\$1,484.48	
Vendor Payments and other	12,708.76	
TOTAL Welfare		\$14,193.24

Culture and Recreation:		
Recreation	\$2,766.43	
Library	43,316.11	
Patriotic Purposes	472.12	
TOTAL Culture and Recreation		\$46,554.66
Conservation:		
Conservation Commission	\$490.00	
TOTAL Conservation		\$490.00
Debt Service:		
Principal-Long Term Notes	\$77,770.00	
Interest-Long Term Notes	14,197.19	
Interest-Tax Anticipation Notes	0.00	
TOTAL Debt Service		\$91,967.19
Capital Outlay:		
RGGI Grant	\$50,983.58	
2010 Generators W.A. #15	18,053.56	
2010 Brush Truck W.A. #17	52,000.00	
2011 Office Reconfiguration W.A. #6	19,942.00	
2011 Small Dump Truck W.A. #8	58,905.30	
2011 Tennis Courts W.A. #10	6,998.00	
TOTAL Capital Outlay		\$206,882.44
Payments of Tax Anticipation Notes:		
TOTAL Tax Anticipation Notes		\$0.00
Payments to Trust Funds & Capital Reserve Funds:		
2010 Asphalt & Paving Expendable Trust	\$0.00	
2010 Hw Veh & Equip Mnt & Rep Ex Trst	0.00	
2010 Fire Veh & Equip Mnt & Rep Ex Trst	0.00	
2010 Gvt Bldg Maint & Rep Ex Trst	0.00	
TOTAL Payments to Trust Funds		\$0.00
Payment to Other Governments:		
Taxes to County	\$169,162.00	
Taxes to School including State Prop Tax	2,254,492.00	
TOTAL Other Governments		\$2,423,654.00
Transfers to NHPDIP		
Total Transfers		\$1,000,000.00
TOTAL on all payments for all purposes		
		\$4,810,219.69

Financial Report

Current Assets	Begin Year	End of Year
Cash and equivalents	\$1,520,746	\$1,679,065
Investments		
Restricted assets		
Taxes receivable	198,151	202,818
Tax liens receivable	104,343	65,203
Accounts receivable		
Due from other governments	143,086	
Due from other funds	5,610	
Other current assets		
Tax deeded property (subject to resale)		
Total Assets	\$1,971,936	\$1,947,086
Current Liabilities		
Warrants and accounts payable	\$25,389	\$14,220
Compensated absences payable	8,482	9,529
Contracts payable		13,482
Due to other governments		
Due to school districts	1,005,155	1,147,304
Due to other funds		6,000
Deferred revenue		
Notes payable - Current		
Bonds payable - Current		
Other payables	5,273	6,195
Total Liabilities	\$1,044,299	\$1,196,730
Fund Equity		
Nonspendable Fund Balance	\$119,993	
Restricted Fund Balance	10,678	
Committed Fund Balance		
Assigned Fund Balance		
Unassigned Fund Balance	796,966	750,356
Total Fund Equity	\$927,637	\$750,356
Total Liabilities and Fund Equity	\$1,971,936	\$1,947,086

Town Clerk Report

	2009	2010	2011
Registrations	\$205,051.99	\$202,079.91	\$198,359.74
Titles	500.00	482.00	480.00
Animal Licenses & Penalties	3,133.50	2,988.00	3,103.50
Marriage Licenses	180.00	335.00	140.00
Vital Copies	184.00	389.00	350.00
UCC Filings	345.00	270.00	270.00
Filing Fees	9.00	2.00	0.00
Wetlands/Dredge Permits	0.00	0.00	0.00
Misc./Postage	0.00	0.00	0.00
Refunds Given	0.00	0.00	0.00
TOTAL	\$209,394.49	\$206,543.91	\$202,703.24



© 2012 Sullivan Perspectives

Mary Ann & Ken Sullivan

Treasurer's Report

Year Ending December 31, 2011

Public Deposit Investment Pool:			
Description	Credit	Debit	Total
Beginning Balance			\$367,193.08
Withdrawals		\$1,260,000.00	
Contributions	\$1,066,638.85		
Interest	\$392.63		
Totals	\$1,067,031.48	\$1,260,000.00	\$174,224.56
Citizens Bank Checking Account:			
Beginning Balance			\$1,276,087.82
Journal Adjustments		\$122,535.17	
Payroll		195,999.76	
Accounts Payable		3,555,230.45	
Payroll Taxes		51,973.22	
Bad Checks		10,036.64	
Transfer from PDIP	\$1,200,000.00		
Transfer to PDIP		1,000,000.00	
Tax Collector	3,433,867.74		
Bank Service Charges		56.00	
Misc. Income	3,076.38		
Town Clerk	202,433.24		
Selectmen	324,855.62		
Interest	350.72		
Totals	\$5,164,583.70	\$4,935,831.24	\$1,504,840.28
Statement Cash on Hand			\$1,679,064.84
Checking Account			\$1,632,341.09

The above is a statement of the transactions of the treasury during the year of 2011

Submitted by Shannon Kelley, *Temple Town Treasurer*



Paul Clifton-Waite

Sources of Revenue

	Est. 2011*	Actual 2011	Est. 2012
Taxes			
Land Use Change Taxes	\$2,475.00	\$2,475.00	\$100.00
Yield Taxes	16,287.00	16,287.06	1,000.00
Payment in Lieu of Taxes	0.00	0.00	0.00
Interest and Penalties on Delinquent Taxes	48,947.00	50,145.28	20,001.00
Inventory Penalties	0.00	0.00	0.00
Excavation Tax	0.00	0.00	0.00
Licenses, Permits and Fees			
Business Licenses and Permits	210.00	295.00	125.00
Motor Vehicle Permit Fees	200,300.00	199,071.74	195,100.00
Building Permits	158.00	158.80	100.00
Other Licenses, Permit, Fees	3,386.00	3,593.50	3,160.00
From Federal Government			
U.S. Fish & Wildlife Refuge	467.00	467.00	400.00
From State Government			
Shared Revenues	0.00	0.00	0.00
Meals and Rooms Tax Distribution	61,028.00	61,027.96	50,000.00
Highway Block Grant	75,864.00	75,864.22	65,000.00
State Forest Land Reimbursement	747.00	747.31	500.00
Other Government Reimbursement:	0.00	0.00	0.00
Fire Grant			139,270.00
State Bridge Aid - Putnam Rd	0.00		26,400.00
State Bridge Aid - Converse Rd	0.00		68,800.00
Charges for Services			
Income from Departments	8,075.00	8,192.04	620.00
Other Charges	0.00	0.00	0.00
Miscellaneous Revenues			
Sale of Municipal Property	19,244.00	19,244.00	100.00
Interest on Investments	685.00	743.35	500.00
Other	5,424.00	5,687.70	557.00

	Est. 2011*	Actual 2011	Est. 2012
Interfund Operating Transfers In			
Capital Reserve Fund	\$0.00	\$66,638.85	\$29,000.00
Trust and Agency Funds	100.00	0.00	100.00
Other Financing Sources			
Fund Balance to Reduce Taxes	135,000.00	135,000.00	0.00
Fund Balance Emergency Expend	0.00	0.00	0.00
Total Revenues and Credits	\$578,397.00	\$645,638.81	\$600,833.00
Total Recommended Budget			1,209,194.00
Total Recommended Warrant Articles			327,000.00
Total Appropriations			1,536,194.00
Less: Amount of Estimated Revenues Exclusive of Taxes			600,833.00
Amount of Taxes to Raise, Exclusive of School & County			\$935,361.00
*Estimated Revenue revised and approved by the State September 2011			



Paul Clifton-Waite

Receipts

Citizens Bank		
Local Taxes:		
Property Taxes	\$3,244,946.91	
Excavation Tax	0.00	
Yield Taxes	15,358.08	
Interest & Costs	43,385.61	
Tax Liens Redeemed	130,177.14	
Overpayments	0.00	
Land Use Change Tax	0.00	
NSF Checks made Good	9,769.64	
TOTAL Taxes Collected and Received		\$3,443,637.38
Town Clerk:		
Vehicle Permit Fees	\$198,359.74	
Vehicle Title Fees	480.00	
Dog Licenses, A.C. Penalties & Vital Stat	3,593.50	
Filing Fees, overpymts, penalties & UCC	270.00	
NSF Checks made Good	499.00	
TOTAL Collected from Town Clerk		\$203,202.24
Other Revenues:		
Payment in Lieu of Taxes	0.00	
TOTAL Other Revenues		\$0.00
From the Federal Government:		
HUD Grant for Town Hall	\$0.00	
Wapack Wildlife Refuge	467.00	
TOTAL Revenue from the Fed. Gov.		\$467.00
From the State of N.H.:		
Shared Revenue	\$0.00	
Rooms & Meals Tax Sharing	61,027.96	
Highway Block Grant	75,864.22	
Forest Land	747.31	
Disaster Relief/FEMA Grants	57,500.00	
ARRA-Dera Grant	0.00	
Fire Department Grant & Police Grant	0.00	
RGGI Grant	85,402.95	
TOTAL Revenue from the State of N.H.		\$280,542.44

Miscellaneous Revenue:		
Business Permits	\$25.00	
Building Permits	158.80	
Selectmen's Office	493.00	
Planning Board Fees	286.90	
ZBA Fees	153.00	
Code Enforcement Fees	90.00	
Fire Department Revenues	1,383.28	
Reimbursements	5,859.99	
Current Use Filing Fees	0.00	
Sale of Town Property	19,594.00	
Interest on Investments	350.72	
Rental of Town Property & Cleaning Dep	1,475.00	
Court Fines	0.00	
Charges for Bad Checks	270.00	
Refunds from All Sources	202.00	
Other Miscellaneous Revenue	3,316.57	
Total Miscellaneous		\$33,658.26
NH Public Deposit Investment Pool	1,200,000.00	
TOTAL Receipts from all sources		\$5,161,507.32
Cash on Hand-Citizens Bank Dec. 31, 2011		
		\$1,504,840.28
NH Public Deposit Investment Pool:		
Interest	\$392.93	
Transfer from Capital Reserve	66,165.30	
Transfer from Trust Funds	473.55	
Transfer from Citizens Bank	0.00	
Total Investment Receipts		\$67,031.78
Less Transfers to Capital Reserves	60,000.00	
Less Transfers to Citizens Bank	1,200,000.00	
Investments Cash Dec. 31, 2011		\$174,224.56

Tax Collector Report

DEBITS	Levies of:		
	2011	2010	2009 & Prior
Uncollected Taxes at Beginning of Year:			
Property Taxes		\$205,808.74	
Yield Taxes			\$121.88
Taxes Committed this Year:			
Property Taxes	\$3,352,402.00		
Land Use Change	4,950.00		
Yield Taxes		9,604.25	6,682.81
Prepayments for 2011	107.00		
Interest/Cost on Delinquent Taxes	1,664.30	11,188.25	40.87
TOTAL Debits	\$3,359,123.30	\$226,601.24	\$6,845.56

CREDITS	Levies of:		
	2011	2010	2009 & Prior
Remitted to Treasurer During Fiscal Year:			
Property Taxes	\$3,122,443.73	\$122,396.18	
Prepayments for 2011	107.00		
Yield Taxes		9,604.25	\$5,753.83
Interest/Costs	1,664.30	4,432.58	40.87
Conversion to Lien		90,168.23	
Abatements Made: Yield Taxes	0	0	928.98
Payments Received in 2010 Applied	2,144.36		
Current Levy Deeded to Town	0	0	0
Uncollected Taxes at End of Fiscal Year:			
	2011	2010	2009 & Prior
Property Taxes	\$227,813.91		
Land Use Change	4,950.00		
Yield Taxes			\$121.88
TOTAL Credits	\$3,359,123.30	\$226,601.24	\$6,845.56

Summary of Tax Lien Accounts

DEBITS	Levies of:		
	2010	2009	2008 & Prior
Debits - Liens for the Year:			
Unredeemed Liens Balance at Beginning of Fiscal Year:		\$75,921.38	\$87,688.79
Liens Executed	\$90,168.23		
Interest/Costs Collected after Lien Execution	1,453.51	3,566.97	32,231.38
TOTAL Debits	\$91,621.74	\$79,488.35	\$119,920.17

CREDITS	Levies of:		
	2010	2009	2008 & Prior
Remitted to Treasurer During Fiscal Year:			
Redemptions	\$20,432.17	\$24,925.84	\$84,815.13
Interest/Costs after Lien Execution	1,453.51	3,566.97	32,231.38
Liens Deeded to Town	0.00	0.00	0.00
Unredeemed Liens Balance at End of Fiscal Year	69,736.06	50,995.54	2,873.66
TOTAL Credits	\$91,621.74	\$79,488.35	\$119,920.17



Mary Ann & Ken Sullivan

Uncollected Taxes

(as of December 31, 2011)

2011 – Property Taxes	\$227,813.91
2011 – Current Use Penalty	4,950.00
1990 – Yield Tax—Northwestern Resources Inc. (previously Kumatsu Gumi LTD & William C Barnsley)	121.88
TOTAL Uncollected Taxes	\$232,885.79

Unredeemed Tax Liens

(as of December 31, 2011)

1991 – Kumatsu Gumi LTD (previously William C Barnsley)	\$350.59
1992: Kumatsu Gumi LTD	344.85
Northwestern Resources Inc.	1,475.90
TOTAL 1992	1,820.75

2008:

Norvell & Margaret Peterson	702.32
---------------------------------------	--------

TOTAL 2008	\$702.32
-----------------------------	-----------------

2009:

J Michele Clements	6,816.52
Douglas Guy Jr.	8,394.90
Douglas Guy Jr.	4,377.34
Douglas Guy Jr, Trustee of Hadley Lot Realty Trust	10,204.81
Douglas Guy Jr, Trustee of Hadley Lot Realty Trust	301.28
Douglas Guy Jr, Trustee of Hadley Lot Realty Trust	4,162.65
Gregg & Jennifer Johnson	5,034.37
Kumatsu Gumi LTD	216.71
Northwestern Resources Inc	2,009.74
Norvell & Margaret Peterson	5,182.15
Paul & Donna Quinn	4,295.07

TOTAL 2009	\$50,995.54
-----------------------------	--------------------

2010:	
Thomas Baker & Katharine Dean.....	73.83
Thomas Baker & Katharine Dean.....	6,641.74
Thomas Baker & Katharine Dean.....	20.74
J Michelle Clements	6,868.03
Wendell & Amber Fisk	5,489.80
Douglas Guy Jr.....	8,497.21
Douglas Guy Jr.....	4,416.49
Douglas Guy Jr, Trustee of Hadley Lot Realty Trust	10,283.21
Douglas Guy Jr, Trustee of Hadley Lot Realty Trust	295.67
Douglas Guy Jr, Trustee of Hadley Lot Realty Trust	4,161.94
Shirley Holt	2,728.61
Gregg & Jennifer Johnson.....	5,079.87
Thomas Krapf (previously Malcolm & Mary Krapf).....	1,378.54
Kumatsu Gumi LTD.	214.76
Kevin & Anna Lithgow.....	4,968.17
Northwestern Resources Inc	2,027.64
Paul & Donna Quinn	4,330.18
Paul Quinn.....	177.57
Dorothy Whiting (previously & Fairfield Whiting Jr)	1,974.75
Dorothy Whiting (previously & Fairfield Whiting Jr)	107.31
TOTAL 2010.....	\$69,736.06
TOTAL Unredeemed Tax Liens.....	\$123,605.26
Total Delinquencies as of December 31, 2011	\$356,491.05



Linda Boltinger

Trust Funds

New Hampshire Public Deposit Investment Pool	\$207,791.57
People's United Certificate of Deposit	60,897.33
People's United Checking Account	55.03
TOTAL	\$268,743.93

Fund	Principal	Accumulated Interest	Total
Bragg Fund	\$3,500.00	\$14,023.85	\$17,523.85
Buswell Fund	2,900.00	17,845.69	20,745.69
Cemetery Care Fund	5,350.00	687.70	6,037.70
Cemetery Lots Fund	16,335.00	22,745.83	39,080.83
Common Fund	2,000.00	935.32	2,935.32
Scholarship Fund	63,968.05	4,751.61	68,719.66
Wheeler Memorial	290.48	402.94	693.42
Hayward-Davidson	28,308.78	9,136.24	37,445.02
Library Fund	1,060.21	614.52	1,674.73
Ruth DeQuoy Memorial	5,000.00	8,082.98	13,082.98
Small Truck Capital Reserve	1,102.81	0.00	1,102.81
Bridge Capital Reserve Fund	29,519.60	116.30	29,635.90
Asphalt/Paving Exp. Fund	20,000.00	44.48	20,044.48
Hwy Vehicle Maint/Repair	5,000.00	10.98	5,010.98
Fire Dept. Veh. Maint/Repair	3,000.00	6.34	3,006.34
Town Bldg Maint/Repair	2,000.00	4.22	2,004.22
TOTAL	\$189,334.93	\$79,409.00	\$268,743.93

James A. Bragg Fund

January 1, 2011 Principal & Interest	\$17,551.12
2011 Interest Income	12.73
Monadnock Music	-40.00
December 31, 2011 Balance	\$17,523.85

Harriet M. Buswell Fund

January 1, 2011 Principal & Interest	\$20,730.64
2011 Interest Income	15.05
December 31, 2011 Balance	\$20,745.69

Common Fund	
January 1, 2011 Principal & Interest	\$2,933.58
2011 Interest Income	1.74
December 31, 2011 Balance	\$2,935.32
Bicentennial Scholarship Fund	
January 1, 2011 Principal & Interest	\$69,418.20
2011 Interest Income	906.46
In Memory of Christina Caswell	1,495.00
In Memory of Edward Schubert	25.00
In Memory of Sean Levesque	25.00
Scholarships Paid	-3,150.00
December 31, 2011 Balance	\$68,719.66
Five scholarships of \$300ea were awarded. Recipients: Haley Chamberlin, Bridget Ferrill, Dylan McNeil, Jessica Pierce & Megan Pratt.	
Cemetery Care Fund	
January 1, 2011 Principal & Interest	\$6,033.36
2011 Interest Income	4.34
December 31, 2011 Balance	\$6,037.70
Cemetery Lots Fund	
January 1, 2011 Principal & Interest	\$39,052.52
2011 Interest Income	28.31
December 31, 2011 Balance	\$39,080.83
Wheeler Memorial Fund	
January 1, 2011 Principal & Interest	\$693.42
2011 Interest Income	0.00
Donation by Trustees of Trust Funds	10.00
Temple Elementary School Awards	-10.00
December 31, 2011 Balance	\$693.42

Trust Funds

Hayward-Davidson Fund	
January 1, 2011 Principal & Interest	\$37,525.78
2011 Interest Income	27.19
Cemetery Flowers	-107.95
December 31, 2011 Balance	\$37,445.02
Library Fund	
January 1, 2011 Principal & Interest	\$1,673.80
2011 Interest Income	0.93
December 31, 2011 Balance	\$1,674.73
Ruth DeQuoy Memorial Fund	
January 1, 2011 Principal & Interest	\$14,807.70
2011 Interest Income	10.49
To Town of Temple	-473.55
To Temple Historical Society	-1,261.66
December 31, 2011 Balance	\$13,082.98
Small Truck Capital Reserve Fund	
January 1, 2011 Principal & Interest	\$0.00
From the Town of Temple	60,000.00
2011 Interest Income	8.11
To Town of Temple	-58,905.30
December 31, 2011 Balance	\$1,102.81
Bridge Capital Reserve Fund	
January 1, 2011 Principal & Interest	\$36,872.08
2011 Interest Income	23.82
To Town of Temple	-7,260.00
December 31, 2011 Balance	\$29,635.90
Asphalt & Paving Expendable Trust Fund	
January 1, 2011 Principal & Interest	\$20,029.84
2011 Interest Income	14.64
December 31, 2011 Balance	\$20,044.48

Highway Vehicle Maintenance & Repair Expendable Trust Fund

January 1, 2011 Principal & Interest	\$5,007.37
2011 Interest Income	3.61
December 31, 2011 Balance	\$5,010.98

Fire Department Vehicle Maintenance & Repair Expendable Trust Fund

January 1, 2011 Principal & Interest	\$3,004.55
2011 Interest Income	1.79
December 31, 2011 Balance	\$3,006.34

Town Building Maintenance & Repair Expendable Trust Fund

January 1, 2011 Principal & Interest	\$2,002.74
2011 Interest Income	\$1.48
December 31, 2011 Balance	\$2,004.22



Touchstone Farms

Current Use Report

	Total no. acres receiv'g Current Use assessment	Assessed valuation	Other Current Use statistics	Total no. of acres
Farm Land	966.840	\$377,149	Receiving 20% recreation adjustment	2,400.890
Forest Land	7,999.320	\$765,690	Removed from C.U. during current year	0
Forest Land w/ Documented Stewardship	934.060	\$46,571		
Wet Land	176.170	\$3,368	Total # of owners in C.U.	157
Total	10,076.39	\$1,192,778	Total # of parcels in C.U.	271

Total Number of Acres Exempted Under C.U. Laws: 10,076.39

Conservation Restriction Assessment Report

	Total no. acres receiving Conservation Restriction Assessment	Assessed valuation	Other Conservation Restriction Assessment statistics	Total no. of acres
Farm Land	7.74	\$3,254	Total # of owners: 1	7.74
Total	7.74	\$3,254	Total # of parcels: 1	7.74



Mary Ann & Ken Sullivan



Miki Clements-Collier

Conservation Commission

2011 was a year of slower economy and activity for the Temple Conservation Commission (TCC) as well as for the nation. In such times it can be tempting to look for quick profits from natural resources or through weakening protective regulations. Fortunately in Temple we continue on a steady path of caring for the health, beauty, and rural character of our community. As the Master Plan states: "Preserving critical open space areas is vital to maintaining not only the environmental health of Temple, but also the natural identity, rural character, and recreation opportunities that are so closely connected to the town." It also makes sound economic sense for the longer term well-being of everyone.

The steady attention and regular duties of TCC members are very important for sustaining Temple's character. This year the seven members monitored conservation easements, improved properties and trails at Kendall Ledge and the Town Forest, cleaned up General Miller Highway, and met with residents who wanted to explore easement possibilities for their properties.

A highlight of TCC's 2011 educational work was member Eric Foley's proposal to do a study of the Temple Town Forest for his college capstone project. He will examine the forest history and health, suggest increased recreational opportunities, and propose a forest management plan. In January 2012 he will interview TCC and Planning Board members about their experiences of the Town Forest and visions for its future. Eric will present all of his findings in a public meeting in late spring. Eric has been attending TCC meetings and assisting in projects since middle school. A special category of Junior Member was created for him in 2001 before he became a full member in 2007.

The Commission hopes that other young residents and their parents may be inspired by Eric's dedicated example to attend a meeting, help on a project, and propose new ideas for enhancing our community place. There are two openings for alternate members on the TCC. Inquiries are encouraged and may be directed to any member.

Respectfully submitted,

Bruce Kantner, *Secretary*

Conservation Commission Public Deposit Investment Pool			
Description	Credit	Debit	Total
Beginning Balance			\$92,214.78
Interest	\$66.70		
Totals	\$66.70	\$0.00	\$92,281.50

Conservation Commission: Citizens Bank Checking Account:			
Beginning Balance			\$9,641.80
Accounts Payable		\$248.00	
Deposits	.00		
Interest	4.59		
Totals	\$4.59	\$248.00	\$9,398.39
Checking Account End Balance			\$9,398.39



Allan Pickman

Highway Department

The year of 2011 was quite calm in comparison to some of the recent years. We had quite a bit of snow in January but things calmed down in February with just a few small-to-medium-sized snow storms. March was cold and wet with just one snowstorm on the 21st.

April Fool's day gave us 7" of snow to think about, and spring was here. It was then time to deal with the mud, start grading roads, and sweep up the winter sand off the paved roads and intersections.

When the springtime maintenance was finished, it was time to work on our big project for the year; the rebuilding of Mansfield Rd. from Hadley Hwy. to Cutter Rd. This project required over 1000' of underground drainage to be installed, several culverts to be replaced or repaired, and dozens of very large rocks to be removed from the road bed. Once this was done, Busby Construction Co. came in with a road grinding machine to grind the pavement into little pieces, regrade it back into a smooth well-shaped road, and repave the surface. The project went very well and we are quite pleased with the outcome.

In August, we did our roadside mowing and graded several gravel roads. The Selectmen held a Town Forum on the 18th of August to discuss driveway snowplowing. It was decided that due to the NH state laws prohibiting this and the liabilities that this would place on the Town, that we should give up this practice. Several people discussed forming a private co-op to take over the driveway snowplowing. This co-op did form and is working quite well with about 160 homes joining in.

Hurricane Irene came through on August 28th with 5-6" of rain and 50-60 mph winds. The Town of Temple fared quite well with only a few minor washouts and about a dozen trees downed. Northern NH and large areas of VT had extreme flooding that will take years to repair.

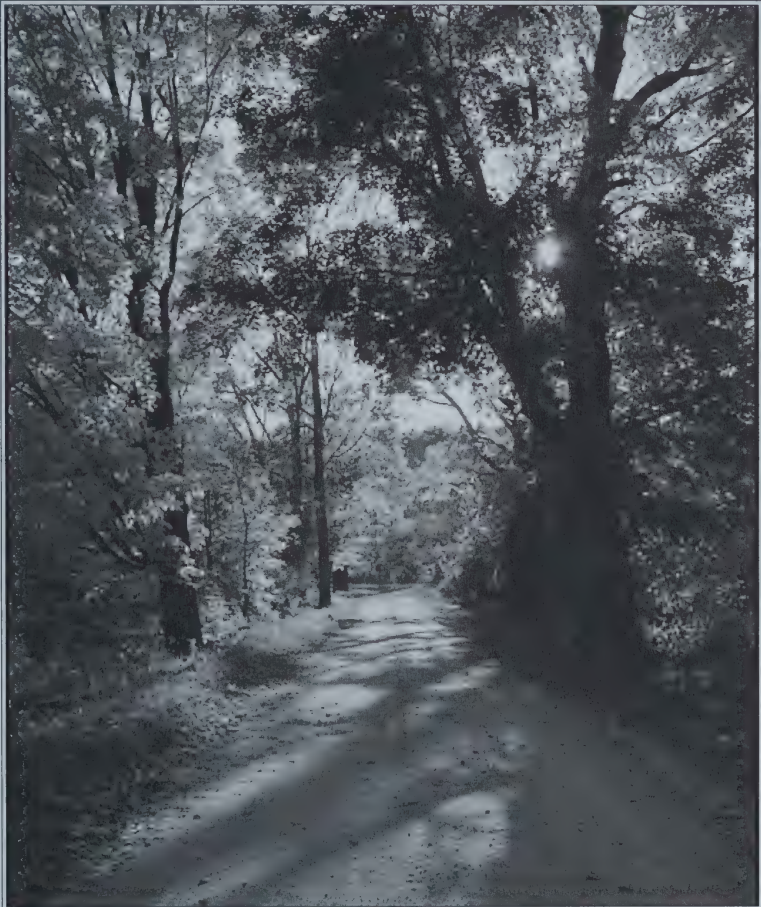
September and October were spent mostly preparing the roads and equipment for winter. We put up our winter sand pile, graded the gravel roads, and prepared the snowplows and sanders. On October 29th and 30th, a snowstorm came in and dumped about 24" of snow on us. It was quite wet and heavy and the power was knocked out in some places for several days. We later discovered that Hillsborough County was declared a disaster from this storm; mostly from all of

the trees that came down in the towns east of Temple. Temple will receive a check for around \$8000.00 from FEMA to help pay for our expenses from the storm because of this declaration.

It seemed like Old Man Winter had nothing left for us after that storm. We had much warmer than normal temperatures in November and December with very little snow. Most of our time was spent cutting back brush and limbs along the roadsides.

In the summer of 2012 we will be sand-sealing the paved sections of North Rd., Webster Rd., and Colburn Rd. We are also in hopes of rebuilding Old Firehouse Ln. near the Birchwood Inn if the funding is available.

Respectfully submitted,
Timothy P. Fiske, Road Agent



Mary Ann & Ken Sullivan

Highway Department

Highway Dept Budget	Budgeted 2011	Expenditures 2011	Proposed 2012
Asphalt and Paving	\$80,000.00	\$68,511.18	\$90,000.00
Labor	126,500.00	122,588.01	130,295.00
Overtime	16,500.00	11,987.51	16,500.00
Social Security	8,866.00	8,288.88	9,101.00
Medicare	2,075.00	1,938.58	2,129.00
Telephone and Pager	2,000.00	2,278.08	2,000.00
Electricity	450.00	449.02	475.00
Propane	800.00	570.85	700.00
Vehicle Maintenance /Repair	10,000.00	9,554.20	10,000.00
Subcontractors	8,000.00	7,090.20	8,000.00
Dues & Drug Testing	500.00	248.00	300.00
Training and Seminars	200.00	60.00	200.00
Supplies	8,000.00	8,361.14	8,000.00
Office Supplies	50.00	30.79	50.00
Postage	200.00	290.30	200.00
Repairs - Building and other equipment	1,000.00	0.00	500.00
Sand and Gravel	38,000.00	23,363.67	38,000.00
Signs	1,500.00	785.77	1,000.00
Culvert Pipe	2,500.00	2,995.10	2,500.00
Subcontractors	10,000.00	7,767.50	9,000.00
Snow Plowing-Driveways	50,000.00	74,523.00	0.00
Winter Salt	18,000.00	14,567.74	18,000.00
TOTAL	\$385,141.00	\$366,249.52	\$346,950.00

Cemetery

This year the grass stayed green and grew quite well all summer long with the rain coming regularly each week. Leaves and pine needles were raked up, lawns were mowed, and bushes were trimmed. The shed in East Cemetery was scraped, primed, and painted. A couple of gravestones were repaired.

A tree removal company was hired in December to come in with a crane. They helped us take down four big pine trees along the west side of East Cemetery that were threatening to fall on many of the old gravestones. It seems to be a regular maintenance project having to take down the trees as they mature.

We have added monies into the 2012 yearly budget to purchase a new lawnmower. This will replace the lawnmower that we bought in 1994.

Respectfully submitted,

Timothy P. Fiske,
Cemetery Supervisor

Cemetery Budget	Budgeted 2011	Expenditures 2011	Proposed 2012
Maintenance Wages	\$3,000.00	\$2,995.76	\$3,090.00
Supervisor Salary	738.00	738.00	760.00
Social Security	232.00	231.46	239.00
Medicare	62.00	54.17	56.00
Maintenance - Expansion	1,000.00	2,200.00	1,000.00
Repairs & Supplies	1,000.00	217.21	5,000.00
TOTAL	\$6,032.00	\$6,436.60	\$10,145.00



Linda Bollinger

Temple-Greenville Police Department

I have compared the statistics for 2011 to those for the past 20 years. The result is that we have a lower incidence of crime now than we did in 1991. The police merger has allowed us to pool our resources and do a better job. Not only does the merger save both towns a substantial amount of money, it has greatly improved our ability to hire well-qualified officers. I am proud to say that while neighboring towns are struggling with increased burglaries, ours have gone down. The fact is that the majority of burglaries are drug related. Sgt. D'Auria has a great working relationship with the DEA, NH State Police and the Attorney General's Drug Task Force. His ongoing investigations with these agencies make a tremendous difference. Officer Sprankle is our lead burglary investigator, as well as serving as the department prosecutor. His knowledge and experience in burglary investigation is unmatched. Their combined efforts have lead to many successful arrests and prosecutions. Officers Needham and Rousseau are our newer officers. They have done a tremendous job, beyond my expectation. Both of these officers are gaining experience in the proper handling of incidents and investigations, along with prosecution of cases. Our part-time officers, Officer Maxwell, Officer Valente and Officer Lamarre are an invaluable part of our team. They are always there when we need them. Elizabeth Maxcy-Humphrey has been our department administrator for over 17 years. She keeps the department administration running smoothly and efficiently. Thank you!

In the fall of 2011, we lost a dear friend, officer and co-worker. Peter Clegg had been employed by the Town of Temple since 1987 as a police officer and animal control officer. He also served as the animal control officer for the Town of Greenville. Pete was instrumental in the development of the police and animal control departments. He is greatly missed by the department. I commend him for his service to the town and his friendship.

Respectfully Submitted,

James H. McTague, *Chief of Police*

Police Department Budget

	Budgetd. 2011	Expend. 2011	Budgetd. 2012
Part Time Wages	\$120,741.00	\$119,741.20	\$120,741.00
Full Time Wages	85,508.00	88,474.80	87,746.00
Chief's Wages	67,227.00	67,114.96	69,244.00
Admin Wages	33,174.00	29,036.81	31,941.00
Overtime Wages	8,917.00	6,628.62	8,917.00
Health Insurance	46,365.00	40,114.20	34,929.96
Dental Insurance	2,580.00	2,579.00	2,924.40
Life, LTD STD Insurance	3,000.00	2,889.52	3,000.00
Social Security	9,543.00	9,401.52	9,466.00
Medicare	4,576.00	4,373.36	4,620.00
NH Retirement	23,865.00	28,674.00	33,099.00
Uniforms	2,500.00	2,191.66	2,000.00
Telephone	4,200.00	4,036.00	3,850.00
Electricity	2,800.00	2,789.85	2,800.00
Vehicle Maintenance	5,000.00	4,438.46	4,000.00
Vehicle Insurance	1,275.00	1,794.00	1,794.36
Equipment Rentals	1,200.00	1,051.83	0.00
Dues & Subscriptions	125.00	150.00	150.00
Heating Oil	2,750.00	3,284.49	3,500.00
Cruiser Fuel	9,500.00	13,283.00	13,800.00
Office Supplies	1,340.00	1,323.00	1,340.00
Postage	325.00	112.91	200.00
Janitorial Supplies	400.00	1,647.00	400.00
Janitorial Payroll	0.00	0.00	2,256.00
Building Maintenance	0.00	0.00	500.00
Books & Periodicals	200.00	83.00	150.00
Departmental Supplies	1,000.00	540.60	800.00
Equipment	1,350.00	2,149.85	1,350.00
Equipment Repairs	500.00	332.50	500.00
Training	2,000.00	1,983.93	1,800.00
Prosecution	6,000.00	5,437.48	6,000.00
Dispatch	21,532.00	21,532.00	22,607.56
Property & Liability Ins.	0.00	0.00	8,903.00
Workers Comp Ins.	0.00	0.00	3,297.00
Unemployment Ins.	0.00	0.00	1,170.00
Sewer	0.00	0.00	320.00
Water	0.00	0.00	180.00
Total	\$469,493.00	\$467,189.55	\$490,296.28

Police Department

Temple-Greenville Police Budget Breakdown	Budgeted 2011	Expenditures 2011	Budgeted 2012
Total	\$469,493.00	\$467,189.55	\$490,296.28
Greenville Share 62%	\$291,085.66	\$289,657.52	\$303,983.69
Temple Share 38%	\$178,407.34	\$177,532.03	\$186,312.59

Temple-Greenville Police Department Statistics	2011	2010	2009
911 Hangups	17	22	18
Alarms	49	84	58
Ambulance Assistance	30	24	33
Animal Calls	66	34	32
Arrests	43	100	154
Assault	9	13	14
Assault - Sexual	4	3	4
Attempted Suicide	3	1	7
Burglary	13	21	18
Child Neglect	0	1	2
Civil Issue, incl standbys	50	39	57
Criminal Mischief	20	18	24
Criminal Threatening	4	3	8
Criminal Trespass	4	15	10
Deaths	6	1	1
Disorderly Conduct	8	9	9
Domestic Dispute	41	45	52
Drugs	8	29	23
Drunk & Disorderly	4	11	18
DWI	7	5	15

Police Department

Temple-Greenville Police Department Statistics	2011	2010	2009
Fire Department Assist	45	39	19
Forgery, Fraud, Counterfeiting	8	10	16
Harassment	18	18	32
Juvenile Issues	25	37	23
Juvenile Runaways	8	10	3
Missing Persons	12	4	9
MV Aband., Dis., Repo'd, Lockout	35	27	31
MV Accidents	67	56	75
MV Complaints	35	51	43
Motor Vehicle Stops	109	1102	949
MV Parking	6	8	27
MV VIN Verifications	20	26	28
Noise Disturbance	48	39	51
OHRV Issues	0	6	8
Open Container Violations	0	2	4
Operating After Suspension	1	13	17
Property Check Requests	32	108	27
Property Lost, Found, Returned	20	23	21
Reckless Driving	1	2	1
Road Hazards	12	7	12
Service of Paperwork	42	66	69
Sex Offender Registrations	14	13	12
Shoplifting	1	1	5
Suspicious Person/Vehicle/incident	35	31	66
Theft	36	33	30
Warrants	21	28	43
Welfare Checks	27	19	26
Miscellaneous calls for service	261	316	407

Town of Wilton Ambulance Department

2011 was a very interesting year for Wilton Ambulance. Our call volume remained relatively flat. We are continuing to do work to improve our facility at minimal cost to the taxpayers. We have been continuing to teach EMS Refresher Training Programs to help offset the cost of running the service.

In 2011, our call volume remained relatively flat from 2011, up 0.5%. Our calls did come in “spurts”, for example, in September our call volume was 40% higher than the average. This kept our staff busy. Our primary and secondary ambulance responded to every call without calling in a mutual aid ambulance during these times of high volume. Kudos to the personnel for picking up this slack! I also want to thank all our personnel for the staffing of the ambulances. Our volunteers have been staffing our ambulances without missing a beat. Our ambulances have been staffed to the Paramedic level 99.6% of the time. Our second ambulance which is staffed by volunteers that are available when the call goes out was staffed 88.9% of the time with a Paramedic. The other statistic that is remarkable is that since 2008, our response time (Time from Ambulance Dispatch to arrival at the scene) has dropped by one minute. This is due to the dedication of the staff of this service.

We have had some building issues over the past year. The building is approximately 40 years old. The roof is leaking, and the water needs a treatment system. We are hoping to fix the roof this year. We are having more, and more, of our staff stay at the station when on call. They are unable to take showers, wash laundry, etc due to the water conditions at the station. We are hoping to fix the water issues by using interest from the Florence Wheeler Fund. This way, there is no tax impact to the citizens of Wilton, Lyndeborough or Temple.

In 2011, we saw 438 patients. This is a 0.5% increase in call volume.

Respectfully Submitted,

Gary Zirpolo, *EMT-Paramedic*
Chief of Department

Chief Gary Zirpolo would like to thank the volunteers, and per-diem staff of Wilton Ambulance, and thank the citizens of Wilton, Lyndeborough, and Temple for their continued support and dedication to this ambulance service.

2011 Breakdown of call volume by town and location transported:

Lyndeborough	Other/Unknown (Transfers, Mutual Aid)	Temple	Wilton	Total
72	54	65	247	438

By Hospital	Number	Percent
Manchester	9	2.05
Milford Medical Center	38	8.68
Nashua	175	39.95
Peterborough	76	17.35
Helicopter/Other or Refused Care, Treatment, or Transport	140	31.96
Total	438	99.99



Diane Kraemer

Volunteer Fire/Rescue Department

In 2011, TVFD placed our new Forestry Truck into service. By working with a local vendor, we were able to work together to design the truck to fit our needs while saving thousands of dollars for the taxpayers of this town.

In 2011, the Temple Fire Department continued with furthering our education and certifications so that we may continue to strive to maintain our standards by participating in many Fire/EMS modules.

The Fire/EMS industry is ever evolving. We would like to remind our community members that the days of old school firefighting are no longer acceptable. Today there are new standards set by the NFPA that prevent accidents and injuries from happening to those trying to make your lives safer. These safety standards range from gloves to coats/pants to pumps and nozzles.

With Fire Safety Standards changing to a higher level comes the rise in prices that no one is exempt from. We as a department are forced to update items that are no longer considered safe or are just too old to be fixed any more. We understand that this has an impact on our tax dollars, and frequently apply for grants that would help offset the cost to our town but at this point we need to ask that individually you consider making a charitable donation to the TVFD. Any donations received to the Fire Department Association will be used to help defer expensive cost of items that we are forced to update and replace. Some of these items include a jaw of life system, thermal imaging camera, and gas meters for carbon monoxide detection.

If you have ever considered volunteering to help your community the Temple Volunteer Fire Department could be what you are looking for. We are always looking for new members to join the department and experience is not required. Even if you don't wish to respond to emergency calls, why not consider joining the Fire Department Auxiliary- a group of men and women waiting to assist and support our fire department with such tasks as food prep for large fire scenes and fundraising.

If you are interested in joining the Fire Department please feel free to stop by the station and talk with a member. Our monthly meetings are held on the first Monday of every month @ 7pm or contact me, Mike Connolly, at 603-924-7289.

I would personally like to thank all of the members of the Fire Department and Rescue Squad for their continued commitment and dedication to the Temple

Community. These members have given many hours of their time over the last year and it is greatly appreciated.

Respectfully submitted,
 Michael Connolly, *Fire Chief*

Call Summary	2011	2010	2009	2008	2007
Structure Fire/Temple	0	0	1	2	3
Structure Fire/Mutual Aid	6	3	4	8	6
Motor vehicle accident	19	14	31	26	20
Motor vehicle fires	1	1	0	3	5
Smoke Investigation	6	9	4	0	5
Brush fire	3	10	4	3	3
Chimney fire	0	0	3	3	4
Misc/ Temple	16	3	4	2	4
CO2 Investigation	4	1	3	7	2
Misc/ Mutual Aid	0	3	2	0	0
Electrical fire	1	0	1	0	1
Wires down	2	1	6	6	4
Automatic Fire Alarm	8	5	5	11	9
Total Fire Calls	66	50	68	71	66
Rescue Squad Summary	2011	2010	2009	2008	2007
Auto Accidents	19	14	31	26	20
Medical	42	46	34	44	50
Medical (Horse Related)	1	1	2	3	3
Child Birth	0	0	0	0	0
Total Rescue	62	61	67	73	73



Cindi Connolly

Volunteer Fire Department Roster

TVFD Roster:	
Michael Connolly	Fire Chief
George Clark	Deputy Chief
Matt Bruneau	Captain
Mark Salisbury	1st Lieutenant
Mark Nichols *	2nd Lieutenant
Ken Patria *	3rd Lieutenant

Fire Fighters:		
Rich Beringer *	Joe Cournoyer	Mark Nichols
Scott Blood	Tim Fiske	Danielle Peterson ***
Mike Brampton **	Olivia Holmes	Luke Peterson *
Morgan Bruneau ***	Art Kelley	Robby Peterson ***
Anthony Caisse ***	Don Kraemer	Keith Swindell
Ken Caisse	Dave Lourenco	Marisa Taylor ***
Krystal Clark ***	Glenn Neilsen *	Anna Voglino
Patrick Connolly		Will Wildes

Fire Department Auxiliary		
Mary Amsden	Sherry Fiske	Barbara Thorngren
Cindi Connolly	Barbara Harling	Bill Wildes
Jill Connolly	Olivia Holmes	Sandra Wildes
Lynda Connolly	Shannon Kelley	Shirley Wildes
Peggy Cournoyer	Kathy Koster	Sydney Wildes ***
		Nancy Woods

* Rescue Squad

** Denotes Military Leave of Absence

*** Denotes Explorer Member

Volunteer Fire Department Budget

Fire Dept Budget	Budgeted 2011	Expenditures 2011	Proposed 2012
Drill Allowance	5,387.00	\$5,225.00	\$5,387.00
Social Security	334.00	323.95	334.00
Medicare	79.00	75.78	79.00
Health & Safety (Misc.)	1,750.00	2,471.00	2,500.00
Telephone/Internet	1,000.00	771.89	850.00
Dues & Subscriptions	900.00	965.50	900.00
Fire Supplies (Personal Protective Equipment)	450.00	497.04	450.00
Postage	200.00	97.70	100.00
Station Supplies (Items in Station)	300.00	119.45	300.00
Equipment (Items on Truck)	3,500.00	5,530.67	3,500.00
Hose Replacement	1,600.00	0.00	1,600.00
Equipment Maintenance (Firefighting Equipment)	1,350.00	0.00	1,350.00
Foam	350.00	0.00	350.00
Equipment (in Station)	650.00	339.20	650.00
Training	4,000.00	2,798.26	4,000.00
Radio Maintenance	1,500.00	923.01	1,500.00
Radio Equipment	1,000.00	2,208.75	1,000.00
Vehicle Maint & Repair	1,000.00	2,556.22	14,000.00
Rescue Squad Expenses	2,450.00	2,163.30	2,450.00
TOTAL	\$27,800.00	\$27,066.72	\$41,300.00



Mary Ann & Ken Sullivan

Temple Town Forester

For the tax year April 1, 2010 through March 31, 2011, the Town received five Reports of Wood or Timber Cut. Two Reports are still delinquent. Yield taxes assessed for these harvesting operations totaled \$8,274.38. As of January 25, 2012, four Intents to Cut have been filed with the Town for the current tax year. Over the past year and as we begin 2012 we continue to see a reasonable demand for forest products in our area. Good quality white pine and hemlock continue to command a strong stumpage price. Softwood & hardwood pulp are also very much in demand. Pricing on red oak and other hardwood have become quite a bit more stable but are still considerably down from their peak of 10 years ago.

The State RSA specifies that any person owning land upon which wood or timber is cut, either for sale or for services rendered, must first file an Intent to Cut form with the Town Selectmen or assessing officials. The exception to this is a person cutting up to 10,000 board feet of logs or up to 20 cords of fuel wood for either their own use or for a land conversion. Under these exceptions an individual does not have to file an Intent to Cut form. The tax year runs from April 1st to March 31st.

The RSA also states that within 60 days of completion of the operation or by May 15th, a Report of Wood or Timber Cut must be filed with the Town specifying the exact volume cut by species. The Town will levy a 10 percent yield tax based on the stumpage value of the material cut. If the job is not completed by March 31st or did not take place, a Report of Cut must still be filed by April 15th. At that time a new Intent to Cut should be filed to renew the permit. If the job is not completed by March 31st but will be completed by June 30th, a 90-day extension may be granted without having to renew the permit. To do this the Selectmen must be notified in writing by the Owner, prior to April 15th. Finally, during a harvesting operation, if the volumes to be harvested are going to exceed the estimated volumes on the original Intent to Cut, a supplemental Intent should be filed immediately showing the additional estimated volumes.

Landowners considering a timber harvest should be aware that there are State harvesting regulations that must be followed. If you have any questions regarding this or the permitting process, you can contact me through the Selectmen's Office.

Respectfully Submitted by:
Allan Oxman, *Licensed Forester #67*

Temple Forest Fire Warden

We had a minimal amount of outdoor fires in 2011. Permits are required for all outdoor burning, except when the ground is covered with snow.

Permits needed may be obtained from Warden Joe Cournoyer (878-1479) or Deputy Warden/Fire Chief Mike Connolly (209-0699).

Respectfully submitted,

Joe Cournoyer, *Temple Forest Fire Warden*



Linda Bollinger

Forest Fire Warden & State Forest Ranger

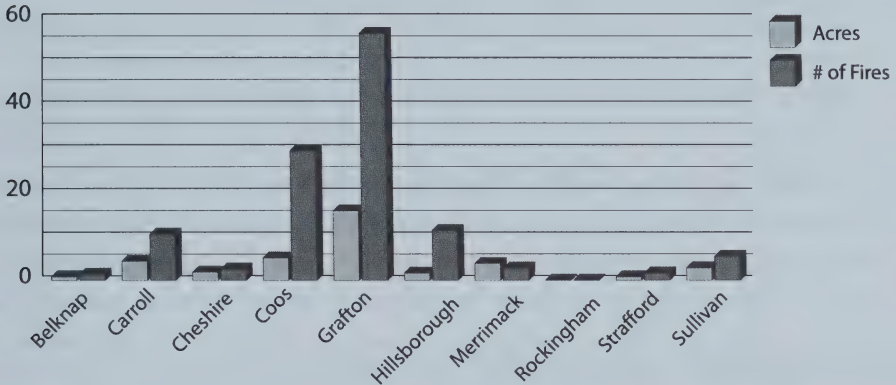
Your local Forest Fire Warden, Fire Department, and the State of New Hampshire Division of Forests & Lands, work collaboratively to reduce the risk and frequency of wildland fires in New Hampshire. To help us assist you, please contact your local Forest Fire Warden or Fire Department to determine if a permit is required before doing ANY outside burning. Under State law (RSA 227-L:17) a fire permit is required for all outside burning, unless the ground is completely covered with snow. The New Hampshire Department of Environmental Services also prohibits the open burning of household waste. Citizens are encouraged to contact the local fire department or DES at 603-271-1370 or www.des.state.nh.us for more information. Safe open burning requires diligence and responsibility. Help us to protect New Hampshire's forest resources. For more information please contact the Division of Forests & Lands at (603) 271-2214, or online at www.nhdf.org.

Both in terms of the number of fires, as well as the number of acres burned, this past fire season was the smallest since records have been kept. Extensive rainfall virtually all season long kept the fire danger down. When fires did start they were kept very small. The largest fire for the season was only 5.4 acres which occurred in Littleton on May 2nd 2011. There was however a small window of high fire danger in the northern third of the state during July when little rainfall was recorded. During this time there were a number of lightning started fires which are fairly unusual in New Hampshire. As has been the case over the last few years, state budget constraints have limited the staffing of our statewide system of 16 fire lookout towers to Class III or higher fire danger days. Despite the reduction in the number of days staffed, our fire lookouts are credited with keeping most fires small and saving several structures due to their quick and accurate spotting capabilities. The towers fire spotting was supplemented by contracted aircraft and the NH Civil Air Patrol when the fire danger was especially high. Many homes in New Hampshire are located in the wildland urban interface, which is the area where homes and flammable wildland fuels intermix. Several of the fires during the 2011 season threatened structures, a constant reminder that forest fires burn more than just trees. Homeowners should take measures to prevent a wildland fire from spreading to their home. Precautions include keeping your roof and gutters clear of leaves and pine needles, and maintaining adequate green space around your home free of flammable materials. Additional information and homeowner recommendations are available at www.firewise.org. Please help Smokey Bear, your local fire department, and the state's Forest Rangers by being fire wise and fire safe!

Fire Statistics

(All fires reported as of November, 2011. Figures do not include fires under the jurisdiction of the White Mountain National Forest)

County Statistics 2011										
	Belknap	Carroll	Cheshire	Coos	Grafton	Hillsborough	Merrimack	Rockingham	Stratford	Sullivan
Acres	.5	5	2	7.5	17.5	2	4	0	.5	3
# of Fires	1	11	3	30	57	12	3	0	2	6



Causes of Fires Reported	
Arson	7
Debris	63
Campfire	10
Children	2
Smoking	9
Railroad	1
Equipment	1
Lightning	3
Misc.*	29
(*Misc.: power lines, fireworks, electric fences, etc.)	

Year-by-Year Fire Statistics					
	2011	2010	2009	2008	2007
Acres	42	145	173	175	212
# of Fires	125	360	334	455	437

Only YOU Can Prevent Wildland Fire

Planning Board

There were few property line alterations to deal with during the past year. The board received just one application for a minor subdivision, and one application for a lot line adjustment, which were both approved.

After the election in March, the following officers were elected for the year: Chairman – Allan Pickman; Vice Chairman – Randy Martin; and Secretary – Rose Lowry.

The possibility of making changes to Village District zoning was brought to the attention of residents in the form of a written survey. Questionnaires were mailed out to each household in September, and the results were discussed at a public forum in November. With an overall response rate of 10 percent, the overwhelming mandate was to leave the village area alone.

By far, the most controversial issue the board dealt with this year was commercial wind energy. During the summer we listened to a presentation by Pioneer Green Energy for a possible proposed development of wind turbines to be located in the area of Kidder Mountain, in the southwest corner of town. This began an onslaught of questions, research, conversations, and meetings that resulted in the drafting of a zoning ordinance for Large Wind Energy Systems (LWES). This document was then introduced to the public via a series of forums and public hearings, with subsequent revisions and edits. The final version will be presented to the voters for approval as a ballot question on March 13, 2012.

At the end of December we were profoundly saddened by the sudden passing of one of our board members, Richard Whitcomb. As I make these final edits to this report, we learn that the Board's senior member, Bruce Kullgren, Sr. has passed, after years of declining health. Between the two of them, they gave a total of sixty years service to the Planning Board and Temple, and they will be greatly missed.

As always, my thanks and appreciation go to my fellow board members and to Betsy Perry for all their hard work and support during the past year.

Respectfully submitted,

Allan Pickman, *Chairman*

Approved Requests to the Planning Board

Date apprvd	Applicant	Map/Lot	Type
06/15/11	Bartolomeo Trust	9-22 creates 9-22-2	minor subdivision
08/31/11	D. Desmarais & R. Caney Heather White	2-80-1 5-10	lot line adjustment

Zoning Board of Adjustment

During 2011 the Temple Zoning Board of Adjustment held four public meetings.

At our first meeting of the year in April we elected officers and made nominations to the Select Board for renewal of members with expiring terms.

In our second, third and fourth meetings of the year we held a continued public hearing for an application for special exception.

I would like to thank the members of the Board for their service and contributions in 2011: Honey Hastings our Vice-Chair, Jenny Houston our Board Secretary, Randy Burnham, Dave Martz and Mary Beth Ayzavian, Alternate.

We have an opening for an Alternate. If you are interested please contact me.

Respectfully submitted,
John L. Pierce, *Chair*



Paul Clifton-Waite

Mansfield Public Library Report

Our year has been marked by work directed at all aspects of your library.

We have been doing the preparation work needed to automate the card catalog. The transfer will be taking place over the course of 2012.

There have been several programs for adults and children this year. These have included: "Financial Fitness" in April, The "One World, Many Stories" Summer Reading Program, Odds Bodkin in August, Lego Club beginning in October and the amazing "Lego Your Mind" workshop in December!

Thanks are due to the Village Green Committee for their help with dollars, advice and planting of our new side garden area. Honey Hastings and her busy young volunteers did a fabulous job!

You also may have noticed that the shrubs on the slope in front of the library have been removed. They finally succumbed to the efforts of Linda and Steve Bollinger, Gary and Sorrel Nielsen, Ken Carpenter, Randy Burnham and his tractor and me! We also thank Tim Fiske for his help in planting the rye grass to stabilize the slope. Thanks also go to Matt Cabana for painting the bathroom.

The trustees have been very active, helping with the pie table, working on our first comprehensive employee manual and updating our policies and procedures.

The Recreation Commission and TEEC have met at the library regularly in 2011.

Ebooks and audiobooks are available to all Temple residents for free through our Audiobook Consortium. We also have audiobooks in our collection on site. We offer a public computer, fax, printer and copier. Books and DVDs and other items that you don't see here are often available through the interlibrary loan service. Visit and like us on our Facebook page! Our email is mansfieldlibrarynh@comcast.net, and our phone number is 878-3100.

Respectfully submitted,

Kathy Fedorka, *Librarian*

Library Circulation & Acquisitions

Library Circulation for 2011:

Adult nonfiction	334
Adult fiction	1,913
Childrens and YA nonfiction	236
Childrens and YA fiction	2,531
Audiobooks (Library-owned)	51
Overdrive Audiobooks	257
Overdrive E-Books	302
Magazines	1,117
DVD	1,437
Interlibrary loan to and from other libraries.	68
TOTAL CIRCULATION:	8,246

Computer use: 915

Purchases:

Adult Books.	285
YA Books.	38
Children Books	235
DVD	71

Gifts:

Books	159
DVD	5



Mary Ann & Ken Sullivan

Temple Town Hall Advisory Committee

In 2010, the Temple Board of Selectmen established the Temple Town Hall Advisory Committee (TTHAC) to act as stewards of this town building. The committee acts in an advisory capacity to the Board of Selectmen.

The primary purpose of the committee is to assist in monitoring the use and condition of this building, advising the Select Board on any issues arising that might impact the Town Hall's functionality or appearance. This will ensure that the building remains a vibrant community center for education, enrichment and general enjoyment, and that its historic, functional and financial values are protected on behalf of all Temple residents. Additionally, this will assist the Town in fulfilling its obligation to preserve the Town Hall in the same structural condition and state of repair as when its rehabilitation was completed, in accordance with but not limited to, the term of the Stewardship Agreement that exists between the Town of Temple and the Land and Community Heritage Investment Program (LCHIP). Extending beyond the LCHIP agreement timeframe, the existence of this advisory committee will ensure that the same spirit of Town Hall stewardship is carried forth, and that the preservation of this building continues in perpetuity.

During spring of 2011, the TTHAC reviewed a request from the Historical Society that they be allowed to hang a shadow box in the Annex hallway, displaying glass shards collected from the Temple Glass Works site. The Committee unanimously supported their proposal and recommended its approval. The TTHAC also recommended that the BOS use monies from the Town Hall Restoration Fund to purchase two door mats for the main hall, and to frame the antique dance poster that was donated to the Town of Temple by Ken Carpenter. In November, the second floor Annex carpet was cleaned, following a notification of need submitted by the TTHAC to the BOS. The Committee also drafted the 2011 LCHIP Historic Resources Annual Monitoring Report in November, which was then submitted to LCHIP by the BOS.

In advance of drafting the LCHIP report, the TTHAC met in October to assess the condition of the Town Hall. The committee found the building's interior to be in very good condition overall, but noted that the Main Hall's oak floor is showing signs of wear and requires refinishing. Some small areas of blistering paint on the building's exterior were also recorded, as was the need

for repainting of the north side Annex door and the boards just below the main entrance and south side doors. The Committee informed the BOS of its findings and included them in the LCHIP report, which was submitted to Concord in December. The CIP has requested an updated quote for exterior painting, which they presently have slated for 2015. The Board of Selectmen will see that the Main Hall floor is refinished in 2012.

When using the Town Hall, please take care to report any accidents or damages, as soon as they occur, to Dick Benotti (878-2297), Connie Kieley (878-1220) or Deb Harling, (878-2536). Everyone’s prompt attention will ensure that the Temple Town Hall remains a building in which we all take great pride.

Respectfully submitted,
 Connie Kieley, *Chair*
 Tedd Petro, *Ex officio*
 Richard Benotti
 Honey Hastings
 Richard Keuper
 Ronald Pulos
 Sydney Thomas



Mary Ann & Ken Sullivan

Town Hall Restoration – Citizens Bank Checking Account:			
Description	Credit	Debit	Total
Beginning Balance			\$949.30
Accounts Payable		\$533.55	
Deposits	.00		
Interest	\$0.30		
Totals	\$0.30	\$533.55	\$416.05
End Balance			\$416.05

Recreation Commission

2011 was a good year for the Recreation Commission. We held our usual activities over the year, moving the Children's Halloween Party to the Town Hall which worked very well.

We brought in a few new members who will help us to keep these events moving forward and hope to add a few more. We would like to hear ideas for events geared towards the older kids and teens which is an area that is lacking at present. Ideas for adult activities are also welcome.

We would like to thank all the people who have volunteered with the various events over the past year. Thank you so much for your help - without it we would not be able to host many of the activities that people of Temple and their families enjoy. We would also like to thank the other Town organizations who support us and often share their resources with us at different events, it is much appreciated. Thanks as well to our Select Board and Administrator for their continued advice and support.

Anyone interested in joining the Recreation Commission or in volunteering for upcoming events may leave their name and contact info at the Mansfield library.

Thanks for another great year.

Respectfully submitted,

Temple Recreation Commission

Recreation Revolving Trust – Citizens Bank Checking Account:			
Description	Credit	Debit	Total
Beginning Balance			\$3,309.75
Accounts Payable		\$450.00	
Deposits	\$509.00		
Interest	1.60		
Totals	\$510.60	\$450.00	\$3,370.35
End Balance			\$3,370.35

Memorial Day/Patriotic Purposes

Meals – Memorial Day 2011	\$334.92
Flags Purchased	137.20
Total.	\$472.12



Diane Kraemer



Mary Ann & Ken Sullivan



Mary Ann & Ken Sullivan

Temple Economical Energy Committee

One of the 2011 success stories for Temple was our victory in the four-town “Energy Challenge” competition with the residents of Jaffrey, Rindge and Bennington. We won by a landslide! And that win brought the prize of an Ice Cream Social to town. By the end of the competition, 15% of our households had successfully taken the “Energy Challenge”. They had stepped up, taken an online survey of their household energy usage, viewed their carbon footprint, and pledged to take at least one new step to save energy and lower their household energy budgets. Together, they will save \$35,656 and 255,092 tons of CO2...in the first year. And they won Temple an ice cream lover’s feast. Over 200 residents with lots of kids enjoyed that prize. On September 24, TEEC members dished out heaping servings of four flavors of ice cream and frozen yogurt donated by Stonyfield Farm, an enormous tub of maple walnut ice cream, made with local maple syrup, from our own Connolly Brother’s Dairy, and 5 delicious toppings. It was a fun celebration of local energy conservation and our town’s community spirit.

Another success was honored on June 11. TEEC held an Open House Celebration for the completion of the grant-funded upgrades and energy conservation retrofit for the Municipal Building/FD and Mansfield Library. Along with all of the new high efficiency equipment, insulation work, etc, we put a spotlight on the critical value of the aggressive “air sealing” that underscored the project’s success. We displayed photos from the work in progress, offered tours, gave a PowerPoint presentation on the story of the work, and, of course, served food and drinks.

TEEC’s “Special Exhibit” for the Harvest Festival showcased a solar-powered pick-up truck and solar thermal exhibit outside Town Hall. Inside, we introduced an exciting new initiative just getting underway for our region, the Monadnock Energy Resources Initiative (MERI). It will begin to bring low-cost solar hot water installations and hands-on home weatherizations to our area in 2012, using the neighbors-helping-neighbors/barn-raiser model of professional and non-professional volunteers.

TEEC expanded our Free Home Weatherization Program to make it available for more residents. And our recycling program continued to run smoothly for Good Roads Day, the Harvest Festival, Town Meeting, 4th of July, the Music

Festival and for Temple's Elementary School. At TES, after a discussion on energy conservation with the 3rd and 4th graders, the students turned their ideas into a fun project. The kids took photos of each other taking energy-saving steps that would help cut costs both at school and at home. Then they enhanced the pictures with computer graphics and created a wall full of posters for the school's front entrance. As we promised the kids beforehand, we then photographed and uploaded their posters onto the "Kids Corner" of our website, www.teec.info to share with other children around the world. TEEC's website has continued to garner thousands of viewings from people all over NH, the US and cities worldwide. We continue to update it with energy saving tips, the latest news on rebates and tax incentives for installing renewables, and with environmental news.

On the two energy-related challenges for 2011: 1) TEEC supported the establishment of a local cooperative to provide energy-saving, consecutive, house-to-house driveway plowing. 2) On the wind proposal, our members conducted research, visited other wind farms, and sent reports to the Planning Board. Although TEEC strongly supports renewable energy development, in general, we have not determined that every rural site is appropriate for large commercial wind turbines.

Respectfully submitted,
Beverly Edwards, *Chairperson*



Bev Edwards

Elections and Registrations

Meals	\$150.00
Election Workers Wages	1,161.95
Supervisors of Checklist Wages.....	.748.01
Supplies130.84
Printing and Advertising.....	.566.06
<hr/> Election Days Total	<hr/> \$2,756.86

Animal Control

It is with regret that we cannot issue a list of animal complaints for 2011. Our long time Animal Control Officer, Peter Clegg, became ill early in 2011 and was unable to perform his duties. The Temple/Greenville Police Department stepped up to the task and helped in this area. Thank you to the Police for their efforts. Peter passed away this year and will be greatly missed.

Late in December 2011 the Board of Selectmen appointed Jennifer Rheame to the position of Animal Control Office. Jennifer has many years of experience with a wide variety of animals and we look forward to working with her.

Dog Owners please take note all dogs over the age of 4 months old must be licensed by April 30 each year, RSA 466:1. The dog tag should be placed around the dogs neck. Not only will this help return your pet if it gets lost, but it's a State law.

For Animal Control Response Please Dial – 878-3474

Respectfully submitted,

Temple Board of Selectmen

250th Anniversary Fund

This year the fund approved a grant to the Temple Elementary School to replace playground equipment.

Recreation Revolving Trust – Citizens Bank Checking Account:			
Description	Credit	Debit	Total
Beginning Balance			\$1,402.50
Accounts Payable		\$2,440.00	
Deposits	\$1,238.32		
Interest	0.49		
Totals	\$1,238.81	\$2,440.00	\$1,402.50
End Balance			\$201.31



Diane Kraemer

Monadnock Family Services

Monadnock Family Services is actively serving members in your community through the provision of quality mental health counseling services to anyone who needs them regardless of their ability to pay. MFS offers a variety of services for persons who experience a range of personal mental health problems, including mental illnesses, emotional, and psychological issues. Our substance abuse programs help people to develop new healthy behaviors and to make positive changes in their lives, while our family programs give new mothers the tools they need to bring happy and healthy children into the world. MFS offers prevention services for youth at risk of substance abuse and mental health problems.

The cost to MFS to serve uninsured persons has increased steadily with more people seeking help and care, but who cannot afford to pay. Your ongoing support of our work is deeply appreciated, and we hope that our partnership in caring for the residents of Temple will continue. We pursue many other sources of funding, such as The Monadnock United Way, grants, and conduct additional fundraising efforts through our Board of Directors. Each source helps with only a portion of the total cost of care.

We thank you for your many years of financial support and ask for your continued allocation to help underwrite the cost of services we provide to the uninsured and underinsured individuals in your community. Therefore, based on figures from the 2010 population estimates from the NH Office of State Planning, we are asking for the equivalent of \$1.25 for each resident in the town, which for the town of Temple, amounts to \$1,708.

Again, your support is very important to us. By working together, we help to insure our communities remain healthy and vital places to live, work, and grow. Thank you for your consideration.

Jennifer M Bowler, Director of Development

Clients from Temple treated for the year ended June 30th 2011: 31.

14 children, 15 adults, 2 seniors.

Total # of appointments provided for above residents	748
Percentage of payments received for services	58%
Discounts based on residents ability to pay, & other discounts . . .	\$12,522.31
In addition, current outstanding and uncollectable balances . . .	\$18,660.74

Home Healthcare, Hospice & Community Svcs

In 2011, Home Healthcare, Hospice and Community Services (HCS) continued to provide home care and community services to the residents of Temple. The following information represents HCS's activities in Temple during the past twelve months.

Service Report

Services Offered	Services Provided
Nursing	283 visits
Physical Therapy	88 visits
Occupational Therapy	28 visits
Medical Social Work	35 visits
Home Health Aide	146 visits
Prenatal and Child Health Care	11 hours
Total unduplicated residents served	32

Nurse Is In clinics, geriatric care management and hospice services are also available to residents. Town funding partially supports these services.

Financial Report

The actual cost of all services provided in 2011 with all funding sources is \$87,128,00.

These services have been supported to the greatest extent possible by Medicare, Medicaid, other insurances, grants and patient fees. Services that were not covered by other funding have been supported by your town.

For 2012, we request an appropriation of \$1,750.00 to continue to be available for home care services in Temple.

For more information about services, residents may call (603) 532-8353 or (800) 541-4145 or visit: www.HCSservices.org

Marriages

Report of Residents of Temple, NH for the Year Ending December 31, 2011

Date of Marriage	Person A's Name	Person A's Residence	Person B's Name	Person B's Residence	Town of Issuance
04/30/2011	Mark A Martin	Temple, NH	Dominique M Ducas	Manchester, NH	Manchester, NH
05/21/2011	Daniel C Cloutier Jr.	Temple, NH	Nicole R Maki	Temple, NH	Temple, NH
07/22/2011	David M Devoid	Temple, NH	Holly A Gladu	Temple, NH	Peterborough, NH
09/23/2011	Timothy R Hamilton	Ashburnham, MA	Jenny M Duchesneau	Temple, NH	Windham, NH
12/11/2011	Matthew A Fedorka	Temple, NH	Jessica R Wood	Rindge, NH	Temple, NH
12/24/2011	Keith A Grimes	Temple, NH	Kim M Karr	Temple, NH	Temple, NH

Deaths

Report of Residents of Temple, NH for the Year Ending December 31, 2011

Date of Death	Name of Deceased	Name of Father	Name of Mother	Place of Death
08/09/2011	Roland Bleau Jr.	Roland Bleau Sr.	Joyce Sullivan	Temple NH
09/23/2011	Peter Clegg	Charles Clegg	Rose Cause	Lebanon NH
10/05/2011	Dorothy Morine	Robert Guillaume	Margaret (Unknown)	Nashua NH
10/17/2011	Frederick Williams	Freeman Williams	Evelyn Lilley	Temple NH
10/19/2011	Edward Schubert	Thomas Schubert	Amelia Byzinski	Jaffrey NH
10/20/2011	Thomas Eldredge	Arthur Eldredge Sr.	Roselle Rice	Temple NH
10/26/2011	Beverly Currier	Robert Currier	Arleen Kageyama	Temple NH
12/29/2011	Richard Whitcomb	Kenneth Whitcomb	Christine Sanborn	Peterborough NH

Births

Report of Residents of Temple, NH for the Year Ending December 31, 2011

Date of Birth	Name of Child	Name of Father	Name of Mother	Place of Birth
01/31/2011	Owen Sverre Ostrem	Travis Ostrem	Madeline Dildine	Milford NH
02/17/2011	Ava Marie Simpson	Andrew Simpson	Alicia Hill	Peterborough NH
04/16/2011	Vincent Taylor Krook	Jason Krook	Samantha Krook	Nashua NH
04/26/2011	Wyatt Joseph Cullinan	William Cullinan	Kasandra Michlik	Peterborough NH
05/09/2011	Elizabeth Catherine Gustavson	Jonathan Gustavson	Darlene Gustavson	Temple NH
05/16/2011	Elliott Michael Connolly	Michael Connolly	Cindi Connolly	Peterborough NH
06/07/2011	Leo James Garnham	Daniel Garnham	Amanda Garnham	Nashua NH
07/03/2011	Natalie Lynne Ellis	Gregory Ellis	Brianna Ellis	Peterborough NH
07/31/2011	Vasilisa Yaroslava Nikitina	Maksym Nikitina	Maryna Gurova	Peterborough NH
09/26/2011	Lydia Mae O'Connor	Shaun O'Connor	Tammy O'Connor	Peterborough NH
10/08/2011	Ashlyn May Beckmann	Eric Beckmann	Krystle Beckmann	Peterborough NH
11/01/2011	Grant Gerald Connolly	Patrick Connolly	Jill Connolly	Peterborough NH



Touchstone Farm

Minutes of the Town of Temple Annual Meeting March 12, 2011

The Temple annual Town Meeting was called to order by Moderator, Tom Baker, at 10:01am at the Temple Elementary School. The meeting began with the Pledge of Allegiance.

An invocation was given by Pastor Graham Ward.

ARTICLE 1: To cast your ballots for the election of all officers required to be elected to serve the Town of Temple for the ensuing year.

Elected March 8th, 2011:

Moderator: **Steve Cullinan** with 123 votes
Selectman: **Michael T. Darnell** with 321 votes
Trustee of Trust Funds: **Iphigenia Hatt** with 339 votes
Cemetery Trustee: **David Yetman** with 348 votes
Fire Engineer: **Donald Kraemer** with 359 votes
Planning Board: **Richard Whitcomb** with 345 votes
Planning Board: **Allan Pickman** with 303 votes
Budget Advisory: **Gary Scholl** with 316 votes
Budget Advisory: **Mike Davidson** with 61 votes
Budget Advisory 1 year: **Luke Peterson** with 314 votes
Library Trustee: **Vicki Moylan** with 349 votes
Library Trustee: **Christine Robidoux** with 40 votes

ARTICLE 2: Voted on March 8th, 2011: To see if the Town of Temple, NH shall vote to adopt the provisions of RSA 40:13 (known as SB 2) to allow official ballot voting on all issues before the Town of Temple, NH on the second Tuesday of March. (*Submitted by Petition*) (3/5 (60%) majority vote required)

YES: 200 *NO: 211 -ARTICLE 2 FAILED

Selectman Chair, John Kieley, asked to speak before discussing Article 3.

MOTION: to reorder the warrant in the following order: #7, #8, #3, #4, #5, #6, #9 and #10, by John Kieley, second by Mike Darnell.

Passed by voter card vote, Yes 55, No 54.

ARTICLE 7: To see if the Town will vote to raise and appropriate the sum of \$1,223,926.00 for town charges as the operating budget and other necessary maintenance and operating expenditures. (Selectmen recommend)

MOTION: to waive the reading of the budget made by, Mike Darnell, second by Ted Petro.

Motion passed by unanimous voice vote.

MOTION: to amend Article 7 by John Kielely, second by Tedd Petro:

To see if the Town will vote to raise and appropriate the sum of \$1,273,926.00 for town charges as the operating budget and other necessary maintenance and operating expenditures. (This is to add \$50,000; \$40,000 for driveways and \$10,000 for welfare).

Motion passed by voice vote.

*ARTICLE 7 PASSED, AS AMENDED, by voice vote

ARTICLE 8: To see if the Town will vote to raise and appropriate the sum of Thirty Thousand dollars (\$30,000.00) to create a Small Highway Dump Truck Capital Reserve Fund for the purpose of purchasing a small Highway dump truck to replace the current small highway dump truck driven by the Road Agent, and further to appoint the Selectmen as agents for this fund. (Selectmen do not recommend 2 to 1)

MOTION: to amend Article 8, made by Tedd Petro, second by Mike Darnell:

To see if the Town will vote to raise and appropriate the sum of Sixty Thousand dollars to create a Small Highway Dump Truck Capital Reserve Fund for the purpose of purchasing and equipping a small highway dump truck to replace the current small highway dump truck currently driven by the Road Agent, and further to appoint the Selectmen as agents for this fund.

Motion passed by voice vote

*ARTICLE 8 PASSED, AS AMENDED, by secret ballot, Yes 110, No 18

ARTICLE 3: To see if the Town will vote to raise and appropriate the sum of Five Thousand dollars (\$5,000.00) to be placed in the Highway Vehicle and Equipment Maintenance and Repair Expendable Trust, previously established by Article #5, March 13, 2010 Town Meeting under the provisions of RSA 31:19-a. (Selectmen recommend)

MOTION: to Table Article 3, made by Mike Darnell, second by Steve Andersen

Motion passed by voter cards, Yes 66, No 43

*ARTICLE 3 TABLED

ARTICLE 4: To see if the Town will vote to raise and appropriate the sum of Four Thousand dollars (\$4,000.00) to be placed in the Fire Department Vehicle Maintenance and Repair Expendable Trust Fund, previously established by Article #6, March 13, 2010 Town Meeting under the provisions of RSA 31:19-a. (Selectmen recommend)

*ARTICLE 4 PASSED by Unanimous Voice Vote

ARTICLE 5: To see if the Town will vote to raise and appropriate the sum of Two Thousand dollars (\$2,000.00) to be placed in the Town Building Maintenance and Repair Expendable Trust Fund, previously established by Article #7, March 13, 2010 Town Meeting under the provisions of RSA 31:19-a. (Selectmen recommend)

MOTION: to Table Article 3, made by Mike Darnell, second by Connie Kieley

Motion failed by unanimous voice vote

*ARTICLE 5 PASSED by Unanimous Voice Vote

ARTICLE 6: To see if the Town will vote to raise and appropriate the sum of Twenty Thousand dollars (\$20,000.00) for the purpose of re-configuring the Municipal Office space and purchasing furniture for this space. (Selectmen recommend 2 to 1)

MOTION: to amend Article 6, made by Sherry Fiske, second by Ben Tirey

To see if the Town will vote to raise and appropriate the sum of Ten Thousand dollars (\$10,000) for the purpose of re-configuring the Municipal Office space and purchasing furniture for this space.

Motion failed by voice vote

*ARTICLE 6 PASSED by Voice Vote

ARTICLE 9: To see if the Town will vote to raise and appropriate the sum of Twenty Thousand dollars (\$20,000.00) to create a Large Highway Dump Truck Capital Reserve Fund for the purpose of purchasing a large Highway dump truck to replace one of the large highway dump trucks and further to appoint the Selectmen as agents for this fund. (Selectmen do not recommend 2 to 1)

*ARTICLE 9 PASSED by Voice Vote

*After the voice vote the Moderator realized that a request for a secret ballot had been presented for this article.

MOTION: was made to accept the voice on Article 9, made by Luke Peterson, second by Steve Andersen

*Motion passed by voice vote

*After Article 10 was voted on and before adjournment, Steve Bollinger, requested that the secret ballot for this question be reconsidered, second by Steve Andersen.

YES: 7 *NO: 112 -ARTICLE 9 FAILED by Secret Ballot

ARTICLE 10: To see of the Town will vote to raise and appropriate the sum of Fifteen Thousand dollars (\$15,000.00) to recondition the Tennis Courts/ Basketball Court. (Selectmen recommend)

*YES: 107 NO: 21 -ARTICLE 10 PASSED by Secret Ballot

MOVED: to adjourn meeting by Debra Harling, second by Will Wildes

Passed by voice vote

Meeting adjourned at 12:15pm.

Submitted by Wendy Drouin,

Temple Town Clerk



Deb Harling

Taxes Assessed

The breakdown of Property Tax Rates for 2011 were as follows:

Town of Temple	\$ 5.18
Hillsborough County	1.10
Conval School District	13.36
State Education Tax	2.30
Total Tax Rate 2011	\$21.94

The breakdown of Property Tax Rates for 2010 were as follows:

Town of Temple	\$ 5.18
Hillsborough County	1.09
Conval School District	12.40
State Education Tax	2.59
Total Tax Rate 2010	\$21.26

The breakdown of Property Tax Rates for 2009 were as follows:

Town of Temple	\$ 5.16
Hillsborough County	1.22
Conval School District	12.23
State Education Tax	2.51
Total Tax Rate 2009	\$21.12

The breakdown of Property Tax Rates for 2008 were as follows:

Town of Temple	\$ 4.78
Hillsborough County	1.11
Conval School District	11.41
State Education Tax	2.28
Total Tax Rate 2008	\$19.58

The breakdown of Property Tax Rates for 2007 were as follows:

Town of Temple	\$ 3.61
Hillsborough County	1.03
Conval School District	10.90
State Education Tax	2.16
Total Tax Rate 2007	\$17.70

Schedule of Valuation

Current Use Land	\$ 1,192,778.00
Conservation Restriction Assessment (at Current Use values)	3,254.00
Discretionary Preservation Easement RSA 79-D	100.00
Land Under Farm Structures	8,300.00
Non-Current Use Land	48,019,900.00
Building Values	100,883,844.00
Mobile Homes	710,500.00
Discretionary Preservation Easement RSA 79-D	22,004.00
Farm Structures	61,899.00
Other(Utilities)	2,604,000.00
Total Assessed Values	\$153,506,579.00

65 regular veterans credits given equaling \$6,500.00

Two totally and permanently disabled veterans credit given equaling \$1400.00

3 elderly exemptions given resulting in a reduction based on property valuation of \$75,000.00



Deb Harling

LAST NAME	FIRST NAME	VETERAN'S CREDIT	ACREAGE	CU VALUE	LAND VALUE	BLDG VALUE	TOTAL VALUE	GROSS TAX
139 Rt 101 Real Estate LLC			18.760	\$1,660.00	\$156,000.00	\$292,300.00	\$449,960.00	\$9,872
5 Terre LLC								
Agresti	Jeffrey	3.400			\$86,600.00	\$108,200.00	\$194,800.00	\$4,274
Ahern	Alan W & Kathleen A	0.700			\$71,600.00	\$136,000.00	\$207,600.00	\$4,555
Aho	Peter & Bonny -Jo	4.800			\$89,200.00	\$288,700.00	\$377,900.00	\$8,291
Albert	John, III & Robin S	55.000		\$3,485.00			\$3,485.00	\$76
Amsden	Mary, Trustee of the Mary Amsden Rev Trust	4.220			\$88,200.00	\$237,100.00	\$88,200.00	\$7,137
		4.000			\$80,000.00	\$207,100.00	\$287,100.00	\$6,299
Anair	Daniel J & Katrina A Spencer	5.100			\$82,200.00	\$232,100.00	\$314,300.00	\$6,896
Andersen	Steven W & Christine M	5.050			\$121,100.00	\$78,600.00	\$199,700.00	\$4,381
Andersen	Steven W & Christine M	3.000			\$70,200.00	\$141,700.00	\$211,900.00	\$4,649
Andersen	Steven W & Christine M	3.000			\$97,500.00	\$106,100.00	\$203,600.00	\$4,467
Anderson	Roy E, Jr & Laurie A	4.180			\$80,400.00	\$169,200.00	\$249,600.00	\$5,476
Armstrong	Michael N	5.310			\$82,600.00	\$130,000.00	\$212,600.00	\$4,664
Arsenault	Gina R	3.040			\$78,100.00	\$49,100.00	\$127,200.00	\$2,791
Attar	Edward J, Trustee, Joseph P. Attar Trust	228.500		\$27,750.00	\$71,700.00	\$19,400.00	\$118,850.00	\$2,608
Aucoin	Brent A	2.000			\$76,000.00	\$165,000.00	\$241,000.00	\$5,288
Ayazian	Mary Beth & Beverly R Edwards	4.260			\$79,700.00	\$122,600.00	\$202,300.00	\$4,438
Bailey	John	1.440			\$74,100.00	\$102,600.00	\$176,700.00	\$3,877
Baker	Thomas J & Katherine P Dean	10.001		\$843.00			\$843.00	\$18
Baker	Thomas J & Katherine P Dean	5.001		\$337.00			\$290,437.00	\$6,372
Baker	Thomas J & Katherine P Dean	5.417		\$457.00			\$457.00	\$10
Ball	Roger & Linda	\$100.00	3.840		\$87,500.00	\$277,500.00	\$365,000.00	\$7,908
Ballantine	Richard & Sherry Rubin	19.000		\$1,930.00			\$1,930.00	\$42
Ballou	Joseph	1.498			\$82,500.00	\$152,900.00	\$235,400.00	\$5,165
Bangs	Gary	5.100			\$90,000.00	\$156,400.00	\$246,400.00	\$5,406
Banks	William N, Jr	23.500			\$82,500.00	\$323,700.00	\$408,517.00	\$8,963
Barrett	Claire V, Trustee of the Claire V Barrett Rev Trust	6.500			\$73,300.00	\$6,000.00	\$79,300.00	\$1,740
Barrett	Claire V	7.190			\$110,600.00	\$331,900.00	\$442,500.00	\$9,708
Barrett	Michael J & Claire V	3.100			\$86,000.00	\$166,600.00	\$252,600.00	\$5,542

Barrett	Michael J & Claire V	11.037	\$2,304.00	\$75,000.00	\$156,100.00	\$233,404.00	\$5,121
Barrett	Michael J & Claire V	3.203		\$81,900.00	\$94,900.00	\$176,800.00	\$3,879
Barrett	Michael J	6.480		\$108,600.00	\$226,400.00	\$335,000.00	\$7,350
Barry	John P	12.000	\$4,208.00	\$68,400.00	\$7,800.00	\$80,408.00	\$1,764
Barry	John P	123.000	\$18,392.00	\$74,000.00	\$80,600.00	\$172,992.00	\$3,795
Barry	John P	10.000	\$1,053.00			\$1,053.00	\$23
Barry	John P	65.000	\$13,155.00			\$13,155.00	\$289
Bartolomeo	Edward, Co- Trustee of the E & R Bartolomeo Rev Trust	21.000	\$3,684.00	\$77,700.00	\$368,400.00	\$449,784.00	\$9,868
Batts	Paul R & Leslie J	4.200		\$88,200.00	\$294,400.00	\$382,600.00	\$8,394
Bauchat	John M & Delynne R Barnhisel	5.100		\$82,200.00	\$128,500.00	\$210,700.00	\$4,623
Bay-Harvey	Sheila, Trustee of the Sheila Bay-Harvey Rev Trust	5.200		\$90,200.00	\$171,700.00	\$261,900.00	\$5,746
Beaudoin	Lisa D	33.333	\$1,558.00	\$600.00	\$2,500.00	\$4,658.00	\$102
Beaudoin	Lisa D	56.834	\$3,888.00	\$99,100.00	\$266,900.00	\$369,888.00	\$8,115
Beaudoin	Lisa D	61.400	\$3,635.00			\$3,635.00	\$80
Benotti	James W & Ann L	11.900	\$1,148.00	\$74,000.00	\$214,900.00	\$290,048.00	\$6,364
Benotti	James W & Ann L	5.174		\$82,100.00	\$127,000.00	\$209,100.00	\$4,588
Benotti	James W	10.000	\$1,016.00			\$1,016.00	\$22
Benotti	Richard A & Sandra, Trustees of the Benotti Family Trust	0.400		\$69,200.00	\$149,700.00	\$218,900.00	\$4,803
Bergeron	Anthony L & Roberta A	3.695		\$87,200.00	\$134,900.00	\$222,100.00	\$4,873
Bergeron	Roger N & Susan I	3.010		\$85,800.00	\$231,900.00	\$317,700.00	\$6,970
Bergholm	William P & Louise	10.600	\$843.00	\$63,700.00	\$205,600.00	\$270,143.00	\$5,927
Beringer	Richard R	14.300	\$1,369.00	\$67,100.00	\$248,900.00	\$317,369.00	\$6,963
Bernier	Raymond G	\$700.00		\$74,100.00	\$256,500.00	\$330,600.00	\$6,553
Berquist	John D & Kathryn B Crawford	6.000		\$84,000.00	\$127,000.00	\$211,000.00	\$4,629
Bigelow	Daniel C & C. Suzanne Cole	5.000		\$96,100.00	\$325,500.00	\$421,600.00	\$9,250
Bigelow	Daniel C & C. Suzanne Cole	1.100		\$81,600.00	\$37,100.00	\$118,700.00	\$2,604
Black	Katherine	12.980	\$2,839.00	\$74,000.00	\$128,100.00	\$204,939.00	\$4,496
Blood	Benton & Nancy	2.800		\$77,600.00	\$59,300.00	\$136,900.00	\$3,004
Boisvert	Daniel J & Melissa M Charbonneau	3.100		\$88,500.00	\$114,500.00	\$203,000.00	\$4,454
Bollinger	Steven A & Linda K	5.683		\$86,900.00	\$127,800.00	\$214,700.00	\$4,711
Bond	David J & Kathryn	11.440	\$935.00	\$74,900.00	\$160,000.00	\$235,835.00	\$5,174

LAST NAME	FIRST NAME	VETERAN'S CREDIT	ACREAGE	CU VALUE	LAND VALUE	BLDG VALUE	TOTAL VALUE	GROSS TAX
Boot	Gary L & Kathleen		1.600		\$77,700.00	\$136,300.00	\$214,000.00	\$4,695
Boutwell	Shaun D & Daniel J Garnham		3.030		\$88,400.00	\$258,500.00	\$346,900.00	\$7,611
Bouyouines	Charles N & Marie		1.521		\$82,500.00	\$192,700.00	\$275,200.00	\$6,038
Boyer	John D & Eileen M		4.850		\$89,500.00	\$216,700.00	\$306,200.00	\$6,718
Bradler	Christopher		3.100		\$86,000.00	\$290,900.00	\$376,900.00	\$8,269
Bradler	Christopher & Jeremy		50.500	\$5,130.00			\$5,130.00	\$113
Bradler	Geraldine & Howard, G Bradler Rvcble Trst		106.500	\$20,392.00			\$20,392.00	\$447
Bradler	Geraldine & Howard, Trustees of the G Bradler Rvcble Trst		122.000	\$20,270.00	\$93,900.00	\$276,500.00	\$390,670.00	\$8,571
Bradler	Geraldine & Howard, Trustees of the G Bradler Rvcble Trst		31.470	\$9,623.00			\$9,623.00	\$211
Bradler	Jeremy		12.500	\$589.00			\$589.00	\$13
Bradler	Jeremy		13.000	\$986.00			\$986.00	\$22
Bradler	Jeremy		30.000	\$2,934.00			\$2,934.00	\$64
Bradler	Jeremy		191.000	\$16,095.00			\$16,095.00	\$353
Bradler	Jeremy		168.500	\$13,185.00			\$13,185.00	\$289
Bradler	Jeremy		15.000	\$1,580.00			\$1,580.00	\$35
Bradshaw	Linda	\$100.00	3.200		\$81,900.00	\$143,700.00	\$225,600.00	\$4,850
Brassard	Leon & Kristen		3.736		\$79,500.00	\$199,500.00	\$279,000.00	\$6,121
Brittain	Jacqueline		3.630		\$79,300.00	\$178,500.00	\$257,800.00	\$5,656
Broderick	Robert J, Trustee of the Joseph E Broderick Jr Irrev Trust	\$100.00	2.020		\$88,500.00	\$186,700.00	\$275,200.00	\$5,938
Brooks	Richard S & Elizabeth A		3.600		\$87,000.00	\$119,600.00	\$206,600.00	\$4,533
Brown	Grafton & Evelyn	\$100.00	3.232		\$78,500.00	\$210,700.00	\$289,200.00	\$6,245
Brown	Kent		1.230		\$74,500.00	\$188,800.00	\$263,300.00	\$5,777
Bullard	Mark S & Susan		5.080		\$82,000.00	\$179,100.00	\$261,100.00	\$5,729
Bunk	Laura J		3.000		\$78,000.00	\$120,200.00	\$198,200.00	\$4,349
Burgess	Isabelle H., Et al		43.500	\$14,044.00			\$14,044.00	\$308
Burke	Martha H		2.331		\$75,900.00	\$189,900.00	\$265,800.00	\$5,832
Burnham	Randy L		7.500		\$94,600.00	\$184,000.00	\$278,600.00	\$6,112
Burritt	Christopher & Karyn		3.000		\$78,000.00	\$208,500.00	\$286,500.00	\$6,286

Cabana	Matthew W & Amy G	3.040	\$85,900.00	\$166,700.00	\$252,600.00	\$5,542
Caisse	Donald G & Marian J	4.060	\$80,100.00	\$149,400.00	\$229,500.00	\$5,035
Campbell	Karolin J & Ellen Hedman	5.000	\$43,000.00		\$43,000.00	\$943
Carey	Kelley A, Trustee of the Fisk Hill Road Trust	1.690	\$67,800.00	\$97,200.00	\$165,000.00	\$3,620
Carignan	Derek C & Dawn R	3.100	\$78,200.00	\$93,800.00	\$172,000.00	\$3,774
Caron	Paul G & Jeanne B	24.900	\$2,623.00		\$2,623.00	\$58
Carpenter	Kenneth G & Lorelle S	4.500	\$81,000.00	\$259,300.00	\$340,300.00	\$7,466
Carpentiere	Casey C & Elizabeth C	1.080	\$81,600.00	\$123,700.00	\$205,300.00	\$4,504
Casey	Charles E	2.408	\$84,500.00	\$197,100.00	\$281,600.00	\$6,178
Castonguay	Robert A & Diane L	4.524	\$84,500.00	\$180,100.00	\$264,600.00	\$5,805
Caswell	Peter W	1.720	\$75,400.00	\$124,500.00	\$199,900.00	\$4,386
Chamberlin	Nathan R & Kristine L	3.230	\$86,300.00	\$222,500.00	\$308,800.00	\$6,775
Chapman	Dawna E	3.800	\$86,600.00	\$113,600.00	\$200,200.00	\$4,392
Charron	Thomas R & Jennifer L Birk	3.950	\$87,700.00	\$98,500.00	\$186,200.00	\$4,085
Chisholm	Brian & Sandra	3.260	\$78,500.00	\$196,400.00	\$274,900.00	\$6,031
Chisholm	Steven M & Dawn	1.457	\$82,400.00	\$195,400.00	\$277,800.00	\$6,095
Chiuve	Diane M & Dennis E Klimaszewski	3.329	\$78,700.00	\$257,400.00	\$336,100.00	\$7,374
Church	David C & Carol, Trustees of the Church Family Trust	24.500	\$2,065.00		\$2,065.00	\$45
Church	David C & Carol, Trustees of the Church Family Trust	78.000	\$6,362.00	\$17,900.00	\$86,662.00	\$1,901
Chuyan	Olga	52.000	\$4,530.00	\$154,100.00	\$239,630.00	\$5,257
Clark	George & Stacey, Trustees of the G. & S. Clark Rev Trust	6.000	\$74,800.00	\$143,000.00	\$217,800.00	\$4,779
Clayton	Michael J & Laura L	0.370	\$39.00		\$39.00	\$1
Clayton	Michael J & Laura L	14.600	\$3,690.00	\$143,600.00	\$221,290.00	\$4,855
Clayton	Michael J & Laura L	5.200	\$1,483.00	\$0.00	\$1,683.00	\$37
Clegg	Peter A & Christine	3.100	\$86,000.00	\$100,800.00	\$186,800.00	\$4,098
Clements	J Michele	1.000	\$81,400.00	\$217,800.00	\$299,200.00	\$6,564
Clifton-Waite	Paul A & Anne C	3.110	\$86,000.00	\$215,100.00	\$301,100.00	\$6,606
Cochrane	Chad S	1.847	\$83,300.00	\$151,900.00	\$235,200.00	\$5,160
Cohen	Michelle R	3.539	\$79,100.00	\$168,700.00	\$247,800.00	\$5,437
Collins	Shawn & Monica	3.080	\$81,500.00	\$230,300.00	\$311,800.00	\$6,841

LAST NAME	FIRST NAME	VETERAN'S CREDIT	ACREAGE	CU VALUE	LAND VALUE	BLDG VALUE	TOTAL VALUE	GROSS TAX
Colpitts	Peter J & Patricia J Edgerton		6.400		\$88,300.00	\$196,700.00	\$285,000.00	\$6,253
Condriet	Jonathan D & Jennifer J O'Connor		4.291		\$90,800.00	\$218,900.00	\$309,700.00	\$6,795
Connolly	Jennifer L & Christopher W		19.700	\$1,759.00	\$78,000.00	\$171,200.00	\$250,959.00	\$5,506
Connolly	Jill L & Patrick L		3.334		\$82,200.00	\$89,200.00	\$171,400.00	\$3,761
Connolly	Lynda & Martin		12.000	\$672.00	\$81,400.00	\$258,100.00	\$340,172.00	\$7,463
Connolly	Lynda & Martin		74.930	\$13,723.00	\$0.00	\$61,900.00	\$75,623.00	\$1,659
Connolly	Lynda & Martin		3.273	\$1,377.00			\$1,377.00	\$30
Connolly	Martin & Lynda		14.600	\$1,327.00	\$68,400.00	\$4,800.00	\$74,527.00	\$1,635
Connolly	Michael D & Cindil L		3.000		\$78,000.00	\$94,900.00	\$172,900.00	\$3,793
Contoocook Valley School District			16.340		\$259,300.00	\$1,767,000.00	\$2,026,300.00	\$0
Cooper	Andrea & William		4.983		\$82,000.00	\$238,500.00	\$320,500.00	\$7,032
Copertino	Marie D, Interested Trustee A. Copertino Sr SST Exempt Trust		114.500	\$14,561.00	\$74,000.00	\$519,000.00	\$607,561.00	\$13,330
Copertino	Alfred F, Jr		15.510	\$5,264.00	\$78,000.00	\$290,800.00	\$374,064.00	\$8,207
Corbett	Daniel		22.390	\$2,148.00	\$76,000.00	\$431,600.00	\$509,748.00	\$11,184
Coste	Carole M & John J Singelais		4.219		\$80,400.00	\$247,400.00	\$327,800.00	\$7,192
Cote	Carroll & Cecile		3.770		\$75,600.00	\$109,300.00	\$184,900.00	\$4,057
Cote	David A & Jennifer A		5.050		\$78,200.00	\$188,100.00	\$266,300.00	\$5,843
Cournoyer	Margaret W	\$100.00	2.700		\$168,600.00	\$327,800.00	\$496,400.00	\$10,791
Craven	Garrett D & Krista M McDowell		3.900		\$79,800.00	\$206,100.00	\$285,900.00	\$6,273
Cromwell	Gail D		104.500	\$6,541.00	\$93,700.00	\$368,100.00	\$468,341.00	\$10,275
Crooker	Roger L, Jr & Joan M		5.560		\$82,700.00	\$109,500.00	\$192,200.00	\$4,217
Cross	Richard H, III & Jeanne		5.008		\$107,800.00	\$75,000.00	\$182,800.00	\$4,011
Croteau	Douglas J & Helen L		6.000		\$74,800.00	\$141,500.00	\$216,300.00	\$4,746
Crowell	Raymond E, Jr. & Florida B		6.250		\$84,500.00	\$180,400.00	\$264,900.00	\$5,812
Cullen	Robert M		1.250		\$74,500.00	\$93,700.00	\$168,200.00	\$3,690
Cullinan	Steven W & Maureen B		5.160		\$85,800.00	\$151,100.00	\$236,900.00	\$5,198
Dagan	Joseph & Cynthia, Trustees Dagan Family Rev Trust		14.500	\$1,222.00			\$1,222.00	\$27
Dahlgren	Leah K		0.740		\$75,500.00	\$76,900.00	\$152,400.00	\$3,344
Daler	Milan & Jennifer B		3.000		\$85,800.00	\$157,100.00	\$242,900.00	\$5,329

Darnell	Jean M & Michael T		3,100		\$86,000.00	\$135,400.00	\$221,400.00	\$4,858
Davidson	Michael D & Catherine S Welch	\$100.00	5,000		\$89,800.00	\$168,600.00	\$258,400.00	\$5,569
Davis	Wendy, Trustee of the Helen Davis Revocble Trust		12,000	\$3,156.00			\$3,156.00	\$69
Davis	Wendy, Trustee of the Helen Davis Revocble Trust		11,000	\$1,159.00			\$1,159.00	\$25
Davis	Wendy, Trustee of the Helen Davis Revocble Trust		38,800	\$4,165.00	\$127,000.00	\$347,700.00	\$478,865.00	\$10,506
Davis	Ross C, Jr		5,000		\$82,000.00	\$234,000.00	\$316,000.00	\$6,933
Davis	Richard H & Jacqueline L		3,066		\$85,900.00	\$99,300.00	\$185,200.00	\$4,063
Day	William O & Nancy		11,700	\$1,127.00	\$74,000.00	\$251,100.00	\$326,227.00	\$7,157
Dean	Julie A. & Jean M. Gallagher		14,000	\$3,262.00	\$75,400.00	\$139,200.00	\$217,862.00	\$4,780
Del Rio	Armando I & Svetlana Shistik		3,918		\$79,800.00	\$188,900.00	\$268,700.00	\$5,895
DeLargay	Laura		7,370		\$84,600.00	\$146,700.00	\$231,300.00	\$5,075
Dennis	John R & Coral Woods		5,002		\$111,700.00	\$307,800.00	\$419,500.00	\$9,204
Desmariais	Chad		3,340		\$77,900.00		\$77,900.00	\$1,709
Desmarais	Rodney & Bernadette		3,499		\$79,000.00	\$232,100.00	\$311,100.00	\$6,826
Desrochers	Patrice M & Alan D		3,139		\$78,300.00	\$220,900.00	\$299,200.00	\$6,564
Desrosiers	Joanne d & Raymond		3,000		\$78,000.00	\$167,300.00	\$245,300.00	\$5,382
Devereaux	John C, Trustee of the John C Devereaux Rev Trust		59,800	\$6,236.00	\$63,700.00	\$17,500.00	\$87,436.00	\$1,918
Dissinger	Robert A & Cheryl A		4,390		\$88,600.00	\$255,600.00	\$344,200.00	\$7,552
Double	David E & Roberta M		7,300		\$86,600.00	\$117,900.00	\$204,500.00	\$4,487
Drouin	Wendy R		21,900	\$9,931.00	\$92,900.00	\$347,800.00	\$450,631.00	\$9,887
Drouin	Wendy R		3,230		\$86,300.00	\$200,000.00	\$286,300.00	\$6,281
Dube	Michael E & Janet A		3,330		\$74,800.00	\$155,000.00	\$229,800.00	\$5,042
Ducharme	Diane E		3,270		\$86,300.00	\$127,100.00	\$213,400.00	\$4,682
Duchesneau	Roger & Janet		5,000		\$89,800.00	\$197,300.00	\$287,100.00	\$6,299
Dugas	Wayne M		6,320		\$84,600.00	\$225,300.00	\$309,900.00	\$6,799
Duhaime	Tammy M & Shaun D O'Connor		3,030		\$85,900.00	\$146,200.00	\$232,100.00	\$5,092
Duhaime	Stephen M & Julia L, Trustees of the S & J Duhaime Rvbl Trst		3,002		\$77,200.00	\$243,400.00	\$320,600.00	\$7,034
Dunleavy	Cynthia J		6,270	\$45.00	\$111,400.00	\$140,300.00	\$251,745.00	\$5,523
Durocher	David A		1,180		\$74,400.00	\$116,300.00	\$190,700.00	\$4,184

LAST NAME	FIRST NAME	VETERAN'S CREDIT	ACREAGE	CU VALUE	LAND VALUE	BLDG VALUE	TOTAL VALUE	GROSS TAX
Eddy	Martin R & Charlene Anne		4.616		\$81,200.00	\$127,900.00	\$209,100.00	\$4,588
Edwards	Carol L	\$100.00	3.000		\$78,000.00	\$125,900.00	\$203,900.00	\$4,374
Edwards	Wayne A & Patricia P		11.500	\$1,053.00	\$75,000.00	\$79,600.00	\$155,653.00	\$3,415
Elizabeth Roselan Co., LLC			11.152		\$93,000.00		\$93,000.00	\$2,040
Ellis	Gregory C		4.300		\$63,000.00		\$63,000.00	\$1,382
Ellis	Nancy A		4.410		\$87,900.00	\$195,100.00	\$283,000.00	\$6,209
Ellis	Patricia		3.510		\$79,000.00	\$223,800.00	\$302,800.00	\$6,643
Ellis	William & Barbara	\$100.00	3.550		\$86,900.00	\$139,700.00	\$226,600.00	\$4,872
Elsing	Reindert J & Wendy A Rimman-Elsing		4.500		\$88,800.00	\$155,200.00	\$244,000.00	\$5,353
Everhart	Robert D & Donna		1.300		\$74,600.00	\$180,000.00	\$254,600.00	\$5,586
Ezell	William & Marilyn A		3.556		\$81,600.00	\$256,000.00	\$337,600.00	\$7,407
Fairpoint Communications						\$1,059,900.00	\$1,059,900.00	\$23,254
Faller	William G & Katherine T Jones		4.010		\$80,000.00	\$172,700.00	\$252,700.00	\$5,544
Federal Home Loan Mortgage Corp			2.648		\$80,800.00	\$208,800.00	\$289,600.00	\$6,354
Federal National Mortgage			4.760		\$73,700.00	\$218,600.00	\$292,300.00	\$6,413
Federal National Mortgage			3.590		\$79,200.00	\$220,000.00	\$299,200.00	\$6,564
Fedorka	Dennis M & Katherine M		3.110		\$86,000.00	\$136,800.00	\$222,800.00	\$4,888
Fedorka	Katherine M		1.290		\$74,000.00	\$38,700.00	\$112,700.00	\$2,473
Felt	Mary E, Trustee of the Mary E Felt Rev Trust		0.530		\$77,300.00	\$180,800.00	\$258,100.00	\$5,663
Ferguson	Douglas S		4.200		\$80,400.00	\$122,700.00	\$203,100.00	\$4,456
Ferguson	Jonah B & Christina P		4.265		\$72,700.00	\$90,000.00	\$162,700.00	\$3,570
Feyh	Robert D & Korin E		3.080		\$86,000.00	\$274,600.00	\$360,600.00	\$7,912
Finsler	Siegfried E & Torin		3.399		\$86,600.00	\$170,800.00	\$257,400.00	\$5,647
Fisk	Wendell A & Amber L		5.360		\$90,500.00	\$260,500.00	\$351,000.00	\$7,701
Fiske	Elena L		4.300		\$80,600.00	\$195,200.00	\$275,800.00	\$6,051
Fiske	Sherry E & Benjamin Tirey		7.750		\$87,500.00	\$233,500.00	\$321,000.00	\$7,043

Fiske	Timothy P & Kathleen	4.100	\$80,200.00	\$263,500.00	\$343,700.00	\$7,541
Fiske	Timothy P & Sherry E	13.000	\$2,269.00	\$8,600.00	\$14,669.00	\$322
Fiske	Timothy P, Gregory J & Sherry E	180.000	\$14,085.00		\$14,085.00	\$309
Five Gates Realty, LLC		12.500	\$3,210.00		\$3,210.00	\$70
Flanders	Frank R & Leona E Davis	\$100.00	\$1,696.00	\$114,200.00	\$182,496.00	\$3,904
Fly-way Farm, LLC		12.769	\$1,240.00	\$329,500.00	\$451,040.00	\$9,896
Fly-way Farm, LLC		51.400	\$5,414.00		\$5,414.00	\$119
Fly-way Farm, LLC		190.000	\$18,432.00	\$23,200.00	\$44,132.00	\$968
Fly-way Farm, LLC		44.960	\$4,693.00	\$100.00	\$5,793.00	\$127
Fly-way Farm, LLC		5.239	\$592.00	\$75,000.00	\$75,592.00	\$1,658
Fly-way Farm, LLC		5.010	\$566.00	\$75,000.00	\$75,566.00	\$1,658
Fly-way Farm, LLC		5.116	\$578.00	\$75,000.00	\$75,578.00	\$1,658
Fly-way Farm, LLC	(PRD Open Space)	14.174			\$0.00	\$0
Fly-way Farm, LLC		5.641	\$157,400.00	\$293,100.00	\$450,500.00	\$9,884
Fly-way Farm, LLC		1.596	\$180.00	\$75,000.00	\$75,180.00	\$1,649
Fly-way Farm, LLC		3.156	\$351.00	\$100.00	\$76,151.00	\$1,671
Fly-way Farm, LLC	(PRD Open Space)	9.524			\$0.00	\$0
Foley	David A & Anne	47.000	\$2,723.00	\$190,400.00	\$267,123.00	\$5,861
Forrest	David S & Colleen A	0.880	\$76,300.00	\$225,600.00	\$301,900.00	\$6,624
Four Winds Foundation		9.800	\$129,400.00	\$100,900.00	\$230,300.00	\$5,053
Fowler	Frederick M	\$100.00	\$78,400.00	\$38,000.00	\$116,400.00	\$2,454
Fox	Bruce A & Elizabeth	\$100.00	\$86,100.00	\$201,700.00	\$287,800.00	\$6,214
Frechette	Steven R & Deborah A Defeso	4.553	\$88,900.00	\$230,500.00	\$319,400.00	\$7,008
Fressilli	Richard J & Leah D	25.560	\$5,926.00	\$241,600.00	\$334,926.00	\$7,348
Fressilli	Richard J & Leah D	33.000	\$87,400.00	\$46,600.00	\$49,971.00	\$1,096
Fu	James E & Angela J Groff	1.180	\$83,500.00	\$246,300.00	\$329,800.00	\$7,236
Funk	Andrew J	4.080	\$80,200.00	\$180,800.00	\$261,000.00	\$5,720
Geddes	Daniel R & Christine M	6.300	\$84,600.00	\$176,100.00	\$260,700.00	\$5,720
Geiger	Roy G & Debra A	3.350	\$86,500.00	\$243,700.00	\$330,200.00	\$7,245
Gettings	George L, Trustee	0.250	\$17,000.00		\$17,000.00	\$373
Gettman	Robert S & Patricia L	3.276	\$87,200.00	\$166,400.00	\$253,600.00	\$5,564
Gifford	Jennifer M	3.060	\$85,900.00	\$127,900.00	\$213,800.00	\$4,691

LAST NAME	FIRST NAME	VETERAN'S CREDIT	ACREAGE	CU VALUE	LAND VALUE	BLDG VALUE	TOTAL VALUE	GROSS TAX
Girard	Mary & Shirley J Quinn		10.750	\$1,027.00	\$74,000.00	\$232,300.00	\$307,327.00	\$6,743
Girard	Mary & Shirley J Quinn		52.000	\$7,359.00	\$200.00	\$900.00	\$8,459.00	\$186
Gladu	Gail & Holly A	\$100.00	16.300	\$1,494.00	\$74,000.00	\$120,000.00	\$195,494.00	\$4,189
Gorski	Matthew T & Franziska L St. Cyr		3.500		\$79,000.00	\$109,600.00	\$188,600.00	\$4,138
Gove	Albert H & Mary L	\$100.00	21.850	\$1,007.00	\$81,400.00	\$316,200.00	\$398,607.00	\$8,645
Gove	Bennett & Shirley	\$100.00	19.800	\$763.00	\$81,400.00	\$60,200.00	\$142,363.00	\$3,023
Greene	Karen J		4.724		\$77,500.00	\$170,400.00	\$247,900.00	\$5,439
Grimes	Keith A		3.010		\$85,800.00	\$294,000.00	\$379,800.00	\$8,333
Gustavson	Darlene & Jonathan		5.600		\$91,000.00	\$128,000.00	\$219,000.00	\$4,805
Guy	Dorothea F		13.900	\$2,589.00	\$74,000.00	\$54,500.00	\$131,089.00	\$2,876
Guy	Dorothea F		16.200	\$1,281.00	\$74,000.00	\$91,100.00	\$166,381.00	\$3,650
Guy	Dorothea F		120.000	\$12,189.00			\$12,189.00	\$267
Guy	Dorothea F		218.005	\$21,105.00	\$117,000.00		\$138,105.00	\$3,030
Guy	Douglas R, Jr		77.400	\$3,291.00	\$322,500.00	\$123,000.00	\$448,791.00	\$9,846
Guy	Douglas R, Jr Trustee of the Hadley Lot Realty Trust		30.000	\$3,296.00	\$5,500.00	\$3,700.00	\$12,496.00	\$274
Guy	Douglas R, Jr		12.030	\$3,075.00	\$95,000.00	\$272,500.00	\$370,575.00	\$8,130
Guy	Douglas R, Jr		6.000		\$81,000.00	\$112,000.00	\$193,000.00	\$4,234
Guy	Douglas R, Jr, Trustee of the Hadley Lot Realty Trust		30.000	\$2,844.00	\$78,000.00	\$108,600.00	\$189,444.00	\$4,156
Hadley	Dana		21.000	\$2,212.00			\$2,212.00	\$49
Hadley	Jay W & Heidi R		18.050	\$2,427.00	\$81,400.00	\$107,400.00	\$191,227.00	\$4,196
Hagen	James R & Donna M	\$100.00	7.200		\$93,400.00	\$129,300.00	\$222,700.00	\$4,786
Harling	Steven C & Debra M	\$100.00	3.420		\$68,800.00	\$180,800.00	\$249,600.00	\$5,376
Harling	Steven C & Debra M		5.130		\$74,200.00		\$74,200.00	\$1,628
Harling	Barbara, Trustee of the Harling Family Trust	\$100.00	4.672		\$81,300.00	\$111,200.00	\$192,500.00	\$4,123
Harrison Cowan Realty Trust			110.000	\$10,356.00			\$10,356.00	\$227
Harrison Cowan Realty Trust			38.000	\$4,003.00			\$4,003.00	\$88
Hastings	Honey		3.677		\$79,400.00	\$120,600.00	\$200,000.00	\$4,388
Hatmaker	Travis R & Amy L		5.000		\$111,300.00	\$315,600.00	\$426,900.00	\$9,366

Hatt	Roger D & Iphigenia	5.204	\$78,300.00	\$182,700.00	\$261,000.00	\$5,776
Hawkes	Robert E	3.140	\$78,300.00	\$137,400.00	\$215,700.00	\$4,732
Hawkins	Thomas B & Deborah S	9.000	\$843.00		\$2,843.00	\$62
Hawkins	Thomas B & Deborah S	12.000	\$1,053.00	\$413,300.00	\$497,953.00	\$10,925
Head	Neil R & Grace C Belfiore	3.469	\$98,400.00	\$102,600.00	\$201,000.00	\$4,410
Heald	Ross L, Trustee of the Heald Family Trust	25.700	\$6,708.00		\$6,708.00	\$147
Hebert	Peter G & Maria	5.140	\$82,300.00	\$287,900.00	\$370,200.00	\$8,122
Heck	Douglas A & Cathy A Burgoyne	2.000	\$76,000.00	\$265,100.00	\$341,100.00	\$7,484
Hedman	C. David & Ellen	13.750	\$1,159.00		\$1,159.00	\$25
Heikkila	Peter J & Lucille C	11.318	\$2,138.00		\$2,138.00	\$47
Hendrixson	Jack R & Ailyn R	3.200	\$78,400.00	\$190,000.00	\$268,400.00	\$5,889
Higley	Mary, Co-Trustee Forrest N Higley Trust	3.540	\$373.00		\$373.00	\$8
Higley	Mary, Co-Trustee Forrest N Higley Trust	7.800	\$2,258.00	\$249,800.00	\$326,758.00	\$7,169
Higley	Gregory J	3.040	\$78,100.00	\$133,200.00	\$211,300.00	\$4,636
Hill	Kathleen	8.800	\$89,000.00	\$176,800.00	\$265,800.00	\$5,832
Hoesch	Marion J	6.600	\$85,200.00	\$120,400.00	\$205,600.00	\$4,511
Hogan	Loriel D	113.200	\$11,072.00		\$11,072.00	\$243
Holding	David E, Trustee of the J & D Holding Rev Trust	80.000	\$8,111.00	\$173,300.00	\$239,911.00	\$5,264
Hollenbeck	Keith S, Jr. & Heather J	1.500	\$75,000.00	\$88,300.00	\$163,300.00	\$3,583
Holmes	Olivia	12.000	\$81,400.00	\$208,500.00	\$291,059.00	\$6,386
Holt	Shirley S	2.390	\$84,400.00	\$155,600.00	\$240,000.00	\$5,266
Holz	Edward C & Erlinda B	3.100	\$86,000.00	\$160,900.00	\$246,900.00	\$5,417
Hook	John A	1.160	\$74,300.00	\$86,900.00	\$161,200.00	\$3,537
Houck	James & Lucia A	81.700	\$83,200.00	\$113,600.00	\$204,990.00	\$4,497
Houck	James & Lucia A	23.587	\$6,585.00	\$430,200.00	\$524,585.00	\$11,409
Houck	James & Lucia A	11.200	\$1,163.00	\$84,800.00	\$167,763.00	\$3,681
Houck	James & Lucia A	7.200	\$2,064.00		\$2,064.00	\$45
Houck	James, Trustee of the James E Houck Rvcble Trust	78.770	\$5,762.00		\$5,762.00	\$126
Howard	Adrienne V	3.160	\$78,300.00	\$83,500.00	\$161,800.00	\$3,550
Howland	Charles F & Virginia H	11.503	\$1,053.00	\$574,700.00	\$723,253.00	\$15,868

LAST NAME	FIRST NAME	VETERAN'S CREDIT	ACREAGE	CU VALUE	LAND VALUE	BLDG VALUE	TOTAL VALUE	GROSS TAX
Humphrey	Mark & Elizabeth		3.560		\$78,300.00	\$214,700.00	\$293,000.00	\$6,428
Iltis	Charles F & Mary Q		12.500	\$939.00	\$69,300.00	\$6,700.00	\$76,939.00	\$1,688
Iltis	Charles F & Mary Q		27.000	\$2,528.00	\$78,000.00	\$502,000.00	\$582,528.00	\$12,781
Jackson	William R & Nancy L	\$100.00	3.003		\$85,800.00	\$153,900.00	\$239,700.00	\$5,159
Jarest	Timothy P		5.000	\$59.00	\$79,800.00	\$88,000.00	\$167,859.00	\$3,683
Jasperson	Jerry D & Rebecca L		3.016		\$78,000.00	\$132,600.00	\$210,600.00	\$4,621
Johnson	Gregg D & Jennifer L		3.140		\$86,100.00	\$134,800.00	\$220,900.00	\$4,847
Johnson	Lawrence & Michelle P		5.006		\$89,800.00	\$130,100.00	\$219,900.00	\$4,825
Johnson	Mary A		1.160		\$74,300.00	\$92,300.00	\$166,600.00	\$3,655
Johnson	Stewart P & Deniece L		5.027		\$89,900.00	\$179,000.00	\$268,900.00	\$5,900
Johnston	William F & Nancy		5.200		\$90,000.00	\$108,100.00	\$198,100.00	\$4,346
Joly	Catherine K		43.500	\$3,838.00	\$78,000.00	\$118,500.00	\$200,338.00	\$4,395
Jones	James B & Camilla M Sanderson		159.000	\$15,454.00	\$66,600.00	\$160,600.00	\$242,654.00	\$5,324
Jones	James B & Camilla M Sanderson		40.000	\$3,251.00			\$3,251.00	\$71
Jones	James B & Camilla M Sanderson		23.000	\$1,869.00			\$1,869.00	\$41
Jordan	Paul E & Heidi M		3.200		\$101,100.00	\$154,800.00	\$255,900.00	\$5,614
Judd	Thomas W, III		18.700	\$3,757.00	\$95,800.00	\$158,400.00	\$257,957.00	\$5,660
Judkins	Jeremy J & Courtney		3.100		\$86,000.00	\$78,100.00	\$164,100.00	\$3,600
Kandoll	Dale & Laurie		2.680		\$85,100.00	\$290,700.00	\$375,800.00	\$8,245
Kantner	Bruce & Barbara, Trustees of the Bruce J Kantner Rev Trust		39.350	\$8,771.00	\$74,000.00	\$227,200.00	\$309,971.00	\$6,801
Kantner	Bruce & Barbara, Trustees of the Bruce J Kantner Rev Trust		75.381	\$17,496.00	\$115,000.00	\$434,000.00	\$566,496.00	\$12,429
Kantner	Bruce & Barbara, Trustees of the Bruce J Kantner Rev Trust		125.000	\$12,227.00			\$12,227.00	\$268
Kantner	Bruce & Barbara, Trustees of the Bruce J Kantner Rev Trust		1.800		\$68,000.00	\$129,300.00	\$197,300.00	\$4,329
Karl	Isobel D, Trustee Isobel D Karl Rev Trust		4.250	\$448.00			\$448.00	\$10
Karl	Isobel D, Trustee Isobel D Karl Rev Trust		21.250	\$2,238.00			\$2,238.00	\$49
Karl	Isobel D, Trustee Isobel D Karl Rev Trust		9.500	\$895.00	\$81,400.00	\$107,400.00	\$189,695.00	\$4,162

Katz	Michael F, Trustee Michael F Katz Rev Trust	3.090	\$86,000.00	\$93,600.00	\$179,600.00	\$3,940
Kelley	Shannon S & Arthur J	5.200	\$82,400.00	\$229,800.00	\$312,200.00	\$6,850
Kelling	Wayne L & Mary Ann	3.001	\$74,100.00	\$83,600.00	\$157,700.00	\$3,360
Kenney	Dale L & Sheryl A	3.150	\$86,400.00	\$86,900.00	\$173,300.00	\$3,802
Keuper	Richard V & Joanne A	3.050	\$85,900.00	\$212,800.00	\$298,700.00	\$6,453
Kieley	John & Constance C	256.050	\$28,899.00	\$974,400.00	\$1,101,599.00	\$24,169
Kiely	Susan	12.167	\$1,652.00	\$180,900.00	\$256,552.00	\$5,629
Kiely	Susan	5.210	\$2,150.00	\$24,600.00	\$27,150.00	\$596
Kinnunen	Paul W	3.680	\$79,400.00	\$152,900.00	\$232,300.00	\$5,097
Kodiak	Deborah E & Gene C Faxon	1.300	\$82,100.00	\$139,300.00	\$221,400.00	\$4,858
Kofstad	Brittany L	3.000	\$78,000.00	\$143,200.00	\$221,200.00	\$4,853
Korek	Michael & Deborah W	5.050	\$101,600.00	\$217,500.00	\$319,100.00	\$7,001
Koster	James T & Kathleen	5.200	\$90,200.00	\$128,100.00	\$218,300.00	\$4,790
Kraemer	Donald A & Diane A	3.485	\$79,000.00	\$145,200.00	\$224,200.00	\$4,919
Krahenbuhl	Dorothy A & Frank A	16.660	\$167,900.00	\$113,200.00	\$281,100.00	\$6,167
Krapf	Thomas	8.250	\$88,500.00	\$29,500.00	\$118,000.00	\$2,589
Kullgren	Brian & Joyce, Trustee Brian & Joyce Kullgren Family Trust	11.050	\$847.00	\$209,800.00	\$292,047.00	\$6,308
Kullgren	Brian & Joyce	3.050	\$18,700.00		\$18,995.00	\$417
Kullgren	Brian & Joyce	6.628	\$698.00		\$698.00	\$15
Kullgren	Brian & Joyce	3.047	\$321.00		\$321.00	\$7
Kullgren	Brian & Joyce	3.048	\$321.00		\$321.00	\$7
Kullgren	Bruce H, Sr	9.540	\$48,700.00		\$48,700.00	\$1,068
Kullgren	Bruce H, Sr & Sheila S	5.286	\$152.00		\$152.00	\$3
Kullgren	Bruce H, Sr & Sheila S	8.990	\$573.00	\$173,000.00	\$252,473.00	\$5,539
Kullgren	Bruce H, Sr & Sheila S	3.000	\$78,000.00	\$34,000.00	\$112,000.00	\$2,457
Kullgren	Brian & Joyce, Trustee Brian & Joyce Kullgren Family Trust	11.300	\$3,261.00	\$93,300.00	\$169,961.00	\$3,729
Kumatsu Gumi, LTD		7.780	\$7,800.00		\$7,800.00	\$171
Kumatsu Gumi, LTD		21.000	\$2,212.00		\$2,212.00	\$49
LaBelle	Jennifer L & Jeffrey A	3.040	\$85,900.00	\$201,800.00	\$287,700.00	\$6,312
Lacy	James V	5.400	\$90,600.00	\$521,900.00	\$612,500.00	\$13,438

LAST NAME	FIRST NAME	VETERAN'S CREDIT	ACREAGE	CU VALUE	LAND VALUE	BLDG VALUE	TOTAL VALUE	GROSS TAX
Lajoie	James A & Joan E	\$100.00	4.200		\$86,700.00	\$30,400.00	\$117,100.00	\$2,469
Lamb	Anne S, Trustee Loy Lamb & Anne Lamb Joint Living Trust		3.050		\$85,900.00	\$187,800.00	\$273,700.00	\$6,005
Lang	Thomas & Deberah		2.200		\$76,400.00	\$113,100.00	\$189,500.00	\$4,158
Langille	Paul F & Risa A Swanson		1.000		\$81,400.00	\$181,000.00	\$262,400.00	\$5,757
La Pree	Robert G, Patricia L & (PRD Open Space)		16.781	\$1,768.00	\$0.00	\$0.00	\$1,768.00	\$39
Laurel Pastures			3.927		\$0.00	\$0.00	\$0.00	\$0
Laycock	Barron T		3.006		\$78,000.00	\$137,800.00	\$215,800.00	\$4,735
Lazzaro	Michael & Jill		1.700		\$82,900.00	\$192,200.00	\$275,100.00	\$6,036
LeBel	Lilliane L		2.660		\$84,900.00	\$194,200.00	\$279,100.00	\$6,123
Lechner	Robert J		2.010		\$76,000.00	\$222,300.00	\$298,300.00	\$6,545
Lee	Raymond F & Patricia C, Trustees Raymond & Pat Lee Rev Trust		3.400		\$69,200.00		\$69,200.00	\$1,518
Lee	Raymond F & Patricia C, Trustees Raymond & Pat Lee Rev Trust		1.140	\$120.00			\$120.00	\$3
Lee	Raymond F & Patricia C, Trustees Raymond & Pat Lee Rev Trust		0.730	\$77.00			\$77.00	\$2
Lee	Raymond F & Patricia C, Trustees Raymond & Pat Lee Rev Trust	\$100.00	35.000	\$4,054.00	\$81,400.00	\$270,100.00	\$355,554.00	\$7,701
Leone	Micheal G & Lisa A		3.237		\$86,300.00	\$157,100.00	\$243,400.00	\$5,340
Leoutsacos	John S		3.742		\$79,500.00	\$155,500.00	\$235,000.00	\$5,156
Lepine	Robert	\$100.00	26.800	\$2,212.00	\$82,100.00	\$112,000.00	\$196,312.00	\$4,207
Levesque	Robert & Michelle Lee		2.320		\$76,600.00	\$204,100.00	\$280,700.00	\$6,159
Lewis	Donald & Bonnie, Trustees D & B Lewis Joint Rev Trust		3.160		\$86,100.00	\$158,700.00	\$244,800.00	\$5,371
Lewis	James & Margaret, Trustees J & M Lewis Rev Trust		12.100	\$5,091.00			\$5,091.00	\$112
Lewis	James & Margaret, Trustees J & M Lewis Rev Trust		11.800	\$1,053.00	\$104,000.00	\$384,200.00	\$489,253.00	\$10,734
Lewis	William E & Karen L		1.424		\$82,300.00	\$229,800.00	\$312,100.00	\$6,847
Lindsay	James F & Shelley A		3.007		\$78,000.00	\$127,800.00	\$205,800.00	\$4,515
Lithgow	Kevin E & Anna M		4.470		\$80,900.00	\$135,100.00	\$216,000.00	\$4,739
Little	Mary Ann		2.600		\$115,800.00	\$157,000.00	\$272,800.00	\$5,985

Lockwood	Camilla C	190.000	\$14,867.00				\$14,867.00	\$326
Lockwood	Camilla C	92.500	\$6,065.00		\$102,000.00	\$282,700.00	\$390,765.00	\$8,573
Long	Derek W & Denise M	5.500			\$81,800.00	\$176,000.00	\$233,400.00	\$5,121
Long	Lawrence R & Heather	4.450			\$80,900.00	\$272,100.00	\$256,900.00	\$5,636
Lorden	Kenneth A, Jr	162.620	\$15,808.00		\$81,400.00	\$68,300.00	\$369,308.00	\$8,103
Lorette	Francis A & Theresa E	3.100			\$78,200.00	\$76,400.00	\$146,500.00	\$3,214
Lorette	Mark F	3.060			\$78,100.00	\$133,500.00	\$154,500.00	\$3,390
Lorette	Robert & Carol	3.067			\$85,900.00	\$142,300.00	\$219,400.00	\$4,814
Lowe	Joseph H & Doris B, Trustees of the Lowe Family Rvcble Trust	5.500			\$79,100.00	\$137,900.00	\$221,400.00	\$4,858
Lowry	Timothy & Rose	2.170			\$76,300.00	\$131,100.00	\$214,200.00	\$4,700
Lunt	Anne D	7.000			\$115,300.00	\$74,200.00	\$246,400.00	\$5,406
M & R Temple Partnership LLC		4.135			\$80,300.00		\$154,500.00	\$3,390
MacDonald	Martha H	19.250	\$2,028.00		\$76,400.00	\$233,400.00	\$309,800.00	\$6,797
Mackensen	W&P, Trustees, C&C Mackensen Realty Trust	2.200			\$85,800.00	\$184,100.00	\$269,900.00	\$5,922
Maclaren	Stephen D & Patricia A	3.000			\$79,400.00	\$129,500.00	\$208,900.00	\$4,583
Mamczak	Jeffrey P & Carol L	3.700			\$76,000.00	\$192,700.00	\$272,555.00	\$5,880
Mamone	Vincent J, Jr	\$100.00	\$3,855.00			\$125,000.00	\$125,000.00	\$2,743
Manchester-Nashua Cellular Telephone								
Mandel	Kedon M & Lori A	2.224			\$76,500.00	\$152,700.00	\$229,200.00	\$5,029
Mann	Sally E	90.000	\$9,040.00		\$76,500.00	\$631,700.00	\$717,240.00	\$15,736
Marcellino	Cary S	3.800			\$78,800.00	\$176,700.00	\$255,500.00	\$5,606
Marчук	Dorothy M	2.500			\$91,000.00	\$95,900.00	\$186,900.00	\$4,001
Marчук	Dorothy M	6.000			\$89,200.00		\$89,200.00	\$1,957
Marчук	Phillip J	0.500			\$83,300.00	\$97,200.00	\$180,500.00	\$3,960
Marr	John E.A. Golden, Trustees, Marr Family Trust	14.760	\$1,626.00		\$75,400.00	\$22,100.00	\$99,126.00	\$2,175
Marsh	Donna	3.870			\$87,500.00	\$131,200.00	\$218,700.00	\$4,798
Martin	Eugene, Trustee Eugene Martin Rev Trust	5.100	\$527.00		\$59,400.00	\$8,600.00	\$68,527.00	\$1,503

LAST NAME	FIRST NAME	VETERAN'S CREDIT	ACREAGE	CU VALUE	LAND VALUE	BLDG VALUE	TOTAL VALUE	GROSS TAX
Martin	Eugene, Trustee Eugene Martin Rev Trust	\$100.00	6.022	\$527.00	\$81,400.00	\$218,600.00	\$300,527.00	\$6,494
Martin	Isabella, Trustee of the Isabella McDaniel Rvcble Trust		23.500	\$8,625.00	\$155,500.00	\$520,200.00	\$684,325.00	\$15,014
Martin	Mark A & Holly J		3.020		\$84,300.00	\$149,000.00	\$233,300.00	\$5,119
Martines	Frank W	\$100.00	6.100		\$92,000.00	\$153,600.00	\$245,600.00	\$5,288
Martz	David & Carol, Trustees, D.H. Martz Rev Trust		3.574		\$86,900.00	\$169,300.00	\$256,200.00	\$5,621
Mattson	Adam D & Sarah J		3.010		\$85,800.00	\$225,000.00	\$310,800.00	\$6,819
Maynard	Lillian P		2.500		\$88,600.00	\$243,200.00	\$331,800.00	\$7,280
Mazza	Chet W		1.000		\$72,000.00	\$15,400.00	\$87,400.00	\$1,918
Mazza	Herta S		2.500		\$77,000.00	\$25,500.00	\$102,500.00	\$2,249
Mazza	Herta S	\$100.00	50.480	\$6,998.00	\$159,400.00	\$369,200.00	\$535,598.00	\$11,651
Mazza	Herta S		30.000	\$8,141.00	\$97,500.00		\$105,641.00	\$2,318
Mazza	Herta S					\$15,400.00	\$15,400.00	\$338
Mazza	Herta S					\$26,600.00	\$26,600.00	\$584
Mazza	Phyllis W, Trustee, Phyllis W Mazza Rev Trust		3.114		\$70,400.00	\$53,300.00	\$123,700.00	\$2,714
McAdoo	Richard & Mary, Trustees, R & M McAdoo Trusts		13.840	\$2,414.00	\$74,000.00	\$180,900.00	\$257,314.00	\$5,645
McAdoo	Julia M & Timothy R Winship		44.750	\$6,264.00	\$74,000.00	\$197,500.00	\$277,764.00	\$6,094
McAdoo	Pamela D & William R Denton		26.520	\$2,794.00			\$2,794.00	\$61
McGettigan	Steven C & Niki A		3.400		\$82,300.00	\$182,500.00	\$264,800.00	\$5,810
McGettigan	Steven C & Niki A		3.150		\$77,500.00		\$77,500.00	\$1,700
McMullan	Joseph C & Susan W		42.700	\$10,385.00	\$131,400.00	\$343,500.00	\$485,285.00	\$10,647
McNeil	Jean M		3.240		\$86,300.00	\$134,100.00	\$220,400.00	\$4,836
McTague	James H & Holly P		3.810		\$79,600.00	\$217,900.00	\$297,500.00	\$6,527
Mellon	Victoria E		6.296		\$108,200.00	\$242,200.00	\$350,400.00	\$7,688
Mercaldo	Cynthia A & Matthew		3.060		\$78,100.00	\$206,900.00	\$285,000.00	\$6,253
Merrill	Jeffrey A		4.000		\$87,800.00	\$119,600.00	\$207,400.00	\$4,550
Michaud	Edward S & Joy E		3.100		\$78,200.00	\$56,500.00	\$134,700.00	\$2,955
Middleton	Julie B, Trustee		70.080	\$15,454.00			\$15,454.00	\$339
Middleton	Julie B, Trustee		39.000	\$9,049.00	\$83,900.00	\$314,100.00	\$407,049.00	\$8,931

Milford Waterfalls, LLC			1.500	\$75,000.00	\$96,900.00	\$171,900.00	\$3,771
Milkey	Andrew L & Cheryl Hackos		21.990	\$7,990.00	\$444,300.00	\$536,490.00	\$11,771
Miller	Chad R		3.303	\$78,600.00	\$121,400.00	\$200,000.00	\$4,388
Mindemann	Karl E & Wendy Hill		2.360	\$76,700.00	\$164,100.00	\$240,800.00	\$5,283
Moore	Catherine R		3.383	\$86,600.00	\$118,300.00	\$204,900.00	\$4,496
Moore	William & Nancy		27.000	\$5,041.00	\$329,400.00	\$432,941.00	\$9,499
Morehead	Deborah M & Mark R		7.899	\$79,500.00	\$309,000.00	\$79,500.00	\$1,744
Morris	Fredric H & Elizabeth B		5.007	\$111,700.00	\$185,500.00	\$272,500.00	\$9,230
Mowatt	Paul M & Judith A		3.600	\$85,800.00	\$249,300.00	\$335,100.00	\$7,352
Moylan	William D & Vicki L P		3.020	\$73,900.00	\$277,000.00	\$350,900.00	\$7,699
Mundae	Ult & Karen Tyne		4.832	\$88,400.00	\$382,000.00	\$473,558.00	\$10,390
Munk	Karine A & Torin Finser		20.500	\$3,158.00	\$230,000.00	\$315,800.00	\$6,929
Munsey	Kenneth L & Elizabeth M		3.030	\$69,000.00	\$225,600.00	\$280,100.00	\$6,145
Murray	Lisa E		3.730	\$87,000.00	\$260,100.00	\$347,400.00	\$7,622
Murray	Lisa G		3.600	\$83,300.00	\$185,200.00	\$268,500.00	\$5,691
Muskavitch	Vinson J & Teri S		3.736	\$103,100.00	\$232,100.00	\$335,200.00	\$7,354
Myrick	C & B, Co-Trustees, Carolyn E Myrick Rev Trust		5.800	\$78,100.00	\$89,400.00	\$167,500.00	\$3,675
N.A.P. Hospitality, LLC	Helen A & Robert J		5.003	\$86,300.00	\$132,300.00	\$218,600.00	\$3,996
Nee	Steven R & Debra M McClure		3.269	\$78,000.00	\$126,400.00	\$204,400.00	\$4,385
Neilon	Robert, Trustee, Robert H Netto Trust		3.000	\$1,899.00		\$1,899.00	\$42
Netto			34.500	\$3,845.00		\$3,845.00	\$84
New England Forestry Foundation	David & Jean, Trustees, David M Nichols Rev Trust		36.500	\$433.00	\$213,200.00	\$295,053.00	\$10
Nichols	Gary R & Constance A Rinaldo		5.700	\$453.00	\$241,200.00	\$317,800.00	\$6,473
Neilsen	Gary R & Constance A Rinaldo		5.300	\$76,600.00	\$112,200.00	\$190,400.00	\$4,177
Neilsen	Glenn W & Sheryl A		2.320	\$82,000.00	\$153,300.00	\$235,300.00	\$5,162
Nikitin	Maksym E & Maryna V Gurova		3.100				
Norris	Nancy S		5.000				

LAST NAME	FIRST NAME	VETERAN'S CREDIT	ACREAGE	CU VALUE	LAND VALUE	BLDG VALUE	TOTAL VALUE	GROSS TAX
North Pack Lodge			197.000	\$5,904.00	\$66,600.00	\$54,600.00	\$127,104.00	\$2,789
Northrup	William R & Lisa A		4.550		\$83,600.00	\$163,600.00	\$247,200.00	\$5,424
Northwestern Resources, Inc			23.650		\$87,200.00		\$87,200.00	\$1,913
Nutting	Glen		7.320		\$94,000.00	\$159,600.00	\$253,600.00	\$5,564
Nutting	Roger N, Jr & Joan L	\$100.00	3.500		\$79,000.00	\$172,000.00	\$251,000.00	\$5,407
Nutting	Roger N & Mary L		7.750	\$816.00			\$816.00	\$18
Nutting	Roger N & Mary L	\$100.00	4.000	\$316.00	\$74,000.00	\$140,000.00	\$214,316.00	\$4,602
Olivio	Nicholas & Melissa		3.070		\$85,900.00	\$90,800.00	\$176,700.00	\$3,877
Orlandella	Vicente P & Cynthia G		4.100		\$80,200.00	\$282,900.00	\$363,100.00	\$7,966
Ostrem	Travis		5.333		\$90,500.00	\$177,500.00	\$268,000.00	\$5,880
Oxman	Allan G & Susan B		4.940	\$160.00			\$160.00	\$4
Oxman	Allan G & Susan B		11.010	\$357.00			\$357.00	\$8
Oxman	Allan G & Susan B		11.040	\$358.00			\$358.00	\$8
Oxman	Allan G & Susan B		11.010	\$593.00	\$81,400.00	\$265,000.00	\$346,993.00	\$7,613
P & H Development, LLC			3.699		\$70,000.00		\$70,000.00	\$1,536
PSNH Tax Accounting					\$2,604,000.00		\$2,604,000.00	\$57,132
Patulis	Mark		1.300		\$74,600.00	\$340,800.00	\$415,400.00	\$9,114
Paradise	Jeffrey & Trisha		3.080		\$74,300.00	\$142,800.00	\$217,100.00	\$4,763
Parker	Robert A & Helen		3.060		\$85,900.00	\$193,100.00	\$279,000.00	\$6,121
Parslow	Richard C & Amy E		5.200		\$82,400.00	\$161,600.00	\$244,000.00	\$5,333
Pascu	Colleen & Sean Radcliffe		3.677		\$81,900.00	\$168,100.00	\$250,000.00	\$5,485
Payson	Laura R		6.000		\$105,800.00		\$105,800.00	\$2,321
Pearson	Jerry & Evelyn B	\$100.00	3.000		\$78,000.00	\$83,300.00	\$161,300.00	\$3,439
Pearson	Jerry & Evelyn B		3.233		\$70,700.00		\$70,700.00	\$1,551
Pearson	Jon		3.370		\$86,500.00	\$69,200.00	\$155,700.00	\$3,416
Pendleton	Arthur L & Mary A	\$100.00	3.250		\$78,500.00	\$28,800.00	\$107,300.00	\$2,254
Perreault	Richard J & Tina L		3.100		\$86,000.00	\$110,700.00	\$196,700.00	\$4,316
Peterson	Nonvell L & Margaret		2.934		\$97,300.00	\$130,100.00	\$227,400.00	\$4,989

Petro	Theodore & Maureen E, Co-Trustees Petro Family Trust	\$100.00	3.000			\$78,000.00	\$214,000.00	\$292,000.00	\$6,306
Pickman	Allan L & Robin M Downes		7.300			\$109,800.00	\$101,500.00	\$211,300.00	\$4,636
Picone	Alan G & Rose M		6.571			\$77,000.00		\$77,000.00	\$1,689
Picone	Alan G & Rose M		43.364	\$4,202.00		\$72,200.00	\$730,400.00	\$806,802.00	\$17,701
Picone	Rose M		12.563	\$1,218.00		\$76,500.00	\$344,300.00	\$422,018.00	\$9,259
Pierce	John L & Susan Q		11.000	\$4,208.00		\$86,500.00	\$329,300.00	\$420,008.00	\$9,215
Plourde	Carl K & Kathleen A, Co-Trustees of the C & K Plourde Rvc Trst	\$100.00	5.068			\$89,900.00	\$192,600.00	\$282,500.00	\$6,098
Posteraro	Anthony F & Catherine C		5.001			\$101,600.00	\$75,000.00	\$176,600.00	\$3,875
Pouliot	Rachel T & Raymond A		3.475			\$79,000.00	\$222,600.00	\$301,600.00	\$6,617
Pratt	Heather		23.500	\$943.00		\$500.00	\$1,200.00	\$2,643.00	\$58
Pratt	Heather		22.000	\$572.00				\$572.00	\$13
Pratt	Heather		175.000	\$8,920.00		\$85,800.00	\$394,200.00	\$488,920.00	\$10,727
Preston	Elizabeth F		43.000	\$4,530.00				\$4,530.00	\$99
Price	Robert G & Camilla R		0.500			\$70,000.00	\$82,900.00	\$152,900.00	\$3,355
Pulos	Ronald A		3.000			\$78,000.00	\$184,800.00	\$262,800.00	\$5,766
Quinn	James A	\$100.00	11.500	\$1,106.00		\$74,000.00	\$76,700.00	\$151,806.00	\$3,231
Quinn	Maureen A		3.120			\$86,000.00	\$310,900.00	\$396,900.00	\$8,708
Quinn	Paul C & Donna M	\$100.00	19.800	\$2,039.00		\$74,000.00	\$114,200.00	\$190,239.00	\$4,074
Quinn	Paul C		72.250	\$7,339.00				\$7,339.00	\$161
Quinn	Kenneth & Susan, Trustee, K & S Quinn Rev Trust		53.735	\$5,458.00				\$5,458.00	\$120
Quinn	Kenneth & Susan, Trustee, K & S Quinn Rev Trust	\$100.00	3.500			\$67,700.00	\$100,000.00	\$167,700.00	\$3,579
Quinn	Ruth E, Trustee, Ruth E Quinn Rev Trust	\$100.00	3.750			\$74,500.00	\$113,500.00	\$188,000.00	\$4,025
Quinn	Ruth E, Trustee, Ruth E Quinn Rev Trust						\$7,800.00	\$7,800.00	\$171
Raposa	Mark & Timothy Knight, Trustees, Raposa Rev Trust		3.750			\$83,800.00	\$270,900.00	\$354,700.00	\$7,782
Ray	Susan & Scott R Allen		2.840			\$84,900.00	\$79,800.00	\$164,700.00	\$3,614
Re	Charles P & Sharon		17.595	\$1,643.00		\$76,000.00	\$556,100.00	\$633,743.00	\$13,904
Re	Charles P & Sharon		32.100	\$3,053.00		\$75,000.00	\$336,200.00	\$414,253.00	\$9,089
Redding	Richard B & Kerry L McDonald		25.000	\$3,211.00		\$83,600.00	\$326,600.00	\$413,411.00	\$9,070

LAST NAME	FIRST NAME	VETERAN'S CREDIT	ACREAGE	CU VALUE	LAND VALUE	BLDG VALUE	TOTAL VALUE	GROSS TAX
Rees	Diane & Harvey C Scobie		1.250		\$74,500.00	\$102,200.00	\$176,700.00	\$3,877
Repak	Annette L., Trustee, Annette L Repak Rev Trust	\$100.00	5.500		\$90,800.00	\$251,400.00	\$342,200.00	\$7,408
Rheame	Lester & Jennifer A	\$100.00	8.140		\$105,200.00	\$155,000.00	\$260,200.00	\$5,609
Ricci	Jean Nigro & Carol Lucyniak		30.000	\$6,314.00			\$6,314.00	\$139
Ricci	Jean Nigro & Carol Lucyniak		0.760		\$72,100.00	\$119,700.00	\$191,800.00	\$4,208
Richards	Gayle A		3.807		\$79,600.00	\$271,700.00	\$351,300.00	\$7,708
Richardson	Mabel C		9.800		\$141,400.00		\$141,400.00	\$3,102
Riddle	James & Karen		3.740		\$79,500.00	\$168,900.00	\$248,400.00	\$5,450
Riva	Carlos & Diane		5.067		\$101,700.00	\$75,000.00	\$176,700.00	\$3,877
Rivard	Gerard & Rita, Trustees, G & R Irrev Trust		2.820		\$77,600.00	\$166,500.00	\$244,100.00	\$5,356
Robbins	Margaret E		20.152	\$1,712.00	\$182,200.00	\$117,500.00	\$301,412.00	\$6,613
Robidoux	Gregory J & Christine E		13.000	\$1,514.00	\$85,800.00	\$453,900.00	\$541,214.00	\$11,874
Rolfe	John T & Mary Anne		2.389		\$80,200.00	\$205,200.00	\$285,400.00	\$6,262
Rosen	David L, Trustee of the David L Rosen Rvcbl Trust		5.800		\$91,400.00	\$160,800.00	\$252,200.00	\$5,533
Rosenberg	Gerald L	\$100.00	5.150		\$90,100.00	\$148,600.00	\$238,700.00	\$5,137
Rothbard	Robert & Elizabeth		5.162		\$108,100.00	\$75,000.00	\$183,100.00	\$4,017
Rousseau,	Carl J, Jr		5.500		\$83,000.00	\$99,300.00	\$182,300.00	\$4,000
Rousseau	Thomas M & Tanya B		0.800		\$79,600.00	\$112,900.00	\$192,500.00	\$4,223
Runge	Ruth H, Trustee, Ruth H Runge Rev Trust	\$100.00	2.750		\$77,500.00	\$106,300.00	\$183,800.00	\$3,933
Ruppel	George F, Jr & Michelle A Urban		3.180		\$86,200.00	\$229,200.00	\$315,400.00	\$6,920
Russell	William E		17.000		\$16,200.00		\$16,200.00	\$355
Saenger	Walter H & Patricia E	\$100.00	3.343		\$86,500.00	\$163,900.00	\$250,400.00	\$5,394
Salera	Marcia, Trustee, Marcia Salera Rev Trust		38.690	\$6,178.00	\$81,400.00	\$298,600.00	\$386,178.00	\$8,473
Salera	Pamela T		11.180	\$800.00	\$73,300.00	\$265,700.00	\$339,800.00	\$7,455
Salisbury	Lawrence & Mark A		2.800	\$1,178.00			\$1,178.00	\$26
Salisbury	Lawrence & Mark A		8.750	\$1,540.00	\$76,900.00	\$23,400.00	\$101,840.00	\$2,234
Satzberg	Kenneth & Elizabeth		4.368		\$80,700.00	\$228,200.00	\$308,900.00	\$6,777

Sargent	Ann	63,000	\$6,399.00	\$6,399.00	\$6,399.00	\$140
Sargent	Ann	5,640	\$594.00		\$594.00	\$13
Sargent	Ann	11,120	\$3,779.00	\$87,700.00	\$249,600.00	\$7,483
Sartell	Telford B & Felicia	12,500	\$3,997.00		\$3,997.00	\$88
Sartell	Telford B & Felicia	13,750	\$3,037.00	\$74,000.00	\$278,900.00	\$7,809
SBA Towers II LLC					\$100,000.00	\$2,194
Schaefer	Martha A	6,800		\$85,600.00	\$216,300.00	\$6,624
Scharnett	Barry & Loretta A	3,230		\$77,300.00	\$272,700.00	\$7,679
Schmidlein	Colleen & Moira Bell, Co-Trustees Daley Family Irrvcble Trst	1,500		\$75,000.00	\$89,800.00	\$3,616
Scholl	Gary W & Mary M	\$100.00	5,100	\$93,900.00	\$311,400.00	\$8,792
Schubert	Mary E	\$100.00	1,004	\$81,400.00	\$101,400.00	\$3,911
Schulte	Elaine P	3,500		\$98,500.00	\$143,100.00	\$5,301
Scott	Martha M	7,000	\$737.00		\$737.00	\$16
Scott	Martha M	19,740	\$2,944.00		\$1,800.00	\$104
Scott	Martha M	6,500	\$527.00	\$102,500.00	\$458,000.00	\$12,309
Scott	Martha M	38,250	\$6,310.00	\$1,100.00	\$38,300.00	\$1,003
Sell	Thomas S & Kimberly E	3,090		\$86,000.00	\$178,400.00	\$5,801
Seppanen	Timothy V & Karin L	3,000		\$81,900.00	\$246,600.00	\$7,207
Shea	Michael J	3,010		\$78,000.00	\$195,100.00	\$5,992
Sheldon	Dennis a & June M	4,560		\$81,100.00	\$187,200.00	\$5,787
Shepard	Robert & Charlotte	26,500	\$2,233.00		\$2,233.00	\$49
Guy	Dorothea F & John A Parker	3,100		\$84,500.00	\$204,100.00	\$6,332
Shields	Michael & Lara	4,460		\$77,900.00	\$254,000.00	\$7,282
Silvestro	Richard & Patricia, Trustees R&P Silvestro Jnt Revcble Trst	7,600		\$95,000.00	\$148,400.00	\$5,340
Sirois	Josh E & Tara T	0,500		\$70,000.00	\$91,900.00	\$3,552
Smith	S & L Gadbois, Trustees, Smith & Gadbois Rev Trust	3,091		\$86,000.00	\$172,900.00	\$5,680
Society for the Protection of NH Forests		164,000	\$12,672.00			\$278
Sones	Angela T & Jeffrey W	3,370		\$86,500.00	\$169,400.00	\$5,614
Sorensen	Anitra	22,000	\$1,264.00	\$85,200.00	\$304,900.00	\$8,587

LAST NAME	FIRST NAME	VETERAN'S CREDIT	ACREAGE	CU VALUE	LAND VALUE	BLDG VALUE	TOTAL VALUE	GROSS TAX
Spears	David A & Heidi I		3.260		\$86,300.00	\$146,800.00	\$233,100.00	\$5,114
St-Amand	Alex W & Katherine M		3.290		\$86,400.00	\$227,500.00	\$313,900.00	\$6,887
Staplefield	Eric S		1.466		\$59,900.00		\$59,900.00	\$1,314
Stark	Terry J & Debra A		1.800		\$74,000.00	\$96,200.00	\$170,200.00	\$3,734
State of NH-DES	Water Resources Division		232.500		\$79,200.00		\$79,200.00	
State of NH-DES	Water Resources Division		56.500		\$279,400.00		\$279,400.00	
State of NH-DES	Water Resources Division		10.240		\$65,100.00		\$65,100.00	
State of NH-DOT	Highway Maintenance District 4		1.500		\$112,400.00		\$112,400.00	
State of NH-DOT	Highway Maintenance District 4		1.500		\$67,500.00		\$67,500.00	
State of NH-DRED			5.000		\$5,000.00		\$5,000.00	
State of NH-DRED			166.090		\$304,280.00		\$304,280.00	
State of NH-DRED			1.480		\$112,400.00		\$112,400.00	
State of NH-DRED			146.010		\$87,220.00		\$87,220.00	
State of NH-DRED			117.000		\$84,200.00		\$84,200.00	
State of NH-DRED			48.000		\$41,300.00		\$41,300.00	
State of NH-DRED			27.000		\$184,000.00		\$184,000.00	
State of NH-DRED			152.000		\$311,900.00		\$311,900.00	
Steelman	Barbara W		5.000		\$82,000.00	\$168,400.00	\$250,400.00	\$5,494
Stevens	Laura A		8.874		\$93,200.00	\$170,100.00	\$263,300.00	\$5,777
Stepping Stone Lodge			3.540		\$98,600.00	\$346,700.00	\$445,300.00	\$9,770
Sterling	Brian S & Karen J		9.100		\$89,600.00	\$157,000.00	\$246,600.00	\$5,410
Stewart	Suzette J & Carmen Ferrera		11.400	\$4,586.00	\$70,000.00	\$102,900.00	\$177,486.00	\$3,894
Stockwell	Bruce W & Lorraine		3.000		\$85,800.00	\$162,800.00	\$248,600.00	\$5,454
Stolz	George & Nancy		5.004		\$111,700.00	\$397,300.00	\$509,000.00	\$11,167
Stonegate Farm, LLC (Open Space)			51.790		\$0.00		\$0.00	\$0
Sullivan	K & M.A., Trustees, K & M.A. Sullivan Rev Trusts		5.479	\$314.00	\$61,600.00	\$51,300.00	\$113,214.00	\$2,484
Sullivan	K & M.A., Trustees, K & M.A. Sullivan Rev Trusts		41.750	\$4,398.00			\$4,398.00	\$96
Sullivan	Eric T & Rachael E Barnard		3.000		\$78,000.00	\$94,000.00	\$172,000.00	\$3,774
Sullivan	Kenneth J & Mary Ann		5.047		\$101,700.00	\$75,000.00	\$176,700.00	\$3,877

Sullivan	Kenneth J & Mary Ann	5.176	\$108,300.00	\$374,900.00	\$483,200.00	\$10,601
Sullivan	Marie C & John M	3.710	\$77,600.00	\$244,900.00	\$322,500.00	\$7,076
Sullivan	Michael K & Christine	4.280	\$88,400.00	\$257,300.00	\$345,700.00	\$7,585
Sumner	Clifford J. & Lisa H. Lazarou	3.100	\$78,200.00	\$174,700.00	\$252,900.00	\$5,549
Swain	James F & Nancy L	3.137	\$78,300.00	\$169,800.00	\$248,100.00	\$5,343
Swindell	Keith A & Marilee P	5.000	\$82,000.00	\$148,900.00	\$230,900.00	\$5,066
Sylvian	David & Ingrid	7.002	\$84,400.00	\$447,000.00	\$531,400.00	\$11,659
Tamposi	Meredith	90.000	\$7,825.00		\$7,825.00	\$172
Tamposi	Meredith	76.000	\$15,395.00	\$798,300.00	\$924,495.00	\$20,283
Tamposi	Meredith	3.700	\$390.00		\$390.00	\$9
Tamposi	Meredith	6.200	\$653.00		\$653.00	\$14
Tamposi	Meredith	8.800	\$874.00		\$2,374.00	\$52
Tanguay	Michael W & Ann Marie R	4.400	\$80,800.00	\$149,200.00	\$230,000.00	\$5,046
Tate	Lisa M	3.000	\$85,800.00	\$156,700.00	\$242,500.00	\$5,320
Taylor	David M & Linda Z	3.300	\$86,400.00	\$156,700.00	\$243,100.00	\$5,334
TDS				\$55,800.00	\$55,800.00	\$1,224
Teixeira	Jorge & Judith R	6.810	\$114,000.00	\$129,300.00	\$243,300.00	\$5,338
Temple Congregational Church		3.340	\$86,300.00	\$191,300.00	\$277,600.00	
Temple Congregational Church		0.380	\$83,500.00	\$461,900.00	\$545,400.00	
Temple Historical Society		1.700	\$1,700.00		\$1,700.00	
Temple Historical Society				\$65,200.00	\$65,200.00	
The Brooke Estates Home Owners Association (Open Space)		23.476	\$0.00		\$0.00	\$0
The Brooke Estates Home Owners Association (Open Space)		0.850	\$0.00		\$0.00	\$0

LAST NAME	FIRST NAME	VETERAN'S CREDIT	ACREAGE	CU VALUE	LAND VALUE	BLDG VALUE	TOTAL VALUE	GROSS TAX
The Lukas Foundation			62.310	\$4,304.00	\$235,400.00	\$488,247.00	\$727,951.00	\$15,971
The Nature Conservancy			426.290	\$33,357.00			\$33,357.00	\$732
The Nature Conservancy			6.700	\$524.00			\$524.00	\$11
Thibodeau	Arnold P & Jean E		1.520		\$75,000.00	\$172,700.00	\$247,700.00	\$5,435
Thibodeau	Michael A & Heidi J	\$100.00	3.700		\$79,400.00	\$108,900.00	\$188,300.00	\$4,031
Thomas	James & Sydney		5.247	\$553.00			\$553.00	\$12
Thomas	James & Sydney		6.300	\$514.00	\$71,100.00	\$192,800.00	\$264,414.00	\$5,801
Thompson	Daniel W & Jaime		5.096		\$81,600.00	\$164,200.00	\$245,800.00	\$5,393
Thompson	Rodney A & Sasha D		3.010		\$85,800.00	\$184,400.00	\$270,200.00	\$5,928
Thorrngren	Peter E & Barbara		6.500		\$85,000.00	\$124,600.00	\$209,600.00	\$4,599
Tobin	Paul & Margaret		5.154		\$108,100.00	\$75,000.00	\$183,100.00	\$4,017
Tobin	Paul & Margaret		5.084		\$124,400.00	\$490,300.00	\$614,700.00	\$13,487
Torphy	Christine, Trustee of the Christine Torphy Rvcble Trust		8.400	\$1,967.00	\$74,000.00	\$422,900.00	\$498,867.00	\$10,945
Torphy	Christine, Trustee of the Christine Torphy Rvcble Trust		5.060	\$1,235.00	\$66,600.00		\$67,835.00	\$1,488
Town of Greenville			5.060		\$197,500.00	\$1,226,400.00	\$1,423,900.00	
Town of Temple			0.430		\$6,900.00		\$6,900.00	
Town of Temple			18.450		\$99,200.00		\$99,200.00	
Town of Temple			4.005		\$72,200.00		\$72,200.00	
Town of Temple			3.650		\$60,100.00		\$71,500.00	
Town of Temple			10.440		\$105,800.00		\$105,800.00	
Town of Temple			4.000		\$60,800.00		\$72,200.00	
Town of Temple			11.087		\$84,200.00		\$84,200.00	
Town of Temple			3.664		\$71,500.00		\$71,500.00	
Town of Temple			4.136		\$72,500.00		\$72,500.00	
Town of Temple			64.610		\$335,800.00		\$335,800.00	
Town of Temple			4.000		\$8,000.00		\$8,000.00	

Town of Temple			4.030	\$236,100.00	\$15,200.00	\$251,300.00
Town of Temple			2.200	\$167,600.00	\$676,300.00	\$843,900.00
Town of Temple			16.440	\$193,300.00	\$311,300.00	\$504,600.00
Town of Temple			1.350	\$67,200.00		\$67,200.00
Town of Temple			1.750	\$124,600.00		\$124,600.00
Town of Temple			1.000	\$162,800.00		\$162,800.00
Town of Temple			16.000	\$15,200.00		\$15,200.00
Town of Temple			46.000	\$224,600.00		\$224,600.00
Towne	Stephen		2.000	\$76,000.00	\$72,800.00	\$3,265
Treadwell	Robert, III, Trustee, Rev Trust of R. C. Treadwell, III		20.990	\$85,800.00	\$309,600.00	\$8,715
Treadwell	Robert, III, Trustee, Rev Trust of R. C. Treadwell, III		8.900	\$75,000.00	\$11,600.00	\$88,599.00
Treadwell	Robert, III, Trustee, Rev Trust of R. C. Treadwell, III		12.100	\$5,091.00		\$5,091.00
Treadwell	Robert, III, Trustee, Rev Trust of R. C. Treadwell, III		12.110	\$5,093.00		\$5,093.00
Troise	Joseph J & Valerie M		9.570	\$80,500.00	\$259,200.00	\$7,453
Trustee and Investors Co., Inc			66.000	\$6,952.00		\$153
Turini	Leo & Dorothy, Co-Trustees, Turini Family Trust of 2007	\$100.00	3.220	\$86,200.00	\$154,900.00	\$5,190
Tyler	Russell, Jr Rev Living Trust, J. Katherman Trustee		2.900	\$70,000.00		\$1,536
Tyler-Wall	James & Mary		3.280	\$86,400.00	\$294,100.00	\$380,500.00
Tyne	Aaron		4.770	\$81,500.00	\$136,000.00	\$217,500.00
U.S. Fish and Wildlife Service (Ntl Wildlife Refuge)			474.500	\$237,300.00		\$237,300.00
Van Dam	Jacobus & Rebecca		3.677	\$87,200.00	\$148,900.00	\$236,100.00
Vanderpoel	Joan		12.500	\$1,317.00		\$1,317.00
Vickery	Edward & Lorraine D		2.000	\$83,600.00	\$178,400.00	\$262,000.00
Viocal, LLC			31.500	\$5,630.00	\$1,496,500.00	\$2,236,530.00
Viocal, LLC			180.000	\$17,606.00		\$17,606.00
Viocal, LLC			140.700	\$14,190.00	\$77,800.00	\$313,990.00

LAST NAME	FIRST NAME	VETERAN'S CREDIT	ACREAGE	CU VALUE	LAND VALUE	BLDG VALUE	TOTAL VALUE	GROSS TAX
Vitello	Peter S, Jr & Tracy A (Fish Road PRD Open Space)		20.810		\$0.00		\$0.00	\$0
Vitello	Peter S, Jr & Tracy A		1.700		\$75,400.00	\$158,400.00	\$233,800.00	\$5,130
Voglino	Paula		11.100	\$1,695.00	\$73,400.00	\$228,500.00	\$303,595.00	\$6,661
Vonsneidern	Peter V C & Lorraine C		74.000	\$7,212.00	\$115,500.00	\$199,700.00	\$322,412.00	\$7,074
Vonsneidern	Peter V C & Lorraine C		51.000	\$5,161.00	\$68,400.00	\$11,900.00	\$85,461.00	\$1,875
Vonzabern	Bertram & Barbara		3.340		\$86,500.00	\$300,000.00	\$386,500.00	\$8,480
Vonzabern	Bertram & Barbara		14.700	\$1,369.00	\$89,200.00	\$289,200.00	\$379,769.00	\$8,332
Vonzabern	Bertram & Barbara		3.580		\$87,000.00	\$212,500.00	\$299,500.00	\$6,571
Vonzabern	Bertram & Barbara		16.790	\$11,769.00			\$11,769.00	\$39
Walker	Robert G		3.300		\$86,400.00	\$114,900.00	\$201,300.00	\$4,417
Walker	William B	\$100.00	92.000	\$7,395.00	\$66,600.00	\$103,200.00	\$177,195.00	\$3,788
Wasilewski	Lawrence J & Anna		4.300		\$80,600.00	\$133,700.00	\$214,300.00	\$4,702
Wasklweicz	Eric J & David R		3.000		\$78,000.00	\$6,500.00	\$84,500.00	\$1,854
Waterman	Philip & Margaret		6.000		\$98,100.00	\$165,200.00	\$263,300.00	\$5,777
Wegmueller	Hagen & Jeannine St. Cyr		13.100	\$2,021.00	\$72,400.00	\$205,100.00	\$279,521.00	\$6,133
Doyle	John M, Jr		8.739	\$3,255.00	\$81,400.00	\$239,800.00	\$324,455.00	\$7,119
Wesby	Meredith D & Suzanne D Schwaiger		55.300	\$5,104.00	\$200.00		\$5,304.00	\$116
Wesby	Meredith D & Suzanne D Schwaiger		18.760	\$1,463.00			\$1,463.00	\$32
West	Barry J, Trustee, Barry J West Rev Trust		68.200	\$7,020.00		\$2,300.00	\$9,320.00	\$204
West	Barry J, Trustee, Barry J West Rev Trust		5.980		\$96,500.00	\$240,800.00	\$337,300.00	\$7,400
Weston	Jennifer & Nathan		9.200	\$864.00	\$79,100.00	\$97,200.00	\$177,164.00	\$3,887
Weston	Jennifer & Nathan		3.400	\$358.00			\$358.00	\$8
Weston	Priscilla, Trustee, Priscilla Weston Rev Trust		12.366	\$2,227.00	\$79,800.00	\$298,700.00	\$380,727.00	\$8,353
Weston	Priscilla, Trustee, Priscilla Weston Rev Trust		27.241	\$4,038.00			\$4,038.00	\$89
Whalen	Willis R & Darlene		3.900		\$87,600.00	\$143,000.00	\$230,600.00	\$5,059
Wheeler	Priscilla, Trustee, Priscilla Wheeler Rev Trust		4.232		\$76,600.00	\$191,000.00	\$267,600.00	\$5,871

Whitcomb	Richard A	10.400	\$877.00					\$877.00	\$19
Whitcomb	Richard A	21.000	\$3,370.00	\$76,000.00	\$169,000.00			\$248,370.00	\$5,449
Whitcomb	Richard A	19.000	\$3,336.00					\$3,336.00	\$73
Whitcomb	Richard A	58.300	\$6,772.00					\$6,772.00	\$149
Whitcomb	Richard A	76.000	\$11,640.00	\$1,600.00	\$9,400.00			\$22,640.00	\$497
Whitcomb	Richard A	20.920	\$3,748.00	\$1,600.00				\$5,348.00	\$117
Whiting	Fairfield, Jr & Dorothy H	0.100	\$11.00					\$11.00	\$0
Whiting	Fairfield, Jr & Dorothy H	7.130	\$2,579.00	\$81,400.00	\$100.00			\$84,079.00	\$1,845
Whiting	Fairfield, Jr & Dorothy H	7.120	\$2,575.00	\$2,000.00	\$100.00			\$4,675.00	\$103
Whitman	Bruce	2.411		\$80,300.00	\$233,000.00			\$313,300.00	\$6,874
Wildcat Partnership		51.470	\$5,032.00					\$5,032.00	\$110
Wildes	William H & Shirley L	\$100.00	\$1,264.00	\$76,000.00	\$225,800.00			\$303,064.00	\$6,549
Wildes	William S & Sandra	13.197	\$1,074.00	\$78,000.00	\$228,000.00			\$307,074.00	\$6,737
Willard	Charles, Trustee, Charles Willard Rev Trust	0.820		\$72,600.00	\$26,000.00			\$98,600.00	\$2,163
Willard	Charles, Trustee, Charles Willard Rev Trust	10.000		\$135,800.00	\$132,900.00			\$268,700.00	\$5,895
Willard	Wm, Trustee, W Willard Rev Trust & George Willard	35.800	\$3,086.00					\$3,086.00	\$68
Willard	Wm, Trustee, W Willard Rev Trust & George Willard	3.230		\$66,800.00				\$66,800.00	\$1,466
Willard	Wm, Trustee, W Willard Rev Trust & George Willard	3.385		\$71,000.00				\$71,000.00	\$1,558
Willard	Wm, Trustee, W Willard Rev Trust & George Willard	83.900	\$8,522.00					\$8,522.00	\$187
Willard	Wm, Trustee, W Willard Rev Trust & George Willard	73.000	\$7,415.00		\$200.00			\$7,615.00	\$167
Willard	Wm, Trustee, W Willard Rev Trust & George Willard	7.900		\$84,400.00				\$84,400.00	\$1,852
Willard	Wm, Trustee, W Willard Rev Trust & George Willard	17.100	\$3,379.00					\$3,379.00	\$74
Willard	Bruce & Dawn	48.300	\$6,560.00	\$84,200.00				\$90,760.00	\$1,991
Willard	George & Susan	\$100.00		\$84,500.00	\$411,600.00			\$496,100.00	\$10,784

LAST NAME	FIRST NAME	VETERAN'S CREDIT	ACREAGE	CU VALUE	LAND VALUE	BLDG VALUE	TOTAL VALUE	GROSS TAX
Willard	George & Wm. Willard, Trustee, Wm Willard Rev Trust		26.000	\$8,731.00			\$8,731.00	\$192
Willard	George & Wm. Willard, Trustee, Wm Willard Rev Trust		50.000	\$10,194.00			\$10,194.00	\$224
Willard	George & Wm. Willard, Trustee, Wm Willard Rev Trust		22.600	\$2,381.00			\$2,381.00	\$52
Willard	George & Wm. Willard, Trustee, Wm Willard Rev Trust		5.004	\$2,105.00			\$2,105.00	\$46
Willard	George & Wm. Willard, Trustee, Wm Willard Rev Trust		3.950	\$1,241.00	\$74,000.00	\$45,900.00	\$121,141.00	\$2,658
Willard	George & Wm. Willard, Trustee, Wm Willard Rev Trust		0.110		\$100.00		\$100.00	\$2
Willett	Thomas & Elizabeth M		119.000	\$11,579.00	\$82,000.00	\$29,900.00	\$123,479.00	\$2,709
Wilson	Craig & Susan Schickel		40.500	\$3,758.00	\$77,300.00	\$269,000.00	\$350,058.00	\$7,680
Wilson	Frank B & Pauline T		17.200	\$1,107.00			\$1,107.00	\$24
Wilson	Lindsay & Sylvia		10.200		\$80,400.00	\$89,500.00	\$169,900.00	\$3,728
Winebrenner	Daryl G & Patricia L	\$200.00	4.716		\$81,400.00	\$234,900.00	\$316,300.00	\$6,740
Wing	Wendy Y		3.014		\$78,000.00	\$163,100.00	\$241,100.00	\$5,290
Wish	Seth A & Francesca J		3.080		\$86,000.00	\$187,100.00	\$273,100.00	\$5,992
Wolbers	Mary Jane, Trustee, Mary Jane Wolbers 1999 Rev Trust		12.750	\$1,343.00			\$1,343.00	\$29
Wolbers	Mary Jane, Trustee, Mary Jane Wolbers 1999 Rev Trust		5.360	\$1,834.00	\$74,000.00	\$190,800.00	\$266,634.00	\$5,850
Wolbers	Mary Jane, Trustee, Mary Jane Wolbers 1999 Rev Trust		5.100	\$1,725.00	\$74,000.00	\$155,200.00	\$230,925.00	\$5,066
Woodbury	Mary Jane, Trustee, Mary Jane Wolbers 1999 Rev Trust							
Woods	Travis & Laura		3.150		\$86,100.00	\$146,200.00	\$232,300.00	\$5,097
Woods	Nancy F, Trustee, Nancy F Woods Rev Trust	\$100.00	2.070		\$76,100.00	\$167,400.00	\$243,500.00	\$5,242
Wright	Randall N & Penny J Culliton		5.000		\$82,000.00	\$157,400.00	\$239,400.00	\$5,252
Yeaw	Gregory M & Michelle E		4.800		\$81,600.00	\$107,900.00	\$189,500.00	\$4,158
Young	Eleanor		5.440		\$82,900.00	\$131,100.00	\$214,000.00	\$4,595
Zahn	Peter M & Claudia M		3.000		\$80,500.00	\$250,300.00	\$330,800.00	\$7,258

Independent Auditor's Report 2010

To the Board of Selectmen
Town of Temple, New Hampshire

We have audited the accompanying financial statements of the governmental activities, each major fund, and the aggregate remaining fund information of the Town of Temple, New Hampshire, as of and for the year ended December 31, 2010 which collectively comprise the Town's basic financial statements as listed in the table of contents. These financial statements are the responsibility of the town of Temple's management. Our responsibility is to express an opinion on these financial statements based on our audit.

We conducted our audit in accordance with auditing standards generally accepted in the United States of America. Those standards require that we plan and perform the audit to obtain reasonable assurance about whether the financial statements are free of material misstatement. An audit includes examining, on a test basis, evidence supporting the amounts and disclosures in the financial statements. An audit also includes assessing the accounting principles used and significant estimates made by management, as well as evaluating the overall financial statement presentation. We believe that our audit provides a reasonable basis for our opinions.

In our opinion, the financial statements referred to above present fairly, in all material respects, the respective financial position of the governmental activities, each major fund, and the aggregate remaining fund information of the Town of Temple, as of December 31, 2010 and the respective changes in financial position thereof and the respective budgetary comparison for the General Fund for the year then ended in conformity with accounting principles generally accepted in the United States of America.

The management's discussion and analysis appearing on the following pages, is not a required part of the basic financial statements but is supplementary information required by accounting principles generally accepted in the United States of America. We have applied certain limited procedures, which consisted principally of inquiries of management regarding the methods of measurement and presentation of the required supplementary information. However, we did not audit the information and express no opinion on it.

Melanson, Heath + Company P.C.

Nashua, New Hampshire
June 1, 2011

NOTICE

If you own real estate lots that were involuntarily merged by municipal action, you may be able to have those lots restored to their pre-merger status.

Your property may qualify if two or more lots were merged for zoning, assessing, or taxation purposes and the merger occurred:

- During your ownership, without your consent; or
- Prior to your ownership, if no previous owner consented to the merger.

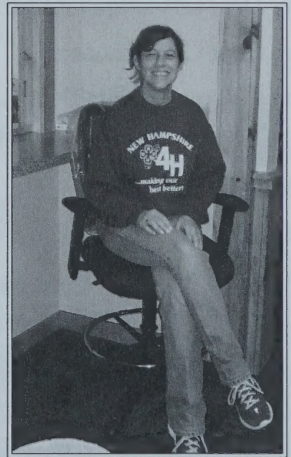
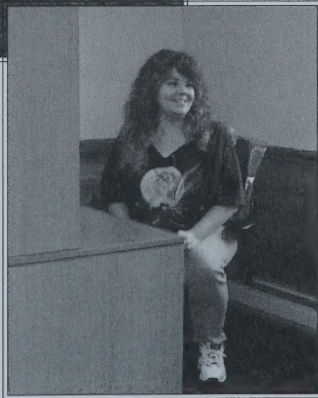
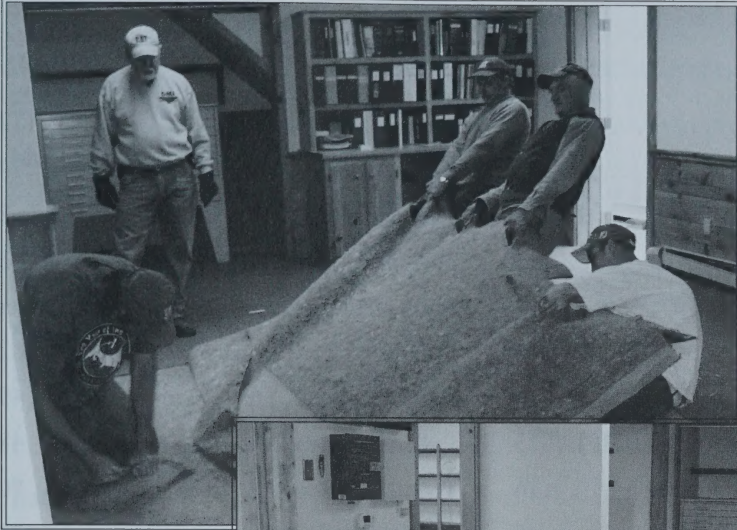
To restore your property to pre-merger status, you must:

- Make a request to the local governing body
- No later than December 31, 2016

Once restored:

- Your properties will once again become separate lots; however, they must still conform to applicable land use ordinances. Restoration does not cure non-conformity.

Read the full statute at [RSA 674:39-aa Restoration of Involuntarily Merged Lots](#).



Town Office Renovation -- Deb Harling

Temple Facts

EMERGENCIES - Ambulance, Fire or Police: call 911

Nearest Hospital - 924-7191

(Monadnock Community Hospital, Peterborough)

Population est.: 1,366 (2010 Census)

Registered Voters: 911

Land Area: 14,241 acres/22.3 square miles. Surface water: 185 acres

Elevation: Highest point - 2198' (subpeak near summit, Pack Monadnock)

Town Hall - 1060'

Lowest point - just over 800' (SE corner of township)

Latitude: 42° 48' N, Longitudes: 71° 51' W

(Approximate for Temple Center)

Normal annual precipitation: 37.23"

Normal temperature: January - 20.1°; July 69°F

Distance in miles to:	Boston 67	Keene 29	Nashua 23
	Concord 49	Manchester 29	Peterborough 8
	Fitchburg 18	Milford 12	

Voting Districts:

Second U.S. Congressional District

Fifth State Councilor District

Eleventh State Senatorial District

Forty Fifth State House of Representatives District

Third County Commissioner District



Mary Ann & Ken Sullivan



New Hampshire State Library
3 4677 00158378 5

