

Washington University School of Medicine

Digital Commons@Becker

2020-Current year OA Pubs

Open Access Publications

7-21-2022

Tumor microenvironment in pancreatic ductal adenocarcinoma: Implications in immunotherapy

Caitlyn Smith

Wei Zheng

Jixin Dong

Yaohong Wang

Jinping Lai

See next page for additional authors

Follow this and additional works at: https://digitalcommons.wustl.edu/oa_4

Authors

Caitlyn Smith, Wei Zheng, Jixin Dong, Yaohong Wang, Jinping Lai, Xiuli Liu, and Feng Yin

World Journal of *Gastroenterology*

World J Gastroenterol 2022 July 21; 28(27): 3282-3534



REVIEW

- 3282 Hepatitis B and circadian rhythm of the liver
Skrlec I, Talapko J
- 3297 Tumor microenvironment in pancreatic ductal adenocarcinoma: Implications in immunotherapy
Smith C, Zheng W, Dong J, Wang Y, Lai J, Liu X, Yin F
- 3314 Crosstalk between dietary patterns, obesity and nonalcoholic fatty liver disease
Ristic-Medic D, Bajerska J, Vucic V

MINIREVIEWS

- 3334 Application of intravoxel incoherent motion diffusion-weighted imaging in hepatocellular carcinoma
Zhou Y, Zheng J, Yang C, Peng J, Liu N, Yang L, Zhang XM
- 3346 Regulatory T cells and their associated factors in hepatocellular carcinoma development and therapy
Zhang CY, Liu S, Yang M
- 3359 Single-incision laparoscopic surgery to treat hepatopancreatobiliary cancer: A technical review
Chuang SH, Chuang SC
- 3370 Probiotics and postbiotics in colorectal cancer: Prevention and complementary therapy
Kvakova M, Kamlarova A, Stofilova J, Benetinova V, Bertkova I
- 3383 Interventional strategies in infected necrotizing pancreatitis: Indications, timing, and outcomes
Purschke B, Bolm L, Meyer MN, Sato H
- 3398 Artificial intelligence in liver ultrasound
Cao LL, Peng M, Xie X, Chen GQ, Huang SY, Wang JY, Jiang F, Cui XW, Dietrich CF
- 3410 Risk factors and diagnostic biomarkers for nonalcoholic fatty liver disease-associated hepatocellular carcinoma: Current evidence and future perspectives
Ueno M, Takeda H, Takai A, Seno H

ORIGINAL ARTICLE**Basic Study**

- 3422 Accumulation of poly (adenosine diphosphate-ribose) by sustained supply of calcium inducing mitochondrial stress in pancreatic cancer cells
Jeong KY, Sim JJ, Park M, Kim HM

- 3435 RING finger and WD repeat domain 3 regulates proliferation and metastasis through the Wnt/ β -catenin signalling pathways in hepatocellular carcinoma

Liang RP, Zhang XX, Zhao J, Lu QW, Zhu RT, Wang WJ, Li J, Bo K, Zhang CX, Sun YL

- 3455 Associations of gut microbiota with dyslipidemia based on sex differences in subjects from Northwestern China

Guo L, Wang YY, Wang JH, Zhao HP, Yu Y, Wang GD, Dai K, Yan YZ, Yang YJ, Lv J

Retrospective Cohort Study

- 3476 Prognostic significance of hemoglobin, albumin, lymphocyte, platelet in gastrointestinal stromal tumors: A propensity matched retrospective cohort study

Zhao Z, Yin XN, Wang J, Chen X, Cai ZL, Zhang B

Retrospective Study

- 3488 Contrast-enhanced ultrasound Liver Imaging Reporting and Data System: Lights and shadows in hepatocellular carcinoma and cholangiocellular carcinoma diagnosis

Vidili G, Arru M, Solinas G, Calvisi DF, Meloni P, Sauchella A, Turilli D, Fabio C, Cossu A, Madeddu G, Babudieri S, Zocco MA, Iannetti G, Di Lembo E, Delitala AP, Manetti R

- 3503 Novel index for the prediction of significant liver fibrosis and cirrhosis in chronic hepatitis B patients in China

Liao MJ, Li J, Dang W, Chen DB, Qin WY, Chen P, Zhao BG, Ren LY, Xu TF, Chen HS, Liao WJ

SYSTEMATIC REVIEWS

- 3514 Percutaneous transhepatic cholangiography *vs* endoscopic ultrasound-guided biliary drainage: A systematic review

Hassan Z, Gadour E

CASE REPORT

- 3524 Isolated gastric variceal bleeding related to non-cirrhotic portal hypertension following oxaliplatin-based chemotherapy: A case report

Zhang X, Gao YY, Song DZ, Qian BX

LETTER TO THE EDITOR

- 3532 Hepatitis B core-related antigen: Are we near a treatment endpoint?

Gupta T

ABOUT COVER

Editorial Board Member of *World Journal of Gastroenterology*, Govind K Makharia, MD, DM,DNB, Professor, Department of Gastroenterology and Human Nutrition, All India Institute of Medical Sciences, Ansari Nagar, New Delhi 110029, India. govindmakharia@aiims.edu

AIMS AND SCOPE

The primary aim of *World Journal of Gastroenterology* (WJG, *World J Gastroenterol*) is to provide scholars and readers from various fields of gastroenterology and hepatology with a platform to publish high-quality basic and clinical research articles and communicate their research findings online. WJG mainly publishes articles reporting research results and findings obtained in the field of gastroenterology and hepatology and covering a wide range of topics including gastroenterology, hepatology, gastrointestinal endoscopy, gastrointestinal surgery, gastrointestinal oncology, and pediatric gastroenterology.

INDEXING/ABSTRACTING

The WJG is now abstracted and indexed in Science Citation Index Expanded (SCIE, also known as SciSearch®), Current Contents/Clinical Medicine, Journal Citation Reports, Index Medicus, MEDLINE, PubMed, PubMed Central, Scopus, Reference Citation Analysis, China National Knowledge Infrastructure, China Science and Technology Journal Database, and Superstar Journals Database. The 2022 edition of Journal Citation Reports® cites the 2021 impact factor (IF) for WJG as 5.374; IF without journal self cites: 5.187; 5-year IF: 5.715; Journal Citation Indicator: 0.84; Ranking: 31 among 93 journals in gastroenterology and hepatology; and Quartile category: Q2. The WJG's CiteScore for 2021 is 8.1 and Scopus CiteScore rank 2021: Gastroenterology is 18/149.

RESPONSIBLE EDITORS FOR THIS ISSUE

Production Editor: Wen-Wen Qi; Production Department Director: Xiang Li; Editorial Office Director: Jia-Ru Fan.

NAME OF JOURNAL

World Journal of Gastroenterology

ISSN

ISSN 1007-9327 (print) ISSN 2219-2840 (online)

LAUNCH DATE

October 1, 1995

FREQUENCY

Weekly

EDITORS-IN-CHIEF

Andrzej S Tarnawski

EDITORIAL BOARD MEMBERS

<http://www.wjgnet.com/1007-9327/editorialboard.htm>

PUBLICATION DATE

July 21, 2022

COPYRIGHT

© 2022 Baishideng Publishing Group Inc

INSTRUCTIONS TO AUTHORS

<https://www.wjgnet.com/bpg/gerinfo/204>

GUIDELINES FOR ETHICS DOCUMENTS

<https://www.wjgnet.com/bpg/GerInfo/287>

GUIDELINES FOR NON-NATIVE SPEAKERS OF ENGLISH

<https://www.wjgnet.com/bpg/gerinfo/240>

PUBLICATION ETHICS

<https://www.wjgnet.com/bpg/GerInfo/288>

PUBLICATION MISCONDUCT

<https://www.wjgnet.com/bpg/gerinfo/208>

ARTICLE PROCESSING CHARGE

<https://www.wjgnet.com/bpg/gerinfo/242>

STEPS FOR SUBMITTING MANUSCRIPTS

<https://www.wjgnet.com/bpg/GerInfo/239>

ONLINE SUBMISSION

<https://www.f6publishing.com>

Tumor microenvironment in pancreatic ductal adenocarcinoma: Implications in immunotherapy

Caitlyn Smith, Wei Zheng, Jixin Dong, Yaohong Wang, Jinping Lai, Xiuli Liu, Feng Yin

Specialty type: Gastroenterology and hepatology

Provenance and peer review: Invited article; Externally peer reviewed.

Peer-review model: Single blind

Peer-review report's scientific quality classification

Grade A (Excellent): 0
Grade B (Very good): B
Grade C (Good): C, C
Grade D (Fair): 0
Grade E (Poor): 0

P-Reviewer: Plougmann JJ, Denmark; Tantau AI, Romania; Zhao CF, China

Received: January 16, 2022

Peer-review started: January 16, 2022

First decision: April 11, 2022

Revised: April 22, 2022

Accepted: June 19, 2022

Article in press: June 19, 2022

Published online: July 21, 2022



Caitlyn Smith, Department of Pathology and Anatomical Sciences, University of Missouri School of Medicine, Columbia, MO 65212, United States

Wei Zheng, Department of Pathology, Emory University School of Medicine, Atlanta, GA 30322, United States

Jixin Dong, Eppley Institute for Research in Cancer and Allied Diseases, Fred and Pamela Buffett Cancer Center, University of Nebraska Medical Center, Omaha, NE 68198, United States

Yaohong Wang, Department of Pathology, Microbiology and Immunology, Vanderbilt University Medical Center, Nashville, TN 37232, United States

Jinping Lai, Department of Pathology and Laboratory Medicine, Kaiser Permanente Sacramento Medical Center, Sacramento, CA 95825, United States

Xiuli Liu, Department of Pathology and Immunology, Washington University, St. Louis, MO 63110, United States

Feng Yin, Department of Pathology and Anatomical Sciences, University of Missouri, Columbia, MO 65212, United States

Corresponding author: Feng Yin, MD, PhD, Assistant Professor, Department of Pathology and Anatomical Sciences, University of Missouri, One Hospital Drive, MSB M263, Columbia, MO 65212, United States. fengyin@health.missouri.edu

Abstract

Pancreatic ductal adenocarcinoma is one of the most aggressive and lethal cancers. Surgical resection is the only curable treatment option, but it is available for only a small fraction of patients at the time of diagnosis. With current therapeutic regimens, the average 5-year survival rate is less than 10% in pancreatic cancer patients. Immunotherapy has emerged as one of the most promising treatment options for multiple solid tumors of advanced stage. However, its clinical efficacy is suboptimal in most clinical trials on pancreatic cancer. Current studies have suggested that the tumor microenvironment is likely the underlying barrier affecting immunotherapy drug efficacy in pancreatic cancer. In this review, we discuss the role of the tumor microenvironment in pancreatic cancer and the latest advances in immunotherapy on pancreatic cancer.

Key Words: Pancreatic ductal adenocarcinoma; Tumor microenvironment; Immunotherapy; Clinical trial; Chemotherapy; Treatment

©The Author(s) 2022. Published by Baishideng Publishing Group Inc. All rights reserved.

Core Tip: Despite advances in basic and translational research, pancreatic cancer remains one of the most lethal cancers. Recent breakthroughs in immunotherapy have revolutionized cancer therapy and have shown great potential to transform pancreatic cancer treatment. However, due to the barrier related to the tumor microenvironment, pancreatic cancer has shown inferior treatment outcomes toward various immunotherapy regimens. Further efforts, such as combinatory immunotherapy or molecular tumor subtyping, are warranted to overcome immunotherapy resistance in pancreatic cancer.

Citation: Smith C, Zheng W, Dong J, Wang Y, Lai J, Liu X, Yin F. Tumor microenvironment in pancreatic ductal adenocarcinoma: Implications in immunotherapy. *World J Gastroenterol* 2022; 28(27): 3297-3313

URL: <https://www.wjgnet.com/1007-9327/full/v28/i27/3297.htm>

DOI: <https://dx.doi.org/10.3748/wjg.v28.i27.3297>

INTRODUCTION

Pancreatic ductal adenocarcinoma (PDAC) develops in the exocrine compartment of the pancreas and accounts for approximately 90% of pancreatic malignancies, making it the most common pancreatic neoplasm. Due to the lack of early diagnosis and limited treatment response, PDAC remains a highly aggressive and lethal malignancy and is the fourth leading cause of cancer-related death worldwide[1]. Although there has been notable progress in understanding tumor biology and the development of novel therapeutic regimens, the average 5-year survival rate is still less than 5%-10% in PDAC patients [1,2]. The clinical manifestations of pancreatic cancers are generally nonspecific, including weight loss, abdominal pain, thromboembolic disease, and type 2 diabetes[3,4]. In approximately 60%-70% of PDAC cases, the tumor arises from the head of the pancreas and could present as pancreatitis and obstructive jaundice[5]. Tumors of the pancreatic body and tail frequently have a poor prognosis due to their late presentation and associated advanced tumor stage[6].

The standard of care for resectable PDAC is surgical resection followed by adjuvant chemotherapy. Surgical resection remains the only curative therapy, but it is available for merely 10%-20% of patients at the time of diagnosis. Moreover, even with curative surgical resection, local recurrence and distal metastasis of PDAC are still quite common[7]. Advanced-stage PDAC is routinely treated with neoadjuvant chemotherapy, and the current first-line therapy regimens include gemcitabine, gemcitabine plus nab-paclitaxel, and FOLFIRINOX (the combination of oxaliplatin, leucovorin, fluorouracil, and irinotecan) [8]. Recently, the poly(adenosine diphosphate-ribose) polymerase inhibitor (PARPi) olaparib (Lynparza) has been approved for patients with germline BRCA-mutated metastatic pancreatic cancer[9]. The development of these neoadjuvant chemotherapy regimens has greatly improved patient survival and quality of life. However, a significant portion of PDAC eventually relapses despite surgical resection and/or neoadjuvant chemotherapy and leads to patient death[10,11].

The difficulties in treating pancreatic cancer lie at the cellular and genetic levels[12]. Mutational changes in pancreatic tumors lead to gene instability, tumor growth, and resistance to treatments[13]. In addition to the characteristic molecular landmarks, including oncogenic *KRAS* mutation and inactivation of the tumor suppressor genes *CDKN2A/P16*, *TP53*, and *SMAD4*, PDAC also frequently harbors mutations involving diverse cell signaling pathways[14]. The molecular heterogeneity likely accounts for its drug resistance in chemotherapy[15]. In addition, pancreatic cancer stem cells, accounting for approximately 1% of all pancreatic cancer cells, have the capacity for self-renewal and exhibit chemoresistance properties[16].

Immunotherapy has emerged as one of the most promising treatment options for advanced solid tumors, including lung, kidney, bladder, liver, and colorectal cancers[17]. Unfortunately, PDAC is notoriously resistant to immunotherapy, and thus far, most phase I/II clinical trials on PDAC have failed to demonstrate the desirable clinical efficacy of immunotherapy[18]. Of note, microsatellite instability (MSI), one of the predictive biomarkers for immune checkpoint blockade therapy, is only detected in a rare small portion of PDAC patients (less than 1%)[19,20]. On the other hand, emerging evidence has pinpointed the tumor microenvironment (TME) in PDAC as a critical component of treatment resistance toward immunotherapy[21,22].

In this review, we discuss the role of the tumor microenvironment and the latest advances in immunotherapy on pancreatic cancer through the search of peer-reviewed clinical and basic research articles related to this topic on PubMed, as well as the publicly accessible information on relevant

clinical trials through ClinicalTrials.gov.

TUMOR MICROENVIRONMENT IN PANCREATIC CANCER

PDAC is a type of stromal-rich cancer that frequently presents with a prominent desmoplastic reaction and is characterized by fibrogenic connective stromal tissue surrounding invasive carcinoma[23] (Figure 1). Desmoplastic reaction, or desmoplasia, is considered as the morphological basis of the TME. In general, the TME in PDAC demonstrates extensive desmoplasia, decreased stromal vascularization, and altered immune cell infiltration that lead to reduced drug activity and advancement of tumor progression. This process is characterized by an increase in the deposition of noncellular components, such as extracellular matrix (ECM), as well as an increase in the proliferation of cellular components, such as cancer-associated fibroblasts (CAFs) and immune cells[24,25]. Various cytokines, including interferons, interleukins, tumor necrosis factor (TNF), and transforming growth factor β (TGF- β), also play essential roles linking the TME cellular and noncellular components to regulate tumor growth, metastases, and drug resistance. Of note, the overall stroma is responsible for most of the tumor mass, but the stromal cellular components make up a relatively small fraction, approximately 10%-30%, of the tumor mass[26].

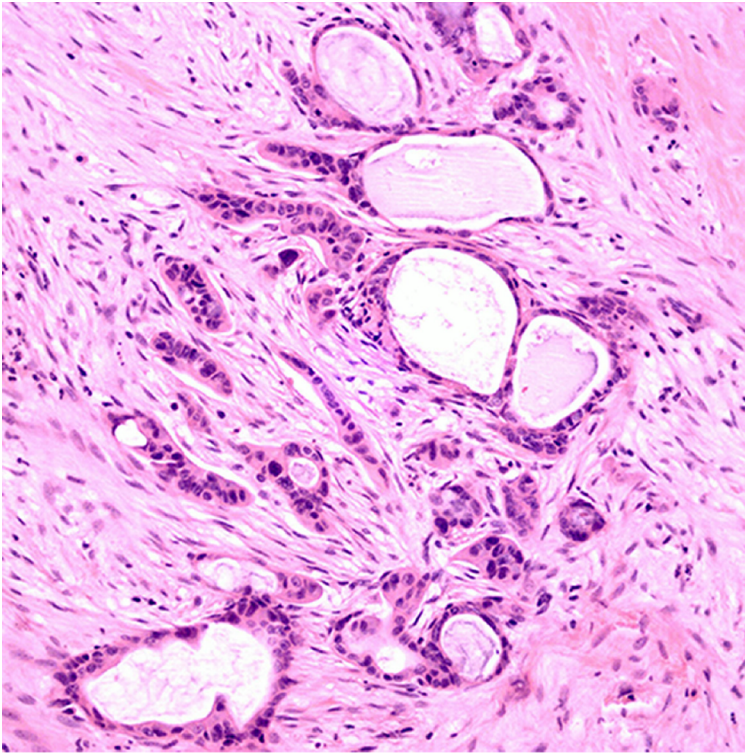
Noncellular components of the tumor microenvironment

The ECM is a significant factor in the initiation and progression of PDAC, and its deposition is associated with tumor migration, invasion, and poor prognosis[27]. The ECM is predominantly produced by cancer-associated pancreatic stellate cells (PSCs), a subtype of CAFs[28]. In PDAC, the ECM comprises most of the tumor mass and various matrix proteins, including collagen, fibronectin, proteoglycans, hyaluronan, proteolytic matrix metalloproteinases (MMPs), and tissue inhibitors of MMP [29]. Among ECM components of particular interest are hyaluronan and MMPs in tumor progression and prognosis in PDAC.

In general, ECM provides a rigid barrier leading to increased tumor pressure, decreased vascularization, and reduced drug delivery. A significant cause of drug resistance is the inability of conventional chemotherapeutic drugs such as gemcitabine to penetrate the thick stromal layer[30]. Therefore, it is rational to propose a combinatory therapeutic strategy for PDAC by targeting the tumor ECM. Hyaluronan, or hyaluronic acid (HA), is a glycosaminoglycan polymer and a major component of the ECM. Increased deposition of HA is associated with tumor metastases, drug resistance, and poor prognosis in PDAC[27,31]. Since stromal HA levels are dynamically regulated by synthases (to produce HA) and hyaluronidases (to degrade HA), hyaluronidase-based drug development has been a promising field in targeted therapy against the TME. The enzymatic depletion of hyaluronan through recombinant hyaluronidase (PEGPH20) has led to significantly increased overall survival when combined with neoadjuvant chemotherapy[32]. This is attributed mainly to improved delivery of systemic therapy through degradation of HA and remodeling of the TME. However, a recent phase IB/II randomized study (NCT01959139) of FOLFIRINOX plus pegylated recombinant PEGPH20 showed increased toxicity with this combination therapy and decreased overall survival (OS) (7.7 mo *vs* 14.4 mo) compared with FOLFIRINOX monotherapy[33]. Moreover, despite promising results of PEGPH20 in phase I-II studies, in a recent phase III randomized study (HALO 109-301), the addition of PEGPH20 to nab-paclitaxel/gemcitabine did not improve OS and progression-free survival (PFS) in patients with hyaluronan-high metastatic PDAC, and additional development of PEHPH20 in metastatic PDAC was halted[34].

MMPs are calcium-dependent metalloproteinases responsible for ECM protein degradation and are implicated in cancer initiation, growth, and metastasis. Clinical trial results with broad-spectrum MMP inhibitors were discouraging due to lack of specificity, associated toxicity, and insufficient clinical benefit[35], warranting further basic and translational studies to classify the role of individual MMPs in PDAC. Among MMP family members, the expression levels of MMP-2, MMP-7, MMP-9, and MMP-11 were significantly elevated in PDAC tumor tissues compared with normal pancreas samples[36,37]. Increased MMP-2 expression in PDAC leads to tumor invasion and progression[38-40]. MMP-7 expression is also associated with PDAC initiation and progression[41] and has been shown to be an independent prognostic factor for PDAC in a multivariate analysis. MMP-9 is significantly associated with pancreatic cancer progression and poor prognosis[37] and has emerged as a prognostic biomarker and potential therapeutic target. Highly selective and potent MMP-9 inhibitory antibodies have been developed for ulcerative colitis and colorectal cancer[42]. However, in a preclinical study, systemic ablation of MMP-9 facilitated pancreatic cancer growth and metastasis by creating a tumor-promoting TME[43]. This study has suggested a controversial role for MMP-9 in pancreatic cancer progression.

Additional studies have also demonstrated conflicting results in drugs targeting the tumor stroma. Olive *et al*[44] demonstrated that depletion of ECM in PDAC, through inhibition of the Sonic Hedgehog signaling pathway, promoted gemcitabine efficacy and improved survival. However, the involvement of the Sonic Hedgehog-dependent tumor stroma in PDAC has been controversial, as evidence shows that some components of the tumor stroma could actually act to restrain, rather than support, tumor



DOI: 10.3748/wjg.v28.i27.3297 Copyright ©The Author(s) 2022.

Figure 1 Pancreatic ductal adenocarcinoma with an associated tumor microenvironment. Please note the desmoplastic stromal reaction surrounding the tumor glands, decreased stromal vascularization, and scattered infiltrating inflammatory cells (HE stain, 200 x).

growth[45]. All these failures indicate that targeting desmoplasia alone is insufficient for treating advanced PDAC. The tumor stroma has both tumor-promoting and tumor-suppressing functions, which are probably context dependent. The stromal heterogeneity should be considered for the development of targeted therapy.

Cellular components of the tumor microenvironment

PDAC displays unique immunologic hallmarks. The TME in PDAC consists of diverse cellular components, including CAFs, regulatory and cytotoxic lymphocytes, macrophages, and endothelial cells [46]. CAFs are the major TME cellular component responsible for the production and deposition of ECM proteins. The involvement of CAFs in the progression of PDAC has been a hot and controversial topic. Similar to the observations made with tumor stroma, CAFs also play dual functions in regulating PDAC progression. On the one hand, CAFs promote cancer progression and drug resistance through the deposition of dense ECM, the release of exosomes (extracellular vesicles), and metabolic support[47-49]. On the other hand, depletion of CAFs leads to accelerated PDAC progression and reduced survival in multiple preclinical studies[50,51]. These discrepancies are likely associated with the heterogeneity of CAFs[52,53], a concept supported by recent studies demonstrating the existence of multiple distinct and mutually exclusive CAF subtypes in pancreatic cancer[54,55]. CAF subtypes with diverse biomarkers, including α -smooth muscle actin (α SMA), fibroblast activation protein (FAP), S100A4, and platelet-derived growth factor receptor- β (PDGFR β), have been identified[56]. Specifically, FAP-positive active CAFs have been linked to tumor-promoting functions by maintaining an immunosuppressive TME[57]. FAP is a type-II transmembrane serine protease, and its expression has been detected in both the tumor stroma and cancer cells in PDAC, with the highest expression in the tumor stroma at the tumor front [58]. FAP-positive CAFs potently shape the immune landscape in the TME by secreting TGF- β , VEGF, and multiple matrix processing enzymes[59,60], recruiting circulating myeloid-derived suppressor cells (MDSCs) into the tumor stroma[57], and inhibiting natural killer cell (NK) cytotoxicity and cytokine production[61]. FAP has been suggested as an ideal target for the TME, and its specific therapeutic reagents are in development[62].

In addition to CAFs, the TME also consists of multiple types of immunosuppressive cells, including regulatory T cells (Tregs), MDSCs, and tumor-associated macrophages (TAMs)[63]. These cells correlate to provide an immunosuppressive TME and have been under extensive preclinical and clinical investigation.

Tregs, defined as CD4⁺/CD25⁺/FOXP3⁺ T cells, are a subtype of repressive T cells that play an essential role in maintaining immune tolerance and preventing autoimmune disorders. Tregs can be found in PDAC and premalignant lesion intraductal papillary mucinous neoplasms (IPMNs). The

prevalence of Tregs in CD4+ T lymphocytes correlates significantly with the progression and invasion of IPMNs and is associated with poor prognosis in PDAC. The immunosuppressive function of Tregs has been attributed to the secretion of suppressive cytokines, including IL-10 and TGF- β 1, and the induction of CD4+ T-cell death[64,65]. Preoperative chemoradiation therapy has been shown to decrease Tregs in PDAC[66]. However, in a recent study, depletion of Tregs in a mouse model caused accelerated tumor progression due to unexpected crosstalk between Tregs and CAFs in PDAC[67]. This study has challenged the current view and posed uncertainties in developing Treg-based targeted therapy.

MDSCs and TAMs have also been suggested as potential therapeutic targets against the TME. Even though these two cell types are considered as separate entities, they have no demarcated boundaries and share many common characteristics[68]. MDSCs are a group of heterogeneous immature myeloid cells and can potentially suppress T-cell function in tumors[69]. The levels of MDSCs correlate with the progression of PDAC and have been proposed as a predictive biomarker of chemotherapy failure[70, 71]. TAMs are circulating monocyte-derived macrophages in the tumor stroma and represent a significant population of immune cells within the TME. TAMs can be further subclassified into the M1 and M2 subtypes, with M1 being proinflammatory (antitumorigenic) and M2 being anti-inflammatory (protumorigenic)[72]. M2-polarized TAMs are associated with an unfavorable prognosis in PDAC[73]. Liu *et al*[74] revealed progressive accumulations of MDSCs and M2-polarized TAMs accompanied by dynamic reductions in cytotoxic T cells (CTLs) and helper T cells (Ths) in PDAC progression. Gemcitabine affects the TME by inhibiting the expansion of MDSCs and the induction of Th2 cells while promoting M2-polarized TAMs[74]. M2-polarized TAMs can also be induced by other chemotherapeutic agents, such as carboplatin and cisplatin, leading to increased secretion of interleukin-6 (IL-6), IL-10, and prostaglandin E2[75]. In addition, interferon- γ upregulates the expression of programmed death-ligand 1 (PD-L1) in MDSCs, resulting in an immunosuppressive environment[76]. Further investigations and clinical trials are needed to test the efficacy of targeting MDSCs and TAMs in pancreatic cancer.

IMMUNOTHERAPY IN PANCREATIC CANCER

Current treatment options for PDAC have limited effects on patient survival. The recent development of immunotherapy has improved clinical outcomes for various types of solid tumors[17] and can revolutionize cancer treatment in PDAC. Activating the patient's T cells is the principal basis for cancer immunotherapy. This is accomplished through multiple mechanisms, such as decreased tumor-specific antigen presentation, T-cell activation, T-cell infiltration into the pancreatic tumor, and elimination of cancer cells by T cells[77]. Multiple cancer immunotherapies have been introduced, including immune checkpoint inhibitors, cancer vaccines, and adoptive cell transfer.

Immune checkpoint inhibitors

Immune checkpoint molecules are a group of surface receptors expressed on various immune cells that transduce inhibitory signals to T cells upon ligand binding. These molecules play an important role in preventing an autoimmune attack against self-antigens. Due to strong immune selective pressure, cancer cells frequently adopt the power of immune checkpoint molecules to avoid immune destruction. Initially approved for the treatment of metastatic melanoma, immune checkpoint inhibitors (ICIs) have been cleared to treat various solid tumors, including advanced or metastatic urothelial carcinoma, non-small-cell lung cancer, colorectal cancer, triple-negative breast cancer, and head and neck squamous cell carcinoma[78,79]. Currently, FDA-approved immune checkpoint inhibitors (ICIs) include anti-CTLA-4 agents (ipilimumab), anti-PD-1 agents (nivolumab, pembrolizumab, cemiplimab) and anti-PD-L1 agents (atezolizumab, avelumab, durvalumab)[79].

ICIs have emerged as a new therapeutic option for pancreatic cancer. Unfortunately, most phase I and II clinical trials on ICI treatment have failed to show the desired beneficial effect in PDAC. Two independent phase II clinical trials have demonstrated unsatisfactory clinical outcomes on monotherapy with anti-CTLA-4 mAb (Table 1). Single-agent ipilimumab, an anti-CTLA-4 mAb, was ineffective for the treatment of advanced PDAC (NCT00112580) (<https://clinicaltrials.gov/ct2/show/NCT00112580>)[80, 81]. Monotherapy with tremelimumab, another anti-CTLA-4 mAb, also yielded poor clinical outcomes in PDAC, with 18 out of 20 patients demonstrating progressive disease and a poor median OS of 4 mo (95%CI: 2.83-5.42 mo) (NCT02527434) (<https://clinicaltrials.gov/ct2/show/NCT02527434>).

Combination therapy with ipilimumab and gemcitabine, on the other hand, has demonstrated promising results due to the increased immune response by enhancing naïve T-cell activation[82]. In a phase 1b clinical trial (NCT01473940) (<https://clinicaltrials.gov/ct2/show/NCT01473940>), initial results on combination therapy with ipilimumab and gemcitabine showed that the treatment was tolerable, with a median PFS of 2.5 mo (95%CI: 0.8-4.8 mo) and a median OS of 8.5 mo (95%CI: 2.2-10.3 mo). In this study, five out of the 11 patients had stable disease, while two had a partial response. An ongoing clinical trial (NCT01928394) (<https://clinicaltrials.gov/ct2/show/NCT01928394>) is comparing nivolumab (anti-PD-1 mAb) monotherapy and combination therapy with nivolumab plus ipilimumab in patients with advanced or metastatic PDAC, and the results will be released in 2023.

Table 1 Complete immune checkpoint inhibitor-based clinical trials in pancreatic ductal adenocarcinoma

Strategy	Treatment	Phase	Number	Cancer stage	Outcomes
Immune checkpoint inhibitor (target) monotherapy	Tremelimumab (CTLA-4)	II	NCT02527434	Advanced/metastatic PDAC	Tremelimumab monotherapy is ineffective for metastatic PDAC.
	Ipilimumab (CTLA-4)	II	NCT00112580	Advanced PDAC	Ipilimumab monotherapy is ineffective for advanced PDAC.
	Atezolizumab (PD-L1)	I/II	NCT03829501	Advanced PDAC	No results reported yet
Immune checkpoint inhibitor (target) + immune checkpoint inhibitor(target)	Tremelimumab (CTLA-4) + Durvalumab (PD-L1)	II	NCT02558894	Metastatic PDAC	ORR 3.1% for combination therapy. (ORR 0% for monotherapy).
	Nivolumab (PD-1) + Ipilimumab (CTLA-4)	I/II	NCT01928394	Advanced/metastatic PDAC	No results reported yet
Immune checkpoint inhibitor (target) + chemotherapy	Tremelimumab (CTLA-4) + Gemcitabine	I	NCT00556023	Advanced PDAC	Median OS 7.4 mo (95%CI: 5.8-9.4 mo)
	Ipilimumab(CTLA-4) + Gemcitabine	Ib	NCT01473940	Advanced/metastatic PDAC	Median OS 6.90 mo (95%CI: 2.63-9.57 mo)
	Pembrolizumab (PD-1) + Gemcitabine and Nab-paclitaxel	Ib/II	NCT02331251	Advanced/metastatic PDAC	Median OS 15.0 mo (95%CI: 6.8-22.6 mo)
Immune Checkpoint Inhibitor (Target) + Target therapy	Durvalumab (PD-L1) + Galunisertib	I	NCT02734160	Metastatic PDAC	Median PFS 1.9 mo (95%CI: 1.5-2.2 mo); median OS was NR (95%CI: 3.6 mo, NR)
	Durvalumab (PD-L1) + Pexidartinib	I	NCT02777710	Advanced/metastatic PDAC	No results reported yet
Immune Checkpoint Inhibitor (Target) + Radiation Therapy	Tremelimumab (CTLA-4) + Durvalumab (PD-1) + SBRT	I/II	NCT02311361	Advanced/metastatic PDAC	ORR of 9.6% including 2 patients who achieved a durable partial response lasting over 12 mo

<https://clinicaltrials.gov/>. PDAC: Pancreatic ductal adenocarcinoma; CTLA-4: Cytotoxic T lymphocyte-associated antigen-4; PD-1: Programmed cell death protein 1; PD-L1: Programmed cell death ligand 1; OS: Overall survival; PFS: Progression-free survival; ORR: Overall response rate; NR: Not reached.

Notably, in a phase I clinical trial (NCT00556023) (<https://clinicaltrials.gov/ct2/show/NCT00556023>), a tolerable and safe profile was demonstrated by combination therapy with tremelimumab plus gemcitabine, warranting further study in patients with metastatic PDAC. Thirty-four patients were enrolled in the study, and the median OS was 7.4 mo (95%CI: 5.8-9.4 mo). Two patients achieved a partial response at the end of treatment[83]. A phase Ib/II study (NCT02331251) (<https://clinicaltrials.gov/ct2/show/NCT02331251>) was performed to evaluate the safety and efficacy of pembrolizumab, an anti-PD-1 mAb, in combination with gemcitabine plus nab-paclitaxel chemotherapy. The median PFS and OS were 9.1 and 15.0 mo for chemotherapy naïve-treated patients, respectively, and changes in tumor cell-free DNA copy number instability were considered to be a potential prognostic factor for OS[84].

A phase I study on atezolizumab, an engineered IgG1 mAb targeting PD-L1, showed tolerability at doses up to 20 mg/kg every three weeks in a Japanese cohort[85]. In a phase II randomized clinical trial (NCT02558894) (<https://clinicaltrials.gov/ct2/show/NCT02558894>), evaluation of durvalumab, an anti-PD-L1 agent, with or without tremelimumab in patients with metastatic PDAC was evaluated following the failure of 5-FU and gemcitabine-based chemotherapy[86]. No patients in the study responded to durvalumab monotherapy, and the efficacy analysis demonstrated an objective response rate (ORR) of 3.1% (95%CI: 0.08-16.22) with the combination therapy of durvalumab plus tremelimumab [86].

A high tumor mutational burden (TMB) in cancer cells tends to produce more immunogenic neoantigens and may predict immunotherapy response[87]. A phase II clinical trial (NCT05093231) (<https://clinicaltrials.gov/ct2/show/NCT05093231>) investigating the efficacy of pembrolizumab plus olaparib in metastatic pancreatic adenocarcinoma patients exhibiting high tumor mutation burden is ongoing, and the results will be released in 2026.

Based on the results from current clinical trials, further studies need to focus on the combined approaches using ICIs with different therapeutic approaches, including chemotherapy, radiotherapy, or additional innovative platforms of immunotherapy, such as cancer vaccine and adoptive cell transfer.

Therapeutic cancer vaccines

Therapeutic cancer vaccines include whole-cell vaccines, dendritic cells, DNA, and peptide vaccines that activate cancer antigen-specific cytotoxic T lymphocytes (CTLs), eliciting immunogenic antigen presentation and leading to an anticancer response[88]. One such pancreatic cancer vaccine is GVAX,

which is generated from irradiated pancreatic cancer cells expressing granulocyte-macrophage colony-stimulating factor (GM-CSF)[89] (Table 2). Upon vaccination, GVAX secretes GM-CSF, induces subsequent activation of antigen-presenting cell and T-cell priming, and stimulates the patient's immune system against pancreatic cancer cells[90]. GVAX was tolerable even at high doses, and the vaccination-induced increased delayed-type hypersensitivity response to autologous tumor cells[91]. In a phase II clinical trial on GVAX (NCT00084383) (<https://clinicaltrials.gov/ct2/show/NCT00084383>), sixty patients received GVAX 8-10 wk after surgical intervention, followed by adjuvant 5-FU-based chemoradiotherapy. The median PFS was 17.3 mo (95%CI: 14.6-22.8 mo), with a median OS of 24.8 mo (95%CI: 21.2-31.6 mo), which compares favorably with published data for resected PDAC[92]. Combinatory immunotherapy has aimed to induce a much more sustained antitumor T-cell response [93]. In a phase Ib trial for locally advanced, unresectable or metastatic PDAC (NCT00836407) (<https://clinicaltrials.gov/ct2/show/NCT00836407>), thirty patients received either ipilimumab monotherapy or ipilimumab plus GVAX cancer vaccine, and the median OS was 3.6 mo for the ipilimumab monotherapy group, compared to 5.7 mo in the group with combination therapy[94]. Although combinatory immunotherapy has shown its potential for advanced PDAC, more studies are needed to fully explore this novel therapeutic strategy's capability.

Few human leukocyte antigen (HLA)-A(*)2402-restricted tumor-associated antigens, including the KIF20A-10-66 peptide, have been identified in PDAC[95]. A phase I/II clinical trial in Japan showed a better prognosis in patients with metastatic PDAC and HLA-A*2402-positive status who received KIF20A-10-66 peptide vaccination as second-line treatment after failure of gemcitabine chemotherapy [96]. In two separate phase II clinical trials, KIF20A-derived peptide was evaluated in combination with two antiangiogenic cancer vaccines targeting vascular endothelial growth factor receptor 1 (VEGFR1) and VEGFR2. In the HLA-A*2402-matched group, patients with peptide-specific CTL induction had improved prognosis and increased OS[97,98]. Another HLA-A24-restricted antigenic peptide, SVN-2B, also functions as an immunogenic molecule. A vaccination protocol of SVN-2B in combination with interferon- α has demonstrated effective clinical and immunological responses for advanced PDAC[99].

Algenpantucel-L is a whole-cell pancreatic cancer vaccine with two irradiated allogenic human pancreatic cell lines (HAPa-1 and HAPa-2) expressing the murine enzyme (1,3)-galactosyltransferase (α GT)[100]. Of note, the α GT enzyme is the critical barrier to xenotransplantation due to hyperacute rejection[101]. As a result, Algenpantucel-L will induce a hyperacute rejection of the allograft cells through rapid activation of antibody-dependent cell-mediated cytotoxicity (ADCC), leading to a response against the patient's pancreatic cancer cells through epitope spreading[102]. A phase II, open-label trial (NCT00569387) (<https://clinicaltrials.gov/ct2/show/NCT00569387>) evaluated the use of the Algenpantucel-L tumor vaccine in combination with gemcitabine plus 5-FU chemoradiotherapy in patients with resected PDAC. Seventy patients were recruited in the study, and the 12-mo disease-free survival (DFS) and OS were 63% and 86%, respectively, suggesting that the Algenpantucel-L tumor vaccine could be administered with standard chemotherapy following surgical resection of pancreatic cancer[101]. Unfortunately, in a recent phase 3, open-label, randomized clinical trial (NCT01836432) (<https://clinicaltrials.gov/ct2/show/NCT01836432>), Algenpantucel-L failed to improve survival on borderline resectable or locally advanced PDAC receiving neoadjuvant chemoradiation therapy[103].

Overexpression of Mucin 1 (MUC-1), a type I transmembrane protein with O-linked glycosylation, plays a crucial role in oncogenic signaling to promote metastasis, angiogenesis, and invasion[104]. MUC-1 has served as a target for cancer vaccine immunotherapy[105]. Following surgical resection, a phase I/II study of a MUC1 peptide-loaded dendritic cell vaccine was conducted in 12 pancreaticobiliary cancer patients. Four out of twelve (33.3%) patients who received this MUC-1-based tumor vaccine were alive after four years without evidence of recurrence[106]. An optimized construct with MUC-1-variable number tandem repeats has been designed with much more potent immunogenicity [107].

Dendritic cell vaccines have been introduced to enhance the antitumor immune response through the stimulation of naïve T cells[108]. In a study evaluating the effectiveness of a dendritic cell vaccine in patients with advanced PDAC (NCT01410968) (<https://clinicaltrials.gov/ct2/show/NCT01410968>), autologous dendritic cells were isolated in HLA-A2-positive patients, loaded with three A-2 restricted peptides, and readministered as a cellular vaccine. The results were promising with the generation of antigen-specific T cells in three patients, as well as tolerable adverse effects[109]. In a phase I study in Japan, a Wilms' tumor 1 (WT1)-pulsed dendritic cell vaccine combined with chemotherapy showed safety and potential acquisition of immunity in resected PDAC[110]. Multiple associated studies have further supported the clinical benefits of dendritic cell-based vaccines in PDAC[111-113].

Approximately 95% of PDAC patients have mutations in the *KRAS* oncogene. Despite an early study suggesting an unproven efficacy by targeting mutated *KRAS* in PDAC[114], multiple subsequent clinical studies have demonstrated the clinical potential for such a therapeutic approach. A phase I/II clinical trial (NCT02261714) (<https://clinicaltrials.gov/ct2/show/NCT02261714>) evaluated the efficacy of a synthetic mutant RAS peptide vaccine with GM-CSF in PDAC. TG01, a mixture of 7 synthetic RAS peptides representing the most common *KRAS* mutations, combined with GM-CSF and gemcitabine was well tolerated with a robust immune response and improved clinical outcome[115]. One study demonstrated a long-term immune response and improved survival in patients with resected PDAC after *KRAS* vaccination[116]. An alternative *KRAS*-based tumor vaccine is GI-4000, a recombinant heat-

Table 2 Complete vaccine immunotherapy-based clinical trials in pancreatic ductal adenocarcinoma

Treatment	Phase	Number	Cancer stage	Outcomes
GVAX, 5-FU, chemoradiation	II	NCT00084383	Resected stage I/II PDAC	Median OS 24.8 mo (95%CI: 21.2-31.6 mo)
GVAX, cyclophosphamide, CRS-207	II	NCT01417000	Metastatic PDAC	Cy/GVAX and CRS-207 extended OS for PDAC patients, with minimal toxicity
GVAX, cyclophosphamide, CRS-207	II	NCT02004262	Metastatic PDAC	Cy/GVAX and CRS-207 did not show survival benefit over chemotherapy in patients with previously treated metastatic PDAC
GVAX, Ipilimumab, FOLFIRINOX	II	NCT01896869	Metastatic PDAC	Ipilimumab + GVAX group did not show survival benefit over chemotherapy [median OS 9.38 mo (95% CI, 5.0-12.2 mo) <i>vs</i> 14.7 mo (95%CI: 11.6-20.0 mo)]
Algenpantucel-L	II	NCT00569387	Surgically resected PDAC	The addition of algenpantucel-L to standard adjuvant therapy for resected pancreatic cancer may improve survival (12-mo DFS 62%, 12-mo OS 86%)
Gemcitabine, 5FU Chemoradiation, Algenpantucel-L	III	NCT01072981	Surgically Resected PDAC	No results reported yet
Dendritic cells pulsed with MUC-1/WT-1	I/II	NCT03114631	PDAC	Dendritic cells immunotherapy provided a favorable outcome in PDAC patents (12-mo OS 78.2% <i>vs</i> 33.8%)
GI-4000 (KRAS), Gemcitabine	II	NCT00300950	Non-metastatic, Post-resection PDAC	Overall, GI-4000 group showed a similar pattern of recurrence-free survival and OS compared with the placebo group. For stratified R1 resection subgroup, there was a trend in 1 year OS (72% <i>vs</i> 56%), an improvement in OS (523.5 <i>vs</i> 443.5 d (hazard ratio: 1.06; 95%CI: 0.53-2.13, <i>P</i> = 0.872), and increased frequency of immune responders (40% <i>vs</i> 8%; <i>P</i> = 0.062) for GI-4000 <i>vs</i> placebo.
Ras-peptide vaccine, IL-2, GM-CSF	II	NCT00019331	Metastatic PDAC	No results reported yet
GV1001 (telomerase peptide vaccine), Gemcitabine, Capecitabine	III	NCT00425360	Locally Advanced or Metastatic PDAC	Adding GV1001 vaccination to chemotherapy did not improve OS.

<https://clinicaltrials.gov/>. PDAC: Pancreatic ductal adenocarcinoma; Cy: cyclophosphamide; DFS: Disease-free survival; OS: Overall survival.

inactivated *Saccharomyces cerevisiae* yeast-derived vaccine expressing mutated KRAS proteins. A phase I trial revealed a favorable safety profile and immunogenicity of the GI-4000 cancer vaccine[117]. A subsequent phase II trial (NCT00300950) (<https://clinicaltrials.gov/ct2/show/NCT00300950>) compared GI-4000 plus gemcitabine with placebo plus gemcitabine alone in patients with resected PDAC carrying *KRAS* mutation. GI-4000 was well tolerated. It led to a similar median OS compared with placebo. However, compared with the placebo group, the GI-4000 group had a trend of improved OS (523.5 *vs* 443.5 d) and an increased frequency of immune responders (40% *vs* 8%) in the stratified R1 resection subgroup[118].

The GV1001 tumor vaccine consists of a fragment (16 amino acids) of human telomerase reverse transcriptase (hTERT) found in a high proportion in PDAC cancer cells and has been introduced as a novel therapeutic regimen[119]. In a phase I/II clinical trial evaluating the clinical outcomes in patients with unresectable PDAC, GV1001 plus GM-CSF elicited an immune response in 63% of patients, resulting in a median OS of 7.2 mo for immune responders compared to 2.9 mo for nonimmune responders[120]. However, in a randomized phase III study of patients with locally advanced and metastatic PDAC, combination therapy consisting of GV1001, gemcitabine, and capecitabine chemotherapy showed no improvement in OS compared to chemotherapy alone [6.9 mo (95%CI: 6.4-7.6 mo) *vs* 7.9 mo (95%CI: 7.1-8.8 mo)] (NCT00425360) (<https://clinicaltrials.gov/ct2/show/NCT00425360>) [121]. Another GV1001-based phase III clinical trial (NCT00358566) (<https://clinicaltrials.gov/ct2/show/NCT00358566>) was terminated early because of a lack of survival advantage.

Adoptive cell transfer

Adoptive cell transfer, also known as cellular immunotherapy, includes chimeric antigen receptor T-cell (CAR T cell) therapy and tumor-infiltrating lymphocyte (TIL) therapy[122,123]. CAR T-cell therapy is the most common type of adoptive cell transfer. Generally, it involves harvesting the patient's T cells, genetic modification to express surface chimeric antigen receptor, *ex vivo* expansion, and then transferring the cells back to enhance tumor immunity. In forty-three patients with PDAC who underwent radical pancreatectomy, gemcitabine plus adoptive cell transfer with T cells stimulated by the MUC1-expressing human pancreatic cancer cell line demonstrated a median OS of 14.7 mo[124]. Mesothelin is a tumor antigen highly expressed in PDAC[125]. In a preclinical study, CAR T-cell therapy targeting mesothelin demonstrated promising tumor-suppressive effects[126]. Amatuximab

Table 3 Complete adoptive cell transfer-based clinical trials in pancreatic ductal adenocarcinoma

Treatment	Phase	Number	Cancer stage	Outcomes
MORAb-009, Gemcitabine	II	NCT00570713	Advanced PDAC	MORAb-009 did not show survival benefit over placebo group [median OS 6.5 mo, 95%CI: 4.5–8.10 mo <i>vs</i> 6.9 mo 95%CI: 5.4–8.8 mo]
MORAb-009	I	NCT00325494	PDAC	No results reported yet
Radiolabeled Amatuximab (MORAb-009)	I	NCT01521325	PDAC	No results reported yet
Autologous Redirected RNA Mesothelin CAR T cells	I	NCT01897415	PDAC	No results reported yet
CART-133 T cells	I/II	NCT02541370	Relapsed and/or Chemotherapy Refractory Advanced PDAC	No results reported yet

<https://clinicaltrials.gov/>. PDAC: Pancreatic ductal adenocarcinoma; OS: Overall survival.

(MORAb-009), a chimeric mAb targeting mesothelin, also led to reduced growth of mesothelin-expressing tumors, including PDAC[127]. In a phase I trial, the efficacy of MORAb-009 was tested in seven PDAC patients, and one patient had disease control for greater than six months[128]. However, in a phase II randomized placebo-controlled clinical trial (NCT00570713) (<https://clinicaltrials.gov/show/NCT00570713>) evaluating the efficacy of MORAb-009 plus gemcitabine, no significantly improved clinical outcome was observed [median OS: 6.5 mo (95%CI: 4.5–8.10 mo) *vs* 6.9 mo (95%CI: 5.4–8.8 mo)]. Compared with the development of ICIs and cancer vaccines, adoptive cell transfer therapy is still in the early development phase against pancreatic cancer (Table 3); more preclinical and clinical studies are needed to further explore its full clinical potential.

IMMUNOTHERAPY AND THE TUMOR MICROENVIRONMENT

Immunotherapy has thus far failed to fulfill its promise in PDAC. The underlying mechanisms appear to be complex and multifactorial primarily due to their unique genetic signatures, metabolic features, and immunosuppressive TME. Pancreatic cancers carry unique molecular genetic backgrounds. MSI in pancreatic cancer is extremely rare (approximately 1%). Oncogenic *KRAS* mutations, the most common mutation in PDAC, have also contributed to PDAC initiation and maintenance by producing an immunosuppressive TME[129].

Furthermore, altered metabolism of glucose, amino acids, and lipids and their crosstalk with the TME play essential roles in PDAC tumor progression[130]. Multiple lines of evidence have pinpointed the TME as one of the significant barriers to developing effective immunotherapy for PDAC. It is of great clinical interest to sensitize PDAC to immunotherapy through modification of the TME.

One such effort has been focused on CAFs in the TME. As an immunosuppressive component of the TME, FAP-positive CAFs potentially account for the ineffectiveness of immunotherapy in PDAC[131]. Another subtype of CAFs, characterized by the expression of the leucine-rich repeat-containing 15 (LRRC15) protein, could only be detected in pancreatic cancer tissue and is associated with poor response to anti-PD-L1 therapy[132]. Notably, FAP-positive CAFs are the only CAF subtype that expresses CXC motif chemokine ligand 12 (CXCL12). Ablation of FAP-positive CAFs or inhibition of CXCL12 uncovers the antitumor activity of CTLA-4 and PD-L1-based immunotherapy[133]. A phase I/II clinical trial (NCT03168139) (<https://clinicaltrials.gov/ct2/show/NCT03168139>) was conducted to evaluate the treatment effect of pembrolizumab in patients receiving docetaxel (NOX-A12), an agent targeting CXCL12 and TME in metastatic PDAC. No results have been reported yet.

Cellular components in the TME, including MDSCs and TAMs, are also promising targets in the combinatory strategy for immunotherapy. MDSCs and TAMs induce an immunosuppressive TME, partially through colony-stimulating factor 1 receptor (CSF1R) and focal adhesion kinase (FAK)[134]. Small molecular inhibitors of CSF1R or FAK can reprogram the TME and improve T lymphocyte-mediated pancreatic cancer destruction[135,136]. Multiple clinical trials with CSF1R or FAK inhibitors combined with immunotherapy are currently ongoing (Table 4).

CONCLUSION

Despite advances in translational research, PDAC remains a highly lethal malignancy. Recent breakthroughs in immunotherapy have revolutionized cancer therapy and have shown great potential to transform future PDAC treatment. However, PDAC has shown inferior treatment outcomes toward

Table 4 Ongoing clinical trials with immunotherapy plus agents targeting the tumor microenvironment in pancreatic ductal adenocarcinoma

Strategy	Treatment	Phase	Number	Cancer stage
Immune checkpoint inhibitor (target) + CAFs/CXCL12 targeted agents	Pembrolizumab(PD-1) + Olaptesed pegol	I/II	NCT03168139	Metastatic PDAC
Immune checkpoint inhibitor (target)+ CSF1R targeted agent	Durvalumab (PD-L1) + Pexidartinib	I	NCT02777710	Metastatic/ Advanced PDAC
	Nivolumab (PD-1) + Cabiralizumab	I	NCT02526017	Advanced PDAC
	Nivolumab (PD-1) + Cabiralizumab + Gemcitabine	II	NCT03697564	Advanced PDAC (Stage IV)
Immune checkpoint inhibitor (target) + FAK targeted agent	Pembrolizumab(PD-1) + Defactinib	I/IIa	NCT02758587	Advanced PDAC
	Pembrolizumab(PD-1) + Defactinib + Gemcitabine	I	NCT02546531	Advanced PDAC
	Pembrolizumab (PD-1) + Defactinib	II	NCT03727880	Resectable PDAC

<https://clinicaltrials.gov/>. PDAC: Pancreatic ductal adenocarcinoma; CTLA-4: Cytotoxic T lymphocyte-associated antigen-4; PD-1: Programmed cell death protein 1; PD-L1: Programmed cell death ligand 1; CAFs: Cancer-associated fibroblasts; CXCL12: CXC motif chemokine ligand 12; CSF1R: Colony-stimulating factor 1 receptor; FAK: Focal adhesion kinase.

various immunotherapy regimens compared to other cancer types. The TME has been considered as the fundamental underlying barrier to therapy resistance. To overcome this therapeutic resistance, further investigations with innovative treatment strategies will be needed.

FOOTNOTES

Author contributions: Smith C and Yin F collected and analyzed the data, made the tables and figure, wrote and finalized the manuscript; Zheng W, Dong J, Wang Y, Lai J and Liu X critically reviewed the manuscript; and All authors have approved the final manuscript.

Conflict-of-interest statement: The authors declare no competing interests in this study.

Open-Access: This article is an open-access article that was selected by an in-house editor and fully peer-reviewed by external reviewers. It is distributed in accordance with the Creative Commons Attribution NonCommercial (CC BY-NC 4.0) license, which permits others to distribute, remix, adapt, build upon this work non-commercially, and license their derivative works on different terms, provided the original work is properly cited and the use is non-commercial. See: <https://creativecommons.org/licenses/by-nc/4.0/>

Country/Territory of origin: United States

ORCID number: Caitlyn Smith 0000-0001-8944-0480; Wei Zheng 0000-0003-3193-2655; Jixin Dong 0000-0002-2757-4464; Yaohong Wang 0000-0001-5964-0465; Jinping Lai 0000-0001-5365-2481; Xiuli Liu 0000-0001-5791-2017; Feng Yin 0000-0002-8444-1123.

S-Editor: Ma YJ

L-Editor: A

P-Editor: Ma YJ

REFERENCES

- 1 Siegel RL, Miller KD, Fuchs HE, Jemal A. Cancer Statistics, 2021. *CA Cancer J Clin* 2021; **71**: 7-33 [PMID: 33433946 DOI: 10.3322/caac.21654]
- 2 Miller KD, Siegel RL, Lin CC, Mariotto AB, Kramer JL, Rowland JH, Stein KD, Alteri R, Jemal A. Cancer treatment and survivorship statistics, 2016. *CA Cancer J Clin* 2016; **66**: 271-289 [PMID: 27253694 DOI: 10.3322/caac.21349]
- 3 Porta M, Fabregat X, Malats N, Guarner L, Carrato A, de Miguel A, Ruiz L, Jarrod M, Costafreda S, Coll S, Alguacil J, Corominas JM, Solà R, Salas A, Real FX. Exocrine pancreatic cancer: symptoms at presentation and their relation to tumour site and stage. *Clin Transl Oncol* 2005; **7**: 189-197 [PMID: 15960930 DOI: 10.1007/BF02712816]
- 4 De Souza A, Khawaja KI, Masud F, Saif MW. Metformin and pancreatic cancer: Is there a role? *Cancer Chemother Pharmacol* 2016; **77**: 235-242 [PMID: 26740120 DOI: 10.1007/s00280-015-2948-8]
- 5 Corbo V, Tortora G, Scarpa A. Molecular pathology of pancreatic cancer: from bench-to-bedside translation. *Curr Drug*

- Targets* 2012; **13**: 744-752 [PMID: 22458520 DOI: 10.2174/138945012800564103]
- 6 **Sperti C**, Pasquali C, Pedrazzoli S. Ductal adenocarcinoma of the body and tail of the pancreas. *J Am Coll Surg* 1997; **185**: 255-259 [PMID: 9291403 DOI: 10.1016/s1072-7515(97)00056-2]
 - 7 **Griffin JF**, Smalley SR, Jewell W, Paradelo JC, Raymond RD, Hassanein RE, Evans RG. Patterns of failure after curative resection of pancreatic carcinoma. *Cancer* 1990; **66**: 56-61 [PMID: 2354408 DOI: 10.1002/1097-0142(19900701)66:1<56::aid-cnrcr2820660112>3.0.co;2-6]
 - 8 **Mizrahi JD**, Surana R, Valle JW, Shroff RT. Pancreatic cancer. *Lancet* 2020; **395**: 2008-2020 [PMID: 32593337 DOI: 10.1016/S0140-6736(20)30974-0]
 - 9 **Ettlich TJ**, Seufferlein T. Systemic Therapy for Metastatic Pancreatic Cancer. *Curr Treat Options Oncol* 2021; **22**: 106 [PMID: 34665339 DOI: 10.1007/s11864-021-00895-4]
 - 10 **Oberstein PE**, Olive KP. Pancreatic cancer: why is it so hard to treat? *Therap Adv Gastroenterol* 2013; **6**: 321-337 [PMID: 23814611 DOI: 10.1177/1756283X13478680]
 - 11 **Conroy T**, Desseigne F, Ychou M, Bouché O, Guimbaud R, Bécouarn Y, Adenis A, Raoul JL, Gourgou-Bourgade S, de la Fouchardière C, Bennouna J, Bachet JB, Khemissa-Akouz F, Péré-Vergé D, Delbaldo C, Assenat E, Chauffert B, Michel P, Montoto-Grillot C, Ducreux M; Groupe Tumeurs Digestives of Unicancer; PRODIGE Intergroup. FOLFIRINOX versus gemcitabine for metastatic pancreatic cancer. *N Engl J Med* 2011; **364**: 1817-1825 [PMID: 21561347 DOI: 10.1056/NEJMoa1011923]
 - 12 **Sarantis P**, Koustas E, Papadimitropoulou A, Papavassiliou AG, Karamouzis MV. Pancreatic ductal adenocarcinoma: Treatment hurdles, tumor microenvironment and immunotherapy. *World J Gastrointest Oncol* 2020; **12**: 173-181 [PMID: 32104548 DOI: 10.4251/wjgo.v12.i2.173]
 - 13 **Storz P**, Crawford HC. Carcinogenesis of Pancreatic Ductal Adenocarcinoma. *Gastroenterology* 2020; **158**: 2072-2081 [PMID: 32199881 DOI: 10.1053/j.gastro.2020.02.059]
 - 14 **Grant TJ**, Hua K, Singh A. Molecular Pathogenesis of Pancreatic Cancer. *Prog Mol Biol Transl Sci* 2016; **144**: 241-275 [PMID: 27865459 DOI: 10.1016/bs.pmbts.2016.09.008]
 - 15 **Samuel N**, Hudson TJ. The molecular and cellular heterogeneity of pancreatic ductal adenocarcinoma. *Nat Rev Gastroenterol Hepatol* 2011; **9**: 77-87 [PMID: 22183185 DOI: 10.1038/nrgastro.2011.215]
 - 16 **Lee CJ**, Li C, Simeone DM. Human pancreatic cancer stem cells: implications for how we treat pancreatic cancer. *Transl Oncol* 2008; **1**: 14-18 [PMID: 18607507 DOI: 10.1593/tlo.08013]
 - 17 **Pham T**, Roth S, Kong J, Guerra G, Narasimhan V, Pereira L, Desai J, Heriot A, Ramsay R. An Update on Immunotherapy for Solid Tumors: A Review. *Ann Surg Oncol* 2018; **25**: 3404-3412 [PMID: 30039324 DOI: 10.1245/s10434-018-6658-4]
 - 18 **Katayama ES**, Hue JJ, Bajor DL, Ocuin LM, Ammori JB, Hardacre JM, Winter JM. A comprehensive analysis of clinical trials in pancreatic cancer: what is coming down the pike? *Oncotarget* 2020; **11**: 3489-3501 [PMID: 33014285 DOI: 10.18632/oncotarget.27727]
 - 19 **Goggins M**, Offerhaus GJ, Hilgers W, Griffin CA, Shekher M, Tang D, Sohn TA, Yeo CJ, Kern SE, Hruban RH. Pancreatic adenocarcinomas with DNA replication errors (RER+) are associated with wild-type K-ras and characteristic histopathology. Poor differentiation, a syncytial growth pattern, and pushing borders suggest RER+. *Am J Pathol* 1998; **152**: 1501-1507 [PMID: 9626054]
 - 20 **Wilentz RE**, Goggins M, Redston M, Marcus VA, Adsay NV, Sohn TA, Kadkol SS, Yeo CJ, Choti M, Zahurak M, Johnson K, Tascilar M, Offerhaus GJ, Hruban RH, Kern SE. Genetic, immunohistochemical, and clinical features of medullary carcinoma of the pancreas: A newly described and characterized entity. *Am J Pathol* 2000; **156**: 1641-1651 [PMID: 10793075 DOI: 10.1016/S0002-9440(10)65035-3]
 - 21 **Foucher ED**, Ghigo C, Chouaib S, Galon J, Iovanna J, Olive D. Pancreatic Ductal Adenocarcinoma: A Strong Imbalance of Good and Bad Immunological Cops in the Tumor Microenvironment. *Front Immunol* 2018; **9**: 1044 [PMID: 29868007 DOI: 10.3389/fimmu.2018.01044]
 - 22 **Ren B**, Cui M, Yang G, Wang H, Feng M, You L, Zhao Y. Tumor microenvironment participates in metastasis of pancreatic cancer. *Mol Cancer* 2018; **17**: 108 [PMID: 30060755 DOI: 10.1186/s12943-018-0858-1]
 - 23 **Waghay M**, Yalamanchili M, di Magliano MP, Simeone DM. Deciphering the role of stroma in pancreatic cancer. *Curr Opin Gastroenterol* 2013; **29**: 537-543 [PMID: 23892539 DOI: 10.1097/MOG.0b013e328363affe]
 - 24 **Ho WJ**, Jaffee EM, Zheng L. The tumour microenvironment in pancreatic cancer - clinical challenges and opportunities. *Nat Rev Clin Oncol* 2020; **17**: 527-540 [PMID: 32398706 DOI: 10.1038/s41571-020-0363-5]
 - 25 **Hessmann E**, Buchholz SM, Demir IE, Singh SK, Gress TM, Ellenrieder V, Neeße A. Microenvironmental Determinants of Pancreatic Cancer. *Physiol Rev* 2020; **100**: 1707-1751 [PMID: 32297835 DOI: 10.1152/physrev.00042.2019]
 - 26 **Erkan M**, Hausmann S, Michalski CW, Fingerle AA, Dobritz M, Kleeff J, Friess H. The role of stroma in pancreatic cancer: diagnostic and therapeutic implications. *Nat Rev Gastroenterol Hepatol* 2012; **9**: 454-467 [PMID: 22710569 DOI: 10.1038/nrgastro.2012.115]
 - 27 **Whatcott CJ**, Diep CH, Jiang P, Watanabe A, LoBello J, Sima C, Hostetter G, Shepard HM, Von Hoff DD, Han H. Desmoplasia in Primary Tumors and Metastatic Lesions of Pancreatic Cancer. *Clin Cancer Res* 2015; **21**: 3561-3568 [PMID: 25695692 DOI: 10.1158/1078-0432.CCR-14-1051]
 - 28 **Karagiannis GS**, Poutahidis T, Erdman SE, Kirsch R, Riddell RH, Diamandis EP. Cancer-associated fibroblasts drive the progression of metastasis through both paracrine and mechanical pressure on cancer tissue. *Mol Cancer Res* 2012; **10**: 1403-1418 [PMID: 23024188 DOI: 10.1158/1541-7786.MCR-12-0307]
 - 29 **Ferrara B**, Pignatelli C, Cossutta M, Citro A, Courty J, Piemonti L. The Extracellular Matrix in Pancreatic Cancer: Description of a Complex Network and Promising Therapeutic Options. *Cancers (Basel)* 2021; **13** [PMID: 34503252 DOI: 10.3390/cancers13174442]
 - 30 **Binenbaum Y**, Na'ara S, Gil Z. Gemcitabine resistance in pancreatic ductal adenocarcinoma. *Drug Resist Updat* 2015; **23**: 55-68 [PMID: 26690340 DOI: 10.1016/j.drug.2015.10.002]
 - 31 **Kultti A**, Zhao C, Singha NC, Zimmerman S, Osgood RJ, Symons R, Jiang P, Li X, Thompson CB, Infante JR, Jacobetz MA, Tuveson DA, Frost GI, Shepard HM, Huang Z. Accumulation of extracellular hyaluronan by hyaluronan synthase 3

- promotes tumor growth and modulates the pancreatic cancer microenvironment. *Biomed Res Int* 2014; **2014**: 817613 [PMID: [25147816](#) DOI: [10.1155/2014/817613](#)]
- 32 **Provenzano PP**, Cuevas C, Chang AE, Goel VK, Von Hoff DD, Hingorani SR. Enzymatic targeting of the stroma ablates physical barriers to treatment of pancreatic ductal adenocarcinoma. *Cancer Cell* 2012; **21**: 418-429 [PMID: [22439937](#) DOI: [10.1016/j.ccr.2012.01.007](#)]
 - 33 **Gulley JL**, Borre M, Vogelzang NJ, Ng S, Agarwal N, Parker CC, Pook DW, Rathenborg P, Flaig TW, Carles J, Saad F, Shore ND, Chen L, Heery CR, Gerritsen WR, Priou F, Langkilde NC, Novikov A, Kantoff PW. Phase III Trial of PROSTVAC in Asymptomatic or Minimally Symptomatic Metastatic Castration-Resistant Prostate Cancer. *J Clin Oncol* 2019; **37**: 1051-1061 [PMID: [30817251](#) DOI: [10.1200/JCO.18.02031](#)]
 - 34 **Van Cutsem E**, Tempero MA, Sigal D, Oh DY, Fazio N, Macarulla T, Hitre E, Hammel P, Hendifar AE, Bates SE, Li CP, Hingorani SR, de la Fouchardiere C, Kasi A, Heinemann V, Maraveyas A, Bahary N, Layos L, Sahai V, Zheng L, Lacy J, Park JO, Portales F, Oberstein P, Wu W, Chondros D, Bullock AJ; HALO 109-301 Investigators. Randomized Phase III Trial of Pegvorhialuronidase Alfa With Nab-Paclitaxel Plus Gemcitabine for Patients With Hyaluronan-High Metastatic Pancreatic Adenocarcinoma. *J Clin Oncol* 2020; **38**: 3185-3194 [PMID: [32706635](#) DOI: [10.1200/JCO.20.00590](#)]
 - 35 **Coussens LM**, Fingleton B, Matrisian LM. Matrix metalloproteinase inhibitors and cancer: trials and tribulations. *Science* 2002; **295**: 2387-2392 [PMID: [11923519](#) DOI: [10.1126/science.1067100](#)]
 - 36 **Bramhall SR**, Neoptolemos JP, Stamp GW, Lemoine NR. Imbalance of expression of matrix metalloproteinases (MMPs) and tissue inhibitors of the matrix metalloproteinases (TIMPs) in human pancreatic carcinoma. *J Pathol* 1997; **182**: 347-355 [PMID: [9349239](#) DOI: [10.1002/\(SICI\)1096-9896\(199707\)182:3<347::AID-PATH848>3.0.CO;2-J](#)]
 - 37 **Xu Y**, Li Z, Jiang P, Wu G, Chen K, Zhang X, Li X. The co-expression of MMP-9 and Tenascin-C is significantly associated with the progression and prognosis of pancreatic cancer. *Diagn Pathol* 2015; **10**: 211 [PMID: [26652622](#) DOI: [10.1186/s13000-015-0445-3](#)]
 - 38 **Okada Y**, Eibl G, Guha S, Duffy JP, Reber HA, Hines OJ. Nerve growth factor stimulates MMP-2 expression and activity and increases invasion by human pancreatic cancer cells. *Clin Exp Metastasis* 2004; **21**: 285-292 [PMID: [15554384](#) DOI: [10.1023/b:clin.0000046131.24625.54](#)]
 - 39 **Schneiderhan W**, Diaz F, Fundel M, Zhou S, Siech M, Hasel C, Möller P, Gschwend JE, Seufferlein T, Gress T, Adler G, Bachem MG. Pancreatic stellate cells are an important source of MMP-2 in human pancreatic cancer and accelerate tumor progression in a murine xenograft model and CAM assay. *J Cell Sci* 2007; **120**: 512-519 [PMID: [17227797](#) DOI: [10.1242/jcs.03347](#)]
 - 40 **Ellenrieder V**, Alber B, Lacher U, Hendler SF, Menke A, Boeck W, Wagner M, Wilda M, Friess H, Büchler M, Adler G, Gress TM. Role of MT-MMPs and MMP-2 in pancreatic cancer progression. *Int J Cancer* 2000; **85**: 14-20 [PMID: [10585576](#) DOI: [10.1002/\(sici\)1097-0215\(20000101\)85:1<14::aid-ijc3>3.0.co;2-o](#)]
 - 41 **Crawford HC**, Scoggins CR, Washington MK, Matrisian LM, Leach SD. Matrix metalloproteinase-7 is expressed by pancreatic cancer precursors and regulates acinar-to-ductal metaplasia in exocrine pancreas. *J Clin Invest* 2002; **109**: 1437-1444 [PMID: [12045257](#) DOI: [10.1172/JCI15051](#)]
 - 42 **Marshall DC**, Lyman SK, McCauley S, Kovalenko M, Spangler R, Liu C, Lee M, O'Sullivan C, Barry-Hamilton V, Ghermazien H, Mikels-Vigdal A, Garcia CA, Jorgensen B, Velayo AC, Wang R, Adamkewicz JI, Smith V. Selective Allosteric Inhibition of MMP9 Is Efficacious in Preclinical Models of Ulcerative Colitis and Colorectal Cancer. *PLoS One* 2015; **10**: e0127063 [PMID: [25961845](#) DOI: [10.1371/journal.pone.0127063](#)]
 - 43 **Grünwald B**, Vandooren J, Gerg M, Ahomaa K, Hunger A, Berchtold S, Akbareian S, Schaten S, Knolle P, Edwards DR, Opendakker G, Krüger A. Systemic Ablation of MMP-9 Triggers Invasive Growth and Metastasis of Pancreatic Cancer via Deregulation of IL6 Expression in the Bone Marrow. *Mol Cancer Res* 2016; **14**: 1147-1158 [PMID: [27489361](#) DOI: [10.1158/1541-7786.MCR-16-0180](#)]
 - 44 **Olive KP**, Jacobetz MA, Davidson CJ, Gopinathan A, McIntyre D, Honess D, Madhu B, Goldgraben MA, Caldwell ME, Allard D, Frese KK, Denicola G, Feig C, Combs C, Winter SP, Ireland-Zecchini H, Reichelt S, Howat WJ, Chang A, Dhara M, Wang L, Rückert F, Grützmann R, Pilarsky C, Izeradjene K, Hingorani SR, Huang P, Davies SE, Plunkett W, Egorin M, Hruban RH, Whitebread N, McGovern K, Adams J, Iacobuzio-Donahue C, Griffiths J, Tuveson DA. Inhibition of Hedgehog signaling enhances delivery of chemotherapy in a mouse model of pancreatic cancer. *Science* 2009; **324**: 1457-1461 [PMID: [19460966](#) DOI: [10.1126/science.1171362](#)]
 - 45 **Cheng X**, Kim JY, Ghafoory S, Duvaci T, Rafiee R, Theobald J, Alborzina H, Holenya P, Fredebohm J, Merz KH, Mehrabi A, Hafezi M, Saffari A, Eisenbrand G, Hoheisel JD, Wölfl S. Methylisoidigo preferentially kills cancer stem cells by interfering cell metabolism via inhibition of LKB1 and activation of AMPK in PDACs. *Mol Oncol* 2016; **10**: 806-824 [PMID: [26887594](#) DOI: [10.1016/j.molonc.2016.01.008](#)]
 - 46 **Truong LH**, Pauklin S. Pancreatic Cancer Microenvironment and Cellular Composition: Current Understandings and Therapeutic Approaches. *Cancers (Basel)* 2021; **13** [PMID: [34638513](#) DOI: [10.3390/cancers13195028](#)]
 - 47 **Richards KE**, Zeleniak AE, Fishel ML, Wu J, Littlepage LE, Hill R. Cancer-associated fibroblast exosomes regulate survival and proliferation of pancreatic cancer cells. *Oncogene* 2017; **36**: 1770-1778 [PMID: [27669441](#) DOI: [10.1038/onc.2016.353](#)]
 - 48 **Olivares O**, Mayers JR, Gouirand V, Torrence ME, Gicquel T, Borge L, Lac S, Roques J, Lavaut MN, Berthezène P, Rubis M, Secq V, Garcia S, Moutardier V, Lombardo D, Iovanna JL, Tomasini R, Guillaumond F, Vander Heiden MG, Vasseur S. Collagen-derived proline promotes pancreatic ductal adenocarcinoma cell survival under nutrient limited conditions. *Nat Commun* 2017; **8**: 16031 [PMID: [28685754](#) DOI: [10.1038/ncomms16031](#)]
 - 49 **Sousa CM**, Biancur DE, Wang X, Halbrook CJ, Sherman MH, Zhang L, Kremer D, Hwang RF, Witkiewicz AK, Ying H, Asara JM, Evans RM, Cantley LC, Lyssiotis CA, Kimmelman AC. Pancreatic stellate cells support tumour metabolism through autophagic alanine secretion. *Nature* 2016; **536**: 479-483 [PMID: [27509858](#) DOI: [10.1038/nature19084](#)]
 - 50 **Özdemir BC**, Pentcheva-Hoang T, Carstens JL, Zheng X, Wu CC, Simpson TR, Laklai H, Sugimoto H, Kahlert C, Novitskiy SV, De Jesus-Acosta A, Sharma P, Heidari P, Mahmood U, Chin L, Moses HL, Weaver VM, Maitra A, Allison JP, LeBleu VS, Kalluri R. Depletion of carcinoma-associated fibroblasts and fibrosis induces immunosuppression and

- accelerates pancreas cancer with reduced survival. *Cancer Cell* 2014; **25**: 719-734 [PMID: 24856586 DOI: 10.1016/j.ccr.2014.04.005]
- 51 Lee JJ, Perera RM, Wang H, Wu DC, Liu XS, Han S, Fitamant J, Jones PD, Ghanta KS, Kawano S, Nagle JM, Deshpande V, Boucher Y, Kato T, Chen JK, Willmann JK, Bardeesy N, Beachy PA. Stromal response to Hedgehog signaling restrains pancreatic cancer progression. *Proc Natl Acad Sci U S A* 2014; **111**: E3091-E3100 [PMID: 25024225 DOI: 10.1073/pnas.1411679111]
- 52 Biffi G, Tuveson DA. Diversity and Biology of Cancer-Associated Fibroblasts. *Physiol Rev* 2021; **101**: 147-176 [PMID: 32466724 DOI: 10.1152/physrev.00048.2019]
- 53 Helms E, Onate MK, Sherman MH. Fibroblast Heterogeneity in the Pancreatic Tumor Microenvironment. *Cancer Discov* 2020; **10**: 648-656 [PMID: 32014869 DOI: 10.1158/2159-8290.CD-19-1353]
- 54 Öhlund D, Handly-Santana A, Biffi G, Elyada E, Almeida AS, Ponz-Sarvise M, Corbo V, Oni TE, Hearn SA, Lee EJ, Chio II, Hwang CI, Tiriach H, Baker LA, Engle DD, Feig C, Kultti A, Egeblad M, Fearon DT, Crawford JM, Clevers H, Park Y, Tuveson DA. Distinct populations of inflammatory fibroblasts and myofibroblasts in pancreatic cancer. *J Exp Med* 2017; **214**: 579-596 [PMID: 28232471 DOI: 10.1084/jem.20162024]
- 55 Sahai E, Astsaturov I, Cukierman E, DeNardo DG, Egeblad M, Evans RM, Fearon D, Greten FR, Hingorani SR, Hunter T, Hynes RO, Jain RK, Janowitz T, Jorgensen C, Kimmelman AC, Kolonin MG, Maki RG, Powers RS, Puré E, Ramirez DC, Scherz-Shouval R, Sherman MH, Stewart S, Tlsty TD, Tuveson DA, Watt FM, Weaver V, Weeraratna AT, Werb Z. A framework for advancing our understanding of cancer-associated fibroblasts. *Nat Rev Cancer* 2020; **20**: 174-186 [PMID: 31980749 DOI: 10.1038/s41568-019-0238-1]
- 56 Kalluri R. The biology and function of fibroblasts in cancer. *Nat Rev Cancer* 2016; **16**: 582-598 [PMID: 27550820 DOI: 10.1038/nrc.2016.73]
- 57 Yang X, Lin Y, Shi Y, Li B, Liu W, Yin W, Dang Y, Chu Y, Fan J, He R. FAP Promotes Immunosuppression by Cancer-Associated Fibroblasts in the Tumor Microenvironment via STAT3-CCL2 Signaling. *Cancer Res* 2016; **76**: 4124-4135 [PMID: 27216177 DOI: 10.1158/0008-5472.CAN-15-2973]
- 58 Shi M, Yu DH, Chen Y, Zhao CY, Zhang J, Liu QH, Ni CR, Zhu MH. Expression of fibroblast activation protein in human pancreatic adenocarcinoma and its clinicopathological significance. *World J Gastroenterol* 2012; **18**: 840-846 [PMID: 22371645 DOI: 10.3748/wjg.v18.i8.840]
- 59 Ziani L, Chouaib S, Thiery J. Alteration of the Antitumor Immune Response by Cancer-Associated Fibroblasts. *Front Immunol* 2018; **9**: 414 [PMID: 29545811 DOI: 10.3389/fimmu.2018.00414]
- 60 Kobayashi H, Enomoto A, Woods SL, Burt AD, Takahashi M, Worthley DL. Cancer-associated fibroblasts in gastrointestinal cancer. *Nat Rev Gastroenterol Hepatol* 2019; **16**: 282-295 [PMID: 30778141 DOI: 10.1038/s41575-019-0115-0]
- 61 Li T, Yi S, Liu W, Jia C, Wang G, Hua X, Tai Y, Zhang Q, Chen G. Colorectal carcinoma-derived fibroblasts modulate natural killer cell phenotype and antitumor cytotoxicity. *Med Oncol* 2013; **30**: 663 [PMID: 23873014 DOI: 10.1007/s12032-013-0663-z]
- 62 Fitzgerald AA, Weiner LM. The role of fibroblast activation protein in health and malignancy. *Cancer Metastasis Rev* 2020; **39**: 783-803 [PMID: 32601975 DOI: 10.1007/s10555-020-09909-3]
- 63 Aliru ML, Schoenhals JE, Venkatesulu BP, Anderson CC, Barsoumian HB, Younes AI, K Mahadevan LS, Soeung M, Aziz KE, Welsh JW, Krishnan S. Radiation therapy and immunotherapy: what is the optimal timing or sequencing? *Immunotherapy* 2018; **10**: 299-316 [PMID: 29421979 DOI: 10.2217/imt-2017-0082]
- 64 Ren X, Ye F, Jiang Z, Chu Y, Xiong S, Wang Y. Involvement of cellular death in TRAIL/DR5-dependent suppression induced by CD4(+)CD25(+) regulatory T cells. *Cell Death Differ* 2007; **14**: 2076-2084 [PMID: 17762882 DOI: 10.1038/sj.cdd.4402220]
- 65 Gondek DC, Lu LF, Quezada SA, Sakaguchi S, Noelle RJ. Cutting edge: contact-mediated suppression by CD4+CD25+ regulatory cells involves a granzyme B-dependent, perforin-independent mechanism. *J Immunol* 2005; **174**: 1783-1786 [PMID: 15699103 DOI: 10.4049/jimmunol.174.4.1783]
- 66 Tsuchikawa T, Hirano S, Tanaka E, Matsumoto J, Kato K, Nakamura T, Ebihara Y, Shichinohe T. Novel aspects of preoperative chemoradiation therapy improving anti-tumor immunity in pancreatic cancer. *Cancer Sci* 2013; **104**: 531-535 [PMID: 23363422 DOI: 10.1111/cas.12119]
- 67 Zhang Y, Lazarus J, Steele NG, Yan W, Lee HJ, Nwosu ZC, Halbrook CJ, Menjivar RE, Kemp SB, Sirihorachai VR, Velez-Delgado A, Donahue K, Carpenter ES, Brown KL, Irizarry-Negron V, Nevison AC, Vinta A, Anderson MA, Crawford HC, Lyssiotis CA, Frankel TL, Bednar F, Pasca di Magliano M. Regulatory T-cell Depletion Alters the Tumor Microenvironment and Accelerates Pancreatic Carcinogenesis. *Cancer Discov* 2020; **10**: 422-439 [PMID: 31911451 DOI: 10.1158/2159-8290.CD-19-0958]
- 68 Ugel S, De Sanctis F, Mandruzzato S, Bronte V. Tumor-induced myeloid deviation: when myeloid-derived suppressor cells meet tumor-associated macrophages. *J Clin Invest* 2015; **125**: 3365-3376 [PMID: 26325033 DOI: 10.1172/JCI80006]
- 69 De Cicco P, Ercolano G, Ianaro A. The New Era of Cancer Immunotherapy: Targeting Myeloid-Derived Suppressor Cells to Overcome Immune Evasion. *Front Immunol* 2020; **11**: 1680 [PMID: 32849585 DOI: 10.3389/fimmu.2020.01680]
- 70 Markowitz J, Brooks TR, Duggan MC, Paul BK, Pan X, Wei L, Abrams Z, Luedke E, Lesinski GB, Mundy-Bosse B, Bekaii-Saab T, Carson WE 3rd. Patients with pancreatic adenocarcinoma exhibit elevated levels of myeloid-derived suppressor cells upon progression of disease. *Cancer Immunol Immunother* 2015; **64**: 149-159 [PMID: 25305035 DOI: 10.1007/s00262-014-1618-8]
- 71 Di Caro G, Cortese N, Castino GF, Grizzi F, Gavazzi F, Ridolfi C, Capretti G, Miner R, Todoric J, Zerbi A, Allavena P, Mantovani A, Marchesi F. Dual prognostic significance of tumour-associated macrophages in human pancreatic adenocarcinoma treated or untreated with chemotherapy. *Gut* 2016; **65**: 1710-1720 [PMID: 26156960 DOI: 10.1136/gutjnl-2015-309193]
- 72 Lankadasari MB, Mukhopadhyay P, Mohammed S, Harikumar KB. TAMing pancreatic cancer: combat with a double edged sword. *Mol Cancer* 2019; **18**: 48 [PMID: 30925924 DOI: 10.1186/s12943-019-0966-6]

- 73 **Hu H**, Hang JJ, Han T, Zhuo M, Jiao F, Wang LW. The M2 phenotype of tumor-associated macrophages in the stroma confers a poor prognosis in pancreatic cancer. *Tumour Biol* 2016; **37**: 8657-8664 [PMID: [26738860](#) DOI: [10.1007/s13277-015-4741-z](#)]
- 74 **Liu Q**, Li Y, Niu Z, Zong Y, Wang M, Yao L, Lu Z, Liao Q, Zhao Y. Atorvastatin (Lipitor) attenuates the effects of aspirin on pancreatic cancerogenesis and the chemotherapeutic efficacy of gemcitabine on pancreatic cancer by promoting M2 polarized tumor associated macrophages. *J Exp Clin Cancer Res* 2016; **35**: 33 [PMID: [26879926](#) DOI: [10.1186/s13046-016-0304-4](#)]
- 75 **Dijkgraaf EM**, Heusinkveld M, Tummers B, Vogelpoel LT, Goedemans R, Jha V, Nortier JW, Welters MJ, Kroep JR, van der Burg SH. Chemotherapy alters monocyte differentiation to favor generation of cancer-supporting M2 macrophages in the tumor microenvironment. *Cancer Res* 2013; **73**: 2480-2492 [PMID: [23436796](#) DOI: [10.1158/0008-5472.CAN-12-3542](#)]
- 76 **Young K**, Hughes DJ, Cunningham D, Starling N. Immunotherapy and pancreatic cancer: unique challenges and potential opportunities. *Ther Adv Med Oncol* 2018; **10**: 1758835918816281 [PMID: [30574212](#) DOI: [10.1177/1758835918816281](#)]
- 77 **Zhang J**, Wolfgang CL, Zheng L. Precision Immuno-Oncology: Prospects of Individualized Immunotherapy for Pancreatic Cancer. *Cancers (Basel)* 2018; **10** [PMID: [29385739](#) DOI: [10.3390/cancers10020039](#)]
- 78 **Iwai Y**, Ishida M, Tanaka Y, Okazaki T, Honjo T, Minato N. Involvement of PD-L1 on tumor cells in the escape from host immune system and tumor immunotherapy by PD-L1 blockade. *Proc Natl Acad Sci U S A* 2002; **99**: 12293-12297 [PMID: [12218188](#) DOI: [10.1073/pnas.192461099](#)]
- 79 **Twomey JD**, Zhang B. Cancer Immunotherapy Update: FDA-Approved Checkpoint Inhibitors and Companion Diagnostics. *AAPS J* 2021; **23**: 39 [PMID: [33677681](#) DOI: [10.1208/s12248-021-00574-0](#)]
- 80 **Royal RE**, Levy C, Turner K, Mathur A, Hughes M, Kammula US, Sherry RM, Topalian SL, Yang JC, Lowy I, Rosenberg SA. Phase 2 trial of single agent Ipilimumab (anti-CTLA-4) for locally advanced or metastatic pancreatic adenocarcinoma. *J Immunother* 2010; **33**: 828-833 [PMID: [20842054](#) DOI: [10.1097/CJI.0b013e3181e3c14c](#)]
- 81 **Torphy RJ**, Zhu Y, Schulick RD. Immunotherapy for pancreatic cancer: Barriers and breakthroughs. *Ann Gastroenterol Surg* 2018; **2**: 274-281 [PMID: [30003190](#) DOI: [10.1002/ags3.12176](#)]
- 82 **Plate JM**, Plate AE, Shott S, Bograd S, Harris JE. Effect of gemcitabine on immune cells in subjects with adenocarcinoma of the pancreas. *Cancer Immunol Immunother* 2005; **54**: 915-925 [PMID: [15782312](#) DOI: [10.1007/s00262-004-0638-1](#)]
- 83 **Aglietta M**, Barone C, Sawyer MB, Moore MJ, Miller WH Jr, Bagalà C, Colombi F, Cagnazzo C, Gioeni L, Wang E, Huang B, Fly KD, Leone F. A phase I dose escalation trial of tremelimumab (CP-675,206) in combination with gemcitabine in chemotherapy-naïve patients with metastatic pancreatic cancer. *Ann Oncol* 2014; **25**: 1750-1755 [PMID: [24907635](#) DOI: [10.1093/annonc/mdu205](#)]
- 84 **Weiss GJ**, Blaydorn L, Beck J, Bornemann-Kolatzki K, Urnovitz H, Schütz E, Khemka V. Phase Ib/II study of gemcitabine, nab-paclitaxel, and pembrolizumab in metastatic pancreatic adenocarcinoma. *Invest New Drugs* 2018; **36**: 96-102 [PMID: [29119276](#) DOI: [10.1007/s10637-017-0525-1](#)]
- 85 **Mizugaki H**, Yamamoto N, Murakami H, Kenmotsu H, Fujiwara Y, Ishida Y, Kawakami T, Takahashi T. Phase I dose-finding study of monotherapy with atezolizumab, an engineered immunoglobulin monoclonal antibody targeting PD-L1, in Japanese patients with advanced solid tumors. *Invest New Drugs* 2016; **34**: 596-603 [PMID: [27363843](#) DOI: [10.1007/s10637-016-0371-6](#)]
- 86 **O'Reilly EM**, Oh DY, Dhani N, Renouf DJ, Lee MA, Sun W, Fisher G, Hezel A, Chang SC, Vlahovic G, Takahashi O, Yang Y, Fitts D, Philip PA. Durvalumab With or Without Tremelimumab for Patients With Metastatic Pancreatic Ductal Adenocarcinoma: A Phase 2 Randomized Clinical Trial. *JAMA Oncol* 2019; **5**: 1431-1438 [PMID: [31318392](#) DOI: [10.1001/jamaoncol.2019.1588](#)]
- 87 **Jardim DL**, Goodman A, de Melo Gagliato D, Kurzrock R. The Challenges of Tumor Mutational Burden as an Immunotherapy Biomarker. *Cancer Cell* 2021; **39**: 154-173 [PMID: [33125859](#) DOI: [10.1016/j.ccell.2020.10.001](#)]
- 88 **Salman B**, Zhou D, Jaffee EM, Edil BH, Zheng L. Vaccine therapy for pancreatic cancer. *Oncoimmunology* 2013; **2**: e26662 [PMID: [24498551](#) DOI: [10.4161/onci.26662](#)]
- 89 **Rosenberg A**, Mahalingam D. Immunotherapy in pancreatic adenocarcinoma-overcoming barriers to response. *J Gastrointest Oncol* 2018; **9**: 143-159 [PMID: [29564181](#) DOI: [10.21037/jgo.2018.01.13](#)]
- 90 **Laheru D**, Biedrzycki B, Jaffee EM. Development of a cytokine-modified allogeneic whole cell pancreatic cancer vaccine. *Methods Mol Biol* 2013; **980**: 175-203 [PMID: [23359154](#) DOI: [10.1007/978-1-62703-287-2_9](#)]
- 91 **Jaffee EM**, Hruban RH, Biedrzycki B, Laheru D, Schepers K, Sauter PR, Goemann M, Coleman J, Grochow L, Donehower RC, Lillemoe KD, O'Reilly S, Abrams RA, Pardoll DM, Cameron JL, Yeo CJ. Novel allogeneic granulocyte-macrophage colony-stimulating factor-secreting tumor vaccine for pancreatic cancer: a phase I trial of safety and immune activation. *J Clin Oncol* 2001; **19**: 145-156 [PMID: [11134207](#) DOI: [10.1200/JCO.2001.19.1.145](#)]
- 92 **Lutz E**, Yeo CJ, Lillemoe KD, Biedrzycki B, Kobrin B, Herman J, Sugar E, Piantadosi S, Cameron JL, Solt S, Onners B, Tartakovsky I, Choi M, Sharma R, Illei PB, Hruban RH, Abrams RA, Le D, Jaffee E, Laheru D. A lethally irradiated allogeneic granulocyte-macrophage colony stimulating factor-secreting tumor vaccine for pancreatic adenocarcinoma. A Phase II trial of safety, efficacy, and immune activation. *Ann Surg* 2011; **253**: 328-335 [PMID: [21217520](#) DOI: [10.1097/SLA.0b013e3181fd271c](#)]
- 93 **Chung V**, Kos FJ, Hardwick N, Yuan Y, Chao J, Li D, Waisman J, Li M, Zurcher K, Frankel P, Diamond DJ. Evaluation of safety and efficacy of p53MVA vaccine combined with pembrolizumab in patients with advanced solid cancers. *Clin Transl Oncol* 2019; **21**: 363-372 [PMID: [30094792](#) DOI: [10.1007/s12094-018-1932-2](#)]
- 94 **Le DT**, Lutz E, Uram JN, Sugar EA, Onners B, Solt S, Zheng L, Diaz LA Jr, Donehower RC, Jaffee EM, Laheru DA. Evaluation of ipilimumab in combination with allogeneic pancreatic tumor cells transfected with a GM-CSF gene in previously treated pancreatic cancer. *J Immunother* 2013; **36**: 382-389 [PMID: [23924790](#) DOI: [10.1097/CJI.0b013e31829fb7a2](#)]
- 95 **Osawa R**, Tsunoda T, Yoshimura S, Watanabe T, Miyazawa M, Tani M, Takeda K, Nakagawa H, Nakamura Y, Yamaue H. Identification of HLA-A24-restricted novel T Cell epitope peptides derived from P-cadherin and kinesin family member 20A. *J Biomed Biotechnol* 2012; **2012**: 848042 [PMID: [22778556](#) DOI: [10.1155/2012/848042](#)]

- 96 **Asahara S**, Takeda K, Yamao K, Maguchi H, Yamaue H. Phase I/II clinical trial using HLA-A24-restricted peptide vaccine derived from KIF20A for patients with advanced pancreatic cancer. *J Transl Med* 2013; **11**: 291 [PMID: 24237633 DOI: [10.1186/1479-5876-11-291](https://doi.org/10.1186/1479-5876-11-291)]
- 97 **Suzuki N**, Hazama S, Iguchi H, Uesugi K, Tanaka H, Hirakawa K, Aruga A, Hatori T, Ishizaki H, Umeda Y, Fujiwara T, Ikemoto T, Shimada M, Yoshimatsu K, Shimizu R, Hayashi H, Sakata K, Takenouchi H, Matsui H, Shindo Y, Iida M, Koki Y, Arima H, Furukawa H, Ueno T, Yoshino S, Nakamura Y, Oka M, Nagano H. Phase II clinical trial of peptide cocktail therapy for patients with advanced pancreatic cancer: VENUS-PC study. *Cancer Sci* 2017; **108**: 73-80 [PMID: 27783849 DOI: [10.1111/cas.13113](https://doi.org/10.1111/cas.13113)]
- 98 **Miyazawa M**, Katsuda M, Maguchi H, Katanuma A, Ishii H, Ozaka M, Yamao K, Imaoka H, Kawai M, Hirono S, Okada KI, Yamaue H. Phase II clinical trial using novel peptide cocktail vaccine as a postoperative adjuvant treatment for surgically resected pancreatic cancer patients. *Int J Cancer* 2017; **140**: 973-982 [PMID: 27861852 DOI: [10.1002/ijc.30510](https://doi.org/10.1002/ijc.30510)]
- 99 **Kameshima H**, Tsuruma T, Kutomi G, Shima H, Iwayama Y, Kimura Y, Imamura M, Torigoe T, Takahashi A, Hirohashi Y, Tamura Y, Tsukahara T, Kanaseki T, Sato N, Hirata K. Immunotherapeutic benefit of α -interferon (IFN α) in survivin2B-derived peptide vaccination for advanced pancreatic cancer patients. *Cancer Sci* 2013; **104**: 124-129 [PMID: 23078230 DOI: [10.1111/cas.12046](https://doi.org/10.1111/cas.12046)]
- 100 **Coveler AL**, Rossi GR, Vahanian NN, Link C, Chiorean EG. Algenpantucel-L immunotherapy in pancreatic adenocarcinoma. *Immunotherapy* 2016; **8**: 117-125 [PMID: 26787078 DOI: [10.2217/imt.15.113](https://doi.org/10.2217/imt.15.113)]
- 101 **Hardacre JM**, Mulcahy M, Small W, Talamonti M, Obel J, Krishnamurthi S, Rocha-Lima CS, Safran H, Lenz HJ, Chiorean EG. Addition of algenpantucel-L immunotherapy to standard adjuvant therapy for pancreatic cancer: a phase 2 study. *J Gastrointest Surg* 2013; **17**: 94-100; discussion p. 100 [PMID: 23229886 DOI: [10.1007/s11605-012-2064-6](https://doi.org/10.1007/s11605-012-2064-6)]
- 102 **McCormick KA**, Coveler AL, Rossi GR, Vahanian NN, Link C, Chiorean EG. Pancreatic cancer: Update on immunotherapies and algenpantucel-L. *Hum Vaccin Immunother* 2016; **12**: 563-575 [PMID: 26619245 DOI: [10.1080/21645515.2015.1093264](https://doi.org/10.1080/21645515.2015.1093264)]
- 103 **Hewitt DB**, Nissen N, Hatoum H, Musher B, Seng J, Coveler AL, Al-Rajabi R, Yeo CJ, Leiby B, Banks J, Balducci L, Vaccaro G, LoConte N, George TJ, Brenner W, Elquza E, Vahanian N, Rossi G, Kennedy E, Link C, Lavu H. A Phase 3 Randomized Clinical Trial of Chemotherapy With or Without Algenpantucel-L (HyperAcute-Pancreas) Immunotherapy in Subjects With Borderline Resectable or Locally Advanced Unresectable Pancreatic Cancer. *Ann Surg* 2022; **275**: 45-53 [PMID: 33630475 DOI: [10.1097/SLA.0000000000004669](https://doi.org/10.1097/SLA.0000000000004669)]
- 104 **Nath S**, Mukherjee P. MUC1: a multifaceted oncoprotein with a key role in cancer progression. *Trends Mol Med* 2014; **20**: 332-342 [PMID: 24667139 DOI: [10.1016/j.molmed.2014.02.007](https://doi.org/10.1016/j.molmed.2014.02.007)]
- 105 **Behrens ME**, Grandgenett PM, Bailey JM, Singh PK, Yi CH, Yu F, Hollingsworth MA. The reactive tumor microenvironment: MUC1 signaling directly reprograms transcription of CTGF. *Oncogene* 2010; **29**: 5667-5677 [PMID: 20697347 DOI: [10.1038/onc.2010.327](https://doi.org/10.1038/onc.2010.327)]
- 106 **Lepisto AJ**, Moser AJ, Zeh H, Lee K, Bartlett D, McKolanis JR, Geller BA, Schmotzer A, Potter DP, Whiteside T, Finn OJ, Ramanathan RK. A phase I/II study of a MUC1 peptide pulsed autologous dendritic cell vaccine as adjuvant therapy in patients with resected pancreatic and biliary tumors. *Cancer Ther* 2008; **6**: 955-964 [PMID: 19129927]
- 107 **Gong YF**, Zhou QB, Liao YD, Mai C, Chen TJ, Tang YQ, Chen RF. Optimized construction of MUC1-VNTR_n DNA vaccine and its anti-pancreatic cancer efficacy. *Oncol Lett* 2017; **13**: 2198-2206 [PMID: 28454381 DOI: [10.3892/ol.2017.5717](https://doi.org/10.3892/ol.2017.5717)]
- 108 **Palucka K**, Ueno H, Fay J, Banchereau J. Dendritic cells and immunity against cancer. *J Intern Med* 2011; **269**: 64-73 [PMID: 21158979 DOI: [10.1111/j.1365-2796.2010.02317.x](https://doi.org/10.1111/j.1365-2796.2010.02317.x)]
- 109 **Mehrotra S**, Britten CD, Chin S, Garrett-Mayer E, Cloud CA, Li M, Scurti G, Salem ML, Nelson MH, Thomas MB, Paulos CM, Salazar AM, Nishimura MI, Rubinstein MP, Li Z, Cole DJ. Vaccination with poly(IC:LC) and peptide-pulsed autologous dendritic cells in patients with pancreatic cancer. *J Hematol Oncol* 2017; **10**: 82 [PMID: 28388966 DOI: [10.1186/s13045-017-0459-2](https://doi.org/10.1186/s13045-017-0459-2)]
- 110 **Yanagisawa R**, Koizumi T, Koya T, Sano K, Koido S, Nagai K, Kobayashi M, Okamoto M, Sugiyama H, Shimodaira S. WT1-pulsed Dendritic Cell Vaccine Combined with Chemotherapy for Resected Pancreatic Cancer in a Phase I Study. *Anticancer Res* 2018; **38**: 2217-2225 [PMID: 29599342 DOI: [10.21873/anticancer.12464](https://doi.org/10.21873/anticancer.12464)]
- 111 **Kimura Y**, Tsukada J, Tomoda T, Takahashi H, Imai K, Shimamura K, Sunamura M, Yonemitsu Y, Shimodaira S, Koido S, Homma S, Okamoto M. Clinical and immunologic evaluation of dendritic cell-based immunotherapy in combination with gemcitabine and/or S-1 in patients with advanced pancreatic carcinoma. *Pancreas* 2012; **41**: 195-205 [PMID: 21792083 DOI: [10.1097/MPA.0b013e31822398c6](https://doi.org/10.1097/MPA.0b013e31822398c6)]
- 112 **Kobayashi M**, Shimodaira S, Nagai K, Ogasawara M, Takahashi H, Abe H, Tanii M, Okamoto M, Tsujitani S, Yusa S, Ishidao T, Kishimoto J, Shibamoto Y, Nagaya M, Yonemitsu Y; DC Vaccine Study Group at the Japan Society of Innovative Cell Therapy (J-SICT). Prognostic factors related to add-on dendritic cell vaccines on patients with inoperable pancreatic cancer receiving chemotherapy: a multicenter analysis. *Cancer Immunol Immunother* 2014; **63**: 797-806 [PMID: 24777613 DOI: [10.1007/s00262-014-1554-7](https://doi.org/10.1007/s00262-014-1554-7)]
- 113 **Takakura K**, Koido S, Kan S, Yoshida K, Mori M, Hirano Y, Ito Z, Kobayashi H, Takami S, Matsumoto Y, Kajihara M, Misawa T, Okamoto M, Sugiyama H, Homma S, Ohkusa T, Tajiri H. Prognostic markers for patient outcome following vaccination with multiple MHC Class I/II-restricted WT1 peptide-pulsed dendritic cells plus chemotherapy for pancreatic cancer. *Anticancer Res* 2015; **35**: 555-562 [PMID: 25550602]
- 114 **Abou-Alfa GK**, Chapman PB, Feilchenfeldt J, Brennan MF, Capanu M, Gansukh B, Jacobs G, Levin A, Neville D, Kelsen DP, O'Reilly EM. Targeting mutated K-ras in pancreatic adenocarcinoma using an adjuvant vaccine. *Am J Clin Oncol* 2011; **34**: 321-325 [PMID: 20686403 DOI: [10.1097/COC.0b013e3181e84b1f](https://doi.org/10.1097/COC.0b013e3181e84b1f)]
- 115 **Palmer DH**, Valle JW, Ma YT, Faluyi O, Neoptolemos JP, Jensen Gjertsen T, Iversen B, Amund Eriksen J, Møller AS, Aksnes AK, Miller R, Dueland S. TG01/GM-CSF and adjuvant gemcitabine in patients with resected RAS-mutant adenocarcinoma of the pancreas (CT TG01-01): a single-arm, phase 1/2 trial. *Br J Cancer* 2020; **122**: 971-977 [PMID: 32063605 DOI: [10.1038/s41416-020-0752-7](https://doi.org/10.1038/s41416-020-0752-7)]

- 116 **Wedén S**, Klemp M, Gladhaug IP, Møller M, Eriksen JA, Gaudernack G, Buanes T. Long-term follow-up of patients with resected pancreatic cancer following vaccination against mutant K-ras. *Int J Cancer* 2011; **128**: 1120-1128 [PMID: 20473937 DOI: 10.1002/ijc.25449]
- 117 **Cohn A**, Morse MA, O'Neil B, Whiting S, Coeshott C, Ferraro J, Bellgrau D, Apelian D, Rodell TC. Whole Recombinant *Saccharomyces cerevisiae* Yeast Expressing Ras Mutations as Treatment for Patients With Solid Tumors Bearing Ras Mutations: Results From a Phase I Trial. *J Immunother* 2018; **41**: 141-150 [PMID: 29528991 DOI: 10.1097/CJI.0000000000000219]
- 118 **Muscarella P**, Bekaii-Saab T, McIntyre K, Rosemurgy A, Ross SB, Richards DA, Fisher WE, Flynn PJ, Mattson A, Coeshott C, Roder H, Roder J, Harrell FE, Cohn A, Rodell TC, Apelian D. A Phase 2 Randomized Placebo-Controlled Adjuvant Trial of GI-4000, a Recombinant Yeast Expressing Mutated RAS Proteins in Patients with Resected Pancreas Cancer. *J Pancreat Cancer* 2021; **7**: 8-19 [PMID: 33786412 DOI: 10.1089/pancan.2020.0021]
- 119 **Suehara N**, Mizumoto K, Muta T, Tominaga Y, Shimura H, Kitajima S, Hamasaki N, Tsuneyoshi M, Tanaka M. Telomerase elevation in pancreatic ductal carcinoma compared to nonmalignant pathological states. *Clin Cancer Res* 1997; **3**: 993-998 [PMID: 9815776]
- 120 **Bernhardt SL**, Gjertsen MK, Trachsel S, Møller M, Eriksen JA, Meo M, Buanes T, Gaudernack G. Telomerase peptide vaccination of patients with non-resectable pancreatic cancer: A dose escalating phase I/II study. *Br J Cancer* 2006; **95**: 1474-1482 [PMID: 17060934 DOI: 10.1038/sj.bjc.6603437]
- 121 **Middleton G**, Silcocks P, Cox T, Valle J, Wadsley J, Propper D, Coxon F, Ross P, Madhusudan S, Roques T, Cunningham D, Falk S, Wadd N, Harrison M, Corrie P, Iveson T, Robinson A, McAdam K, Eatock M, Evans J, Archer C, Hickish T, Garcia-Alonso A, Nicolson M, Stewart W, Anthony A, Greenhalf W, Shaw V, Costello E, Naisbitt D, Rawcliffe C, Nanson G, Neoptolemos J. Gemcitabine and capecitabine with or without telomerase peptide vaccine GV1001 in patients with locally advanced or metastatic pancreatic cancer (TeloVac): an open-label, randomised, phase 3 trial. *Lancet Oncol* 2014; **15**: 829-840 [PMID: 24954781 DOI: 10.1016/S1470-2045(14)70236-0]
- 122 **Morotti M**, Albukhari A, Alsaadi A, Artibani M, Brenton JD, Curbishley SM, Dong T, Dustin ML, Hu Z, McGranahan N, Miller ML, Santana-Gonzalez L, Seymour LW, Shi T, Van Loo P, Yau C, White H, Wietek N, Church DN, Wedge DC, Ahmed AA. Promises and challenges of adoptive T-cell therapies for solid tumours. *Br J Cancer* 2021; **124**: 1759-1776 [PMID: 33782566 DOI: 10.1038/s41416-021-01353-6]
- 123 **Rohaam MW**, Wilgenhof S, Haanen JBAG. Adoptive cellular therapies: the current landscape. *Virchows Arch* 2019; **474**: 449-461 [PMID: 30470934 DOI: 10.1007/s00428-018-2484-0]
- 124 **Matsui H**, Hazama S, Sakamoto K, Shindo Y, Kanekiyo S, Nakashima M, Matsukuma S, Tokuhisa Y, Iida M, Suzuki N, Yoshimura K, Takeda S, Ueno T, Yoshino S, Oka M, Nagano H. Postoperative Adjuvant Therapy for Resectable Pancreatic Cancer With Gemcitabine and Adoptive Immunotherapy. *Pancreas* 2017; **46**: 994-1002 [PMID: 28697053 DOI: 10.1097/MPA.0000000000000880]
- 125 **Chen Y**, Ayaru L, Mathew S, Morris E, Pereira SP, Behboudi S. Expansion of anti-mesothelin specific CD4+ and CD8+ T cell responses in patients with pancreatic carcinoma. *PLoS One* 2014; **9**: e88133 [PMID: 24520352 DOI: 10.1371/journal.pone.0088133]
- 126 **Watanabe K**, Luo Y, Da T, Guedan S, Ruella M, Scholler J, Keith B, Young RM, Engels B, Sorsa S, Siurala M, Havunen R, Tähtinen S, Hemminki A, June CH. Pancreatic cancer therapy with combined mesothelin-redirected chimeric antigen receptor T cells and cytokine-armed oncolytic adenoviruses. *JCI Insight* 2018; **3** [PMID: 29618658 DOI: 10.1172/jci.insight.99573]
- 127 **Hassan R**, Ebel W, Routhier EL, Patel R, Kline JB, Zhang J, Chao Q, Jacob S, Turchin H, Gibbs L, Phillips MD, Mudali S, Iacobuzio-Donahue C, Jaffee EM, Moreno M, Pastan I, Sass PM, Nicolaides NC, Grasso L. Preclinical evaluation of MORAb-009, a chimeric antibody targeting tumor-associated mesothelin. *Cancer Immun* 2007; **7**: 20 [PMID: 18088084]
- 128 **Hassan R**, Cohen SJ, Phillips M, Pastan I, Sharon E, Kelly RJ, Schweizer C, Weil S, Laheru D. Phase I clinical trial of the chimeric anti-mesothelin monoclonal antibody MORAb-009 in patients with mesothelin-expressing cancers. *Clin Cancer Res* 2010; **16**: 6132-6138 [PMID: 21037025 DOI: 10.1158/1078-0432.CCR-10-2275]
- 129 **Collins MA**, Bednar F, Zhang Y, Brisset JC, Galbán S, Galbán CJ, Rakshit S, Flannagan KS, Adsay NV, Pasca di Magliano M. Oncogenic Kras is required for both the initiation and maintenance of pancreatic cancer in mice. *J Clin Invest* 2012; **122**: 639-653 [PMID: 22232209 DOI: 10.1172/JCI59227]
- 130 **Qin C**, Yang G, Yang J, Ren B, Wang H, Chen G, Zhao F, You L, Wang W, Zhao Y. Metabolism of pancreatic cancer: paving the way to better anticancer strategies. *Mol Cancer* 2020; **19**: 50 [PMID: 32122374 DOI: 10.1186/s12943-020-01169-7]
- 131 **Kraman M**, Bambrough PJ, Arnold JN, Roberts EW, Magiera L, Jones JO, Gopinathan A, Tuveson DA, Fearon DT. Suppression of antitumor immunity by stromal cells expressing fibroblast activation protein- α . *Science* 2010; **330**: 827-830 [PMID: 21051638 DOI: 10.1126/science.1195300]
- 132 **Dominguez CX**, Müller S, Keerthivasan S, Koeppen H, Hung J, Gierke S, Breart B, Foreman O, Bainbridge TW, Castiglioni A, Senbabaoglu Y, Modrusan Z, Liang Y, Junttila MR, Klijn C, Bourgon R, Turley SJ. Single-Cell RNA Sequencing Reveals Stromal Evolution into LRRC15⁺ Myofibroblasts as a Determinant of Patient Response to Cancer Immunotherapy. *Cancer Discov* 2020; **10**: 232-253 [PMID: 31699795 DOI: 10.1158/2159-8290.CD-19-0644]
- 133 **Feig C**, Jones JO, Kraman M, Wells RJ, Deonarine A, Chan DS, Connell CM, Roberts EW, Zhao Q, Caballero OL, Teichmann SA, Janowitz T, Jodrell DI, Tuveson DA, Fearon DT. Targeting CXCL12 from FAP-expressing carcinoma-associated fibroblasts synergizes with anti-PD-L1 immunotherapy in pancreatic cancer. *Proc Natl Acad Sci U S A* 2013; **110**: 20212-20217 [PMID: 24277834 DOI: 10.1073/pnas.1320318110]
- 134 **Osipov A**, Saung MT, Zheng L, Murphy AG. Small molecule immunomodulation: the tumor microenvironment and overcoming immune escape. *J Immunother Cancer* 2019; **7**: 224 [PMID: 31439034 DOI: 10.1186/s40425-019-0667-0]
- 135 **Li M**, Li M, Yang Y, Liu Y, Xie H, Yu Q, Tian L, Tang X, Ren K, Li J, Zhang Z, He Q. Remodeling tumor immune microenvironment via targeted blockade of PI3K- γ and CSF-1/CSF-1R pathways in tumor associated macrophages for pancreatic cancer therapy. *J Control Release* 2020; **321**: 23-35 [PMID: 32035193 DOI: 10.1016/j.jconrel.2020.02.011]
- 136 **Jiang H**, Hegde S, Knolhoff BL, Zhu Y, Herndon JM, Meyer MA, Nywening TM, Hawkins WG, Shapiro IM, Weaver

DT, Pachter JA, Wang-Gillam A, DeNardo DG. Targeting focal adhesion kinase renders pancreatic cancers responsive to checkpoint immunotherapy. *Nat Med* 2016; **22**: 851-860 [PMID: [27376576](#) DOI: [10.1038/nm.4123](#)]



Published by **Baishideng Publishing Group Inc**
7041 Koll Center Parkway, Suite 160, Pleasanton, CA 94566, USA
Telephone: +1-925-3991568
E-mail: bpgoffice@wjgnet.com
Help Desk: <https://www.f6publishing.com/helpdesk>
<https://www.wjgnet.com>

