

# On-off pumping for drag reduction in a turbulent channel flow

G. Foggi Rota<sup>1,2</sup>, A. Monti<sup>1</sup>, M. E. Rosti<sup>1</sup> and M. Quadrio<sup>2</sup>

<sup>1</sup>Complex Fluids and Flows Unit, OIST, Japan

<sup>2</sup>Dipartimento di Scienze e Tecnologie Aerospaziali, PoliMi, Italy

# Question

Can we exploit an **unsteady** injection of pumping energy for drag reduction?

# Flow control: where are we?

## Passive

No control energy



## Active

Control energy

## Hybrid

(more) Pumping  
energy

# Making an existing idea practical

*J. Fluid Mech.* (2012), vol. 700, pp. 246–282. © Cambridge University Press 2012  
doi:10.1017/jfm.2012.129

246

## **Pulsating pipe flow with large-amplitude oscillations in the very high frequency regime. Part 1. Time-averaged analysis**

M. Manna<sup>1</sup>, A. Vacca<sup>2</sup> and R. Verzicco<sup>3,4,†</sup>

*International Journal of Heat and Fluid Flow* 88 (2021) 108783



ELSEVIER

Contents lists available at [ScienceDirect](#)

**International Journal of Heat and Fluid Flow**

journal homepage: [www.elsevier.com/locate/ijhff](http://www.elsevier.com/locate/ijhff)

**Prediction of the drag reduction effect of pulsating pipe flow based on machine learning**

Wataru Kobayashi, Takaaki Shimura, Akihiko Mitsuiishi, Kaoru Iwamoto<sup>\*</sup>, Akira Murata

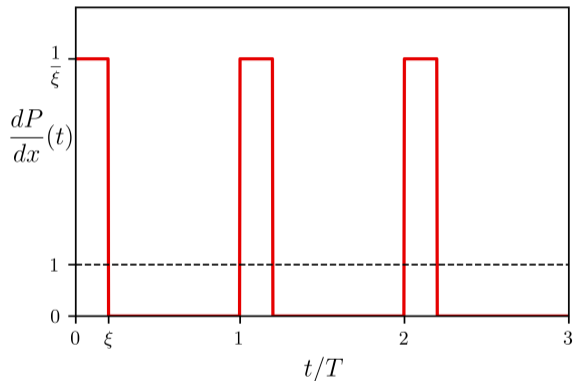
# On-off pumping



- $Re_\tau = 180$

- Two parameters only, since

$$\frac{1}{T} \int_0^T \frac{dP}{dx} dt = 1$$



$$\frac{\partial u_i}{\partial t} + u_j \frac{\partial u_i}{\partial x_j} = -\frac{dP}{dx} \delta_{i1} - \frac{dp}{dx_i} + \frac{1}{Re_\tau} \frac{\partial^2 u_i}{\partial x_j^2}$$

# Our model problem

- DNS of a plane turbulent channel flow

$$3\pi h \times 1.5\pi h \times 2h \Rightarrow 6\pi h \times 3\pi h \times 2h$$

$$\Delta x^+ = 6.6, \Delta y^+ = 3.3, \Delta z^+ = 0.5 - 3.2$$

Higher resolutions employed for verification purposes, up to:

$$\Delta x^+ = 2.2, \Delta y^+ = 1.1, \Delta z^+ = 0.15 - 1.0$$

- Two very diverse codes used to check robustness

## **Time integration:**

Fractional step method (AB)

## **Spatial discretization:**

II order FD

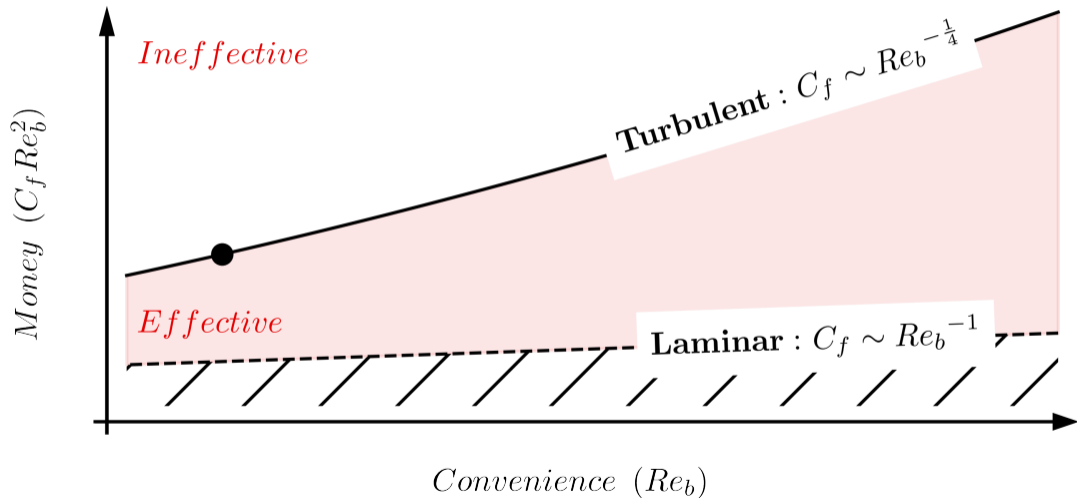
## **Time integration:**

Partially implicit method (RK3 – CN)

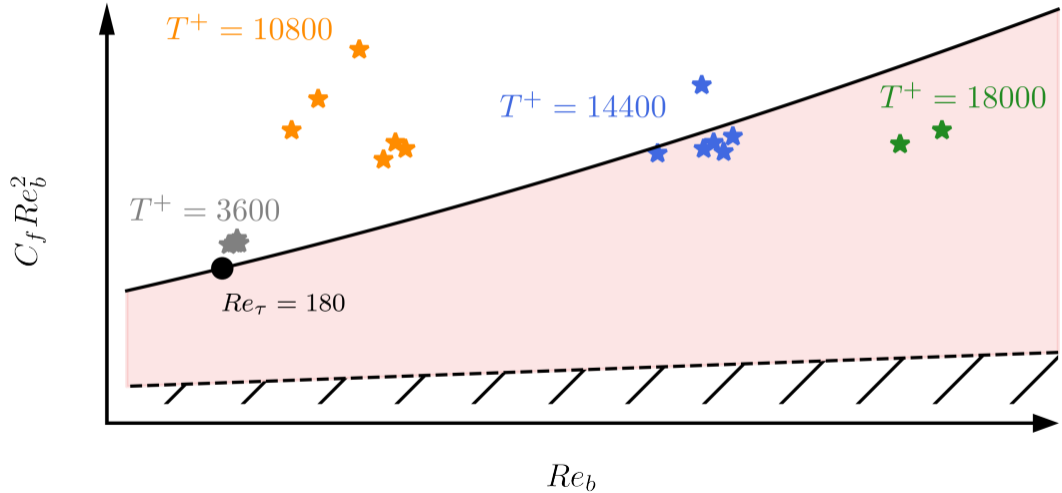
## **Spatial discretization:**

Fourier – IV order compact FD

# Money VS Convenience *(Frohnappel, Hasegawa & Quadrio JFM 2012)*

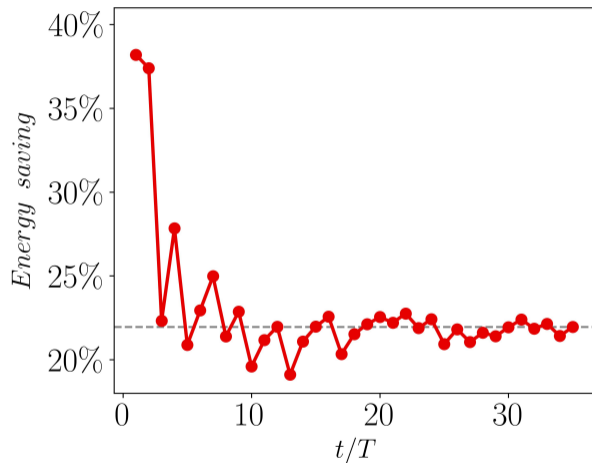


It works!





# A demanding investigation



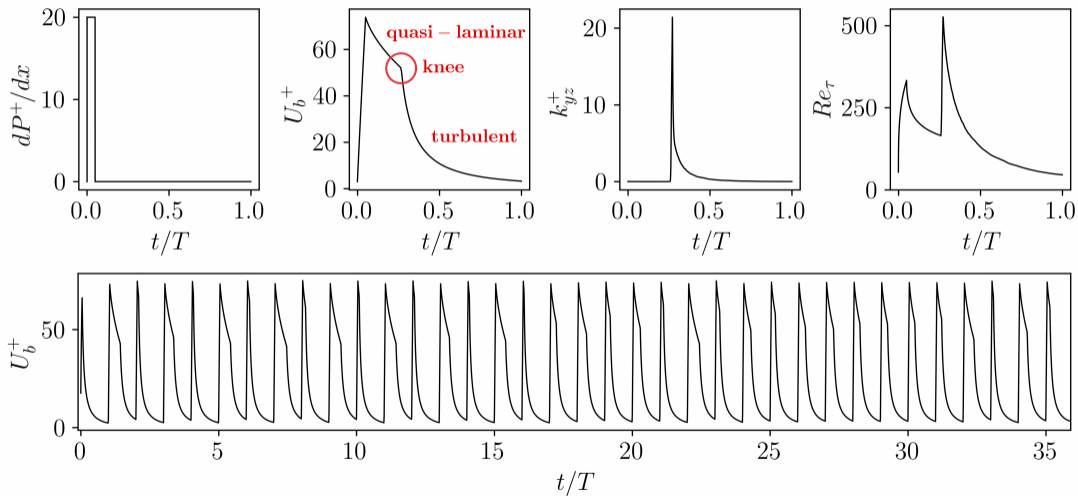
Several cycles needed

Best performance from long periods

Total time: 50x standard channel

Figure: Convergence of the energy saving for our best-performing simulation

# 0D statistics



# The quasi-laminar flow state

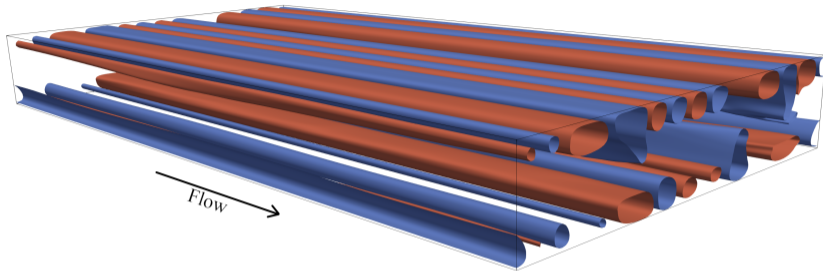


Figure: Positive (red) and negative (blue) contours of the streamwise velocity fluctuations

## Streamwise velocity structures

- Remains of the low- $Re$  flow phase at the beginning of every cycle
- Their instability is responsible for the breakdown to turbulence (knee)

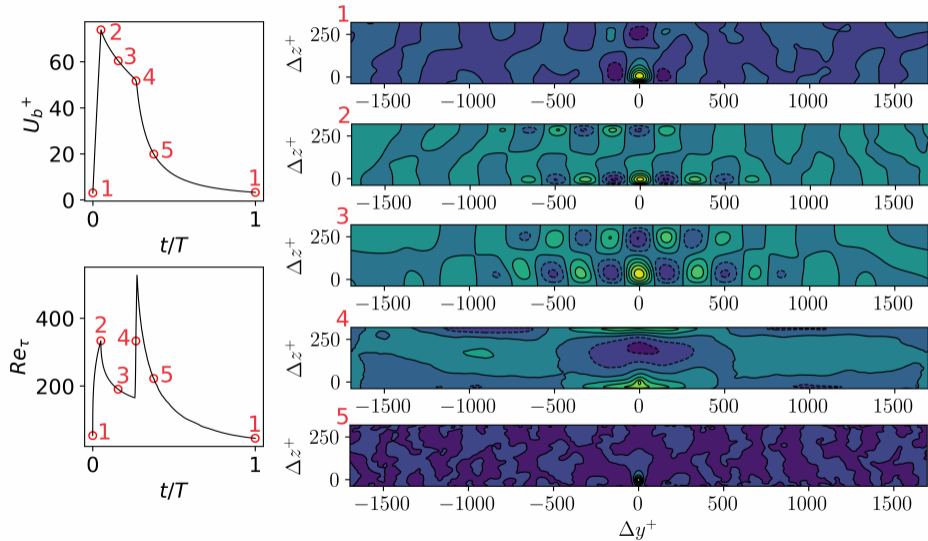
# Conclusions

- Unsteady pumping yields significant energy savings (up to 22%, for the parameters considered)
- Large room for improvement, both in terms of searching for the optimal parameters and understanding of the complex flow physics
- Practical applications?

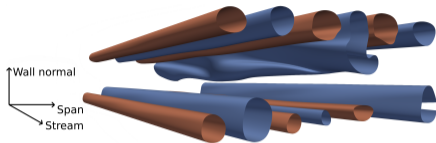
# The End

Questions?

# Spanwise correlations of the streamwise velocity ( $z^+ = 40$ )



# Two competing transition mechanisms



## Oblique waves

- Distort a low speed streak
- May induce an asymmetric transition
- Typically cause an "early" breakdown to turbulence

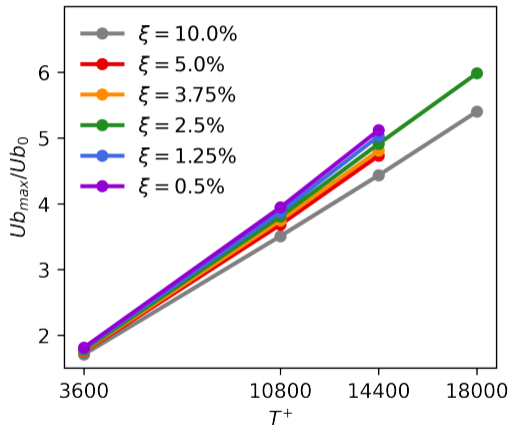
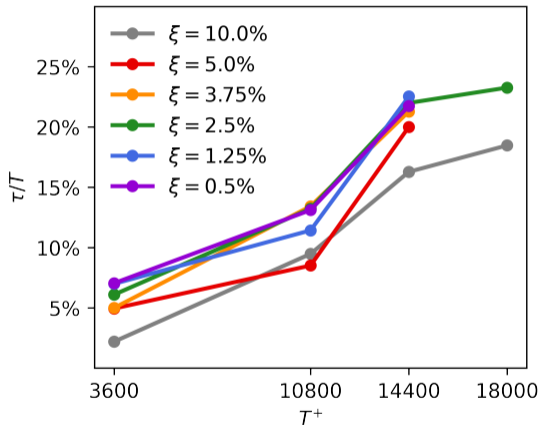


## Hairpins

- Last stage of a complex mechanism
- Induce a symmetric transition
- Typically cause a "late" breakdown to turbulence

The Optimal Time Dependent Modes (*Kern et al., 2021*) are a promising approach for further investigations

# The longer the period, the better





# Parameter study

$\xi \backslash T^+$	3600	10800	14400	18000
0.50%	18	18	18	
1.25%	18	18	35	
2.50%	18	18	35	35
3.75%	18	18	35	
5.00%	18	18	35	
10.0%	18	18	35	35

**Table:** Number of simulated periods.  
Smaller domain in light gray, bigger domain in dark gray.

# Grids

<b>Name</b>	<b><math>L_x/h, L_y/h, L_z/h</math></b>	<b><math>n_x, n_y, n_z</math></b>
<i>LowRes</i>	$3\pi, 1.5\pi, 2$	128, 128, 128
<i>db-LowRes</i>	$6\pi, 3\pi, 2$	256, 256, 128
<i>StdRes</i>	$3\pi, 1.5\pi, 2$	256, 256, 160
<i>db-StdRes</i>	$6\pi, 3\pi, 2$	512, 512, 160
<i>HighRes</i>	$3\pi, 1.5\pi, 2$	512, 512, 256
<i>db-HighRes</i>	$6\pi, 3\pi, 2$	1024, 1024, 256
<i>vHighRes</i>	$3\pi, 1.5\pi, 2$	768, 768, 512

# Robustness of the velocity streaks

## Two codes, one result: streaks!

- Equally observed employing a finite difference or a spectral code
- Visible for all the forcing waveforms considered
- Similar smaller structures are documented (*He & Seddighi, 2013*)
- Their lifetime  $\tau$  is grid and code independent

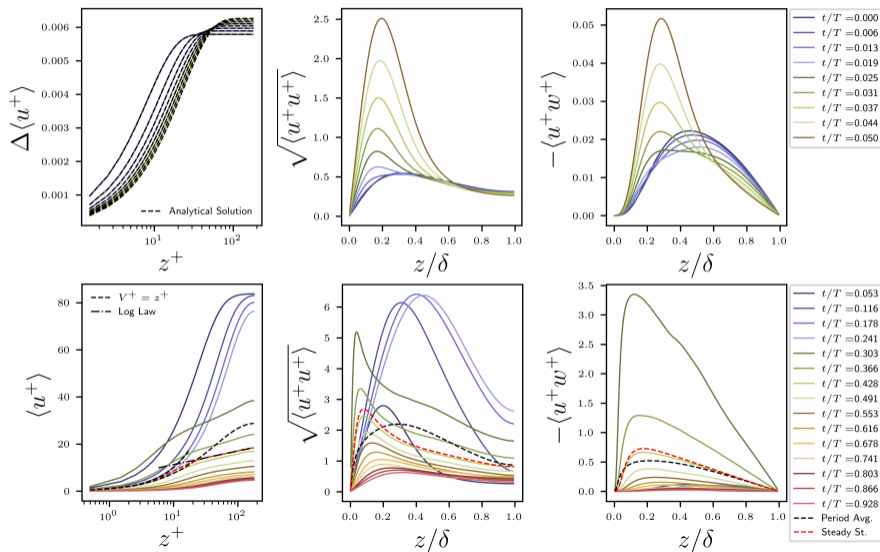
$T^+ = 10800, \xi = 5.0\%$

<b>Setup</b>	$\tau^+$
StdRes	965
HighRes	864
vHighRes	1127

$T^+ = 14400, \xi = 5.0\%$

<b>Setup</b>	$\tau^+$
db-LowRes <b>spectral</b>	2851
db-StdRes	2882
db-HighRes	2911

# 1D-statistics



# Spectra

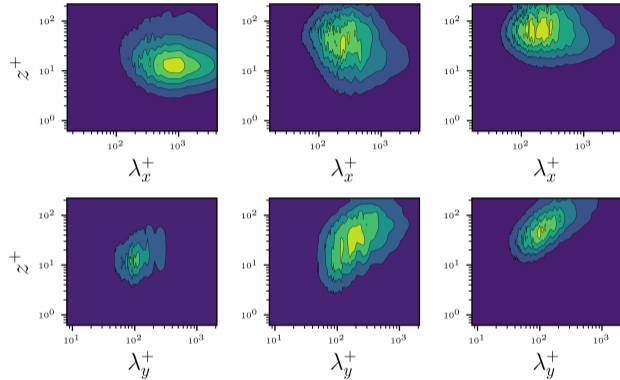
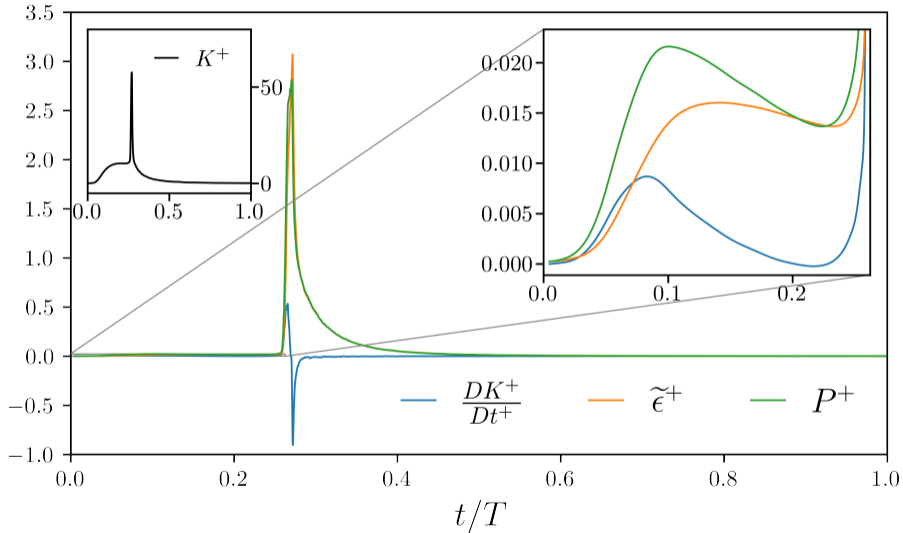


Figure: Pre-multiplied energy spectra in instantaneous wall units corresponding to the 5th correlation plot. The first (second) line refers, respectively, to the stream-wise (span-wise) direction. The stream-wise, span-wise and wall-normal velocity components are varied from left to right.

# TKE balance



# References



Frohnafel, B., Hasegawa, Y. & Quadrio, M. (2012)

Money versus Time: Evaluation of Flow Control in Terms of Energy Consumption and Convenience  
*J. Fluid Mech.* 700, 406–418.



He, S. & Seddighi, M. (2013)

Turbulence in Transient Channel Flow  
*J. Fluid Mech.* 715, 60–102.



Iwamoto, K., Sasou, N. & Kawamura, H. (2007)

Direct numerical simulation of pulsating turbulent channel flow for drag reduction  
*Advances in Turbulence XI*, 709–711



Kern, J. S., Beneitez, M., Hanifi, A. & Henningson, D. S. (2021)

Transient Linear Stability of Pulsating Poiseuille Flow Using Optimally Time-Dependent Modes  
*J. Fluid Mech.* 927.



Kobayashi, W., Shimura, T., Mitsuishi, A., Iwamoto, K. & Murata, A. (2021)

Prediction of the Drag Reduction Effect of Pulsating Pipe Flow Based on Machine Learning  
*Int. J. Heat Fluid Flow* 88, 108783.



Monti, A. (2015)

Skin Friction Drag Reduction in a Turbulent Channel Flow via Pulsating Forcing  
*Master's Thesis at Politecnico di Milano.*