

Responsiveness of Open Innovation to COVID-19 pandemic: the case of Data for Good

Francesco Scotti^{1,*}, Francesco Pierri², Giovanni Bonaccorsi¹, Andrea Flori¹,

1 Department of Management, Economics and Industrial Engineering, Politecnico di Milano, Via Lambruschini, 4/B, 20156, Milan, Italy

2 Department of Electronics, Information and Bioengineering, Politecnico di Milano, 20133, Milano, Italy

*Corresponding author: francesco.scotti@polimi.it

Abstract

Due to the COVID-19 pandemic, countries around the world are facing one of the most severe health and economic crisis of recent history and human society is called to figure out effective responses. However, as current measures have not produced valuable solutions, a multidisciplinary and open approach, enabling collaborations across private and public organizations, is crucial to unleash successful contributions against the disease. Indeed, the COVID-19 represents a Grand Challenge to which joint forces and extension of disciplinary boundaries have been recognized as main imperatives. As a consequence, Open Innovation represents a promising solution to provide a fast recovery. In this paper we present a practical application of this approach, showing how knowledge sharing constitutes one of the main drivers to tackle pressing social needs. To demonstrate this, we propose a case study regarding a data sharing initiative promoted by Facebook, the Data For Good program. We leverage a large-scale dataset provided by Facebook to the research community to offer a representation of the evolution of the Italian mobility during the lockdown. We show that this repository allows to capture different patterns of movements on the territory with increasing level of detail. We integrate this information with Open Data provided by the Lombardy region to illustrate how data sharing can also provide insights for private businesses and local authorities. Finally, we show how to interpret Data For Good initiatives in light of the Open Innovation Framework and discuss the barriers to adoption faced by public administrations regarding these practices.

Introduction

Countries across the world are facing an unprecedented threat constituted by COVID-19. On January 30th 2020, the World Health Organization (WHO) recognized the outbreak as a Public Health Emergency of International Concern (PHEIC) and, as of the end of July 2021, the pathogen is reported to have infected more than 179 million of people with almost 3.9 million of victims at global level. Governments imposed strict policy restrictions on population mobility to mitigate the sharply increasing number of infectious cases, avoiding to overburden the healthcare infrastructures and preserving their capacity to provide adequate assistance to the growing portion of vulnerable population [1]. As a result, the lockdown has kick-started the worst economic recession since the Second World War, with GDP shrinking between 6% and 8% in the Eurozone, US and China [2, 3, 4].

Such global emergency represents an example of one of the Grand Challenges to human society, since it is complex to face and poses organizations and countries against an uncertainty that cannot be easily tackled through the reiteration of past solutions [5]. Indeed, it requires the development of novel and original methods based on a multidisciplinary perspective involving a heterogeneous group of collaborative actors [6].

It is against this background that Open Innovation (OI) can be interpreted as a powerful strategy to face such social challenges. Expanding the boundaries of firms and engaging the participation of different stakeholders, OI can in fact contribute to raising the knowledge and the resource bases, thus increasing the likelihood of finding innovative solutions with a positive social impact [7, 8].

OI frameworks enable win-win solutions for public institutions and firms, as the former achieves a positive social impact, while the latter mainly benefits from a more transparent corporate social responsibility (CSR) and from improved reputation [9, 10]. These benefits can be achieved by higher quality projects based on a multidisciplinary approach [11], more dynamic capabilities which support the improvement of firms performances and product innovation [12, 13], and a larger acceptance of the output of the collaboration [14]. More in general, joint problem solving and the exchange of knowledge and material among actors stimulate synergies and create networks that can contribute to generating positive externalities [15, 16, 17].

However, the success of these projects is subordinated to an effective management of the main challenges associated to OI [18, 19]. A first source of complexity is represented by the presence of a heterogeneous set of stakeholders with diversified objectives, constituted by policymakers, business entities and end-users [20]. In addition, firms need to find an equilibrium between internal and external OI projects, overcoming the “not-invented-here” syndrome (i.e., the skepticism in relying on solutions developed by other organizations) and the fear to lose the control of their core assets because of the collaboration with partners [21].

[22] show that the different innovation policies adopted by a set of 44 OECD countries during the COVID-19 crisis can be clustered in 4 groups depending on the extent to which these countries adopted an OI approach interacting with external stakeholders: centralizers, conservative OI promoters, collaborative supporters and open collaborators. In this context a key role was assumed by “ad hoc” task forces involving a combination of experts from universities, research institutions and specific government departments that were assigned to support central governments in taking informed decisions based on the analysis of real data [23]¹. As a consequence, data sharing and transferring knowledge between governments, laboratories, research centres and private companies became a critical factor in order to provide almost real time evidence on the spread of COVID-19, given the delay in the release of standard official statistics.

With this regard, mobility data describing the movements of individuals in almost real time and with high geographical detail have been widely employed to explain the impact of social restrictions on contagion and human activities [24, 25, 26, 27, 28]. Such data have been mainly provided by tech-giants participating in data sharing programs, often called “Data for Good” projects, where large data repositories are shared even with non-profit or public organizations to address the most cutting-edge problems for the society. As examples of the initiatives promoted during the COVID-19 pandemics, Microsoft launched the Open Data Campaign to improve easier and safer data sharing and collaborative networks, Google and Apple published mobility reports to support the study of the pandemic diffusion, and Facebook provided information on social connections and users movements.² Such initiatives are not only related to the mobility

¹Additional information on policy responses adopted by different countries worldwide and the organization of specific task forces to face the COVID-19 pandemic is provided by WHO at the following link: <https://www.imf.org/en/Topics/imf-and-covid19/Policy-Responses-to-COVID-19>.

²For references see: <https://blogs.microsoft.com/on-the-issues/2020/04/21/>

issue, but also provide demographic, economic, environmental and geographical information to help addressing the world's biggest challenges, thus facilitating a successful collaboration system. Indeed, despite the complexity of integrating massive data coming from different organizations, knowledge sharing is critical to support the actions of public authorities during health emergencies [29, 30]. Furthermore, the aggregation of multi-source data reduces research and development costs, improving the required time to obtain discoveries, with positive consequences for the whole health community [31, 32].

For these reasons, [33] indicates cooperation, openness and data sharing among private and public organizations as imperatives for solving the COVID-19 emergency since this approach could help gathering the global knowledge on this pathogen, enabling faster responsiveness and accelerating the impact of the scientific world to mitigate the pandemic.

In this spirit, our paper distinguishes from extant studies since it attempts to bridge a link between two relevant streams of research, namely the literature on OI aimed to address Grand Challenges and the current research on the usage of almost real time data to support analyses on COVID-19 spread. Our study shows how mobility data disclosed with an open and collaborative approach can be effectively employed to provide scientific evidence on the pandemic dynamics. In particular, we highlight how the OI mechanism can contribute to generating further knowledge to face the pandemic and identify potential solutions in almost real-time. Focusing on the Facebook "Data for Good" initiative, we study how mobility data can be utilized to monitor the main channels of disease transmission and capture changes in socio-economic connections in response to governmental restrictive measures implemented in Italy. To this aim, we specifically focus on the period from February 2020 to April 2020 to highlight how mobility data can be employed to study human behaviour during severe restrictions as those related to lockdown policy. In so doing, we show how mobility information can be integrated with other data sources to interpret in a timely manner the dynamic evolution of users' habits, constituting a relevant source of information to find out effective solutions. Finally, we discuss how collaboration between private and public organizations can be interpreted within the OI framework; we report some missing elements and barriers occurring during a global emergency, such as the spread of COVID-19, which may limit the potential benefits of OI.

Literature review

This paper aims to contribute to two wide and recently growing strands of literature: on one side, the research on OI to tackle Grand Challenges, on the other side, the research on the usage of mobility data disclosed by private firms to support scientific evidence on COVID-19.

As to the first research line, OI has been suggested as a powerful strategy to recognize and mitigate the impacts of a relevant shock such as the COVID-19 pandemic. This is because OI involves a coordinated and collaborative effort on complex questions, requiring multidisciplinary contributions and the need to incorporate experts knowledge and perspectives from different fields, leveraging collective wisdom [34]. In a first step the majority of OI initiatives focused on the public health sector, aiming to provide practical solution to face the COVID-19 pandemic [35, 36, 37]. In this direction, [38] discusses how a shared and not authoritarian coordination and an open knowledge exchange were critical success factors for the Open COVID-19 crowdsourcing program launched by Just One Giant Lab to tackle the pandemic.

open-data-campaign-divide/; <https://www.apple.com/covid19/mobility/>; <https://www.google.com/covid19/mobility/>; <https://dataforgood.fb.com>.

In a second step, OI initiatives based on cooperation, collaborative approaches and crowd-sourcing were also undertaken across different domains such as clothing [39], food [40], energy [38], education [41, 42], capital markets [43] and transportation [44]. Specifically, in the airway sector [45] describe the case of AirAsia that exploiting organization ambidexterity through an OI approach, identified a good trade-off between exploration and exploitation strategies and reconfigured its business model during the pandemic, boosting revenues.

Although the majority of scientific works focuses on OI benefits during emergency situations at firm level, it is less evident how OI can be exploited by public sector organizations which rarely endorse collaborative innovation models. Indeed, public institutions tend to keep a central governance, lacking a collaborative spirit which is necessary to launch OI strategies [46]. In this sense, the fact that at the COVID-19 outbreak governments designed specific task forces to analyse data and support the decision making process has represented a step towards the adoption of OI practices [22].

The second stream of research we aim to contribute refers to the usage of different types of data related to human movements and interactions to better understand the contagion dynamics and impacts. Several authors have highlighted how the manual reconstruction of the disease transmission chain is not a satisfactory procedure to limit the contagion since it might be hampered by lapses in memory, thus leading to self-reporting biases and unreliable measures [47, 48]. Tracing data obtained via digital apps, instead, has been identified as a powerful tool to overcome these pitfalls and support health authorities to identify adequate mitigation strategies [15, 49]. Indeed, these apps allow to implement social distancing measures, since they speed up the process of identification of face-to-face interactions, enabling the collection of information on proximity contacts which is helpful to advise citizens about the need for medical follow-up and testing [50]. This has been confirmed by several international experiences on digital tracing through app devices, which have shown that it is possible to achieve situational awareness about COVID-19 contagion trends and identify high-risk areas.

For instance, the app "Trace-Together" highlighted the main transmission hotspot in Singapore, discovered in the area of migrant workers dormitories where 78% of the 9,125 confirmed cases were identified at the 22nd of April 2020.³ In South Korea, during the first wave of contagion the exploitation of mobility data, obtained with the tracing app "Corona 100m", enabled the identification of four main transmission clusters referring to the Shincheonji church, Chungdo Daenam hospital, gym of Cheonam and a pilgrimage tour to Israel [51]. In UK, the usage of the "COVID-19 Symptom Study" mobile application shed light on the geographical distribution of cases and symptoms [52].

Although such data played a key role for managing the early phases of COVID-19 pandemic, there were several shortcomings in their application. First, a key success factor for the effectiveness of this solution was related to the capability to reach a critical mass of users and achieve a high adoption rate. To observe significant results, the digital tool should be rolled out on a large scale, with at least 60% of national population actively using it.⁴

Moreover, it became fundamental the development of data protection protocols for privacy and confidentiality safety in order to increase citizens trust on the apps, therefore raising their willingness to accept that a portion of personal mobility data are shared among public and private organizations to face this social challenge [53]. In this sense, several protocols were proposed in 2020 with the objective, on one side, to enable digital contact tracing and reconstruct the virus transmission chain (mostly via

³See: <https://qz.com/1842200/singapore-wants-everyone-to-download-covid-19-contact-tracing-apps>

⁴The Oxford University's Big Data Institute: <https://www.research.ox.ac.uk/Article/2020-04-16-digital-contact-tracing-can-slow-or-even-stop-coronavirus-transmission-and-ease-us-ou>

Bluetooth technology), and, on the other side, to ensure cybersecurity standards and respect of individual privacy rights with the usage of encrypted random and temporary codes.

However, high privacy requisites had also unwanted consequences for digital tracing apps. First, they slowed down the development process as developers had to obey to higher than usual requirements and policymakers had to supervise the process in short time, often without an available legal and technical framework to assess the quality of the execution [54]. In Europe the majority of apps was ready only by summer of 2020, when the first COVID-19 wave was already extinguished [53]. Second, data from tracing apps could not be shared among different stakeholders [55], therefore, they not only had higher development costs but also limited economies of scope.

Given these issues, the best immediate alternative to contact tracing has been identified in anonymized mobility data from mobile phones and social networks [56]. A key advantage of such data is that they were already being collected by companies in accordance with data protection laws and hence immediately shareable with researchers and public organizations. [57] highlighted how mobility data might inform and guide public health actions during COVID-19 life cycle, while a scarce employment of this type of information would translate in missing a relevant opportunity for society to produce insights on the COVID-19 pandemic. For instance, [24] and [25] exploited data from the Baidu social network to track movements in the province of Wuhan, in [58] data from Cuebiq Data for Good program have been employed to assess the evolution of mobility during lockdown in the United States, while data from Safegraph have been used by [59] to assess the income distribution of isolated individuals in the United States. In Italy, data from Facebook [60] and from Google mobility reports [61] have been exploited to measure changes in the mobility of citizens during the lockdown.

Furthermore, mobility data have a strong potential for impact assessment and the evaluation of policy interventions. Indeed, taking into account mobility data, [62] showed that the closure of non-essential activities and the implementation of social distancing involving at least 90% of citizens represent adequate alternatives to limit the contagion. [63] highlighted that mobile phone data representing users movements allowed to demonstrate the effectiveness of mild policies in Sweden to achieve social distancing, as it was reduced by 33% the time spent in work areas and by 38% the average distance travelled per individual. [64] provided a comparison of different interventions based on mobility data, showing that to avoid the resurgence of the contagion multiple non pharmaceutical interventions are required until vaccine supply.

In addition to this, mobility data have also been used to identify environments which facilitate virus spreading such as shopping malls, sport facilities, leisure centres, public libraries, theatres and cinemas, clarifying also how short and long distance travelling may contribute to the spread of the contagion [65, 66]. Furthermore, the integration of mobility and epidemiological data have been widely used in order to explain or predict COVID-19 cases with high levels of precision, highlighting how different economic sectors impact on the virus diffusion [27, 28, 67]. In general, mobility data have been suggested as a relevant input information to support the design of optimal restriction strategies [68, 69]. Indeed, different authors highlighted how generalized national lockdown measures disproportionately affected local territories, disrupting existing value chains and raising inequalities across areas [26, 60, 70].

In the next sections, we will use data from Facebook "Data for Good" initiative as case study to illustrate how mobility data can be employed to the study of COVID-19 impacts in different scenarios during crisis periods. By doing so, we are not suggesting that mobility data should replace tracing apps, as they are tailored to different and complementary needs. We instead stress the case that such aggregated mobility data should be sought by public organizations as first response tools, due to their availability

and potential integration with other data sources.

211

Data and methodology

212

We analyze mobility in the Italian peninsula based on movement maps provided by Facebook to the research community through its “Data for Good” program [71], as a demonstrative example of how knowledge sharing between private and public organizations can fuel OI mechanisms that can be exploited to face social challenges [72]. These movement maps consist of de-identified and aggregated information on Facebook users leaving their geo-positioning system enabled, representing movements across Bing tiles and administrative units (e.g., Italian municipalities). The data collection pipeline of Facebook builds upon the Bing tile gridding of the earth’s surface, developed by the online cartographic platform operated under the Bing division of Microsoft.⁵ Similar to data analyzed in similar works on mobility restrictions [24, 25, 60], these measurements do not represent the actual number of individuals traveling. Rather, they provide an index of mobility, constructed by Facebook with proprietary methods to ensure privacy protection [56], which correlates well with real movements of people [71].

213
214
215
216
217
218
219
220
221
222
223
224
225

In our study, we rely on data at the municipality level to analyze national mobility patterns, while to investigate peculiarities of each zone within a given municipality we refer to a more granular spatial level corresponding to mobility within city tiles of size 0.3km by 0.3km. Data referring to movements between municipalities were collected from February 23rd 2020 to April 12th 2020, with about 1 million distinct observations (with 8-hour frequency) covering approximately half of the entire number of Italian municipalities. For what concerns mobility flows in the metropolitan area of Milan (which correspond to a higher resolution w.r.t movements between municipalities), Facebook released data starting from April 6th 2020. We collected these flows for about 3 weeks until April 26th 2020.

226
227
228
229
230
231
232
233
234
235

During the observation period, the average number of daily Facebook users in Italy with their location enabled was approximately 4 million users.

236
237

Finally, our work relies on the use of a network science approach to analyze mobility based on graph formalism. A graph is a collection of vertices (or nodes), which represent entities, and arcs (or edges), which represent existing relationships between entities. A graph can be directed if links are oriented, un-directed otherwise, and weighted if each link is associated to a distinct value (or weight). A link starting and ending on the same vertex is called self-loop. In particular, we represent networks of mobility as weighted directed graphs where nodes are municipalities (or tiles, smaller areas inside municipalities) and edges are weighted based on the amount of traffic from source to destination. We define the strength of a node as the sum of weights over in-going and out-going edges, excluding self-loops, i.e. edges sharing the same source and target nodes, which are analyzed separately. This representation allows us to describe both traffic flowing between locations (using the strength) and the internal mobility of a specific location (using the self-loop).

238
239
240
241
242
243
244
245
246
247
248
249
250

Furthermore, we build mobility networks at province and regional level by aggregating over the municipalities belonging to them, excluding their self-loops: this means that self-loops of provinces and regions represent movements between different municipalities of the same aggregate administrative territory (without capturing their internal mobility).

251
252
253
254
255

⁵See: <https://docs.microsoft.com/en-us/bingmaps/articles/bing-maps-tile-system>.

Results

In the outbreak of COVID-19 pandemic, social distancing has been seen as the solution to mitigate the spread of contagion. As a consequence, recent research has focused on human mobility to understand the extent to which people are adhering to governmental lockdown restrictions [58, 73, 74, 75].

To highlight how population reacted to policy restrictions, we employ an illustrative study at different scales of analysis. First, we show how information embedded in human mobility can be used to reveal changes both at short and long distances. This aspect is of utmost relevance for policymakers, revealing the emergence of potential channels of contagion across different geographical areas, and for business reasons since it indicates the segregation of economic activities. Second, we show how such mobility flows can be investigated to depict the network of connections in a local context, such as an Italian province.

Finally, we provide a micro-level analysis focused on urban mobility in the city of Milan. Following literature which proposes the use of mobile applications to map mobility and people concentration for the study of the spreading of contagion [56, 73, 74], we show how lockdown measures affected in a heterogeneous way the flow of mobility across distinct city districts. In particular, we analyze two cases regarding the lockdown period: first, we focus on differences in mobility for those city areas where at least one mass market retailer (MMR) or a large food retailer is located; second, we repeat a similar analysis but focusing on the location of hospitals. We observe how aggregated flows of mobility might support not only more responsive actions to contain the pandemic, but also be exploited to reshape business activities and support policy decisions.

Mobility patterns under different aggregation scales

Italian mobility has been profoundly affected by policy measures aimed to mitigate the initial spread of contagion. Such reductions in mobility patterns clearly emerge at different levels of analysis. Fig 1 shows the distribution of mobility between regions, provinces and municipalities, both in term of outgoing links (red bars) and inner self-loops (blue bars).

Regarding the strength of links connecting different administrative units, it can be seen that the deployment of lockdown restrictions on March 8th – 9th 2020 [76, 77] deeply reduced the connectivity at all geographical levels. In particular, ANOVA one way tests between the second and third week of the analysed timeframe (02/03 - 08/03 with respect to 09/03 - 15/03) clearly reject the null hypothesis of no difference in the mean number of trips between the two periods, with p-values equal to ~ 0 , 0.049 and 0.077 for municipalities, provinces and regions, respectively. This appears coherent with the governmental effort to circumscribe the diffusion of contagion by preventing flows of people moving from the most negatively affected territories of Northern Italy to the rest of the country.

We observe heterogeneous patterns at different levels of geographical granularity for what concerns inner loops. At municipality level, inner connectivity does not seem to decrease during the lockdown, which can be explained by work reasons. Indeed, an ANOVA one way test does not reject the null hypothesis of absence of difference in the mean number of trips at municipal level between the pre-lockdown and the first lockdown week (p-value equal to 0.485). Conversely, we highlight a significant contraction of inner mobility at province level (p-value equal to 0.037). At regional scale, the difference in the average number of trips between the pre-lockdown and the lockdown period becomes significant starting from the second week of restrictions (for the first week of lockdown the p-value is 0.223). More in general, these mobility

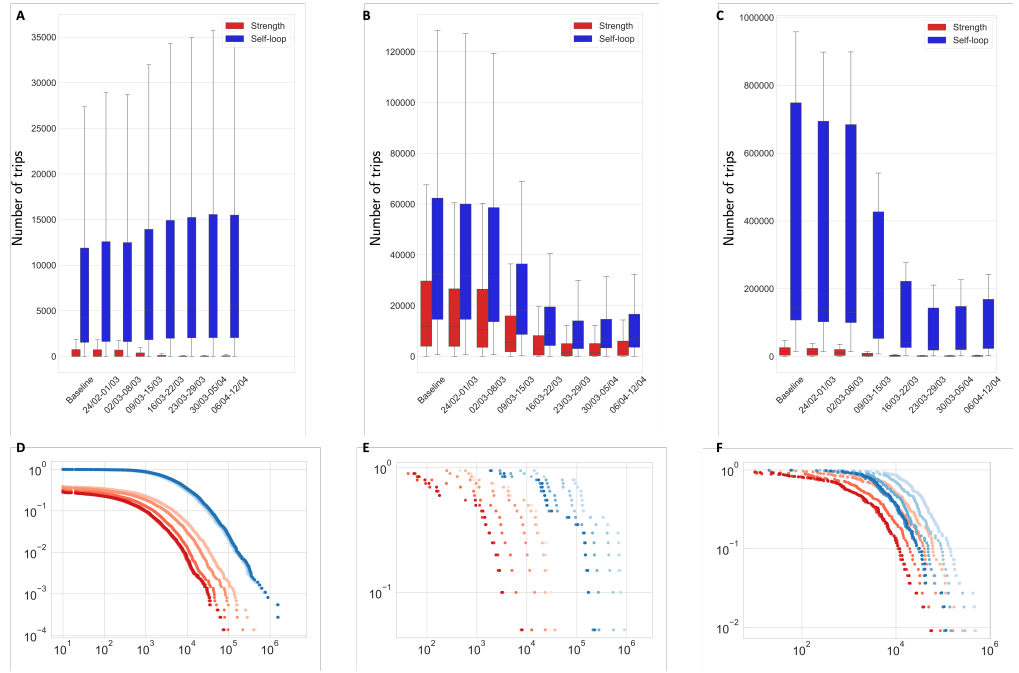


Fig 1. Mobility flows distribution at municipal, province and regional level. (A) and (D) show flows at municipal level, (B) and (E) show flows at province level and (C) and (F) show flows at regional level. Red indicates flows across administrative units, while blue stands for inner self-loops. In top row we also show values for the "baseline" network, which is built considering the average of daily observations over a window of 45 days prior to February 23rd. Bottom row shows the distribution of metrics for each week using a color scale that maps lighter colors to earlier periods. Application of one way ANOVA test between distributions of indicators in the 2nd and 3rd weeks (which capture the transition to national closure) are: Municipalities: Strength ($TEST=27.50$, $PVAL \sim 0$), Self-Loops ($TEST=0.488$, $PVAL=0.485$); Provinces: Strength ($TEST=3.92$, $PVAL=0.049$), Self-Loops ($TEST=4.40$, $PVAL=0.037$); Regions: Strength ($TEST=3.30$, $PVAL=0.077$), Self-Loops ($TEST= 1.50$, $PVAL=0.223$).

patterns suggest how competing behaviors might emerge with respect to the distance of the movement. Lockdown restrictions appear, in fact, more effective in reducing medium-long transfers, thus contributing to the isolation of large geographical areas, while local mobility appears less affected and more prone to maintain a more stable amount of connections.

Although mobility flows reported in Fig 1 provide supporting evidence that policy restrictions reduced the overall degree of connection of the Italian mobility network, still a certain level of heterogeneity seems to emerge once we move from national to the local level of analysis. For this reason, we select the case of the Milan province as an illustrative example of mobility network features before and after the deployment of lockdown measures.

Fig 2 shows the strength of un-directed connections (i.e. we sum the traffic in both directions) among municipalities composing the Milan province (we only show the first 30 municipalities in terms of population), with larger and darker color lines referring to the strongest connections and thinner and lighter colors to weak connections.

As shown in Fig 2, Milan plays a pivotal role in both periods, being very central both in the amount of incoming and outgoing links. This topological position is maintained during the lockdown phase and, similarly, other municipalities such as

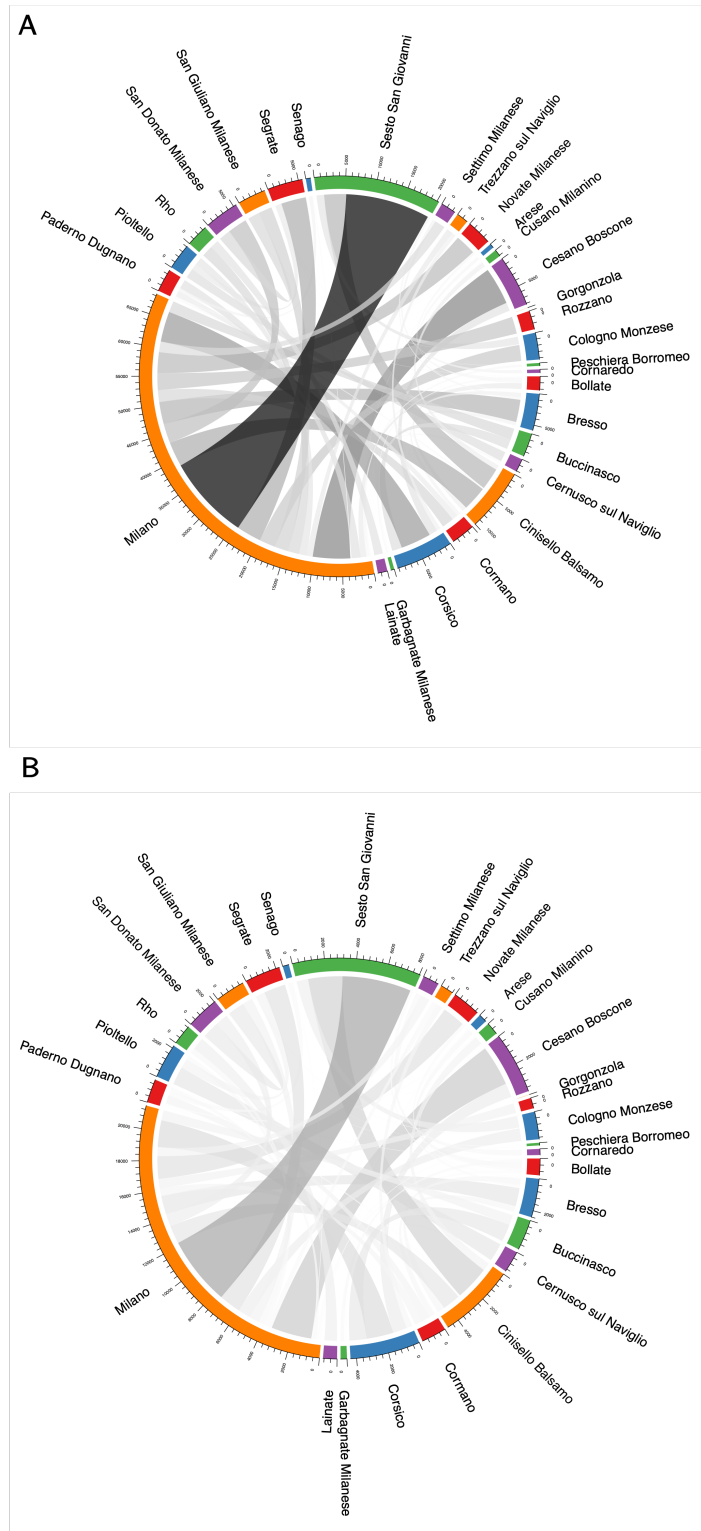


Fig 2. Mobility flows in the province of Milan.

(A) and (B) show the mobility between municipalities in Milan province before (top) and during (bottom) lockdown, respectively. Color intensity indicates the amount of traffic (with darker edges corresponding to higher values), and the same normalization is used across the two diagrams. Properties of the mobility network [before, during] lockdown: Assortativity: $[-0.062, -0.063]$; Average Clustering Coefficient: $[6.28e-05; 2.70e-05]$.

Cinisello Balsamo, Cesano Boscone, Corsico and Sesto San Giovanni, remain at the core of the network while the overall connectivity translated to lower values. More specifically, we compare the distribution of the daily values of assortativity and average clustering coefficient of the network in the two weeks before the lockdown and in the first two weeks of national restrictions, coherently with the time period analysed in Fig 2. We show that the topological structure of the network is not subject to relevant changes in terms of assortativity, as a Kruskal-Wallis test on the two distributions does not reject the null hypothesis that the two samples are extracted from the same population (p-value = 0.613). Conversely, the average clustering coefficient exhibits statistically significant differences (p-value = 0.015) suggesting that lockdown measures contributed to a fragmentation of the mobility network with a relevant reduction of connections across territories. This result indicates that the emerging mobility dynamics are affected by the deployment of lockdown restrictions, whose main result seems to be related not only to the sharp fall in the aggregate amount of flows but also to some changes in the topological properties of the network configuration.

Furthermore, as shown in Fig 1, lockdown measures actually limit movements across administrative units but are likely to increase inner mobility, especially for small towns, as individuals are forced to comply with lockdown measures. At municipality level, the Pearson correlation between the variation in inner mobility during the deployment of lockdown and the corresponding population is -0.63 (p-value = 0.0001), while the correlation with population density is -0.51 (p-value = 0.003).

Such patterns can be explored more in detail by focusing on each municipality composing a certain province. Fig 3 shows how the internal mobility in the city of Milan during the lockdown phase increases less than in other municipalities of the province, clearly suffering from the absence of commuting (and in general of non-residents who returned to their home towns), which most likely contribute to the level of mobility of the province capital in business as usual days.

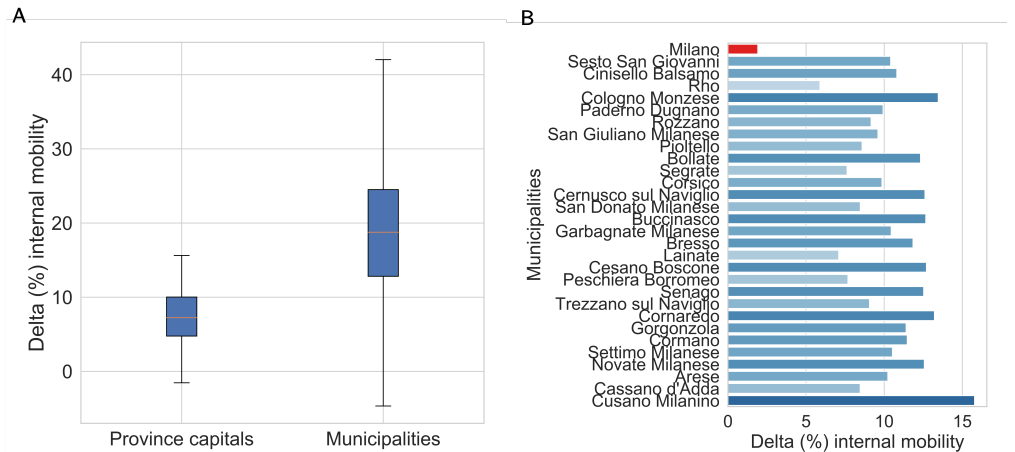


Fig 3. Percentage variation of internal mobility for municipalities between the periods during and before lockdown.

(A) compares the distribution for municipalities and province capitals in the entire peninsula, whereas (B) shows a detailed overview on Milan province and its municipalities.

More generally, such findings emerging from mobility networks at local level may help to disentangle possible changes in mobility patterns that arise due to the interplay between policy restrictions and people reactions. These effects in terms of variations in network properties may be included in the decision processes of both policymakers and

business firms when designing appropriate actions to respond to emerging mobility needs, possibly captured by integrating different data sources. We propose some examples in the following subsection.

Mobility patterns and local features

In this section, we explore some drivers at the intersection between changes in urban mobility and city features. We focus again on the Milan administrative unit, but in this case we consider the municipality level. We enrich mobility data with additional layers of analysis corresponding to the geolocalization of MMRs, large food retailers and hospitals⁶, thus providing alternative paradigms to describe potential flows of people during the lockdown phase.

Basically, we inspect all Bing tiles in Milan and we differentiate between those having at least one MMR shop, a large food retailer, or a Hospital from the other districts of the city. We consider as large food retailers those medium-large shops whose food-related area is more than 50%. We take into account only disjoint tiles, meaning that we focus specifically on those city districts where only one of the aforementioned categories of place of interest is located. In so doing we are able to distinguish between city districts characterized by the presence of at least one MMR, one food-related shop such as a supermarket, or a hospital, but not with the presence of more than one of these types of place of interest, thus hopefully depicting cleaner differences in the emerging patterns of mobility. Then, we study the strength of the connections of these sub-portions of the city for which at least one place of interest is located w.r.t the city altogether. Fig 4 shows the daily mobility trend for these districts during a 3-week period in April 2020.

Some interesting results clearly emerge. First, districts hosting Hospitals are more likely to intercept a larger flow of mobility compared to the rest of the city probably due to the pandemic outbreak at that period. Second, Food-related districts are less central than average, but still more popular than those areas characterized by MMRs only. Third, notwithstanding the policy restrictions, still the week-end effect distinctly characterizes the decrease of mobility, thus suggesting that during the week a non-negligible portion of inhabitants continues to move, probably for work reasons. Fourth, such mobility patterns are able to capture specific events, such as the closure of shops in Easter Monday (13th April 2020).

Despite the aggregate provision of data, these patterns thus seem to be able to highlight relevant behaviors during the lockdown phase, constituting an interest instrument for both policy regulators and firms to manage distressed scenarios as those related to the evolution of the COVID pandemic.

The innovation value of mobility data

Openness unleashes a rapid response against COVID-19 pandemic as scientists, policymakers and business firms are mobilized to cooperate to figure out effective solutions. This attitude corresponds to what in literature has been recognized as OI [78]. Our previous examples illustrate how "Data for Good" initiatives can provide relevant information to the research community, suggesting how heterogeneous entities and forces are required to cope with complex social challenges [79]. Indeed, the OI approach is critical during such emergencies as it accelerates the process of knowledge collection and speeds up the time to market of potentially effective solutions [80].

The innovation mechanism provided by "Data for Good" initiatives to face social challenges relies on the less common outbound (or "inside-out") OI as the actors

⁶Data are retrieved from the Open Data website of Lombardia region: <https://www.dati.lombardia.it/>.

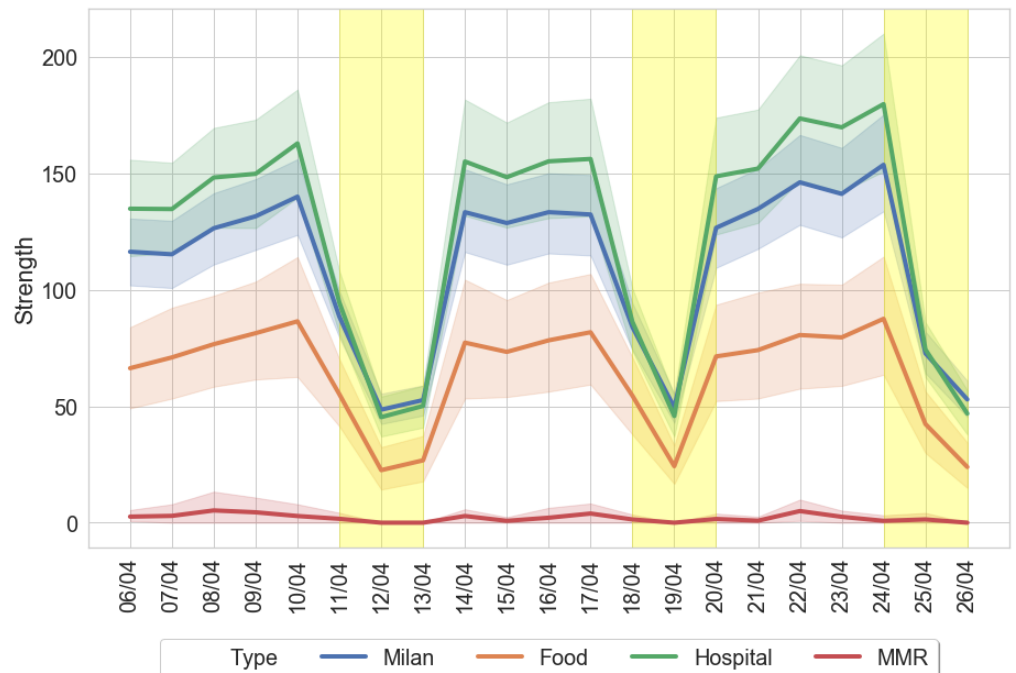


Fig 4. Milan mobility flows. We partition the city of Milan into Bing tiles of size 0.3km by 0.3km. We label each tile as: MMR (in red), Food (in orange) or Hospital (in green) if at least one of the corresponding places of interest is located. Such categorizations are mutually exclusive, meaning that if in the same tile more than one category is present than this tile is not assigned to a specific category. For each category we show the mean value and 95% C.I. with shaded areas; Milan city tiles considered altogether are shown in blue color. Yellow areas indicate weekends and holidays.

canalize the innovation into external markets or organizations that better suit its diffusion and exploitation [11, 81, 82]. Our analysis has highlighted some of the benefits that might arise from the adoption of this approach by exhibiting the role of mobility data in order to highlight the effects of lockdown on connectivity and on changes in human behaviours.

Nevertheless, mobility data might be used not only to assess the impact of policy makers decisions and identify potentially risk areas, but they might be also employed to interpret how changes in the habits of individuals affect future business scenarios. For example, the higher growth of the population mobility during the reference period for Italian small municipalities with respect to province capitals sheds lights on adjustment mechanisms of population concentration. In particular, this pattern might have consequences on the redistribution of expenditures and consumption across geographical areas, with large urban centres which are expected to be the most penalized sites. Firms with many points of sale along the Italian peninsula might be affected for instance by a geographical redistribution of their turnover, with establishments in big metropolitan areas reducing their market share in the company portfolio in favor of those in smaller areas. In addition, lower mobility levels across different municipalities, provinces and regions can have a negative impact on the number of customers physically reaching stores. As a consequence, companies could reflect upon the possibility to proactively rearrange their business models to enable a multi-channel value proposition to reach purchasers both through e-commerce platforms and physical stores. Shared data may provide inspiration for new or more effective solutions to already existing firms'

problems bypassing the not-invented-here syndrome. More generally, such data sharing initiatives may contribute to the analysis of socio-economic dimensions in almost real time. Finally, publicly available data may act as solution of last resort for unforeseen problems, for instance during humanitarian emergencies when usual information channels are less reliable (see, e.g., [71] for the use of social network data during natural disasters).

Our analysis has shown that the share of data between a social network and the research community can serve both societal and business interests and aims to be an illustration of the benefits that this type of public-private cooperation might produce in tackling a Grand Challenge, such as the COVID-19 pandemic. In this sense, by exhibiting some insights that can be captured through the exploitation of mobility data, we have tried to formalize the advantages that can be learnt from this type of experience. Next section frames this approach within the OI framework and discusses some barriers that may have hampered its widespread practical application, highlighting some factors that should be addressed and transformed by society to effectively capture the potential advantages.

Conclusions

With data sharing firms allow external actors to access their private data without being part of the organization and, often, without having any form of partnership with the data owner.

As a form of collaboration between public and private organizations, data sharing belongs to the OI framework: to use the taxonomy outlined in [83] it can be considered as outbound and non-pecuniary OI, also described as "collective invention". Collective invention has been recognized as an optimal innovation strategy when the scope of cooperation invests social challenges and community issues, transcending the usual business and technological boundaries of firms [84]. Indeed, it reduces the cost to access geographically dispersed knowledge [85, 86], allows larger innovation diffusion [87, 88] and improves the reputation of the companies involved [89, 90].

However, unlike previous experiences in the healthcare sector (cfr. the Innocentive and the Harvard Catalyst examples [91]), data sharing initiatives are usually tailored toward the non-profit community. This is because, on one side, researchers and NGOs are expected to better understand and exploit the value of data and, on the other side, they do not represent competitors for the sharing organization. Accordingly, the Data For Good initiatives launched during the COVID-19 pandemics are explicitly designed to provide support for humanitarian purposes.

Such data sharing can be better identified as a form of corporate social responsibility [92, 93]. In fact, the type of framework adopted by data sharing organizations does not correspond to an Open Innovation approach: they do not foresee specific partners interacting with the technology (mobility data in our case), owning and modifying it. This aspect does not prevent data sharing firms from playing the role of innovation intermediaries for the mobility data technology, to the extent they are coordinating a market - such as public administrations looking for an innovative solution to a complex problem - with solution providers such as tech firms. Moreover, given the non-pecuniary nature of their involvement, they can also be associated with the role of innovation missionaries: actors inside the innovation process whose aim is diffusing a certain technology since they believe it is beneficial for the society [94].

The duality in the nature of Data For Good activities, closed-innovation solutions to open problems, highlights that there are still some barriers to the adoption of the mobility data technology and to the achievement of potential advantages of an OI approach. The fear of loosing competitive advantages by private firms [57] may shrink

their willingness to exchange knowledge. Moreover other sector specific factors hurdle the diffusion of innovations in public administrations [95, 96]: often cited reasons are a risk-adverse culture, a hierarchical bureaucratic organization and a lack of coordination among central and local governments [97].

However, the emergence of crises at local and global level allows to overcome these barriers since *"in those cases public awareness, media and political support create an environment in which risk taking is legitimized, leadership and funding is made available and experimentation possible"* [97]. This has been the case for the development of open data protocols for health reports during the Ebola virus crisis [29, 98], which resulted in an efficient implementation during the current COVID-19 pandemics [30, 99].

Unfortunately, a similar approach has not been extended to mobility data [56, 57]. Further investigation will be required to assess the precise reasons why the COVID-19 crisis has not led public institutions to develop open data protocols regarding mobility information. In Europe a possible explanation may be related to the recent European legislation on data protection, the General Data Protection Regulation (GDPR) [100]. By increasing the legal requirements for data collection, the legislation may have increased the transaction costs for firms collecting mobility data, slowing down the development of publicly available datasets. This is also suggested by previous surveys regarding Open Innovation practices in public governance [95], which report that inadequate legislation is a contextual barrier for innovation in public governance 66,6% of the times.

During critical times, citizens, firms and governments are often called to provide innovative solutions to challenging problems. Anonymized mobility data allow organizations to reach a great depth of analysis without relying on user effort (or donation), by simply leveraging data collected during the standard use through a law compliant procedure. In the spirit of OI, this technology is not only already available, but it has also been shared with the research community to help tackle the diffusion of the contagion. One technology, anonymized mobility data, can thus be employed to address several issues of public interest.

Acknowledgements

We thank Facebook for sharing with our research group data on human mobility in Italy through the "Data for Good" Initiative. Moreover, we thank Professor Fabio Pammolli for giving us access to the data.

Author contributions statement

F.S., F.Pi, G.B., A.F. designed the research. F.S., F.Pi. and G.B. collected data. F.S., F.Pi. and G.B. analyzed data and performed research. All authors discussed research results, wrote and reviewed the manuscript.

References

1. Kissler SM, Tedijanto C, Goldstein E, Grad YH, Lipsitch M. Projecting the transmission dynamics of SARS-CoV-2 through the postpandemic period. *Science*. 2020;. 512
513
514
2. Baker SR, Bloom N, Davis SJ, Terry SJ. Covid-induced economic uncertainty. National Bureau of Economic Research; 2020. 515
516
3. IMF. World Economic Outlook, April 2020: The Great Lockdown. International Monetary Fund; 2020. 517
518
4. OECD. OECD Interim Economic Assessment. Coronavirus: The world economy at risk. Organisation for Economic Co-operation and Development; 2020. 519
520
5. Eisenhardt KM, Graebner ME, Sonenshein S. Grand challenges and inductive methods: Rigor without rigor mortis. Academy of Management Briarcliff Manor, NY; 2016. 521
522
523
6. Ferraro F, Etzion D, Gehman J. Tackling grand challenges pragmatically: Robust action revisited. *Organization Studies*. 2015;36(3):363–390. 524
525
7. Chesbrough H, Di Minin A. Open social innovation. *New frontiers in open innovation*. 2014;16:301–315. 526
527
8. Ahn JM, Roijackers N, Fini R, Mortara L. Leveraging open innovation to improve society: past achievements and future trajectories. *R&D Management*. 2019;49(3):267–278. 528
529
530
9. Mirvis P, Herrera MEB, Googins B, Albareda L. Corporate social innovation: How firms learn to innovate for the greater good. *Journal of Business Research*. 2016;69(11):5014–5021. 531
532
533
10. Kotlar J, De Massis A, Wright M, Frattini F. Organizational goals: Antecedents, formation processes and implications for firm behavior and performance. *International Journal of Management Reviews*. 2018;20:S3–S18. 534
535
536
11. Enkel E, Gassmann O, Chesbrough H. Open R&D and open innovation: exploring the phenomenon. *R&D Management*. 2009;39(4):311–316. 537
538
12. Brunswicker S, Vanhaverbeke W. Open innovation in small and medium-sized enterprises (SMEs): External knowledge sourcing strategies and internal organizational facilitators. *Journal of Small Business Management*. 2015;53(4):1241–1263. 539
540
541
542
13. Lee K, Yoo J. How does open innovation lead competitive advantage? A dynamic capability view perspective. *PloS one*. 2019;14(11):e0223405. 543
544
14. Baldwin C, Von Hippel E. Modeling a paradigm shift: From producer innovation to user and open collaborative innovation. *Organization science*. 2011;22(6):1399–1417. 545
546
547
15. Wang Y, Vanhaverbeke W, Roijackers N. Exploring the impact of open innovation on national systems of innovation—A theoretical analysis. *Technological Forecasting and Social Change*. 2012;79(3):419–428. 548
549
550
16. Roper S, Vahter P, Love JH. Externalities of openness in innovation. *Research Policy*. 2013;42(9):1544–1554. 551
552

17. Blasco A, Endres MG, Sergeev RA, Jonchhe A, Macaluso NM, Narayan R, et al. Advancing computational biology and bioinformatics research through open innovation competitions. *PloS one*. 2019;14(9):e0222165. 553-555
18. West J, Gallagher S. Challenges of open innovation: the paradox of firm investment in open-source software. *R&D Management*. 2006;36(3):319–331. 556-557
19. Boudreau KJ, Lacetera N, Lakhani KR. Incentives and problem uncertainty in innovation contests: An empirical analysis. *Management science*. 2011;57(5):843–863. 558-560
20. Gächter S, von Krogh G, Haefliger S. Initiating private-collective innovation: The fragility of knowledge sharing. *Research Policy*. 2010;39(7):893–906. 561-562
21. Vanhaverbeke W. *Managing open innovation in SMEs*. Cambridge University Press; 2017. 563-564
22. Patrucco AS, Trabucchi D, Frattini F, Lynch J. The impact of Covid-19 on innovation policies promoting Open Innovation. *R&D Management*. 2021;. 565-566
23. OECD. *Building Resilience to the Covid-19 Pandemic: the Role of Centres of Government*. OECD (Organisation for Economic Cooperation and Development) Publishing; 2020. 567-569
24. Kraemer MU, Yang CH, Gutierrez B, Wu CH, Klein B, Pigott DM, et al. The effect of human mobility and control measures on the COVID-19 epidemic in China. *Science*. 2020;368(6490):493–497. 570-572
25. Chinazzi M, Davis JT, Ajelli M, Gioannini C, Litvinova M, Merler S, et al. The effect of travel restrictions on the spread of the 2019 novel coronavirus (COVID-19) outbreak. *Science*. 2020;368(6489):395–400. 573-575
26. Bonaccorsi G, Pierri F, Scotti F, Flori A, Maresi F, Ceri S, et al. Socioeconomic differences and persistent segregation of Italian territories during COVID-19 pandemic. *Scientific reports*. 2021;11(1):1–15. 576-578
27. Xiong C, Hu S, Yang M, Luo W, Zhang L. Mobile device data reveal the dynamics in a positive relationship between human mobility and COVID-19 infections. *Proceedings of the National Academy of Sciences*. 2020;117(44):27087–27089. 579-582
28. Persson J, Parie JF, Feuerriegel S. Monitoring the COVID-19 epidemic with nationwide telecommunication data. *Proceedings of the National Academy of Sciences*. 2021;118(26). 583-585
29. Dye C, Bartolomeos K, Moorthy V, Kieny MP. Data sharing in public health emergencies: a call to researchers. *Bulletin of the World Health Organization*. 2016;94(3):158–158. 586-588
30. Moorthy V, Restrepo AMH, Preziosi MP, Swaminathan S. Data sharing for novel coronavirus (COVID-19). *Bulletin of the World Health Organization*. 2020;98(3):150. 589-591
31. Hughes B, Wareham J. Knowledge arbitrage in global pharma: a synthetic view of absorptive capacity and open innovation. *R&D Management*. 2010;40(3):324–343. 592-594

32. Yoda T. The effect of collaborative relationship between medical doctors and engineers on the productivity of developing medical devices. *R&D Management*. 2016;46(S1):193–206. 595
596
597
33. Chesbrough H. To recover faster from Covid-19, open up: Managerial implications from an open innovation perspective. *Industrial Marketing Management*. 2020; 598
599
600
34. Kokshagina O. Open Covid-19: Organizing an extreme crowdsourcing campaign to tackle grand challenges. *R&D Management*. 2021; 601
602
35. Khan KI, Niazi A, Nasir A, Hussain M, Khan MI. The Effect of COVID-19 on the Hospitality Industry: The Implication for Open Innovation. *Journal of Open Innovation: Technology, Market, and Complexity*. 2021;7(1):30. 603
604
605
36. Ramadi KB, Nguyen FT. Rapid crowdsourced innovation for COVID-19 response and economic growth. *NPJ Digital Medicine*. 2021;4(1):1–5. 606
607
37. Vermicelli S, Cricelli L, Grimaldi M. How can crowdsourcing help tackle the COVID-19 pandemic? An explorative overview of innovative collaborative practices. *R&D Management*. 2021;51(2):183–194. 608
609
610
38. Kulachinskaya A, Akhmetova IG, Kulkova VY, Ilyashenko SB. The Challenge of the Energy Sector of Russia during the 2020 COVID-19 Pandemic through the Example of the Republic of Tatarstan: Discussion on the Change of Open Innovation in the Energy Sector. *Journal of Open Innovation: Technology, Market, and Complexity*. 2020;6(3):60. 611
612
613
614
615
39. Ong AKS, Cleofas MA, Prasetyo YT, Chuenyindee T, Young MN, Diaz JFT, et al. Consumer behavior in clothing industry and its relationship with open innovation dynamics during the COVID-19 pandemic. *Journal of Open Innovation: Technology, Market, and Complexity*. 2021;7(4):211. 616
617
618
619
40. Prasetyo YT, Tanto H, Mariyanto M, Hanjaya C, Young MN, Persada SF, et al. Factors affecting customer satisfaction and loyalty in online food delivery service during the covid-19 pandemic: Its relation with open innovation. *Journal of Open Innovation: Technology, Market, and Complexity*. 2021;7(1):76. 620
621
622
623
41. Bertello A, Bogers ML, De Bernardi P. Open innovation in the face of the COVID-19 grand challenge: insights from the Pan-European hackathon ‘EUvsVirus’. *R&D Management*. 2021; 624
625
626
42. Tejedor S, Cervi L, Pérez-Escoda A, Tusa F, Parola A. Higher education response in the time of coronavirus: perceptions of teachers and students, and open innovation. *Journal of Open Innovation: Technology, Market, and Complexity*. 2021;7(1):43. 627
628
629
630
43. Nurhayati I, Endri E, Aminda RS, Muniroh L. Impact of COVID-19 on Performance Evaluation Large Market Capitalization Stocks and Open Innovation. *Journal of Open Innovation: Technology, Market, and Complexity*. 2021;7(1):56. 631
632
633
634
44. Turoń K, Kubik A. Business innovations in the new mobility market during the COVID-19 with the possibility of open business model innovation. *Journal of Open Innovation: Technology, Market, and Complexity*. 2021;7(3):195. 635
636
637

45. Radziwon A, Bogers ML, Chesbrough H, Minssen T. Ecosystem effectuation: creating new value through open innovation during a pandemic. *R&D Management*. 2021;. 638
639
640
46. Pedersen K. What can open innovation be used for and how does it create value? *Government Information Quarterly*. 2020;37(2):101459. 641
642
47. Eagle N, Pentland AS, Lazer D. Inferring friendship network structure by using mobile phone data. *Proceedings of the national academy of sciences*. 2009;106(36):15274–15278. 643
644
645
48. Hellewell J, Abbott S, Gimma A, Bosse NI, Jarvis CI, Russell TW, et al. Feasibility of controlling COVID-19 outbreaks by isolation of cases and contacts. *The Lancet Global Health*. 2020;. 646
647
648
49. Ferretti L, Wymant C, Kendall M, Zhao L, Nurtay A, Abeler-Dörner L, et al. Quantifying SARS-CoV-2 transmission suggests epidemic control with digital contact tracing. *Science*. 2020;. 649
650
651
50. Ienca M, Vayena E. On the responsible use of digital data to tackle the COVID-19 pandemic. *Nature Medicine*. 2020;26(4):463–464. 652
653
51. Shim E, Tariq A, Choi W, Lee Y, Chowell G. Transmission potential and severity of COVID-19 in South Korea. *International Journal of Infectious Diseases*. 2020;. 654
655
656
52. Drew DA, Nguyen LH, Steves CJ, Menni C, Freydin M, Varsavsky T, et al. Rapid implementation of mobile technology for real-time epidemiology of COVID-19. *Science*. 2020;368(6497):1362–1367. 657
658
659
53. Blasimme A, Ferretti A, Vayena E. Digital Contact Tracing Against COVID-19 in Europe: Current Features and Ongoing Developments. *Frontiers in Digital Health*. 2021;3:61. 660
661
662
54. Christensen L, Colciago A, Etro F, Rafert G. The Impact of the Data Protection Regulation in the E.U. 2013;p. 90. 663
664
55. European Commission. Communication from the Commission Guidance on Apps supporting the fight against COVID 19 pandemic in relation to data protection 2020/C 124 I/01. *OJ*. 2020;63:1–19. 665
666
667
56. Buckee CO, Balsari S, Chan J, Crosas M, Dominici F, Gasser U, et al. Aggregated mobility data could help fight COVID-19. *Science*. 2020;368(6487):145.2–146. Available from: <https://science.sciencemag.org/content/early/2020/03/20/science.abb8021>. 668
669
670
671
57. Oliver N, Lepri B, Sterly H, Lambiotte R, Delataille S, De Nadai M, et al.. Mobile phone data for informing public health actions across the COVID-19 pandemic life cycle. *American Association for the Advancement of Science*; 2020. 672
673
674
58. Klein B, LaRock T, McCabe S, Torres L, Privitera F, Lake B, et al. Assessing changes in commuting and individual mobility in major metropolitan areas in the United States during the COVID-19 outbreak. 2020;p. 29. 675
676
677
59. Chiou L, Tucker C. Social Distancing, Internet Access and Inequality. 2020;p. 27. 678

60. Bonaccorsi G, Pierri F, Cinelli M, Flori A, Galeazzi A, Porcelli F, et al. Economic and social consequences of human mobility restrictions under COVID-19. *Proceedings of the National Academy of Sciences*. 2020;117(27):15530–15535. 679–682
61. Vollmer M, Mishra S, Unwin H, Gandy A, Melan T, Bradley V, et al. Report 20: A sub-national analysis of the rate of transmission of Covid-19 in Italy. 2020 May; Available from: <http://spiral.imperial.ac.uk/handle/10044/1/78677>. 683–686
62. Martín-Calvo D, Aleta A, Pentland A, Moreno Y, Moro E. Effectiveness of social distancing strategies for protecting a community from a pandemic with a data driven contact network based on census and real-world mobility data. Working paper, <https://covid-19-sds.github.io> (accessed April 18, 2020); 2020. 687–690
63. Dahlberg M, Edin PA, Grönqvist E, Lyhagen J, Östh J, Siretskiy A, et al. Effects of the COVID-19 Pandemic on Population Mobility under Mild Policies: Causal Evidence from Sweden. *arXiv preprint arXiv:200409087*. 2020;. 691–693
64. Ferguson N, Laydon D, Nedjati Gilani G, Imai N, Ainslie K, Baguelin M, et al. Report 9: Impact of non-pharmaceutical interventions (NPIs) to reduce COVID19 mortality and healthcare demand. 2020;. 694–696
65. Loo BP, Tsoi KH, Wong PP, Lai PC. Identification of superspreading environment under COVID-19 through human mobility data. *Scientific reports*. 2021;11(1):1–9. 697–699
66. Alessandretti L. What human mobility data tell us about COVID-19 spread. *Nature Reviews Physics*. 2022;4(1):12–13. 700–701
67. García-Cremades S, Morales-García J, Hernández-Sanjaime R, Martínez-España R, Bueno-Crespo A, Hernández-Orallo E, et al. Improving prediction of COVID-19 evolution by fusing epidemiological and mobility data. *Scientific Reports*. 2021;11(1):1–16. 702–705
68. Spelta A, Flori A, Pierri F, Bonaccorsi G, Pammolli F. After the Lockdown: Simulating Mobility, Public Health and Economic Recovery Scenarios. *Scientific Reports*. 2020;10(1):16950. Available from: <https://www.nature.com/articles/s41598-020-73949-6>. 706–709
69. Dutta R, Gomes SN, Kalise D, Pacchiardi L. Using mobility data in the design of optimal lockdown strategies for the COVID-19 pandemic. *PLoS Computational Biology*. 2021;17(8):e1009236. 710–712
70. Smolyak A, Bonaccorsi G, Flori A, Pammolli F, Havlin S. Effects of mobility restrictions during COVID19 in Italy. *Scientific reports*. 2021;11(1):1–15. 713–714
71. Maas P, Iyer S, Gros A, Park W, McGorman L, Nayak C, et al. Facebook Disaster Maps: Aggregate Insights for Crisis Response and Recovery. In: *Proceedings of the 16th International Conference on Information Systems for Crisis Response and Management (ISCRAM)*, Valencia, Spain. 2019; 2019. . 715–718
72. Huber F, Wainwright T, Rentocchini F. Open data for open innovation: managing absorptive capacity in SMEs. *R&D Management*. 2020;50(1):31–46. 719–720
73. Aleta A, Moreno Y. Evaluation of the potential incidence of COVID-19 and effectiveness of containment measures in Spain: a data-driven approach. *BMC medicine*. 2020;18(1):1–12. 721–723

74. Chang MC, Kahn R, Li YA, Lee CS, Buckee CO, Chang HH. Variation in human mobility and its impact on the risk of future COVID-19 outbreaks in Taiwan. *BMC Public Health*. 2021;21(1):1–10. 724
725
726
75. Pepe E, Bajardi P, Gauvin L, Privitera F, Lake B, Cattuto C, et al. COVID-19 outbreak response, a dataset to assess mobility changes in Italy following national lockdown. *Scientific data*. 2020;7(1):1–7. 727
728
729
76. DPCM. Ulteriori disposizioni attuative del decreto-legge 23 febbraio 2020, n. 6, recante misure urgenti in materia di contenimento e gestione dell'emergenza epidemiologica da COVID-19. *Gazzetta Ufficiale*. 2020;59(08-03-2020). 730
731
732
77. DPCM. Ulteriori disposizioni attuative del decreto-legge 23 febbraio 2020, n. 6, recante misure urgenti in materia di contenimento e gestione dell'emergenza epidemiologica da COVID-19. *Gazzetta Ufficiale*. 2020;62(09-03-2020). 733
734
735
78. Chesbrough HW. *Open innovation: The new imperative for creating and profiting from technology*. Harvard Business Press; 2003. 736
737
79. Kuhlmann S, Rip A. *The challenge of addressing Grand Challenges*. EU Commission. 2014;. 738
739
80. Vanhaverbeke W, Van de Vrande V, Chesbrough H. Understanding the advantages of open innovation practices in corporate venturing in terms of real options. *Creativity and innovation management*. 2008;17(4):251–258. 740
741
742
81. Chesbrough H. Open innovation: Where we've been and where we're going. *Research-Technology Management*. 2012;55(4):20–27. 743
744
82. Brunswicker S, Chesbrough H. The Adoption of Open Innovation in Large Firms: Practices, Measures, and Risks A survey of large firms examines how firms approach open innovation strategically and manage knowledge flows at the project level. *Research-Technology Management*. 2018;61(1):35–45. 745
746
747
748
83. Dahlander L, Gann DM. How open is innovation? *Research policy*. 2010;39(6):699–709. 749
750
84. De Graaf R, Van der Duin P. Collective Innovation: A new approach for dealing with society induced challenges: A case study in the Dutch Bakery Sector. *Procedia-Social and Behavioral Sciences*, 75, 2013. 2013;. 751
752
753
85. Powell WW, Giannella E. Collective invention and inventor networks. In: *Handbook of the Economics of Innovation*. vol. 1. Elsevier; 2010. p. 575–605. 754
755
86. Gallaud D. *Collaborative innovation and open innovation*; 2013. 756
87. Baldwin CY, Clark KB. The architecture of participation: Does code architecture mitigate free riding in the open source development model? *Management Science*. 2006;52(7):1116–1127. 757
758
759
88. Stuermer M, Spaeth S, Von Krogh G. Extending private-collective innovation: a case study. *R&D Management*. 2009;39(2):170–191. 760
761
89. Lerner J, Tirole J. Some simple economics of open source. *The journal of industrial economics*. 2002;50(2):197–234. 762
763
90. Muller P, Pénin J. Why do firms disclose knowledge and how does it matter? In: *Innovation, Industrial Dynamics and Structural Transformation*. Springer; 2007. p. 149–172. 764
765
766

91. Pisano GP, Verganti R. Which kind of collaboration is right for you. *Harvard business review*. 2008;86(12):78–86. 767
768
92. Porter ME, Kramer MR. The Competitive Advantage of Corporate Philanthropy. *harvard business review*. 2002;p. 16. 769
770
93. Stempeck M. Sharing Data Is a Form of Corporate Philanthropy. *Harvard Business Review*. 2014 Jul; Available from: <https://hbr.org/2014/07/sharing-data-is-a-form-of-corporate-philanthropy>. 771
772
773
94. Krogh Gv. Open-Source Software Development; 2003. Available from: <https://sloanreview.mit.edu/article/opensource-software-development/>. 774
775
95. Cinar E, Trott P, Simms C. A systematic review of barriers to public sector innovation process. *Public Management Review*. 2019 Feb;21(2):264–290. 776
777
96. Cinar E, Trott P, Simms C. An international exploration of barriers and tactics in the public sector innovation process. *Public Management Review*. 2019 Oct;p. 1–28. 778
779
780
97. Bommert B. Collaborative innovation in the public sector. *International public management review*. 2010;11(1):19. 781
782
98. Chretien JP, Rivers CM, Johansson MA. Make Data Sharing Routine to Prepare for Public Health Emergencies. *PLoS Medicine*. 2016 Aug;13(8). Available from: <https://www.ncbi.nlm.nih.gov/pmc/articles/PMC4987038/>. 783
784
785
99. Xu B, Gutierrez B, Mekar S, Sewalk K, Goodwin L, Loskill A, et al. Epidemiological data from the COVID-19 outbreak, real-time case information. *Scientific Data*. 2020 Dec;7(1):106. 786
787
788
100. European Parliament. Regulation (EU) 2016/679 of the European Parliament and of the Council of 27 April 2016 on the protection of natural persons with regard to the processing of personal data and on the free movement of such data, and repealing Directive 95/46/EC (General Data Protection Regulation). *OJ*. 2016;59:1–156. 789
790
791
792
793