

RESEARCH ARTICLE

Correlation of Sedline-generated variables and clinical signs with anaesthetic depth in experimental pigs receiving propofol

Alessandro Mirra^{1,2*}, Claudia Spadavecchia¹, Olivier Levionnois¹

1 Section of Anaesthesiology and Pain Therapy, Department of Clinical Veterinary Medicine, Vetsuisse Faculty, University of Bern, Bern, Switzerland, **2** Graduate School for Cellular and Biomedical Sciences, University of Bern, Bern, Switzerland

* alessandro.mirra@vetsuisse.unibe.ch

Abstract

Most of currently available electroencephalographic (EEG)-based tools to assess depth of anaesthesia have not been studied or have been judged unreliable in pigs. Our primary aim was to investigate the dose-effect relationship between increasing propofol dose and variables generated by the EEG-based depth of anaesthesia monitor Sedline in pigs. A secondary aim was to compare the anaesthetic doses with clinical outcomes commonly used to assess depth of anaesthesia in this species. Sixteen juvenile pigs were included. Propofol infusion was administered at 10 mg kg⁻¹ h⁻¹, increased by 10 mg kg⁻¹ h⁻¹ every 15 minutes, and stopped when an EEG Suppression ratio >80% was reached. Patient state index, suppression ratio, left and right spectral edge frequency 95%, and outcomes from commonly used clinical methods to assess depth of anaesthesia in pigs were recorded. The best pharmacodynamic model was assessed for Patient state index, suppression ratio, left and right spectral edge frequency 95% in response to propofol administration. The decrease of Patient state index best fitted to an inhibitory double-sigmoid model (including a plateau phase). The increase of suppression ratio fitted a typical sigmoid E_{max} model. No relevant relationship could be identified between spectral edge frequency 95% values and propofol administration. A large variability in clinical outcomes was observed among pigs, such that they did not provide a reliable evaluation of propofol dose. The relationship between propofol dose and Patient state index/suppression ratio described in the present study can be used for prediction in future investigations. The evaluation of depth of anaesthesia based on common clinical outcomes was not reliable.

OPEN ACCESS

Citation: Mirra A, Spadavecchia C, Levionnois O (2022) Correlation of Sedline-generated variables and clinical signs with anaesthetic depth in experimental pigs receiving propofol. PLoS ONE 17(9): e0275484. <https://doi.org/10.1371/journal.pone.0275484>

Editor: Emily Chenette, PLOS (Public Library of Science), UNITED KINGDOM

Received: July 18, 2022

Accepted: September 16, 2022

Published: September 29, 2022

Copyright: © 2022 Mirra et al. This is an open access article distributed under the terms of the [Creative Commons Attribution License](https://creativecommons.org/licenses/by/4.0/), which permits unrestricted use, distribution, and reproduction in any medium, provided the original author and source are credited.

Data Availability Statement: All relevant data are available at DOI:<https://doi.org/10.48620/109>.

Funding: This work was supported by the Swiss National Science Foundation (Spark) [<https://www.snf.ch/en>]. Grant number CRSK-3_190926/1. Main grant applicant: OL] and by the Berne University Research Foundation and BEKB Förderfonds [<https://forschungsstiftung.ch/>]. Grant number 22/2020. Main grant applicant: OL]. The funder had no role in study design, data collection and analysis, decision to publish, or preparation of the

Introduction

Despite the large use of the porcine model in translational medicine [1–3], appropriate objective methods to guarantee an adequate depth of anaesthesia (DoA) in pigs are still missing. This is not only a great ethical concern [4], but it seriously raises the question if the results obtained from translational studies are reliable.

manuscript. There was no additional external funding received for this study.

Competing interests: The authors have declared that no competing interests exist.

Over the last 20 years, different variables to assess DoA have been investigated in pigs [5–16].

The SedLine monitor (Masimo Corp., CA, USA) has been recently released on the market. It is designed to record the electroencephalographic (EEG) signal in humans from left and right frontal and pre-frontal transcutaneous electrodes (RD SedLine EEG-sensor). The signal is processed through proprietary algorithms and the Patient State Index (PSI), the suppression ratio (SR) and the left and right 95% spectral edge frequencies (SEF 95%) are calculated. So far, its usability in pigs has been investigated [17] but the correlation between Sedline-generated variables and anaesthetic doses has not been reported.

Besides EEG-based tools, clinical variables (e.g. palpebral reflex, withdrawal reflex, jaw tone) are generally used in pigs to assess DoA [18–20]. However, the relationship between anaesthetic drugs and doses with the clinical outcomes has not been properly evaluated.

Most studies investigating DoA in pigs have been performed under inhalant anaesthesia. Therefore, only scarce information is available about propofol-based anaesthetic protocols and propofol effects on DoA variables in this species. As propofol is largely used in experimental pigs, the characterization of its dose-dependent effects is highly relevant to guarantee anaesthetic safety and animal welfare.

The primary aim of this study was to investigate the pharmacodynamic dose-effect relationship between propofol and PSI, SR and SEF 95% (left and right) response in pigs. A secondary aim was to compare clinical assessment of DoA with anaesthetic dose and the aforementioned Sedline-generated variables.

According to available data from the use of Sedline in humans, we hypothesized that the dose-effect relationship between propofol and Sedline-derived parameters (SR, SEF 95%, PSI) would follow a sigmoid Emax model [21–25].

We also hypothesized that clinical parameters would be largely heterogeneous among pigs, therefore not allowing a fixed relationship with Sedline-generated variables and increasing dose of anaesthetic.

Materials and methods

A permission to perform the study was obtained from the Committee for Animal Experiments of the Canton of Bern, Switzerland (Protocol Number: 32015). Each pig underwent a single experimental trial, at the end of which it was euthanized (pentobarbital; 150 mg kg⁻¹ intravenous (IV)). All efforts were made in order to minimize suffering. Sample size calculation was performed for another investigation running on the same animals and evaluating two groups during the recovery phase without interference with the present study.

Animals

Sixteen pigs (phenotype Edelschwein) of both sexes (10 females and 6 males) with a body weight of 28.9± 4.7 kg (mean±standard deviation (SD)) and of 10±0.6 weeks of age were included in the study.

Pigs were collected from the farm of origin between two and ten days before the experiment in groups of at least two animals and brought to the animal facility of the University of Bern. The animals were housed in single boxes. Visual and auditory contact was allowed during the whole stay, and at least three pigs were always present in the facility. Clinical examination was performed once a day by a veterinarian. The animals were fed three times per day and had ad libitum access to water.

Instrumentation

On the experimental days, the animals were briefly acclimatized to the experimental room (between 30 and 60 minutes) and then placed into a sling for instrumentation. A local anaesthetic cream (eutectic mixture of local anesthetics (EMLA) 5%, Anesderm, Pierre Fabre, Switzerland) was applied over the two ears and on the tail for at least 45 minutes before placing venous (auricular) and arterial (auricular or coccygeal) catheters. The dorsal part of the skull was prepared and the pediatric RD SedLine EEG-sensor placed as previously described [17].

Treatment

A propofol (Propofol 1% MCT, Fresenius Kabi AG, Switzerland) infusion was started at $10 \text{ mg kg}^{-1} \text{ h}^{-1}$ and then increased by $10 \text{ mg kg}^{-1} \text{ h}^{-1}$ every 15 minutes. Oxygen supplementation was always provided via face mask. Endotracheal intubation (ETI) was performed as deemed appropriate by the anaesthetist (AM). After ETI, volume-controlled mechanical ventilation was provided with a tidal volume of 15 ml kg^{-1} while the respiratory rate was adjusted targeting an end-tidal carbon dioxide partial pressure (EtCO_2) between 4.6 and 5.9 kPa (35 and 45 mmHg).

The propofol infusion was increased until the EEG suppression ratio (SR, as read on the Sedline monitor) was maintained above 80% for continuous 10 minutes. At that point, the infusion was stopped and the pig allowed to recover.

At least 90 minutes later, the pig was euthanised with pentobarbital IV (150 mg kg^{-1}).

Data collection

Data generated by the Sedline device (PSI, SR, SEF 95%-left and -right) were recorded and saved automatically every 2 seconds until euthanasia. Eye position was graded every 5 minutes as “central”, “rotated” or “nystagmus”. Palpebral reflex and jaw tone were assessed manually once at baseline (before propofol start), and then every 5 minutes. Both were scored each time as 2 (same as baseline), 1 (reduced) or 0 (absent). At the same time points, mechanical and thermal nociceptive stimulations were applied sequentially. A spring clamp (Little Samson; Salter Abbey, West Midlands, UK) was attached to one arm of a metallic clamping tong and was used to perform the mechanical stimulation. The stimulus was applied at the level of the third or fourth digit of the left hind limb, alternating them to avoid hypersensitization. A constant force of 60 Newtons was applied until a withdrawal response appeared, or for a maximum of 60 seconds. The response was scored similarly as above (score from 2 (same as baseline) to 0 (absent)). Additionally, the sum of the scores for palpebral reflex, jaw tone and response to mechanical stimulation was recorded as the clinical depth of anaesthesia score (CDS, score from 6 to 0). The thermal stimulation was performed using an Nd-YAG (neodymium doped yttrium–aluminum–garnet) laser (Stimul 1340, Deka, Italy), wavelength $1.34 \mu\text{m}$. Pulses of 5 joules (J), 20 milliseconds (ms) duration and 10 mm spot diameter, were applied to the previously shaved lateral aspect of the left front limb, at a 10 cm distance from the skin. The response to laser stimulation was scored as 2 (present at 5J), 1 (present only if increased at 10 or 15J) or 0 (absent at 15 J). At least 30 seconds elapsed between stimuli to avoid temporal summation, and the stimulation site was changed slightly to avoid hypersensitization.

Data analysis

For data analysis, the individual durations of propofol administration were divided in 30 equal time intervals (TI) for each pig (TI_1 to TI_{30}). With this transformation, it was assumed that DoA was increasing continuously from TI_1 to TI_{30} and that all the pigs had approximately

similar DoA at the same TI. For each TI, individual means for PSI, SR and SEF 95%-left and -right, and individual CDSs were calculated. Baseline values (TI_0) for each parameter were also calculated, considering a recording time of an equal length of a single TI, for each pig, taken before propofol start.

Differences between SEF 95% -left and -right were tested for significance with a two-way ANOVA test for repeated measures. Correlations between pairs of variables for propofol dose, PSI, SEF 95% -left, SEF 95%-right and CDS were tested with the Spearman's rank correlation coefficient (SigmaStat 10, Systat Software Inc., United States).

Pharmacodynamic modeling

A pharmacodynamic direct-effect model was established for PSI, SR, SEF 95%-left and -right in response to propofol administration using the software Phoenix 64 v.8.3. NLME (Pharsight Inc., United States).

First, the dose-effect relationship was visually inspected to select possible models to be used among linear, polynomial, exponential (E_{max}), sigmoidal or double-sigmoidal [26, 27], and to determine whether data-transformation was required. Then candidate models were compared by visual analysis of goodness-of-fit (GOF) plots, -2LL significance ($p < 0.05$) and Akaike information criterion (AIC)/ Bayesian information criterion (BIC) for nested models. The best final model was determined with a population pharmacokinetic (popPK) approach using quasi-random parametric expectation maximization (QRPEM) with combined additive and multiplicative error model of residual unexplained variability (RUV). Random effect was tested on PD parameters using exponential model for intra-individual variability (IIV). Standard validation methods in popPK were used to assess model adequacy (visual predictive check and bootstrapping on 1000 replicates). Proportional prediction correction was applied for the visual predictive check (VPC).

Results

Of the initial 16 pigs included in this study, seven were excluded from analysis. Three of them developed sudden respiratory obstruction before ETI. While obstruction was promptly resolved, alteration of the Sedline-generated variables was observed; therefore, these animals were excluded to avoid erroneous pharmacodynamic modeling. All the other pigs completed the entire experiment without complications. In four of them, Sedline data were not properly saved by the device, such that the animals were excluded. Thus, data are presented for nine pigs.

Marked spontaneous breathing was generally maintained after endotracheal intubation impairing the efficiency of mechanical ventilation. Median (interquartile ranges) $EtCO_2$ between endotracheal intubation and the end of propofol administration was 8.9 (7.8–10.1) kPa [67 (59–76) mmHg].

Median and interquartile ranges for propofol doses and TIs, corresponding to the moment in which the score of single clinical parameters changes (i.e., from 2 to 1 or from 1 to 0), are presented in [Table 1](#). Values of PSI, SR, CDS and clinical parameters are represented in [Fig 1](#).

The eye position was observed to be very variable within individuals and among pigs such that a trend could not be determined. The data on eye position were discarded. Palpebral reflex reduction/disappearance was extremely heterogeneous (in one pig started to be reduced at TI_{11} , while in another it disappeared only at TI_{29}). A similar pattern was noticed for jaw tone, that was still present (albeit reduced) in six pigs at the time of tracheal intubation. Five pigs (55%) stopped to react to thermal stimulation abruptly (the score decreased directly from 2 to 0); at TI_{18} , all pigs had ceased to move in reaction to thermal stimulation. All pigs showed a

Table 1. Median (interquartile ranges) of propofol doses (in mg kg⁻¹ h⁻¹) and time intervals at which the different clinical outcome scores changed (in square brackets) and intubation was performed.

EVENTS	Propofol dose	Time interval
	(mg kg ⁻¹ h ⁻¹)	
Palpebral reflex [2→1]	20 (15–30)	7 (3.5–11.5)
Palpebral reflex [1→0]	40 (50–55)	16 (13.5–20.5)
Jaw tone [2→1]	20 (20–30)	8 (6.5–11)
Jaw tone [1→0]	50 (45–60)	21 (16–22.5)
Clamp reaction [2→1]	30 (25–40)	12 (10.5–14)
Clamp reaction [1→0]	70 (60–80)	26 (24.5–29.5)
Laser reaction [2→1]	25 (12.5–30)	12 (9.5–13.5)
Laser reaction [1→0]	40 (30–40)	14 (10.5–17)
Intubation	50 (40–60)	19 (13.5–23)

<https://doi.org/10.1371/journal.pone.0275484.t001>

progressive fading of the reaction to mechanical stimulation; two pigs never completely lost the reaction (score of 1) even at SR>80%.

The PSI decreased over the course of the experiment (Fig 1). Initial PSI (TI₀) was 87 [86–89] and reached the value of 1 [0–4] with a SR > 80% (TI₃₀). Only three pigs (25%) maintained a PSI > 5. A large variability among individuals was observed between TI₁₈ and TI₂₆. The PSI-decrease fitted at best to an inhibitory double-sigmoidal model compared to linear or inhibitory sigmoidal (Fig 2). The final model (Eq 1) included fixed effect and random effect on E_{max}₁, median effective dose (ED₅₀)₁, γ₁, E_{max}₂, ED₅₀₂, and γ₂ (Table 2).

$$E = \left(E_{\max_1} * \frac{D^{\gamma_1}}{ED_{50_1}^{\gamma_1} + D^{\gamma_1}} \right) + \left(E_{\max_2} * \frac{D^{\gamma_2}}{ED_{50_2}^{\gamma_2} + D^{\gamma_2}} \right) \quad (\text{Eq1})$$

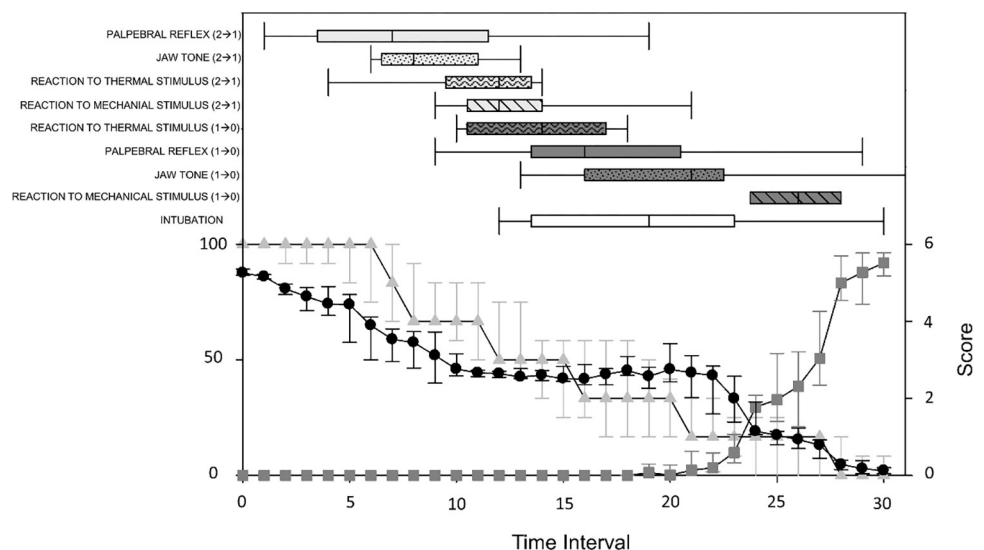


Fig 1. Sedline-generated and clinical variables over time. Median (interquartile range) for patient state index (black dots), suppression ratio (dark grey squares), and clinical depth of anaesthesia score (light grey triangles) during increasing propofol infusion in nine pigs. The individual durations of propofol administration were divided in 30 equal time intervals (TI) for each pig (TI₁ to TI₃₀). T₀ = baseline values. Box plots (median and 25-75th percentiles) represent the time intervals at which the different clinical outcome scores changed (in brackets).

<https://doi.org/10.1371/journal.pone.0275484.g001>

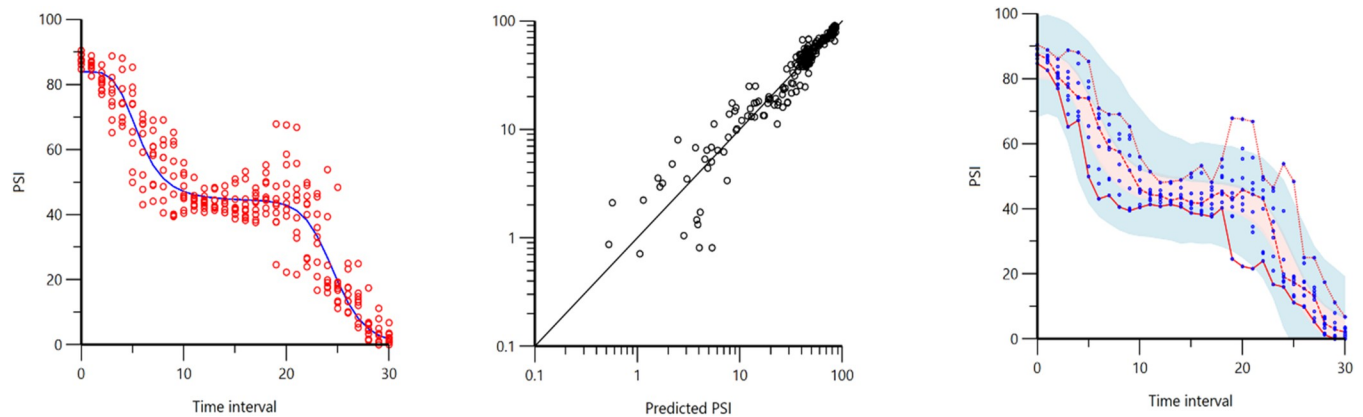


Fig 2. Pharmacodynamic modeling for patient state index (PSI). A. Observed data (circles) and prediction from the final population model (line) for PSI values during increasing propofol infusion rate. The time axis shows the normalized time intervals. B. Observed PSI data against individual-predicted values. C. Prediction-corrected visual predictive check (for 1000 simulations) of the final model for PSI; Blue dots = observations; red lines = 5th, 50th, and 95th percentiles of the observed values; red/blue shaded area = 95% CI of the 5th, 50th and 95th percentiles of the final prediction model.

<https://doi.org/10.1371/journal.pone.0275484.g002>

The SR started to increase at TI₁₈, followed by a steep increase (Fig 3). The SR-increase fitted a typical sigmoid E_{max} model (Fig 3). The final model included a constant E_{max} (100) and a fixed and random effect on ED₅₀ and γ (Table 2).

The values for left and right SEF 95% were not significantly different (p = 1.0, repeated measure two-way ANOVA). The relationship between SEF 95% values and propofol dose did not appear to follow an obvious trend at visual inspection (Fig 4). No modeling was performed.

Spearman correlation coefficients between pairs of variables for propofol dose, PSI, SEF 95%-left, SEF 95%-right and CDS are presented in Table 3.

Discussion

In the present study we found that the relationship between PSI values and increasing dose of propofol is best represented by a double-sigmoid model, while that the relationship between SR and propofol dose is best represented by a sigmoidal model. No clear trend has been identified for SEF 95, that seems to have a poor performance in assessing DoA in pigs if used alone. As expected, the sequence with which the clinical parameters became depressed by increasing doses of propofol seemed to follow a common pattern, but there was a marked individual

Table 2. Pharmacodynamic parameter estimates and confidence interval for the final model and Bootstrap (1000 simulations) for patient state index (PSI) and suppression ratio (SR).

	Final model		Bootstrap	
	Estimate	Confidence interval 2.5–97.5%	Estimate	Confidence interval 2.5–97.5%
Patient State Index (PSI)				
E _{max 1}	39.8	34.2–45.3	39.7	36.6–42.1
Median effective dose ₁	44.2	41.7–46.7	44.2	41.9–46.5
γ_1	4.4	2.4–6.5	4.5	3.6–5.4
E _{max 2}	5.6	3.7–7.6	5.7	4.7–6.8
Median effective dose ₂	16.3	2.0–30.6	16.7	12.3–22.3
γ_2	24.6	22.4–26.9	24.6	24.0–25.2
Suppression Ratio (SR)				
Median effective dose	26.3	25.4–27.2	26.3	25.7–26.9
γ	18.2	11.5–24.9	18.4	13.3–25.1

<https://doi.org/10.1371/journal.pone.0275484.t002>

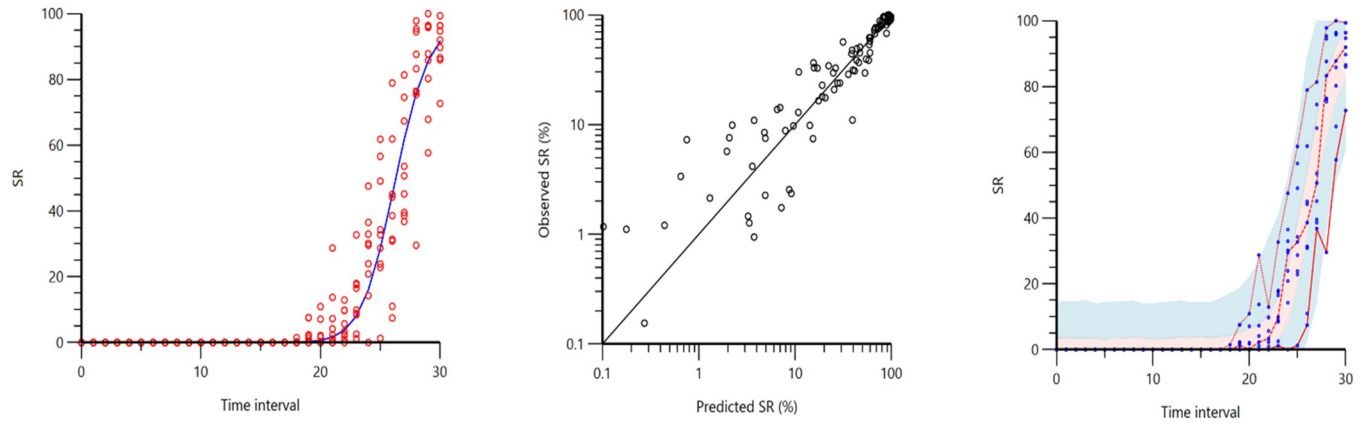


Fig 3. Pharmacodynamic modeling of suppression ratio (SR). A. Observed data (circles) and prediction from the final population model (line) for SR during increasing propofol infusion rate. The time axis shows the normalized time intervals. B. Observed SR data against individual-predicted values. C. Prediction-corrected visual predictive check (for 1000 simulations) of the final model for SR; Blue dots = observations; red lines = 5th, 50th, and 95th percentiles of the observed values; red/blue shaded area = 95% CI of the 5th, 50th and 95th percentiles of the final prediction model.

<https://doi.org/10.1371/journal.pone.0275484.g003>

variation for each single parameter supporting that they cannot be used alone to evaluate DoA in pigs.

In previous publications [24, 28, 29], an inhibitory sigmoidal model was used to describe the relationship between PSI and propofol dose in humans. However, other investigations performed under inhalant anaesthesia found that the dose-effect relationship of EEG-derived variables obtained from BIS and Narcotrend devices was better described with the combination of two fractional sigmoid E_{max} models [26, 27, 30, 31]. The same observation was made for PSI

Spectral edge frequency 95%

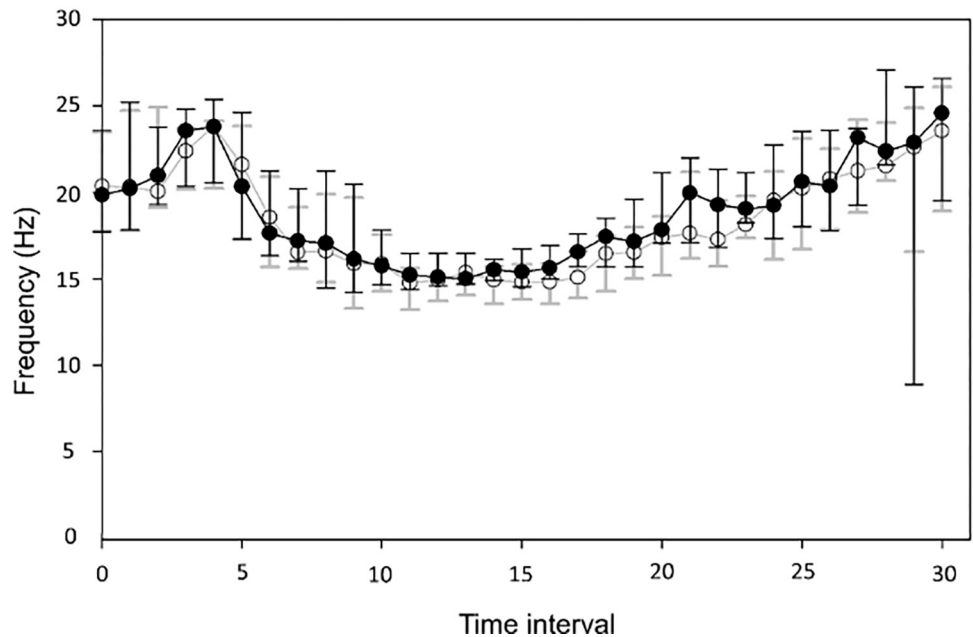


Fig 4. Spectral edge frequency 95% (median and interquartile ranges) -left (white dots) and -right (black dots) at each time interval (TI).

<https://doi.org/10.1371/journal.pone.0275484.g004>

Table 3. Spearman correlation coefficients (r_s) measured for the relationship between propofol dose [corresponding to time intervals (TI)], patient state index (PSI), spectral edge frequency 95% (SEF 95%)-left and -right and clinical depth of anaesthesia score (CDS) in pigs under propofol anaesthesia.

r_s	PSI	SEF 95%-left	SEF 95%-right	CDS
Time interval (TI)	-0.93	0.11	0.16	-0.98
PSI		0	0	0.9
SEF 95%-left			0.95	-0.09
SEF 95%-right				-0.14

<https://doi.org/10.1371/journal.pone.0275484.t003>

in pigs undergoing propofol anaesthesia in the present study. Compared to linear, a sigmoid relationship displays higher sensitivity over the range covered by the steep parts of the curve. Simultaneously, the plateau phase of the curve may help the anaesthetist in maintaining DoA levels around a targeted range. In the present investigation, the plateau was observed at PSI value of 44 ($E_{\max 2} = 44.2$), which falls within the range generally targeted during surgical anaesthesia in humans (25–50). Former studies reported a plateau at around 40 for BIS and 50 for Narcotrend [26, 27, 30, 31]. The value at which these indexes will tend to display a plateau over the range of anaesthetic doses tested depends on the computation algorithm, which is proprietary and often not published. Therefore, it is not possible to hypothesize if this is done on purpose and if it can be extrapolated to pigs.

Former publications in humans reported the plateau to appear at anaesthetic doses at which EEG suppression ratio starts to increase [26, 27, 30, 31]. In the present study, the plateau phase was displayed earlier (approximately at TI_{15}) than appearance of SR (approximately TI_{18}).

These results highlight how a mere translation of end-points set for humans to other species can lead to misleading results and wrong decisions. In order to ensure a correct and stable DoA, species-specific investigations should be performed and species-specific end-points set.

The present study supports previous reports describing SR dose-response relationship with a sigmoidal model [25]. Targeting a certain level of burst suppression has been described in the literature as effective way to guarantee deep levels of anaesthesia in pigs [5, 32]. However, it remains unclear if a specific ratio of EEG suppression can be used to differentiate anaesthetic planes more precisely than its sole presence/absence. In the present investigation, SR increased very rapidly from 10% to >80% over a narrow range of propofol doses. Most of the clinical signs commonly associated with inadequate DoA (e.g., presence of palpebral reflex, jaw tone, reaction to clamp) were still present when EEG suppression started to appear. However, this may be different when other drugs are administered. In humans, recent studies suggest avoiding the phase of EEG suppression during surgery to reduce the occurrence of post-operative delirium [33, 34]. No information regarding the possible influence of intraoperative SR on recovery outcomes is available in veterinary species, and further studies are needed to address this issue.

No obvious relationship was observed between SEF 95% and DoA. The SEF 95% has been widely described in a large variety of species to decrease with deepening of anaesthesia [35] until a paradoxical increase may happen when EEG suppression appears [36]. In the present study, SEF-95% initially increased, then decreased until reaching a plateau level, and finally started to strongly increase again, approximately when SR occurred. Such complex patterns may be the result of technical, methodological or physiological processes and would require further investigation.

Clinical DoA assessment still remains a cornerstone in veterinary anaesthesia. However, few investigations have been conducted to validate species-specific DoA scales, as well as the

influence of different drugs on these clinical parameters. In the present investigation, the sequence of their depression tended to follow a reproducible pattern where reaction to thermal stimulation disappeared first, followed by palpebral reflex, jaw tone and finally reaction to mechanical stimulation. However, there was a large variability between subjects for the predicted DoA at which these events occurred. The variability was lower when evaluation of palpebral reflex, jaw tone and response to mechanical stimulation were combined in a score value (CDS). The CDS showed a potential for prediction of DoA, as well as PSI and SR values. Of notice, palpebral reflex, jaw tone and reaction to clamp stimulation were often present at PSI between 25 and 50.

The absence of reaction to a clamp has been previously associated with a deep anaesthetic plane in pigs [16, 18]. The reason why such a response was still present at high doses of propofol (SR > 80%) in our study is not clear. Differences in methodology to apply the mechanical stimulation as well as the use of concomitant drugs with analgesic properties limit the comparison between published studies. In contrast to the response to mechanical stimulation, the motor reaction to thermal stimulation disappeared early in all the pigs. However, the different stimulation paradigm used (continuous pressure up to 60 seconds for the mechanical versus 20 ms single pulse for the thermal) must be taken in consideration, since it influences the response [14].

The PSI in the awake phase had a median value of 87. This is in line with what has been described in humans when it was assessed in awake patients, with and without closed eyes [37]. The calm behaviour of the animals once placed in the slings (sometimes also associated with a sleeping behaviour) could have prevented higher values being reached. Moreover, the brain areas covered by the recording electrodes may be different between human and pigs [17], influencing the calculated variables.

Incomplete saving of the SedLine-generated data has been already reported [17]; thus, it may be suggested to manually record the displayed values as well.

This paper has some limitations. First, the rate of propofol administration did not reflect how anaesthesia is provided in clinical practice. Different results may have been obtained using faster propofol administration and the use of concomitant drugs. Second, various biological signals have been reported to interfere with EEG recording activity (e.g. arterial pulse, electromyographic signals) [38, 39] and it may have also happened here. Third, the development of hypercapnia may have interacted with DoA and EEG activity, which could have modified the propofol dose-effect relationship [40]. Fourth, no sample size calculation was performed for the present study, being part of another investigation having a different primary aim.

Conclusion

The relationship between propofol dose and PSI/SR described in the present study can be used for prediction in future investigations. No clear trend was identified between SEF 95% and increasing propofol doses. Based on the present findings, the use of single clinical outcomes to assess DoA in pigs undergoing propofol anaesthesia can be misleading, and should be avoided.

Acknowledgments

The authors thank Shannon Axiak Flammer for her contribution in improving the manuscript.

Author Contributions

Conceptualization: Alessandro Mirra, Claudia Spadavecchia, Olivier Levionnois.

Data curation: Alessandro Mirra, Olivier Levionnois.

Formal analysis: Alessandro Mirra, Olivier Levionnois.

Funding acquisition: Alessandro Mirra, Claudia Spadavecchia, Olivier Levionnois.

Investigation: Alessandro Mirra, Claudia Spadavecchia, Olivier Levionnois.

Methodology: Alessandro Mirra, Claudia Spadavecchia, Olivier Levionnois.

Project administration: Olivier Levionnois.

Resources: Claudia Spadavecchia, Olivier Levionnois.

Supervision: Claudia Spadavecchia, Olivier Levionnois.

Validation: Claudia Spadavecchia, Olivier Levionnois.

Writing – original draft: Alessandro Mirra.

Writing – review & editing: Claudia Spadavecchia, Olivier Levionnois.

References

1. Komiya K, Sato Y, Wainai T, Murayama T, Yamada M, Hiruta A, et al. Evaluation of intraoperative infusion solution using a complete anhepatic model in baby pigs. *Transplant Proc.* 2005; 37: 2341–2346. <https://doi.org/10.1016/j.transproceed.2005.03.104> PMID: 15964412
2. Nichols JE, La Francesca S, Niles JA, Vega SP, Argueta LB, Frank L, et al. Production and transplantation of bioengineered lung into a large-animal model. *Sci Transl Med.* 2018;10. <https://doi.org/10.1126/scitranslmed.aao3926> PMID: 30068570
3. Commission European. Seventh Report on the Statistics on the Number of Animals used for Experimental and other Scientific Purposes in the Member States of the European Union. 2013; 1–40. <https://doi.org/10.1017/CBO9781107415324.004>
4. Bradbury AG, Eddleston M, Clutton RE. Pain management in pigs undergoing experimental surgery; A literature review (2012–4). *Br J Anaesth.* 2016; 116: 37–45. <https://doi.org/10.1093/bja/aev301> PMID: 26433866
5. Haga HA, Tevik A, Moersch H. Electroencephalographic and cardiovascular indicators of nociception during isoflurane anaesthesia in pigs. *Vet Anaesth Analg.* 2001; 28: 126–131. Available: <https://ovidsp.ovid.com/ovidweb.cgi?T=JS&CSC=Y&NEWS=N&PAGE=fulltext&D=caba5&AN=20013113873> <https://doi.org/10.1046/j.1467-2987.2001.00051.x> PMID: 28404442
6. Haga HA, Tevik A, Moersch H. Motor responses to stimulation during isoflurane anaesthesia in pigs. *Vet Anaesth Analg.* 2002; 29: 69–75. Available: <https://ovidsp.ovid.com/ovidweb.cgi?T=JS&CSC=Y&NEWS=N&PAGE=fulltext&D=caba5&AN=20023073247> <https://doi.org/10.1046/j.1467-2995.2002.00061.x> PMID: 28404302
7. Martin-Cancho MF, Lima JR, Luis L, Crisostomo V, Ezquerra LJ, Carrasco MS, et al. Bispectral index, spectral edge frequency 95%, and median frequency recorded for various concentrations of isoflurane and sevoflurane in pigs. *Am J Vet Res.* 2003; 64: 866–873. Available: <https://ovidsp.ovid.com/ovidweb.cgi?T=JS&CSC=Y&NEWS=N&PAGE=fulltext&D=caba5&AN=20033135383> <https://doi.org/10.2460/ajvr.2003.64.866> PMID: 12856771
8. Greene SA, Benson GJ, Tranquilli WJ, Grimm KA. Effect of isoflurane, atracurium, fentanyl, and noxious stimulation on bispectral index in pigs. *Comp Med.* 2004; 54: 397–403. Available: <https://ovidsp.ovid.com/ovidweb.cgi?T=JS&CSC=Y&NEWS=N&PAGE=fulltext&D=caba5&AN=20043158418> PMID: 15357320
9. Martin-Cancho MF, Carrasco-Juménez MS, Lima JR, Ezquerra LJ, Crisóstomo V, Usón-Gargallo J. Assessment of the relationship of bispectral index values, hemodynamic changes, and recovery times associated with sevoflurane or propofol anesthesia in pigs. *Am J Vet Res.* 2004; 65: 409–416. <https://doi.org/10.2460/ajvr.2004.65.409> PMID: 15077681
10. Martin-Cancho MF, Lima JR, Luis L, Crisostomo V, Lopez MA, Ezquerra LJ, et al. Bispectral index, spectral edge frequency 95% and median frequency recorded at varying desflurane concentrations in pigs. *Res Vet Sci.* 2006; 81: 373–381. Available: <https://ovidsp.ovid.com/ovidweb.cgi?T=JS&CSC=Y&NEWS=N&PAGE=fulltext&D=caba6&AN=20063193355> <https://doi.org/10.1016/j.rvsc.2006.01.003> PMID: 16516255

11. Sano H, Doi M, Mimuro S, Yu S, Kurita T, Sato S. Evaluation of the hypnotic and hemodynamic effects of dexmedetomidine on propofol-sedated swine. *Exp Anim*. 2010; 59: 199–205. Available: <https://ovidsp.ovid.com/ovidweb.cgi?T=JS&CSC=Y&NEWS=N&PAGE=fulltext&D=caba6&AN=20103186450> <https://doi.org/10.1538/expanim.59.199> PMID: 20484853
12. Haga HA, Ranheim B, Spadavecchia C. Effects of isoflurane upon minimum alveolar concentration and cerebral cortex depression in pigs and goats: An interspecies comparison. *Vet J*. 2011; 187: 217–220. Available: <https://ovidsp.ovid.com/ovidweb.cgi?T=JS&CSC=Y&NEWS=N&PAGE=fulltext&D=emed12&AN=50750495> <https://doi.org/10.1016/j.tvjl.2009.11.010> PMID: 20045357
13. Llonch P, Andaluz A, Rodriguez P, Dalmau A, Jensen EW, Manteca X, et al. Assessment of consciousness during propofol anaesthesia in pigs. *Vet Rec*. 2011; 169: 496. Available: <https://ovidsp.ovid.com/ovidweb.cgi?T=JS&CSC=Y&NEWS=N&PAGE=fulltext&D=caba6&AN=20113361874> <https://doi.org/10.1136/vr.d5643> PMID: 21949060
14. Spadavecchia C, Haga HA, Ranheim B. Concentration-dependent isoflurane effects on withdrawal reflexes in pigs and the role of the stimulation paradigm. *Vet J*. 2012; 194: 375–379. Available: <https://ovidsp.ovid.com/ovidweb.cgi?T=JS&CSC=Y&NEWS=N&PAGE=fulltext&D=emed13&AN=52029796> <https://doi.org/10.1016/j.tvjl.2012.04.018> PMID: 22634182
15. Silva A, Venancio C, Ortiz AL, Souza AP, Amorim P, Ferreira DA. The effect of high doses of remifentanyl in brain near-infrared spectroscopy and in electroencephalographic parameters in pigs. *Vet Anaesth Analg*. 2014; 41: 153–162. Available: <https://ovidsp.ovid.com/ovidweb.cgi?T=JS&CSC=Y&NEWS=N&PAGE=fulltext&D=caba6&AN=20143120885> <https://doi.org/10.1111/vaa.12091> PMID: 24119044
16. Jaber SM, Sullivan S, Hankenson FC, Kilbaugh TJ, Margulies SS. Comparison of heart rate and blood pressure with toe pinch and bispectral index for monitoring the depth of anaesthesia in piglets. *J Am Assoc Lab Anim Sci*. 2015; 54: 536–544. Available: <https://ovidsp.ovid.com/ovidweb.cgi?T=JS&CSC=Y&NEWS=N&PAGE=fulltext&D=caba6&AN=20153348653> PMID: 26424252
17. Mirra A, Casoni D, Barge P, Hight D, Levionnois O, C S. Usability of the SedLine® electroencephalographic monitor of depth of anaesthesia in pigs: a pilot study. *J Clin Monit Comput*. 2022; (in press). <https://doi.org/10.1007/s10877-022-00807-3> PMID: 35059913
18. Lu DZ, Fan HG, Kun M, Song ZL, Ming YS, Sheng J, et al. Antagonistic effect of atipamezole, flumazenil and naloxone following anaesthesia with xylazine, tramadol and tiletamine/zolazepam combinations in pigs. *Vet Anaesth Analg*. 2011; 38: 301–309. Available: <https://ovidsp.ovid.com/ovidweb.cgi?T=JS&CSC=Y&NEWS=N&PAGE=fulltext&D=emed12&AN=361954635> <https://doi.org/10.1111/j.1467-2995.2011.00625.x> PMID: 21672125
19. Santos Gonzalez M, Bertran de Lis BT, Tendillo Cortijo FJ. Effects of intramuscular alfaxalone alone or in combination with diazepam in swine. *Vet Anaesth Analg*. 2013; 40: 399–402. Available: <https://ovidsp.ovid.com/ovidweb.cgi?T=JS&CSC=Y&NEWS=N&PAGE=fulltext&D=emed14&AN=369145120> <https://doi.org/10.1111/vaa.12033> PMID: 23495812
20. Geovanini GR, Pinna FR, Prado FA, Tamaki WT, Marques E. Standardization of anesthesia in swine for experimental cardiovascular surgeries. *Rev Bras Anesthesiol*. 2008; 58: 363–370. Available: <https://ovidsp.ovid.com/ovidweb.cgi?T=JS&CSC=Y&NEWS=N&PAGE=fulltext&D=med7&AN=19378584> <https://doi.org/10.1590/s0034-70942008000400005> PMID: 19378584
21. Rigouzzo A, Servin F, Constant I. Pharmacokinetic-pharmacodynamic modeling of propofol in children. *Anesthesiology*. 2010; 113: 343–352. <https://doi.org/10.1097/ALN.0b013e3181e4f4ca> PMID: 20613468
22. Soehle M, Ellerkmann RK, Grube M, Kuech M, Wirz S, Hoeft A, et al. Comparison between bispectral index and patient state index as measures of the electroencephalographic effects of sevoflurane. *Anesthesiology*. 2008; 109: 799–805. <https://doi.org/10.1097/ALN.0b013e3181895fd0> PMID: 18946290
23. Stanski DR, Hudson RJ, Homer TD, Saidman L, Meathe E. Pharmacodynamic modeling of thiopental anesthesia. *J Pharmacokinet Biopharm*. 1984; 12: 223–240. <https://doi.org/10.1007/BF01059279> PMID: 6491902
24. Soehle M, Kuech M, Grube M, Wirz S, Kreuer S, Hoeft A, et al. Patient state index vs bispectral index as measures of the electroencephalographic effects of propofol. *Br J Anaesth*. 2010; 105: 172–178. <https://doi.org/10.1093/bja/aeq155> PMID: 20587537
25. Bruhn J, Ropcke H, Rehberg B, Bouillon T, Hoeft A. Electroencephalogram approximate entropy correctly classifies the occurrence of burst suppression pattern as increasing anesthetic drug effect. *Anesthesiology*. 2000; 93: 981–985. <https://doi.org/10.1097/0000542-200010000-00018> PMID: 11020750
26. Kreuer S, Bruhn J, Larsen R, Grundmann U, Shafer SL, Wilhelm W. Application of Bispectral Index® Narcotrend® index to the measurement of the electroencephalographic effects of isoflurane with and without burst suppression. *Anesthesiology*. 2004; 101: 847–854. <https://doi.org/10.1097/0000542-200410000-00008> PMID: 15448516

27. Kreuer S, Bruhn J, Ellerkmann R, Ziegeler S, Kubulus D, Wilhelm W. Failure of two commercial indexes and spectral parameters to reflect the pharmacodynamic effect of desflurane on EEG. *J Clin Monit Comput*. 2008; 22: 149–158. <https://doi.org/10.1007/s10877-008-9116-1> PMID: 18368502
28. Pérez GA, Pérez JAM, Álvarez S, JAR M, Fragoso A. Modelling the PSI response in general anesthesia. *J Clin Monit Comput*. 2021; 35: 1015–1025. <https://doi.org/10.1007/s10877-020-00558-z> PMID: 32691283
29. Martín-Mateos I, Méndez JA, Reboso JA, Leñ A. Modelling propofol pharmacodynamics using BIS-guided anaesthesia. *Anaesthesia*. 2013; 68: 1132–1140. <https://doi.org/10.1111/anae.12384> PMID: 23992529
30. Kreuer S, Bruhn J, Walter E, Larsen R, Apfel CC, Grundmann U, et al. Comparative pharmacodynamic modeling using bispectral and narcotrend-index with and without a pharmacodynamic plateau during sevoflurane anesthesia. *Anesth Analg*. 2008; 106: 1171–1181. <https://doi.org/10.1213/ane.0b013e3181684227> PMID: 18349189
31. Han DW, Linares-Perdomo OJ, Lee JS, Kim J, Kern S. Comparison between cerebral state index and bispectral index as measures of electroencephalographic effects of sevoflurane using combined sigmoidal e max model. *Acta Pharmacol Sin*. 2011; 32: 1208–1214. <https://doi.org/10.1038/aps.2011.99> PMID: 21892201
32. Frasch MG, Walter B, Friedrich H, Hoyer D, Eiselt M, Bauer R. Detecting the signature of reticulothalamocortical communication in cerebrocortical electrical activity. *Clin Neurophysiol*. 2007; 118: 1969–1979. Available: <https://ovidsp.ovid.com/ovidweb.cgi?T=JS&CSC=Y&NEWS=N&PAGE=fulltext&D=emed10&AN=47187762> <https://doi.org/10.1016/j.clinph.2007.05.071> PMID: 17604691
33. Fritz Bradley A., Philip L. Kalarickal HRM. Intraoperative Electroencephalogram Suppression Predicts Postoperative Delirium. *Anesth Analg*. 2016; 122: 234–242.
34. Soehle M, Dittmann A, Ellerkmann RK, Baumgarten G, Putensen C, Guenther U. Intraoperative burst suppression is associated with postoperative delirium following cardiac surgery: A prospective, observational study. *BMC Anesthesiol*. 2015; 15: 1–8. <https://doi.org/10.1186/s12871-015-0051-7> PMID: 25928189
35. Silva A, Antunes L. Electroencephalogram-based anaesthetic depth monitoring in laboratory animals. *Lab Anim*. 2012; 46: 85–94. <https://doi.org/10.1258/la.2012.011135> PMID: 22517991
36. Ihmsen H, Schywalsky M, Plettke R, Priller M, Walz F, Schwilden H. Concentration-effect relations, prediction probabilities (Pk), and signal-to-noise ratios of different electroencephalographic parameters during administration of desflurane, isoflurane, and sevoflurane in rats. *Anesthesiology*. 2008; 108: 276–285. <https://doi.org/10.1097/01.anes.0000300074.04200.b1> PMID: 18212573
37. Belletti A, Naorungroj T, Yanase F, Eastwood GM, Weinberg L, Bellomo R. Normative values for Sed-Line-based processed electroencephalography parameters in awake volunteers: a prospective observational study. *J Clin Monit Comput*. 2021; 35: 1411–1419. <https://doi.org/10.1007/s10877-020-00618-4> PMID: 33175254
38. Kamata K, Lipping T, Yli-Hankala A, Jäntti V, Yamauchi M. Spurious electroencephalographic activity due to pulsation artifact in the depth of anesthesia monitor. *JA Clin Reports*. 2021;7. <https://doi.org/10.1186/s40981-021-00441-z> PMID: 33866446
39. Goncharova II, McFarland DJ, Vaughan TM, Wolpaw JR. EMG contamination of EEG: Spectral and topographical characteristics. *Clin Neurophysiol*. 2003; 114: 1580–1593. [https://doi.org/10.1016/s1388-2457\(03\)00093-2](https://doi.org/10.1016/s1388-2457(03)00093-2) PMID: 12948787
40. ÅAkeson J, Messeter K, Rosen I, BjÖoUrkman S. Cerebral haemodynamic and electrocortical CO2 reactivity in pigs anaesthetized with fentanyl, nitrous oxide and pancuronium. *Acta Anaesthesiol Scand*. 1993; 37: 85–91. <https://doi.org/10.1111/j.1399-6576.1993.tb03605.x> PMID: 8424303