

RESEARCH ARTICLE

Changes in lung volume estimated by electrical impedance tomography during apnea and high-flow nasal oxygenation: A single-center randomized controlled trial

Thomas Riedel^{1*}, Fabian Bürgi², Robert Greif^{2,3}, Heiko Kaiser^{2,4}, Thomas Riva^{2,5}, Lorenz Theiler⁶, Sabine Nabecker⁷

1 Division of Paediatric Intensive Care Medicine, Department of Paediatrics, University Children's Hospital, University of Bern, Bern, Switzerland, **2** Department of Anaesthesiology and Pain Medicine, Bern University Hospital, University of Bern, Bern, Switzerland, **3** School of Medicine, Sigmund Freud University Vienna, Vienna, Austria, **4** Centre for Anaesthesiology and Intensive Care Medicine, Hirslanden Klinik Aarau, Hirslanden Group, Aarau, Switzerland, **5** Unit for Research & Innovation in Anaesthesia, Department of Paediatric Anaesthesia, Istituto Giannina Gaslini, Genoa, Italy, **6** Department of Anaesthesia, Kantonsspital Aarau, Aarau, Switzerland, **7** Department of Anesthesiology and Pain Management, Sinai Health System, University of Toronto, Toronto, Canada

* thomas.riedel@insel.ch



OPEN ACCESS

Citation: Riedel T, Bürgi F, Greif R, Kaiser H, Riva T, Theiler L, et al. (2022) Changes in lung volume estimated by electrical impedance tomography during apnea and high-flow nasal oxygenation: A single-center randomized controlled trial. PLoS ONE 17(9): e0273120. <https://doi.org/10.1371/journal.pone.0273120>

Editor: Thomas Penzel, Charité - Universitätsmedizin Berlin, GERMANY

Received: March 21, 2022

Accepted: July 22, 2022

Published: September 28, 2022

Copyright: © 2022 Riedel et al. This is an open access article distributed under the terms of the [Creative Commons Attribution License](https://creativecommons.org/licenses/by/4.0/), which permits unrestricted use, distribution, and reproduction in any medium, provided the original author and source are credited.

Data Availability Statement: The data underlying this study are ethically restricted per the Swiss Human Research Act, therefore data sharing is only possible with approval (<https://www.swissethics.ch/>). The name of the ethics committee is the Cantonal Ethics Committee Bern, Murtenstrasse 31, Hörsaaltrakt Pathologie, Eingang 43A, Büro H372, 3010 Bern, info.kek@be.ch (<https://www.gsi.be.ch/de/start/ueber-uns/kommissionen-gsi/ethikkommission.html>). The data set name is "PHARAO_EIT." Interested

Abstract

Background

Previous studies concerning humidified, heated high-flow nasal oxygen delivered in spontaneously breathing patients postulated an increase in functional residual capacity as one of its physiological effects. It is unclear whether this is also true for patients under general anesthesia.

Methodology

The single-center noninferiority trial was registered at ClinicalTrials.gov (NCT03478774). This secondary outcome analysis shows estimated differences in lung volume changes using electrical impedance tomography between different flow rates of 100% oxygen in apneic, anesthetized and paralyzed adults prior to intubation. One hundred and twenty five patients were randomized to five groups with different flow rates of 100% oxygen: i) minimal-flow: 0.25 l.min⁻¹ via endotracheal tube; ii) low-flow: 2 l.min⁻¹ + continuous jaw thrust; iii) medium-flow: 10 l.min⁻¹ + continuous jaw thrust; iv) high-flow: 70 l.min⁻¹ + continuous jaw thrust; and v) control: 70 l.min⁻¹ + continuous video-laryngoscopy. After standardized anesthesia induction with non-depolarizing neuromuscular blockade, the 15-minute apnea period and oxygen delivery was started according to the randomized flow rate. Continuous electrical impedance tomography measurements were performed during the 15-minute apnea period. Total change in lung impedance (an estimate of changes in lung volume) over the 15-minute apnea period and times to 25%, 50% and 75% of total impedance change were calculated.

researchers may contact the Direction of Division of Research, Department of Anaesthesiology and Pain Medicine, Bern University Hospital, Bern, Switzerland, anaesthesie@insel.ch (<http://www.anaesthesiologie.insel.ch/de/>; phone: +41 31 632 39 65).

Funding: This work was supported by an institutional grant of the Department of Anaesthesiology and Pain Medicine, Inselspital, Bern University Hospital, University of Bern, Bern, Switzerland. The funders had no role in study design, data collection and analysis, decision to publish, or preparation of the manuscript.

Competing interests: TR does receive consulting fees from Sentec AG, Landquart, Switzerland and reports also that he has received a grant from the Swiss Foundation for Research on Muscle Diseases for a different research project. All other authors declare that they have no competing interests. This does not alter our adherence to PLOS ONE policies on sharing data and materials.

Results

One hundred and twenty five patients completed the original study. Six patients did not complete the 15-minute apnea period. Due to maloperation, malfunction and artefacts additional 54 measurements had to be excluded, resulting in 65 patients included into this secondary outcome analysis. We found no differences between groups with respect to decrease in lung impedance or curve progression over the observation period.

Conclusions

Different flow rates of humidified 100% oxygen during apnea result in comparable decreases in lung volumes. The demonstrated increase in functional residual capacity during spontaneous breathing with high-flow nasal oxygenation could not be replicated during apnea under general anesthesia with neuromuscular blockade.

Introduction

High-flow nasal oxygen (HFNO) is the administration of humidified, heated, and blended air/oxygen via nasal cannulas at rates of up to $2 \text{ l.kg}^{-1} \text{ min}^{-1}$ or a maximum of $80 \text{ l.kg}^{-1} \text{ min}^{-1}$. It was first described for the relief of sleep-related oropharyngeal airway obstruction [1]. It was used later in neonatal intensive care units for treatment of apnea in premature infants [2]. Since then, it is used widely in pediatric intensive care medicine mainly for treatment of respiratory distress [3], for respiratory support after extubation [4] in premature children, and for treatment of bronchiolitis in infants [5].

In adult intensive care medicine it is used to improve oxygenation in hypoxemic respiratory failure because it is easy to use and requires minimal cooperation from patients [6]. In anesthesia it was first described in 2015 in a case series of 25 patients [7]. HFNO prolonged apnea time, and was also suspected to improve ventilation during apnea. It was therefore named transnasal humidified rapid-insufflation ventilatory exchange (THRIVE). HFNO gained popularity for both adults and children for tubeless laryngeal surgery [7–9] and for prolongation of apnea time during airway management for patients with potentially difficult airways [7, 10]. Proposed physiological mechanisms of increasing apnea time during HFNO include positive airway pressure generation and an increase in functional residual capacity [11–13].

Multiple studies investigated the effects of high-flow nasal oxygen during respiratory distress [14, 15]. Spontaneously breathing patients using HFNO seem to benefit from decreased inspiratory effort, improved lung volume and lung compliance [16]. Positive airway pressure generation was absent in apneic patients with an open mouth, and minimal with a closed mouth [17].

Two previous studies suggested active carbon dioxide washout during apnea because apnea time was prolonged during HFNO and the rate of carbon dioxide was lower when compared to historical data [7, 8]. However, two randomized controlled trials using different oxygen flow rates in apneic pediatric patients detected no differences in carbon dioxide rise [10, 18]. In a single center randomized controlled trial in paralyzed adults, our group found no differences in carbon dioxide rise at different flow rates between 0.25 and 70 l.min^{-1} [19]. Therefore, the postulated carbon dioxide washout could not be verified during apnea.

The present study is a secondary outcome analysis of this previously published randomized controlled trial [19, 20]. We aimed to assess the dynamics of lung impedance using electrical

impedance tomography (EIT) in apneic patients, to determine whether different oxygen flow rates during apnea may cause less atelectasis formation and/or an increase in functional residual capacity.

To achieve this we estimated the changes in lung volume by EIT during HFNO at different flow rates in apneic, anesthetized and paralyzed adult elective surgical patients prior to intubation.

Methods

The Cantonal Ethics Committee of Bern approved the study (2018–00293). It was registered at ClinicalTrials.gov (NCT03478774, Primary Investigator: Lorenz Theiler. Registration date March 27, 2018. Written informed consent was obtained by the research team from all participants. This single-center randomized controlled trial was performed in the Department of Anaesthesiology and Pain Medicine, at the Bern University Hospital in Bern, Switzerland between March 2018 and December 2019. The primary outcome and the protocol of this project, including detailed methodology, inclusion and exclusion criteria, were published [19, 20].

Eligible study participants were adult patients aged 18 to 80 years with an ASA physical status of 1–3 who were able to speak German or French, and were scheduled for elective surgery under general anesthesia. After screening for inclusion and exclusion criteria, patients were recruited during the standard preadmission clinic.

Study procedure

The detailed methods are published elsewhere [18, 20]. In brief, patients were monitored according to the local standard of anesthesia care with additional placement of two transcutaneous sensors for carbon dioxide and oxygen measurements (TCM 4 and TCM 5; both Radiometer, Krefeld, Germany), and a thoracic EIT belt (PulmoVista 500; Dräger, Lübeck, Germany). A loose-fitting belt with 16 evenly spaced electrodes was placed around the chest of each patient between the 4th and 6th intercostal space, in a thoracic median plane.

After standard pre-oxygenation, anesthesia was induced using a target-controlled infusion of propofol and remifentanyl. Neuromuscular blockade was induced using Rocuronium; adequacy was verified with a train-of-four value of 0 before onset of apnea, every 5 minutes throughout the procedure, and by visual absence of even small diaphragmatic movements on the EIT screen. The patient's position remained unchanged during the study period.

After verification of successful facemask ventilation, patients were randomized to one of five study groups using a computer-generated sequence kept in sealed envelopes. The randomization list was generated by a study nurse of the Department of Anaesthesiology and Pain Medicine of the Bern University Hospital, who was not a member of the study group. Then the apneic period was started. The five studied groups were:

- (i) Minimal-flow group: 0.25 l.min⁻¹ oxygen via endotracheal tube
- (ii) Low-flow group: 2 l.min⁻¹ oxygen + continuous jaw thrust
- (iii) Medium-flow group: 10 l.min⁻¹ oxygen + continuous jaw thrust
- (iv) High-flow group: 70 l.min⁻¹ oxygen + continuous jaw thrust
- (v) Control group: 70 l.min⁻¹ oxygen + continuous laryngoscopy with a McGrath MAC video laryngoscope (Medtronic, Dublin, Ireland).

Blinding of study personnel was not feasible, but patients were blinded to their group allocation. All patients received 100% oxygen. We delivered high-flow humidified oxygen via a

high-flow nasal cannula (Optiflow™ MR 850 system Fisher&Paykel™, Auckland, New Zealand). Medium and low-flow humidified oxygen was delivered using Aquapak Hudson RCI (Teleflex, Wayne, Pennsylvania, USA) and a flow-meter (Carbamed digi-flow, Switzerland) using a standard nasal cannula (O₂-Star nasal cannula curved, Dräger, Lübeck, Germany). Minimal-flow oxygen was delivered via a standard tracheal tube, using the circuit of a Dräger Primus anesthesia machine (Dräger, Lübeck, Germany) to ensure the delivery of exactly 0.25 l.min⁻¹.

We confirmed upper airway patency visually using a nasopharyngeal fiberscope (EF-N slim, Acutronic, Hirzel, Switzerland) immediately after the start of apnea, and at 7 and 14 min of apnea. If the airway was not patent, an oropharyngeal tube (Guedel airway, Intersurgical, Workingham, Berkshire, UK) was inserted [21]. If the airway was then still not patent, the study intervention was terminated.

There were several pre-defined study termination criteria: SpO₂ <92%, transcutaneous CO₂ >100 mmHg, pH <7.1, potassium >6 mmol l⁻¹, and apneic period reaching 15 min. If any of these occurred, immediate bag-mask ventilation was started. The attending anesthesiologists then performed airway management at their discretion. After successful intubation, the anesthesiologist performed a standardized manual airway recruitment maneuver (sustained manual inflation to an airway pressure of 40 mbar for 15 seconds) [22]. The patient was then connected to the circuit of a Dräger Primus anesthesia machine (Dräger, Lübeck, Germany) and mechanical ventilation was commenced with tidal volumes of 6 ml.kg⁻¹ lean body weight.

Measurements

Thoracic EIT measurements were continuously recorded at a frame rate of 30 Hz during the whole study period. We excluded patients with incomplete measurements due to malfunction of the EIT device, if total malfunction of the device occurred, if there were major artefacts in the EIT signal, and if any of the predefined study termination criteria (especially SpO₂ <92% before end of the 15 minutes apnea time) were reached. The EIT images were reconstructed from the raw data based on the Graz consensus reconstruction algorithm for electrical impedance tomography (GREIT) using the torso mesh function [23, 24].

The change in lung volume was estimated by calculating lung impedance change, normalized to the impedance amplitude during mechanical ventilation at 6 ml.kg⁻¹ using adapted customized code (Matlab R2021a; The MathWorks Inc., Nattick, MA, USA) [25, 26]. Additionally, to detect potential differences in curve progression of the change in lung impedance, the time to 25%, 50% and 75% of total impedance reduction from baseline was calculated (Fig 1). All analyses were performed for the global impedance signal as well as for 4 regions of interest (anterior, mid-anterior, mid-posterior, and posterior).

Statistical analysis

The necessary sample size was calculated for the main outcome of the original study (difference in carbon dioxide increase). It was 22 patients per group; 25 patients were recruited per group [19]. No additional sample size calculation was performed for this secondary outcome analysis.

Data are reported as median [IQR] or mean ± SD. A probability of less than 0.05 was considered significant. Differences between groups were analyzed using Kruskal-Wallis test, corrected for multiple comparisons. All statistical analyses were performed with StatsDirect 3.3.5 (StatsDirect Ltd, Wirral, UK).

Results

From the 125 participants of the original study, 65 could be included in the present analysis (six patients were excluded because of malfunction of the measurement device resulting in

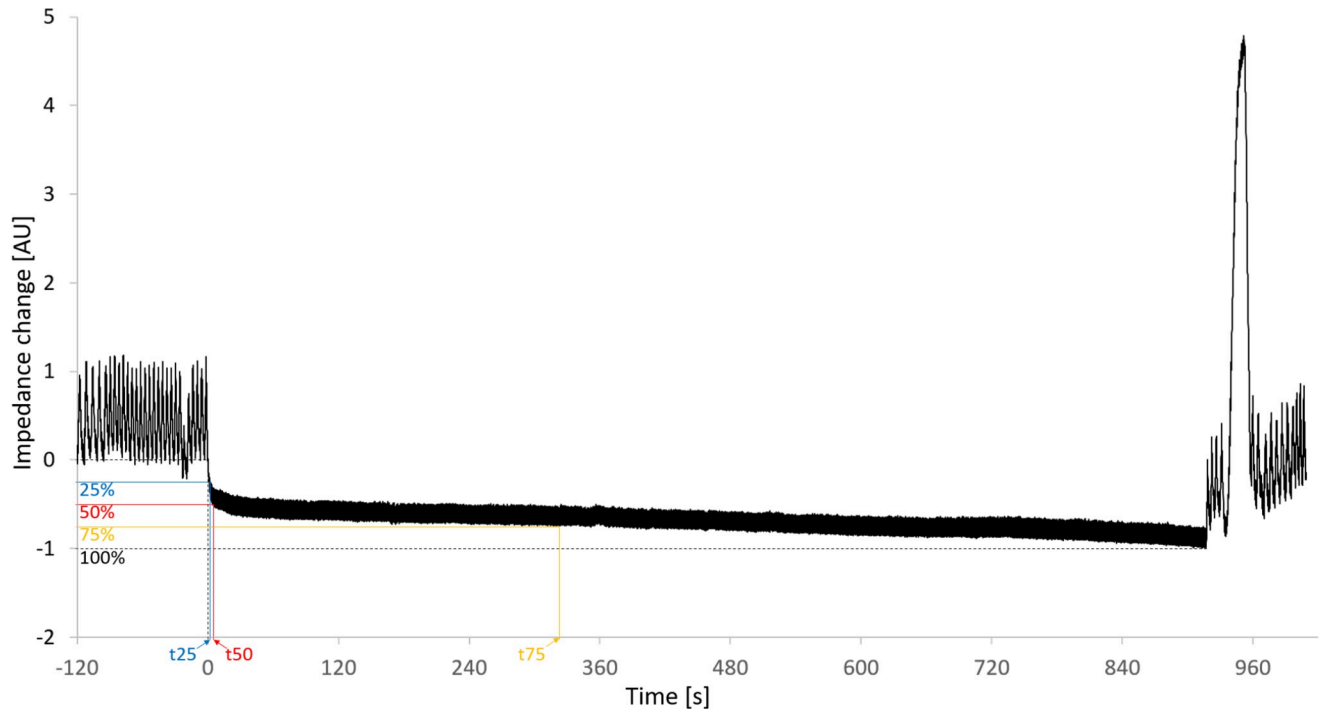


Fig 1. Example of a typical impedance signal time course. t_{25} , t_{50} and t_{75} define the time to 25%, 50% and 75% respectively of total impedance reduction from baseline.

<https://doi.org/10.1371/journal.pone.0273120.g001>

incomplete measurements; eight patients were excluded due to total malfunction of the device, 40 patients had to be excluded because of major artefacts in the EIT signal (sudden, unexplained steps in impedance; movement artefacts), and 6 patients reached the predefined study termination criterion of SpO_2 below 92% before the end of the 15-minute apnea period). The number of patients per randomized group included in this analysis was: (i) minimal-flow: 15 patients; (ii) low-flow: 10 patients; (iii) medium-flow: 12 patients; (iv) high-flow: 17 patients; (v) control: 11 patients (Fig 2). For baseline characteristics see Table 1.

The reduction in lung impedance normalized to the amplitude during mechanical ventilation at tidal volumes of $6\text{ml}\cdot\text{kg}^{-1}$ lean body weight for all patients was 1.45 ± 0.72 . Fig 3 shows the lung impedance change for each group, without significant differences between them, neither for the whole lung ($p = 0.34$) nor for the different regions of interest: $p = 0.94$ (anterior), $p = 0.41$ (mid-anterior), $p = 0.48$ (mid-posterior), and $p = 0.27$ (posterior). Time to 25%, 50% and 75% of total impedance change from baseline also did not differ significantly between groups (Table 2). We could not detect an impact of the tracheal tube on lung impedance in the minimal-flow group.

Discussion

This secondary outcome analysis of a previously published single-center randomized controlled non-inferiority trial on different flow rates of high-flow nasal oxygenation, demonstrates that the decrease in lung volume during apnea measured with electrical impedance tomography is independent of flow rates between $0.25\text{ l}\cdot\text{min}^{-1}$ and $70\text{ l}\cdot\text{min}^{-1}$.

HFNO was first applied in spontaneously breathing preterm infants and pediatric patients with respiratory distress (mainly caused by viral bronchiolitis) [27, 28]. Later, studies showed beneficial outcomes in adult patients with acute lung injury and post-extubation [29, 30]. Different



CONSORT 2010 Flow Diagram

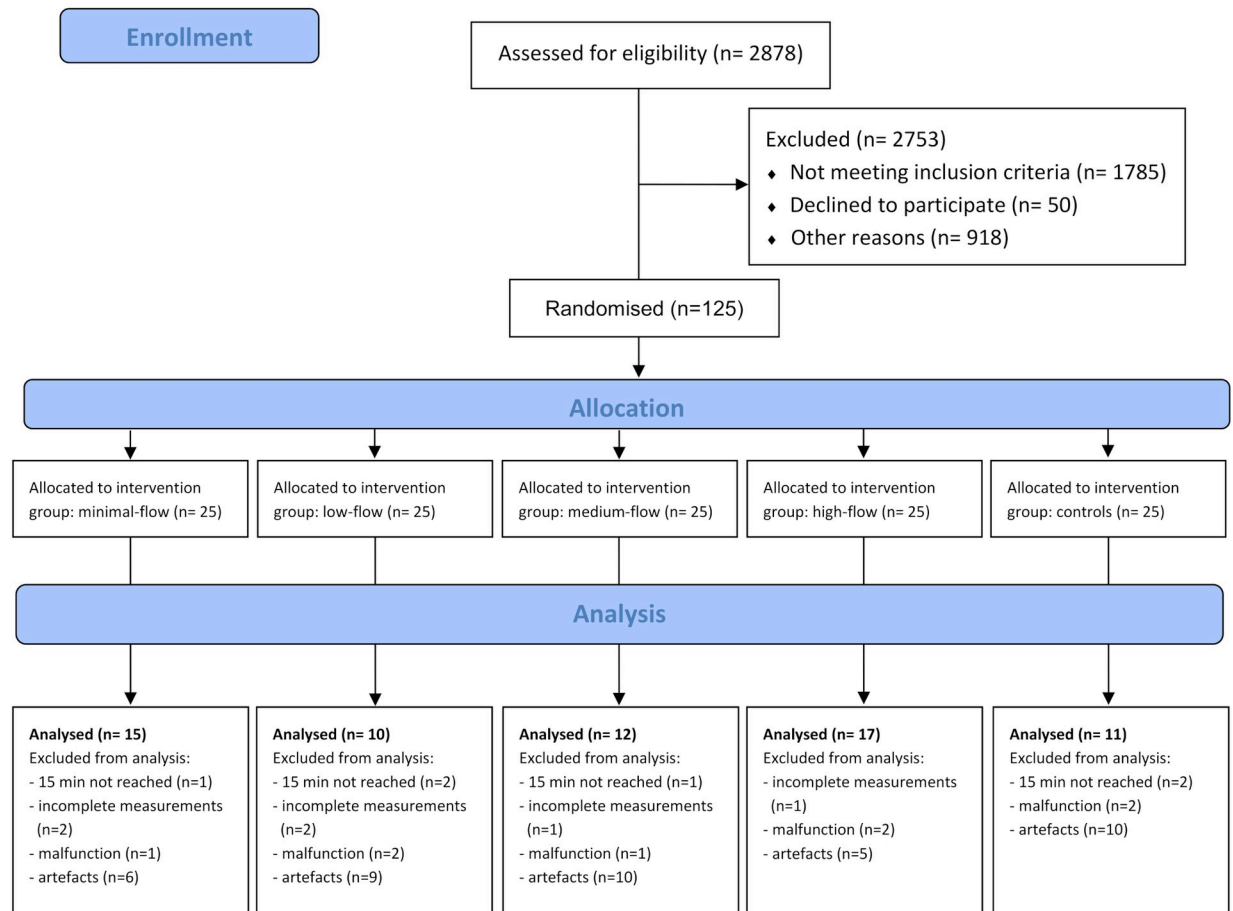


Fig 2. Consolidated standards of reporting trials flow diagram.

<https://doi.org/10.1371/journal.pone.0273120.g002>

physiological mechanisms have been postulated to be responsible for the clinical benefits of HFNO including reduction in work of breathing, carbon dioxide clearance, humidification of the air/oxygen mixture and increased lung volumes [31]. Researchers demonstrated an increase in end-expiratory lung impedance, which is a surrogate parameter for lung volume, that was independent of body position in healthy adults [32]. Others found similar lung recruitment with HFNO compared to non-invasive ventilation in a crossover study on adult patients with acute respiratory failure [33]. A different research group showed continuous lung recruitment with increasing flow rates up to 60 l.min⁻¹ in high risk patients after extubation [34]. Our data shows that while in spontaneously breathing patients the increase of flow rates of HFNO generates an increase in functional residual

Table 1.

	minimal-flow	low-flow	medium-flow	high-flow	controls
	n = 15	n = 10	n = 12	n = 17	n = 11
Female	6 (40)	5 (50)	7 (58)	7 (41)	6 (55)
Age y	44 ± 17	46 ± 15	47 ± 18	49 ± 20	48 ± 20
Weight kg	76 ± 15	75 ± 17	73 ± 17	77 ± 19	69 ± 14
Height cm	172 ± 9	171 ± 8	172 ± 10	170 ± 13	169 ± 11
Body mass index kg.m ⁻²	25 ± 3.7	24 ± 3.5	23 ± 3.5	25 ± 4.2	22 ± 3.9
Smoker/ex-smoker	5 (33)	5 (50)	3 (25)	4 (24)	5 (45)
ASA physical status					
I	7 (47)	2 (20)	2 (17)	4 (24)	3 (27)
II	7 (47)	7 (70)	10 (83)	12 (70)	7 (64)
III	1 (4)	1 (10)	0 (0)	1 (6)	1 (9)

Values given as number (percentage) or mean ± standard deviation; ASA American Society of Anesthesiologists

<https://doi.org/10.1371/journal.pone.0273120.t001>

capacity, the same phenomenon seems not to occur in apneic, anaesthetized and muscle relaxed patients. Lung volume loss as a surrogate parameter for atelectasis formation occurred independently of flow rates and was similar in all groups studied in this analysis.

Multiple studies showed that HFNO prolongs safe apnea time and improves apneic oxygenation during intubation and airway management in adult and pediatric patients under general anesthesia [9, 10, 35–38]. However, none of these studies investigated changes in lung volume or compared different flow rates. A recent study investigated airway pressures during apneic HFNO. The researchers did not find an increase in airway pressure when the mouth of the patients remained open [17]. Our study adds further evidence that prolongation of the apnea period with HFNO occurs by an “aerivatory mass flow” of oxygen independently of the generated airway pressures or lung volumes as already described over 60 years ago [39]. Despite the evident usefulness of HFNO to prolong the safe apnea period, it is now clear that the insignificant pressures generated in the airway cannot prevent atelectasis formation, which could be even provoked by the use of a high oxygen concentrations [22, 40, 41].

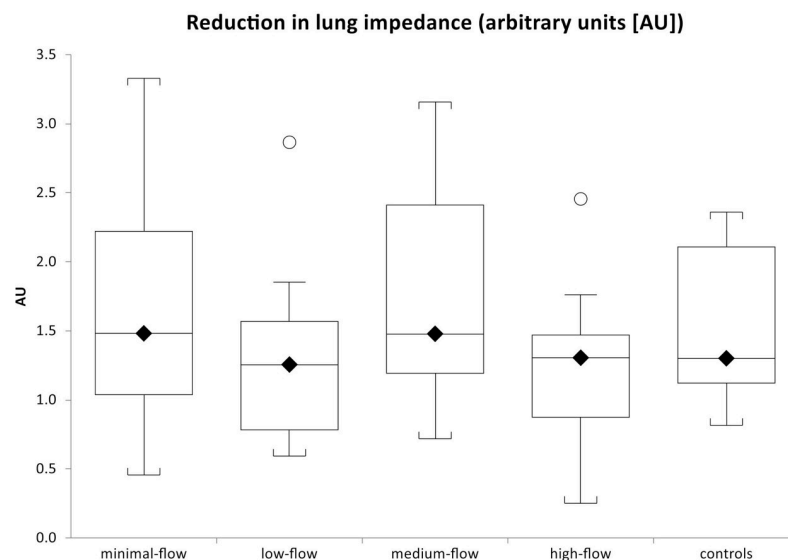


Fig 3. Total reduction in lung impedance normalized for impedance amplitude at tidal volumes of 6ml.kg⁻¹ lean body weight at different flow rates. No significant differences between groups.

<https://doi.org/10.1371/journal.pone.0273120.g003>

Table 2.

	minimal- flow	low- flow	medium- flow	high- flow	controls	
Time to 25%	1.3s [1.0–1.4]	1.4s [0.7–1.8]	1.2s [1.0–1.9]	1.5s [0.9–1.8]	1.3s [1.0–1.7]	p = 0.99
Time to 50%	5.1s [3.6–8.5]	6.2s [3.1–18.7]	5.7s [2.7–6.4]	4.9s [3.1–11.8]	5.1s [2.9–7.2]	p = 0.97
Time to 75%	56.1s [39.5–101.6]	59.6s [38.0–420.4]	54.7s [27.1–61.4]	52.8s [16.4–92.5]	49.2s [31.6–55.0]	p = 0.77

median [IQR] time to 25%, 50% and 75% of total impedance change from baseline; p-values derived from Kruskal-Wallis test

<https://doi.org/10.1371/journal.pone.0273120.t002>

Our study shows additionally that the decrease in lung volume is very rapid after the onset of apnea. Within less than 10 seconds half of the total reduction in lung volume occurred in most patients. Thereafter the decline slowed down, with 25% of volume reduction after approximately 40 seconds. This fast decrease in lung volume is most likely caused by the loss of functional residual capacity approaching residual volume. Later we expect atelectasis formation during ongoing apnea. These results have two major consequences. First, no matter how fast the airway was secured in apneic patients, a substantial reduction in lung volume has already occurred. Second, the amount of lung volume loss seems to justify the performance of a recruitment maneuver after airway instrumentation [42, 43]. No patient in our study desaturated within five minutes of apnea with supplemental 100% oxygen independently of flow rates. This supports the recommendation to use any form of supplemental 100% oxygen administration during airway management [44, 45]. However, providers need to take the extensive exclusion criteria list of this study into account [19, 20].

One limitation of this secondary analysis is the high number of measurements that had to be excluded due to technical reasons. EIT is a technique developed to measure tidal ventilation. During apnea the low signal-to-noise ratio is a disadvantage because minor disturbances often lead to relevant artefacts [46, 47]. Other limitations are the single-center study design and the extensive exclusion criteria list. Those limitations should be considered in judging the generalizability of our results.

In conclusion, this study provides first insights into the decrease in lung volume in anesthetized and paralyzed adults during apneic oxygenation with 100% oxygen at flow rates between 0.25 l.min⁻¹ and 70 l.min⁻¹. It was comparable between all groups. The reduction in lung volume happens rapidly after the onset of apnea, which justifies routine lung recruitment maneuvers after airway instrumentation.

Supporting information

S1 Checklist. CONSORT 2010 checklist of information to include when reporting a randomised trial*.

(DOCX)

S1 File.

(PDF)

Acknowledgments

Assistance with the study: The authors would like to thank Maren Loosli, anesthesia study nurse, for her help in conducting the study. The manuscript's English was reviewed by a native speaker, member of the Department of Anesthesiology and Pain Management, Sinai Health System, University of Toronto, Canada who wishes to remain unnamed.

Author Contributions

Conceptualization: Robert Greif, Thomas Riva, Lorenz Theiler, Sabine Nabecker.

Data curation: Thomas Riedel.

Formal analysis: Thomas Riedel.

Funding acquisition: Lorenz Theiler.

Investigation: Fabian Bürgi, Robert Greif, Heiko Kaiser, Thomas Riva, Lorenz Theiler, Sabine Nabecker.

Methodology: Thomas Riedel, Robert Greif, Heiko Kaiser, Thomas Riva, Lorenz Theiler, Sabine Nabecker.

Resources: Robert Greif, Lorenz Theiler, Sabine Nabecker.

Supervision: Robert Greif, Lorenz Theiler, Sabine Nabecker.

Validation: Robert Greif, Sabine Nabecker.

Writing – original draft: Thomas Riedel.

Writing – review & editing: Fabian Bürgi, Robert Greif, Heiko Kaiser, Thomas Riva, Lorenz Theiler, Sabine Nabecker.

References

1. Klein M, Reynolds LG. Relief of sleep-related oropharyngeal airway obstruction by continuous insufflation of the pharynx. *Lancet*. 1986; 327(8487):935–9. [https://doi.org/10.1016/s0140-6736\(86\)91043-3](https://doi.org/10.1016/s0140-6736(86)91043-3) PMID: 2871240
2. Sreenan C, Lemke RP, Hudson-Mason A, Osioviich H. High-flow nasal cannulae in the management of apnea of prematurity: a comparison with conventional nasal continuous positive airway pressure. *Pediatrics*. 2001; 107(5):1081–3. <https://doi.org/10.1542/peds.107.5.1081> PMID: 11331690
3. Sztrymf B, Messika J, Mayot T, Lenglet H, Dreyfuss D, Ricard JD. Impact of high-flow nasal cannula oxygen therapy on intensive care unit patients with acute respiratory failure: a prospective observational study. *J Crit Care*. 2012; 27(3):324.e9–13. <https://doi.org/10.1016/j.jcrc.2011.07.075> PMID: 21958974
4. Manley BJ, Owen LS, Doyle LW, Andersen CC, Cartwright DW, Pritchard MA, et al. High-flow nasal cannulae in very preterm infants after extubation. *N Engl J Med*. 2013; 369(15):1425–33. <https://doi.org/10.1056/NEJMoa1300071> PMID: 24106935
5. Schibler A, Pham TM, Dunster KR, Foster K, Barlow A, Gibbons K, et al. Reduced intubation rates for infants after introduction of high-flow nasal prong oxygen delivery. *Intensive Care Med*. 2011; 37(5):847–52. <https://doi.org/10.1007/s00134-011-2177-5> PMID: 21369809
6. Frat JP, Thille AW, Mercat A, Girault C, Ragot S, Perbet S, et al. High-flow oxygen through nasal cannula in acute hypoxemic respiratory failure. *N Engl J Med*. 2015; 372(23):2185–96. <https://doi.org/10.1056/NEJMoa1503326> PMID: 25981908
7. Patel A, Nouraei SA. Transnasal Humidified Rapid-Insufflation Ventilatory Exchange (THRIVE): a physiological method of increasing apnoea time in patients with difficult airways. *Anaesthesia*. 2015; 70(3):323–9. <https://doi.org/10.1111/anae.12923> PMID: 25388828
8. Gustafsson IM, Lodenius A, Tunelli J, Ullman J, Jonsson Fagerlund M. Apnoeic oxygenation in adults under general anaesthesia using Transnasal Humidified Rapid-Insufflation Ventilatory Exchange (THRIVE)—a physiological study. *British Journal of Anaesthesia*. 2017; 118(4):610–7. <https://doi.org/10.1093/bja/aex036> PMID: 28403407
9. Riva T, Theiler L, Jaquet Y, Giger R, Nisa L. Early experience with high-flow nasal oxygen therapy (HFNOT) in pediatric endoscopic airway surgery. *International Journal of Pediatric Otorhinolaryngology*. 2018; 108:151–4. <https://doi.org/10.1016/j.ijporl.2018.02.035> PMID: 29605345
10. Riva T, Pedersen TH, Seiler S, Kasper N, Theiler L, Greif R, et al. Transnasal humidified rapid insufflation ventilatory exchange for oxygenation of children during apnoea: a prospective randomised controlled trial. *British Journal of Anaesthesia*. 2018; 120(3):592–99. <https://doi.org/10.1016/j.bja.2017.12.017> PMID: 29452816

11. Ritchie J, Williams AB, Gerard C, Hockey H. Evaluation of a humidified nasal high-flow oxygen system, using oxygraphy, capnography and measurement of upper airway pressures. *Anesth Intensive Care*. 2011; 39:1103–10. <https://doi.org/10.1177/0310057X1103900620> PMID: 22165366
12. Parke RL, Eccleston ML, McGuinness SP. The Effects of Flow on Airway Pressure During Nasal High-Flow Oxygen Therapy. *Respiratory Care*. 2011; 56(8):1151–5. <https://doi.org/10.4187/respcare.01106> PMID: 21496369
13. Parke RL, Bloch A, McGuinness SP. Effect of Very-High-Flow Nasal Therapy on Airway Pressure and End-Expiratory Lung Impedance in Healthy Volunteers. *Respiratory Care*. 2015; 60(10):1397–403. <https://doi.org/10.4187/respcare.04028> PMID: 26329355
14. Frat JP, Ragot S, Thille AW. High-Flow Nasal Cannula Oxygen in Respiratory Failure. *N Engl J Med*. 2015; 373(14):1374–5.
15. Maggiore SM, Idone FA, Vaschetto R, Festa R, Cataldo A, Antonicelli F, et al. Nasal high-flow versus Venturi mask oxygen therapy after extubation. Effects on oxygenation, comfort, and clinical outcome. *Am J Respir Crit Care Med*. 2014; 190(3):282–8. <https://doi.org/10.1164/rccm.201402-0364OC> PMID: 25003980
16. Mauri T, Turrini C, Eronia N, Grasselli G, Volta CA, Bellani G, et al. Physiologic Effects of High-Flow Nasal Cannula in Acute Hypoxemic Respiratory Failure. *Am J Respir Crit Care Med*. 2017; 195(9):1207–15. <https://doi.org/10.1164/rccm.201605-0916OC> PMID: 27997805
17. Riva T, Meyer J, Theiler L, Obrist D, Butikofer L, Greif R, et al. Measurement of airway pressure during high-flow nasal therapy in apnoeic oxygenation: a randomised controlled crossover trial(). *Anaesthesia*. 2021; 76(1):27–35. <https://doi.org/10.1111/anae.15224> PMID: 32776518
18. Riva T, Preel N, Theiler L, Greif R, Butikofer L, Ulmer F, et al. Evaluating the ventilatory effect of trans-nasal humidified rapid insufflation ventilatory exchange in apnoeic small children with two different oxygen flow rates: a randomised controlled trial(). *Anaesthesia*. 2021; 76(7):924–32. <https://doi.org/10.1111/anae.15335> PMID: 33351194
19. Riva T, Greif R, Kaiser H, Riedel T, Huber M, Theiler L, et al. Carbon Dioxide Changes during High-flow Nasal Oxygenation in Apnoeic Patients: A Single-center Randomized Controlled Noninferiority Trial. *Anesthesiology*. 2022; 136(1):82–92.
20. Theiler L, Schneeberg F, Riedel T, Kaiser H, Riva T, Greif R. Apnoeic oxygenation with nasal cannula oxygen at different flow rates in anaesthetised patients: a study protocol for a non-inferiority randomised controlled trial. *BMJ Open*. 2019; 9(7):e025442. <https://doi.org/10.1136/bmjopen-2018-025442> PMID: 31300494
21. Uzun L, Ugur MB, Altunkaya H, Ozer Y, Ozkocak I, Demirel CB. Effectiveness of the jaw-thrust maneuver in opening the airway: a flexible fiberoptic endoscopic study. *ORL J Otorhinolaryngol Relat Spec*. 2005; 67(1):39–44. <https://doi.org/10.1159/000084304> PMID: 15753621
22. Neumann P, Rothen HU, Berglund JE, Valtysson J, Magnusson A, Hedenstierna G. Positive end-expiratory pressure prevents atelectasis during general anaesthesia even in the presence of a high inspired oxygen concentration. *Acta Anaesthesiol Scand*. 1999; 43(3):295–301. <https://doi.org/10.1034/j.1399-6576.1999.430309.x> PMID: 10081535
23. Adler A, Arnold JH, Bayford R, Borsic A, Brown B, Dixon P, et al. GREIT: a unified approach to 2D linear EIT reconstruction of lung images. *Physiol Meas*. 2009; 30(6):S35–55. <https://doi.org/10.1088/0967-3334/30/6/S03> PMID: 19491438
24. Graf M, Riedel T. Electrical impedance tomography: Amplitudes of cardiac related impedance changes in the lung are highly position dependent. *PLoS One*. 2017; 12(11):e0188313. <https://doi.org/10.1371/journal.pone.0188313> PMID: 29145478
25. Schnidrig S, Casaulta C, Schibler A, Riedel T. Influence of end-expiratory level and tidal volume on gravitational ventilation distribution during tidal breathing in healthy adults. *European journal of applied physiology*. 2013; 113(3):591–8. <https://doi.org/10.1007/s00421-012-2469-7> PMID: 22872368
26. Wettstein M, Radlinger L, Riedel T. Effect of different breathing aids on ventilation distribution in adults with cystic fibrosis. *PloS one*. 2014; 9(9):e106591. <https://doi.org/10.1371/journal.pone.0106591> PMID: 25222606
27. Franklin D, Babl FE, Schlapbach LJ, Oakley E, Craig S, Neutze J, et al. A Randomized Trial of High-Flow Oxygen Therapy in Infants with Bronchiolitis. *N Engl J Med*. 2018; 378(12):1121–31. <https://doi.org/10.1056/NEJMoa1714855> PMID: 29562151
28. Lee JH, Rehder KJ, Williford L, Cheifetz IM, Turner DA. Use of high flow nasal cannula in critically ill infants, children, and adults: a critical review of the literature. *Intensive Care Med*. 2013; 39(2):247–57. <https://doi.org/10.1007/s00134-012-2743-5> PMID: 23143331
29. Andino R, Vega G, Pacheco SK, Arenalillo N, Leal A, Fernandez L, et al. High-flow nasal oxygen reduces endotracheal intubation: a randomized clinical trial. *Ther Adv Respir Dis*. 2020; 14:1753466620956459. <https://doi.org/10.1177/1753466620956459> PMID: 32976085

30. Shang X, Wang Y. Comparison of outcomes of high-flow nasal cannula and noninvasive positive-pressure ventilation in patients with hypoxemia and various APACHE II scores after extubation. *Ther Adv Respir Dis.* 2021; 15:17534666211004235. <https://doi.org/10.1177/17534666211004235> PMID: 33781130
31. D'Cruz RF, Hart N, Kaltsakas G. High-flow therapy: physiological effects and clinical applications. *Breathe (Sheff).* 2020; 16(4):200224. <https://doi.org/10.1183/20734735.0224-2020> PMID: 33664838
32. Riera J, Perez P, Cortes J, Roca O, Masclans JR, Rello J. Effect of high-flow nasal cannula and body position on end-expiratory lung volume: a cohort study using electrical impedance tomography. *Respir Care.* 2013; 58(4):589–96. <https://doi.org/10.4187/respcare.02086> PMID: 23050520
33. Artaud-Macari E, Bubenheim M, Le Bouar G, Carpentier D, Grange S, Boyer D, et al. High-flow oxygen therapy versus noninvasive ventilation: a randomised physiological crossover study of alveolar recruitment in acute respiratory failure. *ERJ Open Res.* 2021; 7(4). <https://doi.org/10.1183/23120541.00373-2021> PMID: 34912882
34. Zhang R, He H, Yun L, Zhou X, Wang X, Chi Y, et al. Effect of postextubation high-flow nasal cannula therapy on lung recruitment and overdistension in high-risk patient. *Crit Care.* 2020; 24(1):82. <https://doi.org/10.1186/s13054-020-2809-7> PMID: 32143664
35. Badiger S, John M, Fearnley RA, Ahmad I. Optimizing oxygenation and intubation conditions during awake fibre-optic intubation using a high-flow nasal oxygen-delivery system. *Br J Anaesth.* 2015; 115(4):629–32. <https://doi.org/10.1093/bja/aev262> PMID: 26253608
36. Miguel-Montanes R, Hajage D, Messika J, Bertrand F, Gaudry S, Rafat C, et al. Use of high-flow nasal cannula oxygen therapy to prevent desaturation during tracheal intubation of intensive care patients with mild-to-moderate hypoxemia. *Crit Care Med.* 2015; 43(3):574–83. <https://doi.org/10.1097/CCM.0000000000000743> PMID: 25479117
37. Mir F, Patel A, Iqbal R, Cecconi M, Nouraei SA. A randomised controlled trial comparing transnasal humidified rapid insufflation ventilatory exchange (THRIVE) pre-oxygenation with facemask pre-oxygenation in patients undergoing rapid sequence induction of anaesthesia. *Anaesthesia.* 2017; 72(4):439–43. <https://doi.org/10.1111/anae.13799> PMID: 28035669
38. Waters E, Kellner M, Milligan P, Adamson RM, Nixon IJ, McNarry AF. The use of Transnasal Humidified Rapid-Insufflation Ventilatory Exchange (THRIVE) in one hundred and five upper airway endoscopies. A case series. *Clin Otolaryngol.* 2019; 44(6):1115–9. <https://doi.org/10.1111/coa.13408> PMID: 31356730
39. Bartlett RG Jr., Brubach HF, Specht H. Demonstration of ventilatory mass flow during ventilation and apnea in man. *J Appl Physiol.* 1959; 14(1):97–101. <https://doi.org/10.1152/jappl.1959.14.1.97> PMID: 13630833
40. Grandville B, Petak F, Albu G, Bayat S, Pichon I, Habre W. High inspired oxygen fraction impairs lung volume and ventilation heterogeneity in healthy children: a double-blind randomised controlled trial. *British journal of anaesthesia.* 2019; 122(5):682–91. <https://doi.org/10.1016/j.bja.2019.01.036> PMID: 30916028
41. Rothen HU, Sporre B, Engberg G, Wegenius G, Hogman M, Hedenstierna G. Influence of gas composition on recurrence of atelectasis after a reexpansion maneuver during general anaesthesia. *Anesthesiology.* 1995; 82(4):832–42. <https://doi.org/10.1097/0000542-199504000-00004> PMID: 7717553
42. Rothen HU, Neumann P, Berglund JE, Valtysson J, Magnusson A, Hedenstierna G. Dynamics of re-expansion of atelectasis during general anaesthesia. *Br J Anaesth.* 1999; 82(4):551–6. <https://doi.org/10.1093/bja/82.4.551> PMID: 10472221
43. Tusman G, Bohm SH, Tempra A, Melkun F, Garcia E, Turchetto E, et al. Effects of recruitment maneuver on atelectasis in anesthetized children. *Anesthesiology.* 2003; 98(1):14–22. <https://doi.org/10.1097/0000542-200301000-00006> PMID: 12502973
44. Heard A, Toner AJ, Evans JR, Aranda Palacios AM, Lauer S. Apneic Oxygenation During Prolonged Laryngoscopy in Obese Patients: A Randomized, Controlled Trial of Buccal RAE Tube Oxygen Administration. *Anesth Analg.* 2017; 124(4):1162–7. <https://doi.org/10.1213/ANE.0000000000001564> PMID: 27655276
45. Weingart SD, Levitan RM. Preoxygenation and prevention of desaturation during emergency airway management. *Ann Emerg Med.* 2012; 59(3):165–75 e1. <https://doi.org/10.1016/j.annemergmed.2011.10.002> PMID: 22050948
46. Dunlop S, Hough J, Riedel T, Fraser JF, Dunster K, Schibler A. Electrical impedance tomography in extremely prematurely born infants and during high frequency oscillatory ventilation analyzed in the frequency domain. *Physiol Meas.* 2006; 27(11):1151–65. <https://doi.org/10.1088/0967-3334/27/11/008> PMID: 17028408
47. Frerichs I, Amato MB, van Kaam AH, Tingay DG, Zhao Z, Grychtol B, et al. Chest electrical impedance tomography examination, data analysis, terminology, clinical use and recommendations: consensus statement of the TRanslational EIT developmeNt stuDy group. *Thorax.* 2017; 72(1):83–93. <https://doi.org/10.1136/thoraxjnl-2016-208357> PMID: 27596161