



Promoting Diverse Abilities Across the Lifespan



Director's Corner

Dr. Kiriko Takahashi
CDS Interim Director

Welcome to the September 2022 issue of the CDS eNewsletter. Special highlights in this issue include:

- [Featured Artist Lynnell Mateaki](#)
- [RDS Seeks Manuscript Review Board Members](#)
- [Exhibitor Release #PacRim2023](#)
- [Introducing Deaf in Government Partnership #PacRim2023](#)
- [Call for Presentation Proposals #PacRim2023](#)
- [Legislative Forum Dates | Hawai'i DD Council](#)
- [Hawai'i's Path to Employment First Seminar Recording Now Available](#)
- [2022-2023 CDS Community Advisory Council Introduction](#)
- [Website Launch Project Ho'oku'i V: Kūlia i ka Nu'u](#)
- [Fall Announcements with Project Hōkūlani eNewsletter](#)



Relationship, Together Forever (2022) Mateaki, Wailuku, Hawai'i

Interested in being included in the next newsletter? Submit a request by the fourth Friday of each month at <http://go.hawaii.edu/JBJ>.

READ MORE



Manuscript Review Board



2023 Call for Proposals Release



Legislative Forum Dates

FOLLOW US



Twitter, Facebook, LinkedIn, Instagram, Linktree, Spotify, and YouTube link icons



Center on Disability Studies, College of Education,
University of Hawai'i at Mānoa



Featured Artist

Lynnell Mateaki



Lynnell Mateaki is an artist with Kalima O Maui. She is a prolific artist. Her drawings focus on relationships with friends, family and sports activities such as golf.



Annie Moriyasu
Make Art, Change Lives! Founder
amoriyas@hawaii.edu

Follow MACL



Facebook and Instagram link icon



Relationship, Together Forever
(2022) Mateaki, Wailuku, Hawai'i

Art Media: Dual portraits of a couple. Hand-drawn text in many colors using marker pens surround a dual portrait of Lynnell and her boyfriend.

Description: Hand-drawn text in many colors using marker pens surround a dual portrait of Lynnell and her boyfriend.



Call for Reviewers

TIME FOR REVIEW



The editor and editorial board of the *Review of Disability Studies: An International Journal* invites your participation in peer review of manuscripts.

Manuscript reviewers are critical to the publication process. As a reviewer, you will gain valuable experience in publishing and help shape discourse around disability. Your contribution will be recognized in each issue as a member of our esteemed Manuscript Review Board. Individuals with expertise in disability studies and a commitment to social justice are invited to become reviewers for this well-established open-source journal.

Publishing since 2003, *The Review of Disability Studies, An International Journal* is a quarterly, peer-reviewed, open-access journal committed to accessibility in all domains and contexts. We encourage clearly written submissions that demonstrate a commitment to social justice and help add to a global conversation about the role of disability in human life. We believe furthering such a dialogue will lead to more meaningful inclusion.

More about Guidelines and Ethical Considerations for Manuscript Review Board members may be found on the Review Board Application at <https://tinyurl.com/rds-review-board>.

Applications sent to rdsj@hawaii.edu (subject line: Review Board) will be accepted until September 29th, 2022. Applicants should submit a brief statement of interest explaining their experience with issues of disability studies, along with a current resume/CV. Questions may be addressed to editor Raphael Raphael at rdsj@hawaii.edu.

Follow RDS Journal



Facebook, LinkedIn, Twitter, email, website link icons.

Due: September 29, 2022

If you are interested in being considered for serving as a reviewer:

- Complete the RDS Review Board Application 2022 and submit it to rdsj@hawaii.edu. With subject line: Review Board.
- Should you be invited to serve as a reviewer you will be asked to create an account profile in the journal's submission portal with your application information.
- Review Board Application: <https://tinyurl.com/rds-review-board>.



Exhibitor Invitation

Pacific Rim International Conference on Disability and Diversity



Aloha Mai Exhibitors,

On behalf of the Center on Disability Studies (CDS) at the University of Hawai'i at Mānoa, we would be honored to have you as an exhibitor at the 38th Annual Pacific Rim International Conference on Disability and Diversity which will be hosted in person on March 6-7, 2023 at the Hawai'i Convention Center in beautiful Honolulu, HI. Our target attendance is between 600-750 participants.

Our 2023 conference theme is "Coming Together and Moving Forward" Ho'okahi ka 'ilau like 'ana (Wield the paddles together).

Taking with us lessons from choppy waters and storms, we recognize now more than ever the importance of continuing to move forward, together. This can only be done by coordinating our actions and our energies, keeping in mind our shared destination. Over the last two years, we have seen challenges none of us could have anticipated. And we have shown ourselves, time and again, we are stronger than we think we are. And now, moving forward, with all we have learned, we also know we are strongest together. Come share your research, your personal stories, your practical strategies, fellowship and aloha at the 38th Annual Pacific Rim International Conference on Disability and Diversity. Join us to celebrate the inclusive places and spaces we build together.

Pacific Rim Conference is the premier international gathering for people committed to disability and diversity research, training, service provision and the lived experience. The Center on Disability Studies at the University of Hawai'i at Mānoa, the host of the conference, has a long-standing commitment to promoting diverse abilities across the lifespan through interdisciplinary training, research and service. Pac Rim is one of our many efforts towards this. Our conference attendance goal for this return to an in person platform for the first time in three years is between 600-750 attendees.

For further information about the conference and CDS, we invite you to visit our conference website at pacrim.coe.hawaii.edu. Your organization's presence as an exhibitor will help Pac Rim 2023 be a greater gathering for all. We will be honored to have your presence and have you share your organization's resources with our conference attendees.

Sincerely,

Kiriko Takahashi, Ph.D.
Interim Director
Center on Disability Studies
University of Hawai'i at Mānoa
kiriko@hawaii.edu

Holly Manaseri, Ph.D.
2023 Pacific Rim Conference Co-Chair
Faculty and Outreach Coordinator
Center on Disability Studies, University of Hawai'i at Mānoa
hmanaser@hawaii.edu

WELCOMING DIG ATTENDEES TO PAC RIM!



Deaf in Government (DIG) serves as the only national non-profit organization for Deaf and Hard of Hearing government employees and contractors at the local, state, municipal, and federal levels. Part of DIG's mission is to empower Deaf and Hard of Hearing government employees and contractors through networking, fostering professional growth, and career advancement. DIG will be co-hosting their conference as part of our Deaf strand.



Call for Proposals

38th Pacific Rim International Conference on Disability and Diversity
March 6 - 7, 2023 - Honolulu, Hawai'i, USA (in-person)

Due: Dec 1, 2022, HST at <http://go.hawaii.edu/na2>

"Coming Together and Moving Forward"

Ho'okahi ka 'ilau like 'ana (Wield the paddles together)

It's time to share your most innovative ideas, professional practices, and theoretical knowledge!! #PacRim2023 conference will provide an opportunity to share your research/practices, build your professional network, publish in the conference proceedings, and develop international partnerships at the Premier International Gathering on Disability.

Featured strands include:

- [Built Environment: Digital, Physical and Social](#)
- [Deaf Innovations](#)
- [Education](#)
- [Employment First, Employment For All](#)
- [Family, School, and Community Engagement](#)
- [Healthy Bodies & Minds: Access for All](#)



Submit Proposal

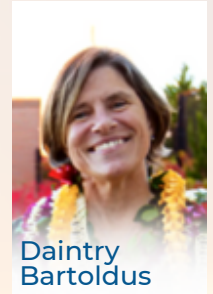
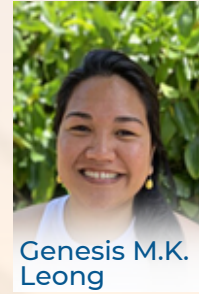
<http://go.hawaii.edu/na2>

Submit your online proposal at <http://go.hawaii.edu/na2> by Dec 1, 2022, HST. All proposals received by Oct 1st will be reviewed by Oct 28th. For more information about the submission process, visit <https://pacrim.coe.hawaii.edu> or contact prcall@hawaii.edu.



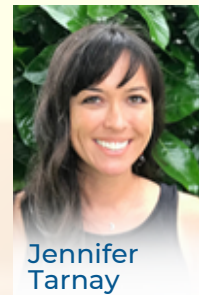
Built Environment: *Digital, Physical, and Social*

Built Environments can give people a sense of belonging and the ability to thrive as a culturally-inclusive society. This strand will offer a platform to learn, engage and grow from ideas around digital environments, physical infrastructure, and social inclusion. Featured topics include: Building and Housing, Climate Resilience and Disasters, Digital Accessibility; and Transportation. We welcome stories, insights and blueprints for collaboration across diverse sectors and generations aimed at creating a more equitable world. Learn more at <http://go.hawaii.edu/kb2>.



Deaf Innovations

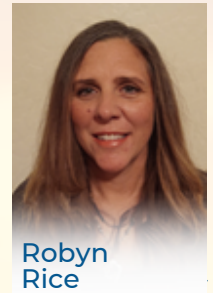
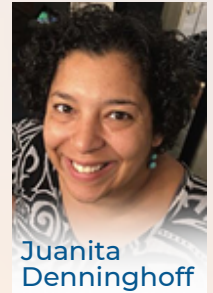
In partnership with Deaf In Government (DIG), the Deaf Innovations topic area for the 2023 Pacific Rim Conference will concentrate on interests and issues, of and for, the Deaf, Hard of Hearing, or Deaf-Blind communities in both the public and private sector. Recognizing the diversity of these communities, this gathering is an opportunity for community members, allies, service providers, educators, researchers, and other stakeholders from a wide range of backgrounds to come together to share strategies, experiences, research, and pedagogical practices pursuing equity and inclusion. We invite topics on advocacy, communication access, education, employment and entrepreneurship, language and culture, independent living, legal rights and issues, interpreting, inclusion and intersectionality, and family support. Learn more at <http://go.hawaii.edu/2bX>.



Education

The landscape of education has transformed out of necessity to rethink and reimagine what education means and how it is delivered, especially for vulnerable and marginalized populations. While the past few years of the pandemic have proved challenging, they have brought about reflection and innovation in education for students of diverse needs. We welcome proposals that reinvigorate our need to discover and create more equitable and accessible systems, pedagogies, practices, policies and services for students with disabilities from early childhood through postsecondary education. Topics of interest include creating inclusive preK-12 and higher education; international models of education and indigenous culturally responsive pedagogy; transition planning, and effective instruction, programs and support services.

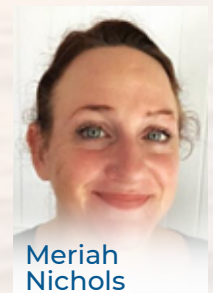
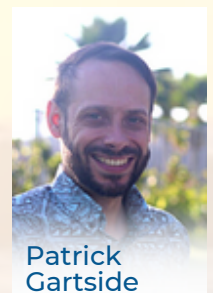
Learn more at <http://go.hawaii.edu/yb2>.



Employment First, Employment for All

Employment gives individuals better economic self-sufficiency, a chance to utilize their skills, and actively engage in their community. This also applies to persons with disabilities and their quality of life. Progress has been made to assist individuals with disabilities to obtain, maintain and retain employment. Work is still being done to provide support including new policies, program implementations, coaching, education, and training. The employment strand will look to provide insight, innovation, and diverse approaches to providing support to individuals with disabilities in their journey towards employment. Topics will include Work Incentives, Transition to Employment, Equity through Diversity and Inclusion in the Workforce, Policy change, and Training Programs. We are seeking proposals that reflect these topics and the impact of employability for persons with disabilities.

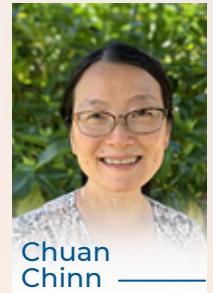
Learn more at <http://go.hawaii.edu/2bn>.



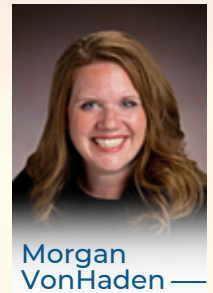
Family, School, and Community Engagement

Engaging with families as partners for guiding their children’s learning and development continues to be important for student success. This holds true from preschool through graduation. In this strand we hope to reflect on what we have learned, what works and directions for future research and practice. We are seeking sessions that address family engagement impacting the following: students’ sense of belonging in schools, attendance in school, mental health, learning, the Special Education process, or other topics salient to the current landscape of education.

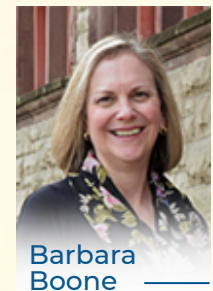
Partnerships with families based on mutual trust, equity and shared responsibility have proven their worth but there is still more we need to do to support the most vulnerable groups in our schools and communities. The challenges of the last year, including social isolation, and widespread use of online and distance learning technology, have brought change as well as new opportunities to the learning environment. This strand of the conference welcomes presentations that support and strengthen the three spheres of influence that contribute to student success: Family, School, and Community. Sessions should have clear grounding in research, center families as important partners, and connect to positive outcomes for students preK - 12. Learn more at <http://go.hawaii.edu/Fb2>.



Chuan Chinn



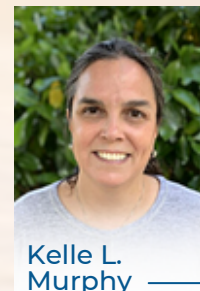
Morgan VonHaden



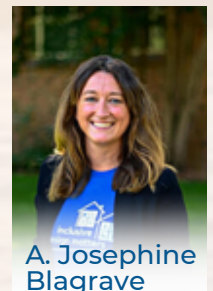
Barbara Boone

Healthy Bodies & Minds: Access for All

Achieving a wellness lifestyle involves a holistic approach encompassing spirit, mind, and body. Components of a wellness lifestyle can include: social connections; physical activity; nutrition, and mental health. People engage in a wellness lifestyle because they like the way it makes them feel, it helps prevent chronic illnesses, and they enjoy the social connections. Those who are disabled face greater barriers to accessing and engaging in physical activity, and this inequality is found across the lifespan and for all disability populations. Closely related, and sharing similar disparities and access issues, health access and wellness are also tied to poorer outcomes. Though these topics are interrelated, they each have their own barriers, facilitators and can improve the lives of those who are disabled in a unique way. This strand provides opportunities for presenters to come together and move forward together by sharing knowledge in the following three areas: physical activity across the lifespan, mental health, and well-being. Learn more at <http://go.hawaii.edu/2ba>.



Kelle L. Murphy



A. Josephine Blagrove

SAVE THE DATE



Hawai'i State Council on Developmental Disabilities
proudly presents

LEGISLATIVE FORUMS



MAUI

October 5th
4:30 - 6:00pm
Online



KAUA'I

October 19-20th
3:30 - 5:00pm
Online



HILO

October 26th
1:30 - 3:00pm
Online



KONA

October 27th
1:30 - 3:00pm

Meet your local incumbents and candidates and discuss current concerns that affect the Developmental Disability Community. There will be Q&A portion of the event.

Che Silvert, Legislative and Community Liaison
Hawai'i State Council on Developmental Disabilities
che.silvert@doh.hawaii.gov

Follow HISCDD

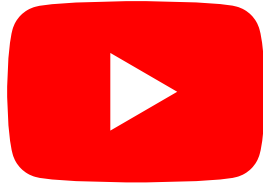


Facebook link icon



Center on Disability Studies, Hawai'i State Council on Developmental Disabilities, and Work Now Hawai'i presents

Hawai'i's Path to Employment First



with Patrick Gartside



Center on Disability Studies



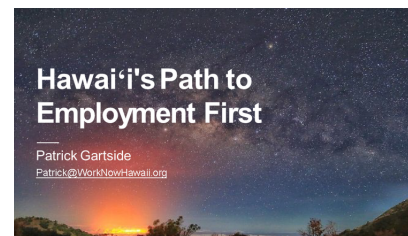
SUBSCRIBE

Center on Disability Studies (CDS), University of Hawai'i at Mānoa proudly presents our August 2022 partner seminar featuring Patrick Gartside, chapter president of the Hawai'i Association of People Supporting Employment First, and founding executive director of Work Now Hawai'i. This video highlights Employment First, a bill approved by the Hawai'i State Legislature meaning that employment in the general workforce should be the first and preferred option for individuals with disabilities receiving assistance from publicly-funded systems; The Association of People Supporting Employment First (APSE); and Work Now Hawai'i, a 501(c)(3) nonprofit organization established to help people living with disabilities achieve independence through gainful employment.

Seminar Resources



Watch Seminar Recording
<http://go.hawaii.edu/2FQ>



View Presenter's Slides
<http://go.hawaii.edu/sF2>



Introducing 2022-2023

Community Advisory Council

Learn more at <https://cde.hawaii.edu/councils>



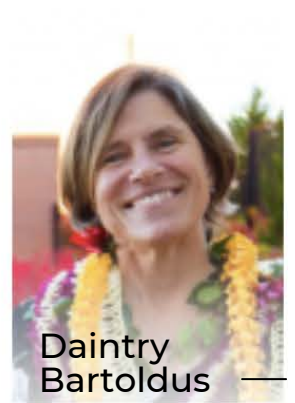
Martha M. Guinan



Isabella Barrett



Kirk Barth



Daintry Bartoldus



Gigi Davidson



Louis Erteschik



Barbara Fischlowitz-Leong



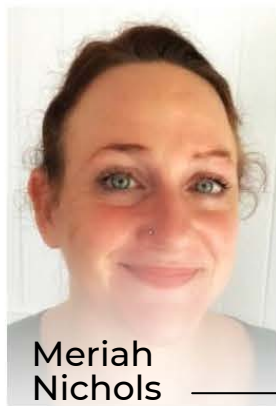
Gayle Fox



Karen Glasser



Holly Manaseri



Meriah Nichols



Sandra Oshiro



Kiele Pennington



Linee Reeves



Charlene Robles



Susan Rocco



Clayton Takemoto



Adam Tanners



Matthew Ulanski

Project Ho'oku'i V: Kūlia i ka Nu'u Website Launch



» Visit Our Website

<https://cde.coe.hawaii.edu/hookui5kulia>

Project Ho'oku'i V: Kūlia i ka Nu'u

- Prepares students transitioning from high school to college on what they will need to know.
- Supports academically ready students in early college programs by providing financial aid, tutoring, and mentoring.
- Supports students who are not academically ready, through tutoring and mentoring.
- Addresses cultural dissonance through place-based and culture-based community activities honoring the traditions of the 'aina and serving the community.
- Is aligned with Hawaii DOE's Nā Hopena A'o - HĀ



Lisa Uyehara, M.A., J.D.
Principal Investigator
uyehara@hawaii.edu

Follow Ho'oku'i V





Hōkūlani Insider



'Ohana Gatherings

Family Engagement Activity Topics & Schedule



Academic Enrichment in Science

Hōkūlani Schedule for Students



Mentoring

Seeking Academic/Cultural Mentor in Hilo, Kona and Lana'i



Internships

Highlighting 2022 Summer Internship Presentations



College Transition Support

Featuring Upcoming College Campus Tours

Follow Project Hōkūlani



Twitter, Facebook, Instagram, email and Website link icons

Dr. Hye-Jin Park
Principle Investigator
parkhye@hawaii.edu

